

GM Larry Evans in the Northwest, 1968-1969

As reported by Russell (Rusty) Miller, Vancouver WA, November 2010

GM Larry Evans won the Strawberry Open held in Marysville Washington, June 8-14, 1968. His score was 9-0. Second place was Viktors Pupols at 7.5-1.5. 95 players took part in the event, sponsored by the Marysville Jaycees. Northwest Ratings in the July 1968 issue listed Evans' rating as 2633. GM Evans gave a simultaneous exhibition at the Monte Cristo Hotel in Everett on June 7, 1968. He lost to Arnold Dubow of Seattle and drew with Tony Campbell of Muncie, Indiana and George LeCompte of Seattle. There were 25 boards and play lasted 3 hours.

The cover of the June 1968 issue was printed with green ink. I think I played Evans in the simul he did and I got him to sign the cover.

In the 1969 Strawberry Open, GM Evans and IM William Addison tied for 1st with 7.5-.5. They drew with each other in round 5 and took home \$800 each. Clear 2nd was Alan Ludgate of Vancouver BC.

Only 61 players took part in the 1969 event open section directed by Isaac Kashdan. The reserve section drew 36 players and was won by Ben Thurston 7.5-.5 for the trophy prize.

{ The next two pages are images of the June 1968 and July 1969 *Northwest Chess* covers. }

**Northwest
CHESS**



Larry Evans

LARRY EVANS

Will Be There!



Will You?

STRAWBERRY OPEN CHESS CHAMPIONSHIP

MARYSVILLE, WASHINGTON

JUNE 8-14

JUNE 1968

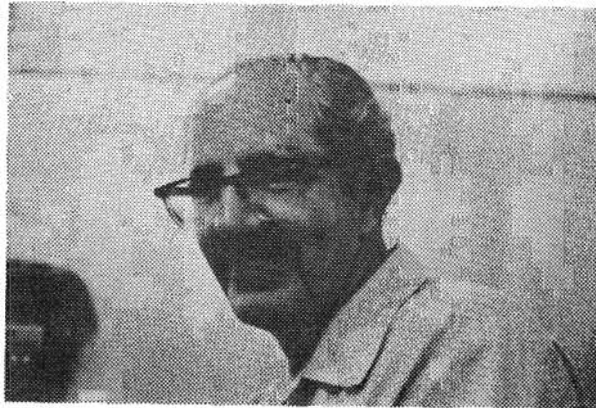
Northwest Chess



Larry Evans



William Addison



Isaac Kashdan

JULY 1969