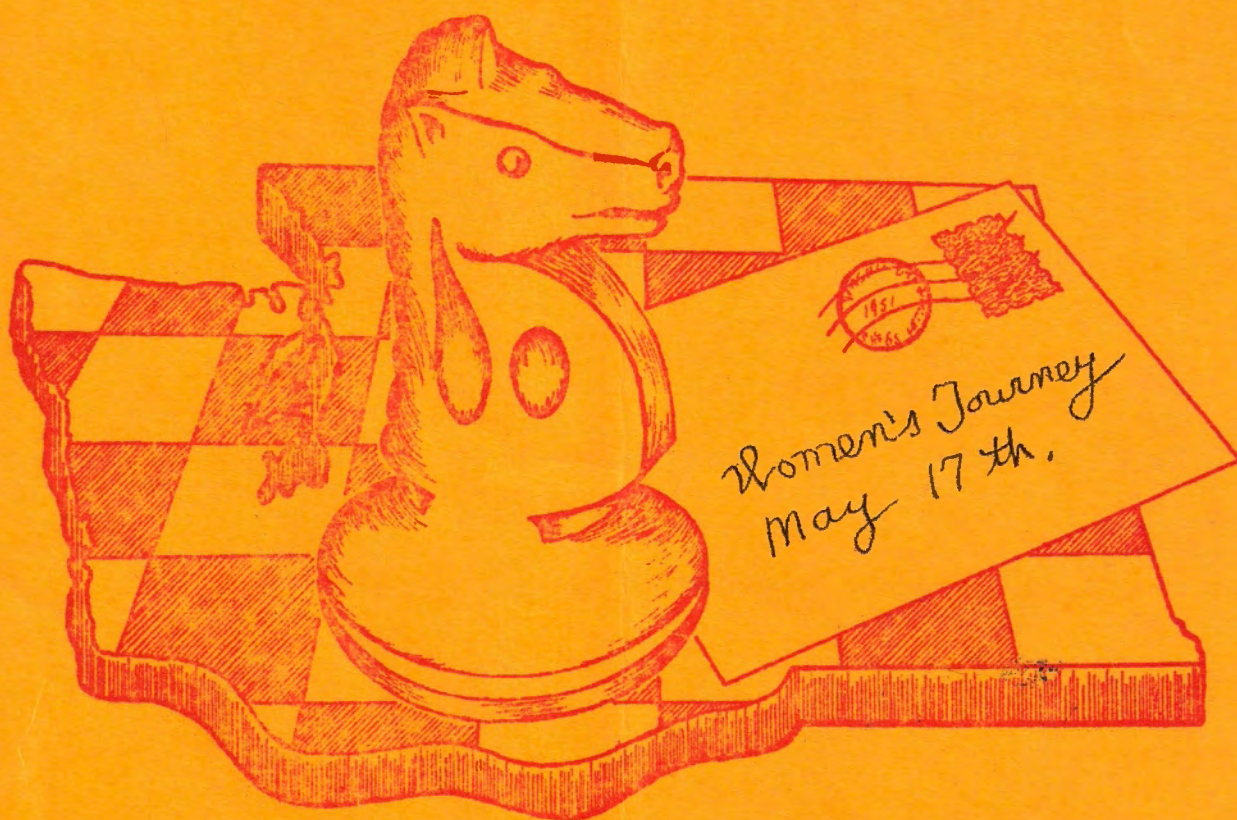


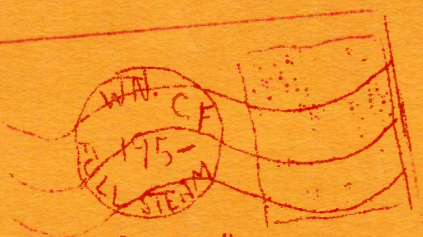
WASHINGTON

CHESS

LETTER



APRIL 1953



# WASHINGTON CHESS LETTER

\$2.00 YEARLY

Dan Wade - Editor  
11023 25th N. E.  
Seattle 55, Wash.

Bob Merk - Circulation  
1026 E. 71st.  
Seattle 5, Wash.

Assistant Editors

John Nourse, Route 1, Box 787, Port Blakely.  
F. H. Weaver, 501 Olympic Place, Seattle 99.  
O. W. Manney, 5930 38th Ave. S. W., Seattle 6.  
E. Zengalis, 1521 18th Ave. Apt. D, Seattle.  
Ken Mulford, 11660 Renton Ave. Apt. 14 Seattle.

W. C. F. EXECUTIVE OFFICERS

O. W. Manney - President    D. Wade - Publication  
R. M. Collins - Vice-Pres.    D. Wade - Tournaments  
Peter Husby - Secretary    R. Merk - Circulation  
W. H. Raleigh - Treasurer    J. Nourse - Past Pres.  
O. LaFreniere - Publicity    L. Taro - Past Pres.  
E. Arnold - Past Pres.

COMING EVENTS

1953 Oregon Open, June  
13-14 at Portland Club.

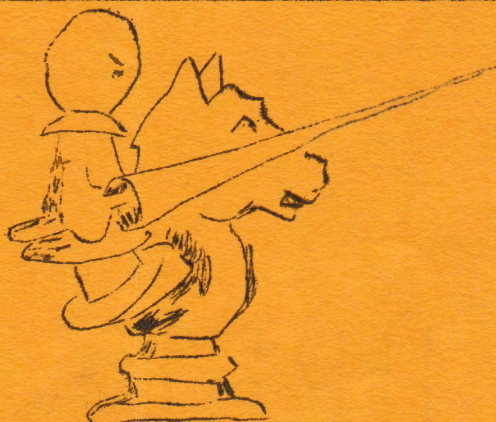
British Columbia-Wash-  
ington match??????????

Second Seattle Seafair  
Open. Date??????????

1953 U.S. Open, July 27  
to Aug. 8 at Milwaukee.  
We must all donate \$\$\$\$  
to the Zengalis Fund if  
we are going to have a  
United States champion.  
\*\*\*\*\*

Help the Washington C.F.  
grow!! Get a subscriber.

Send subscriptions to W. H. Raleigh, 4312 Woodland Park Ave., Apartment #3.  
Seattle, Washington.



# 1953 TOURNEY FOR WOMEN

Are there any women chess players in the state of Washington interested in taking part in a tournament to determine this state's top player of the fair sex? This question can be answered on SUNDAY, MAY 17th. Starting at one o'clock that afternoon at the Seattle Chess Club, 616 Madison St. (in the basement of the Knickerbocker Hotel), a knockout tournament will begin.

Only \$1.00 will be charged to enter this tourney. If enough women play in this event the winner will collect enough prize money to buy a new bit of Spring finery. All of the money collected will go to the winner! This is strictly a non-profit venture. Its only purpose is to satisfy my curiosity regarding the number of women chess players interested. If this is a successful tournament it will probably be made an annual event.

This knockout tournament works quite simply. If you win in the opening round you are eligible to play in the next round and so on until you lose a game. Then you are through! The trick is to not lose. If you play to a draw you have a half loss against you. Two draws equal a loss and you are knocked out.

There is no age limit, of course. The Tournament Director for this big event (I hope) will be Dan Wade. Write him at 11023 25th N. E., Seattle, Washington or phone JU 9214. Whether or not you write or phone you can be Washington State Lady Chess Champion by just appearing at the Seattle C.C. and winning a few games.

CIRCLE SUNDAY, MAY 17, ON YOUR CALENDAR.

ATTEND!



CHESS PLAYERS! IF YOU HAVE A CHESS PLAYING WIFE, GIRL FRIEND, DAUGHTER, SISTER, MOTHER OR ACQUAINTANCE, PASS ALONG THE ABOVE INFORMATION TO HER!

# NOURSE 'AD NAUSEAM<sup>9</sup>

THE EXECUTIONERS SONG from "THE MIKADO".

with apologies to everybody.

\* \* \* \* \*

As some day it may happen that a victim must be found  
I've got a little list - I've got a little list  
Of Caissa offenders who might well be underground  
And who never would be missed - who never would be missed  
There's the pestilential smoker who exhales right in your face  
And the guy who moves his pieces like he's slamming down an ace  
And when it comes to zero, there's nothing quite beneath  
The thrice benighted moron who loves to click his teeth  
And also the kibitzer who just will not desist  
They'd none of 'em be missed - they'd none of 'em be missed.

Chorus;-

He's got 'em on his list - he's got 'em on his list  
And they'll none of 'em be missed - they'll none of 'em be missed.

There's the guy who likes his onions - Ah, WHAT a forceful breather  
I've got him on my list - with the chronic pessimist  
Be it onions - be it garlic - it sure fouls up the ether  
I've got 'em on my list - the pleasure I can't resist.  
There's the egotistic dawdler - who low as low I'd rate  
In meetings and at matches - HE always comes in late.  
But worse by far than these by Gar, is another you may recall  
HE does'nt write - HE does'nt call - HE does'nt show up at ALL.  
I've got 'em on the list - their tactics we must resist  
And they never will be missed - they never will be missed.

Chorus;- Repeat.

There's the chap who chews tobacco - his spray is Oh, so loose,  
I've got him on my list - and ZOWIE what a list  
Though he's not so darned repulsive as the guy who ducks, his dues  
They're all upon the list - and they never will be missed.  
There's the hummer and the strummer - and the boy who likes to croon  
And that dinger of a singer who can't stay on the tune  
There's the man who wants post-mortems whens'er he suffers defeat  
BUT when he wins - there ARE no sins - it's a very spectacular feat  
When we liquidate these savages as the others will insist  
They surely will be missed - they SURELY will be missed  
There'll be but ONE lone member left - the sheer perfectionist.

Chorus :-

They'll all of 'em be missed - they'll all of 'em be missed  
There'll be but one lone member left - that sheer perfectionist.

\* \* \* \* \*  
\* \* \* \* \*

REGARDING AN OREGON CHESS BULLETIN

Jim Schmitt reveals, in recent correspondence with this editor, that players in the Portland Chess Club are making slow progress toward the creation of an Oregon Chess Bulletin. Jim says it will be a magazine consisting of three 13" sheets, folded in the middle to produce ten inside pages and two covers about  $6\frac{1}{2}$ " x  $8\frac{1}{2}$ ", something like the first Everett Chess Letters put out by Larry Taro only three pages instead of two. Jim says he is going to try to get Dake to write for them monthly, although it may be a collection of his best games. It would add a lot of prestige to the magazine as most chess players know of A. Dake and would read his stuff with great interest.

Jim says Portland may have George Reddington back this Fall. He has put in about  $2\frac{1}{2}$  years in the army and is now in Japan. In closing, Jim hints darkly that Reddington would be a strong addition to their team. Tremble, ye stalwart sons of Washington!

CLOCKS! CLOCKS! CLOCKS! CLOCKS!

Time limits in WCF tournament games will have more meaning from now on. Just recently O. W. Manney received six chess clocks he had sent for from West Germany. Move before that flag falls or lose!



# U.S. JUNIOR

The Kansas City Y.M.C.A. Chess Club will be host from August 10th to the 15th, inclusive, to the United States Junior Chess Championship Tournament, it has been announced by the U.S. Chess Federation and the Kansas City Club.

The dates cover the week immediately following the U. S. Open in Milwaukee, arranged so that junior players who compete there may travel directly to Kansas City, if they wish.

Players will be guests in the homes of Kansas City youths for the week, at no charge of course. Those who may arrive on August 9th will be taken care of.

The entry fee will be \$5, and the event will be open to members of the U.S.C.F. and to Canadian youths who are under 21 on the opening date.

A minimum of ten rounds, Swiss system, will be played, and may go to twelve rounds if the number of entries justifies it. Entries close at 10 A.M., Monday, August 10th, and the first round will begin at 1:30 P.M. Two rounds will be played each day in a ten-round event, except Thursday. If it goes to twelve rounds, two rounds will be played on opening day; three rounds each on Tuesday and Wednesday, and two each on Friday and Saturday. Thursday will be set aside as "break day" when the players will be guests of the Chamber of Commerce and the host club for rest, relaxation, and entertainment.

Five trophies will be awarded by the host club. In addition, the Milwaukee Journal's challenge trophy for the champion, now held by Curt Brasket of Tracy, Minnesota, 1952 champion, and the Dittman trophy for the highest ranking player under 15 will be at stake. These two trophies are up each year, the winners holding them for the following year and returning them to the next tournament. Names of winners are inscribed on them each year.

Address inquiries to the Tournament Committee, Y.M.C.A. Chess Club 404 East 10th Street, Kansas City 6, Missouri. Charles W. Graham is Chairman. The committee requests advance notice of intention to enter the event.

\* \* \* \* \*

## A LETTER FROM MCNEIL

The March issue of the Washington Chess Letter has just arrived and we were well pleased with the comments on page 12 and the description of the visit to McNeil Island by Mr. Joe Cerretelli and his team. The men at McNeil Island appreciate your interest in their welfare and they hope that the publicity given in the Chess Letter will bring requests to come to McNeil Island from other groups.

We would like to work out arrangements for placing a team in your Puget Sound Chess League, but of course, all of our games would have to be "home games", and the best time for playing would be on Sunday afternoons.

F. T. Wilkinson, Warden

# NOTES BY MANNEY

## ZEMGALIS FUND

It's time to get busy on the fund to send Elmars Zemgalis to the 1953 U. S. Open. Mr. F. H. Weaver first suggested it in his January column. Dan Wade mentioned it in his editorial last month. Now it is up to you to start the money rolling in. In the event Zemgalis is unable to go every cent will be returned to you. The U. S. Open will be held at Milwaukee July 27 through August 8 and in addition to those two weeks there will be the travel time. Besides his actual expenses Zemgalis must suffer a loss in earnings. In order for him to afford the trip we must raise a minimum of \$200. I suggest we set our goal at \$250. A little more wont be too much. Dont put it off. Do it now! Or give me your pledge.

Zemgalis has been a valuable asset to Washington chess and extremely generous. He has not requested anything for his exhibitions and, more important, has not hesitated to participate in our tournaments when invited. He was with us on our two unhappy trips to Mt. Vernon and Centralia. This is his first opportunity to really show his prowess in an important United States tournament. Let us give him the boost he well deserves. Please send your donations to me at 5930 38th Avenue, Seattle 6, Washington.

Receipts to date: F. H. Weaver...\$10.00. O. W. Manney...\$10.00.  
Ken Mulford....\$10.00.

All contributions will be acknowledged in the Chess Letter. Dan has promised all the space necessary!

\* \* \* \* \*

## AND NOW ON WITH THE "GIUOCO PIANO"

I can imagine the pleasure with which Don Ignacio A. Gutierrez collected these little gems and painstakingly copied them in manuscript. Mr. F. H. Weaver kindly wrote me: "Your notes from Señor Gutierrez are much better for learning chess players than the polished gems of the master players,--really basic chess". True - but since when were Emanuel Lasker, Paul Morphy, William Steinitz, etc., not classed as master players? It's merely that the style has changed. Actually the last word on the soundness of the Moeller Attack has not been voiced. See the many variations in M.C.O. But these are living games!

### SECOND VARIATION

Black plays Q-K2 on his fourth move.

Played in the ancient and historic castle of Montomerency in the year 1760.

ROUSSEAU

DE CONTI

- |          |       |
|----------|-------|
| 1. P-K4  | P-K4  |
| 2. N-KB3 | N-QB3 |
| 3. B-B4  | B-B4  |
| 4. P-B3  | Q-K2  |

The object of this move is to avoid the exchange of pawns after White plays P-Q4.

- |              |        |
|--------------|--------|
| 5. O-O       | P-Q3   |
| 6. P-Q4      | B-N3   |
| 7. B-KB5     | P-B3?  |
| 8. B-R4      | P-N4?? |
| 9. NxNP!     | PxN    |
| 10. Q-R5 ch. | K-B1   |

In case he played....K-Q2, Greco suggested this continuation 10.....K-Q2;

- |                      |                   |
|----------------------|-------------------|
| 11. BxP, Q-N2;       | 12. B-K6ch., KxB; |
| 13. Q-K8 ch., Kx-K2; | 14. P-Q5 mate.    |
| 11. BxP              | Q-N2              |
| 12. P-B4             | PxQP              |
| 13. P-B5!            | PxP ch.           |
| 14. K-R1             | PxP               |
| 15. BxN              | PxR - Q           |
| 16. P-B6!!           | Resigns.          |

Played between the Russian masters interned at Triberg, Germany during a tournament held under the auspices of the British Chess Federation during 1914.

RABINOWITCH                      FLAMBERG

- |    |       |       |
|----|-------|-------|
| 1. | P-K4  | P-K4  |
| 2. | N-KB3 | N-QB3 |
| 3. | B-B4  | B-B4  |
| 4. | P-B3  | Q-K2  |
| 5. | O-O   | P-Q3  |
| 6. | P-Q4  | B-N3  |
| 7. | P-QR4 | P-QR3 |
| 8. | P-R5? | ----- |

A mistake which cost him the exchange as a result of overlooking the tenth move of Black

- |     |          |       |
|-----|----------|-------|
| 8.  | -----    | NxRP! |
| 9.  | RxN      | BxR   |
| 10. | Q-R4 ch. | P-N4  |

The move not considered by White

- |     |      |       |
|-----|------|-------|
| 11. | QxB  | PxB   |
| 12. | PxP  | PxP   |
| 13. | NxP  | N-B3  |
| 14. | B-N5 | O-O   |
| 15. | N-Q2 | B-K3  |
| 16. | P-B4 | P-R3  |
| 17. | B-R4 | KR-N1 |

Returning the exchange, which he could have avoided by playing instead Q-Q3.

- |     |             |       |
|-----|-------------|-------|
| 18. | N-B6        | Q-Q3  |
| 19. | NxR         | QxN   |
| 20. | P-B5        | RxN   |
| 21. | PxB         | PxP   |
| 22. | Q-K5        | RxP   |
| 23. | QxP ch.     | K-R1  |
| 24. | Q-R3        | N-Q2  |
| 25. | B-B2        | P-QR4 |
| 26. | B-Q4        | Q-N5  |
| 27. | P-N3        | N-K4  |
| 28. | Q-K6        | Q-R4  |
| 29. | P-R4        | Q-K7  |
| 30. | Q-B8 ch.??? | ----- |

Rabinowitch stated that had he played instead R-B8 ch., followed by Q-N8 ch. he could have drawn by perpetual check. However, Mr. Amos Burn, editor of the Chess Section of The Field of London discovered the following and beautiful mate.

- |      |          |            |
|------|----------|------------|
| (30. | R-B8 ch. | K-R2       |
| (31. | Q-N8 ch. | K-N3       |
| (32. | R-B6 ch. | KxR (or a) |
| (33. | Q-B8 ch. | K-K3       |
| (34. | Q-K8 ch. | K-Q3       |
| (35. | BxN ch.  | K-B4       |
| (36. | B-Q4 ch. | K-Q3       |
| (37. | Q-Q8 ch. | K-K3       |
| (38. | Q-Q5 ch. | K-K2       |

- |      |            |      |
|------|------------|------|
| (39. | B-B5 ch.   | K-K1 |
| (40. | Q-K6 ch.   | K-Q1 |
| (41. | B-K7 ch.   | K-K1 |
| (42. | B-Q6 ch.   | K-Q1 |
| (43. | Q-K7 ch.   | K-B1 |
| (44. | Qx P Mate. |      |

a. If instead Black plays K-R4, the mate is as follows:

- |      |            |      |
|------|------------|------|
| (32. | R-B6 ch.   | K-R4 |
| (33. | Q-K8 ch.   | K-N5 |
| (34. | Q-K6 ch.   | KxP  |
| (35. | BxN ch.    | KxP  |
| (36. | R-B4 ch.   | K-N6 |
| (37. | R-N4 ch.   | K-B6 |
| (38. | R-N3 ch.   | KxP  |
| (39. | B-Q6 mate! |      |

- |     |          |      |
|-----|----------|------|
| 30. | -----    | K-R2 |
| 31. | Q-B5 ch. | P-N3 |
| 32. | Resigns. |      |

-----

P. C. F. SAN AMANT                      H. STAUNTON  
(First four moves as in preceding game.)

- |     |       |         |
|-----|-------|---------|
| 4.  | ----- | Q-K2    |
| 5.  | P-Q4  | PxP?    |
| 6.  | O-O   | N-K4    |
| 7.  | NxN   | QxN     |
| 8.  | P-B4  | PxP ch. |
| 9.  | K-R1  | Q-Q5    |
| 10. | Q-N3  | N-R3    |
| 11. | NxP   | O-Q     |
| 12. | P-KR3 | -----   |

To prevent N-N5 threatening Q-N8 ch. and N-B7 mate.

- |     |       |       |
|-----|-------|-------|
| 12. | ----- | P-QB3 |
| 13. | P-B5  | Q-B3  |
| 14. | P-K5  | ----- |

The beginning of a brilliant and formidable attack.

- |     |         |      |
|-----|---------|------|
| 14. | -----   | Q-R5 |
| 15. | BxN     | QxB  |
| 16. | N-K4    | B-Q5 |
| 17. | N-Q6    | Q-R4 |
| 18. | BxP ch. | RxB  |
| 19. | P-N4    | BxKP |

Bad enough, but there was nothing better.

- |     |          |          |
|-----|----------|----------|
| 20. | QR-K1    | QxP ch.  |
| 21. | QxQ      | BxN      |
| 22. | R-K8 ch. | B-B1     |
| 23. | KR-K1    | P-Q4     |
| 24. | R-Q8     | R-Q2     |
| 25. | KR-K8    | RxR      |
| 26. | RxR      | P-QN3    |
| 27. | Q-K3     | B-N2     |
| 28. | RxR      | BxR      |
| 29. | Q-K6 ch. | K-R1     |
| 30. | Q-B7     | Resigns. |

-----



D. HARRWITZ

DR. BLEDDOW

(First four moves as in preceding game.)

- |     |        |              |
|-----|--------|--------------|
| 5.  | P-Q4   | B-N3         |
| 6.  | P-Q5   | N-Q1         |
| 7.  | B-K2?? | P-Q3         |
| 8.  | P-KR3  | P-KB4        |
| 9.  | QB-N5  | N-KE3        |
| 10. | QN-Q2  | O-O          |
| 11. | N-RL4  | PxP!         |
| 12. | NxP    | NxN!!!       |
| 13. | BxQ    | BxP ch.      |
| 14. | K-B1   | N-N6 Mate!!! |

- |     |       |       |
|-----|-------|-------|
| 12. | Q-N3? | P-N5! |
| 13. | PxP   | RxP   |
| 14. | B-RL4 | O-O-O |
| 15. | K-R2  | QR-N1 |
| 16. | P-N3  | R-B5! |
| 17. | P-QL4 | BxN   |

White resigned on the 20th move, however the remaining moves are missing.

E. P. BUFORD

E. G. GRAVES

(First four moves as in preceding game.)

- |     |            |            |
|-----|------------|------------|
| 5.  | N-B3       | N-B3       |
| 6.  | N-KN5      | O-O        |
| 7.  | P-B4       | P-KR3      |
| 8.  | P-KR4      | B-FN5      |
| 9.  | Q-Q2       | PxN        |
| 10. | RPxP       | N-KR4      |
| 11. | P-B5       | N-B5       |
| 12. | P-N6       | R-F6       |
| 13. | QxB        | NxNP ch.   |
| 14. | K-R2       | NxQ        |
| 15. | BxN        | Q-Q2       |
| 16. | R-R7       | BxP        |
| 17. | QR-R1      | B-R6       |
| 18. | QRxB       | QxR        |
| 19. | RxQ        | QR-K1      |
| 20. | N-Q5       | PxP ch.??? |
| 21. | N-B6 Mate. |            |

SECOND CONTINUATION

The following elegant game was played in Mexico City during 1874, at which time El Sr. Don Andres Clemente Vasquez enjoyed the title of Champion of Mexico.

W. Carrington

a. c. vasquez

- |     |       |         |
|-----|-------|---------|
| 1.  | P-K4  | P-Y4    |
| 2.  | N-KB3 | N-QB3   |
| 3.  | B-B4  | B-B4    |
| 4.  | P-Q3  | P-Q3    |
| 5.  | O-O   | N-B3    |
| 6.  | B-F3  | B-N3    |
| 7.  | N-B3  | O-O     |
| 8.  | N-QR4 | N-F2    |
| 9.  | P-KR3 | N-N3    |
| 10. | B-N3  | K-R1    |
| 11. | Q-Q2  | N-RL4!  |
| 12. | NxB   | RPxN    |
| 13. | P-B3  | N(3)-B5 |
| 14. | K-R2  | P-KB4   |
| 15. | B-B2  | B-Q2    |
| 16. | P-QL4 | PxKP    |
| 17. | BxP-  | P-QL4   |
| 18. | B-B2  | P-K5    |
| 19. | N-K5  | BxP!    |
| 20. | R-KN1 | -----   |

Better seems PxB, followed by BxN.

- |     |       |            |
|-----|-------|------------|
| 20. | ----- | BxP        |
| 21. | RxB   | Q-R5 ch.   |
| 22. | K-N1  | N-R6 ch.   |
| 23. | K-B1  | NxP!!      |
| 24. | BxN   | Q-R8 ch.   |
| 25. | R-N1  | N-N6 ch.   |
| 26. | K-F1  | QxR ch.    |
| 27. | BxQ   | R-B8 mate! |

Played by correspondence.

DUDLEY

McGRATH

(First five moves as in preceding game.)

- |     |        |       |
|-----|--------|-------|
| 6.  | B-KN5  | P-KR3 |
| 7.  | B-RL4  | P-KF4 |
| 8.  | B-KN3  | B-KN5 |
| 9.  | P-KR3? | B-RL4 |
| 10. | P-B3   | Q-Q2  |
| 11. | QN-Q2  | R-KN1 |

From an antique treatise of Stammo

WHITE

BLACK

(First four moves as in preceding game.)

- |     |         |            |
|-----|---------|------------|
| 5.  | N-N5?   | Q-E3       |
| 6.  | BxP ch. | K-B1       |
| 7.  | O-O     | P-KR3      |
| 8.  | BxN     | PxN        |
| 9.  | B-Q5    | N-Q5       |
| 10. | P-QB3   | Q-R3       |
| 11. | P-KR3   | BxP        |
| 12. | PxN     | BxNP       |
| 13. | KxB     | Q-R6 ch.   |
| 14. | K-N1    | Q-R7 mate. |

(To be continued.)

A marvelous inspiration once struck Prof. Anderssen as he was walking along one of the boulevards of Paris and he went about telling all his friends that he had evolved a completely new line of play in his head, without sight of the chess-board at all.

He played the new line of play against Morphy the first chance he got, and - lost in seventeen moves!

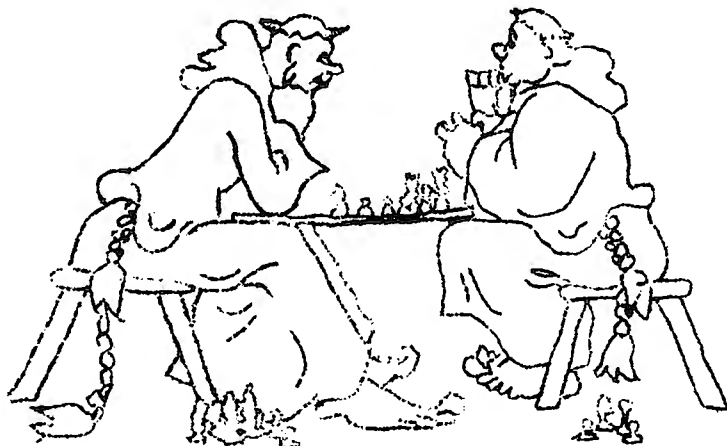
The women's tournament dreamed up by the editor and at this writing, tournament director, could well be termed a wildcat venture. Now I am not calling women chess players wildcats! I am referring to the impromptu nature of this chess promotion. The notice in this magazine plus notices sent to Royal Brougham of the Post Intelligencer and the Y.W.C.A. may or may not bring some response. If we do have women chess enthusiasts in our midst they will have their chance on May 17th.

The 1953 United States Open chess tournament is slated to get under way on July 27th at Milwaukee. If Washington chess players are generous this state will have a very capable representative at this important meet. Elmars Zengalis could be the new U. S. chess champion if he can afford to make the trip. Mr. O. W. Manney is collecting the funds. Please send donations to him. Let us put Washington on the chess map!

This is a lame duck editorial. In our next issue there should be much to write about. The annual WCF meeting on April 26th will be reported in full. Radical changes in our organization are expected. If the planned changes are made, we will have a president with authority and a small committee to keep the president's powers in check. At present we have a very loose organization where everybody and his brother is trying to run things. As long as the tail wags the dog we can get little done.

It is hoped that the entire state will be organized in the not too distant future. I would like to see the day when our Puget Sound League will only be just one of many state chess leagues. Tacoma, four Seattle teams, Kitsap and possibly other Puget Sound area communities could make up the Puget Sound League. Everett, Mount Vernon and Bellingham could make up a Northwest Washington League and Olympia, Centralia and Vancouver could make up a Southwest League. The Spokane, Yakima, Pasco League could be the core of a future East Washington League. The championship teams of two leagues would meet each other. For example the Southwestern champs could meet the Puget Sound champs and the winner of the Eastern League could play the Northwestern champions. The winners of those two matches would then meet for the state title. The same system could be used with modifications for individual title tournaments.

Ted Warner is directing the 1953 Seattle Chess Club tourney. On the 17th of April the standings of this 14 player double round-robin were as follows: Muller (13-6), Walloch (9½-4½), Edberg (14-8), Seiter (9-5), R. Vellias (13½-10½), Mulford (10½-8½), Wade (5-3), Bjerkeseth (7-10), Shephard (5-7), Roberts (5-11), Davidsen (3-8), Koenkow (3-9), Cummings (½-1½) and Blau (0-6). The above standings are not in exact order.



# GAMES

A. DAKE

E. ZEMGALIS

White

Black

1. P-Q4	P-Q4
2. P-QB4	P-K3
3. N-QB3	N-KB3
4. B-N5	B-K2
5. N-B3	P-KR3
6. B-R4	O-O
7. Q-B2	N-K5
8. BxB	QxB
9. P-K3	NxN
10 QxN	P-QB3
11 B-Q3	PxP
12 BxP	P-QN3
13 O-O	N-Q2
14 P-K4	B-N2
15 KR-K1	P-QB4
16 Q-R3	KR-B1
17 QR-Q1	N-B3
18 B-Q3	R-B2
19 B-N1	PxP
20 QxQ	RxQ
21 RxP	R-Q2
22 RxR	NxR
23 N-Q4	P-R3
24 P-B3	R-Q1
25 N-B2	N-K4
26 N-K3	P-KN4
27 R-Q1	

Draw agreed on.

J.L. SHEETS

E.G. SHORT

White

Black

(Notes by Sheets)

1. P-Q4	P-Q4
2. N-KB3	N-QB3
3. P-K3	N-KB3
4. P-QB4	P-K3
5. N-QB3	B-K2
6. B-Q3	O-O
7. O-O	R-K1
8. P-QN3	P-KR3
9. B-N2	

White probably should have played P-QR3, but thought Black would lose more time attacking White's bishop. White wanted to discourage Black's preparations for P-K4 by getting his other bishop on the long diagonal pronto.

9. ....	N-QN5
10 B-N1	P-QB3
11 P-QR3	N-QR3
12 N-K5	B-Q3
13 P-KB4	Q-QB2
14 P-QB5	B-KB1
15 Q-Q3	P-QN3
16 P-QN4	N-QN1
17 P-QR4	

Black threatened B-R3. If White attacks with 17 N-KN4, a simple defense is B-K2; or, if both sides felt adventurous, a sacrificial line might have resulted, e.g., 17 N-KN4, N-K5; 18 NxN, PxN; 19 QxP, P-KB4; 20. Q-QB2, PxN; 21 Q-R7ch, K-B2; 22. P-B5! PxKBP; 23 B-R2ch, K-K2; 24 P-Q5, PxQP (PxBP? P-Q6ch! wins) 25 BxQP, N-B3; 26 BxKNP, BxB; 27 BxN, QxB; 28 QxBch, K-Q1; 29 QR-Q1ch, B-Q2; 30 R-Q6, Q-B2; 31. KR-Q1, R-K2; 32 RxBch! wins. In actual play White saw as far as 22 P-B5 in this variation. However he did not see 23 B-R2 ch. so gave it up as too speculative

17 ....	P-QR4
18 PxQNP	QxP
19 P-QN5	B-QN5
20 PxP	NxP
21 Q-QN5	R-QR3
22 KR-QB1	NxN
23 KBPxN	N-Q2
24 Q-Q3	P-KN3
25 N-QN5	R-Q1
26 B-QR3	R-QR1
27 R-KB1	N-KB1
28 BxB	PxB
29 Q-Q2	B-QR3
30 QxQNP	N-Q2

If 30....BxN; 31 B-Q3.  
31 B-QB2

Of course not B-Q3, as the B would be en prise after the N sacrifice. The Q expedition to K7 leads to nothing, as Black's N sacrifice as in the text, or the simple 31...R-KB1 saves. If 32 QxN?? BxN wins.

31 ....	NxKP
32 PxN	QxPch

33 K-R1 xKP  
 34 QR-K1 Q-KN2  
 35 R-KB3 QR-QB1  
 36 B-QN3 R-QN1  
 37 P-KR3 R-N2?  
 38 Q-R5 R-QR1  
 39 N-B7 R-QB1  
 40 NxB, and wins.

Black struggled on for 17 more moves before resigning. In his footnotes Mr. Sheets writes "I don't know what you'd call this opening, except QPG. It resembles the Tchigorin Defense to the QGD. Short says he played 2...N-QB3 under the impression that he had the Whites."(!)

J. SCHMITT                      C. BALLANTINE  
 White                                      Black

1. P-Q4	P-Q4
2. P-QB4	P-K3
3. N-QB3	N-KB3
4. B-N5	B-K2
5. P-K3	QN-Q2
6. N-B3	O-O
7. PxB	NxP
8. BxB	NxB
9. B-Q3	N-QB3
10 QR-B1	P-K4
11 P-Q5	N-K2
12 N-KN5	N-KB3
13 O-O	P-KR3
14 N-B3	N(2)xP
15 NxP	B-K3
16 N-N5	P-B3
17 N-Q4	B-B1
18 B-B4	Q-K2?

Black now loses 2 pawns.

19 N(5)xQBP!	PxN
20 NxQBP	Q-K5
21 BxN	NxB
22 QxN	QxQ

Black may have had more of a chance if he had kept the Q, but N-K7ch wins the exchange.

23 N-K7ch	K-R2
24 NxQ	B-K3
25 N-B7	QR-N1
26 NxB	PxN
27 R-B2	R-B4
28 R-Q1	R(4)-QN4
29 P-QN3	R-QR4
30 P-N3	R-N2
31 K-N2	R(4)-QN4
32 R-Q6	P-K4
33 R-R6	R-Q4
34 R(6)-B6	R(4)-Q2

35 R(6)-B5	R-K2
36 R-Q2	R-N3
37 R(2)-Q5	R(3)-K3
38 P-QN4	K-N3
39 P-QR4	K-B3
40 P-N5	P-R3
41 R-B6	PxP
42 RxB	KxR
43 RxB	R-R2
44 P-R5	Resigns.

D. MEADOR                      D. WADE  
 White                                      Black

1. P-Q4	P-Q4
2. P-QB4	P-K3
3. N-QB3	N-KB3
4. B-N5	QN-Q2
5. P-K3	B-K2
6. N-B3	O-O
7. R-B1	P-B3
8. B-Q3	PxB
9. BxBP	N-Q4
10 BxB	QxB
11 O-O	NxN
12 RxN	P-K4
13 PxB	NxP
14 NxN	QxN
15 P-B4!	

Again Black's Q-side is in a bind.

15 ....	Q-B3
16 P-B5	P-QN4
17 B-N3	R-Q1
18 Q-B2	B-Q2
19 P-K4	QR-B1
20 R-B5	Q-Q5ch
21 K-R1	B-K1
22 P-Q5	K-R1
23 P-B6	PxB
24 PxB	Q-Q6
25 Q-B1	Q-Q7
26 Q-N1	Q-K7
27 R-KB3	R-Q7
28 R-N5	B-Q2
29 R-N7	R-B7
30 BxB	Resigns.

Very well played by White.

Unfortunately one of the 8 Oregon-Washington match games still remains outside my grasp! When we do get it we will put it into the next month's Game Section along with 3 others we have. The 3 on hand were all too long for the space above.

# FROM 'CHESS LIFE' by WEAVER

Cash prizes in this year's Trans-Mississippi chess tournament, to be held at the Chamber of Commerce auditorium, Davenport, Ia., on June 5-7, will total over \$500 according to the tournament committee. Additional cash and merchandise awards will be given Class B players, and also for Class C and D combined, according to USCF ratings. The event is open to all.

The Minnesota State Championship was notable in the fine scoring of several new-comers as well as the unexpectedly low positions of a number of the former stalwarts. Both Geo. Barnes and Dr. Giles Koelsche who have alternated as State Champions in former years, placed far below their former results. The leaders of 34 entrants were:

- |               |       |
|---------------|-------|
| 1. W.E.Kaiser | 5½-½  |
| 2. L.C.Young  | 5 -1  |
| 3. C.Brasket  | 5 -1  |
| 4. S.Sorenson | 4½-1½ |
| 5. K.Nedved   | 4 -2  |

Dr. A.A. Murray scored a double victory to aid San Antonio in a 10½ to 5½ victory over Houston, Texas.

Milwaukee has had a chess program municipally sponsored for more than 25 years and a comprehensive picture of what can be done with and for chess in any city becomes vivid as one glances at the 18-page booklet issued by the Milwaukee Department of Municipal Recreation to summarize the 1952 activity in chess alone. It shows that 12 teams and 62 players competed in the adult municipal league; that 174 adult players competed in 6 tournaments, while over 1900 youngsters competed in 68 playground tournaments, and 24 women entered a woman's tournament; 2664 people attended the playground events and 3338 people participated in tournament and league events. Playground chess instruction drew 1258 girls and 3268 boys in the Summer courses. It is not accident that year after year the per capita crime in Milwaukee is far below the average for cities of its size and emphasizes the importance of organized recreation as being more lastingly effective than an efficient police force.

Chess Life writer William Rojan notes and quotes from "The Morning After" in the Seattle Post-Intelligencer where Royal Brougham wrote of the talents of young Latvian master Elmars Zengalis. Rojan asks, "How about it, Seattle? Do we hear the gauntlet being cast into the ring?"

Reshevsky often loses a game or two in simultaneous exhibition, but an unusual upset took place at Cleveland when Ronald Rosen beat him twice in one afternoon, once in a blindfold game and then in the 50-board event.

Jerry Sullivan of Knoxville won the Tennessee Open Championship at Oak Ridge with 4½-1½. He held the title previously in 1948 and 1951. In a tie for second with 4-2 each were L.C.Noderer and Martin Southern.

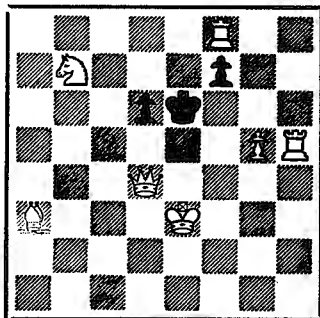
A series of photo finishes made the Los Angeles County Championship a very exciting race. Tied for first place among 26 entries were Arthur Spiller and Louis Spinner who will play a four game match for the title. Irving Rivise finished third, while Open Champion Sven Almgren placed fourth, followed by Rubin, Wallace, Giritsky, and Stevens.

The Hollywood Invitational Tournament at end of twelve rounds sees Herman Steiner (who completed schedule before sailing for Mar del Plata) in the lead with 15½-3½. Other top scorers were Isaac Kashden, 11½-½, Eugene Levin 12½-1½, Sven Almgren, 10½-1½, James Cross 8½-3½.

B. H. Wood, the eminent editor of the British magazine "Chess" has expressed his profound surprise that chess activities in American prisons are possible. Prominent in the discussion was reference to programs at Howard Charleston and San Quentin. Recent activity on the Pacific Coast notably at McNeil and at Walla Walla has been cited by Montgomery Major, in Chess Life as evidence that there is little difficulty for chess to exist anywhere there is desire for it.

## No. 1 - Problem

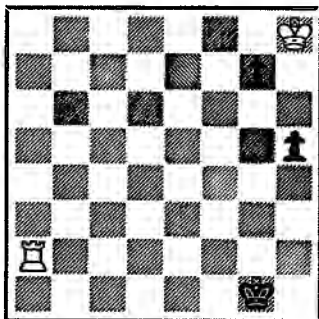
Sam Loyd  
BLACK



WHITE  
White to mate in two.

## No. 2 - Endgame

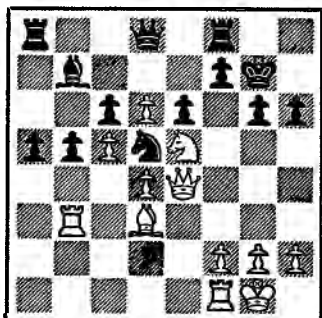
J. Moravec  
7th Prize, La Stratégie, 1914.  
BLACK



WHITE  
White to play and win.

## No. 3 - Combination

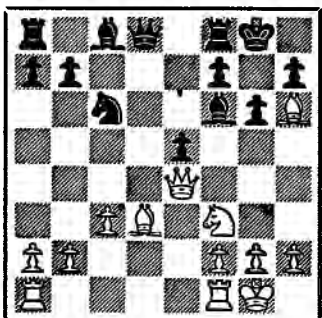
BLACK



WHITE  
White to play and win.

## No. 4 - Combination

BLACK



WHITE  
Black to play and win.

# THE DIAGRAM PAGE

O. W. MANNEY

Well, the diagrams showed up pretty good last month, except for a couple of errors - only one serious - see solutions below. They should be correct this time, but just to be sure I shall repeat the positions in Forsyth.

No. 1. 5R2;1N3p2;3pk3;6PR;3Q4;B3K3;8;8. This is by a famous American composer, not only of chess problems, but also of puzzles and tricks of many kinds. The key move in this problem might be frowned upon by more conventional composers.

No. 2. 7K;6p1;8;7p;8;8;R7;6k1. Although this is a composed endgame, it is a position that might happen to anyone!

No. 3. r2qlr2;1b3pk1;2pPp1pp;ppPnN3;3PQ3;1R1B4;5PPP;5RK1. This occurred in a game played in a Bad-Nauheim tourney, White made one move and Black resigned.

No. 4. r1bqlrkl;pp3p1p;2n2bpB;1p3;4Q3;2PB1N2;PF3PPP;RLRK1. Ed. Lasker v. Carlos Torre. Really too obvious, but Lasker overlooked it when he played his last move, B-KR6, and Torre failed to make the winning move, whereby he would have won a piece.

\*\*\*\*\*

### MARCH SOLUTIONS

No. 1. Endgame by Henry Rinck.

1. R-KN7 K-B7
2. R-N2 ch. K-N3
3. R-QR2 and wins.

If 1.....R-K, White wins in an equally subtle way by 2. R-N, RxR; 3. P-R7 and queens the pawn.

No. 3. Game combination. There was a slight defect in the diagram ---- Black should have had another pawn on KN2 and a black QB4 square!)

1.....P-K6! 2. BPxP (the Rook cannot take without leaving the other Rook en prise, and a Knight move, with the exception of N-KL or B3, would be followed by QxP mate), QxN!; 3. QxQ, N-K5 ch, and 4.....NxQ, winning a knight.

No. 4. Game combination. (And here we really made a mistake -- White's pawn on QB1 should have been a Bishop.) 1.....P-Q4!! Unless White moves the attacked Bishop or takes the Pawn he loses a piece. If the KB moves or takes the pawn, then 2.....QxP ch.!!; 3. PxQ (forced), B-R6 mate!

WELCOME NEW MEMBERS AND OLD MEMBERS RETURNING!!

Victor S. Bollman, Inglewood, Calif.  
Herbert Cooper, Morton  
B. W. Fain, Walla Walla  
John Leonard, Jr., Kansas City, Mo.  
Dr. Waldo E. MacInnis, Newport  
South Park Community Center, Tacoma  
J. C. Thompson, Billings, Montana

This list from the month of March indicates a new trend; more people about the nation are hearing about the Chess Letter and are subscribing to it. We hope we can keep the quality of our publication to such a height that they will be glad they joined us.

There are still many people on the list of unrenewed subscriptions. Please don't let your name get there! When you receive your expiration notice act at once! Have you gotten YOUR new member yet? Let's make that list grow larger each month.

NOTES FROM EAST OF THE MOUNTAINS

The annual Yakima County Round Robin is under way sponsored by the Yakima Chess Club. Tournament Director William H. Hoge announced the opening of the double round robin April 6, running each Monday evening for five full weeks. After the first evening of play Hoge, Eli Treisman, and Oliver LaFreniere all emerged undefeated; LaFreniere is defending his title won twice consecutively. Others entered are: R. B. Dexter, T. Pool, Abram Van Wyck, John Fauvergue, Terry Nelson, and Stephen Falk.

The Yakima Chess Club is very busy these days. Besides the annual round robin, it is scheduled to play return matches with both Pasco and Spokane. With Pasco it will attempt to win again; with Spokane it is working for revenge for the last defeat it received.

ATTENTION all chess players east of the Cascades! The Eastern Washington District Open will be held in Yakima on May 17. A five round Swiss beginning at 9:30 A. M. will be played under the direction of Oliver LaFreniere to determine the best player in Eastern Washington. Suitable prizes will be given to the first several places. Details will be conveyed to the Eastern players by private letter later.



# NOTES BY O.W.L.

Here are three games from the State Junior, designed to demonstrate the various levels of chess in one tournament of the young. The result of this first game made Warner champion. Though I lost it, I feel nevertheless that I have helped to create a fairly good piece of chess, locally speaking.

1953 State Junior - Third Round  
Ruy Lopez - Bird's Defense

O. W. LaFreniere  
White

Ted Warner  
Black

- |    |                     |       |
|----|---------------------|-------|
| 1. | P-K4                | P-K4  |
|    | What, no Sicilian?? |       |
| 2. | N-KB3               | N-QB3 |

3. B-N5 N-Q5  
The Bird's Defense. MCO 6 says it is theoretically unsound and has been abandoned in serious chess.

- |    |       |       |
|----|-------|-------|
| 4. | NxN   | PxP   |
| 5. | O-O   | P-QB3 |
| 6. | B-B4  | P-Q3  |
| 7. | P-Q3  | N-B3  |
| 8. | B-KN5 | B-K2  |

- |     |       |        |
|-----|-------|--------|
| 9.  | R-K1  | O-O    |
| 10. | N-Q2  | P-QN4  |
| 11. | B-N3  | N-N5   |
| 12. | BxB   | QxB    |
| 13. | P-KR3 | N-K4   |
| 14. | P-KB4 | N-N3   |
| 15. | N-B3? | P-QB4? |

Black misses the chance of immediate and strong counter attack. NxP is adequate, for on 16. NxP, Q-N4, with mate on the move. A pawn will inevitably be won either by BxP or NxPch.

- |     |      |       |
|-----|------|-------|
| 16. | B-Q5 | B-N2  |
| 17. | BxB  | QxB   |
| 18. | Q-Q2 | QR-K1 |

Black wants to reserve P-KB4 for himself, which is actually a weak move, due to threats of P-K5-6.

- |     |       |      |
|-----|-------|------|
| 19. | R-K2  | N-K2 |
| 20. | QR-K1 | N-B3 |
| 21. | K-B2  | P-B3 |
| 22. | K-N1  | K-R1 |

This king maneuvering is most senseless. White stops it with a new, interesting variation.

- |     |       |      |
|-----|-------|------|
| 23. | P-K5! | QPxB |
| 24. | PxP   | P-B4 |

If black retakes, white seizes control of the king file, much more valuable than the KB file.

- |     |      |       |
|-----|------|-------|
| 25. | Q-N5 | Q-K2  |
| 26. | K-R2 | QxQ   |
| 27. | NxQ  | P-KR3 |
| 28. | N-B3 | N-N5  |

Decentralization of the Knight aids white's game wonderfully.

- |     |        |       |
|-----|--------|-------|
| 29. | P-K6   | R-K2  |
| 30. | N-R4?? | - - - |

N-K5 wins. The knight can go everywhere, threatening forks, pawns and positional fortes. From R4, however, it can do nothing.

- |     |       |      |
|-----|-------|------|
| 30. | - - - | R-B3 |
| 31. | P-R3  | N-B3 |
| 32. | N-B3  | N-Q1 |
| 33. | N-R4  | P-N4 |
| 34. | N-B3  | N-Q1 |
| 35. | RxR   | RxR  |
| 36. | RxR   | NxR  |

Now black has a pawn plus and a pawn down at Q5. He slowly grinds white into the ground. The rest of the game is not worth looking at.

#### 1953 State Junior - First Round Nimzo-Indian

O. W. LaFreniere                      Jim McCormick  
White    Black

- |    |       |       |
|----|-------|-------|
| 1. | P-Q4  | N-KB3 |
| 2. | P-QB4 | P-K3  |

- |    |       |       |
|----|-------|-------|
| 3. | N-QB3 | B-N5  |
| 4. | Q-B2  | O-O   |
| 5. | P-K3  | P-QN3 |
| 6. | P-QR3 | B-K2  |

It is usual to take the knight.

- |     |       |       |
|-----|-------|-------|
| 7.  | B-Q3  | B-N2  |
| 8.  | N-K4  | P-KR3 |
| 9.  | N-KE3 | P-Q4  |
| 10. | PxP   | BxP   |
| 11. | B-Q2  | QN-Q2 |
| 12. | R-QB1 | N-K1? |

12.- - -, R-QB1 is good because

13. B-R6 is answered by a simple BxN. The text immobilizes the knights.

- |     |       |       |
|-----|-------|-------|
| 13. | P-QN4 | P-KB4 |
| 14. | N-N3  | BxN   |
| 15. | PxB   | QN-B3 |
| 16. | P-K4  | PxP   |
| 17. | PxP   | QxP   |

This is a gambit pawn. White is prepared with all his pieces to attack, using the file black opened.

- |     |       |        |
|-----|-------|--------|
| 18. | N-K2  | Q-Q2   |
| 19. | R-KN1 | K-R1   |
| 20. | N-B4  | P-KN4? |

Actually there is not a better move. Either king move would be answered by P-K5. N-N6ch. cannot be stopped.

- |     |         |         |
|-----|---------|---------|
| 21. | N-N6ch. | K-N2    |
| 22. | NxR     | KxN     |
| 23. | P-KR4   | N-R2    |
| 24. | P-K5    | Resigns |

The attack tells.

#### 1953 State Junior - Fifth Round Wild Opening!

Richard Odlin                                      O. W. LaFreniere  
White    Black

- |    |       |       |
|----|-------|-------|
| 1. | P-Q4  | P-Q4  |
| 2. | P-K3  | P-QB4 |
| 3. | P-QB3 | N-QB3 |
| 4. | B-Q3  | N-B3  |
| 5. | N-Q2  | P-B5  |
| 6. | B-N1  | P-K4  |
| 7. | P-B4? | P-K5! |

White has been trying to set up a Stonewall, but is unsuccessful. Now he has to put up with two advanced pawns.

- |    |      |       |
|----|------|-------|
| 8. | N-K2 | B-K2  |
| 9. | O-O? | N-KN5 |

Now he must lose a pawn. (K3) He cannot possibly protect it.

- |     |       |      |
|-----|-------|------|
| 10. | N-N3? | NxKP |
| 11. | Q-K2  | NxR  |
| 12. | QxN   | O-O  |

After a tedious struggle black managed to break through and win.



# POSTAL CHESS

R.R. MERK  
 POSTAL CHESS EDITOR  
 1026 E 71 ST. SEATTLE WN.

Results of games completed to April 25, 1953.

52A-4B	Points	52B-2A	Points
Coubrough 1 H.E. Yocom 0	26	Winters 1 Cox 0	26

"Chuck" Hardinge, the Minneapolis gambit expert, issues a challenge to take on any player or players in one or two sections playing any or all of the following GAMBITS. Each player playing white to pick any of the GAMBITS shown.

Muzio		Kieseritzsky		Cunningham	
1.P-K4	P-K4	1.P-K4	P-K4	1.P-K4	P-K4
2.P-KB4	PxP	2.P-KB4	PxP	2.P-KB4	PxP
3.N-KB3	P-KN4	3.N-KB3	P-KN4	3.N-KB3	B-K2
4.B-B4	P-N5	4.P-KR4	P-N5	4.B-B4	B-R5 ch.
5.N-B3	PxN	5.N-K5	?	5.K-B1	?
6.QxP	?				

Jerome		Evans		King's Bishop	
1.P-K4	P-K4	1.P-K4	P-K4	1.P-K4	P-K4
2.N-KB3	N-QB3	2.N-KB3	N-QB3	2.P-KB4	PxP
3.B-B4	B-B4	3.B-B4	B-B4	3.B-B4	?
4.BxP ch	?	4.P-QN4	BxP		
		5.P-B3	?		

H. Kaffenberger advises that due to illness his physician advised him to try a trip "South" for awhile and his games will be delayed. He expected to be away for about three weeks, and should be resuming his games very soon now as he left about March 24th.

Leslie Coubrough has raised the point about delays due to sickness and vacations being restricted to a 4 week period. Chess Review limits such time out to 4 weeks after the player has notified his opponents and the Postal Chess Editor in advance. There have been some recent delays for a longer period without notification, which of course is discouraging to the players who do not know why they do not get replies. We feel that such a limitation is fair and unless by agreement, such a limitation will apply in the future. In case of prolonged sickness or other good reason the players may agree among themselves to a longer delay. Such delays should be reported to each opponent and to the Postal Chess Director.

Bargain! Bargain! Bargain!  
 Here is the best bargain in  
 Chess fun to be had at any  
 price.

W.C.F. Postal Chess 50¢  
 per section. Five players  
 in each section, each to  
 play 2 games with each of  
 four opponents.

Meet new players, get new  
 ideas from them, make new  
 friends via postal chess.  
 The biggest 50¢ bargain that  
 you ever can buy.

Send entries to Postal Chess  
 Editor, R. R. Merk, 1026 E 71  
 Seattle 5, Washington.

POSTAL CHESS RATINGS

\*\*\*\*

Class A Players

Greene	1649
Coubrough	1609
Kaffenberger	1482
Mulford	1450
Cerretelli	1447
Dolie	1445
Magerkurth	1426
Bever	1387
Hardinge	1346
Yocom, H.E.	1308
Hazen	1288
Wade	1250
Naas	1226
Sams	1213
Hellums	1190
Harmeson	1136
Husby	1108
Yocom, C.L.	1077

\*\*\*\*

Class B Players

Howard, F.M.	1328
Luters	1258
Allen, W.P.	1246
Merk, R.R.	1237
Winters	1196
Roberts, Don	1186
Dickey	1166
Cairncross	1152
McCarthy	1148
Skarsten	1148
Moore	1137
Amsden	1132
Emerson	1106
Holland	1086
Engstrom	1086
LaFreniere	1054
Haar	1050
Schrank	1050
Leonard	1050
Southerland	1050
Thomas	1050
Merk, Fred	1012
Parry	1012
Martin	997
Roberts, H.H.	961
Cox	898
Baker	878
Malmgren	860
Raleigh	807
Cutshall	806

FROM

WASHINGTON CHESS LETTER  
 1026 E 71  
 Seattle 5, Washington  
 Return postage guaranteed

UNCLAIMED  
 max to R

DUE 8 CENTS

