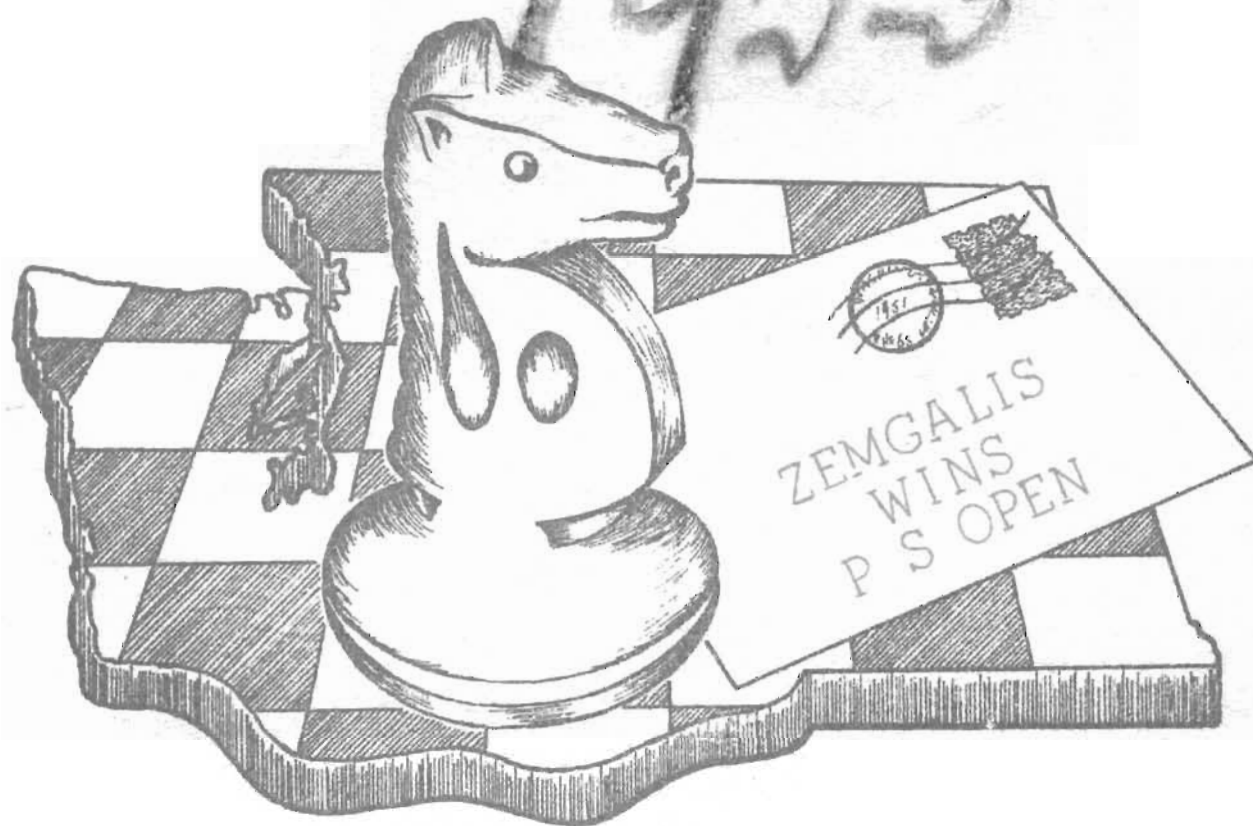


WASHINGTON

CHESS

LETTER

1955



FEBRUARY 1955

WASHINGTON

Chess Letter

J. S. DeWitt Editor
710 Lakeside S. Seattle 44

R. R. Merk Circulation Head
1026 E. 71st Seattle 5

K. W. Mulford Publisher
Apt. 14, 11660 Renton Ave.
Seattle

Contributors

J. N. Nourse (Nourse AdNauseam)
Route 1, Box 298 Winslow, Wn.

F. H. Weaver (From Chess Life)
501 Olympic Place Seattle 99

Victor Pupols (Vox Pupoli)
5525 16th NE Seattle 5

D. E. Wade Feature Writer
11023 25th N. E. Seattle 55

O. W. LaFreniere Feature Writer
Baker House, 1101 Campus Park-
way, Seattle 5

W. C. F. Officers

K. W. Mulford President

Leslie Coubrough Vice-President
25 N. E St., Apt. 304 Tacoma 3

Peter Husby Secretary
Rt. 1, Box 355 East Stanwood

W. H. Raleigh Treasurer
4312 Woodland Pk. Ave. Apt. 3,
Seattle

J.S.DeWitt Tournament Director

O.LaFreniere Publicity Director

COMING EVENTS

SEATTLE CHAMPIONSHIP March 20

A tournament for every chess player in Seattle has been planned to begin at the Seattle Chess Club on March 20. This tournament will be to decide the Seattle Champion for the year. Last year, this title was decided during the Seafair Open Tournament by pairing Seattle players in the early rounds. The present suggestion is much more satisfactory to achieve this objective and it is hoped by Tournament Director Dan Wade that the conditions of play will make it attractive to every player of any strength in Seattle. Details inside.

ANNUAL MEETING April 17

April 17 is the date set for the annual meeting of the Washington Chess Federation. At this meeting, officers for the new year and policy decisions for the federation will be made. Representatives from the member clubs should definitely be on hand for this important meeting as well as all officers. Although only these have votes in the meetings, all members of the federation are encouraged to come and make themselves heard. It is only thus that the federation will continue to grow and be a worthy protagonist of our noble game.

SEND SUBSCRIPTIONS TO
W. H. RALEIGH
TREASURER

TWO DOLLARS PER YEAR

PUGET SOUND NEWS

Round 7 Results.

Kitsap 7 West Seattle 3, Seattle 9½ McNeil ½, U. of Washington 5½ Tacoma 4½ and Latvian Sportsmen 5½ Olympia 4½.

Kitsap, who last season won a one-third share of the championship, won their first match of this season. Kitsap trounced West Seattle's hapless cellar-dwellers 7 to 3. Jack Nourse of Kitsap missed this match as he was vacationing in California.

The Seattle Chess Club had to make the trip to McNeil short one player as Bob Edberg came down with the flu at the last moment. Seattle was prepared to forfeit two points on fifth board but that meant one host club player would have no games. Ulvestad's offer to simultaneously play McNeil's top two players was accepted, hence the resulting 9½ to ½ score against McNeil.

The league-leading U. of Washington notched victory number 6 in as many starts with an eyelash 5½ to 4½ decision over Tacoma. Warner and Clark were the top scorers for the U. while Jim McCormick was Tacoma's best point gatherer of the afternoon. It was the first time in the PSL history that the University ever defeated Tacoma.

The Latvians had their record nearly muddled by another defeat against Olympia. However, the usual four point outburst on the top two boards plus Cakarnis 1½ - ½ upset of Noland saved the day for the favorites, 5½ to 4½. Ken Mulford gathered together a formidable road block for the Latvians to hurdle with new men to League play being Hugh Noland and giant-slayer Ken Day who was the only man to defeat Bisguier in his simultaneous in Seattle.

| | | | |
|--------------------|----|---------------------|---|
| <u>KITSAP CLUB</u> | 7 | <u>WEST SEATTLE</u> | 3 |
| C. Magerkurth | 2 | Max Mage | 0 |
| Dr. Almond | 1 | W. B. Cowan | 1 |
| G. Rehberg | 2 | F. M. Howard | 0 |
| Kennedy | 1 | E. Vukonich | 1 |
| G. Roats | 1* | B. Weisscher | 1 |
| * 2 draws. | | | |

| | | | |
|---------------------|----|----------------------|---|
| <u>SEATTLE CLUB</u> | 9½ | <u>MCNEIL ISLAND</u> | ½ |
| O. Ulvestad | 2 | Berg | 0 |
| O. Ulvestad | 1½ | Dorame | ½ |
| Dan Wade | 2 | McKenzie | 0 |
| F. H. Weaver | 2 | Flint | 0 |
| Ted Davidsen | 2 | Oakley | 0 |

| | | | |
|--------------------|----|--------------------|----|
| <u>U. of WASH.</u> | 5½ | <u>TACOMA CLUB</u> | 4½ |
| G. Patterson | 1 | V. Holmes | 1 |
| Ted Warner | 2 | C. Hewitt | 0 |
| Alan Clark | 2 | Coubrough | 0 |
| R. Brown | ½ | V. Hultman | 1½ |
| L. Allyn | 0 | J. McCormick | 1 |
| O. LaFreniere | 0 | J. McCormick | 1 |

| | | | |
|---------------------|----|---------------------|----|
| <u>LATVIAN CLUB</u> | 5½ | <u>OLYMPIA CLUB</u> | 4½ |
| E. Zemgalis | 2 | C. Joachim | 0 |
| V. Pupols | 2 | Ken Day | 0 |
| Cakarnis | 1½ | Hugh Noland | ½ |
| Grinhagens | 0 | Ken Mulford | 2 |
| E. Robins, Sr. | 0 | J. Cerretelli | 2 |

Round 8 Results.

University of Washington 5½ McNeil Island 4½, Seattle YMCA 7½ Seattle Chess Club 2½, Olympia 8 W. Seattle 2 and Kitsap 5½ Tacoma 4½.

The U. of Washington picked up victory number 7 and cinched at least a tie for first place at the close of the regular schedule. The University barely defeated McNeil Island 5½ to 4½ and Dorame defeated Ted Warner in the process. The great number of drawn games in the match were caused by the fact not enough time was available to finish many of the games.

The triumph meant that just the University and the Seattle YMCA now have any chance to win the League championship this year.

The Seattle YMCA kept hot on the heels of the University by scoring an impressive 7½ to 2½ victory over the Seattle Club. Seattle did not win a game with half of the games being YMCA wins and the other half draws. The score could have been much closer but Ted Davidsen played although very ill and lost twice to Rodnite. These two points, it appeared, made the Seattle players, especially Weaver and Robert Edberg, try to win draws & against strong players this was proved disasterous procedure.

Olympia was scheduled for a match with West Seattle at the Seattle Chess Club on the same day and place as the YMCA-Chess Club match. At 1 o'clock, Mulford received a phone message from Cerretelli. Joe and Yocom had been derailed by an accident and would be unable to play.

Mulford picked up 3 players new to PSL play lounging in the club room and proceeded with an 8 to 2 triumph over W.Seattle.

The Kitsap-Tacoma match was close all of the way with the score being tied at 2-2, 3-3, 4-4 and finally 4½-4½. Blakefield won the last game against Finnigan to give Kitsap the victory 5½-4½. Robert Collins starred for Tacoma and George Rehberg was best point-getter for Kitsap.

| | | | |
|--------------|----|---------------|----|
| U. of WASH. | 5½ | MCNEIL ISLAND | 4½ |
| G. Patterson | 1* | Berg | 1* |
| Ted Warner | ½ | Dorame | 1½ |
| Alan Clark | 1½ | McKenzie | 1* |
| L. Allyn | 1* | Flint | 1* |
| J. Broughton | 1½ | Oakley | ½ |

| | | | |
|--------------|----|--------------|----|
| SEATTLE YMCA | 7½ | SEATTLE CLUB | 2½ |
| W. Bills | 1* | O. Ulvestad | 1* |
| R. Vellias | 1½ | Dan Wade | 1 |
| Max Bader | 1 | R. Edberg | 1 |
| J. DeWitt | 1½ | F.H. Weaver | 1 |
| Rodnite | 2 | Ted Davidsen | 0 |

| | | | |
|--------------|----|---------------|---|
| * 2 draws. | | | |
| OLYMPIA CLUB | 8 | WEST SEATTLE | 2 |
| C. Joachim | 2 | W.B. Cowan | 0 |
| Ken Mulford | 1½ | Max Mage | ½ |
| M. Henion | 2 | F.M. Howard | 0 |
| Parsons | 1 | E. Vukonich | 1 |
| N. McGregor | 1½ | Ben Weisscher | ½ |

| | | | |
|---------------|----|--------------|----|
| KITSAP CLUB | 5½ | TACOMA CLUB | 4½ |
| C. Magerkurth | 0 | R. Collins | 2 |
| Dr. Almond | 1 | L. Coubrough | 1 |
| G. Rehberg | 2 | V. Hultman | 0 |
| F. Blakefield | 1½ | J. Finnigan | ½ |
| Kennedy | 1 | Carlson | 1 |

PUGET SOUND LEAGUE STANDINGS 3/6/55

| | | | | | |
|---------------------|---|---|---|-----|------|
| TEAMS | W | L | D | PF | PA |
| UNIVERSITY OF WASH. | 7 | 0 | 0 | 40 | - 29 |
| SEATTLE YMCA | 5 | 0 | 2 | 46 | - 24 |
| LATVIAN SPORTSMEN | 5 | 1 | 1 | 44½ | -25½ |
| SEATTLE CLUB * | 5 | 3 | 0 | 47½ | -31½ |
| OLYMPIA CLUB | 2 | 3 | 2 | 37½ | -32½ |
| KITSAP COUNTY CLUB | 2 | 4 | 1 | 32 | - 38 |
| TACOMA CLUB | 1 | 5 | 1 | 31 | - 39 |
| MCNEIL ISLAND | 1 | 6 | 0 | 20 | - 50 |
| WEST SEATTLE | 0 | 6 | 1 | 20½ | -49½ |

* season completed.

The ninth and final round of Puget Sound League is scheduled one week from the date of this writing, March 13th. Seattle YMCA visits the University of Washington in the B I G one (The Y should win), Kitsap at McNeil (The Kitsapers should take their third in a row), Olympia at Tacoma (Look for the Tacoma return to the win column) and finally the Latvians are turned loose on little old West Seattle at the Seattle C.C.

In desperate need for material to fill this page, the writer must insert a brilliant game he LOST to Vellias in the YMCA vs. Seattle PSL chess debacle.

| | | | |
|----------|---------|-----------------|---------|
| D. Wade | Vellias | D. Wade | Vellias |
| 1. P-K4 | P-K4 | 13 BxP | R-KN1 |
| 2. N-KB3 | N-QB3 | 14 Q-Q2 | Q-N3 |
| 3. B-N5 | B-B4 | 15 R-R1 | P-KR3 |
| 4. O-O | N-B3 | 16 K-N2 | BxP |
| 5. BxN | QPxB | 17 PxB | QxPch. |
| 6. NxP | Q-K2 | 18 K-R2 | QxNP |
| 7. P-Q4 | B-Q3 | 19 R-K1ch | K-Q2 |
| 8. NxQBP | BxPch. | 20 R-K7ch | K-B1 |
| 9. KxB | PxN | 21 Q-K1? | RxB |
| 10 P-KB3 | N-R4 | 22 Q-B2 | N-B5 |
| 11 P-KN3 | Q-K3 | 23 Resigns. | |
| 12 P-KN4 | P-N4 | (21 Q-N2 should | |

have been played. White had only 1 minute on his clock to move 18 more times in our 40 per hour rate.)

SEATTLE OPEN

Starts between 9 and 9:30 a.m. Sunday, March 20th at the Seattle Chess Club. Be there to make this the greatest affair in our history.

INDIVIDUAL RECORDS IN THE PUGET SOUND LEAGUE AFTER 8 ROUNDS.
(Compiled by Wade)

| TEAM | | W | L | D |
|--------------------------|-----|----|----|----|
| University of Washington | | 7 | 0 | 0 |
| Alan Clark | 11½ | 10 | 0 | 3 |
| G.S.G. Patterson | 9 | 7 | 1 | 4 |
| Ted Warner | 6 | 4 | 4 | 4 |
| Lundh | 3 | 3 | 2 | 0 |
| R. Brown | 2½ | 1 | 1 | 3 |
| D. Allyn | 2 | 2 | 0 | 0 |
| O. LaFreniere | 2 | 2 | 3 | 0 |
| L. Allyn | 2 | 1 | 4 | 2 |
| J. Broughton | 1½ | 1 | 0 | 1 |
| Dr. Michael | 1½ | 0 | 3 | 1 |
| K. Black | 0 | 0 | 2 | 0 |
| 11 players | 40 | 31 | 20 | 18 |

| TEAM | | W | L | D |
|---------------------|----|----|----|----|
| Seattle Y. M. C. A. | | 5 | 0 | 5 |
| Russell Vellias | 9½ | 8 | 3 | 3 |
| John DeWitt | 8½ | 7 | 2 | 3 |
| William Bills | 8½ | 6 | 3 | 5 |
| Max Bader | 8 | 7 | 1 | 2 |
| Rodnite | 4½ | 4 | 3 | 1 |
| George Bishop | 3½ | 3 | 0 | 1 |
| Teres | 2 | 2 | 0 | 0 |
| Jorgan Bader | 1½ | 1 | 2 | 1 |
| Ron Johnson | 0 | 0 | 2 | 0 |
| 9 players | 46 | 38 | 16 | 16 |

| TEAM | | W | L | D |
|-------------------|-----|----|----|----|
| Latvian Sportsmen | | 5 | 1 | 1 |
| Elmars Zemgalis | 13½ | 13 | 0 | 1 |
| Viktor Pupols | 11½ | 10 | 1 | 3 |
| Cakarnis | 7 | 5 | 1 | 4 |
| Grinhagens | 5½ | 4 | 7 | 3 |
| Freimanis | 3 | 3 | 3 | 0 |
| E. Robins Jr. | 2 | 2 | 2 | 0 |
| E. Robins Sr. | 1½ | 1 | 2 | 1 |
| Lapins | 1½ | 0 | 3 | 1 |
| 8 players | 44½ | 38 | 19 | 13 |

| TEAM | | W | L | D |
|--------------------|-----|----|----|----|
| Seattle Chess Club | | 5 | 3 | 0 |
| Olaf Ulvestad | 13½ | 11 | 2 | 5 |
| Dan Wade | 9½ | 8 | 5 | 3 |
| Robert Edberg | 8 | 7 | 1 | 2 |
| Ted Davidsen | 6 | 6 | 6 | 0 |
| F. H. Weaver | 5½ | 4 | 4 | 3 |
| Dr. Shephard | 4 | 4 | 2 | 0 |
| W. Gillette | 1 | 1 | 1 | 0 |
| W. McCulloch | 0 | 0 | 2 | 0 |
| Rosen | 0 | 0 | 2 | 0 |
| 9 players | 47½ | 41 | 25 | 13 |

| TEAM | | W | L | D |
|--------------------|-----|----|----|---|
| Olympia Chess Club | | 2 | 3 | 2 |
| Ken Mulford | 8 | 7 | 5 | 2 |
| J. Cerretelli | 7½ | 7 | 4 | 1 |
| Jim Amidon | 7 | 6 | 2 | 2 |
| Charles Joachim | 3½ | 3 | 8 | 1 |
| C. Harmeson | 2 | 2 | 0 | 0 |
| M. Henion | 2 | 2 | 0 | 0 |
| Alexander | 2 | 2 | 2 | 0 |
| N. McGregor | 1½ | 1 | 0 | 1 |
| Parsons | 1 | 1 | 1 | 0 |
| Ayres | 1 | 1 | 1 | 0 |
| Dr. Gold | 1 | 1 | 1 | 0 |
| H. E. Yocom | ½ | 0 | 1 | 1 |
| Hugh Noland | ½ | 0 | 1 | 1 |
| Ken Day | 0 | 0 | 2 | 0 |
| 14 players | 37½ | 33 | 28 | 9 |

| TEAM | | W | L | D |
|--------------------------|----|----|----|---|
| Kitsap Chess Club | | 2 | 4 | 1 |
| Dr. Almond | 8½ | 8 | 3 | 1 |
| George Rehberg | 5 | 5 | 3 | 0 |
| Frank Blakefield | 5 | 4 | 4 | 2 |
| George Roats | 4 | 2 | 2 | 4 |
| John Nourse | 3½ | 3 | 6 | 1 |
| C. Magerkurth | 3 | 3 | 11 | 0 |
| Kennedy | 2 | 2 | 2 | 0 |
| M. Carter | 1 | 1 | 1 | 0 |
| (Points lost by forfeit) | | 0 | 2 | 0 |
| 8 players | 32 | 28 | 34 | 8 |

| TEAM | | W | L | D |
|-------------------|----|----|----|---|
| Tacoma Chess Club | | 1 | 5 | 1 |
| Victor Hultman | 7 | 6 | 6 | 2 |
| Jim McCormick | 6½ | 6 | 3 | 1 |
| Vernon Holmes | 4½ | 4 | 7 | 1 |
| Les Coubrough | 4 | 3 | 7 | 2 |
| Jack Finnigan | 2½ | 2 | 1 | 1 |
| Robert Collins | 2 | 2 | 2 | 0 |
| Charles Hewitt | 2 | 2 | 4 | 0 |
| Carlson | 1 | 1 | 1 | 0 |
| Thomas Dolle | 1 | 1 | 3 | 0 |
| Avann | ½ | 0 | 1 | 1 |
| 10 players | 31 | 27 | 35 | 8 |

| TEAM | | W | L | D |
|---------------|----|----|----|----|
| McNeil Island | | 1 | 6 | 0 |
| Dorane | 6 | 5 | 7 | 2 |
| Berg | 4 | 3 | 9 | 2 |
| McKenzie | 4 | 2 | 8 | 4 |
| Flint | 3 | 2 | 10 | 2 |
| Oakley | 3 | 2 | 10 | 2 |
| 5 players | 20 | 14 | 44 | 12 |

If the players listed on this page, plus W. Seattle, attend the big Seattle Open (March 20 & 27) it will be the greatest in Wash. history.

ZEMGALIS WINS

Elmars Zemgalis emerged from a semi-retirement to win the extremely strong Puget Sound Open Chess Tournament, held at the Seattle Chess Club over the weekend of Washington's Birthday. Elmars won by the convincing score of $6\frac{1}{2}-\frac{1}{2}$ over the strongest players in the state. Second place was taken by Hugh Noland with a 5-2 score. Third and fourth with equal scores were Olaf Ulvestad and Victor Pupols respectively.

Zemgalis, in his victorious parade allowed only one draw to Hugh Noland in the fourth round and won from Edberg, Bills, DeWitt La Freniere, Ulvestad, and Wade. He was never seriously challenged throughout the seven rounds and took the \$100 first prize going away with a point and a half to spare.

The sensation of the tournament was second place winner Hugh Noland who ran the gauntlet of this strongest of Washington tournaments to emerge undefeated with three wins and four draws. He scored $1\frac{1}{2}$ points against the two participating masters. Hugh is a frequent visitor of the Seattle Chess Club but has been relatively inactive in tournament and league play. Although he is known as a very strong player, undoubtedly of the expert class, his record in this tournament was completely unexpected.

Olaf Ulvestad, Seattle's first master, its pride and sometimes its sorrow, was disappointing in his tournament. His play here was spotty, conceding first a draw to Bills and then throwing away first a won game and then a drawn ending to Noland. He was thus forced to play for a win against Zemgalis, and with the Black pieces. Against the Zemgalis of this tourney, this was tantamount to suicide, and so it proved.

Victor Pupols, the 1954 Puget Sound Open champion, had trouble defending his title in this strong company but managed a quite respectable fourth place on Solkoff points behind Ulvestad.

Russell Vellias, perennially a high scorer in Washington tournaments, started poorly by losing three out of his first four games, but he ended strongly to place sixth. State Champion, Wm. Bills did nothing to enhance his record by winning seventh place with an even score, but he did manage to draw with Ulvestad. Oliver LaFreniere made an impressive start by winning three out of four points with two wins and two draws against strong opposition, but could not keep up the pace and lost his last three games to end eighth.

This tournament was a financial experiment with a \$10 entry fee and a \$100 first prize. By drawing 14 players it managed to make expenses and the high level of play indicates that if scheduled properly a tourney of this type can be quite successful. More like it can be expected in the future.

The tournament director and the players both wish to extend many thanks to Mr. F. H. Weaver and Mr. Burgess of the Seattle Chess Club for their donations which allowed the federation to award \$25 for second prize and \$15 for third. The winner of the best played game and his prize will be announced later.

SUMMARY OF THE 1955 PUGET SOUND OPEN

| Rank | Name | 1 | 2 | 3 | 4 | 5 | 6 | 7 | Score | Sol. |
|------|-------------------|-------|------|------|------|------|------|------|-------|------|
| 1. | Elmars Zemgalis | W-10 | W-7 | W-5 | D-2 | W-8 | W-3 | W-9 | 6½-1½ | 26 |
| 2. | Hugh Noland | D-8 | W-3 | W-12 | D-1 | D-9 | D-5 | W-7 | 5 - 2 | 27 |
| 3. | Olaf Ulvestad | W-6 | L-2 | D-7 | W-11 | W-4 | L-1 | W-5 | 4½-2½ | 30½ |
| 4. | Viktor Pupols | D-11 | L-8 | W-6 | W-7 | L-3 | W-9 | W-10 | 4½-2½ | 24 |
| 5. | John DeWitt | W-13 | W-14 | L-1 | D-9 | W-10 | D-2 | L-3 | 4 - 2 | 24½ |
| 6. | Russell Vellias | L-3 | W-11 | L-4 | L-10 | W-14 | W-13 | W-8 | 4 - 2 | 20½ |
| 7. | William Bills | W-14* | L-1 | D-3 | L-4 | W-13 | W-8 | L-2 | 3½-3½ | 26 |
| 8. | Oliver LaFreniere | D-2 | W-4 | D-9 | W-12 | L-1 | L-7 | L-6 | 3 - 4 | 29 |
| 9. | Daniel Wade | D-12 | W-13 | D-8 | D-5 | D-2 | L-4 | L-1 | 3 - 4 | 27 |
| 10 | Robert Edberg | L-1 | L-12 | W-14 | W-6 | L-5 | W-11 | L-4 | 3 - 4 | 25½ |
| 11 | George Bishop | D-4 | L-6 | W-13 | L-3 | D-12 | L-10 | W-14 | 3 - 4 | 21 |
| 12 | Terry Nelson | D-9 | W-10 | L-2 | L-8 | D-11 | L-14 | D-13 | 2½-4½ | 19½ |
| 13 | Dr. G. Parker | L-5 | L-9 | L-11 | W-14 | L-7 | L-6 | D-12 | 1½-5½ | 21 |
| 14 | Dr. Shephard | L-7* | L-5 | L-10 | L-13 | L-6 | W-12 | L-11 | 1 - 6 | 21½ |

* forfeit.

Tournament Notes by Wade

Easily the sensation of the tournament was the play of Hugh Noland. Not that he wasn't expected to do well but after all, who expected him to defeat both Ulvestad and Bills and draw with Zemgalis? On the other hand, he had to settle for draws with LaFreniere, Wade and DeWitt. This was Hugh's first tournament venture in the Northwest and an auspicious one.

Dan Wade made the biggest "goof" of the tournament, a case of late tournament weariness which affects good judgment. Wade had a good game against Pupols, declined an offer of a draw, later missed two chances to draw (once on purpose) and finally had to adjourn in an unfavorable position. Instead of resigning the game and letting Pupols play Zemgalis in the last round, Wade did not resign & so the game was considered a draw for pairing purposes and Wade had to play Zemgalis. Net: 6½ Solkoff points!

John DeWitt, though saddled with the duties of Tournament Director, turned in a fine performance in this tournament. Being editor of the Chess Letter apparently has not hurt his game which it easily could do. In fact, his game has improved immensely during the past year. John lost to only Zemgalis and Ulvestad.

Elmars Zemgalis was head and shoulders above the field in the final standings and quite probably in ability. No doubt about it, Zemgalis is a chess master in ability in spite of any contrary reports the reader may have read elsewhere.

SEATTLE CHESS

The Seattle Chess Club's Annual Championship Tournament is still slowly moving along and regardless of how many games are left to play, officially ends on the 28th of February. The pair of sectional winners then play a match with the winner of 2 out of 3 winning the championship.

Since the last report, John DeWitt has won important contests with Wade and Edberg and was fortunate to draw with Bills so has nearly cinched the Section 2 and needs only wins over Emil Rennord and Dr. Lewis to qualify for the playoff with Vellias, Section 1 champion.

| Players | 5 Rd. | Swiss | Pts. |
|-----------------|-------------|--------------------|------|
| 1. Bills, W. | W8 W3 W7 D2 | W5-4 $\frac{1}{2}$ | |
| 2. Pupols, V. | D7 W5 W3 D1 | L4-3 | |
| 3. Mulford, K. | W4 L1 L2 W7 | W9-3 | |
| 4. Vellias, R. | L3 W8 W6 L5 | W2-3 | |
| 5. Weissenborn | *1 L2 W9 W4 | L1-3 | |
| 6. Rodnite | W9 L7 L4 *1 | W8-3 | |
| 7. Wade, D. | D2 W6 L1 L3 | *1-2 $\frac{1}{2}$ | |
| 8. Erickson, D. | L1 L4 *1 W9 | L6-2 | |
| 9. Johnson, R. | L6 *1 L5 L8 | L3-1 | |

*1 is point for bye.

Five players tied for the runner-up spot with 3-2 scores and the tie was broken by Solkoff points. Pupols 16, Mulford and Vellias 14, Weissenborn 11 $\frac{1}{2}$ and Rodnite 8 $\frac{1}{2}$ Solkoff points.

Friday evening at 7:30 Mar. 25th, a black knight head will be the prize in another 5 round Swiss speed tournament. Only 50¢ entry fee will be asked.

Other events for Friday eve club entertainment: A match between Puget Sound League teams of the YMCA and Seattle and also a match between the Latvian Club and the University. Five player teams with only one game between opponents. The following week-end the teams could trade opponents and thus the Seattle Chess League could be revived. Before any tournament attracting out of town players, a match between a Seattle team and a team of visitors could be a regular feature.

BRILLIANT VICTORY BY DEWITT OVER WADE TIGHTENS CHESS CLUB TOURNEY

John DeWitt refused to let Dan Wade cinch honors in Section Two of the Club Tourney by playing the following brilliant game.

| | | |
|----------|-------|-------------------|
| DeWitt | Wade | 7. P-QR3, QN-B3; |
| 1. P-K4 | P-QB4 | 8. 0-0, P-KN3; 9. |
| 2. N-KB3 | P-Q3 | B-N5, B-Q2; 10 P |
| 3. P-QN4 | PxP | xNP, NxNP; 11 Bx |
| 4. P-Q4 | P-Q4 | Bch, QxB; 12 N-K |
| 5. QN-Q2 | P-K3 | 5, Q-B2; 13 P-Q |
| 6. B-Q3 | N-K2 | B4, B-N2; 14 B-R3 |

Section 1.

| Players | 1 | 2 | 3 | 4 | 5 | 6 | 7 | Pt. |
|-----------------|---------------|---------------|---|---|---|---|---|-----------------|
| 1. Vellias, R. | X | $\frac{1}{2}$ | 1 | 1 | 1 | 1 | 1 | 5 $\frac{1}{2}$ |
| 2. Davidsen, T. | $\frac{1}{2}$ | X | | 1 | 0 | 1 | 1 | 3 $\frac{1}{2}$ |
| 3. Pupols, V. | 0 | X | | 1 | | | | 1-2 |
| 4. Mulford, K. | 0 | 0 | X | 1 | 1 | | | -2 |
| 5. Erickson, D. | 0 | 1 | 0 | 0 | X | | | 1-2 |
| 6. Dr. Shephard | 0 | 0 | 0 | | X | 1 | | 1-1 |
| 7. Ring, J. | 0 | 0 | 0 | 0 | 0 | X | 0 | X-0 |

Section 2.

| Players | 1 | 2 | 3 | 4 | 5 | 6 | 7 | Pt. |
|------------------|---------------|---|---------------|---------------|---|---|---|-------------------|
| 1. DeWitt, J. | X | 1 | $\frac{1}{2}$ | 1 | 1 | | | 3 $\frac{1}{2}$ |
| 2. Wade, D. | 0 | X | 1 | 1 | 1 | 1 | | 1-5 |
| 3. Bills, W. | $\frac{1}{2}$ | 0 | X | $\frac{1}{2}$ | 1 | 1 | | 1-4 |
| 4. Edberg, R. | 0 | 0 | $\frac{1}{2}$ | X | 1 | 1 | | 1-3 $\frac{1}{2}$ |
| 5. McCulloch, W. | 0 | 0 | 0 | 0 | X | 1 | | -1 |
| 6. Rennord, E. | | 0 | 0 | 0 | 0 | X | 1 | 1-1 |
| 7. Dr. Lewis | | 0 | 0 | 0 | 0 | X | 0 | X-0 |

BILLS WINS CLUB SPEED TOURNAMENT

State Chess Champion William Bills won a club speed chess tourney Friday evening, Feb. 11. Club President Ted Davidsen had donated a ceramic white knight head as a prize. Nine players participated in a five round Swiss which lasted only two hours. Entry fee was only 50¢ and the winner received his entry fee back as well as the prize. Pupols finished second and State Speed Champion Vellias and Ken Mulford tied for third. BxN; 15 PxP, QN-B3; 16 KPXP, PxP; 17 PxP, NxQP; 18 N-B4, N/3-K2; 19 N-Q6ch, K-B1; 20 Q-B3, resigns.

SEATTLE OPEN

SEATTLE OPEN CHAMPIONSHIP TOURNAMENT. THREE ROUNDS ON SUNDAY MARCH 20 AND THREE ROUNDS ON SUNDAY, MARCH 27. This will be a Swiss Tournament for the chess championship of Seattle and all players living anywhere are invited to play. If the ultimate winner is not a Seattle resident he will be Seattle Open Champ. However, the abundance of chess talent in the big city makes it appear unlikely that an outsider could possibly win this tourney!

During the past two years, the Seattle Championship Tourney has been "a tourney within a tourney" in the Seafair Tournament. Before this it was traditional for the Seattle Chess Club to promote, direct and be responsible for this tournament. These conditions will be restored this year and it is hoped the management in future years will keep the tradition alive.

Registration will begin at 9 a. m. Sunday, March 20 in the club room at 616 Madison. The first round is scheduled for 9:30. The time control will be 40 per 1½ hours and after a maximum of 3 hours total elapsed time on a game, a game must be adjourned.

Adjourned games, if any, must be made up as quickly as it is possible to do so. The games played on March 20 must be finished before the start of round 4 scheduled for 9:30 a.m. Sunday March 27th.

Entry fee will be \$2. The tournament is for duffer and beginner as well as for master and expert.

All prizes will come from the entry fees and the more players, the more prizes. Prizes will be announced as soon as possible after the start of the first round.

Also Mage (1½-10½), Cowan (2-8), Woodward (1-1) and Manney (½-1½).

The Solkoff System will be used to break all ties including any for first place.

It is hoped that each Puget Sound League team captain can get his team to attend this tournament. Chess Club Secretary-Treasurer Dan Wade will be the tournament director and will write, make phone calls and seek newspaper publicity to attract as many players as possible. IF SPOKANE CAN ATTRACT 42 PLAYERS, SEATTLE SHOULD GET 100! This is a record-seeking venture. The record for a Western Washington chess tournament is 37 but that tournament was held on a full Saturday-Sunday weekend and many players find it impossible to give up that much time in any single weekend.

If the U. of Washington, West Seattle, Latvian Sportsmen, Seattle YMCA team, Seattle Chess Club, Kitsap Club, Tacoma Club and the Olympia Club team captains will get their teams for Sunday, March 20th and Sunday, March 27th, this could easily be the largest tournament in the State of Washington's history.

It only makes sense that if Western Washington intends to be the leader of Washington chess, they must do better than in the past. Otherwise it will be only sensible to look to Spokane for good leadership.

INDIVIDUAL RECORDS OF THE WEST SEATTLE TEAM IN THE P.S. LEAGUE

| | West Seattle | won | lost | drew | W | L | D |
|-----------------|--------------|-----|------|------|---|----|---|
| Schrank | 3½ | | | | 3 | 2 | 1 |
| Eugene Vukonich | 5½ | | | | 5 | 8 | 1 |
| Ben Weisscher | 3½ | | | | 2 | 5 | 3 |
| F. M. Howard | 3 | | | | 2 | 10 | 2 |

PRESIDENTS REPORT



The Annual meeting will be held in the Student Union Building at the University of Washington April 17 at 1:00 P. M. All members of the WCF are invited to attend and all officers and directors are, of course, requested to be present. I would like to see a representation from Eastern Washington this time.

My compliments to Bob Merk for his valuable contribution to the Chess Letter. As circulation director he maintains a current file of the subscribers and sends reminder notices to members whose subscriptions are about to expire. He also takes care of the postal chess department and does his own mimeographing on his own machine and thus furnishes the back cover of the Chess Letter printed on both sides complete with stamps and addresses.

John DeWitt has done an excellent job of directing our tournaments and except for the extreme lateness of the Chess Letter has done an excellent job as editor. The quality has certainly been maintained.

In order to guard against future lateness of the Chess Letter I will propose at this annual meeting that we write in the By-Laws a due date for the WCL to be the first of the month. That is, the April Chess Letter will be due in your mail box the first of April. The policy in the past has been to regard the due date as April 30 for the April copy.

The position of publicity director has been ably conducted by Oliver LaFreniere. Many of our new subscribers have been introduced to the WCL thru Oliver's publicity campaign.

Oliver proposes at this meeting that we make the offices of president, vice president, secretary and treasure elected by the membership instead of by the board of directors. This is included for your advance consideration. Your comments are requested.

Many chess enthusiasts, officers and feature writers have contributed a great deal to the WCF to make it a stable and growing organization. Their efforts are reflected by the increased strength of our tournaments and Puget Sound League teams. Their services have lead to an increase in the membership and thus more support.

It should be emphasized again that all work done writing and publishing the WCL or organizing chess activities is done for the sheer enthusiasm for chess and goes without financial reward. Hats off to our leaders of chess!

H. W. Mulford

WCF president

INLAND EMPIRE OPEN

The only major tournament played east of the Cascades will be played at the Desert Hotel, Spokane, Washington, on April 23 and 24. Everyone remembers the great Inland Empire Open and what a good tournament it was last year. So here are the details for those who want to attend the Second Inland Empire Open. Registration for a six round Swiss will begin at 11:30 a.m., first round beginning Saturday at 1 p.m. Two rounds will be played Saturday afternoon, two Saturday evening, and two Sunday, with two and one-half hours playing session per game followed by adjudication. The tournament is open to all with a senior entry fee of \$3.00 and only \$1.50 for juniors. \$25.00 cash will be first prize, with other prizes given to the top players in the second half of the ratings. If enough juniors register they will play a separate tournament; if not, they will play with the seniors and the one with the highest score will be declared junior champion of Eastern Washington. The defending champion is Dr. Max Baumwell of Walla Walla, and defending junior co-champions are Terry Nelson, Yakima, Robert Dycus and John Downs, Spokane. There will be a banquet Saturday evening, wives especially invited.

The tournament director will be Dr. G. H. Parker, 416 Hyde Building, Spokane 1, Washington. Any inquiries or advanced registrations, which will be very much appreciated, should be sent to him.

Spokane is counting on this being the biggest tourney yet. Players from Missoula have promised to come over as well as those from Seattle. The secondary prize list gives everyone a chance at a money prize no matter how inexperienced he may be. If you want the thrill of playing in a big tournament and yet want to be assured of finding others in your playing class, come to Spokane for the second annual Inland Empire Open!

SVENSSON WINS IN SPOKANE

Following an unbreakable tie between Leon Svensson and Gordon Cornelius in the huge city championship tournament in Spokane, a two game match was played to determine city champion. In a grueling 56 move game played at 40 moves in two hours, Svensson came out best man. The second game was drawn, giving a winning score of $1\frac{1}{2}-\frac{1}{2}$ to the new Spokane champion, Leon Svensson. Svensson is a relative newcomer to Spokane from Sweden. Cornelius is former champion of that city.

IMPRESSIONS OF THE PUGET SOUND OPEN (from the East Side) -- The Friendliness of the Seattle crowd. Other Easterners competing in the future will find the same. The 'common touch' of Zengalis and Ulvestad who could very easily adopt a patronizing attitude toward us lowly patzers. They are 'good eggs'. The careless disregard for starting times. Each round was from one-half to an hour late starting. The director leaving himself open to criticism by arbitrarily choosing opponents when there were two or more choices. There were no complaints this time, but pairing with the lowest number would eliminate any possibility of griping. The old fashioned blackboard scoreboard with its erasures. Use of our I. E. Open scoreboard would be an improvement. We don't have a patent on it. The excellent chess played by all but the Spokane entry. A laugh: Wade giving me a dime and asking me to call the director an hour after starting time Tuesday to see if he was still in bed. He was. Comments on my beautiful clock which was borrowed from our Swedish city Champ, Svensson. It was made in Sweden. Getting to meet Raleigh, WCF Treasurer, and Davidsen, chess club prexy. Grand men. Pupols' apple juice being passed around. It should be barred from future tourneys as 'help from an agency outside of the match'. Proof: I had one glass while playing Bills but he had two, and as a result beat me. Dan Wade consoled me with a glass of beer after my debacle against him. He is hereby promised two if he lets me beat him in the I. E. Open. A WONDERFUL tournament, WONDERFUL fellows, and a WONDERFUL time. Go west, fellow Easterners, and see for yourself.

-- Dr. Griffith H. Parker, Spokane

WELCOME NEW MEMBERS: William A. Bills, Seattle; V. M. Holmes, Tacoma; Hugh Noland, Seattle. Thanks to Max Bader for sending in names of prospective members.

GAMES

by Wade

Another selection of games from the preliminaries of State Closed Tournament. It is very disappointing to find errors in notation in several interesting, clever games which made them unfit for publication. Among such were the Pupols-Ulvestad and the Patterson-Vellias games.

F. H. WEAVER

A. CLARK

- | | |
|------------|-----------|
| 1. P-QB4 | P-K4 |
| 2. N-QB3 | N-QB3 |
| 3. P-KN3 | P-KB4 |
| 4. P-Q3 | N-B3 |
| 5. B-N2 | B-B4 |
| 6. B-N5 | O-O |
| 7. N-Q5? | BxPch. |
| 8. KxB | N-N5ch. |
| 9. K-K1 | QxB |
| 10 NxF? | N-K6 |
| 11 B-Q5ch. | K-R1 |
| 12 Q-B1 | QR-N1 |
| 13 N-B3 | Q-R3 |
| 14 P-KR4 | P-B5 |
| 15 N-N5 | N-QN5 |
| 16 N-B7ch. | RxN |
| 17 BxR | QN-B7ch. |
| 18 K-B2 | NxR |
| 19 QxN | PxPch. |
| 20 KxP | Q-B5ch. |
| 21 K-R3 | Q-N5ch. |
| 22 K-R2 | Q-N7 mate |

R. EDBERG

R. VELLIAS

- | | |
|-----------|-------|
| 1. P-K4 | P-K4 |
| 2. P-KB4 | PxP |
| 3. N-KB3 | B-K2 |
| 4. B-B4 | N-KB3 |
| 5. N-B3 | N-B3 |
| 6. P-Q4 | P-Q3 |
| 7. QBxP | B-N5 |
| 8. O-O | O-O |
| 9. B-QN3 | R-K1 |
| 10 Q-Q3 | BxN |
| 11 RxB | P-QR3 |
| 12 R-R3 | P-KN3 |
| 13 R-KB1 | N-QR4 |
| 14 BxPch. | KxB |
| 15 P-K5 | PxP |
| 16 PxP | QxQ |

- | | |
|-----------|--------|
| 17 PxQ | N-R4 |
| 18 N-Q5 | NxB |
| 19 RxNch. | K-N1 |
| 20 NxF? | R-KB1 |
| 21 R-QR4 | P-QN4! |
| 22 R-K4 | QR-B1 |
| 23 P-Q4 | RxN |
| 24 R-QB3 | R-QB5 |
| 25 P-KN3 | KR-B1 |
| 26 K-N2 | RxR |
| 27 PxR | RxP |

White resigned on his 46th.

G. BISHOP

J. AMIDON

- | | |
|-----------|----------|
| 1. N-KB3 | N-KB3 |
| 2. P-QB4 | P-KN3 |
| 3. N-QB3 | B-N2 |
| 4. P-KN3 | P-QB3 |
| 5. B-N2 | O-O |
| 6. O-O | P-Q4 |
| 7. PxP | NxF |
| 8. P-Q4 | N-R3 |
| 9. P-K4 | NxN |
| 10 PxF | P-QB4 |
| 11 B-K3 | PxP |
| 12 PxP | P-N3 |
| 13 Q-Q2 | B-N2 |
| 14 N-K1 | Q-Q2 |
| 15 P-B4 | QR-Q1 |
| 16 QR-Q1 | N-B2 |
| 17 P-B5 | PxP |
| 18 RxP | N-K1 |
| 19 R-R5 | N-B3 |
| 20 R-R4 | P-K4? |
| 21 P-Q5 | Q-Q3 |
| 22 B-R6 | N-K1 |
| 23 Q-N5 | Q-KB3 |
| 24 Q-K3 | R-Q3? |
| 25 B-N5 | Q-N3 |
| 26 B-K7 | B-KB3 |
| 27 R-R6 | Q-N2 |
| 28 BxR(3) | NxB |
| 29 R-R5 | B-B1 |
| 30 B-R3 | B-N5 |
| 31 BxB | QxB |
| 32 Q-R6 | QxKP?? |
| 33 QxB | Resigns. |

Black had a lost game prior to his blunder on his 32nd.

THE SEATTLE CHESS CLUB SPONSORS
SEATTLE CHAMPIONSHIP MARCH 20-27

A. CLARK

1. P-QB4
2. P-Q4
3. N-QB3
4. P-KN3
5. B-N2
6. P-N3
7. N-B3
8. BPxP
9. PxpP
- 10 PxnN
- 11 O-O
- 12 B-N2
- 13 QR-Q1
- 14 Q-R4
- 15 Q-B2

V. PUPOLS

- N-KB3
- P-K3
- B-N5
- P-Q4
- O-O
- P-B4
- N-B3
- KNxP
- NxN
- Bxp(4)
- P-K4
- Q-B2
- N-R4
- N-B5

If QxN? Bxpch. winning the Q

- 15 B-Q2
- 16 N-Q2 B-R5
- 17 N-N3 QR-Q1
- 18 RxR RxR
- 19 P-KR3 Q-N3
- 20 B-B1 N-R4
- 21 Q-K4 BxN
- 22 PxB NxP
- 23 QxKP NxB
- 24 RxN Bxpch.
- 25 K-R2 B-B4
- 26 Q-K4 B-Q3
- 27 Q-KR4 Q-B2
- 28 P-B4 R-K1
- 29 B-B3 P-QN4
- 30 K-N2 P-QR4
- 31 B-K4 P-N3
- 32 B-Q3 R-K6
- 33 P-N4 Q-B3ch.
- 34 K-B2 B-N6ch.
- 35 QxB RxQ
- 36 KxR P-N5

White resigned on the 45th move after Black queened pawns.

The following game not only counted in the State Preliminary but gave Pupols a 2-0 sweep in a playoff for the State Junior in which each had made 5-1 scores.

V. PUPOLS

1. P-K4
2. N-KB3
3. B-N5
4. B-R4
5. O-O
6. R-K1
7. P-KR3
8. P-B3
9. P-Q4

J. MCCORMICK

- P-K4
- N-QB3
- P-QR3
- N-B3
- B-K2
- P-Q3
- B-Q2
- O-O
- Pxp

- 10 PxpP
- 11 N-B3
- 12 B-N3
- 13 P-K5
- 14 Bxpch.
- 15 Q-N3ch.
- 16 N-N5
- 17 QxN
- 18 QxN
- 19 Q-B5ch.
- 20 Q-Q5
- 21 QxQP
- 22 Q-N4ch.
- 23 B-B4
- 24 QxB
- 25 RxR
- 26 Q-N3ch.
- 27 Q-B7
- 28 R-K7
- 29 B-K5
- 30 RxQ
- 31 RxPoh.
- 32 RxP
- 33 P-KN4
- 34 P-B4
- 35 B-Q6ch.
- 36 RxR
- 37 BxpP

- R-K1
- P-QN4
- B-QB1
- PxpP
- KxB
- K-B1
- N-Q4
- BxN
- B-Q2
- B-K2
- PxpP
- B-KB3
- K-N1
- BxN
- RxRch.
- P-B3
- K-R1
- R-R2
- Q-KN1
- QxQ
- K-N1
- K-B1
- R-N2
- P-B4
- B-B3
- K-N1
- BxR
- K-B2

White wins as the three K - side pawns are one too many for Black to halt.

O. ULVESTAD

- ✓ 1. P-Q4
2. P-QB4
3. PxpP
4. N-QB3
5. N-B3
6. B-N5
7. B-R4
8. B-N3
9. P-K3
- 10 P-KR4
- 11 PxpP
- 12 PxnN
- 13 Q-N3
- 14 QxNP
- 15 B-N5
- 16 QxQ
- 17 N-K5
- 18 PxB
- 19 BxN
- 20 R-QB1
- 21 O-O
- 22 RxB!, RxN; 23 RxR, Pxr; 24

A. CLARK

- P-Q4
- P-QB3
- PxpP
- N-QB3
- B-B4
- P-KR3
- P-KN4
- B-N2
- N-B3
- N-K5
- NxB
- P-KR4
- P-K3
- R-QB1
- Q-B2
- RxQ
- BxN
- K-K2
- RxB
- R-B5
- P-R3?

R-B6, R-QN1; 25 P-N3, P-R4; 26 R-QR6, R-N4; 27 K-B2, R-B4; 28 K-B3, R-B6; 29 K-B4, R-B7; 30 P-K6, PxpP; 31 K-K5, RxRP; 32 R-R7ch., K-Q1; 33 P-N6, RxP; 34 P-N7 wins.

CHESS IN 'REVIEW' & FROM 'CHESS LIFE'

In the Chess Life column "Chess Life In New York" Allen Kaufman outlines the typical weekly activity of the Marshall Chess Club and the Manhattan Chess Club. Club directors in the minor leagues may glean some ideas from the outline he gives.

Marshall Chess Club at 23 W. Tenth Street owns its own building, has several hundred members, a paid director, and dues of \$3 a month. Monday and Thursday have no scheduled activities. Tuesday is rapid transit night. Members pay 25¢ entry, non-members 50¢, and the club contributes \$2 to the prize fund. An average 25 players play round robin, 10 seconds a move.

Wednesday has an A, B, and a Beginner tournament. Entry fee is \$1, and one game a week at 40 moves in 2 hours is played for cash prizes.

Friday is special event night, with club matches or parties in honor of chess personalities.

Saturday afternoon is scheduled for club Junior activities. No entry fee is collected. First prize is a six-month membership, followed by book prizes.

Sunday is devoted to the club championship, lasts 4 months of Sundays and then a tourney for Amateur Championship of the club is held, limited to non-champions. First prize is the Calderon Cup.

Manhattan Chess Club conducts its weekly rapid transit in A, B, and C sections, which allows the weaker players a chance to win a prize. The Sunday Championship games are played in five sections, the strongest called the Championship Finals. Those who fail to qualify play in a Consolation. The weaker players enter the Premier Reserves, the Major Reserves, and the Minor Reserves. The tournament committee seeds them into these sections according to strength. The club holds four Swiss tournaments each year, the one just now finishing is known as the "Winter Swiss". Instead of a regular playing day there is weekly deadlines for each round, and paired players make their own dates to play.

Soviet stars Paul Keres and Vassily Smyslov, each with 7-2 outclassed a powerful field in the annual Hastings Congress in England. Great Britain had three entries, Alexander making the best showing, with an even score.

Arthur Bisguier, who couldn't seem to win a game in the first half of the Rosenwald Tournament, couldn't lose in the second half, beat Sam Reshevsky in a 44 move King's Indian, and ended up third, after Reshevsky and Evans.

The Vancouver city championship was won by Eugene Butkov, 7½-1½. M. Jursevskis was runner-up with 7-2.

| | | |
|--------------------------|-------|--|
| ILLINOIS (30 players) | | |
| 1. Albert Weisbord | 5 - 1 | |
| 2. E.T.Vano | 5 - 1 | |
| 3. Sam Cohen | 4½-1½ | |

| | | |
|-----------------|-------|--|
| MONTANA | | |
| 1. Gerald Moore | 4½- ½ | |
| 2. John Barto | 4½- ½ | |

| | | |
|--------------------------|-------|--|
| VIRGINIA (28 players) | | |
| 1. Herbert Avran | 6½- ½ | |
| 2. Jack Godfrey | 5½-1½ | |
| 3. William Wright | 5 - 2 | |

| | | |
|--------------------------------|-------|--|
| TENNESSEE OPEN (24 players) | | |
| 1. Norman Whitaker | 5 - 1 | |
| 2. Robert Coveyou | 4½-1½ | |
| 3. Brad Wade | 4½-1½ | |
| 4. William Scott | 4½-1½ | |

NOURSE 'AD NAUSEAM'

THE HOBBY OF COLLECTING CHESS SETS

(Reviewed from two fascinating books: "Chessmen" by Donald Liddell, and "The Book of Chessmen" by Alex Hammond.)

Mr. John Harbeson of New York has accumulated an outstanding collection of about 300 sets, which he exhibits around the States. One of his sets pictures the armies of Napoleon opposing the Spaniards. These are authentic miniatures of the costumes of the period, and are beautifully colored, as indeed most of the rarer sets are.

One of Mr. Harbeson's choice sets is that depicting the wars between the Egyptians and the Assyrians. These figures are perfect replicas of the Pharaohs and their armies, showing weapons and personal ornaments besides the common apparel of the men. The rook is represented by the body of a horse with upswept wings meeting in a tip just above the hindquarters. The head is that of a bearded patriarch. The Assyrian rook was also carved in a rearing horse motif, with the horse heavily bedecked with plumes.

Mr. Harbeson warns would-be collectors of the dangers of being cheated with good imitations of authentic sets. Expert collectors are not easily fooled by imitations. There are certain things to look for. Wedgewood chessmen show the influence of the Victorian era. Georgian chessmen are recognized easily by their graceful lines. The geometrically figured pieces are most likely to be Mohammedan, made, in accordance with the Prophet's prohibition of graven images. There are sets in almost every conceivable material, from ivory to bone, paper, wood and even soap. The older wooden sets were invariably lacquered and otherwise ornamented. One of the hazards connected with Chinese sets is that the Chinese have a reputation for keeping their best products for themselves and palming off a very inferior product on the buyer.

This is a matter which only a connoisseur can be sure of, as many reproductions were made so long ago that they themselves are beginning to have the lure of antiquity.

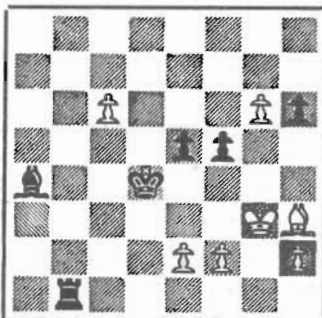
Probably the best known and most popular types are the carved ivory pieces originating in Canton which were exported in vast quantities from the end of the eighteenth century onwards, and have been copied in great numbers in the Straits Settlements and Indo-China in modern times. The difference in the old and the modern is readily understood when one considers that the older Chinese sculptor sometimes spent an entire lifetime carving one set.

There are in this country, probably thousands of genuine red and white hand carved ivory chessmen from the Orient. The pieces are as delicate and graceful as a cherry tree in the spring. They are old, too. Clipper ships brought them here, but because of their number, the value is low.

Authentic Burmese pieces are made in the squatting posture of Buddhist priests. In India the Christian "bishop" becomes a Hindu shrine. Not only do the Russians make Capitalist vs. Bolshevik sets, they also get in a little subtler propaganda by turning out sets representing communist progress. Pawns are made in the shape of incandescent lamps, with bishops replaced by silo or water-tower, and the rooks are represented as groups of the faithful, hands upraised in the Red salute.

No. 1 - STUDY

O. Ulvestad
BLACK



WHITE
White to play and win

No. 2 - PROBLEM

O. Ulvestad
BLACK



WHITE
White mates in 3 moves

No. 3 - STUDY

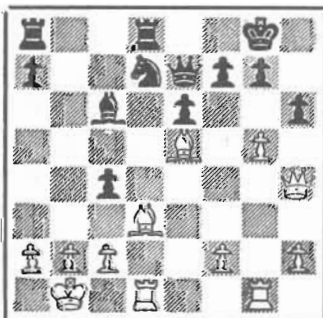
O. Ulvestad
BLACK



WHITE
White to play and win

No. 4 - Combination

BLACK - R. L'HERMET



WHITE - R. SPIELMANN
White to play and win

DIAGRAMS

JOHN
DEWITT

This month's selection, with the single exception of the final combination, was contributed by our local master, Olaf Ulvestad. These are original compositions which have been published previously in other journals or newspapers but never in the WCL.

1. This study had a very famous theme as its basis; known variously as Grimshaw, Plachutta, or Novotny. With this hint, any problem solver should have an advantage in its solution. It is not easy, however, and there are several pretty variations.

2. This three mover is one of the very prettiest that I have seen. It will afford an endless amount of pleasure for you in working out the variations. But first you must find the key-move!

3. Another study, but this one not so difficult as the first. The win is still very tricky, however, so don't be over-confident.

4. Spielmann, a brilliant attacking player, and the author of "The Art of Sacrifice in Chess", affords us here a practical example of how it's done. From the Magdeburg Tournament of 1927.

JANUARY SOLUTIONS

1. Pollack. 1. Q-Q&ch, BxQ 2. N-Q6ch, K-Q1 3. N-B7ch, K-B1 4. R-K8ch BxR 5. R-Q8 mate.

2. Reti. 1. R-Q2!, P-Q5 2. R-Q1!! K-Q4 3. K-Q7! (Not 3. K-B6?, K-K5 4. K-K6, P-Q6 and Black draws) K-K5 4. K-B6!, K-K4 5. K-B5 and Black will lose his Pawn.

3. Rossolimo. 1... RxPch 2. KxR, RxPch 3. BxR, P-K6ch 4. R-Q5, QxBch 5. K-R1, QxRch 6. K-R2, Q-B7ch 7. K-R1 Q-B6ch followed by BxR.

4. Loyd. 1. P-B8(R), K-N3 2. P-R8(R), K-N2 3. R(B8)-N8 mate.

FROM

POSTAL CHESS

R. R. Merk
Postal Chess Editor
1026 E 71 St., Seattle 5, Wash.

Results of games completed

| | Section | Opponent | | Points | Section | Opponent | | Points |
|--------------|----------------|----------|----|-----------|---------------------|---------------|----|--------|
| Baron | 1 Falk | 0 | 12 | Rauen | 1 Youngman | 0 | 64 | |
| | Section 54B-2A | | | | Section 54B-2B | | | |
| Waldron | 1 Carter | 0 | 50 | Waldron | 1 Carter | 0 | 50 | |
| Merk | 1 Carter | 0 | 32 | Merk | 1 Carter | 0 | 32 | |
| Dickson | 1 Carter | 0 | 26 | Dickson | 1 Carter | 0 | 26 | |
| Tressider | 1 Carter | 0 | 50 | Tressider | 1 Carter | 0 | 50 | |
| | Section 53A-2A | | | | Section 54A-2A | | | |
| Kaffenberger | 1 Cairncross | 0 | 54 | Coubrough | $\frac{1}{2}$ Bever | $\frac{1}{2}$ | 10 | |
| | Section 53A-4A | | | | Section 53A-4B | | | |
| Husby | 1 Dickey | 0 | 40 | Husby | 1 Dickey | 0 | 40 | |
| Knapp | 1 Dickey | 0 | 38 | Knapp | 1 Dickey | 0 | 38 | |
| | Section 54A-3A | | | | Section 54A-3B | | | |
| Weaver | 1 Wade | 0 | 64 | Weaver | 1 Knapp | 0 | 50 | |
| Wade | 1 Coubrough | 0 | 46 | Wade | 1 Bever | 0 | 32 | |
| Coubrough | 1 Bever | 0 | 40 | Coubrough | 1 Bever | 0 | 40 | |
| | Section 54A-4A | | | | Section 54A-4B | | | |
| Taro | 1 Nourse, S. | 0 | 34 | Taro | 0 Nourse, S. | 0 | 34 | |

Section 51A-14A

First report of a result in the playoff of a three way tie in this section between Kaffenberger, Cairncross and W. P. Allen gives Kaffenberger a win over Cairncross for a gain of 44 points.

Results of the completion of sections 53B-3A and 53B-3B below show that Baron took the honors by winning all 8 games and to him goes a year's subscription to the WCL.

| | 53B-3A | 53B-3B | W L |
|-------------|-----------|-----------|-----|
| Baron | x 1 1 1 1 | x 1 1 1 1 | 8 |
| McCormick | 0 x 1 0 0 | 0 x 0 0 1 | 2 6 |
| La Freniere | 0 0 x 0 1 | 0 1 x 1 1 | 4 4 |
| Falk | 0 1 1 x 1 | 0 1 0 x 0 | 4 4 |
| Winters | 0 1 0 0 x | 0 0 0 1 x | 2 6 |

NEWS OF THE 1955 CHAMPIONSHIP POSTAL TOURNAMENT

It has been decided that this tournament will be limited to 30 players in each the A division and in the B division. Each division will be divided into 5 sections of 6 players. As near as possible we will put players of equal ability in each section. Each player will play two games with each of 5 opponents. One game as white and the other game as black. The winners of each section will then compete in a final play off of two games with each of the other four section winners and the top three of this final play-off will be awarded first, second and third prize. This will give all players entered a shot at one of the prizes and the winners of the first round a 3 out of 5 chance to place in the top three places.

The first 30 entries received will constitute the tournament players, so get your entry in early or you may be left out. We already have a number of entries and numerous promises. The entry counts, promises do not. Send \$2.00 entry fee to R. R. Merk, postal director, 1026 E 71, Seattle 15.

POSTAL CHESS TOURNAMENTS

New postal chess tournaments are being formed all of the time. Get your entries in now at 50¢ per section of five players each. You play two games with each of four opponents. One game as white and one game as black. Postal chess is an excellent way to improve in chess strategy and thus improve your game because of the uninterrupted opportunity to study out your plan at leisure.

Send entries to
 R. R. Merk
 Postal Chess Director
 1026 E 71
 Seattle 5, Washington

POSTAL CHESS RATINGS

Class A Players

| | |
|--------------|------|
| Greene | 1653 |
| Mulford | 1586 |
| Wade | 1576 |
| Baron | 1570 |
| Cerretelli | 1549 |
| Weaver | 1524 |
| Coubrough | 1522 |
| Luters | 1502 |
| Almond | 1496 |
| Taro | 1478 |
| Howard | 1454 |
| Mage | 1386 |
| Kaffenberger | 1384 |
| Vellies | 1350 |
| Magerkurth | 1344 |
| Eusby | 1324 |
| DeWitt | 1302 |
| Bever | 1275 |
| Mc Patterson | 1250 |
| Roets | 1250 |
| Carter | 1250 |
| Cairncross | 1232 |
| Knapp | 1228 |
| Parry | 1220 |
| Yocom | 1190 |
| Nourse, Sid | 1182 |
| Sams | 1173 |
| Nourse, J. | 1150 |

Class B Players

| | |
|--------------|------|
| Dickson | 1332 |
| Roberts, Don | 1304 |
| Merk, R. R. | 1287 |
| Skarsten | 1268 |
| Allen, W. P. | 1262 |
| Youngman | 1186 |
| Falk | 1172 |
| LaFreniere | 1170 |
| Tressider | 1150 |
| Waldron | 1150 |
| Southerland | 1138 |
| Moore | 1137 |
| Rauen | 1164 |
| Holland | 1086 |
| Winters | 1056 |
| Carpenter | 1050 |
| Davidson | 1050 |
| Laine | 1050 |
| Luberts | 1050 |
| Meliza | 1050 |
| Nichols | 1050 |
| McNees | 1050 |
| Parsons | 1050 |
| Reed | 1050 |
| Schrank | 1050 |
| Vukovich | 1050 |
| McDonald | 1050 |
| Pifley | 1050 |
| Hart | 1050 |
| Engstrom | 1044 |
| McFoligh | 1017 |
| Nelson | 1000 |

FROM

WASHINGTON CHESS LETTER

1026 East 71 Street

Seattle 5, Washington

Return postage guaranteed

Form 3547 requested



John W. Nourse
 Rte 1 Box 298
 Winslow, Wash
 7/55