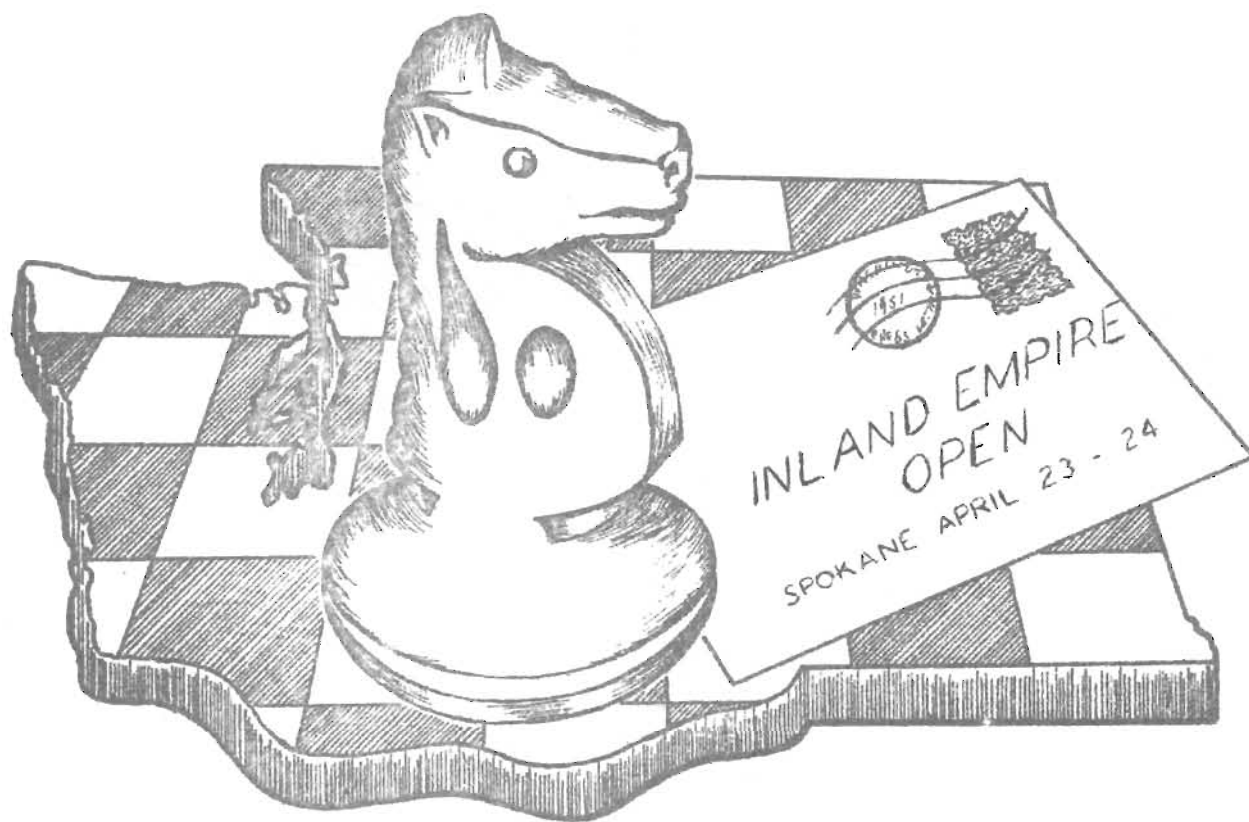


WASHINGTON CHESS LETTER



MARCH 1955

WASHINGTON

Chess Letter

G. B. Schain Editor
410 33rd Ave Seattle 22

R. R. Merk Circulation Dir.
1026 e. 71st Seattle 5

K. W. Mulford Publisher
11660 Renton Ave. Seattle 88

Contributers

J. N. Nourse (Nourse AdNauseam)
Route 1, Box 298 Winslow, Wn.

F. H. Weaver (From Chess Life)
501 Olympic Place Seattle 99

Victors Pupols
5525 16th NE Seattle 5

D. E. Wade Feature Writer
11023 25th NE Seattle 55

O. W. LaFreniere News Writer
1101 Campus Pkwy Seattle 5

W. C. F. Officers

K. W. Mulford President

Leslie Coubrough Vice-Pres
25 N. E St., Apt. 304 Tacoma 3

Peter Husby Secretary
Rt. 1, Box 355 East Stanwood

W. H. Raleigh Treasurer
4312 Woodland Pk. Ave. Apt. 3
Seattle

J. S. DeWitt Tournament Directr

O. LaFreniere Publicity Dir.

COMING EVENTS

ANNUAL MEETING April 17

The annual meeting of the Washington Chess Federation will be held at the Student Union Building on the University of Washington Campus April 17 at 1:00 P.M.

AGENDA

1. Minutes of the last meeting.
2. Treasurers report.
3. Reports of other officers.
4. Old business.
 - a. Clarification of expert ratings and rating of newly organized tournaments not covered at the present time in the By-Laws.
 - b. The Oscar Award. It has been a tradition of the WCF to pay official recognition to those who have given their services to the Federation. The most outstanding of these during the past year is given an Oscar Award.
 - c. Members wishing to clear up any previous points or suggest changes may do so at this time.
5. Election of officers.
6. New business.
 - a. Shall we establish the office of Tournament Director to represent the WCF and organize WCF tournaments in Eastern Washington?
 - b. Members wishing to bring up any new business pertinent to the Federation may do so at this time. KWM

INLAND EMPIRE OPEN

The largest tournament of the year will be played soon in Spokane. This is an affair for everybody, for everybody has a chance to place well, and a chance to get a prize! Here are the details:

- TYPE: Six round Swiss.
- PLACE: Desert Hotel, Spokane, Washington.
- TIME: April 23 and 24. Registration starts 11:30 a.m. First round at 1 p.m. Two rounds Saturday afternoon, two Saturday evening, and two Sunday. Two and one half hours will be allowed for each game with adjudication to follow.
- ENTRIES: Open to all. Fee for seniors \$3.00; for juniors \$1.50.
- PRIZES: \$25.00 first prize guaranteed! Other cash prizes will be given to the top players in the second half of the ratings. (This last arrangement, tested in the recent Spokane City Championship, proved exceedingly popular because everyone gets a chance at a prize!)
- JUNIORS: If enough juniors register they will play a separate tournament. If not, they will play with the seniors and the one with the highest place will be declared Junior Champion.
- DIRECTOR: Dr. Griffith H. Parker, 416 Hyde Building, Spokane 1, Washington. All requests for further information and advanced registrations should be sent to him.
- DEFENDING CHAMPION: Dr. Max Baumwell, Walla Walla, Washington.
- DEFENDING JUNIOR CHAMPIONS: Terry Nelson, Yakima; Robert Dycus and John Downs, Spokane.
- BANQUET: Saturday night--wives especially invited.

Spokane is counting on this being the biggest tourney yet. Players from Missoula, Montana, have promised to come over as well as those from Seattle, Yakima, Walla Walla, and other cities in and out of the state. The secondary prize list gives everyone a chance at a money prize no matter how inexperienced he may be. If you want the thrill of playing in a big tournament and yet want to be assured of finding others in your playing class, come to Spokane for the second annual INLAND EMPIRE OPEN, the biggest state tournament of the year!

COME TO SPOKANE !!!

UNIVERSITY WINS PUGET SD. LEAGUE RACE-WIN STH

The University of Washington won the 1955 Puget Sound League championship. The new champions decisively trounced the Seattle YMCA 6½ to 3½ in the final round of League play. The triumph was the University's 8th in a row in an all-victorious season. The defeat shoved the YMCA down to third behind the second place Latvians in the final PSL standings.

On first board, Bill Bills acquitted himself in fine fashion for the YMCA by beating Ted Warner 1½-½ but the rest of the YMCA team was unable to do much. Especially damaging to the YMCA cause was the inability of Bader and Bishop to score at all being blanked by Schain and Dr. Michael. The return of Jerry Schain from the navy helped the winners a lot but the lopsided score of the match makes it seem probable the University would have won in any event.

Congratulations to Warner, G.S.G. Patterson, Alan Clark and the rest of the U. of Wash. team. It must be especially gratifying this year as it appeared that the PSL was stronger this year than at any time in the past.

The Latvian Sportsmen had little difficulty in defeating West Seattle which they accomplished by the score of 8 to 2. One of the Latvian Club players was late in coming and the West Seattle man went home. Rather than take a forfeit, the top two West Siders elected to play the late comer with disastrous results for them. During the season there were a few irregularities but many of the players felt the League was for playing games of chess and not for receiving points without playing.

Ken Mulford's Olympians are weaker on the road than at home

(Seattle) but still strong as a Holmesless Tacoma team as they demonstrated in their final PSL match by holding the Tacoma team to a 5 to 5 tie. Charles Hewitt of Tacoma helped Charles Joachim of Olympia (nee Seattle) cap his most disasterous PSL season by defeating him twice.

The Kitsap Chess Club was held to a 5 to 5 tie by McNeil. Details are still forthcoming.

FINAL 1955 PUGET SOUND LEAGUE STANDINGS.

TEAMS	W	L	D	PF.	PA.
1. U. of Washington	8	0	0	46	32
2. Latvian Sportsmen	6	1	1	52	27
3. Seattle YMCA	5	1	2	49	30
4. Seattle Club	5	3	0	47	31
5. Olympia Club	2	3	3	42	37
6. Kitsap County	2	4	2	37	43
7. Tacoma Club	1	5	2	36	44
8. McNeil Island	1	6	1	25	55
9. West Seattle	0	7	1	22½	57½

U. of WASH. 6½	SEATTLE YMCA 3½
Ted Warner ½	William Bills 1½
Dr. Michael 2	George Bishop 0
G. Patterson 1	R. Vellias 1
Jerry Schain 2	Max Bader 0
Alan Clark 1*	John DeWitt 1
* two drawn games.	

LATVIAN CLUB 8.	WEST SEATTLE 2.
E. Zemgalis 2	Max Mage 0
V. Pupols 2	F. M. Howard 0
Cakarnis 1	F. M. Howard 0
Cakarnis 1	Max Mage 0
Grinhagens 1	B. Weisscher 1
Freimanis 1	E. Vukonich 1

TACOMA CLUB 5	OLYMPIA CLUB 5
Chas. Hewitt 2	Chas. Joachim 0
L. Coubrough 0	Ken Mulford 2
R. Collins 1	J. Cerretelli 1
V. Hultman 2	M. Henion 0
Thomas Dolle 0	H.E. Yocom 2

Summary of the Kitsap-McNeil match will be found on another of our pages if received soon enough.

P.S.L. INDIVIDUAL RECORDS by Wade

Leading Puget Sound League Point Makers. (Eight or more points.)

PLAYER	BOARD	W L D	Pts.
1. E. Zemgalis (1)		15-0-1	15 $\frac{1}{2}$
2. V. Pupols (2)		12-1-3	13 $\frac{1}{2}$
3. O. Ulvestad (1)		11-2-5	13 $\frac{1}{2}$
4. A. Clark (3-5)		10-0-5	12 $\frac{1}{2}$
5. R. Vellias (2)		9-4-3	10 $\frac{1}{2}$
6. G. Patterson (1-3)		8-2-4	10
7. Dr. Almond (2-3)		9-3-2	10
8. Wm. Bills (1)		7-3-6	10
9. Ken Mulford (2-4)		9-5-2	10
10 J. DeWitt (4-5)		7-2-5	9 $\frac{1}{2}$
11 Dan Wade (2)		8-5-3	9 $\frac{1}{2}$
12 Cakarnis (3)		7-1-4	9
13 V. Hultman (3-4)		8-6-2	9
14 Cerretelli (3-5)		8-5-1	8 $\frac{1}{2}$
15 R. Edberg (3)		7-1-2	8
16 Max Bader (3-4)		7-3-2	8

Other Scores

University of Washington Team
 capt. T. Warner (4-4-4), Lundh (3-2-2),
 R. Brown (1-1-3), Dr. Michael (2-3-1),
 Don Allyn (2-0), Jerry Schain (2-0),
 O. LaFreniere (2-3), L. Allyn (1-4-2),
 J. Broughton (1-0-1) and K. Black (0-2).

Latvian Sportsmen Grinhagens (5-8-3),
 Freimanis (4-4), E. Robins Jr. (2-2),
 E. Robins Sr. (1-2-1) and U. Lavins
 (0-3-1). E. Zemgalis, team captain.
 (Record above).

Seattle YMCA F. Rodnite (4-3-1),
 G. Bishop (3-2-1), Teres (2-0),
 J. Bader (1-2-1) and Ron Johnson (0-2)
 Team capt. Vellias (above).

Seattle Chess Club Team captain
 Ted Davidsen (6-6), F.H. Weaver (4-4-3),
 Dr. Shevhard (4-2), Wm. Gillette (1-1),
 Wm. McCulloch (0-2) and H. Rosen (0-2).

Olympia J. Amidon (6-2-2), Chas. Joachim
 (3-10-1), H. E. Yocom (2-1-1), C. Harmeson
 (2-0), M. Henion (2-2), Alexander (2-2),
 N. McGregor (1-0-1), Parsons (1-1), Ayres
 (1-1), Dr. Gold (1-1), Hugh Noland (0-1-1)
 and Ken Day (0-2).

Kitsap County G. Rehberg (6-4),
 F. Blakefield (5-5-2), G. Roats (2-2-4),
 C. Magerkurth (4-11-1), J. Nourse (3-6-1),
 Kennedy (2-4). (M. Carter with 1-1 on forfeits
 never played so is not counted on Number of
 Players list below)

Tacoma Chess Club J. McCormick (6-3-1),
 V. Holmes (capt.) (4-7-1), Chas. Hewitt
 (4-4), L. Coubrough (3-9-2), R. Collins (3-3),
 Jack Finnigan (2-1-1), Carlson (1-1),
 Tom Dolle (1-5) and Avann (0-1-1).

McNeil Island Dorame (5-8-3),
 McKenzie (3-9-4), Oakley (4-10-2),
 Berg (3-10-3) and Flint (3-11-2).

West Seattle E. Vukonich (6-9-1),
 Ben Weisscher (3-6-3), Schrank (3-2-1),
 F. M. Howard (2-13-2), W. Cowan (2-8),
 Captain of the team Max Mage (1-13-1),
 Woodward (1-1) and O.W. Manney (0-1-1).

Number of Players in the League:

Olympia	14	Latvians	8
U. of Wash.	12	W. Seattle	8
Tacoma	10	Kitsap	7
YMCA	9	McNeil	5
Seattle	9	TOTAL	82

PUGET SOUND LEAGUE CHAMPIONS

1955	University of Washington
1954	Seattle YMCA, Kitsap and Tacoma Chess Clubs.
1953	Tacoma Chess Club
1952	University of Washington
1951	Seattle Chess Club
1950	Seattle Chess Club
1949	Tacoma Chess Club
1948	Tacoma Chess Club
1947	Tacoma Chess Club

Record of the 1955 Champions:

U. of W.	Opp.	U. of W.	Opp.	
6	Seattle	3	6 W. Seattle	4
5 $\frac{1}{2}$	Kitsap	4 $\frac{1}{2}$	5 $\frac{1}{2}$ Tacoma	4 $\frac{1}{2}$
5 $\frac{1}{2}$	Olympia	4 $\frac{1}{2}$	5 $\frac{1}{2}$ McNeil	4 $\frac{1}{2}$
6	Latvians	4	6 $\frac{1}{2}$ YMCA	3 $\frac{1}{2}$
WON 8		LOST 0		

OLVESTAD WINS SEATTLE OPEN

By Wade

Olaf Ulvestad is the new champion of Seattle in the world of chess. Olaf scored $5\frac{1}{2}-\frac{1}{2}$ in a six round, twelve player Swiss played March 20th and 27th at the Seattle Chess Club. He failed to win only one game, a draw with State Champion William Bills.

Jerry Schain, recently returned from the navy, won second place with $4\frac{1}{2}-1\frac{1}{2}$ and Bills was third also with $4\frac{1}{2}-1\frac{1}{2}$ but with two less Solkoff points than Schain.

Ken Mulford, playing his first tournament in a long while, scored 4-2 to finish fourth and tournament director Dan Wade had a poor start but finished fifth with a $3\frac{1}{2}-2\frac{1}{2}$ score.

M. Baumgart defeated Joe Cerretelli and drew with Schain and then got lost! Vellias won from him by forfeit in the 3rd round. George Bishop added more strength to the tourney by taking Baumgart's place on the second Sunday. Bishop finished in sixth place with a 3-3 record.

Newcomer Carl Hanson upset a rather demoralized Jim McCormick and won two more from weak players to also finish with a 3-3 score and take seventh.

Russell Vellias had a bad time in this tourney. In fairness to him, it must be mentioned that he played all of the top four players. He should have a draw with Ulvestad but let Ollie out fox him in the pawn and rook end game. His high Solkoff gave him eighth place with 2-4.

Joe Cerretelli traveled the round trip from Olympia both Sundays to play in the tourney. He lost to Baumgart, Vellias, Bills and Wade but managed to trip up McCormick and defeat Jim Kostenick, a newcomer.

Kostenick, Fred Bowman (who forfeited two games the second Sunday) and the deflated McCormick (who forfeited all three of his last games) were never in contention. Bowman and McCormick forfeited to each other in

the fourth round. Bowman made a brief reappearance for the fifth round, was clobbered, and then got lost again for the last pairings so both he and Jim McCormick were dropped O U T.

The tragedy of the tourney was the very late arrival of Bills for round four. He had to forfeit his game to Schain, ruining his very bright chances of winning the city championship.

Both Seattle newspapers had given this tourney publicity and a good-sized crowd of players was on hand both Sundays. The Seattle P. I. took two pictures of proceedings the first Sunday and a good story. One pic showed the Bowman-Kostenick game and the other showed a pretty Roosevelt High School Chess Club enthusiast, Catherine Tatsumi. The photo-taker was not interested a little bit in the great chess experts all around him. He wanted glamour and also a pic of chess players playing chess and he got what he came for and left.

If the onlookers had played in this tournament, there would have been an entry list of about 30 players. They didn't care to play because they felt the competition was too stiff for them.

The regrettable lateness of the Washington Chess Letter may

have cost the tournament about six more entries. However, the Seattle Chess Club members had notice a month in advance and a few letters were mailed to key Puget Sound area chess leaders plus the newspaper publicity and some phone calls, so the tourney was not a complete secret!

The tourney director wishes to state that Joe Cerretelli's Chili Con Carne is better tasting chili than any brand that I have ever bought. The wife goes along with me on this and thanks a lot from both of us. For once a Washington chess tourney director gets paid! (not an ad)

The tournament gave the Seattle Chess Club a lot more publicity than several ads and might conceivably bring in a few new members whom the club can always use.

SUMMARY:

GOOD: Strength of majority, publicity, and number of spectators.
BAD: Number of entrants, the disregard for punctuality and number of forfeits.

A final story of the tourney appeared in the Seattle P.I. the morning following the tournament. They will give more in the future.

PLAYERS	-1-	-2-	-3-	-4-	-5-	-6-	W L D	PTS.	SOLK.
1. Olaf Ulvestad	W-10	W-4	D-3	W-8	W-2	W-6	5-0-1	5½	20.0
2. Jerry Schain	W-8	D-6	W-5	W-3*	L-1	W-4	4-1-1	4½	22.5
3. William Bills	W-7	W-5	D-1	L-2*	W-9	W-8	4-1-1	4½	20.5
4. Ken Mulford	W-11	L-1	W-10	W-7	W-8	L-2	4-2-0	4	17.0
5. Dan Wade	W-12	L-3	L-2	D-6	W-11	W-9	3-2-1	3½	14.0
6. George Bishop**	W-9	D-2	L-8*	D-5	W-7	L-1	2-2-2	3	20.5
7. Carl Hanson	L-3	W-12	W-11	L-4	L-6	W-10	3-3-0	3	13.5
8. Russell Vellias	L-2	W-9	W-6*	L-1	L-4	L-3	2-4-0	2	23.5
9. Joe Cerretelli	L-6	L-8	W-12	W-10	L-3	L-5	2-4-0	2	15.0
10 Jim Kostenick	L-1	W-11	L-4	L-9	W-12*	L-7	2-4-0	2	14.5
11 Fred Bowman	L-4	L-10	L-7	L-12*	L-5	OUT	0-6-0	0	12.5
12 Jim McCormick	L-5	L-7	L-9	L-11*	L-10*	OUT	0-6-0	0	10.5

* forfeits. ** M. Baumgart played first three rounds.

On March 20th, possibly a dozen players could have been organized into a reserve or "B" tournament and on March 27th it may have been possible to line up 20 players for a reserve tourney. However, it was all the T. D. could do just keeping the main event going.

The 12-player Washington Open was a major tourney with Warner, Vellias, Clark, Wade, Edberg, McCormick and Bader. It would hardly be possible not to rate the Seattle Open as a major tournament with Ulvestad, Bills, Vellias, and Wade rated master and expert in WCF circles plus strong men Schain, Bishop and Mulford.

CHESS IN 'REVIEW'

The April 'Reader's Digest' condenses an article from the April Rotarian which is here further condensed for the April Washington Chess Letter.

Nine million players in the United States, and well over 100 million elsewhere on earth play chess. Prodigies like Capablanca, who learned the game at the age of four by watching his father play, and Reshevsky at age seven, could easily beat experienced, clever adults.

Around 700 A.D. the Moors of North Africa brought the game to Spain. In France, Italy and Spain the Church made clerics do penance for abandoning themselves to chess. British courts fined workingmen for indulging in such frivolity, and French merchants made employees sign "I-do-not-play-chess" affidavits.

Dr. Lasker of Germany ruled as world champion for 27 years until Capablanca defeated him in 1921. In 1927 Capablanca lost his first match and championship to Alekhine, a White Russian who had settled in Germany. The Cuban did not make any special preparation for this match, but Alekhine trained for it like a prize fighter. He cut out smoking and drinking, and did calisthenics for three months. Alekhine was a vain and arrogant man who responded to the loss of a game by hurling his cane and smashing furniture. He was reputed to have memorized every game between masters since 1900

American chess, during this time, was dominated by Frank Marshall, genial gun-chewing fanatic, who once made such a sensational move in a big European tournament that the audience rose with a cheer and showered him with money. One night he arose and recorded a particularly intricate line play which he kept secret for ten years, waiting for the appropriate moment to spring it. The moment came in a match with Capablanca, who calmly examined the unexpected maneuver, and contrived a counterattack which beat it.

Plans are reported progressing for a match with the USSR in Moscow in June or July of this year. The American team reported to consist of Reshevsky, Evans, Bisguier, and the Byrne brothers. Maybe Fine.

U. S. Champion Arthur Bisguier will compete in a 25 day tournament at Buenos Aires, starting April 17. Other invited players are Alexander of Great Britain, Unzicker of West-Germany, Pachman of Czechoslovakia, Szabo of Hungary, and Gligorich and Ivkov of Yugoslavia.

MINNESOTA

(40 players)

1. K. N. Pedersen 5½- ½
2. Fred Galvin 5 - 1
3. W. E. Kaiser 5 - 1
4. W. R. Jones 4½-1½

KENTUCKY

(18 players)

1. John Penquite
2. R. W. Shields
3. R. Bersbach

Among the coming open events are the following classics:

INLAND EMPIRE OPEN	6 round Swiss	\$3 entry	Spokane	April 27-30
GREAT LAKES OPEN	7 round Swiss	\$175 1st prize	Chicago	May 2-5
TRANS-MISSISSIPPI OPEN	7 round Swiss	\$100 1st prize	Davenport	May 28-30

AT SPOKANE

The Spokane Chess Club has created a league within the club itself. The league is composed of six four man teams which were selected by a committee so as to make them as nearly equal in strength as possible. These teams will play a round robin schedule of five matches with the winner to be determined by games won and not match points.

The teams were given names of the chess pieces and captains were chosen for each. The captains were selected by the committee because of their regular attendance and interest from among those who have not held some club office.

At the end of the first night's play the standings were as follows:

Queens 4, Karl Kiszely, captain; Bishops $2\frac{1}{2}$, Steve Stenerson, captain.

Pawns 2, P. A. Lyberger, captain; Rooks $1\frac{1}{2}$, John Vhay, captain.

Kings 1, P. H. Neuman, captain; Knights 0, Phil Aikman, captain.

The Kings and Pawns had only three men present. The fourth men will play later to bring their score to the others' level.

Leon Svensson, Queens, defeated Gordon Cornelius, Knights, in their struggle as number one men on their teams. William E. Voget, Jr., Rooks, drew with Dr. G. H. Parker, Bishops, and P. H. Neuman, Kings, lost to Ray Kromer, Pawns, in other top board matches. The new league was welcomed with lots of enthusiasm by the club members. Players not selected for a team have the privilege of challenging any number four man for his place and other team members may challenge the man above him for his place.

OLAF ULVESTAD played a 33 board simultaneous exhibition at the Spokane Chess Club on March 23. In the most enjoyable affair he pulled in 23 wins and lost only three games. The lucky winners were Gordon Cornelius, Ray Kromer, and Henry Manson of Coeur d'Alene, Idaho. Getting away with draws were Don Daniels, Al Mohr, Jan Spitz, Gary Glenn, Floyd Morris, Don Eilmes, and John Hartman. Following the exhibition Olaf played a blindfold 15 second game which lasted 42 moves with Cornelius. The game ended in a draw.

RESULTS of the balloting to create the Eastern Washington League have been returned and will be put into effect by Dr. G. H. Parker, elected director of the organization. The name will be "Inland Empire League." The clubs voting decided on five man teams to play two games at 40 moves an hour in each meeting. They decided against affiliation with the Washington Chess Federation. Other details, such as league season, were not voted conclusively and are being left to Dr. Parker to decide as the executive of the league.

-- Dr. G. H. Parker reporting

WELCOME NEW MEMBERS

Clifford J. Anderson, Auburn
Sol L. Birulin, Hoquiam
George Bishop, Renton
Al Luberts, Jr., Seattle
Dick Parsons, Centralia
Mac Patterson, Portland, Oregon
James J. Reed, Portland, Oregon

Many thanks again to Max Bader for sending in a list of names and addresses to the Publicity Director. They are badly needed to continue WCF's publicity campaign. Have you done your share? Remember, quality can grow only with circulation.

SEATTLE CHESS

By Wade

ULVESTAD WINS HORSE'S HEAD.

Friday evening, March 25th, was a busy one at the Seattle Chess Club. A tournament of 10 second (blitz) chess was played. Vellias, Mulford, Bills, Wade, Erickson, H.H. Roberts, Bishop, Weaver and Fred Ballantine participated. After this tournament had gone three rounds of a scheduled five, more players wanted to get in. These players were Ulvestad, Edberg, Pupols, Gillette and Shemaria.

After much figuring, it was finally decided that this group could not "cut in" on the original group so they played a semi-round-robin affair with the winners of each group meeting for first place and the prize.

Weaver defeated Vellias in the fifth round allowing Mulford to catch him, each player finishing with 4-1 scores. Vellias defeated Mulford in a playoff.

Meanwhile, Ulvestad rolled up a 4-0 score in his group in which it could never be really ascertained whether the players were in the tourney or not! The two great ones, Ulvestad and Vellias, then met in the grand finale with Ulvestad winning.

Mr. Davidsen donated a ceramic black knight head as first prize. The club treasury picked up \$6.00 from this affair with twelve of the fourteen paying 50 cent entry fees.

VELLIAS AWAITS FOE IN CHESS CLUB TOURNNEY

John DeWitt seems to be unable to find Dr. Lewis and Emil Rennord or vice-versa so his score still stands at $3\frac{1}{2}-\frac{1}{2}$ in the club tournament. The tournament was supposed to be over by Feb. 28th and this is being typed one month after that date. It would be appreciated if the men named would get together.

A LETTER FROM JACK NOURSE

Jack Nourse wrote the following letter from Mexico.

We came down the coast visiting friends enroute (cheaper!) and stayed in Santa Cruz a month. After beating all of the lesser players, I finally tangled with a chap named Dreio, who besides being grand company, gave me a good run for my money. We wound up about even.

We stopped at San Francisco where I noticed that Jim Schmitt is now second on their perpetual board with a big gap between him and the third player. I consider this of interest to Washington players as it proves Schmitt was in error when he belittled our brand of chess as compared to San Francisco's. Probably all Jim had to do was adopt a tighter brand of chess.

Santa Cruz club meets each Wednesday night and about ten players attend. Their membership is 25.

From Santa Cruz down to El Paso, all of the towns make arrangements for chess and similiar games. In El Paso they have a building allotted to indoor games. They have a nice hostess and I noticed 3 boards of chess 2 of checkers, 3 of dominoes and all of the various card games. Too bad Seattle doesn't have something similiar. Of course they cater to oldsters, especially in Southern California as the area is literally crawling with them.

Regret to report I let Wash. chess down badly in El Paso. After beating the patzers, they aroused the El Paso champ - by name - Alfred P. Coles III and I let him take me 8-4 & 1 drawn. (excuses deleted here) He beat Pupols in the 1954 Panhandle and also claims to have beaten O. W. Manney. Please send Mr. Coles a copy of the Chess Letter.

Chess derby at N. Peapod

A WEAVER FEATURE

The North Peapod Island Open Chess Tournament has been reported many-many times in the past, in this column, and people are beginning to ask, "Where is North Peapod Island?", and "Is there a S. Peapod Island?"

Yes, there is a S. Peapod Island. But N. Peapod Island is the most important of the two because it has a tree on it. As one cruises up Rosario Strait between Cypress and Blakely, with N. Peapod on the northern horizon, this tree sparkles for all the world like a Christmas tree, with artificial snow adorning the craglike branches, and all around it what might be taken for ornamental or snow balls, which are in reality various wild fowl and gulls. A very pretty sight, from a distance.

The time of the 1955 tournament is somewhat uncertain, depending on when the salmon run arrives at Lawrence Point. There is nothing quite so exciting as having an impatient salmon leaping and sounding while a rook is en prise in the championship finals.

So, if you hear a flourish on a carillon made of empty gin bottles, in the twilight, in the Straits, -better row over and enter the North Peapod Open.



"I've asked you time and again not to shoot your chess opponent through your pocket."

GAMES

By Wade

Another, and final, selection of games from the preliminary sections of the State Closed. Following are two wins apiece by the two sectional winners, Ulvestad and T. Warner.

G. BISHOP

TED WARNER

- | | |
|------------|---------|
| 1. N-KB3 | P-QB4 |
| 2. P-QB4 | N-KB3 |
| 3. N-B3 | N-B3 |
| 4. P-Q4 | PxP |
| 5. NxP | P-Q4 |
| 6. PxP | NxP |
| 7. NxQN | PxN |
| 8. Q-R4 | B-Q2 |
| 9. B-Q2 | P-K4 |
| 10 P-K4 | N-N3 |
| 11 Q-R5 | B-Q3 |
| 12 B-K2 | O-O |
| 13 B-K3 | Q-K2 |
| 14 P-QR3 | B-K3 |
| 15 BxN | PxB |
| 16 QxP | QR-N1 |
| 17 QxP | KR-B1 |
| 18 Q-R6 | RxP |
| 19 N-Q5 | Q-Q1 |
| 20 B-Q3 | BxN |
| 21 PxB | R-QR1 |
| 22 Q-B4 | B-N5ch. |
| 23 K-B1 | Q-B3 |
| 24 P-B3 | Q-N4 |
| 25 B-K2 | Q-K2 |
| 26 R-B1 | BxP |
| 27 Q-B8ch. | RxQ |
| 28 RxRch. | Q-B1 |
| 29 RxQch. | KxR |
| 30 K-K1 | B-N5ch. |
| 31 K-B2 | B-B4ch. |
| 32 K-K1 | B-N5ch. |
| 33 K-B2 | B-B4ch. |
| 34 K-K1 | B-K6 |
| 35 P-N3 | K-K2 |
| 36 R-B1 | K-Q3 |
| 37 P-B4 | P-K5 |
| 38 P-B5 | KxP |
| 39 P-R4 | B-B4 |
| 40 P-N4 | K-Q5 |
| 41 K-B2 | K-B6ch. |
| 42 K-K1 | R-N8ch. |
| 43 B-Q1 | K-Q6 |
| 44 P-N5 | P-K6 |
| 45 R-B4 | B-N5ch. |

- 46 RxB
 47 B-K2ch.
 48 K-B1
 Black won.

- RxR
 K-K5

J. MCCORMICK

O. ULVESTAD

- | | |
|-------------|-------|
| 1. P-K4 | P-K4 |
| 2. N-KB3 | N-QB3 |
| 3. N-B3 | N-B3 |
| 4. B-N5 | B-N5 |
| 5. O-O | BxN |
| 6. QPxB | Q-K2 |
| 7. R-K1 | P-KR3 |
| 8. BxN | NPxB |
| 9. Q-K2 | P-Q3 |
| 10 P-KR3 | N-R2 |
| 11 B-K3 | O-O |
| 12 QR-Q1 | K-R1 |
| 13 P-B4 | P-QB4 |
| 14 R-Q3?? | P-B4 |
| 15 N-Q2??? | P-B5 |
| 16 Resigns. | |

If 15 B-Q2 or B-B1, PxP; 16 QxP, B-B4 winning exchange. What is called being nipped in the bud.

F. WEAVER

O. ULVESTAD

- | | |
|----------|-------|
| 1. P-QB4 | P-K4 |
| 2. N-QB3 | N-QB3 |
| 3. N-B3 | P-KN3 |
| 4. P-Q4 | PxP |
| 5. NxP | B-N2 |
| 6. P-K3 | KN-K2 |
| 7. B-K2 | O-O |
| 8. O-O | P-Q3 |
| 9. R-N1 | NxN |
| 10 PxN | N-B4 |
| 11 P-Q5 | P-QR3 |
| 12 B-Q2 | B-Q2 |
| 13 P-QN4 | Q-R5 |
| 14 Q-B1 | |

Best was 14 P-B5! (Ulvestad).

- | | |
|------------|---------|
| 14 | P-R3 |
| 15 N-Q1 | QR-K1 |
| 16 N-K3 | N-Q5 |
| 17 B-Q3 | P-KB4 |
| 18 P-B4 | R-K2 |
| 19 P-N3? | Q-B3 |
| 20 N-N2? | N-K7ch. |
| 21 BxN | RxB |
| 22 B-K3 | RxP |

Concluded on next page.

23 P-B5
 24 Q-B4
 25 Q-Q3
 26 Q-R3
 27 KR-B1
 28 R-K1
 29 RxR
 30 R-K1
 31 B-B2
 32 Resigns.

B-R5
 R-QB7
 R-K1
 B-N4
 R-K7
 R-K5
 BxR
 B-B5
 BxP

44 R-R8
 45 P-N8(Q)
 46 RxB
 47 K-K3
 48 R-QB8
 49 R-B7
 50 K-Q4

K-B6
 BxQ
 P-B5
 K-N7
 K-B6
 K-N6
 Resigns.

Postal Chess Section 53 A - 1 A.

TED WARNER

R. EDBERG

1. P-Q4
 2. P-QB4
 3. N-QB3
 4. Pxp
 5. P-K4
 6. B-KB4
 7. B-K3
 8. P-KR4
 9. N-B3
 10 Q-Q2
 11 R-Q1
 12 N-K5
 13 P-B4
 14 QxN
 15 P-R5
 16 P-B5
 17 PxN
 18 PxB
 19 RPxp
 20 Q-R3
 21 Pxpch.
 22 R-QSch.
 23 RxRch.
 24 Qxpch.
 25 B-B4
 26 Q-RSch.
 27 RxQch.
 28 R-NSch.
 29 B-K6

P-Q4
 P-QB3
 N-KB3
 Nxp
 N-B2
 N-K3
 P-KN3
 B-N2
 N-B2
 N-Q2
 N-B3
 N-N5
 NxB
 O-O
 N-N4
 Nxp
 BxN
 Q-R4
 QxKP
 P-KR3
 RxP
 R-B1
 KxR
 Q-N2
 P-N4
 QxQ
 K-N2
 K-B3
 BxB?

B-n2 was proper move.

30 RxR BxRP
 31 RxP B-N8

This was the reason for his 29th. But his try for a draw is not sound.

32 P-N4 BxP
 33 K-B2 P-K3
 34 Pxp Kxp
 35 K-K3 B-Q4
 36 K-B4 K-B3
 37 R-Q7 K-K3
 38 R-KR7 K-Q3
 39 P-N5 K-B4
 40 P-N6 K-B5
 41 R-R3 P-N5
 42 Pxp Kxp
 43 P-N7 P-B4

D. E. WADE

L. M. GREENE

1. P-K4
 2. N-KB3
 3. P-Q4
 4. Nxp
 5. N-QB3
 6. B-K2
 7. O-O
 8. B-K3
 9. N-N3
 10 P-KB4
 11 Nxp
 12 P-QR3
 13 R-B1
 14 B-Q4
 15 R-B3
 16 QxB
 17 BxB
 18 N-Q5?
 19 N-K3
 20 N-Q1
 21 P-K5
 22 P-B3
 23 K-R1
 24 QxQ
 25 R-Q3
 26 R-B3
 27 R-QB2
 28 N-K3
 29 Nxp
 30 R-B2

P-QB4
 P-Q3
 Pxp
 N-KB3
 P-KN3
 N-B3
 B-N2
 O-O
 B-K3
 N-QR4
 QxN
 P-QR3
 QR-B1
 B-B5
 BxB
 N-Q2
 KxB
 P-K3
 N-B3
 P-Q4
 N-K5
 Q-B4ch.
 Q-B5
 RxQ
 N-B4
 N-N6
 N-Q5
 NxpR/2
 R-K5
 P-B3

31 Resigns.

White can no longer keep his finger in the dike. After 31 Pxp ch., RxP; 32 P-KN3, P-KN4; White can not hold off Black's rooks & the knight is useless.

KITSAP CLUB	5	MCNEIL ISLAND	5
Magerkurth	1 1/2	Berg	1 1/2
Dr. Almond	1 1/2	Dorame	1 1/2
G. Rehberg	1	McKenzie	1
Blakefield	1	Flint	1
Kennedy	0	Oakley	2

SPOKANE

APRIL 23
 24

NOURSE 'AD NAUSEAM

THE HOBBY OF COLLECTING CHESS SETS

(Reviewed from two fascinating books: "Chessmen" by Donald Liddell, and the "Book of Chessmen" by Alex Hammond.)

Mr. Harbeson started on his career as a collector quite by accident. He bought a wooden set of chessmen in Ireland just as a souvenir. Later he realized how the war games mirrored history frequently with all the charm and authenticity of a scene in natural color. From that day on he has carved and collected sets in what time he can spare from his business as an architect. He hasn't spent a lot of money on his hobby. If a desirable set is proven too expensive, Mr. Harbeson merely takes out his carving tools and whittles out a copy.

Mr. Harbeson from his vantage of experience has one warning to offer - the Hobby can become a serious malady. An Englishman built one of the finest collections in the world. He spent every cent he possessed. He then found himself forced to sell his collection. Gustavus A. Pfeiffer of New York, America's number one collector, paid him \$90,000.

Several years later Pfeiffer heard again from the Englishman. The \$90,000 was gone. The collector was broke again. He had spent the money on chess sets, and wanted to know whether the American would bail him out once more.

Mr. Jas. F. Magee of Philadelphia has a very interesting collection, containing chessmen from every age and clime, from the rude Norse Ivory pieces, hacked from walrus tusks, with which the Viking Thanes played on the flat of their ox-hide shields, to the master pieces of delicate inlay and tracing work carved for the Emperors of the Ming dynasty by the cunning fingers of Celestial workmen long since dead and forgotten.

In the "Book of Chessmen" a unique set is illustrated, one side of which represents the Chinese conception of European Royalty and soldiery: the pawns appear to be marines, with flat hats and cutlasses in their right hands. In the left hand is what appears to be a baton. The explanation is said to be that when the Treaty Ports were first conceded, every member of an armed party had to carry his own copy of the "Order of the Day" signed by the Officer in Command, so each of these pawns carries with him not a baton, but his written authority to use a cutlass, an interesting sidelight upon early contacts with China.

Another appealing set is designed with a Royalty in Boyland motif, while still another represents William the Conqueror facing the English under Harold II. The Normans were strong with cavalry and archers, while the English made a stout resistance with their battle-axes and other weapons, all the varying warriors and their accoutrements being faithfully copied by design.

Both Mr. Hammond's and Mr. Liddell's books are profusely illustrated, and a perusal of either one should create the desire to join in a fascinating hobby.

Chesstime at Boeing

BY BILLS

"Heh, it's lunchtime -- bring out the chessboard, Joe, and we'll finish our game now, okay?". Lathes stop, pencils drop, and in the various departments throughout the Boeing Aircraft company, chessmen of every description continue to dance their merry way across the 64 squares.

While many players are members of the Washington State Chess Federation, most do not know of organized chess. But they all enjoy that break in the day's routine when the hostile monarch can be pursued until he falls, victim of a clever attack.

Though these people are unorganized and do not participate in the excitement of the WCF sponsored tournaments, at the flight center more than a dozen contestants are finishing their second tournament and are planning a larger one.

The first contest was round-robin with FRANK URIYU and JOE ZAPPALO taking first and second places.

The second go-round is a team match, with three boards making one team. Each board plays two games with his respective opponent from the other teams. (At present the firm of URIYU - HANSON - HAWAGUCHI is just ahead of Mssr. BILLS - SCHULLER - LEBON. State champion BILLS is playing minus rock and bishop.)

The only difficulty encountered so far has occurred when changes in shift or location have forced substitutions. But happily, this has resulted in bringing new players into the group activity.

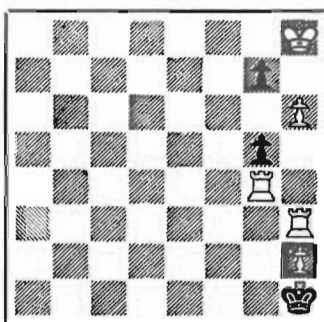
Boeing players who belong to the WCF include: MAX BADER WILLIAM BILLS, JOHN DEWITT, WILLIAM GILLETTE, JIM MCCORMICK and KEN MULFORD.

If Boeing chess players will continue to support their smaller department tournaments, then the first Boeing chess tournament will quickly develop into reality.



No. 1 - PROBLEM

J. C. J. Wainwright
BLACK

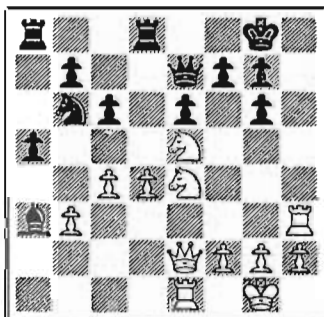


WHITE

White to play and mate in 3.

No. 2 - Combination

BLACK - R. Reti

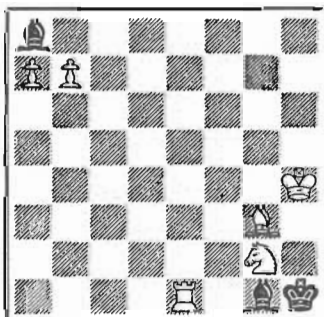


WHITE - F. D. Yates

White to play and win.

No. 3 - PROBLEM

Sam Loyd
BLACK

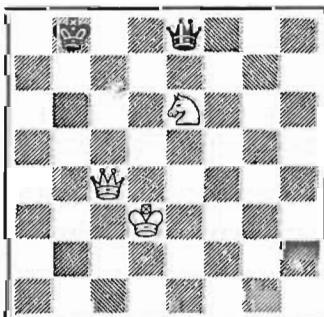


WHITE

White to play and mate in 3.

No. 4 - STUDY

Henri Rinck
BLACK



WHITE

White to play and win.

DIAGRAMS

This month's selection has been taken from a variety of sources from Kenneth Howard's problem series in Chess Review to H. Golombek's new "The Game of Chess". Working out the solutions to these little tasks should give you a better insight into the problems you may encounter in your own games.

1. Joseph C. J. Wainwright was one of the most widely known of the earlier New England composers. He began problem composition in the early 1880's and continued it until his death in 1921. This is a good example of his work, which should not cause you much difficulty.

2. This combination was seen in the great New York Tournament of 1924. Yates, one of England's most famous attacking players, forced Reti to resign in one move from the diagrammed position.

3. This problem has an absurd key, but this is not uncommon for Sam Loyd, who is probably America's most famous problemist. To the business world he was known as a journalist and as the "Puzzle King". Some of these can certainly be perplexing.

4. Henri Rinck of Barcelona was one of the greatest endgame composers who ever lived. Here is an artistic and beautiful example of his art.

FEBRUARY SOLUTIONS

1. Ulvestad. The solution to this study is not immediately available, but will be published in April.

2. Ulvestad. Key move: 1.R-Q5.

3. Ulvestad. 1.K-B6, PxP 2.N-B6 P-R6 3.N-K7, P-R5 4.N-B5ch, K-R4 5. B-Q5, K-N5 6. B-B3 mate.

4. Spielmann. 1.QxP!!, PxQ 2. Pxpch, K-B1 3.R-N8ch!, KxR 4.P-R7ch K-B1 5.P-R8(Q) mate.

POSTAL CHESS

R. R. Merk
Postal Chess Editor
1026 E 71 St., Seattle 5, Wash.

	52A-2A	52A-2B	W	L	D
Skarsten	x 1 0 1 0	x 1 0 0 0	3	5	
Hardinge	0 x 0 0 0	0 x 0 0 0			8
Coubrough	1 1 x 1 1	1 1 x 1 1	7		1
Cairncross	0 1 0 x 0	1 1 0 x 1	4		4
Yocom	1 1 0 1 x	1 1 1/2 0 x	5	2	1

	53A-4A	53A-4B	W	L	D
Almond	x 1 0 0 1/2	x 0 1 0 1/2	2	4	2
Husby	0 x 1 0 1	1 x 1 0 1	5	3	
Knapp	1 0 x 1/2 1	0 0 x 1/2 1	3	3	2
Baron	1 1 1/2 x 1	1 1 1/2 x 1	6		2
Dickey	1/2 0 0 0 x	1/2 0 0 0 x			6 2

	54A-3A	54A-3B	W	L	D
Almond	x 0 0 0 0	x 0 0 0 0			8
Coubrough	1 x 1 0 0	1 x 1 1 1/2	5	2	1
Beaver	1 0 x 1 0	1 0 x 0 0	3	5	
Weaver	1 1 0 x 1	1 0 1 x 0	5	3	
Wade	1 1 1 0 x	1 1/2 1 1 x	6	1	1

Coubrough, Baron & Wade win a 6 month subscription to the WCL by having won in their section.

Section	Player	W	L	D	Points
52A-2B	Yocom	1	0	0	32
53A-3A	Howard	1	0	0	54
54A-4A	Knapp	1	0	0	76
	Dickey	1/2	0	0	0
54A-4B	Dickey	1/2	0	0	0
54A-2A	DeWitt	1	0	0	70
54A-2B	DeWitt	1	0	0	70
54A-3A	Coubrough	1	0	0	50
	Bever	1	0	0	72
	Weaver	1	0	0	28
	Wade	1	0	0	42
54A-3B	Coubrough	1	0	0	50
	Bever	1	0	0	72
	Weaver	1	0	0	28
	Wade	1	0	0	42
	Wade	1	0	0	42
54A-5B	Wade	1	0	0	6
54A-6A	Howard	1	0	0	22
54A-6B	Baron	1	0	0	24
53A-2B	Kaffenberger	1	0	0	32
54B-3A	Waldron	1	0	0	54
54B-3B	Rauen	1	0	0	54
	Rauen	1	0	0	54

Another win in the playoff of the three way tie in 51A-14A, Kaffenberger 2 Allen 0 This cinches a tie for Kaffenberger if Cairncross wins the three games he is still playing and if he doesn't, Kaffenberger wins the section.

Unfortunately Dr. Almond has had to resign all of his postal games due to the press of business. In sections 54A-5A, 5B, 6A & 6B he probably has not made the necessary 6 moves to qualify for a forfeit and unless we hear to the contrary by April 20th, we will substitute a player in each of these sections in his place.

NEWS OF THE 1955 CHAMPIONSHIP POSTAL CHESS TOURNAMENT

We have not as yet heard from SPOKANE, PASCO, YAKIMA and other points in Eastern Washington with entries in our CHAMPIONSHIP POSTAL CHESS TOURNAMENT. There must be some postal players over in that part of the state. There are still places open in the big tournament which we hope to start by May 1st. Entries will be limited to players in Washington and Oregon so that the time in transit of postal cards will be small and the games can progress quite rapidly.

Get in on the chance to participate in the prizes. FIRST PRIZE in each Division will be \$30.00, SECOND PRIZE \$15.00 and THIRD PRIZE \$10.00.

First round players will be matched in 5 or 6 player sections with others of as equal ability so that each player will have an equal chance to get in the final round with a 50-50 chance to draw down one of the prizes.

Send entries to R. R. Merk, 1026 E 71, Seattle 15, Wash., Postal Chess Director.

1955 POSTAL CHESS CHAMPIONSHIP
TOURNAMENT

There is still time to get in on the
CHAMPIONSHIP TOURNAMENT FOR 1955
Entry fee is \$2.00. We plan on two
divisions, an A and a B division.
The first round will have a time
limit of one year and will be played
off in sections of five or six play-
ers. The winners of these sections
will then play in a second round to
determine the final winners. Players
tied in any section of first round
for top place in a section will both
be qualified for the final round.
Ties in final round for the first
three places will divide the prizes.
Points on our postal chess ladder
will be given in same manner as now.
SEE INSIDE OF BACK COVER FOR MORE
PARTICULARS.

POSTAL CHESS RATINGS
"A" Division

Wade	1708
Baron	1594
Coubrough	1590
Mulford	1586
Cerretelli	1549
Weaver	1538
Howard	1530
Luters	1502
Kaffenberger	1492
Taro	1478
DeWitt	1442
Bever	1419
Mage	1386
Vellias	1350
Magerkurth	1344
Knapp	1304
Husby	1300
MacPatterson	1250
Roats	1250
Carter	1250
Yocom	1222
Farry	1214
Cairncross	1210
Nourse, Sid	1182
Sams	1173
Nourse, J.	1150

"B" Division

Dickson	1332
Roberts, Don	1304
Skarsten	1268
Rauen	1260
Merk, R.R.	1255
Waldron	1204
Allen, W.P.	1186
Falk	1172
LaFreniere	1170
Tresidder	1150
Southerland	1138
Moore	1137
Youngman	1090
Holland	1086
Winters	1056
Carpenter	1050
Davidson	1050
Laine	1050
Luberts	1050
Meliza	1050
McNees	1050
Nichols	1050
Parsons	1050
Reed	1050
Schrank	1050
Vukonich	1050
McDonald	1050
Pifley	1050
Hart	1050
Ergstrom	1044
Raleigh	1017
Nelson	1000

Schmidt
Apr 203 - 739 Haight St
San Francisco.

FROM
WASHINGTON CHESS LETTER
1026 East 71 Street
Seattle 5, Washington
Return postage guaranteed
Form 3547 requested

146 30
5' from wall

8' 10" 4' 6" 5-8

John N. Nourse
Rte 1 Box 298
Winslow, Wash
7/55

2 CENTS 2

12) 211
12
91
84
70