

WASHINGTON

# CHESS LETTER



wash. open  
oct. 182

# WASHINGTON CHESS LETTER

VOLUME 9

Number 9

## NEWS REPORTS

News from the San Diego Open Chess Tourney that followed the U.S. Open at Long Beach. In the 8 round tournament, SHERWIN, LOMBARDY and TURNER tied for first place with 6-2 while SAIDY and RADOICIC were close behind with 5-3.

In the 4 round tourney, LARRY EVANS was first with  $3\frac{1}{2}-1\frac{1}{2}$  while VIC PUPOLS took second with 3-1. BRIEGER and some others scored  $2\frac{1}{2}-1\frac{1}{2}$ .

The promoters of the San Diego Open apparently were not short cash-wise. The prizes were most generous with PUPOLS collecting \$75 and BRIEGER \$30 in prize money.

BRIEGER found a good job in San Diego so it appears as though Washington's and Seattle's loss will be California's and San Diego's gain.

What's this we hear about JAMES MCCORMICK slipping away to Portland, Oregon and beating DAKE? The DAKE he beat turns out to be ARTHUR DAKE'S 18 year old daughter MARJORIE! The end!

JIM SCHMITT, former champion in Northwest circles, is now chess champ of San Francisco. He finished in a tie for first with HENRY GROSS, each with 4-1, but won the playoff  $1\frac{1}{2}-1\frac{1}{2}$ .

Editor	D. E. Wade
11023 25th N. E.	Seattle 55
Circulation	R. R. Merk
1026 E. 71st	Seattle 5
Publisher	K. Mulford
Contributors	F. H. Weaver
	V. Pupols
	O. LaFreniere

## W. C. F. OFFICERS

President	K. Mulford
1500 Atlantic	Seattle 44
Vice-President	Dr. G. Parker
416 Hyde Bldg.	Spokane
Secretary	P. Husby
Rt. 1, Box 355	E. Stanwood
Treasurer	W. H. Raleigh
4312 Woodland Park Ave.	Apt. 3
Publicity	O. LaFreniere
2807 W. Yakima Ave.	Yakima
Tournament Director	V. Pupols

Send \$2 to Treasurer Raleigh at 4312 Woodland Park Ave. Apt. 3 in Seattle for 12 month's subscription.

Send news items, queries, etc. to Editor D. E. Wade, address above.

# THE USCF MEETING REPORT WITH EDITOR'S VIEWPOINT

We have a report we wish to pass along to you regarding the USCF annual business meeting held at the U. S. Open at Long Beach, California. We have talked not only to Washington players who were at Long Beach, but to others who have passed through Seattle on their way home from the tournament. Thus far no report contradicts any other report received.

A year ago, at New Orleans, USCF members at that meeting voted to censure "Chess Life" Editor Montgomery Major because they felt he was not in his rights when he used "Chess Life" as a club against his critics and against those he was displeased with. The opponents of Mr. Major felt that "Chess Life" should be used for only one subject - CHESS.

Since that time there ensued a running fight with the printing press, mimeograph machine, typewriter and possibly even pen and ink being chief weapons used. Much mud was tossed by both sides. Blows below the belt and similiar tactics were legalized.

However, a year later, the vote at Long Beach was much the same as at New Orleans. The vote was approximately 43 to 17 against Mr. Major. However, Kenneth Harkness, USCF Business Manager, had several hundred proxies in his possession. He claimed these votes were for Mr. Major so that made the vote several hundred and 17 for Mr. Major against approximately 43.

It was soon obvious to many present at the meeting that their presence was meaningless. Several departed before the meeting's conclusion.

Overlooked is the fact that the Editor of "Chess Life" has complied with the requests, pleas and demands of his critics, opponents and enemies and no longer uses the paper for anything but chess. (Future issues may cancel out this statement.)

Accusations that the leaders of USCF plan to get rich off chess players sound preposterous! No one gets rich off chess players. If it were possible for promoters to do so, we would have much better chess clubs, newspapers and organizations than we do today.

Except for the questionable use of proxy votes, with only the management having much chance of getting very many, the Business Manager Ken Harkness and USCF President Frank Graves have appeared to be honest, hard working pioneers of organized chess. Without their work and the work of others like them, where would chess be today?

Some feel we should stick with the USCF. Others are disgusted and wish to pull out.

Organized chess will certainly outlast not only the present Editor of "Chess Life" but the friends and enemies of this controversial person. We should cease firing at each other and all pull together to make the USCF truly representative of all of the chess players in the United States or do you wish to start from scratch and organize a chess federation of your own?

# LOG CABIN SCORES 3½ TO 2½ OVER SEATTLE C.C.

On Tuesday, August 30th, a six player team representing the Log Cabin Chess Club of New Jersey, defeated a Seattle Chess Club team by the score of 3½ to 2½.

The Log Cabin Club was much stronger this time than on a previous visit a month earlier. On 1st board the Log Cabin Club used JAMES SHERWIN, New York Master, and on their second board was VICTORS PUPOLS, a member of the Seattle Club but also an honorary Log Cabinite because he traveled with the Log Cabins from the U. S. Open at Long Beach to the Monster Chess Open at San Diego and then up the coast to Seattle.

R. HOUGHTON played third board for the visitors, FERRY LAUCKS, the team captain, played fourth, MRS. J. SHERWIN played fifth board and L. COPLIN took care of last board.

The best player on either team was JAMES SHERWIN but the best looking player on either team and also the best looking chess player I've ever seen in the Seattle Club was MRS. SHERWIN.

NATURALLY, the writer of these lines had to play her.

She played chess. Enough said when the writer had tears of gratitude in his eyes when she offered him a draw after 22 moves. See why he accepted by looking at the game found on the next page.

BISHOP was fortunate to draw with HOUGHTON and COPLIN neatly disposed with RODNITE'S body making it 2½-1½ in favor of the visitors because SHEETS and PUPOLS had played a quick draw. It was the 1st time SHEETS had participated in any activity of ours in nearly two years.

WEAVER then won his game with LAUCKS to knot the score 2½-2½. Our champ, BILLS, finally lost out to SHERWIN in a hard fought game so we finally lost the match.

The Seattle Club was caught without adequate notice. Even so, the team we had should have been good enough to do the job. ZEMGALIS on first board and the others moving down a board (except Wade who was happy where he was) would have turned the trick easily.

LOG CABIN C. C.	3½	SEATTLE C. C.	2½
J. Sherwin	1	W. Bills	0
V. Pupols	½	J.L. Sheets	½
R. Houghton	½	G. Bishop	½
F. Laucks	0	F.H. Weaver	1
Mrs. Sherwin	½	D. Wade	½
L. Coplin	1	F. Rodnite	0

On the trip up the coast, the F. LAUCK'S gang received a 6-1 beating at the merciless hands of the Mechanics Institute Chess Club of San Francisco, California. (Aug. 26th)

LOG CABIN C. C.	1	MECHANICS C. C.	6
J. Sherwin	½	W. Addison	½
T. Miller	0	J. Schmitt	1
R. Haefner	0	M. Falconer	1
V. Pupols	0	C. Capps	1
L. Coplin	½	E. Pruner	½
R. Houghton	0	R. Currie	1
F. Laucks	0	C. Bagby	1

When the Log Cabins were in town a month earlier, they were shelled by Seattle twice, 4-0 and 8½-1½. Spokane then had a crack at them and defeated the Cabin boys 3½-½ and tied 2-2 in a two part match. The match was played in the Skyroom atop the Ridpath Hotel and drinks were served with the chess games. This was last July 19, 1955.

On July 20th, the Log Cabin Club defeated Couer d'Alene 3-1 and tied 2-2 at Lou's Hamburger Shop.

Mr. L. Ormesher's home received the visitors as guests and the Log Cabinites went motor boat riding and swimming.

On the same day, the visiting team reached Missoula, Montana and played a double match with a four-man team at Hansen's Ice Cream Parlor. Both matches ended 2-2.

The Log Cabin group stayed in Missoula five days at Mr. Bob Southern's home. They were entertained by a two-day lawn party and turkey dinners at Mr. H. Lundberg's home. They saw a parade, went to a rodeo, circus and a carnival.

After that, the travelers then drove back to New Jersey where they got a larger car to attend the U.S. Open Tourney at Long Beach in.

Summary of the match in Spokane on July 19th, 1955.

LOG CABIN C. C.	$\frac{1}{2}$	SPOKANE C. C.	$3\frac{1}{2}$
H. Holbrook	0	Dr. Parker	1
F. Laucks	$\frac{1}{2}$	D. Daniels	$\frac{1}{2}$
T. Miller	0	D. Eilmos	1
A. Gooding	0	Mary Dimitroff	1

LOG CABIN C. C.	2	SPOKANE C. C.	2
T. Miller	0	Dr. Parker	1
H. Holbrook	1	W. Kramer	0
F. Laucks	1	D. Daniels	0
A. Gooding	0	Mary Dimitroff	1

At Long Beach, California were 18 members of the Log Cabin C. C. The Log Cabins held a banquet on Saturday, August 13th at which 20 members and honored guests attended.

Those who attended were ORLO ROLO-Tournament referee, EMRE KONIG-San Francisco Master, FRANK GRAVES-USCF President, FERRY LAUCKS, EDGER MCCORMICK-New York Master and his wife and two children, and MR. and MRS. KEN JONES of Reno, Chess Masters KARL BURGER, DONALD BYRNE, HANS BERLINER, and NICHOLAS ROSSOLIMO, also non-Masters R. HOUGHTON, LARRY COPLIN, R. GROMBACKER, LOUIS LEVIN and also SVEN ALLGREN and last but not least - ROBERT BRIEGER.

When will our top WCF officers organize a banquet in connection

with some tournament, preferably the coming Washington Open, Oct. 1-2 ?

A game between the lovely Mrs. Sherwin versus the not-so-lovely Dan Wade.

MRS. J. SHERWIN

DAN WADE

Q. Gambit Declined

1. P-Q4	P-Q4
2. P-QB4	P-QB3
3. N-KB3	N-KB3
4. B-N5	P-K3
5. N-B3	B-K2
6. P-K3	N-K5

Black thinks he can storm right through, over and between White's men but has a rude awakening. She DOES play chess!

7. BxB	QxB
8. NxN	PxN
9. N-Q2	P-KB4
10 B-K2	O-O
11 O-O	P-K4
12 P-B3	PxP
13 NxP	P-K5
14 N-Q2	P-KN4
15 Q-B2	N-R3
16 P-QR3	N-B2
17 QR-K1	B-Q2
18 P-B5	B-K3
19 B-B4	BxB
20 NxB	N-Q4
21 N-Q6	Q-Q2
22 P-QN4	R-B3

Draw offered by White and quickly accepted. Mr. Sherwin said there was no clear win but suggested 23.P-N5 as the best continuation for Mrs. Sherwin. She said she offered draw because she couldn't think of a thing to do.

The writer is just full of suggestions for others to act upon! For instance, why didn't we schedule our Washington Open so it would start a few days after the end of the Open? The Open at Long Beach, I mean. Perhaps we could have netted Sherwin & the Log Cabins plus possible others, held a banquet and really had ourselves a ball!

On our next page are letters to the editor from Messrs. McCharles of Vancouver, B. C., Dr. Parker of Spokane and Don Lutens of Gig Harbor.

# LETTERS

Mr. JOHN MCCHARLES of Vancouver, B. C. answered the Editor's request for a Canadian's views on the International Chess Match. Here is his letter:

"Chess players of B. C. in a 30 mile area around the Peace Arch always look forward to this match. Very few of our players come from outside this area whose center is the Peace Arch.

"Our best winning chances are, of course, at the Peace Arch as the traveling distance is short and non-Canadians, who cannot as yet cross the border, can compete.

"Peace Portal is a beautiful site for the match. Luckily we have been blessed with ideal weather almost every time.

"I think that before next year's match, there should be an understanding about the number who are to compete for the "B" trophy. I, myself, would suggest that the minimum number be 15. B. C. usually has been able to have 45 competitors.

"I have noticed the youthfulness of the American players. Their average age is so much lower than ours. We could use younger players.

"WALTER JURSEVSKIS, our B. C. Champion, competed in the strong Canadian Championship Tournament at Ottawa Aug. 16-26. At last report his score was  $2\frac{1}{2}$ - $5\frac{1}{2}$ ."

A short note from the Rev. A. Carter of Ritzville, Wash.:

"I like the "Letter" fine. I am only sorry I can't meet more of the fellows or engage in tourneys."

In the opposite column, is a letter from Don Lutens, Gig Harbor.

"As for the tie-up with the U.S. Chess Federation, I do approve.

"I like a lot of game pages.

"I hope this doesn't hurt your feelings, but I prefer the old cover page on the Chess Letter. In my estimation, it was balanced better and the date of the issue was more pronounced.

"Are we still friends?"

A letter from WCF Vice-Proxy Dr. GRIFFITH PARKER of Spokane.

"Letters of condolence are always hard for me to write but you know you have my deepest sympathy in the loss of your freedom from the "Letter".

"Seriouly, I am tickled pink to see you take on again. Let me know how and when I can help you.

"Don Eilmes and Mary Dimitroff, both members of the Spokane Chess Club, will be married Sept. 10th at 6 p. m. in the First Baptist Church and the whole chess club has been invited to attend. She has just graduated from high school. He got out of the navy in March and played in the Inland Empire Open in Spokane last April.

"I will send you a report of our Fall plans after the organization meeting."

We have no more letters on hand at this time so must stop here. In our next issue, perhaps we will get some more.

See you at the WASHINGTON STATE OPEN, Saturday and Sunday, October 1st and 2nd. It starts at 9 a.m. at the Knickerbocker Hotel in Seattle.

# 1955-6 PUGET SOUND LEAGUE

The annual Puget Sound League schedule is just around the nearest corner. Probable team entries this season are Seattle, the U. of Washington, Tacoma, West Seattle and McNeil Island. Unknown at present, but possible entries, are Latvian Sportsmen, Seattle Y.M.C.A., Olympia and Kitsap County. It will be up to certain organizers whether or not certain clubs have League teams or not. Please let the Editor of the W. C. L. know immediately.

It probably will be up to JACK NOURSE or DR. ALMOND whether or not the Kitsaps have a team. It will be the problem of JOE CERRETELLI and CHARLES JOACHIM in the case of Olympia. MAX BADER and RUSSELL VELLIAS can form the nucleus of a Y.M.C.A. team if they are willing to do the work of organizing it.

EIMARS ZEMGALIS was the League's best player last year and VICTORS PUPOLS was the League's best second board player. If this pair should team up again and get fair support from three others, the Latvian Sportsmen could uphold the writer's last season prediction and win the title.

ALAN CLARK and OLIVER LAFRENIERE can probably handle the University team in preparing for its defense of the League Championship. G. S. G. PATTERSON may again be willing to help by playing on the team.

It looks like DAN WADE'S problem at the Seattle Chess Club. There are enough players available but many of those of League caliber may wish to play on other teams. It is too early to say what sort of team the Seattle Club may have.

MAX MAGE will probably field a team at West Seattle again trying to get out of the League cellar. If OLAF ULVESTAD plays for them as he said he might, the West Siders will win a few matches this time.

LESLIE COUBROUGH and/or VERNON HOLMES will probably see to it that the Tacoma Chess Club has a capable representative in the League this season.

Until the teams actually begin to play, it is impossible at this time to make the annual predictions! There are too many ifs, ands, buts and maybes to make it possible to hazard any guesses.

The League Schedule will be in the next issue of this magazine. Action should get under way about mid-October.

Last season found the strongest teams in League history and also the largest number of players. It will be expecting a great deal to equal it. The enthusiasm of the players will determine whether or not we will have a successful season.

This will be the tenth consecutive year for the Puget Sound League.

All Puget Sound League matches will receive good coverage in the Washington Chess Letter. Team captains are asked to send in results to W. C. L. Editor Wade, address front page, for publicity. If team captains include details, it will be appreciated.

Team captains are expected to place the players in the order of their recognized ability in all matches.





# UPSET

An interesting game from the  
Puget Sound Open Tournament.

HUGH NOLAND

OLAF ULVESTAD

1. N-KB3
2. P-B4
3. P-KN3
4. B-N2
5. P-Q3
6. O-O
7. QN-Q2
8. N-N3
9. KN-Q2
10. N-K4
11. P-B4
12. QN-Q2
13. P-QR3
14. Q-K1
15. P-KN4
16. PxB
17. Q-N3
18. N-B2
19. N-B3
20. N-R4
21. BxBch
22. Q-B3
23. QxQch
24. N-B3
25. B-Q2
26. BxN
27. QR-N1
28. N-R3
29. N-K5
30. N-B2
31. N-R1
32. RxN
33. R/4-B1
34. P-N3
35. RxP
36. RxR
41. N-B6
42. NxP
43. PxB
44. K-B2
45. K-K2

- P-Q4
- P-Q5
- P-KN3
- B-N2
- P-QB4
- N-QB3
- N-B3
- N-Q2
- Q-B2
- P-N3
- B-N2
- P-K3
- P-QR4
- P-R3
- P-B4
- KPxP
- N-B1
- P-R5
- O-O-O
- N-K2
- QxB
- B-B3
- KxQ
- N-B3
- N-R4
- PxB
- N-K3
- P-N4
- P-N5
- KR-B1
- NxP
- BxN
- K-B3
- PxB
- R-QN1
- BxR
- P-R5
- P-B6
- B-B5
- B-B8
- BxP



"She's let the children play with his postal chess album again."

- |                         |         |
|-------------------------|---------|
| 46. K-Q1                | P-R4    |
| 47. N-B6                | P-R5    |
| 48. N-K4                | K-Q2    |
| 49. N-N5                | B-N5    |
| 50. P-B4                | B-K8    |
| 51. KxB                 | Resigns |
| because after           | P-R6    |
| 52. N-K4                | P-R7    |
| 53. NxPch               | K-Q3    |
| 54. N-N3 and white wins |         |

WASH. OPEN OCT. 1-2

# GAMES

*by weaver*

A pair of interesting games by Washington players in the recent U.S. Open at Long Beach, Calif.

W.A.BILLS  
Seattle

F.T.McCORMICK  
E. Orange, N.J.

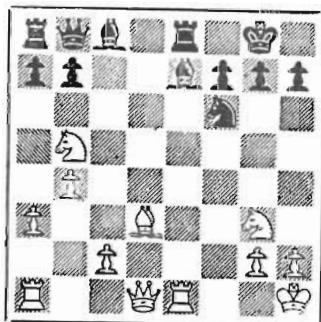
- |          |       |
|----------|-------|
| 1. P-K4  | P-Q4  |
| 2. PxP   | N-KB3 |
| 3. P-Q4  | QxP   |
| 4. N-QB3 | Q-R4  |

Not Black's best not withstanding the analysis in P.C.O.

- |         |       |
|---------|-------|
| 5. B-Q3 | P-B3  |
| 6. N-K2 | QN-Q2 |
| 7. O-O  | P-K3  |
| 8. P-B4 |       |

This square is needed for the Queen bishop.

- |           |      |
|-----------|------|
| 8. ....   | B-K2 |
| 9. N-N3   | O-O  |
| 10. K-R1  | R-K1 |
| 11. P-QR3 | P-B4 |
| 12. B-K3  | PxP  |
| 13. BxP   | P-K4 |
| 14. P-N4  | Q-B2 |
| 15. N-N5  | Q-N1 |
| 16. PxP   | NxP  |
| 17. BxN   | QxB  |
| 18. R-K1  | Q-N1 |



19. N-R5? (a fatal oversight) N-N5

I. Rivise

9th Round

1. P-K4
2. P-Q4
3. P-K5
4. P-QB3
5. B-Q3
6. B-B2
7. P-QR3
8. N-K2
9. B-K3
10. P-QN4
11. N-B4
12. PxN
13. N-Q2
14. BPxP
15. N-B3
16. PxB
17. R-QB1
18. K-B2
19. Q-Q2
20. B-N3
21. RxR
22. RxRch
23. P-KR3
24. B-B2
25. P-KN4
26. PxP
27. K-N3
28. Q-R2
29. NxQ
30. N-B3
31. K-B2
32. P-B5
33. PxP
34. K-K3
35. P-B6ch
36. K-Q2
37. B-Q1
38. K-B3
39. P-R4
40. N-N5
41. B-R5
42. BxP
43. BxP
44. NxNch
45. N-B7
46. P-N5
47. K-Q2
48. K-K3
49. K-B4
50. K-N3
51. K-N4

R. Brieger

- P-K3
- P-Q4
- P-QN3
- Q-Q2
- B-R3
- P-QB4
- P-KN3
- P-KR4
- N-R3
- N-N5
- NxB
- N-B3
- PxQP
- B-R3
- BxN
- N-K2
- QR-B1
- O-O
- R-B5
- RxR
- R-B1
- QxR
- B-B5
- Q-B1
- PxP
- Q-R3
- B-B8
- QxQch
- B-B5
- K-N2
- N-B3
- NPxP
- K-B1
- K-K2
- K-B1
- N-N1
- N-R3
- N-B2
- B-R3
- B-B1
- B-Q2
- BxP
- NxB
- K-B2
- B-B3
- B-N2
- K-N3
- K-B2
- K-N3
- K-B2
- Resigns



Best. The Fegatello Attack, beginning with 6. NxBP is unsound. Black does not stick to book lines in the text either, though.

- |     |         |        |
|-----|---------|--------|
| 7.  | PxP     | P-KR3  |
| 8.  | QxN     | PxN    |
| 9.  | BxQ     | QxQ    |
| 10. | B-K4    | N-Q5   |
| 11. | PxPe.p. | P-KB4  |
| 12. | B-K3    | PxP    |
| 13. | P-QB3   | B-QB4  |
| 14. | BxB     | N-K3   |
| 15. | B-B2    | NxB    |
| 16. | N-Q2    | B-K3   |
| 17. | O-O-O   | O-O-O  |
| 18. | N-N3    | R-Q2   |
| 19. | RPxN    | NxNch. |
| 20. | KxR     | RxRch. |
| 21. | P-KB3   | B-Q4   |
| 22. | K-B1    | R-Q1   |
| 23. | R-Q1    | P-QB3  |
| 24. | RxRch.  | B-K3   |
| 25. | K-Q2    | KxR    |
| 26. | K-K3    | K-Q2   |
| 27. | P-QN4   | K-Q3   |
| 28. | P-KN3   | K-K4   |
| 29. | P-B4ch. | B-Q4   |
| 30. | PxP     | K-K3   |
| 31. | P-KR4   | PxP    |
| 32. | PxP     | K-B3   |
| 33. | K-B4    | K-N2   |
| 34. | K-N5    | B-N1   |
| 35. | B-Q3    | B-R2?  |

This hastens things immeasurably. White wants to exchange bishops and let Black take the KRP while he wipes off the queen side pawns.

- |     |      |         |
|-----|------|---------|
| 36. | BxB  | KxB     |
| 37. | P-B4 | P-N3    |
| 38. | P-B5 | Resigns |

Viktors Pupols                      Stephen Falk  
(Sicilian Defense)

- |    |      |       |
|----|------|-------|
| 1. | P-K4 | P-QB4 |
| 2. | N-K2 | - - - |

This odd move leads in most cases to equality if Black plays the best lines. It may be found in MOO<sup>8</sup> p. 292, col. 139. In the text, however, Black does not stick to book lines.

- |     |       |       |
|-----|-------|-------|
| 3.  | P-KN3 | P-Q3  |
| 4.  | B-N2  | P-KN3 |
| 5.  | O-O   | B-N2  |
| 6.  | P-QB3 | N-QB3 |
| 7.  | P-Q4  | N-B3  |
| 8.  | K-R1  | O-O   |
| 9.  | P-Q5  | Q-N3  |
| 10. | N-Q2  | N-Q1  |
|     |       | N-Q2  |

- |     |       |        |
|-----|-------|--------|
| 11. | P-KB4 | P-B4   |
| 12. | Q-B2  | N-KB3  |
| 13. | P-K5  | PxP    |
| 14. | PxP   | N-N5   |
| 15. | P-K6  | P-QB5? |

Black could win the exchange by N-K6, but due to the extreme penetration by the White pawns the results are not at all clear. Note that 'Philodor's Legacy' does not work here because of the White N at K2.

- |     |      |          |
|-----|------|----------|
| 16. | NxP! | N-B7ch.? |
| 17. | RxN! | QxR      |
| 18. | B-K3 | Resigns  |

Oliver LaFreniere                      Viktors Pupols  
(English Opening)

- |    |         |       |
|----|---------|-------|
| 1. | P-QB4   | N-KB3 |
| 2. | P-KN3   | P-KN3 |
| 3. | P-QN4?! | B-N2  |
| 4. | B-QN2   | O-O   |
| 5. | B-N2    | P-Q3  |
| 6. | P-Q4    | QN-Q2 |
| 7. | N-QB3   | P-K4  |
| 8. | N-B3    | P-B3  |
| 9. | O-O     | P-K5  |

White should have put up a good effort to stop this intrusion. Perhaps 9. Q-N3 was better to delay the coming Black P-Q4.

- |     |        |       |
|-----|--------|-------|
| 10. | N-Q2   | P-Q4  |
| 11. | Q-N3   | N-N3  |
| 12. | P-QR4! | NxBP  |
| 13. | NxN    | PxN   |
| 14. | Q-B2   | - - - |

If 14. QxP, B-K3!

- |       |       |      |
|-------|-------|------|
| - - - | N-Q4  |      |
| 15.   | NxP   | NxP  |
| 16.   | QxP   | N-Q4 |
| 17.   | P-K3  | B-K3 |
| 18.   | Q-Q3  | R-K1 |
| 19.   | N-B5  | B-B1 |
| 20.   | P-R5  | P-R4 |
| 21.   | Q-N3  | P-R5 |
| 22.   | B-R3  | P-N3 |
| 23.   | BxN?? | PxB  |

White needed the KB to help defend the vulnerable white squares around the K.

- |     |        |       |
|-----|--------|-------|
| 24. | PxP    | PxP   |
| 25. | N-Q3   | B-QR3 |
| 26. | KR-N1? | - - - |

Another error leading to quick annihilation. Better was KR-Q1.

- |       |       |       |
|-------|-------|-------|
| - - - | B-B5  |       |
| 27.   | Q-B2  | Q-B3  |
| 28.   | N-K5? | RxN!! |

It seems the N was the only piece staving off this mating combination!

- |     |     |      |
|-----|-----|------|
| 29. | PxR | Q-B6 |
|-----|-----|------|

30. PxP (Forced) Q-N4ch.  
 31. K-R1 B-K7  
 Resigns

17. NxBP PxN  
 18. BxB PxP  
 19. PxP N-K4  
 20. N-N5 P-N4  
 21. B-K2 R-R7  
 22. N-Q4 R-B2  
 23. B-N5 B-B3  
 24. N-K6 Q-N1  
 25. BxN QxB  
 26. NxP Q-N1  
 27. N-K6 P-N4  
 28. B-Q4 N-B5  
 29. R-KB2 BxB  
 30. QxB RxB  
 31. KxR P-R3  
 32. P-R4 R-QR2  
 33. PxP PxP  
 34. R-KR1 R-R7ch.  
 35. K-N1 Q-R2  
 36. R-R8ch. K-B2  
 37. R-R7ch. Resigns

Terry Nelson Viktors Pupols  
 (King's Indian)

1. P-Q4 N-KB3  
 2. P-QB4 P-KN3  
 3. N-QB3 B-N2  
 4. P-K4 P-Q3  
 5. N-B3 O-O  
 6. B-K2 QN-Q2  
 7. O-O P-K4  
 8. P-Q5 P-QR4  
 9. N-K1 N-B4  
 10. P-B3 N-K1  
 11. B-K3 P-N3  
 12. P-QR3 P-B4  
 13. P-QN4 N-Q2  
 14. N-Q3 P-B5  
 15. B-B2 B-QR3  
 16. R-B1 BxP

A good game by Nelson. Next month the three games from the State Junior Playoff will be presented.

## FIVE MINUTE SPEED CHESS

For those who like a fast game, but not a move-on-move blitz game, five or ten minute chess is ideal. An ordinary chess clock equipped with a flag mechanism is necessary. Set both hands five minutes before flag drop time, and then punch the clock as in tournament chess. The only differences are that no game score is kept, less time is consumed per game, and the chess quality collapses. But there is just as much excitement, if not more, than in regular tournament chess. Both players take as much time as they wish on their moves, which is what makes this form much better than 10 second chess, in which forfeit is declared if one player moves a second later than the bell. If he wishes, a player may use up a lot of time to obtain a superior game. But then he must reconcile himself to the fact that his entire playing time is limited to only five minutes, and even if he has a won game he is forfeited if his flag falls before he wins.

There are some house rules ordinarily applied to five and ten minute chess. One is that each player must punch his clock with the same hand he uses to move the pieces. This saves the clock from a rather severe manhandling at exciting points in the game. Another is that a pure draw must be declared a draw regardless of one player's advantage on the clock. Occasionally other rules are applied.

Five minute chess is perfect for small gatherings of chess players in private homes. Often with four to six players present, double or even triple round robins can be played. Try it some time! Below is the record of a recent five minute tourney played at the LaFreniere residence in Yakima. It was a double round robin.

	1.	2.	3.	4.	Score
1. Bob Edberg	XX	0 $\frac{1}{2}$	$\frac{1}{2}$ 1	11	4 -2
2. O. LaFreniere	1 $\frac{1}{2}$	XX	01	01	3 $\frac{1}{2}$ -2 $\frac{1}{2}$
3. Steve Falk	$\frac{1}{2}$ 0	10	XX	10	2 $\frac{1}{2}$ -3 $\frac{1}{2}$
4. W. H. Hoge	00	10	01	XX	2 -4

WASH. WOODPUSHERS, SEPT 10, 11  
 TOURN. RESULTS NEXT MONTH

# seattle club report

by Wade

More active days are ahead for the Seattle Chess Club. The Woodpushers will be shoving wood at each other as this issue goes to press. Details in the next Washington Chess Letter out early in October. Of course you would not wish to miss the 1956 Washington Open starting Oct. 1st. The Puget Sound League also gets under way about mid-October.

Friday and Saturday evenings have proved the most active at the club. Middle of the week nights are generally not well attended. However, it takes only two to play.

Because the club membership is approximately 15 below the required number needed to pay the rent, contributions were asked for and received. Below is a list showing who have contributed up to September 7th.

Ted Davidsen	\$10	Dr. Lewis	\$10	Jacy	\$1	Total Donations Collected
G. S. G. Patterson	\$10	Fred Rice	\$ 5	Weissenborn	\$5	
F. H. Weaver	\$ 5	C.F. Haasch	\$ 5	H.H. Roberts	\$2	
Alan Clark	\$ 1	John Ring	\$ 5	Lindh	\$5	\$64

ROOM FOR YOUR NAME !

## WASHINGTON CHESS FEDERATION

Tournament	Date	System	Entry fee	Location
Washington State Woodpushers	September 10, 11 Begins 10 a.m.	6 Round Swiss 30 moves/1 hr	\$1.00	Seattle C.C.
Washington State Open Championship	October 1, 2 Begins 9 a.m.	6 Round Swiss 40 moves/2 hrs	\$3.00	Seattle C.C.
Washington State Championship	October 29, 30 Begins 9 a.m.	Round Robin 40 moves/2 hrs	\$5.00	Seattle C.C.
Washington State Speed Championship	January 8 Begins 10 a.m.	Round Robin 10 seconds/move	\$1.00	Seattle C.C.
Puget Sound Open	February-March	Details later	* * *	* * * * *
Northwest Masters-Experts Tourney	February-March	Details later	* * *	* * * * *
Washington State Junior Championship	April 7, 8 Begins 1 p.m.	5 Round Swiss 30 moves/1 hr	\$2.00	Seattle C.C.
Inland Empire Open	April-May	Details later	* * *	* * * * *

All tournaments but the State Speed will be USCF rated for the national rankings.

Viktors Pupols, Tournament Director  
O. W. LaFreniere, Publicity Director

# POSTAL CHESS

R. R. Mark  
 Postal Chess Editor  
 1026 E 71 St., Seattle 5, Wash.

54 A - 6 A Points

Weaver 1 Cairncross 0 12

54 B - 1 A

Rauen 1 Raleigh 0 20

54 B - 1 B

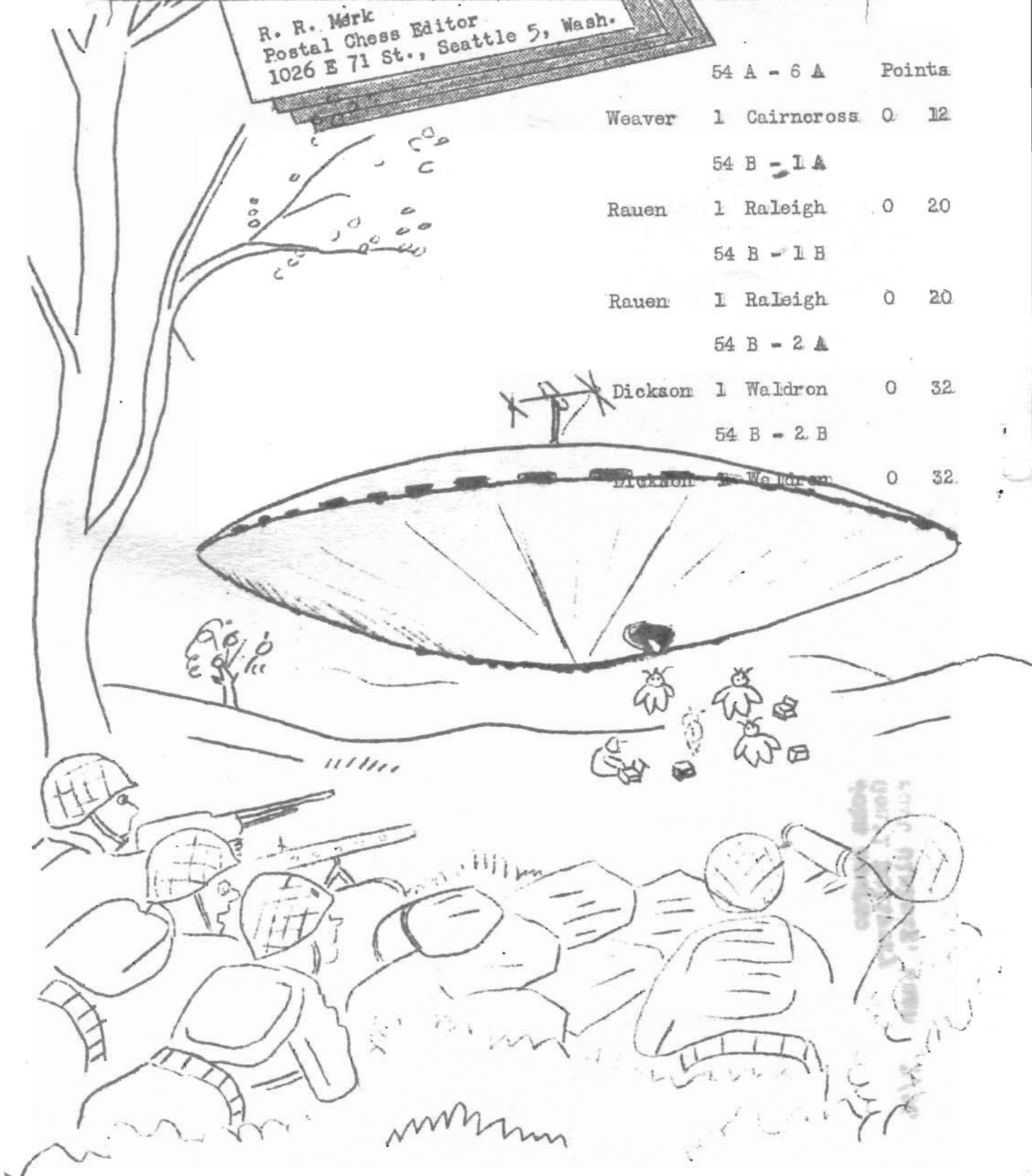
Rauen 1 Raleigh 0 20

54 B - 2 A

Dickson 1 Waldron 0 32

54 B - 2 B

Dickson 1 Waldron 0 32



"Just some little guys with chess sets!! It's a visiting chess team!"

POSTAL CHESS

Postal chess tournaments are being formed all of the time. Our tournaments are composed of sections of 5 players. Each player plays two games with each of the other four opponents, one game as white and the other game as black. Our fee is only 50¢ per section.

Postal chess is a fine way to improve your game as you can take enough time to thoroughly study out the possibilities of nearly any move. A record is kept and it is possible for you to play a game of chess much stronger than a game over the board.

Send entries to  
Postal Chess Director

POSTAL CHESS RATINGS

"A" Division

Baron	1666
Wade	1660
Weaver	1644
Taro	1594
Mulford	1586
Mage	1568
Luters	1558
Cerretelli	1549
Coubrough	1548
Kaffenberger	1548
Howard	1534
DeWitt	1442
Bever	1379
Hingerkurth	1344
Vellias	1316
Knapp	1304
Sid Nourse	1288
Husby	1252
Mac Patterson	1250
Lawrence Allyn	1250
Hultman	1250
Weischer	1250
Carter	1244
Cairncross	1240
Roats	1210
John Nourse	1040

"B" Division

Dickson	1474
Skarsten	1334
Merk	1323
Meliza	1278
Rauen	1276
Don Roberts	1228
Falk	1172
Youngman	1172
LaFreniere	1170
Waldron	1168
Parsons	1150
Laine	1148
Southerland	1138
Moore	1137
Holland	1086
W. P. Allen	1086
Tresidder	1082
Shirley Allyn	1050
Davidson	1050
Schrank	1050
Vukonich	1050
McDonald	1050
Pifley	1050
Nelson	1048
Engstrom	1044
Carpenter	1026
Luberts	1020
Hart	1008
Nichols	970
Raleigh	899

FROM  
WASHINGTON CHESS LETTER  
1026 East 71 Street  
Seattle 5, Washington  
Return postage guaranteed  
Form 3547 requested



John Nourse  
Gen'l Delivery  
Port Blakely, Wash  
7/56