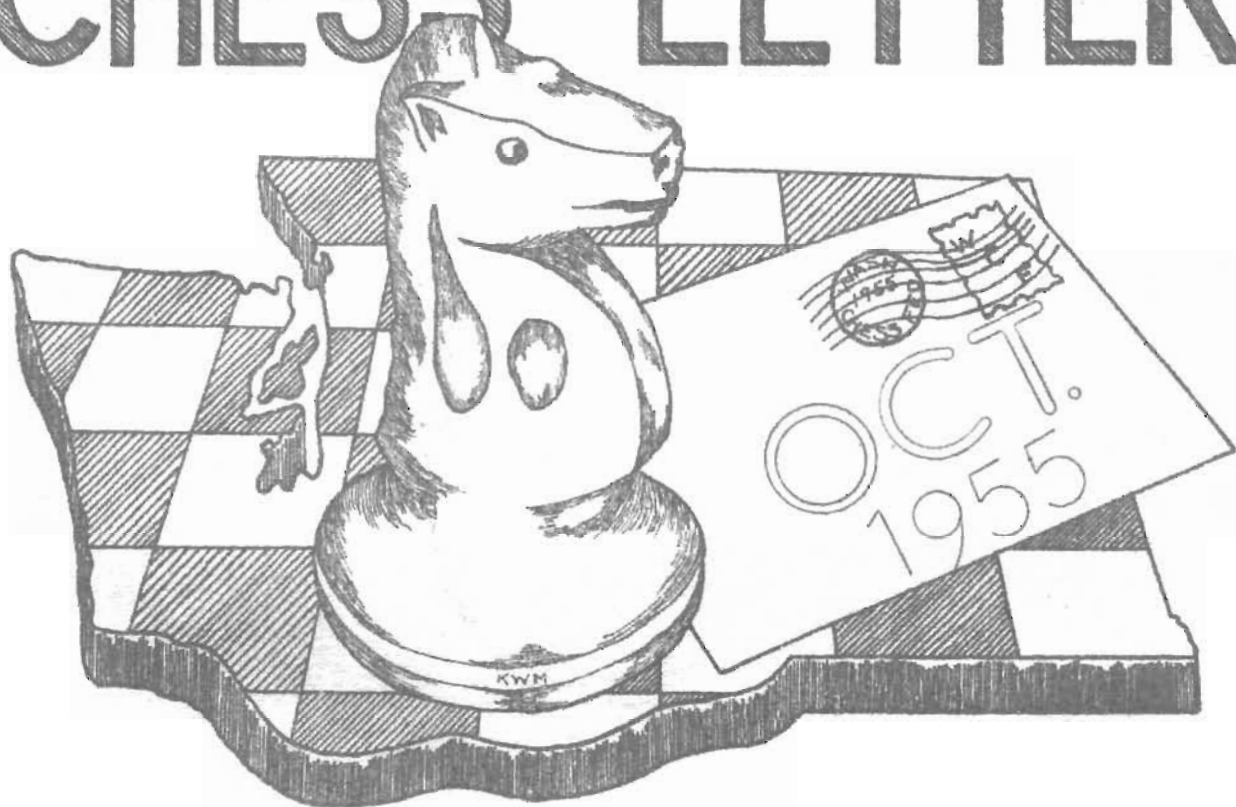


WASHINGTON

CHESS LETTER



PUGET SOUND LEAGUE
SCHEDULE INSIDE

WASHINGTON CHESS LETTER

VOLUME 9

Number 10

TACOMA ELECTION

Mr. Coubrough writes - "At our annual election, Sept. 3rd, Vernon Holmes took over the post of team captain for the Puget Sound League matches this winter. His address is 1849 West Blvd., Tacoma. Phone number is Proctor 6082.

Victor Hultman succeeded Jack Finnigan as President. Coubrough is Club Secretary, Dolle is Treasurer, and Collins is Tournament Director.

Robert Collins is directing a 7 round Swiss for the championship of Tacoma. There are a large number in the tourney including Holmes, Carlson, Pupols, Finnigan, Coubrough and Hultman.

SPOKANE ELECTION

Dr. G. H. Parker writes - "The Spokane Chess Club adopted a new policy of electing 6 directors and gave them the right to elect the club officers from the group.

The following were elected directors: Paul H. Neuman, William E. Vogot, Donald Daniels, P. A. Lybergger, Gordon Cornelius and Dr. G. H. Parker.

The following officers were chosen: President - Dr. G. H. Parker (6th term), Vice-President - Donald Daniels, Treasurer - William Vogot and Secretary - Gordon Cornelius.

Ray Kromer, retiring Vice-President, asked to be relieved of his office because of a new business enterprise."

Editor D. E. Wade
11023 25th W. E. Seattle 55

Circulation R. R. Hork
1026 E. 71st Seattle 5

Publisher K. Mulford
1500 Atlantic Seattle 44

Contributors F. H. Weaver

G. Bishop

O. LaFroniere

W. C. F. OFFICERS

President K. Mulford
1500 Atlantic Seattle 44

Vice-President Dr. G. Parker
416 Hyde Bldg. Spokane

Secretary P. Husby
Rt. 1, Box 355 E. Stanwood

Treasurer W. H. Raleigh
4312 Woodland Park Ave. Apt. 3

Publicity O. LaFroniere
Baker House, 1101 Campus Parkway Seattle 5

Tournament Director V. Pupols

To subscribe, please send \$ 2. to W. H. Raleigh, WCF Treasurer, at 4312 Woodland Park Ave. Apt. #3 in Seattle for one year's subscription.

Send news items to the Editor.

P. S. L. SCHEDULE

Teams in the 1955-56 Puget Sound League

- | | |
|--------------------|-----------------------|
| 1. U. of Wash. C.C | 5. Kitsap County C.C. |
| 2. Latvians Club | 6. Tacoma Chess Club |
| 3. Boeings Club | 7. McNeil Island C.C. |
| 4. Seattle C. C. | 8. West Seattle C. C. |

The Seattle YMCA team has been re-named Boeings. All McNeil matches will be at McNeil Island. All West Seattle matches will be at other clubs.

Both the Seattle C. C. and Boeings will play their home games at Seattle's Chess Club, 616 Madison St. The U. W. plays at the Student Union Bldg. on the U. of Washington Campus.

Kitsap plays at the Bremerton YMCA. The addresses of both Latvian and Tacoma Clubs must be sent in to the Editor of the Chess Letter before the end October. They will be published.

For information regarding the matches at McNeil, write Associate Warden, U. S. Penitentiary, Lock Box 500, Steilacoom, Wash. Catch the 11:10 a.m. boat at Steilacoom.

Matches, with the exception of the matches at McNeil, will start at 1 p.m.

Teams will be composed of 5 players. A substitute can be used on 5th board. Players will play 2 games, once with each color. Team captains are expected to line up their teams in order of playing ability in all matches.

Games will be played at the forty moves per hour rate if clocks are used. By mutual agreement, team captains may elect to play games at a slower rate.

Team captains will draw for colors for first board with other boards alternating colors.

Match results alone will decide the Puget Sound League Championship.

In case of a tie for the championship, it will be up to the teams involved whether or not there is a playoff for the Championship.

VISITING TEAM

HOME TEAM

Round One Sunday, October 23rd

Tacoma C. C.	McNeil Island
Latvian Club	Seattle C. C.
West Seattle	U. of Wash.
Boeings Club	Kitsap C. C.

Round Two Sunday, November 13th

Boeings Club	U. of Wash.
West Seattle	Latvian Club.
Kitsap C. C.	Tacoma C. C.
Seattle C.C.	McNeil Island

Round Three Sunday, November 27th

Latvian Club	McNeil Island
U. of Wash.	Kitsap C. C.
West Seattle	Seattle C. C.
Tacoma C. C.	Boeings Club

Round Four Sunday, December 11th

West Seattle	Kitsap C. C.
Boeings Club	McNeil Island
Tacoma C.C.	Latvian Club
Seattle C.C.	U. of Wash.

Round Five Sunday, January 15th

West Seattle	Tacoma C. C.
Seattle C.C.	Boeings Club
U. of Wash.	McNeil Island
Kitsap C. C.	Latvian Club

Round Six Sunday, January 29th

Seattle C.C.	Tacoma C. C.
West Seattle	Boeings Club
Kitsap C. C.	McNeil Island
Latvian Club	U. of Wash.

Round Seven Sunday, February 12th

Seattle C.C.	Kitsap C. C.
Latvian Club	Boeings Club
U. of Wash.	Tacoma C. C.
West Seattle	McNeil Island

Results of each match will be turned in to the Editor of the Washington Chess Letter by the captains of both teams. This should be done as soon as possible after the match.

VELLIAS WINS

The winner, and new Washington Open Chess Champion, RUSSELL VELLIAS of Seattle! In the closest finish to a Washington tourney seen in years, VELLIAS scored $4\frac{1}{2}-1\frac{1}{2}$ with 3 wins and 3 draws to edge out both TED WARNER of Richland and OLAF ULVESTAD of Seattle by one Solkoff and one Median tie-breaking point. WARNER, who also won 3 and drew 3, and ULVESTAD who made his $4\frac{1}{2}-1\frac{1}{2}$ with four wins, one loss and a draw, tied for second and third places with an equal number of tie-breaking points.

ULVESTAD was already qualified to enter the State Championship Tournament scheduled for October 29th and 30th. The top four players, other than ULVESTAD, qualified for the State Championship Tournament.

Those who qualified:

- | | |
|--------------------|--------------------|
| 1. WILLIAM BILLS | 4. RUSSELL VELLIAS |
| 2. EIMARS ZEMGALIS | 5. TED WARNER |
| 3. OLAF ULVESTAD | 6. ROBERT EDBERG |
| 7. JIM MCCORMICK | |

This is a very talented group of players. ZEMGALIS is presently the Puget Sound Open Champion and has in the past won the Washington State Championship and the Seattle Seafair Open and City Championships. He has won every Washington tournament he has participated in. ULVESTAD has won Washington Championships in the past and is Washington's first player of Master caliber. ZEMGALIS moved to this state a few years ago making him our second Master. Because both are no longer active in national chess, the USCF no longer recognizes their Master status. However, the WCF recognizes both as Masters. WARNER won the Washington Open a year ago and is presently Inland Empire Open and Eastern Washington title holder. EDBERG has won the Montana State title. VELLIAS is now our new Open Champ while BILLS is the defending Washington State Champion. MCCORMICK has won no major tournaments - - - yet!

In the opening round of the Washington Open, the wolves feasted on the lambs. Trouble came in large doses in the second round with five of the eight games ending in draws. The feature game of this round was OLAF ULVESTAD'S draw with ROBERT EDBERG.

The fireworks started in earnest in the third round. VELLIAS spilled ULVESTAD and EDBERG downed PUPOLS. TARO, VELLIAS and EDBERG were the leaders with $2\frac{1}{2}-\frac{1}{2}$ after the first day's play. Six more players, WARNER, WADE, JOACHIM, MCCORMICK, BISHOP and MARTIN all had 2-1 scores. ULVESTAD, who had been the favorite to win the event, had been drawn by EDBERG, and quartered by VELLIAS so had only $1\frac{1}{2}-1\frac{1}{2}$, the same score as PUPOL'S.

Sunday morning found EDBERG, MCCORMICK and WADE suffering their first defeats of the tourney. VELLIAS drew TARO in the feature game of the 4th round so VELLIAS, TARO, WARNER, BISHOP and JOACHIM led the tourney with 3-1 scores. PUPOLS and ULVESTAD closed in on the leaders by scoring wins.

In the crucial fifth round, VELLIAS eliminated BISHOP from champion-

WASH. OPEN

ship consideration while WARNER did the same to JOACHIM and ULVESTAD ruined TARO'S chances for first. This left only WARNER and VELLIAS with 4-1 scores in first place while PUPOLS and ULVESTAD were next best having $3\frac{1}{2}$ - $1\frac{1}{2}$ scores. Five players had 3-2 scores. They were EDBERG, MCCORMICK, BISHOP, TARO and JOACHIM. WADE had an even score and all others had minus totals.

In the final round, WARNER and VELLIAS played to a draw while ULVESTAD eliminated PUPOLS. Both MCCORMICK and EDBERG qualified for the State Championship Tourney by eliminating WADE and JOACHIM, respectively.

On the deficit side, Woodpusher Champ "HAM" MARTIN lost 3 games Sunday to finish 16th with 2-4. FALK, NELSON, GREENWOOD and HOGE did poorly until the late rounds when they picked up points to make their scores more respectable. WADE, who did well in early rounds, slipped later to join them in the nether regions. Newcomer LAWRENCE SVEEN did fairly well with an upset win over GREENWOOD and a draw with NELSON. KENNETH SMITH was over his depth in this very strong tournament. However, he kept trying to the bitter end. He is young and in a few short months could improve many hundreds of percents.

The games were played at the Seattle Chess Club on October 1st and 2nd. The tourney was capably directed by VICTORS PUPOLS. There were 17 entries and because the entry fee was \$5 with \$2 returnable on the completion of the schedule, there were no forfeits!

The uneven number of entries made it necessary for the T. D. to give a bye to one player each round. TARO received the first bye but afterward only the lowest scoring player who had not received a bye was eligible for one each round. Others who received free points from old man bye: SVEEN, SMITH, NELSON (he lost his first 3 games!), GREENWOOD, and FALK.

To show how close the abilities of most of the players were, there is the number of drawn games played. Out of 48 games, 12 were draws.

In spite of the large number of very strong players that did attend, there were many strong absentees. SHEETS, NOLAND, CLARK, NULFORD, and a few others could have added even more class to the event by attending. Of course, ZEMGALIS and BILLS were already seeded into the State Closed and did not have to play in the Open.

To add to the attractiveness of winning the Washington State Championship, ROBERT EDBERG has donated to the WCF a large and beautiful shiny new chess trophy. The winner of the State Championship can keep this for one year besides winning the usual cash prize going to first place. Any player who can win this trophy three times, either in three years or fifty years, can keep it and a new trophy will be donated. Enthusiasm such as Edberg has showed tends to rub off on others. This makes a stronger and better W. C. F. Unfortunately, Edberg did not get the trophy in time so we could let the members of WCF know about it last issue. Also, unfortunately, the news papers neglected to publish the announcement of the Open although sent in.

SUMMARY

CONTESTANTS	HOME	-1-	-2-	-3-	-4-	-5-	-6-	W L D	SCORE	MEDIAN
1. R. Vellias	(S)	W-10	D-13	W-3	D-8	W-7	D-2	3-0-3	4½-1½	14.50
2. T. Warner	(R)	W-15	D-12	D-5	W-4	W-9	D-1	3-0-3	4½-1½	13.50
3. O. Ulvestad	(S)	W-13	D-4	L-1	W-12	W-8	W-6	4-1-1	4½-1½	13.50
4. R. Edberg	(T)	W-16	D-3	W-6	L-2	D-12	W-9	3-1-2	4 -2	13.50
5. J. McCormick	(S)	W-14	D-6	D-2	L-9	W-16	W-12	3-1-2	4 -2	11.50
6. V. Pupols	(Tac)	W-11	D-5	L-4	W-10	W-14	L-3	3-2-1	3½-2½	14.00
7. G. Bishop	(S)	L-9	W-17	W-13	W-16	L-1	D-8	3-2-1	3½-2½	11.00
8. L. Taro	(P)	Bye	D-9	W-10	D-1	L-3	D-7	2-1-3	3½-2½	11.00
9. C. Joachim	(S)	W-7	D-8	D-12	W-5	L-2	L-4	2-2-2	3 -3	15.00
10 W. Hogo	(Y)	L-1	W-15	L-8	L-6	W-13	W-16	3-3-0	3 -3	12.00
11 R. Greenwood	(S)	L-6	L-16	W-15	L-14	Bye	W-17	3-3-0	3 -3	7.00
12 D. Wade	(S)	W-17	D-2	D-9	L-3	D-4	L-5	1-2-3	2½-3½	15.50
13 S. Falk	(Y)	L-3	D-1	L-7	W-17	L-10	Bye	2-3-1	2½-3½	11.00
14 L. Sveen	(L)	L-5	Bye	L-16	W-11	L-6	D-15	2-3-1	2½-3½	9.00
15 T. Nelson	(Y)	L-2	L-10	L-11	Bye	W-17	D-14	2-3-1	2½-3½	8.50
16 W. Martin	(E)	L-4	W-11	W-14	L-7	L-5	L-10	2-4-0	2 -4	13.50
17 K. Smith	(PT)	L-12	L-7	Bye	L-13	L-15	L-11	1-5-0	1 -5	8.00

Median scores are found by totaling the scores of all of each player's opponents getting a Solkoff score and then subtracting the score of his highest scoring opponent and also subtracting the score of his lowest scoring opponent. Byes do not count as a low scoring opponent.

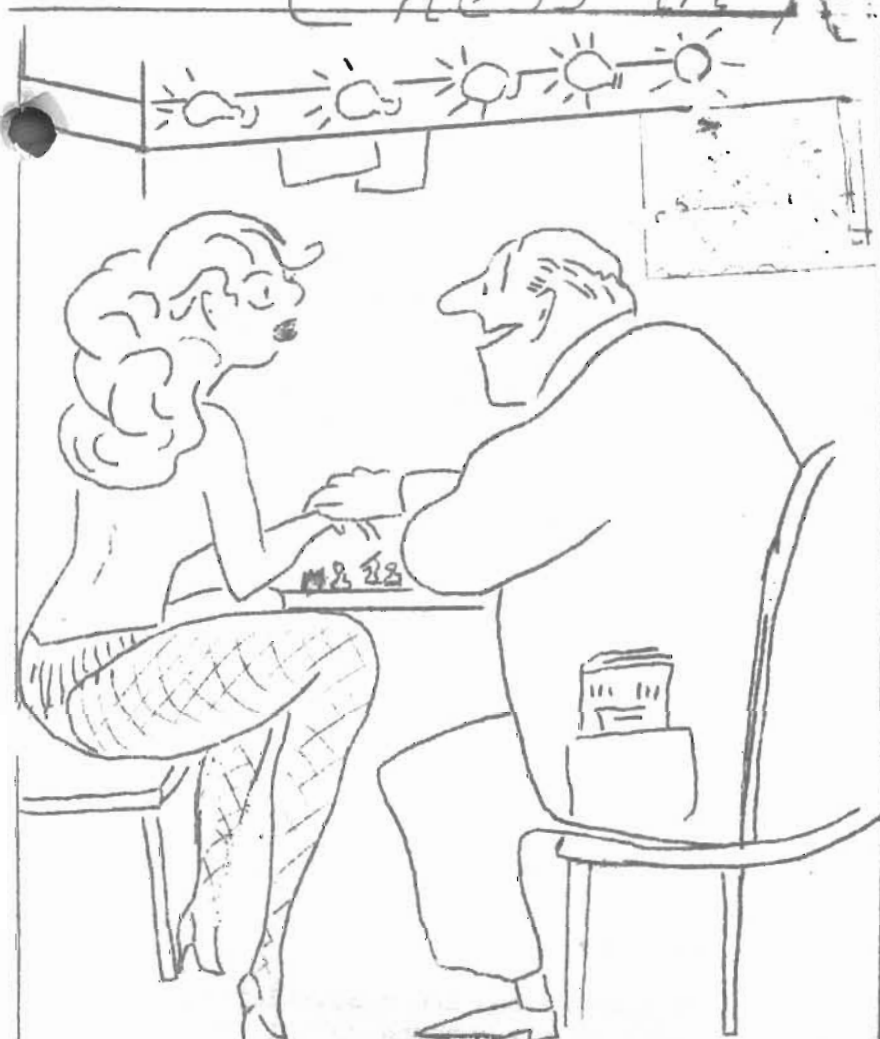
(S) Seattle	(Tac) Tacoma	(L) Ft. Lewis
(R) Richland	(P) Packwood	(E) Ellensburg
(T) Tieton	(Y) Yakima	(PT) Pt. Townsend

Some ties remained unbroken. WARNER and ULVESTAD remain tied for 2nd place. BISHOP and TARO remain tied for 7th place.

This tournament was no place for the faint-hearted. Each player had 2 hours in which to make 40 moves so starting times for each round were about 4½ to 5 hours apart. The player had to make up his mind that he was there for chess only. There was no time for other activities.

by Wade

Chess in Review



"Now for this publicity interview, when the photographer gets here you are looking intelligently at a chessboard."

The title of U.S. Women's Open Champion went to Sonja Graf-Stevenson with a score of 6-6, ranking woman player in the U.S. Open at Long Beach. Kathryn Slater also scored 6-6 for second.

CALIFORNIA OPEN----- Herman Steiner topped 74 players followed by Smook, Martin, Pafnutieff, Pruner, Adams, Ledgerwood, Peizer, Logwood, and Robert Brieger.

NEW YORK STATE--- Ed Mednis, 18, is the new champ, followed by Feuerstein, Soudakoff, Harrow, Lombardy.

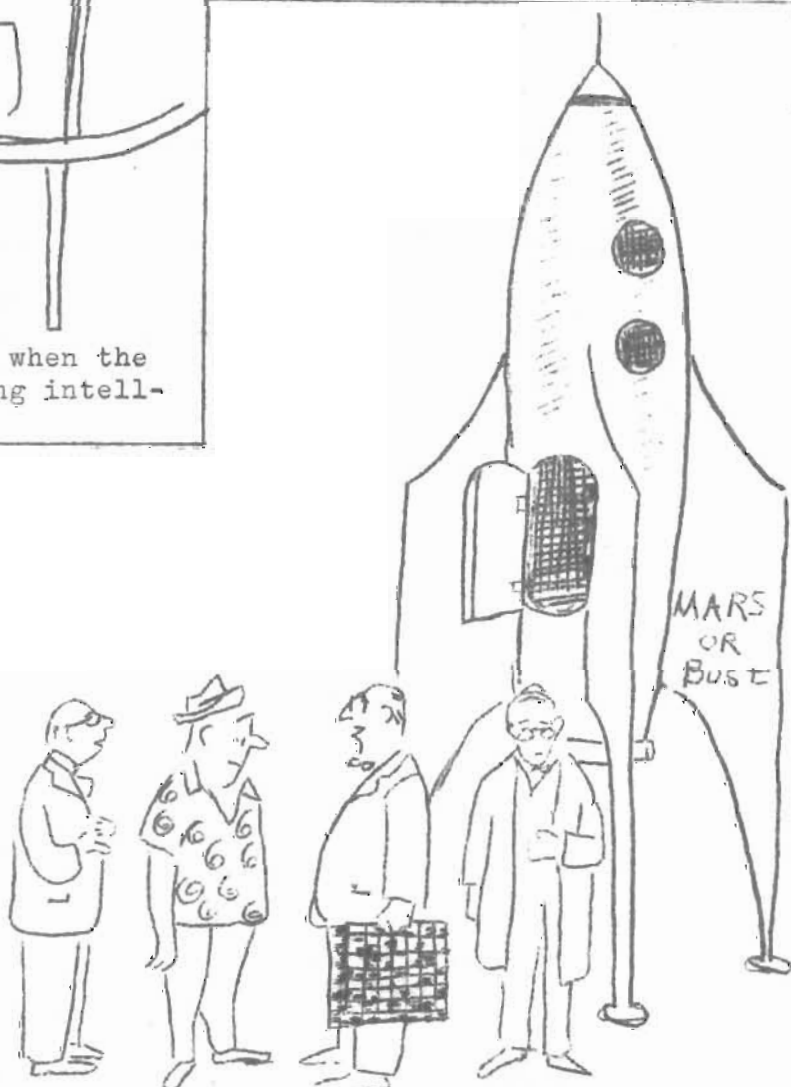
MIDWEST OPEN--Lee Magee 1st, Spence 2nd, Liepnieks 3rd, Staklis 4th.

CAROLINA OPEN

1. Saul Yarmak 5½- ¼
2. Don Burdick 5 - 1
3. Dr. Werthammer 4½-1½
4. Stanley Wysowski 4½-1½

S. CALIF. EXPERTS (22 players)

1. George Soules 8 - 1
 2. William Melwood 7½-1½
 3. Dan Karpilowsky 5½-3½
 4. Larry Frembling 5½-3½
- 5th to 11th with 5-4 each were
D. Young, G. Rubin, P.Nielson,
D.Elliott, L.Johnson, L.Weiss.



"Who can we get to play fifth board?"

by Weaver

MARTIN WINS

WILLIAM HAMILTON MARTIN is the Washington Chess Federation's new Woodpusher Champion. "HAM" MARTIN scored $5\frac{1}{2}-\frac{1}{2}$ in the six-round, two-day Swiss played September 10th and 11th at the Seattle Chess Club.

And whom, you may ask, is Mr. Martin? Several years ago he played on the University of Washington Chess Team in the Puget Sound League and at that time was considered one of this state's better young players. After that he dropped out of Washington Chess and was forgotten. Martin arrived from Tokyo, Japan just shortly before the Woodpusher's Tournament.

Thirteen players entered making it the largest and strongest WP Tournament in the past three years. Before this year, all Woodpusher Tournaments were single day four rounders. Former Woodpusher Champions are G. SCHAIN, S. REIN, J. MCCORMICK and K. MULFORD. The first was CARL ENZ.

LARRY TARO, first Editor of the Washington Chess Letter, took second place in the tournament with a score of $4\frac{1}{2}-1\frac{1}{2}$. He drew with Martin in the final round. Had he been able to defeat Martin, he would have tied with him, each with 5-1, but the Median Points would have broken the tie in Martin's favor $13\frac{1}{2}-13$ although the Solkoff total would be 20 apiece.

Of course the above statistics could not be determined while the Taro vs. Martin game was in progress because too many other games were still to be completed. Taro won a pawn in the opening but the position turned sour and rather than risk a loss, a draw was agreed on.

RICHARD GREENWOOD, one-time Champion of Spokane but now a Seattleite, scored $4\frac{1}{2}-1\frac{1}{2}$, the same as Taro, to take third place. Greenwood lost his opening round game to Martin and, except for a fifth round draw with Robert Collins of Tacoma, was all-victorious after that.

ALAN CLARK, top-ranking player in the tourney in regards to USCF ratings, was defeated in an amazing upset by Dick Parsons of Centralia in the opening round. Clark also stumbled against Taro in the fourth round. He had to be happy with a 4-2 score and fourth place.

ROBERT COLLINS of Tacoma took fifth with $3\frac{1}{2}-2\frac{1}{2}$. Collins shared first place after three rounds with Martin, each having 3-0. This was at the end of the first day's hostilities. The lofty position weighed heavily on his mind during a nearly sleepless night and Sunday found Collins losing $2\frac{1}{2}$ out of a possible 3 points.

If Collins thought he was torpedoed on the second day of play, then it may be of some consolation to him to know he served as a torpedo himself when he sabotaged Taro's chances for first place in the third round.

MARTIN, TARO, GREENWOOD, CLARK and COLLINS were the class of the tournament if you figure such intangibles by won-lost records. PARSONS turned in the biggest upset. He is a WCF Postalite and if he had not dropped from the tourney, probably wouldn't have ended last. He wasn't 13th in ability but only 13th in perseverance. Unfortunately, several lacked perseverance. Forfeits were too numerous.

WOODPUSHER

PLAYERS	-1-	-2-	-3-	-4-	-5-	-6-	W L D	POINTS	MEDIAN
1. W. Martin	W-3	W-8	W-13	W-5	W-6	D-2	5-0-1	5½ - ½	14.0
2. L. Taro	W-9	W-6	L-5	W-4	W-11	D-1	4-1-1	4½ - 1½	13.0
3. R. Greenwood	L-1	W-12	W-9	W-10	D-5	W-6	4-1-1	4½ - 1½	11.0
4. A. Clark	L-13	W-7	W-11	L-2	W-10	W-5	4-2-0	4 - 2	10.5
5. R. Collins	W-7	W-13	W-2	L-1	D-3	L-4	3-2-1	3½ - 2½	16.0
6. O. LaFroniere	W-10	L-2	W-8*	W-13*L-1	L-3		3-3-0	3 - 3	14.0
7. F. Rodnite	L-5	L-4	Bye	W-9	L-8	W-12	3-3-0	3 - 3	9.0
8. J. Ring	Bye	L-1	L-6*	L-11*W-7	W-10*		3-3-0	3 - 3	8.0
9. W. Dawson	L-2	Bye	L-3	L-7	D-12	W-11	2-3-1	2½ - 3½	9.5
10 R. Meliza	L-6	W-11	W-12*L-3	L-4	L-8*		2-4-0	2 - 4	12.0
11 T. Davidsen	W-12	L-10	L-4	W-8*	L-2	L-9	2-4-0	2 - 4	11.5
12 S. Sawyer	L-11	L-3	L-10*Bye	D-9	L-7		1-4-1	1½ - 4½	7.5
13 D. Parsons	W-4	L-5	L-1	L-6*	- - -		1-5-0	1 - 5	7.5

* Forfeits.

An oddity of this tournament was the record of JOHN RING. Ring played only two tournament games, winning one and losing one and even so finished with a 3-3 score and 8th place! Ring received a bye in the first round to give him a 1-0 score. He lost his second scheduled game to Martin and forfeited his third round game to LaFroniere. Sunday morning Ring forfeited his fourth round game to Davidsen. Ring returned to the tourney in the fifth round and scored a win over Rodnite and in the last round Ring received a forfeit win from Ray Meliza who had left after the fifth round. Record 3 won, 3 lost. Played 2.

Martin, Greenwood, Clark, Rodnite, Ring, Davidsen, Meliza & Sawyer are Seattleites. Dawson is in the navy and comes from Detroit. 4 others were from outside Seattle. They are LaFroniere from Yakima, Taro from Packwood, Collins from Tacoma and Parsons from Centralia.

VICTOR PUPOLS was the director. He is from Tacoma. He gave up the weekend in order to direct the tournament. In spite of numerous forfeits and the dropping out and then returning of some players, he managed to keep the tournament going on a fairly even keel. Without players such as Pupols who are willing to give up their time and work for the Washington Chess Federation, activities such as the Woodpusher's Tourney and other tournaments would be impossible to hold.

GAMES

by Weaver & Wade

Another selection of games from the \$100-prize Puget Sound Open Tournament last February.

ZEMGALIS

NOLAND

- | | |
|------------|-------|
| 1. P-Q4 | N-KB3 |
| 2. P-QB4 | P-K3 |
| 3. N-KB3 | P-Q4 |
| 4. N-QB3 | P-B4 |
| 5. PxQP | NxP |
| 6. P-K4 | NxN |
| 7. PxN | N-B3 |
| 8. P-Q5 | PxP |
| 9. PxP | N-K2 |
| 10. N-K5 | P-QR3 |
| 11. Q-R4ch | B-Q2 |
| 12. QxBch | QxQ |
| 13. NxQ | KxN |
| 14. R-QN | NxP |
| 15. RxPch | K-B3 |
| 16. RxP | NxP |
| 17. B-QB4 | R-Kch |
| 18. B-K3 | N-Q4 |
| 19. BxP | NxB |
| 20. PxN | RxPch |
| 21. K-B2 | R-K2 |
| 22. R-B3 | R-R2 |
| 23. B-B4 | B-K2 |
| 24. R-K | R-KB |
| 25. R-K6ch | K-Q2 |
| 26. RxR | BxR |
| 27. R-K3 | B-K2 |
| 28. DRAWN | |

NELSON

NOLAND

- | | |
|-------------|-------|
| 1. P-K4 | P-K4 |
| 2. N-KB3 | N-QB3 |
| 3. B-N5 | P-QR3 |
| 4. B-R4 | N-B3 |
| 5. O-O | B-K2 |
| 6. R-K | P-QN4 |
| 7. B-N3 | O-O |
| 8. P-B3 | P-Q4 |
| 9. PxP | NxP |
| 10. NxP | NxN |
| 11. RxN | P-QB3 |
| 12. Q-B3 | B-Q3 |
| 13. R-K | R-K |
| 14. R-B | Q-R5 |
| 15. P-N3 | Q-R6 |
| 16. BxN | PxB |
| 17. Q-N2 | Q-R4 |
| 18. P-KR4 | B-KB4 |
| 19. P-Q4 | B-Q6 |
| 20. B-K3 | BxR |
| 21. QxB | BxP |
| 22. PxB | RxB |
| 23. K-N2 | Q-N5 |
| 24. RESIGNS | |



PUGET SOUND OPEN, 1955
VIKTORS PUPOLS--RUSSELL VELLIAS

1.	P-K4	P-K4
2.	N-KB3	N-KB3
3.	NxP	P-Q3
4.	N-B3	NxP
5.	P-Q4	P-Q4
6.	P-B4	B-N5ch
7.	QN-Q2	O-O
8.	P-QR3	BxNch
9.	NxB	NxN
10.	QxN	R-K1ch
11.	B-K2	Q-K2
12.	PxP	P-QB3
13.	Q-K3	QxQ
14.	BxQ	P-KB4
15.	PxP	NxP
16.	B-B4ch	K-R1
17.	O-O	B-Q2
18.	P-QN4	QR-B1
19.	KR-B1	P-B5
20.	BxBP	NxQP
21.	B-K3	N-B3
22.	B-R2	N-K4
23.	RxR	RxR
24.	R-QB1	RxRch
25.	BxR	N-Q6
26.	B-K3	P-QN3
27.	B-QB4	N-K4
28.	B-N3	B-N4
29.	P-QR4	B-B5
30.	BxB	NxB
31.	K-B1	K-N1
32.	K-K2	K-B2
33.	B-Q4	P-N3
34.	K-Q3	N-Q3
35.	B-K5	N-B1
36.	P-N5	K-K3
37.	K-Q4	N-K2
38.	B-N8	N-B1
39.	P-B4	P-KR3
40.	P-N4	P-KR4
41.	PxP	PxP
42.	K-K4	K-B3
43.	P-B5	P-R5
44.	K-B4	N-K2
45.	BxP	N-Q4ch
46.	K-N4	P-R6
47.	P-R5	PxP
48.	P-N6	N-K2
49.	P-N7	N-B3
50.	P-N8 (Q)	NxQ
51.	BxN	P-R5
52.	K-B4	P-R6
53.	B-K5ch	K-B2 and

Black resigned

PUGET SOUND OPEN, 1955
WILLIAM BILLS---VIKTORS PUPOLS

1.	P-Q4	N-KB3
2.	P-QB4	P-K3
3.	N-QB3	B-N5
4.	P-K3	P-B4
5.	B-Q3	O-O
6.	KN-K2	P-Q4
7.	BPxP	NxQP
8.	P-QR3	PxP
9.	PxB	PxN
10.	PxP	N-KB3
11.	P-K4	P-K4
12.	B-KN5	B-K3
13.	O-O	QN-Q2
14.	P-QB4	P-QR4
15.	Q-N1	Q-B2
16.	PxP	RxP
17.	RxR	QxR
18.	BxN	PxB
19.	N-B1?	

White was too timid here. His best appears to be an immediate Qx NP and analysis shows he can hold the pawn against Black's best.

(Note by Wade).

(If 19. QxNP N-B4
20. Q-N1 Q-Q7
if 21. N-B1 NxB
22. NxN or QxN and
Black gets BP,
However,
21. R-Q1 keeps pawn.

19.		R-B1
20.	QxP	N-B4
21.	Q-N5	Q-B6
22.	Q-N1	BxP
23.	BxB	QxB
24.	P-B3	N-K3
25.	Q-Q3?	Q-B4ch
26.	K-R1	QxN
27.	P-N3	Q-B7
28.	Q-K3	K-N2
29.	Q-K1	R-QN1
30.	P-N4	R-N7
31.	Q-N3	N-B5
32.	P-N5	Q-N7ch
33.	QxQ	RxQ
34.	PxPch	KxP
35.	R-R1	R-N3
36.	R-R3	N-R6
37.	R-R1	N-B7 Mate

Three games played by our new Woodpusher Tournament Champion, "HAM" MARTIN.

MARTIN IAFRENIERE

- | | |
|----------|-------|
| 1. P-K4 | P-QB4 |
| 2. N-KB3 | P-Q3 |
| 3. B-B4 | B-N5? |

Black know about this in the P. S. O. Tourney and avoided it.

- | | |
|------------|-------|
| 4. BxPch. | KxB |
| 5. N-N5ch. | K-K1 |
| 6. QxB | N-KB3 |
| 7. Q-K2 | |

7. Q-K6 leads to nothing. Black can counter withQ-Q2.

- | | |
|------------|-------|
| 7. | N-B3 |
| 8. N-KB3 | P-KN3 |
| 9. P-QN3 | B-N2 |
| 10 B-N2 | R-KB1 |
| 11 N-B3 | N-QN5 |
| 12 O-O-O | N-R4 |
| 13 Q-N5ch. | K-B2 |
| 14 N-N5ch. | K-B3? |

Black resigns before White can move 15 N-Q5 mate.

COLLINS MARTIN

- | | |
|----------|-------|
| 1. P-Q4 | P-K3 |
| 2. P-K4 | P-Q4 |
| 3. P-QB3 | PxP |
| 4. Q-R5 | P-KN3 |
| 5. Q-K5 | N-KB3 |
| 6. B-KN5 | B-K2 |
| 7. BxN | BxB |
| 8. QxKP | O-O |
| 9. B-N5? | P-B3 |
| 10 B-R4 | P-K4 |
| 11 N-B3 | |

White's best appear to be 10 B-B4 and 11 N-K2. After 11 N-B3 he is in grave danger of losing his queen.

- | | |
|---------|-------|
| 11 | PxP |
| 12 O-O | B-B4 |
| 13 Q-B4 | P-QN4 |
| 14 B-N3 | BxN |

Black's plan to win another pawn looks good on the surface but boomeranges horribly.

- | | |
|-------------------------|------|
| 15 QRxB | PxP? |
| 16 QR-Q1! | N-Q2 |
| If 16....Q-K2; 17 KR-K1 | |
| 17 Q-Q6?? | |

White must play Q-KN4 to win the piece. In the text Black can save himself with 17....N-N3; 18 QxP, R-B1 19 QxNP, Q-B2 with equality.

- | | |
|---------|-------|
| 17 | PxP?? |
|---------|-------|

Black either overlooked the way to save the knight or felt that four pawns to one on the queen-side would win for him.

- | | |
|---------|------|
| 18 QxN | QxQ |
| 19 RxQ | P-B4 |
| 20 B-Q5 | |

Losing time. Better KR-Q1.

- | | |
|----------|-------|
| 20 | QR-Q1 |
| 21 RxR | RxR |
| 22 B-K4 | P-B5 |
| 23 B-B6? | |

B-B2 looks good. The text loses.

- | | |
|----------|-------|
| 23 | P-B6 |
| 24 B-K4 | P-QR4 |
| 25 N-K1? | |

B-B2 still looks best.

- | | |
|---------|------|
| 25 | P-N5 |
| 26 N-B2 | R-Q7 |

After White's 25th, Black has a won game.

- | | |
|---------|------|
| 27 N-K3 | P-R5 |
| 28 B-B2 | |

Much too late!

- | | |
|-------------|---------|
| 28 | RxB |
| 29 NxR | P-N6 |
| 30 N-N4 | P-B7 |
| 31 N-Q3 | P-N8(Q) |
| 32 Resigns. | |

MARTIN TARO

- | | |
|----------|-------|
| 1. P-K4 | P-K3 |
| 2. P-Q4 | P-Q4 |
| 3. P-K5 | P-QB4 |
| 4. P-QB3 | N-QB3 |
| 5. N-KB3 | KN-K2 |
| 6. B-QN5 | B-Q2 |
| 7. O-O? | NxKP |
| 8. NxN | BxB |
| 9. R-K1 | N-N3 |
| 10 N-R3 | B-Q2 |
| 11 N-B2 | NxN |
| 12 PxN | B-K2 |
| 13 Q-N4 | P-KN3 |
| 14 B-R6 | R-KN1 |
| 15 QR-Q1 | B-KB1 |
| 16 B-N5 | B-K2 |
| 17 B-R6 | B-KB1 |
| 18 B-N5 | B-K2 |
| 19 B-R6 | B-KB1 |

Drawn.

Although Black is ahead a pawn, his position is cramped making material advantage of no importance. It was to White's advantage to accept a draw since the $\frac{1}{2}$ point secured first place for him putting him a point up on his nearest rivals.

SOLVER'S CONTEST

GEORGE BISHOP, Contest Judge, reports good response, good comment, and has decided to increase the prize list by addition of a years subscription to CHESS REVIEW.

HOWEVER, he wants to start over, with the problem on this page, because last month's position was poorly explained, which caused many solvers to look for hidden elements, or poor play by Black. There are no trick elements, or hidden meanings to any of the problems. There will be no mistakes in printing of the diagrams, and the problems beginning with the one pictured this month can be resolved in a very few forcing moves against best play.

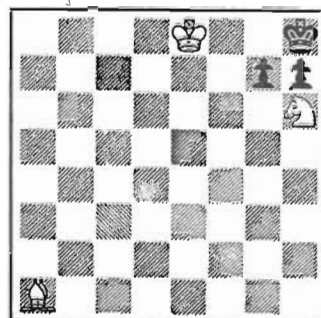
THE CORRECT SOLUTION to the September diagram is a straightforward, forced series of moves:

- | | | |
|-----|------|----------------------|
| 1. | P-B3 | PxP |
| 2. | K-B1 | P-B7 |
| 3. | P-K4 | PxP |
| 4. | KxP | P-K6ch |
| 5. | K-K1 | P-K7 |
| 6. | P-Q5 | PxP |
| 7. | KxP | P-Q5 |
| 8. | K-Q2 | P-Q6 |
| 9. | P-B6 | PxP |
| 10. | KxP | K-N2 but this is not |

the best solution because Black can delay Mate one more move with

- | | |
|-----|----------------|
| 10. | P-B4 |
| 11. | K-B4 K-N2 |
| 12. | KxP K-R1 |
| 13. | K-N5 K-N2 |
| 14. | P-R8 (Q)ch KxQ |
| 15. | K-B6 K-N1 |
| 16. | P-N7 K-R2 |
| 17. | K-B7 K-R3 |
| 18. | P-N8 (Q) K-R4 |
| 19. | Q-N3 K-R3 |
| 20. | Q-N6 Mate |

George called up long distance to set the typist of this page straight on the technical differences between "end games" and "problems" but finally gave up and agreed that the landlubber use of the word "problem" would be all right. He also said to tell everyone that suggestions will always be welcome.



WHITE TO MOVE AND MATE IN 3.

A local attorney says that it took him 6 hours to find the solution to the above so maybe you can beat his time by methodically trying all of the possible moves and even some of the impossible looking ones.

SEND SOLUTIONS TO GEORGE BISHOP, 1500 ATLANTIC ST. SEATTLE, 44, by Oct. 25.

Perfect solutions will be rated 5 points. For less than perfect answers, less points will be credited, but at least 1 point will be awarded for merely answering. If there are any ties at the end of the 6th month, a tie-breaking problem will be devised that will really separate the men from the boys.

The Contest Judge will be mighty pleased to hear from the chess friends who responded last month, and from the additional solvers he hopes will enter, without any handicap, now that the show is on the road. There is no entry fee, merely the desire to make friends for Washington Chess Letter. So get out a postcard or envelope and send encouragement for this new feature.

JUNIOR PLAY-OFF GAMES

by LaFreniere

The four man round robin which was to decide the State Junior Championship ended in a three way tie for first place. A play-off was necessary to decide the winner-- but Vik Pupols had to be back in Seattle before evening, and thus was forced to play his two strong opponents, Nelson and Falk, simultaneously. With this initial disadvantage, he did very well in his effort.

Viktors Pupols (French Defense)	Terry Nelson
1. P-K4	P-K3
2. Q-K2	P-QB4
3. P-KN3	N-QB3
4. P-QB3	Q-B2
5. B-N2	P-QN3
6. P-KB4	B-N2
7. N-B3	O-O-O
8. P-Q4?	PxP

White has made a critical error. He loses a P and exposes his K, but Vik is a resourceful player and gets away alive, as he really should not.

9. PxP	NxP
10. NxN	QxBch.
11. K-B2	Q-B4
12. Q-Q2	Q-N5
13. N-QB3	B-B4
14. K-K3	N-B3
15. B-B3	KR-K1
16. P-QR3	QxN/5ch.
17. QxQ	BxQch.
18. KxB	P-Q4
19. P-K5	N-K5
20. N-N5	N-Q7
21. B-Q1	K-N1
22. N-Q6	R-K2
23. R-QB1	N-B5
24. NxB	RxN
25. R-B2	R-B2
26. B-R5	P-N3
27. B-K2	KR-QB1
28. BxN	RxBch.
29. RxR	RxRch.

And Black would still seem to have the edge. But if his R were more mobile where would it go? What possibilities does he have? He has the kind of better position that soon passes.

30. K-Q3	K-B2
31. P-KR4	P-KR4
32. P-N3	R-B4
33. P-KN4	PxP
34. P-R5	PxP
35. RxP	K-N2
36. R-N5	K-R3
37. RxP	K-N4

Now it is the White R which is more mobile, and the Black K must move.

38. R-N7	R-B2
39. P-B5!	K-B3
Not PxP, for then White plays P-K6, and the P drives through.	
40. K-K3	P-R3
41. PxP	PxP
42. R-N6	R-K2
43. K-Q4	and draw agreed upon.

Stephen Falk (Sicilian Defense)	Viktors Pupols
1. P-K4	P-QB4
2. N-KB3	N-QB3
3. P-Q4	PxP
4. NxP	N-B3
5. N-QB3	P-Q3
6. P-B4	P-KN3
7. NxN	PxN
8. P-K5	PxP
9. QxQch.	KxQ
10. PxP	N-Q4
11. NxN	PxN
12. B-KB4	B-B4
13. B-Q3	BxB

Steve Falk, the exchanger, is at it again! Notice that he manages to exchange in a manner that leaves bishops of the same color on the board.

14. PxB	K-Q2
15. K-Q2	P-B3
16. PxP	PxP
17. P-QR3	B-Q3
18. BxB	KxB
19. P-Q4	KR-K1
20. KR-K1	R-K5
21. RxR	PxR
22. R-QB1	R-K1
23. K-K3	P-B4
24. P-QN4	R-K2
25. P-N5	R-QB2
26. RxR	KxR
27. P-QR4	K-N3
28. P-Q5?	K-B4
29. P-Q6	KxP
30. K-Q4	K-B2
31. P-R5	K-N2
32. P-N3	P-N4?

This error allows White to win, since he is able now to break up the opposing P chain.

33. P-N4! PXP
34. KxP K-B2
35. K-B5 P-KR3
36. KxP K-Q3
37. K-R5 K-B4
38. P-N6??? - - -

This is the kind of error Vik seems to thrive on. White obviously did not bother to calculate the number of moves it will take him to queen the KRP if he captures the K side pawns.

- - - PXP
39. PXP KxP
40. KxP P-N5!
41. K-N5 K-B3
42. KxP K-Q3
43. K-N5 K-K2

And drawn.

So Viktors secured himself two draws and left for Seattle. It was up to Falk and Nelson to decide who was going to be junior champion of Washington. And they decided in the long, exciting game which follows.

Terry Nelson Stephen Falk
(Dutch Defense)

1. P-Q4 P-KB4
2. P-KN3 P-KN3
Known as the Leningrad System.
3. B-N2 B-N2
4. N-KB3 N-KB3
5. O-O O-O
6. P-B3 - - -

An interesting move, reflecting back on an earlier school of thought in the possible answers to the Dutch. The proposal is QN-Q2-B4, and Black never is able to play P-K4. He may have to assume a Stonewall Defense instead.

- - - P-Q3
7. QN-Q2 N-B3
8. N-B4 Q-K1

Still hoping to enforce P-K4. A minority attack on the Q side, beginning with P-QN4 is worthy of consideration, but the argument against it would be the increased strength of White's KB along the beautiful diagonal KRL-QR8.

9. Q-N3 K-R1
10. N-N5 P-K3

Faced with threats of intrusion in such weak squares as B7 and K6, Black forever gives up P-K4, assuming a Stonewall formation instead.

11. B-Q2 P-Q4
12. N-K3 P-KR3
13. N-R3 N-K5

14. BxN BPxB
15. N-B4 N-K2
16. P-B3 PXP
17. RxP P-KN4
18. N-Q3 RxR
19. PXR Q-R4
20. R-KB1 P-N3
21. N-KN4? B-R3
22. Q-B2 R-KB1?

White afforded a possibility which Black passed up. 22 . . . Q-N3 is the best move, double-pinning the N and forcing KN-B2, after which the following might result: 23 . . . Q-B4 24. K-N2, R-KB1 25. P-KB4, PXP 26. BxP and Black rules the situation.

23. R-B2 Q-N3
24. N-N4 QxQ
25. NxQ N-B4
26. N/2-K3 P-QB4

A very good move, opening the field for the lazy bishops.

27. PXP PXP
28. NxN RxN
29. P-KB4 PXP
30. BxP P-R4
31. N-R6!? - - -

White is willing to play his R against two bishops, a questionable idea. But his alternative here, N-K3, is nearly as unpromising. White's minor pieces get in the way of Black's preponderant center pawns, and the Black bishops control the board fully.

- - - RxB
32. RxR BxN
33. R-B6 B-K6ch.
34. K-N2 B-QB5

Hoping to provoke a gaping weakness among these pawns.

35. P-N3 B-Q6
36. RxP P-Q5
37. K-B3 B-Q7
38. PXP PXP
39. R-K8ch. K-N2
40. R-K7ch. K-B3
41. RxP B-B6
42. P-QR4 - - -

White has more important things to do than to fondle this bishop fodder.

- - - B-B7
43. P-R5? P-Q6!
44. R-Q7 K-K3
45. R-Q8 BxRP

This last must have been the move White left out of his calculations. The R has no good move, and Black's next move produces a forced win.

46. R-Q4 B-Q8ch.

47. K-K3 B-N3
 48. KxP BxR
 49. KxB K-B4
 50. P-R3 K-N4
 51. P-QN4 B-K7
 52. K-B5? - - -

- - - B-B8
 53. P-N4 P-R5
 54. P-N5 BxRP
 55. P-N6 B-N7
 56. K-Q4 KxP
 57. K-K3 K-N6
 58. K-K2 P-6
 59. P-N7 BxP
 60. K-B1 P-R7

If there is any hope at all in pulling a draw from the ashes (and there is none), it lies in bringing the K to the K side pawns. Black has seen to it, however, that his B is the same color as the portended queening square.

Resigns

And thus the 1955 State Junior Crown went to Steve Falk. A good game!

TOURNAMENTS, 55 & 56

WASHINGTON CHESS FEDERATION

Tournament	Date	System	Entry fee	Location
Washington State Championship	October 29, 30* Begins 9 a.m.	Round Robin 40 moves/2 hrs	\$5.00	Seattle C.C.
Washington State Speed Championship	January 8 Begins 10 a.m.	Round Robin 10 seconds/move	\$1.00	Seattle C.C.
Puget Sound Open**	February-March	Details later	* * *	Seattle
Northwest Masters-Experts Tourney**	February-March	Details later	* * *	Seattle
Washington State Junior Championship	April 7, 8 Begins 1 p.m.	5 Round Swiss 30 moves/1 hr	\$2.00	Seattle C.C.
Inland Empire Open	April-May	Details later	* * *	Spokane

*If more than four players qualify to play in this event from the State Open, it will be extended to the following weekend to allow a complete Round Robin.

**The Puget Sound Open and the Northwest Master-Experts Tourneys will probably be combined. They will have a high entry fee and a large cash prize list.

All tournaments but the State Speed will be USCF rated for the national rankings. Important tournaments, such as the Puget Sound Open and the State Open, will henceforth have a two to five dollar addition to the entry fee, which will be refunded at the completion of the full tournament schedule. Each forfeit will cost one dollar. It was seen necessary to arrange some system to stop the too frequent forfeits. Out-of-town players who have traveled long distances have often been disappointed by the absence of their scheduled opponents.

Viktors Pupols, Tournament Director
 O. W. LaFreniere, Publicity Director

ANOTHER EXCUSE

A couple Mondays ago I went to the Yakima Chess Club and won over 200 points from innocent Bill Hoge, who befuddled his poor queen in front of his pieces. Then I went home with pains here, and pains there, and the next morning they relieved me of my appendix. Bill Hoge visited at the hospital and took horrible revenge. It seems that, minus appendix, I can't think of a single good move, for I haven't won a game since. Alas, I thought the brain was the chess organ, not the appendix! ---owl

POSTAL CHESS

R. R. Merk
Postal Chess Editor
1026 E 71 St., Seattle 5, Wash.

	54A-6A	Points		54B-1B	Points
Cairncross	1 Husby	0 50	Skarsten	1 Nelson	0 22
Howard	1 Husby	0 16			
	55A-2A		Youngman	54B-3B	
Bever	1 Carter	0 36	Waldron	1 Nichols	0 30
	55A-2B			1 Youngman	0 54
Bever	1 Weaver	0 76	Laine	55B-1B	
Carter	1 Bever	0 80		1 Parsons	0 50
	55A-1A		Laine	55B-2B	
Bever	$\frac{1}{2}$ Mulford	$\frac{1}{2}$ 10		1 Meliza	0 58
			Parsons	55B-1A	
			Parsons	1 Laine	0 66
			Parsons	1 Meliza	0 56
			Parsons	1 Carpenter	0 30

We need one class B and also a class A player to fill two sections waiting to start play.

Washington Postal Chess is experiencing a boom. Never before have so many wanted to play in our postal sections. We had to drop a pair of inactives in order to make room for five new postalites. If the trend keeps up, we will have to devise some new method of arrangement for our ladder on the back cover.

However, we are not complaining! The more, the merrier.

A game won by Grob, famous Swiss painter. He paints well on the chess board too. A Nimzo Indian by transposition:

1. P-QB4	P-K3	8. O-O-O	N-B3	13 B-N5	Q-N3	give up
2. N-QB3	B-N5	9. N-K4	P-QN3	14 PxBP	QxP	material
3. N-B3	N-KB3	10 NxNch.	PxN	15 QxQ	PxQ	he can't
4. Q-B2	O-O	11 B-R6	P-KB4	16 B-B6	R-K1	hope to
5. P-Q4	P-Q4	Willing to give up		17 R-N1ch.	K-B1	regain.
6. B-N5	P-B4	exchange to lessen		18 N-N5	Resigns	
7. QPxP	P-Q5	the pressure.		If 19 K-N1? N-K6		
Seems courageous.		12 P-KN4	Q-B3	Mate. Black must		

Postalites! Send in your best games to Chess Letter Editor Dan Wade for publication.

POSTAL CHESS

Postal chess tournaments are being formed all of the time. Our tournaments are composed of sections of 5 players. Each player plays two games with each of the other four opponents, one game as white and the other game as black. Our fee is only 50¢ per section.

Postal chess is a fine way to improve your game as you can take enough time to thoroughly study out the possibilities of nearly any move. A record is kept and it is possible for you to play a game of chess much stronger than a game over the board.

Send entries to
Postal Chess Director

POSTAL CHESS RATINGS

"A" Division

Baron	1666
Wade	1660
Taro	1594
Mulford	1576
Weaver	1568
Mage	1568
Luters	1558
Howard	1550
Corrotelli	1549
Coubrough	1548
Kaffenberger	1548
Bever	1421
Magerkurth	1344
Vellias	1316
Knapp	1304
Cairncross	1290
Sid Nourse	1288
Carter	1288
Mac Patterson	1250
Lawrence Allyn	1250
Hultman	1250
Weischer	1250
Ronts	1210
Husby	1186
John Nourse	1040

"B" Division

Dickson	1474
Skarsten	1356
Merk	1323
Rauen	1276
Parsons	1252
Don Roberts	1228
Waldron	1222
Laine	1190
Falk	1172
Meliza	1164
Youngman	1148
Southerland	1138
Moore	1137
Holland	1086
W. P. Allen	1086
Tresidder	1082
Shirley Allyn	1050
Davidson	1050
Schrank	1050
Vukonich	1050
McDonald	1050
Pifley	1050
Phillips	1050
Adamsen	1050
Brookshire	1050
Borski	1050
Sween	1050
Engstrom	1044
Nelson	1026
Luberts	1020
Hart	1008
Carpenter	996
Nichols	940
Raleigh	899

FROM

WASHINGTON CHESS LETTER

1026 East 71 Street

Seattle 5, Washington

Return postage guaranteed

Form 3547 requested



SEATTLE, WASH. 48, SEATTLE, WASH. 48, SEATTLE, WASH. 48

John Nourse
Con'l Delivery
Port Blakely, Wash 7/56