

JAN → OUR BEST YEAR

1956

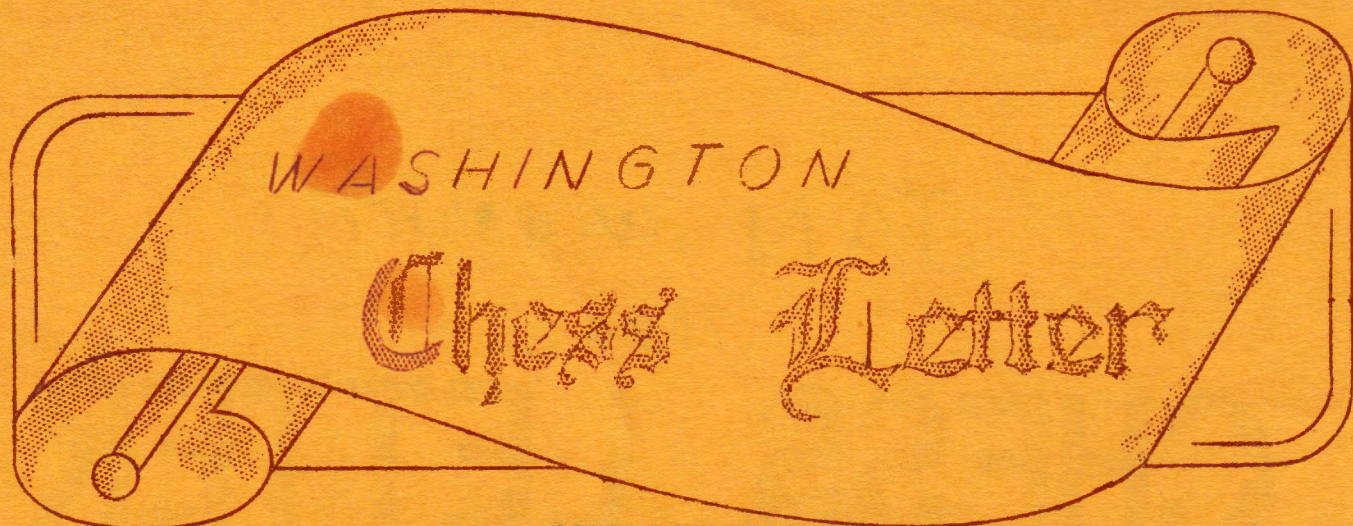
# CHESS LETTER



PUGET SOUND

2 - 4, 5





Editor, George Bishop  
1500 Atlantic, Seattle

Circulation, R.R. Merk  
1026 E. 71st. Seattle

Publisher, K. Mulford  
1500 Atlantic, Seattle

Contributors  
F.H. Weaver

D.E. Wade

Robert Edberg

Ten months ago, the government of Holland started to experiment with chess in the public school system. Their National Education Department employed twenty special employees to conduct tests. Should these tests prove as expected chess will become a full fledged companion of the three R's. Chess is already a requisite in the Russian system of schooling and also in a few portions of Germany and Hungary. The Swiss schools carry it as an elective.

The Convair Aircraft Co. of San Diego has 15 chess players entered in the San Diego County chess tournament. The company weekly headlined the fact that after 28 games Robert Brieger has emerged the winner among 68 players from various chess clubs.

Brieger left Texas last spring, due to the high water, and came to live at the 1500 Club in Seattle. He left for Hollywood to participate in the National Chess Tournament last July and instead of returning went to work for Convair in San Diego. His record at Hollywood was excellent, beating one master and drawing with two others. He will not sleep on porches.

An additional loss to Washington Chess was William Bills and Frank Rodnite. Bills was former State Champion and both were members of the Boeing Chess Team. Their loss will be sadly felt.

Promised information on the Pomar Simultaneous in Seattle has failed to show up and the people who were there and hoped to receive a copy of this issue will be disappointed because we don't have addresses.

Thanks to Reverend Alfred Carter we are able to supply news of Pomar's simultaneous at Spokane and the score of his loss to Daniels.

#### WASHINGTON CHESS FEDERATION

President  
K. Mulford

Vice-President  
Dr. G. Parker

Secretary  
P. Husby

Treasurer  
W.H. Raleigh

Publicity  
O. LaFreniere

Tournament Director  
Viktor Pupols

THE PRICE OF THIS MAGAZINE AND MEMBERSHIP IN THE WASHINGTON CHESS FEDERATION IS \$2 PER YEAR. SEND MONEY TO W.H. RALEIGH, 4312 WOODLAND PARK AV.



TO THE EDITOR:

It is with great regret that I note the resignation of Dan Wade as Editor of the Chess Letter, and I wish to be among the first to thank him for the spectacular job he has done and to congratulate him on the fact that the Chess Letter under his management has now reached what is probably the apex of perfection. With the limited number of subscribers I see very little possibility of expansion and I cannot believe the material will ever be better conceived or the output better executed. These last issues of the C.L. are professional in quality, no less.

As Editor Dan is entitled to the gratitude of all for his long and unselfish devotion to the cause of chess promotion. He will be hard to replace.

Good luck, Dan. Many thanks,

For the Kitsap County C. C.,  
Jack Nourse

# WASHINGTON SPEED

Wade

The annual Washington State Speed Championship Tournament and the 1956 Puget Sound Open are scheduled for Friday, February 3rd and Also Saturday and Sunday February 4th and 5th.

The Speed Tourney is scheduled to begin at 7 p. m. Friday evening at the Seattle Chess Club. Entry fee is only 50 cents. There will be little waiting between games as the system used permits a man to take on his next opponent as soon as one is free provided, of course, he has not already played him. It will be a round-robin type tournament. Players can register for the Puget Sound Open, scheduled to begin the following morning. RUSSELL VELLIS is the 1955 Wash. Speed king and it is expected that there will be a large number of players out to lift the crown from his fevered brow.

## PUGET SOUND OPEN

The 1956 Puget Sound Open Tournament is scheduled to get going at 9 o'clock Saturday morning, Feb. 4th, at the Seattle Chess Club, 616 Madison Street. This will be a six round Swiss event and is open to all chess players, provided they are members of the Washington Chess Federation. Non-WCF players must pay \$2 over the entry fee to play in this tournament.

Prize money will be taken from the entry fees collected. However, in addition to prize money, the winner will receive a new club-size chess set. This set retails for approximately \$19.00 through Chess Review. This set will be donated by GEORGE BISHOP, now acting editor of this magazine.

The Tourney Director for this tournament and also the Speed event will be DAN WADE. He will play in the open if an odd number shows up for that event so there can be no byes given out.

A new system of entry fees has been devised by the "powers that be" which is hoped will take "the hoggishness" out of our tourneys.

All players rated Masters or at one time rated Masters shall pay an entry fee of \$7.00 and must be members of the W. C. F.

All top-notchers in the Expert and near-Expert class, and decided by the Tournament Director, will pay an entry fee of \$4.00.

Duffers, beginners and players with little or no chance of winning the tournament will pay an entry fee of only \$2.00.

10% of the total entry fees will go to the Seattle Chess Club.



# PUGET SOUND LEAGUE — Wade

Boeings and Kitsap remained in first and second places respectively in the seven club Puget Sound League race by scoring close victories in the fourth round of play, December 11th. Boeings defeated McNeil Island  $5\frac{1}{2}$  to  $4\frac{1}{2}$  while Kitsap downed West Seattle by the same score.

At McNeil, BILLS scored two points and BADER  $1\frac{1}{2}$  which was barely good enough to see Boeings through to victory as McNeil scored 4 points on the lower boards. The win gave Boeings a League record of 3 won, 0 lost and 1 draw with two matches left to be played. The bright prospects of a PSL Championship this season have been greatly dimmed, however. Both WILLIAM BILLS and FRANK RODNITE have left the state for California. If MAX BADER can replace that pair with adequate replacements, the Boeings Club still retains good chances. If Boeings is tripped up in one of its remaining 2 matches, then Kitsap has an excellent chance to win its first clear P. S. L. Championship. Kitsap shared the title with the Seattle YMCA and Tacoma two years ago.

OLAF ULVESTAD won two games for West Seattle against Kitsap in games at Bremerton but the remainder of his team failed to follow his example so Kitsap won  $5\frac{1}{2}$  to  $4\frac{1}{2}$ . GEORGE REHBERG with 2 points and DR. ALMOND with  $1\frac{1}{2}$  led the Kitsap assault. The result gave Kitsap a 3-1 League record with 2 matches left to play. Kitsap must visit McNeil and then host the Seattle Chess Club in its remaining matches.

KITSAP CLUB	$5\frac{1}{2}$	WEST SEATTLE	$4\frac{1}{2}$	BOEINGS CLUB	$5\frac{1}{2}$	MCNEIL ISLAND	$4\frac{1}{2}$
John Nourse	0	Olaf Ulvestad	2	William Bills	2	Zamudio	0
Dr. Almond	$1\frac{1}{2}$	Bon Weischer	$\frac{1}{2}$	Max Bader	$1\frac{1}{2}$	Berg	$\frac{1}{2}$
C. Magerkurth	1	Max Mage	1	Frank Rodnito	1	Unger	1
G. Rohborg	2	F. M. Howard	0	Frank Uriyu	0	Flint	2
D. Kennedy	1	E. Vukonich	1	Carl Hanson	1	Schwartz	1

The Seattle Chess Club team has a League record of only one loss, no wins and no draws. On Jan. 8th, the team was scheduled to visit the U. of Washington. After that they tackle Boeings, Tacoma and Kitsap in the order listed. If through some miracle, the Seattle Club should win enough of these matches to have a chance for first place or a tie for first, then the match with McNeil Island will be rescheduled for certain. If the club does not meet such success, the trip to McNeil may still be rescheduled if enough players can be lined up for the trip. The team missed the boat the first time.

Sunday, Jan. 15th

Sunday, Jan. 29th

Sunday, Feb. 12th

West Seattle at Tacoma	Seattle Club at Tacoma	Seattle Club at Kitsap
Seattle versus Boeings	W. Seattle vs. Boeings	U. of Wash. at Tacoma
U. of Wash. at McNeil	Kitsap visits McNeil	West Seattle at McNeil

Let us conduct all WCF affairs on a high plane, ethically speaking. A point in the win column is not as important as how it was put there. If a player has committed himself to play on any team, even though he has still not played a game for them, he is morally wrong to switch to another team and that team is ethically wrong in accepting the services of the player.

# SOLVER'S CONTEST

Of the 33 solvers who have entered the contest, 13 came up with the correct solution to the December position, which appears below. A new entry is Mary Gene Hebert. She is 9 years old and attends the John Muir School. In addition to the correct answer she thoroughly analysed the fallacy of Black failing to take the Queen on the first move, which lets White mate in 3 to 5. Correct solutions came from the following:

Henry Kaffenberger	Horton Thompson
Deane Moore	Don Luters
<b>Bruce</b> Oldham	C.J. Sween
Rev. Alfred Carter	Dennis Hamilton
Robert Collins	P.A. Lyberger
Mary Hebert	Jack Nourse
Vic Hultman	Steve Miller

Only 5 of the above have perfect scores at half-way mark in the contest:

Deane Moore  
 Bruce Oldham  
 Rev. Carter  
 Bob Collins

Other solvers are very close, having been penalized a point or two for such things as being late with their cards, or failing to carry through with the full score of the solution. These solvers can easily overtake the leaders as the more involved end-games begin to take their toll.

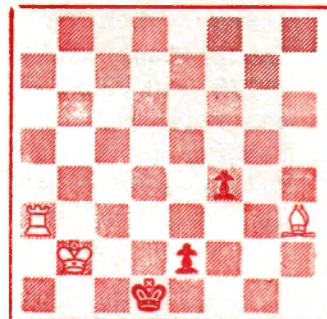
SEND SOLUTIONS TO GEORGE BISHOP, 1500 ATLANTIC ST. SEATTLE, 44, postmarked not later than January 26.

## CORRECTION!

Several "cooks" on the mate in 4 proposition in #4 have been uncovered by our guinea-pig solver, Hugh Noland. White can definitely win, but Black could throw in a delay or two as a hopeless gesture. So, we will restate the solution wanted; At Black's first option of two moves, your solution should show two clever checkmates that have no alternatives other than the loss of both pawns. Don't bother with the promotion of pawn to knight merely as a delaying tactic.

5  
5

POSITION #4



**WHITE TO PLAY  
 AND MATE IN 4 MOVES**

When Black has a choice of moves you can mate in 4 anyway. Send in alternate solutions for the full credit of five points.



SOLUTION TO THE DECEMBER POSITION

1. Q-R7† KXQ
2. RXP† RXR
3. N-B6† K-N3
4. B-R5† K-B4
5. P-N4† RXP
6. PXR CHECKMATE



# CHESS MASTERPIECES

Everyone has heard of a "King hunt" in chess; why be selective? While pursuing the Queen, White effects the demise of the Black King!

AMSTERDAM, 1950  
Queen's Indian

V. Pirc

A. O'Kelly  
de Galway

- |          |       |
|----------|-------|
| 1. N-KB3 | N-KB3 |
| 2. P-Q4  | P-QN3 |

More flexible would be 2.---, P-K3, reserving a choice of such good continuations as 3. P-B4, P-QN3 (Queen's Indian) or 3. P-B4, P-Q4 (Queen's Gambit Declined).

- |         |       |
|---------|-------|
| 3. P-K3 | ----- |
|---------|-------|

A clash of systems. White begins to develop along the Colle System lines.

- |          |       |
|----------|-------|
| 3. ----- | B-N2  |
| 4. B-Q3  | ----- |

Preparing ultimately for P-K4, which square Black attempts to control in the Queen's Indian.

- |          |       |
|----------|-------|
| 4. ----- | P-B4  |
| 5. O-O   | P-K3  |
| 6. QN-Q2 | N-B3  |
| 7. P-B3  | ----- |

The famous Colle Triangle.

- |          |      |
|----------|------|
| 7. ----- | Q-B2 |
|----------|------|

Leaving the Indian complex. 7.-----, P-Q4 is simpler. This is the normal formation against the Colle System.

- |          |       |
|----------|-------|
| 8. P-QR3 | ----- |
|----------|-------|

To prevent 10.-----, N-QN5 after 9. P-K4, PXP; 10. PXP.

- |          |     |
|----------|-----|
| 8. ----- | PXP |
|----------|-----|

While preventing P-K4, this opens the diagonal for White's Queen Bishop. 8.-----, P-Q4 is still the move.

- |        |      |
|--------|------|
| 9. KXP | B-K2 |
|--------|------|

- |         |      |
|---------|------|
| 10 R-K1 | N-Q4 |
|---------|------|

Unpositional; attempting, no matter what the cost, to force the attack.

- |         |      |
|---------|------|
| 11 N-B4 | N-B5 |
|---------|------|

The last and poorest move of a bad plan, but consistent with his previous strategy. Most sensible 11.-----, P-Q3, thereby admitting his strategy (7.-----, Q-B2) and especially the preceding move (10.-----, N-Q4) was faulty.

- |         |     |
|---------|-----|
| 12 BxN! | QxB |
|---------|-----|

The vulnerability of the Black Queen is adequate compensation for the exchange of the Bishop.

- |          |       |
|----------|-------|
| 13 P-Q5! | ----- |
|----------|-------|

Decisive! If 13.-----, PXP; 14 QN-K5 and White commands the open file with immediate threats.

- |           |      |
|-----------|------|
| 13. ----- | N-Q1 |
|-----------|------|

Where else?

- |          |       |
|----------|-------|
| 14 QN-K5 | P-QR3 |
|----------|-------|

He must prevent 15 B-N5, which would be overpowering. For example: 14.-----, BxQP; 15 B-N5, O-O; 16 NxQP, R-Q1; 17 NXP winning exchange.

- |           |      |
|-----------|------|
| 15 P-KN3! | Q-R3 |
|-----------|------|

Not 15.-----, Q-B3; 16 N-N4 and the Queen is lost.

- |         |      |
|---------|------|
| 16 N-N4 | Q-R4 |
|---------|------|

If 16.-----, Q-R6 then 17 B-B1 Q-R4; 18 N(B3)-K5 leads to the text.

- |              |       |
|--------------|-------|
| 17 N(B3)-K5! | ----- |
|--------------|-------|

Threatening to win the Queen by 18 N-B6ch.

- |           |       |
|-----------|-------|
| 17. ----- | P-N3  |
| 18 B-K2   | ----- |

Renews the threat.

- |           |      |
|-----------|------|
| 18. ----- | Q-B4 |
|-----------|------|

- |           |          |
|-----------|----------|
| 19 P-Q6!! | Resigns. |
|-----------|----------|

The primary threat is 19.-----, B-KB1; 20 B-Q3, Q-N4; 21 P-KB4. Black can either lose his Queen or be mated! (21.-----, Q-R4; 22 N-B6 Mate and if 19.-----, B-KB3; 20 B-Q3 is forcing.

## POMAR

Seattle chess players had an opportunity to meet an outstanding figure in international chess when Senor Arturo Pomar culminated a week's visit with Seattle friends, Mr. and Mrs. Ken Day of Bellevue, with an exhibition before several hundred spectators in the Post-Intelligencer Auditorium. He played 44 players, some of whom entered for another game, to make a total of 54 games. In Spokane, several days later, he met another enthusiastic welcome. Excellent publicity in the Post-Intelligencer was the key to the strong showing in Seattle.

Arturo Pomar was born in Majorca, largest of the Balearic Islands in the Mediterranean, 150 miles off the coast of Spain. He lived near Palma, a semi-tropical city of 500,000 population which was the scene of a major chess tournament in 1942 when Pomar was about 11 years old. He was indulgently allowed to enter and his showing was such that General Franco, the Dictator, invited Pomar and his family to come to Madrid for his education.

When Pomar was 15 he entered great tournaments at Santander and in London. His treatment of the black pieces against the Wing Gambit became classic, and is still quoted in Master analysis.

Although quite young, 24, Senor Pomar is Champion of Spain and while a student in New York City in 1954, became co-Champion of the United States, dividing the honor with Larry Evans. He enjoys a 1-0 record against Samuel Reshevsky, who has challenged him to a re-match.

Seattle Chess Club President Theo. Davidsen was host to a reception at his home, December 12, which was well attended by local players reached by phone the same day, to honor Senor Pomar and his fiance, Senorita Flores. Many wives attended with clubmembers Davidsen, Day, Ulvestad, Sturgess, Bills, Rodnite, Mulford, Shepherd, Rosen, Henin, Howard, McCormick, and Weaver. As fitting climax to an evening of music and a smorgasbord prepared by Mrs. Davidsen (which smorgasbord is properly mentioned in the same breath with music), a fast moving game was played between Pomar and Puget Sound Champion Bills, in which Pomar unveiled a tactical conception unknown to local players to win in spectacular style.



Pomar at Spokane

Arturo Pomar, on the evening of December 16th won 21, drew 1 and lost 2. His loss to Don Daniels is shown below.

French Defense.

Pomar	Daniels	14.NxP,	Q-K3
1.P-K4,	P-K3	15.0-0,	QxQ
2.P-Q4,	P-Q4	16.PxQ,	B-QB2
3.N-Q2, a	N-KB3	17.N-Q5,	B-K4
4.B-Q3,	P-QR3	18.N-QN6,	B-K3
5.P-QB3,	P-QB4	19.N-QB4,	B-QB2
6.KPxP,	BPxP	20.B-Q2,	0-0
7.QPxP,	BxP	21.B-QB3,	KR-K
8.Q-QR4 ch	N-QB3	22.KR-K,	R-K2
9.N-K4,	PxP	23.BxN,	PxB
10.NxN ch	QxN	24.RxP,	QR-K
11.B-K4,	B-Q2	25.RxP,	BxN
12.Q-QN3,	R-QN	26.PxB	RxR
13.N-K2,	B-Q3	27.BxR,	RxB mate

(a) Popularized by Tarrash Three generations ago.

FEEDBOX FFRD bets  
on MAC

Should've got a  
leafabread



THE PUGET SOUND

Post time 9:00 A.M. Feb. 4th, 1956. Allowances (Lots of 'em)

P.P.	Entry	Odds	Comment
1	Tare	10	Steady- may need a race
2	Wade	10	Lots of dead heats
3	Weaver	?	Good mudder- may be scratched
4	Warner	5	Won at Spokane
5	Dr Murray	7	Sleeper- been running on Southern tracks.
6	Ulvestad	2	Favored- may be late at the post.
7	Noland	4	Dangerous contender.
8	Vellias	?	Unpredictable- might go clockwise
9	Finnegan	?	No late information.
10	McCormick	?	Won maiden race- may bolt. W/ blinkers
11	Edberg	4	Could take it all.
12	Pupols	5	Bumped in stretch last here-trains on cider
13	LaFreniere	?	No late performance.
14	Bishop	?	Won last in 1931 or so.

Should any one feel they ar'ent getting their money's worth, there will be no refunds. Just bring a towel.

Russel Vellias has agreed to contribute a regular article on the openings. How about a n article from our readers , as an example, on High School play and what can and is being done for the younger players.



JAN. 14

# SEATTLE MEETING

Wade

Hear Ye! Hear Ye! The annual Seattle Chess Club meeting will come to order. This meeting is set for Saturday evening at 8 o'clock on Jan. 14th. Members and all players interested in a large part of Washington's chess future are urged to attend.

Because of illness and/or other pressing duties both outside of the game of chess and inside, the officers of the club during 1955 have not been as active in the promotion of the game and the club as they possibly could have been. Each officer could have arranged some event of interest to the membership once a month giving the club activity every week. This was not done.

The officers, all in good standing, are: TED DAVIDSEN, President; HOWARD WEAVER, Vice-President; DAN WADE, Secretary-Treasurer; PAUL STURGES, Director and OLAF ULVESTAD (honorary member), Director.

Wade promoted a Seattle Open Tourney and three speed events. Ulvestad and Davidsen worked to make the Ponar Simultaneous a success. Otherwise, the 1955 Seattle Chess Club program was a total black out.

Club members paid up to the end of 1955 or beyond that date are as follows: 1. A. Anoma, 2. C. Baasch, 3. M. Bador, 4. P. Benson, 5. L. Berger, 6. B. Bickford, 7. G. Bishop, 8. F. Burgess, 9. W. Cowan, 10. Tod Davidsen, 11. R. Edberg, 12. D. Erickson, 13. F. Forray, 14. Miss Lola Geckeler, 15. W. Gillette, 16. D. Harrison, 17. P. Hickoy, 18. S. Jacy, 19. N. Knudsen, 20. G. Laizure, 21. Dr. A. Lewis, 22. L. Lewis, 23. R. Lindh, 24. J. McCormick, 25. W. McCulloch, 26. A. McGregor, 27. J. Meyer, 28. K. Mulford, 29. H. Noland, 30. G.S.G. Patterson, 31. V. Pupols, 32. W. Raleigh, 33. E. Rennord, 34. F. Rice, 35. J. Ring, 36. H.H. Roberts, 37. H. Rosen, 38. C. Schmoeyer, 39. K. Seckamp, 40. Dr. Soering, 41. J. L. Sheets, 42. P. Sturges, 43. D. Wade, 44. T. Warner, 45. H. Weaver, 46. E. Weissenborn, and 47. A. Worcell. There are about eight more who are only about a month in arrears and are still listed on the member's boards at the club room.

Silver lining in the clouds of despair is that many of the players must renew their dues at this time. The club must raise enough to pay the over due rent and then move to better quarters as soon as possible.

Coming Club events:

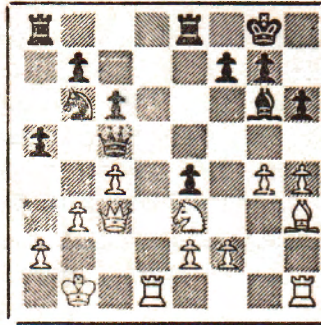
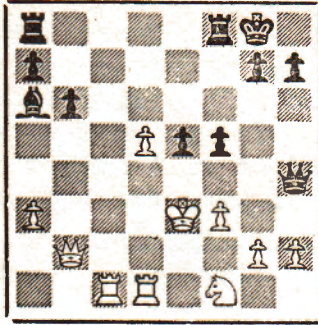
Six round Swiss Seattle Club Championship for dues paid up members only. First Round: Thurs. Feb. 9th at 7 p. m. Second Round: Thursday Feb. 16th at 7 p. m. Third Round: Thursday, Feb. 23rd. Following are rounds four, five and six on March 1st, 8th and 15th. Two forfeits and a player is dropped. No entry fee will be charged. This tourney is an event for those who enjoy competitive chess. The Washington Chess Letter will feature this event, Those who play chess only for prizes and are not interested in the game except for what they can get out of it will not be interested in this event.

Other officers please oblige and arrange events for other evenings.



# WOODPUSHERS ROUND-TABLE

by Weaver



The meager response to the proposed feature, which was titled "What Would You Do?" in last month's Chess Letter indicates there is no desire for such a page. However, in gratitude to the few who did write in with a position for discussion and an appraisal of the one shown, we will wrap it up with this final publication.

The one above was sent in for a suggestion of how White should proceed. This writer, with the blind courage of a Class B player, will try anything. Maybe you are Class A, or higher, and see something better. In that case you should volunteer to run this here page and help improve the plight of us sad sacks.

White is down a pawn and his King is in a dangerous spot with that big wood still on the board. What else but P-N3 to chase the Queen, prepare to repulse the pawns, and most important to make B2 available for the King

1. P-N3      Q-R3ch
2. K-B2

Now White is prepared to capture the KP and push his biggest asset, the passed pawn. Black can't play BxN to win the RP because KxB uncovers protection by the Queen. Say Black plays:

2.            P-B5
3. P-Q6. This will allow the

White Queen to interpolate a check in case Black thinks up a skewer position to pick off the White Queen.

On the other hand Black may play 1. ... Q-R4 followed by 2. ... P-K5, and White is in deep trouble. He is almost forced to take PxP resulting in discovered check, and as he is being beat from pillar to post that KP keeps coming with deadly effect.

The position above is from a postal game in the Chess Review Golden Knight finals of 1948. The loser got a notion that N-B5 was the thing to do, to force the KN file open. The denouement came a few moves later after the exchange when Black played Q-K4 and forced the trade of Queens. Black then pushed his QR pawn with his rooks in position to double behind it to penetrate with the rooks and win 2 pawns for a winning end-game. The winner is in the top 1% of postal players. In review of the game he said he would have almost resigned if White had played P-N5.

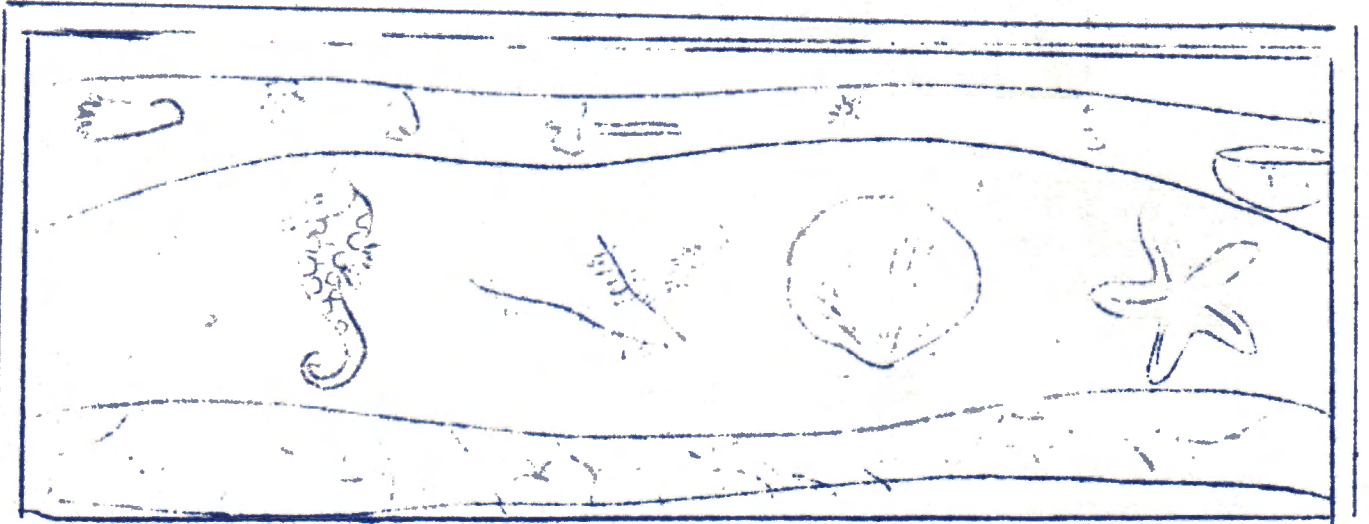
A reader also saw the possibility of P-N5 with the further idea of then playing B-Q7 to get a Rook to the 7th rank in cooperation with the uncovered power of the White Rook on the KR file. Another plan would be to follow it with R-N1.

The game seems to be at the decisive stage where only the best wins. Another reader would start by playing R-Q2, a waiting move that improves safety of the King while preparing to double the rooks on the open file.



## WEAVER on SIENCE

Well Sir! What the Science Editor of this here Chess Letter won't do to gather the facts is a caution. I even had people charge me with drinking the time back in '50 when I reported my amazing discovery of the Little-Inch, which for those who just came in, is an unknown specie of fish that is almost  $7/8$  of an inch long and it will attack and eat anything. Fishermen trolling for salmon or jigging for halibut, after



catching one may have it swallowed by a Inch, but they don't realize it because after swallowing such a big bait the Little-Inch is stretched so thin it becoms transparent, and they don't even know they got one, except that after getting their catch onto the scales at the dock they suddenly find it has shrunk some. That is because the Little-Inch has digested maybe ten pounds or so, and then slipped off and overboard to prey on some other fisherman

Then there was that other time, irrefutably documented with the latest United States charts of Peapod Pass which proved the water was exactly as deep as I said it was, when my chess opponent threw a White Knight overboard in disgust, and when we dredged it up in a Tom Collins glass we must have captured a Little-Inch by mistake because in the next game it ate up his Queen Rook and both his Bishops, and then jumped overboard, and is now the granddaddy of millions of Little-Inch that know how to move like a chess knight, as can easily be seen by observing the peculiar eddies they make up there around Bird Island.

Anyway, what I am getting at is that I now have incontro-pfft-er-jussaminnitnow-vertible proof, thassa wot I got, an I hadda drive two thousen miles over icy mountains and parched deserts until I got to my ol' pals good ol' pal's hacienda. Settin here by the side of his swinnun pool there it is! Big as life! The front of his bar which faces the pool is stratum--back through the ages artifacts embedded in stratum--Mesozoic Age--, an right there in the middle, no, over to the left. I would recognize it anywhere. Thatsa Little-Inch and I aint going over there again. Even if it IS a billion years old I bet that thing can still bite,



# GAME FROM LONG BEACH

Wade

An interesting game from the Long Beach U. S. Open. Ted Warner of Richmond and Seattle placed 96th in U. S. Open with  $5\frac{1}{2}$ - $6\frac{1}{2}$ . His opponent, Gilbert Ramirez of San Francisco, placed 61st with a  $6\frac{1}{2}$ - $5\frac{1}{2}$  score. Viktor Pupols of Tacoma, who placed 90th, smuggled this game to the writer.

G. RAMIREZ

T. WARNER

- |          |       |
|----------|-------|
| 1. P-K4  | P-QB4 |
| 2. N-KB3 | P-Q3  |
| 3. P-Q4  | PxP   |
| 4. NxP   | N-KB3 |
| 5. N-QB3 | P-QR3 |
| 6. B-N5  | P-K4  |
| 7. N-N3  | B-K2  |
| 8. Q-Q2  | QN-Q2 |
| 9. O-O-O | P-QN4 |
| 10 P-QR3 | B-N2  |
| 11 P-B3  | R-B1  |
| 12 P-KN4 | P-R3  |
| 13 BxN   | NxB   |
| 14 P-KR4 | R-B3  |
| 15 N-K2  | R-B2  |
| 16 N-N3  | P-Q4  |
| 17 Q-R2  | B-Q3  |
| 18 B-Q3  | Q-Q2  |
| 19 K-N1  | P-Q5  |
| 20 N-KB5 | P-N3  |
| 21 NxB   | QxN   |
| 22 NxP   | K-K2  |

If 22....QxN? 23 BxPch. winning the Queen.

- |            |         |
|------------|---------|
| 23 BxP     | PxN     |
| 24 P-K5    | Q-B4    |
| 25 PxBch.  | KxP     |
| 26 B-Q3    | B-Q4    |
| 27 P-N5ch. | K-N2    |
| 28 PxBch.  | KxP     |
| 29 QR-N1   | R-QN1   |
| 30 Q-B4ch. | K-N2    |
| 31 P-R5    | R/2-N2  |
| 32 RxBch.  | PxR     |
| 33 P-N4    | RxBch.  |
| 34 PxR     | QxBch.  |
| 35 K-B1    | Q-R6ch. |
| 36 K-Q2    | Q-B6ch. |
| 37 K-K2    | R-K1ch. |
| 38 K-B2    | R-K6    |
| 39 P-R6ch. | K-R2    |

Now it's White's turn to check!

- |            |          |
|------------|----------|
| 40 BxPch.  | KxB      |
| 41 R-N1ch. | K-R2     |
| 42 Q-B5ch. | K-R1     |
| 43 Q-B6ch. | Resigns. |

## CHESS BITS

No sooner than the departure of WILLIAM BILLS for California my telephone rang and guess who is back in Washington? None other than DR. A. A. MURRAY who is now out of the army and will live in Raymond. He wanted a fill-in on all that has happened & when is the next tournament.

Dr. Murray tied with Ulvestad a few years ago in the State Championship Tourney, each scoring  $6\frac{1}{2}$ - $1\frac{1}{2}$  in the nine player round-robin. Ulvestad had lost to Dr. Murray and drawn with Sheets which accounts for the  $1\frac{1}{2}$  points scored on him. Dr. Murray was undefeated but yielded draws to Anidson, Manney and Sheets. Ulvestad won the playoff game from Dr. Murray to win the State Title that year.

It is quite possible Dr. Murray will compete in the forthcoming Puget Sound Open, Feb. 4-5.

# # # #

Word from DR. PARKER of Spokane informs us that the Spokane City int. is planned for Jan. 17-24-31. News of this event may be in our next WCL.

A card from SPENCER in Pasco informs us he and WARNER will field a five man team in the Eastern Washington Chess League.

Spokane C. C. recently celebrated its fifth birthday.



# HOW TO WIN AGAINST THE SICILIAN DEFENSE

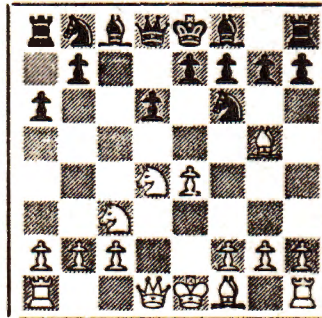
ANALYSIS COMPILED BY GEORGE BISHOP

## THE SITUATION:

- |           |       |
|-----------|-------|
| 1. P-K4   | P-QB4 |
| 2. N-KB3  | P-Q3  |
| 3. P-Q4   | PXP   |
| 4. NXP    | N-KB3 |
| 5. N-QB3  | P-QR3 |
| 6. B-KN5! |       |

SEE DIAGRAM 

## THE "NAJDORF LINE"



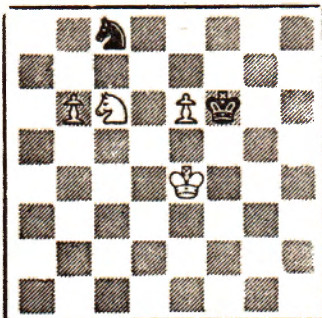
The "Najdorf Line" consists basically of an early ...P-QR3 so that Black can break fast to unseat White's QN and start a Queenside attack. A good challenge to this plan is 6. B-KN5, and Black's counters to this are analysed by such Masters as Euwe, Opocensky, Muller and Barden, to further strengthen White's procedure. Black has 4 major moves:

-A-	-B-	-C-	-D-
6. .... N-B3	6. .... P-K4	6. .... QN-Q2	6. .... P-K3
7. BxN NPxB	7. BxN! QxB	7. B-QB4! P-K3	7. Q-B3 QN-Q2
8. N-N3	8. N-Q5 Q-Q1	8. O-O P-QN4	8. O-O-O Q-B2
White has trans-	9. N-B5 BxN	9. BxKP! PxB	9. Q-N3 P-QN4
posed into a very	10. PxB	10. NxP Q-N3	10. BxP PxB
strong line of the	White has an en-	11. N-Q5 NxN	11. N/4xNP Q-N1
Richter Attack.	during advantage.	12. QxN N-N1	12. NxP BxN
	(9.N-K2 also good)	13. NxB Q-B3	13. QxB QxQ
		14. N-K6!	14. RxQ P-KR3
			15. B-Q2 B-N2
			16. P-B3 (Bron-
			stein-Najdorf)

(Dec. Chess Review, page 373 reviews a fantastic variation devised by the Russians in the Interzonal, Sweden '55)

COVER THE SOLUTIONS TO THE FOLLOWING PROBLEMS while you study them. In "Decoy" note that Black is pretty sure to take a pawn, and then maybe sacrifice knight for a draw. But White can establish a win in 5 moves. In the other problem White can also arrive at a book win in 5 moves.

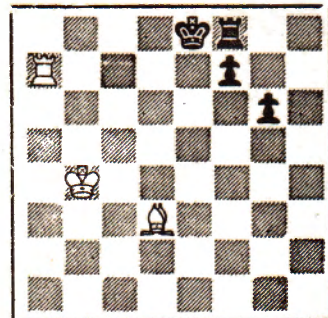
### "THE DECOY"



#### SOLUTION

1. P-N7 N-Q3†
2. K-Q4! NXP
3. K-Q5 K-N2
4. N-Q8 NXN
5. P-k7 AND WINS

### WHITE TO PLAY



#### SOLUTION

1. B-B5 PxB
2. K-B5 P-B3
3. K-Q6 R-N
4. K-k6 K-B
5. Takes P at B6 and wins.



### NORTH CENTRAL OPEN

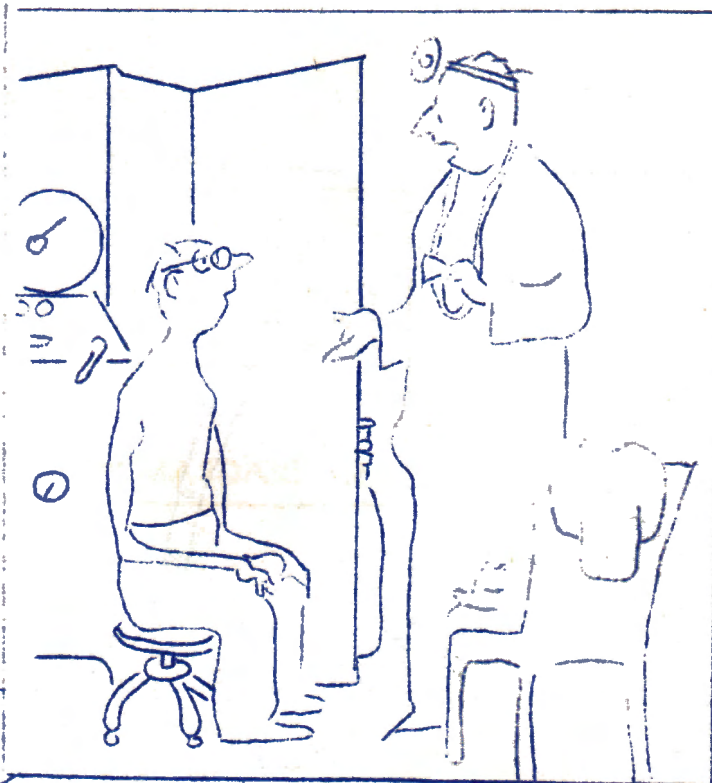
International Master Arturo Pomar won the annual North Central Open at Milwaukee with a score of 6½- ½. The event drew 94 players from 13 States.

Second with 6-1 was Miro Radoicic and third to eighth were Robert Steinmeyer, Angelo Sandrin, John Tums, Ed McCormick, Arpad Elo, and Tautvaisis.

### NORTHERN CALIFORNIA

Henry Gross won the North California championship and qualified to play in the finals of the California State Championship, as did Walter Pafnutieff, and William Addison.

The event was held at Mechanics Institute in San Francisco.



"Two weeks of vitamin shots and exercise, and you'll be able to play with the tournament-size pieces again."



### UTAH STATE (26 players)

1. Ben Greenwald 6 - 0
2. William Taber 4½-1½
3. Richard Heilbut 4 - 2
4. Farrell Clark 4 - 2
5. Irvin Taylor 4 - 2

### OKLAHOMA (34 players)

1. Truman Moore 5 - 0
2. Robert Virgin 4½- ½
3. Eugene Amburn 4 - 1
4. Ernest Chace 4 - 1
5. K.B. Raut 3½-1½

### MIAMI VALLEY (20 players)

1. Charles Heising 4½-1½
2. Robert McCready 4 - 1
3. Richard Ling 4 - 1
4. Kurt Loening 3½-1½
5. William Byland 3½-1½

"Papa can I have 32 dancing girls to make a living chess set out of, just 32, huh papa?"



OUTSIDE EVENTS



"P-K5, eh? With favorable currents I'll checkmate him within 20 years."

DELEWARE--Lt. John Hudson, 4½-½; J.N. Cotter, 4-1; Wm. Bergnan, and Martin Paris, 3-2.

MIDWEST OPEN --Oscar Maring 4½-½ Richard Shields 4-1; James Roark Jack Mayer, and Wm. Batchelder.

MICHIGAN--Leonids Freibergs, 6-1 followed by H. Kalmins, Maurice Weidenbaum, Jack O'Keefe, and Mark Surgies the tops of 64.

SPAIN has offered to hold the next Western European Zonal Tournament in 1957, and Bulgaria may be the scene of the Eastern Zonal. The 1957 Junior World Championship may be staged in Canada.

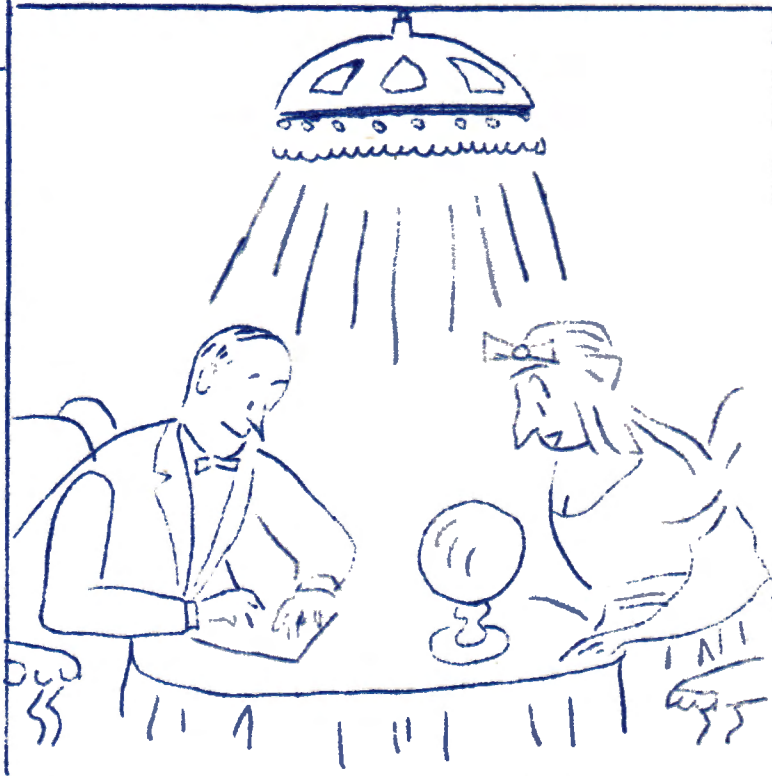
ALABAMA --James Wright topped 40 followed by Lt. Ed Godbold, G.W. Sweets and R.S. Scrivener.

LAKE ERIE OPEN--Dr. Erich Marchand, first. Second to fourth were Paul Vaitonis, Roy T. Black, and George Mauer.

ILLINOIS--Albert Sandrin won, ahead of Povilas Tautvaisas, John Novak, R. Golla, and Karl Wiegmann.

FINAL STANDINGS  
ZAGREB INTERNATIONAL

- |                               |        |
|-------------------------------|--------|
| 1. V. Smyslov (USSR)          | 14½-4½ |
| 2. B. Ivkov (Yugoslavia)      | 12½-6½ |
| 3. A. Matanovic (Yugoslavia)  | 12½-6½ |
| 4. E. Geller (USSR)           | 12 - 7 |
| 5. S. Gligoric (Yugoslavia)   | 12 - 7 |
| 6. Arthur Bisguier (USA)      | 11½-7½ |
| 7. A. O'Kelley (Belgium)      | 11 - 8 |
| 8. P. Trifunovic (Yugoslavia) | 11 - 8 |
| 9. M. Filip (Czechoslovakia)  | 11 - 8 |
| 10. B. Rabar (Yugoslavia)     | 9½-9½  |



"Then he will play N-Q6 and you win the RP"



# POSTAL CHESS

R. R. Merk  
Postal Chess Editor  
1026 E 71 St., Seattle 5, Wash.

	Dec. 3, 1955		
55Ch-3A	Skarsten	$\frac{1}{2}$ Doubrough	$\frac{1}{2}$ 24
55B-2A	Allyn, S.	1 Meliza	0 62
55B-2B	Allyn, S.	1 Meliza	0 62
	Dec. 7, 1955		
54B-1A	McDonald	1 Raleigh	0 38
	McDonald	1 Skarsten	0 84
	Dec. 15, 1955		
53A-1A	Cerretelli	$\frac{1}{2}$ Kaffenberger	$\frac{1}{2}$ 0
53A-1B	Cerretelli	$\frac{1}{2}$ Kaffenberger	$\frac{1}{2}$ 0
53A-2A	Cerretelli	$\frac{1}{2}$ Kaffenberger	$\frac{1}{2}$ 0
53A-2B	Cerretelli	$\frac{1}{2}$ Kaffenberger	$\frac{1}{2}$ 0
51A-14B	Kaffenberger	$\frac{1}{2}$ Cairncross	$\frac{1}{2}$ 22
	Dec. 19, 1955		
54B-2A	Dickson	1 Merk	0 42
54A-2A	Howard	1 DeWitt	0 34
54A-2B	Howard	1 DeWitt	0 34
54A-6A	Howard	1 Weaver	0 38
	Dec. 21, 1955		
55B-3A	Parsons	1 Youngman	0 44
	Dec. 23, 1955		
54A-6B	Howard	$\frac{1}{2}$ Baron	$\frac{1}{2}$ 0
	Dec. 24, 1955		
55Ch-2B	Weischer	1 Cairncross	0 50
	Dec. 30, 1955		
54A-6B	Weaver	1 Husby	0 22
54B-1A	Skarsten	1 Rauen	0 23
54B-1B	Skarsten	1 Rauen	0 23
54B-1A	McDonald	1 Rauen	0 34
54B-1B	McDonald	1 Rauen	0 34
54B-3A	Nichols	1 Rauen	0 56
54B-3B	Nichols	1 Rauen	0 56
54B-3A	Hart	1 Rauen	0 54
54B-3B	Hart	1 Rauen	0 54
55A-1A	Falk	1 Rauen	0 24
	Mulford	1 Rauen	0 4
	Bever	1 Rauen	0 20
	Patterson	1 Rauen	0 26
55A-1B	Falk	1 Rauen	0 24
	Mulford	1 Rauen	0 4
	Bever	1 Rauen	0 20
	Patterson	1 Rauen	0 26

The final results are now in for the play-off of the three way tie in section 51A-14 with the honors going to Kaffenberger.

Kaffenberger	x 1 1	x $\frac{1}{2}$ 1	Points $3\frac{1}{2}$
Cairncross	0 x 1	$\frac{1}{2}$ x 1	$2\frac{1}{2}$
W.P.Allen	0 0 x	0 0 x	0

Section 54B-2A and 54B-2B finished with Dickson wining. He only lost one game out of the eight and to him goes the prize of a six month addition to his subscription to the Washington Chess Letter.

	54B-2A					54B-2B					
Dickson	x	1	0	1	1	x	1	1	1	1	7
Merk	0	x	1	0	1	0	x	1	1	1	5
Tresidder	1	0	x	1	1	0	0	x	1	1	5
Waldron	0	1	0	x	1	0	0	0	x	1	3
Carter, M.	0	0	0	0	x	0	0	0	0	x	0

We welcome four new postal players again this month. Three in the "B" Division and one in the "A" Division. The "B" Division players start with a rating of 1050 and the "A" Division players with a starting rating of 1250. The new "A" player is Bob Edberg who is well known in the Puget area and should make the top contenders in the "A" Division work to hold their positions.

A red hot "A" section just got under way with the three top players, Wade, Baron and Howard, making it tough for Edberg in his first try at our postal tournaments.

We have two entries in both an "A" and "B" section waiting for the other three contestants. Send your half dollar to the postal director and we will get you on the way in a new section.

Send us your games and as space permits we will publish them with annotations.



POSTAL CHESS

Postal chess tournaments are being formed all of the time. Our tournaments are composed of sections of 5 players. Each player plays two games with each of the other four opponents, one game as white and the other game as black. Our fee is only 50¢ per section.

Postal chess is a fine way to improve your game as you can take enough time to thoroughly study out the possibilities of every move and a record is kept so that you can review the game and discover your mistakes. This is not always possible with across the board play.

Sedn entries to  
Postal Chess Director

FROM  
WASHINGTON CHESS LETTER  
1026 East 71 Street  
Seattle 5, Washington  
Return postage guaranteed  
Form 3547 requested

POSTAL CHESS RATINGS

"A" Division

Wade	1706
Baron	1705
Howard	1700
Taro	1665
Mulford	1584
Coubrough	1576
Mage	1568
Luters	1558
Cerretelli	1549
Keffenberger	1526
Weaver	1452
Weischer	1404
Bever	1359
Magerkurth	1344
Vellias	1316
Patterson	1306
Knapp	1304
Cairncross	1297
Sid Nourse	1288
John Nourse	1286
Allyn, Lawrence	1250
Edberg, R.E.	1250
Hultman	1250
Carter	1225
Husby	1134
Roats	1076

"B" Division

Dickson	1427
Falk	1424
Skarsten	1344
Parsons	1308
Tresidder	1293
Roberts	1292
Merk	1261
McDonald	1240
Laine	1190
Allyn, Shirley	1174
Waldron	1160
Youngman	1153
Hart	1076
Meliza	1052
Nichols	1052
Adamson	1050
Brookshire	1050
Edberg, A.Y.	1050
Lyberger	1050
Pifley	1050
Phillips	1050
Skoglund	1050
Smith	1050
Spencer	1050
Squire	1050
Sween	1050
Wynor	1050
Engstrom	1044
Nelson	1026
Luberts	1020
Carpenter	972
Raleigh	900