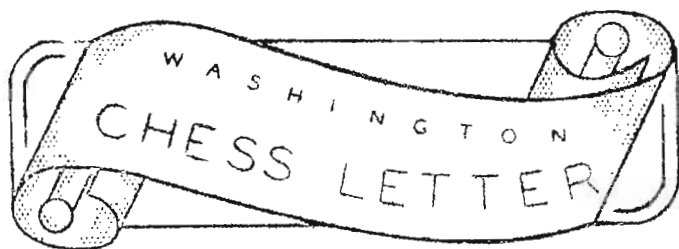


WASHINGTON CHESS LETTER



MAY 1956

WIN FAME AND FORTUNE **THE NEW SOLVERS CONTEST**
ANSWER THE 64-SQUARE QUESTIONS



SEATTLE OPEN TOURNEY MAY 19 - 20

The Second Annual Seattle Open Chess Championship Tournament gets under way at 9 a. m. at the Seattle Chess Club, 616 Madison Street on Saturday, May 19th.

CHESS LETTER STAFF

Editor D. E. Wade
11023 25th N. E. Seattle, Wash.

Circulation R. R. Merk
1026 E. 71st. Seattle, Wash.

Publisher F. H. Weaver
501 Olympic Place Seattle, Wash.

Contributors: Dr. Parker, James McNeese,
George Bishop and Dick Parsons.

OTHER W. C. F. OFFICERS

President Dr. Griffith H. Parker
416 Hyde Bldg. Spokane 1, Wash.

Vice-President Max Mage
2437 55th S. W. Seattle 6, Wash.

Secretary Peder Husby
Route One E. Stanwood, Wash.

Treasurer W. H. Raleigh
4312 Woodland Park Ave. Seattle, Wash.

Tournament Director James McCormick
11035 Beacon Ave. Seattle, Wash.

Tournament Director Robert Edberg
Route One Tieton, Wash.

Publicity Director Don F. Daniels
P. O. Box 920 Spokane 10, Wash.

AFFILIATED W. C. F. CHESS CLUBS

Seattle, Spokane, Tacoma, West Seattle,
McNeil Island, Kitsap County, University
of Washington, Seattle YMCA, Seattle
Boeings and Tri-Cities.

This tournament is sponsored by the Seattle Chess Club and will be directed by JAMES MCCORMICK, official Western Washington W. C. F. Tournament Director.

The time control will be 45 moves in $1\frac{1}{2}$ hours. After 3 hours of play, unfinished games will be adjourned.

This will be a six-round Swiss with the Median tie-breaking system being in use. It will break all ties.

Defending Seattle Champion is OLAF ULVESTAD. He won last year against very strong opposition. BILLS, SCHAIN, MULFORD, WADE, BISHOP, CERRETELLI, VELLIAS and MCCORMICK were among last year's Seattle Open Tournament entries.

This tournament is open to all. If the "impossible" happens and an out of townner wins, he will be declared Seattle Open Champion.

A guaranteed \$20 first prize and if the number of entries warrants, a 60%, 25%, 15% prize split will be in effect. A \$2.50 entry fee will put you into it.

SEATTLE SEAFAIR TOURNEY AUGUST 4 - 5

A Seafair Speed Tourney on the eve of Friday, August 3rd will open this big Seafair Chess Weekend. This will begin at 7 p. m. The regular tournament starts at 9 a. m. on Saturday, August 4th.

Details will be supplied by the T.D. in our next issue out the first week of June.

THE PRICE OF THIS MAGAZINE AND MEMBERSHIP IN THE WASHINGTON CHESS FEDERATION IS \$2 PER YEAR. SEND MONEY TO W.H. RALEIGH. 4312 WOODLAND PARK AV.

THE PRESIDENT'S PAGE

Your Federation has functioned so well under the present plan of organization and apportionment of work it would be presumptuous, as well as foolhardy, for me to try to make any drastic changes in either.

Since it is running smoothly, it seems to me that the only worthwhile long range plan is to make it and its services available to more chess players. Therefore, the first project will be an all-out effort to increase our membership.

Knowing the capabilities and zeal of Don Daniels, I proposed him as a candidate for Publicity Director and your officers saw fit to elect him. He has a number of ideas which he intends to carry out in his campaign for new members.

According to the May Chess Letter, the Federation added a total of TWENTY members during the month of April. Part of these came from Daniel's activities but he was helped greatly by Weaver, Bishop and Bader all of whom made a drive for members on their own. This is the kind of help which will make your organization a really big thing. Watch for more growth.

Since our membership includes the "Letter" and since it is the one tangible thing the prospect can see for his money, it seems to me that it should be as good and as interesting as it is possible to make it.

This is where you come into the picture. Write to Dan Wade or to me and tell us what you would like to see in your "Letter". If enough want the same thing or don't want it, we will accede to your wishes but we won't know what you want unless you tell us.

Wade is carrying out a few suggestions which I have made and they appeared in the May issue. The President's Page and the Club Page were two of them. Another is the publication and annotation of our own games instead of Masters. You can get those in any chess book. If you members write in we will also have a page of "Letters to Ye Ed." where you can applaud or gripe as you wish. (No personalities, please. They have no place in such a bulletin as ours.)

Lastly, I hope to increase the turnout for the tournaments held in Seattle. We get most of the top players but the average players are conspicuous by their absence. In talking to those in the area I became convinced that the small entries are due to lassitude on the part of those in charge. Here in Spokane, every prospect is called by telephone and urged to turn out even though he may not have a good chance to win. Giving prizes to the top of the second half in tournament standings is one of our strong talking points.

The only place we can get more top players is from the ranks of the average and the only way those players are going to become toppers is by competition. The young players should be particularly encouraged to compete. I hope to see forty or fifty competing regularly in the west side tourneys this year.

So now you have my plans for the year, increased membership, the best possible "Letter" and bigger attendance at all of our tournaments. Will you help?

Griffith H. Parkor
W.C.F. President

PUPOLS WINS SEATTLE TITLE!

VICTORS PUPOLS, champion of Tacoma and Inland Empire Open champion is now also the holder of the 1956 Seattle chess championship. Trader Vic staggered to victory with a $4\frac{1}{2}-1\frac{1}{2}$ score with a half of a median point being his margin of victory over runner-up DR. A. A. MURRAY of Raymond, Washington. Oregon Open champion JIM MCCORMICK placed third with 4-2, the same score as that of GEORGE BISHOP who placed fourth.

Others in this small tournament were DON EILLES, PAUL ROOD, DENNIS HAMILTON, DALE BJORNSON and ROBERT KUVARA. Eilmes, Bjornson and Kuvara are Seattleites as are McCormick and Bishop. Pupols is a Tacoma-Seattleite going to school in Seattle and living in Tacoma. Hamilton is a Tacoma junior. Rood is stationed at Larson Air Base at Moses Lake. As has been mentioned above, Dr. Murray resides in Raymond.

On the first day of the tournament, PUPOLS raced to a 3-0 score and a $\frac{1}{2}$ point lead over DR. MURRAY who sustained a third round draw with ROOD. MCCORMICK suffered a third round loss to PUPOLS in the "BIG GAME" of the day. Joining MCCORMICK with 2-1 at the end of the first day's festivities was GEORGE BISHOP whose only loss was one of the gift variety to MCCORMICK. ROOD had a $1\frac{1}{2}-1\frac{1}{2}$ score at the half-way point while the other four players were practically out of the running nursing along feeble hopes with 1-2 scores.

PUPOLS, MCCORMICK, ROOD and the writer of these lines celebrated PUPOL'S victory a trifle prematurely Saturday night which may or may not have some bearing on the following day's hectic scramble.

PUPOLS could only break even in Sunday's three games - hardly a championship pace - but with the great assistance of DON EILLES managed to still take the championship. However, it was not the fault of GEORGE BISHOP that the old Seattle Championship did not get far away from the city limits - to a town as far away as say - Raymond, Washington.

Round four found DR. MURRAY and PUPOLS matched. The result was a draw which maintained PUPOL'S half-point lead over the runner-up. MCCORMICK downed ROOD to join DR. MURRAY in second place. Meanwhile, BISHOP was eliminated from the title picture when he lost an astounding upset to young DALE BJORNSON.

Round five found the "BIG GAME" between MCCORMICK and DR. MURRAY for second place. However, when it was over DR. MURRAY had not won second place but had vaulted into first because BISHOP had unceremoniously toppled PUPOLS from his first place berth! With only one round left to play DR. MURRAY had a 4-1 score, PUPOLS $3\frac{1}{2}-1\frac{1}{2}$ and MCCORMICK and BISHOP each had 3-2 scores. However at this stage of the tourney, DON EILLES had managed to work up to a 3-2 won-lost record too and the final round drawing gave him the task of stopping the title bound DR. MURRAY.

As far as PUPOLS was concerned, EILLES was "Horatio at the Bridge" in the last round when he played DR. MURRAY to a draw. Meanwhile PUPOLS, MCCORMICK and BISHOP all fattened their scores - MCCORMICK defeating "BYE" with ease.

PUPOLS was unbeaten although often drawn in the Tacoma Tourney, the Inland Empire and the Oregon Open before losing to BISHOP in this tournament.

WALLA WALLA WINS 6-4

Walla Walla moved to the top of the heap in the Inland Empire League by handing Spokane its second defeat May 6 at Walla Walla. The final score of 6-4 was not determined until the last two boards were finished. At the end of the first round the score was tied at $2\frac{1}{2}$ - $2\frac{1}{2}$. After three games were finished in the second the score was 4-4 but KRONQUIST and BLACKLER came through for the final points.

RAY KRONQUIST, a high school student playing second board, surprised the Spokaneites with his two wins over ROBERT KITTREDGE. This was the margin of victory for all of the other players split their points.

Yakima is also undefeated after one win over Spokane, and the coming match between it and Walla Walla should be a tough one.

Dr. Baumwell and Cornelius played two draws on first board. Hartwig won his first game from Dr. Parker but Dr. Parker took the second. Both Daniels and Braune of Spokane won their first games but their Walla Walla opponents came back to win the second encounters.

WALLA WALLA	6.	SPOKANE C. C.	4.
Dr. Max Baumwell	1	Gordon Cornelius	1
Ray Kronquist	2	Robert Kittredge	0
Kenneth Hartwig	1	Dr. G. H. Parker	1
Russell Blackler	1	Don F. Daniels	1
Neil Hunter	1	Paul Braune	1

WEST SEATTLE WINS 10-0

Highline High School challenged the West Seattle Chess Club to a match which they lost 10 to 0. The match was held Friday evening on April 27th at the WS club located at the High Point Recreation Center.

The match was a lot closer than the score would indicate. WEISCHER, HOWARD, and MAGE had games that lasted over two hours. The boys showed talent and with a little more experience will be heard from.

VUKONICH played KUVARA his second game as WEISCHER had to leave after 1 game.

The West Seattle Chess Club meets on the 2nd and 4th Friday evenings of each month at the High Point Recreation Center. All players are invited.

WEST SEATTLE	10.	HIGHLINE H. S.	0.
Ben Weischer	1	Robert Kuvara	0
Max Mage	2	Stan Sawyer	0
Killian Seokamp	2	Don Hickoy	0
Fred H. Howard	2	Dale Bjornson	0
Gene Vukonich	2	Munro	0
Gene Vukonich	1	Robert Kuvara	0

SEATTLE OPEN SUMMARY

Place	Player	-1-	-2-	-3-	-4-	-5-	-6-	W	L	D	SCORE	SOLKOFF	MEDIAN
1.	Victors Pupols	W6	W9	W3	D2	L4	W7	4	1	1	$4\frac{1}{2}$ - $1\frac{1}{2}$	19.5	13.0
2.	Dr. A. A. Murray	W8	W7	D6	D1	W3	D5	3	0	3	$4\frac{1}{2}$ - $1\frac{1}{2}$	19.5	12.5
3.	James McCormick	W5	W4	L1	W6	L2	Bye	4	2	0	4 - 2	19.0	14.5
4.	George Bishop	W7	L3	W5	L8	W1	W9	4	2	0	4 - 2	19.0	12.5
5.	Don Eilmes	L3	W8	L4	W9	Bye	D2	3	2	1	$3\frac{1}{2}$ - $2\frac{1}{2}$	17.0	12.5
6.	Paul Rood	L1	Bye	D2	L3	D7	D8	1	2	3	$2\frac{1}{2}$ - $3\frac{1}{2}$	18.0	13.5
7.	Dennis Hamilton	L4	L2	W9	Bye	D6	L1	2	3	1	$2\frac{1}{2}$ - $3\frac{1}{2}$	17.5	13.0
8.	Dale Bjornson	L2	L5	Bye	W4	L9	D3	2	3	1	$2\frac{1}{2}$ - $3\frac{1}{2}$	16.5	12.0
9.	Robert Kuvara	Bye	L1	L7	L5	W8	L4	2	4	0	2 - 4	17.0	12.5

The Tournament Director was James McCormick.

EDBERG REPEATS

ROBERT EDBERG of Tieton, Washington, repeated as Montana State chess champion. All we know about the event is the tourney was held at Billings and was a five round Swiss. Edberg's score was $4\frac{1}{2}-\frac{1}{2}$.

TIE MATCH

The Rainier, Oregon High School chess club team played a $10\frac{1}{2}$ to $10\frac{1}{2}$ drawn match with the Longview, Washington, chess team. Rainier's board two and four, unable to play, forced that team to have to break in three new players.

This is the last tourney of this year for the Rainier team. The club advisor, MR. JIM ROGERS is leaving Rainier. The entire Rainier club extended its appreciation for all he has done for their club.

A proposed match with Centralia fell through. Also, the Longview club is disbanding for the summer.

(Reported by Fred Van Natta)

RAINIER $10\frac{1}{2}$	LONGVIEW $10\frac{1}{2}$
Fred Van Natta $1\frac{1}{2}$	Ira Watson $1\frac{1}{2}$
C. Pierce 1 *	De Yarmon 2
G. Thompson 3	Gemar 0
B. Thompson 0	Hillman 3
Dick Walker 1	Alson 2
B. Phillips 1	Elford 2
L. Reese 3	Yule 0

* two drawn games.

LETTERS TO YE EDITOR

Hey fellows! We are supposed to have a "Letters to Ye Ed" page in here! All "Ye Ed" received was one moldy old letter and it was unsigned. A brick - bat too. Ordinarily "We" would flush it down the drain but since it is all we received, here it is:

Dear Editor - I look forward to receiving the Chess Letter with a great deal of pleasure. However, the last issue seems to disappoint me. The few pages of Chess Letter are of more value for chess news than for a page or two of recriminations.

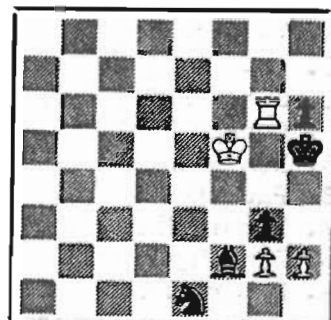
Why not exclude all reference to the Majors and minors of Eastern chess sheets and also the sharps and flats of Western personalities and keep it a truly Western chess publication? A Subscriber (postmarked in Tacoma)

(You mean we should not stand by those who have worked to make the Chess Letter possible when they are falsely accused of wrong doing? As a WCF member first and as a subscriber second, a democratic Federation believes in not keeping secrets from the membership. Are we mistaken? The Editor)

HUGH NOLAND doesn't exactly write us a letter but does send in a problem-like end game for the readers. This position arose in a recent offhand game between 2 of the Seattle Chess Club's younger players, CHARLES GRIFFITHS and CHARLES VAUGHN. GRIFFITHS with White (he has been playing chess only three months) announced mate in three moves.

Try it on your old Giuoco Piano. WHITE TO MOVE AND MATE IN THREE !

WRITE and be sure to SIGN your letters! Black Dan



Offhand? Who's kidding who, Hugh?

AROUND THE CHESS WORLD BY DON EILMES

Vassily Smyslov, 35 year old Russian grandmaster, won the first prize in the Challengers' Tournament in Amsterdam, with a final score of 11½-6½.

This wins for Smyslov the right to play Mikhail Botvinnik, of Russia, the World Champion since 1948, for the title, sometime next year. It will be the second chance for Smyslov to capture the title. He also captured the Challenger Tournament in 1953, following which he tied Botvinnik in a 24-game series of games. Botvinnik retained his title as a result of the tie.

Smyslov drew ahead in the last week of the Challengers Tournament by victories against David Bronstein and Herman Pilnik. Smyslov's record was 6 wins, 1 loss, in his first game against Spassky, and 11 draws.

Of the 90 games played in the tournament, 55 were draws, or 61% of the total. The Russians played 30 games among themselves, of which 19 were drawn, or 63%. It seems it is becoming more difficult to win grandmaster games.

Smyslov's two victories against Geller were probably the most crucial of the tournament. Geller was a point ahead after 9 rounds, and would have tied for first place with an even break in these games.

WHITE, Smyslov; BLACK, Geller; KING'S INDIAN DEFENSE:

1. P-QB4	N-KB3	14. B-QR3	N-K1	27. B-KN2	P-K5
2. P-KN3	P-KN3	15. QN-K4	P-N3	28. Q-B4	P-K6
3. B-N2	B-N2	16. N-B4	B-B4	29. P-R3	Q-N4
4. P-Q4	O-O	17. NxN	NPxN	30. R-N3	R-K1
5. N-QB3	P-B3	18. P-K4	B-Q2	31. B-B1	PxPch
6. P-Q5	P-Q3	19. Q-Q2	P-B4	32. RxB	Q-R4
7. N-B3	P-K4	20. QxP	Q-N4	33. B-N2	R-KB2
8. O-O	PxP	21. N-N6	R-Q1	34. QR-KB3	R-K8ch
9. PxP	QN-Q2	22. P-QN4	PxNP	35. R-B1	R-K5
10. P-QR4	P-QR4	23. QxP	Q-R4	36. Q-B2	R-K4
11. R-N1	N-B4	24. Q-B3	PxP	37. BxB	PxB
12. N-Q2	B-Q2	25. NxB	RxN	38. Q-B8ch	Resigns
13. P-N3	R-B1	26. BxKP	N-B3		

The final standings were: 1. Smyslov, 11½; 2. Keres, 10; 3. Bronstein, 9½; 4. Geller, 9½; 5. Petrosian, 9½; 6. Spassky, 9½; 7. Szabo, 9½; 8. Filip, 8; 9. Panno, 8; 10. Pilnik, 5.

Dr. Jose Raul Capablanca, son of the former World Champion, made his first appearance in an important chess event when he played for one of the teams in the inter-club tournament held each year in memory of his father. Friends had been saying for a long time that he was a strong player. This was confirmed. He won three and drew one of the four games he played.

A "mystery man", in England, has offered 50 pounds (about \$150) towards a fund to lure Samuel Reshevsky to Hastings next Christmas. He believes that Reshevsky, who beat Botvinnik 2½-1½ in the last Russo-US match in Moscow, is the only man in the world who can break the Russian grip on the Premier. As "Sammy" usually asks \$1,000 (355 pounds) to even appear in a European tournament, there is a sizeable bridge to gap. The "mystery man" wants to remain anonymous. If his name is divulged the money stays in his wallet.

TOURNAMENTS IN OTHER STATES

KENTUCKY

1. James Roark	4 - 1
2. Walter Grombacker	4 - 1
3. Oscar Maring	3 - 2
4. George Anderson	3 - 2
5. Arthur Harth	3 - 2

FLORIDA

1. Sam Frucella	5½- ½
2. Marvin Sills	4½-1½
3. Frank Klomprens	4½-1½
4. August Otten	4 - 2
5. Frank Rose	4 - 2

1956 JUNIOR

The 1956 U.S. Junior Championship, open to all US and Canadian players not yet 21 years old, July 1, 1956, will be held in Philadelphia from July 1, through July 7. No registration or entry fee is required by the sponsoring Philadelphia chess clubs, but players must be or become members of USCF. Many valuable prizes will be awarded and efforts will be made to secure the most reasonable accommodations. First round 7 p.m. July 1; two rounds per day on July 2,3,5 and 6; final round July 7; no round on July 4.

U.S. OPEN

The U.S. Open Championship is scheduled for Oklahoma City, Okla., July 16-28, 1956, in the Civic Room of the Oklahoma Biltmore Hotel, (completely air conditioned). The tournament will be 12-round Swiss, with daily play 7 P.M. to 12 M excepting Saturday July 21, and the final round June 28 which begin at 12 Noon. Entry fee is \$15, and the prizes will total \$3,000.

Top-flight medals will be awarded to all players who finish in the top one-half of the standings.

THE SOLVERS' JUDGE

Ol' Judge Weaver demoted himself to Clerk of the Court, in the very first round of the Solvers' Contest, because, being a patzer himself, all the moves looked good, and he was tempted to give ½ points here and there.

Position #2, for instance, had lots of moves that would win, but might not shock a tenacious opponent into immediate surrender.

Olaf Ulvestad knows a good move when he sees one. He has made some himself that are world classics. We asked him to appraise the moves.

We quote: "In position #2 of the contest, 1. BxR is a club player capture; 1. R-R8ch is an expert sacrifice; but an immediate 1. Q-Q7 is a master move. It has the quiet beauty of an unanswerable finesse."

Most of the contestant took #3 too lightly, although the 2 points it was rated should have been a good tip-off. An immediate 1. P-B6 would be answered byQ-B4ch, forcing a trade of Queens. The master move 1. R-K5, removes Black's last hope. IfBxR; 2. P-B6.

"In position #4, 1. RxR is lengthy and prosaic. Black can fight on for a few more moves. An immediate 1. R-N7 is brilliant and conclusive."

The notes shown Ulvestad had #4 incorrectly identified as a Mason game. Olaf quickly declared it was a Capablanca, named a reference book, and sure enough, a later check-up proved it was from Capablanca v. Janowsky, New York, 1918.

Many of the solvers rose to the occasion on the difficult positions, but were content with less than the best in what seemed easy ones. We hope that a tough attitude in judging will be best in the long run, by raising our sights, forcing everyone to think like a master chess player.

Those answering the similar series of 3 on the next page are advised to look for crushing moves, or gain of material that would make a master opponent resign on the move.

WIN FAME AND FORTUNE THE NEW SOLVERS CONTEST

ANSWER THE 64-SQUARE-QUESTIONS

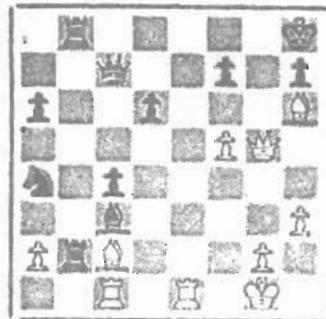


Last
Month's
Series
#1
(1 point)
1. R-N8ch
Resigns



#2
(1 point)
1. Q-Q7
Resigns

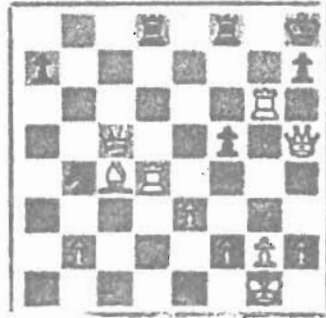
Vidmar v. Tartakower, 1922.



#3
(2 pts.)
1. R-K5
Resigns

(Avoids
exchange
of Q's)

Saemisch v. Ahues, 1946



#4
(1 point)
1. R-N7
Resigns

Capablanca v. Janowsky, 1918

SEND SOLUTIONS
TO F.H. WEAVER
501 OLYMPIC PL.
SEATTLE 99, Wn.
BEFORE JUNE 20



KINGS FOR A MONTH

6 points, for all correct:
Jack Nourse, Dick Parsons

5 points: C.J. Sween, *M.O. Skarsten, *A.J. Thompson, *H. Noland, *J. DeWitt, and *C.R. Dolph.

4 points: *H.F. Thompson, Fred VanNatta, *Bruce Oldham, Sam Spatz, C. Magerkurth, and R.W.Cairncross.

3 points: (should try for 4 with late starters) AC, KS, DH, RGS, JU, RK, PH, JEL, and CWM.

*In cash prize pool
R.W. Collins sent two-bits but no solutions.

Those with less than 4 points are privileged to try for 4 again, by solving the LATE STARTER series of 3 positions, in addition to this month's one problem.

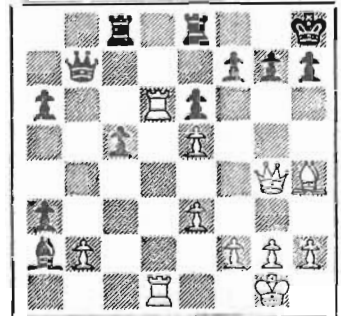
This is the last chance to inclose 25¢ for those who would like to contend for a cash prize in addition to the subscription extension prizes.

There will also be a "door" prize. At the end of the 5th month a little neighbor girl will draw a reply card or letter from a basket, so the more replies you send the more chance on this one.

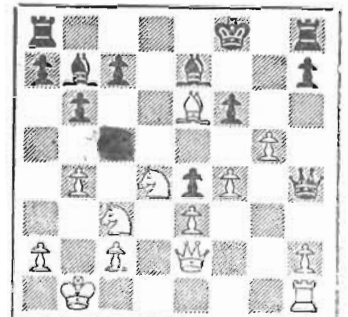
There is just one (but tough) position this month, worth 5 points, but intermediate points will be given for imperfect answers to this one. Late starters answer it in addition to the top 3.

LAST CHANCE TO ENTER

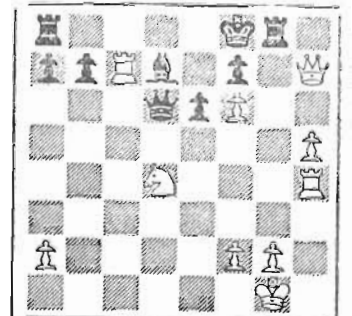
IT WOULDN'T BE FAIR TO THE EARLY STARTERS TO AWARD EQUAL POINTS, BUT LATE ENTRANTS CAN EARN 4 POINTS BY SOLVING THESE 3 WHITE MAKES 1 MOVE, BLACK QUILTS.



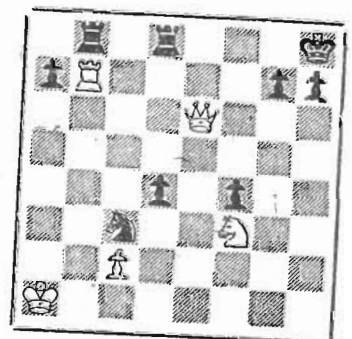
*1
NOTHING on the
B5 square in #2



* 2



* 3



White to play and
mate in 5

IN A LIGHTER VEIN



"The trip's a flop so far. He can't find a picture of a jail to write 'Wish you were here!' to his chess chums back home!"



"My game went to hell, years ago."



"What was it you won these for?"

GAMES

It is the ambition of every young player to knock over a Master in the last round and thereby win the tournament. Such an ambition was realized by JIM MCCORMICK in this game against OLAF ULVESTAD in the recent Oregon Open Tournament held in Portland.

J. MCCORMICK

O. ULVESTAD

1. P-Q4	P-Q4
2. N-KB3	N-KB3
3. P-KN3	P-B4
4. P-B3	QN-Q2
5. B-N2	P-QN3
6. O-O	B-R3
7. R-K1	Q-B1
8. QN-Q2	PxP
9. PxP	B-N2
10 P-QN3	Q-B6

Here is the beginning of Black's downfall. The queen becomes an object of White's attack instead of a weapon forcing White to defend himself as was intended.

11 B-R3	Q-R4
---------	------

The Black queen should have gone home thus admitting his 10th move was a mistake.

12 B-N2	P-K3
13 P-QR3	B-Q3
14 P-QN4	Q-N4
15 KB-B1	BxQNP

Because 16 P-K4 wins the queen & 15---Q-B3 is no good because of 16 R-B.

16 PxP	QxP
17 B-QR3	Q-B6
18 Q-N1	Q-B2
19 R-B1	Q-Q1
20 Q-N3	P-QR3
21 R-B2	R-QB1
22 R/1-B1	RxR
23 QxR	N-QN1
24 N-K5	N/3-Q2
25 N/2-B3	P-B3?
26 N-N6!	Resigns.

Because after 26---R-N1; 27 B-K7, Q-B1; 28 QxQch., BxQ; 29 RxBch. and it is obvious Black's chances are nil.

In the next column the new Oregon Open Champ turns back one of his most formidable challengers - BOB EDBERG.

J. MCCORMICK

R. EDBERG

1. P-Q4	P-K3
2. P-K4	P-Q4
3. N-QB3	P-QB3
4. N-B3	N-Q2
5. B-Q3	PxP
6. NxP	KN-B3
7. O-O	B-K2
8. P-B3	P-B4
9. R-K1	NxN
10 BxN	N-B3
11 B-B2	PxP
12 NxP	B-Q2
13 B-N5	Q-R4
14 B-KR4	R-Q1
15 Q-B3	Q-N3
16 P-QN3	R/Q-B1
17 QR-Q1	N-Q4
18 BxB	NxB
19 P-B4	P-QR3
20 Q-N3	N-N3
21 N-B5	O-O
22 NxP	Q-R4
23 N-R5	B-B3

Better 23---QxN and give up the bishop here. However, hindsight beats foresight every time.

24 N-B4	K-N2
---------	------

Better 24---K-R1 immediately.

25 P-KR4	K-R1
26 NxNch.	RPxN
27 R-K5	Q-B2
28 R/1-K1	B-K1
29 P-R5	P-B3
30 RxBP	QxQ
31 PxQ	PxP
32 R-K7	B-B3?
33 R-R7ch.	K-N1
34 R/1-K7	

Black is in a hopeless position & also in bad time trouble. On his next move he gave away a rook and resigned.

DO YOU HAVE A GAME YOU WOULD LIKE TO SEE PUBLISHED? SEND IT IN TO THE EDITOR, D. WADE 11023 25th N. E. SEATTLE 55, WASHINGTON. ANY NOTES WILL BE APPRECIATED.

THE EDITOR

In the Inland Empire Open at Spokane, JIM POPHAM of Heppner, Oregon is almost victorious over DAN WADE but in the end goes down to defeat in an unusual ending.

D. WADE

J. POPHAM

- | | |
|-----------|-------|
| 1. P-Q4 | P-Q4 |
| 2. N-KB3 | N-KB3 |
| 3. P-K3 | B-N5 |
| 4. P-KR3 | B-R4 |
| 5. B-K2 | P-K3 |
| 6. N-K5 | BxB |
| 7. QxB | QN-Q2 |
| 8. Q-N5 | P-QN3 |
| 9. N-B6 | Q-B1 |
| 10 B-Q2 | P-QR4 |
| 11 N-B3 | B-N5 |
| 12 NxB | PxN |
| 13 QxP/N5 | P-B4 |
| 14 PxB | PxP |
| 15 Q-N5 | R-QN1 |

If 15----P-B5; 16 Q-N4, R-QN1; 17 N-N5.

- | | |
|---------|------|
| 16 Q-K2 | RxP |
| 17 B-B1 | ---- |

If 17 N-N5, Q-B3 or Q-N1 causes White to lose time.

- | | |
|----------|------|
| 17 ---- | R-N2 |
| 18 N-N5 | Q-N1 |
| 19 P-QR4 | O-O |
| 20 O-O | Q-R1 |
| 21 B-Q2 | N-N3 |
| 22 P-R5 | N-B5 |
| 23 N-B3 | R-R2 |

If 23----NxP; 24 NxP. Black wants to win the isolated QRP without losing material.

- | | |
|---------|------|
| 24 N-N5 | R-N2 |
| 25 N-R3 | NxB |

If 25----NxRP? 26 N-N5!

- | | |
|---------|--------|
| 26 QxN | N-K5 |
| 27 Q-K1 | R/1-N1 |

The high water point for Black in this game. White's chances for even a draw appear poor here.

- | | |
|-----------|--------|
| 28 P-KB3 | N-Q3 |
| 29 Q-B3 | P-B5 |
| 30 Q-K5 | N-N4 |
| 31 NxN | RxN |
| 32 P-R4 | R/1-N2 |
| 33 P-R6 | R-R2 |
| 34 QR-N1! | Q-K1! |

The only saving move.

- | | |
|---------|-------|
| 35 Q-Q6 | R-Q2? |
|---------|-------|

This loses. 35----P-R3 could be played here.

- | | |
|---------|-------|
| 36 Q-B6 | RxR |
| 37 RxR | K-B1? |

This sets up the sacrifice but Mr Black is lost anyway.

- | | |
|------------|----------|
| 38 QxR! | QxQ |
| 39 R-N8ch. | K-K2 |
| 40 R-N7 | Resigns. |
- Black can't catch the pawn.

In another game in the Inland Empire Open, GORDON CORNELIUS, champion of Spokane and MCCORMICK play a very interesting game. MCCORMICK is blind to the consequences of his last move & loses. No one is safe from such blind spots.

G. CORNELIUS

J. MCCORMICK

- | | |
|----------|-------|
| 1. N-KB3 | P-KB4 |
| 2. P-Q4 | N-KB3 |
| 3. P-QB4 | P-K3 |
| 4. N-B3 | B-K2 |
| 5. P-KN3 | O-O |
| 6. B-N2 | P-Q4 |
| 7. N-K5 | P-B3 |
| 8. P-B5 | QN-Q2 |
| 9. N-Q3 | Q-K1 |
| 10 P-QN4 | N-K5 |
| 11 B-N2 | B-B3 |
| 12 N-R4 | P-KR3 |
| 13 P-B3 | N-N4 |
| 14 P-R4 | N-R2 |
| 15 N-K5 | BxN |
| 16 PxB | Q-N3 |
| 17 K-B2 | P-KR4 |
| 18 P-B4 | Q-K1 |
| 19 B-Q4 | Q-Q1 |
| 20 N-B3 | P-R4 |
| 21 P-N5 | Q-K2 |
| 22 R-QB1 | R-B2 |

If 22----NxBP; 23 NxP, N-K5 ch.; 24 BxN, BxN; 25 B-B5 wins the exchange for White.

- | | |
|-----------|-------|
| 23 PxB | PxB |
| 24 N-R4 | B-R3 |
| 25 N-N6 | NxN |
| 26 PxB | Q-N2 |
| 27 P-K3 | P-N3 |
| 28 Q-B2 | R-QB1 |
| 29 P-R4 | N-B1 |
| 30 Q-Q2 | N-Q2 |
| 31 QxP | R-N1 |
| 32 R-QN1 | P-B4 |
| 33 KR-QB1 | PxB |

In view of the fact Black did not want a draw but wanted to win in this game very much, the last move was not good.

- | | |
|---------|--------|
| 34 R-B7 | PxBch. |
| 35 KxP | Q-R1 |
| 36 R-R7 | Q-B3 |

Up to this point we have an interesting and completed drawn game. It is obvious neither side can do a thing about it.

37 R-B7 QxPch.???
 38 RxQ Resigns.
 Impossible but it happened!

In the Seattle Open we had show down struggle between the winner of the Inland Empire Open (Pupols) and the winner of the Oregon Open (McCormick) and that denizen from that old swamp south of Leningrad (Pupols) was victorious. He claimed ten big burly Latvians waited outside the club room door in case McCormick won!

J. MCCORMICK

V. PUPOLS

1. P-Q4	N-KB3
2. P-QB4	P-IN3
3. N-QB3	B-N2
4. P-K4	P-Q3
5. B-N5	O-O
6. P-B4	P-B4
7. P-Q5	Q-R4
8. Q-Q2	P-QR3
9. B-Q3	P-QN4
10 N-B3	QN-Q2
11 O-O	R-K1
12 QR-K1	PxP
13 BxP	N-N3
14 B-N3	B-N5
15 P-KR3	BxN
16 RxB	KN-Q2
17 B-KR4	P-B5
18 B-QB2	N-QB1
19 B-IN3	P-K4
20 P-B5	R-N1
21 PxP	BPxP
22 QR-KB1	RxP
23 R-B7	N/B1-N3
24 Q-B2	Q-B4
25 QxQ	NxQ
26 B-Q1	R-KB1
27 R-R7	RxRch.
28 KxR	B-R3
29 B-N4	B-Q7
30 B-K6ch.	NxB
31 PxN	BxN
32 B-R4	B-Q7
33 B-B6	B-R3
34 RxKRP	KxR
35 P-K7	N-Q2
36 P-K8(Q)	NxB
37 Q-B7ch.	B-N2
38 QxBP	R-Q7
39 QxP	NxP
40 P-QR4	N-B4

41 Q-N5 P-K5
 42 P-R5? ----

The race goes to the swift but in chess the race goes to the player who can count! White miscounted here. The analysis gave Black a win anyway.

42 ---- P-K6
 43 P-R6 P-K7ch.
 44 QxP ----

If 44 K-K1, N-Q6ch. results in a win for Black also.

44 ---- RxQ
 45 Resigns.

If you like action-packed games, you will enjoy the McCormick-Pupols 45 move slugfest.

Young DENNIS HAMILTON of Tacoma gives the veteran GEORGE BISHOP quite a battle before losing in the 1st game they played in the Seattle Open.

D. HAMILTON

G. BISHOP

1. P-Q4	N-KB3
2. P-QB4	P-Q3
3. N-KB3	P-KN3
4. N-QB3	B-N2
5. P-K4	O-O
6. B-K2	P-K4
7. PxP	PxP
8. O-O	N-B3
9. B-N5	P-KR3
10 B-K3	Q-K2
11 Q-R4	B-Q2
12 P-QR3	N-Q5
13 Q-Q1	NxBch.
14 QxN	P-B3
15 P-QN4	P-N3
16 P-B5	P-QN4
17 KR-Q1	QR-Q1
18 R-Q3	B-N5
19 QR-Q1	BxN
20 QxB	RxR
21 RxR	R-Q1
22 Q-Q1	RxR
23 QxR	Q-Q2
24 Q-Q6	QxQ
25 PxQ	P-R3
26 P-B4	N-Q2
27 N-K2	PxP
28 BxP	P-N4
29 B-N3?	B-N7
29 B-B1	should have been played.
30 K-B2	P-B3
31 K-K3	BxP
32 N-Q4	BxP
33 NxP	B-B4ch.
34 K-Q3	K-N2

35 K-B3	P-KR4
36 P-R3	P-R5
37 B-R2	B-B7
38 P-K5	PxP
39 NxP	NxN
40 BxNch.	K-B2
41 K-N4	B-N3
42 P-N4	K-K3
43 B-R2	B-K6
44 K-R5	B-B5
45 B-N1	KxP
46 B-Q4	B-Q7ch.
47 KxP	K-Q4
48 B-B6	P-N5
49 K-N5	B-B6
50 BxP	P-N6
51 B-B1	P-N7
52 BxP	BxB
53 K-N4	K-K5
54 K-B4	K-B6
55 K-Q3	K-N7
56 K-K2	B-Q5
57 P-N5	KxP
58 K-B1	K-R7
59 P-N6	P-R6
60 Resigns.	

If White's king could have reached R1 the game would have been a draw.

POSTAL GAMES

HERBERT J. PHILLIPS

DICK PARSONS

1. P-Q4	N-KB3
2. P-QB4	P-K3
3. N-QB3	B-N5
4. Q-B2	P-Q4
5. B-Q2	O-O
6. N-KB3	P-B4
7. P-K3	N-B3
8. B-Q3	QPxP
9. BxP	PxP
10 PxP	NxP
11 NxN	QxN
12 B-Q3?	-----
Loses a move.	
12 -----	R-Q1
13 B-K2	N-Q4
14 R-Q1	NxN
15 PxN	Q-B4
16 O-O	B-Q2
17 B-Q3	QR-B1
18 Q-N1	BxBP
19 BxRPch.	K-R1?
19-----K-B1. should be played here.	
20 BxB	QxB
21 R-Q3	Q-B2?
21-----Q-KB3 best here.	
22 R-KR3	P-K4

23 R-R4	P-QN3
24 Q-Q1	P-KN4
25 R-R5	B-N4
26 Q-B3	K-N2
27 RxBch.	K-B1
28 Q-KB6	Resigns.

STEINER TOURNAMENT

MRS. PIATIGORSKY

R. BRIEGER

1. P-K4	P-K3
2. P-Q4	P-Q4
3. P-K5	P-QN3!
4. N-KB3	B-R3
5. BxB	NxB
6. Q-K2	Q-B1
7. O-O	N-K2
8. B-Q2?	P-QB4
9. P-QB4!	N-B2
10 N-B3	N-B4
11 Q-Q3?	Q-R3!
12 P-QN3	R-Q1
13 B-K3	P-KR4
14 QR-Q1	P-N3?
15 KR-K1?	B-K2
16 PxBP	QxQ
17 RxB	N/2xP
18 N-K4	N-N5
19 R-Q2	PxP
20 NxQP	NxN
21 BxN	O-O
22 KR-Q1	R-Q2
23 B-B3	RxR
24 RxR	R-B1!
25 K-B1?	N-Q4
26 R-Q3	P-QN4
27 B-Q4???	R-B8ch.
28 K-K2	N-B5ch.
29 K-Q2	NxR
30 KxN	R-Q8ch.
31 K-K3	R-K8ch.
32 K-Q3	R-Q8ch.
33 K-K3	P-QR3
34 P-KN3	B-N5
35 P-KR4	K-B1.
36 B-N6	R-K8ch.
37 K-B3	R-QR8
38 B-B7	RxB
39 B-Q6ch.	BxB
40 PxB	R-R6
41 N-B5	P-R4
42 K-K4	P-R5
43 PxP	RxBch.
44 K-K5	R-B5
45 N-N7	K-K1
46 K-B6	R-Q5
47 K-K5	R-Q4ch.
48 Resigns.	

FINI

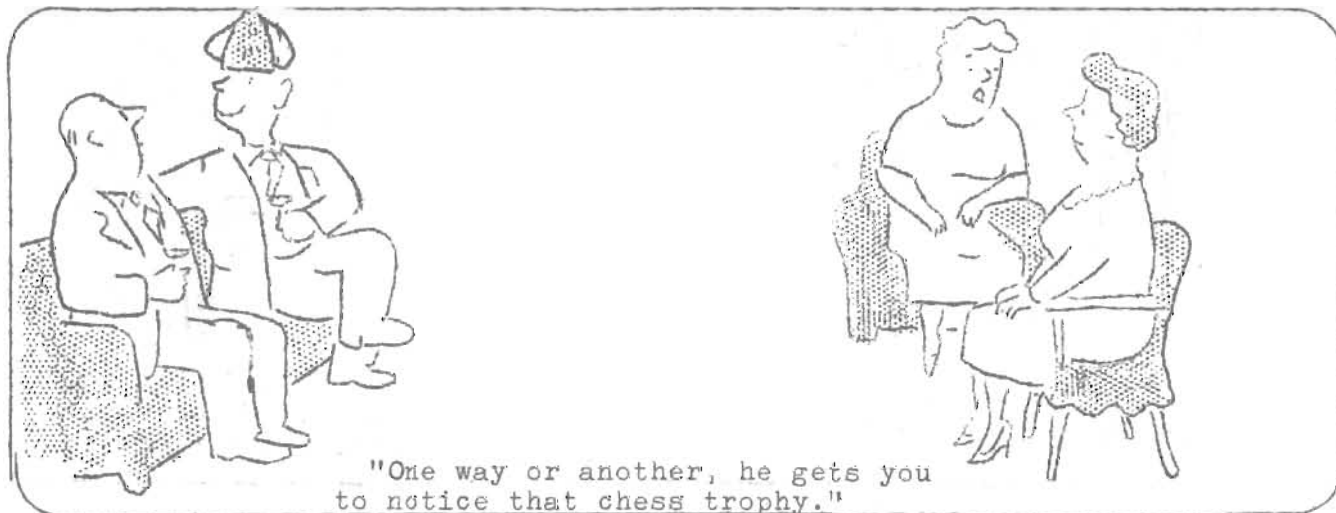
ADJUDICATION "TECHNIQUE"

Supposing it is half-past six, the time fixed for adjudication, and you have made your last move. It will not do to sit back now and light a cigarette with shaking fingers and await the judges with a sickly grin. Nor should you keep on brooding over the board. YOU HAVE WORK TO DO. Now is the time to claim a draw with two pawns and the exchange down. Your preparation for adjudication should begin by lightly touching pieces here and there, by slightly shifting a pawn (always murmuring j'adoube). If you have a Bishop commanding a diagonal, move all adjacent pieces slightly away from that diagonal. The Bishop suddenly seems to cut the board in two! Rooks should stand commandingly in the very center of the square. If your opponent has a backward pawn, push the poor thing back a fraction of an inch and it will look doomed. A passed pawn looks no different than any piece of polished wood until you push it along about 1/4-inch until its base just touches the edge nearest your opponent. So much for the essential preliminaries, but the main job is still to come.

Since it is not proper to proffer your opinion, unless asked for by the Judges (and they may never ask you) all now depends on the look on your face. Easy confidence is the thing -- a beaming, happy smile. You are wallowing in the sun of victory. It is not advisable however to go so far as to stick your thumbs into your armpits, or put your feet on the table, but an onlooker should get the feeling that you are doing it mentally.

The amount of printed advice on this important subject must remain inadequate. The nuances are so fine, the differences so subtle. The novice must take every opportunity of watching masters in action.

- Paul Massarik



3200 PLAYERS RATED BY U. S. C. F.

Statistics for 1955, by Harkness, were published in the May 20, issue of CHESS LIFE, official newspaper of the USCF, with which Washington Chess Federation has been affiliated for several years. Names of players who didn't take part in 1955 tournaments were not published. To make the classifications conform to standards used in Europe, the divisions are now as follows:

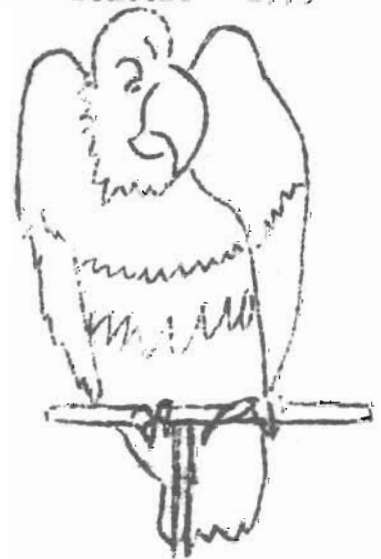
Grandmaster	2600 and up	Master	2200 to 2399	Class A	1800 to 1999
Senior Master	2400 to 2599	Expert	2000 to 2199	Class B	1600 to 1799

Following are names of Northwest players. Arthur Dake of Portland is now rated as Senior Master, Ulvestad as Master, and Zengalis as Inactive Master.

Aikman	Spokane	1963	Goforth	Spokane	1600	Patterson	Seattle	1954
Amidon	Seattle	1793	Greenwood	Seattle	1818	Poncin	Seattle	1700
Anderson	Montana	1720	Hansen	Montana	1807	Potter	Pullman	1700
Austih	Spokane	1680	Hartman	Spokane	1650	Pupols	Tacoma	1925
Bauman	Oregon	1870	Higginson	Spokane	1850	Ring	Seattle	1700
Baumwell	Wal.Walla	1900	Hoge	Yakima	1874	Roberts	Spokane	1750
Bills	Texas	2038	James	Pullman	1760	Rodnite	Seattle	1700
Bishop	Seattle	1888	Joachim	Seattle	1972	Sawyer	Seattle	1625
Blackler	Oregon	1800	Kimpton	Idaho	1975	Schain	Seattle	2092
Boness	Renton	1700	Kiszely	Spokane	1650	Shanley	Montana	1831
Brandt	Seattle	1700	Kittredge	Spokane	1950	Smith	Spokane	1608
Brieger	Texas	2056	Kromer	Spokane	1834	Stork	Chehalis	1763
Burrows	Spokane	1650	LaFreniere	Seattle	1722	Sveen	Fort Lewis	1781
Carter	Ritzville	1786	Lindstrom	Spokane	1775	Svensson	Spokane	2050
Clark	Seattle	1842	Lyberger	Spokane	1800	Tamblyn	Oregon	1800
Cornelius	Spokane	1980	McCormick	Seattle	1955	Taro	Packwood	1915
Daniels	Spokane	1779	Makens	Navy	1834	Thompson	Idaho	1750
Davidson	Seattle	1614	Martin	Ellensburg	1887	Thunberg	Spokane	1682
Dickson	Holden	1766	Maykowski	Spokane	1725	Triplet	Spokane	1600
Dineen	Spokane	1700	Meliza	Seattle	1650	Vellias	Seattle	1943
Downes	Spokane	1656	Mohr	Spokane	1770	Vhay	Spokane	1778
Dycus	Spokane	1906	Morris	Spokane	1620	Voget	Spokane	1704
Edberg	Tieton	2028	Nelson	Yakima	1812	Wade	Seattle	1966
Eilmes	Spokane	1740	Neuman	Spokane	1690	Warner	Seattle	2046
Falk	Yakima	1847	Parker	Spokane	1764	Warren	Spokane	1650
Farrelly	Spokane	1723	Parsons	Centralia	1700	Weaver	Seattle	1779



"We couldn't have picked a more sympathetic fellow for tournament director."



"Parakeets taking over the parrot business. Checker players playing chess. What's the world coming to?"

SCENES FROM THE
OREGON-OPEN
BY STRACHAN



Mr. [Name] and [Name] playing chess.



Mr. [Name] playing chess.

George Bishop has combined "CHESS TEST" Cover the game score with a sheet of paper. Lower it line source material to present: by line and score your points.

Some players study master games by simply playing the moves, without really understanding what they are all about. CHESS TEST answers the reader's inquiries in advance, anticipates his difficulties, grades not only the move made in the master game, but often gives points for other good moves. In this important game from the Interzonal Tournament-1955, you are aided by Fuderer, youthfull Yugoslav star, said by Euwe to be a connoisseur of the openings. In this game he introduces a slight change in the customary theoretical sequence, unleashes a strong attack against what Filip had thought was a thoroughly analysed and safe position.

The preliminary moves are: 1. P-Q4, N-KB3; 2. P-QB4, P-KN3; 3. N-QB3, P-Q4; 4. PxP, NxP; 5. P-K4, NxN; 6. PxN, B-N2. DON'T PEEK! START SCORING!

- 7. B-QB4 2 POINTS. 1 point for less exact B-R3, P-KB4, N-B3 or B-K3.
..O-O
- 8. N-K2 2 POINTS. Score 1 point for N-B3 or B-K3.
..P-N3 Popular lately, to eliminate White's Bishop with next.
- 9. P-KR4 5 POINTS. Score 3 points for B-K3 or Q-O, both safe & solid.
..B-QR3
- 10. BxB 2 POINTS. Also 2 for B-N3, successful in Banfalvics. Honfi.
..NxB
- 11. P-R5 4 POINTS. Score 2 for Q-Q3 (to which black has good replies)
..P-QB4
- 12. RPxP 2 POINTS (now ..BPxP fails because of 13. Q-N3ch).
..RPxP
- 13. Q-Q3 3 POINTS. Queen is headed for the KR file. Nothing else.
..Q-B1 To cover threat of Q-KR3.
- 14. Q-N3 3 POINTS. Next best thing to KR3.
..PxP
- 15. PxP 2 POINTS. Also 2 for Q-R4 or Q-R2 transposing to the text.
..N-N5
- 16. Q-R4 1 POINT. Same for Q-R2.
..P-B3 The only move. ...R-K1 would lose to 17. Q-R7ch., and 16. ..P-B4; 17 Q-R7ch, K-B2; 18. R-R6.
- 17. Q-R7ch 1 POINT.
..K-B2
- 18. B-R6 1 POINT.
..R-KN1 Study this one. 12 points are at stake on the next.
- 19. N-B4 8 POINTS for a deep one with a remarkable King tour.
..Q-B6ch. 4 MORE POINTS if you saw 19...Q-N5; 20. R-R4!QxR; 21.
- 20. K-K2 1 POINT. QxPch, K-B1; 22. N-K6 mate.
..Q-B5ch.
- 21. K-B3 2 POINTS. K-K3 and K-K1 lead to repetition.
..Q-B6ch.
- 22. K-N4 2 POINTS.
..Q-B1ch.
- 23. K-N3 2 POINTS. Now if ..Q-B6ch; 24. P-B3 wins.
..P-K4
- 24. QxPch. 1 POINT.
..K-K2
- 25. BxB 3 POINTS. Nothing for 25. N-R5?
..PxNch.
- 26. K-R2 4 POINTS. The King has reached safety.
..Q-K3
- 27. K-N1 2 POINTS.
..P-B6
- 28. R-R7 3 POINTS. Black resigns.

SCORING
50-60 Master
40-49 Expert
28-39 Class A
15-27 Class B

POSTAL CHESS

R. R. Merk
Postal Chess Editor
1026 E 71 St., Seattle 5, Wash.

			Points
	April 28, 1956		
55B-5B	Brookshire 1	Wayner	0 34
	April 30, 1956		
55CH-1B	Hultman 1	Bever	0 34
	May 3, 1956		
56A-1A	Wade 1	Carter	0 10
56A-1B	Wede 1	Carter	0 10
	May 7, 1956		
55B-5B	Brookshire 1	Smith	0 34
56A-1A	Edberg, R.E. 1	Carter	0 24
	May 10, 1956		
55A-7A	Taro 1	Coubrough	0 34
	May 13, 1956		
56B-1A	Laine 1	Skoglund	0 34
56B-1B	Skoglund 1	Laine	0 66
	May 15, 1956		
55B-4B	Lyberger 1	Phillips	0 74
55B-5R	Smith 1	Spencer	0 54
	May 18, 1956		
56B-3B	Smith 1	Youngman	0 52
	May 21, 1956		
55CH-2A	Baron 1	Cairncross	0 0
55CH-2B	Baron $\frac{1}{2}$	Cairncross $\frac{1}{2}$	50
	May 23, 1956		
54A-6B	Weaver 1	Baron	0 80
	May 25, 1956		
56A-1A	Wade 1	Howard	0 34
55A-7B	Coubrough 1	Taro	0 72
55A-7A	Bever 1	Taro	0 90
55A-7B	Bever 1	Taro	0 90
55A-7A	Baron 1	Taro	0 44
55A-7B	Baron 1	Taro	0 44
55A-7A	Carter 1	Taro	0 100
55A-7B	Carter 1	Taro	0 100
	May 27, 1956		
54B-4A	Waldron 1	Youngman	0 66
	May 29, 1956		
55B-5A	Smith $\frac{1}{2}$	Spencer $\frac{1}{2}$	12

Larry Taro has had to forfeit all of his remaining games in Section 55A-7A because of his having been promoted to a more responsible position and he feels that the new job will require all of his time for a few months until he becomes more familiar with his new duties. We are very sorry to lose him from our postal chess tournaments and hope that it will only be a few months until he will again be showing us how to play the game. Congratulations on the promotion, Larry.

Things are getting very interesting in the 1956 Championship tournament. In 55CH-1A with 1 game to be completed, Wade vs Weaver, we could have a tie. If Wade wins he will have 6 points and as Hultman now has 6 points, Wade is breathing heavy to take his game from Weaver so as to get in the finals. In section 55CH-2A Baron has 3 games to finish, and Weischer has 2 to finish. These two are the leaders in this section. If Weischer wins his two games it will give him 8 points and the section as Baron has one draw which means that the most he can get will be $7\frac{1}{2}$ points, so watch for the fireworks, Weischer may not win both of his games. Both are vs Cairncross who we have found is a tough one in a pinch to beat. Mage in section 55CH-3A has 6 points and is in the lead in this section but Skarston with 5 points and one game to finish could tie him. Looks like the final playoff may be a 5 player fight for the first, second and third prizes of \$19, \$8 and \$5. Keep the postal cards going. We would like to announce the final round next month.

1956 Championship Postal Chess Tournament

As announced last month the WCF is putting \$20.00 up to be added to the entry fees for prizes in this tournament which we would like to get started by Sept. 1. Entry fee of \$2.00. All of the fees will be added to the \$20.00 and divided as prizes. Entries should be sent to the Postal Chess Director. We should have 30 entries, and this would give us \$30.00 to divide up as prize money. If we can get this number of entries we can give a first prize for each section as well as three prizes for the top three places in the final round. You could win a section prize and grand prize.

Washington Chess Letter
Year Books Available

We have on hand bound volumes of Washington Chess Letter that may be had for \$3.00 for each volume. We have three copies of the 1955 issues, two of 1952 and two of 1951 and only one of 1950. Send payment to Circulation Editor.

POSTAL CHESS

Postal Chess entries are 50¢ per section of five players. Each player plays two games with each of four opponents.

Send entries to:

Postal Chess Director
R. R. Merk
1026 E 71
Seattle 15, Wash.

POSTAL CHESS RATINGS
"A" Division

Baron	1729
Wage	1668
Wade	1612
Weischer	1562
Geretelli	1549
Kaffenberger	1542
Hultman	1536
Weaver	1508
Parsons	1494
Bever	1487
Coubrough	1476
Luters	1472
Skarsten	1456
Dickson	1427
Edberg, R.E.	1424
Patterson	1404
Allyn, Lawrence	1400
Howard	1382
Carter	1311
Knapp	1304
Cairncross	1275
Husby	1186
Taro	1159

"B" Division

Roberts, Don	1322
Allyn, Shirley	1318
Tresidder	1293
Sween	1262
McDonald	1252
Brookshire	1234
Merk	1185
Laine	1182
Meliza	1154
Nichols	1160
Phillips	1150
Smith	1100
Skoglund	1082
Lyberger	1066
Edberg, A.Y.	1050
Gordon	1050
Hamilton	1050
Haynes	1050
Jacobson	1050
Lee	1050
McBride	1050
Miltmore	1050
Notter	1050
Rifley	1050
Rogers	1050
Skinner	1050
Squire	1050
VanNatta	1050
Nelson	1026
Spencer	1008
Adamson	998
Wayner	964
Youngman	953
Waldron	922
Raleigh	900

FROM
WASHINGTON CHESS LETTER
1026 East 71 Street
Seattle 5, Washington
Return postage guaranteed
Form 3547 requested

WASHINGTON CHESS LETTER

(911) WASH. 17



Bruce Strachan
5103 N.E. 15th
Portland
Oregon