

WASHINGTON

CHESS

LETTER

DECEMBER
1956



Merry Christmas and a Happy New Year



SUBSCRIPTION PRICE OF TWO DOLLARS A YEAR INCLUDES MEMBERSHIP IN THE W.C.F.

WASHINGTON CHESS LETTER

Official Publication of the
Washington Chess Federation

Editor D. E. Wade
11023 25th N. E. Seattle, Wash.

Circulation R. R. Merk
1026 E. 71st. Seattle, Wash.

Publisher F. H. Weaver
501 Olympic Place Seattle, Wash.

December Contributors: George Bishop, D. Eilmes, D. Hamilton, R. Kronquist, Lt. E. Leininger, J. McNeese.

Last month's Contributors: Dr. Parker, G. Bishop, D. Hamilton, R. Edberg, N. King and D. Vandenburg and D. Eilmes.

OTHER W. C. F. OFFICERS

President Dr. Griffith H. Parker
416 Hyde Bldg. Spokane 1, Wash.

Vice President Max Mage
2437 55th S. W. Seattle 6, Wash.

Secretary Peder Husby
Route One E. Stanwood, Wash.

Treasurer W. H. Raleigh
4312 Woodland Park Ave. Seattle, Wash.

Publicity Director Don Eilmes
1303 44th Ave. S. W. Seattle, Wash.

Tournament Director Robert Edberg
Route One Tieton, Wash.

AFFILIATED W. C. F. CHESS CLUBS

Seattle, Spokane, Tacoma, West Seattle, McNeil Island, Kitsap County, Boeings, and Tri-Cities Chess Clubs.

Room for Walla Walla, Yakima, Olympia & Longview-Kelso Clubs.



Our Treasurer, Mr. William Raleigh, passes along the following offer - If you send in a 3 year subscription to the "Letter", you can get an additional free subscription for a friend making a suitable Christmas present. If you send in a subscription for 5 years, you get two free one year subscriptions which could go as Christmas presents to two friends.

1956 REVIEW

JANUARY - Bishop becomes editor. FEBRUARY - Wade becomes Seattle Club prexy. MARCH - 100th Chess Letter. Schmitt wins Puget Sound Open, Cornelius regains Spokane crown. Wade wins Wash. Speed title. APRIL - Wade wins Seattle Club tourney. McCormick wins Wash. Junior. Seattle is Puget Sound League Club Champion. MAY - Wade becomes Chess Letter editor. Pupols wins Inland Empire Open. McCormick wins Oregon Open. Weischer wins West Seattle Club title. Skinner takes Centralia Hi. School Club championship. Dr. Parker is elected Wash. Chess Federation President. JUNE - Pupols wins Seattle City crown. Edberg again Montana champ. USCF Ratings. JULY - Holmes takes Pierce County in tourney listed as Tacoma Club affair. In AUGUST the Chess Letter changed appearance with a new front cover design, the first real change in many years. SEPT. - Edberg wins Seattle Seafair. Pupols is Seattle Closed Champ. Washington takes International 21-9. NOV. Bishop won Open.

ONE YEAR (12 ISSUES) AND MEMBERSHIP IN THE WASHINGTON CHESS FEDERATION IS \$2.
SEND MONEY TO W. H. RALEIGH, 4312 WOODLAND PARK AVENUE, SEATTLE 3, WASHINGTON.

LEININGER IS WOODPUSHER CHAMP

LIEUTENANT EUGENE LEININGER won the 1956 Woodpusher Tournament with 4-0 in the annual tournament held Sunday, November 25th at the Seattle Chess Club. The new champ joins a string of illustrious predecessors who won former Woodpusher Tournaments such as CARL ENZ, GERALD SCHAIN, SHELDON REIN, JIM MCCORMICK, KENNETH MULFORD and WILLIAM "HAM" MARTIN.

Fourteen players entered the lists including three from Centralia, two from Tacoma and three other out-of-town players. The half dozen total from Seattle may have been greater except for a Seattle bus strike.

LEININGER defeated JOHN GELL, FRED HOWARD, DENNIS HAMILTON and DAVID ERICKSON in his victory march. DAVID ERICKSON, Seattle Chess Club Secretary, took second place with 3-1 and 11 Solkoff Points. Second and third prize money was split equally among ERICKSON, HARRISON and PARSONS as they had identical won-lost records.

LEININGER is stationed near Winslow, ERICKSON and HARRISON are Seattleites and PARSONS is from Centralia. Seattle players monopolized the next highest places. TOM MAKENS and JOHN GELL tied for fifth while FRED HOWARD and DON EILMES shared seventh place. Ninth was taken by DENNIS HAMILTON of Tacoma and tenth was taken by KEN SMITH of Port Townsend. All of these from Makens down to Smith scored 2-2. Only four players showed a deficit after the day's play. They were RON LOUGHEED, Tacoma Chess Club President with 1-3 who nailed down eleventh, JIM MILTIMORE of Centralia who scored 1-3 and took twelveth, ARLENE (Mrs. Bob) EDBERG of Tieton who also scored 1-3 and took thirteenth and in the tournament caboose was RON SKINNER, Centralia High School Champion, who finished with four losses.

Play began at 10:15 a. m. and concluded at 6:30 p. m. Clocks were available and used for most games and the 40 move per hour time limit kept the games moving along at a rapid pace. DAN WADE directed and heard no complaints.

PLACE	NAME	W	L	SOLK	-1-	-2-	-3-	-4-	HOWARD	LEININGER
1.	Eugene Leininger	4-0	(9)	W-6	W-7	W-9	W-2			
2.	David Erickson	3-1	(11)	W-13	W-3	W-4	L-1	13	P-KR3	NxB
3.	Dick Parsons	3-1	(8)	W-5	L-2	W-11	W-8	14	QxN	R-N1
4.	David Harrison	3-1	(8)	W-12	W-8	L-2	W-5	15	QR-N1	P-QN4
5.	Tom Makens	2-2	(9)	L-3	W-12	W-7	L-4	16	Q-Q2	P-K3
6.	John Gell	2-2	(9)	L-1	W-10	L-8	W-11	17	PxNP	PxNP
7.	Fred Howard	2-2	(8)	W-11	L-1	L-5	W-13	18	PxKP	BxP
8.	Don Eilmes	2-2	(8)	W-14	L-4	W-6	L-3	19	P-QN3	P-N5
9.	Dennis Hamilton	2-2	(7)	W-10	L-11	L-1	W-14	20	N-QR4	N-N4
10.	Ken Smith	2-2	(5)	L-9	L-6	W-14	W-12	21	BxN	RxB
11.	Ron Lougheed	1-3	(9)	L-7	W-9	L-3	L-6	22	KR-Q1	P-B5
12.	Jim Miltimore	1-3	(8)	L-4	L-5	W-13	L-10	23	PxP	BxP
13.	Arlene Edberg	1-3	(6)	L-2	W-14	L-12	L-7	24	QxQE	QxQ
14.	Ron Skinner	0-4	(7)	L-8	L-13	L-10	L-9	25	RxQ	BxRP

HOWARD	LEININGER	HOWARD	LEININGER
1. P-Q4	P-QB4	7. Q-Q2	R-K1
2. P-Q5	P-Q3	8. B-R6	B-R1
3. P-QB4	N-KB3	9. P-K4	N-N5
4. N-QB3	P-KN3	10 B-K3	N-QR3
5. N-B3	B-N2	11 B-Q3	N-B2
6. B-B4	O-O	12 O-O	P-QR3

26 R-QB1 P-N6
 27 R-N6 RxR
 28 NxR P-N7
 29 Resigns.

An interesting struggle from the second round of the Woodpusher Tournament.

DEW

PUGET SOUND LEAGUE

Tacoma Chess Club and Seattle Chess Club established themselves as the logical favorites for the 1956-1957 Puget Sound League Championship with lop-sided wins in their opening matches played on Sunday, November 18th.

At Tacoma, the host club and the visiting Boeings Club were deadlocked at $2\frac{1}{2}$ to $2\frac{1}{2}$ after the first half of the match but Tacoma swept the remaining games to win the match $7\frac{1}{2}$ to $2\frac{1}{2}$. Pupols with $1\frac{1}{2}$, Holmes with 2 and Lougheed with 2 did the most damage to the visitors. The Boeings team came up with a quite formidable top three boards in Trembois, Bader and Eilmes and should make a better showing in future matches.

Seattle hosted West Seattle and reversed the Tacoma technique by storming to a $4\frac{1}{2}$ to $\frac{1}{2}$ lead and then held their own in the second half of the match, to finish up with a 7 to 3 victory. Edberg with 2 and Wade and Makens with $1\frac{1}{2}$, did the most to wreck West Seattle's debut. West Seattle beefed up their squad with the addition of Dick Parsons of Centralia while Seattle used Bob Edberg, a resident of Tieton who played with Seattle two years ago.

TACOMA CLUB	$7\frac{1}{2}$	SEATTLE BOEINGS	$2\frac{1}{2}$	SEATTLE CLUB	7	WEST SEATTLE CLUB	3
Vic Pupols	$1\frac{1}{2}$	Jim Trembois	$\frac{1}{2}$	Robert Edberg	2	Dick Parsons	0
Vernon Holmes	2	Max Bader	0	Dan Wado	$1\frac{1}{2}$	Ben Woischer	$\frac{1}{2}$
Charles Hewitt	1	Don Eilmes	1	Chas. Griffiths	1	Max Mage	1
Royal Leach	1	Frank Uriyu	1	Tom Makens	$1\frac{1}{2}$	Fred Howard	$\frac{1}{2}$
Ron Lougheed	2	Carl Hanson	0	Allan McGregor	1	Stuart Woodward	1

Tacoma and Seattle swap opponents in the second round with Seattle at home to Boeings and Tacoma host to West Seattle. These matches were scheduled for Sunday, December 9th, but due to the State Championship Tourney being inserted into the chess schedule on Saturday and Sunday December 8th and 9th, the second round matches are postponed one week to Sunday, December 16th. Matches start at one p. m.

On SUNDAY, JANUARY 6, 1957, TACOMA PLAYS SEATTLE AT THE SEATTLE CHESS CLUB. ONE WEEK LATER ON SUNDAY, JANUARY 13TH, BOEINGS AND WEST SEATTLE MEET. BOTH MATCHES ARE SCHEDULED FOR ONE P. M.

Oliver LaFreniere advertised in the U. Of Washington newspaper and posted a notice on the bulletin board in the Student Union Building but did not receive enough response to warrant entering any team representing the university in the Puget Sound League this year.

Charles Joachim reentered the chess picture after a long absence with a team from Olympia. They play Seattle at the Seattle Chess Club on Sunday, Dec. 2nd. The story of this match will be found in this issue on another page. Olympia can join the Puget Sound League if they play all of the other teams. At present they are playing on a tentative basis.

Hardly a typical Puget Sound contest was the second game between Vernon Holmes of Tacoma and Max Bader, Boeing's second board man.

VERNON HOLMES

MAX BADER

1. P-K4	P-K4
2. N-KB3	N-QB3
3. B-B4	B-B4
4. P-QN4 (Evans)	BxP
5. P-QB3	B-R4
6. P-Q4	P-Q3?
7. PxP	NxP??
8. NxN	PxN?
9. BxPch.	K-K2
10 B-R3ch.	Resigns.

WALLA WALLA WINS

5 1/2 TO 4 1/2

On Friday, Nov. 16th, Walla Walla played a return match with the Tri-City Chess Club at Richland and squeaked by with a 5 1/2 to 4 1/2 victory. Dr. Baumwell was unable to play so Kronquist, a second board player, played first board & was thoroughly beaten by Warner. Happily, however, for the Walla Walla team, Pearson came through with two wins from Spencer and Nightengale drew his 1st & won his 2nd game from his opponent. Ken Hartwig won his first game from Groot & Lew Hartwig won his second game from H. Jensen.

The final score of 5 1/2 to 4 1/2 is the same as the score by which Spokane beat Walla Walla in their last match.

WALLA WALLA	5 1/2	TRI-CITY	4 1/2
Ray Kronquist	0	Ted Warner	2
Ken Hartwig	1	Cornelius Groot	1
Beldon Pearson	2	Roger Spencer	0
Lew Hartwig	1	H. Jensen	1
Ed Nightengale	1 1/2	Name Unknown	1/2

EASTERN WASHINGTON LEAGUE STANDINGS-Nov.

	Won	Lost
Yakima	1	0
Walla Walla	3	1
Spokane	1	2
Tri-City	0	2

The coming match between Yakima & Walla Walla should prove interesting.
(Kronquist)

WHERE TO PLAY CHESS

SEATTLE CHESS CLUB In the Central YMCA, room 604 at 4th Ave. & Madison St. Open 7 days per week afternoons and evenings.

WEST SEATTLE CHESS CLUB Meets on the 2nd and 4th Friday evenings each month at the High Point Recreation Center in W. Seattle.

SPOKANE CHESS CLUB Meets Thursday evenings at the Desert Hotel.

TACOMA CHESS CLUB Meets on Friday evenings at the downtown library.

YAKIMA CHESS CLUB Meets at the Yakima Y MCA on Mondays at 7 p. m.

TRI-CITY CHESS CLUB (Richland, Konnewick and Pasco) meets every Thursday 7 p.m. to 9:30 p. m. at the Richland Community Hall on George Washington Way.

WALLA WALLA VALLEY CHESS CLUB Meets Friday evenings at 7:30 at the Walla Walla YMCA.

BELLEVUE CHESS CLUB Meets on alternated Monday evenings at 7:30. Play is in the various homes of the members. For information, contact V. W. Bever, Gibson 3636.

OLYMPIA CHESS CLUB Meets every Monday at 7:30 p. m. in the Community Center.

SEATTLE 4 OLYMPIA 4

On Sunday, Dec. 2nd, Seattle met the Olympia Chess Club in a match played in the Seattle Chess Club. Olympia had only four men so only four boards were played. Olympia was led by CHARLES JOACHIM and he proved he has lost none of his cunning in two interesting games with DAN WADE. They split their games, Joachim winning the opener with a cute mate and Wade taking the second with an electrifying break-through, winning what had appeared to be a draw.

CHARLES GRIFFITHS won his first game from JOHN MACKINSEY of Olympia as was expected only to have the Olympia man turn

the tables on him and score an upset win.

TOM MAKENS of Seattle saved the home team by winning both of his games on 3rd board from HARRY PARMALEE. On last board PHIL STYMAN of Olympia downed an inexperienced DALE JOHNSON twice. Olympia had a 4-2 lead before Wade and Makens won their last games knotting up the score at 4-4.

SEATTLE CHESS CLUB 4 OLYMPIA CLUB 4

Dan Wade	1	Charles Joachim	1
Charles Griffiths	1	John Mackinsey	1
Tom Makens	2	Harry Parmalee	0
Dale Johnson	0	Phil Styman	2

GAMES

by Wade

The championship game at Spokane.

BELDON PEARSON

1. P-Q4
2. P-QB4
3. N-KB3
4. N-B3
5. B-KN5
6. PxP
7. P-K3
8. B-Q3
9. O-O

Getting "out of the book."

- 10 R-B1
- 11 P-QR3
- 12 B-R4
- 13 B-N3
- 14 BPxB
- 15 Q-B2
- 16 N-K5
- 17 P-QN4
- 18 P-QN5
- 19 PxB
- 20 NxB
- 21 B-K2?

An oversight but White's game isn't good.

- 21 ---- QxPch.
- 22 K-R1? RxPch.
- 23 Resigns.

Mr. Husby shows fine form in a big upset win over Parsons in postal chess.

PEDER HUSBY

1. P-Q4
2. P-QB4
3. N-KB3
4. B-Q2
5. P-K3
6. QxB
7. B-Q3
8. O-O
9. Q-K2
- 10 P-QR3
- 11 N-B3
- 12 PxB
- 13 NxN
- 14 QR-B1
- 15 R-B3
- 16 KR-QB1
- 17 Q-B2

GEORGE BISHOP

- N-KB3
- P-K3
- P-Q4
- QN-Q2
- P-QB3
- KPxP
- B-Q3
- Q-K2
- N-B1
- B-KN5
- N-K3
- P-KN4
- BxB
- B-R4
- B-N3
- O-O-O
- K-N1
- P-B4
- NxP
- RPxN
-

- QxPch.
- RxPch.

DICK PARSONS

- P-K3
- P-KB4
- B-N5ch.
- Q-K2
- BxBch.
- N-KB3
- P-QN3
- B-N2
- N-B3
- O-O
- P-Q4
- NxP
- PxN
- P-QR3
- P-N3
- Q-Q3
- R-B3

- 18 N-K5
- 19 PxN
- 20 RxP
- 21 RxB

- NxN
- QxP
- R-QN1
- Resigns.

A second board game from the West Seattle vs. Seattle P. S. L. match.

BEN WEISCHER

1. P-Q4
2. P-QB4
3. N-QB3
4. N-B3
5. P-K3
6. P-QN3
7. B-N2
8. B-Q3
9. O-O
- 10 Q-B2
- 11 BxBP

PxB looks better.

- 11 ----
- 12 QR-B1
- 13 B-Q3
- 14 KR-K1

P-QR3 looks best here.

- 14 ----
- 15 Q-N1
- 16 QxN
- 17 Q-B2
- 18 NxN?

Frees Black's QB.

- 18 ----
- 19 P-KR3
- 20 N-K5
- 21 Q-K2
- 22 P-B4?

Creates a backward, weak KP.

- 22 ----
- 23 R-B1?
- 24 P-KN4
- 25 PxB
- 26 PxB
- 27 PxBP

More trappy was KRxBP and if Black answers QxPch. White exchanges and then keeps his KBP pushing on to KB6. After analysis, we find this comes to naught.

- 27 ---- QxPch.
- 28 QxQ PxQ
- 29 R-B7 P-K7
- 30 R-K1 P-B4

Black must do a lot with a little.

- 31 R-Q7 BxBch.
- 32 BxB PxB
- 33 RxQP R-K5
- 34 R-Q7 R-KB1

35 P-R4 (if RxNP? R-Q1 wins) R-B3 ;
36 P-N7?, R-N5ch. 37 White resigns.

DAN WADE

- N-KB3
- P-Q4
- P-B3
- P-KN3
- B-N2
- O-O
- QN-Q2
- R-K1
- Q-B2
- PxB
-

- P-K3
- N-N3
- KN-Q4
-

- N-N5
- NxB

- Q-Q1
- N-Q4
-

- KPxN
- Q-B3
- B-B4
- P-KR4

- Q-K2
- P-B3
- PxB
- PxN
- PxBP
-

This game from a recent Chess Review Postal is contributed to the "Never give up" department - a niche occupied at one time by the victim of this game - Alfred Carter of Ritzville, Wash.

I can do no better than to quote him (in part) from WCL, Nov. '55: "It's very imperfect game...the surprising thing is White's recovery after what appears to be a losing game."

JIM MCNEESE

A. CARTER

Annotation by McNeese

1. P-KN3 -----
 Not the winning move exactly.

1. ----- N-KB3
 2. N-KB3 P-KN3
 3. B-N2 B-N2
 4. P-B4 -----
 The Anglo-Indian?

4. ----- P-Q3
 5. P-Q4 O-O
 6. N-B3 P-B3
 7. O-O QN-Q2
 8. P-K4 P-B4
 Perhaps 8-----P-K4 is more better.

9. P-Q5 N-N5
 10 N-K2 Q-N3
 11 P-KR3 N/5-K4
 12 NxN -----
 We don't like Knights there!
 12 ----- NxN
 We do!
 13 Q-B2 B-Q2?
 Uh-oh! Now where does Knightie go?
 14 P-B4 NxP
 15 QxN P-K4
 After 15-----B-N4; 16 Q-B2, Q-R3; 17. R-K1, B-Q6; 18 Q-Q2 Black has not'in.
 16 R-N1? -----
 Ech! White is much overconfident and now the above combo works - with a veng -
 once!
 16 ----- B-N4!
 17 Q-B2 Q-R3
 18 R-B2? -----
 Horribooble.
 18 ----- B-Q6
 19 Q-Q2 BxR
 20 N-B3 BxRP
 Perhaps better is 20-----B-Q6; followed by 21-----P-B5; and 22-----P-QN4.
 21 NxB QxN
 Now why wouldn't a guy resign this? A rook and 2 pawns for a bish. Well.....
 22 P-B5 PxP
 23 RxP P-B3
 24 P-R4 -----
 It seemed so slow, at this point, and the Black king seemed so far away.

24 ---- P-N4
 25 B-R3 Q-B5
 So perhaps a check and exchange of Queens?
 26 Q-K1 P-QR4
 27 R-R5 -----
 But now the attack has built force.No more time for Q-side hoo-ha.
 27 ---- R-R2
 28 B-B5 B-R1
 29 B-R6 -----
 Now things are getting sticky. Every move on each side must be calculated.
 29 ---- Q-Q5ch.
 30 K-R2 -----
 "Throwing him a fish" - I'm sure not going to win this game on pawns, so I offer him another to get my King to R3.
 30 ---- QxPch.
 Perhaps this is better in reserve.
 31 K-R3 R-K1
 32 Q-Q1 Q-KB7
 An attempt to return to the scene of the (forthcoming) crime.
 33 Q-N4ch. -----
 With these variations in mind: I. 33 ----K-B2; (A) 34 B-K3, QxB; 35 RxPch., K-B1; 36 RxBeh., K-K2; 37 Q-B7ch., K-Q1; 38 QxPch., etc. (B) 34 B-K3, Q-B8ch.; 35 K-R2 K-K2; 36 RxPch., K-Q1; 37 RxR, etc.
 II. 33----R-N2; 34 B-K6ch., K-B1; 35 R-B5, Q-N8; 36 BxRch., BxB; 37 Q-R5, Q-R8 ch.; 38 K-N4, Q-Q8ch.; 39 R-B3, K-K2; (39 ----R-K2; 40 QxRP) 40 Q-B7ch., K-Q1; 41 Q-Q8 mate.
 Actually here after 33----R-N2; 34 BxPch. looked good. True, the King can't(34 ----KxB; 35 B-K3 dis.ch., K-N1; 36 RxBeh., KxR; 37 Q-R5ch., K-N1; 38 QxRch., and 39 BxQ) But this points up the critical nature: If 34 BxPch., K-B2, and Black has a perpetual. White must keep the attack going.
 33 ---- B-N2
 34 BxPch. -----
 Which now works with these variations:
 I. (A) 34 ----KxB; 35 BxB dis.ch., K-N1; 36 R-R8ch., K-B2; 37 Q-R5ch., K-K2; (37----KxB 38 Q-R7 mate) 38 QxRch.
 II. 34----K-R1; 35 BxBeh., RxB; 36 B-B1 dis.ch., K-N1; (36 ----R-R2; 37 RxRmate) 37 B-K6ch., RxB; (37----K-B1; 38 R-R8ch., K-K2;)((38----R-N1; 39 QxRch., K-K2; 40 QxR mate.)) (39 QxR ch., K-Q1; 40 Q-Q7 mate) 38 QxRch., R-B2; (K-B1; 39 R-R8ch., R-N1; 40 RxR mate) 39 Q-K8ch., R-B1; (39----K-N2 40 Q-R8, K-N3; 41 Q-R6 mate.) 40 Q-N6 mate.
 Whew! NOW ON WITH THE GAME!
 34 ---- K-B1; 35 R-B5! Killer., QxR; 36 QxQ, R-KB2; 37 BxBeh., KxB; (Better than Rx B) 38 B-N6, P-B5; 39 BxR, Black resigns.

The following is an interesting 1950 game played by our now Woodpusher champ.

WILLIAM VOAS

E. T. LEININGER

Anti-Moran Gambit

1. P-Q4	P-Q4
2. P-QB4	P-QB3
3. N-KB3	N-B3
4. N-B3	P-K3
5. B-N5	PxP
6. P-K4	P-N4
7. P-K5	P-KR3
8. B-R4	P-N4
9. NxKNP	PxN
10 BxNP	QN-Q2
11 PxN	B-QN2
12 Q-KB3!	-----

Loss accurate, but playable, is 12 B-K2, Q-N3; 13 O-O, (13 P-QR4!, P-N5; 14 P-R5, Q-R3!; 15 N-K4, O-O-O with equality) 13 ----O-O-O; 14 P-QR4, P-N5; 15 N-K4, P-B4; 16 Q-N1, Q-B2 with an advantage for Black - Donker - Botvinnik 1945, the most famous Anti-Moran Gambit ever played.

12 ----	Q-N3
13 O-O-O	O-O-O
14 P-KR4?	-----

Q-K3 is the only playable move.

14 ----	Q-R4!
15 K-N1	P-B4
16 Q-K3	P-N5
17 N-K4	P-N6
18 P-R3	N-N3!
19 N-Q2!	-----

If 19 N-B3, N-Q4! starts a winning Queenside pawn roller.

19 ----	PxP
20 NxNP	PxN
21 QxNP	B-K5ch.
22 K-R1	Q-R5
23 QxQ	NxQ
24 B-R6ch.	K-N1
25 P-B3	B-B7
26 B-B4ch.	K-R1
27 B-QN5	N-B4
28 B-B6ch.	N-N2
29 R-Q2	P-Q6!?
30 P-QN4	B-Q3
31 BxB	RxB
32 B-K4	P-R4
33 P-N4	PxP
34 PxP	R-QB1
35 K-N2	K-B5
36 R-R1ch.	K-N1
37 P-R5	R-N3
38 RxQP	R/3xPch.
39 K-R3	N-Q3!
40 P-R6	N-N4ch.

41 K-R2
42 BxB
43 Resigns.

BxR
R-B2

Lieutenant Leininger has won chess championships in the 513th A.A.A. Missile Battalion, 26th A.A.A. Group & the 31st A.A.A. Brigade. (All notes in the above game were by Lt. E. T. Leininger)

JIM MCCORMICK DOING FINE IN NEW YORK !!

Little escapes the sharp eyes of W. C. F. scouts and thus the mystery of the mysterious disappearance of JIM MCCORMICK goes into our files under the heading "Solved Mysteries" and the conjecture is ended. Jarring James has made a headline or two in the New York Times & was last reported leading in the "30 or 40 player" Long Island Championship Tmt. After six rounds, and with only 1 round left to play, Jim had scored 5½ points - for the glory of the Evergreen State - & leads by a full point over his most persistent pursuers, Westbrook, Saudokoff, Steinberger and Hays all having 4½-1½.

THE BEST BUY IN CHESS BOOKS

For a real saving buy your books in England from A. CURTIS, 46, TANKERTON ROAD, TOLWORTH, SURBITON, SURREY. There are many satisfied customers in the rank and file of Washington chess players including GEORGE BISHOP, ROBERT EDBERG, DON EILMES, DICK PARSONS, DENNIS HAMILTON & others. If you send for book list, say you saw this ad in the WASHINGTON CHESS LETTER.

Chess Fundamentals by Capablanca	\$1.50
Chess the Easy Way by Fine	3.00
Modern Chess Strategy by Ed Lasker	2.50
My System by Nimzowitsch	2.15
The Middle Game in Chess by Fine	3.58
1941 USSR Championship (Tmt. Book)	1.79
1946 London (2 sections) " "	0.72
1946-7 Hastings, I. Alexander	0.50
1948 World Championship I. Botvinnik	0.72
1954 Amsterdam, 916 games in sets	2.15

The above ten is just a very few of the many chess book bargains you can get from Mr. Curtis. Send for his lists or look it over posted at the Seattle Chess Club.

CHANGE OF ADDRESS. O. W. MANNEY, former WCF President, has moved to Detroit.

JACK NOURSE'S QUEST FOR CHESS IN LANDS ACROSS THE SEA



Washington State's own Ambassador to the Chess Centers of the World has found a place to his liking on the Balearic Isles, the birthplace of Pomar, and he is going to settle down there for three weeks. His letter is by CORREO AEREO, CARTA-SOBRE AVION, ESPAÑA.

Dear Friends;

Just a line to let you know what the chess angles are on my travels. I was unable to find any chess clubs in Paris, but with all the nudes they had around there I found it didn't really matter. In Barcelona I located the club on the last day but didn't have time to get a line on the quality of their game. The only man I played was an old codger who had to go to the bathroom every second move, so naturally he didn't have much chance.

We are in Palma until the 26th of November. I located their best club here early, mainly because the hotel clerk dabbles in chess, and I have had a very fine time. This club is a hang out of the business men, and they, as all Spaniards, have been most friendly and courteous and helpful. But best of all they play my kind of game. Very rarely do I see a player taking more than 2 minutes on a move, and most of them are very sharp. My record, to give you a slant on the caliber of Palma chess, is roughly about 3-1 in my favor. Against their best player, who is very fast, I am on the wrong end of a 5-4 score with 2 draws. I am quite rusty now, but hope to play a match game for the honor of Washington v. Balearic Isles. If I come out ahead you can be sure I will let you know. On the other hand, if I fail to mention it again, --well!

Chess in Spain is no relaxation for the nervous type. They all sing, loudly and well. If not well, at least loudly. Also to make it a little bit more lively, every coup de grace on any table is accompanied by reverberating ejaculations indicating glee or despair. I have only seen three openings used; the Queen's Gambit, the Muzio, and the Sicilian. It goes P-K3 in answer to P-K4. I've been maltreated so often by Doc Almond on that opening that I can now do all right with it, but boy! am I helpless with the Muzio. And all my books are home, too.

For a representative of Washington chess you could have a much better player, but so far I have heard no complaints. I am making friends here and having lots of fun.

I have heard nothing about Washington chess but hope that Kitsap is still a threat.

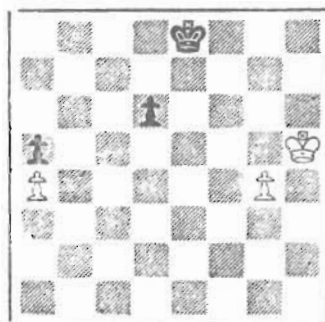
It is all right to publish this letter (subject to editing of course) and I hope some of the boys find it interesting. I hereby greet them, one and all, with best wishes and in grateful remembrance of a heck of a lot of fun. As always, JACK NOURSE

THE NEW SOLVERS' CONTEST

WITH THE BIG SECOND PRIZE!



BLACK TO PLAY



WHITE TO PLAY

To start off the new Solvers' Contest we show two positions that have been taken from actual games.

In the position at the left with Black to play, White resigned after Black's second move. Why? Three points for the answer.

White can win the end game at the right, but his first move is very critical, requires knowledge of accurate procedure. Two points for the correct move, and two more for the correct explanation.

Over thirty readers sent in solutions to one or more positions in the contest just completed. It was won by Cliff Dolph, who missed or failed to answer two positions, but kept trying after others had become discouraged.

Because of the work involved in preparing this page we hope the other readers also enjoy following it, even if they don't send in the solutions. It would be appreciated if such readers would send in at least one card by way of encouragement.

George Bishop has selected an interesting series of positions for the new contest. They will be of benefit to your game even if you fail to solve them correctly, because they will be based on principles of chess that mark the difference between winners and losers.

SEND SOLUTIONS TO F.H.WEAVER, 501 OLYMPIC PL. SEATTLE 99, BEFORE DEC. 28

FIRST PRIZE, as usual, will be a one-year extension of membership and subscription to Chess Letter. SECOND PRIZE will be of greater value than first prize, because it has been donated by an anonymous patron. It will be your choice of:

A 15-month extension to your subscription. Or

A postal chess album, which has six miniature chess sets and score cards for playing postal chess. It is unequalled for playing over games in magazines and books, with plenty of boards to go through the side variations. Or

A choice of chess books such as the new series by Reinfeld:

"How to Play the White Pieces"

"How to Play the Black Pieces"

"How to Win When You're Ahead"

"How to Fight Back" -and others.

THIRD PRIZE will be a 6-month extension to Chess Letter.

Cash prizes will be kept in a separate pool for those who may want to send in 25¢ coin, (which is within the weight limit of a 3¢ stamp).

Cliff Dolph won the first of the cash prizes, and Bruce Oldham won second plus a door prize when his card was drawn from a hat by a little neighbor girl at the end of the last 6-month contest.



MAURICE HENION



JOHN RING



TOM MAKENS

MORE INTRODUCTORY NOTES

MAURICE HENION first appeared around the Seattle Chess Club at the time of the Super Puget Sound Open with the ten dollar entry fee and with Zemgalis and Ulvestad both entered. Since that time nearly two years ago, Henion has spent much time helping the club whenever he could. There are many things a member can do around a club to help and Henion has done more than his share. He also was very helpful when the club moved to its new quarters last summer. Henion has occasionally played for the Seattle Chess Club in team matches and has played in the past two International Matches, winning his game each time.

In the center picture we present JOHN RING who has donated far more than anyone in time and money for the maintenance of the Seattle Club. Ring was the one who found the club's new quarters with a large saving in monthly rent and an increase in members being the chief results. John has played chess for 58 years. Learned from an uncle in Sweden when he was 20. Within a few months he could beat his uncle amidst strong Swedish cussing by uncle. Ring was in the U. S. Navy, then worked in Navy Yards until he retired in 1940. He was one of the old timers at the Seattle Chess Club who toughened up Ulvestad when he was a 14 year old, sometimes playing until 3 a. m. Ulvestad wouldn't go home until he had won.

TOM MAKENS first entered Washington chess at Spokane in the Spring of 1956 at the annual Inland Empire Open. He was in the navy at the time. Tom distinguished himself at Spokane by gaining draws with both Warner and McCormick and finished high in the 40 player event. Next he showed up at Portland and finished high in the 37 player Oregon Open. Recently he finished 6th in the Washington Open held in Spokane. Tom scored 4-2 with 3 wins, 1 loss and 2 draws in the 24 player Washington Open. Makens is now out of the navy and living in Seattle. He is a Seattle Chess Club member and a member of its Puget Sound League team.

FLASH via the grape-vine from Portland, Oregon! One of that state's top chess experts is now home after a hitch in the army. IVARS DALBERGS is home and looking for a tournament he can get into and win. A former Wash. State Open Champion and consistent high finisher in all Northwest chess events, he will undoubtedly be heard from soon.



"So the Pasha threw you out? You must be new around here, -dancing when he is 2 nawne down!"

Final Standings
ALEKHINE MEMORIAL TOURNAMENT

(Botvinnik	Russia	11 - 4
(Smyslov	Russia	11 - 4
Taimanov	Russia	10½-4½
Gligorich	Yugoslavia	10 - 5
Bronstein	Russia	9½ -5½
Najdorf	Argentina	9 - 6
Keres	Russia	8½ -6½
Pachman	Czechoslav	8½ -6½
Stahlberg	Sweden	8 - 7
Unzicker	W. Germany	8 - 7
Szabo	Hungary	6 - 9
Padevsky	Bulgaria	5½ -9½
Uhlman	E. Germany	5½ -9½
Ciocaltea	Roumania	3½ -11½
Sliwa	Poland	3 -12
Golombek	England	2½ -12½

There have been several interesting tournaments in the United States, the most publicized being the Rosenwald Tournament, which Sammy Reshevsky won by a full two points. At the conclusion the points stood: Reshevsky 9, Bisguier 7, Feuerstein 6½, Mednis 6, Byrne 5½, Bernstein 5½, Turner 5½, Fischer 4½, Seidman 4½, Hearst 4, Pavey 4, and Shainswit 3. In the most brilliant game played in the tournament Bobby Fischer, 16, defeated Don Byrne with a series of sacrificed pieces. Donald Byrne handed Reshevsky his only loss. The tournament was played at the Manhattan Chess Club in New York. Reshevsky drew with Feuerstein and H. Seidman.

Another tournament of considerable interest was the Detroit Tartakower Memorial in which Donald Byrne came off first. Bisguier and Tautvaisis followed.

The British Championship was held in Blackpool, England, and won by Alexander.

Gil Ramirez, 17, won the California State Title, Nov. 25, with a score of 6-2, having drawn 4 games. James Schmitt was second with 5½-2½, also undefeated, but drawing 5. Ramirez was the first northern Californian to win the title since 1929. Others entered were Addison, Cross, Rivise, Remlinger, Bendit, Geller and Foley, all having qualified in preliminary events.

Larry Remlinger held undisputed first place in the Southern California Qualifying Tournament with a score of 8½-1½. The others who qualified to play for the California Championship were Geller, I. Rivise, and Steve Sholomson. With exception of the games of an actor Jose Ferrer, who was compelled to leave, there were no unfinished games, which is quite a record as tournament directors know. Others entered included Almgren, Jacqueline Piatigorsky, Nancy Roos, and Robert Cross.

J. McMillan captured the Santa Monica Open title with a score of 5½-1½. There were 22 entries in this tournament.

In another California event, West Valley Chess Championship, Jerome Weiner won with 6-1.

A double round-robin between six masters in the Los Angeles area was won by Robert Cross, 7-3. Jim Cross scored 6-4, Dr. Levin and Irving Rivise were tied with 4½-5½. These items were taken from the chess column of Isaac Kashdan which appears each Sunday in the Los Angeles Times.

GEORGE BISHOP COMBINED NOTES
BY LJUBLINSKY AND EUWE, THEN
ASSIGNED RATING POINTS.

CHESS TEST

WHITE: V. LJUBLINSKY
BLACK: J. ROVNER
MOSCOW, 1955

COVER THE GAME SCORE WITH A SHEET OF PAPER AND LOWER IT LINE BY LINE.

The opening moves were these: 1. P-K4, P-K3; 2. P-Q4, P-Q4; 3. N-QB3, N-KB3; 4. B-N5, B-K2; 5. P-K5, (this advanced pawn in the center is White's first indication that he proposes to attack on the King's side) --KN-Q2; 6. BxB, QxB; 7. P-B4, P-QR3; -- NOW TRY TO GUESS WHITE'S BEST MOVES, AND RECORD YOUR SCORE.

8	N-B3	1 POINT	
	P-QB4		
9	PxP	2 POINTS	
	NxBP		Euwe says 9. ...N-B3 is possibly stronger.
10	B-Q3	3 POINTS	
	NxBch		Black will have to make this trade eventually.
11	PxN!	4 POINTS	Much the best.
	N-B3		
12	Q-Q2	2 POINTS	
	O-O		
13	O-O	2 POINTS	
	B-Q2		
14	R-B2	3 POINTS	Preparing to double the rooks later on the King file, QB file or even the KN file.
	Q-B4		
15	R-QB	3 POINTS	Retains the option of P-Q4. ... N-Q5 would have forced White to answer with K-R.
	Q-R2		
16	P-Q4	2 POINTS	
	N-K2		
17	P-KN4	3 POINTS	Prevents ..N-B4 and furthers the attack on the King.
	QR-B		
18	R-Q	3 POINTS	Preparing!
	R-B5		P-B4 would be better.
19	Q-Q3	3 POINTS	
	KR-B?		Black <u>must</u> play ... P-B4.
20	N-KN5!	3 POINTS	
	N-N3		If ... P-KN3; 21 Q-R3!
21	Q-K3	3 POINTS	Threatening P-B5!
	P-R3?		Nothing is really good.
22	NxBP!	5 POINTS	
	KxN		
23	P-B5	2 POINTS	
	N-K2		...N-B, N-R, or N-R5 will also lose.
24	PxPch	2 POINTS	
	KxP		
25	QxPch	6 POINTS	
	PxQ		
26	R-B6 mate		

Now add up your points and find out your strength as shown in the table:

MASTER 47-52
EXPERT 41-47
CLASS A 36-41
CLASS B 30-36

WASHINGTON CHESS FEDERATION DIRECTORY

SEATTLE

Max Mage,
2437 55th S.W.
Wendell Brazeau
2631 29th Ave. W.
Wm. F. Gillette
1019 Terry
Stan Sawyer
3316 S.W. 102
John Breeze
332 E. 50th
Don Eilmes
1303 44th S.W.
R.K. Schrank
2440 S. 138th
F.H. Waldron
3724 S.W. 107th
John E. Ring
9253 Meridian St.
Oliver LaFreniere
612 Baker House
K.W. Mulford
1500 Atlantic
F.H. Weaver
501 Olympic Pl.
Dave Erickson
3306 E. 70th
B.B. Bickford
5055 Pullman
Max Bader
6007 29th Ave. N.E.
Ben F. Taylor
408 Aurora
Alan Clark
4042 5th N.E.
Theodore Davidsen
4018 Aurora
R.R. Merk
1026 E. 71st
Clyde L. Schmoyer
3724 Prescott Pl.
Arthur E. Lewis
409 Stimson Bldg.
George Minea
13732 Meridian
Dan Wade
11023 25th N.E.
F. M. Howard
5940 36th S.W.
Marco Johnson
6111 Ravenna Ave.
Burnett Sams
6859 Ravenna Ave.
Dr. Frank Uriyu
170 11th Ave.
Walter Youngman
7511 23rd Ave. N.E.
Carl Hanson
7417 S. 116th
Nathaniel Haynes
6302 21st N.E.
Alan McGregor
822 Jackson

Dwight Edwards
7556 21st S.W.
W. H. Raleigh
4312 Woodland Park Ave
Tom Makens
616 Madison
H.J. Phillips
4316 Latona Ave.
H. H. Roberts
4536 7th Ave. N.E.
G.S.G. Patterson
1400 Hubbell Place
J.L. Sheets
3619 Phinney
Jos. Trembois
8017 44th S.W.
Russell Vellias
616 Madison
Jim McCormick, Jr.
11035 Beacon
Hugh Noland
4738 Brooklyn
Ben Weisscher
9374 31st Place S.W.
Lloyd Lewis
2620 Queen Anne Ave.
Elmars Zemgalis
4257 33rd W.
George Bishop
616 Madison
Olaf Ulvestad
616 Madison
S.M. Erenang
3630 Greenwood
Floyd Hebert
1318 30th S.

SPOKANE

P. A. Lyberger
E. 2016 Bridgeport
R. W. Kromer
2714 N. Laura
Dr. G.H. Parker
416 Hyde Bldg.
Tom Meade
E. 3322 24th
L. R. Greenwood
2708 W. Providence
L. W. Bailey
P.O. Box 986
Ed May
1625 E. 20th
Mike Conway
1207 W. Cleveland
Robert F. Kittredge
E. 9618 Marengo Rd.
Gordon Cornelius
3717 E. 17th
Ira Jacobson
E. 7009 Fairview
Carroll D. Gray
1110 Paulsen Bldg.
Lemuel Ball
Box 255 Liberty Lake

SPOKANE

Don F. Daniels
P.O. Box 920, 10
Michael Lulham
N. 2116 Jefferson
George Briebe
2514 Grand Blvd.
Gary Westrom
1724 W. York

TACOMA

Jack L. Finnigan
4913 N. 10th
Leonard A. Lee
6614 S. Husen
Victor Pupols
215 S. J St.
R.M. Collins
3526 Grand View Ave.
Dennis E. Hamilton
5429 S. Sheridan
Leslie Coubrough
25 N. E Street
V.M. Holmes
1849 West Boulevard
John Mills
Star Route Box 116
Ron Lougheed
4834 East B St.

PORTLAND ORE.

E. Bloomquist
1830 N.W. 24th Place
James McNeese
3424 S.W. Vets Rd.
E. G. Short
7315 North Alta
Deane Moore
2020 S.W. 15th
B.B. Strachan
5103 N.E. 15th Ave.
Melvin Hall
646 N.E. 190th
William Goe
5136 S.E. 97th
R.W. Cairncross
8084 N.E. Grand Ave.
James V. Rogers
4305 S.E. Reedway

WASHINGTON STATE

Larry Brewster
Rt. 3 Anacortes
Lewis B. Hall
Rt 3 Anacortes
Elmer Carlson
2825 98 NE Bellevue
V.W. Bever
461 104 S.E. Bellevue
Robert Neale
2102 Smith Rd. Bellingham
Lee Adamson
P.O. Box 1006 Bellingham
Tom Turner
548 Pleasant, Walla Walla

WASHINGTON STATE

Hela Case
2515 Vining St. Bellingham
Walter Nutter
Rt. 5, Bremerton
C.W. Ragerkurth
303 N. Callow, Bremerton
W.P. Allen
Rt. 4, Bremerton
Dick Parsons
1016 Elm St., Centralia
Donald Lutens
Rt. 3, Gig Harbor
Earl Knapp
Rt. 3, Gig Harbor
H. Kaffenberger
Rt. 3, Gig Harbor
Norton B. Dolph
Maryhill, Wash.
C.R. Dolph
Maryhill, Wash.
Bert Geer
Maryhill, Wash.
Ray Kronquist
Whitman College, Walla Walla
Dr. Max Baumwell
Veterans Hospital, Walla Walla
W.H. Parker
Box 520, Walla Walla
Neal King
376 Catherine St. Walla Walla
Terry Nelson
1509 Mt. Vernon, Yakima
Wm. Hoge
817 N. 2nd St. Yakima
Donald Kennedy
Box 41, Keyport
A.C. Stanke
Box 505, Keyport
Mrs. Opal Aldridge
Rt 2, Vashon
C.J. Sween
Rt. 1, Redmond
A.D. Benson
Box 522, Ridgefield
Lucian Curritt
Box 404, Ferndale
Peter Husby
Rt. 1, East Stanwood
Dr. H.C. Shephard
9240 S. 307th, Auburn
Ted Warner
1098 B Guthrie, Richland
John D. Laine
Rt. 2, Woodinville
R.E. Edberg
Tieton
William Wilson
Box 698 sunnyside

WASHINGTON STATE

Ed Henken
300 E. Grover, Lynden
J.M. Skoglund
Box 127, Preston
Archer Squire
714 E. First, Colville
Neil Power
Snohomish
E.C. Ayer
Court House, Olympia
Ira Watson
536 22nd, Longview
Bob Kuvara
Ferry Hall, WSC, Pullman
A.C. Snives
Toledo
Thomas J. Dolle
5910 E 112, Puyallup
Frank Potter
1705 13th, Pullman
Stephen Miller
Box 342, Oak Harbor
Dr. John Almond
Box 188, Paulsbo
J.L. Gordon
Rt. 2, Mt. Vernon
Paul Rood
Moses Lake Air Base
Rodger Spencer
Benton City
John Nourse
Port Blakely
Phillip McBride
807 Crawford, Kelso
Ir. A.A. Murray
758 Flower, Raymond
Lt. E. Leininger
Kingston
Paul L. Bezemer
Metaline Falls
Bert Dickson
Golden
Kenneth Smith
8th & McPherson, P. Townsend
Roy Towne
2523 Hoyt, Everett
Rev. A. Carter
Box 366, Ritzville
E.A. Dahman
Box 150, Quilcene
Sidney Nourse
Clinton

CALIFORNIA

James N. Schmitt, San Fran
Lary Taro, Salyer
Robert C. Stork, Los Angeles
R.A. Dickey, APO San Fran

CALIFORNIA

Gerald Schain
Inglewood
D.M. Witthans
Lancaster
L.M. Greene
Long Beach
Charles Ballantine
Palo Alto

OREGON STATE

Ray Lasser
Milton-Freewater
Vincent Bricher
Cottage Grove
Charles Tresidder
Coos Bay
R.O. Skarsten
Forest Grove
Phil Dolph
Junction City
Sam Spatz
Cornelius
Dr. F.E. Bump
Forest Grove
Fred Van Natta
Salem
Duncan W. York
Canby
C.J.D. Bauman
Heppner
Alan Baron
Eugene

OTHER STATES

Don Roberts
Ketzebue, Alaska
O.W. Manney
Ketchikan, Alaska
John Barto
Great Falls, Mont.
Ralph Hansen
Missoula, Mont
Horton Thompson
Kendrick, Idaho
R.S. Vandenberg
Boise, Idaho
Sven Engstrom
St. Paul, Minn.
Robert Herrick
Tucson, Ariz.
William Bills
Houston, Texas
Mrs. McLeod, Van. BC
A.J. Thompson
Lawrence, Kansas
John DeWitt
Dayton, Ohio

AND CHESS CLUBS AND PUBLIC LIBRARIES IN THE WESTERN UNITED STATES.
SUPPLEMENTAL LISTS OF ADDITIONAL NAMES WILL APPEAR IN FUTURE ISSUES.

Weaver



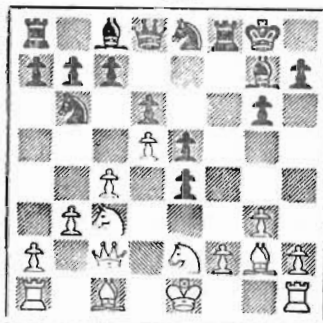
van Kalken

Weisscher



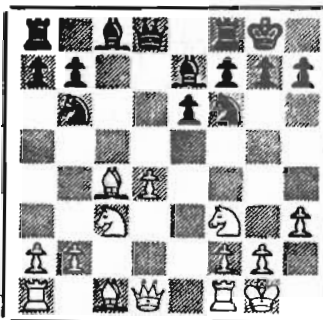
Vogel

Bever



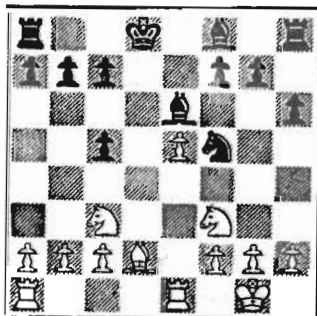
Roos

Wade



Fikke

Bader



Muller

De Heer Nederland gepushing pawns
is, Mr. Seattle at. In a chess match yet.

SEATTLE v. AMSTERDAM

The five diagrams at the left represent the status of the postal chess tournament that is being conducted between five Seattle players and the five best players in Amsterdam, Holland. The tournament actually consists of ten games, each player playing two games with each opponent. We are showing the five games in which the Amsterdam players are playing White. At a later date we hope to show the rest of the positions.

The Seattle team has Dan Wade on first board. The other Seattle players are Howard Weaver, V. W. Bever, Max Bader and Ben Weisscher.

These positions represent the games at Black's 11th move in all of the games except Wade's, which is after Black's 10th move.

The players and their opponents are as follows: Wade vs Fikke, Weaver vs van Kalken, Bever vs Roos, Bader vs Muller and Weisscher vs Vogel. Fikke is Amsterdam Champion, and Vogel is the Indonesian champion, now living in Holland.

Seattle players accumulate their moves, send them all in one air mail envelope, whereas the Amsterdam players, who do not have the convenience of telephones, have a small boy who calls on all of the members of their team via bicycle and collects and distributes the moves. However, the games are progressing almost as fast as if they were played in the Northwest. As an example of the mailing time a letter airmailed in Amsterdam on November 5 was received in Seattle November 7, and the reply posted the next day.

A difficulty is the difference in the style of notation that is used here and that used in Holland. Ben Weisscher is our interpreter, is a former resident of Holland and is personally acquainted with most of their players. The difference in notation has been the cause of several errors in interpreting the moves, but these have been straightened out and will be little cause for trouble in the future.

The Seattle Post-Intelligencer publicized the match with a column on the first page of the Sports section, Sunday, November 25.

POSTAL CHESS

R.R. MERK 
 POSTAL CHESS EDITOR
 1026 E 71 SEATTLE 15

October 29, 1956				November 15, 1956			
			Points				Points
56B-8A	Spatz	1 Hamilton	0 74	56B-7A	Brookshire	1 Van Natta	0 42
October 31, 1956				56A-3B	Bever	1 Howard	0 34
56B-2A	Sween	$\frac{1}{2}$ Skarston	$\frac{1}{2}$ 0	56B-3A	Youngman	1 McBride	0 39
November 2, 1956				56A-3B	Youngman	1 McBride	0 39
55B-5A	Spencer	$\frac{1}{2}$ Brookshire	$\frac{1}{2}$ 30	November 16, 1956			
November 4, 1956				56B-6A	Rogers	1 Notter	0 28
56B-9A	Phillips	1 Benson	0 20	56B-6B	Rogers	1 Notter	0 28
November 5, 1956				November 20, 1956			
56B-6A	Rogers	1 Jacobson	0 46	56B-5A	Van Natta	1 Tresidder	0 42
56B-6B	Rogers	1 Jacobson	0 46	November 21, 1956			
November 8, 1956				56B-7B	Brookshire	1 Spatz	0 22
56B-6A	Skinner	1 Jacobson	0 52	November 25, 1956			
56B-6B	Skinner	1 Jacobson	0 52	56A-4A	Weischer	$\frac{1}{2}$ Coubrough	$\frac{1}{2}$ 11
November 9, 1956				November 26, 1956			
56A-2A	Coubrough	1 Mage	0 56	56B-6A	Brookshire	1 Skinner	0 4
56A-2B	Coubrough	1 Mage	0 56	56A-1A	Howard	1 Edberg	0 68
November 10, 1956				November 27, 1956			
56A-2A	Coubrough	$\frac{1}{2}$ Weaver	$\frac{1}{2}$ 24	56B-8A	Hamilton	1 Miltmore	0 18
56A-5A	Parsons	1 Husby	0 18	56B-4B	Haynes	1 Adamson	0 22
November 11, 1956				56B-5A	Gordon	1 Smith	0 50
56B-5B	Van Natta	1 Phillips	0 60	56B-5B	Gordon	1 Smith	0 50
56A-3B	Cairncross	1 Howard	0 64				

Spatz really racked up the points in a single game won when he upset Hamilton in section 56B-8A for 74 points. Howard also did quite well when he took the game from Edberg in section 56A-1A for 68 points but lost more points than he won by losing to Cairncross and Bever so that his net for the month is a 30 point drop. His rating on the back cover of 1398 should be 1408. Apparently our Univac slipped a few cogs when figuring his points. Correction will show next month.

Brookshire still holds his lead in the "B" Division with Sween also holding his second place. Perhaps these two players will like to graduate into the "A" division when entering another section. How about it?

Edberg feels quite badly over his defeat by that veteran player, Fred Howard, in section 56A-1A. We don't know why he should, but maybe there is a story back of it that we have not heard, possibly a slip of the pencil or over confidence in a winning position with the losing player pulling a fast one on someone's blind side. If it was because of a mistake in Edberg's record he can take some small consolation in the fact that Cairncross took Howard to the cleaners in 56A-3B because of Howard's mistake in notation which Howard refused to try over again at Cairncross's generous offer to take the move over. Cairncross says "I would much rather win when I have outwitted my opponent than by mistakes of his pencil".

Fred Van Natta is busy with his college work in Salem, Oregon but still has time for another section of postal chess. From his score of 1340 it looks as though he is headed for a graduation to the "A" Division.

The two recent graduates from "B" to "A" division, Dickson and Parsons have done right well for themselves as they now occupy 5th and 7th places respectively. Centralia must have some special kind of food for chessmen as we are indebted to that town for two of our past notables, Mulford and Stork, and now a coming rising star in the chess world of the Northwest is Parsons from the same place. Any more like you at home, Dick? Mulford and Stork having retired at the venerable age of 30 plus, we shall hope that Parsons is able to last out the rugged life of a chess player somewhat longer.

POSTAL CHESS

POSTAL CHESS IS A GOOD WAY TO IMPROVE YOUR GAME. You can take enough time to thoroughly study each move. You can enter against any strength of competition and game results will soon give your rating its proper value.

AN ADVANTAGE OF PLAYING NORTHWEST PLAYERS is that the games proceed smoothly with overnight mail delivery. Ratings are adjusted and published each month.

EACH PLAYER IN A FIVE-MAN SECTION PLAYS TWO GAMES WITH EACH OF THE OTHERS.

THE ENTRY IS 50¢. A 6-MONTH SUBSCRIPTION EXTENSION IS THE PRIZE.

COMPLETE RULES ARE SENT.

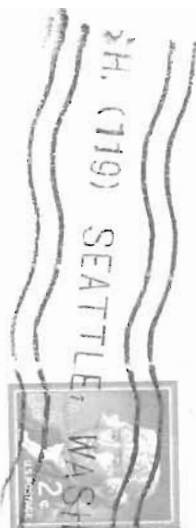
SEND ENTRY TO POSTAL EDITOR

Return postage guaranteed
Form 3547 requested.

WASHINGTON CHESS LETTER
1026 E. 71st ST. SEATTLE, 15, WASH.

B. D. Strachan
5103 N.E. 15 Ave
Portland 11, Ore

04/57



POSTAL CHESS RATINGS

"A" Division

Baron	1726
Coubrough	1679
Wade	1600
Weischer	1591
Dickson	1579
Kaffenberger	1570
Farsons	1563
Bever	1562
Mage	1556
Weaver	1490
Luters	1472
Edberg, A.Y.	1436
Skarsten	1404
Knapp	1403
Witthans	1400
Howard	1398
Cairncross	1361
Carter	1353
Husby	1200

"B" Division

Brookshire	1487
Sween	1405
Van Natta	1340
Roberts, Don	1330
Phillips	1314
Hamilton	1283
Laine	1274
Merk	1263
McDonald	1252
Edberg, A.Y.	1186
Tresidder	1185
Spencer	1185
Spatz	1179
Gordon	1178
Rogers	1178
Nichols	1149
Lyberger	1136
Releigh	1134
Squire	1120
Haynes	1110
Youngman	1099
Lee	1088
Gemar	1050
Mills	1050
Pifley	1050
Watson	1050
Benson	1030
Skoglund	1020
Aldridge	1010
Skinner	996
Nelson	952
Miltmore	936
Waynor	906
Waldron	880
Notter	850
McBride	818
Jacobson	802
Adamson	781
Smith	633