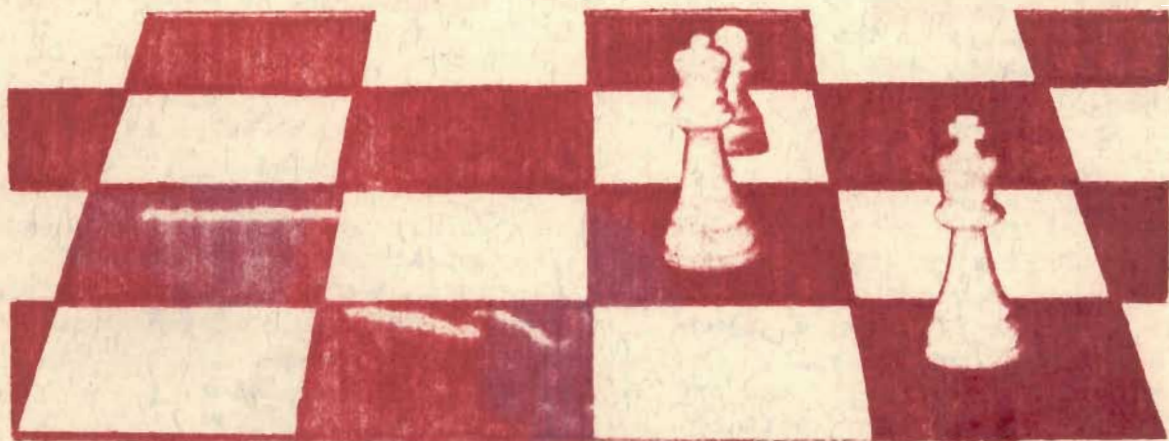


WASHINGTON

CHESS

Dec. 1957

LETTER



Christmas and a Happy New Year

121st ISSUE

Editor D. E. Wade
11023 25th N. E. Seattle, Wash.

Circulation R. R. Merk
1026 E. 71st. Seattle, Wash.

Publisher F. H. Weaver
501 Olympic Place Seattle, Wash.

EDITOR'S REPORT

Just a few odds and ends omitted: VIKTORS PUPOLS WINS AGAIN! According to reports seen in both Seattle newspapers, Vic scored 5-0 to win the open chess tournament played Nov. 23-24 in Portland, Oregon. This is written on Nov. 29th and the deadline is just descending! If you do not see the story about the Oregon Open in this issue, it missed the deadline. We are still in a hoping mood.

FRED HOWARD informs us the annual West Seattle Club Championship is now underway. West Seattle is following a good example set by the Seattle Chess Club last year - changing from a round-robin to a Swiss. Howard says we never complete these round-robins but the Swiss usually are finished up in apple pie order. First round winners are as follows: Defending champ GENE VUKONICH, MAX MAGE, CLYDE SCHMOYER, AL BENDER, and Woodpusher Champ FRED HOWARD.

West Seattle is having a nice turn out for their meetings on the 2nd & 4th Fridays of each month, with 16 to 18 at each meeting.

SEATTLE 6, AMSTERDAM 4

The postal chess match between 5-men teams of Amsterdam, Holland, and Seattle, which began in July of last year, has finally been concluded with a victory for Seattle. On first board, Wade scored 1½, and on second board Max Bader won both of his games to assure the final result. Weisscher drew one, Weaver drew two, and V.W. Bever had a win and a loss.

Ken R. Jones, champion of Nevada and Idaho, recently paid a visit to the Tri-City Club in Richland. In a simultaneous match, Mr. Jones scored 12 to 1. Jones won 2-0 over Groot and Cooper, scored 1-0 wins over Arbogast, Spencer, McHenry, Hogan, Brandt, McHenry Jr. and Gifford. He broke even, 1 to 1 with Hess.

Hess played Spencer a two game match and took over first place on the Tri-City Chess Club ladder.

MONROE REFORMATORY

We understand the supervisors of the Washington State Reformatory at Monroe, Wash. would welcome chess teams the same as at McNeil. Interested teams write to Mr. WALLIS THOEMKE, Supervisor, Box 777, Washington State Reformatory, Monroe. Monroe is not very far from Bothell which is much closer to Seattle than most towns.

JIM MCCORMICK REPORTS!

This is McCormick, W.C.F. New York reporter, reporting. I played in the Manhattan and Marshall Club Rapids - 1-9 in the Manhattan and 4-6 in the Marshall. It took Sherwin 90 plus moves to beat me.

Have beaten Saul Wachs, Abe Turner, and Artie Fuerstein in 5 minute chess. I won't tell you the final results, however. I have been playing with Westin, a Swedish Master quite frequently.

Abe Turner has appointed me his second for the forthcoming U. S. Championship Tournament. I'll send you some of the games from that event.

Jim's address is 38 Jefferson Street in New York City.

TELEVISION

A new category, CHESS, has made its appearance on the list of the television show "The \$64,000 Question", at 9 P.M. Tuesday evenings. Could be in preparation for a new contestant who knows all about chess.

BLOW TO B.C. CHESS

For reasons of "economy" the Vancouver Province has discontinued the excellent chess column by Frank Fillery.

PUPOLS WINS AGAIN TAKES OREGON OPEN

Forty-four players from Idaho, Washington, and Oregon competed at Portland in the 1957 Oregon Open. This is the largest tournament ever held in the Northwest.

VIKTORS PUPOLS of Seattle won the 1st place trophy with a 5-0 score. Tied for 2nd to 7th with 4-1 were VIESTURS SEGLINS of Seattle, IVARS DALBERGS of Portland, DR. A. A. MURRAY of Raymond, Wash., HAROLD HUGHART of Albany, Oregon, FRED BYRON of Milwaukie, Oregon, and DON W. JOHNSON of Portland, finishing in the order named on Median tie breaking. SEGLINS and DALBERGS were awarded 2nd and 3rd place trophies, respectively, while the Class B trophy was awarded to BOB WALKER of Portland, who had a $3\frac{1}{2}$ - $1\frac{1}{2}$ score. The Class C trophy went to DAVE GROENIG, $2\frac{1}{2}$ - $2\frac{1}{2}$, of Spokane. Participants ranged in age from the mid-teens to the mid-70's, and for many it was the 1st tournament competition.

In the nature of an experiment was a catering service to provide coffee, sandwiches, pies, soft drinks, and the like at nominal prices. Evidently, the experiment was a success from both the players' and the caterer's points of view, as the players seemed always to have some refreshment at their elbows.

The tournament, a five round Swiss, was held on November 23 and 24 at the Oregonian Hostess House auditorium and sponsored by the Portland Chess Club. ARTHUR DAKE was present to make the awards and to adjudicate unfinished games in the latter rounds.

Editor's note: Not enough credit can be given to the people who made this event possible. The promotor, DON W. JOHNSON, is deserving some kind of a medal for highly successful efforts. This should test the mettle of other chess promoters lest their efforts seem pale and crude in comparison.

Mr. Johnson sent the Chess Letter six games, two-page tournament table including not only the names, but the addresses, and the story of the tourney given above. We also received a large clipping with a good story of the event from the Portland Oregonian of Monday, November 25th.

Pupols defeated BUZ EDDY of Seattle, R. PINSON of Salem, Oregon, MAL SKARSTEN of Forest Grove, BOB WALKER of Portland and VIESTURS SEGLINS of Seattle. The top three, Pupols, Seglins, and Dalbergs are Latvians. Both Pupols and Seglins were a game ahead of the field with 4-0 when they met in the championship game. DALBERGS had been drawn by DUANE MEADOR in the second round and again held to only a draw by HUGHART in the fourth. MURRAY lost his only game to SEGLINS in the 4th round. HUGHART lost no games but suffered an opening round draw to C. H. STEWART of Boise, Idaho besides drawing DALBERGS. FRED BYRON lost his only game in the 3rd round when he lost to BOB WALKER. JOHNSON also lost his only game in the 3rd round, losing to SEGLINS.

DICK VANDENBURG of Boise, Idaho and editor of Idaho's Chess Quarterly says he will give us a few highlights we can publish next month. Also, we will give more games from this event next month as we lack time and space this month.

Of interest to our readers is this story of the tourney from the Oregonian.

'KILLER' FROM SEATTLE WINS OREGON OPEN CHESS TITLE

After two days of play during five grueling rounds, the winner of the annual Oregon Open Chess Tournament Sunday was declared to be Viktors Pupols, Seattle, who admitted that a chess champion must have the killer instinct.

National ratings don't have Viktors Pupols listed as a champion or a master. He will tell you he has won all but one of the major tournaments in the Pacific Northwest this year. That makes him winner of six and loser of one.

"I am the best player here," he said without a trace of modesty during the lull that followed his first match victory Saturday. He said it loud enough for most of those at the tournament to hear and protest if they cared. None did.

(continued on page 3)
-2-

Pupols, a University of Washington student at Seattle, is neither big nor particularly fierce, though he does appear to cut his own hair. So, you got the impression those who heard him believed him.

"His strength is far above his rating," said Don Johnson, chairman of the tournament, when asked if the boast was true.

Pupols himself explained the others were not being silent in fear of his killer instinct when he answered why he became so good. "You must have vanity and the killer instinct," he said. "The Russians have the killer instinct. That is what makes them so good. If a Russian loses it, then the commissars get their killer instincts working." And he laughed.

He's Latvian born, intense man of 23, a keen student of the game and aggressive. He has played chess since a small boy and said he finds great satisfaction in finding he can lick the other fellow.

You notice this when he plays as he makes careful notes on each move and he watches the board like a rube trying to beat the old shell game.

"A good player always must spend more time studying his moves," said Pupols. "He knows so much more the possibilities than the poor player. He can not assume the poor player doesn't know the possibilities. It's a lot like the game of bridge. You must always think what the other fellow is thinking first!"

For Pupols the tournament was as he stated it, "satisfaction of the ego." To others, like 70-year-old Horton Thompson of Kendrick, Idaho and C. H. Stewart of Boise, it was more like a two night turn around the cracker barrel.

"There are not many players around where I come from," said Stewart. "I have not had a game since I played a fellow from Portland last summer."

Changes in the game since he started playing about 60 years ago? "No changes in the game but the players are better!"

V. PUPOLS Alekhine's Def. V. SEGLINS

- | | |
|-----------|---------|
| 1. P-K4 | N-KB3 |
| 2. P-K5 | N-Q4 |
| 3. P-QB4 | N-N3 |
| 4. P-B5 | N-Q4 |
| 5. B-B4 | P-K3 |
| 6. N-QB3 | NxN |
| 7. QPxN | Q-R5 |
| 8. Q-Q4 | QxQ |
| 9. PxQ | N-B3 |
| 10 N-B3 | P-QN3 |
| 11 PxP | RPxP |
| 12 P-QR3 | B-N5ch. |
| 13 B-Q2 | BxBch. |
| 14 KxB | B-N2 |
| 15 QR-QB1 | N-R4 |
| 16 B-R2 | BxN |
| 17 PxB | P-QB3 |
| 18 K-Q3 | N-N2 |
| 19 KR-Q1 | K-K2 |
| 20 R-KN1 | P-N3 |
| 21 K-K3 | R-R4 |
| 22 KR-Q1 | KR-R1 |
| 23 K-Q3 | R-QN1 |
| 24 R-B3 | KR-QR1 |
| 25 K-B2 | P-QN4 |
| 26 B-N3 | N-Q1 |
| 27 P-B4 | R-QN1 |
| 28 R-R3 | P-R4 |
| 29 K-B3 | N-N2 |
| 30 K-N4 | R-R2 |
| 31 R-QB3 | N-R4 |
| 32 R-B2 | N-B5? |

Trying to win a draw has lost many a game. (Ed.)

- | | |
|----------|---------|
| 33 BxN | R-R5ch. |
| 34 K-N3 | RxB |
| 35 RxR | PxRch. |
| 36 K-R2 | R-N6 |
| 37 R-QB1 | R-R6? |

Black's possibilities were better if his King had been located on the Q-side. Here his last move amounts to a suicide attack. (Ed.)

- | | |
|-----------------------|------|
| 38 RxP | RxP |
| 39 P-R4 | RxP |
| 40 P-R5 | RxBP |
| 41 P-R6 | P-B3 |
| 42 P-R7 | PxP |
| 43 P-R8(Q) TOUCHDOWN! | |

Black played on a few more moves & then resigned.

Sorriest players are those who had to skip the fun at Portland including an editor we know quite well. Oh well, the WASHINGTON OPEN is just around the corner!

1957
OREGON OPEN CHESS TOURNAMENT

Place	Player	City	-1-	-2-	-3-	-4-	-5-	Score	Med.	Solk.	S.	B.
1.	Pupols, Viktors	Seattle	W34	W23	W11	W8	W2	5 - 0				
2.	Seglins, Viesturs	Seattle	W26	W19	W7	W4	L1	4 - 1	10.5			
3.	Dalbergs, Ivars	Portland	W13	D10	W9	D5	W15	4 - 1	10.0			
4.	Murray, Dr. A. A.	Raymond	W32	W17	W18	L2	W11	4 - 1	9.0			
5.	Hughart, Harold	Albany	D9	W22	W42	D3	W21	4 - 1	8.5			
6.	Byron, Fred	Milwaukie	W43	W28	L8	W19	W14	4 - 1	7.5			
7.	Johnson, Don W.	Portland	W20	W30	L2	W28	W12	4 - 1	7.0			
8.	Walker, Robert	Portland	W25	W15	W6	L1	D10	3 $\frac{1}{2}$ -1 $\frac{1}{2}$	10.5			
9.	Stewart, C. H.	Boise	D5	W24	L3	W20	W22	3 $\frac{1}{2}$ -1 $\frac{1}{2}$	9.0			
10.	Meador, Duane	Vancouver	W31	D3	W12	D21	D8	3 $\frac{1}{2}$ -1 $\frac{1}{2}$	8.5			
11.	Skarsten, Mal	Forest Grove	W21	W16	L1	W17	L4	3 - 2	10.0			
12.	Bell, J.	Portland	Wf44	W14	L10	W18	L7	3 - 2	9.5			
13.	Dolph, P.	Junction City	L3	W25	L14	W38	W31	3 - 2	7.5	13.0		
14.	Moore, Deane	Portland	W37	L12	W13	W33	L6	3 - 2	7.5	12.5	6.0	
15.	Makens, Tom	Seattle	W36	L8	W30	W29	L3	3 - 2	7.5	12.5	5.0	
16.	Zwoers, Gerrit	Seattle	W35	L11	D20	W24	D27	3 - 2	7.5	12.0		
17.	Baker, D. W.	Portland	W38	L4	W35	L11	W28	3 - 2	7.0			
18.	Tomlinson, M.	Portland	W42	W29	L4	L12	W33	3 - 2	6.5			
19.	Vandenburg, Richard	Boise	W39	L2	W23	L6	D26	2 $\frac{1}{2}$ -2 $\frac{1}{2}$	9.0			
20.	Feuerberg, G.	Portland	L7	W39	D16	L9	W29	2 $\frac{1}{2}$ -2 $\frac{1}{2}$	8.5			
21.	Harmon, Clark	Portland	L11	W40	W31	D10	L5	2 $\frac{1}{2}$ -2 $\frac{1}{2}$	8.0	13.0		
22.	Thompson, Horton	Kendrick	D24	L5	W43	W30	L9	2 $\frac{1}{2}$ -2 $\frac{1}{2}$	8.0	12.0		
23.	Pinson, R.	Salem	W27	L1	L19	W39	D25	2 $\frac{1}{2}$ -2 $\frac{1}{2}$	7.5	13.5		
24.	Hardin, R.	Portland	D22	L9	W38	L16	W36	2 $\frac{1}{2}$ -2 $\frac{1}{2}$	7.5	12.5		
25.	Groenig, David	Spokane	L8	L13	W40	W37	D23	2 $\frac{1}{2}$ -2 $\frac{1}{2}$	6.5			
26.	Bauer, Wayne	Gladstone	L2	L37	W34	W32	D19	2 $\frac{1}{2}$ -2 $\frac{1}{2}$	6.0	11.0		
27.	Gemar, Joseph	Kelso	L23	W32	L29	W41	D16	2 $\frac{1}{2}$ -2 $\frac{1}{2}$	6.0	9.5		
28.	Murray, R.	Centralia	W33	L6	W37	L7	L17	2 - 3	9.0			
29.	Wilson, J.	Portland	W40	L18	W27	L15	L20	2 - 3	8.0			
30.	Conway, Mike	Spokane	W41	L7	L15	L22	W37	2 - 3	7.5	12.0		
31.	Briher, Joseph	Cottage Grove	L10	W34	L21	Wf42	L13	2 - 3	7.5	11.0		
32.	Friedman, C.	Portland	L4	L27	Bye	L26	W39	2 - 3	6.0	10.0		
33.	Spatz, Sam	Cornelius	L28	W36	W41	L14	L18	2 - 3	6.0	9.5		
34.	Eddy, Buz	Seattle	L1	L31	L26	W43	W41	2 - 3	4.5			
35.	Hunt, E. E.	Vancouver	L16	D38	L17	W40	L24	1 $\frac{1}{2}$ -3 $\frac{1}{2}$	7.5			
36.	Everest, G.	Newberg	L15	L33	L39	Bye	D38	1 $\frac{1}{2}$ -3 $\frac{1}{2}$	5.0			
37.	Geary, C. T.	Eugene	L14	W26	L28	L25	L30	1 - 4	7.0	12.0		
38.	Poe, I. C.	Vancouver	L17	D35	L24	L13	D36	1 - 4	7.0	11.0		
39.	Brown, R.	Dundee, Oro.	L19	L20	W37	L23	L32	1 - 4	6.5			
40.	Dolph, R. C.	Salem	L29	L21	L25	L35	W43	1 - 4	6.0	8.5	0.0	
41.	Walker, M.	Newberg	L30	Bye	L33	L27	L34	1 - 4	6.0	8.5	0.0	
42.	Blums, Raimunds	Longview	L18	W43	L5	Lf21	--	1 - 4	5.0			
43.	Dolph, N. B.	Condon, Ore.	L6	L42	L22	L34	L40	0 - 5	5.5			
44.	Slade, D.	Lf	---	---	---	---	0 - 5	0.0			

Earlier in the year at the annual Puget Sound Open Tourney, IVARS DALBERGS ran away with that event and appeared head and shoulders above the rest of the contestants, including VIKTORS PUPOLS. Since that time, Pupols has won the Inland Empire Open, Montana Open, Seattle Club, tied with MCCORMICK for first in the Seattle Seafair Open, won the Tacoma Open, and the Oregon Open title is his 6th title in a row.

JOACHIM WINS THURSTON TITLE

CHARLES JOACHIM won the first Thurston County Chess Tournament held recently in Olympia. Charles, who also holds the Olympia championship, scored 6-0 to win by $1\frac{1}{2}$ points over his nearest rivals, WALT CONNER and CHESTER HARMESON. In last month's Chess Letter we published Joachim's win over Conner in what proved to be the title deciding game. Twenty-six players at one time or another played in the Swiss event. Some players entered late, so the tourney was not quite an orthodox Swiss, but Mr. Joachim, who also directed, likes to make everybody happy!

Place	Name	Score	-1-	-2-	-3-	-4-	-5-	-6-	Median	Solk.	Olympia Pts.	
											Before	After
1.	Charles Joachim	6 - 0	W8	W6	W3	W10	W2	W7	15.5	23.0	1721	1913
2.	Walt Conner	$4\frac{1}{2}$ - $1\frac{1}{2}$	W17	W4	W9	W7	L1	D3	15.0	23.0	1743	1920
3.	Chester Harmeson	$4\frac{1}{2}$ - $1\frac{1}{2}$	W22	W13	L1	W20	W4	D2	12.5	19.5	1731	1902
4.	Ellis Ayer	4 - 2	W14	L2	W8	W5	L3	W9	15.0	22.0	1698	1860
5.	Richard Pawley	4 - 2	L9	W14	W13	L4	W6	W23	12.0	17.0	1702	1858
6.	Dr. Waldo MacInnis	4 - 2	W21	L1	W18	W15	L5	W13	11.0	18.5	1680	1830
7.	Ted Davis	$3\frac{1}{2}$ - $2\frac{1}{2}$	W15	W18	W20	L2	D9	L1	12.0	19.5	1691	1832
8.	Ed Tveden	$3\frac{1}{2}$ - $2\frac{1}{2}$	L1	W21	L4	W24	D13	W15	10.5	17.5	1721	1856
9.	Harry Parmelee	3 - 3	W5	W17	L2	D14	D7	L4	14.0	20.5	1711	1837
10.	Ron Tabor	3 - 3	W19	L15	W25	L1	W11	L16	10.0	17.0	1500	1630
11.	Dale Wells	3 - 3	L13	W22	W19	L17	L10	W20	8.0	12.0	1658	1772
12.	Richard P. Gall	3 - 3	X	W23	W16	X	X	W26	1.0	3.5	1500	1608
13.	Phil Stymans	$2\frac{1}{2}$ - $3\frac{1}{2}$	W11	L3	L5	W25	D8	L6	14.5	20.0	1694	1793
14.	John MacKenzie	$2\frac{1}{2}$ - $3\frac{1}{2}$	L4	L5	W21	D9	L19	W18	11.0	16.5	1708	1801
15.	George Gates	$2\frac{1}{2}$ - $3\frac{1}{2}$	L7	W10	W24	L6	D23	L8	11.0	16.0	1500	1587
16.	Mrs. Pat Martin	$2\frac{1}{2}$ - $3\frac{1}{2}$	X	X	L12	W19	D18	W10	5.0	10.0	1500	1581
17.	Monroe Burnett	2 - 4	L2	L9	D22	W11	D20	L19	12.0	17.5	1610	1682
18.	John Booth	2 - 4	W20	L7	L6	D23	D16	L14	10.0	15.0	1666	1732
19.	Don McCuiston	2 - 4	L10	L20	L11	L16	W14	W17	10.0	14.5	1666	1726
20.	Jim Mons	$1\frac{1}{2}$ - $4\frac{1}{2}$	L18	W19	L7	L3	D17	L11	10.5	17.0	1520	1571
21.	Larry Moore	$1\frac{1}{2}$ - $4\frac{1}{2}$	L6	L8	L14	D22	D25	D24	8.0	13.0	1500	1542

Others were 22. Frank Lang, 23. Major Martin, 24. Hartley Krueger, 25. Walter Hughes, and 26. Jay Mowell. A host of forfeits and withdrawals were included with the scores of the bottom players.

This tournament was concluded at the end of October and just missed the deadline for publication in last month's Washington Chess Letter.

Regarding the Olympian Club Ratings on the far right of the above tournament table, one tournament point was worth six rating points. Final rank bonus points were also given with six points per place from the bottom. For example, Joachim was 26 places from the bottom and scored six wins. 6 times 26 equals 156, which was the number of points he added to his original Olympian Rating of 1721. 1721 plus 156 equals 1877. Joachim received six rating points for each tournament win or 6 times 6 equaling 36. Add 36 to the 1877 and you get his November 1st rating on the Olympian Club Ladder of 1913 as shown on the far right of the above table.

Although placing second in the tournament, WALT CONNER is still the highest ranking player in the club with 1920. Next is CHARLES JOACHIM with 1913 and 3rd is CHESTER HARMESON with 1902.

Of course, when a higher ranking player than any club member, such as VIKTORS PUPOLS, plays for the club's Puget Sound League team, he must be placed ahead of the others on the team.

DW

PUGET SOUND LEAGUE

BY WADE

Sunday, November 10th found teams of the Puget Sound League again locking horns and after the last wooden man was pushed, we find the following results: Kitsap 6, Seattle 4; Seattle Chess Center 7½, Tacoma 2½; West Seattle 8, McNeil 2 and the remaining struggle found Boeings and the Olympia Club struggling to a 5 to 5 tie. However, Boeings sacrificed a weaker player on first board so stronger players on lower boards would have a better chance. This was a clear violation of Rule Three, "The highest ranking player will play on first board, the second ranking player on second board, etc." In all fairness, we must award the match to Olympia.

KITSAP 6. SEATTLE 4.

Unable to find a winning combination for the second time, the defending champs were once again forced to taste the bitter dregs of defeat. Once again VIESTURS SEGLINS was the lone bright light for the Seattle Chess Club team. Unbeaten Kitsap was aided by the double wins of both JOHN NOURSE and DR. ALMOND.

<u>KITSAP COUNTY</u>	6.	<u>SEATTLE CLUB</u>	4.
Eugene Leininger	0	Viesturs Seglins	2.
John Nourse	2	Tom Makens	0
Dr. Almond	2	Allan McGregor	0
George Rehberg	1*	Maurice Henion	1
Chas. Magerkurth	1	John Garrott	1

* Rehberg and Henion battled to one long drawn game and agreed to call second game a draw because of the late hour.

CHESS CENTER 7½ TACOMA 2½

Once again the talent-loaded Chess Center team won by a wide margin. Tacoma countered with a far stronger lineup than lost to Olympia in the opening round but was no match for a team with such strong players as ULVESTAD, PATTERSON and CHAS. GRIFFITHS.

<u>SEATTLE CHESS CENTER</u>	7½	<u>TACOMA CLUB</u>	2½
Olaf Ulvestad	2	Vernon Holmes	0
G.S.G. Patterson	1	Charles Hewitt	1
Charles Griffiths	2	Les Coubrough	0
John O'Brien	2	S. Lockhart	0
Don Eilmes	½	D. Samson	1½

(Next Column)

WEST SEATTLE 8. MCNEIL 2.

West Seattle easily won its second match in a row to stay tied for the top rung of the League standings. All West Seattle needs to do to stay on top is win their next match. They play Chess Center next!

<u>WEST SEATTLE</u>	8.	<u>MCNEIL ISLAND</u>	2.
Gerrit Zweers	1*	Rod Unger	1
Eugene Vukonich	2	Tod Travis	0
Fred Howard	2	Claud Sweezey	0
Max Mage	2	John Parks	0
Ben Weisscher	1	Roy Hughes	1

* Zweers and Unger took too long on their first game draw and were unable to complete their second so called it drawn.

OLYMPIA 5. BOEINGS 5.

Boeings was unhappy when Pupols decided to play for Olympia. This was perfectly legal since he had played for no other team this season. Also, it was a foregone conclusion that he would be on first board. John Gell was the lamb sacrificed to Pupols so stronger players had easier going on lower boards. The match had a few surprises, however. WALT CONNER duplicated his win over MAX BADER on second board winning 1½-½ and MARTIN FASS upset the flu-ridden CHARLES JOACHIM also 1½-½ on third board.

<u>OLYMPIA CLUB</u>	5.	<u>BOEINGS CLUB</u>	5.
Viktors Pupols	2	John Gell	0
Walt Conner	1½	Max Bader	½
Chas. Joachim	½	Martin Fass	1½
Ellis Ayer	0	Ruppert Dorn	2
R. Pawley	1	Dale Bjornsen	1

TEAM STANDINGS

	W	L		W	L
West Seattle	2-0		Seattle Club	0-2	
Olympia Club	2-0		Tacoma Club	0-2	
Seattle Center	2-0		Boeings Club	0-2	
Kitsap County	2-0		McNeil Island	0-2	

KITSAP 8. MCNEIL 2.

The official score of the match between McNeil and Kitsap has been changed as Leininger obviously lost his second game to Unger leaving them tied 1-1.

GEORGE KOLTANOWSKI'S

"CHESS TEST"



Kolty has selected a game from the September Chess Letter for instruction on how to conduct the White side of the King's Indian Defense. Test your skill!!

Cover the game score with a card and lower it line by line. Whenever you have played a black move, stop and try to guess white's move, which will be on the next line. You can grade yourself by reference to the scoring table.

KING'S INDIAN DEFENSE The opening moves are: 1.P-Q4,N-KB3; 2.P-QB4, P-K3; 3. N-QB3, B-N5; 4. P-K3, O-O; 5. B-Q3, P-B4; 6. P-QR3, BxNch: 7. PxB, N-B3; From now on work out White's moves before you look at the next line.

- | | | |
|-----------------------|----------|--|
| 8. N-B3
...P-QN3 | 3 POINTS | The idea is to advance the King's pawn if Black does not play ...P-Q4. If you played 8. N-K2 you can also mark down 3 points, but if you chose 8PxP you lose 5 points because you triple your pawns and gain nothing in development. What is your move now? |
| 9. P-K4
...P-Q3 | 3 POINTS | Just like we told you. Black has done nothing to stop this move. He should have played 8...P-Q3 so that he could meet P-K4 with P-K4. If you played O-O you can mark down 2 points. |
| 10. P-K5
...PxP | 6 POINTS | No time like the present. The chase is on. If you still chose 10. O-O, only 1 point now. But if you played 10. P-Q5, take off 3 points for a bad move. |
| 11. PxP
...N-Q2 | 1 POINT | Natural continuation. If 11. NxP, deduct 2 points. |
| 12. BxPch
...KxB | 8 POINTS | It's do or die. An interesting combination that is quite common in the Colle opening. If 12. B-B4 or 12. Q-K2, you get nothing as you have then played P-K5 too soon, and are giving your opponent time to play P-KR3. |
| 13. N-N5ch
...K-N3 | 1 POINT | Again the natural continuation, otherwise why sacrifice the Bishop? |
| 14. Q-Q3ch
...P-B4 | 2 POINTS | Again a forced continuation. Now if 14...K-R3; or 14...K-R4; then 15. Q-R3ch leads to mate next move. If you played 14. Q-N4 (1 point) there might follow 14...N/2xP; 15. Q-N3, Q-Q6; 16. N-B3ch, K-R2; etc. |
| 15. Q-N3
...Q-K2 | 3 POINTS | Threatens 16. NxKPch winning the black Queen. Any other moves must lose points. We let you be the judge as to how many points you deserve to lose! If 15. PxP e.p., KxP; 16. Q-B3ch, K-K2; 17. QxN, N-K4!; 18. QxR, N-Q6ch; 19. K-K2, NxP; and the situation is not too clear. |
-

-
16. P-B4 3 POINTS Before proceeding with P-KR4, the King's pawn must
 ...R-R1 be protected. If you played 16. P-KR4 (1 point)
 there follows 16...P-B5; and Black saves himself.
-
17. P-KR4 2 POINTS White must continue sharply, otherwise the material
 ...R-R4 down is going to tell. If 17. Q-B3, B-N2; and White
 has lost time.
-
18. Q-B3 2 POINTS White must continue sharply, to justify his 12th.
-
19. P-N4 4 POINTS If the Rook goes to 19...R-R3?; 20. P-R5ch decides.
 ...PxP If 19...R/4-R1; 20. P-R5ch, K-R3; 21. N-B7ch, K-R2;
 (...QxN; 22. P-N5ch, K-R2; 23. P-N6ch etc.) 22.N-Q6,
 and then P-N5 with strong chances but no clear win.
-
20. Q-K4ch 2 POINTS (Also for 20. Q-Q3ch).
-
21. Q-R7ch mate No points for this obvious move.
-

NOW ADD UP YOUR POINTS

35-40	Expert
30-34	Class A
26-29	Class B
20-25	Class C

No need to repeat what you should do if you have less than 20 points!

MAGIC ON THE CHESSBOARD

KNIGHTS IN THE ENDING

Study by A.S. Gurvic

1st Prize Schachmati, 1955

White is to play and win in spite of the fact that both knights are "en-prise" (if Black is allowed to play ...R-B8ch).

- | | |
|-----------|------|
| 1. R-Q2ch | K-B1 |
| 2. N-R7ch | K-N1 |
| 3. N-B6ch | K-B2 |
| 4. N-B2 | |

The beginning of a deep-thought-out plan.

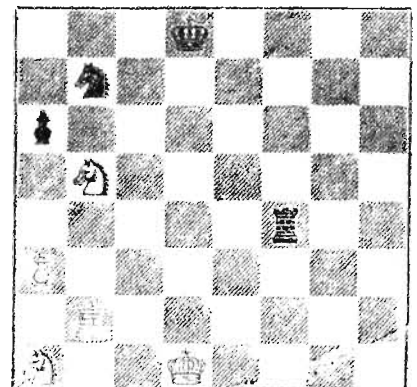
- | | |
|------------|------|
| 4. | KxN |
| 5. N-Q4ch | K-N3 |
| 6. R-N2ch | K-R2 |
| 7. N-B6ch | K-R1 |
| 8. R-N6: | R-B6 |
| 9. K-B2 | RxP |
| 10. K-N1!! | |

The finesse. Black is going to get into zugzwang.

- | | |
|--------------------|------|
| 10. | R-R5 |
| 11. K-N2 and wins. | |

The one Knight sacrifices itself on QB6 and the other comes from R1 to B2-Q4-B6 and takes its place in deadly fashion. A most curious work of art.

3k4
1n6
p7
1N6
5r2
P7
1R6
N2K4



WALLA

WALLA

The Walla Walla Valley Chess Club played a match at the Washington State Penitentiary in early November. The club did not do any better this time than on a previous visit. The match was played on 11 boards with two games being played at each board. However, NIGHTENGALE and RAY did not have time to play their second game.

The Penitentiary Team won by the score of $12\frac{1}{2}$ to $8\frac{1}{2}$ with KEN HARTWIG and TOM TURNER being the only Walla Walla Club players finishing with plus scores.

WALLA WALLA VALLEY CLUB	$8\frac{1}{2}$	WALLA WALLA	$12\frac{1}{2}$
		PENN.	
K. Hartwig	$1\frac{1}{2}$	Jacobs	$1\frac{1}{2}$
Nightengale	$\frac{1}{2}$	Ray	$\frac{1}{2}$
Tilletson	1	Erb	1
Turner	$1\frac{1}{2}$	Brchan	$1\frac{1}{2}$
Krapfel	1	Johnson	1
Bixler	1	Young	1
Hunter	0	Davies	2
Bowerman	1	Bivens	1
Anderson	0	Goodman	2
Bentley	1	Raine	1
Orr	0	Holohan	2

BELDON PEARSON, one of the club's best players, has been located. He isn't in the army yet, but since he is holding down two jobs, he hasn't had much time for chess.

By NEAL KING, Club Sec.

KITSAP

JOHN NOURSE writing about Kitsap's team in the Puget Sound League says, "It looks as though we have a very competent team. LEININGER is not expected to win all of his PSL games on top board against such players as ULVESTAD, SEGLINS, BADER, CONNER and HOLMES, but since there is so little to choose among the balance of our players (about 75 points between first and fifth board) we expect to put up a good fight, relying on our last 3 boards to bring in the winning points. After checking on our Puget Sound League match record for several years, it was found DR. ALMOND leads the team with a score of 20 wins to 10 losses. The rest of us were on the minus side with a team average for four of us of 102 games won and 100 lost."

"Kitsap", continued.

"With these statistics as a basis, it is felt that the Kitsap team should wind up somewhere in the first division. The basic weakness of Kitsap players has always been instability. The County Tmt this year was no exception as everyone beat each other, exactly as they did in all previous tournaments. The answer is possibly condition. When Doc Almond has an easy day at the clinic, he is notoriously hard to beat, and conversely, he is sometimes a very soft touch. However, we all suffer under our various conditions and this is one reason why we could do fairly well this season as Doc has a tough daily schedule but the rest of us are not under the strain we were in during previous years."

CHESS IN IDAHO

IDAHO LOSES ITS PRESIDENT! Bob Campbell, President of the Idaho Chess Association, has moved to Salt Lake City. Dick Vandenburg, Editor, will handle Idaho's chess business for the balance of year.

MATCH RESULTS. Boise with the black pieces and at home, was walloped $5\frac{1}{2}$ to $1\frac{1}{2}$ by Nampa. A return match at Nampa found Boise, with the white pieces, winning by a score of $4\frac{1}{2}$ to $2\frac{1}{2}$. The combined scores of the two matches favored Nampa 8 to 6, putting Nampa into the state finals while the defending champion Boise team was now eliminated from title consideration.

BOISE. C. H. Stewart and Dick Vandenburg top the club ladder with 1096. In third place is Wesley Jennings.

CANYON COUNTY. When Dr. David Groenig moved from Caldwell to Spokane in September, Canyon County lost its top player. C. E. Harris tops the Canyon County Club's ladder with 1111. Roy Parker is in second with 1056 closely followed by A. B. Ellis and John P. English. With the leaving of President Groenig, A. B. Ellis moved from Vice-President to President. Roy Parker is the club's Secretary.

RUPERT. The Rupert club reports good attendance. Larry Walton was elected President for the third year in a row and Darrrell Freeman was elected Vice-President and Treasurer.

1958

WASHINGTON OPEN

JANUARY 18-19

AT THE SEATTLE YMCA

FIRST ROUND AT

9 AM

A 5 ROUND SWISS

The Washington Open will take place at the Seattle YMCA on Saturday and Sunday, January 18th and 19th. This tournament will be 100% U.S.CF rated. It is to be a five-round Swiss with Median tie-breaking. Time limit will be 50 moves in two hours.

Only obvious endings will be adjudicated in order to protect the majority from stalling tactics of a minority. Other games will be declared drawn for pairing purposes and played when possible between rounds.

Entry fee will be \$3 plus a 25 cent rating fee for adults and \$2 plus a 25 cent rating fee for Juniors (under 19). Those paying the \$2 fee will be only eligible for a cash Junior prize.

First prize is guaranteed to be at least \$25. In the last big Seattle tournament, the Seafair, the co-winners each pocketed \$30.

Other cash prizes will be announced at the conclusion of the opening round of play.

First round 9 a.m. to 1 p.m. Saturday. Second round 1:30 p.m. to 5:30.

Third round 7 p.m. to 11 p.m.

Fourth round 8:30 a.m. Sunday. Final round starts at 1 p.m. Sunday.

SOLVERS' CONTEST

LAST MONTH

Our Northwest solvers met the challenge of Koltanowski's barn-burner with five perfect solutions from Hess, Ballantine, Bader, Joachim, Fass.

Among others, Bloomquist, Nourse, Oldham, and Dolph had good ideas, and should receive fractional credit, but they either did not give Black his best moves, thereby lost his Bishop (which is of course the main line threat that forces his King to R1 and allows White's real gimmick, the arrival of his King to give checkmate), or else they started with 1. B-B8, and ended up with a hope that the Black King could be chased to R1.

A solver must not only conduct the White attack brilliantly, but must also find the best defense for Black, at least find moves in which the danger is least apparent.

Ballantine's statement was most concise:

"White's material superiority is enough for a lengthy win unless Black can win (and keep) a piece. From this standpoint Black's first 5 moves are forced.

1. B-K2 K-N2 d.ch.
2. K-N2 B-Q5
3. N-N3 BxN
4. N-R5ch K-R1 (If ...K-B1, 5. B-N4ch)
5. N-B6 B-safe square
6. B-R6 P-N4

White now wins with K-B3-N4-B5-K6-Q7-B8 and B-N7

One of our readers questions how the position could occur in a game. In a problem the only requirement placed on its creator is that it be a possible position, irrespective of the likelihood of its occurring. However, we might speculate, in last month's endgame, that prior to the position shown, a white Pawn at R5 captured a black Pawn at N6, and the black King, from its B4, recaptured.

Correct solutions to the 2-mover were received from Oldham, Jaensch, Karch, Bader, Ballantine, Bloomquist, Fass, Dolph, King, and Hess.

1. R-Q1! Among the wrong tries:
1. Q-Q3, RxR
 1. N-KB5, NxR
 1. N-QB5, BxP

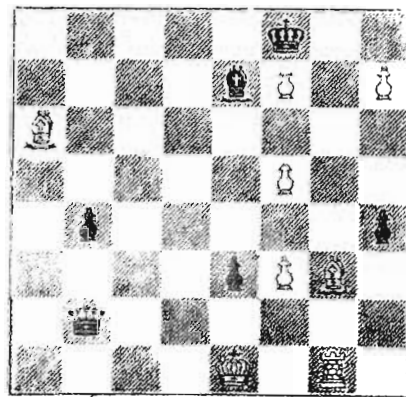
THIS MONTH

Koltanowski has sent an ending that he calls a "cute thing in which, - as is so often the case, the unexpected saves the day."

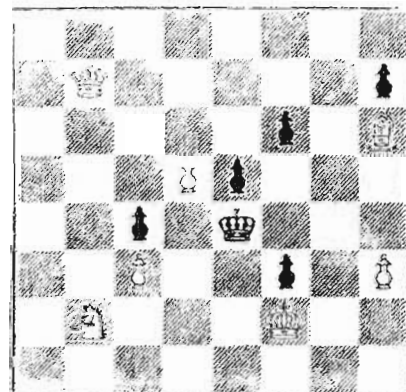
That may be a clue. We hope you don't think we're crazy enough to work on it for hours, when we can peek at the answer (and then set it up and play it out in disbelief).

We hope you will maintain the honor of the Northwest by solving it, and also the 2-mover.

SEND SOLUTIONS TO F.H. WEAVER, 501 OLYMPIC PLACE, SEATTLE 99, BEFORE DEC. 20.



WHITE TO PLAY AND WIN



WHITE TO PLAY AND MATE IN 2

- #1
- 5k2
 - 4bP1P
 - B7
 - 5P2
 - 1p5p
 - 4pPB1
 - 1q6
 - 4K1R1
- 8
- 1Q5p
 - 5p1B
 - 3Pp3
 - 2p1k3
 - 2P2p1P
 - 1N3K2
 - 8
- #2

ULVESTAD WINS BLINDFOLD SIMUL.

Tuesday evening, Nov. 12th, Seattle chess master OLAF ULVESTAD took on eight players simultaneously and won 7 to 1. Nothing remarkable about that you say? Well, it is when we report Olaf tackled these games with his back to the boards visualizing all eight games in his mind! About thirty chess fans watched the so-called "blindfold" match which started at 7:45 and finished almost 5 hours later.

The match, held at the Chess Center at 718 Pine Street, had DEANE MOORE from Portland, now attending school in Seattle, calling out the moves. Opponents were DICK PARSONS of Centralia, home on leave from the Air Force, DON LUTERS and RALPH KNAPP of Gig Harbor, WCF Vice-President MAX MAGE of West Seattle, ROBERT BRANSOM, MR. CARSTEN and MR. KEELER all of the Chess Center, and last, but certainly not least, MARTIN FASS, a player on the Boeings Club chess team. Fass was the spoiler winning the only game, Olaf conceding the defeat at about 1:30 a. m.

The Seattle Chess Center holds tournaments daily with up to four players in a tournament during the week and up to 8 players in a tournament on weekends. All of the middle of the week tournaments to be concluded on the same day started and substantial prizes go to the winners of every tournament. The hours of the Center are now 4 p.m. to midnight every day except Friday. That day the Chess Center is closed but Mr. Ulvestad is available by appointment.

At present a very strong tournament is going on at the Chess Center. Standings on Wednesday, November 20th were as follows:

G. S. G. Patterson	2½ - ½
Viktors Pupols	2½ - 1½
Russell Vellias	3½ - 2½
John O'Brien	2½ - 3½
Deane Moore	2 - 5

In passing, the score of the Pupols vs. Edberg match is still 3½-½ in favor of Pupols with Edberg being inactive of late.

Ulvestad is doing a splendid job of chess promoting with his work at Center.

JUNIOR CHESS

JOHN SCHROEDEL, WCL Junior Chess correspondent, reports the following column.

BRANDAL WINS W. SEATTLE HI TOURNAMENT

A single round-robin tourney was held the last few meetings at West Seattle High School to decide the club's champion player. Only active members were allowed entry and seven entered. WILLY BRANDAL, with 5-1, won the championship. Second went to ALBERT BENDER with 4-2. PHIL MOORMANN was third, also with 4-2. JOHN SCHROEDEL finished fourth with an even score of 3-3. In fifth place was BILL WILLENBERG also with a 3-3 score. BUZ EDDY was next with 1½-4½ and last was the only girl player in the event. JUDY SPENCER finished with a ½-5½ score. Old time chivalry appears dead at the West Seattle High School Chess Club!

Since BENDER and MOORMANN, SCHROEDEL and WILLENBERG paired with 4-2 and 3-3 respectively, tie-breaking games had to be played. BENDER defeated MOORMANN and JOHN SCHROEDEL won over WILLENBERG to win the higher placings. The actual tourney playing saw only one draw, that being in the SPENCER-EDDY game. This was a big upset. Eddy should have won but lately his chess has been quite negative. Other big upsets found SCHROEDEL handing BRANDAL his only loss and BUZ EDDY knocked BENDER out of a chance to win the title in his determined bid to win at least one game.

1. Brandal	XX	1	1	0	1	1	1	5 - 1
2. Bender	0	XX	1	1	1	0	1	4 - 2
3. Moormann	0	0	XX	1	1	1	1	4 - 2
4. Schroedel	1	0	0	XX	0	1	1	3 - 3
5. Willenberg	0	0	0	1	XX	1	1	3 - 3
6. Eddy	0	1	0	0	0	XX	½	1½ - 4½
7. Spencer	0	0	0	0	0	½	XX	½ - 5½

Tie-breakers found Bender over Moormann & Schroedel downing Willenberg.

WEST SEATTLE HIGH SCHOOL CHESS NEWS

When the high school's seven players visited the West Seattle (senior) club at High Point on Nov. 8th to join up, the old duffers up there were certainly surprised to see so many new players. The school players nearly doubled their number then present. Continued on next page)

(Junior Chess, concluded)

In a recent three-way simultaneous, or three players playing each other at the same time, SCHROEDEL WON with a $1\frac{1}{2}$ - $\frac{1}{2}$ score. PHIL MOORMANN placed 2nd with 1-1 and BUZ EDDY last with $\frac{1}{2}$ - $1\frac{1}{2}$. A draw was played by Eddy with Schroedel while Schroedel beat Moormann and Moormann won over Eddy.

SCHROEDEL and MOORMANN are playing a 500 game marathon match. The November 20th score found Moormann ahead 82 to 64 including six drawn games.

WEST SEATTLE HIGH SCHOOL LADDER 11/21

- | | |
|----------------------|-------------------|
| 1. Al Bender | 5. Buz Eddy |
| 2. John Schroedel | 6. Phil Moormann |
| 3. Willy Brandal | 7. Bill Willnberg |
| 4. Bruce McLoughlain | 8. Judy Spencer |

HIGHLINE NEWS

Highline High School Chess Club officers for this year include CHRIS MAP - JUS as President and CHRIS CALLIGAN the Vice-President. ALF HEMSTAD, school foot ball coach, is the chess club advisor and has been so for several years. A match has been arranged with West Seattle High School for the following Monday or Friday following the Thanksgiving holiday. Last season the schools played 2 matches and each won one.

ALF HEMSTAD, Highline High School chess advisor, has been indirectly quoted as saying - "I played on the Roosevelt High School Chess Team from 1938 to 1941. In 1949, Mr. WELCH, Highline faculty member, organized the first Highline vs. West Seattle matches. After he retired, we have kept up those matches."

Three years ago, Highline declared herself state high school chess champion because they defeated every team played through an open challenge in the WASHINGTON CHESS LETTER. When West Seattle won over Highline last year, it was the 1st time Highline had lost in some 7 years.

IMPORTANT NOTICE TO JUNIOR PLAYERS:

Because DR. PARKER has indicated the annual INLAND EMPIRE OPEN has been scheduled in Spokane for APRIL 19th and 20th, the STATE JUNIOR will be played MAY 3 - 4.

TOURNAMENT & PSL SCHEDULES

Sunday, Oct. 27th. Olympia $7\frac{1}{2}$, Tacoma $2\frac{1}{2}$; Chess Center $7\frac{1}{2}$, Boeings $2\frac{1}{2}$; West Seattle 6, Seattle Chess Club 4; Kitsap 8, McNeil Island 2.

Sunday, Nov. 10th. Olympia 5*, Boeings 5; Kitsap 6, Seattle 4; West Seattle 8, McNeil Island 2; Chess Center $7\frac{1}{2}$, Tacoma $2\frac{1}{2}$.
(* Olympia wins by forfeit. Illegal procedure by Boeings.)

OREGON OPEN, NOV. 23-24. (Won by PUPOLS.)

SUNDAY, DEC. 1st. Boeings vs. Seattle at Seattle Club, West Seattle at Chess Center, Tacoma at Kitsap, Olympia at McNeil.

SUNDAY, DEC. 15th. Kitsap vs. West Seattle at Seattle Chess Club, Seattle Chess Club at McNeil, Seattle Chess Center at Olympia and Boeings at Tacoma.

SUNDAY, JANUARY 5th. Chess Center at McNeil, Tacoma at Seattle Chess Club, West Seattle at Olympia, Boeings at Kitsap.

SATURDAY and SUNDAY, JANUARY 18-19. WASHINGTON OPEN TOURNAMENT.

SUNDAY, FEBRUARY 2nd. Olympia at Kitsap, Tacoma at McNeil, Boeings vs. West Seattle at the Seattle Chess Club, Seattle Chess Club at Seattle Chess Center.

SATURDAY and SUNDAY, FEBRUARY 8th and 9th, WASHINGTON STATE CHAMPIONSHIP INVITATIONAL ROUND-ROBIN.

SUNDAY, FEBRUARY 23rd. West Seattle at Tacoma, Boeings at McNeil, Seattle Club at Olympia, Kitsap at Seattle Chess Center.

SATURDAY and SUNDAY, MARCH 22nd and 23rd, PUGET SOUND OPEN.

SATURDAY and SUNDAY, APRIL 19th and 20th, INLAND EMPIRE OPEN IN SPOKANE.

SATURDAY and SUNDAY, MAY 3rd and 4th, WASHINGTON STATE JUNIOR (For players under 21 years of age.)

Details are forthcoming or may be given on another page of this issue regarding all tournaments.

The Editor

CHESS AROUND THE WORLD

LOS ANGELES

James B. Cross scored $9\frac{1}{2}$ - $\frac{1}{2}$ to win the Southern California Chess Championship. Robert Cross was second with 8-2, and third place was tied between Rojas, Rubin, and Yarmak.

NEW YORK

Bobby Fischer, the 14-year-old newly crowned U.S. Open champion, was acclaimed by chess periodicals and columnists for showing moral integrity by deciding to keep his promise to the British tournament at Hastings, but apparently changed his mind, because he is now listed as a competitor in the Rosenwald tournament which takes place at a conflicting date in New York. He is entitled to enter this tournament for the U.S. championship, and then a chance to play for the world title, because he won the open tournament, which took place after he had accepted the British invitation.

HUNGARY

The Hungarian championship was won by grandmaster Gedeon Barcza, who scored 10-3. Following with $8\frac{1}{2}$ - $4\frac{1}{2}$ were Benk and Bilek.

ICELAND

Paul Benko, an international master who held the Hungarian championship in 1948 at the age of 20, has escaped to the free world after playing in the Students' Team Tournament recently held in Iceland. He approached the U.S. Embassy at Reykjavik and asked for political asylum which was granted.

VENICE, ITALY

Bavaria defeated Italy in a 10-man double-round-robin, by a score of 13-7. Unzicker of Germany won one and drew one against Paoli, playing first board.

VANCOUVER, B.C.

After seven rounds of play, Elod Macskasy has a perfect score of 5-0, with two byes, in competition for the Vancouver City championship. His nearest rival, Don Murray, has 5-1.

LOS ANGELES

The U.S. Women's Championship ended in a tie between Gisela Gresser of New York, the defending title holder, and Sonja Graf Stevenson of Palm Springs, California. Both had scores of $9\frac{1}{2}$ - $1\frac{1}{2}$. Mrs. Stevenson had an imposing $9\frac{1}{2}$ - $\frac{1}{2}$ going into the last round but was defeated by Miss Mona Karff, who gained third place.

DALLAS, TEXAS

David Bronstein, one of the leading Russian contenders for the world's chess title, has accepted a bid to play in the Dallas International Chess Tournament in December. His appearance will depend on his getting a visa. Sammy Reshevsky of the U.S. has been trying for years to get a match with him, and will now have two games, in the double round robin between the world's outstanding players.



"I sure had you in hot water in that last game."

GAMES AND NEWS

BY DONEILMES

ALSO, LATEST PSL RESULTS

SEATTLE CHESS CENTER NEWS

The Seattle Chess Center has just released plans to sponsor a series of new tournaments to be started immediately. These new tournaments will be consisting of four, eight and sixteen players. Now you can even have a choice as to what size tournament you'd like to enter.

It seems from all indications in the past that the chessplayers are enjoying these tournaments. It sounds like fun and if you would like to obtain more information about this new series of tournaments, please contact Olaf Ulvestad at the Seattle Chess Center., 718 Pine Street.

Be sure and watch your next I.C. L. for the release of information in regard to a new and different chess display at the Chess Center. This will be something that all passerbys will be able to participate in.

The Chess Center has entered into the Puget Sound League Play and here is a game from one of their matches.

The game was played Oct. 11, 1957

Charles Griffiths	Mr. Coubrough
Seattle C. Center	Tacoma C Club

1. P-Q4	P-Q4
2. P-QB4	P-K3
3. N-KB3	N-KB3
4. B-N5	B-K2
5. F-K3	O-O
6. QN-Q2	P-KR3
7. B-R4	N-K5
8. BxB	QxB
9. Q-B2	NxN
10. QxN	N-Q2
11. B-Q3	PxP

12. BxP	P-QB3
13. O-O	N-N3
14. B-Q3	B-Q2
15. KR-B1	KR-Q
16. P-QN4	QR-B1
17. P-QR4	N-Q2
18. QR-N	Q-K1
19. N-K5	Q-K2
20. P-K4	N-B3
21. N-B4	B-K1
22. P-K5	N-Q4
23. N-Q6	R-N1
24. B-K4	B-Q2
25. P-N5	PxP
26. PxP	B-K1
27. BxN	PxB
28. Q-R2	P-QR3
29. PxP	PxP
30. QxRP	RxR
31. RxR	Q-Q2
32. P-R3	Q-B3
33. QxQ	BxQ
34. R-QB1	B-Q2
35. P-B4	P-N3
36. P-N4	P-R4
37. P-B5	PxNp
38. PxP(4)	PxP
39. PxP	B-K
40. R-B5	B-Q2
41. RxP	BxP
42. NxB	RxR
43. N-K7 ch	Resigns

LAST MINUTE, "DEADLINE" NEWS FLASH !

Kitsap's Puget Sound League entry pushed on to its third straight victory, pummeling Tacoma $7\frac{1}{2}-2\frac{1}{2}$. Winless Tacoma has lost all three of its matches by the same score.

<u>KITSAP COUNTY</u>	<u>7$\frac{1}{2}$</u>	<u>TACOMA CLUB</u>	<u>2$\frac{1}{2}$</u>
John Nourse	1	Chas. Hewitt	1
Eugene Leininger	1*	D. Samson	1*
Dr. Almond	2	Carl Carlson	0
George Rehberg	1 $\frac{1}{2}$	S. Lockhart	$\frac{1}{2}$
Chas. Hagerkurth	2	Wolover	0

* Two drawn games.

ENTER THE WASHINGTON OPEN TOURNAMENT, JAN.
18-19.

LATE NEWS FROM SPOKANE

We regret that this information was unable to reach us in time for the last Washington State Letter.

A surprising upset was staged, when the Spokane Chess Club defeated the Washington State Penitentiary Chess Team by a score of 11½ - 6½.

The State Penitentiary Team was believed to be very strong this year and Spokane did not have all of their strongest team members in the match, it was therefore surprising when the Spokane Chess Club won by such a margin.

CHESS MATCH OF SEPT. 22, 1957

<u>SPOKANE</u>		<u>W.S.P.</u>	
rnd.			
1.	Kromer 1 0	Jacobs	0 1
2.	Kittredge ½ 1	Ray	½ 0
3.	Parker 1 1	Brehan	0 0
4.	Conway 0 1	McGillivray	1 0
5.	Hartman ½ 0	Davies	½ 1
6.	Jansch 0 0	Johnson	1 1
7.	Schneider 1 1	Bivens	0 0
8.	Rose 1 1	Williams	0 0
9.	Barker ½ 1	Raine	½ 0

The final score was 11½ - 6½

A recent game from the Puget Sound League.

Albins Counter Gambit

Ulvestad	Holmes
1. P-Q4	P-Q4
2. P-QB4	P-K4
3. PxKP	P-Q5
4. N-KB3	N-QB3
5. P-QR3	B-KN5
6. B-B4	KN-K2
7. QN-Q2	N-N3
8. P-KN3	Q-K2
9. B-N2	O-O-O
10. Q-N3	P-B3
11. PxP	PxP
12. Q-Q3	QN-K4
13. BxN	NxB
14. NxN	QxN
15. Q-K4	QxQ
16. BxQ	B-R3

PLAY FOR YOUR CLUB IN THE PUGET SOUND LEAGUE MATCHES. SCHEDULE THIS ISSUE.

17	P-R3	KR-K1
18	PxB	BxN ch
19	KxB	RxB
20	RxP	RxNP
21.	R-KB7	P-Q6
22	PxP	R(5)-Q5
23	R-K1!	RxP ch
24	K-B2	R-Q7 ch
25	K-N3	RxBP
26	R(1)-K7	R-Q6 ch
27	K-R2	K-Q1
28	RxQBP	R(6)-Q6
29	RxNP	K-B1
30	P-B5	R-B7
31	P-B6	RxP
32	RxRP	K-N1
33	R(B7)-N7 ch	K-B1
34	R-R7	K-N1
35	R(QR7)-N7 ch	K-R1
36	R(N7)-KR7	R-Q7
37	R-B8 ch	R-Q1
38	RxR ch	KxR
39	P-R4	R-B5
40	K-N3	R-KN5
41	P-R5	RxP ch
42	K-B4	R-N5 ch
43	K-N5	R-N4 ch
44	K-N6	R-N5
45	P-R6	R-N5 ch
46	K-B5	RxP
47	P-R7	Resigns

ANOTHER LAST MINUTE "DEADLINE" STORY.

Poor, poor Seattle Chess Club! No one wants to play for the club in the Puget Sound League. Result: The club took another one on the chin, a 5½ to 4½ clipping by the Boeings up-setters. This was the third boating in three starts for the club forces, but the margin of defeat has always been small.

MAX BADER downed VIESTURS SEG-LINS in their first game but Seglins avenged the defeat in their second. DAN WADE enjoyed himself in a pair of games with MARTIN FASS and ALLAN MCGREGOR stymied DALE BJORNSON 1½-½. Below third board it was all Boeings as JOHN GELL and BILL GILLETTE each won a pair to cook the club's goose.

<u>BOEINGS CLUB</u>	5½	<u>SEATTLE CLUB</u>	4½
Max Bader	1	V. Seglins	1
Martin Fass	0	Dan Wade	2
D. Bjornson	½	A. McGregor	1½
John Gell	2	John Garrett	0
Wm. Gillette	2	John Ring	0

A TRANSLATION FROM THE RUSSIAN BY ROBERT A. KARCH

SFC Robert Karch continues the translation of an article from a Russian chess magazine in which L. Shamkovich dusts off the Ruy Lopez, Marshall attack, for further poking and prying into the standard position shown in the diagram. Previously, 12. P-KR3 was pursued to a conclusion that Black gets a strong attack. (See the Nov. C.L.)

PART II

The moves 12. P-Q4, B-Q3; 13. R-K2, bring us to the position discussed herein.

With 13. R-K2 White defends the KB2 square beforehand, and the move 13.... N-N5 now seems to be a blank shot after 14. P-KR3, Q-R5; 15. N-Q2, B-N2; 16. N-B1. This analysis leads the opening manuals to the opinion that after the move 13. R-K2, Black's attack is repulsed.

In the game Hohlovkin-Havski, in the XVI All-Russian Championship, 1956, a new continuation to 13. R-K2 was tried with 13. ...N-R4. The idea of this move is to prepare direct attack by way of ...Q-R5, since the Knight on KR4 controls the squares KB5 and KN6 for Black.

The threatened invasion of the black Knight to KB5 at a convenient time (after 14. N-Q2 for example) gains significantly in strength because of the position of the Rook on K2. The problem for White is rapid development of pieces on the Queen side by means of 14. B-K3, or 14. N-Q2.

(a) 14. B-K3, B-N2; 15. N-Q2, K-R.

(b) 14. N-Q2, N-B5; 15. R-K3, Q-N4; 16. R-N3, Q-K2! compels White to return the Rook, because after 17. K-B there follows 17..B-KB4! with great strength. On 17. K-R, B-N2; and on 17 R-K3, Q-N4. The previously mentioned game Hohlovkin-Bavski went to this position and White attempted to repulse Black's onslaught with 18. Q-B, and then after 18. ...B-N2?; 19. N-K4, Q-N3; 20 NxP!, BxP; 21. R-N3, BxQ; 22. BxN!, Q-R4, 23. B-K5, White has advantage.

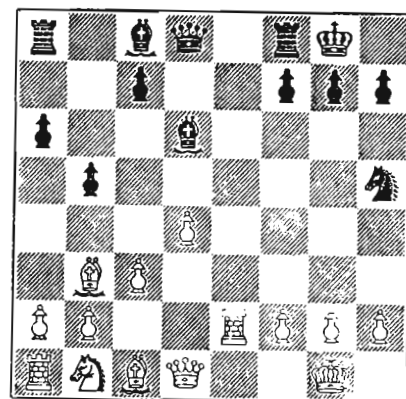
Another continuation of the attack with 18. ...N-R6ch; 19. K-R, Q-B5; 20. N-B3, B-KN5; does not succeed because of 21. N-K5!

Deserving attention is 18. ...Q-R5; with threat of mate. On 19. N-B3, B-N2 with threat of BxN, and if 20. P-KR3, NxPch.

The basic conception for Black is shown in the score below the diagram.

The move 20. P-B3, instead of N-K4 is poor because of 20. ...BxRP; 21. PxB, NxPch; 22. K-N2 N-B5ch; 23. K-B2, Q-R5; 24. K-N, N-R6ch; and Black wins.

It is therefore apparent that after 14. N-Q2, N-B5 gives Black an initiative that compensates for the Pawn sacrifice.



AFTER 13. N-R4

14 N-Q2	N-B5
15 R-K3	Q-N4
16 R-N3	Q-K2
17 R-K3	Q-N4
18 Q-B	Q-R5
19 P-KR3	B-KN5!
20 N-K4	N-K7ch
21 K-R	B-B5!

POSTAL CHESS

11/1,	56B-4B Haynes	1	Adamson	0	4	11/20	57B-7A Hall	1	Sawyer	0	46
	56A-5A Parsons	1	Parker	0	6		57B-7A Gemar	1	Sawyer	0	30
	56A-5B Parsons	1	Parker	0	6		57B-7A Scripps	1	Sawyer	0	28
	55 CH-B Wade	1	Skarsten	0	24		57B-7A Laine	1	Sawyer	0	6
	57B-6B Mills	1	Hall	0	26		57B-7B Hall	1	Sawyer	0	46
11/3	57B-9A Roberts,D1	Moorman	0	22			57B-7B Gemar	1	Sawyer	0	30
	Fredstrom 1	"	0	50			57B-7B Scripps	1	Sawyer	0	28
	Benson 1	Moorman	0	30			57B-7B Laine	1	Sawyer	0	6
	Litke 1	Moorman	0	50			57A-4A Roberts,H	1	Howard	0	58
	57B-9B Roberts,D	1	Moorman	0	22		57A-4B Roberts,H	1	Howard	0	58
	Fredstrom 1	Moorman	0	50			56A-6A Howard	1	Parsons	0	84
	Benson 1	Moorman	0	30			56A-6A Cairncross	1	Parsons	0	98
	Litke 1	Moorman	0	50			56A-6A Woodward	1	Parsons	0	68
11/5	57A-2A Knapp	1	Skarsten	0	50		56A-6B Howard	1	Parsons	0	84
11/7	56B-9A Phillips	1	Gemar	0	28		56A-6B Cairncross	1	Parsons	0	98
	56B-9B Phillips	1	Waldron	0	2		56A-6B Woodward	1	Parsons	0	68
	55B-4A Parsons	1	Waldron	0	0	11/20	56A-6A Carter	1	Parsons	0	78
	56B-4A Adamson	1	Miltmore	0	40		56A-6B Carter	1	Parsons	0	78
	56B-4A Adamson	1	Squire	0	84		57A-2B Bever	1	Coubrough	0	84
	56B-4B Adamson	1	Squire	0	84		57B-4B Hall	1	Finlay	0	36
11/8	57B-4A Eilmes	1	Finlay	0	44	11/22	57A-3A Weaver	1	Husby	0	8
11/9	56B-10B Laine	1	VanNatta	0	52	11/23	55B-5A Parsons	1	Waynor	0	24
11/10	56B-10B Laine	1	Merk	0	49		56B-3A Smith	1	McBride	0	14
11/11	57B-5A Blums	1	Mills	0	88		56B-3B Smith	1	McBride	0	14
	57B-5B Blums	1	Mills	0	88	11/25	56B-1B Skoglund	$\frac{1}{2}$	Youngman	$\frac{1}{2}$	18
	57A-3A Carter	1	Bever	0	32		56B-1B Laine	1	Youngman	0	16
11/12	56B-2B Parsons	1	Skarsten	0	24	11/29	56B-8A Watson	1	Hamilton	0	64
	57A-1B Skarsten	1	Carter	0	70		56B-8A Mills	1	Watson	0	26
	57A-1A Howard	1	R.Edberg	0	70		56B-8B Watson	1	Hamilton	0	64
	57A-1B Howard	1	R.Edberg	0	70		56B-8B Mills	1	Watson	0	26
11/19	57A-3B Bever	1	Husby	0	60						

Nov. report 57B-1A Bennett 1 Gordon 0 should be Gordon 1, Bennett 0, points 34.
The rating is corrected this month.

	56A-5A	56A-5B	<u>Sections Completed</u>	56A-6A	56A-6B
Parsons	x 1 1 1 1	x 1 1 1 1	8	Woodward	x 1 1 1 1 8
Bever	0 x 0 1 1	0 x 1 1 1	5	Carter	0 x 1 1 1 6
Husby	0 0 x 1 1	0 0 x 1 1	4	Cairncross	0 0 x 1 1 4
Parker	0 0 0 x 1	0 0 0 x 1	2	Howard	0 0 0 x 1 2
Baron	0 0 0 0 x	0 0 0 0 x	0	Parsons	0 0 0 0 x 0
	55B-4A	55B-4B		55B-5A	55B-5B
Parsons	x 0 1 1 1	x 1 1 1 1	7	Parsons	x 1 1 1 1 8
Phillips	1 x 1 1 1	0 x 0 0 1	5	Brookshire	0 x $\frac{1}{2}$ 1 1 4 $\frac{1}{2}$
Brook	0 0 x 1 1	0 1 x 1 1	5	Spencer	0 $\frac{1}{2}$ x $\frac{1}{2}$ 1 4
Lyberger	0 0 0 x 1	0 1 0 x 1	3	Smith	0 0 $\frac{1}{2}$ x 1 2 $\frac{1}{2}$
Waldron	0 0 0 0 x	0 0 0 0 x	0	Waynor	0 0 0 0 x 1
	56B-4A	56B-4B		56B-1A	56B-1B
Hamilton	x 1 1 1 1	x $\frac{1}{2}$ 1 1 1	7 $\frac{1}{2}$	A.Y.Edberg	x 1 1 $\frac{1}{2}$ 1 6 $\frac{1}{2}$
Haynes	0 x 1 1 1	$\frac{1}{2}$ x 1 1 1	6 $\frac{1}{2}$	Laine	0 x 0 1 0 1 4
Adamson	0 0 x 1 1	0 0 x 1 0	3	Squire	0 1 x 0 0 3
Squire	0 0 0 x 1	0 0 0 x 1	2	Skoglund	$\frac{1}{2}$ 0 1 x 0 3 $\frac{1}{2}$
Miltmore	0 0 0 0 x	0 0 1 0 x	1	Youngman	0 1 1 1 x 3 $\frac{1}{2}$
	56B-8A	56B-8B			
Mills	x 0 1 1 1	x 1 1 1 1	7	Dick Parsons	advises that he is being transferred to Germany and for that reason feels that he should resign all of his unfinished games. This results in his rating going way down. Good luck Dick, we shall hope to hear from you from time to time and hope to have you with us again in postal chess.
Spatz	1 x 1 1 1	0 x 1 0 1	6		
Watson	0 0 x 1 1	0 0 x 1 1	4		
Hamilton	0 0 0 x 1	0 1 0 x 1	3		
Miltmore	0 0 0 0 x	0 0 0 0 x	0		

Our Postal Chess tournaments are forming all of the time. Sections consist of 5 players. Each player plays two games with each of the other four opponents.

Entry fee is only 50¢ a section.

Our players are divided into two divisions, "A" and "B". You decide which division you want to enter. The "A" Division is for the more advanced players.

Send entry fee of 50¢ to
 R. R. Merk
 Postal Chess Director
 1026 E 71
 Seattle 15, Wash.

POSTAL CHESS RATINGS

"A" Division		"B" Division	
Weisscher	1852	Roberts, Don	1382
Weaver	1824	Scripps	1336
Wade	1779	Benson	1318
Woodward	1772	Gemar	1316
Carter	1698	Lyberger	1262
Coubrough	1671	McDonald	1252
Howard	1648	Haynes	1242
Mage	1601	Bowerman	1239
Kaffenberger	1558	Edberg, A.	1220
Spetz	1549	Hall	1212
Phillips	1533	Rogers	1210
Cairncross	1530	Eilmes	1198
Knapp	1523	Smith	1197
Roberts, H.	1516	Blums	1176
Laine	1515	Tresidder	1162
Bever	1507	Kuvara	1150
Dickson	1491	Fredstrom	1150
Skarsten	1475	Litke	1150
Luters	1472	Nichols	1149
Edberg, R.	1394	Lee	1140
Husby	1388	Watson	1136
Merk	1379	Spencer	1133
Van Natta	1358	Bemis	1127
Mills	1349	Youngman	1118
Parsons	1187	Hamilton	1077
		Bennett	1067
		Raleigh	1059
		Abrahamson	1050
		Benoit	1050
		Cooper	1050
		Devenere	1050
		Guevara	1050
		Pifley	1050
		Schroedel	1050
		Sawyer	1050
		Gifford	1050
		Pierce	1039
		Waldron	1020
		Aldridge	1010
		Finlay	1008
		Skoglund	999
		Adamson	985
		Miller	946
		Moorman	754

WASHINGTON CHESS LETTER
 1026 E 71st. Street
 Seattle 15, Wash

Return postage guaranteed
 Form 3547 requested.

B. B. Strachan
 5103 N.E. 15 Ave
 Portland 11, Ore.
 4/58

