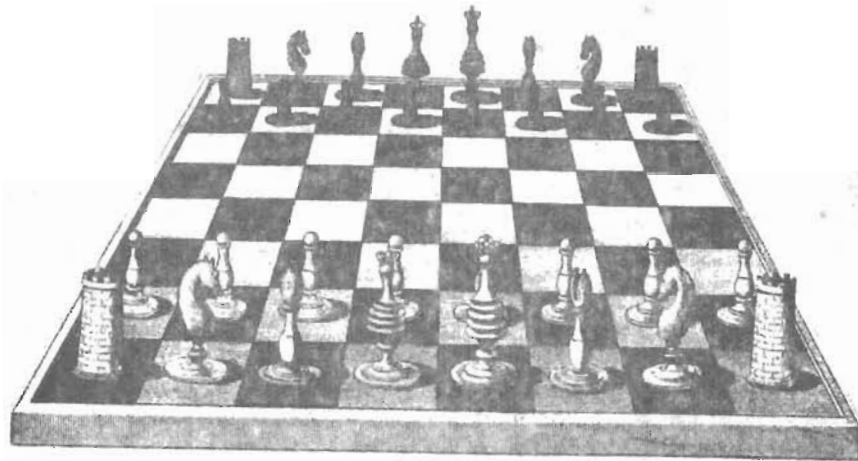


WASHINGTON

# CHESS

LETTER

JULY  
1962



# WASHINGTON CHESS LETTER

NUMBER 176

EDITOR-PUBLISHER Daniel E. Wade  
11030 Chelsea Place N. E.  
Seattle 55, Washington

CIRCULATION & POSTAL DIR. R. R. Merk  
1026 N. E. 71st. Street  
Seattle 15, Washington

TREASURER F. H. Weaver  
501 Olympic Place  
Seattle 99, Washington

GAMES EDITOR Dick Parsons  
2328 10th Ave. East  
Seattle 2, Washington

RATINGS DIRECTOR Jim Montgomery  
1329 S. W. 172nd. St.  
Seattle 66, Washington

FOR \$2 - 12 months of the Washington  
Chess Letter. Send your \$2 to R. R.  
Merk, 1026 N. E. 71st Street, Seattle  
15, Washington.

## LAST CALL FOR ANNUAL SEATTLE SEAFAIR!

See you in the Colman Room at the  
Seattle Y, 4th and Madison St., at 9 a.m.  
Saturday, July 28th. A six round Swiss,  
three rounds Saturday and three on Sun -  
day.

Registration 9-10 a.m. First round  
starts at 10. Entry fee is \$3.50 (less  
50¢ if WCF member) or \$2.50 (less 50¢ if  
WCF member) if you are under 21.

50 moves in two hours per player.  
Median tie-breaking with a secondary Sol-  
koff tie-breaking. A northwest rated ev-  
ent. Al Livingston tournament director.

## NO NEWS IS NOT ALWAYS GOOD NEWS!

No news from The Dalles yet concern-  
ing the class tournaments held there. Pro-  
moters owe it to those who participated to  
get their tournaments publicized. Also,  
it cannot be rated until we get the story.

I DIDN'T LOSE MY LAST ROUND GAME - I DREW!

Don Seiter drew his game with Tim Net-  
tleton in the last round of the Puget Sound  
Open. He did not lose as was recorded. So  
Tim Nettleton's score was not 4-2 but  $3\frac{1}{2}$ -2 $\frac{1}{2}$   
and Seiter's score was not 3-3 but  $3\frac{1}{2}$ -2 $\frac{1}{2}$ .

The error was spotted in time to be cor-  
rected for our Northwest ratings but not for  
the USCF ratings.

## MONEY REPORT ON WCF CLASS TOURNEY HELD IN SEATTLE JULY 7 - 8.

Gross receipts \$128.00 Expenses totaled  
\$42.00 leaving \$86.00 for prizes. Under  
expenses we have room rent \$20, publicity  
\$12 and WCF fund \$10. Division of prize  
money given with story of tournament on  
another page.

## LATE NATIONAL CHESS NEWS

PAL BENKO flew from Curacao to Wash-  
ington D. C., won the 10 round Eastern Op-  
en with  $9\frac{1}{2}$ - $\frac{1}{2}$  against 164 from 18 states,  
including 10 masters, drawing only against  
Dr. K. Burger, who was the runner-up.

International master ROBERT BYRNE won  
the Western Open in Milwaukee. 145 played.

## WHERE TO PLAY CHESS

All northwest chess clubs please let  
RUSSELL W. MILLER know your meeting time  
and location. This information will app-  
ear in this magazine and help your club.

Write to Russell W. Miller, P.O. Box  
A, Chelan, Washington.

## COMING EVENTS

Sept. 1-2-3 Century 21 World Fair Open.  
At World Fair grounds in Seattle, Wash.

Sept. 8 - 9 1962 Oregon Open held in  
Portland, Oregon.

Sept. 9 - Annual Washington State versus  
British Columbia International Match at  
Seven Cedars Pavilion on highway 99 one  
mile north of Mount Vernon, Washington.

Oct. 6 - 7 Northwest Washington Open at  
Bellingham. Name of event changed to  
PEACE ARCE OPEN. Details next month.

Short wave sender who plays chess - get  
in touch with JACK NOURSE, The address  
is Rt. 2, Box 2482, Bainbridge Island.

# WORLD FAIR TOURNEY

## SEPT. 1-2-3

The World Fair International Chess Tournament will be held in the fair grounds in the international mall area on Saturday, Sunday and Monday September 1, 2, and 3. Play will be under an open cement umbrella area 20 feet out from the wall of the India Pavilion. This is symbolic of chess beginnings as India was the cradle of the royal game.

This tournament will be split into two groups. Group one will be USCF rated. Entry fee is \$5.00. If you are not a member of the USCF (United States Chess Federation) you must become a member which will cost an additional \$5. Group two will be northwest rated and cost only \$2 to enter. No player with a rating over 1900 is eligible to play in group two. This group is open only to players with ratings 1900 and under and to players without ratings.

Both groups will be eight round Swiss events with three rounds Saturday, three rounds Sunday, and two rounds Monday (Labor Day). 45 moves in two hours per player with a secondary time control of 25 moves in one hour. Adjournment after four hours. Median tie-breaking with a secondary Solkoff tie-breaking.

Money and trophies for first, second, and third in group one. Also the possibility of other prizes in the form of space needle lighters mounted on wood with a metal side plaque. Prizes in group two will all be trophies.

Registration starts at 9 A. M. Saturday, September 1st. First round begins at 10 A. M. and adjourns at 2 P. M. Second round starts at 2:30 and adjourns at 6:30. Third round starts at 7 P. M. Played to conclusion.

Sunday's play starts at 9:30 A. M. The fourth round adjourns at 1:30 P. M. 2 P. M. is the starting time for round five. Adjournment at 6 P. M. Round six starts at 6:30 P. M. and is played to conclusion.

Round seven starts at 9:30 Monday morning. Round eight starts as soon as all games in previous rounds have been completed. Time given for start of final round is 4 P. M.

Al Livingston will direct group one and George Priebe will direct group two.

Advance registration will be necessary and must be received by the Washington Chess Federation Treasurer, Mr. F. H. WEAVER, 501 Olympic Place, Seattle 99, Wash. by or before August 25th. This will give the Federation time to send back credentials which will include your gate pass for the first day. Each player must play in all games scheduled to be eligible for a gate pass each following day. Late registration can be given by phone or mail but the player will have to pay his or her way through the gate at the fair.

Score sheets will be printed and other physical needs of the tournament will be handled by the World's Fair Special Events Department. Donations to help swell the tournament prize fund will be appreciated. Send to R. R. Merk, 1026 N. E. 71st. Street, Seattle 15, Washington.

## INTERNATIONAL

The annual International match with British Columbia will be played at Seven Cedars Pavilion, one mile north of Mount Vernon on highway 99, the Sunday following the World Fair Tournament. Sunday, September 9th at noon Day Light Savings Time or one P. M. Pacific Standard Time. This is still tentative but a strong possibility.

# BISGUIER SIMULTANEOUS

S P E C I A L N O R T H W E S T E V E N T S

International Grandmaster Arthur Bisguier

Simultaneous Chess Exhibitions [40 boards] and Chess Lectures

SEATTLE : August 3rd - Friday Evening Event

TACOMA : August 4th - All-day Saturday Event

Admission: [Each event] Spectators 50¢; Players \$2.00.

Cash Prizes to all who beat the Grandmaster! Certificates of Achievement to all who get a draw! Consolation letter if you get mated in less than 20 moves!

Play in both events! Any good player has a chance to win! It's easy!... just catch the Grandmaster in a middle-game slip!...then fight to hold your advantage! A lifetime memory whether you win, lose, or draw!

\* \* \* \* \*

In Seattle: 7 P. M. First floor room at Y. M. C. A. Bring men and boards.  
NOTICE! Because of Y. M. C. A. rules, spectators cannot be charged.

At Tacoma: August 4th - Fircrest Community Center - All-day Event.

Morning and Afternoon: Club matches, 5-man teams or less. All games between USCF members will be USCF rated. Match play will start at 9:30 a.m. and 2:00 p.m. Evening simultaneous play at 7:00 p.m. During the afternoon Mr. Bisguier will analyze some Bobby Fischer games, play some skittles chess, and hold a brief Chess Symposium with Northwest chess promoters.

Mr. Bisguier was Bobby Fischer's official second at Curacao. At the Seattle event he will tell about "Personalities at Curacao."

Cash prize or prizes will be half of all admissions collected at both events in excess of Mr. Bisguier's fee. If more than one player defeats the Grandmaster, the prize money for both events will be combined and divided equally among the victors. A prize fund of \$30 is guaranteed regardless of admissions.

Bisguier's credentials: United States Champion from 1954-1957, twice U. S. Junior Champion, three times U. S. Open Champion, 1954 Pan American Champion, member of U. S. team in International Team Championships at Helsinki in 1952, Munich in 1958 and Leipzig in 1960. He was Bobby Fischer's second at Curacao last month.

## NATIONAL SPOTLIGHT IS ON US

With the Puget Sound Open a big success followed by Century 21 International Open, the eyes of everybody but Texas are upon us. Even a few Texans might come. With the USCF on a big membership drive it suddenly looks like the brightest prospects for rapid growth are in the Pacific Northwest. That's the way it looks to the pros of chess promotion. USCF President Fred Cramer devoted almost all of his last chess leaders' bulletin to the Puget Sound Open. The reason the pros think we can pull off a chess boom is because we've got a strong organization boasting the nation's best regional chess magazine. They are absolutely right! Northwest chess is going to boom!

It should be a matter of regional pride for every chess player in the Northwest to support Century 21 and the special appearance of Arthur Bisguier! Following the sensational results of Puget Sound it will clinch national respect for us. We'll be in position to get what we want like for instance the U.S. Open!

One thing we're after hot and heavy is a monthly report of USCF ratings. This will be a special report for tournament promotion. We want to publish frequent USCF lists for British Columbia, Washington, Oregon, Idaho and Montana. Dick Vandenburg, Al Livingston, and Don Liljenquist are writing letters demanding this service. We think we're going to get it.

## USCF OR NORTHWEST RATINGS

Some ludicrous prize awards came out of the Puget Sound. Dick Parsons won the Class C award. Dan Wade won his third clock of recent tournaments, but Eilmes came forth with a 1959 rating proving he should have won it. Eilmes also observes quite accurately that Northwest ratings are superior to USCF ones for running a fair tournament. But...if Northwest tournaments of the past year had all been USCF rated, what then?

We can keep our ratings diffused and mixed up by promoting half USCF and half Northwest ratings, or we can forget USCF and revert to purely regional ratings.

There is another alternative. We can make USCF and regional ratings one and the same thing by promoting USCF events exclusively.

## STRENGTH AT ALL LEVELS

If we want chess to be strong in the Northwest, we've got to build strength at all levels. Our chess clubs have to be strong; our regional organization has to be active and strong; and our affiliation with national chess has to be solid. Anything less is a chink that ought to be repaired immediately.

The Tacoma Chess Club which is rapidly building into one of the best organized clubs in Washington is now raising its dues from \$5 to \$12 per year. The reason is simple: its members want to be solid at all three affiliate levels. A new member pays \$1 per month. After three months if he remains active, the club pays his Pacific Northwest dues. In nine months, he automatically becomes a member of USCF. By then he is ready for tournament competition. If he wants to pay dues in advance, he becomes a member of all three affiliations immediately.

Tacoma Club members are now playing weekly USCF rated match and tournament games.

\* \* \* \* \*

## BISGUIER WILL HELP US

When Arthur Bisguier comes let's impress him with our best manners, our best turnout, and our 40 strongest boards. We want him to see our true potential. Remember that he'll take a report on what we're like back to New York three weeks before the Century 21! We want him to tell other grandmasters they should come to the Pacific Northwest!



# SUTTLES, MONTGOMERY, LYONS WIN CLASS TOURNAMENTS - 56 PLAY

Fifty six players turned out for the annual Washington Chess Federation class tournament held July 7 - 8 at the Seattle YMCA. Eight entered the Class "A" event and the "B" and "C" sections each attracted 24 players.

DUNCAN SUTTLES of Vancouver, B. C. won the Class "A" with 4-1, winning three and allowing two draws. Going into the fifth and final round Suttles was a full point ahead of three players, DARYL DELANEY, PETER O'GORMAN, and COLIN AYKROYD. All three of these won their final games while Suttles, needing only a draw to win the tournament, got it against DON SEITER. Because of the small turnout for this section, Suttles got only \$14 1st prize money while the three runners-up players had to split \$8 three ways.

JIM MONTGOMERY of Seattle won the Class "B" event with  $4\frac{1}{2}-1\frac{1}{2}$ . Jim needed only a draw against FRED M. HOWARD in the last round to win the tournament and got it. Howard would have won the tournament if he could have won that last round game. Since he did not, he finished second. LYMAN T. JOHNSTON and KEN DART, both of Everett, equalled Howard's 4-1 score but finished third and fourth on Solkoff points. Actually Johnston had as many Solkoff points as Howard so the secondary Sonnenborn-Berger points had to be used to decide second and third places. A second round draw with WILLIAM GILLETTE was the only other decision Fred Howard could not win and proved the difference between first and second.

Montgomery won the \$17.50 first prize. The \$10.50 second and \$7. third prizes were divided three ways among Howard, Johnston, and Dart.

The Class "C" tournament was won by WILLIAM LYONS of Seattle who won five in a row. At the conclusion of the tournament it was discovered that Lyons was really a Class "B." player so he received no prize! ROY DREVLO of Seattle and D. L. OLMSTED of Davis, California finished second and third with 4-1 each and split equally the \$15 first and \$8 second prizes. The \$6 third prize went to ALAN LAVERGNE of Seattle and HAROLD COLLINS of Aberdeen, both scoring  $3\frac{1}{2}-1\frac{1}{2}$ .

Besides a good turnout from Seattle, several players showed up from Bellingham, Everett, Gig Harbor, Aberdeen, and Hoquiam. GEORGE PRIEBE directed his first tournament & did a fine job, especially when you consider he was actually directing three tournaments simultaneously!

## CLASS "A"

Place	Name of Player	Home	-1-	-2-	-3-	-4-	-5-	W L D	Score	Solkoff
1.	Duncan Suttles	Vancouver, B.C.	W2	W3	D4	W5	D6	3-0-2	4 -1	14.5
2.	Daryl Delaney	Seattle, Wash.	L1	W7	W6	D3	W5	3-1-1	$3\frac{1}{2}-1\frac{1}{2}$	12.5
3.	Peter O'Gorman	Seattle, Wash.	W7	L1	W5	D2	W8	3-1-1	$3\frac{1}{2}-1\frac{1}{2}$	11.0
4.	Colin D. Aykroyd	Vancouver, B.C.	L5	W6	D1	W8	W7	3-1-1	$3\frac{1}{2}-1\frac{1}{2}$	9.5
5.	Norman Abrahamson	Seattle, Wash.	W4	W8	L3	L1	L2	2-3-0	2 -3	15.0
6.	Donald Seiter	Seattle, Wash.	D8	L4	L2	W7	D1	1-2-2	2 -3	12.5
7.	Bill Young	Seattle, Wash.	L3	L2	W8	L8	L4	1-4-0	1 -4	13.0
8.	P. J. Rehberger	Bellingham, Wash.	D6	L5	L7	L4	L3	0-4-1	$\frac{1}{2}-4\frac{1}{2}$	12.0

Most unusual was the final order of Suttles' opposition. In order 2, 3, 4, 5, 6 &

## Class "B"

Place	Name of Player	Home	-1-	-2-	-3-	-4-	-5-	W L D	Score	Solkoff
1.	Jim Montgomery	Seattle, Wash.	W17	W14	W3	W4	D2	4-0-1	4 $\frac{1}{2}$ - $\frac{1}{2}$	15.5
2.	Fred M. Howard	Seattle, Wash.	W12	D5	W10	W6	D1	3-0-2	4 -1	16.0*
3.	Lyman T. Johnston	Everett, Wash.	W7	W20	L1	W11	W5	4-1-0	4 -1	16.0*
4.	Ken Dart	Everett, Wash.	W16	W22	W6	L1	W9	4-1-0	4 -1	14.0
5.	William Gillette	Seattle, Wash.	W23	D2	W8	W7	L3	3-1-1	3 $\frac{1}{2}$ -1 $\frac{1}{2}$	15.0
6.	John Van Sant	Aberdeen, Wash.	W19	W11	L4	L2	W10	3-2-0	3 -2	14.5
7.	Jack Pattie	Gig Harbor, Wash.	L3	W24	W12	L5	W14	3-2-0	3 -2	13.5
8.	Russell W. Miller	Chelan, Wash.	W21	D10	L5 <sup>3/4</sup>	D12 <sup>3/4</sup>	W15 <sup>3/4</sup>	2-1-2	3 -2	11.5
9.	Myron W. Miller	Bellingham, Wash.	L20	W21	W22	W14	L4 <sup>7</sup>	3-2-0	3 -2	11.0
10.	John J. Reh	Seattle, Wash.	W13	D8	L2	W21	L6	2-2-1	2 $\frac{1}{2}$ -2 $\frac{1}{2}$	13.5
11.	Gregg Smith	Seattle, Wash.	W15	L6	W17	L3	D13	2-2-1	2 $\frac{1}{2}$ -2 $\frac{1}{2}$	13.0
12.	Irving Kahler	Everett, Wash.	L2	W23	L7	D8	W18	2-2-1	2 $\frac{1}{2}$ -2 $\frac{1}{2}$	12.5
13.	Harold Raymond	Bellingham, Wash.	L10	W15	L14	W17	D11	2-2-1	2 $\frac{1}{2}$ -2 $\frac{1}{2}$	10.5
14.	Earl Knapp	Gig Harbor, Wash.	W18	L1	W13	L9	L7	2-3-0	2 -3	14.5
15.	Eddie F. Cooper	Seattle, Wash.	L11	L13	W19	W22	L8	2-3-0	2 -3	11.0
16.	William Blackmore	Bellingham, Wash.	L4	D18	L21	W23	D17	1-2-2	2 -3	7.0
17.	Donald Lutens	Gig Harbor, Wash.	L1	W19	L11	L13	D16	1-3-1	1 $\frac{1}{2}$ -3 $\frac{1}{2}$	13.0
18.	Richard Raymond	Hoquiam, Wash.	L14	D16	D20	D19	L12	0-2-3	1 $\frac{1}{2}$ -3 $\frac{1}{2}$	10.5
19.	Jim Campbell	Grays Harbor, Wash.	L6	L17	L15	D18	W21	1-3-1	1 $\frac{1}{2}$ -3 $\frac{1}{2}$	9.0
20.	Eugene Fomin	Issaquah, Wash.	W9	L3	D18	LF	LF	1-3-1	1 $\frac{1}{2}$ -3 $\frac{1}{2}$	8.5
21.	Dave Oster	Bellingham, Wash.	L8	L9	W16	L10	L19	1-4-0	1 -4	12.0
22.	Don Corey	Seattle, Wash.	W24	L4	L9	L15	LF	1-4-0	1 -4	10.5
23.	Ronald Erickson	Seattle, Wash.	L5	L12	BYE	L16	LF	1-4-0	1 -4	8.0
24.	Ronald Ray	Seattle, Wash.	L22	L7	LF	LF	LF	0-5-0	0 -5	4.5

\* Fred Howard took 2nd with 12 S-B points to Johnston's 10.5. Gillette, by winning his 5th round game, would have tied Montgomery's score but had fewer Solkoff points.

## Class "C"

Place	Name of Player	Home	-1-	-2-	-3-	-4-	-5-	W L D	Score	Solkoff
1.	William Lyons	Seattle, Wash.	W12	W13	W10	W6	W4	5-0-0	5 -0	13.0
2.	Roy Drevlo	Seattle, Wash.	W8	D4	D5	W16	W7	3-0-2	4 -1	14.5
3.	D. L. Olmsted	Davis, California	W23	W18	L6	W12	W8	4-1-0	4 -1	10.5
4.	Alan LaVergne	Seattle, Wash.	W9	D2	W15	W10	L1	3-1-1	3 $\frac{1}{2}$ -1 $\frac{1}{2}$	15.5
5.	Harold Collins	Aberdeen, Wash.	W15	W20	D2	L7	W6	3-1-1	3 $\frac{1}{2}$ -1 $\frac{1}{2}$	11.5
6.	Roy L. Brown	Seattle, Wash.	W16	W19	W3	L1	L5	3-2-0	3 -2	16.5
7.	Frank Kim	Seattle, Wash.	L14	W22	W13	W5	L2	3-2-0	3 -2	13.0
8.	Ronald Smith	Hoquiam, Wash.	L2	W24	W14	W13	L3	3-2-0	3 -2	12.0
9.	Dwight Edwards	Seattle, Wash.	L4	W23	W18	L14	W12	3-2-0	3 -2	8.5
10.	Charles Greenup	Seattle, Wash.	W22	W14	L1	L4	D11	2-2-1	2 $\frac{1}{2}$ -2 $\frac{1}{2}$	14.5
11.	Henry Christoffers	Seattle, Wash.	L19	L16	W21	W15	D10	2-2-1	2 $\frac{1}{2}$ -2 $\frac{1}{2}$	9.0
12.	Bob Street	Aberdeen, Wash.	L1	W17	W19	L3	L9	2-3-0	2 -3	16.0
13.	Dick Dorwin	Seattle, Wash.	W17	L1	L7	L8	W18	2-3-0	2 -3	14.0
14.	Henry Kaffenberger	Gig Harbor, Wash.	W7	L10	L8	W9	L17	2-3-0	2 -3	13.0
15.	Don Roulet	Seattle, Wash.	L5	W21	L4	L11	BYE	2-3-0	2 -3	10.5
16.	Bartlett McCool	Seattle, Wash.	L6	W11	W22	L2	LF	2-3-0	2 -3	9.5
17.	Dr. A. Lewis	Seattle, Wash.	L13	L12	LF	W18	W14	2-3-0	2 -3	7.0
18.	Evelyn Link	Seattle, Wash.	W24	L3	L9	L17	L13	1-4-0	1 -4	13.0
19.	Larry O. Reynolds	Seattle, Wash.	W11	L6	L12	LF	LF	1-4-0	1 -4	7.5
20.	Fred W. Smith	Wenatchee, Wash.	W21	LF5	LF	LF	LF	1-4-0	1 -4	1.0
21.	Jack W. Cowan	Puyallup, Wash.	L20	L15	L11	LF	LF	0-5-0	0 -5	8.0
22.	A. C. Shives	Tolodo, Wash.	L10	L7	LF16	LF	LF	0-5-0	0 -5	5.5
23.	B. Bonnelycke	Seattle, Wash.	L3	LF9	LF	LF	LF	0-5-0	0 -5	4.0
24.	Amado L. Topacio	Seattle, Wash.	L18	LF8	LF	LF	LF	0-5-0	0 -5	1.0

# MCCORMICK WINS OREGON CROWN

JIM MCCORMICK bounced back from his two reverses (Fircrest 2-4) (The Dalles 2½-2½) to win the Oregon State Closed Championship. Jim won the trophy in convincing style. He never appeared in trouble at any time except possibly with Deane Moore in the last round as he scored 7-0. JOHN BELL of Portland, who had won the Puget Sound Open at Fircrest, finished second with 5½-1½. DONALD TURNER of The Dalles was third with 5-2.

The tournament was held on two weekends - July 7-8 and 14-15 at Reed College. The two major disappointments were Ivars Dalbergs' decision not to play and Clark Harmon forfeiting his second weekend's games. He was called to work and could not come down from Seattle for the final four rounds.

GARRY SINGER came up from Albany to direct.

Place	Name	Home	-1-	-2-	-3-	-4-	-5-	-6-	-7-	-8-	Score	S-B
1.	James McCormick	Eugene	X	1	1	1	1	1	1	1	7 -0	
2.	John Bell	Portland	0	X	1	½	1	1	1	1F	5½-1½	
3.	Donald Turner	The Dalles	0	0	X	1	1	1	1	1F	5 -2	
4.	Frank Nettleton	Portland	0	½	0	X	½	½	1	1	3½-3½	
5.	Deane Moore	Portland	0	0	0	½	X	1	0	1	2½-4½	4.25
6.	Fred Krogh	Corvallis	0	0	0	½	0	X	1	1F	2½-4½	3.75
7.	Clay Kelleher	Portland	0	0	0	0	1	0	X	1F	2 -5	
8.	Clark Harmon	Seattle	0	OF	OF	0	0	OF	OF	X	0 -7	

This tournament was USCF rated. Deane Moore goes on to write - "In order for any rating system to be accurate it must be based on a large number of games. If some tournaments are rated and some are not, the system will lose its significance. There won't be a large enough sampling of games. Certain active tournament players will not even be listed because they did not play in any of the rated tournaments. To my way of thinking there is one of 2 decisions to make. Rate all of the tournaments or rate none of them and let some other system rate our northwest players. Personally I am for rating all tournaments."

The finalists came from a list of players who had done best in the last Oregon championship tournament and the three major Oregon Open tournaments (1961 Oregon Open, 1962 Interstate Open, and 1962 Pacific N. W. Open.) Dalbergs, Dr. Henrik Lundh, and Mohammed Al-iabadi of the qualified could not play and were replaced by Nettleton, Krogh, and Kelleher of the alternate list.

# SCHRADER WINS WOMEN'S OREGON OPEN

An Oregon Womens Open Chess Championship was held the weekend of July 14-15 also at Reed College. Only four players entered this event. ESTHER SCHRADER of Salem & EVELYN LINK of Seattle tied for first. Both scored 5-1 in the double round-robin breaking even with each other and scoring 2-0 over each of the other players.

		1.	2.	3.	4.	W	L
1.	Esther Schrader	Salem	X	1	2	2	5 - 1
2.	Evelyn Link	Seattle	1	X	2	2	5 - 1
3.	Elberta Denison	Portland	0	0	X	2	2 - 4
4.	Patricia LeMart	Portland	0	0	0	X	0 - 6

A playoff game was then held and it was won by ESTHER SCHRADER. The women's tournament was not USCF rated.

By Deane Moore



# PORTLAND HIGH SCHOOL ACTIVITY

Portland high schools organized a chess league last school year and here are some of the results.

<u>GRANT</u> 6	<u>ROOSEVELT</u> 2
Clay Kelleher 2	Darrell Larson 0
Mike Hamill 1	Roger Feig 1
Denny Jenquin 2	David Fetterman 0
Roy Fredericks 1	Robin Rickabaugh 1
<u>WILSON</u> 8½	<u>LINCOLN</u> 1½
John Marana 2	Keith Misar 0
Norm Whitely 1	Chris Henalsch 1
Chuck Cummings 2	Mitch Daibart 0
Ted Tibbot 2	Steve Ellis 0
Scott Armstrong 1½	John Pederson ½
<u>WASHINGTON</u> 7	<u>JEFFERSON</u> 1
Bob Stolte 1	Terry Steinborn 1
Bill Blair 2	Roger White 0
David Tver 2	Connie Whitman 0
Barry Tver 2	Jim Zelenka 0
<u>LAKE OSWEGO</u> 6½	<u>CLACKAMAS</u> 3½
George Robinson ½	Tim Nettleton 1½
Sandy Mackie 2	Bob Sanders 0
Jim Evans 2	Rodney Kramer 0
Terry Englert 1	Tom Nettleton 1
Ken Barney 1	Fritz Abendroth 1
<u>LAKE OSWEGO</u> 5	<u>DAVID DOUGLAS</u> 3
George Robinson 2	John Dillon 0
Sandy Mackie 2	Bill Smith 0
Jim Evans 0	Tony Hoff 2
Ken Barney 1	Mike Clemens 1

<u>MADISON</u> 8	<u>JEFFERSON</u> 2
Loy Prather 2	Roger White 0
Steve Buckstein 2	John Dawkins 0
Wayne Matsen 2	Russ Anderson 0
Mark Parker 0	Terry Steinborn 2
Jim Campbell 2	Jim Zelenka 0
<u>MADISON</u> 6½	<u>GRANT</u> 3½
Loy Prather ½	Clay Kelleher 1½
James Wilson ½	Mike Hamill 1½
Steve Buckstein 1½	Denny Jenquin ½
Mark Parker 2	Roy Fredericks 0
Wayne Matsen 2	Roy Jones 0
<u>WILSON</u> 8	<u>DAVID DOUGLAS</u> 2
John Marana 2	Bill Smith 0
Jim Curtin 2	Eric Brostoff 0
Norm Whitely 2	Pat O'Hearn 0
Chuck Cummings 0	Pat Colson 2
Parr Ferris 2	Tony Hoff 0
<u>CLACKAMAS</u> 9	<u>LINCOLN</u> 1
Tim Nettleton 2	Tim Bloch 0
Bob Sanders 2	Chris Henatsch 0
Charles Brownell 1	Steve Ellis 1
Rodney Kramer 2	John Pederson 0
Fritz Abendroth 2	( forfeit ) 0

Match results sent in by Deane Moore.  
Other match results plus final standings in near future whenever received.

## FRANK NETTLETON OREGON SPEED CHAMP

The 1962 Oregon State Speed Chess Championship was held at the J. K. Gill department store in Portland June 30th. Time control was 60 moves in 30 minutes! This was an eight player, four round Swiss. The eight were chosen by invitation of the Portland Chess Club and the tournament was won by FRANK NETTLETON who scored 3½-½. A trophy was awarded him. The tournament attracted the attention of many of the shoppers in the store.

		-1-	-2-	-3-	-4-	W	L	D	Score	S. - B.
1. Frank Nettleton	Portland	W-7	W-2	W-5	D-3	3	0	1	3½-½	----
2. Jack Strong	Gresham	W-4	L-1	W-6	W-5	3	1	0	3-1	----
3. Clay Kelleher	Portland	W-8	L-5	W-4	D-1	2	1	1	2½-1½	----
4. Gary Latcurette	Portland	L-2	W-8	L-3	W-7	2	2	0	2-2	----
5. Fred Byron	Milwaukie	D-6	W-3	L-1	L-2	1	2	1	1½-2½	3.25
6. Gary Feuerberg	Portland	D-5	W-7	L-2	L-8	1	2	1	1½-2½	1.75
7. Fred Krogh	Corvallis	L-1	L-6	W-8	L-4	1	3	0	1-3	1.00
8. Cal Burnham	Portland	L-3	L-4	L-7	W-6	1	3	0	1-3	

(Printed as received. We believe the bottom two players should have been reversed. - Ed.)

# KERN WINS FORT LEWIS TITLE

GREGGORY KERN of the Fourth Infantry Division won the Fort Lewis, Washington chess championship in a five round Swiss event held at the Pioneer Service Club on July 7 - 8. Kern scored  $4\frac{1}{2}-1\frac{1}{2}$ , allowing a draw to EUGENE L. COWAN, formerly of Idaho, who finished a clear second with  $3\frac{1}{2}-1\frac{1}{2}$ . Cowan also organized and directed the tournament.

Third place went to OWEN TRAYNOR, retired army man of Tacoma, who scored 3-2. AVROM ROSEN won the novice prize with a good showing.

Prizes were donated by the Pioneer Service Club who also provided the quarters and most of the equipment. The Pioneer Service Club is also the host of the Fort Lewis Chess Club. The chess club is planning a nationally rated tournament, to be played off during club meetings.

Place	Name	-1-	-2-	-3-	-4-	-5-	W L D	Score	Median
1.	Greggory Kern	W 7	W 6	W 3	D 2	WF	4-0-1	$4\frac{1}{2}-1\frac{1}{2}$	
2.	Eugene Cowan	L 9	W 8	W 4	D 1	W 6	3-1-1	$3\frac{1}{2}-1\frac{1}{2}$	
3.	Owen Traynor	W 5	W 9	L 1	L 7	W 10	3-2-0	3-2	
4.	Avrom Rosen	L 8	W 10	L 2	D 5	W 9	2-2-1	$2\frac{1}{2}-2\frac{1}{2}$	7.0
5.	Bob Ciaffone	L 3	W 7	W 6	D 4	LF	2-2-1	$2\frac{1}{2}-2\frac{1}{2}$	4.5
6.	Henry Kluka	W 10	L 1	L 5	W 9	L 2	2-3-0	2-3	7.5
7.	Charles Bloomingburg	L 1	L 5	W 10	W 3	LF	2-3-0	2-3	6.0
8.	Paul Doumitt (McChord)	W 4	L 2	W 9	LF10	LF	2-3-0	2-3	2.5
9.	Tony Czarnik	W 2	L 3	L 8	L 6	L 4	1-4-0	1-4	7.5
10.	Ellis McDaniels	L 6	L 4	L 7	WF8	L 3	1-4-0	1-4	7.0

# PETROSIAN WINS

A tiger won the Candidates' Chess Tournament at Willemstad, Curacao. TIGRAN PETROSIAN of the USSR won 8, lost 0, and drew 19 to score  $17\frac{1}{2}-9\frac{1}{2}$  and finish  $\frac{1}{2}$  point ahead of both PAUL KERES and EWFIM GELLER. Geller won his adjourned last round game against PAL BENKO of the USA. This was a surprise as Geller was a pawn behind at adjournment and in subsequent play, Geller lost another pawn. However, Benke overstepped the time limit and Geller picked up the full point to tie Keres for second, both with 17-10.

Petrosian drew with DR. MIROSLAV FILIP of Czechoslovakia in only 14 moves in the final round. Keres had to win his final game with BOBBY FISCHER to tie for first place. He had to settle for a draw leaving him  $\frac{1}{2}$  point short.

Fischer failed to live up to the expectations of many U. S. chess fans. At no time did he threaten the leaders. Bobby finished fourth with 14-13. Another favorite, MIKHAIL TAL, scored 7-14 and did not play the last quarter of the tournament due to illness.

		W	L	D	Score
1.	Tigran Petrosian (USSR)	8-	0-	19	$17\frac{1}{2}-9\frac{1}{2}$
2.	Paul Keres (USSR)	9-	2-	16	17-10
2.	Ewfim Geller (USSR)	8-	1-	18	17-10
4.	Bobby Fischer (USA)	8-	7-	12	14-13
5.	Victor Korchnoi (USSR)	7-	7-	13	$13\frac{1}{2}-13\frac{1}{2}$
6.	Pal Benko (USA)	6-	9-	12	12-15
7.	Miroslav Filip (Czech.)	2-	15-	10	7-20
7.	Mikhail Tal (USSR)	3-	10-	8	7-14

# NORTH WEST RATINGS

by Montgomery

## JULY QUARTERLY LISTING

This list includes all reported tournaments in the N. W. played during April, May, June, and the first week of July.

There are three masters, twelve experts, forty-four class A players, eighty-seven class B players, and sixty-five class C players who have been active this quarter.

A warning: if you do not use your full name when you enter a tournament, you risk confusion with someone else.

### NORTHWEST MASTERS (2200-2299)

Bell, John, Portland	2212
Krauss, George Jr., Mtn. Home, Ida	2255
McCormick, James, Eugene	2239

### NORTHWEST EXPERTS (2000-2199)

Dalbergs, Ivars, Portland	2162
Groenig, Dr. David, Spokane	2066
Grover, Kenneth A., Taholah	2009
Harmon, Clark R., Portland	2034
Holmes, Vernon M., Tacoma	2007
Irwin, Peter, Missoula	2067
Lapikan, Dr. Peter P., Missoula	2164
O'Gorman, Peter, Seattle	2048
Parsons, Richard, Seattle	2107
Seglins, Viesturs, Seattle	2165
Vandenburg, Dick, Boise	2200
Wilcox, Rex, California	2032

### CLASS A (1300-1999)

Abrahamson, Norman, Bellingham	1356
Albert, Wally, Helena, Mont.	1927
Aliabadi, Mohammad, Corvallis	1945
Aykroyd, Colton, Vancouver, BC	1379

Barto, John R., Great Falls	1828
Buckendorf, Glen, Buhl, Ida.	1895
Chin, Danny, Bellingham	1947
Cole, Gerald, Kalispell, Mont.	1397
Cowan, Eugene L., Driggs, Ida.	1829
Dart, E. Ken, Everett	1821
Delaney, Daryl, Seattle	1939
Duykers, Dirk, Butte, Mont.	1825
Filmes, Donald P., Seattle	1993
Ellis, A.B., Nampa, Idaho	1912
Gary, Bert, Olympia	1316
Grannis, Dave, Seattle	1868
Hartwell, Ted, Twin Falls	1871
Hewitt, Charles, Russ, Tacoma	1886
Kelleher, Clay R., Portland	1823
Kendall, Don, Bellingham	1995
Kimpton, Loyd E., Twin Falls	1858
Leitis, Eriks, Corvallis	1801
Lyons, William, Seattle	1823
Montgomery, James, Seattle	1808
Moore, Deane B., Portland	1953
Morris, Oliver, Seattle	1814
Murray, Dr. Arthur A.	1989
Muto, Peter	1917
Nettleton, Frank, Portland	1901
Papp, Ellak, Billings	1851
Pearson, Beldon, Dayton, Wash.	1903
Reddy, John, Helena	1826
Schultz, Richard	1980
Seiter, Donald, Seattle	1813
Sheire, James, Butte	1826
Singer, Gary, Albany, Ore.	1917
Somsen, Dick, Tacoma	1990
Stanke, Jerry, Nampa, Ida.	1794
Suttles, Duncan, Vancouver, BC	1920
Vildoso, Eddy	1930
Wade, Daniel E., Seattle	1986
Walloch, Antone	1868
Wennstrom, Max, Boise	1836
Young, Bill, Seattle	1845

### CLASS B (1600-1799)

Anderson, Herbert, Missoula	1666
Applebaum, Ted, Montana	1686
Bauguess, Doug, Seattle	1619
Benedict, Jack, Bellingham	1639
Benson, Albert D., Portland	1759
Berkoff, Dr. D., Bozeman, Mont.	1669
Blackmore, Bill, Bellingham	1614

# OPEN TOURNAMENTS

## 1958-1962

The renaissance or rebirth of Washington chess started shortly after the beginning of Northwest ratings. Add to that a hard-working publicity director and suddenly tournaments that had previously attracted 12, 16, or 20 players were drawing 30, 40, 60, and finally as many as 84 players. Below we have listed the statistics of all open tournaments played in Washington, Oregon, and Idaho during the period January, 1958 to date. We include one Montana event because of the fact that seven Washington State players participated including the winner.

The attendance figures of the Idaho Opens are not impressive due to the fact that state runs split tournaments with lower rated players playing in a Class "B" closed event.

As numerous as are the events here recorded, they represent less than one-third of the tournaments played in the Pacific Northwest during this time. Not included are the numerous class tournaments, junior tournaments, invitational tournaments, and the Puget Sound League and other league team matches. ALL northwest rated!

You can readily see that your northwest rating has meaning whereas your USCF rating under the present circumstances where only a few tournaments each year are USCF rated has no meaning and indeed, never will if present policy is continued. It is at present extreme folly for tournament directors to use USCF ratings for pairings and awarding prizes at this time.

NAME OF TOURNAMENT	DATE PLAYED	WINNER AND HIS SCORE	WHERE PLAYED	TOTAL ENTERED
✓ 1962 Puget Sound Open	June 9-10	JOHN BELL 5-0-1	Tacoma, Wash.	60
1962 Idaho Open	June 2-3	DON TURNER 5-0-0	Boise, Idaho	23(split)
1962 4th Annual Pacific Northwest Open	May 19-20	JIM MCCORMICK 5-0-1	Eugene, Oregon	28(split)
1962 Inland Empire Open	April 14-15	DANNY TOWNE 4-0-2	Spokane, Wash.	20
1962 Inter State Open	March 24-25	IVARS DALBERGS 5-0-1	Portland, Oregon	44
1962 1st Annual March of Dimes Tournament	Feb. 3-4	FRED BYRON 6-0-0	Camas, Wash.	17
✓ 1962 12th Wash. Open	Jan. 27-28 co-winners	VIKTORS PUPOLS 5-0-1 JIM MCCORMICK 5-0-1	Seattle, Wash.	73
1961 Central Wash. Open	Nov. 18-19	ARTHUR WANG 5-0-1	Yakima, Wash.	25
✓ 1961 Northwest Wash. Open	Oct. 21-22	FRANK NETTLETON 5-0-1	Bellingham, Wash.	25
1961 Oregon Open	Sept. 2-3-4	JIM MCCORMICK 5-0-2	Portland, Oregon	36
✓ 1961 Seattle Seafair Open	July 29-30	VIESTURS SEGLINS 5-0-1	Seattle, Wash.	84
1961 Seattle Open	June 24-25	JIM MCCORMICK 5-0-1	Seattle, Wash.	36
1961 3rd Annual Pacific Northwest Open	May 27-28	VIKTORS PUPOLS 4-0-1	Eugene, Oregon	28(split)
1961 Idaho Open	May 27-28	GEORGE KRAUSS 4-0-1	Boise, Idaho	12(split)
1961 Puget Sound Open	May 20-21	CLARK HARMON 5-0-1	Seattle, Wash.	44
1961 Inland Empire Open	April 22-23	VIKTORS PUPOLS 4-0-2	Spokane, Wash.	34
1961 Inter State Open	March 4-5	DICK SCHULTZ 5-0-1	Portland, Oregon	42
1961 11th Wash. Open	Jan. 14-15	IVARS DALBERGS 5-0-1	Seattle, Wash.	50
1960 Central Wash. Open	Nov. 5-6	IVARS DALBERGS 5-0-1	Yakima, Wash.	27
1960 Oregon Open	Sept. 3-4-5	JIM MCCORMICK 6-0-1	Portland, Oregon	32
1960 Seattle Seafair Open	August 6-7	VIESTURS SEGLINS 5-0-1	Seattle, Wash.	52
1960 1st Lilac City Open	July 2-3	VIKTORS PUPOLS 4-1-0	Spokane, Wash.	16
1960 Seattle Open	June 25-26	VIKTORS PUPOLS 5-0-1	Seattle, Wash.	28
1960 Idaho Open	May 28-29	MIKE FRANETT 4-0-1	Boise, Idaho	20(split)



NAME OF TOURNAMENT	DATE PLAYED	WINNER AND HIS SCORE	WHERE PLAYED	TOTAL ENTERED
		W L D		
1960 Puget Sound Open	May 14-15	VIKTORS PUPOLS 5-0-0	Seattle, Wash.	46
1960 Inland Empire Open	April 23-24	MIKE FRANETT 4-0-2	Spokane, Wash.	46
1960 Inter State Open	April 9-10	IVARS DALBERGS 6-0-0	Portland, Oregon	23
1960 Pacific Northwest Open	March 12-13	JIM MCCORMICK 5-0-1	Portland, Oregon	28
1960 Willamette Valley Open	Feb. 13-14	CLARK HARMON 5-0-1	Salem, Oregon	30
1960 10th Wash. Open	Jan. 16-17	VIESTURS SEGLINS 5-0-1	Seattle, Wash.	46
1959 Northwest States Open	Nov. 26-29	RICHARD SCHULTZ 6-0-0	Missoula, Montana	26
1959 Central Wash. Open	Nov. 7-8	CLARK HARMON 5-0-1	Yakima, Wash.	58
1959 Oregon Open	Sept. 5-6-7	ARTHUR DAKE 7-0-0	Portland, Oregon	40
1959 Seattle Seafair Open	August 1-2	VIKTORS PUPOLS 5-0-1	Seattle, Wash.	62
1959 Seattle Open	June 13-14	OLAF ULVESTAD 4-0-1	Seattle, Wash.	20
1959 Idaho Open	May 30-31	GASTON CHAPPUIS 4-0-1	Boise, Idaho	14 (split)
1959 Puget Sound Open	May 9-10	OLAF ULVESTAD 5-0-1	Seattle, Wash.	35
1959 Inland Empire Open	April 25-26	OLAF ULVESTAD 6-0-0	Spokane, Wash.	25
1959 1st (USCF) Pacific Northwest Open	March 28-29	RICHARD SCHULTZ 5-0-1	Portland, Oregon	34
Oregon Centennial Open	Feb. 21-22	CLARK HARMON 4-0-2	Portland, Oregon	34
1959 9th Wash. Open	Jan. 24-25	OLAF ULVESTAD 6-0-0	Seattle, Wash.	50
1958 Central Wash. Open	Nov. 8-9	OLAF ULVESTAD 5-0-1	Yakima, Wash.	28
1958 Tacoma Open	Aug. 23-24	VIKTORS PUPOLS 4-0-1	Tacoma, Wash.	10
1958 Seattle Seafair Open	Aug. 2-3	IVARS DALBERGS 5-0-1	Seattle, Wash.	56 (split)
1958 1st Golden Rose Open	June 14-15	ARTHUR DAKE 4-0-1	Portland, Oregon	24
1958 Idaho Open	May 31-June 1	PETER LAPIKEN 3-0-2	Boise, Idaho	18 (split)
1958 Seattle Open (1st)	May 17-18	JIM MCCORMICK 5-0-0	Seattle, Wash.	8
1958 Inland Empire Open	April 19-20	PETER LAPIKEN 5-0-1	Spokane, Wash.	27
1958 1st Pacific Northwest Open	April 12-13	ROBERT WALKER 4-0-1	Portland, Oregon	29
1958 Puget Sound Open	March 22-23	IVARS DALBERGS 4-0-1	Seattle, Wash.	31
1958 8th Wash. Open	Jan. 18-19	VIKTORS PUPOLS 4-0-1	Seattle, Wash.	38
	co-winners -	OLAF ULVESTAD 4-0-1	Seattle, Wash.	38

Before the 1958 Washington Open the largest tournament ever held in Seattle attracted 37. That was the 1951 (1st) Washington Open won by CHARLES JOACHIM ( $5\frac{1}{2}-\frac{1}{2}$ ). The following year attendance slumped to 26 and after that a tournament in either Seattle or Portland was considered a howling success if it attracted 18 or 20 players! During this period, 1951-58, Spokane was the lone oasis for the player hungering for a big chess tournament. The first Inland Empire Open attracted 26 plus six more playing in a junior event. That was in 1954. In 1955 the Inland Empire Open attracted 40 players and in 1956 once again 40 attended. In 1957 there were 32 in the Inland Empire Open. With the notable exception of 1960 when 46 played, attendance at the Inland Empire Open has steadily declined reaching a low point of only 20 in 1962.

During the period listed, the state of Washington has held 32 open tournaments, Oregon has held 14 open tournaments and Idaho has held 5 open tournaments.

The record shows Dalbergs, Seglins, Pupols, and McCormick have gobbled up most of the major tournaments in the past and Ulvestad won more than his share before leaving the north west for Europe. Harmon, Franett, and Schultz had their occasional moments of glory too. Whenever Dake played, which was not often, he won. Zemgalis played in no open tournaments during this period.

The editor, Dan Wade, holds a unique place in the annals of northwest chess. He actually refused to win a major tournament! In the 2nd Inland Empire Open in 1955 with 40 in attendance, Wade refused a draw with Warner, went on to lose and give Ted Warner the title. Wade mistakenly believed a draw would have given him second place.



Bricher, Vince, Cottage Grove	1657
Brown, Roy L., Seattle	1621
Burke, Thomas C. Eugene	1696
Carlson, Carl E., Tacoma	1783
Case, Hela, Bellingham	1731
Ciaffone, Robert B.,	1678
Clark, Bill, Rogerson, id.	1603
Cooper, Eddie F. Seattle	1652
Corey, Don Seattle	1689
Craft, Fred Eugene	1721
Devore, Don, Helena	1701
Drevlo, Roy, Seattle	1671
Drummond, Clark, Bellingham	1620
Fomin, Eugene, Seattle	1723
Gage, Al Mountain Home, Ida	1608
Gillette, William F., Seattle	1759
Greenup, Charles, Seattle	1639
Gregory, Hugh, Bellingham	1622
Hakes, Bill, Helena	1696
Hansen, Ralph, Missoula	1637
Harris, C.E.	1679
Horstman, E.H. Marsing, Ida.	1689
Howard, Fred M. Seattle	1768
Hulbrit, Lowell Twin Falls	1734
Jarmon, Ron Tacoma	1683
Jarost, Wasyl, Bozeman	1613
Johnston, Lyman T. Everett	1688
Kahler, Irving, Everett	1694
Barclay, Kenneth Boise, Ida	1697
Kern, Gregory, Ft. Lewis	1764
Knapp Earl, Gig Harbor	1698
Laird, John Tacoma	1796
Lande, Larry C.	1607
Lavergne Alan, Seattle	1628
Likens, Cecil, Nampa, Ida	1612
Linde, Hans Eugene Ore.	1793
Laiden, Jack Great Falls	1696
Mayer, Antal, Boise	1631
McDonald, Ted Hungry Horse, Mont	1709
Miller, Myron, Bellingham	1695
Miller, Russell Chelan	1632
Nettleton, Tim Portland	1793
Olmsted, D. L. Davis, Cal.	1654
Ostby, Jim, Bozeman	1771
Parker, Roy S. Nampa, Ida	1772
Pattie, Jack Gig Harbor	1774
Peterson, Ben J., Salt Lake City	1713
Prentice, Ernest, Tacoma	1615
Prephan, Michael, Billings	1673
Rambo, Clarence, Murtaugh	1655
Rambo, Gene, Murtaugh, Ida	1490
Rasor, George, Boise	1796
Ray, Ronald, Seattle	1638
Raymond, Harold, Bellingham	1685
Reeves, Ed, Drummond	1781
Reh, John, Seattle	1710
Rehberger, Phill, Bellingham	1832
Reynolds, Larry O., Seattle	1711
Roney, Wayne, Billings, Mont.	1733
Samuelson, Stanely, Boise	1721
Schrader, Esther, Eugene	1650

Schrader, Jack, Eugene	1792
Skarsten, Hal O., Forest Grove	1658
Skirmants, Nick, Boise	1665
Smith, Gregg 1703	1703
Southern, Bob, Jackson Hole	1661
Southern, Dick, Missoula	1689
Southern, Robert, Missoula	1633
Spaulding, J.B. Helena	1754
Stanke, Jerry, Nampa	1794
Stewart, Charles H. Boise	1695
Street, Bob Aberdeen	1637
Stromsberg, Ingwald Kalispell	1783
Taft, Keith, Helena	1608
Turner, R.G., Kalispell	1655
Vanatta, Van, Seattle	1656
VanSant, John, Aberdeen	1751
Waterman, Vic, Nampa	1621
Weise, Karl, Sutherlin, Ore.	1709
Wendel, Gary A., Butte	1692
Zimmerman, George	1725

CLASS C (1-1599)

Adler, Lynn	1139
Anstey, Paul Caldwell	1293
Beers, Gary, Bellingham	1559
Bonnelyche, B., Seattle	1217
Bricher, Gary, Cottage Grove	1487
Burgmier, Chris, Great Falls	1578
Burley, Robert, Billings	1336
Campbell, Jim Hoquiam	1583
Chenowith, Arthur, Portland	1480
Christoffers, Henry, Seattle	1384
Collins, Harold, Aberdeen	1569
Cowan, Jack W. Puyallup	1007
Dorwin, Dick, Seattle	1509
Edwards, Dwight, Seattle	1461
Erickson, Ronald, Seattle	1556
Gerle, Joe Butte	1559
Graff, Barney, Murtaugh, Ida.	1571
Graff, Kenny Murtaugh	1357
Gregory, Stanley D.	1594
Healy, Alex, Anacanda, Mont.	1472
Hill, Fred J. Butte	1480
Houser, Robert T., Klamath Falls	11542
Jarrell Ben Missoula	1536
Johnson, Jesse Boise	1520
Kaffenberger, Henry, Gig Harbor	1467
Kim, Frank,	1557
Klaus, Del, Boise	1522
Lee, Norman, Boise	1589
Lewis, Dr. A. E., Seattle	1513
Link, Evelyn, Seattle	1370
Ludwig, Steve,	1475
Luters, Donald Gig Harbor	1592
Malison, Dr., Butte	1470
Mayr, Josef, Bellingham	1506
Morgan, Ronald C. Tacoma	1391
Murray, Mike, Homestead, Mont.	1490
Nanson Charles, Cal.	1318



Norton, Ken, Vancouver, Wash.	1339
Olyphant, Clarence, Seattle	1474
Oster, Dave, Bellingham	1548
Parker, Richard, Boise	1465
Parsons, Marion, Nampa	1436
Porter, Eugene Ore	1189
Rambo, Gene, Murtaugh, Ida.	1499
Raymond, Richard Hoquiam	1574
Reid, Dave Boise	1457
Ricco, Ronald, Deer Lodge	1354
Roulet, Don, Seattle	1207
Schaap, Warne, Nampa	1514
Seslar, Robert, Seattle	1421
Shifty, Leroy, Butte, Mont.	1534
Shives, A. C., Toledo	1513
Smith, Fred J. Wenatchee	1598
Smith, Ronald, Hoquiam	1439
Spangenberg, Cecil, Boise,	1523
Stafford, John, Great Falls	1513
Swanberg, Chris, Kalispell	1173
Swanberg, Dolores, Kalispell	1504
Swanberg, Dr. A. V., Kalispell	1414
Topacio, Amado, Seattle	1208
Trout, Lewis, Twin Falls	1597
Ward, John, Tacoma	1518
Warren, Harvey	1340
Watrous, Woody	1465
Wichberg, Gary, Boise	1393

VILDOSO 8 COWAN 3

EDDY VILDOSO has been mustered out of the army at Fort Lewis and is now going to school on the east coast. His parting shot chessically was an 8 to 3 match win against EUGENE COWAN. This result missed our ratings in this issue because it was not sent to the editor and thus the result was not known to the editor in time.

RUSE DE GUERRE - PORTLAND MATCH

The result of the Ruso De Guerre vs. Portland double match was sent to the former editor and we got it via New Orleans. The results did not add up and for rating purposes the matches should be separated and sent in again so we will know who won from whom, etc.

SECTIONAL PRIDE HURT

Genial BOB KITTRIDGE of Spokane did not like our reference to Dr. Groenig's win over McCormick as "the upset of the tournament." He felt this was a slur against the quality of chess played in Spokane! To avoid future misunderstandings of our thinking, perhaps we should confine our writeups on tournaments to one short, terse paragraph.

A. B. ELLIS WINS SECOND

HALF OF CANYON COUNTY TOURNEY

Last month's Chess Letter gave the account of the Canyon County, Idaho Chess Tournament. We learn now that that was only the first half! In the first half A. B. ELLIS in nine games won 7, lost 0 and drew 2. That was only a warmup for the second half's romp. Ellis won 9, lost 0 and drew 0. This is quite a feat for anyone in games played over a period of several weeks at club meetings. Ellis has now either won or placed second in every Canyon County tournament he has entered - and he has been in them all.

Place	Name	Home	1.	2.	3.	4.	5.	6.	7.	8.	9.	10.	W L D	Score
1.	A. B. Ellis	Nampa	X	1	1	1	1	1	1	1	1	1	9-0-0	9 -0
2.	Gene Harris	Caldwell	0	X	1	1	1	0	1	1	1F	1	7-2-0	7 -2
3.	E. H. Horstman	Marsing	0	0	X	1	1	1	1	0	1/2	1	5-3-1	5 1/2 - 3 1/2
4.	Jerry Stanko	Nampa	0	0	0	X	1	0	1	1	1F	1	5-4-0	5 -4
5.	Roy S. Parker	Nampa	0	0	0	0	X	1	1	1	1	1	5-4-0	5 -4
6.	Warne N. Schaap	Nampa	0	1	0	1	0	X	0	1	1F	1	5-4-0	5 -4
7.	Vic Waterman	Bowmont	0	0	0	0	0	1	X	1	1	1	4-5-0	4 -5
8.	Marion D. Parsons	Nampa	0	0	1	0	0	0	0	X	0	1	2-7-0	2 -7
9.	Cecil Likens	Nampa	0	OF	1/2	OF	0	OF	0	1	X	OF	1-7-1	1 1/2 - 7 1/2
10.	Paul Anstey	Caldwell	0	0	0	0	0	0	0	0	1F	X	1-8-0	1 -8

BOISE CHESS CLUB ELECTION

The Boise Chess Club has elected new officers. GEORGE RASOR is the new president, NORMAN LEE continues as secretary-treasurer, and NICK SKIRMANTS is the new tourney director.



# POSTAL CHESS



New players start in "A" Division with a rating of 1600, "B" 1300, and in "C" 1000. Send your entries to the Postal Director with the entry fee of 50¢ per section of four players and if a new player in our tournaments, advise which Division you wish to play in. You can enter as many sections as you desire.

REPORT OF GAMES COMPLETED TO JUNE 30, 1962						61C-6A	61C-6B
Section	Points	Beachy	X 1 0 1	X 1 1 1	5		
5/31 61A-11B Scripps 1	Guess 0	Shives	0 X 1 1	0 X 1 1	4		
6/5 62C-4A Waldron 1	Cyr 0	Waldron	1 0 X 1	0 0 X 1	3		
6/5 62C-4B Waldron 1	Cyr 0	Johnson	0 0 0 X	0 0 0 X	0		
6/3 61C-10B Beachy 1	R. Raymond 0						
6/3 61C-10A Ward 1	R. Raymond 0						
6/3 61C-10B Beachy 1	R. Raymond 0						
6/7 62C-2A E. Dennison 1	Berg 0						
Private H. Raymond 1	R. Raymond 0						
6/13 61C-8A Allen 1	Short 0						
6/13 61C-8B Allen 1	Short 0						
6/13 61C-8A Allen 1	Cotton 0						
6/13 61C-8B Allen 1	Cotton 0						
6/13 61C-7A Waldron 1	M. Knapp 0						
6/13 61C-7B Waldron 1	M. Knapp 0						
6/15 61A-6A Dolph 1	Weaver 0						
6/16 61B-8A Benson 1	Merk 0						
6/20 62A-3B Morris 1	Van Patten 0						
6/22 61B-10A Baskett 1	Lyberger 0						
6/22 61B-10A Chenoweth 1	Merk 0						
6/23 61C-7A Cyr 1	M. Knapp 0						
6/23 61C-7B Cyr 1	M. Knapp 0						
6/7 61C-9A E. Dennison 1	Rystrom 0						
6/26 61C-9A R. Miller 1	E. Dennison 0						
6/26 61A-12A Jones 1	Tuggle 0						
6/26 61A-12B Jones 1	Tuggle 0						
6/26 61A-13A Jones 1	Tuggle 0						
6/27 61A-13B Jones 1	Tuggle 0						
6/27 61C-6A Beachy 1	Johnson 0						
6/27 61C-6B Beachy 1	Johnson 0						
6/30 61C-6A Waldron 1	Beachy 0						
6/30 61C-6B Beachy 1	Waldron 0						
6/30 62C-1B R. Raymond 1	Shives 0						
6/30 61B-8B Howard 1	Merk 0						
6/30 61B-9B Gifford 1	Rogers 0						
6/30 61A-11A Scripps 1	Tuggle 0						
6/30 61A-11A Skarsten 1	Tuggle 0						
6/30 61A-11B Scripps 1	Tuggle 0						
6/30 61A-11B Skarsten 1	Tuggle 0						
6/30 61A-12A Carter 1	Tuggle 0						
6/30 61A-12A C. Allyn 1	Tuggle 0						
6/30 61A-12B Carter 1	Tuggle 0						
6/30 61A-12B C. Allyn 1	Tuggle 0						
6/30 61A-13A Gillette 1	Tuggle 0						
6/30 61A-13B Gillette 1	Tuggle 0						
6/30 61B-2A Cummins 1	Tuggle 0						
6/30 61B-2B Cummins 1	Tuggle 0						
6/30 61B-3A Hager 1	Tuggle 0						
6/30 61B-3B Hager 1	Tuggle 0						
6/30 61B-4A Selles 1	Tuggle 0						
6/30 61B-4B Selles 1	Tuggle 0						
6/30 61B-5A Aarnas 1	Tuggle 0						
6/30 61B-5B Aarnas 1	Tuggle 0						

	61B-4A	61B-4B
H. Raymond	X 1 0 1	X 1 1/2 1
Selles	0 X 1 1	0 X 0 1
L. McKay	1 0 X 0	1/2 1 X 0
Tuggle	0 0 1 X	0 0 1 X

Beachy and Raymond by winning the above sections are awarded the choice of a new section or a three month extension of their membership. If they will advise us of their choice, the prize will be awarded to them.

If any of the opponents of S/Sgt. Jesse Tuggle who were awarded points on the basis of a draw because of his withdrawal from our postal tournaments can demonstrate a win in any of their games we will award them points for a win if the score is sent to us.

Ken Dart in applying for a new postal section submitted the following:

Sometimes I wish I'd never see  
A chess card addressed to me.  
Those sickening moves that  
come my way  
Will ruin me and kill my day.  
But once every not soon  
enough  
My opponent slips and I get  
ruff.  
Thus inspired, here go I again  
Match me with some BIGGER men.

# PLAY CHESS BY MAIL!

Postal chess is a good way to improve your game. You can take enough time to thoroughly study each move. You can enter against any strength of competition and game results will soon give your rating its proper value. An advantage of playing Northwest players is that games proceed smoothly and rapidly with over night mail delivery. Ratings are adjusted and published each month.

Send entry fee of 50¢ for a section of four players with each playing two games simultaneously with each of the others, to

R. R. Merk  
1026 N.E. 71 Street  
Seattle 15, Wash.

WASHINGTON CHESS LETTER  
1026 N.E. 71st St., Seattle 15, Wash.  
RETURN POSTAGE GUARANTEED  
FORM 3547 REQUESTED

Myron Killew  
1137 Humbolt  
Bellingham, Wash

7/63

# POSTAL CHESS RATINGS

"A" Division Above 1500		"B" Division 1200 to 1500	
1	Dolph 2050	1	D. Kendall 1500
2	Collins 2042	2	H. Raymond 1496
3	Scripps 1965	3	Benson 1476
4	Pupols 1948	4	Skarsten 1444
5	Wade 1939	5	Aarnas 1424
6	Vellias 1889	6	Rader 1413
7	E. Knapp 1835	7	Hazen 1405
8	Eilmes 1797	8	Hager 1404
9	C. Allyn 1779	9	Lyberger 1381
10	Koenkow 1765	10	Rogers 1378
11	Mage 1723	11	Baskett 1372
12	S. Smith 1723	12	Gifford 1369
13	Abrahamson 1722	13	Skoglund 1359
14	J. Nourse 1720	14	Delaney 1358
15	Weaver 1669	15	Chenoweth 1354
16	Guess 1667	16	Laine 1348
17	Jones 1661	17	Ward 1339
18	Morris 1650	18	Beachy 1310
19	Weisscher 1647	19	Dart 1308
20	Cummins 1631	20	Dickson 1300
21	Boschan 1620	21	Dorwin 1300
22	Howard 1610	22	Laugen 1300
23	Kiplinger 1603	23	Monrad 1300
24	R. W. Allyn 1602	24	Pattie 1300
25	Schultz 1600	25	Suttles 1300
26	Vanatta 1600	26	Turner 1300
27	Wilson 1600	27	Van Sant 1300
28	Woodward 1575	28	1276
29	Carter 1567	29	Adkisson 1272
30	B.J. Peterson 1566	30	Merk 1272
31	Gillette 1560	31	R. Miller 1266
32	Van Patten 1550	32	Fellows 1260
		33	R. Raymond 1236
		34	Allen 1211
"C" Division Below 1200		"C" Division cont'd Below 1200	
1	T. Koch 1168	14	Kershaw 1000
2	Shives 1160	15	Running 1000
3	Waldron 1140	16	Berg 952
4	Rystrom 1114	17	Hanson 972
5	E. Dennison 1106	18	K. Knapp 944
6	Roemer 1100	19	Cotton 944
7	J. D. Miller 1050	20	S.G. Peterson 928
8	Anderson 1000	21	Link 894
9	Cooper 1000	22	Cyr 864
10	J.R. Donnelly 1000	23	Fomin 860
11	D. Dennison 1000	24	Short 838
12	F.J. Donnelly 1000	25	Johnson 836
13	Matthews 1000		

