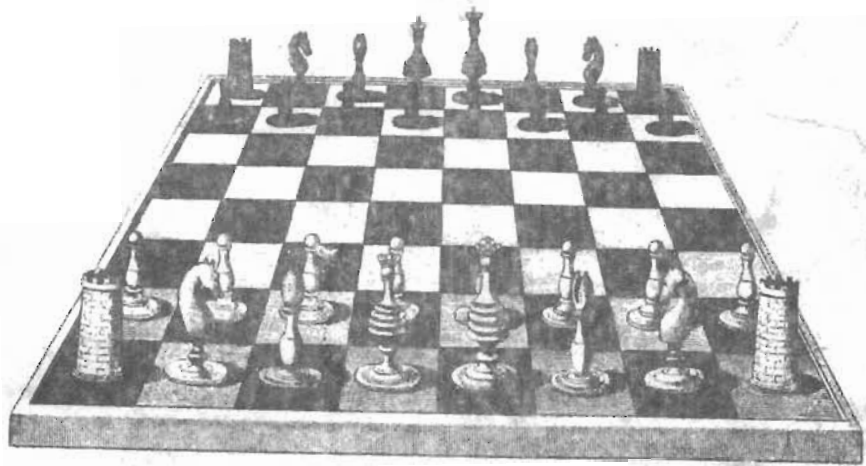


WASHINGTON

CHESS

LETTER

OCT. 1962



WASHINGTON CHESS LETTER

Number 179

EDITOR-PUBLISHER Daniel E. Wade
11030 Chelsea Place N. E.
Seattle 55, Washington

CIRCULATION & POSTAL DIR. R. R. Merk
1026 N. E. 71st Street
Seattle 15, Washington

TREASURER F. H. Weaver
501 Olympic Place
Seattle 99, Washington

GAMES EDITOR Dick Parsons
4422 Phinny Ave.
Seattle, Washington

RATINGS DIRECTOR Jim Montgomery
1329 S. W. 172nd. Street
Seattle 66, Washington

Membership for one year and twelve issues of this magazine are yours for only \$2. A member of the Washington Chess Federation can enter any Washington open tournament for a smaller entry fee than an outsider. He gets all the chess news of the Pacific Northwest each month. Today our membership is higher than ever before.

For membership in the Washington Chess Federation entitling you to a year's subscription to the Washington Chess Letter send two dollars to R. R. Merk, 1026 N.E. 71st Street, Seattle 15, Washington.

PUPOLS 2 DALBERGS 2

One week before ~~September 21~~, Viktors Pupols of Seattle-Tacoma and Ivars Dalbergs of Portland played a four game match. The games were played in Seattle and are to be northwest rated. The final result was each player won one and there were two draws making it 2 to 2.

Dalbergs won the second game when Pupols got into time-pressure. Pupols managed to squeeze out a win in the fourth. Pupols said all four games should have ended in draws.

NORTHWEST RATINGS NEXT ISSUE

DICK SCHULTZ WRITES

Dick Schultz played in the Louisiana Open at Shreveport, La. and tied for 4th with 4-2. Time trouble got Dick down this time, not bad play. His first round game from that event.

Schultz (White) James W. Verrett (Black)

1. P-K4	P-QB4	20. KR-Q1	RxR
2. N-KB3	P-Q3	21. RxR	R-K2
3. P-Q4	PxP	22. K-B1	K-B2
4. NxP	N-KB3	23. K-K2	R-B2
5. N-QB3	N-B3	24. K-Q3	K-K2
6. B-KN5	P-KN3	25. R-N6	P-K4
7. BxN	PxB	26. P-B3	P-R3
8. B-B4	NxN	27. P-QR4	K-B2
9. QxN	B-K2	28. P-R5	K-K2
10. O-O	O-O	29. P-R4	K-B2
11. QR-Q1	B-K3	30. P-QN4	P-R4
12. BxB	PxB	31. P-QB4	K-K2
13. N-N5	Q-N1	32. P-B5	K-B2
14. Q-B4	Q-B1	33. K-B4	K-K2
15. Q-B7	R-K1	34. K-Q5	R-Q2ch.
16. P-QB3	P-QR3	35. R-Q6	K-K1
17. QxQ	QRxQ	36. K-K6	R-KB2
18. NxP	BxN	37. R-Q8ch.	Resigns.
19. RxB	QR-Q1		

LATEST FROM SEATTLE CLUB

Elsewhere in this issue we have Seattle Chess Club news featuring the club's Friday night speed tournament results. Here is another one.

This is dated October 6th, a Saturday. Seven players got together for a double round robin speed tournament. DICK PARSONS edged out JOHN BRALEY and DON COREY in a close 3-way battle for first place. Parsons scored 9-3 while Corey and Braley finished in a two way tie for second each with 8-4. Parsons's 3 losses were one apiece to Corey, Braley and DAVID HARRISON. Corey lost single games to JOHN FOUNTAIN, Braley, Parsons and FRED HOWARD. Braley lost single games to Corey, Parsons, Harrison and DEL NAGEL.

Harrison was close behind the leaders. He finished with $7\frac{1}{2}$ - $4\frac{1}{2}$. Other scores were Fountain $5\frac{1}{2}$ - $6\frac{1}{2}$, Howard 2-10 and Nagel 2-10.

Puget sound schedule

NOTICE PHONE RESULTS OR WRITE TO DAN MADE
11030 CHELSEA PL. N.E. EM 3-9214.

Here is the 1962 Puget Sound League schedule. Seven clubs are in the league this year and each club plays three home matches and three out of town matches. Because of the uneven number of clubs, there will be a bye for one club each round.

Seattle, Tacoma, Kitsap and West Seattle are holdovers from last year. The playing sites are reversed this year. For example - last year Tacoma visited West Seattle so this year West Seattle visits Tacoma. Three new clubs - Bellingham, Furdy and the Seattle "Black Bandits" appear this year replacing three drop outs - North Seattle, Everett and Olympia. LAST MINUTE FLASH! GRAYS HARBOR HAS AGREED TO BE THE VISITOR IN ALL MATCHES IN ORDER TO PLAY IN THE LEAGUE THIS YEAR. THEY WILL TAKE THE PLACE OF THE BYE.

Round 1 Sunday, Oct. 21 at 1 p.m.

Kitsap at Seattle
West Seattle at Tacoma
Bandits at Bellingham
Furdy vs. Harbor

Round 2 Sunday, Nov. 4 at 1 p.m.

Tacoma vs. Bellingham
at the Seattle Chess Club
Furdy at Kitsap
Seattle at West Seattle
Bandits vs. Harbor

Round 3 Sunday, Nov. 18 at 1 p.m.

Seattle at Tacoma
Bandits at West Seattle
Furdy vs. Bellingham
at Everett (L. Johnston's)
Kitsap vs. Harbor

Round 4 Sunday, Dec. 2 at 1 p.m.

Seattle at Bellingham
Tacoma at Furdy
Bandits at Kitsap
West Seattle vs. Harbor

Round 5 Sunday, Dec. 16 at 1 p.m.

Furdy vs. Bandits
at Seattle Chess Club
West Seattle at Bellingham
Tacoma at Kitsap
Seattle vs. Harbor

Round 6 Sunday, Jan. 13 at 1 p.m.

Seattle at Furdy
Bandits at Tacoma
Kitsap at West Seattle
Harbor vs. Bellingham at Seattle club

Round 7 Sunday, Jan. 20 at 1 p.m.

West Seattle at Furdy
Bandits at Seattle
Kitsap vs. Bellingham
at Seattle Chess Club
Tacoma vs. Harbor

Championship Playoff Date
(If necessary)

Sunday, Jan. 27 at 1 p.m.

Site - opposite scheduled
during season including
Grays Harbor.

Teams traveling to Kitsap are to be met by a representative of the Kitsap team in lobby of the Bremerton YMCA near the ferry terminal.

After the first round match at the YMCA, the Seattle Chess Club team will host visiting teams in the Jewish Center, third floor club room. This is the old Elks Club Building one block north of the YMCA across the street from the public library.

The Bellingham Club hosts visitors in the Convention Hall of Bellingham's Leopold hotel.

The Tacoma Club plays their matches at the home of Russ Howitt, 3158 West Soundview Drive in Tacoma. Telephone SK 9-0697.

West Seattle plays at 1955 Sunset S.W. Phone is WE 2-1267.

Furdy plays at Furdy town hall. Cross Tacoma Narrows Bridge and drive north 10-11 miles. Furdy is a small group of houses near Pearl's Restaurant on the highway.

SUTTLES WINS 1962 PEACE ARCH OPEN

By Don Kendall

When the Peace Arch Open ended DUNCAN SUTTLES of Vancouver, B. C. carried 45 American dollars stuffed in his shining new trophy back into Canada.

After mowing down five opponents in a row, a grandmaster draw with DANNY CHIN was all that was needed to capture the tournament crown. Mr. Suttles did have a close call in the 4th round against DON KENDALL. Kendall blundered away a dead draw in a rook versus rook and bishop ending!

Seattle experts MIKE FRANETT and PETER O'GORMAN shared second and third cash prizes, each winning \$18. Both scored 5-1 with Mike losing his 5th round game to Suttles and Peter losing his 4th round game to Franett. Franett took second on the Median tie-break.

The top Class A prize went to Bellingham's star, DANNY CHIN. Chin scored $4\frac{1}{2}$ - $1\frac{1}{2}$ losing to Franett and drawing with Suttles. Also with $4\frac{1}{2}$ - $1\frac{1}{2}$, but with fewer tie-break points, was Seattle's TERRY NELSON who lost to DON KENDALL and drew with EARL KNAPP.

Washington State Junior Champ WILLY BRANDAL, who had been visiting in Denmark, made a good comeback after losing his first two to finish with 4-2.

JIM MONTGOMERY and JOHN REH, both of Seattle, shared the Class B spotlight. Both had $3\frac{1}{2}$ - $2\frac{1}{2}$ scores. Since STEVE LUDWIG of Bellingham received the prize for the best increase in rating, the Class C prize went to MYRON MILLER, also of Bellingham. Steve, a Bellingham High School student, surprised everyone with his excellent $3\frac{1}{2}$ - $2\frac{1}{2}$ score - especially considering the fact that this was his first tournament.

The top junior prize went to RON HAMBLEEN whose only losses were to Chin and Suttles.

JOSEPH KALTENECKER of Alberni, B. C., won the top Canadian prize. Since there were no junior high or unrated players, those two prizes were not awarded.

Work has been started toward deciding the "Best Game Played" award and this will be announced in the next issue.

32 players turned out for the tournament played Saturday and Sunday October 6th and 7th in the Convention Hall of the Leopold Hotel in Bellingham. Ten of these players were Bellingham men. Helping in a big way to make this tournament a success was the appearance of ten players from Seattle. Four Canadian players, including the tournament winner, came down to help the attendance.

Duncan Suttles has now won three Washington State tournaments in recent months. He won a class tournament and then won the last Seattle Seafair Open. Suttles is only about 16 or 17 years old so can be expected to improve considerably in the near future and may give Pupols, McCormick and Seglins trouble then.

In everyone's estimation, the Peace Arch Open was a bigger and better event than the one held in Bellingham last year and is bound to be even bigger and better next year!!

The visiting players found the Leopold Hotel one of the finer hotels and it was nice to have a good place handy to relax in between rounds. Players could either eat in the hotel or step right across the street to a nice eating place.

Summary of the Peace Arch Open - Oct. 6-7

Place	Name	Home	-1-	-2-	-3-	-4-	-5-	-6-	W L D	Score	Med.	Sol.
1.	Duncan Suttles	Vancouver, B.C.	W21	W7	W14	W6	W2	D4	5-0-1	5½-½	---	---
2.	Mike Franett	Seattle, Wash.	W25	W9	W4	W3	L1	W12	5-1-0	5-1	17	---
3.	Peter O'Gorman	Seattle, Wash.	W27	W13	W17	L2	W7	W6	5-1-0	5-1	14½	---
4.	Dan Chin	Bellingham "	W29	W22	L2	W7	W9	D1	4-1-1	4½-1½	15	---
5.	Terry Nelson	Seattle "	D20	W24	W16	W17	L6	W10	4-1-1	4½-1½	12½	---
6.	Don Kendall	Bellingham "	W26	W12	W20	L1	W5	L3	4-2-0	4-2	15½	---
7.	Ron Hamblen	Tacoma "	W31	L1	W15	L4	W18	W14	4-2-0	4-2	13½	---
*8.	Willy Brandal	Seattle "	L15	L10	W19	W31	WF26	W16	4-2-0	4-2	12	---
*9.	Joseph Kaltonecker	Alberni, B.C.	W16	L2	W22	W27	L4	W15	4-2-0	4-2	12½	---
10.	Vladimir Milicic	Bellingham	LF	W8	W18	D12	W11	L5	3-2-1	3½-2½	13½	---
11.	Steve Ludwig	Bellingham	W24	L14	D13	W21	L10	W20	3-2-1	3½-2½	12½	19
12.	Jim Montgomery	Seattle, Wash.	W32	L6	W23	D10	W20	L2	3-2-1	3½-2½	12½	18½
13.	John Reh	Seattle "	W18	L3	D11	L20	W28	W21	3-2-1	3½-2½	11½	---
14.	Leslie Vitanyi	Vancouver, B.C.	W28	W11	L1	W26	L3	L7	3-3-0	3-3	15½	---
15.	John McCharles	Burnaby, B.C.	W8	L17	L7	W24	W25	L9	3-3-0	3-3	13	19½
16.	Myron Miller	Bellingham	L9	W25	L5	W30	W17	L8	3-3-0	3-3	13	17½
17.	Charles Greenup	Seattle, Wash.	W23	W15	L3	L5	L16	W22	3-3-0	3-3	12½	---
18.	Hugh Gregory	Bellingham "	L13	W29	L10	W23	L7	W28	3-3-0	3-3	11	---
19.	Lyman Johnston	Everett "	L22	L23	L8	W29	W30	W27	3-3-0	3-3	6½	---
20.	Earl Knapp	Gig Harbor "	D5	W30	L6	W13	L12	L11	2-3-1	2½-3½	14½	---
21.	Jack Pattie	Gig Harbor "	L1	D28	W31	L11	W27	L13	2-3-1	2½-3½	10	---
22.	Clarence Oliphant	Seattle "	W19	L4	L9	L25	W31	L17	2-4-0	2-4	12½	---
23.	John Dorwin	Seattle "	L17	W19	L12	L18	L24	W30	2-4-0	2-4	11½	---
24.	Ken Dart	Everett "	L11	L5	W32	L15	W23	LF	2-4-0	2-4	11	---
25.	Irving Kahler	Everett "	L2	L16	W29	W22	L15	LF	2-4-0	2-4	10½	---
26.	Gary Gelow	Kirkland "	L6	W32	W30	L14	LF8	LF	2-4-0	2-4	9	---
27.	Harold Raymond	Bellingham "	L3	D31	W28	L9	L21	L19	1-4-1	1½-4½	11	---
28.	George Priebe	Seattle "	L14	D21	L27	W32	L13	L18	1-4-1	1½-4½	10½	---
29.	Bill Blackmore	Bellingham "	L4	L18	L25	L19	D32	Bye	1-4-1	1½-4½	9½	---
30.	Jack Cowan	Puyallup "	Bye	L20	L26	L16	L19	L23	1-5-0	1-5	10½	---
31.	Jack Benedict	Bellingham "	L7	D27	L21	L8	L22	D32	0-4-2	1-5	9½	---
32.	Woody Watrous	Bellingham "	L12	L26	L24	L28	D29	D31	0-4-2	1-5	8	---

* A correction: Kaltonecker 8th and Brandal 9th on tie-breaking points.

NOTE ON THE PUGET SOUND LEAGUE

We had our schedule made and then Purdy wanted in. So we made another schedule with seven clubs and a bye each round. Previously we had informed Grays Harbor that they were outside of the geographical area of the league. At the last minute they said they would be willing to visit the other clubs and meet Bellingham in Seattle in order to play. We did not feel like making the schedule on a stencil for the third time so we merely changed the bye to Harbor on the schedule.

So now we have a nice eight team league stretching from Grays Harbor to Bellingham.

Annual prediction: The Seattle Chess Club will not be as strong as last year. The Black Bandits need more players if they hope to survive. Tacoma needs their best players in all matches - both at home and on the road. Both Grays Harbor and Bellingham have a lot of depth and enthusiasm but do they have good enough top board strength? Kitsap does not seem to have either strength or numbers. To a lesser degree the same can be said for West Seattle. Purdy is in the same class as Kitsap only more so.

Purely a stab in the dark - Seattle Chess Club to win.

MCCORMICK WINS

1962 OREGON OPEN

Less than one week after winning the World's Fair Tournament in Seattle, JAMES MCCORMICK won the Oregon Open in Portland with $5\frac{1}{2}-\frac{1}{2}$. Jim won five in a row, including wins over CLARK HARMON and IVARS DALBERGS, and then allowed JOHN BELL a draw in the last round to end with a $\frac{1}{2}$ point edge over Bell and KEN GROVER who each scored 5-1.

31 players entered this year's Oregon Open played September 8th and 9th. DEANE MOORE directed and announced that the next (1963) Oregon Open will be held during the Labor Day weekend in Portland. This will be a seven round, three day tournament.

John Bell won four and drew with FRED BYRON in the 3rd round and drew McCormick in the last round. He took second on tie-breaking points. Ken Grover won five but lost his third round game to Dalbergs. Dalbergs won three in a row, lost his big 4th round encounter to McCormick and then had to settle for a draw in each of his final two games one with GARY FEUERBERG and one with Byron. Feuerberg took 4th with $4\frac{1}{2}-1\frac{1}{2}$ while Dalbergs finished in 5th heading a six player group who scored 4-2.

There was a double forfeit between Byron and DICK PARSONS in the 4th round agreed to by both men. It seems that Byron had Parsons completely squashed and Parsons jokingly made a remark that caused Byron to make the blunder of his life. Byron was all set to give up the game forever and Parsons agreed that he should have kept quiet so a double forfeit was the result. Fortune was on the side of those who hate a big fight that Parsons is such a nice fellow!

		-1-	-2-	-3-	-4-	-5-	-6-	W L D	Score	Moore	Solk.
1. James McCormick	Eugene	W8	W7	W6	W5	W11	D2	5-0-1	$5\frac{1}{2}-\frac{1}{2}$	---	---
2. John Bell	Newhaven, Con	W16	W4	D10	W11	W8	D1	4-0-2	5-1	22	---
3. Kenneth Grover	Taholah	W23	W31	L5	W21	W12	W6	5-1-0	5-1	16	---
4. Gary Feuerberg	Chicago	W27	L2	W16	W13	D5	W15	4-1-1	$4\frac{1}{2}-1\frac{1}{2}$	Median	Solk.
5. Ivars Dalbergs	Portland	W18	W21	W3	L1	D4	D10	3-1-2	4-2	17	---
6. Clark Harmon	Renton	W22	W13	L1	W14	W7	L3	4-2-0	4-2	15	---
7. Dr. Henrik Lundh	Portland	W19	L1	W18	W9	L6	W16	4-2-0	4-2	14	---
8. Cy Friedman	Portland	L1	W28	W31	W15	L2	W13	4-2-0	4-2	13	---
9. Gregory Kern	Ft. Lewis	W30	L11	W19	L7	W20	W14	4-2-0	4-2	12	---
10. Fred Byron	Milwaukie	W24	W14	D2	LF12	W21	D5	3-1-2	4-2	$11\frac{1}{2}$	---
11. Mohammed Aliabadi	Teheran	W28	W9	D12	L2	L1	W25	3-2-1	$3\frac{1}{2}-2\frac{1}{2}$	---	---
12. Dick Parsons	Seattle	W17	W15	D11	LF10	L3	D21	2-2-2	3-3	14	$21\frac{1}{2}$
13. Roy Parker	Nampa	W20	L6	W24	L4	W17	L8	3-3-0	3-3	14	$20\frac{1}{2}$
14. Jack Schrader	Salem	W26	L10	W23	L6	W18	L9	3-3-0	3-3	13	---
15. Ray Pinson	Salem	W25	L12	W17	L8	W22	L4	3-3-0	3-3	$12\frac{1}{2}$	19
16. Ron Hamblen	Tacoma	L2	W27	L4	W24	W23	L7	3-3-0	3-3	$12\frac{1}{2}$	$18\frac{1}{2}$
17. Russell Miller	Chelan	L12	W25	L15	W19	L13	W24	3-3-0	3-3	$10\frac{1}{2}$	---
18. Vince Bricher	Cot. Grove	L5	W29	L7	W27	L14	W23	3-3-0	3-3	10	$14\frac{1}{2}$
19. Gary Bricher	Cot. Grove	L7	Bye	L9	L17	W28	W22	3-3-0	3-3	10	14
20. Al Miller	Tacoma	L13	L22	W28	W29	L9	W27	3-3-0	3-3	7	---
21. Tim Nettleton	Portland	W29	L5	W22	L3	L10	D12	2-3-1	$2\frac{1}{2}-3\frac{1}{2}$	---	---
22. George Robinson	Lake Oswego	L6	W20	L21	W26	L15	L19	2-4-0	2-4	11	17
23. Robert Houser	Eugene	L3	W26	L14	W25	L16	L18	2-4-0	2-4	11	16
24. Halvar Knudtson	Longview	L10	W30	L13	L16	W29	L17	2-4-0	2-4	10	---
25. Sandy Mackie	Lake Oswego	L15	L17	W30	L23	W27	L11	2-4-0	2-4	9	---
26. Earl Blumenquer	Portland	L14	L23	L27	L22	W30	W28	2-4-0	2-4	6	---
27. Arthur Andrews	Portland	L4	L16	W26	L18	L25	L20	1-5-0	1-5	11	$17\frac{1}{2}$
28. Bill Smith	Portland	L11	L8	L20	W30	L19	L26	1-5-0	1-5	11	$15\frac{1}{2}$
29. Elberta Denison	Portland	L21	L18	Bye	L20	L24	L30	1-5-0	1-5	$8\frac{1}{2}$	---
30. Charles Richardson	Fairchild	L9	L24	L25	L28	L26	W29	1-5-0	1-5	7	---
31. James MacKenzie	Portland	Bye	L3	L8	LF	LF	LF	1-5-0	1-5	4	---

TOURNAMENTS

We have had a couple of tournaments added to our tournament calendar, one in Oregon and one in Montana.

FLATHEAD VALLEY OPEN Oct. 27-28, 1962. This is in Kalispell, Montana and the first round does not start until one p.m. You must register by noon. Site is the Community Room of Kalispell's First National Bank. This is a five round Swiss and 3 hours are allotted for each game at the rate of 30 moves each hour. Entry fee is 75¢ for class A and B & no charge for juniors (under 18).

For further information contact Vernon L. Wyman, 507 W. Arizona St. Kalispell, Montana. Phone 756-3910.

GRANTS PASS, OREGON OPEN Nov. 10-11, 1962. Registration is 9 a.m. Saturday, Nov. 10th. Play starts at 10 a.m. The Grants Pass Club is sending all details which will be found elsewhere in this magazine.

WASHINGTON OPEN Jan. 5-6, 1963. Scheduled for the Seattle YMCA. A six round Swiss event. Championship and reserve sections. No player with either a northwest or USCF rating of 1900 or better is allowed to play in the reserve section. Championship section USCF rated.

WASHINGTON STATE CHAMPIONSHIP Feb. 22-23-24 1963 (Washington birthday weekend) at a site to be determined later. This is a 7 round event, 2 Friday, 3 Saturday and 2 Sunday, & limited to the top 20 Wash. State players. Unseeded players in order to qualify should score at least 4-2 in the Open. To be certain of qualifying you must score $4\frac{1}{2}$ - $1\frac{1}{2}$ in the Wash. Open.

PUGET SOUND OPEN March 23-24, 1963. Divided into two classes with the championship class USCF rated. Location to be determined later.

INLAND EMPIRE OPEN April 20-21 held in Spokane with tournament type and conditions to be set by the Spokane Chess Club.

SEATTLE OPEN (Skipped in 1962 because of the World's Fair Tournament) May 25-26, 1963. At Seattle Y and divided into 2 sections the same as the Wash. Open and Puget Sound Open.

IDAHO OPEN June 1 - 2, 1963. At Boise, Idaho. A five round Swiss USCF rated. 3 rounds Saturday and 2 on Sunday. This is over the Memorial Day weekend, as usual. This year it will be called the "IDAHO CENTENNIAL OPEN" in line with Idaho's 1963 one hundred year Territorial Centennial celebration. There will be special prizes for class winners and handicap winners.

WASHINGTON STATE JUNIOR (limited to players residing in Washington State under 21 years of age.) June 15-16, 1963.

INTERNATIONAL MATCH Sunday, July 14, 1963 seems to be an ideal date for this match.

SEATTLE SEAFAIR OPEN July 27-28. This is subject to change. Tournament conditions can be discussed at the annual meeting.

OREGON OPEN August 31-Sept. 1-2, 1963 in Portland. This is the Labor Day weekend.

BOEING CHESS LEAGUE

Play started Wednesday evening, Sept. 12th in the Boeing Chess League. There are six teams with six players on each. Each board plays two games. Matches are played in the main Boeing cafeteria located at plant 2.

Plant 2 was established by Don Eilmes as the favorite since they have Alan Clark playing first board for them. Eilmes, our correspondent, plays first board for Renton. Ruppert Dorn plays first board for the Plant 1 team. Other players in this league are unknown to tournament players. Clocks are not used in these matches as only Clark and Eilmes have them.

The first round scores:

Renton won over M.F.C. Bldg. $9\frac{1}{2}$ - $2\frac{1}{2}$

Plant 2 won over Plant 1 $6\frac{1}{2}$ - $5\frac{1}{2}$

Development Center won over Facilities by an 8-4 score.

The league winner is to be judged by accumulative points.

GRANTS PASS
OPEN CHESS TOURNAMENT
1962
(USCF rated)

Presented by:

THE GRANTS PASS CHESS CLUB



Date: Saturday and Sunday, November 10th and November 11th.
Place: Josephine County Courthouse, Room 100, Grants Pass, Oregon
Type: 5 Round Swiss

Entry Fee: Seniors \$2.75. Juniors under 21 \$1.75 plus USCF charge for USCF members only.

Time Control - 50 moves first two hours. Adjourned after total elapsed time of 4 hours; unfinished games will be given another hour at a convenient time. If still unfinished they will be adjudicated by the Tournament Director.

Prizes: Cash prizes for the first 3 places, also trophies. Only one prize to a player.

Registration: 9.00 A.M. Saturday, November 10th.

TOURNAMENT SCHEDULE

First, second and third rounds on Saturday, November 10th. Play starts at 10 A.M. Fourth and fifth rounds on Sunday, November 11th.

USCF Membership is not required to enter the tournament. Will be rated by the Northwest Rating System. For advance information or registration write directly to:

Grants Pass Chess Club
1204 S.W. Jordan St.,
Grants Pass, Oregon
phone: Greenwood 9-4019

Please bring your chess sets, boards and clocks. The Grants Pass Chess Club will provide refreshments.

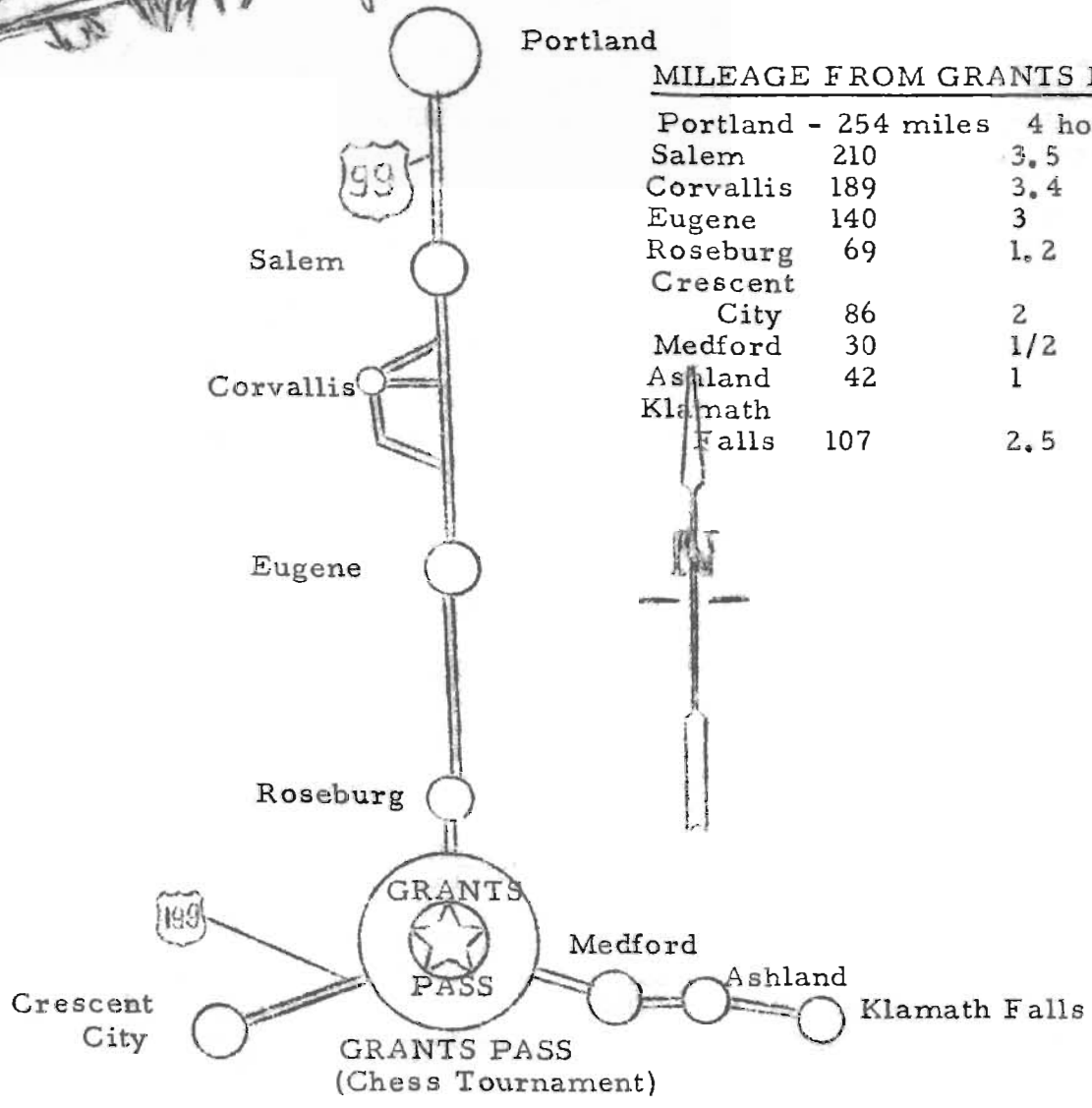
GRANTS PASS CHESS CLUB



Portland

MILEAGE FROM GRANTS PASS

Portland -	254 miles	4 hours
Salem	210	3.5
Corvallis	189	3.4
Eugene	140	3
Roseburg	69	1.2
Crescent City	86	2
Medford	30	1/2
Ashland	42	1
Klamath Falls	107	2.5



SEATTLE CLUB NEWS

BY FRED HOWARD

The Seattle Chess Club is moving from the YMCA! At the annual club meeting on Friday evening, Sept. 28th, only ten members showed up. Those present were President JOHN REH, Vice-President GEORGE KENNY, Secretary-Treasurer DICK PARSONS, director FRED HOWARD, EUGENE FOMIN, DOUG BAUGUENESS, LESTER KERTON, DICK DORWIN, WILLIAM GILLETTE and RON ERICKSON. By a vote of 6-3 it was passed that the club would move to larger quarters in the Jewish Center in the old Elks Building on the 3rd floor. This is one block north on 4th avenue from the YMCA and just across the street from the library. This move will give the club about twice as much room as at present. The move is expected to be November 1st.

It was unanimously passed to raise the club dues to \$10 a year for students and out of town members and \$15 a year for regular members. Also needed are sustaining members. They would donate whenever the club was in financial trouble.

The club at its new location will be closed from sundown Friday evening until sundown Saturday evening to conform to the Jewish sabbath.

MIKE FRANETT tops the Seattle Chess Club perpetual tournament ladder.

On Friday evening, Sept. 14th a speed tourney was held with 12 entered. This event was directed by and also won by GEORGE KENNY who scored 10-1 losing a game to JIM MCCORMICK. McCormick, MIKE FRANETT, and JOHN BRALEY finished in a three-way knot for second, each scoring $8\frac{1}{2}-2\frac{1}{2}$. McCormick lost to DON COREY and Franett and drew with FRED HOWARD. Franett lost to JOHN FOUNTAIN and Kenny and drew with JOHN REH. Braley lost to Kenny and Franett and drew with Corey.

Other scores were DON COREY $6\frac{1}{2}-4\frac{1}{2}$, JOHN FOUNTAIN 5-6, EDDIE COOPER 5-6, FRANK BOSCHAN 5-6, FRED HOWARD 4-7, JOHN REH $2\frac{1}{2}-8\frac{1}{2}$, EARL WILSON $2\frac{1}{2}-8\frac{1}{2}$ and RON ERICKSON 0-11.

Another speed event was held Friday evening, Sept. 21st. Nine players entered and three of them finished in a three-way tie for first all with $6\frac{1}{2}-1\frac{1}{2}$. The top three were DICK PARSONS, WILLIAM GILLETTE, and GARRETT ZWEERS. Parsons lost to Gillette and drew a game with Zweers. Gillette lost to Zweers and drew DON COREY. Zweers lost to JOHN REH and drew with Parsons. Other scores were DON COREY $5\frac{1}{2}-2\frac{1}{2}$, FRED HOWARD $3\frac{1}{2}-4\frac{1}{2}$, JOHN FOUNTAIN $3\frac{1}{2}-4\frac{1}{2}$, JOHN REH 3-5, DICK DORWIN 1-7 and LESTER KERTON 0-8.

The Seattle Chess Club plans to hold a weekly speed tournament. Visitors welcome.

EUGENE FOMIN 3 FRED HOWARD 2

EUGENE FOMIN edged out FRED HOWARD in a five game match for northwest chess rating by a score of 3 to 2. This match was completed on September 7th.

EUGENE FOMIN 0 - 1 - 1 - $\frac{1}{2}$ - $\frac{1}{2}$ 3 - 2
 FRED HOWARD 1 - 0 - 0 - $\frac{1}{2}$ - $\frac{1}{2}$ 2 - 3

Fomin	Howard	Fomin	Howard	Fomin	Howard
1. P-K4	P-K3	9. 0-0	B-N3	17. RxN	R-KB3
2. P-Q4	P-Q4	10. N-K2	R-K1	18. Q-N3	N-Q2
3. RxP	RxP	11. P-QB4	P-QB3	19. BxPch.	K-R1
4. N-KB3	N-KB3	12. RxP	NxP	20. B-K6	RxRch.
5. N-B3	B-N5	13. B-QB4	B-K3	21. RxR	N-B3
6. B-Q2	P-QR3	14. N-N5	P-KR3	22. N-B4	P-KN4
7. P-QR3	B-R4	15. NxB	RxN	23. N-N6ch.	K-N2
8. B-Q3	0-0	16. B-K3	NxB	24. N-K5	BxQ1?
				25. QxNPch. winning	

The score of the 2nd match game starting Fomin on his way to victory.

RUY ANALYSIS

by Parsons

RUY LOPEZ 5.P-Q4 Part III

- (F) 9...O-O! 10.Q-N4 P-KN3 (10...N-K3? 11.BxN QPxN 12.R-Q1 Q-K1 13.B-R6 wins. Anderson - Katz, N.Y. 1947.) 11.B-R6!? R-K1 12.N-B3!
(1) 12...NxB 13.N-Q5!
(a) 13...P-QN4 (mate in 11!) 14.N/BxDch NxB 15.N-B6ch K-R1 16.Q-R4 N-KB4 17.B-N7ch KxB 18.QxPch K-B1 19.Q-R8ch K-K2 20.N-Q5ch K-K3 21.N-D4ch K-K2 22.Q-B6ch K-B1 23.NxPch K-N1 24.Q-R8mate.
(b) 13...P-Q3 14.N/BxDch NxB 15.N-B6ch K-R1 16.QxN wins.
(c) 13...NxB 14.N/BxDch RxB 15.Q-R4! wins.
(d) 13...N-B4 14.N/BxDch RxB 15.N-B6ch K-R1 16.Q-R4 RxB 17.B-N5! P-KR4 18.P-KB4! BxB 19.QxR K-N2 (19...Q-B1 20.P-B5! wins) 20.NxPch K-R2 21.QxN P-Q3 22.Q-Q5 D-K3 23.Q-D3wins.
(e) 13...K-R1 N/BxD NxB 15.D-N5 wins.
(2) 12...P-Q4 13.NxBch QxN 14.Q-KB4 QxP 15.Q-Q2!
(a) 15...N-K5 16.NxB NxB 17.B-B4 Q-K2 18.Q-D3 with advantage to White.
(b) 15...D-K3 15.D-B4 Q-R4 17.BxB NxB 18.DxB with advantage to White.
(c) 15...R-Q1 16.QR-K1 Q-Q5 17.QxQ NxB 18.D-KN5! wins.
(d) 15...Q-D4 16.BxB NxB 17.Q-Q4 N-K3 18.QR-K1! P-B3 19.Q-QR4 D-Q2 20.P-KN4! Q-D6 21.R-K3 wins.
(3) 12...NxB 13.Q-N3 NxB 14.N-Q5! D-D3 15.P-KB4 N-D5 (15...P-Q3 16.PxB DxB 17.N/B-K7ch RxB 18.Q-R4 R-K1 19.D-N5 Q-Q2 20.B-D6wins.) 16.D-N5 DxB 17.PxB NxB 18.N-D6ch K-B1 19.NxBch wins.
(4) 12...P-QN4 13.N-Q5 PxB 14.N/BxDch NxB 15.N-B6ch K-R1 16.Q-R4 N-B4 17.B-N7ch mates in 7.
(5) 12...P-Q3 13.NxBch
(a) 13...NxB 14.Q-KM4! NxB 15.QxN D-Q2! (15...N-B4 16.D-MN5!) 16.Q-R4 D-B3! 17.P-KM4!? (Perhaps 17.D-KN5 Q-Q2! 18.P-D4! is stronger.) N-Q4! 18.D-N5 NxB 19.PxB Q-Q2 20.D-D6 D-D6? (Dost was 20...RxB 21.BxR PxB with good counterchances.) 21.P-KR3 P-KR4 22.QR-Q1 Q-D3 23.Q-N5 K-R2 24.R-Q4 PxF 25.BxF Q-K3 26.R-KB4 D-K7 27.R-K1 D-D5 28.PxF R-KN1 29.K-R2 PxF 30.QxPch Resigns. Anderson - Draxl, Toronto 1955.
(b) 13...QxN 14.Q-D3! NxB (14...QxP 15.BxB PxB 16.P-QN4! N-Q2 17.QxP with the initiative.) 15.Q-N3 P-QB3 (15...NxB 16.N-Q5! Q-K3 17.NxB Q-K3 18.NxB D-D4 19.P-N3! wins.) 16.P-B4 NxB 17.NxB N-Q2 18.QR-K1 Q-Q1 19.RxBch QxR 20.R-K1 Q-Q1 21.Q-QB3 P-B3 22.Q-K3! with a very strong attack.
(c) 13...RxB 14.Q-D3 RxB 15.BxB PxB 16.QR-K1
(1) 16...R-R4? 17.Q-D6! N-K3 18.QxQch NxB 19.R-K8mate.
(2) 16...BxB 17.RxB D-Q2 18.P-QN4 N-K3 19.N-K4 P-KB4 20.N-N5! NxB 21.Q-D3 N-K3 22.RxB K-B2 23.R-K3 Q-KN8 24.P-KR4 with fine attacking chances.
(3) 16...Q-K2? 17.RxB PxB 18.QxP D-N2 19.N-Q5! Q-Q3 20.QxQ PxB 21.N-K7ch K-R1 22.R-Q1 R-Q1 23.D-N5wins.
(4) 16...D-Q2 also loses 17.RxB PxB 18.R-Q1! Q-K2 19.P-QN4 N-K3 20.N-K4 N-Q5 (20...P-KB4 21.RxB! wins.) 21.RxB PxB 22.Q-D6! wins.
(5) 16...R-KB4 17.Q-K3 D-K3 (17...D-Q2 18.Q-Q4! with a strong attack.) 18.P-KB4 R-KR4 19.D-N5 P-KB3 20.P-QN4 PxB 21.PxB D-B4 22.N-K2! retains a strong attack.

It would be appreciated if readers would send in games using analysis published in the Washington Chess Letter for the benefit of others in the area and to augment the analysis that has been published. Send your games to the games editor. I hope to receive several from correspondence players.

GAMES by Parsons

A CORRECTION

Fupols gives the following analysis to his game with Macskasy page 14 of the Sept. Wash Chess Letter. Quote;

15.P-D5? not!

Instead of the result of study, this move is a spontaneous mistake by Macskasy and loses a pawn.

15.... P-R3

16. PxB PxB?

This recapture is automatic, and only transposes into the losing endgame further on. I had automatically assumed that the subsequent ...P-Q4 equalizes for Black. It usually does in similar positions. Now lets look at the unlikely recapture. 16...QxP! wins a pawn.

17.N-N5 Q-N3ch temporizes

17.N-K6 BxN 18.PxB QxP

17.N-R3 PxB and the knight is attacked. I pointed this variation out to Macskasy immediately after the game. In that position, of course, the loss of a pawn isn't necessarily fatal. Regards Vic Unquote.

McCormick - Macskasy
C-21

1.P-Q4	P-Q4
2.P-QD4	P-K3
3.N-QB3	N-KB3
4.B-N5	B-K2
5.P-K3	P-KR3
6.B-R4	O-O
7.N-B3	P-QN3
8.PxP	NxP
9.BxB (9.B-N3 P-QD4!) QxB	
10.NxN	PxN
11.D-Q3 (or 11.R-D1) B-K3	
12.O-O	N-Q2

12...P-QR4 13.PxP PxP 14.P-K4 leads to an equal game e.g., Dr. Filip-Podgorny, 1948.

13.R-D1	P-QD4
14.PxP	PxP
15.Q-R4	P-B5?!
16.B-K2	Q-D4
17.N-Q4	N-N3
18.Q-D2	KR-D1
19.KR-Q1	Q-R4
20.NxB	PxN
21.B-N4	

(Jim felt that 21.Q-N6 wasn't good enough so he does a wait-and-see policy.)

21. R-B3

22.P-QR3	N-Q2
23.P-K4	N-K4
24.PxP	PxP
25.B-K2	R-Q1
26.Q-Q2	QxQ
27.RxQ	R/3-Q3
28.P-B4	N-B3
29.R/1-Q1	N-R4

Starting to look tough for White, after N-N6.

30.R-Q4!	K-B1
30...N-N6 31.RxQP and a later BxP hurts Black rather badly! So a pawn is lost.	
31.B-B3	K-K2
32.RxP	RxR
33.RxR	RxR
34.DxR	K-Q3
35.P-K4	K-B4
36.K-D2	K-Q5
37.B-N6	N-N6

Black might have been better off at this point by playing 37...P-D6 with counterchances on the queen's flank.

38.K-K2	N-D4
39.D-B2	N-Q2
40.P-KN4	N-B3
41.K-B3	N-Q4
42.P-KR4	N-K6
43.D-R4	K-Q6
44.P-R5	N-B8
45.P-N5	N-K6
46.D-Q7	N-Q4
47.D-K6	N-K2
48.P-B5	PxP
49.K-M4	K-Q5
50.KxP	K-K4
51.BxP	NxP
52.K-N6	K-D5
53.P-M4	N-N6
54.P-R4	K-K4
55.P-N5	K-Q5
56.B-D7	K-B4
57.KxP	K-N5
58.P-R6	N-D4ch
59.K-N6	NxP
60.KxN	KxP

61.D-D4 and as Seglins said, "It's a good thing Jim has a White bishop!" Jim, of course, had time to calculate this out before he went into this particular ending. A good game on his part.

Raymond - Reh, Class Try 7-7-62.

1.P-Q4 N-KB3 P-QD4 P-K4 3.PxP N-N5 4.N-KB3 N-QB3 5.B-D4 B-N5ch 6.QN-Q2 Q-K2 7.P-QR3 KNxP! 8.NxN NxN 9.PxB N-Q6 mate!

Harmon - Robinson
Oregon Open 62

1. P-K4	P-K4
2. N-KB3	N-QB3
3. B-N5	P-R3
4. B-R4	N-B3
5. O-O	B-K2
6. Q-K2	P-Q3
7. P-B3	P-QN4
8. B-N3	N-QR4
9. B-B2	P-B4
10. P-KR3	O-O
11. P-Q4	Q-B2
12. R-Q1	N-B3
13. B-K3	R-K1
14. P-QR4	B-Q2
15. PXP	FxP
16. QN-Q2	QR-N1
17. PxBP	FxF
18. N-B1	B-K3
19. P-KN4	B-B5
20. Q-K1	P-N5
21. N-N3	K-R1
22. N-B5	B-K3
23. K-R1	P-N6
24. B-N1	KR-Q1
25. B-N5	RxR
26. QxR	R-Q1
27. Q-K2	P-B5
28. N-Q2	B-B4
29. K-N2	N-QR4
30. Q-D3	N-N2
31. NxBKNP!	RxN
32. DxB	KxN
33. B-R6ch	K-N3
34. R-R8	B-K2
35. Q-K3	NxBNP
36. R-N8ch	K-R4
37. PxBch	DxF
38. R-N5ch	KxD
39. RxBch	K-R4
40. Q-R3ch	B-R5
41. QxB mate.	

McCormick - Dalbergs
62 Oregon Open

1. P-Q4	P-Q4
This is becoming a new weapon of late!	
2. P-QD4	P-K3
3. N-QB3	P-QB3
4. N-B3
Spassky likes P-K4.	
4.	N-B3
5. P-K3	QN-Q2
6. Q-B2
Avoiding the Meran 6. B-Q3 FxP	
8.	FxP

7. BxP	P-QN4
8. B-Q3	P-QR3
9. O-O	P-B4
10. P-QR4	P-N5
11. N-K4	B-N2
12. NxBP	BxN
13. PxB	R-QR1
14. P-B6	RxP
15. Q-K2	O-O
16. R-Q1	Q-K2
17. N-Q4	R-Q3
18. B-Q2	P-QR4
19. N-N5	R-B3
20. N-Q4	R-Q3
21. QR-B1	N-K4
22. B-N5	N-N3
23. P-B3	Q-Q1
24. B-N1	Q-N3
25. B-N3	P-K4
26. N-B5	RxR
27. RxD	R-Q1
28. RxRch	QxR
29. Q-Q3	QxQ
30. BxQ	P-K5
31. PxB	DxB
32. BxB	NxB
33. B-B7	N-B4
34. DxB	NxB
35. P-QN3	N-B4
36. N-Q4	N-R3
37. K-B2	N-K4
38. K-K2	K-B1
39. K-Q2	K-K1
40. N-D3	N-B3
41. B-N6	N/R-N1
42. K-Q3	N-Q2
43. B-B7	N-B1
44. K-D4	K-Q2
45. D-N3	P-D4
46. N-K5ch	NxBN
47. BxN	P-N4
48. KxP	K-K3
49. E-N7!	N-N3
50. D-R6	K-D3
51. K-R5	N-K4
52. P-N3	N-B6
53. P-QN4	NxB the sealed move.

Jim was afraid that the position might be a draw and that the adjournment would give Dalbergs a chance to find the way out of his difficulties, but as it turned out Jim had a win by one tempo and the adjournment gave him a chance to find how to finish off the game.

54. P-N5	N-N5
55. P-N6	N-K4
56. P-N7	N-Q2
57. K-N5	K-N3

58. K-B6 N-N1ch
 59. K-B7 N-R3ch
 60. K-N6 N-N1
 3. The little manoeuvre that Jim just went through, while it may seem superfluous, was the winning procedure as it gained him the extra tempo that insured his win.

61. B-B8 K-D2
 62. B-C6 N-Q2ch
 63. K-D6 K-K3
 64. P-N8(3) NxCch
 65. DxN P-R4
 66. K-B5 P-B5
 67. NxFP Resigns.

Howard - John VanSant
 Class Tny. 7-7-62

1. P-Q4 P-KN3
 2. P-QB4 B-N2
 3. N-QB3 P-Q3
 4. P-K4 N-QB3
 5. P-Q5 N-Q5
 6. P-KR3 P-K4
 7. N-KB3 NxCch
 8. CxN N-K2
 9. B-Q3 O-O
 10. O-C P-KB4
 11. FxF NxF
 12. DxB DxB
 13. Q-K2 Q-R5
 14. P-B3 R-D2
 15. Q-KD2 Q-K2
 16. Q-K2 R-KD1
 17. B-Q2 P-KR4
 18. N-K4 B-D3
 19. B-R6 R.-K1
 20. Q-Q2 BxN
 21. FxD R-R2
 22. B-K3 P-N3
 23. R-D3 R-D2
 24. R1-KD1 R1-KD1
 25. B-R6 B-N2
 27. RxD Q-K1
 28. RxDch QxR
 29. Q-KD2 Q-K1
 30. P-QN3 P-D3
 31. P-KR4 FxF
 32. BxFP Q-D2
 33. QxQch KxQ
 34. P-R4 B-D3
 35. K-D2 DxB
 36. FxD P-R4
 37. K-K3 K-K2
 38. K-Q3 K-Q2
 39. K-D4 K-D2

40. K-N5 K-N2
 41. P-N3 K-R2
 42. K-B6 K-R3
 43. KxP P-N4
 44. FxPch KxP
 45. KxP K-N5
 46. P-Q6 Resigns

Dell - Feuerberg

1. P-Q4 P-Q4
 2. P-QB4 P-K3
 3. N-QB3 N-KB3
 4. B-N5 QN-Q2
 5. FxP FxP
 6. P-K3
 6. NxF loses a piece to NxF!
 6. P-D3
 7. B-Q3 B-K2
 8. Q-D2 P-KR3
 9. B-R4 O-O
 10. KN-K2 R-K1
 11. B-N3 N-R4
 12. O-O NxB
 13. NxB P-R4
 14. R-C1 N-D3
 15. Q-Q2 P-R4
 16. B-N1 P-KR5
 17. N/N-K2 B-Q3
 18. P-D3 Q-K2
 19. P-K4 FxF
 20. FxP B-QN5
 21. P-K5 DxB
 22. NxB N-R2
 23. C-B4 B-K3
 24. N-K4 R-KB1
 25. N-D6ch! NxF
 26. CxRP B-D5
 27. RxD P-KN3
 28. RxDch Resigns

Dalbergs - Feuerberg

This game makes up for Feuerberg's performance in the previous game!

1. P-Q4 P-Q4
 2. P-QB4 ~~P-K3~~
 3. N-QB3 N-KB3
 4. N-B3 P-D3
 5. P-K3 QN-Q2
 6. Q-B2 B-K2
 7. P-QN3 O-O
 8. B-Q3 FxP
 9. FxP Q-B2
 10. B-N2 P-K4
 11. FxP? NxF
 12. NxB QxN
 13. N-Q5 Q-Q3
 14. NxBch QxN
 15. O-O P-KR3

16. Q-B3	P-B4
17. P-KR3	P-QN3
18. QR-K1	R-Q1
19. D-N1	D-R3
20. P-K4	Q-K3
21. P-K5	N-K1
22. R-D1	R-Q2
23. Q-D2	P-N3
24. P-D4	N-N2
25. Q-B3	R-Q1
26. D-K4	D-N2
27. DxB	RxB
28. QR-Q1	R/2-Q2
29. R-Q6	RxR
30. FxR	P-D3
31. R-K1	QxP
32. QxP	QxQ
33. DxC	R-KD1
34. D-K5	N-K3
35. P-N3	N-C5
36. DxB	FxB
37. K-D2	K-D2
38. R-K4	R-Q1
39. K-K2	P-Q6ch
40. K-Q2	K-D3
41. R-K1
41. R-K3 R-Q5!	
41.	R-Q2
42. K-D3	P-Q7
43. R-Q1	K-D4
44. RxP	RxR
45. KxR	K-K5
46. K-K2	P-KR4
47. P-KR4	P-R4
48. P-R4	K-C5
49. K-D3	KxP
50. P-N4	FxFch
51. KxP	P-QN4
52. FxP	KxP
53. P-R5	FxFch
54. KxP	Drawn.

Spassky - Gipslis Rd2 USSR Chmp.

1. P-K4	P-KR4
2. N-QD3	N-QD3
3. P-KN3	P-KN3
4. D-N2	D-N2
5. P-Q3	P-Q3
6. KN-K2	N-D3
7. P-KR3	O-O
8. O-O	N-C5
9. NxB	FxN
10. N-K2	N-Q2
11. P-KD4	P-B4
12. K-R2	K-R1
13. FxP	FxP
14. P-D3	FxP
15. FxP	Q-R4

16. D-K3	N-D4
16... DxB 17. NxD QxN opens Black up too much on the King side.	
17. D-Q4	P-K4
18. D-K3	D-K3
19. R-N1	QR-Q1
20. P-Q4	N-K5
21. RxP	QxRP
22. R-N4	D-Q4
23. R-KN1	D-R1
24. R-R4	Q-N7
25. R-N4	Q-R7
26. R-R4	Q-N7
27. RxP	NxDP
28. NxB	QxN
29. Q-R5	FxQP

It looks like White played 24. Q-R5 in desperation, but after the text move White decides the struggle in one move! Almost unbelievable isn't it with all of his men blocked up around his king. See if you can work out the solution before you go on.

30. RxKB Resigns
if 30... KxR 31. R-QD1! (A) 31... QxN allows mate after 32. R-D7ch K-D3 33. Q-N5ch K-K3 34. D-Q5ch! and if (B) 31... Q-R4 32. DxBch K-N1 33. Q-N5ch K-D2 34. Q-D6ch mates in one.

Morris - Van Patten
Postal 1962

1. P-Q4	N-KD3
2. P-B4	P-K3
3. N-D3	D-N5
4. P-K3	P-D4
5. P-R3	FxP
6. FxP	DxB
7. FxB	P-C3
8. N-D3	Q-R4
9. Q-D2	D-Q2
10. B-Q2	D-R5
11. Q-N1	Q-N-Q2
12. Q-N4	Q-R3
13. D-K2	Q-D3
14. D-D4	N-K5
15. R-N1	K-K2
16. O-O	P-QN3
17. N-K5!	NxB
18. FxN	KR-Q1
19. FxFch	Resigns.

Nettleton - Bell
62 Oregon Closed

1. P-Q4	N-KD3
2. P-QD4	P-K4
3. FxP	N-N5
4. N-KD3	D-D4

972
111
111
111
972

5.P-K3 Q-K2
6.P-QR3! P-QR4
7.P-QN3 P-Q3!
"The normal line 7...NxKP 8.B-N2 NxNch
9.FxN! is strong for White so I decided
to give up the pawn."
8.FxP Dxp
9.B-N2 O-O
10.B-K2 P-KB4
11.P-KR3 N-KB3
12.O-O Q-N-Q2
13.N-D3 P-D3
14.Q-D2 N-K4
15.N-Q4 N-K1
16.N-R4 P-D5
17.N-N6 DxxKRP!
18.FxP

"Both NxR and FxB lose quickly to Q-N4.
18. DxxNP!
" 18...RxP 19.P-N3 wins for White.
19.N-D5! RxN
"If 19.KxB RxP 20.P-D3 Q-N4ch 21.K-B2
Q-R5ch 22.K-K3 Q-N4! and White must
take the draw."
20.QxR P-N3
21.Q-D2

" 21.Q-N5 leads to equality. Interesting
is 21.N-D6 RxN 22.QxR B-D6 As far as
either of us could see black is able
to at least draw."
21. Q-R5
22.KxD N-N5
23.DxN QxDch
24.K-R1 Q-R6ch

Drawn.

M.Tims - K. Kellis
Sons of Latvia Tournament
Sent in by J. Bell with above game.
1.P-K4 P-K4
2.N-KB3 P-KB4
" All games in this tournament began
this way."

3. NxP Q-D3
4.N-D4 Pxp
5.N-D3 Q-KN3
6.P-Q3! Fxp
7.Dxp QxF?
8.Q-R5ch P-N3
9.Q-K5ch B-K2
10.B-K4 Resigns.

As reported in the Wash. Chess Letter
recently, John Bell directed this tny.

Reh - Bourasaw
Boeing vs D.C. Tny
1.P-QB4 N-KB3
2.N-QB3 P-KN3

3.P-K4

Reh stops the Gruenfeld as he has
studied the recent refutation of the
King's Indian in the magazine Chess
Life.

3. D-N2
4.P-Q4 P-Q3
5.P-D3 O-O
6.B-K3 R-K1
7.Q-Q2 Q-N-Q2
8.O-O-O N-N3
9.P-KN4 P-D3
10.P-KR4 P-K4
11.P-Q5 Fxp
12.DFxP KN-Q2
13.B-Q3 P-QR3
14.KN-K2 Q-B2
15.K-N1 N-D5
16.DxN QxB
17.R-QD1 Q-N5
18.N-N3 N-N3
19.DxN? QxB
20.P-R5 B-Q2
21.P-R6? B-KB3
22.R-R5 FxR?

Black had a win by just letting the
rook set where it would be out of play.

23.P-N5 B-K2
24.NxP K-D1
25.N-D6 KR-Q1
26.NxPch K-N1
27.N-D6ch K-D1
28.P-R7

29.Q-R2 Resigns.
At first it looks like Black is giving
up in a won position, however, the threat
30.Q-R6ch K-R1 31.N-R5 can only be met by
29....K-R1 after which there follows,
30...R5! (A) 30...D-K1 31.Q-R6! threat-
ening 32.N-R5 wins. (B) 30...K-N2 31.
Q-R6ch K-R1 32.N-R5wins. (C) 30...R-KD1
31.NxB etc wins. (D) 30...B-KD1 31.QxP
B-N2 32.R-R1! and Black is powerless to
stop 32.Q-N8ch!

Grannis - George W. Friebe
Seafair 62
1.P-A4 P-Q4 12.Fxp Q-D2
2.P-QD4 B-D4? 13.P-D4 R-Q1
3.N-D3 P-K3 14.R-Q1 Dxp
4.N-D3 N-D3 15.DxB QxB
5.P-K3? N-N5 16.NxP Q-K6ch
6.P-K4 FxKP 17.N-K2 DxN
7.P-QR3 N-Q6ch 18.R-Q2 DxN
8.DxN FxB and Black won in
9.D-K3 N-D3 a few more moves.
10.N-K5 P-D4
11.Q-R4ch N-Q2

POSTAL CHESS



New players start in "A" Division with a rating of 1600, "B" 1300, and in "C" 1000. Send your entries to the Postal Director with the entry fee of 50¢ per section of four players and if a new player in our tournaments, advise which Division you wish to play in. You can enter as many sections as you desire.

REPORT OF GAMES COMPLETED TO Sept. 30, 1962				Points
	Section			
9/4	62C-2A	Kershaw 1	Berg	0 26
9/5	61B-10B	Lyberger 1	Merk	0 36
	61B-8A	Skarsten 1	Merk	0 34
	61B-8B	Skarsten 1	Merk	0 34
9/6	62A-1A	R.W. Allyn 1	Benson	0 40
	62A-1A	J. Nourse 1	Benson	0 32
	62C-3B	Turner 1	R.W. Miller	0 32
9/8	61B-10B	Merk 1	Baskett	0 74
9/10	62B-1A	Skoglund 1	Laugen	0 36
	62B-1B	Skoglund 1	Laugen	0 36
	62A-3B	Scripps 1	Van Patten	0 26
9/12	62A-1A	J. Nourse 1	Carter	0 34
	62A-1B	J. Nourse 1	Carter	0 34
	62A-1A	Benson 1	Carter	0 62
	62A-1B	Benson 1	Carter	0 62
9/13	62A-1A	R.W. Allyn 1	Carter	0 34
	62A-1B	R.W. Allyn 1	Carter	0 34
	Private	W.M. Jones 1	Skarsten	0 38
	Private	W.M. Jones 1/2	Skarsten	1/2 12
9/14	62A-3A	Abrahamson 1	Van Patten	0 30
9/17	61A-14A	Mage 1	Koenkow	0 40
	Private	Benson 1	Skarsten	0 39
9/19	62C-3B	R.W. Miller 1	Shives	0 28
9/20	Private	Skarsten 1	W.M. Jones	0 70
	61A-11A	Skarsten 1	Guess	0 72
	61A-11B	Skarsten 1	Guess	0 72
9/21	62A-5A	Cummins 1	Vannatta	0 50
	62A-5B	Cummins 1	Vannatta	0 50
9/22	Private	Skarsten 1	Benson	0 48
	62B-1A	Pattie 1	Dorwin	0 46
	62B-1B	Pattie 1	Dorwin	0 46
9/24	61B-5A	Aarnas 1	Rader	0 40
	61B-5B	Aarnas 1	Rader	0 40
9/25	61B-6B	Baskett 1	Lyberger	0 62
	62B-4B	Weaver 1	Collins	0 96
	62A-4A	Morris 1	W.M. Jones	0 38
	62A-4B	W.M. Jones 1	Morris	0 62
9/26	Private	Benson 1	Skarsten	0 58
	62A-3A	Morris 1	Van Patten	0 24
	62C-4A	J.R. Donnelly 1	Cyr	0 36

Hagor demonstrated a win over Tugglo in 61B-3A which had been previously awarded to him as a draw and his rating is accordingly adjusted.

	61B-5A	61B-5B	
Aarnas	x 1 1 1	x 1 1 1	6
Rader	0 x 1 0	0 x 1 1/2	2 1/2
Tugglo	0 0 x 1	0 0 x 1	2
Gifford	0 1 0 x	0 1/2 0 x	1 1/2

Aarnas has chosen as his prize an extension of his membership.

Weaver by his win over Collins topples Collins from 1st place, putting Dolph again on top. Skarsten makes the jump from 4th place in B Division to 25th in the A Division. Cummins took Vannatta for two games thereby boosting his rating from 17th to 14th in A division. The going gets tougher from here on up. Benson also boosted his rating from the bottom of the A division to 18th place. Skarsten and Aarnas were promoted to the A Division. Carter has again had to abandon all of his games due to pressure of work and thereby is demoted to B division. There was also another demotion to B Division and two demotions to C Division but we won't say too much about that as these contestants are digging in to regain their lost position.

We welcome the return to postal chess our former member, G. L. Christey of Bremerton and also Fred Nedell, William and David Rupel, all of whom have already been assigned to sections.

A correction of the ratings of E. Donison, Link and Berg is made because of error in reporting 8/14 Private E. Donison 1, Link 0 which was a duplication of the report of 8/11

PLAY CHESS BY MAIL!

If you are pressed for time or are located in a situation where you are unable to contact other chess players conveniently when you wish to play, POSTAL CHESS is an ideal way to play. You can play at your convenience and not be tied up for hours with a game. Since you are not pressed for time you are able to carefully study each move and thus improve your game.

Send entry fee of 50¢ for a section of four players with each one playing two games simultaneously with each of the others to
R. R. Merk
1026 N.E. 71 Street
Seattle 15, Wash.

WASHINGTON CHESS LETTER
1026 N.E. 71st St., Seattle 15, Wash.
RETURN POSTAGE GUARANTEED
FORM 3547 REQUESTED

Portland Chess Club
411 Henry Building
S.W. 4th & Oak
Portland 4, Oregon

5/63

POSTAL CHESS RATINGS

"A" Division
Above 1500

"B" Division
1200 to 1500

1	Dolph	2050	1	D. Kendall	1500
2	Collins	1982	2	H. Raymond	1496
3	Wade	1951	3	Van Patten	1470
4	Pupols	1948	4	Skoglund	1468
5	E. Knapp	1859	5	Hager	1458
6	Mage	1846	6	Gifford	1451
7	J. Nourse	1820	7	Turner	1448
8	Scripps	1815	8	Lyberger	1409
9	Vellias	1805	9	Baskett	1408
10	Eilmes	1797	10	Pattie	1392
11	C. Allyn	1797	11	Rogers	1378
12	Morris	1776	12	Beachy	1362
13	Cummins	1755	13	Delaney	1358
14	Abrahamson	1752	14	Dart	1358
15	R. W. Allyn	1748	15	Dickson	1333
16	Weaver	1721	16	Carter	1327
17	Parsons	1712	17	Ward	1319
18	Benson	1687	18	Rystrom	1310
19	S. Smith	1687	19	Chenoweth	1306
20	Koenkow	1674	20	Christey	1300
21	Jones	1673	21	M. Miller	1300
22	Wilson	1652	22	Nagel	1300
23	Vannatta	1649	23	Van Sant	1300
24	Weisscher	1647	24	Corey	1300
25	Skarsten	1645	25	Wm. Rupel	1300
26	Boschan	1620	26	Rader	1279
27	Kiplinger	1603	27	J. McKay	1276
28	Schultz	1600	28	Adkisson	1272
29	Howard	1561	29	Merk	1256
30	Gillette	1560	30	Monrad	1256
31	B.J. Peterson	1554	31	R. W. Miller	1224
32	Woodward	1551	32	Suttles	1217
33	Aarnas	1542	33	Allen	1211
34	Guess	1523			

"C" Division
Below 1200

"C" Division cont'd.
Below 1200

1	Laugen	1190	16	Nedell	1000
2	R. Raymond	1176	17	Priebe	1000
3	Dorwin	1170	18	Running	1000
4	Fellows	1160	19	D. Rupel	1000
5	Kershaw	1159	20	L. T. Smith	1000
6	Waldron	1140	21	Taylor	1000
7	Matthews	1078	22	Roemer	968
8	Hanson	1048	23	Shives	948
9	J. D. Miller	1036	24	E. Denison	937
10	J.R. Donnelly	1036	25	S.G. Peterson	928
11	Anderson	1000	26	Link	898
12	Cooper	1000	27	Berg	876
13	Cowan	1000	28	Fomin	860
14	D. Denison	1000	29	Johnson	836
15	F.J. Donnelly	1000	30	Cyr	828

