

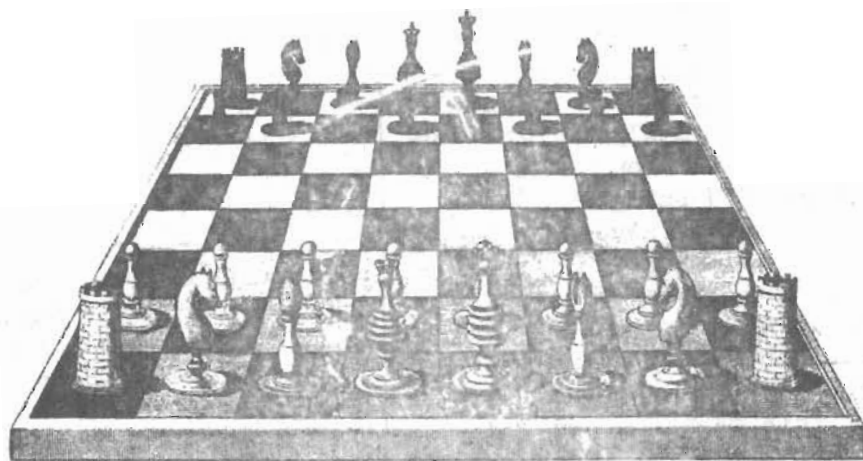
WASHINGTON

CHESS

LETTER

NOV. 1962

024.5
+ 52.1
r



15TH ANNIVERSARY ISSUE

WASHINGTON CHESS LETTER

Number 180

Editor-Publisher Dan Wade
11030 Chelsea Place N.E. Seattle 55.

Circulation & Postal R.R. Merk
1026 N. East 71st St. Seattle 15.

Treasurer F.H. Weaver
501 Olympic Place Seattle 99.

Games Editor Dick Parsons
4422 Phinny Ave. Seattle, Wn.

Ratings Director Jim Montgomery
1329 S.W. 172nd St. Seattle, 66.

One year's subscription (12 issues) is \$2. To subscribe, send \$2 check or money order made out to the Washington Chess Federation to R.R. Merk 1026 N. E. 71st St., Seattle 15, Wn.

180 issues equals fifteen years!

Back in January, 1948 the Everett Chess Letter became official mouthpiece of the newly formed Washington Chess Federation and had its name changed to Washington Chess Letter. The first issue had only $5\frac{1}{4}$ pages not counting the front cover. The back cover was blank. LAWRENCE W. TARO of Everett, who had started the whole thing as Everett Chess Letter, was the first editor of this magazine and judging from his editorial in January of 1948, he had a difficult time getting chess news sent to him.

Later JACK FINNIGAN of Kitsap became editor and his short term was featured by his cartoons. However, it was ROBERT STORK who made the Chess Letter what it is today. With modifications the Chess Letter has tried (with occasional lapses) to live up to Stork's standards ever since.

We doubt if anyone on viewing

that first little issue would have thought this magazine would still be in existence fifteen years later!

HOW ABOUT THE NORTHWEST JUNIOR?

For several years now Yakima has had a Northwest Junior Tournament about this time of the year. We haven't heard a thing so far this year so if Yakima isn't interested, JIM MONTGOMERY of Seattle is. If we don't hear from Yakima, an interested group in Seattle is going to stage this tournament.

CAMAS MARCH OF DIMES TOURNAMENT

Open to all. Feb. 2 and 3, 1963
Moose Lodge in Camas, Washington
Registration 9 a.m. 1st round is at 10 a.m. Six round Swiss.
Trophies to 1st, 2nd, 3rd, best junior (under 18), best woman.

Refreshments for sale by Men of the Moose. For further information contact BILL JESSETT, 707 S.E. Union, Camas, Wash. Phone 834-4981.

ALL PROCEEDS TO GO TO THE MARCH OF DIMES.

The following notice arrived in the mail postmarked October 26. It was too late for the October Chess Letter and the November issue will come out too late to do this tournament any good. We could only pass the information along by phone. Sorry!

OREGON JUNIOR OPEN CHESS TMT.

For persons under 19. Anybody may enter, regardless where he comes from.

The tourney takes place Friday, Nov. 23rd at the Oregonian Hostess House, 1320 S.W. Broadway, Portland, Oregon. 1st round at 9 a.m. Trophies for 1st and 2nd.

Winner will be declared 1962 OREGON JUNIOR CHAMPION.

We had to use up some imperfect covers this month. Bear with us.

GROVER AND NELSON ARE TOP WOODPUSHERS

For the first time in the history of the tournament there were two players with perfect records in the annual Washington Woodpushers. KENNETH GROVER and TERRY NELSON both finished with 4-0 in the 23 player event held Sunday, October 14th at the Seattle YMCA.

Grover won the glory with 12 Solkoff tie-breaking points to Nelson's 9. All four of Grover's opponents scored 3-1 in the tournament. The two shared first prize money getting \$22.10 apiece - not bad for one day of fun!

The 23 entered made it one of the better attended Woodpushers but far below the huge record turnout last year of 52. Terry Nelson won last year's tourney with 4-0 finishing ahead of four who scored $3\frac{1}{2}-\frac{1}{2}$. This year there were no drawn games at all which may help explain the two perfect scores whereas last year there was but one perfect score in a far larger field.

Five other players enjoyed the 40 moves per hour pace picking up 3-1 scores and part of the third prize money, each pocketing \$1.56. GEORGE PRIEBE directed the all-Washing - ton event - no out of state players showed up.

In the old days we had strict rules which forbid any former tourney winner or high ranking player to enter the Woodpushers. Thus neither Grover or Nelson would have been allowed to play. Now all you have to do to qualify is to allow your northwest rating to dip below the 2000 mark. Others have benefited from this rule, or lack of rule, picking up prizes in our major tournaments.

Place	Player	Home	-1-	-2-	-3-	-4-	Won	Lost	Solkoff
1.	Kenneth Grover	Taholah	W7	W6	W4	W3	4	0	12
2.	Terry Nelson	Seattle	W12	W10	W5	W15	4	0	9
3.	Willy Brandal	Seattle	W11	W8	W9	L1	3	1	10
4.	Don Corey	Seattle	W13	W20	L1	W10	3	1	9
5.	Jim Montgomery	Seattle	W14	W17	L2	W8	3	1	9
6.	Lyman T. Johnston	Everett	W19	L1	W13	W11	3	1	$8\frac{1}{2}$
7.	Max Mage	Seattle	L1	W14	W22	W9	3	1	$8\frac{1}{2}$
8.	John Reh	Seattle	W18	L3	W12	L5	2	2	9
9.	Carl E. Carlson	Puyallup	W16	W21	L3	L7	2	2	$8\frac{1}{2}$
10.	Fred M. Howard	Seattle	W23	L2	W17	L4	2	2	$8\frac{1}{2}$
11.	Ernest Prentice	Tacoma	L3	W16	W21	L6	2	2	$8\frac{1}{2}$
12.	Earl Knapp	Gig Harbor	L2	W19	L8	W17	2	2	$7\frac{1}{2}$
13.	Donald A. Luters	Gig Harbor	L4	W18	L6	W23	2	2	$7\frac{1}{2}$
14.	A. C. Shives	Toledo	L5	L7	W18	W21	2	2	$7\frac{1}{2}$
15.	Russell W. Miller	Chelan	L17	W23	W20	L2	2	2	$6\frac{1}{2}$
16.	James N. Turner	Seattle	L9	L11	W19	W22	2	2	5
17.	J. R. Dorwin	Seattle	W15	L5	L10	L12	1	3	9
18.	Steve Lee	Bellevue	L8	L13	L14	W20	1	3	7
19.	David Lyon	Renton	L6	L12	L16	Bye	1	3	7
20.	F. H. Weaver	Seattle	W22	L4	L15	L18	1	3	$6\frac{1}{2}$
21.	Jack W. Cowan	Seattle	Bye	L9	L11	L14	1	3	6
22.	Tommie Grover	Taholah	L20	Bye	L7	L16	1	3	6
23.	Charles Richardson	Fairchild	L10	L15	Bye	L13	1	3	6

AFI

PURDY, 3 SEATTLE TEAMS, WIN OPENING P S L MATCHES

There were two mild upsets and two results which were expected in the opening round of Puget Sound League play. Matches were scheduled for Sunday, October 21st but the West Seattle team visited Tacoma on Friday evening, October 19th. They did this so the Tacoma team could have their best players available.

West Seattle	6	Tacoma	3
Charles Joachim	2	Vernon Holmes	0
Willy Brandal 1574	$\frac{1}{2}$	Dirk Somsen	$\frac{1}{2}$
Les Walker 1667	$1\frac{1}{2}$	Russ Hewitt	$\frac{1}{2}$
Rod Dimoff 1932	1	Lou Fesl	1
Max Mage 1705	0	Carl Carlson	1
Max Mage	1	Ernest Prentice	0

West Seattle surprised by dumping Tacoma when Tacoma was at full strength. The big point makers were Charles Joachim & Les Walker. The second Brandal-Somsen game was not played perhaps due to lack of time.

Black Bandits	8	Bellingham	2
Dick Parsons	$1\frac{1}{2}$	Dan Chin	$\frac{1}{2}$
Mike Franett	2	Don Kendall	0
Clark Harmon	2	Myron Miller	0
John Braley	1	Vladimir Milicic	1
Jim Montgomery	1	Bill Blackmore	0
Jim Montgomery	$\frac{1}{2}$	Phil Rehberger	$\frac{1}{2}$

The B-B boys were expected to win over Bellingham but the margin of victory was a bit unexpected. Still, the Black Bandits do have a power-packed lineup and it will take a mighty good team to head them off at the pass (as they say on the more intellectual T V programs). We understand Mike Franett will be in the army before the end of the season, so future opponents take heart!

Seattle Club	8	Kitsap County	2
Viesturs Seglins	2	George Rehberg	0
George Kenny	2	Dr. John Almond 1492	0
Norman Abrahamson	2	Art Wick 1639	0
Bill Young	2	J. Hanf 1669	0
Fred Howard	0	George Christey 1782	1
John Reh	0	Chas. Magerkurth 1735	1

With Seattle's twin ogres, Seglins and Kenny, leading the way, with plenty of assistance from Abrahamson and Young, Seattle had little trouble with Kitsap.

John Nourse, long time Kitsap mainstay, has sold his home and left the state.

Purdy	$6\frac{1}{2}$	Grays Harbor	$3\frac{1}{2}$
Peter O'Gorman	2	Jim Campbell 1703	0
Lyman Johnston	2	John Soich 1742	0
Jack Pattie	$1\frac{1}{2}$	John Van Sant 1773	$\frac{1}{2}$
Don Luters	1	Bob Street 1619	1
Henry Kaffenberger	0	Aina Van Sant	2

Grays Harbor beat Purdy twice in two earlier non-league matches. However, Purdy loaded up for their first league match securing the services of Peter O'Gorman, young Seattle expert, and his two wins did make a big difference in the final outcome.

The Purdy Knightriders also got plus scores from Lyman Johnston & Jack Pattie. Against O'Gorman, Jim Campbell lost an absolutely certain draw when his flag fell as he made his 39th move.

Aina Van Sant is the wife of John Van Sant. She is a Latvian and is a serious threat to Mary Eilmes for top female chess player in the state (quoting Johnston)

With O'Gorman from Seattle, Johnston from Everett, and the Van Sants now living in Bremerton, this chess match brought in chess players from all sides.

First Round League Standings

	Won	Lost	Scoring
Purdy	1	0	$6\frac{1}{2}$ - $3\frac{1}{2}$
West Seattle	1	0	6 - 3
Black Bandits	2	0	8 - 2
Seattle Club	1	0	8 - 2
Grays Harbor	0	2	$3\frac{1}{2}$ - $6\frac{1}{2}$
Bellingham	0	1	2 - 8
Kitsap County	0	1	2 - 8
Tacoma Club	0	2	3 - 6

Remember, a $5\frac{1}{2}$ - $4\frac{1}{2}$ match win is just as good as a 10-0 win as far as the standings are concerned.

Team captains are urged to send match results to the editor as soon as possible.

BANDITS TAKE LEAGUE LEAD

After only two rounds of action the Puget Sound League has only one team left with a perfect record. The Seattle Black Bandits have now won two in a row while three other opening round winners, Purdy, West Seattle and Seattle Chess Club, played ties and have slipped a half game behind the league leaders.

<u>Bellingham</u>	<u>6½</u>	<u>Tacoma</u>	<u>3½</u>
Larry McKay	1½	Lou Fosl	1½
Dan Chin	2	E. Rasmussen	0
Don Kendall	2	Carl Carlson	0
Myron Miller	1	Ron Hamblon	1
Harold Raymond	1	Eugene Prentice	1

Chin and Kendall packed the most firepower for the winning Bellingham gang. Fosl did a fine job on first board for Tacoma in the absence of Tacoma's star players.

Bellingham would like to split not only 5th board but 4th board in some of their future matches to give some of their youngsters match experience. We see no reason for objecting to this if the opposition is willing. If they are not willing then Bellingham will have to go along with the present rules.

<u>Seattle Chess Club</u>	<u>5</u>	<u>West Seattle</u>	<u>5</u>
Viesturs Seglins	2	Charles Joachim	0
Norman Abrahamson	½	Willy Brandal 1575	1½
Bill Young	0	Les Walker 1667	2
John Reh	½	Don Sciter 1908	1½
Don Corey	2	Max Mage 1705	0

The defending champion Seattle team had its hands full with West Seattle. If George Kenny had been on hand the story might have been different but as it was great efforts by Seglins and Corey pulled the champs through. Looking at the loaded West Seattle lineup it looks like Seattle was lucky to get a tie.

<u>Purdy</u>	<u>5</u>	<u>Kitsap County</u>	<u>5</u>
Peter O'Gorman	1½	George Rehberg	½
Lyman Johnston	0	Dr. John Almond 1312	2
Earl Knapp	1	Gerald Miller	1
Jack Pattie	1½	Charles Magerkurth 1834	1½
Don Luters	1	Arthur Wick 1639	1

O'Gorman and Pattie were best for Purdy while Dr. Almond was the big gunner for Kitsap in their 5 to 5 match. The match, played Friday evening November 2nd, kept the Purdy Knightriders among the undefeated showing the value of O'Gorman, their number one man, who has strengthened the Purdy team very much.

Future visitors to Kitsap should write George Christy, 1721 North Cambrian, Bremerton. He will meet visiting teams at the ferry terminal at Winslow and drive them to Dr. Almond's as that is where Kitsap plays its matches.

<u>Black Bandits</u>	<u>7½</u>	<u>Grays Harbor</u>	<u>2½</u>
Dick Parsons	2	Jim Campbell 1743	0
Miko Franett	1½	John Soich 1742	½
Clark Harmon	1	John Van Sant	1
John Bralcy	2	Bob Street	0
Jim Montgomery	1	Ronald G. Smith 1458	

The Grays Harbor team did better than expected against a team of experts and near-experts. The Bandits have too much strength to have to ever steal a match or resort to banditry! Held Nov. 11.

Puget Sound League Standings on Nov. 12.

	Won	Lost	Drawn	Scoring
1. Black Bandits	2	0	0	15½ - 4½
2. Purdy	1	1	0	11½ - 8½
2. West Seattle	1	0	1	11 - 8
2. Seattle Club	2	0	1	13 - 7
5. Bellingham	3	1	0	8½ - 11½
6. Kitsap County	0	1	1	7 - 13
7. Grays Harbor	0	2	0	6 - 14
7. Tacoma Club	0	3	0	6½ - 12½

It is suggested that people at the Washington Chess Federation's annual meeting this spring vote on whether or not we have geographical limits on clubs entering the Puget Sound League. One argument is if you keep expanding the bubble will burst as it is difficult enough now for a team captain to get a team together even for a match at home. The other argument is if we are going to promote chess it is necessary to expand - to keep growing as the alternative to getting bigger is getting smaller and eventually dying.

ANNUAL PACIFIC NORTHWEST JR.

The Pacific Northwest Junior will be held December 29-30 in Portland. Details next month.

TOURNAMENTS

This month we find more tournaments inserted into our schedule. We must warn promoters to give us ample time in advance if they expect to get much help from their notice.

- December 8-9, 1962 WCF Class Tournaments for Class A and B players. At the Seattle YMCA.
- X January 5-6, 1963 Washington Open with USCF Championship & reserve sections. Seattle Y.
- February 2-3, 1963 2nd Annual March of Dimes Benefit Open. At Moose Lodge in Camas, Wash.
- February 1963 Annual Pacific Northwest Open. At U. of Oregon in Eugene, Oregon.
- ? February 22-23-24, 1963 Washington State Championship. Seattle location still undetermined.
- X March 23-24, 1963 Puget Sound Open with USCF Championship & reserve sections. Location is still undetermined.
- April 20-21, 1963 Inland Empire Open. Conditions and Spokane location still undetermined.
- X May 25-26, 1963 Seattle Open. USCF Championship & reserve sections. At the Seattle YMCA.
- June 1-2, 1963 Annual Idaho Open. USCF rated 5 round Swiss. Held in Boise, Idaho.
- X June 15-16, 1963 Washington State Junior. For state players under 21. Held in Seattle.
- X July 14, 1963 Annual International Match between Washington and British Columbia.
- X July 27-28, 1963 Annual Seattle Seafair Open. Details and confirmation of date later.
- August 31-Sept. 1-2, 1963 Annual Oregon Open. To be held in Portland, Oregon.

Details will appear a month before each tournament if furnished by their promoters.

PUGET SOUND SCHEDULE

Puget Sound League match results must either be mailed or telephoned in to the editor, Dan Wade, 11030 Chelsea Place N. E., Seattle 55, Wash. EM 3-9214 by team captains if they are to be published in this magazine. Remaining schedule is given below. All league matches are scheduled to start at one p.m.

Round 4 Sun. Dec. 2nd. Seattle at Bellingham, Tacoma at Purdy, Bandits at Kitsap, Grays Harbor at West Seattle.

Round 5 Sun. Dec. 16th. Purdy vs. Bandits at the Seattle Chess Club, West Seattle at Bellingham, Tacoma at Kitsap, Grays Harbor at Seattle Chess Club.

Round 6 Sun. Jan. 13th. Seattle Chess Club at Purdy, Bandits at Tacoma, Kitsap at West Seattle, Grays Harbor vs. Bellingham at the Seattle Chess Club.

Round 7 Sun. Jan. 20th. West Seattle at Purdy, Bandits at Seattle Chess Club, Grays Harbor at Tacoma, Kitsap vs. Bellingham at the Seattle Chess Club.

Sunday, Jan. 27th. Championship Playoff (if necessary) at site opposite site during regular season.

RUSSELL'S CHESS CHATS

By Russell Miller

In my monthly column I hope to bring chess news from all over the world to the readers of the Washington Chess Letter. The sources for the news will be the eleven chess magazines which I get.

There has been a change made in the system for choosing the challenger for the world championship. At the International Chess Federation Congress held in Stockholm in September, it was decided to do away with the Candidates' Tournament. In its place will be a series of matches between eight players, six qualifying from the Interzonal and two from the 1962 Candidates' Tournament. The quarter-finals will consist of four matches of ten games each; the semi-finals of two matches of ten games and the final of a match of 12 games.

At the Stockholm chess congress the following were given the title of international grandmaster: Bilek (Hungary) Pomar (Spain), Udovcic (Yugoslavia), Polugaevsky, Simagin and Stein (USSR). Donald Byrne (USA) was given the title of international master.

The Women's World Championship has changed hands. Nona Gaprindashvili, the challenger, won the title from her fellow Russian, Elizaveta Bykova, by the score of 9-2. The match was played in Moscow during the month of October.

The final results of the International Team Tournament held in Varna, Bulgaria are as follows:

Final Group A

1. USSR	31½	7. West Germany	21
2. Yugoslavia	28	8-9 East Germany	20½
3. Argentina	26	8-9 Roumania	20½
4. USA	25	10. Czechoslovakia	18½
5. Hungary	23	11. Holland	18
6. Bulgaria	21½	12. Austria	10½

Final Group B

1. Spain	26½	3. Israel	25
2. England	26½	4. Cuba	22½

5. Sweden	22½	9. Mongolia	20
6. Poland	22½	10. Switzerland	20
7. Belgium	22	11. Iceland	19
8. Finland	20½	12. Denmark	17

Final Group C

1. Norway	32½	7. Puerto Rico	22½
2. Albania	28½	8. Uruguay	22
3. Tunisia	28½	9. Greece	18½
4. India	26½	10. Luxembourg	18
5. Iran	25	11. Turkey	17
6. France	23½	12. Ireland	14½
		13. Cypruss	1½

(The above is all from the November issue of the British Chess Magazine.)

The USSR team, as expected, took first place. The members of the Russian team were World Champion Botvinnik, Petrosian, Spassky, Geller and Tal. The team from the United States was made up of Fischer, Benko, Evans, R. Byrne, D. Byrne and Mednis. This team did not do as well as was expected.

In an interview given the British Chess Magazine at the International Team Tournament, World Champion Mikhail Botvinnik answers to the question "Could you tell us do you intend to defend your title against Petrosian next year?" His answer: "This depends on the state of my health; I had not been feeling completely fit earlier in the year but I had a good rest in August and I felt fit to play here. At the end of the Olympiad I will consult my doctor and if I am then told I am 100 per cent fit I will defend my title in a match against Petrosian."

CHESS LIFE CAN DO BETTER

Answering USCF regional director Richard Vandenburg of Idaho and breaking a self-imposed silence on the subject, your editor & several other Washington tournament players do not think the USCF through Chess Life is giving the various states a fair shake. The big international and other master events are getting the lion's share of the publicity. Ordinary tournaments are used as filler spotted at intervals through Chess Life. The cross table summaries of the tournaments are not being published. Our letter, the Washington Chess Letter, is sent to Chess Life each month but our USCF rated coming events have received no advance notices in Chess Life including the C-21.

SEATTLE CLUB NEWS

by Fred M. Howard

By mid-November the Seattle Chess Club was still in its old YMCA quarters. The secretary for the Jewish Center is out of town and since he has to be on hand to close the deal, it is still not known when or if the move will be made.

On Friday evening October 26th and Friday evening November 2nd the Seattle Chess Club held speed tournaments.

Seven players turned out for the first of these with MIKE FRANETT winning with a 6-0 score. DICK PARSONS was second with 5-1. Other players and their scores were DON COREY $3\frac{1}{2}$ - $2\frac{1}{2}$, EARL WILSON 3-3, JOHN REH 2-4, DICK DORWIN 1-5 and RON ERICKSON $\frac{1}{2}$ - $5\frac{1}{2}$.

The November 2nd speed event had a 14 player turnout and this time DICK PARSONS reversed the tables on MIKE FRANETT. Dick won with 12-1 giving up no losses but drawing a game with Franett and another with DON COREY. Franett was second with $11\frac{1}{2}$ - $1\frac{1}{2}$ losing no games but drawing with Parsons, JOHN BRALEY and JOHN REH. In third place was Braley with a 11-2 score, losing only to Parsons and drawing Franett and FRANK BOSCHAN.

Other players and their scores: 4. Don Corey 9-4, 5. Frank Boschan 8-5, 6. John Reh 8-5, 7. Pat Hickey 7-6, 8. Earl Wilson 7-6, 9. Ron Erickson 5-8, 10. Fred Howard $4\frac{1}{2}$ - $8\frac{1}{2}$, 11. Tom Vivant 3-10, 12. Dick Dorwin 2-11, 13. Frank Eggers 2-11 and 14. Bill Jensen 1-12.

NEW TACOMA LEAGUE

DAVID FULTON, 1016 North Madison St., Tacoma 6, Washington, has formed the Greater Tacoma High School Chess League. This league is slated to start play shortly after Thanksgiving.

The five Tacoma high schools, Stadium, Lincoln, Mt. Tahoma, Bellarmine and Woodrow Wilson plus two outlying high schools, Curtis and North Thurston, are members of this new league.

Mr. Fulton, President of the Woodrow Wilson Chess Club, has promised to inform the Washington Chess Letter on the match results, games, schedules, and standings of the new league.

WHAT YOU GET IN CHESS LIFE

Regarding the USCF and Chess Life the editor and many players he has talked to on the subject agree that far too much space is used on articles about membership tapes, reports on membership gains, drives to raise money to send masters abroad to compete in international events whereas the reader finds little to read concerning the events that must be going on throughout the various United States.

Chess Life had space to burn concerning the Reshevsky-Fischer controversy. Personally we couldn't care less about the entire bad joke. At Varna a supposedly terrific U. S. team led by Fischer could only finish 4th. The USCF has undertaken the task of raising \$2000 to pay the members of this team. Ye ed says let them thumb their way home!

In the Oct. Chess Life an entire page is used up concerning organizational blah concerning the 1962 World Chess Congress in Stockholm. Scattered hither and yon through the magazine a small report on Rocky Mountain Open, Chicago Open, Tennessee Open, Ohio Championship, New England Championship, New Jersey Open, North Carolina Closed and World's Fair Open each taking about one third of a column or totaling less than a page while an entire half page is taken up with article on new vice-presidents elected.

STROMSBORG WINS FLATHEAD VALLEY

INGWALD STROMSBORG of Kalispell won the Class "A" division of the first annual Flathead Valley Open Chess Tournament held in Kalispell, Montana October 27-28, 1962.

DR. A. V. SWANBERG, also of Kalispell, won the Class "B" division. Both Stromsborg and Dr. Swanberg finished with perfect 5-0 scores.

GENE MASSMAN and LEE MCDONALD, both of Columbia Falls, Montana, each scored $4\frac{1}{2}-\frac{1}{2}$ to finish on top of the Junior Class division for players under 18. Massman edged McDonald on S-B, Median and Solkoff tie-breaking to win first.

Eighteen players turned out for the tournament with five in the "A" division, five in the "B" division and eight in the junior event.

		Class "A"							
		-1-	-2-	-3-	-4-	-5-	W	L	D
1.	Ingwald Stromsborg	Kalispell	W2	W3	Bye	W4	W5	5	0-0
2.	Ted McDonald	Columbia F.	L1	W5	W3	Bye	W4	4	1-0
3.	R. G. Turner	Kalispell	W4	L1	L2	W5	Bye	3	2-0
4.	Les Barge	Kalispell	L3	Bye	W5	L1	L2	2	3-0
5.	Ed Measure	Kalispell	Bye	L2	L4	L3	L1	1	4-0

		Class "B"							
		-1-	-2-	-3-	-4-	-5-	W	L	D
1.	Dr. A. V. Swanberg	Kalispell	W5	W3	W2	W4	Bye	5	0-0
2.	Vern Wyman	Kalispell	Bye	W5	L1	W3	W4	4	1-0
3.	Delores Swanberg	Kalispell	W4	L1	Bye	L2	WF5	3	2-0
4.	Dean King	Kalispell	L3	Bye	WF5	L2	L1	2	3-0
5.	George Berg	Kalispell	L1	L2	LF4	Bye	LF3	1	4-0

		Junior Tourney							
		-1-	-2-	-3-	-4-	-5-	W	L	D
1.	Gene Massman	Col. Falls	W6	W3	D2	W4	W5	4	0-1
2.	Lee McDonald	Col. Falls	W7	W8	D1	W3	WF4	4	0-1
3.	Tracy Sunde	Kalispell	W4	L1	W8	L2	W6	3	2-0
4.	Hugh Bartlett	Kalispell	L3	W7	W5	L1	LF2	2	3-0
5.	John Ogden	Whitefish	L8	W6	L4	W7	L1	2	3-0
6.	Dave Peterman	Whitefish	L1	L5	D7	W8	L3	1	3-1
7.	Chris Swanberg	Kalispell	L2	L4	D6	L5	W8	1	3-1
8.	Barry Donahue	Kalispell	W5	L2	L3	L6	L7	1	4-0

PACIFIC NORTHWEST OPEN

The 1963 PACIFIC NORTHWEST OPEN will be held at the University of Oregon in Eugene around the first of February. Exact dates announced later. The University of Oregon is sponsoring the tournament and has allotted one hundred and fifty dollars (\$150) for the tournament. Jim McCormick is in charge of arrangements and hopes to get Fred Byron to direct it if possible. Jim says he has been converted to the idea of lots of small prizes for the weaker players to get their interest. This should result in promoting a larger base of tournament chess players which will benefit all concerned.

The conditions and prizes for the Pacific Northwest Open have always been excellent and considering that the University of Oregon has put out for chess in recent years nearly five hundred (\$500) a year, the university deserves a large turnout of chess players for this tournament. When we get more information we will pass it along to you.

NORTHWEST RATINGS By Montgomery

OCTOBER QUARTERLY LISTING

This list includes all reported N.W. tournaments and matches to Nov. 1. Included are 3 masters, 15 experts, 46 Class A players, 65 Class B players and 66 Class C players.

The ratings used for ranking a tournament are usually adjusted ratings, not the last published ratings. This is done to make the ratings more accurate

Congratulations to Ron Hamblen who during the last three months has piled up 431 points! That is a new record for sure. Willy Brandal made 316 points last year.

NORTHWEST MASTERS (2200-2399)

MacSkasy, Elrod, Vancouver, B.C.	2288
McCormick, James, Eugene, Ore.	2333
Pupols, Viktors, Seattle, Wash.	2210

NORTHWEST EXPERTS (2000-2199)

Bell, John, Portland	2142
Byron, Fred, Milwaukie, Ore.	2086
Dalbergs, Ivars, Portland	2143
Franett, Mike, Seattle	2112
Groenig, Dr. David, Spokane	2059
Grover, Kenneth M., Taholah, Wn.	2135
Joachim, Charles, Seattle	2020
Kenny, George, Seattle	2146
O'Gorman, Peter, Seattle	2062
Parsons, Richard, Seattle	2059
Seglins, Viesturs, Seattle	2118
Shean, Robert, Denver, Col.	2044
Suttles, Duncan, Vancouver, B.C.	2120
Turner, Donald, The Dalles	2125

Class A (1800-1999)

Abrahamson, Norman, Seattle	1854
Aliabadi, Mohammad, Corvallis	1961
Almond, Dr. John, Poulsbo, In.	1812

Aykroyd, Colton, Vancouver, B.C.	1875
Braley, John, Seattle	1868
Brandal, Willy, Seattle	1875
Chin, Danny, Bellingham	1943
Corey, Donald, Seattle	1889
Dickinson, Robert, U.S. Navy	1997
Dimoff, Roderick, Seattle	1932
Ellis, A.B., Nampa, Idaho	1980
Eydal, A., Seattle	1907
Fesl, Lou, Tacoma	1853
Feuerberg, Gary, Portland	1997
Fomin, Eugene, Seattle	1895
Fredrickson, Archie, Bothell	1816
Friedman, Cyrus, Portland	1810
Hamblen, Ronald, Tacoma	1908
Harmon, Clork, Seattle	1934
Harris, Frank, Vallejo, Cal.	1826
Hewitt, Charles, Tacoma	1832
Hickey, Pat, Seattle	1897
Hoge, Bill, Yakima	1801
Holmes, Vernon, Tacoma	1941
Jerome, Ric, Yakima	1971
Kaltenecker, Joseph	1859
Kelleher, Clay, Portland	1904
Kendall, Don, Bellingham	1862
Kern, Gregory, Ft. Lewis	1951
Kiplinger, Bill, Wishram, Wn.	1981
Knobel, Dave, Walla Walla	1844
Krogh, Fred, Corvallis	1803
Lundh, Henrik, Portland	1863
Magarkurth, Charles, Bremerton	1833
Milicic, Vladimir, Bellingham	1926
Moore, Deane B., Portland	1867
Murray, Dr. A. A., Seattle	1962
Nedell, Fred, Seattle	1987
Nelson, Terry, Seattle	1973
Nettleton, Frank, Portland	1956
Rasmussen, Otto, Victoria	1312
Rehberg, George, Bremerton	1863
Rooza, Leonard, Vancouver, B.C.	1851
Seiter, Donald, Seattle	1908
Somsen, Dick, Tacoma	1988
Towne, Danny, Erosser, W-sh.	1978
Vitanyi, Leslie, Vancouver, B.C.	1831
Wade, Dan, Seattle	1979
Young, Bill, Seattle	1941

CLASS B

next page

Bauguess, Doug, Seattle	1630	Andrews, Arthur, Portland	1490
Bricher, Vince, Cottage Grove	1646	Anstey, Paul, Caldwell	1258
Campbell, Jim, Hoquiam	1703	Bazovsky, Igor, Seattle	1473
Carlson, Carl, Tacoma	1756	Benedict, Jack, Bellingham	1539
Cowan, Eugene, Ft. Lewis	1781	Blackmore, Bill, Bellingham	1514
Cristy, G.,	1782	Blumenquer, Earl, Portland	1521
Dart, E. Ken, Everett	1721	Bonneville, John, Seattle	1382
Drévlo, Roy, Seattle	1657	Bricher, Gary, Cottage Grove	1526
Eddy, Buz, Seattle	1670	Brown, Roy, Seattle	1521
Eng, Jon, Seattle	1789	Collins, Harold, Aberdeen	1595
Garrott, John, Kent	1677	Cooper, Bill, Jamas	1578
Gelow, Gary, Kirkland	1640	Cowan, Jack, Puyallup	1057
Gillette, William	1734	Denison, Elberta, Portland	1290
Gilliland, Walter, Lafayette	1611	Dorwin, Dick, Seattle	1438
Grannis, Dave, Seattle	1783	Gregory, Hugh, Bellingham	1575
Greenup, Charles, Seattle	1783	Grover, Tom, Taholah	1210
Hanf, J.,	1669	Jenquin, Denny, Portland	1467
Harris, Gene, Caldwell	1773	Kaffenberger, Henry, Gig Harbor	1401
Horstman, E.H., Marsing, Id.	1712	Kim, Frank, Seattle	1584
Houser, Robert, Klamath Falls	1567	Knudtson, Halvor, Longview	1555
Howard, Fred M. Seattle	1668	Lee, Steven, Bellevue	1547
Jarmon, Ron, Tacoma	1768	Lemart, Patricia, Portland	1147
Johnston, Lyman, Tacoma	1763	Likens, Cecil, Nampa	1590
Kahler, Irving, Everett	1651	Link, Evelyn, Seattle	1422
Knapp, Earl, Gig Harbor,	1613	Luters, Donald, Gig Harbor	1596
Lavergne, Alan, Seattle	1641	Lyon, David, Renton	1453
Ludwig, Steve, Bellingham	1645	Mackenzie, James, Portland	1568
Lyons, William, Seattle	1784	Mackie, Sandy, Lake Oswego	1559
Mage, Max, Seattle	1705	Marlow, Donald, Seattle	1451
McCharles, J.A. Vancouver, B.C.	1699	Miller, Myron, Bellingham	1595
Miller, Al, Tacoma	1663	Moore, Cliff, Vancouver, B.C.	1446
Miller, Russell, Chelan	1735	Morgan, Ron, Tacoma	1449
Monrad, Svend, Seattle	1602	Mulder, Jim, Seattle	1560
Montgomery, James, Seattle	1789	Myers, Roger, Seattle	1583
Morris, Oliver, Seattle CLASS A	1836	Nettleton, Tom, Portland	1362
Nawrocki, Dr. W.E., Wenatchee	1713	O'Leary, John, Tacoma	1546
Nettleton, Tim, Portland	1726	Oliphant, Clarence, Seattle	1562
Parker, Roy, Nampa, Id.	1692	Olston, Allen, Athol, Id.	1330
Pattie, Jack, Gig Harbor	1665	Parr, Larry, Bellevue	1632
Pinson, Dr. Ray, Salem	1783	Parry, Jonathan, Seattle	1368
Rasmussen, Owen, Wenatchee	1603	Parsons, Marion, Nampa, Id.	1443
Raymond, Harold, Bellingham	1632	Pearson, Richard, Seattle	1362
Reh, John, Seattle	1773	Pearson, Robert, Seattle	1435
Rehberger, Phil, Bellingham	1772	Prentice, Ernest, Tacoma	1599
Reynolds, Larry, Seattle	1654	Priebe, George W., Seattle	1567
Richardson, Lewis, Vancouver, Wn.	1605	Puffert, Harold, Everett,	1513
Robinson, George, Oswego, Ore.	1605	Raymond, Richard, Hoquiam	1479
Robinson, Tom, Hoquiam	1602	Richardson, Charles, Spokane	1375
Schrader, Esther, Eugene	1620	Rystrom, Roger, Seattle	1395
Schrader, Jack, Eugene	1783	Schaap, Warné, Nampa	1593
Schwarz, Gerald, Portland	1778	Seslar, Robert, Seattle	1494
Shilling, Dave, Camas	1641	Shagrin, Richard, Seattle	1421
Smith, Gregg, Seattle	1618	Shields, Jim, Seattle	1201
Soich, John, Aberdeen	1742	Shives, A.C., Toledo	1538
Stanke, Jerry, Nampa	1694	Short, Lowery, Maryhill	1560
Street, Bob, Aberdeen	1619	Smith, Ronald G., Hoquiam	1488
Trainor, Ray, Spokane	1697	Smith, Wm. F., Portland	1410
Vansant, John, Aberdeen	1773	Strauss, Rich, Bellevue	1517
Walker, Les, Seattle	1767	Struble, Robert, Seattle	1593
Waterman, Vic, Nampa	1605	Sumeri, Alex, Seattle	1572
Wick, Art	1639	Thomas, James O., Seattle	1486

Topacio, Amado L., Seattle	1408	Ward, John, Tacoma	1491
Turner, James, Bellevue	1457	Warren, Terry, Seattle	1517
VanMetre, Dick, Spokane	1561	Watrous, Woody, Bellingham	1545
VanSant, Aina, Aberdeen	1520	Weaver, Howard, Seattle	1568
Venn, Douglas, Spokane	1460	West, Terry, Seattle	1351

WCF CLASS TOURNEY ON DECEMBER 8-9

Due to the success of the Annual W.C.F. Class Tournament this summer, the Biannual Washington Chess Federation Class Tournament will be held on December 8th and 9th. Again B and C Class players will have a chance at cash prizes and this time trophies, but most of all a chance to have fun playing player of your own strength. Due to tournament director's preference there will be no A section this time. Make sure to register in advance. Let's make this an even bigger success than last time.

Date: Dec. 8-9

Type: Two sections: Class C and unrated, Class B
Six Round Swiss with Median then Solkoff Tie-Breaking
Time Limit: 50 moves in 2 hours
One trophy plus two or three prizes per section depending on the number of entrants

Place: Downtown Seattle YMCA Orkila and Board Rooms

Director: George W. Priebe

Fees, Registration: \$3.25 less 50¢ if W.C.F. member
Juniors \$2.75 less 50¢ if W.C.F. member
An additional 25¢ discount will be given if you register in advance. Send your name and money to
George W. Priebe
4751 17th Ave. N.E.
Seattle 5, Wash.

Checks should be made payable to the Washington Chess Federation. They should be postmarked no later than Dec. 4th. You may also register in advance Friday nights at the Seattle Chess Club.

Regular registration from 8:30 AM to 9:30 AM Saturday.

Times: 1st Round 10:00AM, 2nd Round 2:30, 3rd Round 7:00 PM Saturday
4th Round 8:00AM, 5th 1:00PM, 6th 5:30PM Sunday
The tournament director may advance these times at his discretion.

BRING Clocks, Boards, Men, Pencils, and People

If there is enough interest in a Class A tournament and an expert tournament (a round-robin perhaps,) this can be held at a convenient date. Anyone interested please contact Dan Wade.

OPENINGS - PARSONS

CARO KANN REVISITED

1. P-K4 P-QB3 2. P-Q4 P-C4 3. P-K5 B-B4

1	2	3	4	5	6	7	8
4. P-QB4 DxN	P-K3						
5. RxB Q-R4ch	N-K2 FxpP	N-CB3 N-K2		N-Q2 FxpP		FxpP	
6. B-C2 CxP	N-N3 DxN? d	KN-K2 FxpP	g l	FxpP DPxpP	k	DxP N-C2	
7. P-B5! P-QN4 a	RxB Q-R4ch	N-N3 B-N3		N-B3 N-K2	KN-K2 B-CN5?	N-K2 P-KR3	N-B3 KN-K2 N-N3
8. R-R1! CxP	B-C2 CxP	DxB N-C2	f	B-KN5 P-CR3	P-R3 B-R4	N-N3 B-N3	D-K3 N-K2 N-K2
9. N-K2 P-N5	Q-B1 P-QN4			N-KR4 B-N3	P-QN4 B-B2	B-KN5 Q-N3	C-O N-N3 KN-C4
10. Q-R4 P-N6 b	R-R1 Q-N6			B-K2 Q-N3	N-N3 N-K2	C-C2 N-CB3	B-Q3 KN-C4 B-N3
11. N-B1!c	N-K4! e			Q-C2 h	B-KN5 i	B-K3 j	N-Q2 m P-KR4 o

- a) The threat being 8. B-B3 and 9. R-R1.
 b) Else 11. B-B1.
 c) Now Black is helpless against 12. D-C3 & 13. R-QN1, for example: (1) 11. P-K3 12. B-C3 BxP 13. Nxp or (2) 11... P-KN3 12. P-B4! (not 12. B-C3 B-R3 13. P-B4 BxP) 12... B-R3 13. P-N3! with a further 14. B-C3 and 15. R-QN1.
 d) 6... B-N3 is best.
 e) (1) 11... B-N5 12. D-B3 BxDch 13. FxD P-N5 14. BxBP! (2) 11... N-KR3 12. B-B5 N-B4 13. N-C2 Nxp 14. NxC NxN 15. C-C1 NxR 16. CxN and White has a decisive material advantage, Khenkin-Persits, Moscow 1955.
 f) Transposing to column 7.
 g) After 6. C-N3 Black does best to reply 6... C-D2, not 6... C-N3 7. P-B5! CxC 8. FxQ N-C2 9. P-QN4 (with the unpleasant threat 10. P-N5) 9... P-QN4 10. DxBNP FxD 11. NxBNP with a very promising position for White, Khenkin-Chorkikh, Moscow 55.
 h) 11... N-CB3 12. R-C1 R-B1 13. O-O B-K2 14. DxB NxD 15. NxB RFXN with about equal chances, Unzicker-Golombek, Dublin 54.
 i) 11... B-KN3 12. R-B1 B-N1 (12... O-O 13. DxB CxD 14. Nxp) 13. DxB! KxB (13... CxB 14. NxC P) 14. P-B4 P-B3 15. D-C3 FxpP 16. BFPxP P-CR3 17. BxB FxD 18. Q-N4 N-B1 19. O-O with a winning position for White, Vasyukov-Aronin, Moscow 59.
 j) (or 11. R-C1 P-KR3) 11... B-K2 with equal play.
 k) 6. KN-K2 pxp 7. N-N3 B-C6? 8. DxB FxD 9. O-O (9. CxP? Nxp) Q-B2 10. KN-K4 N-N3 11. B-B4 (11. B-N5!) N-B3 12. CxP NxN 13. NxB N-Q4 14. B-N3 and White has excellent prospects, Khenkin-Liberzon, Moscow 59.
 l) 6... N-C2 7. N-N3 B-N3 8. B-K2 N-KB4? (necessary was 8... FxpP) 9. FxP! DFPxP 10. O-O P-CR3 11. NxB BxN 12. P-KN4 B-N3 13. P-B4 P-B4 14. D-C3 C-N3 15. B-K3 FxpP 16. P-B5 with a strong attack for White, Khenkin-Zagorovsky, Moscow 1954.
 m) 11... D-K2 12. CN-K4 P-CR4 13. P-CR3 P-R5 14. D-D2 O-O 15. R-B1 R-R4 16. N-KN3 BxB 17. RxB P-B4 13. FxPep Nxp & Black easily equalizes.
 n) 8. P-QN3 is possible, as after 8... N-K2 9. D-R3! White gets rid of his bad bishop. 8. B-N3 N-K2 N-N3 B-N3 O-O Q-Q2 B-K3 P-KR4! 12. KN-K2 (possible is 12. KN-K4 KN-C4 13. B-KN5) P-R5 13. N-B4 B-B4 14. R-B1 KN-C4 15. CNxN (better was 15. KNxN NxN 16. B-N5) NxN 16. NxB KFXN with equal play, Khenkin-Livshin, Moscow 55.
 o) 11... P-KR3 12. P-R5 B-R2 13. P-R3 Q-B2 14. O-O O-O-O 15. Q-B2 P-B4 16. N-B5 (stronger was 16. FxpP ep FxpP 17. R-K1) DxB 17. FxD N-C2 18. P-B4 P-KN4 19. FxPep BxP with very sharp play, Khenkin-Livshin, Moscow 1959.

For those who like wild play and uncharted areas they can try 4. P-KN4 first and if then 4... B-C2 follow with 5. P-QB4, if 4... B-N3 then 5. P-KR4 P-KR4 6. P-K6 and White cannot complain of having a dull position! The French seems to have gone out with Botvinnik, the Sicilian is fading what is next, the Caro Kann?

GAMES

Parsons

The following interesting game was sent in by Victor Pupols.

"The Rocket City Open in Huntsville, Ala., was won by Milan Momic, a recent Yugoslav immigrant to this country. Momic's score was 4 1/2-1/2. He conceded a draw to former WCL editor Dick Schultz, whose Boeing defense work has taken him to New Orleans. Dick tied for second place with 4-1. * I am starting to play 1.P-K4 more often now as it seems to kill the fish faster*, writes Dick. *This should prove that I can play an attacking game if the opportunity arises.*"

Schultz - G. Bates
(USCF 1900)

1.P-K4	P-K3
2.P-Q4	P-Q4
3.N-B3	N-KB3
4.B-KN5	B-K2
5.P-K5	KN-Q2
6.P-KR4	P-Q3
7.Q-N4	P-KB4

"This move leads to a dreary blockade where White controls much more space. An enterprising and fashionable variation therefore is 7...BxB 8.PxB P-QB4! which was formerly thought to be impossible because of 9.P-N6. After 9...P-B4! 10.Q-B4! P-R3 11.N-B3 O-O Black can expect to repel the King-side attack and win the pawn on KN6 in the endgame. There is also speculation that Black's counterplay in the center would gain if P-KR3 is delayed for a few moves (and if RxB, ...R-N1). This provocative variation led to a quick defeat for one of Rumania's top masters, Georgesen, who was tempted to play 10. RxB? PxB 11.RxRch N-B1!

8.Q-R5ch	P-N3
9.Q-R6	P-B4?

It is both well known and obvious that ...K-B2 must be played.

10.Q-N7	R-D1
11.QxRP	R-B2
12.QxP	N-D1
13.BxB	QxB
14.Q-N5	PxP

"Two pawns down, Black must surely lose unless White's pawns can be disconnected and attacked. Therefore, 14...QxQ 15.PxQ P-KB5 should have been tried."

After 15.Qxch White went on to win by his use of the two extra pawns.

Here is another interesting game of Spassky's from the last USSR champ for those who liked the one that was put in last month.

Koz	-	Spassky
1.P-K4		P-K4
2.N-KB3		N-QB3
3.B-N5		P-Q3
4.B-R4		N-B3
5.O-O		B-K2
6.R-K1		P-Q3
7.P-B3		B-N5
8.P-KR3		B-R4

9.P-Q3 The only game Spassky lost in this tournament was against Schamkovitsch in the 16th round with this same opening. There White played 9.BxNch PxB 10.P-Q4.

9. ...	Q-Q2
10. N-Q2	P-KN4
11. P-KN4	B-N3
12. N-B1	P-KR4
13. N/3-R2	PxP
14. PxB	O-O-O
15. BxN	QxB
16. BxP	Q-Q2
17. B-K3	NxP
18. QxN	P-KB4
19. PxB	BxP
20. ...K2	R-N1ch
21. N-N3	B-R5
22. ...B3	BxP
23. B-Q2	BxN
24. QxB	

If 24.PxB then the same reply.

24. ...	Q-R6
Resigns.	

62 Puget Sound Open

Dan Wade - Carl Carlson

1.P-Q4	N-KB3
2.P-QB4	P-KN3
3.N-QB3	B-N2
4.P-K4	P-Q3
5.P-B3	O-O
6.B-K3	Q-N-Q2
7.Q-Q2	P-K4
8.P-Q5	P-QR3
9.KN-K2	P-N3
10.B-N5	B-N2
11.P-KN4	Q-B1
12.P-KR4	P-B3
13.P-R5	PxQP
14.BPxP	N-B4
15.PxB	BPxP

16. P-N4 KNxKP
 17. NxBN NxBN
 18. PxBN CxP
 19. R-R4 C-B6
 20. O-O-O R-B1ch
 21. K-N2 R-CB2
 22. B-R3 R-B5
 23. B-N4 C-N7
 24. R-KN1 C-B7
 25. B-K6ch K-R1
 26. RxBch KxB
 27. R-Blch B-R3
 28. RxBch K-N2
 29. R-R4 R-KB5
 30. P-R3 P-N4
 31. C-C1 R-Q5
 32. R-R7ch K-B1
 33. R-R8ch K-N2
 34. R-N8ch K-R2
 35. C-R1ch Resigns.

 Bob Merk sent in the following postal game from his postal section.
 (notes by the winner)

Baskett - Lyberger

1. P-K4 P-CB4
 2. N-KB3 P-Q3
 3. P-Q4 FxP
 4. NxBP N-KB3
 5. N-CB3 P-KN3
 6. P-B3 B-N2
 7. B-K3 O-O
 8. C-C2 R-K1
 9. O-O-O N-B2
 10. P-KN4 N-K4
 11. P-KR3 P-C4
 12. B-R6 B-R1
 13. F-N5 N/3-C2
 14. NxBP N-B4
 15. P-KR4 B-C2
 16. P-R5 C-R-B1
 17. FxP BFP
 18. C-R2 C-R4

The expected counterattack on the queen's side begins. But I thought I had a forced win in hand by B-B8. I overlooked a variation in which he could take the D and still wiggle out of my trap.

19. B-B8? KxB!
 20. CxP B-N2
 21. K-N1 K-B2
 22. C-R2
 Fearing an ambush.
 22. ... N-B3
 23. C-B4ch K-N1
 24. NxBN

Normally the side that's a piece down shouldn't exchange, but I wanted to simplify

to cut down his chances of counterattack so I could resume hammering away at his exposed King. His Knights were dangerous.

...24. ... RxBN (PxN &
 25. C-C2 CxQ 25. R-N1)
 26. RxB P-K3? rwp

This gives me a chance to get rid of his strong defensive Bishop.

27. N-B6ch BxB
 28. FxB

This passed pawn later was to decide the game.

28. ... R-B2
 29. P-K5 B-B3?
 30. R-R2

He dare not take the BP because of R-R8ch followed by mate.

30. ... F-KN4
 31. R-R8ch K-B2
 32. R/R8-R7ch

Not, of course, R/l-R7ch which would result in a mere exchange of Rooks.

32. ... K-N3
 33. RxB R-C1
 34. B-C3ch NxB
 35. FxB BxF

and White went on to win with his material superiority.

This is the first postal game received since I requested postal readers to send in their games. Remember your game doesn't have to be a masterpiece to be enjoyed by others, there are more poor players than good ones is a safe maxim, so let the other group, the majority, get some enjoyment out of sharing your games with them. I make it a policy to place games of all caliber players in this column as long as they contain no gross blunder or blunders. If you have a game you enjoyed with a player of equal strength send it in! Postal or overboard.

 Now that we all agree that Reh had a win in his game with Bourasaw from last issue, why don't you take a second look as Victors Pupols did and see if you can find a bust on move 29 for Black. After Black's correct 29th move White lacks a satisfactory continuation. Don't believe everything you read for fact, look it over and you will find your own play improving, this seems to be a quality of a good player, as the only one to find the bust has been a master out in this for a good many years. If you don't find the answer, take heart, it will be published in the next issue of the WCL.

29. ... K-N1 if 31 NxB RxB
 30. Q-R5 B-K1 if 32 QxP BxP
 if 31 Q-R6 B-D1

Oh, by the way, McCormick turned over his games that we had asked for, if he hadn't I'm told that Mr. Pupols was in the process of digging up every win he had ever had over Jim, and in the days past there have been quite a number!

Murray	-	Morris
1.P-Q4		N-KB3
2.P-QB4		P-KN3
3.N-B3		P-Q3
4.P-K4		Q-N-Q2
5.P-B3		B-N2
6.B-K3		O-O
7.B-Q3		P-K4
8.KN-K2		P-B4
9.FxBP		FxP
10.O-O		P-QR3
11.N-N3		N-R4
12.NxN		FxN
13.Q-Q2		P-N3
14.N-Q5		P-B3
15.QR-Q1		R-R2
16.P-B4		FxP
17.RxP		B-N2
18.R-B5		N-K4
19.RxRP		B-B1
20.B-K2		K-R1
21.Q-K1		R/l-B2
22.Q-R4		B-B1
23.RxN		B-Q3
24.R-R5		Resigns.

Unfortunately for the Black Bandits they are losing one of their top boards, Mike Franett, who has been called up to fight Castro.

Pupols	-	Ken Grover
1.P-Q4		P-Q4
2.P-QB4		N-KB3
3.N-QB3		P-K3
4.B-N5		B-K2
5.P-K3		O-O
6.N-B3		Q-N-Q2
7.B-Q3		R-K1
8.O-O		N-B1
9.Q-B2		FxP
10.BxP		P-B3
11.P-K4		B-Q2
12.P-KR3		N-N3
13.QR-B1		Q-R4
14.KR-Q1		QR-Q1
15.P-R3		B-QB1
16.N-K2		P-QR3
17.N-B4		NxN

18.BxN	P-B4
19.B-Q3	FxP
20.B-B7	Q-R4
21.DxR	RxB
22.Q-D7	K-B1
23.NxP	N-K1
24.B-K2	Q-N3
25.NxPch (from C-21)	winning.

Lyman Johnston-Don Luters
1959 Central Wash. Open
(notes by white)

1.P-Q4	N-KB3
2.P-QB4	P-Q4
3.FxP	NxP
4.P-K4	N-N3
4...N-KB3	5.N-QB3 P-K4! is equal.
5.P-KB4	P-K3
6.P-QR3	B-K2
7.N-KB3	P-KR3
8.P-KR4	O-O
9.P-KN4	P-KB3
10.B-Q3	P-QB4
11.B-B2	N-B3
12.B-K3	N-B5
13.Q-Q3	NxB (nxnp loses NxBchknight)
14.P-K5?	NxQP
15.QxN	QxN
16.NxN	QxBP
17.N-Q2	FxP
18.O-O-O	QxP
19.KR-B1	Q-B4
20.R-N1	P-QN3
21.N-K4	Q-R6 (QxRwins)
22.QR-B1	KxR
23.RxRch	Q-D4
24.Q-B2ch	K-K1
25.Q-N2	QxN
26.QxN	K-Q2
27.Q-N8ch	K-B2
28.R-Q1ch	QxP?(Q-KB5ch Q-KB5ch wins)
29.Q-B7	Q-B1
30.Q-K8	B-N2
31.K-N1	K-N1
32.Q-N5	B-K5ch
33.Q-Q7ch	Q-B3
34.QxP	P-KR4?
35.K-R1	draw.
36.Q-Q7	
37.Q-K8ch	

Even Sack of D&Q for R cannot stop the perpetual, and may lose, Johnston.

Draley had a game in the speed tournament last friday the 18th in true Black Bandit fashion, F's on k4,k5,q4,q5 at the Seattle Chess Club.

POSTAL CHESS



New players start in "A" Division with a rating of 1600, "B" 1300, and in "C" 1000. Send your entries to the Postal Director with the entry fee of 50¢ per section of four players and if a new player in our tournaments, advise which Division you wish to play in. You can enter as many sections as you desire.

REPORT OF GAMES COMPLETED TO OCT. 31, 1962

Section	Points	Ratings of Benson, Skarsten, E. Denison, D. Denison and J.R. Donnelly are not in proper sequence, as you will note.	
7/25 61B-6A Lyberger — 1 Dart 0 42			
10/4 62C-2B Berg 1 J.D. Miller 0 66			
62C-1A Matthews ½ R. Raymond ½ 10			
62C-1A R. Raymond 1 J.D. Miller 0 37			
62C-1B R. Raymond 1 J.D. Miller 0 37			
10/6 62A-1A Nourse 1 R. W. Allyn 0 42		Collins and Pupols now tie for second place in "A" Division.	
Private Benson ½ Skarsten ½ 4		Dolph feels the hot breath on his neck in their try for first place.	
62B-1A Pattie 1 Skoglund 0 58		Weaver jumps from 16th to 10th place by his winning 2 games from Jones.	
10/8 62B-1A Dorwin 1 Laugen 0 48		Gillette advances from 30th to 16th place in "A" Division.	
62B-1B Laugen 1 Dorwin 0 52		Lyberger and Turner win promotions to the "A" Division.	
10/9 61A-13A Gillette 1 Jones 0 62		The big surprise this month is Monrad's leap from 30th to 6th place in "B" Division.	
1-/11 61B-8B Howard 1 Skarsten 0 54		At last Dick Raymond achieved his goal of getting advanced to "B" Division.	
1-/13 62B-2A Turner — 1 Ward 0 38		Dorwin now leads the "C" Division.	
10/14 Private Gillette 4 Carter 2 112		Yes, Carlsen is still with us. By mistake he was omitted from our ratings the past two months.	
61B-6B Lyberger — 1 Dart 0 32		Berg makes progress from 27th to 18th place in "C" Division.	
62B-2B Turner — 1 Ward 0 38			
10/15 62A-4A Weaver 1 Jones 0 39			
62A-4B Weaver 1 Jones 0 39			
10/16 61B-9A Rogers 1 Laugen 0 32			
10/20 61B-9B Monrad 1 Gifford 0 70			
61B-9B Monrad 1 Laugen 0 40			
61B-9A Monrad 1 Rogers 0 66			
62C-4A J.R. Donnelly 1 D. Denison 0 46			
62C-4B J.R. Donnelly 1 D. Denison 0 46			
10/22 62A-2A Pupols 1 Eilmes 0 34			
10/23 62A-3B Morris 1 Abrahamson 0 48			
Private Skarsten 5 Carter 0 100			
10/25 62A-1B Nourse ½ R.W. Allyn ½ 16		Several of our players are left off the ratings list this month because of inactivity.	
62B-2B Dolph 1 Eilmes 0 22		When they enter again it will be at the rating established when they were dropped.	
10/29 62C-1A Matthews 1 Shives 0 36			
10/31 62A-3A Abrahamson 1 Morris 0 62			
62B-2A Ward 1 Shives 0 16			
61B-6A Lyberger — 1 Baskett 0 50			
59A-8A	59A-8B	61A-5A	61A-5B
Dolph x 0 ½ 1 1	x 1 1 0 1	Sage x 1 1 1	x 1 ½ 1
Vellias 1 x 1 1 1	0 x 0 0 1	Jones 0 x 1 0	0 x 1 1
Wade ½ 1 x 1 0	0 1 x 1 1	Skarsten 0 0 x 0	½ 1 x 1
Pupols 0 0 0 x 1	1 1 0 x 1	Carter 0 1 1 x	0 0 0 x
Weisscher 0 0 1 0 x	0 0 0 0 x		2

Dolph wins this section and has been awarded a new section for his prize.

Sage wins this section and has been awarded a new section for his prize.

PLAY CHESS BY MAIL!

Postal chess is a good way to improve your game. You can take enough time to thoroughly study each move. You can enter against any strength of competition and game results will soon give your rating its proper value. An advantage of playing Northwest players is that games proceed smoothly and rapidly with over night mail delivery. Ratings are adjusted and published each month.

Send entry fee of 50¢ for a section of four players with each playing two games simultaneously with each of the others, to

R. R. Merk
1026 N.E. 71 Street
Seattle 15, Wash.

WASHINGTON CHESS LETTER
1026 N.E. 71st St., Seattle 15, Wash.
RETURN POSTAGE GUARANTEED
FORM 3547 REQUESTED

Myron Kallier
1137 Humbolt
Bellingham, Wash
7/63

POSTAL CHESS RATINGS

"A" Division Above 1500 "B" Division 1200 to 1500

1	Dolph	2072	1	D. Kendall	1500
2	Collins	1982	2	H. Raymond	1496
3	Pupols	1982	3	Van Patten	1470
4	Wade	1951	4	Hager	1458
5	Knapp	1859	5	Pattie	1450
6	Mage	1846	6	Monrad	1432
7	J. Nourse	1846	7	Skoglund	1411
8	Vellias	1839	8	Gifford	1381
9	Scripps	1815	9	Beachy	1362
10	Weaver	1799	10	Baskett	1358
11	C. Allyn	1797	11	Rogers	1344
12	Abrahamson	1766	12	Dickson	1333
13	Morris	1762	13	Rystrom	1310
14	Cummins	1755	14	Chenoweth	1306
15	Eilmes	1741	15	Christey	1300
16	Gillette	1734	16	M. Miller	1300
17	Benson	1683	17	Nagel	1300
18	R. W. Allyn	1722	18	Van Sant	1300
19	Parsons	1712	19	Wm. Rupel	1300
20	Koenkow	1674	20	Wick	1300
21	Wilson	1652	21	Dart	1284
22	Skarsten	1695	22	Rader	1279
23	Howard	1615	23	J. McKay	1276
24	Weisscher	1613	24	Ward	1259
25	Schultz	1600	25	Merk	1256
26	B.J. Peterson	1554	26	R. Raymond	1240
27	Vanatta	1549	27	R. W. Miller	1224
28	Woodward	1551	28	Suttles	1217
29	Lyberger	1534	29	Allen	1211
30	Jones	1533			
31	Turner	1524			
32	Guess	1523			

"C" Division Below 1200

"C" Division Cont'd Below 1200

1	Dorwin	1166	13	Priebe	1000
2	Kershaw	1159	14	Running	1000
3	Waldron	1140	15	D. Rupel	1000
4	Carlson	1136	16	Taylor	1000
5	Matthews	1124	17	Roemer	968
6	Laugen	1122	18	Berg	942
7	J.R. Donnelly	1128	19	Link	898
8	Cowan	1000	20	E. Denison	937
9	D. Denison	908	21	Shives	896
10	F.J. Donnelly	1000	22	J.D. Miller	896
11	Freeman	1000	23	Cyr	828
12	Nedell	1000			

