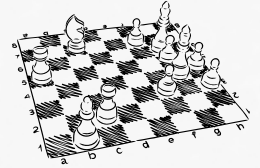


# INAUGURAL SNOHOMISH COUNTY OPEN



**Saturday**  
**August 24th, 2024**



**Co-hosted by Everett and Lake Stevens Chess Club.**

**Place:** Mukilteo Presbyterian Church, 4514 84th St SW, Mukilteo, WA 98275

**Format:** A 5-round Swiss tournament in three sections: Open, U1500, and Unrated.

**Entry fee:** Open to all ages & no play up fees. Open: \$50 U1500: \$40 Unrated: \$30.

**Early Bird Entry** (received by Monday July 29th): Subtract \$10. **On Site entry:** Add \$10.  
**Lake Stevens/Everett/Boeing Chess Club members:** Subtract \$10. Early Bird and Club discounts cannot be combined. Free entry for IM/WIM/WGM/GM. Maximum of 100 players, please register early to reserve your spot!

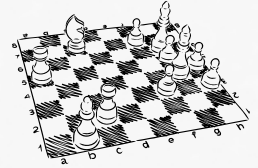
**Schedule:** Registration & Check-in 9-9:30am. Rounds (5): 9:45am, 11:15am, Lunch Break, 1:45pm, 3:15pm, 4:45pm. Closing Ceremony ~ 6:15 pm or asap.

**Time Control:** G/25 + 5 sec. increment per move starting from move 1.

**Rating:** Open and U1500 sections US chess (USCF) rated (Regular + Quick rated).  
August 2024 US Chess Regular Rating will be used to determine pairing and prizes.  
Foreign ratings used for players with no US Chess rating. Higher of US Chess or foreign ratings used at TD discretion.

**Membership:** US Chess (USCF) membership required for Open and U1500 section; no membership required for Unrated section. Memberships must be paid at time of registration.

# INAUGURAL SNOHOMISH COUNTY OPEN



**Saturday**  
**August 24th, 2024**



**Prizes (based on 50 paid entries):** Open: 1st \$300 2nd \$180 3rd \$125; U1500: 1st \$180 2nd \$110 3rd \$70; Unrated: 1st \$120 2nd \$75 3rd \$50

Registration:



<https://nwchess.com/OnlineRegistration/member.php?mode=search&tournamentid=885>

**Online registration + payment deadline: Fri Aug 23rd @ 5pm.** Unpaid players will be removed from the roster after deadline, and players from waitlist will be offered a spot. At-site registration: 9:00-9:30am. On-site payment available by cash, check made out to "Lake Stevens Chess Club", or Venmo. On-site credit card payments accepted (3% fee).

**Byes:** Up to 2 half-point byes available if requested before the end of round 2.

**Misc:** Please bring a tournament chess set and clock if you have one!

**Parking:** Free parking available behind church (100+ spaces). To get to location w/o a car from Seattle take bus #512 from Northgate to Lynnwood Transit Center and from there take Bus #113 to Mukilteo (HWY 525 & 84th St SW). Walk east (up the hill) about 0.3 miles to the venue. Please make arrangements and check bus schedule ahead of time.

**Food:** Restaurants within walking distance include Taco Bell, Sabor A Mexico, Z's Burgers, Brooklyn Bros. Pizzeria, and Mukilteo Thai (all about 0.3 mi).

**Health/Safety Protocols:** Face masks optional for players and spectators. If interested please bring your own masks.