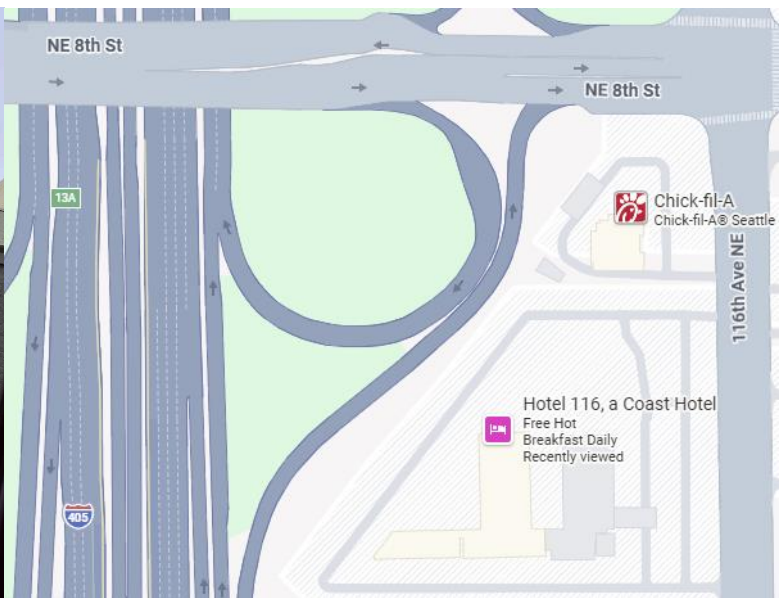
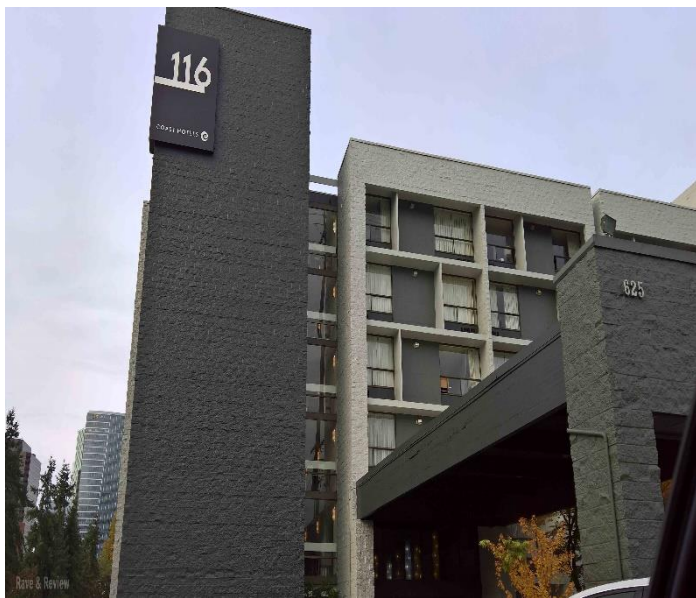


Washington vs British Columbia International Scholastic Chess Match

Saturday, May 9, 2026



Hotel 116 Bellevue
625 116th Ave NE
Bellevue, WA 98004



Format: The top two qualified WA players from each grade, K-12, compete against the top two BC players from the same grades.

Organizing Teams:

- Washington Chess Federation (WCF President Josh Sinanan, WCF Women and Girls Director Chouchan Airapetian)
- British Columbia Organizing Committee (BCCF President Paul Leblanc, BCCF Junior Coordinator Penny Pham, Stephen Wright, Michael Lo)
- WA Team Captains: NM Josh Sinanan, WFM Chouchan Airapetian
- BC Team Captains: WIM Penny Pham, IM Long Le.

Eligibility:

WA Players - The two highest finishers in each grade from the InterMat Candidates tournament on March 7-8 will be selected as the two honored players who will make up Team Washington. If a qualified player is unavailable, the invitation will pass to the next highest finisher for that grade level, followed by the highest rated available WA player in that grade.

BC Players – see InterMat site: <http://chess2inspire.org/2026-intermat-bc-vs-wa>.

Schedule:

9:30am	Check-in, Pickup team wear, Team Photos, Opening Ceremony, and Tournament Rules Announcement
10:00am	Round 1
1:30pm	Lunch break; light refreshments provided.
2:30pm	Round 2 (players finished late in round 1 may postpone the start of round 2 with TD approval)
6:30pm or asap	Closing Ceremony

Equipment: Boards/sets, clocks, scoresheets, and pens will be provided. Recording of moves is required.

Entry Fee: FREE, by invitation – it is an honor to represent your state or province in this international match.

Time Control & Rating: Game in 90 minutes with a 30-second increment per move. Two games, unrated. FIDE rules apply.

Swag: Commemorative team wear will be supplied by Team WA for all players.

Awards: Rotating Team Trophy engraved with the winning state/province for the year.

Registration: Please register via online registration at nwchess.com/OnlineRegistration/. The deadline for accepting the invitation is Sunday, March 15th.

Tournament Director: FA Mani Atikankhotchasee.

Concessions: Many food options are available near the playing site. Complimentary light snacks and refreshments will be provided for all players.

Parking: Complimentary parking can be found in the Hotel 116 parking lot and on the nearby residential streets.

Questions?

Josh Sinanan, WCF President, WashingtonChessFederation@gmail.com, 206-769-3757