

NORTHWEST CHESS

June - July 1970



WHATS A KINGS GAMBIT
ANYWAY?

NORTHWEST CHESS

June - July 1970

Issue 271

Published monthly by the Washington Chess Federation in cooperation with Oregon Chess Federation and Idaho Chess Association and British Columbia Chess Federation.

SUBSCRIBE TO NORTHWEST CHESS:

Regular subscription: \$4.00 for one year; Juniors \$3.00 one year (under 21).

BRITISH COLUMBIA RESIDENTS: send checks to British Columbia Chess Federation, Membership Secretary, Russ Vogler, 7226 16th Ave., Burnaby 3, B.C., Canada
NOTE THE SPECIAL B.C. RATES: \$5.00 for Regular members \$3.00 for Juniors (18 & under).

IDAHO RESIDENTS: send checks to Idaho Chess Assoc. Treasurer, Richard Vandenburg, 2316 Regan Ave. Boise, ID 83702

OREGON RESIDENTS: send checks to Oregon Chess Federation Treasurer, Esther Schrader, 3565 Belle Vista Ct. S., Salem, OR 97302

ALL OTHERS: send checks to Washington Chess Federation Treasurer, Kathy Miller, P.O. Box 1631, Yakima, WA 98901

The subscription price includes a membership for one year in the association or federation to which you send your check. Family memberships are available in W. C. F. & O. C. F. for \$.50 per year. After the first full membership is paid each addition member of a household may join for \$.50.

High School students may join W. C. F. for \$1.00 per year, this does not include a subscription to NWC.

STAFF

EDITOR

507 3rd Ave Box 42

CHESS CLUB NEWS

125 Irving Rd

RATING DIRECTOR

Whitman College

CIRCULATION DIRECTOR

POSTAL DIRECTOR

10011 Renton Ave S.

IDAHO CHESS BULLETIN

2316 Regan Ave

OREGON CHESS NEWS

243 S. Stage Rd (ph 5352279)

B. C. BULLETIN

8386 McGregor Ave. (ph 4350556)

HIGH SCHOOL IN CHESS

8552 Interlake N.

PUBLISHER

(with help of Shield's Bag & Printing)

PROBLEM CORNER

3565 Belle Vista Ct. S.

TOURNAMENT ANN.

P.O. Box 1631 (ph 4535874 or 4537169) Yakima, WA 98901

WILLIE SKUBI

Seattle, WA 98104

DAVID ZEVENBERGEN

Eugene, OR 97402

VICTOR KEISER

Walla Walla, WA 99362

DON EISENBERG

RON NORMAN

Seattle, WA 98178

RICHARD VANDENBURG

Boise, ID 83702

HARRY GLIDDEN

Medford, OR 97501

BOB ELDRIDGE

Burnaby 1, B.C. Can.

HOWIE CHIN

Seattle, WA 98103

JEFF HANSON

Yakima, Wash.

ESTHER SCHRADER

Salem, OR 97302

RUSSELL W. MILLER

Yakima, WA 98901

Contributions to Northwest Chess are welcome. Where ever possible, submit copy typed in columns 4 5/8 inches wide (46 pica typewriter spaces) using a good typewriter ribbon for clean black impressions, and single spaced. PLEASE AVOID sending material which is too thin or too thick to fit in one column, or if a crosstable, two. Games should be in descriptive notation. Photographs and artwork from any source are welcome. Hand written material should be sent well in advance of deadline for typing. Letters for publication are encouraged. Send material to the Staff Editor, Willie Skubi.

DEADLINES: August issue, July 24th; September Issue, August 21st, October issue, September 25.

Material must be received by the deadline!

EDITOR'S CORNER

Due to the fact that the editor missed his own deadline, there was no June Northwest Chess. I failed to make arrangements to have a mail pick up made May 29th, and was locked out Memorial Day. That alone could have been corrected, but Rusty Miller had been counting on receiving the layouts so he could leave on his vacation, and the delay would have cut into his plans. This 32 page issue is a peace offering.



Cover drawing and inside cartoons by Jack Schrader

--- Contents ---

Page	Topic
	Tournament Schedule
3	Idaho Chess
5	B.C. Bulletin
6	Larry Evans Interview
9	Oregon Chess News
10	Lasker's Combination
13	Northwest Ratings
14	Semi-annual Report
17	History of Washington Chess
19	Problem Corner
20	Club News
22	Games and Analysis
25	Understanding Chess Laws
26	High School In Chess
31	1970 Montana Open
32	Postal Chess

(Also send Changes of address to R. Miller)

SEND ALL TOURNAMENT ANNOUNCEMENTS TO: RUSSELL W. MILLER
P.O. BOX 1631
YAKIMA, WA 98901

Washington County Open

JULY 17, 18 & 19

SITE: PACIFIC UNIVERSITY, FOREST GROVE, OREGON
REGISTRATION: 9:30-10:30 am JULY 17
TYPE: 7 rd SWISS - 2 sections- COMBINATION IND. & TEAM
ENTRY FEE: \$4.00 IND. \$20.00 - TEAM (at least 5) PLUS
USCF AND OCF OR WCF (\$.50 less for advance
entry

MORE DETAILS SEE Page 10 OR CHESS LIFE & REVIEW
ADVANCE ENTRY: HILLSBORO CHESS CLUB, RT 1 BOX 50
CORNELIUS, OR 97113

NORTHWEST TOURNAMENT SCHEDULE

JULY		
4-5	PORTLAND INDEPENDENCE DAY OPEN	(PORTLAND)
11-12	SUNFAIR OPEN	(YAKIMA)
17-18-19	WASHINGTON COUNTY OPEN	(FORREST GROVE)
AUGUST		
1-2	SEATTLE SEAFAIR OPEN	(SEATTLE)
8-9	PORTLAND SUMMER OPEN	(PORTLAND)
15	OAK OPEN	(HILLSBORO)
23	INDIAN SUMMER OPEN	(SPOKANE)
SEPTEMBER		
5-6-7	OREGON OPEN	(PORTLAND)
5-6-7	WESTERN WASHINGTON OPEN	(SEATTLE)
12-13	WALLA WALLA VALLEY OPEN	(WALLA WALLA)
26-27	RAZOR EDGE OPEN	(SPOKANE)
26	HILLSBORO JUNIOR	(HILLSBORO)
OCTOBER		
3-4	PEACE ARCH OPEN	(BELLINGHAM)
3-4	PORTLAND FALL OPEN	(PORTLAND)
10-11	SEATTLE OPEN	(SEATTLE)
17	WASHINGTON WOODPUSHER	(SEATTLE)
31-Nov 1	KLAMATH FALLS OPEN	(KLAMATH FALLS)
NOVEMBER		
7-8	SPOKANE COUNTY OPEN	(SPOKANE)
27-28-29	NORTHWEST OPEN	(SEATTLE)
DECEMBER		
6	BLITZ-KREIG OPEN	(SPOKANE)
27-28	NORTHWEST JUNIOR	(SEATTLE)

IF AN EVENT CALLS FOR MEMBERSHIP IN WASHINGTON CHESS FEDERATION (WCF) OR OREGON CHESS FEDERATION (OCF) OR BRITISH COLUMBIA CHESS FEDERATION (BCCF) OR IDAHO CHESS ASSOCIATION (ICA) BEING A MEMBER OF ANY ONE OF THE ABOVE LISTED GROUPS ALLOWS YOU TO PLAY IN THE EVENT WITHOUT JOINING THE GROUP LISTED IN THE ANNOUNCEMENT BECAUSE OF RECIPROCAL AGREEMENTS BETWEEN THESE GROUPS. IF YOU ARE NOT A MEMBER OF UNITED STATES CHESS FEDERATION (USCF) AND IT IS REQUIRED YOU MUST JOIN IT. IF AN EVENT ANNOUNCEMENT DOES NOT STATE OTHERWISE ASSUME THAT NORTHWEST RATINGS WILL BE USED FOR PAIRINGS AND PRIZES.

IF WORD: "GUARANTEED" DOES NOT APPEAR IN THE ANNOUNCEMENT ASSUME THAT IF ENTRY FEES DON'T COVER THE EXPENSES AND PRIZES ANNOUNCED THAT PRIZE FUND WILL BE LOWERED. (This had to be done at last Puget Sound Open.)

PORTLAND INDEPENDENCE DAY OPEN

JULY 4-5

FIVE RD SWISS, PARK HAVILAND HOTEL, SW SALMON & PARK, PORTLAND, OREGON, ENTRY FEE: \$8.00 PLUS USCF AND OCF OR WCF (\$6.50 if received by June 29) TIME CONTROL: 50/2 REG: 9-9:30 SETS & BOARDS PROVIDED BRING CLOCKS PRIZES: 1st-\$50.00 plus 1 YEAR SUBSCRIPTION TO "CHESS DIGEST", 2nd, 3rd and TOP "A", "B" & "C" (inc. Unr) ALL A 1 YEAR SUB. TO "CHESS DIGEST" " LAST QUALIFYING EVENT FOR 1970 OREGON CHAMPIONSHIP" USCF RATINGS USED FOR PAIRINGS & PRIZES. STAY AT PARK HAVILAND: SPECIAL RATES-Single \$7.00, Double \$8.00 Twin \$9.00 ADVANCE ENTRY: EAST-WEST TOURNAMENT ASSOC., c/o HANON W. RUSSELL, 1717 SW PARK AVE #123, PORTLAND, OR 97201

SUNFAIR OPEN

JULY 11-12

FIVE RD SWISS, 2 SECTIONS, HOME FEDERAL SAVINGS & LOAN, 502 W. YAKIMA AVE, YAKIMA, WASH. ENTRY FEE: "OPEN SECTION" \$7.00 ADULTS, \$5.00 JUNIORS (under 19) PLUS USCF & WCF MEMBERSHIPS (\$6.00 and \$4.00 if advanced entry received by July 9th) "NOVICE SECTION" (Rating under 1600) \$1.00 ADULTS \$.25 JUNIORS (under 19) REGISTRATION: 8:30-9:30 am TIME CONTROL: "OPEN"-45/2, "NOVICE"-40/1 PRIZES: GUARANTEED 1st-\$100.00, 2nd-\$60.00, 3rd-\$40.00; 1st "Expert", "A", "B", "C" and Under 19 ALL \$20.00 2nd "Expert", "A", "B", "C" ALL \$10.00 TOTAL CASH \$340.00 GUARANTEED ALSO TOP YAKIMA COUNTY RESIDENT: FREE WHEEL ALIGNMENT (DONATED BY FRANK HOMES TIRES & SERVICE) ADVANCE ENTRY TO: YAKIMA YMCA CHESS CLUB C/O RUSSELL W. MILLER, PO BOX 1631, YAKIMA, WA 98901 (GUARANTEED PRIZE FUND HAS BEEN MADE POSSIBLE BY DONATIONS FROM VALLEY EVAPORATING COMPANY AND SHIELDS BAG & PRINTING CO.)

SEATTLE SEAFAIR OPEN

AUGUST 1-2

FIVE RD SWISS (6 rd if more than 32 in section), 2 SECTIONS, SITE: ROOM 353 & 355 PIGOTT BLDG, SEATTLE UNIVERSITY CAMPUS, SEATTLE, WASH. ENTRY FEE: "OPEN SECTION"- \$7.00 PLUS USCF & WCF MEMBERSHIPS (\$6.00 if entry received by JULY 24) "B" SECTION-\$3.00 PLUS WCF MEMBERSHIP ALSO NORTHWEST RATING 1700 & UNDER, REGISTRATION: 8:30 - 9:30 am, TIME CONTROL "OPEN"-45/2 "B"-40/1 PRIZES: "OPEN" (BASED ON 60 PLAYERS ENTERING) 1st-\$100.00, 2nd-\$60.00, 3rd-\$40.00; 1st "Expert", "A", "B", "C", UNR & JR ALL \$20.00 2nd "Expert", "A", "B", "C", UNR & JR ALL \$10.00 PRIZES: "B" 1st- CHESS CLOCK others UNITED STATES CHESS FEDERATION MEMBERSHIPS AND SUBSCRIPTIONS TO "CHESS DIGEST" as entries allow. ADVANCE ENTRY: WASHINGTON CHESS FEDERATION, P.O. BOX 1631, YAKIMA, WA 98901, TD-SALLY PUPOLS

PORTLAND SUMMER OPEN

AUGUST 8-9

FIVE RD SWISS, PARK HAVILAND HOTEL, SW SALMON & PARK, PORTLAND, OREGON, ENTRY FEE: \$8.00 PLUS USCF & OCF MEMBERSHIPS (\$6.50 if received by August 3rd), TIME CONTROL: 50/2 REGISTRATION: 9:00-9:30 am SETS AND BOARDS PROVIDED BRING CLOCKS, GUARANTEED PRIZES: 1st-\$50.00 plus 1 YEAR SUBSCRIPTION TO "CHESS DIGEST", 2nd, 3rd plus TOP "A", "B", & "C" (inc Unr) ALL 1 year subscription to "CHESS DIGEST". USCF RATINGS USED FOR PAIRINGS & PRIZES, STAY AT PARK HAVILAND: SPECIAL RATES: Single \$7.00, Double \$8.00, Twin \$9.00 advanced entry: EAST-WEST TOURNAMENT ASSOC., c/o HANON W. RUSSELL, 1717 SW PARK AVE #123, PORTLAND, OR 97201

FROM: CHESS DIGEST; KEN SMITH, EDITOR; P.O. BOX 21225, DALLAS, TEXAS 75211
ON ORDERS FOR LESS THAN \$3.00 ADD 50c. TEXANS ADD 4c

NEW BOOKS

2nd edition - revised and enlarged:
FLANK OPENINGS-Keene: a must even if you have the 1st edition as corrections and new evaluations are in this enlarged edition. A study of Reti, Catalan, English, and King's Indian Attack complex. One of the most popular opening books because you know when you are Black one of these will be played against you in about every tournament. In English and English algebraic notation. 230 pages. Glossy limp cover \$3.40

IMPORTANT BOOKS BACK IN PRINT (in English)

THE CHESS PSYCHOLOGIST: Tal-Liepnieks (but most annotations and comments are by Tal)

The Chess world has marveled at Tal's success, at his fighting spirit and brilliancy in his games. Here he is at his best - the years 1956 to and including 1960 when he won the championship of the world. Biography, pictures and combination quiz round out this excellent cloth-bound (D). 172 pages. #G-52 \$4.00

CHESS MATCH: USSR vs HUNGARY 1955

Bronstein, Keres & Petrosian lead the Russian team. 24 pages. Glossy limp cover (A). #H-14 \$1.00

CHESS SECRETS: I Learned From the Masters - Edward Lasker (P) (D) \$2.00

PLAY TOURNAMENT CHESS

BRALEY TOPS A. D. S.

1.	John Braley	2249	W20	W16	W21	W3	W4	5-0	\$ 100.00
2.	Jon Berry	2176	W17	W24	D4	W14	W7	4½-3½	40.00
3.	Russ Vogler	2047	W28	W11	W7	L1	W10	4-1	20.00
4.	Bob Zuk	2264	W12	W8	D2	W5	L1	3½-1½	
5.	Vic Pupols	2263	D9	W18	W10	L4	W14	3½-1½	
6.	Tim Kauppila	1983	L24	W26	W15	W11	D8	3½-1½	20.00 1st A
7.	Peter Torkar	2194	W22	W21	L3	W16	L2	3-2	
8.	Dave Shapero	2000	W25	L4	W17	D9	D6	3-2	
9.	Rich Hanlen	1828	D5	W13	L14	D8	W18	3-2	5.00 2nd A
10.	Paul Heinrich	2094	W15	W23	L5	W12	L3	3-2	10.00 Jr.
11.	Dan Bailey	1586	W19	L3	W24	L6	W26	3-2	10.00 1st C
12.	Marty Gray	1858	L4	W25	W29	L10	W24	3-2	5.00 2nd A
13.	Mike Murray	2103	D27	D9	D20	W28	W22	3-2	
14.	Ted Warner	2020	D26	W27	W9	L2	L5	2½-2½	
15.	Gordon Shuck	1750	L10	W32	L6	WF23	D16	2½-2½	15.00 1st B
16.	Paul Zimanyl	1872	W30	L1	W23	L7	D15	2½-2½	
17.	Sam McKibbin	1793	L2	W31	L8	W29	D19	2½-2½	15.00 1st B
18.	Doug Adams	1920	W29	L5	D19	W27	L9	2½-2½	
19.	Ken Morton	1931	L11	W28	D18	D22	D17	2½-2½	
20.	James Hanlen	1810	L1	D22	D13	D24	W25	2½-2½	
21.	Bill Wraith	1869	W31	L7	L1	D25	W27	2½-2½	
22.	Dave Englehard	1796	L7	D20	W26	D19	L13	2-3	
23.	Dave Allen	1456	Bye	L10	L16	LF15	W30	2-3	6.00 2nd C
24.	Gary Wendel	1621	W6	L2	L11	D20	L12	1½-3½	
25.	Charles Adams	1666	L8	L12	W32	D21	L20	1½-3½	
26.	Jim Tamura	1683	D14	L6	L22	W31	L11	1½-3½	
27.	Bob Bailey	1755	D13	L14	W30	L18	L21	1½-3½	
28.	J. Lyman Johnson	1702	L3	L19	W31	L13	D29	1½-3½	
29.	Jeff Hanson	1544	L18	W30	L12	L17	D28	1½-3½	4.00 2nd C
30.	Jack Galloway	UNR	L16	L29	L27	W32	L23	1-4	1.00 4th C
31.	Dave Mukai	UNR	L21	L17	L28	L26	W32	1-4	1.00 4th C
32.	Joe Dyer	UNR	LF	L15	L25	L30	L31	0-5	



236 Fischer Marovic
Caro-Kann
1 e4 c6 2 d3 d5 3 Sd2 Sd7 4 Sgf3
Dc7 5 ed cd 6 d4 g6 7 Ld3 Lg7 8
o-o e6 9 Tel Se7 lo Sfl Sc6 ll c3
o-o l2 Lg5 e5 l3 Se3 Sb6 l4 de
Se5: l5 Lf4 f6 l6 a4 Df7 l7 a5 Sbc4
l8 Lc4: dc l9 Le5: fe 20 De2 h6 2l
Sc4: Lg4 22 Scc5: Le5: 23 Se5: Le2:
24 Sf7: Tf7: 25 Te2: Td8 26 Toel Td5
27 b4 Tc7 28 Te3 Kf7 29 h4 Td2 3o
Tf3+ Kg7 3l Te6 Tf7 32 Tf7+ Kf7:
33 Te5 Tdl+ 34 Kh2 b6 35 ab ab 36
f3 Td3 37 Tb5 Tc3: 38 Tb6: h5 39
Tb7+ Kf6 4o b5 Tb3 4l b6 Tb4 42
Kg3 Tb2 43 Tb8 Kg7 44 f4 Tb3+ 45
Kf2 Kf6 46 Ke2 Kg7 47 Kd2 Tg3 48
Tc8 l6o

242 Fischer Kortschnoj
Sicilian - Sizilianisch
l e4 c5 2 Sf3 e6 3 d4 cd 4 Sd4:
Sc6 5 Sc3 d6 6 Lc4 Sf6 7 Lb3 Le7
8 Le3 o-o 9 o-o Sd4: lo Ld4: b5
ll Sb5: La6 l2 c4 Lb5: l3 cb Se4:
l4 Dg4 Sf6 l5 De2 Sd7 l6 De3 Lf6
l7 La7: Da5 l8 b6 Ld8 l9 Tadd Lb6:
2o Lb6: Lb6: 2l Dd2 l2 Dc2 Da5:
Ta5: 23 Tcl Ld4 24 Tc2 g5 25 Tdl
Le5 26 Tel Ld6 27 Tc6 Td8 28 Tecl
Le5 29 Tlc2 Tb8 3o g3 Tab5 3l
Kfl T5b6 32 T6c5 Kg7 33 Te2 Kf6
34 Tc2 h5 35 Te3 h4 36 Tce2 Ld6
37 Tf3+ Kg7 38 Tc3 Tb4 39 Kg2
T8b7 4o Tc6 T4b6 4l Tb6: Tb6: 42
Ldl Kf6 43 Td2 Le4 44 b3 Ke7 45
g4 Kd6 46 Tc2 Tb8 47 h3 Ld4 48
Le2 Lc5 49 Tc3 Lb4 5o Tc2 La5 5l
Kfl Tb4 52 Tc8 Lb6 53 Tc3 Tf4 54
Tf3 Tf3: 53 Lf3: Kc5 56 Ldl Kd4 57
Lc2 Lc5 58 Ke2 La3 59 Lh7 Kc3
6o Lbl Lc5 6l Lh7 e5 62 f3 remis

248 Kurojica Fischer
Sicilian - Sizilianisch
l e4 c5 2 Sf3 d6 3 Sc3 a6 4 g3 Sc6
5 Lg2 g6 6 d4 Lg4 7 dc dc 8 Le3
Da5 9 o-o Lg7 lo Td8 ll Sd5 Da4 12
Dcl De4: l3 Sg5 De5 l4 Lf4 Db2:
l5 Db2: Lb2: l6 Tabl Lc7 l7 Tb7:
Lf4: l8 Sf4: Sd4 l9 c3 h6 2o cd
hg 2l Sd5 cd 22 Tel Kf8 23 Tb4
e6 24 Td4: Lf5 25 g4 Th4 26 Tedl
Tg4: 27 Tg4: Lg4: 28 f3 Td5: 29
Td5: ed 3o fg Sf6 3l h3 Ke7 32
Kf2 Kd6 33 Ke3 Ke5 34 Lfl a5 35
La6 Se4 o:l

249 Fischer Udovcic
Pi-r-uf
l e4 g6 2 d4 Lg7 3 Sc3 b6 4 f4
Sc6 5 Sf3 Sf6 6 h3 o-o 7 g4 e5
8 de de 9 f5 gf lo gf Sd4 ll Sf3 c5
l2 Lg5 Db6 l3 Lf6: Df6: l4 Sd5 Sf3+
l5 Df3: Dh4+ l6 Ke2 Le6 l7 Se3
Tad8 l8 Tgl Kh8 l9 fe fe 2o Dg3
Df6 2l Dg7+ Dg7: 22 Tg7: Tf7: 23
Sg4 Tf4 24 Ke3 Td8 25 Le2 h5 26
Se5: Th4 27 Tgl+ Kh7 28 Thl Th4
29 Sd3 T4f7 3o Sc5: Tc8 3l Se6:
l6o

John Braley playing solid chess won first place and \$ 100.00 with a perfect score of 5-0. In hot pursuit all the way were Bob Zuk and Jon Berry. Vic Pupols had a tough time of it, allowing a draw to Rich Hanlen and a loss to Bob Zuk. Mike Murray also found the going rough against the Hanlen brothers, losing to Rich and drawing against Jim while allowing another draw with Bob Bailey. Russ Vogler surprised a few of the entrants with his fine 4-1 score. His only loss was to Braley in the 4th round. The event was sponsored by the Advanced Diesel and Supply Co. of Spokane and the Spokane Chess Club. Mel Leonard directed the event with assistance from Sally Pupols and Rich Hanlen.

A REVIEW OF KENNETH M. HARKNESS'S OFFICIAL CHESS RULEBOOK

By MARTIN E. MORRISON, Columnist and Author on Chess Laws and Tournament Direction Director, United States and California State Chess Federations Chairman and Editor (Chess Voice), Central California Chess Association

Questions and comments from readers on chess laws and tournament direction are welcomed. Send them to the columnist at P. O. Box 1622, Oakland, CA 94604.

Chess players and officials alike will welcome this addition to the limited arsenal of works on chess laws and tournament direction. Kenneth M. Harkness, a recognized authority on the subject and one of the five members of the Permanent Commission of the FIDE (World Chess Federation) for the Laws of the Game, has previously authored two standard works, The Official Blue Book and Encyclopedia of Chess (1956, now out of print) and Official Chess Handbook (New York: David McKay Company, c. 1967, \$6.95). This latest work, just released by David McKay, presents in a convenient form (hardback, 11 x 19 cm., 116 pp., ill. and ind., \$3.75) the current FIDE Laws of the Game of Chess (Basic Rules, Supplementary Rules for Competitions, and Supplements to the Laws), along with many recent interpretations of these Laws by the Permanent Commission, and, in addition, the latest revision of the USCF Tournament Rules, previously available only in the out-of-print Blue Book in an out-dated version. Also included is Mr. Harkness's commentary on many points, in some cases almost verbatim from the Handbook for ready reference. A final section includes comments on "Chess Clocks and Time Limits" and "Unfinished Games." The Rulebook has been approved by the USCF.

Since the Rulebook introduces changes in rules and procedures, I shall here discuss the more important ones in the interest of those thousands of chess players who will be participating in tournaments without having read the Rulebook or who, being inexperienced in the details of tournament procedure, will otherwise not be aware of the changes.

ARTICLE 8: THE TOUCHED MAN. ("... if the player having the move touches one or more men, he must make his move by moving or capturing the first man touched that can be moved or captured. . . .") Mr. Harkness, perhaps relying on a 1968 decision of the Permanent Commission, has interpreted this as follows: if a player touches one or more of his opponent's men and then one or more of his own, CONT. NEXT MONTH

Idaho Chess

By Richard Vandenburg

MONTCHALIN WINS Idaho Open

Mike Montchalin of Happy Valley, Oregon and a junior in high school, won the 1970 Idaho Open with a perfect 5-0 score. In the last round he won from Scott Liddell of Ogden, Utah, to clinch the title. Liddell was a front runner from the start, playing the numbers 1, 2, 5, and 7th place finishers to garner a total of 17½ solkoff points, the highest in the tournament. In round three he beat second ranked Dick Vandenburg, and in round four he drew with first ranked Dave Reynolds, and this draw prevented Reynolds from playing Montchalin in the final round due to the Harkness pairing used. Reynolds won in the last round from Glen Buckendorf to place second and Don Turner, from The Dalles, Oregon, placed third with a 4-1, after losing to Reynolds in round three. Montchalin's last published rating was 1962 but is currently figured at well over 2000, putting three of the tournament entrants in the expert class.

										Rating	Solk
										1962	
1.	Mitch Montchalin										5-0
2.	Happy Valley, Oregon	W18	W9	W8	W13	W4					
3.	David Reynolds									2070	4½-½
4.	Pocatello, Idaho	W16	W6	W3	D4	W8					
5.	Donald Turner									1950	4-1
6.	The Dalles, Oregon	W24	W14	L2	W11	W17					
7.	Scott Liddell									1937	3½-1½
8.	Ogden, Utah	W28	W7	W5	D2	L1					17½
9.	Dick Vandenburg									2041	3½-1½
10.	Boise, Idaho	W20	W11	L4	W10	D6					15
11.	John Alexander									1903	3½-1½
12.	Jackson, Wyoming	W15	L2	W18	W22	D5					14½
13.	Jens Lund									1690	3½-1½
14.	Ogden, Utah	W27	L4	D10	W21	W13					12
15.	Glen Buckendorf									1922	3-2
16.	Buhl, Idaho	W21	W22	L1	W14	L2					16
17.	Alan Faye									1782	3-2
18.	Salt Lake City, Utah	W23	L1	D19	D15	W18					13½
19.	Ted Hartwell									1773	3-2
20.	Twin Falls, Idaho	D13	W25	D7	L5	W19					13
21.	Deane Moore									1805	3-2
22.	Portland, Oregon	W29	L5	W21	L3	W20					12½
23.	Max Wernstrom									1692	3-2
24.	Boise, Idaho	D25	W26	L13	D19	W22					9½
25.	Tim Estle									1333	2½-2½
26.	Boise, Idaho	D10	W17	W12	L1	L7					17
27.	Lennis Hansen									1707	2½-2½
28.	Sandy, Utah	W19	L3	W20	L8	D15					13½
29.	Ezra Brumbach									1554	2½-2½
30.	Parma, Idaho	L6	D16	W29	D9	D14					12½
31.	Fred Doekal									1688	2½-2½
32.	Salt Lake City, Utah	L2	D15	W26	L17	W25					12½
33.	Jerry Starke									1758	2½-2½
34.	Nampa, Idaho	D26	L13	W25	W16	L3					12
35.	C.E. Harris									1609	2-3
36.	Calidwell, Idaho	L1	W23	L6	W27	L9					14½
37.	R.K. Hart									unrated	2-3
38.	Pocatello, Idaho	L14	W24	D9	D12	L10					13½
39.	Nick Skirwants									1664	2-3
40.	Boise, Idaho	L5	W29	L14	W23	L11					12
41.	Cordell Chipman									1576	2-3
42.	Provo, Utah	L8	W30	L11	L7	W26					11
43.	Fred Wagner									1534	2-3
44.	Boise, Idaho	W30	L8	W27	L6	L12					10½
45.	Kenny James									1396	2-3
46.	Twin Falls, Idaho	L9	L18	W30	L20	W28					8
47.	Charles Metselaar									1585	2-3
48.	Ogden, Utah	L3	288	L28	W30	W27					8
49.	Glen Peck									unrated	1½-3½
50.	Pocatello, Idaho	D12	L10	L17	W28	L16					12
51.	Phil Irwin									1140	1½-3½
52.	Beaverton, Oregon	D17	L12	L16	W29	L21					11
53.	Carroll Powell									unrated	1-4
54.	Emmett, Idaho	L7	W28	L22	L18	L24					10½
55.	Walter Young									1581	1-4
56.	Boise, Idaho	L4	L27	W24	L25	L23					10
57.	Vic Waterman									1453	1-4
58.	Nampa, Idaho	L17	L20	L15	L25	W30					9
59.	Debra Stikes									unrated	0-5
60.	Meridian, Idaho	L22	L21	L23	L24	L29					

The first three rounds were played in Boise's YMCA building but the weather was so nice Tournament Director Dick Vandenburg set Sunday's games for Boise's beautiful Ann Morrison Park, which proved to be a perfect setting for the final competition. Like the previous Idaho Open, this tournament attracted the largest field in recent years, with 30 entrants, all from Utah, Wyoming, Oregon and Idaho. Previous tournament winners who entered were Don Turner, Dick Vandenburg and Glen Buckendorf.

Mike won the first place trophy plus \$60., Reynolds won \$30. and Turner \$20. First in class "B" was Jens Lund (\$25.), 2nd was Alan Faye (\$10.), both from Utah. First in class "C" was Tim Estle (\$15.), a fourteen year old high school boy from Boise who narrowly missed winning his last round game and a fifth place finish, and second was Ezra Brumbach (\$7.). Junior trophy winners were Phil Irwin and Debra Stikes. Prizes were more than planned due to the large field.

Dick Vandenburg, Director
(Typed by W. Skubi)

1970 Idaho Open, Montchalin - Liddell

1. N-KB3	N-KB3	22. B-Q2	R-Q1
2. P-B4	P-KN3	23. P-R3	B-B2
3. N-B3	B-N2	24. R-B2	B-Q2
4. P-K4	P-Q3	25. R/1-KB1	B-B1
5. P-Q4	O-O	26. Q-B1	N-KB2
6. B-K2	QN-Q2	27. N-B4	P-N4
7. O-O	P-B4	28. N-R5	QxP
8. P-Q5	N-K1	29. BxNP	NxB
9. B-K3	N-B2	30. NxB	Q-Q5
10. N-Q2	P-K4	31. N-K6	RxN
11. Q-B2	K-R1	32. PxB	Q-K4
12. P-QR3	Q-K2	33. B-N4	R-QN1
13. P-QN4	P-N3	34. K-R1	R-N1
14. QR-K1	N-R3	35. R-K2	Q-N4
15. N-R2	B-N2	36. QxQ	PxQ
16. P-B4	PxP	37. P-K7	B-K4
17. BxP	N-K4	38. B-K6	P-KR3
18. N-B3	QR-QB1	39. BxR	KxB
19. P-N5	N-B2	40. R-B8ch	K-R2
20. N-B1	P-B3	41. R-B2	K-N3
21. N-Q3	N-K1	42. P-N4	Resigns



B. C. BULLETIN

By Bob Eldridge

BOB ZUK - B.C. CHAMPION

	1	2	3	4	5	6	7	8	9		
1. R. Zuk	2264	x	1/2	1	0	1	1	1	1	1/2	6
2. P. Biyiasas	2271	1/2	x	1	1	1	1	0	1	1/2	5
3. A. Zaradic	2275	0	1/2	x	1/2	1	1	0	1	1	5
4. D. Suttles	2392	1	0	1/2	x	1/2	0	1	1	1	4 1/2
5. E. Macskasy	2294	0	0	0	1/2	x	1	1	1	1	4
6. R. Kerr	2232	0	1/2	0	1	0	x	1/2	1	1	3 1/2
7. S. Pakosta	urd.	0	0	1	1	0	1	0	x	0	1
8. J. Lee	1955	0	1	0	0	0	1	0	1	x	0
9. J. Berry	2176	1/2	1/2	0	0	0	1/2	0	1	x	2 1/2

Bob Zuk, giving the best performance of his career to date, has won the British Columbia Championship! The eight-player round robin, consisted of no less than Six Masters, One Expert, One "A" Player, and a player who although not rated as yet will I have no doubt be at

least an Expert very shortly. Bob qualified for this years Championship by winning two and placing second four times in six of the eight qualifying tournament held during the season. Bob's only loss of the tournament was to the Canadian Champion, "International Master" Duncan Suttles, who was invited to play almost at the last minute. Peter Biyiasas, B.C. Champion for the last two years, missed his opportunity to post a no loss result and tie Bob Zuk for first place when he lost to John Lee in the 7th round, but undaunted he jumped back into form the following day to defeat Duncan Suttles in the last round. Tony Zaradic, winner of the B.C. Open 6 - 0, also gave a magnificent performance, losing out to Peter for Second Place only by "Sonnenborn-Berger" tie break. This tournament was without doubt the strongest event ever held in British Columbia. And I hope an example of things to come. Congratulations once again to Bob Zuk, The New B.C. Champion.

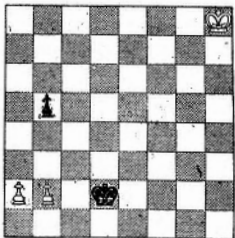
Zaradic Tops BC Open

Here is the complete crosstable from the 1970 B.C. Open. It is quite apparent that this tournament attracted many strong players looking for a qualifying entry into the B.C. Championship.

This was easily the strongest open tournament of the year, and it is unusual to see unrated players in the top ten and experts near the other end. Of course Molnar and Vitanyi are not usually listed in the unrated category.

The ratings shown are Northwest, not CFC.

Gordon Leask typed up the crosstable, which arrived at the B.C. Bulletin desk through the reliable Russ Vogler pipeline.



White to play

In the game, White played P-N4 and eventually lost. How could he have drawn?

	Rd1	Rd2	Rd3	Rd4	Rd5	Rd6	Tot.	TB
1. A. Zaradic	2275 W4	W14	W40	W5	W7	W2	6	20.0
2. B. Zuk	2303 W18	W8	W10	W7	W6	L1	5	22.5
3. J. Smolij	1983 W42	L5	W13	W31	W18	W9	5	17.5
4. H. Seid	1800 L1	W33	W36	W11	W8	W16	5	16.0
5. S. Pakosta	urd. W17	W3	W20	L1	W15	D6	4 1/2	22.0
6. P. Biyiasas	2243 W31	W38	W19	W12	L2	D5	4 1/2	18.0
7. J. Kaltenecker	1989 W28	W36	W12	L2	L1	W18	4	19.5
8. J. Lee	1914 W23	L2	W27	W26	L4	W22	4	19.0
9. J. Molnar	urd. D15	W21	D35	W14	W17	L3	4	17.0
10. V. Seglins	2049 W13	W25	L2	L15	W26	W29	4	17.0
11. W. Crookes	1975 W26	L13	W22	L4	W37	W20	4	16.5
12. J. Berry	2136 W22	W29	L7	L6	W19	D15	3 1/2	17.5
13. K. Baker	1919 D35	W11	L3	D24	D23	W30	3 1/2	17.5
14. K. Morton	1957 W33	L1	D16	L9	W41	W31	3 1/2	17.5
15. B. Harper	1887 D9	D30	W28	W10	L5	D12	3 1/2	17.5
16. B. Thorvardson	1724 L40	W39	D14	W41	W29	L4	3 1/2	14.5
17. W. Jung	1914 L5	W42	W25	W35	L9	D21	3 1/2	13.5
18. I. Ratkai	1828 L2	W23	W30	W40	L3	L7	3	17.5
19. D. Shapero	1996 W27	W37	L6	D29	L12	D23	3	15.5
20. B. Kruger	1833 W34	L40	L5	W36	W35	L11	3	15.5
21. B. Irwin	1869 D30	L9	L24	W45	W33	D17	3	14.5
22. W. Ng	1763 L12	W43	L11	W39	W24	L8	3	14.5
23. L. Vitanyi	urd. L8	L18	W42	W27	D13	D19	3	14.0
24. P. Brown	urd. D41	L35	W21	D13	L22	W37	3	13.5
25. J. Weber	1659 W32	L10	L17	L30	W44	W36	3	13.5
26. J. Soukup	1598 L11	W45	W38	L8	L10	W39	3	13.5
27. F. Yee	1709 L19	W34	L8	L23	W42	W35	3	13.0
28. A. Rudrum	1654 L7	W44	L15	D34	D32	W41	3	11.5
29. B. Foon	1854 W39	L12	W37	D19	L16	L10	2 1/2	16.0
30. R. Fancett	urd. D21	D15	L18	W25	D31	L13	2 1/2	15.5
31. S. Kennedy	1782 L6	W46	W32	L3	D30	L14	2 1/2	13.5
32. C. Balmer	1990 L25	W41	L31	L33	D28	W34	2 1/2	12.0
33. W. Van Camp	1550 L14	L4	W46	W32	L21	D42	2 1/2	12.0
34. J. Baldwin	urd. L20	L27	W43	D28	W38	L32	2 1/2	12.0
35. B. Cotter	1513 D13	W24	D9	L17	L20	L27	2	16.5
36. J. O'Neill	1450 W44	L7	L4	L20	W46	L25	2	15.0
37. A. Eason	1519 W45	L19	L29	W38	L11	L24	2	14.5
38. D. Maley	1883 W46	L6	L26	L37	L34	W45	2	13.5
39. K. Dugal	urd. L29	L16	W44	L22	W43	L26	2	12.5
40. E. Krzyzowski	2011 W16	W20	L1	L18	-	-	2	2
41. J. Bryden	1851 D24	L32	W45	L16	L14	L28	1 1/2	14.0
42. A. Mushey	1634 L3	L17	L23	W46F	L27	D33	1 1/2	12.0
43. R. Sneath	1487 L10	L22	L34	D44	L39	W46	1 1/2	9.0
44. N. Holden	1540 L36	L28	L39	D43	L25	BYE	1 1/2	
45. N. Fullbrook	1945 L37	L26	L41	L21	BYE	L38	1	
46. M. Gauer	urd. L38	L31	L33	L42F	L36	L43	0	10.0

F - Won or lost by Default.

The second issue of this magazine is out, and it is just as good as the first one was. Most of the material is international content, and there is one particularly good article in which several masters' annotations to the same game are seen to be sometimes in agreement and sometimes diametrically opposed.

You can subscribe by sending \$5.50 to 13 Fulton Avenue, Toronto 355 and it is well worth it.

ARTICLE 13 OF THE FIDE RULES.

Robert Brieger and I have been exchanging letters on the subject of the scoring of the game and the time control. Neither of us has got very far in convincing the other fellow of anything.

In his most recent letter Robert says something which I feel I should answer in public, as many people seem to have the same viewpoint as he has, and it seems to me apparent that the view is wrong.

He says: "FIDE does not say that "you must record every move as you make it".

Here is the FIDE text in the original language:

"Au cours du jeu, chaque joueur est tenu d'inscrire la partie (ses coups et ceux de son adversaire), coup apres coup, d'une facon aussi claire et lisible que possible sur le formulaire prescrit pour la competition."

The Canadian rules transcribe this practically word for word, as follows:

"During the course of the game, each player is required to record the score of the game (his moves and those of his opponent), move after move, as clearly and legibly as possible on the scoresheet prescribed for the tournament."

Surely "move after move" means "as each move is made". If you dispute this, what about the next paragraph, which commences: "If under severe time pressure, it is apparently impossible for a player to carry out his obligation prescribed by Para. 1 he has, however, to do his utmost to mark on his scoresheet the number of moves made. As soon as the time pressure has passed he will have the positive duty to complete immediately his score sheet of the game by writing in the omitted moves....."

It is obvious that the intent of the rules is to make each player keep a current score all the time. Such words as "positive duty" and "complete immediately" do not appear often in the rules. If the words "move after move" are held to mean the score can be brought up to date at any time as long as they finally appear in the correct order, then the words should be changed at the first opportunity.

Whether we agree or not that the rules ought to say this, there is no doubt in my mind that this is the intent: the score should be always up to date.

In the May 1970 issue of "Magazine Chess Scribe" Jim DiDomenico questions whether it is possible for a set of international rules to be written in such a way that they cover the national situations that arise in the conduct of the game.

This is a valid question. Undoubtedly in some of the chess playing countries the ruling philosophy is that of personal self-expression, and in others it is that of rigid self-discipline. In others yet it goes even further and is that of cooperation as a team to achieve a desired result irrespective of personal glory.

But if we are to have meaningful international competition we must have an agreed set of international rules, and it would be good practice for the top flight players to be used to playing to them. This does not preclude the writing of national by-laws to fill in some of the gaps; but a by-law which contravenes a basic law would be confusing.

In any case, as Jim says repeatedly, there is a clear need for discussion and agreement, followed by orderly exposition and enforcement of whatever clear rules come out of the process.

DAN SCOONES - RESERVE

		1	2	3	4	5	6	7	8	
1. D. Scoones	1936	x	1	1/2	1/2	1/2	1	1	1	5 1/2
2. R. Vogler	2046	0	x	1	0	1	1	1	1	5
3. H. Satanove	1986	1/2	0	x	1/2	1/2	1	1	1	4 1/2
4. H. Brown	1946	1/2	1	1/2	x	0	0	1	1	4
5. P. Danenhower	1838	1/2	0	1	x	0	1	1	1	4
6. B. McLaren	1852	0	0	0	1	1	x	1	1	4
7. H. Seid	1800	0	0	0	0	0	0	x	1	1
8. G. Mink	1754	0	0	0	0	0	0	0	x	0

Dan Scoones, from Victoria, won the reserve section of the B.C. Championship by posting a no loss result. Dan gave up only three draws to win by a half point over your reporter Russ Vogler. Harry Satanove took third, losing only one and drawing three games. Piled up behind Harry were Harold Brown, Peter Danenhower and Brian McLaren, all with four points each. Although overshadowed by the Championship, which was held in the same room, the reserve section was an excellent event in its own right. All the games were hard fought and a good time was had by all. Congratulations Dan!

BCCF Annual Meeting

The B.C.C.F. held its annual meeting on Saturday June 13 in Vancouver. Mr. Dave Wight was elected President for a third term in Office. Mr. George Bryant - Secretary-Treasurer, Mr. Russ Vogler - Tournament Director and Membership Secretary, Mr. Mike Potoma - Junior Chess Co-ordinator and Mr. Wayne Crookes - B.C. Chess Stores. Some of the main points of the meeting were:- (1) Having received a \$1500.00 Grant from the British Columbia Government, the B.C.C.F. will try to find means and ways of having the Canadian Open held in Vancouver in August 1971. This will mean a major tournament in the Pacific North West Area. We hope to have a prize fund of around \$3000.00 with an entry fee of \$20.00 to \$25.00. Its still just on the paper at the moment, but we do have the grant and its looking real good. (2) Starting now B.C.C.F. membership fees will be \$5.00 for regular members, this is to include a subscription to N.W.C., \$.50 for junior (18 and under) with the option of buying N.W.C. for \$2.50, and \$.50 for Senior members (65 and over) with the option of buying N.W.C. for \$3.50. (This should increase the N.W.C. circulation by about 200 over the next five to six months.) (3) The reciprocal agreement between Washington, Oregon, Idaho, and British Columbia was officially ratified, although it has been in effect for nearly a year the B.C. C.F. had to wait until its annual meeting to make it official. (4) The B.C.C.F. has agreed to hold at least one and possibly two quaranteed Prize Money Tournaments during the coming season. Amount of Quaranteee not to exceed \$250.00 per tournament. (5) B.C.C.F. and C.F.C. to be on two separate cards, the B.C.C.F. card to expire 12 full months from the date of issuance, while the C.F.C. card will still expire June 30 of each year. Things in general for the coming season look great!

Your Reporter R. Vogler

NEW WEST.

New Westminster Junior Tournament

	(12 years and under)	Rd1	Rd2	Rd3	Rd4	Rd5	Rd6	Tot
1. Laurence Weisdorn	L2	L2	W4	W4	W3	W3		4
2. John Boates	W1	W1	L3	W3	L4	W4		4
3. Steven Yeomans	W4	W4	W2	L2	L1	L1		3
4. David Corris	L3	L3	L1	L1	W2	L2		1

New Westminster Rating Tournament

Laurence Weisdorn received a trophy

Rd1 Rd2 Rd3 Rd4 Rd5 Rd6 Tot

1. Josef Smolij	1993	W13	W12	W4	W2	D6	W10	5 $\frac{1}{2}$
2. Barry Thorvardson	1760	W6	W18	W7	L1	W9	D3	4 $\frac{1}{2}$
3. David Shapero	1977	W19	W9	W8	L6	W4	D2	4 $\frac{1}{2}$
4. Mike Potoma	2018	W11	W7	L1	W17	L3	W6	4
5. Hee Seid	1800	L8	Eye	L17	W7	W13	W11	4
6. Wayne Crookes	2001	L2	W19	W14	W3	D1	L4	3 $\frac{1}{2}$
7. Sig Simson	1839	W20	L4	L2	L5	W8	W13	3
8. Charles Balmer	2002	W5	W14	L3	L9	L7	W16	3
9. Ivan Ratkai	1891	D15	L3	W19F	W8	L2	D14	3
10. William Kleinhout	1717	L18	L17	W15	W14	W12	L1	3
11. Lyle Craver	1830	L4	W15	D12	D13	W16	E5	3
12. Leslie Corris	1447	W16	L1	D11	W18	L10	L15	2 $\frac{1}{2}$
13. Bill Heussner	1739	L1	W16	D18	D11	L5	L7	2 1
14. Ben Kruger	1804	W17	L8	L6	L10	D15	D9	2 2
15. Roy Sneath	1505	D9	L11	L10	L16	D14	W12	2 3
16. Gabor Gasztonyi	Unr	L12	L13	Eye	W15	L11	L8	2 4
17. Ernest Krzyzowski	2016	L14	W10	W5	L4	--	--	2 5
18. Bob Irwin	1978	W10	L2	D13	--	--	--	1 6
19. Tom Middleton	1692	L3	L6	L9F	--	--	--	0 7
20. Larry Chow	Unr	L7	L5F	--	--	--	--	0 8

zUK WINS BURNABY OPEN

Burnaby Mountain Open June 6-7

Rd1 Rd2 Rd3 Rd4 Rd5 Rd6

1. Zuk B.	2264	W18	W8	W20	W12	D2	W5	5 $\frac{1}{2}$
2. Berry J.	2176	W6	W21	D7	W3	D1	W8	5
3. Murray M.	2103	D4	W15	W14	L2	W12	W9	4 $\frac{1}{2}$
4. Bailey B.	1755	D3	L7	W16	W15	W20	W14	4 $\frac{1}{2}$
5. Biyiasas P.	2271	W16	W11	L12	W21	W7	L1	4
6. Kennedy S.	1787	L2	W17	L9	W22	W21	W16	4
7. Pakosta S.	urd.	D14	W4	D2	D9	L5	W21	3 $\frac{1}{2}$
8. Irwin B.	1978	W25	L1	D23	W20	W10	L2	3 $\frac{1}{2}$
9. Smolij J.	1956	L10	W24	W6	D7	W18	L3	3 $\frac{1}{2}$
10. Sember J.	urd.	W9	L20	D18	W14	L8	W22	3 $\frac{1}{2}$
11. Shapero D.	2000	W23	L5	--	D17	W15	W12	3 $\frac{1}{2}$
12. Vogler, R.	2047	W19	W22	W5	L1	L3	L11	3
13. Morton K.	1931	D15	L14	--	W19	D23	W20	3
14. Rasmussen O.	1851	D7	W13	L3	L10	W25	L4	2 $\frac{1}{2}$
15. Waldmo A.	urd.	D13	L3	W19	L4	L11	W24	2 $\frac{1}{2}$
16. Ratkai I.	1887	L5	D19	L4	W24	W17	L6	2 $\frac{1}{2}$
17. Fancett R.	urd.	L21	L6	W25	D11	L16	W23	2 $\frac{1}{2}$
18. Gray M.	1858	L1	W25	D10	W23	L9	--	2 $\frac{1}{2}$
19. Mink G.	1754	L12	D16	L15	L13	BYE	W25	2 $\frac{1}{2}$
20. Krzyzowski E	2016	W24	W10	L1	L8	L4	L13	2
21. Evanson A.	1972	W17	L2	W22	L5	L6	L7	2
22. Soukup J.	1485	BYE	L12	L21	L6	W24	L10	2
23. Eason A.	1519	L11	BYE	D8	L18	D13	L17	2
24. Weber J.	1659	L20	L9	BYE	L16	L22	L15	1
25. Donald A.	urd.	L8	L18	L17	BYE	L14	L19	1

New Westminster Rating Improvement Tournaments.

Mike Potoma writes that he had expected a better turnout by the average player, in view of the low entry fee.

Why were there only 20 entries for the main event?

Was it because 16 regular players were in the two championship round robins?

Or because of the holiday weekend?

Or because there were no money prizes?

Mike says: "The startling fact is that after meeting expenses I could only have provided a \$2 money prize, and this with no rent to pay. If there had been rent of \$37.50, the income from entry fees would have allowed for two small trophies or two \$5 prizes. To provide any reasonable prizes, an entry of at least \$5 is necessary.

My recommendation for the next Rating Improvement Tournament is to leave the entry fee at \$3 but have cash prizes on a percentage basis, instead of trophies. This may attract a bigger turnout.

One surprising fact about this chess festival was that only four people turned up for the junior tournament. Although there was no advertising, it was announced at the B.C. Junior Chess Championship, where the turnout was good.

An interesting result occurred in this class. John Boates, the current B.C. Junior Champion, scored two wins against Laurence Weisdorn in the regular round robin (double), but lost to him two straight in the play-off. Laurence was tied for fourth in the B.C. Junior, held a month earlier."

Mike doesn't mention that he called attention to Laurence Weisdorn as one to watch, in his report of the Junior.

Trophies awarded to:

Josef Smolij	- First Place
Barry Thorvardson	- Second Place
William Kleinhout	- First under 1600
Sig Simson	- First Unrated
Hee Seid	- First Student Trophy

Another strong tournament, what with two Masters, five Experts and seven "A" Class out of a total of only twenty-five. Bob Zuk, newly crowned B.C. Champion showed the form that made him Champ to win with a 5 $\frac{1}{2}$ - 6 score, giving up only one draw to Jon. Berry. Jon. Berry scored an excellent 5 - 6 to take second clear. M. Murray and Bruce Bailey, both coming up from Seattle tied for 3rd and 4th spots.

HENRY KAFFENBERGER

Henry Kaffenberger's death, at age 86, saddened the hearts of his many Northwest chess friends. Born in Frankfurt-am-Main, Germany, he came to this country in 1904. Henry was an inveterate over-the-board as well as postal chess player and a long time subscriber to many chess journals from the American Chess Bulletin edited by Herman Helms in the early 1900's thru all the Chess Reviews, Chess Lives, Everett Chess Letters, WCL's and NWC's. He was the organizer of the Purdy Chess Club and played in many local tournaments in his later years. Henry's more mundane pursuits included logging on Camano Island, operating a chicken ranch at Purdy which later became a Christmas tree receiving yard. He passed away May 6th in an Olympia hospital. His survivors include his wife Faith of 192 Circle Drive, Lacey, Wash., a Brother, Willi in Germany, and two sisters, Dora Suender in Germany, and Mrs. Marie Miller of Tacoma.

Jack Finnagin

Larry Evans Interview

An interview by Martin Morrison and Elwin Meyers

An interview by Martin Morrison and Elwin Meyers, Chess Voice editors, of Larry Evans, International Grandmaster. Reprinted from the April-May 1970 Central California Chess Voice.
(cont. from May N.W.C.)

Question: USCF Expert John A Blackstone recently wrote that, "Most tournaments here in the United States seem to be put on a treadmill basis... because of incompetent tournament directors." DO any tournament directors stand out in your mind as being particularly good or bad?

Answer: FIDE Judge Isaac Kashdan is good. FIDE Judge George Koltanowski is all right. Phillip Haley of Canada directs tournaments with some top-notch ideas. For example, he gives a higher priority to the top players getting equal color allocation. A director should be fair and strong enough to make his decisions stick.

Question: Do you think that sanctions should have been taken against FIDE affiliated national federations involved in the imprisonment of International Grandmaster Luděk Pachman, as some US players have maintained.

Answer: Politics should have no influence on chess at all, but its funny—chess is of an international nature, so whenever anything is happening politically, it shows up in chess first. For example, there was a dispute over whether East Germany or West Germany or both should be allowed to have a team in the Chess Olympics. Also, years ago, whenever Russia was getting ready to take over a country, they sent their chess team in advance on a good-will mission. They did that in Czechoslovakia in 1948 and also in Hungary, so all you had to do was watch which country they were sending their team to, in order to find out who they were going to take over next. That's no longer the case.

Question: It would be interesting to hear your impressions of some notable chess figures in the San Francisco Bay area and the United States. First International Master William Addison, a San Francisco resident.

Answer: A very talented player who applies himself. He's inconsistent, though. At times he plays very well, and at other times, not so well. Perhaps he needs to play in more tournaments, but he has problems financially. He wants to go places in chess, but seems to get depressed about a loss, more depressed than he ought to be, but who isn't.

Question: Lt. Col. Edmund B. Edmundson, Executive Director of the U.S.C.F.

Answer: He's been very good for the game. He's a good organizer.

Question: Local USCF Master Jude F. Acers.

Answer: Acers has been good for chess too. There's room for many kinds of flowers in the garden of chess. He doesn't play as well as he'd like to, though. You know, there are two outstanding players from this area: John Blackstone and Erik Osburn.

Question: International Grandmaster Walter Browne, who recently gave a series of simultaneous exhibition in this area.

Answer: I saw him in Canada, but I don't know him that well. He has great energy, but is too impetuous and emotional—at least he was when he was younger. He has a critical faculty and is enthusiastic, but he's not as stable as he might be. In short, he's a fine player who needs seasoning—particularly more opening study.

Question: David Blohm, last year's California State Champion.

Answer: I met him when we played in Seattle /1969 Strawberry Open, and he had by far the worst sporting attitude of anyone playing there. He kept everyone waiting for hours by playing against me two Queens down!

Question: Kenneth Smith, editor of Chess Digest Magazine.

Answer: He's improved tremendous since he began to edit the magazine. He'll never be a Grandmaster, though, he's a solid opponent.

Question: He seems to have a lot to offer in other areas as well. What, for example, do you think of his magazine?

Answer: I hear he's having trouble getting renewals. It's too bad, but the odds are against having two national chess magazines. Chess Digest covers specialty areas and chess theory very well, but it is for the advanced player. Chess is supported by duffers—"God must have loved duffers, he made so many of them," Smith edited The American Chess Quarterly from 1961-1965 with outstanding articles by Fischer and the best American talent. That failed. Maybe the time is ripe now. Smith will continue to publish monthly!

Question: George Koltanowski, chess columnist, who resides in San Francisco.

Answer: He's done a lot for the game. I like to play in tournaments he directs.

Question: Marshall Rohland, USCF President.

Answer: I'm sorry, but I don't know him well enough.

Question: Larry Evans.

Answer: Well, I haven't been playing in enough tournaments. I only play in two or three short ones a year, and that's not enough to get me in top form. This inactivity hurts my game. I need to do more in European tournaments. I love chess, but it just takes too much time to devote myself to it sufficiently. If it comes to enjoying life at the expense of some bad chess results, I'll take life. One cannot serve two masters.

It was now time for Mr. Evans to give a simultaneous exhibition at the Oakland Chess Club, with fine results: 15-1. We were pleased with the interview and Mr. Evans' very candid statements. He obviously has very well thought-out hopes and schemes for the future of chess and has intelligent opinions on chess laws and tournament direction. Let us say in conclusion that it is gratifying to find so strong a player as Mr. Evans concerning himself with such matters. If more Grandmasters (as well as we mere mortals) follow his lead, his rosy dreams of the future of chess may come true.

OREGON NEWS

CHESS

By HARRY GLIDDEN

Wash.

COUNTY Open

The Washington County Open will be held July 17, 18 & 19 at Pacific University, Forest Grove, Oregon. Reg. 9:30 to 10:30 AM July 17. 7 Rd. Swiss - 2 sections - comb. individual and team event. Time: Open section 40 in 2; secondary 20 in 1. Reserve Sec. 50 in 2; secondary 25 in 1. EF; Open Sec. \$4 Indv. \$20 team of 5 or more, less 50¢ if before July 13. Reserve Sec. \$2 Indv. \$10 team of 5 or more, less 25¢ if before July 13. Open Sec. requires USCF & OCF. Reserve Sec. requires OCF.

Prizes: Open Sec. 1st - cash 40% plus trophy; 2nd - 30% plus trophy; 3rd - 20% plus trophy; 4th-10%. Trophies for 1st & 2nd teams. Reserve Sec. is limited to class B and Below with Trophies for 1st, 2nd & 3rd places with cash on same percentages as above. Trophy for 1st place team.

Overnight accommodations available at college for \$3.50 per night, no meals. Please send in reservations with advance registrations. Send to Hillsboro Chess Club, Rt. 1 Box 50, Cornelius, Or. 97113.

SPECIAL: Anyone driving 3 or more individuals to play in this event will be given his own entry free.

Tulatin Valley OPEN

Player	Held May 2				Score
	Rds.	1	2	3	
1 Norman Thompson, Port.	W16	W-8	W-3	D-2	3½
2 Don Grisham, Port.	W-5	W-9	W10	D-1	3½
3 Hanon Russell, Port.	W14	W-7	L-1	W-9	3
4 Art Lettermaier, Port.	L-8	W16	W11	W-7	3
5 Phil Irwin, Beaverton	L-2	E13	W-8	W10	2½
6 Lee Miles, Port.	W15	D10	L-7	W14	2½
7 Bruce Beardsley, Tacoma	W11	L-3	W-6	L-4	2
8 Bill Faus, Port.	W-4	L-1	L-5	W15	2
9 Russell Miller, Yakima	W13	L-2	W12	L-3	2
10 Rick Haynes, Port.	W12	D-6	L-2	L-5	1½
11 Jim Clemmons, Olympia	L-7	W14	L-4	D12	1½
12 Jim Hawkins, Port.	L10	W15	L-9	W11	1½
13 David Chamberlain, Port.	L-9	D-5	L14	W16	1½
14 Greg Reese, Port.	L-3	L11	W13	L-6	1
15 Al Hopp, Shelton, Wash.	L-6	L12	W16	L-8	1
16 Mal Skarsten, Forest Grove	L-1	L-4	L15	L13	0

This tournament was held in the City Hall at Hillsboro.

by Pat Maloney

The Hillsboro CC has held 4 rated tournaments over a period of 4 months. Providing a larger schedule in the Portland area has proved its worth. Sixty-Seven different individuals have played in one or more of these 4 events.

It is plain that holding many tournaments close together for the present level of OCF membership would result in loss after loss. The Hillsboro CC has gambled and will continue to hope for the membership level of OCF to rise as the direct result of more tournaments.

(Ed. Note: Above Crosstable displays no Hillsboro chess players even though the HillsboroCC promoted and conducted the event. Reasonable local support is necessary for successful tournaments.)

The Hillsboro CC is not asking readers of NWC to come to tournament after tournament. Instead we are asking you to urge your friends and neighbors who are inclined towards chess to take advantage of the larger tournament schedule. Urge your friends to become members of OCF and to enter a tournament at their own convenience. Expound the greatness of our official organ, NWC. If you as a reader of NWC have never done anything to help chess grow except send in your subscription, start now by copying one of the tournament announcements from NWC and posting it on the bulletin board at work or school.

Bits & Pieces

Been receiving a lot of gas about NO Interstate Open tournament this Memorial Day weekend. Portland Chess Club going into one of its sleep cycles??? How about the Oregon Open - are you going to hold it???

Looks like this fellow Chance is looking for some more chances - in chess that is. It is easy to hold your entry fees down and get your prize funds up. Yup! All it takes is a lot of work, persistence and re-tries by the promoters. Oh! Yes nearly forgot one thing. That little bit after the tournament. One followup requirement is a must. Did you say thank you to the last fellows who helped with an event.

Noticed in May issue a fellow named Martin E. Morrison is claiming a copyright on FIDE (Federation International of Chess) rules interpretations. If these writings are Mr. Morrison's personal versions of the interpretations, pardon my interruptions. Ofcourse in that case they are not the FIDE product, that, I at least thought they were being presented to be.

Mr. Morrison is certainly entitled to, credit and any possible monetary profit for his effort. Should you not agree you can always send for the French copy and do your own interpreting.

On the other hand: The rules and regulations of the FIDE belong to its members and affiliates. The USCF is an affiliate of the FIDE. Therefore members of the USCF are entitled to the rules and interpretations of these organizations; FIDE included. Chew it down real fine.

It seems Howie Chin has been picked on. Howie I gathered that the main criticism was about the amount of space you wanted in NWC; Not what or how you wrote it. Perhaps I am wrong but that is how it looked from here.

It did seem you could have said the same, in the same manner, in much less space. Ofcourse if things do not go just your way, anyone can leave an organization, join another, or start a new setup. One nice thing about our chess federations, no force.

It does appear, from this distance, that you do not seem to give your players or faculty advisors a chance to vote on how they would like to operate. Perhaps that is just an impression from the bits and pieces of information that get into print.

In Oregon the faculty advisors attending the state play-offs voted during their business meeting to stay out of what is predominately a high school athletic association. Some of those advisors checked with their players before voting.

I can not help wondering just how much of a high school chess deal you would have in Washington now, Mr. Chin, if it had not been for the Washington Chess Federation.

Harry Glidden

Thompson Tops Oregon H.S. CHAMPIONSHIP

	1	2	3	4	5	6	Score
1 Norm Thompson	W9	W12	W22	W-2	W-3	W-4	6
2 David Mitchell	W18	W10	W-6	L-1	W19	W14	5
3 Donald Grisham	W29	W36	W32	W-5	L-1	W-6	5
4 David Jones	W23	W16	D-8	W31	W-7	L-1	4½
5 Mike Montchalin	D11	W19	W20	L-3	W31	W-9	4½
6 Al Dvorshak	W33	W15	L-2	W12	W27	L-3	4
7 Philip McCreedy	W25	D20	W11	W-8	L-4	D13	4
8 Melvin Bartels	W28	W39	D-4	L-7	W17	D11	4
9 George Ferrell	L-1	W48	W24	W10	W20	L-5	4
10 James Bricher	W34	L-2	W35	L-9	W23	W25	4
11 Doug Neubauer	D-5	W44	L-7	W24	W21	D-8	4
12 Gary Pobanz	W48	L-1	W25	L-6	W26	W27	4
13 Phil Irwin	D17	D31	W26	D21	W33	D-7	4
14 Jeff Washburn	L35	W46	W37	W17	W15	L-2	4
15 David Sletten	W47	L-6	W39	W22	L44	W19	4
16 Bill Hardy	W40	L-4	W42	L19	W38	W22	4
17 Van Louie	D13	W30	W18	L44	L-8	W32	3½
18 Jonathan Lundberg	L2	W34	L17	W28	D32	W31	3½
19 Will Crowe	W30	L-5	W23	W16	L-2	L15	3
20 Rick Asai	W43	D-7	L-5	W33	L-9	D21	3
21 Robin Shuler	W42	L27	W29	D13	L11	D20	3
22 James Harp	W44	W35	L-1	L15	W37	L16	3
23 Steve Boyd	L-4	W40	L19	W34	L10	W41	3
24 DeWayne Derryberry	L26	W28	L-9	L11	W41	W38	3
25 Robert Larrance	L-7	W43	L12	W40	W36	L10	3
26 John Crown	W24	L32	L13	W39	L12	W36	3
27 Scott Dannen	W45	W21	L31	W32	L-6	L12	3
28 Dan Bryant	L-8	L24	W43	L18	W40	W37	3
29 Brian Anders	L-3	W41	L21	L38	W45	W47	3
30 Ronnie Bryson	L19	L17	W48	L37	W42	W45	3
31 Leroy Olinger	W38	D13	W27	L-4	L-5	L18	2½
32 Greg Reese	W46	W26	L-3	L27	D18	L17	2½
33 Gary Turner	L-6	W47	W36	L20	L13	D34	2½
34 Jim Murray	L10	L18	W45	L23	W35	D33	2½
35 Raymond Boldway	W44	L22	L10	L41	L34	W43	2
36 Karl Granat	W41	L-3	L33	W42	L25	L26	2
37 Bobby Ringo	L39	W38	L44	W30	L22	L28	2
38 Vic Alich	L31	L37	W47	W29	L16	L24	2
39 Tony Pinkham	W37	L-8	L15	L26	L44	W46	2
40 Wes Varin	L16	L23	W46	L25	L28	W44	2
41 R. Michael Beatty	L36	L29	W44	W35	L24	L23	2
42 Darrel Wolff	L21	W45	L16	L36	L30	Bye	2
43 Mike Knippert	L20	L25	L28	W44	W46	L35	2
44 Clay VerBryck	L22	L11	L41	L43	W39	L40	1
45 Philip Boldway	L27	L42	L34	W-F	L29	L30	1
46 Howard George	L32	L14	L40	W47	L43	L39	1
47 Joe Corey	L15	L33	L38	L46	Bye	L29	1
48 Chris Roberts	L12	L-9	L30	F	F	F	0

The 5th annual Oregon High School Individual Chess Championship tournament held at the Medford YMCA June 6 & 7 was filled with the highest quality competition to date for an Oregon High School contest.

The official ratings of the 48 players entered included 1 Expert, 3 Class A, 14 Class B, 15 Class C, 4 Class D and 11 unrated. The 48 players represented 23 schools from throughout Oregon.

NORMAN THOMPSON of Parkrose High School in Portland, with a perfect 6-0 score, captured the title - "1970 OREGON HIGH SCHOOL INDIVIDUAL CHESS CHAMPION". Norman was awarded the \$50 U. S. National Bank Scholarship; the Champion Gold Medal and 1st place High School Trophy. Thompson intends to attend Massachusetts Institute of Technology this fall.

DAVID MITCHELL, a junior of Klamath Falls Union High School won the 2nd place high school trophy on tiebreaker points.

DONALD GRISHAM, a sophomore of David Douglas High in Portland, took 3rd place high school trophy. David and Donald because of their tie in games won, in accordance with the rules of this event, competed in an extra game of 5 minute, speed chess, to decide placing of the other two U. S. National Bank Scholarships. The boys were given their choice of each receiving an equal \$30 scholarship or playing the speed chess. They chose speed chess.

Grisham defeated Mitchell, with a positive checkmate in the time limit, to take the \$35 scholarship and Mitchell received the \$25 scholarship.

All three boys take this opportunity to thank the U. S. National Bank for these education aids.

David Jones of Willamette High School in Eugene took 4th place overall. David was awarded a year membership in the U. S. Chess Federation. He played Thompson in the 6th round and when regular scheduled time ran out the game had arrived at a potential draw position. The director, in accordance with the announced procedure on doubtful adjudications, made these two the offer of a draw or speed chess. Such a decision must be mutual. In this case Jones agreed to a draw but Thompson asked for speed chess. Jones lost the speed play.

Mike Montchalin of Clackamas High in Portland, last year's Champion, was given a disturbing upset in his first round of play. Although Mike finished with 4½ wins he was unable to play his best after that first game.

The upset came from the hands of a relative newcomer in chess, Doug Neubauer of Newport High School. I felt that Montchalin had relied too strongly on the SWISS pairing system in his first round. Neubauer had not played in

enough chess tournaments for his rating to give a true picture of his strength. As this game worked into its "end-game" phase it appeared Montchalin was facing loss. However lack of experience against tough competition then begin to show. Although Neubauer had a winning position he did not seem to know how to carry it out. Time allotted expired. The director first called it a loss for Montchalin but allowed Mike the right to contest such a decision. If Montchalin could break - in speed chess - the director's announced decision he would be given a draw. Montchalin did and the director then gave Neubauer the right to contest. Neubauer accepted the draw. Doug later said he thought it was his fear of the renowned Montchalin which caused him to play so cautiously.

PHILIP MCCREEDY of Cascade Jr. High in Eugene won the 1st place junior high trophy. James Bricher of Lincoln Jr. High in Cottage Grove captured 2nd and Phil Irwin of Highland Park Jr. High in Beaverton won 3rd. Incidentally Irwin, besides Thompson, was the only undefeated player in the tournament.

David Sletten of Scenic Jr. High in Central Point took 4th place out of 19 junior high players. Sletten was awarded a year membership in USCF. Sletten said he liked the award instead of 3rd place trophy.

All four boys at the top of the junior high group scored 4-2 forcing tiebreaker decisions.

Sletten actually earned 3rd place junior high on his own playing but the fortunes of battle, time and a game he was only a spectator to, decided otherwise. In the 6th round James Bricher was playing Robert Larrance from Hillsboro Senior High. Larrance outplayed Bricher right up to the "end game" when the game ran out of allotted time. In the part of the "end game" these two did complete before time ran out the tournament director felt Larrance had displayed lack of know how to force his win. The director ruled Bricher had the win and then allowed Larrance the right to challenge the ruling by a display of moves. Larrance proceeded to defeat himself. Without this game Bricher would not have placed in the junior high classification. Had Larrance won the game he would not have qualified for any awards.

If Bricher and Larrance will send me the moves from this game I will print them in the next available NWC. I had watched this game for some 5 or 6 moves just prior to time running out.

Portland St. Open

No. 2

Remember this director is a staunch believer in the young players doing their own winning or losing as the case may be.

During the tournament there were five calls for adjudication. Rules on time were that at the first flag fall on the secondary time period the regularly scheduled game was terminated. Two adjudications were without contest. The other three were as written up in this article as they occurred.

In the case of Bricher - Larrance it was later shown by kibitzers that Larrance had a win. One person stated, "This just showed that Glidden (the director) could play better than Larrance". Such is not necessarily so. In Larrance's case and the so-called win shown him, if he will send me his moves after my K-B4 for black, and show me anything better than a draw - in slow chess - I will award him one year of USCF.

(If Larrance does not read this NWC or his own local area news paper, The Argus, he will not know of this offer.) (Unless you tell him)

Three boys from Mae Richardson Elementary School in Central Point swept that field. Brian Anders won 1st place trophy; Ronnie Bryson 2nd; Darrel Wolff 3rd.

In the first 4 rounds of play these young fellows played high and junior high students in the course of the SWISS system. At the start of round 5 no grade school student was in contention for any overall prize so they were paired against each other in rounds 5 and 6 to settle their trophies on their own.

Several junior high students asked to have this done in their classification also. However the director did not fee free to do this; as some of the junior high players were still in the running for an overall prize. Because of the classification trophies I felt that all would have had to be eliminated from an overall contention in order to remove any.

David Douglas High School captured this year's school trophy with 21½ wins out of a possible 36. Klamath Union High with 17 wins out of 24 was second. Scenic Jr. High was the only other school with 4 or more players and scored 9 out of 24.

All three schools were awarded a year membership in OCF with NWC included. Faculty chess sponsor will receive the OCF membership card and the NWC goes to the school library.

Schools not previously mentioned that were represented by players were: Hedrick Jr. High of Medford, Fleming Jr. High of Grants Pass, Manzanita Elementary of Grants Pass, Jefferson Elementary of Cottage Grove, Thurston High of Springfield, Corvallis High, Western View Jr. High from Corvallis, Albany Union High, No. Albany Jr. High, The Dalles Jr. High and Hood River High.

This may be a long winded account of a tournament but I can not help but think there are a lot of readers who would like to know what went on besides figures.

MARYHILL MUSEUM

Have you ever driven past the castle on the hill over looking Columbia River near Maryhill grade south of Goldendale, Washington adn across river from Biggs, Oregon and wonder waht there was there to see. It is the Maryhill Museum and for the chess player there is quite a bit for him to see. In 1957 there was a display of chess sets brought to the museum for displaying. Chess master Arthur Dake of Portland put on a simultaneous exhibitions as part of the program one Saturday while the display was there. That was the biggest day attendance wise the museum has ever had. The chess set display moved on but one set was donated to the museum from the group. From that one set the Gallery of Chessmen has grown to a fine display of 80 sets. They have been in large part donated by American Collectors. Maryhi is only museum in world with a large display on permanent exhibit. There are over 400 recognized standard patterns of chess sets. Hope to have in some future issue of NWC a picture of the display of some of the sets. The display is really something

Cont page 13

Held May 23 & 24

Directed by Hanon W. Russell

	1	2	3	4	Score
1 Don Grisham	W12	W-7	W14	W-4	4
2 Art Lettermaier	Bye	W10	L-4	W-9	3
3 John Crown	W-6	L-5	W22	W17	3
4 David Mitchell	W25	W11	W-2	L-1	3
5 Janon Plesko	D13	W-3	D-9	W11	3
6 Norman Thompson	L-3	W23	W24	W13	3
7 Leroy Olinger	W17	L-1	W19	D10	2½
8 Greg Reese	L10	W16	D13	W14	2½
9 Rodney Espey	W21	W15	D-5	L-2	2½
10 Robert Mitchell	W-8	L-2	W12	D-7	2½
11 Bob Livesay	W19	L-4	W20	L-5	2
12 Paul Chance	L-1	Bye	L10	W22	2
13 Phil Irwin	D-5	W18	D-8	L-6	2
14 Stan Pollock	W24	W22	L-1	L-8	2
15 R. G. Neve	W16	L-9	L17	W25	2
16 Barry Neuhaus	L15	L-8	W25	W21	2
17 Jeri Heidrick	L-7	W24	W15	L-3	2
18 Jim Earl	W20	L13	Bye	W4.	2
19 Chris Bowen	L11	W25	L-7	D20	1½
20 George Laugen	L18	W21	L11	D19	1½
21 Mrs. E. Denison	L-9	L20	W23	L16	1
22 Sunny Espey	W23	L14	L-3	L12	1
23 Garth Cummings	L22	L-6	L21	D24	1
24 Deborah Quaring	L14	L17	L-6	D23	1
25 John Aho	L-4	L19	L16	L15	0

Ed. Note: There were no comments or story submitted with this crosstable.

White - D. Suttles
Black - R. Zuk

1. P-KN3	P-QB4
2. B-N2	P-KN3
3. N-QB3	B-N2
4. P-Q3	N-QB3
5. B-Q2	P-K3
6. P-QR3	P-Q4
7. N-R3	P-N3
8. O-O	B-N2
9. P-K4	P-Q5
10. N-K2	KN-K2
11. P-KB4	Q-Q2
12. N-B2	P-K4
13. B-R3	Q-Q3
14. P-B5	P-B3
15. P-KN4	P-KN4
16. N-N3	P-N4
17. P-QB4	PxP ep.
18. PxP	P-QR4
19. N-R5	K-B1
20. B-K3	B-QR3

21. Q-Q2	P-R3
22. N-Q1	R-B1
23. N-N2	K-B2
24. Q-KB2	N-QN1
25. KR-Q1	KR-Q1
26. B-KB1	B-KB1
27. P-KR4	N-KN1
28. R-Q2	N-B3
29. QR-Q1	N-Q5
30. Q-N3	N-N6
31. R-R2	P-R5
32. PxP	BPxP
33. P-Q4	BPxP
34. N-Q3	RxP
35. B-B2	R-K1
36. B-K1	R-B5
37. B-N4	Q-B2
38. BxB	KxB
39. P-B6	R-B6
40. R-KB2	R-K3
41. Q-B3	Q-B2
42. Q-B5	B-B1
43. NxKP	R-B4
44. NxQ	RxQ
45. KPxR	Resigns

9. ...P-Q5 is over-optimistic. Better is PxP.
14. ...P-B3. Suttle's suggestion of 14. ... P-KR4 is better than the move played.
29. ... N-Q5! Evidently overlooked by White.
32. ... BPxP? Very weak. Black would not stand badly after RPxP.
34. N-Q3. It is not clear why White plays this instead of the simple PxP.
36. ...R-B5? Better is 36. ...RxN with an unclear position.

LASKER'S COMBINATION

part three

(Condensed and translated by Hanon W. Russell from an article by Yu. Kotkov in the October, 1969 issue of Shakhmaty v SSSR.)

In the last two articles we took a look at the original combination played by Lasker against Bauer and then Tarrasch's pretty win against Nimzovich. Now the brilliant tactical master Alekhin:

Alekhin - Druit, Portsmouth 1923

- | | | | |
|----------|-------|-----------|-------|
| 1. N-KB3 | P-Q4 | 9. QN -Q2 | Q-K2 |
| 2. P-QN4 | P-K3 | 10. B-Q3 | R-Q1 |
| 3. B-N2 | N-KB3 | 11. O-O | B-Q2 |
| 4. P-QR3 | P-B4 | 12. N-K5! | B-K1 |
| 5. PXP | BXP | 13. P-B4 | QR-B1 |
| 6. P-K3 | O-O | 14. R-B1 | N-Q2 |
| 7. P-B4 | N-B3 | 15. NxN! | RxN |
| 8. P-Q4 | B-N3 | 16. P-QB5 | --- |

Now, bad is 16. -- BxR4! due to 17. N-N3 B-B2 18. B-N5 and white wins the exchange. Therefore black decided to sacrifice a piece. However, the long QR1-KR8 diagonal is now opened for the black-squared Bishop.

- | | |
|---------|-----|
| 16. -- | NxP |
| 17. PxN | BxP |

Alekhine wrote, "For his knight, Black has already won two pawns and threatens to win a third. However white rapidly wraps up the game via a sacrifice, the main point of which was begun with 15 NxN!".

- | | | |
|------------|------|---------------|
| 18. R-KB3! | BxRp | 20. BxPch KxB |
| 19. RxR | BxR | 21. R-R3ch |

In contrast to the previous game, the rook enters the action first.

- | | |
|---------|---------------------|
| 21. -- | K-N1 |
| 22. BxP | and Black resigned. |

On 22. -KxB there followed 23. Q-N4ch K-R1 (or 25. -- K-B2) 26. BxB and further resistance is hopeless.

Here is what Alekhine himself had to say about the combination, "A similar sacrifice of the two bishops had been encountered previously. What is interesting, however, is how this combination came into being: white concealed his plan of attack on the kingside through his actions on the queenside."

LASKER'S COMBINATION

(Condensed and translated by Hanon W. Russell from an article by Yu. Kotov in the October issue of Shakhmaty v SSSR.) Part four of five parts.

Now, a more modern game which deals with Lasker's combination, first seen in his game with Bauer in 1889.

Ruy Lopez

Kirillov - Furman

- | | | | |
|----------|-------|--------------|-------|
| 1. P-K4 | P-K4 | 10. NxB | PxN |
| 2. N-KB3 | N-QB3 | 11. O-O | O-O |
| 3. B-N5 | P-QR3 | 12. Q-B4 | P-QB4 |
| 4. B-R4 | N-B3 | 13. PXP e.p. | PXP |
| 5. Q-K2 | P-QN4 | 14. QxQBP | R-R2 |
| 6. B-N3 | B-K2 | 15. Q-KB3 | R-B2 |
| 7. P-QR4 | P-N5 | 16. P-Q3 | B-N2 |
| 8. B-Q5 | NxB | 17. Q-Q1 | B-Q3 |
| 9. PxB | N-Q5 | 18. N-Q2 | R-K1 |
| | | 19. N-B4 | |

To capture or not to capture? Before answering this question, Furman spent some time analyzing White's defensive resources: the White Queen does control the important squares, especially KN4 and is prepared to aid the King at any moment.

Nevertheless: Furman played.....

- | | | | |
|---------|--------|----------|------|
| 19. --- | BXPch! | 21. K-N1 | BXP |
| 20. KXB | Q-R5ch | 22. KXB | R-B3 |

In this example the attacking side does not have at his disposal a check with the Queen in the KN file. Since the King can withdraw to the KR file. This circumstance provides a possibility of defense. At this point, White can put up some stubborn resistance by playing 23. Q-B3!. The struggle might develop thusly: 23...R-N3ch, Q-N3 R-K7, 25.QxR BXPQ, 26.B-Q2 RxB, 27.NxR Q-N4ch, 28.KxR1 QxN, 29.QR-QB1 and Black still has to overcome some difficulty to win.

But Kirillov plays differently! 23. B-B4 after 23. -- QxB 24. R-R1, it seemed as if the white King would be able to slip into KB1, however, 24. -- R-KB3! followed.

A very strong move. Now 25. P-B3 does not save white due to 25. -- R-N3ch 26. K-B1 Q-N6 and on 25. Q-Q2 there follows 25. -- R-N3 ch 26. K-B1 Q-N5.

The game continued 25. R-R2 R-N3ch and white resigned, not desiring to be mated elegantly after 26. K-R1 R-K8ch! 27. QxR Q-B6ch 28. R-N2 QxR mate.

** typed by David Karch and W. Skubi**

**PRESIDENT'S
CORNER**

Explorer Scouts are including chess competition in and Olympics they are having. The local councils are have competitions to choose players to go on to the National event at Fort Collins, Colorado. Washington Chess Federation and Yakima YMCA Chess are going to help Yakima area councils with chess part of local Olympics. I called a number of the councils in state to ask if WCF could be of help in anyway. A number of councils are not have the Olympics but probably will next year and would like some help. If you would like to help give your local boy scout office a call. Tim Kauppila has resigned his post as tournament director effective after Washington Junior. I will take on the job until I can find someone else to take the post. Anyone want to volunteer? Several Northwest players has expressed to me the prize structure of Portland State Opens and Portland Independence Day Opens don't seem to match up to the entry fee being charged. They seem to feel the organizer is making money off of Northwest chessplayers. I don't feel that is the case. Mr Russell is using the extra money taken in to buy chess sets and other equipment plus build up a fund for guaranting a larger prize fund in each event he holds. If you don't like the setup of an event don't play in it. I am sure the organizer would like to hear or read your views why you did not attend if it had to do with the setup of the event.

by R. Miller

Northwest Ratings

SEMI-ANNUAL REPORT

BY VIC KEISER

EVENTS COVERED: PSU no. 2; B.C. Championship; Kerrisdale Spring Tourney; B.C. Open; Kerrisdale Club Championship; Kerrisdale Runner-up Tourney; Kelowna Open; Baseline Open; Richland Atomic Open; Tualatin Valley Open; Nanaimo Open; Hickey-3, Alexandro-0; Hardy-3, Carlon-1; all events previously listed in 1970 WCF Newsletters.

Abrahamson, N.	WA 1980	Carter, B.	WA 1567*	Fancett, R.	CD 1807*	Hopp, A.	WA 1470*
Abrams, W.	OR 1538*	Cattanach, N.	OR 1251*	Faus, B.	OR 1729*	Horn, B.	OR 1690
Adams, C.	WA 1666	Chamberlain, D.	OR 1568*	Fedoruk, M.	CD 1676*	Hubbell, R.	WA 1838
Adamic, P.	CD 1668*	Chance, J.	WA 1414	Feist, R.	WA 1462	Hudson, S.	WA 1635*
Adams, D.	WA 1920	Chance, P.	OR 1655*	Ferrell, G.	WA 1492*	Hughes, B.	CD 1458*
Addington, J.	OR 1396*	Childers, J.	OR 1143*	Finnigan, J.	WA 1872*	Hum, T.	MN 1899*
Addington, John	OR 1425*	Chitwood, J.	OR 1878*	Fiorvento, N.	CD 1752*	Hunt, D.	CD 1755*
Aho, J.	OR 1264*	Christian, C.	OR 1263*	Fleming, G.	CD 1400*	Huntley, H.	OR 1378*
Aikin, C.	CD 1343*	Christopher, S.	WA 1790	Foan, B.	CD 1887	Irwin, B.	CD 1906
Alaots, M.	CD 1817*	Clark, A.	WA 2054	Foster, M.	WA 1753*	Irwin, P.	OR 1654
Alexandro, F.	WA 1883	Clarkson, R.	WA 1457	Franett, M.	WA 2226	Jaeger, I.	CD 1738*
Allard, J.	WA 1250	Clayton, J.	WA 1408*	Fraser, K.	CD 1594*	Jaeger, W.	CD 1387*
Anders, B.	OR 1521*	Clemens, D.	CD 1662*	Freeburger, F.	OR 1569	Jaaska, E.	WA 1895
Anderson, B.	WA 1718*	Clemmens, J.	WA 1400*	Freeman, D.	OR 1496	Jakes, I.	OR 1438*
Anderson, I.	CD 1597	Clendaniel, D.	WA 1754	Frei, H.	CD 1800*	Jarmon, R.	WA 1889
Andrus, E.	OR 1634*	Clendaniel, R.	WA 1397*	Friesen, J.	CD 1437*	Jarrell, B.	ID 1459*
Andrus, F.	OR 1620*	Collis, C.	CD 1719	Fullbrook, N.	CD 1852*	Jarvis, G.	CD 1858*
Armstrong, M.	CD 1589*	Collyer, D.	WA 2094	Gaerne, D.	CD 1767*	Jensen, H.	CD 1659*
Ayerbe, A.	CD 1744*	Cook, G.	WA 1623	Garen, R.	WA 1529	Jessett, B.	OR 1468
Baak, D.	CD 1892*	Cooper, H.	CD 1533*	Garrett, J.	CD 1355*	Johnson, B.	OR 1292*
Bailey, B.	WA 1755*	Cooper, J.	CD 1355*	Gauer, M.	CD 1280*	Johnson, C.	WA 1401*
Bailey, D.	WA 1586*	Cooper, T.	CD 1679*	Gaunt, C.	WA 1000*	Johnson, D.	OR 1608*
Baker, K.	CD 1986	Cornish, R.	CD 1665*	Geiger, B.	WA 1477	Johnson, L.	WA 1702
Baldwin, J.	CD 1733	Cotter, R.	CD 1554	George, H.	OR 1445*	Johnston, H.	CD 1584*
Ball, L.	OR 1808	Cotton, R.	OR 1785	Gesang, E.	CD 1882*	Johnston, L.	WA 1853
Balmer, C.	CD 1842	Craver, L.	CD 1830	Gilmore, G.	OR 1535*	Johnston, W.	CD 1303*
Bartels, M.	OR 1634*	Crapley, R.	CD 1793*	Gist, R.	OR 1807	Joiner, K.	WA 1906
Beardsley, B.	OR 1817	Crookes, W.	CD 2003	Glidden, H.	OR 1536	Jones, B.	CD 1727*
Becker, W.	WA 1643*	Crowe, W.	OR 1788	Goff, A.	OR 1304*	Jones, D.	OR 1783
Berry, J.	CD 2134	Crown, J.	OR 1658*	Grace, K.	CD 1599*	Jones, D.	CD 1574*
Best, H.	ID 1469*	Cummings, G.	OR 1173*	Granat, K.	OR 1648*	Jones, W.	OR 1850*
Bigham, S.	OR 1327*	Cummings, R.	CD 1960	Gray, G.	WA 1525*	Jung, W.	CD 1899
Biyiasas, P.	CD 2287	Currie, A.	CD 1918*	Gray, M.	WA 1858	Jursevskis, M.	CD 2020*
Blackman, J.	CD 2001*	Curry, Dave	OR 918*	Gregg, S.	WA 1572*	Kaltenecker, J.	CD 2043
Blackwood, J.	OR 1540*	Curry, Del	OR 1221*	Grenzer, B.	OR 1286*	Kaupppila, T.	WA 1978
Boates, J.	CD 1772*	Dale, A.	OR 1133*	Grisham, D.	OR 1909	Kerr, R.	CD 2219
Bodie, E.	CD 1725*	Dale, C.	OR 1156*	Grisham, Doug	WA 1674*	Keiser, V.	WA 1876
Boettcher, J.	WA 1671	Danenhower, P.	CD 1974*	Groenig, D.	WA 2054	Kennedy, S.	CD 1810
Boire, E.	CD 1837*	Daupherty, K.	OR 1306*	Gumbel, E.	CD 1415*	Kent, S.	OR 1354*
Bolin, B.	WA 1725*	Davidson, D.	OR 1921	Gunderson, W.	WA 1334	Kern, G.	OR 1976
Bosse, E.	WA 1537	Day, B.	WA 1710*	Haas, P.	CD 1736	Kidman, R.	WA 1592*
Bourne, G.	CD 1629*	Deagle, F.	CD 1625*	Hackhofer, B.	CD 1602*	Kiersky, L.	WA 1536
Bowen, C.	OR 1497	Deater, I.	CD 1577	Hagan, D.	OR 1796	Kindret, M.	CD 1905
Brandenburg, J.	OR 1936	DeHaven, A.	WA 1667*	Hahn, E.	OR 1199*	King, H.	CD 1648*
Bray, P.	CD 1885*	deLenea, D.	WA 1866	Hammes, T.	ID 1000*	Kiplinger, B.	OR 2047
Bricher, J.	OR 1619	Denison, E.	OR 1345	Hanlen, J.	WA 1810	Kirkpatrick, F.	WA 1594
Brown, H.	CD 1962*	Devries, S.	CD 1722	Hanlen, R.	WA 1828	Kleefman, C.	CD 1637*
Brown, P.	CD 1719*	Donelson, ??	1612*	Hannay, D.	CD 1767*	Kleemaier, K.	CD 1761*
Bruncke, J.	CD 1642*	Dugal, K.	CD 1567*	Hanson, J.	WA 1574	Kleinhou, W.	CD 1615*
Bryan, D.	CD 1381*	Dvorshak, A.	OR 1836	Hardy, B.	OR 1637	Knapp, E.	WA 1714
Bryant, G.	CD 1864*	Dvorshak, F.	OR 1484*	Harner, B.	CD 1946	Kong, E.	CD 1944*
Bryden, J.	CD 1806	Dvorshak, O.	OR 1855	Harris, R.	WA 1714*	Krauss, G.	WA 2159
Bryson, R.	OR 1526*	Dykstra, S.	WA 1573	Hatfield, R.	WA 1722	Kruger, B.	CD 1810
Buchanan, R.	WA 1728*	Earl, J.	OR 1549*	Hausch, D.	CD 1718	Kryzowski, E.	CD 2022
Buckberry, R.	CD 1544	Eason, A.	CD 1664	Hawkins, J.	OR 1629*	Krzeminski, T.	CD 1518*
Burdett, D.	CD 1943*	Eddy, B.	WA 1811	Haynes, J.	OR 1448*	Kuehn, J.	WA 1861
Burke, P.	CD 2071*	Edmiston, J.	WA 1590	Haynes, R.	OR 1761*	Kuge, T.	OR 1632*
Burright, L.	OR 1518	Ecert, A.	OR 1729	Heidrick, J.	OR 1398*	Lacy, R.	OR 1359*
Byers, D.	CD 1334*	Eldridge, R.	CD 1683	Henrich, P.	WA 2094*	Lamarca, R.	WA 1649
Byron, F.	OR 1962	Englehard, D.	WA 1855	Henry, L.	WA 1758	Lambard, B.	WA 1483
Cain, D.	CD 1523*	Ellis, B.	OR 1609*	Hessen, P.	WA 1958	Larrance, B.	OR 1352*
Calhoun, R.	WA 1716*	Erickson, M.	WA 1816	Hester, B.	OR 1070*	Laugen, G.	OR 1463
Cameron, B.	CD 1771*	Espey, R.	OR 1832	Herbers, P.	WA 1874	Lazzarotto, E.	CD 1943*
Campos, P.	CD 1445*	Espey, S.	OR 1532	Heussner, B.	CD 1699*	Leask, G.	CD 1679
Carlson, H.	OR 1639	Etsel, E.	OR 1130*	Hewitt, C.	WA 1791*	Lee, J.	CD 2051
Carlson, C.	WA 1705	Evanson, A.	CD 1972	Hickey, P.	WA 1986	LeCompte, G.	WA 1995
Carson, C.	OR 1378*	Falkowsky, C.	CD 1737	Higgins, D.	OR 892*	Lee, Jerome	OR 1895
				Hill, J.	WA 1804*	Lenke, H.	CD 1782
				Hill, L.	OR 1548	Lenung, K.	CD 1656*
				Hoggatt, W.	OR 1241*	Leonard, M.	WA 1692
				Holden, N.	WA 1540	Lettenmaier, A.	OR 1829
				Holmes, V.	WA 1934	Leun, K.	CD 1635*
				Holmquist, G.	WA 2068	Livesay, B.	OR 1652*

Longley, D.	CD 1618	Potter, B.	CD 1943	Tanner, D.	WA 1408*	Whitacre, Tim	WA 1507*
Lownie, W.	WA 1564	Poulson, S.	OR 1896	Thifault, F.	CD 1908*	Whitacre, Tom	WA 1931
Luters, D.	WA 1598	Prentice, E.	WA 1847	Thompson, D.	WA 1661	White, D.	WA 1570*
Lyle, R.	CD 1495*	Prinz, G.	CD 1403*	Thompson, H.	WA 1466	Wiebe, K.	CD 1753*
Lyster, R.	CD 1824*	Pratt, L.	WA 1936	Thompson, N.	OR 1855	Williams, B.	CD 1939
Lysnes, S.	CD 1609	Price, B.	OR 1763	Thomson, J.	CD 1809*	Wemyss, I.	CD 1444*
Lynch, R.	OR 1682	Pullen, K.	WA 2157	Thompson, S.	OR 1308*	Wight, D.	CD 1722*
Macskasy, E.	CD 2281	Punols, V.	WA 2263	Thorvardson, B.	CD 1881	Williams, D.	CD 1779
Maley, D.	CD 1886	Quaring, D.	OR 1199*	Torkar, J.	WA 1481*	Wilson, B.	CD 1532*
Maloney, P.	OR 1624	Rahrd, H.	CD 1847*	Torkar, P.	WA 2194	Wilson, F.	CD 1748*
Mason, R.	OR 962*	Rajala, A.	WA 1408*	Trainor, R.	WA 1718	Wilson, W.	CD 1589*
Mattsen, R.	WA 1587*	Rasmussen, E.	WA 1945	Tumaitis, H.	CD 1496*	Winkler, T.	CD 1909*
Melchior, H.	CD 1897	Rasmussen, O.	CD 1863	Turner, D.	OR 2056	Wise, J.	WA 1383*
Mellema, R.	CD 1874*	Rasmussen, O.	WA 1755	Uyeji, L.	WA 1543*	Wolfe, J.	WA 2016
Middleton, T.	CD 1863	Ratkai, I.	CD 1967	Van Camp, W.	CD 1683	Wolff, D.	OR 1316*
Miles, L.	OR 1758*	Raymond, H.	WA 1902	Vandenbergh, G.	CD 1880	Wong, S.	CD 1890*
Miller, B.	CD 1793	Reader, B.	OR 1163*	Van Deene, G.	WA 2040	Wong, W.	CD 1718
Miller, R.	WA 1797	Richardson, L.	OR 1728	Verbryck, C.	OR 1230*	Wood, R.	OR 1333
Miller, W.	CD 1752	Reaney, D.	CD 1528*	Viaud, R.	CD 1835*	Woolsey, B.	CD 1703*
Mills, C.	WA 1527	Reese, G.	OR, 1671	Vitanyi, L.	CD 1908	Woywoda, K.	CD 1355*
Milne, D.	CD 1600*	Reid, E.	CD 1788	Vogler, R.	CD 2067	Wraith, B.	WA 1867*
Miner, T.	OR 1186*	Rickey, M.	OR 1685	Walker, J.	WA 2063	Yee, L.	CD 1801*
Mink, G.	CD 1783	Ripfel, H.	WA 1603*	Ward, J.	WA 1802	Zaradic, A.	CD 2289
Mitchell, D.	OR 1968	Robbins, P.	CD 1625*	Warner, E.	WA 2044	Zarins, A.	CD 1882
Mitchell, R.	OR 1936	Roberts, E.	CD 1729*	Warren, R.	CD 1319*	Zeidaks, A.	CD 2043
Molnar, J.	CD 1838	Rogers, D.	MN 1815	Washburn, J.	OR 1779	Zerkowitz, G.	CD 1884*
Montchalin, M.	OR 2030	Ross, B.	CD 1270*	Wasson, P.	CD 1734*	Zevenbergen, D.	OR 1453*
Moore, D.	OR 1915	Ross, W.	ID 1617*	Waterman, D.	OR 2205	Zimanyi, P.	WA 1904*
Moore, H.	CD 1714*	Roughley, I.	CD 1708*	Weber, J.	CD 1710	Zornes, J.	WA 1896
Morran, R.	WA 1515	Rowan, T.	WA 1572*	Weikel, J.	OR 1665	Zuk, R.	CD 2330
Morris, M.	OR 2198*	Rudrum, A.	CD 1837*	Wendel, G.	MN 1621	Zwitzer, M.	OR 1702
Morris, R.	OR 1774*	Ruotsalainen, R.	WA 1848	Wheeler, R.	CD 1521*		
Mortensen, M.	CD 1622*	Rupel, D.	WA 1981				
Morton, K.	CD 1955	Russell, H.	OR 1984				
Moyer, J.	OR 1394*	Ruteck, W.	CD 1432*				
Mulder, J.	WA 1760	Sandoval, E.	WA 1957				
Munzlinger, K.	WA 1911	Satonove, H.	CD 2060				
Murray, M.	WA 2103	Schaad, W.	CD 1272*				
Mushey, A.	CD 1583	Schave, D.	WA 1596				
McCormick, J.	WA 2205	Schemm, M.	OR 1914				
McCready, P.	OR 1773	Schmidt, F.	WA 1743				
McCurdy, R.	WA 1482	Schneider, G.	CD 1916*				
McIvor, E.	CD 1793*	Schrader, J.	OR 1797				
McKaig, W.	OR 1623	Schulz, F.	CD 2027				
McKibbin, S.	WA 1790	Schwalm, D.	WA 1670				
McLaren, B.	CD 1940	Scoones, D.	CD 2041				
McLennan, A.	OR 1596	Scott, L.	OR 1775				
McMillan, I.	CD 1618	Seglins, V.	WA 2032				
McNee, J.	CD 1485*	Seid, H.	CD 1897				
Nawrocki, W.	WA 1690	Seitinger, D.	OR 1333*				
Nechodom, S.	WA 1533*	Shannon, R.	WA 1788				
Neilson, B.	CD 1634*	Shanero, D.	CD 1990				
Neuhaas, B.	OR 1583*	Shindel, R.	CD 1821				
Neubauer, D.	OR 1505*	Shera, B.	OR 1397*				
Neve, R.	OR 1620*	Shew, B.	CD 2009*				
Ng, W.	CD 1804	Shronshire, R.	WA 1705*				
Nightingale, J.	CD 1263	Shuck, G.	MN 1750*				
Nishio, G.	CD 1647*	Shuler, R.	OR 1748				
Norman, R.	WA 1627	Simonsen, L.	OR 1537*				
Notman, J.	CD 1729	Simson, S.	CD 1876*				
Notunley, K.	OR 1364*	Singh, S.	WA 1723*				
O'Gorman, P.	WA 2049	Skabeikis, V.	CD 1897				
Oldham, J.	CD 1743*	Skarsten, M.	OR 1588				
Olinger, L.	OR 1635*	Skove, P.	CD 1328*				
O'Malley, M.	CD 1744*	Skucas, P.	CD 1669*				
O'Neill, J.	CD 1553	Sletten, D.	OR 1479*				
O'Rourke, M.	OR 1785*	Sletten, Dave	OR 1556				
Ortiz, B.	WA 1500*	Smolij, J.	CD 2017*				
Padelford, W.	WA 1781	Sneath, R.	CD 1633				
Pakosta, S.	CD 2175*	Soukup, J.	CD 1639				
Pashnik, V.	CD 1724	Stevens, C.	OR 1813				
Parsons, S.	OR 1440*	Stevens, R.	CD 1783*				
Pattie, J.	WA 1644	Stone, N.	WA 1897*				
Pearson, L.	OR 1374*	Stroda, T.	OR 1387*				
Pearson, S.	WA 1677	Strong, J.	CD 2051				
Pedersen, G.	CD 1541*	Sueiyama, T.	CD 1831*				
Pennington, B.	CD 1699*	Sukkau, D.	CD 1641*				
Perala, B.	OR 1837	Sung, H.	CD 1763*				
Pex, D.	OR 1533	Suttles, D.	CD 2351				
Pierson, G.	OR 1234*	Sweet, S.	OR 1253*				
Pitt, A.	WA 2078	Szeto, S.	CD 2073*				
Plesko, J.	OR 2034*	Talwar, P.	WA 1000*				
Poljer, K.	CD 1710*	Tammer, J.	WA 1682*				
Pollock, S.	OR 1539*						
Potoma, M.	CD 1895						

Games & Analysis

Jim Hanlen Chuck Adams

SICILIAN DRAGON VAR.

1. P-K4 P-QB4
2. N-KB3 N-QB3
3. F-Q4 PxP
4. NxP P-KN3
5. B-K3 B-N2
6. N-QB3 P-Q3
7. B-QB4 N-KB3
8. F-KB3 O-O
9. Q-Q2 N-QR4
10. B-N3 NxP
11. BfXN F-QR3
12. O-O-O F-QN4
13. K-N1 B-Q2
14. B-R6 P-N5
15. N(3)-K2 P-QR4
(15....P-K4?!)
16. P-KN4 Q-N3
17. P-KR4 P-R5
(17....P-K4?!)
18. PxP RxP
19. P-N3 R-R4
20. BxB KxB
21. QR-N1 KR-QR1
22. N-B1 R-QB1?
(22....P-R4! seals
against White's
attack or possibly
giving Black K-side
chances if White
takes the R-pawn.)
23. P-R5 K-N1?
24. PxB BfXP
25. P-N5 N-K1
(25....N-R4? Loses
to 26. RxN, FxR,
27. P-N6 FxP,
28. RxPch, 29, Q-
R6ch).
26. Q-R2?! QxN
27. QxPch K-B1
28. QxN Q-N2
29. ~~Q-N4~~ (An exchange
of Queens would give
Black all the play.)
29. ... R(1)-B4?
(29... P-Q4!!)
30. P-B4 B-K3
31. Q-B3? R-B6
32. Q-Q1 N-B2!
(An interesting plan
for Black.)
33. P-B5 N-N4!
34. P-B6 N-R6ch?
(A time pressure
miscalculation. 34.
...FxP or Q-N3! were
better. Black would
then have an overwhelming
position.)
35. K-R1 FxP
36. QxPch K-B2
37. P-N6ch K-K1
38. QxBch K-B1
39. R-R8ch resigns

(Notes: Hanlen)

J. McCormick Wins Puget Sound Open

A relatively small number (63) turned out to play in the Puget Sound Open. The tournament was held in the Seattle Center Food Circus. There were complaints about the size of the playing area and location which may mean there will not be any events held here again. Two alternate sites have been mentioned. More on this later.

To the surprise of some of James McCormick's "followers" the veteran player won this event in masterly fashion. There had been some doubts lingering in a few minds whether the "old man" of Washington Chess could score big again after his troubled performance at the last state championship (Mr. McCormick placed third after dropping out and then resuming play).

McCormick did win big, however, and placed $\frac{1}{2}$ point above the field. Not an easy task after one considers the strength of the opposition. There were four master and an equal number of experts in the competition. His draw came in a drowsy second round where Jim missed the win and had to settle for a half point. "Dirty Jim" complained of being tired and noone disputed his assertion.

James McCormick is not yet ready to be laid to rest. In fact, he may even win the Washington State Championship again.

George Krauss edged Dennis Waterman with a better tie-breaking score to finish second. George was going strong for the first four rounds. In the fifth he was stopped by the winner. George said that some current opening

innovation had beaten him (apparently McCormick came prepared). Mr. Krauss was satisfied with his play, though, and happy with his overall performance. Well he should be. His string of four victories was unequalled.

Dennis Waterman, who says he isn't used to not winning these things (in jest?), matched Krauss with four wins and one loss. His loss came in the third round against Eugene Warner. Dennis was somewhat upset when the final round began. He was paired down to the next lowest score group and had to play Michael Franett (the current Washington State Champion). After creating complications in a very tight position, Franett slipped to defeat. Of course, this made Dennis quite happy.

Marathon chess player, Pat Herbers, tied with Robert Routsalain but came out on top in median tie-breaking points to take first in the Amateur Section of the Puget Sound Open. Pat's win came as no surprise. Besides being top rated he is an experienced tournament player.

Robert is also experienced in tournament competition. His 4-1 record was made up of three wins and two draws which indicates he is tough to beat.

Paul Thomas took first Novice and Dan Bailey second, both with identical $4\frac{1}{2}$ scores. Their draw came in the fifth round against each other.

Russell Miller had help from Tim Kauppila, Willie Skubi, and others in directing the event. Report by Tim Kauppila.

PLAYER										Med	Solk
1 James McCormick	Seattle, Wa	2205	W19	D12	W20	W8	W2	4 $\frac{1}{2}$			
2 George Krauss	Tacoma, Wa	2159	W24	W10	W11	W5	L1	4	9		
3 Dennis Waterman	San Francisco, Ca	2205	W13	W18	L8	W16	W15	4	7.5		
4 John Braley	Seattle, Wa	2249	L18	W24	W17	W7	D6	3 $\frac{1}{2}$	7.5		
5 John Walker	Seattle, Wa	2063	W25	W14	W19	L2	D11	3 $\frac{1}{2}$	7		
6 Pat Hickey	Seattle, Wa	1973	D14	W25	D13	W20	D4	3 $\frac{1}{2}$	6.5		
7 Frank Alexandro	Kirkland, Wa	1930	W11	D9	W12	L4	D16	3	8		
8 Eugene Warner	Kennewick, Wa	2020	D22	W15	W3	L1	LF	3	7.5		
9 Kent Pullen	Kent, Wa	2157	W26	D7	W14	L11	W18	3	7		
10 Hanon Russell	Portland, Or	1971	D20	D2	W22	W13	D12	3	6.5		
11 Viktors Pupols	Holly, Wa	2263	L7	W16	L2	W9	D5	2 $\frac{1}{2}$	9.5		
12 Tim Kauppila	Seattle, Wa	1983	W21	D1	L7	D18	D10	2 $\frac{1}{2}$	8	14	
13 Bert Germalm	Bremerton, Wa	1900	L3	W21	D6	L10	W22	2 $\frac{1}{2}$	8	13.5	
14 Pat Hessen	Seattle, Wa	1964	D6	L5	L9	W23	W21	2 $\frac{1}{2}$	8	12.5	
15 Michael Franett	Seattle, Wa	2226	W17	L8	D18	W19	L3	2 $\frac{1}{2}$	8	12	
16 George LeCompte	Seattle, Wa	1995	W23	L11	W25	L3	D7	2 $\frac{1}{2}$	6.5		
17 Michael Schemm	Corvallis, Or	1914	L15	W23	L4	D21	W20	2 $\frac{1}{2}$	5.5		
18 Doug Adams	Spokane, Wa	1920	W4	L3	D15	D12	L9	2	10		
19 Carl Sloan	Seattle, Wa	1905	L1	W26	L5	L15	W23	2	7		
20 Ron Smith	Aberdeen, Wa	----	D9	W22	L1	L6	L17	1 $\frac{1}{2}$	9		
21 Norman Donelson	Bothell, Wa	1612	L12	L13	W26	D17	L14	1 $\frac{1}{2}$	7.5		
22 Jim Mulder	Seattle, Wa	1760	D8	L20	L10	W24	L13	1 $\frac{1}{2}$	7		
23 Tom Rowan	Woodinville, Wa	1671	L14	L17	W24	L14	L19	1	7		
24 Jack Finnigan	Tacoma, Wa	1872	L2	L4	L23	L22	Bye	1	6	10	
25 Mark Erickson	Vancouver, Wa	1816	L5	L6	L16	WF	LF	1	6	9.5	
26 Richard Hubbell	Seattle, Wa	1836	L10	L19	L21	LF	LF	0			

AMATEUR SECTION

									Med	Solkoff
1	Pat Herbers	Spokane, Wa	1874	W14	L3	W13	W7	W5	4	8
2	Robert Ruotsalainen	Seattle, Wa	1848	D8	W10	W11	D5	W3	4	7½
3	Jim Hanlen	Spokane, Wa	1810	W12	W1	W16	D4	L2	3½	10½
4	Steve Thomas	Kent, Wa	1799	D10	W18	W9	D3	D6	3½	8½
5	Sam McKibbin	Seattle, Wa	1793	D18	W8	W6	D2	L1	3	9½
6	Robert Morris	Seattle, Wa	1813	W9	D11	L5	W8	D4	3	7½
7	Stephen Christopher	Bothell, Wa	1790	W13	L16	W12	L1	W9	3	7
8	Owen Overton	Edmonds, Wa	1634	D2	L5	W18	L6	W14	2½	
9	Ron Norman	Seattle, Wa	1627	L6	W15	L4	W13	L7	2	8
10	George Brautacht	Bothell, Wa	1606	D4	L2	L14	WF	D11	2	7½
11	Walter North	Seattle, Wa	1756	W15	D6	L2	L12	D10	2	7
12	Mike Wellens	Seattle, Wa	1624	L3	W17	L7	W11	L15	2	7
13	Dave Jones	Seattle, Wa	unrt	L7	W14	L1	L9	WF	2	7
14	Doug Shafer	Klamath Falls, Or	1683	L1	L13	W10	W15	L8	2	6½
15	Byron Olson	Seattle, Wa	unrt	L11	L9	W17	L14	W12	2	6
16	Eero Jaaska	Marysville, Wa	1895	W17	W7	L3	LF	LF	2	4
17	Robert Holland	Seattle, Wa	1752	L16	L12	L15	Bye	LF	1	
18	Chris Cumming	Seattle, Wa	1342	D5	L4	L8	LF	LF	½	

NOVICE SECTION

									Med	Solkoff
1	Paul Thomas	Seattle, Wa	1589	W14	W11	W3	W4	D2	4½	10
2	Dan Bailey	Seattle, Wa	1586	W9	W16	W6	W8	D1	4½	9
3	Jeff Hanson	Yakima, Wa	1544	W12	W7	L1	W9	W6	4	9
4	Lew Kiersky	Seattle, Wa	1536	W17	W15	W12	L1	W7	4	6½
5	Wayne Hatcher	des Moines, Wa	unrt	L11	D10	W16	W15	W13	3½	
6	Tim Stewart	Bothell, Wa	1504	W18	W8	L2	W13	L3	3	10
7	Leo Wesley	Tacoma, Wa	unrt	W10	L3	W18	W16	L4	3	7½
8	Harlan Christie	Tacoma, Wa	unrt	W13	L6	W11	L2	W12	3	7
9	Paul Chance	Pertland, Or	unrt	L2	W17	W14	L3	W11	3	7
10	Howie Chin	Everett, Wa	1421	L7	D5	LF	W18	W17	2½	
11	Bob Leu	Edmonds, Wa	1518	W5	L1	L8	W17	L9	2	9½
12	Henri Fischer	Seattle, Wa	unrt	L3	W19	L4	W14	L8	2	8½
13	William Lowrie	Tacoma, Wa	1564	L8	W18	W15	L6	L5	2	7½
14	John Chance	Tacoma, Wa	1414	L1	Bye	L9	L12	W16	2	6
15	Marc Wilhelm	Seattle, Wa	1412	Bye	L4	L13	L5	W18	2	5½
16	Robert McCurdy	Seattle, Wa	1482	W19	L2	L5	L7	L14	1	8
17	Richard Haskins	Seattle, Wa	unrt	L4	L9	WF	L11	L10	1	7½
18	Margaret Krauss	Tacoma, Wa	unrt	L6	L13	L7	L10	L15	0	7½
19	John Sira	Seattle, Wa	unrt	L16	L12	LF	LF	LF	0	1

A History of Wn. Chess

BY JOHN NOURSE
1950 WCL)

The decade from 1930 was a memorable period in the history of Washington chess from all standpoints. Organization took its first steady steps and competitions were inaugurated which inturn developed much talent. In the early depression years of the '30ties a second Seattle Chess League was founded by Clyde Schmoeyer, Max Pölllock, myself and others. The League ran for two years with the Seattle Chess Club emerging victor each year. Entries were the Seattle Chess Club, the Y.M.C.A., the ELK's club, Washington Atheletic Club, Mr. Raleigh's Queen Anne Club, and Hugh Enochsen's North End Club. The participants have all forgotten why the League folded, but the demise is commonly accredited to the advent of better business conditions. At this time the Seattle Chess Club was prospering under the very able administration of our old and dependable friend, Mr. V. W. Bever, who has been in the forefront of chess promotion for many years.

It was during this period also that the Seattle High School League was founded

by Otto Case. Due to the lamentable fact that three of the West Seattle players were also members of the Seattle Chess Club, this team proved virtually unbeatable, which may possibly have proved the reason for the League's early demise. The West Seattle High School team must have been a honey, including as it did Olaf Ulvestad, Ishida, and Dunkle, all of whom being prominent in the down town club.

It would seem that High School competitions are a very efficient way of developing chess talent. It will later be shown that a high school instructor named Ivan Scates of Centralia, realizing the value of chess in developing the adolescent mind taught chess in Centralia High School, and later passed on to the Washington Chess Federation several top-flight players including Kenneth Mulford, Maurice Butler, and our own Bob Stork, who would be very difficult to replace in his work for chess.

The year 1932 saw the fine efforts of Julius Schmidt culminate in the formation of the Washington State Chess Association, later to become the Washington State Chess Federation, and it was immediately accepted as the governing body for all Washington chess events. Mr. Schmidt was elected President, and the first official Washington

George Krauss

Wins TACOMA Tournament

George Krauss won five in a row and survived a sixth round near loss to become the 1970 Pierce County Chess Champion with a $5\frac{1}{2}-\frac{1}{2}$ score. Jack Finnigan took second, a close $\frac{1}{2}$ point behind, losing only to Krauss. Third place was captured by Earnest Prentice, who lost to Vernon Holmes and drew with Krauss in the final round. Bruce Beardsley who played a perfect first three rounds, drew in the

fourth and folded in the final two rounds a against Prentice and Finnigan, won 4th place via the tie breaking route. William Lowrie won the coveted Junior prize, a chess clock, with a very creditable $3\frac{1}{2}$ points. More capable players entered this event than any previous one in our experience at the Tacoma Chess Club. T.D. was John Ward.

1. George Krauss	W-21	W-8	W-2	W-10	W-5	D-3	$5\frac{1}{2}-\frac{1}{2}$	
2. Jack Finnigan	W-24	W-13	L-1	W-16	W-10	W-4	5 - 1	
3. Ernest Prentice	W-23	W-19	L-5	W-9	W-4	D-1	$4\frac{1}{2}-1\frac{1}{2}$	
4. Bruce Beardsley	W-20	W-6	W-7	D-5	L-3	L-2	$3\frac{1}{2}-2\frac{1}{2}$	16
5. Vernon Holmes	W-11	W-12	W-3	D-4	L-1	L-F	$3\frac{1}{2}-2\frac{1}{2}$	$14\frac{1}{2}$
6. C. Russell Hewitt	W-17	L-4	L-10	W-15	W-14	D-7	$3\frac{1}{2}-2\frac{1}{2}$	$11\frac{1}{2}$
7. Ray Richards	W-18	W-22	L-4	L-F	W-9	D-6	$3\frac{1}{2}-2\frac{1}{2}$	11
8. William Lowrie	W-14	L-1	W-20	L-11	W-16	D-10	$3\frac{1}{2}-2\frac{1}{2}$	$10\frac{1}{2}$
9. Ron Jarmon	L-13	W-11	W-12	L-3	L-7	W-16	3 - 3	$14\frac{1}{2}$
10. Bob Geiger	D-16	W-17	W-6	L-1	L-2	D-8	3 - 3	14
11. Harlan Christie	L-5	L-9	W-23	W-8	L-13	W-17	3 - 3	$12\frac{1}{2}$
12. Earl Knapp	W-25	L-5	L-9	W-17	L-F	W-14	3 - 3	10
13. Lyman Johnston	W-9	L-2	W-18	L-F	W-11	L-F	3 - 3	8
14. Joe Sackey	L-8	W-21	D-15	W-18	L-6	L-12	$2\frac{1}{2}-3\frac{1}{2}$	$11\frac{1}{2}$
15. Edward Bosse	L-19	D-16	D-14	L-6	W-21	D-20	$2\frac{1}{2}-3\frac{1}{2}$	$9\frac{1}{2}$
16. Wolfgang Sauer	D-10	D-15	W-22	L-2	L-8	L-9	2 - 4	12
17. Curt Johnson	L-6	L-10	W-21	L-12	W-20	L-11	2 - 4	$11\frac{1}{2}$
18. Jon Kay	L-7	W-23	L-13	L-14	L-19	W-21	2 - 4	$10\frac{1}{2}$
19. William Wallace	W-15	L-3	L-F	L-20	W-18	L-F	2 - 4	$6\frac{1}{2}$
20. Ralph Malone	L-4	L-F	L-8	W-19	L-17	D-15	$1\frac{1}{2}-4\frac{1}{2}$	
21. Richard Koler	L-1	L-14	L-17	W-23	L-15	L-18	1 - 5	9
22. Richard Mattsen	W-26	L-7	L-16	L-F	L-F	L-F	1 - 5	$4\frac{1}{2}$
23. Loring Maier	L-3	L-18	L-17	L-21	L-F	L-F	0 - 6	5
24. Mike Petrovich	L-2	L-F	L-F	L-F	L-F	L-F	0 - 6	$2-7\frac{1}{2}$
25. Steve McGlothlin	L-12	L-F	L-F	L-F	L-F	L-F	0 - 6	2-6
26. Harold Roberts	L-22	L-F	L-F	L-F	L-F	L-F	0 - 6	2-5

Atomic Open

WENATCHEE

VALLEY OPEN

The 2nd annual Wenatchee Valley Open was held April 25th at W.V.C. campus.

Eugene (Ted) Warner of Kennewick won the Richland Atomic Open on tie-break over Dave Engelhard of Connell. They both scored 4-0 and won \$7.50 each for their efforts. Paul Zimanyi of Yakima was all alone in 3rd place with $3\frac{1}{2}-\frac{1}{2}$. Dave Clendaniel of Walla Walla finished 4th and won Class "B" money. Tom Whitacre of Richland finished 6th with 3-2 score and won unrated prize.

This is first tournament every to my knowledge to be held in Tri-Cities. It was organized by Russ Kidman of Richland and held May 9th at Central United Protestant Church using time control of 40 in 1. 22 players took part 12 from Tri-Cities area, WCF gained several new members. TD R. Miller

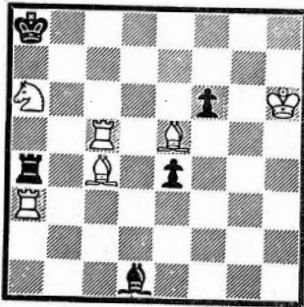
1. Sam Mc Kibbon	$3\frac{1}{2}-\frac{1}{2}$	1st place trophy
2. Dave Collyer	3 -1	Chelan County Trophy
3. Owen Rasmussen	$2\frac{1}{2}-1\frac{1}{2}$	
4. Bob Allyn	$2\frac{1}{2}-1\frac{1}{2}$	(12 years old) Book
5. Horton Thompson	2 -2	
6. Fred Smith	2 -2	
7. Mike Foster	2 -2	Book
8. John Wise	2 -2	
9. Kurt Collyer	2 -2	
10. Hardd Moye	$1\frac{1}{2}-2\frac{1}{2}$	
11. Tom Allyn	1 -3	(8 years old)

Sam Mc Kibbon captured first by busting Collyer's Caro-Kann in the third round and drawing a rook-pawn ending against Rasmussen in the final round. Noteworthy is young Bob Allyn's performance.

SOLVE THE ↑↑↑↑↑↑↑↑ PROBLEM



Problem Corner No. 6, by H. Froberg,
courtesy of Isaac Kashdan.



White to move & mate in 3.
White has 6 pieces & Black has 5.

Solution in ^{August} ~~July~~ NWC.

Send solution by ^{July} ~~June~~ 10 to:

Mrs. Esther Schrader
3565 Belle Vista Ct. S.
Salem, Ore. 97302

It would seem that No. 4 was more difficult than we had thought; only 19 solutions received, and two of those were incorrect. The answer? Q-B6.

C BALLANTINE (4), B HARDY (4), P MCCREADY (4), D NEUBAUER (3), J WEIKEL (4) (Ore); R HENKEL (4), K HOPPE (4), M HORMAN (2), R JARMON (4), S MCKIBBIN (4), D PARSONS (4), L PRATT (4), A RAJALA (3), R RUOTSALAINEN (4), M STEVENS (4), H THOMPSON (1), A WHITE (4), J WISE (1) (Wash); and H SATANOVE (1) (BC). The reply to ...Q-K-4, is N-K6.

Not too many solutions received for No. 5 thus far -- yes, the diagram is correct, Dicki! Hope you find the winning move. This month is a landmark, of sorts. For the first time in well over two years -- probably since the beginning of Problem Corner, as a matter of interest -- Mel Horman has missed one. Sorry to single you out, Mel, but even bad news is news to our faithful following.

Have another crossword puzzle scratched together, but just can't seem to find the time to type it up, etc. So, maybe next month. Thanks for all the kind remarks, and we will endeavor to avoid misnumbering and mangling names in the next one.

Letters to the Editor

Some suggestions for improving the content of N.W.C. magazine might be to 1st include some games from the N.W. masters either annotated or unannotated. You go out and get them to annotate one of their games from a recent tournament. Ask George Krauss or Mc Cormick or Braley or Pupols, maybe Waterman, Biyasas or Zuk. This would give the magazine some class and some value.

2nd get H.W. Russell to write a longer translation column. Theory is invaluable -- give it space and encouragement.

3rd, finally --include some games(maybe as filler) from Chess Express from recent International events

Always keep the club news!

Jim Hanlen

I feel it is best for Northwest Chess to print complete crosstables, or at the very least, a list of competitors in order of finish, including final scores and tie breakers. There are several reasons for this opinion:

1. Complete coverage of local events is one of the few things a regional magazine like N.W. Chess can do better than a national magazine which doesn't have space to cover all regional and local events in detail.
2. Most players are interested in their final standing in the tournament. Unless a crosstable is published, the player must wait until tie-breakers are finished (which may not even be done at the tournament site) or contact the director later, an inconvenience for both parties.
3. Readers do like to see how their acquaintances fare, as was mentioned in an earlier letter. Also it helps a player to keep track of tournament results so he knows who the newer players are and their approximate strength.

Please continue to print crosstables of as many events as possible and to have the director include an article with a summary of what happened, who won what, anything worth noting.

Keep up your good work,
Lewis Richardson
419 Chinook Avenue
Astoria, Oregon

NOTICE

COAT AND HAT FOUND AT END OF PSO

A man's coat and hat were found at the completion of the Puget Sound Open. Please contact Tim Kauppila (LA 5-6278) to claim items.

--- For Sale ---

Used Postal Recorder Albums

\$1.25 each ppd.

\$1.00 each U pick up

Fred M. Howard

5940 -- 36th Ave SW, Seattle 98126

WE 2-1063

Chess Club News

By Zevenbergen

1970 Idaho Club Event

Dick Vandenburg won the Boise, Idaho Chess Club Championship. In games completed Wednesday evening, June 10th, at the Boise Chess Club's YMCA playing room, Dick Vandenburg retained his club championship title by compiling a perfect 16-0 score, in a tournament played during recent weeks. This is the tenth straight year that Vandenburg has won the local tournament. Second place went to George Razor, who scored 13-3. John Cosho (12 $\frac{1}{2}$ -3 $\frac{1}{2}$) was third, Jon Egge (12-4) placed fourth, and Max Wennstrom (11-5) finished fifth.

In junior competition, Tim Estle (8-7), fourteen years old, was first and Tom Winchell (6-10), sixteen years old, was second. All winners were from Boise. Debra Stikes, of Meridian, was the only girl entering the event and shee scored three wins. Debra is fourteen years old. Vandenburg was tournament director.

Future club action during the summer will feature matches with the canyon county club, and a special handicap rapid transit tournament for local players. Chess Club meetings in Boise are held every Wednesday evening at the YMCA beginning at 7:30 PM and visiting players are invited to attend.

Age/ Junior	S.B.	1	2	3	4	5	6	7	8	9	10	11	12	13	14	15	16	17	Score	
1. Dick Vandenburg		xxx	w2	w3	w4	w5	w6	w7	w8	w9	w10	w11	w12	w13	w14	w15	w16	w17	16-0	
2. George Razor		l1	xxx	l3	w4	w5	w6	w7	w8	w9	w10	w11	w12	w13	w14	w15	w16	w17	13-3	
3. John Cosho		l1	w2	xxx	l4	w5	w6	w7	w8	w9	w10	w11	w12	w13	w14	w15	w16	w17	12 $\frac{1}{2}$ -3 $\frac{1}{2}$	
4. Jon Egge		l1	l2	w3	xxx	l5	w6	w7	w8	w9	w10	w11	w12	w13	w14	w15	w16	w17	12-4	
5. Max Wennstrom		l1	l2	l3	w4	xxx	w6	w7	w8	w9	w10	w11	w12	w13	w14	w15	w16	w17	11-5	
6. Walter Young		l1	w2	l3	l4	l5	xxx	w7	xxx	w9	w10	w11	w12	w13	w14	w15	w16	w17	10-5	
7. Nick Skirmants		l1	l2	l3	l4	w5	l6	xxx	w8	w9	w10	l11	w12	w13	w14	w15	w16	w17	10-6	
14 8. Tim Estle	50 $\frac{1}{2}$	l1	l2	w3	w4	l5	xxx	w7	xxx	w9	w10	w11	w12	l13	l14	w15	w16	w17	8-7	1st/Jr
9. Fred Wagner	38 $\frac{1}{2}$	l1	l2	l3	l4	l5	w6	l7	w8	xxx	w10	w11	w12	w13	w14	w15	w16	w17	8-8	
10. Carroll Powell	38 $\frac{1}{2}$	l1	l2	D3	l4	D5	l6	l7	w8	w9	xxx	l11	w12	w13	w14	w15	w16	w17	8-8	
11. Ted Dingus	36 $\frac{1}{2}$	l1	l2	l3	l4	l5	l6	w7	w8	w9	w10	xxx	w12	w13	w14	w15	w16	w17	8-8	
16 12. Tom Winchell		l1	l2	l3	l4	l5	l6	l7	w8	w9	l10	l11	xxx	w13	w14	w15	w16	w17	6-10	2nd/Jr
13. Don Aldrich		l1	l2	l3	l4	D5	l6	l7	w8	w9	l10	l11	l12	xxx	w14	w15	w16	w17	5 $\frac{1}{2}$ -10 $\frac{1}{2}$	
14 14. Debra Stikes		l1	l2	l3	l4	l5	l6	l7	w8	w9	l10	l11	l12	l13	xxx	w15	w16	w17	3-13	
15 15. Roy Williams	3	l1	l2	l3	l4	l5	l6	l7	w8	w9	l10	l11	l12	l13	w14	xxx	w16	w17	2-14	
16 16. Dave Reid	2	l1	l2	l3	l4	l5	l6	l7	w8	w9	l10	l11	l12	l13	l14	w15	xxx	w17	2-14	
12 17. Rex Montcalm		l1	l2	l3	l4	l5	l6	l7	w8	w9	l10	l11	l12	l13	l14	l15	l16	xxx	0-16	

East Wenatchee Chess Club

Dave Collyer captured the East Wenatchee Chess Club Championship with a 4-0 score. Owen Rasmussen and Horton Thompson took 2-3 place honors. Ten participated.

Barry Newhouse and Dave Collyer tied for the State College Championship in Wenatchee May 16. Neuhaus of Highline J.C. drew with Collyer in the last round of the top section when he avoided a rook sac. Stan Pollack, also of Highline, captured the third place spot.

Dave Collyer, WCF Expert, gave a simultaneous exhibition at the Brewster High School Lunch-room on May 15th at 3:30 PM. The "Simul" was well attended with sixteen players participating. Collyer won fourteen and lost two; one to Mr. Dave Gibb of Brewster, and Mr. Scot Greg of Wenatchee. Speed games were played before the main event.

submitted by
John Wise
Box 766
Brewster, Wa

ASTORIA CHESS CLUB

The Astoria Chess Club held a small five minute tournament on May 11. Results were:

	1	2	3	4	Total
1. Rickey	x	1	$\frac{1}{2}$	1	2 $\frac{1}{2}$
2. Richardson	0	x	1	1	2
3. Gilmore	$\frac{1}{2}$	0	x	1	1 $\frac{1}{2}$
4. Mosor	0	0	0	x	0

The Club meets every Monday evening from 7:30 to 10:30 in room 201 of the Astor Bldg. For Further Information, contact Lewis Richardson at 325-7953.

The Club would still like matches. Call Mr. Richardson or write him at 419 Chinook, Astoria, Oregon, 97103.

HILLSBORO C.C. TOP TEN(MAY)

Clarence Hoggatt.....	1512
Joe Nelson.....	1415
Charles Stevens.....	1252
Robin Shuler.....	1216
Jim Snowden.....	1156
Jim Abrahamson.....	1131
Mal Skarsten.....	1115
Pat Maloney.....	1112
Karl Granat.....	1108
Phil Irwin.....	1092

Send Your chess club's news to Dave Zevenbergen!

SPOKANE NEWS

Jim Hanlen

SPOKANE CHESS CLUB

meets 7-12 p.m. every Friday at
Gonzaga University bldg. Rm 132,
E. 502 Boone.

EUGENE CHESS CLUB

Meets on Tuesdays, 7-11 P.M., at the River Road Branch of the Citizens Bank (next to Bi-Mart). Dues are: High School and below, \$2 a yr.; out of High School to age 65, \$4 a yr.; age 65 and older \$3 a yr. Visitors are welcomed.

Lane Community College

The Knights and Castles Chess Club meets on Tuesdays from 5-9 P.M. Officers are: Pres. Kim Nomris; Vice-Pres. Jerry Weikel; and Sec.-Treas. Lynn Lawrence. There are 15 members in the club.

L.C.C. Closed, April 25

Name	#1	#2	#3	#4	Total	Med.	Solk	S.B.
1. Norris	W7	W6	W11	W3	4			
2. Ewing	W13	D5	W8	W7	3½			
3. Herman	W10	W15	W4	L1	3	5		
4. Weikel	W8	W11	L3	W9	3	4		
5. Teller	W14	D2	D6*	W11	3	3½		
6. Kubik	W12	L1	D5*	W13	2½			
7. Holm	L1	W12	W13	L2	2	4½		
8. Loughlin	L4	W14	L2	W12	2	4		
9. Pickering	L11	W10	W15	L4	2	3	7	3
10. Mills	L3	L9	W14	W15	2	3	7	2
11. Cantrell	W9	L4*	L1	L5	1	6		
12. Lundy, K.	L6	L7	Bye	L8	1	4½	8½	
13. Lundy, T.	L2	Bye	L7	L6	1	4½	8	
14. Lawrence	L5	L8	L10	Bye	1	4	7	
15. Pickering	Bye	L3	L9	L10	1	4	7	

* players were paired to the Kashdan Sys. from their adjourned games. Jerry Weikel directed and played in the L.C.C. Closed. The entrants were students, staff, and dependents of L.C.C. There was a \$1 entrance fee, with 40% of the prize fund going to 1st. place, 25% to second, and 15% to third. A traveler's chess set, as a door prize, was won by Cantrell.

The purpose of this tournament was to give the L.C.C. Chess Club members some tournament experience, and to gain a basic rating for the club members. This was a first tournament-director job for Jerry, and he did a fine job and should be congratulated.

Seattle Chess Club

CLUB HOURS: Tuesday 7-12 PM
Friday 7-12 PM
Sunday 1-6 PM

LOCATION: 617 S Jackson St. Seattle, Wash. 98104

PHONE: MA 3-9899

DUES: Regular Member \$15.00 1 year
\$10.00 ½ year
Students under 21, out of town residents, retired and over 65 \$10.00 1 year
\$6.00 ½ year
\$3.50 ¼ year

VISITORS POLICY: 50% a day to play
Spectators free

TACOMA NEWS

Tacoma Chess Club

JOHN WARD won the 1970 Crusaders Chess Club crown, beating out JOSEPH BRICHER by ½ median point. Both players scored 3½ points out of 4, drawing with each other in the third round. RICHARD MATTSSEN followed closely behind with a 3-1 score. Tournament directed by John Ward.

1. John R. Ward	W-7	W-4	D-2	W-3	3½ - ½	4½
2. Joseph Bricher	W-8	W-5	D-1	W-4	3½ - ½	4
3. Richard Mattsen	BYE	W-8	W-9	L-1	3 - 1	
4. Jim Boettcher	W-6	L-1	W-5	L-2	2 - 2	5½
5. Harlan Christie	W-9	L-2	L-4	W-8	2 - 2	3
6. Wendale Gunderson	L-4	W-7	L-8	BYE	2 - 2	2½
7. Ron Clarkson	L-1	L-6	BYE	W-9	2 - 2	2
8. Edward Bosse	L-2	L-3	W-6	L-5	1 - 3	4½
9. Robert Garen	L-5	BYE	L-3	L-7	1 - 3	3½

HARLAN CHRISTIE won the 2nd round of the 1969 - 70 Crusaders Chess Club season, with a perfect 8 - 0 sweep of the field. He was followed closely by JOHN WARD with 7 - 1. From there on, the scores evened out. LYMAN JOHNSTON had to bow out after 3 wins because of business reasons, but he scored 10 wins during the season, and was undefeated.

1. Harlan Christie	X W W W - W W W W W	8 - 0
2. John Ward	L X W W - W W W W W	7 - 1
3. Robert Garen	L L X L - W W W L W	4 - 4
4. Ron Clarkson	L L W X - W W L W L	4 - 4
5. Lyman Johnston	- - - X - W W - W	3 - 0
6. Joseph Bricher	L L L L - X L W W W	3 - 5
7. Richard Mattsen	L L L L W X L W W	3 - 6
8. Wendale Gunderson	L L L W L W X L W	3 - 6
9. Jim Boettcher	L L W L - L L W X L	2 - 6
10. Edward V. Bosse	L L L W L L L L W X	2 - 7

SEATTLE UNIVERSITY TOP TEN

Name	Rating	Home	Year
1. Howie Chin	1595	Everett	Jr.
2. Larry Parent	1420	Vancouver, Wn.	Fr.
3. Gerry Pleuth	1452	Spokane	Fr.
4. Ron Norman	1620	Renton	Sr.
5. Gary Lavett	1419	Portland	Fr.
6. Tom Naish	1011	Spokane	Fr.
7. Alecia Butcher	1541	Mexico City	So.
8. Steve Davis	1549	Seattle	Sr.
9. Jim Pitzlaff	1277	Spokane	Fr.
10. Dave Morelli	1414	Hillsboro, Ore.	So.

MATCHES

Howie Chin	2-1	Gary Lavett
Howie Chin	4-0	Mert....
Howie Chin	2-0	Jim Pitzlaff
Alecia Butcher	4-0	Tom Naish
Alecia Butcher	0-1	Scott Henderson
Howie Chin	3-0	Jim Pitzlaff
Gerry Pleuth	2-0	Mert....
Howie Chin	4-4	Larry Parent
Howie Chin	5-0	Larry Parent
Howie Chin	3-1	Larry Parent
Howie Chin	3-2	Gerry Pleuth
Howie Chin	4-2	Larry Parent
Howie Chin	2-0	Bill McCartney

When Scott Henderson surprised everyone by beating Alecia Butcher, he decided to go after the top man, Howie. Scott announced that he wasn't going home until he beat Howie. The disastrous results were:

Howie Chin 50-0 Scott Henderson

GAMES BY ZUK

From the 1970 B.C. Championship

White - A. Zaradic
Black - R. Zuk

1. P-Q4	N-KB3	20. Q-K2	Q-Q3
2. N-QB3	P-Q4	21. N-B4	N-Q4
3. B-N5	B-KB4	22. P-KN3	P-QB4
4. P-KB3	P-QB3	23. QR-Q1	PxP
5. P-K4	PxP	24. PxP	NxN
6. BxN	KPxP	25. RxN	Q-Q4
7. PxP	B-N3	26. R/4-B1	B-N3
8. N-B3	B-QN5	27. N-N2	BxPch
9. B-Q3	O-O	28. K-R1	QxRP
10. O-O	N-Q2	29. R-Q2	P-K6
11. N-K2	R-K1	30. R-Q3	B-N3
12. N-N3	B-Q3	31. KR-K1	RxR
13. P-K5	PxP	32. RxR	Q-N8ch
14. BxB	RPxB	33. R-Q1	Q-K5
15. N-K4	B-B2	34. K-N1	R-QB1
16. P-B3	N-B3	35. N-K1	Q-QB5
17. N(4)-N5	P-K5	36. R-Q3	Q-K5
18. N-R4	Q-Q4	37. N-B2	P-B4?
19. N-R3	QR-Q1	38. P-QN3	RxN
		39. Resigns	

2. N-QB3. White plans an early p-K4. Without actually being bad White's opening has little to recommend it since Black can achieve an easy development. 13. P-K5? A move which I simply cannot understand coming from a player of Zaradic's strength. Indicated was 13. N-B5 BxN; 14. PxP with a draw as the probable outcome. 16. ...N-B3. Of course 16. ...PxP could be played but in a won position this player prefers to avoid complications unless forced into them.

White - P. Biiyasas
Black - A. Zaradic

1. P-K4	P-K3	18. NxR	P-QR3
2. P-Q4	P-Q4	19. B-K2	P-QN4
3. N-QB3	N-KB3	20. B-B3	B-N2
4. B-KN5	QPxKP	21. BxB	NxB
5. NxP	QN-Q2	22. K-B1	R-QB1
6. N-KB3	B-K2	23. P-QB3	N-B4
7. NxNch	BxN	24. P-QN3	K-B1
8. BxB	QxB	25. K-K2	K-K2
9. Q-Q2	O-O	26. P-QB4	P-N5
10. B-Q3	R-K1	27. P-QR3	R-QN1
11. O-O	P-QB4	28. PxP	RxP
12. KR-K1	PxQP	29. K-Q1	R-N3
13. R-K4	N-QB4	30. K-B2	R-Q3
14. R-KB4	Q-KR3	31. P-N4	N-Q6
15. B-QN5	R-Q1	32. R-QN1	NxKBp
16. RxQP	QxQ	33. P-QB5	R-Q5
17. RxQ	RxR	34. K-B3	R-Q6ch
		35. K-B2	R-Q5
		36. K-B3	R-Q6ch
		37. K-B2	DRAW

5. NxP. More double-edged would be 5. BxN.
16. RxQP. Better is R-Q1.
22. K-B1. White has the inferior position now since Black can put pressure on the Queen - side.
31. P-QN4! The combination ...RxNch; 32. KxR, N-N6ch; 33. K-B2, NxRch; 34. K-N2 would only result in a draw.
33. ...R-QB3 instead 34. P-KR3, P-B4; 35. R-KB1 and White will regain his Pawn.

White - R. Zuk
Black - E. Macskasy

1. P-Q4	P-Q4	22. P-KR3	R-QB1
2. P-QB4	P-K3	23. QxRch	RxQ
3. N-QB3	N-KB3	24. RxRch	K-R2
4. B-N5	B-K2	25. R/1-QB1	N-Q3
		26. R/8-B7	Q-B3
		27. R/7-B2	N-B4
		28. P-QN4	P-KN4
		29. R-B7	N-K2
5. N-B3	O-O	30. R-N7	N-Q4
6. P-K3	P-KR3	31. N-Q4	K-N3
7. B-R4	P-QN3	32. R-B8	K-N2
8. PxP	NxP	33. R-QR8	Q-K4
9. BxB	QxB	34. R/8-R7	NxP
10. R-B1	B-N2	35. RxBPch	K-N3
11. B-K2	R-QB1	36. R-KN7ch	K-R4
12. O-O	N-Q2	37. R/R-Q7	Q-K5
13. Q-R4	P-QR3	38. PxN	QxPch
14. NxN	BxN	39. K-B1	Q-Q6ch
15. KR-Q1	P-QN4	40. K-B2	Q-Q7ch
16. Q-R5	P-QB4	41. N-K2	QxNP
17. PxP	NxP	42. P-N4ch	K-R5
18. R-B2	KR-N1	43. R-KR7	Q-B1ch
19. Q-N4	B-B5	44. K-N2	Q-QR1ch
20. BxB	PxB	45. R-QN7	Q-KB1
21. QxP	N-N2	46. N-N1	Resigns

10. R-B1. A novelty which is neither better or worse than the regular NxN.
17. ...NxP is weaker than RxP.
18. ...KR-N1 costs Black a Pawn but White stood better since he would get control of the QB file.
22. ...R-QB1. Dr. Macskasy was probably hoping for a swindle in the resultant ending.
23. QxRch. Some of the spectators actually thought this was a bad move! White's subsequent play is not the most exact but it is good enough to win.
37. ...Q-K5. Black could play on a While longer with ...P-N5 or NxNp.
42. P-N4ch. With this move White forces Mate or the win of the Queen.
43. ...Q-B1ch. If 43. ...Q-B4ch; 44. K-N2, Q-B3ch; 45. K-R2, P-K4; 46. RxPch!, QxR; 47. N-N3 and Black must give up his Queen for the Knight.

White - A. Zaradic
Black - J. Berry

1. P-KN3	P-Q4	8. QR-N1	P-QR4
2. B-N2	N-KB3	9. P-QN3	O-O
3. N-KB3	P-B3	10. B-N2	P-QN4
4. O-O	B-N5	11. P-K4	Q-N3
5. P-Q3	QN-Q2	12. Q-B2	QPxKP
6. QN-Q2	P-K3	13. PxKP	P-K4
7. P-QB4	B-Q3	14. QR-B1	P-N5
		15. P-B5	NxBP
		16. N-B4	Resigns

10. ...P-QN4 is premature. Black should take some measures against an eventual advance of White's KP.
11. ...Q-N3? This move invites Pawn forks.
15. P-B5! A good move which gives White clear positional superiority.
15. ...NxBP? Loses a piece but even after ... BxBP; 16. N-B4 Black would stand badly.

Museum Cont from p 12

worth seeing. There are sets of all shapes and sizes. They come from all over the world. Chess sets is not the only thing housed at the museum. There are many fine paintings, sculpture, ceramics, glass, mementos of European Royalty, old dolls, French Mannequins, old guns, Northwest Indian Collection and much more. A stop is very worth while. Hours ar 9:00am to 5:30 pm every day Sundays and Holidays Included March 15 to November 15.

by R. Miller

Games & Analysis

Translations by Larry Parr

The following article is from a recently published three volume work, Botvinnik's Creative Chess. These volumes contain 300 of Botvinnik's wins, losses and draws, covering the period 1924-1967. Botvinnik annotated many, but not all of the games in these volumes. Price: \$9.25 (3 volumes) Publisher: world's largest publisher, only one guess!

Continued from the April N.W.C.

IN MY OPINION, A VERY INSTRUCTIVE CHAPTER ON OPENING PLAY, THE DYNAMICS OF MAINTAINING A MIDDLE GAME ADVANTAGE, AND THE THEORY OF QUEEN AND PAWN ENDINGS. THE NOTES OF MINEV AND BOTVINNIK ARE BY BOTVINNIK.

IF YOU DECIDE TO PRINT THESE GAMES, YOU MIGHT CONSIDER THE FOLLOWING TO BE THE "HOW" AND BOTVINNIK=RAVINSKY AS THE "HOW NOT."

1954 AMSTERDAM OLYMPICS. BOTVINNIK=MINEV.
1... N=KB3, N=KB3., 2... P=B4, P=B3., 3... P=Q4, P=Q4., 4... N=B3, P=K3., 5... P=K3, QN=Q2., 6... BQ3, PXP., 7... BxBP, P=QN4., 8... B=Q3, P=N5., AS IN MY GAME WITH G. LISITZIN FROM THE 8th. SOVIET CHAMPIONSHIP 1933.

9... N=K4, B=N2.. LISITZIN CONTINUED, 9... B=K2. IN THE 13th. GAME OF THE RETURN MATCH WITH SMYSLOV 9... N=K4, WAS PLAYED. THAT, IT APPEARED, WAS ALSO INSUFFICIENT FOR EQUALITY.

10... N=K4, B=N2.. BLACK STRIVES TO GAIN SHARP PLAY, BUT NOW THE KING WILL NOT BE SECURE ON EITHER THE KING OR THE QUEEN'S WING.

11... P=K4, B=Q3., OR 11... P=QB4 WHITE, PROBABLY, COULD ANSWER WITH 12... P=Q5. 12... Q=O, R=KN1., 13... Q=K2, Q=R4., PARRYING 14... B=QR6 AND IN TURN THREATENING 14... Q=R4.

14... N=Q2, Q=O=O. BOLDLY PLAYED, BUT NOT GOOD. BETTER WAS 14... Q=B21., PROVOKING 15... P=KN3. BUT IN SO FAR AS 15... P=KR4 WAS IMPOSSIBLE (16... QxRP, BxNP., 17... BPxB, RXPch., 18... PXR, QXPch., 19... K=R1), WHITE, ALL THE SAME, MAINTAINED THE ADVANTAGE. 15... N=B4, Q=B2., 16... P=KB4., POSSIBLE ALSO WAS 16... P=KNP.

FOR AFTER 16... PK=R4., 17... QxP, BxNP., 18... BPxB, RXPch., 19... PXR, QXNPch., 20... K=R1, QxB., 21... N=Q6ch, K=B2., 22... B=B4, BLACK IS HOPELESS. THE MOVE IN THE GAME, IS DECISIVE! 16... P=QB4., 17... P=QR3! THE OPENING OF LINES ON THE QUEEN'S SIDE IS INEVITABLE (ON ANY MOVE 17... P=QXP, 17... P=XP, OR 17... P=N6, WHITE CONTINUES, WITH ADVANTAGE, 18... B=Q2), AND BLACK FINDS HIMSELF IN A DIFFICULT POSITION. MINEV LAUNCHES A DESPERATE ATTEMPT AT ATTACK ON THE CENTRAL POINT K4, IN ORDER, AT ANY COST, TO OPEN THE DIAGONAL QR1=KR8 AND TO BRING HIS BISHOP AT QN2 INTO BATTLE. 17... P=KB4., 18... PXP, N=KB3., WITTY, BUT ALL THE SAME, INSUFFICIENT.

NOW WHITE DID NOT ATTEMPT TO ACHIEVE ANYTHING IMPORTANT AFTER 19... RXP, PXP. 20... B=B2.

(20... NxBch, RXN., 21... B=6, RxB., 22... RXP, PXP, PXP. TO ME, ALSO NOT QUITE CONVINCING WAS 19... NPXP, PXP. 20... PxB, PxB. 21... PXP, PXP. 22... PXR(Q)ch, KxQ., HOW+ EVER, IN THIS LAST VARIATION WHITE COULD HAVE FOUND THE HIDDEN IMPROVEMENT.. 19... NPXP, PXP. (19... BxQB. 20... PxB, RxB. 21... QxR, BxP. 22... N=Q6ch, QxN. 23... QxB.) 20... NxBch! RXN. 21... B=N5!! (21... RXP. 22... P=B6, AND B=K3), AND BLACK'S POSITION IS HOPELESS. UNFORTUNATELY, I DID NOT SEE THIS CONTINUATION DURING THE GAME, ALSO DID NOT SEE IT DURING THE ANALYSIS., ONLY SEVERAL DAYS LATER DID I GUESS THE MOVE 21... B=N5, DURING A STROLL. 19... N=R5, P=B5!! I OVERLOOKED THIS INTERMEDIATE MOVE. NOW THERE IS NO LONGER THE THREAT OF B=QR6, AND INSTEAD OF A QUICK WIN, WHITE HAS TO CONTENT HIM+

SELF WITH A POSITIONAL SUPERIORITY. 20... NxB, PxB. 21... NxBch, RXN. HARDLY BETTER WAS 21... QXN IN VIEW OF 22... QXP, PXP., 23... Q=B4ch, K=N2., 24... P=B5., THE OPEN POSITION OF THE BLACK KING GIVES WHITE AN ADVANTAGE. 22... QXP, PXP., AND AFTER 22... NXP., 23... B=K3, K=N1., 24... P=Q5, BLACK DOES NOT STAND WELL. 23... Q=K2, Q=N2, NO BETTER EITHER WAS 23... RXP., 24... B=K3 OR 23... R=Q4., 24... P=B5, RXP., 25... RXP, PXR., 26... Q=R6ch! 24... P=B5! WITH THE OPENING OF THE KR2=QN8 DIAGONAL, THE POSITION OF THE BLACK KING BECOMES SO BAD, THAT MINEV IS READY TO GO INTO AN END GAME TWO PAWNS DOWN, IN ORDER NOT TO LOSE IMMEDIATELY. 24... N=Q4., 25... QxKP, NXP. THE CONTINUATION 25... PXP., 26... QXPch, K=N1., 27... P=KN3 (BUT NOT 27... QxKP, RXPch., 28... KxR, N=B4 dbl. dis. ch.) ALSO HOLDS NO HOPE FOR BLACK. 26... QxQch, KxQ., 27... PXP, PXP., 28... R=B7ch, K=B3., 29... B=K3, K=Q4., 30... RXP, N=B3., ALSO POSSIBLE IS 3 OR (1) XP. 31... B=B4, R(3)=Q1, WHITE ONCE AGAIN ALLOWS A SECOND CHANCE, THIS TIME HE OVERLOOKS A SIMPLE REPLY OF HIS OPPONENT, AND THE BATTLE FLARES UP WITH NEW FORCE! AFTER 31... R=KR5ch, K=B5 (31... K=K5., 32... R=K1), 32... R=B5ch. THE GAME HAD TO END QUICKLY. 32... B=B7, R=KR1., THUS BLACK DOES NOT PERMIT THE WHITE ROOK ON Q7., THE EXCHANGE OF ROOKS IS INEVITABLE., AND THE PAWN ON Q4 IS LOST. 33... R=N7, RR1=N1., 34... R=R7, R=KR1., 35... R=N7, RR1=N1., 36... R=B7, RR1=B1., 37... QR=KB1, RXP., 38... RXP, R=QB1., 39... B=K5, NXP. IN THE ROOK ENDING THE CENTRAL POSITION OF THE KING GIVES BLACK FAIR COUNTERCHANCES. 40... BxN, KxB., 41... KB2. THE SEALED MOVE. PERHAPS, SIMPLER WAS 41... RXP OR THE IMMEDIATE 41... P=KN4. 41... P=QR4. IN CASE OF 41... R=QN1 THERE WOULD FOLLOW THE SAME REPLY AS IN THE GAME, AND AFTER 41... R=B7ch., 42... K=B3, RXP., 43... P=R4, P=R5., 44... P=R5, R=N8., 45... K=N4, P=K4., 46... R=Q7ch, K=B5., 47... K=B5, WHITE'S DECISIVE MOVE ADVANTAGE CAN HARDLY BE DOUBTED! 42... P=KN4, R=B7ch., 43... K=N3, RXP., 44... P=N5, P=R5., 45... P=N6, NO BETTER WAS 45... R=QR7, K=K5! (45... K=K4., 46... R=R5ch.), 46... P=N6, K=B4., 47... P=N7, R=N1., (48... R=B7ch, K=N3., 49 R=B8, R=N6ch.) 45... R=N8., 46... K=R4!, R=N8., 47... K=R5, K=B5! EXCELLENTLY PLAYED. AFTER, FOR EXAMPLE, 47... R=N7., 48... P=R4, P=R6., 49... R=QR7, P=R7., 50... K=R6, K=B6., 51... P=R5, P=K4., 52... K=N7, P=K5., 53... P=R6, P=K6., 54... P=R7, P=K7., 55... P=R8(Q), P=K8(Q), 56... Q=B8ch, AND BLACK IS HURTING. IF AFTER THE TEXT, AT ONCE 48... R=QR7, K=N6 AND BLACK PICKS UP AN EXTRA TEMPO. FORTUNATELY FOR WHITE, HE CAN GO INTO A QUEEN ENDING WITH AN EXTRA PAWN. 48... R=B4ch, K=N4., 49... R=B3, K=N5., 50... R=B4ch, K=N4., 51... R=B3, K=N5., 52... R=N3, RXP., 53... PXR, P=R6. WITH ONLY AN EXTRA RP, OF COURSE, IT WOULD BE WISHFUL TO EXPECT VICTORY IN A QUEEN ENDING., BUT WITH THE NP VICTORY IS QUITE POSSIBLE. 54... P=N7, P=R7., 55... P=N8(Q), P=R8(Q). 56... Q=N4ch, K=R4., AND AFTER 56... K=R6., 57... Q=B3ch, K=N5., 58... BLACK'S KING IS DRIVEN TO THE FIFTH RANK. 57... QXP. AND SO FOR THE SECOND TIME IN MY TOURNAMENT CAREER, A Q&NP ENDING HAS BEEN REACHED? (SEE MY GAME WITH RAVINSKY, #315). AND, IT SEEMS, THIS IS THE SECOND TIME IN MASTER PRACTISE. IN THE GAME WITH RAVINSKY, I PLAYED UNCONVINCINGLY, AND KERES, IN A LARGE ANALYTICAL ARTICLE (COLLECTED CHESS 1947 = 1949), CRITICIZED MY PLAY. AS THE READER CAN SEE FROM THE COURSE OF THE AFOREMENTIONED GAME, MY PLAY REALLY DESERVED CENSURE. I THEN DID NOT UNDERSTAND THIS ENDING. IN HIS ARTICLE, KERES ANALYZED SEVERAL SPECIFIC POSITIONS, BUT, UNFORTUNATELY, DID NOT POINT OUT THE OVERALL, CORRECT METHOD OF PLAY FOR WHITE. MINEV WAS ACQUAINTED WITH THE

ARTICLE BY KERES BUT GLEENED FROM IT ONLY ONE SYGGESTION . . . KEEP THE KING ON "A4". SUCH A BANAL TACTIC BY BLACK ONLY SIMPLIFIED MY TASK. WHITE IS ABLE TO ADVANCE THE PAWN TO N6 COMPARATIVELY QUICKLY. 57.. Q=R1ch. AFTER 57 . . . , Q=R8ch., 58.. K=N5 AND BLACK HAS NO CHECKS. (WHAT ABOUT 58 . . . , Q=Qb8ch? IT'S A CHECK, BUT AFTER 59.. K=N6, THINGS LOOK BLEAK FOR BLACK. L. PARR) %'.. K=N6, Q=B6., 59.. P=N4, Q=Q7., 60.. P=N5, Q=Q5., 61.. Q=B5ch, K=R5. THE KING CAN ONLY RETREAT TO THE FOURTH RANK, BUT MINEV HAD BEEN STRIVING FOR THIS, SINCE KERES, IN THE PREVIOUSLY MENTIONED ARTICLE, RECOMMENDED (IN CERTAIN, SPECIFIC CASES!) THAT BLACK MAINTAIN HIS KING ON "A4". 62.. K=R5, Q=R1ch., 63.. K=N4, Q=K R8., AGAIN (SIC) THERE ARE NO MORE CHECKS., THE ADVANCE OF THE PAWN TO N6 IS ALREADY INSURED. 64.. Q=B4ch, K=R4., BEFORE ADVANCING THE PAWN, IT IS USEFUL TO PUT THE QUEEN ON THE CENTRAL SQUARE "B5". 65.. Q=K5ch, K=R5., 66.. P=N6, Q=Q8ch. NOW BLACK CAN GIVE CHECKS (BAD CHECKS? L.P.)? FOR SEVERAL MOVES, WHITE CANNOT FIND THE CORRECT PLAN. 67.. K=N5, Q=Q1ch., 68.. K=B5, Q=QB1ch., 69.. K=B4, Q=B8ch., 70.. Q=K3, Q=B2ch., 71.. Q=K 5, Q=B8ch., 72.. K=B5, Q=B1ch., 73.. K=N5, Q=Q1ch. HERE THE GAME WAS ONCE AGAIN ADJOURNED WITH BLACK SEALING THE MOVE. ON BOARD IT IS THE SAME POSITION AS AFTER MOVE 67, BUT HOME ANALYSIS HELPED TO UNRAVEL THE SECRETS OS THE POSITION. 74.. Q=B6! . . . ONLY THUS! IN CASE OF 74.. K=R6, Q=R5ch., 75.. K=N7, Q=R6., AND WHITE HAS ONLY MADE HIS TASK MORE DIFFICULT., ON THE LAST RANKS THE WHITE KING, GENERALLY SPEAKING, STANDS POORLY, BECAUSE THE BLACK QUEEN RECEIVES FREEDOM OF OPERATION THIS ALSO, I DID NOT UNDERSTAND WHEN I PLAYED THE ENDING WITH RAVINSKY AND FOR A LONG TIME MANEUVERED WITH THE KING ON THE LAST RANKS. THIS ERROR OF METHOD WAS NOT REMARKED UPON BY KERES IN HIS ARTICLE. WHERE THEN HAS WHITE TO PUT HIS KING? AS THE READER WILL SEE, THE WHITE KING HAS TO BE PLACED ON EITHER THE SAME RANK OR ON RANKS NEIGHBORING THE BLACK KING. HERE, IN FACT IS THE SECRET OF THE WHOLE ENDING! BLACK'S CHECKS ARE KEPT AT A MINIMUM BECAUSE WHITE CAN COVER CHECK WITH HIS QUEEN AND DECLARE CHECK AT THE SAME TIME. AND IT WAS IN THIS MANNER HOW I FINALLY PROCEEDED AND DEFEATED RAVINSKY. IT MAY BE ASKED, THEN, "WHY IN CHESS THEORY WAS IT LONG CONSIDERED THAT AN END GAME WITH NP CARRIES A DRAWISH CHARACTER?" APPARENTLY, THIS IS EXPLAINED BY THE FACT THAT THE ANALYSTS STUDIED SUCH ENDINGS WITH A PAWN ON THE 7th. RANK AND THE WHITE KING ON THE 8th. IN THE CASE WITH A PAWN ON B7 A WINNING MANUEVER WAS FOUND., BUT WITH A PAWN ON N7, IT WAS NOT FOUND. IN THE GAME WITH RAVINSKY, CONTESTED UNDER THE INFLUENCES OF THESE ANALYSES, WHITE KEPT HIS KING ON THE 7th. AND 8th. RANKS AND LITTLE BY LITTLE FELL INTO A DRAW. THIS TIME I DID NOT REPEAT THE OLD ERRORS. 74.. Q=Q4ch., 75.. Q=B5, Q=Q1ch. 76.. K=R5. . . . BLACK HAS BUT ONE LAST CHECK 76.. Q=R1ch, BUT AFTER 77.. K=N4, BLACK'S SMARTING. THE STRENGTH OG WHITE'S POSITION IS ILLUSTRATED BY THE FOLLOWING AMUSING VARIATION.. 76... Q=R1ch., 77.. K=N4, Q=N2., 78.. Q=B7!., Q=B6 (THE ONLY MOVE) 79.. P=N7! THEREFORE BLACK ATTEMPTS TO PIN THE PAWN ON N6 ALONG THE DIAGONAL. 76.. Q=K1., 77.. Q=B4ch. . . . THE QUEEN TAKES OVER THE "D4" SQUARE. 77.. K=R4. BY MANUEVERING THE KING ONLY BETWEEN THE SQUARES "A4" AND "A5", BLACK OF COURSE FACILITATES WHITE IN THE CALCULATION OF VARIATIONS. 78.. Q=Q 2ch, K=R5., 79.. Q=Q4ch, K=R4., 80 K=N5, Q=K2ch., 81.. K=B5!., Q=B1ch., 82 K=K4 (AGAIN THE CHECKS END.) THE WHITE KING IS EXCELLENTLY SITUATED IN THE CENTER.) Q=R3., 83.. Q=K5ch, K=R5., 84.. P=N7, Q=R8ch., 85.. K=Q4, Q=Q8 ch., 86. K=B5, Q=B8ch., 87.. K=Q6; (AFTER THE ~~XXXXXXXXXX~~ 87.. K=Q5, Q=B1 THE WHITE KING WOULD STAND POORLY AND THE BLACK QUEEN

NOT UNFAVOURABLY.) Q=Q7ch. (OR 8'.... Q=Kbch., 88.. K=Q5!.) . . . 88.. K=K6, Q=R7ch., 89.. Q=Q5, Q=K7ch., 90.. K=Q6, Q=R7ch., 91.. K=B5! RESIGNS. THE CONCLUDING POSITION UNDOUBTEDLY DESERVES A DIAGRAM BECAUSE IT REVEALS WITH UTMOST CLARITY THE METHOD OF PLAY IN THE ENDING, "Q + NP vs. Q." IN THIS GAME I TWICE OVERLOOKED SIMPLE WINS, BUT THEN THERE WOULD NOT HAVE BEEN THE INTERESTING QUEEN ENDING, WHICH RESULTED IN A DIFFICULT VICTORY. THE FOLLOWING TWO GAMES ARE WIDELY UNKNOWN LOSSES OF BOTV INNIK. THEY ARE ANNOTATED, BUT I WILL ONLY PRESENT THE GAMES THEMSELVES.... M. BOTV INNIK vs. V. RAGOSIN. 1936 . . . 1.. P=K4, P=QB4., 2.. N=KB3, P=K3., 3.. P=Q4, PXP., 4.. NXP, N=KB3., 5.. N=QB3, P=Q3., 6.. B=K2, P=QR3., 7.. B=K3, Q=B2., 8.. P=QR4, P=QN3., 9.. P=KB4, B=N2., 10.. B=B3, QN=Q2., 11.. Q=K2, B=K2., 12.. O=0, O=0., 13.. P=KN4, P=Q4., 14.. P=K5, N=K5., 15.. NXP, PXP., 16.. B=N2, B=Q4., 17.. KR=B1, QR=B1., 18.. B=B2, N=B4., 19.. P=QN4, N=Q6! 20.. PXP, QXRch., 21.. RXP, RXPch., 22.. B=B 1, KR=B1., 23.. Q=N2, PXP., 24.. P=QN5, PXP., 25.. PXP, R=Q8!., 26.. N=B6, B=B1., 27.. B xNP, P=Q7., 28.. Q=B2, B=B6., 29.. WHITE RESIGNS BOTV INNIK vs. KAN, 1952.... 1.. P=Q4, N=KB3., 2.. P=QB4, P=KN3., 3.. P=KN3, B=N2., 4.. B=N2, P=Q3., 5.. N=KB3, O=O., 6.. O=O, QN=Q2., 7.. N=QB3, P=K4., 8.. P=K4, PXP., 9.. NXP, N=QB4., 10.. P=QN4, N=K3., 11.. N=N3, R=K1., 12.. B=N2, N=N4., 13.. P=KB3, P=KR4., 14.. Q=Q2, N(4) R2., 15.. QR=Q1, B=K3., 16.. Q=K2, P=R5., 17.. P=KN4, P=QB3., 18.. P=QB5, P=Q4., 19.. Q=KB2, Q=B2., 20.. P=KR3, PXP., 21.. PXP, QR=Q1., 22.. P=K5, RXP., 23.. RXP, QXP., 24.. QXP, BXP., 25.. PXP, P=R4, 26.. P=QN5, QXPch., 27.. Q=B2, Q=N5., 28.. PXP, PXP., 29.. BXP, R=KB1., 30.. R=Q3, QXP., 31.. B=R4, Q=N5., 32.. Q=Q2, Q=B4ch., 33.. Q=B2, Q=B5., 34.. B=N5, Q=N4., 35.. Q=Q2, N=N4., 36.. QXP, QXB., 37.. Q=Q2, QXP., 38.. RXP, NXP., 39.. N=Q5, R=N1., 40.. N=K7ch, K=K2., 41.. B=R4, AND RESIGNS.

(Editor's note: Many thanks to Larry Parr for his effort in translating this game from the original Russian, and to Doreen Zimanyi for typing it.)

Washington Junior
Larry Pratt - Jon Berry



Ken Hoppe WAYNE CHIN

- | | |
|------------|-------|
| 1 P-Q4 | P-Q4 |
| 2 P-QB4 | P-K3 |
| 3 N-QB3 | P-QB3 |
| 4 P-K3 | N-B3 |
| 5 N-B3 | N-Q2 |
| 6 B-Q3 | B-Q3 |
| 7 O=O | O=O |
| 8 P-QN3 | R-K1 |
| 9 B-N2 | Q-B2 |
| 10 R-K1 | P-K4 |
| 11 P-B5? | BXP |
| 12 PxB | P-K5 |
| 13 B-B2 | PXP |
| 14 QXP | NXP |
| 15 QR-Q1?? | B-N5 |
| 16 WXP?? | |
- White resigned after six more moves.

- | | |
|-----------|--------|
| 1. P-K4 | P-QB4 |
| 2. N-KB3 | P-Q3 |
| 3. P-Q4 | PXP |
| 4. NXP | N-KB3 |
| 5. N-QB3 | P-QR3 |
| 6. B-QB4 | P-K3 |
| 7. B-N3 | P-QN4 |
| 8. P-KB4 | P-N5 |
| 9. N-R4 | NXP |
| 10. O-O | P-Q4 |
| 11. P-B5 | Q-B2! |
| 12. B-KB4 | B-Q3 |
| 13. BxB | QxB |
| 14. Q-N4 | P-N3 |
| 15. P-B6 | N-Q2 |
| 16. QR-Q1 | N/2XP |
| 17. Q-B3 | O-O |
| 18. P-QB4 | PXP ep |
| 19. NXP | B-N2 |
| 20. NXP | NXP |
| 21. Q-R2 | P-QR4 |
| 22. B-B2 | B-R3 |
| 23. B-Q3 | BxB |
| 24. RxB | P-K4 |
| 25. N-N3 | P-R5 |
| 26. QXP | PXP |
| 27. PXP | Q-N3ch |
| 28. Q-K3 | QXPch |
| 29. RXP | P-K5 |
| 30. R-B6 | K-N2 |
- White resigns move 47.

Understanding Chess Laws

***UNDErSTANDING CHESS LAWS AND TOURNAMENT

DIRECTION: TIME FORFEITURE***

By MARTIN E. MORRISON

USCF Director

Questions and comments on chess laws and tournament direction are welcome, but I regret I cannot promise to answer letters personally, although they may be discussed in my columns. Send them to me at P. O. Box 1622, Oakland, CA 94604.

In response to one of my columns, I recently received a letter from Peter J. Meschter, Chairman of the USCF College Chess Committee and industrious President of the Intercollegiate Chess League of America. His column "College Chess News" appears in Chess, Life & Review.

The letter runs in part as follows:

"I have read some of your recent comments on rules with great interest, and finally the article in the most recent (2/1970) Northwest Chess moves me to comment. . . .

"As for recording moves in time trouble--this has led to more arguments than I could ever begin to count. I believe that most commentators to this problem, and especially Mr. Schroeder Editor of View from the Flag Pole, of Cleveland, Ohio, are much too optimistic in their proposed rulings. If and when I run tournaments, the rules will be as follows: Since I cannot guarantee to be able to oversee every time difficulty, the only time forfeits allowed will be by claim. The claiming player must show 1) that his opponent's flag is down, and 2) that his score sheet shows that his opponent's flag fell before the time control. . . .

"I realize that this set of rules which are given in far more detail than is possible to include here may not be in exact conformity with the FIDE World Chess Federation rules; on the other hand, I think it is a common-sense modification of them to the conditions of a Swiss System tournament, which may have only one official for 100 or more players. Its usefulness is its justification. Of course, much different rules would apply to a grandmaster tournament, where an official would be on hand at each time difficulty to make absolutely sure of the circumstances; but a large (or even small) Swiss is not a grandmaster tournament, so why do the rules have to be exactly the same? . . ."

I am very grateful for Mr. Meschter's so precisely formulated contribution to this problem. In this field of chess laws and tournament direction such precision is too often lacking, to the detriment of both directors and players. Although Mr. Meschter's complete set of rules is too long to quote here in full, the section quoted above provides quite sufficient food for comment.

Let me preface my remarks by stating that Article

13 of the FIDE Laws on Recording of Games and Article 17.1 on Loss of the Game on time are so unclear in practice that even International Grandmaster Larry Evans believes a clarification is necessary. However, after intense study of the problem, I am now of the opinion that the FIDE Laws envisage two methods of time forfeiture: by claim of a player and by action of the tournament director. That a player is allowed to make a claim is implicit in Article 19(c); Mr. Meschter assumes this right of a player. On the other hand, the right, indeed the duty, of the tournament director "to establish that the prescribed time limit has not been exceeded by the players" is clearly stated in Article 19 (b).

One of the most eloquent formulations of the basic principles at work here was recently penned in the November 1969-January 1970 Magazine Chess Scribe, edited by James A. DiDomenico. In my next column I shall quote and analyze Mr. DiDomenico's remarks, which will shed considerable light on how to administer time forfeits.

20-15-10-5 years ago

FROM PAGES WCL

June 1950, Washington won the International Peace Arch chess tournament, winning on the Class A boards by a score of 16-12 and snatching the B class with a 14-4 score. Another international match held in Colville, Washington was also won by a Washington team with a 4-1 score over their British Columbian counterparts. The issue stated that the present tally on known international matches between Washington and B.C. was 34-17, in favor (of course) of Washington. Two Russians won the candidates tournament held in Budapest, Bronstein and Boleslavski. Bronstein lost 2 and drew 8, while Boleslavski drew 12. It was announced that the winners would play world champion Botvinnik, in the near future. They had no Postal Chess standings in this issue of 18 pages.

June 1955, The International Match was announced as being held on July 24th, underneath the Peace Arch. Washington, the Chess letter said, was shooting for an unprecedented third straight win. The Seafair Chess Tournament was also announced with a \$2.50 entry fee. An argument for a new WCF constitution was put forth stating that: "The Chess Letter was outmoded and outdated, that it left the president powerless and didnot properly define the roles of officers." It was also announced that the WCF was now affiliated with the USCF. The Connecticut Title Chess Tournament was won by Dr. Joseph Platz, and the Kentucky Open was won by Mr. Jack Mayer. The Yakima Round Robin tournament was won by Bob Edberg of Tieton with a 24-1-2 record. 18 pages in this issue.

June 1960, Viktors Pupols won the Puget Sound Open over a field of 46 with a perfect 5-0 score. Second was Richard Schultz with 4½-½ score. 2 tries harder! Seattle dominated the tournament. The rate was 30-1, then a petition was circulated calling for a 50-2. The tournament director then amended it to 50 in one hour 45 minutes! Dalberg Wins Again! was the title of one of the columns, which went on to tell how Ivars Dalbergs won the Portland Interstate Open with a perfect score of 5/0; with second place Henrik Lundh having a score of 4-1. The Washington Jr. and the International Matches were announced in this issue of 14 pages.

June 1965, In the B.C. Open, a tie resulted between Duncan Suttles and Mascosy, both with 4½-½ scores. Clark Harmon took the second annual University of Washington Chess Tournament. He waked away with a prize of \$14.00, Kent Pullen second \$7.00, and a three way tie for third between Willy Brendal, Don Corey and Tony Marsland for a third prize of \$3.50. Pretty good for a field of 14. I wonder what the entry fee was! In a team match, U. of W. drew a team match between them and Portland State. The score was 5-5. In a match between McNeil and University of Washington, The big U. won by a score of 6-1. In the Zagreb International Tournament, an extremely tough field consisting of 15 grandmasters and 4 international grandmasters. When the dust finally settled, Borislav Ivkov and Uhlam tied for first, a full point ahead of then World Champion, Tigran Petrosian.

John Allard

High School in Chess

BY HOWIE CHIN

Part I: League Round-ups

Western District Independents (final reports)

Auburn	3-0	+Woodway	0-1
Roosevelt	2-0	+Mariner	0-1
C. Wright	1-0	+Mt. Baker	0-2
M. Terrace	1-0	Olympic Jr.	0-2
Everett	2-0-1	Tahoma	0-1
Cascade	1-1-1	Peninsula	0-1
Washington	1-1	Puyallup	0-1
Lakes	0-0-1	Hale	0-1
Lincoln(T)	0-0-1	Kennedy	0-1
Bothell	1-0		

+indicates a true independent, i.e., a school without a league.

The Western Conference (final standings)

	robl	robII	overall
*Everett	1-2	2-0-1	5-2-2
Cascade	3-0	2-1-0	7-2-1
M. Terrace	2-1	1-1-1	4-2-1
Snohomish	0-3	0-3-0	0-6-0

Northwest League (final standings)

	robl	robII	overall
* Bellingham	3-0	3-0	6-0
Sehome	2-1	1-2	3-3
Sedro Woolley	1-2	1-3	2-5
Oak Harbor	0-3	0-3	0-6

Sehome and Sedro have a double forfeit.

Northwest Metro League (final standings)

		overall
*O'Dea Preparatory	2-0	9-13-0
Blanchet High	1-1	2-2-0
Kennedy High	0-2	6-17-0

Seattle Catholic League

		overall
*Kennedy High	1-1	6-17-0
*Blanchet High	1-1	2- 2-0
*O'Dea Preparatory	1-1	9-13-0

Eventhough Kennedy; Blanchet, and O'Dea tied for the Seaco title, Kennedy went into the State Tourney as a bid-winner.

Metro League

Seattle Metro League Final Standings Championship Division

	rob I	rob I	overall
1 Roosevelt	11-1-1	7-0-0	24-2-1
2 Mt. Rainier	10-1-1	5-2-0	15-3-1
3 Franklin	8-3-2	4-2-1	12-5-3
4 Garfield	7-5-1	4-3-0	11-8-1
5 Queen Anne	8-2-3	3-3-1	11-5-4
6 Ingraham	9-2-1	2-4-1	11-6-2
7 O'Dea	7-4-2	1-6-0	11-11-3
8 Rainier Bch.	6-7-0	0-6-1	6-13-1

Alternates' Division

Roosevelt JV.	0-0-0	5-0-2	5-0-2
Ballard	5-7-1	5-1-1	10-8-2
Lakeside	0-0-0	5-2-0	5-2-0
Lincoln	3-9-1	4-2-1	7-11-2
Kennedy	2-11-0	4-3-0	6-14-0
Hale	0-0-0	1-6-0	1-6-0
W. Seattle	5-7-1	1-6-0	6-13-1
Tyee	2-11-0	1-6-0	3-17-0
Cleveland	0-13-0	0-0-0	0-13-0

King County League

Bothell	6-0-0	6-0-0	14-3-0
Belleuve	3-2-1	4-1-1	7-3-2
Newport	2-3-1	4-2-0	6-5-1
Interlake	3-3-0	3-2-1	6-5-1
Mercer Island	2-4-0	2-4-0	4-8-0
Redmond	2-4-0	1-5-0	3-9-0
Lk. Wash.	2-4-0	0-6-0	2-10-0

Eds. Note: In overall standings, league, independent, and NW Zonal Tmt. are counted. State Tmt. matches are not counted.

Puget Sound League (final standings)

	leag.	overall
* Enumclaw	5-0	5-0
Olympic Jr.	4-1	4-3
Auburn	3-2	6-2
Peninsula	1-3	1-4
Rogers	1-3	1-3
Kent-Meridian	0-5	0-5

There is still a make-up match between Peninsula and Rogers.

(P.C.) Tacoma League (final standings)

* Lincoln (T)	3-0	5-1-2	
C. Wright	2-1	5-2-0	
Lakes High	1-2	3-4-1	
F. Pierce	0-3	4-3-0	

The Central and Southern Divisions' standings are in April's "High School in Chess." The other league members are: Bellarmine Prep., Mt. Tahoma, Stadium, of the Central Division, and Clover Park, Puyallup and Washington of the Central Division.

The leagues' robin I, robin II, and independent matches are added to the overall. State Tournament matches are NOT added. Inter-league matches are not added to the overall, because the Inter-league Tournament had 4-man teams. HSB rules, as laid down by league directors, calls for 5-man teams.

Only the robin II standings count toward the league title. (JV indicates a junior varsity teams.) *star indicates a league champion. "Rob" indicates a round robin standing. P.C. abbreviates Pierce County.

1970 ALL STATE TEAM

(as chosen by the high school editors)

player	rating	grade	school
Walter North	1800	Sr.	Roosevelt
Mike Burke	1650	Sr.	Roosevelt
Robert Born	1550	Jr.	Queen Anne
Wayne Chin	1995	Sr.	Bellingham
Steve Drew	1628	Sr.	Ingraham

Washington HIGH SCHOOL TEAM TOURNAMENT

1970 STATE TOURNAMENT

RdI RdII RdIII RdIV Score

*1 Roosevelt	W9	W7	W3	W2	4-0
2 Queen Anne	W11	W4	W6	L1	3-1
3 Ingraham	W8	W10	L1	W6	3-1
*4 Bothell	W15	L2	W12	W7	3-1
*5 Bellingham	L12	W14	W11	W8	3-1
*6 O'Dea	w14	W12	L2	L3	2-2
*7 Lincoln(T)	W13	L1	W10	L4	2-2
*8 Cascade	L3	W16	W9	L5	2-2
9 Olympic Jr.	L1	W13	L8	E	1-2
*10 Kennedy	W16	L3	L7	E	1-2
*11 Enumclaw	L2	W15	L5	E	1-2
12 Bellevue	W5	L6	L4	E	1-2
13 Interlake	L7	L9	E	E	0-2
14 Mt. K. Terrace	L6	L5	E	E	0-2
15 Ch. Wright	L5	L11	E	E	0-2
16 Mt. Rainier	L10	L8	E	E	0-2

*indicates a league champion. ** Everett High is the Wesco League Champion, but Cascade, as Wesco Runner-up, replaced Everett's Tournament berth.

On 25 and 25 April, league champions, and other powerful teams, met at the 4th. Annual State Tournament. It was the Roosevelt "Rough Riders" who galloped away with the title.

(Round I)

In Round I, every league champion was paired off against non-champ. Here were the scores:

*Roosevelt	5	*Bellingham	1
Olympic Jr.	0	Bellevue	4
*Lincoln(T)	3	*O'Dea	2½-3
Interlake	2	M. Terrace	2½-2
*Kennedy	5	*Bothell	3
Mt. Rainier	0(f)	C. Wright	2
*Cascade	2	*Enumclaw	2
Ingraham	3	Qu. Anne	3

Bellevue over Bellingham was the biggest upset, with Bellingham fielding a board order with A B B C they were beaten 4-1 by Bellevue C C C C D. And Bellingham's lead board, Wayne Chin, the highest rated player at the Tournament was drawn by Bellevue's female lead board, Carol Schetzl!

Round II

In round II, the pressure increased. The "Sweet Sixteen System" was used, which calls for the elimination of scoreless round II teams. And non-scorers were fighting to stay in the State Tournament.

Olympic Jr.	3	*Bellingham	2½-4
Interlake	2	M. Terrace	2½-1
Mt. Rainier	0(f)	Bellevue	2½-1
*Cascade	5	*O'Dea	2½-4
*Roosevelt	4½	*Bothell	1
*Lincoln(t)	½	Qu. Anne	4
*Kennedy	½	C. Wright	1½
Ingraham	4½	*Enumclaw	3½

Coach Mr. Lathrop, who coaches the only junior high school in a league affiliated with the HSB, watched his young lads eliminate Interlake the returning State Runner-up.

In the early 60's, there was great rivalry between the Seattle City and Tacoma City Champs. This rivalry was re-lived when the Roosevelt, the Seattle Metro Champs, were paired with Lincoln, the Tacoma Champs. Lincoln had even games for a lengthy time. But all at once, the Lincoln "Abes" broke under the "Rough Riders." This kept the "Abes" out of the title. But as this editor watched the match; he detected the "Abes" sense of deterring courage.

Wright Academy, which had three of her faculty members watching the match were heart-broken when Enumclaw, the Puget Sound Champ, stund Wright 3½-1½. The Wright coach, Mr. Alcorn pledged to return next year.

Round III

By round III, four schools were eliminated, and the picture of the 8 placers was beginning to come to light. In Queen Anne vs. O'Dea, the winner goes on for the title, and loser clashes with the loser of Ingraham vs. Roosevelt for 3rd or 6th. The winners would then fight for 1st or 2nd. In Olympic Jr. vs. Cascade, and Bellingham vs. Enumclaw, the winners

go on to vie for 5th and 8th, and the losers are eliminated. In Lincoln(T) vs. Kennedy, and Bellevue vs. Bothell, the winners go on to play for 4th and 7th, and the losers are eliminated. So the tension and pressure were keen in this round. Here are the results:

Olympic Jr.	2	*Roosevelt	4½
*Cascade	3	Ingraham	½
*Lincoln(T)	5	*O'Dea	1
*Kennedy	0	Qu. Anne	4
*Bellingham	3	Bellevue	0
*Enumclaw	2	*Bothell	5

Roosevelt, the State Tournament favorite, bigged Ingraham, led by a fiery captain-Steve Drew, 4½-½. Lincoln, the Taco League Champs, blanked Kennedy 5-0, which shows the superiority of the Tacoma League over the Seaco. League. Bellingham, led by Captain Wayne Chin, eliminated Enumclaw, led by Coach Mr. Estby. Mr. Estby, a very serious coach pledged to come to State again, hopefully to win 1st. Cascade, the acting Wesco champ eliminated Olympic Jr., led by Coach Mr. Lathrop. Mr. Lathrop, who coaches his young team both in the morning and afternoon (after school), also exclaimed to return next year. Both faculty congratulated the tournament officials on a well-run event.

Round IV

The final round proved to be the most exciting, with 8 State places awaiting the schools. The 8 places were determined in the following:

*Roosevelt	(score:www)	3½
Queen Anne	(score:www)	1½
Ingraham	(score:wwl)	3-
*O'Dea	(score:wwl)	2
*Bothell	(score:wlw)	3½
*Lincoln	(score:wlw)	1½
*Bellingham	(score:llw)	4½
*Cascade	(score:llw)	½

Bellingham, which was upset in the first round, finally got down to business, and won the rest of her matches---with high scores. Bellingham took 5th.

Bothell, led by 1969's #1 coach, Mr. Christopher, snatched 4th from Lincoln, led by Mr. Beamish, coach and "cheerleader."

Ingraham, slipped by O'Dea, led by Coach Mr.H.Chin (your editor) 3-2. Ingraham, with her first entry into the Tournament, seized 3rd from O'Dea, a team with traveling expenses and coaches' salary paid for by her student body. After many sacrifices, and lengthy hours of training, O'Dea was heart broken at the close score.

Roosevelt, having scored 10th at the Nationals and 1st at the NW Zonal, scored 2-0 on the returning State Champs, Queen Anne. Then, in a tricky combination, "Rough Rider" Captain Walt North, scored against "Kuay" captain, Bob Born. This tricky combination gave Roosevelt the title.

All through the Tournament, this editor could see many emotions displayed. Patience, perseverance, pressure, fear, heart-break, admiration, and school loyalty--the greatest virtue there---could be witnessed throughout the event. It was these emotion, and above all, school loyalty, which motivated the desire for victory. Every move in every game had meaning; it was done for dear, and loving Alma Mater.

Part III: Organizational

Executives from the Washington Interscholastic Activities Association were invited to the State Tournament. Dr. Henry Rybus, WIAA Executive Secretary, congratulated the HSB Coordinator on a tournament "well done ." Next year, 1971, the State Tournament will probably run by the WIAA. By 1972, the leagues will probably run by the WIAA. When the HSB enters the WIAA, chess will become an interscholastic activity with full WIAA status.

Part III: Misc. News

The 1970 St. Tmt. Facilities

The "Tourney" was staged at Seattle University, which provided many good facilities. Thanks to many people on the SU campus, as well as others, this event has had the best facilities of any tournament in Washington. We had tourney programs, giving info on every entry and the HSB, sold. There were pep rallies, and radio-newspaper coverage. Above all, there was TELEVISION coverage. There were lodging facilities for players, and seats for spectators. It was a great tournament!

1969 ALL STATE TEAM

1	Tim Kauppila	1765	Sr.	Queen Anne
2	Digne Delenea	1852	Sr.	Garfield
3	Larry Pratt	1860	Sr.	Newport
4	Karl Joiner	1809	Sr.	Interlake
5	Vincent Hikida	1670	Sr.	Auburn

1970 TOP TEN COACHES (as chosen by the high school eds.)

1	Mr. Wm. J. Lathrop	Olympic Junior
2	Mr. Spencer Grendahl	Bellevue Highh
3	Mr. St-Christopher	Bothell Highh
4	Br. John Hunt	O'Dea High
5	Mr. Stan O. Seely	Auburn High
6	Mr. Howard Chin	O'Dea High
7	Mr. H. R. Estby	Enumclaw
8	Mr. Kent Alcorn	Charles Wright Acad.
9	Mr. G. Partington	Kennedy High
10	Mr. Ron Jarmon	Stadium Highh

EDITORIAL

(The following editorial is taken from the winter, 1969 edition of the South Carolina Chess Association News, and raises some good questions about the U.S.C.F.)

As most of you know, Chess Life has just absorbed Chess Review and now has attained a near monopoly in American Chess Publishing. This will undoubtedly result in a strong USCF, and will make difficult for anyone else to compete with any of its functions. Thus, although the Correspondence Chess League of America is supposed to be recognised by the USCF as the official national body for correspondence chess, the USCF is now in direct competition with it. Since the USCF includes virtually all tournament chessplayers in the US, it has a great advantage; some sort of merger would appear likely in a very few years.

There are numerous advantages in having a strong, active USCF as the central body in American chess. There are also dangers. The strength of the USCF is due almost entirely to one man, Col. Edmondson, who is vastly more efficient and dedicated than any of his predecessors. Thus the future of the organisation for the next few years is very much dependent on his continued health and dedication to his work. The USCF officers must bear this in mind and attempt to build the organisation into one that will function in any event.

It also seems inevitable that a larger USCF will become even more impersonal and unresponsive to the membership, if this is possible. The recent casual elimination of family memberships is an example of the kind of "minor" change which saves a little trouble for the USCF business office at the expense of the members, including several South Carolina families. This should be reconsidered, and the organisation should be alert for ways to provide more service. Alas, I doubt that this will happen, and in several years of dealing with the USCF as first a USCF Director and then as a state officer, I have found the officers quite unresponsive even to the thoughts of the "Directors." Apparently the annual meetings of the directors are the only opportunities to be heard, and relatively few attend these; the officers and the Business Manager do attend the Director's Meeting, armed with enough proxies to defeat any movement offensive to them or to accomplish any purpose of their own. This is obviously a very unhealthy situation, with dangers which are immediately apparent. In addition, the by-laws have just been changed so that Director's must be certified further in advance of the annual Director's Meeting, thus frustrating the practice of several states which appointed as Directors those members who planned to play in the U.S. Open and who therefore would represent their state at the meeting in person.

Letters to the Editor

Too often we take the dedicated service of some individuals for granted--never indicating to them our appreciation. May I, cognizant of the growth of the WCF, the improvement in its publication, and the overall contribution to chess in the North west state that all this is attributable, to a great extent to one individual. Russ Miller has given of his time and energy, always helpful in assisting individuals and groups, and cooperating to the fullest extent possible with those who seek guidance. And so I take this opportunity to express my appreciation to him for his accomplishment in furthering chess in the Northwest.

Edward V. Bosse
Tacoma, Wn..

JOIN O.C.F.

28

1970 WASHINGTON H.S. Indiv. Championship

WASHINGTON HIGH SCHOOL INDIVIDUAL CHAMPIONSHIP

Seattle University May 23 - 24

PLAYER-SCHOOL-YEAR	-1-	-2-	-3-	-4-	-5-	TOTAL
1 Walter North Roosevelt Sr.	W10	W7	W2	D4	D3	4 - 1
2 Wayne Chin Bellingham Sr.	W9	W11	L1	W8	W4	4 - 1
3 Owen Overton Edmonds Sr.	W12	D4	W10	W9	D1	4 - 1
4 Bob Ruotsalainen Garfield Sr.	W8	D3	W5	D1	L2	3 - 2
5 Steve Drew Ingraham Sr.	W13	W6	L4	L10	W9	3 - 2
6 Tom Rowan Redmond Jr.	L7	L5	WF	W12	W10	3 - 2
7 Jan Hanner Bellingham Soph.	W6	L1	L9	W11	D8	2½-2½
8 Ken Hoppe Cascade Soph.	L4	W13	W11	L2	D7	2½-2½
9 Alford White Cascade Soph.	L2	W12	W7	L3	L5	2 - 3
10 Frank Grgurich Enumelaw Jr.	L1	Bye	L3	W5	L6	2 - 3
11 Mitchell Skreen Enumelaw Sr.	Bye	L2	L8	L7	W12	2 - 3
12 Bruce Robinson Enumelaw Sr.	L3	L7	Bye	L6	L11	1 - 4
13 Carl Brecht Roosevelt Soph.	L5	L8	LF	LF	LF	0 - 5

A small band of players showed up the morning of May 23 to compete in a tournament that would decide the 1970 Washington high school individual champion. Even though the number was small the spirits were high. The result was a three way tie.

Walter North landed atop the jam with better tie-breaking points, but did not demonstrate by his play a clear superiority over the second and third place finishers except in his game with Chin. In that game Wayne attempted a "routine" attack that lacked preparation and was interrupted by some unrelated moves on the queen side that resulted in many wasted tempos.

The most wins were claimed by Wayne Chin. He was the only one to score four wins. He effectively took advantage of his opponents weak play to secure his victories. A representative game is given below.

Owen Overton, like North and Chin, is part of the graduating class of 1970. It came as no surprise when he drew Walter North in the final round to take a share of first. His technique is good and he was able to convert small advantages into plus scores. Owen went unbeaten and had an identical score with Walter; three wins and two draws.

Other trophy winners:

Robert Ruotsalainen (top senior) [the top three chose to take their respective place trophies], Tom Rowan (top junior), and Jan Hanner (top sophomore).

Wayne Chin WALT NORTH

1 P-Q4	N-KB3	20	P-B4
2 P-QB4	P-KN3	21 N-N5?	R-B2
3 N-QB3	B-N2	22 NxN	RxN
4 P-K4	P-Q3	23 RxR	NxR
5 P-B3	QN-Q2	24 B-Q3	P-B5
6 B-K3	P-K4	White has the bad Bishop. Notice how his own pawns restrict its movement.	
7 P-Q5	O-O	25 N-K2	B-R3?
8 P-KN4	N-B4	Black trades his "good" Bishop and his Knight ends up on a poor square. Better is B-K2 with good chances for Black.	
9 P-N4	N-R3	26 BxB	NxB
10 P-QR3	P-B3	27 K-Q2	R-QB1
11 P-KR4	PxP	28 N-B3	N-B2
12 BPxP	P-N3	29 R-QB1	R-Q1?
13 R-B1?		QxQ is indicated. Black would then win the isolated rook pawn and have a passed pawn on the King side. Bk would then move 30 ... N-K1.	
This move and other moves on the Queen side sway from the planned King side attack.			
13	N-B2	30 QxQ	KxQ
14 Q-Q2	N3-K1	31 P-R4	R-Q2
15 P-R5?		32 N-R2	K-B1
White is not prepared to make this push, his pieces are not mobilized for the attack. Better is B-Q3 followed by N-K2 and O-O-O if that were possible (see note above).			
15	Q-K2	33 P-N5	R-R2
16 B-R6?		34 N-N4	N-K1
Again, this is premature and leads to no advantage.			
16	P-B3	35 N-B6	R-R7ch
The point of Q-K2.			
17 PxP	PxP	36 K-B3	R-KB7
18 Q-KR2	BxB	37 NxRP	RxPch
19 QxB	Q-N2	38 K-Q2	R-QR6
20 P-N5?		39 R-B4	R-R7ch
Another unfortunate pawn move. Here he might have tried R-B2 then QR-R2, but black is in no trouble.			
49 K-B2	P-N4	40 K-K1	R-R8ch
50 P-R5	P-N5	41 K-B2	R-R7ch
51 R-B2	R-KB6ch	42 K-B3	R-R6ch
52 K-N1	R-KN6ch	43 K-N4	R-KN6ch
53 R-KN2	R-N6	44 K-R4	R-N8
54 P-R6	P-N6!	45 N-B8	R-KR8ch
This move saves the day. The threat is R-N7 mate.			
55 R-QB2	P-B6!	46 K-N4	R-KN8ch
(see note above)			
56 R-B1	RxP?	47 K-B3	RxP
56...R-N7 wins if 57 P-R7 then Black has R-KN7ch K-B1 (K-R1?, R-R7ch K-N1, P-B7ch wins-work it out.) R-Kr7 K-K1, R-R8ch wins.			
57 P-R7	N-B2	48 NxNP	R-N6ch
58 P-R8(Q)ch	NxQ		
59 NxN	R-N6?		
R-N7 still wins.			
60 R-KB1	R-K6		
61 N-B7	P-N7		
62 R-Q1	RxP		
63 K-B2	R-N5		
64 R-KN1	P-K5		
65 K-K3	R-R5		
66 N-K6ch	K-K2		
67 N-N5	R-R8		
68 NxBP	PxN		
and Black wins			

State Chess Championship Tournament was held in that year. Special publicity was given this event in an effort to attract players from other parts of the State, with the gratifying result, that while only six players entered, two were from Tacoma, a one from Bangor.

1933 saw the birth of the Puger Sound Open Tournament, and the initial tourney was held in the beautiful setting of Point Defiance Park. Tacoma, the players being seated in a pavilion overlooking picturesque Puger Sound. I am indebted to Carröll Craih for the following recording of the competition; - "Dightman was the prime mover in organizing the Puget Sound Tournaments with rather lukewarm cooperation from the rest of us since we had just completed the Washington State Tourney. The final standing in 1933 was Ulvestad first with straight wins, Sheets second with 1½ losses (drew with me and overreached himself playing for a win against Ulvestad in the final round,) Holms third by virtue of several draws and no losses, and myself fourth.

Ed. Hilton of Tacoma brought up the rear with straight losses and promptly retired from chess, (escape note for the frustrated), to become bride champion."

In 1938, due to the spade work of E. G. Bayliss, the Lowman and Hanford Co. donated for the Washington State Tournament an exceptionally handsome trophy, which evoked such special interest that it become necessary to hold the tournament in three sections because of the unpreceented number of entries. A significant feature being that the publicity attracted an enormous crowd of spectators, who taxed the quarters of the club to capacity.

The inauguration of the Seattle High School League about 1930 brought into the picture the name of Olaf Ulvestad, who was destined to become Washington's brightest chess luminary. The League itself suffered an early demise, probably as Ole recalls because the West Seattle teams' three top boards--Ulvestad, Ishida and Dubkle were all members of the Seattle Chess Club, rendering this team practically unbeatable.

However, while it lasted, the League was instrumental in developing many players who are still staunch chess fans.

The early Ulvestad was a sensitive thoughtful youth with a grand sense of humor. He was also endowed with a rare attribute among chess masters--the endearing trait of modesty. These qualifications, coupled with an ample endowment of tolerance place Olaf, in my estimation, in the top bracket of chess masters.

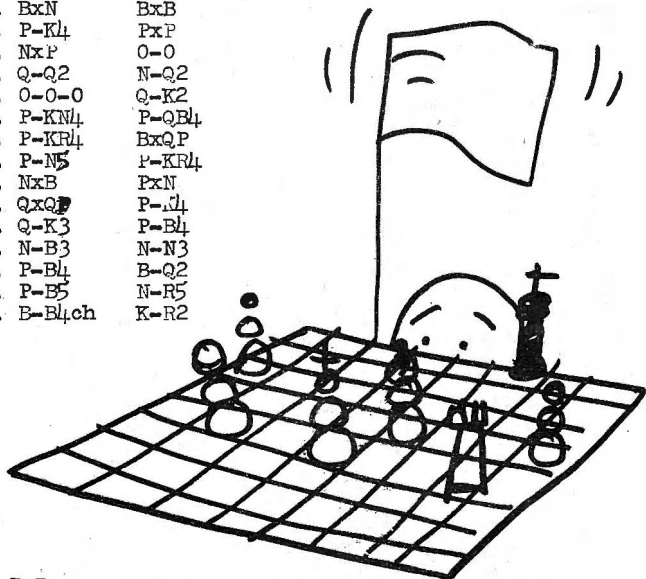
I have met several chess masters in my time, and usually am reminded of the English lady at a diplomatic function, who was sitting by herself, obviously bored and a little disgusted. A friend, trying to help, invited her to join her group, saying, "My dear, I'd love to have you meet some of our politicians. Won't you join us." The lady replied; with a hint of weariness in her tone; "No thanks, I've just met one."

Only once do I recall that Olaf's mantle of tolerance slipped a little. This when Ole and I were defending democracy in the Bremerton Navy Yard, and whiling away the ferry time by playing chess. By some mischance, Ole was distraught and suffered a fourth defeat, whereupon I, making some commonplace remark, as-- "WOW, that's four straight. YIPPEE,"--inpired Ole to a rare breach of manners. He said, "Yes,

Jim Mc Cormick vs George Krauss
Puget Sound Open, May 17, 1970

(This game was sent in by Jim Hanlen, who notes that it was the the last game in the Open (championship) section of the tournament and it decided first place, the honors and the money.)

- | | | |
|-----|--------|-------|
| 1. | P-Q4 | N-KB3 |
| 2. | P-QB4 | P-K3 |
| 3. | N-QB3 | P-Q4 |
| 4. | B-N5 | B-K2 |
| 5. | N-B3 | P-KR3 |
| 6. | BxN | BxB |
| 7. | P-K4 | PxP |
| 8. | NxP | O-O |
| 9. | Q-Q2 | N-Q2 |
| 10. | O-O-O | Q-K2 |
| 11. | P-KN4 | P-QB4 |
| 12. | P-KR4 | BxQP |
| 13. | P-N5 | P-KR4 |
| 14. | NxB | PxN |
| 15. | QxQ | P-N4 |
| 16. | Q-K3 | P-B4 |
| 17. | N-B3 | N-N3 |
| 18. | P-B4 | B-Q2 |
| 19. | P-B5 | N-R5 |
| 20. | B-B4ch | K-R2 |



- | | | | | | |
|-----|------|-------|-----|-------|---------|
| 21. | RxB | QxR | 31. | RxR | PxRch |
| 22. | B-N5 | Q-Q5 | 32. | KxP | K-N2 |
| 23. | QxQ | PxQ | 33. | N-K5 | P-R4 |
| 24. | NxN | P-QR3 | 34. | P-R3 | R-Q1 |
| 25. | B-Q3 | QR-K1 | 35. | P-N5 | R-Q4 |
| 26. | K-Q2 | R-K6 | 36. | P-QB6 | PxP |
| 27. | N-N6 | P-N3 | 37. | PxP | P-R5 |
| 28. | N-Q7 | R-QB1 | 38. | B-R6 | R-B4 |
| 29. | P-N4 | R-B6 | 39. | K-Q4 | R-B8 |
| 30. | R-K1 | R-K6 | 40. | N-B4 | Resigns |

what in the world is the matter with me."

During his first few years of competitive chess, Ulvestad was remarkable for his brilliant conceptions, and failed to be a consistent winner only because of lack of experience. He could - and did - make mistakes. His first four years of the game however, gave indubitable proof that he possessed all the attributes of a true champion. The chess-board set-up was from the first, crystal clear to him, and logical plans presented themselves readily. Chess was his natural forte. Gifted with a potent

imagination, a quick intelligence, which made him one of our fastest players, and a retentive mind, as illustrated by his ability to play successfully as many as ten blind-fold games simultaneously, combined to later earn him the respected title of Chess Master.

He was just commencing to "fell his oats", - 3rd place and brilliancy prize in the 1932 Wash. State Open; Puget Sound Champion - 1933; and Wash. State Champion - 1934, when the exigencies of fate isolated him from the game for three years in Alaska.

In 1938 Ulvestad made the decision to try for national recognition, and began intensive training in the talent-loaded New York area. He became partner in a chess and checker concession in a busy profes-

1970 MONTANA OPEN

CLASS B

1. Gary Wendel
2. Leonard Readlicker
3. Pete McKeon
4. Jack Hum
5. Bill Wraith
6. Joseph Sweetin
7. Gordon Shuck
8. Stuart Wiles
9. Aaron Hitchcock
10. Norman Nowis
11. William Shifty
12. Laurie Williams
13. Jim Wiersom
14. Kenneth Werner
15. Gary Watt
16. Eva Shanley
17. Dale Brodeck
18. Marleich Bollinger
19. Austreng, John
20. Jerry Howard

35th ANNUAL TOURNAMENT MONTANA CHESS ASSOCIATION
 BUTTE, MONTANA FINLEN HOTEL APRIL 25 & 26, 1970
 FINAL RESULTS AND RATINGS

Rank	Name	Location	CLASS A					Score	Median
			1	2	3	4	5		
1.	Tai Hum	Butte	W-12	W-7	W-16	D-3	W-6	4½	8
2.	David Reynolds	Pocatello	W-4	W-14	W-6	D-5	D-3	4	10½
3.	Peter Lapiken	Missoula	W-17	W-16	W-5	D-1	D-2	4	9
4.	Wasyl Jarosz	Bozeman	L-2	W-20	W-11	W-8	W-7	4	8
5.	Wally Albert	Missoula	W-9	W-13	L-3	D-2	W-11	3½	9
6.	Dan Rogers	Bozeman	W-15	W-8	L-2	W-12	L-1	3	9
7.	Kenneth Shinn	Billings	W-18	L-1	W-19	W-9	L-4	3	8
8.	Ingward Stromsborg	Kalispell	W-19	L-6	W-14	L-4	W-15	3	7
9.	John Hammon	Missoula	L-5	W-18	W-17	L-7	W-13	3	6½
10.	L.W. Dunkin	Great Falls	L-13	L-11	W-29	W-18	W-12	3	5
11.	Dmitory Berkoff	Bozeman	L-14	W-10	L-4	W-16	L-5	2	8½
12.	Claude Laubach	Carter	L-1	W-15	W-13	L-6	L-10	2	8
13.	John Ward	Tacoma	W-10	L-5	L-12	W-17	L-9	2	8
14.	William Flora	Missoula	W-11	L-2	L-8	L-15	W-19	2	7
15.	Jack Reddy	Helena	L-6	L-12	W-18	W-14	L-8	2	7
16.	John Barto	Great Falls	W-20	L-3	L-1	L-11	D-17	1½	7½
17.	Ralph Hanson	Missoula	L-3	W-19	L-9	L-13	D-16	1½	6½
18.	Doug Smith	Bozeman	L-7	L-9	L-15	L-10	W-20	1	8
19.	Paul Shanley	Deer Lodge	L-8	L-17	L-7	W-20	L-14	1	6½
20.	Harold Ericson		L-16	L-4	L-10	L-19	L-18	0	5½

Junior Class

1. Jeff Markle
2. Jim Sullivan
3. Terry Smith
4. Jack McCormack
5. Bob Griffith
6. Brian Roth
7. Gary Solomen
8. Joe Woods
9. Robert Becker

sional section of the city, and for two years played all comers at a settled rate per game. This was not a particularly lucrative effort financially, but it added immeasurably to Ole's experience. Layer, realizing that in the slow ponderous field of tournament play, endurance and vitality could be more important than ability, he underwent a rigorous training schedule in the mountains, where he combined study with hiking, climbing, etc. topped off with vitamin-rich fresh farm food. The encouraging result was an even score, and three special prizes at the 1939 Ventnor City Tournament.

The supreme thrill of his life come when he was selected by the top seven U.S. chess masters to play the 19th board against Russia in 1946. The fascinating story of Mr. Ulvestad's trip, seen through his keen observant eyes was printed in the Chess Letter in the issues from Oct. 1948 to Mar. 1949 inclusive. Students of Russian phenomena should make a point of rereading this revealing picture of the Russian scene,

Ulvestad's opponent was David Brodstein, with whom he broke even, winning the second game in 40 moves and losing the first one after 118 moves and 1½ hours.

In 1950 he was again selected to represent the U.S. against Yugoslavia. This time he played on the fifth board.

Since 1948 Mr. Ulvestad has been studying

music, devoting one year in Italy and Scandinavia to development of his fine baritone voice - opera being his final goal.

His numerous chess friends and acquaintances will join in hoping that his career in music will surpass even his brilliant achievements in chess.

Good luck to you, Ole.

CHESS DIGEST NEWSLETTER OPENING THEORY

CHESS DIGEST MAGAZINE will go back to 12 issues per year in 1970. Price will be only \$8.50! This is a really great publication and needs your support. 1969 was a quarterly publication year for Chess Digest cost was \$5.80. You can order 1969 copies also.

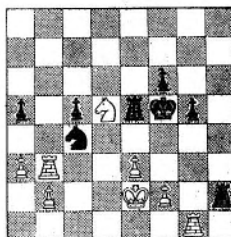
NEWSLETTER is published on 1st & 15th of every month and costs \$2.88 for 12 issues Jan-June, 1970. Has latest chess news plus best of Russia's "64" and special reports from tournament sites. It is mailed first class!

OPEN THEORY is 12 issues per year for \$6.40. It has open theory for Russia's famous Schahmatny Bulletin translated into English. You can improve your openings with this.

ALL THE ABOVE CAN BE ORDERED FROM: CHESS DIGEST
 Don't forget to ask for their P.O. Box 21225
 book & equipment catalog it has the best Dallas, TX 75211
 and at reasonable prices.

U.S.S.R. - WORLD TEAM

Round 3



Spassky - Larsen
 White to play

White played 36 R-Q1, a move which caused the spectators to gasp. Black now wound up the game with 36 ... P-N5; 37 K-B1, R-R8 check; 38 K-K2, R-R8; and White resigned for he must lose the Knight.

RENEW

Postal Chess League

BY RON NORMAN
10011 Renton Ave S.
Seattle, WA 98178

This month we announce an addition and a suspension. We are reinstating Class "AA" on an experimental basis. Any "A" player who would like to play "AA" players should request it when signing up for a section. Any "A" players who, for some reason, would not like to play "AA" players should report this when signing up so that you will not be put into an "AA" section. We will dip into Class "A" to complete "AA" sections if this is needed. If there is no objection we will, as needed, put "AA" players into "A" sections. We hope that this will not be necessary.

Concerning forfeits, I announced in the November 1969 issue that the moves of the games were required for forfeit credit. At this time I would like to suspend this requirement. All I need to know is the number of moves played before the forfeit is claimed. This is necessary because of the 6-move rule, which calls for a substitute to be assigned if 6 moves or less have been played. Please be sure to mention when you last heard from your opponent.

In the 1970 Washington-Oregon Match, Ron Norman defeated Phil Irwin in the "B" game on Board 14. The score is Washington 2, Oregon 0. 14½ points decides the issue!

GAME OF THE MONTH Mel Leonard is the star performer this month. In this game he launches a neat little attack and wins with ease. You are invited to submit your games to the director for publication in this column.

SECTION: 69B1B WHITE: Leonard
 BLACK: Cyr

1. P-Q4, N-KB3; 2. P-QB4, P-K3; 3. N-QB3, B-N5; 4. Q-B2, P-Q4; 5. PXP, QXP; 6. N-B3, P-B4; 7. B-Q2, EXN; 8. EXB, PXP; 9. R-Q1, P-K4; 10. P-K3, Q-K5; 11. B-Q3, Q-N5; 12. B-N4, PXP; 13. Q-B5, PXPch; 14. K-B1, N-B3; 15. B-N5, Q-K3; 16. N-N5, N-Q2; 17. NXQ, NXQ; 18. N-B7ch, K-K2; 19. BXNch
 BLACK RESIGNS.

SECTION	WINNERS	POINTS	LOSERS
65NWF8	Waterman	51	O. Morris
70B1B	Hagan	30	Pickering
70W014B	Norman	8	Irwin
70A1A	Mulder	52	Lundberg
70A1B	Mulder	38	Lundberg
69C6B	R. McCord	69	Camp
70C1B	Engelhard	59	Maloney
70B1A	Hagan	38	Pickering
69M3A	Skarsten	79	Leonard
69M3B	Skarsten ½	13	Leonard
68A7AB?	Nourse	35	Ward
69C6A	Camp	7	J. Miller
69A8AB?	Reh	81	Holmberg
68A7A	Waid	52	Reh
69F1A	Holmberg	70	Becker

? = not sure whether A or B game.

Class "AA" (1700 & Up)	Hart	1516	Pickering	1154
Schultz 2349	Moks	1516	Herbers	1149
Dean 2192	Beardsley	1497	Lyberger	1148
Waterman 2121	Sisley	1494	Hittle	1116
O. Morris 2028	Skarsten	1473	Sala	1110
Schmidt 2015	Espey R.	1466	Webb	1103
Rudzitis 1971	McCready	1453		
Wester 1917	Joiner	1451	Class "C"	
Lyon 1898	Reh	1444	(Under 1100)	
Mage 1876	LeBoeuf	1420	Olsen	1082
Schrader 1854	Hagan	1414	Johnson J.L.	1066
Weikel 1848	Scannell	1410	Engelhard	1059
Mitchell 1812	Keating	1406	Reddig	1047
Becker 1782			Miller J.	1047
Greenwood 1779	Class "B"		Maloney	1030
Schemm 1760	(1100-1399)		Felty	1024
Eilmes 1729	Dodson	1397	Hostick	1020
Holmberg 1726	Hill	1379	Hanson	1020
Parsons 1720	D McCord	1374	Casperson	1020
Norman 1715	P. Murray	1350	Shafer	1010
Karch 1712	Cyr	1341	White	1007
Lundh 1711	Phipps	1340	J. Davis	1000
Nourse 1709	Rousey	1328	Perala	1000
	Grassham	1320	Crown	1000
	J. Murray	1310	Hawkins	1000
Class "A"	Richardson	1308	Johnson B.	1000
(1400-1699)	Feist	1300	McLennan	1000
Mulder 1690	Grisham	1300	Sahlman	1000
Vanatta 1673	Pulley	1300	Olinger	1000
Henry 1672	Shuler	1300	Collier	1000
Abrahamson 1668	Hanlen R.	1300	Ewing	1000
Hunt 1637	Hargreaves	1300	Rickey	1000
James 1620	Morris R.	1300	Irwin	992
Bjornson 1607	Z'v'nbergen	1300	Camp	987
Hanlen, J. 1600	Hardy B.	1300	Strahl	980
LaVergne 1600	Donnelly	1280	Goakey	957
Leonard 1579	Dart	1257	Weeks	930
Hauser 1576	Reese	1252	R. McCord	929
Pattie 1542	Miller R.	1235	Green	912
Adams D. 1600	Espey S.	1228	Demarco	902
Vroman 1600	Bowen	1210	Hendricks	892
Ward 1535	Langsdorf	1210	Ashton	891
Lundberg 1526	R. Davis	1205	Reeck	862
Adams H. 1524	Running	1200	Fischer	847
Hansen 1517	Glidden	1183	Bauman	835

Play Postal Chess

Only \$.50

FROM
 NORTHWEST CHESS
 P. O. BOX 1631
 YAKIMA, WASHINGTON 98901

THIRD CLASS

BULK RATE U.S. POSTAGE PAID YAKIMA WASH PERMIT NO. 84

Mj Robert March
 536-22-9023
 USARPAC INTEL School
 APO San Francisco CA 96331