

NORTHWEST CHESS

JANUARY

1973

SUPPORT YOUR CLUB !!

WASHINGTON

AUBURN CHESS CLUB
Auburn YMCA, Mondays 7-10 PM

BELLINGHAM CHESS CLUB
Bellingham YMCA, Sundays 2 PM

BOEING CHESS CLUB
Plant 2 Cafeteria, Tuesday evenings

ELLENSBURG CHESS CLUB
Room 206, SUB, CWSC, Wednesdays 7-11 PM

EVERETT CHESS CLUB
Forest Park Field House, Tuesdays and Thursdays 8-11 PM

INLAND EMPIRE CHESS CLUB
Spokane Press Club, W. 911 Sprague (take elevator to 3rd floor), Tuesdays and Fridays 7-12 evenings

MOSES LAKE CHESS CLUB
McCosh Park Community Recreation Center, Wednesdays and Fridays 7:30-11 PM

OLYMPIA CHESS CLUB
Community Center Bldg, 1314 East 4th, Mondays 7-10 PM

PORT TOWNSEND CHESS CLUB
Youth Center, Wednesday evenings

RENTON CHESS CLUB
Renton Library, Thursday evenings

SEATTLE CHESS CLUB
617 S. Jackson, Sundays 1-6 PM, Tuesdays through Fridays 7PM to Midnight, Saturdays 1-6 PM

SKAGIT VALLEY CHESS CLUB
Mount Vernon YMCA, Thursdays 7 PM - Midnight

SULTAN CHESS CLUB
Sultan VFW Hall, Sundays 6-10 PM

TACOMA CHESS CLUB
719 S. "I" St, Sundays 12:30 - 6 PM, Tuesdays and Fridays 7:30 PM - Midnight

TRI-CITIES CHESS CLUB
Kennewick Methodist Church, 2 S. Dayton St, Tuesdays 6:30 PM and also Richland Community House, George Washington Way, Thursdays 7 PM

UNIVERSITY OF WASHINGTON CHESS CLUB
HUB Building, 3rd Floor, Friday afternoons

VANCOUVER CHESS CLUB
YMCA (1st Floor Caribou Room), 655 Burrard St, Mondays and Fridays 7 PM - Midnight

WHIDBEY ISLAND CHESS CLUB
USO, 1182 W. Pioneer Way, Mondays 7-10 PM and Saturdays 2-10 PM

YAKIMA CHESS CLUB
YMCA, 5 North Naches, Wednesdays 6 PM

OREGON

ASTORIA CHESS CLUB
PP&L Building, 10th & Commercial Streets, Thursdays 7:30-10:30 PM

HOUSE OF CHESS
2118 SE 11th Ave, Portland 97214, Evenings and Weekends

PORTLAND CHESS CLUB
210 Bullier Building, 420 SW Washington, Tuesdays and Thursdays 7PM-on and Saturdays from 1PM on

SALEM CHESS CLUB
Unitarian Church Basement, 490 19th NE, Tuesdays and Thursdays from 7PM on

An effort has been made to supply a full list of the chess clubs in Washington, Oregon, and British Columbia. Much of this list is based on old information, so that errors and omissions may occur.

Be sure to send in your CORRECTIONS because we intend for the chess club master listing to appear in at least every other issue of NWC.

INDEX

- 1 Chess Clubs Listing
- 2 Editorial Staff; Remarks
- 3 Chess Calendar; West. Idaho Open
- 4-10 Annual Ratings List (1700)
- 10 Spokane Quadrangular; Leave the Door Open
- 11-15 British Columbia
- 11 Point Grey Open
- 12 Kelowna CC Swiss; Kelowna vs Osoyoos Match
- 13 Bruce Harper cartoon
- 14 Kerrisdale Club Championship
- 15 Univ of Wash Open; Univ of Wash vs Boeing CC Match
- 16 Problems
- 17 High Schools; Whidbey Isl Chpp; Chess Digest Open; Skagit Valley Open
- 18 Portland Holiday Open; Intern. Tat in Texas; Visiting the Clubs
- 19-23 Chess Calendar Announcements
- 23 David L. Brown cartoon
- 24 (Back cover) Letters to the Editor

BRITISH COLUMBIA

NANAIMO CHESS CLUB:
Meets each Wednesday at 7:30 PM in the Library Auditorium, 580 Fitzwilliam Street, Membership is \$12 per year or casual playing at 60¢ per night.

CHILLIWACK CHESS CLUB:
Meets every Thursday 8:00 PM to 12:00 at the Red Cross Hall, 207 Margaret Ave., Chilliwack Membership is \$5 adults and \$2.50 juniors per year, bring sets. Free refreshments served.

KERRISDALE CHESS CLUB:
Meets each Wednesday at 7:00 PM to 11:00 PM at the Kerrisdale Community Center, West Boulevard and 42nd Ave, Vancouver. Membership might still be \$3.00 not sure.

RICHMOND CHESS CLUB:
Meets each Tuesday from 7:00 to 10:00 PM at the Richmond Arts Center, Membership is \$3.00 per year.

KELOWNA CHESS CLUB:
Meets each Sunday and Tuesday (except the 1st Sunday and Tuesday of the Month) time 7:30 PM, Membership is \$1.50 per month Adults and 50¢ for Students. Meets at Okanagan Regional Library board room, 480 Queensway.

KINGS KNIGHT CHESS CLUB:
Meets each Friday 7:00 to 11:00 pm at the Royal Athletic Park Lounge, corner of Caledonia and Vancouver Streets, Victoria. Membership is .35¢ per player per night.

KITIMAT CHESS CLUB:
Meets each Wednesday at the YMCA in Kitimat no further details at present.

NEW WESTMINSTER CHESS CLUB:
Meets each Thursday 7:00 to 11:00 PM at the Community Center, 65 - 6th Ave, New West. Memberships were \$4.00 per year but have possibly gone up.

BURNABY CHESS CLUB:
Meets Thursday from 7:00 to 11:00 PM at the Westburn Park Community Center, Patterson and Moscrop, Burnaby. Membership was \$5.00 per year but may have increased.

NORTHWEST CHESS

A monthly chess paper published by the Washington Chess Federation, in cooperation with the Oregon Chess Federation and the British Columbia Chess Federation.

Issue #302, January 1973

EDITOR

Robert A. Karch
5300 Keystone Place N
Seattle, WA 98103
Phone: (206) 632-5594

RATINGS

Bruce W. Bailey
10818 Roseberg S.
Seattle, WA 98168

PROBLEMS

David L. Brown
204 Irving Ave
Rockford, IL 61103

HIGH SCHOOLS (Washington)

Duane J. Polich
13220 - 6th Ave SW
Seattle, WA 98146

GAMES EDITOR

Vacant

OREGON

Bob Larrance
339 NE 5th
Hillsboro, OR 97123

BRITISH COLUMBIA

Larry W. Kirstein
3042 Orilla St
Victoria, BC, Canada

POSTAL

Richard W. Parsons
1305 - 43rd NE, Apt 511
Seattle, WA 98105

CHESS CALENDAR

Sue Richardson
1136 - 14th St
Astoria, OR 97103

CIRCULATION, MISSED ISSUES

David P. Karch
5300 Keystone Place N
Seattle, WA 98103

Note: The editorial staff may be expanded or decreased on the decision of the editor, who is responsible for the total content of the publication. Members of the staff may also (and often do!) hold elective positions in their respective regional organizations, but this does not affect their status as a staff contributor to this paper.

HOW TO RECEIVE NORTHWEST CHESS

BY PAID ANNUAL SUBSCRIPTION:

OREGON RESIDENTS:

\$4 (Juniors under 20 \$3) also includes membership in the Oregon Chess Federation (OCF).

\$13 (Juniors under 20 \$7.50) also includes membership in OCF and in the United States Chess Federation (the latter includes subscription to CHESS LIFE AND REVIEW).

Send checks to OCF Treasurer:

Michael A. Schemm
2434 SE Ankeny #2
Portland, OR 97214

BRITISH COLUMBIA RESIDENTS:

\$6 (Juniors under 19 \$3.50) (Seniors over 64 \$4.50) also includes membership in the British Columbia Chess Federation (BCCF).

\$4 WBCC members.

Send checks to BCCF Membership Secretary:

Larry W. Kirstein
3042 Orilla St
Victoria, BC, Canada

WASHINGTON RESIDENTS AND ALL OTHERS:

\$4 (Juniors under 21 \$3) also includes membership in the Washington Chess Federation (WCF).

Send checks to WCF Treasurer:

Dennis Vaughan
PO Box 1631
Yakima, WA 98907

BY EXCHANGE: We welcome exchange with editors of chess publications (at least six issues per year). Our policy is that anything can be extracted or quoted from NWC, if full credit is given to both the writer and to the publication. Exchange implies reciprocal agreement to this effect.

FROM THE EDITOR

This section of the publication is being written last, at 8 AM, Tuesday, December 26th. Have to go to the printer this morning, because I need the afternoon to get things ready for the NORTHWEST JUNIOR, which starts tomorrow.

The small, 24-page issue can be attributed to several factors, but mainly because of the change in deadlines. As a result, some of the staff contributors (who must themselves depend on others for their material) could not make it on time. I feel sure that the February issue will be back on track with a full 32 pages.

We have a new problem editor and I'll give you a biographical sketch next issue.

I played over all the games in this issue. What you don't see are another 3 pages of games which contained errors and so were sent back. In many cases, I retyped the articles or the reports to either clean up the copy or to achieve better spacing. Toward the end, I got tired of re-typing so you'll see some stuff that should have been (but wasn't).

In terms of priority, a tournament cross-table always goes in first. I expect a cross-table to show full name, home town (unless a local club championship, in which all have the same), rating used, round results, score, and prizes earned. The narrative report which accompanies the table should give additional information that is not self-evident. For example, repeating the names of who came 1st, 2nd, 3rd, is not meaningful.

I welcome your suggestions and ideas!

ON SUBMISSIONS TO THIS PUBLICATION

The basic, maximum sheet size for each page (before photo offset reduction) is 11 1/4 inches wide by 14 inches in height. This is usually divided into two columns 5 1/2 inches wide.

Ordinary articles and stories should be kept within one column (5 inches minimum, 5 1/2 inches maximum). Tournament reports which include crosstables may be expanded in any combination into two columns that total not less than 11 inches, nor more than 11 1/2 inches wide.

At the moment, unsolicited articles sent in are published without compensation. We hope to change this, but it is first necessary to build a slightly higher circulation. On no account will this editor pay anyone an advance on articles not yet written. On the other hand, any past payments for incomplete articles are hereby FORGIVEN. We start off with a clean slate, all of us!

I especially welcome pictures and cartoons of chess events and leading personalities. We also want stories of chess clubs, how they were founded, what they are doing now, etc. for which we will pay \$2 per column inch (after publication). Such club articles will be considered "solicited" but must be received before the deadline for the FEBRUARY ISSUE. Remember, "Names make news!"

The editor works on the paper continuously and prefers to receive material throughout the month. The deadline applies to the Editorial Staff, whose material occupies several pages each and, if missing, must be filled up. Earlier submissions are preferred.

DEADLINE - MATERIAL MUST BE RECEIVED BY:

February issue	Jan 23
March issue	Feb 21
April issue	Mar 20
May issue	Apr 19
June issue	May 22
July issue	Jun 18
August issue	Jul 19
September issue	Aug 27

April 9th 1966

CHESS

... Robert A. Karch



"Checkmate, I think?"



"Checkmate my foot! Not on my board."

chess calendar

JANUARY	SPONSOR	EVENT	WHERE	USCF	State	REMARKS
3,10,17,24,31	HOC	Tmt 5-SS	Portland	Yes	No	Wed nites
6-7	WCF	Tmt 5-SS	Seattle	Yes	Yes	\$500 prizes
8,15,22,29	ACA	Crs, 8 lessons	Seattle CC	No	No	\$3 nite, \$15 crs
13	Local	Tmt 3-SS	Ellensburg	No	Yes	
13-14	ACS	Tmt 5-SS	Portland	Yes	Yes	\$500 prizes
13-14	Local	Tmt 5-SS	Kelowna	No	Yes	% prizes
20-21	HOC	Tmt 4-SS	Portland	Yes	No	\$10 1st
20-21	Lions Club	Tmt 5-SS	Medford	No	Yes	Blind Benefit
20-21	ACS	Tmt 5-SS	Sea-Tac	Yes	No	\$500 prizes
27-28	OCC	Tmt 5-SS	Eugene	Yes	Yes	\$215 prizes
27-28	ACS	Tmt 5-SS	Yakima	Yes	Yes	\$260 prizes
27-28	HOC	Tmt 4-SS	Portland	Yes	No	\$10 1st

FEBRUARY	SPONSOR	EVENT	WHERE	USCF	State	REMARKS
2-4	HOC	Tmt 5-SS	Portland	Yes	No	\$10 1st
3-4	Local	Tmt 5-SS	Seattle	No	Yes	\$350 prizes
3-4,10-11	WCF	State Chpp	Seattle	Yes	Yes	\$180 prizes
5,12,26	ACA	Crs, contd	Seattle CC	No	No	\$3 nite, \$15 crs
7,14,21,28	HOC	Tmt 4-SS	Portland	Yes	No	Wed nites
10	Local	Tmt 4-SS	Everett	No	Yes	\$85 prizes
10-11	Local	Tmt 5-SS	Astoria	No	Yes	Trophies
17-18	BCCF	Tmt 5-SS	Nanaimo	No	Yes	% prizes
17-18	HOC	Tmt 4-SS	Portland	Yes	No	\$10 1st
17-19	ACS	Tmt 6-SS	Seattle	Yes	Yes	\$500 prizes
24-25		Tmt	Corvallis			OSU Open
24-25	WCF	Tmt	Wenatchee	No	Yes	Wash Jr Open

MARCH	SPONSOR	EVENT	WHERE	USCF	State	REMARKS
1-2	HOC	Thurs-Fri Open	(Portland)			
2-3	WCF	HS Team Tmt	(Auburn)			
3-4	Oak Harbor	Open				
3-4	HOC	Insanity Open	(Portland)			
7,14, etc	HOC	Wed eve Open	(Portland)			
9-11		4th NW HS Tm I-sonal	(Portland)			
10-11		Yakima Spring Open				
10-11		Salem Jr				
10-11		2d College Tm Tmt	(Portland)			
10-11		New Westminster Open				
10-11		Snohomish County	(Everett)			
10-11		Portland Open				
12-13		HOC Mon-Tues Open	(Portland)			
17-18		HOC Open	(Portland)			
17-18		Cascade Open	(Eugene)			
17-18		Seattle Spring Festival				
24-25		Portland Amateur				
31, Apr 1		Jet-Way Open	(Sea-Tac)			
31, Apr 1		HOC Open	(Portland)			

APRIL	SPONSOR	EVENT	WHERE	USCF	State	REMARKS
7		Pilchuk Mtn Woodbusters	(Ev't)			
7-8		Portland Spring Open				
14-15		Puget Sound Open	(Everett)			
14-15		NW Women's Chpp	(Everett)			
14-15		Inland Empire	(Spokane)			
14-15		Willamette Valley	(Corvallis)			
20-22		BC Chpp S-Finals	(Vancouver)			
21		Spring Tornado	(Everett)			
28-29		Seattle Class Chpps				

Late additions to the Calendar

*Jan 20	SE Wash Open	(Kennewick)
*Jan 27-28	Louis Riel Open	(Univ BC)
Feb 8-11-13	Biyisasas v. Suttles	(not firm)
Feb 10-11	Spokane tmt	
Feb 17-18	N. Vancouver Isl Open	(Nanaimo)
Mar 17-18	Spokane tmt	
Mar 24-25	Swiss Open, Inter Hse	(Univ BC)
Apr 14-15	Inland Empire	(Spokane)
May 12-13	Spokane tmt	
Jul 21-22	Spokane tmt	
Aug 11-12	Spokane tmt	
Sep 8-9	Spokane tmt	
Oct 13-14	Spokane tmt	
Nov 10-11	Spokane City Open	

*Detailed announcements on page 23

MAX

5	Match: Seattle CC vs HOC	(S'tle)
12-13	Cherry City Open	(Salem)
12-13	Everett City Open	
19-20	Seattle Open	
19-21	BC Chpp Finals	(pending)
26-28	Rose City Open	(Portland)

JUNE

2-3	Tri-State Open	(Spokane)
11-15	Chess Academy	(Seattle)
23-24	Viking Open	(Astoria)
30, Jul 1	30/30 Warmup Swiss	(Sea-Tac)

JULY

1-8	Independence Wk Congress	(S-Tac)
2-6	NW Team Chpp	(Sea-Tac)
4	Speed Tournament	(Sea-Tac)
14-15	Yakima Sunfair	
21-22	Oregon Woodpusher	(Salem)
28-29	Seattle Seafair	
28-29	Sunset Empire Open	(Astoria)

AUGUST

4-5	Portland Summer Open	
4-5	Oregon Men's Chpp	
11-12	Northern Oregon Open	
11-12	Ore Men's & Women's Chpps	
18-19	Emerald Empire Open	(Eugene)
18-19	Sea-Tac Summer Open	

Note to organizers and interested persons: Shown to the left is the new format for the Northwest CHESS CALENDAR. It will list tournaments, exhibitions, lessons, etc. A one-line entry is free to all. More detailed announcements, which include information provided by the sponsor (but may be re-typed to fit space requirements) will be published on the back pages of each issue. In the past, these announcements were free. Effective with the MARCH 1973 issue, the charge will be \$1 per column inch (as published) and the invoice will be sent out after each issue. On the balance of this page is the calendar in the old style, but it will be converted to the new format next issue.

Continue to send your one-line entries, and your detailed announcements to:

Sue Richardson
1136 - 14th Street
Astoria, Oregon 97103

SEPTEMBER

1-3	Oregon Open	(open to bid)
1-3	WCF Open	(Yakima)
8-9	ACS Tmt	(Seattle)
22-23	Corvallis Open	
29	St Helens Open	
29-30	Tacoma Fall Open	

OCTOBER

6-7	Emerald City Open	(Eugene)
13-14	Pacific NW Open	(Portland)
20-21	Salem Open	
20-21	Seattle Amateur	
27	Astoria Open	

NOVEMBER

3-4	Mitchell Mem Tmt	(K. Falls)
3-4	ACS Tmt	(Seattle)
10-11	Portland Fall Open	
23-25	Seattle Turkey Shoot	
24-25	Oregon Jr	

DECEMBER

1-2	Holiday Open	(Portland)
15-16	ACS Tmt	(Seattle)

Explanation of Abbreviations

OCF - Oregon Chess Federation
OCC - Oregon Chess Club
WCF - Washington Chess Federation
ACS - American Chess Service
HOC - House of Chess

PLEASE REMEMBER!!

One-line entries and detailed announcements (5 1/2 inches wide, maximum) must be received by SUE RICHARDSON at least 8 weeks prior to the event, or you run the risk of not getting published.

1972 Western Idaho Open

Boise Idaho

December 2, 1972

Player

Player	Town	USCF	1	2	3	4	SCORE	SOLK	PRIZES
1. Kenneth Sanderson	Boise	1504	W3	D2	W11	W5	3 1/2 - 1/2	10 1/2	1st
2. Eugene Cowan	Driggs	1687	W13	D1	W12	W4	3 1/2 - 1/2	8	2nd
3. Jerry Stanke	Nampa	1783	L1	W14	W9	W6	3 - 1	9	3rd
4. T.C. Hartwell	Twin Falls	1847	W9	W10	D5	L2	2 1/2 - 1 1/2	10	
5. Harold Moye	Kimberly	1512	W8	W12	D4	L1	2 1/2 - 1 1/2	9 1/2	High "C"
6. Ezra Brumbach	Parma	1635	W7	D11	W10	L3	2 1/2 - 1 1/2	9	High "B"
7. Ed Trappen	Twin Falls	1787	L6	W13	D8	W11	2 1/2 - 1 1/2	7 1/2	
8. Carroll Powell	Emmett	1839	L5	W16	D7	W14	2 1/2 - 1 1/2	6 1/2	
9. Kenneth James	Twin Falls	1585	L4	W15	L3	W12	2 - 2	7	
10. William Jackson	Glenns Ferry	1686	W15	L3	L6	W13	2 - 2	6 1/2	
11. Walter Young	Boise	1784	W16	D6	L1	L7	1 1/2 - 2 1/2	9	
12. George Razor	Boise	1631	W14	L5	L2	L9	1 - 3	9	
13. Joel Stookey	Boise	UNR	L2	L7	W16	L10	1 - 3	8 1/2	Most Improve
14. David Ball	Caldwell	1358	L12	L3	W15	L8	1 - 3	7	
15. John Streiff	Boise	UNR	L10	L9	L14	W16	1 - 3	5	
16. Delmer Davis	Twin Falls	1504	L11	L8	L13	L15	0 - 4	5	

Tournament was played at the Boise State College Union building. Dick Vandenburg was Director. Sanderson and Moye are new to Idaho and both have played in only one previous USCF tournament, and are considerably stronger than their ratings. They will be welcome additions to the Idaho chess scene. Eugene Cowan tied for first, the highest placing for his years in Idaho chess tournaments. Carroll Powell was defending champion.

RATINGS

RATING DIRECTOR
 BRUCE W. BAILEY
 10818 Roseburg S.
 Seattle, WA 98168

1972 ANNUAL RATING LIST

The following lists include all players active in events rated for the Feb. - Dec. 1972 issues of NWC, plus these events:

Torkar 5 1/2 - Rupel 1/2, Spokane County Open, Sagebrush Open (two sections), Kings Knight Klub Klobber, Wenatchee Fall Open, Central Wash. Junior Open, Oregon Junior Open, November Point Grey Open, Pilchuck Mountain Amateur, Holiday Open (two sections), Yakima Open (five sections over two days), Tacoma Open, Leave The Door Open, Jarouette 3 - Mike McGee 1.

A few numbers. The list contains 1731 names. The average rating is 1497 (down dramatically since I took over this job - I attribute it to the large number of new players who joined up this year). There are 687 established players in the list, average rating 1707, and 1044 provisionals, average rating 1359. There are 16 Masters and 76 Experts among the established players, with more class B's than in any other rating group. The average provisional is a class D player rated 1300. I should have said "the modal provisional" for the statistically minded, because among the provisionals the mean differs substantially from the mode.

The most encouraging item in this list for me is the continued trend in the established players' ratings towards the ideal distribution. Translated into English that means that Prof. Elo's system is working fine. Between February, when I took over this job, and now, the standard deviation in the established players' ratings has dropped from over 300 to 250. The ideal number is 200, but 250 is much more than twice as good as 300. We must be doing something right. For those of you who habitually dismiss Northwest ratings as ridiculously inflated, note that our average rating is lower than the USCF average as given in Larry Evan's column in the December CL and R. I will repeat here what I have been saying privately and believe to be true: as compared to the theoretical USCF rating norm Northwest ratings are closer than local USCF ratings; in other words, Northwest ratings are less inflated than local USCF ratings are deflated.

On another subject, apologies for the over-printed entries in these lists. The computer printer was not working well the evening I prepared the lists. Here are the illegible ones: Dewese, Malcolm, 1321; Dewese, Robert, 1808/8; Garrott, John, 1842; Garry, Bob, 1301/5; Macskasy, Elod, 2252; Mahn, Richard, 1341/1; Rajala, Al, 1277/14; Ralston, David, 1219; Simmons, Bill, 1203/6; Simmons, Jack, 1423/4.

EXPERTS

2066/12	ARNOLD, BRUCE	CA
2073	AYKROYD, COLIN	CD
2063	BAILEY, BRUCE	WA
2037/13	BALLANTINE, CHARLES	OR
2091	BLACKWOOD, JIM	WA
2046	BRANDENBURG, JOE	DR
2022/04	CHENG, DOUG	WA
130	CLARK, ALAN	WA
2019	COLLYER, DAVE	WA
148	CROOKES, WAYNE	CD
111	DANENHOWER, PETER	CD
2096	DEAN, RANDY	WA
2015	EGGERS, PAUL	WA
2089	GENTALA, WALT	WA
2069	GRANNIS, DAVE	CD
2080	GRISHAM, DON	OR
2020	GROENIG, DAVID	WA
2037/09	GRONDIEN, MIKE	WA
2013	GROVER, KEN	WA
2058	HAINES, DUNCAN	CD
2007	HANKINSON, ROB	CD
2033	HERBERS, PAT	WA
2035/05	HESS, PETER	OR
2036	HICKEY, PAT	WA
2086	HILL, ALAN	CD
2059	HLADEK, DAVID	CD
2020	HOLMES, VERNON	WA
2016/09	HUBBARD, DON	CA
2055	IRWIN, BOB	CD
2024	JEWITT, EARL	CD
2015	JONES, CHRISTOPHER	CD
2089	KALTENECKER, JOE	CD
2056	KAUPPILA, TIM	WA
2094	KERN, GREG	OR
2077	KIPLINGER, BILL	OR
2051	KRUGER, BEN	CD
2085	LASSEN, GERALD	CD
2016	LECOMPTÉ, GEORGE	WA
2013	LEEMANS, DIRK	CD
2029	LEE, JOHN	CD
2098/01	LING, RICHARD	OH

2029/05	MATCH, CHARLES	WA
2048	MCLAREN, BRIAN	CD
2039	MIEHE, JON	OR
2059	MONTECALIN, MIKE	DR
2021	MOORE, HARRY	CD
2077	MORRIS, MICHAEL	OR
2048	MORTON, KEN	CD
2075	MURRAY, MIKE	WA
2062	NEDELL, FRED	WA
2026	OGORMAN, PETER	WA
14	OSZVALD, JOE	CD
2037	OSZVALD, JOE	CD
2022	PAENITZ, VLADIMIR	WA
2025	PERALA, BYRON	OR
2066	PINTAR, JOHN	OR
2086	POMFRET, RICHARD	CD
2086	POTOMA, MIKE	CD
2039	POTTER, BRIAN	CD
2060	PUGLSEN, SIEF	OR
2034	PULLEN, KENT	WA
2011	RASMUSSEN, ERNST	WA
2013	ROMAN, TOM	WA
2041	RUOTSALAINEN, ROBERT	WA
2004	RUPEL, DAVE	WA
2041	SAGE, LEON	OR
2084	SATANOVE, HARRY	CU
2080	SCHEM, MIKE	OR
2049	SCHULTZ, FRED	CD
2099	SCOONES, DAN	CD
2003	SEID, HEE	CD
2041	SHAPERO, DAVE	CD
20109	SLOAN, CARL	WA
2097	STRONG, JACK	DR
2066/14	TENTO, CHRIS	OR
2048	THORVARSSON, BARRY	CD
2088	TOTH, JOE SR	WA
2056	TURNER, DON	DR
2027	VAN DEENE, GERRY	WA
2086/10	VAZQUEZ, IGLESIAS	SP
2089	WARNER, EUGENE	WA
2045	WHITE, DAVE	OR
2016	WILLIAMS, BRIAN	CD
2038	WILLIAMS, DAVE	WA
2018	WOLFE, JERRY	OR
2082	WOOD, ALEX	CD
2011	ZIMANYI, PAUL	WA

MASTERS

2292	BERRY, JON	CD
2431	BIYIASAS, PETER	CD
2033	FRANETT, MIKE	WA
236/05	FULLER, ALBERT	CD
2061	HARMON, CLARK	OR
2020	HARPER, BRUCE	CD
2051/07	JCYNER, LIONEL	CD
2494	KERR, RAY	CD
2026	MACSKASY, ELOD	CD
2059	MCCORMICK, JIM	WA
2055	PAKOSTA, STAN	CD
2071	PCHELL, DAVID	WA
2049	PUPOLS, VIKTORS	WA
236/05	STEMSHOLT, EIVIND	OR
2259/03	STONE, DENNIS	WA
2449	SUTTLES, DUNCAN	CD
2077	TORKAR, PETER	WA
2045	WALKER, JOHNNY	WA
2361	WATERMAN, DENNIS	OR
2361	ZUK, BOB	CD

THE TOP FIFTY

2449	SUTTLES, DUNCAN	CD
2431	BIYIASAS, PETER	CD
2361	ZUK, BOB	CD
2021/07	JONK, LIONEL	CD
2021	HARPER, BRUCE	CD
2019	PUPOLS, VIKTORS	WA
2093	FRANETT, MIKE	WA
2092	BERRY, JON	CD
2071	PCHELL, DAVID	CD
2061	HARMON, CLARK	OR
2259/03	STONE, DENNIS	WA
2059	MCCORMICK, JIM	WA
2055	PAKOSTA, STAN	CD
2052	MACSKASY, ELOD	CD
2045	WATERMAN, DENNIS	OR
2036/05	FULLER, ALBERT	OR
2036/05	STEMSHOLT, EIVIND	OR
2022	KERR, RAY	CD
2207	TORKAR, PETER	WA
2207	WALKER, JOHNNY	WA
2199	SCOONES, DAN	CD
2186	HILL, ALAN	CD
2184	SATANOVE, HARRY	CD
2177	KIPLINGER, BILL	OR
2177	MORRIS, MICHAEL	OR
2175	MURRAY, MIKE	WA
2156	TURNER, DON	OR
2151/15	GROVER, KEN	WA
2148	CROOKES, WAYNE	CD
2141	OSZVALD, JOE	CD
2135/05	HESS, PETER	OR
2134	PULLEN, KENT	WA
2130	WILLIAMS, DAVE	WA
2130	CLARK, ALAN	WA
2129	LEE, JOHN	CD
2122	PERALA, BYRON	OR
2118	WOLFE, JERRY	OR
2116	WILLIAMS, BRIAN	CD
2113	LEEMANS, DIRK	CD
2113	DANENHOWER, PETER	CD
2109	SLOAN, CARL	WA
2098/01	LING, RICHARD	OH
2097	STRONG, JACK	OR
2096	DEAN, RANDY	WA
2091	BLACKWOOD, JIM	WA
2089	GENTALA, WALT	WA
2089	KALTENECKER, JOE	CD
2089	WARNER, EUGENE	WA
2088	TOTH, JOE SR	WA
2086/10	VAZQUEZ, IGLESIAS	SP

FULL LIST

1721/06	ABELL, DICK	WA
900/03	ABELS, IRENE	CD
1662	ABRAHAMSON, LYNN	WA
1814	ABRAHAMSON, NORM	WA
1197/07	ACHEY, PAT	WA
1522/10	ACTON, WAYNE	WA
1969	ADAMS, DOUG	WA
1351	ADDINGTON, JOHN	OR
1921	ADDIS, EDWARD	OR
1199/05	ADLKIRCHNER, FRED	CD
1852	ADLKIRCHNER, GEORGE	CD
1437/10	ADLKIRCHNER, TONY	CD
1672/15	AKHAI, DAVID	OR
1804	ALBRECHT, JIM	WA
1523/11	ALCORN, LANCE	OR
1361/07	ALGUIRE, BRIAN	CD
1223/03	ALLEN, DAN	WA
1233/04	ALLEN, JIM	OR
1493/04	ALLEN, TIM	OR
831	ALLYN, BILL	WA
1669	ALLYN, BOB	WA
1397/12	ALLYN, CARL	OH
1277/03	ALLYN, DAVE	WA
1217/11	ALLYN, DON	OH
1800	ALLYN, LARRY	WA
1324	ALLYN, PAH	WA
1441	ALLYN, PATTI	WA
1331	ALLYN, TOM	WA
1276/01	ANDERSON, DOUGLAS	WA
1254/05	ANDERSON, ERIK	WA
1793/12	ANDERSON, GREG	OR

1432/05 ANDERSON, MIKE OR
 1798 ANDERSON, ROBERT WA
 1449 ANDERS, BRIAN WA
 1851 ANDREOTTI, DAVE WA
 1514/14 ANDREOTTI, MIKE WA
 1202/04 ANDREWS, HAL OR
 1262/04 ANDREWS, ROGER OR
 1709 ANDRUS, FRED OR
 1504 ANDRUS, WILLIAM OR
 1133/04 ANGLIN, DON WA
 1467 ANKNEY, BOB OR
 994/04 ANKLIN, BILL OR
 1542 ANSTED, MARVIN OR
 833/12 ARCHER, TOD OR
 1633/16 ARIENT, BILL OR
 1398/05 ARMSTRONG, BILL OR
 2066/11 ARMSTRONG, ROBYNN WA
 1028/02 ASHKEILL, BRUCE CA
 1519/02 ASTOR, DAVE CD
 1662/09 ATCHISON, BURL OR
 1540/13 ATCHISON, DAVID OR
 1367 ATKINS, BRUCE WA
 1614 AUGUSTINE, PETER WA
 1473/10 AUSTIN, DONALD OR
 1044/04 AUSTIN, EARL WA
 1804/10 AUSTIN, PAUL WA
 1710/09 AVERILL, STEVE WA
 2073 AYKROYD, COLIN CU
 1377/06 BACHMEYER, KURT OR
 1576 BACKUS, WALT WA
 1721/05 BAHRAM, BOR OR
 2063 BAILEY, BRUCE WA
 1761 BAILEY, DAN WA
 1687/05 BAKER, DAVID TE
 1927 BAKER, KEN CD
 1005/05 BAKER, MICKEY OR
 1651/10 BAKER, NEIL CU
 2037/13 BALLANTINE, CHARLES OR
 1788 BALLARD, BILL OR
 1608/16 BANCROFT, DOUG CU
 1717 BARBEAU, ROBERT CD
 1670/09 BARIS, ALLEN WA
 1461/01 BARKER, DEAN WA
 1203/04 BARLOW, TCBY OR
 1649/04 BARNES, KEN OR
 1139/05 BARNES, MARK CD
 1197/01 BARNES, MICKEY ID
 1412/16 BARNETT, DAVE WA
 1702/05 BARNHILL, DAVID WA
 1727 BARR, SAM WA
 1854 BARTELS, MEL OR
 1579/11 BARTLEY, RAY OR
 1684/12 BAUER, FRITZ CD
 1436/04 BAUMAN, CARL WA
 1490/04 BAUMAN, C. J. D. WA
 1368/02 BAXTER, DOUG WA
 1210/10 BAYES, ED WA
 1825 BEARDSLEY, BRUCE WA
 1410/14 BEARD, WALT OR
 1364 BEATTY, R. MICHAEL OR
 1411/08 BECKER, DARYL OR
 1336/04 BEDNARZ, BEN OR
 994/06 BEDNAR, RON OR
 1722 BEERS, GARY WA
 1505/07 BEERY, MARSHA WA
 1017/04 BEILSTEIN, MIKE OR
 1795/01 BEIL, RONALD WA
 1360/04 BELL, DENNIS CD
 1642/06 BELL, JEFF OR
 1355/05 BELL, KEITH CD
 867/05 BELL, KEVIN CD
 841/06 BENNETT, TOM OR
 1658/05 BENSON, BOYD WA
 1799 BERGQUIST, LARRY OR
 1607 BERMAN, ERIC WA
 2292 BERRY, JON CD
 890/04 BERRY, MARCIA CD
 1647/05 BERTING, DAN CD
 1185/02 BERTRAM, CAL WA
 1362 BESS, CARL WA
 1862 BETZER, BRUCE OR
 1435/05 BIDWELL, MIKE OR
 1260 BIGHAM, STEVEN OR
 1719 BILLEY, JOHN OR
 1381/03 BIRD, JOHN CD
 2430 BIYIASAS, PETER CD
 1526 BJORGE, ROBERT OR
 1754 BJORNSON, DALE WA
 1494/15 BJORNSON, DEAN WA
 1647 BLACHLY, DAN WA
 1846/02 BLACKLER, RUSSELL OR
 1313/04 BLACKLER, F. OR
 1330/01 BLACKLOCK, JEFF OR
 2091 BLACKWOOD, JIM WA
 1413/10 BLAIR, NELLO WA
 1228/12 BLASNER, STUART CD
 1514/06 BLOCH, KEN WA
 1305/03 BLOMQUIST, ART CD
 1507/09 BLOSE, DAVID OR
 966/04 BLOUNT, ROBERT WA
 1097/08 BLUMHAGEN, RICK WA
 1949 BLUMS, RAY WA
 1753/04 BLUNCK, JOHN OR
 1081/05 BOEHMER, GEORGE OR
 1077/04 BOGART, JOANNE CD
 1531/04 BOGENBERGER, PAUL WA
 1835/09 BOKIS, PETER CD

1577 BLODWAY, RAY OR
 1686 BOLD, ELLIOT OR
 1711/11 BOLLAND, JOHN WA
 1881 BOOD, ABRAHAM CU
 1448 BOOKER, TONY CD
 1817/01 BOOMER, KAYLE WA
 1755/07 BOORMAN, GREG CD
 1043/11 BORECKI, JOE WA
 1327/01 BORO, RICK OR
 1471 BOSSE, ED OR
 1691 BOWEN, CHRIS OR
 1666/13 BOWLEY, BOB WA
 845/01 BOWMAN, LYNN WA
 1461/03 BOYCE, GEORGE WA
 1579/11 BRADLEY, DALE OR
 1906/07 BRAME, MICHAEL WA
 1284/03 BRAMMIEP, JOHN WA
 2046 BRANDENBURG, JOE OR
 1628/04 BRATCHER, MIKE OR
 1327 BRECHT, CARL WA
 1801 BRICHER, GARY OR
 1995 BRICHER, JAMES OR
 1802 BRICHER, ROGER OR
 1706 BRICHER, VINCE OR
 1606/04 BRIDGES, LOUIS WA
 1294/06 BRIDWELL, BILL WA
 1415/16 BRISLAWN, MIKE WA
 1547 BRISTOL, RICK WA
 1759/03 BRITTON, DALE WA
 1576/01 BROMAN, VINCENT WA
 1239/08 BROOKS, JOHN WA
 1635 BROUSHART, LARRY OR
 1135/04 BROWN, DAN ID
 1265/07 BROWN, EARL WA
 1894 BROWN, HAROLD WA
 1907 BROWN, PAUL CD
 1099/01 BROZOVSKY, ELBEN WA
 1155/01 BROZOVSKY, JOHN WA
 1585 BRYSON, RON OR
 1744/03 BUCHANAN, RICHARD WA
 1625/14 BUETTNER, HUGH CD
 1551/05 BUFFINGTON, JCN WA
 1515/03 BUHL, TOM WA
 1816/04 BUIVA, ULDIS MO
 1377/03 BUNCH, DON WA
 1217/01 BURDEN, MIKE WA
 1333/04 BURFORD, GEORGE WA
 1444/04 BURKSTIN, JOE WA
 1637 BURNS, ROBERT WA
 1580 BURRIGHT, LARRY WA
 1260 BURSELL, BRIAN WA
 1309/02 BUTNER, GORDON OR
 1009/04 BUTTERFIELD, SKIP CD
 1695/12 BUTTON, WILLIAM OR
 867/06 BYERS, BRETT OR
 1876 BYRON, FRED OR
 1158/02 CAIN, KENNETH WA
 1759/05 CAIN, TERRY NE
 1434 CALHOUN, C. W. OR
 1889 CALHOUN, ROGER WA
 1692 CALKINS, DAVE OR
 1628/15 CALLIS, DON OR
 1317/02 CAMERON, ROBERT CD
 1724 CAMPAA, STEVEN CD
 1383 CAMPBELL, GORDON CD
 1322/11 CAMPFIELD, ROB OR
 1121/04 CANTWELL, MIKE WA
 1253 CAPWELL, KEVIN OR
 1246/03 CAPWELL, GEORGE OR
 1470/03 CARANO, TOM CD
 1807 CARLSON, BOB CD
 1658/12 CARLSON, CARL WA
 1135/07 CARLSON, GERALD OR
 937/02 CARLSON, MARK WA
 1731 CARLSON, PAUL OR
 1494/09 CARR, R. J. WA
 1793 CARRIER, BEN WA
 1573 CARTER, DAN WA
 1854/10 CARTMELL, DON OR
 1427/08 CASSERO, MARK OR
 1312/05 CASTILLO, ANALITO CD
 1063/02 CASTLE, CLIFF WA
 1619 CATURAY, JAY CD
 1671 CAVETT, DAVID CD
 1915 CAVIN, RICHARD OR
 1657/05 CAYFORD, JERRY CD
 1608 CHAMBERS, KEVIN OR
 1465 CHANCE, JOHN WA
 1668 CHANCE, PAUL OR
 1655/02 CHANEY, HENRY WA
 1725/09 CHANEY, JAMES OR
 1294 CHANG, TOM OR
 1250/08 CHAPPELLE, CHARLES CD
 1252 CHASE, JILL WA
 1662 CHASE, STEVE JR WA
 1539/07 CHA, DAVID CD
 2022/04 CHENG, DOUG WA
 1586 CHESTEEN, RANDY OR
 1958/15 CHIN, ARNOLD WA
 1554/05 CHIN, DAVID WA
 1593/05 CHOW, CALVIN CD
 1993 CHOW, ROBERT CD
 1701 CHRISTENSEN, DON WA
 1710 CHRISTENSEN, FRANK WA
 969/05 CHRISTIANSON, SCOTT OR
 1431/03 CHRISTIE, LEO WA
 1115/08 CHRISTIE, SCOTT WA
 1865 CHRISTOPHER, STEPHEN WA

1737 CILLIS, DANIEL OR
 1051/02 CLANCY, MIKE WA
 845/01 CLARK, JEFF WA
 1869 CLARKE, JOHN CD
 1473 CLARKSON, RONALD WA
 2133 CLARK, AN WA
 1435 CLARK, JOHN WA
 1697/04 CLARK, MIKE WA
 1468/14 CLARK, ROBERT WA
 1263/05 CLEMENTS, BOB OR
 1724 CLENDANIEL, BOB WA
 1920 CLEVELAND, JOHN OR
 1387/13 COATS, ARTHUR OR
 1791/13 COHEN, STEVE OR
 1503 CCHN, BOB OR
 1027/04 CCLE, LEWIS WA
 1795/06 CGLLINS, BARRIE CU
 1027/04 COLLINS, CASSANDRA WA
 1065/03 COLLINS, CHARLIE WA
 1424/01 COLLISON, BILL WA
 2019 CGLLYER, DAVE WA
 1721/11 CGLSON, ROD WA
 1426/04 CONRAU, G. CD
 1377/04 CCONROY, FAY WA
 1512/13 CCOOKSON, JAM CD
 1859 CCOOKSON, IAN CU
 1852 COOK, GERALD CD
 1622/01 COOK, NORMAN WA
 1611/07 COOMBE, JOCK WA
 1673/03 COONEY, JOHN OR
 1543/07 COOPER, F. J. WA
 1466/05 COOPER, THURMAN OR
 1748 COOPER, TRACY CD
 1194/10 COPPOCK, FLORA OR
 1291/11 COPPOCK, KEN OR
 1601/11 COREY, LES OR
 1907 CORKNELIUS, GORDON WA
 1610 CORRIGAN, BARRETT WA
 1496/12 COSTANZO, ROBERT WA
 723/04 COSTELLO, HAT WA
 1644 COTTON, DENNIS OR
 1929 COTTON, RON OR
 1163/11 CUTTON, STEVE OR
 1202/11 COUCH, GRANT WA
 1193/12 COUCH, JIM WA
 696/02 CCULSUN, KEN WA
 1342/12 COVADALE, RICHARD CD
 1426/04 CRAIG, RYAN WA
 1571/08 CRAIG, TOM WA
 1153/06 CRAVEN, CHRIS WA
 1413/06 CRAWFORD, ALAN OR
 1083/04 CRAWFORD, DANIEL OR
 1653 CRAWFORD, MALCOLM OR
 1233/04 CREITZ, AL WA
 1321/03 CRIPE, ANDY WA
 2148 CROOKES, WAYNE CD
 1373/10 CROOKE, DAVE OR
 1403/01 CROSBY, KIM WA
 1641 CROWE, BILL OR
 1392/11 CROWE, WAYNE CD
 1561/04 CROWLEY, TERRY WA
 1763/05 CROWLEY, WALTER WA
 1443/04 CUMMINS, CLINT WA
 1672/06 CUMMINS, JOHN OR
 1439/12 CUNNINGHAM, GREG OR
 1381/15 CURWAIN, ERIC CD
 1468/01 DADSWELL, DENNIS CD
 914/07 JAGG, DAVID OR
 1085/01 DAHLKE, TOM WA
 1349/04 DAILEY, JIM WA
 1381/03 DAILEY, KEET WA
 1533/10 DALE, KORNELIUS OR
 1590/12 DAMISH, TODD WA
 1261/04 DAMRON, ERIC WA
 2113 DANENHOWER, PETER CD
 1346/05 DANNEN, GENE OR
 1590 DANNEN, SCOTT OR
 1824 DARBY, MICHAEL WA
 1809 DARLOW, KEITH OR
 1555 DART, KEN WA
 1737/03 DAUGERT, DALE WA
 1824 DAVENPORT, FRANK WA
 1585/12 DAVIDSON, GLENN CD
 1214/02 DAVIE, JAY WA
 1358/05 DAVIDSON, RICHARD OR
 1715 DAVIS, BOB WA
 1633/12 DAVIS, GARY CD
 1360 DAVIS, MARK WA
 1657/03 DAVIS, MCCLELLAND WA
 1297/03 DAVIS, TIM WA
 1260/09 DAVIS, TROY OR
 1454/05 DAVIS, WILLIAM OR
 1466 DAWSON, DAVID NM
 1850/13 DAWSON, DICK CD
 1682 DAWSON, SETH WA
 1344/08 DAWSON, WALTER OR
 1627/14 DAYTON, ALAN WA
 1728 DAY, TED WA
 1649 DEAN, DOUG WA
 2096 DEAN, RANDY WA
 1643 DEAN, STEVE WA
 1699 DEATER, IVAN CD
 1084/04 DEBAMP, PHILLIP OR
 1274/09 DEDMON, ARLIE OR
 1174/02 DEDMON, RUSSELL C. OR
 1202/02 DEDMON, RUSSELL G. OR
 1256/11 DEEDY, JEFF OR
 1965/15 DEIKE, RON ID

1593/05 DEJONG, NFN CU
1712/05 DELAPLAIN, BRUCE WA
1974 DELENEA, OIGNE WA
1669 DELP, DAVE WA
1548/09 DEL CASAL, ED WA
1289 DENISON, ELBERTA OR
1438/15 DENNER, PAUL OR
1318 DEPAOLI, LILLIAN CU
1111/02 DEPEPENTIGNY, MIKE WA
1711 DERRYBERRY, DEWAYNE OR
1868/08 DEWEESE, ROBERT M MA
1591/03 DEYARHON, DONOVAN WA
1912/17 DE LA FENTE, GEORGE WA
1748 DIAL, FOREST WA
1561/05 DICKINSON, DAVE CR
1521/06 DICKINSON, DAVID WA
1543/09 DICKINSON, GARY WA
1743 DIETSCH, KRISTEN WA
1355 DIRKS, KEVIN WA
1682 DITTMAN, RON WA
1381/01 DOBUS, BOB CU
1729/10 DOBROVICIN, JERRY CU
1103/03 DODGEN, STEVE WA
1502/06 DOUGETT, WILLIAM WA
939/95 DOIG, JOHN CU
1557 DOICAN, PAT WA
1865/05 DOLE, MICHAEL WA
1534 DOMORAUSKY, AL WA
1212/12 DOMORAUSKY, CAMILLE WA
1382 DOMERAUSKY, MATT WA
1646/04 DONAHUE, GAVIN WA
1562 DONA, GRANT WA
1198/04 DONIHUE, BOB OR
1751 DONNELL, BRIAN OR
1136/01 DONOVAN, JOE WA
1464/15 DONOVAN, MIKE WA
1339/04 DOOLIN, RICHARD WA
1628/04 DOOTY, DWIGHT WA
1331/04 DOUBLEDAY, STEVE CR
1355/10 DOUWNS, JIM CU
1424/12 DOYLE, AARON CD
1493/10 DOYLE, DENNIS WA
1461/08 DRINNON, BOB WA
1203 DRISCOLL, PAUL WA
1316/04 DROSMAN, RICHARD OR
1675/05 DUDLEY, KEN WA
1634/01 DUMONT, JULES CD
1335/07 DUNCAN, PATRICK WA
1417/14 DUNCAN, RAY WA
1444 DUNCAN, STEVE WA
1472/05 DUNHAM, DOUGLAS WA
1591/13 DURHAM, DAVID WA
1270/02 DURHAM, DOUG WA
1194/04 DURKENT, STEVE WA
1465/07 DUSANG, BOB CD
1363/13 DUSOLEIL, DAN CD
1961 DVORSHAK, ALAN GR
1407 DVORSHAK, FRANK OR
1787 DVORSHAK, OWEN OR
1391/05 DYKES, RICHARD WA
1884 EAGLES, ROLAND CD
1358/05 EASLEY, PAT OR
1868 EASON, ALEX CD
1431 EASON, EARL CD
1364/03 EASTON, TOM WA
1471/15 ECLIPSE, LARRY WA
1728 EDDY, BUZ WA
1411/11 EDELSTEIN, GERALD WA
1784 EDIE, BILL CD
1355/02 EDWARDS, JAMES WA
1625/12 EFGAN, MUSTAFA WA
1781 EGGERS, CHRIS WA
2015 EGGERS, PAUL WA
1988 EGGERTSEN, JOE WA
1705 ELLIENS, BOB WA
1588 ELLIDGE, AL CON WA
1071/06 ELLIS, ALLEN OR
1640 ELLIS, BILL OR
1697/11 ELLIS, BUD OR
1440 ELLIS, CLIFF JR CD
1066/06 ELLIS, JOE WA
1217 ELLIS, MIKE OR
1230 ELLIS, STEVE OR
952/03 EMERTICK, ERNEST WA
1954 EMERSON, MIKE WA
1466/06 EMERSON, SCOTT WA
1873 EMICH, DONALD WA
1974 EMIG, MARTIN CD
1454 ENGELHARDT, DARRELL WA
1658 ERICKSON, LARRY WA
1934 ERICKSON, MARK WA
1808 ERICKSON, RONALD WA
976/03 ERICKSON, STEVE WA
1841 ESPEY, RODNEY OR
1579 ESPEY, SUNNY LOU OR
1349/08 ESTES, DAVE WA
922/06 ESTES, WALTER WA
1664/04 EULER, PETER WA
1279/12 EVANS, DAN ID
1774 EVANS, JOHN WA
1589 EVANS, RUSS CD
1893 FANCETT, ROBERT CD
1537 FAITAL, FRANK JR WA
1441/08 FAITAL, FRANK WA
1541 FEIST, RICK WA
1426/06 FELLMAN, DOUG WA
1721 FENNELL, BRUCE OR

1662/04 FERGUSON, BILL OR
1525 FERGUSON, BOB WA
1922/05 FERNANDEZ, OSWALDO WA
995/03 FIFAREK, TOM WA
1549/04 FINCH, MIKE WA
1473/11 FINCH, ROBERT WA
1431/05 FINLAY, NFN CD
1685 FINNIGAN, JACK WA
1267/08 FINN, LENNIS WA
1504/07 FISCHER, PETER CD
1533/02 FISHER, PAUL WA
1522/02 FLANDERS, BOB WA
1709 FLOKA, WILLIAM OR
1809 FOGAKASSY, FRANK CD
1680 FOLTZ, KEN WA
1983 FOLKE, GENE WA
1799 FOLKE, GERRY WA
1518 FORBES, NORMAN CD
1683 FORKES, ALLAN CD
1483/04 FOKRSTER, BRUCE MD
1046/07 FOKSYTH, KELVIN WA
1566/05 FOSBURY, DAVE OR
1455/12 FOSTER, ELDON WA
1934 FOX, JEFF WA
2293 FRANETT, MIKE WA
1463/03 FRANKEL, RICHARD OR
1715 FRANKE, JIM WA
1996/04 FRANSEN, SUE OR
1588/10 FFELERICKS, GARY OR
850/02 FREDRICKSON, TOM WA
1636 FREEBURGER, FRANK WA
1736 FREEMAN, CHARLES WA
1469/04 FRENCH, ED OR
1518 FRENCH, TOM WA
1651/05 FRIEDL, D. CD
914/15 FRINK, MARC WA
1123/03 FROST, DOUG CR
1379/04 FROST, GENE CR
1975 FULLBROOK, NIGEL OR
2236/05 FULLER, ALBERT CU
1227/07 FUNK, BOB CD
1558/09 FUREY, MIKE GR
1638/10 GADDIS, WILLIAM WA
1613/05 GAIN, BRIAN WA
1168/08 GAMBLE, GILL WA
1671/13 GANAPATHY, I. CD
1737/12 GANCEE, STEVE OR
1336/04 GARAY, BERT WA
1806 GARCIA-PELAYO, PEURO WA
1729 GARCIA, ARNIE WA
1450 GAREN, ROBERT WA
1524/04 GARNER, RON WA
894/02 GAROUTTE, TEDDY WA
1801/05 GARRAS, JIM WA
1801/05 GARROTT, BOB WA
1395/05 GARVER, CHUCK OR
1673 GARVIN, JAMES WA
1673/05 GEAKY, CHARLES WA
1916 GEIGER, BOB WA
1658 GEIGER, GARY WA
1683/09 GEMNER, NIRON WA
1712/13 GENTALA, CHRIS WA
2089 GENTALA, HALT WA
1396/11 GEORGE, HOWARD OR
1666 GERLEI, GEORGE OR
1949 GERHALM, BERT WA
1603 GERVIN, ROGER WA
1381/04 GETTMANN, JEFF WA
1362/05 GIUSON, STEVE WA
1162/06 GILBERT, MIKE OR
1121/05 GILLIAM, JESSE OR
1330/03 GILLIAM, WAYNE CD
985/05 GILLIGAN, KEVIN WA
1213/06 GILL, BOB WA
1572 GILMORE, GARY OR
1301/04 GILMOUR, BRETT WA
1682 GLAD, RICK OR
1610 GLIDDEN, HARRY WA
973/05 GOEDDE, GLEN ID
1276/04 GOEHEEN, BYRON WA
1936 GOLPHENE, GREG WA
1485/14 GCODEY, CHRIS WA
1738/13 GORDON, STEVE AL
1279/06 GOTTSCHLING, FRED OR
1687 GRACE, KEVIN CD
1142/03 GRAHAM, BEN OR
1236/08 GRAHAM, ROBERT OR
1770 GRANAT, KARL OR
1474 GRANAT, BILL OK
1298/03 GRANDAGE, BILL CD
2369 GRANNIS, DAVE CD
1618/01 GRANT, ALAN CD
1593 GRANT, TERRY WA
1504/13 GRASSMUCK, CLAU CD
1377/16 GRAVES, TOMMY OR
1174 GRAY, DARREN CD
1680 GRAY, GORDON WA
1904 GRAY, MARTY WA
1494/06 GRAY, ROBERT OR
1414/04 GRAY, TRACY WA
1487 GREENUP, RANDY WA
1566/01 GREENWOOD, BILL WA
1368 GREEN, ORLAND CD
1492 GREEN, TOM OR
1794 GREGA, PHIL WA
1407/03 GREGG, AUDREY WA
1407 GREGG, SCOTT WA

1763 GREGORY, ROGER OR
1936 GRGURICH, FRANK WA
1235/02 GRIFFIN, GARY CD
1762 GRIGSBY, JACK WA
1376/04 GRINDE, JOE WA
2081 GRISHAM, EON OR
1592 GRISHAM, DOUG OR
1997/04 GRISHOLD, DOUG OR
1488 GRISWOLD, ED OR
2021 GROENIG, DAVID WA
1248/09 GRONAU, BILL WA
2037/09 GRONAU, MIKE WA
1995 GROSCHL, BOBEK WA
2151/15 GROVER, KEN WA
1661 GRUBBS, JERRY WA
1102/03 GRUBICH, JOE WA
1476/08 GRUDIN, JONATHAN WA
967/02 GUNDESON, STEVE WA
1441/06 GUSTAFSON, DAVID WA
1375/05 GUYER, DAVE OR
1295/11 GUYNER, DAVID OR
1581/04 HAARIG, DAVE WA
1258 HAESSLER, CARL OR
1738 HAGAN, DONALD WA
1596 HAGEN, GORDON WA
1497 HAGER, KONRAD WA
951/05 HAGER, ROBERT OR
1414/03 HAHN, ED WA
2010 HAINES, DUNCAN CD
1313/05 HAIRE, TERRY CD
1538/07 HAJSKY, MILOS CO
1331/05 HALE, GENE OR
1807 HALFANT, MATTHEW OR
1233/05 HALLER, RICHARD OR
1547/11 HALL, DOUG WA
1278/02 HALL, JOHN WA
1565/06 HALL, LOU WA
1456/11 HALL, STEVE WA
851/05 HAMILTON, BLAKE OR
1681/05 HAMILTON, GARY CD
1251 HAMILTON, PHIL CD
1623 HAMILTON, RON OR
1495/04 HAMMERLIK, MANFRED CU
1594/01 HAMMES, DAN ID
933/04 HAMMONS, MIKE OR
1093/03 HAMPTON, PAUL WA
1617/07 HAMP, MARK WA
1393/07 HANDFORD, RICHARD CD
1562/07 HAND, JERRY WA
2358 HANKINSON, ROB CD
1837 HANLEN, JIM WA
1971 HANLEN, PICH WA
1125/06 HANNEAL, ERIC WA
1607/04 HANSEN, CHARLES WA
780/01 HANSEN, HANS WA
1443/04 HANSON, CHRIS WA
1499/06 HANSON, GEORGE WA
1738 HANSON, JEFF WA
1105/04 HANSON, JOHN OR
1755 HANSON, ROGER WA
1531 HANSON, SCOTT QR
1373/04 HAPP, RICK WA
1409/04 HAPP, RON WA
1307/12 HARDING, RUSS OR
1716 HARDY, BILL OK
1616 HARKER, KEMP OR
2261 HARMON, CLARK OR
2320 HARPER, BRUCE CD
1121/01 HARPER, JIM WA
1823 HARPER, ROGER WA
1215/04 HARPOLE, MARTIN CD
1378 HARRSCHCU, BROCK WA
1516/15 HARRISON, AL OR
1221/03 HARRISON, NATHAN WA
1397 HARRISON, STEVEN WA
1305/05 HARRISON, W. LEE JR WA
1294/04 HARTLEY, RICK WA
1686/07 HARTWIG, KEN WA
1574/08 HARVEY, FRED WA
1402/03 HASELDEN, KEITH CD
1955 HATCHER, WAYNE WA
1549/04 HATFIELD, ERIC WA
1745 HATFIELD, ROBERT WA
1579 HAUFF, STEVE WA
1729 HAUGHTON, LONNIE WA
1535/05 HAWKES, MARY CD
1208/12 HAWKINSON, RAY WA
1235/05 HAWKINS, JEFF OR
1437 HAWKINS, JERRY WA
1738 HAYAMI, MARVIN WA
1334/04 HAYES, RICH WA
997/06 HAYNES, DAN OR
1831 HAYNES, RICK OR
1532 HEAP, RICHARD OR
1748 HEATHCOTE, JOHN OR
904/03 HEATHCOTE, TOM WA
965/03 HEINZ, RANDY WA
1751/05 HELLER, WARREN CD
1916 HELLING, TERRY OR
1586 HEMBERRY, KEN WA
1459/03 HENNINGS, RALPH CA
1753 HENRY, LEW WA
1317/06 HENSEL, KRIS OR
729/05 HENSHAW, JOEY LEE OR
2007 HENBERGS, PAT WA
2033 HESSEN, PAT WA
2135/05 HESS, EETER OR

1941 HEYWOOD, BILL OR
2036 HICKEY, FAT WA
1407/02 HIGBIE, GORDON CR
1254/06 HILLIS, THOMAS CR
1109/08 HILLS, STEVE CR
2186 HILL, ALAN CD
1281/11 HILL, ERIAN WA
1489/04 HILL, MIKIF WA
1459/07 HILL, LANCY OR
1075/01 HILL, LEONARD WA
1491 HILL, LEWIS OR
1063/08 HILTON, DEVON WA
973/03 HINKLEY, ROBERT WA
905/06 HINSHAW, CAPRICE WA
1327/08 HITCHCOCK, JEFF UR
2050 HLADEK, DAVID CD
1544/12 HOBUSS, MIKE OR
975/04 HOBUSS, VICKI OR
1732/07 HODGKINSON, CHRIS CD
1387/02 HODGSON, KENT CD
1327/06 HOEKSTRA, DAVID OR
1698 HOFFMAN, DAN OR
1877 HOFFMAN, TERRY WA
1622/02 HOGE, WILLIAM WA
1526 HCLDEN, NATALIE WA
1431/07 HCLLEN, NEAL WA
1393/15 HCLDERMAN, MIKE WA
1748 HOLLAND, BOB WA
2020 HOLMES, VERNON WA
1343/03 HOLM, CHRIS CD
1343/03 HOLZKNECHT, AL CD
1269/09 HOOKWAY, RICHARD CD
1792 HOOVER, BRADLEY WA
1337/03 HOOVER, KEN WA
1599 HOPPE, G WA
1704 HORN, BEN OR
1374/04 HORN, FAUL UR
1204/11 HCUEK, DAVID OR
1766/08 HOUSE, DAN WA
966/03 HUBBARD, DARRAL WA
2016/05 HUBBARD, DCN CA
1018/06 HUBBARD, PAUL CA
1174/06 HUBBELL, RODNEY OR
1320/02 HUBER, F. OR
1582/09 HUFFMAN, JOE ID
1209/03 HUIE, JIM WA
1490/03 HULLSMAN, STEVE WA
1643 HUMPHRIES, GERRY CD
1103/12 HUNDLEY, CORNELIUS WA
1604/15 HUNTER, NEIL WA
1045/03 HUNTON, ROBERT CD
1896 HUNT, DARREL CD
1080/02 HUOT, GERALD CD
1240/04 HUTCHINSON, A. A. WA
1235/02 HUTCHINSON, DEBBIE OR
1469 HUTCHINSON, RAYMOND CD
1308/11 HUTCHINS, DARRELL OR
1481 HUYBENS, BARRY CD
1913/11 HYOSTITK, WALTER WA
1811 HURAMIL, SEID WA
1804 HUSDA, FRED WA
1290/14 HUSPEY, MICHELL CD
843/03 INNES, JOHN CD
2055 IRWIN, BOB CD
1944 IRWIN, PHIL OR
1113/06 IVENS, JOHN CD
1222/12 IVES, JONATHAN CD
1841 JAASKA, LERO WA
1586/08 JACHAU, CURTIS WA
1726/11 JACKSON, WAYNE WA
951/03 JACOBBERGER, FRANK OR
1435 JACOBSON, ROBERT WA
1882 JANGORE, KRIS WA
1363/03 JARCHIE, HULGER CD
1725 JARMON, RON WA
1595 JARRELL, BEN ID
1573/04 JARVELA, ERIC CJ
1322/14 JAY, ROGER WA
1112/04 JAY, STEVE WA
1799 JEANPIERRE, RICHARD CD
1466/06 JEFFERIS, MIKE OR
976/04 JENNEMAN, SKIP OR
1964 JENQUIN, DENNY WA
1539/13 JENSEN, BERNIE WA
1223/09 JENSEN, BOB OR
1111/08 JENSEN, JIM OR
1178/12 JENSEN, RICK OR
1799 JEROME, RICHARD WA
1522 JESSEIT, BILL WA
2024 JEWITT, EARL WA
1329/04 JOHNSON, DALE OR
1329/02 JOHNSON, DARYL CD
1468/05 JOHNSON, DOUG CD
992/07 JOHNSON, J. CD
1403/16 JOHNSON, KEVIN WA
1665/08 JOHNSON, MARK OR
1039/06 JOHNSON, MIKE WA
1451/13 JOHNSON, MITCHELL OR
1648/04 JOHNSON, SHANNON OR
1315/12 JOHNSON, VERN WA
1219/04 JOHNSON, VIC WA
1442 JOHNSTONE, KIRBY CD
819/02 JOHNSTON, IAN CD
1684 JOHNSTON, LYMAN JR WA
1834 JOHNSTON, LYMAN WA
1509/04 JOHNSTON, WALLY WA
1461/05 JCHO, WERNER CD

1192/12 JONES, BOB OR
1315/01 JONES, BRUCE WA
1657/11 JONES, CASEY WA
2015 JONES, CHRISTOPHER CD
1941 JONES, DAVID OR
1632/16 JONES, GEORGE OR
1617/05 JONES, TED OR
1432 JONES, WARREN OR
1829 JONES, WILLIAM OR
1619/03 JOYGENSEN, KARL OR
2351/07 JOYNER, LONEL CD
1417/06 JOYNER, MYRON CD
2089 KALTENICKER, JOE CD
1541/11 KAMINSKI, J. CD
1599/14 KANELLIS, GEORGE WA
1991/03 KANG, CHARLES WA
1163/03 KAO, JIM WA
1552 KARCH, DAVID WA
1001/14 KARCH, MIKE WA
1992 KARCH, ROBERT WA
2056 KAUPPILA, TIM WA
1492/15 KAY, JOHN WA
1454/06 KAZA, ROGER OR
1111/09 KEAGUINE, ANTHONY OR
1827 KEISER, VICTOR WA
1378/02 KELEMER, KARL CD
1513/06 KELLY, KEITH WA
1097/05 KELLY, PAT CD
1763/03 KELLY, WAYNE WA
1481/03 KELSAY, GARY WA
1766/14 KENDRICK, PHIL CD
1897 KENNEDY, STUART CD
1892/11 KENNEL, JAMES WA
1219/04 KENNY, DCN WA
1504/06 KENT, R. CD
2003 KERLIN, PAT OR
2003 KERN, GREG OR
2212 KEKR, FAY CD
1318/05 KERSHAW, TONY OR
1140/03 KERTON, LESTER OR
1573/03 KIDMAN, DARRYL WA
1656 KIDMAN, RUSS WA
1535 KIERSKY, LOU WA
1233/07 KIMBALL, STEVE WA
1321/14 KINGHORN, RUSSELL CD
1463 KING, DOUG WA
1057/05 KING, FRED WA
2177 KIPPLINGER, BILL OR
1484 KIPP, CHARLES WA
1730 KIRKPATRICK, FRANCIS WA
1252/11 KIRSCHNER, JIM WA
1565 KIRSTEIN, LARRY CD
1142/03 KIRWAN, JCN WA
1152/02 KISSLER, GARY OR
1591/09 KIVI, EDWIN WA
1772 KLEEMAEIER, KON CD
1653 KLEINHOUT, WILLIAM CD
1628/11 KLEINER, DAVE OR
1231/06 KLINETSBE, DAVID WA
1483 KLINGELER, JIM WA
1172/03 KLINGELERMAN, RALPH OR
926/05 KLOOR, MIKE OR
1633 KNAPP, EARL WA
1854 KNOBEL, DAVE WA
1298/07 KNOL, RANDALL WA
1771 KOBERSTEIN, PAUL WA
1362/12 KOCHER, LARRY OR
1232/08 KOCH, FRANK WA
1494 KOLB, NATI WA
1174 KOLBE, RICHARD WA
1491 KONECNY, JOHN WA
1787 KONG, EARL CD
996/03 KONKA, KARL OR
1533/08 KOPP, COLIN CD
1702 KQZU, MIKE WA
1526/07 KRAMER, F. CD
1966/06 KRAPEL, BILL WA
1737/03 KRAVEC, G. CD
941/06 KREITER, BRIAN WA
1420 KREITZ, STEVE WA
1301 KRON, CURTIS WA
2051 KRUGER, BEN CD
1296/05 KRUMS, ALEX WA
1640/02 KRUMS, ALFRED WA
1933 KRZYCZWSKI, ERNEST CD
1810 KUGE, TOM OR
1617 KUSNIC, MIKE WA
1172/03 KHAUK, S. CD
1352/05 KYNAS, AL CD
1343/09 LACTIN, DEREK CD
681/02 LAFORCE, TIM CD
1626/10 LAING, BRIAN CD
-4431 LAMAR, BILL WA
955/03 LAMBERT, KEN WA
1459/04 LAMBERT, RONNIE WA
1325/14 LAMBRIGHT, MIKE WA
1743/04 LAMB, DICK WA
1830 LAM, GREGORY CD
1343/02 LANE, GUY WA
1307/04 LANE, G. ALPH JR WA
1097/04 LANGLEY, JOHN WA
1547/06 LANTRIF, JOUG WA
1641 LAPI, LOUIS WA
1718/07 LAPORE, G. CD
893/05 LARKIN, COLIN WA
1066/02 LARKIN, DGN WA
1050/05 LARKIN, ERIN WA

733/05 LARKIN, IAN WA
1687 LARRANCE, BOB WA
1123/04 LARFAGAN, BOB WA
1319 LARSEN, TED OR
1219/12 LARSON, BOB OR
788/03 LASHER, MIKE WA
2005 LASSEN, GERALD CD
1822 LASSEN, MARV WA
903 LATHKCF, KEVIN WA
1599 LATHKCF, WILLIAM WA
1328/04 LAUDON, GENE WA
1305/15 LAWRENCE, LARRY WA
1771 LAXTON, VINCENT WA
1941 LAZZAROTTO, E. CD
2016 LECOMTE, GEORGE WA
1381/03 LEDGER, EDWARD WA
2113 LEMAKS, DIRK CD
1239/08 LEE, GUY OR
1969 LEE, JEROME OR
2129 LEE, JOHN CD
1464/05 LEE, ROBERT CU
1432/01 LEICHTNER, MIKE WA
1704 LEMKE, HAROLD WA
1748 LEMONE, JACK WA
1671/04 LENDERMAN, J. WA
1643 LENOIR, CARLOS WA
1469/03 LENOIR, ROU WA
1735/10 LEONG, ALBERT OR
1299/03 LESLIE, JEFF OR
1662/05 LESTER, DAVID WA
1437 LEITH, RANCY WA
1755 LEU, BOB WA
1445/02 LEVIN, MURRY CD
1030/03 LEWIS, BOB WA
1597 LEWITT, MARTIN WA
1374 LIDDLE, STUART WA
1285/09 LIGON, MIKE OR
1581/06 LINDBERG, JOHN WA
1222/04 LINDBURG, BILL WA
1198/10 LINDBURG, PETE WA
1455/06 LING, KEN OR
2098/01 LING, RICHARD OH
1851/11 LITTEN, TIM WA
552/07 LITTLE, BLAIR CD
1.74/06 LITTLE, GRAEME CD
1801 LI, ALLAN OR
1878/05 LINGLARD, JAMES OR
1650 LONGLEY, DENNIS CO
1503/04 LONGRAIN, VINCE WA
1164/11 LUCDEN, GENE WA
1528 LOUGHLIN, JOHN OR
1395 LOUIE, DONALD OR
1687/13 LOUIE, HENRY WA
1790/09 LOUIE, STANTON OR
1703 LOUIE, VAN OR
1262 LOVE, JACK WA
1243/01 LOW, JOE WA
1811 LOWKIE, WILLIAM WA
948/04 LUBY, EABS WA
873/04 LUBY, EVV WA
1457/13 LUBY, BOB WA
1275/04 LUCE, E. E. OR
1222/02 LUCKMAN, GREG WA
1311/02 LUNDQUIST, VIC WA
1648 LUTERS, DONALD WA
1630 LVAAS, FLEE WA
1032/02 LYNCHOLM, KEVIN WA
1966 LYON, DON WA
1597 LYSNE, SAM CD
1096/03 MAAGSMA, HANK WA
1626/02 MACDONALD, H. CD
1354/12 MACGAVIN, DON WA
1898 MACH, JOE CD
1363/12 MACKENZIE, MARK OR
733/05 MACKAY, GLENN CD
1886/10 MACKAY, TERRY CD
1716/04 MACK, DON CD
757/05 MACNEILL, DANIEL CD
1133 MACPHERSON, GLADYS CD
1571/05 MACSKASY, BILL CD
1382/01 MAHNRICHARD CD
943/02 MALONEY, CAROLYN OR
1647 MALONEY, PAT OR
1195/04 MANDELIS, DIMITRI WA
1651 MANIED, MIKE CD
1752 MANION, MARK OR
1706/05 MANZIN, EZIO WA
1468/05 MARANDA, BRIAN CD
1743 MARGOLIN, PHILLIP OR
1724/12 MARION, FRANCIS WA
1455/04 MARION, FRANK WA
1526 MARKERT, MIKE WA
1268/03 MARTIN, BILL OR
1396/02 MARTIN, DAVE CO
1237/03 MARTIN, FRED WA
1165/12 MARTIN, GARY WA
1400/06 MARTIN, JEFF OR
1425/05 MASON, NFN CD
1186/01 MATHESON, JOHN WA
1295/01 MATHISON, AJAY WA
2023/02 MATHIC, CHARLES WA
1814 MATSEN, CHARLES OR
1369/01 MATTSON, ERIC OR
1321/05 MAXWELL, WRAY OR
1324/05 MAYS, KEN OR
983/02 MAY, JIM WA
1153/11 HAZENIS, JAMES IL

1587/06 MCAINSH, BILL CD
 1348 MCALLISTER, JCE CD
 1433 MCBRIDE, CYNTHIA OR
 1475/08 MCBRIDE, DAVID OR
 1766 MCCALL, JOHN WA
 1529/03 MCCLELLAND, LYLE CU
 1483/05 MCCLELLAN, JAMES WA
 1759/02 MCCONNELL, BOB WA
 1292/04 MCCORU, MARSH WA
 1421 MCCORMICK, GRANT OR
 2259 MCCORMICK, JIM OR
 1695 MCCOY, ROBERT CD
 1644 MCCREA, VERN WA
 1500 MCCURDY, BOB WA
 1407/05 McDONALD, WALT WA
 1771 MCEACHEM, DAVID OR
 1449 MCGEARY, BILL WA
 1280/14 MCGEE, MARK WA
 1528/14 MCGEE, MIKE WA
 1567/05 MCGINTY, JOHN WA
 1595 MCGREAL, GARY WA
 1072/01 MCGREGOR, JOHN WA
 1353/03 MCGREK, DAVE WA
 1599/11 MCHUGH, JOHN CD
 1341/01 MCININCH, DAVID OR
 1673 MCKAIG, HESLEY WA
 1932 MCKIBBIN, SAM WA
 2046 MCLAREN, BRIAN CD
 1817 MCMAUGH, BARRETT CD
 1531 MCNEE, JIM CD
 1528 MCNELLY, DAVE WA
 1363/05 MCNELLY, PETER WA
 1897 MCREADY, PHIL OR
 1345/03 MCREE, MARCUS OR
 1321/07 MCTAVISH, JIM CU
 944/04 MEANS, MIKE WA
 1599 MELKER, BILL OR
 711/04 MEEKIN, CATHERINE WA
 1147 MEEKIN, JULIE WA
 1054 MEEKIN, KEVIN WA
 1295/03 MEEKIN, THOMAS WA
 1199 MEEKIN, TOM WA
 1931 MELCHER, HAROLD CD
 1864 MELEMA, RALPH CD
 445/02 MELO, TOM CD
 1793 MERRILL, RONALD OR
 1154/12 MERTLE, WILLIAM OR
 841/03 MERZ, BRIAN CD
 1361 MESSINGER, ROBERT CD
 1995 MICHAEL, ERNEST CD
 1811 MIDDLETON, TOM CD
 2039 MIEHE, JON OR
 1425/05 MIEHE, PETE OR
 1121/02 MILLER, JOY WA
 1987 MILLER, KATHY WA
 1556 MILLER, KEITH WA
 1663/02 MILLER, MIKE WA
 1363/02 MILLER, PETE WA
 1595/07 MILLER, RY OR
 1899 MILLER, RUSSELL WA
 1615 MILLER, STEPHEN WA
 1779 MILLER, WILLIAM CD
 1623 MILLIGAN, KERRY WA
 1405/04 MILLS, CHARLTON WA
 1360 MILLS, JOHN OR
 1806/05 MITCHELL, BOB OR
 1463/10 MITCHELL, CAROL OR
 971/04 MITCHELL, CURT WA
 1346/06 MOAN, RUSSELL WA
 1562/07 MOAN, DAVE CD
 1249/03 MOCATS, MIKE CD
 1698 MCKS, EINO CD
 1507 MOLDEN, LEONARD CD
 1145/06 MOLLGARD, KRISTIAN CD
 1906 MOLNAR, ROY CD
 1650 MONAHAN, DENNIS WA
 1288/05 MCNFORTON, JOE WA
 1837/03 MONGE, AL WA
 1217/01 MONICAL, ROBERT WA
 1088/01 MONOHAN, BOB WA
 1681 MONTECHALIN, MARK OR
 1586/14 MCNTCHALIN, MATT OR
 2059 MCNTCHALIN, MIKE OR
 1595/12 MCNTGCHRY, JIM OR
 498/04 MOORE, CONNIE CD
 1885 MOORE, DEANE CD
 1161/01 MOORE, EON CD
 2021 MOORE, HARRY CD
 1167/06 MOORE, MARTIN OR
 877/05 MOORE, MELISSA OR
 1421/06 MOORE, PAUL OR
 1371/07 MOORE, RICHARD OR
 1032/04 MOORE, TOM OR
 1526/05 MORGAN, JOE OR
 1773 MORIN, GLENN CD
 1801 MORISSETTE, SYLVIO CD
 1056 MORIWAKI, RUBY WA
 1419/14 MORRISON, MIKE WA
 1202/02 MORRIS, BOB CD
 1154/04 MCCORRIS, ERNIE WA
 1712/04 MORRIS, KEN OR
 2177 MORRIS, MICHAEL OR
 1386 MORSE, DOUG CD
 1832 MORTIMER, PHIL CD
 2048 MORTON, KEN CD
 1636 MOSHOFESKY, GERARD CD
 1471/06 MOSS, MARK CD
 1650/12 MOULIJN, JOHN WA

1652 MOYA, HERMAN WA
 1793 MCOYE, HAROLD WA
 1461/03 MOYLES, RICK OR
 1435/05 MOZAFARI, HUOSHANG OR
 1011/06 MUEHLECK, CHARLES OR
 1443/04 MUEHLECK, CHARLES OR
 1403/04 MUELLEF, WILFRIED CD
 1434/01 MUGWERU, JAMES WA
 1522/11 MULFORD, MIKE WA
 1547/07 MULKEY, HOLLY WA
 1182/03 MULLIGAN, DAVID WA
 1135/04 MUNOZ, JOE CR
 1827 MUNRO, JAMES PA
 1908 MUNZLINGER, KARL WA
 1668 MURPHY, CHARLES WA
 1596 MURPHY, KEVIN WA
 1465/05 MURRAY, ED WA
 2175 MURRAY, MIKE WA
 1377 MYERS, BILL WA
 1477 MYERS, HERMAN WA
 856/04 MYERS, RICHARD WA
 1262/07 NAFFIE, LAURENCE OR
 1282/06 NAKAMURA, BOBBY OR
 1493 NATT-CCH-DAG, GENE WA
 1589 NAWROCKI, WALTER WA
 1672 NEALY, GERALD WA
 1664/04 NEALY, JEFFREY WA
 2062 NEDELL, FRED WA
 1205/11 NEEDS, SHEILA CD
 1675 NELSON, BRIAN CD
 1357 NELSON, CRAIG CR
 1089/11 NELSON, GARY OR
 1532/11 NELSON, JAY OR
 1773 NELSON, JIM OR
 1833/07 NELSON, JOE OR
 1935/06 NELSON, JOHN WA
 1507/11 NELSON, KERMIT WA
 1821 NELSON, ROBERT WA
 1713 NELSON, WALT WA
 1645 NEUHAUS, BARRY WA
 1406/05 NEUMAN, GLENN WA
 1378 NEVE, RICHARD OR
 1550 NGAI, DON CD
 1803 NG, WILLIAM CD
 1383/12 NICHOLS, TONY WA
 992/02 NICHOL, ARON OR
 1372/11 NIEDERMAYER, REX OR
 1092/01 NIELSEN, ALAN CD
 1343/02 NIELSEN, SVEND CD
 1736 NIEMI, ROBERT CD
 1482/03 NIXON, JACKIE CD
 1453 NCLAN, THOMAS WA
 1564 NORMAN, RONALD WA
 1571 NORTH, BOB CU
 1344/04 NORTON, BEN WA
 1271/10 NOSTRAND, BOB WA
 1121/06 NULF, WILLIAM WA
 918/03 NUNEZ, DOUG WA
 1881 O'BRIEN, JAMES OR
 1578 O'BRIEN, MICHAEL WA
 1512/13 O'DONNELL, PAT WA
 2026 OGHORMAN, PETER WA
 1922/02 OHARA, PAUDY CD
 1331/13 O'KEEFE, JIM WA
 1215/04 OKRENT, DAVE WA
 1323/15 OKRENT, NEIL WA
 1512 OKRENT, RICHARD WA
 1457/06 OLSEN, JEFF OR
 1499/03 OLSON, BRIAN OR
 1669/13 OLSON, CRAIG WA
 1214/05 OLSON, GERALD WA
 1426 OMEARA, BILL WA
 1494/04 O'REILLY, CRAIG CD
 1571 ORTIZ, BERT CD
 985/02 OSTENSNGE, LARRY OR
 2141 OSZVALD, JOE CD
 858/03 OTIS, JERRY CD
 764/03 OTIS, JIM WA
 1592/06 OVERTON, SAM WA
 1701/05 OWENS, MIKE WA
 1243 OWENS, SHERI OR
 2037 PAFNUTIEFF, VLADIMIR WA
 2255 PAKOSTA, STAN CD
 893/06 PALMER, JOE WA
 1426/03 PALMER, ROGER WA
 1793/07 PANKHURST, J. CD
 1758 PANTELIC, BORISAV CD
 1133/07 PARKIS, STEVE CD
 1166/03 PARK, CHESTER WA
 798/07 PARRY, ED WA
 1982 PARSONS, RICHARD WA
 1551/11 PARSONS, STEVE WA
 1786/09 PARSON, IAN CD
 1704 PASHNIK, VICTOR CD
 963/03 PATTENDEN, NICK CD
 1783 PATTERSON, GABE WA
 1449 PATTIN, JACK WA
 1577 PAULSON, LUTHER WA
 1526 PAULY, DOUG WA
 1904/03 PAYNE, DANA WA
 1036/04 PEARSON, BRIAN WA
 1921 PEARSON, ERIK WA
 1881 PEARSON, FRED WA
 1248/06 PEARSON, JIM WA
 1767 PEARSON, STUART WA
 1858 PEARSON, TOM OR
 1394/11 PECK, MURRAY OR
 1555/03 PEDEN, MIKE WA

1636 PEDERSON, GEORGE CD
 1392/02 PEDRONI, ARCHIE OR
 1507/14 PENNELL, DAVE OR
 1130/01 PENNINGTON, BRENT OR
 2122 PERALA, BYRON OR
 1019/02 PERRINS, FRANK OR
 1174 PERRY, MIKE WA
 1574/07 PETERSON, EDWIN OR
 847/03 PLETTERSON, GENE WA
 1607/03 PETERSON, JIM WA
 1120/07 PETERSON, RUSS WA
 1640/04 PETERS, ED OR
 810/03 PETERS, ROD WA
 1760/10 PEITY, BILL WA
 1294/01 PFEIFFER, EDDIE ID
 1770/03 PFEIFFER, GUENTHER CD
 1872/09 PFEIFFER, ROBIN OR
 1278/11 PFISTER, MARK WA
 1281 PIHL, ERIC CD
 1017/06 PILKEY, A. N. CD
 2024 PINTAR, JOHN OR
 1905/16 PITRE, HANNIEGN WA
 1972 PITT, ANGUS WA
 1905 PCBANZ, GARY WA
 974/03 PCGRNICH, ROB WA
 1726 POLICH, DUANE WA
 2006 PCMFRET, RICHARD CD
 1583/02 PCNDER, MIKE CD
 1152/03 PON, FRANK CU
 1080/05 PORTER, DCN WA
 1549 PORTER, L. W. WA
 1874/14 PORTER, SID WA
 1041/03 PORTOL, CHRIS OR
 2006 POTOMA, MIKE CD
 2039 PCTER, BRIAN CD
 1434 POULSEN, MIKE OR
 2063 POULSEN, SIEF CD
 2271 POWELL, DAVID OR
 1740 POYSEK, KIP CD
 1146/04 PRANGLEY, MIKE CD
 1992 PRATT, LARRY WA
 1272/01 PREDMORE, BILL WA
 1808 PRESKITT, RANDY WA
 1608/07 PRICE, TIM OR
 1262/03 PRICHETT, R. W. OR
 1529 PRINKE, GEORGE OR
 1985/13 PRINKE, LAURENCE OR
 1138/04 PRONOVOST, GENE OR
 1542 PRUM, AND. CD
 1494 PRUIT, JACK CD
 2134 PULLEN, KENT WA
 2319 PUPPLS, VIKTORS WA
 1520/08 PUTNAM, HUGH WA
 1517/11 QUATIER, RICHARD WA
 1256/03 QUINTER, CHUCK OR
 1813 RAGIC, NICK CD
 1451 RAUFORD, RON WA
 1314/10 RAUKE, ED WA
 1935 RAHDER, HARRO CD
 1277/14 RAJALA, AL WA
 1219 RALSTON, DAVID OR
 1642/06 RAMSEYER, JIM WA
 1133/02 RAMSEY, JIM CD
 1657 RAPANOS, WILLIAM CD
 1291/14 RAPLEE, CHOCK WA
 2011 RASMUSSEN, ERNST WA
 1348 RASMUSSEN, MARTIN WA
 1822 RASMUSSEN, OTTO CD
 1697 RASMUSSEN, OWEN WA
 1296/04 RASSENTI, PETER CD
 1862 RATKAI, IVAN CD
 1609 RAVEN, ROGER CD
 808/05 RAWLINSON, JIM OR
 1635 RAYMOND, RICHARD OR
 1179/03 RAYMOND, ROJ CU
 1202/02 RAYMOND, TONY WA
 1414/02 RAYNER, BILL CD
 1818 RAY, RONALD WA
 1781 REESE, GREG OR
 1296 REEVES, FRED OR
 1681 REEVE, JEFF CD
 1638/05 REEVE, JIM CD
 1370/03 REICH, ED CD
 165 REID, BILL CD
 1524/01 REILLY, G. CD
 1739 REITER, DAN CD
 1218/06 RIBERY, RAYMOND OR
 788/02 RICE, JEFF OR
 1508 RICE, WAYNE WA
 1677 RICHARDSON, LEWIS OR
 1325/03 RICHARDSON, MIKE OR
 1405/05 RICHARDS, GEOFF WA
 1795 RICHARDS, RAY WA
 1724 RICHEK, MERYL OR
 1682/10 RIDDELL, GEORGE CD
 1302/08 RIDDL, JIM CD
 1466 RIDENOUR, JOHN OR
 1372/03 RIDGEWAY, MIKE OR
 746/05 RIDLEY, HUGH CD
 1549/11 RIEKSTINS, ULDIS CD
 1170/05 RIESENHUBER, GARY OR
 1567/06 RIGBY, RAYMOND CD
 1193/06 RIGEL, JOHN OR
 941/04 RILEY, JAMES OR
 1522/10 RINGO, BOB OR
 1217 RINKES, DANN OR
 1564 RINK, KEN CD
 1642 RITTENHOUSE, ROBERT WA
 1878/04 ROBERTS, BILL WA

1105/C2 ROBERTS, MARVIN CU
1279/11 ROBE, KEN CD
1598/11 ROBINSON, LANCE CD
1709/11 ROBIN, ROGER WA
1739/17 ROURIGUEZ, ED WA
1198 RODSTILL, DAVE ID
1846 ROUSS, WILFEU WA
1313/03 ROYAN, JERRY WA
1211/03 ROWLES, DAVID WA
1279/13 ROWLES, STEVE WA
1264/11 ROYAL, TOM WA
1651/14 RUAKK, DOYLE WA
1843 RLOB, LARRY WA
971/06 RUMNELL, STEVE OR
1883 RUNNINC, JEFF OR
2441 RUOTSALAINEN, ROBERT WA
2404 RLPEL, DAVE OR
1326/11 RUSSELL, ROBERT CD
1363 RUTECK, HALTEK OR
1494 RYAN, FORREST OR
1783 SACKETT, AL WA
1675 SACKEY, JOE WA
2011 SAGE, LEON WA
1301/03 SAGE, VICTORIA WA
958/06 SALAZAR, MIKE WA
1466/11 SALA, STEPHEN WA
1502/03 SALISELRY, BRIAN WA
1938 SALMON, NEIL WA
1729 SAMSEL, TOM WA
1599/04 SANCHEZ, TONY WA
1026/03 SANDAL, JIM WA
1442/06 SANDBERG, DAVE WA
965/06 SANDERSON, DELTA WA
603/06 SANDO, LOREN WA
1613 SANDOZ, S. WA
1114/06 SANDOSTED, SCOTT WA
2484 SANDOZ, DAVE WA
1561 SATANOVE, HARRY WA
1251/11 SAULTEK, GIL WA
1141/01 SAUNUEK, CLIVE WA
1967/06 SAVAGE, BART WA
1850/12 SAWYER, LARRY WA
1409 SCANNELL, JOHN WA
1789/03 SCHADEN, ROBERT CU
2080 SCHAEFFER, R. CU
1642/04 SCHEMM, MIKE WA
987/03 SCHEVING, JOHN WA
1611/05 SCHILLER, STAN WA
1853 SCHLAGEL, THEODORE WA
1743/14 SCHMIDT, FRED WA
1629/06 SCHMIDT, MARK CD
1142/06 SCHMIDT, MIKE CU
1142/11 SCHOFIELD, HEBA CU
1325/11 SCHOFIELD, BARBARA CD
1367/11 SCHOFIELD, BOB CD
1457/11 SCHOFIELD, JACLENE CD
1769 SCHOFIELD, MICHELLE CU
1402/12 SCHOFIELD, ROBERT CU
1649 SCHOFIELD, ROBIN CD
1911 CHRALLER, ESTHER, OR
1327 CHRADER, JACK OR
1103 CHRADER, JAY OR
1409 CHROYER, RICHARD OR
1426/07 SCHULIZ, DWAYNE OR
2019 SCHULTZ, TOM ID
1406/06 SCHWARZ, FRED CD
1750/11 SCHWARZ, DANRELL WA
1211/06 SCHWINDT, MARK WA
1473/08 SCIOGLY, TONY WA
2199 SCOOONES, DAN WA
1545 SCOTT, KEN CD
1906 SCOTT, LARRY OR
2000 SEID, HEE WA
1746 SEIRAHAN, YASSER WA
1759 SELBIE, ANDREW CU
586/01 SELL, DAVE WA
1221/06 SELTER, STEVE WA
1473 SERNA, ALBERT WA
817/02 SETTLES, TERRY WA
1621/12 SHAFER, DAVE OR
1542/11 SHANK, STEVE OR
1433 SHANLEY, TOM WA
2641 SHAPERO, DAVE CD
987/03 SHARPE, JOHN WA
918/01 SHAWLEY, STEVE WA
1149/11 SHAW, ANGUS CD
1873/11 SHAW, WILLIAM WA
1613/06 SHELLENBERGER, R. L. NB
1639/03 SHEN, YEE LING WA
1311/02 SHIPMAN, JOHN WA
1242/07 SHOMLER, MARK WA
1872 SHORT, LOWERY WA
1661/13 SHOR, L. H. WA
1690 SHROPSHIRE, RICHARD WA
1672/13 SHULER, RUSBIN OR
1286/04 SHYROCK, KEITH OR
1175/02 TEGEL, KEN WA
1528/03 TEGEL, RON WA
1423/06 THIMMONS, BARK WA
1469/08 THIMMONS, LAURENCE OR
1391/05 SIMON, TERRY WA
855/01 SIMS, GARY WA
1536/06 SINCLAIR, KIRK WA

1807 SINGER, GADY JR
1087/14 SINGLETARY, UIRK WA
1433/06 SIX, ROGER WA
1603/06 SKARSTEN, N. CU
1793/07 SKIVER, JIM WA
1567 SKLEAS, MITCHELL WA
1717 SKLOAS, PETER WA
1736 SKUCE, ALLAN CU
1439 SLETTEN, PETER CU
1579 SLETTEN, DAVID OR
2104 SLOAN, CARL WA
1378/04 SLOAT, BRYAN CD
1603/05 SMITH, BRAD WA
1142/04 SMITH, BROCKE IL
1291/04 SMITH, DICK WA
1564/05 SMITH, GERALD WA
1905 SMITH, KEN WA
1572 SMITH, LLOYD OR
1614/10 SMITH, MARK OR
1518/05 SMITH, PAUL CU
1558 SMITH, PHIL WA
1207/10 SMITH, TIM WA
1534 SMITH, WARD WA
1481 SNEATH, ROYAL CU
1765 SNIER, EDDIE WA
1399/06 CCS, STEVE WA
1187/05 SOUTHWELL, PETER CU
781/05 SOUTHWELL, STEPHEN CU
1162/05 SOUTHWELL, TOMMY CD
1374/05 SPARKS, DOUG WA
1774/10 SPARKS, JAMES WA
1616 SPATZ, SAM WA
1733 SPATEK, TOM WA
1807 SPILGEL, MIKE WA
1754/04 STACE, JOE WA
1082/11 STAMPS, ELM WA
961/05 STANING, BILL OR
1592 STANEJ, CARL OR
1922 STEFURAK, D. LEO WA
1432/04 STEFURAK, PETER WA
1223/08 TEEGER, JOHN OR
1211/05 TELBER, STANLEY OR
2236/05 TENSCHLT, EIVIND OR
1999 TEPHENSON, ROBERT WA
1050/04 TERLING, DEREK OR
1246/08 TERKLING, STEVE WA
1023/15 TEVENSON, SIDNEY CU
1253/03 TEVENS, ED WA
1711/09 STEWART, MURRAY CD
1554/07 STEWART, T. JAMES CU
1703 STEWART, TIM WA
1438/04 STILES, KEITH WA
1763 STOJANOVIC, LJUBOMIR CO
2253/02 STONE, DENNIS WA
1567/07 STONE, LARRY WA
1351/03 STRADLEY, MIKE OR
1211/05 STRAU, JOHN WA
1395/01 STRAUB, ROGER WA
1589/04 STRAUSE, STEVEN WA
1334 STRLETER, JIM WA
1373 STRINGER, GAIL CU
1334 STRINGER, LYNN CD
1226 STRINGER, MARK CU
1648 TRONK, ROBERT WA
2097 TRONK, JACK OR
1420 TRYCKE, ARDEN WA
1303 TRUCKEY, ALAN WA
1475/04 LUCKERT, GEORGE CU
1341/03 LUCKERT, KARL CD
1843 SUDBOROUGH, DANA OR
1827 SUGIYAMA, TOM CD
1677 SUKKAU, DON OR
1418/05 SUKKAU, RANDY CU
1454/05 SULLG, HANS WA
1396/05 SULLIVAN, BRIAN WA
1461/06 SUNDRSTROM, BILL WA
1417/06 SURPATT, DAVID WA
848/05 SUTHERLAND, ADRIAN CD
963/07 SUTHERLAND, SEAN CD
1496/05 SUTINEN, PAUL OR
2449 SUTTLES, DUNCAN CD
1122/02 SUWARA, OTTO WA
1116/05 SWAN, DAN WA
1451/13 SWAN, LARRY WA
1679 SWENLEY, DON WA
1118/03 SWENSON, STEVE WA
1621 SZABO, ANDY CD
1655 TADLOCK, SAM OR
1400 TAIT, STAN OR
1831/06 TALAVS, ARVED CD
1032/06 TAMAKI, BLAINE CD
1747 TAMURA, JIP OR
1501/04 TANG, LANY OR
1513/07 TATE, WILLIAM CD
1603/06 TATE, W. CU
1014/11 TAYLOR, CHRIS CU
1961/12 TAYLOR, JACK CD
1142/06 TAYLOR, ROB OR
2066/14 TENTO, CHRIS OR
1203/03 TETLOCK, PHILIP CD
1458/01 THOMASSON, BILL OR
1685/13 THOMAS, GREG WA
1748/05 THOMAS, PAUL OR
1868 THOMAS, STEVE WA
1821/10 THOMAS, WILLIAM WA
1432 THOMPSON, ALLEN WA

1591/04 THOMPSON, ALVA WA
1943 THOMPSON, DAVID OR
1084/06 THOMPSON, GORDON OR
1574 THOMPSON, HURTON WA
1433/13 THORINSON, RCGER WA
2348 THORVARSON, BARRY WA
1791 THURSTON, BEN CU
1621/04 TICE, DAVE WA
1621/03 TILMERSMA, C. J. WA
1253/04 TILLMAN, SCOTT WA
1110/05 TILMAN, SCOTT WA
1450 TITZ, ELMOR CU
1141/14 ITOU, ESTHER WA
1367/10 TOLLIVER, DALE OR
1469/10 TURJUSSEN, TERJE OR
2207 TORKAR, PETER WA
1686 TRKELSON, ALAN WA
1602/13 TOTH, JOE JR WA
2088 TOTH, JOE SR WA
1303/04 TOUTSEK, LEIF WA
1697/05 TOUTSEK, RICHARD WA
1506 TRAIL, ERIC WA
1661 TRAINOR, RAY WA
1989 TREDER, JEFF WA
1627/14 TUCKER, ZACK WA
1230/06 TUMBLESON, RAY CR
1738 TURINIA, DENNIS WA
823/04 TURNER, BRIAN OR
2156 TURNER, GCM OR
1683 TURNER, GCM OR
1912/07 TURNER, KEVIN OR
1511 TURNER, MARK OR
1358 UOHUS, STEVE WA
1341/15 UNDERWOOD, ROGER WA
1444/02 URAM, PETER CD
1437/04 WALATA, ERNIE WA
1378/05 WANNATA, BRUCE OR
1957 VANNATA, FRED OR
1846 VAN CAMP, WILLIAM CU
2029 VAN DEN, PERRY WA
917/04 VAN NOSTRAND, CATHY WA
1174/04 VAN NOSTRAND, JIM WA
1634 VAN PARYS, MARTIN WA
1618 VARNER, MERLIN WA
1069 VARNER, RON WA
1248/02 VARNER, CLAY OR
1316 VAUGHAN, DENNIS WA
2086/10 VAZQUEZ, IGLESIAS SP
851/02 VELTRI, BOYCE WA
1328/02 VENKATACHALAN, R. S. WA
1499 VICEKRY, RAY CD
833/03 VIERRA, ERIC WA
1855 VIGIER, GERRY CD
1618 VINYARD, GARY OR
1921/05 VINYARD, MIKE OR
1339/04 VIOSEN, TOM WA
1984 VITANYI, LESLIE CD
1347/07 VOGEL, JOHN WA
1282/08 VULLINGS, HANS CD
1244/01 WADE, CLIFFORD WA
1359/04 WAGNER, CHRIS WA
1341/11 WAGNER, ERNIE WA
1497/04 WAGNER, NEWELL OR
1713 WAINY, KEN WA
1192/04 WALDHEF, MIKE WA
1172/06 WALORON, DOUG WA
1306/06 WALKER, JESS WA
2207 WALKER, JOHNNY WA
1635/10 WALKER, JOHN WA
1632/15 WALLACE, WILLIAM WA
1267/05 WALLER, SCOTT WA
1693 WALS, DALE CD
1693 WALS, CHRIS CD
1889/11 WALSH, ED WA
1375/04 WALTERS, BOB WA
1101/04 WALTERS, JIM WA
1168/06 WALTER, RANDY WA
1129/02 WALTON, JOEL WA
1578 WARDELL, JIM WA
1731 WARD, GARY WA
1768 WARD, JOHN WA
1371/15 WARD, PICK WA
2089 WARNER, EUGENE WA
613/06 WARREN, ED OR
1657/06 WARREN, GEORGE CD
1477/12 WASHBURN, DAVE WA
1510/12 WASHBURN, LARRY WA
1013/02 WASSON, D. J. OR
2245 WATERMAN, DENNIS OR
1447 WATERS, GARY OR
1166/11 WATKINS, CURTIS OR
1303/12 WATSON, JOHN OR
1401 WATT, PEGGY WA
1203/02 WEBB, DON WA
1603/04 WEBER, RICHARD OR
1028/03 WEIGELT, ED WA
1922 WEIKEL, JERRY OR
1708 WEINMAN, GORDON OR
1121/03 WEISSBECK, MATT WA
1424 WEIZEL, DENNIS CD
1910 WESLEY, LEO CD
963/07 WESTON, GREG CD
1923 WESTON, PAUL CD
1173 WESTON, TODD WA
1711 WEST, DAVID CD

1437/15	WEST, SONNY	OR	1203/07	WILLIAMS, R. K.	CD	1312	YAMAMOTO, EJ	WA
1502	WHALEN, FRED	WA	1655	WILLIAMS, SCOTT	OR	1637/05	YANG, MARY	CD
1163/05	WHARTON, GORDON	WA	1277/03	WILSON, BLAIR	WA	1682	YEAGER, STEVE	WA
1156/09	WHEELER, AUDREY	WA	1319/03	WILSON, DAVE	WA	1674/10	YEE, GARY	WA
1796	WHEELER, RAY	NE	1361/06	WILSON, JEFF	OK	1373/10	YOCUM, DAVID	CU
1642	WHITE, AL	WA	1514/02	WILSON, LES	WA	1355/02	YOUNG, MCKRIS	CU
2045	WHITE, DAVE	OR	1518/07	WILSON, R.	CU	1623	YOUNG, BRENT	WA
1643	WHITE, JIM	WA	1589/11	WILSON, STEVE	WA	1677	YOUNG, DUANE	OR
1311/04	WHITNEY, WAYNE	WA	1488	WINKLE, DAVE	WA	1406	YOUNG, MARK	WA
1363/03	WICKHAM, PAYMOND	WA	1437/06	WISDOM, CHARLES	OR	1483/10	YOUNG, MICHAEL	OR
1040/06	WICKMAN, ED	WA	1585/04	WISER, BURLETTE	WA	1352/02	YOUNG, PETER	OR
1815	WICKMAN, LOWELL	WA	1783	WISE, JOHN	WA	1611/10	YOUNKER, GARY	WA
1669/05	WICKWIRE, MIKE	WA	2118	WOLF, JERRY	OR	1671/05	ZAK, GARY	CD
1712	WIDDINGTON, WILLIAM	CO	1483	WOLFF, DARREL	OR	1463/11	ZASITKO, MARK	CU
1004/01	WIDMER, JOHN	OR	1627/11	WOLFF, JOHN	OR	1491	ZASTERA, JIM	OR
1935/02	WIEDERMAN, K.	CD	1157/02	WOLTHAUSEN, EDWARD	WA	1295/06	ZELENSKI, MIKE	WA
1715	WIGHT, DAVE	CD	1700	WONG, DAVID	CU	1287/04	ZEMKE, NORM	WA
1382/03	WILBUR, MARVIN	WA	1473	WONG, DAVID	OR	1266	ZEPEDA, JCC	WA
1243/03	WILKE, KURT	OR	1934	WONG, HARVEY	CU	1464/07	ZETTERVALL, JAY	OR
816/02	WILKINS, JOHN	WA	1355/15	WOODVILLE, ANTHONY	OR	1374	ZEVENBERGEN, DAVID	OR
978/01	WILLIAMS, KENT	OR	2982	WOOD, ALEX	CD	2311	ZIMANYI, PAUL	WA
2110	WILLIAMS, BRIAN	CD	1071/06	WOOD, PENNY	OR	1729	ZINKEVICIUS, WALTER	IL
1473	WILLIAMS, DAVE C.	WA	1698/10	WUSTENBERG, TOM	CA	2361	ZUK, BOB	CD
1901	WILLIAMS, DAVE	CU	972/04	WRETLAND, ART	OR	1777	ZWITZER, MARTIN	OR
2131	WILLIAMS, DAVE	WA	1771	WRIGHT, HAL	WA	1184/05	ZYSSET, SAM	OR
1364/05	WILLIAMS, DAVID	CD	1689/06	WURTZ, ADAM JR	WA			
963/07	WILLIAMS, DENNIS	WA	1563/06	WURTZ, ADAM	WA			

Spokane Quadrangular Open
December 16
Our Savior's Lutheran Church
(Players are from Spokane except when noted otherwise.)

1. Peter Torkar	2131	W18	W19	W35	3-0	USCF membership prize
2. Stephen Christopher	1833	W17	W31	W34	3-0	(already life member)
3. Allen Sackett	1799	W11	W22	W36	3-0	USCF membership prize
4. Mike Brislaw	1415	W13	W27	W39	3-0	USCF membership prize
5. David Winkel	1414	W23	W24	W25	3-0	USCF membership prize
6. Norm Zemke	1287	W14	W28	W40	3-0	USCF membership prize
7. Bruce Warren	Unr.	W20	W21	W37	3-0	USCF membership prize
8. Dan Browne	Unr.	W12	W26	W38	3-0	USCF membership prize
9. Mike Waldher	Unr.	W16	W32	W33	3-0	USCF membership prize
10. Steve Rowles	1296	W29	L15	W30	2-1	USCF membership prize
11. Bob Bowley	1666	W36	W22	L3	2-1	
12. Allen Thompson	1401	W26	W38	L8	2-1	
13. Vern Johnson	1348	L4	W27	W39	2-1	
14. David Schmidt	Unr.	W40	W28	L6	2-1	
15. Tom Marsh	Unr.	W29	L30	W10	2-1	
16. Don Gray	Unr.	W32	L9	W33	2-1	
17. John Boyd	Unr.	D34	W31	L2	1-1	USCF membership prize
18. Rich Hanlen	1945	W35	D19	L1	1-1	
19. Jim Hanlen	1833	L1	W35	D18	1-1	
20. Ron Happ, Grand Coulee	1408	D21	L7	W37	1-1	
21. Nick Harmon	Unr.	L7	W37	D20	1-1	
22. Ben Jerrell, St. Maries	1601	W36	L11	L4	1-2	
23. Craig Spicer, St. Maries	Unr.	L24	L5	W25	1-2	
24. David Gustafson	Unr.	L25	W23	L5	1-2	
25. Steve Lester	Unr.	L5	W24	L23	1-2	
26. Bill Dodrill	Unr.	W38	L8	L12	1-2	
27. John James	Unr.	L4	W39	L13	1-2	
28. George Hatch	Unr.	L14	W40	L6	1-2	
29. Steve Daley	Unr.	L15	W30	L10	1-2	
30. Jerry Rineo	Unr.	L10	L29	W15	1-2	
31. Fred Kloefer	Unr.	W34	L17	L2	1-2	
32. Glen Kosler	Unr.	L9	L16	D33	1-2	
33. Mike Means	944	D32	L9	L16	1-2	
34. Peter Vathis	Unr.	D17	L31	L2	1-2	
35. Thomas Samsel	1713	L18	L19	L1	0-3	
36. Eric Trail	1519	L22	L11	L3	0-3	
37. Shawn Coyle	Unr.	L21	L7	L20	0-3	
38. Doug Johnson	Unr.	L26	L8	L12	0-3	
39. Cliff Castle	Unr.	L4	L13	L27	0-3	
40. Mike Halvorson, Mead	Unr.	L14	L6	L28	0-3	

Forty played in the second Spokane Quadrangular Open, exactly twice as many as entered the October 14 tournament. Prizes of a year's membership in the United States Chess Federation were won by ten: Peter Torkar, Allen Sackett, Mike Brislaw, David Winkel, Norm Zemke, Bruce Warren, Mike Waldher, Steve Rowles, all of Spokane; and Dan Browne and John Boyd, of Moscow, Idaho. Many of the area's high schools were represented by several students each who were playing in their first rated contest.

All games were finished by 5 p. m. except the one between Peter Torkar, Spokane County champion, and Rich Hanlen, Gonzaga University junior. Expert Torkar won in the third time-control period when he won a pawn by forking it and a rook with his bishop. The players had to finish the game in the apartment of Stephen J. Christopher, director, to make room for a Christmas party in the church basement hall where the tournament was held.

Nineteen new WCF members were gained. Those who won USCF memberships in this and the October 14 tournament are looking for USCF rated tournaments.

1. Jim Blackwood	W23	W12	W4	W11	4-0	17. Mike Holderman	L8	L9	D18	W26	1-2	On Dec 16, Jim
2. Gene Fomin	W9	W13	D3	W12	3-1	18. Stephen Miller	L11	L14	D17	W25	1-2	Blackwood swept
3. Bob Zuk	W20	W21	D2	W8	3-1	19. Frank Fattal, Jr.	L10	W24	L5	L9	1-3	to a perfect 4-0
4. John Scannell	W6	W22	L1	W8	3-1	20. Barry Neuhaus	L3	W15	L13	F	1-2	score as he won
5. Roger Hanson	W14	L11	W19	W13	3-1	21. Robert Elkins	W22	L3	L14	L15	1-3	the Leave the
6. Randy Freskitt	L4	W25	W23	W14	3-1	22. Robert McCurdy	L21	L4	W24	L10	1-3	Door Open held at
7. Hanniegn Pitre	W26	D8	W16	L3	2-1	23. Roger Gervin	L1	W26	L6	F	1-2	the Seattle Chess
8. Terry Hoffman	W17	D7	W11	L4	2-1	24. Russ Peterson	L13	L19	L22	Bye	1-3	Club. Gene Fomin
9. Henry Louie	L2	W17	D10	W19	2-1	25. Tom Shanley	D16	L6	L12	L18	1-3	Seattle CC Presi-
10. Pedro Garcia-Pelayo	W19	L16	D9	W22	2-1	26. John Langley	L7	L23	L15	L17	0-4	dent, held Bob
11. Randy Dean	W18	W5	L8	L1	2-2							Zuk to a draw in
12. Charles Freeman	W15	L1	W25	L2	2-2							round three, and they both shared 2nd and 3rd prizes. Best 1700's, 1600's,
13. Wayne Rice	W24	L2	W20	L5	2-2							1500's, and 1300's and unrated were Roger Hanson, Stephen Miller, John
14. Jim McNee	L5	W18	W21	L6	2-2							Scannell, and Mike Holderman, respectively. Wayne Rice and Mike Mulford.
15. Mike Mulford	L12	L20	W26	W21	2-2							MARVIN Y. HAYAMI, TD
16. Sam Barr	D25	W10	L7	F	1-1							

BRITISH COLUMBIA

December in B.C. is a slow month for Tournaments however, an event in late November occurred with the following results:

NOVEMBER POINT GREY OPEN, Nov 25-26 University of British Columbia

		-1-	-2-	-3-	-4-	-5-	T
1. Brian Williams	2075	W14	W22	W8	W2	D3	4 1/2
2. Dirk Leemans	2095	W11	W4	W18	L1	W8	4
3. Alan Hill	2156	w12	W6	D5	W9	D1	4
4. Josef Mach	1817	W29	L2	W20	W19	W10	4
5. Chris Jones	2005	W19	W13	D3	L10	w18	3 1/2
6. Ernest Krzyzowski	1929	BYE	L3	W14	W15	D9	3 1/2
7. Robert Barbeau	1715	L20	W27	W26	W18	D13	3 1/2
8. Roy Molnar	1866	W21	W16	L1	W11	L2	3
9. Brian McLaren	2034	D16	W25	W10	L3	D6	3
10. Nigel Fullbrook	2013	W17	W15	L9	W5	L4	3
11. Chris Walsh	1677	L2	W29	W16	L8	W20	3
12. Glenn Morin	1683	L3	L24	W27	W13	W19	3
13. Robert Niemi	1755	w27	L5	W17	L12	D7	2 1/2
14. Jay Caturay	1650	L1	W21	L6	D24	W22	2 1/2
15. William Tate	1693	W23	L10	W24	L6	D17	2 1/2
16. Norman Forbes	1615	D9	L8	L11	W27	W24	2 1/2
17. Kirby Johnstone	1398	L10	W23	L13	W21	D15	2 1/2
18. Robert Fancett	1942	W26	W20	L2	L7	L5	2
19. Warren Heller	--	L5	W28	W22	L4	L12	2
20. Mark Yang	--	W7	L18	L4	W26	L11	2
21. Robert Funk	--	L8	L15	W23	L17	WF	2
22. Harold Lemke	1738	W24	L1	L19	WF	L14	2
23. Mike Canic	--	L15	L17	L21	WF	W27	2
24. Brian Maranda	--	L22	W12	L15	D14	L16	1 1/2
25. Paddy O'Hara	--	W28	L9	LF	LF	LF	1
26. Art Blomquist	--	L18	BYE	L7	L20	LF	1
27. Mark Barnes	--	L13	L7	L12	LF	L23	0
28. Stephen Gordon	1793	L25	L19	LF	LF	LF	0
29. Robert Cameron	--	L4	L11	LF	LF	LF	0

All B.C. except Gordon, (Washington)

Brian WILLIAMS won the November edition of the Point Grey Open, which will probably be the last at the present location. Present plans have Tournaments on slate for INTERNATIONAL HOUSE, just a few blocks away, where there will be room for many more than 100 people...

One of the interesting facets of the Tournament was Warren HELLER's electric(!) chess clock, the first one that I had ever seen. It consisted of two alarm clocks connected by a system of relays. Unfortunately, the apparatus takes up about half a table, although apparently it can all be fused into something the size of a normal clock.

The results of adjourned games proved hard to predict. The McLaren - Forbes game in the first round was adjourned with Forbes up a piece, while McLaren had one passed and two blocked pawns as compensation. What a surprise it was to find the game drawn with McLaren trying for a win near the end! The real surprise was to come later, in the game Barbeau - Fancett. The game was adjourned in a double rook and pawn ending which was totally blocked except for 'one break', which belonged to Fancett. I therefore paired Fancett as 1/2 point and Barbeau as 1/2 point. When the game got played out, however, there was a break all right, which won Fancett two pawns. However, it lost the game, as Barbeau queened first and with check!! The Best Played Game prize was split between Jones, Hill and Morin for the first two games which follow. Brian WILLIAMS picked up \$30 for first plus Qualifying position for the BC Championships. Leemans, Hill and Mach split \$42 for 2nd, 3rd, and top A. 2nd A (\$6) was Ernest Krzyzowski; 1st B - Robert Barbeau (\$12), 2nd B - Chris Walsh (\$6), 1st C (\$12) - Kirby Johnstone, while Heller, Funk and Yang split the \$6 for 2nd C and Unrated. Glenn Morin won the Junior (14 & under Class) for \$6.

HILL (W) JONES (B)

1. P-Q4	N-KB3
2. P-QB4	P-K3
3. P-KN3	P-QB4
4. P-Q5	PxP
5. PxP	P-Q3
6. N-QB3	P-KN3
7. B-N2	B-N2
8. N-KB3	O-O
9. O-O	N-R3
10. N-Q2	N-B2
11. N-B4	P-QN4
12. NxQP	B-QR3
13. N-K4	P-N5
14. NxBP	PxN
15. P-Q6	R-QB1
16. NPxP	B-B5
17. PxN	RxP
18. B-K3	Q-QB1
19. N-N3	R-Q1
20. B-Q4	N-Q4
21. BxB	NxBP
22. BxN	RxQ
23. KRxR	BxN
24. PxB	RxB
25. RxRP	R-B8
26. R-R1	RxKR
27. RxKR	Q-B7
28. R-Q8+	K-N2
29. B-Q5	QxKP
30. R-Q7	K-R3
31. K-N2	Q-N4
32. R-Q8	Q-R4
33. R-Q7	Q-N4
34. Draw.	

MCLAREN (W) HILL (B)

1. Nf3	g6
2. g3	Bg7
3. d3	Nf6
4. Bg2	O-O
5. O-O	d5
6. Nbd2	Nc6
7. c4	e5
8. Rb1	Re8
9. b4	e4
10. Ne1	exd
11. Nd3	Bf5
12. Re1 ?	Ne5
13. cxd	Nd5
14. Rb3	Nd3
15. exd	Nc3
16. Re8 +	Qe8
17. resigns	
if Qf1....Bd3!	
18. Qd3....Ne2+	
19. K moves Nc1	

FULLBROOK (W) MACH (B)

1. P-K4	P-K4
2. P-KB4	PxP
3. N-KB3	N-QB3
4. P-Q4	P-Q4
5. P-K5	B-KB4
6. BxP	Q-Q2
7. B-Q3	B-K2
8. O-O	P-KR3
9. N-B3	O-O-O
10. P-QR3?	P-KN4
11. B-N3	BxB
12. QxB	P-KB4
13. P-N4	P-B5

14. B-B2?	R-B1
15. N-QR4	P-N5
16. N-Q2	P-R4
17. N-B5	BxN
18. NPxB	P-R5
19. B-K1	Q-N2
20. R-N1	KN-K2
21. Q-N5	NxQP
22. QxP+	K-Q2
23. N-N3	R-QN1
24. P-B6+	N2xP
25. N-B5+	K-Q1
26. QxR+	NxQ
27. RxN+	K-K2
28. R-N7	QxP
29. B-N4	N-K7+
30. K-R1	N-N6+
31. K-N1	Q-K6+
32. R-B2	Q-B8+
33. Resigns	

KRZYZOWSKI (W) HILL (B)

1. d4	Nf6
2. c4	e6
3. Nc3	Bb4
4. a3	Bc3+
5. bc	c5
6. Nf3	O-O
7. e3	d6
8. Bd3	Nc6
9. O-O	e5
10. d5	Ne7
11. e4	Ng6
12. Bg5	h6
13. Bd2	Qe7
14. h3	Nh5
15. Kh2	Nhf4
16. Bf4	Nf4
17. Ng1	g6
18. g3	Nh5
19. f4	ef
20. gf	f5
21. Qf3	fe
22. Qe4	Qe4
23. Be4	Nf4
24. Rf3	Bd7
25. Rxf1	g5
26. h4	Rae8
27. Bc2	Re7
28. hg	hg
29. Rg3	Rg7
30. Nf3	Ne2
31. Rg2	g4!
if 32. Nd2	g3+!
33. Kh1	Rf1+
34. Nf1	Bh3!
35. Re2	g2+ wins

32. Re2?	gf
33. Ref2	Rf6
34. Kh1	Rh6+
35. Rh2	Rh2+
36. Kh2	Rg2+
37. resigns	

BY B.C. NEWS EDITOR:
Larry Kirstein
3042 Orillia St.
Victoria, B.C.

Kelowna Chess Club Swiss

	Rating	Rd1	Rd2	Rd3	Rd4	Rd5	Rd6	Tot	TB
1 Vic Pashnik	1704	W16	W13	W21	L3	W14	W9	5	16
2 Barry Thorvardson	2043	W26F	W15	W5	W8	W3	-	5	15 1/2
3 Kon Kleemaier	1772	W20	W18	D4	W1	L2	W10	4 1/2	20
4 Helmut Titz	1454	WF	W10	D3	D6	D9	W8	4 1/2	19 1/2
5 George Riddell	1682	W12	W11	L2	W13	D6	W14	4 1/2	18 1/2
6 Alex Wood	2082	W23	L8	W12	D4	D5	W13	4	19
7 Wilfred Mueller	1408	L13	W16	W11	L9	W19	W18F	4	12
8 Sam Lysne	1597	W22	W6	W9	L2	D10	L4	3 1/2	20 1/2
9 Harro Rahder	1935	W25	W14	L8	W7	D4	L1	3 1/2	20
10 Ken Fraser	1730	WF	L4	W22	W17	D8	L3	3 1/2	17
11 L. Zais	Unr	W24	L5	L7	W20	D12	W17	3 1/2	16 1/2
12 Greg Fraser	Unr	L5	W24	L6	W15	D11	W19	3 1/2	13 1/2
13 Keith Winter	Unr	W7	L1	W18	L5	W16	L6	3	19
14 Ken Rink	1564	W17	L9	W19	W22	L1	L5	3	17
15 Bill Greenwood	1566	W21	L2	L17	L12	W20	W22F	3	13
16 Billy Fleming	Unr	L1	L7	W26F	W23-	L13	W21	3	11
17 B. Rueger	Unr	L14	W25	W15	L10	D18	L11	2 1/2	13 1/2
18 Gerry Fleming	1481	W19	L3	L13	W21	D17	L7F	2 1/2	12
19 G. Sage	Unr	L18	W20	L14	W25F	L7	L12	2	12 1/2
20 Ricky Dawson	Unr	L3	L19	W23	L11	L15	W24	2	11 1/2
21 Roger Mueller	Unr	L15	W26F	L1	L18	W25F	L16	2	10 1/2
22 R. Goss	Unr	L8	W23	L10	L14	W24	L15F	2	9 1/2
23 Jim Ramsay	1133	L6	L22	L20	L16	W26F	W25F	2	7
24 Dale Wall	1267	L11	L12	L25	W26F	L22	L20	1	8 1/2
25 Miss L. Barber	Unr	L9	L17	W24	L19F	L21F	L23F	1	3 1/2
26 K. Allin	Unr	L2F	L21F	L16F	L24F	L23F	-	0	

Alex WOOD reports from Kelowna that this event with 26 entries made it the largest Club tourney in five years. It will add 11 rated players to our roster, once the computer sends their new ratings. There were at least two major upsets, with Alex WOOD taking only 6th place and Harro RAHDER 9th, whereas these two players are usually 1st and 2nd! Disappointing is the fact that Barry THORVARDSON could not stay to play his last game, since even a loss to Vic PASHNIK would have given Barry the win on tie-breaking but the forfeit cost him 1st place. The final results had a smaller spread of scores than most of our Tournaments - certainly the number of draws (especially in round 5) was at least partially responsible, as were the number of forfeits.

The Kelowna Club has been quite active in its matches. A match with Osoyoos in November saw Kelowna coming through with a strong win but Osoyoos obviously picked up a few pointers because the return match in December showed the following results.

KELOWNA	SCORE	OSOYOOS
1 Alex Wood	0 - 1	John Rist
2 Harro Rahder	1 - 1	Tibor Halmaj
3 Kon Kleemaier	1 - 1	Carl Storey
4 Vic Pashnik	1 - 1	Bill Storey
5 Keith Winter	1 - 1	Brian Cudworth
6 Sam Lysne	2 - 0	Bert Knott
7 Wilf Mueller	2 - 0	Helmut Klein
8 Billy Fleming	1 - 1	Bernard Wiens
9 Roger Mueller	0 - 2	Harry Bray
10 Sheryl Shultz	0 - 2	Ron Phingstag
	9 - 10	

The whole match with the 'Osoyoos Chess Nuts' depended on the outcome of the last game to finish - on board 1, where John Rist won over Alex Wood after a gruelling but well played, five hour game. This brings the series to 1 each with a third match - the rubber planned for the Spring.

Send your Interior News to Alex at Box 302 Kelowna. Regret the error in the reminder of the Kelowna Open for the Capri Hotel set for JANUARY 13 and 14. Hope you all can make it.

SUPPORT

FOR '1973'

BRITISH COLUMBIA CHESS



SCOONES (W)	JEWITT (B)	SMEADER (W)	BATEMAN (B)	Ten minute Game	
1. P-Q4	N-KB3	P-Q4	P-Q4	1. P-K4	P-QB4
2. P-QB4	P-QB4	N-KB3	N-KB3	2. N-KB3	P-Q3
3. N-KB3	PxP	B-B4	B-B4	3. P-Q4	PxP
4. Nxp	N-QB3	P-K3	P-K3	4. Nxp	N-KB3
5. N-QB3	P-KN3	B-K2	PxP	5. B-K2	N-B3
6. P-KN3	B-N2	BxP	B-QN5	6. BxP	B-Q2
7. B-N2	Q-R4	B-Q2	O-O	7. B-Q2	NxB
8. N-B2	O-O	N-KB3	B-N3	8. N-KB3	P-KR4
9. O-O	P-Q3	O-O	P-B3	9. O-O	P-QR3
10 P-QR3	Q-KR4	10 R-K1	P-N4	10 Q-Q2	P-QN4
11 N-Q4 ?	NxN	11B-N3	B-Q3	11 P-KB4	R-B1
12 QxN ??	N-N5	12 P-K4	B-B2	12 O-O-O	B-N2
13 Resigns		13 P-K5	N-Q4	13 K-N1	N-R4
		14 N-N5	P-KR3	14 N-B5	NxB
		15 N-B3	N-K2	15 NxB+	K-B1
		16 P-Q5	KPxP	16 RPxN	KxN
		17 N-Q4	K-R1	17 P-B5	P-R4
		18 P-K6	N-N1	18 P-R4	P-QN4
		19 Q-B3	Q-R5	19 N-R2	Q-N3
		20 N/3-K2	QxRP+	20 P-N4	Q-B4
		21 K-B1	PxP!?	21 PxP	RxP
		22 QxR	B-Q6	22 R/Q1-N1+	black lost on time
		23 P-B3	B-N6		
		24 resigns			

I regret I cannot forecast an event for Victoria as I have a problem of shift work and can only give about two months notice so stay tuned. Made a blunder in the BC Interior News with my reminder of the Kelowna Event giving the wrong dates however the notice under the Tournament section was correct so I hope this won't hurt their event.

One complaint has been received with regard to the qualifying events that are Open events but only a player from the region where the event is held can Qualify. The purpose of leaving the events open is so players from outside areas can also compete for prizes and have an event to play in. The purpose for regional qualifying is so every area possible, we hope, in B.C. will be represented in the Championships - a total of 16 players from across the province will compete.

Dave WIGHT has resigned as Tournament Director for the Federation and Jon BERRY has been appointed to the position to finish out the term of office. Jon has directed Point Grey events in October and November and unless he can get assistance will be running the events at International House. This is a beautiful site and has hosted the Canadian Championships not to long ago.

A reminder of the NORTHERN VANCOUVER ISLAND OPEN in Nanaimo 17-18 February. This will be another well run event by Fred SCHULZ and should be a big one. Here is a brilliancy from last years Open with Jon BERRY getting blasted in Round 1 by Harold BROWN who is ever dangerous. Harold is one of the Victoria heavies who doesn't make it to too many events but when he does he's a contender. Now that Dan SCOONES is retiring from play for a while and going to Spain to teach, Harold will be a power to deal with in Victoria next to tough Ray!!!

BROWN (W)
BERRY (B)

1. P-K4 P-QB4
2. N-KB3 P-Q3
3. P-Q4 PxP
4. NxP N-KB3
5. N-QB3 P-QR3
6. B-QB4 P-K3
7. B-N3 B-K2
8. P-KR3?

- 16 N/R5xN BxN2
- 17 Q-R5ch N-N3
- 18 Nx8 KxN
- 19 B-Q2 QR-B1
- 20 Q-B3ch K-N2
- 21 B-B3ch K-N1
- 22 KR-K1 Q-KB2
- 23 QxQch KxQ

Aiming for P-KB4 and B-K3 without worrying about N-N5 for black.

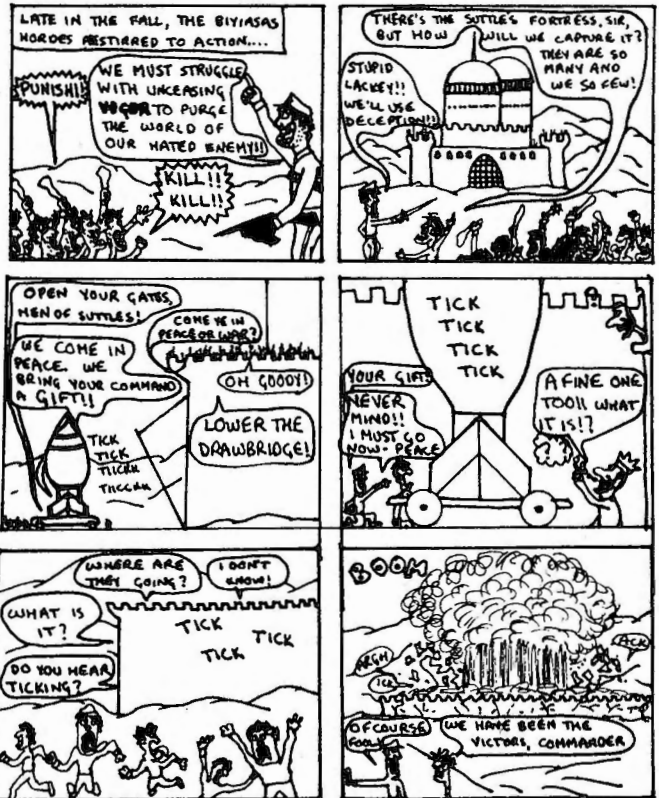
- 8..... P-QN4
 9. P-R3 B-N2
 - 10 BxKP!?
- risky but because of blacks open king gives chances for both sides.

the chances are good for white if he can meet blacks threats on the king side and put pressure on the QP.

- 10..... Px8
- 11 NxKp Q-Q2
- 12 NxPch K-B2
- 13 N-R5 R-K1
- 14 O-O N-B3?
- 15 N-Q5 N-K4

- 24 P-B3 R-KN1
- 25 K-R2 N-B5
- 26 P-KN3 N-K3
- 27 QR-Q1 K-K2
- 28 R-Q2 N-N4
- 29 K-N2 QR-KB1
- 30 R-Q3 R-N3
- 31 B-N4 N-B2
- 32 P-K5 P-QR4??
- 33 PxP disch K-Q2
- 34 R-K7ch K-B1
- 35 P-Q7ch K-Q1
- 36 RxN RxR
- 37 BxPch resigns

On the lighter side we present the following short cartoon by Bruce Harper who advises any resemblance to persons living or dead is purely coincidental and has cleared things with n'ral look-a-likes and people of same name so his house isn't burned down...??? After all Chess Masters never die they just loose their pawns...



To be continued next month....

Earl JEWITT and Martin EMIG are presently playing a match as a play off for Qualifying entry from Southern Vancouver Island to the BC Championships. Here is a Club game by Earl winning over Bruce FENNELL who has been having his ups and downs lately but a tough competitor on a good day. Both play at the Gordon Head Chess Club in Saanich, Tuesday nights. At any rate this is nicely done!!!

JEWITT (W)
FENNELL (B)

1. P-K4 P-K4
 2. N-KB3 N-QB3
 3. B-N5 P-QR3
 4. B-R4 P-QN4
 5. B-N3 P-Q3
 6. O-O N-KB3
 7. N-N5 P-Q4
 8. PxP NxP
 9. NxBP!! KxN
 10. Q-B3ch K-K3
 11. QN-B3 NB3-K2
 12. P-Q4 B-N2
 13. B-N5 P-QB3
 14. KR-K1 K-Q2
 15. RxP K-B2
 16. NxNch PxN
 17. QR-K1 K-N1
 18. BxN BxB
 19. Rx8 K-R2
 20. BxP resigns
- Now thats pressure!

The CFC have published their once-a-year rating list, now for \$5.00 per year, which is their new membership fees, thats what they call service!! HOWEVER, should Anyone want a copy drop me a post card or something and I'll mail it out to you, and that is courtesy of the BCCF and not the CFC as they are obviously not willing to send them to all their members direct. Write Larry Kirstein, 3042 Orillia St, Victoria, if you want one.

A couple of short wind up notes here. First of all if you are going to send me games that are annotated you type them then I'll print them. If you write them out long hand I'll type them but I'm afraid I'll leave out your annotations as its just too much to handle. I received a letter by Brian Potter sent to the Editor and then forwarded to me to print however have misplaced it, sorry, Brian, and should I recover same will put it in as it had something nice to say about ME! The other members of the executive too but was too flatering really and makes us want to work harder so cut it out you guys.

*****NOTE*****

BCCF MEMBERSHIP FEES

- ADULT: \$6.00 AND includes NORTHWEST CHESS.
JUNIOR: \$1.00 without NORTHWEST CHESS \$3.50 includes NORTHWEST CHESS 18 years and under.
SENIOR: \$1.00 without NORTHWEST CHESS \$4.50 includes NORTHWEST CHESS 65 years and over.

** Carry your card so it can be produced to Tournament Directors to speed up registration at events. You cannot play in a rated event unless you hold a valid card so RENEW NOW!!!

BC INTERIOR AND NORTHERN NEWS FOLLOWS, ENJOY.

KERRISDALE CLUB CHAMPIONSHIP

1. Brian Williams	W12	W9	W4	D2	W3	4 1/2
2. N. Fullbrook	W27	W11	W10	D1	W7	4 1/2
Ken Baker	3.	W30	W17	W7	W14	L1 4
4. Paul Brown	W32	W8	L1	W21	W9	4
5. George Schneider	W28	L7	W20	W12	W16	4
6. E.C. Boire	W24	L10	Wdf	D8	W15	3 1/2
7. Brian Potter	W23	W5	L3	W15	L2	3
8. Robert Kaye	W22	L4	W26	D6	D17	3
9. Ben Kruger	W19	L1	W24	W10	L4	3
10. J. Somerville	W31	W6	L2	L9	W20	3
11. Jerry Cayford	W13	L2	L14	W31	W21	3
12. Richard Baril	L1	W30	W32	L5	WDF	3
13. William Jung	L11	L24	W28	W18	W25	3
14. Bill Miller	W25	D16	W11	L3	Ldf	2 1/2
15. Roy Westwick	D18	W32	W16	L7	L6	2 1/2
16. Ivan Ratkai	W21	D14	L15	W17	L5	2 1/2
17. Boris Pantelic	W29	L3	W19	L16	D8	2 1/2
18. Cyril Collis	D15	L19	W30	L13	W24	2 1/2
19. A.J. Edwards	L9	W18	L17	L22	W30	2
20. David McPherson	Ldf	W23	L5	Wdf	L10	2
21. Ivan Deater	L16	W25	W31	L4	L11	2
22. Greg Jarvis	L8	Ldf	W27	W19	Ldf	2
23. Frank Wadelin	L7	L20	L25	Wdf	Wdf	2
24. Gorde McPherson	L6	W13	L9	D25	L18	1 1/2
25. Hugh MacDonald	L14	L21	W23	D24	L13	1 1/2
26. Gordon McPherson	Ldf	W28	L8	Ldf	D27	1 1/2
27. Ray Hutchinson	L2	L31	L22	W28	D26	1 1/2
28. A.M. Grasdal	L5	L26	L13	L27	BYE	1
29. J. Oldham	L17	Wdf	Ldf	Ldf	Ldf	1
30. Al Hare	L3	L12	L18	W32	L19	1
31. Martha Street	L10	W27	L21	L11	L32	1
32. J. Bilson	L4	L15	L12	L30	W31	1

The Kerrisdale Club Championship is over. Held on five consecutive Wednesdays, this qualifying event's top honours were grubbed by Brian Williams on tie-break over Nigel Fullbrook. The top six will now play a round robin to decide the Champion. Also at the same time, there will be an open Swiss system event to give the rest of the Club an opportunity to lose more games.
t.d.-Nigel Fullbrook

Kerrisdale Championship Rnd. 2 PIRC

Brian Williams vs. Ben Kruger

1. P-K4	P-Q3	26. QXP	N-K4
2. P-Q4	N-KB3	27. NXN	BXN+
3. N-QB3	P-KN3	28. K-R1	P-N4
4. P-KB4	B-N2	29. PXP+	K-R2
5. N-B3	P-B4	30. Q-Q5	Q-R5
6. PXP	Q-R4	31. B-B4	BXB
7. B-Q3	QXP	32. RXB	QXP
8. Q-K2	O-O	33. R-N4	Q-K7
9. B-K3	Q-QR4	34. Q-N3	P-R4
10. O-O	N-N5	35. R-B4	R-B1
11. B-Q2	Q-N3+	36. P-B8(N)	K-R1?
12. K-R1	QXP	37. N-N6+	K-N2
13. QR-N1	Q-R6	38. Q-N1	Q-K6
14. R-N3	Q-B4	39. Q-N2+	R-B6
15. P-KR3	N-KB3	40. Q-N2	QXP+
16. N-QN5	N-R4	41. QXQ	RXQ+
17. K-R2	B-K3	42. MXR	K-N2
18. B-K3	Q-B1	43. NXP	RXP+
19. R-R3	N-QB3	44. K-N3	P-N5
20. P-N4	P-QR3	45. P-B6+	K-B2
21. PXN	PXN	46. N-B6	P-N6
22. RXR	QXR	47. N-Q8+	K-B1
23. P-B5	B-B5!?	48. P-B7	P-R5+
24. BXB	PXB	49. RXP	RESIGNS
25. RPXP	P-R3		

This is going to be catch up month for a lot of back logged games and articles. Several games from the SAANICH FALL OPEN were cut from the December issue as Rusty ran out of space.

MORISSETTE (W)
HUNT (B)

1. d4	e5
2. d5	c5
3. e4	d6
4. c4	g6
5. Bd3	Bg7
6. Ne2	Ne7
7. O-O	O-O
8. b3	f5
9. f3	Nbd7
10. Qc2	Nf6
11. Ng3	f4
12. Nh1	g5
13. Nf2	Ng6
14. g3	h5
15. Nbc3	Bd7
16. Rb1	Bh6
17. Ne2	Rf7
18. Kh1	Rh7
19. Rg1	Kf7
20. gxf4	gxf4
21. Rxf6	Kxf6
22. Bxf4	Bxf4
23. Nxf4	Kf7
24. b4	Rg7
25. bxc5	exf4
26. cxd6	Ne8
27. e5	Kf8
28. Ne4	Qa5
29. e6	Ba4
30. Qc1	Rc8
31. Qxf4+	Kg8
32. d7	Bxd7
33. exd7	Rxd7
34. Rg1+	Rg7
35. Rxf7+	Nxf7
36. Nf6+	Kf7
37. Nxf5+	Kg8
38. Qg4	Rc7
39. Nf6+	Kf8
40. Nh7+	Kg8
41. Qf4	Qe1+
42. Kg2	Qe7
43. Nf6+	Kf7
44. Nd7+	resigns

CLARKE (W)
ELLIS (B)

1. d4	Nf6
2. Nc3	g6
3. g3	d5
4. c:d	N:d5
5. Bg2	N:N
6. b:c	Nd7
7. Nh3	Bg7
8. O-O	O-O
9. d4	c5
10. e3	c:d
11. c:d	e5
12. Bb2	e:d
13. B:d4	Nf6
14. Nf4	Re8
15. Qb3	Ne4
16. Rfd1	Qa5
17. B:B	K:B
18. Racl	Rb8
19. Rd5	b5
20. h4	a6
21. Qb2. ch	Kg8
22. h5	Qb6
23. B:N	R:B
24. h6	f6
25. Rcd1	Bf5
26. Rd6	Qb7
27. Q:f6	Ree8?
28. Rd7	Resigns

Frank Wadelin vs David McPherson

1. P-K4	K-QB3	18. P-B4	B-N2
2. N-KB3	F-K4	19. K-B2	RXR
3. N-B3	N-B3	20. RXR	BXN
4. B-N5	B-B4	21. FXB	R-N1
5. O-O	P-Q3	22. P-QR4	P-N3
6. P-Q4	PXP	23. P-N4	R-N7+
7. LXP	BXN	24. K-N3	P-N4
8. QXB	O-O	25. P-R5	K-N2
9. BKN	FXB	26. R-KB1	R-N6+
10. B-N5	P-B4	27. K-R2	R-N5
11. Q-Q3	P-QR4	28. R-B5	K-N3
12. C-N3	R-K1	29. P-N3	P-B5
13. N-Q5	NXP	30. R-B3	R-N6
14. BXQ	RXQ	31. R-B2	P-B6
15. BPXN	RXB	32. R-B2??	R-N7
16. MXBP	R-N1	33. RESIGNS	
17. R-Q5	RXP		

Ray Hutchinson vs Martha Street Ruy Lopez

1. P-K4	F-K4	12. P-QB4	N-KB3
2. N-KB3	N-QB3	13. P-QR3	Q-QB4
3. B-N5	P-QR3	14. N-QB3	P-Q2
4. B-R4	N-B3	15. P-KR3	KR-K1
5. F-Q3	P-Q4	16. P-N3	R-K2
6. PXP	NXP	17. B-N2	QR-K1
7. BXN+	PXB	18. N-K2?	BXN
8. NXP	B-R2	19. FXB	QXP
9. O-O	B-Q3	20. P-B4	N-N5
10. R-K1	O-O	21. P-B3	Q-R7+
11. N-KB3	P-KR3	22. K-B1	N-K6MATE

Ken Baker vs Boris Pantelic

1. N-KB3	P-Q3	14. N-QR4	N-Q2
2. P-Q4	P-KN3	15. B-B3	R-K1
3. P-B4	B-N2	16. QR-Q1	Q-B2
4. N-B3	N-KB3	17. P-B5	R-K2
5. P-K4	B-N5	18. Q-B4+	K-R1
6. B-K2	P-B3	19. N-N5	B-B1
7. O-O	O-O	20. R-Q3	N(2)-B3
8. N-KR4	BXB	21. N-K6	Q-B1
9. QXB	N-R4	22. R-Q8	QXN
10. B-K3	P-K4	23. QXQ	RXQ?
11. N-B3	P-KB4	24. RXR	R-K1
12. PXP	P-B5	25. RXR	NXR
13. B-Q2	PXP	26. BXP+	and white won

William Jung vs G.C. McPherson Budapest

1. P-Q4	N-KB3	15. B-N2	P-QB3
2. P-QB4	F-K4	16. N-K3	BXN
3. PXP	N-N5	17. FXB	BXP
4. N-KB3	B-B4!?	18. B-K2	Q-R5+
5. P-K3	N-QB3	19. P-N3	QXKP
6. N-B3	(N)XP(4)	20. O-O	B-Q4
7. B-K2	P-Q3	21. K-B2	Q-N7+
8. P-QR3	P-QR4	22. K-K1	QXRP
9. R-QN1	B-B4	23. BXN	PXB
10. P-K4	NXN+	24. Q-Q3	QXP+
11. BXN	B-K3	25. K-Q2	R-R7+
12. N-Q5	N-K4	26. K-B3??	R-R6+
13. P-QN4	PXP	27. RESIGNS	
14. PXP	B-R2		

DON'T FORGET***!!!!!!**

Get your copy of "The Tournament Book of The 1972 B.C. Championship" by Bruce Harper. Send \$2.00 to Tournament Book, 563 Eastcot, West Vancouver. A terrific production!!!

Black plays something a little different and Kurt likes the tune so much he adds a few notes himself.

GAMES FROM CLUB SWISS

Kurt WIDMANN (W)	1. P-Q4	N-KB3
Bert VAN DYK (B)	2. P-QB4	P-Q4
	3. PxP	NxP
1. P-K4	P-QB4	
2. N-KB3	P-Q3	
3. P-Q4	B-KN5	
4. B-QN5+	N-Q2	
5. PxP	BxN	
6. QxB	PxP	
7. O-O	P-QR3	
8. BxN+	QxB	
9. R-Q1	Q-B3	
10. N-B3	N-B3	
11. B-N5	P-R3	
12. BxN	KPxB	
13. Q-N3	P-KN3	
14. P-K5	B-K2	
15. N-Q5	R-Q1	
16. P-QB4	R-Q2	
17. PxP	BxP	
18. NxB+	QxN	
19. Q-N8+	resigns	

RINK (W)
ZAIS (B)

1. P-Q4	N-KB3
2. P-QB4	P-Q4
3. PxP	NxP
4. P-K4	N-N3
5. N-QB3	P-K3
6. N-B3	B-N5
7. B-Q3	BxN
8. PxB	N-B3
9. O-O	N-Q2
10. R-K1	O-O
11. P-K5	P-QN3
12. Q-B2	P-N3
13. B-R6	R-K1
14. R-K4	N-K2
15. B-KN5	N-B1
16. B-B6	B-N2
17. R-N4	Q-Q2
18. N-R4	Q-Q4?
19. B-K4!	Q-Q2
20. BxB	QR-Q1
21. Q-Q2	P-B3??
22. Q-R6	resigns

REEVE (W)	12. Q-K3	NxB
EVANS (B)	13. QxN	B-N4
	14. Q-B3	B-K3
1. P-K4	P-K4	
2. N-KB3	N-QB3	
3. N-B3	N-B3	
4. B-B4	B-B4	
5. O-O	O-O	
6. P-QR3	B-K2	
7. P-Q4	PxP	
8. NxP	P-Q3	
9. B-B4	NxN	
10. QxN	P-KR3	
11. QR-Q1	N-R4	

12. Q-K3	NxB
13. QxN	B-N4
14. Q-B3	B-K3
15. N-Q5	P-QB3
16. N-K3	BxN
17. BxB	BxP
18. QxB	PxB
19. Q-N3	P-Q4
20. P-KR3	Q-N3 ch
21. K-R2	PxP
22. R-Q7	P-N4
23. Q-K5	resigns

M. JOHNSON (W)
G. BRAUN (E)

1. P-Q4	P-Q3
2. P-QB4	N-KB3
3. N-QB3	B-Q2
4. P-K4	P-K4
5. P-Q5	B-K2
6. N-KB3	O-O
7. B-Q3	P-KR3
8. P-KR3	N-R2
9. O-O	P-KB4
10. PxP	BxP
11. N-K4	BxN
12. BxB	N-KB3
13. B-N6	QN Q5-Q2
14. Q-Q3	K-R1
15. N-R4	N-B4
better for black might have been first 15....	
P-K5 if 16 BxP NxP	
etc or 15....P-K5 and 16.... N-B5	
16. Q-B2	P-K5
17. B-K3	N-Q6
18. B-KB5	K-N1
19. N-N6	R-K1
20. B-K6+	K-R2
21. B-B7	R-B1
22. NxR+	QxN
23. B-K6	K-R1
24. B-B5 K05	Q-B2
25. BxKP	NxB
26. QxN	N-B3
27. B-Q4	R-KB1
28. QR-K1	N-R4
29. R-K6	N-B5?
30. RxP+	K-N1
31. Q-R7 mate.	

Canadian Correspondence Chess

BATEMAN (W)
R. GREGORZ (B)

1. P-QN4	P-K4
2. B-N2	P-KB3
3. P-K4	BxP
4. B-QB4	N-K2
5. Q-R5+	N-N3
6. N-KB3	N-B3
7. N-R4	N-K2
8. O-O ? (P-KB4)	P-B3
9. P-KB4	PxP
10. RxP ?	Q-N3+1
11. K-R1	BxP (B-Q3)
12. NxB	QxB
13. QR-KB1	K-Q1
14. R/4-B2	NxN
15. QxN	N-N3
16. Q-R5	Q-K4
17. R-B5	Q-K2
18. B-N3	P-Q3
19. R/4-B2	N-K4
20. P-B4	B-K3
21. P-B5	PxP
22. BxB	QxB
23. R-Q1	K-B2
24. P-KR3	QxQRP
25. N-B3	Q-B2
26. Q-B5	NxN
27. RxN	QR-K1
28. QxP/B5	Q-K2
29. Q-R5+	K-N1
30. R-R1	P-QR3
31. R-QN3	K-B1
32. Q-N6	Q-QB2
33. Q-R7	RxP
34. P-N3	KR-K1
35. RxRP	R-K8+
36. K-N2	R/L-K7+
37. K-B3	R-K6+
38. resigns	

If my good friend Dominic is reading this take note.

UNIVERSITY OF WASHINGTON OPEN Nov. 18-19, 1972

1. Robert Zuk	BC 2373	W19	W11	W17	W3	4-0
2. Randy Dean	WA 2037	W18	W32	W5	D4	3 1/2 - 1/2
3. Dave Williams	WA 2095	W21	W20	W7	L1	3-1
4. Bruce Bailey	WA 2038	W29	D10	W15	D2	3-1
5. Michael Murray	WA 2180	W30	W23	L2	W8	3-1
6. Doug Cheng	WA UNR	W9	L7	W30	W23	3-1 *
7. Joseph Toth	WA 2003	W31	W6	L3	W19	3-1 *
8. Walter Gentala	WA 2099	W16	W27	W14	L5	3-1
9. Michael Spiegel	WA 1713	L6	W31	W22	W17	3-1
10. Ben Carter	WA 1712	W22	D4	D13	D14	2 1/2 - 1 1/2
11. Robert Stephenson	WA 1829	W28	L1	W21	D16	2 1/2 - 1 1/2
12. Robert Elkins	WA 1485	D36	D15	D20	W27	2 1/2 - 1 1/2
13. Digne de Lenea	WA 1998	W32	L18	D10	W25	2 1/2 - 1 1/2
14. Peter O'Gorman	WA 2049	W26	W33	L8	D10	2 1/2 - 1 1/2
15. Michael Kusnic	WA 1712	W35	D12	L4	W30	2 1/2 - 1 1/2
16. Gary Gelow	WA 1636	L8	W37	WF	D11	2 1/2 - 1 1/2
17. Pat Hessen	WA 2052	W34	W25	L1	L9	2-2
18. Kristen Dietsch	WA 1591	L2	W13	D27	D20	2-2
19. Donald Christensen	WA 1695	L1	W28	W35	L7	2-2
20. Chris Gentala	WA 1767	W24	L3	D12	D18	2-2
21. Stephen Dean	WA 1631	L3	W24	L11	W32	2-2 *
22. Dwight Doty	WA UNR	L10	W26	L9	W31	2-2 *
23. Pedro Garcia-Pelayo	WA 1825	W39	L5	W34	L6	2-2
24. Tony Scioly	WA 1345	L20	L21	BYE	W34	2-2
25. Craig Olson	WA 1753	W38	L17	W33	L13	2-2 *
26. Frederick Harvy	WA 1565	L14	L22	WF	W33	2-2 *
27. Robert Anderson	WA 1819	W37	L8	D18	L12	1 1/2 - 2 1/2
28. Bruce Forrester	MO 1389	L11	L19	D29	W38	1 1/2 - 2 1/2
29. Roger Gervin	WA 1602	L4	LF	D28	W37	1 1/2 - 2 1/2
30. Theodore Schlagel	WA 1651	L5	W39	L6	L15	1-3
31. John Scannell	WA 1506	L7	L9	W37	L22	1-3
32. Bo Natt-Och-Dag	WA 1504	L13	L2	W38	L21	1-3
33. Mike Market	WA 1340	BYE	L14	L25	L26	1-3
34. Frank Pattal	WA 1625	L17	W38	L23	L24	1-3
35. Hanniegn Pitre	WA UNR	L15	WF	L19	LF	1-3
36. Leo Wesley	WA 1859	D12	LF	LF	LF	2-3 1/2
37. Pat O'Donnel	WA 1349	L27	L16	L31	L29	0-4
38. Don Anglin	WA UNR	L25	L34	L32	L28	0-4
39. Thomas Voisen	WA 1369	L23	L30	LF	LF	0-4

#USCF *Unbreakable T

The 3rd Annual UofW Open garnered 39 players to double the attendance of previous years. It seems an 'established' event is developing.

Of no surprise was the emergence of Robert Zuk of the Northwest with a perfect score but the three other possibilities faded. Randy Dean came close with 3 1/2. 2nd place was worth \$42.50 while Zuk won \$60.

5 players shared 3rd place: Williams, Bailey, Murray, Toth and Gentala, \$3.40 each cigarette money. 1st 'A' was shared by Stephenson and D. deLenea, \$8.50 each. It's rare in an event that has more Experts than Class A's. Where'd ya go, Wesley? Michael Spiegel won 1st 'B', \$17.00. Doug Cheng, a familiar face at U of W Chess Club meetings took 1st 'C' and Unrated with 3 points! for \$17.00.

Finally, Seattle's own and U of W Chess Club Secretary, Robert Ruotsalainen, directed.

Univ of Wash 27, Boeing CC 13		
1. Robert Stephenson	0-0	1-1 Mike Murray
2. Stuart Liddle	0-0	1-1 Al Clark
3. Robert Ruotsalainen	1/2-1	2-0 Bruce Bailey
4. Fritz Scholz	1-1	0-0 George LeCompte
5. Digne de Lenea	1-1	0-0 Ed Tusnadi
6. Chris Lindberg	1-1	0-0 Frank Connelly
7. Scott Sandgathe	1-1/2	0-1/2 Lew Henery
8. Dennis Burman	0-0	1-1 Jim Knittel
9. Doug Cheng	1-1	0-0 Marv Lassen
10. Dan Bailey	1/2-F	1/2-1 Frank Davenport
11. Rick Elfbrandt	1-0	0-1 Gordy Weinman
12. Mike Hoover	1/2-1	1/2-0 Jack Higgins
13. Les Cowan	1-F	0-1 Tino Lazzaretti
14. Bruce Morris	1-1	0-0 Antonio Delo
15. Doug Dean	1-1	0-0 Jack Gouge
16. Theodore Valentine	1-1	0-0 Fred Henzi
17. Steve Dean	1-1	0-0 Max Pfitzner
18. John Petty	1-	0-0 Phil Zackula
	1	0 Vince Vallone
19. Rick Glad	1-1	0-0 Shirley Higgins
20. Don Anglin	0-0	1-1 Steve Zackula

Match played Nov 12, 1972

Problems

Send all correspondence
for this column to:
DAVID L. BROWN
204 Irving Avenue
Rockford, Illinois 61103

♠ stands for Mate in n Moves

As new Editor of the Problem Column, I would first like to extend my compliments to past Editor Ron Norman for his work, and wish him good luck in all his future pursuits.

Beginning this issue, there will be a solving competition open to everyone. Only keys for all the eight Problems here need be sent. 3 points will be given for each correct solution, 1 point if incorrect (so at least guess). An additional 3 points is given for a correct claim of a cook, but if incorrect then the entire score will be reduced to 1 point for that Problem, regardless if the key is right. Either Algebraic or Descriptive notation may be used, but it must be precise! So, barring any cooks, you can shoot for 24 points. Every few months, names and scores of all entrants will be published. At the end of the year, PRIZES will be awarded for the highest cumulative totals. I cordially invite ALL of you to participate!

Admittedly, Problems are not as popular as Game-play. This is due in part to the lack of promotion by various Editors, and also to the general lack of competitiveness. However, this current competition will help stimulate active participation, and I hope that other solving contests will follow elsewhere. Since I deal almost exclusively in the Problem Art, I encourage anyone who has interest in them to try their hand at composing and I will assist in any way I can, and will answer any questions regarding Problems. So, if you want to develop a talent in this most fascinating side of Chess, I urge you to make your move!

In addition, from time to time there will be Reviews on Problem Books elsewhere in NWC and I highly recommend this month's book: Chess Problems: Introduction to an Art. This book is as important to a Problemist as an Opening book is to a Player!

The Algebraic system of notation will be used because it is simpler and easier. (Note in the December issue of CHESS LIFE AND REVIEW their "campaign") The only difference will be that S stands for Knight, since the Problem Committee of FIDE also uses it.

Since most Chess-minded people rarely have an opportunity to read about and really get into what Problems are, I will feature each month an analysis of some of the more interesting elements. Nos. 4-6 here illustrate an old and often used theme: the Grimshaw, first showed by Walter Grimshaw (1832-80). It is based on the mutual interferences on the same square between two line-pieces (usually Bishop and Rook). Thus, in No. 4, if Black, moving first, were to play either 1...Bc3 or 1...Rc3, White has set mates: 2. Se3 and Se5 respectively. But after White plays the key and Black tries to defend by playing these same two moves, White now has different mates! Grimshaw interferences also occur in No. 5, this time on three different squares: b7, g7 and f6. Loshinski, a Moscow mathematician, is quite probably the best two- and three-move composer ever! In No. 6, when you see that a Grimshaw could happen on g6, it might suggest a possible defence against a White threat. And once you see this, the key will be almost automatic. This process, used by many good solvers, is known as theme-spotting. It makes solving easy and enjoyable. THE DEADLINE FOR SOLUTIONS IS FEB. 11.

* BOOK REVIEW *

CHESS PROBLEMS: Introduction to an Art, by Michael Lipton, Robin Matthews and John Rice. The Citadel Press, New York 1965. 295 p.

For any Chess player who has wanted to learn more about Chess Problems, there is probably no other book that covers the Art so thoroughly and so well. The three authors are tops in this field, and all have won high honors for their work. They have not only written a book that illustrates the many aspects of Problems, but have presented a very readable treatise which should strongly interest anyone who knows anything about Chess.

Unlike many other Problem books that jump into the subject matter without any concern for the reader's knowledge, CPIA defines in several well-written and luring essays just what Problems are, their purpose and their significance in both Chess and Art. A complete treatment of the terminology used is given. But more than just an introductory book, CPIA examines almost every component involved in Problems, as illustrated by famous examples by the world's best composers.

Much of the emphasis is placed on the sections of Two- and Three movers, but there is also a section on longer Problems and Fairy Chess. Throughout each chapter are many interesting items about composers, tournaments and various organizations, filling an historical account as well. And, to challenge the reader, at the end are a hundred additional Problems to be solved. Solutions are, of course, provided near the index.

Having once read CPIA, the reader can, and will, appreciate all other Problem books as well. And, in going over various Problems in magazines and newspapers, he will find it a valuable source of reference.

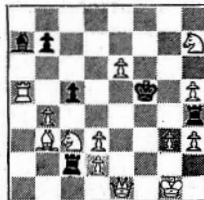
All diagrams are clear and sharp; the printing is neat and easy to read. There are, however, misprints in a few diagrams but these are noted in the errata. The old Descriptive notation is used, e.g. 2...Kt-QR5; this perhaps is the book's only bothersome point.

Citadel Press reports that CPIA is now out of print. However, it may be purchased from: British Chess Magazine Ltd., 9 Market Street, St. Leonards-on-Sea, Sussex, ENGLAND. The price is \$5.85 (Cloth-bound). If payment is made by check, add 50¢ for Bank Collecting charges. Sent by Surface Mail. (Airmail letters to England are 21¢ postage.)

- By D. L. Brown

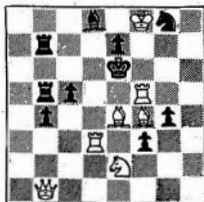
NWC, January 1973, page 16

No. 1
Edgar Holladay
Deerfield, IL



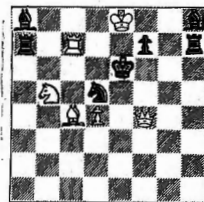
#2

No. 3
David L. Brown
Rockford, IL



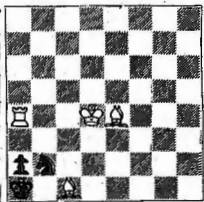
#2

No. 5
L. I. Loshinski
"Tijdschrift v.d.
N.S." 1930



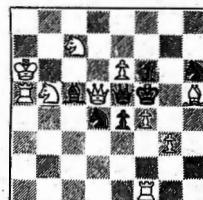
#2

No. 7
Helmer Holm
"Olympic Ty."
1950 1st Comm.



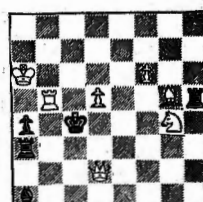
#3

No. 2
Frederick Mihalek
Ambridge, PA



#2

No. 4
M. Manolescu
"Revista de Sah"
1956 1st Prize



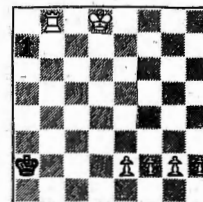
#2

No. 6
W. A. Whyatt
Brit. Chess Fed.
1961 1st Prize



#3

No. 8
Bo Lindgren
"Skakbladet" 1948
3rd Hon. Mention



#7

HIGH SCHOOLS

Send all material to:
Duane J. Polich
13220 - 6th Ave SW
Seattle, WA 98146

So far the Tacoma League, the Spokane League and the Seattle Metro have started play. The North Puget Sound League will go into operation in the first week of January. Also the Columbia River League will start soon. Nothing so far from the Central portion of the state, around Wenatchee and Yakima. Or is there anything from the Kingco League and North around Everett. Or north around Bellingham. If you need help establishing a league in these areas just let me know.

The Washington High School Team Tournament is scheduled for March 2 - 3 in the Kent or Auburn area. I hope to have it as an Open and I will have more details next month. The 4th Annual N.W. Interzonal High School Team Tournament will be in Portland on March 9-10 and 11. Washington should send a few teams. The Nationals will be in Chicago May 4-6. Maybe if we could get enough people from this area, we could charter a bus. Let me know if you would like to go. High school players should play in a lot of tournaments because it helps develop your skill. The American Chess Service is putting on a lot of tournaments and you should play in them. Concerning my ideas on rating the matches will probably have to be dropped and worked on again next year. There has been work done by the Monroe High School coach on getting us affiliated with the Washington Interscholastic Athletics Association, and he has drawn up some guidelines that I hope I can present next month. So without further ado I shall present the reports from the Tacoma League.

Schedule for 1972-73

WA - Washington
LI - Lincoln
RO - Rogers
WI - Wilson
BE - Bellarmine

LA - Lakes
MT - Mt Tahoma
ST - Stadium
CP - Clover Park
PU - Puyallup

Nov 28th
+ WA vs PU
4 LI vs CP 1
0 RO vs ST 5
WI vs MT
BE vs LA

Dec 9th	Dec 12th	Jan 9th	Jan 16th	Jan 23rd
CP vs WA +	WA vs ST	MT vs WA	WA vs LA	BE vs WA
5 ST vs PU 0	CP vs MT	LA vs ST	MT vs BE	WI vs LA
4 MT vs LI 1	PU vs LA	BE vs CP	ST vs WI	RO vs MT
LA vs RO	LI vs BE	WI vs PU	CP vs RO	LI vs ST
BE vs WI	RO vs WI	RO vs LI	PU vs LI	PU vs CP

Feb 6th	Feb 13th	Feb 20th	Where reported, score results
WA vs WI	RO vs WA	WA vs LI	are shown for matches on Nov
BE vs RO	LI vs WI	PU vs RO	28th and Dec 9th. + symbol
LA vs LI	PU vs BE	WI vs CP	indicates victor, but scores
MT vs PU	CP vs LA	ST vs BE	unknown. Home Team is always
ST vs CP	ST vs MT	LA vs MT	to the left.

Now for the Spokane League. Gonzaga is running away with the league title as it is the only undefeated team. Mr Christopher, recently of the Kingco League, is Gonzaga's coach.

Gonzaga Prep	3 - 0	Lewis & Clark	2 - 1
Ferris	0 - 2	St. Georges	1 - 1
Shadle Park	1 - 1 Bye	Mead	0 - 1 Bye
North Central	1 - 1 Bye		

Neither Ferris and North Central nor St. Georges and Mead's games have been completed.

WHIDBEY ISLAND CHESS CLUB CHAMPIONSHIP

1. JOHN GARROTT	W12	W9	W7	W5	4 - 0	The Whidbey Island Chess Club recently finished its annual club championship tournament. Winners as shown in the table. A trophy was awarded for 1st and a club plaque initiated showing each year's winner. The club is still growing as it nears the end of its first year with 23 paid members.
2. Robert Carr	D5	D3	W10	W7	3 - 1	
3. Dean Holly	W8	D2	W5	L1	2½-1½	
4. Walt Crowley	W10	L7	W9	D6	2½-1½	
5. Tim Delotte	D2	W12	L3	WF	2½-1½	
6. Sam Henley	L7	W8	W11	D4	2½-1½	
7. Ed Bickel	W6	W4	L1	L2	2 - 2	
8. John Meredith	L3	L6	Bye	W9	2 - 2	
9. Randy Greenup	W11	L1	L4	L8	1 - 3	
10. Dan Stalling	L4	W11	L2	LF	1 - 3	
11. Dick Dorwin	L9	L10	L6	Bye	1 - 3	
12. Manuel Reade	L1	L5	w/drew	0 - 4		

John Garrott, TD

DAVE CALKINS WINS CHESS DIGEST OPEN

Dec 16-17, Everett

1. Dave Calkins	W-5	W-3	D-2	W-4	3½-1½
2. Stephen Chase	L-3	W-6	D-1	W-5	2½-1½
3. Gerald Edelstein	W-2	L-1	L-4	W-6	2-2
4. Marcus Burns	L-6	W-5	W-3	L-1	2-2
5. Larry Swan	L-1	L-4	W-6	L-2	1-3
6. Ted Valentine	W-4	L-2	L-5	L-3	1-3

Stephen L. Chase Jr, TD

The Seattle Metro league is in action, possibly the largest league in the state. I don't have any information on them yet, but will have a complete report from them next month, along with the North Puget Sound League. Columbia River will also have a report next month.

League Directors

Tacoma	RONALD R. JARMON (Tacoma)
Seattle	THEODORE SCHLAGEL (Seattle)
NPSL	GENE GAROT
Spokane	MIKE BRISLAWN (Spokane)
Columbia	STEPHEN M. DEAN (Vancouver)

Some of the Seattle Metro League Champions of Long Ago

1933	Garfield	1963	Queene Anne
1934	West Seattle	1964	Edmonds
1935	Lincoln	1965	Roosevelt
1936	Franklin	1966	Queene Anne
1952	Cleveland	1967	Queene Anne
1958	West Seattle	1968	Roosevelt
1959	Garfield	1971	Franklin
1960	Garfield	1972	Franklin
1961	Roosevelt	1973	??
1962	Queene Anne		

Tacoma City League since 1963 under the direction of Mr Ron Jarmon

1963	Stadium	1967	Stadium
1964	Wilson	1968	Auburn
1965	Stadium	1969	Pierce
1966	Stadium	1970	Lincoln

16 Schools Entered 1970 State Tournament

1. Roosevelt	9. Olympic Jr
2. Queene Anne	10. Kennedy
3. Ingraham	11. Enumclaw
4. Bothell	12. Bellevue
5. Bellingham	13. Interlake
6. O'Dea	14. Mountlake Terrace
7. Lincoln	15. Charles Wright
8. Cascade	16. Mt Rainier

1970 All State Team

Walter North	1800	Senior	Roosevelt
Mike Burke	1650	Senior	Roosevelt
Robert Born	1550	Junior	Queene Anne
Wayne Chin	1995	Senior	Bellingham
Steve Drew	1628	Senior	Ingraham

1969 All State Team

Tim Kaupilla	1765	Senior	Queene Anne
Digne Delenea	1852	Senior	Garfield
Larry Pratt	1860	Senior	Newport
Karl Joiner	1809	Senior	Interlake
Vincent Hikida	1670	Senior	Auburn

This is some of the stuff from years past, and I wonder who will fill the slots in years to come. I want to thank Russell Miller for the fine job he did as editor of NWC, and I hope Karch will put out many fine issues of NWC since he has a lot of good ideas.

EERO JAASKA TOPS SKAGIT VALLEY OPEN

1. Eero Jaaska	W-12	W-5	W-3	3-0
2. Larry Erickson	W-11	W-9	D-7	2½-1½
3. Walter Crowley	W-7	W-6	L-1	2-1
4. Steve Kreiter	L-5	W-11	W-9	2-1
5. Karl Jorgensen	W-4	L-1	W-11	2-1
6. Marvin Wilbur	W-10	L-3	W-8	2-1
7. Stephen L. Chase	L-3	W-12	D-2	1½-1½
8. Brian Kreiter	L-9	W-10	L-6	1-2
9. C.J. Piemersma	W-8	L-2	L-4	1-2
10. Loren Sande	L-6	L-8	Bye	1-2
11. Hank Haagsma	L-2	L-4	L-5	0-3
12. Gordon Butner	L-1	L-7	F	0-3

Eero Jaaska had an easy time defeated three unrateds as he won the Skagit Valley Open, held at the P.U.D. building in Mount Vernon. Steve Chase was upset by Walt Crowley, and then drew to Larry Erickson, who was number three going into the tournament. Chase should have won the game until he blundered, trying to catch a passed pawn. Walt Crowley made a strong showing, and Steve Kreiter was much improved from his Whatcom County Open, from last year. NWC, January 1973, page 17

PLAYER	HOME	RATE	-1-	-2-	-3-	-4-	-5-	Sc	Prize
1. Robert Zuk	Surrey	2387	W14	W4	W11	D2	W3	4½	\$58.00
2. Randy Dean	Olympia	2160	W19	W9	W5	D1	D6	4	\$ 6.00
3. Bill Kiplinger	Portland	2163	W22	W3	W7	W9	L1	4	\$ 6.00
4. Bill Heywood	Portland	1883	W18	L1	W23	W13	W7	4	\$19.50
5. Denny Jenquin	Portland	1942	W26	W21	L2	W10	W8	4	\$19.50
6. Michael Morris	Medford	2205	D13	D19	W20	W16	D2	3½	
7. John Pintar	Eugene	2041	W12	W10	L3	W14	L4	3	
8. Dave Andreutti	Yakima	1846	W15	L3	W10	W11	L5	3	
9. James O'Brien	Portland	1878	W23	L2	W21	L3	W15	3	
10. Steve Thomas	Kent	1840	W15	L7	W13	L5	W20	3	
11. Robert Karch	Seattle	2043	W25	W20	L1	L8	W14	3	
12. John McCall	Renton	1705	L7	L13	W25	W17	L15	3	\$27.00
13. Owen Dvorshak	Portland	1775	D6	W12	L10	L4	W21	2½	\$12.00
14. Tom Kuge	Portland	1793	L1	W17	W24	L7	L11	2	
15. Jim Wardell	Yakima	1506	L10	W22	L16	W18	L9	2	\$13.50
16. Wayne Matsen	Portland	1857	L21	W26	W15	L6	L12	2	
17. George Capwell	Salem	1554	L8	L14	Bye	L12	W22	2	\$13.50
18. Paul Chance	Gladstone	1670	L4	L24	W22	L15	W19	2	\$27.00
19. Ron Dittman	Corvallis	1697	L2	D6	L8	WF	L18	2	\$ 6.00
20. Wayne Jackson	Yanhill	1697	W24	L11	L6	D21	L10	1½	\$ 6.00
21. Brent Youiden	Yakima	1521	W16	L5	L9	D20	L13	1½	
22. John Wolf	Portland	1747	L3	L15	L18	W25	L17	1	
23. Gary Gelow	Seattle	1653	L9	W25	L4	LF	LF	1	
24. Alan Dvorshak	Portland	1987	L20	W18	L14	LF	LF	1	
25. Lewis Richardson	Astoria	1738	L11	L23	L12	L22	LF	1	
26. Gerald Carlson	Portland	1690	L5	L16	LF	LF	LF	0	

PORTLAND HOLIDAY OPEN - December 2 - 3

Robert Zuk once again proved why he was top rated, going into the event and won Holiday Open held Dec 2-3 at Park Haviland in Portland. It was not a clean sweep. Randy Dean held him to a draw in round 4, but the game was not finished until after Zuk had beaten Kiplinger in Rd 5. Game appeared to be a draw and was paired that way. After Zuk had won from Kiplinger and the adjourned game was set up, he asked the TD if there was any perfect score prize and being none offered the draw. That made his score from Nov 4th up to then 22 wins, 1 draw and 0 losses. He had to play about 6 hours to win from Kiplinger in what appeared to be for a long time a draw but the clock got to Kiplinger and caused some errors. Zuk won the first overall prize plus the 2000 and Up first place prize.

Kiplinger and Dean split the 2nd place 2000 and up prize. Bill Heywood and Denny Jenquin took home money for 1800-1899 prize group. John McCall topped the 1700-1799 group with 3=2 while lone 2½=2½ scorer in the event Owen Dvorshak was 2nd. Paul Chance was top 1600-1699 with 2=3 while Wayne Jackson and Ron Dittman split 2nd place funds in the group. Jim Wardell and George Capwell split 1500-1599 prize money.

Several players withdrew from the event but one fellow did not advise us he was not going to play. His opponent had to wait an hour to win the game via forfeit. Notice Grandmaster Larry Evans believes that a shorter period time should be allowed or maybe even none.

William Button's victory in the Reserve Section was only by the tie-break method. Going into 6th round only Mustafa Efecan had a perfect 5=0 score. Button wanted very much to be the one to play him but TD followed his usual method for last round, top player plays the highest rated player in the group below. Worked out okay I guess for Green won and event ended up in three way tie.

Time control of 40/1 caused a problem for a few and the fact that there was a shortage of clocks also was the cause of some problems. 40/1 does get three rounds in one day over in short period of time and now USCF events can be rated that are played at 40/1 but I think players like 40/1½ better. Note that 40/80 is played in number of events announced in **CLLR**.

Note this was last event in Oregon to be sponsored by East-West Tournament Association, for American Chess Service takes over in January with guaranteed prizes but same TD.

RUSSELL W. MILLER, TD

Player	Home	Rate	-1-	-2-	-3-	-4-	-5-	-6-	Sc	Prize
1. William Button	Corvallis	1430	7W	10W	20D	4D	6W	8W	5	\$8.34
2. Thomas Green	W.Linn	1452	17W	5L	14W	19W	4W	3W	5	\$8.33
3. Mustafa Efecan	Portland	1417	13W	14W	5W	20W	9W	2L	5	\$8.33
4. Durrell Engelhardt	Van.Wash	1420	12W	19D	6W	1D	2L	10W	4	
5. Eldon Foster	Portland	1336	18W	2W	3L	9L	13W	11W	4	\$7.50
6. C.W. Calhoun	Portland	1417	21W	16W	4L	11W	1L	20W	4	
7. Roger Kaza	Beaverton	----	1L	12L	18W	22W	15W	9W	4	\$10.00
8. Doug Morse	Portland	1371	14L	17W	19W	15W	20W	1L	4	\$7.50
9. Randy Leth	Yakima	1459	16L	18W	12W	5W	3L	7L	3	
10. Mark MacKenzie	Portland	1357	15W	1L	11L	12W	19W	4L	3	
11. Cynthia McBride	Portland	1465	19L	13W	10W	6L	14W	5L	3	
12. Jeff Wilson	Portland	UNR	4L	7W	9L	10L	16W	14W	3	\$2.50
13. Bill Bridwell	Portland	UNR	3L	11L	21W	16W	5L	15W	3	\$2.50
14. Rob Taylor	Boring	UNR	8W	3L	2L	17W	11L	12L	2	
15. Rick Ward	Vancouver	1476	10L	22W	16W	8L	7L	13L	2	
16. William Mertle	Beaverton	1128	9W	6L	15L	13L	12L	21W	2	
17. Tod Archer	Beaverton	737	2L	8L	22W	14L	18L	19L	2	
18. Brett Byers	Aloha	UNR	5L	9L	7L	21W	17L	22W	2	
19. Carl Haessler	Lk Oswego	1225	11W	4D	8L	2L	10L	17W	2½	
20. Russell Harding	Portland	1406	22W	21W	1D	3L	8L	6L	2½	
21. Tom Bennett	Portland	UNR	6L	20L	13L	18L	22W	16L	1	
22. Edward Warren	Portland	UNR	20L	15L	17L	7L	21L	18L	0	

Three Tie for 1st In Chess Tourney

SAN ANTONIO, Tex. — (UPI) — Lajos Portisch of Hungary and Russians Anoply Karpov and Tigran Petrosian tied last night for the championship of the \$11,000 San Antonio international chess tournament with 10½ points each.

The three will split a total of \$7,000 for first, second and third place—but fourth place will not be decided until three games adjourned in the final round are completed today.

Paul Keres, the third Russian in the tournament, held onto fourth at adjournment with 9½ points, but grandmaster Svetozar Gligoric of Yugoslavia could advance to 10 points with a victory over Mario Campos-Lopez of Mexico today.

With 400 spectators, including world chess champion Bobby Fischer, watching, Portisch played White brilliantly forcing Danish grandmaster Bent Larsen to resign on the 34th move.

"It was a tough tournament and I'm glad I could make it in the end," said the seven-time Hungarian champion. "Now I plan to give some exhibitions in the U.S., starting in New Orleans, and go back to Budapest and relax."

Fischer, who was swarmed by dozens of autograph seekers during his four-hour stay, left by limousine after watching the conclusion of the Portisch-Larsen match through binoculars from near the back of the room.

Karpov, 20, the current Russian champion, and Petrosian, world champion from 1963-69, played to early draws yesterday apparently by design, then waited for completion of the Portisch-Larsen match.

Karpov and Henrique Mecking, 20, of Brazil reached their draw in only nine moves, while Petrosian and Duncan Suttles of

Canada reached a draw in 11 moves.

Keres reached a draw with Julio Kaplan of Puerto Rico last night, while Donald Byrne of Penn State University and Vlastimil Hort of Czechoslovakia also agreed to a draw.

Besides the Gligoric-Campos-Lopez match, other games adjourned were between Dr. Anthony Saily of Los Angeles and Larry Evans of Las Vegas, and between Kenneth Smith of Dallas and Walter Shawn Browne of Australia.

Standings after the incomplete 15th and final round of the San Antonio international chess tournament:

1. 10½ points: (tie) Anoply Karpov, USSR; Tigran Petrosian, USSR; Lajos Portisch, Hungary.

4. 9½ points: Paul Keres, USSR.

5. 9 points: (tie) Duncan Suttles, Canada; Vlastimil Hort, Czechoslovakia; Svetozar Gligoric, Yugoslavia.

8. 8½ points: Henrique Mecking, Brazil; Bent Larsen, Denmark.

10. 7 points: Donald Byrne, U.S.

11. 6 points: Larry Evans, U.S.

12. 5½ points: Walter Browne, Australia.

13. 5 points: Julio Kaplan, Puerto Rico.

14. 3½ points: Mario Campos-Lopez, Mexico.

15. 3 points: Dr. Anthony Saily, U.S.

16. 2 points: Kenneth Smith, U.S.

Gligoric, Campos-Lopez, Saily, Evans, Smith and Browne have one adjourned game each to complete today.

Seattle Post-Intelligencer

VISITING THE CLUBS - Bob Karch

Since arriving in Seattle in mid-September, your editor has been making the rounds of the chess clubs and the tournaments, the latter with mixed results.

Gave a demonstration class to the Mount Vernon Chess Club, to encourage some of the members to do chess teaching in their own area.

With the simultaneous exhibitions, I have so far experienced progressively better results:

DATE	CLUB	TOTAL	WON	DREW	LOST	%
30 Oct 72	Olympia	23	13	5	5	67.3
20 Nov 72	Sequoia Jr High	35	29	2	4	85.7
13 Dec 72	Moses Lake	17	15	1	1	91.2

In all the exhibitions, players came after the announced starting time, but at Olympia I made the mistake of allowing some in. You see, the exhibitor gets an opening advantage in many games due to his speed in the early moves. Late-comers then get to play their opening moves at the "middle-game rate" since most of the other games are much further progressed.

My charge is quite a bit below the master rate, but then I don't usually score 100% either! At Moses Lake, for example, the draw was with A. A. Hutchinson and the loss to Club Champion, Luther Paulson. The Olympia Club agreed that I would get a revenge try, except that if I can't beat 67.3%, it's free!

Chess Tournament

EXCITEMENT IN 1973!!

January 3, 10, 17, 24, 31 (Ore.)
WEDNESDAY EVENINGS OPEN
 4-SS, 40/2, House of Chess, 2118 SE 11th Ave., Portland. EF: \$5, H of C members \$3 less. If joining USCF for 1st time, 50% off dues (cost borne by sponsor). \$10 and trophy 1st, trophy to top B, C, D. unr. Reg. 4:30-5:30 PM 1/4, rds. 6 PM each Wed. ENT: House of Chess, address above.

WASHINGTON OPEN

Jan 6-7

OPEN TO: Members of USCF and WCF/OCF/BCCF/ICA
TYPE EVENT: 5 Rd Swiss, single section. If more than 76 entries TD may split into 2 sections, each with \$90-\$20 1st-2nd prizes plus rating prizes. 50/2 all rounds.
ENTRY FEE: \$10 if mailed by Jan 2, otherwise \$3 more
SPECIAL ADVANCE EF PACKAGE (Select One):
 (1) \$20 - 3 or more family members at same address
 (2) \$12 - Mother and daughter(s)
 (3) \$5 - Each individual who joins USCF for first time
SITE: Edgewater Inn, Pier 67, Seattle
TELEPHONE: (206) 624 - 7000
SCHEDULE: Reg closes 9 AM; Players meeting 9:45 AM; Rds (Sat) 10 - 2 - 7; (Sun) 10 - 4
RECORDING: Original must be turned in; games become property of WCF for eventual publication.
RATINGS: NW Primary; USCF Secondary; then "Unrated"
PRIZES: \$500 IN CASH GUARANTEED: \$90-\$20 1st-2nd; * Rating prizes \$30 each 100 point group: Above 2199, 2100-2199, 2000-2099; 1900-1999; 1800-1899; 1700-1799; 1600-1699; 1500-1599; 1400-1499; 1300-1399; 1200-1299; Below 1200; Unrated plus Certificate to each winner.
PLEASE BRING: BOARDS, CLOCKS AND SETS (Staunton only)
SPONSORED BY: Washington Chess Federation
DIRECTED BY: Robert A. Karch Make
 AND 5300 Keystone Place N checks
ADV ENTRIES: Seattle, Wash 98103 to WCF
 Note: Stephen J. Christopher will also direct.

HOUSE OF CHESS EVENTS

Note: H. of C. events are not NW rated
 All H. of C. events listed below follow the same format:

Type: One section, 4 Rd Swiss 40/2
 Site: House of Chess, 2118 S.E. 11th, Portland
 E.F.: \$5 (\$3 less for club members) plus USCF
 Special 50% discount on USCF dues for players joining USCF for FIRST time.
 Registration: 9-9:30 a.m. Sat. 2 Rds Sat. 2 Rds. Sun.
 Prizes: 1st Place - \$10 guaranteed plus trophy
 Trophies for 1st B, 1st C, 1st D, 1st Unr.
 For more info, contact Pat Maloney at above address.
 USCF ratings used for pairing and prizes. Bring sets, boards, and clocks.
 10th H. of C. Open - Jan. 20-21
 11th H. of C. Open - Jan. 27-28
 13th H. of C. Open - Feb. 17-18
 14th H. of C. Open - Feb. 24-25

H. of C. Wed. Evenings Open will be 5-Rd Swiss with one Round each Wed. in January. Contact Pat Maloney for details. E.F.: \$5 (members \$3 less) plus USCF.
 Registration: 4:30 to 5:30 p.m. Jan. 3; 1st Rd: 6p.m. Jan. 3. Same prizes as above.
 House of Chess 12th Open is Feb. 2-4. 5 Rd. Swiss with E.F. as above. Registration: 4:30-5:30 p.m. Feb. 2. 1st Rd: 6 p.m. Friday. 2 Rds. Sat.; 2 Sun. Prizes as above.

January 20-21 (Ore.)
10th HOUSE OF CHESS OPEN
 4-SS, 40/2, House of Chess, 2118 SE 11th Ave., Portland. EF: \$5, H of C members \$3 less. \$8 10. trophies to 1st, top B, C, D. unr. Reg. 9:30 AM rds. 10:30 2. 50% off USCF dues if joining for 1st time (cost borne by sponsor). ENT: House of Chess, address above.

January 27-28 (Ore.)
11th HOUSE OF CHESS OPEN
 4-SS, 40/2, House of Chess, 2118 SE 11th Ave., Portland. EF: \$5, H of C members \$2. \$10 1st, trophies to 1st, top B, C, D. unr. Reg. 9:30 AM 1/27, rds. 10:30 2. 50% off USCF dues if joining for 1st time (cost borne by sponsor). ENT: House of Chess, address above.

February 2-4 (Ore.)
12th HOUSE OF CHESS OPEN
 4-SS, 40/2, House of Chess, 2118 SE 11th Ave., Portland. EF: \$5, H of C members \$2. \$10 1st, trophies to 1st, top B, C, D. unr. Reg. 4:30 PM 2/2, rds. 6, 9, 2, 9:2 30% off USCF dues if joining for 1st time (cost borne by sponsor). ENT: House of Chess, address above.

February 17-18 (Ore.)
13th HOUSE OF CHESS OPEN
 4-SS, 40/2, House of Chess, 2118 SE 11th Ave., Portland. EF: \$5, H of C members \$3 less. \$8 10 plus trophy, trophies to top B, C, D. unr. Reg. 9:30 AM 2/17, rds. 10:30 3:2 50% discount on USCF dues if joining for 1st time (cost of reduction borne by sponsor). ENT: House of Chess, address above.

AMERICAN CHESS ACADEMY



Intermediate Chess Course

(Rating up to 1800)

Monday evenings 7:30 - 9:30 PM at Seattle Chess Club, 617 S. Jackson. \$3 per lesson or \$15 for entire course (8 lessons).

JAN 8 Queen's Gambit Accepted
 JAN 15 Combinations and Tactics
 JAN 22 Gruenfeld Defense
 JAN 29 Closed Ruy Lopez
 FEB 5 King's Indian Defense
 FEB 12 Psychological Chess
 FEB 26 Blackmar-Diemer Gambit
 MAR 5 Combinations and Tactics

Instructor: ROBERT A. KARCH 632 - 5594

MANASTASH SNOW BALL

January 13

Type: 3 rd. Swiss 30/1
 Site: Rooms 204-205, S.U.B., Central Wash. St. Coll. Ellensburg, WA
 Entry fee: \$3.00 Adults, \$2.00 18 & under; plus WCF. SPECIAL-\$1.00 entry fee for those joining WCF for first time.
 Registration: 10-10:30 am
 Prizes: As entries warrant - Cash (or possibly clocks), with WCF or USCF as class prizes.
 Equipment: Bring clocks
 Tournament Director: Dave Collyer
 Organizer: Kipy Poyser
 505 1/2 N. Kittitas, E'burg
 925-2432

PORTLAND WINTER OPEN

Jan 13 - 14

OPEN TO: Members of USCF and OCF (or equivalent)
TYPE EVENT: 5 Rd Swiss, single section. If more than 76 entries, TD may split into 2 sections, each with \$90 1st and \$20 2nd prizes, plus rating prizes. 4 1/2 2 all rounds.
ENTRY FEE: \$10 if mailed by Jan 9th, otherwise \$3 more.
SPECIAL ADVANCE EF PACKAGE: (Select One)
 (1) \$20 - All family members at same address.
 (2) \$12 - Mother and daughters.
 (3) \$5 - Anyone joining USCF for first time.
SITE: Park Haviland Hotel, SW Salmon and Park, Portland.
 Phone: (503) 226 - 7831. Rates: \$7, \$8, \$9 - mention chess tournament.
SCHEDULE: Registration closes 9 AM; Players meeting 9:45 AM; Rounds (Sat) 10 - 2 - 7; (Sun) 9:30 - 4
RECORDING: Original must be turned in; all games subject to use for instruction or for publication by Sponsor.
RATINGS: NW for pairing and prizes; then USCF; then "Unrated."
PRIZES: \$500 IN CASH GUARANTEED! 1st \$90, 2nd \$20 plus Rating Prize \$30 each 100 point group: Above 2100; 2100-2199; 2000-2099; 1900-1999; 1800-1899; 1700-1799; 1600-1699; 1500-1599; 1400-1499; 1300-1399; 1200-1299; Below 1200; Unrated; plus Certificate to all winners.

PLEASE BRING: CHESS BOARDS, CLOCKS, AND SETS (Staunton only)
DIRECTED BY: Mr and Mrs Russell W. Miller
SPONSORED BY: AMERICAN CHESS SERVICE
ADVANCE ENTRIES: 5300 Keystone Place N
 Seattle, Wash 98103



THE KELOWNA OPEN

January 13 - 14

One section 5 Round Swiss 45/2, then 25/hour
 Site: Capri Hotel (Chandelier Room) Kelowna B.C.
 E.F.: All players rated over 1899 - \$7.00
 Players rated under 1900 - \$5.00
 All players rated under 1600- \$3.00
 (NWC ratings will be used for pairings and prizes)
 Membership in the B.C.C.F. required (will be available at tournament)
 Registration: 8:00 - 9:00 a.m. (with first round following) three rounds Saturday, 2 Sunday
 Prizes: % of entry fee after expenses
 20% -1st prize 10% - 2nd prize
 15% -1st A 10% - 2nd A 5% - 3rd A
 15% -1st B 5% - 2nd B
 10% -1st C or below plus unrated 5% - 2nd C or below
 5% - highest placed junior Or Unrated
 Only 1 prize to a Winner.
 Highest placed interior player qualifies for B.C. Championship
 T.D.: Don Sukkau Ass: Ken Fraser
 Please bring sets, boards, and clocks.

BLIND BENEFIT CHESS TOURNAMENT

January 20 - 21, 1973

PLACE: So. Oregon Lions Clubs' Blind Center, 228 North Holly St, Medford, Oregon 97501.
 Plenty of hotels and motels within a few blocks with low winter rates.
 ENTRY FEE: \$3 plus OCF or affiliate memberships. Bring all the equipment you have. Cost of tourney participation is income tax deductible, as blind benefit.
 TOURNAMENT DIRECTOR: Harry Glidden, 243 S. Stage Road, Medford, Oregon 97501. Phone 535-2279 for specific information or advance entries.
 REGISTRATION: (For early thanks) 8:30 - 9:30 AM, Saturday First Round at 10 AM.
 TIME CONTROL: 50/2 Saturday for three rounds 40/2 Sunday for two rounds FIVE ROUND SWISS.
 TROPHIES: First three places, also 1st C, 1st D and lower rated. If five or more females participate, trophy for top lady. Youngest player and player traveling farthest distance will be awarded prizes.

AIRPORT OPEN

Jan 20 - 21

OPEN TO: Members of the U.S. Chess Federation
 TYPE EVENT: 5 Rd Swiss, single section. If more than 76 entries, TD may split into 2 sections, each with \$90 1st and \$20 2nd prizes, plus rating prizes. 50/2 all rounds.
 ENTRY FEE: \$10 if mailed by Jan 16th, otherwise \$3 more.
 SPECIAL ADVANCE EF PACKAGE: (Select One)
 (1) \$20 - All family members at same address.
 (2) \$12 - Mother and daughters.
 (3) \$8 - Each out-of-state entry.
 (4) \$5 - Anyone joining USCF for first time.
 Due to limited time at registration, these reductions will not be given at the tournament.
 SITE: Holiday Inn, 17338 Pacific Hwy South, Seattle 98188 (On Highway 99, near SEA-TAC Airport) 206-248-1000
 SCHEDULE: Registration closes 9 AM; Players meeting 9:45 AM; Rounds (Sat) 10 - 2 - 7; (Sun) 10 - 4
 RECORDING: Original must be turned in; all games subject to use for instruction or for publication by Sponsor.
 RATINGS: NW for pairing and prizes; then USCF; then "Unrated".
 PRIZES: \$500 IN CASH GUARANTEED! 1st \$90, 2nd \$20 plus Rating Prize \$30 each 100 point group: Above 2100; 2100-2199; 2000-2099; 1900-1999; 1800-1899; 1700-1799; 1600-1699; 1500-1599; 1400-1499; 1300-1399; 1200-1299; Below 1200; Unrated; plus Certificate to all winners.
 PLEASE BRING: CHESS BOARDS, CLOCKS, AND SETS (Staunton only)
 DIRECTED BY: Robert A. Karch, David P. Karch, Dorothy M. Tarr
 SPONSORED BY: AMERICAN CHESS SERVICE
 ADVANCE ENTRIES: 5300 Keystone Place N Seattle, Wash 98103



January 27-28 (Ore.)

EUGENE OPEN

5-SS, 40/2 (rds. 1-2 40/1 1/2). Eugene Hotel, 222 E. Broadway, Eugene, OR. \$8, \$6 before 1/22. OCF mem. req. \$5, 70, 40, 30, 20, A, 15, B, 10, C, 10, D, unr. 10; trophies to 1st, top B, C, D, Jr., unr. Reg. 8:30-9:30 AM 1/27. 1st rd. 10. One free entry drawn from advance entries. HR 7:30-11, 1:30 if 4 in room. ENT: Oregon Chess Club, 1136-14th, Astoria, Ore. 97103.

YAKIMA WINTER OPEN

Jan 27 - 28

OPEN TO: Members of USCF and WCF (or equivalent)
 TYPE EVENT: 5 Rd Swiss, single section. If more than 60 entries, TD may split into 2 sections, each with \$60 1st prize, plus rating prizes.
 TIME CONTROL: 45/2
 ENTRY FEE: \$10 if mailed by Jan 23rd, otherwise \$3 more.
 SPECIAL ADVANCE EF PACKAGE (Select One):
 (1) \$20 - All family members at same address.
 (2) \$12 - Mother and daughters.
 (3) \$8 - Each out-of-state entry.
 (4) \$5 - Anyone joining USCF for first time.
 Due to limited time at registration, these reductions will not be given at the tournament.
 SITE: Cosmopolitan-Chinook Hotel, So 4th St and E, Yakima
 SCHEDULE: Registration closes 9 AM; Players meeting 9:45 AM Rds (Sat) 10 - 2 - 7 (Sun) 10 - 4
 RECORDING: Original must be turned in; all games subject to use for instruction or for publication by Sponsor.
 RATINGS: NW for pairing and prizes; then USCF; then "Unrated."
 PRIZES: \$260 IN CASH GUARANTEED! 1st \$60 plus Rating prize \$25 each 100 point group: Above 1999; 1900-1999; 1800-1899; 1700-1799; 1600-1699; 1500-1599; 1400-1499; Below 1400 and Unrated; plus Certificate to all winners.
 PLEASE BRING: CHESS BOARDS, CLOCKS, AND SETS (Staunton only)
 DIRECTED BY: Mr and Mrs Russell W. Miller
 SPONSORED BY: AMERICAN CHESS SERVICE
 ADVANCE ENTRIES: 5300 Keystone Place N Seattle, Wash 98103



THE LAST EXIT WINTER AMATEUR

February 3 - 4

5 Round Swiss
 SITE: The Last Exit Coffeehouse, 39th and Brooklyn, Seattle.
 ENTRY FEE: \$8 if mailed by Jan 25th; \$10 at registration. WCF or NW membership required.
 REGISTRATION: From now until 9 AM, February 3rd.
 PRIZES: \$350 IN CASH GUARANTEED!
 \$75 First under 2000 (NW Ratings)
 \$50 Second under 2000
 \$50 First in category 1800-1899
 \$50 First in category 1700-1799
 \$50 First in category 1600-1699
 \$25 First in category 1500-1599
 \$25 First in category 1400-1499
 \$25 First in category Unrated - 1399
 PLEASE BRING: SETS AND BOARDS AND CHESS CLOCKS
 ADVANCE ENTRIES: TD Sam Barr 10604 8th NW Seattle, WA 98177
 Food will be available during the tournament.

WASHINGTON STATE CHAMPIONSHIP

and ALTERNATES CUP

Feb 3-4 and 10-11

OPEN TO: MIKE FRANETT (Defending Champion) and JAMES MCCORMICK (Runner-Up) plus next six highest Northwest rated, based on NW List after the 1973 Washington Open.
 ENTRY FEE: \$10 Championship; \$5 Alternates (The next eight)
 MEMBERSHIPS: USCF and WCF
 TIME CONTROL: 40/2, then 20 per hour CHPP PRIZES
 TYPE EVENT: Round Robin, but minus one round \$85 plus Trophy
 SCHEDULE: 2 + 1 + Adjournments \$50, \$30, \$15
 2 + Adjournments + Final Round
 SITE: Northgate Bon Marche
 INVITATIONS: Will be mailed by January 20th (or earlier).
 TOURNAMENT DIRECTOR: Robert A. Karch
 Phone: (206) 632 - 5594
 Note: We will not use the primitive "show up" system; players will be asked to register in advance. No surprises!

To be sure of having a clock and a set to play with,
 BRING THEM

EVERETT WINTER OPEN
February 10, 1973

SITE: Forest Park Field House, Everett
REGISTRATION: 8:30-9:30 A.M. February 10
First Round at 10:00
TYPE: 4 Round Swiss 30/1 hour.
ENTRY FEE: \$6.00 Adults, Juniors \$5.00
Plus W.C.F., O.C.F., or B.C.C.F. required

PRIZE FUND: 1st \$40 2nd \$25 3rd \$20

1st A Trophy 1st B Trophy
1st C Trophy 1st D Trophy
TROPHY TO First High School and Junior High.
PLEASE BRING BOARDS, SETS, AND CLOCKS!

ASTOR OPEN
February 10-11

5 Round Swiss 45/2
Site: Bank of Astoria Hospitality Room
85 W. Marine Drive, Astoria, Oregon
E.F.: \$3.00 plus OCF, WCF, ICA, or BCCF membership
Prizes: Trophies for 1st, 2nd, 3rd,
1st B, 1st C, 1st D, 1st Unrated,
1st Junior.
Registration: 8:30 to 9:30 a.m.
Sponsored by Astoria Chess Club
T.D.: Lewis L. Richardson
1136-14th Street, Astoria, Oregon 97103
Limited amount of free housing available to those
registering in advance and requesting it.
Please bring sets, boards, and clocks.

NORTHERN VANCOUVER ISLAND OPEN - FEB 17 and 18

Regional Qualifying Tournament for the B.C. Championship
SITE: Auditorium, Vancouver Island Regional Library,
580 Fitzwilliam St., NANAIMO.
TYPE: FIVE ROUND SWISS
ENTRY: \$6 Adults; \$4 Seniors 65 and over; \$3 Juniors 18 and under
BCCF or Northwest State membership required.
REGISTRATION: 9 - 9:45 AM, Feb 17th at site, or in advance to:
FRED SCHULZ, 2201 Fern Road, NANAIMO, BC
1st Round - 10 AM sharp!!
TD: Fred Schulz.
PRIZES: 1st - 25% 1st - Expert, A Class, B Class - 10%
2nd - 15% 2nd - Expert, A Class, B Class - 5%
3rd - 5% 1st - C Class - 5% 1st - Unrated - 5%
BRING SETS, BOARDS, CLOCKS!

PRESIDENT'S OPEN
Feb 17 - 19

OPEN TO: Members of USCF and WCF (or equivalent)
TYPE EVENT: 6 Rd Swiss, single section. If more than 85 entries,
TD may split into 2 sections, each with \$90 1st and
\$20 - 2nd prizes, plus rating prizes. 45/2 all rds.
ENTRY FEE: \$10 if mailed by Feb 13th, otherwise \$3 more.
SPECIAL ADVANCE EF PACKAGE (Select One):
(1) \$20 - All family members at same address.
(2) \$12 - Mother and daughters.
(3) \$5 - Anyone joining USCF for first time.
Due to limited time available at registration, these
reductions will not be given at the tournament.
SITE: Roosevelt Hotel, 7th and Pine, Seattle.
SCHEDULE: Registration closes 9 AM; Players meeting 9:45 AM;
Rounds (Sat - Sun - Mon) 10 - 4 daily.
RECORDING: Original must be turned in; all games subject to use
for instruction or for publication by Sponsor.
RATINGS: NW for pairing and prizes; then USCF; then "Unrated."
PRIZES: \$500 IN CASH GUARANTEED! 1st \$90, 2nd \$20 plus Rating
Prize \$30 each 100 point group: Above 2199; 2100-2199;
2000-2099; 1900-1999; 1800-1899; 1700-1799; 1600-1699;
1500-1599; 1400-1499; 1300-1399; 1200-1299; Below
1200; Unrated; plus Certificate to all winners.
PLEASE BRING: CHESS BOARDS, CLOCKS, AND SETS (Stauton only)
DIRECTED BY: Robert A. Karch and David P. Karch
SPONSORED BY: AMERICAN CHESS SERVICE
ADVANCE ENTRIES: 5300 Keystone Place N
Seattle, Wash 98103



OAK HARBOR OPEN
March 3 - 4, 1973

TYPE: 5 round swiss, 50/2
SITE: USO Club, 1182 W. Pioneer Way, Oak Harbor, Wa. 98277
FEE: \$4.00 plus WCF/OCF/BCCF membership
PRIZES: 1st - 60%, 2d - 30%, 3d - 10%. This will be modified to permit class prizes if enough entries.
REGISTRATION: 8 - 9 am March 3
SCHEDULE: RND: 1 - 10 am, 2 - 2 pm, 3 - 6 pm
March 3 and 4 - 10 am, 5 - 2 pm March 4
RATINGS USED: NW
PLEASE BRING BOARDS, SETS AND CLOCKS. LITTLE OR NO EQUIPMENT CAN BE SUPPLIED!
TOURNAMENT DIRECTOR: John E. Garrett
8157 - 800 E.
Oak Harbor, Wa. 98277

HOUSE OF CHESS WENSDAY EVENINGS OPEN

March 7, 14, 21, 28, 1973
4-SS, 40/2. House of Chess, 2118 SE 11 Ave.,
Portland, Oregon. EF: \$5, members \$3, plus USCF.
\$10 1st, Trophies for 1st, 2nd, 3rd.
Reg. 5:30-6:30PM March 7th. SPECIAL 50% discount
on USCF dues if joining for 1st time.

4TH ANNUAL NORTHWEST INTERZONAL
HIGH SCHOOL CHESS TEAM TOURNAMENT

March 9-10-11, 1973

TYPE: 5 Rd Team Swiss, Time Control 40/2
SITE: Park Haviland Hotel, SW Salmon & Park, Portland,
Oregon 97205
SPECIAL HOTEL RATES: \$7 single, \$8 double, \$9 Twin
ENTRY FEE: \$30 for first FIVE man team from each school (\$35
after March 6th) = additional teams from same
school \$15 each (\$20 after March 6th) USCF required,
SPECIAL 50% discount on USCF dues if joining for
first time.
FINAL REGISTRATION: 4 - 6 PM, March 9th, advance registrations
must include team lineups along with current USCF
ratings and USCF expiration dates, if any.
SCHEDULE: 1st Round - 7 PM, Friday
2nd Round - 10 AM, Saturday
3rd Round - 4 PM, Saturday
4th Round - 9 AM, Sunday
5th Round - 3 PM, Sunday
FOR ADVANCE REGISTRATION: Write: House of Chess, 2118 SE 11th
Ave, Portland, OR 97214
PRIZES: \$1000 expense money to send first place team to the Nat-
ional HS Championship! plus title of "Northwest High
School Chess Team Champions!" (\$1,000 is not guaranteed;
but is dependent on EF and contributions) TROPHIES FOR:
1st, 2nd, 3rd, 4th, 5th & 6th Place Teams.
NOTE: Please bring chess sets and chess clocks.
PAST WINNERS:
1969-70: Roosevelt HS, Seattle, Washington (10th at Nationals)
1970-71: David Douglas HS, Portland, Ore (6th at Nationals)
1971-72: David Douglas HS, Portland, Ore (13th at Nationals)

JUDE ACERS

1973 Lecture and Simultaneous Exhi-
bition Tour:

Exhibitions are free to groups in
penal institutions, grade schools, and
hospitals. For an exhibition at a chess
club, the fee is \$50 for less than
twenty boards plus \$3 for each board
over twenty.

Mr. Acers will be in California dur-
ing February and in Illinois, Michi-
gan, & Indiana during March and
April. He will be in Washington and
Oregon in May and Canada during
June. Georgia and Florida will be
covered during November and Decem-
ber. The Southwest and the South
shall be toured during the months of
July and August. Illinois and Indiana
will again be toured as well as Penn-
sylvania and Ohio in September and
October.

To book an exhibition by Mr.
Acers, write to: Russell W. Miller,
President, Washington Chess Federa-
tion, P.O. Box 1631, Yakima, WA
98907.

February 24-25 (Ore.)
14th HOUSE OF CHESS OPEN

4-SS, 40/2. House of Chess, 2118 SE 11 Ave.,
Portland. EF: \$5, club members \$3 less. \$3 10
plus trophy, trophy to top B.C.D. unr. 50%
discount on USCF dues in joining for 1st time
(cost of reduction borne by sponsor). Reg. 9:
9:30 AM, rds. 10:3, 9:2 ENT: House of Chess,
address above.

Once Rated,
Always Rated

You never lose your rating. If you
become inactive, your rating is no
longer published but it remains in
effect.

If you return to tournament play
after a long absence, do not tell the
Tournament Director that you are
Unrated. Give him your old rating
and its date of publication, as nearly
as you can remember them, and we
will look it up when calculating your
opponent's rating.

2nd ANNUAL NORTHWEST
COLLEGIATE CHESS TEAM TOURNAMENT

March 10-11, 1973

TYPE: 4-Rd. 3 Team Swiss, 40/2
SITE: Park Haviland Hotel, S.W. Salmon & Park,
Portland, Oregon 97205
SPECIAL HOTEL RATES: \$7 Single, \$8 Double, \$9 Twin
ENTRY FEE: \$30.00 per FIVE man team plus USCF,
SPECIAL 50% discount on USCF dues if joining
for first time.
REGISTRATION: 9:00 AM - 10:00 AM March 10th, 1973
SCHEDULE: 1st Rd. - 11:00 AM Saturday
2nd Rd. - 4:00 PM Saturday
3rd Rd. - 9:00 AM Sunday
4th Rd. - 3:00 PM Sunday
PRIZES: 1st Place Team - 60% of prize fund
2nd Place Team - 40% of prize fund
Trophies for 1st, 2nd & 3rd Place Teams
FOR ADVANCE REGISTRATION: House of Chess
2118 S.E. 11th Ave.
Portland, Oregon 97214
NOTE: Please bring chess sets & chess clocks.
PAST WINNERS:
1972-73: University of British Columbia

NEW WESTMINSTER OPEN - MARCH 10-11

** A BC Championship Qualifying Event **

SITE: Arts & Crafts Centre Music Room
Moody Park, New Westminster.
Centre on 8th St, between 8th & 6th Ave
TYPE: SINGLE SECTION - 5 Round Swiss.
TIME CONTROL: Saturday Rds 1 - 2 - 3
40 moves 1 1/2 Hrs then
15 moves next 1/2 hour
Sunday Rds 4 - 5
45 moves 2 hours then
25 moves next hour
ENTRY FEE: \$6.00 Plus BCCF or Northwest
State Membership required
REGISTER: 9:00 - 9:30 AM 10th at the site
or preregister with:
T.D. - Mike POTOMA
1906 River Drive,
NEW WESTMINSTER, BC
522-2560

PLEASE BRING YOUR SET, BOARD, AND CLOCK!!!!

Coffee and sandwiches will be available at
the tournament site.

PRIZES: 1st - Trophy plus 25% - Qualifying
2nd - 15%, 3rd - 10%, 4th - 10%.
1st A - Trophy plus 10% (1800-1999)
2nd A - 5%
1st B - Trophy plus 10% (1600-1799)
2nd B - 5%
1st C - Trophy plus 5% (1599-under)
1st UNRATED - Trophy plus 5%

CLASSES BY NORTHWEST RATING.

HOUSE OF CHESS THURSDAY-FRIDAY OPEN

March 1-2, 1973

4-SS, 40/2. House of Chess, 2118 SE 11 Ave.,
Portland, Oregon. EF: \$5, members \$3 plus USCF.
\$10 1st, Trophies for 1st, 2nd, 3rd. Reg. 4:30-
5:30 PM March 1st. SPECIAL 50% discount on USCF
dues if joining for 1st time.

HOUSE OF CHESS INSANITY OPEN

March 3-4, 1973

10-SS, 40/1. House of Chess, 2118 SE 11 Ave.,
Portland, Oregon. EF: \$5, members \$3, plus USCF.
\$10 1st, Trophies for 1st, 2nd, 3rd. Reg. 9-9:30AM
March 3rd. SPECIAL 50% discount on USCF dues if
joining for 1st time. Rds. every 3 hrs. - bring
sleeping bags and pillows.

SNOHOMISH COUNTY SPRING OPEN
March 10-11 1973

SITE: FOREST PARK FIELD HOUSE, EVERETT
TYPE: 5 ROUND SWISS 50/ 2 HOURS

REGISTRATION: 8:30-9:30 A.M. SATURDAY
MARCH 10

ENTRY FEE: \$10 if before MARCH 2, \$13
thereafter or at door; with W.C.F.,
O.C.F., and U.S.C.F. required

PRIZE FUND (Based on 50 entries)

	1st \$70	2nd \$50	3rd \$30
First 1900	\$35	Second 1900 Trophy	
First 1800	\$35	Second 1800 Trophy	
First 1700	\$35	Second 1700 Trophy	
First 1600	\$35	Second 1600 Trophy	
First 1500	\$25	First 1400 \$25	
First 1300 Trophy		First Unrated Trophy	

TOURNAMENT DIRECTOR: Send all questions and
advance entry fee to: Stephen L. Chase Jr.
4723 Mermont Drive, Everett, Washington 98203
1-(206) 252-8568

PLEASE BRING SETS, BOARDS, AND CLOCKS

PORTLAND OPEN

March 10-11, 1973

TYPE: 4-Rd. Swiss, Time Control 40/2
SITE: Park Haviland Hotel, S.W. Salmon & Park,
Portland, Oregon 97205
SPECIAL HOTEL RATES: \$7 Single, \$8 Double, \$9 Twin
ENTRY FEE: \$5, SPECIAL 50% discount on USCF dues
for Players joining for first time. USCF
required.
REGISTRATION: 9:00 AM - 10:00 AM March 10th
SCHEDULE: 1st Rd. - 11:00 AM Saturday
2nd Rd. - 4:00 PM Saturday
3rd Rd. - 9:00 AM Sunday
4th Rd. - 3:00 PM Sunday
PRIZES: 1st Place - \$10.00 Guaranteed!!
Trophies for - 1st, 2nd & 3rd
Trophies for - 1st'D', 1st'C', 1st'B' &
1st Unrated
Trophy for - Rob H.S. Faculty Advisor '72-73'
FOR ADVANCE REGISTRATION: House of Chess
2118 S.E. 11th Ave.
Portland, Oregon 97214
PROFITS: All profits go to 4th Annual N.W.
Interzonal U.S. Chess Team Tournament.

CASCADE OPEN

Mar 17 - 18

OPEN TO: Members of USCF and OCF (or equivalent)
TYPE EVENT: 5 Rd Swiss, single section. If more than 76 entries,
TD may split into 2 sections, each with \$90 1st and
\$20 2nd prizes, plus rating prizes. 45/2 all rounds.
ENTRY FEE: \$10 if mailed by Mar 13th, otherwise \$3 more.
SPECIAL ADVANCE EF PACKAGE (Select One):
(1) \$20 - All family members at same address.
(2) \$12 - Mother and daughters.
(3) \$8 - Each out-of-state entry.
(4) \$5 - Anyone joining USCF for first time.
Due to limited time at registration, these reductions
will not be given at the tournament.
SITE: Eugene Hotel, 222 E. Broadway, Eugene, Oregon.
Phone: (503) 344 - 1461. Rates (by advance reserva-
tion only) \$7.50 single, \$11 double, \$5 if 3 in room,
\$3.50 if 4 in room. (Mention chess tournament)
SCHEDULE: Registration closes 9:30 AM, Players meeting 10:15 AM,
Rds (Sat) 10:30, 2:30, 7:30 (Sun) 9:30, 3:00.
RECORDING: Original must be turned in; all games subject to use
for instruction or for publication by Sponsor.
RATINGS: NW for pairing and prizes; then USCF; then "Unrated."
PRIZES: \$500 IN CASH GUARANTEED! 1st \$90, 2nd \$20 plus Rating
Prize \$30 each 100 point group: Above 2199; 2100-2199;
2000-2099; 1900-1999; 1800-1899; 1700-1799; 1600-1699;
1500-1599; 1400-1499; 1300-1399; 1200-1299; Below
1200; Unrated; plus Certificate to all winners.
PLEASE BRING: CHESS BOARDS, CLOCKS, AND SETS (Staunton only)
DIRECTED BY: Lewis L. Richardson Jr and Robert A. Karch
SPONSORED BY: OREGON CHESS CLUB and AMERICAN CHESS SERVICE
ADVANCE ENTRIES: Oregon Chess Club.
1136 - 14th Street
Astoria, Oregon 97103

Being that the notice for the coming Louis Riel Open was received too late to go in to Sue, it is shown below. If you live in the lower mainland try to make it for sure. This event is a feeler as the top section will be CFC rated as well as NORTHWEST and appears to have a strong line up of top players. The second section will be BCCF requirement only and rated NORTHWEST only **Entry only \$4.00** - what more can you ask for!! Attend and take a friend - also a clock!!!

The First Annual Louis Riel Open JAN 27-28

Nature of the event: Two section tournament -
 Top section - Entry fee - \$6.00
 Canadian Chess Federation membership required. This tournament will be CFC rated!
 First - 35% Second 20% Third 15%
 Top expert (2200-2000) 15%
 Top A player (1800-2000) 15%

Northwest Ratings may well be used for prize distribution and pairings, if the organizers decide to do so.

Five rounds - Swiss if sufficient entries are present.

Bottom Section - Entry fee - \$4.00
 Only BCCF membership required.
 1st - 30% 2nd - 20%
 Top A - 10% 2nd A - 5%
 Top B - 10% 2nd B - 5%
 Top C - 10% 2nd C - 5%
 Top unrated 5%
 Five round Swiss

Site for both events: International House, on the western side of the Campus of the University of B.C. Canada
 Time: Registration 9:45-10:15 a.m. No one will be admitted later than 10:15 no matter how ingenious their excuse for lateness!!

Advance registration may take ^{PLACE} by mailing your fee to Jonathan Berry. For further information phone 224-1678
 Time control: Saturday - 40 moves in 1½ hours.
 Sunday - 45 moves in 2 hours.

SOUTH-EAST WASHINGTON OPEN Chess Tournament.

20 January 1973

TYPE: Single Section . 4 round Swiss.

T-G: 40/1

SITE: First United Methodist Church, 2 S. Dayton St., Kennewick, Wn.

Entry FEE: \$3.00 adults, \$2.00 under 18. ½ price for joining WCF for first time. (WCF required.)

Registration: 8:30 - 9:00. a.m.

PRIZES: 1st overall - 35%
 2nd " - 25%
 3rd " - 10%

1st A - 6%
 1st B - 6%
 1st C - 6%
 1st D - 6%
 1st UNR - 6%

TOURNAMENT COMMITTEE: Jack Grigsby, Jack Le Moine, and Frank J. Cooper.

For further info write 1915 N. Illinois, Pasco or call 547-2813.

SECOND PILCHUK MOUNTAIN WOODBUSTERS!

April 7, 1973

SITE: Forest Park Field House, Everett
 TYPE: 4 Round Swiss 30/1

REGISTRATION: 8:30 - 9:30 AM, Saturday, April 7th

ENTRY FEE: \$6 Adults, \$5 Juniors, WCF required.

PRIZE FUND: 1st \$40 2nd \$25 3rd \$20

1st 1500 Trophy 1st 1400 Trophy

1st 1300 Trophy 1st 1200 Trophy

1st Unrated Trophy 1st High School Trophy

PLEASE BRING BOARDS, SETS, AND CLOCKS

FIRST ANNUAL INDEPENDENCE WEEK CHESS CONGRESS

Sponsored by the American Chess Service



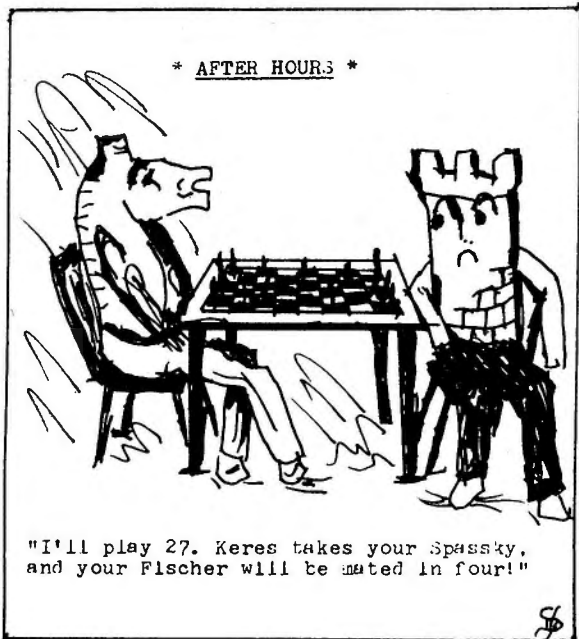
- 30-30 UNRATED WARM-UP SWISS - All day Saturday through Sunday afternoon. \$240 IN CASH PRIZES GUARANTEED!
- WEEK-LONG EIGHT ROUND SWISS - Sunday to Sunday, July 1 - 8; Most Rounds 7 PM daily, Final Round 10 AM, Sunday, July 8th. \$1,500 IN CASH PRIZES GUARANTEED! \$160 1st - \$75 2nd plus:
 RATING PRIZES: 1st \$75 and 2nd \$40 each rating group!
 Above 2100; 2000-2099; 1900-1999; 1800-1899; 1700-1799; 1600-1699; 1500-1599; 1400-1499; 1300-1399; Below 1300; Unrated; Also Certificate to all winners.
- FIVE-DAY TEAM TOURNAMENT: Mon - Tue - Thu - Fri - Sat
- 4TH OF JULY SPEED TOURNAMENT SPECTACULAR!

WHERE: Seattle Hyatt House, Highway 99, near SEA-TAC Airport

ENTRY FEES	ADVANCE	REGULAR
30-30	\$5	\$8
Open	\$18	\$22
Team Member	\$2.50	\$3
Speed Tmt	\$3	\$5
PACKAGE	\$25	\$38

DIRECTED BY A TEAM OF WELL-KNOWN NORTHWEST PERSONALITIES!

STEPHEN J. CHRISTOPHER ROBERT A. KARCH
 KATHY MILLER DAVID P. KARCH
 RUSSELL W. MILLER



LETTERS TO THE EDITOR

Mr Karch:

In my opinion, the direction you are taking Northwest Chess in your capacity as Tournament Director is a bad one. By devoting nearly eighty percent of the prize fund to players below master strength, you are in effect encouraging mediocrity; furthermore, you are virtually forcing aspiring masters who might otherwise be able to devote full time to chess to find other means of support.

I realize that class prizes are necessary to ensure adequate participation in tournaments; however, they should be perhaps five dollars more than the entry fee (maybe more, to cover expenses) and awarded over at least a two-hundred-point rating span.

/s/ David N. Williams

Hello, David!

Notwithstanding your disagreement with my prize formula for the chess tournaments, I appreciate your open expression of opinion. Remember that I have been back in the Northwest only since mid-September, and my program is barely three months old. How much can a chess promoter accomplish in such a limited time? The prize formula is admittedly an experimental one, but it will take several consecutive events before we can analyze its effectiveness.

One should consider that the ACS is holding cash money events with a far greater frequency than the Northwest had been able to hold in the past. I feel that such a succession of guaranteed-prize tournaments should improve the situation for the aspiring chess master. In the past, the Northwest averaged perhaps one big-money event per month, along the lines you implied with substantial prizes for the winners and runners-up. ACS events seem to give less, when considering a single event, but add up to much more when considering the whole series.

The prize formula is really only one of several innovations which I hope to test in Northwest Chess. Here are some ideas which I am thinking of for the near future:

- (1) Perfect score cash bonus (\$50 for two consecutive tournaments, \$100 for three, \$150 for four, etc. paid each time at the end of the tournament)
- (2) Northwest-wide elimination match series
- (3) Quarterly invitational tournaments (No EP)
- (4) One-day teaching clinics in various cities

Thank you for writing, and I hope that you and the other Masters and Experts will be patient over the next few months while the overall program for the American Chess Service is being further developed and refined.

Yours, very cordially

/s/ Robert A. Karch

Dear Bob,

Seemingly, the Puget Sound League is defunct for this year but that didn't stop the University of Washington from challenging Boeing. In the past these matches have always resulted in a Boeing romp but a 20 instead of 5 board match showed the Boeing folks we have depth. It's a good thing Kent Pullen, Angus Pitt and Marty Gray didn't show. Stuart Little was thrown to Board 2 when Kris Jangord couldn't make it but for the most part the games were quite decent. (Match results on page 15.)

A rematch was called for by Boeing but I'd like to savor our 27 - 13 romp for a time. In the future there may be a match with Tacoma. Rarely does the UofW team venture from Seattle but still, if your organization is interested in a match our address is UofW Chess Club Box 81 HUB Seattle Wash 98105.

Two basic chess courses exist in the Experimental College: 'Basic Mating Positions', to date I have not found an admitted participant. The other course is taught by Mike 'Mikal' Hoover having mainly women in his class. Many dropped out when they discovered chess being easy.

DIGNE B. de LENEA

NWC, January 1973, page 24

Dear Mr. Karch,

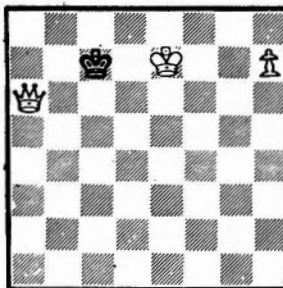
I read your article in NWC 12/72 with great interest. I see that you feel the same way about tournament prize structure as I do, namely that there should be many prizes, even though small, for players of all ratings. I think it is extremely important for players, particularly juniors, to have (call it) a "successful experience" every so often to maintain interest in tournament chess. This is hard on the higher rated players of course, but they can hardly be expected to walk off with all the money all the time. I was getting a bit tired of that early-Saturday-morning depression brought on by my first sleepy-eyed squint at the wall chart which told me that I didn't have the poltergeist of a chance of breaking even. Bravo!, bravo for your body blow to Darwinism in chess! At least now I don't have to beat two or three opponents 400-700 rating points above me just to get my entry fee back. I'll take chess lessons on my own terms, thank you very much.

In connection with the above I have a suggestion, probably unnecessary and unwanted, but here it is. For the Junior Open why not offer chess sets and books for prizes, or alternate prizes? Money is nice, but it goes quickly and then what do you have? Besides, young players like to have "something to show" Mom and Dad and their friends. Also, don't overlook the value of players having something around the house that reminds them of chess. Spread a few books and sets around and watch those young players carry them back to your tournaments!

A very Merry Christmas and the best of everything in the new year for you and your family.

Sincerely,

/s/ Martin G. Van Parys



MATE IN TWO. More of a gimmick than anything else, reminding one of those trick problems in which White castles to mate with Rook and simultaneously cover the escape square with his King. Here, Black has only two free squares: b8 and c7, both dark, and the point is White under-promotion -- to what? LIMIT: 3 seconds. Of course, you saw that there were two solutions! A good one for the Chess Club. Use a stopwatch and jot down how many seconds it takes for the first solution, and then for the second.

From
AMERICAN CHESS SERVICE
5300 Keystone Place N
Seattle, WA 98103

BULK RATE
U.S. POSTAGE
PAID
Seattle, Wash
Permit No. 217