

NORTHWEST CHESS

Washington Chess Federation
Oregon Chess Federation

September 2004
409 \$3.95



A scene from the Sizzling Summer open

926-0501A
MIKE MACGREGOR



**Oleg Zaikov and Michael Lee Score
against Titled Players at U.S. Open**

**Dr. Leo Returns after Summer Hiatus
Fleury, Rowan and more!**

Northwest Chess

September 2004, Volume 58,9 Issue 675
ISSN Publication 0146-6941

Published monthly by the Northwest Chess Board. Of
fice of record: 2420 S 137 St, Seattle WA 98168.

POSTMASTER: Send Address Changes to:
Northwest Chess, PO Box 84746,
Seattle WA 98124-6046.

Periodicals Postage Paid at Seattle, WA

USPS periodicals postage permit number (0422-390)

NWC Staff

Editor: Fred Kleist

Games Editor: FM Chuck Schulien

Technical Assistance: Russell Miller

Printer: Snohomish Publishing

Business Manager: Eric Holcomb

Board Representatives

Oregon: Clark Harmon

& Dave Yoshinaga

Washington: Duane Polich &

Kent McNall

Entire contents copyright 2004 by Northwest Chess. All
rights reserved. Published opinions are those of the
contributors and do not necessarily reflect the views of the
editor or the Northwest Chess Board.

Advertising Rates

Display ads run \$150 for a full page, \$100 for
trmt ads; \$85 for a half-page, \$60 for trmt ads;
\$30 for a quarter page, \$20 for an eighth of a
page, and \$10 for a business card-size ad. Add
\$10 if the ad is not copy ready and the staff must
do layout work. A 15% discount is available for
two or more consecutive ads of the same size.

Event Announcement Rates

Each appearance in *Event Announcements*
costs \$20. Payment is required before publica-
tion. Enclose \$2 additional if an invoice is
required—this is a mandatory service charge.

Advertising & Copy Deadline

Please get your ads and submissions in by the
10th of the month for the items to appear in the
next issue (e.g., no later than Oct. 10 for the
Nov. issue). The editor cannot guarantee that late
submissions will appear in the desired issue.

Submit all ads and payments to:

Business Manager, Northwest Chess
PMB 342, 12932 SE Kent-Kangley Rd
Kent WA 98030-7940
Eric@Holcomb.com

Submissions

Hey folks! The editor depends on YOU to make
this magazine vibrant and exciting. I need your
games, photographs, thoughts, and ideas. This
magazine has a great tradition and I hope people
will contribute enthusiastically. You can send
me your materials via U.S. mail or via e-mail:

Northwest Chess
Fred Kleist, Editor
2420 S. 137th Street
Seattle WA 98168
NWCeditor@cs.com
206-242-7076

If you'd like your games annotated by a senior
master, send them to our Games Editor:

FM Chuck Schulien
cschess@hotmail.com

Subscription Information

Northwest Chess is a benefit of membership in
either the Oregon or Washington Chess Federa-
tions. Adult dues are \$25; Junior dues (under
20) are \$17 (or \$10 for six months). Please send
dues, along with pertinent information to:

Business Manager

Northwest Chess

Eric Holcomb

PMB 342, 12932 SE Kent-Kangley Rd

Kent WA 98030-7940

Eric@Holcomb.com

http://www.nwchess.com

Northwest Grand Prix Administrator

Murlin Varner

13329 208 Ave NE

Woodinville WA 98072

MEVjr54@yahoo.com

425-882-0102

Oregon Chess Federation

President

Jerry Ramey

541-232-0328

j-adoube@efn.org

Vice President

Paul Shannon

541-271-4010

pshannon@harborside.com

Secretary/Treasurer

Clark Harmon

charmon@solarprism.com

Director-at-Large #1

Peter Prochaska

503-504-5756

pete@chessodyssey.com

Director-at-Large #2

Bruce Peterson

503-642-9238 (home)

503-805-0493 (cell)

b_r_u_c_e_p_e@yahoo.com

Tournament Coordinator

Pat Thurlow

541-343-4977

patt@efn.org

Scholastic Coordinator

Dave Yoshinaga

503-670-9855 ext 7

dave@kdtonline.com

Washington Chess Federation

President

Kent McNall

425-672-1304

kent@aproposretail.com

Vice President

Duane Polich

425-462-1776

pduane2@qwest.net

Secretary

Gary Dorfner

253-535-2536

ggarychess@aol.com

Treasurer

Robert J. Allen

253-761-1288

allenrobertj@msn.com

Tournament Coordinator

Carol Kleist

206-242-7076

WCFtnmtcor@cs.com

NW Chess Board Member

Kevin Korsmo

509-466-0530

KKorsmo@spokanecounty.org

Greetings from the Editor



*Editor's
Desk*

In the works for the
October issue is a report
on the Spokane City
Championship. Chris Ka-
lina is preparing a report
on the Seattle Seafair and
Henry Chiu may send in a report on the
24-Hour Marathon in Vancouver, BC.

In addition, I hope to be able to pub-
lish Oleg Zaikov's win over GM Sagalchik
(the round 9 bulletin from the U.S. Open
has not yet arrived. And, of course, there
will likely be a report on the Oregon Open.

Keep on sending me material! If
you've come across a good book and would
like to review it, or if you'd like to share
your opening analysis, great! And pho-
tographers, please remember to identify the
people and places in your pictures.

Best Wishes,

Frederick K. Kleist

Northwest Chess Knights

*Northwest Chess Knight donors
will be listed in the magazine
for a period of one year follow-
ing receipt of donation. All per-
sons who did not donate in 2003
have been removed from the
list. Please consider making a
donation today to help North-
west Chess!*

King: \$1000+
Queen: \$500-\$999
Rook: \$250-\$499
Bishop: \$100-\$249
Knight: \$50-\$99
Pawn: \$15-\$49

Current Patrons

Queen: Stephen Christopher,
Kent McNall, Russell Miller

Rook:

Bishop: Wayne Metsker

Knight: Curt Collyer

Pawns: Robert D. Brewster,
Matt Fleury

*Contributions can be sent to the
Northwest Chess Business
Manager, and are greatly ap-
preciated!*

President's Corner

Greetings Fellow WCF Members,

As you know, *Northwest Chess* is a joint publication of the Washington Chess Federation and the Oregon Chess Federation, with equal access to both state chess federation bodies. This makes our magazine a great vehicle for the state federations to communicate to our memberships - but it's worth taking a sentence or two to acknowledge that there is a broader audience of subscribers than our membership in the Washington Chess Federation!

After holding an all-day business planning meeting for the WCF on August 15th, I would like to share with you the four major areas that we will be focusing our energy on in the coming year, and hopefully beyond. Traditionally, the WCF has participated in and supported many activities relating to chess in the northwest - but we can't do it all at the same time, and we have prioritized four key areas:

WCF-sponsored Tournaments are our #1 priority - both to greatly expand the two major tournaments the WCF sponsors at this time (the Class Championships and the Washington Open), but also to expand the number of tournaments so sponsored. We would like to sponsor one or two tournaments in Eastern Washington, for example, and "re-activate" one of the older tournaments, or create a new one, in another part of Western Washington.

Membership Management and Expansion - During this year, we will bring our member list management into the 21st century to understand who our members are, and provide more value to them - and to expand our membership in the WCF. More members are a good thing for us all. You can help by simply doing what we all love to do - play chess, renew your membership, and tell a friend! By the way, an important piece of membership management will be the protection of the privacy of our members, you can all count on that.

Scholastic Support is our third priority. Many of us on the Board can easily reflect on how we got started in chess and interested in it as a lifelong activity. Scholastic chess was a huge part of that, and the WCF shall continue this support. We are seeking even better ways to support the dedicated individuals who put so much time and effort into bringing chess to our youth, in the tradition of Ollie Lafreniere and many others.

Volunteer and TD expansion - While this was identified as our fourth priority, it is in a way the foundation of everything we want to do. In a word, we need more help and I know it's out there. We need assistant TD's for our upcoming Class Championships, and volunteers for many of our planned activities.

Continued on page 15

Northwest Chess

September 2004

President's Corner
page 3

Northwesterners Score at U.S. Open
Murlin Varner reports
page 4

USCF Delegates Meeting
page 6

Tournament Ads
pages 8, 15, 22-23

Northwest News
page 11

USCF Crosstables
page 12

Christopher NWGP Report
page 16

50 Years Ago in the WA Chess Letter
page 16

Five Years Later
Matt Fleury looks at the 1999 WA Championship
page 17

Crystal Ball for Your Chess Future
Improving Your Chess with NM Tom Rowan
page 18

Sizzling Summer Open
page 19

Scholastic Checkup with Dr. Leo
page 20

Scholastic News
page 21

**The Northwest Chess Calendar
of Upcoming Events**
back cover

On the Cover: A scene from Clatskanie's Sizzling Summer Open, round 3. At board 1 (foreground), Jon Coby (left) goes head-to-head with FM Chuck Schulien. On board 2, Andy May (left) playing Dave Roper (1st place winner). *Photo courtesy of Kate Taylor.*

Florida Hosts Chess Players and High Winds

(And, no, I'm not talking about the delegates' meetings.)

By Murlin Varner

The 105th U.S. Open Chess Tournament was held in Weston, Florida, August 7-15. For those unfamiliar with Florida, the weather that time of year is predictably hot and muggy, with frequent chances of high-speed, counter-clockwise winds. 2004 did not behave out of the ordinary, with both Bonnie and Charley hitting the state during the week of the Open. Fortunately, neither chose to pass over the tournament site. Charley hit the gulf coast of Florida and was said to be the most significant storm to hit that part of Florida since 1960. It was a very powerful storm and, unfortunately, deadly.

There were two important tournaments held concurrent with the Open. The 20th Denker Tournament of State High School Champions included two Northwest players among the 46 entrants, Oleg Zaikov of Oregon and Eduard Shamilov of Washington. Zaikov was the highest rated player in the Denker. He scored 4.5 points, finishing in a tie for third place. Shamilov tied for 11th with 3.5 points. The Denker co-champions were Mackenzie Molner from New Jersey and Pieta Garrett from Arizona, scoring 5.0 in six rounds.

King's Indian Panno

Brandon Cooksey (1838, CO)
Eduard Shamilov (2141)

Fort Lauderdale, Denker Tnmt (1) 2004

1.c4 g6 2.♘f3 ♗g7 3.g3 d6 4.♗g2 ♘f6 5.♘c3 O-O 6.O-O ♘c6 7.d4 a6 8.♞e1 ♞b8 9.e4 b5 10.h3 bxc4 11.e5 dxe5 12.dxe5 ♞xd1 13.♞xd1 ♘d7 14.e6 fxe6 15.♘g5 ♘d4 16.♗e3 ♘c2 17.♘xe6 ♘xa1 18.♘xf8 ♘xf8 19.♞xa1 ♞xb2 20.♞c1 ♘e5 21.♞d1 ♘d3 22.♗d5 ♗b7 23.♗xc4 ♗xc3 24.f3 ♘e1 25.♞d8+ ♘g7 26.♞g8+ ♘f6 27.♞f8+ ♘e5 28.♗f4+ ♘d4 29.♗g8 ♘f3+ 30.♘f1 a5

30...♘h2+ 31.♘g1 ♞g2+ 32.♘h1 ♞f2+ 33.♗d5 ♗xd5+ 34.♘g1 ♞f1+

35.♘xh2 ♞h1 mate

31.♞d8+ ♘e4 0-1

Black Knights Tango

NM Oleg Zaikov (2316)
Michael Patraw (2000, NV)

Fort Lauderdale, Denker Tnmt (1) 2004

1.d4 ♘f6 2.c4 ♘c6 3.♘f3 e6 4.a3 d6 5.♘c3 ♗e7 6.e4 O-O 7.♗d3 a5 8.O-O e5 9.d5 ♘b8 10.♗d2 ♗g4 11.♗e2 ♘e8 12.♘e1 ♗xe2 13.♞xe2 ♗g5 14.♘d3 ♘d7 15.b4 f5 16.exf5 ♗xd2 17.♞xd2 ♞h4 18.f4 ♞xf5 19.g3 ♞e7 20.♞e2 ♞f7 21.♞ae1 axb4 22.axb4 ♘ef6 23.fxe5 dxe5 24.c5 ♞e8 25.♞a2 e4 26.d6 cxd6 27.♘xe4 1-0

Giuoco Piano

Eduard Shamilov (2141)
Spector Jason (2012)—MA

Fort Lauderdale, Denker Tnmt (2) 2004

1.e4 e5 2.♘f3 ♘c6 3.♗c4 ♘f6 4.d4 exd4 5.e5 ♘e4 6.♗d5 ♘c5 7.O-O ♘e6 8.♞e1 ♗c5 9.♘bd2 ♘e7 10.♗xe6 dxe6 11.♘e4 b6 12.♞e2 ♗b7 13.♗d2 a5 14.♘xc5 bxc5 15.♞b5+ ♗c6 16.♞xc5 ♗xf3 17.gxf3 ♞d5 18.♞xc7 ♞xf3 19.♞c5 ♞g4+ 20.♘h1 Draw

Sicilian Dragon Yugoslav

Davis Whaley (1954, KY)
Eduard Shamilov (2141)

Fort Lauderdale, Denker Tnmt (3) 2004

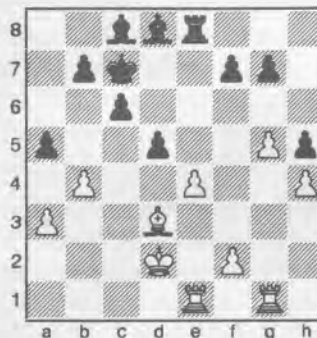
1.e4 c5 2.♘f3 d6 3.d4 cxd4 4.♘xd4 ♘f6 5.♘c3 g6 6.♗e3 ♗g7 7.f3 ♘c6 8.♞d2 O-O 9.O-O-O d5 10.exd5 ♘xd5 11.♘xc6 bxc6 12.♗d4 ♗xd4 13.♞xd4 ♞b6 14.♘d5 cxd5 15.♞xb6 axb6 16.a3 ♗b7 17.♞d4 ♞fd8 18.♗d3 e5 19.♞b4 ♞d6 20.♞e1 f6 21.♞e2 ♞a5 22.c4 ♞c5 23.♞c2 f5 24.cxd5 ♞xc2+ 25.♘xc2 ♗xd5 26.♗c4 ♗xc4 27.♞xc4 ♘g7 28.♞c7+ ♘f6 29.♞xh7 e4 30.f4 e3 31.♞h3 ♞d2+ 32.♘c3 ♞xg2 33.♞xe3 ♞xh2 34.♞d3 Draw

Budapest Gambit

NM Oleg Zaikov (2316)
Bradley Denton (2047, MS)

Fort Lauderdale, Denker Tnmt (4) 2004

1.d4 ♘f6 2.c4 e5 3.dxe5 ♘g4 4.♘f3 ♗c5 5.e3 ♘c6 6.a3 a5 7.b3 O-O 8.♗b2 ♞e8 9.♘c3 ♘cxe5 10.♘xe5 ♘xe5 11.♗e2 ♞a6 12.♘d5 ♞d6 13.♞c2 c6 14.♘f4 ♞e7 15.♞c3 ♗b6 16.♞xe5 ♞xe5 17.♗xe5 ♞xe5 18.♘d3 ♞e8 19.c5 ♞xd3 20.♗xd3 ♗xc5 21.♘d2 d5 22.♞hb1 ♘f8 23.h3 ♘e7 24.b4 ♗b6 25.h4 h6 26.♞g1 ♘d6 27.g4 ♗d8 28.g5 h5 29.♞ae1 ♘c7 30.e4



30...axb4 31.axb4 ♗e7 32.♘c3 d4+ 33.♘xd4 ♗xb4 34.♞e2 b5 35.♞c2 ♘b6 36.♞b1 ♞d8+ 37.♘e3 ♗c5+ 38.♘e2 ♗g4+ 39.f3 ♗xf3+ 40.♘xf3 ♞xd3+ 41.♘g2 ♗d6 42.♞bc1 c5 43.e5 ♗e7 44.♞f2 ♞e3 45.♞xf7 ♞xe5 46.♞xg7 c4 47.♞h7 ♘c5 48.g6 ♗xh4 49.g7 ♞g5+ 50.♘h3 ♗f2 51.♞f1 ♗d4 52.♞f5+ ♞xf5 53.g8=♞ ♞e5 54.♞c7+ 1-0

Hungarian Defense

Eduard Shamilov (2141)
Erik Santarius (1992, WI)

Fort Lauderdale, Denker Tnmt (4) 2004

1.e4 e5 2.♘f3 ♘c6 3.♗c4 ♗e7 4.c ♘f6 5.d4 exd4 6.cxd4 ♗b4+ 7.♗d ♗xd2+ 8.♘bxd2 d5 9.exd5 ♘xd 10.♞b3 ♘a5 11.♞a4+ ♘c6 12.♘e O-O 13.♗xd5 ♞xd5 14.♘xc6 bxc 15.O-O c5 16.♞ac1 ♞xd4 17.♞c ♗e6 18.♞fd1 ♞fb8 19.b3 a5 20.♘e

♖e5 21. ♘xc5 ♕f5 22. ♖c4 ♜d8
 23. ♜e1 ♗f6 24. ♗f4 h5 25. ♗xc7 ♜d2
 26. a4 h4 27. ♗f4 ♜ad8 28. ♘e4 ♕xe4
 29. ♗xf6 gx6 30. ♜xe4 ♜8d3
 31. ♜c8+ ♘g7 32. ♜g4+ ♘h6 33. ♜h8
 mate

Giuoco Piano

Eduard Shamilov (2141)
Bradley Denton (2047, MS)

Fort Lauderdale, Denker Tnmt (6) 2004

1. e4 e5 2. ♘f3 ♘c6 3. ♕c4 ♕c5 4. c3
 ♘f6 5. d4 exd4 6. cxd4 ♖b4+ 7. ♕d2
 ♘xe4 8. ♖xb4 ♘xb4 9. ♖xf7+ ♘xf7
 10. ♗b3+ ♘f8 11. ♗xb4+ ♗e7 12.
 ♗xe7+ ♘xe7 13. O-O ♜e8 14. ♜e1
 ♘f8 15. ♘a3 d5 16. ♘b5 ♜e7 17.
 ♜ac1 c6 18. ♘c3 ♕f5 19. ♘e5 ♘g5
 20. f4 ♘e4 21. g4 ♘xc3 22. ♜xc3
 ♖xg4 23. ♜ce3 ♕e6 24. f5 ♖xf5
 25. ♘g6+ ♖xg6 26. ♜xe7 ♜e8
 27. ♜xe8+ ♖xe8 28. b4 ♕d7 29. ♜e5
 a6 30. ♘f2 ♘f7 31. ♘g3 ♘f6 32. ♘f4
 ♕e6 33. h4 ♘f7 34. a3 ♘f6 35. a4 ♘f7
 36. ♜e1 ♘f6 37. ♜e5 ♘f7 Draw

Held for the first time was the Susan Polgar Invitational Tournament for Girls. Thirty-four girls participated in this event, including Emily Nicholas of Idaho, who finished tied for 14th place with 3.0 points, in spite of having the lowest rating of the tournament. There was no representative from either Washington or Oregon. Roza Eymullayeva of Massachusetts won the Polgar with a score of 5.5.

Ponziani

Genevieve Hayman (1617, NV)
Emily Nicholas (949)

Ft. Lauderdale, Polgar Invitational (2) 2004

1. e4 e5 2. ♘f3 ♘c6 3. c3 ♘f6 4. d4
 exd4 5. e5 ♘g4 6. cxd4 d6 7. h3 ♘h6
 8. ♖f4 g6 9. ♘c3 ♖g7 10. ♗d2 ♘f5
 11. g4 dxe5 12. gx6 exf4 13. fxg6 hxg6

14. ♗xf4 ♘xd4 15. ♘xd4 ♖xd4
 16. ♘a4 ♜h4 17. ♗f3 ♕d7 18. ♖c4
 ♖xf2+ 19. ♘xf2 ♜xc4 20. ♗e2+ ♖e6
 21. ♗e5 ♗d2+ 22. ♘g3 O-O-O 23.
 ♜ad1 ♜d3+ O-1

The Open ended with a seven-way tie for the championship. Scoring 7.5 of nine were GMs Alexander Onischuk, Rodrigo Vasquez, Aleks Wojtkiewicz, Ildar Ibragimov, and IMs Andranik Matikozyan, Renier Gonzalez, and FM Marcel Martinez. (My spell checker is not at all happy with this list of names!) Eleven Northwest players were among the 443 players in the US Open this year. These include Oregonians Zaikov, Morgan Griffiths, Carl Haessler, and Eduardo Daroza. Washington sent Shamilov, Fred and Carol Kleist, Michael Lee, Clint Ballard, Nataliya Allard and yours truly. Also present was long-time Northwest favorite John Donaldson, now of California.

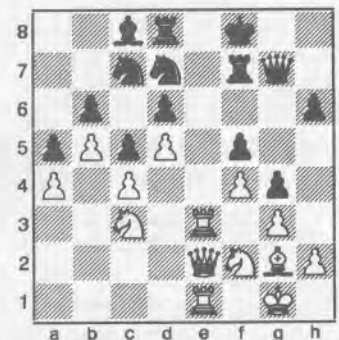
I would like to make mention of the many points Northwest players took from titled players. How about a point and a half, instead? Grade-schooler Michael Lee started off well here, drawing with IM Mark Ginsburg (2414, AZ) in the first round. We had to wait until the final round for the full point, when Oleg Zaikov defeated GM Gennady Sagalchik (2529, NY) on board nine. Good job, Oleg! The Northwest contingent as a whole finished strong, going 9-3 in the final round.

English

Michael Lee (1827)
IM Mark Ginsburg (2414, AZ)

Fort Lauderdale, U. S. Open (1) 2004

1. c4 g6 2. ♘c3 ♖g7 3. g3 d6 4. ♖g2 e5
 5. ♘f3 f5 6. d4 e4 7. ♘g5 h6 8. ♘h3 g5
 9. f4 exf3 10. exf3 ♘f6 11. ♘f2 O-O 12.
 O-O c6 13. d5 c5 14. f4 g4 15. ♗d3 ♘a6
 16. a3 ♘c7 17. b4
 b6 18. ♜b1 ♕d7
 19. ♕d2 ♘fe8 20.
 ♜fe1 ♗f6 21.
 ♘e2 ♜d8 22.
 ♖c3 ♗f7 23.
 ♖xg7 ♗xg7 24.
 ♘c3 ♖c8 25.
 ♜e2 ♘f6 26.
 ♜be1 ♜f7 27.
 ♜e3 ♘d7 28.
 ♗e2 a6 29. b5
 ♘f8 30. a4 a5



31. ♘d1 ♘f6 32. ♘d3 h5 33. ♘f2 h4
 34. ♗d2 hxg3 35. hxg3 ♘h5 36. ♗e2
 ♕d7 37. ♘c1 ♜e8 38. ♜xe8+ ♘xe8
 39. ♗e3 ♘ef6 40. ♘d1 ♘g8 41. ♗d3
 ♜e7 42. ♜xe7 ♘xe7 43. ♘b3 ♘g6
 44. ♘f2 ♗h6 45. ♗e3 ♘f6 46. ♘c3
 ♗h2 47. ♘e2 ♘e4+ 48. ♘f1 ♘e7 49.
 ♘d2 ♘xd2+ 50. ♗xd2 ♘g8 51. ♗c3
 ♘f7 52. ♗e3 ♘f6 53. ♘c3 ♗h8 54.
 ♘f2 ♘h5 55. ♗d3 ♗f6 56. ♗e3 ♘g7
 57. ♗d3 ♘f8 58. ♗e3 ♖e8 59. ♗d3
 ♖g6 60. ♗e3 ♘e8 61. ♗d3 ♘g7 Draw

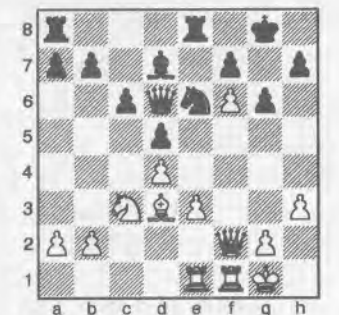
Zaikov was the highest placing Northwest player, tying for eighth place with seven points. His only loss came against eventual co-champion IM Matikozyan (2541, ARM). This was his third Open. His six days of two-a-day play (Denker in the morning, Open in the evening) didn't seem to hold him back.

Queen's Gambit Declined


NM Oleg Zaikov (2316)
Trevor Jackson (2037, LA)

Fort Lauderdale, U. S. Open (3) 2004

1. d4 e6 2. c4 d5 3. ♘c3 ♘f6 4. ♖g5 c6
 5. ♘f3 ♘bd7 6. e3 ♕e7 7. cxd5 exd5
 8. ♕d3 O-O 9. O-O ♜e8 10. ♗c2 ♘f8
 11. ♜ae1 ♘g6 12. h3 ♘e4 13. ♖xe7
 ♗xe7 14. ♘d2 ♘xd2 15. ♗xd2 ♖e6
 16. ♗c2 ♗d6 17. f4 ♕d7 18. f5 ♘f8
 19. f6 g6 20. ♗f2 ♘e6



21. h4 ♘h8 22. h5 ♜g8 23. hxg6 fxg6
 24. e4 ♜af8 25. exd5 cxd5 26. ♜e5



Carl A. Haessler
 Lessons • Lectures • Exhibitions

USCF Life Master
 3-Time Oregon Champion

(503) 358-7871
 ssmith6154@aol.com

♘c7 27. ♖e7 ♗xe7 28. fxe7 ♖xf2
29. ♖xf2 ♖e8 30. ♖e2 ♘g7 31. ♗c2
♘f6 32. ♗b3 ♗c6 33. g4 ♖xe7 34. g5+
♘f7 35. ♖f2+ ♘g7 36. ♘h2 ♖d7
37. ♖e2 ♘f7 38. ♖e5 ♖e7 39. ♗xd5
♗xd5 40. ♗xd5+ ♗xd5 41. ♖xd5
♖e2+ 42. ♘g3 Draw

Modern Defense

NM Oleg Zaikov (2316)

Vanel Sanchez (2064, UT)

Fort Lauderdale, U. S. Open (5) 2004

1. d4 g6 2. c4 d6 3. ♗f3 ♗g7 4. ♗c3
♗g4 5. e3 ♗c6 6. ♗e2 e5 7. d5 ♗ce7
8. O-O h6 9. e4 f5 10. ♗e1 ♗xe2 11.
♗xe2 ♗f6 12. exf5 gxf5 13. f4 e4 14.
♗c2 c5 15. ♗e3 ♗d7 16. ♗d2 h5 17.
♖ab1 a6 18. b4 cxb4 19. ♖xb4 ♗g6
20. ♗a4 O-O 21. ♗b6 ♗c7 22. ♗xa8
♖xa8 23. ♗xf5 ♗d7 24. ♗xg7 ♗xg7
25. ♗c3 ♖e8 26. ♗b2 ♖f8 27. ♖xb7
♗e7 28. ♖e1 1-0

Sicilian

IM Andranik Matikozian (2541, ARM)

NM Oleg Zaikov (2316)

Fort Lauderdale, U. S. Open (6) 2004

1. e4 c5 2. ♗c3 ♗c6 3. ♗f3 g6 4. ♗c4
♗g7 5. O-O e6 6. d4 cxd4 7. ♗b5 d6
8. ♗fxd4 ♗xd4 9. ♗xd4 a6 10. ♗b3
♗e7 11. ♗e3 O-O 12. ♗d2 b5 13. f4 d5
14. e5 f6 15. exf6 ♗xf6 16. ♖ae1 ♗d6
17. c3 ♗d7 18. ♘h1 ♖ae8 19. ♗g1
♗g7 20. ♗d1 ♗h6 21. ♗e3 ♖f6
22. ♖f2 ♗c8 23. ♗b3 ♗c7 24. g3 e5
25. fxe5 ♖xf2 26. ♗xf2 ♗xe5 27. ♗d2
♗g7 28. ♖xe8+ ♗xe8 29. ♗xh6 ♗xh6
30. ♗c5 ♗h3 31. ♗xd5+ ♗f7 32. ♗d8+
♘g7 33. ♗d4+ ♘g8 34. ♗d2 ♗b6
35. ♗f3 1-0

Modern Benoni

NM Oleg Zaikov (2316)

Aaron Kahn (2066, MI)

Fort Lauderdale, U. S. Open (7) 2004

1. d4 ♗f6 2. c4 e6 3. ♗f3 c5 4. d5 exd5
5. cxd5 d6 6. ♗c3 g6 7. e4 a6 8. a4 ♗g4
9. ♗e2 ♗xf3 10. ♗xf3 ♗g7 11. O-O
O-O 12. ♗f4 ♗e7 13. ♗d2 ♗bd7 14.
♖fe1 ♖fe8 15. h3 ♖ac8 16. ♗e2 c4
17. f3 ♗h5 18. ♗h2 g5 19. g3 ♗hf6
20. ♗xg5 ♗d8 21. ♘h1 ♗e5 22. ♗d2
♗d7 23. g4 ♗g6 24. a5 ♗d8 25. ♗a4
♗d7 26. ♖ac1 ♗h4 27. ♖xc4 ♖xc4
28. ♗xc4 ♗de5 29. ♗e2 ♗xh3 30. ♗d1
♗h4 31. ♗f1 ♗xf3+ 32. ♗xf3 ♗hxf3
33. ♖e2 ♗xh2 34. ♘xh2 ♗xg4+

35. ♘g3 ♗f6 36. ♘f3 ♖c8 37. ♖e3
♗d7 38. ♖b3 ♗c5 39. ♗xc5 ♖xc5
40. ♖xb7 ♖xa5 Draw

In addition to the draw mentioned above, Lee, currently rated class A, also drew with Oregonian Carl Haessler (2207), Bill Kramer (2053, FL), and Danny Rade (1999, NY). In round eight, Michael defeated Kyle Jones (2014, OH) and then finished with a win over Benjamin Tejes (2117, CA) in round nine. This gave him six points to tie for 40th place, and should result in a nice increase in his rating. Michael was playing in his second U.S. Open, scoring five points in Los Angeles in a twelve-round event last year. This very talented young man is showing an impressive rate of improvement.

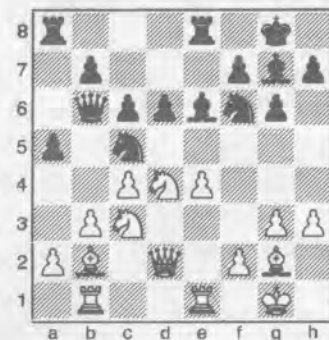
King's Indian

NM Carl Haessler (2207)

Michael Lee (1827)

Fort Lauderdale, U. S. Open (3) 2004

1. c4 ♗f6 2. g3 g6 3. b3 ♗g7 4. ♗b2 O-O
5. ♗g2 d6 6. d4 ♗bd7 7. ♗f3 c6 8. O-O
♗b6 9. ♗c3 ♖e8 10. ♗d2 e5 11. e4
exd4 12. ♗xd4 ♗c5 13. ♖fe1 a5
14. ♖ab1 ♗e6 15. h3



15...a4 16. ♗a1 axb3 17. axb3 ♖xa1
18. ♖xa1 ♗xb3 19. ♗xb3 ♗xb3 20.
♖ab1 ♗xc4 21. ♖xb7 ♗d7 22. ♖c1
♗c5 23. ♗b5 ♗xb7 24. ♖xc4 ♗xc4
25. ♗xd6 ♖d8 26. ♗xc4 ♖xd2 27.
♗xd2 ♗a5 28. ♘f1 ♘f8 29. ♘e2 ♘e7
30. ♘d3 c5 31. f4 c4+ 32. ♗xc4 ♗xc4
33. ♘xc4 f6 34. ♘d5 h6 35. h4 ♘f7
36. ♘d6 ♗f8+ 37. ♘d7 ♗g7 38. ♗f1
♗f8 39. g4 g5 40. ♗c4+ ♘g7 41. fxg5
fxg5 42. hxg5 hxg5 43. ♘e6 ♗b4 44. e5
♗a3 45. ♘f5 ♗e7 46. ♘e6 ♗a3 Draw

Also scoring six points was Carl Haessler. Carl doesn't remember how many Opens he's played in, but says his best one may have been the one in Portland. Carl only suffered one loss, to Ray Robson (1918, FL), but had to endure

USCF Delegates Meeting

by Fred Kleist

At last year's Delegates meeting, we learned of the USCF's dire financial situation and its desperate need to sell its building in order to raise cash. A deal to move to a new purpose-built building in Crossville, Tennessee, was supposed to be virtually locked in and the delegates were pressed to authorize the Executive Board to take extraordinary cost-cutting measures.

This year was a bit more upbeat. Though the USCF offices are still in the same building in New Windsor, New York, the USCF is now a renter. Costs have been slashed by eliminating half the staff, having Bill Goichberg serve as an unpaid CEO, outsourcing the books and equipment to Chess Cafe, eliminating Chess Life print overruns and the practice of discounting certain ads, etc. The result was an operating profit of \$278,000.

Unfortunately, membership renewals—adult, youth, and scholastic—are down since last year's dues increase. Citing similar declines after previous dues increases, CEO Goichberg proposed a modest decrease in dues. This "post hoc, ergo propter hoc" argument failed to impress the delegates, who called for further study. Another dues proposal received overwhelming support. Two new family memberships—one for parents and any number of children (U20 or to age 24 if full-time students) - \$64/yr and one for just children (U20) - \$35—will replace the current \$23 for each additional family member.

The budget that was approved thus assumed significantly lower membership revenue, though no one who spoke in favor of the budget, including President Beatriz Marinello and CEO Goichberg, felt that membership revenue would drop as much as indicated. The only other major motion on which the delegates acted was a rules proposal.

The rules committee had fielded numerous complaints about an organizer who, in his display ads, failed to mention that his prize funds were "based on," rather than guaranteed. The remedy approved by the delegates was that the "based on" must appear adjacent to the prize fund and must be of the same type size. Additionally, a prize fund may not be used in the title of an event unless it is fully guaranteed.

Unlike last year, the meeting adjourned early; Carl Haessler, Murlin Varner and I could prepare for our last round games.

four draws against lower-rated players, including the aforementioned game with Lee.

King's Indian

NM Carl Haessler (2207)
 Danny Tsai (1727, FL)

Fort Lauderdale, U. S. Open (1) 2004

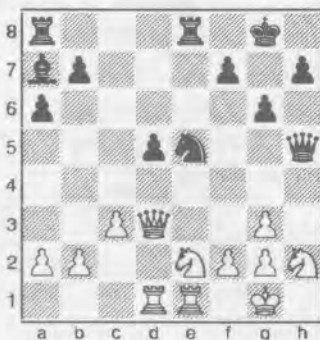
1.c4 ♖f6 2.g3 g6 3.b3 d6 4.d4 ♗g7
 5.♗b2 O-O 6.♗g2 ♖bd7 7.♗f3 ♖e8
 8.O-O c6 9.♗c3 ♗c7 10.e4 e5 11.♗d2
 exd4 12.♗xd4 ♗c5 13.♖fe1 ♗e7
 14.h3 h5 15.♖ad1 ♖d8 16.f4 ♗e6 17.
 ♗f3 b6 18.f5 ♗c5 19.e5 ♗c7 20.exf6
 ♗xf6 21.♗d5 cxd5 22.♗xf6 ♗e4
 23.♖xe4 1-0

French Tarrasch

Tenzing Shaw (1953, DC)
 NM Carl Haessler (2207)

Fort Lauderdale, U. S. Open (4) 2004

1.e4 c5 2.c3 e6 3.d4 d5 4.exd5 exd5
 5.♗b5+ ♗c6 6.♗f3 a6 7.♗e2 ♗f6
 8.O-O ♗d6 9.dxc5 ♗xc5 10.♗bd2
 O-O 11.♗b3 ♗a7 12.♗g5 ♖e8 13.
 ♗d3 ♗d6 14.♖ad1 ♗g4 15.♗h4 ♗f4
 16.♗g5 ♗d6 17.♗h4 ♗e4 18.♗bd4
 ♗h6 19.♗g3 ♗xg3 20.hxg3 ♗h5 21.
 ♖fe1 g6 22.♗h2 ♗xe2 23.♗xe2 ♗e5



24.♗xd5 ♗xf2+ 25.♗xf2 ♗xh2 26.
 ♖h1 ♗g4+ 27.♗f3 ♗xh1 28.♖xh1 h5
 29.♖xh5 ♗f6 30.♗xb7 ♗xh5 31. b4
 ♗f6 32.c4 ♖ad8 33.♗f4 ♖d1 34. g4
 ♖f1+ 35.♗g3 ♗e4+ 36.♗h2 ♖xf4
 37.♗c6 ♗f6 38.g5 ♗g4+ 39.♗g3
 ♖ee4 40.b5 axb5 41.cxb5 ♗e3 42.
 ♗h2 ♖g4 43.g3 ♗f1+ 44.♗g2 ♗xg3
 45.b6 ♗f5+ 46.♗f2 ♖e2+ 47.♗f1
 ♖f4+ 48.♗xe2 ♗d4+ 49.♗e3 ♗xc6

From the Business Manager:

Please send memberships and address changes directly to the business manager's listed address. Sending to the PO Box In Seattle will usually result in a two to three week delay in processing your mail.

50.♗xf4 ♗f8 51.♗e4 ♗e7 52.♗d5
 ♗d7 53.a4 ♗b8 54.a5 ♗c6 55.b7
 ♗c7 56.a6 ♗e7+ 57.♗e5 ♗g8 58.
 ♗d5 f5 59.gxf6 ♗xf6+ 60.♗e5 Draw

King's Indian Attack

NM Carl Haessler (2207)
 Ray Robson (1918, FL)

Fort Lauderdale, U. S. Open (5) 2004

1.♗f3 d5 2.b3 ♗f6 3.♗b2 c6 4.g3 ♗g4
 5.d3 ♗bd7 6.♗bd2 e6 7.e4 ♗d6 8.h3
 ♗xf3 9.♗xf3 O-O 10.♗g2 e5 11.O-O
 a5 12.g4 d4 13.h4 ♗e8 14.♗g3 b5
 15.♗h3 g6 16.♗f3 ♗b8 17.♗c1 ♗g7
 18.g5 f5 19.gxf6+ ♗exf6 20.♗g5 ♗e8
 21.♗xf6+ ♗xf6 22.♗g5 ♗h5 23.♗g4
 ♗f4 24.h5 h6 25.♗f3 ♗xh5 26.♗g2
 ♖a7 27.♗h4 ♖f4 28.♗f5+ ♗f7 29.
 ♗e2 ♖xf5 0-1

Double Fianchetto

NM Carl Haessler (2207)
 Augustin Gomez (1900, WI)

Fort Lauderdale, U. S. Open (7) 2004

1.♗f3 d5 2.b3 c6 3.♗b2 ♗g4 4.g3 e6
 5.d3 ♗f6 6.♗bd2 ♗bd7 7.♗g2 ♗xf3
 8.exf3 ♗b4 9.f4 ♗a5 10.a3 ♗xd2+
 11.♗xd2 ♗xd2+ 12.♗xd2



12...O-O 13.♗h3 ♗e8 14.♖ae1 ♗d6
 15.♖e2 ♖fe8 16.♖he1 g6 17.g4 b6
 18.f5 exf5 19.♖xe8+ ♖xe8 20.♖xe8+
 ♗xe8 21.gxf5 g5 22.f4 h6 23.♗e3 f6
 24.c4 dxc4 25.bxc4 c5 26.♗e4 ♗c7
 27.fxg5 hxg5 28.♗g4 ♗f7 29.♗d1
 ♗e7 30.♗a4 ♗f8 31.♗c3 a6 32.♗e1
 b5 33.♗a5 ♗e8 34.cxb5 axb5 35.♗d1
 ♗d6 36.♗b3 ♗d7 37.♗f7 ♗c7 38.♗c3
 ♗e7 39.♗d5 ♗d6 40.♗b7 ♗e8 41.
 ♗d5 ♗c7 42.♗g8 ♗e7 43.♗a5 ♗d6
 44.♗e1 ♗b6 45.♗c3 ♗d7 46.♗a5
 ♗e8 47.♗f7 ♗c7 48.d4 cxd4 49.♗xd4
 ♗e5 50.♗xc7+ ♗xc7 51.♗e8 ♗f3+
 52.♗d5 ♗xh2 53.♗xb5 g4 54.♗d3 g3
 55.♗e4 ♗b6 56.♗g2 ♗g4 57.♗e4
 ♗b5 58.♗f4 ♗h6 59.♗e4 ♗a4 60.
 ♗xg3 ♗xf5+ Draw

Center-Counter

Matthew Fouts (1966, IN)
 NM Carl Haessler (2207)

Fort Lauderdale, U. S. Open (8) 2004

1.e4 d5 2.exd5 ♗xd5 3.♗c3 ♗a5 4.♗c4
 ♗f5 5.♗f3 ♗f6 6.O-O e6 7.d4 c6 8.♖e1
 ♗e7 9.♗f4 ♗bd7 10.♗b3 O-O 11.♗e5
 ♖ad8 12.♗c4 ♗a6 13.♗c7 ♖c8 14.♗d6
 ♖ce8 15.♗e2 ♗g6 16.♖ad1 ♗xd6
 17.♗xd6 ♗xe2 18.♗xe2 ♖b8 19.♗f4
 ♖fd8 20.♗xg6 hxg6 21.f3 ♗f8 22.♗e4
 ♗xe4 23.fxe4 e5 24.d5 c5 25.c3 ♗b6
 26.♖f1 ♖d6 27.♖f3 ♗e7 28.g4 ♖f8
 29.♖df1 ♗c8 30.♗f2 ♖dd8 31.♗e3 ♗d6
 32.a3 ♖h8 33.h3 ♖h4 34.♗a2 ♖dh8
 35.b4 c4 36.a4 ♖xh3 37.♗b1 ♖xf3+
 38.♖xf3 ♖h1 39.♗c2 ♖g1 40.♖h3
 ♖xg4 41.♗f3 ♖g1 42.♖g3 ♖xg3+
 43.♗xg3 f5 44.♗f3 ♗f6 45.♗d1 ♗xe4
 46.♗e2 ♗d6 47.♗e3 g5 48.b5 b6
 49.♗xc4 ♗xc4+ 50.♗d3 ♗d6 51.c4 g4
 52.c5 bxc5 53.a5 e4+ 54.♗c3 ♗xb5+
 55.♗c4 ♗d6+ 56.♗xc5 ♗e5 57.a6 g3
 58.♗c6 g2 59.♗c7 g1=♗ 60.♗b8 ♗c1
 61.♗a8 ♗c8+ 62.♗xa7 ♗c5+ 63.♗a8
 ♗b5 64.d6 ♗a7 mate

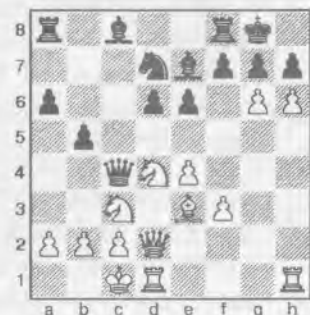
Eduard Shamilov scored six as well. Although this was his first Open, he is no stranger to large, important chess tournaments, having played in such impressive opens as the World, National, Continental, North American, and SCC Tornado. Shamilov suffered only two losses, to FM Victor Reznik (2386, Israel) and Lewis Eisen (2322, NJ). One of his wins will be mentioned below.

Sicilian English Attack

Eduard Shamilov (2141)
 Mark Sturman (1700, NC)

Fort Lauderdale, U. S. Open (1) 2004

1.e4 c5 2.♗f3 d6 3.d4 cxd4 4.♗xd4
 ♗f6 5.♗c3 a6 6.f3 e6 7.♗e3 ♗e7
 8.♗d2 O-O 9.g4 ♗c6 10.O-O-O ♗c7
 11.h4 b5 12.h5 ♗e5 13.g5 ♗fd7 14.
 g6 ♗c4 15.♗xc4 ♗xc4 16.h6



"Reminds me of a European Chess Festival," IM John Donaldson
~Former World Champion SPASSKY will be here!~

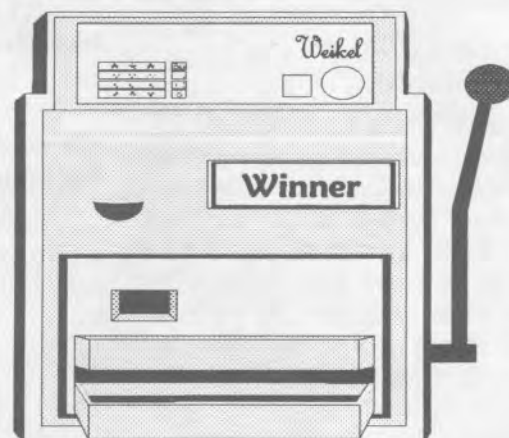
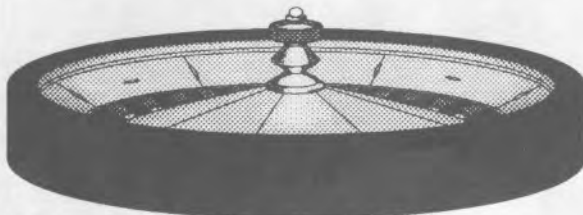
22nd Annual Sands Regency Reno Western States Open

Sands Regency Hotel/Casino, 345 N Arlington Ave, Reno NV 89501
ph 1-866-FUNSTAY or 775-348-2200

October 15,16,17, 2004

Reno, Nevada

6-Rd. Swiss
\$52,400 projected!
(based on 500)
\$33,550 guaranteed!
200 Grand Prix points!



15 Places paid in ALL (7) Sections!

TROPHIES FOR TOP THREE PLACES SECTIONS A-E

FREE LECTURE/ANALYSIS by GM Larry Evans

CLINIC/TALKS/SIMUL by GM Boris Spassky

Open: \$5,000 \$2500 \$1,500 \$1,200 \$1,000 \$900 \$800 \$700 \$600 \$500.

(See ad in this issue page15)

(2400-2499) \$1000 (2300-2399) \$1000 \$600 \$400 (Under 2300) \$1000 \$600 \$400

First in Each Section - Expert: \$2000 Class A: \$1900 Class B: \$1800 Class C: \$1700

Class D/below/adult unrated: \$1500 Class E/below/Jr unrated: \$500

Over 65: \$500 \$300 \$200-\$100 Clubs: \$1000 \$500 \$300 \$200

DON'T MISS THIS ONE!!!

The country's **BEST** book/equipment concession (Jay Blem of L.A.) will be present throughout the tourney.

7 Sections **Open EF:** GM-IM free, Masters \$150, Experts \$201, others \$301; **Expert EF:** \$149; **"A" EF:** \$148; **"B" EF:** \$147; **"C" EF:** \$146; **Class D:** \$145 **Class E:** \$75. **ALL** entry fees \$11 more if postmarked after 9/27, \$22 at site. \$20 off to over 65 or under 20. Prizes based on 500 paid entries. United States Chess Federation membership required.

Time control 40/2,20/1. **Hotel:** 866 FUNSTAY or 775-348-2200

For more information or tournament flyer contact Jerry Weikel, 6578 Valley Wood Dr.,
Reno, NV 89523 (775) 747-1405 wackykl@aol.com or see *Chess Life* or *NWC*

website <http://www.nwchess.com> or www.SandRegency.com

Mail Entry Fee to
Sands Regency Hotel/
Casino

16...fxg6 17.b3 ♖b4 18.hxg7 ♗a3+ 19.♘b1 ♙f7 20.♙xh7 ♚f6 21.♙h8+ ♘xg7 22.♗h2 ♜h5 23.♙xh5 gxh5 24.♗xh5 ♙f6 25.♙h6+ ♘g8 26.♙g1+ ♙g7 27.♙xg7 ♙d7 28.♗h8 mate

Sicilian Accelerated Dragon

Eduard Shamilov (2141)
Thomas Fries (1980, CA)

Fort Lauderdale, U. S. Open (3) 2004

1.e4 c5 2.♚f3 ♚c6 3.d4 cxd4 4.♚xd4 g6 5.♚c3 ♙g7 6.♙e3 ♚f6 7.♚xc6 bxc6 8.e5 ♚g8 9.f4 f6 10.♙d4 ♚h6 11.exf6 ♙xf6 12.♗d2 O-O 13.O-O-O d5 14.♙e2 ♚f5 15.♙xf6 exf6 16.g4 ♚g7 17.h4 f5 18.g5 ♙e6 19.h5 ♙f7 20.hxg6 ♙xg6 21.♚a4 ♚e6 22.♙h5 ♗c7 23.♙xg6 hxg6 24.♙h4 ♚g7 25.♙h6 ♘f7 26.♗d4 ♗e7 27.♚c5 ♙ae8 28.♘b1 ♙h8 29.♚d3 ♙xh6 30.gxh6 ♚e6 31.♗g1 ♚xf4 32.♚xf4 g5 33.♚d3 ♗e3 34.♗f1 f4 35.♙e1 ♗d4 36.♙xe8 ♘xe8 37.♗e2+ ♘f8 38.♗h5 ♘g8 39.♗xg5+ ♘h7 40.♗xf4 ♗g1+ 41.♚c1 ♗b6 42.♗f6 ♗b7 43.♚d3 d4 1-0

Sicilian Dragon Yugoslav

Robert Lau (1785, HI)
Eduard Shamilov (2141)

Fort Lauderdale, U. S. Open (6) 2004

1.e4 c5 2.♚f3 d6 3.d4 cxd4 4.♚xd4 ♚f6 5.♚c3 g6 6.♙e3 ♙g7 7.f3 ♚c6 8.♗d2 O-O 9.♙c4 ♙d7 10.O-O-O ♗a5 11.♙b3 ♙fc8 12.h4 ♚e5 13.♚d5 ♗xd2+ 14.♙xd2 ♚xd5 15.♙xd5 ♙ab8 16.g4 a5 17.a3 b5 18.♘d1 ♚c4 19.♙xc4 ♙xc4 20.♙hh2 b4 21.axb4 ♙bxb4 22.c3 ♙b8 23.♘c1 a4 24.♚c2 f5 25.♚a3 ♙c7 26.gxf5 gxf5 27.♙hg2 ♘h8 28.♙d4 e5 29.♙e3 fxe4 30.fxe4 ♙c6 31.♙g4 h5 32.♙g5 ♙xe4 33.♙xh5+ ♘g8 34.♚c2 ♙f7 35.♚e1 a3 36.b4 ♙f1 37.♙f2 ♙c8 38.♙c2 ♙xc2 39.♘xc2 ♙xf2+ 40.♘d1 0-1

Three Northwest players scored 5.5 points. One was Eduardo Daroza. Daroza, playing in his first Open, came up against something in the second round I know many of us have experienced. Having traveled all the way across the country, he was paired with fellow Oregonian Morgan Griffiths. Morgan was victorious in that encounter. As if that wasn't enough, he then faced Shamilov

in round five, again falling victim. But Daroza finished strong, scoring three points in the last four rounds, including a victory in round nine over Charles Musgrove (2129, FL). Earlier in the tournament, Daroza drew with Denis Strenzwilk (2208, MD).

Reti

Ed Daroza (1936)
NM Morgan Griffiths (2218)

Fort Lauderdale, U. S. Open (2) 2004

1.♚f3 ♚f6 2.c4 c6 3.g3 d5 4.b3 ♙g4 5.♚e5 ♙h5 6.♙g2 e6 7.♙b2 ♚bd7 8.♚xd7 ♗xd7 9.O-O ♙d6 10.d4 b5 11.c5 ♙c7 12.♚d2 O-O 13.♚f3 ♙xf3 14.exf3 ♙ae8 15.♙e1 ♗d8 16.b4 a5 17.a4 ♗b8 18.f4 ♗b7 19.♙f1 bxa4 20.♙xa4 ♙a8 21.♙c3 ♚e4 22.♙xe4 dxe4 23.bxa5 ♙fb8 24.a6 ♗b1 25.♗d2 f5 26.h4 ♗b3 27.♙b4 ♙xb4 28.♙b4 ♘f7 29.♙a5 ♗b8 30.♙c4 ♘e7 31.♗a2 ♙xa5 32.♗xa5 ♙a7 33.♗b6 ♗c7 34.♗b3 g6 35.♗a2 ♗d7 36.♗b2 ♙a8 37.♗b6 ♙d8 38.♗b3 ♗xd4 39.♙f1 ♗xc5 40.♗b7+ ♙d7 41.♗b3 ♙d2 42.♗e3 ♗xe3 43.fxe3 ♙c2 44.h5 ♘d6 45.hxg6 hxg6 46.a7 ♙a2 47.g4 ♘c5 48.♙e2 ♙xa7 49.gxf5 exf5 0-1

Clint Ballard, playing in his second Open, about two decades after the first, was another Northwesterner scoring 5.5. He no longer remembers his results from Pasadena, so no comparison can be made here. It wouldn't quite constitute a trend anyway. Clint had the opportunity to play two titled opponents, losing to FM Ian Thompson and IM Nikolay Andrianov. Ballard has recently returned to tournament chess after a six-year hiatus. Among his five wins was a ninth round victory over Augustin Gomez (1900, WI), snapping Gomez' string of five straight draws. I mention this because one of the draws was against our editor. (Small world observation—Gomez defeated me at the Open in Hawaii seven years ago.)

English

FM Ian Thompson (2293, ENG)
Clint Ballard (2035)

Fort Lauderdale, U. S. Open (3) 2004

1.c4 e5 2.g3 d6 3.♙g2 c6 4.♚f3 ♙e6 5.b3 ♙e7 6.♚c3 ♚d7 7.d4 exd4 8.♚xd4 ♚gf6 9.O-O ♚b6 10.e4 ♗d7 11.♚xe6 ♗xe6 12.♙b2 O-O 13.♙e1

♙ad8 14.♚e2 ♗g4 15.♗c2 ♚h5 16.h3 ♗g5 17.f4 ♗h6 18.♙f1 ♙f6 19.g4 ♙xb2 20.♗xb2 d5 21.gxh5 dxe4 22.♙xe4 ♗xh5 23.♙g2 ♙d3 24.♙ad1 ♙e3 25.♙d2 ♙fe8 26.♚d4 ♗g6 27.♙e2 ♙xe2 28.♚xe2 ♗d3 29.♚c1 ♗d6 30.♗f2 ♗b4 31.♚d3 ♗f8 32.♙e1 ♙xe1+ 33.♗xe1 g6 34.♚e5 ♚c8 35.♚g4 ♗d8 36.♗e5 h5 37.♚h6+ 1-0

Fred Kleist, NWC editor, made the trek to his sixth U.S. Open, and finishes up our group at 5.5 points. Time was Fred's main enemy. In all three of his losses, his time ran out. This includes a game in round three when he flagged against eventual co-champion Marcel Martinez (2458, FL). Fred tells me that he should have drawn that game. Hopefully, he will include that game in this coverage so we can all judge for ourselves. In round five, Kleist defeated the "world famous" Ashley Carter (well, famous among the small part of the world which plays on USCL).

Marshall Gambit

Fred Kleist (2082)
Brian Cornell (1653, NJ)

Fort Lauderdale, U. S. Open (1) 2004

1.d4 d5 2.c4 e6 3.♚c3 c6 4.e4 dxe4 5.♚xe4 ♙b4+ 6.♙d2 ♗xd4 7.♙xb4 ♗xe4+ 8.♙e2 ♚d7 9.♚f3 c5 10.♙c3 ♚gf6 11.♗d6 ♗g6 12.♚e5 ♗xg2 13.♙f3 ♚e4 14.♗xd7+ ♙xd7 15.♙xg2 ♚xc3 16.bxc3 ♙b8 17.a4 b6 18.♘e2 f6 19.♚c6 ♙b7 20.a5 bxa5 21.♙xa5 ♙c7 22.♚xa7 ♘f7 23.♚b5 1-0

Sicilian Kan

Steve Smith (1873, II)
Fred Kleist (2082)

Fort Lauderdale, U. S. Open (2) 2004

1.e4 c5 2.♚f3 e6 3.d4 cxd4 4.♚xd4 a6 5.♚c3 b5 6.a3 ♙b7 7.♙d3 ♗b6 8.♙e3 ♙c5 9.♚ce2 ♚c6?! 10.c3 ♚e5 11.b4 ♙f8 12.♚b3 ♗c7 13.O-O ♚f6 14.f3 d5 15.exd5 ♙xd5 16.♙c2 ♙d8 17.♗e1 ♚c4 18.♙f4 ♗b6+ 19.♗f2 ♗xf2+ 20.♘xf2 e5 21.♙g3 ♙e7 22.a4 O-O 23.h3 ♚h5 24.♙h2 ♙g5 25.♙e4 ♚e3 26.♙fb1 ♙xe4 27.fxe4 f5 28.exf5 ♙xf5+ 29.♘g1 ♙df8 30.g4 ♙f2 31.♙xe5 ♙xe2 32.gxh5 ♙f3 33.axb5 ♙g2+ 0-1

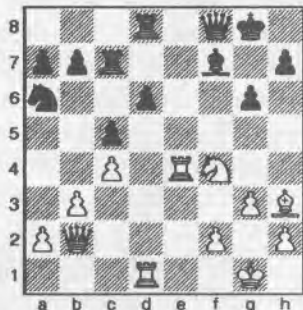
Dutch Leningrad

Fred Kleist (2082)

Ashley Carter (1745, MI)

Fort Lauderdale, U. S. Open (5) 2004

1.d4 f5 2.g3 ♘f6 3.♗g2 g6 4.c4 ♗g7
5.♘c3 O-O 6.♘h3 d6 7.d5 ♖e8 8.♘f4
♘a6 9.♗b1 c6 10.O-O e5 11.dxe6
♗xe6 12.b3 ♗d8 13.♗a3 ♖e7 14.
♖c2 ♗d7 15.♗bd1 ♗fd8 16.♗fe1
♗f7 17.e4 ♘xe4 18.♘xe4 fxe4 19.
♗h3 ♗c7 20.♗xe4 ♖f8 21.♖d2 c5
22.♗b2 ♗xb2 23.♖xb2 ♗e7?



24.♘e6 ♗xe6 25.♗xe6+ ♗xe6
26.♗xe6 ♘c7 27.♗e2 b5 28.♗de1 b4
29.♗e7 ♗e8 30.♖e2 ♗xe7 31.♖xe7
♖xe7 32.♗xe7 ♘a6 33.♗xa7 ♘b8
34.♗a8 1-0

Queen's Gambit Accepted

Fred Kleist (2082)

John Yehl (1955, FL)

Fort Lauderdale, U. S. Open (7) 2004

1.d4 d5 2.c4 dxc4 3.e3 ♘f6 4.♗xc4 e6
5.♘f3 c5 6.O-O ♘c6 7.♘c3 ♗e7 8.
♖e2 O-O 9.♗d1 a6 10.dxc5 ♖a5 11.e4
♗xc5 12.♗g5 ♘g4 13.♗h4 b5 14.
♗b3 ♖b6 15.e5 ♘h6 16.♘e4 ♘f5 17.
♗g5 h6 18.♘c5 hxg5 19.♗ac1 g4 20.
♘g5 ♘h6 21.♖e4 ♘f5 22.♗d6 1-0

Morgan Griffiths, playing in his third U.S. Open, scored 4.5 points. I have already mentioned his victory over Daroza, something that he could have taken care of at the PCC, without involving airfare and hurricanes. Griffiths started off well, scoring three points in the first four rounds, but then the wheels fell off. In the final five rounds, Morgan managed only three draws.

Modern Benoni

NM Morgan Griffiths (2218)

Ed Knesevitch (1750, NJ)

Fort Lauderdale, U. S. Open (1) 2004

1.d4 ♘f6 2.c4 c5 3.d5 e6 4.♘c3 exd5

5.cxd5 d6 6.e4 g6 7.♗d3 ♗g7 8.h3
O-O 9.♘f3 ♘bd7 10.♗f4 ♘e8 11.O-O
a6 12.a4 b6 13.♖d2 ♗b7 14.♗h6
♘ef6 15.♗xg7 ♘xg7 16.♗ab1 ♗e8
17.♗fe1 ♖c7 18.b4 ♗ac8 19.b5 a5
20.♖c2 ♗e7 21.♘d2 ♗ce8 22.♗e3
♗c8 23.f4 ♗b7 24.♗f3 ♗c8 25.♘c4
♘g8 26.e5 ♘h5 27.exd6 ♗e1+
28.♗xe1 ♗xe1+ 29.♘f2 1-0

English Defense

NM Morgan Griffiths (2218)

Dan Mayers (2022, ID)

Fort Lauderdale, U. S. Open (3) 2004

1.d4 e6 2.c4 b6 3.e4 ♗b7 4.♗d3 f5
5.exf5 exf5 6.♖e2+ ♖e7 7.f3 ♘c6
8.♗e3 O-O 9.♗f5 ♖f6 10.♗e4 ♘xd4
11.♖d2 ♗c5 12.♗g5 ♖e5 13.♗xd8
♗xe4 14.fxe4 ♖xe4+ 15.♘d1 ♘xd8
16.♘c3 ♖g4+ 17.♘ge2 ♘f6 18.b4
♗xb4 19.♖xd4 ♖xd4+ 20.♘xd4 ♗xc3
21.♘c2 ♗xa1 22.♘xa1 ♗e8 23.♘b3
♗e4 24.♘d2 ♗d4 25.♗e1 d5 26.cxd5
♘xd5 27.♘c2 ♘b4+ 28.♘c3 c5 29.♘f3
♗g4 30.♗e2 ♘c6 31.♗f2 ♘d4 32.♘e5
♗h4 33.g3 ♗h5 34.♘c4 ♗f5 35.♗d2
♘c7 36.♘b2 ♘c6 37.♘e3 ♗e5 38.♘g4
♗e2 39.♗xe2 ♘xe2 40.♘e5+ ♘d5
41.♘d7 b5 42.♘f8 h6 43.♘g6 a5 44.
♘e7+ ♘e6 45.♘c6 a4 46.♘a7 ♘d4
47.♘c8 ♘d7 48.♘b6+ ♘c6 49.♘c8 ♘f5
50.♘a7+ 0-1

Also at 4.5 was yours truly. This was my seventh Open in a row, and the fifth time I have performed better than my rating would indicate. (This was especially gratifying considering my terrible performance at the Washington Open.) I defeated two class A players, Leroy Collins (1800) and David Price (1809), and drew with a third, Sharmus Yeargin (1838), all local Florida players. Noticeable about this Open was the large percentage of players from the home state. Over one third of the entries were from Florida, as were five of my nine opponents. Considering that I played no one from the host state at Reno or Cherry Hill, this really seemed like a lot. Had it not been for the local players, this tournament would have been a disaster.

French Advance

Murlin Varner (1617)

David Price (1809, FL)

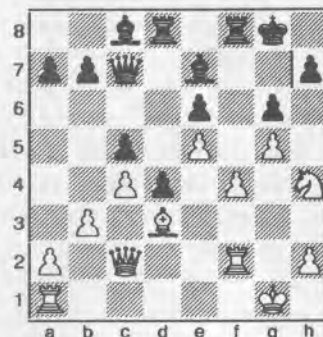
Fort Lauderdale, U. S. Open (6) 2004

1.e4 e6 2.d4 d5 3.e5 c5 4.c3 ♘c6

5.♘f3 ♖b6 6.♗e2 ♗d7 7.O-O ♗e7?!
8.b3 f6 9.♗e3

9.exf6 ♗xf6 10.♗e3 ♘ge7 11.dxc5
♖c7 12.♖d2± Gutierrez—Lozano,
Oropesa 1999 (1-0, 37)

9...fxe5 10.♘xe5 ♘xe5 11.dxe5±/=
♖c7 12.f4 ♘h6 13.♘d2 ♘f5 14.♗f2
O-O=∓ 15.♘f3 ♗ad8 16.g4 ♘h6
17.g5 ♘g4 18.♘h4 ♘xf2 19.♗xf2
♗c8 20.♖c2 d4 21.♗d3 g6 22.c4



22.♗xg6 hxg6 23.♖xg6+ ♘h8
24.♗f3 ♗xg5 25.♖xg5 ♗g8 26.♘g6+
♗xg6 (26...♘g7 27.♖f6+ ♘h6 28.♗h3
mate) 27.♖xg6+

22...♗xg5??

22...♗f7

23.fxg5 ♖xe5 24.♗af1 ♖xg5+
25.♘g2 e5 26.h4 ♖e7 27.h5 ♗xf2
28.♗xf2 g5 29.h6 ♗d6 30.♗xh7+
♘h8

30...♖xh7 31.♗f8+ ♘xf8 32.♖xh7+

31.♖e4 ♗xh6 32.♗g6! ♖g7? 33.♗f7!
♗f5??

33...♗xg6 34.♗xg7 ♗xg7 35.♖xe5+

34.♖xf5 ♖xg6 35.♖xe5+ 1-0

35...♘g8 36.♖e8 mate

Barry Attack

Leroy Collins (1800)

Murlin Varner (1617)

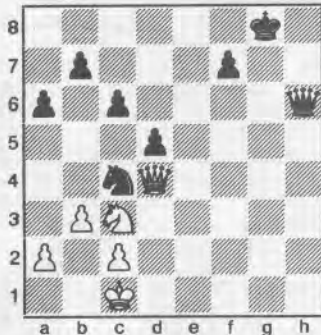
Fort Lauderdale, U. S. Open (7) 2004

1.♘f3 d5 2.d4 ♘f6 3.♗f4 g6 4.e3 ♗g7
5.♗e2 O-O 6.♘c3 a6 7.♘e5 ♘bd7
8.h4 h5 9.g4 ♘xe5 10.♗xe5∓/∓
♗xg4 11.♗xg4 ♘g4 12.♗xg7 ♘xg7
13.♖f3 c6 14.O-O e5 15.dxe5 ♘xe5
16.♖e2 ♖f6 17.f4 ♘c4 18.♖f3 ♗ae8
19.♗de1 ♗e7 20.♗hg1 ♗fe8 21.f5
♗xe3 22.♗xe3 ♗xe3 23.♖xh5 ♗e5?

23...♗e1+ 24.♗xe1 gxh5

24.♖d1 ♗xf5 25.h5 ♗g5 26.hxg6

♖xg1! 27. ♖xg1 ♖xg6 28. ♖d4+ ♖g8
29. b3 ♖h6+



30. ♖d1

30. ♖b1 ♖h1+ 31. ♖d1 ♖d6 32. ♖c1 ♖h8 33. ♖g4+ ♖g7 34. ♖f4 ♖a1+ 35. ♖d2 ♖e4+ 36. ♖e2 ♖xa2 37. ♖e3 ♖a5 38. ♖g4+ ♖h7

30... ♖h1+ 31. ♖e2 ♖h2+ 32. ♖e1 ♖e5+ 33. ♖xe5 ♖xe5 34. ♖e2 ♖g7 35. ♖e3 f5 36. ♖d4 ♖f6 37. ♖e2 b6 38. b4 ♖f3+ 39. ♖e3 ♖e1 40. ♖d2 ♖g2 41. ♖d4 c5 42. bxc5 bxc5 43. ♖f3 f4 44. ♖d3 ♖f5 45. a4 a5 46. c3 ♖e3 47. ♖e2 ♖c4 48. ♖h4+ ♖e4 49. ♖g6 ♖b2 1-0

50. ♖h4 d4 [50... ♖xa4 51. c4 ♖c3+ 52. ♖f2 a4 53. cxd5 ♖xd5 54. ♖f3 a3 55. ♖d2+ ♖d3 56. ♖b3 c4 57. ♖c5+ ♖c2 58. ♖e6 a2 59. ♖f3 a1=♖ 60. ♖e4

♖f6+ 61. ♖xf4 ♖e1 62. ♖f5 ♖d7 63. ♖g5 ♖e5+ 64. ♖g6 ♖f8+ 65. ♖f7 ♖xg5 66. ♖xf8 ♖d3 67. ♖e8 ♖g7 68. ♖d8 ♖d4 69. ♖c8 ♖c5 70. ♖d8 ♖d6 71. ♖e8 ♖g8 mate] 51. ♖f3 d3+ 52. ♖f2 ♖d1+ 53. ♖g2 c4 54. ♖d2+ ♖e3 55. ♖xc4+ ♖e2 56. ♖h2 f3 57. ♖xa5 f2 58. ♖b3 f1=♖ 59. ♖g3 ♖e3 60. ♖g4 ♖f6 61. ♖d4 ♖g6+ 62. ♖h3 ♖f2+ 63. ♖h2 ♖h5+ 64. ♖g2 ♖h1+ 65. ♖g3 ♖h3 mate

At 4.0 points was Nataliya Allard, playing in her first Open. Although she was listed as a Washington player, she tells me she has recently moved to Texas. Her husband is still in Washington, and she doesn't rule out moving back. Right now, she commutes a lot. Among her four victims was James Clague (1800, NY). Allard defeated another New Yorker as well, Phyllis Benjamin (1228), mentionable only because I had defeated her a few rounds earlier. (Another piece of information showing that a tournament of over 440 is not really all that big.)

King's Indian

Nataliya Allard (1523)

Patrick McCartney (2024, NC)

Fort Lauderdale, U. S. Open (1) 2004

1. c4 ♖f6 2. ♖c3 g6 3. d4 ♖g7 4. e3 O-O 5. ♖d3 d6 6. h3 e5 7. ♖ge2 ♖c6 8. d5 ♖e7 9. O-O ♖e8 10. e4 f5 11. ♖g5 f4

12. f3 h6 13. ♖h4 g5 14. ♖f2 h5 15. c5 ♖g6 16. cxd6 cxd6 17. ♖h2 g4 18. fxd4 hxg4 19. hxg4 ♖xg4 20. ♖e1 ♖f7 21. ♖h1 ♖h8+ 22. ♖g1 ♖xh1+ 23. ♖xh1 ♖g5 24. ♖g1 ♖f6 25. ♖c1 ♖h8+ 26. ♖g1 ♖f3 27. g3 ♖h1 mate

Carol Kleist rounds out the group, scoring 2.5 points in her sixth U.S. Open. Carol did not have a particularly good result this year. Most of her opponents were rated lower than she. But, in my final small world observations, while Fred would defeat Ashley Carter two rounds later, Carol defeated her little brother Michael Carter (1136, MI) in round three. Carol also started out the tournament against Dan Mayers (2022, ID), another "why bother to travel so far" pairing. (As if that isn't enough, I lost to Mayers in round eight as well.)

Oh, and how about John Donaldson? Well, he finished with 6.5 points. Donaldson never lost, but did take five draws, leaving him a full point off the pace, and denying him qualification for the U S Championship.

Next year, the U.S. Open is in Phoenix. Not exactly a cooler venue, but should lack the hurricane excitement. I plan to be there, how about you? ■

Northwest News

Tributes to S. Christopher

Stephen Christopher was the first major book and equipment seller in the Pacific Northwest and one of the driving forces behind the 1966 U.S. Open in Seattle. Chess has many unsung heroes and Stephen was one of them. ChessCo founder Bob Long wrote in a memorial in the July issue of Northwest Chess how he would have been forced to close his business long ago if Mr. Christopher had not stepped in to help him. IM Jeremy Silman is known today as one of the premier instructional writers in the chess world but his classic *Reassess Your Chess* might never have seen the light of day if Mr. Christopher hadn't helped to finance its publication. Although Christopher

played in one Washington State Championship, he was never much higher than a low class A player, but he really loved the game and played in hundreds of tournaments in the NW. Many players benefited from his small kindnesses whether it was giving them rides to tournaments, sponsoring their entry fees or giving them books or sets. He was a real gentleman and will be greatly missed.

—John Donaldson

Very few people have contributed to chess in this area for such a long time as Stephen Christopher. I will miss seeing him at local tournaments.

—Eric Tangborn

Portland, OR

Ray Lipin and NM Nick Raptis topped the 12-player Open section of the Portland Summer Open, held July 17-

18. Both scored four points in the five-round tournament. Blake Salisbury won the U2000 prize, scoring three points.

William Gagnon and Marcus Robinson likewise scored four points to win the 23-player Reserve section. Other winners were: U1600—John Jarvinen & Drew Serres, U1400—David Cohen & Jerry Larkin, and U1200—Levi Schoen & Mike Terrill.

Tacoma, WA

The Washington Senior Adult Championship was held at the University Place Library on August 7-8. There were eight players in all. The winners were: Champion 2004 Paul Bartron \$75, 2nd David Rupel \$60, 3rd Ernst Rasmussen \$50, 4th Mike Rompogren \$45.00.

—TD Gary Dorfner ■

SCC July Quads	7/24	TD: Fred Kleist
1 Hickey, Patrick	1762 1807	W2 W4 W5 3.0
2 Fryberg, Skylor	1691 1754	L1 W3 W6 2.0
3 Bragg, David	2220 2200	D6 L2 W4 1.5
4 O'Gorman, Peter	1814 1804	W5 L1 L3 1.0
5 Baldwin, Christopher	1579 1584	L4 W6 L1 1.0
6 Fabian, Steve	1656 1641	D3 L5 L2 0.5
1 Watts, Peter	1238 1369	- W W W 3.0
2 Manber, Devon	1435 1418	L - U W 1.0
3 Schorzman, Boyd	488 688	L U - W 1.0
4 Poyneer, Thomas	1207 1143	L L L - 0.0

July Lightning Quick	Spokane	7/31	TD: David Griffin
1 Herbers, Patrick	(1962) (1958)	- WD LW WW WW WW WW WW WW	14.5
2 Steinocher, Kirk	(1886) (1867)	LD - DW WW WL WW WW WW WW	13.0
3 Atwood, Adam	(1543) (1613)	WL DL - WW LW WW WW WW WW	12.5
4 Countryman, Zach	(1276) (1404)	LL LL LL - WW LW WW WW WW	9.0
5 Griffin, David	(1525) (1504)	LL LW WL LL - DW LW WW WW	8.5
6 Kirin, Patrick	(1335) (1331)	LL LL LL WL DL - LW WW WW	6.5
7 Waugh, James	(1227) (1236)	LL LL LL LL WL WL - WL WW	5.0
8 Baker, Ted	(1185) (1117)	LL LL LL LL LL LL LW - WL	2.0
9 Greer, Matthew	(890) (893)	LL LL LL LL LL LL LL LW -	1.0

Seattle Seafair Open	7/30-8/1	TD: Fred Kleist
1 Koons, Nat	2224 2230	W48 W13 W15 W5 D2 4.5
2 Bragg, David	2200 2211	W42 W47 W31 W4 D1 4.5
3 Collyer, Curt	2162 2178	H W38 W6 W9 W10 4.5
4 Gale, Geoffrey	2042 2049	W53 W21 W17 L2 W18 4.0
5 Wyde, David	1879 1934	W29 W46 W8 L1 W17 4.0
6 Peres, Ignacio	2213 2200	W33 D12 L3 W32 W19 3.5
7 Arganian, David	2075 2067	W57 W22 D11 L10 W21 3.5
8 Ballard, Clint	2027 2022	W20 W18 L5 W11 D12 3.5
9 Mason, Scott	1952 1944	D26 W30 X L3 W23 3.5
10 Ellinger, David	1950 1962	W56 W24 H W7 L3 3.5
11 Cloy, Elston	1945 1948	W43 W27 D7 L8 W26 3.5
12 Edwards, Gary	1844 1865	W36 D6 D14 W25 D8 3.5
13 Walther, Randy	1806 1811	W35 L1 W36 D24 W27 3.5
14 Kalina, Chris	1963 1951	W32 L17 D12 W43 H 3.0
15 Sinanan, Joshua	1950 1941	W54 W19 L1 L17 W33 3.0
16 Julian, John	1885 1867	H D26 L33 W35 W24 3.0
17 Fryberg, Skylor	1774 1863	W52 W14 L4 W15 L5 3.0
18 Buck, Stephen	1715 1723	W37 L8 W49 W33 L4 3.0
19 Fabian, Steve	1641 1667	W39 L15 W51 W31 L6 3.0
20 Churchill, Sam	BC 1204 1318	L8 L43 W56 W37 W34 3.0
21 Hickey, Patrick	1807 1799	W44 L4 H W45 L7 2.5
22 O'Gorman, Peter	1804 1800	W49 L7 D43 L26 W38 2.5
23 Taki, Steven	1688 1686	L40 W56 D27 W44 L9 2.5
24 June, Peter	1650 1666	W51 L10 W47 D13 L16 2.5
25 Monahan, Darby	1571 1572	W50 L31 W38 L12 H 2.5
26 Wilson, Matthew	1538 1626	D9 D16 D41 W22 L11 2.5
27 Dillingham, Gregg	1516 1652	W41 L11 D23 W42 L13 2.5
28 Omori, Michael	1433 1440	L31 H H D36 W44 2.5
29 Yang, Matthew	1321 1334	L5 D32 L45 W51 W42 2.5
30 Kurtis, Matthew	1065 1194	H L9 L32 W56 W43 2.5
31 Selzler, Richard	2055 2037	W28 W25 L2 L19 U 2.0
32 Dietz, Richard	1628 1615	L14 D29 W30 L6 Z 2.0
33 Hendricks, David	1597 1614	L6 W35 W16 L18 L15 2.0
34 Charleston, Scott	1417 1387	L47 L51 W50 W39 L20 2.0
35 Osseward, J P	1345 1389	L13 L33 W48 L16 W50 2.0
36 Witecki, Thomas	1319 1361	L12 W48 L13 D28 Z 2.0
37 Omori, Jeffrey	1301 1285	L18 H H L20 W51 2.0
38 Charleston, Jay	921 993	B L3 L25 W49 L22 2.0
39 Pasumansky, Masha	0 1306	L19 W55 L42 L34 W45 2.0
40 Raptis, Nick	OR 2321 2322	W23 H F U U 1.5
41 Wyde, Ben	1836 1813	L27 W45 D26 U U 1.5
42 Piper, August	1593 1561	L2 H W39 L27 L29 1.5
43 Li, Jerry	1412 1409	L11 W20 D22 L14 L30 1.5
44 Inglis, David	1284 1294	L21 W54 H L23 L28 1.5
45 Kurtis, Alexander	854 924	H L41 W29 L21 L39 1.5
46 Weissbarth, Adam	2177 2164	W55 L5 U U U 1.0
47 Fleck, Casey	1829 1812	W34 L2 L24 U U 1.0
48 Jusak, Jeremy	1560 1497	L1 L36 L35 L50 W56 1.0
49 Selzler, Andrew	1434 1404	L22 W50 L18 L38 U 1.0
50 Watts, Peter	1384 1340	L25 L49 L34 W48 L35 1.0
51 Osseward, Peter	986 1018	L24 W34 L19 L29 L37 1.0
52 Roper, David	2318 2303	L17 H U U U 0.5
53 Lund, Richard	1619 1616	L4 U U U U 0.0
54 Chang, Eddie	1448 1419	L15 L44 U U U 0.0
55 Deison, Ben	1426 1400	L46 L39 U U U 0.0
56 La Madrid, Ramone	1364 1302	L10 L23 L20 L30 L48 0.0
57 Wang, Shanglun	781 780	L7 U U U U 0.0

President's Corner continued from page 3

Our next step is to create the strategies that will support these priorities, and we are well on the way. You'll notice a much higher, guaranteed prize fund for the upcoming Class tournament, for example - and you'll soon be hearing about other initiatives as well.

We feel that we are representing the wishes of the WCF membership with our priorities, but we want to hear from you. We'd especially like to hear from you if you want to get more involved. Would you like to be an assistant TD or a full TD? Can you volunteer for a tournament event - regular or scholastic?

We're not looking for WCF members to dedicate their lives to chess... we need a much more practical level of help! Can you take pictures at an event near you? Can you check out a couple of hotels in your area as a possible event for a tourney? Can you help out with a scholastic event one weekend a year? That's the kind of help we're looking for.

Within a couple of months, you'll see a new WCF website that will have resources and information you need, as well as features like a volunteer sign-up form and a "volunteers needed" bulletin. We're hoping that coordinating such needs through our website will hook up people that need the time and energy of reliable volunteers to the people that have time to give.

How does this sound for WCF chess action in 2004-2005: A Class championship with a \$4,000 prize fund! Washington Open with a 5-figure prize fund! Two additional WCF-sponsored events, especially in Eastern Washington! A statewide Team league and possible championship! It may be that we can't bring all of this about - but we can bring a lot of it to Northwest chess players, and we will!

I think we can make this an exciting time of growth for chess in the northwest, and it is exciting to be a part of it. Get involved! As always, please feel free to contact me or any of our board members with your ideas. You can reach me at kent@aproposretail.com.

Until we meet over the 64,

Kent McNall

President

Washington Chess Federation

House of Aragón

Is proud to present
**Fine Leather Chess Boards for the
truly discerning player and enthusiast.**

www.houseofaragon.com
360-668-4108

BORIS SPASSKY IN RENO!!!

Sands Regency Hotel/Casino & Jerry Weikel (Organizer and Chief TD) are proud to announce that GM Boris Spassky (World Chess Champion 1969-1972) will be at the Reno-Western States Open Chess Tournament for 5 Days!!!

The RENO-WESTERN STATES OPEN dates are Oct. 15-17, 2004 in Reno, Nevada Held at the Sands Regency Hotel/Casino. \$52,400 Prize Fund Projected (Info: p. 8)

GM BORIS SPASSKY'S SCHEDULE

WED(10 /13) 8:30PM "An Evening with Boris" \$30 (Includes Dinner) Reservations Req. Don't miss this! 4 Speakers scheduled so far to talk about Boris on the "lighter side"!

THURS. (10/ 14) 6-7:15 PM GM Larry Evans (free) Lecture on Boris Spassky
7:30 PM GM Boris Spassky Simul (25 boards) \$100 (includes commemorative pen), Spectator fee: (\$5)*

FRI. (10/15) 10-11AM GM Boris Spassky Book Signing Session (free)

SAT. (10/16) 4:30-6 PM GM Boris Spassky Clinic (\$10)*

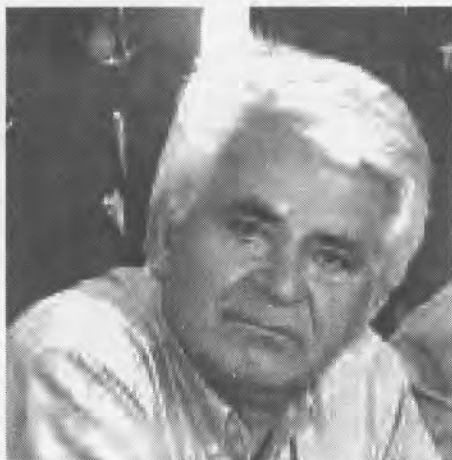
SUN. (10/17) 4-5:30 PM the film *Clash of the Titans* (Bobby Fischer & Boris Spassky) (produced in Europe) will be shown (40 min.) followed by a Question & Answer Session hosted by GM Larry Evans & GM Boris Spassky (\$10)*

*Everyone who is playing in the main tournament (Reno-West. States Open) will receive a free admission (non-transferable) to these 3 GM Boris Spassky events).

DON'T MISS THIS HISTORICAL EVENT IN RENO!!!!!!

INFO: Jerry Weikel, 6578 Valley Wood Dr., Reno NV 89523 (775)7471405 wackykl@aol.com

Photos below from Chessbase.com website and taken during North Ural Cup - Ladies super Tournament in July 2004
Boris Spassky analyses with players and visitors at the event.



Christopher Memorial Northwest Grand Prix

Murlin Varner, administrator
13329 208th Ave. NE
Woodinville WA 98077
mevjr54@yahoo.com

Current standings (Includes all events through 8/15/04):

Oregon		Washington	
Masters			
1 Raptis, Nick	117.0	1 Bragg, David	146.0
2 Haessler, Carl	34.0	2 Koons, Nat	82.0
3 Zaikov, Oleg	26.0	3 Perez, Ignacio	46.0
4 Griffiths, Morgan	22.0	4 Pupols, Viktors	43.5
5 Rowan, Thomas	10.5	5 Schill, William	29.0
6 Prochaska, Peter	4.5	6 Serper, Gregory	28.0
		6 Roper, David	28.0
Experts			
1 Lin, Benjamin	67.0	1 Gale, Geoffrey	130.5
2 Martin, Roger	26.0	2 Collyer, Curt	79.5
3 Slye, Damon	24.0	3 Bartron, Paul	61.0
4 Gutman, Richard	16.0	4 Drake, Christopher	55.0
5 Morris, Michael	14.5	5 Selzler, Richard	46.5
6 Heywood, Bill	5.0	6 Ballard, Clint	36.5
Class A			
1 Salisbury, Blake	47.5	1 Cloy, Elston	93.5
2 Banner, Richard	47.0	2 Steinocher, Kirk	89.0
3 Phillips, Blake	43.0	3 Buck, Stephen	83.0
4 Pritchett, Pete	35.5	4 Kalina, Chris	82.0
5 Herrera, Robert	33.0	5 Julian, John	69.0
6 Shitabata, Russell	29.5	6 Cambareri, Michael	54.0
Class B			
1 Gagnon, William	38.5	1 Mathews, Dan	89.0
2 Rosenbaum, David	35.5	2 May, Andy	85.0
3 Goodspeed, Timothy	21.0	3 Monahan, Darby	67.5
4 Gay, Daniel	19.0	4 May, Todd	63.0
4 Gay, Patrick	19.0	5 Knutson, Keegan	59.0
4 Peake, Ethan	19.0	6 Hickey, Patrick	53.5
Class C			
1 Robinson, Marcus	38.0	1 Kirlin, Patrick	61.5
2 Serres, Drew	32.0	2 Griffin, David	60.0
3 Becker, Brett	30.0	3 Delson, Ben	50.0
4 Arun, Aditya	23.0	4 Omori, Michael	49.5
5 Jarvinen, John	18.0	5 Blumenthal, Gabriel	46.5
6 Scharzt, Brian	13.0	6 Charleston, Scott	45.0
Class D and below			
1 Terrill, Michael	57.5	1 Li, Jerry	48.5
2 Wang, Eddie	28.5	2 Akopov, Michael	43.0
3 Taylor, Michael	22.0	3 Omori, Jeffrey	42.5
4 Campbell, Paul	15.0	3 Inglis, David	41.0
5 Nettles, Jordan	14.0	5 Yang, Matthew	37.5
6 Kanwar, Gurtej	13.0	6 Countryman, Zachary	36.5
Overall Leaders			
1 Raptis, Nick	117.0	1 Bragg, David	146.0
2 Lin, Benjamin	67.0	2 Gale, Geoffrey	130.5
3 Terrill, Michael	57.5	3 Cloy, Elston	93.5
4 Salisbury, Blake	47.5	4 Mathews, Dan	89.0
5 Banner, Richard	47.0	4 Steinocher, Kirk	89.0
6 Phillips, Blake	43.0	6 May, Andy	85.0
7 Gagnon, William	38.5	7 Buck, Stephen	83.0
8 Robinson, Marcus	38.0	8 Kalina, Chris	82.0
9 Pritchett, Pete	35.5	8 Koons, Nat	82.0
9 Rosenbaum, David	35.5	10 Collyer, Curt	79.5

Not a lot of changes this month. A few moved up, a few moved down. Don't forget, you can see all the standings on the Northwest Chess website. If your name is not here, check there. We are nearly two thirds of the way through the year. Time to start making your plans to attend a bunch of tournaments and make the leaders sweat! Lots of points remain this year. Grand Prix events are planned this fall in Eugene, Seattle, Portland, Spokane, and Tacoma. Play, play, play!

50 Years Ago

Washington Chess Letter

September 1954

by Russell "Rusty" Miller

John DeWitt continues as Editor. R. R. Merk was the circulation head with Ken Mulford as Publisher. Contributors: John Nourse ("Nourse AdNauseam"), Fred Weaver ("From Chess Life"), Viktors Pupols ("Vox Pupoli"), Stephen Falk ("Chess Bits"), Dan Wade (feature writer), Ollie LaFreniere (feature writer).

Puget Sound League play for 1954-55 was announced with matches to start in October. Nine teams were to take part: West Seattle, Seattle YMCA, U of W, Seattle CC, Olympia, Kitsap County, Tacoma, McNeil Island Prison, and the Latvian Sports Club. Wade predicts the Latvians will win the league, what with Zemgalis and Pupols on the team. James McCormick is to join the Tacoma team; so Wade predicts a 2nd place finish.

The Washington State Championship was to be held at the Seattle CC, starting October 17th. The announced time control was 40/2 and 10/30. The event will have preliminary round robins and then a final. The 1954 Washington Junior attracted only seven players. Pupols and McCormick when both ended up tied for first with 5-1 scores. They were to have a two-game playoff. Pupols won the first game. The Washington Open winner was Ted Warner 6.5-.5 over 11 others. Vernon Holmes won the Pierce County Championship; Pupols was 2nd. Five games played by J. L. Sheets in 1953 Washington Championship were given; he won 4 and drew one.

The Log Cabin CC of West Orange, NJ, paid a visit to the Pacific Northwest in September 1954. E. Forry Laucks was the leader of the group that was touring all summer. Spokane beat them 4-3. The Seattle CC also won (4-2), but City Chess Club of Vancouver, BC, lost 2.5-1.5. Herman Hesse was the Log Cabiners top board.

1954 California Open of 81 players was won by Herman Steiner 6.5-.5 with Jim Schmitt (who used to live in Portland) 2nd at 6-1. William Lombardy, age 16, won a New York State event 7-2. The Heart of America Open drew 54 players with John Rigan and Eliot Hearst taking 1st place. The Northwest Open (held in an unknown part of USA, but I am guessing the Midwest) drew 41 players; Lee Magee came 1st.

Olaf Ulvestad announced he would give master annotations to games for a \$1.00 per. LaFreniere reported that WCF had 146 current members.

Five Years Later

by Matthew Fleury

Hanging out at the Seattle Chess Club recently, I came across the March 1999 *Northwest Chess*, which was the Washington State Championship issue. Finishing last in this tournament had a devastating effect on me, and it was a big factor in my subsequent break from over-the-board chess. Interestingly, I had never seen this issue of *NWC* before. Not surprisingly, my play was described as sub-Master and impatient, and each of my losses were ripped apart, and for good reason, for I played badly.

The horror began in round one.

Sicilian Accelerated Dragon

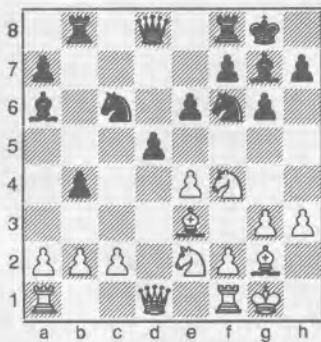
Nat Koons (2083)
Matt Fleury (2115)

Seattle, WA Championship (1) 1999

1.e4 c5 2.♘f3 ♘c6 3.♘c3 g6 4.d4 cxd4 5.♘xd4 ♙g7

I realized recently that I've never beaten anyone with the Accelerated Dragon who was either a higher-rated or better player. On this day, it was the latter.

6.♘de2 ♘f6 7.g3 b5 8.♙g2 ♖b8 9. O-O O-O 10.h3 ♙a6 11.♙e3 b4 12. ♘d5 e6 13.♘df4 d5??



13...d6 is fine. Black's position is now a combo factory.

14.exd5 ♘xd5 15.♘xd5 exd5 16.♖e1 d4 17.♙f4 ♖c8 18.♞d2 ♖e8 19. ♖ad1 ♙c4 20.♙xc6 ♖xc6 21.♘xd4 ♖xe1+ 22.♞xe1 (22...♙xd4 23. ♖xd4 ♞xd4 24.♞e8+ ♔g7 25.♙e5+) 1-0

Northwest Chess

This result ruined my confidence and I never recovered. The next round featured a missed mate-in-four against Georgi Orlov. That was followed by horrible losses to Jim McCormick, Slava Mikhailuk, David Bragg, and Paul Bartron. In addition, I was outplayed by Bill Schill and achieved nothing against David Arganian.

There was one game, however, which got no mention and was not annotated.

Grünfeld

David Rupel (2126)
Matt Fleury (2115)

Seattle, WA Championship 1999

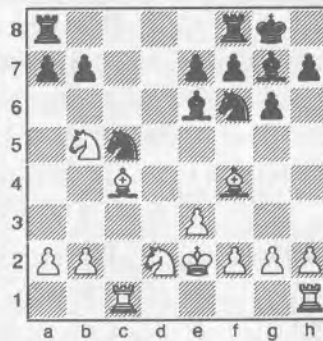
1.d4 ♘f6 2.c4 g6 3.♘c3 d5

The one and only time I played the Grünfeld, and only because I was under the illusion that it was the most annoying defense against real 1.d4 players.

4.♙f4 ♙g7 5.e3 c5 6.dxc5 ♞a5 7.♞d2 dxc4 8.♙xc4 ♘bd7 9.♖c1 O-O 10.♘f3 ♘xc5 11.♘b5

Initiating a Queen trade, which could also have been achieved by 7.♞a4+. Castling first may have been better.

11...♞xd2+ 12.♘xd2 ♙e6 13.♔e2



Again, castling is better; White would have a good position. Centralizing the King is law in the endgame, but just because the Queens are off doesn't necessarily mean we've reached the endgame.

13...♖ad8

Offering the a-pawn for tempi.

14.♘xa7 ♙xc4+ 15.♖xc4

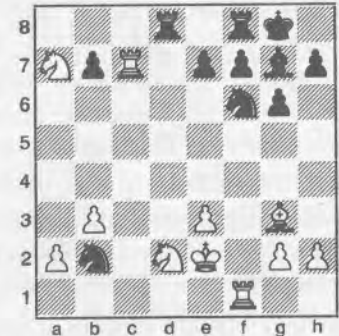
15.♘xc4 avoids the worst.

September 2004

15...♘d3 16.b3

With the f2- and b2-pawns hanging, White chose to save the b-pawn.

16...♘xf2 17.♖f1 ♘d3 18.♙g3 ♘b2 19.♖c7



Going for pawns, but overlooking...

19...♘d5 20.♖xb7 ♘c3+

... when White must lose a piece, because 21.♔e1 runs into 21...♘d3 mate.

21.♔f3 ♖xd2 22.a4 e5 23.♘c6 e4+ 24.♔g4

The King must tread in outer space.

24...♘d5 25.♖f2 ♘xe3+ 26.♔h3 ♖xf2 27.♙xf2 ♘d5 28.a5 ♘d3 29.♙h4 ♘5f4+

Leads to mate.

30.♔g3 ♘e2+ 31.♔g4 f5+ 0-1 ■

Serving Chess Enthusiasts
Since 1972!

The Chess House

www.thechesshouse.com

sales@chesshouse.com

800-348-4749

Fax 360-354-6765

PO Box 705

Lynden, WA 98264

- * School Discounts
- * Membership Pricing
- * Service Oriented
- * Free Catalog Send for your copy TODAY!

A Crystal Ball for Your Chess Future

by NM Tom Rowan

[This is the latest in a series of articles on improving your chess by NM Tom Rowan. Earlier articles in this series are available for viewing at Tom's chess website, www.tomrowan.com. Send your questions, comments, and suggestions for future articles to Tom at chess@tomrowan.com.]

If someone offered you a crystal ball that could show you your chess future, would you be willing to peer into it? You may not like what you see . . .

This article is my version of a crystal ball for your chess future. It's a collection of "signs" that tell whether you're destined to become a stronger player. Don't get depressed if you aspire to be a strong player and you don't like what the crystal ball shows you. Your chess fate is in your own hands but you may have to make some changes to achieve your goals.

Player: "I don't study classic chess games. They're too old to be relevant."

Crystal Ball: That's analogous to a writer not being interested in reading, enjoying, and learning from good literature. This player is missing out on improvement, not to mention much of the fun in chess.

Player: "I don't have time to study chess because of job/school/family responsibilities."

Crystal Ball: This is a completely valid comment. However, most strong players have similar responsibilities and find time to study anyway.

Player: "I don't want to look at my game. It's too painful."

Crystal Ball: It can't be that painful, because, if you don't try to learn from your mistakes, you're choosing to go through that same pain game after game.

Player: "I don't need to look at my game. I know what I did wrong."

Crystal Ball: (Sarcastically) Impressive! Strong players have to study their own games very carefully to figure out what they did wrong. You accomplish the same thing without even a second glance.

Player: Regularly turns down post-mortems because he's too tired, hungry, or annoyed to spend time going over the game.

Crystal Ball: Player has several handy excuses why he should skip the best opportunity to learn what he did wrong during the game.

Player: Expresses satisfaction in how long he lasted against a strong player.

Crystal Ball: I see many happy, friendly games in your future. You are happy to lose long games. Your opponents are happy to win them.

Player: Plays in lowest possible section to maximize chances at prize money.

Crystal Ball: There's more money to be had working at a fast food restaurant, but this player is putting money ahead of challenges, competition, and improvement.

Player: Makes reference to "protecting my rating."

Crystal Ball: Player has applied the brakes. He may not slide too much downhill, but he's definitely not going to be moving uphill.

Player: "My opponent was lucky."

Crystal Ball: Maybe, but improving players never believe it. They look for reasons for a loss and for things they can do better next time.

Player: Emphasizes easy to play openings or offbeat gambits to get easy wins.

Crystal Ball: I see a player who doesn't want to think too hard. That makes it more difficult to learn and to improve.

Player: "Maybe I don't have what it takes to be a stronger chess player."

Crystal Ball: This sign is fuzzy, because even strong players have doubts about their abilities sometimes. However, strong and improving players recover quickly and keep studying. That's a constructive path that minimizes the setbacks that can cause self doubt. A player with chronic self doubt often has the talent to become a much stronger player, but not the determination to keep returning to the constructive path.

The common theme to all these signs is attitude. The player who will continue to improve is curious, determined, confident, willing to work, and takes a long term view. He knows that how far he goes in chess is up to him. ■

The Italian Gambit & A Guiding Repertoire For White – E4!

by Jude Acers and George Laven

is now available through —

TRAFFORD Publishing

Phone 250-383-6864

Toll-free 1-888-232-4444 (Canada & USA only)

Order online at www.trafford.com/robots/02-0417.html

Also at www.Italiangambit.com

Everyone a Winner in Clatskanie!

by Kate Taylor

Clatskanie Chess Club's 3rd annual Sizzling Summer Open tournament was held on July 10, 2004. 62 players were in attendance.

The Super Novas (Open) section sported four master level players: FM Chuck Schulien (New York), Carl Haessler (Portland), Dave Roper (Seattle) & Nick Raptis (Portland). 'Expert' Jon Coby was also in attendance, as well as Class 'A' Larry Ball.

The biggest upset of the day was a game played between Carl Haessler (2214) and 13-year-old Andy May (1622) from Vancouver. (See Chuck Schulien's analysis of the game in October).

Award winners were determined by blitz tie breaks in all sections.

Dave Roper and Nick Raptis tied for first place with perfect scores of four points each. We had a tight four-way tie for second among Chuck Schulien, Larry Ball and teens Blake Salisbury and Keegan Knutson with scores of three. The final results were:

Super Novas Cash Awards

- 1st Dave Roper (\$100)
- 2nd Nick Raptis (\$60)
- 3rd Chuck Schulien (\$40)

Trophies

- U1800 Blake Salisbury
- U1400 Jonathan Makela

In the Galloping Galaxies (U1200) section, 11-year-old Josiah Spence (857) a Clatskanie native, won first place with a perfect score, having bested two adult players: second place Steve Reed (1177) & third place Mike Terrill (1149).

In the Perplexing Planetoids (U800) section, Keegan Cox and Alex Petersen tied with scores of 4.5 and duked it out over blitz to see who would win the first (Cox) and second (Petersen) place trophies. William Yuan (3rd) played a wild round robin blitz against Alex Harnsberger and Billy Edwards, coming out on top with a perfect blitz score.

The Novice Nebula section had clear winners with Michael Lee taking 1st; Josh Jacobson, 2nd; and Trevor Shelby, 3rd place trophies. The Casual section played a round robin with the following results:

- 1st Tom Jakubowski (received a \$10 gift certificate to Borders Books)
- 2nd Celine Hustoles (received a magnetic chess set)
- 3rd David Roehm & Joel May (received Subway gift certificates)

Other Awards

- Best Notation** John Strohbehn & Martin Makela
- Best Handshake** Gabriel Schmidt
- Best Attitude** Keegan Cox
- Never Give Up, Never Surrender** Patrick Linegar
- Best Puzzler** Ben Chase
- Star Performer** Alex Petersen
- Early Registration \$50 savings bond raffle winner** Josh Jacobson
- Biggest Pest** Andy May (for his game with Carl Haessler)
- Good Sportsmanship** Drew Serres (special note: The sportsmanship award is our biggest award and can be won by anyone, including (which has happened) 1st place finishers). Drew received this award for always keeping his cool under pressure and being gracious and kind to his opponents.

Medals were given to high scoring players. "Rising Star" pins were given to players who didn't receive an award.

After the tournament, we held a Bughouse elimination event with Nick Raptis and Bruce Holler (team name - Chess Vader) capturing first place and receiving Bug Gliders.

Other Bughouse Winners:

- 2nd DJ FM (received Spiderman Candy) - Michael Taylor & Drew Serres
- 3rd Keegan & Andy (received Sweet Tart Bugs) Keegan Knutson & Andy May

Other Teams: Just Met, Whatever's, Them, Falcons, Us, Killer Bees, Pests, Boogie Bugs, We, Mighty Potatoes, Murderous Makelas, Annoying People, Shooting Stars, Land Sharks, Autism Team

Many of the tournament attendees gathered at Fultano's pizza for even more chess in the form of Blitz and Bughouse until about 10 p.m. At that point, we headed over to the City of Rainier "Days in the Park" to watch a terrific fireworks display. A perfect ending to a great day!

The tournament was a wonderful opportunity for players of all abilities to see each other in action. As the TD, I think my favorite part of the day was that everyone stayed for the awards. The young chess players watched as their "heroes" received their cash awards. And the Open section winners cheered loudly as every person in attendance received something.

Below is the crosstable for the unrated Novice section. For crosstables of the USCF-rated sections see page 13.

Novice Nebula

1 Lee, Michael	W3	W2	W4	W5	W9	5.0
2 Jacobson, Josh	W7	L1	W6	W4	W5	4.0
3 Shelby, Trevor	L1	W7	L5	W6	W4	3.0
4 Mullins, Jessica	W5	W8	L1	L2	L3	2.0
5 Jakubowski, Liron	L4	W0	W3L1	L2		2.0
6 Linegar, Patrick	D0	W9	L2	L3	D8	2.0
7 Porter, Naomi	L2	L3	W9	L8	W0	2.0
8 Timmreck, Casey	D9	L4	L0	W7	D6	2.0
9 Krause, Hunter	D8	L6	L7	W0	L1	1.5
0 Spence, Alyna	D6	L5	W8	L9	L7	1.5

The Chess Store

Order all your chess supplies online and have them shipped free to your door.



www.thechessstore.com

Scholastic Checkup with Dr. Leo

Is chess an art, a science or a sport? Has the role of chess in human society changed over time and what is its primary role in the new millennium?

Naturally, chess is art, science and sport. Chess provides a venue for human beings to express their highest artistic, rational and competitive aspirations within a well-defined creative medium. Chess is a representative medium that allows dynamic expressions of logic, movement, grace and power to be sustained in a life-like environment maintained by two players. Chess is a reduced and simplified model of life in our physical universe. Starting from the basic elements of time, space, material, structure and life, chess allows complex strategic entanglements to be generated that mimic the cultural and political involvements present in human societies. Chess has the virtue of being able to demonstrate, on a small scale, the essence of truth, beauty and justice that we come to know in practice, on a large scale, as citizens, consumers, and family members.

Chess is art. Chess play reflects the personality, style, and emotional depth and breadth of a participant. Chess is largely a rational exercise, but the highest level of strategic decision making in chess depends upon quite personal factors and creative approaches inherent to the players. Chess, like jazz, is improvisational and innovative in its expression. The call and response of jazz musicians is recreated in the move and reply of two chess players. Chess is melodic and lyrical. chess tactics flow like a melody building to a crescendo while also conveying a semantic and strategic text of logic and meaning. Chess play is informed by inspiration, imagination and intuition. without them chess is rote and dull.

Chess is dance. Partners alternate leading, while the twists and turns of piece movements enact a ballet of subtle choreography on the chessboard stage. Players anticipate their partners' next motions and, based on that expectation of location, speed, and direction, players move in concert to generate the interdependent point and counterpoint of the game.

As artistic expression, chess creates beauty. The imagination of two players creates dramatic tension that unfolds as the plot thickens and then is resolved as various storylines come together and conclude in triumph and defeat. Beauty is intrinsically rewarding and beauty in chess is often sufficient to motivate potential players while fulfilling long-term participants.

Chess is science. Hypothesis building and testing are critical to good chess play. Players are always asking, "What if ... ?" and evaluating their suppositions with projected variations of play. Every chess game represents a grand experiment where some amalgam of tactics and strategy is put to a validation test. Fortunately, many subvariations of overall play have specific outcomes (e.g., this tactic ends up losing a piece) so that thematic variables can often be disambiguated and possible confounds of cause and effect eliminated. Specifically, chess as science is about geometry, topology, mechanics, economics, and psychology. Chess play is informed by logic, reason, and calculation. Chess is an arena of truth where truth, in the long run, always defeats the false.

Chess is sport. Chess represents everything that is good about competition. Opponents are not enemies, but rather members of the 'loyal opposition.' In chess, we do not demonize our opponents, but rather seek to empathize with them and to understand their means and motives. Chess is the martial art of the mind. Chess requires a disciplined mind and teaches players how to control, use and realize the functioning of their minds. Chess rewards effort and strengthens the ability of players to concentrate, attend and perform mental work. Chess delivers justice and is where, in the final analysis, just outcomes are always obtained.

Originally, chess provided a simulation of battle to war planners. Formations and strategic approaches could be evaluated for battle-wor-

Washington Chess Federation (WCF)/Oregon Chess Federation (OCF)

Adult: \$25/year (12 issues). Residents of OR and WA receive a 1-year membership in the OCF or WCF. Members receive *Northwest Chess* via periodicals mail each month.

Junior: \$17/year (12 issues) or \$10/6 months (6 issues). Must be under age 20 at time of expiration. OR/WA residents only; state membership included. Juniors receive *Northwest Chess* each month.

USA Subscriber: \$25/year (12 issues). For subscribers living inside the US mail system, but outside the OR/WA area. Subscribers receive *Northwest Chess* each month.

Family: \$5/year (not a subscription — membership only). This class of membership is open only to co-resident of an Adult or Junior member. Expires at the same time.

Trial: \$13 (membership and subscription, expires in 3 months). By paying the balance of dues for an Adult or Junior membership, this option can be extended to 12 months. The balance must be paid before the trial status is expired.

Membership Application/Renewal Form

Name _____ If Junior, give date of birth _____

E-Mail (if you want to subscribe to the *Northwest Chess* e-mail mailing list) _____

Phone Number (optional, will not be used for telemarketing) (____) _____

Street or P.O. Box _____

City _____ State _____ Zip _____

Country (if not USA) _____ Amount Enclosed \$ _____

Make check or money order (USA \$ only) out to Northwest Chess and mail to:

Credit this membership to:

Eric Holcomb
NW Chess Business Manager
PMB 342
12932 SE Kent-Kangley Rd.
Kent WA 98030

For general information, Eric Holcomb (253) 850-2996, e-mail: Eric@Holcomb.com

thiness. Soon, however (in roughly 600 C.E.), chess was transformed from military to civilian use and was played for its entertainment and game value. a change of swords into plowshares was accomplished. Today, Dr. Leo views chess as a stealth educational technology which allows mass practice in decision making and human information processing.

The 21st century will be known, Dr. Leo believes, as the information century. Chess provides students practice in separating and processing information, misinformation and disinformation. The global competitive arena in 21st century industry and commerce will be about information share, intellectual property, and knowledge economics. Dr. Leo believes that playing chess has the potential to prepare students for successful professional lives while also feeding and expanding their cultural minds and artistic souls. Chess is mentally nutritious -- try some at home!

Copyright Dr. Leo Stefurak 2004 chess.

Scholastic News

Alex and the Wednesday Chess Club

Janet Wong, a Medina chess parent and author of more than a dozen children's books, will soon release her latest title, *Alex and the Wednesday Chess Club*. The book contains illustrations by Stacey Schuett and is suitable for ages four through eight.

Hullabaloo Books in West Seattle will hold a book signing on Saturday, October 2nd starting at 11am. Wong will speak about her new book and "Dr. Leo" will give a simultaneous exhibition! All chess players, especially parents and students, are welcome to drop by and have fun at this early fall festival of chess. ■

Seattle Chess Club

Address

17517 15 Ave NE
Seattle WA 98155

Infoline

206-417-5405

Address for Entries

SCC Tnmt Dir
2420 S 137 St
Seattle WA 98168

☞ **Sept. 18, Oct. 23**

SCC Saturday Quads☞

Format: 3-RR, 4-plyr sections by rating. **TC:** 40/90, SD/60. **EF:** \$6 (+\$5 fee for non-SCC). **Prizes:** Free entry for future quad. **Reg:** 9:00-9:45 am. **Rds:** 10:00-2:30-ASAP. **Misc:** USCF, WCF/OCF memb. req'd, OSA. NS, NC.

☞ **Sept. 12, Oct. 10**

SCC Sunday Tornado☞

Format: 4SS. **TC:** G/64. **EF:** \$14 (+\$5 fee for non-SCC). **Prizes:** 1st 35%, 2nd 27%, Bottom Half 1st 22%, 2nd 16% (\$10 from each EF goes to prize fund). **Reg.:** 10:30-11:15a. **Rds:** 11:30-1:50-4:10-6:30. **Misc:** USCF, WCF/OCF memb. req'd, OSA. ½-K rated. NS, NC.

Sept. 11 **SCC Novice**

Format: 4SS. Open to U1200 and unrated. **TC:** G/75. **EF:** \$10 by 9/8, \$15 at site. (20% disc. for SCC mem., 10% mem. of other dues-req'd CCs in WA, OR, & BC). **Prizes:** Memberships (SCC, WCF, USCF). **Reg.:** 9-9:45a. **Rds:** 10-12:45-3:30-6. **Byes:** 1 (Rd 3 or 4 - commit at reg.). **Misc:** USCF memb. req'd. NS, NC.

SCC Championship

Sept. 10, 17, Oct. 1, 8, 22, 29, Nov. 5

A 1-section, 7-round Swiss chess tournament, played over seven Fridays, with a time control of 35/100 & 25/60. 75% of the entry fees go to the prize fund.

**First 23%, Second 16%, U2000 9%, U1800 8%,
U1600 7%, U1400 6%, UNR 3%, Endurance 3%**

Entry Fee: \$25 by 9/10, \$30 thereafter

SCC membership required - special \$24 tournament membership

Registration: 7-7:45 pm on Fridays

Rounds: 8 pm each Friday

Byes: 4 (1 in Rounds 5-7, commit before Round 4)

Info: 206-242-7076, cfkleist@cs.com

Miscellaneous: USCF & WCF req'd. No smoking. No computers.

Seattle Fall Open

September 24-26 or September 25-26

A 2-section, 5-round Swiss chess tournament with a time control of 40/2 & SD/1 (except Rd 1 of the 2-day option - G/64) with a prize fund of \$1000 based on 58 paid entries, 6 per prize group.

A Christopher Memorial Grand Prix event

Open: \$180 gtd-\$120 gtd, U2200 \$100, U2000 \$95, U1800 \$90

Reserve (U1700): \$110-\$80, U1550 \$70, U1450 \$65, U1350 \$60, UNR \$30

Entry Fees: \$32 by 9/22, \$40 at site. 25% discount to SCC members or 12.5% discount to members of other dues-req'd CCs in BC, OR, & WA. Unrated players FREE with purchase of 1-yr USCF & WCF. Add \$1 for 2-day option. Make checks payable to SCC.

Registration: Fri. 9/24 7-7:45 pm or Sat. 9/25 9-9:45 am.

Rounds: Fri. 8 pm, Sat. (10@G/64)-12:30-6:45, Sun. 11-5.

Info: 206-242-7076, cfkleist@cs.com.

Byes: 2 available. Rounds 4 or 5 must commit at registration.

Miscellaneous: USCF & WCF required. No smoking. No computers.

Future Events

♣ indicates a Christopher Memorial NW Grand Prix event

♣September 18-19 Eastern Washington Open♣

Site: Schoenberg Center, Room 201, Gonzaga University, N 900 Pearl St, Spokane (SW corner of GU campus – one block E of Division/Ruby couplet off DeSmet Ave.). **Format:** 1-section, 5-round Swiss. **TC:** G/120. **EF:** \$21 if rec'd by 9/17, \$26 at site; u18 – \$5 less. **Prize Fund:** \$5510 gtd. **Prizes:** \$125-110-60, B 50-25, C 50-25, D/E/UNR 50-25. Additional classes and class prizes may be created if entries exceed 30 players. Class prizes based on at least 5 per class; classes (and class prizes) may be reconfigured if less than 5 class entries. Only one prize per player. **Reg:** 8:30-9:30 am. **Rds:** 10-2:30-7, 9-1:30 or ASAP. **Byes:** One 1/2-point bye available if requested by end of preceding round. Sunday bye must be requested by end of rd 3. **Misc:** Director reserves right to use class pairings in final round. NS. NC. W. **Ent/Info:** Spokane CC, c/o Kevin Korsmo, N 9923 Moore, Spokane WA 99208-9339. For information please call 509-466-0530 evenings or weekends; 509-477-2871 days. Club website: www.spokanechessclub.org.

♣Sept 16,23,30, Oct 7,14 Spokane Fall Ch.♣

Site: Herak Rm. 121, Gonzaga University, Spokane. **TC:** G/120. **EF:** \$16. Can be paid at the club or on day of tnmt. **Reg:** 6:45-7:15 pm. **Rds:** 7:30 (7 in following wks) approx. **Misc:** USCF memb req'd. **Info:** Kevin Korsmo 509-477-2871; kkorsmo@spokanecounty.org.

♣September 25 PCC Game-in-60♣

Site: Portland Chess Club, 8205 SW 24th Ave. **Format:** 4SS. **TC:** G/60. TD may switch to 5SS and G/45 if over 20 entries. **EF:** \$20, \$5 discount for PCC Members. No advance entries. **Prize Fund:** \$200/b20. **Prizes:** \$60-40-30 U1800 35, U1500 35. **Reg:** 9-9:30am. **Byes:** 1/2-point bye if requested at reg. **Misc:** USCF and OCF/WCF memb req'd, OSA. **Info:** Neil Dale 503-256-5233 www.aboutchess.org.

♣October 9-10 Portland Fall Open♣

Site: Portland Chess Club, 8205 SW 24th Ave, Portland OR 97219. **Format:** 2-section, 5-round Swiss. **TC:** 40/90, SD/30 – Rds 1-3, 40/2 SD/1 – Rds 4-5. **EF:** \$30 if rec'd by 10/7, \$35 at site. \$10

discount for PCC Members. **Prize Fund:** \$650 b/40. **Prizes:** Open (\$325): \$150-100, U2000 75. Reserve (U1800, \$325): \$100-75, U1600 50, U1400 50, U1200/UNR 50. **Reg:** 9-9:30 am. **Rds:** Sat 10-2-ASAP, Sun: 10-ASAP. **Byes:** 1/2-point bye if requested at reg, maximum two. **Misc:** OCF/WCF and USCF memb req'd, OSA. **Ent/Info:** Portland Chess Club, 8205 SW 24th Ave, Portland OR 97219. Neil Dale 503-256-5233, www.aboutchess.org.

October 23-24 Southern Oregon Open II

Site: Rogue Community College – "J" Bldg, 3345 Redwood Hwy, Grants Pass OR. **Format:** 1-section, 5-round Swiss. **TC:** 40/90, SD/30. **EF:** \$30 by 10/20, \$35 at site. **Prize Fund:** \$775 b/30. **Prizes:** \$150-100, X 80-50, A 80-50, B 50-25, C 50-25, D/E 50-25, Unr 40. **Reg:** 8-9 am. **Rds:** Sat 9:30-2-6:30, Sun 9-2. **Misc:** USCF membership required for all. **Ent/Info:** Wray A. Maxwell, 740 NW 4th St, Grants Pass OR 97526; 541-476-5000.

♣November 26-28 WA Class Championships♣

Site: Red Lion Bellevue Inn, 11211 Main St, Bellevue. **Format:** 6-section, 6-round Swiss. **TC:** 40/2, SD/1. **Prize Fund:** \$4000 gtd. **Master:** FIDE rated. **EF:** \$65 adv. Free Entry to GMs, IMs, WGMs. \$500-300, U2300 200. **Expert:** FIDE rated. **EF:** \$60 adv. \$400-250, U2100 150. **Class A:** **EF:** \$55 adv. \$300-175, U1900 125. **Class B:** **EF:** \$55 adv. \$300-175, U1700 125. **Class C:** **EF:** \$55 adv. \$300-175, U1500 125. **Class D/Under:** **EF:** \$50 adv. \$150-100, U1300 75, U1200 75. **All:** Adv entries must be rec'd by 11/20, if later or at site add \$12. Add \$10 to play up one class. Canadians may pay \$C at par. Juniors (U21) may play for medals only: **EF:** \$15 if rec'd by 11/20, \$27 at site. **Reg:** Fri 9-10:30, or Sat 9-10 if entering with two 1/2 pt. byes. **Rds:** Fri: 11-5:30, Sat: 11-5:30, Sun 9:30-4. **Byes:** 2 avail., rds 4-6 commit by end of rd 2, irrev. **Misc:** USCF, WCF/OCF membership req'd. OSA. **HR:** \$80 chess rate incl. cont'l brkfst 425-455-5240. Reserve by 11/15. Free parking for all. www.redlion.com. **Side Events:** **Scholastic:** Fri 11/26. 5SS K-3, 4-6, 7-12. G/30. Pre-registered only. **EF:** \$15 if rec'd by 11/20, if later add \$5. **Trophy Awards:** **WA Class Novice (U1200):** Sat 11/27 4SS, G/45. **EF:** \$12 if rec'd by 11/20, \$17 at site. **Trophy awards:** **Reg:** 9-10, Rds 10:30, 12:30, 2:15, 4. **Sat Night Blitz:** **EF:** \$10. Play starts 10 pm. **Reg:** by 9:45 p.m. **Ent/Info:** WCF Tournament Coordinator Carol Kleist, 2420 S. 137th St, Seattle, WA 98168. 206-242-7076, wcfntmtcor@cs.com. Checks payable to Washington Chess Federation (WCF).

Scholastic Events

September 2004

27 Chess Odyssey fall term begins P. Prochaska 503-504-5756 pete@chessodyssey.com www.chessodyssey.com Portland OR

October 2004

30 Bughouse Booonanza Kate Taylor katetaylor@clatskanie.com clatskaniechessclub.tripod.com Clatskanie OR

November 2004

6 NW Grade Level Championships P. Prochaska 503-504-5756 pete@chessodyssey.com www.chessodyssey.com Portland OR

20 Newburg Scholastic Bruce Cheney 503-625-5747 bcheney@teleport.com home.teleport.com/~bcheney Newburg OR

26 WA Class Scholastic Carol Kleist 206-242-7076 WCFntmtcor@cs.com Bellevue WA

December 2004

27 Chess Odyssey Holiday Camp P. Prochaska 503-504-5756 pete@chessodyssey.com www.chessodyssey.com Beaverton OR

January 2005

8 Chess Odyssey Winter Olympics P. Prochaska 503-504-5756 pete@chessodyssey.com www.chessodyssey.com Hillsboro OR

15 Ollie LaFreniere Memorial (K-8) Jon Licht 360-754-6472 jlicht@earthlink.net Olympia WA

17 Chess Odyssey Parent/Child Workshop P. Prochaska 503-504-5756 pete@chessodyssey.com www.chessodyssey.com Beaverton OR

February 2005

12 Central Seattle Chess Combo (K-6, K-8 qds) Meg Strong winterwren@juno.com Seattle WA

21 Chess Odyssey Girls Only Pentathlon P. Prochaska 503-504-5756 pete@chessodyssey.com www.chessodyssey.com Hillsboro OR

Open Events

September 2004

10	TCC G/15 #3	Gary Dorfner 253-535-2536 ggarychess@aol.com	Tacoma WA
10,17	SCC Championship, Rds 1& 2	SCC Infoline 206-417-5405 cfkleist@cs.com www.seattlechessclub.org...	Seattle WA
11	SCC Novice (U1200 & Unr)	SCC Infoline 206-417-5405 cfkleist@cs.com www.seattlechessclub.org...	Seattle WA
♣12	SCC Sunday Tornado	SCC Infoline 206-417-5405 cfkleist@cs.com www.seattlechessclub.org...	Seattle WA
♣16,23,30	Spokane CC Fall Champ.	David Griffin 509-928-3260 dbgriffin@hotmail.com www.spokanechessclub.org ..	Spokane WA
17	TCC G/10 Knockout #1	Gary Dorfner 253-535-2536 ggarychess@aol.com	Tacoma WA
♣18	SCC Saturday Quads	SCC Infoline 206-417-5405 cfkleist@cs.com www.seattlechessclub.org...	Seattle WA
18-19	Apropos Invitational #1	Kent McNall kent@aproposretail.com	Lynnwood WA
♣18-19	Eastern Washington Open	Kevin Korsmo kmkorsmo@comcast.net www.spokanechessclub.org	Spokane WA
19	First Move Celeb. Tnmt & Dinner	America's Foundation for Chess info@af4c.org www.af4c.org	Bellevue WA
24	TCC Championship, Rd 1	Gary Dorfner 253-535-2536 ggarychess@aol.com	Tacoma WA
♣24-26	Seattle Fall Open	SCC Infoline 206-417-5405 cfkleist@cs.com www.seattlechessclub.org...	Seattle WA
♣25	Portland CC G/60	Bruce Peterson 503-805-0493 b_r_u_c_e_p_e@yahoo.com www.aboutchess.org .	Portland OR

October 2004

1,8,15,22,29	TCC Championship, Rds 2-6	Gary Dorfner 253-535-2536 ggarychess@aol.com	Tacoma WA
1,8,22,29	SCC Championship, Rds 3-6	SCC Infoline 206-417-5405 cfkleist@cs.com www.seattlechessclub.org...	Seattle WA
♣3,10	Spokane CC Fall Championship	David Griffin 509-928-3260 dbgriffin@hotmail.com www.spokanechessclub.org ..	Spokane WA
♣9-10	Portland Fall Open	Bruce Peterson 503-805-0493 b_r_u_c_e_p_e@yahoo.com www.aboutchess.org .	Portland OR
♣10	SCC Sunday Tornado	SCC Infoline 206-417-5405 cfkleist@cs.com www.seattlechessclub.org...	Seattle WA
13-17	GM Boris Spassky events	Jerry Weikel 775-747-1405 wackyykl@aol.com	Reno NV
15-17	Western States Open	Jerry Weikel 775-747-1405 wackyykl@aol.com	Reno NV
♣23	SCC Saturday Quads	SCC Infoline 206-417-5405 cfkleist@cs.com www.seattlechessclub.org...	Seattle WA
♣23-24	82nd Puget Sound Open	Gary Dorfner 253-535-2536 ggarychess@aol.com	Tacoma WA
23-24	Southern Oregon Open II	Wray Maxwell 541-476-5000	Grants Pass OR
♣30	Portland CC G/60	Bruce Peterson 503-805-0493 b_r_u_c_e_p_e@yahoo.com www.aboutchess.org	Portland OR

November 2004

5	TCC G/45, Rds 1&2	Gary Dorfner 253-535-2536 ggarychess@aol.com	Tacoma WA
5	SCC Championship, Rd 7	SCC Infoline 206-417-5405 cfkleist@cs.com www.seattlechessclub.org...	Seattle WA
6-7	Turkey Open	Bill McBroom whminmsla@hotmail.com 406-728-4654	Missoula MT
♣7	SCC Sunday Tornado	SCC Infoline 206-417-5405 cfkleist@cs.com www.seattlechessclub.org	Seattle WA
12	TCC G/45, Rds 1&2	Gary Dorfner 253-535-2536 ggarychess@aol.com	Tacoma WA
♣13-14	Tacoma Open	Gary Dorfner 253-535-2536 ggarychess@aol.com	Tacoma WA
♣20-21	Jack Taylor Memorial	Gregory Churchill gregorychurchill@shaw.ca	Victoria BC

December 2004

3,10,17	TCC Mini-Swiss #2	Gary Dorfner 253-535-2536 ggarychess@aol.com	Tacoma WA
♣5	SCC Sunday Tornado	SCC Infoline 206-417-5405 cfkleist@cs.com www.seattlechessclub.org	Seattle WA
♣17-20	SCC 125th Birthday Celebration	SCC Infoline 206-417-5405 cfkleist@cs.com www.seattlechessclub.org	Seattle WA
♣18-19	TCC Christmas Congress	Gary Dorfner 253-535-2536 ggarychess@aol.com	Tacoma WA
♣18-19	Portland Winter Open	Bruce Peterson 503-805-0493 b_r_u_c_e_p_e@yahoo.com www.aboutchess.org	Portland OR
26-29	North American Open	Continental Chess www.chestour.com	Las Vegas NV

January 2005

♣22-23	Don McAdam Memorial	Gregory Churchill gregorychurchill@shaw.ca	Victoria BC
--------	---------------------	--	-------------

April 2005

♣23-24	Daffodil Open	Gregory Churchill gregorychurchill@shaw.ca	Victoria BC
--------	---------------	--	-------------

June 2005

♣11-12	Island Open	Gregory Churchill gregorychurchill@shaw.ca	Victoria BC
--------	-------------	--	-------------

NOTE: A '♣' in front of the date indicates a Christopher Memorial Northwest Grand Prix event. A '♣' in front of the date indicates an Island Grand Prix event. Events listed in boldface type have tournament announcements (in our Future Events Section) or display advertisements elsewhere in this issue