

www.nwchess.com

NORTHWEST CHESS

926-0501A
MIKE MACGREGOR

[REDACTED]

|||||

Washington Chess Federation
Oregon Chess Federation

November 2004
411 \$3.95



Ollie LaFreniere Memorial Chess Table at Shorewood High School

**Seafair & Auntie's Opens
Dr. Leo, Peachcroft, Rowan and More**

Northwest Chess

November 2004, Volume 58,11 Issue 677

ISSN Publication 0146-6941

Published monthly by the Northwest Chess Board. Of
file of record: 2420 S 137 St, Seattle WA 98168.

POSTMASTER: Send Address Changes to:
Northwest Chess, PO Box 84746,
Seattle WA 98124-6046.

Periodicals Postage Paid at Seattle, WA

NWC Staff

Editor: Fred Kleist
Games Editor: FM Chuck Schulien
Technical Assistance: Russell Miller
Printer: Snohomish Publishing
Business Manager: Eric Holcomb

Board Representatives

Oregon: Clark Harmon
& Dave Yoshinaga
Washington: Duane Polich &
Kent McNall

Entire contents copyright 2004 by Northwest Chess. All
rights reserved. Published opinions are those of the
contributors and do not necessarily reflect the views of the
editor or the Northwest Chess Board.

Advertising Rates

Display ads run \$150 for a full page, \$100 for
tmnt ads; \$85 for a half-page, \$60 for tmnt ads;
\$30 for a quarter page, \$20 for an eighth of a
page, and \$10 for a business card-size ad. Add
\$10 if the ad is not copy ready and the staff must
do layout work. A 15% discount is available for
two or more consecutive ads of the same size.

Event Announcement Rates

Each appearance in *Event Announcements*
costs \$20. Payment is required before publica-
tion. Enclose \$2 additional if an invoice is
required—this is a mandatory service charge.

Advertising & Copy Deadline

Please get your ads and submissions in by the
10th of the month for the items to appear in the
next issue (e.g., no later than Dec 10 for the
Jan issue). The editor cannot guarantee that late
submissions will appear in the desired issue.
Submit all ads and payments to:

Business Manager, Northwest Chess
PMB 342, 12932 SE Kent-Kangley Rd
Kent WA 98030-7940
Eric@Holcomb.com

Submissions

Hey folks! The editor depends on YOU to make
this magazine vibrant and exciting. I need your
games, photographs, thoughts, and ideas. This
magazine has a great tradition and I hope people
will contribute enthusiastically. You can send me
your materials via U.S. mail or via e-mail:

Northwest Chess
Fred Kleist, Editor
2420 S. 137th Street
Seattle WA 98168
NWCeditor@cs.com

If you'd like your games annotated by a senior
master, send them to our Games Editor:

FM Chuck Schulien
cschess@hotmail.com

Subscription Information

Northwest Chess is a benefit of membership in
either the Oregon or Washington Chess Federa-
tions. Adult dues are \$25; Junior dues (under
20) are \$17 (or \$10 for six months). Please send
dues, along with pertinent information to:

Business Manager

Northwest Chess
Eric Holcomb
PMB 342, 12932 SE Kent-Kangley Rd
Kent WA 98030-7940
Eric@Holcomb.com
http://www.nwchess.com

Northwest Grand Prix Administrator

Murlin Varner
13329 208 Ave NE
Woodinville WA 98072
MEVjr54@yahoo.com
425-882-0102

Oregon Chess Federation

President
Jerry Ramey
541-232-0328
j-adoube@efn.org

Vice President
Paul Shannon
541-271-4010
pshannon@harborside.com

Secretary/Treasurer
Clark Harmon
charmon@solarprism.com

Director-at-Large #1
Peter Prochaska
503-504-5756
pete@chessodyssey.com

Director-at-Large #2
Bruce Peterson
503-642-9238 (home)
503-805-0493 (cell)
b_r_u_c_e_p_e@yahoo.com

Tournament Coordinator
Pat Thurlow
541-343-4977
patt@efn.org

Scholastic Coordinator
Dave Yoshinaga
503-670-9855 ext 7
dave@kdotonline.com

Washington Chess Federation

President
Duane Polich
425-462-1776
pduane2@qwest.net

Vice President
David Hendricks
425-868-3881
davidhendricks@comcast.net

Secretary
Gary Dorfner
253-535-2536
ggarychess@aol.com

Treasurer
Robert J. Allen
253-761-1288
allenrobertj@msn.com

Tournament Coordinator
Carol Kleist
206-242-7076
WCFtnmtcor@cs.com

NW Chess Board Member
Kent McNall
425-787-3406
kent@aproposretail.com

Greetings from the Editor



Editor's Desk

Another scholastic season is upon us. This year, I'm hoping that some coaches and tournament organizers will send *NWC* some articles, games or reports. And, of course, pictures. The *NWC* Board wants to have eight pages of scholastic content per issue, and I can't do it without your input! Remember, pictures should be accompanied by identification of the people and places pictured.

In the works for next issue are reports by Keith Yamanaka (Boris Spassky smiul and lecture) and Mark Ryan (Western States Open), two key members of the Seattle CC team in Reno. In addition, Duane Polich is working on a report of the WA-BC Match.

Best Wishes,

Frederick K. Kleist

Northwest Chess Knights

Northwest Chess Knight donors will be listed in the magazine for a period of one year following receipt of donation. All persons who did not donate in 2003 have been removed from the list. Please consider making a donation today to help Northwest Chess!

King: \$1000+
Queen: \$500-\$999
Rook: \$250-\$499
Bishop: \$100-\$249
Knight: \$50-\$99
Pawn: \$15-\$49

Current Patrons

Queen: Stephen Christopher,
Kent McNall, Russell Miller
Rook:
Bishop: Wayne Metsker
Knight: Curt Collyer
Pawns: Robert D. Brewster,
Matt Fleury

*Contributions can be sent to the
Northwest Chess Business
Manager, and are greatly ap-
preciated!*

Christopher Mem. NWGP Report

Murlin Varner, administrator
13329 208th Ave. NE
Woodinville WA 98077
mevjr54@yahoo.com

The 2004 Grand Prix is heading into the home stretch. Just a little over two months to go, and most prizes are still up for grabs. My results have all events through October 10, with the exception of the Seattle Chess Club's October Tornado. There are still many opportunities to increase your point totals. Based on the calendar published in last month's issue, there are still about 14 events to be added to the GP totals, in Seattle, Portland, Tacoma, Spokane and Bellevue. (Sadly, three events are currently scheduled for the same weekend in December, all along the I-5 corridor. We really need to have a better way of scheduling events. All three will suffer, as players are forced to choose that weekend.)

This month, I have decided to let you do the sorting, so without further ado, here is the list of the Top 100 Grand Prix points earners for 2004. The rating shown is the highest for the year. There will be one more rating adjustment made when the December annual list is released.

Top 100

Raptis, Nick	OR	2317	168.0	Herrera, Robert	OR	1849	53.5
Gale, Geoffrey	WA	2042	157.0	Omori, Jeffrey	WA	1301	50.5
Bragg, David	WA	2240	155.5	Selzler, Richard	WA	2037	50.5
Buck, Stephen	WA	1868	135.0	Wilson, Matthew	WA	1626	50.5
May, Andy	WA	1746	121.0	Waugh, James	WA	1370	50.0
Koons, Nat	WA	2233	118.5	Inglis, David	WA	1294	49.0
Steinocher, Kirk	WA	1896	111.5	Brendemuhl, Steve	WA	1625	48.5
Cloy, Elston	WA	1946	103.5	June, Peter	WA	1666	48.5
Julian, John	WA	1914	98.5	Zaikov, Oleg	OR	2325	48.5
Bartron, Paul	WA	2077	91.5	Wang, Eddie	OR	1267	48.0
Collyer, Curt	WA	2187	90.5	Edwards, Gary	WA	1865	47.0
May, Todd	WA	1614	89.5	Pitre, H G	WA	1863	47.0
Mathews, Dan	WA	1756	89.0	Warrior, Krishnan	WA	1471	46.5
Knutson, Keegan	WA	1778	86.0	Yang, Matthew	WA	1334	46.5
Terrill, Michael	OR	1298	82.5	Perez, Ignacio	WA	2218	46.0
Kalina, Chris	WA	1989	82.0	Martin, Roger	OR	2194	45.5
Kirlin, Patrick	WA	1502	79.0	Rozenfeld, Yevgeniy	WA	2046	44.5
Lin, Benjamin	OR	2152	78.5	Ummel, Igor	WA	1543	44.0
Griffin, David	WA	1526	77.5	Hughes, Kamran	WA	1631	43.5
Fabian, Steve	WA	1667	77.0	Milener, Gene	WA	1427	43.5
Serres, Drew	OR	1619	76.0	Akopov, Michael	WA	1333	43.0
Hickey, Patrick	WA	1799	72.5	Korsmo, Kevin	WA	1698	43.0
Pupols, Viktors	WA	2208	72.5	Taylor, Michael	OR	1390	43.0
Drake, Christopher	WA	2019	71.5	Lakhovsky, Meir	WA	1934	42.0
Salisbury, Blake	OR	1858	71.5	Fryberg, Skylor	WA	1863	41.5
Chen, Howard	WA	1547	69.0	Rasmussen, Ernst	WA	1841	41.5
Phillips, Blake	OR	1923	69.0	Bravo, Angelo	WA	1709	40.5
Cambareri, Michael	WA	1833	68.0	Gay, Daniel	OR	1636	40.5
Monahan, Darby	WA	1691	67.5	Gay, Patrick	OR	1609	40.5
Banner, Richard	OR	1832	67.0	Jacobi, Gunther	OR	1668	40.5
Becker, Brett	OR	1592	67.0	Taki, Steven	WA	1710	40.5
Lanka, Adi	WA	1854	66.5	Manber, Devon	WA	1424	40.0
Robinson, Marcus	OR	1591	64.5	Rosenbaum, David	OR	1690	40.0
Weyland, Phillip	ID	1700	64.0	Van Veen, Kerry	WA	1287	40.0
Blumenthal, Gabriel	WA	1586	63.0	Wyde, David	WA	1934	40.0
Dietz, R Sterling	WA	1618	63.0	Watts, Peter	WA	1340	39.5
Lee, Michael	WA	1895	60.5	Lee, Nathan	WA	1288	39.0
Charleston, Scott	WA	1461	60.0	Monkhouse, Neale	BC	2076	39.0
Herbers, Patrick	WA	1960	60.0	Fetters, Jason	WA	1483	38.5
Benson, Dustin	WA	1769	59.5	Gagnon, William	OR	1685	38.5
Li, Jerry	WA	1383	59.5	Hosford, Michael	WA	1752	38.0
Omori, Michael	WA	1480	57.5	Wang, Michael	WA	1097	38.0
Haessler, Carl	OR	2216	56.5	Alpernas, Gregori	OR	1950	37.5
Copeland, Daniel	WA	1747	56.0	Arun, Aditya	OR	1579	37.5
Wu, Darren	WA	1528	56.0	Hendricks, David	WA	1622	37.5
Attwood, Adam	WA	1532	55.5	Ballard, Clint	WA	2051	36.5
Countryman, Zachary	WA	1166	54.5	Brewster, Robert	CAN	2030	36.5
Piper, August	WA	1635	54.5	Pritchett, Pete	OR	1872	35.5
Delson, Ben	WA	1438	54.0	Allen, Robert	WA	1752	35.0
O'Gorman, Peter	WA	1815	54.0	Sprenkle, David	WA	2329	35.0

Northwest Chess

November 2004

Christopher NWGP Report

page 3

Thunderboats at the SCC

page 4

Tournament Ads

pages 7, 18, 19, 22-23

WCF Mail Ballot — Constitutional Changes

page 9

A Christmas Story

Don Emigh looks at Peachcroft's World

page 10

Add Punch to Your Chess Boxing

Improving Your Chess with NM Tom Rowan

page 11

USCF Crosstables

page 12

50 Years Ago in the WA Chess Letter

page 15

Upsets at Auntie's Open

page 16

Scholastic Checkup with Dr. Leo

Is there more to chess than winning and losing?

page 20

The Northwest Chess Calendar of Upcoming Events

back cover

On the Cover: Ollie LaFreniere (1935-2002) Memorial Chess Table at Shorewood High School *Photo courtesy of Sharon Svien.*

Thunderboat Chess at the Seattle C.C.

by Chris Kalina

The Seattle Seafair Open, an annual tradition, was held the weekend of July 30-August 1, exactly one week before the "thunderboats" took to Lake Washington. Seafair is an unusual tournament for the Seattle Chess Club, as most SCC events have two or more sections, whereas Seafair has but one. As a result, there are more frequent and bigger upsets. The lower-rated players struck early and hard. There were a few close calls in round one, but Skylor Fryberg's defeat of FM David Roper was the biggest story. (Fryberg had recently unseeded FM David Bragg in another SCC event.) Round two saw more excitement, as Adam Weissbarth (2180) was vanquished by David Wyde (1880), and Skylor Fryberg struck yet again, defeating yours truly (1963).

After round three, NM Nat Koons and FM David Bragg had jumped out to the early lead, while Skylor's hot streak was squelched by expert Geoff Gale. David Wyde (1880) defeated Clint Ballard (2040) to end up 3-0 on Saturday evening.

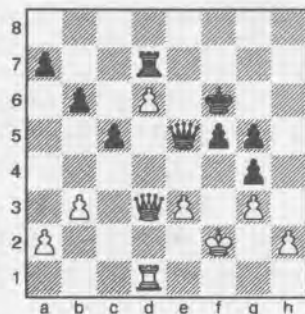
On Sunday morning, Wyde and Gale fell prey to Koons and Bragg who forged ahead to 4-0. David Arganian achieved a superior position against David Ellinger, but was victimized by time pressure. Collyer closed in on the leaders by taking care of NM Ignacio Perez. In the final round, Koons and Bragg settled things peacefully, and waited to see if Ellinger or Collyer would join them. Collyer pulled through on the black side of a Benko to claim a share of the top honors.

Dutch Leningrad

Skylor Fryberg (1695)
FM David Roper (2311)

Seattle, Seafair Open (1) 2004

1. d4 f3 f5 2. d4 d6 3. c4 g6 4. g3 g7 5. g2 d6 6. O-O O-O 7. d3 c6 8. e3 d6 9. d2 e8 10. e2 e5 11. dxe5 dxe5 12. ad1 e4 13. d4 d5 14. d2 e6 15. e1 d8 16. d1 d3 17. b3 d4 18. c3 ge5 19. f3 xe1 20. fxe1 exf3 21. xf3 e7 22. g2 d4 23. xg7 xg7 24. h3 h5 25. xg4 hxg4 26. a3 c3 27. c2 e5 28. d1 xd1 29. xd1 c5 30. d2 b6 31. d3 f7 32. d1 d7 33. d5 xd5 34. cxd5 f7 35. f2 g5 36. d3 f6 37. d6



37... e4 38. xe4 fxe4 39. d5 e6 40. xg5 xd6 41. e2 d7 42. xg4 f5 43. f4+ e5 44. h4 b5 45. g4 g7 46. h5 h7 47. f2 c4 48. bxc4 bxc4 49. e2 d7 50. g5 c3 51. g6 d2+ 52. e1 h2 53. d1 xh5 54. g4 h8 55. g7 g8 56. c2 f6 57. xc3 xg7 58. xg7 xg7 59. d4 f6 60. xe4 e6 61. a4 a5 62. d4 d6 63. c4 c6 64. e4 1-0

Pirc Classical

Gary Edwards (1822)
NM Ignacio Perez (2215)

Seattle, Seafair Open (2) 2004

1. e4 d6 2. d4 d6 3. d3 c3 4. h3 g7 5. e3 O-O 6. d3 d6 7. e2 c5 8. e5 d7 9. exd6 exd6 10. O-O d7 11. d2 d6 12. ad1 a6 13. a4 a5 14. d5 xd2 15. xd2 d6 16. d7+ h8 17. dxc8 axc8 18. dxc5 dxc5 19. fd1 h6 20. c4 fe8 21. c3 e7 22. d3 h7 23. c1 cc7 24. e1 d8 25. d3 d8 26. xe7 xe7 27. d1 d6 28. f4 e7 29. e3 a5 30. xa6 d6 31. b5 f5 32. d7 e6 33. xe7+ xe7 34. d5 f4 35. d2 d3 36. c4 xd2 37. xe6 b6 Draw

The below is my own analysis, not a chess computer malfunctioning!

Sicilian Closed

Pat Hickey (1762)

Geoffrey Gale (2027)

Seattle, Seafair Open (2) 2004

Annotations by Pat Hickey

1. e4 c5 2. d3 c6 3. g3 g6 4. g2 g7 5. d3 e6

The chief advantage of 5...e6 over 5...d6 is that Black is ready for an early ...f7-f5, jamming up White's kingside pawnstorm.

6. f4 ge7 7. d3 f3 O-O 8. O-O b8 9. e3 d4 10. f2!

10. f2 evicts the d4-Knight pronto or sticks Black with doubled d-pawns. Black should play 10...xf3+ 11. xf3 d6 with an equal game.

10...d6 11. d4 cxd4 12. e2

A high-spirited temporary pawn sac leading to sharp play would be 12. b5 b6 13. a4 a6 14. a3 xb2 15. d4 c4 b4 16. e1 c5 17. e5 b6 18. b1 c6 19. e5 d5 20. dxb6 with a stiff attack (threats galore)!

12...e5 13. c3

A "fish move" played in the true "patzer spirit," throwing White's advantage out the window.

13...dxc3 14. dxc3 d6 15. b1 e6 16. a4?

The Queen is happier at home on d1. More important, how could either side resist the totally strange position that occurs after 16. d5 xd5 17. exd5 d4 18. xd4 exd4, sticking each side with doubled, but separated, pawns.

16...d7 17. d5 b5 18. d1 exf4 19. gxf4 d4 20. e3 bc8 21. xd4?

White should have doggedly striven to hang on to his dark-squared Bishop, perhaps leading to this continuation: 21. h1 d2 22. g1 f5!

21...xd4+ 22. h1 c5 23. b4 c6 24. f5?



24.e5 $\text{\textcircled{e}}$ xd5 25. $\text{\textcircled{e}}$ xd5 $\text{\textcircled{b}}$ b6 26.exd6 $\text{\textcircled{b}}$ xd6 27. $\text{\textcircled{g}}$ g2 probably allows White to bail out with Bishops-of-opposite-colors draw. Gale would have made a titanic effort to prevent that.

24... $\text{\textcircled{e}}$ xd5 25.exd5 $\text{\textcircled{c}}$ c3 26. $\text{\textcircled{e}}$ e4?

Utterly pointless.

26... $\text{\textcircled{f}}$ fc8! 27. $\text{\textcircled{b}}$ b2?? $\text{\textcircled{c}}$ c1

The winning move, played at the "speed of light."

0-1

London System

Chris Kalina (1963)

Skylor Fryberg (1695)

Seattle, Seafair Open (2) 2004

Annotations by Chris Kalina

1.d4 $\text{\textcircled{f}}$ f6 2. $\text{\textcircled{f}}$ f3 d5 3. $\text{\textcircled{e}}$ f4 $\text{\textcircled{e}}$ f5 4.e3 e6 5.h3?!

This move is unnecessary until White is ready to castle. Better is to finish developing with 5. $\text{\textcircled{e}}$ e2, 6. $\text{\textcircled{d}}$ bd2, and 7. O-O.

5...c5? 6.c4?

White needs to capitalize on Black's underdeveloped kingside immediately by 6. $\text{\textcircled{e}}$ xb8, intending 7. $\text{\textcircled{e}}$ b5+, leaving Black's King stuck in the center.

6...cxd4 7. $\text{\textcircled{d}}$ xd4 $\text{\textcircled{e}}$ xb1!

Skylor strikes first, using my own idea against me! Any recapture on b1 runs into 8... $\text{\textcircled{e}}$ b4+, which is rather unpleasant.

8. $\text{\textcircled{b}}$ xa4+ $\text{\textcircled{d}}$ d7 9. $\text{\textcircled{d}}$ b5

Avoiding the Queen exchange and menacing c7 in an attempt to muddy the waters. However, Skylor calmly plays 8... $\text{\textcircled{d}}$ c6, offering an Exchange sac where White would face two Bishops with a King stuck in the center.

Northwest Chess



9... $\text{\textcircled{d}}$ c6 10. $\text{\textcircled{b}}$ xb1 $\text{\textcircled{e}}$ b4+ 11. $\text{\textcircled{d}}$ c3 O-O 12. $\text{\textcircled{e}}$ e2 d4

The White King is still uncastled; so Skylor, with his King now safe, correctly opens the center.

13.exd4 $\text{\textcircled{b}}$ xd4 14. $\text{\textcircled{e}}$ e3

The only move, since 14. $\text{\textcircled{e}}$ d2 runs into 14... $\text{\textcircled{d}}$ e4 15. $\text{\textcircled{d}}$ xe4 $\text{\textcircled{b}}$ xe4, attacking both b1 and g2.

14... $\text{\textcircled{e}}$ xc3+ 15. $\text{\textcircled{f}}$ f1??

Oh yeah, he still has that square!

15... $\text{\textcircled{b}}$ e4 0-1

English

Casey Fleck (1832)

FM David Bragg (2240)

Seattle, Seafair Open (2) 2004

1.c4 e5 2. $\text{\textcircled{d}}$ c3 d6 3.g3 $\text{\textcircled{e}}$ e6 4.d3 c6 5. $\text{\textcircled{e}}$ g2 $\text{\textcircled{e}}$ e7 6. $\text{\textcircled{d}}$ f3 $\text{\textcircled{d}}$ d7 7.O-O h5 8.h4 f6 9.e4 $\text{\textcircled{d}}$ h6 10. $\text{\textcircled{d}}$ h2 g6 11.f4 $\text{\textcircled{b}}$ b6+

Serving Chess Enthusiasts
Since 1972!

The Chess House

www.thechesshouse.com

sales@chesshouse.com

800-348-4749

Fax360-354-6765

PO Box 705

Lynden, WA 98264

* School Discounts

* Membership Pricing

* Service Oriented

* Free Catalog Send for your copy TODAY!

12. $\text{\textcircled{g}}$ h1 $\text{\textcircled{e}}$ g4 13. $\text{\textcircled{e}}$ f3 exf4 14. $\text{\textcircled{e}}$ xg4 $\text{\textcircled{d}}$ xg4 15. $\text{\textcircled{d}}$ xg4 hxg4 16. $\text{\textcircled{b}}$ xg4 g5 17. $\text{\textcircled{e}}$ xf4 gxf4 18. $\text{\textcircled{b}}$ g7 O-O-O 19. $\text{\textcircled{b}}$ xe7 fxg3 0-1

Modern Benoni

Peter June (1477)

Casey Fleck (1832)

Seattle, Seafair Open (3) 2004

1.d4 $\text{\textcircled{d}}$ f6 2.c4 c5 3.d5 e6 4. $\text{\textcircled{d}}$ c3 exd5 5.cxd5 d6 6. $\text{\textcircled{d}}$ f3 g6 7. $\text{\textcircled{d}}$ d2 a6 8.a4 $\text{\textcircled{d}}$ bd7 9. $\text{\textcircled{d}}$ c4 $\text{\textcircled{d}}$ b6 10. $\text{\textcircled{d}}$ a3 $\text{\textcircled{e}}$ g7 11.a5 $\text{\textcircled{d}}$ bd7 12. $\text{\textcircled{d}}$ c4 $\text{\textcircled{b}}$ c7 13. $\text{\textcircled{e}}$ f4 $\text{\textcircled{e}}$ f8 14.e4 b5 15. axb6 $\text{\textcircled{d}}$ xb6 16.h3 $\text{\textcircled{d}}$ xc4 17. $\text{\textcircled{e}}$ xc4 $\text{\textcircled{e}}$ g7 18. $\text{\textcircled{d}}$ b5 $\text{\textcircled{b}}$ b6 19. $\text{\textcircled{d}}$ xd6+ $\text{\textcircled{f}}$ f8 20. $\text{\textcircled{d}}$ xc8 $\text{\textcircled{b}}$ b4+ 21. $\text{\textcircled{b}}$ d2 $\text{\textcircled{b}}$ xc4 22. $\text{\textcircled{d}}$ d6 $\text{\textcircled{b}}$ b4 23. $\text{\textcircled{b}}$ xb4 cxb4 24. $\text{\textcircled{e}}$ d2 $\text{\textcircled{d}}$ xe4 25. $\text{\textcircled{d}}$ xe4 $\text{\textcircled{e}}$ e8 26. $\text{\textcircled{e}}$ xb4+ $\text{\textcircled{g}}$ g8 27.f3 f5 28.d6 fxe4 29.d7 $\text{\textcircled{e}}$ d8 30.O-O-O $\text{\textcircled{f}}$ f7 31.fxe4 $\text{\textcircled{f}}$ e6 32. $\text{\textcircled{e}}$ d6+ $\text{\textcircled{f}}$ e5 33. $\text{\textcircled{e}}$ hd1 $\text{\textcircled{e}}$ f8 34. $\text{\textcircled{e}}$ c3+ 1-0

King's Indian Attack

John Julian (1894)

David Hendricks (1622)

Seattle, Seafair Open (3) 2004

1.g3 d5 2. $\text{\textcircled{e}}$ g2 e5 3.d3 $\text{\textcircled{d}}$ f6 4. $\text{\textcircled{d}}$ f3 $\text{\textcircled{d}}$ c6 5.O-O $\text{\textcircled{e}}$ e7 6.c3 O-O 7.b4 a6 8.a4 $\text{\textcircled{e}}$ d7 9. $\text{\textcircled{e}}$ b2 b5 10. axb5 axb5 11. $\text{\textcircled{b}}$ xa8 $\text{\textcircled{b}}$ xa8 12.c4 bxc4 13.b5 $\text{\textcircled{d}}$ a5 14. $\text{\textcircled{e}}$ xe5 $\text{\textcircled{e}}$ xb5 15. $\text{\textcircled{e}}$ xc7 $\text{\textcircled{c}}$ c8 16. $\text{\textcircled{e}}$ e5 $\text{\textcircled{d}}$ d7 17. $\text{\textcircled{e}}$ d4 $\text{\textcircled{e}}$ f6 18. $\text{\textcircled{e}}$ xf6 $\text{\textcircled{d}}$ xf6 19. $\text{\textcircled{d}}$ d4 $\text{\textcircled{e}}$ d7 20. $\text{\textcircled{d}}$ d2 $\text{\textcircled{c}}$ c7 21. dxc4 $\text{\textcircled{d}}$ xc4 22. $\text{\textcircled{d}}$ xc4 $\text{\textcircled{c}}$ xc4 23. $\text{\textcircled{b}}$ d3 $\text{\textcircled{b}}$ c8 24.e3 $\text{\textcircled{e}}$ h3 25. $\text{\textcircled{d}}$ e2 $\text{\textcircled{e}}$ xg2 26. $\text{\textcircled{f}}$ xg2 $\text{\textcircled{b}}$ c6 27. $\text{\textcircled{d}}$ d4 $\text{\textcircled{b}}$ c8 28. $\text{\textcircled{e}}$ d1 $\text{\textcircled{c}}$ c3 29. $\text{\textcircled{b}}$ f5 $\text{\textcircled{b}}$ xf5 30. $\text{\textcircled{d}}$ xf5 $\text{\textcircled{f}}$ f8 31. $\text{\textcircled{b}}$ a1 $\text{\textcircled{c}}$ c8 32. $\text{\textcircled{b}}$ a7 $\text{\textcircled{e}}$ d8 33.h3 g6 34. $\text{\textcircled{d}}$ d4 h5 35.f4 $\text{\textcircled{b}}$ b8 36. $\text{\textcircled{d}}$ c6 $\text{\textcircled{b}}$ b2+ 37. $\text{\textcircled{f}}$ f3 $\text{\textcircled{d}}$ e4 0-1

English

Elston Cloy (1946)

David Arganian (2086)

Seattle, Seafair Open (3) 2004

1. $\text{\textcircled{d}}$ f3 c5 2.g3 g6 3. $\text{\textcircled{e}}$ g2 $\text{\textcircled{e}}$ g7 4.O-O $\text{\textcircled{d}}$ c6 5.c4 e6 6. $\text{\textcircled{d}}$ c3 $\text{\textcircled{d}}$ ge7 7.e3 O-O 8.d4 cxd4 9.exd4 d5 10.cxd5 $\text{\textcircled{d}}$ xd5 11. $\text{\textcircled{d}}$ xd5 exd5 12. $\text{\textcircled{e}}$ e3 $\text{\textcircled{e}}$ f5 13.a3 $\text{\textcircled{b}}$ b6 14. $\text{\textcircled{b}}$ d2 $\text{\textcircled{d}}$ a5 15. $\text{\textcircled{b}}$ b4 $\text{\textcircled{d}}$ b3 16. $\text{\textcircled{b}}$ xb6 axb6 17. $\text{\textcircled{b}}$ ad1 $\text{\textcircled{e}}$ c2 18. $\text{\textcircled{d}}$ e5 $\text{\textcircled{e}}$ xd1 19. $\text{\textcircled{b}}$ xd1 $\text{\textcircled{e}}$ xe5 20.dxe5 d4 21. $\text{\textcircled{e}}$ h6 $\text{\textcircled{b}}$ fd8 22. $\text{\textcircled{e}}$ xb7 $\text{\textcircled{b}}$ a7 23. $\text{\textcircled{e}}$ g5 $\text{\textcircled{e}}$ e8 24. $\text{\textcircled{e}}$ d5 $\text{\textcircled{e}}$ xe5 25. $\text{\textcircled{e}}$ xb3 $\text{\textcircled{b}}$ xg5 26. $\text{\textcircled{b}}$ xd4 $\text{\textcircled{b}}$ b5 27. $\text{\textcircled{e}}$ d3 $\text{\textcircled{c}}$ c7 28. $\text{\textcircled{b}}$ f3 $\text{\textcircled{b}}$ f5 29. $\text{\textcircled{b}}$ xf5 gxf5 30. $\text{\textcircled{f}}$ g2 $\text{\textcircled{c}}$ c1

31. d5 c5 32. f3 c2 33. b3 d2
 34. a4 g7 35. b4 f6 36. a5 bxa5
 37. bxa5 a2 38. b7 f4 39. a6 a3
 40. f3 e5 41. h3 f5 42. e4+
 g5 43. b7 a2 44. c8 h6 45. b7
 f6 46. c8 h5 47. b7 f5 48. c8+
 e5 49. b7 fxg3 50. hxg3 d4 51. g4
 hxg4+ 52. fxg4 a5 53. f4 d3
 54. e4+ e2 55. b7 f2 56. e4
 g3 57. d4 Draw

French Anderssen

NM Ignacio Perez (2215)

Curt Collyer (2136)

Seattle, Seafair Open (3) 2004

Annotations by Curt Collyer

1. e4 e6 2. d4 d5 3. c3 f6 4. g5
 e7 5. xf6

A surprise. I'd expected Ignacio to play the Alekhine-Chatard (5.e5 d7 6.h4).

5... xf6 6. f3 O-O 7. d3 c5 8. e5
 e7 9. h4

A highly aggressive move with the simple idea of sac'ing on h7 and delivering checkmate. Now 9...h6 is the natural response, but I chose a different path.

9...c4?!

Definitely playing with fire, but I couldn't see any direct mate and decided to risk it. Having taken a first round bye, I needed to win this game to stay in contention for first place. Afterwards, Ignacio suggested that 9...cxd4 10. hxh7+ hxh7 11. d5+ h6! ? may be possible. I chose the text, because I didn't want to give his Queen access to d3.

10. hxh7+

White is forced to give up the piece, as, after 10. e2 c6 followed by the ...f7-f6 pawn break, Black is better.

10... hxh7 11. d5+ g6

This is forced, as 11... g8 12. h5 xg5 13. hxg5 and 11... xg5 12. hxg5+ g6 13. h5+ lead to mate, of course.

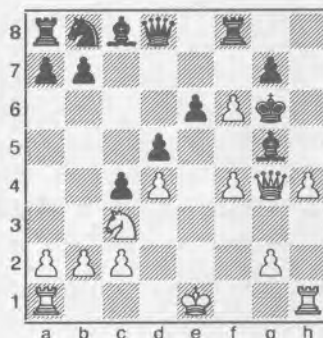
12. g4 xg5 13. f4! ?

This was Perez' idea. 13. e2 could also be considered.

13... f5 14. exf6? !

Better was 14. g3 followed by capturing on g5 with the f-pawn, castling queenside, transferring the Knight to f4

or d6 and advancing the kingside pawns. Black would remain a piece up but would face difficulty in developing his queenside forces. After the text, however, Black has an unexpected defense.



14... xf6!

The only move, as after 14... gxf6 15. hxg5 , both 15... f8 and 15... h8 fail to 16. h6+ . Also winning for White is 14... xf6 15. hxg5 xf4 16. h5+ .

15. hxg5+ e7

The King now escapes to the queenside.

16. h7 g8 17. O-O-O d6 18. e1
 a6!

A key defensive move. The Knight will be transferred to c7 where it will guard the e6-, d5-, and b5-squares.

19. e2 f8

Protecting g7 and counterpressuring f4.

20. e5+ c6 21. g4 c7 22. e2
 d6 23. d3

23. xg7 xe5

23... xe5 24. dx5 d7

Black's extra piece.

25. d5 af8 26. f1 e8

Building a fortress on the kingside.

27. h1 d4!

Black activates his queenside pawn majority, his King, and, most important, his extra Bishop.

28. g6 c5 29. g5 c6

Threatening ... c6-e4xg6 .

30. e1 f3 31. d6

31... gxf6 32. exf6 xf6

This seemed simplest.

33. gxf6 xg6 34. c7+ c6 35. x6
 gxf6 36. e5+ b6 37. ce7 xf4
 38. a4 f1+ 0-1

It was now clear I'd make it to move forty; so Ignacio resigned.

London System

Chris Kalina (1963)

Gary Edwards (1822)

Seattle, Seafair Open (3) 2004

Annotations by Chris Kalina

1. d4 f6 2. f3 c5 3. c3 e6 4. g5 d5
 5. e3 c6 6. e2 h6 7. h4 d7
 8. bd2 cxd4

Gary correctly waits until the Knight has moved to d2 before exchanging on d4: the Knight will be less active than on c3.

9. cxd4 e7 10. O-O O-O 11. c1 c8
 12. a3 a5

This is premature. The pawn can play to a5 with more effect if White has played b2-b4.

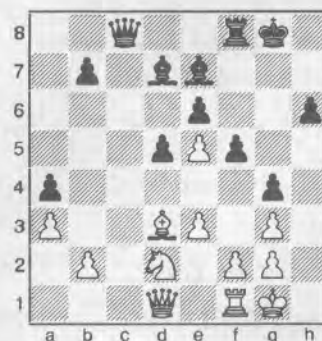
13. b3 g5 14. g3 h5

Certainly very brave play just to obtain the two Bishops. I tried to find a way to invade on the weakened light squares. Perhaps a queenside assault via 13...a4 and 14... a5 , intending to swing into c4 after a ...b7-b5 push, is Black's best idea.

15. d3 d3 16. hxg3 f5!

Blocking access to the light squares.

17. d5 xe5 18. dx5 a4 19. xc8
 xc8 20. d1 g4!



Again, no access for the White pieces.

21. f4 c5 22. f2 g7 23. h1 b5
 24. b4 b6 25. xb5 xb5 26. c2
 c6 27. xc6 bxc6 28. c1 c8



Washington Class Championships

A Christopher NW Grand Prix Event

November 26-28, 2004

Red Lion Bellevue Inn

11211 Main St

Bellevue WA 98004

\$4000 in prizes

fully guaranteed

Master	Expert	Class A	Class B	Class C	Class D & Under
\$500	\$400	\$300	\$300	\$300	\$150
\$300	\$250	\$175	\$175	\$175	\$100
U2300 \$200	U2100 \$150	U1900 \$125	U1700 \$125	U1500 \$125	U1300 \$75
					U1200 \$75
EF \$65	EF \$60	EF \$55	EF \$55	EF \$55	EF \$50

Advance entries must be received by November 20. Add \$12 after or at site. **Add \$10** to play up one class. **Free Entry** to GMs, IMs, and WGMs. **Juniors** (U21) may play for medals only for an advance EF of \$15. **Canadians** may pay at par (no coins, please).

Registration: Friday 9-10:30 or, Saturday 9-10 if entering with two 1/2-pt. byes. **Rounds:** Fri: 11:00-5:30 Sat: 11:00-5:30, Sun 9:30-4:00. **Time Controls:** 40/2 & SD/1. **Format:** Six section, six-round Swiss. **Miscellaneous:** Master and Expert sections FIDE rated. USCF and WCF/OCF membership required in all sections. OSA. Classes combined if fewer than 8 in a section. Play any two days, taking two 1/2-point byes.

Ent/Info: WCF Tnmt. Coordinator, Carol Kleist, 2420 S. 137th St., Seattle WA 98168. 206-242-7076, or wcfntmtcor@cs.com. Also see www.nwchess.com, www.whsca.org. Chks payable to Washington Chess Fed'n (WCF).

Hotel Rate: \$80 includes continental breakfast, mention chess. Reserve by November 15, call 425-455-5240. www.redlion.com. **Parking:** Free for all.

Side Events

Scholastic

Friday 11/26

5SS (K-3, 4-6, 7-12). G/30. Pre-registered only. EF: \$15 if rec'd by 11/20, if later add \$5. Trophy Awards. First Round: 9:00 a.m. USCF memb. req'd. Can join at site.

WA Class Novice

Saturday 11/27

Open to U1200 or UNR. 4SS, G/45. EF \$12 if rec'd by 11/20, \$17 at site. Trophy awards. Reg: 9-10 a.m., Rds: 10:30-12:30-2:15-4. USCF memb. req'd. Can join at site.

Evening Blitz

Saturday 11/27

EF \$10. Play starts 10 pm. Reg by 9:45 p.m.

Black will be okay after forcing 29...c5.

29.♘e2 c5 30.bxc5 ♜xc5 31.♜xc5 ♙xc5 32.♟b1 d4 33.exd4 ♙xd4 34.♟d2 ♘f7 35.♘d3 ♙f2 36.♟f1 ♙c5 37.♘c4!

White has just enough time to get at the a-pawn.

37...♙xa3 38.♘b5 ♘e7 39.♘xa4 ♙c5 40.♘b5 ♙f2 41.♘c6 ♙e1 42.♘c7 Draw

The only way for White to win is the comical line pointed out by Curt Collyer, viz., 42...h5 43.♘c8 h4 44.gxh4 ♙xh4 45.g3. As that was unlikely, I made another in a series of draws with Gary Edwards.

QGD Slav

Skylor Fryberg (1695)

Joshua Sinanan (1947)

Seattle, Seafair Open (4) 2004

1.♟f3 d5 2.d4 c6 3.c4 ♟f6 4.♟c3 dxc4 5.e3 b5 6.a4 ♖b6 7.axb5 cxb5 8.b3 e6 9.♙d2 ♟bd7 10.bxc4 bxc4 11.♙xc4 ♙e7 12.O-O O-O 13.♖e2 ♙b7 14.e4 ♜fc8 15.♜fb1 ♖c7 16.♙d3 ♟b6 17.e5 ♟fd5 18.♟e4 ♖d8 19.♟fg5 g6 20.♜b3 ♖f8 21.♙b1 ♖g7 22.♜h3 h6 23.♟f3 h5 24.♟fg5 ♜c4 25.♜f3 ♜xd4 26.♟xf7 ♜xd2 27.♖xd2 ♟d7 28.♖b2 ♟5b6 29.♖d4 ♜c8 30.♙a2 ♙d5 31.♙xd5 exd5 32.♟ed6 ♙xd6 33.♟xd6 ♖xe5 34.♖xe5 ♟xe5 35.♜e3 ♜c6 36.♜xe5 ♜xd6 37.♜xa7 ♘f8 38.♘f1 ♟c4 39.♜ee7 ♟d2+ 40.♘e2 ♟e4 41.f3 ♟c5 42.♘d2 ♟e6 43.♜eb7 ♟d8 44.♜d7 ♜xd7 45.♜xd7 1-0

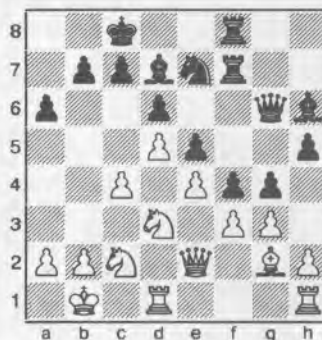
Trompovsky

David Wyde (1880)

NM Nat Koons (2213)

Seattle, Seafair Open (4) 2004

1.d4 ♟f6 2.♙g5 e6 3.e4 h6 4.♙xf6 ♖xf6 5.♖d2 ♟c6 6.c3 d6 7.♟a3 a6 8.♟c2 g5 9.g3 h5 10.O-O-O ♙d7 11.♘b1 O-O-O 12.♙g2 ♙h6 13.♖e2 ♖g6 14.f3 f5 15.♟h3 e5 16.d5 ♟e7 17.♟f2 ♜df8 18.♜df1 ♜f7 19.c4 ♜hf8 20.♟d3 g4 21.♜d1 f4



22.gxf4 ♙xf4 23.b3 ♙xh2 24.fxg4 ♙xg4 25.♙h3 ♙xh3 26.♖xh2 ♙g4 27.♜de1 ♖g5 28.♖g1 ♖d2 29.♟b2 ♜f2 30.♜c1 ♟g6 31.c5 dxc5 32.♟c4 ♖d3 33.♖e1 b6 34.d6 ♜e2 35.♖g1 ♜ff2 36.d7+ ♖xd7 37.♟b4 cxb4 0-1

Benko Gambit

David Ellinger (1941)

Curt Collyer (2136)

Seattle, Seafair Open (5) 2004

Annotations by Curt Collyer

1.d4 ♟f6 2.c4 c5

The last time I played Ellinger was several years ago at the Washington Open. I played a Queen's Gambit Declined and we drew a rather dull game, which seemed fine with him. I decided to play something more dynamic for this encounter.

3.d5 b5

I'd never played the Benko, but I've seen some games, including a few from Oregon.

4.cxb5 a6 5.b6 d6

I knew 3...e6 was the critical line, but didn't feel like getting into a theoretical debate with Ellinger. He usually knows his openings fairly well.

6.♟c3 ♟bd7 7.a4 a5 8.e4 g6 9.♟f3 ♙g7 10.♙b5 O-O 11.O-O ♙b7 12.♖e2 ♟xb6 13.♜d1 ♖c7 14.h3

The following moves are strategically interesting. I try to prevent him from playing the e5-pawn break by targeting the d5-pawn and he aims at d6 to prevent my playing ...e7-e6.

14...♜ad8 15.♙f4 h6

Preventing the potential ♖e2-d2 and ♙f4-h6 to exchange my dark-squared Bishop.

16.♙h2 ♘h7 17.♜d2 ♖c8 18.♜ad1 ♖a8 19.♟e1

I think White is beginning to drift. 19...♟e8 20.f3 ♟c7 21.♟c2 ♙a6 22.e5

This was unexpected aggression after the solid f2-f3. I'd anticipated 22.♙xa6 ♖xa6 23.♖xa6 ♟xa6, when I felt Black would have the advantage, as White's queenside would be under pressure. The text, however, misses a tactical trick.

22...♟xa4! 23.♙xa6 ♟xc3 24.bxc3 ♖xa6 25.♖xa6 ♟xa6 26.♜a1



Here, my opponent offered a draw. When playing 22...♟xa4, I'd intended to play 26...dxе5, maintaining my extra pawn, but now this looked inadequate. 27.♜xa5 ♜d6 is awkward, as White will try to bring his Knight to c4. After almost a half-hour of thought, I found a strong plan.

26...♟b8!

It is important that Black maintain his better pawn structure; that is where his advantage lies. The rest of my moves now came quickly and naturally. It was my opponent who ended up in time trouble!

The Chess Store
 Order all your chess supplies online and have them shipped free to your door.

www.thechessstore.com

27. ♖xa5 ♘d7

Pressuring the White center. Now 28. exd6 exd6 29. ♗xd6? loses to 29... ♗xc3 30. ♗xf8 ♗xd2! (30... ♗xa5 31. ♗e7 ♗e8 32. ♗e2 ♗d8 33. d6) 31. ♗e7 ♗xa5 (31... ♗e8 32. ♗a7 ♗xe7 33. d6) and the d8-Rook is guarded.

28. f4 g5

Undermining the pawns.

29. exd6 exd6 30. ♖a3 ♗f6 31. c4 ♖fe8 32. ♖e3

Naturally, White would like to exchange one of his "bad" Rooks.

32... ♗xe3 33. ♗xe3 ♗e4

A surprisingly stable post for the Knight.

34. ♖d3 ♗d4 35. ♖f1 ♖b8 36. fxg5 hxg5 37. ♗d1 f5

Material is still level, but Black's pieces dominate their counterparts.

38. g3 ♖b4 39. ♗e3 ♖g6

Asking White to find a useful move.

40. ♗d1 ♖xc4 41. ♗g1 ♗e5 42. ♗f2 ♖c2 43. g4 f4 44. ♖g1 c4 0-1

45. ♖f3 ♖c1 will win a piece; so White resigned.

David and I were tied for first going into this last-round game. The temptation to agree to a quick draw is awfully strong. Are not four hard-fought games enough for one weekend? And let me be blunt: from a financial perspective, while a win is marginally better than a draw, a loss, if I'm lucky, snags a quarter-share of third — lunch money. And why on earth do I get paired against another Master only when my mental reserves are at their lowest? In August, on a Sunday afternoon, in the nostalgia-drenched upper room of Seattle Chess Club, my strongest instinct is to take a nap. OK! Enough whining — against all the arguments given above, we must consider the following:

- 1) Grandmaster draws are for GMs, not fish like us;
- 2) We all want to improve, an endeavor that must include regular tests of our mettle;
- 3) We actually enjoy playing (a point easy to miss);

And finally, unless I am mistaken,

4) Other players tend to give a "look" if you agree to an early draw. Just a small pause, a mental, "Oh, OK, whatever." or "Yeah, I knew you had the intestinal fortitude of a jellyfish!!"

Veresov

FM David Bragg (2240)

NM Nat Koons (2213)

Seattle, Seafair Open (5) 2004

Annotations by NM Nat Koons

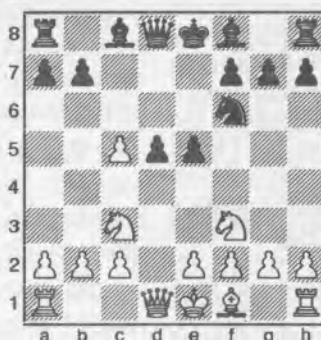
1. d4 ♗f6 2. ♗c3 d5 3. ♗g5!?

Preparing for Bragg is a snap: you can't; so you don't! I find the Veresov a humorous choice, because David is none too keen on its twin, the better-known Ruy Lopez.

3... ♗bd7 4. ♗f3 c5?! 5. ♗xf6!

Black was trying both to avoid doubled pawns and to attack the center; White must refute such ambitions!

5... ♗xf6 6. dxc5 e5!?



White is a pawn up, and threatens e2-e4, grabbing an equal share of the center. A normal line like 6... e6 7. ♗d4 ♗c7 8. b4 a5 9. ♗b5 ♗c6 10. e3 is clearly better for White. The text move, denying d4 to the Queen and meeting e2-e4 with ...d5-d4, seemed a good choice. But my plan of 7. ♗xe5 d4?! is not so hot: 8. b4 dxc3 9. ♗xd8+ ♖xd8 10. ♗xf7+ ♖e8 11. ♗xh8 g6 12. ♗xg6 hxg6 gives White a Rook and many pawns for two pieces. It looks better for White (though it's not totally clear). So a better choice is 7... ♗xc5 8. ♗d3 (stops ...♗d8-b6) 8... ♗d4 and Black has compensation.

7. e4 ♗xc5

Change of plans! 7... d4 8. ♗b5+ ♗d7 (not 8... ♗d7 9. ♗xe5! dxc3 10. ♗d5 ♗e7 11. O-O-O! —Bragg) 9. ♗xd7+ ♗xd7 10. ♗d5 didn't appeal to me. But Black has another, funnier option pointed out by my computer CRAFTY: 8... ♖e7! 9. ♗xe5 ♖g8! 10. ♗b1! ♗a5+! 11. ♗c3! ♗d8!, equal.

8. ♗b5+ ♗d7 9. ♗xd7+ ♗xd7 10. ♗xe5

White has a complicated alternative, another CRAFTY suggestion: 10. ♗xd5 ♗xe4 11. ♗xe5 ♗f5 12. ♗c7+ ♖f8 13. ♗d5!?, but actually playing this is rolling the dice (or spinning the roulette wheel) — and this is chess, not Yahtzee!

10... ♗e7 11. ♗d3 dxe4 Draw

A draw after all! Relieved sighs all around! Don't give me that look! ■

OFFICIAL MAIL BALLOT

(Only WCF members in good standing may vote)

1. SHOULD THE PROPOSED CHANGES TO THE WASHINGTON CHESS FEDERATION CONSTITUTION, AS PUBLISHED IN THE JULY 2004 ISSUE OF *NORTHWEST CHESS*, BE APPROVED IN FULL?

Yes

No

Full Name: _____

Signature: _____

Deadline for submission of the mail ballot is November 30, 2004. Ballots may be submitted in person at the Washington Class Championships or mailed to: WCF c/o Gary J Dorfner, 8423 East B Street, Tacoma, WA 98445-2223. **BALLOTS THAT ARE IMPROPERLY MARKED, NOT SIGNED, OR POSTMARKED AFTER THE DEADLINE WILL NOT BE COUNTED.**

A Christmas Story

by Don Emigh

Actually, here in the rain, Peachcroft's shoes looked better than they had in years. Marinated in the puddles, they glistened with a patent leather shine. His be-draggled coat was another matter. The thin windbreaker material had long since absorbed all the water it could hold, and the coat hung on his shoulders like wet newspaper. His hat had put up the best resistance, but, even so, it, too, was giving up. He could feel the rain soaking through the crown of the hat. Water was beginning to run down past his ears.

Yes, it had been a long ten-block walk from the Club, with rain every step of the way. However, here he was. Peachcroft turned into the doorway, shivering and stamping his feet for a moment before he thumbed open the latch. He entered, closing the door behind him, and stood uncertainly just inside the doorway. An expanding puddle of water formed at his feet as he looked around the cluttered sales area of the store.

A clerk had been watching from behind the glass counter as he entered. She seemed to be debating whether to call one of the men, or to take on the problem herself. Finally, she came out into the aisle and said, "Yes?"

From under the dripping hat, Peachcroft's grey eyes focused on the sour-faced woman before him. He said, "I have heard, madam, that this establishment carries at least some of the equipment needed for the royal game. I hope this might be true, as it has been a long walk on a rainy afternoon."

The clerk replied icily, "You know, I don't have any idea what you're talking about."

"Ah," said Peachcroft, "I'm sorry. My fault. Not everyone is as familiar as I am with our game. I am speaking of chess. Do you sell chess pieces here, and chess boards?"

The clerk did not bother to answer, but turned and led the way past a floor display of glassware and down through an aisle of candy to Section F, Toys & Games. She stopped, and when Peachcroft came up, pointed to some boxes with pictures of chessmen on the sides. A few folding boards with red and black squares were on the shelf, edgewise, beside the boxes.

"I believe that this is precisely what is needed," said Peachcroft, picking up one of the boxes. The men were black and white plastic, as shown in the picture on the side. "May I open this?" he asked. "I must have a closer look before purchasing."

"Well, I suppose so, but don't open those plastic bags inside," admonished the clerk. "They've got the white and black pieces separated. I can't sell that stuff if the bags are opened."

Peachcroft was satisfied by his inspection, though he could see that the imitation felting was off center on some of the pieces. He needed a board. Sliding out one, he unfolded it,

looked at it carefully, and then refolded it. He handed the box of chessmen and board to the clerk.

"These will do," he said, "these will do nicely. May I enquire the price, please?"

The woman said, "What?"

"How much do these items cost?"

"It's right on the bottom of the box, mister. I thought you noticed. And look, here's a little sticker on the board." She leaned over and pointed.

The chessmen were six dollars and the board was a dollar and a half. Returning to the front of the store, the clerk smoothed the damp bills that Peachcroft had handed her on the counter and rang up the purchase. She put the chessmen and board in a sack and pushed it across to Peachcroft. Then she started around the side of the counter, heading for the back of the store.

"One moment, if you please," said Peachcroft, before the woman got out into the aisle. "Could I have this gift-wrapped? This is for a friend of mine. The wrapping will be almost as important to him as the gift itself." He pushed the sack back across the counter.

"We don't gift-wrap below twenty dollars," the woman snapped. "It's company policy." The words were abrupt. Her hostile gaze tooh in once more the gaunt face under the still dripping hat.

"Well, yes. Rules are to be followed, madam, that is for sure. I've always said myself that people breaking rules are the cause of most of the world's problems. You are to be commended for holding to the principles of your employer." Peachcroft turned toward the door, starting to put the sack under his coat.

"Just a minute," said the clerk. "Wait a minute. Give me those things. Maybe I do have some leftover wrapping paper down here." She disappeared below the counter and began rummaging about the shelves.

She found some green paper and she wrapped the chessmen and board in it. It was an awkward-looking package, with the thin board and the square box of chessmen sitting atop it. "That doesn't look right," she said, shaking her head. "I must have some sort of box under here. I'll just put this bigger box to make it look a little better." She returned to the shelves under the counter. A box was found and the gifts were soon enclosed therein, the package being completed with a festive red outer wrapping and a bow of gold ribbon.

During this proceeding, Peachcroft had stood shaking his head and protesting. "I assure you, madam, that you will

Continued on page 15

Add Punch to Your Chess Boxing

by NM Tom Rowan

[This is the latest in a series of articles on improving your chess by NM Tom Rowan. Earlier articles in this series are available for viewing at Tom's chess website, www.tomrowan.com. Send your questions, comments, and suggestions for future articles to Tom at chess@tomrowan.com.]

Tell someone that boxing and chess are alike, and he'll laugh in your face. Boxing is physical. Chess is mental. Chess is physical only where the chess player meets the chair. And so on.

Despite the obvious differences, boxing and chess have a surprising number of similarities. In fact, I think there are enough similarities that we can use lessons and observations from the world of boxing to give us ideas on how to improve our chess. Let's look at the parallels and see if they mean anything to our chess play.

Boxing and chess are both intense, one-on-one competitions. Once inside the ring, the boxer is on his own to correctly apply everything he's learned in his training before the fight. Between fights, an improving boxer makes heavy use of a trainer to get him in shape and to identify and correct problem areas in boxing technique. Boxers without trainers don't improve, and can only hope to survive to collect a small paycheck.

This is closely related to another parallel between boxing and chess: both require making decisions for the long term and for the short term. Outside the ring, you have to make important long-term decisions about how you're going to prepare and to improve. This is also true for chess and probably for all important activities. If you skip long-term planning and do nothing more than show up for the next fight, don't expect any improvement.

Inside the ring, you have short-term decisions, problems you need to deal with right away. In both boxing and chess, these decisions have to become natural and instinctive reactions. If your training outside the ring hasn't been building these instincts, you're unlikely to survive against a well-prepared opponent. The punch will land on your nose while you're still trying to figure out where to place your feet and hands.

After landing an effective punch, a weak boxer withdraws and starts thinking about how he might land another single effective punch. A strong boxer doesn't withdraw. After landing an effective punch, he follows up with a flurry of punches to take advantage of his opponent being off balance. He doesn't give his opponent a chance to recover.

On the other hand, if you throw everything you have at an opponent, you better make sure you knock him out. If you don't and if you have no punches left to throw, your opponent will take over control. The chess parallel here is in launching

an unsound attack. If you haven't laid the groundwork for a ferocious attack with positional superiority, you're relying on landing a lucky punch. That won't succeed often against a strong, well-prepared opponent.

It's possible for a boxer to lose a fight even before he steps into a ring. Being out of shape or out of practice can be big handicaps. Even simply being tired can be dangerous. Stamina and mental alertness are required in order to perform close to your potential.

Chess players can also learn something from how boxers train. Boxers use a variety of techniques to build up their skills and general physical condition: sparring, punching bag, road work, etc. Chess players should mix up their training as well. A healthy mix would include studying your own games, studying chess classics, studying tactics, and playing plenty of games for practice.

Boxing experts often distinguish between boxing styles by referring to a fighter as a "boxer" or a "slugger." Sluggers are aggressive. They're always on the offensive, always throwing a lot of punches, and they aren't afraid to get hit. Boxers don't get hit as much. They dance around, keeping their distance until a good opportunity presents itself. You can make a similar division of chess players. Neither style is necessarily better than the other, and which style better describes your play is more a matter of personality than of choice.

However, the sluggers do have one advantage over the boxers. Sluggers can use their aggressive style against any opponent. This is less true of cautious boxers who spend most of their time well out of harm's way. If their opponents have the same style, little actual boxing will take place. There won't be much evidence that demonstrates that one boxer is better than the other.

The chess lesson to be learned from this boxing observation is that sometimes the careful positional player has to be able to turn on the aggression at times. If you feel you're the stronger player, you have to pose problems for your opponent in order to prove it.

Boxing can also give us graphic demonstrations on how to lose. You could, for example, attempt to show your superiority by dropping your guard to demonstrate you can beat your opponent without much effort. Anytime you give less than your best effort, you run the risk that your kitten opponent will suddenly turn into a tiger.

Another way to lose is to play defense only. Don't punch back. Cover up to protect yourself. If that's all you do, a favorable outcome is impossible.

Continued on page 18

USCF Crosstables

(qqqq) indicates Quick Rating

Washington Class Scholastic Bellevue 11/29/03 TD: Gary Dorfner

Grades K-6																				
1 Manber, Devon	1418(1132)	1419(1172)	D2	W18	W9	W7	W6	4.5												
2 Wang, Michael	1090(765)	1134(973)	D1	W22	D4	W13	W11	4.0												
3 Shaver, Aaron	992(965)	1072(1054)	W4	W20	L6	W9	W5	4.0												
4 London, Joshua	989(1036)	1007(1032)	L3	W14	D2	W18	W16	3.5												
5 Kaul, Sheen	981(972)	1048(1010)	W11	W16	W7	D6	L3	3.5												
6 Solomon, Bryan	862(851)	1004(979)	W13	W17	W3	D5	L1	3.5												
7 Lee, Nathan	1199(957)	1173(965)	W12	W10	L5	L1	W17	3.0												
8 Pham, Quincy	977(870)	949(865)	L9	W23	W17	L11	W14	3.0												
9 Wu, Darryl	945(968)	968(971)	W8	W15	L1	L3	W18	3.0												
10 Shankland, Julia	742(831)	743(802)	W19	L7	L18	W20	W21	3.0												
11 Muhammad, Joshua	0(954)	954(922)	L5	W25	W15	W8	L2	3.0												
12 VanWinkle, Mark	1020(942)	963(882)	L7	W24	D16	L14	W22	2.5												
13 Rind, David	875(881)	854(845)	L6	W21	W20	L2	D15	2.5												
14 Hsieh, Michael	823(819)	819(805)	D22	L4	W23	W12	L8	2.5												
15 Martin-Noble, George	637(639)	672(659)	W21	L9	L11	W24	D13	2.5												
16 Gertler, Jeff	633(585)	707(673)	W23	L5	D12	W22	L4	2.5												
17 Turman, Ryan	704(736)	698(712)	W24	L6	L8	W19	L7	2.0												
18 Chao, Derek	630(682)	682(700)	W26	L1	W10	L4	L9	2.0												
19 Rind, Charles	296(476)	317(453)	L10	W26	L22	L17	W25	2.0												
20 Klug, Amanda	0(562)	562(550)	W25	L3	L13	L10	W24	2.0												
21 Klug, Jesse	0(486)	486(483)	L15	L13	W26	W23	L10	2.0												
22 Turman, Evan	648(659)	637(640)	D14	L2	W19	L16	L12	1.5												
23 Joyce, Zack	472(462)	410(418)	L16	L8	L14	L21	W26	1.0												
24 Kane, Alex	0(365)	365(348)	L17	L12	W25	L15	L20	1.0												
25 Joyce, Jermy	0(168)	168(168)	L20	L11	L24	W26	L19	1.0												
26 Kaul, Shaarika	0(100)	100(100)	L18	L19	L21	L25	L23	0.0												

Grades 7-12																				
1 Binz, Kevin	1712(1577)	1728(1605)	W6	W13	W4	W2	W10	5.0												
2 Smith, Micah	1665(1464)	1660(1470)	W8	W5	W3	L1	W9	4.0												
3 Armancas, Gabriel	1295(1187)	1319(1234)	W14	W15	L2	W11	W5	4.0												
4 Shankland, Sarah	1162(1053)	1187(1106)	W10	W16	L1	L5	W11	3.0												
5 Binz, Alex	1124(1162)	1162(1168)	W17	L2	W7	W4	L3	3.0												
6 Blumenthal, Max	951(981)	1028(993)	L1	W17	W12	L10	W13	3.0												
7 Weishaar, Chris	504(542)	765(734)	W12	W10	L5	L8	W14	3.0												
8 Okinaka, Michael	1226(1079)	1194(1052)	L2	L11	D14	W7	W12	2.5												
9 Hunting, Jordan	882(171)	891(330)	D15	B	L10	W13	L2	2.5												
10 Warriar, Krishnan	1462(1320)	1401(1256)	L4	L7	W9	W6	L1	2.0												
11 Chaney, Jeff	1046(1104)	1022(1050)	L13	W8	W16	L3	L4	2.0												
12 Schmidt, Peter	1015(364)	972(481)	L7	W14	L6	W16	L8	2.0												
13 Ives, Shaina	734(662)	808(672)	W11	L1	W15	L9	L6	2.0												
14 Gose, Ben	1125(1095)	1057(1002)	L3	L12	D8	W15	L7	1.5												
15 Weishaar, Nicholas	768(518)	748(493)	D9	L3	L13	L14	W16	1.5												
16 Cohen, Michael	0(358)	358(268)	B	L4	L11	L12	L15	1.0												
17 Chesnow, Joseph	864(832)	832(804)	L5	L6	U	U	U	0.0												

Washington Open Scholastic 5/29 Bellevue TD: Gary Dorfner

Grades K-3																				
1 Elliott, Zack	1136(962)	1179(1088)	W9	W11	W2	D5	W3	4.5												
2 Wu, Darryl	968(971)	982(982)	W10	W23	L1	W15	W11	4.0												
3 O'Neal, Max	870(847)	931(913)	W8	W21	W4	W6	L1	4.0												
4 Chuck, Caleb	346(341)	597(671)	W16	W19	L3	W9	W10	4.0												
5 Orlov, Nicholas	1189(1110)	1200(1130)	W15	W13	W6	D1	U	3.5												
6 Fisher, Thayer	808(700)	824(762)	W14	W17	L5	L3	W15	3.0												
7 Shankland, Julia	743(802)	715(769)	L17	W14	W22	L10	W19	3.0												
8 Apacible, Christopher	690(742)	742(754)	L3	W18	W17	L11	W20	3.0												
9 Rosenthal, Jacob	496(672)	643(741)	L1	W20	W19	L4	W13	3.0												
10 Harvey, Rainier	464(588)	698(770)	L2	W12	W13	W7	L4	3.0												
11 Davis, Benjamin	0(841)	841(839)	W22	L1	W21	W8	L2	3.0												
12 Chi, Quentin	1268(880)	880(756)	L19	L10	W16	L18	W22	2.0												
13 Ostrow, Elijah	974(1078)	899(989)	W18	L5	L10	W17	L9	2.0												
14 Chuck, Carlin	822(814)	669(721)	L6	L7	L20	W23	W18	2.0												
15 Hannibal, Dana OR	467(420)	480(436)	L5	W16	W23	L2	L6	2.0												
16 Ashley, Catherine	363(322)	322(300)	L4	L15	L12	B	W23	2.0												
17 Thatcher, Julian	0(651)	651(658)	W7	L6	L8	L13	W21	2.0												
18 McKinley, Harvey	0(589)	589(594)	L13	L8	B	W12	L14	2.0												
19 Watkins, Tabitha	0(566)	566(577)	W12	L4	L9	W21	L7	2.0												
20 Bimbach, Zamir	0(466)	466(475)	L21	L9	W14	W22	L8	2.0												
21 Sather, Jack	505(482)	467(461)	W20	L3	L11	L19	L17	1.0												
22 Isik, Oliver	239(211)	211(191)	L11	B	L7	L20	L12	1.0												
23 Benavides, Gabriel	0(100)	100(100)	B	L2	L15	L14	L16	1.0												

Grades 4-12																				
1 Rassilyer, Blake	1208(1068)	1269(1187)	W18	W19	W14	W11	D5	4.5												
2 Parker, Addison	1053(854)	1205(1086)	W22	W12	D5	W14	W6	4.5												
3 Kurtis, Matthew	1194(1204)	1204(1215)	W9	W20	L4	W22	W7	4.0												

4 Dibble, Jason	1073(1011)	1184(1195)	W13	W8	W3	L5	W11	4.0												
5 Kurtis, Alexander	924(1135)	1135(1229)	W17	W15	D2	W4	D1	4.0												
6 So, Ernest	1169(1070)	1155(1067)	W23	L11	W21	W8	L2	3.0												
7 So, Conan	1161(1142)	1142(1116)	L11	W23	W17	W19	L3	3.0												
8 Tucker, Jimmy	1112(1124)	1092(1096)	W26	L4	W20	L6	W21	3.0												
9 Tucker, Joseph	975(977)	966(948)	L3	L10	B	W25	W19	3.0												
10 Hunting, Jordan	891(330)	984(636)	L12	W9	L11	W23	W13	3.0												
11 Gottlieb, Ethan	0(1216)	1216(1186)	W7	W6	W10	L1	L4	3.0												
12 Isik, Alexander	0(1080)	1080(1025)	W10	L2	D16	D15	W18	3.0												
13 Apacible, Jennifer	0(1032)	1032(988)	L4	W26	W15	W16	L10	3.0												
14 Harvey, Tristan	1198(964)	1159(961)	W21	W16	L1	L2	D17	2.5												
15 Bailey, Taylor OR	1018(1009)	990(973)	W27	L5	L13	D12	W22	2.5												
16 Wolf, Andrew	968(859)	959(845)	W25	L14	D12	L13	W23	2.5												
17 Scott, Andrew	784(770)	857(807)	L5	W27	L7	W20	D14	2.5												
18 Huiras, Will	1005(904)	904(861)	L1	W24	L19	W27	L12	2.0												
19 Harvey, Whitney	940(975)	928(947)	W24	L1	W18	L7	L9	2.0												
20 Thatcher, Andrew	865(814)	814(780)	B	L3	L8	L17	W24	2.0												
21 Davis, Benjamin	841(839)	841(816)	L14	W25	L6	W24	L8	2.0												
22 Marcyan, Karen	0(617)	617(610)	L2	B	W27	L3	L15	2.0												
23 Hannibal, Carson OR	804(639)	773(607)	L6	L7	W25	L10	L16	1.0												
24 Turski, Robert	0(597)	597(581)	L19	L18	W26	L21	L20	1.0				</								

10 Porter, Nathan	1335	1318	L11	W14	W19	D12	L3	2.5	4 Rompogren, Michael	1780	1788	W8	L2	D5	W7	L1	2.5
11 Sercombe, William	1159	1265	W10	L17	W13	L6	D9	2.5	5 Buck, Stephen	1723	1737	D1	W7	D4	L2	L3	2.0
12 Wang, Kevin	941	1011	B	L9	W18	D10	L5	2.5	6 Karch, Robert	1732	1744	W7	L1	U	U	U	1.0
13 Kudva, Vikram	1504	1464	L1	W15	L11	L8	W17	2.0	7 Pitre, H G	1822	1779	L6	L5	L3	L4	D2	0.5
14 Sharp, Austin	1188	1172	L9	L10	L16	W20	W19	2.0	8 Piper, August	1561	1547	L4	L3	U	U	U	0.0
15 Caushik, Hari	1161	1182	L6	L13	W20	W19	L7	2.0									
16 Mathisen, Ryan	1015	1055	L2	L19	W14	W18	L8	2.0	PCC July Game-in-60	7/31	TD: Korneljs Dale						
17 Rotithor, Sagar	1264	1282	D4	W11	L3	L7	L13	1.5	1 Lin, Benjamin	2137(1914)	2147(1938)	W23	W13	W8	W4	D5	4.5
18 Button, Mitchel	1014	991	H	L4	L12	L16	W20	1.5	2 Rosenbaum, David	1659(1613)	1667(1631)	D16	W17	D3	W18	W11	4.0
19 Wang, Eddie	1223	1174	L3	W16	L10	L15	L14	1.0	3 Jacobi, Gunther	1649(1728)	1656(1716)	D17	W16	D2	W20	W10	4.0
20 Flores, Rizal	1079	1010	L5	L8	L15	L14	L18	0.0	4 Raptis, Nick	2325(2178)	2316(2170)	W18	W14	W5	L1	H	3.5
									5 Phillips, Blake	1900(1963)	1918(1966)	W7	W10	L4	W6	D1	3.5
									6 Herrera, Robert	1835(1822)	1837(1814)	W19	D15	W9	L5	W14	3.5
									7 Kudva, Vikram	1420(1221)	1504(1345)	L5	W26	W13	D14	W15	3.5
									8 Banner, Richard	1822(1734)	1807(1722)	W20	W12	L1	L11	W18	3.0
									9 Knutson, Keegan WA	1803(1651)	1778(1624)	W24	W25	L6	L10	W19	3.0
									10 Serres, Drew	1622(1314)	1629(1375)	W26	L5	W19	W9	L3	3.0
									11 Esler, J Brian	1553(1627)	1545(1607)	L25	W24	W23	W8	L2	3.0
									12 Scharzt, Brian	1521(1541)	1493(1507)	W28	L8	L20	W25	W21	3.0
									13 Richardson, Lewis	1501(1474)	1500(1448)	W22	L1	L7	W24	W20	3.0
									14 May, Andy WA	1767(1452)	1754(1461)	W21	L4	W15	D7	L6	2.5
									15 Goodspeed, Timothy	1532(1438)	1526(1420)	W27	D6	L14	W16	L7	2.5
									16 Terrill, Michael	1230(1007)	1298(1152)	D2	L3	W17	L15	W23	2.5
									17 Encke, Michael	1057(1174)	1174(1186)	D3	L2	L16	W26	W24	2.5
									18 Jarvinen, John	1510(1516)	1499(1499)	L4	W21	W25	L2	L8	2.0
									19 Rotithor, Sagar	1269(1227)	1264(1214)	L6	W27	L10	W22	L9	2.0
									20 Wang, Eddie	1195(882)	1223(963)	L8	W28	W12	L3	L13	2.0
									21 Bailey, Taylor	961(959)	1018(1009)	L14	L18	W27	W23	L12	2.0
									22 Harnsberger, Ephraim	740(700)	818(792)	L13	L23	W28	L19	W25	2.0
									23 Nettles, Jordan	1332(1281)	1274(1221)	L1	W22	L11	L21	L16	1.0
									24 Fernandez, Matthew	1153(1011)	1126(998)	L9	L11	W26	L13	L17	1.0
									25 Quinn, Brian	985(1016)	992(1018)	W11	L9	L18	L12	L22	1.0
									26 Kanwar, Gurtej	720(695)	727(701)	L10	L7	L24	L17	W28	1.0
									27 Kanwar, Vikramjit	653(638)	573(596)	L15	L19	L21	L28	B	1.0
									28 Lopez, Joshua NV	651(606)	581(592)	L12	L20	L22	W27	L26	1.0
									Auntie's Open	8/14-15	Spokane	TD: David Griffin					
									1 Herbers, Patrick	1932	1960	W15	W23	W19	W4	W5	5.0
									2 Gale, Geoffrey	2049	2042	W24	L6	W11	W13	W9	4.0
									3 Drake, Christopher	1980	1986	W20	D5	H	W18	W10	4.0
									4 Kelley, Dereque	1964	1956	W11	W13	D6	L1	W15	3.5
									5 Julian, John	1867	1882	W16	D3	W17	W6	L1	3.5
									6 Steinocher, Kirk	1864	1876	W26	W2	D4	L5	W16	3.5
									7 Cloy, Elston	1948	1923	W14	L19	W22	L10	W17	3.0
									8 Rowles, David	1901	1899	W12	H	D15	U	W19	3.0
									9 Carpenter, Romie	MT1815	1817	D25	W10	H	W19	L2	3.0
									10 Weyland, Phillip	ID 1696	1712	W28	L9	W23	W7	L3	3.0
									11 Morkill, Alex	1519	1576	L4	W26	L2	W23	W24	3.0
									12 Stripes, James	1487	1493	L8	W30	L13	W27	W18	3.0
									13 Harris, Tim	1043	1252	W27	L4	W12	L2	W20	3.0
									14 Copeland, Chris	1530	1525	L7	W27	H	L15	W26	2.5
									15 Morkill, Garrett	1513	1541	L1	W28	D8	W14	L4	2.5
									16 Attwood, Adam	1454	1499	L5	W20	W21	D17	L6	2.5
									17 Martin, Robert	MT 1739	1707	D22	W21	L5	D16	L7	2.0
									18 Bodie, Brad	ID 1734	1701	D21	W25	H	L3	L12	2.0
									19 Copeland, Daniel	1686	1689	W30	W7	L1	L9	L8	2.0
									20 McCourt, Daniel	MT1605	1600	L3	L16	W25	W26	L13	2.0
									21 Waugh, James	1212	1229	D18	L17	L16	H	W28	2.0
									22 Sullivan, Garrett	ME 467	617	D17	W24	L7	H	U	2.0
									23 Kenney, Abe	0	1548	W29	L1	L10	L11	W27	2.0
									24 McBroom, William	MT1608	1567	L2	L22	H	W25	L11	1.5
									25 Erickson, Kenneth	ID 1396	1391	D9	L18	L20	L24	W30	1.5
									26 Kirlin, Patrick	1406	1378	L6	L11	W30	L20	L14	1.0
									27 Chow, Alex	1286	1247	L13	L14	W28	L12	L23	1.0
									28 Greer, Matthew	907	932	L10	L15	L27	W30	L21	1.0
									29 Downes, John	1700	1700	L23	U	U	U	U	0.0
									30 Baker, Ted	1153	1097	L19	L12	L26	L28	L25	0.0
									Danny Chen Open	8/14	Bellingham	TD: Mark Anderson					
									1 Anderson, Mark	ID 1711	1725	W7	L2	W4	W3	3.0	
									2 June, Peter	1666	1693	W8	W1	L3	W6	3.0	
									3 Abrahamson, Norman	1866	1850	D4	W5	W2	L1	2.5	
									4 VanWeerdhuizen, Lane	1526	1563	D3	W6	L1	W7	2.5	
									5 Botez, V Alexandr	875	1005	D6	L3	W7	B	2.5	
									6 Perez, Juan	1697	1654	D5	L4	W8	L2	1.5	
									7 VanWeerdhuizen, David	ID 1197	1159	L1	D8	L5	L4	0.5	
									8 Taylor, Ronald	0	1141	L2	D7	L6	U	0.5	
									August Ajeeb Quads	8/5-26	Spokane	TD: David Griffin					
									1 Steinocher, Kirk	1876	1863	-	X	D	D	2.0	
									2 Drake, Christopher	1986	1981	F	-	W	D	1.5	
									3 Griffin, David	1511	1564	D	L	-	W	1.5	
									4 Weyland, Phillip	ID 1712	1707	D	D	L	-	1.0	
									WA Senior Adult Championship	8/7-8	Tacoma	TD: Gary Dorfner					
									1 Bartron, Paul	2045	2057	D5	W6	W2	W3	W4	4.5
									2 Rupel, David	2089	2081	W3	W4	L1	W5	D7	3.5
									3 Rasmussen, Ernst	1784	1803	L2	W8	W7	L1	W5	3.0

August Ajeeb Quads cont'd

1 Brendemihl, Steve	1600	1608	-	D	W	W	2.5
2 Attwood, Adam	1499	1526	D	-	W	W	2.5
3 Kirlin, Patrick	1378	1371	L	L	-	W	1.0
4 Johnson, Vern	1297	1266	L	L	L	-	0.0
1 Waugh, James	1229	1325	W4	W6	W3	W5	4.0
2 Greer, Matthew	932	1002	H	L3	W7	W4	2.5
3 Ramer, Paul	1142	1126	L5	W2	L1	W7	2.0
4 Baker, Ted	1097	1084	L1	W5	B	L2	2.0
5 Countryman, Zachary	1166	1144	W3	L4	H	L1	1.5
6 Burney, James	1165	1159	W7	L1	H	U	1.5
7 Christiansen, Peter	911	868	L6	B	L2	L3	1.0

SCC August Quads

		8/21	TD: Fred Kleist				
1 Bragg, David	2211	2214	-	D	W	W	2.5
2 Kleist, Fred	2073	2078	D	-	W	D	2.0
3 Hickey, Patrick	1799	1812	L	L	-	W	1.0
4 Gale, Geoffrey	2042	2025	L	D	L	-	0.5

1 Binz, Kevin	1638	1663	W5	W2	W3	3.0
2 Lund, Richard	1616	1601	W4	L1	X	2.0
3 Watts, Peter	1340	1398	W6	W5	L1	2.0
4 Schuhmacher, Don	877	934	L2	W6	X	2.0
5 Weller, Stephen	1311	1290	L1	L3	F	1.0
6 Piper, August	1547	1500	L3	L4	F	0.0

SCC August Tornado

		8/22	TD: Carol Kleist				
1 Koons, Nat	2230	2236	W6	W9	W3	D2	3.5
2 Pupols, Viktors	2208	2212	W13	W7	W9	D1	3.5
3 Bragg, David	2214	2212	W4	W5	L1	W6	3.0
4 Fryberg, Skylor	1863	1864	L3	W13	D5	W11	2.5
5 O'Gorman, Peter	1800	1808	W10	L3	D4	W7	2.5
6 Hickey, Patrick	1812	1813	L1	W12	W10	L3	2.0
7 Buck, Stephen	1737	1735	W11	L2	W8	L5	2.0
8 Piper, August	1500	1504	L9	W11	L7	W12	2.0
9 Selzler, Richard	2037	2032	W8	L1	L2	U	1.0
10 Hulsman, Alan	1538	1531	L5	B	L6	U	1.0
11 Watts, Peter	1398	1390	L7	L8	W12	L4	1.0
12 Wang, Michael	1097	1090	B	L6	L11	L8	1.0
13 Baxter, Cecil	1604	1600	L2	L4	U	U	0.0

SCC Dog Days

		8/6-27	TD: Carol Kleist				
1 Bragg, David	2212	2214	H	W17	W6	U	2.5
2 Piper, August	1504	1520	U	H	W15	W9	2.5
3 Darby, Michael	1856	1864	W5	W12	U	U	2.0
4 Weller, Stephen	1290	1303	L10	W18	W5	U	2.0
5 Fan, George	944	1110	L3	W13	L4	W16	2.0
6 Fryberg, Skylor	1864	1867	D14	W9	L1	U	1.5
7 Hubbell, Larry	1738	1739	U	U	H	W13	1.5
8 Lund, Richard	1601	1570	U	H	L9	W18	1.5
9 Breneman, Jesse	988	1062	H	L6	W8	L2	1.5
10 Kalina, Chris	1951	1952	W4	U	U	U	1.0
11 Sinanan, Joshua	1941	1942	W13	U	U	U	1.0
12 Woro, Eric	1735	1726	W18	L3	U	U	1.0
13 Poynner, Thomas	1139	1118	L11	L5	W18	L7	1.0
14 Gale, Geoffrey	2025	2021	D6	U	U	U	0.5
15 Milener, Gene	1422	1407	U	H	L2	U	0.5
16 Watts, Peter	1390	1355	U	U	H	L5	0.5
17 Harmon, Dana	1341	1341	H	L1	U	U	0.5
18 Wang, Shanglun	780	769	L12	L4	L13	L8	0.0

Eastern Washington Open

		9/18-19	Spokane	TD: Kevin Korsmo					
1 Raptis, Nick	OR	2314	2317	W22	W16	W15	D2	W8	4.5
2 Sprenkle, David		2287	2286	W30	W10	W9	D1	D5	4.0
3 Pitre, H G		1779	1814	W32	L14	W23	W17	W9	4.0
4 Serres, Drew	OR	1619	1698	W25	W7	W26	L8	W19	4.0
5 Bartron, Paul		2016	2015	W12	L8	W18	W19	D2	3.5
6 Herbers, Patrick		1947	1941	W27	L19	W30	W10	D7	3.5
7 Rowles, David		1899	1897	W23	L4	W12	W16	D6	3.5
8 Carpenter, Romie	MT	1817	1846	W28	W5	H	W4	L1	3.5
9 Drake, Christopher		1969	1966	W24	W18	L2	W15	L3	3.0
10 Steinocher, Kirk		1860	1858	W21	L2	W24	L6	W22	3.0
11 McBroom, William	MT	1567	1574	L14	W31	H	W21	D13	3.0
12 Morkill, Garrett		1541	1580	L5	W32	L7	W30	W24	3.0
13 Chow, Alex		1247	1405	W17	L15	H	W26	D11	3.0
14 Merwin, Steven		2096	2092	W11	W3	D19	U	U	2.5
15 Julian, John		1933	1921	W20	W13	L1	L9	D16	2.5
16 Cambareri, Michael		1819	1815	W31	L1	W20	L7	D15	2.5
17 Benson, Dustin		1757	1719	L13	D21	W29	L3	W25	2.5
18 Weyland, Phillip	ID	1735	1728	W33	L9	L5	D27	W26	2.5
19 Fabian, Steve		1683	1701	W29	W6	D14	L5	L4	2.5
20 Morton, Jerry		1416	1459	L15	W22	L16	W28	H	2.5

21 Erickson, Kenneth	ID	1391	1426	L10	D17	W34	L11	W27	2.5
22 Brendemihl, Steve		1608	1596	L1	L20	W33	W23	L10	2.0
23 Attwood, Adam		1542	1528	L7	W25	L3	L22	W32	2.0
24 Copeland, Chris		1525	1514	L9	W33	L10	W29	L12	2.0
25 Baker, Ted		1111	1145	L4	L23	B	W31	L17	2.0
26 Copeland, Daniel		1689	1643	H	W34	L4	L13	L18	1.5
27 Griffin, David		1539	1503	L6	L29	W32	D18	L21	1.5
28 Johnson, Vern		1266	1267	L8	L30	W31	L20	D29	1.5
29 Countryman, Zachary		1143	1193	L19	W27	L17	L24	D28	1.5
30 Mundee, Richard	ID	1600	1600	L2	W28	L6	L12	U	1.0
31 Kirlin, Patrick		1360	1297	L16	L11	L28	L25	B	1.0
32 Weyland, Ronald	ID	1283	1268	L3	L12	L27	W34	L23	1.0
33 Waugh, James		1247	1222	L18	L24	L22	H	D34	1.0
34 Edwards, Blanche		1073	1064	H	L26	L21	L32	D33	1.0

PCC September Game-in-45

		9/25	TD: Kornelijis Dale						
1 Raptis, Nick		2317(2166)	2324(2177)	W12	W11	W3	W2	W4	5.0
2 Haessler, Carl		2200(2172)	2200(2165)	W17	W13	W16	L1	W9	4.0
3 Serres, Drew		1698(1395)	1717(1472)	W23	W26	L1	W16	W8	4.0
4 Markovic, Goran		1852(1915)	1854(1904)	D10	W22	W14	W5	L1	3.5
5 Knutson, Keegan	WA	1832(1612)	1819(1615)	D18	W10	W20	L4	W14	3.5
6 May, Andy	WA	1738(1418)	1705(1419)	L14	W25	L11	W19	W17	3.0
7 Jacobi, Gunther		1656(1676)	1631(1642)	L13	W23	W12	L9	W18	3.0
8 Gay, Daniel		1610(1519)	1607(1513)	W19	L16	W13	W11	L3	3.0
9 Gay, Patrick		1584(1422)	1591(1459)	W21	L14	W19	W7	L2	3.0
10 Porter, Nathan		1321(1236)	1415(1330)	D4	L5	W22	D18	W16	3.0
11 Peake, Ethan		1567(1553)	1574(1544)	W15	L1	W6	L8	D12	2.5
12 Schartz, Brian		1493(1507)	1494(1501)	L1	W15	L7	W23	D11	2.5
13 Terrill, Michael		1362(1152)	1406(1244)	W7	L2	L8	D15	W21	2.5
14 Hedlund, Kirk		1324(1353)	1436(1415)	W6	W9	L4	D17	L5	2.5
15 Porter, Joel		1106(919)	1164(1015)	L11	L12	W24	D13	W22	2.5
16 Arun, Aditya		1621(1562)	1602(1532)	W24	W8	L2	L3	L10	2.0
17 Jarvinen, John		1499(1499)	1484(1468)	L2	D21	W26	D14	L6	2.0
18 Taylor, Michael		1338(1280)	1367(1301)	D5	L20	W21	D10	L7	2.0
19 Lau, Timothy	WA	1211(1262)	1206(1234)	L8	W24	L9	L6	W26	2.0
20 Goodspeed, Timothy	WA	1496(1400)	1485(1400)	D25	W18	L5	U	U	1.5
21 Encke, Michael		1495(1396)	1421(1339)	L9	D17	L18	W25	L13	1.5
22 Wang, Eddie		1203(1009)	1170(982)	H	L4	L10	W26	L15	1.5
23 Buckley, Timothy	WA	1094(1030)	1078(1017)	L3	L7	W25	L12	D24	1.5
24 Larson, Bradley		811(842)	842(836)	L16	L19	L15	B	D23	1.5
25 Kanwar, Gurtej		720(701)	740(718)	D20	L6	L23	L21	B	1.5
26 Kanwar, Vikramjit		573(596)	569(587)	B	L3	L17	L22	L19	1.0

SCC Novice

		9/11	TD: Carol Kleist					
1 Wu, Darryl		982	1094	W9	W3	W6	W5	4.0
2 Guo, Anthony		629	679	B	L7	W9	W8	3.0
3 Marcjan, Cezary		0	1113	W5	L1	W7	W6	3.0
4 Schmidt, Karen		756	806	L6	W9	H	W7	2.5
5 Babcock, Chris		738	749	L3	B	W8	L1	2.0
6 Keegan, Clarice		0	935	W4	W8	L1	L3	2.0
7 Lee, Megan		951	873	L8	W2	L3	L4	1.0
8 Simpson, Stephen		679	647	W7	L6	L5	L2	1.0
9 Marcjan, Karen		617	535	L1	L4	L2	B	1.0

SCC Tornado

		9/12	TD: Fred Kleist					
1 Readey, John		2310	2314	W6	W5	W4	D2	3.5
2 Pupols, Viktors		2200	2205	W11	W10	W7	D1	3.5
3 Kelley, Dereque		1964	1966	W12	L4	W9	W7	3.0
4 Ferguson, Bobby		2192	2191	W8	W3	L1	H	2.5
5 Kleist, Fred		2070	2071	W9	L1	W11	U	2.0
6 Hickey, Patrick		1813	1808	L1	L7	W12	W8	2.0
7 Buck, Stephen		1755	1759	W13	W6	L2	L3	2.0
8 Baxter, Cecil		1600	1612	L4	W12	W10	L6	2.0
9 Wu, Darren		1528	1531	L5	W13	L3	W14	2.0
10 Gale, Geoffrey		1984	1973	W14	L2	L8	U	1.0
11 Fryberg, Skylor		1867	1863	L2	W14	L5	U	1.0
12 Wang, Michael		1134	1139	L3	L8	L6	W13	1.0
13 Schuhmacher, Don		934	952	L7	L9	W14	L12	1.0
14 Watts, Peter		1355	1329	L10	L11	L13	L9	0.0

SCC Quads

		9/18	TD: Carol Kleist						
1 Binz, Kevin		1728	1742	-	D	D	W	U	2.0
2 Buck, Stephen		1759	1746	D	-	D	U	D	1.5
3 Blumenthal, Gabriel		1586	1612	D	D	-	D	U	1.5
4 Fryberg, Skylor		1863	1841	L	U	D	-	U	0.5
5 Piper, August		1520	1531	U	D	U	U	-	0.5
1 Delson, Ben		1400	1401	W6	L2	W7	2.0		
2 Piper, August		1531	1536	U	W1	D3	1.5		
3 Manber, Devon		1419	1400	W7	L5	D2	1.5		
4 Kleist, Carol		1442	1452	W5	U	U	1.0		
5 Guo, Alex		1225	1253	L4	W3	U	1.0		
6 VanVeen, Kerry		1216	1211	L1	W7	U	1.0		

7 Schuhmacher, Don	952	935	L3	L6	L1	0.0
Autumn Leaves			TD: Fred Kleist			
1 Lund, Richard	1570	1576	W10	H	W2	2.5
2 Wang, Shanglun	769	822	B	W8	L1	2.0
3 Darby, Michael	1864	1865	U	H	W8	1.5
4 Milener, Gene	1407	1412	U	H	W9	1.5
5 Watts, Peter	1329	1359	U	H	W7	1.5
6 Kelley, Dereque	1966	1967	W7	U	U	1.0
7 Roach, Erin	1469	1443	L6	H	L5	0.5
8 Poyneer, Thomas	1118	1075	H	L2	L3	0.5
9 Breneman, Jesse	1062	1055	U	H	L4	0.5
10 Weller, Stephen	1303	1295	L1	U	U	0.0

Seattle Fall Open			TD: Fred Kleist					
Open								
1 Koons, Nat	2229	2239	W14	W6	D5	W3	W2	4.5
2 Collyer, Curt	2187	2189	H	W19	W13	W5	L1	3.5
3 Gale, Geoffrey	1973	1985	X	D13	W12	L1	W8	3.5
4 Lee, Michael	1895	1927	H	D17	D9	W12	W14	3.5
5 Rozenfeld, Yevgeniy	2046	2050	W10	W8	D1	L2	D6	3.0
6 Cloy, Elston	1923	1938	W18	L1	W14	H	D5	3.0
7 Julian, John	1921	1923	H	D9	W16	L8	W13	3.0
8 Milligan, Kerry	1898	1904	W16	L5	W19	W7	L3	3.0
9 Monkhouse, Neale	BC 2076	1958	H	D7	D4	D13	D11	2.5
10 Buck, Stephen	1746	1743	L5	L18	H	W20	W19	2.5
11 Chen, Howard	1597	1621	L13	L14	B	W15	D9	2.5
12 Brewster, Robert	BC 2030	2006	H	W15	L3	L4	D16	2.0
13 Lanka, Adi	1869	1867	W11	D3	L2	D9	L7	2.0
14 O'Gorman, Peter	1808	1810	L1	W11	L6	W18	L4	2.0
15 Hickey, Patrick	1808	1791	D17	L12	H	L11	B	2.0
16 Wilson, Matthew	1626	1631	L8	W21	L7	D19	D12	2.0
17 Selzler, Richard	2032	2020	D15	D4	D18	U	U	1.5
18 Fryberg, Skylor	1841	1834	L6	W10	D17	L14	U	1.5
19 Fabian, Steve	1701	1679	B	L2	L8	D16	L10	1.5
20 Schuhmacher, Don	935	934	U	U	U	L10	U	0.0
21 Schorzman, Boyd	809	808	U	L16	U	U	U	0.0

Reserve								
1 Blumenthal, Gabriel	1612	1659	W10	H	W5	W3	W7	4.5
2 Becker, Brett	OR 1534	1562	W18	W11	D13	W6	H	4.0
3 Warrior, Krishnan	1401	1510	W12	W4	W14	L1	W9	4.0
4 Holcomb, Eric	1587	1576	W23	L3	D11	W17	W13	3.5
5 Li, Jerry	1409	1430	W15	D6	L1	W20	W14	3.5
6 Dietz, R Sterling	1576	1563	W16	D5	W20	L2	H	3.0
7 Smith, Catherine	1545	1531	L14	W18	W12	W10	L1	3.0
8 Wu, Darren	1531	1507	H	L14	W22	W15	D11	3.0
9 Kleist, Carol	1452	1455	W21	H	H	W13	L3	3.0
10 VanVeen, Kerry	1211	1332	L1	W16	W23	L7	W17	3.0
11 Lee, Nathan	1173	1277	W22	L2	D4	X	D8	3.0
12 Watts, Peter	1359	1351	L3	W21	L7	D16	W20	2.5
13 Yang, Matthew	1334	1391	W25	W19	D2	L9	L4	2.5
14 Guo, Alex	1253	1333	W7	W8	L3	H	L5	2.5
15 Schorzman, Boyd	808	868	L5	B	H	L8	W21	2.5
16 Ormori, Michael	1440	1403	L6	L10	H	D12	W24	2.0
17 Inglis, David	1294	1268	H	X	H	L4	L10	2.0
18 Ormori, Jeffrey	1285	1281	L2	L7	H	D21	W22	2.0
19 Louie, Henry	AK 1453	1432	W24	L13	H	F	U	1.5
20 Wang, Michael	1139	1117	H	X	L6	L5	L12	1.5
21 Custer, Vaughn	0	1007	L9	L12	W24	D18	L15	1.5
22 Plesha, Joe	1569	1388	L11	H	L8	H	L18	1.0
23 Selzler, Andrew	1404	1373	L4	W24	L10	U	U	1.0
24 Schuhmacher, Don	934	903	L19	L23	L21	B	L16	1.0
25 Piper, August	1536	1511	L13	F	U	U	U	0.0

Extra Rated Game						
1 Wang, Michael	1117	1153	1.0			
2 Inglis, David	1268	1237	0.0			

Spokane City Championship			8/14-15 TD: David Griffin					
1 Sprenkle, David	2296(2249)	2287(2252)	L	D	D	W	(W)	3.0
2 Collyer, Curt	2178(1942)	2187(1939)	W	D	D	L	(L)	2.0

Your Mailing Label

Please use your mailing label as evidence of membership. The first line of your label contains the expiration date as the 4-digit year followed by the 2-digit month (e.g., 200407 for this month). This is followed by a letter code indicating membership type (e.g., A for adult, J for Junior, L for library, Z for life members). The letter "F" will also appear for each additional family member. Please contact the business manager if you find any errors or if your renewal isn't processed within 1 to 2 months. (If you renew late in the month, the next month's label may still show the old expiration date.)

50 Years Ago

Washington Chess Letter

November 1954

by Russell "Rusty" Miller

John DeWitt continues as Editor. R. R. Merk was the circulation head with Ken Mulford as Publisher. Contributors: John Nourse ("Nourse AdNauseam"), Fred Weaver ("From Chess Life"), Viktors Pupols ("Vox Pupoli"), Stephen Falk ("Chess Bits"), Dan Wade (feature writer), Ollie LaFreniere (feature writer).

Puget Sound League results:

Seattle CC	6.0	Kitsap	4.0
Latvian	9.5	McNeil Island	0.5
Seattle YMCA	5.0	Olympia	5.0
Tacoma	5.0	West Seattle	5.0
Seattle YMCA	5.0	Latvian	5.0
Olympia	3.0	Seattle CC	7.0
West Seattle	3.0	McNeil Island	7.0
Kitsap	4.0	U of W	5.0

The Latvian team leads play with two matches won and one drawn. Olaf Ulvestad was playing for the Seattle CC as was Dan Wade. State Champion William Bills held down first board for Seattle YMCA, while Vernon Holmes was tops for Tacoma CC. O.W. Manney was first board for West Seattle and Jim Amidon had that duty for Olympia. Ted Warner was playing first board for U of W.

The *Chess Life* report gives Walter Shipman as winner of the New Jersey Open. The Golden Gate Championship must have been a big affair, for R. Curris won in 16-3 with W. Addison 2nd at 15.5. Irving Rivise won the 50-player Southern California qualifying event with 10 points.

10 players turned up for the 30-30 tournament in November and chess master Olaf Ulvestad won it 5-0. The Ulvestad simultaneous at the Seattle CC resulted in a 10-6 score for the master. Beating him were: Jim Amidon, John DeWitt, Viktors Pupols, Russell Vellias and William Shemaris, while draws were recorded by Max Bader and George Bishop. The master numbered among his victims Ted Warner and William Bills. There was a 15 seconds per move blindfold game against Amidon won by the master.

It was reported that Pupols won his playoff match with Jim McCormick to win the State Junior Title. "Nourse AdNauseam" this issue was about chess set collecting. A short report is given about the Whidby Island Chess Club. ■



A Christmas Story continued from page 10

succeed only in getting yourself in trouble if you continue this project. Your employer may even now know what you are doing."

The woman laughed. "You think so, huh? Well, the boss is gone. He won't be back till after New Year's. And anyway, he wouldn't care — and even if he did, so what?"

She gave him a plastic sack for the package, to keep it out of the rain. Peachcroft adjusted his hat and pulled the useless coat up around his shoulders as he made his way to the door. The woman said as he went out, "Your friend will like that gift, mister. Have a Merry Christmas!"

TO BE CONTINUED IN DECEMBER

Pat Herbers' Perfection Survives Despite Upsets All Around

by David Griffin

For the first time ever, the Spokane Chess Club, along with Dave Rowles and Dawn Fields, brought forth the Great Auntie's Open. This new event, which took place at Auntie's Book Store, was run in conjunction with the Spokane City Championship. The prize fund, which started at \$400, ended up at \$575. I myself was hoping for at least twenty players, but 29 players and a house player participated! Included were four players from Missoula, Montana, as well as four from the Seattle area. The Spokane club didn't disappoint, with 21 club players as well as house player Dave Rowles.

The original prize structure awarded prizes to first and second place as well as to U2000, U1700, and U1400. However, the overwhelming amount of players in the event allowed for a restructuring. As fourteen players were rated between 1700 and 1999, two U2000 prizes were added as well as the other prizes being raised.

Pat Herbers was the only one of the top six players not to be drawn or beaten by a lower-rated player. In fact, Pat finished with a perfect 5-0 score to take sole first. After surviving an early scare from Garrett Morkill, who took him to the limit in the opening round, Pat then went on to finish Saturday as the only player with a 3-0 score. On Sunday, Pat turned

back both Chris Kalina and John Julian to claim the top prize unscathed. Geoff Gale of Seattle and Chris Drake of Spokane tied for second with four points apiece. Chris Kalina, John Julian, and Kirk Steinocher all tied for first-third in the U2000 category with 3.5 points apiece. Alex Morkill and James Stripes tied for the U1700 prize, scoring three each. Both managed fifth round upset wins to claim a share of the prize. In the U1400 category, Jim Waugh, Zach Countryman, and newcomer Abe Kenney all scored two points.

The tournament had many upsets, with at least one upset of more than 200 points in each round. Waugh, Countryman, and Kenny Erickson got the event off to an explosive start, as each recorded an upset draw. The second round was more of the same for Countryman, as he managed a 450-point upset over Bill McBroom, the largest in the event. Dan Copeland also recorded an upset win in round two. In round three, Garrett Morkill kept the upsets rolling when he managed a draw with Dave Rowles. On Sunday, Phil Weyland pulled off a fourth round upset win. Alex Morkill and Stripes finished off the upsets.

Finally, thank you to Dave Rowles and Dawn Fields, and to Auntie's Book Store, for making this first time event a great success!

King's Indian Fianchetto

Bob Martin (1733)

Zachary Countryman (1151)

Spokane, Auntie's Open (1) 2004

1. ♖f3 ♗f6 2. c4 g6 3. g3 ♘g7 4. ♘g2
O-O 5. O-O d6 6. d4 ♗bd7 7. ♗c3 e5
8. dxe5 ♗xe5 9. ♗xe5 dxe5 10. ♘g5 h6
11. ♘xf6 ♗xf6 12. ♗b3 c6 13. ♖ad1
♗e7 14. ♗e4 ♘e6 15. ♗a4 b5 16. cxb5
cxb5 17. ♗xb5 ♖ab8 18. ♗a5 ♖xb2
19. ♖d2 ♖xd2 20. ♗xd2 ♖b8 21. ♖c1
♖b2 22. a3 ♖a2 23. a4 ♗d7 24. ♗e4
♖xa4 25. ♗e1 ♖a2 26. ♗c5 ♗b5 27.
♗xe6 ♖xe2 28. ♗f1 fxe6



29. ♖b1 ♗c4 30. ♖c1 Draw

English

James Waugh (1286)

Brad Bodie (1734)

Spokane, Auntie's Open (1) 2004

1. c4 c5 2. ♗c3 g6 3. e3 ♗c6 4. ♗f3
♘g7 5. d4 b6 6. ♘e2 ♗f6 7. O-O O-O
8. d5 ♗a5 9. ♖b1 ♗b7 10. a4 a6 11. e4
d6 12. h3 ♘d7 13. ♘d3 ♖b8 14. ♗e2
♗a5 15. b3 ♗e8 16. ♘d2 e6 17. e5
exd5 18. ♗xd5 ♗c6 19. ♘c3 dxe5 20.
♗xe5 ♗xe5 21. ♘xe5 ♖b7 22. ♘xg7
♗xg7 23. ♗f3 ♘c8 24. ♖fe1 f5 25.
♖e5 ♗e6 26. ♗e3 f4 27. ♗e2 ♗d4
28. ♗e1 f3 29. g4 ♘f5



30. ♘xf5 gxf5 31. ♗e7+ ♖xe7 32.

♖xe7 fxg4 33. ♗e5 ♗f5 34. ♖a7 ♗g5
Draw

Center Counter

Zachary Countryman (1151)

Bill McBroom (1605)

Spokane, Auntie's Open (2) 2004

1. e4 d5 2. exd5 ♗xd5 3. ♗c3 ♗a5
4. ♗f3 ♗f6 5. d4 ♘g4 6. h3 ♘xf3
7. ♗xf3 c6 8. ♘d2 ♗b6 9. ♗a4 ♗xd4
10. ♗c3 ♗bd7 11. O-O-O O-O-O
12. ♘e3 ♗b4 13. ♘xa7 e6 14. ♖d4
♗a5 15. ♖a4 ♗g5+ 16. ♗b1 ♗e5
17. ♗e2 ♗d2 18. ♘b6 ♗xe2 19. ♖a8+
♗d7 20. ♖xd8+ ♗e7 21. ♘xe2 ♗ed7
22. ♘c7 g6 23. ♖d1 ♗d5 24. ♗xd5+
exd5 25. ♘g4 f5 1-0

Catalan

John Julian (1885)

Christopher Drake (1980)

Spokane, Aunties Open (2) 2004

1. d4 ♗f6 2. c4 e6 3. g3 d5 4. ♘g2 c6
5. ♗f3 ♘d6 6. O-O h6 7. ♗c2 ♗bd7
8. ♖d1 O-O 9. ♗bd2 ♖b8 10. e4 dxe4

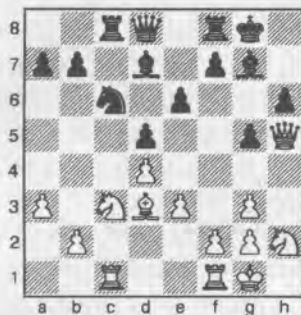
11. ♖xe4 ♜xe4 12. ♖xe4 ♜f6 13. ♖e2 b5 14. ♜e5 ♙b7 15. b3 bxc4 16. bxc4 ♖c7 17. ♜g4 ♖e7 18. c5 ♙c7 19. ♜e5 ♜d5 20. ♙e1 ♙a5 21. ♙d2 ♙c7 22. ♙xd5 exd5 23. ♖g4 ♙xe5 24. ♙xe5 ♖f6 25. ♙f5 ♖g6 Draw

Torre Attack

Chris Kalina (1963)
Stephen Buck (1770)

Spokane, Auntie's Open (2) 2004

1. d4 d5 2. ♜f3 ♜f6 3. ♙g5 e6 4. e3 c5 5. c3 ♜c6 6. ♙e2 cxd4 7. cxd4 ♙e7 8. O-O O-O 9. ♜c3 ♙d7 10. a3 ♙c8 11. ♙c1 h6 12. ♙h4 g5 13. ♙g3 ♜h5 14. ♙d3 ♜xg3 15. hxg3 ♙f6 16. ♜h2 ♙g7 17. ♖h5



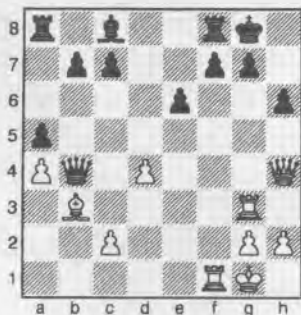
17... ♙e8 18. ♜g4 f5 19. ♜xh6+ ♙xh6 20. ♖xh6 ♖e7 21. f4 g4 22. ♜f2 ♖g7 23. ♖xe6+ 1-0

French

Dan McCourt (1600)
Adam Attwood (1447)

Spokane, Auntie's Open (2) 2004

1. e4 e6 2. d4 d5 3. ♙e3 dxe4 4. f3 exf3 5. ♜xf3 ♜f6 6. ♙c4 ♜bd7 7. O-O ♜b6 8. ♙b3 ♜bd5 9. ♖e2 ♜xe3 10. ♖xe3 ♙e7 11. ♜c3 O-O 12. ♜e5 ♜d5 13. ♖e4 ♜xc3 14. bxc3 ♙f6 15. ♙ad1 ♙xe5 16. ♖xe5 ♖d6 17. ♖e4 ♖c6 18. ♖h4 a5 19. a4 ♖xc3 20. ♙d3 ♖b4 21. ♙h3 h6 22. ♙g3



22... c5 23. c4 ♜h7 24. ♙xg7+ ♜xg7 25. ♖f6+ ♜g8 26. ♙a2 ♖c3 27. ♖xh6

♖xd4+ 28. ♜h1 ♖g7 29. ♖e3 0-1

English

Bob Martin (1733)
John Julian (1885)

Spokane, Auntie's Open (3) 2004

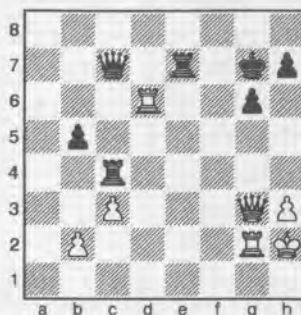
1. ♜f3 ♜f6 2. c4 d6 3. ♜c3 g6 4. g3 ♙g7 5. ♙g2 O-O 6. O-O ♜bd7 7. d3 e5 8. ♙d2 c6 9. ♖c1 ♜e8 10. ♙h6 f5 11. ♙xg7 ♜xg7 12. ♖h6 ♜f6 13. ♖d2 ♖e7 14. ♙ad1 ♙d7 15. e4 ♙ad8 16. ♖g5 ♜e6 17. ♖e3 f4 18. ♖e2 g5 19. h3 h5 20. ♜h2 ♜d4 21. ♖e1 g4 22. hxg4 hxg4 23. f3 fxg3 24. ♖xg3 ♜h5 25. ♖e1 g3 26. ♜h1 0-1

Sicilian Closed

Christopher Drake (1980)
Stephen Buck (1770)

Spokane, Auntie's Open (4) 2004

1. e4 c5 2. ♜c3 ♜c6 3. f4 d6 4. ♜f3 g6 5. g3 ♙g7 6. ♙g2 e6 7. O-O ♜ge7 8. d3 O-O 9. ♙e3 ♜d4 10. h3 ♜ec6 11. ♖d2 ♙b8 12. a4 a6 13. ♙ab1 b5 14. axb5 axb5 15. ♜e2 ♜xf3+ 16. ♙xf3 ♜d4 17. ♙g2 f5 18. c3 ♜xe2+ 19. ♖xe2 ♙b7 20. e5 ♙xg2 21. ♜xg2 ♖c7 22. exd6 ♖xd6 23. ♜h2 ♙fe8 24. ♙bd1 e5 25. ♖f2 exf4 26. ♙xf4 ♙e5 27. ♙d2 ♙bd8 28. ♙fd1 ♙xf4 29. gxf4 ♖c7 30. ♖f3 ♙e7 31. ♙f1 ♙de8 32. ♙ff2 ♙e3 33. ♖d5+ ♜g7 34. d4 cxd4 35. ♖xd4+ ♜h6 36. ♖f6 ♙3e6 37. ♖g5+ ♜g7 38. ♙g2 ♙8e7 39. ♖xf5 ♙f6 40. ♖g4 ♙xf4 41. ♖g3 ♙c4 42. ♙d6



42... ♖c5 43. ♙xg6+ 1-0

Sicilian Alapin

Pat Herbers (1932)
Chris Kalina (1963)

Spokane, Auntie's Open (4) 2004

1. e4 c5 2. d4 cxd4 3. c3 ♜f6 4. e5 ♜d5 5. cxd4 ♜c6 6. ♙c4 ♜b6 7. ♙b3 e6 8. ♜f3 d6 9. ♖e2 ♙e7 10. O-O O-O 11. ♜c3 a6 12. ♙d1 ♖c7 13. ♙c2 ♜d7

14. ♜g5 g6 15. ♜xh7 dxe5 16. ♜xf8 ♙xf8 17. dxe5 ♜dxe5 18. ♙f4 ♙d6 19. ♙g5 ♙e7 20. h4 b5 21. ♜e4 ♙b7 22. h5 ♙xg5 23. ♜xg5 ♜g7 24. hxg6 ♙h8 25. gxf7 ♖e7 26. ♖e3 ♙h5 27. f4 ♜g4 28. ♜xe6+ ♜xf7 29. ♜g5+ ♜f8 30. ♖xe7+ ♜xe7 31. ♙e1+ ♜d8 32. ♙d1 ♙h4 33. g3 ♙h2 34. ♙xg4 ♙xb2 35. ♙ad1+ ♜c7 36. ♙e2 1-0

Nimzo-Indian Sämisch

John Julian (1885)
Kirk Steinocher (1850)

Spokane, Auntie's Open (4) 2004

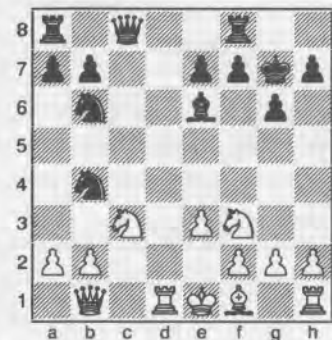
1. d4 ♜f6 2. c4 e6 3. ♜c3 ♙b4 4. f3 c5 5. d5 ♙xc3+ 6. bxc3 d6 7. e4 e5 8. ♙d3 a6 9. ♜e2 ♜bd7 10. O-O h6 11. ♜g3 ♜f8 12. ♙c2 ♜g6 13. ♙a4+ ♙d7 14. ♜f5 O-O 15. ♙xd7 ♖xd7 16. ♙b1 ♜e7 17. ♜g3 b5 18. f4 ♜g4 19. f5 ♜f6 20. ♜h5 ♜xh5 21. ♖xh5 f6 22. ♙f3 ♙f7 23. ♙xh6 ♜f8 24. ♙d2 bxc4 25. ♙g3 ♖a4 26. ♖h8+ ♜g8 27. ♙h6 ♖d7 28. ♙b6 ♙d8 29. ♙xg7+ ♜e7 30. ♙g6 ♖c7 31. ♙b1 ♜d7 32. ♖h4 ♙b8 33. ♖e1 ♙b6 34. ♙h8 ♜e7 35. ♙xf6 ♜xg6 36. ♙g5 ♖b7 1-0

English

Brad Bodie (1734)
James Stripes (1487)

Spokane, Auntie's Open (5) 2004

1. d4 ♜f6 2. c4 c5 3. ♜f3 g6 4. ♜c3 cxd4 5. ♜xd4 ♙g7 6. ♙d2 ♜c6 7. ♜f3 d5 8. cxd5 ♜xd5 9. ♖b3 ♜b6 10. ♙d1 ♙e6 11. ♖c2 O-O 12. ♙h6 ♖c8 13. ♙xg7 ♜xg7 14. e3 ♜b4 15. ♖b1



15... ♙xa2 16. ♜xa2 ♜c2+ 17. ♜d2 ♙d8+ 18. ♙d3 ♙xd3+ 19. ♜xd3 ♖c4+ 20. ♜d2 ♙d8+ 21. ♜d4 ♜xd4 22. ♜c3 ♜b5+ 23. ♜e1 ♜xc3 24. bxc3 ♖xc3+ 25. ♜e2 ♖c4+ 26. ♙d3 ♜a4 27. ♙c1 ♖g4+ 28. ♜f1 ♙d7 29. f3 ♖e6 30. ♙cd1 ♖c4 31. ♜f2 ♙c7 32. ♖a1+ ♜c3 33. ♙3d2 b5 34. ♙c1 b4 35. ♙d4

♖e2+ 36.♘g3 ♖xe3 37.♜xb4 ♖xc1
38.♖a5 ♘e2+ 39.♙f2 ♖g1+ 40.♙xe2
♜c2+ 41.♙d3 ♖d1+ 42.♙e4 f5+
43.♙f4 ♖d2+ 44.♘g3 ♖xg2+ 45.♙f4
♖xh2+ 46.♙e3 ♖d2 mate

French Steinitz

Christopher Drake (1980)
Phillip Weyland (1695)

Spokane, Auntie's Open (5) 2004

1.e4 e6 2.d4 d5 3.♘c3 ♘f6 4.e5 ♘fd7
5.f4 c5 6.♘f3 ♘c6 7.♙e3 cxd4 8.
♘xd4 a6 9.♙d3 ♘xd4 10.♙xd4 ♙c5
11.♙xc5 ♘xc5 12.O-O O-O 13.♜f3
♖b6 14.♙h1



14...♖xb2 15.♜b1 ♖a3 16.♘xd5
♘xd3 17.♜xd3 ♖xa2 18.♘b6 ♜b8

19.♜a1 ♖b2 20.♜b3 ♖xa1 21.♖xa1
♜d8 22.h3 ♙d7 23.♘c4 ♙c6 24.♘d6
♜d7 25.♖xa6 ♙d5 26.♖a7 ♜bd8
27.♜c3 h6 28.♖b6 ♙c6 29.♙h2 1-0

Catalan

John Julian (1885)
Pat Herbers (1932)

Spokane, Auntie's Open (5) 2004

1.d4 d5 2.c4 e6 3.g3 g6 4.♙g2 ♙g7
5.♘f3 ♘e7 6.O-O O-O 7.cxd5 exd5
8.♘c3 c6 9.b4 ♙g4 10.e3 ♘d7 11.
♖b3 ♘b6 12.♘d2 ♖d7 13.♜e1 h5
14.♙b2 h4 15.e4 hxg3 16.hxg3 ♙h3
17.♘e2 ♙xg2 18.♙xg2 dxe4 19.♘xe4
♖d5 20.♖c2 ♘f5 21.♘f4 ♖c4 22.
♖d2 ♜ad8 23.♜ec1 ♖b5 24.♜c5 ♖a6



Double Fianchetto

Alex Morkill (1533)
Bill McBroom (1605)

Spokane, Auntie's Open (5) 2004

1.♘f3 d5 2.g3 ♘f6 3.b3 c6 4.♙b2
♘bd7 5.♙g2 ♖c7 6.d4 e6 7.O-O ♙e7
8.c4 O-O 9.♘c3 ♜e8 10.♜e1 ♙b4
11.a3 ♙xc3 12.♙xc3 ♘e4 13.♖c2
♘df6 14.♘d2 ♘xc3 15.♖xc3 ♙d7
16.e4 e5 17.cxd5 exd4 18.♖xd4 ♜ad8
19.♖xa7 cxd5 20.exd5 ♖c3 21.♘f3
♖xb3 22.d6 ♙c6 23.♘d4 ♜xe1+
24.♜xe1 ♖c3 25.♜e7 ♖c1+ 26.♙f1
h6 27.♘xc6 ♖xc6 28.♜xb7 ♖xd6
29.♜xf7 ♜d7 30.♜xd7 ♘xd7 31.
♖a8+ ♙f7 32.♙c4+ ♙e7 33.a4 ♖d1+
34.♙g2 ♖c2 35.♙b5 ♖c5 36.♖c6
♖xc6+ 37.♙xc6 ♘b8 38.♙b5 ♙d6
39.♙f3 ♙e5 40.♙g4 g6 41.f4+ ♙f6
42.a5 h5+ 43.♙f3 g5 44.fxg5+ ♙xg5
45.a6 ♘xa6 46.♙xa6 h4 47.g4 ♙g6
48.♙g2 ♙g5 49.♙h3 1-0

Add Punch continued from page 12

A loss can also be etched in stone by your attitude. In some fights, even before the first punch is thrown, you can see in a boxer's eyes that he knows he's going to lose. This "I'm doomed" attitude does more harm than any mismatch in skill. If you think you're doomed before the fight, you probably are. It's a self-fulfilling prophecy. If you play only with a view to survive or to survive as long as you can, you're blind to opportunities to win. You're constantly covering up in expectation of your opponent's next punch. Fighting back aggressively is not only the best way to win, it's also the best way to survive.

Boxing is hardly a perfect model for how one should go about studying chess. However, boxing does have graphic lessons that can give you a new perspective on your chess play. ■

2005 Washington Open

May 28-30

at the new Lynnwood Convention Center

\$12,500 gtd

4 sections: Open, U2000, U1700, U1400

The Italian Gambit & A Guiding Repertoire For White – E4!

by Jude Acers and George Laven

is now available through —

TRAFFORD Publishing

Phone 250-383-6864

Toll-free 1-888-232-4444 (Canada & USA only)

Order online at www.trafford.com/robots/02-0417.html

Also at www.italiangambit.com



Carl A. Haessler

Lessons • Lectures • Exhibitions

USCF Life Master
3-Time Oregon Champion

(503) 358-7871
ssmith6154@aol.com

Apropos Invitational #2

Something a little different from your friends at
Apropos!

Here's how it works:

The first 20 players to register for the tournament via e-mail, plus four alternates, are in! There's no entry fee! The only requirement is that you not break your commitment to play. If you do, you will not be eligible to play in any of the next three Apropos invitationals. The top five finishers from each of the first four events will meet in the fifth event to declare the Season One champion and winner of the Apropos Cup!

There's a generous prize fund of \$500.00, especially when you consider there's no entry fee!

Registration is easy, simply e-mail kent@aproposretail.com. You'll receive a confirmation e-mail asking for your FIRM COMMITMENT to play, and upon receiving your confirmation you're in!

Alternates: If you are not one of the first 20 whose registration is accepted, you will be asked if you would like to be an alternate. The first four to accept an alternate's spot will have the same playing commitment as those in the tournament. More information will be provided to alternates.

- ♔ 4 -Round SS
- ♔ No Entry Fee
- ♔ \$500 Prize Fund:
 - \$250.00 1st
 - \$150.00 2nd
 - \$50.00 1st Expert
 - \$50.00 1st A
- ♔ #2 open to Master, Expert, A Players Only
- ♔ Free Refreshments
- ♔ Sunday Pre-Round Brunch
- ♔ USCF Rated
- ♔ Qualifier for the 2005 Apropos Cup
- ♔ First 20 Players + 4 Alternates Only, Register Today!

The Apropos Invitational #2 Chess Tournament

December 4-5, 2004

Location: Apropos offices, 3400 188th St SW #185, Lynnwood WA 98037. Conveniently near Alderwood Mall. **Time Controls:** 40/2, SD/1 **Rounds:** 10am, 4pm. **Misc:** NS/NC; USCF and WCF/OCF required. Players only at the tournament site, except by pre-arrangement with TD. **TD and Contact:** Kent McNall (kent@aproposretail.com). Hosted by Apropos Chess Events, 13409 51st Ave W, Edmonds WA 98026

Watch for the Apropos Invitational #3, coming Spring 2005, for A, B, and C Players!

Scholastic Checkup with Dr. Leo

Chess games typically produce a winning player and a losing player. Is there more to chess than competition, winning, and game outcomes?

Chess does involve winning and losing but chess is more about the process of playing, the enjoyment of mental challenge, and the pleasure in setting and solving mental problems than in the outcome of the game. Chess is mostly about the human penchant for puzzle solving and the intrinsic intellectual rewards reaped from thinking through a situation to achieve a reasonable and successful resolution.

Playing chess is its own greatest reward. Camaraderie between players, the spirit of just and intense competition, and the challenge of seeing both into our own mind and into the mind of an opponent are all fulfilling reasons for playing the game of chess. Chess also has the added potential of bringing a player into profound mental and emotional contact with him or herself.

To cite one example, chess can be an expression of the Noble Eightfold Path. This path – and chess is certainly a journey not to be confused with the destination of victory or defeat – is traditionally said to be comprised of the following eight aspects:

1. Right Views
2. Right Intention
3. Right Speech
4. Right Action
5. Right Enterprise
6. Right Effort
7. Right Mindfulness
8. Right Concentration.

In chess, a right view is essential to orienting one's thinking and in providing a complete factual basis for strategy and tactics. See, then Think! Chess players would do well to view (see, notice, apprehend) all checks, all captures and all threats that both sides have available. Chess players also need to visualize possible variations of play and see ahead.

Chess players have the right intentions when they want to do their best, play their hardest, and learn from whatever happens in a game (even losing!). A chess player with the right intentions practices good sportspersonship and accepts victory with grace and defeat with silence. The right intention is to play the game intending to win with a willingness to learn from a possible loss.

The right speech in chess is no speech! Mature and confident chess players do what they can to allow their opponents opportunities to play well. Although chess players are not expected to help their opponents play well, they will not disturb, distract, or hinder their opponents by unnecessary talking during play.

A chessplayer demonstrates right action when they follow the touchmove rule and reach out to make a move only after they have decided upon their move. Right action also entails the calling over of a Tournament Director (by raising a hand) whenever a problem arises during play.

Right enterprise involves preparation and training for play. The will to win is not as important as the will to prepare to win. Any sport requires practice, and good chess play is generated by prior puzzle solving, training games, and sustained opening and endgame preparation.

Chess players with right effort endeavor to play their best, make their best effort, and be the best opponents possible. In chess, right effort means seeing, thinking, planning, calculating, visualizing, and deciding. Right effort requires that chess players involve their hearts and their minds in playing the game at every moment and during every move.

A chess player needs not only to think, but to metathink. Right mindfulness may refer to the usefulness of a chess player watching and monitoring his or her own thinking and thought pro-

Washington Chess Federation (WCF)/Oregon Chess Federation (OCF)

Adult: \$25/year (12 issues). Residents of OR and WA receive a 1-year membership in the OCF or WCF.

Members receive *Northwest Chess* via periodicals mail each month.

Junior: \$17/year (12 issues) or \$10/6 months (6 issues). Must be under age 20 at time of expiration. OR/WA residents only; state membership included. Juniors receive *Northwest Chess* each month.

USA Subscriber: \$25/year (12 issues). For subscribers living inside the US mail system, but outside the OR/WA area. Subscribers receive *Northwest Chess* each month.

Family: \$5/year (not a subscription — membership only). This class of membership is open only to co-resident of an Adult or Junior member. Expires at the same time.

Trial: \$13 (membership and subscription, expires in 3 months). By paying the balance of dues for an Adult or Junior membership, this option can be extended to 12 months. The balance must be paid before the trial status is expired.

Membership Application/Renewal Form

Name _____ If Junior, give date of birth _____

E-Mail (if you want to subscribe to the *Northwest Chess* e-mail mailing list) _____

Phone Number (optional, will not be used for telemarketing) (_____) _____

Street or P.O. Box _____

City _____ State _____ Zip _____

Country (if not USA) _____ Amount Enclosed \$ _____

Make check or money order (USA \$ only) out to Northwest Chess and mail to:

Credit this membership to:

Eric Holcomb
NW Chess Business Manager
PMB 342
12932 SE Kent-Kangley Rd.
Kent WA 98030

For general information, Eric Holcomb (253) 850-2996, e-mail: Eric@Holcomb.com

cesses during the game. Chess players are witness to their own behavior as well as to their opponents' behavior. See the board. See the pieces. See your opponent. And see yourself!

Right concentration is the true force which a chess player wields to attain victory and to stave off defeat. Chess players need to think clearly, intensely, and with a single-minded focus on strategic and tactical ideas as each one comes along in a game. The human mind is a lens and chessplayers have the ability to focus their thought and will upon problems and opportunities with their mental lens.

Chess is a discipline of mind. The competition inherent to chess playing represents one path to developing and refining one's own mental discipline. Chess play is a means to practice the harnessing of one's own mental resources to perform useful creative and imaginative work on some problem or situation at hand.

Chess results, in their highest sense and utility, can help to inform us of how our discipline of

mind is coming along. Chess results are diagnostic in this way and can serve as useful feedback to direct our chess efforts and studies. It is wonderful to win a chess game, but that glory is temporary and often limited to lasting only until we play our next game!

Chess can bring us much more than winning and chess is always teaching us about ourselves even as we lose. The spirit of right competition allows us to accept loss as much or more than victory. Accept loss and then you can truly accept and enjoy victory! Playing chess is better than winning and always provides players with more than losing.

Chess has the potential of teaching us about ourselves. Chess is a means to an end and not essentially an end in and of itself. Dr. Leo believes that looking into the mirror of the chessboard can help each of us to be more empathetic, more thoughtful and ultimately more human as we interact with ourselves and others.

Seattle Chess Club

Address

17517 15 Ave NE
Seattle WA 98155

Infoline

206-417-5405

Address for Entries

SCC Tnmt Dir
2420 S 137 St
Seattle WA 98168

SCC 125th Birthday Celebration

Friday, Dec. 17 **Rapid Transit Tournament** (10 seconds per move) – Celebrating the early Twentieth Century – EF: \$2 (non-members \$3) 1st Rd - 8:00 p.m.

Saturday, Dec. 18 **Simultaneous Exhibitions** — details on exhibitors, times, and EFs to appear in December.

Birthday Party starts at 7:00 p.m. The SCC especially invites its former Presidents and Champions.

Sunday, Dec. 19 **High-Roller Octagonals** — Celebrating the 1980s — 3SS, 8-player sections, G/90; EF: \$10 (non-members \$15); Prizes: \$40-20; Reg.: 9-9:45 a.m.; Rds: 10-1:15-4:30; Misc: USCF, WCF/OCF memb. req'd, OSA. 1/2-K rated. NS, NC.

SCC 2005 Weekend Calendar

Novice: February 12, May 7, September 10

Quads: Jan. 22, Feb. 19, Mar. 26, Apr. 23, May 14, June 11, July 23, Aug. 27, Sept. 10, Oct. 1, Oct. 29, Dec. 17

Tornados: Jan. 9, Feb. 6, Mar. 13, Apr. 10, May 8, June 5, July 10, Aug. 28, Sept. 18, Oct. 9, Nov. 6, Dec. 4

Seattle City Ch – January 14-16

Seafair Open – July 29-31

Seattle Spring Open – April 1-3

Seattle Fall Open – September 23-25

Plus-Score Swiss – April 30-May 1

Rain City – November 19-20

Emerald City – June 24-26

☞ Nov. 20

SCC Saturday Quads☞

Format: 3-RR, 4-plyr sections by rating. **TC:** 40/90, SD/60. **EF:** \$6 (+\$5 fee for non-SCC). **Prizes:** Free entry for future quad. **Reg:** 9:00-9:45 a.m. **Rds:** 10:00-2:30-ASAP. **Misc:** USCF, WCF/OCF memb. req'd, OSA. NS, NC.

☞ Dec. 5

SCC Sunday Tornado☞

Format: 4SS. **TC:** G/64. **EF:** \$14 (+\$5 fee for non-SCC). **Prizes:** 1st 35%, 2nd 27%, Bottom Half 1st 22%, 2nd 16% (\$10 from each EF goes to prize fund). **Reg.:** 10:30-11:15 a.m. **Rds:** 11:30-1:50-4:10-6:30. **Misc:** USCF, WCF/OCF memb. req'd, OSA. 1/2-K rated. NS, NC.

Future Events

☞ indicates a Christopher Memorial NW Grand Prix event

☞ November 20 PCC Game-in-60
Site: *Portland CC*, 8205 SW 24 Ave, Portland OR. **Format:** 1-section, 4-round Swiss. TD may switch to 5SS and G/45 if over 20 entries. **TC:** G/60. **EF:** \$20 \$5 discount for PCC members. No advance entries. **Prize Fund:** \$\$200 b/20. **Prizes:** \$60-40-30, U1800 35, U1500 35. **Reg:** 9-9:30 am. **Byes:** 1/2 point bye if requested at reg. **Misc:** OCF/WCF and USCF memb req'd, OSA. **Info:** Neil Dale 503-256-5233 www.aboutchess.org.

☞ December 11-12 WA Challengers' Cup
Site: *Table Top Games*, 2510 S 84 St, Suite D22, Tacoma WA. **Format:** 2-section, 5-round Swiss. **TC:** Sat. 40/90 & SD/60, Sun.

40/2 & SD/1. **EF:** \$30 if rec'd by 12/10, \$35 at site. UNR free w/ purchase of 1-yr USCF & WCF. **Prize Fund:** \$\$675 gtd. **Prizes:** *Open* - \$120-100, U2000 80, Highest finishing WA resident seeded into WA State Champ.; *Reserve (U1900)* - \$100-80, U1700 70, U1500 65, U1300 60. **Reg:** 9-9:45 am. **Rds:** Sat 10-2:30-70, Sun 10-4. **Byes:** Two half-point byes avail. rds 1-4. **Misc:** Sponsored by WCF. NS. NC. W. **Ent/Info:** WCF c/o Gary Dorfner, 8423 E B St, Tacoma WA 98445; Ggarychess@aol.com; 253-535-2536 (voice or fax).

☞ December 11 Xmas Chaos
Site: *Valley Library*, 12004 E Main, Spokane WA. **Format:** 4SS. **TC:** G/45. **EF:** \$11. **Prize Fund:** 90% of EF. **Reg:** 10-10:30 am. **Rds:** Lunch break TBD. **Misc:** USCF 1/2-K rated. Coffee & snacks provided. **Info:** David Griffin 509-928-3260 dbgriffin@hotmail.com.

More Scholastic Events

November 2004

13 Chess Mates Fall Kick-off	Georgi Orlov 206-789-9614 chessmates@earthlink.net www.chessmates.org Seattle WA
13 Rosemont Ridge Scholastic	Andrea Boyd-Helm 503-650-9347 jazt@netzero.net www.rrms.wlww.k12.or.us West Linn OR
13 Coquille Fall Scholastic (K-12)	Nancy Keller 396-3855 dr.keller@nbmconline.com Coquille OR
20 Eugene Fall Classic	Pat Thurlow 541-343-4977 patt@efn.org Eugene OR
20 Kulshan Fall Classic (K-12)	KulshanChess@cpurity.com http://home.earthlink.net/~kaech5 Bellingham WA
26 WA Class Scholastic	Carol Kleist 206-242-7076 WCFtrnmtcor@cs.com Bellevue WA
29 NW Gamma Tournament	Randy Kaech kaech5@earthlink.net http://home.earthlink.net/~kaech5 Bellingham WA

December 2004

4 Intermt Tmt (Invitational)	Kirk Winges kwinges@comcast.net http://whsca.org Seattle WA
4 Richland Rook Round-up (K-2,3,4,5,6,7-12)	Cathy Kuwamoto (509)942-2380 Cathy_Kuwamoto@rsd.edu Richland WA
4 Bryant Fall Classic (K, 1-3,4-6)	Joe Roseto jroseto@comcast.net www.bryantschool.org Seattle WA
11 Class Action Tmt (JHS,MS & HS)	Kirk Winges kwinges@comcast.net http://whsca.org Tukwila WA
18 Skagit ChessFest	Randy Walther, RandyWalther@msn.com, http://home.earthlink.net/~kaech5/ Sedro-Woolley WA
18 Hillsboro Holiday Classic (K-12)	hnoonanharris@comcast.net Hillsboro OR
18 Christmas Classic (K-12)	Steve Seymour (360)887-8315 seymours@pacifier.com Ridgefield WA
20-22 Chess Odyssey Holiday Camp	P. Prochaska 503-504-5756 pete@chessodyssey.com www.chessodyssey.com Beaverton OR

January 2005

15 Chess Odyssey Winter Olympics Team Tnmt	P. Prochaska 503-504-5756 pete@chessodyssey.com www.chessodyssey.com Hillsboro OR
15 Ollie LaFreniere Memorial (K-8)	Jon Licht 360-754-6472 jlicht@earthlink.net Olympia WA
15 WA Scholastic Action Ch (6-8,9-12)	Kirk Winges kwinges@comcast.net http://whsca.org Edmonds WA
15 Apple Crunch (K-12)	Loren Schmidt gaijin@nwinform.net Yakima WA
15 Whatcom County Championship	http://home.earthlink.net/~kaech5 Lynden WA
17 Martin Luther King Day Chess (K-12)	hnoonanharris@earthlink.net Hillsboro OR
22 Heritage Winter Scholastic (K,1-3,4-6)	Karen Dixon karen@dixonshome.com www.heritagechessclub.org Bothell WA
23 Chess Odyssey Parent/Child Workshop	P. Prochaska 503-504-5756 pete@chessodyssey.com www.chessodyssey.com Beaverton OR
28-9 WA HS Individual Ch	Kirk Winges kwinges@comcast.net http://whsca.org Lynnwood WA

February 2005

5 WA MS/JHS Individual Ch	Kirk Winges kwinges@comcast.net http://whsca.org Lynnwood WA
12 Central Seattle Chess Combo (K-6, K-8 qds)	Meg Strong winterwren@juno.com Seattle WA
12 Chess Jam 2005	Randy Kaech kaech5@earthlink.net http://home.earthlink.net/~kaech5 Ferndale WA
12 Cornerstone (K,1-3,4-6,7-8,9-12)	Norm May nmay@pacifier.com Vancouver WA
19 NSC Winter Scholastic (K-3,4-6)	http://www.chessplayer.com/NSC_REG.htm Seattle WA
19 Eastern Wash. Ch (K-2,3,4,5-6,7-8,9-12)	Cathy Kuwamoto (509)942-2380 Cathy_Kuwamoto@rsd.edu Richland WA
21 Chess Odyssey Girls Only Pentathlon	P. Prochaska 503-504-5756 pete@chessodyssey.com www.chessodyssey.com Hillsboro OR
26 Queen's Quest (K-8 girls only)	Jon Licht 360-754-6472 jlicht@earthlink.net Olympia WA

USCF NATIONAL Scholastics

For information on any national event, contact Diane Reese at events@uschess.org.

Dec 10-12, 2004: National Scholastic K-12 Grade Championship Orlando FL

April 8-10, 2005: Super Nationals III Nashville TN

Open Events

November 2004

11,18	Turkey Quads, Rds 2&3	David Griffin 509-928-3260 dbgriffin@hotmail.com www.spokanechessclub.org ... Spokane WA
12	TCC G/45, Rds 3&4	Gary Dorfner 253-535-2536 ggarychess@aol.com www.tacomachessclub.netfirms.com .. Tacoma WA
13-14	Tacoma Open CANCELLED	Gary Dorfner 253-535-2536 ggarychess@aol.com .. Tacoma WA
13-14	Silver Star Challenge	Wally Steinke 250-545-6677 www.chess.bc.ca Vernon BC
120	Portland CC G/60 NOTE DATE CHANGE	Bruce Peterson 503-805-0493 b_r_u_c_e_p_e@yahoo.com www.aboutchess.org Portland OR
120	SCC Saturday Quads	SCC Infoline 206-417-5405 cfkleist@cs.com www.seattlechessclub.org... Seattle WA
120	The Gobbler	David Griffin 509-928-3260 dbgriffin@hotmail.com www.spokanechessclub.org ... Spokane WA
20	IM Georgi Orlov Simul	chessmates@earthlink.net Seattle WA
120-21	Jack Taylor Memorial	Gregory Churchill gregorychurchill@shaw.ca Victoria BC
126-28	WA Class Championships	Carol Kleist 206-242-7076 WCFTnmtcor@cs.com www.nwchess.com .. Bellevue WA

December 2004

3,10,17	TCC Mini-Swiss #2	Gary Dorfner 253-535-2536 ggarychess@aol.com www.tacomachessclub.netfirms.com .. Tacoma WA
4-5	Apropos Invitational #2	Kent McNall kent@aproposretail.com Lynnwood WA
125	SCC Sunday Tornado	SCC Infoline 206-417-5405 cfkleist@cs.com www.seattlechessclub.org... Seattle WA
111	Xmas Chaos	David Griffin 509-928-3260 dbgriffin@hotmail.com www.spokanechessclub.org .. Spokane WA
111-12	WA Challengers' Cup	Gary Dorfner 253-535-2536 ggarychess@aol.com www.tacomachessclub.netfirms.com .. Tacoma WA
17-19	SCC 125th Birthday Celebration	SCC Infoline 206-417-5405 cfkleist@cs.com www.seattlechessclub.org... Seattle WA
118-19	Portland Winter Open	Bruce Peterson 503-805-0493 b_r_u_c_e_p_e@yahoo.com www.aboutchess.org Portland OR
26-29	North American Open	Continental Chess www.chesstour.com Las Vegas NV

January 2005

18-9	Gresham Open	Neil Dale pdxchess@aol.com www.aboutchess.org Portland OR
15-16	Vancouver Team Tnmt	Bruce Harper 604-263-8264 bruce54321@shaw.ca www.chess.bc.ca Vancouver BC
120,27	Winter Championship, Rds 1&2	David Griffin 509-928-3260 dbgriffin@hotmail.com www.spokanechessclub.org ... Spokane WA
122-23	Don McAdam Memorial	Gregory Churchill gregorychurchill@shaw.ca Victoria BC
28	TCC Membership Mtg	Gary Dorfner 253-535-2536 ggarychess@aol.com www.tacomachessclub.netfirms.com .. Tacoma WA
129	Portland CC Game-in-45	Bruce Peterson 503-805-0493 b_r_u_c_e_p_e@yahoo.com www.aboutchess.org Portland OR
129-30	Stephen Christopher Memorial	Gary Dorfner 253-535-2536 ggarychess@aol.com www.tacomachessclub.netfirms.com .. Tacoma WA

February 2005

13,10,17	Winter Championship, Rds 3-5	David Griffin 509-928-3260 dbgriffin@hotmail.com www.spokanechessclub.org ... Spokane WA
4,11,18,25	Pierce County Ch, Rds 1-4	Gary Dorfner 253-535-2536 ggarychess@aol.com www.tacomachessclub.netfirms.com .. Tacoma WA
16-7	Winter Open	Ben Daswani 604-596-1606 bndaswani@bcnet.com www.geocities.com/vanseasonal .Burnaby BC
126	Portland CC Game-in-60	Bruce Peterson 503-805-0493 b_r_u_c_e_p_e@yahoo.com www.aboutchess.org Portland OR
126-27	Dave Collyer Memorial	Kevin Korsmo kmkorsmo@comcast.net www.spokanechessclub.org Spokane WA

March 2005

4	Pierce County Ch, Rd 5	Gary Dorfner 253-535-2536 ggarychess@aol.com www.tacomachessclub.netfirms.com .. Tacoma WA
125-6	Northwest Open	Gary Dorfner 253-535-2536 ggarychess@aol.com www.tacomachessclub.netfirms.com .. Tacoma WA
112-13	Portland Spring Open	Bruce Peterson 503-805-0493 b_r_u_c_e_p_e@yahoo.com www.aboutchess.org Portland OR
18-20	Far West Open	Jerry Weikel 775-747-1405 wackykykl@aol.com Reno NV
126	Portland CC Game-in-60	Bruce Peterson 503-805-0493 b_r_u_c_e_p_e@yahoo.com www.aboutchess.org Portland OR

April 2005

1,8,15,22,29	Tacoma City Ch	Gary Dorfner 253-535-2536 ggarychess@aol.com www.tacomachessclub.netfirms.com .. Tacoma WA
116-17	33rd Daffodil Open	Gary Dorfner 253-535-2536 ggarychess@aol.com www.tacomachessclub.netfirms.com .. Tacoma WA
123-24	Daffodil Open	Gregory Churchill gregorychurchill@shaw.ca Victoria BC
130	Portland CC Game-in-60	Bruce Peterson 503-805-0493 b_r_u_c_e_p_e@yahoo.com www.aboutchess.org Portland OR

May 2005

17-8	Spring Open	Ben Daswani 604-596-1606 bndaswani@bcnet.com www.geocities.com/vanseasonal .Burnaby BC
14	Pierce County Action Ch	Gary Dorfner 253-535-2536 ggarychess@aol.com www.tacomachessclub.netfirms.com .. Tacoma WA
18-22	HB Global Chess Challenge	800-964-2448 www.hbfoundation.org Minneapolis MN
20-23	Keres Memorial	www.chess.bc.ca BC
121	Portland CC Game-in-60	Bruce Peterson 503-805-0493 b_r_u_c_e_p_e@yahoo.com www.aboutchess.org Portland OR
128-30	Washington Open	Carol Kleist 206-242-7076 WCFTnmtcor@cs.com Lynnwood WA

NOTE: A '121' in front of the date indicates a Christopher Memorial Northwest GP event. A '123' in front of the date indicates an Island GP event. A '124' in front of the date indicates a Vancouver Seasonal GP event. Events listed in boldface type have tournament announcements (in our Future Events Section) or display advertisements elsewhere in this issue