



NORTHWEST CHESS

Washington Chess Federation

August 2005
805 \$3.95

926-0601A *****28
MIKE MACGREGOR



First round action at the Lilac Open

**Raptis, Bartron Enjoy Lilacs in Spokane
Return of the Crosstables
Emigh, Rowan and More!**

Northwest Chess

August 2005, Volume 59,8 Issue 686

ISSN Publication 0146-6941

Published monthly by the Northwest Chess Board. Of
fice of record: 2420 S 137 St, Seattle WA 98168.

POSTMASTER: Send Address Changes to:
Northwest Chess, PO Box 84746,
Seattle WA 98124-6046.

Periodicals Postage Paid at Seattle, WA

USPS periodicals postage permit number (0422-390)

NWC Staff

Editor: Fred Kleist

Games Editor: FM Chuck Schulien

Technical Assistance: Russell Miller

Printer: Snohomish Publishing

Business Manager: Eric Holcomb

Board Representatives

Oregon: Clark Harmon

& Dave Yoshinaga

Washington: Kent McNall &

Murlin Varner

Entire contents copyright 2005 by Northwest Chess. All rights reserved. Published opinions are those of the contributors and do not necessarily reflect the views of the editor or the Northwest Chess Board.

Advertising Rates

Display ads run \$150 for a full page, \$100 for trim ads; \$85 for a half-page, \$60 for trim ads; \$30 for a quarter page, \$20 for an eighth of a page, and \$10 for a business card-size ad. Add \$10 if the ad is not copy ready and the staff must do layout work. A 15% discount is available for two or more consecutive ads of the same size.

Event Announcement Rates

Each appearance in *Event Announcements* costs \$20. Payment is required before publication. Enclose \$2 additional if an invoice is required—this is a mandatory service charge.

Advertising & Copy Deadline

Please get your ads and submissions in by the 10th of the month for the items to appear in the next issue (e.g., no later than Oct 10 for the Nov issue). The editor cannot guarantee that late submissions will appear in the desired issue.

Submit all ads and payments to:

Business Manager, Northwest Chess
PMB 342, 12932 SE Kent-Kangley Rd
Kent WA 98030-7940
Eric@Holcomb.com

Submissions

Hey folks! The editor depends on YOU to make this magazine vibrant and exciting. I need your games, photographs, thoughts, and ideas. This magazine has a great tradition and I hope people will contribute enthusiastically. You can send me your materials via U.S. mail or via e-mail:

Northwest Chess
Fred Kleist, Editor
2420 S. 137th Street
Seattle WA 98168
NWCeditor@cs.com
206-242-7076

If you'd like your games annotated by a senior master, send them to our Games Editor:

FM Chuck Schulien

cschess@hotmail.com

Subscription Information

Northwest Chess is a benefit of membership in either the Oregon or Washington Chess Federations. Adult dues are \$25; Junior dues (under 20) are \$17 (or \$10 for six months). Please send dues, along with pertinent information to:

Business Manager

Northwest Chess

Eric Holcomb

PMB 342, 12932 SE Kent-Kangley Rd

Kent WA 98030-7940

Eric@Holcomb.com

http://www.nwchess.com

Northwest Grand Prix Administrator

Murlin Varner

13329 208 Ave NE

Woodinville WA 98072

MEVjr54@yahoo.com

425-882-0102

Oregon Chess Federation

President

Jerry Ramey

541-232-0328

j-adoube@efn.org

Vice President

Dave Yoshinaga

503-670-9855 ext 7

dave@kdtonline.com

Secretary

Megan Esler

503-292-6842

jaffagold@yahoo.com

Treasurer

Clark Harmon

charmon@solarprism.com

Director-at-Large #1

Mike Terrill

503-580-9187

pflotus@yahoo.com

Director-at-Large #2

Grisha Alpernas

grisha_alpernas@hotmail.com

National Representative

Carl Haessler

ssmith6154@aol.com

Scholastic Coordinator

Peter Prochaska

503-504-5756

pete@chessodyssey.com

Washington Chess Federation

President

Kent McNall

425-672-1304

kent.mcnall@gmail.com

Vice President

Duane Polich

425-462-1776

dpolich@verizon.net

Secretary

Gary Dorfner

253-535-2536

ggarychess@aol.com

Treasurer

Robert J. Allen

253-761-1288

allenrobertj@msn.com

Tournament Coordinator

H. G. Pitre

206-284-9314

hgpitre@attbi.com

Scholastic Coordinator

David Hendricks

425-868-3881

davidhendricks@comcast.net

NW Chess Board Member

Murlin Varner

425-882-0102

MEVjr@yahoo.com

Greetings from the Editor

I suppose you're thinking, "Well, he's going off to Arizona for the US Open; so, naturally, it's a short issue." Untrue! I had the time to produce a 24-page issue, but I had not the articles!



*Editor's
Desk*

You, dear readers, are essential to this magazine, for you are its writers, its photographers, its cartoonists. If you have an idea for an article, but haven't gotten around to writing it yet, now's the time to act!

Best Wishes,

Frederick K. Kleist

Thanks to C. Kleist for proofreading this issue.

Thanks to R. Miller for working on the crosstables.

Northwest Chess Knights

Northwest Chess Knight donors will be listed in the magazine for a period of one year following receipt of donation. Please consider making a donation today to help Northwest Chess!

King: \$1000+
Queen: \$500-\$999
Rook: \$250-\$499
Bishop: \$100-\$249
Knight: \$50-\$99
Pawn: \$15-\$49

Current Patrons

Queen: Kent McNall, Russell Miller

Rook: Nat Koons

Bishop: Wayne Metsker

Knight: Curt Collyer, Matt Fleury, Shankland family

Pawns: Adam Attwood, Robert D. Brewster, David Griffin, Jack Hatfield

Contributions can be sent to the Northwest Chess Business Manager, and are greatly appreciated!

Northwest News

Las Vegas, NV

The US Senior Open, held June 13-18, attracted several Northwesterners. Michael Schemm took top U2000, scoring four points from six and drawing with GM Arthur Bisguier. Carol Kleist tied for second-third U1600 on 2.5.

Philadelphia, PA

This year's World Open was more lightly attended than usual, as slightly less than 1000 players took part. And only a dozen Northwesterners spent the July 4th weekend in the City of Brotherly Love. GM Gregory Serper of Bellevue, WA, scored six points from nine to tie for 13th-39th in the 199-player Open section as did Michael Schemm (Seattle) in the U2000 section (=19th-35th/185). NM Oleg Zaikov (Eugene, OR) scored 5.5 in the Open section. Washingtonian Bryan Black, who scored five in the U2000 section, rounds out the list of plus-scorers.

Seattle, WA

Forty-seven players turned out for this year's Seafair Open, held on July 29-31 at the Seattle CC. FM David Bragg and Josh Sinanan tied for first-second on 4.5/5. FM David Roper is preparing a complete report for the next issue.

The SCC July Quads (7/23) consisted of three sections. Josh Sinanan (1963) won the top quad, scoring 3-0. Devon Manber (1460) defeated three other Class C players in winning the second quad. Sterling Kolde (835) won the bottom trio with a score of 2-0.

David Ellinger (1962) scored 4-0 in winning the 14-player SCC July Tornado, held on July 3. Dereque Kelley and Ben Wyde tied for 2nd-3rd on three points. Dakota Dixon (1497) was tops U1900 at 2.5 and Peter O'Gorman was second with a 2-2 score.

Phoenix, AZ

Nearly twenty Washingtonians and Oregonians will brave the scaring desert heat to play in the US Open as well as the Denker Tournament of High School Champions and the Susan Polgar Invitational for Girls. Blake Salisbury will represent Oregon in the Denker, while David Wyde will represent Washington and will also play in the Open. The Polgar representatives are Taylor Bailey (OR) and Gabriella Rader (WA). The former will be playing in the Open as well. Other Open players include: David Arganian (WA), Richard Banner (OR), Aaron Boonshaft (OR), J. P. Cerminaro & J. P. Cerminaro III (WA), Herman Chiu (OR), Eduardo Daroza (OR), Carl Haessler (OR), Carol & Fred Kleist (WA), Michael Lee (WA), Gregory Serper (WA), Murlin Varner (WA), Adam Weissbarth (WA), and Ben Wyde (WA). ■

Northwest Chess

August 2005

Northwest News
page 3

Tripping through the Lilacs
page 4

Tournament Ads
pages 7, 11, 15

USCF Crosstables
Thanks to Rusty Miller, crosstables have returned
page 9

CNGP Report
page 10

The Tarot Customer, Part I
Don Emigh offers up a chess mystery
page 12

Improving Your Play
One Weakness at a Time
Improving Your Chess with NM Tom Rowan
page 13

The Northwest Chess Calendar
of Upcoming Events
back cover

On the Cover: Lilac Open, first round: (from foreground and left to right) Vern Johnson; Zach Countryman; William Spencer, Kevin Korsmo; Abe Kenney, Chris Kalina; Geoff Gale, James Stripes; John Julian, Chris Copeland; Adam Attwood, and Josh Sinanan. *Photo by Randy Countryman*

Scholastic Summer Chess Camps



Chess Odyssey	various sites OR
503-534-2302 tony@chessodyssey.com www.chessodyssey.com	
Aug 15-19	for ages 7-19 Beaverton OR
WGM Elena Donaldson	various sites WA
chess64@comcast.net www.chessplayer.com/elena_camp.htm	
Aug 8-12	Elena's Summer Chess Camp . Woodinville WA
15-19	Elena's Summer Chess Camp Seattle WA
Evergreen School	Shoreline WA
Danielle 206-957-1533 dlarway@evergreenschool.org www.evergreenschool.org	
Aug 8-12	Advanced (ages 9-15)
Sammamish	Sammamish WA
Jing-Ping 425-246-6326 chineseacademy2000@yahoo.com	
Aug 8-12	for K-12

Raptis, Bartron Run Through the Lilacs

by Kevin Korsmo

Paul Bartron and Nick Raptis won the 2005 revival of the Lilac Open on June 18-19, 2005, with scores of 4.5 in the five round event. The two drew in the fourth round. Raptis then defeated tourney leader Chris Kalina (4.0) in the final round while Barton stopped Geoff Gale to join Raptis in first. Each won \$292.50. Kalina and Phil Weyland tied for third and also had the best "A" score. They won \$155 each for those prizes. Kalina also had the top upset and added \$75 to his payday for that achievement.

Elston Cloy won \$55 for taking second in the "A" category with a 3.5 score. Steve Brendemihl, Michael Cambareri, and Kevin Korsmo won \$58.33 each in taking top honors in the "B" class. Chris Copeland and Zach Countryman each won \$75 sharing first and second in class "C" with 3.0 scores. Vern Johnson and Ron Weyland (2.0) likewise won \$75 each for sharing the class "D" prizes. The tourney paid out a \$1,500 guaranteed prize fund.

The tourney was hard fought with few draws (and most of those resulted from hard fought games) and multiple upsets in nearly every round. The 30 contestants came from four states. Dave Griffin directed the event.

Sicilian

Adam Attwood (1618)

Josh Sinanan (1993)

Spokane, Lilac Open (1) 2005

1.e4 c5 2.♘c3 ♘c6 3.♗c4 e6 4.a3 ♘f6 5.d3 d5 6.exd5 exd5 7.♗a2 ♗e7 8.h3 O-O 9.♘f3 ♗e8 10.O-O h6 11.♗f4 ♗f5 12.♗e1 d4 13.♘e4 ♘d5 14.♗h2 ♗f8 15.♘fd2 ♗d7 16.♗f3 ♗e6 17.♗g3 ♘h7 18.♘f3 f6 19.♘h4 ♗ad8 20.♘g6 b6 21.♘xf8+ ♗xf8 22.♗d6 ♗g8 23.♗xd7 ♗xd7 24.♘d2 ♗fd8 25.♗c4 ♘c7 26.♗xg8+ ♘xg8 27.♗xc7 ♗xc7 28.♗e4 ♘f7 29.♗ae1 b5 30.♘f1 ♗d5 31.f4 ♘a5 32.g4 ♘b7 33.f5 ♘d6 34.♗e6 c4 35.♘f3 cxd3 36.cxd3 g6 37.fxg6+ ♘xg6 38.h4

♘f7 39.h5 ♗c2 40.♘h4 f5 41.♗xh6 fxg4 42.♗ee6 ♘c8 43.♗hf6+ ♘g8 44.♗g6+ ♘f7 45.♗g6+ ♘g8 Draw

Slav

NM Nick Raptis (2323)

Brad Bodie (1693)

Spokane, Lilac Open (1) 2005

1.d4 d5 2.♘f3 ♘f6 3.c4 dxc4 4.♘c3 c6 5.♗g5 ♘bd7 6.e4 ♗a5 7.♗d2 h6 8.♗h4 e5 9.dxe5 ♘xe5 10.♘xe5 ♗xe5 11.f4 ♗e6 12.e5 g5 13.O-O-O ♘d7 14.f5 ♗xf5 15.♗xc4 ♗f4 16.♗xf4 gxf4 17.♗he1 ♗e7 18.e6 ♗xh4 19.exd7+ 1-0

Pillsbury Defense

Kevin Korsmo (1710)

Chris Kalina (1956)

Spokane, Lilac Open (2) 2005

Annotations by Chris Kalina

1.e4 d6 2.d4 e5!?

Uh, Chris, is that you? Where's the Sicilian Dragon?

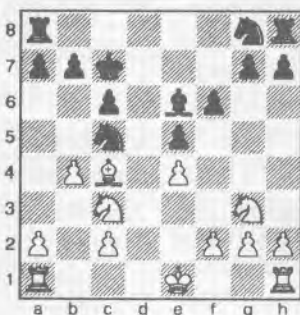
3.dxe5 dxe5 4.♗xd8+ ♘xd8 5.♗c4 f6 6.♗e3 c6

Now Black has achieved his desired pawn structure with c6 and f6 blunting possible annoying Knight invasions on b5, d5, e5, and g5. The King will have a safe haven on c7.

7.♘c3 ♘c7 8.♘ge2 ♘d7 9.♘g3 ♗c5

Planning to exchange both pairs of Bishops. The Black Knights appear to have the edge over their White counterparts in finding useful squares at this point.

10.♗xc5 ♘xc5 11.b4 ♗e6!



Offering the exchange of White's best piece.

12.♗xe6 ♘xe6 13.b5 ♘e7

Instead, 13...♘d4 14.♗b1 ♘xc2+ 15.♘d2 ♘a3 16.♗b3 ♘xb5 wins a pawn.

14.O-O ♗hd8 15.♗fd1 ♘d4

This would have been better on move 13!

16.bxc6 bxc6 17.♗ac1 ♗d7 18.♘f1 ♗ad8 19.♗e1?

White was actively challenging the d-file, but this move not only makes his Rook passive, but also prevents the King from becoming active for a few moves. Better would have been 19.♘e1 and 20.♘ge2 (not 20.♘ce2?? ♘xc2+, mating). I believe that position to be relatively even.

19...g6

Prevents the g3-Knight from going to f5, and prepares to play ...h7-h5-h4, putting the question to the Knight.

20.♘a4

Kevin sees the weakest squares in Black's position.

20...♘e6

Defending the weak square, while also eyeing the f4-square.

21.♘b2

Planning to blockade on d3 if given the chance.

21...♘c5

Denied!

22.f3

A solidifying move so White can attempt to activate without pressure on e4.

22...♗b8 23.♘c4 ♗b4 24.♘e3

As expected.

24...♗a4 25.♗a1 ♘c8

An attempt to route a Knight to c3. 26.♘e2 ♘d6 27.♘c1 ♘b5 28.♘b3 ♘e6 29.♘d1

Spoiling Black's Knight-on-c3 fantasies.

29...c5

At least making a threat of c4 in the near term. Note that c4 is not a threat yet due to 30...c4 31.♖b2 ♖b4 32.a3 ♖xa3 33.♖xa3 cxb3, when Black has achieved nothing useful.

30.♖b2 ♖a6 31.a4 ♖bd4

Obviously, the Knight cannot hop into c3, because 32.♖e3 will have the Knight all dressed up with nowhere to go. The text move is a more active square.

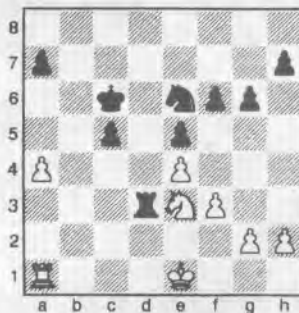
32.♖ec1 ♖b6 33.♖c4?

Missing the following continuation, which wins a pawn.

33...♖xb3 34.cxb3 ♖xb3 35.♖e3 ♖xa1 36.♖xa1 ♖c6

Prepares to play ...f6-f5 and ...♖g5 to undermine White's Knight should it occupy d5.

37.♖e1 ♖d3?



Anticipating that White cannot play 38.♖e2 ♖f4+ 39.♖f2 ♖d2+ 40.♖f1 ♖e2 41.♖e1 ♖a2, winning.

38.♖g4

I had completely forgotten that he had this move. I had planned earlier in the game to play ...h7-h5 preventing this possibility, but never did. Thankfully, I have the next saving move.

38...♖d6

Indirect defense. White should play 39.♖d1, when the trade of Rooks leaves the f6-pawn hung out to dry. 39...♖d4 is the only response, but 40.♖b1 h5 41.♖e3 offers White some compensation.

39.♖xf6?? ♖d4

Kevin told me after the game that he did not look at that move, only 39...♖f4, when a long game is still to be played.

Northwest Chess

40.♖b1 ♖xf6 41.♖b8 ♖f7 42.♖d2 ♖e6 43.♖c3 g5 44.♖c4 h5 45.♖e8 ♖d6 46.a5 ♖b7 47.♖a8 ♖b4+ 48.♖c3 ♖b5 49.♖xa7 ♖c7 50.♖c4 ♖b4+ 51.♖c3 ♖b5+ 0-1

Oops! Kevin told me after the game that this game used up his quota of Knight moves for the whole tournament!

Dutch Leningrad

Josh Sinanan (1993)

Elston Cloy (1930)

Spokane, Lilac Open (3) 2005

1.d4 g6 2.♖f3 ♖g7 3.♖f4 d6 4.e3 f5 5.♖e2 ♖f6 6.h3 O-O 7.O-O ♖e8 8.♖h2 ♖c6 9.♖bd2 e5 10.dxe5 dxe5 11.♖c4 ♖e4 12.c3 ♖h8 13.a4 ♖e7 14.♖c2 ♖g5 15.♖xg5 ♖xg5 16.♖h1 ♖e6 17.e4 f4 18.f3 h5 19.a5 ♖e7 20.♖fd1 g5 21.♖f1 g4 22.fxg4 hxg4 23.hxg4 ♖xg4 24.♖e2 ♖e6 25.♖d2 ♖f7 26.b4 ♖e7 27.♖d3 ♖ad8 28.♖b5 ♖b8 29.♖f3 a6 30.♖c5 ♖f6 31.♖xc7 ♖fc8 32.♖d6 ♖g6 33.♖d2 ♖b3 34.♖dc1 ♖d8 35.♖b2 ♖e6 36.c4 ♖h4 37.♖f1 ♖xf3 38.gxf3 ♖h4 39.♖g1 ♖d4 40.♖ad1 ♖bd8 41.♖xd4 ♖xd4 42.♖f1 ♖f6 43.c5 ♖e7 44.♖c3 ♖d7 45.♖g2 ♖h3 46.♖g1 ♖xf1 47.♖xf1 ♖h3 48.♖g1 ♖xe4 Draw

Usually, I do not annotate my wins. However, I was requested to annotate this one, since it was the biggest upset of the tournament.

Pillsbury Defense

Chris Kalina (1956)

NM Curt Collyer (2214)

Spokane, Lilac Open (3) 2005

Annotations by Chris Kalina

1.d4 d6 2.♖f3 ♖g4 3.e4

Interesting. Curt and I had just studied this opening the night before the tournament, which explains my opening choice in round two against Korsmo, and now this game.

3...♖f6 4.♖c4

4...♖xe4 loses to 5.♖d5.

4...e6 5.♖g5 ♖e7 6.♖bd2 c6 7.c3 ♖bd7 8.O-O ♖xf3

Black is trying to win the e4-pawn.

9.♖xf3 ♖b6

9...♖xe4 is refuted by 10.♖xe4 ♖xg5 (10...d5 11.♖d6+! wins the Queen or else

mates on f7) 11.♖xd6+ ♖e7 12.♖xf7, winning. Now the Queen defends d6.

10.♖d3

Black still cannot capture on e4 effectively, i.e., 10...♖xe4 11.♖xe4 ♖xg5 12.♖g3, with a double attack on d6 and g7.

10...h6 11.♖e3

Vacating the h4-d8 diagonal, as 11.♖h4 would fail to 11...♖xe4 12.♖xe7 ♖xd2, winning a crucial center pawn

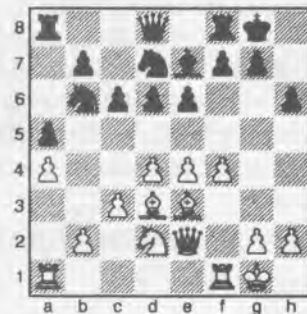
11...♖fd7 12.a4

The idea, if not to play a4-a5, is to prevent access for the Knight to a4, as this may later generate Black some queenside activity.

12...a5 13.♖e2

Perhaps a bit cautious. 13.♖g3 or ♖g4 is more active, menacing the Black kingside. However, on e2, White will have a lesser likelihood of being harassed and is in line to protect b2, if necessary. By moving the Queen, the door is open to launch an attack by f2-f4.

13...O-O 14.f4



Before playing this move, I had to consider Black replying with 14...f5. Three thoughts crossed my mind:

- 1) This fights for control of the center—namely d5—a key central square where Black's pieces can affect the whole board;
- 2) Slows down White's attacking possibilities by controlling g4, and preventing an f4-f5 advance;
- 3) The only drawback for Black is that it weakens the light squares in front of his King.

Without Black's light-squared Bishop on the board, I felt that the resulting position would favor White.

14...f5

Expected.

15. ♖h5

Attempting to invade the light squares.

15... ♖e8!

Access denied!

16. ♖h3

Planning to play g2-g4.

16... ♖g6!

Access denied! Ergh!

17. ♖f3

Elston Cloy pointed out a strong plan for White, viz., 17. ♖h1, 18. ♖g1, and 19. g2-g4.

17... ♖h8 18. ♖g3 ♖h7

A somewhat passive square for the Queen. However, it is holding down the fort.

19. b3

Solidifying the queenside in preparation for moving the a1-Rook.

19... d5?

Black plans sending the b6-Knight on a tour to e4 via c8 and d6, which looks nice. The text left me with two choices - capturing on f5, or pushing past to e5. Pushing past fixes the weakness at e6 and prevents the Knights from getting to e4, while capturing f5 opens the position for the two Bishops and allows access for pieces to e5.

20. exf5 exf5 21. ♖f3 ♖f6

Trying to defend g6.

22. ♖e5 ♖f8

More defenders for g6.

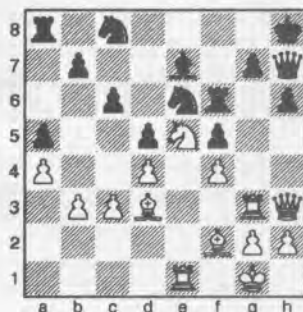
23. ♖e1 ♖c8

Continuing on his plan to place a Knight on e4.

24. ♖f2

Prepares ♖g3-e3, which will then threaten ♖f2-h4.

24... ♖e6?



I believe there's nothing wrong with 24. ♖d6. However, this move loses by force.

25. ♖f7+ ♖xf7

Deflecting Black's Rook from the defense of the third rank. If 25... ♖g8, I had originally planned 26. ♖xe6, however after 26... ♖xf7, I never did find a clear win. Curt pointed out that the correct way would have been 26. ♖xf5 ♖xf5 27. ♖xf5 ♖xf5 28. ♖xh6+, which is a bust.

26. ♖xe6 ♖f8 27. ♖h5 1-0

Black faces serious problems. The f7-Rook is loose. Moving it loses the f5-pawn to ♖xf5, and defending it also loses: 27... ♖d6 28. ♖xd6; 27... ♖g8 28. ♖xh6 wins the Queen or checkmates on h8; 27... ♖g8 28. ♖xf5, threatening 29. ♖xh6 gxh6 30. ♖xg8+ ♖xg8 31. ♖e6; or 27... g6 28. ♖xg6, and 29. ♖xh6 is unpreventable. After a long think, my worthy opponent threw in the towel.

Sicilian Dragon

Steve Brendemihl (1699)

Zach Countryman (1465)

Spokane, Lilac Open (3) 2005

1. e4 c5 2. ♖f3 d6 3. d4 cxd4 4. ♖xd4 ♖f6 5. ♖c3 g6 6. ♖e3 ♖g7 7. f3 O-O 8. ♖d2 ♖d7 9. ♖c4 ♖c6 10. O-O-O ♖c8 11. ♖b3 ♖a5 12. ♖h6 ♖xb3+ 13. ♖xb3 ♖e6 14. ♖xg7 ♖xg7 15. ♖d5 ♖xd5 16. exd5 ♖f5 17. ♖d4 ♖d7 18. ♖he1 ♖c5 19. ♖b3 ♖b5 20. ♖e4 ♖f5 21. ♖h4 ♖c7 22. g4 ♖c8 23. c3 ♖d7 24. ♖h6+ ♖f6 25. g5+ ♖f5 26. ♖d4+ 1-0

King's Indian

NM Curt Collyer (2214)

Elston Cloy (1930)

Spokane, Lilac Open (4) 2005

Annotations by Elston Cloy

1. d4 ♖f6 2. ♖f3 g6 3. c4 ♖g7 4. ♖c3 O-O 5. ♖g5 d6 6. e3 c5 7. d5 h6 8. ♖h4

e6 9. ♖d2 exd5 10. cxd5 g5 11. ♖g3 ♖f5 12. ♖c4 ♖e8 13. ♖b5 a6 14. ♖bxd6 ♖xd6 15. ♖xd6 ♖g6 16. ♖c4

16. ♖xb7!?

16... b5 17. ♖e5 ♖e4 18. f3 ♖xd5 19. e4 ♖e8 20. ♖xd5 ♖xd5 21. exd5 ♖xe5 22. O-O-O ♖d4 23. h4 ♖d7 24. hxg5 hxg5 25. ♖c2?

Curt was in time trouble and afraid of checks on e3. [25. ♖h5 f6 26. ♖d3 ♖e5 27. ♖xe5=]

25... ♖f6 26. d6 ♖d5 Draw

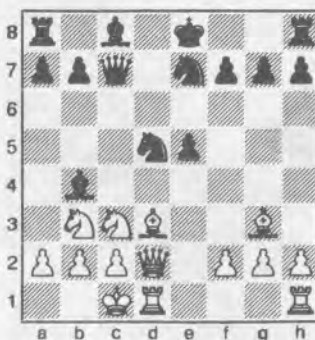
Sicilian

Michael Cambareri (1749)

Josh Sinanan (1993)

Spokane, Lilac Open (4) 2005

1. e4 c5 2. ♖f3 ♖c6 3. d4 cxd4 4. ♖xd4 ♖f6 5. ♖c3 ♖b6 6. ♖b3 e6 7. ♖e3 ♖c7 8. ♖d2 ♖b4 9. ♖d3 d5 10. ♖f4 e5 11. exd5 ♖xd5 12. ♖g3 ♖ce7 13. O-O-O



13... O-O 14. ♖xh7+ ♖xh7 15. ♖d3+ ♖h8 16. ♖xd5 ♖xd5 17. ♖xd5 f6 18. ♖d4 ♖f5 19. ♖h4+ ♖h7 20. ♖e4 g5 21. ♖xh7+ ♖xh7 22. ♖xb4 ♖fc8 23. c3 a5 24. ♖b6 ♖c6 25. ♖e3 a4 26. ♖d2 a3 27. b3 ♖ac8 28. ♖e4 ♖c7 29. ♖b1 f5 30. ♖xg5 ♖g8 31. ♖xe5 ♖e7 32. ♖d1 ♖d8 33. ♖xd8+ ♖xd8 34. ♖d4 1-0

Colle

Phillip Weyland (1835)

Steve Brendemihl (1699)

Spokane, Lilac Open (4) 2005

1. d4 d5 2. e3 c6 3. ♖d3 ♖f6 4. ♖d2 e6 5. ♖gf3 ♖bd7 6. O-O ♖d6 7. ♖e1 O-O 8. e4 dxe4 9. ♖xe4 ♖xe4 10. ♖xe4 f5 11. ♖xe6 ♖b6 12. ♖e2 f4 13. c4 ♖c7 14. ♖e5 ♖g5 15. ♖c2 ♖f5 16. b3 ♖ad8 17. ♖f3 ♖g6 18. ♖xf5 ♖xf5 19. ♖xf5 ♖xf5 20. ♖a3 ♖c8 21. ♖ae1 ♖f7 22. ♖e4 g5 23. ♖e7 ♖g8 24. ♖xg5 ♖fxg5 25. ♖xg5+ ♖xg5 26. ♖e8 1-0

From the Business Manager:

Please send memberships and address changes directly to the business manager's listed address. Sending to the PO Box in Seattle may result in a two-week delay in processing your mail.

54th Annual Oregon Open

September 3, 4 & 5

6-round Swiss: 2 sections, Open & Reserve (under 1800)

Time Control: 40 moves in 2 hours, then sudden death in 1 hour (40/2; SD/1)

Registration: Saturday 9-10:30 am

Rounds: Saturday 11 & 5:30; Sunday 9:30 & 5:30; Monday 9 & 3

Location: Mt. Hood Community College, Vista Room; 26000 SE Stark, Gresham

Check www.aboutchess.org for directions to playing site (not at the same location as previous tournaments)

Organizer: Portland Chess Club **Byes:** 2 Byes available, commit before Rd 3

OCF Business Meeting: Sunday 3:30

\$3,000 Guaranteed

\$1500 to each Section

Increased at discretion of Organizer if more that 100 non-junior players

Open: 1st \$550; 2nd \$300; 3rd \$200 **U2000:** 1st \$200; 2nd \$150; 3rd \$100

Reserve: 1st \$370; 2nd \$220; 3rd \$130 **U1600, U1400, U1200 each \$130-80-50**

Unrated players limited to class prizes of \$100 in Open, \$60 in reserve

Entry: \$60; \$50 if *received* by August 31

Juniors (under 19) may pay \$15 and compete for non-cash prizes in Reserve Section (no PCC discount)

Memberships: USCF and OCF/WCF required (OSA). \$10 discount to PCC members. Christopher Grand Prix.

Name _____

Address _____

USCF ID # _____ USCF Exp _____ OCF/WCF Exp _____ Rating _____

Email _____ Section _____ Bye Rds _____

Entries: Payable to Portland Chess Club; mail to Mike Morris, 2344 NE 27th Ave., Portland, OR 97212

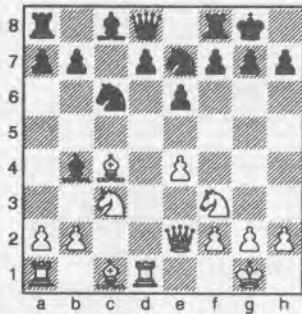
Smith-Morra Gambit

Zach Countryman (1465)

Marcus Robinson (1668)

Spokane, Lilac Open (4) 2005

1.e4 c5 2.d4 cxd4 3.c3 dxc3 4.♖xc3 ♖c6
5.♗f3 e6 6.♗c4 ♗b4 7.O-O ♗ge7 8.
♖e2 O-O 9.♗d1



9...a6 10.♗f4 b5 11.♗b3 ♖b6 12.♗ac1
♗d8 13.a3 ♗xc3 14. ♗xc3 d5 15.exd5
♗xd5 16.♗xd5 ♗xd5 17. ♗xd5 ♗b7 18.
♗dc5 ♗d8 19.h3 b4 20. ♗c1 bxa3 21.
bxa3 h6 22. ♗e3 ♖b3 23. ♗xc6 ♗xc6
24. ♗xc6 ♗d1+ 25.♗h2 ♖b1 26.♖c2
♗h1+ 27.♗g3 ♖b8+ 28.♗f4 1-0

Sicilian Scheveningen

Elston Cloy (1930)

Brad Brodie (1705)

Spokane, Lilac Open (5) 2005

1.e4 c5 2.♗f3 e6 3.d4 cxd4 4.♗xd4 ♗c6
5.♗c3 a6 6.♗e2 d6 7.O-O ♗f6 8.♗e3
♗e7 9.f4 e5? 10.♗b3 b5 11.a3 ♗b7
12.♗d5 exf4 13.♗b6 ♖d7 14.♗c7+ ♗f8
15.♗xa8 ♗xa8 16. ♗xf4 ♗e5 17.♗d3
d5 18.♗d2 ♗g6 19.♖f3 ♗xf4 20.♖xf4
♗d6 21.e5 ♗h5 22.♖f3 ♗xe5 23.♖xh5
♗xb2 24.♗c5+ ♗g8 25. ♗f1 g6 26.♖g5
♗g7 27.♗f3 ♗e8 28.♗d4+ ♗xd4+
29.♗xd4 ♖d6 30.♗f5+ 1-0

After a 4-0 start with some luck in this tournament, I faced Nick Raptis, the top seed, who, along with Paul Bartron, had 3.5/4. My main goal was to not get miniaturized.

Larsen's Opening

Chris Kalina (1956)

NM Nick Raptis (2323)

Spokane, Lilac Open (5) 2005

Annotations by Chris Kalina

1.b3

Knowing that Nick likes kingside fianchetto systems, I chose to contest the diagonal.

1...♗f6 2.♗f3 g6 3.e3 ♗g7 4.♗b2 O-O
5.♗e2 d5 6.d4 c5 7.c4?

As Nick pointed out, castling is better, and if Black plays 7...♗c6, then 8.dxc5.

7...cxd4 8.♗xd4 ♗c6 9.♗b2 dxc4
10.♖xd8 ♗xd8 11.♗xc4 ♗b4

White is getting tied up.

12.♗a3

Forced.

12...♗g4 13.O-O

I did not really think that Black would capture on f3, giving me the two Bishops. I forgot that the b2-Bishop would likely be exchanged.

13...♗xf3 14.gxf3 ♗fd5

Following the general rule that if your opponent has two bishops, exchange one of them.

15.♗xg7 ♗xg7 16.♗b5

An attempt to free up my position some after driving out the annoying b4-Knight with a2-a3.

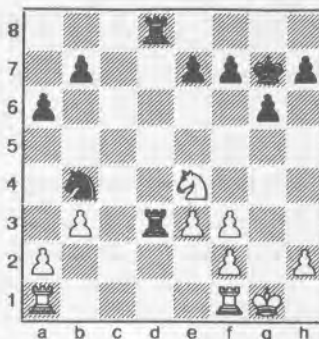
16...a6 17.♗xd5

Not wanting to exchange this piece, I am faced with either exchanging it or retreating it to the passive e2-square.

17...♗xd5 18.♗c3

18.♗c7 fails to 18...♗g5+ 19.♗h1 ♗c8 20. ♗fc1 ♗c6 21.♗xa6 bxa6 22. ♗c3 ♗a7 or 22... ♗b5 23. ♗ac1 ♗b6.

18...♗d3 19.♗e4 ♗ad8



20.♗c5?

A pointless move, since b7 is not in take (20...♗3d5 21.♗xb7 ♗b8). Better would have been 20. ♗fc1, when 21.♗c5 becomes a real threat.

20...♗3d5 21. ♗fc1 b6 22.a3?

Loses a pawn by force.

22...bxc5 23.axb4 cxb4 24. ♗xa6 ♗d1+
25. ♗xd1 ♗xd1+ 26.♗g2 ♗b1 27. ♗a7
♗f6 28. ♗d7 ♗xb3 29. ♗b7 ♗b1 30.h3
b3 31. ♗b5 b2?

Making it hard on himself. Better to leave the pawn on b3 to let the King get to b2, a much easier win.—Raptis

32.♗h2 ♗e6 33.♗g2 ♗d6 34.♗h2 ♗c6
35. ♗b8 ♗c5 36.♗g2 ♗c4 37. ♗c8+
♗d3 38. ♗b8 e5 39. ♗d8+ ♗e2 40. ♗b8
f5

Nick demonstrates strong technique to convert the full point.

41. ♗b7 g5 42. ♗b8 h5 43. ♗b7 f4
44.exf4 gxf4

The e5-pawn acts as a nice shield for the Black King from annoying checks. Not to mention the devastating threat of 45...e4 46.fxe4 f3+, winning. Here I prevent the pawn break, but this allows just enough time to win the Rook.

45. ♗b4 h4

If Tom Crispin ever saw this position, his kibitz would be "And now, MOVE." White plays a few checks before resigning

46. ♗e4+ ♗d3 47. ♗b4 ♗c3 48. ♗b8
♗c1

The point.

49. ♗c8+ ♗d2 50. ♗d8+ ♗e1 0-1

And this gave Nick a share of first. Well played. ■

Serving the chess community since 1972



THE CHESS HOUSE

A sincere thank you for the phone call and the excellent customer service. I look forward to receiving my clock and set!
- S.N., SD, USA

Tournament Quality Board+Pieces+Bag Store all your chess accessories in one convenient carryall



\$25 Special

Stock Code: C212

also mention discount "NWC"



1000's of chess products - free catalog
low price guarantee - service oriented store

www.ChessHouse.com

e4@chesshouse.com

800-348-4749

USCF Crosstabes

SCC June Quads		6/11	TD: Fred Kleist				
1 Gale, Geoffrey	1962	1954	-	D	L	L	0.5
2 Bartron, Paul	2139	2133	D	-	L	W	1.5
3 Sinanan, Joshua	1995	2024	W	W	-	D	2.5
4 Weissbarth, Adam	2172	2163	W	L	D	-	1.5
1 O'Gorman, Peter	1800	1800	-	L	X	D	1.5
2 Ballard, Clint	1929	1930	W	-	W	L	2.0
3 Fryberg, Skylor	1871	1849	F	L	-	L	0.0
4 Hickey, Patrick	1761	1810	D	W	W	-	2.5
1 Monahan, Darby	1561	1553	W	W	L	-	2.0
2 Cohen, Eryn	731	788	L	-	D	F	0.5
3 Kostic, Miodrag	1098	1076	L	D	-	L	0.5
4 Ioli, Mark	1693	1703	W	X	W	-	3.0
1 Wei, Alva	963	960	-	W	L	L	1.0
2 McKay, Casey	688	667	L	-	L	L	0.0
3 Oseran, Zachary	1450	1475	W	W	-	W	3.0
4 Li, William	1275	1272	W	W	L	-	2.0

NB: The USCF crosstabes, for the time being do not come in 'standings' order.

Newport Open		6/11-12	TD: Roy Benson						
1 Raptis, Nick	WA	2318	2317	W13	W8	D3	W9	W6	4.5
2 Hoefler, Dennis		2118	2103	W14	W7	W5	L6	L8	3.0
3 Brownell, Landon		2120	2116	W16	W10	D1	L5	W11	3.5
4 Lalic, Vljako	WA	1936	1920	W17	L9	D11	W21	D5	3.0
5 Herrera, Robert		1930	1943	W18	W12	L2	W3	D4	3.5
6 Ball, Larry		1882	1905	W20	W11	W15	W2	L1	4.0
7 Smyth, Scott		1969	1961	W21	L2	W12	D10	H	3.0
8 Brownell, Bryant		1884	1902	W22	L1	W13	W20	W2	4.0
9 Pitre, H G	WA	1842	1852	W23	W4	H	L1	D10	3.0
10 Jacobi, Gunther		1725	1737	W24	L3	W18	D7	D9	3.0
11 Esler, J Brian		1743	1740	W25	L6	D4	W23	L3	2.5
12 Stevens, Daniel		1669	1671	W26	L5	L7	W18	W15	3.0
13 Gagnon, William		1606	1602	L1	W22	L8	W26	D14	2.5
14 Ulrich, Friedrich		1604	1592	L2	D21	H	W25	D13	2.5
15 Davey, Brent		1463	1462	H	W19	L6	W24	L12	2.5
16 Sinclair, Paris		1565	1532	L3	L24	U	U	U	0.0
17 Petersen, George		1259	1255	L4	L23	L21	W19	W18	2.0
18 Benson, Roy	AZ	1330	1305	L5	W26	L10	L12	L17	1.0
19 Babcock, Albert		1278	1216	H	L15	L20	L17	D26	1.0
20 Dickey, Matt		1258	1284	L6	W25	W19	L8	W22	3.0
21 Esler, Megan		1227	1308	L7	D14	W17	L4	W23	2.5
22 Crobar, Woody		1055	1019	L8	L13	L26	B	L20	1.0
23 Yang, Muchen		1161	1174	L9	W17	H	L11	L21	1.5
24 Hylton, C G		957	1047	L10	W16	H	L15	W25	2.5
25 Woods, Theresa		750	738	L11	L20	B	L14	L24	1.0
26 Grimaldi, Richard		1000	1032	L12	L18	W22	L13	D19	1.5

Lilac Open		Spokane	6/18-19	TD: David Griffin						
1 Raptis, Nick		2321	2323	W16	W10	W6	D3	W7	4.5	
2 Collyer, Curt		2215	2201	W17	W11	L7	D8	W15	3.5	
3 Bartron, Paul		2125	2139	W18	W9	W12	D1	L6	4.5	
4 Sinanan, Joshua		1993	1971	D19	W29	D8	L12	D5	2.5	
5 Julian, John		1983	1965	W20	L12	W14	L7	D4	2.5	
6 Gale, Geoffrey		1964	1967	W21	W13	L1	W11	W3	3.0	
7 Kalina, Chris		1955	1986	W22	W15	W2	W5	L1	4.0	
8 Cloy, Elston		1931	1938	X	D14	D4	D2	W16	3.5	
9 Steinocher, Kirk		1912	1897	W24	L3	L17	W19	U	2.0	
10 Weyland, Phil	ID	1835	1857	W27	L1	W18	W13	W12	4.0	
11 Martin, Robert	MT	1778	1764	W26	L2	W20	L6	L13	2.0	
12 Cambareri, Michael		1749	1783	W28	W5	L3	W4	L10	3.0	
13 Brendemihl, Steve		1699	1710	W30	L6	W24	L10	W11	3.0	
14 Benson, Dustin		1721	1725	W25	D8	L5	L15	W19	2.5	
15 Korsmo, Kevin		1708	1718	W31	L7	W28	W14	L2	3.0	
16 Bodie, Brad	ID	1693	1695	L1	D19	W29	W21	L8	2.5	
17 Anderson, Mark	ID	1683	1717	L2	W25	W9	H	U	2.5	
18 Robinson, Marcus	OR	1669	1628	L3	W26	L10	L24	L21	1.0	
19 Attwood, Adam		1618	1617	D4	D16	H	L9	L14	1.5	
20 Copeland, Chris		1584	1596	L5	W27	L11	W28	W25	3.0	
21 Stipes, James		1558	1568	L6	W30	H	L16	W18	2.5	
22 Kenney, Abe		1528	1476	L7	L28	W27	L25	W29	2.0	
23 Erickson, Kenneth	ID	1509	1509	F	U	U	U	U	0.0	
24 Countryman, Zach		1485	1495	L9	W31	L13	W18	W26	3.0	
25 Griffin, David		1498	1487	L14	L17	W31	W22	L20	2.0	
26 Weyland, Ronald	ID	1359	1361	L11	L18	W30	W29	L24	2.0	
27 Johnson, Vern		1383	1373	L10	L20	L22	W31	W28	2.0	
28 Kirlin, Patrick		1297	1300	L12	W22	L15	L20	L27	1.0	
29 Baker, Ted		1242	1216	H	L4	L16	L26	L22	0.5	
30 Waugh, James		1247	1225	L13	L21	L26	H	W31	1.5	
31 Spencer, William	MT	455	453	L15	L24	L25	L27	L30	0.0	

SCC July Tornado		7/3	TD: Fred Kleist					
1 Roper, David		2284	2278	W8	W6	L7	U	2.0
2 Wyde, David		2058	2046	L9	W11	L5	W14	2.0
3 Cloy, Elston		1925	1915	W10	L7	L8	U	1.0
4 Kelley, Dereque		1967	1963	L11	W12	W9	W8	3.0
5 Ellinger, David		1966	1979	W12	W9	W2	W7	4.0
6 Herrera, Robert	OR	1926	1927	W14	L1	W10	U	2.0
7 Wyde, Ben		1958	1967	W13	W3	W1	L5	3.0
8 O'Gorman, Peter		1800	1805	L1	W13	W3	L4	2.0
9 Mathews, Dan		1732	1739	W2	L5	L4	H	1.5
10 Ioli, Mark		1703	1689	L3	W14	L6	L11	1.0
11 Dixon, Dakota		1637	1652	W4	L2	D12	W10	2.5
12 Lee, Megan		1294	1312	L5	L4	D11	W13	1.5
13 Melvin, Michael		1291	1259	L7	L8	L14	L12	0.0
14 Kolde, Sterling		835	870	L6	L10	W13	L2	1.0

Emerald City Open		7/8-10	TD: Fred Kleist						
Open									
1 Gale, Geoffrey		1955	1962	W8	W12	D5	L3	W11	3.5
2 Kleist, Fred		2033	2041	H	W4	U	U	U	1.5
3 Lee, Michael		2021	2039	H	W11	W7	W1	W10	4.5
4 Kalina, Chris		1986	1996	W10	L2	W6	W5	H	3.5
5 Ellinger, David		1963	1966	W9	H	D1	L4	W6	3.0
6 Colorado, Ramon		1859	1839	D11	D7	L4	W13	L5	2.0
7 Lanka, Adi		1857	1845	B	D6	L3	L11	W9	2.5
8 Pitre, H G		1852	1827	L1	D10	L11	B	U	1.5
9 Hickey, Pat		1785	1761	L5	W13	H	L10	L7	1.5
10 Mathews, Dan		1734	1743	L4	D8	H	W9	L3	2.0
11 Hughes, Kamran		1747	1772	D6	L3	W8	W7	L1	2.5
12 Shen, Eric		1609	1621	W13	L1	H	U	W14	2.5
13 Monahan, Darby		1590	1561	L12	L9	H	L6	H	1.0
14 Omori, Jeffrey		1194	1190	U	U	U	U	L12	0.0

Reserve									
1 Dietz, R Sterling		1612	1642	W10	W9	W2	W12	D8	4.5
2 Holcomb, Eric		1549	1510	D8	D3	L1	L7	D4	1.5
3 Lee, Nathan		1545	1530	L9	D2	W4	L8	W10	2.5
4 Hornickde, John		1429	1395	L6	D11	L3	B	D2	2.0
5 Hatfield, Robert		1451	1453	W13	U	U	U	U	1.0
6 Kleist, Carol		1495	1490	W4	H	H	L9	U	2.0
7 Inglis, David		1431	1430	W11	L12	H	W2	H	3.0
8 Witcecki, Thomas		1514	1522	D2	L10	W11	W3	D1	3.0
9 Wang, Michael		1453	1501	W3	L1	W10	W6	D12	3.5
10 Omori, Michael		1470	1450	L1	W8	L9	H	L3	1.5
11 Omori, Jeffrey		1190	1187	L7	D4	L8	H	B	2.0
12 Guo, Anthony		1069	1173	B	W7	H	L1	D9	3.0
13 McGee, Donald		822	820	L5	U	U	U	U	0.0

Portland Summer Open		7/16-17	TD: Korneljs Dale						
Open									
1 Anka, Emil		2518	2520	W16	W9	W8	W4	D3	4.5
2 Raptis, Nick	WA	2323	2306	W17	L11	W14	L9	W5	3.0
3 Harmon, Clark		2234	2249	W18	W14	H	W6	D1	4.0
4 Roua, Radu		2336	2269	W19	W15	W7	L1	L8	3.0
5 Prochaska, Peter		2200	2200	L20	W28	D16	W27	L2	2.5
6 Lin, Benjamin		2124	2129	W21	W25	W11	L3	D9	3.5
7 Hoefler, Dennis		2103	2095	W22	W20	L4	L11	U	2.0
8 Gutman, Richard		2092	2111	W23	W27	L1	W13	W4	4.0
9 Morris, Michael		2073	2092	W24	L1	W18	W2	D6	3.5
10 Salisbury, Blake		2054	2033	L25	W21	L27	W30	W28	3.0
11 Wyde, David	WA	2046	2056	W26	W2	L6	W7	L15	3.0
12 Daroza, Eduardo		2008	1995	L27	H	W28	D25	W26	3.0
13 Gale, Geoffrey	WA	1954	1951	L28	W22	W20	L8	W25	3.0
14 Alpernas, Gregori		1971	1956	W29	L3	L2	D21	D30	2.0
15 Herrera, Robert		1927	1950	W30	L4	H	W19	W11	3.5
16 Wyde, Ben	WA	1967	1976	L1	W23	D5	D26	W27	3.0
17 Smith, Dylan	ID	1910	1890	L2	D24	L26	U	U	0.5
18 Ball, Larry		1905	1886	L3	W29	L9	L28	U	1.0
19 Serres, Drew		1940	1931	L4	D26	W24	L15	W29	2.5
20 Pritchett, Pete		1868	1862	W5	L7	L13	H	L21	1.5
21 Lanka, Adi		1845	1861	L6	L10	W23	D14	W20	2.5
22 Wilkinson, F Scott	WA	1832	1791	L7	L13	H	L29	L23	0.5
23 Banner, Richard		1821	1819	L8	L16	L21	W24	W22	2.0
24 Rosenbaum, David		1744	1730	L9	D17	L19	L23	B	1.5
25 Rosell, John	WA	1734	1757	W10	L6	H	D12	L13	2.0
26 Esler, J Brian		1794	1809	L11	D19	W17	D16	L12	2.0
27 Foster, Raleigh		1650	1710	W12	L8	W10	L5	L16	2.0
28 Chen, Howard	WA	1699	1738	W13	L5	L12	W18	L10	2.0
29 Rankin, Josh		1573	1586	L14	L18	B	W22	L19	2.0
30 Figone, Nick		1446	1460	L15	B	H	L10	D14	2.0

Reserve									
1 Knutson, Keegan	WA	1791	1792	B	L5	W14	W6	W3	4.0
2 Gay, Daniel		1763	1751	W12	D7	D5	W16	D9	3.5

Continued on page 14

Christopher Memorial Northwest Grand Prix

Murlin Varner, administrator
13329 208th Ave. NE
Woodinville WA 98077
mevjr54@yahoo.com

Well, it has been a couple of months since I've made the magazine deadline. Perhaps this report will see print. There have been a number of changes in the leaderboard, due in a large part to the events with multipliers. Since the last list appeared in the magazine, we have added the Newport June Open (times 2), the Lilac Open and Oregon Class (times 3) and the Washington Open (times a whopping 6). By the time this report comes out, the Seafair Open (times 2) and the Columbia Cup (times 3) will have been completed. If you want to make a major move before the end of this year's Grand Prix, you need to plan on attending the events with multipliers. (I have plans to attend the Seafair before heading off to Arizona for the US Open, and the Oregon Open (times 4) Labor Day weekend. I don't think this will be enough to overtake the leaders in class B, but I might as well try, don't you think?)

The Grand Prix is growing again this year. Last year we had 70 Grand Prix events, compared to 68 the year before. This year we already have 62 completed or scheduled just through August. We have many people and thank for this. The Portland started including their monthly Grand Prix. The Newport Open GP event, with more to follow, Brownell is organizing a new Corvallis in August, which I you will support. Kate Taylor event in July in Clatskanie that added a new site and a number of new names to the GP. Watch for additional events from that venue in the future. With at least seven GP events scheduled for September, the end of year total should exceed last year by 20% or more.

Players in 2005 Database			
	OR	WA	--
Master	6	14	7
Expert	9	15	2
A	16	34	8
B	20	52	10
C	20	46	10
D & Under	49	85	22
	120	246	57
Total		423	

Unfortunately, some events have not been supported well recently. In May, the SCC Tornado had six players and the PCC Quads had eight. In June, only six showed up in Tacoma for the TCC G/60. And, on the 16th of July, only four players each made it to the Tacoma/Pierce County Action Championships and the Spokane Summer Lightning Open. I understand real lightning may have inhibited the turnout in Spokane. Organizers know this will happen from time-to-time. Life intrudes. If you find yourself with a free weekend, drop in to play in one of these organizers' future events and help take some of the sting out of their earlier losses. Organizers need players and players need organizers. See you over the 64 squares!

A quick note to organizers: If you are using electronic means to transmit tournament results to the USCF, you no longer need to send me a crosstable. Just send me an email with the tournament's identification number and I can access the results off of the USCF web site. Tournaments are showing up in just a few days. I am writing this on July 22nd, and I have results for all events through last Saturday, not due to prompt mailing of results by directors, but due to the USCF's fast turn-around time on rating and posting! Of course, you still need to send the GP fee to Eric. The USCF web site isn't going to give us that. Thanks.

Current Grand Prix Leaders

Oregon	Masters	Washington
Prochaska, Peter	42.0	Raptis, Nick 182.0
Zaikov, Oleg	22.5	Collyer, Curt 78.0
Haessler, Carl	22.0	Bragg, David 66.0
Harmon, Clark	12.5	Koons, Nat 56.5
Martin, Roger	12.0	Pupols, Viktors 51.0
		Orlov, Georgi 42.0
		Readey, John 41.5

Experts		
Salisbury, Blake	37.0	Gale, Geoff 161.0
Brownell, Landon	29.0	Bartron, Paul 128.5
Phillips, Blake	24.0	Weissbarth, Adam 46.5
Lin, Ben	16.0	Selzler, Ricky 40.5
Griffiths, Morgan	15.0	Rozenfeld, Yevgeniy 39.0
Morris, Michael	15.0	Ballard, Clint 38.5

Class A		
Lakic, Vljako	104.5	Julian, John 105.0
Serres, Drew	98.5	Cloy, Elston 99.5
Banner, Richard	75.5	Cambareri, Michael 80.5
Smyth, Scott	63.0	Fryberg, Skylor 80.5
Herrera, Robert	56.5	Sinanan, Joshua 67.5
Daroza, Eduardo	48.5	Kalina, Chris 64.0

Class B		
Gay, Daniel	76.5	Buck, Steve 81.0
Gay, Patrick	68.0	Copeland, Chris 67.5
Esler, J Brian	56.0	Hughes, Kamran 65.5
Hann, Anthony	46.5	Brendemihl, Steve 60.0
Robinson, Marcus	39.0	Chen, Howard 59.0
Taylor, Michael	30.0	Hickey, Pat 58.5

Class C		
Terrill, Michael	70.5	Attwood, Adam 92.0
Becker, Brett	65.0	Countryman, Zach 70.5
Kudva, Vikram	39.0	Wu, Darren 66.0
Mowery, Zane	25.5	Holcomb, Eric 59.5
Midson, Tony	21.5	Wang, Michael 58.5
Zimber, Craig	21.0	Monahan, Darby 50.5
		Warrier, Vishnu 50.5

Class D & Under		
Bailey, Taylor	75.5	VanVeen, Kerry 53.5
Esler, Megan	43.5	Li, William 49.0
Gregson, Cameron	25.0	Vermulst, Marc 48.0
Harnsberger, Ephraim	25.0	Lee, Megan 47.0
Grinaldi, Richard	22.0	Omori, Jeffrey 44.5
Wang, Eddie	22.0	Waugh, James 44.0

Overall		
Lakic, Vljako	104.5	Raptis, Nick 182.0
Serres, Drew	98.5	Gale, Geoff 161.0
Gay, Daniel	76.5	Bartron, Paul 128.5
Bailey, Taylor	75.5	Julian, John 105.0
Banner, Richard	75.5	Cloy, Elston 99.5
Terrill, Michael	70.5	Attwood, Adam 92.0
Gay, Patrick	68.0	Buck, Steve 81.0
Becker, Brett	65.0	Cambareri, Michael 80.5
Smyth, Scott	63.0	Fryberg, Skylor 80.5
Herrera, Robert	56.5	Collyer, Curt 78.0

Players from outside OR and WA

Weyland, Phillip	ID	1848	74.5
Weyland, Ronald	ID	1442	52.0
Martin, Robert	MT	1764	43.5
deFirmian, Nick	DEN	2626	42.0
Brewster, Robert	BC	2030	37.0
Churchill, Sam	BC	1547	33.0
McCormick, James	NV	2213	33.0
Monkhouse, Neale	BC	1807	30.5
Caluza, Severo	BC	1736	30.0
Skulsky, Ian	BC	2241	30.0
Bodie, Brad	ID	1702	28.5
Erickson, Kenneth	ID	1479	28.0
McCormick, Kyle	KY	unnr	28.0
LOuie, Henry	AK	1469	27.0
McBroom, William	MT	1605	27.0

"Reminds me of a European Chess Festival," IM John Donaldson
~A Weikel Tournament~

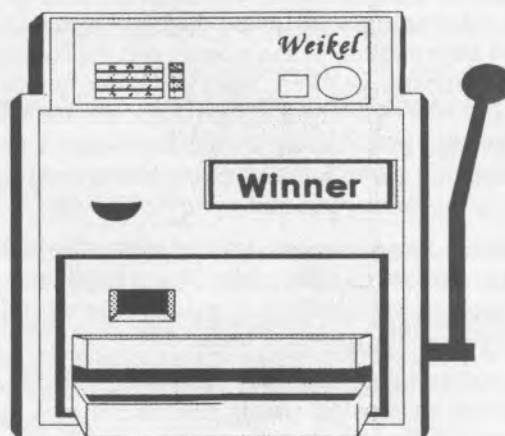
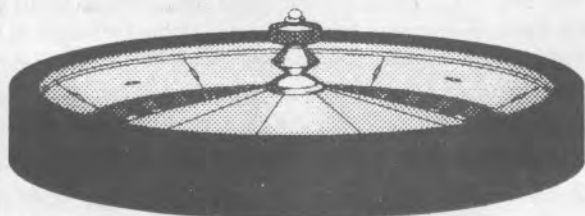
23rd Annual Sands Regency Reno Western States Open

Sands Regency Hotel/Casino, 345 N. Arlington Ave., Reno NV 89501
ph 1-866-FUNSTAY or 775-348-2200

October 14,15,16, 2005

Reno, Nevada

6 Rd. Swiss
\$52,400 projected!
(based on 500 paid entries)
FIDE Rated
200 Grand Prix points!



15 Places paid in ALL (7) Sections!!
TROPHIES FOR TOP THREE PLACES Sections A through E

FREE LECTURE/ANALYSIS by GM Larry Evans

DON'T MISS THIS ONE!!!

The country's **BEST** book/equipment conession (Jay Blem of L.A.) will be present throughout the tourney.

Sands Regency is located in heart of downtown Reno.

GM Boris Spassky former World Champion

will be a special guest at the tournament. He will be in Reno Oct 12-16. Reception Wed., Simul Thur., Book Signing Fri., Clinic on Sat., game analysis on Sun.

United States Chess Federation membership required.

Time control 40/2,20/1. **Hotel:** 866-FUNSTAY or 775-348-2200
Hotel Rates: single-dble \$39 Sun-Thurs, \$59 Fri or Sat +13.5% tax

Mail Entry Fee to
Sands Regency Hotel/
Casino

More Details

For more information or a tournament flyer contact Jerry Weikel, 6578 Valley Wood Dr., Reno, NV 89523 (775) 747-1405 wackykl@aol.com or see *Chess Life* or *NWC* website <http://www.nwchess.com> & <http://www.renochess.org/wso>

The Tarot Customer

by Don Emigh

My name is Jack Diamond. I'm in the Yellow Pages. My office is at Fenway and Forty-fifth, over Desemone's (Madame Desemone's) Tarot Readings. I mention this because Desemone's is where my story starts.

One day in April, I stopped in to say good morning, as I usually do, before I went up the stairs to my office. I stopped in just to be polite, and because she owns the building, and, anyway, it's a good idea to stay on the right side of a Tarot reader. Sometimes I've been a little late with my rent, and I think it's because I always pop in to say good morning that she lets it slide a bit.

On the morning in question, there was a customer sitting at the small table in back. It was so early that the sun still stood behind the buildings, but here was a customer hunched over the Tarot table. He didn't look up as I came in. He was wearing a long coat and a black hat like a friar's hat—round, low-crowned, wide-brimmed. The hat was tilted forward over his face. I couldn't make out his features.

Madame Desemone rose abruptly from the table and came bustling toward me as I closed the door, a huge smile on her face and a couple of bills clutched in one fat, brown hand. Now that was a surprise—the money, I mean.

"Good morning, Madame Desemone," I said in a low voice. I stood with my hand on the door knob, my eyes moving from the stranger at the table to the money in her hand. I didn't want to interrupt a business deal.

"Jackie," she whispered in her husky, masculine voice. She always calls me that; nothing I can do about it. "Jackie," she repeated, nodding over her shoulder toward the table, "da' guy just gimme fifty bucks! He wanna know wha's gonna happen to'm this week." Her black eyes glowed like coals and she showed me about thirty of thirty-two teeth. "He's gonna know, b'lieve me! I'll thinna somet'in'."

I looked over at the table just as the fellow raised his head. I saw him plainly for an instant; I had an unmistakable, recognizing glimpse of him in the second before he disappeared once more under his hat. I couldn't believe my eyes. I had seen him on a television program just the other morning. There, sitting at the Tarot table, was Wolfgang Erfishe.

Now, I don't know a thing about chess. I've never played the game in my life, and I don't know a horse from a castle. But, for the last week, it had been in all the newspapers and on television that a world championship match was going to be played between some guy named Wolfgang Erfishe (I remembered the name and face they showed, because I laughed so hard) and the World Champion, Boris Somebody-or-other.

I grabbed Madame Desemone by the arm and brought her ear up to my face. "Don't you know who that man is?" I said. "His name is Erfishe. He's playing a match this week for the chess championship of the world—right here in town. They say he's a genius and can't lose, but he's real paranoid. He thinks everybody is out to get him."

Madame Desemone's eyes twinkled up into mine. "T'anks, sweetie. I owe ya for dis. Stick aroun' n' preten' you're a customer."

With her thighs pumping and her long skirt swishing, she moved back to the table and sat down heavily, the chair squeaking.

All right, Mr. Erfishe, le's ge' down to bid'ness." She picked up the deck of cards and began to arrange them.

"How did you know my name? I hadn't told you yet."

"It's my bid'ness to know such t'ings, Mr. Erfishe. Dere's I'd dat's hidden from me." She suddenly, sharply drew in her breath, put her fingertips to her temples, and bent over the table. "I'm beginnin' ta see somet'in'," she exclaimed, "somet'in' a great importance t'ya. You're involved in a magnificen' 'ndeavor a some type. I b'lieve it's a contes', p'r'aps a game. Is it a game called 'chess'? Aaah, it's a terrible struggle." She shuddered.

"My God! You mean you actually know these thing? Yes, yes, go on! What will happen? Am I going to beat S_____?"

"Patience, patience! Da cards'll tell. Da future lies in da cards." She began to select certain cards and arrange them in a wide semi-circle in front of Erfishe. She stabbed a finger at one of them. "Ah, hal Victory'll be yours! See? Dis is dee Success card. You'll crush S_____ like a grape on a railro' track! Dis . . . dis . . . wha' . . . no . . ." A look of consternation fell across her face. She became silent.

"What?" demanded Erfishe, alarmed. "I'm going to win, aren't I? What else?"

Madame Desemone looked at the ceiling. Her arms dropped to her sides. In a low, hollow voice she intoned, "Dark Forces. I see Dark Forces stan'in' in da pat'. Dee Success card wavers n' ben's n' whips inna wind. Aieeeeeeeeee!" This last was delivered in a piercing shriek. Erfishe jumped.

"Dark Forces!" he yelled. "What's out there? The Russians?"

With great effort, Madame Desemone composed herself. She brought her hands once more to the table top and pushed one of the Tarot cards toward Erfishe.

"Dear sir," she began, even now your enemies conspire t'preven' your ascension to da t'rone. Here's da proof!" She tapped on the card. "Dis shows da' dey're all aroun' you. Dey walk in your footsteps, n' dey're wai'in' inna street. Dey wanna rip your Success card ta shreds n' reduce ya ta rubble."

"But you said I was going to win."

"Only if—n' b'lieve me, sir, it's a big 'if'—da Dark Forces can be obfuscated. You mus' do everyt'in' possible to foil da conspiracies rankin' 'gainst ya. Ya may need help. I sugges' a bodyguard or detective to help wit' your para . . . paralyzin' pro'lems. See dat customer over dere?" She pointed at me. Erfishe turned. "I interpre' da cards for him once in a while. He's Jack Diamon', da famous detective. He might be da help you're lookin' for." ■

To be continued

Improving Your Play

One Weakness at a Time

by LM Tom Rowan

[This is the latest in a series of articles on improving your chess by LM Tom Rowan. Earlier articles in this series are available for viewing at Tom's chess website, www.tomrowan.com. Send your questions, comments, and suggestions for future articles to Tom at chess@tomrowan.com.]

Your clock is ticking and you have to make a move. If you were attacking or being attacked, your choice would be easier. But here and now, all the moves and plans you can think of seem equally uninspiring. If you keep waiting for inspiration you'll waste a lot of clock time, but if you start playing moves just to stop the clock, you're playing the kind of planless chess that inevitably leads to trouble.

A simple and often recommended piece of advice in such cases can be surprisingly effective. Improve the position of your worst piece. You may not be able to do this in one move but that's OK. At least you have a concrete mini-goal. Once you reach it, your position will be improved.

Now step back and consider a similar scenario that takes place on a larger scale.

Your calendar is ticking and you have to figure out which move to make to become a better chess player. It's not clear what you should work on. Waiting for inspiration to strike wastes valuable study time. Choosing without any overall plan won't work any better here than it would over the board. The improve-your-worst-piece rule suggests a solution.

Improve the weakest aspect of your play.

This gives you a clear plan to focus on so you're not wasting time. As long as you keep applying this to the weakest parts of your play, your overall play will keep improving.

To implement this improvement strategy, you first need a means to determine what the weakest aspect of your play is.

One option is to have a strong player look over some of your games to assess your play. Most likely, he will be able to tell which aspect of your play you need to work on first.

Another option is to figure out your biggest weaknesses yourself by annotating your own games. Where and why do you think you missed tactics? Where and why do you think you wasted too much time choosing a move or a plan? Wherever you think you made a wrong decision, try to figure out the root cause. Were you too tired? Was it an opening or an ending you weren't familiar with? Looking over your comments, you should be able to write a short summary of the game, what you did right and what you did wrong. Looking over the comments of many of your games, you should be able to see patterns of mistakes.

Which option should you choose? That's a trick question. There's no reason you can't choose both. You can't be serious about improving unless you're analyzing your own games. Also, if you want a strong player to assess your play, you need to give him your moves and your comments, not just your moves.

OK, let's suppose you have a pretty good idea what the weakest aspect of your play is. How do you proceed? Obviously, it depends on the weakness. Here are some sample weaknesses and some approaches you might want to try.

Time Pressure

It's easier to play good moves quickly if we feel at home in a position. Don't have too broad an opening repertoire, and don't change your openings frequently. You're better off playing a small number of openings you know well.

Write down the times of each of your moves. Note where you spent a lot of time and try to pin down the reason.

If you think your time pressure is the result of general indecisiveness, try playing practice games where you concentrate primarily on time management. One way to do this is by playing online with fast time controls.

Miscalculation

Calculating is a learnable skill. It takes practice and a clear head. You can practice tactics by solving exercises in books or using software like CT-ART. It's not enough to guess the correct first move of the solution. You have to be able to identify the key variations and assess future positions, all in your head.

To improve your ability to visualize, try playing games of blindfold chess or play over games without using a board.

Missed Tactics

During the game there's no caption that says "White to move and win." You need an inner voice that alerts you to tactical possibilities. If you solve enough tactical exercises, you'll become much better at recognizing common patterns. Then, during a game you'll hear a faint inner voice that tells you something about this position looks familiar, and you can start to look for tactics that might work.

You should also develop your appreciation for how often tactics lurk in positions that appear safe and quiet. If you play over lots of GM games, you'll be stunned by how often they beat weaker players in equal positions simply by looking harder at the tactical possibilities. Even GMs miss plenty of tactics. Have FRITZ or CRAFTY run in the background while you play over GM games, and you'll see plenty of missed tactics that even you could see if your inner tactical voice were operating at the time.

Washington Chess Federation (WCF)/Oregon Chess Federation (OCF)

Adult: \$25/year (12 issues). Residents of OR and WA receive a 1-year membership in the OCF or WCF. Members receive *Northwest Chess* via periodicals mail each month.

Junior: \$17/year (12 issues) or \$10/6 months (6 issues). Must be under age 20 at time of expiration. OR/WA residents only; state membership included. Juniors receive *Northwest Chess* each month.

USA Subscriber: \$25/year (12 issues). For subscribers living inside the US mail system, but outside the OR/WA area. Subscribers receive *Northwest Chess* each month.

Family: \$5/year (not a subscription — membership only). This class of membership is open only to co-resident of an Adult or Junior member. Expires at the same time.

Trial: \$13 (membership and subscription, expires in 3 months). By paying the balance of dues for an Adult membership, this option can be extended to 12 months. The balance must be paid before the trial status is expired.

For general information, Eric Holcomb (253) 850-2996, e-mail: Eric@Holcomb.com

OCF/WCF Membership Application/Renewal Form

Name _____ If Junior, give date of birth _____

E-Mail (if you want to subscribe to the *Northwest Chess* e-mail mailing list) _____

Phone Number (optional, will not be used for telemarketing) (____) _____

Street or P.O. Box _____

City _____ State _____ Zip _____

Country (if not USA) _____ Amount Enclosed \$ _____

Make check or money order (USA \$ only) out to Northwest Chess and mail to:

Credit this membership to:

Eric Holcomb
NW Chess Business Manager
PMB 342
12932 SE Kent-Kangley Rd.

Tactics predominate in blitz play, so playing blitz may be a way to improve your focus on seeing where tactics exist.

Missing or Incorrect Plans

One definition of a chess master is someone who can throw a piece in the air and have it land on the right square. It does seem that way some times. You make reasonable looking moves, and so does your strong opponent. Your position degrades, his seems to improve. You may have trouble labeling any particular move as a mistake. More likely, the problem is that your strong opponent is working with a plan that better meets the demands of the position.

One way to come up with a plan is to first look at the pawn structure. Books like Soltis' *Pawn Structure Chess* are a good resource. They can tell you how you should approach positions with certain common pawn structures.

You can also look to books on the openings you play. A good opening book will discuss the ideas of positions typical of that opening.

Classic annotated games, such as games annotated by Alekhine, Botvinnik, or Bronstein, are another excellent resource. They'll tell you, "In this position, this is what you want to do" and then you get to see how they implement that plan.

Unannotated GM games versus weaker players can be another good resource. Playing through the game on a PC lets you step back and forth through the game. At various points in the game, stop and consider what you would play in that

position. Is there a pawn break you should aim for? Should you be opening up the position? Should you be attacking? Should you be exchanging minor pieces or not? Step ahead in the game to see how the position changes. Did the GM's position improve? If it did, it was almost certainly by design. Back up to the position you looked at earlier. Now that you have a better idea what the GM's goal may have been, see if you now have a better idea what plan should be adopted in that position. Trying to mind-read a GM this way is obviously difficult, but the what-would-I-do-here exercise is usually worthwhile.

Working on improving your play, one weakness at a time, isn't a simple quick fix. It does have the advantage, though, that your efforts will be focused and part of a cohesive plan. ■

Newport Open, Reserve Section continued from page 9

3 Mathews, Dan	WA	1739	1755	W13	W6	W4	W5	L1	4.0
4 Robinson, Marcus		1628	1647	W14	W10	L3	D7	W5	3.5
5 Ward, H H		1656	1659	W15	W1	D2	L3	L4	2.5
6 Gagnon, William		1602	1600	W16	L3	W18	L1	L14	2.0
7 Ulrich, Friedrich		1592	1600	W17	D2	H	D4	D10	3.0
8 Coussens, Nathaniel		1566	1508	L18	L16	U	U	U	0.0
9 Becker, Brett		1535	1553	W19	H	W11	H	D2	3.5
10 Zlatnik, Sean		1535	1536	W20	L4	H	W11	D7	3.0
11 Terrill, Michael		1401	1362	H	W18	L9	L10	L16	1.5
12 Gregson, Cameron		1284	1271	L2	W17	H	D13	L15	2.0
13 Wang, Eddie		1273	1245	L3	W20	L16	D12	D17	2.0
14 You, Sean		1256	1306	L4	W19	L1	W17	W6	3.0
15 Esler, Megan		1356	1372	L5	H	H	W18	W12	3.0
16 Ehrenfreund, Max		1177	1321	L6	W8	W13	L2	W11	3.0
17 Boonshoft, Aaron		1017	1023	L7	L12	W20	L14	D13	1.5
18 Diamond, Noah		1027	1068	W8	L11	L6	L15	W19	2.0
19 Mistry, Zubin		567	550	L9	L14	B	L20	L18	1.0
20 Jones, Morgan		876	787	L10	L13	L17	W19	B	2.0

Future Events

♣ indicates a Christopher Memorial NW Grand Prix event

♣ August 13

Qualchan Quads♣

Site: Gonzaga Univ., Herak 121. **Format:** Round-Robin. **TC:** G/120. **EF:** \$16 (Can be paid at the club or on day of tournament). **Reg:** 9-9:45 am. **Rds:** 10-2:30-7. **Info:** David Griffin 509-928-3260 on weekdays, dbrgrffn@hotmail.com.

♣ August 13

Thurston County Action Champ.♣

Site: Sacred Heart Church Hall, 812 Bowker St SE, Lacey WA. **Format:** 5SS. **TC:** G/30. **EF:** \$20. **Prize Fund:** \$300 gtd. **Prizes:** \$80-70, U2000 60, U1700 50, U1500 40. **Reg:** 9-9:45 a.m. **Rds:** Open - 11-12:30-2-3:30-5. **Misc:** OCF/WCF and USCF memb req'd, OSA. **Ent/Info:** Gary J. Dorfner, 8423 E "B" St, Tacoma WA 98445. 253-535-2536 ggarychess@aol.com. **Organizer:** Dr. Rex DeAsis. **TD:** Gary Dorfner.

♣ August 20-21

Pierce County Open♣

Site: Tacoma CC, 409 Puyallup Ave E (DTI Soccer Building), Room 11, 2nd Floor, Tacoma WA. **Format:** 5-round Swiss. **TC:** Sat 40/90, SD/60; Sun 40/2, SD/1. **EF:** \$25 adv., \$35 at site. **Jrs:** \$20 adv., \$25 at site. **Economy (no prize money):** \$10. **Unrateds - FREE (no prize money; to play for 1st place prize, must pay regular EF).** *Please pre-register—space limited to 25 players.* **Prize Fund:** 67% of full-paying EFs. **Prizes:** 1st-25%, Under 2000 (3 equal groups)—15%, 14%, 13%. **Economy:** certificate and free econ. **EF** to future event. **Reg:** 9-9:45 am. **Rds:** Sat 10-2:30-7, Sun 10-3 (or ASAP). **Byes:** Two ½-pt. byes avail. if declared in advance. **Misc:** USCF & WCF membership req'd. **NS. NC. Ent/Info:** Gary J. Dorfner, 8423 E "B" St, Tacoma WA 98445. Make checks payable to TCC. 253-535-2536, 253-627-3731, www.tacomachessclub.net-firms.com or ggarychess@aol.com. **CHANGES IN EFS, PRIZES.**

♣ August 20-21

Corvallis Summer Open♣

Site: 1140 NW Lester Ave, Corvallis OR 97330. **Format:** 2-section, 5-round Swiss. **TC:** G/120. **EF:** Open—\$49 if rec'd by 8/17, \$59 at site. **Reserve (U1600):** \$39 if rec'd by 8/17, \$49 at site. **Prize Fund:** Open—\$750 (b/20), Reserve—\$525 (b/20). **Class prizes reduced by 50% if less than four players in class.** **Prizes:** Open—\$250-150-100, U2000 \$100-75, U1800 \$75; Reserve—\$150-100, U1400 \$100, U1200 \$75, U100 \$50, UNR \$50. **Reg:** 9-9:45 am. **Rds:** Sat 10-2:30-7 (or ASAP), Sun 10-3 (or ASAP). **Byes:** Two ½-pt. byes avail. if req'd at reg. **Misc:** USCF & WCF membership req'd. **Ent/Info:** Corvallis Open 1140 NW Lester Ave, Corvallis OR 97330. Register on line at www.stickers.cc/chess or call Roger 1-800-682-3712; e-mail roger@stickers.cc.

♣ Aug. 21, Sept. 11

PCC Sunday Quads♣

Site: Portland CC, 8205 SW 24th, Portland OR 97219. **Format:** 3-RR. **TC:** G/120. **EF:** \$15, \$5 discount for PCC members. **No advance entries!** **Reg:** 9:30 am. **Misc:** OCF/WCF and USCF memb req'd, OSA. **Info:** portlandchessclub@gmail.com 503-246-2978 www.about-chess.org.

♣ August 27

PCC Game-in-45♣

Site: Portland CC, 8205 SW 24th, Portland OR 97219. **Format:** 5-round Swiss (TD may switch to 4SS and G/60 if under 20 entries). **TC:** G/45. **EF:** \$20 at site. \$5 discount for PCC memb. **No advance entries!** **Prize Fund:** \$200 b/20. **Prizes:** \$60-40-30, U1800 35, U1500 35. **Reg:** 9-9:30 a.m. **Byes:** One half-point bye avail. if requested at reg. **Misc:** OCF/WCF and USCF memb req'd, OSA.

Info: portlandchessclub@gmail.com 503-246-2978 www.about-chess.org.

♣ Aug. 27

SCC Saturday Quads♣

Site: Seattle CC, 17517 15 Ave NE, Seattle WA 98155. **Format:** 3-RR, 4-plyr sections by rating. **TC:** G/120. **EF:** \$6 (+\$5 fee for non-SCC). **Prizes:** Free entry for future quad. **Reg:** 9:00-9:45 a.m. **Rds:** 10:00-2:15-ASAP. **Misc:** USCF, WCF/OCF memb. req'd, OSA. **NS, NC. Info:** 206-417-5405; cfkleist@cs.com.

♣ August 27-28

Auntie's Open♣

Site: Auntie's Book Store, W 402 Main, Spokane WA; 509-838-0206. **Format:** 5-round Swiss (Open to players 50 years of age & over). **TC:** G/90. **EF:** \$18 by 8/13, jrs (U18) \$15, \$25 at the site. **Unrateds, free. Prize Fund:** \$400 (b/20; 4/prz gp). **Prizes:** \$100-60, U2000 60, U1700 60, U1400 60, biggest upset \$60 (both players w/established ratings). **Reg:** 9-9:40 am. **Rds:** Sat 10-2-6, Sun 11-3 or ASAP. **Byes:** One ½-pt. bye avail. if req'd before previous rd. **Byes for rds 4 or 5 must be made before the end of rd 3.** **Misc:** USCF membership req'd. **NC. Special Event:** Spokane City Championship Match—defending champ FM David Sprenkle will play challenger to be decided in a 6-plyr RR on 8/13-14. **Ent/Info:** Dave Griffin, PO Box 631, Veradale WA 99037. 509-928-3260; dbrgrffn@hotmail.com; www.spokanechessclub.org.

♣ August 28, Sept. 10

SCC Sunday Tornado♣

Site: Seattle CC, 17517 15 Ave NE, Seattle WA 98155. **Format:** 4-SS. **TC:** G/64. **EF:** \$14 (+\$5 fee for non-SCC). **Prizes:** 1st 35%, 2nd 27%, Bottom Half 1st 22%, 2nd 16% (\$10 from each EF goes to prize fund). **Reg:** 10:30-11:15 a.m. **Rds:** 11:30-1:50-4:10-6:30. **Misc:** USCF, WCF/OCF memb. req'd, OSA. ½-K rated. **NS, NC. Info:** 206-417-5405; cfkleist@cs.com.

Sept. 9,16,30, Oct. 7,21,28, Nov. 4 SCC Championship

Site: Seattle CC, 17517 15 Ave NE, Seattle WA 98155. **Format:** 7-round Swiss. **TC:** 35/100 & 25/60. **EF:** \$25 if rec'd by 9/7, \$30 thereafter. **SCC membership required—special \$24 tournament membership.** **Prize Fund:** 75% of EFs. **Prizes:** 23%-16%, U2000 9%, U1800 8%, U1600 7%, U1400 6%, UNR 3%, Endurance 3%. **Reg:** Fri. 7-7:45 p.m. **Rds:** 8:00 p.m. on Fridays. **Byes:** 4 (1 in rds 5-7, commit before rd 5). **Misc:** USCF memb. req'd. **NC, NS. Ent/Info:** SCC Tnmt Director, 2420 S 137 St, Seattle WA 98168. 206-417-5405; cfkleist@cs.com.

September 10

SCC Novice

Site: Seattle CC, 17517 15 Ave NE, Seattle WA 98155. **Format:** 4SS. **Open to U1200 and unrated.** **TC:** G/75. **EF:** \$10 by 9/8, \$15 at site. (20% disc. for SCC mem., 10% mem. of other dues-req'd CCs in WA, OR, & BC). **Prizes:** Memberships (SCC, WCF, USCF). **Reg:** 9-9:45a. **Rds:** 10-12:45-3:30-6. **Byes:** 1 (Rd 3 or 4—commit at reg.). **Misc:** USCF memb. req'd. **NS, NC. Info:** 206-417-5405; cfkleist@cs.com.

October 8

SCC Championship Qualifier

Site: Seattle CC, 17517 15 Ave NE, Seattle WA 98155. **Format:** 4-round Swiss (min. 8 plyrs). **TC:** G/75. **EF:** \$10. **Prizes:** SCC memberships. **Take your score into the SCC Championship (EF \$20, must be SCC member), join tnmt in Rd 5 (Fri., 10/21). Not eligible for Endurance prize.** **Reg:** 9-9:45a. **Rds:** 10-12:45-3:30-6. **Byes:** 2. **Misc:** USCF memb. req'd. **NC, NS. Info:** 206-417-5405; cfkleist@cs.com.

OR Open—Sept. 3-5 see page 7

Open Events

August 2005

Rb13	Qualchan Quads	Dave Griffin 509-928-3260 dbgrffin@hotmail.com www.spokanechessclub.org Spokane WA
Rb13	Thurston County Action Ch	G. Dorfner 253-535-2536 ggarychess@aol.com Lacey WA
13-14	Spokane City Ch Contenders (Inv)	Dave Griffin 509-928-3260 dbgrffin@hotmail.com www.spokanechessclub.org Spokane WA
14	TCC G/15	G. Dorfner 253-535-2536 ggarychess@aol.com www.tacomachessclub.netfirms.com Tacoma WA
Rb20-21	Corvallis Summer Open	Roger Brownell 800-682-3712 roger@stickers.cc www.stickers.cc/chess Corvallis OR
Rb20-21	Pierce County Open	G. Dorfner 253-535-2536 ggarychess@aol.com www.tacomachessclub.netfirms.com Tacoma WA
Rb21	PCC Sunday Quads	Neil Dale 503-256-5233 pdxchess@aol.com www.aboutchess.org Portland, OR
Rb27	PCC Game-in-45	Neil Dale 503-256-5233 pdxchess@aol.com www.aboutchess.org Portland, OR
Rb27	SCC Saturday Quads	SCC Infoline 206-417-5405 cfldeist@cs.com www.seattlechessclub.org Seattle WA
27-28	Spokane City Championship (Inv)	Dave Griffin 509-928-3260 dbgrffin@hotmail.com www.spokanechessclub.org Spokane WA
Rb27-28	Auntie's Open	Dave Griffin 509-928-3260 dbgrffin@hotmail.com www.spokanechessclub.org Spokane WA
Rb28	SCC Sunday Tornado	SCC Infoline 206-417-5405 cfldeist@cs.com www.seattlechessclub.org Seattle WA
29	TCC Rapid Transit (10 sec./move)	G. Dorfner 253-535-2536 ggarychess@aol.com www.tacomachessclub.netfirms.com Tacoma WA

September 2005

Rb3-5	Oregon Open	Mike Morris mikejmorris@earthlink.net www.aboutchess.org Gresham OR
4	Oregon Chess Federation Annual Mtg	OCF President Jerry Ramey 541-232-0328 j-adoube@efn.org Gresham OR
9,16	TCC Gambit Tmt	G. Dorfner 253-535-2536 ggarychess@aol.com www.tacomachessclub.netfirms.com Tacoma WA
9,16,30	SCC Championship (Rds 1-3)	SCC Infoline 206-417-5405 cfldeist@cs.com www.seattlechessclub.org Seattle WA
10	TCC G/60 Open & Novice	G. Dorfner 253-535-2536 ggarychess@aol.com www.tacomachessclub.netfirms.com Tacoma WA
10	SCC Novice	SCC Infoline 206-417-5405 cfldeist@cs.com www.seattlechessclub.org Seattle WA
Rb10	SCC Saturday Quads	SCC Infoline 206-417-5405 cfldeist@cs.com www.seattlechessclub.org Seattle WA
Rb11	PCC Sunday Quads	Neil Dale 503-256-5233 pdxchess@aol.com www.aboutchess.org Portland OR
11	TCC G/15	Gary 253-535-2536 ggarychess@aol.com www.tacomachessclub.netfirms.com Tacoma WA
17	TCC G/60 Open & Novice	G. Dorfner 253-535-2536 ggarychess@aol.com www.tacomachessclub.netfirms.com Tacoma WA
Rb17-18	Eastern Washington Open	Kevin Korsmo kmkorsmo@comcast.net www.spokanechessclub.org Spokane WA
Rb18	SCC Sunday Tornado	SCC Infoline 206-417-5405 cfldeist@cs.com www.seattlechessclub.org Seattle WA
23,30	TCC Championship (Rds 1&2)	G. Dorfner 253-535-2536 ggarychess@aol.com www.tacomachessclub.netfirms.com Tacoma WA
Rb23-25	Seattle Fall Open	SCC Infoline 206-417-5405 cfldeist@cs.com www.seattlechessclub.org Seattle WA
Rb24	PCC Game-in-60	Neil Dale 503-256-5233 pdxchess@aol.com www.aboutchess.org Portland OR

October 2005

Rb1	SCC Saturday Quads	SCC Infoline 206-417-5405 cfldeist@cs.com www.seattlechessclub.org Seattle WA
2	TCC G/15	G. Dorfner 253-535-2536 ggarychess@aol.com www.tacomachessclub.netfirms.com Tacoma WA
7	Chess Rocks benefit concert	America's Foundation for Chess www.firstmovechess.org Seattle WA
7,14,21,28	TCC Championship (Rds 3-6)	G. Dorfner 253-535-2536 ggarychess@aol.com www.tacomachessclub.netfirms.com Tacoma WA
7,21,28	SCC Championship (Rds 4-6)	SCC Infoline 206-417-5405 cfldeist@cs.com www.seattlechessclub.org Seattle WA
8	SCC Championship Qualifier	SCC Infoline 206-417-5405 cfldeist@cs.com www.seattlechessclub.org Seattle WA
8	TCC G/60 Open & Novice	G. Dorfner 253-535-2536 ggarychess@aol.com www.tacomachessclub.netfirms.com Tacoma WA
Rb9	SCC Sunday Tornado	SCC Infoline 206-417-5405 cfldeist@cs.com www.seattlechessclub.org Seattle WA
14-16	Western States Open	Jerry Weikel 775-747-1405 wackyykl@aol.com www.renochess.org/wso Reno NV
Rb15-16	Portland Fall Open	Neil Dale 503-256-5233 pdxchess@aol.com www.aboutchess.org Portland OR
Rb22-23	Puget Sound Open	G. Dorfner 253-535-2536 ggarychess@aol.com www.tacomachessclub.netfirms.com Tacoma WA
Rb29	PCC Game-in-45	Neil Dale 503-256-5233 pdxchess@aol.com www.aboutchess.org Portland OR
Rb29	SCC Saturday Quads	SCC Infoline 206-417-5405 cfldeist@cs.com www.seattlechessclub.org Seattle WA

NOTE: A 'Rb' in front of the date indicates a Christopher Memorial Northwest GP event. Events listed in boldface type have tournament announcements (in our Future Events Section) or display advertisements elsewhere in this issue

Scholastic Events

August 2005

9	Hot Summer Chess III	Randy Kaech kaech@verizon.net http://mysite.verizon.net/~kaech Bellingham WA
14	♁ 1st Soccer-Season Scholastic Qd (K-12)	Sudhakar 503-430-5744 www.aboutchess.org Portland OR
30	Hot Summer Chess IV	Randy Kaech kaech@verizon.net http://mysite.verizon.net/~kaech Bellingham WA

September 2005

18	Chess Odyssey Fresh Air Blitz	Pete 503-504-5756 pete@chessodyssey.com www.chessodyssey.com Hillsboro OR
18	♁ 2nd Soccer-Season Scholastic Qd (K-12)	Sudhakar 503-430-5744 www.aboutchess.org Portland OR
26	Chess Odyssey Clubs Fall Term begins	Pete 503-504-5756 pete@chessodyssey.com www.chessodyssey.com Portland area OR

October 2005

9	Nat'l Chess Day Girls-Only Challenge (K-12)	Lisa 503-430-5744 lakudva@comcast.net www.cmchessclub.org Beaverton OR
19	Chess Odyssey Parent Orientation	Pete 504-5756 pete@chessodyssey.com www.chessodyssey.com Beaverton OR
23	♁ 3rd Soccer-Season Scholastic Qd (K-12)	Sudhakar 503-430-5744 www.aboutchess.org Portland OR
29	St. Michael U1000 & Over 900 (K-3,4-8)	Jon 360-754-6472 jonjerrie@comcast.net Olympia WA

November 2005

6	♁ 4th Soccer-Season Scholastic Qd (K-12)	Sudhakar 503-430-5744 www.aboutchess.org Portland OR
---	--	--

NOTE: A '♁' in front of the tournament name indicates an OSCF qualifying tournament.

For scholastic summer chess camps, see page 3