

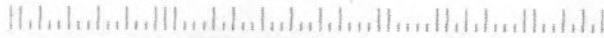


NORTHWEST CHESS

Washington Chess Federation
Oregon Chess Federation

January 2006
106 \$3.95

926-0601A * * * * * 40
MIKE MACGREGOR



**WA Class, Slugfest, WA vs. BC,
Intermat, WA Jr. Closed and More!**

Northwest Chess

January 2006, Volume 60,1 Issue 691
ISSN Publication 0146-6941

Published monthly by the Northwest Chess Board. Office of record: 2420 S 137 St, Seattle WA 98168.

POSTMASTER: Send Address Changes to: Northwest Chess, PO Box 84746, Seattle WA 98124-6046.

Periodicals Postage Paid at Seattle, WA

USPS periodicals postage permit number (0422-390)

NWC Staff

Editor: Fred Kleist

Games Editor: FM Chuck Schulien

Technical Assistance: Russell Miller

Printer: Snohomish Publishing

Business Manager: Eric Holcomb

Board Representatives

Oregon: Clark Harmon

& Dave Yoshinaga

Washington: Kent McNall &

Murlin Varner

Entire contents copyright 2006 by Northwest Chess. All rights reserved. Published opinions are those of the contributors and do not necessarily reflect the views of the editor or the Northwest Chess Board.

Advertising Rates

Display ads run \$150 for a full page, \$100 for tmnt ads; \$85 for a half-page, \$60 for tmnt ads; \$30 for a quarter page, \$20 for an eighth of a page, and \$10 for a business card-size ad. Add \$10 if the ad is not copy ready and the staff must do layout work. A 15% discount is available for two or more consecutive ads of the same size.

Event Announcement Rates

Each appearance in *Event Announcements* costs \$20. Payment is required before publication. Enclose \$2 additional if an invoice is required—this is a mandatory service charge.

Advertising & Copy Deadline

Please get your ads and submissions in by the 10th of the month for the items to appear in the next issue (e.g., no later than Jan 10 for the Feb issue). The editor cannot guarantee that late submissions will appear in the desired issue.

Submit all ads and payments to:

Business Manager, Northwest Chess
PMB 342, 12932 SE Kent-Kangley Rd
Kent WA 98030-7940
Eric@Holcomb.com

Submissions

Hey folks! The editor depends on YOU to make this magazine vibrant and exciting. I need your games, photographs, thoughts, and ideas. This magazine has a great tradition and I hope people will contribute enthusiastically. You can send me your materials via U.S. mail or via e-mail:

Northwest Chess
Fred Kleist, Editor
2420 S. 137th Street
Seattle WA 98168
NWCeditor@cs.com
206-242-7076

If you'd like your games annotated by a senior master, send them to our Games Editor:

FM Chuck Schulien
cschess@hotmail.com

Subscription Information

Northwest Chess is a benefit of membership in either the Oregon or Washington Chess Federations. Adult dues are \$25; Junior dues (under 20) are \$17 (or \$10 for six months). Please send dues, along with pertinent information to:

Business Manager

Northwest Chess

Eric Holcomb

PMB 342, 12932 SE Kent-Kangley Rd

Kent WA 98030-7940

Eric@Holcomb.com

http://www.nwchess.com

Northwest Grand Prix Administrator

Murlin Varner

13329 208 Ave NE

Woodinville WA 98072

MEVjr54@yahoo.com

425-882-0102

Oregon Chess Federation

President

Jerry Ramey

541-232-0328

j-adoube@efn.org

Vice President

Dave Yoshinaga

503-670-9855 ext 7

dave@kdtonline.com

Secretary

Megan Esler

503-292-6842

jaffagold@yahoo.com

Treasurer

Clark Harmon

charmon@solarprism.com

Director-at-Large #1

Mike Terrill

503-580-9187

pflotus@yahoo.com

Director-at-Large #2

Grisha Alpernas

grisha_alpernas@hotmail.com

National Representative

Carl Haessler

ssmith6154@aol.com

Scholastic Coordinator

Peter Prochaska

503-504-5756

pete@chessodyssey.com

Washington Chess Federation

President

Kent McNall

425-672-1304

kent.mcnall@gmail.com

Vice President

Duane Polich

425-462-1776

dpolich@verizon.net

Secretary

Gary Dorfner

253-535-2536

ggarychess@aol.com

Treasurer

Robert J. Allen

253-761-1288

allenrobertj@msn.com

Tournament Coordinator

H. G. Pitre

206-284-9314

hgpitre@comcast.net

Scholastic Coordinator

David Hendricks

425-868-3881

davidhendricks@comcast.net

NW Chess Board Member

Murlin Varner

425-882-0102

MEVjr54@yahoo.com

Greetings from the Editor

What do you think of BAP, Fischer time controls (e.g., G/105 + 30 seconds per move), Chess960 etc. We know what Curt Collyer thinks (see page 3) from his posting on the Northwest Chess Center Forum. Send your comments to nwceditor@cs.com. Also, send articles and game annotations there.



*Editor's
Desk*

Remember, this magazine needs you, its readers, to act as its reporters and feature writers. Take a camera with you to your next tournament, snap photos of your friends or of the winners and send them to *NWC*.

Best Wishes,

Frederick K. Kleist

Thanks to C. Kleist for proofreading this issue.

Thanks to R. Miller for working on the crosstables.

Northwest Chess Knights

Northwest Chess Knight donors will be listed in the magazine for a period of one year following receipt of donation. Please consider making a donation today to help Northwest Chess!

King: \$1000+
Queen: \$500-\$999
Rook: \$250-\$499
Bishop: \$100-\$249
Knight: \$50-\$99
Pawn: \$15-\$49

Current Patrons

Queen: Kent McNall, Russell Miller

Rook: Nat Koons

Bishop: Wayne Metsker

Knight: Curt Collyer, Matt Fleury, Shankland family

Pawns: Adam Attwood, Robert D. Brewster, David Griffin, Jack Hatfield

Contributions can be sent to the Northwest Chess Business Manager, and are greatly appreciated!

An Exciting Idea!

Here is my proposal:

I think that the 2006 Washington State Chess Championship should be a Chess960 knockout tournament, scored under the BAP System, using a time control G/0:00.03 with a 77-second increment.

Five other special rules for this event:

1. If your cell phone rings during play, you WILL be immediately disqualified. However, an exception will be made if the person calling can produce a sufficiently deficient, anti-classical, result-randomizing idea (to incorporate into next year's event) within an allotted 66.6 seconds.

2. Writing down your move before playing it will NOT be allowed. However, you MAY write down some mathematical calculations if you don't have a calculator (see regulation 3).

3. Computer use will NOT be allowed during games. However, you WILL be allowed a basic, handheld calculator with which to calculate exactly how many points you will score should you accidentally stalemate Black's king on a8, before the fifth move, while your opponent simultaneously flags.

4. The words "Draw" and "Kramnik" may NOT be mentioned within 100 yards of the playing site, nor spoken, written, or coughed during play. The intent of Regulation 4 is to avoid offending the non-existent sponsors.

5. Finally, in addition to "Draw" and "Kramnik," all words containing the consecutive letters "ra" will also be banned. This way no one can describe the organizers' ideas as "c--ppy."

Curt "GMinem" Collyer

Many thanks to Chris Kalina's **Northwest Chess Center Forum** (<http://pub16.bravenet.com/forum/show.php?usernum=1316140942>) for access to this letter and to comments on the WA Class, Intermat and WA Jr. Closed.

Northwest Chess

Northwest Chess

January 2006

An Exciting Idea!

page 3

WA Class: Reports, Games, Commentary

page 4

USCF Crosstables

page 11

3-2-1-0, Ignacio

Clint Ballard reports on his experiment with BAP

page 14

WA vs. BC Match

page 22

WA Junior Closed

David Wyde reports Adi Lanka's win

page 24

The Critical Moment

IM Eric Tangborn translates an article by GM Hort

page 25

Intermat: WA Kids vs. BC Kids

page 26

Scholastic News

page 28

Northwest Chess Board Meeting

page 28

Angels at the SCC

page 28

Tournament Ads

pages 30, 31

Northwest Chess Calendar of Upcoming Events back cover

On the Cover: Various Winners Center—Michael Lee receives his 6th Grade Championship trophy from former Women's World Champion GM Susan Polgar at the National K-12/Collegiate Chess Championship in Houston. *Photo by Hock Lee.* Top Left—NM Lucas Davies, 2nd Master Section, WA Class. Top Right—Michael MacGregor, 1st Expert Section, WA Class. Bottom Left—Alexandra Botez, =2nd-4th Class C, WA Class. Bottom Right—NM Harley Greninger, =3rd-4th Master Section, WA Class. *Photos by Andrei Botez*

January 2006

3

Fishing at the WA Class

Raptis (M), MacGregor (X), Piper (C), Kriewall (D), Grabar (E)

by Gary Dorfner

The Washington Class Championships were held at the Red Lion Inn in Bellevue. There were 134 players in the tournament: 26 in Section #1 (Master/Expert), 47 in Section #2 (Class A & B) 44 in Section #3 (Class C & D) & 17 in Section #4 (Class E & Below/Unr). The winners were: *Master/Unr.* 1st Nick Raptis \$400, 2nd Lucas Davies \$250, 3rd-4th Bill Schill, Elliott Neff, Harley Greninger, Federico Garcia, Nat Koons, Viktors Pupols & David Bragg \$50 each. *Expert & Below* 1st Mike MacGregor \$300, 2nd Michael Lee \$200, 3rd-4th Matt Edwards & Kent McNall \$125 each. *Class A* 1st-2nd Ben Wyde & Duane Polich \$225 each. 3rd-4th Adi Lanka & Andy May \$125 each. *Class B* 1st-2nd Stephen Buck & Brian Opalewski \$225 each. 3rd-4th Greg Prentice, Dan Gay, Michael Omori & Eric Hufnagel \$62.50 each. Juniors winning medals in Class B were Adam Shankland, Darren Wu & Nathan Lee. *Class C* 1st August Piper \$250, 2nd-4th Todd May, Scott Charleston & Alexandra Botez \$150 each. *Class D & Below* 1st David Kriewall \$250, 2nd Sterling Kolde \$200. 3rd-4th John Hornickle & James Mulligan \$125 each. Juniors winning medals in Class C were Nicholas Orlov & David Inglis, in Class D Jennifer Apacible, William Li & Sarah Shankland. *Class E & Below* 1st Anatoly Grabar \$150, 2nd-3rd Logan MacGregor & David Stefurak \$100 each. 4th Kwan-Leung Chan \$100. Juniors winning medals were Michael Choi & Alva Wei. TDs Fred & Carol Kleist, Gary Dorfner & H.G. Pitre.

The Thanksgiving Scholastic was held on Friday. There were 114 players in all, 47 in the K-3 Section, 40 in the 4-6 Section & 27 in the 7-12 Section. The winners were: *in K-3* 1st Kevin Ma, 2nd Wesley Yu, 3rd Casey Xing, 4th Donovan Zhao & 5th Derek Dawson. Upsets, 1st William Lundgren, 2nd Augie Johnson, 3rd Kevin Ma, 4th Michael Vaschillo, 5th Jonathan Swecker. *4-6*, 1st Nicholas Orlov, 2nd Frank Qu, 3rd Ethan Gottlieb, 4th Nat Mayer, 5th Drew Dawson. Upsets, 1st Dennis Ling, 2nd Jennifer Glerum, 3rd Daniel Wu. *7-12*, 1st Sterling Kolde, 2nd Calvin Chan, 3rd Jeffrey Kuan, 4th Kerry Xing, 5th Jennifer Apacible. Upsets, 1st Jeff Kuan, 2nd Lex Burgin, 3rd Alex Vaschillo. 1st to 5th in each section each won a trophy. Upset winners were each awarded a medal. TD David Hendricks.

A Chess 960 tournament was held Friday & Sat. nights. There were eight players in all. The winners were 1st Nat Koons \$62, U1900 Eric Hufnagel \$38. TD H.G. Pitre.

A Blitz tournament was also held on Fri. & Sat. nights. There were fourteen players in all. The winners were 1st Nick Raptis \$88, 2nd Elliott Neff \$58, U2000 Adi Lanka \$35, U1800 Lane VanWeerdhuizen \$35. TD Gary Dorfner.

Special guest Bobby Ferguson gave a short talk before the start of round six.

French Exchange

Adi Lanka (1905)

Ethan Neff (1727)

Bellevue, WA Class (2) 2005

1.e4 e6 2.d4 d5 3.exd5 exd5 4.c4 ♘f6
5.♙d3 c6 6.♘e2 ♙d6 7.O-O-O 8.♘bc3
dxc4 9.♙xc4 ♙f5 10.♘g3 ♙xg3 11.fxg3
♙g4 12.♙d3 ♘bd7 13.♙g5 b5 14.♙b3
♘c5 15.♙d2 ♘xb3 16.axb3 ♙b6 17.
♙xf6 gxf6 18.♙xf6 ♙h5 19.g4 ♙g6 20.
h4 ♘g7 21.♙af1 b4 22.♘a4 ♙b5 23.h5

♙e4 24.♘c5 ♙d5 25.♘d7 ♙ae8 26.
♙g5+ ♘h8 27.♘xf8 ♙xf8 28.♙e5 ♘g8
29.h6 ♙e6 30.♙xe6 ♙xf1+ 31.♘xf1
fxe6+ 32.♘g1 ♘f7 33.♙g7+ ♘e8 34.
♙xh7 ♙f7 35.♙g6 ♘f8 36.h7 1-0

Sicilian

Ben Wyde (1979)

David Hendricks (1643)

Bellevue, WA Class (2) 2005

1.e4 c5 2.♘f3 d6 3.b3 ♘f6 4.♘c3 ♘c6
5.♙b2 g6 6.♘d5 ♙g7 7.♘xf6+ exf6

8.♙b5 ♙d7 9.O-O O-O 10.d4 a6 11.
♙xc6 bxc6 12.dxc5 dxc5 13.♙d6 ♙c8
14.♙ad1 ♙c7 15.♙xc5 ♙c8 16.♘d2
♙e8 17.f3 ♙b7 18.♘c4 ♙a7 19.♙xa7
♙xa7 20.♙d4 ♙aa8 21.♙xf6 ♙e6 22.
♙xg7 ♘xg7 23.♙d6 ♙ec8 24.♘b6 ♙d8
25.♙fd1 ♙xd6 26.♙xd6 ♙a7 27.♙xc6
♘f8 28.♘f2 ♘e8 29.♘e3 h5 30.c4 a5
31.a4 ♙b7 32.♘d4 ♙d7 33.♙d6 ♘e7
34.♙xd7+ ♙xd7+ 35.♘xd7 ♘xd7 36.
♘e5 ♘e7 37.c5 f6+ 38.♘d5 1-0

Modern Pseudo-Austrian Attack

NM Federico Garcia (2241)

NM Nat Koons (2239)

Bellevue, WA Class (2) 2005

1.e4 g6 2.d4 ♙g7 3.♘c3 a6 4.♙e3 d6
5.f4 b5 6.a3 ♘d7 7.♘f3 c5 8.dxc5 dxc5
9.e5 ♙b7 10.♙d3 ♙c7 11.♙e2 ♘h6
12.h3 c4 13.♙e4 ♙xe4 14.♘xe4 ♘f5
15.♙f2 h5 16.♘d4 ♘xd4 17.♙xd4 ♙c6
18.O-O-O ♙e6 19.g4 hxg4 20.hxg4
♙xh1 21.♙xh1 O-O-O 22.♘g5 ♙d5
23.♙d1 c3 24.♙xc3 ♙a2 25.♙d3 ♙h8
26.♙h3 ♙xh3 27.♘xh3 ♘b6 28.♙e4
♙a1+ 29.♘d2 ♘c4+ 30.♘e2 ♘c7 31.
♙a8 ♙b1 32.♙a7+ ♘d8 33.♙b8+ ♘d7
34.♙b7+ ♘d8 35.♙b8+ ♘d7 36.♙b7+
♘d8 37.♙d5+ ♘e8 38.♙d1 ♙xd1+
39.♘xd1 ♘e3+ 40.♘d2 ♘xg4 41.♙d4
e6 42.♘g5 ♙h6 43.♘c3 ♙xg5 44.fxg5
♘d7 45.♘d3 ♘c6 46.♘e4 ♘h2 47.♙e3
♘f1 48.♙f4 ♘c5 49.b3 a5 50.c3 a4 51.
bxa4 bxa4 52.♘d3 ♘d5 53.c4+ ♘c6
54.♘d4 ♘b6 55.c5+ ♘b5 56.c6 ♘xc6
57.♘c4 ♘b6 58.♘b4 ♘a6 59.♘xa4
♘b6 60.♘b4 ♘c6 61.♘c4 ♘b6 62.♘d3
♘b5 63.♘e2 ♘a4 64.♘xf1 ♘xa3 65.
♘e2 ♘b4 66.♘d3 ♘c5 67.♘e4 ♘c4 68.
♙c1 ♘c3 69.♙a3 ♘c4 70.♙e7 ♘c3
71.♘e3 ♘c4 72.♘d2 ♘d5 73.♙f6 ♘d4
74.♙g7 ♘c4 75.♘c2 ♘b4 76.♘d3 ♘c5
77.♘c3 ♘d5 78.♘b4 ♘c6 79.♘c4 ♘b6
80.♙f8 ♘c6 81.♙c5 ♘c7 82.♘b5 ♘c8
83.♘c6 ♘d8 84.♙d6 ♘c8 85.♙c7 1-0

Ruy Lopez Chigorin

Dave Kriewall (1371)

Eric Holcomb (1509)

Bellevue, WA Class (2) 2005

Annotations by David Kriewall
1.e4 e5 2.♘f3 ♘c6 3.♙b5 a6 4.♙a4 ♘f6

5.O-O ♖e76. ♜e1 b57. ♜b3 d68. c3 ♘a5

The Old Chigorin System, without Black's 8...O-O and White's 9.h3.

9. ♙c2 c5 10. d4 ♞c7 11. d5

11.a4! should be played immediately (threatening axb5 and b2-b4, winning material) before Black has castled, because he cannot defend his Queen Rook by ...♙d7. Also better than 11.d5 is 11. ♘bd2, preventing ...♘a5-c4.

11...♙g4 12. ♘bd2 O-O 13.h3

Better is 13.b3!, preventing ...♘a5-c4. If 13...c4, 14.b4 and Black's a5-Knight has trouble finding a home.

13...♙h5 14. ♘f1 h6 15.g4 ♙g6 16. ♘h4?

I missed his reply winning my e-pawn. With a pawn on h6, Black's King is weaker when the g-file is half-open, because White hits h6. Therefore, the correct move is 16. ♘g3, preparing to go to f5.

16...♙xe4! 17. ♙xe4 ♘xe4 18. ♘f5

Nevertheless, White has some compensation for the pawn: the f5-Knight is a strong piece and Black's h6-pawn is just a target.

18...♘g5?!

Here, the Knight becomes a target. Better was 18...♘f6, keeping pressure on the d5-pawn.

19.f4! ♘h7

19...♘h3+ 20. ♘h2 ♘xf4 21. ♙xf4 and White has a piece for three pawns.

20.fxe5 ♘b7

Not 20...dxe5? 21.d6, forking Queen and Bishop.

21. ♙f4

Black is in some trouble. Though material is even, White has nice pressure in the center and on the kingside.

21...♙fe8 22. ♘1g3 ♙f8

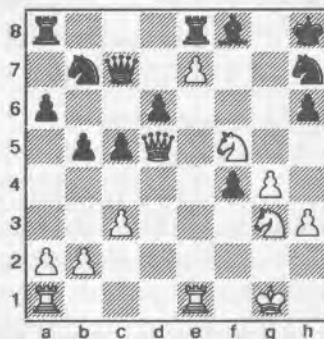
Black is finally ready to play ...dxe5. 23.e6! fxe6 24.dxe6 g5?

With the a2-g8 diagonal about to open, Black opens another avenue to his King. 24...♘h8 was relatively better, removing the check from White's upcoming ♞d1-d5.

25.e7 gxf4?

Black needs to stop 26. ♞d5+ by playing 25...♘f6 or 25...♞c6. Anything else loses more than a piece, e.g., 25...♙xe7? 26. ♞d5+ ♘h8 27. ♞f7!!, creating a double pin on the Bishop with a mate threat at g7 to boot.

26. ♞d5+ ♘h8



I missed the crushing 27. ♞f7!!, which threatens to win Black's Queen by 28. exf8=♞+. Black cannot play 27...♙xe7 because of 28. ♞g7 mate. Nor can he guard the Queen with 27...♙ac8, because 28. ♘h4 threatens an unstoppable 29. ♘g6 mate. Black must give up his Queen by 27...♙xe7 28. ♙xe7 ♞xe7 29. ♘xe7.

27.exf8=♞+? ♘xf8 28. ♘h5

28. ♘h6 threatening 29. ♞g8 mate was much better. Now Black is still a pawn up, but his King is too weak and his b7-Knight is completely out of play.

28...♙e5 29. ♙xe5 dxe5 30. ♘h6 ♘g6 31. ♘f7+ ♘h7 32. ♙e1 ♙f8 33. ♘g5+ ♘h6 34. ♘e6 ♞f7 35.g5+! ♘h7

Of course not 35...♘h5 36. ♞f3+ ♘h4 37. ♞g4 mate.

36. ♘xf8+ ♞xf8 37. ♞xb7+ ♘h8 38. ♘f6 ♞e7 39. ♞xe7 ♘xe7 40. ♙xe5 ♘g6 41. ♙xc5 ♘h4 42. ♘f2 f3 43. ♙c7 ♘g2 44. ♙h7 mate

Sicilian Dragon

NM Elliott Neff (2263)
NM Federico Garcia (2241)

Bellevue, WA Class (3) 2005

1.e4 c5 2. ♘c3 ♘c6 3. ♘ge2 g6 4. d4 cxd4 5. ♘xd4 ♙g7 6. ♘de2 ♘f6 7. g3 d6 8. h3 O-O 9. ♙g2 ♙d7 10. O-O ♞c8 11. ♘h2 ♙b8 12. ♘d5 ♘xd5 13. exd5 ♘e5 14. a4 ♘c4 15. ♙a2 b6 16. b3 ♘a5 17. ♙e3 ♙d8 18. ♙d4 ♙xd4 19. ♘xd4 e5 20. dxe6 fxe6 21. ♙e1 e5 22. ♞d2 ♞c5 23. ♘f3 ♘c6 24. ♞h6 ♙f5 25. c4 ♘d4 26. ♘g5 ♙d7

27. ♙d5+ ♘h8 28. ♙e3 ♞c7 29. ♙b2 ♙e8 30. ♙d2 ♙e6 31. ♙xe6 ♘xe6 32. ♘xe6 ♙xe6 33. ♞f8 mate

Sicilian Maroczy Bind

Nathan Lee (1578)
Brian Opalewski (1500)

Bellevue, WA Class (3) 2005

1.e4 c5 2. ♘f3 g6 3. d4 cxd4 4. ♘xd4 ♘c6 5. c4 ♘f6 6. ♘c3 d6 7. ♙e2 ♘xd4 8. ♞xd4 ♙g7 9. ♙e3 O-O 10. ♞d1 ♙e6 11. ♙c1 ♞a5 12. O-O ♙fc8 13. ♞b3 ♙ab8 14. ♞b5 ♞xb5 15. cxb5 a6 16. bxa6 bxa6 17. ♙xa6 ♙c6 18. ♙b5 ♙xc3 19. bxc3 ♙xb5 20. f3 ♙xa2 21. c4 ♙b7 22. c5 dxc5 23. ♙xc5 ♘h5 24. ♙e3 ♙e6 25. ♙b1 ♙xb1 26. ♙xb1 ♙e5 27. ♙b5 f6 28. ♙b6 ♘f7 29. g3 g5 30. ♙b5 h6 31. ♙b7 ♙d6 32. ♙a7 f5 33. exf5 ♙d5 34. ♘f2 ♘g7 35. g4 ♙xh2 36. ♙c5 ♘g8 37. ♙xe7 ♙f7 38. ♘e2 ♙f4 39. ♘f2 h5 40. ♙e3 ♙xe3+ 41. ♘xe3 h4 42. ♘f2 ♘f8 43. ♙a7 ♘e8 44. ♘g2 ♘f6 45. ♙a3 ♘d5 46. ♘h2 ♘e7 47. ♙d3 ♘f6 48. ♙d4 ♘f4 49. ♙e4 ♙d5 50. ♙e3 ♙c4 51. ♘g1 h3 52. ♘h2 ♙f1 53. ♙e1 ♙g2 54. ♙e3 ♘f7 55. ♘g3 ♙f1 56. ♘h2 ♘e2 57. ♙e6 ♘d4 58. ♙e3 ♙g2 59. ♘g3 ♘f6 60. ♙d3 Draw

Sicilian Closed

NM Lucas Davies (2207)
FM William Schill (2276)

Bellevue, WA Class (3) 2005

1.e4 c5 2. ♘c3 ♘c6 3. g3 g6 4. ♙g2 ♙g7 5. d3 d6 6. ♙e3 e5 7. ♞d2 ♘ge7 8. ♙h6

Serving the chess community since 1972



THE CHESS HOUSE

A sincere thank you for the phone call and the excellent customer service. I look forward to receiving my clock and set!
- S.N., SD, USA

Tournament Quality Board+Pieces+Bag Store all your chess accessories in one convenient carryall

\$25 Special

Stock Code: C212

also mention discount "NWC"



1000's of chess products - free catalog low price guarantee - service oriented store

www.ChessHouse.com
e4@chesshouse.com 800-348-4749

♖xh6 9. ♖xh6 ♖e6 10. ♖f3 ♖d4 11. ♖c1
 ♖b6 12. b3 ♖a5 13. ♖d2 ♖h3 14. ♖xd4
 ♖xg2 15. ♖db5 ♖xh1 16. ♖xd6+ ♖d7
 17. ♖xf7 ♖c6 18. ♖xh8 ♖xh8 19. ♖d5
 ♖xd2+ 20. ♖xd2 ♖f3 21. ♖e3 ♖f8 22. h3
 h5 23. ♖g1 ♖b4 24. c4 ♖c2+ 25. ♖d2
 ♖d4 26. ♖e3 g5 27. g4 hxg4 28. hxg4
 ♖e2 29. ♖g3 ♖f3+ 30. ♖xf3 ♖xf3
 31. ♖f6+ ♖e7 32. ♖h7 ♖xg4 33. ♖xg5
 ♖f6 34. ♖h7+ ♖g6 0-1

Colle

NM Harley Greninger (2245)
 Geoffrey Gale (1945)

Bellevue, WA Class (3) 2005

1. d4 ♖f6 2. ♖f3 e6 3. e3 c5 4. ♖d3 d5 5. b3
 cxd4 6. exd4 ♖b4+ 7. c3 ♖d6 8. O-O b6
 9. ♖e2 O-O 10. ♖b2 ♖b7 11. ♖bd2
 ♖bd7 12. ♖e5 ♖e8 13. f4 g6 14. g4 ♖f8
 15. ♖ae1 ♖g7 16. ♖f3 ♖f8 17. ♖a3 ♖c7
 18. ♖c1 a5 19. ♖b5 ♖ec8 20. ♖e2 ♖d8
 21. ♖d3 a4 22. b4 ♖c7 23. b5 ♖8d7
 24. ♖d6 ♖cc8 25. ♖b4 ♖e8 26. ♖ce1
 ♖df6 27. ♖xf7 1-0

Queen's Gambit Accepted

Eric Woodlief (1579)
 August Piper (1517)

Bellevue, WA Class (3) 2005

1. d4 d5 2. c4 dxc4 3. ♖f3 ♖f6 4. ♖c3 a6
 5. a4 ♖c6 6. e3 ♖g4 7. ♖xc4 e6 8. O-O
 ♖b4 9. ♖d2 O-O 10. ♖c1 ♖a5 11. ♖e4
 ♖xd2 12. ♖exd2 ♖d6 13. ♖c2 ♖ac8
 14. ♖e5 c5 15. ♖d3 g6 16. ♖xg4 ♖xg4
 17. ♖f3 cxd4 18. ♖xc8 ♖xc8 19. ♖xc8+
 ♖g7 20. exd4 ♖c6 21. h3 ♖xd4 22. ♖xd4
 ♖h2 mate

French Tarrasch

FM William Schill (2276)
 NM Nick Raptis (2292)

Bellevue, WA Class (4) 2005

1. e4 e6 2. d4 d5 3. ♖d2 ♖f6 4. e5 ♖fd7
 5. ♖d3 c5 6. c3 ♖c6 7. ♖e2 cxd4 8. cxd4
 f6 9. exf6 ♖xf6 10. O-O ♖d6 11. ♖f3
 O-O 12. ♖f4 ♖xf4 13. ♖xf4 ♖e4 14. ♖c1
 ♖f6 15. ♖e2 e5 16. dxe5 ♖xe5 17. ♖xe4
 dxe4 18. ♖xe5 ♖xe5 19. ♖c3 ♖xc3 20.
 ♖xc3 ♖f5 21. ♖fe1 ♖ad8 22. ♖e2 ♖d4
 23. ♖ae1 ♖fd8 24. h3 ♖d2 25. ♖xd2
 ♖xd2 26. ♖e2 ♖xe2 27. ♖xe2 ♖f7
 28. ♖f1 ♖e6 29. ♖e1 ♖e5 30. ♖d2 ♖e6
 31. b3 ♖d7 32. h4 ♖g4 33. ♖c3 ♖d4
 34. ♖b5+ ♖c5 35. ♖a3 ♖d4 36. ♖c2+
 ♖e5 37. b4 ♖e6 38. a3 ♖b3 39. ♖e3 ♖e6
 40. ♖c3 ♖a2 41. g3 ♖e6 42. a4 h6 43. a5
 g5 44. hxg5 hxg5 45. ♖c2 ♖d5 Draw

For those who have played against
 Mr. Bragg, it's a surprise when one of
 the center pawns is advanced two squares
 on the first move, although this is "nor-
 mal." Each time I've played David, he's
 had the White pieces and played a unique
 opening variation. Although I've hoped,
 and for some unexplained reason, ex-
 pected a mainline variation, David makes
 a move and reminds me that, yes, I am
 playing David Bragg.—*M. MacGregor*

QGD Semi-Slav

FM David Bragg (2210)
 Michael MacGregor (2197)

Bellevue, WA Class (4) 2005

Annotations by Michael MacGregor

1. e3! ♖f6 2. c4 c6 3. ♖c3 d5 4. d4 e6
 5. ♖f3 ♖bd7

So after the first few moves, the game
 is steered into a mainline Slav.

6. ♖b3 ♖e7N

6... ♖d6 7. ♖e2 [7. ♖d3 O-O 8. O-O
 ♖e7 9. ♖d2 dxc4 10. ♖xc4 e5 11. dxe5
 ♖xe5 12. ♖e2 ♖xf3+ 13. ♖xf3 ♖g4 14.
 ♖xg4 ♖xg4 15. h3 ♖f6 16. ♖c4 ♖fe8 17.
 ♖ad1 ♖ad8 18. ♖c1 ♖e5 19. g3 h5 20.
 ♖d3 ♖c7 21. ♖fd1 ♖xd3 Golcman-Sha-
 banov, Dresden 2002 (0-1, 39)] 7... O-O
 8. O-O b6 9. cxd5 exd5 10. a4 a5 11. ♖d1
 ♖e8 12. ♖d2 ♖f8 13. ♖e1 ♖a7

7. ♖d3

7. ♖e2 O-O 8. O-O dxc4 9. ♖xc4 b5
 10. ♖d3 ♖b7 11. e4 ♖b6 12. ♖c2 h6 13.
 ♖f4 a6 14. ♖ad1 ♖e8 15. ♖c1 g5 16.
 ♖xg5 ♖h8 17. ♖xf6+ ♖xf6 18. ♖xh6+
 1-0 Lisboa-Nascimento, Brasilia 2003

7... ♖b6N

The point of this move is to make
 White commit to a decision about the
 center. He will not give up his King
 Bishop for the Knight; so he will either
 advance his c-pawn, in which case the
 Knight returns to d7, or he will capture
 on d5. In the former variation, Black will
 castle and prepare ...e6-e5. If White plays
 e3-e4, Black may capture and have an
 outpost on d5. In the latter variation,
 White will open the c8-h3 diagonal for
 Black's Queen Bishop, and open the e-
 file for Black's Rook.

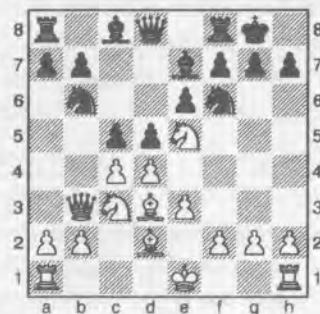
7... O-O 8. ♖a4 dxc4 9. ♖xc4 ♖c7 10.
 ♖c3 ♖b6 11. ♖b3 ♖d7 12. ♖e5 ♖e8 13.
 O-O a6 14. a4 c5 15. a5 ♖bd7 16. f4 ♖c8 17.
 ♖d2 ♖xe5 18. fxe5 c4 19. ♖xc4 ♖xc4 20.

♖xc4 ♖xc4 21. exf6 ♖xf6 22. ♖e4 Elka-
 Hemmingsen, Norway 1999 (0-1, 56)

8. ♖e5

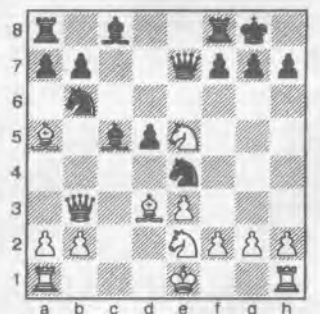
A good move which avoids Black's
 ideas for the center and centralizes the
 Knight. Moreover, this Knight may re-
 capture on c4 and, in this way, White
 doesn't have to exchange his Bishop for
 a Knight.

8... O-O 9. ♖d2 c5=



At this point, I realized that Black had equalized.

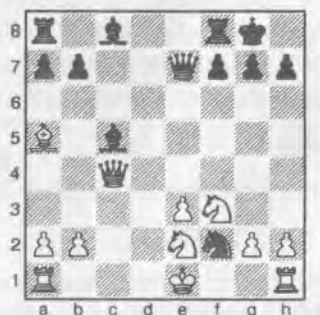
10. dxc5 ♖xc5 11. cxd5 exd5 12. ♖e2
 ♖e4 13. ♖a5?! ♖e7



14. ♖f3 ♖c4 15. ♖xc4

15. ♖xe4? ♖xa5 16. ♖a4 dxe4 17.
 ♖d2 ♖c6

15... dxc4 16. ♖xc4 ♖xf2!



17. ♖xf2 ♖xe3+ 18. ♖e1 ♖e6?!=

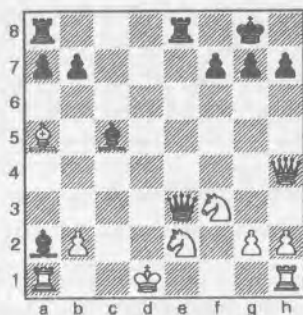
This move is slightly inaccurate, as
 it allows White more defensive resources.

18... ♖f2+ 19. ♘d1 b6 20. ♗f4 bxa5
21. ♖e2 ♗d8+ 22. ♗d3 ♖xe2+ 23. ♘xe2
♙a6+ (FRITZ 8)

19. ♖h4! ♗fe8 20. ♘d1?

With so many tactical possibilities, it's easy to miss the correct defense allowed by Black's 18... ♙e6. Better is 20. ♙d2 ♖d3 21. ♗e5 ♖d5 22. ♖g3 ♙f5 23. ♙c3 ♗ad8 24. ♘f1 ♙d6 25. ♖f3 ♗xe5 26. ♙xe5 ♙e4 27. ♖f2 ♙xe5 and, although Black has an advantage, it's not as decisive as in the game. Some dangers lurk on the e-file after the text, e.g., 20... b6 21. ♙d2 ♖xe2+ 22. ♘xe2 ♙c4 mate.

20... ♙xa2



Threatening mate-in-two with 21... ♙b3+ 22. ♘e1 ♖xe2.

21. ♗xa2 ♖xe2+ 22. ♘c1 ♖xg2

Now Black regains his sacrificed piece with interest: three pawns and still has the attack.

23. ♗e1 ♖xf3 24. ♗xe8+ ♗xe8 25. ♙c3 ♖d3 0-1

London System

Kent McNall (1886)

Robert Bond (2021)

Bellevue, WA Class (4) 2005

1. d4 ♗f6 2. ♗f3 d5 3. ♙f4 c5 4. e3 ♗c6
5. c3 e6 6. ♗bd2 ♙d6 7. ♙g5 ♖c7 8. ♙e2
e5 9. dxc5 ♙xc5 10. ♗b3 ♙e7 11. ♙xf6
gxf6 12. ♖xd5 ♙e6 13. ♖b5 a6 14. ♖a4
O-O 15. ♖h4 ♗ad8 16. ♗d1 ♙f5 17.
O-O ♘h8 18. ♖h6 ♖b6 19. ♙c4 ♗xd1
20. ♗xd1 ♗d8 21. ♗xd8+ ♖xd8 22. h3
♙g6 23. ♗h4 ♖d1+ 24. ♘h2 ♖c2
25. ♗xg6+ ffg6 26. ♙f7 ♗d8 27. ♙e8
♗e6 28. ♖h4 ♖e2 29. ♙xg6 ♗f8 30. ♙f7
♘g7 31. ♙e8 ♖xb2 32. ♖g4+ ♘h6
33. ♖h5+ 1-0

This was my first opportunity to play in a REAL chess tournament after over two years of OTB inactivity.—R. Karch

Bird's Opening

Igor Ummel (1660)

Robert A Karch (1742)

Bellevue, WA Class (4) 2005

Annotations by Robert Karch & Igor Ummel
1. f4

I always like to play Bird's Opening, because the positions that arise are unique. (U)

1... ♗f6 2. ♗f3 d6 3. b3?!

I usually play 3. e3. I was afraid of ... ♙g4. The problem is that now Black can play ... c5, which White wants to prevent. (U)

As Black, I didn't have a specific plan other than to survive into the middlegame. Only when checking the database (3 million games) did I learn that White scored a very high 64% in 57 games. Sometimes, it is better not to know! (K)

3... c5

He makes it. (U)

Black misses the fork idea 3... e5 4. fxe5 dxe5 5. ♗xe5? ♖d4, winning a piece. White would sidestep this, of course, but Black would benefit by opening lines for his two Bishops. (K)

4. ♙b2 ♗c6 5. e3 a6

A bit slow, but I wanted to keep White's Bishop off the dangerous a2-g8 diagonal. (K)

6. ♙e2

My Bishop is in the way. Usually, in the Bird, White wants to get rid of the light-squared Bishop via ♙b5, but here Black's pawn on a6 prevents that. (U)

6... g6 7. O-O ♙g7 8. h3

Preparing a possible g2-g4 push and protecting the g4-square. (U)

8... O-O 9. ♖e1?

How could I miss Black's next move? (U)

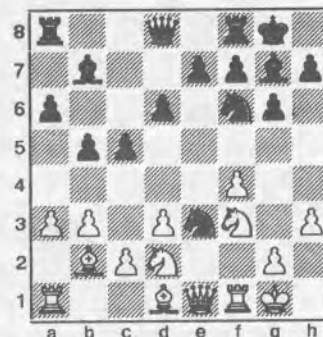
9... ♗b4 10. ♙d1 b5 11. d3 ♙b7 12. ♗bd2 ♗bd5

I saw an opportunistic double attack, exploiting the unprotected White Bishop on b2. (K)

13. a3?

I missed a simple fork. Best is 13. c4. (U)

13... ♗xe3



14. ♖xe3 ♗d5 15. ♖e4 ♙xb2 16. ♗b1 ♙c3!

Essential to the combination, preventing the advance of the c-pawn, when White would win the pinned d5-Knight. (K)

If 13... ♙g7, 14. c4 wins a piece. (U)

17. g3

Now I realized that my opponent was a tactical player; so I decided to play positionally (my favorite style) to make him have a hard time. (U)

17... ♗b8 18. ♖e1

A discovery was threatened. (U)

18... ♖c7 19. ♖f2 ♙a5 20. ♗e4 ♙b6(?)

Yes, Black threatens 21... c4, but the response ♗f3-d4 improves my position. (U)

In general, I think that it is a good idea to aim your pieces at the opposing King. There is also a tactical threat against the White Queen. (K)

21. c4 ♗f6

The only place to go. (U)

The exchange of Knights will saddle Black with doubled pawns, partially compensating White for his one pawn deficit. (K)

22. ♗xf6+ exf6

Now Black's extra pawn is worthless. (U)

All too true! (K)

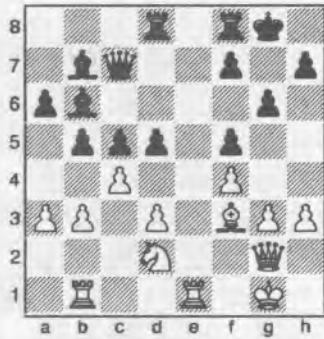
23. ♗d2

Planning ♙e2-f3. (U)

23... ♗bd8 24. ♙f3 d5

Best. (U)

25. ♖g2 f5 26. ♗fe1



With the exception of being a pawn down — and he threatens to win it back — White does not seem to be in any trouble.

26... ♖d7 27. ♗e5 ♗fd8 28. ♖h2?

Bad move.(U)

28... dxc4 29. ♗xb7 ♗xd3??

Black would have had a huge advantage after 29... ♗xb7 (FRITZ). After the text, Black was just barely better than equal.(U)

And yet, at the board, with neither of us having a computer, I was feeling optimistic!(K)

30. ♖f1 cxb3

I felt that the two connected passed pawns would be worth more than White's Bishop.(K)

If White plays correctly, the pawns will be stopped.(U)

31. ♗xa6!

The only move!(U)

31... c4 32. ♗xb5 ♗c3 33. ♗b2 ♗d4

This fork is decisive.(K)

34. ♗ee2??

A big blunder. 34. ♗e1, allowing the b2-Rook a flight to e2, should have won!(U)

34... ♗c1 35. ♗bd2 c3



The passed pawns begin to pay off. 36. ♗d3 cxd2 37. ♖xd2 ♗g1+ 38. ♖h1 ♗xd3 0-1

I remember the Ummel family from my organizing days a few years back, and I am glad to see that Igor is moving up and playing in an adult section. He does have a good sense of planning, and he only needs to brush up on his tactics—as do I!

QGD Marshall

William Li (1272)

Murlin Varner (1519)

Bellevue, WA Class (4) 2005

1.d4 d5 2.c4 ♖f6 3.cxd5 ♖xd5 4.e4 ♖b6 5. ♖c3 e6 6. ♖f3 ♗e7 7. ♗e3 0-0 8. ♗e2 ♖8d7 9. ♗c2 f5 10. 0-0 ♖f6 11. ♗fd1 ♗d7 12. ♗d3 fxe4 13. ♗xe4 ♖xe4 14. ♖xe4 ♖d5 15. a3 ♖xe3 16. fxe3 ♗c8

17. ♗b3 ♗e8 18. ♗d3 ♗g6 19. ♖g3 ♗c6 20. ♖e5 ♗h6 21. e4 ♗d6 22. ♖xc6 bxc6 23. e5 ♗e7 24. ♗c2 c5 25. dxc5 ♗g5 26. ♗e1 ♗cd8 27. b4 ♗f4 28. ♗f3 ♗d2 29. ♗e4 ♗d7 30. ♗ef1 ♗df7 31. h3 ♗xg3 32. ♗xf7 ♗d8 33. ♗xc7 ♗d2 34. ♗f3 ♗d4+ 35. ♖h1 ♗xe5 36. ♗f7+ ♖h8 37. ♗f8+ ♗xf8 38. ♗xf8 mate

Old Indian

Sterling Kolde (984)

Darby Monahan (1554)

Bellevue, WA Class (4) 2005

1.c4 ♖f6 2. ♖c3 e6 3. e4 d6 4. d4 ♖bd7 5. ♗d3 a6 6. ♖ge2 e5 7. ♗e3 exd4 8. ♖xd4 ♖e5 9. f3 ♗e6 10. ♖d5 ♖xd3+ 11. ♗xd3 ♗e7 12. ♗b3 ♗xd5 13. cxd5 c5 14. dxc6 bxc6 15. ♖xc6 ♗c7 16. ♗c1 0-0 17. 0-0 h6 18. ♗fd1 ♖e8 19. ♗f4 ♗f6 20. ♗g3 ♖h7 21. f4 g6 22. e5 dxe5 23. fxe5 ♗g5 24. e6 ♗c8 25. e7 1-0

Chess960 at the WA Class

by H. G. Pitre

The Chess960 event at the Washington Class was a new side event held in the evening of Friday and Saturday in the midst of the tournament. We obtained eight players to participate. We would have had a few more, but the rigors of a normal tourney and family matters caused a couple of players not to play. There were four rounds. Our time control was G/12 with 10-second increments.

After the random drawing of the starting position, the players studied that position for four minutes and then started the clocks. The winner was Nat Koons, a master from the Seattle area. We also offered a prize to the best player rated under 1900 which went to Eric Hufnagel. The tournament was not rated, but upheld all the procedures recommended by chesstigers.de. I believe that if we try this again next year, it will be with a longer time control, maybe G/25 with 10-second increments.

At the same time there was also an eight-round blitz event which drew fourteen players. So we have more work to do to reach more players with this interesting variant of chess. I am hoping that some clubs in our area will try Chess960 in a casual setting to see if it has the appeal that we find in it.

Here is one game played by Mr. Koons from the event {starting position #839}.

Position #839

NM Nat Koons (2239)

Gene Milener (1408)

Bellevue, Chess 960 (1) 2005



1.e4 g6 2.d4 ♗g7 3.b3 ♖c6 4. ♗d2 ♗f8 5. ♖e3 b6 6. d5 ♖d8 7. ♗a6+ ♗b7 8. ♗xb7+ ♖xb7 9. 0-0 0-0-0 10. e5 e6 11. c4 f6 12. f4 fxe5 13. fxe5 ♗a3 14. b4 ♗h6 15. ♗b3 ♗xe3+ 16. ♗xe3 ♗xa2 17. ♗a3 ♗xc4 18. ♗xa7 ♖b8 19. ♗a3 c6 20. d6 ♖a5 and White went on to win nicely 1-0

Nimzovich Defense

Michael Omori (1523)
Michael Hosford (1792)

Bellevue, WA Class (4) 2005

1.e4 d3 2.d4 d5 3.exd5 ♖xd5 4. e3
e5 5. f3 g4 6. e2 O-O-O 7.c3 exd4
8.cxd4 ♙b4+ 9. d3 d7 10.O-O ♗d7
11. d5 e2 12. dxe2 d5 13. e1 f6
14. f3 g5 15. a3 d6 16. b4 d7 17.
♙b3 h5 18. d2 h4 19. d4 g4 20. d2c3
dxc3 21. e3c3 d5 22. e2 f5 23.
dxd6+ ♗xd6 24. e1c1 f4 25. d2 g3
26. f1 h3 27. fxg3 hxg2+ 28. g2 fxg3
29. hxg3 d7 30. e1h1 e1h1 31. g1h1
h1h7+ 32. g2 e6 33. f3 f7 34. ♗d3
♙f6 35. e2 f8 36. ♗g4+ ♙b8 37. e4
e3+ 38. e3e3 ♙f1+ 39. g2 h2 h8+
40. ♙h4 e1h4+ 41. gxh4 e1 42. g5
d1 43. d2 f3 44. g2 b6 45. g3
f2+ 46. h3 d4 47. h5 d7+ 48.
h4 d4+ 49. g4 f2+ 50. g3
h2+ 51. g4 c8 52. h6 d7 53. h3
e2+ 54. g3 d3+ 55. g4 h7 56.
h5 c5 57. bxc5 bxc5 58. f3c4 59. f6
c3 60. g6 ♙f7 Draw

Slav Exchange

NM Nat Koons (2239)
Kent McNall (1886)

Bellevue, WA Class (5) 2005

1.d4 d5 2.c4 c6 3. d3 d6 4. f3 d7
5.cxd5 dxd5 6.e4 dxc3 7.bxc3 ♙a5
8. ♙b3 d6 9. d3 e6 10.O-O e7 11.
g5 h6 12. d2 h5 13.a4 d7 14.
e1 g5 15. d5 d6 16. e2 h4 17.
g3 ♙xe4 18. h5 d5 19. ♗xd5 1-0

Slav Exchange

Alexandra Botez (1406)
George Fan (1579)

Bellevue, WA Class (5) 2005

1.d4 d5 2.c4 c6 3.cxd5 cxd5 4. d3 f5
5. f4 d6 6. e3 e6 7. b5 d6 8. dge2
d6 9. g5 O-O 10.O-O h6 11. f4 e7
12. e1 a6 13. a4 b5 14. e2 e3
15. e3c2 d6 16. g3 h5 17. a3 d3
18. d3g3 e3 19. f4 ♙c7 20. e2 f5
21. e1c1 ♙b8 22. d1 e7 23. d2
e3c2 24. e3c2 a5 25. d3 e3c2 26. d1
e4 27. ♙c1 d6 28. d1 h7 29. d2
dxd4 30. exd4 e3d4 31. e3c8 ♙a7
32. d2 e3f4 33. e2e5 34. e1 d2
35. e3d2 ♙c5 36. h1 a4 37. d3 ♙c4
38. ♙xe5 h8 39. ♙xf5 e4 40. h3 e8
41. h2 d4 42. ♙c5 e3 43. ♙xc4 bxc4
44. d4c3 45. bxc3 e3c3 46. d3 b3
47. g3 g8 48. f3 f7 49. e4 b2

50.g4 e2+ 51. dxd4 e6 52. e3+
e3e3 53. e3e3 e5 54. h4 g6 55. d3+
d6 56. d4 g5 57. h5 d7 58. d5+
c6 59. dxa4 b5 60. d3c+ a5 1-0

Sicilian Najdorf

Zachary Oseran (1476)
Stephen Buck (1763)

Bellevue, WA Class (5) 2005

1.e4 c5 2. d3 d6 3. d4 cxd4 4. dxd4 d6
5. d3c3 a6 6. g5 e6 7. f4 e7 8. ♙f3 ♙c7
9.O-O-O d7 10.g4 b5 11. a3 b7 12.
e3f6 d3f6 13.g5 d7 14.h4 ♙b6 15.
e3h3 b4 16. axb4 ♙xb4 17. e3e6 fxe6 18.
dxe6 f7 19. f5 d5 20. ♙h5+ g6 21.
♙h6 e8 22. fxg6+ d3g6 23. d3f8 e3f8
24. e1f1+ e8 25. e1f8+ e1f8 26. ♙xh7
d5 27. d5 e3d5 28. e3d5 e1f1+
29. d1 e3d1+ 30. e3d1 d4+ 31. c1
d4 32. ♙g6+ d7 33. ♙f7+ c8 34.
e8+ c7 35. e7+ c8 36. ♙f8+ c7
37. ♙f1 b6 38. c3 d2+ 0-1

Sicilian Dragon Yugoslav

NM Lucas Davies (2207)
Eduard Shamilov (2164)

Bellevue, WA Class (5) 2005

1.e4 c5 2. d3 d6 3. d4 cxd4 4. dxd4 d6
5. d3c3 g6 6. e3 g7 7. f3 d6 8. ♗d2
O-O 9.O-O-O d5 10. exd5 dxd5 11. dxc6
bxc6 12. dxd5 cxd5 13. ♗xd5 ♙c7 14.
♙c5 ♙b7 15. ♙a3 a5 16. d4 e5 17. e3
e6 18. d3 d5 19. e1h1 e1f8 20.
e4 e8 21. e3d5 e3d5 22. ♙b3
e6+ 23. b1 e8 24. e3d5 ♙xd5
25. ♙xd5 e3d5 26. b3 f6 27. a4 f7
28. b2 e6 29. e4 f5 30. e2 d6
31. e1 f4 32. h3 g5 33. c4 e3 34.
d2 h4 35. e3 e6 36. d2+ e6
37. d5 e6 38. d2 e4 39. fxe4 fxe4
40. c2 e2 41. e3a5 e3a8 42. e3e3 e3
43. d3 g1 44. a5 f8 45. e5+ d7
46. d4 e2 47. e3e3 e3g2 48. e3g1
e3g1 49. b4 e1 50. d4 d6 51. c5+
c6 52. e6+ b7 53. c4 1-0

Caro-Kann

Drew Serres (1949)
LM Viktors Pupols (2229)

Bellevue, WA Class (5) 2005

1.e4 c6 2.c4 e5 3. d3 d6 4. d3c3 g4
5. e2 d7 6. h3 h5 7. d3 e7 8. e3
e3f3 9. e3f3 g5 10.O-O e3e3 11. fxe3
d3f6 12. e2O-O 13. b4 e7 14. e1b1
e1d8 15. e2 d8 16. d4 d6 17. e1b1
d5 18. cxd5 cxd5 19. dxd5 dxd5 20. exd5
e4 21. g4 e3 22. e2 f5 23. h5

d8 24. ♙f2 g6 25. e2 d7 26. e3c4+
h8 27. ♗d2 e8 28. e1 f5 29. a3
d7 30. ♙f2 d6 31. ♙g3 h7 32. e1c1
d6 33. ♙g5 e7 34. h1 g7 35. e3b3
d7 36. ♙h4 ♙f6 37. ♙f4 g5 38. ♙f2 f4
39. d5 e5 40. e3c5 d6 41. e3c7 d7
42. e7c5 h6 43. e2 d6 44. ♗d2
d6 45. e3c7 f3 46. e3e7 ♙xe7 47. ♗d4
g4 48. g3 gxh3 49. e3c2 d7 50. e2h2 ♙f6
51. ♗d1 d5 52. g1 e5 53. e1 d7
54. e3c2 e3c7 55. e3c7 ♙xc7 56. h2h4
57. ♙f2 e5 58. e3c4 g7 59. a4 f6
60. e1 f1 e7 61. e3c4 d6 62. e3b5
hxg3+ 63. ♙xg3 ♙xg3+ 64. g3g3 d5
65. d7 c4 66. b5 b6 0-1

Reti

NM Nick Raptis (2292)
NM Harley Greninger (2245)

Bellevue, WA Class (5) 2005

1.c4 c6 2. d3 d5 3. g3 d6 4. g2 e3
5. cxd5 cxd5 6. ♙b3 ♙c8 7. d3c3 e6 8. d3
e7 9.O-O O-O 10. e4 d6 11. e1c1
d7 12. e4 g6 13. exd5 exd5 14. d4
a5 15. d1 e8 16. d5 e8 17.
d3g6 hxg6 18. ♙f3 ♗d7 19. dxd5 dxd5
20. ♙xd5 ♙xd5 21. e3d5 e3c1 22. e3c1
d8 23. e3b7 d3b7 24. e3c7 e3f6 25.
e3b7 e3d4 26. f1 d5 27. e2g5 28.
e3 e3e3 29. e3e3 a5 30. a4 e5+ 31.
f3 e3c3 32. e3b5 g4+ 33. e3c3 c2 34.
e3a5 e3b2 35. e3b5 e2 36. e3b4 f5 37.
e3f4 g6 38. d3 f7 39. c3 f6 40.
b3 e2 41. a5g5 42. e4a4 e3f2 43. a6
e3h2 44. a7 h8 45. a8=♙ e3a8 46.
e3a8 f4 47. c3 f3 48. d3 g2 49.
e1a1 f5 50. e3 1-0

English

Michael Lee (2057)
Noam Davies (2002)

Bellevue, WA Class (5) 2005

1.c4 d6 2. d3 d5 3. cxd5 dxd5 4. g3
g6 5. g2 d6 6. d3 g7 7.O-O O-O
8. d3 d6 9. e3e5 10. a3 d4 11. d4e4
d5 12. g5 f6 13. dxd4 exd4 14. d2
b6 15. ♙a4 e3 16. ♙xd4 d4 17. d3f6+
f6 18. ♙xf4 e3g2 19. ♙xf6 e3f6 20.
g2g2 e3b2 21. e2 e3 22. e2c5 23.
a4 e3c8 24. e3 e7 25. e1c1 e1d8
26. d4 d7 27. dxc5 bxc5 28. e4 e3
29. e1c2 f7 30. f3 e3 31. e2 d6
32. e4 e6 33. f4 e7 34. f3 e3+ 35.
e2 e3 36. e3 h5 37. h3 e3 38.
e2c3 a5 39. e2 e3 40. d2 e3c4
41. e3c4 d8 42. g4 hxg4 43. hxg4 e3b6
44. f5+ gx5 45. gx5+ f6 46. f3 d8
47. e3 d7 48. e1 h7 49. f4 e3+

Comments on Fischer Time Controls

Everyone in the adult tournament seemed to enjoy themselves, however that does not mean they endorsed the time control. In fact, the opposite seemed true. Admittedly, a few adults did like the TC, but the vast majority I spoke with did not. I really look forward to the two big WA Federation events in part due to the fact that the time control has always been 40/2 & SD/1.—**Geoffrey Gale**

[I]n general I think the faster time control was well received, and once we "train" ourselves it will make the time control, and therefore our events, more popular.—**Kent McNall**

I found myself actually favoring the 30-second time increment after my first game, because it gives you more time for the first 30 moves. With the standard time control you get 90 minutes. What if you are in a critical middlegame position and you don't reach time control, because you only have 90 minutes? In my first game, I had one second left when I made time control, and I blundered several moves earlier, because time was a contributing factor. In my subsequent games, I preferred having the additional 15 minutes afforded by G/105 +30sec., because, in my play, the most critical thinking is required for the middlegame and sometimes the opening. In fact, for the rest of my games, I didn't suffer for time despite incremental time control.—**Michael MacGregor**

I was expecting to like and do well in the 2-day rapid games, but, to my surprise, the opposite occurred. My time management skills for G/45 or G/60 are honed fairly well, I think, but were completely upset by G/15+30. The intent behind such a time control is to relieve "absolute" time pressure, where someone has to make 10 or 20 or an unlimited number of moves in, say, 15 seconds. The frantic pieces flying banging clocks sort of scene. True, this increment takes care of that problem, but it also introduces another meddlesome effect: it forces each player to manage their time in a certain way. Since ongoing notation is also required, we have the a sort of "perfect storm."

Normally, during a G/45, I take a few minutes choosing an opening, play the opening quickly, and then manage my time sporadically in the middlegame: sometimes a minute or two, sometimes 10 seconds, sometimes 5, 10, or 15 minutes. Very often with about 15 minutes left a critical position arises . . . and I spend as much of my remaining time as I need (up to about 13 minutes) on a few moves. Then I switch to blitz mode, playing intuitively, completely concentrating on the board, without recording (as per regulations). This is the best way I know how.

Now the new control: Starting with [only] 15 minutes, I already feel under some pressure. I choose my opening with a little more haste and, after 10 moves, I have 11 minutes [left]. Now I reach the first important middlegame position where I have to try to figure out what's going on and what, in general, I should do. . . Normally, I would spend 5 minutes or so, but is it rational to do so now? No, it's not. I might need the time in a couple of moves for another longish think. So, instead, I take 2 minutes, maybe a third of which is spend decid[ing] how long it should take to decide! Sure enough, in a couple of moves the position is really complicated and I have to take 5 minutes to think out my plan. By this point I'm down to two minutes. The position is still complicated—we're trading some pieces, getting closer to the endgame. But I don't have any time for big thinks, so my while my play is regular—a move every 30 seconds—it's shallow and reflexive. Reflexive, but not intuitive, because, unlike a blitz game where I'm fully concentrated on the main line of events, here I still have to break my concentration after every move in order to notate. A glance at the clock, then back to the board to try to recall everything I was just thinking about . . . and zap, my extra 30 [seconds] are almost gone. I'm not going to lose on time (no banging pieces!), and the game may last another 10 minutes, but real chess, as I understand it, is over. And there was much less of it than in the G/45 scenario.—**Nat Koons**

50. ♖g4 ♙b6 51. ♙h4+ ♜e5 52. ♙g3+ ♜f6 53. e5+ ♜f7 54. ♙h4 ♙g7+ 55. ♜f3 ♙g1 56. e6+ ♜e8 57. f6 1-0

Queen Pawn

Constantin Etingher (1481)

Jennifer Apacible (1296)

Bellevue, WA Class (5) 2005

1. d4 d5 2. ♖f3 ♖f6 3. g3 ♙g4 4. ♙g2 e6 5. O-O ♖bd7 6. h3 ♙xf3 7. ♙xf3 ♙d6 8. ♙e3 c6 9. ♖d2 O-O 10. c4 ♙c8 11. c5 ♙c7 12. b4 b6 13. a4 bxc5 14. bxc5 e5 15. ♙b1 e4 16. ♙g2 ♙b8 17. ♖c2 ♖e7 18. ♙xb8 ♙xb8 19. ♙b1 ♖d8 20. ♖b3 ♖e7 21. ♙g5 ♖d8 22. ♖d2 ♙xb1+ 23. ♖xb1 ♖b8 24. ♖xb8+ ♙xb8 25. ♙f4 ♙xf4 26. gxf4 ♖f8 27. f3 e3 28. ♖f1 ♖h5 29. f5 ♖f4 30. ♖xe3 ♖xe2+ 31. ♜f2 ♖xd4 32. ♙f1 ♖d7 33. ♖xd5 cxd5 34. c6 ♖xc6 35. ♙b5 ♖db8 36. ♜e3 a6 37. ♙e2 g6 38. fxc6 fxc6 39. f4 ♜f7 40. ♙g4 ♜f6 41. h4 h6 42. ♙c8 ♖e7 43. ♙h3 ♖f5+ 44. ♜d3 a5 45. ♙g2 ♖a6 46. ♙xd5 ♖c5+ 47. ♜c4 ♖xa4 0-1

Nimzovich Defense

Daniel Gay (1742)

Michael Hosford (1792)

Bellevue, WA Class (6) 2005

1. e4 ♖c6 2. d4 d5 3. e5 ♙f5 4. ♖f3 ♖d7 5. ♙d3 ♙xd3 6. ♖xd3 e6 7. ♙e3 ♖ge7 8. ♖bd2 ♖f5 9. c3 ♙e7 10. h4 f6 11. g4 ♖xe3 12. ♖xe3 fxe5 13. ♖xe5 ♖xe5 14. ♖xe5 ♙d6 15. ♖e3 ♙f8 16. O-O O-O 17. ♙de1 ♙de8 18. ♜b1 ♖e7 19. h5 e5 20. ♜xe5 ♙c5 21. ♖d3 ♙xf2 22. ♖b3 c6 23. ♖xh7 ♙b6 24. h6 gxc6 25. ♖xe7 ♙xe7 26. ♙xh6 ♙g7 27. e6 ♜d8 28. a4 a6 29. a5 ♙c7 30. ♙h8+ ♜e7 31. ♖d4 ♙xa5 32. ♖f5+ ♙xf5 33. gxf5 d4 34. ♙h6 1-0

Sicilian Dragon Yugoslav

Eduard Shamilov (2164)

Michael Lee (2057)

Bellevue, WA Class (6) 2005

1. e4 c5 2. ♖f3 d6 3. d4 cxd4 4. ♖xd4 ♖f6 5. ♖c3 g6 6. ♙e3 ♙g7 7. f3 O-O 8. ♖d2 ♖c6 9. ♙c4 ♙d7 10. O-O-O ♙b8 11. ♙b3 ♖a5 12. h4 b5 13. ♙h6 ♙xh6 14. ♖xh6 e5 15. ♖de2 ♖xb3+ 16. axb3 ♙c6 17. h5 b4 18. ♖a4 ♖c7 19. ♜b1 ♙fd8 20. g4 ♖e7 21. g5 ♖e8 22. ♖g3 ♙d7 23. ♖f5 ♖f8 24. ♖xf8+ ♜xf8 25. ♖e3 ♖c7 26. ♙d2 ♖b5 27. hxg6 fxc6 28. ♖d5 ♙xd5 29. ♙xd5 ♜e8 30. ♙f1 ♙f7 31. c3 a5 32. c4 ♖d4 33. ♙xd6 ♖xf3 34. ♙fd1 ♖xg5 35. ♖c5 ♙c8 36. ♙1d5 ♖f3 37. ♙a6 g5 38. ♖d3 g4 39. ♖xe5 ♖xe5 40. ♙xe5+ ♜f8 41. ♙axa5 ♙g7 42. ♙f5+ ♜g8 43. ♙g5 ♙cc7 44. ♙a8+ ♜f7 45. ♙aa5 ♙g6 46. ♙h5 ♜g7 47. ♙h2 g3 48. ♙g2 ♙f7 49. ♙f5 h5 50. c5 h4 51. c6 ♙xf5 52. exf5 ♙xc6 0-1

King's Indian Fianchetto

Stephen Buck (1763)

Greg Prentice (1745)

Bellevue, WA Class (6) 2005

1. c4 ♖f6 2. ♖c3 g6 3. g3 d6 4. d4 ♙g7 5. ♙g2 c6 6. ♖f3 O-O 7. O-O a5 8. e4 ♙g4 9. h3 ♙xf3 10. ♙xf3 ♖c8 11. ♜h2 e5 12. d5 c5 13. ♙g5 h6 14. ♙e3 ♖a6 15. ♖d2 ♜h7 16. ♙e2 ♖g8 17. f4 f5 18. ♙d3 fxe4 19. ♖xe4 ♖d8 20. ♙f2 ♖e7 21. ♙af1 ♖f6 22. ♖xf6+ ♙xf6 23. fxe5 ♙xf2+ 24. ♙xf2 ♙xe5 25. ♙xh6 ♙xb2 26. ♙g5 ♖e5 27. ♙f6 ♖xf6 28. ♙xf6 ♙xf6 29. ♖f4 ♙f8 30. ♖xd6 ♜g7 31. h4 ♙f7 32. ♖e6 ♖b4 33. ♙b1 ♙d4 34. ♖xg6+ ♜f8 35. h5 ♖xa2 36. ♖d6+ ♜g8 37. ♖e6 ♜f8 38. ♙g6 ♙e7 39. ♖d6 a4 40. h6 b5 41. ♖d8+ 1-0

Ruy Lopez

John Hornickle (1373)

Jeff Omori (1175)

Bellevue, WA Class (6) 2005

1. e4 e5 2. ♖f3 ♖c6 3. ♙b5 ♖f6 4. d3 d6 5. O-O ♙e7 6. ♖c3 O-O 7. ♙d2 ♙g4 8. ♙xc6 bxc6 9. h3 ♙xf3 10. ♖xf3 d5 11. ♙ad1 d4 12. ♖e2 a5 13. a3 a4 14. ♖g3 ♙b8 15. ♙c1 c5 16. ♖f5 g6 17. ♖xe7+ ♖xe7 18. ♖g3 ♖e6 19. ♖g5 ♙b6 20. f4 exf4 21. ♙xf4 ♜g7 22. ♙df1 c4 23. ♙xf6 ♖xf6 24. ♙xf6 ♙xf6 25. ♖e5 cxd3 26. cxd3 c6 27. ♙g5 h6 28. ♙xf6+ ♜h7 29. ♖e7 1-0

10 Terrill, Michael	1315	1348	B	W8	L6	L2	L3	2.0	2 Nast, Alexis	1306	1272	W4	D3	L1	1.5
11 Bohn, Calvin	1384	1360	L7	B	L4	F	L9	1.0	3 Li, William	1342	1304	L1	D2	W4	1.5

Bainbridge Slugfest 12/10-11 TD: Clint Ballard

1 Peres, Ignacio	2183	2197	D4	W8	W11	W10	3.5	
2 Orlov, Georgi	2580	2570	D5	W13	W6	D4	3.0	
3 Haessler, Carl	OR	2247	2256	W11	D4	W5	D6	3.0
4 Raptis, Nick		2322	2328	D1	D3	W9	D2	2.5
5 Russell, Corey	OR	2201	2213	D2	W7	L3	W12	2.5
6 Selzler, Ricky		2021	2048	W9	W10	L2	D3	2.5
7 Roua, Radu	OR	2241	2208	W13	L5	L10	W11	2.0
8 Ballard, Clint		1927	1942	W14	L1	W12	L9	2.0
9 Pupols, Viktors		2212	2200	L6	H	L4	W8	1.5
10 Vukic, George		1950	1955	H	L6	W7	L1	1.5
11 Gale, Geoffrey		2058	2048	L3	W14	L1	L7	1.0
12 Dizon, Noel		2057	2041	H	H	L8	L5	1.0
13 Bond, Robert		2009	2004	L7	L2	U	U	0.0
14 McNall, Kent		1912	1896	L8	L11	U	U	0.0

Reserve

1 Rosell, John	1842	1855	W10	W3	W4	D2	3.5	
2 Rasmussen, Ernst	1728	1748	W9	D8	W3	D1	3.0	
3 Pitre, H G	1820	1803	W6	L1	L2	W4	2.0	
4 Hann, Anthony	OR	1700	1685	W7	W5	L1	L3	2.0
5 McGuire, Dennis		1314	1309	L8	L4	W6	W7	2.0
6 Mooney, Jimmy		622	764	L3	W10	L5	W9	2.0
7 Iordanov, Stoyan		491	648	L4	W9	W10	L5	2.0
8 Murray, Michael		1300	1743	W5	D2	U	U	1.5
9 Gracia, Roel		763	699	L2	L7	H	L6	0.5
10 Hjerrild, Steven		861	786	L1	L6	L7	U	0.0

SCC Tornado 12/4 TD: Fred Kleist

1 Gale, Geoffrey	2048	2051	W2	W5	H	H3.0	
2 Kolde, Sterling	1505	1519	L1	D3	W6	W8	2.5
3 Hufnagel, Eric	1577	1583	L4	D2	W8	W6	2.5
4 Kleist, Fred	2022	2023	W3	W7	U	U	2.0
5 OGorman, Peter	1819	1817	W6	L1	W7	U	2.0
6 Apacible, Jennifer	1320	1325	L5	W8	L2	L3	1.0
7 James, Mark	1123	1147	W8	L4	L5	U	1.0
8 Thorsen, Eric	1498	1453	L7	L6	L3	L2	0.0

C.B. Bagley Memorial Seattle 12/2-16 TD: Carol Kleist

1 Arasu, Arvind	1300	1593	W2	L3	W4	2.0
2 Fan, George	1477	1478	L1	W8	D6	1.5
3 Kleist, Carol	1496	1520	H	W1	U	1.5
4 Milener, Gene	1404	1394	W9	H	L1	1.5
5 Weller, Stephen	1267	1278	U	H	W8	1.5
6 Hubbell, Larry	1697	1688	U	H	D2	1.0
7 Hatfield, Robert	1425	1408	D8	U	U	0.5
8 Speakmon, Ben	1021	1045	D7	L2	L5	0.5
9 Ozeki, Taishi	481	481	L4	U	U	0.0

SCC Quads 12/17 TD: Fred Kleist

1 Bragg, David	2200	2206	W2	D3	W4	2.5
2 Gale, Geoffrey	2051	2062	L1	W4	W3*	2.0
3 Sinanan, Joshua	2046	2049	W4	D1	L2*	1.5
4 Kleist, Fred	2023	2003	L3	L2	L1	0.0
1 Manber, Devon	1595	1664	W4	W2	W3	3.0
2 Dixon, Dakota	1656	1662	W3	L1	W4	2.0
3 Ummel, Igor	1619	1602	L2	W4	L1	1.0
4 Kolde, Sterling	1519	1486	L1	L3	L2	0.0
1 Mulligan, Jamey	1367	1381	D4	W3	L2	1.5
2 Van Veen, Kerry	1450	1460	D3	U	W1	1.5
3 Maider, Tate	1325	1349	D2	L1	W4	1.5
4 Hufnagel, Eric	1583	1548	D1	U	L3	0.5
1 Gelb, Nicolo	678	844	W3	L4	W2	2.0

*Sinanan won the game, correction sent to USCF

Portland Winter Open 12/17-18 TD Komeljijs Dale

Open												
1 Raptis, Nick	WA	2328	2331	D11	W7	W10	W5	3.5				
2 Serres, Drew		1979	1994	W8	W12	D5	H	3.0				
3 Foster, Raleigh		1821	1867	L4	W14	W12	W11	3.0				
4 Morris, Michael		2134	2136	W3	D10	H	D7	2.5				
5 Smyth, Scott		1971	1976	W13	W9	D2	L1	2.5				
6 May, Andy	WA	1859	1862	L12	W11	D8	X	2.5				
7 Haessler, Carl		2256	2247	H	L1	W9	D4	2.0				
8 Arun, Aditya		1693	1712	L2	W13	D6	H	2.0				
9 Zlatnik, Sean		1524	1521	B	L5	L7	X	2.0				
10 Alpernas, Gregori		1952	1957	W14	D4	L1	F	1.5				
11 Ball, Larry		1886	1876	D1	L6	W14	L3	1.5				
12 Gutman, Richard		2105	2085	W6	L2	L3	U	1.0				
13 Esler, Brian		1804	1782	L5	L8	H	F	0.5				
14 Becker, Brett		1619	1604	L10	L3	L11	H	0.5				

Section 2

1 Kaiser, Brian	WA	1650	1668	W12	W9	H	W4	3.5
2 Gagnon, William		1623	1618	L9	W12	W6	W5	3.0
3 Porter, Nathan		1450	1456	D8	D6	W9	W10	3.0
4 Figone, Nick		1522	1520	H	W8	W7	L1	2.5
5 Dietz, Arliss		1501	1500	W10	D7	H	L2	2.0
6 Cohen, David		1340	1357	H	D3	L2	W12	2.0
7 Porter, Joel		1133	1204	W11	D5	L4	D8	2.0
8 Kyle-Milward, Thomas		1108	1189	D3	L4	W11	D7	2.0
9 Terrill, Michael		1391	1399	W2	L1	L3	H	1.5
10 Diamond, Noah K		1183	1196	L5	W11	H	L3	1.5
11 Midson, Tony		1346	1263	L7	L10	L8	B	1.0
12 Ashby, Stephen		1326	1296	L1	L2	B	L6	1.0

Christmas Congress Tacoma 12/10-11 TD: Gary Dorfner

1 Kleist, Fred	2003	2010	W9	W7	W3	L2	W5	4.0
2 Buck, Stephen	1786	1833	W6	L3	W5	W1	W8	4.0
3 MacGregor, Michael	2204	2194	W8	W2	L1	H	W9	3.5
4 Alhajri, Andrew	1296	1316	D5	L9	W11	D6	B	3.0
5 Rompogren, Michael	1813	1792	D4	W10	L2	W8	L1	2.5
6 Hornickle, John	1439	1421	L2	L8	B	D4	W11	2.5
7 Guo, Alex	1663	1660	W11	L1	H	H	U	2.0
8 Woodlief, Eric	1554	1562	L3	W6	W9	L5	L2	2.0
9 Etingher, Constan	1426	1430	L1	W4	L8	W11	L3	2.0
10 Guo, Anthony	1129	1127	B	L5	H	H	U	2.0
11 Mac Gregor, Logan	1071	1046	L7	B	L4	L9	L6	1.0

WA Quick Championship Tacoma 12/18 TD: Gary Dorfner

1 Gale, Geoffrey	(1829)	(1855)	W3	W5	D2	W7	W4	4.5
2 Sinanan, Joshua	(1741)	(1856)	W7	W9	D1	W4	W6	4.5
3 Woodlief, Eric	(1562)	(1630)	L1	D8	W10	D9	W7	3.0
4 Pitre, H G	(1713)	(1730)	D9	W6	W5	L2	L1	2.5
5 Allen, Robert	(1749)	(1711)	W10	L1	L4	L6	W8	2.0
6 Buck, Stephen	(1730)	(1714)	D8	L4	D9	W5	L2	2.0
7 Vamer, Murlin	(1524)	(1533)	L2	W10	W8	L1	L3	2.0
8 Alhajri, Andrew	(1316)	(1424)	D6	D3	L7	W10	L5	2.0
9 Zaragoza, Rogelio	(1845)	(1791)	D4	L2	D6	D3	L10	1.5
10 Etingher, Constantin	(1577)	(1538)	L5	L7	L3	L8	W9	1.0

If you played in the WCF Thanksgiving Scholastic event, welcome to Northwest Chess!!

Your subscription and WCF membership is good for three months, through February 2006. To make it a full year (through November 2006) and receive a permanent membership number, please send \$12 to the Business Manager as listed on the membership application or the inside cover of this magazine. For those of you with two junior chess players in the same family at the Thanksgiving tournament, there is no additional cost for the second junior if you wish to receive only one magazine subscription instead of two. To add other family members who did NOT play in the tournament, please add \$5 per family member.

3-2-1-0, Ignacio!

by Clint Ballard

It might just be my imagination (sleep deprivation?), but I think almost all the players had fun at the Slugfest. If confirmed, that is the most important thing about BAP. It makes chess more fun! I know the speed chess event went great, I have the video tape.

I want to thank IM Georgi Orlov who had little to gain and a lot to lose, with all his opponents being significantly lower rated. Thanks for your support, Georgi! I would also like to thank Geoff Gale, who tirelessly promoted the Slugfest. Without his efforts we wouldn't have had seven masters play in the Slugfest. That makes the Slugfest third out of all tournaments this year in WA state as far as number of masters.

I apologize for all the mistakes I made, there were plenty. While I was able to color-balance everyone, I am sure I could have done a better job. I didn't have time to work out all the details before the weekend and was planning on doing that during the rounds. However, when every round had an odd man out and I became "Mr. Bye" and I also became the photographer, there just wasn't the time.

All players who won two games got a Slugfest T-shirt and I lost track of who all did it, but when I do the formal crosstable, I will know. Over \$1500 was given out in cash prizes, about \$800 in hotel and gas costs, \$80 for the pizza, \$260 for the facility, \$100 for the shirts; so that's double what I had budgeted. That's just the costs for the tournament and doesn't count the DGT boards, seven laptops, and other one-time purchases. I did receive \$193.01 in donations to offset part of the above and I hope that for future tournaments we can get 50+ to attend with a \$20 entry fee so that I can hold these on a regular basis.

Round One

There was no preregistration list for the free Slugfest. I had the idea of letting each player fill out a 3x5 card with all the required info. It worked pretty well, except for not having all the critical information, but details, details. With the players filling out the cards, I was able to get the Pledge and Release Form printed out. It was a combination of a standard model release, so that I could use the video footage, and a Slugfest Pledge: "I pledge to fight for a win every game and hand in a completed scoresheet for every round." Everybody seemed to chuckle a bit at that, but it did have some significant prize money implications later on.

With several last minute cancellations and competing events in Tacoma and Vancouver, we had fewer people than I had expected. Which was good, as I was barely able run the tournament, film key games, and play in all four rounds.

There were two upsets, with Ricky defeating LM Viktors Pupols in a miniature and former Oregon state champ Corey Russell drawing Georgi. Since Georgi had the White pieces, this meant that he had zero points after the first round. As three of the four decisive games were won by White, I, the sole Black victor, was the tournament leader. How weird is that?

Benoni

Ricky Selzler (2026)

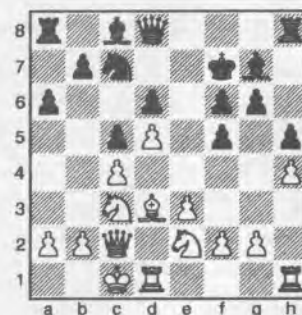
LM Viktors Pupols (2216)

Bainbridge, Slugfest (1) 2005

Annotations by Clint Ballard

1.d4 c5 2.d5 d6 3.c4 f5 4.♘c3 ♘f6
5.♙g5 g6 6.♚d2 h6 7.♙xf6 exf6 8.e3
♙g7 9.♙d3 ♘f7

We have a Slugfest in progress here!
10.O-O-O ♘a6 11.♘ge2 ♘c7 12.♚c2
h5 13.h4 a6



Too slow. Better is 13...b5 14.cxb5 a6 15.b6 ♘b5—Black's position is still worse, but at least a move faster than the game—16.g4 c4 17.♙xc4 ♘xc3 18.♘xc3 fxg4 19.♙d3 f5, the old checkerboard defense to equalize in this line!

14.g4

The rest is an example of technique in how to use the initiative.

14...hxg4 15.h5 ♙xh5 16.♙xh5 gxh5
17.♙xf5 b5

Right move, but played in the wrong order—a very common inaccuracy. We see the right moves, but finding the proper order seems to take a computer.

18.♘f4 bxc4 19.♙h1 ♘b5

A critical mistake in a difficult position. It's not clear whether anything else would have saved the game, but now it is over. After 19...♘g8 20.♘h5 ♚e7 21.♙h4, 21...♘b5 doesn't look so bad. Black's attack was too far behind White's after the slow 13...a6. In opposite-side castled positions, it is a race much like when two pawns are racing to the queening square. A single move is all the difference in the world.

20.♙e6+ ♙xe6 21.dxe6+ ♘g8 22.♙xh5 f5 23.♚xf5 1-0

FRITZ says mate-in-nine, but it doesn't take a computer to figure out that the game is over. Ricky used to be a positional player, but realized that without strong tactics, you can't play positionally at a high level. He then got a lot better at tactics and, for some strange reason, doesn't want to go back to being a positional player. This game is a very good example of White's advantage: Black had

just one chance to equalize, but the wrong move-order allowed White to force the issue. The logical 13...a6 appears to be the losing move in this game.

Sicilian Alapin

NM Carl Haessler (2247)
Geoffrey Gale (2048)

Bainbridge, Slugfest (1) 2005

Annotations by Clint Ballard

1.e4 c5 2.♘f3 g6 3.c3 ♗g7 4.♗d3 d5 5.exd5 ♖xd5 6.♞e2 ♞e6 7.♗b5+ ♘f8 8.O-O a6 9.♗c4 ♞xe2 10.♗xe2 ♘c6 11.d3 e5 12.♗e3 b6 13.♘bd2 ♘ge7 14.♘c4 ♗b8 15.d4 ♘d5 16.♘fxe5 ♘xe5 17.♘xe5 ♗xe5 18.dxe5 ♘xe3 19.fxe3 b5 20.♗ad1 ♘g7 21.♗d6

One of the few inaccuracies by White during the entire game.

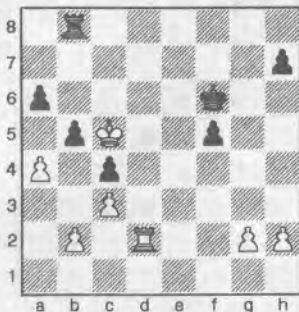
21...♗e8 22.♗d5 c4 23.♗f3

23.♗c5 would have maintained a better position, now Black can equalize.

23...♗b7 24.♗d6 ♗be7 25.♗d5 ♗e6 26.♗c6 ♗b8 27.♗f4 ♗f8 28.♘f2 ♗c8 29.e4 ♗xe5 30.♘e3 ♗e6 31.♗xe6 ♗xe6

Black finally equalizes.

32.♘d4 ♗d8+ 33.♗d5 ♘f8 34.♘c5 ♘e7 35.♗f2 f5 36.♗xe6 ♘xe6 37.exf5+ gxf5 38.♗e2+ ♘f6 39.a4 ♗b8 40.♗d2



41...♘e5

40...♗c8+ was necessary here to maintain an even position, i.e., 41.♘b6 (41.♘b4 bxa4) 41...bxa4.

41.axb5 axb5 42.♗d7 ♘e4 43.♗xh7 ♘d3 44.♗f7 ♗c8+?

44...♘e4 45.♗e7+ ♘d3 46.g3 ♗c8+ 47.♘b4 is recommended by FRITZ. Now it is a matter of technique for White.

45.♘b4 ♗g8 46.g3

It's over!

46...♗h8 47.♗xf5 ♗xh2 48.♗d5+ ♘e4 49.♗xb5 ♗xb2+ 50.♘xc4 ♗g2 51.♗b1 ♘e5?

51...♘f3 or 51...♗xg3 was needed, but game was lost anyway.

52.♗e1+ ♘d6 53.♗e3 ♗g1 54.♘d4 ♗a1 55.c4 ♗d1+ 56.♗d3 ♗e1 57.g4 ♗e2 58.♗g3 ♗e1 59.g5 ♗d1+ 60.♘e4 ♘e7 61.g6 ♘f8 62.g7+ ♘g8 63.c5 ♗d2 64.♘e5 ♗d1 65.c6 ♗e1+ 66.♘d6 ♗d1+ 67.♘e7 ♗c1 68.♗g6 1-0

An excellent example of a python slowly crushing the life out of its prey. The prey jumped out of it somehow and White had to create a win from an even Rook endgame.

QGD Semi-Slav

Radu Roua (2241)
Robert Bond (2021)

Bainbridge, Slugfest (1) 2005

Annotations by Clint Ballard

1.d4 ♘f6 2.♘f3 d5 3.c4 e6 4.♘c3 c6 5.e3 ♘bd7 6.♗d3 ♗d6 7.O-O O-O 8.e4 dxc4 9.♗xc4 e5 10.♗e3 ♞e7 11.d5 ♘c5

FRITZ gives a slight edge to Black with 11...♘b6 12.♗xb6 axb6 13.a4.

12.♞c2 ♗g4 13.♘d2 b5 14.♗b3

14.♘xb3 would have given Black a slight edge. The text leads to an even game.

14...b4 15.♗xc5 ♗xc5 16.♘a4 ♗d4 17.dxc6 ♘h5 18.♘c4

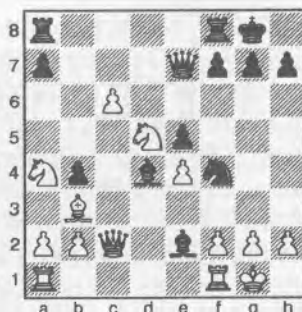
18.♗d5 or 18.g3 keeps the balance 18...♘f4

Black is better now.

19.♘e3 ♗e2

19...♞g5 was needed to keep up the pressure. The text allows White to even things up right away.

20.♘d5



20...♘d5

20...♞g5 was still best, now White gets an edge

21.♞xe2 ♘f4 22.♞f3 g5?

Until this move, Black was doing fine and had been playing a great game. Without pieces to back up the g5 move this just looks terribly weakening.

23.g3 g4 24.♞xg4+ ♘h8 25.♞f5 ♗g8 26.♘h1 ♗g6?

Can't White just take the Knight??

27.♗ac1

FRITZ doesn't understand this either. A Knight is a lot to ignore and if it goes to e6, Black still has some chances.

27...♗ag8??

Getting the Knight out of danger by 27...♘e6 would've also prevented...

28.c7 ♗xf2 29.♗xf2 1-0

A frustrating loss for Black. He had White under pressure, but then lost the thread and pushed too far.

Dutch

Kent McNall (1882)
Clint Ballard (1928)

Bainbridge, Slugfest (1) 2005

Annotations by Clint Ballard

1.d4 f5 2.♘f3 b6 3.♗f4 ♗b7 4.e3 ♘f6 5.♘bd2 e6 6.♗e2 ♘c6 7.O-O ♗d6 8.♘e5 ♞e7 9.c3

A slow move that lets Black start to dictate things.

9...O-O-O

I always like to castle on opposite sides, unless it would be suicidal. Maybe that's why my draw percentage is so low?

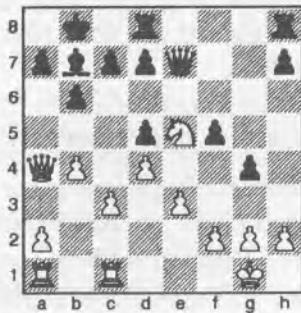
10.b4 g5 11.♘xc6 ♗xc6 12.♗xd6 ♞xd6 13.♗f3

13.b5 ♗b7 14.a4 would have been better for White. Always push pawns with tempo when castled opposite.

13...♘d5 14.♘c4 ♞e7 15.♘e5 ♗b7 16.♞a4 ♘b8 17.♗fc1

Things are looking a bit dangerous as c3-c4 looks unstoppable. In fact, it could have been played immediately. Pushing pawns with tempo is usually best.

17...g4 18.♗xd5 exd5



19. ♖c2?

I think this was the turning point. White's move just forces Black to move a Rook to the f-file, where it wanted to go anyway. The simple b4-b5 would have been consistent with the theme of this game—pawn storm

19... ♖h8 20. ♘d3 ♖f6 21. ♘f4 ♖df8 22. a4

Pieces are much faster than pawns.

22... ♖h6 23. b5 ♖h4

A 2x4 is an effective weapon when you can land a solid blow to the head.

24. a5

FRITZ (and Ricky!) suggest the ugly 24. h3 gxh3 25. g3 h2+ 26. ♔g2 ♖e7.

24... ♖xh2+ 25. ♔f1 g3

A bit of demolition work. White's position is supercritical: one misstep and it's over!

26. f3

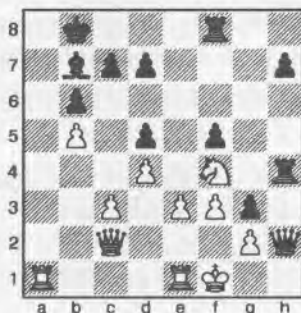
Now it's over. The g3-pawn is as valuable as a piece.

26... ♖h4

White probably missed this. That Knight must die.

27. axb6 axb6 28. ♖e1?

28. ♘e2 was better, now Black has a mini-combination.



28... ♖xf4 29. exf4 ♖h1+ 30. ♔e2 ♖e8+ 31. ♔d3

Losing a full Rook.

31... ♖xe1 32. ♖xe1 ♖xe1 33. ♖b2 ♖f1+ 34. ♔e3 h5 35. ♖c2 ♖g1+

Why let White's Queen into the game when you can just keep making the King block her path?

36. ♔d3 h4 37. ♖e2 ♖b1+ 38. ♔e3 c6 39. c4 ♖c1+ 0-1

Catalan

IM Georgi Orlov (2580)

NM Corey Russell (2201)

Bainbridge, *Slugfest (1)* 2005

Annotations by Clint Ballard

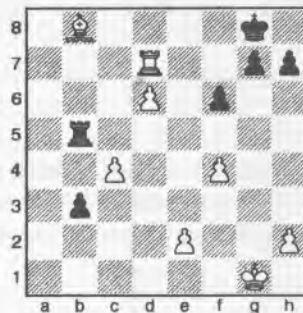
1. ♘f3 ♘f6 2. c4 e6 3. g3 d5 4. ♖g2 ♖e7 5. O-O O-O 6. d4 a6 7. ♘c3 ♘bd7 8. ♖c2 dxc4 9. ♖d1 ♖b8 10. ♘e5 ♘xe5 11. dxe5 ♘d7 12. ♖e3 c5 13. f4 b5 14. ♘e4 ♖c7 15. ♘d6 ♖xd6 16. exd6 ♖b6 17. b3 cxb3 18. axb3 ♖b7 19. ♖xb7 ♖xb7 20. ♖xc5 b4 21. ♖d4 ♖fc8 22. ♖b2 ♖e4 23. ♖ac1 f6 24. ♖c7 e5 25. ♖a7 ♖a8 26. ♖c1 ♖d8 27. ♖c4+ ♖xc4 28. bxc4 exf4 29. gxf4 a5 30. ♖a1

30. c5 is strongest here, e.g., 30... b3 31. c6 ♘b8 32. ♖xb8 ♖dx8 33. d7 b2 34. ♖b7 ♖xb7 35. cxb7 ♖d8 36. ♖b1.

30... b3 31. ♖xa5 ♖db8

The key move that sets up the draw.

32. ♖xb8 ♖xa5 33. ♖xd7 ♖b5



Clever move, but White still has a win by taking, e.g., 34. cxb5 b2 35. ♖c7 b1=♖+ 36. ♔f2 ♖f5 37. d7 ♖xf4+ 38. ♔e1 ♖b4+ 39. ♔d1 ♖a4+ 40. ♔d2 ♖d4+ 41. ♔c2 ♖e4+ 42. ♔c3 ♖e3+ 43. ♔b4 ♖d2+ 44. ♔c5 ♖c3+ 45. ♔b6 ♖d4+ 46. ♔b7 ♖e4+ 47. ♔c8 ♖f5 48. ♖a7 h5 49. b6. Glad I have FRITZ to help with analysis. Clearly, it's humanly impossible to see that White can get out of

perpetual in 15 moves and achieve victory with his two passed pawns.

34. ♖d8+

This sure looks like it wins quickly, but...

34... ♔f7 35. ♖d7+ ♔f8 36. ♖d8+ ♔f7 37. d7 ♔e7 38. ♖g8 ♔xd7 39. ♖xg7+ ♔e8 40. cxb5 b2 41. ♔f2 b1=♖ 42. ♖a7 ♖xb5 43. ♖xh7 ♖f5 44. ♖h8+ ♔f7 45. ♖e3 ♖e4 46. ♖h3 ♔g6 47. ♖f3 f5 48. ♖g3+ ♔h6 49. ♖g5 ♔h7 50. ♖g3 ♔h6 51. ♖f3 ♔g6 52. ♖c5 ♔h5 53. ♖e3 ♔g6 54. ♔f1 ♖b1+ 55. ♔f2 ♖e4 56. h3 ♔h5 57. ♔e1 ♖b1+ 58. ♔d2 ♖e4 59. ♖f2 ♖b4+ 60. ♔c1 ♖c4+ 61. ♔d2 ♖b4+ 62. ♔d1 ♖a4+ 63. ♔e1 ♖c4 64. ♖e3 ♖e4 65. ♖d2 ♔h4 66. ♖c3 ♖b1+ 67. ♔f2 ♖e4 68. ♖f6+ ♔h5 69. ♖e5 ♔h6 70. ♖d3 ♔g6 71. ♖d7 ♔h6 72. ♖d8 ♖h1 73. ♖h8+ ♔g6 74. h4 ♖h2+ 75. ♔e3 ♖h1 76. h5+ ♔f7 77. h6 ♖h3+ 78. ♔d2 ♖h1 79. ♔e3 ♖c1+ 80. ♔f2 ♖c5+ 81. ♔f3 ♖a3+ 82. ♔g2 ♖e3 83. ♔f1 ♖c1+ 84. ♔f2 ♖c5+ 85. ♔f3 ♖a3+ 86. ♔f2 Draw

French Steinitz

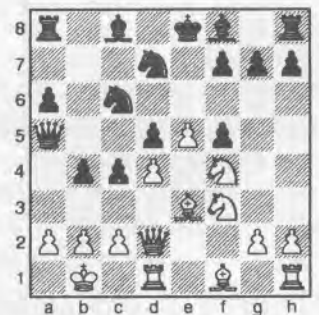
Ignacio Peres (2197)

NM Nick Raptis (2301)

Bainbridge, *Slugfest (1)* 2005

Annotations by Clint Ballard

1. e4 e6 2. d4 d5 3. ♘c3 ♘f6 4. e5 ♘fd7 5. f4 c5 6. ♘f3 ♘c6 7. ♖e3 a6 8. ♖d2 b5 9. O-O-O b4 10. ♘e2 c4 11. f5 exf5 12. ♘f4 ♖a5 13. ♔b1



We've got a Slugfest in progress!

13... ♘b6

Black crashes through with 13... c3 14. ♖c1 b3 15. cxb3 ♘b4 16. ♖xc3 ♖xa2+ 17. ♔c1.

14. b3??

Better is 14. ♖e1: without tempo on the ...c4-c3 pawn-push, White's position seems to hold.

14...♔e7 15.h4?!

15.♖h5 ♖g8 16.♔g5 gives White counterplay. After 15.h4, Black has a winning position.

15...♖b8 16.♖h3 ♖a7 17.e6 ♖b5??

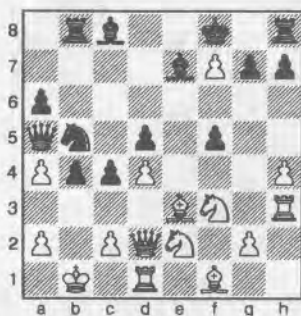
This lets White back into the game. Simply taking the pawn was best. After 17...fxe6 18.♖e5 ♖b5 19.♖e2 ♔b7, Black is two pawns up with the attack and White has no counterplay.

Chess is so confusing. How often has spending the move to take the pawn been the mistake? The entire tournament's course was affected by this game.

18.exf7+ ♔f8 19.♖e2 ♖a4!!

A brilliant move and sets up a winning combination.

20.bxa4



20...♖xa4??

Throws away the win. 20...♖c3+ either mates or wins a Queen: 21.♔a1 (21.♔b2 ♖xa4 22.♖c1 ♖xa2 23.♖xa2 c3+) 21...♖xa2 22.c3 ♖xc3 23.♔b2 ♖xa4+ 24.♔c1.

21.♔a1 ♖c3

Unfortunately, if Black doesn't grab the draw now, White is the one that gets the advantage, e.g., after 21...♔xf7 22.♔g5 ♔d6 23.♖e5+ ♔g8 24.h5 ♔e6 25.♔f4 ♖b7 26.h6 g6, White has full compensation for the two pawns, as Black's King Rook is out of play. Such a great game that almost was!

22.♖xc3 bxc3 23.♖xc3 ♔b4 24.♖b2 ♔d6 25.♖c3 ♔b4 Draw

Round Two

I did the pairings for the second round treating myself just like the other players. I didn't think much of it, but some of the players didn't like that I

would be paired as if I had actually won a game. However, I re-paired the round treating myself as the substitute for giving someone a full point bye. That someone turned out to be Ignacio who had drawn as White the first round! But the average rating of 2137 meant that there would be no easy opponents.

Most games went as expected. Only teenager Ricky Selzler earned a Slugfest T-shirt. He had five points and was all alone in first place. There was a massive tie for second place, with half a dozen or so having three points. Some with a single Black win, some with a Black draw and a White win, etc.

King's Indian Sämisch

Robert Bond (2021)

IM Georgi Orlov (2580)

Bainbridge, Slugfest (2) 2005

Annotations by Clint Ballard

1.e4 d6 2.d4 ♖f6 3.f3

While f2-f3 has its appeal, I've found it is too slow for White, unless Black is also playing slow moves such as ...a7-a6.

3...g6 4.c4

Starting the game with four pawn moves looks impressive, but usually does not end well if Black is developing quickly as in this game.

4...♔g7 5.♖c3 O-O

Ballard Antidraw Point System

The BAP is my solution to the prevalence of draws, particularly in late rounds, and to White's significant advantage. Draws cannot be eliminated, or outlawed, but they can easily be disincentivized by simply changing the point system. Using the BAP for the tiebreak is the weak form, but might make sense for the amateur sections where the draw problem is not as pronounced. For open sections and, certainly for GM events, I advocate using BAP as THE scoring system. We can keep the current one point for a win, one-half point for a draw as the tiebreaker for sentimentalists.

The BAP is simply as follows: three points for a Black win, two points for a White win, one point for a Black draw, and zero for all else!

The ratio of a White win vs. a Black draw is the same 2:1 that it is now, so we can't complain about that. The 3:2 ratio for Black vs. White wins does not fully compensate for Black's disadvantage. It should really be 2:1 or higher, but I achieve additional biasing in Black's favor by eliminating any value for a White draw. Clearly, the latter has some value, but I am intentionally sacrificing this to achieve two things. First, it gets the white vs. black disparity almost into balance. For example, I rescored the WA 2005 championship using BAP and White scored 54% of the total points vs. 66% in the traditional scoring. Second, and more important, is that White will have the burden to win. White will need to play aggressively and get into unclear positions. To play safe is to guarantee a zero. Speculative sacrifices, gambits, all-out attacks, a free for all, a SLUGFEST.

Now, let's look at Black's psychology. Drawing is a bit better than losing, but, with White behaving like a madman, there are no safe draws. Things are almost certain to get lively and, if Black ever sees anything more than a one-third chance to win, Black will go for it. If Black goes all out for a win and loses 60% of the time, that is better than drawing everytime under the BAP.

BAP requires color balancing to trump other pairing rules (other than playing the same opponent). It is also best if there are an even number of rounds in a BAP tournament so there is exact color balance.

Currently, the stronger the players get the higher the ratio of White wins vs. Black wins. Also, the higher the draw ratio. BAP ameliorates the White advantage in that the increasing draw ratio is in Black's favor. Do these forces exactly balance out? Of course not, but it will be an interesting experiment.

Rating	1-0	1/2	0-1	Rating	1-0	1/2	0-1
20XX	38%	30%	32%	24XX	32%	47%	22%
21XX	39%	30%	31%	25XX	28%	54%	18%
22XX	37%	35%	29%	26XX	28%	55%	16%
23XX	34%	40%	26%	27XX	28%	57%	15%

Games between computers have percentages much closer to the lower range; so that indicates that GMs play to minimize the number of losses. With current incentives, this is the logical thing for strong players to do. BAP will free players to play for a win, because they have nothing to lose by going for a win.

100% fairness is NOT the goal. The current system is biased, as long as BAP has about the same bias in either direction, that is close enough.

Black is fully equalized and is way ahead in development. Can you convert this temporary advantage into something tangible?

6. e3 e5

Already Black has tactical threats that cannot be ignored.

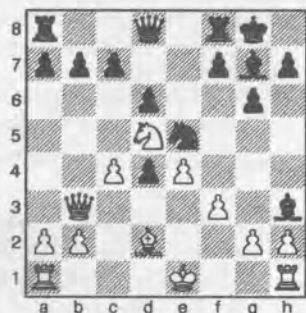
7. d3?

Now it's game over if you are playing an IM. 7.d5, closing the center and slowing things down, might have been the best try to catch up in development without paying a big price.

7... d4 8. d2

8. fxg4 exd4 isn't much better.

8... exd4 9. d5 dxe5 10. e2 dbd7 11. d3 dxd3+ 12. exd3 dxe5 13. b3 exh3 0-1



White resigned here, not wanting to feel the pain of 14.gxh3 Wh4+ 15. d1 c6 16. d7 Wxh3 17. dxa8 Wg2 18. e1 dxf3 19. Wd3 dxe1 20. exe1 Wxa8 etc. When I saw the four pawn moves in a row with Black castling quick, I knew White was in trouble, but the speed at which the position collapsed was a bit surprising.

Caro-Kann Advance

NM Corey Russell (2201)

NM Radu Roua (2241)

Bainbridge, Slugfest (2) 2005

Annotations by Clint Ballard

1. e4 c6 2. d4 d5 3. e5 ef5 4. d3 c3 5. g4 eg6 6. d2 ge2 7. d4 f4 8. d5 h5 9. d3 c3 10. b5 cxd4 11. exd4 a6 12. exc6+ bxc6 13. d4 a4 c5?

Gives the advantage to White.

14. dxc5 exc5

14... Wa5+ was the only move. After 15. Wd2 Wxd2+ 16. exd2 Wc8 17. b4 a5 18. c3 , Black's position is not great, but it's much better than the game.

15. exc5 Wg5 16. f4 Wh4+ 17. ef2 Wh3 18. Wd4 Wxg4 19. Wa4+ cf8 20. d6 gxf6??



Now there is no hope. 20... dxc5 21. exf6 eg6 22. Wc6 Wd8 looks precarious, but White's open King will make it tough to avoid going into an opposite-colored Bishops endgame.

21. exf6 d4 22. Wb4+ ce8 23. Wg1 dxf6 24. Wxg4 dxc4 25. exd4 Wg8 26. h3 dh2 27. ef6 1-0

English

George Vukic (1950)

Ricky Selzler (2026)

Bainbridge, Slugfest (2) 2005

Annotations by Clint Ballard

1. c4 d6 2. d3 c3 3. g3 g6 4. eg2 eg7 5. e3 dge7 6. d2 ge2 7. O-O h5 8. d5 h4 9. d3 d5 10. e4 d4 11. e3 hxg3 12. hxg3

Black's aggressive, but sound, play has given him a better position already.

12... eg4 13. f3 ee6 14. b4 dxe2+ 15. Wxe2 Wd7 16. b5 de7?!

16... d4 seems necessary to prevent White from equalizing.

17. Wab1 O-O?

An outright mistake. Black gives up the open h-file.

18. Wf2 dc8 19. Wfc1?!

19. f4 seems more consistent with 18. Wf2 .

19... c6 20. bxc6 bxc6 21. d3 de7 22. de2 d5 23. cxd5 cxd5 24. Wc5

24. ec5 seems a little better.

24... d4 25. ed2 exa2 26. Wb2 ee6 27. Wcb5 dc6 28. f4 Wd6 29. f5 ec8 30. g4 We8?!

30... ea6 wins tempo and would have allowed Black to play ... g6-g5 .

31. g5



Things are dead even again, according to FRITZ.

31... ea6 32. Wd5??

A time-pressure-induced error in a very complicated position. The ... Wd6-a3 threat was underestimated. After 32.

Chess on TV

When they solved how to profitably televise poker, it opened the door for chess to succeed on TV. Poker did not work until two very significant things happened. First, the audience was shown the hole cards and, second, the percentage chances of winning were displayed. Commentators mixed in basic poker education with explanations of what was going on. People could finally see the poker players bluff each other or get called with nothing in their hands.

Given that millions of adults in the U.S. used to play scholastic chess and that chess is used by sports broadcasters all the time [e.g., "The coaches are playing a game of chess against each other."], we have a real possibility of getting chess to survive on TV. It won't even get women's golf ratings, but it should get more than pro bowling ratings. With computer displays of the current evaluation and the suggested lines of play, people CAN follow the game as well as they can follow poker.

We get one shot at making a first impression and aggressive fighting chess full of sacrifices has a much better chance of capturing people's imagination than games where all the pieces are traded off and a draw agreed to, regardless of how hard fought it is. Yes, draws can be edited out of a 30-minute show, but, if the final round in the tournament comes down to four top players and they all agree to a draw within 10 minutes of the round starting, it would be hard to edit out or to explain to the audience. Do you think they will watch the next week's show?? With that scenario possible and actually being the most likely, I cannot justify investing the time and money I expect this will take to get it off the ground, as it won't fly. Hence, BAP was born.

♖5b3, White's domination of the b-file and the kingside compensates the pawn.
32...♞a3

Ouch! White's pieces become dis-coordinated.

33. ♖c2 ♘e7 34. fxc6

34. ♖a5 ♞xd3 35. ♖ca2

34...fxg6 35. ♗h3??

An ill-advised Exchange sac.

35...♘xd5 36. exd5 ♗c8 37. ♖c7 ♞f8

Black defends easily.

38. ♞g2 ♗xh3 39. ♞xh3 e4 40. ♘xd4

The Morozevich method of resign-ing. Just lose a piece, and it becomes much easier to do what needs to be done!

40...♗xd4+ 0-1

Nimzo-Indian Classical

NM Nick Raptis (2301)

NM Carl Haessler (2247)

Bainbridge, Slugfest (2) 2005

1.d4 ♘f6 2.c4 e6 3.♘c3 ♗b4 4.♞c2 d5 5.♗g5 c5 6.cxd5 ♞xd5 7.♗xf6 gxf6 8.dxc5 ♞xc5 9.♖c1 ♘c6 10.a3 ♗xc3+ 11.♞xc3 ♞xc3+ 12.♖xc3 ♗d7 13.♘f3 ♖c8 14.g3 ♗e7 15.♗g2 ♘a5 16.O-O ♖xc3 17.bxc3 ♖c8 18.♖c1 ♘c4 19.♘d4 b6 20.a4 a5 21.♗b7 ♖c7 22.♗a6 ♘d6 23.♖b1 ♗xa4 24.♖xb6 ♖xc3 25. ♗d3 ♗d7 26.g4 h6 27.♖a6 a4 28.♗g2 e5 29.♘f5+ ♘xf5 30.gxf5 a3 31.♖a7 Draw

Pirc 150 Attack

Clint Ballard (1928)

Ignacio Perez (2197)

Bainbridge, Slugfest (2) 2005

Annotations by Clint Ballard

1.d4 ♘f6 2.♘c3 g6 3.e4 d6 4.♗e3 ♗g7 5.♞d2 ♘g4 6.♗g5 h6 7.♗h4 ♘c6 8.f3

In contrast to Bond-Orlov, I, at least, have some pieces out and I get to play f2-f3 with tempo on the Knight; so it doesn't count as a move spent

8...♘f6 9.♗c4 O-O 10.♘ge2 e5

I must have been pretty tired, as this surprised me. At least, I noticed the ...♘f6xe4 tactic in time.

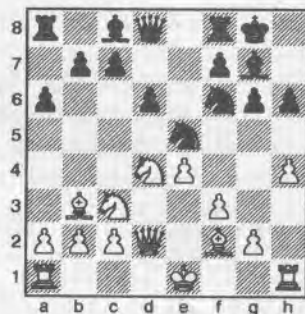
11.♗f2 a6 12.h4

The more tired I am, the more I want to unbalance things. Not sure why that is.

Northwest Chess

If I followed my own advice, I'd play 12.d5 with a space advantage. As a rule, I don't like blocked positions, but if the alternative is a worse position, I should go for it.

12...exd4 13.♘xd4 ♘e5 14.♗b3



I simply didn't bother to think about what Black's next move would be. I was only thinking about taking the pawn on g6.

14...c5! 15.♘de2 c4 16.f4 ♘eg4 17.♗xc4 ♘xf2 18.♗xf2 ♞b6+ 19.♗f3?!

All pretty much forced. White is losing; so I have to create some sort of counterplay and I didn't want to cut the connection between the Rooks and lose another tempo after ...♞xb2. But FRITZ says g3 was the better square—I was more worried about the Knight than the c8-Bishop.

19...♗g4+ 20.♗g3 ♗xe2

This lets White get back in the game. Simply add pressure with 20...♖e8 and what can White do?

21.♞xe2 ♞xb2 22.♘d5 ♘d5 23.♗xd5 ♞a3+ 24.♗h2

I have battled back into an even position, but didn't even consider playing 24.c3 to save the Exchange. Tiredness seems to lead to lack of thoroughness.

24...♗xa1 25.♖xa1 ♞b2 26.♖f1 ♖ac8 27.♖f2 ♗g7 28.h5 b5 29.♞g4 ♞f6

29...♖xc2 works, but after 30.♗xf7 we get a position that most humans don't feel comfortable with. Can the Black King get out of perpetual in this line? Even FRITZ, looking 12-ply deep, isn't sure.

30.hxg6 fxc6 31.♞d7+ ♗h8 32.♞h3

If only I had one more piece! White can't make any more progress with this pseudo attack. Unfortunately, I couldn't

shift gears to blockade mode. 32.♞a7 to pressure the queenside pawns offers the best drawing chances.

32...h5 33.g4 ??

Ruining what's left of my King's shelter. I completely missed Black's move.

33...♖c3 34.♖f3 ♞xf4+ 35.♖xf4 ♖xh3+ 36.♗xh3 ♖xf4 37.gxh5 gxh5 38.♗g3 ♖g4+ ... 0-1

Round Three

Doing the pairings for round three, I realized the true complexity that BAP creates. These pairings will pretty much force the next round's pairings and, if not done carefully, the leader may end up playing someone far down the list. I had to project likely outcomes and make sure that in all the scenarios there would be a sane pairing that keeps the color balance.

Clearly, if someone gets a chance at 11 points or only 9 points when everybody else has a chance at 10 points, that would be unfair. BAP quantifies the unfairness of color allocations in all odd number of round swiss tournaments.

The second day was MUCH smoother than the first day. I even had time to do some video player interviews before the round started. Those went pretty well and I decided to continue to do them whenever I could. I should have thought of that the first day, but I was too busy missing obvious moves on the chessboard.

The way BAP works, ten players were still in the hunt for prize money and even NM Nick Raptis, who only had one point could tie for first. With the pressure on, everybody played sharp, decisive games and the rating system predicted most of the outcomes. Vukic winning as Black over Roua was the only upset, but we had Raptis sac a queen against Pupols to pull of a win as Black.

Catalan

NM Radu Roua (2241)

George Vukic (1950)

Bainbridge, Slugfest (3) 2005

1.♘f3 d5 2.g3 ♘d7 3.d4 ♘gf6 4.♗g2 e6 5.O-O ♗d6 6.b3 O-O 7.♗b2 b6 8.♘e5 ♗b7 9.c4 c6 10.♘d2 c5 11.e3 ♞e7 12.♖e1 ♖fd8 13.♞c2 ♖ac8 14.

♖ac1 cxd4 15.exd4 ♗b4 16.♗c3
 ♗xc3 17.♞xc3 ♗xe5 18.dxe5 ♗e8 19.
 ♞b2 dxc4 20.♗xc4 ♗xg2 21.♗xg2
 ♗c5 22.♞e2 h6 23.h4 ♗cd5 24.♗c3
 b5 25.♗e3 ♗xe5 26.♞f3 ♗f6 27.♗f5
 exf5 0-1

English

NM Carl Haessler

NM Corey Russell

Bainbridge, Slugfest (3) 2005

1.c4 ♗f6 2.g3 g6 3.b3 ♗g7 4.♗b2
 O-O 5.♗g2 d6 6.d4 e5 7.dxe5 ♗g4
 8.♞d2 dxe5 9.h3 ♗h6 10.♗f3 ♗c6
 11.e3 ♗f5 12.♗c3 e4 13.♞xd8 ♗xd8
 14.♗d2 ♗b4 15.♗xe4 ♗d3+ 16.♗xd3
 ♗xd3 17.♗a4 b6 18.♗xg7 ♗xg7 19.
 ♗e2 ♗d7 20.♗c3 ♗b7 21.♗hd1 h5
 22.♗f3 ♗e7 23.♗d5 ♗xd5 24.♗xd5
 ♗ae8 25.♗d3 a5 26.♗d4 ♗d6 27.♗b5
 ♗b7 28.♗ad1 ♗c5 29.♗d8 ♗xd8
 30.♗xd8 ♗e6 31.♗d1 ♗g5 32.h4 ♗e4
 33.♗d3 f6 34.♗c3 ♗c5 35.♗d8 ♗e6
 36.♗d5 ♗f7 37.♗c8 ♗d7 38.f4 f5
 39.a3 b5 40.♗e8 ♗f7 41.♗a8 a4 42.
 bxa4 bxc4 43.♗a5 ♗d6 44.♗b5 c6
 45.♗b7+ ♗f8 46.♗c3 ♗d3 47.♗b1
 ♗c5 48.♗b4 ♗e4 49.♗xc4 ♗b3 50.
 ♗d2 ♗b2 51.♗d4 c5 52.♗xe4 fxe4 53.
 ♗d1 ♗a2 54.♗xe4 ♗xa3 55.♗d2 c4
 56.♗c3 ♗e7 57.e4 ♗a1 58.♗e3 ♗g1
 59.♗d4 ♗xg3 60.a5 ♗d6 61.e5+ ♗c6
 62.e6 ♗d6 63.♗e4+ 1-0

Center-Counter

Noel Dizon (2057)

Clint Ballard (1928)

Bainbridge, Slugfest (3) 2005

Annotations by Clint Ballard

1.e4 d5 2.exd5 ♗f6 3.d4 ♗xd5 4.♗e2
 e6 5.♗f3 b6 6.O-O ♗d6 7.♗e1 ♗b7
 8.c4 ♗f4 9.♗f1 ♞f6 10.♗bd2 ♞g6
 11.♗h1 ♗d7 12.♞b3 O-O-O 13.g3
 ♞h5 14.♗e4

14.gxf4 ♗xf4 15.♗g2 ♗f6 16.♗f1 g5
 14...♗h3 15.♗xd6+ cxd6 16.♗g2 g5
 17.d5 g4 18.♗h4 ♗c5 19.♞d1 exd5
 20.f3 dxc4 21.♗xc4 ♗xf3+ 22.♗xf3
 gxf3+ 23.♞xf3 ♞xf3+ 24.♗xf3 f6 25.b4
 ♗d7 26.♗e6 ♗g5+ 27.♗xg5 ffg5
 28.♗ac1+ ♗b8 29.♗ed1 ♗e5+ 30.
 ♗g2 ♗he8 31.♗f5 h5 32.h3 g4 33.
 hxg4 ♗xg4 34.♗xg4 hxg4 35.♗c2
 ♗e4 36.b5 d5 37.♗d3 ♗b4 38.♗cd2
 d4 39.a3 ♗xb5 40.♗xd4 ♗xd4 41.
 ♗xd4 ♗b2+ 42.♗f1 ♗b3 43.♗xg4
 ♗xa3 44.♗g7 ♗a2 45.♗e1 b5 46.g4

b4 47.♗d1 a5 48.g5 b3 49.♗c1 a4
 50.g6 ♗c2+ 51.♗d1 a3 52.♗g8+ ♗b7
 53.g7 ♗g2 0-1

Center-Counter

Ignacio Perez (2197)

Geoffrey Gale (2048)

Bainbridge, Slugfest (3) 2005

1.e4 d5 2.exd5 ♞xd5 3.♗c3 ♞a5
 4.♗c4 ♗f6 5.d4 ♗g4 6.♗ge2 ♗c6 7.f3
 ♗f5 8.♗d2 ♞b4 9.b3 ♞d6 10.♗b5
 ♞d8 11.♗f4 ♗c8 12.d5 ♗b4 13.♗bd4
 ♗g6 14.♗b5+ c6 15.dxc6 bxc6 16.♗c4
 e6 17.c3 ♗bd5 18.b4 ♗d6 19.♗xd5
 cxd5 20.♞a4+ ♞d7 21.♞xd7+ ♗xd7
 22.♗xd6 ♗xd6 23.♗b5+ ♗d7
 24.♗xa7 ♗b8 25.a4 e5 26.b5 ♗b7
 27.♗c6 ♗d6 28.♗f2 ♗d7 29.♗hd1
 ♗c2 30.♗d2 ♗b3 31.♗a5 ♗c5 32.
 ♗xb7+ ♗xb7 33.a5 ♗c4 34.♗b2 ♗c5
 35.♗c1 ♗b8 36.a6 ♗a8 37.♗e3 f6
 38.a7 ♗c7 39.b6+ ♗b7 40.♗a5 ♗d7
 41.♗b3 ♗xb6 42.♗d2 ♗c6 43.♗f2
 ♗d3 44.c4 ♗xc4 45.♗xc4 ♗xc4 46.
 ♗b8 ♗xa5 47.♗xa8 ♗b7 48.♗g8
 ♗xa7 49.♗xg7+ ♗b6 50.♗xh7 d4 51.
 ♗f7 ♗c4 52.h4 ♗c6 53.h5 d3 54.h6
 ♗b2 55.♗e3 1-0

King's Indian Makagonov

LM Viktors Pupols (2216)

NM Nick Raptis (2301)

Bainbridge, Slugfest (3) 2005

1.d4 ♗f6 2.c4 g6 3.♗c3 ♗g7 4.e4
 O-O 5.♗f3 d6 6.h3 ♗a6 7.♗d3 e5 8.d5
 ♗c5 9.♗c2 a5 10.g4 c6 11.♗e3 cxd5
 12.cxd5 ♗d7 13.a4 ♞b6 14.♗a3 ♗fc8
 15.♗d2 ♞xb2 16.♗xc5 ♗xc5 17.♗b3
 ♞xc3 18.♗xc3 ♗xc3 19.O-O ♗ac8
 20.♗b1 b5 21.♗b3 bxa4 22.♗xa5 a3
 23.♞d2 ♗f8 24.f3 ♗b5 25.♗c6 ♗c5
 26.♗c1 ♗xc6 27.♗xc5 dxc5 28.dxc6
 ♗xc6 29.g5 ♗b6 30.♞c1 ♗h5 31.♗a2
 ♗f4 32.♞xa3 ♗xh3+ 33.♗g2 ♗xg5
 34.♞a7 ♗f6 35.♞c7 ♗xf3 36.♗c4
 ♗g7 37.♗g3 ♗d6 38.♞d8 h5 39.♞d7
 ♗g5 40.♗d5 ♗f8 41.♞c7 ♗d6 42.
 ♞d7 c4 43.♞c8 ♗b4 44.♞xc4 ♗e1+
 45.♗g2 ♗f2+ 0-1

Reti

IM Georgi Orlov (2580)

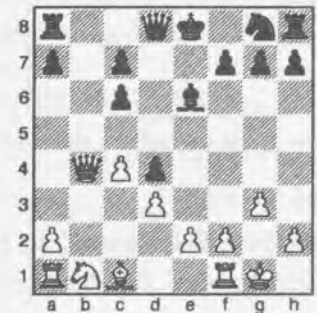
Ricky Selzler (2026)

Bainbridge, Slugfest (3) 2005

Annotations by Clint Ballard

1.♗f3 d5 2.c4 d4 3.g3 ♗c6 4.♗g2 e5
 5.O-O ♗e6 6.d3 ♗e7 7.b4 ♗xb4 8.

♗xe5 ♗xe5 9.♞a4+ ♗c6 10.♗xc6+
 bxc6 11.♞xb4



Black's pawns are doubled. Is this enough of an advantage for White to win?

11...♗e7 12.♗a3

12...h5 is an interesting idea to try to exploit White's lack of a light-squared Bishop

12...♞d7 13.♗d2 a5 14.♞c5 ♞d6

Black gives up hope for counterplay with the Queen trade. But without trading Queens, Black's King is stuck in the middle. In four moves, White has gone from a good position to a winning one, but it is unclear what Black could have done to prevent this. Looks like 7...♗xb4 was the losing move.

15.♞xd6 cxd6 16.♗xd6

Even without Queens, Georgi does the python thing and the mouse does not escape. The initiative is a very dangerous thing in the hands of an IM!

16...♗f5 17.♗c5 h5 18.♗ab1 ♗d7 19. ♗b7+ ♗c8 20.♗fb1 ♗d8 21.♗f3 f6 22.h3 g5 23.g4 hxg4 24.hxg4 ♗h6 25. ♗xd4 ♗xg4 26.f3 ♗d7 27.♗d6 1-0

Round Four

With four players having five points and two players with four points going into the last round, there were dozens of possible outcomes. There were certainly no quick draws in the final round of the Slugfest. In that regard, there is no doubt that BAP works. There was definitely a dramatic finish!

Georgi and Carl Haessler were both up the Exchange and appeared to be cruising toward a playoff. Ignacio Perez was two pawns down, but with pieces scattered everywhere and a nice attack. Would the attack be strong enough? Ignacio boastfully predicted he would win in my interview with him after round

three and the road looked pretty tough for him, but, in the super-complicated position, Ignacio broke through and scored a Black win!

On the other boards, things weren't looking too good for our first day leader Ricky Selzler. Having lost his third round game as Black, he could not catch up to Ignacio, even with a win. However, as White there was no difference if he won or lost. Would he go for broke on the off chance he could get a long shot win and a chance at second place? . . . What's this, something's happening, it's a . . . , it's a . . . , what? It's a perpetual check!? Better to draw than to lose, if only for the rating points, the pride. We won't truly know without hearing from Ricky himself.

The time control was G/90 plus 30 seconds per move. Nick is a VERY fast player and Georgi's rust from a six-month layoff was showing. To simplify things, Georgi sac'ed back the Exchange to go into a Rook + Knight endgame a pawn up. In time trouble, Georgi dropped a pawn (I guess it happens to everyone so don't feel bad when you do it). Nick might have had some winning chances, but, after struggling all game, he was satisfied with a draw and soon the position repeated three times.

Incredibly, Ignacio became the winner of the Bainbridge Slugfest, with a lot of help from his rivals as everything went exactly how it had to.

In the bottom section, a draw was agreed to on first board in a position that I know I could certainly botch, but what do you expect, the bottom section used the traditional pt system so the incentives are to not play the games to the finish. You get what you pay for.

Doing all this was ten times more work than I ever imagined, but if I can get others to see that we can change the point system and it will eliminate unplayed games, without very many negative effects, then it would have been worth all the money and sleepless nights.

The players, by and large, seemed to be happy and want me to hold more of these tournaments, but I will have to find a new site. I guess I was too tired to notice that the place was not up to the spotlessly clean standards of the Bainbridge

Island Park district. They were actually quite upset and said that we could never use that site again

Lack of high speed internet and remoteness from food made it a less than ideal site, so it is probably for the best. I think the next Slugfest will be sometime in March.

Scotch Four Knights

Geoffrey Gale (2048)

NM Radu Roua (2241)

Bainbridge, Slugfest (4) 2005

1.e4 d6 2.f3 e5 3.d4 exd4 4.dxd4 d6 5.c3 b4 6.xc6 bxc6 7.d3 d5 8.exd5 cxd5 9.O-O O-O 10.g5 c6 11.a4 h6 12.h4 g5 13.g3 e4 14.c3 e7 15.b4 f5 16.e5 f6 17.xf6 xf6 18.xe4 fe4 19.d4 a6 20.f1 ae8 21.c5 c8 22.e1 e5 23.ad1 g4 24.d2 fe8 25.e3 h4 26.g3 e3 27.e6 xe6 28.xe3 xe3 29.xe3 f7 0-1

King's Indian Classical

George Vukic (1950)

Ignacio Perez (2197)

Bainbridge, Slugfest (4) 2005

1.f3 f6 2.c4 g6 3.c3 g7 4.d4 O-O 5.e4 d6 6.e2 a6 7.h3 e5 8.d5 c6 9.dxc6 bxc6 10.O-O c5 11.g5 b8 12.c2 h6 13.xf6 xf6 14.ad1 d8 15.b3 d7 16.d2 h5 17.b1 h6 18.dd1 a5 19.a4 e6 20.c5 g5 21.cxd6 g4 22.hxg4 hxg4 23.h2 g3 24.fxg3 e3+ 25.h1 d4 26.xd4 xd4 27.f1 h6 28.c4 xd6 29.xf7+ h8 30.e2 a6 0-1

Veresov

Clint Ballard (1928)

LM Viktors Pupols (2216)

Bainbridge, Slugfest (4) 2005

1.d4 e6 2.c3 d5 3.d3 c6 4.f4 a6 5.f3 f6 6.e5 b4 7.d2 c5 8.e3 d7 9.e2 e7 10.g4 O-O 11.h4 c8 12.h5 cxd4 13.exd4 e4 14.d1 xc3 15.bxc3 xc3 16.d2 xc2+ 17.f1 c8 18.b1 b5 19.h6 g6 20.b2 a3 21.b4 f6 22.xg6 xb4 23.xb4 f7 24.f4 c7 25.d3 c2 26.b1 xd4 27.c1 d6 28.g5 xe2 29.xc8+ xc8 30.xe2 e5 31.g6 hxg6 32.c2 f5 33.h7+

xh7 34.xh7 xh7 35.f4 exf4 36.f3 e4+ 37.f2 xd3 38.xd3 e6 39.d1 e3+ 40.g2 f3+ 41.h1 h6+ 42.g1 g5+ 0-1

Sicilian Najdorf

NM Corey Russell (2201)

Noel Dizon (2057)

Bainbridge, Slugfest (4) 2005

1.e4 c5 2.f3 d6 3.d4 f6 4.c3 cxd4 5.xd4 a6 6.g5 e6 7.d3 e7 8.f4 bd7 9.O-O O-O c7 10.e2 b5 11.f3 b7 12.he1 O-O 13.e5 c5 14.e3 xf3 15.exf6 gxf6 16.h6 h5 17.g3+ g6 18.f5 exf5 19.d5 1-0

King's Indian Fianchetto

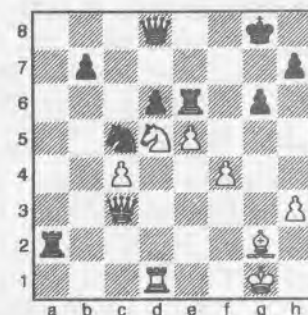
NM Nick Raptis

IM Georgi Orlov

Bainbridge, Slugfest (4) 2005

Annotations by Clint Ballard

1.f3 f6 2.g3 g6 3.g2 g7 4.O-O O-O 5.d4 d6 6.c4 bd7 7.c3 e5 8.h3 e8 9.e4 c6 10.e3 exd4 11.xd4 c5 12.c2 a5 13.ad1 fd7 14.fe1 a4 15.b4 axb3 16.axb3 b6 17.b1 b4 18.ed1 f8 19.c2 e7 20.d2 b6 21.e3 b4 22.d2 a3 23.c3 a7 24.a1 b6 25.b4 a6 26.ab1 c5 27.bxc5 xc5 28.d3 c8 29.b5 c5 30.c2 xb5 31.xg7 a4 32.c3 xd1 33.h6 fe6 34.xd1 a4 35.f6 d8 36.a1 ac5 37.c3 f6 38.f4 g5 39.xg5 fxg5 40.d5 e6 41.f4 gxf4 42.gxf4 a2 43.e5



43...Wh4

43...dxe5 44.fxe5 g5 45.f3 xe5 44.f1 dxe5 45.fxe5 g5 46.f3 xg2+ 47.xg2 xg2+ 48.xg2 xe5 49.b1 g5+ 50.h2 e5 51.b5 e2+ 52.g3 e4+ 53.f3

Continued on page 29

Washington Trounces British Columbia

The 2005 BC-WA match was held on Saturday, December 3rd in Bellingham at the offices of Nick Paleveda's 416(i) Company. Like last year, Washington outrated the B.C. team, this time by an average of 64 points per board. The Washingtonians prevailed 8½-1½, getting some lucky breaks along the way. The match was organized by Duane Polich (WA) and Len Molden (BC), and directed by Lynn Stringer of Victoria, BC.

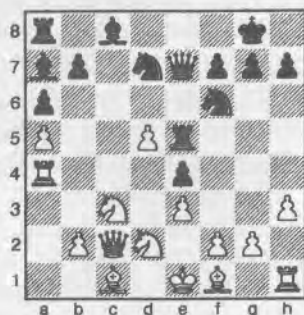
English

Dan Scoones (2290)

IM Eric Tangborn (2462)

Bellingham, BC vs WA 2005

1. d4 d5 2. c4 d6 3. d4 cxd4 4. dxd4 e5 5. dxf3 e4 6. d4 d5 7. cxd5 dxc5 8. dxb3 dxb6 9. dxc3 O-O 10. e3 dxe8 11. h3 dxd7 12. a4 a6 13. a5 dxa7 14. dxa4 dxe5 15. cxc2 dxe7 16. d2



16... dxc5 17. dxc4 dxf5 18. d4 dxd3+ 19. dxd3 exd3 20. dxd3 dxe3+ 21. fxe3 dxe3+ 22. d1 dxd3 23. a4 dxf2 24. dxe1 dxf3 25. dxe4 dxf3+ 26. d2 dxe4+ 27. dxe4 dxb5 28. a3 dfg2+ 29. d1 dxe8 30. dxf6+ gxf6 31. dxe8+ dxe8 32. d6 h6 dfg1+ 0-1

King's Indian Reversed

FM John Readey (2338)

Alfred Pechisker (2252)

Bellingham, BC vs WA 2005

1. d4 d5 2. g3 c5 3. d2 d6 4. O-O e5 5. d3 f6 6. c4 d4 7. e3 dxe6 8. exd4 cxd4 9. a3 a5 10. dxe1 dge7 11. dxd2 dxc8 12. dxe4 dxe7 13. h4 d7 14. d2 O-O 15. f4 d8a7 16. d2 dxc8 17. d1 b6 18. d3 d8h8 19. d2 d8b8 20. fxe5 dxe5 21. dxe5 fxe5 22. d5 g5 23. d2 d6 24. d1 a4 25. c2 d5 26. d1 c1

dxf1 27. dxf1 dxe8 28. d2 g8 29. d2 d8 30. d1 e1 31. dxf1 d5 32. dxf5 dxf5 33. d3 h6 34. g4 d6 35. h5 dxe8 36. dxc5 bxc5 37. d5 a5 38. d6 d6 39. dxc5 gxh5 40. gxh5 d7 41. d3 d8 42. d6 d6 43. d8 d7 44. d4 d5 45. d5 d6 46. d6 h6 47. d5+ d7 48. h6+ d7 49. d6 dxd3 50. d4+ d6 51. dxd3 dxd3 52. d5 dxc4 53. dxe5 d3 54. d4 d3 55. d6 d2 56. d5 d6 57. d4 d7 58. d3 d6 59. d2 d7 60. b4 axb3 61. d2 d1 62. a4 d3 63. dxb3 d6 64. d3 d6 65. dxd3 d5 66. a5 d5 67. a6 1-0

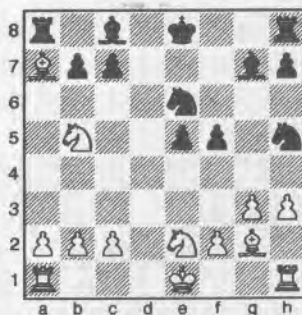
Pirc

Brian McLaren (2232)

NM Elliott Neff (2263)

Bellingham, BC vs WA 2005

1. g3 d6 2. d2 g6 3. e4 d6 4. d4 d5 5. d2 e5 6. d3 d6 7. h3 d5 8. d3 f5 9. dxe5 dxe5 10. d8+ d8 11. exf5 gxf5 12. d5 d6 13. dxa7



13... d7 14. dxb7 d7 15. dxa8 dxa8 16. dxc7 dxa7 17. d5+ d7 18. a3 d6 19. O-O-O d4 20. dxd4 exd4 21. d4 d8 22. d8h1 23. d8h1 d6 23. d1+ d6 24. d2 d6 25. f3 Draw

Colle

NM Harley Greninger (2245)

Paul Brown (2217)

Bellingham, BC vs WA 2005

1. d4 d5 2. d3 e6 3. e3 d6 4. d3 c5 5. b3 d6 6. O-O d6 7. d2 d7 8. a3 O-O 9. d3 a6 10. dxc5 dxc5 11. e4 d4 12. d2 e5 13. d3 d8 14. d1 d2 15. h3 d7 16. d5 d6 17. d4 d7 18. d3 d6 19. d7 d5 20. dxf5 dxc6 21. dfe1 b5 22. a4 d7 23. d2 d8 24. axb5 axb5 25. g3 d4 26. d2 dxd2 27. dxd2 d5 28. d7 d8 29. d1 d4 30. d2 d3 31. d4 d6 32. d7 d5 33. d7 d5 34. d2 d5 35. d7+ d8 36. dxc8 dxc8 37. dxe5 d8 0-1

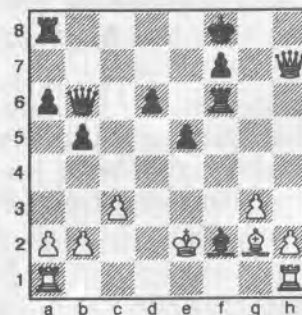
Sicilian Sveshnikov

NM Lucas Davies (2239)

NM Nat Koons (2207)

Bellingham, BC vs WA 2005

1. e4 c5 2. d3 d6 3. d4 cxd4 4. dxd4 d6 5. d3 e5 6. ddb5 d6 7. d5 a6 8. d3a3 b5 9. d5 d7 10. dxf6 dxf6 11. c3 d7 12. d2 d7 13. dce3 d5 14. dxe7 dxe3 15. d5 d5 16. d7g7+ d8 17. d5 dxe4 18. d4 d5 19. dxf5 d8 20. g3 d6 21. d2 d6 22. d8h7 dxf2+ 23. d2 d6



British Columbia

- Dan Scoones (2290)
- Alfred Pechisker (2252)
- Brian McLaren (2232)
- Paul Brown (2217)
- Lucas Davies (2207)
- Bindi Cheng (2201)
- Ian Skulsky (2134)
- Laszlo Tegzes (2109)
- M. Radzikowski (2095)
- Hee Seid (2061)

Washington

- Eric Tangborn (2462)
- John Readey (2338)
- Elliott Neff (2263)
- Harley Greninger (2245)
- Nat Koons (2239)
- Bill McGeary (2219)
- David Bragg (2210)
- Bruce Kovalsky (2166)
- Curt Collyer (2164)
- Nick Paleveda (2130)

Lanka Wins Abbreviated WA Junior Closed

by David Wyde

Congratulations to Adi Lanka, 2005 Junior Closed Champion! That will be the extent of the enthusiasm in this article.

The tournament was held at the Tacoma Chess Club on Saturday, December 17. There were only four participants. There are supposed to be six. I just don't get it—Ricky Selzler and Michael Lee couldn't come, but I find it hard to believe that Kevin Binz, Andy May, Meir Lakhovsky, Skylor Fryberg, or any of the dozen or so B players under age 19 in the state were also unavailable. If I had wanted to play in a quad, I would have gone to the SCC! I hate to point fingers, but the organizer (Gary Dorfner here) should be able to find six players for a Washington Closed qualifier. Can we have a meeting about scholastic chess at the Challenger's Cup or something? First Intermat and now this.

The actual tournament was interesting enough: G/90, all three rounds on Saturday. Participating were Adi Lanka, Eduard Shamilov, Ben Wyde, and David Wyde. In round one, Adi dropped/sacced an Exchange as Black against Eduard, but got enough initiative in the queenless middlegame to win the game. Ben (Black) and I spent all of our time in the opening, and I had a sizable advantage before my position disintegrated in time trouble.

Old Indian

David Wyde (2067)
Ben Wyde (1979)

Tacoma, WA Jr Closed (1) 2005

1.d4 d6 2.c4 d7 3.c3 d7 4.e4 e5 5.f4 exd4 6.♖xd4 c6 7.d3 d5 8.cxd5 ♗c5 9.♖c4 cxd5 10.dxd5 dxd5 11.♖xd5 ♖e7 12.♗d3 O-O 13.♗d2 ♖b8 14.♗c3 b6 15.♖g5 f6 16.♖h4 g6 17.O-O-O ♗b4 18.♗xb4 ♖xb4 19.f5 g5 20.♖g4 ♖f7 21.h4 and eventually 0-1 (time)

Sicilian Closed

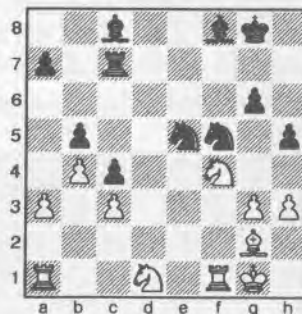
Eduard Shamilov (2164)
Adi Lanka (1900)

Tacoma, WA Jr Closed (1) 2005

1.e4 c5 2.d3 d6 3.g3 d6 4.♗g2 g6 5.d3 ♗g7 6.♗e3 d4 7.♖d2 ♖b8 8.d1 e5 9.c3 d6 10.d2 ♖a5 11.a3

2.0	Adi Lanka	\$150
1.5	David Wyde	\$75
	Eduard Shamilov	\$75
1.0	Ben Wyde	2 books

b5 12.b4 ♖b6 13.f4 ♖c7 14.O-O h5 15.h3 f5 16.d4 c4 17.dxe5 dxe5 18.fxe5 dxe5 19.d4 d7 20.♗c5 O-O 21.♖d6 ♖b7 22.exf5 dxf5 23.♖xc7 ♖xc7 24.♗xf8 ♗xf8



25.♗h2 ♗d6 26.d2 h4 27.d4 h4g3+ 28.♗g1 ♗f8 29.d5 ♗g7 30.♖ae1 ♗h8 31.d3g3 ♗d6 32.d4 ♗b8 33.d5 ♗g8 34.♗e4 ♗g7 35.♖fe1 ♗e8 36.♖d1 d3 37.♗e3 d5 38.♗e2 d4 39.d3 d3f3+ 40.♗f2 ♖f8 41.♗xf3 ♖xf3+ 42.♗e1 0-1

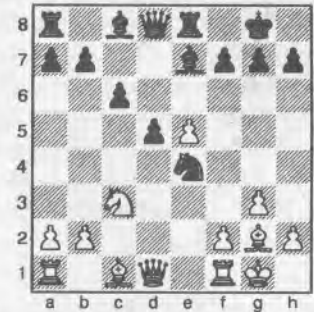
In round two, Adi had White against me and was fighting for equality early out of a hybrid Catalan/QGD Exchange and eventually Black won the endgame. Ben – Eduard ended as a win for Black after some complications. After two rounds, we were all tied at one point apiece.

Catalan

Adi Lanka (1900)
David Wyde (2067)

Tacoma, WA Jr Closed (2) 2005

1.c4 e6 2.g3 d5 3.d3 f3 d6 4.♗g2 ♗e7 5.O-O O-O 6.cxd5 exd5 7.d4 d7 8.d3 c3 ♗e8 9.d5 c6 10.e4 dxe5 11.dxe5



11...dxe4 12.dxe4 dxe4 13.♖c2 ♖d3 14.♗xe4 ♖xc2 15.♗xc2 ♗c5 16.♖d1 ♗g4 17.♖e1 ♖ad8 18.♗g2 ♗d4 19.♖e4 ♗e6 20.f3 ♗xb2 21.♖b1 ♗xc1 22.♖xc1 ♖d2+ 23.♗g1 ♗f5 24.♖c4 ♖xc2 25.♖1xc2 ♗xc2 26.♖xc2 ♗xe5 27.♖d2 ♖d5 28.♖b2 ♖d7 29.♗f2 f6 30.g4 ♗f7 31.a4 b6 32.♖c2 c5 33.a5 0-1

Sicilian

Ben Wyde (1979)
Eduard Shamilov (2164)

Tacoma, WA Jr Closed (2) 2005

1.e4 c5 2.b3 d6 3.♗b2 e5 4.♗c4 g6 5.f4 ♗g7 6.d3 f3 d6 7.O-O d6 8.d3 O-O 9.♗d5 exf4 10.♗xg7 ♗xg7 11.d4 ♖f6 12.♗xc6 bxc6 13.dxc5 dxc5 14.e5 ♖e7 15.♖c1 g5 16.♖b2 ♗e6 17.d2 d5 18.d4 d3 19.♖c3 dxf1 20.♖xf1 ♖ad8 21.g3 ♗d5 22.d6 ♗h8 23.♖e1 ♖e6 24.d1 ♖h3 25.♖e2 ♖de8 26.e6+ ♗g8 27.e7 ♗xe7 28.♖f6 ♖fe8 29.♖xg5+ ♗f8 30.♖f6 ♗xe2 0-1

In round three, Adi slowly built up against Ben and then broke through as White to win the game, and Eduard and I had a slightly interesting Chigorin. He could have won after a couple of mistakes by White, but allowed a perpetual in time trouble. Only 17% of the games were drawn!

QGD Chigorin

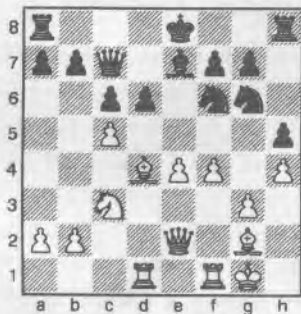
David Wyde (2067)
Eduard Shamilov (2164)
Tacoma, WA Jr Closed (3) 2005

1.d4 d5 2.c4 ♘c6 3.cxd5 ♖xd5 4.e3 e5 5.♗c3 ♙b4 6.♙d2 ♙xc3 7.bxc3 ♘f6 8.c4 ♖d6 9.d5 ♘e7 10.♖b1 e4 11.♘e2 c6 12.♙b4 ♖e5 13.♙c3 ♖d6 14.♙b4 ♖d8 15.♘c3 cxd5 16.cxd5 ♘exd5 17.♙b5+ ♙d7 18.♘d5 ♙xb5 19.♘xf6+ ♖xf6 20.♖xe4+ ♖e6 21.♖d4 f6 22.♙c1 ♙c6 23.O-O ♘f7 24.♖f4 ♙hd8 25.♙fd1 ♙xd1+ 26.♙xd1 ♖xa2 27.♖c7+ ♘g8 28.♙d8+ ♙e8 29.♙d1 ♙c6 30.♙d8+ ♙xd8 31.♖xd8+ ♘f7 32.♖c7+ ♘g6 33.♖g3+ ♘f7 34.♖c7+ Draw

Old Indian

Adi Lanka (1900)
Ben Wyde (1979)
Tacoma, WA Jr Closed (3) 2005

1.c4 d6 2.g3 ♘f6 3.♙g2 e5 4.♘c3 ♘bd7 5.♘f3 c6 6.e4 ♙e7 7.O-O ♖c7 8.♙b1 ♘f8 9.d4 ♘g6 10.♙e3 h5 11. h4 ♙g4 12.♖c2 ♙xf3 13.♙xf3 ♘g4 14.♖e2 ♖c8 15.♙bd1 exd4 16.♙xd4 ♘6e5 17.♙g2 ♖c7 18.f3 ♘f6 19.f4 ♘g6 20.c5



20...dxc5 21.♙xf6 ♙xf6 22.e5 ♙e7 23.♘e4 O-O 24.♖xh5 ♙ad8 25.e6 ♙xd1 26.♙xd1 ♘xf4 27.gxf4 ♖xf4 28.♘g5 ♖e3+ 29.♘h1 ♙xg5 30.exf7+ ♙xf7 31.hxg5 ♖e5 32.♖h4 ♙f4 33. ♙d8+ ♙f8 34.g6 ♙e8 35.♖h7+ ♘f8 36.♖h8+ 1-0

From the Business Manager:
Northwest Chess could use a few donations to help cover expenses, including library subscriptions. Even small donations are helpful. Donations of \$15 or more to the "knight-hood" will be listed in the magazine for a period of one year after the donation is received.

The Critical Moment

by Vlastimil Hort, translated from *Schach Echo* by Eric Tangborn

Sicilian Closed

GM Boris Spassky
GM Vlastimil Hort
Germany, Bundesliga 1985/86

1.e4 c5 2.♘c3 ♘c6 3.g3 g6 4.♙g2 ♙g7 5.d3 e5 6.♘ge2

Spassky persistently plays the closed variation, which recently has lost popularity. We must still remember the great duel between Spassky and Geller in the candidates match, where Spassky was very successful with 2.♘c3! In my opinion, White can hardly get an advantage out of this opening, but the resulting positions are complicated and the middle-game is demanding.

6...♘ge2 7.O-O d6 8.a3 O-O 9.♙b1

Preparing the advance b2-b4.

9...f5

Black seeks counter chances on the kingside. 10.b4 is hardly possible due to 10...f4 and Black would get a strong attack on the kingside.

10.♙d2 a5

Stopping 11.b4, but now the b5-square falls to White!

11.a4 ♙e6 12.♘d5 h6 13.c3 ♘h7 14.♙e3 ♙f7!

Better than the methodical 14...♙g8, because Black wants to reserve the g8-square for the Knight.

15.f4 ♘xd5 16.exd5 ♘e7 17.♖b3 b6 18.♙be1

The Rook has nothing more to do on the queenside.

18...♙a7

The e-file will be very significant in the next stage of the game.

19.c4 ♘g8 20.fxe5

White offered a draw here, but Black wanted to fight on. The position is very unclear, but instructive.

20...♙xe5

20...dxe5 was also possible.

21.d4 ♙g7 22.dxc5 bxc5 23.♘c3 ♙e7 24.♘b5 ♙fe8 25.♙d2 ♙e5 26.g4!?

Very sharp. White demolishes all bridges. 26.♙c3 was positionally better.

26...♘f6

Black plays very intuitively and brings the last "unemployed" piece into the game. I was not pleased with 26...fxg4 27.♙xe5 dxe5 28.d6!

27.gxf5 gxf5 28.♙xf5!

After the game, White suggested 28.♙h3. The variation 28...♙g6 29.♙xf5 ♙xf5 30.♙xf5 ♙xh2+ 31.♘xh2 ♙xe1 32.♙xe1 ♙xe1 33.♖f3 ♙e3! is, nevertheless, favorable for Black. If one meditates on the position, without analysis, one comes to the conclusion that, although the Knight on b5 stands very well, in many variations it fails to defend the King.

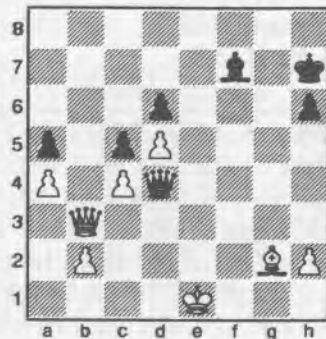
28...♙d4+!

The move Black had put his hopes on.

29.♘d4 ♙xe1+ 30.♙xe1 ♙xe1+ 31.♘f2 ♖e7

This entire variation is forced.

32.♙xf6 ♖xf6+ 33.♘xe1 ♖xd4



White to move

- A) In your opinion how does White stand?
 - a) equal
 - b) a little bit worse
 - c) a little bit better
- B) With White how would you continue?

Solution on page 29

Washington Kids Crushed by B.C. Kids

Commentary on the Match by Participants, Parents, and Others

by David Wyde, 11th grade WA participant

We lost 30.5-17.5 overall (15-9 1st round, and 15.5-8.5 2nd). We were outrated in grades 5-12, but we put up a pretty good fight and scored a couple of upsets. Thanks to Karen Dixon and WHSCA for putting together the Washington side, and to the BC organizers.

I will say that I'm a bit disappointed with the lack of camaraderie- the event might as well have been held online. Short of seeing about 6 kids and their parents at breakfast, and spending about 30 [minutes] altogether with Kevin Binz and his dad, all I did was play chess. We didn't really do anything as a team, nor anything with the BC kids, which I thought would have been cool. If anyone has any suggestions about how to help fix this or to get strong players to participate (another big problem), please speak up.

by Kevin Binz, 12th grade WA participant

I'd like to congratulate the Wydes on an excellent performance in the InterMat against seasoned opposition. I was personally pleased after defeating Lucas Davies (rated 2207.) Washington does need to step up if we want to take back the tournament... I think WA can... recover - we've got a lot of young

talent, we just need to translate that to the older boards.

Again, congratulations Ben and David on some pretty interesting games!

by Ricky Selzler, 10th grade WA non-participant

I wasn't about to miss [Slugfest] to play two games against weaker players all the way in Canada, when I can play masters and an IM 15 min away from my house. However, even if that had not been going on, I still would not have gone... it is a very long trip... [and] our opponents are not strong enough... I went there once and crushed my two Canadian foes quickly and it wasn't much fun. It felt like a waste of a trip even though Washington won that year.

by Andrei Botez, BC parent

The BC team had this year three masters and two experts... six players from the team were selected to represent Canada in World Youth Championships this year in France... Our good players enjoy playing for our team, they are proud when they get the invitation letter.

by Eduardo Azmitia, BCCF Publicity Coordinator

The USCF Rating system has a more sophisticated algorithm that seems to keep track better the improvement of juniors than the Canadian rating system. It is not unheard to have BC juniors beating soundly players rated above them by even 500 points.

Pirc

Jacob Jensen (1001)

Wesley Yu (1234)

Burnaby, InterMat (1.2) 2005

1.d4 ♘f6 2.♘c3 g6 3.♘f3 ♗g7 4.e4 d6 5.♗c4 O-O 6.♗f4 e6 7.♞d2 ♗d7 8.O-O-O ♘c6 9.♗h6 ♘a5 10.♗xg7 ♘xc4 11.♞e2 ♘xb2 12.♘xb2 ♘xg7 13.g4 ♘xg4 14.♗df1 a6 15.h4 b5 16.h5 b4 17.hxg6 bxc3+ 18.♘xc3 ♗b5 19.♞d2 ♗xf1 20.e5 c6 21.♞f4 ♞a5+ 22.♘b2 ♗ab8+ 23.♘c1 ♞a3+ 24.♘d1 ♗b1+ 0-1

Sicilian Kopec

Milner, Aviv - Chow, Alex

Burnaby, InterMat (1.6) 2005

1.e4 c5 2.♘f3 d6 3.c3 ♘f6 4.♗d3 g6 5.♗c2 ♗g7 6.O-O ♘c6 7.d3 O-O 8.h3

♗d7 9.♗e3 b5 10.a3 a5 11.d4 cxd4 12.cxd4 b4 13.a4 b3 14.♗d3 ♗b8 15.♗d2 ♞b6 16.♗c3 ♘b4 17.♞d2 d5 18.e5 ♘e4 19.♗xe4 dxe4 20.♘e1 ♗c8 21.f3 exf3 22.♗xb4 fxe2 23.♘xg2 ♞xb4 24.♞xb4 ♗xb4 25.♘f3 ♗b7 26.♗d1 0-1

King's Indian Sämisch

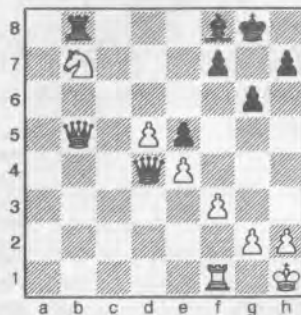
Bryan Young (1294)

John Talbot (1440)

Burnaby, InterMat (1.8) 2005

1.d4 d6 2.c4 ♘f6 3.♘c3 g6 4.e4 ♗g7 5.♗e3 ♘bd7 6.f3 O-O 7.♗d3 e5 8.d5 ♘b6 9.c5 ♘bd7 10.cxd6 cxd6 11.♘ge2 b6 12.O-O ♘c5 13.♗b5 ♘e8 14.b4 ♘b7 15.♗c6 ♗b8 16.♘b5 a6 17.♘a7 ♞c7 18.♘xc8 ♗xc8 19.♗c1 ♘f6 20.♘c3 ♘d8 21.♘a4 ♗b8 22.♞d3 a5 23.♗b5 ♞a7 24.bxa5 ♞xa5

25.♗c7 ♘e8 26.♗d2 ♞a8 27.♗xe8 ♗xe8 28.♞b5 ♘b7 29.♘xb6 ♞xa2 30.♗xb7 ♞xd2 31.♘c4 ♞d4+ 32.♘h1 ♗bd8 33.♗b6 ♗f8 34.♘xd6 ♗e7 35.♗b7 ♗xb7 36.♘xb7 ♗b8



37.♞d7 ♞b6 38.♘a5 ♞xa5 39.f4 exf4 40.g3 ♗d8 41.♞b7 ♞b4 42.♞c7 ♞xe4+ 43.♘g1 ♞d4+ 44.♗f2 ♗xd5 45.♘g2 ♞e4+ 46.♘h3 ♗h5+ 47.♘g4 f5 mate

Vienna Game

Bindi Cheng (2201)
David Wyde (2032)

Burnaby, Intermt (1.11) 2005

1.e4 e5 2.d3 c3 3.f3 c6 4.d3
e7 5.f4 d6 6.f3 O-O 7.O-O exf4
8.fxf4 a5 9.a3 xc4 10.dxc4 e6
11.d3 d7 12.d5 f6 13.d4
xd5 14.cxd5 c5 15.c4 xe4 16.
ae1 c5 17.b4 d7 18.f5 e5
19.b3 g6 20.g3 d7 21.h6+
h8 22.fxf6 gxf6 23.f3 f5 24.fxf5
f6 25.d4 ae8 26.e6 f7 27.fh5
b5 28.e4 a4 0-1{time}

Queen's Gambit Declined

Samuel Meisner (1260)
Jacob Jensen (1001)

Burnaby, Intermt (2.2) 2005

1.d4 d5 2.c4 e6 3.d3 c3 4.f3
c6 5.g5 e7 6.c2 b4 7.b3
O-O 8.c5 a5 9.O-O-O e4 10.fxe4
xg5+ 11.fexg5 f6 12.h3 e7 13.
f4 f7 14.h3 e5 15.d3 e4 16.
xb4 exf3 17.d3 fxe2 18.fxe2 a4
19.b4 f5 20.a3 xd3 21.fxd3
e7 22.e3 d7 23.f3 c6 24.
he1 f7 25.e7 g6 26.fxb7
ab8 27.fxc6 fxc8 28.fxd5+ h8
29.fxa4 fh6+ 30.fb1 fg6+ 31.
e4 g5 32.fb7 ff5+ 33.fa1
xf2 34.fh8+ 1-0

Guioco Piano

Shinichiro Tanaka (1493)
Bryan Young (1294)

Burnaby, Intermt (2.8) 2005

1.e4 e5 2.f3 c6 3.f3 c5 4.c3
f6 5.d3 d6 6.g5 g4 7.d5 h6

8.fxf6+ gxf6 9.fh4 d4 10.fg3 f5
11.c3 fxe4 12.dxe4 fxf3+ 13.gxf3
fh5 14.d3 f6 15.f2 O-O-O 16.
fb3 fhg8 17.f3 d1 g6 18.b4 fb6
19.a4 a6 20.a5 fa7 21.b5 axb5 22.
fxb5 fe7 23.f1 c6 24.f4 fc5
25.f3 d5 26.f2 d4 27.cxd4 exd4
28.f3 d6 29.a6 b5 30.fxd6 fxd6
31.f1 a1 fb8 32.f1 hb1 fa7 33.fxb5
cxb5 34.fxb5 d3+ 35.f1 d1 fxe4
36.fxe4 fg1+ 37.f1 d2 f1xb1 38.f1xb1
fc7 39.f1b7+ f1xb7 40.f1xb7 fb8 41.
f1b3 f1f6 42.f1e3 d2 43.f1d3 fb7
44.f1xd2 fc6 45.f1d5 f1e6 46.f1f5
f1e7 47.f1f6+ f1e6 48.f1xe6+ f1e6
49.f1f4 f1d6 50.f1f3 e5+ 51.f1f5 h5
52.f1h4 fc5 1-0

Sicilian English Attack

Michael Cambareri (1802)
Danny Yu (1438)

Burnaby, Intermt (2.9) 2005

1.e4 c5 2.f3 e6 3.d3 c3 a6 4.d4 cxd4
5.fxd4 fc7 6.f3 e3 f6 7.f3 d6 8.
fd2 fbd7 9.g4 h6 10.O-O-O f7 11.
h4 f5 12.fg2 fh7



13.f4 c6 14.g5 f8 15.f3 d3 fxd4
16.fxd4 e5 17.f5 d5 fd8 18.fgh6
fg8 19.f6 b6 fd7 20.fhg1 g6 21.

f1e5 dxe5 22.f3 c4 fc6 23.f1 e6
24.h5 fg5+ 25.f1 b1 fc8 26.f1b3
fe8 27.f1c7 fxc7 28.f1xc7 fc6 29.
f1xe5 f1xb3 30.f1xb3 fe6 31.f1g7+
f1e7 32.f1hxg6 f1xg6 33.e5 1-0{time}

Caro-Kann Exchange

Sarah Shankland (1259)
Tiffany Tang (1815)

Burnaby, Intermt (2.10) 2005

1.e4 c6 2.f3 d5 3.fxd5 cxd5 4.d4
fg4 5.f2 e2 f6 6.O-O e6 7.f3 c3 c6
8.f4 f6 9.f2 d2 a6 10.f1ad1 O-O
11.fg5 f7 12.f1fe1 fc8 13.h3 fh5
14.f5 e5 fxe2 15.f1xe2 b5 16.f4 a5
17.b3 fc7 18.f1e3 b4 19.f1e2 fxc2
20.f1e1 fc7 21.f1h4 f1fe8 22.f1g3
f1e4 23.f1c1 f1xg5 24.f1xg5 f1xg3
25.f1xc7 f1xe2+ 26.f1f2 f1xc7 27.
f1xe2 f1c2+ 28.f1f3 f1ec8 29.f1g3
f18c3+ 30.f1h2 f1c8 31.f1f4 f12c7 32.
h4 f1c6 33.f1g4 f1e7 34.h5 f1c2 35.
f1e5 f1f5 36.g6 f1xg6 37.f1xg6 f1xg6 38.
f1xg6 f1xa2 39.f1g4 f1cc2 40.f1f4
f1d2 41.f1g6 f1xd4 42.f1e8+ f1h7 43.
f1g6+ f1g8 44.f1e8+ f1h7 45.f1g6+
f1g8 46.f1e8+ Draw

King's Indian Classical

David Wyde (2032)
Valentina Goutor (2082)

Burnaby, Intermt (2.11) 2005

1.d4 g6 2.c4 fg7 3.f3 d6 4.f3 c3
f6 5.e4 O-O 6.f2 e5 7.O-O c6
8.d5 f7 9.f1e1 f1e8 10.f2e3 f5 11.f3
f4 12.f2 g5 13.a4 f1f7 14.a5 f8
15.c5 fg7 16.b4 f6 17.f1b5 g4
18.cxd6 cxd6 19.f1xa7 g3 20.f1b6

Round 1 (WA playing Black)

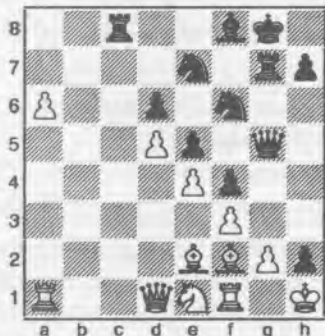
B.C.	15-9	Washington
Gr. 1 John Doknjas (1171)	0-1	Kevin Ma (1269)
Janak Awatramani (903)	½-½	Justin Yu (1077)
Gr. 2 Harrison Lee (798)	½-½	Samuel Meisner (1260)
Jacob Jensen (1001)	0-1	Wesley Yu (1234)
Gr. 3 Alex Sabaratnam (1178)	½-½	Carlin Chuck (1256)
Donovan Zhao (1164)	1-0	Alva Wei (1282)
Gr. 4 Arik Milner (1568)	1-0	Nathan Lee (1479)
Tanraj Sohal (1291)	1-0	Alec Ho (1458)
Gr. 5 Jack Cheng (1628)	½-½	Michael Omori (1561)
Farley Cannon (1599)	0-1	David Inglis (1456)
Gr. 6 Aviv Milner (1663)	0-1	Alex Chow (1466)
Joshua Wild (1530)	1-0	Blake Dixon (1381)
Gr. 7 Louie Jiang (2033)	1-0	Dakota Dixon (1636)
Elliot Raymer (1662)	1-0	Devon Manber (1594)
Gr. 8 Richard Huang (1626)	1-0	Shinichiro Tanaka (1493)
Bryan Young (1294)	0-1	John Talbot (1440)
Gr. 9 Noam Davies (2002)	1-0	Michael Cambareri (1802)
Danny Yu (1438)	0-1	Andy May (1789)
Gr. 10 Tiffany Tang (1815)	1-0	Conan So (1290)
Clyde Chen (1385)	1-0	Sarah Shankland (1259)
Gr. 11 Bindi Cheng (2201)	0-1	David Wyde (2032)
Valentina Goutor (2082)	1-0	Ben Wyde (1924)
Gr. 12 Fanhao Meng (2255)	1-0	Kevin Binz (1879)
Lucas Davies (2207)	1-0	Jeremy Jusak (1525)

Washington ratings are Northwest scholastic ratings, rather than USCF

Round 2 (WA playing White)

B.C.	15½-8½	Washington
Gr. 1 John Doknjas (1171)	0-1	Justin Yu (1077)
Janak Awatramani (903)	½-½	Kevin Ma (1269)
Gr. 2 Harrison Lee (798)	1-0	Wesley Yu (1234)
Jacob Jensen (1001)	0-1	Samuel Meisner (1260)
Gr. 3 Alex Sabaratnam (1178)	1-0	Alva Wei (1282)
Donovan Zhao (1164)	½-½	Carlin Chuck (1256)
Gr. 4 Arik Milner (1568)	1-0	Alec Ho (1458)
Tanraj Sohal (1291)	1-0	Nathan Lee (1479)
Gr. 5 Jack Cheng (1628)	1-0	David Inglis (1456)
Farley Cannon (1599)	½-½	Michael Omori (1561)
Gr. 6 Aviv Milner (1663)	1-0	Blake Dixon (1381)
Joshua Wild (1530)	1-0	Alex Chow (1466)
Gr. 7 Louie Jiang (2033)	1-0	Devon Manber (1594)
Elliot Raymer (1662)	1-0	Dakota Dixon (1636)
Gr. 8 Richard Huang (1626)	1-0	John Talbot (1440)
Bryan Young (1294)	0-1	Shinichiro Tanaka (1493)
Gr. 9 Noam Davies (2002)	1-0	Andy May (1789)
Danny Yu (1438)	0-1	Michael Cambareri (1802)
Gr. 10 Tiffany Tang (1815)	½-½	Sarah Shankland (1259)
Clyde Chen (1385)	½-½	Conan So (1290)
Gr. 11 Bindi Cheng (2201)	1-0	Ben Wyde (1924)
Valentina Goutor (2082)	0-1	David Wyde (2032)
Gr. 12 Fanhao Meng (2255)	1-0	Jeremy Jusak (1525)
Lucas Davies (2207)	0-1	Kevin Binz (1879)

gxh2+ 21.♖h1 ♖e8 22.♗xc8 ♜xc8
 23.b5 ♖h5 24.a6 bxa6 25.bxa6 ♖h4
 26.♗f2 ♖g5



27.♗b1 ♗g6 28.♗b7 ♗h5 29.♗xg7+
 ♗xg7 30.♖b3 ♗g3+ 31.♗xg3 ffg3
 32.♖b7 ♖d8 33.a7 ♗h6 34.♗a6 ♗a8
 35.♗c2 ♗f8 36.♗b5 ♖c8 37.♖xc8
 ♗xc8 38.♗c6 ♗g6 39.♗b1 ♗f4 40.
 ♗e1 1-0

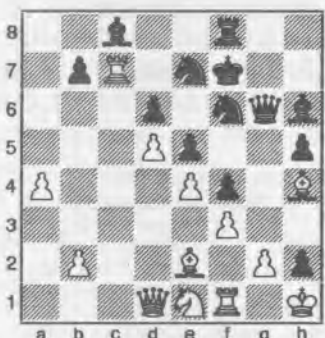
King's Indian Classical

Kevin Binz (1879)

Lucas Davies (2207)

Burnaby, Intermt (2.12) 2005

1.d4 ♗f6 2.c4 g6 3.♗c3 ♗g7 4.e4 d6
 5.♗f3 O-O 6.♗e2 e5 7.O-O ♗c6 8.d5
 ♗e7 9.♗e1 ♗d7 10.f3 f5 11.♗e3 f4
 12.♗f2 g5 13.a4 h5 14.♗b5 ♗f6 15.
 ♗xa7 ♗xa7 16.♗xa7 g4 17.♗f2 ♖e8
 18.c5 ♖g6 19.cxd6 cxd6 20.♗h4 g3
 21.♗c1 gxh2+ 22.♖h1 ♖f7 23.♗c7
 ♗h6



24.♗xf6 ♖xf6 25.♗f2 ♗g5 26.♗f1
 ♗h4 27.♗fc2 ♖g6 28.♗d3 ♖g5
 29.♖d2 ♗g8 30.♖b4 ♖f6 31.a5 ♗h3
 32.♖xb7 ♗g3 33.♗xe7+ ♖xe7
 34.♗c7 1-0

Please check your mailing label
 and PLEASE RENEW!!
 Please submit changes of address
 promptly to the Business Manager.
 Please make checks payable to North-
 west Chess, not WCF or OCF.

Scholastic News

Houston, TX

On the weekend of December 2-4, eleven Washington and three Oregon scholastic players participated in the 2005 National K-12 / Collegiate Chess Championship in Houston. The Northwest players did extremely well. Michael Lee of Bellevue, WA, won the National Champion title for 6th grade. Ten of the fourteen participants from the Northwest won an individual trophy in the main event (see picture on page 23). The result is as follows:

Kindergarten

5th Kevin Ma WA 5.0

3rd grade

16th Nicholas Orlov WA 5.0

4th grade

7th Michael Wang WA 5.5

8th Megan Lee WA 5.5

12th Alec Ho WA 5.5

16th Nathan Lee WA 5.5

5th grade

11th Daniel Ho WA 5.5

13th Michael Omori WA 5.5

6th grade

1st Michael Lee WA 7.0

10th grade

6th Landon Brownell OR 5.0

Courtesy of Hock Lee

NWC Board Meeting 11/26/05

Present: WA-Kent McNall, Eric Holcomb, Fred Kleist, Murlin Varnar. OR-Dave Yoshinaga. Absent: Clark Harmon. The meeting was called to order at 3:50 pm. Reading of the minutes was dispensed with.

Financial report: There is \$3220 on hand as of 11/26/05. NWC is staying within the budget so far.

Discussed obtaining a Washington business license & Federal tax ID number. Eric to talk to Robert Allen to see what needs to be done to do this.

Discussed accepting credit cards through PayPal for paying dues. A motion was made by Mr. Yoshinaga & 2nd by Mr. Varnar to instruct the Business Manager to set up an account with PayPal so people can use credit cards to pay their dues.

Discussed the magazine status: Fred said that he has no regular contributors at this time. It was suggested that the prize winners from the WA Class annotate one of their games. Eric said that there should be more pictures. Board needs to get as many Organizer/TDs to submit stories & pictures as possible.

Discussed the NW Grand Prix: Mr. Miller will no longer be able to sponsor the Grand Prix. He has been donating \$1000 each year. Kent McNall said that he will donate \$1000 for the 2006 Grand Prix. The purpose of the Grand Prix is for more play & more promotion. The fee is \$15 minimum, \$1 a player. It was suggested that this be dropped to \$10 minimum. This was discussed & it was decided to table this issue so that the board can study it further.

Conducted the annual 2-year review of the Editor job performance. Fred said that he needs more material for the magazine. Other than that, Fred said that he is doing ok.

Meeting adjourned at 4:27 pm.

Gary J. Dorfner, Sec.

Angels at Seattle Chess Club

by August Piper and Carol Kleist

Do angels exist? We at the SCC now know they do, because several of them recently materialized. On December 18th, a Sunday afternoon, John Cerminaro, principal French Horn player with the Seattle Symphony, recording artist, author, lecturer and class "A" chess player performed the Mozart Horn Quintet with the Emerald String Quartet in a benefit concert for the SCC. It was a rare opportunity to experience professional chamber music in an intimate setting. The acoustic in the drama studio adjacent to the SCC served the music well, and the audience was able to appreciate the magic, subtleties and humour of Wolfgang Amadeus and the supreme artistry of John Cerminaro,

French Horn, Mariel Bailey violin, Mara Gearman and Laura Renz viola, and last, not least, cellist and likewise class "A" chess player, Bruce Bailey.

In addition to the Mozart, the string players presented rich and colorful movements from a suite by Hungarian composer, Ernst von Dohnanyi. The audience was even invited to direct questions to the performers, and after these discussions all adjourned to refreshments and those interested to a chess Blitz competition won by FM David Bragg. On behalf of the Seattle Chess Club and the Chess Community in general we wish to here express our profound gratitude to these magnificent artists for sharing their time and talent for the cause of Chess. ■

Washington Chess Federation (WCF)/Oregon Chess Federation (OCF)

Adult: \$25/year (12 issues). Residents of OR and WA receive a 1-year membership in the OCF or WCF. Members receive *Northwest Chess* via periodicals mail each month.

Junior: \$17/year (12 issues) or \$10/6 months (6 issues). Must be under age 20 at time of expiration. OR/WA residents only; state membership included. Juniors receive *Northwest Chess* each month.

USA Subscriber: \$25/year (12 issues). For subscribers living inside the US mail system, but outside the OR/WA area. Subscribers receive *Northwest Chess* each month.

Family: \$5/year (not a subscription — membership only). This class of membership is open only to co-resident of an Adult or Junior member. Expires at the same time.

Trial: \$13 (membership and subscription, expires in 3 months). By paying the balance of dues for an Adult membership, this option can be extended to 12 months. The balance must be paid before the trial status is expired.

For general information, Eric Holcomb (253) 850-2996, e-mail: Eric@Holcomb.com

OCF/WCF Membership Application/Renewal Form

Name _____ If Junior, give date of birth _____
 E-Mail (if you want to subscribe to the *Northwest Chess* e-mail mailing list) _____
 Phone Number (optional, will not be used for telemarketing) (____) _____
 Street or P.O. Box _____
 City _____ State _____ Zip _____
 Country (if not USA) _____ Amount Enclosed \$ _____
 Make check or money order (USA \$ only) out to Northwest Chess and mail to:

Credit this membership to:

Eric Holcomb
 NW Chess Business Manager
 PMB 342
 12932 SE Kent-Kangley Rd.
 Kent WA 98030-7940

Slugfest cont'd from page 21

1.e1 54. 1.xb7 2.d2+ 55. 3.f2 1.e6
 56. 1.b6 1.e5 57. 2.e3 h5 58. 1.xg6+
 3.f7 59. 1.c6 2.e4+ 60. 3.f3 2.d2+
 61. 3.e2 2.e4 62. 3.d3 2.f2+ 63. 3.e2
 2.xh3 64. 1.c7+ 3.e6 65. 1.c6+ Draw

Schmid Benoni

Ricky Selzler (2026)
NM Carl Haessler (2247)

Bainbridge, Slugfest (4) 2005

Annotations by Clint Ballard

1.d4 2.f6 2. 2.c3 c5 3.d5 e5 4. 1.g5 d6
 5. 1.d2 1.e7 6. 1.xf6 1.xf6 7. 0-0-0
 1.g5 8.e3 f5 9.f4 exf4 10.exf4 1.f6 11.
 1.e1+ 3.f7 12. 2.f3 a6 13. 2.g5+ 1.xg5
 14.fxg5 1.f8 15.g4 2.g8 16.gxf5 1.xf5
 17.h4 2.d7 18. 1.g2 2.e5 19. 1.xe5
 dxe5 20.d6 1.d7 21. 1.d5+ 2.h8 22.
 1.xe5 1.xc2 23. 1.xc5 1.ac8 24. 1.d4
 1.f5 25.h5 b5 26.h6 1.c4 27. 1.d5 1.e6
 28. 1.xe6 1.xe6 29. 1.e1 1.g4 30. 1.e7
 30.hxg7+ 1.xg7

30...gxh6 31.gxh6 1.f5 32.d7 1.xd7
 33. 1.xd7 b4 34. 1.e4 bxc3 35. 1.xh7+
 2.g8 36. 1.g7+ 2.h8 Draw

Solution to the Critical Moment

The step between "equal" and "a little bit worse" is difficult to cut. White does have a pawn more, but also many problems because his pieces are passive. Likely "a little bit worse" holds true. If 34. 1.f3 had been played instead of 34. 1.g3, White's position is defendable. After 34. 1.g3, it becomes difficult to demonstrate how Black can win. There is nothing to be done against the advance of the Black King to capture White had an important decision to make. After 40. 1.e7 c4 41.d6 1.f6, he would be in trouble.

40... 1.f4+ 41. 2.f4 2.f6 42. 1.e4 c4 43.d6 1.e8 44. 1.d5?

Loses the endgame. After 44. 1.c2 1.g6! 45. 1.d1 2.e6 46. 2.e3 2.e5! 47. 1.g2 1.d7 48. 1.d1 1.f5, White still has 49. 1.c2! at his disposal. It is then difficult to demonstrate how Black can win.

44... 1.xa4 45. 1.xc4 1.c6 46. 1.a2 a4 47. 1.c4 1.d7 48. 2.e3 a3 49. 2.d4 1.e6 50.d7 1.xd7 51. 2.c3 1.e6 52. 1.e2 0-1

Your Mailing Label

Your mailing label is evidence of membership. The first line of your label contains your membership expiration date as the 2-digit year followed by the 2-digit month (e.g., -0504 for April). The date is followed by a letter code indicating your membership type (e.g., A for adult, J for Junior, L for library, Z for life members). The letter "F" will also appear for each additional family member. Please contact the business manager if you find any errors or if your renewal isn't processed within 1 to 2 months.

Seattle Chess Club

Address

17517 15 Ave NE
Seattle WA 98155

Infoline

206-417-5405
cfkleist@cs.com

Address for Entries

SCC Tnmt Dir
2420 S 137 St
Seattle WA 98168

Jan. 21, Feb. 25

SCC Saturday Quads

Format: 3-RR, 4-plyr sections by rating. **TC:** G/120. **EF:** \$6 (+\$5 fee for non-SCC). **Prizes:** Free entry for future quad. **Reg:** 9:00-9:45 a.m. **Rds:** 10:00-2:15-ASAP. **Misc:** USCF, WCF/OCF memb. req'd, OSA. NS, NC.

February 5

SCC Sunday Tornado

Format: 4-SS. **TC:** G/64. **EF:** \$14 (+\$5 fee for non-SCC). **Prizes:** 1st 35%, 2nd 27%, Bottom Half 1st 22%, 2nd 16% (\$10 from each EF goes to prize fund). **Reg:** 10:30-11:15 a.m. **Rds:** 11:30-1:50-4:10-6:30. **Misc:** USCF, WCF/OCF memb. req'd, OSA. 1/2-K rated. NS, NC.

February 4

SCC Novice

Format: 4-SS. Open to U1200 and unrated. **TC:** G/75. **EF:** \$10 by 2/1, \$15 at site. (20% disc. for SCC mem., 10% mem. of other dues-req'd CCs in WA, OR, & BC). **Prizes:** Memberships (SCC, WCF, USCF). **Reg:** 9-9:45a. **Rds:** 10-12:45-3:30-6. **Byes:** 1 (Rd 3 or 4-commit at reg.). **Misc:** USCF memb. req'd. NS, NC.

Seattle Spring Open

March 31-April 2 or April 1-2

A two-section Swiss (4 rounds – Open, 5 rounds – Reserve) with a time control of 40/2 and SD/1 (two-day Reserve schedule – Round 1, G/64). The prize fund of \$750 is based on 40 paid entries, 5 per prize group.

a Christopher Grand Prix event

Championship		Reserve (U2000)	
First	\$140	First	\$100
Second	\$100	Second	\$70
U2200	\$75	U1800	\$50
U2000	\$40	U1600	\$40
		U1400	\$30
		U1200	\$25
		Unrated	\$15

Plus Score Pool – \$100

Entry Fees: \$32 if rec'd by 3/29, \$40 at site. **Unrated**–Free with purchase of 1-yr USCF & 1-yr WCF. **SCC members**–subtract 25%. Members of other dues-required CCs in BC, OR, and WA–subtract 12.5%. **Add \$1 to any EF for 2-day schedule.**

Registration: **Open**–Sat. 11- noon; **Reserve**–Fri. 7-7:45pm, Sat. 9-9:45am.

Rounds: **Open**–Sat. 12:30-6:45, Sun. 10-4; **Reserve**–Fri. 8, Sat. (10 @ G/64)-12:30-6:45, Sun. 10-4.

Byes: 1 in Open, 2 in Reserve (Sunday rounds, commit at registration).

Miscellaneous: USCF & WCF membership req'd. No smoking. No computers.

SCC 2006 Weekend Calendar

Novice (3): February 4, May 6, September 9

Quads (12): Jan. 21, Feb. 25, Mar. 18, Apr. 15, May 20, June 10, July 15, Aug. 26, Sept. 16, Oct. 14, Nov. 11, Dec. 9

Tornados (13): Jan. 8, Feb. 5, Mar. 5, Mar. 26, Apr. 30, May 21, June 25, July 10, Aug. 27, Sept. 10, Oct. 8, Oct. 29, Dec. 3

Chal Cup/Seattle City Ch –
January 13-15

Seattle Spring Open –
March 31-April 2

Plus-Score Swiss– May 13-14

Emerald City– June 16-18

Seafair Open– July 28-30

Seattle Fall Open– Sept. 22-24

Rain City– November 4-5

Future Events

♣ indicates a Christopher Memorial NW Grand Prix event

♣ Jan. 19-Feb. 16 Spokane Winter Champ. ♣

Site: Spokane CC, Rm. 121 Herak Building, Gonzaga Univ., Spokane WA. TC: G/2 EF: \$16. Reg: 6:30-7:15 pm. Rds: (2-5) 7:15 pm. Info: dbgrffn@hotmail.com.

♣ January 28 PCC Game-in-60 ♣

Site: Portland CC, 8205 SW 24th Ave, Portland OR 97219. Format: 4-rd Swiss. TD may switch to 5SS and G/45 if more than 25 entries. TC: G/60. EF: \$20, \$5 discount for PCC members. No advance entries. Prize Fund: \$\$200/b20. Prizes: \$60-40-30, U1800 35, U1500 35. Reg: 9-9:30 am. Byes: One 1/2-pt. byes

avail. if requested at reg. Misc: USCF & OCF/WCF membership req'd, OSA. Entries: See site address. Info: portlandchessclub@gmail.com, 503-246-2978, www.aboutchess.org.

♣ January 28-29 Stephen Christopher Mem. ♣

Site: Tacoma CC, DTI Soccer Store Bldg, 409 Puyallup Ave E, room 11 (2nd floor), Tacoma WA. Format: 5-rd Swiss. TC: 40/90, SD/60. EF: \$25 adv, \$35 at site; jrs \$20 adv, \$25 at site; economy (no prize money) \$10, free for UNR; UNR may play for 1st w/regular EF. Prize Fund: 67% of full EFs. Prizes: 25%, U2000 (3 equal gps) 15%, 14%, 13%. Econ: certificate + free econ entry to future event. Reg: 9-9:45 am. Rds: Sat. 10-2:30-7, Sun. 10-3 (or ASAP). Byes: Two 1/2-pt byes avail if declared in adv. Misc: USCF & OCF/WCF membership req'd, OSA. Books For sale. NS. NC. Ent/Info: Gary Dorfner 8423 E 'B' St, Tacoma WA 98445. Make checks payable to TCC. ggarychess@aol.com, 253-535-2536, 253-627-3731, www.tacomachessclub.netfirms.com

Scholastic Events

January 2006

21	♣ Buckman Scholastic (K-12)	Mike Whetter 503-244-3183 mwhetter@comcast.net	Portland OR
21	2006 Ollie LaFraniere Mem (K-8)	Jon Licht 360-754-6472 jonjerrie@comcast.net	Olympia WA
21	Winterfest	James Stripes 509-251-2737 jdstripes@comcast.net	Deer Park WA
22	Chess Odyssey Parent/Child Workshop	Pete 503-504-5756 pete@chessodyssey.com www.chessodyssey.com	Beaverton OR
27-28	WA HS State Individual Champ.	Kirk Winges kwinges@comcast.net http://whsca.org	Lynnwood WA
28	Bryant Grade Level Chps (K-6)	Gregg 425-221-5886 mephibosheth@comcast.net www.chess4life.com	Seattle WA

February 2006

4	WA MS/JHS State Individual Ch	Kirk Winges kwinges@comcast.net http://whsca.org	Lynnwood WA
4	Univ. Child Devel. Sch. (K,1-3,4-6)	ucdschess06@hotmail.com http://signup4chess.com/ucds	Seattle WA
10-12	Oregon Junior Championship	Clark Harmon charmon@solarprism.com	McMinnville OR
11	International Chess Jam (4-12)	Randy Kaech kaech@verizon.net http://mysite.verizon.net/kaech	Ferndale WA
18	NSC Scholastic Open (K,K-3,4-6)	Elena Donaldson chess64@comcast.net www.chessplayer.com/NSC_reg.htm	Shoreline WA
20	♣ Capitol City Chess Festival (K-3,K-6,K-12)	Eric 503-931-5626 erichannibal@comcast.net www.oscf.org	Salem OR
20	Chess Odyssey Girls Only Pentathlon	Pete 504-5756 pete@chessodyssey.com www.chessodyssey.com	Hillsboro OR
24-25	WA High School State Team Ch	Kirk Winges kwinges@comcast.net http://whsca.org	Issaquah WA
24-25	OR High School State Team Ch	Mike mwolfe@lane.k12.or.us http://ohscta.tripod.com	Cottage Grove OR
25	Cornerstone Chall. (K,1-3,4-6,7-8,9-12, parents)	Norm May 360-256-4397 nmay@pacifier.com	Vancouver WA

March 2006

3-4	Chess for Success State Ch (K-12)	Julie 503-520-8960 julie@chessforsuccess. www.chessforsuccess.org	Portland OR
4	WA MS/JHS State Team Championship	Kirk Winges kwinges@comcast.net http://whsca.org	Mercer Island WA
4	Bear Creek School Tmt (K,1-3,4-6)	Lisa Dineen ldineen@tbes.org	Redmond WA
4	Sammamish Spring Tmt (K-6)	Gregg 425-221-5886 mephibosheth@comcast.net www.chess4life.com	Sammamish WA
11	♣ Cooper Mtn/Whitford Sch (K-12)	Kudva president@oscf.org www.cmchessclub.org	Beaverton OR
18	St. Michael Queen's Quest (K-8, girls only)	Jon Licht 360-754-6472 jonjerrie@comcast.net	Olympia WA
18	WA Girls Open/Polgar Qualifier (K-12)	Jon Licht 360-754-6472 jonjerrie@comcast.net	Olympia WA
18	Tacoma CC Scholastic #3 CANCELLED	Gary 253-535-2536 ggarychess@aol.com www.tacomachessclub.netfirms.com	Tacoma WA
18-19	Oregon Chess Federation HS Ch	Jerry Ramey 541-232-0328 j-adoube@efn.org	Eugene OR
21-23	Chess Odyssey Spring Break Camp	Pete 504-5756 pete@chessodyssey.com www.chessodyssey.com	Beaverton OR
25	Spring Scholastic (K-3,4-6,7-12)	John Palm http://whsca.org/TASpring.pdf	Vancouver WA
27	Chess Odyssey Clubs Spring Term begins	Pete 504-5756 pete@chessodyssey.com www.chessodyssey.com	Portland OR area

April 2006

1	OSCF Tournament (K-12)	oscf@oscf.org www.oscf.org	TBA
1	Tournament of Champions	www.chessplayer.com/stars.htm chess64@comcast.net	Seattle WA
8	Washington Elementary Championships	www.chesschampions.org	Kennewick WA
15	♣ Eugene Spring Fling (K-12)	Jerry Ramey 541-232-0328 j-adoube@efn.org www.chessways.com	Eugene OR

NOTE: A '♣' in front of the tournament name indicates an OSCF qualifying tournament.

USCF NATIONAL Scholastics

For information on any national event, contact Diane Reese at events@uschess.org.

April 7-9	National Junior High (K-9) Championship	Louisville KY
April 21-23	National High School (K-12) Championship	Milwaukee WI
May 12-14	National Elementary (K-6) Championship	Denver CO

Open Events

January 2006

Feb 19,26	Spokane CC Winter Ch. (rds 1-2)	509-928-3260 dbgrffn@hotmail.com www.spokanechessclub.org Spokane WA
Feb 21	SCC Saturday Quads	SCC Infoline (206) 417-5405 cfkleist@cs.com www.seattlechessclub.org Seattle WA
21-22	Apropos Cup (Invitational)	K. McNall 206-853-8624 kent.mcnall@gmail.com Redmond WA
27	TCC Membership Meeting	G. Dorfner 253-535-2536 ggarychess@aol.com www.tacomachessclub.netfirms.com Tacoma WA
Feb 28	PCC Game-in-60	503-246-2978 portlandchessclub@gmail.com www.aboutchess.org Portland OR
28	PCC Annual Meeting	503-246-2978 portlandchessclub@gmail.com www.aboutchess.org Portland OR
Feb 28-29	Stephen Christopher Memorial	G. Dorfner 253-535-2536 ggarychess@aol.com www.tacomachessclub.netfirms.com .. Tacoma WA

February 2006

Feb 2,9,16	Spokane CC Winter Ch (rd 3-5)	509-928-3260 dbgrffn@hotmail.com www.spokanechessclub.org Spokane WA
3,10,17,24	Pierce County Chess League	G. Dorfner 253-535-2536 ggarychess@aol.com www.tacomachessclub.netfirms.com Tacoma WA
4	SCC Novice	SCC Infoline 206-417-5405 cfkleist@cs.com www.seattlechessclub.org Seattle WA
Feb 5	SCC Sunday Tornado	SCC Infoline 206-417-5405 cfkleist@cs.com www.seattlechessclub.org Seattle WA
7	PCC Tuesday Quads begins	503-246-2978 portlandchessclub@gmail.com www.aboutchess.org Portland OR
10-12,18-19	Oregon Championship	Clark Harmon charmon@solarprism.com McMinnville OR
Feb 11-12	TCC Under 1800 Tmt	G. Dorfner 253-535-2536 ggarychess@aol.com www.tacomachessclub.netfirms.com Tacoma WA
11-12,18-20	Washington Championship & Premier	H.G. Pitre hgpitre@comcast.net www.nwchess.com TBA
Feb 18	PCC Game-in-60	503-246-2978 portlandchessclub@gmail.com www.aboutchess.org Portland OR
Feb 25	SCC Saturday Quads	SCC Infoline 206-417-5405 cfkleist@cs.com www.seattlechessclub.org Seattle WA
Feb 25-26	Collyer Memorial	Kevin Korsmo kmkorsom@comcast.net www.spokanechessclub.org Spokane WA

March 2006

3	SCC G/15 Championship	SCC Infoline 206-417-5405 cfkleist@cs.com www.seattlechessclub.org Seattle WA
3,10	Pierce County Chess League	G. Dorfner 253-535-2536 ggarychess@aol.com www.tacomachessclub.netfirms.com Tacoma WA
Feb 5	SCC Sunday Tornado	SCC Infoline 206-417-5405 cfkleist@cs.com www.seattlechessclub.org Seattle WA
7	PCC Tuesday Quads begins	503-246-2978 portlandchessclub@gmail.com www.aboutchess.org Portland OR
Feb 11-12	Northwest Open	G. Dorfner 253-535-2536 ggarychess@aol.com www.tacomachessclub.netfirms.com Tacoma WA
11-12	Jefferson State Open	Jeff Holmes 541-469-3067 Brookings OR
Feb 18-19	Portland Spring Open	503-246-2978 portlandchessclub@gmail.com www.aboutchess.org Portland OR
Feb 18	SCC Saturday Quads	SCC Infoline 206-417-5405 cfkleist@cs.com www.seattlechessclub.org Seattle WA
24,31	TCC Gambit Tournament	G. Dorfner 253-535-2536 ggarychess@aol.com www.tacomachessclub.netfirms.com Tacoma WA
Feb 25	PCC Game-in-60	503-246-2978 portlandchessclub@gmail.com www.aboutchess.org Portland OR
Feb 26	SCC Sunday Tornado	SCC Infoline 206-417-5405 cfkleist@cs.com www.seattlechessclub.org Seattle WA
Feb 31-Apr 2	Seattle Spring Open	SCC Infoline 206-417-5405 cfkleist@cs.com www.seattlechessclub.org Seattle WA

April 2006

4	PCC Tuesday Quads begins	503-246-2978 portlandchessclub@gmail.com www.aboutchess.org Portland OR
7,14,21,28	Pierce County Champ (Rds 1-4)	G. Dorfner 253-535-2536 ggarychess@aol.com www.tacomachessclub.netfirms.com Tacoma WA
Feb 8	TCC Game-in-60 #2	G. Dorfner 253-535-2536 ggarychess@aol.com www.tacomachessclub.netfirms.com Tacoma WA
8-10	Reno-Far West Open VI	Jerry Weikel 775-747-1405 wackyyl@aol.com www.renochess.org Reno, NV
Feb 15	SCC Saturday Quads	SCC Infoline 206-417-5405 cfkleist@cs.com www.seattlechessclub.org Seattle WA
Feb 22-23	Daffodil Open	G. Dorfner 253-535-2536 ggarychess@aol.com www.tacomachessclub.netfirms.com Tacoma WA
Feb 29	PCC Game-in-60	503-246-2978 portlandchessclub@gmail.com www.aboutchess.org Portland OR
Feb 30	SCC Sunday Tornado	SCC Infoline 206-417-5405 cfkleist@cs.com www.seattlechessclub.org Seattle WA

May 2006

2	PCC Tuesday Quads begins	503-246-2978 portlandchessclub@gmail.com www.aboutchess.org Portland OR
5,12	Pierce County Champ (Rds 5-6)	G. Dorfner 253-535-2536 ggarychess@aol.com www.tacomachessclub.netfirms.com Tacoma WA
6	SCC Novice	SCC Infoline 206-417-5405 cfkleist@cs.com www.seattlechessclub.org Seattle WA
Feb 6-7	Pierce County Open	G. Dorfner 253-535-2536 ggarychess@aol.com www.tacomachessclub.netfirms.com Tacoma WA
Feb 13-14	Plus Score Swiss	SCC Infoline 206-417-5405 cfkleist@cs.com www.seattlechessclub.org Seattle WA
Feb 20	PCC Game-in-60	503-246-2978 portlandchessclub@gmail.com www.aboutchess.org Portland OR
Feb 20	SCC Saturday Quads	SCC Infoline 206-417-5405 cfkleist@cs.com www.seattlechessclub.org Seattle WA
Feb 21	SCC Sunday Tornado	SCC Infoline 206-417-5405 cfkleist@cs.com www.seattlechessclub.org Seattle WA
Feb 27-29	Washington Open	H.G. Pitre hgpitre@comcast.net www.nwchess.com TBA

June 2006

2,9	TCC Gambit Tournament	G. Dorfner 253-535-2536 ggarychess@aol.com www.tacomachessclub.netfirms.com Tacoma WA
Feb 3	TCC Game-in-60 #3	G. Dorfner 253-535-2536 ggarychess@aol.com www.tacomachessclub.netfirms.com Tacoma WA
6	PCC Tuesday Quads begins	503-246-2978 portlandchessclub@gmail.com www.aboutchess.org Portland OR
Feb 10	SCC Saturday Quads	SCC Infoline 206-417-5405 cfkleist@cs.com www.seattlechessclub.org Seattle WA
Feb 16-18	Emerald City Open	SCC Infoline 206-417-5405 cfkleist@cs.com www.seattlechessclub.org Seattle WA
23,30	TCC Action Tournament	G. Dorfner 253-535-2536 ggarychess@aol.com www.tacomachessclub.netfirms.com Tacoma WA
Feb 25	PCC Game-in-60	503-246-2978 portlandchessclub@gmail.com www.aboutchess.org Portland OR
Feb 25	SCC Sunday Tornado	SCC Infoline 206-417-5405 cfkleist@cs.com www.seattlechessclub.org Seattle WA

NOTE: A 'Feb' in front of the date indicates a Christopher Memorial Northwest GP event. Events listed in boldface type have tournament announcements (in our Future Events Section) or display advertisements elsewhere in this issue