



NORTHWEST CHESS

Washington Chess Federation
Oregon Chess Federation

April 2006
406 \$3.95

928-0701A
MIKE MACGREGOR



2006 Washington Chess Championship



Northwest Chess

April 2006, Volume 60,4 Issue 694

ISSN Publication 0146-6941

Published monthly by the Northwest Chess Board. Office of record: 2420 S 137 St, Seattle WA 98168.

POSTMASTER: Send Address Changes to: Northwest Chess, PO Box 84746, Seattle WA 98124-6046.

Periodicals Postage Paid at Seattle, WA

USPS periodicals postage permit number (0422-390)

NWC Staff

Editor: Fred Kleist

Games Editor: FM Chuck Schulien

Technical Assistance: Russell Miller

Printer: Snohomish Publishing

Business Manager: Eric Holcomb

Board Representatives

Oregon: Clark Harmon

& Dave Yoshinaga

Washington: Kent McNall &

Murlin Varner

Entire contents copyright 2006 by Northwest Chess. All rights reserved. Published opinions are those of the contributors and do not necessarily reflect the views of the editor or the Northwest Chess Board.

Advertising Rates

Display ads run \$150 for a full page, \$100 for tmt ads; \$85 for a half-page, \$60 for tmt ads; \$30 for a quarter page, \$20 for an eighth of a page, and \$10 for a business card-size ad. Add \$10 if the ad is not copy ready and the staff must do layout work. A 15% discount is available for two or more consecutive ads of the same size.

Event Announcement Rates

Each appearance in *Event Announcements* costs \$20. Payment is required before publication. Enclose \$2 additional if an invoice is required—this is a mandatory service charge.

Advertising & Copy Deadline

Please get your ads and submissions in by the 10th of the month for the items to appear in the next issue (e.g., no later than Apr 10 for the May issue). The editor cannot guarantee that late submissions will appear in the desired issue.

Submit all ads and payments to:

Business Manager, Northwest Chess
PMB 342, 12932 SE Kent-Kangley Rd
Kent WA 98030-7940
Eric@Holcomb.com

Submissions

Hey folks! The editor depends on YOU to make this magazine vibrant and exciting. I need your games, photographs, thoughts, and ideas. This magazine has a great tradition and I hope people will contribute enthusiastically. You can send me your materials via U.S. mail or via e-mail:

Northwest Chess
Fred Kleist, Editor
2420 S. 137th Street
Seattle WA 98168
NWCeditor@cs.com

If you'd like your games annotated by a senior master, send them to our Games Editor:

FM Chuck Schulien
cschess@hotmail.com

Subscription Information

Northwest Chess is a benefit of membership in either the Oregon or Washington Chess Federations. Adult dues are \$25; Junior dues (under 20) are \$17 (or \$10 for six months). Please send dues, along with pertinent information to:

Business Manager

Northwest Chess

Eric Holcomb

PMB 342, 12932 SE Kent-Kangley Rd

Kent WA 98030-7940

Eric@Holcomb.com

http://www.nwchess.com

Northwest Grand Prix Administrator

Murlin Varner

13329 208 Ave NE

Woodinville WA 98072

MEVjr54@yahoo.com

425-882-0102

Oregon Chess Federation

President

Jerry Ramey

541-232-0328

j-adoube@efn.org

Vice President

Dave Yoshinaga

503-670-9855 ext 7

dave@kdtonline.com

Secretary

Megan Esler

503-292-6842

jaffagold@yahoo.com

Treasurer

Clark Harmon

charmon@solarprism.com

Director-at-Large #1

Mike Terrill

503-580-9187

pflotus@yahoo.com

Director-at-Large #2

Grisha Alpernas

grisha_alpernas@hotmail.com

National Representative

Carl Haessler

ssmith6154@aol.com

Scholastic Coordinator

Peter Prochaska

503-504-5756

pete@chessodyssey.com

Washington Chess Federation

President

Kent McNall

206-853-8624

kent.mcnall@gmail.com

Vice President

Duane Polich

425-462-1776

dpolich@verizon.net

Secretary

Gary Dorfner

253-535-2536

ggarychess@aol.com

Treasurer

Robert J. Allen

253-761-1288

allenrobertj@msn.com

Tournament Coordinator

H. G. Pitre

206-284-9314

hgpitre@comcast.net

Scholastic Coordinator

David Hendricks

425-868-3881

davidhendricks@comcast.net

NW Chess Board Member

Murlin Varner

425-882-0102

MEVjr54@yahoo.com

Greetings from the Editor

Okay, so you're tired of hearing me beg for material. Well, I'll stop my pleading for one issue, as I already have enough for May, including some corrections from the March issue. Nevertheless, please read the paragraph below... and act on it!



Editor's Desk

Remember, this magazine needs you, its readers, to act as its reporters and feature writers. Take a camera with you to your next tournament, snap photos of your friends or of the winners and send them to *NWC*. Send your comments to nwceditor@cs.com. Also, send articles and game annotations there.

Best Wishes,

Frederick K. Kleist

Thanks to R. Miller for working on the crosstables.
Thanks to C. Kleist for proofreading.

Northwest Chess Knights

Northwest Chess Knight donors will be listed in the magazine for a period of one year following receipt of donation. Please consider making a donation today to help Northwest Chess!

King: \$1000+
Queen: \$500-\$999
Rook: \$250-\$499
Bishop: \$100-\$249
Knight: \$50-\$99
Pawn: \$15-\$49

Current Patrons

King: Russell Miller

Queen: Kent McNall

Rook: Nat Koons

Bishop: Wayne Metsker

Knight: Steve Buck, Curt Collyer, Matt Fleury, Shankland family

Pawns: Adam Attwood, Robert D. Brewster, David Griffin, Jack Hatfield, Mark James, Gene Milener

Contributions can be sent to the Northwest Chess Business Manager, and are greatly appreciated!



Scholastic News

Mercer Island, WA

Odle Chess Teams Win 1st and 2nd Places in Washington State Team Championship!

Odle Middle School of Bellevue fielded three teams for the 2006 Washington State Middle/Junior High School State Chess Team Championship, held March 4, 2006, at Islander Middle School, Mercer Island, WA.

The team A members were Michael Lee, Alex Guo, Jerry Li, Gabriella Rader, and Calvin Chan; Team B members were Aviv Caspi, Ernest So, Jerry Ling, Max Slivka, and Jason Zhou; and team C members were Philip Huang, Matt Dingman, Anshuman Siripurapu, Michael Qian, and Kiran Gurajala.

After four of the five rounds had been played, the Odle team B was in first place, the Odle team A was in second place, and both were substantially ahead of the other 18 teams. So Odle team A was required to play Odle team B!

In an exciting and unexpected finish, each team scored 2.5 points, giving Odle B the state championship with 19.5 points, and Odle A second place with 19.0 points! Washington Middle School (Seattle) added a bit of excitement in round 5, winning all five games against Lakeside, but came up short at 18.5 points, good for third place. The Odle team C played valiantly, finishing 16th out of 20 teams.

Medals were also given to the top player on each of the five boards. Odle players took four of the five medals: 1st board (Michael Lee), 2nd board (Ernest So), 4th board (Max Slivka), and 5th board (Calvin Chan).

Since 1975, Odle Middle School has won the state team chess championship twice before, in 1991 and 1992.

Courtesy of the Caspi Family

Olympia, WA

The first annual Washington Girls Open was held at St. Michael's School in Olympia, WA on Saturday, March 18. Twelve of the top under 19 players from all over the state participated for the right to represent Washington at this year's Susan Polgar tournament to be played concurrently with the U.S. Open in Chicago.

The format was four games at G/60. After the first three rounds, Karen Marcjan, a sixth grade student at St. Louise School in Redmond, boasted the only undefeated score. Needing only a draw to secure the title, she was paired with Janell Talbot, a senior at Liberty Christian School in Richland.

Janell played marvelously and defeated Karen to force a play-off. Meanwhile three other players had a chance to join the play-offs. However, on table two, Megan Lee and Jennifer Apacible

Continued on page 19

Northwest Chess

April 2006

Scholastic News

page 3

WA Championship & Premier

H. G. Pitre reports on the first weekend and has had the players annotate several of their games

page 4

Tournament Ads

pages 12, 15, 19, 20, 30, 31

FNGP Report

How do you stand?

page 21

Donaldson Tops Collyer Memorial

Dave Griffin reports; Cloy, Collyer, and

Donaldson annotate

page 22

Peter Lapiken

Mike Murray looks at several more games

page 26

Northwest Chess Calendar of Upcoming Events

back cover

On the Cover: Upper left—SM Slava Mikhailuk (l) vs. Matt Fleury (r). Upper right—NM Nick Raptis (l) vs. FM William Schill (r). Lower right—NM Nat Koons (l) vs. NM Harley Greninger (r). Lower center—Ricky Selzler (l) vs. FM John Readey (r). Lower left—LM Viktors Pupols (l) vs. Adi Lanka (r). Center—(front row, l-r) Selzler, Readey, Greninger, Mikhailuk, Raptis; (back row, l-r) Lanka, Fleury, Schill, Koons, Pupols. *Photo and layout by Eric Holcomb*

From the Business Manager:

Northwest Chess could use a few **donations** to help cover expenses, including library subscriptions. Even small donations are helpful. Donations of \$15 or more to the "knighthood" will be listed in the magazine for a period of one year after the donation is received.

Slava, Harley, & Schill Take Early Lead Ignacio Rockets to 4-0 Start

by H. G. Pitre

The 2006 Washington State Championship and Premier tourney began as scheduled on February 11, 2006, with all players who had agreed to play present. The players ranged in age from 14 years, Andy May of Vancouver, to 70 years, the redoubtable, Mr. Northwest Chess—LM Viktors Pupols of Poulsbo. Four were former Washington State Champions, i.e., Pupols, SM Slava Mikhailuk, FM William Schill, and NM Harley Greninger. We also had, from Vancouver, NM Nick Raptis, a former Oregon State Champion. Five of the twenty players were high school students. Their interest and high ratings are an indication of recent successes in the scholastic area in the state of Washington. There were no players from east of the Cascades in the event, probably because of the time commitment and travel required.

On January 21, 2006, the WCF officers adopted the proposal of the Tournament Coordinator that the time control be G/120 plus 30 seconds per move. We lost the donated site of the past three state championships at the Oki Foundation in downtown Bellevue, as it was now rented to a commercial interest with fitness and health classes on the weekends. Some pre-tournament maneuvering led to the tourney being scheduled for both weekends in Tacoma at a nice site on the UW Tacoma campus. This marked the first time that a time control that involved 30-second increments per move was used in this esteemed setting. Perhaps the winner should have an asterisk after his name on the plaque of champions for this year's performance? The same prize structure as last year's was in place for the Championship and the Premier. In addition, Clint Ballard offered \$1000 to the winner of the Championship, according to his BAP rules. Would we see more lively play and fewer draws as a result?

After discussing some rules of play, drawing for pairing numbers, forming a players' committee, and taking photos, we went on to other housekeeping items, such as discussing where it was permissible to roam, where to park, and whether eating was to be allowed in the playing room. Then play began. Later in the round, a number of the players had to scurry out to cars parked in a one-hour zone as a parking enforcement officer approached. What were they thinking? Who ever has a one-hour game in the first round of the Championship?

Round One

As they settled into the regularity of play, the big surprise of the first round was Adi Lanka's win over Pupols. Also surprising was the quick outcome of Schill-Raptis. Those two could have used the one-hour parking spaces safely and been gone before the meter reader came along. The finish in Koons-Greninger was very interesting. In the Premier, the big match-up was MacGregor-Bragg: FM David Bragg won a very important game.

French Classical

FM William Schill (2247)

NM Nick Raptis (2334)

Tacoma, WA Championship (1) 2006

Annotations by FM Schill (WS) & NM Raptis (NR)

1.e4 e6 2.d4 d5 3.♘c3 ♘f6 4.♗g5 ♗e7
5.e5 ♗fd7 6.♗xe7 ♞xe7 7.f4 ♗b6

Black has been scoring well with this new line. The old moves are 7...O-O and 7...a6. {NR}

A new move that has been doing very well internationally. 7...a6 8.♞g4 O-O 9.♗f3 c5 10.♗d3 cxd4 11.♗xh7+ ♖xh7 12.♗g5+ ♞xg5 13.♞xg5 dxc3 Bartron-Raptis, 2006. {WS}

8.♞g4

This is what Paul Bartron played against me in Apropos #4. {NR}

(!) I had never seen 7.♗b6 in this position before and just decided to attack on the kingside, as Black's Knights were on the queenside. {WS}

8...O-O 9.♗f3 c5 10.♗d3 cxd4

(?) How to explain this? It seems Nick was beating Paul Bartron in the above game. 10...f5 11.exf6 ♞xf6 12.dxc5, ± at least. {WS}

11.♗xh7+

(!) Of course, a player should notice that Black will be getting three pieces for the Queen, but those pieces will not be very active, will they? {WS}

11...♖xh7 12.♗g5+ ♖g8 13.♞h4!

Better than 13.♞h5, you'll soon see why. {NR}

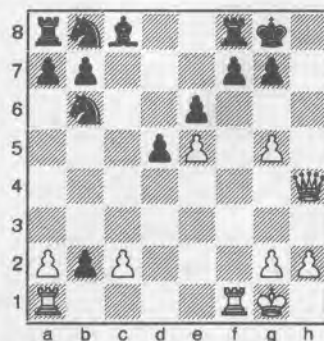
13...♞xg5 14.fxg5

Both the pawn and the open f-file will help to defeat Black. {WS}

14...dxc3

I have three pieces for a Queen and consider the position unclear. [I've come to realize, however, that this Queen sac line beginning with 10...cxd4 is unplayable with the Knight on b6.] {NR}

15.O-O cxb2??



The losing move. I just didn't see it coming. 15...♗8d7 or 15...♗c6 needed to be played. {NR}

The key move that had to be analysed before playing 10.♗d3 was 15...♗8d7,

which defends the Rook on f8 so that g5-g6 will not just win outright. During the game I looked at 16. ♖f3 ♗xe5 (16... cxb2 17. ♖af1 ♗xe5 18. ♖h3 etc.) 17. ♖h3 f6 18. g6 ♗xg6 19. ♖h7+ ♗f7 20. ♖g3 ♗e5, but Black may be surviving here! A better line is 16. ♖ae1 cxb2 17. ♖e3± ♗xe5 18. ♖xe5 (18. ♖h3 f5 19. gxf6 ♖xf6 20. ♖h8+ ♗f7 21. ♖xf6+ ♗xf6 looks crazy with the pawn on b2, but White must be doing better.) 18... ♗c4 19. ♖ee1. {WS}

16.g6!!

Making me go instantly into a full body sweat! {NR}

Forces checkmate. Sad, but true. {WS}

16...fxg6 17. ♖xf8+ ♗xf8 18. ♖d8+ ♗f7 19. ♖f1 mate

English

SM Slava Mikhailuk (2438)

Matthew Fleury (2122)

Tacoma, WA Championship (1) 2006

Annotations by SM Slava Mikhailuk

1.c4e5 2. ♗c3 ♗f6 3. ♗f3 ♗c6 4.g3 ♖b4 5. ♖g2 O-O 6.O-O ♖e8

6...e4 is another way to go. Most of my opponents have played that.

7. ♗d5 e4!?

I wasn't expecting this. I considered only 7... ♖c5, 7... ♖f8, and 7... ♗xd5.

8. ♗xb4?!

I couldn't resist getting the two Bishops, even though I fall behind in development. 8. ♗e1 is safer.

8... ♗xb4 9. ♗e1 d5 10.cxd5 ♖xd5

I have to be careful here.

11.d3 ♖g4

If 11... ♗xa2, then I have a choice of 12. ♖d2 or 12. ♖e3 with good compensation for the pawn.

12. ♖f4

The only move. I can't play 12.h3?? because of 12... ♖h5!

12... ♖h5 13.f3 exf3 14. ♗xf3

I'm now developed and have the two Bishops. Black needs to exchange one of them.

14... ♗bd5 15.e4?!

Too hasty. 15. ♖d2 was more solid.

15... ♗xf4 16.gxf4 ♖ad8 17.e5?

I should've connected my Rooks and gotten out of the pin by 17. ♖c2.

17... ♗d5 18. ♖d2 ♖h6 19. ♗g5

The only move.



19... ♖b6+

Even better was 19...f6 20.exf6 ♖xf6, when I'm left with a lot of weak pawns.

20. ♗h1 h6

The g5-Knight presents a danger. If 20... ♖e3, then 21. ♖a5 ♗xf4 22. ♖ae1 ♖e2 23. ♖xc7 with sharp play.

21. ♗e4 ♖e3 Draw

Black offered a draw and, after some hesitation, I accepted. My pawns are too weak for an endgame; so I have to keep Queens on, e.g., 22. ♖a5 ♗xf4 23. ♖ae1 ♖e2 24. ♖xf4 ♖xf4 25. ♖xe2, unclear.

French Exchange

Adi Lanka (1932)

LM Viktors Pupols (2200)

Tacoma, WA Championship (1) 2006

Annotations by Adi Lanka

1.e4 e6 2.d4 d5 3.exd5

I don't know any theory in the French. 3...exd5 4. ♗f3 ♖d6 5.c4 ♗f6 6. ♗c3 c6 7.cxd5

Not a very good move.

7...cxd5 8. ♖d3 O-O 9.O-O h6 10.h3 ♖e6?!

He is giving me a lot of play.

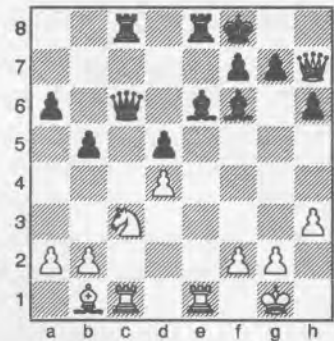
11. ♗b5 ♖e7 12. ♖f4 ♗e8?!

White is moving forward to the eighth rank and Black is moving backward to the eighth rank.

13. ♖c1 ♗c6 14. ♖b1 a6 15. ♗c3 ♗f6 16. ♖d3 ♖e8 17. ♗e5 ♖b6 18. ♗xc6 ♖xc6?!

Black sets foot on the losing path, as his Queen gets awkward.

19. ♖fe1 ♖ac8 20. ♖e5 b5?? 21. ♖xf6 ♖xf6 22. ♖h7+ ♗f8



23. ♗xd5! ♖xd5 24. ♖xc8 ♖xc8 25. ♖h8+ ♗e7 26. ♖xc8 ♖xd4 27. ♖c7+ ♗f6

27... ♗f8 28. ♖e4; 27... ♗e8 28. ♖e4 28. ♖f4+ ♗e7 29. ♖c7+ ♗f6 30. ♖c2

Threatening ♖e4 and ♖b3.

30... ♖e5?? 31. ♖xe5 1-0

If 28... ♖xe5, then 29. ♖d8 mate.

Sicilian Maroczy Bind

FM John Readey (2331)

Ricky Selzler (2105)

Tacoma, WA Championship (1) 2006

Annotations by Ricky Selzler

1. ♗f3 ♗f6 2.c4 g6 3. ♗c3 ♖g7 4.e4 c5 5.d4 ♖a5

Serving the chess community since 1972



THE CHESS HOUSE

A sincere thank you for the phone call and the excellent customer service. I look forward to receiving my clock and set!
- S.N., SD, USA

Tournament Quality Board+Pieces+Bag Store all your chess accessories in one convenient carryall



\$25 Special

Stock Code: C212

also mention discount "NWC"

1000's of chess products - free catalog low price guarantee - service oriented store

www.ChessHouse.com
e4@chesshouse.com 800-348-4749

This opening position has a very similar trait to the Pterodactyl opening, which is to pressure the dark squares with all your pieces. This is a slightly dubious version, however.

6. $\text{d}2$ $\text{cxd}4$ 7. $\text{dxd}4$ O-O

I had hopes of playing 7... $\text{dxe}4$, but 8. $\text{dxe}4$ $\text{we}5$ 9. $\text{wc}2$ $\text{wxd}4$ 10. $\text{xc}3$ and I lose the Bishop on g7. I castled to protect this Bishop. Alas, this was not meant to happen.

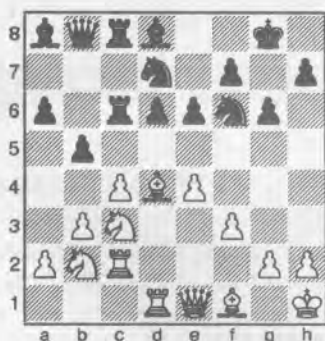
8. $\text{db}3$ $\text{wc}7$ 9. $\text{xe}2$ $\text{dc}6$ 10. O-O $\text{de}5$ 11. $\text{xc}1$ $\text{d}6$ 12. $\text{d}5$ $\text{wd}8$ 13. $\text{eg}5$ $\text{ded}7$ 14. $\text{dc}3$ $\text{b}6$

I was simply curious to see how White would attack my position; so I played a strange hedgehog setup.

15. $\text{f}3$ $\text{eb}7$ 16. $\text{wd}2$ $\text{xe}8$ 17. $\text{d}4$ $\text{xc}8$ 18. $\text{fd}1$ $\text{wc}7$ 19. $\text{xe}3$ $\text{wb}8$ 20. $\text{ef}1$ $\text{wa}8$ 21. $\text{b}3$ $\text{a}6?$

This move caused me problems for the rest of the game. I think 21... $\text{xf}8$, intending ... $\text{e}7$ - $\text{e}6$ and ... $\text{d}6$ - $\text{d}5$ was a more sound plan for me. After that, it's still unclear how White can break through.

22. $\text{da}4$ $\text{wa}7$ 23. $\text{wb}4$ $\text{xf}8$ 24. $\text{de}2$ $\text{xc}6$ 25. $\text{we}1$ $\text{e}6$ 26. $\text{wf}2$ $\text{xa}8$ 27. $\text{dec}3$ $\text{wb}7$ 28. $\text{xc}2$ $\text{xec}8$ 29. $\text{xd}4$ $\text{xe}7$ 30. $\text{xdc}1$ $\text{wb}8$ 31. $\text{ch}1$ $\text{xd}8$ 32. $\text{db}2$ $\text{eb}7$ 33. $\text{d}3$ $\text{dc}5$ 34. $\text{db}2$ $\text{dcd}7$ 35. $\text{we}1$ $\text{xa}8$ 36. $\text{fd}1$ $\text{b}5?$



I was simply tired of shuffling pieces and, in time trouble, I was concerned whether I'd be able to do nothing and shuffle my pieces in the correct way as to not let him in. So that's my reason for this illogical pawn sacrifice. It is just hard to sit there without a plan and not make a blunder from the monomania. This move, however, loses. The rest is hopeless.

37. $\text{cxb}5$ $\text{axb}5$ 38. $\text{b}4$ $\text{de}5$ 39. $\text{xb}5$ $\text{xc}6$ 40. $\text{a}4$ $\text{dc}6$ 41. $\text{xc}6$ $\text{xc}6$ 42. $\text{b}5$ $\text{xc}6$ 43. $\text{dc}1$ $\text{e}5$ 44. $\text{eg}1$ $\text{d}5$ 45. $\text{we}2$ $\text{dxe}4$

46. $\text{dxe}4$ $\text{dxe}4$ 47. $\text{fxe}4$ $\text{wb}7$ 48. $\text{xc}7$ $\text{xc}7$ 49. $\text{xc}7$ $\text{xc}7$ 50. $\text{dc}4$ $\text{we}4$ 51. $\text{we}4$ $\text{xe}4$ 52. $\text{b}6$ $\text{eb}8$ 53. $\text{xc}5$ $\text{xd}5$ 54. $\text{de}3$ $\text{xe}4$ 55. $\text{a}5$ $\text{xd}3$ 56. $\text{d}5$ $\text{e}4$ 57. $\text{db}4$ $\text{f}5$ 58. $\text{a}6$ $\text{xa}6$ 59. $\text{dxa}6$ $\text{xe}5$ 60. $\text{b}7$ $\text{f}4$ 61. $\text{eb}6$ $\text{e}3$ 62. $\text{xc}7$ 1-0

I played thematically against Harley ... and lost convincingly! Back to the drawing board.—Koons

French Advance

NM Nat Koons (2229)

NM Harley Greninger (2228)

Tacoma, WA Championship (1) 2006

Annotations by NM Harley Greninger

1. $\text{e}4$ $\text{e}6$ 2. $\text{d}4$ $\text{d}5$

The French served me well over the first leg of the event: two wins and a draw.

3. $\text{e}5$ $\text{c}5$ 4. $\text{c}3$ $\text{dc}6$ 5. $\text{df}3$ $\text{wb}6$ 6. $\text{a}3$ $\text{c}4$ 7. $\text{dbd}2$ $\text{da}5$ 8. $\text{fb}1$ $\text{xd}7$ 9. $\text{xe}2$

9. $\text{b}4$ was played in Rijnaarts-Drost, Arnhem 1996. After 9... $\text{cxb}3$ 10. $\text{c}4$ $\text{xc}6?$! (Better is 10... $\text{xa}4$!) 11. $\text{xd}3$ $\text{de}7$ 12. O-O O-O 13. $\text{c}5$ $\text{wc}7$, White had an edge. 9... $\text{de}7$ 10. $\text{h}4$!

New move. Almost always played here is either 10. O-O or 10. $\text{df}1$.

10... $\text{f}6$ 11. O-O

11. $\text{h}5$ $\text{dec}6$ 12. $\text{exf}6$ (12. $\text{h}6$ $\text{fxe}5$ is good for Black.) 12... $\text{gxf}6$ 13. $\text{b}3$ $\text{cxb}3$ 14. $\text{dxb}3$ $\text{wc}7$ with approximate equality, although I would prefer Black due to the absence of any real weaknesses. The possible weak pawns at $\text{a}3$, $\text{c}3$ and $\text{h}5$ and weak squares at $\text{a}4$ and $\text{c}4$ would give Black a comfortable selection of plans.

11... O-O-O

In my first three games of the weekend, White castled kingside and Black castled queenside, while in the 4th game neither side castled at all!

12. $\text{b}3$

Although I would have preferred the positional 12. $\text{fe}1$ here, I actually expected Nat to play this as it is very much in keeping with his style.

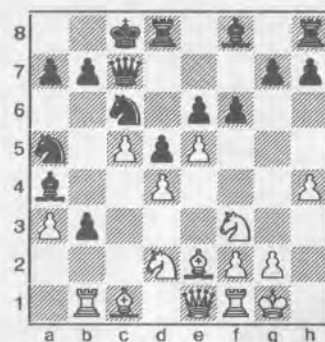
12... $\text{cxb}3$ 13. $\text{c}4$ $\text{xa}4$

I don't intend to try to hold the pawn, but cause White consternation in arranging its capture.

14. $\text{c}5$?!

After this, White's play becomes constricted and the advantage belongs to Black. Better would have been 14. $\text{xb}2$. 14... $\text{wc}7$ 15. $\text{we}1$ $\text{dec}6$!

Forcing White's hand in the center.



16. $\text{exf}6$ $\text{gxf}6$ 17. $\text{xb}2$ $\text{xh}6$ 18. $\text{xd}1$ $\text{xhe}8$ 19. $\text{xc}3$ $\text{e}5$

White's position is now critical.

20. $\text{dxe}5$ $\text{fxe}5$ 21. $\text{dg}5$

21. $\text{xa}5$ $\text{dxa}5$ 22. $\text{dxb}3$ should have been preferred.

21... $\text{xxg}5$ 22. $\text{hxg}5$ $\text{fg}8$

Most likely the simplest way to realize a decision.

23. $\text{we}3$ $\text{cb}8$

23... $\text{d}4$ 24. $\text{wh}3+$ $\text{cb}8$ 25. $\text{xa}5$ $\text{dxa}5$ 26. $\text{de}4$ $\text{xc}6$ is also very strong. I had a difficult time deciding between the two lines and finally went with what I thought would give my opponent the fewest counter-chances.

24. $\text{xa}1$ $\text{we}7$ 25. $\text{f}4$ $\text{ca}8$ 26. $\text{fxe}5$ $\text{d}4$ 27. $\text{we}4$ $\text{wxc}5$ 28. $\text{dxb}3$

Finally got rid of that little thorn in the side!

28... $\text{dxb}3$ 29. $\text{xb}3$ $\text{xb}3$ 30. $\text{xc}3$ $\text{xc}5$ 31. $\text{we}5$ $\text{dxe}5$ 32. $\text{xf}4$ $\text{d}3$!

One final little finesse.

33. $\text{fb}1$ $\text{dc}6$ 34. $\text{fd}1$ $\text{fd}5$ 35. $\text{cf}2$ $\text{d}2$ 36. $\text{xc}3$ $\text{xc}5$ 37. $\text{xd}2$ $\text{fd}5$ 38. $\text{g}4$ $\text{fgd}8$ 0-1

White's flag fell. Nat had played 39. $\text{de}2$ on the board. The finish would have been 39... $\text{d}4+$ 40. $\text{de}1$ $\text{db}3$ and after the forced 41. $\text{xf}2$, Black's win is assured.

Please check your mailing label and PLEASE RENEW!!

King's Indian Smyslov

Mark Ryan (1877)
Ignacio Perez (2202)

Tacoma, WA Premier (1) 2006

1.d4 ♘f6 2.c4 g6 3.♗c3 ♘g7 4.♗f3
O-O 5.♙g5 c5 6.e3 h6 7.♙h4 ♗c6 8.d5
♗a5 9.♙e2 d6 10.♙c2 a6 11.♙c1 b5
12.cxb5 axb5 13.♙xb5 ♙a6 14.♙xa6
♙xa6 15.b3 ♙a8 16.e4 ♙b8 17.♗d2
♙ab6 18.♙b1 ♙a6 19.f3 g5 20.♙f2
♗d7 21.a4 ♗xb3 22.♗xb3 ♙c4 23.♗d2
♙xb3 24.♗b5 ♙b4+ 25.♗e2 c4 26.
♙d4 ♙xd4 27.♗xd4 ♙xb1 28.♗c6 ♙b3
0-1

Center-Counter

Geoffrey Gale (2047)
Chris Kalina (1977)

Tacoma, WA Premier (1) 2006

1.e4 d5 2.exd5 ♗f6 3.♙b5+ ♙d7 4.♙e2
♙f5 5.d4 ♗xd5 6.♗f3 e6 7.O-O ♙e7 8.a3
O-O 9.c4 ♗f6 10.♗c3 c5 11.♙e3 cxd4
12.♗xd4 ♙g6 13.♙f3 ♙c8 14.♙b3
♗c6 15.♗xc6 bxc6 16.♙a4 1-0

Sicilian

Ben Wyde (1973)
Andy May (1876)

Tacoma, WA Premier (1) 2006

1.e4 c5 2.b3 b6 3.c4 ♙b7 4.d3 ♗c6
5.♙b2 e5 6.f4 d6 7.♗f3 ♙c7 8.♗c3 ♗d4
9.♗xd4 exd4 10.♗e2 ♗e7 11.♙c1 g6
12.♗g3 ♙g7 13.♙e2 O-O-O 14.O-O
♙hf8 15.f5 f6 16.♙d2 ♗c6 17.a3 g5
18.b4 ♙f7 19.♙b3 ♙f8 20.♙fb1 ♗e5
21.bxc5 dxc5 22.a4 ♙d6 23.a5 ♙e7
24.♗f1 ♙d8 25.♙e1 ♙e7 26.♙a3 ♙c7
27.♗d2 ♙d8 Draw

Caro-Kann Panov-Botvinnik

Mike MacGregor (2185)
FM David Bragg (2200)

Tacoma, WA Premier (1) 2006

Annotations by FM David Bragg

1.e4 c6 2.d4 d5 3.exd5 cxd5 4.c4 ♗f6
5.♗c3 g6 6.cxd5 ♙g7 7.♙c4

White often checks the Black King to force the b-Knight to d7, allowing a return of the pawn by a timely d5-d6 push. White's most natural development is 7. ♙b3 O-O 8. ♙e2 ♗bd7 9. ♙f3 ♗b6 10. ♗ge2 ♙f5 11. O-O, when White's control of the center and more active pieces give him a solid edge.

7...O-O 8. ♗ge2 a6?!

More common is 8... ♗bd7.

9.a4 b6 10.O-O ♙b7N

10... ♙a7 11. ♙f4 ♙b7 12. ♙b3 ♙a8
13.h3 ♙d7 14.d6 exd6 15. ♗d5 ♗xd5 16.
♙xd5 Egri-Sinka, Hungary 2000 (0-1, 74)
11. ♙b3 a5

Just because I moved this pawn three moves ago is no reason to avoid moving it again. Black is eyeing the b4-square.

12.f4 ♗a6 13.f5

The weak diagonal through the f7-square and the potential rapid redeployment of White's pieces to the kingside mean that Black must be careful.

13... ♗b4 14.fxg6 hxg6



15. ♙g5

I'd expected White to continue pushing pieces at my kingside with 15. ♗f4. The coming exchange of material leaves White on the defensive and, hence, Black with the better prospects.

15... ♙c8 16. ♙ac1 ♗fxd5 17. ♗xd5
♙xd5 18. ♙xd5 ♙xd5 19. ♙xd5 ♗xd5
20. ♙fd1 e6 21. ♗c3 ♗xc3 22. ♙xc3
♙xc3 23.bxc3 ♙c8 24. ♙d2 ♙c4 25.
♙b1 ♙xa4 26. ♙xb6 ♙a2 27. ♙b8+ ♗h7
28. ♙f4 ♙c2 29. ♙b3 a4 30. ♙a3 ♙xc3
31. ♙xa4

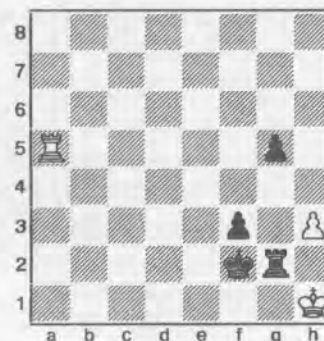
31. ♙xc3 ♙xd4+ 32. ♙e3 a3 33. ♗f1
a2+

31... ♙d3 32. ♙e5 ♙d2 33. ♗f1 g5 34.h3
♗g6 35.g4 f6 36. ♙g3 ♙d3 37. ♗g2 f5
38.gxf5+ exf5 39. ♙a6+ ♗h7 40. ♙e5
♙xe5 41.dxe5 ♙e3 42. ♙e6 ♗g7 43.
♗h2 f4 44. ♗g2 ♗f7 45. ♙f6+ ♗e7 46.
♙f5 ♙g3+ 47. ♗h2 ♗e6 48. ♙f8 ♗xe5
49. ♙e8+ ♗f5 50. ♙f8+ ♗e4 51. ♙e8+?

White has every hope of a successful defense by moving his Rook to the queenside, threatening to harrass the Black King from the side and, at the right

moment, to retarget the g-pawn. To stop this, Black would have to give up his g-pawn and, with it, added protection from future checks.

51... ♗f3 52. ♙e5 ♗f2 53. ♙f5 f3 54. ♙a5
♙g2+ 55. ♗h1



55...g4

A basic endgame idea, creating *Luft* for the King, while avoiding the stalemating idea 55... ♗g3?? 56. ♙xg5+ ♗xh3 57. ♙g3+.

56.hxg4 ♗g3 57. ♙a3 ♙c2 0-1

Two Knights Defense

Elston Cloy (1964)
Kevin Binz (1870)

Tacoma, WA Premier (1) 2006

1.e4 e5 2. ♗f3 ♗c6 3.d4 exd4 4. ♙c4
♗f6 5.e5 d5 6.exf6 dxc4 7.O-O ♙xf6
8. ♙e1+ ♙e6 9. ♙g5 ♙f5 10. ♗bd2 f6
11. ♙e2 ♗d7 12. ♙h4 ♙b4 13.c3 d3
14. ♙d1 ♙c5 15.b4 ♙b6 16.a4 a5 17.b5
♗e7 18. ♙e4 ♙d5 19. ♗d4 ♙g6 20. ♙g4
♙f7 21. ♙f4 h5 22. ♗f3 ♗g6 23. ♙f5
♙e4 24. ♗g5 ♙e7 25. ♗xe4 ♙xe4
26. ♙f3 ♙xf3 27. ♗xf3 ♗e6 0-1

Round Two

In my role as TD or arbiter, I was entering the game scores without the best software for the purpose and was unable to participate in analysis of games, or even enjoy the games, as I entered them into the computer, so I missed a lot of the flavor of the tourney. I hope you will get that by reading through the annotations of the players involved. I did get to play the role of the host occasionally, as some visitors came by inquiring about the chess championship which had been reported in the *Tacoma News-Tribune* and for which we had signs spread out on campus. I did have *Northwest Chess* magazine issues to distribute, and I hope we

will obtain some new members and players as a result.

In the Championship, the game Raptis-Greninger was the subject of some analysis. It's hard for me to believe that blitz-whiz Raptis would think that the time control affected the result—a draw, even though in a late-game position he had a winning breakthrough.

The marathon Bragg-Wyde game had to be the big upset this round in the Premier. Ben won a piece and took a long time thereafter, but was able to negate Bragg's hopes of salvaging a draw in the endgame.

King's Indian Reversed

NM Nick Raptis (0.0)

NM Harley Greninger (1.0)

Tacoma, WA Championship (2) 2006

1.e4 e6 2.♘f3 d5 3.♗c3 d4 4.♗e2 c5
5.d3 ♘c6 6.g3 e5 7.♙g2 ♙e7 8.O-O h5
9.c3 ♙e6 10.cxd4 cxd4 11.♙d2 g5
12.♖c1 g4 13.♗e1 h4 14.f4 gxf3 15.
♗xf3 hxg3 16.♗xg3 f6 17.♖a4 ♖d7 18.
♗f5 ♙f8 19.♗3h4 ♗ge7 20.♖f3 ♗xf5
21.♗xf5 ♗b4 22.♖d1 ♗xa2 23.♖a1
♖b5 24.♖g3 O-O-O 25.♖b1 ♙b4 26.
♙h6 ♙xf5 27.♖xa2 ♙d7 28.♙g7 ♖hg8
29.♖xa7 ♙d6 30.♙xf6 ♖xg3 31.hxg3
♖f8 32.♖c1+ ♙c6 33.♙g7 ♖g8 34.
♖a8+ ♙b8 35.♖a3 ♙c7 36.♙h3+ ♗b8
37.♖a1 ♖a6 38.♖xa6 bxa6 39.♙f6 ♙b5
40.♙f1 ♖xg3+ 41.♗f2 ♖g4 42.♙e7
♖g7 43.♙h4 ♖f7+ 44.♗g2 ♗b7 45.
♙e2 ♙d6 46.♖c1 ♖c7 47.♖xc7+ ♗xc7
48.♙e1 ♗b6 49.♗g3 ♙d7 1-0

Sicilian English Attack

FM William Schill (1.0)

Adi Lanka (0.0)

Tacoma, WA Championship (2) 2006

Annotations by FM William Schill

1.e4 c5 2.♗f3 d6 3.d4 cxd4 4.♗xd4 ♗f6
5.♗c3 a6 6.♙e3

I have never played this line before, and I prepared it just for Adi, an old student of mine. I trust he sees this as the compliment that it is.

6...e6 7.f3 b5 8.♖d2 ♙b7

Not what I expected; so all the prep goes out the window. Still, some of the ideas I saw in the games I looked at come into play. 8...♗bd7 9.g4 ♗b6 is what all the GMs are doing currently.

9.g4 ♗f7?!

9...♙e7

10.a4! b4

10...bxa4

11.♗a2 ♖a5?!

Adi said he did this just to get my Knight off of d4 and because he did not like 11...a5 12.♙b5.

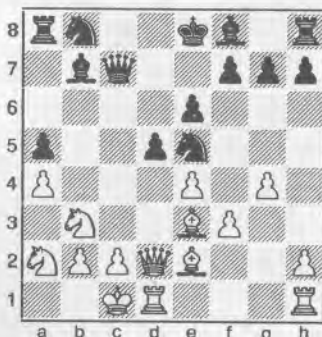
12.♗b3 ♖c7 13.♗xb4 ♗e5 14.♙e2 a5

14...d5 15.exd5 ♙xb4 16.♖xb4 ♙xd5 17.♗d4!? is slightly better for White.

15.♗a2

15.♗d3? ♗c4

15...d5 16.O-O-O!



I missed 16.f4! ♗c4 17.♖c3, gaining a substantial edge.

16...♗bd7

16...dxe4 17.♗c5?! ♙xc5 18.♙xc5 ♗xf3 (18...♖xc5 19.♖d8 mate) 19.♙xf3 exf3± is one of those lines that I thought was great for me at the time, but now I wonder what I was thinking! After 17.♙b5+! ♗bd7 18.f4 ♗c6, White is doing well, but I never considered this at the time. Perhaps I would have figured it had he played 16...dxe4. I hope so!

17.♗d4!

17.♗c3? ♙b4

17...♗c4?!

17...dxe4 18.♗b5 ♖c8 19.f4±

18.♗b5 ♖c8 19.♙xc4 ♖xc4 20.♗ac3 ♗e5?

20...♙b4 21.♖d4 ♖xd4 (21...♙c5 22.♖xc5 ♗xc5 23.♗d6+, winning) 22.♙xd4 O-O 23.exd5±

21.♖d4!

That's it, the rest took five minutes.

21...♖xd4 22.♙xd4 ♗xf3 23.♗c7+ ♗d7
24.♗xa8 ♗xd4 25.♗b6+ ♗c6 26.♖xd4
♗xb6 27.exd5 exd5 28.♗xd5+ ♗c5
29.♖hd1 ♙d6 30.c3 ♖e8 31.b4+ axb4
32.cxb4+ ♗c6 33.♖c4+ 1-0

Queen's Gambit Accepted

Matthew Fleury (0.5)

NM Nat Koons (0.0)

Tacoma, WA Championship (2) 2006

Annotations by Matthew Fleury

1.d4 d5 2.c4 dxc4 3.♗f3 a6 4.e3 ♙g4
5.♙xc4 e6 6.h3 ♙h5 7.♖b3

Setting a trap, 7...b5? 8.♙b5+!

7...♙xf3 8.gxf3 b5 9.♙e2 c5

We now left ECO D22, where 9...♗d7 is given.

10.dxc5 ♙xc5 11.♖g1!

This forces Black's next move, because if 12...g6? 13.♖c3! and if 12...♖f6, then ♗b1-d2-e4 is unpleasant.

11...♙f8 12.a4 b4 13.♗d2 ♗f6 14.♗c4 ♗bd7 15.e4!?

A standard idea here is f3-f4 to transfer the Bishop to f3, although I did not know this during the game, nor did I even think of it. This idea also prevents the Black Queen from getting to h2, as in the game; so perhaps it is a better plan. But 15.e4 has its points as well, and for now, it allows the Queen to go to e3 if need be.

15...♖b8! 16.♙e3 ♗c5 17.♙xc5!

Accepting the challenge. White prevents castling, but Black will get to infiltrate with the Lady.

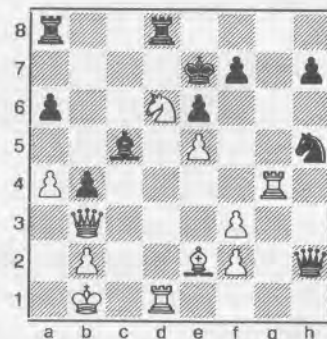
17...♙xc5 18.♖xg7 ♖h2 19.O-O-O ♖xh3

19...♖f2 is a possibility.

20.♗b1 ♖h2 21.e5 ♗h5

Avoiding 21...♗d5 22.♖xd5 exd5 23.♗d6+ ♙xd6 24.♖xd5, which was the intention.

22.♖g4 ♗e7 23.♗d6 ♖hd8



24. ♖c4??

This looks so tempting. I threaten the c5-Bishop and the move ♖g4-h4 is in the air. But 24. ♜xb4!!, as Nat pointed out after the game, would have been tough to meet due to the threats that are piling up around the Black King.

24... ♜xe5!! 25. ♜e4 ♜xd6!

If 25... ♜g5 26.f4! wins a piece. This Queen sac is great if Black keeps his passed h-pawn.

26. ♜xd6 ♜xd6 27. ♜d3 ♘f6 28. ♜e1 ♜dc8 29. ♜b3 ♘f8?? 30. ♜xh7! ♘xh7 31. ♜d3 ♘e7 32. ♜xh7

White now plays as if Black has a mating attack, although keeping the remaining Rook on might have given winning chances.

32... ♜c4 33. ♜e4 ♜c6 34. ♜h4+ ♘d7 35. ♜c4?! ♜ac8 36. ♜xc6 ♜xc6 37. ♘a2 ♘e8 38. ♜e4 ♘d7 39. ♜h7 ♘e8 40. ♜g8+ Draw

And, believing Black had made a fortress, White offered a draw, which was accepted.

English

Ricky Selzler (0.0)
SM Slava Mikhailuk (0.5)

Tacoma, WA Championship (2) 2006

1.c4 e5 2.g3 ♘f6 3. ♜g2 ♘c6 4. ♘c3 ♜c5 5.e3 d6 6. ♘ge2 ♜g4 7.O-O O-O 8.a3 ♜d7 9.b4 ♜b6 10. ♜b2 ♜ae8 11.d3 a6 12. ♜b3 ♜h3 13. ♘d5 ♘xd5 14.cxd5 ♘e7 15.d4 ♜xg2 16. ♘xg2 e4 17.f4 ♜f5 18. ♘c3h5 19.h3 ♜g6 20. ♘h2f5 21. ♜g1 ♜f7 22. ♜a2 ♘h8 23. ♜g2 ♘g8 24. ♜h1 ♘f6 25. ♘g1 ♘g8 26. ♘f2 ♜a7 27. ♘e2 b5 28. ♘d2 ♘d7 29.g4 fxg4 30.hxg4 ♜xd4 31.exd4 ♜xf4+ 32. ♘c2 ♜f3 33. ♜hg1 ♜d3+ 34. ♘b3 h4 35. ♜d1 ♜h3 36. ♜a1 ♜f3 37. ♜e2 ♘b6 38. ♘c2 ♘c4 39. ♜h2 ♜xg4 40. ♜dh1 h3 41. ♘b3 ♜ef8 42. ♜e1 ♜g3 43. ♜e2 ♜ff3 44. ♘a2 ♜xc3 45. ♜xc3 ♜xc3 46. ♜xc3 ♜xe2+ 47. ♘a1 h2 48. ♜b1 ♜f3 49. ♜c1 h1=♜ 0-1

King's Indian

LM Viktors Pupols (0.0)
FM John Readey (1.0)

Tacoma, WA Championship (2) 2006

1. ♘f3 g6 2.d4 ♜g7 3.b4 b6 4. ♜b2 c5 5.b5 ♜b7 6.e3 d6 7. ♜e2 ♘d7 8.O-O ♜c7 9.c4 ♜c8 10. ♘bd2 e5 11.dxe5 dxe5

12. ♘g5 h6 13. ♘ge4 ♘e7 14. ♘c3 ♘f6 15.e4 O-O 16. ♘d5 ♘exd5 17.cxd5 ♘e8 18. ♘c4 ♘d6 19. ♘xd6 ♜xd6 20. ♜c4 ♜c7 21.a4 ♜e7 22. ♜e2 ♘h8 23. ♜c3 f5 24.f3 f4 25.a5 h5 26.axb6 axb6 27. ♜a3 g5 28. ♜fa1 ♜f6 29. ♜e1 ♜g6 30.g4 fxg3 31.hxg3 g4 32. ♜h2 ♜h6 33. ♜xh5 ♜h7 34. ♜f5 ♜g5 35. ♜e6 ♜xe6 36.dxe6 ♜g8 37. ♜d5 and White soon won 1-0 [Bad Score]

Sicilian Sveshnikov

Mark Ryan (0.0)
Geoffrey Gale (1.0)

Tacoma, WA Premier (2) 2006

Annotations by Mark Ryan
1.e4 c5 2. ♘f3 ♘c6 3.d4 cxd4 4. ♘xd4 ♘f6 5. ♘c3 e5

The Sveshnikov Variation.

6. ♘db5 d6 7. ♘d5

A rare move in this position, usual is 7. ♜g5 with which White has been doing well in recent tournament praxis.

7... ♘xd5 8.exd5 ♘b8

The other choice is 8... ♘e7.

| WA Championship | USCF FIDE | SM | NR | HG | JR | WS | NK | AL | MF | VP | RS | Total | USCF Post | S-B |
|---------------------|--------------|-----|-----|-----|-----|-----|-----|-----|-----|-----|-----|-------|-----------|-------|
| FM Slava Mikhailuk | 2438 2448 | ♔ | 1/2 | 1/2 | 1 | 1/2 | 1 | 1 | 1/2 | 1 | 1 | 7.0 | 2436 | 27.75 |
| NM Nick Raptis | 2334 2295 | 1/2 | ♔ | 1/2 | 1/2 | 0 | 1/2 | 1 | 1 | 1 | 1 | 6.0 | 2333 | 23.00 |
| NM Harley Greninger | 2228 2239 | 1/2 | 1/2 | ♔ | 1/2 | 1/2 | 1 | 0 | 1/2 | 1 | 1 | 5.5 | 2240 | 22.50 |
| FM John Readey | 2331 2287 | 0 | 1/2 | 1/2 | ♔ | 1/2 | 1 | 1/2 | 1 | 0 | 1 | 5.0 | 2318 | 20.25 |
| FM William Schill | 2247 2298 | 1/2 | 1 | 1/2 | 1/2 | ♔ | 0 | 1 | 1/2 | 1/2 | 0 | 4.5 | 2242 | 21.50 |
| NM Nat Koons | 2229 2288 | 0 | 1/2 | 0 | 0 | 1 | ♔ | 1/2 | 1/2 | 1 | 1 | 4.5 | 2227 | 16.00 |
| Adi Lanka | 1932 0000 | 0 | 0 | 1 | 1/2 | 0 | 1/2 | ♔ | 1/2 | 1 | 0 | 3.5 | 1974 | 15.00 |
| Matthew Fleury | 2122 2144 | 1/2 | 0 | 1/2 | 0 | 1/2 | 1/2 | 1/2 | ♔ | 0 | 1 | 3.5 | 2126 | 14.50 |
| LM Viktors Pupols | 2200 2240 | 0 | 0 | 0 | 1 | 1/2 | 0 | 0 | 1 | ♔ | 1/2 | 3.0 | 2200 | 11.75 |
| Ricky Selzler | 2105 2062 | 0 | 0 | 0 | 0 | 1 | 0 | 1 | 0 | 1/2 | ♔ | 2.5 | 2097 | 9.50 |

9.c4 ♖e7 10.♗e2 O-O 11.O-O f5 12.f4

One of the hardest moves of the game for me. What are some decent standard plans for White here? Geoff and I looked at 12.♗e2 and 12.♖b1. White decides to challenge Black's expansion ideas. This could open the center, especially the e5-square, for Black's pieces.

12...a6 13.♘c3 ♘d7

I expected 13...exf4 14.♗xf4 ♘d7. 14.g3

White allows the opening up of his kingside.

14...♗f6

I like this move since it slows White's queenside expansion down a bit.

15.♗e3 exf4 16.gxf4 ♗xc3

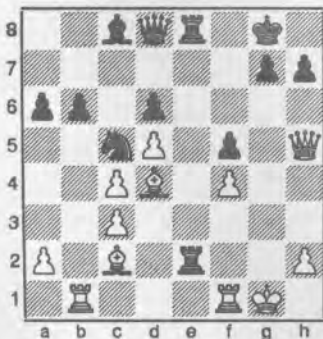
This move took me completely by surprise. It seems rather anti-positional, as it weakens Black's kingside dark squares. White will try to exploit this with his Bishops.

17.bxc3 b6 18.♗d4 ♖a7 19.♖b1 ♖e8 20.♗d3

Another difficult decision to make. I also considered 20.♗f3 to cover both e2 and the kingside light squares, but I felt that I could bait Geoff into a false sense of security and into thinking that he'd have easy access to e2 later.

20...♘c5 21.♗c2 ♖ae7 22.♗h5

The key move to White's strategy. 22...♖e2



Unsuspectingly, Black takes the e2-square. But what about his kingside?

23.♖f2

23.♗xf5 gives the initiative to White—Maestro Ignacio Perez.

23...♖xf2 24.♗xf2

10

Preventing 24...♗e7 for now.

24...b5 25.cxb5 axb5 26.♖e1?!

There is NO reason NOT to take the f5-pawn. 26.♗xf5 g6? 27.♗xg6 hxg6 28.♗xg6+ {Winning!—Maestro Ignacio Perez} 28...♗f8 29.♗h6+ ♗g8 30.♗d4 ♗e7 31.♗h8+ ♗f7 32.♗g7 mate

26...♖xe1+ 27.♗xe1 ♘e4

This is a nice home for the Knight!

28.♗e2 ♗e8 29.♗d3

I had a very hard time deciding how to expand White's queenside initiative. I felt that trading was the best way to establish the outside passer for the win.

29...♗d7 30.c4 bxc4 31.♗xc4 ♗g6+ 32.♗h1 ♗h6 33.♗b5 ♗xb5 34.♗xb5 ♗h5 35.♗d3 ♗e8 36.♗b4??

A terrible way to end a good game, especially at the State Championship.

36...♘f2+ 0-1

Sicilian Sveshnikov

Ignacio Perez (1.0)

Andy May (0.5)

Tacoma, WA Premier (2) 2006

1.e4 c5 2.♘f3 ♘c6 3.d4 cxd4 4.♘xd4 ♘f6 5.♘c3 e5 6.♘db5 h6 7.♘d6+ ♗xd6 8.♗xd6 ♗e7 9.♗xe7+ ♗xe7 10.♗e3 d6 11.♗e2 ♗e6 12.O-O-O a6 13.f3 ♖ac8 14.♖d2 ♘a5 15.♖hd1 ♖c6 16.♘d5+ ♗xd5 17.exd5 ♖cc8 18.♗b6 ♘c4 19.♗xc4 ♖xc4 20.b3 ♖cc8 21.♗b2 ♘d7 22.♗f2 f6 23.a4 ♖c7 24.a5 ♖hc8 25.c4 ♗f7 26.♖c1 ♘c5 27.b4 ♘d7 28.♗b3 g5 29.♗b6 ♘xb6 30.axb6 ♖d7 31.c5 ♗xc5 32.bxc5 ♗e7 33.♗b4 ♖cd8 34.d6+ ♗e6 35.c6 bxc6 36.♖xc6 ♖b7 37.♗a5 ♖a8 38.d7+ ♗e7 39.♖c8 ♖xd7 40.♖xd7+ ♗xd7 41.♖xa8 1-0

Grünfeld Exchange

Kevin Binz (1.0)

Mike MacGregor (0.0)

Tacoma, WA Premier (2) 2006

1.d4 ♘f6 2.c4 g6 3.♘c3 d5 4.cxd5 ♘xd5 5.e4 ♘xc3 6.bxc3 ♗g7 7.♘f3 c5 8.♖b1 O-O 9.♗e2 cxd4 10.cxd4 ♗a5+ 11.♗d2 ♗xa2 12.O-O ♗e6 13.♗c2 ♗d7 14.♗e3 b6 15.d5 ♗a6 16.♖fd1 ♗c8 17.♗d3 ♗xc2 18.♗xc2 ♖c8 19.♖dc1 ♘d7 20.♗a4 ♘c5 21.♗c6 ♖ab8 22.♗f4 ♘e4 23.♗xb8 ♖xb8 24.♖e1 f5 25.♗b5 ♗xb5 26.♖xb5 a6 27.♖b3 b5 28.♖c1

a5 29.♖c7 a4 30.♖b1 a3 31.♖a7 ♗b2 32.♖e1 b4 0-1

English

Chris Kalina (0.0)

Elston Cloy (0.0)

Tacoma, WA Premier (2) 2006

1.c4 ♘f6 2.♘c3 c5 3.e4 ♘c6 4.g3 g6 5.♗g2 ♗g7 6.♘ge2 O-O 7.O-O d6 8.a3 ♘e8 9.d3 ♘c7 10.♖b1 ♘e6 11.b4 ♘ed4 12.b5 ♘xe2+ 13.♘xe2 ♘d4 14.♘xd4 ♗xd4 15.♗h6 ♖e8 16.♗d2 ♖b8 17.♗h1 ♗g7 18.♗xg7 ♗xg7 19.d4 e5 20.d5 ♗d7 21.f4 f6 22.♖b3 a6 23.a4 axb5 24.axb5 ♖a8 25.♖bf3 ♗e7 26.fxe5 ♗xe5 27.♖xf6 ♗xf6 28.♖xf6 ♗xf6 29.♗f4+ ♗g7 30.h3 ♖e5 31.g4 g5 32.♗d2 ♗g6 33.♗f2 ♗g7 34.♗h2 ♗e8 35.h4 g4 36.♗xh4 ♗g6 37.g5 ♖ae8 38.♗f4 ♖f8 39.♗g4 ♗e8 40.♗h3 ♖e7 41.♗h4 ♗d7 42.g6 ♗xg6 43.♗xe7 1-0

Philidor

FM David Bragg (1.0)

Ben Wyde (0.5)

Tacoma, WA Premier (2) 2006

Annotations by Ben Wyde

1.e4 d6 2.d4 ♘f6 3.♘c3 ♘bd7

I played the Hanham variation. It isn't sharp. Against a normal White setup with ♗e2/♗e3/O-O/♘f3, Black's goal is to break with ...e7-e5, expand on the queenside, and try to attack the e4-pawn with ...♖e8. It gets the job done.

4.g4!?

I've played against this move a few times before. I can't allow him to break through with g4-g5 and f2-f4 or h2-h4; so I need to stop this immediately.

4...h6!? 5.g5?!

From experience, I feel that the best way to follow up the g4-break is with 5.f3, 6.♗e3, 7.♗d2, and 8.O-O-O, treating the position like a Sämisch in the King's Indian. The text is a little too aggressive.

5...hxg5 6.♗xg5 e5

The typical Black counterplay.

7.f4

This was his most aggressive continuation.

7...c6 8.♘f3 ♗a5?!=

Stronger for me is 8...exf4! 9.♗xf4 ♗b6! or simply 8...♗b6!

9. ♖d2 ♘h5!?

I thought about this move for a long time, about 25 minutes. I wanted to try to mix things up and I think this was the best and most interesting move. My other option involved 9... ♗e7 followed by 10. O-O-O (or ♗d3, ♗e2, or ♗c4) b5 with queenside expansion.

10. ♗xe5

I thought he might play 10.f5 which allows 10... ♗g3 11. ♖g1 ♗xf1 12. ♖xf1 b5!?, but I think Black's a little better here or, at least, easier to play.

10... dxe5 11. dxe5 ♗b4!

This was the idea behind 9... ♘h5. I threaten 10... ♗g3 followed by 11... ♗xe4, winning immediately.

12. ♖g1

Stopping any threat of my ... ♗g3.

12... ♗c5!

Threatening ... ♗xe4.

13. O-O-O

This stops... ♗xe4 for a move and gets the King to safety.

13... ♗e6

Stopping the mate and developing the Bishop into the attack.

14. ♖d4 ♗xc3 15. bxc3 ♖a3+ 16. ♗d2 f6 17. exf6 gxf6 18. ♗e3!



Stopping all my threats.

18... ♗d7

I need to defend the f6-pawn. 18... ♖f8 was slightly better, though, as my Knight would remain in the action.

19. ♗h4 O-O-O 20. ♖b4 ♖xb4?

This move should have lost me the game. 20... ♖xa2 gives me an even game, but I was worried about 21. ♗d3 and 22.

♖b1!, which wins for White. I didn't see that after 21. ♗d3, I could play 21... a5!, which holds the advantage for Black.

21. cxb4 ♗b6 22. ♖xd8+ ♖xd8 23. a3 ♖e8 24. ♗d4 ♗d5 25. ♗d3 ♗c4+ 26. ♗xc4??

26. ♗f2! keeps the advantage.

26... ♖xe4+ 27. ♗d3 ♖xh4 28. ♗xd5 ♗f4+ 29. ♗c4 ♗xd5 30. ♗c5 ♗e7 31. ♗f3 ♖f4 32. ♗d6??

We had even positions before this move, but this just loses a piece. He was running a little low on time; so that might explain it.

32... ♗f5+ 33. ♗e6 ♖xf3 34. ♗xf6 ♗d7 35. ♗e5 ♗d6 36. ♖g7+ ♗f7+ 37. ♗e4 ♖f6 38. h4 ♗e6 39. c4 ♗d6+ 40. ♗d3 ♗e5?

40... ♖f3+ is much stronger. My move is not too bad, but it allows for counterplay.

41. c5 ♖f3+ 42. ♗e2 ♖f7 43. ♖xf7 ♗xf7 44. ♗e3 ♗h6 45. ♗d3 ♗d5 46. h5 a5 47. ♗c3 a4 48. ♗d3 ♗f5 49. ♗c3 ♗e5 50. ♗d3 ♗e7 51. ♗c4 ♗d5 52. b5 ♗f6 53. ♗d4 ♗g7

Better is 53... ♗c7.

54. b6 ♗f6

54... ♗h6

55. h6 ♗f4 56. h7 ♗g6 57. ♗e4 ♗e6 58. ♗f3 ♗f5 59. ♗e3 ♗f6 60. ♗e4 ♗e6 61. ♗f3 ♗f5 62. ♗e3 ♗h8 63. ♗f3 ♗f7 64. ♗g3 ♗g5 65. ♗f3 ♗f6 66. ♗f4 ♗e6 67. ♗g4 ♗e5 68. ♗h4 ♗f5 69. ♗h5 ♗h8 70. ♗h6 ♗f6 71. ♗h5 ♗f7 72. ♗g4 ♗g7 73. ♗f5 ♗xh7 74. ♗f6 ♗g8 75. ♗e6 ♗g5+

The only winning move.

76. ♗f5 ♗f3 77. ♗e4 ♗d2+ 0-1

Round Three

In the Premier, an important result was Ignacio's win in Gale-Perez. Geoff provides some good notes about this encounter. Both had been 2-0. I thought also very interesting was Ben Wyde's win over Kevin Binz. An early exchange sacrifice always catches my eye.

In the Championship, Matt Fleury earned his third comfortable draw. This seemed that it might bode well as to his preparedness and overall outcome.

French Tartakower

SM Slava Mikhailuk (1.5)

LM Viktor's Pupols (1.0)

Tacoma, WA Championship (3) 2006

1. e4 e6 2. d4 d5 3. ♗c3 ♗f6 4. ♗g5 ♗e7 5. e5 ♗e4 6. ♗xe7 ♗xc3 7. bxc3 ♖xe7 8. h4 c5 9. h5 ♗c6 10. ♖d2 ♗d7 11. h6 g6 12. f4 O-O-O 13. ♗f3 ♗b8 14. ♗f2 ♖c8 15. ♖b1 ♖c7 16. ♗d3 f5 17. exf6 ♖xf6 18. ♖e3 ♖f8 19. g3 c4 20. ♗e2 ♖f5 21. ♖bc1 ♗d8 22. ♗e1 ♖f6 23. ♗g5 ♖e7 24. ♗d2 ♗f7 25. ♗xh7 ♖h8 26. ♗g5 ♖xh6 27. ♖xh6 ♗xh6 28. ♖h1 ♗f5 29. ♖e5 ♗d6 30. ♖h8+ ♗c8 31. ♗g4 1-0

French Winawer

Adi Lanka (1.0)

NM Nick Raptis (1.0)

Tacoma, WA Championship (3) 2006

1. e4 e6 2. d4 d5 3. ♗c3 ♗b4 4. ♗ge2 dxe4 5. a3 ♗e7 6. ♗xe4 ♗f6 7. ♗2g3 ♗bd7 8. ♗d3 b6 9. ♗xf6+ ♗xf6 10. ♖f3 ♖b8 11. ♗b5+ ♗d7 12. ♗xd7+ ♖xd7 13. c3 O-O 14. O-O c5 15. ♖d1 ♖b5 16. ♖d3 ♖c6 17. ♗g5 ♖fd8 18. ♗h5 ♗xh5 19. ♗xe7 ♗f4 20. ♖f1 ♖d5 21. ♗h4 cxd4 22. ♗g3 ♖d6 23. ♖xd4 ♖xd4 24. cxd4 ♖xd4 25. ♖d1 ♖e4 26. ♖e1 ♖f5 27. ♖c4 ♗d3 28. ♖c7 ♖f8 29. ♖f1 ♗xb2 30. ♗d6 ♖a8 31. ♖c1 h6 32. h3 ♗d3 33. ♖c3 ♖xf2+ 34. ♗h2 ♖d4 35. ♖c4 ♖d5 36. ♖g4 e5 37. ♖g3 e4 38. ♖c3 g5 39. ♗e7 ♗f4 40. h4 ♗e2 41. ♖f6 ♗xg3 42. ♖xh6 ♗f1+ 43. ♗h1 ♗e3 0-1

Grünfeld

NM Nat Koons (0.5)

Ricky Selzer (0.0)

Tacoma, WA Championship (3) 2006

Annotations by NM Nat Koons

1. d4 ♗f6 2. c4 g6 3. ♗c3 d5

The Grünfeld Defence. Games like Byrne-Fischer (0-1, in good style) and Hübner-Kasparov (0-1) (found in the opening chapter of every Grünfeld book) make this opening look like fun. It's funny how they don't show you Spassky-Fischer (1-0), Karpov-Kasparov (1-0 many, many times), Kramnik-Kasparov (1-0 when it mattered the most), etc. Also, personally, Mikhailuk-Koons, WA Ch 2005 (1-0, in about 25 moves) wasn't much fun. So this year I switched to the rock-solid Slav.

4. ♗g5

Oregon Class Championships

May 6 & 7 at the University of Oregon, Eugene

\$3200 in Prizes

Based on 100 entries

| M/X +2000 | Class A U2000 | Class B U 1800 | Class C U 1600 | Class D U 1400 | Class E U 1200 |
|--------------|------------------|-------------------|-------------------|-------------------|-------------------|
| \$500 | \$300 | \$300 | \$300 | \$300 | \$150 |
| \$300 | \$150 | \$150 | \$150 | \$150 | \$75 |
| \$200 | \$100 | \$100 | \$100 | \$100 | \$50 |
| EF \$60 | EF \$50 | EF \$50 | EF \$50 | EF \$50 | EF \$40 |

Advance entries must be received by April 24. Late or on-site entries add \$15. Players allowed to play up one class, if desired. Free entry to GMs, IMs, and WGMs. Out-of-state players welcome. To download an application or for more information visit: <http://gladstone.uoregon.edu/~chess/>

Registration: Saturday 8:30-9:45 a.m. **Rounds:** May 6: 10-2:30-7. May 7: 10-2:30. **Time Controls:** 40/90 + SD/30. **Miscellaneous:** Swiss Format. OCF/USCF membership required in all sections. Classes combined if less than 8 in a section.

Ent/Info: Tournament coordinator, Elden Tan Burns, (541)606-4122
E-mail: eburns@uoregon.edu

Sponsored by Oregon Chess Federation in partnership with University of Oregon Chess.

Not the most fashionable move, but I noticed it played in the fantastic positional crush Jobava-Miton 2005, so I decided to try to repeat that entire game. And just last week, White won two games with this line in Linares.

4...d4 5. h4 dxc3 6.bxc3 g7

6...dxc4 is the main move.

7.cxd5 d5 8. b3 a5 9.e3 d6?!

Either 9...c5 10. b5+ d6 11. xa5 xa5 (White is a little more comfortable, but that's all) or 9...e5! 10.d5 d7, aiming for ...d7-c5 is preferable.

10. c1!

My best move of the tournament. White defends c3 ahead of time, and is therefore ready to meet ...e7-e5 with d4-d5. Additionally, b7 becomes an option. 10.d3 e5 11.d5? e4! is not so hot.

10...O-O

Ricky told me after the game that he wanted to play 10...e5 11.d5 d4!?, but

couldn't quite make it work. Indeed, 12.exd4 exd4 13.d3 O-O 14. e2 e8 15.f1 dxc3 16. b5! (Raptis) wins.

11. d3 e6 12. c4 xc4 13. xc4 e5 14.O-O a3 15.d5

White could maintain a slight advantage with 15. b1, but decides to chuck the center and go pawn hunting.

15...d7 16. xc7 d5 17. xb7 a5

If now 17...xc3 18. e7 d2+ 19. h1, the position is not satisfactory for Black. There were further adventures in this game, but without the game score in front of me I can't quite remember what they were.

18.c4 d3 19. c2 ac8 20. e7 fe8 21. d6 e4 22. d2 a4 23. b3 d7 24.c5 a4 25. fc1 c6 26. b4 e6 27.h3 d3 28. b3 b5 29. xb5 xb5 30. g3 a6 31.c6 d7 32. d5 b6 33. dx4 f8 34. d6+ g7 35. xc7 1-0

King's Indian Classical

FM John Readey (1.0)

FM William Schill (2.0)

Tacoma, WA Championship (3) 2006

Annotations by FMs Readey (JR) & Schill (WS)

1. d3 d6 2.c4 g6 3. d3 g7 4.e4 d6 5.d4 O-O 6. e2 e5 7.O-O d6 8.d5 d7 9.b4 c6

My favorite sideline. {WS}

10. g5

I hadn't seen 9...c6 before, but I thought I should avoid something like 10. d1 a5 11. a3 axb4 12. xb4 c5. {JR}

10.dxc6 bxc6 11. g5 h6?? 12. xf6 xf6 13. d2 g7 14. fd1, winning, happened to me in Hungary. Never again! Hence 10...cxd5. {WS}

10...cxd5

10...h6 11. xf6 xf6 12.dxc6 bxc6 13. d2 g7 14. fd1 and Black can't defend the d6-pawn. {JR}

11.cxd5 h6 12. xf6 xf6

(?!) 12. ♕d2 would be better. Giving Black the two Bishops is a large concession. {WS}

13. ♖b3

13. ♜c1 {WS}

13...g5

This looks odd, but it works out rather well for Black. {JR}

13... ♗g7 14. ♜ac1 f5 15. ♗d2 fxe4 16. ♗dxe4 ♗f5 would be the typical way of getting the problem Knight on e7 into the game. {WS}

14. ♗d2 ♗g6 15. ♜fc1

Better would be to leave my Rook on f1 for the moment, and play ♗c4-e3 . {JR}

15...g4

This is the big idea behind my strange pawn moves, I want to put the Bishop on g5 to take c1 away from his other Rook, and only then play ... ♗g6-f4 . {WS}

16. ♗c4 ♗g5 17. ♜c2 f5 18. ♗b5 ♜f6 19. ♗a5

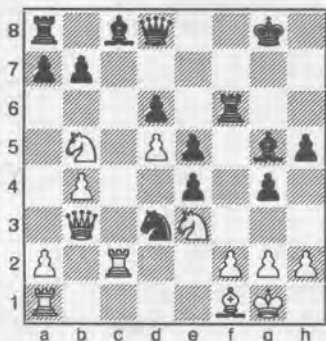
(?!) 19. ♗e3! {WS}

19. ♗e3 would be better. {JR}

19... ♗f4 20. ♗f1 fxe4 21. ♗c4 h5

The computer recommends holding on to the pawn by 21...a6 22. ♗c3 ♗f5 23. ♗e3 ♖d7 . Looks dumb to me! {WS}

22. ♗e3 ♗d3



23. ♗c7

(?) {WS}

I was thinking I needed to cut the Queen off from b6, but 23. ♗xd3 ♗xe3 24. ♗xe4 ♗xf2+ 25. ♜xf2 ♖b6 26. ♜af1 ♜xf2 27. ♜xf2 ♖xb5 28. ♖e3 wins for White. {JR}

23... ♗xe3

(?) I cannot believe I did not play 23... ♜xf2! I was looking for it for a long while and I just did not expect 23. ♗c7 and then snoozed right through it! 24. ♜xf2 (24. ♗xa8 ♗xe3 25. ♗h1 ♜xc2 26. ♖xc2 ♗f5) 24... ♗xe3 25. ♗xd3 (25. ♗xa8 ♗xf2+ 26. ♗h1 g3 , winning) 25... ♖xc7 , winning. {WS}

We both missed the crushing 23... ♜xf2! 24. ♗xa8 ♗xe3 25. ♗h1 g3 26. ♗xd3 ♖h4 27. ♜xc8+ ♗g7 28. h3 ♖xh3+! 29. gxh3 ♜h2 mate. {JR}

24. fxe3 ♜b8 25. ♗xd3 exd3 26. ♖xd3 ♗d7 27. a4 ♖e7

I turned down a draw here, but if anyone has chances it's Black. {JR}

This is equal; so I offered a draw. I had less time; so John declined. But then he started to tie himself in knots! {WS}

28. ♗b5 a6 29. ♗c3 ♗f5 30. e4 ♗g6 31. ♗d1

(?) Taking one pair of Rooks off (31. ♜f1 or 31. ♜f2) is crucial with the f-file open by your King! {WS}

I should trade off a pair of Rooks with 31. ♜f1 . {JR}

31... ♜f4 32. ♗f2 ♜b8 33. ♜ac1 ♖f6

This should win. {WS}

34. ♖e2 ♖g5 35. ♖e3

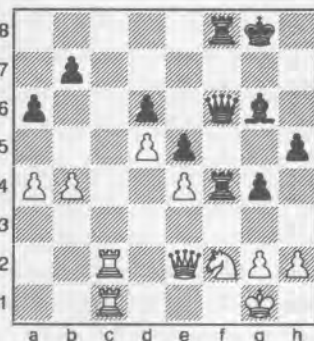
35. ♜c8 {JR}

35... ♖f6

I'd run myself down to less than four minutes, oh well. {WS}

35... ♗xe4! 36. g3 ♗xc2 37. gxf4 ♖f5 38. fxe5 ♗xa4 {JR}

36. ♖e2 Draw



Bill was short of time so agreed to a draw, but Black would be a bit better after h4. {JR}

36. ♖e2 h4 37. ♗xg4 [37. g3 hxg3 38. hxg3 ♜f3 39. ♜c8 (39. ♗g2? ♜xf2+ 40. ♖xf2 ♗xe4+ , winning; 39. ♗h1 FRITZ thinks White might live, OH SURE!) 39... ♜xg3+ 40. ♗f1 ♗e8] 37... ♖g5 38. ♗e3 (38. h3 ♜xe4 39. ♖d2 ♖xd2 40. ♜xd2 ♜xb4 , winning) 38... ♜xe4 39. ♜c3 ♜xb4 {WS}

QGD Von Hennig-Schara Gambit

NM Harley Greninger (1.0)

Matthew Fleury (1.0)

Tacoma, WA Championship (3) 2006

1. d4 d5 2. c4 e6 3. ♗c3 c5 4. cxd5 cxd4 5. ♖a4+ ♗d7 6. ♖xd4 exd5 7. ♖xd5 ♗c6 8. e3 ♗f6 9. ♖d1 ♗c5 10. ♗f3 ♖e7 11. a3 O-O-O 12. ♖c2 ♗b8 13. ♗d2 ♜he8 14. ♗e2 g5 15. ♗xg5 ♜g8 16. ♗ce4 ♗xe4 17. ♗xe4 ♗b6 18. ♗g3 f5 19. ♗c4 ♗d4 20. ♖c3 ♗e6 21. O-O ♜c8 22. exd4 ♜xc4 23. ♖f3 ♖d7 24. ♜ae1 ♗d5 25. ♖h5 ♜xd4 26. ♗e3 ♜dg4 27. ♗xb6 axb6 28. f3 ♜4g5 29. ♖h4 ♖d6 30. ♜f2 f4 31. ♗e4 ♗xe4 32. fxe4 ♜g4 33. ♖h3 ♖e5 34. ♖f3 h5 35. h3 ♜g3 Draw

Despite arriving approximately 15 minutes late, Chris was not worried. He would be playing the Sicilian Dragon and so the first 12 to 15 moves would be automatic. The game had some special significance since for the last two to three times I've played Chris in the Premier Section, I could draw but not win the game, despite having a small opening advantage.—MacGregor

Sicilian Dragon

Mike MacGregor (1.0)

Chris Kalina (1.0)

Tacoma, WA Premier (3) 2006

Annotations by MacGregor (MM) & Kalina (CK)
1. e4 c5 2. ♗f3 d6 3. d4 cxd4 4. ♗xd4 ♗f6 5. ♗c3 g6 6. ♗e3 ♗g7 7. f3 O-O 8. ♖d2 ♗c6 9. ♗c4 ♗d7 10. O-O-O ♖a5 11. h4

11. ♗b3 is usually played first, but we soon transpose. {MM}

11... ♜fc8 12. ♗b3 ♗e5 13. h5 ♜xc3

This was the first surprise I had planned for Mr MacGregor. Having drawn against him with Black the past three times we played, I went for a more unbalanced theoretical line that offered good winning chances. This is what I might call a 'Pitresque' Exchange sacrifice! {CK}

My *ChessBase Openings Book* punctuates this move “!?”. {MM}

14. ♖xc3

Novelty. The main line preserves the queens on the board with 14.bxc3 ♘h5 15. ♗h6 ♗xh6 16. ♖xh6 ♘f6 17. ♖b1 ♖c8 18. ♘e2 ♘c4 19. ♖d5 ♖a3 20. ♗xc4 ♖xc4 21.e5 ♖c6 22. ♘d4 ♖b6+ 23. ♘b3 ♗f5. {MM}

14... ♖xc3 15.bxc3 ♘h5 16.g4 ♘f6 17.g5 ♘h5 18. ♖dg1 ♖c8 19. ♗d2

A much better move than 19. ♖b2??, met by 19... ♘xf3! 19. ♘xf3 ♖xc3. Here I began to think about White sacrificing the Exchange back on h5 and playing g6. With the Bishop on b3, that looks scary. {CK}

And here Black has equalized, according to FRITZ. {MM}



19...b5 20.f4 ♘c4 21.f5 ♘xd2

I went ahead and played 21... ♘xd2, but I think instead that blocking the b3-pest via 21...d5!? and then taking d2 might have been a better try. {CK}

And now evaluation shows a half-point advantage to White. {MM}

22. ♖xd2 b4 23. ♖xh5!

(!) Recapturing on h5 immediately loses to the g5-g6 push, when taking on f7 looks crushing for White. I had, instead, planned another sacrifice with 23... ♖xc3, undermining the defense of d4 while the h5-Rook is still in take. If the Rook retreats, I get a free Knight. {CK}

(?!) This sacrifice isn't as sound as it first appeared to me over the board. 23...gxf5 24.f6 (24.g6 hxg6 25.fxg6 e6 26.gxf7+ ♖xf7-+) 24...bxc3+ 25. ♖d3 ♗f8 26. ♘f5 e6 27. ♘h6+ ♗xh6 28. gxf6+ ♖h8 29. ♖h1 (29. ♖g5 ♖c5 30. ♖g7 ♗e8 31.a4 h4 32. ♗xe6 fxe6 33. ♖xa7 ♖h5 34.f7) 29... ♗b5+ 30.

♖e3 ♖g8 31. ♖xh5 e5 32. ♖f5 ♗e8 33. ♖f3 ♖g6 34. ♖d3 ♖xh6 35. ♖xc3 ♖h4 36. ♗d5 —FRITZ {MM}

23... ♖xc3 24. ♘e2 ♖xb3

As planned. Removing the pest at b3 and only then taking the Rook at h5. The whole problem with this idea becomes evident on move 26. {CK}

25. axb3 gxh5 26.f6!

Black is faced with some real problems. The pawn obviously cannot be captured, and my Bishop will be left with few good squares. {CK}

26... ♗f8 27. ♘f4 ♗g4 28. ♘d5 exf6 29. ♘xf6+ ♖g7 30. ♘xg4 hxg4 31. ♖xg4 ♖g6 32. ♖e3 ♗g7

Mike thought that the other move I considered here, 32... ♖h5 might have drawn. He felt that, in order to make progress, he would eventually have to give up the g5-pawn. I felt that it was better to centralize my Bishop. {CK}

33. ♖f3 ♗e5 34. ♖g1 ♗d4

I offered Mike a draw, thinking that the position was holdable. Mike does a nice job of finessing me from here out to prevent my King from centralizing, while doing so with his own King. {CK}

35. ♖d1 ♗c5 36. ♖g4 f6 37. gxf6 ♖xf6 38. ♖d5 ♖e6 39. ♖f4 ♖f6 40. ♖f5+ ♖g6 41. ♖g4 h6 42. ♖d5 ♖f6 43. ♖h5 ♗e3 44. ♖f5+ ♖e6 45. ♖g6 ♖d7 46. ♖f7 ♖c6 47. ♖e6 ♗d4 48. ♖f8 ♗e5 49. ♖f7 a6 50. ♖a7 ♖b6 51. ♖h7 ♗f4 52. ♖d5 a5 53. ♖d7 ♗e5 54. ♖f7 ♖b5 55. ♖b7+ ♖a6 56. ♖c6 ♗g3 57. ♖h7 ♗f4 58. ♖g7 ♗e5 59. ♖g6 a4

Chris decides to mix it up now to see if White can make a mistake. {MM}

The last big mistake, though I am already lost here. 60. ♖g8! threatens mate; so the a4-pawn dies. {CK}

60. ♖g8 ♖a7 61.bxa4

And now instead of resigning, Black moved his King back to a6 for mate. I

Need some sample issues of *Northwest Chess* for promotional purposes? Request copies from the Business Manager at least two weeks in advance of the event.

didn't make the move, Chris did; so 60... ♖a6 was the last official move.

60... ♖a6 1-0

Four Knights

Ben Wyde (1.5)

Kevin Binz (1.0)

Tacoma, WA Premier (3) 2006

Annotations by Kevin Binz

1.e4 e5 2. ♘f3 ♘f6 3. ♘c3 ♘c6 4.g3 ♗b4 5.d3 O-O 6. ♗g2 d5 7.exd5 ♘xd5

Black has a comfortable position and the superior center.

8. ♗d2 ♗xc3 9. ♗xc3

White should have gone for 9.bxc3, which opens the b-file and consolidates his position. Black rapidly cements his center and dominates the light squares.

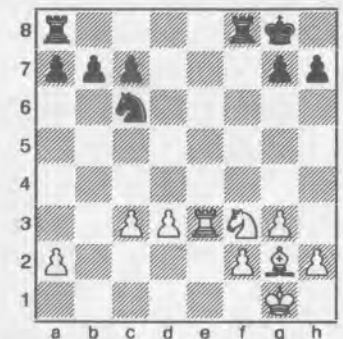
9...f6 10.O-O ♗e6 11. ♖e1 ♖d7

It is difficult for White to find a move in this position. However, the following attempt at breaking Black's central vise backfires tactically.

12.d4 ♘xc3 13.bxc3 ♗g4

Whoops, d4 is dropping. 14.d5 was White's only chance to hold his material, but after 14... ♘a5 (15. ♖d3 ♗f5) his position is a mess.

14.dxe5 ♖xd1 15. ♖axd1 fxe5 16. ♖d3 e4 17. ♖xe4 ♗f5 18. ♖ee3 ♗xd3 19.cxd3



The critical position. My analysis had concluded with “19... ♖ae8 and Black wins.” Looking ahead after fxe3, however, I began worrying about how to stop the e-pawn's advance, supported by the Bishop and Knight. 19... ♖f5 was an attempt to nab that bit on a2 prior to the Rook swap and simplify the technical work somehow. Turns out that 19... ♖f5 and particularly 20... ♖f8 complicate the situation considerably. The simple 19... ♖ae8 20.d4 ♖xe3 21.fxe3 ♘a5! fol-

31st Paul Keres Memorial Chess Tournament

May 19-22, 2006

Hungarian Cultural Centre, 728 Kingsway, Vancouver, BC, Canada

Open (FIDE-rated)

Under 2000

Under 1600

7 rounds

6 rounds

6 rounds

EF: \$C130 by 5/12,
\$C150 at site

EF: \$C110 by 5/12,
\$C125 at site

EF: \$C90 by 5/12,
\$C100 at site

EF Discounts: Junior or Senior, less 50%; FIDE rated, less 25%; FIDE titled, free; limit of one discount.

EF Surcharge: \$25 extra for Open Section players who have a lifetime highest rating under 2000.

Prizes: Based on entries.

Time Control: 40/120 & SD/60. **Rounds:** Fri. (Open) 5:30, Sat 11:30-5:30, Sun. 10-4, Mon. 9-3 or ASAP.

Registration: Open: Fri. 3-5 pm; U2000 & U1600: Fri. 3-10 pm, Sat. 9-9:30 am.

Entry: please mail cheques (payable to BCCF) to
British Columbia Chess Federation
PO Box 15548
Vancouver BC V6B 5B3
Canada

Byes: half-point byes may be requested for all but the last round.

Misc: Sets and boards provided, please bring clocks. BCCF General Meeting – 9:00 am, Sat.

Contact: Stephen Wright, swright2@telus.net, 604-221-7148. PDF flyer on BCCF website.

lowed by ...c7-c6 wins comfortably (“when ahead in material, trade pieces” isn’t all that bad of an idea!).

19... ♖f5 20. d4 ♗f8

After this mistake #2, things become much more unclear. I should have jumped on the chance to play 20... ♖af8 and paralyze my opponent. Black would then have ideas of ...g5-g4 and ... ♖a5-c4.

21. ♗h3 ♖a5 22. ♗e6 ♖e8 23. ♗d2 ♗d8
24. ♖f3+ ♗e7 25. ♗b3 ♗d7 26. ♗c4
♖a6 27. ♗e5+ ♗c8 28. h4

Yuck. How does Black free himself?

28...c5 29. ♗d3 cxd4 30. cxd4 ♖d6 31. d5
♖f6 32. ♗f4 ♖e7 33. ♖c3+ ♗b8 34. ♗f1
g6 35. ♗d1 ♗f7 36. h5 g5 37. ♗e6 h6
38. ♗c5 a6 39. ♗g4 ♗a7 40. ♗e6 ♗e5
41. ♖e3 ♗g4 42. ♖e2 ♖fxe6 43. ♖xe6
♖xe6 44. dxe6 ♗f6 45. ♗d7

The rest is a straightforward win for White.

Northwest Chess

45... ♗d5 46. f4 gxf4 47. gxf4 ♗e7 48.
♗e2 b5 49. ♗e5 ♗b6 50. ♗g6 ♗g8 51.
e7 ♗f6 52. ♗e5 ♗c7 53. ♗g4 ♗e8 54. f5
♗d7 55. f6 ♗e6 56. ♗d3 ♗d6 57. ♗d4
a5 58. ♗c5 b4 59. f7 ♗e4+ 60. ♗d4 ♗xe7
61. ♗xe4 ♗xf7 62. ♗xh6+ ♗f6 63. ♗g4+
♗g5 64. h6 ♗g6 65. ♗d3 a4 66. ♗c4 b3
67. axb3 axb3 68. ♗xb3 ♗h7 69. ♗c4
♗g6 70. ♗d5 ♗f7 71. ♗e5 ♗g8 72. ♗f6
♗h7 73. ♗g5 ♗g8 74. ♗g6 ♗h8 75. ♗e3
♗g8 76. ♗c4 ♗h8 77. ♗d6 1-0

A very disappointing game for me. After excellent opening play, Black lost his way in the endgame, allowing White a strong initiative which he never relinquished.

Modern Defense

Geoffrey Gale (2.0)

Ignacio Perez (2.0)

Tacoma, WA Premier (3) 2006

Annotations by Geoffrey Gale

1.e4 g6

Not a surprise, Ignacio’s two main defenses are a Pirc/Modern, which he usually reaches through a Modern move order, and the Sicilian Dragon.

2. d4 ♗g7 3. ♗c3 c5

But this was unusual. 4. ♗f3, transposing into a variation of the Dragon, and 4. d5, a Schmidt Benoni, are both good, but critical is . . .

4. dxc5 ♗xc3+?!

This WAS a surprise, unexpected and highly provocative.

5. bxc3 ♖a5 6. ♗d2?

Too passive. Better is 6. ♗d3, intending 7. ♗f3 and 8. O-O.—Ignacio

Maybe 6. ♗f3 was better, the doubled c-pawn is not very important and the extra tempo could well turn out to be, e.g., 6... ♖xc3+ 7. ♗d2 ♖xc5 8. ♗d3 with good compensation.

6... ♖xc5 7. ♗d3 d5!?

April 2006

15

I was not impressed with this move either—"Opening the position favors the better developed side."

8. ♖b1 dxe4 9. ♗xe4 ♘c6 10. ♘f3 ♘f6 11. ♗d3

So I give back a tempo, maybe taking on d5 was more accurate.

11...O-O 12.O-O a6?!

Another non-developing move.

13.c4

Now he should have trouble developing his Bishop.

13... ♖b8 14. ♗e3

Not sure what to play, I attacked the Queen.

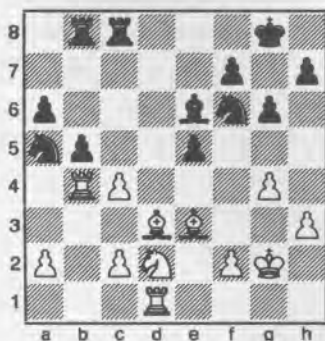
14... ♖h5 15.h3

I had a long think before playing this move. The move I really wanted to play was 15. ♗f4, but I was worried about 15... e5. I eventually decided on 15.h3 to avoid ...♗c8-g4. Turns out 15. ♗f4 was playable and good, as 15...e5 fails to simply 16. ♘xe5. I thought this was impossible, since two Black pieces were guarding the square, but it was an optical illusion. A rare version of the removing-the-guard tactic—after the Knight moves, the Queen on h5 has to come off and now the Bishop can simply recapture on e5, winning a pawn.

15...e5 16. ♘d2 ♖xd1 17. ♖fxd1

A close to equal endgame has arisen with b7 being as weak as c4.

17... ♗e6 18.g4 ♖fc8 19. ♘g2 ♘a5 20. ♖b4 b5?



This is simply bad and should lose. He surprised me: I quickly realized that he had another 'removing the guard' idea in mind. This time it is the c4-pawn that is guarding the d5-square. With it gone, the Knight is free to come in. The first

two moves I looked at were 21. ♖db1 and 21. ♗g5. I quickly rejected the latter, as I couldn't see anything concrete after the Knight moved or the King guarded it. 21.g5 seemed similarly innocuous. I finally came up with an Exchange sac that should have won the game.

21.cxb5

This seemed more forcing than 21. ♖db1, when he could play the Knight back and maybe push the pawn. On the ride back home, Ignacio told me he had planned 21... ♖ba8? and said I was losing. I couldn't believe it, this is one of those situations where, during the game, you think your opponent is playing well, only to hear his ideas after and realize that he had no clue. After 21... ♖ba8, 22. cxb5 wins even quicker, with threats like b5-b6-b7 in the air.

21... ♘d5 22. ♖a4 ♘c3 23. ♖xa5 ♘xd1

I had calculated 24.bxa6 ♘xe3+ 25. fxe3 and figured I was winning. I was right, the a-pawn is eventually going to cost Black a piece. When we reached this position, I noticed that I had ♗e3-a7. Why not keep both Bishops? I quickly decided it was good. 'If he moves the Rook, I win immediately,' I thought, without considering what move he actually might make.

24. ♗a7? ♖xb5

As usually happens when one makes a bad move, I immediately saw what he would play. He gave the Exchange back, and now he was even better.

25. ♖xa6?

I was so upset that I had thrown away the win and now had to fight for a draw, I lost without a fight. Of course, I had to take the Rook on b5. I figured refusing the Exchange and keeping the passed a-pawn was the only way to keep winning chances. I didn't calculate anything, I just knew that I was worse if I took the Rook, but that maybe I was ok if I got my passed pawn close to its queening square. Turns out that the position was still a draw if I had taken the Rook. The line is not that hard to find, the first few moves being obvious, and I would probably have found the rest over the board with a little effort. 25. ♗xb5 axb5 26. ♖xb5 ♖xc2 27. ♘e4 ♖xa2 28. ♖b8+ ♘g7 29. ♗c5! g5 30. ♖d8 ♗b3 31. ♘xg5 and if anyone is better here, it is White. The rest of the game is

not interesting, being a pretty simple win for a player of Ignacio's calibre. As often happens, demoralized by the course of events, I put up virtually no resistance, playing on out of inertia and frustration.

25... ♗d5+ 26. ♘g3 ♖b2 27. a4 ♘c3 28. f3 ♖a8 29. ♘b3 ♗xb3 30. cxb3 ♖xb3 31. a5 ♘b5 32. ♗c4 ♖b2 33. ♗d4 ♖xa6 34. ♗xb2 ♖xa5 35. ♗xe5 ♘a3 36. ♗c3 ♘xc4 37. ♗xa5 ♘xa5 38. h4 ♘f8 39. ♘f4 ♘e7 40. ♘g5 ♘c4 41. f4 ♘e3 42. h5 f6+ 43. ♘h4 ♘e6 44. ♘g3 f5 45. hxg6 hxg6 46. gxf5+ gxf5 47. ♘f3 ♘d5 48. ♘g3 ♘f6 49. ♘f3 ♘g6 50. ♘g3 ♘h5 1-0

London System

Andy May (0.5)

FM David Bragg (1.0)

Tacoma, WA Premier (3) 2006

Annotations by Andy May

1. d4 ♘f6 2. ♘f3 b6 3. ♗f4 ♗a6 4. ♘bd2 e6 5. h3

5.c4 would be slightly better.

5... ♗d6 6. ♗g5 h6 7. ♗xf6 gxf6 8. c4

8.e4 is also good 8... ♗xf1 9. ♘xf1.

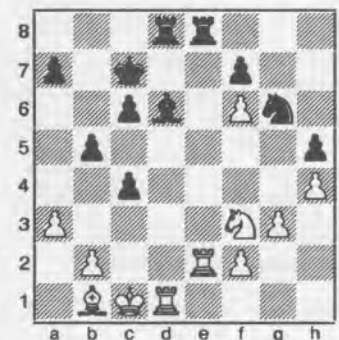
8...f5 9.e3 ♖g8 10. ♖c2 c5 11.O-O-O

Castling kingside would be too risky

11... ♘c6 12.a3 ♖c7 13.d5 ♘e7 14.e4 O-O-O 15.g3 ♗b7 16.exf5 exd5

After 16... ♘xf5 17. ♗d3 ♘e7, it is about an equal game.

17.f6 ♘g6 18.cxd5 ♗xd5 19. ♘e4 ♗xe4 20. ♖xe4 ♖c6 21. ♖xc6+ dxc6 22. ♗c4 ♖g8 23. ♖he1 ♘c7 24.h4 b5 25. ♗a2 h5 26. ♖e2 c4 27. ♗b1 ♖fe8



28. ♖de1

After the game, I found 28. ♖xe8 ♖xe8 29. ♗xg6 fvg6 30.f7 ♖b8 31. ♘g5, winning. Threats of ♘e6+, or ♘e4 if ...♘d7, are too much for Black to handle.

28... ♖xe2 29. ♖xe2 c3 30. ♗xg6 cxb2+ 31. ♘xb2 fvg6 32. ♘g5 ♘d7 33.f7 ♖f8

34. ♖e6 ♗c5 35. ♖xg6 ♗xf2 36. ♖h6 ♗xg3 37. ♖xh5 ♗e5+ 38. ♗b3 ♗f6

A drawn position; so I decided to simplify into a simple Rook-and-pawn endgame.

39. ♖h7 ♖xf7 40. ♖xf6+ ♖xf6 41. ♖h7+ ♗d6 42. ♖xa7

With a drawn Rook endgame.

42... ♖f3+ 43. ♗b4 ♖f4+ 44. ♗b3 ♖xh4 45. ♖g7 ♖d4 46. ♖g6+ ♗c5 47. ♖g5+ ♖d5 48. ♖g3 ♖d6 49. ♖g5+ ♖d5 50. ♖g3 ♗b6 51. a4 ♖d4 52. axb5 ♗xb5 53. ♖g5+ c5 54. ♗c3 ♖c4+ 55. ♗b3 ♖h4 56. ♖g3 ♖b4+ 57. ♗c3 ♖a4 58. ♗b3 c4+ 59. ♗b2 ♗b4 60. ♖g8 c3+ 61. ♗b1 ♗b3 62. ♖b8+ ♗c4 63. ♗c2 ♖a2+ 64. ♗c1 ♖a1+ Draw

Both players agreed to a draw.

Round Four

After this round, it became evident that Slava Mikhailuk, Harley Greninger, and William Schill were all in good form, each scoring three out of four. NM Nat Koons and Raptis have recovered from first round losses to have 2.5. Suffering most was Ricky Selzler, who said to me that he wasn't playing as he had intended to. He had a score of zero at the conclusion of the first weekend.

In the Premier, Perez dispatched Bragg. He was 4-0 and had a one-point lead over MacGregor and Wyde. Bragg had played some long games: 57, 77, 64, and 48 moves to start the first weekend, and now was two points behind the leader.

The *Tacoma News-Tribune* published a story and photos, which appeared on Monday, and *University Week* had a story appearing on Wednesday. Paul Sand, a reporter from the *News-Tribune* came by and took extensive interviews of some of the players, and put together a very interesting tale for the readership. The *Columbian*, a newspaper from Vancouver, followed the progress of Andy May and Nick Raptis.

King's Indian Fianchetto

NM Nick Raptis (2.0)

Matthew Fleury (1.5)

Tacoma, WA Championship (4) 2006

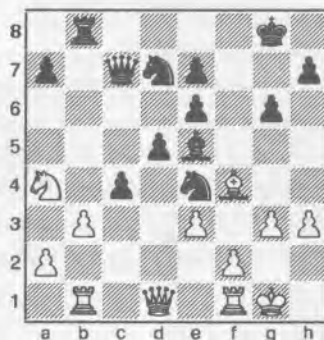
Annotations by Matthew Fleury

1. ♖f3 ♖f6 2.g3 g6 3. ♗g2 ♗g7 4.O-O O-O 5.d4 d6 6.c4 c6 7. ♖c3 ♖a5 8.h3

♗e6 9.d5 cxd5 10. ♖d4 dxc4 11. ♖xe6 fxe6 12. ♗xb7 ♖bd7 13. ♗xa8 ♖xa8 14. ♗d2 ♖b8 15. ♖b1 d5?!

This exciting position is E62, and it is not a bad line for Black against the Fianchetto variation of the KID, despite the result in this game. More to the point here is 15... ♖h5, followed soon by ...d7-d5. The Queen gets stuck on the queenside in the game.

16. ♖a4 ♖c7 17.b3 ♖e4 18. ♗f4! ♗e5 19.e3!



Leaving the Bishop on a craggy island is an excellent way to defend the kingside, and it comes with a one move trap, 19...g5? 20. ♖g4!

19...c3??

A straight-up blunder, due to the c-pawn dropping by force. Probably 19... ♖b6 or 19...cxb3 is better.

20. ♖c1 ♖f8 21. ♖d3 g5 22. ♖xc3 ♖xf2

A futile last attempt. 22... ♖g3 wins a tempo compared to the game, but even that makes no difference.

23. ♖xf2 gxf4 24. gxf4 ♗g7 25. ♖e2 ♖a5 26. ♖d4 ♖f6 27. ♖g2 ♖c5 28. ♖c3! ♖xc3 29. ♖xc3 ♖e4 30. ♖c7 ♗f7 31. ♖c6 1-0

And there is nothing left.

French Winawer

Ricky Selzler (0.0)

NM Harley Greninger (1.5)

Tacoma, WA Championship (4) 2006

1.e4 e6 2.d4 d5 3. ♖c3 ♗b4 4.e5 c5 5.a3 ♗xc3+ 6.bxc3 ♖a5 7. ♗d2 ♖e7 8.h4 ♖a4 9. ♖e2 ♖bc6 10. ♗g5 b6 11. ♗xe7 ♖xe7 12.h5 h6 13. ♖h4 ♗a6 14. ♖g3 ♗xf1 15. ♖xf1 cxd4 16.cxd4 ♖f5 17. ♖f4 ♖a5+ 18. ♗e2 ♖c3 19.g4 ♖e7 20. ♖e3 ♖c6 21. ♖b1 ♖a5 22. ♖f3 ♖c8 23. ♗f1 ♖c4 0-1

Sicilian Alapin

FM William Schill (2.5)

SM Slava Mikhailuk (2.5)

Tacoma, WA Championship (4) 2006

Annotations by FM William Schill

1.e4 c5 2.c3

I played the Open Sicilian in round two, but Slava was watching that one too closely I thought, so back to my usual stuff.

2...d5

The first surprise, my esteemed opponent has always played 2... ♖f6 against me in the past.

3.exd5 ♖xd5 4.d4 ♖f6 5. ♖f3 e6 6. ♖a3

6. ♗d3 is the main line, White tries to build up a kingside attack. However, I did not want to take on an isolated pawn against a 2400+ player, it gives him a winning plan right away!

6... ♖c6

6... ♖d8 7. ♗f4 cxd4 (7... ♖d5?!; 7... ♖c6!) 8. ♖xd4 ♗xa3? 9. ♖a4+ ♖bd7 10. ♖xa3 e5 11. ♖f5 1-0 Schill-Ehlvest, Las Vegas, National Open Blitz.

7. ♖b5 ♖d8 8.dxc5 ♗xc5 9. ♖xd8+ ♗xd8 10. ♗f4 ♖e4!

This is a move that has become popular only recently and I had never seen it before! Black has been scoring just over 50% whatever White has tried. So far I am the only player to say, "Just take that pawn then!"

10... ♖d5 11.O-O-O ♗e7 12. ♗g3 a6 13. ♖bd4 ♖xd4 14. ♖xd4 ♖e8 15. ♖b3 ♗a7 16.c4 ♖b6 17. ♗d6+ ♗f6 18. ♖c5± Schill-McCormick, WA Championship 2000 (Draw in 54).

11. ♗c4! ?N



I spent twenty minutes coming up with this idea, the Bishop does not really attack anything yet, but White will also get an open f-file and development. After 11. $\text{E}d1+$ $\text{C}e7$ 12. $\text{C}bd4$, Black is fine.

11... $\text{C}xf2?$!

11... $\text{C}xf2+$! 12. $\text{C}e2$ $\text{C}b6$ 13. $\text{E}hd1+$ and, however Black gets out of check, White will have enough play for the pawn, but surely no more.

12. $\text{E}f1$ Draw

Here I offered a draw with the comment, "I lost a pawn." As I explained to Adi Lanka and Ben Wyde in the hallway, this was a bluff on my part. I was sure Slava would not accept, but I figured he would take some time thinking about it. Where my plan backfired was he spent 45 minutes thinking about it!! Then, short on time, he accepted. Clearly, at this point, either player could still win, but I can honestly say that I wanted to play. I outstrategized myself!

Then again, he could have played 11... $\text{C}xf2+$ instead and then I would have been working for the draw for a long time. A good weekend all around! Slava said he spent all of his time looking at 12...a6. I did not think it was best, but I overlooked that, after White plays $\text{C}b5$ -c7, Black could play ... $\text{E}a8$ -a7, with the idea of ...b7-b5!

12...e5 (12... $\text{C}g4$) 13. $\text{C}g3$ $\text{C}e4$ (13... $\text{C}g4$ 14. $\text{C}g5$ $\text{E}f8$ 15. O-O-O+, winning. However, I never considered ... $\text{C}f2$ -g4 in any of my analysis during the game.) 14. $\text{C}xe5$ ±;

12... $\text{C}e4?$! 13. $\text{C}g5!$ $\text{C}xg5$ 14. $\text{C}xg5+$ f6 (14... $\text{C}e7$ 15. $\text{E}xf7$; 14... $\text{C}e7$ 15. $\text{E}d1+$ $\text{C}d7$ 16. $\text{E}xf7$; 14... $\text{C}e8$ 15. $\text{C}c7+$) 15. $\text{E}xf6$ gxf6 (15...h6 16. $\text{E}d1+$ $\text{C}e8$ (16... $\text{C}d7$ 17. $\text{E}f8$;) 17. $\text{C}c7+$ $\text{C}e7$ 18. $\text{E}xe6+$ $\text{C}f7$ 19. $\text{E}xh6+$ $\text{C}f8$ 20. $\text{E}xh8$ ±; 15... $\text{C}e7$ 16. $\text{E}d1+$ $\text{C}d7$ 17. $\text{C}xe6$ $\text{C}xf6$ (17... $\text{C}b8$ 18. $\text{E}f7$ $\text{C}xg5$ 19. $\text{E}dxd7+$ $\text{C}xd7$ 20. $\text{E}xd7+$ $\text{C}c8$ (20... $\text{C}e8$ 21. $\text{C}d6+$ $\text{C}f8$ 22. $\text{E}f7+$ $\text{C}g8$ 23. $\text{E}f6$;) 21. $\text{C}d6+$ $\text{C}b8$ 22. $\text{E}xb7$;) 18. $\text{E}xd7+$ $\text{C}e8$ 19. $\text{C}d6+$ $\text{C}f8$ 20. $\text{E}f7+$ $\text{C}g8$ 21. $\text{E}xf6$;) 16. $\text{C}xf6+$

In the post-mortem, I thought taking on e6 after 12...a6 13. $\text{C}c7$ $\text{E}a7$ 14. $\text{E}xf2$ $\text{C}xf2+$ 15. $\text{C}xf2$ b5 16. $\text{E}d1+$ $\text{C}d7$, looked very promising. It turns out that the White Knight loses it's way among the Black

pieces, e.g., 17. $\text{C}xe6$ fxe6 18. $\text{C}xe6+$ $\text{C}c8$ 19. $\text{C}xg7$ $\text{C}g4$. The longer we looked at this position the worse it got for White. The right way to go is 17. $\text{C}xb5$, as the Black forces stay disorganized, e.g., 17... axb5 18. $\text{C}xb5$ $\text{C}c8$ 19. a4! (19. $\text{E}xd7?$! $\text{C}xd7$ 20. $\text{C}e5+$ $\text{C}c8$ 21. $\text{C}xc6$ f6 22. $\text{C}c4$ e5 23. $\text{C}e3$ $\text{E}xa2$;) 19...f6 20. $\text{C}e3$ $\text{E}a8$ 21. b4. Here we both declared we were winning! I like the connected passed pawns myself.

Pirc Austrian Attack

Adi Lanka (1.0)

FM John Readey (1.5)

Tacoma, WA Championship (4) 2006

1. e4 d6 2. d4 $\text{C}f6$ 3. $\text{C}c3$ g6 4. f4 $\text{C}g7$ 5. $\text{C}f3$ c5 6. dxc5 $\text{C}a5$ 7. $\text{C}d3$ $\text{C}xc5$ 8. $\text{C}e2$ O-O 9. $\text{C}e3$ $\text{C}a5$ 10. O-O $\text{C}g4$ 11. h3 $\text{C}xf3$ 12. $\text{C}xf3$ $\text{C}c6$ 13. $\text{E}ab1$ $\text{C}b4$ 14. f5 $\text{C}d7$ 15. $\text{C}g5$ $\text{C}e5$ 16. $\text{C}g3$ and Drawn in 23 [Bad Score]

Black survived a bad opening. A "blunderful" game.—Koons

Reti

LM Viktors Pupols (1.0)

NM Nat Koons (1.5)

Tacoma, WA Championship (4) 2006

Annotations by LM Viktors Pupols

1. $\text{C}f3$ d5 2. g3 g6 3. c4 dxc4 4. $\text{C}a4+$ $\text{C}d7$ 5. $\text{C}g2$ $\text{C}g7$ 6. O-O $\text{C}g6$ 7. $\text{C}xc4$ O-O 8. $\text{C}c3$ b6 9. d4 $\text{C}b7$ 10. $\text{E}d1$ $\text{E}c8$ 11. $\text{C}a4$ a6 12. $\text{C}e5$ b5 13. $\text{C}a3$ $\text{C}xg2$ 14. $\text{C}xg2$ $\text{C}b8$

Forced, but still a surprise. Black makes room for ... $\text{C}d8$ -d6, supporting ...c7-c5. White should not trade, but still needs to complete his development.

15. $\text{C}f4$ $\text{C}d6$ 16. b4 $\text{C}h5$ 17. $\text{C}e3$

?—Koons

The alternative to this pawn sac is allowing ... $\text{C}xf4+$, making White's pawn structure unattractive.

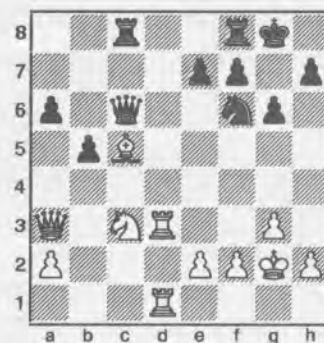
17... $\text{C}xe5$ 18. dxe5 $\text{C}xe5$ 19. $\text{E}d5$ $\text{C}e6$ 20. $\text{E}ad1$ $\text{C}f6$ 21. $\text{E}d5$ $\text{C}bd7$ 22. $\text{C}d4$ c5

Not immediately necessary.

23. bxc5 $\text{C}xc5$

?—Koons

24. $\text{C}xc5$ $\text{C}c6+$



More games are lost than won. To win, you have to make many good moves to lose, only a single bad one. Often, natural, automatic moves are not strongest Here's one:

25. f3

An automatic move. Stronger is 25. $\text{C}d5$ {!—Koons} 25... $\text{C}xd5$ 26. $\text{E}xd5$ e6 27. $\text{C}xf8$ $\text{E}xf8$ 28. $\text{C}d6$ $\text{C}b7$ 29. e4.

25... $\text{C}xc5$ 26. $\text{C}xa6$ b4 27. $\text{C}d5$ $\text{E}a8$ 28. $\text{C}xf6+$

An automatic move. Stronger is 28. $\text{C}c6$.

28...exf6 29. $\text{C}xf6$ $\text{E}xa2$ 30. $\text{E}d8?$

The automatic move 30. $\text{E}d8$ should be played. If 30... $\text{E}xd2$, 31. $\text{E}xd2$ controls b2 and keeps the b-pawn from advancing; or, if 31... $\text{C}c3$, 32. $\text{C}xc3$ bxc3 33. $\text{E}c2$ wins the pawn. White feared 30...b3, but did not see 31. $\text{E}xa2$ bxa2 32. $\text{C}a6$, which is not automatic, but wins the pawn while guarding e2. The game continued with . . .

30... $\text{E}xe2+$ 31. $\text{C}h3$ $\text{C}h5+$ 32. $\text{C}h4$ $\text{C}xh4+$ 33. $\text{C}xh4$ $\text{E}xh2+$ 34. $\text{C}g5$ $\text{E}xd8$ 35. $\text{E}xd8+$ $\text{C}g7$ 36. $\text{E}b8$ $\text{E}b2$ 37. $\text{C}f4$ $\text{E}b1$ 38. g4 b3 39. $\text{C}g3$ $\text{C}f6$ 40. $\text{E}b5$ h6 41. $\text{C}g2$ $\text{C}e6$ 42. f4 $\text{C}d6$ 43. f5 $\text{C}c6$ 44. ffg6 ffg6 45. $\text{E}b8$ $\text{C}c5$ 46. $\text{E}c8+$ $\text{C}d5$ 47. $\text{E}h8$ h5 48. gxf5 gxf5 49. $\text{E}xh5+$ $\text{C}c4$ 50. $\text{C}f2$ $\text{E}d1$ 51. $\text{C}e2$ $\text{E}d8$ 52. $\text{E}h7$ b2 53. $\text{E}b7$ $\text{C}c3$ 54. $\text{E}c7+$ $\text{C}b3$ 55. $\text{E}b7+$ $\text{C}c2$ 56. $\text{E}c7+$ $\text{C}b1$ 57. $\text{E}c6$ $\text{E}d5$ 58. $\text{C}e3$ $\text{C}a2$ 0-1

Ruy Lopez Berlin

Mark Ryan (0.5)

Mike MacGregor (2.0)

Tacoma, WA Premier (4) 2006

1. e4 e5 2. $\text{C}f3$ $\text{C}c6$ 3. $\text{C}b5$ $\text{C}f6$ 4. O-O $\text{C}xe4$ 5. $\text{E}e1$ $\text{C}d6$ 6. $\text{C}xc6$ dxc6 7. $\text{C}xe5$ $\text{C}e7$ 8. d4 O-O 9. $\text{C}c3$ $\text{C}e6$ 10. $\text{C}f4$ $\text{C}f5$ 11. $\text{C}e2$ c5 12. dxc5 $\text{C}xc5$ 13. $\text{C}d3$ $\text{C}b6$

14. d3g3 d3xg3 15. d3xg3 d3f5 16. d3b4c6
 17. f3f3 f6 18. d3e5 d3e6 19. f3xf6 gxf6
 20. d3ee1 d3fe8 21. d3d3 d3f5 22. d3xe8+
 d3xe8 23. d3e1 d3d8 24. d3d1 c5 25. b3
 d3d4 26. f3f1 c4 27. bxc4 d3xc4 28. d3f4
 d3xc2 29. d3d7 d3e4 30. d3h5 d3c6 31.
 d3xf6+ d3g7 32. d3d6 d3c7 33. d3h5+ d3f8
 34. d3d1 d3xg3 35. hxg3 d3c2 36. d3a1 b5
 37. a3 a5 38. d3f6 d3g7 39. d3g4 d3e4 40.
 d3e1 d3b2 41. d3e3 h5 42. d3d1 d3b3 43.
 d3d2 d3xg2 44. d3c2 d3d5 45. d3c3 d3e6
 46. d3b1 d3xb1 47. d3xb1 b4 48. axb4 axb4
 49. d3b5 d3f6 50. d3d4 d3e5 51. d3c6+
 d3e4 52. d3xb4 d3f3 53. d3d3 d3f5 0-1

Nimzo Indian Classical

Kevin Binz (1.0)

Andy May (1.0)

Tacoma, WA Premier (4) 2006

1. d4 d3f6 2. c4 e6 3. d3c3 d3b4 4. f3c2 d5
 5. a3 d3xc3+ 6. f3xc3 d3e4 7. f3c2 O-O
 8. e3 b6 9. d3d3 d3b7 10. d3e2 d3d7 11.
 O-O f5 12. f3 d3ef6 13. cxd5 d3xd5 14.
 d3d2c5 15. e4 d3e7 16. d3f4 d3f6 17. d3c4
 d3f8 18. dxc5 bxc5 19. d3c3 d3h6 20. exf5
 f3c7 21. g3 d3d5 22. f3b3 d3b8 23. f3a2
 d3xc4 24. f3xc4 d3xf5 25. d3ae1 d3e8
 26. d3e5 d3d6 27. d3xc5 f3b6 28. f3d4 d3f5
 29. f3f2 d3d7 30. d3a5 e5 31. d3xa7 exf4

32. d3xd7 f3xg3 33. hxg3 f3e6 34. f3d2
 d3g6 35. f3d5 d3xg3+ 36. d3f2 d3g2+
 1-0

Torre Attack

Chris Kalina (1.0)

Ben Wyde (2.5)

Tacoma, WA Premier (4) 2006

1. d4 d6 2. d3f3 d3f6 3. d3g5 d3bd7 4. e3
 e5 5. dxe5 dxe5 6. d3c4 d3e7 7. O-O O-O
 8. d3c3 c6 9. f3e2 f3c7 10. d3fd1 d3c5
 11. a4 Draw

Sicilian Maroczy Bind

Geoffrey Gale (2.0)

Elston Cloy (0.5)

Tacoma, WA Premier (4) 2006

1. e4 c5 2. d3f3 d3c6 3. d4 cxd4 4. d3xd4
 g6 5. c4 d3g7 6. d3c2 d3f6 7. d3c3 O-O
 8. d3e2 a6 9. O-O d6 10. d3e3 b6 11. f4 d3b7
 12. d3f3 d3d7 13. g3 d3c8 14. d3g2 d3a5
 15. f3e2 e6 16. d3d2 f3c7 17. d3ac1 d3fe8
 18. b3 d3c6 19. d3fd1 f3b8 20. h3 d3d4 21.
 f3f2 b5 22. d3e1 b4 23. d3e2 d3xe2+ 24.
 f3xe2 d3a8 25. e5 d3xg2 26. f3xg2 f3a7
 27. d3f2 dxe5 28. d3f5 f3c7 29. d3d6 exf4
 30. gxf4 d3f6 31. d3xe8 d3xe8 32. d3e3
 d3h5 33. f3f3 f3a5 34. d3c2 f3f5 35. d3cd2

d3e5 36. f3c6 d3xf4 37. f3xe8+ d3g7
 38. d3xf4 d3xf4 39. f3d8 d3hx3+ 40. d3h2
 f3f4+ 41. d3hx3 f3f3+ 42. d3h2 f3f4+ 43.
 d3g2 f3g4+ 44. d3f1 f3h3+ 45. d3g2 f3f3+
 46. d3g1 f3e3+ 47. d3h2 f3h6+ 48. d3g1
 f3e3+ and eventually 1-0

Caro-Kann Advance

Ignacio Perez

FM David Bragg

Tacoma, WA Premier (4) 2006

1. e4 c6 2. d4 d5 3. e5 d3f5 4. d3c3 e6 5. g4
 d3g6 6. d3ge2 f3h4 7. d3f4 d3b4 8. d3xg6
 hxg6 9. d3g2 f5 10. exf6 gxf6 11. f3e2 d3h7
 12. d3f4 d3d7 13. O-O e5 14. d3g3 f3h6
 15. f4 O-O-O 16. g5 f3g5 17. f3e5 d3e7
 18. f3g4 f3h5 19. d3f3 f3xg4 20. d3xg4
 d3xc3 21. bxc3 d3h6 22. h3 d3xg4 23. hxg4
 d3g8 24. d3ae1 d3ge8 25. d3e3 d3e6
 26. d3ef3 d3b6 27. d3f7 d3c4 28. d3g7
 d3e7 29. d3g8+ d3d7 30. d3f3 a6 31. d3e1
 d3h7 32. d3g2 d3d6 33. d3ff8 d3c4 34. d3c8
 d3e3+ 35. d3g3 d3ee7 36. d3gd8+ d3e6
 37. d3d6+ d3f7 38. d3f6+ d3g7 39. d3d2
 d3xc2 40. d3xg5 d3f7 41. d3d6 d3e1
 42. d3f6+ d3h6 43. g5+ d3h5 44. e6 d3e7
 45. d3d7 d3xd7 46. exd7 d3xd7 47. d3h8+
 d3h7 48. d3hx7 mate

To be continued in May

Scholastic News cont'd from page 3

played to a draw, and Alexis Nast was defeated by Sarah May to leave Janell and Karen as the only three point winners.

A one game G/10 playoff occurred between Janell and Karen. It was close down to the three minute mark until Karen craftily pushed her A pawn to a Queen. Although Janell did all she could, she succumbed in the end to Karen's relentless offence.

In addition to the tournament invite and the champion's trophy, Karen will also receive \$240 from the tournament towards her travel expenses.

Courtesy of Jon Licht

Tacoma, WA

The 2005-06 TAPCO season is over. There were eight schools this year. Two schools fielded two teams each for a total of ten teams. The final standings are:

1. Charles Wright (A) 31.0
2. Foss (A) 29.0
3. Bonney Lake 18.5

4. Fife 18.5
5. Foss (B) 18.5
6. Sumner 18.0
7. Charles Wright (B) 16.0
8. Mt. Tahoma 12.5
9. Lincoln 12.0
10. Puyallup 11.0

Silver Ron Macoubrie Bonney Lake
 Bronze Eric Jang Charles Wright (B)
 League Director: Gary Dorfner

The 1st, 2nd, 3rd & 4th place teams each received a trophy. Tiebreaks had to be used to decide 3rd & 4th as well as some of the top grade prizes.

Top Grades

12th

Gold John O'Donnell Foss (A)
 Silver Bob Colvin Charles Wright (A)
 Bronze Alex Stoker Charles Wright (B)

11th

Gold Kevin Keal Foss (A)
 Silver Steve Combest Chas. Wright (A)
 Bronze Mike Potin Bonney Lake

10th

Gold Chris Peterson Foss (A)
 Silver J.P. O'Connor Foss (B)
 Bronze Ben Rude Bonney Lake

9th

Gold Evan Hanson Foss (B)

**Puget Sound
 League News**

I would like to reorganize the Puget Sound Chess League. The league was last active in 1999-2000. I would first like to know how much interest there is in the PSCL. If you are interested in being involved in the PSCL, forming or playing on a team etc. please e-mail me & let me know. Ggarychess@aol.com If enough players respond, I will schedule a meeting during the Wash. Open. I know that most of you will be there.

GARY J. DORFNER,
 past PSCL Director

WASHINGTON CHESS FEDERATION

WASHINGTON OPEN & CHESS FESTIVAL

May 27-29, 2006

Prize Fund

**\$8,000 Guaranteed by the
Washington Chess Federation
or \$10,000 based on 200 entries**

| Open | Premier | Reserve | Booster |
|--------|---------|---------|---------|
| \$1000 | \$400 | \$300 | \$250 |
| \$600 | \$300 | \$250 | \$150 |
| \$400 | \$250 | \$200 | \$100 |
| \$300 | \$200 | \$150 | \$100 |
| \$200 | \$150 | \$100 | |
| \$100 | \$100 | | |
| U2150 | U1850 | U1550 | U1100 |
| \$400 | \$250 | \$200 | \$120 |
| \$250 | \$150 | \$100 | \$80 |
| \$150 | \$100 | \$100 | UNR |
| \$100 | \$100 | \$100 | \$120 |
| | | | \$80 |

WA Open Entry Fees (by May 8 / May 22 / on site)

| | |
|------------------|--------------------|
| Open: | \$80 / \$90 / \$95 |
| Premier (U2000): | \$70 / \$80 / \$85 |
| Reserve (U1700): | \$60 / \$70 / \$75 |
| Booster (U1400): | \$45 / \$55 / \$60 |

Canadians may pay entry fee in C\$ at par (no coins, please). Memberships (including USCF) must be current or paid fully.

Entries/Information:

WCF Tournament Coordinator
H.G. Pitre
700 Crockett St., #105
Seattle WA 98109
206-284-9314

Also see www.nwchess.com, www.whsca.org for information.

Make checks payable to Washington Chess Federation (WCF).

Holiday Inn, 3105 Pine Street, Everett WA

In downtown area. From I-5 South take exit 194, from I-5 North take exit 193.

Registration: Saturday 9-10:30 a.m. for 3-day, or 3:30-4 p.m. if entering 3-day with one half-point bye, Sunday 8:30-9 a.m. for 2-day option; 9:30-10 a.m. if entering 3-day with two half-point byes. Up to 2 half-point byes available only at registration.

Format: Four sections, six round Swiss system, USCF rated. Section 1 (Open) is also FIDE rated.

Time Controls: 3-day schedule: 30/90, SD/60. 2-day schedule: Rounds 1-3: G/60 (rounds 4-6 same as 3-day schedule). Both schedules: Digital clocks preferred. 5-second time delay used from start of game.

Rounds: 3-day schedule: Saturday 11-5:30, Sunday 10-5:30, Monday 9-3. 2-day schedule: Sunday 9:30-11:45-2:30-5:30, join 3-day schedule for rest of tourney. *WCF annual meeting:* 3:00 p.m. Sunday.

Miscellaneous: 2006 Chess Cafe Grand Prix event (10 pts), Christopher Memorial NW Grand Prix event, USCF and WCF/OCF membership required in all sections. Please bring set, board and clock. No smoking. No computers. If also playing in a side event (to be decided) deduct \$5 from the combined total entry fees.

Entries/Prizes/Info: See bar at left. Entry form will be posted on NWC website.

Hotel Rates: \$79/night single or double. Free Parking. 425-339-2000 www.hieverett.com.

Chess Festival Events: To Be Decided — See the *Northwest Chess* Website (www.nwchess.com) or the April issue of *Northwest Chess* magazine.

Washington Open Scholastic: A separate flyer will be published on the NWC website for this event, scheduled for Saturday, May 27. Contact:

David Hendricks
WCF Scholastic Director
2439 220th Place NE
Sammamish, WA 98074

425-868-3881

davidhendricks@comcast.net

Franett Memorial Northwest Grand Prix

Murlin Varner, administrator
13329 208th Ave. NE
Woodinville WA 98077
mevjr54@yahoo.com

Here we are, with a new year, new sponsor (Kent McNall), new name (see above), and even some new leaders. The standings below include all events from January and February, except the SCC Quads of Feb 25th (5 points maximum possible from that event). We have seen steady growth in the Grand Prix, and this year has started off well enough to expect the trend to continue.

The total number of Grand Prix events in 2005 increased by 12.9% over 2004, with 13 events having multipliers (up two from 2004), and many increasing their multipliers. The number of active players increased 4.2%, to 545, and the total number of entries into GP events increased 2.3%. Total points awarded increased by a whopping 25.1%, due to both the increase in number and size of multipliers and the fact that fewer players are withdrawing from GP events (remember, completion of an event gains you a two-point bonus, added before the multiplier is applied). Prizes went up as well in 2005, increasing 3.1% for Oregon and 4.2% for Washington. There were declines in two statistical categories. Entries per event dropped by 9.4%, due in a large part to the increase in smaller events being added to the Grand Prix. Entries per player dropped by a small amount, 1.9%, from 3.38 to 3.32. This statistic was ahead all year until two events in December provided me with 14 new-to-GP players. This is not a bad thing, and the decrease is insignificant. All in all, it was a good year.

There was one bad thing at the end of the year. One event had to be removed from the Grand Prix because the organizers failed to pay the GP fee. We attempted to contact them and gave them until the end of January to rectify this, but in the end, the event was removed. I did not look to see if this changed the eventual winners, and I don't think I want to know. We'll just hope it doesn't happen again. Remember, the only official standings are the ones posted after the year is done. All the others, such as below, are "interim" standings, subject to change of points, rating class and residence.

| Oregon | | Washington | |
|--------------------|------|-----------------------|------|
| Masters | | | |
| 1 Haessler, Carl | 18.0 | 1 Raptis, Nick | 23.5 |
| 1 Roua, Radu | 18.0 | 2 Mac Gregor, Michael | 11.0 |
| 3 Prochaska, Peter | 13.5 | 3 Pupols, Viktors | 10.0 |
| 4 Harmon, Clark | 4.5 | 4 Bragg, David | 8.0 |
| | | 5 Koons, Nat | 6.0 |
| | | 6 McGearry, Bill | 4.5 |

| Experts | | | |
|--------------------|------|-------------------|------|
| 1 Daroza, Eduardo | 33 | 1 Gale, Geoffrey | 38.0 |
| 2 Gutman, Richard | 18 | 2 Collyer, Curt | 27.0 |
| 3 Morris, Michael | 16.5 | 3 Julian, John | 23.0 |
| 3 Tisinger, Steve | 16.5 | 4 Merwin, Steve | 18.0 |
| 5 Salisbury, Blake | 12 | 5 Kalina, Chris | 16.5 |
| | | 6 Sinanan, Joshua | 16.0 |

| Class A | | | |
|----------------|------|-----------------|------|
| 1 Gay, Daniel | 21.5 | 1 Buck, Stephen | 48.5 |
| 2 Serres, Drew | 19.5 | 2 Chen, Howard | 28.5 |

| | | | |
|-------------------|------|---------------------|------|
| 3 Banner, Richard | 18.0 | 3 Rosell, John | 27.0 |
| 4 Peake, Ethan | 17.5 | 4 Herbers, Patrick | 22.5 |
| 5 Phillips, Blake | 16.5 | 5 Cloy, Elston | 19.5 |
| 5 Foster, Raleigh | 16.5 | 6 Prentice, Gregory | 13.5 |
| 5 Ramey, Forrest | 16.5 | | |

| Class B | | | |
|--------------------|------|----------------------|------|
| 1 Becker, Brett | 18.0 | 1 Hosford, Michael | 28.5 |
| 2 Bannon, David | 13.5 | 2 Mathews, Dan | 24.5 |
| 2 Jacobi, Gunther | 13.5 | 3 Fabian, Steve | 23.5 |
| 2 Lundin, Robert | 13.5 | 4 Downes, John | 20.5 |
| 5 Robinson, Marcus | 5.0 | 5 Stripes, James | 18.0 |
| 6 Chow, Andrew | 3.5 | 6 Cambareri, Michael | 15.0 |
| | | 6 Dillingham, Gregg | 15.0 |
| | | 6 Lee, Nathan | 15.0 |

| Class C | | | |
|-------------------|------|------------------------|------|
| 1 Levin, Scott | 13.5 | 1 Etingher, Constantin | 31.0 |
| 2 Bailey, Taylor | 13.5 | 2 Hornickle, John | 28.0 |
| 3 Midson, Tony | 12.0 | 3 Chow, Alex | 22.0 |
| 4 Sinclair, Paris | 10.5 | 4 Varner, Murlin | 17.5 |
| 5 Wentz, Dale | 10.5 | 5 Griffin, David | 16.0 |
| 6 Kelly, George | 10.0 | 6 O'Bannan, Robert | 15.0 |
| | | 6 Mangiaracina, Mark | 15.0 |

| Class D and Below | | | |
|----------------------|------|--------------------|------|
| 1 Fernandez, Matthew | 16.5 | 1 Kirlin, Patrick | 16.5 |
| 2 Yang, Muchen | 12.0 | 2 Li, William | 15.0 |
| 3 Markowski, Gregory | 10.5 | 2 Sattarov, Sattar | 15.0 |
| 4 Friesen, Daniel | 9.0 | 4 Baker, Ted | 14.5 |
| 4 Burns, Elden | 9.0 | 5 Johnson, Vern | 12.5 |
| 6 You, Sean | 8.0 | 6 Burney, James | 12.0 |
| | | 6 Desmarais, Cyrus | 12.0 |
| | | 6 Desmarais, Niles | 12.0 |

| Overall Leaders | | | |
|-----------------------|------|------------------------|------|
| 1 Daroza, Eduardo | 33.0 | 1 Buck, Stephen | 48.5 |
| 2 Gay, Daniel | 21.5 | 2 Gale, Geoffrey | 38.0 |
| 3 Serres, Drew | 19.5 | 3 Etingher, Constantin | 31.0 |
| 4 Becker, Brett | 18.0 | 4 Chen, Howard | 28.5 |
| 4 Banner, Richard | 18.0 | 4 Hosford, Michael | 28.5 |
| 4 Gutman, Richard | 18.0 | 6 Hornickle, John | 28.0 |
| 4 Haessler, Carl | 18.0 | 7 Collyer, Curt | 27.0 |
| 4 Roua, Radu | 18.0 | 7 Rosell, John | 27.0 |
| 9 Peake, Ethan | 17.5 | 9 Mathews, Dan | 24.5 |
| 10 Fernandez, Matthew | 16.5 | 10 Raptis, Nick | 23.5 |
| 10 Phillips, Blake | 16.5 | 10 Fabian, Steve | 23.5 |
| 10 Foster, Raleigh | 16.5 | 12 Julian, John | 23.0 |
| 10 Ramey, Forrest | 16.5 | 13 Herbers, Patrick | 22.5 |
| 10 Morris, Michael | 16.5 | 14 Chow, Alex | 22.0 |
| | | | |
| 10 Tisinger, Steve | 16.5 | 15 Downes, John | 20.5 |

| Players from Other States | | | |
|---------------------------|----|------|------|
| 1 Donaldson, W John | CA | 2462 | 21.0 |
| 2 Weyland, Ronald | ID | 1540 | 17.0 |
| 3 Erickson, Kenneth | ID | 1516 | 15.0 |
| 3 Weyland, Phillip | ID | 1856 | 15.0 |
| 3 Jensen, J Michael | MT | 1893 | 15.0 |
| 6 Bishop, Alan | CA | 2041 | 13.5 |
| 6 Carpenter, Romie | MT | 1825 | 13.5 |
| 6 Martin, Robert | MT | 1764 | 13.5 |
| 6 McBroom, William | MT | 1549 | 13.5 |
| 10 Anderson, Mark | ID | 1716 | 10.5 |
| 10 Mundee, Richard | ID | 1600 | 10.5 |
| 12 Walker, Andrew | NJ | 1836 | 9.5 |
| 13 Drake, Melvin | MT | 1165 | 7.5 |
| 14 Hong, Albert | ID | 1494 | 4.0 |
| 15 Hong, Brian | ID | 1368 | 3.5 |

From the Business Manager:

Please send memberships and address changes directly to the business manager's listed address. Sending to the PO Box in Seattle may result in a two-week delay in processing your mail.

Players from Near and Far Enjoy the Collyer Donaldson-1st, Cloy-2nd

by Kevin Korsmo

John Donaldson repeated as champion of the 14th Dave Collyer Memorial, Spokane's biggest chess tournament. He scored a perfect 5.0 to top the 52 player field. Elston Cloy, a Spokane native now living in Seattle, finished second with 4.5. Curt Collyer and Steve Merwin, each with 4.0, tied for third place and also were the top Experts.

As has been the case in the last several Collyer tourneys, up and coming youngsters again made their presence known. Middle-schooler Alex Chow followed up his strong performance in the recent Spokane Winter Championship with another outstanding effort in the Collyer. Between the two events, he raised his rating nearly 200 points in the course of a week! The Desmarais twins from Chelan, Cyrus and Niles, entered their first USCF tourney and came away with provisional ratings near 1600.

A new feature this year was a "Sleep In" option in which players could defer their first round game until noon and play that round at G/60 time controls instead of G/120. It turned out to be popular, with twelve players choosing that option — including the top three boards. Those who "slept in" missed the first upset of the tourney. Chow caught class A veteran Dave Rowles in a trap in the Smith-Morra Gambit and claimed an early

scalp. The top boards all rolled along through their first three games. Round 3 saw the biggest upset of the tourney when Jerry Morton (1444) upended Rowles.

Morton and newcomer Sattarov Sattar, an Uzbekistan émigré to the U.S. who recently arrived in Spokane, added an international flavor to the tourney. Morton, an old veteran of Spokane and Tri-Cities chess, is currently working in Kazakhstan. The tourney was played during one of his visits back to the states. He likely will retire the award for the person who traveled furthest for the Collyer tourney. Earlier tourneys had seen players come from Alaska and Texas, but no one had ever ventured over from central-Asia before!

The first day ended with three perfect 3-0 scores: Donaldson, Geoff Gale, and Cloy. Cloy earned his way to the tie by defeating Chow in round 2 and then Merwin in round 3. Collyer and Eduard Daroza, making his first visit to a Spokane tourney, took byes and were positioned a half-point back heading in to the final day. Sunday morning's fourth round saw the top players locking up head to head. Donaldson quickly defeated Gale, while Cloy and Collyer played quite awhile before agreeing to a draw. Daroza edged John Julian to tie Cloy for second with 3.5 scores entering the final round.

managed to win an Exchange against Gale and looked to be in good position to claim a share of first if Board One ended in a draw. Cloy followed up by sacrificing a Rook and entered into a Queen versus three pieces endgame. Donaldson then went to work, showing fine IM technique, wresting a pawn in the late middle game and then tying up his opponent and maneuvering into a winning endgame. Cloy later followed with a victory to claim clear second.

Donaldson pocketed \$325 for his victory and Cloy received \$200 for second. Collyer and Merwin shared the \$225 awarded for third place and best Expert prizes. The Class prizes (\$100 first and \$75 second) were widely dispersed. Pat Herbers and Chris Kalina paced the A section with 3.5 scores. They recorded a draw against each other in the final round. The B class prizes were shared by Michael Cambareri, John Downes, and Michael Hosford, each of whom finished with 3.0 scores. Alex Chow, at 3.5, was the C winner. Four shared second in the category with 3.0 scores: Ken Erickson, Constantine Etingher, Mark Mangiaracina, and Bob O'Bannan. The D/unrated category prizes went mostly to three unrated players entering their first USCF events. First place, with 3.0, went to Sattarov Sattar. The second place prize was shared by the Desmarais brothers and Tacoma's John Hornickle. Each scored two points.

Jerry Morton won \$100 for having the biggest upset, while Alex Chow pocketed \$50 for the second biggest upset.

Donaldson kicked off the weekend with a lecture and simul at Aunties Bookstore on Friday night. The lecture, about the upcoming US Championships, was well attended. Twenty-five players then took on the IM in the simul. Donaldson won 20 games, lost one, and drew four.

Donaldson squared off against Daroza, while Cloy was paired on Board Two against Gale. The position on Board One was looking somewhat drawish (at least, it did to this class B player), but Cloy



Carl A. Haessler
Lessons • Lectures • Exhibitions

USCF Life Master
3-Time Oregon Champion

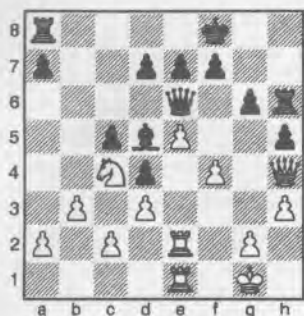
(503) 358-7871
ssmith6154@aol.com

Sicilian Rossolimo

IM John Donaldson
Constantin Etingher (1432)

Spokane, Auntie's Simul 2006

1.e4 c5 2.♟f3 ♘c6 3.♙b5 ♘f6 4.e5
♘g4 5.♙xc6 bxc6 6.O-O ♖b6 7.d3 g6
8.h3 ♘h6 9.♙e1 ♘f5 10.♘bd2 ♙g7
11.♘c4 ♖c7 12.♙f4 ♘d4 13.♘xd4
cxd4 14.♘d6+ ♘f8 15.♘c4 ♙b7 16.
♖g4 h5 17.♖h4 c5 18.♙e2 ♙h6 19.
♙xh6+ ♙xh6 20.♙ae1 ♖c6 21.f3
♙e6 22.f4 ♙d5 23.b3



23...♙xc4 24.bxc4 ♙b8 25.♖g5 ♙h8
26.g4 hxg4 27.hxg4 ♖c6 28.♙e4
♙b2 29.♙1e2 ♙b1+ 30.♘g2 ♙bh1
31.e6 dxe6 32.♖e5 ♙1h2+ 33.♘g1
♙h1+ 34.♘g2 ♙8h2+ 35.♘g3 ♙h3+
36.♘g2 ♙1h2+ 37.♘g1 ♙xe2 0-1

Slav Exchange

Romie Carpenter (1826)
Curt Collyer (2183)

Spokane, Collyer Memorial (2) 2006

Annotations by Curt Collyer

1.d4 d5 2.♟f3 c6 3.c4 ♘f6 4.♘c3 a6
5.cxd5 cxd5

This game was played only a few days after Ivanchuk-Topalov, Morelia 2006, so naturally I was feeling quite confident.

6.g3

Probably the first sign of something; I'm not sure what, but, as Black, I know I like it.

6...♘c6 7.♙g2 e6

7...♙f5 would also make sense, of course.

8.O-O ♙d6

I recall thinking to myself, "If he plays 9.♙g5 it will be a fight; if he plays 9.b3 then I will win." It is strange, but

this was somehow the critical moment of the game, although it is based on nothing objective.

9.b3 O-O 10.♙b2 b5

Besides the Topalov game, Serper-Nakamura, US Championship 2005, was now also swimming in the river of my thoughts.

11.♙c1 ♖b6 12.e3 ♙d7 13.♘e5 ♙f8 14.♘e2 ♙e8

There are many candidates, but, generally speaking, ...♙e8 might be my favorite possible move on the chessboard. It is even more enjoyable to play when over 85% of your pawns are on light squares.

15.♘f4 ♙ac8 16.♘h5?

Like a gust of wind, I did not see this coming. The first variation is simple enough: 16...♘h5 17.♖xh5 f6 -. However, the second variation required some calculation.



16...♘h5 17.♘xc6 ♘xg3! 18.♘xd8 ♙xc1

In his delightful book, *15 Games and Their Stories*, Botvinnik writes about a tournament game that occurred relatively late in his career. As the pieces were exchanged and the game drifted toward a draw, The Patriarch set one final and subtle trap. As his opponent extended his hand to make the move, one of Botvinnik's friends, who was standing behind him said out loud, "Oh, you are a clever one aren't you." His opponent then retreated his hand, made a different move and went on to draw the game. Botvinnik indicates that, because of this incident, he never spoke to his "friend" again. After spending some time on my 16th move, my opponent and I now began to play rather quickly. In fact, Carpenter had already recorded the move 19.♖xc1 on his score-

sheet (anticipating 19...♘xf1, regaining the Exchange). However, at this moment, a certain spectator who shall remain unnamed, murmured "Oh. Pretty!" Apparently this was enough to convince Carpenter to reevaluate the position, notice the Black Knight could also move to e2, and cross out 19.♖xc1 on his scoresheet. However, since this game did not end in a draw, I will be more forgiving than Mikhail Moiseyevich.

19.♙xc1 ♘xf1 20.♘xf7 ♙xh2+ 21.♘xf1 ♙xf7

Before playing 16...♘h5, I needed to make sure my Bishop was not getting trapped after 22.f4. Thankfully, Black can always play a quick ...h5-h4, if necessary.

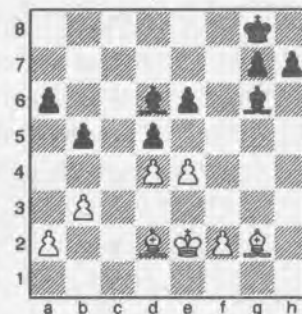
22.♖c2 ♖c7

With a passed h-pawn, I assumed the Bishop ending would be technically winning.

23.♖c5 ♙d6 24.♖xc7 ♙xc7 25.♙d2

I had been so certain White would play 25.e4, my clock ran for about five minutes before I even realized 25.♙d2 had already been played.

25...♙g6 26.♘e2 ♙d6 27.e4



Ill-timed, as now Black can practically calculate a forced win. 27.f3 and 28.e4, just sitting tight and making Black do the work, was a better try.

27...♙xe4 28.♙xe4 dxe4 29.♘e3 ♘f7 30.♘xe4 h5 31.f4 h4 32.♘f3 ♘g6 33.♘g4 h3!

The idea is to trade the h-pawn for the f-pawn, while penetrating with the King; then things will be decided quickly.

34.♘xh3 ♘f5 35.♘g2

35.♘g3 g5!

Please submit changes of address promptly to the Business Manager.

35...xf4 36.xb4 e4 37.xc3 g6
38.gh3 e3 39.g4 xd4 40.xb4
xf6 0-1

French Advance

Steve Merwin (2090)

Elston Cloy (1903)

Spokane, Collyer Memorial (3) 2006

Annotations by Elston Cloy

1.e4 c5 2.c3 e6 3.d4 d5 4.e5 dxc6 5.f3
b6 6.e2 cxd4 7.cxd4 dh6 8.dxc3
df5 9.d4 a4 a5+ 10.xd2 xb4 11.
xc3 b5 12.a3 xc3+ 13.dxc3 b4 14.
axb4

In an earlier game, Merwin had
played 14.dh5!? and I'd responded 14...
xd7 15.g4! and lost in 36 moves.

14...xb4 15.a4!?

I had taken a whole 44 seconds to get
to this point. He had used 54 minutes.
The main line continues 15.xb5 xd7
16.xc6 xc6 17.d2 xb5=.

15...xd7

Not 15...xb2 16.xc6+ xd7 17.
xa8+ e7 18.xa7, winning.

16.xb4 dx4 17.d2 h5!?N

Previous games had featured 17...
xc6 (-9=3+1), 17...e7 (-3=6+4) and
17...0-0 (-1=1+3). I like my Knight on f5
and there it shall stay.

18.dh5 xb5

18...c8 19.xc1 O-O 20.xa7
and Black does not have enough compen-
sation for the material.

19.xb5+ e7 20.a4 a5!!

At first, I believed I was in big
trouble, but I realized his King is very
vulnerable as well. Merwin commented
that he had thought 20...a5 was not go-
ing to work.

21.c1 a7

21...xc8 22.xd3 dc6 23.xf5
xf5=

22.c5 b8

I offered a draw. Merwin was push-
ing for a win and I figured he'd say no
anyway. {Time check-Merwin 1:38; Cloy
0:41}

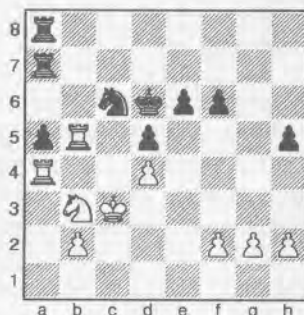
23.c3 f6 24.e2 ba8 25.exf6+
gxf6 26.d2 d6 27.d3 dc6
28.xb5 dfe7

28.dfxd4 29.xd4 dx4 30.xd4
e5+ 31.d3 a4 32.c6+±

29.xc6 dx6

Steve offered me a draw. I declined,
not in view of his time trouble, but be-
cause Black is better.

30.b5?!



Steve should play 30.f4! with re-
sources to fight for a draw, e.g., 30...g8
31.g3 h4.

30...e5 31.g3 c8 32.d2 ac7
33.dxa5??

White should play 33.dxe5 first (!!),
with a difficult Rook ending ahead.

33...dx4 34.b6+ e7 35.b7
xb7 36.dxb7 c2+ 37.e3 xb2
38.d5 e2+ 39.d3 xf2 40.a7+
d6 41.d4 xh2 42.a6+ dc6
0-1

Before this game I was half a point
ahead of my opponent and Elston Cloy
who was having a tremendous event. In
the end Elston won his last game to fin-
ish on 4.5 with a performance rating of
over 2350 for his last three games. Well
done, Elston.

English

IM John Donaldson

Eduardo Daroza

Spokane, Collyer Memorial (5) 2006

Annotations by IM John Donaldson

1.f3 c5 2.c4 b6 3.g3 b7 4.xg2
df6 5.d3 c3 g6

The Double Fianchetto variation en-
joys an excellent reputation and has been
played by all 3 Ks—Kasparov, Karpov,
and Kramnik.

6.O-O xg7 7.d4 cxd4 8.xd4

8.dxd4 xg2 9.xg2 is not consid-
ered dangerous. White needs to keep the
pieces on the board to try to exploit his

space advantage.

8...d6

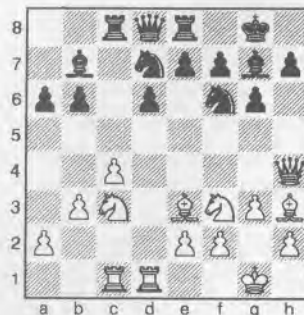
8...dc6 picks up a tempo, but it's a
bad one. The Knight belongs on d7.

9.e3 O-O 10.h4 dh7 11.ac1 a6
12.fd1 e8

Not only intending to meet xh6 with
...xh8, but also giving the e-pawn valu-
able protection. 12...c8 13.b3 c7,
dispensing with ...e8 in preparation for
...b8 and a quick ...b6-b5, is another
idea.

13.b3 c8 14.xh3

White has tried several ideas includ-
ing 14.d1, 14.xh6, and 14.g4. The
latter, planning g4-g5 to drive Black's
Knight from the center, is probably the
most dangerous. It is important that
White take active steps, as Black is com-
ing quickly with ...c7, ...a8, and
...b6-b5. The problem with 14.g4 is,
while positionally motivated, it allows
14...h6 15.xh6 dx6 16.xh6 dxg4
Though White is active, Black's structure
is very solid. The idea behind 14.xh3 is
multifold. It pins the Knight on d7 and
in some lines xd7 is a consideration.
Also, White can move the f3-Knight
without allowing ...xg2. Of course, the
main thing it does is prepare g3-g4.



14...xf3?

This move is often played in this line
but usually only after xh6 and ...xh8
have been inserted and Black wants to
stop dg5. Trading on f3 gives White
doubled pawns, but these are more than
offset by the powerful Bishop that will
reemerge on g2. White will eventually

Please check your mailing
label and PLEASE RENEW!!

play f4, opening the diagonal and driving a Black Knight from e5. Several other Black moves lead to trouble:

14... ♖c7 15. ♗h6 ♗xh6 16. ♖xh6 ♗xf3 17. exf3 ♖b7 18. ♗d4 ♗c5 19. ♗xd7 ♖xd7 20. ♗h4 ♗h5 21. ♗xh5 ♗xh5 22. ♗d5 b5 23. ♗e1 bxc4 24. bxc4 e6 25. ♖xh5 exd5 26. ♗xe8+ ♖xe8 27. ♖xd5 with a clear advantage in Fancsy-Dudas, Budapest 1994;

14... ♗b8 15. ♗d5 h5 16. ♗g5 ♗a8 17. ♗d4 b5 18. e4 bxc4 19. bxc4 e5 20. ♗e3 ♗xd5 21. cxd5 ♗f6 22. g4! 1-0 Delchev-Kutuzovic, Nova Gorica 1997;

White will meet 14... ♗c7 with 15.g4;

14...b5 looks nice and active, but after 15.cxb5 axb5 16. ♗xb5 ♗xc1 17. ♗xc1 ♗xf3 18. exf3 ♗e5 19. ♗g2 ♖a5 20. a4, White was just a pawn up in Wojtkiewicz-Gallagher, Chicago 1989;

14...h5!? restraining g3-g4 may be Black's best.

15. exf3 ♗e5

15... ♗c7 16.g4 b5 17.g5, Vandevoort-Genov, Charleroi 2003, leaves Black in a very difficult position.

16. ♗g2 ♖c7 17.g4

The idea is g4-g5 and ♗d5.

17...e6

Covers d5, but weakens the d-pawn.

18. ♗h6

18.g5 ♗fd7 19. ♗e4 is very nice but Black can defend, at least for the moment, with 19... ♗f8; similarly, 18. ♗g5 ♗fd7 19. ♗e4 ♗f8.

18... ♗xh6

If 18... ♗h8 19. ♗g5 ♗fd7 20. ♗e4, 20... ♗f8 is not possible.

19. ♖xh6 ♖e7

Black anticipates g4-g5 and ♖c3-e4-f6+.

20. ♖e3

White brings the Queen back into play before playing g4-g5.

20... ♗b8 21.g5 ♗h5

Northwest Chess

Forced, as 21... ♗fd7 22.f4 wins the e5-Knight.

22.f4 ♗d7 23. ♖d2

23. ♗f3 ♗g7 24. ♗e4 ♗f5 gives Black time to both defend d6 and avoid ♗xh5.

23... ♗c5 24. ♗f3

Now Black must choose between losing the d6-pawn and allowing ♗xh5, shattering his kingside. 24. ♖xd6? ♖xd6 25. ♗xd6 ♗xf4 allows Black to trade pawns.

24... ♗g7

24... ♗ed8 25.b4 ♗b7 26. ♗xh5 gxh5 27. ♗e4 would be crushing with ♗f6+ and ♖d3 coming.

25. ♖xd6

25.b4 ♗b7 26. ♗e4 ♗ed8 is good but doesn't win anything.

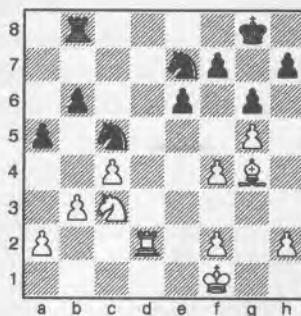
25... ♖xd6 26. ♗xd6 ♗f5 27. ♗d2 ♗ed8 28. ♗cd1 ♗xd2 29. ♗xd2 a5

To stop b3-b4, which would have been very strong.

30. ♗g4

White offers Black a choice—trade or retreat. It's usually easiest to win when there is no imbalance in the position - trading Bishop for Knight would leave each side with the same pieces.

30... ♗e7 31. ♗f1



White's plan is to centralize his King and then prepare a2-a3 and b3-b4, driving back Black's only active piece.

31... ♗f8 32. ♗e2 ♗e8 33. ♗b5 ♗g8

33... ♗d8?? 34. ♗c7+

34. ♗e3 h5

Ridding himself of the h7-weakness.

35. ♗h3 ♗d8 36. ♗xd8+ ♗xd8 37. ♗d6 f5

Now g6 is permanently weak.

38. ♗f7+ ♗c7 39. ♗g2 ♗e7 40. ♗d4 ♗d7 41. ♗c3

The final preparation for a2-a3 and b3-b4.

41... ♗c7 42.a3 ♗c8 43. ♗e5 ♗e7 44.b4 axb4+ 45.axb4 ♗a6 46. ♗d3 ♗d6 47. ♗d4 ♗b8 48.c5+ bxc5+ 49. bxc5+ ♗d7 50. ♗e5

The end, White's King is heading for g6.

50... ♗bc6+ 51. ♗xc6+ ♗xc6+ 52. ♗f6 ♗d4 53. ♗xg6 h4 54. ♗f7 1-0

Nimzo-Indian Rubinstein

Elston Cloy (1903)

Geoffrey Gale (2079)

Spokane, Collyer Memorial (5) 2006

Annotations by Elston Cloy

1.d4 ♗f6 2.c4 e6 3. ♗c3 ♗b4

Geoff and I have played many times and the games tend to be very original; so I thought it would keep it in book.

4.e3 b6 5. ♗f3!?

Very committal. I should play 5. ♗d3 first, giving the option of putting the Knight on e2

5... ♗b7 6. ♗d3 O-O 7.O-O c5 8. ♖e2 ♗xc3

More common is 8...d5, but, if you're looking for a straight-forward plan, 8... ♗xc3 is very practical.

9.bxc3 ♗c6??

A serious blunder. He should play 9... ♗e4 or even 9... ♗e4. The former trades off a pair of Bishops and tries to prepare an attack on the weak pawns

10.e4!! ♗e8 11.e5 d6!?

I felt at the time Geoff had to play 11...f6 or 11...f5; it looked ugly but playable.

12. ♖e4 g6 13. ♗g5 ♖d7

Not 13... ♖c7, as I can take on d6 with tempo and my Bishops will be very powerful indeed.

14. ♖h4

The text initiates a double pawn sac to blow open the board for my two Bishops. (14. ♖g4! h5 15. ♖g3 dxe5 16. ♗xe5 ♗xe5 17.dxe5)

Continued on page 29

Peter Petrovich Lapiken

1907-1983

By Russell (Rusty) Miller (Chelan, WA), Tom Kalaris, IM John Donaldson (Berkeley, CA), and back issues of *Northwest Chess* and its predecessor *The Washington Chess Letter*, and with editorial assistance and game analysis by Mike Murray (Port Townsend, WA). U.S. Open information from Jack O'Keefe.

Some Lapiken Games—Cont'd

Notes by Mike Murray (with FRITZ 8), now of Port Townsend in October and November of 2005.

FRITZ did a two-hour blunder check on this game and found nothing.

Sicilian Richter-Rauzer

Peter Lapiken
GM Nicolas Rossolimo

Long Beach, U.S. Open 1955

Annotations by Mike Murray

1.e4 c5 2.♘f3 ♘c6 3.d4 cxd4 4.♘xd4 ♘f6 5.♘c3 d6 6.♗g5 e6 7.♖d2 a6 8.O-O-O ♗d7 9.f4 ♗e7 10.♗e2 ♖c7 11.g4

My database search found a number of games from this position. Two of the more interesting ones:

White won in Robert Byrne – Liberzon, Biel 1976, after 11.♗f3 O-O-O 12.♘b3 ♗e8 13.♖e1 ♘d7 14.♗xe7 ♘xe7 15.♖f2 ♘b6 16.♗d3 ♗c6 17.♘d4?? e5 18.♘de2 exf4 19.♘d5?! ♗xd5 20.exd5 ♘a4 21.♖d4 ♖d7 22.♘xf4 ♘f5 23.♖a7 ♘h4 24.♘e6 fxe6 25.dxe6 ♖c7 26.♖a8+ ♖b8 27.♗xb7+ ♗c7 28.♖xa6 ♖xb7 29.♖xa4 1-0.

On the other hand, Black got a quick point in Kaplan–Lombardy, Amsterdam 1974, after 11.♘b3 O-O-O 12.♗xf6 gxf6 13.♗h5 ♗e8 14.♖e3 ♗g8 15.♖h3 ♗b8 16.f5 ♖c8 17.♗d2 ♗g5 18.♗f1 ♗d7 19.♗xf7 exf5 20.♖xh7 ♗h8 0-1.

11...h6

In most recent games, Black immediately castles on the Queen-side.

12.♗xf6 ♗xf6 13.♘b3 g5 14.e5

26

Possible is 14.♖xd6 ♖xd6 15.♗xd6 ♗xc3 16.bxc3 gxf4.

14...dxe5 15.f5 O-O-O 16.♘e4 ♗e7 17.f6 ♗f8 18.♖e3 ♘b4 19.c3 ♘d5 20.♖a7 ♖b6 21.♖xb6 ♘xb6 22.♘a5 ♗c7 23.♗d2 ♗c8 24.♗hd1 ♗xd2 25.♗xd2 ♗g8 26.b4 ♘d5 27.♘c4 ♗d7 28.♘xe5 ♗e8 29.a3 ♘b6 30.c4 ♘d7 31.♘xd7 ♗xd7 32.c5



The theme of the rest of the game is established. White tries to keep Black bottled up, and Black tries to break out. If Black succeeds, his two Bishops and Rook will be very dangerous.

32...♗c6 33.♘g3 a5 34.♗b2 axb4 35.axb4 b6 36.♗c2 bxc5 37.bxc5 h5

Black has to move his Bishop in order to activate his Rook, and this temporary pawn sac is the only way to do it.

38.♗a3

White evidently seeks to reinforce the c-pawn, but this doesn't work. Why not take the Pawn?

Less effective is 38.♘xh5. After 38...♗e4 (A finesse preventing White from walling off c6 by ♗b5) 39.♗c3 ♗c6 and the c-pawn falls as Black unravels his position.

Best seems 38.gxh5 when something like 38...♗d5 39.♗b5 ♗h8 40.♗e8 ♗h6 41.♗xf7 ♗xf6 42.♗g6 can follow.

38...hxg4

FRITZ prefers 38...h4, with the idea of 39.♘h5 ♗h6, when the Rook gets into the action and the c-pawn is indefensible after the Bishop goes back to f8.

39.♗xg4 ♗h6 40.♗h5 ♗a8+ 41.♗b4 ♗a4+ 42.♗c3 ♗f4 43.♗a2 ♗xf6 44.♗a7+ ♗b7 45.♘e4 ♗f5

Allows White to liquidate into a drawn position, but after 45...♗f1, White has 46.♘d6.

46.♗xb7+ ♗xb7 47.♘d6+ ♗c6 48.♘xf5 exf5 49.♗xf7 ♗xc5 Draw

When I first got to know Dr. Lapiken back in the early 1960s, I asked him if he'd ever played Fischer. He replied to the effect that, yes, he had lost badly to Fischer when the latter was only a child; he played the opening poorly and though he wriggled and squirmed, Fischer didn't let him off the hook. Lapiken didn't volunteer to show me the game.

I looked it up in the first edition of Frank Brady's *Profile of a Prodigy*, where Brady referred to Lapiken as "the giant-killer of master chess." The game was dropped from the revised edition.

It's from the fourth round of the 1956 U.S. Open. Fischer had just won the U.S. Junior, and his potential was widely recognized, but he as yet had no memorable successes in adult tournaments. Lapiken was a respected master, so this game must have been considered an upset. Fischer scored 8.5-3.5 in that tournament, going undefeated. His five wins, and seven draws did not presage the later Fischer approach to an open tourney!

King's Indian Attack

Bobby Fischer
Peter Lapiken

Oklahoma City, U.S. Open (4) 1956

Annotations by Mike Murray

1.♘f3 ♘f6 2.g3 d5 3.♗g2 ♗f5 4.O-O e6 5.d3 c6 6.♘bd2 ♘a6

This might make an awkward first impression, but had already occurred twice in grandmaster practice: Tsvetkov–Smyslov, Amsterdam 1954, and Reshevsky–Evans, New York 1955.

7.a3 ♖c5

Smyslov and Evans each played 7... ♗e7.

8.c4 b5?

This clinker, leaving c6 unprotected, gives White play on the diagonal and, since it allows White to exchange Black's Bishop on f5 rather than on g6, also weakens the d-pawn.

Lapiken had to be aware of these general considerations; my guess is that he was being provocative. He once told me that he no longer kept up with opening theory and tried only to know enough "book" to get out of the book.

Zaitsev-Korelov, USSR 1962, continued more thematically with 8...a5 9.b3 ♗e7 10.♗b2 h6, providing the light-squared Bishop with a nice retreat square and letting the Knight stay on c5 a while longer.

9.♖d4

A good move, but fairly obvious. In more usual positions (without the c6-pawn hanging), if White wants to trade off Black's light-squared Bishop, he has to play 9.♖h4 ♗g4 10.h3 ♗h5 11.g4 ♗g6 12.♖xg6 and this entails some loosening of White's position, with less damage to Black's pawn structure. Here, White forces the exchange on f5 and Black gets disjointed.

9...♗d7 10.♖xf5 exf5 11.♖b3

Putting pressure on the weakened queenside. FRITZ, after an hour's think, likes 11. b4 a little better. Fixing Black's Pawn weaknesses by exchanging either on b5 or d5 seems a reasonable alternative, now or on the next few turns.

11...h6

A waste of time, giving White virtually a free move. Black needed to get developed. Better was 11...bxc4 12.dxc4 ♖fe4 13.cxd5 ♗xd5 14.♖d4 ♗e7 15. ♗e3 ♗f6 16. ♖c1 ♖d8 17.f3. Also playable was 11...♖xb3 12.♗xb3 bxc4 13. dxc4 ♗e7 14. ♖d1 ♖d8, leaving White with a much smaller advantage than in the game.

12. ♗e3

Fischer combines pressure with simple development

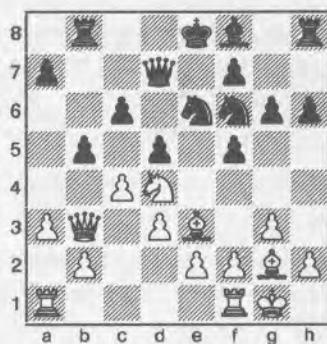
12...♖e6

With White's dark-squared Bishop developed, 12... ♖xb3 is much worse than earlier. For example, 13.♗xb3 dxc4 14.dxc4 ♗e6 15. ♖fc1 ♖e4 16.♗c2 ♗e7 17.g4.

13.♖d4 g6

Protecting the Pawn, at the cost of a position like Swiss cheese. 13...♖xd4 14. ♗xd4 ♗e7 seems more natural, although, after 15.cxb5 cxb5, White has a clear edge with his two Bishops, initiative, and better pawn structure.

14.♗b3 ♖b8?



Lapiken's recent pawn moves have loosened and worsened a probably defensible position. Now he makes an outright error and Fischer pounces. Either 14... ♖c5 15.♗c3 bxc4 16.♖c2 ♗e6 17.dxc4 or 14...bxc4 15.dxc4 ♖c5 16.♗c2 ♖ce4 17.cxd5 leave White with a nice plus, but no immediate win.

15.♖xc6!

Crunch!

15...♗xc6 16.cxd5 ♖c5

Probably hoping for 17.dxc6? ♖xb3 18. ♖ad1 ♗d6 19. ♗xa7 ♖a8 and Black has more than recovered. The alternative 16...♗d7 17.dxe6 ♗xe6 18. ♗xe6+ fxe6 19. ♗xa7 might lose a little less badly.

17.♗c3 ♗d6

On 17...♗b6 18.b4 ♗d8 19.bxc5, Black is two Pawns down and paralyzed.

18. ♗xc5 ♗xc5

After 18...♗d8, White has 19.♗e5+ ♖d7 20.d6.

19.♗xf6 1-0

Now, if 19... ♖g8 20.♗e5+ snags the other Rook. So Black resigns.

International Master Raymond A. Weinstein, born in 1941, was 1958 US Junior Champion when this game was played. He later played in five US Championships, finishing third in 1960-61, behind Fischer and Lombardy. One of the great chess tragedies, he suffered from mental illness and was institutionalized in the mid-1960s, reportedly murdering another inmate.

This, along with the earlier Hailparn game, was cited by GM Evans in *MCO-10's* section on the Albin.

Albin Counter-Gambit

Raymond Wienstein

Peter Lapiken

Rochester, U.S. Open 1958

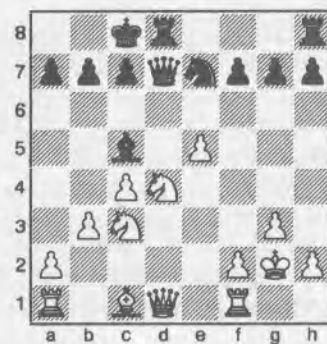
1.d4 d5 2.c4 e5 3.dxe5 d4 4.♖f3 ♖c6 5.g3 ♗e6 6.b3

This straightforward defense of the c-pawn sets Black few problems. 6.♖bd2 or 6.♗a4 are sharper.

6...♗d7 7. ♗g2 O-O-O 8.O-O ♗h3

Black has all he could reasonably hope from this opening: opposite side castling, White has holes in his King position after the Bishop exchange, and Black's h-pawn is ready to roll. All for a Pawn.

9.e3 ♗xg2 10.♖xg2 ♗c5 11.exd4 ♖xd4 12.♖c3 ♖e7 13.♖xd4



White's best chance is to simplify while retaining his pawn. FRITZ suggests 13. ♗g5 ♖he8 14. ♗xe7 ♗xe7 15.♖xd4 ♗xd4 16.♗xd4 ♖xd4 17. ♖ad1 ♗c5 18. f4.

13... ♗xd4 14. ♗b2

Safer is 14.♗c2. After the text, Black can pick up the Queen for Rook and Bishop.

14...♗c6+ 15.♖g1

15. ♖f3 ♗xf3+ 16. ♔xf3 ♕xc3 17. ♕xc3 ♖d3+ drops a Bishop; on 15. ♔h3 ♗e6+ 16. ♗g4 ♕f5, White has no answer to the threat of ... h5.

15... ♕xe5

Why does Black avoid the obvious 15... ♕xf2+ 16. ♖xf2 ♖xd1+ 17. ♖xd1?

16. ♗h5 ♕g6 17. ♕b5 ♗f6 18. ♕xe5 ♕xe5 19. ♕xa7+ ♔b8 20. ♕b5 ♖d2 21. ♕c3

After 21. ♖ad1 ♖hd8 22. ♖xd2 ♖xd2 23. ♗xh7 c6 24. ♕a3 ♕f3+ 25. ♔h1 ♕g5 26. ♗h5 ♖xf2, Black has a nice plus.

21... ♕g6 22. ♕e4

White has nothing else. This works if Black plays 22... ♕gxh5, but, unfortunately, after ...

22... ♗e7

... White's Queen has nowhere to go that defends against ... ♕f3+ followed by ... ♗xe4. So, White has to give up the Queen for Rook and Knight.

23. ♗xe5 ♗xe5 24. ♕xd2 h5

This move or next, Black should play 24... ♗e2 25. ♖ad1 (forced) ♖d8 26. ♖fe1 ♗d3 and the threat of ... ♗c2 forces White to give up both Rooks for the Queen, leaving Black with a relatively clean material advantage of Rook for Knight and pawn, e.g., 27. ♕e4 ♗xd1 28. ♖xd1 ♖xd1+ 29. ♔g2 ♖a1 30. ♕c3 f5.

25. h4 ♗f5 26. ♖fe1 g5 27. hxg5 h4 28. ♕e4 hxg3 29. ♕xg3 ♗xg5 30. ♖ad1 ♖d8 31. ♔g2 ♖xd1 32. ♖xd1 c6 33. ♖e1 ♔c7 34. ♖e4 ♗g6 35. ♖e2 f5 36. f4 ♗g4 37. ♖e5 ♗xf4 38. ♖xf5 ♗g4 39. ♖f2 ♔b6 40. ♖f5 ♗d4 41. ♖f2 ♔c5 42. ♖f5+ ♔b4 43. ♖f2 Draw

A draw was agreed at this point. Black can never break through.

“White emerges from the opening in this game with a battered Pawn structure. He does a fine job subsequently of creating complications, but tournament winner Benko unravels them with equal dexterity and wins. It's a good game, scintillating and pleasant to follow.”—Hans Knoch, in the December 1961 *Chess Review*. Most of the notes which follow are taken from that article.

Noteworthy is the respect Knoch affords Dr. Lapiken, albeit in a losing effort.

Sicilian Closed

Peter Lapiken

GM Pal Benko

San Francisco, U.S. Open 1961

Annotations by Hans Knoch

1. e4 c5 2. g3 g6 3. ♕g2 ♕g7 4. ♕e2 ♕f6 5. ♕bc3 ♕c6 6. d3 d6 7. O-O O-O 8. h3 ♕e8 9. f4 f5 10. ♕e3

Now White threatens to get a good game with 11. d4.

10... ♕d4 11. ♕f2

White is preparing for 12. ♕xd4, but his whole plan works out poorly. A better method of dislodging the Black Knight is 11. ♗d2 and 12. ♕d1 (11... ♗a5 12. ♕c1) as is usual in these positions.

11... ♕c7 12. ♕xd4 cxd4 13. ♕e2 e5 14. c3

Now White incurs weaknesses in his pawn formation. 14. ♕e1 first is better.

14... dxc3 15. bxc3

15. ♕xc3 costs a Pawn: 15... exf4 16. gxf4 fxe4 and 17... ♖xf4.

15... fxe4 16. dxe4 ♕e6

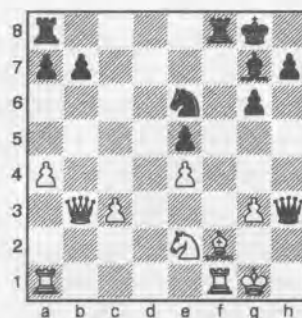
Black clearly has the edge.

17. fxe5 dxe5 18. ♗c2 ♗c8 19. a4

Dr. Lapiken strives for complications. He is a dangerous opponent in a wild position. No one can blame him for

not trying to hold this game in a steady positional way.

♕xh3 20. ♕xh3 ♗xh3 21. ♗b3+ ♕e6



In this case, walking into the pin is, by way of exception, strong. White must watch out for the possibility of ... ♕g5.

22. ♕c5

After 22. ♗xb7, Black proceeds with 22... ♖ab8, followed possibly by 23... ♖b2. The immediate 22... ♕g5 is not so good because of 23. ♕c5.

22... ♕h6! 23. ♖f5

Hopeless for White is the alternative 23. ♕xf8 ♕e3+ 24. ♖f2 ♖xf8 25. ♖af1 ♖f7 with 26... ♕g5 threatened. With the text, however, White gets complications going.

23... gxf5 24. ♗xe6+ ♔h8 25. ♗xe5+ ♕g7 26. ♗d5 ♖ad8 27. ♗xb7

White has achieved a lot. He needs now but little more to reach safety, be it by recovery of the Exchange or by the almost complete elimination of enemy pawns.

FRITZ recommends the Queen sacrifice as a better effort in a lost cause. However, after 27. ♕xf8 ♖xd5 28. ♕xg7+ ♔xg7 29. exd5 f4 30. ♖a2 (30. gxf4 loses either the Knight or the Rook) 30... fxc3 31. ♕xg3 ♔f8 32. ♖f2+ ♔e7 33. ♖f3 ♗g4 34. ♔f2 ♗xa4, White's still busted. —Murray

27... f4!

But now justice strikes. Black resumes his attack with irresistible force and wins quickly. The threats are obvious. 28. ♕xf8 ♖xf8 29. ♕xf4 ♗xg3+ 30. ♕g2 ♕e5 0-1

This article is a work in progress. I've used version 23. Games from the 60s and 70s as well as personal memories of Lapiken will appear in up coming issues.—the editor

From the Business Manager:

New! - Northwest Chess now accepts PayPal membership payments (see www.paypal.com) at info@nwchess.com. You can pay using a credit card, e-check, or funds already in your PayPal account. This should make it much more convenient to renew your subscription or start a new one! A PayPal Subscription/Membership Form is available on the Northwest Chess website at www.nwchess.com/nwcmag/MemberApp_PayPal.htm (or just use the link on the home page or magazine info page).

Washington Chess Federation (WCF)/Oregon Chess Federation (OCF)

Adult: \$25/year (12 issues). Residents of OR and WA receive a 1-year membership in the OCF or WCF. Members receive *Northwest Chess* via periodicals mail each month.

Junior: \$17/year (12 issues) or \$10/6 months (6 issues). Must be under age 20 at time of expiration. OR/WA residents only; state membership included. Juniors receive *Northwest Chess* each month.

USA Subscriber: \$25/year (12 issues). For subscribers living inside the US mail system, but outside the OR/WA area. Subscribers receive *Northwest Chess* each month.

Family: \$5/year (not a subscription — membership only). This class of membership is open only to co-resident of an Adult or Junior member. Expires at the same time.

Trial: \$13 (membership and subscription, expires in 3 months). By paying the balance of dues for an Adult membership, this option can be extended to 12 months. The balance must be paid before the trial status is expired.

For general information, Eric Holcomb (253) 850-2996, e-mail: Eric@Holcomb.com

OCF/WCF Membership Application/Renewal Form

Name _____ **If Junior, give date of birth** _____

E-Mail (if you want to subscribe to the *Northwest Chess* e-mail mailing list) _____

Phone Number (optional, will not be used for telemarketing) (____) _____

Street or P.O. Box _____

City _____ **State** _____ **Zip** _____

Country (if not USA) _____ **Amount Enclosed \$** _____

Make check or money order (USA \$ only) out to Northwest Chess and mail to:

Credit this membership to:

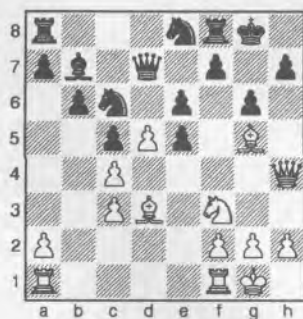
Eric Holcomb
NW Chess Business Manager
PMB 342
12932 SE Kent-Kangley Rd.
Kent WA 98030-7940

Collyer cont'd from page 25

14...dxe5

14...h5!? 15. ♖ad1±

15.d5!



15...exd5

Donaldson kept watching our game. Perhaps he thought Geoff should have played something sharper or perhaps he was just enjoying the show.

16.cxd5 ♖xd5 17. ♙c4 ♗d7 18. ♖ad1

As Carl Haessler would say, "G.A.Y. G.O." {Get all your guys out!!}

18... ♗c7 19. ♙h6!?

19. ♖fe1!?

19... ♗a5 20. ♙xf8 ♗xc4 21. ♙h6 ♗cd6!?

I thought he was going to play 21... ♙xf3, with a long ending in view.

22. ♗xe5! ♗f5 23. ♗f4 ♗xh6 24. ♖d7! ♗b8 25. ♖xf7!!



With this move, I caught up to Geoff's time and passed him. I used over 41 minutes to calculate. Though 25. ♗xh6 ♗xe5 26. ♖xb7 was "good enough," I did not want to have to grind this one out: ... ♗d6 can be very annoying.

25... ♗xe5

Other variations are not so good, but very complex:

25... ♙d5 26. ♖d7! ♙e6 27. ♖fd1! ♗f5 28.g4 and the tactics are all good for White;

25... ♗f5 26. ♖f8+ ♗g7 27.g4 ♗fd6 28. ♗d7, winning;

25... ♗d6 26. ♖d7! ♗hf5 27.g4 ♙c8 28. ♖d8+ ♗g7 29.gxf5 ♗xf5 30. ♖fd1±

26. ♖f8+ ♗g7 27. ♗xe5+ ♗xf8 28. ♗h8+ ♗g8 29. ♗xh7 ♙e4 30.f3 ♙d3

I was burning up alot of time. I had thought this would be easier to play, but his minors are super defenders.

31. ♖e1 ♗g6 32. ♗b7 ♖d8 33. ♗xa7

I felt better after I had gotten a second pawn.

33... ♗d5 34. ♗a3 ♗ef6 35. ♗c1 c4 36. ♗h6+ ♗g8 ... 1-0

And White won on move 54 or so after much effort.

With the win, I took clear second. I look forward to next year! ■

Seattle Chess Club

Address

17517 15 Ave NE
Seattle WA 98155

Infoline

206-417-5405
ckkleist@cs.com

Address for Entries

SCC Tnmt Dir
2420 S 137 St
Seattle WA 98168

Apr. 15, May 20

Format: 3-RR, 4-plyr sections by rating. **TC:** G/120. **EF:** \$6 (+\$5 fee for non-SCC). **Prizes:** Free entry for future quad. **Reg:** 9:00-9:45 a.m. **Rds:** 10:00-2:15-ASAP. **Misc:** USCF, WCF/OCF memb. req'd, OSA. NS, NC.

SCC Saturday Quads

Apr. 30, May 21

Format: 4-SS. **TC:** G/64. **EF:** \$15 (+\$5 fee for non-SCC). **Prizes:** 1st 35%, 2nd 27%, Bottom Half 1st 22%, 2nd 16% (\$10 from each EF goes to prize fund). **Reg:** 10:30-11:15 a.m. **Rds:** 11:30-1:50-4:10-6:30. **Misc:** USCF, WCF/OCF memb. req'd, OSA. NS, NC.

SCC Sunday Tornado

May 6

Format: 4-SS. Open to U1200 and unrated. **TC:** G/75. **EF:** \$10 by 5/1, \$15 at site. (20% disc. for SCC mem., 10% mem. of other dues-req'd CCs in WA, OR, & BC). **Prizes:** Memberships (SCC, WCF, USCF). **Reg:** 9-9:45a. **Rds:** 10-12:45-3:30-6. **Byes:** 1 (Rd 3 or 4-commit at reg.). **Misc:** USCF memb. req'd. NS, NC.

SCC Novice

SCC Blitz Ratings

| | | |
|-----------------|---------|------|
| Clark, Jeff | 1486/16 | |
| Hughes, Kamran | 1786 | +76 |
| Kalina, Chris | 1997 | +24 |
| Kleist, Fred | 1928 | -77 |
| Kolde, Sterling | 1548 | +63 |
| Koons, Nat | 2250 | +17 |
| Lanka, Adi | 1938 | +6 |
| Manber, Devon | 1640 | -26 |
| Mathews, Dan | 1772 | +22 |
| McGeary, Bill | 2206 | -13 |
| Seizler, Ricky | 2138 | -11 |
| Wilson, Matt | 1836 | +106 |

Plus-Score Swiss

May 13-14

A one-section, four-round Swiss with a time control of G/125 (or G/100+30 sec. per move). The prizes are based on at least eight entries.

a Christopher Grand Prix event

4.0 — **\$100**

3.5 — **\$60**

3.0 — **\$35**

2.5 — **\$18**

Entry Fees: \$25 if rec'd by 5/10, \$30 at site. **SCC members-** subtract \$4. Members of other dues-required CCs in BC, OR, and WA-subtract \$2.

Registration: Sat. 10-10:45.

Rounds: Sat. 11-3:30, Sun. 11-3:30.

Byes: 1 (Sunday rounds, commit at registration).

Miscellaneous: USCF & WCF membership req'd. No smoking. No computers.

May 7

SCC Blitz

Format: Prelim & final RRs, 12-24 rds. **TC:** G/5. **EF:** \$10 (non-SCC mem. add \$1 tnmt mem. fee). **Prizes:** 80% (EFs minus \$15). **Reg:** 11:30-12:30. **1st Rd:** 1:00 p.m. **Misc:** NS, NC.

SCC 2006 Weekend Calendar (Revised)

Novice: May 6, September 9

Blitz: Apr. 9, May 7, June 11, July 8, Aug. 19, Sept. 17, Oct. 7, Nov. 17, Dec. 10

Quads: Apr. 15, May 20, June 10, July 15, Aug. 26, Sept. 16, Oct. 14, Nov. 11, Dec. 9

Tornados: Apr. 30, May 21, June 25, July 10, Aug. 27, Sept. 10, Oct. 8, Oct. 29, Dec. 3

Chal Cup/Seattle City Ch —
January 13-15-33 players

Seattle Spring Open—
March 31-April 2-40 players

Plus-Score Swiss— May 13-14

Emerald City— June 23-25

Seafair Open— July 28-30

Seattle Fall Open— Sept. 22-24

Future Events

♣ indicates a Christopher Memorial NW Grand Prix event

♣April 29 PCC Game-in-60♣
Site: *Portland CC*, 8205 SW 24th Ave, Portland OR 97219.
Format: 4-rd Swiss. **TC:** G/60. TD may switch to 5SS and G/45 if more than 25 entries. **EF:** \$20, \$5 discount for PCC members. No advance entries. **Prize Fund:** \$\$200/b20. **Prizes:** \$60-40-30, U1800 35, U1500 35. **Reg:** 9-9:30 am. **Byes:** One ½-pt. bye avail. if requested at reg. **Misc:** USCF & OCF/WCF membership req'd, OSA. **Info:** portlandchessclub@gmail.com, 503-246-2978, www.aboutchess.org.

♣April 22-23 Daffodil Open♣
Site: *Freighthouse Square* (East end of bldg), 430 E 25th St, Tacoma WA. Two blocks uphill from the TCC and one block downhill from the Tacoma Dome. **Features:** large room; quiet (little train noise); food court in middle of building; nearby motels. **Format:** 4-rd Swiss. **TC:** 40/90 & SD/30. **EF:** \$25 adv., \$35 at site; jrs \$20 adv, \$25 at site; economy (no prize money) \$10, free for Unr; Unr may play for 1st place with regular EF. **Prize Fund:** 67% of full-paying EFs. **Prizes:** 25%, U2000 (3 equal grps) 15%-14%-13%. Economy winner: certificate and free economy entry to future event. **Reg:** 9-9:45 am. **Rds:** 10-2:30, 10-2:30. **Byes:** One ½-pt. bye avail. if declared in advance. **Misc:** WCF/OCF and USCF memb. req'd. NS. NC. W. **Entries/Info:** Gary Dorfner, 8423 E B St., Tacoma WA 98445, 253-535-2536 or 253-627-3731, Ggarychess@aol.com. Make checks payable to TCC. www.tacomachessclub.netfirms.com.

April 22-23 UW Spring Open
Site: *UW Campus*, Seattle WA. **Format:** 2-section, 4-rd Swiss. **TC:** *Open* G/90. *Booster* G/45. **EF:** *Open* \$25, \$20 ASUW. *Booster* \$13, \$10 ASUW. **Prize Fund:** ~70% of EFs. **Prizes:** USCF and WCF memberships, coupons, some cash. **Reg:** 9-9:45 am. **Rds:** *Open* Sat. 10-2, Sun. 10-2. *Booster* Sat. 10-11:45-2-4. **Misc:** *Open* USCF membership req'd. *Booster* will not be USCF rated. **Info:** www.students.washington.edu/chessuw.

♣April 29-30 Inland Empire Open♣
Site: *Gonzaga Univ., Schoenberg Ctr. Room 201*, N 900 Pearl St, Spokane WA. **Format:** 5-rd Swiss. TD reserves right to use class pairings in final rd. **TC:** G/120. **EF:** \$26 if rec'd by 4/28, \$31 at site. Under 18, \$5 less. **Prize Fund:** \$\$800 gtd. **Prizes:** \$175-125-100, X 50, A 50-25, B 50-25, C 50-25, D/E/Unr 50-25, Upset 50. Class prizes b/5 per class; TD reserves right to reconfigure classes based on entries. **Reg:** 8:30-9:30 am. **Rds:** Sat. 10-2:30-7, Sun. 9-1:30 or ASAP. **Byes:** A ½-pt. bye avail. in rds 1-4 if requested before end of preceeding rd. **Misc:** USCF rated. Coffee and snacks provided. **Info:** 509-928-3260 on weekdays or e-mail at dbgrffin@hotmail.com. **Entries:** Spokane CC, c/o David Griffin P.O. Box 631 Veradale, WA 99037.

♣May 6-7 Pierce County Open♣
Site: *Freighthouse Square* (East end of bldg), 430 E 25th St, Tacoma WA. Two blks uphill from the TCC and one blk downhill from the Tacoma Dome. **Features:** large room; quiet (little train noise); food court in bldg; nearby motels. **Format:** 4-rd Swiss. **TC:** 40/90 & SD/30. **EF:** \$25 adv., \$35 at site; jrs \$20 adv, \$25 at site; economy (no prize money) \$10, free for Unr; Unr may play for 1st place with regular EF. **Prize Fund:** 67% of full-paying EFs. **Prizes:** 25%, U2000 (3 equal grps) 15%-14%-13%. Econ. winner: certificate and free econ. entry to future event. **Reg:** 9-9:45 am. **Rds:** 10-2:30, 10-2:30. **Byes:** One ½-pt. bye avail. if declared in advance. **Misc:** WCF/OCF and USCF memb. req'd. NS. NC. W. **Entries/Info:** Gary Dorfner, 8423 E B St., Tacoma WA 98445, 253-535-2536 or 253-627-3731, Ggarychess@aol.com. Make checks payable to TCC. www.tacomachessclub.netfirms.com.

May 20-21 Southern Oregon Open III
Site: *Rogue Community College*, 3345 Redwood Hwy, J Bldg, Grants Pass, OR. **Format:** 5-rd. Swiss. **TC:** G/2. **EF:** \$30 by 5/18, \$35 at site. **Prize Fund:** \$\$750 b/30. **Prizes:** \$200, X 100, A 100, B 100, C 100, D/E 100, Unr 50. **Reg:** 8-9 am. **Rds:** Sat 9:30-2-6:30, Sun 9-2. **Info/Entries:** Wray A. Maxwell, 740 NW 4th St, Grants Pass OR 97526, 541-476-5000.



Scholastic Summer Chess Camps



Chess4Life Bellevue WA

Elliott Neff 425-283-0549 kids@chess4life.com www.chess4life.com
 July 10-14 for K-6
 Aug 7-11 for K-6

Chess Odyssey various sites OR

camps@chessodyssey.com www.chessodyssey.com

June 19-23 for ages 7-19 Beaverton OR
 26-30 for ages 7-19 Portland OR
 July 10-14 for ages 7-19 Portland OR
 24-28 for ages 7-19 Portland OR
 Aug 7-11 for ages 7-19 Portland OR
 21-25 for ages 7-19 Beaverton OR

WGM Elena Donaldson various sites WA

chess64@comcast.net www.chessplayer.com/elena_camp.htm

July 10-14 Elena's Summer Chess Camp Bellevue WA
 17-21 Elena's Summer Chess Camp Redmond WA
 Aug 7-11 Elena's Summer Chess Camp Woodinville WA
 14-18 Elena's Summer Chess Camp Seattle WA

Evergreen School Shoreline WA

Danielle 206-957-1533 dlarway@evergreenschool.org www.evergreenschool.org

June 19-23 for ages 5-8
 26-30 for ages 6-9
 July 3,5-7 Siamese (ages 6-15)
 10-14 for ages 6-9
 17-21 Intermediate (ages 8-13)
 Aug 7-11 Advanced (ages 9-15)

IM Georgi Orlov various sites WA

chess64@comcast.net www.chessplayer.com/camps.htm

June 26-30 Orlov Summer Chess Camp Seattle WA
 July 24-28 Orlov Summer Chess Camp Seattle WA
 July 31-Aug 4 Orlov Summer Chess Camp Shoreline WA

Sammamish Sammamish WA

Elliott Neff 425-283-0549 kids@chess4life.com www.chess4life.com

June 26-30 Sammamish Summer Camp I (K-12)
 July 31-Aug 4 Sammamish Summer Camp II (K-12)

Open Events

April 2006

- | | | | |
|----------|--|---|--------------|
| ♣13,20 | Taxing Quads (Rds2-3) | David Griffin 928-3260 dbgrffn@hotmail.com www.spokanechessclub.org | Spokane WA |
| 14,21,28 | Pierce County Champ (Rds 2-4) | G. Dorfner 253-535-2536 ggarychess@aol.com www.tacomachessclub.netfirms.com | Tacoma WA |
| ♣15 | SCC Saturday Quads | SCC Infoline 206-417-5405 cfkleist@cs.com www.seattlechessclub.org | Seattle WA |
| ♣22-23 | Daffodil Open | G. Dorfner 253-535-2536 ggarychess@aol.com www.tacomachessclub.netfirms.com | Tacoma WA |
| 22-23 | UW Spring Open | UW Chess Club hgpitre@comcast.net www.students.washington.edu/chessuw | Seattle WA |
| 22-23 | Idaho State University Chess Challenge | | Pocatello ID |
| ♣29 | ♠ PCC Game-in-60 | 503-246-2978 portlandchessclub@gmail.com www.aboutchess.org | Portland OR |
| ♣29-30 | Inland Empire Open | David Griffin 928-3260 dbgrffn@hotmail.com www.spokanechessclub.org ... | Spokane WA |
| ♣30 | SCC Sunday Tornado | SCC Infoline 206-417-5405 cfkleist@cs.com www.seattlechessclub.org | Seattle WA |

May 2006

- | | | | |
|--------|-------------------------------|---|-----------------|
| 2 | PCC Tuesday Quads begin | 503-246-2978 portlandchessclub@gmail.com www.aboutchess.org | Portland OR |
| 5,12 | Pierce County Champ (Rds 5-6) | G. Dorfner 253-535-2536 ggarychess@aol.com www.tacomachessclub.netfirms.com | Tacoma WA |
| 6 | SCC Novice | SCC Infoline 206-417-5405 cfkleist@cs.com www.seattlechessclub.org | Seattle WA |
| ♣6-7 | Oregon Class Championships | Elden 541-606-4122 eburns@uoregon.edu or http://gladstone.uoregon.edu/~chess/ ... | Eugene OR |
| ♣6-7 | Pierce County Open | G. Dorfner 253-535-2536 ggarychess@aol.com www.tacomachessclub.netfirms.com | Tacoma WA |
| 7 | SCC Monthly Blitz (G/5) | SCC Infoline 206-417-5405 cfkleist@cs.com www.seattlechessclub.org | Seattle WA |
| ♣13-14 | Plus Score Swiss | SCC Infoline 206-417-5405 cfkleist@cs.com www.seattlechessclub.org | Seattle WA |
| 19-22 | Paul Keres Memorial | 604-221-7148 swright2@telus.net www.bjdy.com/juniorchess/Keres_2006.html ... | Vancouver BC |
| ♣20 | ♠ PCC Game-in-60 | 503-246-2978 portlandchessclub@gmail.com www.aboutchess.org | Portland OR |
| ♣20 | SCC Saturday Quads | SCC Infoline 206-417-5405 cfkleist@cs.com www.seattlechessclub.org | Seattle WA |
| 20-21 | Southern Oregon Open III | Wray Maxwell 541-476-5000 | Grants Pass, OR |
| ♣21 | SCC Sunday Tornado | SCC Infoline 206-417-5405 cfkleist@cs.com www.seattlechessclub.org | Seattle WA |
| ♣27-29 | Washington Open | H.G. Pitre hgpitre@comcast.net www.nwchess.com | Everett WA |

June 2006

- | | | | |
|-----------|--|---|-----------------|
| 2,9 | TCC Gambit Tournament | G. Dorfner 253-535-2536 ggarychess@aol.com www.tacomachessclub.netfirms.com | Tacoma WA |
| ♣3 | TCC Game-in-60 #3 | G. Dorfner 253-535-2536 ggarychess@aol.com www.tacomachessclub.netfirms.com | Tacoma WA |
| 6 | PCC Tuesday Quads begin | 503-246-2978 portlandchessclub@gmail.com www.aboutchess.org | Portland OR |
| ♣10 | SCC Saturday Quads | SCC Infoline 206-417-5405 cfkleist@cs.com www.seattlechessclub.org | Seattle WA |
| 11 | SCC Monthly Blitz (G/5) | SCC Infoline 206-417-5405 cfkleist@cs.com www.seattlechessclub.org | Seattle WA |
| 16-18 | National Open & Polgar Girls Ch | www.lvchessfestival.com | Las Vegas NV |
| ♣18 | SCC Sunday Tornado NOTE DATE CHANGE | SCC Infoline 206-417-5405 cfkleist@cs.com www.seattlechessclub.org | Seattle WA |
| 23,30 | TCC Action Tournament | G. Dorfner 253-535-2536 ggarychess@aol.com www.tacomachessclub.netfirms.com | Tacoma WA |
| ♣23-25 | Emerald City Open NOTE DATE CHANGE | SCC Infoline 206-417-5405 cfkleist@cs.com www.seattlechessclub.org | Seattle WA |
| ♣25 | ♠ PCC Game-in-60 | 503-246-2978 portlandchessclub@gmail.com www.aboutchess.org | Portland OR |
| 30-July 4 | World Open | www.chessplayer.com | Philadelphia PA |

July 2006

- | | | | |
|------------|-------------------------|---|------------|
| 7,14,21,28 | TCC Firecracker Swiss | G. Dorfner 253-535-2536 ggarychess@aol.com www.tacomachessclub.netfirms.com | Tacoma WA |
| 8 | SCC Monthly Blitz (G/5) | SCC Infoline 206-417-5405 cfkleist@cs.com www.seattlechessclub.org | Seattle WA |
| ♣8-9 | Evergreen Open | G. Dorfner 253-535-2536 ggarychess@aol.com www.tacomachessclub.netfirms.com | Tacoma WA |
| ♣9 | SCC Sunday Tornado | SCC Infoline 206-417-5405 cfkleist@cs.com www.seattlechessclub.org | Seattle WA |

NOTE: A '♣' in front of the date indicates a Franett Memorial Northwest GP event. A ♠ in front of the tournament name indicates an OSCF qualifying tournament. Boldface type indicates a tournament announcement (in our Future Events Section) or display ad in this issue.

Scholastic Events

April 2006

- | | | | |
|----|-------------------------------------|--|--------------|
| 15 | ♠ Eugene Spring Fling (K-12) | Jerry Ramey 541-232-0328 j-adoube@efn.org www.chessways.com | Eugene OR |
| 22 | Girls Chess Tournament (K-12) | Melisa chess4girls@comcast.net | Vancouver WA |
| 22 | WA State Elem. Team & Indiv. (K-8) | Elliott Neff 425-283-0549 kids@chess4life.com www.chess4life.com | Seattle WA |
| 29 | WA Junior Open & Reserve (under 21) | David Hendricks 425-868-3881 DavidCHendricks@comcast.net | Bellevue WA |
| 29 | 2006 Oregon Girls' Championship | Jerry Ramey (541)232-0328 j-adoube@efn.org | Eugene OR |

May 2006

- | | | | |
|----|----------------------------|--|-------------|
| 27 | Washington Open Scholastic | David Hendricks 425-868-3881 DavidCHendricks@comcast.net | Everett, WA |
|----|----------------------------|--|-------------|

June 2006

- | | | | |
|----|---------------------------|--|---------------|
| 27 | Hot Summer Chess I (K-12) | Randy Kaech (360) 384-2792 kaech@verizon.net http://mysite.verizon.net/kaech | Bellingham WA |
|----|---------------------------|--|---------------|

NOTE: A '♠' in front of the tournament name indicates an OSCF qualifying tournament.

USCF NATIONAL Scholastics

For information on any national event, contact Diane Reese at events@uschess.org.

| | | |
|-------------|--|--------------|
| April 21-23 | National High School (K-12) Championship | Milwaukee WI |
| May 12-14 | National Elementary (K-6) Championship | Denver CO |
| July 21-23 | U.S Junior Open | Dallas TX |

For scholastic summer camps, see inside back cover