



NORTHWEST CHESS

Washington Chess Federation
Oregon Chess Federation

June 2006
606 \$3.95

926-0701A
MIKE MACGREGOR



Inland Empire Open at Gonzaga University

**Games from the Portland Masters
Spokane Report
UW Spring Open and more!**

Northwest Chess

June 2006, Volume 60,6 Issue 696

ISSN Publication 0146-6941

Published monthly by the Northwest Chess Board. Office of record: 2420 S 137 St, Seattle WA 98168.

POSTMASTER: Send Address Changes to: Northwest Chess, PO Box 84746, Seattle WA 98124-6046.

Periodicals Postage Paid at Seattle, WA

USPS periodicals postage permit number (0422-390)

NWC Staff

Editor: Fred Kleist

Games Editor: FM Chuck Schulien

Technical Assistance: Russell Miller

Printer: Snohomish Publishing

Business Manager: Eric Holcomb

Board Representatives

Oregon: Clark Harmon

& Dave Yoshinaga

Washington: Kent McNall &

Murlin Varner

Entire contents copyright 2006 by Northwest Chess. All rights reserved. Published opinions are those of the contributors and do not necessarily reflect the views of the editor or the Northwest Chess Board.

Advertising Rates

Display ads run \$150 for a full page, \$100 for tmnt ads; \$85 for a half-page, \$60 for tmnt ads; \$30 for a quarter page, \$20 for an eighth of a page, and \$10 for a business card-size ad. Add \$10 if the ad is not copy ready and the staff must do layout work. A 15% discount is available for two or more consecutive ads of the same size.

Event Announcement Rates

Each appearance in *Event Announcements* costs \$20. Payment is required before publication. Enclose \$2 additional if an invoice is required—this is a mandatory service charge.

Advertising & Copy Deadline

Please get your ads and submissions in by the 10th of the month for the items to appear in the next issue (e.g., no later than July 10 for the Aug. issue). The editor cannot guarantee that late submissions will appear in the desired issue.

Submit all ads and payments to:

Business Manager, Northwest Chess
PMB 342, 12932 SE Kent-Kangley Rd
Kent WA 98030-7940
Eric@Holcomb.com

Submissions

Hey folks! The editor depends on YOU to make this magazine vibrant and exciting. I need your games, photographs, thoughts, and ideas. This magazine has a great tradition and I hope people will contribute enthusiastically. You can send me your materials via U.S. mail or via e-mail:

Northwest Chess
Fred Kleist, Editor
2420 S. 137th Street
Seattle WA 98168
NWCeditor@cs.com

If you'd like your games annotated by a senior master, send them to our Games Editor:

FM Chuck Schulien

cschess@hotmail.com

Subscription Information

Northwest Chess is a benefit of membership in either the Oregon or Washington Chess Federations. Adult dues are \$25; Junior dues (under 20) are \$17 (or \$10 for six months). Please send dues, along with pertinent information to:

Business Manager

Northwest Chess

Eric Holcomb

PMB 342, 12932 SE Kent-Kangley Rd

Kent WA 98030-7940

Eric@Holcomb.com

http://www.nwchess.com

Northwest Grand Prix Administrator

Murlin Varner

13329 208 Ave NE

Woodinville WA 98072

MEVjr54@yahoo.com

425-882-0102

Oregon Chess Federation

President

Jerry Ramey

541-232-0328

j-adoube@efn.org

Vice President

Dave Yoshinaga

503-670-9855 ext 7

dave@kdtonline.com

Secretary

Megan Esler

503-292-6842

jaffagold@yahoo.com

Treasurer

Clark Harmon

charmon@solarprism.com

Director-at-Large #1

Mike Terrill

503-580-9187

pflotus@yahoo.com

Director-at-Large #2

Grisha Alpernas

grisha_alpernas@hotmail.com

National Representative

Carl Haessler

ssmith6154@aol.com

Scholastic Coordinator

Peter Prochaska

503-504-5756

pete@chessodyssey.com

Washington Chess Federation

President

Geoff Gale

206-860-9963

geoffreygale@gmail.com

Vice President

Duane Polich

425-462-1776

dpolich@verizon.net

Secretary

Gary Dorfner

253-535-2536

ggarychess@aol.com

Treasurer

Robert J. Allen

253-761-1288

allenrobertj@msn.com

Tournament Coordinator

Dan Mathews

425-778-7682

dthmathews@hotmail.com

Scholastic Coordinator

David Hendricks

425-868-3881

davidhendricks@comcast.net

NW Chess Board Member

Murlin Varner

425-882-0102

MEVjr54@yahoo.com

Greetings from the Editor

This year's Washington Open appears to have been a great success, with over 170 players in the main event. Good work, H. G.! And congratulations to the new WCF officers, President Geoff Gale and Tournament Coordinator Dan Mathews! I'm looking forward to reports and games from the event.



*Editor's
Desk*

As always, your contributions are what make this magazine, so keep writing articles and taking photographs!

Best Wishes,

Frederick K. Kleist

Thanks to R. Miller for working on the crosstables.
Thanks to C. Kleist for proofreading.

Northwest Chess Knights

Northwest Chess Knight donors will be listed in the magazine for a period of one year following receipt of donation. Please consider making a donation today to help Northwest Chess!

King: \$1000+
Queen: \$500-\$999
Rook: \$250-\$499
Bishop: \$100-\$249
Knight: \$50-\$99
Pawn: \$15-\$49

Current Patrons

King: Russell Miller

Queen: Kent McNall

Rook: Nat Koons

**Bishop: Wayne Metsker,
Michael Omori**

Knight: Steve Buck, Curt Collyer, Matt Fleury, Shankland family

Pawns: Adam Attwood, Robert D. Brewster, David Griffin, Jack Hatfield, Mark James, Gene Milener

Contributions can be sent to the Northwest Chess Business Manager, and are greatly appreciated!

Scholastic News

Portland, OR

The Mod Quads! (4/29)

We knew it was groovy, but . . . It was also elegant! When players arrived in the Pearl Room of *Powells City of Books*, they were treated to tableclothed individual quad tables, classical music quietly playing in the background, modern art to peruse, and a store manager who was as happy to see us as we were to meet her!

A big thank you to Meredith Schreiber, Powells' manager, for making us feel welcome and seeing to our every need while children played chess and parents prowled for bargains and great books. Bruce, her wonderful assistant, helped set things up and offered advice on parking and general logistics during our visit. I'd also like to personally thank Michal Drannen, Powells' events coordinator, who helped arrange the event. Local artist Dennis Petersen also donated his fantastic triple weighted chess sets, which added a great deal to the ambience of the day.

The staff and customers of Powells were delighted to see our young players in thoughtful play. They were surprised at the young age and maturity our children showed during the day. Great job players and parents! Guess what? We've been invited to come back later this year!

Congratulations to the first place winners, recipients of the \$25 Powells' Gift Cards:

Morgan Jones
Alex Piatski
Mitchell Linegar
Freddy Davis
Heather Young
Philip Weiss
Zoe MacWilliamson
Cole Wilson
Thomas Shearer
Mayur Paralkar
Isaiah Elder
Carter MacWilliamson

Sportsmanship: Cole Wilson received a very hip and cool chess dogtag for chess excellence and good sportsmanship! Matched with a player who was having a difficult day, Cole treated his opponent with the utmost respect and kindness and allowed him a few extra minutes to gather his thoughts. Cole also helped a younger player in another quad learn how to check-mate with a new technique. Cole is an inspiration to others and a joy to have at our events!

Super Stars: Isaiah Elder, Joshua Venagas & Cameron Kocher demonstrated a great attitude and went above and beyond in their chess play. Congratulations to all!

Best Handshake: Philip Weiss

A little something for everyone: All players who did not receive an award, went home with a magnetic set and a starburst.

Continued on page 17

Northwest Chess

June 2006

Scholastic News

page 3

Games from the Portland Masters

page 4

Book Note: *Children and Chess*

Neil Dale looks at Alexey Root's teachers' guide
page 8

Annotated Game: Bragg-Fryberg

page 8

Holler's Chess Column

page 9

UW Spring Open

H. G. Pitre reports

page 10

USCF Crosstables

page 11

Spokane Report

Club Championship, Taxing Quads, & Inland Empire
page 14

Peter Lapiken, Part IV

Mike Murray concludes the article with several more
games and some recollections
page 18

Tournament Ads

pages 22, 23

Northwest Chess Calendar of Upcoming Events

back cover

On the Cover: General view of the Inland Empire Open playing site at Gonzaga University's Schoenberg Center. *Photo courtesy of Russell Miller*

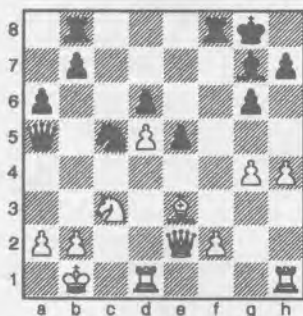
Games from the Portland Masters

Modern

LM Harmon (2198)
Radu Roua (2155)

Portland Masters (1) 2006

1.d4 ♘c6 2.♗f3 d6 3.c4 g6 4.♘c3 ♙g7
5.h3 e5 6.d5 ♘ce7 7.e4 f5 8.exf5 ♗xf5
9.♙d3 ♗h4 10.g3 ♗xf3+ 11.♗xf3 ♗f6
12.g4 O-O 13.♗e2 c6 14.♙g5 ♗a5 15.
♙d2 ♗b6 16.♙e3 ♗a5 17.O-O-O cxd5
18.cxd5 ♙d7 19.♗b1 ♗ab8 20.♙b5 a6
21.♙xd7 ♗xd7 22.h4 ♗c5



23.♗d2 ♗b4 24.♗dg1 e4 25.h5 ♗d3
26.hxg6 hxg6 27.a3 ♗c4 28.♗h2 ♗xb2
29.♗xb2 ♙xc3 30.♗c1 ♗d3+ 31.♗c2
♗b5+ 32.♗a2 ♗xd5+ 33.♗b3 ♗xb3+
34.♗xb3 ♙e5 35.♗h6 d5 36.♗xg6+
♗f7 37.♗g5 ♗e6 38.♙b6 ♙f4 0-1

Irregular

FM Oleg Zaikov (2365)
FM Nick Raptis (2300)

Portland Masters (2) 2006

1.a3 g6 2.♗f3 ♙g7 3.g3 ♗f6 4.♙g2
O-O 5.O-O d6 6.d3 ♗c6 7.b4 e5 8.♙b2
h6 9.♗bd2 ♙e6 10.♗b3 ♗d7 11.♗e1
♗ae8 12.♗fd2 ♗h7 13.c4 ♗g5 14.b5
♗d8 15.♗a5 ♗h3+ 16.♗f1 c6 17.bxc6
bxc6 18.♗a4 d5 19.♗bd3 ♗g5 20.♗c5
♗d6 21.♗xe6 fxe6 22.♗g1 ♗e7 23.♗f1
♗ef7 24.♗ac1 h5 25.cxd5 cxd5 26.♙c3
♗d7 27.♗xd7 ♗xd7 28.♙b4 ♗e8 29.h4
♗g7 30.♙h3 ♙f8 31.♗c8 ♙xb4 32.
axb4 ♗d6 33.♗a8 ♗f7 34.♗c1 ♗f5
35.♗b3 ♗d4 36.♗xd4 exd4 37.♗a1
♗ee7 38.b5 ♗f6 39.♗a6 ♗f7 40.♗a4
♗d6 41.♗xd4 ♗xb5 42.♗a4 ♗b7 43.
♗c8 0-1

Ruy Lopez Chigorin

NM Carl Haessler (2209)
NM Morgan Griffiths (2263)

Portland Masters (2) 2006

1.e4 e5 2.♗f3 ♗c6 3.♙b5 a6 4.♙a4 ♗f6
5.O-O ♙e7 6.♗e1 b5 7.♙b3 O-O 8.h3
d6 9.c3 ♗a5 10.♙c2 c5 11.d4 ♗c7
12.♗bd2 Draw

Petroff

NM Landon Brownell (2265)
LM Clark Harmon (2198)

Portland Masters (2) 2006

1.e4 e5 2.♗f3 ♗f6 3.d4 ♗xe4 4.♗xe5
d5 5.♙d3 ♙d6 6.O-O ♗d7 7.♗e2 ♗e7
8.♗xd7 ♙xd7 9.c4 c6 10.c5 ♙c7 11.
♗e1 O-O-O 12.♙xe4 dxe4 13.♗c3 f5
14.d5 ♗xc5 15.♙g5 ♗de8 16.♗ed1 h6
17.♙e3 ♗d6 18.g3 g5 19.dxc6 ♗xc6
20.♗ac1 ♗e6 21.♗b5 ♙xb5 22.♗xb5
a6 23.♗c5 ♗h7 24.♗a7 1-0

Queen's Gambit Accepted

NM Morgan Griffiths (2263)
Matthew Fleury (2144)

Portland Masters (3) 2006

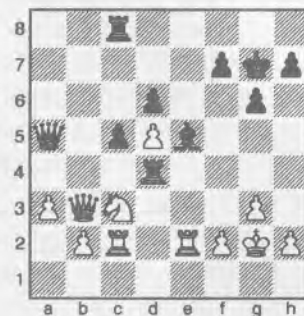
1.d4 d5 2.c4 dxc4 3.e4 e5 4.♗f3 exd4
5.♙xc4 ♗c6 6.O-O ♙e6 7.♙xe6 fxe6
8.♗g5 ♗d7 9.♗h5+ g6 10.♗h3 O-O-O
11.♗xe6 h6 12.♗xd7+ ♗xd7 13.♗e6
♙e7 14.♗d2 ♗f6 15.a3 ♗e8 16.♗g7
♗g8 17.♗e6 ♗e8 18.♗g7 ♗g8 19.♗e6
Draw

Benko Gambit

LM Clark Harmon (2198)
FM Oleg Zaikov (2365)

Portland Masters (3) 2006

1.d4 ♗f6 2.c4 c5 3.d5 b5 4.cxb5 a6
5.bxa6 g6 6.♗c3 ♙xa6 7.e4 ♙xf1
8.♗xf1 ♙g7 9.♗f3 d6 10.g3 O-O 11.♗g2
♗bd7 12.♗e1 ♗a5 13.e5 ♗g4 14.exd6
exd6 15.♙f4 ♗fb8 16.♗e2 ♗ge5
17.♗xe5 ♗xe5 18.♙xe5 ♙xe5 19.♗c1
♗b4 20.a3 ♗d4 21.♗b3 ♗g7 22.♗cc2
♗c8



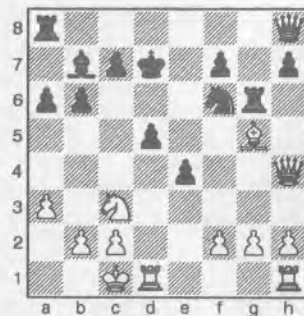
23.♗b7 ♗c7 24.♗b8 ♗d3 25.♗b5 ♗d7
26.f4 ♗d8 27.♗b7 ♙f6 28.♗c7 ♗g8
29.♗c6 ♙d4 30.♗b5 ♗a4 31.♗xd6
♗b3 32.♗c4 ♗d1 33.d6 ♗g7 34.♗e4
h5 35.♗e7 ♗g1+ 36.♗h3 ♗f3 37.♗e5
♙xe5 38.♗xe5+ ♗h7 39.♗g5 ♗xd6
40.f5 gxh5 41.♗f2 ♗g4+ 42.♗xg4
hxg4+ 43.♗h4 ♗g6 44.♗xc5 ♗f6 45.
♗c8 ♗d1 46.♗g8+ ♗h6 47.♗xg4 ♗d5
48.♗gf4 ♗b6 49.b4 ♗g6 50.g4 ♗d3
51.gxf5+ ♗f6 52.♗4f3 ♗d4+ 53.♗f4
♗d3 54.♗2f3 ♗d2 55.♗g3 ♗b8 56.h3
♗g8+ 57.♗g4 ♗a8 mate

French Winawer

Radu Roua (2155)
NM Landon Brownell (2265)

Portland Masters (3) 2006

1.e4 e6 2.d4 d5 3.♗c3 ♙b4 4.♗ge2
dxe4 5.a3 ♙xc3+ 6.♗xc3 b6 7.♗g4 ♗f6
8.♗xg7 ♗g8 9.♗h6 ♙b7 10.♙g5 ♗g6
11.♗h4 ♗bd7 12.♙b5 a6 13.♙xd7+
♗xd7 14.d5 exd5 15.O-O-O ♗h8



16.♗h3+ ♗e8 17.♗f5 c6 18.h4 ♗h5 19.
♙e3 ♙c8 20.♗xh5 ♙g4 21.♙d4 f6
22.♙xf6 ♗xf6 23.♗xh7 ♙xd1 24.♗xd1

♖g7 25. ♖h5 ♖h6+ 26. ♖xh6 ♖xh6
27. ♖h1 ♗e7 28. ♗d2 ♗d6 29. g3 ♖f8
30. ♗e1 c5 31. ♗e2 ♗e5 32. h5 d4 33.
♖h4 c4 34. ♗f4 ♖g8 35. ♗g6+ ♗d6
36. ♗d2 ♗c5 37. ♖xe4 ♖xh5 38. ♗f4
♖h2 39. ♖e2 b5 40. ♗e6+ ♗d5 41. ♗f4+
♗c6 42. ♖e6+ ♗d7 43. ♗e1 ♖h1+ 44.
♗d2 ♖f1 45. ♗e2 ♖c1 46. ♗d2 ♖f1 47.
♖e2 ♖b1 48. ♗e6 d3 49. ♗c5+ ♗c6 50.
♗xd3 cxd3 51. ♖e6+ ♗d5 52. ♖xa6
♖xb2 53. ♗xd3 ♖c8 54. g4 ♖bxc2 0-1

Owen's Defense

FM Nick Raptis (2300)

NM Carl Haessler (2209)

Portland Masters (3) 2006

1. d4 b6 2. ♗f3 ♖b7 3. g3 ♖xf3 4. exf3 d5
5. ♖g2 e6 6. O-O g6 7. c4 c6 8. ♗c3 ♖g7
9. cxd5 cxd5 10. ♖a4+ ♗f8 11. ♖f4 ♖d7



12. ♖xb8 1-0

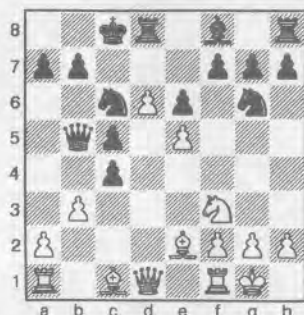
French Advance

Matthew Fleury (2144)

NM Landon Brownell (2265)

Portland Masters (4) 2006

1. e4 e6 2. d4 d5 3. e5 c5 4. c3 ♖b6 5. ♗f3
♖d7 6. ♖e2 ♖b5 7. c4 dxc4 8. O-O ♗c6
9. ♗c3 O-O-O 10. d5 ♗ge7 11. d6 ♗g6
12. ♗xb5 ♖xb5 13. b3



13... ♗gxe5 14. ♗xe5 ♗xe5 15. bxc4
♖a6 16. ♖b3 ♖xd6 17. ♖b1 ♗c6 18. ♖f3
♖d7 19. ♖e3 f5 20. g3 ♖g8 21. ♖fd1 g5
22. ♖b5 ♖xb5 23. ♖xb5 ♗c7 24. ♖xc5
♖xc5 25. ♖xd7+ ♗xd7 26. ♖xc5 ♗d6
27. ♖b5 ♗d4 28. ♖xb7 ♗xf3+ 29. ♗f1

Northwest Chess

♖c8 30. ♖xa7 ♖xc4 31. h3 h5 32. ♗e2
♗g1+ 33. ♗d3 ♖c7 34. ♖a8 ♗xh3 0-1

Vienna Game

Carl Haessler (2209)

Clark Harmon (2198)

Portland Masters (4) 2006

1. e4 e5 2. ♗c3 ♗f6 3. f4 d5 4. ♖xe5 ♗xe4
5. ♗f3 ♖g4 6. d3 ♗xc3 7. bxc3 c5 8. ♖e2
♗c6 9. ♖f4 ♖e7 10. O-O ♖e6 11. ♖e1
h6 12. ♖b1 ♖d7 13. d4 c4 14. ♖g3
O-O-O 15. a4 g5 16. ♖e3 ♖dg8 17. ♖b5
a6 18. ♖b2 ♗a5 19. ♖a1 g4 20. ♗d2 h5
21. ♖e1 h4 22. ♖f1 ♖d8 23. ♖b1 ♖f8
24. ♖f4 ♖h5 25. ♖e1 ♖c7 26. ♖e3 ♖g8
27. ♖bb1 ♖d8 28. ♖a2 ♖f5 29. ♖d1
♖c7 30. g3 ♖d8 31. ♖g2 hxg3 32. hxg3
♖h5 33. ♗f1 ♖gh8 34. ♖b1 ♗c6 35.
♖ab2 ♗a5 36. ♖a2 ♖e8 37. ♖c1 ♖f8
38. ♖b2 b6 39. ♖b4 ♗c6 40. ♖b2 ♗a5
41. ♗e3 ♖h2 42. ♖b4 ♖e8 43. ♖ab2
♗c6 44. ♖a3 ♖c7 45. ♖xb6 ♖xb6
46. ♖xb6 ♗c7 47. ♖c5 ♖xg2+ 48. ♗xg2
a5 49. ♖a6 1-0

Queen's Gambit Accepted

NM Morgan Griffiths (2263)

FM Nick Raptis (2300)

Portland Masters (4) 2006

1. d4 d5 2. c4 dxc4 3. ♗f3 c6 4. e3 ♗f6
5. ♖xc4 e6 6. O-O ♗bd7 7. ♗c3 b5 8. ♖d3
a6 9. e4 b4 10. e5 bxc3 11. exf6 ♗xf6
12. bxc3 ♖d6 13. ♖g5 ♖c7 14. ♖e1 ♖b7
15. c4 O-O 16. ♖c2 h6 17. ♖xf6 gxf6 18.
c5 ♖e7 19. ♖d2 ♗g7 20. ♖ab1 ♖fd8 21.
♖b6 ♖c8 22. ♖eb1 ♖a7 23. ♖e4 ♖d7
24. ♖b2 f5 25. ♖d3 ♖f6 26. ♖xa6 ♖e8
27. g3 ♖d5 28. ♖b4 ♖d8 29. ♖c4 ♖da8
30. a4 ♖d7 31. a5 ♖c8 32. ♖xc8 ♖xc8
33. ♖a4 ♖xa5 34. ♖xc6 ♖d8 35. ♖b7
♗g6 36. ♖d7 ♖a1 37. ♖xa1 ♖xa1+ 38.
♗g2 ♖b8 39. ♖b7 ♖f8 40. c6 ♖a3 41.
♖b8 ♗g7 42. ♗e5 ♖xe5 43. ♖xe5+ ♗g6
44. ♖d8 ♖d3 45. ♖g8+ ♗h5 46. g4+
♗h4 47. ♖g3+ ♖xg3+ 48. hxg3 mate

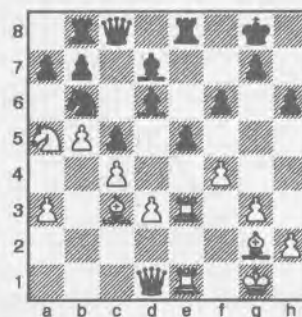
Reti

Oleg Zaikov (2365)

Radu Roua (2155)

Portland Masters (4) 2006

1. a3 d5 2. ♗f3 c5 3. c4 d4 4. b4 ♖c7 5. g3
e5 6. d3 ♗f6 7. ♖g2 ♖e7 8. O-O O-O
9. ♗bd2 h6 10. ♗b3 ♗bd7 11. ♖d2 ♖d6
12. ♗h4 ♖e8 13. ♗f5 ♖f8 14. e4 dxe3
15. ♗xe3 ♖b8 16. ♗a5 ♗b6 17. ♖c3
♖d7 18. b5 ♖c8 19. ♖e1 ♖d6 20. ♖a2
♗g4 21. ♖ae2 ♗xe3 22. ♖xe3 f6 23. f4



23... ♖g4 24. ♖c2 ♗d7 25. ♖d5+ ♗h8
26. ♖g2 ♖e7 27. ♖xb7 ♖c7 28. ♖d5 ♖f8
29. ♗c6 ♖ee8 30. ♖f3 ♖xf3 31. ♖xf3
♖a8 32. f5 ♗b6 33. ♖a5 ♖d7 34. ♖e4
♖c7 35. ♖h4 ♗a4 36. ♖d2 ♗h7 37.
♖ee4 ♖h8 38. ♖eg4 ♗b2 39. ♖g6 ♖xd3
40. ♖xh6 ♖xf3 41. ♖xg7 mate

Benko Gambit

Clark Harmon (2198)

Morgan Griffiths (2263)

Portland Masters (5) 2006

1. d4 ♗f6 2. c4 c5 3. d5 b5 4. cxb5 a6 5.
bxax6 6. ♗c3 ♖xa6 7. e4 ♖xf1 8. ♗xf1
d6 9. ♗f3 ♖g7 10. g3 O-O 11. ♗g2 ♗bd7
12. ♖e1 ♖a5 13. e5 ♗g4 14. exd6 exd6
15. ♖f4 ♖fb8 16. ♖e2 ♗ge5 17. ♖xe5
♗xe5 18. ♗xe5 ♖xe5 19. ♖c1 ♖b4 20.
a3 ♖d4 21. ♖b3 ♖a6 22. ♖b5 ♖c4 23.
♖xa6 ♖xa6 24. ♖ec2 ♖xc3 25. ♖xc3
♖d4 26. b4 cxb4 27. axb4 ♖xd5 28. ♖b3
♖b6 29. ♖c7 ♖f5 30. h3 h5 31. ♖c4 ♗f8
32. g4 ♖e5 33. f4 ♖d5 34. ♗f3 hxg4+
35. hxg4 ♗e7 36. ♖c7+ ♗f6 37. ♖e3 g5

Serving the chess community since 1972



THE CHESS HOUSE

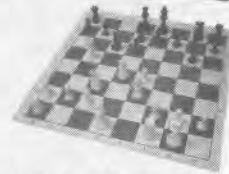
A sincere thank you for the phone call and the excellent customer service. I look forward to receiving my clock and set!
- S.N., SD, USA

Tournament Quality Board+Pieces+Bag Store all your chess accessories in one convenient carryall

\$25 Special

Stock Code: C212

also mention discount "NWC"



1000's of chess products - free catalog low price guarantee - service oriented store

www.ChessHouse.com

e4@chesshouse.com

800-348-4749

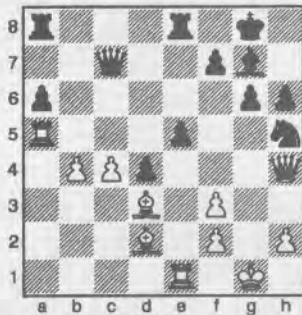
38. ♖e4 ♖d3+ 39. ♗e2 ♖b3 40. ♖ee7
gxf4 41. ♖xf7+ ♗g5 42. ♖c4 ♖6xb4 43.
♖f5+ ♗g6 44. ♖cxf4 Draw

Owen's Defense

Radu Roua (2155)
NM Carl Haessler (2209)

Portland Masters (5) 2006

1.e4 b6 2.d4 ♖b7 3.♗d3 e6 4.♗f3 d6
5.O-O ♗d7 6.♗g5 h6 7.♖h5 g6 8.♖h3
♖f6 9.♗f3 ♗g7 10.a4 a6 11.c4 ♖d8 12.
a5 c5 13.♖g3 ♖c7 14.axb6 ♖xb6 15.e5
cxd4 16.exd6 ♗g6 17.♗bd2 O-O 18.b4
♗h5 19.♖h4 ♖xd6 20.♗e4 ♖c7 21.
♗g3 ♗df6 22.♖a5 ♗xf3 23.gxf3 e5 24.
♖e1 ♖fe8 25.♗xh5 ♗xh5 26.♗d2



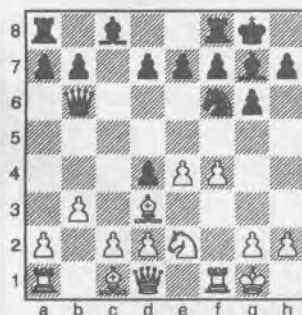
26...♗f4 27.♗xf4 exf4 28.♖e1 ♖ab8
29.b5 axb5 30.cxb5 ♖c3 31.♖5a3 ♖d2
32.♖h3 ♗f8 33.♖b3 ♖bc8 34.♗e4 ♖c3
35.♖xc3 dxc3 36.♖f1 ♗c5 37.♖d1 ♖b2
38.♖b1 ♖a2 39.♖a1 ♖e6 40.♖d1 ♖f6
41.♖c4 ♖e5 42.♖d7 ♖e6 43.♖d8+
♗f8 44.♖b4 ♖e7 45.♖xe7 ♖xe7 46.b6
c2 47.♖c8 f5 48.b7 fxe4 49.b8=♖ exf3
50.♖xf8+ ♗g7 51.♖g8+ ♗f6 52.♖d6+
♖e6 53.♖xg6+ 1-0

Sicilian Grand Prix Attack

NM Landon Brownell (2265)
FM Oleg Zaikov (2365)

Portland Masters (5) 2006

1.e4 c5 2.♗c3 g6 3.f4 ♗g7 4.♗f3 ♗c6
5.♗b5 ♗d4 6.♗xd4 cxd4 7.♗e2 ♖b6
8.♗d3 ♗f6 9.O-O O-O 10.b3



10...♗xe4 11.♗h1 ♗c5 12.♗g3 ♗xd3

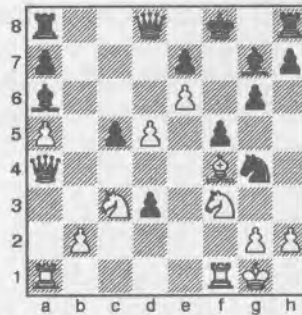
13.cxd3 d6 14.♖e2 ♗e6 15.♗b2 ♖a5
16.♖f2 ♖d5 17.♖ae1 ♖ac8 18.f5 ♖c2
19.♗a1 ♗xf5 20.♗xf5 ♖xf5 21.♗xd4
♖xf2 22.♗xf2 e6 23.♗xa7 ♖xd2 24.a4
♖xd3 25.♖b1 ♖c8 26.b4 ♖a8 27.♗b6
♖xa4 28.g3 ♖da3 29.♖bc1 ♖a1 30.♗g2
♖xc1 31.♖xc1 ♖xb4 32.♗c7 ♗e5 0-1

Benko Gambit

Matthew Fleury (2144)
FM Oleg Zaikov (2365)

Portland Masters (6) 2006

1.d4 ♗f6 2.c4 c5 3.d5 b5 4.a4 bxc4
5.♗c3 d6 6.e4 ♗a6 7.f4 ♗bd7 8.♗f3 g6
9.a5 ♗g7 10.e5 dxe5 11.fxe5 ♗g4 12.e6
♗de5 13.♖a4+ ♗f8 14.♗e2 f5 15.O-O
♗d3 16.♗xd3 cxd3 17.♗f4



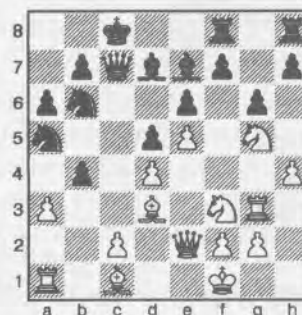
17...♗xc3 18.bxc3 ♖xd5 19.h3 h5
20.hxg4 hxg4 21.♗e5 ♗b7 22.♖a2 ♗g7
23.♖xd5 ♗xd5 24.♗xd3 ♖hc8
25.♗e5+ ♗h6 26.♗f4 ♗e4 27.♖fd1 g5
28.♗d5 ♖c6 29.♗xe7 ♖xe6 30.♖d6
♖xd6 31.♗xd6 ♖d8 32.♖d1 ♖d7 33.
♗f2 ♖b7 34.♖d2 ♖b5 35.♗e5 c4 36.
♗f6 f4 37.♖d8 g3+ 38.♗e1 ♗h5 0-1

French

NM Carl Haessler (2209)
NM Landon Brownell (2265)

Portland Masters (6) 2006

1.e4 e6 2.♗f3 d5 3.♗c3 ♗f6 4.e5 ♗fd7
5.♗e2 c5 6.♗f4 a6 7.b4 cxb4 8.d4 ♗c6
9.♗d3 ♗b6 10.h4 ♗e7 11.♖h3 ♗d7
12.♖g3 g6 13.♗h3 ♖c7 14.♗f1 O-O
O 15.♗hg5 ♖df8 16.♖e2 ♗a5 17.a3



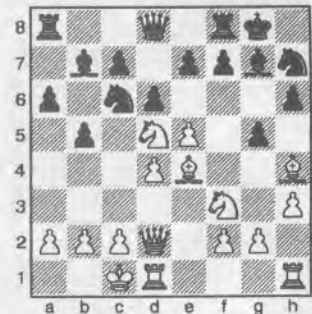
17...h6 18.♗h3 ♗bc4 19.♗d2 ♗b5
20.h5 g5 21.a4 ♗xd2+ 22.♗xd2 ♗xd3
23.♖xd3 ♗b8 24.c3 b3 25.f4 ♖c4
26.fxg5 b2 27.♖b1 ♖a2 28.♖d1 ♗c4
29.♖c2 hxg5 30.g4 ♖hg8 31.♗e2 f5
32.exf6 ♗xf6 33.♗f2 e5 34.♗d1 ♖f7
35.♗e3 exd4 36.cxd4 ♖e8 37.♗d1
♗xd4 38.♗f5 ♗a3 39.♖xd4 ♗xc2
40.♗xc2 ♖c8+ 0-1

Pirc

NM Morgan Griffiths (2263)
Radu Roua (2155)

Portland Masters (6) 2006

1.d4 ♗c6 2.♗f3 d6 3.e4 ♗f6 4.♗c3 g6
5.♗e3 a6 6.♖d2 ♗g4 7.♗g5 h6 8.♗h4
♗g7 9.h3 ♗f6 10.O-O O-O 11.♗d3 O-O
12.e5 ♗h7 13.♗e4 ♗b7 14.♗d5 g5



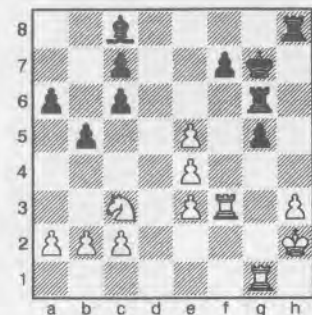
15.♗xh7+ ♗xh7 16.♗xg5 hxg5 17.
♗xg5+ ♗g8 18.♖d3 f5 19.exf6 ♖xf6 20.
♖h7+ ♗f8 21.♗xf6 exf6 22.♗e6+ 1-0

Portuguese Attack

FM Nick Raptis (2300)
LM Clark Harmon (2198)

Portland Masters (6) 2006

1.e4 e5 2.♗b5 ♗f6 3.♗c3 ♗c6 4.♗ge2
♗c5 5.O-O O-O 6.d3 a6 7.♗xc6 dxc6
8.♗e3 ♗xe3 9.fxe3 ♖e7 10.♗g3 ♗g4
11.♖d2 ♖ad8 12.h3 ♗c8 13.♖f3 ♖d6
14.♖af1 ♗e8 15.♖f2 g6 16.♗ge2 ♗g7
17.♗h2 b5 18.g4 h5 19.gxh5 ♗xh5 20.
♗g3 ♗xg3 21.♖xg3 g5 22.♖g1 ♖g6
23.d4 ♗g7 24.♖xe5+ ♖xe5+ 25.dxe5
♖h8



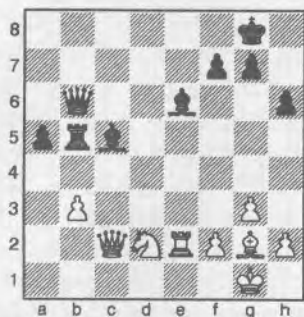
26. ♖e2 c5 27. ♜f5 ♙e6 28. ♜g3 g4
 29. ♖f4 ♙xf5 30. exf5 ♜g5 31. e4 ♜d8
 32. e6 ♜d2+ 33. ♖g1 f6 34. h4 ♜d4 35.
 hxg5 fxg5 36. ♖h5+ ♖h6 37. ♖f6 1-0

QGD Tarrasch

LM Clark Harmon (2198)
 Matthew Fleury (2144)

Portland Masters (7) 2006

1. d4 d5 2. c4 e6 3. ♖f3 c5 4. cxd5 exd5 5. g3
 ♖c6 6. ♙g2 ♖f6 7. O-O ♙e7 8. ♖c3 O-O
 9. ♙g5 cxd4 10. ♖xd4 h6 11. ♙f4 ♖b6
 12. ♖xc6 bxc6 13. ♖a4 ♖a5 14. ♜c1 ♙d7
 15. b3 ♜ac8 16. ♖c2 c5 17. ♖c3 ♙e6
 18. ♙d2 ♖a6 19. ♜fe1 ♜fd8 20. e4 dxe4
 21. ♖xe4 c4 22. ♙c3 cxb3 23. axb3 ♖d5
 24. ♖b2 ♖xc3 25. ♜xc3 ♜xc3 26. ♖xc3
 ♖b6 27. ♖e5 ♜d5 28. ♖b2 ♙b5 29. ♖d2
 ♙c5 30. ♜e2 a5 31. ♖c2



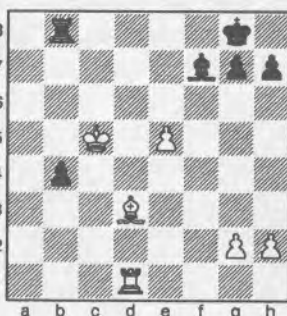
31... ♙f8 32. ♖c4 ♖d4 33. ♜d2 ♖a1+
 34. ♜d1 ♖f6 35. ♙e4 ♜c5 36. ♖d3 a4
 37. ♖d2 axb3 38. ♙h7+ ♖h8 39. ♖e4
 ♜d5 40. ♖xd5 ♙xd5 41. ♖xf6 ♙e6
 42. ♖d7 1-0

French Steinitz

Radu Roua (2155)
 FM Nick Raptis (2300)

Portland Masters (7) 2006

1. e4 e6 2. d4 d5 3. ♖c3 ♖f6 4. e5 ♖fd7
 5. ♖ce2 c5 6. c3 ♖c6 7. f4 ♖b6 8. ♖f3
 ♙e7 9. a3 a5 10. ♜b1 O-O 11. ♙e3 f6
 12. dxc5 ♙xc5 13. ♙xc5 ♖xc5 14. ♖ed4
 ♙d7 15. ♙d3 ♙e8 16. ♙c2 ♖e4 17.
 O-O ♙h5 18. ♖d3 fxe5 19. ♖xe5 ♖xe5
 20. fxe5 ♜xf1+ 21. ♜xf1 ♖xb2 22. ♖xe6
 ♖xc3 23. ♖xc3 ♖xc3 24. ♖f4 ♖e2+
 25. ♖xe2 ♙xe2 26. ♜b1 b5 27. ♖f2 ♙c4
 28. ♖e3 ♜f8 29. ♙d3 d4+ 30. ♖e4 ♙f7
 31. ♜d1 b4 32. axb4 axb4 33. ♖xd4 ♜d8+
 34. ♖c5 ♜b8



35. ♜d2 b3 36. ♜b2 ♖f8 37. ♖d4 ♖e7
 38. ♖c3 ♜c8+ 39. ♖b4 h6 40. ♜e2 ♙d5
 41. ♙f5 ♜a8 42. ♜d2 ♜b8+ 43. ♖c3
 ♙e6 44. ♙xe6 ♖xe6 45. ♜e2 ♜b5 46.
 ♖b2 ♜xe5 47. ♜f2 ♜b5 48. ♜f3 ♖e5
 49. ♜f7 g5 50. g4 ♜b4 51. h3 ♜f4 52.
 ♜h7 ♜f2+ 53. ♖b1 ♜f6 54. ♖b2 ♖f4

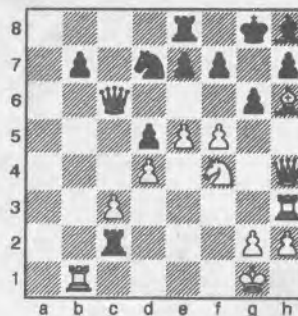
55. ♜b7 ♖g3 56. ♜xb3+ ♖g2 57. ♖c2
 ♜f3 58. ♜b6 ♜xh3 59. ♖d2 ♖g3 60. ♖e3
 ♖xg4+ 61. ♖f2 ♖h5 62. ♖g2 ♜a3 63.
 ♖h2 g4 64. ♜b2 ♖h4 65. ♜c2 h5 66.
 ♜b2 ♜a4 67. ♜c2 g3+ 68. ♖g2 ♖g4 69.
 ♜b2 h4 70. ♜b1 h3+ 71. ♖g1 h2+ 72.
 ♖h1 ♖h3 0-1

Sicilian Grand Prix Attack

NM Landon Brownell (2265)
 NM Morgan Griffiths (2263)

Portland Masters (7) 2006

1. e4 d6 2. ♖c3 g6 3. f4 ♙g7 4. ♖f3 c5
 5. ♙b5+ ♙d7 6. ♙xd7+ ♖xd7 7. O-O ♖c6
 8. d3 ♖f6 9. ♖e1 ♖d4 10. ♖xd4 cxd4
 11. ♖e2 ♖c6 12. c3 dxc3 13. bxc3 O-O
 14. ♜f3 ♖a4 15. f5 ♜ac8 16. ♙e3 d5
 17. e5 ♖d7 18. d4 ♖c2 19. ♜c1 ♖xa2
 20. ♜a1 ♖c4 21. ♜xa7 ♖b5 22. ♜a1
 ♜a8 23. ♜b1 ♖c6 24. ♖h4 ♜fe8 25.
 ♙h6 ♙h8 26. ♜h3 ♜a2 27. ♖f4 ♜c2



28. ♙g7 ♙xg7 29. ♖xh7+ ♖f8 30. ♖e6+
 fxe6 31. ♖xg6 ♜xc3 32. ♜f1 ♜c1

Portland Masters	USCF FIDE	NR	LB	OZ	MG	RR	CH	CH	MF	Total	USCF Post	S-B
NM Nick Raptis	2335 2305	♙	1/2	1	0	1	1	1	1	5.5	2348	27.75
NM Landon Brownell	2237 0000	1/2	♙	0	1	1	1	1	1	5.5	2265	23.00
FM Oleg Zaikov	2364 2391	0	1	♙	1/2	1	1	1/2	1	5.0	2366	22.50
Morgan Griffiths	2147 2263	1	0	1/2	♙	1	1/2	1/2	1/2	4.0	2167	20.25
Radu Roua	2198 2210	0	0	0	0	♙	1	1	1	3.0	2195	21.50
NM Carl Haessler	2233 2208	0	0	0	1/2	0	♙	1	1	2.5	2219	16.00
LM Clark Harmon	2242 2192	0	0	1/2	1/2	0	0	♙	1	2.0	2220	15.00
Matthew Fleury	2125 2149	0	0	0	1/2	0	0	0	♙	0.5	2099	14.50

33. ♖h3 ♗xf1+ 34. ♗xf1 exf5 35. e6 ♖e5
36. dxe5 ♗c5+ 37. ♗h1 1-0

Owen's Defense

Oleg Zaikov (2365)
Carl Haessler (2209)

Portland Masters (7) 2006

1. e4 b6 2. d4 ♗b7 3. ♖c3 e6 4. ♖f3 ♖e7
5. d5 ♖g6 6. h4 ♗e7 7. h5 ♖f8 8. ♗d4
9. ♗g8 9. h6 gxf6 10. ♗xh6 ♖g6 11. O-O-
O c5 12. ♗e3 e5 13. d6 ♗f6 14. ♗c4 ♖h8
15. ♗h5 ♖c6 16. ♖d5 ♗c8 17. ♗f5 ♗g6
18. ♖xf6+ ♗xf6 19. ♗g5 ♗xf5 20. ♗xd8
21. ♗xf3 22. ♗f6 1-0

The following two games were played outside of the tournament.

Queen's Indian

LM Clark Harmon (2198)
Paul Enright (2155)

Portland Masters (x) 2006

1. d4 ♖f6 2. c4 e6 3. ♖f3 b6 4. g3 ♗a6
5. b3 ♗b4+ 6. ♗d2 ♗e7 7. ♗g2 c6 8. ♗c2
9. O-O-O 10. ♗d1 ♖bd7 11. a4 ♗c8
12. a5 ♗b7 13. b4 c5 14. dxc5 bxc5 15. b5
16. ♗f4 ♗e8 17. e3 ♗xf3 18. ♗xf3 e5
19. ♗g5 h6 20. ♗xf6 ♗xf6 21. ♗a3 ♗e7
22. ♖d2 g6 23. ♗d5 ♗h7 24. ♗b1 ♗g7
25. b6 axb6 26. a6 dxe3 27. fxe3 f5 28. a7
29. ♗xa8 ♗xa8 30. ♗a4 ♗d6
31. ♗d1 ♗c7 32. ♖e4 ♖f8 33. ♖c3 e4
34. ♖d5 ♗d6 35. ♗b3 1-0

Sicilian Scheveningen

Matthew Fleury (2144)
Paul Enright (2155)

Portland Masters (x) 2006

1. e4 c5 2. ♖f3 e6 3. d4 cxd4 4. ♖xd4 ♖c6
5. ♖c3 ♗c7 6. ♗e3 a6 7. g3 d6 8. ♗g2 ♗d7
9. O-O ♖f6 10. ♖xc6 ♗xc6 11. a4 ♗e7
12. a5 ♖d7 13. f4 O-O 14. g4 ♗fe8 15. g5
16. ♗f3 g6 17. ♗h3 ♗g7 18. ♗g4
19. ♗ac8 19. ♗h4 ♖f8 20. ♗b6 ♗d7 21. ♗d1
22. ♗hd3 f5 23. ♗xd6 ♗xc3 24. bxc3
25. ♗xe4 25. ♗xe4 fxe4 26. ♗e1 e5 27. ♗xe4
28. ♗xc3 28. ♗d8 ♗f7 29. ♗f6 ♗c4 30. ♗xb7
31. ♗xc2 31. ♗xa6 ♗c5+ 32. ♗h1 exf4
33. ♗d6 ♗xh2+ Draw

From the Business Manager:

When sending payments or other material to the business manager, please remember to always include the BM's name [Eric Holcomb], PMB number and street address. *Northwest Chess* is optional. Games and letters to the editor should NOT be mailed to the BM.

Book Note

Children and Chess, A Guide for Educators

by Alexey W. Root

published by Teacher Ideas Press in 2006
pb., 136 pages, \$25.00.

by Neil Dale

Yes, the former Northwest chess player has authored a book. For those who are newer readers of *Northwest Chess*, Alexey Root (née Rudolph) was a very active junior player in the Northwest in the 1970s. She later moved to California and taught high school in the late 1980s. She was the U.S. Women's Champion in 1989, and since 1999 has been on the faculty of the University of Texas at Dallas (yes, at that famous collegiate chess powerhouse). She is married to IM Doug Root and now resides in Denton, Texas and is active in local chess circles. She has taught at chess camps, has been a volunteer chess teacher at her children's schools, and has taught chess-related courses at UTD.

Now about the book. It definitely is what the title implies, a guide for chess teachers and coaches on the scholastic level. It supports the concept that chess instruction has a positive influence on improving overall academic achievements. Ample previous studies in this area are

quoted. This book should also be required reading for school administrators, who control the purse strings and often are the decision makers as to whether chess should be a part of the curriculum. But I think that the best part of this book is that it is a very well-organized teaching tool.

It is set up in such a way with detailed teaching plans and learning objectives, that even a teacher who is barely familiar with the game of chess could do a good job of teaching the basics. Of course, that brings up the question why someone who does not know the game would be interested in teaching it. Experienced players will also find the lesson plans and teaching techniques quite helpful and it will make their job of teaching chess so much easier. This is a well-thought-out and scholarly book with a practical approach.

The book is available at Amazon.com and from the publisher (www.ti.com, find the book and use code F238). You can also order it by phone at 800-225-5800. ■

Annotated Games

Blackmar-Diemer Gambit

FM David Bragg (2200)
Skylor Fryberg (1870)

Seattle, Match (3) 2005

Annotations by FM David Bragg
1. e4 c6 2. d4 d5 3. ♖c3 dxe4 4. f3

I played this against Bob Ferguson at the Apropos #2 (see *NWC*, Feb 2005, pg 11, for Bob's annotations). I don't expect to play this too often in the future, as I was rather disappointed with the position after the opening in both games.
4...exf3 5. ♖xf3 ♖f6 6. ♗c4 e6 7. O-O ♗e7

A major question was where to put my Queen's Bishop. 8. ♗g5 is the recommended move. I chose 8. ♗f4 to deter c5, since the Bishop and Knight carry threats against the Black queenside (♖c3-b5-c7+xa8).

8. ♗f4 O-O 9. ♗e1 b5 10. ♗d3

I thought that 10. ♗b3 would leave the Bishop out of play, and that it could be a target for Black's advancing queenside pawns.

10...♗b7 11. ♗d1 ♖a6 12. ♖e4 ♖d5? 13. ♖eg5! ♖f6

Oooops! Have to go back! [13...♖xf4? 14. ♗xh7+ ♗h8 15. ♗h4 ♗xg5 16. ♖xg5 g6 17. ♗g8+ ♖g7 18. ♖xe6+ fxe6 19. ♗h7+ ♖f6 20. ♗xf4+ ♖g5 21. ♗h4 mate]

Continued on page 17

Holler's Chess Column

London Bridge Still Standing Strong

by Bruce and Robert Holler

The London tournament of 1922 was a top class event. The games from this tournament hit the world chess headlines of the day. Among the openings regularly played against a variety of black defenses was White's formation of 1.d4, 2.f3 and 3.e4, subsequently named the London System. Nevertheless, this opening has been referred to as a Slav in reverse, the old man's bad habit, and the businessman's opening.

Here in the Northwest, the London System is condemned by some and loved by others. But, if the truth be known, it is a solid opening that is easy to play, effective, time tested, and is a complete opening system no matter what Black decides to throw at it.

Young players find the simplicity of the London System welcome, as it's easier to play with a plan. Also, the ideas and plans of the games of GMs, IMs, and Masters who play the London System may be followed as a cohesive whole. From the very first move, a beginning player will understand the importance of the center, developing pieces, when and how to attack from a given position, and when to head to the endgame. The London System has good points and followers include Grandmasters.

Heroes of the London System

The London takes on the Tarrasch

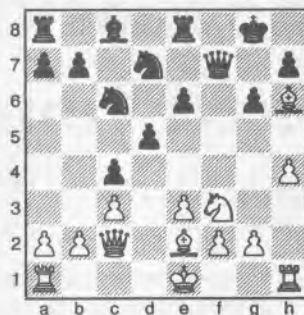
London System

NM Gata Kamsky (2345)
Arruda Marcos (UNR)

Timisoara, World Youth Ch. 1988

1.d4 f6 2.f3 d5 3.e4 e6 4.e3 c5 5.c3 d6 6.f3 d5 7.e4 e6 8.h3 d6 9.e5 xe5 10.dxe5 d7 11.f3 f5 12.exf6 xf6 13.g5 f7 14.c2 g6 15.h6 c4 16.e2 e8 17.h4

Northwest Chess



17...dxe5 18.g5 f6 19.h5 f5 20.e4 dxe4 21.fxe4 f7 22.hxg6 hxg6 23.fh4 ce5 24.e4 g5 25.xg5 g6 26.fh7+ gh8 27.d6 dxg5 28.fh6+ 1-0

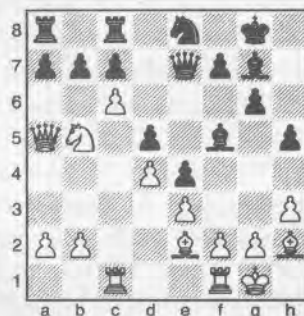
The London takes on the Kings Indian

London System

GM Artur Yusupov (2595)
FM Maxwell Fuller (2380)

Esbjerg 1980

1.d4 f6 2.f3 g6 3.e4 g7 4.e3 d6 5.e2 O-O 6.h3 bd7 7.O-O e8 8.c4 e5 9.h2 e4 10.bbd2 dx2 11.fxd2 e4 12.e1 e7 13.c2 f6 14.ac1 h5 15.a3 f5 16.c5 d5 17.b5 ffc8 18.a5 e8 19.c6



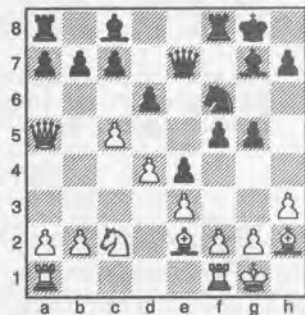
19...b6 20.a4 e6 21.f3 a6 22.d3 d8 23.f4 f6 24.f3 g5 25.h2 exf3 26.fxf3 g4 27.xd5 xe3+ 28.h1 gxh3 29.fce1 hxg2+ 30.xg2 fg5 31.e4 fg6 32.fxf6+ fxf6 33.f3 e4 34.fxe4 xe4 35.fxe4 xe4 36.fxe4 xd4 37.fg1+ fh8 38.xc7 fe8 39.fxb6 fc4 40.f3 fe6 41.b4 1-0

London System

IM Arnaud Payen (2415)
NM Daniel Gross (2370)

New York, Fan Adams Int'l (6) 1999

1.d4 f6 2.f3 g6 3.e4 g7 4.e3 d6 5.h3 O-O 6.e2 bd7 7.O-O e8 8.h2 e5 9.c4 e4 10.bbd2 dx2 11.fxd2 e4 12.e1 e7 13.c2 f5 14.a5 d6 15.c5 g5



16.cxd6 cxd6 17.a3 b5 18.f3 b4 de8 19.fxb5 f4 20.fxe8 xe8 21.fxd6 fa6 22.fc1 fe3 23.fxe3 f7 24.g3 ad8 25.c7 f1+ 26.fxf1 xf1+ 27.fh2 xd6 28.fxd6 fe1 29.c2 e2 30.f3 d3 31.d5 c2 32.fxa7 f1 33.f5 xe5+ 34.dxe5 xg2 35.f6+ fh8 36.e6 1-0

The King Walk

The London vs. the Double Fianchetto

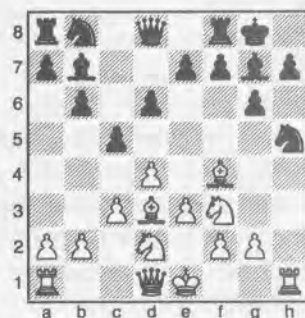
The readers need to understand Mr. Stubbs dared Robert to play the London, because he said he was going to crush it with the double fianchetto.

London System

Robert Holler (1580)
David Stubbs (1423)

Portland, Oregon Open (6) 2003

1.d4 f6 2.f4 b6 3.f3 fb7 4.fbd2 g6 5.e3 g7 6.f3 O-O 7.c3 d6 8.h4 c5 9.h5 fxh5



10.fh5 gxh5 11.fh7+ fh7 12.dg5+ fg6 13.df3 xf3 14.fxf3 d5 15.fg3 h4 16.fh4 fh8 17.fg3 fh6 18.f5+ fh5 19.fh4+ fg6 20.fh7+ fxg5 21.f4+ fh4 22.fh5 fg3 23.fg5+ fh2 24.fh2 1-0

"The London System is one of White's most dependable openings, promising rapid development and a solid pawn formation. There are also real possibilities for a kingside attack, which has attracted players such as Hodgson, Kasparov and Yusupov." -Gary Lane

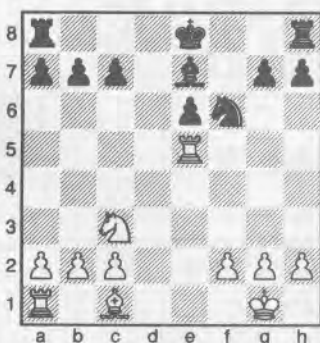
A New Kid on the Block: UWCC Holds First USCF-rated Tourney in Years

by H. G. Pitre

Twelve players participated in the University of Washington Spring Open, held April 22 and 23. Four played in the unrated one-day Booster Section, which was won by Dr. Marvin Hayami, class of '73, with a 3-0 score. He donated his first prize of a \$20 certificate of Haagen Dazs Ice Cream products back to the prize fund. And those who tied for second received \$10 each after Brian Mason also donated his share.

The other eight players were scheduled for four games in the USCF-rated Open section over the weekend with first place being taken by Nat Koons, a more recent graduate of the UW. He received more than \$50 in gift certificates from Zoe's Cafe, The Mix Ice Cream Shop, Haagen Dazs, and Starbuck's, all businesses on University Way NE (a.k.a., "the Ave"). Please thank our supporters if you are in the neighborhood some time. A total of approximately \$150 went to players, who, apart from Koons, consisted of Peter O'Gorman, Dymitr Mozdyniewicz, Ethan Gottlieb, David Inglis, and Catherine Smith.

The University of Washington Chess Club hopes to hold an event that would attract you to play in it. It might be in October when the football team is playing an away game. Let the club know what it would take to get your support. Go to the website at www.students.washington.edu/chessuw/ or contact the officers at chessuw@u.washington.edu.



O'Gorman-Smith

Annotations by H. G. Pitre

1...O-O-O

Rather than defending the pawn by 1...♟f7, Catherine prefers to play actively.

2. ♖xe6 ♘b4 3. ♘g5 ♘xc3 4. bxc3 ♖hf8 5. ♘xf6 ♖xf6 6. ♖xf6 gxf6 7. ♟f1 ♖d5 8. ♟e2 ♖e5+ 9. ♟d3 ♟d7 10. c4 ♟d6 11. ♖d1 ♖a5 12. ♟c3+ ♟e6 13. ♟b3 ♖e5 14. ♖d3 f5 15. ♖e3

Probably 15. ♖d8 was better, but it seems Peter can't lose after 15. ♖e3.

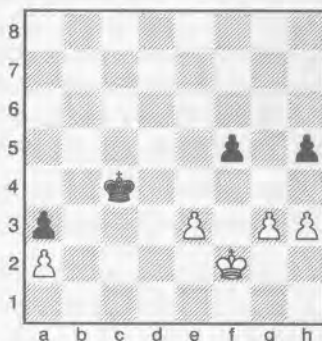
15... ♖xe3+ 16. fxe3 ♟e5 17. ♟c3 ♟e4 18. ♟d2 a5 19. ♟e2 c6 20. ♟f2 b5 21. cxb5 cxb5 22. ♟e2 b4 23. ♟d2 a4 24. ♟e2 h5 25. ♟d2 ♟d5 26. ♟d3 ♟c5 27. g3 ♟d5 28. h3 ♟c5 29. c3 bxc3

Marvin Hayami and I thought that 29...b3 was safer for Black.

30. ♟xc3 ♟d5 31. ♟d3 a3 32. ♟e2

The more natural 32. ♟d2 ♟c4 33. ♟c2 ♟d5 34. ♟d3 ♟e5 35. ♟d2 ♟e4 (35... ♟d5 36. ♟e1 ♟c4 37. e4 fxe4 38. g4 hxg4 39. hxg4 ♟d4 40. ♟e2 ♟d5) 36. ♟e2 ♟d5 37. ♟f3 ♟e5 38. h4 ♟e6 39. ♟f4 ♟f6 40. e4 fxe4 41. ♟xe4 or 41. g4 hxg4 42. ♟xg4 also leads to a draw, as the Black King has time to eliminate the h-pawn and then return to blockade the a-pawn.

32... ♟c4 33. ♟f2



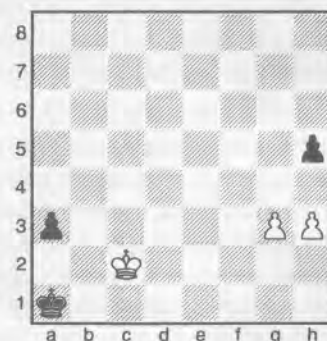
It seems that 33. ♟f2 begins White's tricky bid to win. Out in the hallway, thinking that maybe Black was going to win, I was excitedly drawing comments from players and spectators about the

position. Brian Mason, UW Chess Club co-President, quickly could see the stalemate that I hadn't considered.

33... ♟d3

33... ♟c3 wins a tempo versus the idea played in the game; so White must take the draw after 34. ♟e1 ♟b2 35. ♟d2 ♟xa2 36. ♟c2 ♟a1 37. ♟c1 ♟a2 38. ♟c2.—ed.

34. ♟f3 ♟c2 35. e4 fxe4+ 36. ♟xe4 ♟b2 37. ♟d3 ♟xa2 38. ♟c2 ♟a1



39. h4

This unforeseen move happened while I was out in the hallway. Black has only two moves to choose from, and incredibly one move wins and one loses. If Peter had played any of the expected moves, a stalemate is the likely result (39. g4 hxg4 40. hxg4 a2; 39. ♟b3 a2 40. ♟c2 h4). Was this misanalysis on this new Houdini's part?

39... a2

The wrong way!

To win, Black must choose 39... ♟a2 40. g4 (not 40. ♟c1 ♟b3 41. ♟b1 a2+ 42. ♟a1 ♟a3, when White is the one to get mated in the corner) 40... hxg4 41. h5 g3 42. h6 g2 43. h7 g1=♚ 44. h8=♚, when she is likely to win the Queen ending.—ed.

40. g4 hxg4 41. h5 1-0

Showing one of the fascinating traps in chess. Black queens first, but White's turn to queen is decisive. Catherine, for her part, was truly deserving of the most congenial player in the tourney. ■

USCF Crosstables

(qqq) indicates Quick Rating

SCC March Tornado		3/5	TD: Fred Kleist					
1 Manber, Devon	1707	1724	W8	W5	W2	D4	3.5	
2 Mathews, Dan	1747	1755	W4	W3	L1	W7	3.0	
3 VanWeerdhuizen, Lane	1646	1852	W7	L2	W5	W6	3.0	
4 Piper, August	1613	1626	L2	W7	W6	D1	2.5	
5 Lessler, Peter	985	1141	W6	L1	L3	W8	2.0	
6 Wang, Michael	1507	1468	L5	W8	L4	L3	1.0	
7 Etingher, Constantin	1459	1450	L3	L4	W8	L2	1.0	
8 Kolde, Sterling	1468	1398	L1	L6	L7	L5	0.0	

Match Seattle		3/8-29	TD: Carol Kleist			
1 Bragg, David	2200	2209	5.0			
2 Gale, Geoffrey	2032	2022	1.0			

March Winds Seattle		3/3-31	TD: Carol Kleist				
1 Milener, Gene	1360	1396	H	W7	W8	2.5	
2 Darby, Michael	1961	1965	W10	W6	U	2.0	
3 Kleist, Carol	1553	1555	U	H	W11	1.5	
4 Chiriack, Francis	901	905	H	W12	U	1.5	
5 Cherski, Artour	1005	1677	U	H	W10	1.5	
6 Hubbell, Larry	1679	1676	W13	L2	U	1.0	
7 Fan, George	1548	1525	W11	L1	U	1.0	
8 Poyneer, Thomas	1051	1066	D9	H	L1	1.0	
9 Thongmee, Thom. TX	1442	1426	D8	U	U	0.5	
10 Weller, Stephen	1297	1292	L2	H	L5	0.5	
11 McGee, Donald	977	972	L7	H	L3	0.5	
12 Zhu, Hanlin	395	395	H	L4	U	0.5	
13 Thongmee, Sansern	1300	1277	L6	U	U	0.0	

Seattle Spring Open		3/31-4/2	TD: Fred Kleist					
1 Raptis, Nick	2353	2366	W3	W2	W4	W7	4.0	
2 Selzler, Ricky	2108	2112	W11	L1	W13	W8	3.0	
3 Rosell, John	1859	1884	L1	W11	W12	W9	3.0	
4 Collyer, Curt	2182	2181	W14	D7	L1	W10	2.5	
5 Bartron, Paul	2108	2095	D6	D8	D10	W13	2.5	
6 Wilson, Matthew	1754	1806	D5	D13	D14	W12	2.5	
7 Pupols, Viktors	2200	2200	W10	D4	H	L1	2.0	
8 Fabian, Steve	1716	1749	W12	D5	D9	L2	2.0	
9 Li, Jerry	1579	1641	D13	W15	D8	L3	2.0	
10 O'Gorman, Peter	1825	1828	L7	B	D5	L4	1.5	
11 Fletcher, Christopher	1650	1641	L2	L3	B	H	1.5	
12 Gale, Geoffrey	2022	1987	L8	W14	L3	L6	1.0	
13 Cloy, Elston	1943	1922	D9	D6	L2	L5	1.0	
14 Mathews, Dan	1821	1811	L4	L12	D6	H	1.0	
15 Bond, Robert	2004	1987	H	L9	U	U	0.5	

Reserve									
1 Edwards, Gary	1866	1865	W23	W8	D2	D6	W9	4.0	
2 Buck, Stephen	1716	1740	W16	W7	D1	D5	W6	4.0	
3 Mathews, Dan	1811	1815	W10	H	D13	W8	H	3.5	
4 Wu, Darren	1691	1706	H	D5	H	W14	W12	3.5	
5 Maider, Tate	1352	1535	W24	D4	W12	D2	D11	3.5	
6 Lee, Nathan	1618	1636	H	B	W11	D1	L2	3.0	
7 Nelson, James	1600	1610	W19	L2	H	W22	H	3.0	
8 Chase, Warren	1558	1567	W25	L1	W23	L3	W19	3.0	
9 Piper, August	1626	1660	H	H	W24	W13	L1	3.0	
10 Yang, Matthew	1502	1511	L3	H	W16	D23	W21	3.0	
11 Shankland, Adam	1724	1698	W18	D17	L6	H	D5	2.5	
12 Blumenthal, Gabriel	1689	1671	W15	H	L5	W17	L4	2.5	
13 Omori, Michael	1673	1666	H	W14	D3	L9	D15	2.5	
14 Wang, Michael	1522	1525	H	L13	W20	L4	W22	2.5	
15 Van Veen, Kerry	1492	1494	L12	H	D19	W20	D13	2.5	
16 Monahan, Darby	1539	1509	L2	D19	L10	W25	H	2.0	
17 Thorsen, Eric	1510	1508	B	D11	H	L12	U	2.0	
18 Etingher, Constan	1409	1400	L11	L24	W25	L19	W23	2.0	
19 Hornickie, John	1401	1411	L7	D16	D15	W18	L8	2.0	
20 Wu, Darryl	1266	1251	H	H	L14	L15	W25	2.0	
21 Chiriack, Francis	905	931	D22	H	H	H	L10	2.0	
22 Kleist, Carol	1555	1509	D21	H	H	L7	L14	1.5	
23 Kolde, Sterling	1433	1406	L1	W25	L8	D10	L18	1.5	
24 Anderson, Larry	1699	1668	L5	W18	L9	U	U	1.0	
25 Iordanov, Stoyan	753	746	L8	L23	L18	L16	L20	0.0	

Daffodil Open Tacoma		4/22-23	TD: Gary Dorfner				
1 MacGregor, Michael	2190	2196	W9	W8	H	W3	3.5

2 Bartron, Paul	2100	2098	W11	W5	H	D6	3.0
3 Gale, Geoffrey	1982	1997	W14	W6	W4	L1	3.0
4 Lee, Michael	2105	2096	H	W13	L3	W11	2.5
5 Buck, Stephen	1742	1752	W12	L2	W10	D7	2.5
6 Mathews, Dan	1861	1863	W16	L3	W15	D2	2.5
7 Lee, Nathan	1656	1680	H	D10	W8	D5	2.5
8 Butler, David	1710	1703	W15	L1	L7	W12	2.0
9 Walloch, Stephen	1748	1729	L1	L15	B	W14	2.0
10 Wu, Darren	1706	1698	H	D7	L5	W15	2.0
11 Karch, Robert	1731	1722	L2	D12	W14	L4	1.5
12 Hornickie, John	1424	1435	L5	D11	W13	L8	1.5
13 Wu, Darryl	1251	1239	H	L4	L12	W16	1.5
14 Lee, Megan	1517	1500	L3	W16	L11	L9	1.0
15 Etingher, Constantin	1432	1447	L8	W9	L6	L10	1.0
16 Morris, Brandon	332	332	L6	L14	H	L13	0.5

UW Spring Open		4/22-23	TD: H G Pitre				
1 Koons, Nat	2242	2249	W6	W3	W2	W4	4.0
2 O'Gorman, Peter	1828	1830	W8	W6	L1	W5	3.0
3 Mozdyniewicz, Dymtr	2050	2041	W7	L1	D4	W8	2.5
4 Pitre, H G	1823	1829	W5	H	D3	L1	2.0
5 Gottlieb, Ethan	1187	1238	L4	W7	W8	L2	2.0
6 Smith, Catherine	1485	1459	L1	L2	L7	B	1.0
7 Inglis, David	1427	1419	L3	L5	W6	U	1.0
8 Yang, Tien Han	1069	847	L2	H	L5	L3	0.5

April Showers Seattle		4/7-28	TD: Carol Kleist				
1 Kolde, Sterling	1413	1477	W19	W4	H	W6	3.5
2 Mathews, Dan	1833	1838	H	W16	W8	U	2.5
3 Watts, Peter	1351	1391	H	W19	W14	U	2.5
4 Thongmee, Sansern	1277	1381	W17	L1	H	W15	2.5
5 Kleist, Fred	2006	2007	U	H	W9	U	1.5
6 Chase, Warren	1575	1554	U	H	W18	L1	1.5
7 Mayer, Carol	1515	1519	H	W12	U	U	1.5
8 Fan, George	1525	1552	W14	H	L2	U	1.5
9 Poyneer, Thomas	1066	1083	U	H	L5	W17	1.5
10 Cohen, Eryn	890	946	U	H	W16	U	1.5
11 Huchala, Andrew	750	773	U	U	H	W19	1.5
12 Huchala, Thomas	1300	1121	H	L7	W19	U	1.5
13 Rosell, John	1878	1880	H	D14	U	U	1.0
14 Darby, Michael	1965	1927	L8	D13	L3	U	0.5
15 Milener, Gene	1425	1401	U	U	H	L4	0.5
16 Weller, Stephen	1285	1245	H	L2	L10	U	0.5
17 McGee, Donald	972	948	L4	U	H	L9	0.5
18 Chiriack, Francis	931	929	U	H	L6	U	0.5
19 Zhu, Hanlin	395	395	L1	L3	L12	L11	0.0

Inland Empire Open Spokane		4/29-30	TD: David Griffin					
1 Mathews, Dan	1838	1861	H	D2	W18	W12	W8	4.0
2 Herbers, Patrick	1954	1945	D16	D1	W14	W9	D5	3.5
3 Weyland, Phil	ID 1886	1887	W23	D13	H	W10	D4	3.5
4 Rosell, John	1880	1884	H	W16	W13	D5	D3	3.5
5 Chow, Alex	1696	1718	W29	W19	D9	D4	D2	3.5
6 Griffin, David	1606	1624	H	U	W26	W17	W24	3.5
7 Steinocher, Kirk	1920	1918	W17	D14	W21	H	U	3.0
8 Carpenter, Romie	MT 1800	1800	W22	D11	H	W23	L1	3.0
9 Martin, Robert	MT 1728	1733	W24	W15	D5	L2	H	3.0
10 Catton, Theodore	MT 1721	1701	L19	W29	W24	L3	W23	3.0
11 Attwood, Adam	1695	1696	W20	D8	H	D13	D15	3.0
12 Downes, John	1725	1712	W18	D21	H	L1	D16	2.5
13 Korsmo, Kevin	1663	1659	W27	D3	L4	D11	D19	2.5
14 McCourt, Daniel	MT 1650	1646	W25	D7	L2	D16	D18	2.5
15 Mangiaracina, Mar	1619	1610	W30	L9	H	D21	D11	2.5
16 Countryman, Zachary	1573	1601	D2	L4	W19	D14	D12	2.5
17 McBroom, William	MT 1553	1528	L7	W20	H	L6	L21	2.5
18 Hornickie, John	1411	1424	L12	W25	L1	W28	D14	2.5
19 Baker, Ted	1399	1442	W10	L5	L16	W25	D13	2.5
20 Waugh, James	1177	1240	L11	L17	W22	H	W27	2.5
21 Walton, John	1593	1608	W28	D12	L7	D15	W17	2.0
22 Weyland, Ronald	ID 1439	1390	L8	L28	L20	W26	W29	2.0
23 Etingher, Constantin	1436	1432	L3	W27	W28	L8	L10	2.0
24 Batman, James	1300	1333	L9	W30	L10	W27	L6	2.0
25 Ackerman, Ryan	SC 1023	1109	L14	L18	W30	L19	W28	2.0
26 Dittman, William	628	844	U	H	L6	L22	W30	1.5
27 Weyland, Annette	ID 1069	1075	L13	L23	W29	L24	L20	1.0
28 Melkonyan, Oganess	1300	1139	L21	W22	L23	L18	L25	1.0
29 Johnson, Vern	1289	1222	L5	L10	L27	D30	L22	0.5
30 Spencer, William	MT 426	448	L15	L24	L25	D29	L26	0.5

SCC April Quads		4/15	TD: Carol Kleist		
1 Setzler, Ricky	2112 2145	- W W W	3.0		
2 Koons, Nat	2241 2242	L - X W	2.0		
3 Raptis, Nick	2371 2349	L L - W	1.0		
4 Rosell, John	1884 1878	L F L -	0.0		

1 Omori, Michael	1666 1667	- D X D	2.0		
2 Hickey, Patrick	1776 1767	D - L W	1.5		
3 Mathews, Dan	1830 1833	F W - D	1.5		
4 Chase, Warren	1567 1575	D L D -	1.0		

1 Maider, Tate	1535 1536	- L W W	2.0		
2 Etingher, Constantin	1404 1436	W - L W	2.0		
3 Kolde, Sterling	1406 1415	L W - D	1.5		
4 Torkelson, Alan	1435 1403	L L D -	0.5		

1 King, Ryan	1293 1336	- W W W	3.0		
2 Weller, Stephen	1292 1285	L - W W	2.0		
3 Wei, Alva	1147 1121	L L - W	1.0		
4 Kineke, Jack	441 441	L L L -	0.0		

1 Cohen, Eryn	826 890	- X W W	3.0		
2 Saver, Keith	1156 1120	L - W W	2.0		
3 Johnson, Trevor	600 582	L L - W	1.0		
4 DeVesci, Olivia	436 191	F L L -	0.0		

PCC April Quads		4/4-24	TD: Gregori Alpernas		
1 Gregori Alpernas	1998 2031	- W W W	3.0		
2 Michael Morris	2095 2096	L - W W	2.0		
3 Mike Janniro	2094 2079	L L - W	1.0		
4 Richard Banner	1800 1800	L L L -	0.0		

1 Gunther Jacobi	1760 1758	- D D W	2.0		
2 Robert Lundin	1727 1723	D - D X	2.0		
3 Brett Becker	1550 1595	D D - W	2.0		
4 Sean O'Connell WA	1580 1556	L F L -	0.0		

PCC Game-in-60		4/29	TD: Kornelijis Dale					
1 Harmon, Clark	2218(2245)	2227(2253)	W8	W10	W4	D2	3.5	
2 Pupols, Viktors	WA 2204(2209)	2217(2218)	W17	W11	W3	D1	3.5	
3 Raptis, Nick	WA 2349(2212)	2341(2207)	W13	W6	L2	W5	3.0	
4 Roua, Radu	2201(2051)	2195(2042)	W14	W12	L1	W11	3.0	
5 Goshen, Matthew	WA 2005(1874)	2006(1876)	W15	W7	W16	L3	3.0	
6 Pritchett, Pete	1862(1628)	1872(1645)	W18	L3	W9	W12	3.0	
7 Porter, Nathan	1505(1351)	1543(1400)	W23	L5	W21	W10	3.0	
8 Davey, Brent	1400(1334)	1439(1377)	L1	W19	W22	W16	3.0	
9 Becker, Brett	1595(1431)	1607(1444)	H	W13	L6	W17	2.5	
10 Peake, Ethan	1839(1646)	1820(1625)	W19	L1	W17	L7	2.0	
11 Banner, Richard	1800(1536)	1800(1539)	W20	L2	W15	L4	2.0	
12 Arun, Aditya	1720(1519)	1711(1508)	W21	L4	W20	L6	2.0	
13 Kudva, Vikram	1465(1312)	1458(1310)	L3	L9	W18	W19	2.0	
14 Midson, Tony	1366(1358)	1338(1328)	L4	L20	W23	W21	2.0	
15 Porter, Joel	1279(1167)	1286(1175)	L5	W23	L11	W22	2.0	
16 Carney, Dirk	1596(1517)	1571(1490)	H	W22	L5	L8	1.5	
17 Terrill, Michael	1399(1231)	1390(1226)	L2	W18	L10	L9	1.0	
18 Li, Devin	1013(1032)	1003(1009)	L6	L17	L13	B	1.0	
19 Horton, James	992(990)	984(976)	L10	L8	B	L13	1.0	
20 Huang, Jonathan	CA 918(933)	957(957)	L11	W14	L12	L23	1.0	
21 Ruiz, Gabriel	CA 708(604)	705(602)	L12	B	L7	L14	1.0	
22 Seto, Leandro	NV 598(403)	596(401)	B	L16	L8	L15	1.0	
23 Schmitt, Phillip	1300(1300)	1065(1020)	L7	L15	L14	W20	1.0	

WA Junior Open		Bellevue	4/29	TD: David Hendricks				
1 Guo, Alex	1760(1193)	1774(1302)	W35	W33	W6	W5	4.0	
2 Lee, Nathan	1636(1218)	1656(1318)	W22	W20	W17	W11	4.0	
3 Inglis, David	1419(1237)	1445(1293)	W31	D29	W14	W12	3.5	
4 Li, William	1344(998)	1388(1166)	W38	W16	D12	W15	3.5	
5 Shankland, Adam	1698(1414)	1692(1406)	W21	W18	W7	L1	3.0	
6 Apacible, Jennifer	1418(1128)	1431(1175)	W9	W8	L1	W26	3.0	
7 Bleich, Travis	1357(1292)	1358(1282)	W37	W32	L5	W25	3.0	
8 Solomon, Bryan	1129(924)	1146(975)	W43	L6	W41	W27	3.0	
9 Jensen, Michael	894(876)	1048(970)	L6	W43	W34	W17	3.0	
10 Lee, Christian	724(724)	1198(1136)	L29	W38	W36	W19	3.0	
11 Manber, Devon	1685(1428)	1660(1398)	W36	D14	W29	L2	2.5	
12 Oseran, Zachary	1510(1383)	1489(1336)	W23	W19	D4	L3	2.5	
13 Rader, Gabriella	1400(1325)	1370(1293)	L16	D28	W35	W29	2.5	
14 Gottlieb, Ethan	1238(1110)	1252(1122)	W40	D11	L3	W32	2.5	
15 Chan, Calvin	1271(1446)	1266(1319)	D28	W25	W33	L4	2.5	

16 Chen, Irving	935(865)	1109(1030)	W13	L4	D28	W33	2.5	
17 Marcyan, Karen	1299(1177)	1274(1146)	W39	W27	L2	L9	2.0	
18 Wei, Alva	1121(1016)	1111(1008)	W42	L5	D32	D28	2.0	
19 Saver, Keith	1120(1021)	1111(1016)	W41	L12	W24	L10	2.0	
20 Larus-Stone, Nicholas	1111(1041)	1102(1021)	W26	L2	L25	W37	2.0	
21 Davis, Benjamin	1006(815)	1021(841)	L5	H	H	W38	2.0	
22 Clarfeld, Molly-Rose	871(816)	878(827)	L2	W42	L27	W41	2.0	
23 Strong, Edward	917(717)	930(773)	L12	L41	W39	W34	2.0	
24 Wu, William	724(595)	857(736)	L33	W35	L19	W36	2.0	
25 Slivka, Max	259(248)	459(448)	B	L15	W20	L7	2.0	
26 Bakke, Bob	908(908)	1149(1032)	L20	W31	W30	L6	2.0	
27 Ifrim, Raluca	665(665)	1074(987)	W30	L17	W22	L8	2.0	
28 Wessbecher, Francis	777(777)	1209(1150)	D15	D13	D16	D18	2.0	
29 Budzianowski, Jaan	1111(1071)	1166(1105)	W10	D3	L11	L13	1.5	
30 Ma, Kevin	1057(1089)	1026(1013)	L27	W39	L26	D31	1.5	
31 Grabar, Svetlana	1074(978)	1051(958)	L3	L26	W40	D30	1.5	
32 Zhou, Jason	698(665)	874(783)	W34	L7	D18	L14	1.5	
33 Qu, Frank	1249(1065)	1180(1013)	W24	L1	L15	L16	1.0	
34 Guo, Anthony	1259(907)	1162(838)	L32	W37	L9	L23	1.0	
35 Gelb, Nicolo Rain	1068(805)	1027(773)	L1	L24	L13	W42	1.0	
36 Siripurapu, Anshu	963(963)	904(883)	L11	W40	L10	L24	1.0	
37 Fisher, Thayer	929(813)	902(774)	L7	L34	W43	L20	1.0	
38 Hilfinger, Jack	887(837)	861(795)	L4	L10	W42	L21	1.0	
39 Nelson, Evan	765(756)	741(721)	L17	L30	L23	W43	1.0	
40 Turski, Robert	615(573)	597(553)	L14	L36	L31	B	1.0	
41 Yu, Justin	635(839)	694(772)	L19	W23	L8	L22	1.0	
42 Zhang, Leon	553(553)	455(362)	L18	L22	L38	L35	0.0	
43 Oratz, Josh	741(741)	349(324)	L8	L9	L37	L39	0.0	

SCC Tornado		4/30	TD: Fred Kleist				
1 Warren Chase	1554	1643	L6	W8	W5	W2	3.0
2 Fred Kleist	2007	1991	W7	W6	D3	L1	2.5
3 Kamran Hughes	1703	1720	W8	D5	D2	D6	2.5
4 Michael Wang	1525	1577	D5	D7	D6	W8	2.5
5 Patrick Hickey	1777	1761	D4	D3	L1	W7	2.0
6 Stephen Buck	1751	1748	W1	L2	D4	D3	2.0
7 Glen Osslander	1675	1662	L2	D4	W8	L5	1.5
8 Sterling Kolde	1477	1441	L3	L1	L7	L4	0.0

SCC Novice		5/6	TD: Carol Kleist					
1 Alva Wei	1111	1187	W9	W4	W2	W5	4.0	
2 Tristan Sun	1043	1097	W8	W3	L1	W6	3.0	
3 Stoyan Jordanov	746	907	W10	L2	W7	W8	3.0	
4 Menaka Narayanan	900	932	W7	L1	H	W10	2.5	
5 Karen Schmidt	664	804	W11	D6	W12	L1	2.5	
6 Teresa VanHorn	1026	994	W12	D5	D8	L2	2.0	
7 Trevor Johnson	579	622	L4	B	L3	W11	2.0	
8 Thomas Huchala	1121	960	L2	W10	D6	L3	1.5	
9 Madhavi Narayanan	810	797	L1	H	L10	W12	1.5	
10 Tony Valley	OR 961	895	L3	L8	W9	L4	1.0	
11 Jarva Dodge	873	754	L5	L12	B	L7	1.0	
12 Voicu Albu	0	648	L6	W11	L5	L9	1.0	

Plus Score Swiss		Seattle	5/13-14	TD: Fred Kleist				
1 Michael Lee	2096	2101	W2	D3	W4	W5	3.5	
2 Patrick Hickey	1761	1799	L1	W9	W3	W4	3.0	
3 Peter O'gorman	1830	1827	W9	D1	L2	W6	2.5	
4 Elston Cloy	1942	1925	W6	W7	L1	L2	2.0	
5 Dan Mathews	1845	1827	L8	D6	W7	L1	1.5	
6 Sterling Kolde	1441	1452	L4	D5	W9	L3	1.5	
7 Constantin Etingher	1400	1400	H	L4	L5	X	1.5	
8 Fred Kleist	1991	1997	W5	U	U	U	1.0	
9 Francis Chiriac	929	925	L3	L2	L6	F	0.0	

Continued on page 21

Get a free extra copy of Northwest Chess for you!

Make your request to the Business Manager.

Northwest Open Tacoma 3/12 TD: Gary Dorfner	
1 Michael MacGregor	2181 2194 W4 W7 W2 H W5 4.5
2 Paul Bartron	2101 2108 W13 W8 L1 W10 W4 4.0
3 Dan Mathews	1755 1762 H H D11 D8 W12 3.0
4 Stephen Walloch	1719 1748 L1 W14 W15 W7 L2 3.0
5 Alex Guo	1661 1711 D10 W6 W8 H L1 3.0
6 Michael Wang	1468 1522 H L5 H W14 W11 3.0
7 Geoffrey Gale	2049 2031 W14 L1 H L4 W13 2.5
8 David Butler	1722 1710 W16 L2 L5 D3 B 2.5
9 Anthony Guo	1127 1259 W11 L10 L13 H W15 2.5
10 Bobby Ferguson	2173 2157 D5 W9 H L2 U 2.0
11 Stephen Buck	1797 1753 L9 W13 D3 D12 L6 2.0
12 Nathan Lee	1629 1618 H D15 H D11 L3 2.0
13 Constantin Etingher	1450 1452 L2 L11 W9 B L7 2.0
14 John Hornickie	1404 1401 L7 L4 B L6 W16 2.0
15 Eric Holcomb	1509 1500 H D12 L4 D16 L9 1.5
16 Andrew Evenson	1406 1344 L8 H H D15 L14 1.5

OSCF State Championships Beaverton 4/1 TD: Sudhakar Kudva	
1 Corbin Yu	1840(1723) 1903(1763) W10 W8 W2 W5 4.0
2 Ethan Peake	1819(1601) 1839(1646) W9 W3 L1 W6 3.0
3 Andy May WA	1925(1733) 1923(1726) W7 L2 D4 W8 2.5
4 Daniel Gay	1814(1536) 1824(1565) L8 W6 D3 W9 2.5
5 Raleigh Foster	1958(1567) 1937(1564) L6 W10 W7 L1 2.0
6 Marcus Robinson	1768(1622) 1784(1619) W5 L4 W8 L2 2.0
7 Steven Breckenridge	1598(1488) 1613(1487) L3 W9 L5 W10 2.0
8 Drew Serres	1980(1692) 1950(1662) W4 L1 L6 L3 1.0
9 Taylor Bailey	1522(1349) 1515(1340) L2 L7 W10 L4 1.0
10 Michael Taylor	1533(1358) 1498(1314) L1 L5 L9 L7 0.0

Class C	
1 David Breckenridge	1550(1448) 1600(1497) W9 W5 D3 W4 3.5
2 Zane Mowery	1533(1384) 1545(1403) L5 W9 W6 W7 3.0
3 Austin Sharp	1510(1441) 1518(1438) W7 D10 D1 D5 2.5
4 Nathan Porter	1499(1335) 1505(1351) D6 W8 W10 L1 2.5
5 Sagar Rotithor	1441(1205) 1474(1296) W2 L1 W8 D3 2.5
6 Carson Hannibal	1355(1291) 1401(1308) D4 W12 L2 W10 2.5
7 Kevin Oliver	1318(1229) 1334(1231) L3 W11 W12 L2 2.0
8 Cameron Gregson	1255(1153) 1285(1160) W12 L4 L5 W11 2.0
9 Sean You	1481(1393) 1455(1353) L1 L2 D11 W12 1.5
10 Vikram Kudva	1464(1338) 1442(1312) W11 D3 L4 L6 1.5
11 Albert Hong WA	1384(1137) 1329(1100) L10 L7 D9 L8 0.5
12 Muchen Yang	1279(1037) 1220(995) L8 L6 L7 L9 0.0

Class D	
1 Justin Hooker	1315(1187) 1396(1294) W16 W9 W13 W6 4.0
2 Daniel Friesen	1381(1267) 1376(1266) W22 L6 W20 W8 3.0
3 Isaac Kim	1219(1120) 1302(1217) W11 L5 W14 W10 3.0
4 Mitchel Button	1269(1147) 1282(1178) W15 L7 W22 W13 3.0
5 Joel Porter	1242(1084) 1279(1167) W26 W3 L6 W17 3.0
6 Caleb Kesey	1071(974) 1217(1133) W25 W2 W5 L1 3.0
7 James-Paul Cumming	856(909) 1104(1106) W14 W4 L8 W12 3.0
8 Sarah May WA	1251(1151) 1253(1162) W17 D20 W7 L2 2.5
9 Kevin Wang	1178(1088) 1192(1105) W24 L1 D19 W20 2.5
10 Matthew Fernandez	1392(1237) 1355(1207) L13 W19 W15 L3 2.0
11 Brian Hong WA	1301(1358) 1272(1310) L3 L15 W26 W19 2.0
12 David Kim	1293(1236) 1258(1199) W18 L13 W16 L7 2.0
13 Joseph Tanquary	1148(994) 1202(1075) W10 W12 L1 L4 2.0
14 Bryce Eng	1210(1107) 1194(1101) L7 W18 L3 W22 2.0
15 Alex Piatski	1107(1013) 1149(1075) L4 W11 L10 W23 2.0
16 Calvin Yue	1085(1022) 1121(1061) L1 W26 L12 W21 2.0
17 Christopher Liu	1100(1024) 1119(1054) L8 W21 W23 L5 2.0
18 Yun Teng WA	974(897) 1025(957) L12 L14 W25 W26 2.0
19 Rohan Vora	1067(961) 1080(992) W23 L10 D9 L11 1.5
20 Dana Hannibal	1002(930) 1041(971) W21 D8 L2 L9 1.5
21 Tian Song	1200(1195) 1135(1117) L20 L17 W24 L16 1.0
22 Benjamin Pikus	1122(1030) 1094(1001) L2 W25 L4 L14 1.0
23 Byron Bean	1121(1148) 1075(1079) L19 W24 L17 L15 1.0
24 Michael Riches	1157(1079) 1076(1004) L9 L23 L21 D25 0.5
25 Jessie Liu	1026(1026) 977(943) L6 L22 L18 D24 0.5
26 Drew Coughlin	1166(1105) 1083(1020) L5 L16 L11 L18 0.0

TCC G/60 4/8 TD: Gary Dorfner	
1 Bill McGeary	2192(2177) 2197(2189) W3 W2 D4 W5 3.5
2 Michael MacGregor	2194(2202) 2190(2193) W5 L1 W6 W4 3.0
3 Patrick Hickey	1776(1776) 1786(1782) L1 D4 W5 W6 2.5
4 Geoffrey Gale	1987(1855) 1983(1859) W6 D3 D1 L2 2.0
5 Michael Taylor OR	1498(1314) 1497(1315) L2 W6 L3 L1 1.0
6 Anthony Guo	1259(907) 1248(902) L4 L5 L2 L3 0.0

May 4th Massacre Spokane TD: David Griffin	
1 John Julian	(1872) (1867) W11 W7 W2 D5 3.5
2 Alton Blue	(1417) (1478) W12 W4 L1 W8 3.0
3 Alex Chow	(1232) (1432) W10 D5 D4 W7 3.0
4 Patrick Herbers	(1913) (1900) W6 L2 D3 W10 2.5
5 Zach Countryman	(1503) (1520) W13 D3 D10 D1 2.5
6 Ted Baker	(1305) (1308) L4 W13 D11 W12 2.5
7 Ronald Weyland ID	(1309) (1316) W8 L1 W9 L3 2.0
8 William Dittman	(0) (1142) L7 W12 W13 L2 2.0
9 Benjamin Blue	(1106) (1124) W14 L10 L7 W11 2.0
10 Adam Attwood	(1697) (1663) L3 W9 D5 L4 1.5
11 James Waugh	(1256) (1230) L1 W14 D6 L9 1.5
12 Annette Weyland ID	(1097) (1062) L2 L8 W14 L6 1.0
13 David Blue	(597) (599) L5 L6 L8 W14 1.0
14 Jacob Hagen	(0) (203) L9 L11 L12 L13 0.0

Taxing Quads Spokane 4/6-27 TD: David Griffin	
1 Patrick Kirlin	1347 1386 - L W W 2.0
2 Alton Blue	1334 1379 W - W L 2.0
3 Ronald Weyland ID	1469 1439 L L - W 1.0
4 Ted Baker	1421 1399 L W L - 1.0
1 Benjamin Blue	1238 1233 - W L W 2.0
2 James Waugh	1164 1177 L - W W 2.0
3 Annette Weyland ID	1081 1069 W L - L 1.0
4 Ryan Ackerman	0 1023 L L W - 1.0

Pierce County Open Tacoma 5/6-7 T D: Gary Dorfner	
1 Paul Bartron	2098 2113 W12 W7 W11 W4 4.0
2 Darren Wu	1697 1675 H W10 W6 W7 3.5
3 Michael Wang	1577 1625 H D13 W10 W11 3.5
4 Michael MacGregor	2196 2187 W8 W6 H L1 2.5
5 Megan Lee	1500 1508 L10 W15 D13 W12 2.5
6 Stephen Buck	1748 1737 W15 L4 L2 W13 2.0
7 David Hendricks	1699 1684 W14 L1 W8 L2 2.0
8 Scott Charleston	1519 1522 L4 W9 L7 X 2.0
9 John Hornickie	1437 1435 L11 L8 W15 B 2.0
10 Jay Charleston	1153 1257 W5 L2 L3 W15 2.0
11 Dan Mathews	1865 1845 W9 H L1 L3 1.5
12 Eric Holcomb	1500 1500 L1 W14 H L5 1.5
13 Darryl Wu	1239 1424 H D3 D5 L6 1.5
14 Philip Nesser	1298 1282 L7 L12 B F 1.0
15 Constantin Etingher	1445 1400 L6 L5 L9 L10 0.0

From the Business Manager

If you joined or renewed at the Washington Open, thank you and welcome to Northwest Chess! Please address any questions or concerns to the Business Manager as listed on the inside front cover of the magazine.

Address changes and membership renewals should be received by the 20th of each month to ensure that the membership records are updated in time for the next month's mailing. Did you know that *Northwest Chess* pays 75 cents postage due each time a magazine is returned due to a bad address? Please help us avoid this expense. Returned magazines will not be replaced unless you pay a \$2.00 fee, or unless you are able to pick up an extra copy at a club or tournament, where available.

Mathews Wins Inland Empire

Julian Club Champ; Blues Boys Grab Tax Refund

Julian Repeats as Club Champion

by David Griffin

John Julian won his second straight Spokane Club Championship and Spokane Winter championship with a score of 4.5. His only draw came to the second seed, Pat Herbers who finished second overall in the event with a score of four points. This is John's third straight club championship and his ninth overall. John Downes, David Griffin, and Alex Chow finished in a three way tie for third overall with a score of 3.5 a piece. Vern Johnson took the U1400 award with two points. Johnson also managed the biggest upset of the event. There were sixteen players and a houseman for the event. Along with cash prizes *NWC* magazines were awarded as well to some of the winners.

King's Indian Fianchetto

Patrick Kirlin (1274)

Zachary Countryman (1652)

Spokane, Winter Championsip (1) 2006

1.c4 ♖f6 2.♗c3 g6 3.g3 ♕g7 4.♕g2 O-O 5.e3 d6 6.♗e2 ♗bd7 7.O-O e5 8.d4 ♗h5 9.d5 f5 10.e4 f4 11.♖h1 f3 12.♗xf3 ♗xf3 13.♗g1 ♗f7 14.♗h3 h6 15.f4 exf4 16.gxf4 ♖h4 17.♖f3 ♗e5 0-1

French Classical

Zachary Countryman (1652)

John Julian (1996)

Spokane, Winter Championsip (2) 2006

1.e4 e6 2.d4 d5 3.♗c3 ♗f6 4.♕g5 ♕e7 5.e5 ♗fd7 6.♕xe7 ♖xe7 7.f4 a6 8.♗f3 c5 9.♖d2 ♗c6 10.dxc5 ♖xc5 11.O-O O ♗b6 12.g4 ♕d7 13.♕e2 O-O-O 14.♗d4 ♖b8 15.♗b3 ♖b4 16.a3 ♖e7 17.♖e3 ♗c8 18.♗c5 d4 19.♗xd7+ ♗xd7 20.♖d3 ♗hd8 21.♗e4 f6 22.exf6 gxf6 23.♗he1 ♗b6 24.♕f3 ♗d5 25.f5 ♗e5 26.♖b3 ♗e3 27.fxe6 ♗xf3 28.♗xe3 dxe3 29.♗xd7 ♖xd7 30.exd7 e2 31.♖xf3 e1=♖+ 32.♖d1 ♖xe4 33.b3 ♖c6 34.♖f1 ♗xd7 35.♖f4+ ♖d6 0-1

London System

David Griffin (1560)

Hugh Brodie (1695)

Spokane, Winter Championsip (4) 2006

1.d4 d5 2.♗f3 ♗f6 3.♕f4 e6 4.e3 c5 5.c3 ♗c6 6.♕e2 cxd4 7.exd4 ♕e7 8.♗bd2 a6 9.O-O b5 10.♗e5 ♗xe5 11.♕xe5 ♕d7 12.f4 ♖b6 13.g4 ♗xg4 14.♕xg4 f6 15.♗f3 fxe5 16.♗xe5 g5 17.♕h5+ ♗d8 18.fxg5 ♗g8 19.♗f7+ ♖c7 20.h4 e5 21.♖e2 e4 22.♗f4 ♕e6 23.♗af1 ♗af8 24.♖h2 ♖b7 25.♖h1 ♖c7 26.♗e5 ♗xf4 27.♗xf4 b4 28.♖c2 ♗c8 29.♖b3 ♖a7 30.♕e2 bxc3 31.bxc3 ♖xc3 32.♖xc3 ♗xc3 33.♖g2 ♗c2 34.♖f2 ♕a3 35.♗f6 ♕c8 36.♗f7+ ♖a8 37.♗xh7 ♕c1 38.g6 ♕f5 39.♗h8+ ♖b7 40.g7 e3+ 41.♖g3 ♗xe2 42.♗b8+ ♖xb8 43.g8=♖+ ♕c8 44.♖xd5 ♕b7 45.♗c6+ ♖c7 46.♖c4 ♗e1 47.♗a5+ ♖b8 48.♗xb7 e2 49.♖f2 ♕d2 50.♗c5 ♗c1 51.♖b3+ ♖c8 52.♖b7+ ♖d8 53.♖d7 mate

Taxing Quads

by Kevin Korsmo

The Taxing Quads shaped up Blue as father Alton and son Ben both won their sections. Alton Blue finished 2-1 and tied for first in Quad A with Pat Kirlin. Each won \$25 for his efforts. Ben Blue and Jim Waugh won Quad B with respective 2-1 scores and likewise shared the \$50 quad prize. Every player in the event won at least one game.

Inland Empire

by Kevin Korsmo

Dan Mathews of Edmonds won the 2006 installment of the Inland Empire Open on April 29-30. His 4.0 score edged out five who shared second place with 3.5 scores: Pat Herbers, John Rosell, Phil Weyland, eleven-year-old Alex Chow, and tournament director (!) Dave Griffin. Mathews claimed the \$175 first prize by winning both of his Sunday games and overtaking the others

when the Herbers-Chow and Weyland-Rosell final round games ended in draws. Each of the five second-place winners received \$77 as their share of second and third places as well as the A and B class prizes.

There were 14 draws, all long fought, in the tourney. Mix in quite a few first and third round byes, and it was easy to see why there were no perfect scores after the first day. Both the tourney leaders and the class prize groups were closely bunched the whole way, with many of the prizes dependent upon the outcome of the last few games.

The Class C prize was shared by Zach Countryman, John Hornickle of Tacoma, and Bill McBroom of Missoula. Each received \$27. The Class D prizes were claimed by Ted Baker and Jim Waugh, who received \$40 each. Waugh celebrated his 77th birthday on the first day of the tourney! He capped the day by winning his third round game and then tied for the class prize the following day. Way to go Jim!

William Spencer of Helena claimed the biggest upset prize of \$50 by drawing a player 820 points higher than him! Ted Baker captured the second upset prize (\$30) for his first round victory of a player rated 322 points higher.

There were 30 players taking part this year, including John Downes who participated in the very first IEO in 1954! The IEO is the oldest of our Spokane's annual weekend tourneys and one of the longest running events in Washington state.

Sicilian Smith-Morra

Patrick Herbers (1954)

Zachary Countryman (1573)

Spokane, Inland Empire (1) 2006

1.e4 c5 2.d4 cxd4 3.c3 dxc3 4.♗xc3 e6 5.a3 g6 6.♗f3 ♕g7 7.e5 ♗c6 8.♕f4 ♗ge7 9.♕b5 O-O 10.O-O f6 11.exf6 ♗xf6 12.♕d6 a6 13.♕a4 b5 14.♕b3

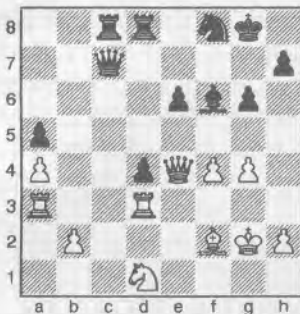
♙b7 15. ♖e4 ♜f8 16. ♗c5 ♖c8 17. ♖e2
♜h8 18. ♜ac1 ♜e8 19. ♜fd1 ♗f5 20. ♗e4
♖d8 21. ♗c5 ♖c8 22. ♗e4 ♖d8 Draw

Sicilian Scheveningen

Theodore Catton (1721)
Ted Baker (1399)

Spokane, Inland Empire (1) 2006

1. e4 c5 2. ♗f3 e6 3. d4 cxd4 4. ♗xd4 a6
5. ♗c3 ♖c7 6. g3 d6 7. ♙g2 ♗f6 8. O-O
♙e7 9. ♙e3 O-O 10. f4 ♗c6 11. ♗xc6
bxc6 12. a4 d5 13. e5 ♗d7 14. ♖e2 a5 15.
♜f3 ♙b7 16. ♙f2 ♜fe8 17. ♗d1 c5 18. g4
d4 19. ♜h3 ♙xg2 20. ♜xg2 f6 21. ♖e4
g6 22. exf6 ♙xf6 23. ♜aa3 ♗f8 24. c3
♜ed8 25. cxd4 cxd4 26. ♜hd3 ♜ac8



27. ♙xd4 ♙xd4 28. ♜xd4 ♜xd4 29.
♖xd4 ♜d8 30. ♖g1 ♖xf4 31. ♜g3
♜d2+ 32. ♜h3 ♖h6 mate

French Exchange

Kevin Korsmo (1663)
Phillip Weyland (1886)

Spokane, Inland Empire (2) 2006

1. e4 e6 2. d4 d5 3. exd5 exd5 4. c3 ♙d6
5. ♗f3 ♗e7 6. ♙d3 ♙g4 7. h3 ♙h5 8. ♙g5
f6 9. ♙e3 c6 10. ♗bd2 ♗d7 11. ♖c2 ♙g6
12. ♗h4 ♙xd3 13. ♖xd3 ♖c7 14. ♗f5
♗xf5 15. ♖xf5 O-O-O 16. c4 g6 17. ♖c2
f5 18. c5 f4 19. cxd6 ♖xd6 20. O-O fxe3
21. fxe3 ♜de8 22. ♜f3 ♜e7 23. a3 ♜he8
24. ♗f1 ♜e4 25. b4 ♗b6 26. b5 ♗c4
27. bxc6 bxc6 Draw

Modern

Dan Mathews (1838)
Patrick Herbers (1954)

Spokane, Inland Empire (2) 2006

1. e4 g6 2. c3 ♙g7 3. d4 d6 4. ♙d3 ♗f6
5. ♗e2 O-O 6. O-O e5 7. f3 c6 8. ♙e3 ♗bd7
9. ♗a3 ♜e8 10. ♙c2 d5 11. exd5 ♗xd5
12. ♙f2 b6 13. ♖d2 a5 14. ♜fe1 ♙a6
15. ♗g3 ♖c7 16. ♙b3 ♙b7 17. ♗f1 exd4
18. ♙xd4 ♗f6 19. ♜xe8+ ♜xe8 20. ♜e1
♜xe1 Draw

Northwest Chess

QGD Slav

Romie Carpenter (1800)
Adam Attwood (1695)

Spokane, Inland Empire (2) 2006

1. d4 d5 2. ♗f3 ♗f6 3. c4 c6 4. g3 ♙f5
5. ♙g2 e6 6. ♗bd2 ♙d6 7. O-O h6 8. b3
O-O 9. ♙b2 ♗bd7 10. ♜h1 ♜e8 11. ♗e5
♗e4 12. ♗xe4 ♙xe4 13. f3 ♙h7 14.
♗xd7 ♖xd7 15. e4 dxc4 16. bxc4 ♜ad8
17. ♖b3 ♖c7 18. f4 b6 19. ♜ac1 ♙e7
20. e5 ♖d7 21. ♜fd1 ♜c8 22. d5 cxd5
23. cxd5 ♜xc1 24. ♜xc1 exd5 25. ♙xd5
♙c5 26. ♜d1



26... ♖f5 27. ♙d4 ♙xd4 28. ♜xd4 ♖b1+
29. ♜d1 ♖xb3 30. ♙xb3 ♙f5 31. ♜g2
♜f8 32. ♜d2 Draw

Modern

Zachary Countryman (1573)
John Rosell (1880)

Spokane, Inland Empire (2) 2006

1. e4 g6 2. d4 d6 3. ♗c3 ♙g7 4. ♙e3 a6
5. ♖d2 b5 6. h4 h5 7. ♙d3 ♗d7 8. f4 c5



Photo by Russell Miller

TD David Griffin

June 2006

9. dxc5 ♗xc5 10. ♗ge2 ♗f6 11. ♗g3
♗g4 12. ♙xc5 dxc5 13. O-O-O O-O
14. ♖e2 ♖a5 15. e5 ♙e6 16. ♗ce4 c4
17. ♗g5 cxd3 18. ♜xd3 ♙c4 19. ♗xh5
gxh5 20. ♖e4 f5 21. exf6 ♗xf6 O-1

English

Kirk Steinocher (1920)
Dan McCourt (1650)

Spokane, Inland Empire (2) 2006

1. c4 e5 2. ♗c3 d6 3. ♗f3 f5 4. d4 e4 5. ♗g1
♗f6 6. ♗h3 ♗c6 7. e3 g6 8. ♗f4 ♙g7 9. h4
♗e7 10. ♙d2 c6 11. b4 d5 12. c5 ♜f7 13.
♙e2 ♙d7 14. ♖b3 h5 15. O-O Ob5 16. ♜c2
a5 17. a3 a4 18. ♖b1 ♗eg8 19. ♜d1 ♗h6
20. ♖f1 ♖e7 21. ♖d1 ♗hg4 22. ♖e1
♜ag8 23. ♙xg4 hxg4 24. g3 ♙e8 25.
♗ce2 ♗h5 Draw

King's Indian Fianchetto

Robert Martin (1728)
Alex Chow (1696)

Spokane, Inland Empire (3) 2006

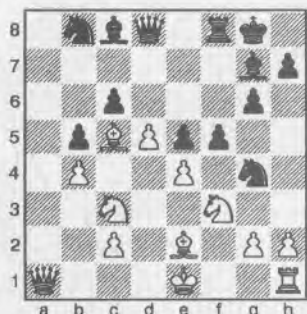
1. ♗f3 ♗f6 2. c4 g6 3. g3 ♙g7 4. ♙g2 O-
O 5. O-O d6 6. d4 ♗bd7 7. ♗c3 e5 8. dxe5
♗xe5 9. ♗xe5 dxe5 10. e4 ♙e6 11. ♖e2
c6 12. ♜d1 ♖c7 13. h3 ♜fd8 14. ♙e3
♗d7 15. b3 f5 16. exf5 ♙xf5 17. ♗e4 ♗f8
18. ♙g5 ♜xd1+ 19. ♜xd1 ♗e6 20. ♙e3
♗d4 21. ♖f1 ♜d8 22. ♙g5 ♜f8 23. g4
♙xe4 24. ♙xe4 h6 25. ♙h4 ♖d6 26. ♙g3
♜d8 Draw

Pirc Austrian Attack

Dan McCourt (1650)
Patrick Herbers (1954)

Spokane, Inland Empire (3) 2006

1. e4 g6 2. d4 ♙g7 3. ♗c3 d6 4. f4 c6
5. ♙e3 ♗f6 6. ♗f3 O-O 7. ♙e2 b5 8. b4
a5 9. a3 ♗g4 10. ♙g1 e5 11. fxe5 axb4
12. axb4 ♜xa1 13. ♖xa1 dxe5 14. d5 f5
15. ♙c5



15... fxe4 16. ♙xf8 ♖xf8 17. ♗e4 ♖xb4+
18. ♗fd2 cxd5 19. ♖a2 ♗e3 20. ♜f2 ♙h6
21. ♗f6+ ♜g7 22. ♗xd5 ♖f8+ 23. ♙f3
♖c5 24. ♜e2 ♙e6 25. ♖b2 ♗d7 26. ♗c3

♖c4 27. ♗xc4 ♘xc4+ 28. ♗d1 ♖d4+
29. ♗e1 ♖d2 mate

Pirc

John Rosell (1880)
Kevin Korsmo (1663)

Spokane, Inland Empire (3) 2006

1. d4 d6 2. e4 ♗f6 3. ♗c3 g6 4. ♘e3 ♘g7
5. ♖d2 ♗g4 6. ♘g5 h6 7. ♘h4 O-O 8. f4 ♗f6
9. ♗f3 ♖e8 10. ♘e2 c6 11. a4 ♖c7 12.
O-O ♗bd7 13. e5 dxe5 14. fxe5 ♗d5 15.
♗e4 f5 16. exf6 exf6 17. ♘g3 ♖d8 18. ♗d6
♖e6 19. ♘d3 ♗f8 20. c4 ♗c7 21. c5 ♗d5
22. ♖ae1 ♖xe1 23. ♖xe1 f5 24. ♖e8 ♖d7
25. ♗e5 ♘xe5 26. ♘xe5 1-0

Modern

Alex Chow (1696)
John Rosell (1880)

Spokane, Inland Empire (4) 2006

1. e4 g6 2. d4 ♘g7 3. ♗c3 d6 4. f4 ♗c6
5. ♗f3 ♘g4 6. ♘b5 ♘xf3 7. gxf3 a6
8. ♘xc6+ bxc6 9. e5 e6 10. h4 h5 11. ♖d3
d5 12. ♗e2 ♘f8 13. ♘e3 ♘e7 14. ♘f2
♗h6 15. ♖c3 ♗d7 16. ♗c1 ♗f5 17. ♗b3
♖b8 18. a3 ♖b5 19. ♗a5 ♖ab8 20. b4
♖b6 Draw

Nimzovich Countergambit

Zachary Countryman (1573)
Dan McCourt (1650)

Spokane, Inland Empire (4) 2006

1. e4 e5 2. f4 d5 3. exd5 c6 4. dxc6 ♗xc6
5. ♗c3 exf4 6. ♗f3 ♗f6 7. d4 ♘d6 8. ♘b5
O-O 9. O-O ♘g4 10. ♗e2 ♖c7 11. c4
♖ad8 12. ♘xc6 bxc6 13. ♖c2 ♖b8 14. b4
♘h5 15. ♗h4 Draw

Sicilian Closed

Kevin Korsmo (1663)
Adam Attwood (1695)

Spokane, Inland Empire (4) 2006

1. e4 c5 2. ♗c3 ♗c6 3. f4 e6 4. ♘b5 a6
5. ♘xc6 bxc6 6. ♗f3 d5 7. e5 ♗e7 8. O-O
d4 9. ♗e4 ♗d5 10. d3 ♘e7 11. ♗fg5 h6
12. ♖h5 g6 13. ♖h3 ♗e3 14. ♖f2 ♗f5
15. g4 ♗g7 16. ♘d2 ♗f8 17. ♖af1 ♗g8
18. ♗f3 h5 19. g5 ♗f5 20. ♗h4 ♖b6
21. b3 a5 22. ♖g2 a4 23. ♗f6+ ♗g7
24. ♗xf5+ exf5 25. ♖g3 axb3 26. axb3
♖a2 27. ♖c1 ♘e6 28. ♖g2 ♖a6 29. ♖h3
♖a1 30. ♖e2 ♖xc1+ 31. ♘xc1 ♖a1
32. ♗f2 Draw

Sicilian Smith-Morra

Patrick Herbers (1954)
Alex Chow (1696)

Spokane, Inland Empire (5) 2006

1. e4 c5 2. d4 cxd4 3. c3 dxc3 4. ♗xc3 ♗c6
5. ♘c4 e6 6. ♗f3 ♖c7 7. O-O ♗f6 8. ♖e2
♗g4 9. g3 ♘c5 10. ♗g2 O-O 11. ♘b3 a6
12. ♘f4 d6 13. ♖ac1 ♖e7 14. h3 Draw

Modern

Romie Carpenter (1800)
Dan Mathews (1838)

Spokane, Inland Empire (5) 2006

1. d4 g6 2. ♗f3 ♘g7 3. c4 e6 4. g3 ♗e7
5. ♘g2 O-O 6. ♗c3 c6 7. e4 d5 8. cxd5 exd5
9. e5 ♘e6 10. O-O ♘g4 11. h3 ♘xf3
12. ♘xf3 ♗d7 13. ♖b1 ♖c7 14. ♘f4 ♖b6
15. g4 ♖fe8 16. ♘g2 f5 17. ♘e3 ♖c7
18. b4 ♗f8 19. b5 ♗e6 20. bxc6 bxc6
21. ♖c1 ♖d7 22. ♗e2 ♖f8 23. ♗f4 ♗xf4
24. ♘xf4 fxg4 25. ♘g5 gxh3 26. ♘xh3
♖xh3 27. ♘xe7 ♖f7 28. ♘d6 ♖f5 29. e6
♖h5 30. f3 ♖g5+ 31. ♗f2 ♖g2+ 0-1



Patrick Herbers



Photo by Russell Miller

Kevin Korsmo



Photo by Russell Miller

Constantin Etingher

Volunteers: The Mod Quads would not have been possible without the thoughtful judging and excellent leadership of: Sudhakar Kudva (OSCF President), Norm May (Cornerstone Coach & TD for the 2007 WA State Elementary Championship to be held in Vancouver!), Steve Davis (Cornerstone Coach), Linda Peake, Minnie Quiring and Michael Taylor. Thanks so much for your help throughout the day. A special thanks also goes out to all the parents who helped with setup and cleanup. You certainly made the day run smoothly. We even had a surprise visit from local Chess Master and instructor, Carl Haessler, who added to the fun of the day!

Courtesy of Kate Taylor

Crossville, TN

Oleg Zaikov Takes 1st

The Scholar-Chessplayer Outstanding Achievement Awards for 2006 were announced on April 21st at the National High School Championship in Milwaukee, Wisconsin. These scholarships are given to high school juniors and seniors who excel in academics, chess, and leadership. Scholarships are awarded upon matriculation at an institution of higher learning. These annual awards are given by the U.S. Chess Federation and the U.S.

Bragg-Fryberg cont'd from page 8

14.c3 ♖c7 15.♗xc7 ♜xc7 16.♘e5 h6 17.♘h3

An important point to remember is that we cannot play "Hope" chess: "I will play a variation with a hole in it, because I hope he will not play the strongest line." It backfires too often. I have also experienced occasions where my weaker opponent trusts my analysis, and decides not to play a sacrifice, thus saving time on his clock. Don't trust Masters, they make mistakes, too. Perform your own analysis. Sometimes that sacrifice works!

I wanted to play 17. ♗xf6?, but it just doesn't work. With accurate defense, Black enters a winning endgame, i.e., 17... ♗xf6 18. ♖e4 g6 19. ♘exf7 (19. ♘gxf7 ♗xf7 20. ♖xg6+ ♖f8-+) 19... ♗xf7 20. ♖xg6+ (20. ♘e6 ♖e7 21. ♖xg6+ ♗g7 22. ♘g7 ♖xg7-+) 20... ♗g7 21. ♖xf6 (21. ♘e6 ♗g6 22. ♘c7 ♗c8 23. ♗xg6 ♗xc7-+) 21... ♗xg5 22. ♖xe6+ ♖f7-+.

Chess Trust and are intended to encourage high school students who promote a positive image of chess. Congratulations to the winners and a special thank you to the twenty-nine students who applied.

In order of finish the 2006 Scholar-Chessplayers are:

Oleg Zaikov	OR	\$2000
Alexander King	TN	\$1000
Ankur Bakshi	NJ	\$700
Kevin Binz	WA	\$500
Peter Tu	TX	\$400
Thomas Gossell	MO	\$200
Adam Holmes	NC	\$200

To apply for the Scholar-Chessplayer Award, you must be a current U.S. Chess Federation member and submit five copies of a completed application form, high school transcript showing all courses and grades, a letter of recommendation from a teacher, a letter of recommendation from a chess coach, an essay of no more than 500 words describing the positive influence that chess has had on your life, and a recent photograph. The deadline for the next award, the 2007 Scholar-Chessplayer Award, is March 1, 2007.

Courtesy of USCF

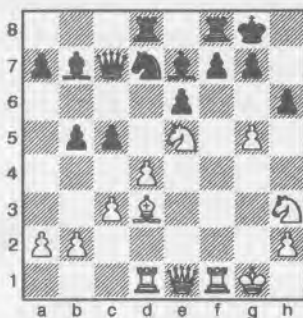
Milwaukee, WI

Landon Brownell who lives in Oregon as well as Arizona was on fire dur-

17... ♗ad8 18.g4

White rushes to open the position.

18...c5 19.g5 ♘d7



20. ♘f3?

In my calculations during the game, I looked at 20. ♘f3! ♖c6 (20... ♗xf7? 21. ♖xe6 and Black can't defend f7) 21.d5 exd5 22. ♖xe7 d4 23. ♘h6+ ♖h8 (23... gxf6 24. ♖h7 mate) 24. ♗e4 ♖xe4 25. ♖xe4 ♗xe4 26. ♘f7+!, but missed this finishing touch, seeing only that my

ing the weekend of April 21-23. With 6.5 out of seven, he won the National High School Championship on tiebreaks. There were 368 players in the top section, and 1465 players in all. Excellent scores of 5.5 were posted by Jamey Mulligan and Adi Lanka. Ben Wyde scored five points. A total of ten Oregonians and seven Washingtonians played in the open section. The four lower sections—U1500, U1200, U900, and UNR—didn't attract many Northwesters. Two from Washington competed in the U1200 and one from Oregon in the U900.

Brownell also won the Blitz Championship, scoring eleven out of twelve. There were 294 players in the six-round double swiss. Wyde had ten points, tying for 5-11th place and Lanka had 9.5, which put him in a tie for 12-17th place.

Landon Brownell teamed with Daniel Rohde (NY) in the Bughouse championships. The team finished in a tie for 2nd-4th. But here is some more great news. Adi and Ben came in first! The teams of Mulligan & Eric Hufnagel and of Alex Glass & Sterling Kolde came tied 10th-21st out of 82 teams.

Special congratulations to all the Northwest players I have mentioned.

Courtesy H. G. Pitre and USCF

Knight was attacked. FRITZ preferred 23. ♘f5 ♗xf5 24. ♗xf5 d4 25. ♖h4+ ♖h6 26. ♖g3 ♖h5 27. ♘f4 ♗d6 28. ♘h5 ♗xg3 29. ♘xg3+- . After the move played, Black is better.

20...cxd4

Not 20... ♖c6? 21.d5.

21.cxd4 ♖c6 22.gxf6 g5?

Black should keep the kingside closed by 22...g6! 23.d5. Also interesting is 22... ♗f6 23. ♗xg7 ♗xd4+ 24. ♖g2 (24. ♖h1? ♖xf3+).

23. ♘hxg5 ♗xg5 24. ♖g3 ♖h8 25. ♘g5 f6 26. ♗e4 ♖b6 27. ♗xb7 ♖xb7 28. ♘e6 ♗g8 29. ♘g7 ♖h7 30. ♗f2 ♖xh6

Black had a nice idea, but missed White's 31st.

31. ♗f4 1-0

Mating. Black had planned for 31. ♗g2?? ♖xg2+, winning a piece. ■

Peter Petrovich Lapiken

1907-1983

By Russell (Rusty) Miller (Chelan, WA), Tom Kalaris, IM John Donaldson (Berkeley, CA), and back issues of *Northwest Chess* and its predecessor *The Washington Chess Letter*, and with editorial assistance and game analysis by Mike Murray (Port Townsend, WA). U.S. Open information from Jack O'Keefe.

Some Lapiken Games—Cont'd

Notes by Mike Murray (with FRITZ 8), now of Port Townsend, in October and November of 2005.

I (Mike Murray) left Missoula for Seattle in February of 1968. In the month before I left, Dr. Lapiken and I played a series of clock games at tournament time control (40 moves in two hours) — not a formal match, but we took the games seriously. I was a low-rated NW Expert at the time. I've annotated this game with the help of FRITZ8.

Black Knights' Tango

Peter Lapiken
Mike Murray

Missoula 1968

Annotations by Mike Murray

1.d4 ♘f6 2.c4 ♘c6

The Kevitz-Traikovich Defense, nowadays called "The Tango." I used to do very well with it against strong players. Long after I quit playing, IM Georgi Orlov published his monograph and later his book on it, and recently Richard Palliser has published another; so I suppose it's lost most of its surprise value.

3.d5 ♘e5 4.♖d4 d6

Orlov and Palliser each recommend 4...♘g6, retaining the option of developing the Bishop at c5 or b4.

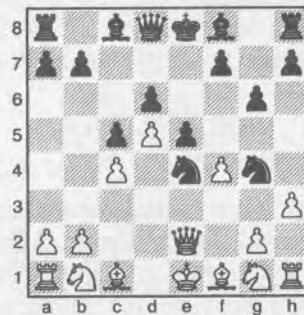
5.e4 c5 6.♖e3 g6

After the game, Lapiken suggested the fanciful 6...g5!? Book is 6...e6, but the fianchetto also has to be reasonable.

7.f4 ♘eg4 8.♖e2 e5 9.h3

Doc says, "Show Me!" Capturing *en passant* was a prudent alternative.

9...♘xe4!



10.hxg4

10.♖xe4 seems playable 10...♖h4+ 11.♘d2 ♘f2 12.♖e1 ♖g3 13.♖h2 ♘h6 14.♘e2 ♖xh2 15.♖xf2 ♘xf4 16.♘xf4 ♖xf4 17.♖xf4 exf4 with a Rook and two Pawns for two minors.

10...♘g3 11.♖f3 ♘xh1 12.g3 ♘xg3

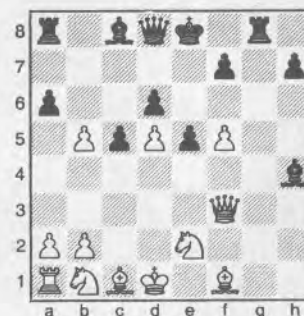
There was no rush to get something for the Knight. 12...♘g7 was better, since if 13.♖xh1 ♘xg4.

13.♖xg3 ♘g7 14.f5 gxf5 15.gxf5 ♘f6 16.♖f3 ♘h4+

It was tempting to force the King to move, but better was 16...♘g5 17.♘d2 ♘xd2+ 18.♘xd2 ♖h4+ 19.♖f2 ♖xf2+ 20.♘xf2 ♘xf5 21.♘f3 and Black has the material edge.

17.♘d1 ♖g8 18.♘e2 b5 19.cxb5 a6

Trying to open it up before White can consolidate. It's a strange position — Black is sacrificing and attacking on both wings, while White's King calmly strolls about in the center—Dr. Lapiken was never afraid to put his King at risk. FRITZ thinks things are about equal.



20.b6 ♘d7

The b-pawn eventually becomes a bone in the throat, and Black should have just snatched it up with 20...♖xb6.

21.♘bc3 ♘b5?

There was still time to grab the Pawn with 21...♖xb6.

22.b7 ♖b8 23.♘xb5 axb5 24.♘c3 b4

24...♖xb7 25.♘xb5+ ♘f8 26.♘h6+ ♘e7 might have been a little better, but Black's game is deteriorating.

25.♘b5+ ♘e7 26.f6+

The point is to gain a tempo by attacking the Bishop, but the immediate 26.♘e4, putting extra pressure on Black's King, is even better.

26...♘xf6 27.♘e4 ♖g1+

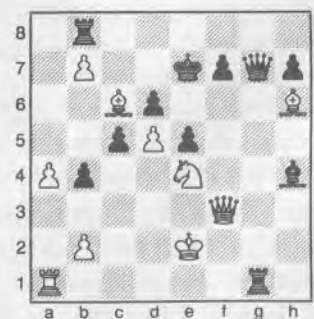
No better was 27...♘h8 28.♘c6 ♖g6 29.♘g5+ f6 30.♘e2 fxg5 31.♖f1 and Black is totally helpless.

28.♘e2 ♖h8

Or 28...♘h8 29.♘g5+ ♖xg5 30.♘xg5.

29.♘c6 ♖g7 30.a4 ♘h4 31.♘h6

Black can't take the Bishop, because the Rook hangs, but this move throws away White's advantage. Correct was 31.♖h3, when it will be hard to fend off the Queen and the passed Pawn.



31...♖g7?

For a serious attack, the Queen and Bishop just aren't enough. Black needs to keep the Rook on the board. Good

chances were offered by 31...♖g2+ and if, e.g., 32.♗d1 (FRITZ found 32.♗d3 ♖g6 33.♗c4 ♖g4 34.a5 ♖xe4+ 35.♗b5 with a slight edge, but who'd ever play this in a real game?) 32...♖g6 33. ♗e3 b3.

32. ♖xg1 ♖xg1 33. ♖f5

Now, it's all over unless Black can turn a few checks into something good. I couldn't find anything. Thirty-six years later, neither could FRITZ.

33... ♖e1+ 34.♗d3 c4+ 35.♗xc4 ♖e2+ 36.♗b3 ♖d3+ 37.♗a2 ♖c4+ 38.♗a1 ♖xb7 39.♗xb7 b3 40.♗c6 1-0

Here's a rather uneventful game he played against the Northwest's own Mike Franett.

King's Indian Attack

Peter Lapiken
Mike Franett

Chicago, U.S. Open 1973

1.e4 c5 2.♗f3 e6 3.d3 ♗c6 4.g3 g6 5.♗g2 ♗g7 6.O-O ♗ge7 7.♖e1 d6 8.c3 O-O 9.d4 e5 10.dxc5 dxc5 11.♗e3 b6 12.♖c1 ♖c7 13.b4 ♗d8 14.bxc5 bxc5 15.♖a3 ♗e6 16.♗g5 ♗xg5 17.♗xg5 ♗e6 18.♗d2 ♖fd8 19.♗f1 f6 20.♗e3 ♗f8 21.♗c4 ♗c8 Draw

A brace of losses to the well-known correspondence player, Ignas Zalys, who won a couple of Golden Knights (correspondence) tournaments years ago.

King's Indian Attack

Peter Lapiken
Ignas Zalys

Worcester (MA) 1964

1.g3 g6 2.♗f3 ♗g7 3.♗g2 ♗f6 4.O-O O-O 5.d3 d6 6.♗bd2 ♗bd7 7.a4 ♖b8 8.e4 e5 9.♗c4 ♗c5 10.b4 ♗e6 11.c3 b6 12.♖c2 ♗b7 13.h3 ♗h5 14.♖b3 ♗h8 15.♗e3 ♖e8 16.♖e1 f5 17.exf5 gxf5 18.♗f1 ♖f7 19.♖b1 ♗f6 20.♗h4 ♗xg2 21.♗xg2 ♖be8 22.♖d1 ♗d5 23.♗d2 f4 24.c4 ♗e7 25.g4 ♖g6 26.♗c1 ♗g5 27.♗h2 ♗xh3 28.♗xh3 ♖h6+ 29.♗h4 ♗g6 30.♗g2 ♗xh4+ 31.♗g1 ♖g6 32.f3 h5 33.♗f2 hxg4 34.fxg4 e4 35.dxe4 ♖xe4 36.♗b2 ♗xb2 37.♖xb2 ♖xe1 38.♗xe1 ♖e8+ 39.♗d2 ♖e4 40.♗c3 ♗f3 41.♖f2 ♗e5 42.♖d4 ♖e1+ 43.♗c2 ♖f8 44.♖xf4 ♖e2+ 45.♗d2 ♖xf4 46.♖xf4 ♖xg4 47.♖f8+ ♗h7 48.♖b8 ♖g7 49.♗b3 ♖f7 50.♗c3 ♗c6 51.♖b7 ♖g7+ 52.

♗b3 ♖g3+ 53.♗b2 ♖e5+ 54.♗c2 ♗xb4+ 0-1

Philidor

Ignas Zalys
Peter Lapiken

Lincoln, U.S. Open 1969

1.e4 e5 2.♗f3 d6 3.d4 ♗f6 4.♗c3 ♗bd7 5.♗c4 ♗e7 6.h3 c6 7.♗e3 ♖c7 8.a4 O-O 9.♖d2 b6 10.O-O ♗b7 11.♗e2 a6 12.♖fb1 d5 13.exd5 cxd5 14.dxe5 ♗e4 15.♗xd5 ♗xd2 16.♗xc7 ♗xb1 17.♗xa8 ♗c3 18.bxc3 ♖xa8 19.♗d4 ♖c8 20.♗d2 ♖c7 21.♗d3 ♗c5 22.♗c4 ♗xa4 23.♗xb6 ♗xb6 24.♗xb6 ♖xc3 25.♗d4 ♖c7 26.c3 ♖c8 27.♖b1 ♖c7 28.♖a1 ♖c8 29.f4 f6 30.♗xa6 ♗xa6 31.♖xa6 fxe5 32.♗xe5 ♗f8 33.♗f2 g6 34.♗f3 ♗f7 35.♗d4 ♗e8 36.♗e4 ♗f7 37.g4 ♖c7 38.♖a7 ♖c6 39.♗e5 ♖c4+ 40.♗d3 ♖c6 41.c4 ♗e6 42.♗d4 ♗d6 43.♗e4 ♖xc4 44.f5+ 1-0

Next is a nice game against long-time USCF bigwig Marshall Rohland.

Sicilian Closed

Peter Lapiken
Marshall Rohland

Snowmass/Aspen, U.S. Open 1968

Annotations by Mike Murray

1.e4 c5 2.♗c3 ♗c6 3.g3 g6 4.♗g2 ♗g7 5.d3 d6 6.f4 e5 7.♗h3 ♗f6

The Knight is probably more effective on e7. For example, 7...exf4 8.gxf4 ♗ge7, or 7...♗ge7 immediately.

8.O-O ♗g4 9.♖d2 ♗d4 10.♗f2 h5 11.h3 ♗e6 12.♗cd1 exf4 13.gxf4 ♗h6 14.c3?!

Did Lapiken just blunder a Pawn?

14...♗xf4 15.♖e1 ♗c2?

But Black wants more. After 15...♗xc1 16.♖xc1 ♗c6, does White have enough compensation?



16. ♖e2 ♗xa1 17.♗xf4 ♗xa2

The point, thinks Black. This appears to win another Pawn and provide an escape hatch for the Knight. Better was 17...♖a5, but it's ugly after 18. ♗xd6.

18. ♗e3 ♗b3 19.♗g5

The stinger. White threatens to pile up on the pinned Knight with ♗d5, or ♗h1, or both. Black is busted.

19... ♗a5

To protect d5. Unfortunately, a piece drops, and the Knight is still pinned. The rest is slaughter.

20.b4 cxb4 21.cxb4 ♗c6 22.♖xa2 ♗xb4 23.♖a4+ ♖d7 24.♖xb4 ♗h7 25.♗d5 O-O 26.♗h6 ♖fe8 27.♖d4 ♖e5 28.♗f4 ♖ee8 29.h4 b5 30.♗h3 ♖d8 31.♗g5 ♗xg5 32.♗f6+ ♗f8 33.hxg5 ♖e7 34.♗d7+ ♗g8 35.♖xd6 a5 36.e5 a4 37.e6 a3 38.exf7+ ♖xf7 39.♖xg6+ 1-0

Here's a miniature which Lapiken lost to former Washington State Champion Viesturs Seglins.

Scotch

Viesturs Seglins
Peter Lapiken

Snowmass/Aspen, U.S. Open 1968

Annotations by Mike Murray

1.e4 e5 2.♗f3 ♗c6 3.d4 exd4 4.♗xd4 ♗f6 5.♗c3 ♗b4 6.♗xc6 bxc6 7.♖d4 ♖e7 8.♗d3 d5

8...♗c5 9.♖a4 ♗g4 seems better.

9.O-O c5 10.♗b5+ ♗f8 11.♖d1 ♗xc3 12.bxc3 dxe4 13.♗a3 ♖b8??

A blunder. After 13...♗g8 14.♖e2 ♖e5 15.♗c6 ♖b8 16.♖fb1, White has only a slight edge.

14.♗xc5 ♖xb5 15.♖d8+ 1-0

Some Mike Murray Memories

One Hansen's (the Missoula chess players' hangout) anecdote which I remember:

Lapiken occasionally had back problems, and this particular evening, it was obvious he was in some discomfort. He sat ramrod straight in his chair and practiced extra precise and controlled move-

ments when it was his turn. He was playing somebody pretty good, possibly Wally Albert, and a spectator who shall remain nameless (except his name was John Hammond) stood behind Lapiken, engrossed in the game. Unfortunately, the spectator had a fresh cup of hot coffee. As said spectator became more and more engrossed in the game, he leaned further and further over Lapiken's shoulder, eventually tilting the cup enough that a stream of the hot liquid poured down Lapiken's back. Lapiken jerked up and away, which, of course, was the wrong thing to do with a bad back. We helped him remove his suit-coat, which had taken the brunt of the coffee, while the spectator sputtered and stammered profuse apologies.

Ever the gentleman, Lapiken, teeth clenched in pain, said only, "It's.... all.... right.... Just.... get..... away.... from.... me."

An hour later, it was pretty much forgotten.

Another anecdote, nothing special, just something I remember:

Doc and John Hammond and I carpooled to the Montana Open in 1966, which I believe was in Billings. We took Lapiken's car. I don't believe John knew how to drive or if he did, neither Doc nor I wanted to let him. It was a long drive back after a five-round weekend Swiss. I was wasted and Lapiken ended up driving the whole way. I remember complaining to him that, since I was almost 40 years younger than he, why was he the one with the endurance? He just laughed, but was obviously pleased.

Michael Jensen Memories

I grew up in Missoula when Dr. Lapiken was here and would be more than happy to send you a few things I have relating to him. As of two weeks ago, I am Montana's current State Chess Champion. Back then, I would go down to a back room in Hansen's Ice Cream parlor as a boy where Dr. Lapiken and the other chess greats gathered to play on weekends on huge glass-covered chessboards. Dr. Lapiken would dress up in a suit and some would smoke cigars, etc. Occasionally, I got to play him, which

was a big thrill for me. He was a most impressive person that I greatly respected. I believe that I do have some of his game scores from a 1965 Montana State Tournament that he won. (I was Junior Champion that year.)

References and sources:

Mechanics Institute Newsletter by John Donaldson #260 & 263

Tom Kalaris tkalaris@msn.com

Mike Murray, Port Townsend formerly Montana

Jack O'Keefe jokeefe@webtv.net

Mike Jensen, Montana

Bill Lynch sscarff@montana.edu

Various Washington Chess Letter and Northwest Chess Letter and Northwest Chess

California Chess Journal 2005.3 (Fall 2005) article by John Donaldson

California Death Index on Ancestry.com website

The Shkurkin Far East Files, 6025 Pink Arbor, San Pablo CA 94806-4147, website has the following:

*On July 16, 1942, in California, a Certificate of Naturalization '4906691 was issued to Peter Petrovich Lapiken, then 35 years old.

*A Membership Book and Working Card for the Building Service Employee's Union Local 87, San Francisco, California, 1942, was issued to Peter Lapiken.

*Army of the United States Document appointing Private Peter P. Lapiken, 39025469, to be Corporal (Temporary), Battery B, 52nd F.A. Tng. Bn. Dated 5 November 1942.

*Certificate. "Headquarters Western Defense Command and Fourth Army. Counter Intelligence Corps. This is to certify that Peter P. Lapiken has successfully completed the course of instruction in the C.I.C. Preliminary Training School." Dated 21 March 1943.

* Extract from Special Orders '141 dated 12 June 1943 on PPL's graduation from the Seventh Course at the Military Intelligence Training Center, Camp Ritchie, Maryland.

* Extract from orders of Hq European T of Opns USA, dated 13 May 1945, posting 2nd Lts AUS to EAD. [PPL is on the list.]

* Shipping Ticket to Antwerp Belgium from Lt. P.P. Lapiken: 1 ea Can Meat, 1 ea Knife, 1 ea Fork, 1 ea Spoon. [No date.]

* Restricted list of personnel in the US Group Control Council (Germany) (Rear) dated 12 August 1945. [Peter P. Lapiken, 2nd Lt. is among those listed.]

* Extract from Special Orders '145 dated 23 August 1945 from Headquarters US Group Control Council (Germany). [One of the orders includes PPL.]

* "Office of Military Government for Germany (US). Formerly US Group Control Council (Germany). Pass '15." Issued to Peter P. Lapiken, 2nd Lt., 30 October 1945. With photograph.

* Extract from Special Order '7 dated 7 January 1946 from Headquarters, Switzerland Leave Center, US Army, concerning seven-days leave (furlough) for American personnel. [PPL is among those granted leave.]

* Extract from Special Orders '37 dated 13 February 1946, Office of Military Government for Germany US. [The list includes PPL.]

* Appointment of PPL to Second Lieutenant, Military Intelligence as of 4 April 1946, dated 5 December 1946.

* "War Department General Staff. Intelligence Division. Memorandum for All Military Intelligence Reserve Officers." July 1946.

* "Headquarters Sixth Army. Memorandum for All Military Intelligence Reserve Officers." Dated 20 December 1946.

* Navy Department. Resignation Document of PPL dated 26 November 1948. Describes PPL as an Assistant Professor of Russian in US Naval School (Naval Intelligence) at Anacostia DC, born 7.7.1907 in Riga, Russia. Original and a copy.

* Undated letter from War Department General Staff Intelligence Division, asking PPL to fill in Personal History Statement.

Washington Chess Federation (WCF)/Oregon Chess Federation (OCF)

Adult: \$25/year (12 issues). Residents of OR and WA receive a 1-year membership in the OCF or WCF. Members receive *Northwest Chess* via periodicals mail each month.

Junior: \$17/year (12 issues) or \$10/6 months (6 issues). Must be under age 20 at time of expiration. OR/WA residents only; state membership included. Juniors receive *Northwest Chess* each month.

USA Subscriber: \$25/year (12 issues). For subscribers living inside the US mail system, but outside the OR/WA area. Subscribers receive *Northwest Chess* each month.

Family: \$5/year (not a subscription — membership only). This class of membership is open only to co-resident of an Adult or Junior member. Expires at the same time.

Trial: \$13 (membership and subscription, expires in 3 months). By paying the balance of dues for an Adult membership, this option can be extended to 12 months. The balance must be paid before the trial status is expired.

For general information, Eric Holcomb (253) 850-2996, e-mail: Eric@Holcomb.com

OCF/WCF Membership Application/Renewal Form

Name _____ If Junior, give date of birth _____

E-Mail (if you want to subscribe to the *Northwest Chess* e-mail mailing list) _____

Phone Number (optional, will not be used for telemarketing) (____) _____

Street or P.O. Box _____

City _____ State _____ Zip _____

Country (if not USA) _____ Amount Enclosed \$ _____

Make check or money order (USA \$ only) out to Northwest Chess and mail to:

Credit this membership to:

Eric Holcomb
NW Chess Business Manager
PMB 342
12932 SE Kent-Kangley Rd.
Kent WA 98030-7940

* Undated official letter from the White House with expression of gratitude to PPL for the service in the Armed Forces.

* Letter from Veterans Administration in San Francisco dated 1 May 1946, denying PPL's claim for disability pension based upon active service in the US Armed Forces in World War II.

* "Notification of Transfer of Records" re Disability Compensation of PPL, dated 6 December 1950. Records forwarded to Los Angeles.

* "Honorable Discharge from the Armed Forces of the United States of America of Peter P. Lapiken O2 026 392 2d Lt MI USAR," dated 1 April 1953.

* "Enlisted Record of Lapiken Peter P."

* Black and white negative photocopy of Official Transcript of Record, University of California, Berkeley, of PPL for 1940-1941.

* University of California, Program of the Final Examination for the Degree of Doctor of Philosophy

of Peter Petrovich Lapiken, Grad. (Harbin Institute of Oriental and Commercial Sciences) 1931. Slavic Languages and Literatures. Tuesday, June 11, 1953.

* Degree of Doctor of Philosophy Conferred by the Regents of the University of California, Berkeley, to PPL on 18 June 1953. Original and two Xerox copies.

* list "Publications of Peter P Lapiken," 3 typewritten copies.

* Folder "teacher:" complete, detailed Curriculum Vitae PPL. Describes formation, interests and work. Different official documents, connected with the teaching work at the different universities, including on a constant work at the university Montana as Assistant Professor, The University of Montana, State Capitol, Helena.

"The American Contract Bridge League Certificate of Life Master to Dr. Peter P. Lapiken" 1969 and accompanying letter.

Mike Murray Game Data BASE

PPL-Kaufmann (Hollywood 1954)
Rivise-PPL (Hollywood 1954)
Meyer-PPL (Hollywood 1954, blindfold)
Fischer-PPL (US Open 1956)
Lux-PPL (USA 1962)
PPL-Rohland (US Open 1968)
PPL-Burger (US Open 1968)
Seglins-PPL (US Open 1968)
Wallach-PPL (US Open 1968)
PPL-Willis (US Open 1969)
PPL-Franett (US Open 1973)
PPL-Hudson (US Open 1973)
Timm-PPL (US Open 1973)
Hulse-PPL (US Open 1973)

From the Business Manager:

Please check your mailing label and PLEASE RENEW!!

Please submit changes of address promptly to the Business Manager.

Please make checks payable to Northwest Chess, not WCF or OCF.

June 10, July 15

Format: 3-RR, 4-plyr sections by rating. **TC:** G/120. **EF:** \$6 (+\$5 fee for non-SCC). **Prizes:** Free entry for future quad. **Reg:** 9:00-9:45 a.m. **Rds:** 10:00-2:15-ASAP. **Misc:** USCF, WCF/OCF memb. req'd, OSA. NS, NC.

SCC Saturday Quads

June 18, July 9

Format: 4-SS. **TC:** G/64. **EF:** \$15 (+\$5 fee for non-SCC). **Prizes:** 1st 35%, 2nd 27%, Bottom Half 1st 22%, 2nd 16% (\$10 from each EF goes to prize fund). **Reg:** 10:30-11:15 a.m. **Rds:** 11:30-1:50-4:10-6:30. **Misc:** USCF, WCF/OCF memb. req'd, OSA. NS, NC.

SCC Sunday Tornado

September 9

Format: 4-SS. Open to U1200 and unrated. **TC:** G/75. **EF:** \$10 by 9/7, \$15 at site. (20% disc. for SCC mem., 10% mem. of other dues-req'd CCs in WA, OR, & BC). **Prizes:** Memberships (SCC, WCF, USCF). **Reg:** 9-9:45a. **Rds:** 10-12:45-3:30-6. **Byes:** 1 (Rd 3 or 4—commit at reg.). **Misc:** USCF memb. req'd. NS, NC.

SCC Novice

SCC Blitz Ratings 5/8

Clark, Jeff	1486/16
Glass, Alex	1861 +200
Hughes, Kamran	1695 -91
Kalina, Chris	1967 -30
Kleist, Fred	1792 -136
Kolde, Sterling	1690 +142
Koons, Nat	2234 -16
Lanka, Adi	1901 -37
Manber, Devon	1640 -26
Mathews, Dan	1772 +22
McGeary, Bill	2206 -13
Selzler, Ricky	2138 -11
Sun, Tristan	1274 +140
Watts, Peter	1527 +176
Wilson, Matt	1836 +106

June 11, July 8 SCC Monthly Blitz

Format: Prelim & final RRs, 12-24 rds. **TC:** G/5. **EF:** \$5 (non-SCC mem. add \$1 tmnt mem. fee). **Prizes:** 80% (EFs minus \$15). **Reg:** Noon-12:45. **1st Rd:** 1:00 p.m. **Misc:** NS, NC.

Emerald City Open

June 23-25

A two-section, five-round Swiss with a time control of 40/2 & SD/1 (Rd 1 of 2-day schedule – G/64). The prize fund of \$800 is based on forty entries.

a Franett Grand Prix event

Open		Reserve (U1700)	
First	\$200	First	\$140
Second	\$130	Second	\$90
U1950	\$95	U1450	\$65
		Unr	\$20

Upset (rds 1-4) \$15

Entry Fees: \$32 if rec'd by 6/20, \$40 at site. **SCC members**—subtract 25%. Members of other dues-required CCs in BC, OR, and WA—subtract 12.5%. **Unr**—free with purchase of 1-year USCF and WCF. **Add \$1** to any EF for 2-day schedule.

Registration: Fri. 7-7:45 p.m., Sat. 9-9:45 a.m.

Rounds: Fri. 8, Sat. (10 @ G/64)-12:30-6:45, Sun. 11-5.

Byes: 2 (Sunday rounds, commit at registration).

Miscellaneous: USCF & WCF membership req'd. No smoking. No computers.

Seattle Chess Club

Address

17517 15 Ave NE
Seattle WA 98155

Infoline

206-417-5405
cfkleist@cs.com

Address for Entries

SCC Tmnt Dir
2420 S 137 St
Seattle WA 98168

SCC 2006 Weekend Calendar (Revised)

Novice: September 9

Blitz: June 11, July 8, Aug. 19, Sept. 17, Oct. 7, Nov. 17, Dec. 10

Quads: June 10, July 15, Aug. 26, Sept. 16, Oct. 14, Nov. 11, Dec. 9

Tornados: June 18, July 10, Aug. 27, Sept. 10, Oct. 8, Oct. 29, Dec. 3

Chal Cup/Seattle City Ch –
January 13-15-33 players

Seattle Spring Open–
March 31-April 2-40 players

Plus-Score Swiss–
May 13-14-8 players

Emerald City– June 23-25

Seafair Open– July 28-30

Seattle Fall Open– Sept. 22-24

Rain City– November 3-5

Future Events

♣ indicates a Christopher Memorial NW Grand Prix event

♣ June 24

PCC Game-in-60♣

Site: *Portland CC*, 8205 SW 24th Ave, Portland OR 97219.
Format: 4-rd Swiss. **TC:** G/60. TD may switch to 5SS and G/45 if more than 25 entries. **EF:** \$20, \$5 discount for PCC members. No advance entries. **Prize Fund:** \$\$200/b20. **Prizes:** \$60-40-30, U1800 35, U1500 35. **Reg:** 9-9:30 am. **Byes:** One ½-pt. bye avail. if requested at reg. **Misc:** USCF & OCF/WCF membership req'd, OSA. **Info:** portlandchessclub@gmail.com, 503-246-2978, www.pdxchess.org.

♣ July 8-9

Evergreen Empire Open♣

Site: *Tacoma CC*, 409 Puyallup Ave E, room 11 (2nd floor), Tacoma WA. **Format:** 5-rd Swiss. **TC:** 40/90, SD/60. **EF:** \$25 advance, \$35 at site; Juniors \$20 advance, \$25 at site; Economy (no prize money) \$10, free for UNR (may play for 1st w/regular EF). Entries may be limited to 25 players. **Prize Fund:** 67% of full EFs. **Prizes:** 25%, U2000 (3 eq. grps) 15%-14%-13%. Economy winner: certificate and free economy entry to future event. **Reg:** 9-9:45 a.m. **Rds:** Sat. 10-2:30-7, Sun. 10-3 or ASAP. **Byes:** Two ½-pt. byes avail. if declared in advance. **Misc:** USCF & OCF/WCF membership req'd, OSA. **NS. NC. Ent/Info:** Gary Dorfner 8423 E 'B' St, Tacoma WA 98445. Make checks payable to TCC. ggarychess@aol.com, 253-535-2536 www.tacomachessclub.net-firms.com.

♣ July 15-16

Portland Summer Open♣


Site: *Portland CC*, 8205 SW 24th Ave, Portland OR 97219. **Format:** 2-sec., 5-rd. Swiss. **TC:** Rds 1-3 40/90, SD/30; Rds 4-5 40/2, SD/1. **EF:** \$30 by 7/12, \$35 at site. \$10 discount for PCC members. **Prize Fund:** \$\$650 b/40. **Prizes:** *Open:* \$150-100, U2000 75. *Reserve (U1800):* \$100-75, U1600 50, U1400 50, U1200/unr 50. **Reg:** 9-9:30 a.m. **Rds:** Sat 10-2-ASAP, Sun 10-ASAP. **Byes:** Two ½-pt. byes avail. if requested at reg. **Misc:** USCF & OCF/WCF membership req'd, OSA. **Info:** portlandchessclub@gmail.com, 503-246-2978, www.pdxchess.org. **Entries:** Portland Chess Club, 8205 SW 24th Ave, Portland OR 97219.

♣ July 22

Summer Lightning♣

Site: *Spokane Valley Library*, 12004 E Main, Spokane WA 99206. **Format:** 1 (or 2) x RR. **TC:** G/10. **EF:** \$11 (Can be paid at the Club to Dave Griffin or day of tournament). **Prize Fund:** 100% **Reg:** 10-10:30 pm. **Misc:** USCF quick-rated event. Coffee & snacks provided **Info:** Adam Attwood, aattwood@eagles.ewu.edu.





Carl A. Haessler
Lessons • Lectures • Exhibitions

USCF Life Master
3-Time Oregon Champion

(503) 358-7871
ssmith6154@aol.com

Scholastic Summer Chess Camps

Chess Odyssey

various sites OR

pete@chessodyssey.com www.chessodyssey.com

June 19-23	for ages 7-19	Beaverton OR
26-30	for ages 7-19	Portland OR
July 10-14	for ages 7-19	Portland OR
17-21	for novices	Lake Oswego OR
24-28	for ages 7-19	Portland OR
31-Aug 4	for novices	Lake Oswego OR
Aug 7-11	for ages 7-19	Portland OR
21-25	for ages 7-19	Beaverton OR

WGM Elena Donaldson

various sites WA

chess64@comcast.net www.chessplayer.com/elena_camp.htm

July 10-14	Elena's Summer Chess Camp	Bellevue WA
17-21	Elena's Summer Chess Camp	Redmond WA
Aug 7-11	Elena's Summer Chess Camp	Woodinville WA
14-18	Elena's Summer Chess Camp	Seattle WA

IM Georgi Orlov

various sites WA

chess64@comcast.net www.chessplayer.com/camps.htm

June 26-30	Orlov Summer Chess Camp	Seattle WA
July 24-28	Orlov Summer Chess Camp	Seattle WA
July 31-Aug 4	Orlov Summer Chess Camp	Shoreline WA

Chess4Life

Bellevue WA

Elliott Neff 425-283-0549 kids@chess4life.com www.chess4life.com

July 10-14	for K-6
Aug 7-11	for K-6

Bryant Elementary

Seattle WA

Elliott Neff 425-283-0549 kids@chess4life.com www.chess4life.com

July 17-21	for K-12
------------	----------

Sammamish

Sammamish WA

Elliott Neff 425-283-0549 kids@chess4life.com www.chess4life.com

June 26-30	Sammamish Summer Camp I (K-12)
July 31-Aug 4	Sammamish Summer Camp II (K-12)

Evergreen School

Shoreline WA

Danielle 206-957-1533 dlarway@evergreenschool.org www.evergreenschool.org

June 19-23	for ages 5-8
26-30	for ages 6-9
July 3,5-7	Siamese (ages 6-15)
10-14	for ages 6-9
17-21	Intermediate (ages 8-13)
Aug 7-11	Advanced (ages 9-15)

Annie Wright Elementary

Tacoma WA

Elliott Neff 425-283-0549 kids@chess4life.com www.chess4life.com

July 24-28	for K-12
------------	----------

Open Events

June 2006

16-18	National Open & Polgar Girls Ch	www.lvchessfestival.com	Las Vegas NV
18	SCC Sunday Tornado	SCC Infoline 206-417-5405 cfkleist@cs.com www.seattlechessclub.org	Seattle WA
23,30	TCC Action Tournament	G. Dorfner 253-535-2536 ggarychess@aol.com www.tacomachessclub.netfirms.com	Tacoma WA
23-25	Emerald City Open	SCC Infoline 206-417-5405 cfkleist@cs.com www.seattlechessclub.org	Seattle WA
25	8 PCC Game-in-60	503-246-2978 portlandchessclub@gmail.com www.pdxchess.org	Portland OR
30-July 4	World Open	www.chessplayer.com	Philadelphia PA

July 2006

7,14,21,28	TCC Firecracker Swiss	G. Dorfner 253-535-2536 ggarychess@aol.com www.tacomachessclub.netfirms.com	Tacoma WA
8	SCC Monthly Blitz (G/5)	SCC Infoline 206-417-5405 cfkleist@cs.com www.seattlechessclub.org	Seattle WA
8-9	Evergreen Open	G. Dorfner 253-535-2536 ggarychess@aol.com www.tacomachessclub.netfirms.com	Tacoma WA
9	SCC Sunday Tornado	SCC Infoline 206-417-5405 cfkleist@cs.com www.seattlechessclub.org	Seattle WA
11	PCC Tuesday Quads begin	503-246-2978 portlandchessclub@gmail.com www.pdxchess.org	Portland, OR
15	SCC Saturday Quads	SCC Infoline 206-417-5405 cfkleist@cs.com www.seattlechessclub.org	Seattle WA
15-16	Portland CC Summer Open	503-246-2978 portlandchessclub@gmail.com www.pdxchess.org	Portland OR
21-23	GM Slugfest Qualifier	Clint Ballard clint@slugfest.org www.gmslugfest.com	Poulsbo WA
21-23	Pacific Coast Open	www.chesstour.com	Agoura Hills CA
28-30	Seattle Seafair Open	SCC Infoline 206-417-5405 cfkleist@cs.com www.seattlechessclub.org	Seattle WA
29	TCC 10-Second Tournament	G. Dorfner 253-535-2536 ggarychess@aol.com www.tacomachessclub.netfirms.com	Tacoma WA
29	8 PCC Game-in-60	503-246-2978 portlandchessclub@gmail.com www.pdxchess.org	Portland OR

August 2006

1	PCC Tuesday Quads begin	503-246-2978 portlandchessclub@gmail.com www.pdxchess.org	Portland OR
3,10,17	August Adjeeb	David Griffin 509-928-3260 dbgrffn@hotmail.com www.spokanechessclub.org	Spokane WA
4	TCC 10-Second Tournament	G. Dorfner 253-535-2536 ggarychess@aol.com www.tacomachessclub.netfirms.com	Tacoma WA
5-6	Washington Senior Adult Championship	G. Dorfner 253-535-2536 ggarychess@aol.com www.tacomachessclub.netfirms.com	Tacoma WA
5-13	U.S. Open	www.uschess.org/tournaments/2006/usopen/.FIDE	Oak Brook IL
11,18,25	Tacoma Summer Championship	G. Dorfner 253-535-2536 ggarychess@aol.com www.tacomachessclub.netfirms.com	Tacoma WA
12	Qualchan Quads	David Griffin 509-928-3260 dbgrffn@hotmail.com www.spokanechessclub.org	Spokane WA
12-13	Spokane City Ch Contenders (Inv.)	David Griffin 509-928-3260 dbgrffn@hotmail.com www.spokanechessclub.org	Spokane WA
19	SCC Monthly Blitz (G/5)	SCC Infoline 206-417-5405 cfkleist@cs.com www.seattlechessclub.org	Seattle WA
19-20	Tacoma City Championship	G. Dorfner 253-535-2536 ggarychess@aol.com www.tacomachessclub.netfirms.com	Tacoma WA
26	8 PCC Game-in-60	503-246-2978 portlandchessclub@gmail.com www.aboutchess.org	Portland OR
26	SCC Saturday Quads	SCC Infoline 206-417-5405 cfkleist@cs.com www.seattlechessclub.org	Seattle WA
26-27	Auntie's Open	David Griffin 509-928-3260 dbgrffn@hotmail.com www.spokanechessclub.org	Spokane WA
26-27	Spokane City Championship	David Griffin 509-928-3260 dbgrffn@hotmail.com www.spokanechessclub.org	Spokane WA
27	SCC Sunday Tornado	SCC Infoline 206-417-5405 cfkleist@cs.com www.seattlechessclub.org	Seattle WA

September 2006

2-4	Oregon Open	Jerry Ramey OCF President j-adoube@efn.org www.nwchess.org	TBA OR
8,15	Tacoma CC Gambit Tmt	G. Dorfner 253-535-2536 ggarychess@aol.com www.tacomachessclub.netfirms.com	Tacoma WA
9	Seattle CC Novice	SCC Infoline 206-417-5405 cfkleist@cs.com www.seattlechessclub.org	Seattle WA
10	SCC Sunday Tornado	SCC Infoline 206-417-5405 cfkleist@cs.com www.seattlechessclub.org	Seattle WA
12	PCC Tuesday Quads begin	503-246-2978 portlandchessclub@gmail.com www.pdxchess.org	Portland OR
16	SCC Saturday Quads	SCC Infoline 206-417-5405 cfkleist@cs.com www.seattlechessclub.org	Seattle WA
17	Seattle CC Monthly Blitz (G/5)	SCC Infoline 206-417-5405 cfkleist@cs.com www.seattlechessclub.org	Seattle WA
22,29	TCC Championship (Rds 1-2)	G. Dorfner 253-535-2536 ggarychess@aol.com www.tacomachessclub.netfirms.com	Tacoma WA

NOTE: A 'P' in front of the date indicates a Franett Memorial Northwest GP event. A '8' in front of the tournament name indicates an OSCF qualifying tournament. Boldface type indicates a tournament announcement (in our Future Events Section) or display ad in this issue.

Scholastic Events

June 2006

27	Hot Summer Chess I (K-12)	Randy Kaech 360-384-2792 kaech@verizon.net http://mysite.verizon.net/kaech	Bellingham WA
----	---------------------------	--	---------------

July 2006

11	Hot Summer Chess II (K-12)	Randy Kaech 360-384-2792 kaech@verizon.net http://mysite.verizon.net/kaech	Bellingham WA
----	----------------------------	--	---------------

August 2006

1	Hot Summer Chess III (K-12)	Randy Kaech 360-384-2792 kaech@verizon.net http://mysite.verizon.net/kaech	Bellingham WA
22	Hot Summer Chess IV (K-12)	Randy Kaech 360-384-2792 kaech@verizon.net http://mysite.verizon.net/kaech	Bellingham WA

NOTE: A '8' in front of the tournament name indicates an OSCF qualifying tournament.

USCF NATIONAL Scholastics

For information on any national event, contact Diane Reese at events@uschess.org.

July 21-23

U.S. Junior Open

Dallas TX

For scholastic summer camps, see inside back cover