

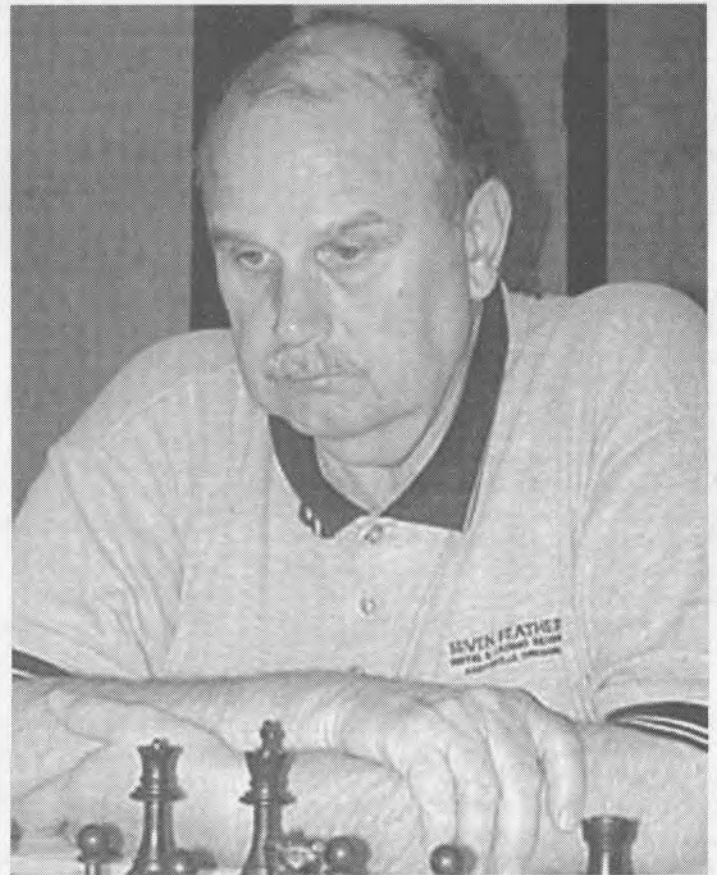


NORTHWEST CHESS

Washington Chess Federation
Oregon Chess Federation

September 2006
906 \$3.95

926-0701A
MIKE MACGREGOR



Top Scorers from Oregon, EdDaroza (L) and LM Clark Harmon (R), at the U.S. Open

U.S. Open, Seafair, WA Senior and More!

Northwest Chess

September 2006, Volume 60.9 Issue 699
ISSN Publication 0146-6941

Published monthly by the Northwest Chess Board. Office of record: 2420 S 137 St, Seattle WA 98168.

POSTMASTER: Send Address Changes to: Northwest Chess, PO Box 84746, Seattle WA 98124-6046.
Periodicals Postage Paid at Seattle, WA
USPS periodicals postage permit number (0422-390)

NWC Staff

Editor: Fred Kleist
Games Editor: FM Chuck Schulien
Technical Assistance: Russell Miller
Printer: Snohomish Publishing
Business Manager: Eric Holcomb

Board Representatives

Oregon: Clark Harmon
& Dave Yoshinaga
Washington: Kent McNall & Murlin Varner

Entire contents copyright 2006 by Northwest Chess. All rights reserved. Published opinions are those of the contributors and do not necessarily reflect the views of the editor or the Northwest Chess Board.

Advertising Rates

Display ads run \$150 for a full page, \$100 for tmt ads; \$85 for a half-page, \$60 for tmt ads; \$30 for a quarter page, \$20 for an eighth of a page, and \$10 for a business card-size ad. Add \$10 if the ad is not copy ready and the staff must do layout work. A 15% discount is available for two or more consecutive ads of the same size.

Event Announcement Rates

Each appearance in *Event Announcements* costs \$20. Payment is required before publication. Enclose \$2 additional if an invoice is required—this is a mandatory service charge.

Advertising & Copy Deadline

Please get your ads and submissions in by the 10th of the month for the items to appear in the next issue (e.g., no later than Aug 10 for the Sept. issue). The editor cannot guarantee that late submissions will appear in the desired issue.

Submit all ads and payments to:

Business Manager, Northwest Chess
PMB 342, 12932 SE Kent-Kangley Rd
Kent WA 98030-7940
Eric@Holcomb.com

Submissions

Hey folks! The editor depends on YOU to make this magazine vibrant and exciting. I need your games, photographs, thoughts, and ideas. This magazine has a great tradition and I hope people will contribute enthusiastically. You can send me your materials via U.S. mail or via e-mail:

Northwest Chess
Fred Kleist, Editor
2420 S. 137th Street
Seattle WA 98168
NWCeditor@cs.com

If you'd like your games annotated by a senior master, send them to our Games Editor:

FM Chuck Schulien
cschesss@hotmail.com

Subscription Information

Northwest Chess is a benefit of membership in either the Oregon or Washington Chess Federations. Adult dues are \$25; Junior dues (under 20) are \$17 (or \$10 for six months). Please send dues, along with pertinent information to:

Business Manager

Northwest Chess
Eric Holcomb
PMB 342, 12932 SE Kent-Kangley Rd
Kent WA 98030-7940
Eric@Holcomb.com
http://www.nwchess.com

Northwest Grand Prix Administrator

Murlin Varner
13329 208 Ave NE
Woodinville WA 98072
MEVjr54@yahoo.com
425-882-0102

Oregon Chess Federation

President
Jerry Ramey
541-232-0328
j-adoube@efn.org

Vice President
Dave Yoshinaga
503-670-9855 ext 7
dave@kdtonline.com

Secretary
Megan Esler
503-292-6842
jaffagold@yahoo.com

Treasurer
Clark Harmon
charmon@solarprism.com

Director-at-Large #1
Mike Terrill
503-580-9187
pflotus@yahoo.com

Director-at-Large #2
Grisha Alpernas
grisha_alpernas@gmail.com

National Representative
Carl Haessler
ssmith6154@aol.com

Scholastic Coordinator
Peter Prochaska
503-504-5756
pete@chessodysey.com

Washington Chess Federation

President
Geoff Gale
206-860-9963
geoffreygale@gmail.com

Vice President
Duane Polich
206-852-3096
dpolich@verizon.net

Secretary
Gary Dorfner
253-535-2536
ggarychess@aol.com

Treasurer
Robert J. Allen
253-761-1288
allenrobertj@msn.com

Tournament Coordinator
Dan Mathews
425-778-7482
dthmathews@hotmail.com

Scholastic Coordinator
David Hendricks
425-868-3881
davidhendricks@comcast.net

NW Chess Board Member
Murlin Varner
425-882-0102
MEVjr54@yahoo.com

Greetings from the Editor

Carol and I had a lot of fun this August playing in the U.S. Open in Chicago and the U.S. Senior Open in Nashville. Unfortunately, those trips took up most of the month, which left me behind in my magazine duties as well as my TD responsibilities at the SCC. I'll catch up soon, I hope.

Meanwhile, I still need articles and photos. So if you go to an event, please consider writing a report and sending some games, perhaps even annotating some. Or take some pictures and send them, identifying the people in the photos.

Best Wishes,
Frederick K. Kleist

Thanks to R. Miller for working on the crosstables.
Thanks to C. Kleist for proofreading.



Editor's Desk

Northwest Chess Knights

Northwest Chess Knight donors will be listed in the magazine for a period of one year following receipt of donation. Please consider making a donation today to help Northwest Chess!

King: \$1000+
Queen: \$500-\$999
Rook: \$250-\$499
Bishop: \$100-\$249
Knight: \$50-\$99
Pawn: \$15-\$49

Current Patrons

King: Cinthia McBride, Russell Miller

Queen: Kent McNall

Rook: Nat Koons

Bishop: Wayne Metsker, Michael Omori, Boyd Schorzman

Knight: Steve Buck, Curt Collyer, Matt Fleury, Shankland family

Pawn: Adam Attwood, Robert Brewster, David Griffin, Jack Hatfield, Mark James, Gene Milener

Contributions can be sent to the Northwest Chess Business Manager, and are greatly appreciated!

Letter to the Editor

Reverend Dr. Alfred Carter & Nuremberg 1896

About a month ago I bought a book at the Magus Book Store in the University District in Seattle. It's purple, 358 pages, and appears to have been produced at a place like Kinko's. On the front cover it says "Alfred Carter Library" and below that "researched and translated by Reverend Dr. Alfred Carter. The book is a translation from German of the Nuremberg 1896 tournament book. The book appeared in 1992. There is another translation of Nuremberg 1896 by John Owen published by Caissa Editions in 1999. Inside the book there is an address for Dr. Carter of 15236 NE 13th Place #2405, Bellevue WA 98007.

I had never heard of or seen this book before buying it at the Magus. The noted book dealer Dale Brandreth says he has never seen it. The John G. White Cleveland collection of the Cleveland Public Library, the world's largest public repository of chess books, doesn't list it.

Rusty Miller has discovered that an Alfred Carter was born 25 October 1906 and died 16 Nov 1998 and was living in Bellevue at the time of his passing.

Can anyone shed some light? I would be curious to know more about Reverend Carter. This book was clearly a labor of love and must have taken him many years to finish.

John Donaldson

57 Post, #408
San Francisco CA 94104
imwjd@aol.com

Northwest Chess

September 2006

Letter to the Editor

page 3

U.S. Open in Chicago

Murlin Varner reports

page 4

Tournament Ads

pages 7, 22, 23

USCF Delegates' Meeting

page 12

Tacoma CC News

page 13

Games from the WA Senior Open

page 14

Koons Sails through the Seafair

page 15

NW Representatives to the Polgar Girls' Tourney

page 18

Why Kramnik is the Only Current World Champion

Gene Milener makes his case

page 19

Northwest Chess Calendar of Upcoming Events

back cover

On the Cover: Expert Eduardo Daroza (L) of Hillsboro, OR, and LM Clark Harmon (R) of Amity, OR, both finished with 6.5/9 in the U.S. Open. Washington experts Michael Lee and Ricky Selzler (both not pictured) also scored 6.5. *Photos courtesy of Chris Bird, U.S. Open 2006 CD*

Breaking News

NASHVILLE, TN. The only three Northwesterners entered in the U.S. Senior Open win prizes!! Full story next issue.

BELLEVUE, WA. The Seattle Sluggers win their first two matches U.S. Chess League play. Story with new match updates next issue. ■

2006 US Open in Chicago

by Murlin Varner

CHICAGO, Chicago, what a wonderful town. Well, actually Oak Brook. I never really saw much of Chicago. But Oak Brook was very nice, except for the lack of sidewalks and crosswalks in places. Lots of big houses on large lots for about half the price they'd be in Redmond or Bellevue. Plus many golf courses (I walked past three during one afternoon stroll), and a large, open-air, upscale shopping center right across the street from the playing site. And the weather...!

I know I've expressed my complaints about US Open weather in the past (monsoons in Phoenix, hurricanes in Florida, 125% humidity in New Jersey and Massachusetts), but this particular week in the Chicago area was wonderful. A couple of minor rain showers, but with temperatures often cooler than back home in Seattle, and relatively low humidity (for the Midwest, that is), I loved it there. Mind you, a week earlier, people there were dying from heat. Ya gotta give the USCF its props for excellent scheduling. I'll put this one in the good weather column, along with LA, Reno, St. Paul and Hawaii. Next year the Open is back in the misery of New Jersey, so I think I'll be renting an air-conditioned car again. Walking is not good there in August.

The Open was divided into only three schedules this year, the traditional, a six-day and a five-day. No weekender, no matinee. There were Northwest players in all schedules, but most were in the traditional. All together, 21 players were present to represent Washington and Oregon, with four more from Idaho. Three players were present from Canada, but I didn't recognize any as among our friends from BC. Also present in the International contingent were players from Hungary, Scotland, Netherlands Antilles,

Chile, Italy and Netherlands. Overall, there were over 500 entrants, plus a handful of re-entries.

So, let's take a look at the results:

9 Points:

No one managed a score of nine points. I have not seen that happen except at the Open in Los Angeles, where there were 12 rounds. I wonder if there has ever been a perfect score at the US Open, but not enough to try looking it up.

8.5 Points:

Nobody here either. Sorry.

8 Points:

The 2006 US Open has a single winner, Yuri Shulman, from the host state. This doesn't happen too often either, single winner or home state. Shulman drew twice, in the sixth round with GM Joel Benjamin (NJ), and in the final round with IM Emilio Cordova (also NJ). Based on this, perhaps he should avoid Cherry Hill next year.

7.5 Points:

Ten players finished a half point off the pace, all titled, except for Michael Aigner of CA. Aigner and John Fedorowicz (NY) were the only players within a half point of Shulman going into the final round. Their draw sealed the win for Shulman. Aigner defeated Northwesterners Ricky Selzler and Clint Ballard in rounds six and seven.

7 Points:

The top Experts scored seven points, but because they weren't from around here, we don't care. There doesn't seem to be a complete list of prizewinners on the USCF web site, so I had to scan through the entire list to try to come up with some idea of who got what. To make

it more complicated, the crosstable is sorted by end rating rather than start rating. If I have made an error or misstate some class result, get over it.

6.5 Points:

Finally, I can mention some Northwest players. The top unrated had this score, but neither the USCF nor I seem to know where he comes from. I don't think it is around here. We had four with this score. Good job guys, for leading the Northwest.

CLARK HARMON (#34) lost twice, to players who finished in the top five (Kaidanov and Kacheishvili, both rated over 2600). Outside of one draw, all other opponents fell to Clark's skills. (He beat me in the first round at Reno a few years ago, but I didn't get my shot at a rematch.) Clark gained 15 rating points for this performance.

Petroff

Kevin Zhang (1943, AZ)

LM Clark Harmon (2217)

Chicago, US Open (2) 2006

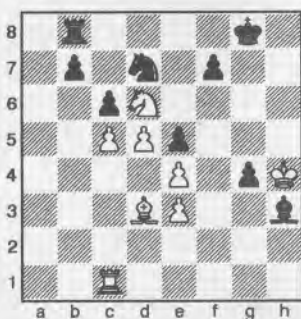
1.e4 e5 2.♘f3 ♘f6 3.♘xe5 d6 4.♘f3 ♘xe4 5.♖e2 ♖e7 6.d3 ♘f6 7.♗g5 ♖xe2+ 8.♗xe2 ♗e7 9.♘bd2 ♘c6 10. O-O-O ♗f5 11.♘c4 O-O 12.♘e3 ♗e6 13.a3 ♗fe8 14.♗he1 d5 15.♗xf6 ♗xf6 16.d4 ♘e7 17.c3 ♗ac8 18.♗d3 c5 19. dxc5 ♗xc5 20.♘c2 ♗g4 21.♗e2 ♗ec8 22.♘fd4 ♗d7 23.♗f3 ♗a4 24.♗d3 ♘g6 25.♗b1 ♘e5 26.♗de3 ♘c4 27.♗3e2 ♗d7 28.♗g4 ♘b6 29.♗xd7 ♘xd7 30.♗e8+ ♘f8 31.♘f5 ♗xe8 32.♗xe8 ♗c7 33.♘c3 ♗d7 34.♘g4 ♗g5 35.h4 ♗d8 36.♗xd8 ♗xd8 37.♘ge3 g6 38.♘d6 ♗hx4 39.g3 ♗d8 40.♘xd5 b6 41.♘c8 a6 42.♘cxb6 ♘e6 43.♗c2 h5 44.b4 g5 45.♗d3 h4 46.gxh4 gxh4 47. ♗e3 f5 48.c4 h3 49.♗f3 ♗h4 50.c5 ♘g5+ 51.♗e3 h2 52.c6 ♘e6 53.♘f4 ♗g5 0-1

Black Knights' Tango

LM Clark Harmon (2217)
Harold Stenzel (2028, NY)

Chicago, US Open (3) 2006

1.d4 ♘c6 2.c4 e5 3.d5 ♘ce7 4.e4 ♘g6
5.♘f3 ♘f6 6.♗d3 ♗c5 7.h3 O-O 8.♘c3
d6 9.♗d2 a6 10.a3 h6 11.b4 ♗a7 12.g4
♘h7 13.♗e3 ♗xe3 14.fxe3 ♘h4 15.
♖e2 ♘xf3+ 16.♖xf3 ♖h4+ 17.♖f2
♖xf2+ 18.♗xf2 ♗d7 19.c5 ♘f6 20.
♗hg1 a5 21.♗f3 g5 22.♗gc1 h5 23.
gxh5 ♗xh3 24.♗g1 g4+ 25.♗g3 ♘xh5+
26.♗h4 axb4 27.axb4 ♘f6 28.♘b5
♗xa1 29.♗xa1 dxc5 30.bxc5 ♘d7 31.
♗c1 c6 32.♘d6 ♗b8



33.♗a6 cxd5 34.♗xb7 ♗g7 35.c6 ♗h8+
36.♗g3 ♘f6 37.c7 ♘h5+ 38.♗h2 dxe4
39.c8=♖ g3+ 40.♗xh3 ♘f4+ 41.♗xg3
♗xc8 42.♗xc8 1-0

Nimzo-Indian Sämisch

GM Gregory Kaidanov (2696, KY)
LM Clark Harmon (2217)

Chicago, US Open (4) 2006

1.d4 ♘f6 2.c4 e6 3.♘c3 ♗b4 4.e3 c5
5.a3 ♗xc3+ 6.bxc3 ♘c6 7.♗d3 O-O
8.♘e2 d6 9.e4 ♘e8 10.O-O f5 11.exf5
exf5 12.♗e3 b6 13.♗e1 ♗d7 14.♘f4
♘c7 15.♖h5 ♖f6 16.♘d5 ♘xd5 17.
cxd5 ♘a5 18.♗g5 ♖f7 19.♖xf7+ ♗xf7
20.dxc5 dxc5 21.d6 h6 22.♗e7 g5 23.h3
♗g7 24.♗e2 ♗g6 25.♗f3 ♗e8 26.
♗ad1 ♗h7 27.♗d5 ♗hh8 28.♗e6 ♗xe6
29.♗xe6+ ♗f7 30.♗f6+ ♗g7 31.♗xf5
♘c6 32.♗f6+ ♗g6 33.g4 ♗hf8 34.d7
1-0

QGD Slav

LM Clark Harmon (2217)
Matthew Klegon (2078, MA)

Chicago, US Open (7) 2006

1.d4 c6 2.c4 d5 3.♘f3 ♘f6 4.♖c2 a6
5.g3 b5 6.b3 ♗g4 7.♗g2 e6 8.O-O ♘bd7
9.♘bd2 ♗e7 10.e4 dxe4 11.♘xe4 ♗f5
12.♘xf6+ ♗xf6 13.♖e2 O-O 14.♗a3

♗e8 15.♘e5 ♘xe5 16.dxe5 ♗d3 17.
♖e3 ♗xf1 18.♗xc6 ♖c7 19.♗xe8 ♗xe8
20.exf6 ♗h3 21.♖g5 1-0

Queen's Indian

GM Giorgi Kacheishvili (2648, NY)
LM Clark Harmon (2217)

Chicago, US Open (8) 2006

1.d4 ♘f6 2.c4 e6 3.♘c3 ♗b4 4.♘f3 b6
5.♗g5 ♗b7 6.♘d2 h6 7.♗h4 ♗xc3
8.bxc3 d6 9.f3 ♘bd7 10.♖a4 O-O 11.e4
e5 12.♗d3 ♖e8 13.O-O ♘h5 14.♗fe1
♘f4 15.♗c2 ♖e6 16.♘f1 ♗h8 17.♘e3
♗fc8 18.♗ad1 a6 19.♘d5 g5 20.♗f2 f6
21.♗b3 c5 22.♘e3 ♗c6 23.d5 1-0

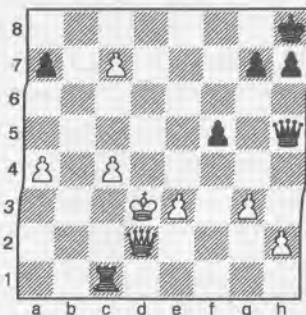
MICHAEL LEE (#40) defeated controversial writer and IM Tim Taylor in the fourth round, putting him with the leaders at 4-0. Unfortunately, his two losses immediately followed back-to-back against GM Benjamin (2632) and Master Justin Sarkar (2388). Michael finished with 1.5 in the last two rounds against 2200+ rated masters and gained 29 points on his rating.

Anglo-Dutch

Michael Lee (2124)
IM Timothy Taylor (2384, CA)

Chicago, US Open (4) 2006

1.c4 f5 2.♘c3 ♘f6 3.g3 d6 4.♗g2 e5
5.d3 ♗e7 6.♗b1 O-O 7.b4 ♖e8 8.e3 ♘c6
9.♘ge2 ♗e6 10.♘d5 ♗d8 11.b5 ♘e7
12.♘xf6+ ♗xf6 13.♗xb7 ♗b8 14.♗g2
c6 15.a4 d5 16.f4 exf4 17.♘xf4 dxc4 18.
♘xe6 ♗xe6 19.dxc4 ♗a5+ 20.♗f2 ♘g6
21.♗xc6 ♗xc6 22.bxc6 ♗xb1 23.♖d5+
♗h8 24.♖xa5 ♘e5 25.c7 ♘d3+ 26.♗e2
♘xc1+ 27.♗xc1 ♗xc1 28.♖d2 ♖h5+
29.♗d3



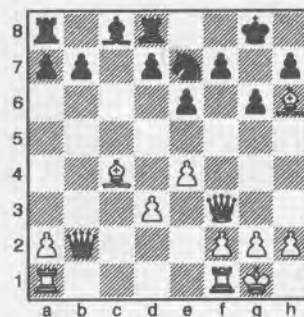
29...♗xc4 30.♖b4 h6 31.♖xc4 ♖d1+
32.♗c3 ♖e1+ 33.♗b2 ♖d2+ 34.♖c2
♖b4+ 35.♗a2 1-0

Sicilian

GM Joel Benjamin (2632, NJ)
Michael Lee (2124)

Chicago, US Open (5) 2006

1.e4 c5 2.♘c3 ♘c6 3.♗b5 ♘d4 4.♗c4
g6 5.♘f3 ♗g7 6.O-O e6 7.♘xd4 cxd4
8.♘b5 ♖b6 9.c3 ♘e7 10.♘xd4 ♗xd4
11.cxd4 ♖xd4 12.d3 O-O 13.♗h6 ♗d8
14.♖f3 ♖xb2



15.♗g5 ♗e8 16.♗f6 ♖d2 17.♗ae1
♖h6 18.♗e3 a6 19.♖g3 d5 20.♗b3 dxe4
21.dxe4 ♘c6 22.♗f3 ♖f8 23.♗b2 ♗d8
24.♖h4 ♘d4 25.♖f6 ♖d6 26.♖xf7+
♗h8 27.♗h3 1-0

RICKY SELZLER (#42) only lost once, in the aforementioned game with Aigner. After giving a draw to an over-achieving class B player in the first round, Ricky ran off three wins and a draw in round five against IM Michael Mulyar. Then came the game with Aigner. Ricky finished with 2.5 in the last three rounds, including a win over Drake Wang (2259,

Serving the chess community since 1972



THE CHESS HOUSE

A sincere thank you for the phone call and the excellent customer service. I look forward to receiving my clock and set!
- S.N., SD, USA

Tournament Quality Board+Pieces+Bag Store all your chess accessories in one convenient carryall

\$25 Special

Stock Code: C212

also mention discount "NWC"



1000's of chess products - free catalog low price guarantee - service oriented store

www.ChessHouse.com
e4@chesshouse.com 800-348-4749

CA) and a draw versus FM Igor Tsyganov. Ricky gained 23 points on his rating.

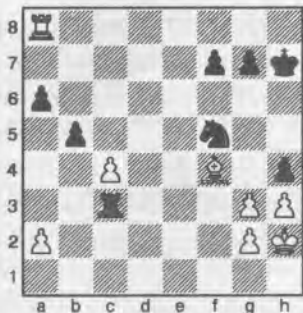
Ruy Lopez

Ricky Selzler (2120)

IM Michael Mulyar (2437, CO)

Chicago, US Open (5) 2006

1.e4 e5 2.♘f3 ♘c6 3.♗b5 a6 4.♗a4 ♘f6
5.O-O b5 6.♗b3 ♗c5 7.♗xe5 ♗xe5 8.d4
♗xd4 9.♗xd4 d6 10.c3 c5 11.♗e3 O-O
12.♗d2 ♗b7 13.♗c2 ♗e8 14.♗e1 ♗c7
15.b3 d5 16.♗b2 ♗eg4 17.♗h3 ♗f4
18.♗e2 dxe4 19.♗ae1 h5 20.♗c1 ♗d6
21.♗g3 ♗xg3 22.fxg3 ♗ad8 23.h3 ♗h6
24.♗h2 ♗f5 25.♗xe4 ♗xe4 26.♗xe4
♗xe4 27.♗xe4 ♗xe4 28.♗xe4 ♗d3
29.♗f4 ♗xc3 30.♗e8+ ♗h7 31.♗a8 c4
32.bxc4 h4



33.cxb5 hxg3+ 34.♗xg3 axb5 35.♗f2
♗c2 36.♗g1 ♗c1+ 37.♗h2 ♗c2
38.♗g1 ♗c1+ 39.♗h2 ♗f1 40.♗g1
♗b1 41.♗b8 ♗b4 Draw

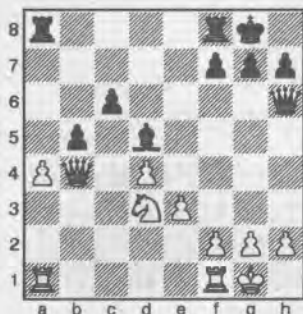
QGD Chigorin

FM Igor Tsyganov (2283, IL)

Ricky Selzler (2120)

Chicago, US Open (9) 2006

1.d4 d5 2.c4 ♗c6 3.cxd5 ♗xd5 4.e3 e5
5.♗c3 ♗b4 6.♗d2 ♗xc3 7.bxc3 ♗f6
8.♗b3 ♗d6 9.♗c1 exd4 10.cxd4 a5
11.♗a3 ♗b4 12.♗c4 O-O 13.♗f3 c6
14.♗e5 ♗fd5 15.O-O ♗e6 16.♗d3 b5
17.♗xd5 ♗xd5 18.♗xb4 axb4 19.♗xb4
♗h6 20.a4



20...♗xg2 21.♗xg2 ♗g6+ 22.♗f3
Draw

EDUARDO DAROZA (#45) won his first two, over a class C and a class B before losing to IM Mulyar in round three. Eduardo went win-loss the next two and then finished strong with 3.5 in the last four. The draw came against Ian Aird, the player from Scotland. Eduardo was rewarded with 19 rating points for his nine days work.

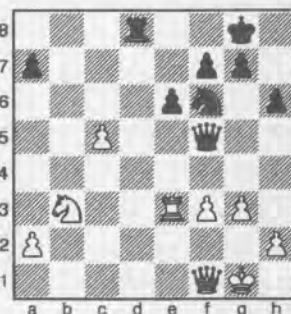
Catalan

Eduardo Daroza (2028)

IM Michael Mulyar (2437, CO)

Chicago, US Open (3) 2006

1.♗f3 d5 2.c4 e6 3.g3 ♗f6 4.♗g2 ♗e7
5.d4 O-O 6.O-O c6 7.♗c2 ♗bd7 8.♗bd2
b6 9.b3 ♗b7 10.♗b2 c5 11.♗fd1 ♗c8
12.dxc5 ♗xc5 13.e3 ♗e7 14.♗ac1 dxc4
15.bxc4 ♗a3 16.♗xa3 ♗xa3 17.♗b3
♗c5 18.♗b5 ♗c7 19.♗b3 ♗fd8 20.
♗d4 ♗c6 21.♗b4 ♗b7 22.♗e1 ♗xg2
23.♗xg2 ♗e5 24.♗e1 ♗d7 25.♗b5
♗xd4 26.exd4 ♗f3+ 27.♗xf3 ♗xf3 28.
c5 ♗e4 29.♗f1 h6 30.♗e1 bxc5 31.♗e3
♗f5 32.f3 ♗f6 33.dxc5 ♗d8



34.♗c1 ♗d5 35.♗d4 ♗f6 36.♗e4 e5
37.♗b3 ♗xf3 38.♗e1 f6 39.c6 ♗c8
40.♗a5 ♗h7 41.h4 ♗e7 42.♗h2 ♗xc6
43.♗b1 f5 44.♗c4 ♗d8 0-1

Catalan

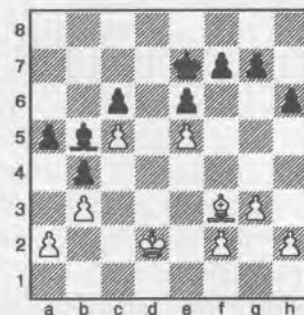
Eduardo Daroza (2028)

Geoffrey Caveney (2153, IL)

Chicago, US Open (9) 2006

1.♗f3 d5 2.c4 e6 3.g3 ♗f6 4.♗g2 ♗e7
5.d4 O-O 6.O-O c6 7.b3 ♗bd7 8.♗c2 b6
9.♗d1 ♗b7 10.♗c3 ♗c7 11.♗f4 ♗d6
12.♗xd6 ♗xd6 13.e4 ♗xe4 14.♗xe4
dxe4 15.♗xe4 ♗e7 16.♗ac1 a5 17.♗e5
♗xe5 18.dxe5 ♗fd8 19.♗xd8+ ♗xd8
20.c5 b5 21.♗c2 ♗d4 22.♗f3 ♗g5 23.
♗e1 b4 24.♗b2 ♗d8 25.♗c1 h6 26.
♗d1 ♗f8 27.♗f1 ♗a6+ 28.♗e1 ♗b5

29.♗e3 ♗xd1+ 30.♗xd1 ♗e7 31.♗f3
♗d7 32.♗d2 ♗xd2+ 33.♗xd2



33...f6 34.exf6+ gxf6 35.g4 ♗d7 36.♗e4
♗f1 37.♗e3 ♗a6 38.f4 ♗b7 39.h4 ♗e7
40.g5 fxg5 41.fxg5 hxg5 42.hxg5 e5
43.♗f5 a4 44.bxa4 ♗a6 45.♗d3 ♗c8
46.♗c4 ♗f5 47.a5 ♗d8 48.a6 ♗c7
49.♗f7 ♗b8 50.g6 ♗a7 51.g7 ♗h7
52.♗c4 e4 53.♗f4 b3 54.axb3 e3
55.♗xe3 ♗f5 56.g8=♗ ♗c8 57.♗f7+
1-0

6 Points:

The top class A players scored six points, as did one of our players (who is not class A anymore).

CORBIN YU (#77) started out the tournament by beating Liz Taylor! And I thought Dustin Diamond was the only big time Hollywood star attending chess tournaments. After another win in round two, he ran into GM Benjamin (is he picking on our young players?). Corbin won the next two, including one over fellow Northwesterner John Rosell, before dropping his sixth round game against Drake Wang. Corbin took one more loss in round seven, before finishing with two straight wins. Corbin's rating crept up by 5 points.

Caro-Kann

Corbin Yu (2076)

Ashley Carter (1848, MI)

Chicago, US Open (2) 2006

1.e4 c6 2.♗c3 d5 3.♗e2 dxe4 4.♗xe4
♗f5 5.d3 e6 6.♗f4 ♗f6 7.♗f3 ♗e7 8.g3
♗d5 9.♗d2 ♗d7 10.♗g2 ♗7f6 11.
O-O O-O 12.a3 a5 13.♗fd1 h6 14.♗e1
♗d7 15.h3 ♗e8 16.c4 ♗5f6 17.♗c3
♗c7 18.♗h2 b6 19.♗d4 ♗xe4 20.dxe4
♗e5 21.♗e2 ♗c5 22.f4 ♗xd4 23.♗xd4
c5 24.♗d6 ♗fg4+ 25.hxg4 ♗xd6 26.
♗xe5 ♗e7 27.♗c3 ♗ad8 28.e5 ♗c7 29.
♗e4 ♗d7 30.♗c2 ♗ed8 31.♗e4 g6 32.

A U.S. CHAMPIONSHIPS QUALIFYING EVENT

24th Annual Sands Regency
RENO - WESTERN STATES OPEN
A WEIKEL TOURNAMENT

200 Grand Prix Pts. ♦ **October 6-8, 2006** ♦ F.I.D.E. Rated

(This year's tournament is dedicated to GM Igor Ivanov)

\$50,000!!

(Projected)

\$32,350!!

(Guaranteed)

6 Round Swiss ♦ 6 Sections ♦ 40/2 - 20/1 - G/1/2
Entry: \$139 and below! ♦ Rooms: \$39/\$59!!

★★PLUS! A VERY SPECIAL JUNIOR CHESS CLINIC AND ONE-DAY TOURNAMENT!★★

WITH SPECIAL GUEST **GM BORIS SPASSKY** 10TH WORLD CHESS CHAMPION

GM Spassky will give a special clinic for junior players on Friday night, and present the awards to the winners of Saturday's one-day Junior Tournament!

Boris' Schedule: Friday - Book Signing ★ Saturday - "Stupid Positions" Clinic ★
Sunday - Tribute to GM Igor Ivanov: Analysis of Igor's Best Game(s) ★

And if a large prize fund and GM Spassky isn't enough...Look at these EXTRAS!! ★ Thursday GM Larry Evans Free Lecture! ★ Thursday GM Labosh Kavalek Simul! ★ Blitz (5 Min.) Tourney! ★ 12 Places paid in every Class! ★ Trophies to Top 3 (A-D)!! ★ FREE Commemorative pins! ★ FREE Coffee & coffee cakes! ★ Sets & boards provided! ★ 10 demo boards! ★ GREAT LOW ROOM RATES!! Plus all the perks the Reno-Western States Open is famous for!

ATTENTION JUNIORS: Don't miss this special opportunity to get up close and personal with legendary world champion Boris Spassky! Friday evening from 7:30 to 9 p.m. GM Spassky Junior Clinic \$30. Saturday 9 a.m. to 4 p.m. 5 Round Junior Tournament \$30 (includes lunch!) GM Spassky will present all trophies! **SPECIAL PRICE:** Junior Clinic and Junior Tournament, \$50 for both!!

RENO, NEVADA

Site of the 100th US Open



For a flyer call or write: **Orgainzer and Chief TD N.T.D. Jerome V. (Jerry) Weikel,**
(775)747-1405 6578 Valley Wood Dr.,
Reno NV 89523,

Or e-mail wackykl@aol.com

Room Reservations: Call the Sands Regency,
1-866-FUN STAY. Ask for code CHE 105.

To receive confirmation
of receipt of entry
provide e-mail address.

VISIT THE WESTERN STATES WEBSITE AT WWW.RENOCHESS.ORG/WSO

35. 3.f3 38. 3.e2 41. 3.g8 44. 3.d8 47. 3.e3 50. 3.g8 53. 3.h6 56. 3.g6 59. 3.g4 1-0

Benoni

GM Joel Benjamin (2632, NJ)
Corbin Yu (2076)

Chicago, US Open (3) 2006

1.d4 2.c4 3.e3 4.3.c3 5.3.g7 6.3.O-O 7.3.e2 8.3.b7 9.3.d5 10.3.e4 11.3.a6 12.3.f4 13.3.c7 14.3.h3 15.3.d7 16.3.d2 17.3.e8 18.3.ad1 19.3.a6 20.3.a4 21.3.b5 22.3.cxb5 23.3.axb5 24.3.a5 25.3.h6 26.3.h8 27.3.c2 28.3.a8 29.3.d2 30.3.b6 31.3.f4 32.3.c8 33.3.b3 34.3.a7 35.3.a1 36.3.c4 37.3.xa7 38.3.xa7 39.3.d2 40.3.d4 41.3.xc4 42.3.xc4 43.3.d7 44.3.d2 45.3.e2 46.3.c5 47.3.c1 48.3.a8 49.3.d3 50.3.b4 51.3.h6 52.3.e5 53.3.e3 54.3.b8 55.3.d2 56.3.a2 1-0

5.5 Points:

The top class B players scored 5.5 points, but we didn't have any of those either. Our neighbor Dan Mayers from Idaho managed to make this score, in part by beating our own Megan Lee in round one.

5 Points:

We have quite a few players with this score. As best as I can tell, the top class C players scored 5.0 and two of them were ours. (I got this score once, but not this year L.)

DAVID LEVINE (#154) did not have as good a tournament as I imagine he would have liked. With the exception of his last-round draw, every player he faced ended up lower than he did on the final crosstable. This includes the two he lost to and the other three he drew with. None of his opponents were rated higher than he, meaning a loss of 44 rating points. David's last round draw partner (David Bohm of Arizona) beat me earlier in the week, not that this means anything.

FRED KLEIST (#165) started well, defeating his first three opponents, including FM Mehmed Pasalic in round two

and chess chronicler Jerome Hanken in round three. (Jerry had a decades long string of plus scores at the US Open, but this ended in Chicago. His health seems much better than it has in recent years, so not all is bad for him.) Fred dropped a half point off the pace with a draw in round four, and then dropped his round five game to Evan Ju from NJ (so he knows how Shulman must feel). Fred suffered another loss in round six, before defeating Philip Placek, who went on to share the top C prizes with our players below. Fred finished with a draw in the penultimate round and a loss in the final round to another of the international contingent, Zoltan Revesz of Hungary. Fred gained 25 rating points.

Sicilian Kan

FM Mehmed Pasalic (2446, IL)
Fred Kleist (1985)

Chicago, US Open (2) 2006

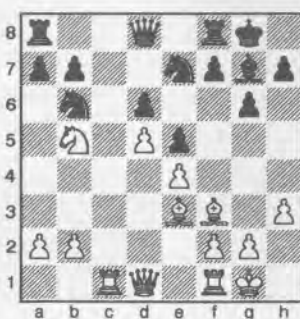
1.e4 2.c5 3.d4 4.cxd4 5.3.d3 6.3.c6 7.3.dxc6 8.3.O-O 9.3.e6 10.3.e3 11.3.b6 12.3.b8 13.3.f3 14.3.d7 15.3.f8 16.3.c4 17.3.c8 18.3.c5 19.3.f8 20.3.c2 21.3.e8 22.3.g3 23.3.h8 24.3.a4 25.3.a7 26.3.b6 27.3.b7 28.3.a5 29.3.d7 30.3.h3 31.3.f6 32.3.f3 33.3.g7 34.3.xd7 35.3.d1 36.3.e6 37.3.d3 38.3.c8 39.3.c2 40.3.f7 41.3.e2 42.3.e6 43.3.g4 44.3.f7 45.3.g3 46.3.g7 47.3.g2 48.3.f7 49.3.d1 50.3.g7 51.3.xe6 52.3.xe6 53.3.c7 54.3.f7 55.3.d5 56.3.c8 0-1 {Time}

Sicilian Hyper-Accelerated Dragon

Fred Kleist (1985)
LM Jerry Hanken (2200, CA)

Chicago, US Open (3) 2006

1.e4 2.d4 3.3.g7 4.3.f3 5.3.c5 6.3.c3 7.3.cxd4 8.3.cxd4 9.3.f6 10.3.c3 11.3.O-O 12.3.e2 13.3.d6 14.3.O-O 15.3.g4 16.3.h3 17.3.xf3 18.3.xf3 19.3.d6 20.3.e3 21.3.e5 22.3.d5 23.3.e7 24.3.c1 25.3.d7 26.3.b5 27.3.b6



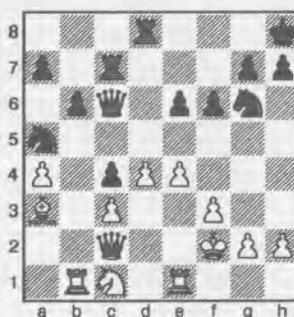
15. 3.b3 16. 3.a4 17. 3.c7 1-0

Nimzo-Indian Samisch

NM Trevor Jackson (2205, LA)
Fred Kleist (1985)

Chicago, US Open (4) 2006

1.d4 2.c4 3.3.c3 4.3.b4 5.3.xc3+ 6.3.bxc3 7.3.f3 8.3.d5 9.3.cxd5 10.3.dxd5 11.3.O-O 12.3.e2 13.3.b6 14.3.f2 15.3.O-O 16.3.a5 17.3.a2 18.3.c4 19.3.g5 20.3.f6 21.3.e3 22.3.d7 23.3.ab1 24.3.ad8 25.3.c2 26.3.h8 27.3.a4 28.3.g6 29.3.e1 30.3.c6 31.3.c1 32.3.f7 33.3.a3 34.3.c7 35.3.d1



24... 3.b3 25. 3.xb3 26. 3.xc3 27. 3.ed1 28. 3.xc2 29. 3.xc2+ 30. 3.g3 31. 3.h5 32. 3.c1 33. 3.g8 34. 3.d5 35. 3.exd5 36. 3.e7 37. 3.b5 38. 3.c5 39. 3.xc5 40. 3.bxc5 41. 3.e3 42. 3.xd5 43. 3.xd5 44. 3.xc5 45. 3.a6 46. 3.a5 47. 3.f7 48. 3.f4 49. 3.e6 50. 3.f3 51. 3.f5 52. 3.h3 53. 3.g6 54. 3.g4 55. 3.hxg4+ 56. 3.hxg4 57. 3.f6 58. 3.gxf5+ Draw

MICHAEL SCHEMM (#179) did not start well. He won his first game and then dropped three straight. Michael never lost again, scoring three wins and taking two half-point byes. With the exception of his second round opponent, Jason Duncan (2232, IL), all of his opponents were rated lower than Michael and so his rating dropped 24 points.

CLINT BALLARD (#192) was one of the handful of re-entry players. After three rounds of the traditional, he withdrew and entered the six-day schedule. This looked like a good decision, since after six rounds, Clint was only a half-point off the pace at 5-1. Among his victims were Steven Szpisjak (2200, IL), William Wright (2207, OH), Seth Homa (2197, MI) and Trevor Jackson (2205, LA). His only loss during this string was to IM William Paschall (2380, MA). Then, in the seventh round, he ran into Aigner (see above) and finished 0-3. In-

terestingly, with the exception of his first round class E opponent, all of the players Clint faced finished higher on the crosstable. With six master level opponents, Clint's rating rose 35 points.

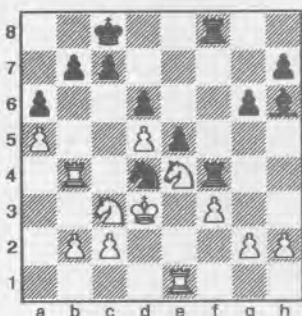
Modern Defense

IM William Paschall (2380, MA)

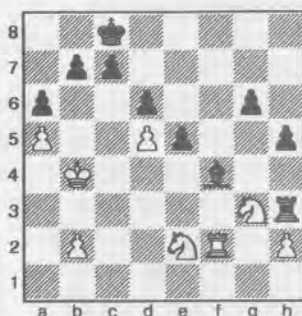
Clint Ballard (1914)

Chicago, US Open (4) 2006

1. d1f3 g6 2. e4 d6 3. d4 e7 4. e2 c6 5. d3 c5 6. e5 f6 7. e3 e4 8. d5 dce7 9. d2 e2 10. xe2 a6 11. a4 f5 12. exf5 dxf5 13. d4e4 dxe3 14. xe3 e6 15. e3 h3 d7 16. xd7+ xd7 17. e2 f8 18. a3 e7 19. b3 c8 20. a5 d5 21. d3 d4 22. b4 f4 23. f3 hf8 24. e1



24... f3+ 25. gxf3 f3+ 26. c4 dxc2 27. e2 dxb4 28. cxb4 h3 29. f2 e4 30. d3h5 31. dce2 e2+ 32. d3 e4 33. dce2



33... b6 34. axb6 cxb6 35. dxf4 exf4 36. f4 f2 37. d4 e4 38. f7+ d8 39. c3 h3+ 40. d4 h4 41. f6 g5 42. xd6+ c7 43. c6+ b7 44. e5 a5 45. c2 f4 46. d6 f8 47. d5g5 c8 48. xc8 xc8 49. e6 1-0

French Rubinstein

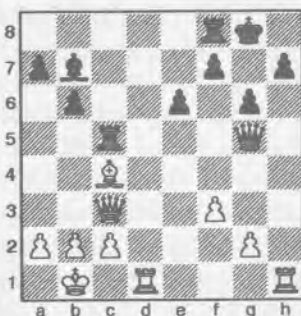
Clint Ballard (1914)

Seth Homa (2197, MI)

Chicago, US Open (5) 2006

1. d4 d6 2. d3 d5 3. d3 e6 4. e4 dxe4 5. dxe4 dbd7 6. e5 e7 7. f3 O-O 8.

O-O b6 9. e6 d6 10. d6+ e6 11. h4 e7 12. d3 d5 13. d5 e6+ 14. hxg5 xg5+ 15. b1 g6 16. c3 c5 17. dxc5 ac8 18. e4 xc5



19. xh7 c7 20. h1+ h5 21. xh5+ xh5 22. b3 g8 23. f6 e8 24. g4 h3 25. f4 e5 26. e3 f3 27. g5 g3 28. h4 f3 29. h6 g3 30. f5 exf5 31. gxf5 e1+ 32. b2 gxf5 33. d6 ge3 34. xd5 e5 35. d8+ g7 36. g5+ f8 37. h6+ e7 38. h7 f6 39. xf5 b5 40. a3 a5 41. e3 e6 42. g8 e7 43. a8 f5 44. xa5 f6 45. d8+ g6 46. g8+ h5 47. g3 e3 48. f4 1-0

DAKOTA DIXON (#208) began his Open experience with two draws against FM Renard Anderson (2270, CO) and Tenzing Shaw (2142, IL). Later, he drew in the sixth and seventh rounds with two class C players. Dakota finished with two wins, including defeating one of the eventual top class E players, Adam Schuld of IL. Dakota's rating edged up by four points in Oak Brook.

Benko Gambit

Dakota Dixon (1763)

FM Renard Anderson (2270, CO)

Chicago, US Open (1) 2006

1. d4 d6 2. c4 c5 3. d5 b5 4. cxb5 a6 5. b6 a5 6. d3 e6 7. g3 xb6 8. e2 d6 9. d3 g6 10. O-O e7 11. c2 O-O 12. e1 d7 13. e4 d4 14. e4 d5 15. dxe5 dxe5 16. xe5 xe5 17. b3 ab8 18. e1 b4 19. ac1 xf1 20. xf1 fc8 21. a4 a3 22. e3 b4 23. d3 cb8 24. b1 b2 25. xb2 xb2 26. c2 e4 27. d3 a4 28. d2 axb3 29. axb3 a8 30. c4 a1+ 31. e2 b7 32. d3 a2+ 33. d2 xd2+ 34. xd2 f8 35. f3 e6 36. dxe6 fxe6 37. d3 e1 38. h3 e2 39. g4 e1 40. c3 e2 41. c4 e7 42. a4 d5 43. exd5 exd5 44. e2 e4 45. d3 e1 46. a6 e2 47. a4 g5 48. c3 e4

49. b1 e6 50. c2 e5 51. d3 e3 52. a8 d4 53. d4 f7 54. g8 h6 55. e8+ f4 56. d3 xf3 57. dxc5 f6 58. d6 g3 59. d4 d4 60. xd4 xh3 61. e4 h5 62. gxh5 g4 63. b4 g3 64. e3 g4 65. e8 f4+ 66. e3 xb4 Draw

EDDIE CHANG (#215) looks to have tied for top class C. He scored four points in the first six rounds to take the Class C lead from our next player, fell back by losing the next two and then re-joined the leaders with a win in round nine. All of his opponents were rated higher than Eddie, making this a very good result. His victims included wins over Sylvester Smarty (2129, OH, winner most interesting name award), Raymond Garrison (1846, MI), Brian Luo (1972, WI), and Andrew Groeger (1797, IL), and a draw with Anthony Boron (1903) another of our foreign contingent, this one from Canada. Eddie's losses were to two class A players and the same FM Anderson that Dakota drew with earlier in the tournament. Eddie went up a whopping 189 points from all this. Welcome to class B Eddie!

TAYLOR BAILEY (#217) is our other class C winner. She was all alone atop class C after four rounds with a score of 2.5, having drawn with Miomir Stevanovic (2017, IL) and beaten Guy Hoffman (1925, WI). Taylor then suffered a pair of defeats at the hands of class A opponents to slip behind Eddie and others. Taylor finished like gangbusters, scoring 2.5 in the last three against a string of class A players. Only one of Taylor's opponents was rated below class A, and her rating has jumped by an astounding 139 points. Congratulations Taylor! (This will have an impact on the Oregon Grand Prix standings.)

Dutch

Taylor Bailey (1550)

Miomir Stevanovic (2017, IL)

Chicago, US Open (1) 2006

1. d4 b6 2. e3 e7 3. d3 f5 4. e3 e6 5. d2 d6 6. e2 d5 7. d5 e6 8. d3 O-O 9. d5 e7 10. h4 d7 11. f4 xe5 12. fe5 d4 13. e2 c5 14. c3 a5 15. d7 fc8 16. d5 d8 17. f3 g6 18. f4 g7 19. e2 e6

20. ♖xa6 ♘xa6 21. h5 ♚h8 22. hxg6 ♗xg6 23. ♚xh8 ♚xh8 24. ♘h3 ♘b8 25. ♚h1 ♘c6 26. ♖g3 ♗g7 27. ♘f2 ♚xh1 28. ♘h1 ♗f7 29. ♖h3 ♗e8 30. ♖h8+ ♖f8 31. ♖xf8+ ♗xf8 32. ♘f2 ♘xf2 33. ♗xf2 c4 34. ♗f3 ♗f7 35. ♗f4 ♗g6 36. ♖e1 b5 37. a3 ♗h5 38. ♗f3 a4 39. ♗f4 ♘e7 40. ♖f2 Draw

Taylor Bailey scored a top ten finish in the Polgar tournament, and tied for first place in Class C with upsets like this. Her opponent played a lazy opening and was just smashed.—C. Schulien

Budapest

Elisha Garg (1842, CA)
Taylor Bailey (1550)

Chicago, US Open (7) 2006

Annotations by FM Chuck Schulien

1. d4 ♘f6 2. c4 e5 3. d5 ♖c5 4. ♘f3 d6 5. ♘c3 a6 6. e4 ♘g4! 7. ♖g5 ♖xf2+ 8. ♗e2 f6 9. ♖d2 ♖d4 10. ♖a4+ ♘d7 11. ♘d4 exd4 12. ♘b5 ♘b6 13. ♘xc7+ ♗f7 14. ♖b3 ♖xc7 15. c5 ♖xc5 16. ♗e1 d3 17. ♖xd3 ♖f2+ 18. ♗d1 ♖d7 19. a4 ♚ac8 20. ♖e2 ♖d4 21. ♗e1 ♘c4 22. ♖c1 ♖f2+ 23. ♗d1 ♘ge3+ 24. ♖xe3 ♘xe3+ 25. ♗d2 ♚c2+ 26. ♖xc2 ♘xc2 27. ♚hf1 ♖d4+ 28. ♗xc2 ♚c8+ 29. ♗b3 a5 30. ♚a3 ♖e3+ 31. ♗a2 ♖xe2 32. ♚ff3 ♖xe4 33. ♚fd3 ♖c4+ 34. ♗b1 ♖f5 35. ♗a1 ♖xd3 36. ♚c3 ♖xa4+ 37. ♚a3 ♚c1+ 38. ♗a2 ♖c2 39. ♚c3 ♖a4+ 40. ♚a3 ♖c4+ 41. b3 ♖xb3+ 42. ♗b2 ♚c2+ 0-1

French Tarrasch

Nathaniel Criss (1895, IN)
Taylor Bailey (1550)

Chicago, US Open (9) 2006

1. e4 e6 2. d4 d5 3. ♘d2 c5 4. exd5 ♖xd5 5. dxc5 ♖xc5 6. ♘gf3 ♘f6 7. ♖d3 ♘c6 8. a3 O-O 9. O-O e5 10. ♘g5 ♖g4 11. ♖e1 h6 12. ♘ge4 ♖e7 13. ♘xf6+ ♖xf6 14. ♘e4 ♖e7 15. h3 ♖f5 16. ♘f6+ ♖xf6 17. ♖xf5 ♘d4 18. ♖d3 ♚ac8 19. c4 ♘f3+ 20. gxf3 ♖xd3 21. ♖e3 ♖g6+ 22. ♗h2 ♚xc4 23. ♚g1 ♖h5 24. ♚g4 ♚fc8 25. ♖xa7 ♚c2 26. b4 e4 27. ♖xe4 ♖e5+ 0-1

4.5 Points:

This was the point value for the top class D players. None of them were from here. One local player did get this break-

even score, but it wasn't me. This is my goal at these things, to break even. I've only done it twice in nine tries, but I have done it.

RANDY SMOLENSKY (#248)

one of our short-schedule players, did not go away empty handed from the open. Although finishing a point and a half behind the class A leaders, Randy did win a side event, the US Open Action Championship, a dual-rated event where he sent his regular rating up by 55 points. In the Open, Randy started off slow, scoring only one win and two draws in the first six rounds. He finished much better, getting 2.5 points in the last three rounds, but a steady diet of class C and D players resulted in a 50 point loss on his recently increased rating.

4 Points:

The top E and under players are in this score group and one of them is from Oregon! Also in this score group was Kenrick Barkell of Idaho.

DANA HANNIBAL (#368), unless I am mistaken, is a top E player. Dana started off with a couple of losses, defeated class C Alexander Garivaltis (1431, IL) and then suffered through three more losses. Then things turned around. Dana finished 3-0 to gain the top E spot, including an eighth round win over Tillman Adkins (1426, AR). She moves into class D with a 64 point increase.

Caro-Kann Classical

Alexander Garivaltis (1431, IL)
Dana Hannibal (1170)

Chicago, US Open (3) 2006

1. e4 c6 2. d4 d5 3. ♘c3 dxe4 4. ♘xe4 ♖f5 5. ♘g3 ♖g6 6. ♘f3 ♘f6 7. h4 h6 8. h5 ♖h7 9. ♖d3 ♖xd3 10. ♖xd3 e6 11. ♖d2 ♘bd7 12. O-O c5 13. ♚he1 ♖e7 14. dxc5 ♘xc5 15. ♖e2 O-O 16. ♗b1 ♖b6 17. ♘e5 ♚ac8 18. ♖e3 ♖c7 19. f4 ♘d5 20. ♖xc5 ♖xc5 21. f5 ♖a3

22. ♚xd5 exd5 23. bxa3 ♖b6+ 24. ♗a1 ♖f6 25. ♖d3 ♚fd8 26. ♗b1 ♚d6 27. c3 ♚e8 28. ♘f1 ♚xe5 29. ♚c1 ♚xf5 30. ♘d2 ♚xh5 31. ♚e1 ♚e5 32. ♚f1 ♖e6 33. ♘f3 ♚e3 34. ♖d4 ♖f5+ 35. ♗a1 ♚d3 36. ♖xd3 ♖xd3 0-1

3.5 Points:

All the cool people scored in this group. Trust me on this. A couple of those cool people were from Idaho, Jesse Brent and Daniel Taylor.

MURLIN VARNER (#400) is a wonderful person. Handsome, too, but not always so good at chess. I managed to snatch defeat from the jaws of victory more than once during this tournament. I played only two people rated below me and beat both of them. I gained my other 1.5 from people rated about where I used to be about 17 years ago. I drew with Janice Chen (1764, UT) in round two and defeated Matthew Morabito (1762, MI) in round seven. Although I didn't defeat one more B class player in round nine to achieve my goal, I did move my rating a good 17 points off of my floor.

London System

Janice Chen (1790, UT)
Murlin Varner (1550)

Chicago, US Open (2) 2006

1. d4 ♘f6 2. ♘f3 g6 3. ♖f4 ♖g7 4. h3 d6 5. e3 O-O 6. ♖d3 ♘bd7 7. O-O c5 8. c3 a6 9. a4 b6 10. ♘bd2 ♖b7 11. ♖c2 d5 12. ♘e5 c4 13. ♖e2 b5 14. axb5 axb5 15. ♖f3 ♘xe5 16. ♖xe5 e6 17. ♚fe1 ♘d7 18. ♖xg7 ♗xg7 19. e4 dxe4 20. ♖xe4 ♖c7 21. ♘f3 ♘f6 22. ♖xb7 ♖xb7 23. ♘e5 ♘d5 24. ♖d2 f6 25. ♘f3 ♖c6 26. ♘h2 g5 27. g3 h6 28. ♖e2 ♘c7 29. ♖f3 ♘d5 30. ♘g4 ♚xa1 31. ♚xa1 ♚a8 32. ♖d1 ♘b6 33. ♖e1 ♚xa1 34. ♖xa1 ♘a4 35. ♖a3 ♖d7 Draw



Carl A. Haessler
Lessons • Lectures • Exhibitions

USCF Life Master
3-Time Oregon Champion

(503) 358-7871
ssmith6154@aol.com

MEGAN LEE (#402) performed about as close to what the ratings would predict as you could hope for. She was never upset, and she was never able to pull an upset. There were not very many unrateds in the Open, but Megan was scheduled to face two of them. While losing to the first one in round seven, she drew with her unrated opponent in the final round, a moral upset, if nothing else, as this unrated now has a 1600 provisional rating. Megan's rating fell by only two points as a result.

Sicilian Sveshnikov

Megan Lee (1492)

Alison Parshall (1259, AK)

Chicago, US Open (3) 2006

1.e4 c5 2.♘f3 ♘c6 3.d4 cxd4 4.♗xd4 e5 5.♗b5 d6 6.♗1c3 a6 7.♗a3 ♗f6 8.♙g5 ♙e7 9.♗c4 ♙e6 10.♙xf6 gxf6 11.♗d5 b5 12.♗xe7 ♙xc4 13.♗xc6 ♗c7 14.♙xc4 bxc4 15.♗b4 ♙g8 16.♗d5 ♗d8 17.♗f3 ♙g6 18.h4 ♙h6 19.h5 ♗a5+ 20.c3 ♗d8 21.♗e3 ♗b8 22.♗xb2 23.♗xf6+ ♗e7 24.♗d5+ ♗e8 25.♗c1 ♗b7 26.♙b1 ♗a7 27.♗e3 ♗xe3+ 28.♗xe3 ♗d7 29.♗xc4 ♙f8 30.♙d1 f5 31.exf5 ♙xf5 32.♙xd6+ ♗e7 33.♙xa6 ♗d8 34.♗e2 1-0

CAROL KLEIST (#403) did not start out well. When I first saw her, she wouldn't even speak to me. Actually, she couldn't, as she was experiencing the wonders of laryngitis. After losing the first round, she requested a bye for round two so she could rest up and look for her voice. While her voice came back, her chess didn't. Carol lost the next two rounds before gaining a point via forfeit. This was followed with another loss, leaving her at 1.5/6, but 0/4 for rating purposes. Things did change for the better a little, as Carol managed two draws and a win in the last three rounds. Unfortunately, all three opponents were class D players, and her rating tumbled by 59 points.

KAREN MARCJAN (#408) dished out her share of upsets. Sadly, no upset prizes were offered for this tournament. All of Karen's opponents were rated significantly above her. Karen defeated Terrence Eakens (1678, TX) in round two, Mario Bartucci (1583, IL) in round five and Drew Irby (1711, IL) in round six. In round eight she finished her scoring by drawing with Jessica Wamala (1711, MA). As a reward, Karen has received 118 shiny new rating points.

CARSON HANNIBAL (#409) is, I suspect, related to Dana. Carson also performed above rating, gaining 48 points. Carson split with two unrateds, and pulled three upsets, drawing with Christopher Adkins (1696, AR) in round five and defeating Jim Froehlich (1621, IL) in round six and Elisha Garg (1842, CA) in round nine. Outside of the unrateds, none of Carson's opponents were rated below 1575.

3 Points:

We have one player at this score. I suspect he wasn't happy about it.

JOHN ROSELL (#424) is the second highest rated player in this score group. This is not really a good thing. John started well, winning the first two, including an upset over David Bennett (2130, CA). His reward was to face Michael Lee in round three and Corbin Yu in round four. It seems always unfortunate to me when you go halfway across the country and end up playing two opponents from your own back yard. And it's even more unfortunate when you lose both games. John never seemed to recover from his experience against these two kids, and scored only two draws before withdrawing after round eight. John's rating gave up 35 points. (*ed.—John had just started the semester at Chicago Medical School; so he played his games after going to class.*)

King's Indian Fianchetto

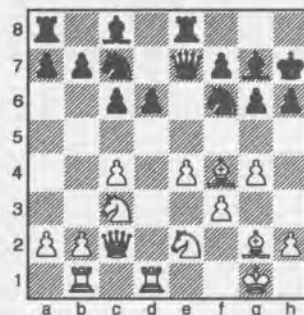
David Bennett (2131, CA)

John Rosell (1900)

Chicago, US Open (2) 8/2006

1.d4 g6 2.c4 ♙g7 3.♗f3 d6 4.g3 ♗f6 5.♙g2 O-O 6.O-O ♗bd7 7.♗c2 e5 8.♙d1 ♗e7 9.♗c3 h6 10.e4 ♙e8 11.♙b1 exd4 12.♗xd4 ♗c5 13.f3 ♗e6 14.♗de2

c6 15.♙e3 ♗h7 16.g4 ♗c7 17.♙f4



17...d5 18.cxd5 cxd5 19.♗g3 ♗c5+ 20.♗f2 ♗xf2+ 21.♗xf2 ♗e6 22.♙d6 d4 23.♗b5 ♙d7 24.♗c7 ♗xc7 25.♙xc7 ♙ac8 26.♙bc1 ♙c6 27.♙a5 ♗d7 28.h3 b6 29.♙b4 ♙b5 30.♙f1 ♙xf1 31.♗xf1 ♗e5 32.♗e2 ♗c4 33.b3 ♗b2 34.♙e1 ♙f6 35.♗d2 ♙g5 36.♙d6 d3+ 0-1

2.5 Points:

Here we also have one player. At this level, we begin to see a lot of players who chose not to stick it out to the end. Of the 26 players in this score group, ten took an early leave. Personally, I come to these to play chess, and my airline ticket doesn't get any cheaper if I quit early. Winning is nice, but the play's the thing.

CEZARY MARCJAN (#482) did not take a powder, but played through, and came out ahead in terms of rating points, gaining four. Cezary defeated the two lower rated players he faced and, in round two, drew with Martin Franek (1700, IL). Existential chess: We play, therefore we are.

2 Points:

Seven of nineteen in this score group couldn't stick it out to the end, but the group includes no Northwest players, so we'll move on.

1.5 Points:

Here five of nine couldn't wait around, although a few might be re-entries. I'm too tired to check, so you go ahead if you want to. You have to give a stick-to-itivism award to those who play out the full schedule anyway at these low levels. I shall, then send props out to one of my opponents, Kathy Schneider of CO and one of my former opponents (in

Sample copies of Northwest Chess magazine will be available at the Puyallup Fair on Sunday, Sept. 24 at the Tacoma Chess Club booth.

USCF Delegates' Meeting

by Fred Kleist

With the controversial election of Sam Sloan of New York, perennial gadfly of the USCF delegates' meeting, to a one-year term on the USCF Executive Board, there promised to be some fireworks at the Annual Meeting. It was said that Susan Polgar and the Polgar Foundation would not work together with USCF as long as he was on the board. The Scholastic Council pointed to "objectionable material" on Sloan's website. Many accused Sloan of being a felon and some were demanding a recall. Nevertheless, the delegates' meeting turned out to be rather quiet.

The first measure accomplished in regard to Sloan was the institution of a recall procedure prior to installation of the two new board members (Randy Hough of southern California won a two-year term). After the two had been installed, the Board thanked Sloan for having removed the "objectionable material" from his website. And that was that.

After that little item, came a truncated reports section wherein only new developments since the publication of the Delegates' Call were to be presented.

President Bill Goichberg, long an advocate of lower dues, called for a restructuring of dues for the under-25 crowd. Executive Director Bill Hall noted that the role of clubs is declining and advocated USCF-provided liability insurance for clubs and TDs, online registration via USCF for local events, and sending lists of local tournaments to new USCF members along with their membership cards as ways to help clubs. The VP of Finance Joel Channing presented a budget with a "projected positive cash flow of \$48,000 for 2006-2007," which was duly approved. He also shared his concern that the new USCF headquarters building in Crossville, Tennessee, currently has little resale value. It is located in an industrial park where the only covenant-approved uses are industrial or "headquarters of a membership organization." He will work to change the covenant terms.

Chess Life editor and Director of Publications Daniel Lucas talked about the stylistic integration of *CL*, *CL for Kids*, and the website as well as the move of some magazine columns to the website, freeing up space in the magazine for features. The Ratings Committee reported that regular oth ratings are stable, but a bit low. Quick rat-

ings are in trouble because not enough games are Quick rated. A proposal to have all games Quick-rated is under consideration.

The Rules Committee had two proposed rule changes. The first was to require players to make their moves before recording them. After some objections, chiefly from the scholastic crowd, the motion passed. Then came a discussion of rules for "electronic scoresheets." The committee's recommendations were approved.

The Scholastic Committee is working on certification standards for chess coaches. The Survey Committee conducted a survey in the San Francisco Bay area at clubs and a 1000-player scholastic event which suggested that "the cost of membership is not as important as the services." Two motions came from the membership meeting. The first was to award \$10,000 from the Professional Players' Health and Benefit Fund to Beatriz Marinello, who needs a kidney transplant. The delegates approved the expenditure. The second motion, a version of which had failed last year, was to require candidates for the Executive Board to disclose any adult felonies. Though opponents argued that felonies vary from state to state and that one's opponents could bring up criminal activities, the bylaws change was approved by one vote over the necessary two-thirds.

The dues restructuring was the next substantial item on the agenda. The proposal was to lower scholastic dues, available to those under 14 at expiration and including a subscription to Chess Life for Kids, and youth dues, available to those under 17 at expiration and including six issues of Chess Life, and to create a new membership category, young adult, for those under 25 at expiration. The suggestion to the Board was that one-year dues be \$17, \$19, and \$25 respectively. The restructuring was approved.

Most of the rest of the motions dealt with technical changes in the bylaws. Two that didn't were a proposal to decertify state chapters, e.g., the WCF or the OCF, for failure to provide a list of candidates for the board of delegates or for failure to pay dues and a motion by Sam Sloan to ban headphones and earphones in tournaments. The delegates deemed the first too draconian. The latter also failed to pass, because the delegates worried that it would be difficult to distinguish permissible hearing aids.

NJ, 2002), Ruth Arluck of NY, for playing out the full schedule in spite of only gaining 1.5 points.

1 Point:

The first Clint Ballard can be found here (#525) along with a few more re-entries and two players who played out the entire schedule while only getting one point. In one case, that point was a bye!

Scores below one point were all of people who dropped out or filled in. NO one managed to stick around for all nine rounds without getting a point by some means or another. This is good.

Denker

Two other major events were held during the US Open, fondly known as the Denker and the Polgar. The Denker Tournament of High School Champions was won by Nelson Lopez of NC, with 5.5/6. Corbin Yu (OR) and Ricky Selzler (WA) represented the Northwest in the Denker. Corbin tied for third with 4.5/6 and Ricky scored 3/6 to tie for 21st. There were 46 players in the Denker.

Nimzo-Indian

Ricky Selzler (2126)
Matthew Carlson (1869, MN)

Chicago, Denker 2006 (4) 2006

1.e4 c6 2.d4 d5 3.exd5 cxd5 4.c4 ♘f6
5.♘c3 e6 6.♘f3 ♙b4 7.♙d3 dxc4
8.♙xc4 O-O 9.O-O a6 10.♙b3 ♖c7
11.♗d3 ♘c6 12.♙g5 ♙e7 13.a3 ♗d8
14.♙c2 g6 15.♗f1 ♘d5 16.♙h6 ♙f6
17.♘e4 ♙h8 18.♗ac1 ♗b6 19.♙b3
♘f6 20.♗c3



20...♘xe4 21.♗xe4 ♘xd4 22.♘xd4
♗xd4 23.♗cd3 ♗xb3 24.♗xd4 1-0

Oregon's representative Corbin Yu defeated a master in the last round of the Denker Invitational tournament, held in conjunction with

the US Open. The opening was a very topical Sicilian Najdorf, English Attack.—C. Schulien

Sicilian English Attack

Francis Chen (2203, CA)

Corbin Yu (2076)

Chicago, Denker (6) 2006

Annotations by FM Chuck Schulien

1.e4 c5 2.♟f3 d6 3.d4 cxd4 4.♞xd4 ♟f6 5.♞c3 a6 6.f3 e6 7.♞e3 b5 8.♞d2 ♟bd7 9.g4 ♟b6 10.O-O-O ♞b7 11.♞f2 ♟fd7 12.♞b1

12.♞d3 ♞c8 13.♟ce2 d5 14.e5 ♟xe5 15.♟xe6 fxe6 16.♞xb6 ♞f6 was very complicated, and eventually drawn in Socko-Shirov, Turin 2006.

12... ♞c8 13.♟b3

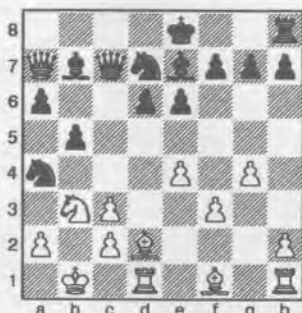
A very similar position is featured in the current *Chess Life* magazine, in a review of Stohl's book on Kasparov's games, part 2 (*Chess Life*, August 2006, p 10.) The gist is that no professional player would allow the coming exchange sacrifice as White. Kasparov notes in more extended commentary that if Black's Knight can reach a4, he doesn't need to play for a quick checkmate, as the Black pieces are just as good as any White Rook.

Movsesian-Kasparov, Sarajevo 2000, continued 13.♞d3 ♞xc3 14.bxc3 ♞c7 15.♟e2 ♞e7 16.g5 O-O 17.h4 ♟a4 18.♞c1 ♟e5 19.h5 d5 20.♞h2 ♞d6 21.♞h3 ♟xd3 22.cxd3 b4 23.cxb4 ♞c8 24.♟a1 dxe4 25.fxe4 ♞xe4 26.g6 ♞xh1 27.♞xh1 ♞xb4 28.gxf7+ ♟f8 29.♞g2 ♞b8 30.♞b2 ♟xb2 31.♟d4 ♟xd1 32.♟xe6+ ♟xf7 0-1.

13... ♞xc3

Not forced, but a good sacrifice.

14.bxc3 ♟a4 15.♞d2 ♞c7 16.♞a7 ♞e7



17.♟a5?N

Kriventsov-Winer, Washington DC 1999, continued 17.c4 O-O (White's idea is 17...bxc4 18.♞xc4 O-O 19.♞xa6, although this is still playable for Black; 19... ♞c8 20. ♞c1 ♞xa6 21. ♞xa6 ♟ab6) 18.cxb5 ♞a8 19.♞e3 ♟e5 (19... axb5) 20.b6 (20.♞a5 ♞c8 21.b6) 20... ♞xb6 (On 20... ♟xb6 Black didn't like the looks of 21.♞a5, but it's not decisive 21... ♞c8 22. ♞d2 ♟ed7) 21. ♞xb6 ♟xb6 22.♞e2 ♞b8 23.♞c3 ♟bc4 24.♞xe5 ♟xe5 25.c4 ♞c8 26.♟a5 ♞a8 27. ♞hf1 g5 28. ♞c1 ♟d7 29. ♞fd1 ♟g7 30. ♟b3 ♞b8 31. ♟c2 ♟e5 32. ♞b1 ♞c8 33.c5 ♞c7 34. ♞d4 d5 35.exd5 ♞xd5 36. ♞xd5 exd5 37. ♟c3 ♟d7 Draw.

17... ♞xa5 18. ♞xb7 ♞f6!

Corbin is just brutal in his conduct of the attack. Black aims decisive force at the White king and doesn't worry about material.

19. ♞c6 O-O!

19... ♞xc3 20. ♞xd6 prevents a quick mate.

20. ♞xd6

20. ♞xd7 abandons the c3- and b4-squares; so Black will win quickly beginning ... ♟xc3+.

20... ♟xc3+ 21. ♞xc3 ♞xc3 22. ♟c1 ♞c8 23. ♞d3 ♞b2+ 24. ♟d2 ♟e5 25. ♞b3 ♟xf3+

25... ♞g5+ was more precise, but Corbin's move is plenty good enough.

26. ♟e2 ♞xc2+ 27. ♟xf3 ♞f2+ 0-1

Polgar

The Polgar had 44 players, including three from the Northwest. The winner of the Polgar, for the second year in a row, was Abby Marshall of VA. She also scored 5.5/6. Taylor Bailey of OR tied for sixth with 4/6. Karen Marcjan of WA scored 3/6 to tie for 17th, and Dana Hannibal of OR tied for 29th with 2.5/6.

Next year, the Open returns to Cherry Hill, NJ. (I may have mentioned this already.) I wish it was going someplace I haven't been before, but I guess I'll probably end up going anyway. Hope to see you there, and maybe if I'm lucky, two delegates will show up from Washington and I'll be able to skip the meetings for a change.

Tacoma Chess Club News

The 55th TCC Evergreen Empire Open was held at the club July 7-8. There were 13 players in all. The winners were: 1st Joshua Sinanan \$74, 1st Group 1 Allen Smith \$44, 1st Group 2 Constantin Etingher & John Hornickle \$20.50 each, 1st Group 3 Carl Nighswonger \$39.99. TD: Gary Dorfner.

The Firecracker Swiss was held on all four Friday nights in July at the club. There were 18 players in all. The winners were 1st Mike MacGregor, 2nd Allen Smith, 1st under 1800 Eric Holcomb, 1st under 1600 Bill Rogers, 1st under 1400 Jerry Olson. The winners each had a choice of a book from the book boxes. TD: Gary Dorfner.

A 10-second tournament was held at the club on 8/4. There were 14 players in all. The winners were: Larry Anderson & Stephen Buck, 1st U2000 Allen Smith, 1st U1600 Constantin Etingher & John Hornickle, 1st U1400 Ian McPherson. TD: Gary Dorfner.

The Washington Senior Open was held at the Parkland/Spanaway Library on Aug. 5-6. There were 8 players in all. The winners were 1st Paul Bartron, Ernst Rasmussen & Colin Southcote-Want, \$19 each. Paul Bartron was awarded the plaque on tie-breaks. Mr. Southcote-Want was also the U2000 winner. 1st U1600 Constantin Etingher \$20. Bartron (2100) lost to Ernst Rasmussen (1763) in round four. Dave Rupel (2087) drew Stephen Buck (1742) in round four. TD: Gary Dorfner.

Your Mailing Label

Your mailing label is evidence of membership. The first line of your label contains your membership expiration date as the 2-digit year followed by the 2-digit month (e.g., -0610 for October). The date is followed by a letter code indicating your membership type (e.g., A for adult, J for Junior, L for library, Z for life members). The letter "F" will also appear for each additional family member. Please contact the business manager if you find any errors or if your renewal isn't processed within 1 to 2 months.

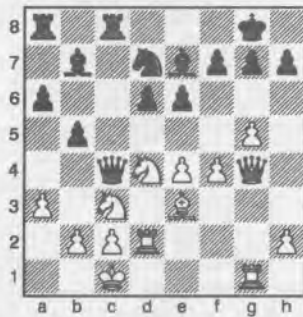
Games from the WA Senior Open

Sicilian English Attack

Robert Karch
FM Paul Bartron (2100)

Parkland, WA Senior Open (1) 2006

1.e4 c5 2.♘f3 d6 3.d4 cxd4 4.♗xd4 ♘f6
5.♗c3 a6 6.♙e3 b5 7.a3 ♙b7 8.f3 e6
9.♖d2 ♙e7 10.O-O-O O-O 11.g4 ♖c7
12.♗g2 ♗c6 13.g5 ♗d7 14.♙g1 ♗ce5
15.f4 ♗c4 16.♙xc4 ♖xc4 17.♖g4 ♙fc8
18.♙d2



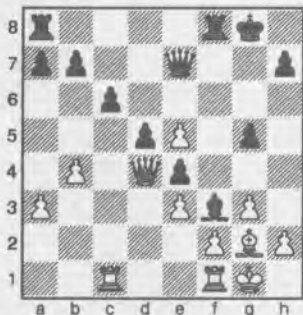
18...d5 19.♗xe6 ♙xa3 20.bxa3 ♖xc3
21.♙d4 ♖xa3+ 22.♙b2 ♖e3 23.♗xg7
♗c5 24.♗d1 ♗xe4 25.♙gg2 ♗xd2
26.♙xd2 d4 27.♙d3 ♖f2 0-1

Dutch Stonewall

David Rupel (2087)
Colin Southcote-Want (1671)

Parkland, WA Senior Open (1) 2006

1.d4 e6 2.♗f3 f5 3.g3 ♗f6 4.♙g5 ♙e7
5.♙g2 d5 6.O-O O-O 7.c4 c6 8.♗bd2
♗bd7 9.a3 ♗e4 10.♙xe7 ♖xe7 11.e3
g5 12.♗e5 ♗xe5 13.dxe5 ♙d7 14.♙c1
♙e8 15.♗xe4 fxe4 16.cxd5 exd5 17.
♖d4 ♙h5 18.b4 ♙f3



19.b5 ♙e2 20.bxc6 ♙xf1 21.♖xd5+ ♖f7
22.♖xf7+ ♙xf7 23.cxb7 ♙af8 24.♙xf1
♙xb7 25.♙xe4 ♙b2 26.a4 a5 27.♙c6

♙c8 28.♙d7 ♙cc2 29.h3 ♙d2 30.e6
♗f8 31.g4 ♗e7 32.♗g2 h6 33.♗g3 ♙a2
34.♗f3 ♙ab2 35.♗g2 ♙e2 36.♗g3
♙ed2 37.♗f3 ♙a2 38.♗g3 ♙a3 39.♗f3
♙aa2 40.♗g3 ♙a3 41.h4 ♙aa2 42.hxg5
hxg5 43.f4 ♙g2+ 44.♗f3 gxh4 45.exf4
♙h2 46.g5 ♙a3+ 47.♗g4 ♙g2+ 48.♗f5
♙c3 49.♙h1 ♙c5+ 50.♗g6 ♙f2
51.♙h7+ ♗d6 52.♙f7 ♙c1 53.f5 ♙h2
54.♙b5 ♙ch1 55.e7 1-0

Sicilian Scheveningen

FM Paul Bartron (2100)
Stephen Buck (1742)

Parkland, WA Senior Open (2) 2006

1.e4 c5 2.♗f3 d6 3.d4 cxd4 4.♗xd4 ♗f6
5.♗c3 a6 6.♙e2 e6 7.f4 ♗c6 8.♙e3 ♖c7
9.♖d2 ♙e7 10.♙f3 ♙d7 11.♗b3 b5
12.O-O ♙c8 13.♗e2 O-O 14.c3 ♙fd8
15.♗ed4



15...♗xd4 16.♙xd4 ♙c6 17.♖f2 ♙b8
18.♙ae1 e5 19.♙e3 ♙xe4 20.fxe5 dxe5
21.♙xe4 ♗xe4 22.♖xf7+ ♗h8 23.♖f5
♗d6 24.♖xe5 ♙f6 25.♙xf6 gxh6
26.♖xf6+ ♖g7 27.♙d4 ♖xf6 28.♙xf6+
1-0

English

Stephen Buck (1742)
Colin Southcote-Want (1671)

Parkland, WA Senior Open (3) 2006

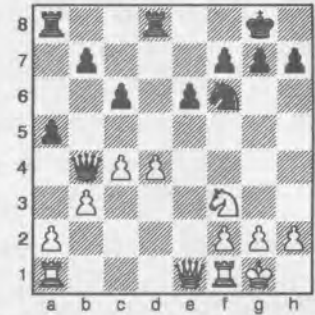
1.c4 ♗f6 2.♗c3 c5 3.♗f3 b6 4.g3 ♙b7
5.♙g2 e5 6.O-O ♙d6 7.♗b5 ♙c7 8.d3
h6 9.b3 a6 10.♗xc7+ ♖xc7 11.♙b2 d6
12.e3 ♗bd7 13.d4

QGD Slav

David Rupel (2087)
FM Paul Bartron (2100)

Parkland, WA Senior Open (3) 2006

1.d4 d5 2.♗f3 ♙f5 3.e3 e6 4.c4 c6 5.♗c3
♗d7 6.♙d3 ♙xd3 7.♖xd3 ♗gf6 8.O-O
♙d6 9.e4 dxe4 10.♗xe4 ♗xe4 11.♖xe4
♖a5 12.♙f4 ♗f6 13.♖e3 ♙xf4 14.♖xf4
O-O 15.♖e5 ♖b4 16.b3 a5 17.♖e1
♙fd8



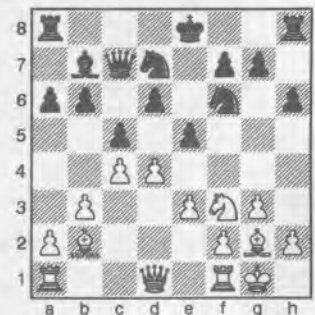
18.♖xb4 axb4 19.♙fe1 ♙a3 20.♗e5
♙xd4 21.♙ad1 ♙xd1 22.♙xd1 ♗f8 23.
g4 ♗e8 24.f3 ♙xa2 25.♗d3 ♗d7 26.c5
♙c2 27.♗xb4 ♙xc5 28.♗d3 0-1

English

Stephen Buck (1742)
David Rupel (2087)

Parkland, WA Senior Open (4) 2006

13...♙e4 14.dxe5 ♗xe5 15.♗xe5 ♙xg2
16.♗xf7 ♖xf7 17.♗xg2 O-O 18.♙xf6
♖xf6 19.♖d5+ ♗h8 20.♙ad1 ♙fd8
21.♙d2 b5 22.♙fd1 bxc4 23.bxc4 ♙a7
24.♖c6 ♙f7 25.f4 ♖c3 26.♖e4 ♖f6
27.♙d5 ♙e7 28.♖d3 ♖e6 29.♙xc5
dxc5 30.♖xd8+ ♙e8 31.♖d3 ♙b8
32.♙d2 ♙b4 33.♙c2 ♖f6 34.e4 ♙b2
35.e5 ♖c6+ 36.♗f2 ♖h1 37.♙xb2
♖xh2+ 38.♗f3 ♖xb2 39.e6 ♖f6 40.♖d7
♖c3+ 41.♗g4 h5+ 42.♗xh5 ♖f3+
Draw



Koons Finds Smooth Sailing at Seafair

by Fred Kleist

As usual, the Seattle Seafair was the largest event on the SCC calendar, attracting 54 players. Local NM Nat Koons swept the field with a 5-0 score which included wins over experts Benjamin Calpo and Ricky Selzler as well as fellow NM David Roper. Curt Collyer of Spokane finished clear second, allowing but one draw to Roper, while defeating FM Nick Raptis en route to a 4½-½ score. Experts David Arganian, Paul Bartron and Calpo tied for third-fifth, scoring four points apiece. Bartron gave up two draws—to Raptis and Darren Wu—while Arganian and Calpo were nicked for a loss apiece—to NMs Roper and Koons respectively.

Clint Ballard, Alex Guo, Stephen Buck, Darren Wu, Nathan Lee, and Peter Watts shared the U2000 and U1800 prizes, scoring 3½ points each. Of the six, only Wu was undefeated. He took a half-point bye and drew with experts Bartron and Selzler. Topping the U1600 crew with 3-2 scores were George Fan and William Li. Jeff Omori's and Anthony Guo's even scores captured U1400 honors. Jay Charleston scored 1½ points in winning the U1200 prize as did Peter Nichols in winning the Unrated prize.

In addition, nine players split Plus-Score money. There were also upset prizes for the first four rounds. Jennifer Apacible had the highest upsets in the first two rounds, August Piper in the third round, and Brian Kelly in the fourth round.

French Rubinstein

NM David Roper (2250)
Carol Kleist (1519)

Seattle, Seafair Open (1) 2006

1.e4 e6 2.d4 d5 3.♘d2 dxe4 4.♘xe4 ♘d7 5.♘f3 ♘gf6 6.♙d3 b6 7.O-O ♙b7 8.♞e2 ♙e7 9.♙e1 O-O 10.♘e5 ♘xe4 11.♙xe4 ♙xe4 12.♞xe4 ♘xe5 13.dxe5 ♞d5 14.♞g4 f5 15.exf6 ♙xf6 16.c3 ♞f5 17.♞e2 ♙ae8 18.♙e3 ♙f7 19.♙ad1 ♙g5 20.♙d3 c5 21.♙xg5

♞xg5 22.♙e3 ♙fe7 23.♙e5 ♞f6 24.g3 ♘f7 25.f4 g6 26.a4 ♙d8 27.a5 ♙d5 28.axb6 axb6 29.♞b5 ♙d6 30.h4 ♘g7 31.♞e2 h5 32.♞e3 ♘f7 33.♘g2 ♘e8 34.♙e2 ♘d7 35.♞e4 ♘e8 36.♘h3 ♘f7 37.♞c4 ♙ed7 38.♞b5 ♙e7 39.♙e1 ♞g7 40.♙a1 ♙d5 41.♙xd5 exd5 42.♞xb6 ♞f6 43.♞xf6+ ♘xf6 44.♙a6+ ♘f5 45.♙d6 d4 46.cxd4 cxd4 47.♙xd4 ♙e2 48.♙d5+ ♘f6 49.♙b5 ♙d2 50.♙b6+ ♘f5 51.b4 ♙b2 52.♙b8 ♙b3 53.b5 ♘f6 54.♘g2 ♘f5 55.b6 ♘g4 56.♘f2 ♙xg3 57.♙g8 ♘xh4 58.b7 ♙b3 59.b8=♞ ♙xb8 60.♙xb8 ♘g4 61.♙f8 h4 62.♘g2 1-0

Nimzo-Indian Classical

Matthew Yang (1511)
NM Nat Koons (2249)

Seattle, Seafair Open (1) 2006

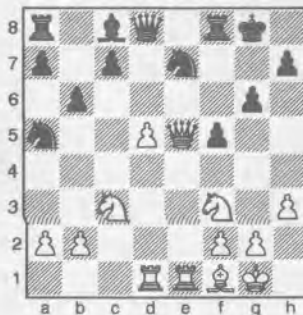
1.d4 ♘f6 2.c4 e6 3.♘c3 ♙b4 4.♞c2 O-O 5.♘f3 c5 6.e3 d5 7.a3 ♙xc3+ 8.bxc3 b6 9.♙b2 ♙a6 10.cxd5 ♙xf1 11.♘xf1 ♞xd5 12.c4 ♞h5 13.♙d1 ♘bd7 14.h3 cxd4 15.exd4 ♙ac8 16.♘g1 ♙c7 17.♘h2 ♙fc8 18.♘d2 ♞e2 19.♞b3 ♞xf2 20.♙hf1 ♞e2 21.♙f3 b5 22.c5 e5 23.dxe5 ♘xc5 24.♞c2 ♘ce4 0-1

Hungarian Defense

David Arganian (2021)
Peter Watts (1600)

Seattle, Seafair Open (2) 2006

1.e4 e5 2.♘f3 ♘c6 3.d4 exd4 4.♙c4 ♙e7 5.c3 ♙f6 6.cxd4 d6 7.h3 ♘ge7 8.♘c3 ♙d7 9.O-O O-O 10.♙e1 g6 11.♙h6 ♙g7 12.♞d2 ♙c8 13.♙ad1 ♘a5 14.♙f1 f5 15.♙xg7 ♘xg7 16.d5 b6 17.♞d4+ ♘g8 18.e5 dxe5 19.♞xe5 1-0

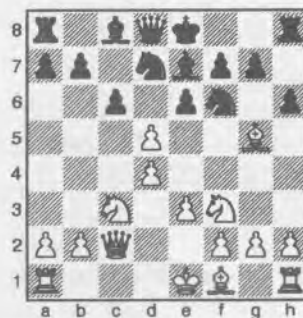


QGD Exchange

NM Nat Koons (2249)
Stephen Buck (1742)

Seattle, Seafair Open (2) 2006

1.d4 d5 2.c4 c6 3.♘f3 ♘f6 4.♘c3 e6 5.♙g5 ♙e7 6.e3 ♘bd7 7.♞c2 h6 8.cxd5



8...exd5

8...hxg5 9.dxe6 fxe6 10.♞g6+ ♘f8 11.♘g5 ♞e8 12.♘xe6+ ♘g8 13.♞xg7 mate, Reitz-Heuberger, Würzburg 1995. 9.♙f4 O-O 10.♙d3 ♙e8 11.O-O ♘h5 12.♘xd5 ♘xf4 13.♘xf4 ♙d6 14.♘e2 ♘f8 15.h3 ♘e6 16.♙ad1 ♘g5 17.♘g5 ♞xg5 18.f4 ♞a5 19.e4 ♞xa2 20.e5 ♙f8 21.f5 ♞a5 22.♙c4 c5 23.e6 fxe6 24.f6 ♘h8 25.♞g6 ♙d8 26.♙d3 1-0

Anglo-Dutch

Alex Guo (1760)
NM David Roper (2250)

Seattle, Seafair Open (2) 2006

1.c4 f5 2.♘c3 ♘f6 3.g3 g6 4.♙g2 ♙g7 5.d3 e5 6.e4 ♘c6 7.♘ge2 d6 8.O-O O-O 9.♘d5 ♘xd5 10.cxd5 ♘e7 11.♙g5 h6 12.♙xe7 ♞xe7 13.♙c1 f4 14.f3 fxg3 15.hxg3 h5 16.♞c2 ♙f7 17.f4 ♙g4 18.fxe5 ♙xf1+ 19.♙xf1 ♞xe5 20.♘g2 ♙h6 21.♙e1 ♙f8 22.♘g1 ♞f6 23.♘h3 h4 24.♘g1 hxg3 25.♘xg3 ♞g5 26.♘h2 ♞h4+ 27.♘g2 ♞xe1 28.♙e2 ♞f2+ 29.♘h1 ♞h4+ 30.♘g2 ♙f2 mate

Please submit changes of address promptly to the Business Manager.

Grünfeld

Matthew Yang (1511)

Alex Guo (1760)

Seattle, Seafair Open (3) 2006

1.d4 ♘f6 2.c4 g6 3.♗c3 d5 4.♙f4 ♙g7
5.♗f3 c6 6.e3 O-O 7.c5 ♘h5 8.♙g3
♗xg3 9.hxg3 ♗d7 10.♙d3 e5 11.♙e2
exd4 12.exd4 b6 13.cxb6 ♖xb6 14.♖d2
♙b8 15.♙b1 ♗f6 16.b3 ♙f5 17.♗a4
♗e4 18.♗xb6 ♗xd2 19.♗xd2 axb6
20.♙bc1 ♙a8 21.a4 b5 22.axb5 ♙a2+
23.♗d1 ♙e8 24.♙e1 ♙h6 25.bxc6
♙xc1 26.♗xc1 ♙axe2 0-1

French

NM David Roper (2250)

Curt Collyer (2181)

Seattle, Seafair Open (4) 2006

Annotations by Curt Collyer

1.e4 e6 2.d4 d5 3.♗c3 a6

It was an early morning round, and so I decided to take away our pillow of theory, hoping Roper was feeling more drowsy than I was. Ironically, White is already in a kind of Zugzwang, as there is no pin with 4.♙g5, while 4.e5 is a kind of Advance Variation with a strange Knight on c3. Meanwhile, ...a7-a6 is almost always a useful move for Black in the French.

4.♙d3

4.♗f3 ♗f6 5.e5 ♗fd7 and White no longer has the Steinitz option with f4.

4...♗c6 5.♗ge2 ♗b4

“Trapping” the Bishop.

6.O-O ♗f6 7.exd5

A good decision. After 7.e5 ♗fd7 8.f4 c5, Black would already have some advantage.

7...exd5 8.♗g3!

Roper ensures that he will be able to recover his Bishop pair by bringing his Knight into the f5-square.

8...♗xd3 9.♖xd3 ♙e7 10.♙e1 O-O
11.♗f5 ♙xf5

Black must return the Bishop, however he has gained time to complete development.

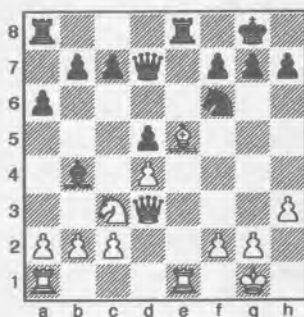
12.♖xf5 ♙e8 13.♙f4 ♖c8!

It is imperative to connect the Rooks as well as reassume control over the light squares.

14.♖d3 ♖d7 15.h3 ♙b4

Now the pieces are “balanced.” However, it is White’s move; so he still has a slight initiative.

16.♙e5!



This is the best try to create something. Roper’s idea is 16...♗e4? 17.♗xe4 ♙xe1 18.♖g3!, when White is suddenly winning. Black must be accurate, as the strong Bishop on e5 could give White some advantage.

16...♙e6

I took around 1/2 hour for this move. Black’s idea is to make room for the Knight on e8, where it will do one or more of the following: defend g7, prepare f6, come to d6 and control c4.

17.♙e3 ♙xc3

The Knight must be exchanged, since it is no longer pinned.

18.bxc3 ♗e8!

Here we go!

19.c4 dxc4 20.♖xc4 ♗d6 21.♖b3 b5

Black has equalized and is even threatening to put the Knight on c4 with advantage. Roper decides it’s time to make a draw.

22.♙xd6 ♖xd6 23.♙xe6 Draw

Modern Defense

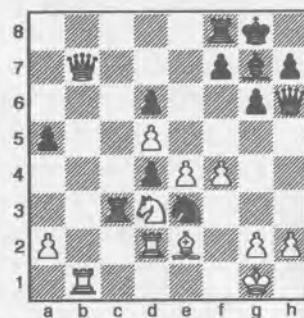
NM Nat Koons (2249)

Ricky Selzler (2145)

Seattle, Seafair Open (4) 2006

1.e4 g6 2.d4 ♙g7 3.c4 d6 4.♗f3 e5
5.♙e3 ♗c6 6.♙e2 ♙g4 7.d5 ♙xf3
8.♙xf3 ♗d4 9.♙xd4 exd4 10.♗a3 ♗e7
11.O-O O-O 12.♗c2 c5 13.♗e1 a6
14.♗d3 b5 15.♖c2 bxc4 16.♖xc4 ♗c8

17.b3 ♗b6 18.♖c2 ♙c8 19.♙fd1 c4
20.bxc4 ♙xc4 21.♖b3 ♙c3 22.♖b4
♗c4 23.♙ab1 ♖g5 24.♙e2 ♖h6 25.f4
a5 26.♖b7 ♗e3 27.♙d2



27...♙xd3 28.♙xd3 ♖xf4 29.♙f2 ♖g4
30.♖e7 ♙e5 31.♙c1 g5 32.♙e2 ♖h4
33.g3 ♙xg3 34.hxg3 ♖xg3+ 35.♗h1
♖xf2 36.♖xg5+ ♗h8 37.♙g1 1-0

Sicilian Dragon

David Arganian (2021)

August Piper (1552)

Seattle, Seafair Open (4) 2006

1.e4 c5 2.♗c3 e6 3.♗f3 d6 4.g3 g6 5.d4
cxd4 6.♗xd4 a6 7.♙g2 ♙g7 8.O-O
♗c6 9.♙e3 ♗ge7 10.♗b3 O-O 11.a4
♖c7 12.a5 ♗e5 13.♙b6 ♖d7 14.♖e2
♖c6 15.♙a4 ♙d7 16.f4 ♗g4 17.♙c4
1-0

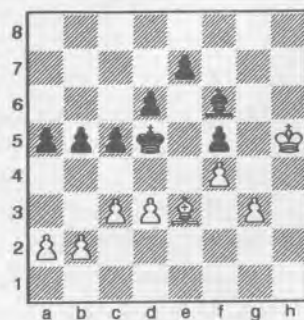
Sicilian Closed

Darren Wu (1706)

FM Paul Bartron (2100)

Seattle, Seafair Open (4) 2006

1.e4 c5 2.♗c3 d6 3.♗ge2 g6 4.g3 ♙g7
5.♙g2 ♗c6 6.d3 ♙d7 7.♙e3 ♗d4 8.
O-O ♖c8 9.♖d2 ♙h3 10.♗d1 h5 11.c3
♗xe2+ 12.♖xe2 h4 13.f4 hxg3 14.hxg3
♗f6 15.♙d2 ♖g4 16.♖xg4 ♗xg4 17.
♗f2 ♙xg2 18.♗xg2 ♗xf2 19.♙xf2
♗d7 20.♙h1 f5 21.♙xh8 ♙xh8 22.
♗g1 ♗c6 23.exf5 gxf5 24.♙h2 ♙xh2
25.♗xh2 b5 26.♗h3 ♗d5 27.♙e3 a5
28.♗h4 ♙f6+ 29.♗h5



29...c4 30.dxc4+ bxc4 31.♗g6 ♗e4
32.♗d4 ♗xd4 33.cxd4 d5 34.♗g5
a4 35.a3 e6 36.♗f6 ♗xd4 37.♗xe6
♗e4 38.g4 d4 39.gxf5 d3 40.f6 d2
41.f7 d1=♖ 42.f8=♖ Draw

Colle

Curt Collyer (2181)
FM Nick Raptis (2349)

Seattle, Seafair Open (5) 2006

Annotations by Curt Collyer

1.d4 ♗f6 2.♗f3 c5 3.c3

Of course, all the books say 3.d5 b5 4.♗g5 with advantage for White. The problem with this line is that, should White ever lose his "advantage" (which is disputable in itself), he will likely be worse rather than just equal. In the past, I had employed 3.e3 successfully, but here I decided to go for a different idea entirely.

3...g6 4.e3 ♗g7 5.b4!?

And this is it! White immediately gains space on the queenside and pressures the Black c-pawn.

5...b6 6.♗a3 cxb4

Raptis decides to give up the c5-point in order to temporarily shut down the a3-Bishop. However, when White eventually plays b4-b5, this Bishop will resurrect.

7.cxb4 ♗b7 8.♗bd2 O-O 9.♖c1

A useful waiting move, as it is not yet clear where the light-squared Bishop belongs: if the Black d-pawn goes to d6, then White will play ♗d3 in combination with e3-e4, taking over the center.

9...d5

Raptis prevents the above-mentioned plan, while staking a claim in the center. However, Black's fianchettoed Bishops are not ideally placed for an Exchange Slav-type structure.

10.♗e2

10.♗d3? would be wrong, as then a Black Knight would entrench itself on e4.

10...♗bd7 11.O-O ♗e4 12.♗xe4

Of course, this Knight cannot be tolerated.

12...dxe4 13.♗d2

Now White has a comfortable French Defense-like structure with some initiative on the queenside.

13...♗f6

13...e5 14.b5! ♖e8 15.♗c4 would be good for White.

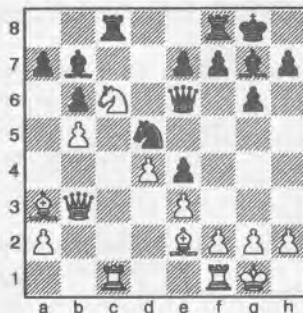
14.♗c4 ♗d5 15.♖b3 ♖c8 16.♗e5

White has ideas of ♖a4, b5, and ♗c6, when Black's queenside will be under pressure.

16...♖d6?

Raptis feels it is necessary to immediately attack the Knight and connect the Rooks. However, the Queen becomes uncomfortably placed.

17.b5 ♖e6 18.♗c6!



Indirectly inspired by Kramnik-Aronian, Turin 2006. The c6-square is Black's problem in this position. Now White will even have ideas of ♖xd5 and ♗xe7+.

18...♗xc6 19.bxc6 ♖fd8

19...♖xc6 20.♗c4 ♖d8 21.♖b5 and Black would be under great pressure, for example, 21...♗c7 22.♖xc6!

20.♗c4 ♗f8

Raptis decides to cover the e7-pawn, as it is hanging in some lines. However, this gives White the chance to force material concessions. 20...♖xc6 21.♖b5 would transpose to the variation mentioned above.

21.c7! ♖d7

21...♖xc7 22.♗xd5

22.♗b5

Forcing the Rook off the d-file.

22...♖dxc7 23.♗c4!!

This retreat is the move Raptis missed: now his Rooks cannot cover both each other and the d5-Knight.

23...♖xc4

Both 23...♖d8 and 23...♖d7 would be met by 24.♗xd5, winning material.

24.♖xc4 ♖d8 25.♖fc1 h5 26.♖c6 ♖f5 27.♖c4 h4 28.h3 g5 29.♖c8 ♖d7 30.♖c6!

Threatening both 31.♖a8 and 31.♖h6.

30...♗f6 31.♖a8

Now it is over.

31...g4

31...♗h7 32.♖xf8+ ♗xf8 33.♖c8 would be sufficient.

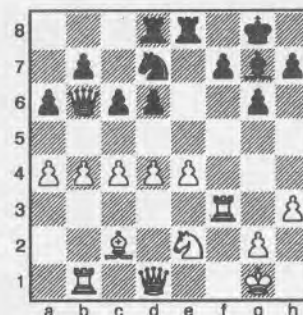
32.♖xf8+ ♗g7 33.♖h8 ♖g5 34.♖f8+ ♗g6 35.♖g8+ ♗xg8 36.♖xg8+ ♗f5 37.♖xf7+ ♖f6 1-0

Pirc

William Li (1485)
Vishnu Warriar (1633)

Seattle, Seafair Open (5) 2006

1.e4 d6 2.d4 ♗f6 3.♗d3 g6 4.♗e3 ♗g7
5.c3 c6 6.♗e2 e5 7.O-O O-O 8.♗d2 ♗g4
9.♗f3 ♗xe3 10.fxe3 ♗g4 11.♗c2 ♗d7
12.h3 ♗xf3 13.♖xf3 ♖b6 14.♖b1 ♖ad8
15.c4 ♖fe8 16.b4 a6 17.a4 exd4 18.exd4



18...♗e5 19.♖c3 ♗d7 20.♗h1 d5 21.c5 ♖c7 22.exd5 cxd5 23.b5 ♖e6 24.♖d2 ♖de8 25.♗f4 ♗h6 26.♗xe6 ♖xe6 1-0

Reti

NM Nat Koons (2249)
NM David Roper (2250)

Seattle, Seafair Open (5) 2006

1.♗f3 f5 2.d3 ♗f6 3.e4 d6 4.e5 dxe5
5.♗xe5 ♗c6 6.f4 ♗xe5 7.fxe5 ♗g4 8.d4
e6 9.♗f4 g5 10.h3 ♗h6 11.♗e3 ♗e7

12. ♖h5+ ♟f7 13. ♛c3 c6 14. O-O-O b5
 15. ♜b1 a5 16. ♙e2 ♙d7 17. ♞hf1 a4
 18. d5 ♖b8 19. d6 ♙d8 20. ♟e4 O-O
 21. ♟f6+ ♙xf6 22. exf6 a3 23. b3 ♜h8
 24. g4 ♖d8 25. gxf5 ♖xf6 26. ♙d4 e5
 27. ♙e3 ♞g8 28. ♙f3 ♞g7 29. ♙e4
 ♞ag8 30. ♙c5 g4 31. ♙xa3 g3 32. ♙g2
 ♞a8 33. ♙b2 ♞a7 34. ♖e2 ♞g8 35. a3
 ♞aa8 36. ♖e3 h6 37. ♞de1 ♞ae8
 38. ♖a7 ♞d8 39. ♖e3 ♞de8 40. ♖a7
 ♞d8 41. ♞e3 ♞g5 42. ♖c7 ♙xf5 43. h4
 ♞g4 44. ♞ef3 ♖xd6 45. ♖xf7 1-0

Sicilian Accelerated Dragon

FM Paul Bartron (2100)
 Peter O'Gorman (1830)

Seattle, Seafair Open (5) 2006

1. e4 c5 2. ♟f3 ♟c6 3. d4 cxd4 4. ♟xd4
 g6 5. ♙e3 ♟f6 6. ♟c3 ♙g7 7. ♟xc6
 bxc6 8. e5 ♟g8 9. f4 d6 10. ♙c4 ♟h6
 11. O-O O-O 12. exd6 exd6 13. ♙d4
 ♙xd4+ 14. ♖xd4 ♖b6 15. ♖xb6 axb6
 16. ♞ad1 d5 17. ♙d3 ♙f5 18. a3 ♞fe8
 19. ♞fe1 ♜f8 20. h3 ♙xd3 21. cxd3 ♟f5
 22. ♜f2 ♟d4 23. ♞xe8+ ♞xe8 24. ♞e1
 ♞xe1 25. ♜xe1 ♜e7 26. ♜d2 ♜d6
 27. b4 h5 28. ♟e2 ♟xe2 29. ♜xe2 d4
 30. g4 f5 31. gxh5 gxh5 32. ♜d2 c5
 33. bxc5+ ♜xc5 34. ♜c2 ♜b5 35. ♜b3
 1-0

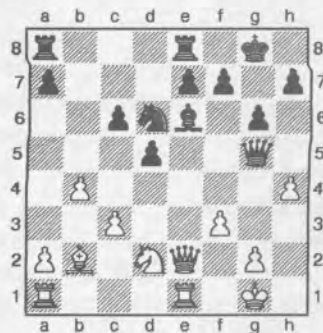
Sicilian Hyper-Accelerated Dragon
 Benjamin Calpo (2016)
 Larry Hubbell (1676)

Seattle, Seafair Open (5) 2006

Annotations by Larry Hubbell
 1. e4 c5 2. ♟f3 g6 3. d4 cxd4 4. ♖xd4
 ♟f6 5. e5 ♟c6 6. ♖c3 ♟e4 7. ♖e3
 ♖a5+ 8. c3 d5 9. b4 ♖c7 10. ♙b5 ♙g7
 11. ♙b2 ♙xe5 12. ♙xc6+ bxc6 13.
 ♟xe5 ♖xe5 14. O-O ♖g5 15. ♖e2 O-O
 16. ♞e1 ♙e6?

Better is 16...e6.

17. f3 ♟d6 18. ♟d2 ♞fe8 19. h4



19... ♖g3 20. h5 ♟c4 21. ♟xc4 dxc4
 22. h6 ♙d5
 22... ♞ad8 23. ♞ad1 ♞d5
 23. ♞ad1 ♖d6?
 23... e5

24. ♖f2 e5 25. ♙c1 f6 26. ♙e3 ♖c7
 27. a4 ♞eb8 28. a5 ♞c8 29. ♙c5 ♞d8
 30. ♞d2 ♖f7 31. ♞ed1 ♞d7 32. ♖e3 g5
 33. ♖e2 ♖h5 34. b5 ♖f7 35. b6 a6 36.
 ♖xc4 ♞b7 37. ♖g4 ♖e6 38. ♖h5 ♖f7
 39. ♖g4 ♖e6 40. ♖b4 ♖e8 41. ♙d6 f5
 42. c4 e4 43. ♖c3 e3 44. ♙c7 1-0

Modern Gurgenedze

Nathan Lee (1636)
 Dan Mathews (1838)

Seattle, Seafair Open (5) 2006

1. e4 c6 2. d4 d5 3. e5 g6 4. ♟c3 ♙g7
 5. ♙e3 e6 6. f4 ♟e7 7. g4 ♟d7 8. ♙g2
 b6 9. ♟ge2 ♙b7 10. ♟g3 a6 11. ♖e2 c5
 12. O-O cxd4 13. ♙xd4 ♟c6 14. ♙e3
 O-O 15. ♞ad1 f5 16. gxf5 gxf5 17. ♟h5
 ♞f7 18. ♖f2 ♜h8 19. ♜h1 ♙f8 20. ♟a4
 b5 21. ♟b6 ♟xb6 22. ♙xb6 ♖c8 23. a3
 ♟e7 24. ♙d4 ♟g6 25. ♞d3 ♙e7 26.
 ♞c3 ♖d7 27. ♙b6 ♞c8 28. ♞xc8+
 ♖xc8 29. ♞d1 ♙d8 30. ♙xd8 ♖xd8
 31. ♟f6 ♟f8 32. ♖c5 ♖c7 33. ♖f2 ♟d7
 34. ♟xd7 ♞xd7 35. c3 ♞g7 36. ♖d4
 ♖c4 37. ♖xc4 bxc4 38. ♙f3 ♞g6 39.
 ♞g1 ♞h6 40. ♜g2 ♙c6 41. h3 ♙a4 42.
 ♜h2 ♞h4 43. ♜g3 ♞h6 44. h4 ♙c2
 45. h5 ♙e4 46. ♙xe4 fxe4 47. ♜h4 a5
 48. a4 e3 49. ♞e1 ♜g7 50. ♜g5 1-0 ■



Polgar
 Representatives



Above: Dana Hannibal, OR
 Right: Karen Marcjan, WA
 Far Right: Taylor Bailey, OR

Photos courtesy of Chris Bird, U.S. Open 2006 CD

Why Kramnik is the Only Current World Chess Champion in August 2006

by Gene Milener

Too many people say the upcoming September WCC (World Chess Champion) title match between Vladimir Kramnik and Veselin Topalov is a title "reunification" match. I disagree. It is important to clear away this confusion before the match begins and our judgments become tainted with knowledge of the results.

Defended with Honor

In 1993, Garry Kasparov had his first title defense match since the collapse of Soviet Russia. This gave Kasparov the freedom to split his WCC title away from the financial control of FIDE. True or false: since the 1993 split, both Kasparov and his successor Kramnik have reverted back to the tactics of delaying title defense matches (the way title holders did in the era of Emanuel Lasker and Jose Capablanca and Alexander Alekhine)? The answer is false.

From 1993-2006, counting the title matches Kasparov-Short 1993 and the upcoming Kramnik-Topalov, Kasparov and Kramnik have defended their WCC title at the rate of once every 2.8 years, even faster than the traditional 3.0 years. Plus each tried to defend at an even faster rate.

In 1998 Kasparov offered Alexei Shirov a title match. Shirov earned the challenge match by winning the cycle run by the World Chess Council (now defunct). But Shirov rejected the offer saying he wanted a prize fund bigger than the \$650,000 the sponsors were offering. So Kasparov moved on to the Council's next best challenger, who was Kramnik. Kramnik won the WCC title by defeating Kasparov in 2000, obliterating any doubts about his worthiness as a challenger.

In 2002 Kramnik signed the Prague Agreement, along with Kasparov, Karpov, Ponomarev, and FIDE president Kirsan Ilyumzhinov. This was an extraordinary concession by Kramnik, for it meant the WCC title holder would defend his title against two challengers instead of just one, entirely unprecedented. It was not Kramnik's fault that Ponomarev and others subsequently behaved in a manner that ruined the agreement. Kramnik then agreed to defend against whomever won at Dortmund, and that turned out to be Peter Leko. Kramnik survived a tied title match against Leko in late 2004 (with a daring opening against Leko's Caro-Kann to win the final game).

Kirsan the Absurd

A few months later, Kirsan invited Kramnik to play in the upcoming 2005 FIDE championship tournament, to be held at San Luis. The major condition was that Kramnik would have to formally agree in writing that the winner of San Luis would become the one and only owner of the one and only WCC title.

In other words, Kirsan graciously offered Kramnik an opportunity to defend his title against the planet's top seven challengers simultaneously! And this only months after Kramnik had just finished defending his title. Kramnik wisely rejected this absurd offer, which was really more of a threatening ultimatum from Kirsan.

Kirsan should have worked to get Kramnik to agree beforehand that the winner of San Luis would thereby earn a challenge match for Kramnik's title. FIDE thrives when it is seen as the one proper generator of official WCC match challengers.

Instead, Kirsan made it clear to Kramnik that FIDE would consider the winner of San Luis to be the only true WCC, even if Kramnik refused to risk his title at San Luis. Imagine if in 1975 FIDE had told Bobby Fischer that Fischer would forfeit and have his WCC title taken away unless he agreed to risk his title against the top seven players simultaneously, in a tournament hatched by the leader of Kalmykia. It would have been laughable, and everyone would have sided with Fischer. Yet today there are some respected voices in the upper echelons of chess that urge Kramnik be discarded in precisely this way. Is it a farce?

FIDE on the Upswing

In 2005 Kirsan had more power than in the past. This is because Kirsan decided to heed everyone's advice about how to design the San Luis tournament. First, instead of another dreadful knockout tournament, San Luis would be a double round-robin format. Also, San Luis would mark the return to long time controls. This time when Kirsan said his tournament winner was the new true one and only WCC title holder, there would be some important people who would agree with him.

Ultimately it is not FIDE or Kramnik or Wilhelm Steinitz or Paul Morphy who controls the WCC title, it is the court of public opinion. This natural fact has frustrated Kirsan since 1995, and Florencio Campomanes at FIDE before him.

As San Luis 2005 was about to begin, it seemed Kramnik had lost some of the consensus public support that had kept him as the WCC title holder since his defeat of Kasparov. This was caused in part by Kramnik's sparse and weak play since surviving Leko in 2004. The world has since learned that during this time, Kramnik was suffering from arthritis so severe that he underwent surgery to reduce his constant discomfort.

There is also the aspect of personality. Even at his best, Kramnik is nowhere near the powerful public personality that was Kasparov. Steinitz did not dare to call any of his major chess matches a world championship match until after Morphy died in 1884¹. Similarly, it was not until after the WCC title

transferred from Kasparov to the mild mannered Kramnik that people like Veselin Topalov and Susan Polgar dared to claim publicly that the WCC title no longer belonged to those players operating outside of full FIDE control, who continued to defend it in classical match style.

From an interview on ChessCafe.com shortly before San Luis 2005, we read Susan Polgar urging the chess world to strip Kramnik of his title, less than a year after Kramnik had successfully defended it (see <http://chesscafe.com/text/polgar40.pdf>):

"2. Do you consider this to be a legitimate World Championship?"

"Yes. This will end all the controversies about a legitimate World Champion.

"3. Is Kramnik still the legitimate World Champion?"

"To my mind, Kramnik is no longer World Champion.

"4. Should the winner of the FIDE World Championship in San Luis, Argentina play Kramnik to unify the title or should he/she be crowned as the outright World Champion?"

"Absolutely not! The winner of this tournament is the outright World Champion and that winner should not play Kramnik."

Susan is doing great things for chess. So I was disappointed in reading her interview. Polgar's desire to strip Kramnik of his title is plainly evident. But nowhere in the interview can I find any reasoning behind it, other than Kirsan invited Kramnik to defend against seven challengers simultaneously. Kramnik earned his WCC title by doing what nobody else was able to do, by defeating Kasparov in a one-on-one match. Kramnik has also successfully defended his title.

Topalov Helps Kirsan Regain Control

The long standing tradition has been for the FIDE champion to have thus earned a challenge match against the champion. Kramnik promptly offered a challenge match after Topalov won San Luis. Topalov answered no, saying that he, Topalov, was now the true WCC title holder. Topalov said Kramnik should have accepted Kirsan's invitation to play in San Luis.

A few months later Topalov reconsidered, but he set an awful condition. Topalov insisted that Kramnik sign Kirsan's contract that required the winner to agree that, starting in 2007, the one and only true WCC title holder would be whomever won each FIDE championship tournament (not match, tournament). Kramnik probably felt the world's best super grandmasters were aligning themselves with whatever plan would give them more opportunities to play for the WCC title, with other considerations being subordinate. There was the prospect that Kramnik would no longer be able to secure a top challenger for direct title defense matches. Perhaps a blackballing of Kramnik was on the horizon. With his options narrowing, Kramnik did what WCC title holders do – he signed to defend in a match against Topalov. And Kramnik signed Kirsan's cursed contract to return control of the WCC title to Kirsan in 2007.

Why did Topalov sully himself by helping Kirsan retake control of the WCC title? Was it because Kasparov and Kramnik were not defending the title often enough? No, we saw above that cannot be the reason. Was it because they were dodging the top challengers? No again, we saw above they defended against the top challengers. Indeed Kramnik had promptly offered a match to Topalov. Was it to reunify a split WCC title? No, because the title was never split, unless perhaps Topalov was having some success with his damaging claims that Kramnik should be stripped of the WCC title even though Kramnik had defended it in 2004. Besides, Kramnik was offering a match to Topalov, which would reunify the title if Topalov thought it was split. Well then, why?

With every other explanation ruled out, I must conclude that Topalov compelled Kramnik to sign Kirsan's cursed contract because Topalov agrees with Kirsan's objective of *eliminating the use of one-on-one matches* for the determination of each new WCC title holder. Topalov and Kirsan want a tournament used instead. Yuk.

Haven't You Heard, It's a Battle of Words

Topalov's complicity has empowered Kirsan to dictate that our prestigious WCC title will in 2007 be taken from its owner and given to the winner of a tournament. It is plenty possible that the tournament winner could also lose to the defending WCC title holder during the tournament, and yet still take away the title from the champ. Being given one slot in a many player tournament is not really a "defense" of one's title in the first place, as the connotation is wrong. A tournament is more like putting the title in the center of the table so all players can grab for it.

I have great respect for the San Luis tournament, as I will for its bi-annual successors. But the proper role for San Luis was to generate a top challenger for Kramnik's title, not to bestow the WCC title on the winner of a mere tournament. Transferring the WCC title based on a tournament will lower the prestige of the WCC title. Tournaments can be exciting, but there are lots of them every year. A few months after Topalov won in San Luis, future WCC title holder Levon Aronian won a similar tournament over largely the same group of super grandmasters, including over Topalov. The only reason Topalov is the current FIDE champion instead of Aronian is a matter of lucky timing: it is not enough to win a super tournament, you have to win the particular tournament annointed by FIDE, meaning lucky timing is crucial. This kind of arbitrariness does not occur with one-on-one WCC title matches. Retaining the title match would not eliminate any exciting tournaments. But Kirsan's plan means eliminating the title matches the chess world has esteemed since the 1800's.

In my view Kirsan is not just modifying the WCC format, he is trying to change long accepted definitions of the venerated term "World Chess Champion." I suspect too few people think of it this way.

Kirsan will call the 2007 tournament winner the new "World Chess Champion," but personally I will consider the winner to be only the "Tournament WCC." This concept is

Washington Chess Federation (WCF)/Oregon Chess Federation (OCF)

Adult: \$25/year (12 issues). Residents of OR and WA receive a 1-year membership in the OCF or WCF. Members receive *Northwest Chess* via periodicals mail each month.

Junior: \$17/year (12 issues) or \$10/6 months (6 issues). Must be under age 20 at time of expiration. OR/WA residents only; state membership included. Juniors receive *Northwest Chess* each month.

USA Subscriber: \$25/year (12 issues). For subscribers living inside the US mail system, but outside the OR/WA area. Subscribers receive *Northwest Chess* each month.

Family: \$5/year (not a subscription — membership only). This class of membership is open only to co-resident of an Adult or Junior member. Expires at the same time.

Trial: \$13 (membership and subscription, expires in 3 months). By paying the balance of dues for an Adult membership, this option can be extended to 12 months. The balance must be paid before the trial status is expired.

For general information, Eric Holcomb (253) 850-2996, e-mail: Eric@Holcomb.com

OCF/WCF Membership Application/Renewal Form

Name _____ If Junior, give date of birth _____

E-Mail (if you want to subscribe to the *Northwest Chess* e-mail mailing list) _____

Phone Number (optional, will not be used for telemarketing) (____) _____

Street or P.O. Box _____

City _____ State _____ Zip _____

Country (if not USA) _____ Amount Enclosed \$ _____

Make check or money order (USA \$ only) out to Northwest Chess and mail to:

Credit this membership to:

Eric Holcomb
NW Chess Business Manager
PMB 342
12932 SE Kent-Kangley Rd.
Kent WA 98030-7940

distinct from the "Match WCC." Today Kramnik is the undisputed Match WCC. I suppose Topalov is the current "Tournament WCC." The Match WCC is the most prestigious title in chess (*2). After Kirsan's 2007 tournament I might feel that nobody is currently the Match WCC. That would be better than devaluing the WCC title by ignoring the implied 'Tournament' qualifier.

The idea of using clarifying modifiers in front of the term "WCC" is not new. Since 1993 many have used the terms "Classical" WCC and "FIDE" WCC, and this distinction has successfully protected the list of Match WCC title holders from bloat. But those terms are becoming obsolete and will no longer work.

Preventing the Coming Bloat

Kirsan will crown a new Tournament WCC once every two years. There is a much increased chance that most champions will be replaced in the immediately next bi-annual cycle. In a single decade this system could quickly bloat the glorious list of Match World Chess Champions founded 120 years ago. A mere decade from now the list could grow from 14 (Steinitz-Kramnik) to 18 or 19.

I believe the chess community will backlash against this eventually, though after it is too late and the damage has been done. That backlash will constitute a repudiation of Topalov's complicity with Kirsan. The way for us to defend the honored

list of Match World Chess Champions now is by making the distinction from the Tournament WCC.

End Notes

*1: In the 1870s, Steinitz visited with Morphy in Morphy's home for a long afternoon of enjoyable conversation. Steinitz reported that Morphy was very lucid and spoke knowledgeably on a broad range of topics, though Morphy let it be known that chess was not permitted as a conversation topic. Morphy displayed no delusion or paranoia during this visit.

*2: Topalov's name will be added to the historic list of Match WCC title holders if but only if Topalov defeats Kramnik in 2006. Kramnik's name is already on the list. ■

From the Business Manager:

When sending payments or other material to the business manager, please remember to always include the BM's name (Eric Holcomb), PMB number and street address. *Northwest Chess* is optional. Games, articles, and letters to the editor should NOT be mailed to the BM.

SCC Championship

Sept. 8, 15, 29, Oct. 13, 20, 27, Nov. 3

A one-section, seven-round Swiss held on Friday evenings with a time control of 35/100 and 25/60. The prize fund is 75% of the entry fees.

First	23%
Second	16%
U2000	9%
U1800	8%
U1600	7%
U1400	6%
Unrated	3%
Endurance	3%

SCC CHAMPIONS 1990-2005

1990 Michael Oshiro
 1991 Fred Kleist
 1992 Dan Marshall
 1993 Dave Weinstock
 1994 Dan Marshall
 1995 Jeff Nomura
 1996 Slava Mikhailuk
 1997 Ignacio Perez
 1998 Huso Hadzic
 1999 Fred Kleist
 2000 Nat Koons
 2001 Bobby Ferguson
 2002 Huso Hadzic
 2003 Fred Kleist & Adam Weissbarth
 2004 Geoff Gale
 2005 Michael Darby

Seattle Chess Club

Address

17517 15 Ave NE
 Seattle WA 98155

Infoline

206-417-5405
 cfkleist@cs.com

Address for Entries

SCC Tnmt Dir
 2420 S 137 St
 Seattle WA 98168

Entry Fees: \$25 if rec'd by 9/6, \$30 thereafter. **SCC membership** req'd — special \$24 tournament membership.

Registration: Fri. 7-7:45 p.m. **Rounds:** Fridays 8 p.m.

Byes: 4 (1 in rds 5-7, commit by 10/18). **Miscellaneous:** USCF memb. req'd. No smoking. No computers.

SCC Monthly Blitz
No more events scheduled

NM Nat
 Koons speaks
 about the upcoming
 World Championship
 6:15-7:45 p.m. on Friday before
 the first round

Seattle Fall Open

September 22-24 or September 23-24

A 2-section, 5-round Swiss chess tournament with a time control of 40/2 & SD/1 (except Rd 1 of the 2-day option — G/64) with a prize fund of \$1000 based on 58 paid entries, 6 per prize group.

A Franett Memorial Grand Prix event

Open: \$180 gtd-\$120 gtd, U2200 \$100, U2000 \$95, U1800 \$90

Reserve (U1700): \$110-\$80, U1550 \$70, U1450 \$65, U1350 \$60, UNR \$30

Entry Fees: \$32 by 9/20, \$40 at site. 25% discount to SCC members or 12.5% discount to members of other dues-req'd CCs in BC, OR, & WA. Unrated players FREE with purchase of 1-yr USCF & WCF. **Add \$1 for 2-day option.** Make checks payable to SCC.

Registration: Fri. 7-7:45 pm or Sat. 9-9:45 am. **Rounds:** Fri. 8 pm, Sat. (10@G/64)-12:30-6:45, Sun. 11-5.

Byes: 2 available. Rounds 4 or 5 must commit at registration. **Misc.:** USCF & WCF required. NS. NC.

⌘ Sept. 16, Oct. 14

Format: 3-RR, 4-plyr sections by rating. **TC:** G/120. **EF:** \$6 (+\$5 fee for non-SCC). **Prizes:** Free entry for future quad. **Reg:** 9:00-9:45 a.m. **Rds:** 10:00-2:15-ASAP. **Misc:** USCF, WCF/OCF memb. req'd, OSA. NS, NC.

Sat. Quads⌘

⌘ Oct. 8, Oct. 29

Format: 4-SS. **TC:** G/64. **EF:** \$15 (+\$5 fee for non-SCC). **Prizes:** 1st 35%, 2nd 27%, Bottom Half 1st 22%, 2nd 16% (\$10 from each EF goes to prize fund). **Reg:** 10:30-11:15 a.m. **Rds:** 11:30-1:50-4:10-6:30. **Misc:** USCF, WCF/OCF memb. req'd, OSA. NS, NC.

Sunday Tornado⌘

November 18

SCC Novice

Format: 4-SS. Open to U1200 and unrated. **TC:** G/75. **EF:** \$10 by 9/7, \$15 at site. (20% disc. for SCC mem., 10% mem. of other dues-req'd CCs in WA, OR, & BC). **Prizes:** Memberships (SCC, WCF, USCF). **Reg:** 9-9:45a. **Rds:** 10-12:45-3:30-6. **Byes:** 1 (Rd 3 or 4—commit at reg.). **Misc:** USCF memb. req'd. NS, NC.

Coming Nov. 3-5
SCC Extravaganza
\$1000 gtd!!!

7 rounds, G/90, 3 byes
available

Future Events

⌘ indicates a Christopher Memorial NW Grand Prix event

⌘Sept 14-Oct 12 Spokane Fall Championship⌘

Site: 121 Herak, Gonzaga U., Spokane. **Format:** 5-rd. Swiss. **TC:** G/120. **EF:** \$16. **Reg:** 6:30-7:15 p.m. **Rds:** Thursdays 7:15 p.m. **Misc:** USCF membership req'd. TD reserves right to use class pairings in final rd. **Info:** dbgriffin@hotmail.com.

⌘Sept 16-17 Eastern Washington Open⌘

Site: Schoenberg Ctr (Rm 201), Gonzaga U., N 900 Pearl St, Spokane (SW corner of campus - 1 blk E of Division/Ruby off DeSmet Ave). **Format:** 5-rd. Swiss. **TC:** G/120. **EF:** \$21 by 9/15, \$26 at site. \$5 discount for u18. **Prize Fund:** \$\$800 gtd. **Prizes:** \$150-120-80, A 65-35, B 65-35, C 65-35, D/E/unr 65-35, Upset 50. Add'l classes/prizes poss. if entries exceed 30. Class prizes b/5 per class; classes/prizes may be reconfigured if less than 5 class entries. **Reg:** Sat. 8:30-9:30 a.m. **Rds:** Sat 10-2:30-7, Sun 9-1:30 (or ASAP). **Byes:** One ½-pt. bye avail. if requested by end of preceding rd (rd 3 for a Sunday bye). **Misc:** USCF membership req'd. TD reserves right to use class pairings in final rd. **Info:** 509-466-0530 eve. or wknd; 509-477-2871 days; www.spokanechessclub.org. **Entries:** Spokane CC, c/o Kevin Korsmo N. 9923 Moore, Spokane, WA 99208-9339

⌘Sept. 30 Tacoma/Pierce County Quick Championship⌘

Site: Freighthouse Square, 430 E 25th St, Tacoma WA. 2 blks up the hill from the Tacoma CC and 1 blk down the hill from the Tacoma Dome. Playing room is at the E end of bldg. **Format:** 4-rd. Swiss. **TC:** G/30. **EF:** \$20. **Prize Fund:** \$30 b/20. **Prizes:** \$80-70, U2000 60, U1700 50, U1500 40. **Reg:** 9-9:45 a.m. **Rds:** 10-12-1:30-3-5:30 (or ASAP). **Misc:** USCF/WCF membership req'd. **Ent/Info:** Gary Dorfner, 8423 E 'B' St, Tacoma WA 98445 (make checks payable to TCC); 253-535-2536, ggarychess@aol.com. www.tacomachess-club.netfirms.com.

⌘September 30

PCC Game-in-60⌘

Site: Portland CC, 8205 SW 24th Ave, Portland OR 97219. **Format:** 4-rd Swiss. **TC:** G/60. TD may switch to 5SS and G/45 if more than 25 entries. **EF:** \$20, \$5 discount for PGC members. No advance entries. **Prize Fund:** \$\$200/b20. **Prizes:** \$60-40-30, U1800 35, U1500 35. **Reg:** 9-9:30 am. **Byes:** One ½-pt. bye avail. if requested at reg. **Misc:** USCF & OCF/WCF membership req'd, OSA. **Info:** portlandchessclub@gmail.com, 503-246-2978, www.pdxchess.org.

October 7 UWCC Autumn Qtr Tourney & Fund Raiser

Site: Ethnic Cultural Ctr, UW Campus, NE 40 St & Brooklyn Ave NE. **Format:** 2-section (Rated & Unrated), 4-rd Swiss. **TC:** G/45. **EF:** USCF-rated: \$20 adv. (\$15 UW students), \$5 more at site. Unrated: \$12 adv. (\$7 UW students), \$3 more at site. **Prize Fund:** Based on entries. **Prizes:** Cash & coupons. **Reg:** 10-10:30 a.m. **Rds:** 10:45-12:15-2:45-4:15. **Misc:** USCF/WCF memb. req'd in USCF-rated Section. **Entries:** H.G Pitre, 700 Crockett Street #105, Seattle WA 98109 (by Oct. 4) or deliver to UWCC. **Info:** www.students.washington.edu/chessuw

⌘Oct 14-15

Portland Fall Open⌘

Site: Portland CC, 8205 SW 24th Ave, Portland OR 97219. **Format:** 2-sec., 5-rd. Swiss. **TC:** Rds 1-3 40/90, SD/30; Rds 4-5 40/2, SD/1. **EF:** \$30 by 10/11, \$35 at site. \$10 discount for PCC members. **Prize Fund:** \$\$650 b/40. **Prizes:** Open: \$150-100, U2000 75. Reserve (U1800): \$100-75, U1600 50, U1400 50, U1200/unr 50. **Reg:** 9-9:30 a.m. **Rds:** Sat 10-2-ASAP, Sun 10-ASAP. **Byes:** Two ½-pt. byes avail. if requested at reg. **Misc:** USCF & OCF/WCF memb. req'd, OSA. **Info:** portlandchessclub@gmail.com, 503-246-2978, www.pdxchess.org. **Entries:** Portland Chess Club, 8205 SW 24th Ave, Portland OR 97219.

More Scholastic Events

January 2007

6	LaFraniere Memorial Classic (K-8)	Jon Licht 360-754-6472 jonjerrie@comcast.net	Olympia WA
13	State Qualifier (K-6)	Elliott Neff 425-283-0549 kids@chess4life.com www.chess4life.com	Tacoma WA
15	♁ Martin Luther King Jr. Classic (K-12)	Helen 503-628-7305 hnoonanharns@comcast.net www.oscf.org.	Hillsboro OR
20	♁ Mystery Scholastic	Kate Taylor katetaylor@clatskanie.com http://clatskaniechessclub.tripod.com	Clatskanie OR
24	TCC Wed. Kids Night	Gary 253-535-2536 ggarychess@aol.com www.tacomachessclub.netfirms.com	Tacoma WA

February 2007

10	TCC Bughouse Scholastic	Gary 253-535-2536 ggarychess@aol.com www.tacomachessclub.netfirms.com	Tacoma WA
14	TCC Wed. Kids Night	Gary 253-535-2536 ggarychess@aol.com www.tacomachessclub.netfirms.com	Tacoma WA
17	♁ Diva Claissa Classic	Kate Taylor katetaylor@clatskanie.com http://clatskaniechessclub.tripod.com.	Clatskanie OR
23-24	Oregon HSCTA State Tmt		Portland OR
24	Comerstone Challenge (K-1,2-3,4-6,7-12,parents)	Norm May nmay@pacifier.com	Vancouver WA

March 2007

3	♁ CMCC/Whitford Scholastic Ch (K-12)	Sudhakar 503-430-5744 smkudva@comcast.net	Beaverton OR
10	St. Michael Queen's Quest (K-8 girls)	Jon Licht(360)754-6472 jonjerrie@comcast.net	Olympia WA
10	WA Girls Open & Polgar Qualifier	Jon Licht(360)754-6472 jonjerrie@comcast.net	Olympia WA
17	♁ Leapin Leprechauns!	Kate Taylor katetaylor@clatskanie.com http://clatskaniechessclub.tripod.com	Clatskanie OR

NOTE: A '♁' in front of the tournament name indicates an OSCE qualifying tournament.

USCF NATIONAL Scholastics

For information on any national event, contact Diane Reese at events@uschess.org.

Dec. 8-10	Nat'l Scholastic (K-12)/Collegiate Ch	Orlando FL
Mar. 30-Apr. 1	Nat'l Junior High (K-9) Championship	Sacramento CA
April 13-15	Nat'l High School (K-12) Championship	Kansas City MO
May 11-13	Nat'l Elementary (K-6) Championship	Nashville TN

Open Events

September 2006

20	Seattle Sluggers vs Tennessee Tempo	Clint Ballard clint@slugfest.org	Bellevue WA
22,29	TCC Championship (Rds 1-2)	G. Dorfner 253-535-2536 ggarychess@aol.com www.tacomachessclub.net/firms.com	Tacoma WA
22-24	Seattle Fall Open	SCC Infoline 206-417-5405 cfkleist@cs.com www.seattlechessclub.org	Seattle WA
25	Seattle Sluggers vs New York Knights	Clint Ballard clint@slugfest.org	Bellevue WA
28	8 PCC Game-in-60	503-246-2978 portlandchessclub@gmail.com www.pdxchess.org	Portland OR
30	Tacoma/Pierce County Action Ch	G. Dorfner 253-535-2536 ggarychess@aol.com www.tacomachessclub.net/firms.com	Tacoma WA

October 2006

3	PCC Tuesday Quads begin	503-246-2978 portlandchessclub@gmail.com www.pdxchess.com	Portland OR
4	Seattle Sluggers vs Miami Sharks	Clint Ballard clint@slugfest.org	Bellevue WA
6-8	Western States Open	Jerry Weikel 775-747-1405 wackykd@aol.com	Reno NV
6,13,20,27	TCC Championship (Rds 3-6)	G. Dorfner 253-535-2536 ggarychess@aol.com www.tacomachessclub.net/firms.com	Tacoma WA
7	UW CC Autumn Qtr Tourney	H.G. Pitre www.students.washington.edu/chessuw	Seattle WA
7	SCC Monthly Blitz Go to Reno!	SCC Infoline 206-417-5405 cfkleist@cs.com www.seattlechessclub.org	Seattle WA
28	SCC Sunday Tornado	SCC Infoline 206-417-5405 cfkleist@cs.com www.seattlechessclub.org	Seattle WA
11	Seattle Sluggers vs San Fran. Mechanics	Clint Ballard clint@slugfest.org	Bellevue WA
13-15	GM Slugfest (Invitational)	Clint Ballard clint@slugfest.org www.gmslugfest.org	Poulsbo WA
28	SCC Saturday Quads	SCC Infoline 206-417-5405 cfkleist@cs.com www.seattlechessclub.org	Seattle WA
28-29	Portland CC Fall Open	503-246-2978 portlandchessclub@gmail.com www.aboutchess.org	Portland OR
18	Seattle Sluggers vs Miami Sharks	Clint Ballard clint@slugfest.org	Bellevue WA
21-22	84th Puget Sound Open	G. Dorfner 253-535-2536 ggarychess@aol.com www.tacomachessclub.net/firms.com	Tacoma WA
23	Seattle Sluggers vs San Fran. Mechanics	Clint Ballard clint@slugfest.org	Bellevue WA
28	8 PCC Game-in-60	503-246-2978 portlandchessclub@gmail.com www.pdxchess.com	Portland OR
29	SCC Sunday Tornado	SCC Infoline 206-417-5405 cfkleist@cs.com www.seattlechessclub.org	Seattle WA

November

1	Seattle Sluggers vs Dallas Destiny	Clint Ballard clint@slugfest.org	Bellevue WA
16	Turkey Quads	D. Griffin 509-928-3260 dbgrffn@hotmail.com www.spokanechessclub.org	Spokane WA
	TCC Quick Championship	G. Dorfner 253-535-2536 ggarychess@aol.com www.tacomachessclub.net/firms.com	Tacoma WA
5	SCC Extravaganza	SCC Infoline (206) 417-5405 cfkleist@cs.com www.seattlechessclub.org	Seattle WA
	PCC Tuesday Quads begin	503-246-2978 portlandchessclub@gmail.com www.pdxchess.com	Portland OR
	SCC Saturday Quads	SCC Infoline (206) 417-5405 cfkleist@cs.com www.seattlechessclub.org	Seattle WA
	3rd Spokane G/10	D. Griffin 509-928-3260 dbgrffn@hotmail.com www.spokanechessclub.org	Spokane WA
12	Tacoma Open	G. Dorfner 253-535-2536 ggarychess@aol.com www.tacomachessclub.net/firms.com	Tacoma WA
	SCC Monthly Blitz CANCELLED	SCC Infoline (206) 417-5405 cfkleist@cs.com www.seattlechessclub.org	Seattle WA
	SCC Novice ADDED	SCC Infoline (206) 417-5405 cfkleist@cs.com www.seattlechessclub.org	Seattle WA
8	8 PCC Game-in-60	503-246-2978 portlandchessclub@gmail.com www.pdxchess.com	Portland OR
	SCC Sunday Tornado ADDED	SCC Infoline 206-417-5405 cfkleist@cs.com www.seattlechessclub.org	Seattle WA
26	Washington Class	Dan Mathews dthmathews@hotmail.com www.nwchess.com	TBA WA

E: A 'P' in front of the date indicates a Franett Memorial Northwest GP event. A '8' in front of the tournament name indicates an OSCF qualifying tournament. Boldface type indicates a tournament announcement (in our Future Events Section) or display ad in this issue.

Scholastic Events

September 2006

Chess4Life Quads (K-12)	Elliott Neff (425)283-0549 kids@chess4life.com www.chess4life.com	Bellevue WA
-------------------------	--	-------------

October 2006

Charles Scholastic (1-3,4-6)	Larry Clark lc_nc7_ch@yahoo.com www.harbornet.com/~rab/sco2006.html	Tacoma WA
06 St. Michael U1000 (K-8)	Jon Licht(360)754-6472 jonjerrie@comcast.net	Olympia WA
06 St. Michael Over 900 (K-12)	Jon Licht(360)754-6472 jonjerrie@comcast.net	Olympia WA
ihops Boooooonanza!	Kate Taylor katetaylor@clatskanie.com http://clatskaniechessclub.tripod.com	Clatskanie OR

November 2006

Louise State Qualifier (K-6,7-12)	Elliott Neff (425)283-0549 kids@chess4life.com www.chess4life.com	Bellevue WA
SB Youth Action (K-3,K-6,K-12)	Sudhakar Kudva 503-430-5744 smkudva@comcast.net	Aloha OR
race Park Kickoff (K-6)	www.signup4chess.com	Mountlake Terrace WA
Mod Quads - Episode 2	Kate Taylor katetaylor@clatskanie.com http://www.oscf.org	Portland OR

December 2006

2 Intermat 2006 (Annual WA-BC K-12 match)	Karen Dixon karen@dixonshome.com	Bellevue WA
2 Bryant Fall Classic (K, 1-3, 4-6)	jroseto@nbbj.com	Seattle WA
9 Lakeridge Elementary (K,1-3,4-6)	www.lakeridgechess.com	Mercer Island WA
16 8 Hillsboro Holiday Classic (K-12)	Helen 503-628-7305 hnoonanharns@comcast.net www.oscf.org	Hillsboro OR

NOTE: A '8' in front of the tournament name indicates an OSCF qualifying tournament.

For more scholastic tournaments, see inside back cover