

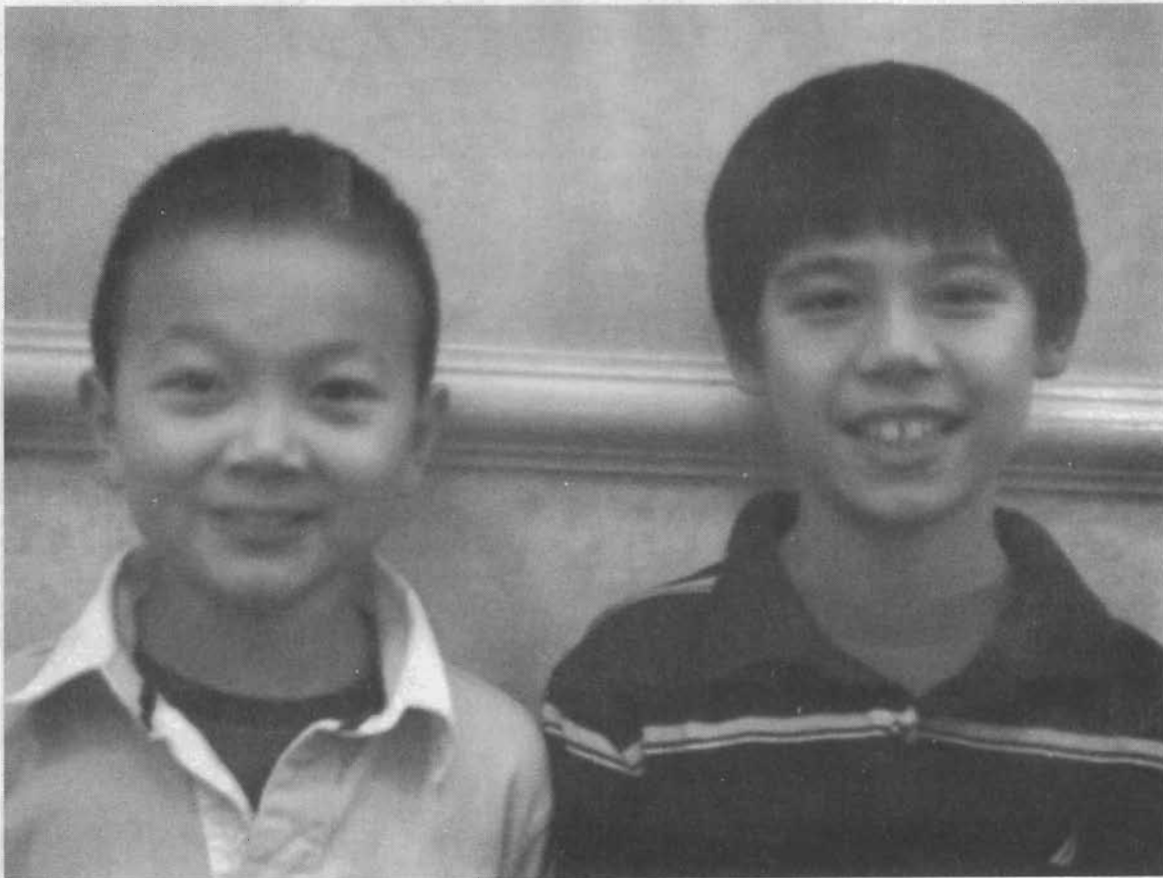


NORTHWEST CHESS

926-0801A
MIKE MACGREGOR



February 2007
207 \$3.95



Michael Wang (l) and Alec Ho (r) co-winners of the U1800 section of the North American Open

**Challengers' Cup, WA Class games, SCC
Extravaganza and More!**

Northwest Chess

February 2007, Volume 61,2 Issue 704

ISSN Publication 0146-6941

Published monthly by the Northwest Chess Board. Office of record: 2420 S 137 St, Seattle WA 98168.

POSTMASTER: Send Address Changes to: Northwest Chess, PO Box 84746, Seattle WA 98124-6046.

Periodicals Postage Paid at Seattle, WA

USPS periodicals postage permit number (0422-390)

NWC Staff

Editor: Fred Kleist

Games Editor: FM Chuck Schulien

Technical Assistance: Russell Miller

Printer: Snohomish Publishing

Business Manager: Eric Holcomb

Board Representatives

Oregon: Clark Harmon

& Dave Yoshinaga

Washington: Geoff Gale &

Murlin Varner

Entire contents copyright 2007 by Northwest Chess. All rights reserved. Published opinions are those of the contributors and do not necessarily reflect the views of the editor or the Northwest Chess Board.

Advertising Rates

Display ads run \$150 for a full page, \$100 for tmnt ads; \$85 for a half-page, \$60 for tmnt ads; \$30 for a quarter page, \$20 for an eighth of a page, and \$10 for a business card-size ad. Add \$10 if the ad is not copy ready and the staff must do layout work. A 15% discount is available for two or more consecutive ads of the same size.

Event Announcement Rates

Each appearance in *Event Announcements* costs \$20. Payment is required before publication. Enclose \$2 additional if an invoice is required—this is a mandatory service charge.

Advertising & Copy Deadline

Please get your ads and submissions in by the 10th of the month for the items to appear in the next issue (e.g., no later than Mar. 10 for the Apr. issue). The editor cannot guarantee that late submissions will appear in the desired issue.

Submit all ads and payments to:

Business Manager, Northwest Chess
PMB 342, 12932 SE Kent-Kangley Rd
Kent WA 98030-7940

Eric@Holcomb.com

Submissions

Hey folks! The editor depends on YOU to make this magazine vibrant and exciting. I need your games, photographs, thoughts, and ideas. This magazine has a great tradition and I hope people will contribute enthusiastically. You can send me your materials via U.S. mail or via e-mail:

Northwest Chess
Fred Kleist, Editor
2420 S. 137th Street
Seattle WA 98168
NWCeditor@cs.com

If you'd like your games annotated by a senior master, send them to our Games Editor:

FM Chuck Schulien
cschesss@hotmail.com

Subscription Information

Northwest Chess is a benefit of membership in either the Oregon or Washington Chess Federations. Adult dues are \$25; Junior dues (under 20) are \$17 (or \$10 for six months). Please send dues, along with pertinent information to:

Business Manager

Northwest Chess

Eric Holcomb

PMB 342, 12932 SE Kent-Kangley Rd

Kent WA 98030-7940

Eric@Holcomb.com

http://www.nwchess.com

Northwest Grand Prix Administrator

Murlin Varner

13329 208 Ave NE

Woodinville WA 98072

MEVjr54@yahoo.com

425-882-0102

Oregon Chess Federation

President

Dave Yoshinaga

503-590-2441 ext 7

dave@kdtonline.com

Vice President

Mike Terrill

503-580-9187

pflotus@yahoo.com

Secretary

Treasurer

Clark Harmon

charmon@solarprism.com

Tournament Coordinator

Peter Prochaska

503-504-5756

pete@chessodyssey.com

Scholastic Coordinator

Lisa Kudva

503-430-5744

lakudva@comcast.net

Director-at-Large #1

Taylor Bailey

503-282-6796

cosmos24@gmail.com

Director-at-Large #2

Marcus Robinson

503-245-1204

mprscorp@comcast.net

National Representative

Carl Haessler

csmith6154@aol.com

Washington Chess Federation

President

Geoff Gale

206-860-9963

geoffreygale@gmail.com

Vice President

Duane Polich

206-852-3096

dpolich@verizon.net

Secretary

Gary Dorfner

253-535-2536

ggarychess@aol.com

Treasurer

Robert J. Allen

253-761-1288

allenrobertj@msn.com

Tournament Coordinator

Dan Mathews

425-778-7482

dthmathews@hotmail.com

Scholastic Coordinator

David Hendricks

425-868-3881

davidhendricks@comcast.net

NW Chess Board Member

Murlin Varner

425-882-0102

MEVjr54@yahoo.com

Happy Holidays from the Editor



Editor's Desk

Yes, it's true, the March issue will feature the WA State Championship and Premier! However, that doesn't mean you've been given a free pass. I still need your reports, games, reviews, pictures, articles, and even cartoons.

Oh, by the way, as yet I've not received a report on December's Internat. See p. 8 for a makeshift report on the WA-BC match sans one game.

Best Wishes,
Frederick K. Kleist

Thanks to R. Miller for working on the crosstables.
Thanks to C. Kleist for proofreading.

Northwest Chess Knights

Northwest Chess Knight donors will be listed in the magazine for a period of one year following receipt of donation. Please consider making a donation today to help Northwest Chess!

King: \$1000+
Queen: \$500-\$999
Rook: \$250-\$499
Bishop: \$100-\$249
Knight: \$50-\$99
Pawn: \$15-\$49

Current Patrons

King: Cinthia McBride, Kent McNall

Queen:

Rook: Nat Koons

Bishop: **Ralph Hall**, Michael Omori, Boyd Schorzman

Knight: Robert Brewster, Steve Buck, **Darby Monahan**

Pawn: Mark James, Gene Milner

Contributions can be sent to the Northwest Chess Business Manager, and are greatly appreciated!

Wang and Ho at the NAO!

by John Wang

We are just back from North American Open in Las Vegas. I'm so glad to report that Michael (fifth grader, 10 year old) tied for the first place in under 1800 section, along with another Washington fifth grader Alec Ho and two adult players from other states. They each won \$2,279.75 award. This is Michael's first national win and we are so happy about it.

Michael entered the tournament with an official rating of 1572. He skipped the U1600 section and entered the U1800 section. He got a full-point bye in the first round, since he was the lowest-rated player in the section for the four-day schedule. But he was unstoppable during the tournament. He beat Paul Reid (1737) and Liz Taylor (1746), drew Jeremy Weiss (1798), beat Vardan Betikyan (1636) and Eddy Schuck (1778). After six rounds, he and Beau Mueller were the only two players with 5.5 points. They played over five hours in the championship game and drew. Alec Ho and Joselito Quiba, who won their last round games joined the pair.

Alec Ho had a tough start, but recovered well to earn six points at the end.

[Other Northwesters who did well in the North American Open include Daniel Stevens of Oregon, who scored 5/7 in the 98-player U2000 section, good for a 7th-15th place tie and the trio of Brett Becker (OR), August Piper (WA), and Megan Lee (WA), who tied for 8th-17th in the 102-player U1600 section, scoring five points apiece.—ed.]

[Alec also did well at the K-12/Collegiate Championships in Lake Buena Vista, Florida, held December 8-10. He finished in a tie for first-second with 6.5/7 in the 186-player Grade Five section. His brother Daniel scored 5.5, good for 6th-13th in the 156-player Grade Six section. A lot of Northwesters ended up on five points: Kevin Ma and Nathaniel Yee (both WA, gr. 1, 88, 7-170, Justin Yu (WA, gr. 2, 133 players, 11th-26th), Samuel Meissner (WA, gr. 3, 186, 19-36), Yun Teng (WA, gr. 4, 201, 16-37), Michael Omori (WA, gr. 6, 156, 14-29), Ethan Gottlieb (WA, gr. 7, 135, 10-25), Marcus Robinson (OR, gr. 10, 58, 5-10), and Landon Brownell (OR, gr. 11, 66, 4-11).—ed.]

Sicilian Sveshnikov

Daniel Rozovsky (1900)

Alec Ho (1773)

Lake Buena Vista, K-12/Collegiate Championships (6) 2006

Annotations by FM Chuck Schulien

1.e4 c5 2.♘f3 ♘c6 3.d4 cxd4 4.♘xd4 ♘f6 5.♘c3 e5 6.♘b3

Not the most challenging move. Usual and best is 6.♘db5.

Continued on page 21

Northwest Chess

February 2007

Wang and Ho at the NAO

page 3

Challengers Gear Up for Championship

page 4

Tournament Ads

pages 7, 9, 22, 23

WA-BC Match

page 8

Games from the WA Class

page 10

USCF Crosstables

page 13

Tacoma Chess Times

page 14

**Book Note: Boris Spassky:
Master of Initiative**

Robert Karch examines a tactics book

page 15

WCF Meeting, Dec. 7

page 15

Product Note: Chess Opening Playing Cards

page 15

Portland Report

page 16

Extra! Extra! Extravaganza

page 17

**Northwest Chess Calendar
of Upcoming Events**

back cover

On the Cover: Michael Wang and Alec Ho, who tied with two others 1st-4th in the U1800 section of the North American Open in Las Vegas. *Photo courtesy of John Wang.*

Challengers Gear Up for Championship

Playoff to Decide Winning Challenger

Bragg, Collyer, Gale Tie

by Kevin Korsmo

The Washington Challenger's Cup – played in Spokane on December 16-17, 2006 – provided a lot of great chess, but failed to deliver a clear winner. The Open Section winner was to be seeded into the Washington Closed Championship in February. However, the fourteen-player Open Section ended in a three-way tie with FM David Bragg, NM Curt Collyer, and Geoff Gale all finishing at 3-1. They will play a match in Seattle on January 20-21 to determine which one wins the coveted spot in the Closed Championship. The three shared the \$500 in prize money in the Open Section.

The final round saw quite a bit of excitement. Bragg, at 3-0, had a one-point lead over five others tied for second. The hopes of the five pursuers rested on Collyer beating Bragg, while the other four produced some victories to join in a play-off. The hopes came to fruition. Collyer took advantage of Bragg's time trouble and was able to obtain a win while Bragg scrambled to make time. The board three contest between Steve Merwin and Eddie Chang then ended in a draw — the first and only draw of the 28 games in the Open Section. That left the board two game between Gale and Josh Sinanan. Another draw would leave Collyer the winner based on his head-to-head victory. Bragg, Gale, and Sinanan all hoped for a decisive result that would lead to a three-way playoff. Gale pulled out the win to force a playoff. The three co-champions agreed to play off in Seattle the next month rather than delay travel plans for Seattle residents.

The Reserve Section saw sixteen players fight for another \$500 in prizes. Steve Brendemihl held the lead with a 3-0 score after the first day's action, but fell to James Stripes (2.5) in the fourth round. In the final round, Brendemihl defeated John Walton of Pullman, while Stripes was drawn by Adam Attwood. Brendemihl and Stripes each received \$125. The Class C prizes were shared by Kevin Baker and Mark Mangiaracina (3.0), who each pocketed \$55. The Class D prize (\$70) went to Alton Blue (3.5). Veteran Jim Waugh, age 77, scored the biggest upset and the accompanying \$40 prize. Dave Griffin had the next biggest upset and claimed \$30 for that feat.

The turnout of 30 players was hurt some by the terrible weather in Seattle that left much of the Puget Sound area without power on the eve of the tourney. While Spokane weather was nice, it was small comfort to those who had to get there from the west side. Geoff Gale had a carpool of six who tried two mountain passes before they arrived at 2:30 am Saturday. The furthest travelers, though, came from much more exotic locales. Stephen Tamang of Great Falls, Montana, came via the Caribbean, where he is attending medical school. Old Spokane chess warhorse Jim Hanlen, now of Anchorage, Alaska, managed to be in town to visit family and made time to play in the event.

It is believed that this is the first WCF tournament played in Spokane since the 1957 Washington Open was played there 50 years ago in October, 1956.

Larsen's Opening

NM Curt Collyer (2201)

John Julian (2006)

Spokane, Challengers' Cup (3) 2006

Annotations by NM Curt Collyer

1.b3

The explanation for this move is simple: I had not had time to prepare anything special against Julian's King's Indian Defense.

1...e5 2. ♖b2 ♘c6 3. e3 d5 4. ♘f3 ♗g4 5. h3 ♗xf3
6. ♗xf3

It occurred to me that the position is similar to a Torre Attack with colors reversed. Oftentimes, Black has chances to be better in that opening in the long-term, thanks to the two Bishops, but, in the early middlegame, it is necessary to go into a "crouch" formation.

6... ♘f6 7. ♗e2

7. d3 ♗b4+ seemed irritating.

7... ♗d6 8. d3 ♗e7 9. a3



THE CHESS HOUSE

Serving the chess community since 1972

**your chess sets
and equipment store**



chess sets, combos, clocks
electronic chess, software
books, dvd's, teaching supplies
awards, chess for education
accessories, boards, pieces

www.ChessHouse.com

1-800-348-4749

9. ♖d2?! ♗a3! and White has lost his main trump—the Bishop pair.

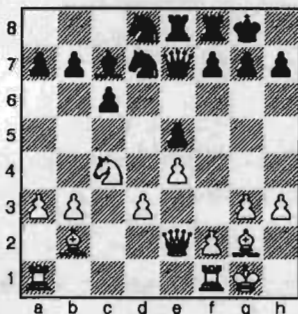
9...O-O 10.g3 ♗ae8 11. ♗g2 ♖d8

There are no outposts available for the Knights; so Black begins a strategic redeployment of forces.

12. ♖d2 c6 13.O-O ♖d7

Preparing to play ...f7-f5; therefore it is necessary for White to strike at the center to prevent this.

14.c4 dxc4 15. ♖xc4 ♗c7 16.e4!?



A very interesting move, fighting for the central light squares. It is on the light squares that Black has difficulties, since he gave away his Bishop on move five. At first sight, White's move seems dubious, because it gives away the d4-square. However, if one looks at White's position as a kind of Najdorf or Sveshnikov structure (with colors reversed), then it seems more dynamic. Now Black cannot play ...f7-f5, as White will simply capture; then Black's light squares will feel a little airy.

16... ♖e6 17.b4 f6 18. ♗ac1 ♗d8

The Rook clearly belongs on the d-file.

19.h4

White's Bishop needs to come into play.

19... ♖b6 20. ♖a5 ♗b8 21. ♖b3

It is appropriate to cover the d4-square again, so that Black cannot recapture with the Rook after the inevitable ...♖d4.

21... ♖a4 22. ♗a1 c5?!

I thought this move was dubious, as Black's light squares are weakened further. I would have been tempted to bring the Bishop to a better diagonal with ...a7-a6, ♗a7, when Black is well placed.

23. ♗h3 ♖d4

23...b6 24. ♗c2 and White has ideas of b4-b5 and ♗c4, trapping the a4-Knight.

24. ♖xd4

White needs the Bishop to cover the c3-square.

24...cxd4 25. ♗a2+ ♖h8 26. ♗b3 b5!

Anchoring the Knight. The question is which piece is worse: the a4-Knight or the a1-Bishop?

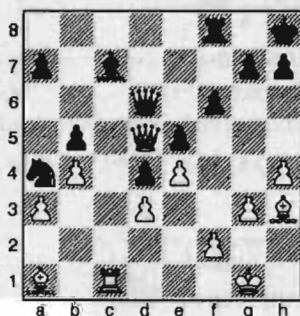
27. ♗c6

Going into this variation, I felt that White would be very well off with his light-square domination and control of the c-file. However, proving that these advantages amount to something decisive is still tricky.

27... ♗d6 28. ♗xd6

28. ♗fc1 ♖c3! 29. ♗xd6 ♖e2+ was something to avoid.

28... ♗xd6 29. ♗c1 ♗c7 30. ♗d5!?



Another very interesting move. I did not see how to make progress on the c-file without this exchange, for Black's Queen is controlling a lot of key squares. Also, I fantasized that my now passed d-pawn would become a strength—which indeed came true.

30... ♗xd5 31.exd5 ♗b6 32. ♗d7

This is the big idea: target the queenside pawns. Because b5 is a light square, it may, in fact, become difficult to defend for Black.

32...a6 33. ♖g2

Again, 33. ♗c8 ♖c3!

33... ♗b8 34. ♗c8! a5 35.d6 axb4 36.axb4 ♗d8 37.d7 ♖g8

Black's best defense is to bring the King over to round up the d-pawn. Here I had originally intended to play ♖f2-f4, pressuring the Black center pawns and preparing a possible ♗e1. However, I became distracted by an idea based on a simple miscalculation.

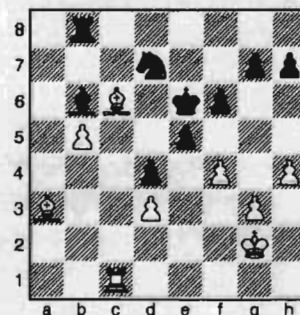
38. ♗a6?! ♖b6! 39. ♗xb5

39. ♗c8 had been my idea, it fails to the simple 39... ♖xd7.

39... ♖f8 40. ♗c6 ♖e7 41.b5

White's two Bishops and passed b-pawn are still yielding an advantage.

41... ♖xd7 42. ♗b2 ♗b6 43. ♗a3+ ♖e6 44.f4!



A surprisingly difficult move to meet. White is simply threatening 45.f5+, winning the Knight.

44...f5?!

Black is desperate to stop the White f-pawn's advance, but 44...g6 would have been better. I had been analyzing the line 44... ♖f8 45.f5+ ♖xf5 46. ♗e4+ ♖g4 (46... ♖e6 47. ♗xf8 ♗xf8 48. ♗c6+) and was trying to find a checkmate. 47.h5!?

45. ♗xd7+ ♖xd7 46.fxe5 ♗a8!

The best move. Now White has to be accurate.

47. ♗b4

I decided on a forcing line going into the Rook and pawn endgame, an endgame where I thought I would have good chances to win. [47. ♗c5 ♗c8!; 47. ♗b2 ♗a2]

47... ♗a2+ 48. ♖f3 ♗b2 49. ♗f8

49. ♗c4!? might be better.

49...g6 50.e6+ ♖xe6 51. ♗c6+ ♖f7 52. ♗xb6 ♖xf8 53. ♗b7

This is the position I was aiming for. Black's King is poorly placed.

53...♖b3 54.♔e2

When playing 47.♗b4, I had hoped that 54.♔f4, bringing my King up to create mating threats, would be possible. Unfortunately, this idea does not quite work, which brings the whole line into question.

54...h5?!

This move doesn't make sense. Black should try to make his own passed pawn with 54...h6, 55...g5, 56...f4, etc.

55.b6 ♖b2+?

Driving the White King up the board is a mistake. After 55...♔g8 56.♖b8+ ♔g7 57. b7 ♔h7 (57...♔f7? 58. ♖h8 is a typical way to lose.), just shuffling the King between h7 and g7 should hold.

56.♔f3 ♖b3 57.♔f4 ♖xd3

Losing immediately, but with the White King in the game, things are looking bad anyway.

58.♖h7 1-0

The game could finish 58...♔g8 59. b7! ♖b3 60. ♖c7 followed by 61. ♖c8+ and 62. b8=♖.

Orangutan

Ward Chow (1349)

James Stripes (1631)

Spokane, Challengers' Cup (1) 2006

Annotations by James Stripes

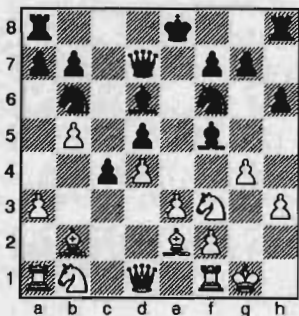
1. b4 d5 2. ♗b2 ♔f6 3. e3 ♗f5 4. ♔f3 e6 5. a3 ♔bd7 6. h3 h6 7. c4 c5 8. b5?

White needs piece activity on the queenside; so better is 8. cxd5.

8... ♔b6 9. cxd5 exd5 10. d4 c4

Black has the advantage

11. ♗e2 ♗d6 12. O-O ♖d7 13. g4??



I planned to meet 13. ♔c3 with 13... ♗xh3, but my idea loses to 14. ♔e5.

13... ♗xg4

This game garnered attention due to this piece sacrifice, followed by the one on move 23. But, White's pieces are locked onto the queenside and most of Black's pieces can get to the White King.

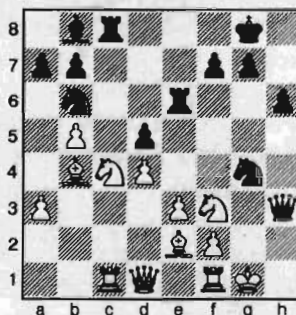
14. hxg4 ♖xg4+ 15. ♔h1 ♖h3+ 16. ♔g1 ♔g4

All Black needs is a Rook lift and the game is over.

17. ♔bd2 ♖c8 18. ♗c3 O-O 19. ♗b4 ♗h2+

Two checks give Black the tempo for a free Rook move.

20. ♔h1 ♗b8+ 21. ♔g1 ♖fe8 22. ♖c1 ♖e6 23. ♔xc4



It is tempting to take the Knight and be ahead a pawn, but I sensed there must be something better. Then, I found it.

23... ♔xe3 24. fxe3 ♖g6+ 25. ♔g5 ♖h2 mate

French Tarrasch

Steve Brendemihl (1661)

James Stripes (1631)

Spokane, Challengers' Cup (4) 2006

Annotations by James Stripes

1. e4 e6 2. d4 d5 3. ♔d2 ♔f6 4. e5 ♔fd7 5. ♗d3 c5 6. c3 ♔c6 7. ♔e2 cxd4 8. cxd4 f6 9. exf6 ♖xf6 10. ♔f3 h6 11. O-O ♗d6 12. g3??

This unfortunate blunder gave Black a winning advantage. Nevertheless, Brendemihl found ways to complicate the position and force me to earn the point.

12... ♖xf3 13. ♗g6+ ♔e7 14. ♖e1 ♖f8 15. ♗f4

Can White trap the Black Queen?!

15... ♔f6 16. ♖d2 ♔g4 17. ♗xd6+!

Lures the Black King to a more vulnerable square and provides a way to support the vulnerable f2 pawn.

17... ♔xd6 18. ♔f4

I didn't like the prospects of h2-h3 followed by ♖e3; so I gave back some material.

18... ♖xf4 19. gxf4 ♗d7 20. ♖ac1

Although this move looked obvious, Steve spent 38 minutes thinking before making it, and I then spent 22 minutes on my obvious reply.

20... ♖f8

20... ♔e7 21. ♖b4 mate would have been embarrassing.

21. ♖xc6+

FRITZ calls this move a blunder, but sacrificing the Exchange to expose the Black King is the only idea that gives White practical chances.

21... bxc6 22. ♖b4+

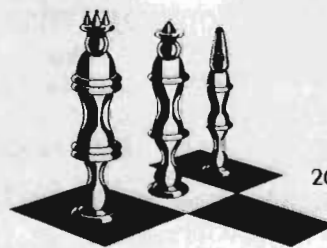
The Rook stands behind a skewered King, but the vulnerability of the White King protects the Rook.

22... ♔c7 23. ♖a5+ ♔c8 24. ♖a6+ ♔b8 25. ♖f1

The Queen has run out of checks.

25... ♖xf4 26. ♖g2 ♖xd4 27. ♖g3+ ♔c8 28. ♖e2 ♖d1+ 0-1

Need sample issues of Northwest Chess for promotional purposes? Request copies from the Business Manager at least two weeks in advance of the event.



ALLEN SMITH
CHESS LESSONS

USCF A Player
2006 Puget Sound Champion

(253) 230-3736 • CHARTERINV@COMCAST.NET

"The Biggest Little Chess Tournament in the World"
RENO - FAR WEST OPEN VII

A WEIKEL TOURNAMENT
 HOSTED BY THE SANDS REGENCY CASINO HOTEL

APRIL 6-8, 2007
 EASTER WEEKEND

\$25,000 Based on 275 ♦ \$16,000 Guaranteed
 40/2, 20/1, G/1/2 ♦ F.I.D.E. ♦ 150 GP Points (Enhanced)
 6 Round Swiss ♦ 7 Sections
 Entry: **\$116** and below! ♦ Rooms: **\$27/\$54!**

Plus! Thursday 4/5 Free Lecture by GM Larry Evans, GM Sergey Kudrin Simul (with Analysis!), and Blitz (5 Min./U2200) Tournament, Saturday 4/7 GM Larry Evans Clinic/Game Analysis, Sunday 4/8 Quick Tournament 5 Rd. (G/25)

FOR MORE INFORMATION:
 Far West Website
www.renochess.org/fwo
 Chess Life TLA
 February 2007 Issue

To enter by e-mail or telephone:
Organizer & Chief TD
N.T.D. Jerome V. (Jerry) Weikel
wackyykl@aol.com - (775)747-1405
For room reservations
call the Sands Regency:
1-866-FUN STAY, Code CHE 405.

IMPORTANT! IF YOU HAVE QUESTIONS OR ARE UNSURE OF ANY INFORMATION, CALL, WRITE, E-MAIL OR VISIT THE WEBSITE FOR COMPLETE DETAILS BEFORE ENTERING.

ENTRY FORM - Far West Open VII Chess Tournament - Reno, Nevada - April 6-7-8, 2007

Mail to: Sands Regency Casino Hotel - 345 N. Arlington Avenue - Reno NV 89501

PRINT Name _____ Daytime Phone _____ USCF/FIDE Rating _____

Street Address _____ City _____ State _____ Zip _____

USCF I.D. Number _____ Exp. Date _____ **All pre-registered players please check in at tournament desk on arrival.**

ENTRY FEE ENCLOSED: (CIRCLE SECTION AND FEE BELOW) **BYE(S) REQUESTED FOR ROUND(S): (CIRCLE) 1 2 3 4 5 6**

----- OPEN SECTION -----			"Expert"	"A"	"B"	"C"	"D"	"E/Under"	UNRATED	
GM/IM	2200-Up	2000-2199	1999-Below	2000-2199	1800-1999	1600-1799	1400-1599	1200-1399	1199-Below	Free With
Free	\$116	\$151	\$201	\$115	\$114	\$113	\$112	\$111	\$60	USCF Dues

FEES ALSO ENCLOSED FOR:

- Hotel Deposit \$30.65* (Weekday) or
- Hotel Deposit \$61.29* (Friday)
- \$20 Thursday GM Evans Simul
- \$20 Thursday Blitz (5 Min./U2200)
- \$20 Sunday Quick (5 Rd. - G/25)
- \$49 USCF Dues (Adult)
- \$25 USCF Dues (Junior)
- (\$10) Jr./Sr. Discount Taken Age _____

HOTEL INFORMATION:

- No Room Needed
- Made By Phone
- Please Make Me a Reservation*
 Arrival Date _____
 Departure Date _____
- One Bed Two Beds S NS

*Send \$30.65 for weekday arrival, \$61.29 for Friday arrival.

ENTER BY MAIL BEFORE MARCH 15 AND SAVE!

Add \$11 after March 15, \$22 on-site. Do not mail after March 31.
 Make check/m.o. payable to THE SANDS REGENCY or provide credit card information and signature. \$5 service charge on credit card entries.

Visa Master Card Am. Exp. CHECK ENCLOSED
 CHARGE MY CARD
 Card Number AND **Expiration Date** _____
 Signature _____
TOTAL FEES: \$

Kissin' Cousins: WA & BC Play to 5-5 Tie

by NM Nat Koons

The WA-vs.-BC Match was played with FIDE rules: 40/2 followed by SD/1 with no increment or delay. This proved to be important for me.

The match came down to the final game . . . my game vs. Jiganchine. I had a clear advantage out of the opening, but, just after the first time control, I made a big mistake in the technical phase. As a result, at about move 60, with both sides having about 40 minutes on the clock, we reached Queen+pawn vs. Queen. I had the extra pawn, on g3. About 20 moves and 20 minutes later (per side) the pawn finally advanced to g4.

At the very end of the game, I had less time than my oppoent did, but the pawn started advancing rapidly. Finally, when I had about 15 seconds on the clock and he had 30, the pawn reached g7. He checked back and forth several times and I offered a draw, which was accepted. Probably the position was a winning one, but I couldn't find it with eight seconds for the rest of the game! Perhaps he actually did me a favor by accepting—had he stopped checking and allowed me to queen, I would certainly have flagged. So a hard-fought draw, but I blew my real chances earlier by (rather annoyingly) not seeing a simple line (pointed out by Bragg immediately afterwards).

Apologies for only talking about my game, but I didn't have a chance to see any other post-mortems, for obvious reasons. Impressions.... Marcel won a nice Nimzo-Indian... John Graves has been studying the Bayonet attack...

Posted on the NW Chess Forum (www.wachess.com or www.orchess.com) on November 1

Grünfeld

FM Loren Schmidt (2430)

NM Dan Scoones (2284)

Bellingham, WA-BC Match (1) 2006

1.d4 ♘f6 2.c4 g6 3.♘c3 d5 4.♗g5 ♘e4 5.♗h4 ♘xc3 6.bxc3 dxc4 7.e3 ♗e6

8.♗b1 b6 9.♘f3 ♗g7 10.♘d2 O-O 11.♘xc4 c5 12.♗e2 ♘c6 13.O-O cxd4 14.cxd4 ♖d7 15.♖d2 ♗ac8 16.♗fd1 ♘xd4 17.♘xb6 axb6 18.exd4 ♗fd8 19.d5 ♖xd5 20.♖xd5 ♗xd5 Draw

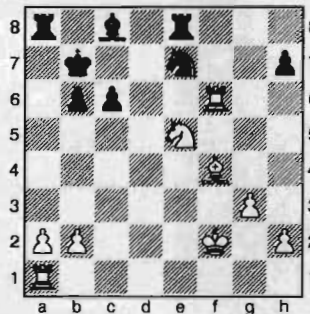
Caro-Kann Advance

NM Nat Koons (2283)

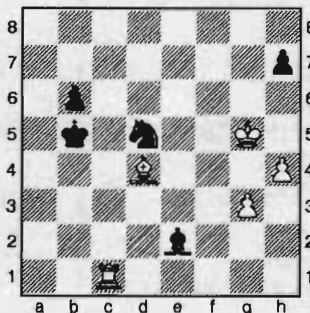
NM Roman Jiganchine (2227)

Bellingham, WA-BC Match (3) 2006

1.e4 c6 2.d4 d5 3.e5 c5 4.c4 e6 5.♘f3 ♘c6 6.♘c3 cxd4 7.♘xd4 ♗c5 8.♘xc6 bxc6 9.♗d3 dxc4 10.♗xc4 ♗xf2+ 11.♘xf2 ♖h4+ 12.g3 ♖xc4 13.♖d6 f6 14.♗d1 ♘f7 15.♗d4 ♖a6 16.♖c7+ ♘e7 17.exf6 gxf6 18.♘e4 e5 19.♗d6 ♖b6+ 20.♖xb6 axb6 21.♗xf6+ ♘e8 22.♘d6+ ♘d7 23.♘f7 ♗e8 24.♘e5+ ♘c7 25.♗f4 ♘b7



26.♘c4 ♘a6 27.a4 ♗d7 28.b4 ♘d5 29.b5+ cxb5 30.axb5+ ♘xb5 31.♘d6+ ♘b4 32.♗b1+ ♘c3 33.♘xe8 ♗xe8 34.♗e5+ ♘c4 35.♗c1+ ♘b5 36.♗d6 ♗a2+ 37.♘f3 ♘b4 38.h4 ♗c6+ 39.♘g4 ♗e2 40.♗f6 ♗g2 41.♘g5 ♘d5 42.♗d4 ♗e4 43.♗e6 ♗d3 44.♗xe2 ♗xe2



45.♗b1+ ♘c6 46.♗b3 ♗c4 47.♗f3 b5 48.♘h6 ♗e2 49.♗f7 ♗d3 50.♗xh7

♗xh7 51.♘xh7 b4 52.♘g7 ♘c3 53.h5 ♘d5 54.♗f6 ♘e4 55.h6 ♘xf6 56.♘xf6 b3 57.h7 b2 58.h8=♖ b1=♖ 59.♖h5+ ♘c4 60.♖f5 ♖b2+ and eventually Draw

King's Indian Attack

NM Brian McLaren (2220)

NM Elliott Neff (2268)

Bellingham, WA-BC Match (4) 2006

1.♘f3 ♘f6 2.g3 g6 3.♗g2 ♗g7 4.d3 O-O 5.e4 d6 6.h3 e5 7.♘bd2 ♘h5 8.b3 f5 9.♗b2 ♘c6 10.c3 d5 11.♖c2 ♗e6 12.O-O ♗f6 13.♗fe1 dxe4 14.dxe4 f4 15.g4 ♘g7 16.♗f1 ♗f7 17.♗ad1 ♗d7 18.♗c4 ♖e7 19.b4 ♗ad8 20.♗xe6+ ♘xe6 21.♘b3 a6 22.♗xd7 ♖xd7 23.♗e2 h5 Draw

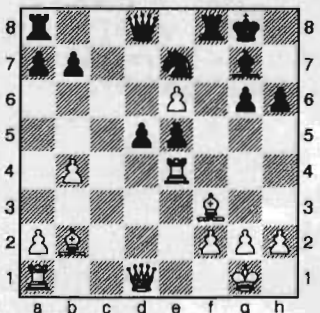
King's Indian Classical

NM John Graves (2254)

Lucas Davies (2178)

Bellingham, WA-BC Match (5) 2006

1.d4 ♘f6 2.c4 g6 3.♘c3 ♗g7 4.e4 d6 5.♘f3 O-O 6.♗e2 e5 7.O-O ♘c6 8.d5 ♘e7 9.b4 ♘h5 10.♗e1 f5 11.♘g5 ♘f6 12.♗f3 c6 13.♗b2 h6 14.♘e6 ♗xe6 15.dxe6 fxe4 16.♘xe4 ♘xe4 17.♗xe4 d5 18.cxd5 cxd5

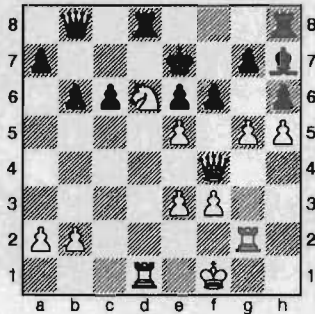


19.♗xe5 ♗xe5 20.♗xe5 ♖b6 21.♗b2 ♗ac8 22.♖e2 ♖d6 23.♗d1 ♘h7 24.h4 ♗f5 25.♗g4 ♗f4 26.♗e5 ♖xb4 27.♗xf4 ♖xf4 28.h5 gxh5 29.♗xh5 ♗c1 30.♖b2 ♗xd1+ 31.♗xd1 b6 32.♖a3 ♖f6 33.♗c2+ ♘g7 34.♖g3+ ♖g5 35.♖c3+ ♖f6 36.♖g3+ ♖g5 37.♖c3+ ♖f6 Draw

London System

Bindi Cheng (2173)
NM Harley Greninger (2240)
Bellingham, WA-BC Match (6) 2006

1. d3 d6 2. d4 d5 3. e4 e5 4. c4 c6
 5. cxd5 dxd5 6. e3 b8 e3b8 7. d2 d6
 8. e3 e6 9. e5 e6 10. g4 g6 11. h4
 e3e5 12. dxe5 d4 13. d4 c4 h6 14. h5
 e3h7 15. f3 d3 16. e2 h2 dxf1 17. d6+
 e7 18. xf1 c7 19. d4 b6 20. g2
 f6 21. d1 e8 22. f4 b8 23. g5

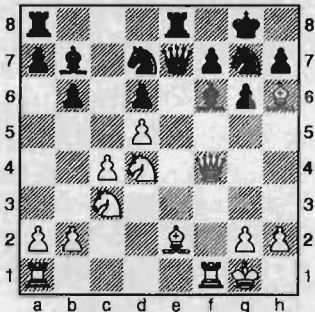


23... e5 24. gxf6+ gxf6 25. g7+ 1-0

Queen's Indian

NM Curt Collyer (2213)
Roger Patterson (2165)
Bellingham, WA-BC Match (7) 2006

1. d4 d6 2. d3 b6 3. e3 e7 4. e3 e6
 5. O-O c5 6. c4 e7 7. d3 cxd4 8. exd4
 d6 9. d5 e5 10. d2 O-O 11. f4 exf4 12.
 d3 d5 13. d4 g6 14. e2 d7 15.
 xf4 d7 16. d2 e8 17. e6 e6 18.
 f4 e7



19. d6 e6 20. dxc6 e3 21. bxc3
 e5 22. e5 d6 23. e7 d7
 24. xf4 e7 25. d1 c8 26. xd6
 xc6 27. xc6 dxc6 28. f3 e5
 29. d4 xf3+ 30. gxf3 e3 31. c5
 xc3 32. cxb6 axb6 33. b4 xf3
 34. xb6 a3 35. b2 f5 36. g2 g7
 37. c2 g5 38. b2 g4 39. c2 g6
 40. b2 g5 41. f2 h5 42. b2 h4
 43. c2 h3+ 44. f2 f4 45. b2 g3+
 46. hxg3 fxg3+ 47. g1 g4
 48. b8 h2+ 49. h1 c3 50. g8+
 h5 0-1

Philidor

FM Nigel Fullbrook (2147)
NM Bill McGeary (2210)
Bellingham, WA-BC Match (8) 2006

1. e4 d6 2. d4 d6 3. d3 d7 4. d3
 e5 5. e4 e7 6. h3 O-O 7. O-O c6
 8. a4 c7 9. e3 b6 10. dxe5 dxe5
 11. e2 b7 12. ad1 a6 13. d5 b5
 14. b3 c5 15. f4 b3 16. cxb3 b4

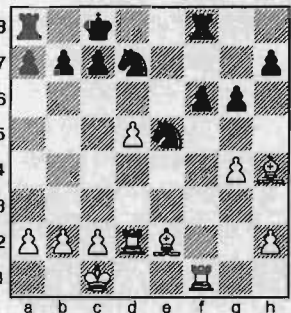


17. fxe5 xe5 18. f5 c7 19. e5 d5
 20. dxd5 cxd5 21. h5 xg5 22. xg5
 c2 23. d4 b3 24. g3 b2 25.
 xg7+ 1-0

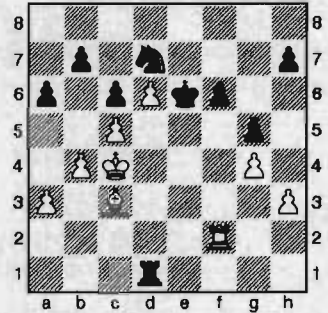
Modern Defense

FM David Bragg (2200)
Dragoljub Milicevic (2118)
Bellingham, WA-BC Match (9) 2006

1. e4 g6 2. d4 e7 3. e2 d6 4. f4 e5
 5. dxe5 dxe5 6. xd8+ xd8 7. fxe5
 e5 8. d3 e7 9. d3 e6 10. e5+ c8
 11. O-O-O d7 12. d4 xd4 13. xd4
 f6 14. e4 e7 15. f1 f8 16. g4 d6
 17. d2 ce5 18. d5 xd5 19. exd5



19... g5 20. e3 d8 21. h3 e7 22. f5
 a6 23. f1 ae8 24. e2 d8 25. b3
 d7 26. c4 d6 27. f2 e3 28. f3
 fe8 29. xe3 xe3 30. f2 e8
 31. d4 e1+ 32. c2 d4 33. xe4
 xe4 34. d3 e1 35. f2 e7 36. c5
 c6 37. d2 e4 38. d6+ e6 39. d3
 e1 40. b4 d1+ 41. c3 e1 42. a3
 e4 43. d3 e1 44. e3 d1+
 45. c4

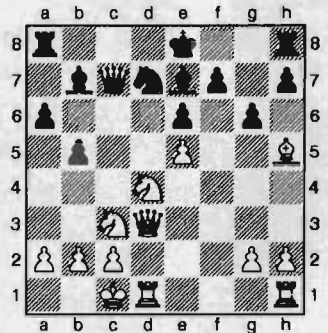


45... d5 46. e4 d7 47. e2 e5+
 48. xe5 xe5 49. xe5 fe5 50. d3
 f6 51. e4 e6 52. d7 xd7 53. xe5
 c7 54. f6 b6 55. xg5 a5 56. h6
 b7 57. xh7 1-0

Sicilian Najdorf

Noam Davies (2109)
Nick Paleveda (2130)
Bellingham, WA-BC Match (10) 2006

1. e4 c5 2. d3 d6 3. d4 cxd4 4. dxd4 d6
 5. d3 a6 6. e5 e6 7. d3 bd7 8. f4
 e7 9. e2 c7 10. O-O-O b5 11. f3
 b7 12. e6 d6 13. e5 dxe5 14. fxe5
 d7 15. e5 g6



16. dxe6 fe6 17. e6+ hxg6 18. e6+
 d8 19. xe6 e8 20. g4 c8 21.
 d5 xd5 22. xd5 c6 23. hd1 a7
 24. d3 c7 25. c3 {and Black won soon
 after} 0-1

WA State Championship / Premier

The 2007 Washington State Championship / Premier tournaments will be conducted as round-robins the weekends of February 10-11 and 17-19, 2007 in Seattle. Rounds began at 10:00 AM and 5:00 PM on the weekends, and at 1:00 PM on President's Day, Monday, February 19.

The playing site is Walsh Construction, 509 Fairview Avenue N, Seattle, WA 98109. It is right off of the Mercer Street Exit close to downtown Seattle. Mercer is the exit to take to get to the Seattle Center. Spectators are welcome; they just need to contact Dan Mathews or Geoff Gale in order to get in.

More WA Class Games

Caro-Kann

Andy May (1952)
Arik Milner (1800)

Seattle, WA Class (1) 2006

Annotations by Andy May

1.e4 c6 2.♘c3 d5 3.♗f3 e6?

Too passive. More aggressive would be either 3...dxe4 or 3...♗g4.

4.d4 ♗d7 5.♗d3 ♖c7?

A bad square for the Queen. Probably best would have been 5...♗b4 with the idea of 6...♗e7 and castle next.

6.♖e2 ♗e7 7.exd5 cxd5 8.♗b5

And the bad position of the Black Queen begins to show.

8...♖b6 9.♗f4 ♗d8

Black has no useful moves; so White can take the time to castle, also clearing a square on e1 for a Rook.

10.O-O ♗gf6 11.♗d6+ ♗e7 12.♗g5 ♖xd4??

The best try at defense for Black is 12...♗c7 13.♗gxf7 ♗f8 14.♗g5 ♗e4 15.♗xe4 ♗xd6 16.♗xd5, but with a winning attack for White.

13.♗f5+ 1-0

Sicilian Paulsen

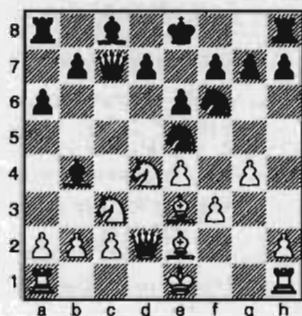
Devon Manber (1792)
Andy May (1952)

Seattle, WA Class (2) 2006

Annotations by Andy May

1.e4 c5 2.♗f3 ♗c6 3.d4 cxd4 4.♗xd4 ♖c7 5.♗c3 e6 6.♗e3 a6 7.f3 ♗f6 8.♗e2 ♗b4 9.♖d2 ♗e5

Another good option for Black is 9...d5 10.g4?



Too early. Castling to either side first would have been much better.

10...♗exg4 11.fxg4 ♗xe4 12.♖d3?!

I had expected this move, but better is 12.♖c1 so that after 12...♗xc3 13.bxc3 ♗xc3+ 14.♗f2 ♗xa1 15.♖xa1 ♖ the Rook remains on h1 and the h2-pawn doesn't hang.

12...♗xc3 13.bxc3 ♗xc3+ 14.♗f2 ♗xa1 15.♗xa1 ♖xh2+ 16.♗e1 ♖h1+ 17.♗f1 ♖h4+?!

A risky move. Black already has enough pawns and should have played 17...O-O with a nice advantage.

18.♗d2 ♖xg4 19.♗e2 ♖g6 20.♖c3 ♖f6 21.♗f1 ♖e7 22.♗b3 e5 23.♗a5 d6 24.♗c4 ♗e6 25.♗b6 ♗d8 26.♗g1 f6 27.♗g4 ♗xg4 28.♗xg4 O-O 29.♗h6 ♗f7 30.♖b3 d5 31.♗c1 ♗h8 32.♗d2 ♖e6 33.♗h4 f5 34.♖h3 ♖g6 35.♗a5 ♗d6 36.♗c8 ♗c6 37.♗a7 ♗c4 38.♗h5 h6 39.♗d2 f4 40.♗xe5

Black has been defending most of the game; so White overlooks Black's shot 40...♖xc2 mate

Although the spectators were in awe of my beautiful victory against Michael Lee in the final round, this game against the tourney winner was my most enjoyable encounter of the event.—Greninger

QGD Slav

LM Viktors Pupols (2203)
NM Harley Greninger (2240)

Seattle, WA Class (3) 2006

Annotations by NM Harley Greninger

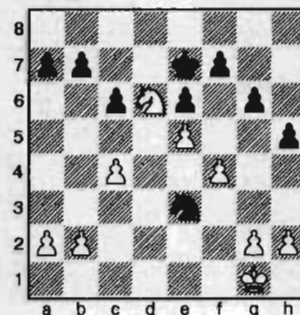
1.c4 c6 2.d4 d5 3.♗f3 ♗f6 4.♖c2 g6 5.e3 ♗f5 6.♗d3 ♗xd3 7.♖xd3 ♗g7 8.♗c3 O-O 9.O-O ♗bd7 10.e4 dxe4 11.♗xe4 ♖c7 12.♗xf6+ ♗xf6 13.♗g5 ♗xg5 14.♗xg5 ♖f4 15.♗h3

15.♗xh7? ♗fd8! (15...♗xh7? 16.♖h3+) 16.♖h3 ♗g7 17.g3 ♖h6 18.♖xh6+ ♗xh6-+; 15.♖h3 ♖xg5 (15...♗f6 16.♖h6) 16.♖xd7 ♗ab8

15...♖f6 16.f4 ♗fd8 17.♗ad1 e6 18.♗g5 h6 19.♗e4 ♖f5 20.♖e2 ♗f6 21.♗g3 ♖a5 22.♖e5 ♖xe5 23.dxe5

White's weak d-pawn has graduated into a strong e-pawn! Black's defensive task is now quite difficult.

23...♗g4 24.♗fe1 h5 25.♗e4 ♗f8 26.♗d6 ♗e7 27.♗ed1 ♗e3 28.♗xd8 ♗xd8 29.♗xd8 ♗xd8 30.♗d6 ♗e7



31.c5

Better is 31.♗xb7 ♗xc4 32.b3 ♗e3 33.♗f2±.

31...♗d5

Black's Knight is now very active and holds the game in balance.

32.g3 b6 33.♗e4

33.♗c8+? ♗d7 34.♗xa7 bxc5 and the White Knight is trapped.

33...♗b4 34.a3 ♗d3 35.cxb6 axb6 36.b3 ♗e1 37.♗f2 ♗c2 38.a4 ♗d7

38...c5?! 39.a5 bxa5 40.♗xc5±

39.♗g5 c5 40.♗e2

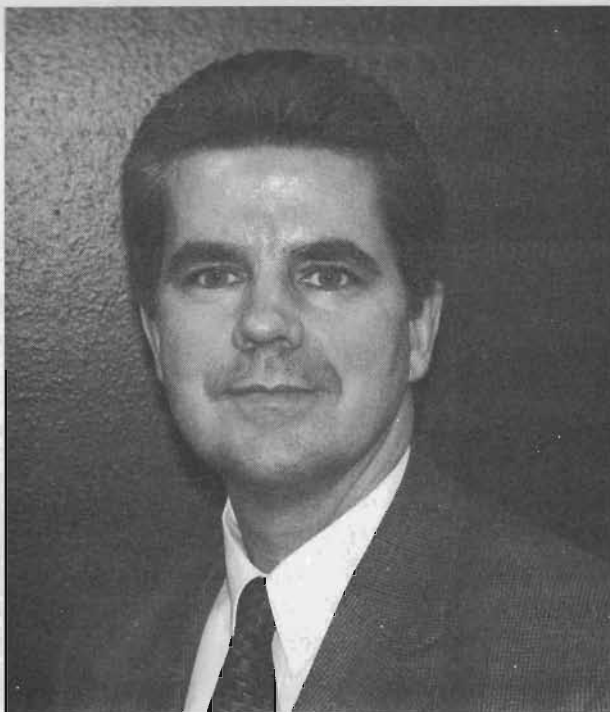
Similar is 40.♗xf7 ♗d4

40...♗d4+ 41.♗d3 ♗xb3 42.♗xf7 ♗c6 43.♗c4 ♗d2+ 44.♗d3 ♗f3 45.♗h8 ♗xh2 46.♗e2 c4 47.♗xg6 ♗d5 48.♗f8



48...c3!

From Black's perspective, this is the most important move of the game. Black



NM Harley Greninger of Hoquiam, WA

Photo courtesy of Harley Greninger

3. ♖c3 a6 4. ♗f3 ♗f6
5. ♕g5 ♕e7 6. ♕xf6 ♕xf6
7. ♖e2

This unexpected idea is typical of Ignacio. White is planning to castle queenside and throw everything at Black's King, but, at least to me, the Queen on e2 and Bishop on f1 look inappropriate.

7...O-O

Incidentally, White was threatening to win a pawn with 8.exd5.

8.O-O-O c5

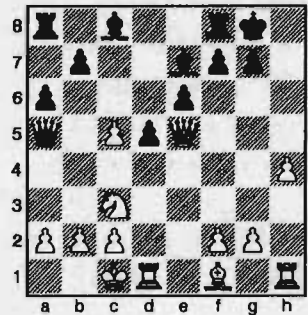
Strategically, it is very important that Black attempt to open the dark-square diagonal for his Bishop.

lifts with mate. Blocking the checkmate with 15...f5 is better, but then 16.exf6 ♖xf6 and White can still try some ideas, although, objectively, they look insufficient.

12...♖xe5?! 13.♗xh7!?

13.♖xe5 f6 was my idea. However, White could then try 14.♖e1! fxe5 15.♗xd5!, which looks good for him.

13...♗xh7 14.♖xe5 ♗g8



I had wanted to play 14...f5, but after 15.♗xd5, 15...♖xc5 fails to 16.b4, when White is better. Also, 14...♕f6 15.♖h5+ ♗g8 16.♕d3g6 17.♖f3 combined with the advance h4-h5 looked unpleasant for Black.

15.♗xd5

I had not expected Perez to go for this, as now his King becomes exposed.

15...exd5 16.♖xe7 ♖xa2 17.♕d3 ♖a1+ 18.♗d2 ♖xb2 19.♕h7+ ♗xh7 20.♖xf8 ♖b4+

20...♖d4+ 21.♗c1 (21.♗e1?? ♖xd1+)

21.♗c1

After this move, Black has no more than a draw. 21.♗e2? ♕g4+ wins; 21.c3? ♖b2+ 22.♗e1 ♕g4! once again.

21...♖a3+

21...♕f5 was the only other try. 22.♖xa8?? fails to the quiet 22...♖c3, when White is mated. Unfortunately, White can simply play 22.♖xf7, winning. However, even in this line I found a funny variation: 22...♕g6 23.♖xd5 ♖d8! 24.♖xd8? ♖c3 25.♖d2 ♖a1 mate!

22.♗d2 ♖b4+ 23.♗c1 ♖a3+ Draw

From the Business Manager:
See you at the state championship!
Free sample copies of Northwest Chess magazine will be available!

loses after 48...♗g4 49.♗d7 ♗c6 50. ♗f6!, e.g., ♗xf6 51.exf6 ♗d7 52.♗d2 ♗e8 53.♗c3 ♗f7 54.♗xc4 ♗xf6 55. ♗b5 etc.

49.♗d3!

White is up to the challenge! If instead 49.♗d7(?) ♗f1! 50.♗d3 (50. ♗xb6+ ♗c5 51.a5 c2 52.♗a4+ ♗b4-+; 50. ♗xf1 c2-+) 50...♗xg3 51.♗xb6+ ♗c5 52.a5 h4, Black wins.

49...♗f1 50.♗d7 ♗c6 51.♗f8 Draw

It becomes clear after 51...♗xg3 52. ♗xe6 h4 53.♗g5 that neither side can make true progress without seriously risking loss.

French

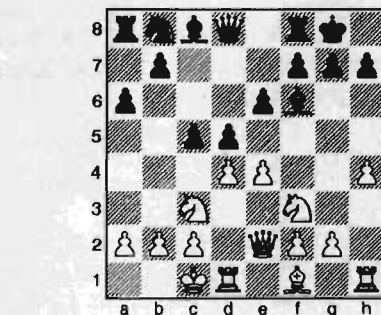
NM Ignacio Perez (2241)

NM Curt Collyer (2201)

Seattle, WA Class (3) 2006

1.e4 e6 2.d4 d5

Ignacio and I have already played many interesting games; when he is Black, it is always the King's Indian, and when I am Black, it is invariably the French Defense. We have a certain clash of styles that usually makes for interesting struggles—similar to Botvinnik–Tal or Kramnik–Topalov. But, of course, we know who ultimately prevailed in those!



9...♗c6?!

Trading inaccuracies. Here Black could have gained a stable advantage, pointed out by Perez after the game, with 9...cxd4 10.♗xd4 ♕xd4! 11.♖xd4 ♗c6 12.♖d2 d4 followed by ...♖a5. Somehow, the thought of trading off my beautiful Bishop did not occur to me.

10.e5 ♕e7 11.dxc5

White is now threatening to bring his Knight to e4, utilizing the pin on the d-file. Here I could not decide between 11...♖c7 and 11...♖a5, but latter looked more aggressive; so I chose that.

11...♖a5 12.♗g5

Trying to stir up some trouble. I now became concerned about variations such as 12...♖xc5 13.♗xh7 ♗xh7 14.♖h5+ ♗g8 15.♕d3 g6 16.♕xg6 fxe6 17.♖xg6+ with at least a draw and possible Rook

Reti

Brian Opalewski (1726)
Andy May (1952)

Seattle, WA Class (4) 2006

- 1. ♖f3 ♗f6 2. c4 e6 3. g3 b6 4. ♗g2 ♗b7
- 5. O-O ♗e7 6. b3 O-O 7. ♗b2 c5 8. ♗c3
- d5 9. e3 dxc4 10. bxc4 ♗c6 11. ♗e2 ♗c8
- 12. ♗fd1 ♗c7

My database shows 12... ♗d7 as another possibility. However, I did not like White's potential to play ♗e5 later on.

- 13. ♗b5 ♗b8 14. d3 ♗fd8 15. h3?!

Wasting time. I would have considered 15. ♗ac1 or 15. ♗ab1.

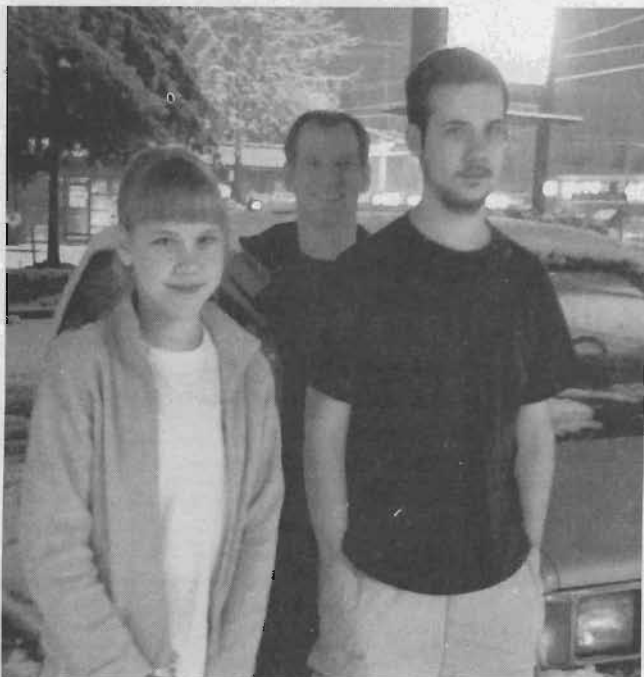
- 15... ♗d7 16. d4 a6 17. ♗c3

One line I'd looked at was 17. dxc5 ♗a5 18. ♗d6 ♗xd6 19. ♗xd6 ♗xd6 20. cxd6 ♗xd6 21. ♗d1 ♗c7 22. ♗xf6 gxf6 23. ♗b2 e5 24. ♗b1, but I believe Black is fine after 24... ♗d8 due to White's weak queenside.

- 17... cxd4 18. exd4 ♗a5 19. ♗e5 ♗dc7
- 20. d5 ♗xc4 21. ♗xc4 ♗xc4 22. ♗ac1 e5?

This gives White good play with 23. d6! Most accurate is 22... ♗c5!, when moves like ... ♗d4 are coming. Of course, if 23. ♗xc4, there is 23... ♗xf2+!

- 23. ♗f1 ♗d4 24. ♗xd4 exd4 25. ♗xe7
- dxc3 26. ♗xc3 ♗xd5 27. ♗e1 ♗xc3
- 28. ♗xc3 ♗xc3 29. ♗xc3 ♗d6



Sarah and Andy May with father Norm behind

Photo courtesy of Norm May

With the threat of ... ♗d5.

- 30. ♗g2 ♗xg2 31. ♗xg2 ♗b8 32. a4 b5
- 33. ♗b4 g6 34. g4 ♗b7+ 35. f3 h6
- 36. ♗h2?

Losing another pawn. Better is 36. h4.

- 36... ♗c7+ 37. ♗g2 ♗c2+ 38. ♗g3 ♗xa4
- 39. ♗e7 ♗d4

Centralizing the Queen and controlling the important a1-h8 diagonal

- 40. ♗e8+ ♗g7 41. ♗c6 b4 42. ♗xa6 b3
- 43. ♗b5 b2 44. ♗g2 ♗d2+ 0-1

Bird's Opening

Duane Polich (1939)
Andy May (1952)

Seattle, WA Class (6) 2006

- 1. b3 ♗f6 2. ♗b2 d5 3. e3 ♗f5 4. f4 e6
- 5. ♗f3 ♗e7 6. ♗e2 O-O 7. O-O c5 8. ♗e5

After board two agreed to an early draw, I was guaranteed first; so I didn't mind taking risks here.

- 8... ♗fd7 9. g4 ♗g6

9... ♗xe5?! 10. ♗xe5 ♗e4! (now d2-d3 will weaken the e3-square) 11. d3 ♗g6 12. f5 exf5 13. gxf5 ♗f6 14. ♗xb8 ♗xa1 15. ♗g3 ♗g5 16. ffg6 ♗xe3+ 17. ♗g2 ffg6 18. ♗f3± with excellent play for White's Bishops.

- 10. ♗xg6

On 10. f5, I had calculated 10... exf5 11. gxf5 ♗f6 12. ffg6 (12. ♗xd7? ♗xb2 13. ♗xf8 ♗g5+ 14. ♗h1 ♗xf5 15. ♗f3 ♗xa1 16. ♗xd5 ♗c6 -+) 12... ♗xe5 13. gxf6+ ♗h8 14. ♗xe5 ♗xe5. Here I considered three main moves—

- 15. ♗e1 d4 16. ♗g3 ♗bc6±;

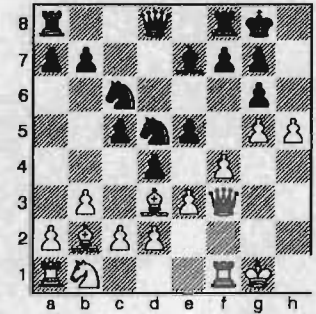
- 15. ♗f5 ♗d6 16. ♗f1 d4 17. ♗a3 dxe3 18. dxe3 ♗g6+ 19. ♗h1 ♗bd7∞; and

- 15. d4 ♗ec6 16. ♗h1 ♗g5 17. ♗c3 ♗d7 18. dxc5 ♗f6∞—

all of which look ok or slightly better for Black.

- 10... hfg6 11. g5 e5 12. h4 d4 13. ♗c4 ♗b6 14. ♗d3 ♗d5 15. ♗f3 ♗c6 16. h5

- 16. ♗e4 ♗c7 17. ♗xc6 bxc6 18. fxe5 ♗d7∞



- 16... ♗xg5 17. hfg6

17. ffg5 ♗xg5+ 18. ♗g2 (18. ♗f2!? ♗db4 19. ♗e4 ♗xh5 20. ♗xh5 gxf5 and if 21. a3?, then 21... f5!) 18... ♗xg2+ 19. ♗xg2 gxf5 20. ♗e4 ♗de7 again with an unclear position, and White's tangled queenside could be a problem.

- 17... ffg6 18. ♗c4 ♗ce7 19. ♗g2 ♗h6 20. e4 b5 21. ♗xd5+ ♗xd5 22. exd5 ♗xf4

After thinking for a long time FRITZ finally finds White lost in this position.

- 23. c4

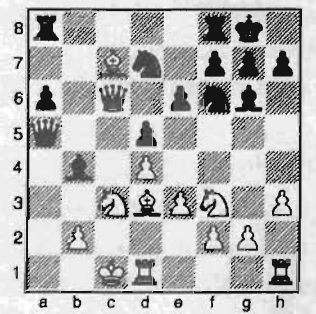
Too slow, critical was 23. ♗a3. 23... ♗h4 24. d6 ♗h2+ 25. ♗xh2 ♗xf1+ 26. ♗xf1 ♗xh2 27. ♗a3 ♗f8+ 28. ♗e1 d3 29. ♗d4 ♗e2 mate

QGD Slav

Jiayi Hu (UNR)
Sarah May (1263)

Seattle, WA Class (4) 2006

- 1. d4 d5 2. c4 c6 3. ♗c3 ♗f6 4. ♗f3 a6
- 5. ♗c2 ♗g4 6. h3 ♗h5 7. ♗f4 e6 8. e3
- ♗bd7 9. ♗d3 ♗g6 10. O-O-O b5 11. cxb5
- cx b5 12. a3 b4 13. axb4 ♗xb4 14. ♗a4
- ♗a5 15. ♗c6 O-O 16. ♗c7



- 16... ♗a1+ 17. ♗c2 ♗xd3+ 18. ♗b3 ♗c4+ 19. ♗c2 ♗b5 20. ♗b7 ♗a4+ 21. ♗d3 ♗xb2 22. ♗xa4 ♗b3+ 23. ♗e2 ♗xa4 24. ♗c1 ♗b5+ 25. ♗xb5 axb5 26. ♗b1 ♗a4 27. ♗xb4 ♗xb4 28. ♗d6 ♗b2+ 29. ♗d3 ♗c8 30. ♗a1 ♗e4 31. ♗g3 ♗c3 mate

USCF Crosstables

(qqq) indicates Quick Rating

Extra Chaos

1 Engelhard, Raymond	594	640	w2	1.0
2 Blue, David	714	671	L1	0.0

Washington Challenger's Cup Spokane 12/16-17 TD: Kevin Korsmo

Open	
1 Bragg, David	2200 2205 W10 W4 W8 L2 3.0
2 Collyer, Curt	2221 2219 W12 L9 W11 W1 3.0
3 Gale, Geoffrey	1978 1986 L6 W12 W14 W8 3.0
4 Merwin, Steven	2056 2052 W14 L1 W9 D5 2.5
5 Chang, Eddie	1719 1773 W11 L8 W15 D4 2.5
6 Countryman, Zachary	1675 1737 W3 L7 H W14 2.5
7 Koons, Nat	2291 2293 U W6 U W12 2.0
8 Sinanan, Joshua	2088 2077 W13 W5 L1 L3 2.0
9 Hanlen, Jim	AK 1869 1887 W15 W2 L4 U 2.0
10 Fryberg, Skylor	1860 1863 L1 L14 W16 W11 2.0
11 Julian, John	2006 1980 L5 W13 L2 L10 1.0
12 Rowles, David	1854 1852 L2 L3 W13 L7 1.0
13 Cambareni, Michael	1817 1802 L8 L11 L12 W15 1.0
14 Pitre, H G	1779 1770 L4 W10 L3 L6 1.0
15 Chow, Alex	1656 1632 L9 H L5 L13 0.5
16 Korsmo, Kevin	1648 1641 U U L10 U 0.0

Reserve	
1 Brendemihl, Steve	1661 1692 W15 W12 W7 L2 W9 4.0
2 Stripes, James	1631 1670 W16 W10 H W1 D6 4.0
3 Tamang, Stephen	MT1634 1653 D4 D14 W17 W7 H 3.5
4 Blue, Alton	1371 1505 D3 L5 W10 W12 W11 3.5
5 Martin, Robert	MT1723 1714 L12 W4 W13 D6 H 3.0
6 Attwood, Adam	1708 1703 W17 D8 H D5 D2 3.0
7 Baker, Kevin	1560 1613 W14 W9 L1 L3 W13 3.0
8 Mangiaracina, Mark	1462 1480 X D6 H L9 W15 3.0
9 Walton, John	1705 1682 W13 L7 D12 W8 L1 2.5
10 Waugh, James	1324 1384 W11 L2 L4 H W17 2.5
11 Copeland, Chris	1595 1562 L10 L13 W15 W14 L4 2.0
12 Griffin, David	1572 1569 W5 L1 D9 L4 H 2.0
13 Weyland, Ronald	ID 1461 1473 L9 W11 L5 W17 L7 2.0
14 Mathews, Dan	1773 1732 L7 D3 H L11 H 1.5
15 Baker, Ted	1433 1396 L1 D17 L11 D16 L8 1.0
16 Chow, Ward	1349 1346 L2 H U D15 U 1.0
17 Blue, Benjamin	1473 1418 L6 D15 L3 L13 L10 0.5
18 Anderson, Mark	ID 1727 1727 F U U U U 0.0

Hillsboro Holiday Classic 12/16 Beaverton, OR TD: Sudhakar Kudva

1 Wang, Kevin	1192(1105) 1273(1196) W18 W16 W15 W4 D3 4.5
2 Hannibal, Dana	1247(1252) 1261(1247) W17 D5 W7 D6 W9 4.0
3 Eng, Bryce	1193(1101) 1202(1115) L16 W19 W5 W15 D1 3.5
4 Li, Devin	1210(1109) 1217(1125) W11 W6 W9 L1 D7 3.5
5 Pikus, Benjamin	1178(1080) 1184(1091) W12 D2 L3 W17 W10 3.5
6 Sen, Samir	1128(1032) 1144(1057) W21 L4 W22 D2 W16 3.5
7 Nguyen, Austin	579(557) 886(846) W8 W12 L2 W16 D4 3.5
8 Harnsberger, Ephraim	915(872) 917(861) L7 W24 W17 L9 W20 3.0
9 Maleki, Seena	997(870) 1024(934) W2 W18 L4 W8 L2 3.0
10 Love, Nathan	489(459) 741(704) L22 W13 W20 W14 L5 3.0
11 Pikus, Aaron	1047(979) 1022(954) L4 W22 L14 W23 D15 2.5
12 Truong, Peter	840(840) 866(807) L5 L7 W24 W22 D14 2.5
13 Peake, Annelise	876(816) 863(805) L15 L10 W18 D20 W21 2.5
14 Petersen, Alexander	965(939) 931(890) W24 L17 W11 L10 D12 2.5
15 Wilson, Cole	511(511) 1022(956) W13 W21 L1 L3 D11 2.5
16 Kelly, Connor	996(920) 992(919) W3 L1 W19 L7 L6 2.0
17 Dirickson, Mason	1062(816) 1029(834) L2 W14 L8 L5 W22 2.0
18 Linegar, Mitchell	1032(985) 984(932) L1 L9 L13 W19 W23 2.0
19 Moua, Meng	811(811) 773(719) W23 L3 L16 L18 W24 2.0
20 Townson, Stephen	852(852) 692(638) L9 W23 L10 D13 L8 1.5
21 Espinoza, Derek	948(912) 756(710) L6 L15 L23 W24 L13 1.0
22 Kudva, Priya	931(887) 869(812) W10 L11 L6 L12 L17 1.0
23 Smith, Chloe	732(703) 688(651) L19 L20 W21 L11 L18 1.0
24 Fung, Andrew	605(605) 354(309) L14 L8 L12 L21 L19 0.0

X-Mas Chaos Spokane 12/21 TD: David Griffin

1 Julian, John	(1902) (1898) W5 D2 W3 2.5
2 Countryman, Zachary	(1684) (1696) W4 D1 W6 2.5
3 Griffin, David	(1422) (1442) W6 W5 L1 2.0
4 Baker, Ted	(1244) (1304) L2 W6 W5 2.0
5 Mangiaracina, Mark	(1451) (1391) L1 L3 L4 0.0
6 Elisara, Travis	(1154) (1116) L3 L4 L2 0.0

PCC Game-in-60 12/30 TD: Korneljs Dale

1 Raptis, Nick	WA 2305(2207) 2312(2214) W18 W26 W9 W10 4.0
2 Buck, Stephen	WA1700(1669) 1720(1678) W28 W15 D3 W13 3.5
3 Gay, Daniel	1869(1630) 1862(1639) W8 D12 D2 W16 3.0
4 Esler, Brian	1837(1719) 1839(1720) W19 L9 W20 W15 3.0
5 Taylor, Michael	CA1789(1716) 1780(1705) W21 D13 W23 D7 3.0
6 Kudva, Vikram	1562(1434) 1565(1440) W31 L14 W28 W21 3.0
7 Sharp, Austin	1563(1450) 1608(1494) W33 D11 W12 D5 3.0
8 Kim, Isaac	1392(1288) 1448(1351) L3 W34 W25 W14 3.0
9 Piatski, Boris	0(0) 2075(1964) W16 W4 L1 W22 3.0
10 Pikus, Fedor	0(0) 2046(1934) W17 W22 W14 L1 3.0
11 Bailey, Taylor	1659(1409) 1646(1421) W29 D7 L13 W23 2.5
12 Smith, Micah	WA1688(1588) 1683(1559) W30 D3 L7 W24 2.5
13 Ashenberger, P	1265(1265) 1456(1407) W35 D5 W11 L2 2.5
14 Pitre, H G	WA1770(1683) 1756(1662) W20 W6 L10 L8 2.0
15 Porter, Nathan	1541(1361) 1532(1359) W25 L2 W29 L4 2.0
16 Hannibal, Carson	1442(1360) 1445(1359) L9 W32 W30 L3 2.0
17 Kim, David	1445(1380) 1429(1358) L10 L29 W34 W28 2.0
18 Etingher, Con	WA1400(1390) 1400(1362) L1 L28 W31 W33 2.0
19 Porter, Joel	1408(1262) 1383(1238) L4 L30 W36 W29 2.0
20 Hannibal, Dana	1260(1248) 1272(1257) L14 W31 L4 W30 2.0
21 Chin, Benjamin	WA1279(1152) 1317(1202) L5 W33 W26 L6 2.0
22 Arun, Aditya	1700(1557) 1686(1542) D24 L10 W32 L9 1.5
23 Carson, Phillip	1545(1495) 1522(1460) D32 W24 L5 L11 1.5
24 Piatski, Alex	1390(1240) 1408(1294) D22 L23 W27 L12 1.5
25 Holstein, Lee	WA 635(765) 663(775) L15 B L8 D32 1.5
26 Nyma, Michael	1626(1541) 1602(1513) W34 L1 L21 U 1.0
27 Fortune, Jon	WY1500(1693) 1500(1668) U U L24 W34 1.0
28 Wang, Eddie	1193(1031) 1210(1070) L2 W18 L6 L17 1.0
29 Tanquary, Joseph	1196(1073) 1211(1086) L11 W17 L15 L19 1.0
30 Pikus, Aaron	1022(954) 1058(990) L12 W19 L16 L20 1.0
31 Mullins, Michael	WA 936(973) 933(966) L6 L20 L18 W36 1.0
32 Le Grove, Jeremy	1023(926) 1020(934) D23 L16 L22 D25 1.0
33 Kudva, Priya	869(812) 861(803) L7 L21 B L18 1.0
34 Pikus, Benjamin	1184(1091) 1158(1069) L26 L8 L17 L27 0.0
35 Kudva, Sudhakar	760(842) 758(839) L13 U U U 0.0
36 Fortune, Barbara	WY693(738) 678(721) U U L19 L31 0.0

WA Junior Closed Sammamish 12/20-21 TD: David Hendricks

1 Lee, Michael	2169 2189 - W W W W W 5.0
2 Setzler, Ricky	2137 2131 L - D D W W 3.0
3 Binz, Kevin	1874 1896 L D - L W W 2.5
4 Wyde, David	2060 2047 L D W - L D 2.0
5 Guo, Alex	1911 1918 L L L W - W 2.0
6 Lanka, Adi	1978 1949 L L L D L - 0.5

Christmas Congress Tacoma 12/16-17 TD: Gary Dorfner

1 Raptis, Nick	2310 2305 W8 W4 D3 D2 W6 4.0
2 Bartron, Paul	2117 2118 D5 D9 W6 D1 W3 3.5
3 MacGregor, Michael	2172 2161 W7 D6 D1 W5 L2 3.0
4 Smith, Allen LA	1810 1812 W1 L1 H W8 D7 3.0
5 Woodlief, Eric	1615 1640 D2 D8 W10 L3 W11 3.0
6 O'Gorman, Peter	1807 1817 W10 D3 L2 W9 L1 2.5
7 Ng, Michael	1556 1572 L3 H H W10 D4 2.5
8 Buck, Stephen	1700 1700 L1 D5 W11 L4 D9 2.0
9 Monahan, Darby	1519 1537 H D2 H L6 D8 2.0
10 Hornick, John	1288 1300 L6 W11 L5 L7 B 2.0
11 Etingher, Constantin	1403 1400 L4 L10 L8 B L5 1.0

Your Mailing Label

Please use your mailing label as evidence of membership. The first line of your label contains the expiration date as the 2-digit year followed by the 2-digit month (e.g., 0702 for this month). This is followed by a letter code indicating membership type (e.g., A for adult, J for Junior, L for library, Z for life members). The letter "F" will also appear for each additional family member. Please contact the business manager if you find any errors or if your renewal isn't processed within 1 to 2 months. (If you renew late in the month, the next month's label may still show the old expiration date.)

TACOMA CHESS TIMES

December 2006

The September Gambit Tournament was held at the club on the 1st and 2nd Friday nights. There were sixteen players in all. The four-round event featured a different gambit each round. The winners were: 1st Stephen Buck, 2nd Connie Etingher, 3rd Bill Rogers & Wes Keister.



FM Nick Raptis, winner of the Tacoma Open and the Dec. G/60

The Tacoma Pierce County Championship was held at Freight House Square on September 30th. There were eleven players in all. The winners were: 1st Paul Bartron \$50, 2nd Bill McGeary \$40, 1st U2000 Allen Smith and Constantin Etingher \$17.50 each, 1st U1500 Travis Bleich \$24.

The September Wednesday Night Blitz was held at the club on the 4th Wednesday. There were six players in all. The winners were: 1st Collin Wisdom, 2nd Stephen Buck, 3rd Connie Etingher.

The Tacoma CC Championship was held at the club the last two Friday nights in September and all four Friday nights in October. There were twenty players in all. The Club Champion for 2006 is Paul Bartron and the Jr. Champion is Ian

McPherson. Class champions: Class A—Drayton Harrison, Class B—Stephen Buck, Class C—Eric Woodlief, Class D—Alex Nikolskyy. The prizes were trophies.

The Puget Sound Open was held at Freight House Square on October 21-22. There were twenty players in all, six in the Open Section & fourteen in the Reserve. The winners were: in the Open section, 1st Allen Smith \$90, 2nd H.G. Pitre \$85. In the Reserve section, 1st Niles Desmarais \$85, 2nd Stephen Buck and David Kriewall \$37.50 each, 1st U1600 Bill Li and Eric Holcomb \$35 each, 1st U1400 Ian McPherson \$70.

The TCC Quick Chess Championship was held at the club on the 1st and 2nd Friday nights in November. There were sixteen players in all. The winners were 1st Stephen Buck, 2nd Larry Anderson and Connie Etingher, 3rd Bill Rogers & Wes Keister.

The Tacoma Open was held at the club on Nov. 11-12. There

were fourteen players in all. The winners were: 1st Nick Raptis \$90, 1st U2000 Tony Weller, 1st U1700 Brian Hong \$48.

The TCC G/60 #4 was held at the club on December 2nd. There were six players in all. The winners were: 1st Nick Raptis \$35, 1st U2000 H.G. Pitre and Stephen Buck \$7.50 each. 1st U1700 Connie Etingher and Anthony Guo \$7.50 each.

The TD was Gary Dorfner for all events listed.

Nimzo-Indian

Ian McPherson (968)

Michael Mullins (1098)

Tacoma, Puget Sound Open (4) 2006

1.d4 ♘f6 2.♘f3 e6 3.c4 ♘b4+ 4.♘c3 O-O 5.e3 ♘e4 6.♘d2 ♘xc3 7.♘xc3 ♘xc3+ 8.bxc3 b6 9.♘d3 ♖f6 10.O-O ♘b7 11.e4 d6 12.♖e2 ♘d7 13.♖fe1 e5 14.d5 ♖fe8 15.♖e3 ♖f4 16.♖xf4 exf4 17.♖e2 h6 18.♖ae1 f6 19.h3 ♘e5 20.♘xe5 fxe5 21.f3 c6 22.♖b2 c5 23.a4 ♘a6 24.♖a1 ♖eb8 25.♖bb1 ♘c8 26.a5 bxa5 27.♖xb8 ♖xb8 28.♖xa5 a6 29.♖h2 ♖b3 30.♖a1 g5 31.♖c1 ♖f8 32.♘e2 ♖b2 33.♘f1 a5 34.♖a1 ♖b3 35.♖xa5 ♖e7 36.♖a7+ ♘d7 37.♖g1 ♖xc3 38.♖a8 ♘e8 39.♖a1 ♘d7 40.♘e2 ♖d8 41.♖f2 ♖c2 42.♖g1 ♖c7 43.g3 ♘xh3 44.g4 ♘xg4 45.♖xg4 ♖d7 46.♖g1 ♖c3 47.♖h1 g4 48.♖xh6 g3+ 49.♖g2 ♖c2 50.♖h7+ ♖e8 51.♖f1 g2+ 52.♖xg2 ♖xe2+ 53.♖h3 ♖e3 54.♖g4 ♖c3 55.♖h6 ♖xc4 56.♖xd6 ♖e7 57.♖e6+ ♖d7 58.♖xe5 ♖d4 59.♖xf4 1-0



Michael MacGregor(l) and Constantin Etingher(r)

Both photos by H. G. Pitre

Boris Spassky, Master of Initiative

by GM Raetsky and IM Chetverik
published by Everyman Chess,
pb., 160 pages, © 2006. Retail \$21.95.

by Robert A. Karch

All the games of the tenth world champion have been placed under the microscope, of which 160 game positions are given. The authors state that they "have selected Spassky's best tactical finishes to give the reader a chance to improve their tactics."

Here is a quick overview of the 11 chapters: Chapter (1) A short biography (14 pages), including annotated wins vs Bronstein (a King's Gambit), Tukmakov (Sicilian), Karpov (Sicilian) and Fischer (Sicilian, poisoned pawn). All lightly annotated.

Chapter (2) Warming Up. Three games with a sharp tactical twist are followed by 20 diagrams – four to a page – given Puzzle numbers 2-20. Under each diagram is the challenge, also showing where to find the "Tip" and the "Solution."

Additional chapters: (3) A greater depth, (4) It's time to calculate, (5) Up another level, (6) The very best of Spassky, (7) Endgame legacy, (8) Retaliation — 25 spectacular Spassky defeats, based on tactical shots —, (9) Missed opportunities, either by Spassky or his opponent, (10) Tips, and (11) Solutions to Puzzles, which, for the most part, include the full game scores.

An excellent tactical refresher. **Recommended for players rated at 1900 and below.** ■

Product Note

Chess Opening Playing Cards

produced by SynHeme, © 2006. Retail \$8.99.

A Canadian company that produces educational flash cards that double as playing cards has begun a series of chess opening cards. The first deck of 52 cards deals with the basic openings, e.g., the Nimzo-Indian or the Scotch Game. Succeeding decks feature opening variations, e.g., the Sicilian Dragon Yugoslav Attack or the King's Gambit Accepted, Kieseritsky Variation. Each card includes a diagram with the moves leading up to the position above the diagram. Listed below the diagram are the main choices for the side to move. The opening or variation is named and the ECO code is given. In addition, one of the jokers serves as a table of contents for the deck.

Northwest Chess

Officers present: Pres. Geoff Gale, V.P. Duane Polich, Sec. Gary Dorfner, Treas. Robert Allen, T.C. Dan Mathews, NWC Rep. absent, B.M. NWC Eric Holcomb, and S.D. David Hendricks. The meeting was called to order at 6:50 p.m. The minutes were read & approved.

Discussed the WA Jr. Closed. Approved the budget changes made by David. Prize fund \$225 (100-75-50), TD fee \$50, Misc. \$10 for a total of \$285. Date: Dec. 20-21.

Discussed the State Championship Site: Seattle Chess Club, TD will be Fred Kleist. Prize fund, \$1000 for Championship Section, \$400 for Premier Section, TD fee \$250, Rating fees: \$18 USCF & \$70 FIDE. A motion was made by Mr. Polich & 2nd by Mr. Dorfner to give \$2250 to the prize fund, the vote 2 yes, 3 no, motion failed. Mr. Hendricks amended the motion & reduced the amount to \$2000, 2nd by Mr. Polich, passed.

Discussed the WA Quick Chess Championship. Duane, who was to have organized it, said he has not had time to do so. Gary said he would do it on Dec. 30th. It was decided it would be held March 17, 2007. Site to be determined at a later date.

Discussed the Susan Polgar Qualifier tournament for 2007. David to organize & run it.

Discussed the Champion of Champions internet tournament for the state champions from all 50 states. Dan to look into it.

Discussed the WA Open: A motion was made by Mr. Polich & 2nd by Mr. Dorfner to purchase the new version of Swis-Sys for use at various tournaments, passed.

Discussed giving Viktors Pupols a WCF Life Membership: A motion was made by Mr. Dorfner to give him a life membership, 2nd by Mr. Mathews, passed.

Discussed going back to the mail ballot in NWC for election of officers & proposals.

A motion was made by Mr. Hendricks & 2nd by Mr. Dorfner to pay the winners of the Denker & Polger tournaments each \$250.00 for a total of \$500.00, passed.

Discussed the WCF Web Page.

The next meeting will be on 1/25/07 at Zoopa's Restaurant.

Adjourned at 9:06 pm.

Gary J. Dorfner Sec.

While flash cards may be useful for chemistry students who need to memorize the periodic table, memorizing names of openings and their ECO codes is not particularly important for chess students. Rather, chess players must understand the ideas behind the moves and move orders as well as having a knowledge of the typical middlegame plans. These flash cards will not help in either of those respects.

However, for some adults with limited repertoires, the cards might be useful in providing an overview of other openings. And, of course, since the flash cards are also playing cards, they might come in handy next year as chess-related stocking stuffers. ■

February 2006

15

The Portland Report

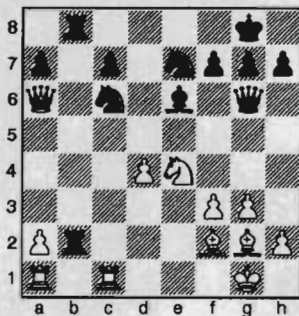
At the Portland Winter Open, FMs Nick Raptis and Chuck Schulien tied with Expert Radu Roua for first place at four points apiece. Each had defeated one of the other two with the White pieces, while defeating all other opponents in the five-round event. In the Reserve section, Friedrich Ulrich captured first with a score of 4.5. Tying for second-third with scores of 3.5 were William Gagnon and Nathaniel Porter.

Scotch

FM Nick Raptis (2297)
FM Charles Schulien (2337)

Portland Winter Open (3) 2006

1.e4 e5 2.♘f3 ♘c6 3.d4 exd4 4.♗xd4 ♗c5 5.♗e3 ♟f6 6.c3 ♗g7 7.g3 d5 8.♗g2 ♗xd4 9.cxd4 dxe4 10.♗c3 O-O 11.♗xe4 ♟g6 12.O-O ♗f5 13.f3 ♗ad8 14.♟b3 ♗e6 15.♟xb7 ♗b8 16.♟a6 ♗xb2 17.♗f2 ♗fb8 18.♗fc1



18...♗xd4 19.♗xc7 ♗d5 20.♗xa7 ♗c2 21.♗c1 ♗ce3 22.♗a8 f5 23.♗xb8+ ♗xb8 24.♟a7 ♗f8 25.♗xe3 fxe4 26.fxe4 ♗xe3 27.♟xe3 ♗xa2 28.♗f1 ♗xf1+ 29.♗xf1 h6 30.♗g2 ♟d6 31.h3 ♗e6 32.♟f4 ♟d4+ 33.♗h2 ♗d7 34.

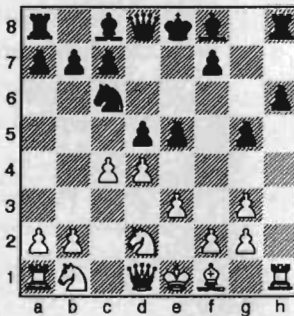
♟c7 ♗h7 35.♟c2 ♗g8 36.♟e2 ♟e5 37.♟d3 ♗e6 38.♟e3 ♗h7 39.♟f4 ♟d4 40.e5 ♟xf4 41.gxf4 g5 42.♗e4+ ♗g7 43.f5 ♗c4 44.♗g3 ♗e2 45.h4 gxh4+ 46.♗xh4 ♗f7 47.♗g3 ♗c4 48.♗f4 ♗b3 49.♗f3 ♗c2 50.♗d5+ ♗g7 51.f6+ 1-0

London System

FM Charles Schulien (2337)
Radu Roua (2161)

Portland Winter Open (2) 2006

1.d4 ♗c6 2.♗f3 d5 3.♗f4 ♗f6 4.e3 ♗h5 5.♗g5 h6 6.♗h4 g5 7.♗fd2 ♗g7 8.♗g3 ♗f5 9.c4 ♗xg3 10.hxg3 e5



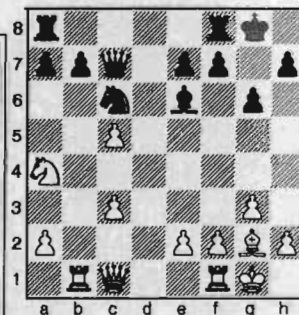
11.cxd5 ♟xd5 12.♗c3 ♟d8 13.d5 ♗e7 14.♗de4 ♗f5 15.♗b5+ ♗d7 16.♗xd7+ ♗xd7 17.♟g4 1-0

Queen Pawn

Radu Roua (2161)
FM Nick Raptis (2297)

Portland Winter Open (4) 2006

1.♗c3 d5 2.d4 ♗f6 3.♗f3 g6 4.g3 ♗g7 5.♗g2 O-O 6.♗e5 c5 7.dxc5 d4 8.♗a4 ♟a5+ 9.c3 dxc3 10.bxc3 ♟c7 11.♗c4 ♗fd7 12.♗f4 ♗e5 13.♗xe5 ♗xe5 14.♗xe5 ♟xe5 15.O-O ♗c6 16.♗b1 ♟c7 17.♟c1 ♗e6



18.♟f4 ♟xf4 19.gxf4 ♗xa2 20.♗xb7 ♗ac8 21.

♗xc6 ♗xc6 22.♗xa7 ♗b3 23.♗b6 ♗e6 24.♗a5 ♗d8 25.c4 ♗d2 26.e4 ♗c2 27.♗d5 ♗f8


May In January

The 2007 Gresham Open
by Neil Dale

No, this will not be about global warming, although one could say that someone was hot. This is the story of Andy May, who took clear first with 4½ points, the draw coming in the third round against Drew Serres. Second through fifth places were shared by four players: NM Carl Haessler, Mat Goshen, Ethan Peake, and Daniel Gay. The Gresham open thus showcased the younger players, at least six out of the top nine appear to fit that category. That is good news for the chess community. Michael Olson, Sterling Kolde, and Micah Smith shared the U1800 prizes with three points apiece, while Arliss Dietz upheld the honors of the not-so-young (also with three points) by claiming first in the U1600 group. The prize winner in the U1400 category was very young Yun Teng with two points.

The weather gods were very kind to us this year; they provided the perfect chess playing weather with gray skies and occasional rain. The tournament was held at a very nice site at Mt. Hood Community College.

The Portland CC, organizer of this event, thanks all the 48 players who came and played. I would like to apologize to Chuck Schulien for not checking my e-mail on Sunday morning. He had to withdraw due to illness, and I gave him an undeserved forfeit. Unfortunately, errors do happen, and maybe in a perfect world all chess games would end in a draw. Neil Dale and Grisha



Carl A. Haessler
Lessons • Lectures • Exhibitions

USCF Life Master
3-Time Oregon Champion

(503) 358-7871
ssmith6154@aol.com

Extra, Extra, Extravaganza!

by Carol Kleist

The Seattle Chess Club tried a new tournament format November 3-5th. The idea grew out of a board meeting. Sometimes good things really happen at "bored" meetings! Our president, Dr. August Piper, wanted to try a tournament with more rounds and faster than traditional time controls, and a larger than usual guaranteed prize fund. He backed up his idea with an offer to make up with his own cash any financial deficit the club should happen to encounter. The board agreed it was worth a try, so our Tournament Director, Fred Kleist, worked up the details and created the First Annual Extravaganza plan.

As time closed in toward the tournament, even up until the morning of the event, it certainly looked like August would have a good chance to practice austere self-sacrifice, as we had very few advance entries. But Seattle players came through, in their inimitable spirit of spontaneity and signed up at the last minute on site in welcome numbers. So the club did fine financially and didn't need August's back-up contribution this time.

With three sections I was busy as the T.D., having insisted that Fred should have a turn to play. This was possible because the games did not last till 2 a.m., as they can on a traditional Friday night first round, so one person could handle the job. Busy, but everything went off in good spirit, with all the players being cooperative and cool. One father, who shall be named, Mr Wu, proud Dad of Darren and Darryl, helped me remove heavy obstacles and make more space for the players, and FM Nick Raptis took on the job of houseman and played two games at once, for five additional games to anyone who had a forced bye, be it in any section including the Open! Nick was also the winner of the evening Blitz side event with a score of 9-1!

That brings us to the winner of this extravagant event and its \$200 first prize. Yes, it was none other than FIDE Master Nick Raptis, who, in addition to winning his five houseman games, went undefeated in the seven round tournament, finishing with 6 points after taking a 1/2-point bye in the first round for travel, and drawing with NM Nat Koons in round three. Expert Benjamin Calpo, new to this area from California took second prize of \$125, with 5 1/2, winning over Master Nat Koons who had recently finished 4-0 plus a 1/2-point bye as the clear winner of the SCC's Fall Open. That, of course, shows how Chess is a game and not a science, in that the results are not totally predictable. Expert Geoff Gale earned 3 1/2 points, sharing 1st and second under 2000 with High School Senior Sterling Kolde and a young player from B.C., sixth grader Arie Milner, who is so young that he considers his prize of \$50 lots of money!

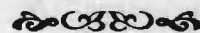
The Reserve Section saw exciting play with Cecil Baxter out in front with a perfect score after four rounds, but who then apparently got tired and remained at four points, while Dan Mathews and Matthew Yang went on to draw each other in round six and each to win his final round to tie for 1st and 2nd, winning \$100 each. Not bad earnings for Matthew the sixth grader! Cecil was still in the prize pool, however, sharing 1st-2nd Under 1800 with high school Freshman George Fan for \$45 each. The money will soon be spent, but the honor of achievement will remain. Yeah!

In the Booster Section, speaking of honors, these went to the highest rated player, August Piper, whose brainchild the tournament was originally. Undefeated, he gave up two draws to take clearfirst with a prize of \$90. Following closely with 5 points were Alan Torkelson and fifth grader Tristan Sun, tying for second, winning \$30

each. And finally, and after all predictably, the youngest of all steps up to take the U1200/Unr prize of \$30 with his 3 1/2 points. You will probably hear more from this second grader, Justin Yu.

So maybe some other chess player out there would like to design his/her own dream tournament, guarantee a no loss financial risk, make it come true at the Seattle Chess Club, and perhaps win first place in his/her section!

To make this a memorable forever tournament, one of the cherished members and supporters of chess, Life Master David Bragg, who was too busy with work at microsoft to play, stopped by and made an incredible donation of \$600. Such an unselfish act insures that institutions like the Seattle Chess Club can keep afloat during times of high rents and energy costs, and makes it possible for others to continue playing tournament chess. May we volunteers use it wisely and I'm sure I express thanks from all the chess community when I say: "Thank you, David."



Now to a sampling of the winners' games. Tournament winner FM Nick Raptis only gave up one draw; this was to NM Nat Koons, and was a predictably exciting one.

Trompowsky

NM Nat Koons (2316)
FM Nick Raptis (2297)

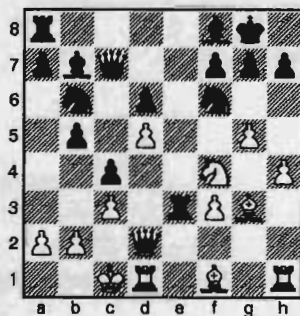
Seattle, SCC Extravaganza (3) 2006

Comments by Carol Kleist

1.d4 ♘f6 2.♗g5 ♘e4 3.♗f4 c5 4.f3
♞a5+ 5.c3 ♘f6 6.d5 e6 7.e4 exd5
8.exd5

Perhaps 8.e5!?, as it looks like the Knight will have a hard life thereafter.

8...d6 9.♘a3 ♗e7 10.♘c4 ♞c7 11.g4
O-O 12.♞d2 ♘bd7 13.h4 b5 14.♘e3
c4 15.♘e2 ♘b6 16.♗g3 ♗b7 17.♘f4
♚fe8 18.O-O-O ♗f8 19.g5 ♚xe3



Nick sacs the Exchange for a pawn, an opened up light-squared Bishop and a centralized Knight, with tempo. But how would 20.gxf6!?, opening up Black's kingside a little sooner, work? It could get pretty wild, but so does the game.

20. ♖xe3 ♜fxd5 21. ♜xd5 ♜xd5 22. ♖d4 g6 23. h5 ♜g7 24. ♖h4

The Queen has made herself a nice home just in time, and Nat is storming the King's castle in the most alarming way! 24... ♜d8 25. hxg6 ♜xc3

Now Nick sacs a whole piece! What does he have in mind? We soon see it is repetition for a draw. But what if Nat doesn't accept the sacrifice, but bangs ahead with 26. ♖xh7+ followed by 27.gxf7!? Any letters to the editor forthcoming to analyse if Nat could have won this game?

26. bxc3 ♖a5 27. ♜e1 ♖xa2 28. gxf7+ ♜f8 29. g6 ♖a1+ 30. ♜d2 ♖xc3+

With Nat threatening mate in one or other annihilations if the one-move mate is covered, Nick pulls off a perpetual with Queen from c3 to f3 for the forced repetition.

31. ♜e2 Draw

From the winners of the Reserve Section (U2000), Dan Mathews and Matthew Yang, we have the following for you:

Matthew Yang's win over top seed Peter O'Gorman saw Matthew develop and defend against the Dutch for about 25 moves, suffering his pieces to be driven back in defensive posture, but he is developed at least and ready to spring out at the first chance. When black becomes overextended and doesn't finish developing, the last fifteen moves belong to White, who finishes off with a flourish of pins and an unstoppable mate threat.

18

Dutch Antoshin

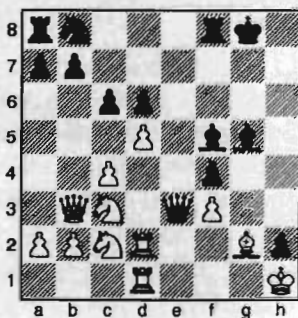
Matthew Yang (1551)

Peter O'Gorman (1852)

Seattle, SCC Extravaganza (2) 2006

Comments by Carol Kleist

1. d4 f5 2. ♜f3 ♜f6 3. c4 d6 4. ♜c3 c6 5. ♜g5 ♖c7 6. e3 e5 7. ♜e2 ♜e7 8. O-O O-O 9. ♖c2 h6 10. ♜xf6 ♜xf6 11. ♜fd1 g5 12. ♜ac1 g4 13. ♜e1 ♜g5 14. ♜d3 f4 15. exf4 exf4 16. f3 ♜f5 17. ♖b3 h5 18. d5 h4 19. ♜e1 ♖e7 20. ♜h1 h3 21. ♜f1 hxg2+ 22. ♜xg2 g3 23. ♜d2 ♖e3 24. ♜cd1 gxh2 25. ♜c2



From here on, it's White's turn and all his pieces come alive, while Black's a-Rook remains in its original position and the Knight has not made it in.

25... ♖e7 26. ♜d4 c5 27. ♜xf5 ♜xf5 28. ♜e4 ♜a6 29. ♜h3 ♜e5 30. ♜e6+

The Bishop is in command! The King decides to stay on the dangerous g-file, probably to get his Rook out, desperate for development, but this walks into a double pin coming up.

30... ♜g7 31. ♜g2 b6

First, Matthew pins the Bishop, and Peter takes time out to secure his queenside with b6. But there is no time!

32. ♖c3!

Pinning the defender of the pinned piece.

32... ♜h6

No use giving this a question mark, for there is no satisfactory move. The text defends the piece, but invites the next move.

33. ♜xh2+ ♜h4

Pinned, but defended.

34. ♜xd6!

Snagging a pawn in front of the hapless Queen, taking away the support of

February 2006

the e5-Rook and threatening 35. ♜f5+ which would cost Black the Exchange. 34. ♖e1 might look nice, but Black can defend and bring in his Rook at long last. Matthew's move keeps up the tempo.

34... ♖xd6

The Queen decides to take the pesky Knight and defend her Rook.

35. ♜xh4+ ♜g5 36. ♜g4+ ♜h6 37. ♖c2

With the threat of mate in one.

37... ♜h5+ 38. ♜g2 ♜g8

Delaying the inevitable.

39. ♜xg8 ♜g5+ 40. ♜xg5 ♜xg5 41. ♖f5+ 1-0

An adventurous game! Peter had the initiative for a long time, but chalk one up for development this time.

Co-winner of the Reserve, Dan Mathews, achieves a victory over NWGP A Class leader Steve Buck's Sicilian. Dan is running second to Steve in the NWGP. With a multiplier of 3x in the Seattle Chess Club's Extravaganza he could make some gains, but he will be too busy at the WA Class as Tournament Coordinator to play. Great to see young people stepping forward to take on serious responsibilities in the Chess world!

Sicilian Scheveningen

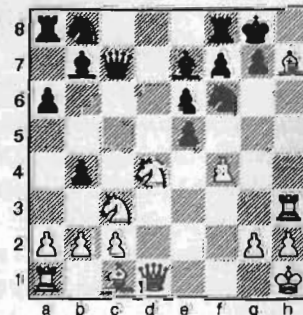
Dan Mathews (1737)

Stephen Buck (1700)

Seattle, SCC Extravaganza (5) 2006

Comments by Carol Kleist

1. e4 c5 2. ♜f3 d6 3. ♜e2 ♜f6 4. ♜c3 a6 5. O-O e6 6. d4 cxd4 7. ♜xd4 ♜e7 8. ♜h1 O-O 9. f4 ♖c7 10. ♜f3 b5 11. ♜d3 ♜b7 12. ♜h3 b4 13. e5 dxe5 14. ♜xh7+



14... ♜h8

The pawn is lost, and if 14... ♜xh7 White will get his piece back after 15. ♖h5, but I don't see a mate after 15... f6

Northwest Chess



Dr. August Piper, 1st Booster

Sterling Kilde, = U2000



Benjamin Calpo, 2nd Open

*Arie Milner,
= U2000*



*Tristan Sun,
= 2nd Booster*



*Matthew Yang,
= 1st-2nd Reserve*



Dan Mathews, = 1st-2nd Reserve



George Fan, = U1800

All photos on this page taken by Carol Kleist at the WAClass

Some of the Winners at the SCC Extravaganza

giving the King room, so wouldn't it be better to have one of the attacking pieces, this vicious Bishop, simply gone? Neither Dan nor Steve are here to ask, so I ask our faithful readers.

14... ♖xh7 15. ♖h5 f6 16. ♖xh7+ ♔f7
17. ♖g3 ♕e8 18. ♖xe6 ♖c4 (18... ♖c6
19. ♖g6+ ♔d7 20. ♖xf8+ ♕c8 21. ♖f7
♕d8 22. ♖e6 g5 23. fxe5 a5 24. ♖xd8)
19. ♖xg7+ ♔d8 20. ♖d3+ ♖xd3 21.
♖xd3+ ♕c8 22. ♖d5 ♕c5 23. ♖e6
15. fxe5 ♕xg2+ ♖xe5

Here, I think, Steve's Bishop goes wild. Probably jealous of its light-squared counterpart in White's camp. Dan has no compunctions about snatching up the sacrifice.

16. ♔xg2 ♖xe5

White can't bring his Queen into h5, but the vicious Bishop now has an exclamation move.

17. ♕e4+!

The Knight can't take him anymore due to the discovered check and the victorious Bishop emerges to slice off a whole Rook after devouring a pawn, opening the h-file for the heavy pieces, and taunting the poor Knight on f6.

17... ♔g8 18. ♕xa8 bxc3 19. bxc3

White is still up a whole Rook.

19... ♖d5

With Black's Queen guarding h5, this Knight offers to become active, but, of course, the Bishop on a8, his nefarious (from Black's viewpoint) deeds accomplished, offers himself up by exchanging fates with the Knight, and dies a glorious hero's death (White's view) on d5. The rest is predictable.

20. ♕xd5 ♖xd5+ 21. ♖f3 ♖e5 22. ♖h5 f5 23. ♕d2 ♕c5 24. ♖e1 ♖d5+ 25. ♖f3 ♖xa2 26. ♖xe6 ♖xc2 27. ♖d5 1-0

We come to the winner of the Booster Section (U1600), Dr. August Piper. He may be dismayed to find that after this tournament, with his score of 5½-1½, he will no longer be eligible for the U1600. Yes, he was the top-rated, but how very often the top rated player does not win his section. Almost worth researching as a curiosity. I ask August for a game and with typical disarming self-humour he

gives me a game where his opponent is probably winning, but Caïssa steps in with the sometimes ironic laws of CHESS and the opponent succumbs to a prepared cheapo Knight fork which decides the game.

Colle

Constantin Etingher (1400)

August Piper (1567)

Seattle, SCC Extravaganza (4) 2006

Comments by Carol Kleist

1. ♖f3 e6 2. d4 d5 3. e3 ♖f6 4. ♕d3 c5
5. c3 ♖c6 6. ♖bd2 g6

Unusual after having played ...c5 and ...e6. Now Constantin takes advantage of this.

7. dxc5 ♕g7

Black's move is that of a believer in development. However, a pawn can be a pawn sometimes, even when it goes out of the center. Black doesn't have much choice but to let the pawn go if he doesn't want a hole close to his King.

8. O-O ♖e7 9. b4 O-O 10. ♖e2 e5 11. e4 d4 12. ♕b2 ♖d8 13. ♖c4 ♕g4 14. h3 ♕xf3 15. ♖xf3 a5 16. a3 axb4 17. axb4

Better is 17. cxb4, for although Black gets a passed pawn, it is securely blocked and White will gain potential outposts on d6, b6, and even d5 for his Knight. He may eventually threaten to play b4-b5, when the Knight on c6 has no good squares.

17... dxc3 18. ♕xc3 ♖d4

This way it is Black who gets an outpost.

19. ♖e3 ♖h5 20. ♖xa8

There does not seem to be any need to give up the a-file and allow the opponent counterplay. 20. ♖b6 perhaps or 20. g3 to keep Black's Knight out of f4.

20... ♖xa8 21. ♖d6 ♖a3 22. ♕c4 ♖e6

August plays a necessary defensive move to protect f7, but the Knight on e6 also serves as a potential replacement for his brother Knight, who hopes to get to f4.

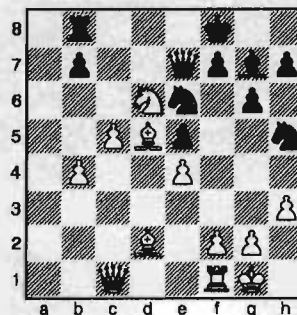
23. ♖c1

The Queen steps out of the pin situation and hits the Rook, but does nothing to prevent ...♖f4 yet.

23... ♖a8 24. ♕d2

Suggestions for something better? White's position is fine; he is a pawn up, and must find a good plan of his own, while watching his opponent's counterplay. Does Constantin intend to tradeoff August's bad Bishop? Perhaps 24. g3 now or centralize his Rook?

24... ♖b8 25. ♕d5 ♔f8



I can't help liking this tricky move setting up the cheapo fork which occurs on move 28. Now ♕xf7 will not be check. There is no forced way to achieve his cheapo goal, but August prepares for his longshot to win the game. Stay tuned.

26. ♕h6

Why?

26... ♖hf4

Here comes the Knight!

27. ♕xf4 ♖xf4 28. ♕xf7?? ♖e2+

And the Knight achieves his goal!

29. ♔h1 ♖xc1 30. ♖xc1 ♖d8

Perhaps one should think about undermining the Knight with 30...b6. But August prefers the potential threat of winning two pieces for a Rook.

31. ♕b3

Constantin takes care of the threat, but 21. ♕d5, where he soon comes, was better.

31... ♖xd6

August gives back some material, which is often advisable, but doesn't seem necessary here.

32. cxd6 ♖xd6 33. ♖c8+ ♔e7 34. ♕d5 ♕h6 35. ♖h8 ♕f4

Setting up a new and improved cheapo, this time a mate threat, and harder to defend against.

Washington Chess Federation (WCF)/Oregon Chess Federation (OCF)

Adult: \$25/year (12 issues). Residents of OR and WA receive a 1-year membership in the OCF or WCF. Members receive *Northwest Chess* via periodicals mail each month.

Junior: \$17/year (12 issues) or \$10/6 months (6 issues). Must be under age 20 at time of expiration. OR/WA residents only; state membership included. Juniors receive *Northwest Chess* each month.

USA Subscriber: \$25/year (12 issues). For subscribers living inside the US mail system, but outside the OR/WA area. Subscribers receive *Northwest Chess* each month.

Family: \$5/year (not a subscription — membership only). This class of membership is open only to co-resident of an Adult or Junior member. Expires at the same time.

Trial: \$13 (membership and subscription, expires in 3 months). By paying the balance of dues for an Adult membership, this option can be extended to 12 months. The balance must be paid before the trial status is expired.

For general information, Eric Holcomb (253) 850-2996, e-mail: Eric@Holcomb.com

OCF/WCF Membership Application/Renewal Form

Name _____ **If Junior, give date of birth** _____

E-Mail (if you want to subscribe to the *Northwest Chess* e-mail mailing list) _____

Phone Number (optional, will not be used for telemarketing) (____) _____

Street or P.O. Box _____

City _____ **State** _____ **Zip** _____

Country (if not USA) _____ **Amount Enclosed \$** _____

Make check or money order (USA \$ only) out to Northwest Chess and mail to:

Credit this membership to:

Eric Holcomb
NW Chess Business Manager
PMB 342
12932 SE Kent-Kangley Rd.
Kent WA 98030-7940

36. ♖xh7+ ♘d8 37. ♖xb7??

No more time for anything but 37.g3. If Black continues the mate threat with 37... ♗a6, then quickly 38. ♘g2 and White survives to fight on, though Black is still better. If White takes the Bishop instead of playing ♘g2, then 38... ♗f1+ 39. ♘h2 and after Black plays 40... ♗xf2 + and 41... exf4, the Queen and advanced pawn look ominous indeed.

37... ♗a6 38. ♖b8+ ♘c7 39. ♖b7+ ♘c8

Now that White's checks are gone, it's mate in one after . . .

40.b5

. . . as played, and mate in four if White tries 40.g3, now too late.

40... ♗a1 mate ■

Wang and Ho cont'd from page 3

6... ♖b4 7. ♖d3 O-O

Mihalik-Chovanec, Slovakia 2000, continued 7...d5! 8.exd5 ♘xd5 9. ♖d2 ♖xc3 10.bxc3 O-O 11.O-O f5 12. ♖c4 ♘h8 13. ♗e2 ♘f6 14. ♖ad1 ♗e7 15. 17. ♖fe1

♖e3 b6. Black's central pawns and better pawn structure give him a slight advantage.

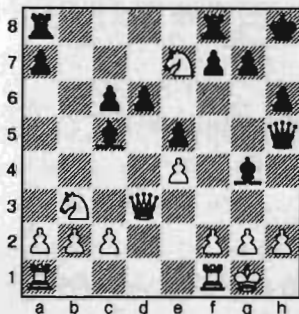
8.O-O d6 9. ♖g5 h6?!

Black should first of all eliminate the strong Knight before it occupies d5, i.e., 9... ♖xc3 10.bxc3 h6.

10. ♖xf6 ♗xf6 11. ♘d5 ♗g6 12. ♗e2 ♘h8 13. ♖b5?!

13.c3

13... ♖c5 14. ♖xc6 ♖g4 15. ♗d3 bxc6 16. ♘e7 ♗h5?!



A missed opportunity for white. He should have played 17. ♘xc5 dxc5 (After 17... ♖e2 18. ♗xd6 ♖xf1 19. ♖xf1, White has two Knights for a Rook.) 18. f3±.

17... ♗h4!

A double attack on f2 and e7. 17... ♖b6! is another good move.

18. ♘xc5 ♗xe7 19. ♘b3 f5 20.h3 fxe4 21. ♗xe4 ♖d7

Stronger is 21... ♖e6 22. ♗xc6 ♖ac8.

22.c4 ♗f6 23. ♗e2 ♖ae8 24. ♖ad1 ♗g6 25. ♗e3 ♖f4 26. ♗g3 ♗f6 27. ♘d2 d5 28.cxd5 cxd5 29. ♘e4 ♗c6 30. ♘c3 d4 31. ♖xe5 and eventually 0-1

31... ♖xe5 32. ♗xf4 ♖xh3! 33.gxh3 ♖g5+ 34. ♘f1 dxc3 35.bxc3 ♗xc3 is a little better for Black. It is easy to imagine Black winning such a position in mutual time pressure. ■

Please check your mailing label and PLEASE RENEW!!

Seattle Chess Club Tournaments

Address
17517 15 Ave NE
Seattle WA 98155
Infoline
206-417-5405
cfkleist@cs.com
Address for Entries
SCC Tnmt Dir
2420 S 137 St
Seattle WA 98168

Seattle Spring Open

March 23-25 or March 24-25

A two-section Swiss (4 rounds – Open, 5 rounds – Reserve) with a time control of 40/2 and SD/1 (two-day Reserve schedule – Round 1, G/64). The prize fund of \$750 is based on 40 paid entries, 5 per prize group.

a Franetti Memorial Grand Prix event

Championship		Reserve (U2000)	
First	\$140	First	\$100
Second	\$100	Second	\$70
U2200	\$75	U1800	\$50
U2000	\$40	U1600	\$40
		U1400	\$30
		U1200	\$25
		Unrated	\$15

Plus Score Pool – \$100

Entry Fees: \$32 if rec'd by 3/21, \$40 at site. **Unrated**—Free with purchase of 1-yr USCF & 1-yr WCF. **SCC members**—subtract 25%. Members of other dues-required CCs in BC, OR, and WA—subtract 12.5%. **Add \$1 to any EF for 2-day schedule.**

Registration: **Open**—Sat. 11- noon; **Reserve**—Fri. 7-7:45pm, Sat. 9-9:45am.

Rounds: **Open**—Sat. 12:30-6:45, Sun. 10-4; **Reserve**—Fri. 8, Sat. (10 @ G/64)-12:30-6:45, Sun. 10-4.

Byes: 1 in Open, 2 in Reserve (Sunday rounds, commit at registration).

Miscellaneous: USCF & WCF membership req'd. No smoking. No computers.

2007 Weekends

Novice: May 5, Aug. 25, Nov. 4

Quads: Feb. 24, Mar. 17, Apr. 21, June 16, July 21, Aug. 18, Sept. 15, Oct. 13, Nov. 3, Dec. 8

Tornados: Mar. 11, Apr. 1, Apr. 29, June 3, July 1, July 29, Aug. 26, Sept. 30, Oct. 21, Nov. 18, Dec. 9

Seattle Spring Open—March 23-25.

Plus-Score Swiss—May 12-13.

Emerald City—June 22-24.

Seafair Open—August 10-12.

Seattle Fall Open—September 21-23.

Extravaganza—November 9-10.

Feb. 24, Mar. 17

SCC Saturday Quads

Format: 3-RR, 4-plyr sections by rating. **TC:** G/120. **EF:** \$6 (+\$5 fee for non-SCC). **Prizes:** Free entry for future quad. **Reg:** 9:00-9:45 a.m. **Rds:** 10:00-2:15-ASAP. **Misc:** USCF, WCF/OCF memb. req'd, OSA. NS, NC.

Mar. 11, Apr. 1

SCC Sunday Tornado

Format: 4-SS. **TC:** G/64. **EF:** \$15 (+\$5 fee for non-SCC). **Prizes:** 1st 35%, 2nd 27%, Bottom Half 1st 22%, 2nd 16% (\$10 from each EF goes to prize fund). **Reg:** 10:30-11:15 a.m. **Rds:** 11:30-1:50-4:10-6:30. **Misc:** USCF, WCF/OCF memb. req'd, OSA. NS, NC.

May 5

SCC Novice

Format: 4-SS. **Open** to U1200 and unrated. **TC:** G/75. **EF:** \$10 by 5/2, \$15 at site. (20% disc. for SCC mem., 10% mem. of other dues-req'd CCs in WA, OR, & BC). **Prizes:** Memberships (SCC, WCF, USCF). **Reg:** 9-9:45a. **Rds:** 10-12:45-3:30-6. **Byes:** 1 (Rd 3 or 4—commit at reg.). **Misc:** USCF memb. req'd. NS, NC.

Future Events

♣ indicates a Christopher Memorial NW Grand Prix event

February 17

PCC Game-in-60♣

Site: *Portland CC*, 8205 SW 24th Ave, Portland OR 97219.
Format: 4-rd Swiss. **TC:** G/60. TD may switch to 5SS and G/45 if more than 25 entries. **EF:** \$20, \$5 discount for PCC members. No advance entries. **Prize Fund:** \$\$200/b20. **Prizes:** \$60-40-30, U1800 35, U1500 35. **Reg:** 9-9:30 am. **Byes:** One ½-pt. bye avail. if requested at reg. **Misc:** USCF & OCF/WCF membership req'd, OSA. **Info:** portlandchessclub@gmail.com, 503-246-2978, www.pdxchess.org.

Feb 17-18 Washington Woodpushers U1800

Site: *Tacoma CC*, Rm. 11 (2nd floor), 409 Puyallup Ave, Tacoma WA. **Format:** 5-rd. Swiss, open to U1800. **TC:** 40/90, SD/30. **EF:** \$30 adv., \$35 at site; jrs \$20 adv., \$25 at site; Economy (no prize money) \$12, free for UNR; UNR may play for 1st w/regular EF. **Prize Fund:** 67% of full-paying EFs. **Prizes:** 25%, Top Third 15%, Middle Third 14%, Bottom Third 13% (If fewer than 9 full-payers, there will be 2 groups. Econ. winner: certificate and \$10 disc. on econ. entry to future event. **Reg:** Sat. 9-9:45 am. **Rds:** Sat 10-2:30-7, Sun 10-3 (or ASAP). **Byes:** Two ½-pt. byes avail. for rds 1-4 if requested in advance. **Misc:** USCF and WCF/OCF membership req'd. NS, NC. **Ent/Info:** WCF c/o Gary Dorfner, 8423 E 'B' St, Tacoma WA 98445; 253-535-2536, ggarychess@aol.com.

Feb 24-25

Dave Collyer Memorial♣

Site: *Schoenberg Center*, Room 201, Gonzaga U., N 900 Pearl St, Spokane WA (SW corner of campus - 1 blk E of Division/Ruby couplet off DeSmet Ave). **Format:** 5-rd. Swiss. Class pairings may be used in last rd. **TC:** G/120 (G/60-rd 1 of Sleep-In Option). **EF:** \$27 if rec'd by 2/23, \$33 at site; u19-\$5 less. Telephone entries accepted. **Sleep-In:** Start play at noon. **Prize Fund:** \$\$1,600 gtd. **Prizes:** \$325-200-125, X 100, A 100-75, B 100-75, C 100-75, D/E/UNR 100-75, Biggest Upsets (estab. rtgs only) 100-50. Class

prizes b/5 per class; classes (and class prizes) may be reconfigured if fewer than 5 class entries. **Reg:** 8:30-9:30 a.m. All who play in the 10:00 rd must check in by 9:30. Late arrivals may not be paired. **Mandatory Players' Mtg** 9:45 a.m. **Sleep-In** plyrs may reg. till 11:40 a.m. **Rds:** 10-(12)-2:30-7, 9-1:30 (or ASAP). **Byes:** One ½-pt bye avail. if requested by end of preceding rd. Sunday bye must be requested by end of rd 3. **Side Events:** IM John Donaldson Talk (6 p.m.) and Simul (6:45 p.m.) at Aunties Bookstore, W 402 Main Ave, on February 23. **Misc:** Coffee and cookies provided. NS, NC, W. **Entries:** Spokane CC, c/o Kevin Korsmo, N 9923 Moore, Spokane WA 99208-9339. **Info:** 509-466-0530 evenings or weekends; 509-477-2871 days. www.spokanechessclub.org.

March 10-11

Northwest Open♣

Site: *Tacoma CC*, Rm. 11 (2nd floor), 409 Puyallup Ave, Tacoma WA. **Format:** 5-rd. Swiss. **TC:** 40/90, SD/30. **EF:** \$30 adv., \$40 at site; jrs \$20 adv., \$25 at site; Economy (no prize money) \$12, free for UNR; UNR may play for 1st w/regular EF. **Prize Fund:** 67% of full-paying EFs. **Prizes:** 25%, Top Third 15%, Middle Third 14%, Bottom Third 13% (If fewer than 9 full-payers, there will be 2 groups. Econ. winner: certificate and \$10 disc. on econ. entry to future event. **Reg:** Sat. 9-9:30 am. **Rds:** Sat 10-2:30-7, Sun 10-3 (or ASAP). **Byes:** Two ½-pt. byes avail. for rds 1-4 if requested in advance. **Misc:** USCF and WCF/OCF membership req'd. NS, NC. **Ent/Info:** WCF c/o Gary Dorfner, 8423 E 'B' St, Tacoma WA 98445; 253-535-2536, ggarychess@aol.com.

March 17-18

Portland Spring Open♣

Site: *Portland CC*, 8205 SW 24th Ave, Portland OR 97219. **Format:** 2-sec., 5-rd. Swiss. **TC:** Rds 1-3: 40/90, SD/30; Rds 4-5: 40/2, SD/1. **EF:** \$30 if rec'd by 3/14, \$35 at site. \$10 discount for PCC members. **Prize Fund:** \$\$650 b/40. **Prizes:** *Open:* \$150-100, U2000 75. *Reserve (U1800):* \$100-75, U1600 50, U1400 50, U1200/UNR 50. **Reg:** 9-9:30 a.m. **Rds:** 10-2-ASAP, 10-ASAP. **Byes:** Two ½-pt byes avail. if requested at reg. **Misc:** OCF/WCF memb. req'd, OSA. **Entries:** See site above. **Info:** 503-246-2978, www.pdxchess.com, portlandchessclub@gmail.com

More Scholastic Events

March 2007

17 North Seattle Spring Festival (K-12)	Siva Narayanan 206-963-1841 siva @shakthi.net	Seattle WA
21 TCC Wed. Kids Night	Gary 253-535-2536 ggarychess@aol.com www.tacomachessclub.net/firms.com	Tacoma WA
23 Bughouse Bonanza (K-12)	David dsommers@libertychristian.net http://www.chesschampions.org	Richland WA
23-24 OSCF State Championships	oscf@oscf.org www.oscf.org	Salem OR
24 Shoreline Reg Tmt(K-6 U800,K-3,K-6,7-8)	Peter 206-801-7019 peter@meisner.com www.SignupChess.com	Shoreline WA
24 Camas Prairie Wildcat Chal. (K-3,4-6)	Greg Turner 253-875-0789 turnerg@chibcha.com www.chibcha.com/~cp	Spanaway WA
24 End of the Season Chess Party (K-12)	David dsommers@libertychristian.net http://www.chesschampions.org	Richland WA
27-29 Chess Odyssey Spring Chess Camp	503-504-5756 pete@chessodyssey.com www.chessodyssey.com	Portland OR
31 Chess Mates Fest (K-1,2-4,5-8)	Chess Star Co. chess64@comcast.net www.chessplayer.com/SignuptoPlayChess.htm	Seattle WA
31 Heritage Christian Tmt (K-3 op/U800,4-6 op/U800)	chess64@comcast.net www.chessplayer.com/hcs.htm	Bothell WA

April 2007

7 Tmt of Champions and Challengers	www.chessplayer.com/SignuptoPlayChess.htm	Shoreline WA
7 Blitz for Kids (1-2,3-4,5-6)	www.chessplayer.com/SignuptoPlayChess.htm	Shoreline WA
18 TCC Wed. Kids Night	Gary 253-535-2536 ggarychess@aol.com www.tacomachessclub.net/firms.com	Tacoma WA
20 Bughouse Tournament (K-12)	Norm May nmay@pacifier.com www.PlayingForTheKing.com/2007State	Vancouver WA
21 Washington Elementary Champ. (K-6)	Norm May nmay@pacifier.com www.PlayingForTheKing.com/2007State	Vancouver WA
21 I Love Chess Too (K-12)	Norm May nmay@pacifier.com www.PlayingForTheKing.com/2007State	Vancouver WA

NOTE: A '8' in front of the tournament name indicates an OSCF qualifying tournament.

USCF NATIONAL Scholastics

For information on any national event, contact Diane Reese at events@uschess.org.

Mar. 30-Apr. 1	Nat'l Junior High (K-9) Championship	Sacramento CA
April 13-15	Nat'l High School (K-12) Championship	Kansas City MO
May 11-13	Nat'l Elementary (K-6) Championship	Nashville TN

Open Events

February 2007

- | | | |
|-------------|--------------------------------------|---|
| 16,23 | Pierce County Chess League (Rds 3-4) | G. Dorfner 253-535-2536 ggarychess@aol.com www.tacomachessclub.netfirms.com Tacoma WA |
| 10-11,17-19 | WA Championship & Premier | Dan Mathews 425-778-7482 dthmathews@hotmail.com Seattle WA |
| Feb 17 | 8 PCC Game-in-60 | 503-246-2978 portlandchessclub@gmail.com www.pdxchess.com Portland OR |
| 17-18 | TCC Under 1800 | G. Dorfner 253-535-2536 ggarychess@aol.com www.tacomachessclub.netfirms.com Tacoma WA |
| 23 | IM John Donaldson Talk & Simul | K Korsmo 509-466-0530 kmkorsmo@comcast.net www.spokanechessclub.org Spokane WA |
| Feb 24 | SCC Saturday Quads | SCC Infoline 206-417-5405 cfkleist@cs.com www.seattlechessclub.org Seattle WA |
| 24-25 | 15th Dave Collyer Memorial | K Korsmo 509-466-0530 kmkorsmo@comcast.net www.spokanechessclub.org Spokane WA |
| 28 | TCC Wednesday Night Blitz | G. Dorfner 253-535-2536 ggarychess@aol.com www.tacomachessclub.netfirms.com Tacoma WA |

March 2007

- | | | |
|-----------|-----------------------------|---|
| 2 | Pierce County Chess League | G. Dorfner 253-535-2536 ggarychess@aol.com www.tacomachessclub.netfirms.com Tacoma WA |
| Feb 3 | TCC Quick | G. Dorfner 253-535-2536 ggarychess@aol.com www.tacomachessclub.netfirms.com Tacoma WA |
| 4 | TCC Sunday Blitz | G. Dorfner 253-535-2536 ggarychess@aol.com www.tacomachessclub.netfirms.com Tacoma WA |
| 6 | PCC Tuesday Quad Tmt Begins | 503-246-2978 portlandchessclub@gmail.com www.pdxchess.com Portland OR |
| 9 | TCC Quick (G/15) | G. Dorfner 253-535-2536 ggarychess@aol.com www.tacomachessclub.netfirms.com Tacoma WA |
| Feb 10-11 | Tacoma CC Northwest Open | G. Dorfner 253-535-2536 ggarychess@aol.com www.tacomachessclub.netfirms.com Tacoma WA |
| Feb 11 | SCC Sunday Tornado | SCC Infoline 206-417-5405 cfkleist@cs.com www.seattlechessclub.org Seattle WA |
| 16,23,30 | TCC Spring Swiss | G. Dorfner 253-535-2536 ggarychess@aol.com www.tacomachessclub.netfirms.com Tacoma WA |
| Feb 17 | SCC Saturday Quads | SCC Infoline 206-417-5405 cfkleist@cs.com www.seattlechessclub.org Seattle WA |
| Feb 17-18 | Portland Spring Open | 503-246-2978 portlandchessclub@gmail.com www.pdxchess.com Portland OR |
| Feb 23-25 | Seattle Spring Open | SCC Infoline 206-417-5405 cfkleist@cs.com www.seattlechessclub.org Seattle WA |
| 28 | TCC Wednesday Night Blitz | G. Dorfner 253-535-2536 ggarychess@aol.com www.tacomachessclub.netfirms.com Tacoma WA |
| Feb 31 | 8 PCC Game-in-60 | 503-246-2978 portlandchessclub@gmail.com www.pdxchess.com Portland OR |

April 2007

- | | | |
|-------------|-----------------------------|---|
| Feb 1 | Seattle CC Sunday Tornado | SCC Infoline (206) 417-5405 cfkleist@cs.com www.seattlechessclub.org Seattle WA |
| 6-8 | Far West Open | Jerry Weikel wackyk1@aol.com www.renochess.org/fwo Reno NV |
| 6,13,20,27 | Pierce County Championship | G. Dorfner 253-535-2536 ggarychess@aol.com www.tacomachessclub.netfirms.com Tacoma WA |
| 7 | TCC Novice | G. Dorfner 253-535-2536 ggarychess@aol.com www.tacomachessclub.netfirms.com Tacoma WA |
| 10 | PCC Tuesday Quad Tmt Begins | 503-246-2978 portlandchessclub@gmail.com www.pdxchess.com Portland OR |
| Feb 14-15 | Daffodil Open | G. Dorfner 253-535-2536 ggarychess@aol.com www.tacomachessclub.netfirms.com Tacoma WA |
| 20-22,28-29 | Oregon Championships | Clark Harmon charmon@solarprism.com McMinnville OR |
| Feb 21 | SCC Saturday Quads | SCC Infoline 206-417-5405 cfkleist@cs.com www.seattlechessclub.org Seattle WA |
| 25 | TCC Wednesday Night Blitz | G. Dorfner 253-535-2536 ggarychess@aol.com www.tacomachessclub.netfirms.com Tacoma WA |
| Feb 28 | 8 PCC Game-in-60 | 503-246-2978 portlandchessclub@gmail.com www.pdxchess.com Portland OR |
| Feb 28-29 | Inland Empire Open | Kevin Korsmo (509)466-0530 kmkorsmo@comcast.net www.spokanechessclub.org Spokane WA |
| Feb 29 | SCC Sunday Tornado | SCC Infoline 206-417-5405 cfkleist@cs.com www.seattlechessclub.org Seattle WA |
| 29 | TCC Sunday Blitz | G. Dorfner 253-535-2536 ggarychess@aol.com www.tacomachessclub.netfirms.com Tacoma WA |

NOTE: A 'b' in front of the date indicates a Franett Memorial Northwest GP event. A **8** in front of the tournament name indicates an OSCF qualifying tournament. Boldface type indicates a tournament announcement (in our Future Events Section) or display ad in this issue.

Scholastic Events

February 2007

- | | | |
|-------|--|---|
| 14 | TCC Wed. Kids Night | Gary (253)535-2536 ggarychess@aol.com www.tacomachessclub.netfirms.com Tacoma WA |
| 17 | 8 Diva Claissa Classic | Kate Taylor katetaylor@clatskanie.com http://clatskaniechessclub.tripod.com Clatskanie OR |
| 17 | 8 St. Valentine Chess Tmt | Jerry Ramey 541-232-0328 j-adoube@efn.org Eugene OR |
| 19 | 8 Pres. Day Capital City Chess Festival | Eric Hannibal 503-931-5626 erichannibal@comcast.net Salem OR |
| 23-24 | Oregon HSCTA State Tmt | Mike Wolfe mwolf@lane.k12.or.us http://ohscta.tripod.com Portland OR |
| 24 | Cornerstone Chall (K-1,2-3, 4-6,7-12,parents) | Norm May, nmay@pacifier.com www.playingfortheKing.com Vancouver WA |
| 24 | Shelton View Invitational (K,1-3,4-6) | Michelle Marchello 425-483-0583 tmarchello@wwdb.org Bothell WA |

March 2007

- | | | |
|-------|--|---|
| 3 | 8 CMCC/Whitford Schol Ch (K-12) | Sudhakar 503-430-5744 smkudva@comcast.net Beaverton OR |
| 3 | Bear Creek Spring (K-6,7-12) | Elliott Neff 425-283-0549 kids@chess4life.com www.chess4life.com WA |
| 3 | Chess F.E.S.T. (K,1-3,4-6) | Randy Kaech kaech@verizon.net http://mysite.verizon.net/kaech/ Ferndale WA |
| 3 | Zeiger Elem. Tmt (K-3,4-6) | Dave McKeen 253-770-3120 davemckeen@msn.com Puyallup WA |
| 3 | Eastern Wash. Ch. (K-2,3-4,5-6,7-12) | Corsten 509-375-5078 treasurer@chesschampions.org West Richland WA |
| 3-4 | Susan Polgar Qualifier | davidhendricks@comcast.net www.nwchess.com/calendar/WCF_SusanPolgar2007.pdf Sammamish WA |
| 10 | Sammamish Spring State Qualifier (K-6) | Elliott Neff 425-283-0549 kids@chess4life.com www.chess4life.com Sammamish WA |
| 10 | Charles Wright Acad. Chal. (K-3,4-6) | Melania Duarte-Sanchez 425-271-6587 alexnmelania@comcast.net Tacoma WA |
| 10 | Terrace Park Spring Fling (K-6) | Rick Jorgensen@gmail.com www.chess4life.com/chess-events/tournaments Mountlake Terrace WA |
| 10 | Northshore Grade Scholastic (K-6) | 206-363-6511 chess64@comcast.net www.chessplayer.com/SignUpToPlayChess.htm Everett WA |
| 10 | WA MS/JHS State Team | wa_ratings@nwrs.org www.whsca.org/toumannounce.html Mercer Island WA |
| 10-11 | Oregon Junior Closed | Portland OR |
| 16-17 | Chess for Success State Tournament | Julie Young info@chessforsuccess.org www.chessforsuccess.org Portland OR |
| 17 | Leapin Leprechauns! | Kate Taylor katetaylor@clatskanie.com http://clatskaniechessclub.tripod.com Clatskanie OR |

NOTE: A '**8**' in front of the tournament name indicates an OSCF qualifying tournament.
For more scholastic tournaments, see inside back cover