



NORTHWEST CHESS

Washington Chess Federation

March 2007

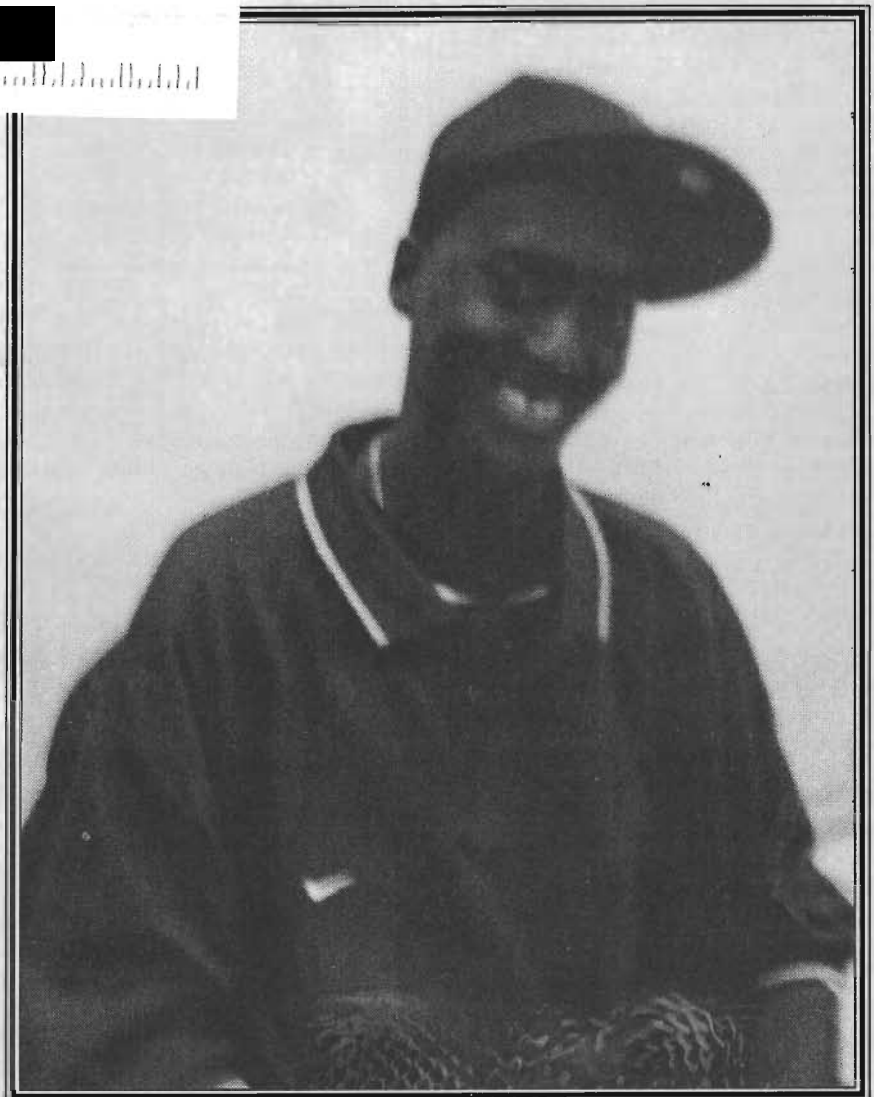
307 \$3.95

928-0801A * 3034 97 96 96 96 96 96 96 96 96 96 23
NIKE MACGREGOR

eration



**Ignacio Perez
Wins WA
Championship;
Nat Koons
Second;
Michael Lee
Third**



WA State Champion Ignacio Perez

**Josh Sinanan Tops Premier;
Kalina, May Second-Third**

Northwest Chess

March 2007, Volume 61,3 Issue 705

ISSN Publication 0146-6941

Published monthly by the Northwest Chess Board. Office of record: 2420 S 137 St, Seattle WA 98168.

POSTMASTER: Send Address Changes to: Northwest Chess, PO Box 84746, Seattle WA 98124-6046.

Periodicals Postage Paid at Seattle, WA

USPS periodicals postage permit number (0422-390)

NWC Staff

Editor: Fred Kleist

Games Editor: FM Chuck Schulien

Technical Assistance: Russell Miller

Printer: Snohomish Publishing

Business Manager: Eric Holcomb

Board Representatives

Oregon: Clark Harmon

& Dave Yoshinaga

Washington: Geoff Gale &

Murlin Varner

Entire contents copyright 2007 by Northwest Chess. All rights reserved. Published opinions are those of the contributors and do not necessarily reflect the views of the editor or the Northwest Chess Board.

Advertising Rates

Display ads run \$150 for a full page, \$100 for trim ads; \$85 for a half-page, \$60 for trim ads; \$30 for a quarter page, \$20 for an eighth of a page, and \$10 for a business card-size ad. Add \$10 if the ad is not copy ready and the staff must do layout work. A 15% discount is available for two or more consecutive ads of the same size.

Event Announcement Rates

Each appearance in *Event Announcements* costs \$20. Payment is required before publication. Enclose \$2 additional if an invoice is required—this is a mandatory service charge.

Advertising & Copy Deadline

Please get your ads and submissions in by the 10th of the month for the items to appear in the next issue (e.g., no later than Mar. 10 for the Apr. issue). The editor cannot guarantee that late submissions will appear in the desired issue.

Submit all ads and payments to:

Business Manager, Northwest Chess
PMB 342, 12932 SE Kent-Kangley Rd
Kent WA 98030-7940

Eric@Holcomb.com

Submissions

Hey folks! The editor depends on YOU to make this magazine vibrant and exciting. I need your games, photographs, thoughts, and ideas. This magazine has a great tradition and I hope people will contribute enthusiastically. You can send me your materials via U.S. mail or via e-mail:

Northwest Chess

Fred Kleist, Editor

2420 S. 137th Street

Seattle WA 98168

NWCeditor@cs.com

If you'd like your games annotated by a senior master, send them to our Games Editor:

FM Chuck Schulien

cschess@hotmail.com

Subscription Information

Northwest Chess is a benefit of membership in either the Oregon or Washington Chess Federations. Adult dues are \$25; Junior dues (under 20) are \$17 (or \$10 for six months). Please send dues, along with pertinent information to:

Business Manager

Northwest Chess

Eric Holcomb

PMB 342, 12932 SE Kent-Kangley Rd

Kent WA 98030-7940

Eric@Holcomb.com

http://www.nwchess.com

Northwest Grand Prix

Administrator

Murlin Varner

13329 208 Ave NE

Woodinville WA 98072

MEVjr54@yahoo.com

425-882-0102

Oregon Chess Federation

President

Dave Yoshinaga

503-590-2441 ext 7

dave@kdtonline.com

Vice President

Mike Terrill

503-580-9187

pflotus@yahoo.com

Secretary

Treasurer

Clark Harmon

charmon@solarprism.com

Tournament Coordinator

Peter Prochaska

503-504-5756

pete@chessodyssey.com

Scholastic Coordinator

Lisa Kudva

503-430-5744

lakudva@comcast.net

Director-at-Large #1

Taylor Bailey

503-282-6796

cosmos24@gmail.com

Director-at-Large #2

Marcus Robinson

503-245-1204

mprscorp@comcast.net

National Representative

Carl Haessler

ssmith6154@aol.com

Washington Chess Federation

President

Geoff Gale

206-860-9963

geoffreygale@gmail.com

Vice President

Duane Polich

206-852-3096

dpolich@verizon.net

Secretary

Gary Dorfner

253-535-2536

ggarychess@aol.com

Treasurer

Robert J. Allen

253-761-1288

allenrobertj@msn.com

Tournament Coordinator

Dan Mathews

425-778-7482

dthmathews@hotmail.com

Scholastic Coordinator

David Hendricks

425-868-3881

davidhendricks@comcast.net

NW Chess Board Member

Murlin Varner

425-882-0102

MEVjr54@yahoo.com

Happy Holidays from the Editor

Hi, I've been sick much of January and all of February with a lingering case of bronchitis, but I'm almost back to full strength now. Since I'm so late with this issue, expect a 16-page April issue.

Yes, I still will need your input; so keep on writing those articles (Geoff Gale is going to do a bio of Ignacio Perez) and pictures coming!

Best Wishes,

Frederick K. Kleist

Thanks to R. Miller for working on the crosstables.
Thanks to C. Kleist for proofreading.



Editor's Desk

Northwest Chess Knights

Northwest Chess Knight donors will be listed in the magazine for a period of one year following receipt of donation. Please consider making a donation today to help Northwest Chess!

King: \$1000+

Queen: \$500-\$999

Rook: \$250-\$499

Bishop: \$100-\$249

Knight: \$50-\$99

Pawn: \$15-\$49

Current Patrons

King: Cynthia McBride, Kent McNall

Queen:

Rook: Nat Koons

Bishop: Ralph Hall, Russell Miller, Michael Omori, Boyd Schorzman

Knight: Robert Brewster, Steve Buck, Darby Monahan

Pawn: Mark James, Gene Milner

Contributions can be sent to the Northwest Chess Business Manager, and are greatly appreciated!

Lake Oswego Wins OR High School Team Championship

by Neil Dale

The 2007 championships are over now. This event took place on February 23 & 24 and Lake Oswego HS finished on top without a loss, clinching the title by defeating the host team, Portland Christian, in the last round. Three teams scored four out of five; tie breaks determined their final positions. Thus, last year's champion Wilson finished second, third place went to Sunset and Portland Christian ended up with the fourth place honors.

A total of 22 teams competed in the "A" division. This year, the Oregon High School Chess Team Association (the organization that runs the tournament) took a leaf from the athletic group and awarded trophies in various categories. Schools could choose to go for overall awards or category state championships. Portland Christian chose fourth overall in lieu of the 3A state title.

I am not sure if I like the new system, on the athletic side it is still being contested in the courts by some schools. On the plus side, the system can dispense far more championships than before, and this may encourage participation. Sherwood (three points) chose the state title and thus was crowned as the 5A state champ. Cottage Grove, also with three points, is the 4A state titleholder. Due to the host choosing fourth overall, Coquille became the 3A state champion with two points.

The B division, where the rules permit grades 6 through 12 to compete, had 23 teams entered, some of them middle schools. The team from Sunset High went undefeated through the five rounds, and thus clinched the state B title. Three teams scored four points, Lake Oswego, International School of Beaverton (a middle school) and Portland Christian #2. International chose the state Middle School title. Next in the standings with 3.5 points was Portland Christian MS.

Twenty players participated in the individual/alternates tournament. The top finisher with 4.5 points was Caleb Kesey of Pleasant Hill.

Northwest Chess

March 2007

OR High School Team Championship
page 3

Washington Championship and Premier
page 4

Tournament Ads
pages 7, 30, 31

Diva Caissa Classic
page 28

Correction
page 29

Northwest Chess Calendar
of Upcoming Events
back cover

On the Cover: NM Ignacio Perez at the WA Class
in November. Photo by Carol Kleist.

Scoring four points were Andy Li of Sunset and Kiet Le of Portland Christian.

Awards were also given for the top board performances in the A division. All board prize winners had perfect 5-0 scores. Some won on tiebreaks.

Board Five	Isaac Payne, Clackamas
Board Four	Richie Kasem, Lake Oswego Isaac Kim, Sunset
Board Three	Daniel Friesen, Sunset William Sercombe, Wilson
Board Two	Michael Riches, Sherwood
Board One	Corbin Yu, Lake Oswego Chris Griffin, Sherwood.

This certainly was the biggest (and maybe the best) High School Team State tournament. Many thanks to Portland Christian and Alan Svehaug, the chess coach and teacher, who provided the site, and to all the volunteers who helped in the organization of this tournament. Special recognition must go to Amy Coughlin who did all the computer work and thus helped bring this tournament into the twenty-first century. Ed Addis and Neil Dale shared the directing duties. ■

Ignacio Perez Wins WA Champ

Koons Second; Sinanan Tops Premier

In this year's edition of the Washington State Championship, a ten-player round-robin, NM Ignacio Perez parlayed his blitz-honed aggressive style into six victories and two draws. His seven points put him a point ahead of second-place finisher NM Nat Koons. Washington's newest and youngest Master, thirteen-year-old Michael Lee, placed third with 5.5 points.

The Premier, also a ten-player round-robin, had a different dynamic. Top-rated Joshua Sinanan dodged multiple bullets to emerge undefeated. His three wins and six draws were enough to capture first place. Tying for second-third a half-point back were Chris Kalina and Andy May. May has a number of good results since his poor showing in the GM Slugfest in October.

Replacement Players

Just a couple of days before the Championship and Premier were set to begin at the offices of Walsh Construction in Seattle, NM Harley Greninger, who found himself with too great a workload, withdrew from the Championship. The highest-rated player in the Premier, FM Paul Bartron, moved into his spot. WCF President Geoff Gale and Tournament Coordinator Dan Mathews began a frantic search for a tenth player to complete the Premier. On the day before the event, Bartron's fellow Tacoma CC member Allen Smith agreed to play.

The pairing order had been determined nearly two-and-a-half weeks before the event when lots had been drawn at the Seattle CC on Wednesday, January 24. This followed FM David Bragg's victory over NM Curt Collyer and Gale in the Challengers' Cup Playoff the previous weekend. Thus many players were well-prepared for their first weekend opponents. This was not the case for the replacement players, Bartron and Smith, who were also the lowest rated in their respective sections.

Nonetheless, both players shot out of the gates and into the early lead. Bartron scored wins over Lee, FM John Readey, and LM Viktors Pupols before falling to Bragg. His three points put Paul a half-point up on Lee and Perez, while Bragg, Collyer, and Koons sat on even scores. Meanwhile, top seeds Readey and FM Nick Raptis were able to score only a point-and-a-half each. Pupols and Michael MacGregor trailed at a point apiece, but had their second round game yet to play (Pupols had been called to work suddenly on Saturday).

Smith did even better in the Premier. He began with wins against May and Clint Ballard, a short draw with Kalina, and another win over Alex Guo. Despite the first round setback, successive wins over Elston Cloy, Gale, and Ballard vaulted May, a high-school sophomore from Vancouver, into sole possession of second place. Kalina and Sinanan occupied the third and fourth slots at 2.5 points. Cloy, Gale, and Guo stood on even 2-2 scores. Ballard and Ben Calpo had one point each; David Arganian had only one draw.

Intermezzo

On Monday night, MacGregor and Pupols played a long draw, as Unkel Vik was unable to checkmate with two Knights versus a pawn in the allotted time. The rest of the intervening week was devoted to speculation whether FM Raptis would withdraw.

Nick was quite unhappy and felt that everyone was gunning for him. NM Koons had taken a quick first-round draw against FM Bragg, but had prepared something special for Raptis. He felt that he should have won his first two games instead of drawing both. Then, in the third round, he was outplayed in a mainline KID by Michael Lee. Perhaps, Nick ruminated, he shouldn't waste his time and money on a second weekend.

Fumbling & Stumbling

Leader Paul Bartron fumbled the ball, scoring but two draws in rounds 5-8. Koons and Perez both ran away from the pack: Nat was three-for-three in rounds 5-7, while Ignacio scored 2.5. At the end of seven rounds, they stood on five points, a point-and-a-half ahead of Bartron, Collyer, Lee, and Pupols. In round eight, Koons faced his nemesis, FM Readey, and Perez faced the struggling Raptis (yes, Nick returned and pulled himself up to an even score before losing in the seventh round): result—Nat lost and Ignacio won. Meanwhile, Lee defeated Pupols to take sole possession of third at 4.5.

In the Premier, Smith stumbled as badly as Bartron, also scoring but two draws. Kalina and Sinanan continued their undefeated march, drawing two and winning two, to take a half-point lead over May, who was +1=2-1. Gale joined Smith at 4.5 despite a disheartening loss to Sinanan in round six.



THE CHESS HOUSE

Serving the chess community since 1972

**your chess sets
and equipment store**



www.ChessHouse.com

1-800-348-4749

The Final Round

The last round was played on Presidents' Day at the Seattle CC. Perez, Koons, and Lee all won, solidifying their one-two-three finish, and Raptis failed to appear. In the Premier, Sinanan and May drew quickly, leaving Kalina several hours to consider his options (the game against Calpo was to start four hours late, as Ben had been called to work). Chris suffered his only loss, thus sharing second-third with May.

Round One

English

FM David Bragg (2205)

NM Nat Koons (2280)

Seattle, WA Championship (1) 2007

1.e3 e5 2.c4 g6 3.♘c3 ♗g7 4.g3 ♘e7
5.♗g2 c5 6.♘ge2 ♘bc6 7.O-O 8.a3
d6 9.♖b1 a5 10.♘d5 ♘xd5 11. cxd5
♘e7 12.♘c3 ♗d7 Draw

English

FM Nick Raptis (2286)

NM Curt Collyer (2218)

Seattle, WA Championship (1) 2007

1.c4 ♘f6 2.♘c3 c5 3.♘f3 ♘c6 4.g3 d5
5.cxd5 ♘xd5 6.♗g2 ♘c7 7.O-O e5 8.a3
f6 9.d3 ♗e6 10.♗e3 ♗d7 11.♖c1 ♘d4
12.♘d2 ♗e7 13.♗xb7 ♖b8 14.♗g2
♖xb2 15.♖b1 ♖xb1 16.♗xb1 O-O 17.
♗b7 ♘cb5 18.♘xb5 ♗xb7 19.♗xb7
♘xb5 20.♖c1 ♖b8 21.♗f3 ♘xa3 22.
♘e4 c4 23.♗xa7 ♖c8 24.dxc4 ♘xc4
25.g4 ♗f8 26.♘g3 g6 Draw

Sicilian Dragon

FM Paul Bartron (2110)

NM Michael Lee (2202)

Seattle, WA Championship (1) 2007

Annotations by FM Paul Bartron

1.e4 c5 2.♘f3 d6 3.d4 cxd4 4.♘xd4 ♘f6
5.♘c3 g6 6.♗e2

I discovered in a game against Andy May that, for some reason, Black's queenside attack is faster than White's on the kingside in the Yugoslav Attack. Although I should have won the game, it scared me away from queenside castling.

6...♗g7 7.♗e3 O-O 8.O-O ♘c6 9.♗d2

I have tried 9.h3 to prevent ...♘g4, but it is too slow against Black's central play with ...d6-d5.

9...♘g4 10.♗xg4 ♗xg4 11.h3 ♗d7
12.♘ce2

I start preparing a queenside attack.

12...♖c8 13.♖ac1 ♘a5

Ouch! He sees me coming. I should have tried 13.b3, when, even though my intention is obvious, he cannot stop me.

14.b3 b5 15.♘c3

I must use tactics to rectify my positional error.

15...a6 16.♘d5 ♘c6 17.♘e2 ♖b8 18.c4

Finally, I have made my c2-c4 push.

18...♖e8 19.cxb5 axb5 20.♖c2 e6
21.♘df4 ♗e7 22.♖d1 ♖e8

Defending the d6-pawn tactically. I could see no way forward without exchanges.

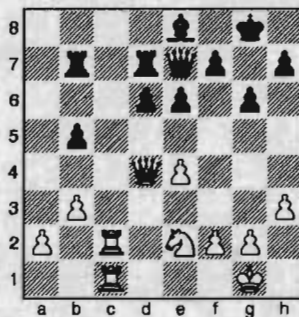
23.♘d4 ♘xd4 24.♗xd4 ♗xd4 25.♗xd4

The pawn fork 25...e5 is met by
26.♘d5.

25...♗e8 26.♖dc1 ♖b7 27.♘e2

I am trying to get the Knight to d4, but for some reason my Queen is spaced out and is uninclined to move.

27...♖dd7



28.a4?

My Queen has entered the 'Duh?' Zone. I should have played 28.♗b4. If he plays 28...d5, I swap Queens, play e4-e5, and then ♘d4.

28...bxa4 29.bxa4 d5

Now e4-e5 does not work. Knights hate open positions without outposts!

30.♖c5

To prevent 30...♖b4. Had I left the pawns on the board, my Knight would be better than his Bishop. However, I still thought I was winning; instead, I should be fighting for the draw.

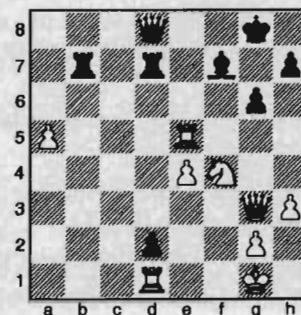
30...e5 31.♗d3 d4 32.f4 f6 33.fxe5 fxe5

It is now my Rook's turn to become a space cadet, as it obstinately refuses to vacate c1 for the Knight.

34.a5? ♗f7

I am in serious trouble; so an all-out counter is in order.

35.♗g3 d3 36.♖xe5 ♗d8 37.♘f4 d2
38.♖d1



38...♖dc7

I have two options: one seems to force perpetual check on his part, whereas the other seems to force perpetual check on my part. I am an Exchange down in the latter, a piece in the former. But my opponent thinks he is winning; so he fumbles the ball.

39.♗e3

The other move here was 39.♘e2 ♗b3 40.♖d5 ♖d7 41.♖1xd2 ♗xd5 42.exd5 ♖xd5 43.♖xd5 ♗xd5 44.a6.

39...♖c1 40.♖xc1 dxc1=♗+ 41.♗xc1 ♗d4+ 42.♗h1 ♖b3

Huh? He must have missed my next move.

43.♘e6 ♗xe6 44.♖xe6 ♖d3 45.♗f4 ♖d1+ 46.♗h2 ♗g1+ 47.♗g3 ♖d3+ 48.♗h4

Now what?

48...♗c5

Trying to win are we? There is a punishment for that sort of thing, you know!

49.♖e8+ ♗g7 50.♗e5+

Off with her head, as they say in *Alice in Wonderland*.

50...♗xe5 51.♖xe5 ♗f6 52.♖b5

Oops! 52...♖d4 would win a pawn for Black, but the ending is still lost.

52...♖a3 53.♗g4 ♖a2 54.g3 h5+

55.  f4  f2+ 56.  e3  g2 57.  f3  a2
58. h4  a1 59.  b6+  e5 60.  xg6
 a3+ 61.  e2  xe4 62. a6  a2+ 63.
 d1  f3 64.  c1  e4 65.  b1  a4
66. g4

There are tactics even in the ending!

66...  d3 67. gxh5  xh4 68.  d6+  c3
69.  c6+  b3 70.  b6+

Endings are a game of knowledge rather than skill. I am sure that Michael had no idea how to defend or what the object of all the checks was until now.

70...  c3 71. a7  a4 72.  b7  a6 73. h6 1-0

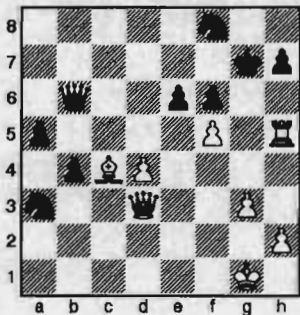
Catalan

FM John Readey (2336)

LM Viktors Pupols (2237)

Seattle, WA Championship (1) 2007

1.  f3 d5 2. d4 e6 3. c4  f6 4. g3  e7
5.  g2 O-O 6. O-O dxc4 7.  c2 a6 8.
 xc4 b5 9.  c2  b7 10.  d2  bd7
11.  a5  c8 12.  bd2  e8 13. b4  d5
14.  b3 f5 15.  fd2  h5 16. e3  f6
17.  d1  f7 18.  c1  h6 19. e4  xb4
20.  xc7  xc7 21.  xc7 fxe4 22.  xe4
 d5 23.  a5 b4 24.  e2  e8 25.  c1
 f8 26. f4  a4 27.  c7  c6 28.  d2
 e8 29.  d6  xd6 30.  xd6  c3 31.
 xe8  xe8 32.  c5  h5 33.  f1  d5
34. a3 a5 35.  e1  f6 36.  e5  d6
37.  c4  b1 38.  d3  xa3 39.  e4
 b6 40.  xf6+ gxf6 41.  h5  g7 42. f5



42...  xc4 43.  xc4 b3 44. fxe6 b2
45.  b5 b1= + 46.  xb1  xb1+ 47.
 f2  b2+ 48.  f1  b1+ 49.  f2  f5+
50.  g2  xe6 51.  c7+  d7 52.  xa5
 e4+ 53.  f1  xd4 0-1

Ruy Lopez Chigorin

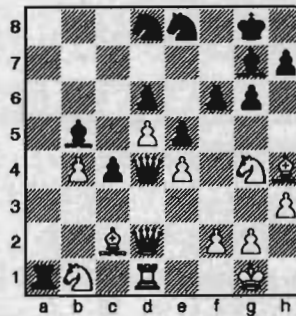
NM Ignacio Perez (2239)

Michael MacGregor (2175)

Seattle, WA Championship (1) 2007

1. e4 e5 2.  f3  c6 3.  b5 a6 4.  a4  f6
5. O-O  e7 6.  e1 b5 7.  b3 O-O 8. h3

d6 9. c3  a5 10.  c2 c5 11. d4  c7
12.  bd2  e6 13. d5  d7 14. b3  b7
15.  f1 a5 16. a4 c4 17. b4  fb8 18.  g3
 d8 19. axb5 axb4 20.  xa8  xa8
21. cxb4  xb5 22.  f5  f8 23.  g5  e8
24.  d2 f6 25.  h4 g6 26.  e3  h6
27.  b1  a1 28.  g4  g7 29.  d2  a7
30.  d1  d4



31.  c3  xb1 32.  xd4 exd4 33.  xb1
h5 34.  h2 g5 35.  f3 d3 36.  g3 f5
37. exf5 c3 38.  xd3  xd3 39.  xd3  f7
40. b5 g4 41. hxg4 hxg4 42. b6  d8 43.
 g5  d4 44.  e4  xb6 45.  xd6  xd6
46.  xd6  f7 47.  f4  g7 48.  f1  f6
49.  e2  e5 50.  e3  d7 51. d6  e5
52.  b5  c5 53. d7  d6 54. f6  xd7
55.  xd7  xe3 56. fxe3  xd7 57. e4 1-0

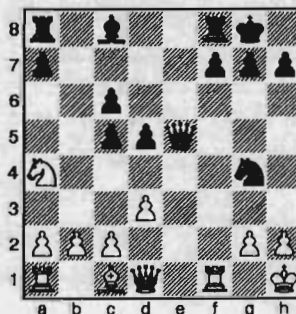
Sicilian Grand Prix Attack

Andy May (2019)

Allen Smith (1816)

Seattle, WA Premier (1) 2007

1. e4 c5 2.  c3 e6 3. f4 d5 4. exd5 exd5
5.  b5+  c6 6.  f3  f6 7.  xc6+ bxc6
8.  e5  c7 9. O-O  d6 10. d3 O-O 11.
 a4  xe5 12. fxe5  xe5 13.  h1  g4



14.  f4  d4 15.  f3  xa4 16.  d6
 e6 17.  xf8  xf8 18. h3  f6 19.  g3
 h5 20.  g5 g6 21. b3  d4 22.  ae1
h6 23.  xh6  g3+ 24.  h2  xf1+ 25.
 xf1  e5+ 26.  h1  e8 27.  h4  f5
28. g4  e2 29.  f2  d1+ 30.  g2  e6
31.  f6 d4 32.  g3  d5 33.  h4  e1
34.  g5  e5+ 35.  xe5  xe5+ 36.  f6
 e6+ 37.  g5  g7 38. h4  e3 39. a4

 f3 40.  xf3  xf3 41.  f4  d1 42.
 e5  xc2 43.  d6  xb3 44.  xc5
 xa4 45.  xd4  b5 46.  c5 a5 47. d4
a4 48.  b4 f5 0-1

Veresov

Elston Cloy (1959)

Geoffrey Gale (1964)

Seattle, WA Premier (1) 2007

1. d4  f6 2.  c3 d5 3.  g5  bd7 4.  f3
c6 5. e3 b5 6.  d3 g6 7. O-O  g7 8. a4
b4 9.  e2 O-O 10. a5 c5 11. c3 bxc3
12. bxc3 h6 13.  h4  e4 14.  xe4 dxe4
15.  d2 f5 16.  f4 g5 17.  e6  e8
18.  xf8  xf8 19.  g3  g6 20. f3 cxd4
21. cxd4 exf3 22.  xf3  a6 23.  fc1 f4
24.  f2 e5 25.  d5+  h8 26.  e4 fxe3
27.  xe3  f4 28.  xf4 exf4 29.  e1
 b8 30.  xg5  g6 31.  f7+  h7 32.
 e5  f6 33.  e4+  g8 34.  ab1  f8
35.  ec1  c8 36.  c6  g5 37.  f3
 xa5 38.  xc8 1-0

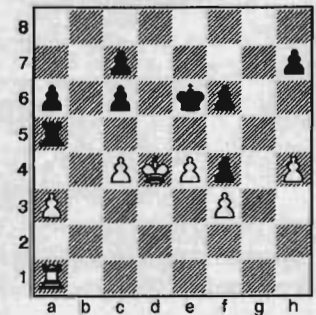
QGD Chigorin

Chris Kalina (1954)

David Arganian (2020)

Seattle, WA Premier (1) 2007

1. d4 d5 2. c4  c6 3.  f4  f6 4. e3 dxc4
5.  xc4 e5 6. dxe5  xd1+ 7.  xd1  g4
8.  e2  gx5 9.  b5  d6 10.  c3 a6
11.  xe5  xe5 12.  d3  g4+ 13.  f3
O-O-O 14. h3  f3+ 15. gxf3  he8 16.
 f5+  b8 17.  hd1 g6 18.  c2  c8
19.  b3 f6 20.  f7  e7 21.  d5  xc3
22. bxc3  d6 23.  d2  e5 24.  ad1
 h5 25.  xc6  xd2+ 26.  xd2 bxc6
27.  h1  a5 28.  a1  h5 29.  h1  d7
30.  d3  d6 31.  c4  e6 32. a3  f5
33. f4  h5 34.  d4  d5+ 35.  c4  h5
36.  d4  d6 37. c4  e6 38.  e4  h4
39.  d4 g5 40. f3 gxf4 41. e4  h5 42. h4
 a5 43.  a1



43... f5 44. a4 fxe4 45.  xe4  h5 46.
 h1  d6 47.  xf4  c5 48.  g4  h6
49.  c1  b4 50. f4  f6 51. f5  xa4 52.
 g5  f7 53.  b1 a5 54. f6  d7 55.  f5

"The Biggest Little Chess Tournament in the World"
RENO - FAR WEST OPEN VII

A WEIKEL TOURNAMENT
 HOSTED BY THE SANDS REGENCY CASINO HOTEL

APRIL 6-8, 2007
 EASTER WEEKEND

\$25,000 Based on 275 ♦ \$16,000 Guaranteed
 40/2, 20/1, G/1/2 ♦ F.I.D.E. ♦ 150 GP Points (Enhanced)
 6 Round Swiss ♦ 7 Sections
 Entry: **\$116** and below! ♦ Rooms: **\$27/\$54!**

Plus! Thursday 4/5 Free Lecture by GM Larry Evans, GM Sergey Kudrin Simul (with Analysis!), and Blitz (5 Min./U2200) Tournament, Saturday 4/7 GM Larry Evans Clinic/Game Analysis, Sunday 4/8 Quick Tournament 5 Rd. (G/25)

FOR MORE INFORMATION:
 Far West Website
www.renochess.org/fwo
 Chess Life TLA
 February 2007 Issue

To enter by e-mail or telephone:
Organizer & Chief TD
N.T.D. Jerome V. (Jerry) Weikel
wackyyki@aol.com - (775)747-1405
For room reservations
call the Sands Regency:
1-866-FUN STAY, Code CHE 405.

IMPORTANT! IF YOU HAVE QUESTIONS OR ARE UNSURE OF ANY INFORMATION, CALL, WRITE, E-MAIL OR VISIT THE WEBSITE FOR COMPLETE DETAILS BEFORE ENTERING.

ENTRY FORM - Far West Open VII Chess Tournament - Reno, Nevada - April 6-7-8, 2007

Mail to: Sands Regency Casino Hotel - 345 N. Arlington Avenue - Reno NV 89501

PRINT Name _____ Daytime Phone _____ USCF/FIDE Rating _____
 Street Address _____ City _____ State _____ Zip _____

USCF I.D. Number _____ Exp. Date _____ **All pre-registered players please check in at tournament desk on arrival.**

ENTRY FEE ENCLOSED: (CIRCLE SECTION AND FEE BELOW) **BYE(S) REQUESTED FOR ROUND(S): (CIRCLE) 1 2 3 4 5 6**

	----- OPEN SECTION -----	"Expert"	"A"	"B"	"C"	"D"	"E/Under"	UNRATED		
GM/IM	2200-Up	2000-2199	1999-Below	2000-2199	1800-1999	1600-1799	1400-1599	1200-1399	1199-Below	Free With
Free	\$116	\$151	\$201	\$115	\$114	\$113	\$112	\$111	\$60	USCF Dues

- FEES ALSO ENCLOSED FOR:**
- Hotel Deposit \$30.65* (Weekday) or
 - Hotel Deposit \$61.29* (Friday)
 - \$20 Thursday GM Evans Simul
 - \$20 Thursday Blitz (5 Min./U2200)
 - \$20 Sunday Quick (5 Rd. - G/25)
 - \$49 USCF Dues (Adult)
 - \$25 USCF Dues (Junior)
 - (\$10) Jr./Sr. Discount Taken Age _____

- HOTEL INFORMATION:**
- No Room Needed
 - Made By Phone
 - Please Make Me a Reservation*
 Arrival Date _____
 Departure Date _____
 - One Bed Two Beds S NS
- *Send \$30.65 for weekday arrival, \$61.29 for Friday arrival.

ENTER BY MAIL BEFORE MARCH 15 AND SAVE!
 Add \$11 after March 15, \$22 on-site. Do not mail after March 31. Make check/m.o. payable to THE SANDS REGENCY or provide credit card information and signature. \$5 service charge on credit card entries.

Visa Master Card Am. Exp. CHECK ENCLOSED
 CHARGE MY CARD
 Card Number AND Expiration Date _____
 Signature _____

TOTAL FEES: \$

♖d2 56. ♗f7 ♖f2+ 57. ♜e6 h5 58. ♜b8 c5
59. ♜e7 1-0

Bird's Opening

Clint Ballard (1913)
Joshua Sinanan (2088)

Seattle, WA Premier (1) 2007

1. f4 ♘f6 2. ♘f3 d5 3. g3 ♙f5 4. d3 e6
5. ♙g2 ♙e7 6. O-O h6 7. ♖e1 O-O 8. h3
♙h7 9. ♘bd2 ♘bd7 10. b3 a5 11. a4 c6
12. ♜h2 ♖c7 13. e4 dxe4 14. ♘xe4 ♘xe4
15. dxe4 ♘c5 16. ♘e5 ♙f6 17. ♙b2
♖fd8 18. ♖e3 ♘d7 19. ♘c4 ♙xb2
20. ♘xb2 e5 21. f5 f6 22. ♖fd1 ♖b6
23. ♖e2 ♘c5 24. ♘c4 ♖c7 25. ♖d2 ♜h8
26. ♖ad1 ♙g8 27. ♙f3 ♙xc4 28. ♖xc4
b6 29. ♖c3 ♘b7 30. ♖xd8+ ♖xd8
31. ♖xd8+ ♘xd8 32. ♜g2 ♘b7 33. ♜f2
♘c5 34. ♜e3 ♖f7 35. ♙e2 g6 36. ♖d2
gxf5 37. ♖d8+ ♜h7 38. exf5 ♖g7 39. ♜f3
♖d7 40. ♖xd7+ ♘xd7 41. ♜e3 ♜g7
42. ♙f3 ♘b8 43. ♙e4 ♜f7 44. ♜f3 c5
45. ♙d5+ ♜f8 46. ♜e4 ♘a6 47. ♙c4
♘c7 48. ♙e2 ♜e7 49. ♙h5 ♜d6 50. ♙f7
♜e7 51. ♙g8 ♘e8 52. ♜f3 ♘d6 53. ♙e6
♜f8 54. ♜e3 ♜g7 55. ♜d3 h5 56. h4
♜h6 57. ♜e3 Draw

English

Alex Guo (1922)
Benjamin Calpo (2008)

Seattle, WA Premier (1) 2007

Annotations by Alex Guo

1. c4 ♘f6 2. ♘c3 e5 3. ♘f3 ♘c6 4. g3 ♙b4
5. ♙g2 O-O 6. O-O d6 7. ♘d5

This move may have been premature. However, I was aiming at having a piece or pawn in the center on d5.

7... ♘d5 8. cxd5 ♘e7 9. ♘e1 c6 10. ♘c2
♙c5 11. e4 cxd5 12. exd5 f5 13. d4 ♙b6
14. dxe5 dxe5 15. d6

A mistake. This move relinquishes control over e6 and c6 and forces the e7-Knight over to a good square.

15... ♘c6 16. ♖d5+ ♜h8 17. b3

To bring the Bishop out either to b2 or a3.

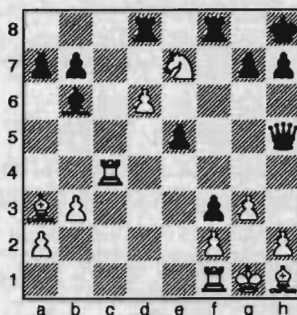
17... ♖e8 18. ♙a3 ♙d7 19. ♖ad1 ♖g6
20. ♘b4 ♖ae8 21. ♖c4??

This move was the worst move of the game. Now I will have to endure the pain and suffering of a humongous kingside attack. Note how the c6-Knight eventually gives Calpo the advantage.

21... f4 22. ♘d5 f3

The move I missed when I played 21. ♖c4. Now material loss for White is guaranteed.

23. ♙h1 ♘d4 24. ♖d2 ♙b5 25. ♘e7 ♖h5
26. ♖xd4 ♙xc4 27. ♖xc4 ♖d8



OK, looks like I'm down a Queen for a Knight and Bishop.

28. ♖h4

A must in order for White to develop his Rook on f1. If 28. ♖fc1, then 28... ♙xf2+ 29. ♜xf2 ♖xh2+ and White is dead.

28... ♖f7 29. ♖e1 ♙d4 30. ♖c1 ♖e6
31. ♖c7 ♖xd6 32. ♙xf3 g5

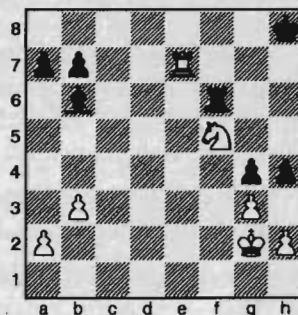
This move gives rise to complications which may even give me winning chances. Simple was 32... ♖xf3 33. ♖c8+ ♖xc8 34. ♘xc8 with Black easily winning the ending.

33. ♙g4 ♖f6 34.
♘f5 gxf4 35. ♙xd6
♙xf2+

The mistake which costs Calpo his win. If he really wants to move his Bishop —although it is not necessary—he should retreat it to b6 with tempo.

36. ♜g2 ♙b6 37.

♖e7 h5 38. ♙xe5 hxg4 39. ♙xf6+ ♖xf6



40. ♖e5

The right move to secure at least a draw. If 40. ♘h4, then 40... ♖f2+ 41. ♜h1 ♖f1+ 42. ♜g2 ♖g1 mate.

40... h3+ 41. ♜f1 ♖c6 42. ♘e3 ♖c1+
43. ♜e2 ♙xe3 44. ♜xe3 ♖h1 45. ♜f4
♖xh2 46. ♜xg4 ♖h1

The final mistake of the series of mistakes by Calpo which turned his game from winning, to barely winning, to losing. Now White wins the h-pawn and White converted the advantage into a win.

47. ♖h5+ ♜g7 48. ♖xh3 ♖a1 49. ♖h2
♜g6 50. ♖d2 ♜f6 51. ♖f2+ ♜g6
52. ♖d2 ♜f6 53. ♜f4 ♖f1+ 54. ♜e4 ♜e6
55. g4 ♖e1+ 56. ♜f4 ♖g1 57. ♜g5 a6
58. ♖e2+ ♜f7 59. ♖c2 ♜e6 60. ♖c7
♖g2 61. ♖xb7 ♖xa2 62. ♜g6 ♖g2 63. g5
♖g3 64. ♖b6+ ♜e7 65. ♜h6 a5 66. g6
♖h3+ 67. ♜g7 ♖c3 68. ♖b5 ♖g3 69.
♖xa5 ♖xb3 70. ♖e5+ ♜d7 71. ♖e1 ♖h3
72. ♜f7 ♖f3+ 73. ♜g8 ♜d6 74. g7 ♖h3
75. ♖e4 ♖h1 76. ♜f7 1-0

Round Two

Catalan

FM John Readey (2336, 0.0)
FM Paul Bartron (2110, 1.0)

Seattle, WA Championship (2) 2007

1. ♘f3 ♘f6 2. c4 e6 3. g3 d5 4. d4 c6
5. ♙g2 ♘bd7 6. ♖c2 ♙e7 7. O-O O-O
8. b3 b6 9. ♖d1 ♘e4 10. ♘bd2 ♘xd2
11. ♘xd2 ♙b7 12. e4 ♖c8 13. ♙b2 ♖c7
14. ♖ac1 ♖b8 15. ♖b1 h6 16. ♘f1 ♖fd8
17. ♘e3 dxe4 18. ♙xe4 ♘f6 19. ♙g2
♖d7 20. ♖e1 ♖cd8 21. ♖a1 ♖a8 22.
♙h3 ♖c7 23. ♖e2 ♘e8 24. ♙g2 ♖cd7
25. ♖ce1 ♙f6 26. ♖d1 c5 27. ♙xb7
♖xb7 28. d5 ♙xb2 29. ♖xb2 ♘c7 30.
♖bd2 exd5 31. cxd5 ♘xd5 32. ♘f5 f6 33.
♖c1 ♘b4 34. a3 ♘c6 35. f4 ♖xd2 36.
♖xd2 ♖xd2 37. ♖xd2 ♖f7 38. ♖d6 ♘d4
39. ♘d4 cxd4 40. ♖xd4 ♖xb3 41. a4 a6

Carl A. Haessler
Lessons • Lectures • Exhibitions

USCF Life Master
3-Time Oregon Champion

(503) 358-7871
ssmith6154@aol.com

42. ♖e4 ♖d1+ 43. ♘g2 ♖d2+ 44. ♘g1 ♖c1+ 45. ♘g2 ♖c8 46. ♖d5+ ♘h8 47. ♖e4 b5 48. axb5 axb5 49. f5 ♘h7 50. h4 ♖c4 51. ♖xc4 bxc4 52. ♘f3 g6 53. ♘e3 h5 54. ♘d4 gxf5 55. ♘xc4 ♘g6 56. ♘d4 f4 57. gxf4 ♘f5 58. ♘e3 ♘g4 0-1

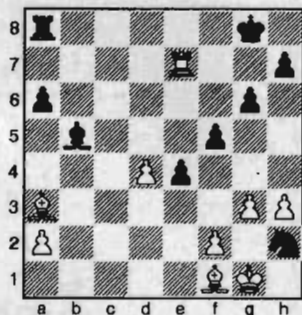
Anglo-Dutch

NM Michael Lee (2202, 0.0)

FM David Bragg (2205, 0.5)

Seattle, WA Championship (2) 2007

1. c4 f5 2. ♖c3 ♖f6 3. g3 g6 4. ♘g2 ♘g7 5. ♖f3 O-O 6. O-O c5 7. d4 cxd4 8. ♖xd4 ♖c6 9. e3 a6 10. b3 e5 11. ♖xc6 dxc6 12. ♘a3 ♖xd1 13. ♖axd1 ♖e8 14. ♖d2 e4 15. ♖fd1 b5 16. ♖e2 bxc4 17. bxc4 ♘e6 18. ♖d4 ♘xc4 19. ♖xc6 ♘b5 20. ♖d4 ♘a4 21. ♖c1 ♖ed8 22. ♘f1 ♖g4 23. ♖c7 ♘e5 24. ♖e7 ♘b5 25. h3 ♘xd4 26. ♖xd4 ♖xd4 27. exd4 ♖h2



28. ♘h2 ♘xf1 29. d5 ♖d8 30. d6 ♘b5 31. g4 ♖d7 32. ♖e5 fxg4 33. hxg4 ♘c4 34. ♖xe4 ♘xa2 35. ♖a4 ♘e6 36. ♘g3 ♖a7 37. ♘c5 ♖a8 38. ♘b6 ♘d7 39. ♖a3 ♘b5 40. ♖b3 ♘d7 41. ♖a3 ♘f7 42. f4 ♖c8 43. ♘c7 ♖a8 44. ♖a5 ♖e8 45. ♖xa6 h5 46. gxh5 gxh5 47. ♖a5 ♖g8+ 48. ♘f2 h4 49. ♖e5 ♘f6 50. ♖h5 h3 Draw

French Advance

NM Nat Koons (2280, 0.5)

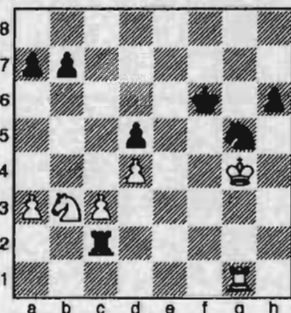
FM Nick Raptis (2286, 0.5)

Seattle, WA Championship (2) 2007

Annotations by NM Nat Koons

1. e4 e6 2. d4 d5 3. e5 c5 4. c3 ♖c6 5. ♖f3 ♖b6 6. a3 c4 7. ♖bd2 ♖a5 8. ♘e2 ♘d7 9. O-O ♖e7 10. ♖b1 ♖g6 11. g3 ♘e7 12. h4 h6 13. ♖c2 ♖c8 14. ♖h2 ♖b3 15. ♖xb3 ♘a4 16. ♘e3 ♖f8 17. h5 cxb3 18. ♖d2 ♘b5 19. f4 g6 20. hxg6 fxg6 21. g4 ♘d7 22. f5 ♘xe2 23. ♖xe2 exf5 24. e6+ ♖xe6 25. gxf5 ♖g7 26. fxg6 ♖xg6+ 27. ♖g4+ ♖xg4+ 28. ♖xg4 ♖cg8 29. ♖e5+ ♘e6 30. ♘h2 ♖f5 31. ♘f4 ♘h4 32. ♖f3 ♘g3+ 33. ♘xg3 ♖xg3 34.

♖be1+ ♖e4 35. ♖g1 ♖xg1 36. ♖xg1 ♖f8 37. ♖e5 ♖f2+ 38. ♘h3 ♖g5+ 39. ♘g4 ♖xb2 40. ♖d3 ♖c2 41. ♖c5+ ♘f6 42. ♖xb3



After an interesting middle game and time scramble, the position is clearly winning for Black. The question he faces is, what's the easiest way? The first impulse is, of course, 42... ♖xc3. This move allows the White Knight some temporary activity—43. ♖c5 b6 47. ♖d7+ ♘e6 48. ♖e5 ♖xa3—which doesn't really lead anywhere. Nick, ever the maximalist, decides to first dominate White's pieces.

42...b6 43. ♖c1!?

Presenting Black with another interesting question. The Knight-and-pawn ending must be a win, but may be rather tricky. Perhaps the very fact that White apparently wishes to enter this ending also plays a role—perhaps it is a draw?! And so, Black avoids 43... ♖xc1, and the White c-pawn improbably stays alive. Meanwhile, 43... ♖xc1 44. ♖xc1 ♖e4 45. ♖e2 h5+ 46. ♘h5 ♘f5 47. ♘h4 ♖d6 and ... ♘e4-d3 followed by ... ♖e4 or ... ♖b5 looks decisive.

43... ♖a2 44. ♖f1+ ♘g6 45. ♖c1!

White is still quite lost, however his Knight is attaining a certain activity. If 45... ♖xa3 46. ♖e2, threatening ♖f4+xd5. Or 45... ♖c2, 46. ♖d3-e5+. Neither line looks quite easy enough though.

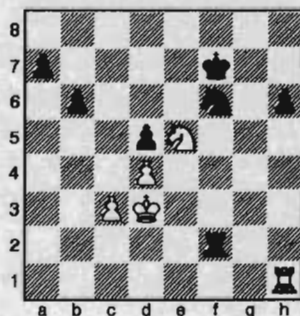
45... ♖a1 46. ♘f4 ♘f6 47. ♘e3+ ♘e7 48. ♘d3!

The White King has made it back, rather unexpectedly! The White pieces are pinned down, but the Black Rook is awkwardly placed as well.

48... ♖e4 49. a4 ♖xa4 50. ♖e2 ♖a2 51. ♖f4!

It's important to prepare ♖h1, and not play it right away.

51... ♖f6 52. ♖h1 ♖f2 53. ♖g6+ ♘f7 54. ♖e5+!



The Knight has arrived at its dream square!

54... ♘g7 55. ♖g1+ ♘h7 56. ♖a1 a5 57. ♖b1!

Obvious, but pleasing. Drawing this game, from such a position as the one at move 42, felt as good as winning!

57... a4 58. ♖xb6 a3 59. ♖b7+ ♘g8 60. ♖a7 a2 61. c4 dxc4+ 62. ♘xc4 ♖c2+ 63. ♘b3 ♖d2 64. ♖xa2 ♖xd4 65. ♖a8+ ♘g7 66. ♖a7+ Draw

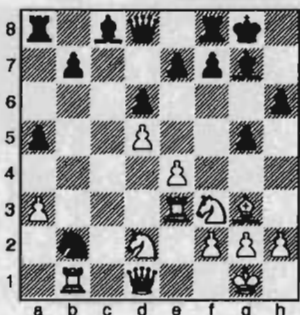
Torre Attack

NM Curt Collyer (2218, 0.5)

NM Ignacio Perez (2239, 1.0)

Seattle, WA Championship (2) 2007

1. d4 ♖f6 2. ♖f3 g6 3. ♘g5 ♘g7 4. ♖bd2 O-O 5. e4 c5 6. c3 cxd4 7. cxd4 d6 8. ♘d3 h6 9. ♘h4 ♖c6 10. d5 ♖b4 11. ♘e2 a5 12. O-O ♖h5 13. a3 ♖a6 14. ♖b1 ♖c5 15. ♖e1 ♖f4 16. ♘f1 g5 17. ♘g3 ♖cd3 18. ♘xd3 ♖xd3 19. ♖e3 ♖xb2



20. ♖b3 a4 21. ♖b4 f5 22. exf5 ♖c7 23. ♖d4 ♖c5 24. ♖xc5 dxc5 25. ♖e6 ♘xe6 26. fxe6 ♖f5 27. d6 exd6 28. ♖e4 ♖c4 29. ♖xd6 ♖xd6 30. ♘xd6 ♖d5 31. ♘g3 c4 32. h3 b5 33. e7 ♖e8 34. ♖e6 c3 35. ♖c1 ♘f7 36. ♖c6 ♖xe7 37. ♘d6 ♖e6 38. ♖c7+ ♘g6 39. ♘b4 ♘e5 40. ♖c8 ♖d3 41. g3 ♘d4 42. ♘xc3 ♖xg3+ 43. ♘f1 ♖xc3 44. ♖1xc3 ♘xc3 45. ♖xc3 ♖e4 46. ♖c6+ ♘h5 47. ♖b6 ♖e5 48.

2007 Washington State Championship

Name & USCF/FIDE	Rtg	1	2	3	4	5	6	7	8	9	10	T	Post
1 Perez, Ignacio	2239 2135		1	0	0.5	0.5	1	1	1	1	1	7.0	2272
2 Koons, Nat	2280 2280	0		1	1	0.5	0	1	1	1	0.5	6.0	2291
3 Lee, Micheal	2202 2176	1	0		0	0.5	1	0	1	1	1	5.5	2221
4 Collyer, Curt	2218 2178	0.5	0	1		0.5	0.5	0.5	0	1	0.5	4.5	2216
5 Bragg, David	2205 2255	0.5	0.5	0.5	0.5		0	1	1	0	0	4.0	2208
6 Readey, John	2336 2299	0	1	0	0.5	1		0	1	0	0.5	4.0	2309
7 Bartron, Paul	2110 2234	0	0	1	0.5	0	1		0	1	0.5	4.0	2126
8 MacGregor, Michael	2175 2247	0	0	0	1	0	0	1		0.5	1	3.5	2163
9 Pupols, Viktors	2237 2185	0	0	0	0	1	1	0	0.5		1	3.5	2222
10 Raptis, Nick	2286 2328	0	0.5	0	0.5	1	0.5	0.5	0F	0		3.0	2264

♖g2 ♖c5 49. ♗h2 ♖c2 50. ♖g2 ♖b2
 51. ♖g3 ♖b3+ 52. ♖g2 ♖xa3 53. ♖xb5
 ♖b3 54. ♖a5 ♖b4 55. ♖g3 ♖g6
 56. ♖a6+ ♖g7 57. ♖a7+ ♖f8 58. ♖a6h5
 59. ♖a7 g4 60. h4 ♖e8 61. ♖a5 ♖d7
 62. ♖xh5 ♖c6 63. ♖a5 ♖b6 64. ♖a8
 ♖b7 65. ♖a5 Draw

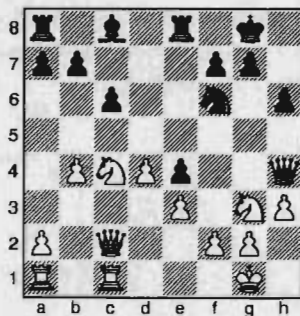
QGD Exchange

Pupols Viktors - MacGregor Michael
Seattle, WA Championship (2) 2007

Annotations by LM Viktors Pupols
 1. c4 ♖f6 2. ♖c3 c6 3. d4 d5 4. ♖f3 e6
 5. cxd5 exd5 6. ♖g5 ♖e7 7. ♖c2 0-0 8. e3
 ♖bd7 9. ♖d3 ♖e8 10. 0-0 h6 11. ♖h4
 ♖e4 12. ♖xe7 ♖xe7 13. ♖xe4 dxe4
 14. ♖d2 ♖f6 15. ♖fc1

After a reasonable opening, the most
 common White continuation is 15. ♖ae1,
 intending f2-f3 and later e3-e4. It is not
 my style to break up a pawn structure
 like that. 15. ♖fc1 is intended to free the
 f1-square for a Knight. Black has some
 kingside play and the Knight will protect
 against mate.

15... ♖e6 16. b4 ♖f5 17. ♖c4 ♖g5 18.
 ♖e2 ♖h4 19. ♖g3 ♖g4 20. h3 ♖f6



21. ♖f1

White would like to play 21. ♖d6, but
 both players eyed the line 21... ♖xh3 22.
 ♖xe8 ♖xe8 23. gxf3 ♖xf3, when Black
 is a full Rook down. But if Black is on
 move, he wins: 24... ♖g4 threatens not
 only a Rook lift, but 25... ♖h2! (Mac-
 Gregor). However, it is White on move.
 Although e5 and d6 are not accessible to
 the White Queen, 24. ♖c5 ♖g4 25. ♖h5
 is! If Black takes a move to prevent this
 with 24... g6, there is no longer a Rook
 lift and 25. ♖f1 holds the mate.

21... ♖d5 22. a3 ♖e6 23. ♖g1 b5 24. ♖e5
 ♖xe3 25. ♖xe4 ♖xe4 26. ♖xe4 ♖f5
 27. ♖xc6 ♖xd4 28. ♖xe6 ♖xe6 29. ♖c5
 ♖c2

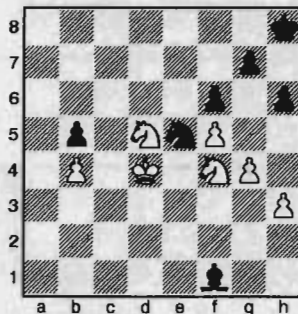
Black goes for the win of a pawn. If
 30. ♖xe6 is allowed, White is first to at-
 tack pawns.

30. ♖c1 ♖f5 31. g4 ♖h7 32. f4 ♖xa3
 33. f5 f6 34. ♖c6 ♖h8 35. ♖a1 ♖c4
 36. ♖xa7 ♖xa7 37. ♖xa7 ♖d6 38. ♖c6
 ♖g8 39. ♖f2 ♖c4 40. ♖e7

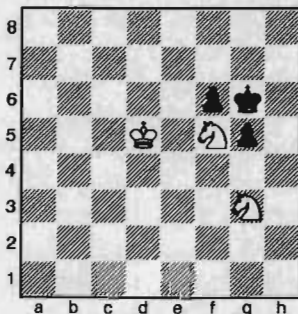
White boxes Black's King!

40... ♖a2 41. ♖e3 ♖c4 42. ♖d3 ♖f7
 43. ♖f4 ♖e5 44. ♖d4 ♖f1 45. ♖ed5!

Intending ♖e3 and forcing Black's
 Bishop to an unfavorable square. 45.
 ♖c5 would be met by 45... ♖d3+.



45... ♖c4 46. ♖e3 ♖f7 47. ♖c5 ♖e8
 48. ♖ed5 ♖g8 49. ♖c7 ♖d7 50. ♖xb5 h5
 51. ♖d6 hxg4 52. hxg4 ♖xg4 53. b5
 ♖xb5 54. ♖xb5 ♖e3 55. ♖c5 ♖xf5
 56. ♖xf5 g5 57. ♖h5 ♖f7 58. ♖d5 ♖g6
 59. ♖hg3



Most GMs go a lifetime without hav-
 ing this endgame. Fine's *Basic Chess*
Endings quotes GM Lilienthal as draw-
 ing it. The research was done by prob-
 lemists, who established a jagged line
 across the board. If the defending side's
 pawns cannot cross it, the Knights win.

59... ♖f7 60. ♖d6
 ♖e8 61. ♖e6 ♖d8

62. ♖h6 ♖c7 63. ♖g4 ♖c6 64. ♖f5 ♖c5
 65. ♖xf6 ♖d5 66. ♖fe3+ ♖e4 67. ♖e6
 ♖f4 68. ♖d5 ♖f3 69. ♖e5 ♖g3 70. ♖e4
 ♖h4 71. ♖f5 ♖g3 72. ♖f1+ ♖f3 73.
 ♖fh2+ ♖e2 74. ♖e4 ♖d2 75. ♖d4 ♖c2
 76. ♖f3 ♖b3 77. ♖fe5 ♖b4 78. ♖d3+
 ♖b3 79. ♖c5 ♖c3 80. ♖df2 ♖b3 81. ♖e4
 ♖a4 82. ♖d2 ♖a5 83. ♖b3+ ♖a4
 84. ♖c4 ♖a3 85. ♖c5 ♖b2 86. ♖d4 ♖a3
 87. ♖c3 ♖a2 88. ♖d3 ♖a3 89. ♖b2 ♖a2
 90. ♖c4 ♖b1 91. ♖d2

The game was drawn in this position
 when White ran out of time. The younger
 Unkel Vik would have won this position,
 not because he was younger—the time
 controls were different then! The logical
 sequence is 91... ♖a1! 92. ♖c1! ♖a2
 93. ♖c2! ♖a1 94. ♖d2 ♖a2 95. ♖b1
 ♖a1 96. ♖f2 g4 97. ♖c3 g3 98. ♖fe4 g2
 99. ♖d2 g1=♖ 100. ♖b3 mate. P.S. We
 all study to improve. What's the use?

Here's my favorite game of the tour-
 ney so far (after four rounds).—A. Smith

French Rubenstein

Allen Smith (1816, 1.0)
Clint Ballard (1913, 0.5)
Seattle, WA Premier (2) 2007

Annotations by Allen Smith
 1. e4 e6 2. d4 d5 3. ♖c3 dxe4!

I was expecting a closed game.
 4. ♖xe4 ♖f6 5. ♖xf6+ gxf6
 5... ♖xf6 6. ♖d3 ♖c6 7. ♖f3 h6 8.
 0-0 ♖d6 is slightly better for Black.
 6. ♖f3 ♖g8!?

The Rook goes to the open file im-
 mediately. I learned to develop my mi-
 nor pieces first and castle early.
 7. ♖e3 ♖d6

Better is the more centralizing 7...
 ♖d5.



ALLEN SMITH
CHESS LESSONS

USCF A PLAYER
2006 PUGET SOUND CHAMPION

(253) 230-3736 • CHARTERINV@COMCAST.NET

8. ♖d2 ♗d7 9. O-O-O ♗c6

Clint moves the Bishop twice, violating another opening principle. The Bishop has strong scope on c6, but maybe 9... ♗c6 and 10... O-O-O are better.

10. ♗f4

Moving my Bishop to a stronger diagonal.

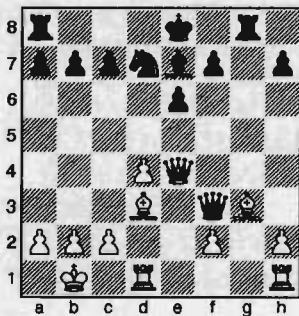
10... ♖d7 11. ♖b1

The threat was 11... ♗xf3 and 12... ♖d5, winning a pawn.

11... ♗d5 12. ♗g3 ♖c6 13. ♖f4 ♗d6

Clint had been thinking about 13... ♗a6 14. ♖xf6 ♗xa2+! 15. ♖xa2 ♗b4+, when I must either lose my Queen or get checkmated. And he was right!

14. ♖xf6 ♗d7 15. ♖h4 ♗xf3 16. gxf3 ♖xf3 17. ♗d3 ♗e7 18. ♖e4!



Now Black loses a pawn.

18... ♖xe4 19. ♗xe4 f5?

It is better to castle long and give up the h-pawn. The text opens lines of attack on the queenside for my Bishops.

20. ♗xb7 ♖b8 21. ♗c6 ♗a3 22. b3 ♖b6 23. d5 exd5 24. ♗xd5 ♖gg6 25. ♗xc7 ♖a6 26. ♗c4 ♖ac6 27. ♖he1+ ♗e7 28. ♗a5 ♖xc4

There's nothing better. Black finds the threats of 28. ♗b4 and 28. ♗b5 difficult to meet.

29. bxc4 ♗b6

Trying to free his pieces.

30. c5 ♗c4

30... ♗d7 31. ♖d6 ♗xc5 32. ♖xg6 hxg6 33. ♗b4 ♖f7 34. ♖xe7+ ♖xe7 35. ♗xc5+

31. ♗d8 ♖g7

All my pieces are working together: my Bishop is a sniper and my Rooks are cannons. Time to send in the infantry!

32. c6 1-0

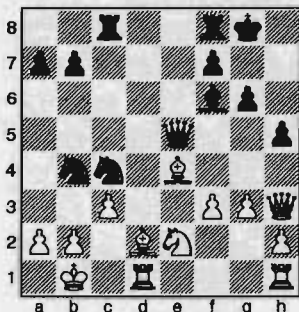
Veresov

Elston Cloy (1959, 1.0)

Andy May (2019, 0.0)

Seattle, WA Premier (2) 2007

1. d4 ♗f6 2. ♗c3 d5 3. ♗g5 ♗f5 4. f3 ♗bd7 5. ♗xd5 ♗xd5 6. e4 h6 7. ♗c1 e6 8. exf5 exf5 9. ♖d3 ♗d6 10. g3 O-O 11. ♗d2 c5 12. O-O-O cxd4 13. ♖xd4 ♗7b6 14. ♗d3 ♖c7 15. ♗e2 ♗e5 16. ♖h4 ♗f6 17. ♖h3 ♖ac8 18. ♖xf5 g6 19. ♖g4 h5 20. ♖h3 ♖e5 21. c3 ♗b4 22. ♗e4 ♗c4 23. ♖b1



23... ♗xb2 24. ♖xb2 ♖b5 25. ♖a1 ♖xe2 26. ♖f1 ♖xc3 27. ♖b1 ♖c2 0-1

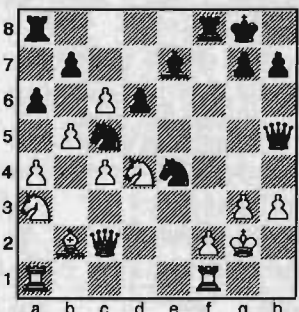
Orangutan

David Arganian (2020, 0.0)

Alex Guo (1922, 1.0)

Seattle, WA Premier (2) 2007

1. ♗f3 f5 2. b4 ♗f6 3. ♗b2 e6 4. b5 d6 5. c4 e5 6. d3 ♗e7 7. g3 O-O 8. ♗g2 c6 9. a4 ♗d7 10. ♗fd2 f4 11. ♖b3 ♖c8 12. ♗a3 a6 13. O-O ♗h3 14. d4 ♗xg2 15. ♖xg2 e4 16. h3 ♖f5 17. d5 ♗bd7 18. dxc6 ♗c5 19. ♖c2 f3+ 20. exf3 exf3+ 21. ♗xf3 ♗fe4 22. ♗d4 ♖h5



23. ♖e2 ♖xe2 24. ♗xe2 bxc6 25. ♗c2 ♗b3 26. ♖ad1 axb5 27. cxb5 cxb5 28. ♗f4 ♖xa4 29. ♗d5 ♗d8 30. ♗d4 ♗bd2 31. ♗e6 ♗xf1 32. ♖xf1 ♖a2 33. ♗xf8 ♖xb2 34. ♗e6 ♗a5 35. ♖a1 ♖xf2+ 36. ♖g1 ♗d2 37. ♖a7 ♗h6 38. ♗c3 ♖f8 39. ♗xf8 ♗e3+ 40. ♖g2 ♗xa7 41. ♗xb5

♗f2 42. ♗e6 ♗xg3 43. ♖f3 d5 44. ♗ec7 ♗xc7 45. ♗xc7 ♗f6 46. ♖f4 ♖f7 47. ♖e5 h6 48. ♗xd5 ♗xd5 49. ♖xd5 ♖f6 50. ♖e4 ♖g5 51. ♖f3 ♖f5 52. ♖e3 g5 53. ♖f3 h5 54. ♖e3 ♖e5 55. ♖f3 ♖d4 56. ♖f2 ♖e4 57. ♖e2 ♖f4 58. ♖f2 h4 59. ♖g2 ♖e3 0-1

Scotch Game

Geoffrey Gale (1964, 0.0)

Benjamin Calpo (2008, 0.0)

Seattle, WA Premier (2) 2007

1. e4 e5 2. ♗f3 ♗c6 3. d4 exd4 4. ♗xd4 ♗f6 5. ♗c3 ♗b4 6. ♗xc6 dxc6 7. ♖xd8+ ♖xd8 8. f3 ♗e6 9. ♗g5 ♖c8 10. a3 ♗xc3+ 11. bxc3 ♗d7 12. ♗e3 a5 13. f4 ♖e8 14. ♖f2 f6 15. c4 ♗f7 16. ♗d3 a4 17. g4 b6 18. h4 ♗g6 19. ♖f3 h6 20. ♖ag1 ♖b7 21. g5 ♗h5+ 22. ♖f2 ♖e7 23. gxf6 gxf6 24. ♖g3 ♖ae8 25. ♖hg1 ♖xe4 26. ♗xe4 ♖xe4 27. ♖g7 ♗b8 28. c5 b5 29. c3 f5 30. ♖h7 ♖e6 31. ♖gg7 ♗a6 32. ♖e7 ♖f6 33. ♗d4 ♖f8 34. ♖xh6 ♗g4 35. h5 ♖d8 36. ♖hh7 b4 37. axb4 a3 38. ♖d7 a2 39. c4 ♖e8 40. ♖he7 ♖xe7 41. ♖xe7 ♗xh5 42. ♖e3 ♗d1 43. ♖e1 ♗c2 44. ♖d2 ♗e4 45. ♖a3 ♗b1 46. ♖c1 ♗b8 47. ♖b2 ♗d7 48. ♗g7 ♖c8 49. ♖e3 ♖d8 50. ♖e6 ♗d3 51. ♖b3 ♗b8 52. ♗f6+ ♖c8 53. ♖e8+ ♖b7 54. ♖d8 ♗b1 55. ♗d4 ♗a6 56. ♗e5 ♖a7 57. ♖a4 ♖b7 58. ♖a5 ♗e4 59. ♖a4 ♖a7 60. ♖b3 ♗b1 61. ♖d7 ♖b7 62. ♖e7 ♗d3 63. ♖h7 ♖c8 64. ♖h3 ♗b1 65. ♗d4 ♖b7 66. ♖b2 ♖c8 67. ♖b3 ♗b8 68. b5 cxb5 69. cxb5 c6 70. b6 ♖b7 71. ♖h3 ♗a6 72. ♖h7+ ♖a8 73. ♖a7+ 1-0

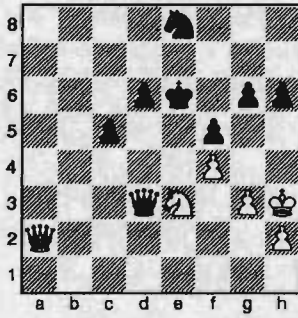
King's Indian Fianchetto Yugoslav

Joshua Sinanan (2088, 0.5)

Chris Kalina (1954, 1.0)

Seattle, WA Premier (2) 2007

1. ♗f3 ♗f6 2. d4 g6 3. c4 ♗g7 4. ♗c3 O-O 5. g3 d6 6. ♗g2 c5 7. d5 e5 8. O-O ♗h5 9. ♖c2 f5 10. a3 h6 11. b4 ♗d7 12. ♗d2 ♖e7 13. ♗b3 b6 14. ♗b5 e4 15. ♖b1 ♗e5 16. bxc5 bxc5 17. a4 a6 18. ♗a3 ♗d7 19. ♗a5 ♖fb8 20. ♗d2 ♖e8 21. ♖xb8 ♖xb8 22. ♖b1 ♖c8 23. f3 exf3 24. exf3 ♖c7 25. ♗c3 ♖b4 26. ♗c6 ♖xb1+ 27. ♗xb1 ♗xc6 28. dxc6 ♗xc6 29. f4 ♗f6 30. ♗xc6 ♖xc6 31. ♖b2 ♗e8 32. ♗xg7 ♗xg7 33. ♗c3 ♗e8 34. ♗d5 ♖xa4 35. ♖e2 ♖d7 36. ♖a2 ♖b7 37. ♖a4 ♖f7 38. ♖a1 a5 39. ♖xa5 ♖b1+ 40. ♖g2 ♖c2+ 41. ♖h3 ♖xc4 42. ♖a7+ ♖e6 43. ♗e3 ♖d3 44. ♖a2+



44...d5 45. ♖a8 ♘d7 46. ♗xd5 ♜f1+
47. ♗h4 ♜e2 48. ♗h3 g5 49. ♗b6+ ♗e7
50. ♜b7+ ♗f8 51. ♗d7+ ♗g8 52. ♜d5+
♗g7 53. fxg5 ♜g4+ 54. ♗g2 ♜e2+
Draw

Round Three

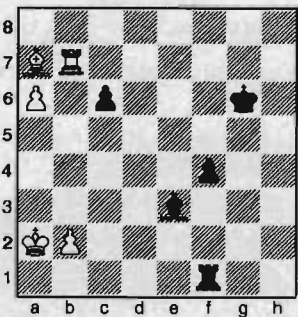
Ruy Lopez Schliemann

NM Ignacio Perez (2239, 1.5)

NM Nat Koons (2280, 1.0)

Seattle, WA Championship (3) 2007

1.e4 e5 2. ♗f3 ♗c6 3. ♗b5 f5 4. ♗c3 ♗f6
5. d4 exd4 6. ♗xd4 fxe4 7. ♗g5 ♗xd4
8. ♜xd4 c6 9. ♗xe4 ♜a5+ 10. ♗d2 ♜d8
11. ♗xf6+ ♜xf6 12. ♜xf6 gxf6 13. ♗e2
♗f7 14. h4 d5 15. O-O ♗f5 16. g4 ♗d7
17. ♗c3 ♗e8 18. ♗f3 ♗g7 19. ♗d4 ♗hg8
20. c4 ♗xg4 21. ♗xg4 ♗h6+ 22. ♗b1
♗xg4 23. cxd5 ♗d8 24. f3 ♗g3 25. dxc6
bxc6 26. ♗xa7 ♗xd1+ 27. ♗xd1 ♗xf3
28. ♗d7+ ♗g6 29. h5+ ♗xh5 30. ♗xh7
♗g6 31. ♗b7 ♗e3 32. a4 f5 33. a5 f4
34. a6 ♗f1+ 35. ♗a2



35... ♗h1 36. ♗xe3 fxe3 37. ♗e7 ♗h5
38. ♗xe3 1-0

King's Indian Classical

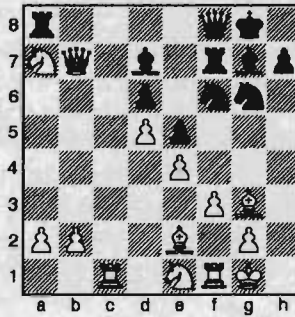
FM Nick Raptis (2286, 1.0)

NM Michael Lee (2202, 0.5)

Seattle, WA Championship (3) 2007

1. d4 ♗f6 2. ♗f3 g6 3. c4 ♗g7 4. ♗c3 O-O
5. e4 d6 6. ♗e2 e5 7. O-O ♗c6 8. d5 ♗e7
9. ♗e1 ♗d7 10. ♗e3 f5 11. f3 ♗f6 12.
♗c1 f4 13. ♗f2 g5 14. c5 ♗g6 15. cxd6

cxd6 16. ♗b5 ♗f7 17. ♗xa7 ♗d7 18.
♜c2 g4 19. ♜c7 ♜f8 20. ♜xb7 g3 21.
hxg3 fxg3 22. ♗xg3



22... ♗h6 23. ♗c3 ♗h5 24. ♗f2 ♗gf4
25. ♗b5 ♗b8 26. ♜a6 ♗xb5 27. ♗xb5
♗e2+ 28. ♗h1 ♗hg3+ 29. ♗xg3 ♗xg3+
30. ♗g1 ♗e2+ 31. ♗f2 ♗xc3 32. bxc3
♗a8 33. ♜xd6 ♗xa2+ 34. ♗g1 ♗e3+
35. ♗h2 ♜g7 36. ♜e6 ♗f4+ 37. ♗h1
♜g6 38. ♜h3 ♜a6 39. ♜g4+ ♗h8
40. ♜h5 ♜xb5 41. ♗g1 ♗f6 40. ♜e8+
♜xe8 0-1

Sicilian Dragon

FM David Bragg (2205, 1.0)

FM John Readey (2336, 0.0)

Seattle, WA Championship (3) 2007

1. e4 d6 2. d4 ♗f6 3. ♗c3 g6 4. ♗e2 ♗g7
5. f4 c5 6. ♗f3 cxd4 7. ♗xd4 ♗c6 8. ♗b3
♗d7 9. ♗e3 a6 10. g4 h6 11. a4 a5 12.
♗d5 ♗xe4 13. ♗b6 ♜c8 14. c3 ♗f8 15.
♗c7 ♗b8 16. ♗f3 ♗f6 17. h3 h5 18. g5
♗e8 19. ♗b5 ♗xh3 20. ♗xa5 ♗d7 21.
♗c4 ♗d4 22. ♗xd4 ♜xc4 23. ♗d5 ♜c8
24. ♗b6 ♗c6 25. O-O ♜f5 26. ♗xc6 bxc6
27. ♗d4 ♗xd4+ 28. ♜xd4 ♗g8 29. a5 h4
30. ♗h2 e5 31. fxe5 ♜xg5 32. exd6 ♜g3+
33. ♗h1 ♗xd6 34. ♜f4 ♗f5 35. ♗f3 ♜xf4
36. ♗xf4 ♗g7 37. ♗g1 ♗g3+ 38. ♗h2
♗e2 39. ♗f2 ♗xb6 40. ♗xe2 ♗b5 41. b4
g5 42. ♗e7 ♗d8 43. ♗c7 ♗d2+ 44. ♗g2
♗xg2+ 45. ♗xg2 g4 46. ♗xc6 h3+
47. ♗g3 ♗h5 48. ♗c5 f5 0-1

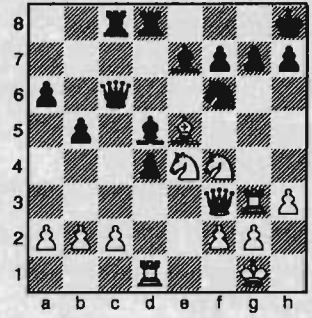
French

Michael MacGregor (2175, 0.0)

NM Curt Collyer (2218, 1.0)

Seattle, WA Championship (3) 2007

1. e4 e6 2. d4 d5 3. ♗c3 a6 4. ♗d3 ♗c6
5. ♗f3 ♗b4 6. O-O ♗e7 7. exd5 exd5
8. ♗e5 ♗xd3 9. ♜xd3 ♗f6 10. ♗g5 O-O
11. ♗ad1 c6 12. ♗fe1 ♗e8 13. h3 ♗e6
14. ♗e3 c5 15. ♗g3 ♜c7 16. ♜f3 ♗h8
17. ♗e3 b5 18. ♜f4 ♗ac8 19. ♜f3 ♗f8
20. ♗f4 ♜a7 21. dxc5 ♜xc5 22. ♗d3 ♜c6
23. ♗e5 ♗fd8 24. ♗f4 d4 25. ♗e4 ♗d5



26. ♗xd5 ♗xd5 27. ♗xf6 ♗xf6 28. ♗xf6
gxf6 29. c3 ♗cd8 30. ♗xd4 ♜e6 31. ♗xd5
♗xd5 32. ♜f4 ♗g5 33. ♗xg5 fxg5
34. ♜xg5 ♜e1+ 35. ♗h2 ♜xf2 36. ♜d8+
♗g7 37. ♜d4+ ♜xd4 38. cxd4 ♗f6
39. ♗g3 1-0

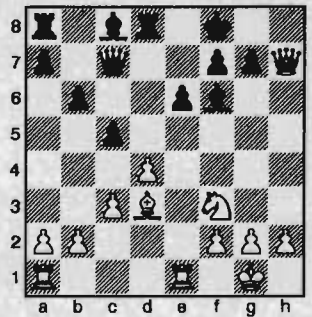
Caro-Kann

FM Paul Bartron (2110, 2.0)

LM Viktors Pupols (2237, 1.0)

Seattle, WA Championship (3) 2007

1. e4 c6 2. d4 d5 3. ♗c3 dxe4 4. ♗xe4 ♗d7
5. ♗f3 ♗gf6 6. ♗g3 e6 7. ♗d3 ♗d6 8. O-O
O-O 9. ♗e1 c5 10. c3 ♜c7 11. ♜e2 b6
12. ♗e4 ♗xe4 13. ♜xe4 ♗f6 14. ♜h4
♗d8 15. ♗g5 ♗e7 16. ♗xf6 ♗xf6
17. ♜xh7+ ♗f8



18. d5 ♗xd5 19. ♗e4 ♗b7 20. ♗xd5
♗xd5 21. ♗e3 ♗d8 22. ♜c2 g6 23. ♗d1
♗g7 24. c4 ♗xf3 25. ♗xd8 ♜xd8 26.
♗xf3 ♜d4 27. ♗a3 ♜d7 28. h3 ♗e5
29. ♜e2 ♜c7 30. ♗d3 ♗d4 31. b3 e5
32. g4 ♜b7 33. ♗g3 f6 34. h4 e4 35. ♗h3
♜e7 36. ♗g2 ♜e5 37. ♗h1 ♜f4 38. h5
g5 39. ♗e1 f5 40. gxf5 ♜xf5 41. ♜xe4
♜xf2+ 42. ♗h3 ♜h4+ 43. ♜xh4 gxf4
44. ♗e7+ ♗h6 45. ♗xa7 ♗xh5 46. ♗b7
♗g5 47. ♗xb6 ♗f4 48. a4 1-0

Slav Exchange

Chris Kalina (1964, 1.5)

Allen Smith (1816, 2.0)

Seattle, WA Premier (3) 2007

1. d4 d5 2. c4 c6 3. cxd5 cxd5 4. ♗c3 ♗c6
5. ♗f4 ♗f6 6. e3 g6 7. ♗f3 ♗g7 8. ♗e2

O-O 9.h3 ♖e8 10.O-O a6 11. ♖c1 ♗f5
12. ♖a4 ♖d7 Draw

Sicilian Hyper-Accelerated Dragon

Benjamin Calpo (2008, 0.0)
David Arganian (2020, 0.0)

Seattle, WA Premier (3) 2007

1.e4 c5 2. ♖f3 g6 3. ♗c4 ♗g7 4. c3 ♖a5
5.O-O b5 6. ♗d5 ♖c6 7.a4 ♖f6 8. ♖e1
O-O9.axb5 ♖xa1 10. ♖a3 ♖xd5 11. exd5
♖b4 12.cxb4 ♗xb2 13. ♗xb2 ♖xb2
14. ♖c2 d6 15.d4 ♗g4 16.bxc5 ♗xf3
17.gxf3 ♖xb5 18. ♖h1 ♖fe8 19. ♖d2 e6
20. ♖g1 exd5 21. ♖e3 ♖xe3 22. ♖xe3
♖e8 23. ♖c3 ♖c8 24. ♖c1 ♖c6 25. ♖g2
a5 26. ♖e3 dxc5 27. ♖e7 ♖g7 28. ♖e5+
♖g8 29. ♖xd5 a4 30.dxc5 ♖c8 Draw

Sicilian Closed

Andy May (2019, 1.0)
Geoffrey Gale (1964, 1.0)

Seattle, WA Premier (3) 2007

1.e4 c5 2. ♖c3 ♖c6 3.g3 g6 4. ♗g2 ♗g7
5.d3 d6 6.f4 e6 7. ♖f3 ♖ge7 8. O-O
O-O 9. ♗e3 ♖d4 10.e5 ♖ef5 11. ♗f2
♖xf3+ 12. ♖xf3 ♖d4 13. ♖d1 dxe5 14.
fxe5 ♗xe5 15. ♖a4 ♗d7 16.c3 ♖c6 17.
♖xc5 ♖c7 18. ♖e4 f5 19. ♗c5 fxe4 20.
♗xf8 ♖xf8 21. ♖xf8+ ♖xf8 22. d4 ♗g7
23. ♗xe4 ♖d8 24. ♖b3 ♗c6 25. ♖c4
♗f6 26. ♖f1 ♖g7 27. ♖f2 ♖e7 28. ♗c2
♗g5 29. ♖d3 b5 30.h4 ♗c1 31. ♗b3
♗a8 32. ♖xb5 ♗e3 33. ♖e5+ 1-0

English

Alex Guo (1922, 2.0)
Joshua Sinanan (2088, 1.0)

Seattle, WA Premier (3) 2007

1.c4 ♖f6 2. ♖c3 e6 3.e4 c5 4.e5 ♖g8
5. ♖f3 ♖c6 6.d4 cxd4 7. ♖xd4 ♗c5 8.
♖xc6 bxc6 9. ♗e3 ♗xe3 10.fxe3 ♖g5
11. ♖d4 f6 12. ♖e4 ♖xe5 13. ♖d6+ ♖e7
14. ♖xe5 fxe5 15.c5 ♖f6 16. ♗e2 a5
17.g4 h6 18. ♖c4 e4 19. ♖e5 ♖g8 20.h4
g5 21.hxg5 ♖xg5 22. ♖c4 ♖xc5
23. ♖xh6 ♗a6 24. ♖d2 ♗xe2 25. ♖xe2
d5 26.g5 ♖g4 27. ♖h7+ ♖d6 28. ♖g1
♖e5 29.g6 ♖g8 30.g7 ♖b5 31. ♖h8
♖bb8 32. ♖h2 ♖xb2 33. ♖d1 ♖e7 34.
♖g5 ♖xd2+ 35. ♖xd2 ♖f3 36. ♖g2
♖xd2 37. ♖xd2 ♖f6 38. ♖f2+ ♖xg7
39. ♖c3 c5 40. ♖b2 ♖f6 41. ♖b5 c4 42.
♖xa5 ♖e5 43.a4 ♖g3 44. ♖d2 ♖g2+
45. ♖d1 ♖a2 46. ♖a8 ♖d6 47.a5 ♖c5
48.a6 ♖b4 49. ♖c1 ♖c3 50. ♖b1 ♖a5
51. ♖a7 ♖d2 52. ♖b7 c3 53. ♖c7 ♖xa6
54. ♖c5 ♖b6+ 0-1

Schmid Benoni

Clint Ballard (1913, 0.5)
Elston Cloy (1959, 1.0)

Seattle, WA Premier (3) 2007

1.f4 g6 2.e4 c5 3.d4 ♗g7 4.d5 d6 5. ♖c3
♖f6 6. ♗b5+ ♖fd7 7. ♖f3 O-O 8.O-O a6
9. ♗xd7 ♖xd7 10. ♖e2 b5 11.a3 ♖b6
12. ♖g3 e6 13.dxe6 fxe6 14.e5 d5 15.b4
♖c7 16.bxc5 ♖c4 17. ♖d4 ♗d7 18. ♖d2
♖xe5 19.fxe5 ♗xe5 20. ♖e3 ♖xf1+
21. ♖gxf1 ♗xa1 22.c3 ♖a5 23.c6 ♗c8
24. ♖b3 ♖xc3 25. ♖xa1 ♖xa1 26. ♖g5
♖g7 27. ♖d8+ ♖f8 28.c7 ♗b7 29. ♗g5
♖c8 30. ♖e3 h5 31.h4 ♖h7 32. ♗f6 ♖f7
33. ♗e5 d4 34. ♖xd4 ♖xc7 35. ♗xc7
♖xc7 36. ♖f2 e5 37. ♖b4 ♖f7+ 38. ♖e2
♖g7 39. ♖c3 ♖e7 40.g4 ♖h7 41.gxh5
gxh5 42. ♖f5 ♖f7 43. ♖xe5 ♖c4+
44. ♖e3 ♖c1+ 45. ♖e2 ♖c2+ 46. ♖e3
♖b3+ 47. ♖f4 ♖f3+ 48. ♖g5 ♖g4+
49. ♖f6 ♖g6+ 50. ♖e7 ♗c8 51. ♖d6
♗g4 52. ♖e8 ♖h6 53. ♖f4+ ♖h7
54. ♖f6+ ♖g7 55. ♖e8+ ♖h7 Draw

Round Four

Catalan

FM John Readey (2336, 1.0)
FM Nick Raptis (2286, 1.0)

Seattle, WA Championship (4) 2007

1. ♖f3 ♖f6 2.c4 e6 3.g3 d5 4. ♗g2 ♗e7
5.O-O O-O 6.d4 dxc4 7. ♖c2 a6 8. ♖xc4
b5 9. ♖c2 ♗b7 10. ♗f4 ♗d6 11. ♖bd2
♖bd7 12. ♖b3 ♗e4 13. ♖d2 ♖e7 14.
♖ac1 ♖fc8 15. ♗xd6 cxd6 16. ♖a5
♖cb8 17. ♖fd2 ♗xg2 18. ♖xg2 ♖b6
19.e4 ♖b7 20.f3 ♖c8 21. ♖b4 ♖d7
22. ♖a5 h6 23.b3 ♖xc1 24. ♖xc1 ♖c8
25. ♖a3 ♖h7 26. ♖b2 ♖c7 27. ♖c3 ♖c8
28. ♖b1 b4 29. ♖xc7 ♖xc7 30.a3 bxa3
31. ♖xa3 ♖a4 32. ♖d2 ♖c3 33. ♖5c4
♖b5 34. ♖xb5 axb5 35. ♖a3 ♖c6
36. ♖c2 ♖a6 37. ♖xb5 ♖xb5 38.e5+
♖g8 Draw

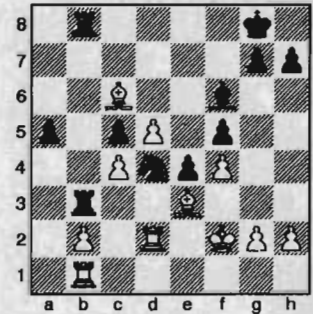
Sicilian Scheveningen

FM Paul Bartron (2110, 3.0)
FM David Bragg (2205, 1.0)

Seattle, WA Championship (4) 2007

1.e4 c5 2. ♖f3 d6 3.d4 cxd4 4. ♖xd4 ♖f6
5. ♖c3 a6 6. ♗e2 e6 7. ♗e3 ♖c6 8. ♖d2
♗d7 9.O-O ♖c7 10.f4 ♗e7 11. ♗f3
♖xd4 12. ♗xd4 e5 13. ♗e3 ♗c6 14.a4
O-O 15. ♖d5 ♗xd5 16.exd5 e4 17. ♗e2
♖d7 18.a5 f5 19.c4 ♗f6 20. ♖ac1 ♖c5
21. ♖c2 ♖b3 22. ♖b4 ♖d4 23. ♖d2 ♖c5
24. ♖xc5 dxc5 25. ♗d1 b5 26.axb6 a5

27. ♗a4 ♖ab8 28.b7 ♖xb7 29. ♗c6 ♖b3
30. ♖f2 ♖fb8 31. ♖b1



31... ♖xe3 32. ♖xe3 ♖b3+ 33. ♖f2 e3+
34. ♖e1 exd2+ 35. ♖xd2 ♖xc6 36.dxc6
♖b6 37. ♖a1 ♖xc6 38. ♖xa5 ♗xb2 0-1

English

NM Michael Lee (2202, 1.5)
NM Ignacio Perez (2239, 2.5)

Seattle, WA Championship (4) 2007

Annotated by NM Michael Lee

1.c4 ♖f6 2. ♖c3 g6 3.g3 ♗g7 4. ♗g2
O-O 5.e4

The Botvinnik System. Also play-
able here are the moves 5.e3 and 5. ♖f3,
the latter transposing into the main varia-
tions of the English.

5...d6 6. ♖ge2 e5 7.O-O ♖bd7

7... ♖c6 is also a main line, where
8.d3 ♗e6 9.h3 ♖d7 10. ♖h2 ♖e8 11.f4
f5 12. ♗e3 ♖f6 13. ♖d5 ♖ae8 14. ♖d2 is
a possible continuation.

8.f4!?

The more cautious 8.d3 is the main
line.

8...c6 9.h3

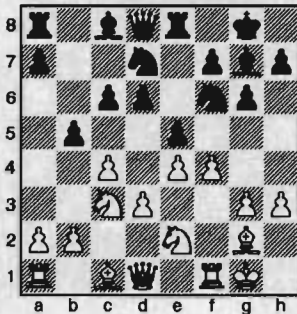
From the Business Manager:

We are looking for a donor to sponsor the Northwest Chess Grand Prix this year. In the past a single individual has donated \$1 000 and has received naming rights (last year it was the Franett Memorial Northwest Chess Grand Prix). Although we would like to have a single donor at this level we are also open to a series of smaller donations say at the \$100 level. The minimum donation for partial naming rights will be \$500. The total prize fund we are aiming for is \$3 000, which includes \$1 per player as part of the entry fee at advertised Grand Prix events.

Preventing ... $\text{d}4$. $9.\text{d}3?! \text{b}6+$ 10. $\text{h}1 \text{d}4$ 11. $\text{e}1 \text{c}5$ 12. $\text{d}1 \text{e}6$ 13. $\text{e}1$ is at least a draw for Black, as he can continue the ... $\text{e}6$ - $\text{c}5$ - $\text{e}6$ maneuver. $9... \text{e}8$

Black attempts a KID set-up, which will work only if White plays $\text{d}4$, as Black will then exchange on $\text{d}4$ and play ... $\text{c}5$, ... $\text{b}6$, and ... $\text{a}7$ - $\text{a}5$ - $\text{a}4$. The Botvinnik System, however, usually plays $\text{d}2$ - $\text{d}3$.

$10.\text{d}3 \text{b}5?!$



True to his aggressive style, Black strikes out on the queenside, trying to create open play.

$11.\text{e}3?!$

Better is $11.\text{c}xb5 \text{c}xb5$ $12.\text{e}3!$ ($12.\text{d}xb5? \text{b}6+$) $12... \text{b}4$ $13.\text{d}b5\pm$, planning to bring the Rook to the open c -file, which gives White a healthy advantage.

$11... \text{b}4 = 12.\text{d}a4$

$12.\text{d}b1 \text{d}5$ also helps open the center.

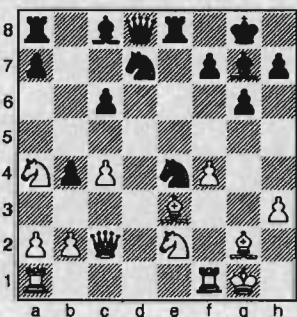
$12... \text{d}5!$

Quickly breaking open the center while White's forces are disorganized.

$13.\text{c}c2$

Supporting the center, but missing the combination to come.

$13... \text{dxe}4$ $14.\text{dxe}4 \text{exf}4$ $15.\text{gxf}4 \text{dxe}4!$

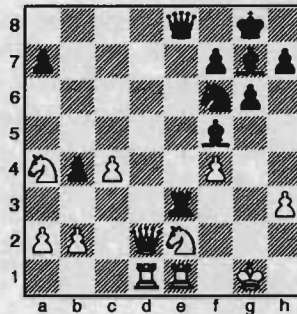


A beautiful combination, taking advantage of White's undefended pieces on the e -file.

$16.\text{dxe}4 \text{d}f6$ $17.\text{dxc}6 \text{dxe}3$ $18.\text{dxa}8?$

Missing the point. Better is $18.\text{d}ad1 \text{d}d7$ ($18... \text{e}7?!$ $19.\text{dxa}8 \text{dxe}2$ $20.\text{d}d3$, preventing $20... \text{e}3+$).

$18... \text{d}f5! \text{f}f$ $19.\text{d}ad1 \text{cxa}8$ $20.\text{d}d2 \text{e}e8$ $21.\text{d}fe1$



Forced. Even though White is up the Exchange, his position is hopeless.

$21... \text{d}d3?!$

Black loses the thread. This move is a gross blunder. Better is $21... \text{e}4!$, restricting the $\text{e}2$ -Knight because of the threat of ... $\text{g}3+$. If $22.\text{d}c5$, then $22... \text{f}f3!$

$22.\text{d}c1!$

Now Black has to struggle for a draw.

$22... \text{cxa}4?$

Another blunder. $22... \text{dxd}2$, hoping to save the endgame, is the only move, e.g., $23.\text{dxe}8+ \text{dxe}8$ $24.\text{dxd}2 \text{d}xh3\pm$.

$23.\text{dxd}3 \text{h}5?$

One last blunder, dropping the b -pawn. The game is over now.

$24.\text{cxb}4 \text{c}a6$ $25.\text{d}e5 \text{d}e4$ $26.\text{d}d4 \text{d}g3$ $27.\text{c}a3 \text{b}b6$ $28.\text{c}c5 \text{c}c7$ $29.\text{c}xg3 \text{c}xc5$ $30.\text{f}f2 \text{h}7$ 1-0

Grünfeld Modern Exchange

NM Nat Koons (2280, 1.0)

Michael MacGregor (2175, 1.0)

Seattle, WA Championship (4) 2007

$1.\text{d}4 \text{d}f6$ $2.\text{c}4 \text{g}6$ $3.\text{d}c3 \text{d}5$ $4.\text{cxd}5 \text{dxd}5$ $5.\text{e}4 \text{dxc}3$ $6.\text{bxc}3 \text{d}g7$ $7.\text{d}f3$ O-O $8.\text{d}e2 \text{c}5$ $9.\text{d}b1 \text{cxd}4$ $10.\text{cxd}4 \text{c}a5+$ $11.\text{d}d2 \text{cxa}2$ $12.\text{O-O} \text{d}g4$ $13.\text{d}g5 \text{h}6$ $14.\text{d}h4 \text{g}5$ $15.\text{d}g3 \text{d}c6$ $16.\text{d}5 \text{dxf}3$ $17.\text{dxf}3 \text{d}d4$ $18.\text{e}5 \text{dxf}3+$ $19.\text{c}xf3 \text{f}5$ $20.\text{axf}6 \text{dxf}6$ $21.\text{e}e4 \text{d}f7$ $22.\text{d}xb7 \text{d}d8$ $23.\text{dxe}7 \text{cxd}5$ $24.\text{d}e8+ \text{d}f8$ $25.\text{dxf}8+ \text{dxf}8$ $26.\text{c}g6+ \text{d}g7$ $27.\text{h}4 \text{c}f7$ $28.\text{c}a6 \text{gxh}4$ $29.\text{d}xh4 \text{d}d4$ $30.\text{d}g3 \text{h}7$ $31.\text{d}c1 \text{d}d7$ $32.\text{d}b8 \text{d}d4$

$33.\text{e}e2 \text{c}g6$ $34.\text{c}f3 \text{d}g7$ $35.\text{h}2 \text{d}f6$ $36.\text{d}c6 \text{d}f7$ $37.\text{d}a6 \text{c}g5$ $38.\text{e}e4+ \text{d}g7$ $39.\text{d}xa7 \text{c}h5+$ $40.\text{d}g3 \text{d}e5+$ $41.\text{dxe}5+$ 1-0

QGD Slav

LM Viktors Pupols (2237, 1.0)

NM Curt Collyer (2218, 1.0)

Seattle, WA Championship (4) 2007

$1.\text{d}4 \text{d}5$ $2.\text{c}4 \text{c}6$ $3.\text{d}f3 \text{d}f6$ $4.\text{d}c3 \text{a}6$ $5.\text{c}5 \text{d}bd7$ $6.\text{d}f4 \text{d}h5$ $7.\text{e}3 \text{dxf}4$ $8.\text{exf}4 \text{g}6$ $9.\text{d}d3 \text{d}g7$ $10.\text{O-O} \text{c}c7$ $11.\text{g}3 \text{O-O}$ $12.\text{d}e1 \text{d}e8$ $13.\text{d}e5 \text{d}f8$ $14.\text{d}a4 \text{f}6$ $15.\text{d}b6 \text{d}b8$ $16.\text{d}f3 \text{d}g4$ $17.\text{d}e2 \text{dxf}3$ $18.\text{dxf}3 \text{e}5$ $19.\text{fxe}5 \text{fxe}5$ $20.\text{dxe}5 \text{dxe}5$ $21.\text{dxe}5 \text{cxe}5$ $22.\text{d}b1 \text{d}e8$ $23.\text{b}4 \text{d}e6$ $24.\text{d}b3 \text{d}h6$ $25.\text{d}g4 \text{d}d4$ $26.\text{d}d3 \text{d}e2+$ $27.\text{dxe}2 \text{cxe}2$ $28.\text{cxe}2 \text{dxe}2$ $29.\text{a}3 \text{d}a2$ $30.\text{d}d7 \text{d}c1$ $31.\text{d}f3 \text{dxa}3$ $32.\text{d}f6+ \text{d}f7$ $33.\text{dxd}5+ \text{d}e6$ $34.\text{d}f4+ \text{d}e5$ $35.\text{d}e3+ \text{d}d4$ $36.\text{d}e6+ \text{d}c4$ $37.\text{d}d8 \text{d}xb4$ $38.\text{d}e4+ \text{d}b5$ $39.\text{d}xb7 \text{dxc}5$ $40.\text{d}e5 \text{d}c2$ $41.\text{d}d6+ \text{d}b4$ $42.\text{d}e4 \text{a}5$ $43.\text{d}e8 \text{a}4$ $44.\text{d}b8+ \text{d}a3$ $45.\text{h}4 \text{d}a2$ $46.\text{g}4 \text{d}c4$ $47.\text{dxc}5 \text{dxc}5$ $48.\text{d}b7 \text{a}3$ $49.\text{d}xh7 \text{d}b1$ $50.\text{g}5 \text{a}2$ $51.\text{d}a7 \text{d}c4$ $52.\text{d}b7+ \text{d}c2$ $53.\text{d}a7 \text{d}b2$ $54.\text{d}b7+ \text{d}a3$ 0-1

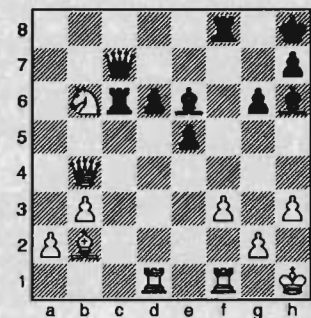
Sicilian Maroczy Bind

Geoffrey Gale (1964, 1.0)

David Arganian (2020, 0.5)

Seattle, WA Premier (4) 2007

$1.\text{e}4 \text{c}5$ $2.\text{d}f3 \text{g}6$ $3.\text{d}4 \text{cxd}4$ $4.\text{dxd}4 \text{d}c6$ $5.\text{c}4 \text{d}f6$ $6.\text{d}c3 \text{d}g7$ $7.\text{d}c2 \text{d}6$ $8.\text{d}e2 \text{O-O}$ $9.\text{O-O} \text{d}d7$ $10.\text{d}d2 \text{a}5$ $11.\text{d}a3 \text{d}c5$ $12.\text{d}ab5 \text{f}5$ $13.\text{exf}5 \text{dxf}5$ $14.\text{d}e3 \text{d}e4$ $15.\text{d}f3 \text{dxc}3$ $16.\text{dxc}3 \text{h}8$ $17.\text{d}d2 \text{d}e5$ $18.\text{d}e2 \text{d}c8$ $19.\text{b}3 \text{d}g4$ $20.\text{d}xg4 \text{d}xg4$ $21.\text{h}3 \text{d}f5$ $22.\text{d}ad1 \text{d}d7$ $23.\text{f}3 \text{d}c6$ $24.\text{d}d5 \text{a}4$ $25.\text{d}b6 \text{c}e6$ $26.\text{d}xa4 \text{b}5$ $27.\text{d}b6 \text{bxc}4$ $28.\text{d}xc4 \text{c}c8$ $29.\text{d}d4 \text{e}5$ $30.\text{d}b2 \text{c}c7$ $31.\text{h}1 \text{d}e6$ $32.\text{d}e3 \text{d}h6$ $33.\text{d}d5 \text{c}g7$ $34.\text{c}b4 \text{d}d7$ $35.\text{d}b6 \text{c}c7$



$36.\text{dxd}6 \text{d}fg7$ $37.\text{dxe}5 \text{d}c1$ $38.\text{d}xg7+$

♘xg7 39. ♖xc1 ♜xc1+ 40. ♖h2 ♖f4
41. ♞d2 1-0

King's Indian Sämisch

Elston Cloy (1959, 1.5)
Chris Kalina (1954, 2.0)

Seattle, WA Premier (4) 2007

1.d4 ♘f6 2.c4 g6 3.♘c3 ♖g7 4.e4 d6
5.f3 O-O 6.♗e3 e5 7.d5 ♘e8 8.♞d2 f5
9.O-O-O c5 10.dxc6 bxc6 11.c5 ♗e6
12.cxd6 ♘d7 13.exf5 gxf5 14.g4 f4 15.
♗f2 ♞a5 16.♗d3 Draw

French

Andy May (2019, 2.0)
Clint Ballard (1913, 1.0)

Seattle, WA Premier (4) 2007

1.e4 e6 2.♘c3 d5 3.♘f3 dxe4 4.♘xe4
♘f6 5.♘xf6+ gxf6 6.d4 ♞d6 7.♗d3 ♗d7
8.O-O ♘c6 9.♗e3 h5 10.c4 O-O-O
11.a3 ♗h6 12.b4 e5 13.d5 ♗xe3 14.fxe3
♗g4 15.h3 e4 16.♗xe4 ♘e5 17.hxg4
hxg4 18.♘e5 ♞xe5 19. ♞xg4+ ♖b8
20.♞f4 ♞c3 21.♗f3 ♖hg8 22.♞d4 ♞c2
23.♞e4 ♞b2 24.d6 c6 25.b5 ♖de8
26.♞f4 ♖e5 27.♖ab1 ♞xa3 28.bxc6
♞xd6 29.♖xb7+ ♖c8 30.♗g4+ ♖xg4
31.♞xg4+ 1-0

French Winawer

Allen Smith (1816, 2.5)
Alex Guo (1922, 2.0)

Seattle, WA Premier (4) 2007

1.e4 e6 2.d4 d5 3.♘c3 ♗b4 4.e5 c5 5.
♗d2 ♘e7 6.♘b5 ♗xd2+ 7.♞xd2 O-O
8.♘f3 cxd4 9.♗d3 ♘bc6 10.♘bxd4 f6
11.exf6 ♖xf6 12.O-O-O ♘xd4 13.♘xd4
e5 14.♘b3 ♞c7 15.f3 ♗e6 16.♖he1
♗f7 17.♖e2 a5 18.♖b1 a4 19.♘c1 ♘c6
20.♖de1 ♖c8 21.♞g5 ♞d6 22. ♞h4
♖h6 23.♞xa4 ♖xh2 24.♗f5 ♖d8
25.♗h3 ♗e6 26.♗xe6+ ♞xe6 27.♘d3
♞d6 28.b3 h6 29.♘xe5 ♘xe5 30. ♖xe5
♖xg2 31. ♖e8+ ♖h7 32. ♖xd8 ♞xd8
33.♞b5 ♖d2 34. ♞xb7 ♞f6 35. ♞b4 ♖f2
36. ♞c5 ♞xf3 37.a4 ♖d2 38.a5 d4
39. ♞c4 ♞f5 40.b4 1-0 {Time}

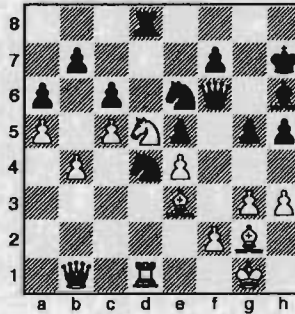
King's Indian Smyslov

Joshua Sinanan (2088, 2.0)
Benjamin Calpo (2008, 0.5)

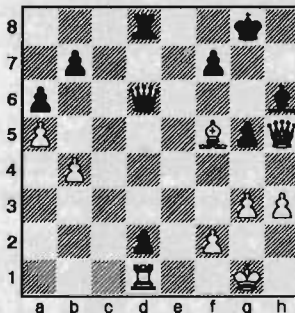
Seattle, WA Premier (4) 2007

1.d4 ♘f6 2.♘f3 g6 3.c4 ♗g7 4.♘c3 d6
5.♗g5 c6 6.e3 ♞a5 7.♗d3 O-O 8.h3 a6
9.a4 e5 10.O-O ♖e8 11.dxe5 dxe5 12.e4
♘bd7 13.♗d2 ♞c7 14.a5 ♘c5 15.♗c2

♗e6 16.b4 ♘cd7 17.c5 ♖ad8 18.♞e2
h6 19. ♖fd1 ♘h5 20. ♗e3 ♘f8 21. ♘d2
♘f4 22. ♞f1 g5 23. ♘c4 ♗xc4 24. ♞xc4
♘8e6 25. ♖xd8 ♖xd8 26. ♖d1 ♘d4
27. ♗d3 ♞e7 28. ♗f1 h5 29. g3 ♘fe6
30. ♗g2 ♞f6 31. ♞a2 ♖h7 32. ♞b1 ♗h6
33. ♘d5



33...cxd5 34.exd5+ ♖g7 35.♖h1 ♘c7
36. ♗xd4 exd4 37. ♞d3 ♘b5 38. d6 ♖d7
39. ♖g1 ♖g8 40. ♞e2 ♘xd6 41. cxd6
♞xd6 42. ♞xh5 d3 43. ♗e4 d2 44. ♗f5
♖d8



45. ♖xd2 ♞xd2 46. ♞xh6 g4 47. ♞h7+
♖f8 48. ♞h8+ ♖e7 49. ♞e5+ ♖f8 50.
♗xg4 ♞d4 51. ♞c7 ♖d6 52. ♞xb7 ♖f6
53. ♗f3 ♞d3 54. ♖g2 ♞f5 55. h4 ♖g7
56. h5 ♖d6 57. ♞c7 ♞f6 58. ♞c5 ♖e6
59. g4 ♖e5 60. ♞d4 ♖e6 61. ♞d2 ♖d6
62. ♞e3 ♖e6 63. ♗e4 ♞e5 64. f3 ♖d6
65. ♖h3 ♞a1 66. f4 ♞f1+ 67. ♖h4 ♞c4
68. ♗f5 ♞d4 69. ♞e7 ♞f6+ 70. ♞xf6+
♖xf6 71. ♗c8 ♖d4 72. g5+ ♖g7 73. ♖g4
♖xb4 74. ♗xa6 ♖a4 75. h6+ ♖f8 76.
♗b5 ♖xa5 77. ♗c4 ♖c5 78. ♗b3 ♖c3
79. ♗d5 ♖d3 80. ♗e4 ♖e3 81. ♗h7 ♖e1
82. f5 ♖h1 83. f6 ♖g1+ 84. ♖f4 ♖f1+
85. ♖e5 ♖g1 86. ♖f4 ♖f1+ 87. ♖e5 ♖g1
88. ♖f5 ♖f1+ 89. ♖g4 ♖g1+ Draw

Need sample issues of Northwest Chess for promotional purposes? Request copies from the Business Manager at least two weeks in advance of the event.

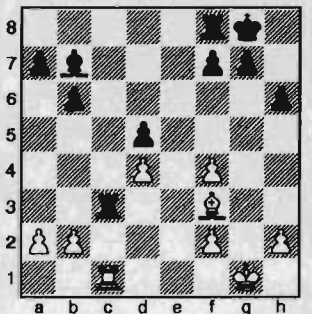
Round Five

Catalan

FM Nick Raptis (2286, 1.5)
FM Paul Bartron (2110, 3.0)

Seattle, WA Championship (5) 2007

1.♘f3 ♘f6 2.g3 d5 3.♗g2 e6 4.O-O ♗e7
5.c4 c6 6.d4 ♘bd7 7.♘c3 b6 8. ♘e5
♗b7 9.e4 ♘xe5 10.exd5 ♘f3+ 11. ♗xf3
exd5 12.cxd5 ♘xd5 13.♘xd5 cxd5 14.
♗f4 O-O 15. ♖c1 ♗d6 16. ♞d2 ♞d7 17.
♗xd6 ♞xd6 18. ♖c3 ♖ac8 19. ♖fc1 h6
20. ♞f4 ♞xf4 21. gxf4 ♖xc3



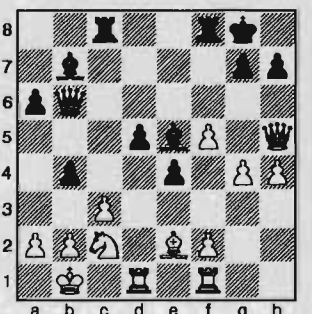
22. bxc3 ♖d8 23. c4 ♖d7 24. c5 ♖c7
25. ♖c3 bxc5 26. ♖xc5 ♖xc5 27. dxc5
♖f8 28. ♖f1 ♖e7 29. ♖e2 ♗a6+ 30. ♖e3
♗c4 31. a3 ♖d7 32. ♖d4 ♖c6 33. ♗d1
♖b5 34. h4 a5 35. ♗c2 f6 36. ♗g6 ♖c6
37. ♗f7 ♗a2 38. ♗e8+ ♖c7 39. ♗b5
♗b3 40. ♖c3 ♗d1 41. ♗e8 ♗g4 42. ♖d4
♗f3 43. ♗b5 ♖b7 44. ♖e3 ♗g4 45. ♗a4
♖c7 46. ♖d4 ♗f3 47. ♖c3 ♖b7 48. ♗b5
♖c7 49. ♗a4 Draw

Sicilian Sveshnikov

Michael MacGregor (2175, 1.5)
NM Michael Lee (2202, 2.5)

Seattle, WA Championship (5) 2007

1.e4 c5 2.♘f3 ♘c6 3.d4 cxd4 4.♘xd4
♘f6 5.♘c3 e5 6.♘db5 d6 7.♗g5 a6
8.♘a3 b5 9.♘d5 ♗e7 10. ♗xf6 ♗xf6
11.c3 O-O 12.h4 ♘e7 13.♘xe7+ ♗xe7
14.♘c2 ♗b7 15. ♗d3 f5 16.exf5 d5
17. ♞h5 ♗f6 18.O-O-O ♞b6 19.g4 e4
20. ♗e2 ♗e5 21. ♖b1 ♖ac8 22. ♖hf1 b4



23. ♖xb4 ♙xc3 24. bxc3 ♚xc3 25. ♚d2 a5 26. ♙d1 ♜xb4+ 27. ♚b2 ♜c4 28. ♙e2 ♜c7 29. ♜g5 h6 30. ♜d2 ♚c8 31. a4 ♜c6 32. g5 ♚c7 33. ♙b5 ♜d6 34. f6 d4 35. fxg7 e3 36. fxe3 ♙e4+ 0-1

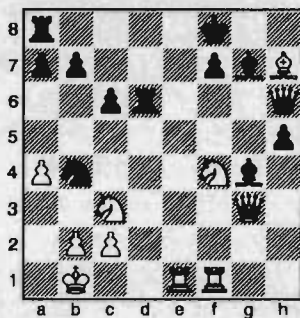
Pirc 150 Attack

NM Ignacio Perez (2239, 2.5)

FM John Readey (2336, 1.5)

Seattle, WA Championship (5) 2007

1. e4 d6 2. d4 ♖f6 3. ♖c3 g6 4. f3 c6 5. a4 ♙g7 6. ♙e3 O-O 7. ♜d2 e5 8. O-O ♜a5 9. h4 h5 10. g4 hxg4 11. h5 gxh5 12. dxe5 ♜xe5 13. ♙f4 ♜a5 14. ♙xd6 ♚d8 15. e5 ♖e8 16. ♙d3 ♖xd6 17. exd6 ♖a6 18. ♖ge2 gxh3 19. ♖f4 ♙g4 20. ♚dg1 f2 21. ♜xf2 ♚xd6 22. ♜g3 ♜e5 23. ♖b1 ♖b4 24. ♚e1 ♜f6 25. ♙h7+ ♖f8 26. ♚hf1 ♜h6



27. ♖g6+ ♚xg6 28. ♚xf7+ ♖xf7 29. ♜c7+ ♖f6 30. ♜e5+ ♖f7 31. ♜e7 mate

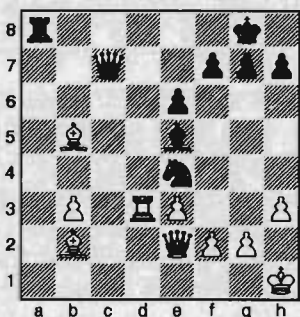
Queen's Gambit Accepted

NM Curt Collyer (2218, 2.0)

NM Nat Koons (2280, 2.0)

Seattle, WA Championship (5) 2007

1. d4 d5 2. c4 dxc4 3. ♖f3 ♖f6 4. e3 e6 5. ♙xc4 a6 6. a4 c5 7. O-O ♖c6 8. ♜e2 cxd4 9. ♚d1 ♙e7 10. ♖xd4 ♖xd4 11. ♚xd4 ♜c7 12. ♖c3 ♙d7 13. b3 ♙d6 14. h3 ♙h2+ 15. ♖h1 ♙e5 16. ♚d3 O-O 17. ♙b2 b5 18. axb5 axb5 19. ♚xa8 ♚xa8 20. ♖xb5 ♙xb5 21. ♙xb5 ♖e4



22. ♙c6 ♜xc6 23. ♙xe5 ♜c5 24. ♙d4 ♜f5 25. ♖g1 ♖xf2 26. ♚d2 ♖e4 27.

♚d1 ♚d8 28. ♚c1 h5 29. ♜b2 e5 30. ♙c3 ♚d3 31. b4 ♜g5 32. b5 ♜xe3+ 33. ♖h1 ♖f2+ 34. ♖h2 ♜g3+ 35. ♖g1 ♖xh3+ 36. ♖h1 ♖f2+ 37. ♖g1 ♖g4 38. ♙xe5 ♜xe5 39. ♚c8+ ♖h7 40. ♜b1 ♜d4+ 0-1

Semi-Slav Meran

FM David Bragg (2205, 2.0)

LM Viktors Pupols (2237, 1.5)

Seattle, WA Championship (5) 2007

1. d4 d5 2. c4 e6 3. ♖c3 ♖f6 4. ♖f3 c6 5. e3 ♖bd7 6. ♙d3 dxc4 7. ♙xc4 b5 8. ♙d3 a6 9. O-O c5 10. b3 ♙b7 11. ♙b2 cxd4 12. ♖xd4 ♖c5 13. ♙e2 b4 14. ♖b1 ♙e7 15. a3 bxa3 16. ♖xa3 O-O 17. b4 ♖cd7 18. b5 axb5 19. ♖axb5 ♚xa1 20. ♙xa1 ♜b6 21. ♜b1 ♙e4 22. ♜b2 ♚b8 23. f3 ♙d5 24. ♖h1 e5 25. ♖f5 ♙f8 26. ♜d2 ♚a8 27. ♖c3 ♙e6 28. ♖g3 ♖c5 29. ♖ce4 ♖fxe4 30. ♖xe4 ♖xe4 31. fxe4 f6 32. ♙g4 ♙f7 33. h3 ♚a2 34. ♜d7 ♜a6 35. ♜d1 ♜a3 36. ♙xe5 fxe5 37. ♚xf7 ♚a1 0-1

Queen's Indian

Chris Kalina (1954, 2.5)

Andy May (2019, 3.0)

Seattle, WA Premier (5) 2007

1. ♖f3 ♖f6 2. d4 e6 3. ♙g5 ♙e7 4. e3 b6 5. ♙e2 ♙b7 6. O-O O-O 7. c4 c5 8. ♖c3 h6 9. ♙h4 ♖e4 10. ♙xe7 ♜xe7 11. ♚c1 d6 12. ♜c2 ♖xc3 13. ♜xc3 ♖d7 14. ♚fd1 e5 15. d5 f5 16. e4 fxe4 17. ♖d2 ♖f6 18. ♜e3 ♜f7 19. ♚f1 ♜g6 20. ♙d1 ♙c8 21. ♙c2 ♙f5 22. h3 ♖h5 23. ♙xe4 ♖f4 24. ♖h2 ♚f6 25. ♚ce1 ♚af8 26. ♜g3 ♜h7 27. ♜e3 h5 28. h4 ♖g6 29. g3 ♖e7 30. f4 ♖g6 31. ♙xf5 ♚xf5 32. fxe5 ♖xe5 33. ♖g2 ♜g6 34. ♚xf5 ♚xf5 35. ♜e4 ♜f6 36. ♚f1 ♚xf1 37. ♖xf1 ♖f7 38. ♖e3 Draw

Orangutan

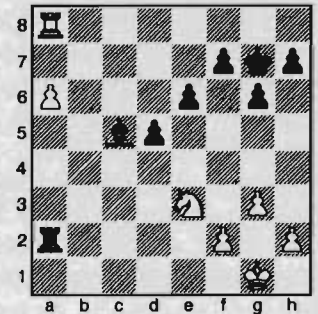
David Arganian (2026, 0.5)

Joshua Sinanan (2088, 2.5)

Seattle, WA Premier (5) 2007

1. ♖f3 ♖f6 2. b4 e6 3. a3 b6 4. ♙b2 ♙b7 5. e3 c5 6. bxc5 bxc5 7. d4 cxd4 8. exd4 d6 9. ♙d3 ♖bd7 10. O-O ♚b8 11. ♙c3 ♜c7 12. ♚e1 ♙e7 13. ♙d2 O-O 14. ♖c3 a6 15. ♜e2 ♜c6 16. ♖e4 ♖xe4 17. ♙xe4 ♜xe4 18. ♜xe4 ♙xe4 19. ♚xe4 ♚fc8 20. c3 ♖f6 21. ♚ee1 d5 22. a4 ♖e4 23. ♚ab1 ♚xb1 24. ♚xb1 ♖xd2 25. ♖xd2 ♚xc3 26. ♚b8+ ♙f8 27. ♚b6 ♚d3 28. ♖f1 a5 29. ♚b5 ♚xd4 30. ♚xa5 g6 31.

♚a8 ♖g7 32. a5 ♚a4 33. a6 ♚a2 34. g3 ♙c5 35. ♖e3



35...d4 36. ♖g4 d3 37. ♚d8 h5 38. ♖e3 ♙xe3 39. fxe3 d2 40. a7 d1=♚+41. ♚xd1 ♚xa7 42. ♚d2 ♚a1+ 43. ♖f2 ♖f6 44. ♖f3 ♖f5 45. h4 e5 46. ♚d5 ♚a2 47. ♚b5 ♚d2 48. ♚a5 f6 49. ♚b5 g5 50. hxg5 fxg5 51. e4+ ♖e6 52. ♚b6+ ♚d6 53. ♚b8 ♚d3+ 54. ♖f2 g4 55. ♚e8+ ♖f6 56. ♚f8+ ♖g6 57. ♚f5 ♚f3+ 58. ♚xf3 gxh3 59. ♖xf3 ♖g5 60. ♖e3 ♖g4 61. ♖f2 h4 62. gxh4 ♖xh4 63. ♖e3 ♖g3 64. ♖e2 ♖f4 65. ♖f2 ♖xe4 66. ♖e2 ♖f4 67. ♖f2 e4 68. ♖e2 e3 69. ♖e1 ♖e5 70. ♖e2 ♖e4 71. ♖e1 ♖f3 72. ♖f1 e2+ 73. ♖e1 ♖e3 Draw

Veresov

Clint Ballard (1913, 1.0)

Geoffrey Gale (1964, 2.0)

Seattle, WA Premier (5) 2007

1. d4 ♖f6 2. ♖c3 d5 3. ♙f4 e6 4. ♖f3 c5 5. e3 ♙e7 6. dxc5 O-O 7. b4 a5 8. ♖b5 axb4 9. ♙c7 ♜e8 10. ♙d6 ♖a6 11. a3 ♙d7 12. axb4 ♙xb5 13. ♙xb5 ♜xb5 14. ♙xe7 ♜xb4+ 15. ♖d2 ♚fc8 16. ♙xf6 gxh6 17. ♚b1 ♜c3 18. ♜g4+ ♖f8 19. ♜d4 ♚xc5 20. ♚xb7 ♜xd4 21. exd4 ♚xc2 22. ♖e2 ♖c7 23. f4 ♚aa2 24. ♚d1 ♖g7 25. ♚b3 ♖e8 26. ♚g3+ ♖f8 27. ♚h3 ♖d6 28. ♖d3 f5 29. ♖e2 ♖e4 30. ♚d3 ♖c3+ 31. ♖e1 ♖xd1 32. ♖xd1 ♖e7 33. g3 ♖f6 34. h3 ♚cb2 35. ♖e1 ♚a1+ 36. ♖f2 ♚d1 37. ♖e2 ♚h1 38. h4 ♚h2+ 39. ♖e1 ♚a2 40. ♖f1 ♚hg2 41. ♖e3 ♚g1+ 0-1

QGD Exchange

Alex Guo (1922, 2.0)

Elston Cloy (1959, 2.0)

Seattle, WA Premier (5) 2007

1. c4 e6 2. ♖c3 d5 3. cxd5 exd5 4. d4 c6 5. ♖f3 ♙f5 6. g3 ♖f6 7. ♙g2 ♙e7 8. O-O O-O 9. ♖e5 ♖bd7 10. f4 ♜b6 11. e3 h5 12. h3 ♚ad8 13. ♖h2 ♙b4 14. ♙f3 ♙xc3 15. bxc3 g6 16. g4 hxg4 17. hxg4 ♙e4

18.g5 ♖xf3 19.♗xf3 ♜xe5 20.fxe5 ♜e4 21.♝g2 ♗a6 22.a4 b6 23.♞a2 ♗c4 24.♞b2 ♗xc3 25.♝g1 ♜xg5 26.♗g4 f6 27.♞bf2 ♗d3 28.exf6 ♜h7 29.f7+ ♝g7 30.♗e6 ♗e4 31.♗xe4 dxe4 32.♞a3 ♜g5 33.♞xf8+ ♞xf8 34.♝g2 ♜f3 35.♞c1 ♜h4+ 36.♝g1 ♜f5 37.♞xc6 ♞xf7 38.♞e6 ♜xe3 39.♞xf7+ ♝xf7 40.♞xe4 ♜f5 41.♝f2 ♜d6 42.♞e5 ♜c4 43.♞b5 ♜d6 44.♞d5 ♝e6 45.♞e5+ ♝d7 46.♝f3 ♜f7 47.♞b5 ♝c6 48.d5+ ♝c7 49.♝e3 ♜d6 50.♞b1 ♜f5+ 51.♝e4 ♝d6 52.♞g1 ♜e7 53.♞g5 a6 54.♞e5 ♝d7 55.♞e6 ♜c8 56.♝e5 g5 57.♞g6 b5 58.♞g7+ ♝e8 59.♝e6 ♝f8 60.♞b7 1-0

Sicilian Kan

Benjamin Calpo (2008, 1.0)

Allen Smith (1816, 3.5)

Seattle, WA Premier (5) 2007

1.e4 c5 2.♜f3 e6 3.d4 cxd4 4.♜xd4 a6 5.c4 ♜f6 6.♜c3 d6 7.♞e2 g6 8.O-O ♞g7 9.♞g5 O-O 10.♗d2 ♗c7 11.♞ac1 b6 12.♞h6 ♞b7 13.♞xg7 ♝xg7 14.f3 ♜bd7 15.♝h1 h5 16.♞fd1 ♞ad8 17.♞f1 h4 18.♜ce2 ♞h8 19.♜f4 ♞he8 20.♜c2 ♜e5 21.♜e3 ♞h8 22.♜h3 ♝f8 23.b4 ♝e7 24.♗b2 ♞dg8 25.c5 bxc5 26.bxc5 dxc5 27.f4 ♜ed7 28.e5 ♜e4 29.♞d3 ♞b8 30.♗c2 ♗c6 31.♜c4 ♜c3 32.♞d2 ♜d5 33.♞e4 ♗c7 34.♞cd1 ♞hd8 35.a3 ♜7b6 36.♜d6 ♞c6 37.♗xc5 ♜a4 38.♗f2 ♞h8 39.f5 gxf5 40.♞xd5 ♞xd5 41.♞xd5 exd5 42.♗xf5 ♞bf8 43.♜f4 ♜b6 44.h3 ♞hg8 45.♞b1 ♝d8 46.♞xb6 ♗c1+ 47.♝h2 f6 48.♞b8+ 1-0

Round Six

QGD Slav

FM John Readey (2336, 1.5)

Michael MacGregor (2175, 1.5)

Seattle, WA Championship (6) 2007

1.♜f3 ♜f6 2.c4 c6 3.d4 d5 4.e3 ♞g4 5.♗b3 ♗b6 6.♜e5 ♗xb3 7.axb3 ♞e6 8.♜c3 ♜bd7 9.f4 g6 10.♞e2 ♞g7 11.♞f3 a6 12.♜xd7 ♝xd7 13.♜a4 ♞ad8 14.♜c5+ ♝c8 15.♜xe6 fxe6 16.♞d2 h5 17.♞b4 ♝d7 18.♝e2 ♞dg8 19. ♞ag1 ♞h7 20.♞e1 ♞gh8 21.g3 ♝e8 22.♝d3 ♝f7 23.h3 ♞h6 24.♞a5 ♞6h7 25.♞a1 ♜e8 26.c5 ♜f6 27.♞a4 ♞b8 28.♞b4 ♜e8 29.h4 e5 30.dxe5 e6 31.♞a4 ♞f8 32.♞b6 ♝e7 33.♞b4 ♞a8 34.♝e2 ♝d7 35.♝f2 ♞e7 36.♞e2 ♜g7 37.♞d3 ♜f5 38.e4 dxe4 39.♞xe4 ♝c8 40.♞d1 a5

41.♞c4 ♞a6 42.♝f3 ♞xb6 43.cxb6 ♞d8 44.♞xc6 bxc6 45. ♞xc6+ ♝b7 46.♞xe6 ♞xb6 47.♞xg6 ♜d4+ 48.♝e4 ♜xb3 49.f5 ♞c7 50.f6 ♞c4+ 51.♝d5 ♞c5+ 52.♝e6 ♞c6+ 53.♝f7 ♞c7+ 54.♝g8 ♞c8+ 55.♝h7 ♞d4 56.e6 a4 57.e7 ♞xb2 58.♞d8 ♞c7 59.♝g8 ♞xf6 60.e8=♗ ♞xd8 61.♗xd8 1-0

King's Indian Classical Exchange

FM David Bragg (2205, 2.0)

FM Nick Raptis (286, 2.0)

Seattle, WA Championship (6) 2007

1.d4 ♜f6 2.c4 g6 3.♜c3 ♞g7 4.e4 O-O 5.♜f3 d6 6.♞e2 e5 7.dxe5 dxe5 8.♗xd8 ♞xd8 9.♞g5 ♜bd7 10.O-O-O ♞f8 11.♜d5 c6 12.♜e7+ ♝h8 13.♜xc8 ♞axc8 14.♞e3 ♞fe8 15.a3 ♞f8 16.b4 a5 17.c5 axb4 18.axb4 b6 19.cxb6 ♞xb4 20.♞c4 ♝g7 21.♜g5 ♞e7 22.f4 ♞b8 23.♞hf1 ♜g4 24.♞g1 ♜xb6 25.♞xf7 h6 26.fxe5 hxg5 27.e6 ♜c4 28.♝c2 ♜ge3+ 29.♝d3 ♞d8+ 30.♝e2 ♜xd1 0-1

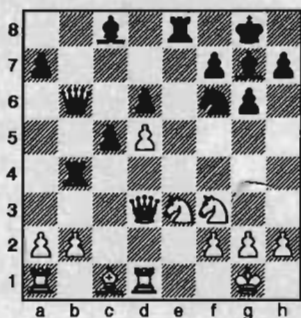
Pirc

FM Paul Bartron (2110, 3.5)

NM Ignacio Perez (2239, 3.5)

Seattle, WA Championship (6) 2007

1.e4 g6 2.d4 ♞g7 3.♜f3 d6 4.♞c4 ♜f6 5.♜c3 O-O 6.♗e2 ♜c6 7.d5 ♜a5 8.♞d3 c5 9.♜d1 e6 10.c4 exd5 11.exd5 ♞e8 12.♜e3 b5 13.O-O bxc4 14.♞xc4 ♜xc4 15.♗xc4 ♞b8 16.♞d1 ♞b4 17.♗d3 ♗b6



18.b3 ♜g4 19.♞d2 ♜xe3 20.fxe3 ♞f5 21.♗e2 ♞xa1 22.♞xa1 ♞be4 23.♜g5 ♞4e5 24.♞c3 ♞xe3 25.♗b2 ♞e2 0-1

Reti

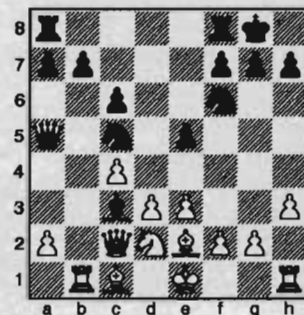
LM Viktors Pupols (2237, 2.5)

NM Nat Koons (2280, 3.0)

Seattle, WA Championship (6) 2007

1.♜f3 d5 2.c4 c6 3.b3 ♞g4 4.e3 e5 5.h3 ♞xf3 6.♗xf3 ♜f6 7.♞b2 ♞d6 8.♗d1 O-O 9.♞e2 ♜bd7 10.d3 ♞b4+ 11.♜d2

dxc4 12.bxc4 ♜c5 13.♗c2 ♗a5 14.♞c1 ♞c3 15.♞b1



15...♜fe4 16.dxe4 ♞ad8 17.O-O ♞xd2 18.♞f3 ♞xc1 19.♗xc1 ♞d2 20.♞b2 ♞fd8 21.♗a1 ♞2d6 22.♞c2 f6 23.♗b2 b6 24.♗b1 ♗a3 25.♝h2 ♝f8 26.♞fc1 ♞d2 27.♗a1 ♝e7 28.h4 ♜b3 29.axb3 ♗xa1 30.♞xa1 ♞xc2 31.♞xa7+ ♞d7 32.♞a6 ♞b7 33.♝g3 ♞c3 34.♞a3 ♝d6 35.♞d1 ♝c5 36.♝f3 ♞d7 37.♞a1 ♞d2 38.♞e2 ♞xb3 0-1

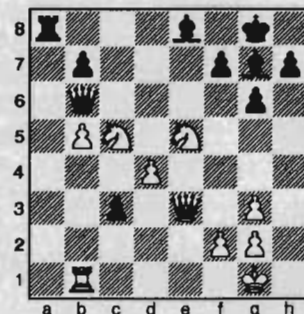
Slav Exchange

NM Michael Lee (2202, 3.5)

NM Curt Collyer (2218, 2.0)

Seattle, WA Championship (6) 2007

1.c4 c6 2.♜c3 d5 3.cxd5 cxd5 4.d4 ♜f6 5.♜f3 ♜c6 6.♞f4 e6 7.e3 ♜h5 8.♞g3 ♜xg3 9.hxg3 g6 10.♞d3 ♞g7 11.O-O O-O 12.♞b1 ♗e7 13.a3 ♞d7 14.b4 ♞fd8 15.♗b3 ♞e8 16.♞fc1 ♞ac8 17.♞c2 ♞f8 18.♞d1 a5 19.b5 a4 20.♜xa4 ♜a5 21.♗b2 ♞xc2 22.♗xc2 ♗xa3 23.♞b1 ♗d6 24.♗c3 ♞a8 25.e4 ♜c4 26.♜c5 ♗b6 27.exd5 exd5 28.♞xc4 dxc4 29.♜e5 ♞g7 30.♗e3 c3



31.♜c4 ♗d8 32.♗xc3 ♞xd4 33.♗b4 ♗e7 34.♜d3 ♗e2 35.♗d2 ♗xd2 36.♜xd2 ♞a3 37.♜f4 ♞a2 38.♜e4 f5 39.♜d6 ♞xf2+ 40.♝h2 ♞f7 41.♜xb7 ♞a3 42.♝h1 ♞xg3 43.♜e2 ♞e5 44.♜c5 ♞c4 45.♜g1 ♞d4 46.♜b7 ♞xb5 47.♞xb5 ♞a1 48.♞d5 ♞xg1 49.g3 ♝g7 50.♞d7+ ♝h6 51.♝g2 ♞b6 52.♜d6 ♞c5 53.♜f7+ ♝h5 54.♞d5 ♞c1 55.♜e5 ♝h6 56.♜f7+ ♝g7 57.♜g5 ♞e7

58. $\text{E}d7 \text{E}c2+ 59. \text{C}f3 \text{C}f6 60. \text{C}xh7+ \text{C}e6 61. \text{E}b7 \text{E}h2 62. \text{g}4 \text{E}xh7 63. \text{gxf5}+ \text{gxf5} 64. \text{E}b6+ \text{E}d6 0-1$

Sicilian Maroczy Bind

Allen Smith (1816, 3.5)

David Arganian (2020, 1.0)

Seattle, WA Premier (6) 2007

1. $\text{e}4 \text{c}5 2. \text{C}f3 \text{g}6 3. \text{c}4 \text{C}c6 4. \text{d}4 \text{cxd}4 5. \text{C}xd4 \text{C}f6 6. \text{C}c3 \text{d}6 7. \text{E}e2 \text{C}xd4 8. \text{C}xd4 \text{E}g7 9. \text{O-O} 10. \text{E}g5 \text{E}e6 11. \text{C}d2 \text{E}e8 12. \text{E}ae1 \text{E}c8 13. \text{b}3 \text{C}a5 14. \text{E}d3 \text{C}d7 15. \text{C}d5 \text{C}xd2 16. \text{E}xd2 \text{E}xd5 17. \text{exd5} \text{C}e5 \text{Draw}$

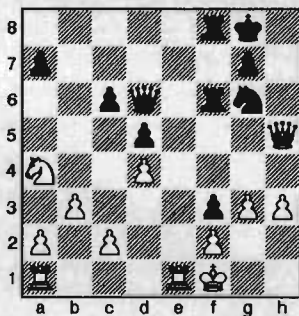
French

Andy May (2019, 3.5)

Alex Guo (1922, 3.0)

Seattle, WA Premier (6) 2007

1. $\text{e}4 \text{e}6 2. \text{C}c3 \text{d}5 3. \text{C}f3 \text{c}5 4. \text{exd}5 \text{exd}5 5. \text{E}b5+ \text{C}c6 6. \text{C}e2+ \text{E}e7 7. \text{O-O} \text{E}g4 8. \text{h}3 \text{E}xf3 9. \text{C}xf3 \text{C}f6 10. \text{d}3 \text{O-O} 11. \text{E}xc6 \text{bxc}6 12. \text{b}3 \text{C}d7 13. \text{C}a4 \text{E}d6 14. \text{E}a3 \text{C}e5 15. \text{C}d1 \text{f}5 16. \text{E}xc5 \text{f}4 17. \text{d}4 \text{C}g6 18. \text{C}g4 \text{E}f6 19. \text{E}fe1 \text{h}5 20. \text{C}xh5 \text{f}3 21. \text{E}xd6 \text{C}xd6 22. \text{g}3 \text{E}af8 23. \text{C}f1$



23... $\text{C}f4 24. \text{gxf}4 \text{C}xf4 25. \text{C}g4 \text{C}xg4 26. \text{E}e3 \text{C}xh3+ 27. \text{C}e1 \text{C}h1+ 28. \text{C}d2 \text{C}xa1 29. \text{C}c3 \text{C}f1 30. \text{C}d1 \text{C}h3 31. \text{a}4 \text{E}e6 32. \text{E}d3 \text{E}e2+ 33. \text{C}c3 \text{a}5 34. \text{C}b2 \text{C}f1 35. \text{C}c3 \text{E}e1 36. \text{C}e3 \text{C}xf2 37. \text{C}g4 \text{C}g3 38. \text{C}e5 \text{E}xe5 39. \text{dxe}5 \text{C}xe5+ 40. \text{C}d2 \text{f}2 41. \text{E}e3 \text{C}f4 42. \text{C}d3 \text{f}1= \text{C}+ 43. \text{E}e2 \text{C}f3+ 44. \text{E}e3 \text{C}3xe3 \text{mate}$

Sicilian

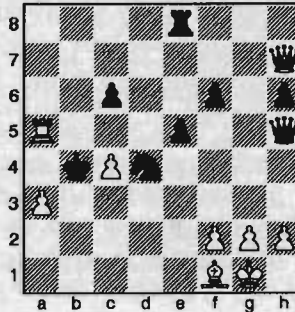
Geoffrey Gale (1964, 3.0)

Joshua Sinanan (2088, 3.0)

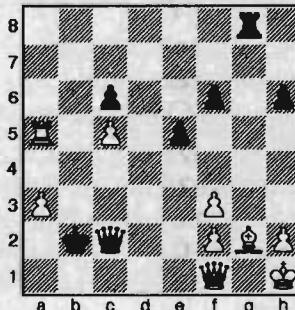
Seattle, WA Premier (6) 2007

1. $\text{e}4 \text{c}5 2. \text{C}f3 \text{C}c6 3. \text{d}4 \text{cxd}4 4. \text{C}xd4 \text{C}b6 5. \text{C}b3 \text{C}f6 6. \text{C}c3 \text{e}6 7. \text{E}d3 \text{E}b4 8. \text{O-O} \text{E}xc3 9. \text{bxc}3 \text{d}6 10. \text{E}a3 \text{C}c7 11. \text{E}e1 \text{O-O} 12. \text{C}d4 \text{a}6 13. \text{C}xc6 \text{C}xc6 14. \text{e}5 \text{dxe}5 15. \text{E}xf8 \text{C}xf8 16. \text{E}xe5$

$\text{C}xc3 17. \text{E}e3 \text{C}c7 18. \text{E}f1 \text{E}d7 19. \text{E}b1 \text{E}c6 20. \text{c}4 \text{E}d8 21. \text{E}d3 \text{E}e8 22. \text{E}b2 \text{h}6 23. \text{E}bd2 \text{C}e4 24. \text{E}e2 \text{C}c5 25. \text{E}g3 \text{e}5 26. \text{C}e1 \text{a}5 27. \text{E}ge3 \text{f}6 28. \text{C}b1 \text{C}e6 29. \text{C}h7 \text{C}f7 30. \text{E}d2 \text{C}h5 31. \text{E}d6 \text{C}d4 32. \text{E}g3 \text{C}e7 33. \text{E}xc6 \text{bxc}6 34. \text{E}xg7+ \text{C}d6 35. \text{E}a7 \text{C}c5 36. \text{E}xa5+ \text{C}b4 37. \text{a}3+$



37... $\text{C}c3 38. \text{C}d3+ \text{C}b2 39. \text{C}d2+ \text{C}b3 40. \text{c}5 \text{C}f3+ 41. \text{gxf}3 \text{E}g8+ 42. \text{E}g2 \text{C}g6 43. \text{C}b4+ \text{C}a2 44. \text{C}c4+ \text{C}b2 45. \text{C}e2+ \text{C}b3 46. \text{C}d1+ \text{C}b2 47. \text{C}f1 \text{C}c2 48. \text{C}h1$



48... $\text{E}d8 49. \text{C}g1 \text{E}d1 50. \text{E}f1 \text{C}c3 51. \text{E}a6 \text{C}xf3+ 52. \text{E}g2 \text{E}xg1+ 53. \text{C}xg1 \text{C}d1+ 54. \text{E}f1 \text{C}d5 55. \text{E}g2 \text{e}4 56. \text{a}4 \text{f}5 57. \text{a}5 \text{C}xc5 58. \text{E}a8 \text{C}c1+ 59. \text{E}f1 \text{C}g5+ 60. \text{C}h1 \text{C}d2 61. \text{a}6 \text{C}xf2 0-1$

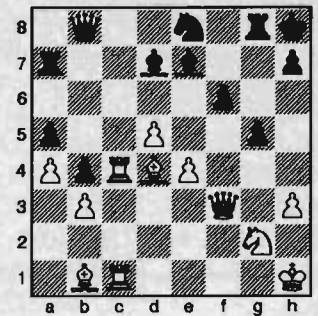
Ruy Lopez Chigorin

Elston Cloy (1959, 2.0)

Benjamin Calpo (2008, 2.0)

Seattle, WA Premier (6) 2007

1. $\text{e}4 \text{e}5 2. \text{C}f3 \text{C}c6 3. \text{E}b5 \text{a}6 4. \text{E}a4 \text{C}f6 5. \text{O-O} \text{E}e7 6. \text{E}e1 \text{d}6 7. \text{c}3 \text{b}5 8. \text{E}b3 \text{O-O} 9. \text{h}3 \text{C}a5 10. \text{E}c2 \text{c}5 11. \text{d}4 \text{C}c7 12. \text{C}bd2 \text{cxd}4 13. \text{cxd}4 \text{E}d7 14. \text{C}f1 \text{E}fc8 15. \text{C}e3 \text{E}f8 16. \text{b}3 \text{C}c6 17. \text{E}b2 \text{E}a7 18. \text{E}c1 \text{C}b8 19. \text{E}b1 \text{E}e8 20. \text{C}d5 \text{a}5 21. \text{C}xf6+ \text{gxf}6 22. \text{d}5 \text{C}b4 23. \text{g}4 \text{E}h6 24. \text{a}3 \text{C}a6 25. \text{C}h4 \text{C}h8 26. \text{C}g2 \text{b}4 27. \text{a}4 \text{E}g8 28. \text{f}4 \text{C}b6+ 29. \text{C}h1 \text{C}c7 30. \text{C}f3 \text{C}e8 31. \text{E}c4 \text{E}f8 32. \text{E}ec1 \text{E}e7 33. \text{g}5 \text{fxg}5 34. \text{fxe}5 \text{dxe}5 35. \text{E}xe5+ \text{f}6 36. \text{E}d4 \text{C}b8$



37. $\text{C}e3 \text{E}a6 38. \text{C}g4 \text{C}f4 39. \text{C}g2 \text{h}5 40. \text{E}f1 \text{C}b8 41. \text{C}h6 \text{E}g7 42. \text{e}5 \text{g}4 43. \text{C}f5 \text{fxe}5 44. \text{C}xg7 \text{exd}4 45. \text{C}e4 \text{E}f5 46. \text{C}xf5 \text{E}f6 47. \text{C}d6 \text{E}a7 48. \text{E}c8 1-0$

Bird's Opening

Clint Ballard (1913, 1.0)

Chris Kalina (1954, 3.0)

Seattle, WA Premier (6) 2007

1. $\text{f}4 \text{d}5 2. \text{C}f3 \text{c}5 3. \text{g}3 \text{b}6 4. \text{E}g2 \text{E}b7 5. \text{O-O} \text{C}f6 6. \text{d}3 \text{e}6 7. \text{C}e1 \text{E}e7 8. \text{b}3 \text{O-O} 9. \text{E}b2 \text{C}c6 10. \text{e}4 \text{dxe}4 11. \text{dxe}4 \text{C}b4 12. \text{e}5 \text{C}xc2 13. \text{C}e2 \text{C}xa1 14. \text{exf}6 \text{E}xf6 15. \text{C}a3 \text{C}xb3 16. \text{axb}3 \text{E}xb2 17. \text{C}xb2 \text{C}d3 18. \text{C}c4 \text{C}d7 19. \text{C}ce5 \text{C}c7 20. \text{C}c2 \text{h}6 21. \text{E}h3 \text{E}ad8 22. \text{C}e2 \text{E}d5 23. \text{C}e3 \text{E}d6 24. \text{C}h4 \text{E}f8 25. \text{f}5 \text{exf}5 26. \text{E}xf5 \text{E}e6 27. \text{C}g4 \text{E}d5 28. \text{E}e1 \text{E}c6 29. \text{C}e5 \text{C}b8 30. \text{E}e4 \text{E}d1 31. \text{E}h7+ \text{C}xh7 32. \text{C}f5+ \text{C}h8 33. \text{E}xd1 \text{E}xd1+ 34. \text{C}f2 \text{C}d8 35. \text{C}f3 \text{E}xf3 36. \text{C}xf3 \text{C}d2+ 0-1$

Round Seven

Sicilian Four Knights

Michael MacGregor (2175, 15)

FM Paul Bartron (2110, 3.5)

Seattle, WA Championship (7) 2007

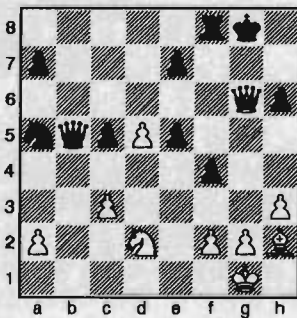
1. $\text{e}4 \text{c}5 2. \text{C}f3 \text{e}6 3. \text{d}4 \text{cxd}4 4. \text{C}xd4 \text{C}f6 5. \text{C}c3 \text{C}c6 6. \text{C}xc6 \text{bxc}6 7. \text{e}5 \text{C}d5 8. \text{C}e4 \text{C}c7 9. \text{f}4 \text{C}b6 10. \text{E}d3 \text{E}b8 11. \text{C}e2 \text{C}b4 12. \text{E}e3 \text{C}xd3+ 13. \text{C}xd3 \text{C}a5+ 14. \text{C}f2 \text{E}a6 15. \text{C}d6+ \text{C}d8 16. \text{C}d4 \text{c}5 17. \text{C}xc5 \text{C}xc5 18. \text{E}xc5 \text{C}c7 19. \text{b}4 \text{f}6 20. \text{E}hd1 \text{fxe}5 21. \text{fxe}5 \text{E}e7 22. \text{c}4 \text{E}hf8+ 23. \text{C}g1 \text{E}f4 24. \text{E}ac1 \text{C}d8 25. \text{b}5 \text{E}b7 26. \text{E}xa7 \text{E}xd6 27. \text{E}xd6 \text{E}a8 28. \text{E}b6+ \text{C}e8 29. \text{E}d2 \text{E}a4 30. \text{c}5 \text{E}d5 31. \text{c}6 \text{dxc}6 32. \text{bxc}6 \text{E}ac4 33. \text{E}dc2 \text{E}xc2 34. \text{E}xc2 \text{E}c4 35. \text{E}xc4 \text{E}xc4 36. \text{a}3 \text{E}b5 37. \text{c}7 \text{C}d7 38. \text{C}f2 \text{C}c8 39. \text{g}3 \text{C}b7 40. \text{E}a5 \text{E}d7 41. \text{C}e3 \text{C}a6 42. \text{E}b4 \text{C}b7 43. \text{E}d6 \text{E}a4 44. \text{C}d4 \text{E}d7 45. \text{C}c5 \text{E}a4 46. \text{h}4 \text{E}d1 47. \text{C}d4 \text{C}c8 48.$

♘e3 h5 49.♙f4 g6 50.♘g5 ♖c2 51. ♙f6 ♘d7 52.♙f7 ♖d3 53.a4 ♖c2 54. a5 ♖d3 55.♙f6 ♖f5 56.a6 ♖d3 57.a7 ♖e4 58.♙f7 ♖d5 59.♙xg6 ♖f3 60. a8=♙ 1-0

King's Indian

NM Curt Collyer (2218, 3.0)
FM John Readey (2336, 2.5)
Seattle, WA Championship (7) 2007

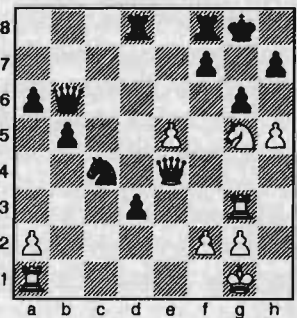
1.♘f3 g6 2.d4 ♖g7 3.c4 d6 4.♘c3 ♘f6 5.♖f4 O-O 6.e3 c5 7.♖e2 ♖f5 8.h3 ♘e4 9.♙b3 ♘c6 10.d5 ♘a5 11.♙a3 ♘xc3 12.bxc3 b6 13.O-O h6 14.♖ad1 ♖c8 15.♖d3 ♖a6 16.♘d2 ♙c7 17. ♖de1 ♖ab8 18.♖b1 f5 19.♙c1 g5 20. ♖h2 ♙d7 21.♙c2 f4 22.exf4 gxf4 23. ♖fe1 ♖e5 24.♖e4 b5 25.cxb5 ♖xb5 26. ♖xb5 ♖xb5 27.♖xb5 ♙xb5 28. ♖xe5 dxe5 29.♙g6+ Draw



Ruy Lopez Open

NM Ignacio Perez (2239, 4.5)
FM David Bragg (2205, 2.0)
Seattle, WA Championship (7) 2007

1.e4 e5 2.♘f3 ♘c6 3.♖b5 a6 4.♖a4 ♘f6 5.O-O ♘xe4 6.d4 b5 7.♖b3 d5 8.dxe5 ♖e6 9.♙e2 ♖c5 10.♖e3 ♙e7 11.♖d1 ♖d8 12.♖xc5 ♙xc5 13.♘bd2 ♘xd2 14.♖xd2 ♘a5 15.♘d4 ♙b6 16. c3 O-O 17.♖c2 ♘c4 18.♖d3 ♘xb2 19. ♖g3 g6 20.h4 c5 21.♘f3 d4 22.cxd4 cxd4 23.♖e4 ♘c4 24.h5 ♖d5 25.♘g5 ♖xe4 26.♙xe4 d3



27.♘h7 ♘xh7 28. e6 ♙xe6 29.hxg6+ ♙xg6 30.♖xg6 fxg6 31.♙h4+ ♘g8 32.♙g4 ♖f6 33.a4 d2 34.axb5 axb5 35.♘h2 ♖fd6 36.♖d1 ♘g7 37.♙g5 ♖d5 38.♙e7+ ♘g8 39. ♘g3 ♖d3+ 40.♘g4 ♖8d4+ 41.♘g5 ♖d6 42.♙e8+ ♘g7 Draw

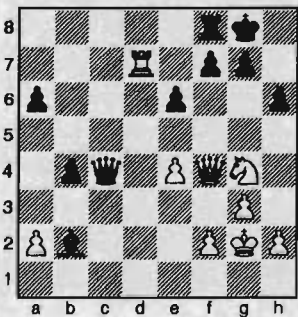
Sicilian Wing Gambit Deferred

NM Nat Koons (2280, 4.0)
NM Michael Lee (2202, 3.5)
Seattle, WA Championship (7) 2007

1.e4 c5 2.a3 ♘c6 3.b4 cxb4 4.axb4 ♘xb4 5.c3 ♘c6 6.d4 d5 7.exd5 ♙xd5 8.♘a3 ♖d7 9.♘f3 e6 10.♘b5 ♖c8 11.c4 ♙e4+ 12.♖e2 a6 13.♘g5 ♖b4+ 14.♙f1 ♙f5 15.♘a3 h6 16.♖d3 ♙f6 17.♘e4 ♙e7 18.♘c2 ♘f6 19.♖b1 ♘xe4 20.♖xe4 a5 21.♖b3 ♘a7 22.c5 ♖a4 23.♖g3 g6 24.♖f4 ♘b5 25.♙a1 ♖xc2 26.♖xc2 e5 27.♖xe5 O-O 28. ♖xg6 fxg6 29.♖xg6+ ♙f7 30.♖g7+ ♘e8 31.♙a4 ♙e6 32.♙xb5+ ♖c6 33.♖xb7 ♖xf2+ 34.♙xf2 ♙f5+ 35. ♘e3 ♙g5+ 36.♖f4 1-0Catalan

FM Nick Raptis (2286, 3.0)
LM Viktors Pupols (2237, 2.5)
Seattle, WA Championship (7) 2007

1.♘f3 d5 2.g3 ♘f6 3.♖g2 e6 4.c4 ♖e7 5.O-O O-O 6.d4 dxc4 7.♙c2 a6 8.♙xc4 b5 9.♙c2 ♖b7 10.♖f4 ♘c6 11.♖d1 ♘b4 12.♙c1 ♖c8 13.♘c3 ♘bd5 14. ♘e5 ♘xc3 15.♙xc3 ♖xg2 16.♙xg2 ♘d5 17.♙f3 ♖d6 18.♖ac1 c5 19.dxc5 ♖xc5 20.♖xc5 ♖xc5 21.♖d3 ♙c8 22.e4 ♘xf4+ 23.♙xf4 ♖e7 24.♙d2 h6 25.♖d7 ♖f6 26.♘g4 ♖xb2 27.♙d6 ♙c4 28.♙f4 b4



29.♖c7 ♙xa2 30.♘h3 ♙b1 31.♘g2 ♙d3 32.♖b7 a5 33.♖a7 ♙b5 34.e5 b3 35.♘f6+ gxf6 36.exf6 ♙d5+ 37.f3 ♙g5

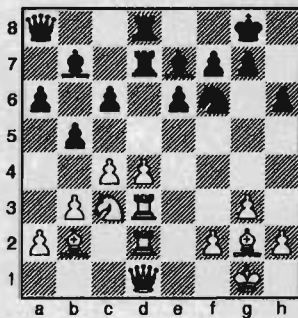
Please submit changes of address promptly to the Business Manager.

38.♙a4 ♖xf6 39.♙xb3 ♙c5 40.♖d7 ♖c8 41.♙b7 ♙c2+ 0-1

Catalan

Joshua Sinanan (2088, 4.0)
Allen Smith (1816, 4.0)
Seattle, WA Premier (7) 2007

1.d4 d5 2.♘f3 ♘f6 3.c4 c6 4.♘c3 e6 5.g3 ♖e7 6.♖g2 ♘bd7 7.O-O O-O 8.b3 b6 9.♖b2 ♖b7 10.♙c2 ♙c7 11.♖fd1 a6 12.♖ac1 ♖ac8 13.♙b1 ♙b8 14.e4 dxe4 15.♘g5 h6 16.♘gx4 ♘xe4 17. ♙xe4 ♘f6 18.♙e2 ♖fe8 19.♙f1 ♖cd8 20.♖d3 ♖d7 21.♖cd1 ♖ed8 22.♖1d2 ♙a8 23.♙d1 b5

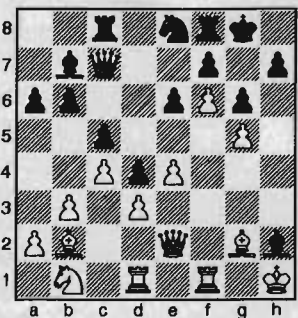


24.♘e2 bxc4 25.bxc4 c5 26.d5 exd5 27.♖xf6 ♖xf6 28.♖xd5 ♖xd5 29.♖xd5 ♖xd5 30.♖xd5 ♖xd5 31.cxd5 ♙d8 32.♙d3 ♙a5 33.♙c2 ♙b5 34.♘f4 c4 35.♙e4 c3 36.d6 ♙b2 37.♘d5 c2 38.♘xf6+ gxf6 39.♙g4+ ♙f8 40.♙c8+ ♙g7 41.♙g4+ Draw

English

Chris Kalina (1954, 4.0)
Geoffrey Gale (1964, 3.0)
Seattle, WA Premier (7) 2007

1.♘f3 c5 2.c4 b6 3.g3 ♖b7 4.♖g2 ♘f6 5.O-O d6 6.♘c3 e6 7.d3 ♖e7 8.b3 ♘bd7 9.♖b2 a6 10.e4 O-O 11.♙e2 ♖c8 12.♘d2 ♙c7 13.f4 ♘e8 14.♖ae1 g6 15.f5 ♘g7 16.g4 ♖h4 17.♖d1 ♖f6 18.♘f3 ♘e5 19.♘xe5 ♖xe5 20.f6 ♘e8 21.♘b1 d5 22.♙h1 d4 23.g5 ♖xh2



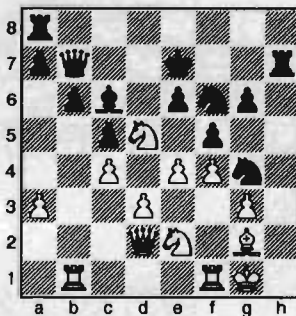
24. f3 f4 25. c1 xc1 26. xc1
 e5 27. d2 h6 28. cf1 xg5 29. f2
 e5 30. h3 d8 31. g3 h5 32. g2
 d6 33. g4 g5 34. e6 xf6 35.
 xf6 xf6 36. xg6+ h7 37. gxf6
 g8+ 38. f2 xe6 39. xf7+ g7
 40. e2 c8 41. f8 d7 42. d2
 e8 43. h1 g5 44. f2 g7 45.
 f3 h5 46. fh3 f6+ 47. e1 g4
 48. g3 f4 49. hg1 h5 50. f3 f6
 51. xg5 xg5 52. f1 h4 53. gg1 h3
 Draw

English

Alex Guo (1922, 4.0)
 Clint Ballard (1913, 1.0)

Seattle, WA Premier (7) 2007

1. c4 f5 2. c3 f6 3. g3 g6 4. g2 g7
 5. f4 c5 6. d3 d6 7. e3 b6 8. ge2 d7
 9. O-O h5 10. b1 e6 11. a3 c6 12. e4
 h4 13. a4 c7 14. b4 hxg3 15. hxg3
 b6 16. bxc5 dxc5 17. ac3 b7 18. c2
 g4 19. b5 e7 20. b2 xb2 21.
 xb2 h7 22. d2 d7 23. dbc3
 ddf6 24. d5+



24... dxd5 25. cxd5 exd5 26. exf5 gxf5
 27. d4 f8 28. d3 h5 29. c3 c4
 30. d2 d8 31. fe1 h7 32. f1
 h1+ 33. e2 e8+ 34. f3 hxe1
 35. xe1 h2+ 36. f2 g4+ 37. f1
 xe1+ 38. xe1 e7 39. xe7+ xe7
 40. e2 f6 41. d1 e4 42. xe4 dxe4
 43. e3 e6 44. d2 b5 45. c3 d7
 46. b4 d6 47. a5 c6 48. b4 e6
 49. a5 c8 50. b4 a6 51. c2 d5
 52. c3 e3 53. xe3+ e4 54. c2 f3
 55. d2 b7 56. e3c3+ 57. d3 e4+
 58. xc3 xe3 0-1

Sicilian Moscow

Benjamin Calpo (2008, 2.0)
 Andy May (2019, 3.5)

Seattle, WA Premier (7) 2007

1. e4 c5 2. f3 c6 3. b5 f6 4. e2
 c7 5. c3 e5 6. O-O d6 7. h3 a6 8. c4
 b5 9. d5 xd5 10. exd5 e7 11. d4

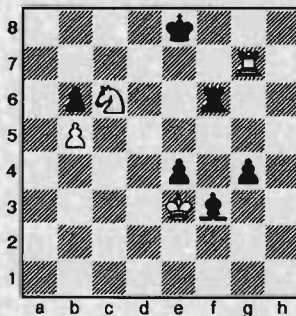
g6 12. e1 f6 13. dxe5 dxe5 14. c4
 d7 15. c3 b8 16. b3 d6 17. cxb5
 axb5 18. a4 bxa4 19. bxa4 O-O 20. b5
 xb5 21. axb5 b8 22. b1 b7 23. b6
 f5 24. b2 e4 25. h2 e5 26. b5
 d4 27. a2 d7 28. b3 e5 29.
 e3 d3 30. f1 e5 31. d1 xh3
 32. xd3 exd3 33. xd3 e6 34. f4 f5
 35. b3 d4 36. xd4 cxd4 37. b4
 d6 38. f3 e4 39. b5 xf3 40.
 gxf3 xf4 41. b7 c1+ 42. f2 d2+
 43. g3 g5+ 44. f2 d2+ 45. g3
 c3 46. a2 f8 47. a6 c7+ 48. d6
 c1 49. a5 g1+ 50. h3 h1+
 51. g3 g1+ 52. h3 h1+ 53. g3
 g1+ Draw

Larsen's Opening

David Arganian (2020, 1.5)
 Elston Cloy (1959, 3.0)

Seattle, WA Premier (7) 2007

1. f3 d5 2. b3 g4 3. e5 f5 4. e3
 d7 5. xd7 xd7 6. b2 f6 7. f4
 O-O-O 8. e2 h5 9. d3 h6 10. h3 f7
 11. xh5 e5 12. xf7 xf7 13. fe5 fe5
 14. f1 e6 15. f3 g6 16. g4
 xg4 17. hxg4 e4 18. d4 h4 19. c3
 c6 20. O-O-O xg4 21. e2 d6 22. g3
 h5 23. c4 xg3 24. cxd5 cxd5 25. c3
 h4 26. d2 f3 27. a3 h2 28.
 g1 h1 29. xh1 xh1 30. c2 b8
 31. e7 d7 32. g5 f3 33. d2 b6
 34. f4+ xf4 35. exf4 g6 36. e3 c7
 37. d2 h7 38. xd5 d7 39. b4
 xd4+ 40. c3 d6 41. d2 e6 42.
 c2 f6 43. d4 xf4 44. e3 f6
 45. d7 g5 46. d4 g4 47. g7 a6 48.
 a4 c8 49. b4 d8 50. b5 axb5 51. axb5
 e8 52. c6



52... f8 53. g5 f7 54. e5+ e6
 55. xg4 f5 56. g6+ f7 57. xb6
 xg4 58. xe4 c5 59. c6 xb5
 60. a6 e6 61. d4 d5+ 62. e4
 f6 63. b6 c5 64. b4 h5 65.
 b6 h4+ 66. d3 e5 67. c3
 h3+ 68. d2 c4 69. b8 d4 70.
 d8+ d5 71. d7 h2+ 72. d1

g4 73. e1 d4 74. d1 e4 75.
 c1 b3 76. d2 h3 77. b2 d5
 78. c2 d4 79. d2+ c4 80. c2+
 b4 81. d2 c4 82. f2 b3+ 83.
 c2 c3+ 84. b2 e3 85. d2 d3
 86. c1 c3 87. c2+ d4 88. h2
 a1+ 89. b2 b1+ 90. a2 c3
 91. h8 b2+ 92. a1 b6 93. h2
 a6+ 94. a2 e6 95. a3+ c2
 96. a2+ c1 97. b2 c4 98. c2+
 xc2 Draw

Round Eight

King's Indian Four Pawns

FM Nick Raptis (2286, 3.0)
 NM Ignacio Perez (2239, 5.0)

Seattle, WA Championship (8) 2007

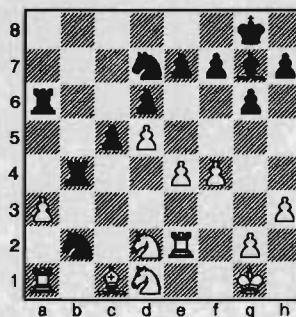
1. d4 f6 2. c4 g6 3. c3 g7 4. e4 O-O
 5. f4 d6 6. f3 c5 7. d5 a6 8. a4 e6 9. e2
 exd5 10. cxd5 g4 11. O-O bd7 12.
 e1 e8 13. h3 xf3 14. xf3 c4 15.
 e3 a5 16. h1 e7 17. d4 ae8
 18. e5 dxe5 19. fe5 xe5 20. xe5
 xe5 21. xe5 xe5 22. d4 xd5
 23. xc4 xc3 24. c8+ f8 25. bxc3
 b5 0-1

Benko Gambit

LM Viktors Pupols (2237, 3.5)
 NM Michael Lee (2202, 3.5)

Seattle, WA Championship (8) 2007

1. d4 f6 2. c4 c5 3. d5 b5 4. cxb5 a6
 5. bxa6 g6 6. c3 xa6 7. f4 d6 8. f3
 g7 9. e4 a5 10. xa6 xa6 11. e2
 O-O 12. xa6 xa6 13. O-O bd7 14.
 e1 b8 15. h3 b6 16. e2 a4 17.
 d1 b4 18. d2 d7 19. a3 xb2



20. b1 xd1 21. axb4 c3 22. e1
 xb1 23. bxc5 xd2 24. c6 b6 25.
 xd2 a1 26. xa1 xa1 27. e3
 c8 28. f2 f8 29. e2 e6 30. d3
 exd5 31. exd5 e8 32. g4 f5 33. g5 d8
 34. c4 c7 35. b5 b2 36. d2
 d4 37. a5+ b6 38. d2 f2 39.
 a5+ b8 40. d2 b6 41. b4
 xd5 42. xd6+ c7+ 43. c4 c8

2007 Washington State Premier

	Name & USCF/FIDE	Rtg	1	2	3	4	5	6	7	8	9	10	T	S-B
1	Sinanan, Joshua	2094 2125		0.5	0.5	0.5	1	0.5	1	1	0.5	0.5	6.0	2091
2	Kalina, Chris	1954 2079	0.5		0.5	0.5	1	0	0.5	0.5	1	1	5.5	1974
3	May, Andy	2023 0	0.5	0.5		0	0	0.5	1	1	1	1	5.5	2028
4	Smith, Allen	1821 1912	0.5	0.5	1		1	0	0	0.5	0.5	1	5.0	1885
5	Guo, Alex	1922 0	0	0	1	0		1	1	1	1	0	5.0	1942
6	Calpo, Benjamin	2003 0	0.5	1	0.5	1	0		0	0	0.5	1	4.5	1995
7	Gale, Geoffrey	1973 2184	0	0.5	0	1	0	1		0	1	1	4.5	1972
8	Cloy, Elston	1959 2124	0	0.5	0	0.5	0	1	1		0.5	0.5	4.0	1953
9	Arganian, David	2020 2107	0.5	0	0	0.5	0	0.5	0	0.5		1	3.0	2000
10	Ballard, Clint	1918 2062	0.5	0	0	0	1	0	0	0.5	0		2.0	1888

44. ♖d3 ♗e6 45. ♗e2 ♖b6 46. ♖f3 ♗c7 47. ♖b4 ♗xf4 48. h4 ♖c7 49. ♗e1 ♖xc6 50. ♗f2 ♖d5 51. ♗e1 ♗e5 52. ♗a5 ♖d4+ 53. ♖f2 ♖e4 0-1

Queen Pawn

FM Paul Bartron (2110, 3.5)

NM Curt Collyer (2218, 3.5)

Seattle, WA Championship (8) 2007

1. d4 d5 2. ♖f3 c6 3. g3 ♗g4 4. ♗g2 ♖d7 5. O-O e6 6. ♖bd2 ♖g6 7. c3 ♖b6 8. ♗e1 ♗e7 9. a4 O-O 10. a5 ♖c7 11. b4 e5 12. ♖xe5 ♖xe5 13. dxe5 ♖xe5 14. ♖b3 ♖h5 15. e4 dxe4 16. ♖xe4 ♖xe4 17. ♗xe4 ♗e6 18. c4 b5 19. axb6 axb6 20. ♗xa8 ♗xa8 21. ♖b2 ♗d8 22. ♗f3 ♖g6 23. ♖e3 c5 24. b5 ♗f6 25. ♗xf6 ♖xf6 26. ♗g4 ♗d6 27. ♗xe6 fxe6 28. ♖g2 Draw

Going into the penultimate round Ignacio and I were tied for the lead. I was paired with Readey, Ignacio with Raptis. My lifetime score against Readey is something like +0-4=2.

Catalan

FM John Readey (2336, 3.0)

NM Nat Koons (2280, 5.0)

Seattle, WA Championship (8) 2007

Annotations by NM Nat Koons

1. ♖f3 ♖f6 2. c4 e6 3. g3 d5 4. d4 ♖b4+ 5. ♗d2 ♗e7 6. ♗g2 O-O 7. O-O c6 8. ♖c2 ♖bd7 9. ♗d1 b6 10. b3 ♗a6 11. ♗f4 ♗c8 12. ♖c3 ♖h5

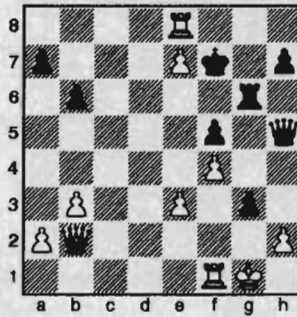
This opening requires sensitivity to positional subtleties, which John certainly has, and which I am developing. Further, he's been playing it for decades while this is my first crack at it. Why I thought it was a good idea to play an unfamiliar opening in a crucial game is not clear.

13. ♗c1 f5 14. ♖b2 ♖e8 15. e3 ♖hf6 16. ♖e2 ♖e4 17. ♖f4 ♗f6 18. ♖e5 ♖xe5 19. dxe5 ♗h6 20. f3 ♖c5 21. ♗f1 g5 22. ♖d3 ♖h5 23. ♖g2 ♗f8

Paul Bartron asked me the next day, "Why didn't you play 23... ♖h8 and 24... ♗g8 instead?" I have to admit, that's a good point! Exactly how does 23... ♗f8 improve Black's position? On g8, it would have come in quite handy! Around here, Raptis started shaking his head in resignation. "Hang in there, Nick!" I thought to myself.

24. ♖xc5 ♗xc5 25. ♗d4 f4 26. gxf4 ♗xd4 27. ♗xd4 ♗g6 28. f5 exf5 29. cxd5

30. ♗xf1 31. ♗xd5 ♖h8 32. ♖b2 g4 33. f4 g3 34. e6+ ♖g8 35. e7 ♗e8 36. ♗d8 ♖f7 37. ♗xe8



37... ♖xe8

A crucial decision! Black's attack (rather improbably, it seemed to me at the time) appears to be on the verge of breaking through. I saw Black had an easy draw, i.e., 37... gxf6+ 38. ♖h1 ♗g1+ 39. ♗xg1 hxf6= ♖+ 40. ♖xg1 ♖g4+ with a perpetual. White can never trade allow a Queen trade, because then the pawn ending is lost for White, due to the h-pawn! Remember this idea!

38. h3 ♖xh3 39. ♗c1!

OK, so White is threatening 40. ♖h8+ ♖xe7 41. ♗c7+ and 42. ♖e5 mate. Time to bail.

39... ♖h2+ 40. ♖xh2 gxf6+ 41. ♖xh2

This is move 41—time control has been made; so Black had an hour on his clock.

41... ♗d6?

41... ♗e6—NM Bobby Ferguson; or 41... ♗g7—FRITZ.

42. ♖g3 ♖xe7 43. ♗c7+ ♗d7??

Played casually! "He can't take, of course, because the pawn ending is lost, isn't it?"

44. ♗xd7+ ♖xd7 45. ♖h4 ♖e6 46. ♖g5 1-0

Yes, it is. Yes, it is—for Black (46... ♖e6 47. ♖h6 ♖d5 48. ♖xh7 ♖e4 49. ♖g6!)! Edmar Mednis once imparted to me the following philosophy, "Winning isn't everything, but losing is nothing." Sounds about right.

Lessons from this game? Play familiar openings! Study the endgame! Apply what you have learned! Save you it can! For gosh sakes, slow down and think!

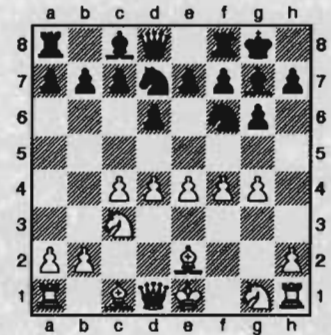
King's Indian Five Pawns

FM David Bragg (2205, 2.5)

Michael MacGregor (2175, 2.5)

Seattle, WA Championship (8) 2007

1. c4 g6 2. ♖c3 ♗g7 3. d4 ♖f6 4. e4 d6 5. ♗e2 ♖bd7 6. f4 O-O 7. g4



7... e5 8. g5 ♖e8 9. dxe5 dxe5 10. f5 ♖d6 11. f6 ♖xf6 12. gxf6 ♗xf6 13. ♗h6 ♗g7 14. ♗e3 ♗h6 15. ♖d3 ♗e6 16. b3 f5 17. O-O-O f4 18. ♗d2 b6 19. ♖f3 ♗g7 20. h4 h6 21. ♗dg1 ♗f7 22. ♗g2 a5 23. a4 ♖b7 24. ♖xd8 ♗axd8 25. ♖c2 ♖c5 26. ♗hg1 ♖h7 27. ♗c1 ♗fe8 28. ♗b2 c6 29. ♗d1 ♗xd1 30. ♗xd1 ♗d8 31. ♗d2 ♗xd2+ 32. ♖xd2 ♗f6 33. ♗c2 ♗e6 34. ♖d1 ♖d7 35. ♖f2 g5 36. hxg5 hxg5 37. ♖d3 g4 38. ♖fxe5 ♗g5 39. ♖xd7 f3+ 40. ♖e1 ♗h4+ 41. ♖f1 ♗xd7 42. ♖f4 ♗g5 43. ♖h5 ♖h6 44. ♖g3 ♗f4 45. ♖f2 ♖g5 46. ♖f5 ♗xf5 47. exf5 ♖h4 48. ♗e4 ♗g3+ 49. ♖f1 ♗d6 50. ♗xc6 ♖g5 51. f6 ♖f4 52. ♗c1+ ♖f5 53. ♗d7+ ♖xf6 54. ♗xg4 ♖e5 55. ♗xf3 ♖d4 56. ♗d1 ♖d3 57. ♖f2 ♗c5+ 58. ♖f3 ♗g1 59. ♖f4 ♗d4 60. ♖f5 ♗c5 61. ♖e5 ♖c3 62. ♖d5 ♖d3 63. ♖c6 ♖c3 64. ♗g5 ♖d3 65. ♗d8 ♖d2 66. ♗xb6 ♗b4 67. ♗h5 ♖c2 68. ♗f7 ♖xb3 69. ♖b5 1-0

French

Andy May (2019, 4.0)

David Arganian (2020, 2.0)

Seattle, WA Premier (8) 2007

1. e4 e6 2. ♖c3 d5 3. ♖f3 ♖f6 4. e5 ♖e4 5. ♗d3 ♖xc3 6. dxc3 c5 7. c4 dxc4 8. ♗xc4 ♖xd1+ 9. ♖xd1 ♖c6 10. c3 ♗d7 11. ♖c2 O-O-O 12. ♗g5 ♖e7 13. ♖d2 h6 14. ♗h4 g5 15. ♗g3 ♗c6 16. f3 ♗g7 17. ♗he1 ♖g6 18. ♗d3 b5 19. ♗xg6 fxg6 20. ♖e4 ♗xe4+ 21. ♗xe4 ♗d5 22. a4 b4 23. cxb4 ♗hd8 24. ♖b3 ♗d3+ 25. ♖c4 cxb4 26. ♖xb4 ♗f8+ 27. ♖c4 ♗d2 28. b4 ♗c2+ 29. ♖b3 ♗dd2 30. ♗c4+ ♗xc4 31. ♖xc4 ♗xg2 32. ♖b5 ♗b2 33. ♗c1+ ♖b7 34. ♗c4 h5 35.

♖d4 a6+ 36. ♘a5 h4 37. ♙e1 ♖e2 38.
 ♖d7+ ♘c6 39. ♖f7 ♖xe5+ 40. ♘xa6
 ♙d6 41. b5+ ♘d5 42. ♙d2 ♖e2 43.
 ♙xg5 ♖xh2 44. ♖d7 ♖a2 45. ♙e7
 ♖xa4+ 46. ♘b6 h3 47. ♙xd6 e5 48.
 ♙c5+ ♘e6 49. ♖d2 ♖h4 50. ♙g1 e4
 51. fxe4 g5 52. ♙h2 ♖xe4 53. ♘c5 1-0

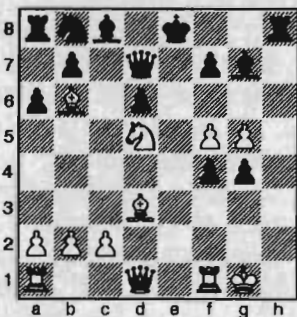
Sicilian Kan

Geoffrey Gale (1964, 3.5)

Allen Smith (1816, 4.5)

Seattle, WA Premier (8) 2007

1. e4 c5 2. ♖f3 e6 3. d4 cxd4 4. ♖xd4 a6
 5. ♖c3 ♖c7 6. ♙d3 g6 7. ♙e3 ♙g7 8.
 O-O ♖f6 9. f4 d6 10. g4 e5 11. g5 ♖g4
 12. ♖d5 ♖d8 13. ♖f5 ♖xf5 14. ♙b6 ♖d7
 15. exf5 h5 16. h3 exf4 17. hxg4 hxg4



18. f6 g3 19. ♖e1+ ♘f8 20. fxg7+ ♘xg7
 21. ♙d4+ ♘f8 22. ♙xh8 ♖h3 23. ♖e2
 ♙e6 24. g6 ♖xh8 25. ♖xf4 ♖c6 26.
 ♖xe6+ fxe6 27. ♖f1+ ♘e7 28. ♖f7+
 ♘d8 29. g7 1-0

Dutch

Chris Kalina (1954, 4.5)

Alex Guo (1922, 4.0)

Seattle, WA Premier (8) 2007

Annotations by Alex Guo

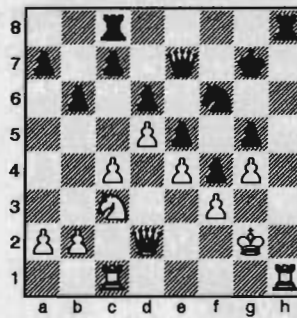
1. d4 e6 2. ♖f3 f5 3. ♙g5 ♖f6 4. e3 ♙e7
 5. ♙e2 b6

This is not good. Simply 5...d6 and going for ...e6-e5 would be a good plan. Fianchettoing the Bishop weakens the light squares e6 and f5.

6. c4 ♙b7 7. ♖c3 d6 8. ♖c1 ♖bd7 9. O-O O-O 10. ♖c2

Here is where the weak squares e6 and f5 come in. 10...e5 is impossible because of 11. ♖xf5 and White can get away with the pawn grabbing.

10... ♖e4 11. ♙xe7 ♖xe7 12. ♖d2
 ♖xd2 13. ♖xd2 g5 14. d5 e5 15. e4 f4
 16. ♙g4 ♖f6 17. ♙e6+ ♘h8 18. f3 ♙c8
 19. ♙xc8 ♖axc8 20. g4 h5 21. h3 hxg4
 22. hxg4 ♘g7 23. ♘g2 ♖h8 24. ♖h1



Here Kalina offered me a draw. I knew that it was a dead draw, but I really wanted to win badly. I soon blundered a pawn and everything went downhill, as there were no significant open lines.

24... ♖h4?! 25. ♖xh4 gxh4 26. ♖h1
 ♖h8 27. ♖f2 ♖d7? 28. ♖b5 ♖f8 29.
 ♖xa7

White went on to win convincingly.

29... ♖h6 30. ♖c6 ♖g5 31. b4 ♖h7
 32. a4 ♖f6 33. ♘h3 ♖h8 34. a5 ♘f7
 35. a6 ♖g6 36. ♖e2 ♖a8 37. a7 ♖h5
 38. ♖b1 ♖g3 39. ♖c2 ♘e8 40. c5 b5
 41. ♖d3 ♘f7 42. ♖e1 ♖h5 43. ♖xb5
 ♖f6 44. cxd6 ♘g7 45. ♖b7 ♖h7 46.
 ♖xc7+ ♘h6 47. ♖e7 ♖g5+ 48. ♘g2
 h3+ 49. ♘f2 ♖xe4+ 50. fxe4 ♖f6 51.
 ♘f3 ♖e8 52. ♖f5+ ♘g6 53. ♖g7+
 ♖xg7 54. ♖xg7 ♘xg7 55. ♖h1 ♖a8
 56. d7 ♘f7 57. b5 ♘e7 58. b6 ♘xd7 59.
 ♖xh3 ♘d6 60. b7 ♖c8 61. b8=♖+ 1-0

Modern Benoni Taimanov

Elston Cloy (1959, 3.5)

Joshua Sinanan (2088, 4.5)

Seattle, WA Premier (8) 2007

Annotations by Joshua Sinanan

1. d4 ♖f6 2. c4 e6 3. ♖c3 c5 4. d5 exd5
 5. cxd5 d6 6. e4 g6 7. f4 ♙g7 8. ♙b5+

Elston chooses the aggressive Taimanov Attack against the Modern Benoni. A less popular alternative is the Mikenas Attack with 8.e5, which hasn't scored as well in practice.

8... ♖fd7 9. a4 a6 10. ♙c4?! ♖h4+

This check is thrown in to induce light-square weakness on the kingside, where White cannot easily fianchetto.

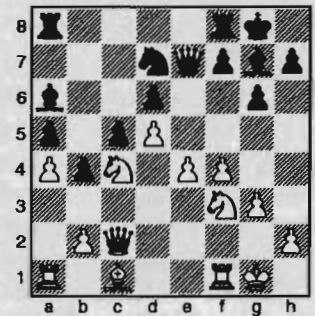
11. g3 ♖e7 12. ♖e2 O-O 13. ♖f3 ♖b6 14. O-O

Better was 14. ♙d3, after which the Knight will be misplaced when White plays a4-a5.

14... ♖xc4 15. ♖xc4 b5 16. ♖e2 b4 17.
 ♖b1 a5

Undermining the center immediately with 17...f5 is also good for Black, as White will have a hard time defending d5.

18. ♖bd2 ♙a6 19. ♖c4 ♖d7 20. ♖c2



20...b3!

Opening the b-file enables Black to emphasize his lead in development.

21. ♖xb3 ♖ab8 22. ♖c2 ♙xc4

If 22... ♖b4, then 23. ♖fd2 ♖b6 24. ♖xa5 ♙xf1 25. ♖c6 is good for White.

23. ♖xc4 ♖b4 24. ♖c2 ♖xe4

Trading Queens is also good for Black after 24... ♖xe4 25. ♖xe4 ♖xe4.

25. ♙d2 ♖f6 26. ♖ae1 ♖xe1 27. ♖xe1
 ♖b7 28. ♙xa5 ♖xd5 29. ♖d1 ♖c6
 30. ♙c3 ♖e4 31. ♙xg7 ♘xg7 32. ♖d2 f5

Having lost most of my advantage, I thought that advancing my center pawns, while denying White's Knight of a good outpost, was key to maintaining some imbalance in the position.

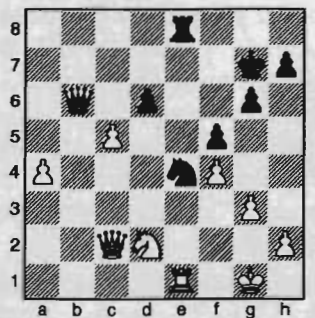
33. ♖c2 ♖e8 34. b4

White is better after 34. ♖xe4 fxe4 35. b4 e3.

34... ♖b6

If 34... ♖d5, then 35. ♖b2+ ♘f7 36. ♖xe4 ♖xe4 37. ♖xe4 fxe4 38. ♘f2 is slightly better for Black.

35. bxc5=



Not 35. ♖xe4 ♜xb4 36. ♜b1 ♜xe4 37. ♜xe4 fxe4, where Black is winning. After this move, Elston offered a draw, which I declined, because I thought the Rook ending was favorable for me after 35... dxc5 36. ♖xe4 ♜b4 37. ♜b1 ♜xe4 38. ♜xe4 ♜xe4. FRITZ evaluates the position as equal.

35... dxc5 36. ♖c4 ♜f6 37. ♖e5 ♜xe5?!

An interesting alternative was 37... g5!? During the game, I thought this Exchange sacrifice was sound, because White's Rook was tied to defending the King, and the c-pawn seemed more dangerous than the a-pawn. I believed that whichever side sacked first in this position would be able to attack, while the other side would have to consolidate and patiently defend.

38. fxe5 ♜xe5 39. ♜d1 c4 40. ♜d7+ ♖h6 41. ♜d2+??

Better was 41. ♜a7 ♜d5 42. ♜e3+ ♖g7 43. ♜c1.

41... ♖xd2 0-1

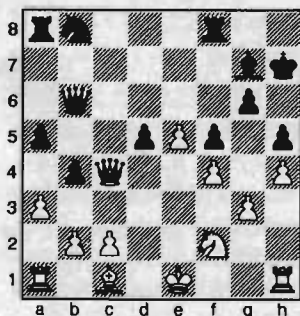
And Elston resigned because of the fork on f3.

Pirc

Clint Ballard (1913, 2.0)
Benjamin Calpo (2008, 2.5)

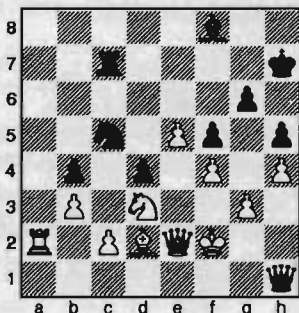
Seattle, WA Premier (8) 2007

1. f4 g6 2. ♖f3 ♖g7 3. g3 d6 4. d4 ♖f6 5. ♖c3 O-O 6. ♖g2 c6 7. e4 b5 8. e5 ♖e8 9. ♜e2 b4 10. ♖e4 a5 11. h4 h5 12. ♖f2 f5 13. ♖g5 dxe5 14. ♜c4+ e6 15. ♖xe6 ♖xe6 16. ♜xe6+ ♖h7 17. dxe5 ♖c7 18. ♜c4 ♖d5 19. a3 ♜b6 20. ♖xd5 cxd5



21. ♜e2 ♖c6 22. O-O ♜ac8 23. axb4 axb4 24. ♖e3 d4 25. ♖d2 ♖a5 26. ♜fc1 ♜fd8 27. ♖d3 ♖f8 28. b3 ♜b5 29. ♜a4 ♖c6 30. ♜ca1 ♖b8 31. ♜1a2 ♜dc8 32. ♜e1 ♜c7 33. ♜a1 ♜d5 34. ♖f2 ♜bc8 35. ♜a8 ♜xa8 36. ♜xa8 ♖d8 37. ♜a7 ♖b7 38. ♜a2 ♜e4 39. ♜e1

♖c5 40. ♜e2 ♜h1



41. ♜f1 ♖e4+ 42. ♖e1 ♜xf1+ 43. ♖xf1 ♖xd2+ 44. ♖g2 ♖b1 45. ♖e1 ♖a3 46. ♖f3 ♜c3+ 47. ♖g2 ♖g7 48. ♖h3 ♖f7 49. ♜a1 ♖e6 50. ♜d1 ♖d5 51. ♜d2 ♖c5 52. ♖g2 ♜e3 53. ♖d3 ♖xc2 54. ♖xc5 ♖e1+ 55. ♖f2 ♖xc5 56. ♜a2 ♖d3+ 57. ♖g2 ♖d5 58. ♜a6 ♖e4 59. e6 ♜e2+ 60. ♖h3 ♖f2+ 61. ♖g2 ♖g4+ 62. ♖h1 ♖f3 63. ♜a1 ♜h2+ 64. ♖g1 ♜g2+ 65. ♖f1 ♖e3+ 66. ♖e1 ♜e2 mate

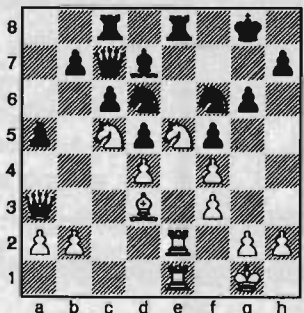
Round Nine

QGD Cambridge Springs

NM Nat Koons (2280, 5.0)
FM Paul Bartron (2110, 4.0)

Seattle, WA Championship (9) 2007

1. d4 d5 2. c4 e6 3. ♖c3 ♖f6 4. ♖f3 c6 5. ♖g5 ♖bd7 6. e3 ♜a5 7. cxd5 exd5 8. ♖d3 ♖e4 9. O-O f5 10. ♜b3 ♜b6 11. ♜c2 ♖d6 12. ♖f4 ♖xf4 13. exf4 O-O 14. ♖a4 ♜c7 15. ♖e5 ♖df6 16. f3 ♖d6 17. ♜fe1 ♖d7 18. ♖c5 ♖c8 19. ♜ac1 g6 20. ♜c3 ♜e8 21. ♜e2 ♖d7 22. ♜b4 ♜ac8 23. ♜ce1 a5 24. ♜a3



24... ♖g7 25. ♖exd7 ♜xe2 26. ♜xe2 1-0

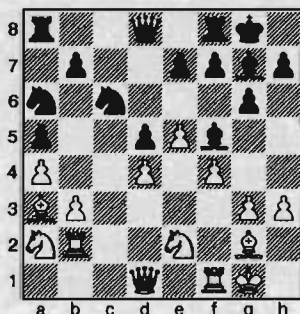
English

NM Michael Lee (2202, 4.5)
FM John Readey (2336, 4.0)

Seattle, WA Championship (9) 2007

1. c4 g6 2. ♖c3 ♖g7 3. g3 d6 4. ♖g2 ♖f6 5. e4 O-O 6. ♖ge2 c6 7. O-O a6 8. a4 a5 9. f4 ♖a6 10. h3 ♖b4 11. d4 d5 12. cxd5

cxd5 13. e5 ♖e8 14. b3 ♖c7 15. ♖a3 ♖ca6 16. ♖a2 ♖c6 17. ♜b1 ♖f5 18. ♜b2



18... ♜d7 19. g4 ♖e6 20. b4 axb4 21. ♖xb4 f5 22. g5 ♖axb4 23. ♖xb4 ♜fc8 24. ♖d3 b6 25. ♜xb6 ♜a7 26. ♜b1 ♖f7 27. ♜c1 ♜xa4 28. ♖b2 ♜a2 29. ♜xa2 ♜xa2 30. ♖f1 ♖a7 31. ♜xc8+ ♖xc8 32. ♜b8 ♖f8 33. ♖c1 ♜xb2 34. ♜xb2 e6 35. ♖d3 ♖e7 36. ♜b6 ♖e8 37. ♜xe6 ♖b5 38. ♖e2 1-0

King's Indian Smyslov

NM Curt Collyer (2218, 4.0)
FM David Bragg (2205, 3.5)

Seattle, WA Championship (9) 2007

1. ♖f3 g6 2. d4 ♖g7 3. c4 ♖f6 4. ♖c3 O-O 5. ♖g5 d6 6. e3 h6 7. ♖h4 c5 8. d5 ♖f5 9. ♖d2 g5 10. ♖g3 ♖g6 11. ♖e2 ♜b6 12. ♜c1 ♖bd7 13. O-O ♖h5 14. f4 gxf4 15. exf4 ♖xg3 16. hxg3 e6 17. ♖f3 exd5 18. ♖xd5 ♜d8 19. ♖h4 ♜e8 20. ♖f3 ♖d3 21. ♜d1 ♖h7 22. ♜d2 ♖b8 23. ♜e1 ♜xe1+ 24. ♜xe1 ♖c6 25. b3 ♜d7 26. ♖h2 ♜e8 27. ♖g4 ♜d8 28. ♖f5 ♖d4 29. ♖xh7+ ♖xh7 30. ♜d3+ ♖g8 31. ♜xe8+ ♜xe8 32. ♖f5 ♜e6 33. ♖fe3 ♖f8 34. ♖h1 ♜g6 35. ♜xg6 fxg6 36. ♖h2 ♖f7 37. g4 ♖e2 38. ♖d1 ♖d4 39. g3 a6 40. ♖g2 b5 41. ♖f3 ♖c1 42. cxb5 axb5 43. a4 bxa4 44. bxa4 ♖b3 45. ♖e4 ♖a5 46. ♖1c3 ♖f2 47. ♖b5 ♖xg3 Draw

Ruy Lopez Chigorin

NM Ignacio Perez (2239, 6.0)
LM Viktors Pupols (2237, 3.5)

Seattle, WA Championship (9) 2007

Annotations by NM Ignacio Perez with assistance from NM Curt Collyer

1. e4 e5 2. ♖f3 ♖c6 3. ♖b5 a6 4. ♖a4 ♖f6 5. O-O ♖e7 6. ♜e1 b5 7. ♖b3 O-O 8. h3 d6 9. c3 ♖a5 10. ♖c2 c5 11. d4 ♜c7 12. ♖bd2 cxd4 13. cxd4 ♖c6 14. d5 ♖b4 15. ♖b1 a5 16. a3 ♖a6 17. b4 ♖d7 18. ♜b3 ♜ac8

More precise was 18... ♖fc8.

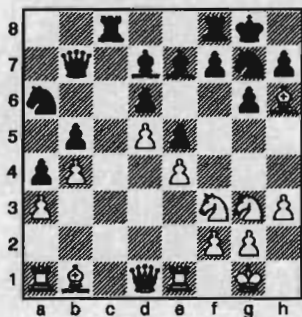
19. ♖b2 a4 20. ♖d1 g6

This move made me very happy, as I now have a target near his King.

21. ♖f1 ♖h5 22. ♖c1 ♖g7 23. ♖g3 ♖b7

Black has been outplayed and seems to be casting about for a plan.

24. ♖h6



Pupols sank into thought for more than twenty minutes. Perhaps he should have accepted my early draw offer!

24... ♖c7

Pupols should have played 24... ♖c3!?, because of the possible line 25. ♖d2 ♖fc8 26. ♖d3 ♖d8 27. ♖ec1 ♖xc1+ 28. ♖xc1 ♖b6 29. ♖xc8+ ♖xc8 30. ♖h2! (not 30. ♖c1? ♖xh3!).

25. ♖a2 ♖ce8 26. ♖d3 ♖f6 27. ♖c2 ♖xc2 28. ♖xc2 ♖c8 29. ♖d2 ♖fe8 30. ♖c1 ♖b8 31. ♖c3 ♖d8 32. ♖h2 ♖b6 33. ♖e2 ♖a7 34. ♖c2 f5 35. ♖g5 f4 36. ♖f1 ♖d8 37. ♖d2 ♖b6 38. ♖b1 ♖f6 39. ♖c3 ♖d8 40. ♖f3 ♖c7 41. ♖xg7 ♖xg7 42. ♖d1 ♖e8 43. ♖g1 h5 44. ♖e2 ♖b6 45. ♖f1 ♖h7 46. ♖e1 g5 47. ♖xg5+ ♖h6 48. ♖e6 ♖g7 49. ♖xg7 ♖xg7 50. ♖d1 ♖f6 51. ♖c1 ♖g5 52. ♖b1 h4 53. ♖f3 ♖e8 54. ♖e2 ♖d8 55. ♖d1 ♖c8 56. ♖g4 ♖xc2 57. ♖e6+ ♖g6 58. ♖xc2 f3 59. ♖xf3 ♖c7+ 60. ♖c3 ♖b6 61. ♖d7 ♖d4 62. ♖c6 ♖d2+ 63. ♖b1 ♖c1+

[63... ♖e1+ 64. ♖a2 ♖d2 65. ♖b1 ♖xe2 66. ♖c2 ♖xf3 67. ♖xd2+ ♖g7 — Pupols]

64. ♖a2 ♖c2+ 65. ♖a1 ♖c1+ 66. ♖b1 ♖e1 67. ♖xb5 ♖xf2 68. ♖d3 ♖e3 69. ♖b2 ♖d4+ 70. ♖c2 ♖e8 71. ♖c3 ♖d7 72. ♖d2+ ♖g6 73. ♖b5 ♖xh3 74. ♖xd4 ♖xd4 75. ♖xd4 exd4 76. b5 ♖g5 77. b6 ♖c8 78. ♖f1 ♖f4 79. ♖h3 ♖a6 80. ♖d2 ♖e5 81. ♖f1 ♖c8 82. ♖e1

♖f4 83. ♖f2 ♖e5 84. ♖b5 ♖f4 85. ♖xa4 d3 86. ♖d1 h3 87. a4 ♖a6 88. ♖b3 d2 89. e5 ♖xe5

Somewhere around here, Black made a claim of “insufficient losing chances.” The director was unable to come to a decision and put a delay clock on the game. However, with less than ten seconds left, Pupols soon blundered and then flagged.

90. ♖g3 ♖d4 91. ♖xh3 ♖c4 92. ♖d1 ♖xd5 93. a5 ♖c5 94. ♖e2 ♖c6 95. f4 ♖b7 96. f5 ♖b3 97. f6 1-0

Queen's Indian

Joshua Sinanan (2088, 5.5)
Andy May (2019, 5.0)

Seattle, WA Premier (9) 2007

1. d4 ♖f6 2. ♖f3 e6 3. c4 b6 4. g3 ♖b7 5. ♖g2 ♖b4+ 6. ♖d2 a5 7. a3 ♖xd2+ 8. ♖xd2 d6 9. ♖c3 ♖e4 10. ♖xe4 ♖xe4 11. ♖f4 f5 12. O-O O-O 13. ♖g5 ♖xg2 14. ♖xg2 ♖f6 15. d5 e5 16. ♖d2 ♖d7 17. ♖e6 ♖fc8 18. b4 ♖f8 19. ♖xf8 ♖xf8 20. ♖ac1 Draw

QGD Exchange

Alex Guo (1922, 4.0)
Geoffrey Gale (1964, 4.5)

Seattle, WA Premier (9) 2007

1. c4 e6 2. ♖c3 d5 3. cxd5 exd5 4. d4 c6 5. ♖f3 ♖f5 6. g3 ♖f6 7. ♖g2 ♖d6 8. O-O O-O 9. ♖f4 ♖xf4 10. ♖xf4 ♖e8 11. ♖e5 ♖e7 12. f3 ♖h5 13. e4 ♖d7 14. f5 ♖f4 15. ♖f2 c5 16. ♖d3 ♖xd3 17. ♖xd3 ♖c6 18. exd5 ♖d7 19. dxc5 ♖xc5 20. ♖e4 ♖b6 21. f6 ♖b5 22. ♖d2 ♖d7 23. a4 ♖a6 24. a5 ♖d8 25. ♖xg7 ♖f6 26. ♖d1 ♖h5 27. ♖h6 ♖h4 28. ♖g5 ♖d3 29. ♖xd3 ♖e1+ 30. ♖f1 ♖xf1+ 31. ♖xf1 1-0

From the Business Manager:

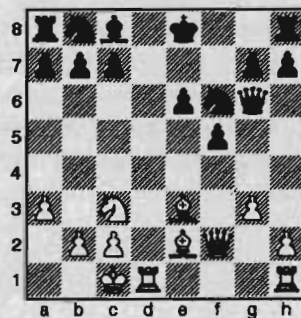
Northwest Chess now accepts PayPal membership payments (see www.paypal.com) at info@nwchess.com. You can pay using a credit card, e-check, or funds already in your PayPal account. This should make it much more convenient to renew your subscription or start a new one! A PayPal Subscription/Membership Form is available on the Northwest Chess website at www.nwchess.com/nwcmag/MemberApp_PayPal.htm (or just use the link on the home page or magazine info page).

French Winawer

David Arganian (2020, 2.0)
Clint Ballard (1913, 2.0)

Seattle, WA Premier (9) 2007

1. e4 e6 2. d4 d5 3. ♖c3 ♖b4 4. ♖ge2 dxe4 5. a3 ♖xc3+ 6. ♖xc3 f5 7. f3 exf3 8. ♖xf3 ♖h4+ 9. g3 ♖xd4 10. ♖e3 ♖g4 11. ♖f2 ♖f6 12. ♖e2 ♖g6 13. O-O-O



13... ♖d7 14. ♖f4 O-O 15. ♖xc7 ♖c6 16. ♖he1 ♖e4 17. ♖xe4 ♖xe4 18. ♖d3 ♖d5 19. ♖b1 ♖f7 20. ♖d6 ♖d8 21. ♖f4 ♖d7 22. g4 e5 23. ♖xe5 ♖xe5 24. ♖xe5 ♖e4 25. ♖xf5 ♖xd3 26. ♖xd3 ♖xd3 27. cxd3 ♖c8 28. ♖e4 h5 29. ♖e7 ♖b3 30. ♖e8+ ♖xe8 31. ♖xe8+ ♖h7 32. ♖xh5+ ♖g8 33. ♖e8+ ♖h7 34. ♖e4 ♖h8 35. h4 a5 36. ♖c4 ♖d1+ 37. ♖a2 a4 38. d4 b5 39. ♖b4 ♖d3 40. f6 ♖xf6 41. ♖f8+ ♖h7 42. ♖f7+ ♖h8 43. ♖xf6+ ♖g8 44. ♖e6+ ♖h8 45. ♖d5 ♖h7 46. ♖d7+ ♖h8 47. ♖c8+ ♖h7 48. ♖c3 ♖f5 49. ♖c7+ ♖g8 50. ♖d8+ ♖h7 51. ♖e7+ ♖h6 52. ♖g5+ ♖xg5 53. hxc5+ ♖xg5 54. ♖b1 1-0

Sicilian Sveshnikov

Allen Smith (1816, 4.5)
Elston Cloy (1959, 3.5)

Seattle, WA Premier (9) 2007

1. e4 c5 2. ♖f3 ♖c6 3. d4 cxd4 4. ♖xd4 ♖f6 5. ♖c3 e5 6. ♖db5 d6 7. ♖g5 a6 8. ♖a3 b5 9. ♖d5 ♖e7 10. ♖xf6 ♖xf6 11. c3 O-O 12. ♖d3 ♖g5 13. ♖c2 ♖e6 14. ♖ce3 g6 15. h4 ♖xe3 16. ♖xe3 b4 17. h5 bxc3 18. bxc3 ♖g5 19. ♖e2 a5 20. g3 ♖e7 21. ♖h4 d5 22. exd5 ♖xd5 23. ♖xd5 ♖xd5 24. hxc6 hxc6 25. ♖e4 ♖xe4 26. ♖xe4 ♖ad8 27. ♖xe5 ♖h6 28. f4 ♖h1+

29. ♖f1 ♗c6 30. ♖c1 ♖f8 31. ♖xe8+ ♖xe8+ 32. ♔f2 ♗c5+ 33. ♔g2 ♗d5+ 34. ♔g1 ♗xa2 35. ♖e1 ♗a4 36. ♖xe8+ ♗xe8 37. ♗d1 ♗e3+ 38. ♔h2 ♗xc3 39. ♗a4 ♔g7 40. ♔h3 g5 41. ffg5 ♗e5 42. ♗h4 ♔g8 43. ♔g2 ♗b2+ 44. ♔f3 ♗b4 45. ♗h6 ♗c3+ 46. ♔g2 ♗c2+ 47. ♔f3 ♗d3+ 48. ♔f2 a4 49. ♗c6 ♗d4+ 50. ♔e1 ♗a1+ 51. ♔d2 a3 52. g6 ♗d4+ 53. ♔c1 ♗g1+ 54. ♔c2 ♗f2+ 55. ♔c1 ♗f1+ 56. ♔c2 ♗f5+ 57. ♔b3 ffg6 58. ♔xa3 ♗d3+ 59. ♔b4 ♗xg3 60. ♗e8+ ♔g7 61. ♗e7+ ♔h6 62. ♗f8+ ♔h5 63. ♗h8+ ♔g4 64. ♗c8+ ♔f3 65. ♗c3+ ♔g2 66. ♗d2+ ♔f1 67. ♗c2 g5 68. ♗c4+ Draw

In a mutual time scramble, Black dropped his Queen and his pawn, but White was unable to checkmate before his own flag fell.

At this point Josh Sinanan and I were tied for the lead at 5.5 with one round to go. Both of us were also undefeated. Andy May trailed us with five points and was to face Sinanan in the final round. Josh and I expected Andy to be playing for a win, since he would have a chance for at least a share of first place. However, their game was drawn in about 20 moves. My game was not to start until 5:00 p.m., as my opponent had to work on short notice. I went into the game knowing that if I won, that I would be the clear winner of the Premier, and that a draw would leave me tied for first place with Josh.—C. Kalina

Sicilian Dragon

Benjamin Calpo (2008, 2.5)

Chris Kalina (1954, 5.5)

Seattle, WA Premier (9) 2007

Annotations by Chris Kalina

1. e4 c5 2. ♔f3 d6 3. d4

The last time I played Ben, he played the 3. ♖b5+ ♔d7, and went on to crush me in about 20 moves! I had planned to face this variation again.

3... cxd4 4. ♔xd4 ♔f6 5. ♔c3 g6 6. ♖c4 ♖g7 7. f3 O-O 8. ♖e3 ♔c6 9. ♖b3 ♖d7 10. ♗d2 ♗a5 11. O-O-O ♖fc8

At this point, I was feeling comfortable about my prospects of playing for a win, as I have seen this position countless times.

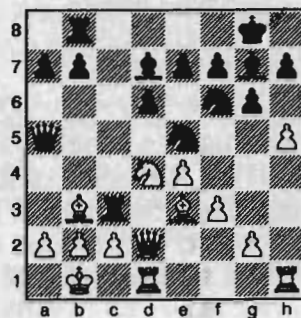
12. ♔b1

12.h4 is more typical, though the text is also playable.

12... ♔e5 13.h4 ♖ab8

Since White had already played ♔b1, I played this natural-looking move, preparing to play ...b7-b5 without sacrificing the pawn. Black can also play the immediate ...b7-b5, planning to open lines in front of the White monarch, e.g., 13... b5 14. ♔cxb5 ♗a6 15. ♔c3 ♖ab8.

14.h5 ♖xc3



The immediate Exchange sacrifice is theory. Black doubles and isolates White's c-pawns, and, in one variation, takes the h5-pawn. White can decline the sacrifice by 15.h6!? ♖c5 16.hxg7 ♗xd2 17. ♖xd2 with chances for both sides.

15. ♗xc3 ♗xc3 16.bxc3 ♔xh5

Black has a plan of prying White open with his a- and b-pawns: the open lines for the Rook and Bishops can lead to a decisive attack. Any ending reached should be at least equal or favor Black. White's plan is to continue to fire away along the h-file or to build up against e7.

17. ♔e2 a5

Threatening the obvious 18...a4, winning the Bishop.

18.a3 b5 19. ♖d4 ♖c6

White was threatening 20.g4 ♔f6 21. ♖xe5 dxe5 22.g5, winning a piece. I offered a draw here, as I was having flashbacks of MacGregor-Kalina from last year's Premier where I was ground down in an Exchange-down ending. I was feeling rather restless and not as comfortable with my position as I was a few moves earlier. At least a draw would tie for first was my thinking. Ben wisely senses my discomfort in the position and declines.

20.g4 ♔f6 21.g5 ♔fd7

I could have chosen 21... ♔h5. However, I was concerned with an eventual exchange of the dark-squared Bishops, doubled Rooks on the h-file and a timely ♔g3, which could be a serious mate threat if Black is not careful. With the text, I had a plan of sending the Knight to b6 and c4, which looked like a promising plan, or possibly to f8 and e6 pressuring the d4- and g5-squares.

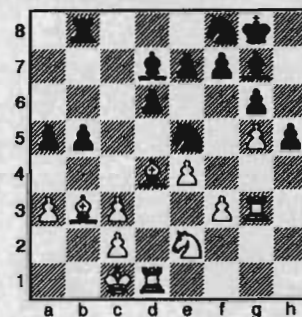
22. ♖h3 ♔f8

In hindsight, I believe that going to b6 and c5 would have been better. Though I would have to be cautious of a mating attack by doubling on the h-file and exchanging the g7-Bishop.

23. ♔c1 ♖d7

To displace his Rook from the h-file or else win a pawn on f3.

24. ♖g3 h5!



The point of forcing the Rook off of the h-file was this move. Either I have a protected passed pawn on h5, or if he exchanges *en passant*, then the King can escape via the f6-square in the event of an attack.

25.f4 ♔c4

Blocking the Bishop on b3 for good. This Bishop was useful for menacing the f7-square from a distance. The flip side is that if he exchanges, the b- and a-pawns are now more vulnerable to attack.

26. ♖xc4 bxc4 27. ♖f1 ♖c6

Hitting the tender e4-pawn at once. However, I believe that playing 27...e5 was a better idea: the Bishop pressures the e4-pawn and the Knight moves to a powerful outpost at e6. Black will have to babysit the d6-pawn in some lines, though.

28.e5

Well, if I don't play it, then he will!
28...dxe5 29.fxe5 ♖e6

Black almost threatens to snatch the g5-pawn due to ...♗h6, but this is met by ♗e3, winning two pieces for the Rook and pawn.

30.♖f4 ♖xf4 31.♗xf4 ♗d5

I felt that the position was likely a draw, since I expected the a-pawns to be traded. After that, I see no forced way for White to win.

32.♗e3 ♗b5

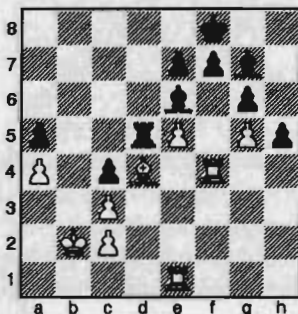
Lining up for the e5-pawn so that the White pieces are tied up a bit. Things look very good for Black if either e5 or g5 falls.

33.♗e1

White is preparing to take over the b-file. I am getting under time pressure at this point.

33...♗e6 34.a4 ♗d5 35.♗b2 ♗f8

Calpo suggested 35...♗f5. Now if White wants to free a Rook to go to the b-file, he must let Black's h-pawn advance—ed.



36.♗fe4

Defending the critical e5-pawn to free the other Rook to move over to b1.

36...♗d8 37.♗b1 ♗b8+?

I felt that the h-pawn gave me good chances to at least draw after the Rook exchange. This decision needed to be made quickly due to time pressure.

38.♗c1 ♗xb1+ 39.♗xb1 ♗d5

And here is where I had expected to have the a-pawns traded.

40.♗h4 ♗c6 41.♗f4

Obviously threatening to push the pawn to e6.

41...♗d5

[41...♗xa4 42.e6 ♗e8 43.exf7 ♗xf7 44.♗xg7+ ♗xg7 45.♗b2 ♗d5 46.♗d4 e6 47.♗a3 ♗f7 48.♗a4 ♗e7 49.♗xa5 ♗d6 50.♗f4 ♗e5 51.♗f7 h4]

42.♗c1 e6??

Black really wanted to play 42...♗e8. However, White again would play 43.e6! with a double threat.

43.♗c5+ ♗e8 44.♗d6 1-0

At this point, I realized that I once again had blown it, as I usually do. The White King will walk in to d4 and then everything is going to collapse. I began to feel very disgusted with myself, as I had worked hard to lead this tournament and then, with one bad game, it feels like it was all for absolutely nothing.

Sure, I did tie for second (Actually third, since Andy May most certainly has better tiebreaks. *Not so, Chris was second on tiebreaks—ed.*), but those of you who have been leading and blown it in the final round know exactly the feeling I am describing. . . . The result is Josh Sinanan will advance to the Championship, and Andy May will be seeded into the Premier next year. Congrats to Josh on a fine result by him and good luck to everyone that plays in the Championship and Premier next year. ■

Caissa was a dryad beloved by Mars, the god of war, but who rejected him. Mars asks the god of sport to invent a game to charm her heart. Cupid makes an appearance to cause a bit of trouble, which is why we hold this event near Valentines Day. Does the game of chess win Caissa's heart? Only those who attended the tournament know for sure.

Alan Skirvin, 2nd grader from Clatskanie Elementary, won the coveted sportsmanship award (the biggest trophy of all) for kindness and consideration of his opponents, his never give up spirit and for his helpful and encouraging attitude all day.

Open

- 1st Albert Hong
- 2nd Brian Hong

Class E (1000-1199)

- 1st Katie Hong
- 2nd Torrie Licht
- 3rd Benjamin Jury

Class F (800-999)

- 1st Greg Foster
- 2nd Allison Mitchell
- 3rd Sam Canfield

Class G (600-799)

- 1st Josh Jacobson
- 2nd Tyler Hooper
- 3rd Bryce Croucher

Class H (400-599)

- 1st Noah Piwonka
- 2nd Kristin Wyatt
- 3rd Gautam Singh
- 4th Timothy Cano
- 5th Lynn Siltala & Alan Skirvin

Other Awards

- Best Notation Lynn Siltala
- Best Handshake Anthony Trekler
- Best Attitude Katie Hong
- Never Give Up, Never Surrender. Bethany Mullins
- Brainiest Move Kelby Cano
- Clatskanie Spirit Connor Thorud
- Best Diva Ashlyn Melvin
- \$50 Early Entry Savings Bond Allison Mitchell
- Sportsmanship Alan Skirvin

Bughouse Winners

- 1st Metal Mouth & Four Eyes (Michael Taylor & Torrie Licht)
- 2nd Ear Wax Dummies (Michael Siltala & Allison Mitchell)

February 17

Diva Caissa Classic

by Kate Taylor

Players from throughout the Pacific Northwest attended this event held at the Clatskanie Community Education Center. This was the first tournament for many of the attendees.

As each round was about to begin, we told the story of the lovely Diva Caissa (based on a poem written in 1763 by Sir William Jones).

Washington Chess Federation (WCF)/Oregon Chess Federation (OCF)

Adult: \$25/year (12 issues). Residents of OR and WA receive a 1-year membership in the OCF or WCF. Members receive *Northwest Chess* via periodicals mail each month.

Junior: \$17/year (12 issues) or \$10/6 months (6 issues). Must be under age 20 at time of expiration. OR/WA residents only; state membership included. Juniors receive *Northwest Chess* each month.

USA Subscriber: \$25/year (12 issues). For subscribers living inside the US mail system, but outside the OR/WA area. Subscribers receive *Northwest Chess* each month.

Family: \$5/year (not a subscription — membership only). This class of membership is open only to co-resident of an Adult or Junior member. Expires at the same time.

Trial: \$13 (membership and subscription, expires in 3 months). By paying the balance of dues for an Adult membership, this option can be extended to 12 months. The balance must be paid before the trial status is expired.

For general information, Eric Holcomb (253) 850-2996, e-mail: Eric@Holcomb.com

OCF/WCF Membership Application/Renewal Form

Name _____ **If Junior, give date of birth** _____

E-Mail (if you want to subscribe to the *Northwest Chess* e-mail mailing list) _____

Phone Number (optional, will not be used for telemarketing) (____) _____

Street or P.O. Box _____

City _____ **State** _____ **Zip** _____

Country (if not USA) _____ **Amount Enclosed \$** _____

Make check or money order (USA \$ only) out to Northwest Chess and mail to:

Credit this membership to:

Eric Holcomb
NW Chess Business Manager
PMB 342
12932 SE Kent-Kangley Rd.
Kent WA 98030-7940

Correction

Other Teams: Crouching Tigers, Team Helios, Team Agent Striking Cobra, The Mariners, Diva Caissa Fans, We don't know!!!!, Viva La Diva

Special thanks to everyone who helped make our tournament a success. Clatskanie Park & Rec, Amy Coughlin, Jon Licht, Kiersten Sermino, Paulette Vidos, Warren Taylor, Michael Taylor, Melody Skirvin, Clatskanie School District, Clatskanie Chief, Northwest Engraving, Fultano's Pizza, Subway and the families of our chess players.

Join us at the Leapin' Leprechauns on March 10th. This will be the last OSCF 2007 State Championship Qualifier and a great place to practice for upcoming state and national tournaments. ■

Hi.

This isn't a letter to the editor. I'd just like to point out a little oversight in an article. My son Ryan Scott is good friends with Alec Ho, who was featured along with Michael, in the February magazine. What a great accomplishment for them! The article mentioned the accomplishments of a number of other kids who went to Florida in November, but it failed to mention that Ryan also had five points in the 5th grade section.

Thanks! We appreciate all of your efforts to keep this magazine and web site going!

Dave Scott

From the Business Manager:

When sending payments or other material to the business manager, please remember to always include the BM's name (Eric Holcomb), PMB number and street address. *Northwest Chess* is optional. Games, articles, and letters to the editor should NOT be mailed to the BM.

To order magazine back issues from 2002-2006, please contact the Business Manager. You will receive a substantial discount off the regular subscription price, although you must pay postage separately.

Seattle Chess Club Tournaments

Address
17517 15 Ave NE
Seattle WA 98155

Infoline
206-417-5405
cfkleist@cs.com

Address for Entries
SCC Tnmt Dir
2420 S 137 St
Seattle WA 98168

Seattle Spring Open

March 23-25 or March 24-25

A two-section Swiss (4 rounds – Open, 5 rounds – Reserve) with a time control of 40/2 and SD/1 (two-day Reserve schedule – Round 1, G/64). The prize fund of \$750 is based on 40 paid entries, 5 per prize group.

a Franett Memorial Grand Prix event

Championship		Reserve (U2000)	
First	\$140	First	\$100
Second	\$100	Second	\$70
U2200	\$75	U1800	\$50
U2000	\$40	U1600	\$40
		U1400	\$30
		U1200	\$25
		Unrated	\$15

Plus Score Pool – \$100

Entry Fees: \$32 if rec'd by 3/21, \$40 at site. **Unrated**—Free with purchase of 1-yr USCF & 1-yr WCF. **SCC members**—subtract 25%. Members of other dues-required CCs in BC, OR, and WA—subtract 12.5%. **Add \$1 to any EF for 2-day schedule.**

Registration: **Open**—Sat. 11- noon; **Reserve**—Fri. 7-7:45pm, Sat. 9-9:45am.

Rounds: **Open**—Sat. 12:30-6:45, Sun. 10-4; **Reserve**—Fri. 8, Sat. (10 @ G/64)-12:30-6:45, Sun. 10-4.

Byes: 1 in Open, 2 in Reserve (Sunday rounds, commit at registration).

Miscellaneous: USCF & WCF membership req'd. No smoking. No computers.

2007 Weekends

Novice: May 5, Aug. 25, Nov. 4

Quads: Apr. 21, June 16, July 21, Aug. 18, Sept. 15, Oct. 13, Nov. 3, Dec. 8

Tornados: Apr. 1, Apr. 29, June 3, July 1, July 29, Aug. 26, Sept. 30, Oct. 21, Nov. 18, Dec. 9

Seattle Spring Open—Mar. 23-25.

Plus-Score Swiss—May 12-13.

Emerald City—June 22-24.

Seafair Open—August 10-12.

Seattle Fall Open—Sept. 21-23.

Extravaganza—November 9-10.

☞ **Apr. 21**

SCC Saturday Quads☞

Format: 3-RR, 4-plyr sections by rating. **TC:** G/120. **EF:** \$6 (+\$5 fee for non-SCC). **Prizes:** Free entry for future quad. **Reg:** 9:00-9:45 a.m. **Rds:** 10:00-2:15-ASAP. **Misc:** USCF, WCF/OCF memb. req'd, OSA. NS, NC.

☞ **Apr. 1, 29**

SCC Sunday Tornado☞

Format: 4-SS. **TC:** G/64. **EF:** \$15 (+\$5 fee for non-SCC). **Prizes:** 1st 35%, 2nd 27%, Bottom Half 1st 22%, 2nd 16% (\$10 from each EF goes to prize fund). **Reg:** 10:30-11:15 a.m. **Rds:** 11:30-1:50-4:10-6:30. **Misc:** USCF, WCF/OCF memb. req'd, OSA. NS, NC.

May 5

SCC Novice

Format: 4-SS. Open to U1200 and unrated. **TC:** G/75. **EF:** \$10 by 5/2, \$15 at site. (20% disc. for SCC mem., 10% mem. of other dues-req'd CCs in WA, OR, & BC). **Prizes:** Memberships (SCC, WCF, USCF). **Reg:** 9-9:45a. **Rds:** 10-12:45-3:30-6. **Byes:** 1 (Rd 3 or 4—commit at reg.). **Misc:** USCF memb. req'd. NS, NC.

Coming This Year!

Ben Delson Thematic

Play Sicilian Dragon, Nimzo-Indian, and English in a fun event celebrating long-time SCC member Ben Delson. Details in a later issue.

Future Events

♣ indicates a Christopher Memorial NW Grand Prix event

♣ March 31 PCC Game-in-60
Site: *Portland CC*, 8205 SW 24th Ave, Portland OR 97219.
Format: 4-rd Swiss. **TC:** G/60. TD may switch to 5SS and G/45 if more than 25 entries. **EF:** \$20, \$5 discount for PCC members. No advance entries. **Prize Fund:** \$200/b20. **Prizes:** \$60-40-30, U1800 35, U1500 35. **Reg:** 9-9:30 am. **Byes:** One ½-pt. bye avail. if requested at reg. **Misc:** USCF & OCF/WCF membership req'd, OSA. **Info:** portlandchessclub@gmail.com, 503-246-2978, www.pdxchess.org.

April 7 TCC Novice
Site: *Tacoma CC*, Rm. 11 (2nd floor), 409 Puyallup Ave, Tacoma WA. **Format:** 4-rd. Swiss, open to U1300 or unrated. **TC:** G/60. **EF:** \$15. **Prizes:** 1-2-3 trophies; 4-5-6 medals. **Reg:** 9-9:45 am. **Rds:** 10-12:30-3-5:30 (or ASAP). **Byes:** One ½-pt. byes avail. **Misc:** No memberships req'd. NS, NC. **Ent/Info:** Gary Dorfner, 8423 E 'B' St, Tacoma WA 98445; 253-535-2536, ggarychess@aol.com.

♣ April 5, 12, 19 Taxing Quads
Site: *Herak* 121, Gonzaga U., Spokane WA. **Format:** 3-RR. **TC:** G/120. **EF:** \$16. **Reg:** 6:45-7:15 p.m. **Info:** Dave Griffin 509-928-3260. dbgriffin@hotmail.com.

♣ April 14-15 Daffodil Open
Site: *Tacoma CC*, Rm. 11 (2nd floor), 409 Puyallup Ave, Tacoma WA. **Format:** 5-rd. Swiss. **TC:** G/120. **EF:** \$30 adv., \$40 at site; jrs \$20 adv., \$25 at site; Economy (no prize money) \$12; free for UNR w/purch USCF & WCF/OCF memb; UNR may play for 1st w/regular EF. **Prize Fund:** 67% of full-paying EFs. **Prizes:** 25%,

Top Third 15%, Middle Third 14%, Bottom Third 13% (if fewer than 9 full-payers, there will be 2 groups). Econ. winner: certificate and \$10 disc. on econ. entry to future event. **Reg:** Sat. 9-9:45 a.m. **Rds:** Sat 10-2:30-7 (or ASAP), Sun 10-3 (or ASAP). **Byes:** Two ½-pt. byes avail. for rds 1-4 if requested in advance. **Misc:** USCF and WCF/OCF membership req'd. NS, NC. **Ent/Info:** WCF c/o Gary Dorfner, 8423 E 'B' St, Tacoma WA 98445; 253-535-2536, ggarychess@aol.com.

♣ May 26-28 Washington Open
Site: *North Seattle Community College*, 9600 College Way N, Seattle WA 98103. **Format:** 4-sec., 6-rd. Swiss [Open, Premier (U2000), Reserve (U1700), & Booster (U1400)]. **TC:** 40/2, SD/1 (2-day schedule: Rds 1-3 G/60). **EF:** *Open* \$79 by 4/15, \$89 by 5/15, \$99 at site. *Premier* \$69 by 4/15, \$79 by 5/15, \$89 at site. *Reserve* \$59 by 4/15, \$69 by 5/15, \$79 at site. *Booster* \$49 by 4/15, \$59 by 5/15, \$69 at site. Canadians may pay EF+\$1 in C\$ at par (no coins, please). **Prize Fund:** \$8000 gtd. **Prizes:** *Open* \$1000-600-400-300-200, U2150 400-250-150-100. *Premier* \$400-300-250-200-150, U1850 250-150-100-100. *Reserve* \$350-250-200-150-100, U1550 200-100-100-100. *Booster* \$300-150-100-100-100, U1100 120-80, UNR 120-80. **Reg:** Sat. 8:30-9:30 a.m. (3:30-4 p.m. if entering w/½-pt. bye). **2-Day Schedule:** Sun. 8:30-9 a.m. **Rds:** Sat 10-5, Sun 10-5, Mon 9-3. **2-Day Schedule:** Rds 1-3 Sun. 9:30-11:45-2:30 **Byes:** Two ½-pt. byes avail. **Misc:** USCF and WCF/OCF membership req'd. *Open* - FIDE rated. NS, NC. **Side Events:** *WAO Scholastic* May 26, *contact* David Hendricks, WCF Scholastic Director, 2439 220 PL NE, Sammamish WA 98074, 425-868-3881, davidhendricks@comcast.net. *Bughouse* May 26. *Blitz* May 26. *WCF Annual Mtg* 3:30 May 27. **Ent/Info:** WCF c/o Gary Dorfner, 8423 E 'B' St, Tacoma WA 98445; 253-535-2536, ggarychess@aol.com. Make checks payable to Washington Chess Federation (WCF). **Info:** Dan Mathews (WCF Tnmt Coordinator), 425-218-7529, dthmathews@hotmail.com

Scholastic Events

March 2007

23 Bughouse Bonanza (K-12)	David dsommers@libertychristian.net http://www.chesschampions.org	Richland WA
23-24 OSCF State Championships	oscf@oscf.org www.oscf.org	Salem OR
24 Shoreline Reg Tmt(K-6 U800,K-3,K-6,7-8)	Peter 206-801-7019 peter@meisner.com www.SignupChess.com	Shoreline WA
24 Camas Prairie Wildcat Chal. (K-3,4-6)	Greg Turner 253-875-0789 turnerg@chibcha.com www.chibcha.com/~cp	Spanaway WA
24 End of the Season Chess Party (K-12)	David dsommers@libertychristian.net http://www.chesschampions.org	Richland WA
27-29 Chess Odyssey Spring Chess Camp	503-504-5756 pete@chessodyssey.com www.chessodyssey.com	Portland OR
31 Chess Mates Fest (K-1,2-4,5-8)	Chess Star Co. chess64@comcast.net www.chessplayer.com/SignuptoPlayChess.htm	Seattle WA
31 Heritage Christian Tmt (K-3 op/U800,4-6 op/U800)	chess64@comcast.net www.chessplayer.com/hcs.htm	Bothell WA

April 2007

7 Tmt of Champions and Challengers	www.chessplayer.com/SignuptoPlayChess.htm	Shoreline WA
7 Blitz for Kids (1-2,3-4,5-6)	www.chessplayer.com/SignuptoPlayChess.htm	Shoreline WA
18 TCC Wed. Kids Night	Gary 253-535-2536 ggarychess@aol.com www.tacomachessclub.net/firms.com	Tacoma WA
20 Bughouse Tournament (K-12)	Norm May nmay@pacifier.com www.PlayingForTheKing.com/2007State	Vancouver WA
21 Washington Elementary Champ. (K-6)	Norm May nmay@pacifier.com www.PlayingForTheKing.com/2007State	Vancouver WA
21 I Love Chess Too (K-12)	Norm May nmay@pacifier.com www.PlayingForTheKing.com/2007State	Vancouver WA

May 2007

19 Oregon Junior Open & Denker Qualifier	info TBA	OR
23 TCC Wed. Kids Night	Gary 253-535-2536 ggarychess@aol.com www.tacomachessclub.net/firms.com	Tacoma WA
26 WAO Scholastic	David Hendricks 425-868-3881 davidhendricks@comcast.net	Seattle WA

NOTE: A 'g' in front of the tournament name indicates an OSCF qualifying tournament.

USCF NATIONAL Scholastics

For information on any national event, contact Diane Reese at events@uschess.org.

Mar. 30-Apr. 1	Nat'l Junior High (K-9) Championship	Sacramento CA
April 13-15	Nat'l High School (K-12) Championship	Kansas City MO
May 11-13	Nat'l Elementary (K-6) Championship	Nashville TN

Open Events

March 2007

16,23,30	TCC Spring Swiss	G. Dorfner 253-535-2536 ggarychess@aol.com www.tacomachessclub.netfirms.com . Tacoma WA
Feb 17	SCC Saturday Quads	SCC Infoline 206-417-5405 cfkleist@cs.com www.seattlechessclub.org Seattle WA
Feb 17-18	Portland Spring Open	503-246-2978 portlandchessclub@gmail.com www.pdxchess.com Portland OR
Feb 23-25	Seattle Spring Open	SCC Infoline 206-417-5405 cfkleist@cs.com www.seattlechessclub.org Seattle WA
28	TCC Wednesday Night Blitz	G. Dorfner 253-535-2536 ggarychess@aol.com www.tacomachessclub.netfirms.com . Tacoma WA
Feb 31	♠ PCC Game-in-60	503-246-2978 portlandchessclub@gmail.com www.pdxchess.com Portland OR

April 2007

Feb 1	Seattle CC Sunday Tornado	SCC Infoline (206) 417-5405 cfkleist@cs.com www.seattlechessclub.org Seattle WA
Feb 5,12,19	Spokane CC Taxing Quads	David Griffin 509-928-3260 dbgriffin@hotmail.com www.spokanechessclub.org Spokane WA
6-8	Far West Open	Jerry Weikel wackyk1@aol.com www.renochess.org/fwo Reno NV
6,13,20,27	Pierce County Championship	G. Dorfner 253-535-2536 ggarychess@aol.com www.tacomachessclub.netfirms.com . Tacoma WA
7	TCC Novice	G. Dorfner 253-535-2536 ggarychess@aol.com www.tacomachessclub.netfirms.com Tacoma WA
7-9	Grand Pacific Open	braymer@telus.net http://victoriachessclub.pbwiki.com Victoria BC
10	PCC Tuesday Quads Begin	503-246-2978 portlandchessclub@gmail.com www.pdxchess.com Portland OR
Feb 14-15	Daffodil Open	G. Dorfner 253-535-2536 ggarychess@aol.com www.tacomachessclub.netfirms.com Tacoma WA
20-22,28-29	Oregon Championships	Clark Harmon charmon@solarprism.com McMinnville OR
Feb 21	SCC Saturday Quads	SCC Infoline 206-417-5405 cfkleist@cs.com www.seattlechessclub.org Seattle WA
25	TCC Wednesday Night Blitz	G. Dorfner 253-535-2536 ggarychess@aol.com www.tacomachessclub.netfirms.com . Tacoma WA
Feb 28	♠ PCC Game-in-60	503-246-2978 portlandchessclub@gmail.com www.pdxchess.com Portland OR
Feb 28-29	Inland Empire Open	Kevin Korsmo (509)466-0530 kmkorsmo@comcast.net www.spokanechessclub.org . Spokane WA
Feb 29	SCC Sunday Tornado	SCC Infoline 206-417-5405 cfkleist@cs.com www.seattlechessclub.org Seattle WA
29	TCC Sunday Blitz	G. Dorfner 253-535-2536 ggarychess@aol.com www.tacomachessclub.netfirms.com . Tacoma WA

May 2007

1	PCC Tuesday Quad Tmt Begins	503-246-2978 portlandchessclub@gmail.com www.pdxchess.com Portland, OR
4	Pierce County Championship (Rd 5)	G. Dorfner 253-535-2536 ggarychess@aol.com www.tacomachessclub.netfirms.com . Tacoma WA
5	SCC Novice	SCC Infoline 206-417-5405 cfkleist@cs.com www.seattlechessclub.org Seattle WA
5-6	Oregon Class Championships	David Yoshinaga dave@kdtonline.com Site TBA, OR
Feb 5-6	Pierce County Open	G. Dorfner 253-535-2536 ggarychess@aol.com www.tacomachessclub.netfirms.com . Tacoma WA
11,18	TCC Gambit Tmt	G. Dorfner 253-535-2536 ggarychess@aol.com www.tacomachessclub.netfirms.com . Tacoma WA
Feb 12-13	Plus Score Swiss	SCC Infoline 206-417-5405 cfkleist@cs.com www.seattlechessclub.org Seattle WA
18-21(19-21)	Paul Keres Memorial	Steve Wright 604-221-7148 swright2@telus.net www.chess.bc.ca Vancouver BC
Feb 19	♠ PCC Game-in-60	503-246-2978 portlandchessclub@gmail.com www.pdxchess.com Portland OR
26-28	Washington Open	Dan Mathews 425-778-7482 dthmathews@hotmail.com www.nwchess.com Seattle WA

June 2007

1,8	TCC Quick (G/30)	G. Dorfner 253-535-2536 ggarychess@aol.com www.tacomachessclub.netfirms.com . Tacoma WA
2	TCC Quads	G. Dorfner 253-535-2536 ggarychess@aol.com www.tacomachessclub.netfirms.com . Tacoma WA
Feb 3	SCC Sunday Tornado	SCC Infoline 206-417-5405 cfkleist@cs.com www.seattlechessclub.org Seattle WA
5	PCC Tuesday Quads Begin	503-246-2978 portlandchessclub@gmail.com www.pdxchess.com Portland OR
Feb 16	SCC Saturday Quads	SCC Infoline 206-417-5405 cfkleist@cs.com www.seattlechessclub.org Seattle WA
22	TCC 10-Second Tmt	G. Dorfner 253-535-2536 ggarychess@aol.com www.tacomachessclub.netfirms.com . Tacoma WA
Feb 22-24	Emerald City Open	SCC Infoline 206-417-5405 cfkleist@cs.com www.seattlechessclub.org Seattle WA
29	Pierce County Championship	G. Dorfner 253-535-2536 ggarychess@aol.com www.tacomachessclub.netfirms.com . Tacoma WA
Feb 30	♠ PCC Game-in-60	503-246-2978 portlandchessclub@gmail.com www.pdxchess.com Portland OR

July 2007

Feb 1	Seattle CC Sunday Tornado	SCC Infoline (206) 417-5405 cfkleist@cs.com www.seattlechessclub.org Seattle WA
6,13,20	TCC Quads	G. Dorfner 253-535-2536 ggarychess@aol.com www.tacomachessclub.netfirms.com . Tacoma WA
Feb 7	TCC (Weekend) Quads	G. Dorfner 253-535-2536 ggarychess@aol.com www.tacomachessclub.netfirms.com . Tacoma WA
Feb 7-8	Portland CC Summer Open	503-246-2978 portlandchessclub@gmail.com www.pdxchess.com Portland OR
10	Portland CC Tuesday Quad Tmt Begins	503-246-2978 portlandchessclub@gmail.com www.pdxchess.com Portland OR
Feb 14-15	Evergreen Open	G. Dorfner 253-535-2536 ggarychess@aol.com www.tacomachessclub.netfirms.com . Tacoma WA
Feb 21	Seattle CC Saturday Quads	SCC Infoline (206) 417-5405 cfkleist@cs.com www.seattlechessclub.org Seattle WA
Feb 21	♠ PCC Game-in-60	503-246-2978 portlandchessclub@gmail.com www.pdxchess.com Portland OR
27	TCC Quick (G/15)	(253)535-2536 ggarychess@aol.com www.tacomachessclub.netfirms.com Tacoma WA
Feb 27	Summer Lightning	David Griffin 509-928-3260 dbgriffin@hotmail.com www.spokanechessclub.org ... Spokane WA

NOTE: A 'Feb' in front of the date indicates a Franett Memorial Northwest GP event. A ♠ in front of the tournament name indicates an OSCF qualifying tournament. Boldface type indicates a tournament announcement (in our Future Events Section) or display ad in this issue.

For scholastic tournaments, see inside back cover