



# NORTHWEST CHESS

Washington Chess Federation  
Oregon Chess Federation

April 2007  
407 \$3.95

926-0801A  
MIKE MACGREGOR



2007  
Washington  
Chess  
Championship



**Donaldson, Koons Tie in Collyer Memorial  
Leapin' Leprechauns, Pupols—Collyer and More!**

# Northwest Chess

April 2007, Volume 61,4 Issue 706  
ISSN Publication 0146-6941

Published monthly by the Northwest Chess Board. Of-  
fice of record: 2420 S 137 St, Seattle WA 98168.

**POSTMASTER:** Send Address Changes to:  
Northwest Chess, PO Box 84746,  
Seattle WA 98124-6046.

Periodicals Postage Paid at Seattle, WA

USPS periodicals postage permit number (0422-390)

## NWC Staff

Editor: Fred Kleist  
Games Editor: FM Chuck Schulien  
Technical Assistance: Russell Miller  
Printer: Snohomish Publishing  
Business Manager: Eric Holcomb

## Board Representatives

Oregon: Clark Harmon  
& Dave Yoshinaga  
Washington: Geoff Gale &  
Murlin Varner

Entire contents copyright 2007 by Northwest Chess. All  
rights reserved. Published opinions are those of the  
contributors and do not necessarily reflect the views of the  
editor or the Northwest Chess Board.

## Advertising Rates

Display ads run \$150 for a full page, \$100 for  
tmnt ads; \$85 for a half-page, \$60 for tmnt ads;  
\$30 for a quarter page, \$20 for an eighth of a  
page, and \$10 for a business card-size ad. Add  
\$10 if the ad is not copy ready and the staff must  
do layout work. A 15% discount is available for  
two or more consecutive ads of the same size.

## Event Announcement Rates

Each appearance in *Event Announcements*  
costs \$20. Payment is required before publica-  
tion. Enclose \$2 additional if an invoice is  
required—this is a mandatory service charge.

## Advertising & Copy Deadline

Please get your ads and submissions in by the  
10th of the month for the items to appear in the  
next issue (e.g., no later than May 10 for the  
June issue). The editor cannot guarantee that late  
submissions will appear in the desired issue.

## Submit all ads and payments to:

*Business Manager, Northwest Chess*  
PMB 342, 12932 SE Kent-Kangley Rd  
Kent WA 98030-7940  
Eric@Holcomb.com

## Submissions

Hey folks! The editor depends on YOU to make  
this magazine vibrant and exciting. I need your  
games, photographs, thoughts, and ideas. This  
magazine has a great tradition and I hope people  
will contribute enthusiastically. You can send  
me your materials via U.S. mail or via e-mail:

**Northwest Chess**  
**Fred Kleist, Editor**  
2420 S. 137th Street  
Seattle WA 98168  
NWCeditor@cs.com

If you'd like your games annotated by a senior  
master, send them to our Games Editor:

**FM Chuck Schulien**  
cschess@hotmail.com

## Subscription Information

**Northwest Chess** is a benefit of membership in  
either the Oregon or Washington Chess Federa-  
tions. Adult dues are \$25; Junior dues (under  
20) are \$17 (or \$10 for six months). Please send  
dues, along with pertinent information to:

## Business Manager

**Northwest Chess**  
Eric Holcomb  
PMB 342, 12932 SE Kent-Kangley Rd  
Kent WA 98030-7940  
Eric@Holcomb.com  
http://www.nwchess.com

## **Northwest Grand Prix Administrator**

Murlin Varner  
13329 208 Ave NE  
Woodinville WA 98072  
MEVjr54@yahoo.com  
425-882-0102

## **Oregon Chess Federation**

### President

**Dave Yoshinaga**  
503-590-2441 ext 7  
dave@kdtonline.com

### Vice President

**Mike Terrill**  
503-580-9187  
pflotus@yahoo.com

### Secretary

**Clark Harmon**  
charmon@solarprism.com

### Tournament Coordinator

**Peter Prochaska**  
503-504-5756  
pete@chessodyssey.com

### Scholastic Coordinator

**Lisa Kudva**  
503-430-5744  
lakudva@comcast.net

### Director-at-Large #1

**Taylor Bailey**  
503-282-6796  
cosmos24@gmail.com

### Director-at-Large #2

**Marcus Robinson**  
503-245-1204  
mprscorp@comcast.net

### National Representative

**Carl Haessler**  
ssmith6154@aol.com

## **Washington Chess Federation**

### President

**Geoff Gale**  
206-860-9963  
geoffreygale@gmail.com

### Vice President

**Duane Polich**  
206-852-3096  
dpolich@verizon.net

### Secretary

**Gary Dorfner**  
253-535-2536  
ggarychess@aol.com

### Treasurer

**Robert J. Allen**  
253-761-1288  
allenrobertj@msn.com

### Tournament Coordinator

**Dan Mathews**  
425-778-7482  
dthmathews@hotmail.com

### Scholastic Coordinator

**David Hendricks**  
425-868-3881  
davidhendricks@comcast.net

### NW Chess Board Member

**Murlin Varner**  
425-882-0102  
MEVjr54@yahoo.com

## *Happy Holidays from the Editor*

Well, this 16-page is-  
sue is off to the printer at  
an early date (April 3), but  
I fear it's a rather slap-dash  
effort. Unfortunately, if I  
took one more day to im-  
prove the issue, it would  
take one more week to get to the printer, as  
I am flying off to Foxwoods and Carol is  
leading the SCC Team to Reno.

Yes, I still will need your input; so keep  
on writing those articles and keep those pic-  
tures coming!

Best Wishes,  
*Frederick K. Kleist*

Thanks to R. Miller for working on the crosstables.  
Thanks to C. Kleist for proofreading.



*Editor's  
Desk*

## **Northwest Chess Knights**

*Northwest Chess Knight donors  
will be listed in the magazine  
for a period of one year follow-  
ing receipt of donation. Please  
consider making a donation  
today to help Northwest Chess!*

King: \$1000+  
Queen: \$500-\$999  
Rook: \$250-\$499  
Bishop: \$100-\$249  
Knight: \$50-\$99  
Pawn: \$15-\$49

## Current Patrons

*King: Cinthia McBride, Kent  
McNall*

*Queen:*

*Rook: Nat Koons  
Bishop: Ralph Hall, Russell  
Miller, Michael Omori, Boyd  
Schorzman*

*Knight: Robert Brewster, Steve  
Buck, Darby Monahan*

*Pawn: Mark James, Gene  
Milner*

*Contributions can be sent to the  
Northwest Chess Business Man-  
ager, and are greatly appreci-  
ated!*

# Letter to the Editor

## Some Thoughts on the Approach of Spring

The world becomes so different so quickly at this time of year. Changes catching us unaware: that cherry tree, resting in winter dormancy last week, riots this week in pink; the catalogues suddenly focus on outdoor barbeques, swimsuits, lawn furniture—suddenly, winter begone!

Sometimes changes in people, too, burst upon us. Example: Carol Kleist's report ("Extra, Extra, Extravaganza!") in February's *Northwest Chess*. Over the years, I must have read ten or more of her articles, but I never noticed before what a lively and thoroughly engaging writing style she has. Look at the deft turns of phrase—and especially those strong, colorful, vigorous verbs: "slice off a whole Rook;" "storming the King's castle in a most alarming way;" "a vicious Bishop;" "the Queen has made herself a nice home;" "devouring a pawn;" "a flourish of pins" (pure inspiration, that!); "taunting the poor Knight on f6;" "jealous of its light-square counterpart;" "the Bishop on a8, his nefarious . . . deeds accomplished, offers himself up and dies a glorious hero's death." In her prose, the pieces fairly thrum with life and vitality.

If my chess-playing sang like her writing, I'd be a Master!

*Anonymous*

**If you set up a *NWC* subscription using PayPal last year, it will automatically renew this year, unless you specified only a single payment. Please log on to your PayPal account for more information or to manage your subscriptions.**

# Northwest Chess

April 2007

**Letter to the Editor / WCF Board Meeting**  
page 3

**David Collyer Memorial**  
page 4

**Tournament Ads**  
pages 7, 8, 14, 15

**USCF Crosstables**  
page 9

**Leapin' Leprechauns**  
page 10

**Pupols—Collyer, WA Championship**  
page 11

**NWGP Report**  
page 12

**Northwest Chess Calendar  
of Upcoming Events**  
back cover

**On the Cover:** WA Championship photo montage. (clockwise from upper left) LM Viktors Pupols (l) vs. FM John Readey (r), title, NM Nat Koons (l) vs. FM David Bragg (r), NM Ignacio Perez (l) vs. Michael MacGregor (r), FM Paul Bartron (l) vs. NM Michael Lee (r), NM Curt Collyer (l) vs. FM Nick Raptis (r), TD Fred Kleist. *Arrangement and photos by Eric Holcomb*

## **WCF Board Meeting**

1/31/07

**Officers Present:** Pres. Geoff Gale, V.P. Duane Polich, Sec. Gary Dorfner, Treas. Robert Allen, T.C. Dan Mathews, NWC Rep. absent, S.D. David Hendricks, NWC B.M. Eric Holcomb

The meeting was called to order at 7:37 pm. The minutes were read & approved.

### **Officers Reports:**

**President:** \$1500 owed the WCF for last year's state championship still has not been paid. Fred Kleist will be the TD for this year's state championship. Looking into the possibility of broadcasting the games over the internet. Mr. Dorfner suggested talking to Clint Ballard about it, seeing as he did it for his Slugfest event. \$100.00 was added to the state championship budget for refreshments. The tournament is set to start on Feb. 10<sup>th</sup>. Still trying to find a site for the WA Open. Pres. has looked at a number of possible sites.

**Vice-President:** Did not have time to do anything with the WA Quick Championship yet. Will try & do it the end of March or in April sometime. Gary said that he would do it, if Duane cannot.

**Scholastic Director:** The profit for the WA Junior Open was \$1000. Expect to have 16 to 20 girls for the Susan Pulgar Qualifier Tournament.

**Financial report:** About \$2000 was made on the WA Class Scholastic & the WA Junior Open combined. This will help pay expenses for the WA State Championship & Premier.

*Continued on page 13*

# Donaldson, Koons Top 53-Player Collyer Memorial

by Kevin Korsmo

**T**op seeds IM John Donaldson and NM Nat Koons shared first place in the Fifteenth Dave Collyer Memorial tournament in Spokane on February 24-25, 2007. The two champions drew in their fourth round match and finished at 4.5. Four players finished at 4.0 to tie for third and claim the Expert and Class A prizes: Paul Bartron, John Julian, Chris Kalina, and David Rowles.

The first day's action ended with Donaldson, Koons, and Expert Josh Sinanan leading the 53-player field with perfect 3.0 scores. Sunday morning saw Koons and Donaldson hook up in a Slav that, at its conclusion, had Donaldson two pawns up, but having a hard time finding good squares for his pieces. Sinanan bested Curt Collyer's English in a lengthy game to maintain his perfect score and sole possession of first place heading into the final round.

Josh followed that up by playing a long game on board one against Donaldson in the final round. It became a must win game for the IM when Koons outmaneuvered Chris Kalina in a Bishop-and-pawn endgame to finish at 4.5 and claim at least second place. The board one contest went down to its final minutes and an electronic clock was put in place when Sinanan claimed insufficient losing chances. Donaldson played a nice endgame and won the encounter. While that game was in its final moments, the board five encounter between Geoff Gale and David Rowles devolved into an old fashioned time scramble that saw captured pieces flying off the board and the poor mechanical clock taking quite a pounding from the two chess veterans. Rowles finished nicely and won with a few second to spare. It was an exciting end to the tournament!

The event attracted 53 players this year. One of those players was B.G. (call him Bert or call him Jerry) Dennison, a retired teacher from Tyler, Texas. The Collyer tourney marked his first Washington chess tournament and made it the 49<sup>th</sup> state in which he has played. Bert needs only to play in the Wyoming Open (scheduled April 28-29) to complete a fifty-state chess tour. The tournament also served as a surprise reunion for Dennison when Spokane players Alton, Ben, and David Blue entered the tourney. They formerly lived in Tyler and knew Dennison from playing at the Tyler chess club. It really is a small chess world out there!

Dennison made his tournament experience all the more enjoyable by sharing the Class B prize. His 3.5 score tied with Alex Chow and Dan Mathews. Professor Bill McBroom (3.0) of Missoula won the Class C prize and high schooler Ken Erickson placed second in the class with his 2.5 score. The class D prize was won by Dr. Ward Chow. Second place in the D and under category was shared by Ryan Ackerman, newcomer Khai Le, and old veteran Jim Waugh. The biggest upset prize went to youngster David Blue for defeating a player nearly twice his 742 rating! The second largest upset prize went to Pat Kirlin with a 456 point upset.

The Collyer continued to be a worldwide event when Jerry Morton returned from Moscow, Russia, to play. Jerry has spent the last two years in Kazakhstan and recently moved to Moscow. This year marked the third consecutive Collyer he has flown halfway around the world to participate in! Jerry described Moscow as "chess heaven" and he regularly sends photos

for the Spokane Chess Club website ([www.spokanechessclub.org](http://www.spokanechessclub.org)) from his tournament visits over there.

The event also saw the return to tournament play of John Stanfield. Stanfield, a many time North Dakota state champion in the 1980s, has lived in Waterville since the end of that decade. His last tournament was a 1990 event run by Dave Collyer in the Collyer basement! He made his return to the royal game look easy, winning his first two matches before drawing with Collyer in the third round. We hope to see John back in the state chess scene.

A total of \$1600 in prizes was awarded again this year. The Spokane Chess Club and the Gary Younker Foundation again jointly sponsored the tourney.

The Collyer weekend kicked off with Donaldson giving his annual lecture, well attended as always, at Auntie's Bookstore on Friday, February 23. That was followed by a simultaneous exhibition. The IM quickly worked over the field, scoring 16-0 in less than two hours time.



**THE CHESS HOUSE**

Serving the chess community since 1972

**your chess sets  
and equipment store**



chess sets, combos, clocks  
electronic chess, software  
books, dvd's, teaching supplies  
awards, chess for education  
accessories, boards, pieces

**[www.ChessHouse.com](http://www.ChessHouse.com)  
1-800-348-4749**

This past February I had the opportunity to make a trip to the Northwest and combine two of my favorite activities—meeting with old friends and playing chess. My first stop was the Portland Chess Club where the rough treatment I received in the simul proved an excellent wake-up call. One thing I learned from my game with Michael Morris was that after 1.d4 d5 2.c4 e6 3.♘c3 c5 4.cxd5 exd5 5.♘f3 ♘c6 6.g3 ♘f6 7.♙g2 ♙e7 8.O-O O-O 9.♙g5 cxd4 10.♘xd4 h6 11.♙e3 ♙e8 12.♙a4, Black must play 12...♙d7 (Michael played 12...♘e5?, when 13.♘xd5 ♘xd5 14.♙xd5 ♙h3 15.♙xb7 ♙xf1 16.♙xa8 ♙xe2 17.♙g2 left White a safe pawn up, but Black won!). Then 13.♘xd5 leads to a more or less forced draw after 13...♘xd5 14.♙xd5 ♘b4 15.♙b3 ♘xd5 16.♙xd5 ♙h3 17.♙xd8 ♙axd8 18.♙fd1 ♙f6 19.♙d2 ♙g4, regaining the pawn.

The next night in Spokane went much better, as I won all 16 games in the simul in about an hour and a half. Things did not go as easily during the Collyer Memorial. All my opponents put up stiff resistance and I was happy to tie for first. My most interesting game, at least from a theoretical standpoint, was with Paul Bartron of Tacoma, a true chess aficionado who loves postmortems almost as much as the games themselves.—JD

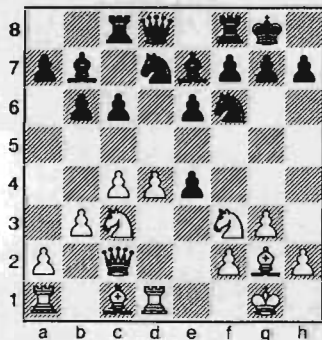
*Catalan*

IM John Donaldson (2466)  
FM Paul Bartron (2110)

*Spokane, Collyer Memorial (3) 2007*

Annotations by IM John Donaldson

1.♘f3 ♘f6 2.g3 d5 3.♙g2 e6 4.O-O ♙e7 5.d4 O-O 6.c4 c6 7.♙c2 b6 8.b3 ♙b7 9.♙d1 ♘bd7 10.♘c3 ♙c8 11.e4 dxe4



12.♘xe4

The natural-looking continuation and the most commonly-played move, but Northwest Chess

White has two better choices:

A) 12.♘g5! was the favorite of the late Alex Wojtkiewicz, who used it to win two miniatures after 12...c5 13.dxc5 ♙xc5 14.♙xe4! ♙c7 15.♙xh7+ ♘h8 16.♙e4 and now:

A1) 16...♘e5 17.♙f4 ♘xe4 18.♘cxe4 f5 19.♙e2 ♘g8 20.♘xc5 1-0 Wojtkiewicz–Becerra, Marshall Masters, New York 2003.

A2) 16...♘xe4 17.♘cxe4 f5 18.♙e2 g6 19.♙b2+ ♘g8 20.♘d6 e5 21.♘xb7 1-0 Wojtkiewicz–Ziatdinov, Philadelphia 1998.

Black's best is likely 12...h6, but after 13.♘gxe4 ♘xe4 14.♘xe4 ♘f6 15.c5 ♘d5 16.a3 a5 17.♙f1 ♙c7 18.♙d2 ♙fd8 19.b4 axb4 20.♙xb4 ♙a8 21.cxb6 ♙xb6 22.♙xe7 ♘xe7 23.♘c5 White had a big advantage in Beliavsky–Mitkov, Panormo 2001 (via many transpositions).

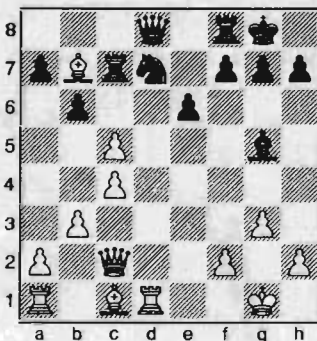
B) If 12.♘g5! is not to your taste, another good move is 12.♘e5, played many times with success by Dmitry Gurevich and Alexander Veingold.

12...c5

This move is necessary to free Black's position. Instead 12...♘xe4 13.♙xe4 ♙c7 14.♙f4 ♙d6 15.♙xd6 ♙xd6 is strongly met by 16.c5! White stops ...c6-c5 permanently, grabs space, gains control of d6 and shuts in the Bishop on b7. Black's access to d5 doesn't provide enough compensation. Note that 16...bxc5 17.dxc5 ♘xc5?? fails to 18.♙b4 ♙e7 19.♙ac1.

13.♘xf6+ ♙xf6 14.♘g5 ♙xg5 15.♙xb7 ♙c7 16.dxc5

16.♙e4 is also possible, but doesn't promise any advantage against best play.



16...♙f6?!

16...♙xc1 17.♙axc1 ♙xb7 18.c6 ♙c7 19.♙xd7 ♙xd7 20.cxd7 ♙xd7 21.♙d1 ♙e7 22.♙d3 g6 23.♙d6 ♙e8 24.♙d7 ♘f8 25.♙a4 a5 26.♙d7 ♙c5 27.♙b5 ♙xb5 28.cxb5 ♙c8 29.♙b7 a4 30.bxa4 ♙c4 31.♙xb6 ♙xa4 32.♙a6 1-0 Yusupov–Beitar, Thessaloniki (ol) 1988, is the game that sold me on 12.♘xe4 and 16.dxc5, but, as GM Mihai Marin, points out in his excellent CD for ChessBase on the Catalan, Black should play 17...bxc5! 18.♙g2 ♙e7 19.♙d2 ♘f6 as in Cvitan-Borgo, Porto San Giorgio 1997, when White has next to nothing.

17.♙b1

The question that White has to decide is what ending offers the most prospects: with Queens, Rook and Bishop or Rook and pawn? I probably did not make the right decision. An important alternative here is 17.♙b2 ♙xb2 18.♙xb2 ♙xb7 19.c6 ♙c7 20.cxd7 ♙e7 21.♙d2 ♙d8 22.♙ad1 ♙cxd7 with a Queen ending soon to arise.

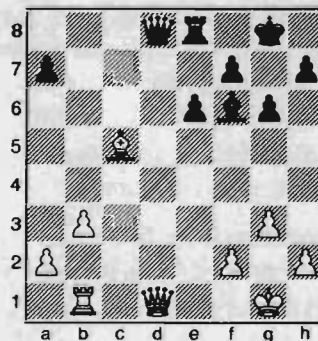
17...♙xb7 18.c6 ♙c7 19.cxd7 ♙xd7 20.♙e3

20.♙a3 was played in Adamski–Petersen, Copenhagen 1995, but I thought the Bishop should face Black's queenside pawns.

20...g6?!

20...♙xd1+ 21.♙xd1 ♙c7 22.♙e4 was only slightly better for White in Minero Pineda–Juan Jimenez, San Jose 2001, yes this is our Juan!

21.c5 bxc5 22.♙xc5 ♙xd1+ 23.♙xd1 ♙e8



24.b4

I felt that after 24.♙xa7 ♙a5 25.♙e3 ♙xa2 26.b4 ♙d8 27.♙f1 ♙d4 Black would have adequate counterplay. For example, 28.♙xd4 ♙xd4 29.b5 ♙d2

30.b6 ♖xf2 31.♗xf2 ♗xb1+ 32.♔g2 and it's unclear how White can make progress. 24...♗xd1+ 25.♖xd1 ♕e7 26.♗xe7?!

Maybe 26.♗xa7! ♗xb4 27.a4 was a more challenging continuation. If 27...♖a8, then 28.♖d7 ♔f8 29.♔f1 ♔e8 30.♖b7 and the White King comes to the queenside.

26...♖xe7 27.b5 e5?

This and Black's following moves are an ill-advised attempt to go for active counterplay and things rapidly go downhill from here. It was better to be patient and bring the King to b7 to free the Rook. After 27...♖c7 28.♖d6 ♔f8 29.a4 ♔e7 30.♖a6 ♔d7 31.♔f1 ♔c8 32.♔e2 ♔b7 Black can resist, though with 33.♖d6 White is still better.

28.♖d6

Ruling out any breakout attempts with ...a6. White plans to bring his King to the queenside. The rest is pretty straightforward.

28...f5 29.♔f1 ♔g7 30.♔e2 ♔h6 31.a4 ♔h5 32.h3 ♔g5 33.a5 ♖b7 34.b6 axb6 35.axb6 f4 36.♔f3 ♔f5 37.g4+ ♔g5 38.♔e4 ♔h4 39.♔xe5 ♔xh3 40.♔xf4 ♖f7+ 41.♔g5 ♖xf2 42.♖d3+ ♔g2 43.♖b3 ♖f8 44.b7 ♖b8 45.♔h6 1-0

*King's Indian Smyslov*

Joshua Sinanan (2088)

IM John Donaldson (2466)

Spokane, Collyer Memorial (5) 2007

Annotations by Joshua Sinanan

1.d4 ♘f6 2.♘f3 g6 3.c4 ♗g7 4.♘c3 O-O 5.♗g5

I chose to play the solid Smyslov/Akopian system, a positional sideline that strives for a small advantage and allows for natural development of White's pieces.

5...c5 6.e3 d6 7.♗e2 ♗f5 8. O-O ♘c6 9.d5 ♘b4

Donaldson is the first to deviate from book, where 9...♘a5 is played.

10.♗d2 ♘e4 11.♘e4 ♗xe4 12.a3 ♘a6 13.♘e1 ♗f5 14.f3 ♘c7 15.e4 ♗d7 16.♖b1 b5

We have reached a Benoni-like position, where Black's plan is to free his minor pieces on the queenside. Here, I chose to play thematically on the dark

squares and tried to take advantage of Black's awkwardly-placed Knight and Bishop.

17.b4 cxb4 18.c5!?

If 18.axb4 bxc4 19.♗xc4 ♘b5 20.♘d3 ♘a3, Black wins the two Bishops and has a pleasant game.

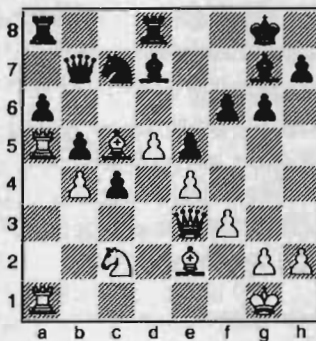
18...f6 19.♗e3 dxc5 20.axb4

If 20.♗xc5, then 20...bxa3 21.♗a2 ♖f7 is slightly better for Black.

20...c4

20...cxb4 21.♗xb4 a5 was also good for Black.

21.♖a1 a6 22.♘c2 e5 23.♖a5 ♗c8 24.♖fa1 ♗b7 25.♗c5 ♖fc8 26.♗e3 ♖d8



After this move, I felt I had obvious compensation for the pawn, but I wasn't sure how to proceed. Black can slowly consolidate with moves like ...♗f8, ...♘e8-d6, and ...♗c8-b7. I decided to try and tie Black's pieces to defending the queenside, while slowly switching my focus to the kingside.

27.♗a3 ♗c8 28.♘e3 ♘e8 29.♗d1 ♘d6 30.♗c2 ♗f8 31.♗c3 ♖b8 32.g3?

I was reluctant to trade my Rooks for the Queen after 32.♖xa6 ♗xa6 33.♖xa6 ♗xa6. However, White could have gained an advantage by 34.f4 ♗g7 35.fxe5 fxe5 36.♘g4 ♘f7 37.♗e7 ♖e8 38.♘f6+ ♗xf6 39.♗xf6.

32...♖e8 33.♘g4 ♗g7 34.♖xa6 ♗xa6 35.♖xa6 h5 36.♘e3

If 36.♘xe5, then 36...fxe5 37.

♗xd6 ♗xd6 38.♖xd6 ♗a7+ 39.♔f1 ♖b6 40.♖xb6 ♗xb6 and Black is winning.

36...♖ed8 37.♗a3?



This natural move turns out poorly, because it allows Black to take control of the only open file. A better try would have been 37.♖a5.

37...♗b7 38.♖c6

If 38.♖b6, then 38...♖a8 39.♗c3 ♗a7 practically forces the Queens off. Donaldson finishes the game off well to earn a share of first place in the tournament.

38...♖a8 39.♗c3 ♖a6 40.f4 ♖xc6 41.dxc6 ♗xc6 42.♗xd6 ♗xd6 43.♘d5 ♗g7 44.♗f3 f5 45.♔g2 exf4 46.gxf4 fxe4 47.♗xe4 c3 48.♗e3 ♖e8 49.♗d3 ♗e6 50.♗f3 ♖d8 51.♗xb5 ♔h8 52.♗c4 ♖c8 53.♗f1 c2 54.♗c1 ♗d4 55.f5 gxf5 56.b5 ♖g8+ 57.♔h3 f4+ 58.♔h4 ♗f6+ 59.♔xh5 ♗f7+ 60.♔h6 ♗h7 mate

This game below is, surprisingly, the very first time Curt Collyer and I have ever played! I had highly anticipated this moment ever since I first noticed him at the state high school tournament in 2002 (which Curt won, by the way).—JS



**ALLEN SMITH**  
CHESS LESSONS

USCF A PLAYER  
2006 PUGET SOUND CHAMPION

**(253) 230-3736 • CHARTERINV@COMCAST.NET**

# TACOMA CHESS CLUB Simultaneous Exhibition With NM Elliott Neff Saturday, April 28, 2007

Site: Freighthouse Square, Phoenix Room  
at the east end of the building.  
430 E 25<sup>th</sup> St (2 blocks downhill from Tacoma Dome)

## Entry fees:

\$15.00 per board for Adults  
\$10.00 per board for Juniors under age 21

Please bring standard size sets and boards.

Registration: 9:30 to 10:15 AM (on-site).

Play starts at 10:30 AM.

Reentry allowed before 2:00 PM.

There will also be a Quick Chess Tournament  
(5 round Swiss, TC: G/10, EF: \$5.00) after the simul.

Prizes: Trophies for 1<sup>st</sup>, 2<sup>nd</sup>, 3<sup>rd</sup>, 4<sup>th</sup> and 5<sup>th</sup>.

Advance entries for both events: Gary J. Dorfner,  
8423 E. "B" St., Tacoma, WA 98445

Info: Ph. (253) 535-2536, e-mail ggarychess@aol.com

## English

NM Curt Collyer (2218)

Joshua Sinanan (2088)

*Spokane, Collyer Memorial (4) 2007*

Annotations by Joshua Sinanan

1.c4 ♖f6 2.♗c3 g6 3.g3 ♗g7 4.♗g2  
O-O 5.e3 d6 6.♗ge2 c5 7.O-O ♗c6 8.b3  
♗f5 9.d4

Curt chooses a solid double-fianchetto line of the symmetrical English. My plan to equalize was to trade the light-square Bishops, after which White's kingside looks a little airy.

9...♞c8 10.♞e1 ♗b4

Forcing White to advance his center in the hopes of undermining it before he can complete his development.

11.e4 ♗h3 12.♗b2 ♗xg2 13.♕xg2

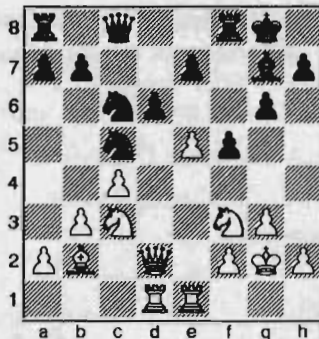
Without the light-squared Bishops, Black can proceed with the idea of playing on the light squares. This is difficult, however, due to White's space advantage and Maroczy-Bind pawn structure. Before this game, I had asked several friends for advice on what to play against Curt.

Northwest Chess

17.♞ad1 f5

I played this thematic break, with confidence that my plan to play on the light squares was working. I returned to the board in slight disbelief of Curt's response.

18.e5!



18...♗xe5

All three captures had to be considered. On 18... dxe5, FRITZ gives 19. ♞d5+ ♗e6 20. ♗g5 ♗cd8 21. ♞xe5 ♗xe5 22. ♞xe5 ♞c7 23. ♗d5 ♞xe5 24. ♗xe7+ ♕g7 25. ♗xe5+ ♕h6 26.h4 with a two-pawn advantage for White. I

Dan Mathews ruled out 18... ♗xe5 because of 19. ♗d5, when it is difficult to guard the e-pawn. This left me with 18... ♗xe5, where I had to grab the pawn and hope to survive the ensuing attack.

19. ♗xe5 dxe5

Not 19... ♗xe5 20. ♗d5 ♞c6 21.f4±.

20. ♞d5+ ♗e6 21. ♞xe5

Curt plays thematically with what we both considered to be a sound Exchange sacrifice.

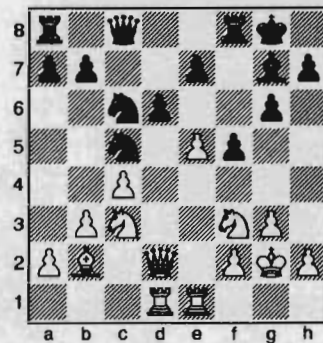
21... ♗xe5 22. ♞xe5 ♞c6+ 23. ♗d5 ♕f7 24. ♗a3 ♞ae8 25.f3

If 25. ♗xe7, Curt was worried about the pin after Black moves the Knight somewhere. Upon examining it more closely after the game, we found that White's position is very playable.

25... ♞a6 26. ♗b2 ♞d8 27. ♞e1 ♞d6 28. ♞e3 b5

A better try for me was to prevent the White Queen from invading with 28... f4 29.gxf4 ♞d7, according to FRITZ. I rejected this idea, because it seemed to leave my King a bit naked.

29. ♞h6 ♞h8 30. ♞e2 bxc4 31.bxc4 ♞c8



After this move, I offered Curt a draw, as time pressure was approaching for both of us. He declined, and later told me that he had missed the defense after his next move.

32. ♗f4 ♗d4! 33. ♞d2

Interesting was 33.c5, with the idea of 33... ♞xc5 34. ♗d3.

33... ♞xc4 34. ♗h3 e5 35. ♗g5+ ♕g8 36. ♞h4 h6 37. ♗h3 ♕g7 38. ♗f2 ♞hc8 39.g4 ♞c2 40. ♞xc2 ♞xc2 41. ♗xd4 exd4 42.g5 h5 43.a3 ♞e5 44. ♕h3 ♞e3 0-1

# WASHINGTON CHESS FEDERATION



## Washington Open Chess Tournament May 26-28, 2007

North Seattle Community College, 9600 College Way North,  
Seattle, WA 98103-3514

### WA Open Sections/Entry Fees (by April 15 / May 15 / on site)

#### OPEN

EF \$79 / \$89 / \$99

#### PREMIER (U2000)

EF \$69 / \$79 / \$89

#### RESERVE (U1700)

EF \$59 / \$69 / \$79

#### BOOSTER (U1400)

EF \$49 / \$59 / \$69

Canadians may pay entry fee +\$1  
in C\$ at par (no coins, please).

### \$8,800 Prizes Guaranteed by the Washington Chess Federation!

Open	Prem.	Res.	Boos.
\$1,000	\$400	\$350	\$300
\$600	\$300	\$250	\$150
\$400	\$250	\$200	\$100
\$300	\$200	\$150	\$100
\$200	\$150	\$100	\$100
U2150	U1850	U1550	U1100
\$400	\$250	\$200	\$120
\$250	\$150	\$100	\$ 80
\$150	\$100	\$100	\$120(*)
\$100	\$100	\$100	\$ 80 (*)

(\*) Prizes for unrated players.

#### Entries/Information:

Gary Dorfner, TD  
8423 East "B" St  
Tacoma, WA 98445-2223  
Phone (235) 535-2536  
[GGaryChess@aol.com](mailto:GGaryChess@aol.com)

Dan Mathews  
WCF Tournament Coordinator  
Cell Phone (425) 218-7529  
[Dthmathews@hotmail.com](mailto:Dthmathews@hotmail.com)

Checks payable to Washington  
Chess Federation (WCF).  
Also see [www.nwchess.com](http://www.nwchess.com).

**Registration:** Saturday 8:30-9:30AM for 3-day, or 3:30-4:00 PM if entering with one half-point bye. Sunday 9:00-9:30 AM for 2-day, or 9:00-9:45 AM if entering 3-day event with two half-point byes. Two half-point byes available.

**Format:** Four sections (see bar at left), six round Swiss system, USCF rated. The Open Section is also FIDE rated.

**Time Controls:** 3-day schedule: 40/2 Hrs., SD/1 Hr. 2-day schedule: Rounds 1-3: Game/60 minutes. (Rounds 4-6 same as 3-day schedule.) Both schedules: Digital clocks preferred. 5-second time delay used from start of game.

**Rounds:** 3-day schedule: Saturday: 10:00AM, 5:00PM, Sunday: 10:00AM, 5:00PM, Monday: 9:00AM, 3:00PM. 2-day schedule: Sunday: 9:30AM, 11:45AM, 2:30PM, then join 3-day schedule for rest of tourney. WCF annual meeting: 3:30 PM Sunday.

**Memberships:** USCF and WCF or OCF memberships required in all sections, OSA. Memberships (including USCF) must be current or paid fully.

**Miscellaneous:** 2007 Chess Cafe Grand Prix event, Mike Franett Memorial NW Grand Prix event. Please bring set, board and clock. No smoking. No computers. Please use entry form (available soon) for a list of all discounts and fees, and to indicate schedule, section, side events and byes requested.

**Entries/Prizes/Info:** See bar at left. Entry form will be posted on NWC website.

**Side Events:** (details will be posted on NWC website when available)

**May 26 Washington Open Scholastic:** A separate flyer is available on the NWC website for this event, scheduled for Saturday, May 26. Contact: David Hendricks, WCF Scholastic Director, 2439 220th Place NE, Sammamish, WA 98074, ph. 425-868-3881, e-mail: [DavidCHendricks@comcast.net](mailto:DavidCHendricks@comcast.net)

**May 26 Bughouse Championship.**

**May 26 Blitz Championship.**

Revised 3/14/2007.



# USCF Crosstables

(qqqq) indicates Quick Rating

Rated GM, Knight	Spokane	1/4	TD: David Griffin
1 Baker, Ted	1396	1407	W4 1.0
2 Ackerman, Ryan	SC 1314	1345	W3 1.0
3 Weyland, Ronald	ID 1473	1447	L2 0.0
4 Weyland, Annette	ID 1211	1198	L1 0.0
1 Korsmo, Kevin	(1615)	(1631)	W2 W2 U U 2.0
2 Griffin, David	(1442)	(1421)	L1 L1 L3 W4 W4 2.0
3 Baker, Ted	(1304)	(1345)	U W5 W2 U U 2.0
4 Weyland, Ronald	ID (1290)	(1262)	U U U L2 L2 0.0
5 Weyland, Annette	ID (1151)	(1138)	U L3 U U 0.0

TCC Tornado	1/6	TD: Gary Dorfner	
1 Pitre, H G	1768(1662)	1770(1671)	D3 W4 D2 W6 3.0
2 Desmarais, Niles	1766(1717)	1764(1709)	W6 W5 D1 D3 3.0
3 Desmarais, Cyrus	1588(1534)	1619(1573)	D1 W6 W5 D2 3.0
4 Holcomb, Eric	1505(1499)	1518(1500)	H L1 W6 W5 2.5
5 Guo, Anthony	1393(1059)	1368(1051)	B L2 L3 L4 1.0
6 Kochendorfer, David	1320(1320)	1299(1282)	L2 L3 L4 L1 0.0

SCC January Quads	1/20	TD: Fred Kleist	
1 Sinanan, Joshua	2076	2084	- W W W 3.0
2 Hickey, Patrick	1738	1770	L - W W 2.0
3 Manber, Devon	1856	1844	L L - W 1.0
4 Mathews, Dan	1742	1718	L L L - 0.0
1 Omori, Michael	1652	1660	- D W D 2.0
2 Gottlieb, Ethan	1499	1518	D - L W 1.5
3 Warriar, Krishnan	1719	1704	L W - D 1.5
4 Lessler, Peter	1562	1554	D L D - 1.0
1 Torkelson, Alan	1442	1470	- W D W 2.5
2 Etingher, Constantin	1400	1400	L - D D 1.0
3 Monahan, Darby	1517	1508	D D - U 1.0
4 Larus-Stone, Nicholas	1141	1150	L D U - 0.5
1 Ooley, Dustin	1277	1347	- D W W 2.5
2 Yu, Justin	1218	1244	D - W W 2.5
3 Manion, Jimmy	1063	1050	L L - W 1.0
4 Lessler, Nate	823	794	L L L - 0.0

WA Challengers' Cup Playoff	1/20	TD: Fred Kleist	
1 Bragg, David	2205	2212	- LW DW 2.5
2 Colyer, Curt	2218	2212	WL - DU 1.5
3 Gale, Geoffrey	1965	1973	DL DU - 1.0

Stephen Christopher Memorial	Tacoma	1/27-28	TD: Gary Dorfner
1 MacGregor, Mike	2171	2175	D9 W16 W4 W8 W3 4.5
2 Raptis, Nick	2287	2286	W7 W6 H D3 D5 3.5
3 Sinanan, Joshua	2076	2088	W10 W11 W5 D2 L1 3.5
4 Ballard, Clint	1903	1915	H X L1 W15 W13 3.5
5 Pupols, Viktors	2246	2237	X W15 L3 H D2 3.0
6 Bartron, Paul	2117	2110	W14 L2 D7 W9 H 3.0
7 Fleck, Casey	1807	1814	L2 W14 D6 D11 D9 2.5
8 Walker, Andrew	NJ 1713	1732	H F W16 L1 W15 2.5
9 Mathews, Dan	1742	1774	D1 W12 H L6 D7 2.5
10 Woodlief, Eric	1642	1646	L3 L13 B D12 W16 2.5
11 Holcomb, Eric	1518	1595	W13 L3 H D7 D12 2.5
12 O'Gorman, Peter	1865	1833	L15 L9 W14 D10 D11 2.0
13 Smith, Allen	LA 1843	1821	L11 W10 H H L4 2.0
14 Buck, Stephen	1720	1700	L6 L7 L12 D16 B 1.5
15 Wang, Michael	1800	1800	W12 L5 H L4 L8 1.5
16 Etingher, Constantin	1400	1401	B L1 L8 D14 L10 1.5
17 Walloch, Stephen	1729	1729	F U U U 0.0

Winter Championship	Spokane	1/18-2/15	TD: Kevin Korsmo
1 Julian, John	1980	1982	W11 D10 W5 W3 W4 4.5
2 Countryman, Zach	1739	1751	W12 W6 L3 W7 W9 4.0
3 Stripes, James	1670	1718	W13 W17 W2 L1 W10 4.0
4 Chow, Alex	1632	1664	W15 H W6 W10 L1 3.5
5 Baker, Kevin	1613	1619	W16 W20 L1 W13 H 3.5
6 Copeland, Chris	1562	1559	W18 L2 L4 W12 W13 3.0
7 Blue, Alton	1505	1511	W20 L9 W8 L2 W1 3.0
8 Ackerman, Ryan	SC 1345	1385	L10 W19 L7 W17 W11 3.0
9 Downes, John	1715	1700	H W7 L10 W11 L2 2.5
10 Korsmo, Kevin	1641	1649	W8 D1 W9 L4 L3 2.5
11 Weyland, Ron	ID 1447	1429	L1 W18 W15 L9 L8 2.0

12 Baker, Ted	1407	1369	L2 L15 W18 L6 W20 2.0
13 Waugh, James	1384	1393	L3 W16 W17 L5 L6 2.0
14 Chow, Ward	1346	1347	U U W19 W16 L7 2.0
15 Kirlin, Patrick	1290	1262	L4 W12 L11 L18 W19 2.0
16 Weyland, Annette	ID 1198	1176	L5 L13 W20 L14 W18 2.0
17 Griffin, David	1511	1461	W19 L3 L13 L8 H 1.5
18 Blue, David	671	742	L6 L11 L12 W15 L16 1.0
19 Engelhard, Raymond	640	642	L17 L8 L14 W20 L15 1.0
20 Baker, Joel	923	259	L7 L5 L16 L19 L12 0.0

Festival of Chess: Elite Eight	Seattle	3/17	TD: Siva Narayanan
1 Neff, Elliott	2265(2158)	2275(2166)	W5 W3 D6 D2 3.0
2 Readey, John	2310(2372)	2311(2336)	L7 W4 W3 D1 2.5
3 Koons, Nat	2300(1979)	2291(1985)	W8 L1 L2 W6 2.0
4 Bragg, David	2208(2142)	2202(2134)	D6 L2 D5 W8 2.0
5 Fleury, Matthew	2103(2120)	2110(2089)	L1 D8 D4 W7 2.0
6 Wyde, David	2047(1723)	2063(1777)	D4 W7 D1 L3 2.0
7 Selzler, Ricky	2148(1962)	2140(1958)	W2 L6 D8 L5 1.5
8 Sinanan, Joshua	2111(1950)	2101(1940)	L3 D5 D7 L4 1.0

PCC Game-in-60	1/27	TD: Gregori Alpernas	
1 Holler, Robert	1700(1638)	1735(1659)	W19 W10 W2 D4 3.5
2 Pitre, H G	WA 1770(1671)	1773(1673)	W11 W5 L1 W10 3.0
3 Banner, Richard	1811(1611)	1802(1606)	D16 D12 W17 W7 3.0
4 Knutson, Keegan	1798(1600)	1793(1604)	W17 W14 D7 D1 3.0
5 Friesen, Daniel	1602(1488)	1619(1512)	W22 L2 W14 W8 3.0
6 Arun, Aditya	1686(1542)	1664(1518)	L14 W20 D12 W11 2.5
7 Sharp, Austin	1609(1494)	1612(1491)	W15 W21 D4 L3 2.5
8 Taylor, Michael	1768(1705)	1737(1667)	D12 D18 W16 L5 2.0
9 Becker, Brett	1663(1372)	1626(1346)	D18 L16 W21 D12 2.0
10 Porter, Nathan	1509(1359)	1504(1361)	W20 L1 W18 L2 2.0
11 Dietz, Arliss	1521(1377)	1514(1373)	L2 W19 W15 L6 2.0
12 You, Sean	1464(1341)	1523(1391)	D8 D3 D6 D9 2.0
13 Davey, Brent	1432(1377)	1425(1366)	U L15 W20 W16 2.0
14 Holler, Bruce	1225(1156)	1285(1219)	W6 L4 L5 W21 2.0
15 Boonshoft, A	1037(937)	1165(1075)	L7 W13 L11 W19 2.0
16 Kim, Isaac	1448(1351)	1463(1358)	D3 W9 L8 L13 1.5
17 Porter, Joel	1394(1239)	1381(1225)	L4 W22 L3 D18 1.5
18 Tanquary, J	1211(1086)	1269(1138)	D9 D8 L10 D17 1.5
19 Wang, Kevin	1293(1213)	1255(1170)	L1 L11 W22 L15 1.0
20 LeGrove, Jeremy	1049(993)	1041(982)	L10 L6 L13 W22 1.0
21 Mullins, Michael	958(966)	948(948)	B L7 L9 L14 1.0
22 Croucher, Bryce	491(491)	491(491)	L5 L17 L19 L20 0.0

New Peninsula/West Sound Club!

## Kitsap County Chess Club

Meets Thursdays 7pm-9pm

680 Lebo Blvd., Bremerton, WA 98310

4-5 rd. G/29 USCF Swiss per month, \$20 EF,  
prizes b/entries, ferry & late entry discounts,

no other dues. See below for details & directions:

<http://kitsapchess.yoll.net> [theknight@myway.com](mailto:theknight@myway.com)



**Carl A. Haessler**

Lessons • Lectures • Exhibitions

USCF Life Master  
3-Time Oregon Champion

(503) 358-7871  
ssmith6154@aol.com

# Leapin' Leprechauns!

by Kate Taylor

Fifty players and their families, from throughout the Pacific Northwest, attended this event held at the Clatskanie Community Education Center. This was the first tournament for many of the attendees.

While pairings were prepared, the day began with a fun game of "lucky chess" where parents and players tried their luck at chess! Pieces are moved based on the luck of a dice roll (1-pawn, 2-Knight, 3-Bishop, 4-Rook, 5-Queen, 6-King). If there are no legal moves for a piece, then the player skips a turn. The only way to win is to capture the opponents King. Within about 12 moves, players would shout out "checkmate" and then come up and claim a prize. So... before the tournament even began, we already had winners!

A mysterious leprechaun left behind lucky shamrock coins to assorted players who were able to turn them in for commemorative T-shirts of the event. Warren Skirvin, 6th grader from Clatskanie Elementary, won the coveted sportsmanship award (the biggest

*Continued on page 13*

**Class E**

1st	Greg Foster
2nd	John Flett
3rd	Archer Morgan

**Class F**

1st	Allison Mitchell
2nd	Chase Morgan
3rd	Drake Morgan

**Class G**

1st	Anthony Garcia
2nd	Elias Coulson
3rd	Azaylea Jay
4th	Jeffrey Clappe
Medals	Jessica Mullins Bethany Mullins Celina Vidos Joseph Heyman

**Class H**

1st	Jacob Moore
2nd	Anna Nixon
3rd	Allen Skirvin
4th	Josh Sills
5th	Timothy Cano
6th	Kelby Cano
7th	Ben MacMillan
8th	Kalin Horness
9th	Anthony Trekler
Medals	Kiersten Sermino Jesse Renno

**Other Awards**

<b>Best Notation</b>	Kevin Holm
<b>Best Handshake</b>	John Flett
<b>Best Attitude</b>	Joey Kasper
<b>World Class Performance</b>	Connor Thorud
<b>Never Give Up, Never Surrender</b>	Timothy Cano
<b>Clatskanie Spirit</b>	Jesse Renno
<b>Star Performer</b>	Kasidy Engen
<b>Leadership Award</b>	Lynn Siltala
<b>Best Leprechaun</b>	Allison Mitchell
<b>Sportsmanship</b>	Warren Skirvin

**Bughouse Winners**

1st	M&M (Michael Taylor & Michael Siltala)
2nd	Heat (The Morgan Brothers)
Other Teams: Lucky Leprechauns, Multi-Tasking Medaling Medal-ions, Chess Masters, Little Leaping Leprechauns, Issy Prissy Woosy Pants, Leprechauns, Akri, Leapin' Ducks, JD-RC, Agent Striking Cobra, A's	

**Dave Collyer Memorial** Spokane 2/24-25 TD: Kevin Korsmo

1 Donaldson, John CA	2466	2487	W15	W10	W3	D2	W4	4.5
2 Koons, Nat	2280	2290	W20	W24	W11	D1	W9	4.5
3 Bartron, Paul	2110	2117	W34	W25	L1	W29	W12	4.0
4 Sinanan, Joshua	2094	2107	W32	W26	W31	W7	L1	4.0
5 Julian, John	1982	1985	W21	L19	W20	W17	W13	4.0
6 Rowles, David	1852	1877	W50	L7	W42	W25	W11	4.0
7 Collyer, Curt	2212	2201	W16	W6	D13	L4	W19	3.5
8 Merwin, Steven	2053	2041	W35	L29	W26	D15	W24	3.5
9 Kalina, Chris	1954	1965	D17	W27	W23	W14	L2	3.5
10 Weyland, Phil ID	1874	1880	W39	L1	D32	W31	W30	3.5
11 Gale, Geoffrey	1973	1969	W42	W30	L2	W16	L6	3.0
12 Cloy, Elston	1959	1947	W36	L31	W35	W18	L3	3.0
13 Stanfield, John	1915	1912	W37	W40	D7	D19	L5	3.0
14 Hanlen, Jim AK	1887	1881	W38	W48	H	L9	D15	3.0
15 Kolde, Sterling	1848	1859	L1	W39	W37	D8	D14	3.0
16 Smith, Allen LA	1821	1825	L7	W50	W40	L11	W29	3.0
17 Fleck, Casey	1798	1813	D9	W28	H	L5	W34	3.0
18 Mathews, Dan	1794	1797	D23	W45	H	L12	W35	3.0
19 Dennison, B G, Jr TX	1735	1768	W51	W5	H	D13	L7	3.0
20 Chow, Alex	1664	1678	L2	W47	L5	W43	W38	3.0
21 Mc Broom, William MT	1559	1578	L5	W51	H	D28	W41	3.0
22 Mitchell, Mika	1877	1881	H	U	U	W45	W37	2.5
23 Jensen, J Michael MT	1845	1825	D18	W41	L9	L30	W44	2.5
24 Carpenter, Romie MT	1800	1801	W47	L2	H	W36	L8	2.5
25 Desmarais, Nilles	1764	1755	W43	L3	W38	L6	D32	2.5
26 Countryman, Zach	1751	1749	W44	L4	L8	W39	D31	2.5
27 Martin, Robert MT	1740	1723	D45	L9	W48	D34	H	2.5
28 Walker, Andrew NJ	1732	1710	D41	L17	W45	D21	H	2.5
29 Attwood, Adam	1703	1716	W49	W8	H	L3	L16	2.5
30 Downes, John	1700	1707	W53	L11	H	W23	L10	2.5
31 Walton, John	1682	1699	W46	W12	L4	L10	D26	2.5
32 Erickson, Kenneth ID	1586	1602	L4	W49	D10	H	D25	2.5
33 Stripes, James	1718	1671	L48	L38	H	W51	D36	2.0
34 Younker, Jeremy	1645	1644	L3	W43	H	D27	L17	2.0
35 Desmarais, Cyrus	1619	1617	L8	W44	L12	W40	L18	2.0
36 Engelhard, David	1538	1540	L12	W46	H	L24	D33	2.0
37 Morton, Jerry	1528	1523	L13	W53	L15	W48	L22	2.0
38 Varner, Murlin	1521	1525	L14	W33	L25	W49	L20	2.0
39 Blue, Alton	1511	1504	L10	L15	W52	L26	W48	2.0
40 Weyland, Ronald ID	1429	1416	W52	L13	L16	L35	W49	2.0
41 Chow, Ward	1347	1391	D28	L23	H	W42	L21	2.0
42 Copeland, Chris	1559	1525	L11	W52	L6	L41	D43	1.5
43 Blue, Benjamin	1418	1412	L25	L34	W46	L20	D42	1.5
44 Waugh, James	1393	1378	L26	L35	W53	H	L23	1.5
45 Ackerman, Ryan SC	1385	1390	D27	L18	L28	L22	W52	1.5
46 Le, Khai	746	1156	L31	L36	L43	D52	W51	1.5
47 Griffin, David	1461	1414	L24	L20	L49	B	U	1.0
48 Kirin, Patrick	1262	1279	W33	L14	L27	L37	L39	1.0
49 Blue, David	742	816	L29	L32	W47	L38	L40	1.0
50 Mangiaracina, Mar	1480	1472	L6	L16	H	U	U	0.5
51 Baker, Ted	1369	1324	L19	L21	H	L33	L46	0.5
52 Engelhard, Raymond	642	665	L40	L42	L39	D46	L45	0.5
53 Mathieu, Davis	629	629	L30	L37	L44	H	U	0.5

**SCC February Quads** 2/24 TD: Fred Kleist

1 Lee, Michael	2202	2211	-	W	W	U	U	2.0
2 McCormick, James	2200	2200	L	-	D	U	W	1.5
3 Wang, Michael	1800	1809	L	D	-	U	D	1.0
4 Kleist, Frederick	1979	1985	U	U	U	-	W	1.0
5 O'Gorman, Peter	1829	1818	U	L	D	L	-	0.5
1 Warriar, Krishnan	1704	1730	-	W	D	W		2.5
2 Hickey, Patrick J	1770	1771	L	-	W	W		2.0
3 Ummel, Igor	1679	1666	D	L	-	D		1.0
4 Lee, Megan	1572	1559	L	L	D	-		0.5
1 Qu, Frank	1448	1481	-	X	W	W		3.0
2 Thongmee, Thomas	1424	1460	F	-	W	W		2.0
3 Charleston, Scott	1517	1487	L	L	-	W		1.0
4 Meisner, Samuel	1349	1311	L	L	L	-		0.0
1 Gelb, Nicolo	1137	1176	W5	D3	B			2.5
2 Cohn, Michael	977	1203	D4	W6	W5			2.5
3 So, Ernest	1289	1291	W6	D1	H			2.0
4 So, Conan	1266	1263	D2	W7	U			1.5
5 Charleston, Jay	1264	1211	L1	B	L2			1.0
6 Kostic, Miodrag BC	1083	1055	L3	L2	B			1.0
7 Srikanth, Ashwath	465	465	H	L4	U			0.5

# Another Annotated Game from the WA Championship

It is always a great honor to play such a legendary player as Viktor Pupols. "Viktors Pupols"—there is so much in that name!

*QGD Slav*

LM Viktor Pupols (2237, 1.0)

NM Curt Collyer (2218, 1.0)

Seattle, WA Championship (4) 2007

Annotations by NM Curt Collyer

1.d4 d5 2.c4 c6 3.♘f3 ♘f6 4.♘c3 a6

Vik has such vast opening experience, this relatively modern line of the Slav seemed like a good practical try. In fact, it could be argued that this small waiting move has become the new main line of this classical defense.

5.c5

Taking up the challenge; somehow I had expected him to go for the Exchange Variation instead, which is an especially good choice when Black has already played the somewhat weakening move ...a7-a6. In fact, I think Orlov defeated Readey with this idea at the 2006 Washington Open.

5...♘bd7

I knew that Shirov had played 5...♘f5 before, you see.

6.♘f4 ♘h5

I had two victories in this year's State Championship; in both games I was Black, in both I played the Slav, and in both I used this Knight maneuver. The strategy is very simple: grab the two Bishops, consolidate the position, enjoy the slight advantage!

7.e3 ♘xf4

Money in the Bank.

8.exf4 g6 9.♘d3 ♘g7 10.O-O ♖c7 11.g3 O-O 12.♗e1 ♗e8

It is very clear that if Black can achieve the pawn break ...e7-e5, this will be strategically favorable; White's pawn on c5 will be overextended and the cen-

tral dark squares will collapse due to Black's powerful Bishop.

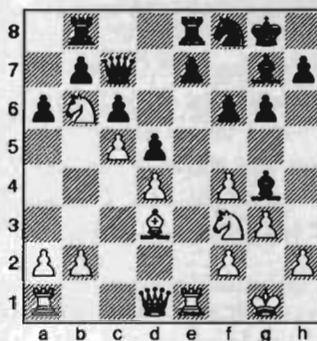
13.♘e5 ♘f8!

13...f6? 14.♘xg6! needs to be avoided. Now g6 is defended, while White will not have the option of trading Knights after Black plays ...f7-f6.

14.♘a4 f6 15.♘b6 ♗b8 16.♘f3

16.♘xc8? fxe5

16...♗g4



White's control of e5 is slipping; strategically, the position is already dangerous for him.

17.♗e2

Now there is a forcing sequence.

17...♗xf3 18.♗xf3 e5 19.fxe5 fxe5 20.dxe5 ♗xe5 21.♗xe5 ♖xe5 22.♗b1 ♗e8 23.b4 ♘e6 24.♗b3 ♗h6

White was trying to bring his Rook to e3.

25.♗g4

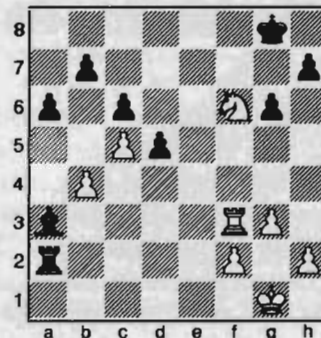
Here I decided to go for the ending, as White's queenside pawns are vulnerable to attack; they are too far up the board.

25...♘d4 26.♗d3 ♘e2+ 27.♗xe2 ♖xe2 28.♖xe2 ♗xe2 29.a3 ♗a2 30.♘d7 ♗c1 31.♗f3!?

Vik played this very quickly and it is an interesting idea. I had originally planned to now play 31...♗xa3 and meet 32.♘f6+ with 32...♗f7, winning. However, instead White can play 32.♗f8+!

and 33.♗b8 counter-attacking my own queenside pawns.

31...♗xa3 32.♘f6+



32...♗f7

I had calculated the following variation 32...♗g7 33.♘e8+ ♗h6 (33...♗h8 34.♗f8 mate; 33...♗g8 34.♘f6+) 34.♗f7 ♗xb4 35.♘f6!? ♗xc5 36.h4 g5 and felt a little uneasy. I stopped my calculation after 37.h5, although 37...g4 is apparently okay for Black.

It seemed to me that creating a mating net with a single Rook, Knight and pawn, would be something that Vik just might pull off! FRITZ has a different opinion, but I was not so brave. Or perhaps I was just more pragmatic; I decided to activate my King instead.

33.♘xd5+ ♗e6 34.♘f4+ ♗e5 35.♗e3+ ♗d4 36.♘e6+ ♗c4

Even the King is contributing to the queenside assault.

37.♘d8 ♗xb4 38.♗e4+ ♗b5 39.♘xb7 ♗xc5 40.♗e5 ♗c2 41.♘d6+

White rushes back to defend f2.

41...♗b4 42.♘e4 a5

The passed a-pawn is too strong; I did not see any way for White to defend. 43.♗e8 a4 44.♗b8+ ♗a3 45.h4 ♗a2 46.g4

White's only hope is to seek counterplay on the kingside.

46...♗c4 47.♘xc5 ♗xc5 48.♗b7 a3

*Continued on page 13*

## 2006 Franett Memorial Northwest Grand Prix

Murlin Varner, administrator  
13329 208th Ave. NE  
Woodinville WA 98077  
mevjr54@yahoo.com

### Oregon Champ – Taylor Bailey Washington Champ – Nick Raptis

The 2006 Grand Prix ended with a number of very close races. As you look down the list below, note how many places and money winners could have changed with less than 10 points! This includes the Oregon overall winner, where Taylor Bailey edged Daniel Gay by just nine points. Elsewhere in Oregon, Michael Terrill edged Vikram Kudva for second place Class C by just one point and Blake Phillips held on to second Expert by only half a point over Richard Gutman (with Michael Morris just another 2 points back of Gutman.)! In Washington, Dan Mathews held off Peter O’Gorman for second Class A by 6.5 points, and Zachary Countryman took first Class B by 7 points over Michael Wang, who was, in turn, only 5.5 points ahead of Nathan Lee. One-and-one-half points were enough to take second place for Tristan Sun (over John Hornickle) in Class C and for Jeffrey Omori (over James Waugh) in Class D.

Congratulations to all our winners, some new, some repeating. First place in a class won \$158.32 in Washington and \$101.54 in Oregon. Second was good for \$79.16 and \$50.77, respectively. First overall in each state (Bailey and Raptis) received an additional first place share. Prizes have been sent out and should be in the hands of the winners as of this writing. The final results for all players can be found on the NWC website.

We had 550 different chess players involved in one or more GP events in 2006, an increase of five over 2005. Our number of entries went up by 130 (7%), however, meaning players are playing more often. The entries per player rose from 3.32 in 2005 to 3.53 last year. There were a total of 80 GP events, up one from 2005, and 13 had multipliers, the same as the previous year. Entries per event rose from 22.9 per event to 24.3 in 2006. Prizes rose by 4.4% in Oregon, and dropped by 3% in Washington. We reduced the minimum Grand Prix fee to \$10 from \$15 last year, which had a greater effect on the prizes in Washington than those in Oregon, because there are more small events being held in Washington.

Now we look to 2007, which has hit the ground running. There were eight GP events in January, two of which had 2x multipliers, and five more in February, including the Collyer Memorial, with a 3x multiplier! If you haven’t started playing yet, you should.

#### Players in Database 2006

	OR	WA	Other	Total
Master	7	14	4	25
Expert	13	18	5	36
Class A	24	34	15	73
Class B	23	72	11	106
Class C	33	53	10	96
Class D-below	58	138	18	214

#### Oregon

1 Haessler, Carl	65.0
2 Roua, Radu	55.0
3 Prochaska, Peter	42.0
4 Brownell, Landon	30.0
5 Harmon, Clark	18.5
6 Zaikov, Oleg	18.0

1 Daroza, Eduardo	84.5
2 Phillips, Blake	55.0
3 Gutman, Richard	54.5
4 Morris, Michael	52.5
5 Alpernas, Gregori	37.5
6 Yu, Corbin	34.5

1 Gay, Daniel	131.0
2 Banner, Richard	107.0
3 Peake, Ethan	87.5
4 Foster, Raleigh	86.0
5 Serres, Drew	83.0
6 Robinson, Marcus	73.5

1 Bailey, Taylor	140.0
2 Becker, Brett	94.5
3 Porter, Nathan	72.0
4 Levin, Scott	59.0
5 Sinclair, Paris	57.5
6 Breckenridge, David	54.5

1 Midson, Tony	94.5
2 Terrill, Michael	59.5
3 Kudva, Vikram	58.5
4 Hooker, Justin	44.0
5 Dietz, Arliss	43.5
6 Wentz, Dale	42.5

1 Cohen, David	71.0
2 Porter, Joel	58.0
3 Petersen, George	45.0
4 Henzie, Rex	30.0
5 Harry, Ken	28.0
6 Le Grove, Jeremy	26.0

1 Bailey, Taylor	140.0
2 Gay, Daniel	131.0
3 Banner, Richard	107.0
4 Becker, Brett	94.5
5 Midson, Tony	94.5
6 Peake, Ethan	87.5
7 Foster, Raleigh	86.0
8 Daroza, Eduardo	84.5
9 Serres, Drew	83.0
10 Robinson, Marcus	73.5
11 Porter, Nathan	72.0
12 Cohen, David	71.0
13 Haessler, Carl	65.0
14 Breckenridge, Steve	64.0
15 Terrill, Michael	59.5

#### Washington

##### Masters

Raptis, Nick	262.0
Collyer, Curt	143.0
Koons, Nat	126.0
Pupols, Viktors	118.0
MacGregor, Michael	114.5
Bragg, David	75.0

##### Experts

Gale, Geoffrey	152.0
Bartron, Paul	139.0
Lee, Michael	90.5
Sinanan, Joshua	90.5
Setzler, Richard	87.5
Julian, John	69.5

##### Class A

Buck, Stephen	243.5
Mathews, Dan	139.5
O’Gorman, Peter	133.0
Wu, Darren	123.5
Smith, Allen	102.0
Chen, Howard	100.5

##### Class B

Countryman, Zachary	137.5
Wang, Michael	130.5
Lee, Nathan	125.0
Kolde, Sterling	121.0
Piper, August	105.0
Omori, Michael	92.5

##### Class C

Etingher, Constantin	233.5
Sun, Tristan	125.5
Hornickle, John	124.0
Lee, Megan	108.5
Monahan, Darby	103.0
Yang, Matthew	102.0

##### Class D and Below

Wu, Darryl	110.5
Omori, Jeffrey	87.5
Waugh, James	86.0
Yu, Justin	67.0
Kirlin, Patrick	65.5
May, Sarah	63.0

##### Overall Leaders

Raptis, Nick	262.0
Buck, Stephen	243.5
Etingher, Constantin	233.5
Gale, Geoffrey	152.0
Collyer, Curt	143.0
Mathews, Dan	139.5
Bartron, Paul	139.0
Countryman, Zachary	137.5
O’Gorman, Peter	133.0
Wang, Michael	130.5
Koons, Nat	126.0
Sun, Tristan	125.5
Lee, Nathan	125.0
Hornickle, John	124.0
Wu, Darren	123.5

#### Players from Other States

1 Weyland, Ronald	ID	1540	84.5
2 Weyland, Phillip	ID	1899	71.0
3 Milner, Aviv	CAN	1418	51.0
4 Martin, Robert	MT	1764	49.5
5 Taylor, Michael	CA	1625	46.5
6 Zhao, Donovan	CAN	1209	45.5
7 Gaciu, Vlad	CAN	1764	38.5
8 Harmon, Luke	ID	1229	38.0
9 Milner, Arie	CAN	1552	37.5
10 Anderson, Mark	ID	1750	36.0
11 Harmon, Carl	ID	1165	36.0
12 Carpenter, Romie	MT	1825	33.5
13 McBroom, William	MT	1589	32.5
14 Weyland, Annette	ID	1232	32.0
15 Mulford, Michael	GA	1808	30.0

## Washington Chess Federation (WCF)/Oregon Chess Federation (OCF)

**Adult:** \$25/year (12 issues). Residents of OR and WA receive a 1-year membership in the OCF or WCF. Members receive *Northwest Chess* via periodicals mail each month.

**Junior:** \$17/year (12 issues) or \$10/6 months (6 issues). Must be under age 20 at time of expiration. OR/WA residents only; state membership included. Juniors receive *Northwest Chess* each month.

**USA Subscriber:** \$25/year (12 issues). For subscribers living inside the US mail system, but outside the OR/WA area. Subscribers receive *Northwest Chess* each month.

**Family:** \$5/year (not a subscription — membership only). This class of membership is open only to co-resident of an Adult or Junior member. Expires at the same time.

**Trial:** \$13 (membership and subscription, expires in 3 months). By paying the balance of dues for an Adult membership, this option can be extended to 12 months. The balance must be paid before the trial status is expired.

For general information, Eric Holcomb (253) 850-2996, e-mail: Eric@Holcomb.com

### OCF/WCF Membership Application/Renewal Form

Name \_\_\_\_\_ If Junior, give date of birth \_\_\_\_\_

E-Mail (if you want to subscribe to the *Northwest Chess* e-mail mailing list) \_\_\_\_\_

Phone Number (optional, will not be used for telemarketing) (\_\_\_\_) \_\_\_\_\_

Street or P.O. Box \_\_\_\_\_

City \_\_\_\_\_ State \_\_\_\_\_ Zip \_\_\_\_\_

Country (if not USA) \_\_\_\_\_ Amount Enclosed \$ \_\_\_\_\_

Make check or money order (USA \$ only) out to Northwest Chess and mail to:

Credit this membership to:

**Eric Holcomb**  
**NW Chess Business Manager**  
**PMB 342**  
**12932 SE Kent-Kangley Rd.**  
**Kent WA 98030-7940**

*Leprechauns cont'd from page 10*

trophy of all) for kindness and consideration of his opponents, his can-do attitude and his courage under pressure.

In Class F, the top three finished in a tie for first which we tried to break by blitz. The players remained tied; so we used tiebreaks. Nevertheless, all three players are considered co-champions. In all classes, medals were given to those who scored three or more points without receiving a trophy.

The "Never Give Up, Never Surrender" award is based on the reputation of the Tlatskanai Indians, a fierce and tenacious tribe, whose name survives in the name of our town — Clatskanie. The winner of this award was down to just a King, when his opponent stalemated the game.

Northwest Chess

Special thanks to everyone who helped make our tournament a success. Clatskanie Park & Rec, Legend Products (for the use of their Kings Indian and Alegria triple weighted sets), Amy Coughlin, Gretchen Moore, Paulette Vidos, Warren Taylor, Michael Taylor, Melody Skirvin, Elizabeth Nichols, Clatskanie School District, Clatskanie Chief, Northwest Engraving, Fultano's Pizza, Subway and our chess players' families. ■

*Pupols-Collyer cont'd from page 11*

49. ♖xh7 ♗b1 50.g5 a2 51. ♖a7

I briefly calculated queening the pawn, but realized there is something simpler.

51... ♖c4!

Now White will have no counterplay with the kingside pawns.

52. ♖b7+ ♗c2 53. ♖a7 ♗b2 54. ♖b7+ ♗a3! 0-1 ■

*WCF Meeting cont'd from page 3*

**Secretary:** Still updating the archives. Have a lot of research left to do yet. Putting together a tournament calendar & trying to make sure that these WCF tournaments are held each year. Also, in the process of updating the list of chess clubs in the state. Will be getting a new laptop & printer & will be set up to send stuff in on line. Have new Swiss-Sys program. Will also get registration program from Kirk Wings & put it on computer.

**NWC Business Manager:** Grand Prix will still be held without donations. Will still try & solicit donations. The prize fund is \$1000. Will send report out in Feb. Discussed doing USCF/WCF scholastic tournaments. These would be G/60 dual-rated events.

**Old Business:**

Andy May is the State High School Champion for 2007 & will represent Washington in the Denker Tournament.

Discussed the State Championship & Premier. It will be held on Feb. 10-11 & Feb. 17-19.

**New Business:**

Discussed the WA Open. Still looking for a site. A motion was made by Mr. Polich to adopt similar prize fund to last year— \$8000 guaranteed, 4-section format. 2<sup>nd</sup> by Mr. Dorfner, passed.

It was suggested that the WCF should try to get non-profit status & maintain it.

Discussed the WA-OR Match.

Discussed the WA Senior Open.

Meeting adjourned at 9:10 pm

*Gary J. Dorfner, Sec.*

April 2006

13

# Seattle Chess Club Tournaments

**Address**  
17517 15 Ave NE  
Seattle WA 98155

**Infoline**  
206-417-5405  
cfkleist@cs.com

**Address for Entries**  
SCC Tnmt Dir  
2420 S 137 St  
Seattle WA 98168

## Apr. 21

**Format:** 3-RR, 4-plyr sections by rating. **TC:** G/120. **EF:** \$6 (+\$5 fee for non-SCC). **Prizes:** Free entry for future quad. **Reg:** 9:00-9:45 a.m. **Rds:** 10:00-2:15-ASAP. **Misc:** USCF, WCF/OCF memb. req'd, OSA. NS, NC.

## Apr. 29

**Format:** 4-SS. **TC:** G/64. **EF:** \$15 (+\$5 fee for non-SCC). **Prizes:** 1st 35%, 2nd 27%, Bottom Half 1st 22%, 2nd 16% (\$10 from each EF goes to prize fund). **Reg:** 10:30-11:15 a.m. **Rds:** 11:30-1:50-4:10-6:30. **Misc:** USCF, WCF/OCF memb. req'd, OSA. NS, NC.

## May 5

### SCC Novice

**Format:** 4-SS. Open to U1200 and unrated. **TC:** G/75. **EF:** \$10 by 5/2, \$15 at site. (20% disc. for SCC mem., 10% mem. of other dues-req'd CCs in WA, OR, & BC). **Prizes:** Memberships (SCC, WCF, USCF). **Reg:** 9-9:45a. **Rds:** 10-12:45-3:30-6. **Byes:** 1 (Rd 3 or 4—commit at reg.). **Misc:** USCF memb. req'd. NS, NC.

Nine out of ten  
doctors agree . . .

cooler heads play better chess.

Therefore the SCC Board is striking a  
blow for more comfort this summer!

*Yes, you heard it first right  
here: we're going to buy sun-  
blocking curtains for the club!*

Four members have pledged financial help  
for this project. You can give YOUR con-  
tribution, in any amount, to Fred, Carol,  
August, or any other Board member.

*Good is Good!!*

## SCC Saturday Quads

## SCC Sunday Tornado

## 2007 Weekends

**Novice:** May 5, Aug. 25, Nov. 4

**Quads:** Apr. 21, June 16, July 21, Aug. 18, Sept. 15, Oct. 13, Nov. 3, Dec. 8

**Tornados:** Apr. 29, June 3, July 1, July 29, Aug. 26, Sept. 30, Oct. 21, Nov. 18, Dec. 9

**Plus-Score Swiss—May 12-13.**

**Emerald City—June 22-24.**

**Seafair Open—August 10-12.**

**Seattle Fall Open—Sept. 21-23.**

**Extravaganza—November 9-10.**

## Friday, May 4

SCC General Meeting and Election  
to SCC Board — 7:30 p.m.

## Plus-Score Swiss

May 12-13

A one-section, four-round Swiss with a time control of G/125 (or G/100+30 sec. per move). The prizes are based on at least eight entries.

*a Franetti Northwest Grand Prix event*

**4.0 — \$100**

**3.5 — \$60**

**3.0 — \$35**

**2.5 — \$18**

**Entry Fees:** \$25 if rec'd by 5/9, \$30 at site. **SCC members—**subtract \$4. Members of other dues-required CCs in BC, OR, and WA—subtract \$2.

**Registration:** Sat. 10-10:45.

**Rounds:** Sat. 11-3:30, Sun. 11-3:30.

**Byes:** 1 (Sunday rounds, commit at registration).

**Miscellaneous:** USCF & WCF membership req'd. No smoking. No computers.

## Future Events

♣ indicates a Christopher Memorial NW Grand Prix event

♣April 14-15

Daffodil Open♣

**Site:** Tacoma CC, Rm. 11 (2nd floor), 409 Puyallup Ave, Tacoma WA. **Format:** 5-rd. Swiss. **TC:** G/120. **EF:** \$30 adv., \$40 at site; jrs \$20 adv., \$25 at site; Economy (no prize money) \$12; free for UNR w/purch USCF & WCF/OCF memb; UNR may play for 1st w/regular EF. **Prize Fund:** 67% of full-paying EFs. **Prizes:** 25%, Top Third 15%, Middle Third 14%, Bottom Third 13% (If fewer than 9 full-payers, there will be 2 groups). Econ. winner: certificate and \$10 disc. on econ. entry to future event. **Reg:** Sat. 9-9:45 a.m. **Rds:** Sat 10-2:30-7 (or ASAP), Sun 10-3 (or ASAP). **Byes:** Two ½-pt. byes avail. for rds 1-4 if requested in advance. **Misc:** USCF and WCF/OCF membership req'd. **NS, NC.** **Ent/Info:** Tacoma CC c/o Gary Dorfner, 8423 E 'B' St, Tacoma WA 98445; 253-535-2536, ggarychess@aol.com.

♣April 28

PCC Game-in-60♣

**Site:** Portland CC, 8205 SW 24th Ave, Portland OR 97219. **Format:** 4-rd Swiss. **TC:** G/60. TD may switch to 5SS and G/45 if more than 25 entries. **EF:** \$20, \$5 discount for PCC members. No advance entries. **Prize Fund:** \$\$200/b20. **Prizes:** \$60-40-30, U1800 35, U1500 35. **Reg:** 9-9:30 am. **Byes:** One ½-pt. bye avail. if requested at reg. **Misc:** USCF & OCF/WCF membership req'd, OSA. **Info:** portlandchessclub@gmail.com, 503-246-2978, www.pdxchess.org.

♣April 28-29

Inland Empire Open♣

**Site:** Gonzaga U, Schoenberg Ctr, Rm. 201, N 900 Pearl St, Spokane WA. **Format:** 5-rd. Swiss. **TC:** G/120. **EF:** \$26 if rec'd by 4/27, \$31 at site; u18, \$5 less. **Prize Fund:** \$\$750 gtd (Class prizes b/5 per class). **Prizes:** \$17-125-100, A 50-25, B 50-25, C 50-25, D/E/UNR 50-25, Upset 50 (both plyrs need estab. rigs). **Reg:** Sat. 8:30-9:30 a.m. **Rds:** Sat 10-2:30-7, Sun 9-1:30 (or ASAP). **Byes:** One ½-pt. bye avail. for rds 1-4 if requested before end of preceeding rd. **Misc:** USCF membership req'd. Director reserves the right to use class pairings in the final round. Coffee and snacks provided. **Entries:** Spokane CC, c/o David Griffin, PO Box 631, Spokane Valley WA 99037. **Info:** 509-928-3260 weekdays; dbgrffn@hotmail.com.

♣May 19-20

Daffodil Open♣

**Site:** Tacoma CC, Rm. 11 (2nd floor), 409 Puyallup Ave, Tacoma WA. **Format:** 5-rd. Swiss. **TC:** G/120. **EF:** \$30 adv., \$40 at site; jrs \$20 adv., \$25 at site; Economy (no prize money) \$12; free for UNR w/purch USCF & WCF/OCF memb; UNR may play for 1st w/regular EF. **Prize Fund:** 67% of full-paying EFs. **Prizes:** 25%, Top Third 15%, Middle Third 14%, Bottom Third 13% (If fewer than 9 full-payers, there will be 2 groups). Econ. winner: certificate and \$10 disc. on econ. entry to future event. **Reg:** Sat. 9-9:45 a.m. **Rds:** Sat 10-2:30-7 (or ASAP), Sun 10-3 (or ASAP). **Byes:** Two ½-pt. byes avail. for rds 1-4 if requested in advance. **Misc:** USCF and WCF/OCF membership req'd. **NS, NC.** **Ent/Info:** Tacoma CC c/o Gary Dorfner, 8423 E 'B' St, Tacoma WA 98445; 253-535-2536, ggarychess@aol.com.

# 32nd Paul Keres Memorial

May 18-21, 2007

at the Hungarian Cultural Centre, 728 Kingsway, Vancouver BC

Three sections: Open (7 rds), U2000 (6 rds), U1600 (6 rds)

Prizes based on entries (Unrated players eligible for prizes only in Open)

**Entry Fees:** Open \$130 by 5/11, \$150 at site. **EF Discounts:** 50%—born after 5/20/87 or before 5/20/42. 25%—FIDE-rated w/o titles. FREE—titled players.

U2000 \$110 by 5/11, \$125 at site.

U1600 \$90 by 5/11, \$100 at site.

**Surcharge:** \$25 for players in the Open who have never been rated above 1999.

**Time Control:** G/120 + 30 sec./move or G/150

**Registration:** Open Fri. 3-5 p.m. U2000/U1600 Fri. 3-10 p.m.; Sat. 9-9:30 a.m.

**Rounds:** 5:30 (Open only), 10-5, 10-3:30, 9-ASAP

**Byes:** half-point byes may be requested for all but the last round

**Miscellaneous:** CFC rated. Open also FIDE rated. Sets and boards provided.

**BCCF General Meeting:** between rounds on Saturday

**Entries:** British Columbia Chess Federation, PO Box 15548, Vancouver BC V6B-5B3, CANADA

**Information:** Stephen Wright, swright2@telus.net, 604-221-7148

# Open Events

April 2007

14-15	Grants Pass Open	Rich Duron 541-582-6712 .....	Grants Pass OR
<b>14-15</b>	<b>Daffodil Open</b>	<b>G. Dorfner 253-535-2536 ggarychess@aol.com www.tacomachessclub.netfirms.com</b>	<b>Tacoma WA</b>
20-22,28-29	Oregon Championships	Clark Harmon charmon@solarprism.com .....	McMinnville OR
<b>21</b>	<b>SCC Saturday Quads</b>	<b>SCC Infoline 206-417-5405 cfkleist@cs.com www.seattlechessclub.org</b>	<b>Seattle WA</b>
25	TCC Wednesday Night Blitz	G. Dorfner 253-535-2536 ggarychess@aol.com www.tacomachessclub.netfirms.com	Tacoma WA
<b>28</b>	<b>8 PCC Game-in-60</b>	<b>503-246-2978 portlandchessclub@gmail.com www.pdxchess.com</b>	<b>Portland OR</b>
28	NM Neil Salmon Simul & Quick	<b>NOTE CHANGE</b> from ad p. 7 .....	Tacoma WA
<b>28-29</b>	<b>Inland Empire Open</b>	<b>Kevin Korsmo 509-466-0530 kmkorsmo@comcast.net www.spokanechessclub.org</b>	<b>Spokane WA</b>
<b>29</b>	<b>SCC Sunday Tornado</b>	<b>SCC Infoline 206-417-5405 cfkleist@cs.com www.seattlechessclub.org</b>	<b>Seattle WA</b>
29	TCC Sunday Blitz	G. Dorfner 253-535-2536 ggarychess@aol.com www.tacomachessclub.netfirms.com	Tacoma WA

May 2007

1	PCC Tuesday Quad Tmt Begins	503-246-2978 portlandchessclub@gmail.com www.pdxchess.com	Portland, OR
5	SCC Novice	<b>SCC Infoline 206-417-5405 cfkleist@cs.com www.seattlechessclub.org</b>	<b>Seattle WA</b>
5-6	Oregon Class Championships	David Yoshinaga dave@kdonline.com .....	Site TBA, OR
<b>5-6</b>	<b>Pierce County Open</b>	<b>G. Dorfner 253-535-2536 ggarychess@aol.com www.tacomachessclub.netfirms.com</b>	<b>Tacoma WA</b>
11,18	TCC Gambit Tmt	G. Dorfner 253-535-2536 ggarychess@aol.com www.tacomachessclub.netfirms.com	Tacoma WA
<b>12-13</b>	<b>Plus Score Swiss</b>	<b>SCC Infoline 206-417-5405 cfkleist@cs.com www.seattlechessclub.org</b>	<b>Seattle WA</b>
<b>18-21(19-21)</b>	<b>Paul Keres Memorial</b>	<b>Steve Wright 604-221-7148 swright2@telus.net www.chess.bc.ca</b>	<b>Vancouver BC</b>
<b>19</b>	<b>8 PCC Game-in-60</b>	503-246-2978 portlandchessclub@gmail.com www.pdxchess.com	Portland OR
<b>26-28</b>	<b>Washington Open</b>	<b>Dan Mathews 425-778-7482 dthmathews@hotmail.com www.nwchess.com</b>	<b>Seattle WA</b>

NOTE: A 'B' in front of the date indicates a Franett Memorial Northwest GP event. A 8 in front of the tournament name indicates an OSCF qualifying tournament. Boldface type indicates a tournament announcement (in our Future Events Section) or display ad in this issue.

# Scholastic Events

April 2007

18	TCC Wed. Kids Night	Gary 253-535-2536 ggarychess@aol.com www.tacomachessclub.netfirms.com	Tacoma WA
20	Bughouse Tournament (K-12)	Norm May nmay@pacifier.com www.PlayingForTheKing.com/2007State	Vancouver WA
21	Washington Elementary Champ. (K-6)	Norm May nmay@pacifier.com www.PlayingForTheKing.com/2007State	Vancouver WA
21	I Love Chess Too (K-12)	Norm May nmay@pacifier.com www.PlayingForTheKing.com/2007State	Vancouver WA
28	Girls Open Challenge (K-12)	Lisa Kudva 503-430-5744 lakudva@comcast.net www.oscf.org	Beaverton OR
28	OR Girls Championship/Polgar Qualifier	Lisa Kudva 503-430-5744 lakudva@comcast.net www.oscf.org	Beaverton OR

May 2007

13	Kirkland B&G Club (K-3,4-6/Open,U1000)	www.chessplayer.com/signuptoPlayChess.htm	Kirkland WA
19	Oregon Junior Open & Denker Qualifier	info TBA	OR
19	Northshore Scholastic (K,1-3,4-6)	www.chessplayer.com/signuptoPlayChess.htm	Everett WA
23	TCC Wed. Kids Night	Gary 253-535-2536 ggarychess@aol.com www.tacomachessclub.netfirms.com	Tacoma WA
26	WAO Scholastic	<b>David Hendricks 425-868-3881 davidhendricks@comcast.net</b>	<b>Seattle WA</b>
27	Bellevue B&G Club (K-3,4-6/Open,U1000)	www.chessplayer.com/signuptoPlayChess.htm	Bellevue WA

NOTE: A '8' in front of the tournament name indicates an OSCF qualifying tournament.

## USCF NATIONAL Scholastics

For information on any national event, contact Diane Reese at [events@uschess.org](mailto:events@uschess.org)

April 13-15	<b>Nat'l High School (K-12) Championship</b>	<b>Kansas City MO</b>
May 11-13	<b>Nat'l Elementary (K-6) Championship</b>	<b>Nashville TN</b>

# Scholastic Chess Camps

April 2007

9-12	IM Orlov Spring Break Camp (K-8)	206-363-6511 chess64@comcast.net www.chessplayer.com/camps2007.htm	Seattle WA
9-12	TOPS Spring Break Camp	Mark Morales 206-325-4079 markmorales@msn.com www.whsca.org/tatops.doc	Seattle WA
9-13	IM Orlov Spring Break Camp (K-8)	206/363-6511 chess64@comcast.net www.chessplayer.com/camps2007.htm	Seattle WA

June 2007

18-22	Chess Odyssey Summer Chess Camp	503-504-5756 pete@chessodyssey.com www.chessodyssey.com	TBA OR
25-29	Chess Odyssey Summer Chess Camp	503-504-5756 pete@chessodyssey.com www.chessodyssey.com	TBA OR
25-29	Summer Chess Camp Novice Week	www.evergreenschoo.org/summer/index.shtml	Shoreline WA
25-29	Beaverton Chess Camp	Tony Hann 503-880-0581 www.chessvision.net	Beaverton OR