



# NORTHWEST CHESS

June 2007  
607 \$3.95

Double the content, double the fun! 128 pages.

**Oregon  
Championship**

**OR Junior  
Championship**

**News from the  
East**

**And More!**



*New Oregon Champion Radu Roua*

# Northwest Chess

June 2007, Volume 61,6 Issue 708

ISSN Publication 0146-6941

Published monthly by the Northwest Chess Board. Office of record: 2420 S 137 St, Seattle WA 98168.

**POSTMASTER:** Send Address Changes to: Northwest Chess, PO Box 84746, Seattle WA 98124-6046.

Periodicals Postage Paid at Seattle, WA

USPS periodicals postage permit number (0422-390)

## NWC Staff

Editor: Fred Kleist

Games Editor: FM Chuck Schulien

Technical Assistance: Russell Miller

Printer: Snohomish Publishing

Business Manager: Eric Holcomb

## Board Representatives

Oregon: Dave Yoshinaga

Washington: Geoff Gale &

Ricky Selzler

Entire contents copyright 2007 by Northwest Chess. All rights reserved. Published opinions are those of the contributors and do not necessarily reflect the views of the editor or the Northwest Chess Board.

## Advertising Rates

Display ads run \$150 for a full page, \$100 for trmt ads; \$85 for a half-page, \$60 for trmt ads; \$30 for a quarter page, \$20 for an eighth of a page, and \$10 for a business card-size ad. Add \$10 if the ad is not copy ready and the staff must do layout work. A 15% discount is available for two or more consecutive ads of the same size.

## Event Announcement Rates

Each appearance in *Event Announcements* costs \$20. Payment is required before publication. Enclose \$2 additional if an invoice is required—this is a mandatory service charge.

## Advertising & Copy Deadline

Please get your ads and submissions in by the 10th of the month for the items to appear in the next issue (e.g., no later than July 10 for the August issue). The editor cannot guarantee that late submissions will appear in the desired issue. **Submit all ads and payments to:**

*Business Manager, Northwest Chess*  
**PMB 342, 12932 SE Kent-Kangley Rd**  
**Kent WA 98030-7940**  
**Eric@Holcomb.com**

## Submissions

Hey folks! The editor depends on YOU to make this magazine vibrant and exciting. I need your games, photographs, thoughts, and ideas. This magazine has a great tradition and I hope people will contribute enthusiastically. You can send me your materials via U.S. mail or via e-mail:

**Northwest Chess**  
**Fred Kleist, Editor**  
2420 S. 137th Street  
Seattle WA 98168  
NWCeditor@cs.com  
206-242-7076

If you'd like your games annotated by a senior master, send them to our Games Editor:

**FM Chuck Schulien**

cschess@hotmail.com

## Subscription Information

**Northwest Chess** is a benefit of membership in either the Oregon or Washington Chess Federations. Adult dues are \$25; Junior dues (under 20) are \$17 (or \$10 for six months). Please send dues, along with pertinent information to:

*Business Manager*

**Northwest Chess**

Eric Holcomb

PMB 342, 12932 SE Kent-Kangley Rd

Kent WA 98030-7940

Eric@Holcomb.com

http://www.nwchess.com

## **Northwest Grand Prix Administrator**

Murlin Varner

13329 208 Ave NE

Woodinville WA 98072

MEVjr54@yahoo.com

425-882-0102

## **Oregon Chess Federation**

*President*

**Dave Yoshinaga**

971-404-5251

dave@kdtonline.com

*Vice President*

**Mike Terrill**

503-580-9187

pflotus@yahoo.com

*Secretary*

-----

*Treasurer*

-----

*Tournament Coordinator*

**Peter Prochaska**

503-504-5756

pete@chessodyssey.com

*Scholastic Coordinator*

**Lisa Kudva**

503-430-5744

lakudva@comcast.net

*Director-at-Large #1*

**Taylor Bailey**

503-282-6796

cosmos24@gmail.com

*Director-at-Large #2*

**Marcus Robinson**

503-245-1204

mprscorp@comcast.net

*National Representative*

**Carl Haessler**

ssmith6154@aol.com

## **Washington Chess Federation**

*President*

**Geoff Gale**

206-860-9963

geoffreygale@gmail.com

*Vice President*

**Logan MacGregor**

loganmacgregor@gmail.com

*Secretary*

**Gary Dorfner**

253-535-2536

ggarychess@aol.com

*Treasurer*

**Robert J. Allen**

253-761-1288

allenrobertj@msn.com

*Tournament Coordinator*

**Dan Mathews**

425-778-7482

dthmathews@hotmail.com

*Scholastic Coordinator*

**David Hendricks**

425-868-3881

davidhendricks@comcast.net

*NW Chess Board Member*

**Ricky Selzler**

rts89@comcast.net

## *Greetings from the Editor*

Drayton Harrison volunteered to produce a bulletin for the Washington Open; so we should have a large number of games for next month's issue. In addition, Michel Milczewski took some pictures and perhaps others did, too. If you played an interesting game at the WAO, why not annotate it for July? Try to get those to me within a week or two. I'm off to the National Open in Las Vegas and hope to see many Northwesters there.



*Editor's  
Desk*

Best Wishes,

*Frederick K. Kleist*

Thanks to R. Miller for working on the crosstables.  
Thanks to C. Kleist for proofreading.

## **Northwest Chess Knights**

*Northwest Chess Knight donors will be listed in the magazine for a period of one year following receipt of donation. Please consider making a donation today to help Northwest Chess!*

King: \$1000+  
Queen: \$500-\$999  
Rook: \$250-\$499  
Bishop: \$100-\$249  
Knight: \$50-\$99  
Pawn: \$15-\$49

## Current Patrons

*King:* Cynthia McBride, Kent McNall  
*Queen:*  
*Rook:* Nat Koons  
*Bishop:* Ralph Hall, Russell Miller, Michael Omori, Boyd Schorzman  
*Knight:* Robert Brewster, Steve Buck, Darby Monahan  
*Pawn:* Mark James, Gene Milner

*Contributions can be sent to the Northwest Chess Business Manager, and are greatly appreciated!*

# Capablanca in the United Kingdom (1911-1920)

by Vlastimil Fiala  
published by Moravian Chess,  
hc., 360 pages, © 2006. Retail €32.95

Vlastimil Fiala, author of a two-volume “warts-and-all” biography of Alexander Alekhine, has turned his attention to José Raúl Capablanca, the third World Champion. According to the author, “so far nobody has been brave enough to write [Capablanca’s] complete chess biography.” Because “a chronological biography” may “fail (especially due to the limitation in size) to register each event from the chess life to the optimal degree,” Viala has chosen to write a series of “partial studies,” *Capablanca’s Chess Career*, the first two of which are geographically-based. In so doing, he expects to publish “several thousand pages.”

If *Capablanca in the United Kingdom (1911-1920)* is any indication, he’ll certainly succeed in his expectation. The presentation tends to be archival in nature, i.e., much of the prose consists of articles culled from newspapers, magazines, etc. Thus there may be several accounts of a particular event. In addition, the author provides a summary of the account(s).

Even for the reader vitally interested in the particulars of Capablanca’s simuls, this repetition may be a bit too much. Nevertheless, there are plenty of games (123) to revive the spirit. For the two monographs devoted to Capablanca’s sojourns in the British Isles [the second, *Capablanca in the United Kingdom (1922-1939)*, is due out later this year], Viala has found over 100 games that have not been published in other books. Annotations, if any, are from contemporaneous sources only. And they, too, may be repetitious.

A curious thing is that it is in the annotations that the majority of ‘typographical errors’ are found. The games themselves are presented in figurine algebraic, but captures are variously notated, sometimes with ‘x’ and sometimes without, often in the same game. A further irritation is that, if one is the slightest bit inattentive in one’s reading, one may not notice the passing from the author’s words to a quoted article or from one quoted article to another. Such extensive quotations should be highlighted by using indented paragraphs to visually cue the reader.

All in all, it’s a decent book, though not a great one. If you’re interested in Capablanca, contemporaneous writings about him, and what he himself said, then by all means invest in this series. ■

## Northwest Chess

June 2007

Book Note: *Capablanca in the United Kingdom (1911-1920)*

page 3

Radu Roua Romps in OR Championship

page 4

Tournament Ads

pages 7, 22, 23

News from the East

*Inland Empire Open, Montana Open,*

*Spokane Out-of-Towners’ Grand Prix*

page 17

Games from the OR Junior Championship

page 18

NWGP Report

page 21

Northwest Chess Calendar  
of Upcoming Events

back cover

**On the Cover:** New Oregon Champion Radu Roua poses outside of the Portland Chess Club. *Photo courtesy of Mike Morris*

**Need sample issues of *Northwest Chess* for promotional purposes? Request copies from the Business Manager at least two weeks in advance of the event.**

# Relentless Romanian Radu Roua Romps in Oregon Championship

by Neil Dale

On the first day, it looked like the youngest players would take over, the two leaders after day one were Blake Phillips and Raleigh Foster, who each won the first two games. But that was only the beginning, at the end it was Radu Roua, the "Relentless Romanian," who finished a full two points ahead of the field with a final score of 7½ points. He drew his first game with Corey Russell, a former state champion, and then won six straight. He finished with draws in the last two games. Three players tied for second through fourth: Phillips, Mike Morris, and Russell. Phillips played real fighting chess, he only had one draw. After a great start, he lost the next three in a row. To his credit, he did not let it get him down, he scored 3½ out of the last four rounds. Morris had a good tournament, his only losses were to Phillips and the champion. Russell also finished strong, after scoring only two points out of the first five games, his only loss was to Raleigh Foster, who finished in sole possession of fifth place with five points. Eduardo Daroza scored 4½ to finish in the sixth slot. Carl Haessler did not have a good tournament, I guess this was not the Gresham Open. He ended up in the seventh spot with a score of four. Next, we have "drawmeister" Grisha Alpernas, who lost two games and drew seven! Gunther Jacobi and Mike Janniro each scored two points.

It was the first state championship appearance for Alpernas, Daroza, Foster, Jacobi, and Phillips. It was statistically unlikely that all the rookies would do well, but the two younger ones (Foster and Phillips) did very well, in my opinion. Watch out for these guys in the future. The tournament was held at the Portland Chess Club, over two successive weekends, starting on April 13th. It originally was scheduled for McMinnville, but the illness of Clark Harmon forced the move. Clark Harmon died on April 12, so this year's tournament started on a somber note, with a moment of silence in remembrance of Clark Harmon. We all will miss him.

## Round One

*Pirc*

Mike Morris (2051)  
Grisha Alpernas (1954)

*Portland, Oregon Championship (1) 2007*

1.e4 d6 2.d4 ♘f6 3.♘c3 g6 4.♘f3 ♙g7 5.h3 c6 6.a4 ♘a6 7.♙e3 O-O 8.♙d2 ♘b4 9.♙e2 a5 10.O-O e5 11.dxe5 dxe5 12.♙fd1 ♙e6 13.♙c5 ♙xd2 14.♙xd2 ♙fd8 15.♙ad1 ♙xd2 16.♙xd2 ♘d7 17.♙d6 f6 18.♘d1 ♘f7 19.♘e3 ♘a6 20.♙xa6 ♙xa6 21.b3 ♙a8 22.♙d1 ♙f8 23.♙xf8 ♘xf8 24.♘f1 ♘e7 Draw

*Benko Gambit*

Blake Phillips (2052)  
Mike Janniro (2031)

*Portland, Oregon Championship (1) 2007*

1.d4 ♘f6 2.c4 c5 3.d5 b5 4.cxb5 a6 5.b6 ♙xb6 6.♘c3 g6 7.e4 d6 8.♘f3 ♙g7 9.a4 O-O 10.a5 ♙b7 11.♙c4 ♙g4 12.h3 ♙xf3 13.♙xf3 ♘bd7 14.♙e2 ♘e5 15.♙a2 ♘e8 16.f4 ♘d7 17.O-O ♘c7 18.♙c4 ♙fb8 19.e5 ♘b5 20.e6 ♘d4 21.exf7+ ♘xf7 22.♙d3 ♘g8 23.♙f2 ♘f6 24.♙e3 ♘h8 25.♙e1 ♙e8 26.♙d2 e5 27.dxe6 d5 28.♙a2 ♙xe6 29.♙f2 ♙xe1+ 30.♙xe1 ♙d8 31.♙f2 ♙c7 32.♙xa6 ♙xf4 33.♙d1 ♘e4 34.♘e4 dxe4 35.♙f1 ♙e5 36.g3 ♙f3 37.♘h2 ♘e2 38.♙e6 ♙g7 39.♙g4 ♘xg3


40.♙xg3 ♙e2 41.♘g1 ♙xb2 42.♙b3 ♙e5 43.a6 ♙g5+ 44.♙g3 ♙e7 45.♙e3 ♙e5 46.♙e1 ♙d4 47.♙g3 ♙e5 48.♙g4 ♙d4 49.♙f4 ♙e5 50.♙g5 ♙d6 51.a7 ♙a8 52.♙f7 ♙d1+ 53.♘g2 ♙c2+ 54.♙f2 ♙c3 55.♙d5 1-0

*Owen's Defense*

Raleigh Foster (1970)  
NM Carl Haessler (2205)




*Portland, Oregon Championship (1) 2007*

1.d4 e6 2.e4 b6 3.♙d3 ♙b7 4.♘f3 d6 5.O-O ♘d7 6.♙e2 ♘e7 7.♙g5 h6 8.♙h4 g5 9.♙g3 ♙g7 10.c3 ♘g6 11.e5 ♘f4 12.♙xf4 ♙xf4 13.♘bd2 O-O 14.♙ad1 ♙e7 15.♙fe1 ♙fe8 16.♙e4 d5 17.♙b1 a5 18.♘f1 f6 19.♙c2 ♘f8 20.exf6 ♙xf6 21.h3 ♙ad8 22.♘1h2 h5 23.♘e5 ♙g7 24.♘hf3 ♙h6 25.♙d2 ♙g7 26.♘d3 ♘g6 27.♘fe5 ♘xe5 28.♘xe5 ♙f8 29.♙d3 ♙f6 30.♙e2 ♘f8 31.♙de1 ♘e7 32.♘f3 ♘d7 33.b4 axb4 34.cxb4 ♙g8 35.♘e5+ ♘c8 36.f3 ♙f8 37.a4 ♙d6 38.a5 ♙xe5 39.♙xe5 ♙g5 40.axb6 cxb6 41.♙e2 ♘d7 42.♙b5+ ♘d6 43.♙xg5 ♙xg5 44.♙e5+ 1-0


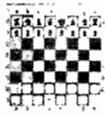



**THE CHESS HOUSE**  
Serving the chess community since 1972

**your chess sets  
and equipment store**

chess sets, combos, clocks  
electronic chess, software  
books, dvd's, teaching supplies  
awards, chess for education  
accessories, boards, pieces

**www.ChessHouse.com**  
**1-800-348-4749**

*King's Indian Fianchetto*

**Radu Roua (2174)**

**NM Corey Russell (2200)**

*Portland, Oregon Championship (1) 2007*

Annotations by NM Corey Russell

1.c4 ♘f6 2.g3 g6 3.♗g2 ♗g7 4.♘c3 O-O 5.♘f3 d6 6.d4 ♘bd7 7.h3 e5 8.♗e3 c6 9.♗b3 exd4 10.♗xd4 ♘c5 11.♗a3 ♗e7 12.O-O ♗d7 13.♗ad1 ♗fe8 14.b4 ♘a6 15.♗b2 d5 16.cxd5 ♗xb4 17.♗a1 ♗e7

Played to provoke White's next move.

18.d6 ♗f8

The passed d-pawn could be a strength, but I believed I could win it (and I was correct).

19.♗e5 ♗ad8 20.♗a4 ♗h5

This was played to prevent ♘c5 and also ♗xa7. These moves would now lose a piece.

21.♘d7 ♗xd7 22.♗xg7 ♘xg7

I thought for a long time on this move. I wanted to trade Queens, but was afraid of 23.♗xg7+ ♘xg7 24.e4 ♗ed8 25.e5, holding the d6-pawn. However, I can see now that Black can improve with 23... ♘xg7 24.e4 ♗e6!, and the pawn will fall.

23.♗b2 ♗e6 24.♘c3 ♗exd6 25.♗xd6 ♗xd6 26.♗e4 ♗d4

The only move to avoid material loss.

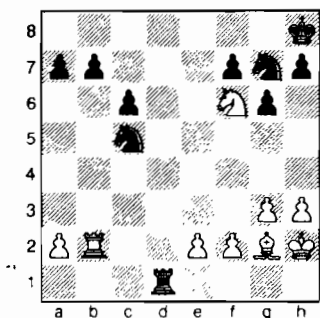
27.♗f6+ ♘h8 28.♗b1!

White sets up a sneaky idea, which I missed.

28...♗xb2 29.♗xb2 ♗d1+?!

This move was played hastily because I thought ...♘c5 would hold everything. In hindsight 29...♗e7 30.♗d1 ♗e6 ♣ is better.

30.♘h2 ♘c5



31.♗xc6!

A great practical chance to restore the balance.

31...♗d6

Black's point is that after 32.♗xb7 ♗xf6, White has no good discoveries with the Bishop. In fact, no matter where White moves it, Black will just play ...♗ge6 and have a piece for a pawn, which is not enough compensation.

32.♗e4 ♗xc6 33.♘xc5 ♗xc5 34.♗xb7 ♗e6 35.♗xa7 ♘g7 36.♘g2 ♗c7 37.♗a8 ♘f6

The beginning of the wrong plan. The right plan is to use the Black Rook and Knight to win as many of White's kingside pawns as possible before Black must give his piece back. Black can also set up a mating net in some lines.

38.e3 ♘e7 39.♘f3 ♘d8 40.h4 h5 41.g4 hxg4+ 42.♘xg4 ♘c6 43.f4 ♗a7 44.♗xa7+ ♘a7 45.f5 ?

Throwing away his winning chance. If Black can take on g6 with his King, he draws. Instead 45.♘g5 followed by f4-f5 would have given White winning chances.

45...♘f6!

Guaranteeing the draw.

46.fxg6 ♘xg6 47.a4 ♘c6 48.♘f4 ♘h5 49.♘g3 ♗a5 50.e4 ♘c6 51.♘f4 ♘xh4 52.♘f5 ♘g3 53.e5 ♘f3 54.♘f6 ♘e4 55.e6 fxe6 56.♘xe6 Draw

*English*

**Gunther Jacobi (1984)**

**Eduardo Daroza (2050)**

*Portland, Oregon Championship (2) 2007*

(no score) Draw

**Round Two**

- 1.0 Foster, Phillips
- 0.5 Alpernas, Daroza, Jacobi, Morris, Roua, Russell
- 0.0 Haessler, Janniro

*Sicilian Closed*

**Gunther Jacobi (1984)**

**Blake Phillips (2052)**

*Portland, Oregon Championship (2) 2007*

1.♘c3 c5 2.f4 ♘c6 3.♘f3 g6 4.g3 ♗g7 5.♗g2 d6 6.O-O ♗b8 7.a4 e6 8.d3 ♘ge7 9.e4 O-O 10.♗e3 ♘d4 11.♗e2 ♗ec6 12.c3 ♘xe2+ 13.♗xe2 b6 14.♗ad1 ♗a6

15.f5 ♗e7 16.fxe6 ♗xe6 17.♘g5 ♗b3 18.♗g4 ♗e5 19.♗h4 h5 20.♗f4 f6 21.♘h3 g5 22.♗xh5 gxf4 23.♘xf4 ♗f7 24.♗e2 ♗c8 25.h3 ♗e6 26.g4 ♗h6 27.♘h5 ♗g6 28.♗f2 ♗g5 29.♘h1 ♘xg4 30.hxg4 ♗xg4 31.♘g3 ♗h6+ 32.♘g1 ♗e3 0-1

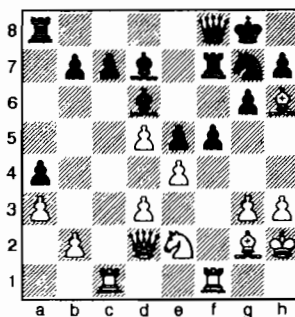
*English*

**Mike Janniro (2031)**

**Radu Roua (2174)**

*Portland, Oregon Championship (2) 2007*

1.c4 e5 2.♘c3 ♗b4 3.g3 ♘f6 4.♗g2 O-O 5.e4 ♘c6 6.♘ge2 a5 7.O-O d6 8.h3 ♘e8 9.d3 f5 10.f4 ♗c5+ 11.♘h2 g6 12.fxe5 dxe5 13.♗h6 ♘g7 14.♗d2 ♘b4 15.♘d5 ♗f7 16.a3 ♘xd5 17.cxd5 a4 18.♗ac1 ♗d6 19.♗g5 ♗f8 20.♗h6 ♗d7



21.d4 fxe4 22.dxe5 ♗xe5 23.♘f4 ♗d6 24.♗xg7 ♗xg7 25.♗e4 ♗af8 26.♗c2 ♗e5 27.♗g2 ♗b5 28.♗fe1 ♗xf4 29.gxf4 ♗xf4+ 30.♘h1 ♗g3 31.♗e4 ♗e8 32.♗b4 ♗xe1+ 33.♗xe1 ♗f2 34.♗g1 ♗f1 0-1

*King's Indian Fianchetto*

**Eduardo Daroza (2050)**

**Grisha Alpernas (1954)**

*Portland, Oregon Championship (2) 2007*

1.♘f3 ♘f6 2.c4 g6 3.g3 ♗g7 4.♗g2 d6 5.♘c3 c6 6.d4 O-O 7.O-O ♘bd7 8.♗c2 ♘b6 9.b3 d5 10.c5 ♘bd7 11.♗g5 h6 12.♗xf6 ♘xf6 13.♘h4 ♘h7 14.♗ad1 e5 15.dxe5 ♗xe5 16.♘f3 ♗g7 17.e4 ♗a5 18.♗a4 dxe4 19.♗xe4 ♘f6 20.♗f4 ♘d5 21.♗c1 ♗g4 22.h3 ♗xf3 23.♗xf3 Draw

*Sicilian Dragon*

**NM Corey Russell (2200)**

**Raleigh Foster (1970)**

*Portland, Oregon Championship (2) 2007*

Annotations by NM Corey Russell

1.e4 c5 2.♘f3 d6 3.d4 cxd4 4.♘xd4 ♘f6 5.♘c3 g6 6.♗c4 ♗g7 7.h3 O-O 8.♗b3

♟bd7 9.O-O ♞c5 10.♞e1 a6 11.f4 e6  
12.♞e3

I rejected 12.♟f3 because of 12...b5  
13.♞e3 Bb7 14.♞f2 b4! and White loses  
the pawn anyway. With the text, I saw  
some activity for my pieces. I don't have  
full compensation, but I do have some.

12...♞cxe4 13.♞xe4 ♞xe4 14.♟f3 ♞c5  
15.c3

Besides reinforcing my Knight at d4  
and blunting the a1-h8 diagonal, I have  
the "positional" threat of ♞c2.

15...♞xb3 16.♞xb3 ♟c7 17.a4

I want to prevent a b5-b4 idea by  
Black, plus get to use b6 for my pieces.

17...♞d7 18.a5 ♞c6 19.♟f2 ♞d5  
20.♞b6 ♟d7 21.♞d2 e5 22.♞ad1 exf4  
23.♞e4!

This is White's best try for equality.

23...♞xe4 24.♞xe4 ♞fe8

Note that Black can't play 24...  
♞e5?? because 25.♞xe5 would win a  
piece (the d-pawn is pinned).

25.♟xf4 ♞xe4 ?!

Dubious. 25...♞e5 must be better,  
because it keeps Black's one-pawn advan-  
tage. Note that in this line 26.♞xe5??  
doesn't work because 26...dxe5! would  
hit the White Queen. End result: Black  
would be up an Exchange.

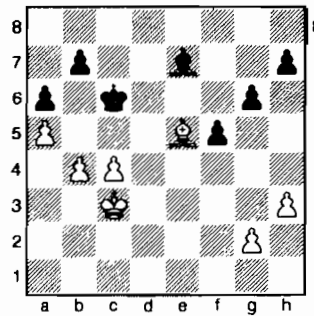
26.♟xe4 ♞e8 27.♞xd6! = ♟b5

A good move — it practically forces  
White to trade Queens.

28.♟xe8+ ♟xe8 29.♞d8 ♟xd8 30.♞xd8  
f5 31.♞f2 ♞f7 32.♞e3 ♞e6 33.♞d3  
♞d5 34.c4+ ♞c5 35.♞e7+ ♞c6 36.b4  
♞e5 37.♞c5 ♞f6 38.♞d4 ♞e7 39.♞c3  
♞d8 40.♞e5

The position is equal. White should  
just invite a repeat, 40.♞c3 ♞d8 41.♞e5  
♞e7 42.♞c3, etc. If White tries to win  
this, he will lose.

40...♞e7 41.♞c3



Intending ♞b3-a4 and b4-b5 — it  
gets my queenside mobilized, but at the  
cost of a loss!

41...h5 42.♞b3 g5 43.♞a4 g4 44.hxg4  
fxg4 45.g3

Some people have criticized this  
move, because it allows Black to force a  
trade of Bishops. However, that doesn't  
matter, Black is winning. Example: 45.  
♞f4 h4 46.♞e5 h3 47.gxh3 gxh3 48.♞f4  
♞d6 followed by ...h3-h2.

45...♞d6 46.b5+ ♞c5 47.♞xd6+ ♞xd6  
48.♞b4 h4 49.c5+ ♞c7 50.bxa6 bxa6  
51.gxh4 g3 52.h5 g2 53.h6 g1=♟ 54.h7  
♟b1+ 55.♞c4 ♟xh7 0-1

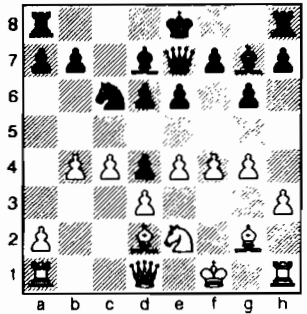
*Sicilian*

NM Carl Haessler (2205)

Mike Morris (2051)

*Portland, Oregon Championship (2) 2007*

1.e4 c5 2.c4 ♞c6 3.f4 g6 4.♞f3 ♞g7  
5.♞c3 d6 6.h3 e6 7.d3 ♞ge7 8.g4 ♞d4  
9.♞xd4 cxd4 10.♞e2 ♞c6 11.♞g2  
♟h4+ 12.♞f1 ♟e7 13.♞d2 ♞d7 14.b4



14...f5 15.♞g3 O-O 16.b5 ♞d8 17.exf5  
gxf5 18.g5 e5 19.a4 ♞b8 20.h4 ♞e6  
21.♞d5 ♞h8 22.♞xe6 ♞xe6 23.♟f3 e4  
24.dxe4 ♞xc4+ 25.♞f2 fxe4 26.♟xe4  
♟f7 27.♞he1 ♞e5 28.♞g1 ♞be8  
29.♞ac1 ♞d5 30.♟d3 ♟d7 31.♞xe5  
dxe5 32.f5 b6 33.♞b4 ♞b7 34.♞xf8  
♞xf8 35.♞e1 ♟d5 36.♟e4 ♟xe4  
37.♞xe4 ♞xe4 38.♞xe4 ♞xf5 39.♞g2  
♞g7 40.♞g3 ♞f7 41.♞g4 ♞e6 42.h5  
d3 43.♞e1 ♞f4+ 44.♞g3 ♞d5 45.♞a1  
♞f7 46.a5 e4 47.axb6 axb6 48.g6 hxg6



Photo courtesy of Mike Morris

The competitors (L-R): NM Carl Haessler, NM Corey Russell, Ed Daroza, Blake Phillips, Grisha Alpernas, Mike Morris, Raleigh Foster, TD Neil Dale, Mike Janniro, Gunther Jacobi, and Radu Roua

# Clark Harmon Memorial Open

## July 14-15

### \$1500 Guaranteed!

Sponsored by Portland Chess Club and contributors to the  
Harmon Memorial Fund

**5-round Swiss:** One open section

**Time Control:** Saturday 40/90, SD/30; Sunday 40/120, SD 60

**Registration:** Saturday 9-9:45 am. Registration is limited to first 50 entrants. Advanced registration is strongly encouraged.

**Rounds:** Saturday 10:00; 2:30 & 7:00; Sunday 9:30 & 4:30

**Location:** Portland Chess Club, check [www.pdxchess.org](http://www.pdxchess.org) for directions

**Byes:** 2 half-point byes available if requested before 1<sup>st</sup> round. GMs & IMs may enter in round 2 with 1 point or round 3 with 1.5 points.

1<sup>st</sup> \$425 2<sup>nd</sup> \$250 3<sup>rd</sup> \$150

U2000, U1700, U1400 each 1<sup>st</sup> \$150, 2<sup>nd</sup> \$75

**Entry:** \$50; \$40 for PCC members.

**Memberships:** USCF and OCF/WCF required (OSA). Harmon NW Grand Prix.

This is the **First Annual Harmon Memorial**. We hope players will join in this tribute to one of the Northwest's premier players and ambassadors of the game. The prize fund is underwritten through the generosity of contributors to the Harmon Memorial Fund. To date the following have contributed:

Sherry Harmon; Alexey Root; Neil Dale; Jonna Schuder; Taylor Bailey; Mike Morris;  
Shirley Venhaus; Marvin Hayami; Russell Miller; Mike Schemm; Grisha Alpernas;  
Jon & Barbie Fortune; Michael Ratliff; Laszlo Szalvay; Ted Lundin

Any net proceeds from this tournament will be added to the fund, so that this will become an annual event.

Name \_\_\_\_\_

Address \_\_\_\_\_

USCF ID # \_\_\_\_\_ USCF Exp \_\_\_\_\_ OCF/WCF Exp \_\_\_\_\_ Rating \_\_\_\_\_

Email \_\_\_\_\_ Bye Rds \_\_\_\_\_

Entries: Payable to Portland Chess Club; mail to Mike Morris, 2344 NE 27<sup>th</sup> Ave., Portland, OR 97212



49.hxg6 ♖g7 50.♗f4 ♜xg6 51.♗e3 ♜g3+ 52.♗d2 ♜g2+ 53.♗e3 ♜e2+ 54.♗f4 ♗c4 0-1

### Round Three

2.0 Foster, Phillips  
1.5 Morris, Roua  
1.0 Alpernas, Daroza  
0.5 Jacobi, Russell  
0.0 Haessler, Janniro

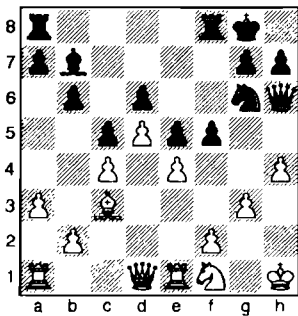
#### Bogo-Indian

Blake Phillips (2052)

Eduardo Daroza (2050)

Portland, Oregon Championship (3) 2007

1.d4 ♗f6 2.♗f3 e6 3.c4 ♖b4+ 4.♗bd2 c5 5.e3 b6 6.♗d3 ♖b7 7.a3 ♗xd2+ 8.♗xd2 ♗e4 9.♗xe4 ♗xe4 10.♗c3 d6 11.O-O-O 12.♗d2 ♖b7 13.♜e1 ♞g5 14.e4 ♗c6 15.d5 ♗e5 16.g3 ♗g6 17.♗h1 e5 18.h4 ♞h6 19.♗f1 f5



20.exf5 ♗xh4 21.gxh4 ♞xh4+ 22.♗h2 ♞xc4 23.♞g4 ♗xd5+ 24.♗g1 ♞xg4+ 25.♗xg4 ♗xf5 26.♜ad1 ♗f3 27.♜xd6 ♗xg4 28.♜xe5 ♜xe5 29.♗xe5 ♜e8 30.♗c3 ♗f7 31.♜c6 ♜e7 32.♗g2 ♗e6 33.♗g3 ♜d7 34.♗f4 h6 35.♗e5 ♜e7 36.♗d6 g5 37.b4 cxb4 38.♗xb4 ♗h3 39.♜c3 ♜e6+ 40.♗c7 ♗g2 41.♜g3 ♗e4 42.♗d6 b5 43.f4 gxh4 44.♗xf4 h5 45.♜g5 ♜f6 46.♗e3 ♜f5 47.♜xf5+ ♗xf5 48.♗xa7 ♗c2 49.♗d6 ♗f6 50.♗d5 ♗f5 51.♗b8 ♗g4 52.♗d4 ♗f3 53.♗c3 ♗a4 54.♗d2 h4 55.♗e1 ♗g2 0-1

#### Benko Gambit

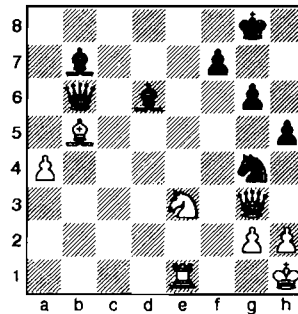
Raleigh Foster (1970)

Mike Janniro (2031)

Portland, Oregon Championship (3) 2007

1.d4 ♗f6 2.c4 c5 3.d5 b5 4.cxb5 a6 5.f3 g6 6.e4 d6 7.a4 ♗g7 8.♗a3 O-O 9.♗e2 e6 10.♗c3 ♗h5 11.♗e3 exd5 12.♗xd5 ♗xb2 13.♜a2 ♗g7 14.b6 ♗c6 15.♗c2 a5 16.♗b5 ♗b7 17.O-O ♗e7 18.♗c7 ♜c8 19.♞d2 ♜xc7 20.bxc7 ♞xc7 21.♗a3 d5 22.♜c1 dxe4 23.♜xc5 ♞b8 24.fxe4 ♗xe4 25.♞xa5 ♗f5 26.♞e1 ♗xe3 27.♞xe3 ♜d8 28.♜d2 ♜xd2

29.♞xd2 ♞b6 30.♞f2 ♗f8 31.♜c8 ♞d6 32.♗c2 ♗b7 33.♜e8 ♗f6 34.♜e1 ♗g4 35.♞g3 ♞b6+ 36.♗e3 h5 37.♗h1 ♗d6



38.♗c4 ♗f2+ 39.♗g1 ♗h3+ 40.♗f1 ♞g1+ 41.♗e2 ♗xg3 42.♜xg1 ♗xg1+ 43.♗f1 ♗xh2 44.a5 h4 45.a6 ♗e4 46.a7 ♗a8 47.♗f2 h3 48.g3 ♗f3 49.♗b6 0-1

#### French Classical

Michael Morris (2049)

NM Corey Russell (2200)

Portland, Oregon Championship (3) 2007

Annotations by NM Corey Russell

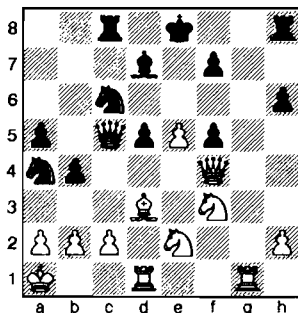
1.e4 e6 2.d4 d5 3.♗c3 ♗f6 4.♗g5 ♗e7 5.e5 ♗fd7 6.♗xe7 ♞xe7 7.f4 a6 8.♗f3 c5 9.♞d2 ♗c6 10.dxc5 ♞xc5 11.♗d3 b5 12.O-O-O b4 13.♗e2 a5 14.♗b1 ♗b6 15.g4 ♗a4 16.f5 ♜b8

Threatening 17...♗c3+ --.

17.♗a1! h6

Necessary, as ♞g5 was too strong for white.

18.♜hg1 ♗d7 19.g5 exf5 20.gxh6 gxh6 21.♞f4 ♜c8



In many lines I looked at, if I moved my Knight at c6, White responds with e5-e6!, hitting the d7-Bishop and unprotected Rook on b8, so I thought I would get out of the tactics.

22.♗ed4?

A mistake. 22.♗xf5 ♗xf5 23.♞xf5 ♗e7 24.♞f6 ♜f8 25.♗ed4 would have given White a clear advantage.

22...♗e7 23.♗xf5

This leads to equality. 23.♜g2 would leave White with a small plus.

23...♗xf5 24.♗xf5 ♗xf5 25.♞xf5 ♞xc2 26.♞xc2 ♜xc2 27.♜xd5 ♗e7 28.♗d4 ♜c5!

Of course, not 28...♜xb2??, as 29.♜xa5 ♜d2 30.♗b3 would win a piece for White.

29.♜xc5 Draw

White offered a draw. I thought it was equal, but that White had slightly better chances, as my queenside pawns would be tough to defend.

#### Modern Defense

Radu Roua (2174)

Gunther Jacobi (1984)

Portland, Oregon Championship (3) 2007

1.e4 g6 2.d4 ♗g7 3.c3 d6 4.♗d3 ♗c6 5.♗e2 ♗f6 6.O-O O-O 7.♗g3 e5 8.d5 ♗e7 9.f4 exf4 10.♗xf4 ♗g4 11.♗e2 ♗e5 12.♗d2 f5 13.♗c4 ♗xc4 14.♗xc4 fxe4 15.♗xe4 h6 16.♗g3 ♗f5 17.♞d2 ♞h4 18.♗d3 ♗d7 19.♜f3 ♜ae8 20.♜af1 ♗xg3 21.♗xg3 ♞h5 22.♞c2 ♜xf3 23.♜xf3 ♞xd5 24.♗xg6 ♞c5+ 25.♗h1 ♜f8 26.♞b3+ ♗h8 27.♜xf8+ ♗xf8 28.♞f7 1-0

#### King's Indian Attack

Grisha Alpernas (1954)

NM Carl Haessler (2205)

Portland, Oregon Championship (3) 2007

1.♗f3 d5 2.g3 ♗f6 3.♗g2 c5 4.d3 ♗c6 5.O-O e6 6.♗bd2 ♗e7 7.e4 ♞c7 8.c3 b6 9.♜e1 ♗b7 10.e5 ♗d7 11.d4 g5 12.♗f1 g4 13.♗g5 h6 14.♗xh7 ♗xh7 15.♞xg4 h5 16.♞f3+ ♗g7 17.♞d1 ♜ag8 18.♗f3 cxd4 19.cxd4 ♗f8 20.♗xh5 ♗xd4 21.♗e3 ♗f5 22.♜c1 ♞b8 23.f4 d4 24.♗f2 ♞a8 25.♗d2 ♗c5 26.♗e2 ♗h4 27.♗f3 ♗d3 28.♗xb7 ♞xb7 29.♗e4 ♗xe1 30.♞xe1 ♗e7 31.♗d6 ♗xd6 32.exd6 ♗h4 33.♗f1 d3 34.♞e3 ♞h1+ 35.♗g1 ♞g2+ 36.♗e1 d2+ 0-1

If you set up a *NWC* subscription using PayPal last year, it will automatically renew this year, unless you specified only a single payment. Please log on to your PayPal account for more information or to manage your subscriptions.



## Round Four

|     |   |
|-----|---|
| 2.5 | Roua                                    |
| 2.0 | Deroza, Foster, Morris,<br>Phillips     |
| 1.0 | Alpernas, Haessler, Janniro,<br>Russell |
| 0.5 | Jacobi                                  |

### King's Indian Attack

Eduardo Deroza (2050)  
NM Carl Haessler (2205)

Portland, Oregon Championship (4) 2007

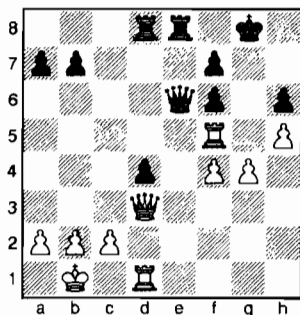
1. ♖f3 d5 2. c4 d4 3. b4 f6 4. d3 e5 5. ♗a3  
 ♗e6 6. g3 ♖d7 7. ♗g2 ♗c6 8. b5 ♗d8  
 9. ♗xf8 ♗xf8 10. a4 ♗e7 11. h4 h5  
 12. ♗bd2 ♗f5 13. ♗e4 ♗e6 14. ♗fd2  
 ♗f7 15. ♖b3 g5 16. hxg5 ffg5 17. ♗f3  
 ♗xe4 18. ♗e5+ ♗e8 19. ♗xd7 ♗xg2  
 20. ♗h2 ♗xd7 21. ♗xg2 ♗c5 22. ♖b2  
 ♗f5 23. ♖a3 b6 24. a5 ♗ae8 25. ♗d2  
 ♗e7 26. ♗e1 ♗he8 27. ♗h2 h4 28. g4  
 ♗h6 29. ♖b2 ♗c8 30. axb6 cxb6 31. f3  
 ♗f7 32. ♗a1 ♗e5 33. ♗a3 ♗g6 34. ♖xd4  
 ♗f4 35. ♖f6 ♗xe2 36. ♖c6+ ♗b8  
 37. ♖xe8+ ♗xe8 38. ♗xe2 ♗f8 39. d4  
 ♗b7 40. ♗ae3 ♗d6 41. ♗d3 ♗c8 42. c5  
 bxc5 43. dxc5 ♗xb5 44. ♗e8+ ♗xe8  
 45. ♗xe8+ ♗d7 46. ♗e5 1-0

### Center-Counter

Gunther Jacobi (1984)  
Raleigh Foster (1970)

Portland, Oregon Championship (4) 2007

1. ♗c3 d5 2. e4 dxe4 3. ♗xe4 ♗f5 4. ♗g3  
 ♗g6 5. ♗f3 ♗d7 6. h4 h6 7. h5 ♗h7 8. d4  
 e6 9. ♗d3 ♗xd3 10. ♖xd3 ♗gf6 11. ♗d2  
 ♗e7 12. O-O-O c5 13. ♗b1 ♖c7 14. ♗e5  
 cxd4 15. ♗xd7 ♖xd7 16. ♗f4 ♗d8 17. f3  
 ♗d6 18. ♗h4 ♗xf4 19. ♗xf4 e5 20. ♗f5  
 ♖e6 21. f4 e4 22. ♗xe4 O-O 23. ♗xf6+  
 gxf6 24. g4 ♗fe8



25. g5 ffg5 26. ffg5 ♖e2 27. g6 ffg6  
 28. hxg6 ♖xd3 29. cxd3 ♗f8 30. ♗e5  
 ♗de8 31. ♗d5 ♗d8 32. ♗e5 ♗d7  
 33. ♗de1 ♗f6 34. ♗e7 ♗xe7 35. ♗xe7  
 ♗xg6 36. ♗xb7 h5 37. ♗xa7 h4 38. ♗a5  
 ♗g7 39. ♗c2 h3 40. ♗h5 ♗h6 41. ♗g5+

♗f6 42. ♗g1 h2 43. ♗h1 ♗f5 44. a4 ♗e5  
 45. b4 ♗d5 46. ♗b3 ♗h3 47. a5 ♗xd3+  
 48. ♗a4 ♗h3 49. ♗b5 d3 50. a6 d2 51. a7  
 ♗a3 52. ♗b6 ♗e4 53. ♗b7 ♗f4  
 54. a8=♖ ♗xa8 55. ♗xa8 ♗f3 56. b5  
 ♗g2 57. ♗d1 h1=♖ 58. ♗xh1 ♗xh1  
 59. b6 d1=♖ 60. b7 ♖a4+ 61. ♗b8 ♗g2  
 62. ♗c7 ♖c4+ 63. ♗b6 ♖b4+ 64. ♗c7  
 ♖c5+ 65. ♗d7 ♖b6 66. ♗c8 ♖c6+  
 67. ♗b8 ♗f3 68. ♗a7 ♖c7 69. ♗a8 ♖a5+  
 70. ♗b8 ♗e4 71. ♗c8 ♖c5+ 72. ♗d7  
 ♖b6 73. ♗c8 ♖c6+ 74. ♗b8 ♗d5  
 75. ♗a7 ♖c7 76. ♗a8 ♖a5+ 77. ♗b8  
 ♗c6 0-1

### Pirc Classical

NM Corey Russell (2200)  
Grisha Alpernas (1954)

Portland, Oregon Championship (4) 2007

Annotations by NM Corey Russell

1. e4 d6 2. d4 ♗f6 3. ♗c3 g6 4. ♗f3 ♗g7  
 5. h3 c5 6. d5 O-O 7. ♗e2

A natural move, but it allows Black to equalize. I think 7.a4 is a better attempt to try to retain an edge.

7...b5! 8. ♗xb5 ♗xe4 9. ♗xe4 ♖a5+

My biggest problem was trying to find a way to castle without trading Queens, as the ending is good for Black.

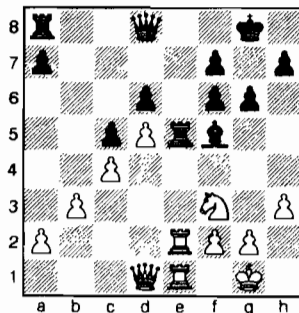
10. ♗ed2 ♖xb5 11. c4 ♖a5 12. O-O ♗a6

My opponent later told me that he meant to play 12...♗a6 — he picked up the wrong piece!

13. ♗e1 ♖d8 14. ♗b1 ♗c8 15. b3 ♗f5  
 16. ♗e4 ♗d7 17. ♗b2 ♗f6 18. ♗xf6+  
 ♗xf6 19. ♗xf6

When Black went into this line, he missed that 19...♗xb1?? 20. ♗xe7 wins for White.

19...exf6 20. ♗b2 ♗e8 21. ♗be2 ♗e5!



22. ♗xe5

Accepting the sacrifice fixes Black's pawn structure and closes the file off for

my Rooks, but not taking it was even worse.

22...fxe5 23. ♗b2

If instead 23.f4, then 23...exf4 24. ♗e7 ♗e6! 25. ♗b7 ♗c8 26. ♗e7 ♗e6 is a repeat of the position

23...a5 24. ♖d2 ♗b8 25. a3 h5 26. ♗e2

I was worried about the ...♖b6 pin in some lines.

26...♗g7 27. b4 cxb4 28. axb4 axb4 29. ♗xb4 ♗c8 30. ♗e1?!

30. ♖c3 followed by 31. ♗eb2 was more prudent.

30...♖a5 31. ♖b2?

31. ♗c1 was forced.

31...♗xc4! 32. ♗xc4 ♖xe1+ 33. ♗h2  
 ♗e4 34. ♖b7 ♖e2 35. ♖c6 ♖d3

Black is threatening to get a second pawn for his Exchange. If he can get that, he has good winning chances.

36. ♗xe4 Draw

I offered a draw here, as, after 36... ♖xe4 37. ♖xd6, the position is level.

### King's Indian Classical

Blake Phillips (2052)  
Radu Roua (2174)

Portland, Oregon Championship (4) 2007

Annotations by Radu Roua

1. d4 ♗f6 2. ♗f3 d6 3. c4 g6 4. ♗c3 ♗g7  
 5. e4 O-O 6. ♗e2 e5 7. O-O ♗c6 8. d5 ♗e7  
 9. b4 ♗h5 10. ♗e1 f5 11. ♗g5 ♗f4

Until here nothing special, just common theory for King's Indian Defence.

12. ♗f1

It seems that White's decision is not the best. 12. ♗xf4 exf4 13. ♗c1 is what Kramnik played in his game against Shirov ten years ago.

12...h6 13. ♗f3 fxe4

Trying to make my pieces happy on the kingside.

14. ♗d2 ♗d3

I thought it was a good moment to force a favorable trade.

15. ♗xd3 exd3 16. ♗de4 a5

A prophylactic move intending to slow down White's attack on the queenside.

17.bxa5 ♖xa5 18.♗xd3 b6 19.a4 ♘f5

The Knight is looking for trouble!

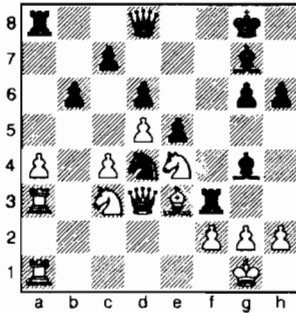
20.♗d2 ♖a8

Another defensive move against the threatened ♘b5.

21.♖a3 ♘d4 22.♖ea1 ♗g4

Dark clouds are approaching White's position. The storm is gathering.

23.♗e3 ♖f3!?



Don't ask me why I played this move! Ask White's king what he feels about it!

24.♗f1 ♗h4 25.♘b5 ♖f7 26.♗xd4 exd4 27.♖e1 ♖af8 28.f3 ♗e5 29.g3 ♗h5 30.f4 g5 31.♗g2 ♗g7

In my opponent's time trouble, I missed the best answer: 31...gxf4! 32.gxf4 ♖xf4 33.h3 ♘h7! with decisive threats.

32.♖d3 gxf4 33.gxf4 ♖xf4 34.♘xd4 ♗xd4+ 35.♖xd4 ♘h7 36.♘g3 ♗g6 37.♖e7+ ♖f7 38.♖xf7+ ♖xf7 39.♗e4 ♗f5 40.♗e3 ♗c2 41.♘h1 ♗xa4 42.♖e4 ♗c2 43.♖e6 ♗g5 44.♗d4 ♗g6 45.♘g2 ♗f4 46.♗xf4 ♖xf4 47.♖e7+ ♖f7 48.♖xf7+ ♗xf7 49.♘f3

The endgame is not as simple as it looks (what endgame is?), especially after such a complicated middlegame.

49...b5 50.♘e4 bxc4 51.♘e2 ♘g6 52.♘c3 ♗e8 53.♘d4 ♘g5 54.♘xc4 h5 55.♘e4+ ♘f4 56.♘d4 h4 57.♘f6 ♗g6 58.♘c4 ♗f7 59.♘d4 h3 60.♘h7 ♗g6 61.♘f8

Now, due to the ♘e6+ threat, Black still has to play carefully in order to avoid "undesired surprises."

61...♘f5!

Now I'm ready to play ...c7-c5+ after ♘e6.

62.♘d7 ♗e8 63.♘f8 c5+ 64.dxc6 ♗xc6 65.♘h7 ♘f4 66.♘f6 ♘f3 67.♘c4 ♘g2 68.♘g4 ♗f3 0-1

And here is where the game ended after five-and-a-half hours.

*English*

Mike Janniro (2031)

Mike Morris (2051)

Portland, Oregon Championship (4) 2007

1.c4 c5 2.g3 ♘c6 3.♗g2 g6 4.♘f3 ♗g7 5.O-O e5 6.♘c3 ♘ge7 7.d3 O-O 8.♖b1 d6 9.a3 a5 10.♘d5 ♖b8 11.♗g5 f6 12.♗d2 ♗e6 13.♘xe7+ ♗xe7 14.♘e1 f5 15.♘c2 f4 16.b4 axb4 17.axb4 ♗d7 18.e4 b6 19.b5 ♘e7 20.♖a1 ♖f6 21.gxf4 exf4 22.♗c3 f3 23.♗xf6 fxf2 24.♗xg7 gxf1=♗+ 25.♘xf1 ♘xg7 26.♖a6 ♗h3+ 27.♘e1 ♗e6 28.♘e3 ♗e5 29.♗a1 ♗xa1+ 30.♖xa1 ♖b7 31.♖a8 ♘f6 32.♖f8+ ♘e6 33.♖h8 h5 34.♖h7 ♖a7 35.♘d5 ♖a1+ 36.♘d2 ♘xd5 37.exd5+ ♘e5 38.♖e7+ ♘f4 39.♖b7 ♗f5 40.♖xb6 ♘e5 41.♖a6 ♖b1 42.♘e3 g5 43.♖a8 ♖b3 44.♖e8+ ♘f6 45.♖f8+ ♘g6 46.♖d8 ♗xd3 47.♖xd6+ ♘f5 48.b6 ♗xc4+ 49.♘d2 ♘e5 50.♖h6 ♗xd5 51.♖xh5 ♘d4 52.♖xg5 ♖b2+ 53.♘c1 ♖xf2 54.h4 c4 55.♘d1 c3 56.♘e1 ♖b2 57.♖g7 ♘e3 58.♘d1 ♗e4 59.♖g3+ ♘d4 0-1

**Round Five**

|     |                        |
|-----|------------------------|
| 3.5 | Roua                   |
| 3.0 | Daroza, Foster, Morris |
| 2.0 | Phillips               |
| 1.5 | Alpernas, Russell      |
| 1.0 | Haessler, Janniro      |
| 0.5 | Jacobi                 |

*King's Indian Attack*

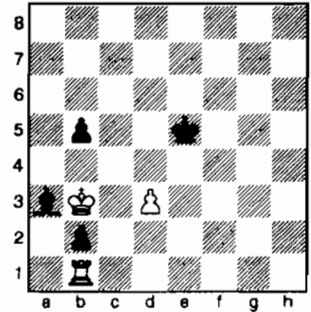
Radu Roua (2174)

Eduardo Daroza (2050)

Portland, Oregon Championship (5) 2007

1.e4 e6 2.d3 d5 3.♘d2 c5 4.g3 ♘c6 5.♗g2 g6 6.♘gf3 ♗g7 7.O-O ♘ge7 8.♖e1 O-O 9.c3 ♗c7 10.♗c2 ♗d7 11.♘f1 d4 12.♗d2 ♖fc8 13.c4 e5 14.h4 h5 15.♘g5 f6 16.♘h3 ♘b4 17.♗b1 ♗e6 18.a3 ♗d7 19.axb4 ♗xh3 20.bxc5 ♗xg2 21.♘xg2 ♖xc5 22.b4 ♖cc8 23.♖a3 ♘h7 24.♗a2 b6 25.♖a1 ♖c7 26.♖a6 ♘c8 27.♘h2 ♖b8 28.♘f3 ♖bb7 29.♘e1 ♗f7 30.f4 ♗e6 31.fxe5 fxe5 32.♘f3 ♗g4 33.♖f1 ♘h8 34.♗b1 ♖f7 35.♗d1 ♘g8 36.♘g5 ♗xd1 37.♖xd1 ♖f6 38.♘h3 ♖bf7 39.♗g5 ♖d6 40.♖da1 ♗f8 41.c5 ♖c6 42.♖a2 ♘g7 43.♗d2 ♖fc7 44.♘g5 ♖f6 45.♘f3 bxc5 46.♗h6+ ♘xh6 47.♖xf6 ♗g7 48.♖fa6 cxb4 49.♖b2 ♖b7 50.♖a4 ♗f8 51.♘xe5 ♗c5 52.♘c4 ♘b6 53.♘b6 axb6

54.♖a8 ♘g7 55.♖f2 ♖c7 56.♖a6 ♗e7 57.♖a4 ♖b7 58.♖f1 ♗d6 59.♖a6 ♗c5 60.g4 hxg4 61.♘g3 ♖c7 62.♘xg4 ♗e7 63.h5 gxh5+ 64.♘xh5 ♖e5+ 65.♘g4 ♘g6 66.♖f5 ♖xf5 67.exf5+ ♘f6 68.♘f4 b3 69.♖a1 b2 70.♖b1 ♗a3 71.♘e4 b5 72.♘f4 ♗d6+ 73.♘e4 ♗a3 74.♘xd4 ♘xf5 75.♘c3 ♘e5 76.♘b3



76...♗c5 77.♖xb2 ♘d4 78.♘c2 b4 79.♖b1 ♗d6 80.♖g1 ♗e7 81.♖g4+ ♘d5 82.♘d2 ♗d6 83.♘e3 ♗e7 84.♖g8 ♗f6 85.♖b8 ♗c3 86.♖d8+ ♘c5 87.♘e4 b3 88.♖c8+ ♘b4 89.♖c4+ ♘a3 90.♖xc3 1-0

*King's Indian Fianchetto*

Grisha Alpernas (1954)

Mike Janniro (2031)

Portland, Oregon Championship (5) 2007

1.♘f3 ♘f6 2.g3 g6 3.♗g2 ♗g7 4.O-O O-O 5.c4 d6 6.d4 c6 7.♘c3 ♘bd7 8.e4 e5 9.dxe5 dxe5 10.♗c2 ♗c7 11.b3 ♖e8 12.♗b2 ♘f8 13.♖ad1 ♗g4 14.h3 ♗xf3 15.♗xf3 ♖ad8 16.♗g2 ♘e6 17.♘e2 ♘h5 18.♘h2 ♖xd1 Draw

*Sicilian Najdorf*

Raleigh Foster (1970)

Blake Phillips (2052)

Portland, Oregon Championship (5) 2007

1.e4 c5 2.♘f3 d6 3.d4 cxd4 4.♘xd4 ♘f6 5.♘c3 a6 6.♗g5 e6 7.f4 ♗c7 8.♗f3 b5 9.♗xf6 gxf6 10.O-O-O ♘d7 11.e5 ♗b7 12.♗h5 ♘c5 13.♗xb5+ axb5 14.♘dxb5 ♗a5 15.exd6 ♖c8 16.d7+ ♘xd7 17.♘d6+ 1-0

*Modern Defense*

Mike Morris (2051)

Gunther Jacobi (1984)

Portland, Oregon Championship (5) 2007

1.e4 g6 2.d4 ♗g7 3.♘f3 d6 4.♘c3 a6 5.a4 b6 6.♗c4 e6 7.O-O ♘e7 8.♗e3 h6 9.♗d2 ♘d7 10.♖ad1 ♗b7 11.h3 g5 12.♗d3 ♘g6 13.♘e2 O-O 14.♘g3 ♘f6

# 2007 Oregon State Championship

| Name               | Rtg          | 1   | 2   | 3   | 4   | 5   | 6   | 7   | 8   | 9   | 10  | T   | Post |
|--------------------|--------------|-----|-----|-----|-----|-----|-----|-----|-----|-----|-----|-----|------|
| 1 Roua, Radu       | 2174<br>2210 |     | 0.5 | 1   | 1   | 1   | 1   | 0.5 | 0.5 | 1   | 1   | 7.5 | 2196 |
| 2 Russell, Corey   | 2200<br>2211 | 0.5 |     | 0.5 | 0.5 | 0   | 1   | 0.5 | 0.5 | 1   | 1   | 5.5 | 2200 |
| 3 Morris, Mike     | 2051<br>2173 | 0   | 0.5 |     | 0   | 1   | 1   | 1   | 0.5 | 0.5 | 1   | 5.5 | 2069 |
| 4 Phillips, Blake  | 2052<br>---- | 0   | 0.5 | 1   |     | 0   | 0   | 1   | 1   | 1   | 1   | 5.5 | 2075 |
| 5 Foster, Raleigh  | 1970<br>---- | 0   | 1   | 0   | 1   |     | 0.5 | 1   | 0.5 | 1   | 0   | 5.0 | 1999 |
| 6 Daroza, Eduardo  | 2050<br>2102 | 0   | 0   | 0   | 1   | 0.5 |     | 1   | 0.5 | 0.5 | 1   | 4.5 | 2054 |
| 7 Haessler, Carl   | 2205<br>2167 | 0.5 | 0.5 | 0   | 0   | 0   | 0   |     | 1   | 1   | 1   | 4.0 | 2200 |
| 8 Alpernas, Grisha | 1954<br>---- | 0.5 | 0.5 | 0.5 | 0   | 0.5 | 0.5 | 0   |     | 0.5 | 0.5 | 3.5 | 1959 |
| 9 Jacobi, Gunther  | 1984<br>---- | 0   | 0   | 0.5 | 0   | 0   | 0.5 | 0   | 0.5 |     | 0.5 | 2.0 | 1962 |
| 10 Janniro, Mike   | 2031<br>2125 | 0   | 0   | 0   | 0   | 1   | 0   | 0   | 0.5 | 0.5 |     | 2.0 | 2001 |

15.c4 g4 16.hxg4 17.♖h2 ♖xe3  
 18.♗xe3 ♗h4 19.♗f3 ♗g4 20.♖h2 ♗f4  
 21.♖h5 ♗h4 22.♖xg7 ♖xg7 23.f4 f5  
 24.exf5 exf5 25.d5 ♖ae8 26.♗d4+ ♖g8  
 27.♖f3 ♗h5 28.♖f1 ♖h7 29.♖g3 ♗g4  
 30.♖e2 ♖e7 31.♖g3 ♗h5 32.♖h3 ♗g4  
 33.♖g3 ♗h5 Draw

**Orangutan**

NM Carl Haessler (2205)  
 NM Corey Russell (2200)

*Portland, Oregon Championship (5) 2007*  
 Annotations by NM Corey Russell

1.b4 e5 2.♖b2 d6 3.c4 ♖f6 4.e3 ♖e7  
 5.d4 exd4 6.exd4 d5 7.c5 O-O 8.♖f3 ♖f5  
 9.♖d3 ♖xd3 Draw

I offered a draw here — I could see the position was going to get blockaded by an eventual ♖e5 by White. I also believed White had the better chances, so I thought a draw now would be a good idea.

**Round Six**

- 4.5 Roua
- 4.0 Foster
- 3.5 Morris
- 3.0 Daroza
- 2.0 Alpernas, Russell, Phillips
- 1.5 Haessler, Janniro
- 1.0 Jacobi

**French**

Gunther Jacobi (1984)  
 Grisha Alpernas (1954)

*Portland, Oregon Championship (6) 2007*

1.♖c3 d5 2.e4 e6 3.♖f3 dxe4 4.♖xe4  
 ♖f6 5.♖g3 ♖e7 6.♖c4 O-O 7.O-O c5  
 8.d3 ♖c6 9.a4 ♗c7 10.♖e1 h6 11.♗e2  
 ♖d4 12.♖xd4 cxd4 13.♖d2 a5 14.♖f5  
 ♖d6 15.♖xd6 ♗xd6 16.♗e5 ♗d8 17.h3  
 b6 18.♖f4 ♖a6 19.b3 ♖b7 20.♗c7 ♖d5  
 21.♗xb7 ♖xf4 22.♗f3 ♗f6 23.♖e4 e5  
 24.♖ae1 ♖g6 25.♗g4 ♖fe8 26.g3 ♖e7  
 27.h4 ♖d8 28.♖g2 ♗d6 29.h5 ♖f8  
 30.♗f5 ♗f6 31.♗xf6 gxf6 32.f4 ♖de8  
 33.♖1e2 ♖d7 34.♖b5 f5 35.♖xd7 fxe4  
 36.♖xe8 exd3 37.♖xf7+ ♖xf7 38.cxd3  
 exf4 39.gxf4 ♖xf4 40.♖e6 ♖f5 41.♖xh6  
 ♖g7 42.♖xb6 ♖xh5 43.♖b5 ♖h6 44.  
 ♖xa5 ♖c6 45.♖d5 ♖c3 46.♖xd4 ♖xb3  
 47.♖f3 ♖f6 48.♖e4 ♖e6 49.♖c4 ♖d6  
 50.♖d4 ♖a3 51.♖b4 ♖c6 52.♖c4 ♖a1  
 53.d4 ♖a3 54.d5+ ♖c7 55.♖c5 ♖a1  
 56.d6+ ♖c8 57.♖e4 ♖c1+ 58.♖c4 ♖a1  
 59.♖c6 ♖a2 60.♖b4 ♖c2+ 61.♖d5  
 ♖d2+ 62.♖d4 ♖a2 63.♖c4+ ♖d7 64.  
 ♖c7+ ♖d8 65.♖a7 ♖d2+ 66.♖c6 ♖c2+  
 67.♖b5 ♖b2+ 68.♖a6 ♖d2 69.d7 ♖d6+  
 70.♖b5 ♖xd7 71.♖xd7+ ♖xd7 72.♖b6

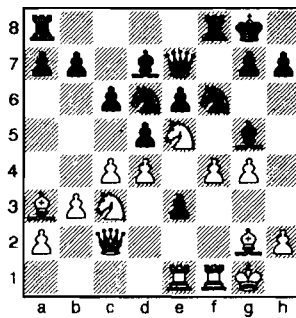
♖c8 73.♖a7 ♖c7 74.a5 ♖c8 75.a6 ♖c7  
 76.♖a8 ♖c8 77.♖a7 ♖c7 Draw

**Dutch Stonewall**

Mike Janniro (2031)  
 NM Carl Haessler (2205)

*Portland, Oregon Championship (6) 2007*

1.d4 e6 2.g3 d5 3.♖g2 f5 4.♖f3 ♖d7  
 5.b3 ♖gf6 6.c4 c6 7.O-O ♖e7 8.♖b2  
 ♖e4 9.♖bd2 ♖d6 10.♖e5 O-O 11.♗c2  
 ♗e8 12.f3 f4 13.g4 ♖f6 14.♖ae1 ♖g5  
 15.♖a3 ♗e7 16.♖b1 ♖f6 17.♖c3 ♖d7  
 18.e4 fxe3 19.f4



19...♖xg4 20.fxg5 ♖f2 21.♖e2 ♖xe5  
 22.♖xd6 ♖xf1+ 23.♖xf1 ♗xd6 24.dxe5  
 ♗xe5 25.♖d1 d4 26.♖g1 ♗xg5 27.♗e4  
 e5 28.♖xe3 dxe3 29.♖xe3 ♖e8 30.b4  
 ♗f4 31.♗d3 ♗d4 32.♗e2 ♖g4 33.♗e1  
 ♗d1 34.♗xd1 ♖xd1 35.♖d3 ♖g4 36.c5  
 ♖f7 37.♖f2 ♖e7 38.♖g3 ♖f8+ 39.♖e3  
 ♖e6 40.♖xg7+ ♖f7 41.♖g3 ♖xa2  
 42.♖e4 ♖d5 43.♖h3 ♖xe4 44.♖xe4  
 ♖e6 45.♖h6+ ♖f6 46.♖xh7 ♖f4+ 47.  
 ♖e3 ♖xb4 48.h4 ♖d5 49.h5 ♖b3+ 50.  
 ♖f2 a5 51.♖g2 ♖b2+ 52.♖g3 ♖b1 53.  
 ♖g2 a4 54.h6 a3 55.♖d7+ ♖xc5 56.h7  
 a2 57.h8=♗ a1=♗ 58.♗f8+ ♖b6 59.  
 ♗f2+ ♖a6 60.♖d2 ♗c3 61.♖a2+ ♖b5  
 62.♗e2+ ♖b6 63.♖d2 ♖b3 0-1

**English**

Eduardo Daroza (2050)  
 NM Corey Russell (2200)

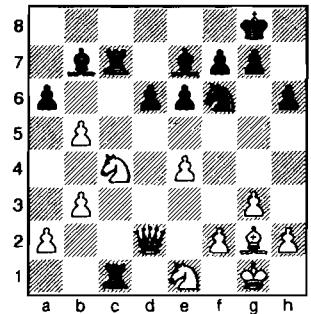
*Portland, Oregon Championship (6) 2007*  
 Annotations by NM Corey Russell

1.♖f3 c5 2.c4 ♖f6 3.g3 b6 4.♖g2 ♖b7  
 5.O-O e6 6.d4 cxd4 7.♗xd4 d6 8.♖c3  
 ♖e7 9.♖d1 a6 10.♖g5 ♖bd7 11.e4 ♗c7  
 12.♖ac1 ♖c8 13.b3 O-O 14.♖e1 h6  
 15.♖xf6 ♖xf6 16.♖a4 b5

Risky play, 16...♖d7 was more sound.

17.cxb5 ♗xc1 18.♖xc1 ♖xc1 19.♗d2  
 ♖fc8 20.♖b6 ♖8c7 21.♖c4

I wanted to play ...♖a1, but after the reply b5-b6, that passed pawn was giving me problems in a lot of lines, and I couldn't solve them over the board.



21...axb5 22.♗xc1 bxc4 23.e5 ♖e4  
 24.♗e3 cxb3 25.♗xb3 d5 26.♖d3 ♖c8  
 27.♗b8 ♖c3 28.♖f1 d4 29.♖g2 f5  
 30.exf6 ♖xf6 31.♖b7 ♖xd3 32.♗xc8+  
 ♖f7 33.♗c4 ♖d1+ 34.♖g2 ♖d2 35.a4  
 h5 36.h3 ♖d7 37.a5 ♖e5

White was very low on time, so had to make a quick move. After his next move, Black is better.

38.♗c1 ♖xf2+ 39.♖g1

Of course, 39.♖xf2?? ♖d3+ 40.♖~  
 ♖xc1 would leave Black a piece up.

39...♖a2 40.♗f4+ ♖f6 41.♗xd4 0-1

Here White captured the Black pawn with his Queen, had his hand on it and moved it back to f4 then tried to move it to c1. Rules of chess say that if you grasp an opponent's piece without prefacing it with "I adjust," then you must capture the piece. It doesn't matter if you "kept [your] hand on it." I called him on it, but he claimed that wasn't the rule. So I had to call the TD over — the TD looked up the rule and showed it to the opponent to show that I was correct. White therefore resigns as...♖f3+ wins the White Queen. Nevertheless, White is lost with 41.♗c1 as well: 41...d3 42.a6 d2 43.♗b1 ♖c4!! wins. If White takes the Black Rook, Black queens, but Black is threatening 44...♖a1 45.♗xa1 ♖xa1. Note that in many lines if a6-a7, ...♖d4+ picks up the a-pawn.

**QGD Marshall Gambit**

Radu Roua (2174)  
 Raleigh Foster (1970)

*Portland, Oregon Championship (6) 2007*  
 Annotations by Radu Roua

1.c4 e6 2.♖c3 d5 3.d4 c6 4.e4

The first time I played this variation was in 2001, in Romania. This is the second time for me in an official game.

4...dxe4 5. Qxe4

My opponent in the first game played 5...Qf6; so, from now on, everything is new for me (except some vague memories of a few games that I've seen).

5...xb4+ 6. Qd2 Qxd4 7. Qxb4 Qxe4+ 8. Qe2 Qa6

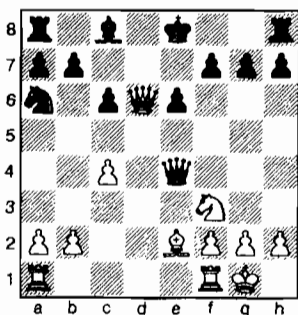
This is the most popular move, but many others are possible, including 8... Qxg2 9. Qd6 Qd7 [9... Qxh1? 10. Qf8+ Qd7 11. O-O-O+ Qd5 (11... Qc7 12. Qd8 mate) 12. cxd5 exd5 13. Qxd5+ cxd5 14. Qg4+ f5 15. Qxf5+ Qc6 16. Qc5 mate] 10. Qf3 Qg5 11. Qe2 is more playable. 9. Qd6 Qe7

Here 9... Qxg2, 9...e5, or 9...f6 are considered to be the best continuations. Nobody tried 9... Qe7 before.

10. Qf3 Qf5 11. O-O Qxd6

The whole idea looks dubious, because Black loses too many moves in the opening, this being the main reason for his defeat.

12. Qxd6



12...f6

Maybe Raleigh felt it was too late, that after 12... Qxe2 13. Qad1 his King and his Rook would be unhappy.

13. Qfe1

A prophylactic move against ... Qf7.

13... Qg6

The lonely Queen must leave downtown! 13... Qf7 14. Qg5+ fxg5 15. Qh5+ and Black loses his only hope.

14. Qad1 Qf8 15. c5 Qb8

Other moves would not cure the illness of this position: 15... Qf7 16. Qxa6

bx a6 17. Qxc6 and Black must lose something, e.g., 17... Qb8 18. Qc7+; 15... Qb4 16. Qc7 and the "centralised" King dreams in vain of a better place under the sun (16... Qd5 17. Qxd5 exd5 18. Qd3+). 16. Qc4 Qc2 17. Qxe6 1-0

Taking with the Rook on e6 would have been a faster mate, but I couldn't refuse myself the pleasure of such a nice "picture." My fifth victory in a row.

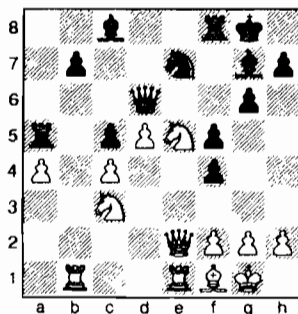
### King's Indian Classical

Blake Phillips (2052)

Mike Morris (2051)

Portland, Oregon Championship (6) 2007

1. d4 Qf6 2. c4 g6 3. Qc3 Qg7 4. e4 d6 5. Qe2 O-O 6. Qf3 e5 7. O-O Qc6 8. d5 Qe7 9. b4 Qh5 10. Qe1 Qf4 11. Qf1 a5 12. bxa5 Qxa5 13. a4 c5 14. Qb1 f5 15. Qxf4 exf4 16. e5 dxe5 17. Qxe5 Qd6 18. Qe2



18...f3 19. Qxf3 Qxc3 20. Qxe7 Qxe7 21. Qxe7 Qxa4 22. Qc7 Qb4 23. Qd1 b6 24. d6 Qf6 25. d7 Qa6 26. Qc6 Qd8 27. Qe5 Qb7 28. Qc8 Qa4 29. Qb8 Qe4 30. f3 Qa8 31. Qd6 Qa2 32. Qe6 Qc7 33. Qee8 Qxb8 1-0 {Time}

### Round Seven

- 5.5 Roua
- 4.0 Foster
- 3.5 Morris
- 3.0 Daroza, Russell, Phillips
- 2.5 Alpernas, Haessler
- 1.5 Jacobi, Janniro

### King's Indian

NM Carl Haessler (2205)

Gunther Jacobi (1984)

Portland, Oregon Championship (7) 2007

1. e4 g6 2. d4 Qg7 3. c4 d6 4. Qc3 e5 5. Qge2 Qc6 6. d5 Qce7 7. Qg3 Qf6 8. Qd3 O-O 9. O-O c6 10. f4 exf4 11. Qxf4 cxd5 12. cxd5 Qb6+ 13. Qh1 Qg4 14. Qd2 Qd7 15. Qae1 Qac8 16. h3 Qe5 17. Qg5 f6 18. Qe3 Qa5 19. Qf2 b5 20. a3

Qce8 21. Qe2 a6 22. Qf1 f5 23. Qd2 fxe4 24. Qdx e4 Qf5 25. Qf4 Qd8 26. Qd2 h6 27. g4 Qh4 28. Qef1 Qb6 29. Qxe5 Qxf2 30. Qxf2 Qxe5 31. Qf4 Qe7 32. Qf6+ Qh8 33. Qce4 Qd4 34. Qxd6 Qxd3 35. Qxe7 Qxh3+ 36. Qg1 1-0

### Sicilian Closed

Grisha Alpernas (1954)

Blake Phillips (2052)

Portland, Oregon Championship (7) 2007

1. Qf3 c5 2. d3 Qc6 3. g3 g6 4. Qg2 Qg7 5. e4 e5 6. Qc3 Qge7 7. Qe3 d6 8. Qd2 Qd4 9. Qe2 Qh3 10. O-O Qxf3+ 11. Qxf3 Qxf1 12. Qxf1 Qd7 13. Qg2 O-O 14. c3 Qac8 15. d4 cxd4 16. cxd4 Qa4 17. Qc3 Qc4 18. dxe5 Qxe5 19. Qxa7 Qxc3 20. bxc3 Qxc3 21. Qxd6 Qc6 22. Qe3 Qfd8 23. Qf4 Qd4 24. Qf3 Qxf3+ 25. Qxf3 Qd3 26. Qg2 Qb2 27. e5 Qcc3 28. Qc1 Qb5 29. Qe4 Qd5 30. Qxd5 Qxd5 31. a3 Qf8 32. Qe1 Qe7 33. h4 Qe6 34. h5 Qc2 35. hxg6 hxg6 36. Qf4 Qf5 37. Qb1 b5 38. Qb4 Qa2 39. Qb3 g5 40. Qc1 Qxe5 41. Qf3+ Qe6 42. Qb3 g4 43. Qe3 Qd7 44. Qc3 Qe4 45. Qf4 Qe1 46. Qd3+ Qc6 47. Qd2 Qd1 48. Qc3+ Qb7 49. Qf4 Qaa1 0-1

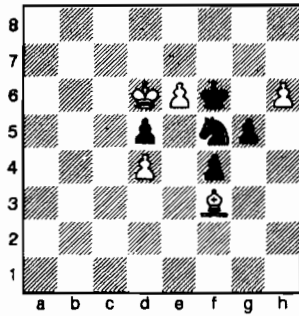
### Bogo-Indian

Raleigh Foster (1970)

Eduardo Daroza (2050)

Portland, Oregon Championship (7) 2007

1. d4 Qf6 2. Qf3 e6 3. c4 Qb4+ 4. Qd2 Qe7 5. Qc3 Qc6 6. e3 Qxc3 7. Qxc3 Qe4 8. Qc2 Qxc3 9. Qxc3 Qb4 10. Qxb4 Qxb4 11. Qd2 d6 12. a3 Qc6 13. b4 O-O 14. c5 Qd8 15. cxd6 cxd6 16. Qe2 Qd7 17. Qhc1 Qac8 18. Qc3 Qe7 19. Qac1 Qd5 20. Qxc8 Qxc8 21. Qxc8+ Qxc8 22. e4 Qb6 23. e5 d5 24. Qc3 Qd7 25. b5 Qc8 26. a4 Qf8 27. Qe1 Qe7 28. Qb4 b6 29. Qd3 Qd8 30. Qf4 g6 31. h4 h5 32. Qd3 Qe7 33. Qc3 Qg8 34. Qd2 Qh6 35. f3 Qe7 36. Qe3 Qf8 37. Qf2 Qg7 38. Qg3 Qg8 39. Qh3 Qe7 40. g4 hxg4+ 41. fxg4 Qc8 42. Qg3 a6 43. Qe2 Qa7 44. Qc3 axb5 45. axb5 Qh6 46. Qf4 Qe8 47. Qe2 Qd7 48. h5 g5+ 49. Qe3 Qg7 50. Qd2 Qe8 51. Qc2 Qd7 52. Qb3 Qe8 53. Qb4 Qc8 54. Qa4 Qd7 55. Qxb6 Qxb6 56. Qc5 Qa4+ 57. Qd6 Qb6 58. Qc7 Qxb5 59. Qxb5 Qc4 60. Qc6 f6 61. Qc5 Qe3 62. Qe2 Qc2 63. Qd1 Qe3 64. Qf3 f5 65. gxf5 exf5 66. Qd6 f4 67. e6 Qf6 68. h6 Qf5+ Draw



*French Steinitz*

NM Corey Russell (2200)

Mike Janniro (2031)

*Portland, Oregon Championship (7) 2007*

Annotations by NM Corey Russell

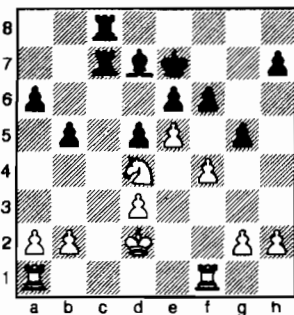
1. e4 e6 2. d4 d5 3. ♘c3 ♘f6 4. e5 ♘fd7  
5. f4 c5 6. ♘f3 ♘c6 7. ♗e3 a6 8. ♖d2 b5  
9. dxc5 ♗xc5 10. ♗xc5 ♘xc5 11. ♗d3  
♖b6 12. ♖f2 ♘xd3+

Instead, 12... ♗b8 13. O-O ♘a4 14.  
♘xa4 bxa4 15. ♖xb6 ♗xb6 with an even  
game. In return for doubled a-pawns  
Black has pressure on White's queenside.  
The problem with the text move is that  
White gets an unassailable Knight on d4,  
and Black is left with a bad Bishop.

13. cxd3 ♖xf2+ 14. ♗xf2 ♗d7 15. ♘e2  
♗e7 16. ♘ed4 ♗hc8 17. ♘xc6+ ♗xc6  
18. ♘d4 ♗c7 19. ♗e3 ♗ac8 20. ♗hf1

Black has command of the c-file, but  
has nothing to do on it because of the com-  
manding Knight at d4.

20... f6 21. ♗d2 g5 ??



My opponent and I both agree this  
was the losing move. Black has no active  
plan in this position, he mostly has to sit  
and wait.

22. exf6+ ♗xf6 23. fxg5+ ♗xg5 24. ♗ae1  
♗g6 25. ♗e3

Threatening to win outright with 26.  
♗g3+ ♗h6 27. ♗f6+ ♗h5 28. ♗f7  
(threatening 29. ♗xh7 mate) h6 29. ♗gg7

♗d8 30. ♘f3 (threatening g2-g4 mate) e5  
31. h3! ♗xh3 32. ♗xc7 and Black is down  
a Rook.

25... ♗g7 26. ♗xe6! ♗xe6 27. ♘xe6+  
♗g6 28. ♘xc7 ♗xc7 29. ♗f2

Threatens to centralize my King with  
♗e3-d4.

29... d4 30. ♗f4 ♗d7 31. ♗c2 ♗e7  
32. ♗xd4 ♗e2+ 33. ♗c3 ♗xg2 34. ♗d6+  
♗g5 35. ♗xa6 b4+ 36. ♗xb4 ♗xb2+  
37. ♗c5 ♗xh2 38. d4 ♗c2+ 39. ♗d6 h5  
40. d5 h4 41. ♗a8 h3 42. ♗h8 h2 43. a4  
♗f6 44. ♗d7 ♗a2 45. d6 ♗xa4 46. ♗xh2  
♗a7+ 47. ♗c8 ♗a8+ 48. ♗b7 ♗a1  
49. ♗d2 +- ♗e6 50. d7 ♗b1+ 51. ♗a6  
♗a1+ 52. ♗b5 1-0

Black resigns, because he sees that  
white will simply march his King up the  
a- and b-files to the Black Rook. Black  
will run out of checks and be forced to  
sacrifice his Rook for the White Queen.

*Alekhine's Defense*

Mike Morris (2051)

Radu Roua (2174)

*Portland, Oregon Championship (7) 2007*

Annotations by Radu Roua

1. e4 ♘f6 2. e5 ♘g8

Here I would like to remind you of a  
famous Bronstein quote: "A game of  
chess is not an examination of knowledge;  
it is a battle of nerves."

3. d4 d6 4. exd6 cxd6 5. ♗c4 ♘f6 6. ♘c3  
g6 7. ♘f3 ♗g7 8. O-O O-O 9. h3 a6 10. a4  
b6 11. ♗e1 ♗b7 12. ♗g5 e6 13. ♖e2 h6  
14. ♗f4 ♗e8 15. ♗ad1

We reached a typical hedgehog struc-  
ture. It is a battle between White's per-  
fect position (that hardly can be im-  
proved!) and Black's potential. David  
versus Goliath.

15... ♘c6 16. ♖d2 ♗h7 17. d5

Otherwise, Black would have placed  
one of his pieces on this important square.

17... ♘a5 18. ♗a2 e5 19. ♗e3 ♗c8

A defensive move against the b4-  
threat.

20. ♖e2 ♘h5

Even if they look awkward, I'm still  
proud of my Knights in this game! They  
helped me to win!

21. ♘d2 f5

The idea behind my previous Knight  
move, controlling the e4-square and  
threatening to win the Bishop.

22. f3

Now White's threat is to reinforce the  
attack against the b6-pawn with ♖f2; so  
it's the Bishop's turn to help.

22... ♗f6 23. ♗f2 ♗h4 24. ♖e3 ♗xf2+  
25. ♖xf2 ♖c7

Now it's about time for some more  
active ideas. The computer's first sug-  
gestions are 25... b5 or 25... ♘f4, but  
nobody's perfect.

26. ♗b1 ♖c5 27. ♗e3

No attacking player likes to trade  
Queens!

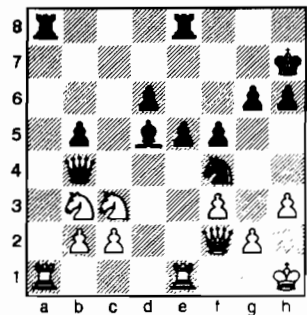
27... ♖b4 28. ♗h1 b5 29. axb5 axb5  
30. ♗b3 ♘f4

It is the Knight's time to come into  
play, inspiring fear in the helpless d5-  
pawn.

31. ♗a1

The last hope for Mike, maybe an  
attack on the a-file, the seventh rank, or  
(why not?) a sacrifice on b5.

31... ♘xb3 32. ♘xb3 ♗a8 33. ♗ee1 ♗xd5



34. ♗a7+

A computer variation shows how  
complicated things can be: 34. ♖b6! (with  
the idea to take the Bishop, the Rook and  
then to fork the King and the remaining  
Rook with ♖b7) 34... ♗g8 35. ♗xa8  
♗xa8 36. ♗d1 (now the pressure on the  
d-file brings White a well-deserved draw)  
36... ♗xb3 37. cxb3 ♖xb3 38. ♗xd6 ♖xb2  
39. ♗xg6+ ♘xg6 40. ♖xg6+ and the game  
will end by perpetual.

34... ♗g8 35. ♗ea1



In a little time trouble (five moves for three minutes or so), Mike misses the best reply that would have kept the fire on the board. [35. ♖xd5 ♗xd5 36. ♜ea1] 35... ♜xa7 36. ♜xa7 ♜xb3 37. ♞b6

I guess Mike was not willing to play an endgame being two pawns down and went for one last shot.

37... ♜f7 38. ♞b7 ♞c4

A double purpose move, defends the f7-bishop, but also creates a mating threat.

39. ♖h2 ♜f8 40. g3 b4 41. ♜a4 ♞c5 0-1

The time trouble passed and in this hopeless position Mike resigned, giving me the sixth victory in a row.

## Round Eight

|     |                           |
|-----|---------------------------|
| 6.5 | Roua                      |
| 4.5 | Foster                    |
| 4.0 | Foster, Russell, Phillips |
| 3.5 | Daroza, Haessler, Morris  |
| 2.5 | Alpernas                  |
| 1.5 | Jacobi, Janniro           |

*Pirc*

Radu Roua (2174)

Grisha Alpernas (1954)

*Portland, Oregon Championship (8) 2007*

1. e4 d6 2. d4 ♖f6 3. ♗d2 e5 4. c3 ♗c6 5. d5 ♗e7 6. ♜d3 c6 7. c4 c5 8. ♗e2 ♗g6 9. O-O ♜e7 10. f4 exf4 11. ♗xf4 ♗xf4 12. ♜xf4 O-O 13. b3 ♗d7 14. ♜b2 ♜f6 15. ♜xf6 ♗xf6 16. ♞c2 ♗g4 17. g3 ♗e5 18. ♜e2 ♞e7 Draw

*Sicilian Najdorf*

Raleigh Foster (1970)

Mike Morris (2051)

*Portland, Oregon Championship (8) 2007*

1. e4 c5 2. ♗f3 d6 3. d4 cxd4 4. ♗xd4 ♗f6 5. ♗c3 a6 6. ♜g5 e6 7. f4 ♞c7 8. ♞f3 ♗bd7 9. g4 b5 10. ♜xf6 gxf6 11. O-O-O ♜b7 12. ♜g2 b4 13. ♗ce2 ♜c8 14. c3 ♗c5 15. ♞e3 ♗a4 16. ♜d3 ♞b6 17. b3 ♗c5 18. ♜d2 bxc3 19. ♜c2 ♞a5 20. ♗xc3 ♜h6 21. ♗f5 ♜xf4 0-1

*Reti*

Eduardo Daroza (2050)

Mike Janniro (2031)

*Portland, Oregon Championship (8) 2007*

1. ♗f3 d5 2. c4 c6 3. g3 ♗f6 4. ♜g2 g6 5. b3 ♜g7 6. ♜b2 O-O 7. O-O ♜g4 8. d4 ♗bd7 9. ♗bd2 h6 10. h3 ♜e6 11. ♜e1 b5 12. c5 ♗e4 13. ♗xe4 dxe4 14. ♗e5 ♗xe5

15. dxe5 e3 16. f4 ♞c8 17. ♖h2 ♜d8 18. ♞c1 ♜d2 19. ♜c3 ♞d7 20. ♜d1 ♜d8 21. ♜xd2 exd2 22. ♞c3 f6 23. ♜ab1 fxe5 24. fxe5 b4 25. ♞e3 ♞c7 26. ♜b2 ♜xe5 27. ♜bxd2 ♜xd2 28. ♜xd2 h5 29. h4 ♜f5 30. ♜h3 ♜xh3 31. ♖xh3 ♖g7 32. ♖g2 a5 33. ♜d1 ♖h7 34. ♜f1 ♖g7 35. ♜f3 ♜f6 36. ♞e6 ♞b7 37. ♜d3 ♞b8 38. ♜d7 ♖h6 39. ♞xc6 ♞e5 40. ♜d2 ♞e3 41. ♞d5 ♜c3 42. ♜c2 e6 43. ♞g5+ 1-0

*English Defense*

Blake Phillips (2052)

NM Carl Haessler (2205)

*Portland, Oregon Championship (8) 2007*

1. d4 e6 2. c4 b6 3. ♗f3 ♜b7 4. a3 d6 5. ♗c3 f5 6. d5 e5 7. e4 f4 8. g3 ♞f6 9. ♜h3 g5 10. ♗b5 ♖d8 11. gxf4 gxf4 12. b4 ♞h6 13. ♜e6 ♗f6 14. ♞d3 ♗bd7 15. h4 ♜e7 16. ♗g5 ♜f8 17. ♜f5 ♗e8 18. ♗e6+ ♖c8 19. ♗xf8 ♜xf8 20. ♜d2 ♖d8 21. O-O-O ♗df6 22. ♜dg1 ♗g7 23. ♜h3 ♞xh4 24. ♜f1 ♞xf2 25. ♜g2 ♞xg2 26. ♜xg2 ♜c8 27. ♜h3 h5 28. ♜xc8 ♖xc8 29. ♜g1 ♗g4 30. ♞h3 ♖b7 31. ♜xg4 hxg4 32. ♞xg4 ♗e8 33. ♞d7 a6 34. ♞c6+ ♖b8 35. ♞xe8+ ♖b7 36. ♞c6+ 1-0

*Bird's Opening*

Gunther Jacobi (1984)

NM Corey Russell (2200)

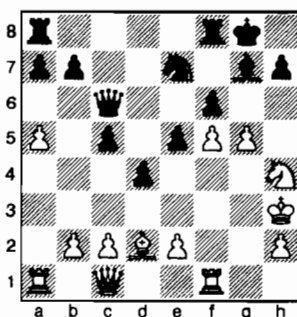
*Portland, Oregon Championship (8) 2007*

Annotations by NM Corey Russell

1. ♗c3 c5 2. f4 d5 3. g3 ♗f6 4. d3 g6 5. ♜g2 d4 6. ♗e4 ♜g7 7. ♗f3 ♗xe4 8. dxe4 O-O 9. O-O ♗c6 10. ♜d2 ♞b6 11. ♞c1 e5 12. f5 gxf5 13. ♗h4 ♗e7 14. exf5 f6 15. a4 ♜d7 16. a5 ♞c7 17. g4 ♜c6 18. g5??

This attack doesn't work for reasons that will soon be seen. Perhaps striking in the center with 18. c3 was better.

18... ♜xg2 19. ♖xg2 ♞c6+ 20. ♖h3



20. ♖g3 avoids the tactical problems he encounters, but it's hard to attack the

Black King when your own is blocking the file you need to use!

20... ffg5 21. ♜xg5 ♗xf5! 22. ♗xf5 ♜xf5! 23. ♜xf5 ♞e6 24. ♞f1 ♜f8

The point of all this is that 25. ♖g4 is no good as 25... h5+ wins. Black will regain his material with a winning attack.

25. e4 dxe3 0-1

## Round Nine

|     |                        |
|-----|------------------------|
| 7.0 | Roua                   |
| 5.0 | Russell, Phillips      |
| 4.5 | Daroza, Foster, Morris |
| 3.0 | Alpernas, Haessler     |
| 1.5 | Jacobi, Janniro        |

*Queen Pawn*

Grisha Alpernas (1954)

Raleigh Foster (1970)

*Portland, Oregon Championship (9) 2007*

1. ♗f3 d5 2. g3 ♗f6 3. ♜g2 e6 4. d4 ♜e7 5. ♗bd2 O-O 6. O-O c5 7. c3 ♗c6 8. ♜e1 ♞c7 9. e4 cxd4 10. ♗xd4 ♗xd4 11. cxd4 dxe4 12. ♗xe4 ♜d8 13. ♗xf6+ ♜xf6 14. ♜e3 ♞b6 15. ♞c2 ♜xd4 16. ♜xd4 ♜xd4 17. ♜ad1 ♜xd1 18. ♜xd1 e5 19. ♞e4 f6 20. b3 ♜b8 21. ♞c4+ ♜e6 22. ♜d5 ♜e8 23. ♜xe6+ ♞xe6 24. ♞xe6+ ♜xe6 25. ♜d7 ♜b6 26. ♖g2 h5 27. h4 ♖h7 28. ♖f3 ♜b4 29. ♖e3 ♖g6 30. f3 a5 31. ♜d5 a4 32. ♜d3 axb3 33. axb3 ♖f5 34. ♜c3 g5 35. hxg5 ffg5 36. ♖f2 ♜b6 37. ♖e3 ♜c6 38. ♜d3 h4 39. g4+ ♖e6 40. ♖f2 ♜c8 41. ♖g2 b5 42. b4 ♜c2+ 43. ♖h3 ♜f2 44. ♜c3 ♖d5 45. ♜e3 e4 46. fxe4+ ♖e5 47. ♜c3 ♖xe4 48. ♜e3+ ♖d4 49. ♜d3+ ♖e5 50. ♜e3+ ♖d4 51. ♜d3+ ♖c4 52. ♜c3+ ♖xb4 53. ♜b3+ ♖c4 54. ♜b4+ ♖d3 55. ♜d4+ ♖e3 56. ♜e4+ ♖f3 57. ♜e3+ Draw

*Nimzovich Defense*

NM Carl Haessler (2205)

Radu Roua (2174)

*Portland, Oregon Championship (9) 2007*

1. e4 ♗c6 2. d4 e5 3. d5 ♗ce7 4. ♜d3 ♗g6 5. ♗e2 ♜c5 6. O-O ♗f6 7. c4 O-O 8. ♗bc3 a6 9. a3 d6 10. b4 ♜a7 11. ♞c2 ♗g4 12. h3 ♗xf2 13. ♜xf2 ♞h4 14. ♗d1 ♜xf2+ 15. ♗xf2 ♗f4 16. ♗xf4 exf4 17. ♜b2 f3 18. ♞c3 f6 19. ♜f1 ffg2 20. ♜xg2 ♜d7 21. c5 ♜ac8 22. a4 ♜fe8 23. c6 bxc6 24. dxc6 ♜e6 25. ♞f3 ♜b8 26. ♜a3 ♜b6 27. ♜c1 ♞g5 28. ♜c3 ♜f7 29. ♖h2 h5 30. ♞g3 ♞d2 31. ♜c1 ♞d4 32. ♜a3 ♜e5 33. a5 h4 34. ♞d3 ♞xf2 35. axb6 ♜g5 36. ♞f1 ♞xb6 37. ♜c1



38.  $\text{g5}$  39.  $\text{hx4}$  40.  $\text{e5}$  41.  $\text{exd6}$  42.  $\text{g3}$  43.  $\text{f5}$  44.  $\text{f1 a5}$  45.  $\text{d3}$  46.  $\text{g4}$  47.  $\text{h4}$  48.  $\text{e2 a4}$  49.  $\text{d6 a3}$  50.  $\text{e7}$  51.  $\text{f8+}$  52.  $\text{xf7+}$  53.  $\text{xf6}$  54.  $\text{h3}$  55.  $\text{d3}$  Draw

*Torre Attack*

Mike Janniro (2031)  
Gunther Jacobi (1984)

Portland, Oregon Championship (9) 2007

1.  $\text{d4}$  2.  $\text{f3}$  3.  $\text{g5}$  4.  $\text{h4}$  5.  $\text{e3}$  6.  $\text{c6}$  7.  $\text{b6}$  8.  $\text{b3c4}$  9.  $\text{xb6}$  10.  $\text{bd2}$  11.  $\text{xd2}$  12.  $\text{f5}$  13.  $\text{f3}$  14.  $\text{e4}$  15.  $\text{g6}$  16.  $\text{e2}$  17.  $\text{d6}$  18.  $\text{g3}$  19.  $\text{f2}$  20.  $\text{b5}$  21.  $\text{xd6}$  22.  $\text{a3}$  23.  $\text{f6}$  24.  $\text{he1}$  25.  $\text{ae8}$  26.  $\text{g3}$  27.  $\text{hf8}$  28.  $\text{exd5}$  29.  $\text{exd5}$  30.  $\text{f1}$  31.  $\text{xe1}$  32.  $\text{xe1}$  33.  $\text{e8}$  34.  $\text{xe8}$  35.  $\text{h3}$  36.  $\text{d7}$  37.  $\text{xd7}$  38.  $\text{e3}$  39.  $\text{e6}$  40.  $\text{h4}$  41.  $\text{e7}$  42.  $\text{f1}$  43.  $\text{d6}$  44.  $\text{f4}$  45.  $\text{e6}$  46.  $\text{h5}$  47.  $\text{c8}$  48.  $\text{g4}$  49.  $\text{b6}$  50.  $\text{e3}$  51.  $\text{g6}$  52.  $\text{hxg6}$  53.  $\text{hxg6}$  54.  $\text{d1}$  Draw

*French Classical*

Mike Morris (2051)  
Eduardo Daroza (2050)

Portland, Oregon Championship (9) 2007

1.  $\text{e4}$  2.  $\text{d4}$  3.  $\text{c3}$  4.  $\text{g5}$  5.  $\text{e5}$  6.  $\text{fd7}$  7.  $\text{xe7}$  8.  $\text{f4}$  9.  $\text{a6}$  10.  $\text{f3}$  11.  $\text{c5}$  12.  $\text{d2}$  13.  $\text{c6}$  14.  $\text{dxc5}$  15.  $\text{xc5}$  16.  $\text{e2}$  17.  $\text{b6}$  18.  $\text{ed4}$  19.  $\text{d7}$  20.  $\text{O-O-O}$  21.  $\text{a5}$  22.  $\text{xa5}$  23.  $\text{d3}$  24.  $\text{O-O}$  25.  $\text{b3}$  26.  $\text{c6}$  27.  $\text{b2}$  28.  $\text{fc8}$  29.  $\text{c3}$  30.  $\text{c7}$  31.  $\text{he1}$  32.  $\text{e7}$  33.  $\text{g4}$  34.  $\text{ac8}$  35.  $\text{c1}$  36.  $\text{g6}$  37.  $\text{f5}$  38.  $\text{f4}$  39.  $\text{b1}$  40.  $\text{a5}$  41.  $\text{f1}$  42.  $\text{h3}$  43.  $\text{e1}$  44.  $\text{a4}$  45.  $\text{f3}$  46.  $\text{g5}$  47.  $\text{e3}$  48.  $\text{h6}$  49.  $\text{h4}$  50.  $\text{h7}$

29.  $\text{g2}$  30.  $\text{e8}$  31.  $\text{f4}$  32.  $\text{g1}$  33.  $\text{ec8}$  34.  $\text{eg3}$  35.  $\text{a3+}$  36.  $\text{c2}$  37.  $\text{g6}$  38.  $\text{d2}$  39.  $\text{g7}$  40.  $\text{h5+}$  41.  $\text{h8}$  42.  $\text{f6}$  43.  $\text{g7}$  44.  $\text{h5+}$  45.  $\text{h8}$  46.  $\text{f6}$  47.  $\text{g7}$  48.  $\text{h5g5}$  49.  $\text{f1}$  50.  $\text{c6}$  51.  $\text{gf3}$  52.  $\text{b8}$  53.  $\text{f2}$  54.  $\text{bc8}$  55.  $\text{fxe6}$  56.  $\text{g6}$  57.  $\text{e7}$  58.  $\text{d3}$  59.  $\text{bd7}$  60.  $\text{xd7}$  61.  $\text{xd7}$  62.  $\text{f6}$  63.  $\text{xf6}$  64.  $\text{exf6+}$  65.  $\text{f8}$  66.  $\text{fxe7+}$  67.  $\text{xe7}$  68.  $\text{g6}$  69.  $\text{d7}$  70.  $\text{f7+}$  71.  $\text{d6}$  72.  $\text{h7}$  73.  $\text{f8}$  74.  $\text{f7}$  75.  $\text{d8}$  76.  $\text{d3}$  77.  $\text{e5}$  78.  $\text{b5}$  79.  $\text{xb5}$  80.  $\text{xb5}$  81.  $\text{d4}$  82.  $\text{c4}$  83.  $\text{b6}$  84.  $\text{d3}$  85.  $\text{d6}$  86.  $\text{d7}$  87.  $\text{1-0}$

*Sicilian Najdorf*

NM Corey Russell (2200)  
Blake Phillips (2052)

Portland, Oregon Championship (9) 2007

Annotations by NM Corey Russell  
1.  $\text{e4}$  2.  $\text{c5}$  3.  $\text{f3}$  4.  $\text{d6}$  5.  $\text{cxd4}$  6.  $\text{d4}$  7.  $\text{cxd4}$  8.  $\text{f6}$  9.  $\text{c3}$  10.  $\text{a6}$  11.  $\text{g5}$  12.  $\text{e6}$  13.  $\text{d3}$  14.  $\text{b5}$  15.  $\text{a3}$  16.  $\text{bd7}$  17.  $\text{f3}$  18.  $\text{b7}$  19.  $\text{O-O-O}$  20.  $\text{c8}$  21.  $\text{b1}$  22.  $\text{e7}$  23.  $\text{h4}$  24.  $\text{e5}$  25.  $\text{d2}$  26.  $\text{c4}$

I was happy to see this move, as it allows me to trade a piece (r1-Bishop) that I moved zero times for a piece of his that moved three times.

14.  $\text{xc4}$  15.  $\text{xc4}$  16.  $\text{d3}$

Protects e4 so I can play f2-f4 at some point. The move also has a strange positional threat: a3-a4! and Black's queenside collapses, for the b5-pawn can't move, as it's protecting the Rook.

15...  $\text{c8}$

Black parries the threat.

16.  $\text{de2}$

Prevents ...d6-d5.

16...  $\text{h6}$  17.  $\text{xf6}$  18.  $\text{xf6}$

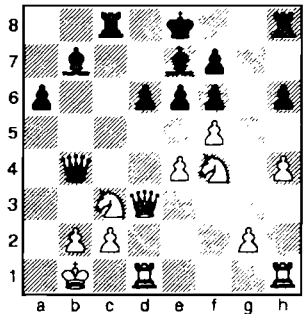
17...  $\text{xf6}$ ? doesn't work, since 18.  $\text{xd6}$  19.  $\text{d7+}$  20.  $\text{xb7}$  picks up a Bishop.

18.  $\text{f4}$  19.  $\text{b6}$  20.  $\text{b4}$  21.  $\text{xb4}$  22.  $\text{f4}$

With this move, White was offering a pawn with 19...  $\text{exf5}$  20.  $\text{exf5}$   $\text{g2}$  21.  $\text{he1}$ , but Black (correctly) deduced that White would get excellent compensation.

19...  $\text{b4}$  20.  $\text{xb4}$  21.  $\text{xb4}$  22.  $\text{f4}$

If 21...  $\text{exf5}$  22.  $\text{he1}$  with initiative.



21...  $\text{c4}$ !

Forcing a level position.

22.  $\text{fxe6}$  23.  $\text{xc4}$  24.  $\text{xc4}$  25.  $\text{xe6}$  26.  $\text{xe4}$  27.  $\text{xe4}$  28.  $\text{de1}$  29.  $\text{xe1+}$  30.  $\text{xe1}$  31.  $\text{d7}$  32.  $\text{f4}$  Draw

I offered a draw because I thought overall the position was level. White does have the better pawn structure and a better minor piece, but Black will have an active Rook and better King position, so I thought that leveled it out. ■

**Washington Chess Federation (WCF)/Oregon Chess Federation (OCF)**

**Adult:** \$25/year (12 issues). Residents of OR and WA become members and receive *NWC* via periodicals mail each month. **Junior:** \$17/year (12 issues) or \$10/6 months (6 issues). Must be under age 20 at expiration. OR/WA residents only; state membership included. Juniors receive *NWC* each month. **USA Subscriber:** \$25/year (12 issues). For subscribers living inside the US mail system, but outside the OR/WA area. Subscribers receive *NWC* each month. **Family:** \$5/year (not a subscription — membership only). This class of membership is open only to co-resident of an Adult or Junior member. Expires at the same time. **Trial:** \$13 (membership and subscription, expires in 3 months). By paying the balance of dues for an Adult membership before the trial status is expired, this option can be extended to 12 months.

**OCF/WCF Membership Application/Renewal Form**

Name \_\_\_\_\_ If Junior, give date of birth \_\_\_\_\_  
 E-Mail (if you want to subscribe to the *Northwest Chess* e-mail mailing list) \_\_\_\_\_  
 Phone Number (optional, will not be used for telemarketing) (\_\_\_\_\_) \_\_\_\_\_  
 Street or P.O. Box \_\_\_\_\_  
 City \_\_\_\_\_ State \_\_\_\_\_ Zip \_\_\_\_\_  
 Country (if not USA) \_\_\_\_\_ Amount Enclosed \$ \_\_\_\_\_

Make check or money order (USA \$ only) out to Northwest Chess and mail to:

Eric Holcomb, NW Chess Business Manager  
 PMB 342  
 12932 SE Kent-Kangley Rd.  
 Kent WA 98030-7940



# News from the East

## Westside Reigns in Inland Empire

by Kevin Korsmo

Paul Barton and Josh Sinanan won the 2007 Inland Empire Open. Their 4.5 scores topped the 39 player field. Dan Mathews, the 2006 champion, finished third with a 4.0 score. The tourney title went to the very end. Sinanan stopped John Julian in one of the last contests of the day. Bartron then upended top seed Dave Sprenkle in the very last game of the tourney to share the title with Sinanan.

The Class A prizes were shared by Chris Kalina and Michael Murray, each of whom scored 2.5. The Class B prizes were split by Cyrus Desmarais and John Walton, both of whom also scored 3.5. The Class C prizes were won by Ryan Ackerman and Travis Elisara. Ackerman also won the prize for the second largest upset.

The Class D category was won by Taylor Coles. Taylor, the lowest rated player in the tourney, scored an impressive 3.0 en route to claiming the section prize. The second place in Class D was split between Elliott Chow and Jim Waugh. Waugh, the oldest player in the event, celebrated his 78th birthday on the final day of play. Way to go, Jim! The largest upset prize was secured by Scott Engelhard.

The Inland Empire Open, first played in 1954, is the oldest weekend tournament in Eastern Washington and one of the longest running events in the state.

## Julian Tops Montana Open

by Bill McBroom

Missoula hosted the 72nd State Open the weekend of April 21-22. A total of 35 players participated—the largest turnout in a number of years. Arman Goplen came all the way from North Dakota and he brought a friend, Steven Legenfelder. The Harmans brought their young sons (Carl, 12, and Luke, 8) from Boise. Luke did well and got the respect of every player with whom he played. This was virtually a certainty after beating a strong “A” player in the first round. And, of course, our friends from Spokane (and environs) came out in force, contributing ten to the total.

John Julian of Spokane started on board one and stayed there for five rounds. In earning his first place with 4 ½ points (and \$175), he was obliged to take on a C player, a strong B player and three A players. There was a three-way tie for second-third involving Michael Murray (Seattle), Phil Weyland (Post Falls), and Zach Countryman (Spokane)—each had a score of four points and shared \$150. The best the C players could do was an even score, and this was accomplished by Ron Weyland of Post Falls, ID, Missoula’s Bob Rajala, and eight-year-old Luke Harman from Boise. In contrast, one D player

(Ward Chow of Spokane) and a Missoula unrated (Eric Eklund) each earned a plus score of three points.

As usual, the annual business meeting was conducted between rounds four and five. Dan McCourt, reelected as Secretary/Treasurer will soon have notes available. The State Open concludes the 2006-2007 grand prix cycle and is the last part of the process of seeding six players into the Closed/Barto (June 9-10 in Butte). The qualifiers and alternates will be identified as soon as the Open’s grand prix points are calculated and their names will be posted on the MCA web site. Billings is the site for the 2008 State Open and the new Executive Board will soon select a date and secure a location.

As an aside—and a learning experience—there was a dispute in a game during this year’s Open. Two players, each of whom commented a number of times over the board that their game was “drawish” or “drawn,” had a different understanding as to whether they had in fact agreed to a draw. Given the absence of clear-cut evidence, the T.D. declared the game drawn and was upheld by an on-site appeals committee. The lesson of this is to make sure you and your opponent have the same understanding and promptly sign both score sheets with the outcome indicated. Despite temptation, leave the playing hall for any analysis or “what-ifs.” Analysis in the playing hall is not only proscribed in most tournaments, but it also risks the sort of misunderstanding described here.

## Spokane Out-of-Towners’ GP

It will run at the same time as the next Spokane Grand Prix from Aug. 1, 2007 thru July 31st 2008 and follows the same scoring rules. The prize however is a bit different. The out-of-town player with the most points will get free entry into ALL NWGP Spokane Chess Club Grand Prix events the following year: August 1, 2008 through July 31, 2009.

This is NOT a cash prize and CAN’T be used by anyone else.

Spokane Grand Prix scoring system:

|                |    |                 |            |
|----------------|----|-----------------|------------|
| 1st Overall    | 25 | Draw            | 0.5        |
| 2nd Overall    | 15 | Loss            | 0          |
| 3rd Overall    | 10 | Biggest Upset** | 2.5pts     |
| Section Winner | 5  | Upset Win       | .5pt       |
| Quad Winner    | 5  | Upset Draw      | .25        |
| Participation* | 1  | Rating Bonus*** | .05/rtg pt |
| Win            | 1  |                 |            |

\* no forfeit or withdrawals    \*\* (established ratings only)

\*\*\* For every rating point that your 7/31/2008 rating is above your rating of 8/1/2007, you gain an extra .05 points (established ratings only).

All games/events with a time control of G/60 or less will be scored at a rate of 50%.

Since I’m a number crunching nut, I checked out who would have won last year and who would be leading now as well. If you are interested I’ll send you those results just email me at [www.dbgffn@hotmail.com](mailto:www.dbgffn@hotmail.com).

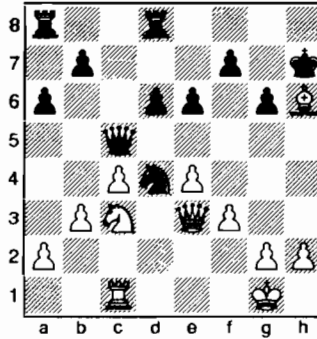
# Games from the Oregon Junior Championship

## Sicilian Alapin

Steven Breckenridge (1948)  
Blake Phillips (2052)

Portland, OR Junior Championship (1) 2007

1.e4 c5 2.c3 ♟f6 3.e5 ♟d5 4.d4 cxd4  
5.cxd4 e6 6.♟f3 d6 7.♟c3 ♟xc3 8.bxc3  
♟c6 9.♟f4 ♟a5 10.♟d2 d5 11.♟d3 b6  
12.O-O ♟a6 13.a4 ♟c8 14.♟fb1 ♟xd3  
15.♟xd3 ♟b8 16.♟b5+ ♟c6 17.♟d3  
Draw

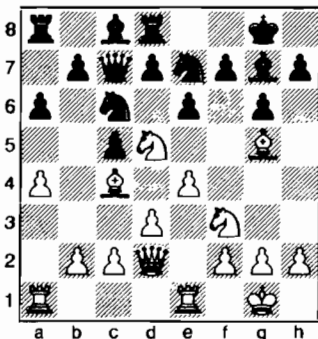


## Sicilian

Robert Holler (1735)  
Marcus Robinson (1765)

Portland, OR Junior Championship (1) 2007

1.e4 c5 2.♟c3 e6 3.♟f3 ♟c6 4.♟c4 g6  
5.O-O ♟g7 6.d3 ♟ge7 7.♟e1 O-O  
8.♟g5 a6 9.a4 ♟c7 10.♟d2 ♟d8  
11.♟d5



11...exd5 12.exd5 ♟e8 13.dxc6 dxc6  
14.♟e3 ♟f8 15.♟xc5 ♟xb2 16.♟ab1  
♟g7 17.♟e2 f6 18.♟d2 ♟g4 19.♟a5  
♟d7 20.♟be1 ♟xf3 21.♟e6 b6 22.  
♟xd7 bxc5 23.gxf3 f5 24.♟xe8 ♟xe8 25.  
♟b6 ♟d4 26.♟c7 ♟c3 27.♟b1 1-0

## Sicilian Moscow

Drew Serres (1990)  
Daniel Gay (1902)

Portland, OR Junior Championship (1) 2007

1.e4 c5 2.♟f3 d6 3.♟b5+ ♟d7 4.♟xd7+  
♟xd7 5.O-O g6 6.d4 cxd4 7.♟xd4 ♟f6  
8.♟e1 ♟g7 9.c4 ♟c6 10.♟c3 ♟g4 11.f3  
♟h4 12.♟e3 O-O 13.♟d2 h6 14.♟ac1  
a6 15.♟de2 ♟e5 16.b3 ♟fd8 17.♟f4  
♟h5 18.♟cd5 e6 19.♟c3 ♟xf4 20.♟xf4  
♟h7 21.♟ed1 ♟c6 22.♟e3 ♟d4 23.  
♟xd4 ♟xd4 24.♟g3 ♟g5 25.♟f4 ♟c5  
26.♟xh6

26...g5 27.♟xg5 ♟g8 28.♟f4 e5 29.♟d1  
♟xf3+ 30.♟f2 ♟h4 31.♟g3 ♟xe3+  
32.♟xe3 ♟xg2+ 33.♟f3 ♟f4 34.♟xf4  
exf4 35.♟xd6 ♟ad8 36.♟xd8 ♟xd8  
37.♟d5 b5 38.c5 f5 39.♟xf4 fxe4 40.  
♟xe4 ♟g7 41.c6 ♟d6 42.c7 ♟c6 43.h4  
♟f7 44.h5 ♟g7 45.♟e5 ♟h6 46.b4  
♟g7 47.♟e4 ♟h6 48.♟f5 ♟g7 49.♟g5  
♟h7 50.♟f6+ ♟g7 51.h6+ ♟f7 52.♟d5  
♟g6+ 53.♟f5 ♟c6 54.a3 ♟c1 55.h7  
♟g7 56.♟e6 ♟xh7 57.♟d7 ♟d1 58.  
♟c6 ♟c1+ 59.♟b7 ♟d1 60.♟b6 1-0

## King's Indian Four Pawns

Daniel Gay (1902)  
Steven Breckenridge (1948)

Portland, OR Junior Championship (2) 2007

1.e4 g6 2.d4 ♟g7 3.c4 d6 4.♟c3 ♟f6  
5.f4 O-O 6.♟f3 e5 7.dxe5 dxe5 8.♟xd8  
♟xd8 9.♟xe5 ♟bd7 10.♟xd7 ♟xd7  
11.♟e3 ♟f6 12.♟d1 ♟xd1+ 13.♟xd1  
♟g4+ 14.♟e2 ♟d8+ 15.♟e1 ♟e8 16.e5  
♟xe2 17.♟xe2 ♟e4 18.♟f1 ♟e6 19.  
♟d4 ♟a6 20.a3 ♟a4 21.♟e2 c5 22.♟f3  
f5 23.♟d3 b5 24.♟c1 b4 25.♟a1 g5  
26.g3 ♟a6 27.♟d2 gxf4 28.gxf4 ♟xd2  
29.♟xd2 ♟h6 30.♟h1 ♟h4 31.♟e2  
bxa3 32.bxa3 ♟h6 33.♟f3 ♟h3+ 34.♟f2  
♟f7 35.a4 a6 36.♟b1 ♟xh2+ 37.♟g3  
♟c2 38.♟b6 ♟g7 39.e6+ ♟f6 40.♟xc5  
♟xc4 41.e7+ ♟f7 42.♟b8 ♟c3+ 43.  
♟g2 ♟e3 44.♟f8+ 1-0

## Dutch Leningrad

Blake Phillips (2052)  
Marcus Robinson (1765)

Portland, OR Junior Championship (2) 2007

1.d4 f5 2.g3 g6 3.♟g2 ♟g7 4.♟f3 ♟f6  
5.O-O d6 6.c4 O-O 7.♟c3 ♟e8 8.d5 ♟a6  
9.♟b1 ♟b8 10.♟d4 e5 11.dxe6 ♟xe6

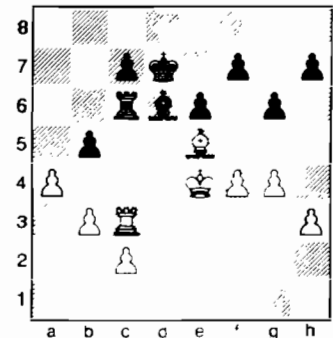
12.♟xe6 ♟xe6 13.b3 ♟fe8 14.♟e3 c6  
15.♟xa7 ♟bd8 16.♟d4 ♟c7 17.♟c2 d5  
18.cxd5 ♟cxd5 19.♟xd5 ♟xd5 20.♟xg7  
♟xg7 21.e3 ♟e5 22.♟xd5 ♟xd5  
23.♟b2 ♟xb2 24.♟xb2 ♟ed8 25.♟c1  
♟f6 26.♟f1 ♟e5 27.♟e2 c5 28.a4 b6  
29.h4 h6 30.♟cc2 ♟d1 31.a5 bxa5  
32.♟xc5+ ♟1d5 33.♟c6 ♟8d6  
34.♟xd6 ♟xd6 35.♟c2 ♟e6 36.♟c3 g5  
37.h5 ♟f6 38.f4 gxf4 39.gxf4 ♟a6  
40.♟c4 ♟b6 41.♟c3 ♟a6 42.♟d3 a4  
43.bxa4 ♟xa4 44.♟c6+ ♟g7 45.♟g6+  
♟h7 46.♟f6 ♟a5 47.♟d4 ♟g7 48.  
♟g6+ ♟h7 49.♟e6 ♟g7 50.♟e5 ♟a4+  
51.♟d5 ♟a5+ 52.♟e6 ♟a1 53.♟xf5  
♟h1 54.♟e6 ♟d1 55.♟d5 1-0

## Center-Counter

Robert Holler (1735)  
Drew Serres (1990)

Portland, OR Junior Championship (2) 2007

1.e4 d5 2.exd5 ♟xd5 3.♟c3 ♟d6 4.♟f3  
♟f6 5.♟c4 ♟g4 6.d3 a6 7.♟e3 e6  
8.♟e2 ♟e7 9.O-O-O ♟bd7 10.♟e4 ♟c6  
11.h3 ♟xf3 12.♟xf3 ♟e5 13.♟xf6+  
♟xf6 14.♟xc6+ ♟xc6 15.g4 ♟a5 16.f4  
O-O-O 17.♟hf1 ♟xc4 18.dxc4 ♟xd1+  
19.♟xd1 ♟d8 20.♟d3 ♟d6 21.b3 ♟c6  
22.♟d2 g6 23.♟d4 ♟e7 24.a4 ♟d6  
25.♟f3 ♟c5 26.♟e5 ♟d7 27.♟d3 ♟d6  
28.♟e4 b5 29.cxb5 axb5 30.♟c3



30...f5+ 31.♟d4 ♟xe5+ 32.fxe5 ♟xc3  
33.♟xc3 bxa4 34.bxa4 ffg4 35.hxg4 h6  
36.♟d4 ♟c6 37.c3 ♟b6 38.♟c4 ♟a5  
39.♟c5 h5 40.gxh5 gxh5 41.♟c6 h4  
42.♟xc7 h3 43.♟d6 h2 44.♟xe6 h1=♟  
45.♟d6 ♟d1+ 46.♟e7 ♟d3 47.e6 ♟xc3  
48.♟f7 ♟c4 49.♟f6 ♟f4+ 50.♟g6 ♟f8  
51.♟g5 ♟xa4 52.♟g6 ♟b5 53.♟g5

♖c6 54. ♖g6 ♖d6 55. e7 ♖xe7 56. ♖h7 ♜f6 57. ♖g8 ♜g5+ 58. ♖h8 ♖f7 0-1

*Sicilian Najdorf*

Daniel Gay (1902)  
Blake Phillips (2052)

Portland, OR Junior Championship (3) 2007

1. e4 c5 2. ♘f3 d6 3. d4 cxd4 4. ♘xd4 ♘f6 5. ♘c3 a6 6. ♗e3 e5 7. ♘b3 ♗e6 8. f3 h5 9. ♘d5 ♘xd5 10. exd5 ♗f5 11. ♗d3 ♗xd3 12. ♜xd3 ♘d7 13. O-O-O ♗e7 14. ♖b1 ♗g5 15. ♗xg5 ♜xg5 16. ♜d2 ♜xd2 17. ♘xd2 ♗c8 18. ♘e4 ♖e7 19. ♗he1 f6 20. ♗e3 ♘c5 21. ♘xc5 ♗xc5 22. ♗b3 b5 23. a4 f5 24. axb5 axb5 25. ♗a3 ♗hc8 26. c3 g5 27. ♗a7+ ♗8c7 28. ♗a8 ♗c8 29. ♗a7+ ♗8c7 30. ♗a8 Draw

*Sicilian Alapin*

Steven Breckenridge (1948)  
Robert Holler (1735)

Portland, OR Junior Championship (3) 2007

Annotations by FM Chuck Schulien

1. e4 c5 2. c3 ♘c6 3. d4 cxd4 4. cxd4 d5 5. exd5 ♜xd5 6. ♘f3 ♗g4 7. ♗e2 ♘f6 8. ♘c3 ♜d7?

Black innocently sets himself up for a deadly pin. Slower development and lack of space make the Black position tactically fragile in the early stages of many Sicilian lines. Tactical vigilance is a must. 8... ♜a5 is the standard move, after which Black seems to have a reasonable position. A few examples:

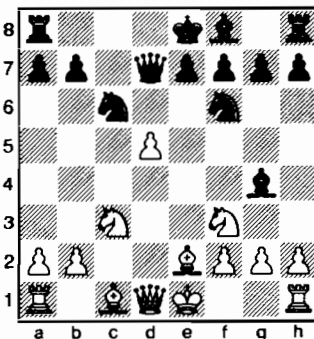
9. h3 ♗h5 10. O-O e6 11. ♗e3

A) 11... ♗d6 12. a3 O-O

A1) 13. b4 ♜d8 14. ♜b3 ♗e8 15. ♗ad1 ♘d5 16. ♘e4 a5 17. ♘c5 axb4 18. axb4 ♜b6 19. b5 ♘xd4 20. ♘xd4 ♗xe2 21. ♘xe2 ♗xc5 22. ♗xc5 ♜xc5 Finkel-Sermek, Olomouc 1996 (0-1, 40);

A2) 13. ♜b3 ♗ab8 14. ♗fd1 ♗fd8 15. ♜b5 ♜xb5 16. ♘xb5 ♘d5 17. ♘xd6 ♗xd6 18. ♖f1 f6 19. ♗ac1 ♗bd8 20. g4 ♗e8 21. ♘d2 ♘ce7 22. ♘e4 ♗c6 23. ♗xc6 ♗xc6 24. ♘c3 ♖f7 25. ♘xd5 ♘xd5 26. ♗d3 g5 27. ♖e2 ♗h8 28. ♗e4 h5 29. ♗xd5 ♗xd5 30. ♗g1 a5 31. ♗d2 a4 32. ♗c3 hxg4 33. hxg4 ♗h3 Brady-Nisipeanu, Saint Vincent 2004 (0-1, 54);

B) 11... ♗e7 12. a3 O-O 13. b4 ♜c7 14. ♗c1 a6 15. ♘e5 ♗xe2 16. ♘xe2 ♗fc8 17. ♜a4 ♘d5 18. ♘xc6 bxc6 19. ♗c2 a5 Viering-Van Wely, Netherlands 1992 (0-1, 28).



Due to the potential pin ♗b5 (if the Knight moves), White is winning. As the appended games illustrate, Robert is hardly the first player to walk into this trap.

9... ♗xf3 10. gxf3 a6 11. dxc6 ♜xc6 12. ♜a4

12. O-O ♗d8 13. ♜a4 ♗d6 14. ♜xc6+ ♗xc6 15. ♗e3 e5 16. ♗ac1 ♗e7 17. ♘e4 ♗xc1 18. ♗xc1 ♘d5 19. ♗c8+ ♗d8 20. ♘c5 ♘f6 21. ♗b8 O-O 22. ♘xb7 1-0 Verhaegen-Ulburghs, Leuven 1994;

12. ♗e3 e6 13. ♜b3 ♗d8 14. ♗d1 ♗c8 15. a3 g6 16. ♜b6 ♜xb6 17. ♗xb6 ♗g7 18. ♗d4 O-O 19. O-O ♗fe8 20. f4 ♗ed8 21. ♗e5 ♗e8 22. ♗f3 ♗e7 23. ♗d3 h6 24. ♗fd1 ♗ee8 25. ♗xb7 ♗c5 26. b4 ♗xe5 27. fxe5 ♘g4 28. f4 g5 29. h3 gxf4 30. hxg4 ♗xe5 31. ♗d8 ♗xd8 32. ♗xd8+ ♖g7 33. ♘e4 f5 34. gxf5 exf5 35. ♘f2 ♗c7 36. ♗d7+ ♖g6 37. ♗xc7 1-0 Staszewska-Marciniak, Zamosc 1999;

12. ♗g1 b5 13. ♗f4 ♗d8 14. ♜b3 ♘d7 15. ♗c1 ♜b7 16. ♘d5 ♗c8 17. ♗xc8+ ♜xc8 18. ♘c7+ ♖d8 19. ♜xf7 ♘f6 20. ♗g5 ♜d7 21. ♘e6+ ♖c8 22. ♗c5+ ♖b7 23. ♗c7+ 1-0 Huger-Seibert, Erlangen 1999.

12... ♗c8

12... ♜xa4 13. ♘xa4 b5 14. ♘c3 e6 15. O-O ♗b4 16. ♘e4 ♘d5 17. a3 ♗e7 18. ♗d2 O-O 19. ♘c3 ♘f6 20. ♗fd1 ♗ac8

21. ♗ac1 h6 22. ♗e3 ♗fd8 23. ♗xd8+ ♗xd8 24. ♘e4 ♘d5 25. ♗c6 ♗a8 26. ♗c5 ♗h4 27. ♗d6 ♗d8 28. ♘c5 ♗b6 29. ♗d3 ♗xc5 30. ♗xc5 ♘f4 31. ♗e4 ♗d8 32. ♗d6 ♗c8 33. ♗e3 1-0 Dudas-Bokros, Turul 2003.

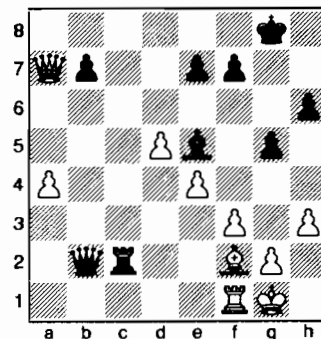
13. ♗d2 g6 14. ♘b5 ♗g7 15. ♗c1 1-0

*Grünfeld Exchange*

Marcus Robinson (1765)  
Drew Serres (1990)

Portland, OR Junior Championship (3) 2007

1. d4 ♘f6 2. c4 g6 3. ♘c3 d5 4. cxd5 ♘xd5 5. e4 ♘xc3 6. bxc3 ♗g7 7. ♗g5 c5 8. ♗c1 O-O 9. ♘f3 ♗g4 10. ♗e2 cxd4 11. cxd4 ♗xf3 12. ♗xf3 ♘c6 13. d5 ♘e5 14. O-O ♘xf3+ 15. ♜xf3 ♜d7 16. ♜a3 ♗fe8 17. ♗fd1 h6 18. ♗f4 ♜g4 19. ♜e3 g5 20. ♗g3 ♗ec8 21. f3 ♜d7 22. ♗xc8+ ♗xc8 23. ♜xa7 ♜b5 24. h3 ♜b2 25. ♗f2 ♗c2 26. a4 ♗e5 27. ♗f1




27... ♗xf2 28. ♗xf2 ♗d4 29. ♜b8+ ♖h7 30. ♜g3 0-1

*Pirc Austrian Attack*

Drew Serres (1990)  
Steven Breckenridge (1948)

Portland, OR Junior Championship (4) 2007

1. e4 d6 2. d4 g6 3. ♘c3 ♗g7 4. f4 ♘f6 5. ♘f3 O-O 6. ♗d3 ♘c6 7. O-O ♗g4 8. ♗e3 e5 9. fxe5 dxe5 10. d5 ♘d4 11. ♗e2 ♘xe2+ 12. ♜xe2 ♘h5 13. ♜d2 f5 14. h3 ♗xf3 15. ♗xf3 f4 16. ♗c5 ♗f7 17. ♗d1 b6 18. ♗f2 ♜d7 19. ♜e2 g5 20. ♜c4 ♘f6 21. ♜c6 ♗d8 22. ♜xd7 ♗fxd7 23. ♗fd3 h5 24. ♖f1 ♗f8 25. a3 ♗g7 26. ♗e1 a6 27. ♘b1 ♗e7 28. c4 g4 29. ♗h4 ♗f8 30. ♗xf6 ♗xf6 31. ♘c3 f3 32. hxg4 hxg4 33. b4 ♗h7 34. gxf3 gxf3 35. ♗ee3 ♗h1+



**Carl A. Haessler**  
Lessons • Lectures • Exhibitions

USCF Life Master  
3-Time Oregon Champion

(503) 358-7871  
ssmith6154@aol.com

36. ♖f2 ♖h2+ 37. ♖f1 ♖h1+ 38. ♖f2 ♖g6 39. ♖xf3 ♖h4 40. ♖d1 ♖h2 0-1

**Bogo-Indian**

**Blake Phillips (2052)**  
**Robert Holler (1735)**

*Portland, OR Junior Championship (4) 2007*

1.d4 ♖f6 2.c4 e6 3.♗f3 ♖b4+ 4.♗bd2 O-O 5.a3 ♖xd2+ 6.♖xd2 d5 7.♖g5 b6 8.e3 ♖a6 9.♖c1 ♗bd7 10.cxd5 ♖xf1 11.♖xf1 exd5 12.♖c6 ♖e8 13.♖c2 ♖c8 14.♖f5 ♖e7 15.♖e2 ♖e4 16.♖xe4 dxe4 17.♗d2 ♖e6 18.♖xe6 fxe6 19.♖c1 ♖f7 20.♖xf6 ♗xf6 21.f3 exf3+ 22.gxf3 ♖e7 23.f4 g6 24.b4 ♖d7 25.♖d3 ♖f8 26.♗f3 ♗d5 27.♗e5+ ♖d8 28.h4 a6 29.♖g1 ♖f5 30.♖g5 ♗e7 31.♗g4 b5 32.♖e4 ♗d5 33.♗h6 ♖f6 34.♖g3 ♖f8 35.♖e5 ♖d7 36.h5 ♗e7 37.hxg6 ♗xg6+ 38.♖e4 ♖d6 39.♖g5 c6 40.f5 exf5+ 41.♗xf5+ ♖e6 42.♖h5 ♖f7 43.♗h4 ♗xh4 44.♖xh4 ♖d6 45.♖h6+ ♖d7 46.♖d3 ♖c7 47.♖e2 ♖e7 48.♖d3 ♖f7 49.♖h3 ♖d6 50.e4 ♖c7 51.e5 ♖d7 52.♖e4 ♖e7 53.♖h6 ♖c7 54.♖f5 ♖d7 55.♖h4 ♖e7 56.♖g4 ♖d7 57.♖g8 ♖e7 58.♖f6 ♖d7 59.♖g7 h5 60.♖xd7+ ♖xd7 61.♖f7 h4 62.e6+ ♖d6 63.e7 h3 64.e8=♖ ♖d5 65.♖e6+ ♖xd4 66.♖xh3 ♖c4 67.♖e3 a5 68.bxa5 b4 69.♖e4+ ♖b3 70.♖xb4+ ♖a2 71.a6 c5 72.♖xc5 ♖a1 73.a7 ♖a2 74.a8=♖ ♖a1 75.♖g2 ♖b1 76.♖cg1 mate

**King's Indian Four Pawns**

**Marcus Robinson (1765)**  
**Daniel Gay (1902)**

*Portland, OR Junior Championship (4) 2007*

1.d4 ♗f6 2.c4 g6 3.♗c3 ♖g7 4.e4 d6 5.f4 O-O 6.♗f3 c5 7.d5 e6 8.♖e2 exd5 9.cxd5 ♖g4 10.O-O ♗bd7 11.h3 ♖xf3 12.♖xf3 ♖e8 13.g4 h6 14.h4 h5 15.♖g2 hxg4 16.♖xg4 ♗xe4 17.♗xe4 ♖xe4 18.h5 gxh5 19.♖xd7 ♖xd7 20.♖xh5

♖b5 21.♖f2 ♖ae8 22.f5 ♖e2 23.f6 ♖xf6 24.♖g4+ ♖g7 25.a4 ♖d3 26.♖a3 ♖xf2+ 27.♖xf2 ♖c2+ 0-1

**London System**

**Robert Holler (1735)**  
**Daniel Gay (1902)**

*Portland, OR Junior Championship (5) 2007*

1.d4 ♗f6 2.♗f3 g6 3.♖f4 ♖g7 4.♗bd2 d6 5.e3 O-O 6.♖e2 ♗fd7 7.O-O e5 8.♖g3 ♗c6 9.c3 ♖h8 10.♖c2 f5 11.h3 g5 12.d5 ♗cb8 13.♖ac1 h5 14.♖h1 f4 15.♖h2 g4 16.♗g1 ♖g5 17.♗e4 ♖g6 18.♗d2 ♖g5 19.♗e4 ♖g6 20.♖d3 ♖h6 21.♖e2 ♗f6 22.c4 ♗bd7 23.b4 ♗xe4 24.♖xe4 ♗f6 25.♖b1 ♗h7 26.♖xh7 ♖xh7 27.c5 f3 28.gxf3 gxf3 29.♖c4 ♖g6 30.♖g3 e4 31.h4 ♖e5 32.♗xf3 ♖xf3 33.♖g1 ♖f5 34.♖g2 ♖xg3 35.fxg3 ♖d7 36.♖d4+ ♖h7 37.♖cg1 ♖f8 38.cxd6 cxd6 39.♖c3 ♖f1 0-1

**Grünfeld Exchange**

**Blake Phillips (2052)**  
**Drew Serres (1990)**

*Portland, OR Junior Championship (5) 2007*

Annotations by NM Peter Prochaska

1.d4 ♗f6 2.c4 g6 3.♗c3 d5 4.cxd5 ♗xd5 5.e4 ♗xc3 6.bxc3 ♖g7 7.♖g5 c5 8.♖c1 cxd4 9.cxd4 O-O 10.d5 f5

10...♖a5+ 11.♖d2 ♖xd2+ 12.♖xd2 e6 13.♗f3 exd5 14.exd5 ♗d7 15.♖c4 ♗c5 16.♖e7 ♖h6+ 17.♖c3 ♗e4+ 18.♖b4 ♖f5 19.♗d4 a5+ 20.♖a3 ♖xc1+ 21.♖xc1 ♖fc8 22.♗xf5 gxf5 23.♖b2 ♖g7 24.f3 ♗f6 25.a4 ♗g8 26.♖h4 ♗f6 27.♖g3 ♖g6 28.♖c3 ♗d7 29.♖b5 ♗b6 30.♖d3 f6 31.d6 ♗c4+ 32.♖b3 ♗e5 33.d7 ♖g8 34.♖d6 ♖f7 35.♖h4 ♖e7 36.♖xf6 ♗xd7 37.♖h6+ 1-0 Milov-Howell, Catalan Bay 2007

11.♖c4 ♖h8 12.exf5 ♖xf5 13.♖e2 13.♗f3

13...♖a5+ 14.♖d2 ♖a3 15.g4 ♖d7 16.h4 ♖d4 17.♖h3 ♖c5?

A very bad spot for Black's Queen. Better is 17...♖d6.

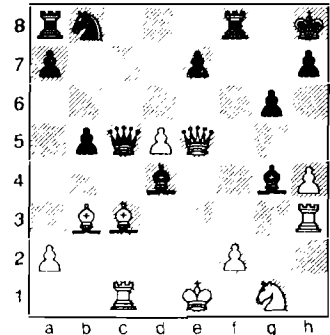
18.♖c3!?

18.♖f3 is safer.

18...b5 19.♖b3 ♖xg4?

A very tempting attack, but 19...♗a6 finishes development and, not incidentally, guards the Black Queen.

20.♖e5+!



A very nice, winning tactical blow.

20...♖xe5 21.♖xe5+ ♖g8 22.♖xc5 ♗d7 23.d6+ e6 24.♖hc3

24.♖xb5 is much sharper: 24...♖xh3 25.♗xh3 ♗xe5 26.♖xe5 +-.

24...♗xc5

24...b4

25.♖xc5 ♖ac8 26.♖xc8 ♖xc8 27.♖f6 ♖c1+ 28.♖d2 ♖c6 29.♖e5 ♖f7 30.♗e2 ♖xe2 31.♖xe2 a5 32.♖d2 a4 33.♖c2 ♖c5 34.f4 ♖e8 35.a3 ♖d7 36.♖d3 ♖c6 37.♖e3 ♖c1 38.♖e4+ ♖d7 39.♖d3 ♖c6 40.♖xb5+ ♖xb5 41.d7 1-0

**From the Business Manager**

If you joined or renewed at the Washington Open, thank you and welcome to Northwest Chess! Please address any questions or concerns to the Business Manager as listed on the inside front cover of the magazine.

|                        | Pre  | BP | DG | SB | DS | RH | MR | Total | Post |
|------------------------|------|----|----|----|----|----|----|-------|------|
| <b>B. Phillips</b>     | 2052 | ♖  | ½  | ½  | 1  | 1  | 1  | 4     | 2058 |
| <b>D. Gay</b>          | 1898 | ½  | ♖  | 1  | 0  | 1  | 1  | 3½    | 1917 |
| <b>S. Breckenridge</b> | 1934 | ½  | 0  | ♖  | 1  | 1  | ½  | 3     | 1938 |
| <b>D. Serres</b>       | 1990 | 0  | 1  | 0  | ♖  | 1  | 1  | 3     | 1986 |
| <b>R. Holler</b>       | 1735 | 0  | 0  | 0  | 0  | ♖  | 1  | 1     | 1727 |
| <b>M. Robinson</b>     | 1765 | 0  | 0  | ½  | 0  | 0  | ♖  | ½     | 1741 |

# 2007 Clark Harmon Memorial Northwest Grand Prix

Murlin Varner, administrator  
13329 208th Ave. NE  
Woodinville WA 98077  
mevjr54@yahoo.com

The 2007 edition of the grand prix has been named in honor of our recently passed friend, Clark Harmon. I do not have a full list of the donors, but I thank them. Clark was a friend of mine for many years, although the only time we got to play was in the opening round of the US Open in Reno a few years ago.

This year is off to a good start. 254 people have entered one or more GP events, as of the end of April. Although not included in the statistics below, the Pierce County Open in Tacoma the first weekend of May added ten new players to that tally. We are also getting good attendance from players who live outside of the region. Twenty-six players from ten states and Canada have added to our GP turnout. I expect a big jump in these numbers when the Washington Open results are added in.

One last thing. will someone wake up the Masters and Experts in Oregon? There has got to be more than two each.

| OREGON                   |      | WASHINGTON           |      |
|--------------------------|------|----------------------|------|
| <b>Masters</b>           |      |                      |      |
| 1 Haessler, Carl         | 18.0 | Koons, Nat           | 34.5 |
| 2 Schulien, Charles      | 3.0  | Collyer, Curt        | 28.5 |
|                          |      | Raptis, Nick         | 20.0 |
|                          |      | MacGregor, Michael   | 18.5 |
|                          |      | Sprenkle, David      | 11.0 |
|                          |      | Lee, Michael         | 9.0  |
| <b>Experts</b>           |      |                      |      |
| 1 Morris, Michael        | 16.5 | Sinanan, Joshua      | 96.5 |
| 2 Salisbury, Blake       | 4.5  | Bartron, Paul        | 57.0 |
|                          |      | Julian, John         | 35.5 |
|                          |      | Calpo, Benjamin      | 24.0 |
|                          |      | May, Andy            | 19.0 |
|                          |      | Merwin, Steve        | 16.5 |
| <b>Class A</b>           |      |                      |      |
| 1 Breckenridge, Steven   | 25.0 | Kolde, Sterling      | 66.5 |
| 2 Ball, Larry            | 22.0 | O'Gorman, Peter      | 43.0 |
| 3 Banner, Richard        | 20.5 | Smith, Allen         | 36.5 |
| 4 Gay, Daniel            | 17.0 | Fleck, Casey         | 33.5 |
| 5 Peake, Ethan           | 16.5 | Kalina, Chris        | 30.5 |
| 6 Surak, Steve           | 13.5 | Harrison, Drayton    | 26.5 |
| <b>Class B</b>           |      |                      |      |
| 1 Becker, Brett          | 28.0 | Mathews, Dan         | 74.5 |
| 2 Bailey, Taylor         | 20.5 | Chow, Alex           | 31.5 |
| 3 Kudva, Vikram          | 16.5 | Desmarais, Niles     | 28.5 |
| 4 Encke, Michael         | 14.5 | Desmarais, Cyrus     | 28.0 |
| 5 Olson, Michael         | 14.0 | Hickey, Patrick      | 27.0 |
| 6 Arun, Aditya           | 9.0  | Stripes, James       | 27.0 |
| Gagnon, William          | 9.0  |                      |      |
| <b>Class C</b>           |      |                      |      |
| 1 Porter, Nathan         | 21.0 | Etingher, Constantin | 53.5 |
| 2 Dietz, Artiss          | 17.0 | Ackerman, Ryan       | 29.5 |
| 3 Davey, Brent           | 15.5 | Piper, August        | 27.0 |
| 4 You, Sean              | 9.0  | Baker, Ted           | 24.5 |
| 5 Hannibal, Carson       | 9.0  | Copeland, Chris      | 23.5 |
| 6 Kim, Isaac             | 7.5  | Lee, Megan           | 21.0 |
|                          |      | Monahan, Darby       | 21.0 |
| <b>Class D and Below</b> |      |                      |      |
| 1 Porter, Joel           | 18.5 | Waugh, James         | 26.5 |
| 2 Kudva, Sudhakar        | 10.0 | Chow, Ward           | 24.0 |
| 3 Kudva, Pnya            | 9.5  | Engelhard, Raymond   | 20.5 |
| 4 Boonshoft, Aaron       | 7.0  | Kirlin, Patrick      | 20.0 |
| 5 Cohen, David           | 5.0  | Wessbecher, Francis  | 17.5 |
| 6 Donchenko, Oleg        | 4.5  | Yu, Justin           | 16.5 |
| <b>Overall Leaders</b>   |      |                      |      |
| 1 Becker, Brett          | 28.0 | Sinanan, Joshua      | 96.5 |
| 2 Breckenridge, Steven   | 25.0 | Mathews, Dan         | 74.5 |
| 3 Ball, Larry            | 22.0 | Kolde, Sterling      | 66.5 |
| 4 Porter, Nathan         | 21.0 | Bartron, Paul        | 57.0 |
| 5 Bailey, Taylor         | 20.5 | Etingher, Constantin | 53.5 |
| 6 Banner, Richard        | 20.5 | O'Gorman, Peter      | 43.0 |
| 7 Porter, Joel           | 18.5 | Smith, Allen         | 36.5 |

|                    |      |                  |      |
|--------------------|------|------------------|------|
| 8 Haessler, Carl   | 18.0 | Julian, John     | 35.5 |
| 9 Dietz, Artiss    | 17.0 | Koons, Nat       | 34.5 |
| 10 Gay, Daniel     | 17.0 | Fleck, Casey     | 33.5 |
| 11 Kudva, Vikram   | 16.5 | Chow, Alex       | 31.5 |
| 12 Peake, Ethan    | 16.5 | Kalina, Chris    | 30.5 |
| 13 Morris, Michael | 16.5 | Ackerman, Ryan   | 29.5 |
| 14 Davey, Brent    | 15.5 | Desmarais, Niles | 28.5 |
| 15 Encke, Michael  | 14.5 | Collyer, Curt    | 28.5 |

#### Players from Other States

|                      |    |      |      |
|----------------------|----|------|------|
| 1 Walker, Andrew     | NJ | 1758 | 31.5 |
| 2 Weyland, Ronald    | ID | 1530 | 24.0 |
| 3 Carpenter, Romie   | MT | 1819 | 23.5 |
| 4 McBroom, William   | MT | 1584 | 23.0 |
| 5 Donaldson, W John  | CA | 2468 | 19.5 |
| 6 Colorado, Ramon    | PA | 1951 | 17.0 |
| 7 Weyland, Phillip   | ID | 1899 | 16.5 |
| 8 Milner, Arie       | BC | 1811 | 15.5 |
| 9 Hanlen, Jim        | AK | 1908 | 15.0 |
| 10 Dennison, Bert    | TX | 1758 | 15.0 |
| 11 Jensen, J Michael | MT | 1870 | 13.5 |
| 12 Martin, Robert    | MT | 1740 | 13.5 |
| 13 Erickson, Kenneth | ID | 1602 | 13.5 |
| 14 Taylor, Michael   | CA | 1782 | 13.0 |
| 15 Kostic, Miodrag   | BC | 1111 | 9.5  |

#### Players in Database 2007

|               | OR        | WA         | Other     | totals     |
|---------------|-----------|------------|-----------|------------|
| Master        | 2         | 8          | 1         | 11         |
| Expert        | 2         | 10         | 2         | 14         |
| Class A       | 11        | 26         | 7         | 44         |
| Class B       | 14        | 38         | 7         | 59         |
| Class C       | 8         | 34         | 5         | 47         |
| Class D-below | 15        | 60         | 4         | 79         |
| <b>totals</b> | <b>52</b> | <b>176</b> | <b>26</b> | <b>254</b> |



**Allen Smith**  
CHESS LESSONS

USCF A PLAYER  
2006 Puget Sound Champion

**(253) 230-3736 • CHARTERINV@COMCAST.NET**



# Seattle Chess Club Tournaments

## Address

17517 15 Ave NE  
Seattle WA 98155

## Infoline

206-417-5405

www.seattlechessclub.org

ckfleist@cs.com

## Address for Entries

SCC Tnmt Dir  
2420 S 137 St  
Seattle WA 98168

## June 16, July 21

**Format:** 3-RR, 4-plyr sections by rating. **TC:** G/120. **EF:** \$6 (+\$5 fee for non-SCC). **Prizes:** Free entry for future quad. **Reg:** 9:00-9:45 a.m. **Rds:** 10:00-2:15-ASAP. **Misc:** USCF, WCF/OCF memb. req'd, OSA. NS, NC.

## SCC Saturday Quads

## July 1, July 29

**Format:** 4-SS. **TC:** G/64. **EF:** \$15 (+\$5 fee for non-SCC). **Prizes:** 1st 35%, 2nd 27%, Bottom Half 1st 22%, 2nd 16% (\$10 from each EF goes to prize fund). **Reg:** 10:30-11:15 a.m. **Rds:** 11:30-1:50-4:10-6:30. **Misc:** USCF, WCF/OCF memb. req'd, OSA. NS, NC.

## SCC Sunday Tornado

## August 25

**Format:** 4-SS. Open to U1200 and unrated. **TC:** G/75. **EF:** \$10 by 8/22, \$15 at site. (20% disc. for SCC mem., 10% mem. of other dues-req'd CCs in WA, OR, & BC). **Prizes:** Memberships (SCC, WCF, USCF). **Reg:** 9-9:45a. **Rds:** 10-12:45-3:30-6. **Byes:** 1 (Rd 3 or 4-commit at reg.). **Misc:** USCF memb. req'd. NS, NC.

## SCC Novice

## 2007 Weekends

Novice: Aug. 25, Nov. 4

Quads: June 16, July 21, Aug. 18, Sept. 15, Oct. 13, Nov. 3, Dec. 8

Tornados: July 1, July 29, Aug. 26, Sept. 30, Oct. 21, Nov. 18, Dec. 9

Emerald City-June 22-24.

Seafair Open-August 10-12.

Seattle Fall Open-Sept. 21-23.

Extravaganza-November 9-11.

## Emerald City Open

June 22-24

A two-section, five-round Swiss with a time control of 40/2 & SD/1 (Rd 1 of 2-day schedule - G/64). The prize fund of \$800 is based on forty entries.

*a Harmon Memorial Grand Prix event*

| Open   |       | Reserve (U1700) |       |
|--------|-------|-----------------|-------|
| First  | \$200 | First           | \$140 |
| Second | \$130 | Second          | \$90  |
| U1950  | \$95  | U1450           | \$65  |
|        |       | Unr             | \$20  |

### Upset (rds 1-4) \$15

**Entry Fees:** \$32 if rec'd by 6/19, \$40 at site. **SCC members-** subtract 25%. Members of other dues-required CCs in BC, OR, and WA-subtract 12.5%. **Unr-free** with purchase of 1-year USCF and WCF. **Add \$1** to any EF for 2-day schedule.

**Registration:** Fri. 7-7:45 p.m., Sat. 9-9:45 a.m.

**Rounds:** Fri. 8, Sat. (10 @ G/64)-12:30-6:45, Sun. 11-5.

**Byes:** 2 (Sunday rounds, commit at registration).

**Miscellaneous:** USCF & WCF membership req'd. No smoking. No computers.

## Aug. 10-12, 11-12 Seattle Seafair

**Format:** 5-SS. **TC:** 40/2 & SD/1 (2-day schedule - rd 1, G/64). **EF:** \$40 if rec'd by 8/8, \$48 at site. **GMs, IMs, & WGMs-FREE.** **Unrated-Free** with purchase of 1-yr USCF & 1-yr WCF. **SCC members-subtract 25%.** Members of other dues-required CCs in BC, OR, and WA-subtract 12.5%. **Add \$1** to any EF for 2-day schedule. **Prize Fund:** \$\$!620 b/58, 6/prz grp. **Prizes:** \$300-195-115 gtd., U2200 140, U2000 135, U1800 130, U1600 125, U140 120, U1200 60, UNR 45, Upset (rds 1-4) 10/rd. Plus Score Pool 215. **Reg:** Fri. 7-7:45 p.m., Sat 9-9:45 a.m. **Rds:** Fri 8, Sat (10@G/64)-12:30-6:45, Sun 11-5. **Byes:** 2 (Sunday rds commit at reg.) **Misc:** USCF, WCF/OCF memb. req'd, OSA. NS, NC.

## Coming in October!

### Ben Delson Thematic

Play Sicilian Dragon, Nimzo-Indian, and English in a fun event celebrating long-time SCC member Ben Delson. Details in a later issue.



# Future Events

♣ indicates a Christopher Memorial NW Grand Prix event

WA. **Format:** 4-rd Swiss. **TC:** G/60. **EF:** \$15. **Prizes:** Trophies to 1-2-3. **Reg:** 9-9:45. **Rds:** 10-12:30-3-5:30 or ASAP. **Byes:** One ½-pt. bye avail. **Misc:** NS. NC. **Ent/Info:** Gary Dorfner, 8423 E 'B' St, Tacoma WA 98445; 253-535-2536, ggarychess@aol.com.

## ♣ June 30 PCC Game-in-60♣

**Site:** Portland CC, 8205 SW 24th Ave, Portland OR 97219. **Format:** 4-rd Swiss. **TC:** G/60. TD may switch to 5SS and G/45 if more than 25 entries. **EF:** \$20, \$5 discount for PCC members. No advance entries. **Prize Fund:** \$\$200/b20. **Prizes:** \$60-40-30, U1800 35, U1500 35. **Reg:** 9-9:30 am. **Byes:** One ½-pt. bye avail. if requested at reg. **Misc:** USCF & OCF/WCF membership req'd, OSA. **Info:** portlandchessclub@gmail.com, 503-246-2978, www.pdxchess.org.

## ♣ July 14-15 Evergreen Empire Open♣

**Site:** Parkland/Spanaway Library, 13718 Pacific Ave S, Parkland WA 98444. **Format:** 2-sec, 5-rd Swiss. **TC:** G/120. TD may switch to 5SS and G/45 if more than 25 entries. **EF:** \$30 advance, \$40 at site. Juniors \$20 advance, \$25 at site. Economy players \$12.00. UNR – free with purchase of USCF & WCF memberships. **Prize Fund:** \$\$600 gtd. **Prizes:** Open \$110-90, U2000 80. Reserve (U1800) \$100-80, U1600 70, U1400 70. **Reg:** 9-9:45. **Rds:** 10-2:30-7, 10-3 or ASAP. **Byes:** Two ½-pt. byes avail. rds 1-4. **Misc:** USCF & WCF membership required. **Ent/Info:** Gary Dorfner, 8423 E 'B' St, Tacoma WA 98445; 253-535-2536, ggarychess@aol.com.

## June 30 TCC Girls' & Women's Fun Chess Day

**Site:** Tacoma CC, 409 Puyallup Ave E, Rm 11 (2nd flr), Tacoma

# Scholastic Events

June 2007

- 16 Chess Fest. and Multicultural Celeb'n Charles Moding 206-252-2218 cdmoding@seattleschools.org ..... Seattle WA
- 17 Kirkland B&G Club (K-3,4-6/Open,U1000) www.chessplayer.com/signuptoPlayChess.htm ..... Kirkland WA
- 20 TCC Wed. Kids Night Gary 253-535-2536 ggarychess@aol.com www.tacomachessclub.netfirms.com ..... Tacoma WA

July 2007

- 14 Scholastic Quads Kate Taylor 503-728-3754 katetaylor@clatskanie.com ..... Clatskanie OR
- 18 TCC Wed. Kids Night Gary 253-535-2536 ggarychess@aol.com www.tacomachessclub.netfirms.com ..... Tacoma WA

## USCF NATIONAL Scholastics

For information on any national event, contact Diane Reese at events@uschess.org

June 22-24

U.S. Junior Open

Tampa FL



# Scholastic Summer Chess Camps



## Chess4Life

## various sites WA

## Evergreen School

## Shoreline WA

|  |  |
|--|--|
| Elliott Neff 425-283-0549 kids@chess4life.com www.chess4life.com |  |
| June 25-29   | grades K-8 ..... Tacoma WA             |
| 27-29  | grades 1-8 ..... Lynden WA             |
| July 2-6   | grades K-8 ..... Bellevue WA           |
| 9-13   | grades K-8 ..... Sammamish WA          |
| 9-13   | grades K-12 advanced ..... Bellevue WA |
| 16-20  | grades K-8 ..... Seattle WA            |
| 23-27  | grades K-8 ..... Bellevue WA           |
| July 30-Aug 3  | grades K-8 ..... Tacoma WA             |
| Aug 6-9  | grades K-6 ..... Richland WA           |
| 13-17  | grades K-8 ..... Sammamish WA          |
| 20-24  | grades K-8 ..... Bellevue WA           |

www.evergreenschool.org/summer/index.shtml

|               |                          |
|---------------|--------------------------|
| June 25-29    | Novice (ages 5-8)        |
| July 2-3,5-6  | Beginner (ages 5-9)      |
| 9-13          | Siamese (ages 6-15)      |
| 16-20         | Beginner (ages 5-9)      |
| 23-27         | Intermediate (ages 8-13) |
| July 30-Aug 3 | Advanced (ages 9-15)     |
| Aug 6-10      | Siamese (ages 6-15)      |

## Chess Odyssey

## various sites OR

|   |                                      |
|---|--------------------------------------|
| 503-504-5756 pcte@chessodyssey.com www.chessodyssey.com |                                      |
| June 11-15  | ..... Tillamook OR                   |
| 18-22   | ..... Beaverton OR                   |
| 25-29   | GM Workshop ..... Portland OR        |
| July 9-13   | for grades 2-5 ..... Portland OR     |
| 16-20   | Half-Day Novice ..... Lake Oswego OR |
| 23-27   | for grades 2-5 ..... Portland OR     |
| Aug 6-10  | ..... Portland OR                    |
| 20-24   | ..... Beaverton OR                   |

## WGM Elena Donaldson & IM Georgi Orlov various sites WA

|  |                                       |
|--|---------------------------------------|
| 206-363-6511 chess64@comcast.net www.chessplayer.com/camps2007.htm |                                       |
| June 25-29   | grades K-6 ..... Everett WA           |
| July 9-13  | Elena grades K-6 ..... Bellevue WA    |
| 9-13   | Georgi grades K-8 ..... Seattle WA    |
| 16-20  | Elena grades K-6 ..... Redmond WA     |
| 16-20  | Georgi grades K-8 ..... Seattle WA    |
| 23-27  | Half-Day Camp ..... Seattle WA        |
| 23-27  | Elena grades K-6 ..... Bellevue WA    |
| 23-27  | Georgi grades K-8 ..... Seattle WA    |
| July 30-Aug 3  | Georgi grades K-8 ..... Shoreline WA  |
| July 30-Aug 3  | grades K-6 ..... Everett WA           |
| Aug 6-10   | Elena grades K-6 ..... Seattle WA     |
| 6-10   | Elena grades K-6 ..... Woodinville WA |
| 13-17  | Georgi grades K-8 ..... Seattle WA    |
| 20-24  | grades K-6 ..... Everett WA           |
| 20-24  | grades K-8 ..... Bothell WA           |

## Chess Vision

## various sites OR

|  |                            |
|--|----------------------------|
| Tony Hann 503-880-0581 www.chessvision.net |                            |
| June 25-29                                 | ..... Beaverton OR         |
| July 9-13                                  | ..... Lake Oswego OR       |
| 16-20                                      | ..... North Wilsonville OR |
| 23-27                                      | ..... Portland OR          |
| Aug 6-10                                   | ..... Portland OR          |
| 13-17                                      | ..... North Wilsonville OR |

## David Hendricks

## Sammamish WA

|   |            |
|---|------------|
| 425-868-3881 davidhendricks@comcast.net |            |
| July 9-13                               | grades 4-9 |
| 23-27                                   | grades 1-3 |
| Aug 6-10                                | grades 4-9 |
| 20-24                                   | grades 1-3 |

# Open Events

## June 2007

|               |   |  |                    |
|---------------|---|--|--------------------|
| <b>¶16</b>    | <b>SCC Saturday Quads</b>                 | <b>SCC Infoline 206-417-5405 cflakeist@cs.com www.seattlechessclub.org</b> ..... | <b>Seattle WA</b>  |
| 16            | Chess Fest. and Multicultural Celeb'n     | Charles Meding 206-252-2218 cdmeding@seattleschools.org                          | Seattle WA         |
| 17            | Salem Chess Tournament                    | Tom 503-370-8727   | Salem OR           |
| 22            | TCC 10-Second Tmt                         | 253-535-2536 ggarychess@aol.com www.tacomachessclub.netfirms.com                 | Tacoma WA          |
| <b>¶22-24</b> | <b>Emerald City Open</b>                  | <b>SCC Infoline 206-417-5405 cflakeist@cs.com www.seattlechessclub.org</b> ..... | <b>Seattle WA</b>  |
| 28            | Chessmates Rally                          | 509-686-4166 nena.walton@chelanpub.org   | Wenatchee WA       |
| <b>¶30</b>    | <b>♁ PCC Game-in-60</b>                   | <b>503-246-2978 portlandchessclub@gmail.com www.pdxchess.com</b> .....           | <b>Portland OR</b> |
| <b>30</b>     | <b>TCC Girls' &amp; Women's Fun Chess</b> | <b>253-535-2536 ggarychess@aol.com www.tacomachessclub.netfirms.com</b> .....    | <b>Tacoma WA</b>   |

## July 2007

|                |                              |  |                    |
|----------------|------------------------------|--|--------------------|
| <b>Jn 30-4</b> | <b>World Open</b>            | Continental Chess www.chesstour.com 406-896-2038                                 | Valley Forge PA    |
| <b>¶1</b>      | <b>SCC Sunday Tornado</b>    | <b>SCC Infoline 206-417-5405 cflakeist@cs.com www.seattlechessclub.org</b> ..... | <b>Seattle WA</b>  |
| 6,13,20        | TCC Quads                    | 253-535-2536 ggarychess@aol.com www.tacomachessclub.netfirms.com                 | Tacoma WA          |
| 10             | PCC Tuesday Quads begin      | 503-246-2978 portlandchessclub@gmail.com www.pdxchess.com                        | Portland OR        |
| <b>¶14-15</b>  | <b>Harmon Memorial</b>       | <b>503-246-2978 portlandchessclub@gmail.com www.pdxchess.com</b> .....           | <b>Portland OR</b> |
| <b>¶14-15</b>  | <b>Evergreen Empire Open</b> | <b>253-535-2536 ggarychess@aol.com www.tacomachessclub.netfirms.com</b> .....    | <b>Tacoma WA</b>   |
| 20-22          | Pacific Coast Open           | Continental Chess www.chesstour.com 406-896-2038                                 | Agoura Hills CA    |
| <b>¶21</b>     | <b>SCC Saturday Quads</b>    | <b>SCC Infoline 206-417-5405 cflakeist@cs.com www.seattlechessclub.org</b> ..... | <b>Seattle WA</b>  |
| <b>¶21</b>     | <b>♁ PCC Game-in-60</b>      | 503-246-2978 portlandchessclub@gmail.com www.pdxchess.com                        | Portland, OR       |
| 27             | TCC Quick (G/15)             | 253-535-2536 ggarychess@aol.com www.tacomachessclub.netfirms.com                 | Tacoma WA          |
| <b>¶27</b>     | <b>Summer Lightning</b>      | David Griffin 509-928-3260 dbgriffin@hotmail.com www.spokanechessclub.org        | Spokane WA         |
| <b>¶29</b>     | <b>SCC Sunday Tornado</b>    | <b>SCC Infoline 206-417-5405 cflakeist@cs.com www.seattlechessclub.org</b> ..... | <b>Seattle WA</b>  |

## August 2007

|                |                                 |  |                   |
|----------------|---------------------------------|--|-------------------|
| <b>Jl 28-5</b> | <b>U. S. Open</b>               | USCF www.uschess.org 800-903-8723  | Cherry Hill NJ    |
| 3,10,17,24,31  | TCC Summer Championship         | 253-535-2536 ggarychess@aol.com www.tacomachessclub.netfirms.com                 | Tacoma WA         |
| 4              | TCC Novice                      | 253-535-2536 ggarychess@aol.com www.tacomachessclub.netfirms.com                 | Tacoma WA         |
| 7              | PCC Tuesday Quads begin         | 503-246-2978 portlandchessclub@gmail.com www.pdxchess.com                        | Portland OR       |
| <b>¶10-12</b>  | <b>Seattle Seafair Open</b>     | <b>SCC Infoline 206-417-5405 cflakeist@cs.com www.seattlechessclub.org</b> ..... | <b>Seattle WA</b> |
| 14-19          | U. S. Senior Open               | USCF www.uschess.org 800-903-8723  | Palm Springs CA   |
| <b>¶18</b>     | <b>SCC Saturday Quads</b>       | <b>SCC Infoline 206-417-5405 cflakeist@cs.com www.seattlechessclub.org</b> ..... | <b>Seattle WA</b> |
| <b>¶18</b>     | <b>♁ Portland CC Game-in-60</b> | 503-246-2978 portlandchessclub@gmail.com www.pdxchess.com                        | Portland OR       |
| <b>¶18-19</b>  | <b>Tacoma Summer Open</b>       | 253-535-2536 ggarychess@aol.com www.tacomachessclub.netfirms.com                 | Tacoma WA         |
| <b>25</b>      | <b>SCC Novice</b>               | <b>SCC Infoline 206-417-5405 cflakeist@cs.com www.seattlechessclub.org</b> ..... | <b>Seattle WA</b> |
| <b>¶26</b>     | <b>SCC Sunday Tornado</b>       | <b>SCC Infoline 206-417-5405 cflakeist@cs.com www.seattlechessclub.org</b> ..... | <b>Seattle WA</b> |

## September 2007

|               |                                     |  |                   |
|---------------|-------------------------------------|--|-------------------|
| <b>¶1-3</b>   | <b>Oregon Open</b>                  | Jerry Ramey j-adoube@efn.org 541-232-0328  | Eugene OR         |
| 1-3           | Langley Open Labor Day Tournament   | Hugh Long www.langleychess.com   | Langley BC        |
| 7,14          | TCC Gambit Tmt                      | 253-535-2536 ggarychess@aol.com www.tacomachessclub.netfirms.com                 | Tacoma WA         |
| 11            | PCC Tuesday Quads begin             | 503-246-2978 portlandchessclub@gmail.com www.pdxchess.com                        | Portland OR       |
| <b>¶15</b>    | <b>SCC Saturday Quads</b>           | <b>SCC Infoline 206-417-5405 cflakeist@cs.com www.seattlechessclub.org</b> ..... | <b>Seattle WA</b> |
| <b>¶21-23</b> | <b>Seattle CC Seattle Fall Open</b> | <b>SCC Infoline 206-417-5405 cflakeist@cs.com www.seattlechessclub.org</b> ..... | <b>Seattle WA</b> |
| 21,28         | TCC Championship                    | 253-535-2536 ggarychess@aol.com www.tacomachessclub.netfirms.com                 | Tacoma WA         |
| <b>¶29</b>    | <b>♁ PCC Game-in-60</b>             | 503-246-2978 portlandchessclub@gmail.com www.pdxchess.com                        | Portland OR       |
| <b>¶30</b>    | <b>SCC Sunday Tornado</b>           | <b>SCC Infoline 206-417-5405 cflakeist@cs.com www.seattlechessclub.org</b> ..... | <b>Seattle WA</b> |

## October 2007

|               |                           |  |                    |
|---------------|---------------------------|--|--------------------|
| 2,9,16,23,30  | PCC Championship          | 503-246-2978 portlandchessclub@gmail.com www.pdxchess.com                        | Portland OR        |
| 5,12,19,26    | TCC Championship          | 253-535-2536 ggarychess@aol.com www.tacomachessclub.netfirms.com                 | Tacoma WA          |
| 6-7           | Washington Senior Open    | 253-535-2536 ggarychess@aol.com  | TBA                |
| <b>¶13</b>    | <b>SCC Saturday Quads</b> | <b>SCC Infoline 206-417-5405 cflakeist@cs.com www.seattlechessclub.org</b> ..... | <b>Seattle WA</b>  |
| <b>¶13-14</b> | <b>Portland Fall Open</b> | <b>503-246-2978 portlandchessclub@gmail.com www.pdxchess.com</b> .....           | <b>Portland OR</b> |

**NOTE:** A '¶' in front of the date indicates a Harmon Memorial Northwest GP event. A ♁ in front of the tournament name indicates an OSCF qualifying tournament. Boldface type indicates a tournament announcement (in our Future Events Section) or display ad in this issue.