



NORTHWEST CHESS

Washington Chess Federation
Oregon Chess Federation

August 2007
807 \$3.95



*Special
Issue*



1966 U.S. OPEN CO-CHAMPIONS

Northwest Chess

August 2007, Volume 61,8 Issue 710

ISSN Publication 0146-6941

Published monthly by the Northwest Chess Board. Of
file of record: 2420 S 137 St, Seattle WA 98168.

POSTMASTER: Send Address Changes to:
Northwest Chess, PO Box 84746,
Seattle WA 98124-6046.

Periodicals Postage Paid at Seattle, WA

USPS periodicals postage permit number (0422-390)

NWC Staff

Editor: Fred Kleist
Games Editor: FM Chuck Schulien
Technical Assistance: Russell Miller
Printer: Snohomish Publishing
Business Manager: Eric Holcomb

Board Representatives

Oregon: Dave Yoshinaga
Washington: Geoff Gale &
Ricky Selzler

Entire contents copyright 2007 by Northwest Chess. All
rights reserved. Published opinions are those of the
contributors and do not necessarily reflect the views of the
editor or the Northwest Chess Board.

Advertising Rates

Display ads run \$150 for a full page, \$100 for
trmt ads; \$85 for a half-page, \$60 for trmt ads;
\$30 for a quarter page, \$20 for an eighth of a
page, and \$10 for a business card-size ad. Add
\$10 if the ad is not copy ready and the staff must
do layout work. A 15% discount is available for
two or more consecutive ads of the same size.

Event Announcement Rates

Each appearance in *Event Announcements*
costs \$20. Payment is required before publica-
tion. Enclose \$2 additional if an invoice is
required—this is a mandatory service charge.

Advertising & Copy Deadline

Please get your ads and submissions in by the
10th of the month for the items to appear in the
next issue (e.g., no later than Sept. 10 for the
Oct. issue). The editor cannot guarantee that late
submissions will appear in the desired issue.
Submit all ads and payments to:

Business Manager, Northwest Chess
PMB 342, 12932 SE Kent-Kangley Rd
Kent WA 98030-7940
Eric@Holcomb.com

Submissions

Hey folks! The editor depends on YOU to make
this magazine vibrant and exciting. I need your
games, photographs, thoughts, and ideas. This
magazine has a great tradition and I hope people
will contribute enthusiastically. You can send
me your materials via U.S. mail or via e-mail:

Northwest Chess
Fred Kleist, Editor
2420 S. 137th Street
Seattle WA 98168
NWCeditor@cs.com
206-242-7076

If you'd like your games annotated by a senior
master, send them to our Games Editor:

FM Chuck Schulien
cschess@hotmail.com

Subscription Information

Northwest Chess is a benefit of membership in
either the Oregon or Washington Chess Federa-
tions. Adult dues are \$25; Junior dues (under
20) are \$17 (or \$10 for six months). Please send
dues, along with pertinent information to:

Business Manager

Northwest Chess

Eric Holcomb

PMB 342, 12932 SE Kent-Kangley Rd

Kent WA 98030-7940

Eric@Holcomb.com

http://www.nwchess.com

Northwest Grand Prix Administrator

Murlin Varner

13329 208 Ave NE

Woodinville WA 98072

MEVjr54@yahoo.com

425-882-0102

Oregon Chess Federation

President

Dave Yoshinaga

971-404-5251

dave@kdtonline.com

Vice President

Mike Terrill

503-580-9187

pflotus@yahoo.com

Secretary

Treasurer

Tournament Coordinator

Peter Prochaska

503-504-5756

pete@chessodyssey.com

Scholastic Coordinator

Director-at-Large #1

Taylor Bailey

503-282-6796

cosmos24@gmail.com

Director-at-Large #2

Marcus Robinson

503-245-1204

mprscorp@comcast.net

National Representative

Carl Haessler

ssmith6154@aol.com

Washington Chess Federation

President

Geoff Gale

206-860-9963

geoffreygale@gmail.com

Vice President

Logan MacGregor

loganmacgregor@gmail.com

Secretary

Gary Dorfner

253-535-2536

ggarychess@aol.com

Treasurer

Robert J. Allen

253-761-1288

allenrobertj@msn.com

Tournament Coordinator

Dan Mathews

425-778-7482

dthmathews@hotmail.com

Scholastic Coordinator

David Hendricks

425-868-3881

davidhendricks@comcast.net

NW Chess Board Member

Ricky Selzler

rts89@comcast.net

Greetings from the Editor

Hi-ho, hi-ho, it's off to
the U.S. Senior I go! By
the time you get this issue,
I should be returning from
sunny (read HOT) Palm
Springs, CA.



*Editor's
Desk*

Next issue will feature
this year's U.S. Open as
well as games from the Washington Open
(received on July 29). I also have some his-
torical articles and a short story.

Nevertheless, please send in your
games, articles and pictures! I need mater-
ial to work on.

Best Wishes,

Frederick K. Kleist

Thanks to R. Miller for working on the crosstables.
Thanks to C. Kleist for proofreading.

Northwest Chess Knights

*Northwest Chess Knight donors
will be listed in the magazine
for a period of one year follow-
ing receipt of donation. Please
consider making a donation
today to help Northwest Chess!*

King: \$1000+
Queen: \$500-\$999
Rook: \$250-\$499
Bishop: \$100-\$249
Knight: \$50-\$99
Pawn: \$15-\$49

Current Patrons

*King: Cinthia McBride, Kent
McNall*

Queen:

Rook: Nat Koons

*Bishop: Ralph Hall, Russell
Miller, Michael Omori, Boyd
Schorzman*

*Knight: Robert Brewster, Steve
Buck, Darby Monahan*

*Pawn: Mark James, Gene
Milner*

*Contributions can be sent to the
Northwest Chess Business Man-
ager, and are greatly appreci-
ated!*

Seattle Prepares to Slug It Out in the U.S. Chess League

by Eddie Chang, Sluggers manager

Hello, sports fans! As we get set for the fall, one of Seattle's better sports teams is gearing up for another championship run. With the Mariners chasing the Angels, the Sonics rebuilding, and the Seahawks in the toughest division in the NFL, our very own Seattle Sluggers have the best chance at going to the play-offs and winning the championship!

First off, my condolences to Portland, which, I heard, put in a bid for a team this year, but lost out to two east coast teams, the New Jersey Knockouts, and Queens Pioneers. So, in the absence of a Portland team, embrace us as you have embraced the Mariners.

This season, we are back at the Chess4Life Center in Bellevue, where there is plenty of room to come watch and analyze games. We kick off the Season against the Boston Blitz, last seasons favorites. On September 19th, we face off against our nemesis, and one of the favorites this year, the San Francisco Mechanics. Another interesting match-up will occur on October 3rd, when we play against the defending Eastern Division Champions, the New York Knights, who return with GM Pascal Charbonneau, IM Irina Krush, but also add GM Hikaru Nakamura this year. They will definitely be one of the early season favorites.

Our roster has yet to be determined, but we do have some returning players, including GM Serper, IM Orlov, and NM Michael Lee. So come one, come all, to the Chess4Life Center and cheer on your Seattle Sluggers as we take on the world.

Schedule:

8/29	Boston Blitz
9/5	Miami Sharks
9/12	Tennessee Tempo
9/19	San Francisco Mechanics
9/26	Carolina Cobras
10/3	New York Knights
10/10	Dallas Destiny
10/17	Dallas Destiny
10/22	San Francisco Mechanics
10/31	Miami Sharks

Bold indicates that the Sluggers are the home team and will have White on Boards One and Three. All matches are scheduled to begin at 6:00 p.m.

Northwest Chess

August 2007

Seattle Sluggers Preseason
page 3

Tournament Ads
pages 8, 19, 30, 31

Special 1966 U.S. Open Issue

Annotated Games

Byrne–Matera (Kmoch)
page 7

Cleghorn–Benko (Donaldson)
page 10

Byrne–Lombardy (Byrne)
page 18

Holzinger–Pupols (Parr)
page 18

Jackson–Formanek (??)
page 22

Saldy–Suttles (Donaldson)
page 22

Schoene–Pupols (Pupols & Parr)
page 24

Byrne–Macskasy (Kmoch)
page 25

Benko–Blisguier (Benko)
page 26

Lombardy–Benko (Benko)
page 28

Lombardy–Gross (Kmoch)
page 29

**Northwest Chess Calendar
of Upcoming Events**
back cover

On the Cover: GM Robert Byrne (left) and GM Pal Benko (right). *Photo courtesy of chessbase.com and Chess Life.*

Robert Byrne & Pal Benko Win 1966 United States Open Championship

By Buz Eddy from the September 1966 *Northwest Chess Letter*

201! The third largest U.S. Open, and the eighth largest chess tournament ever conducted in the United States was held last month in Seattle. The 1966 U.S. Open was won by two Grandmasters, Robert Byrne, and Pal Benko. The USCF does not break first place ties, and the two players are United States Open Co-Champions. Byrne and Benko each scored 11-2 in the thirteen-round event. Byrne was undefeated, but was held to four draws in his games with Arthur Bisguier, Anthony Saidy, Duncan Suttles, and Co-champion Benko. Benko was upset in round four by Californian master Peter Cleehorn, and drew with Byrne and Suttles.

Suttles took a clear third place in the tournament with a 10-3 record, losing . . . to William Lombardy and Anthony Saidy; and drawing each of the champions.

A six-way tie developed for fourth place in the 9.5-3.5 score group. In order of tiebreaking Anthony Saidy, Arthur Bisguier, Peter Cleghorn, Ivars Dalbergs, Touradj Saidi, and Ronald Gross. Saidi won the top expert award.


Seven players finished the event with 9-4 records. They were William Lombardy, Edward Formanek, Andre Kalotay, Jerome Hanken, Viktors Pupols, James McCormick, and Viesturs Seglins. This group included three experts, and second expert prize money was pooled with the 9th thru 15th prize money with each of the players, regardless of rating, receiving an equal share.

The class "A" competition was closely contested, and when the smoke cleared at the conclusion of round thirteen, no less than nine players were tied at 8 - 5 for first "A". Robert Holzinger, *won* the title on tie-breaking. Holzinger won five of his first six games, posting wins over expert Jerome Hanken, James McCormick, and master Elod Macskasy. The class "B" competition was a walk-away for Robert Erkes, of Baltimore, MD, as he posted a 8.5-4.5 record, a point and a half ahead of his nearest competition. Micheal Murray of Missoula and Vince Gillis each posted a 7.5-5.5 record to share top class "C" money. Murray took the trophy on tie breaking

The turnout of 201 at this event must be considered an overwhelming success, and yet we might have done considerably better had it not been for two uncontrolable occurrences. The airline strike apparently held many eastern players home, and the fact that the Piatogorsky Cup Tournament was still in progress as our tournament began held nearly a dozen L.A. players away, as they were busy supporting that event. But the success of any tournament is not the outside draw, but the local support it receives. In this, the 1966 U.S. Open stands alone. Ninety-six of the participants were from the state of Washington. Never in the history of this tournament has there been such a large representation from a single state.

The tournament itself was quite successful as U.S. Opens go, as no major complaints were registered at any time, and the tournament committee received numerous compliments on the preparations and arrangements. The excellent playing conditions were reflected in the fact that the tourney suffered only ten dropouts, again a record for the Seattle U.S. Open.

The Northwest representation in the upper eschelons did extremely well in the tournament, taking five of the top sixteen places. Suttles, expectedly, led the N.W. contingent, taking third place. Dalbergs placed seventh, and Pupols, McCormick, and Seglins were 14th, 15th, and 16th respectively. In the 8.5-4.5 [group, there were] three more Northwest players: Dr. Elod Macskasy, Elmars Zemgalis and Peter O'Gorman. McCormick got off to a very bad start scoring only 3.5 out of the first six rounds, but came back with 5.5 in the final seven rounds, including a final round draw with Bisguier to finish in the money. Pupols played steady sharp chess throughout the event, although clipped for an early draw by Greg Kern, of Portland, and upset by young Dennis Fritzing, of San Francisco. His famed Latvian luck did not make its appearance until the final round, when his opponent, Alex Panayotu, of Vancouver, failed to fill in his 30th move on his scoresheet and mistakenly thought that he had completed the required 50 moves, when he had, in fact, only completed 49. Panayotu, thinking he had made time-control, let his flag drop in a reportedly won position.



THE CHESS HOUSE
Serving the chess community since 1972

**your chess sets
and equipment store**



chess sets, combos, clocks
electronic chess, software
books, dvd's, teaching supplies
awards, chess for education
accessories, boards, pieces

www.ChessHouse.com
1-800-348-4749

The struggle for first place developed into an interesting strategic battle, as R. Byrne went into the final round a half-point ahead of the field. Byrne . . . offered Suttles an early draw, hoping Lombardy would hold Benko to at least a draw. Suttles neither accepted nor rejected the offer immediately, but simply watched the other games develop. For if Benko could be held to a half-point or less, a win against Byrne would give [Suttles] a share of first place.

But Benko was not to be stopped. In the eleventh round, he had beaten Saidy; in the twelfth, . . . Bisguier, and in the final round he needed a win against Lombardy with the Black pieces. Benko played a sharp line of the Sicilian and emerged victorious. As Suttles saw the win for Benko developing he accepted Byrne's draw offer, taking a clear third.

The tournament was directed by George Koltanowski of San Francisco, California. He handled the event very well, and no major disputes arose during the run of the event. In acting as assistant TD, your writer was able to watch the intricacies of Mr. Koltanowski's work, and was much impressed with the efficiency with which he handled the tremendous job. We found that we held divergent philosophies in regard to recording moves in competitive chess. In this event, no recording was actually required, whereas, in any event directed by your writer, recording is mandatory as each move is played.

The most vociferous objector during the tournament turned out to be Dr. Anthony Saidy. Saidy was in a more or less make-or-break situation. He could gain a slot on the U.S. team only with a win of this tourney. The morning following his draw with Byrne, Saidy came to Koltanowski's room at about 8 a.m. "It's your fault!" said the good doctor, "If you had given me White instead of Black, I would have beaten Byrne. If I had beaten Byrne, I would have gone on to win this tournament. If I won this tournament, Spann would have no choice but to pick me for the U.S. team. If I played on the team, I would win 22 games, become an International Grandmaster, and then go on to win the World Championship." "And," said the indomitable Mr. Koltan-

owski," if your Aunt had four wheels she'd be a cable car."

The tournament brought many of our former Northwest players back for a visit. Jack Nourse and Robert Edberg came up from California to play in the event. Ted Warner and Sgt. Robert Karch stopped by for visits. (Karch is on leave, and will be in the NW for about a month and a half before departing for Vietnam.)

All in all, your writer, and apparently every participant, enjoyed himself completely. Our particular high point was at the awards banquet the morning following the tourney. Working straight through the night before computing tie breaking, we found ourselves in rare form, handing out awards and barbs with equal vigor.

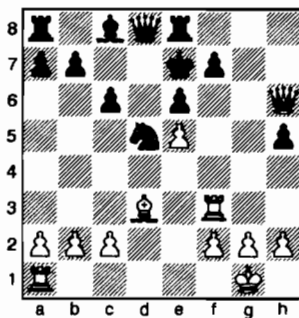
. . . [W]e will close . . . with a salute to the volunteer help that made this event the success that it was. Thanks to Bill Gillette, Pete Olson, Pat Hickey and others for the fine set of board numbers, to Chris Oder, Cherie Mathewson, Kathy Eddy, & Linda Sweetman for the fine work on the desk, coffee, and admissions. To Jerold Phillips for his all around tournament room help. To Blaine Walgren and others helping with book sales. And a very special thank you to Miss Susan Ford, tournament secretary.

Center-Counter

**GM Pal Benko
William Lyons**

Seattle, U.S. Open (1) 1966

1.e4 d5 2.exd5 ♖xd5 3.♗c3 ♖a5 4.d4 ♗f6 5.♗c4 c6 6.♗f3 e6 7.O-O ♗e7 8.♞e1 O-O 9.♗g5 ♗bd7 10.♗e4 ♞e8 11.♗g3 ♖c7 12.♖e2 ♗b6 13.♗d3 ♗bd5 14.♗e5 h6 15.♗d2 ♗d6 16.♗h5 ♗xh5 17.♖xh5 ♗f6 18.♖h4 ♖d8 19.♗xh6 gxh6 20.♞e3 h5 21.♖g5+ ♗f8 22.♖h6+ ♗e7 23.♞f3 ♗xe5 24.dxe5 ♗d5



25.♞xf7+ ♗xf7 26.♗g6+ 1-0

French Winawer

**Max Burkett
Pat Herbers**

Seattle, U.S. Open (1) 1966

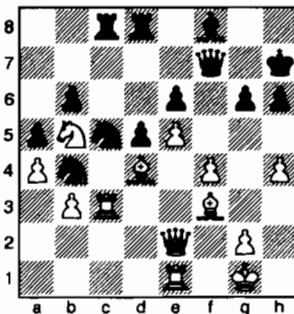
1.e4 e6 2.d4 d5 3.♗c3 ♗b4 4.e5 c5 5.♖g4 ♗f8 6.♗f3 ♗c6 7.♗d2 cxd4 8.♗xd4 ♗xe5 9.♗xe6+ ♗xe6 10.♖xb4+ ♖e7 11.♖f4 ♗g4 12.♗e2 ♗xe2 13.♗xe2 ♞e8 14.♗b4 1-0

Schmid Benoni

**GM Robert Byrne
Robert Erkes**

Seattle, U.S. Open (1) 1966

1.e4 g6 2.d4 ♗g7 3.♗c3 c5 4.d5 d6 5.♗f3 ♗g4 6.♗e2 ♗d7 7.O-O ♗gf6 8.♗g5 h6 9.♗e3 O-O 10.♞e1 a6 11.a4 b6 12.h3 ♗xf3 13.♗xf3 ♖c7 14.♗e2 c4 15.f4 ♞ac8 16.♗f3 ♗h7 17.♖d2 e5 18.dxe6 fxe6 19.♞ad1 ♗e8 20.e5 d5 21.♗e2 ♗c5 22.♗d4 ♖d7 23.b3 cxb3 24.cxb3 ♗c7 25.♞c1 a5 26.♞c3 ♗7a6 27.♗b5 ♞fd8 28.♗d4 ♗f8 29.♖e2 ♗b4 30.h4 ♖f7



31.h5 ♖xf4 32.hxg6+ ♗xg6 33.♗h5+ ♗h7 34.♞f1 ♖g5 35.♞f7+ ♗g7 36.♗e3 ♖h4 37.♗f2 ♖e4 38.♞g3 ♞g8 39.♗g6+ ♖xg6 40.♞xg6 ♗xg6 41.♗d6 ♗e4 42.♖g4+ ♗g5 43.♗e3 ♗xe5 44.♗xg5 ♗xd6 45.♞f6+ ♗g7 46.♗h4+ 1-0

Budapest

**Ivars Dalbergs
Robert Lundin**

Seattle, U.S. Open (1) 1966

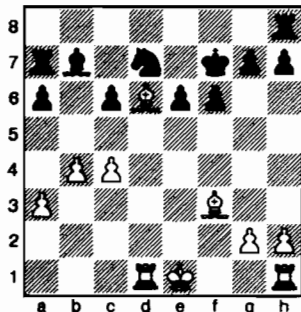
1.d4 ♗f6 2.c4 e5 3.dxe5 ♗g4 4.♗f3 ♗c6 5.♗f4 ♗b4+ 6.♗bd2 ♖e7 7.a3 ♗gxe5 8.♗xe5 ♗xe5 9.e3 ♗xd2+ 10.♖xd2 f6 11.♗e2 d6 12.O-O O-O 13.♞ac1 b6 14.b4 c5 15.♞fd1 ♞d8 16.a4 ♗b7 17.a5 d5 18.♗xe5 fxe5 19.bxc5 bxc5 20.cxd5 ♗xd5 21.♖c2 ♗b7 22.♖xc5 ♖g5 23.♗f1 ♞ac8 24.♖xa7 1-0

Sicilian Paulsen

**Ronald Erickson
Dennis Fritzinger**

Seattle, U.S. Open (1) 1966

1.e4 c5 2. d4 f3 e6 3. d4 cxd4 4. d4 c6
5. d3 c3 a6 6. e3 c7 7. e2 b4 8.
c2 d2 9. f3 d5 10. a3 xc3 11. xc3
dx4 12. dxc6 xc6 13. xc6+ bxc6
14. c5 exf3 15. xf3 b7 16. d1 d7
17. d6 f6 18. c4 f7 19. b4 a7



20. g3 a8 21. c5 e5 22. d6 a5 23.
O-O axb4 24. axb4 b8 25. fd1 e7
26. e1 c7 27. g4 f8 28. a1 g6
29. h4 g5 30. e1 b7 31. a7 a8
32. xa8 xa8 33. f3 b7 34. e4 h6
35. h4 e6 36. hxg5 hxg5 37. g3 d8
38. b5 cxb5 39. a5 xc5 40. xd8+
cxd6 41. xb7 e6 42. g2 b4 43. e4
b3 44. b6 b5 45. e3 f5 46. b1 f4
47. gxf4 gxf4 48. d2 d5 49. c3 d1
50. h7 b2 51. g8+ f6 0-1

Queen's Gambit Declined

**Robert Holzinger
William Friedman**

Seattle, US Open (1) 1966

1. d4 f6 2. c4 e6 3. d3 c3 b4 4. g5
e7 5. e3 O-O 6. d3 c5 7. f3 d5 8.
O-O dxc4 9. xc4 h6 10. xf6 xf6
11. e2 a6 12. fd1 c7 13. e4 e7
14. ac1 b5 15. d3 c4 16. b1 b7
17. g3 d7 18. e4 b6 19. h4 f4 20.
h5 d6 21. e5 xf3 22. gxf3 c7 23.
c2 g6 24. hxg6 g5 25. g7 xg7 1-0

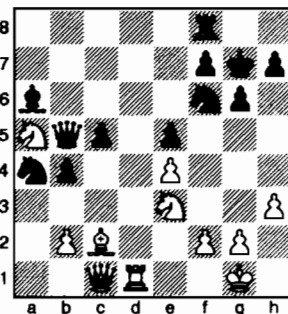
King's Indian Classical

**NM Elod Macskasy
Paul Nielsen**

Seattle, U.S. Open (1) 1966

1. d4 f6 2. c4 g6 3. d3 c3 g7 4. e4 d6
5. f3 O-O 6. e2 d6 7. O-O e5 8. e1
c6 9. f1 c7 10. h3 a6 11. e3 b5
12. cxb5 axb5 13. c1 b8 14. h6 b4
15. d1 b7 16. xg7 xg7 17. dx5
dx5 18. d3 d6 19. c2 c5 20. e3
d6 21. a4 a5 22. d2 a6 23. d1

c6 24. b3 xa4 25. xa4 xa4
26. a5 b5



27. f5+ g8 28. h6 e8 29. e7+ 1-0

Philidor

**Don Luters
GM William Lombardy**

Seattle, U.S. Open (1) 1966

1. e4 e5 2. f3 d6 3. d4 f6 4. c3 bd7
5. d5 g6 6. h3 c5 7. g5 h6 8. xf6 xf6
9. b5+ d7 10. O-O h5 11. d2 a6
12. xd7+ xd7 13. f3 e7 14. g3
h6 15. d3 g5 16. f3 g4 17. fxg4 hxg4
18. f2 gxh3 19. gxh3 f4 20. f3 g5+
21. f2 xd2 22. g3 f6+ 23. f3
f4 24. e2 e7 25. ag1 xg3
26. xf6+ xf6 27. xg3 xh3 28. g2
ah8 29. f2 h2 0-1

Grünfeld

**Russell Miller
NM Peter Cleghorn**

Seattle, U.S. Open (1) 1966

1. d4 f6 2. c4 g6 3. d3 c5 4. e3 g7
5. f3 O-O 6. d2 c5 7. b3 cxd4 8. exd4
e4 9. e3 dxc4 10. xc4 d6 11. e2
f5 12. d1 xe3 13. fe3 d7 14. O-O
e6 15. e4 b6 16. d3 d5 17. c1
h6 18. h4 b6 19. ed2 a6 20. d4
c8 21. a4 xc4 22. xc4 xc4 23.
xc4 xe3+ 24. xe3 xe3 25. c1
f5 26. f4 d6 27. d2 d8 28. g5
xd4 29. e5 xe2+ 0-1

QGD Baltic

**Bruce Haisfield
Howie Chin**

Seattle, US Open (1) 1966

1. d4 d5 2. c4 f5 3. cxd5 f6 4. d3
xd5 5. f3 xc3 6. bxc3 e6 7. e4 g6
8. d3 h3 9. dx5 xd1+ 10. xd1 d6
11. f4 O-O 12. c2 a6 13. c4 e8
14. d5 xe5 15. xe5 xe5 16. xf7
xf7 17. xf7 c5 18. he1 f8 19.
c4 b5 20. d5 f6 21. ad1 b4
22. cxb4 xb4 23. f1 c6 24. c4 c5

25. b3 a5 26. xb4 e5 27. xa6+
c7 28. c4 c5+ 29. c3 b6 30. d5
e7 31. xc5+ d6 32. d5+ c6
33. a4 bb7 34. fd1 b6 35. b1+
c7 36. xb7+ xb7 37. a5 c6
38. b5+ b7 39. d7+ xd7 40. xd7
a6 41. b4 g5 42. e5 b7 43. e6 h5
44. e7 g4 45. e8= gxf3 46. c8+ a7
47. c6 1-0

Evans Gambit

**Andy Schoene
Seth Hawkins**

Seattle, U.S. Open (1) 1966

1. e4 e5 2. f3 d6 3. c4 c5 4. b4
xb4 5. c3 a5 6. d4 exd4 7. O-O d6
8. cxd4 g4 9. b3 xf3 10. xf7+ f8
11. xg8 xg8 12. xf3+ f6 13. xf6+
gxf6 14. h6+ f7 15. d5 e5 16. a3
a6 17. e3 f3+ 18. h1 h4 19. g3
f3 20. ac1 gc8 21. fd1 b5
22. g2 e5 23. f4 b4 24. fe5 xa3
25. e6+ e7 26. c6 a5 27. d4 ab8
28. f1 1-0

Caro-Kann Classical

**GM William Lombardy
Alan Clarke**

Seattle, U.S. Open (2) 1966

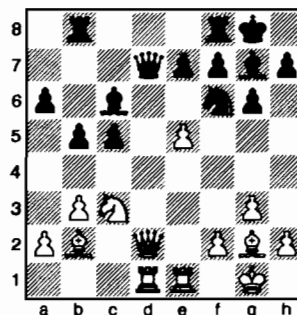
1. e4 c6 2. d3 d5 3. d3 dx4 4. xe4
f5 5. d3 g6 6. h4 h6 7. e5 h7
8. h5 g6 9. f3 d5 10. xd5 cxd5
11. b5+ 1-0

Reti Opening

**Jerry Hanken
Edward Sweetman**

Seattle, U.S. Open (2) 1966

1. f3 c5 2. g3 d6 3. g2 d6 4. O-O f6
5. c4 g6 6. d4 cxd4 7. xd4 d7 8. b3 g7
9. b2 O-O 10. d3 a6 11. e4 b8
12. e1 xd4 13. xd4 c6 14. d2
d7 15. ad1 b5 16. c5 dxc5 17. e5



17... xg2 18. exf6 h3 19. f4 f3
20. fxg7 fd8 21. xd8+ xd8 22.
xd8+ xg7 23. d5+ h6 24. e3

♖e6 25.f5 ♗b6 26.♞d7 ♖a5 27.♔f2
 ♖xa2 28.♞d2 ♖a5 29.♙c1 ♙c6
 30.♞d5 ♔g7 31.♞xe7 ♙b7 32.f6+ ♔f8
 33.♞ed1 ♔e8 34.♞e2 1-0

Sicilian Richter-Rauzer

Edgar McCormick
 Robert Holzinger

Seattle, U.S. Open (2) 1966

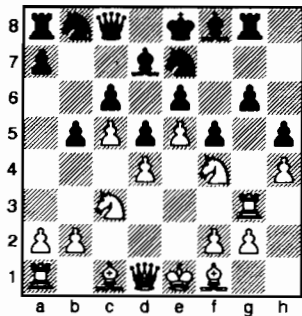
1.e4 c5 2.♞f3 d6 3.d4 cxd4 4.♞xd4 ♞f6
 5.♞c3 a6 6.♙g5 e6 7.♖d2 h6 8.♙xf6
 ♖xf6 9.O-O-O ♙d7 10.f4 ♞c6 11.♞f3
 ♖d8 12.g4 ♙e7 13.♔b1 ♖c7 14.h4 O-
 O-O 15.♞h3 ♔b8 16.f5 ♞e5 17.♞xe5
 dxe5 18.♞d3 ♙c6 19.♖f2 ♙f6 20.fxe6
 fxe6 21.♖g3 ♙e7 22.♙e2 ♞df8 23.g5
 hxg5 24.hxg5 ♞f4 25.a3 ♙c5 26.♙g4
 ♖e7 27.♙f3 ♞hf8 28.♞e2 ♙b5
 29.♞xf4 exf4 30.♖g4 ♙xd3 31.♞xd3
 ♙e3 32.e5 ♞f5 33.♞b3 b6 34.♖h3 ♔a7
 35.♞d3 b5 36.♖h8 ♞f8 37.♖h5 ♞f5
 38.♙c6 ♞xg5 39.♖f3 ♞g1+ 40.♔a2
 ♖c5 41.♞c3 ♖xe5 42.♙a8 ♖b8
 43.♙e4 ♞g3 44.♖d1 ♔b6 45.♞c6+
 ♔a5 46.b4+ 1-0

French Advance

GM Arthur Bisguier
 Viesturs Seglins

Seattle, U.S. Open (3) 1966

1.d4 e6 2.e4 d5 3.e5 f5 4.c4 c6 5.♞c3
 ♞e7 6.♞h3 ♙d7 7.♞f4 g6 8.c5 b5 9.h4
 h5 10.♞h3 ♖c8 11.♞g3 ♞g8



12.♞xh5 g5 13.♖xh5+ ♔d8 14.♞xg8
 ♞xg8 15.♖f7 ♔c7 16.♖xg8 1-0

King's Indian

Joe Brandenburg
 Kent Pullen

Seattle, U.S. Open (3) 1966

1.d4 g6 2.c4 ♙g7 3.♞c3 d6 4.♙f4 ♞c6
 5.♞f3 a6 6.e3 ♙g4 7.h3 ♙xf3 8.♖xf3
 e5 9.dxe5 ♞xe5 10.♖xb7 ♞b8 11.♖xa6
 ♞xb2 12.♖a3 ♞b8 13.♙e2 ♞e7 14.O-O
 O-O 15.♞ab1 ♞a8 16.♖b3 ♖d7 17.

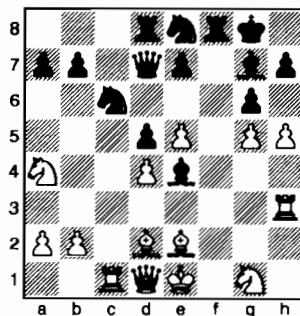
♞fd1 ♞a5 18.e4 ♞fa8 19.♞d2 ♞a3 20.
 ♖c2 ♞xc4 21.♞d3 ♞3a5 22.♖b3 ♞b6
 23.♙xd6 cxd6 24.♖xb6 d5 25.♙f3 d4
 26.e5 ♞8a6 27.♖b8+ ♙f8 28.g4 ♞a3
 29.♞b3 ♞c6 30.♖b5 ♖e6 31.♙d5
 ♖xe5 32.♙xc6 ♖e1+ 33.♔g2 dxc3
 34.♞dxc3 ♞xa2 35.♞f3 ♞a1 36.♔g3
 ♙d6+ 37.♔h4 ♞1a5 38.♖c4 ♖e7+ 0-1

Modern

Robert Brieger
 Duncan Suttles

Seattle, U.S. Open (3) 1966

1.e4 g6 2.d4 ♙g7 3.♙e3 c5 4.c3 ♞f6
 5.f3 cxd4 6.cxd4 O-O 7.♞c3 d5 8.e5 ♞e8
 9.h4 f6 10.f4 ♞c6 11.♙e2 ♙e6 12.g4
 ♖b6 13.♞a4 ♖a5+ 14.♙d2 ♖c7
 15.♞c1 ♞d8 16.g5 fxe5 17.fxe5 ♙f5
 18.h5 ♙e4 19.♞h3 ♖d7



20.♙g4 ♙f5 21.♞c5 ♙xg4 22.♞xd7
 ♙xd1 23.♞xf8 ♙g4 24.♞h4 ♙f5 25.
 ♞xh7 ♔xh7 26.hxg6+ ♔g8 27.♞e2
 ♙xg6 28.b4 a6 29.a4 ♙d3 30.♞c5 ♙c4
 31.b5 axb5 32.axb5 ♞a7 33.b6 ♞c6
 34.♙c3 ♙f8 35.♞f4 ♞g7 36.♞h6 e6
 37.♞xc6 bxc6 38.♞xe6 ♞xe6 39.♞xe6
 ♙b5 40.♞g6+ ♔f7 41.♞f6+ ♔g7 42.
 ♙a5 ♙e7 43.♞d6 ♙xd6 44.exd6 ♙a6
 0-1

Scrutiny Required

The difficult variation with its many ramifications probably favors White, anyhow. So it's small wonder that the boy of sixteen eventually

falters before the Grandmaster's pressure. The game is worth a profound scrutiny to find out if Black can solve his problems and hold his own.

Sicilian Najdorf

GM Robert Byrne
 Salvatore Matera

Seattle, U.S. Open (3) 1966

Annotations by IM Hans Kmoch

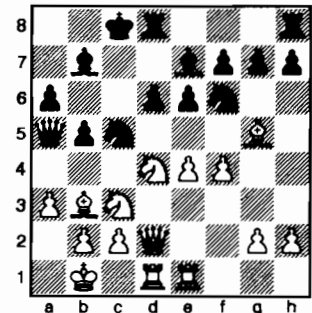
1.e4 c5 2.♞f3 d6 3.d4 cxd4 4.♞xd4 ♞f6
 5.♞c3 a6 6.♙g5 ♞bd7 7.♙c4 ♖a5
 8.♖d2 e6 9.O-O-O b5 10.♙b3 ♙b7
 11.♞he1 O-O-O

Black's text is natural but unusual, it seems, being unquoted in the books.

12.a3!

Charles Weldon-Edward Formanek in the recent Western Open ran 12.f3 ♙e7 13.♙e3 ♔b8 14.♙xe6? fxe6 15.♞xe6 b4 16.♞d5 ♞xd5 17.exd5 ♙f6 18.♞xd8 ♞xd8 19.♙f4 ♞b6 20.♞e4 ♞xd5 21.♔b1 ♙xb2 22.♔xb2 ♖a3+ 23.♔a1 ♞c3 24.♙xd6+ ♔a8 25.♙xb4 ♖xa2 mate

12...♙e7 13.f4 ♞c5 14.♔b1




Now 15.♞d5 is threatened, an old twist, but difficult to assess here as combined with the possibility of 14...♞xb3, e.g., 15.cxb3 (White can achieve nothing with 15.♞xb3):

A 15...♖c7 16.♞c1 and White ought to win.

B 15...b4 16.axb4 ditto as 16...♖xb4 fails against 17.♞d5!

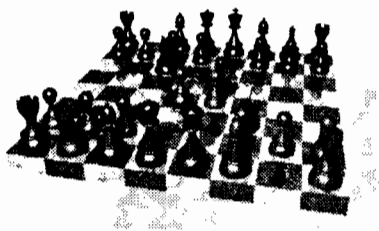
C 15...♔b8 16.b4 ♖b6 17.f5 with a fine game for White: 17...e5 18.♞b3 d5? 19.♙xf6 etc.



Allen Smith
CHESS LESSONS

USCF A PLAYER
2006 PUGET SOUND CHAMPION

(253) 230-3776 • CHARTERINV@COMCAST.NET



2007 Oregon Open

You are cordially invited to attend the 56th annual Oregon Open September 1st thru 3rd.

6-round Swiss in two sections: OPEN (open to all) & RESERVE (rated under 1800).

Three-Day Schedule: Saturday Registration 9-10AM; Rounds: Sat. 10:30AM & 5:00PM; Sun. 9:30AM & 5:00PM; Mon. 9:00AM & 3:30PM. Time Controls: 40/120, SD/60.

Two-Day Schedule: Sunday Registration 8-8:45AM. Rounds: Sun. 9AM, 11:30AM, 2PM, & 5PM. Rnds 1-3 are G/60 and will join Three-Day Schedule for 4th Rnd Sunday at 5PM

\$4300 Prize Fund

(based on a minimum of 100 entries)

Open Section Prizes:(1-3) \$700-\$400-\$250; U2200:(1-2) \$250-\$150;
U2000:(1-2) \$250-\$150.

Reserve Section Prizes:(1-3) \$400-\$300-\$250; U1600:(1-2) \$250-\$150;
U1400:(1-2) \$250-\$150; U1200:(1-2) \$250-\$150.

Entry Fees: Open: \$70; Reserve: \$60; (with updated USCF & OCF/WCF memberships).
Free entry for GMs, IMs, WGMs (Amt. of entry fee will be deducted from prizes won).
Add \$10 for on-site entries.

Oregon Chess Federation Annual Meeting: Sunday, 3:30PM. Players encouraged to attend.

SITE: Lane Comm. College; 4000 E. 30th Ave. (I-5 30th Ave Exit), Eugene; "Center" Bldg

To: Jerry Ramey; 1626 Willamette; Eugene, OR 97401 (541)232-0328, j-adoube@efn.org

Last Name:		First name:		Rating:	Tourn. Fee:	
Address:			Phone:	USCF#	USCF Fee:	
City:	State:	Zip:	Exp. Date:	OCF/ Fee: WCF		
E-mail:		Club:		OCF/ Exp: WCF	Total Pd:	
Section: (circle one)		Schedule:			Byes Requested:	
<input type="radio"/> Open <input type="radio"/> Reserve		<input type="radio"/> 2-Day <input type="radio"/> 3-Day				

D 15...♖b6 16.b4 etc., as under C. 14...♖c7 15.♙xf6 ♙xf6 16.g4 h6 17.♙a2

Now White threatens 18.b4, e.g.:

A 18...♗d7 19.♗cxb5 axb5 20.♗xb5 ♖b6 21.♗xd6+ ♖b8 22.e5 ♙e7 23.♗xf7 with a distinctive advantage for White with a Rook and many pawns for two minor pieces

B 18...♙xd4 19.♖xd4 also with a distinct plus for White: 19...♗d7 20.♖xg7! or 19...e5 20.fxe5!

17...♙c6 18.f5

Or 18.b4. Still, weakening Black's King Pawn is better.

18...♙he8

All alternatives clearly favor White:

18...e5 19.♗xc6 ♖xc6 20.♙xf7;

18...♙xd4 19.♖xd4 e5 20.♖d2;

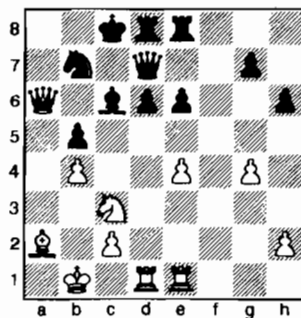
18...exf5 19.♗xc6 ♖xc6 20.exf5.

19.b4 ♗b7

Not 19...♗d7 because of 20.fxe6 ♙xd4 21.exd7+, but 19...♗a4, bad as it is, is still better than the text.

20.fxe6 ♙xd4 21.♖xd4 fxe6 22.♖a7! a5 23.♖a6! axb4 24.axb4 ♖d7

Here is the fifth forced move in a row. Black is in bad shape, of course.



25.♙d5!

A decisive step forward.

25...♙d5

And a quick way to lose. Another is 25...♖b8 26.♗b6 ♖e7 27.♗d3 etc.

To put up resistance 25...exd5 26.exd5 ♖c7 is necessary. Then White seems to have no better than 27.dxc6 ♖xc6 28.♖xc6+ ♖xc6 29.♙d5+ ♖c7 30.c3! (30.♙xe8 ♙xe8 31.♙xb7 ♖xb7 32.♙xd6 ♙e4 33.♙d7+ ♖c6 34.♙xg7

♙xb4+ 35.♖c1 h5 36.h3 (36.g5 ♙h4) 36...♙f4 (36...hxg4 37.♙xg4) 37.♙g6+ ♖c7 38.♙g5 hxg4 39.hxg4 b4 – now White is a pawn up, but it is not certain that he can win), by simply bidding his time, White wins easily.

26.exd5 e5 27.♗d3 1-0

There is no hope: e.g. 27...♖b8 28.♙a3 ♙c8 29.♙ee3, etc.

[Chess Review, Nov. 1966, pp. 350-51]

Schmid Benoni

NM Ivars Dalbergs

Robert Erkes

Seattle, U.S. Open (3) 1966

1.d4 g6 2.e4 ♙g7 3.f4 c5 4.d5 d6 5.♗f3 e6 6.♙b5+ ♙d7 7.♙xd7+ ♖xd7 8.♗c3 ♗e7 9.dxe6 fxe6 10.♙e3 ♗a6 11.♖d2 ♙d8 12.O-O-O d5 13.exd5 exd5 14.♙f2 O-O 15.♙he1 d4 16.♙h4 ♙de8 17.♗e5 ♙xe5 18.fxe5 ♖g4 19.♙xe7 dxc3 20.♖d5+ ♙f7 21.♙d6 cxb2+ 22.♖b1 ♖f5 23.e6 ♖xd5 24.♙xd5 ♙f2 25.a3 ♙xg2 26.♖xb2 c4 27.♙d4 c3+ 28.♖xc3 ♙c8+ 29.♖b3 ♙gxc2 30.e7 ♙2c3+ 31.♖b2 ♙c2+ 32.♖b1 1-0

French Rubinstein

Bill Goichberg

Larry Parr

Seattle, U.S. Open (3) 1966

1.e4 e6 2.d4 d5 3.♗c3 dxe4 4.♗xe4 ♗f6 5.♗xf6+ ♖xf6 6.♗f3 ♖d8 7.♙d3 c5 8.O-O ♗c6 9.dxc5 ♙xc5 10.♖e2 ♖e7 11.♙e1 ♙d7 12.c3 ♙d6 13.b4 f6 14.b5 ♗e5 15.♗xe5 ♙xe5 16.♙d2 ♙c8 17.♖h5+ ♖f7 18.♖f3 ♙c7 19.♙ac1 O-O 20.c4 ♙d6 21.♙e3 b6 22.♙ed1 ♙c5 23.♙xc5 ♙xc5 24.♙xh7+ ♖xh7 25.♖d3+ ♖g6 26.♖xd7 ♙fc8 27.♙c3 ♖e8 28.♙g3 ♖xd7 29.♙xd7 ♙g5 30.♙xg5 fng5 31.♙xa7 ♙xc4 32.♖f1 ♙c2 33.♙a6 1-0

Ruy Lopez Moller

Burt Hochberg

Pat Herbers

Seattle, U.S. Open (3) 1966

1.e4 e5 2.♗f3 ♗c6 3.♙b5 a6 4.♙a4 ♗f6 5.O-O b5 6.♙b3 ♙c5 7.d3 O-O 8.c3 d5 9.♙g5 dxe4 10.♙xf6 ♖xf6 11.dxe4 ♙g4 12.h3 ♙xf3 13.♖xf3 ♖xf3 14.gxf3 ♗e7 15.♗d2 ♗g6 16.♙d5 ♙ad8 17.♗b3 ♙b6 18.a4 ♗f4 19.♙b7 bxa4 20.♙xa4 ♗xh3+ 21.♖h2 ♗xf2 22.♙xa6 ♗d3

23.♙a2 ♗c5 24.♗xc5 ♙xc5 25.♙d5 ♙d6 26.♙fa1 g5 27.♖g3 h5 28.♙h1 h4+ 29.♖g4 ♖g7 30.b4 ♙e3 31.♙e2 ♙f4 32.♙a2 f5+ 33.♖h3 g4+ 34.fng4 fng4+ 35.♖g2 h3+ 36.♖f2 g3+ 0-1

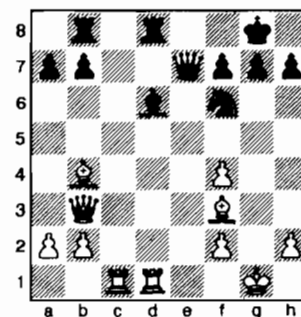
Queen's Gambit Accepted

Leroy Jackson

Walter Browne

Seattle, U.S. Open (3) 1966

1.d4 d5 2.c4 dxc4 3.♗f3 ♗f6 4.e3 ♙g4 5.♙xc4 e6 6.♖b3 ♙xf3 7.gxf3 ♗bd7 8.♗c3 ♗b6 9.♙e2 ♙e7 10.♙d2 O-O 11.O-O c5 12.dxc5 ♙xc5 13.♙fd1 ♖e7 14.♙ac1 ♙fd8 15.f4 e5 16.♗a4 ♗xa4 17.♖xa4 ♙d6 18.♙f3 exf4 19.exf4 ♖d7 20.♖b3 ♙ab8 21.♙b4 ♖e7



22.♙xd6 ♙xd6 23.♙xd6 ♖xd6 24.♖xb7 ♙xb7 25.♙c8+ ♖f8 26.♙xb7 ♖xc8 27.♙xc8 ♗d5 28.f5 ♖f8 29.♙b7 ♗f4 30.f6 ♗d3 31.fng7+ ♖ng7 32.♖f1 ♗xb2 33.♖e2 ♖f6 34.♙d5 ♗a4 35.♖d3 ♗b6 36.♙b3 ♖e7 37.♖d4 f6 38.a4 ♖d7 39.a5 ♗c8 40.♙c2 ♖d6 41.♙xh7 ♗e7 42.♙e4 f5 43.♙h1 ♗g6 44.♖c4 ♗e5+ 45.♖b5 ♖c7 46.h4 ♗g4 47.h5 1-0

King's Indian

NM James McCormick

Robert Holzinger

Seattle, U.S. Open (3) 1966

1.c4 ♗f6 2.♗c3 g6 3.g3 c5 4.♙g2 ♗c6 5.e3 ♙g7 6.♗ge2 O-O 7.d4 d6 8.O-O ♙d7 9.h3 ♙b8 10.b3 a6 11.♙b2 b5 12.cxb5 axb5 13.d5 ♗a5 14.♖d2 b4 15.♗e4 ♗xe4 16.♙xe4 ♙xb2 17.♖xb2 ♙xh3 18.♙fe1 ♖d7 19.♗f4 ♙f5 20.♙g2 g5 21.♗h5 f6 22.g4 ♙xg4 23.♗g3 c4 24.f3 ♙h3 25.♖h2 ♙f5 26.e4 ♙g6 27.♙h3 ♖a7 28.♖g2 c3 29.♖c2 ♖c5 30.♙e6+ ♖h8 31.♙h1 ♗b7 32.♙f5 ♖g7 33.e5 dxe5 34.♙xh7+ ♙xh7 35.♙xh7 f5 36.♙xf5 ♙h8 37.♖e2 ♖d4 38.♙d1 ♖f4 39.♙c2 ♗d6 40.♖a6 ♙h6 41.♖a7 ♙b7 42.♖c5 ♖f7 43.♖f2 ♙b8 0-1

Sicilian Sozin

Andy Schoene
IM Anthony Saïdy

Seattle, U.S. Open (3) 1966

1.e4 c5 2.♘f3 ♘c6 3.d4 cxd4 4.♗xd4
♗f6 5.♘c3 d6 6.♙c4 ♖b6 7.♗de2 e6
8.♙b3 ♙e7 9.O-O O-O 10.♙e3 ♗c7
11.♗g3 a6 12.f4 b5 13.f5 ♗a5 14.fxe6
fxe6 15.♗d5 ♗xd5 16.♙xf8+ ♙xf8
17.exd5 ♗c4 18.dxe6 ♙xe6 19.♙d4 d5
20.♗e2 ♙e8 21.♗f2 ♙d6 22.♙e1 ♙f8
23.♗e2 ♙d7 24.♗h5 ♗c6 25.c3 ♙c5
26.♙d1 g6 27.♗g5 ♙e6 28.h3 ♗xb2
29.♙e1 ♙xd4+ 30.cxd4 ♗c4 31.♙c2
♙c8 32.♙e7 ♗f6 33.♗xd5+ ♗h8
34.♙e2 ♙d8 35.♗e4 ♙d7 36.d5 ♙e8
37.♗d3 ♙xe2 38.♗xe2 ♗a1+ 39.♗h2
♗e5+ 40.♗h1 ♙f5 41.♗b3 ♗xe2 42.
♙xf5 ♗e1+ 43.♗h2 ♗e5+ 44.♗h1 gxf5
0-1

Benoni

Walter Browne
Jerry Wolfe

Seattle, U.S. Open (4) 1966

1.d4 ♗f6 2.c4 c5 3.d5 g6 4.♗c3 ♙g7
5.g3 O-O 6.♙g2 d6 7.♗f3 ♗a6 8.O-O
♗c7 9.a4 e6 10.dxe6 ♙xe6 11.♙f4
♙xc4 12.♗xd6 ♗e6 13.♙fd1 ♗a5
14.♗e5 ♙b3 15.♙xb7 ♗xf4 16.♙xa8
♗h3+ 17.♗g2 ♙xd1 18.♙xd1 ♗xf2
19.♗xf2 ♙xa8 20.♗e7 ♙f8 21.♗g2
♗b4 22.♙d8 1-0

English Opening

John Walker
Eugene Cowan

Seattle, U.S. Open (3) 1966

1.♗f3 ♗f6 2.c4 c5 3.♗c3 g6 4.b3 ♙g7
5.♙b2 O-O 6.e3 ♗c6 7.♙e2 d5 8.♗xd5
♗xd5 9.cxd5 ♙xb2 10.♙b1 ♙g7
11.dxc6 b6 12.O-O ♙g4 13.h3 ♙f5 14.d3
e5 15.b4 e4 16.♗e1 cxb4 17.♙xb4 ♗d5
18.♗c2 exd3 19.♙xd3 ♙e6 20.a4 ♙ac8
21.♙e4 ♗c5 22.
♗xc5 bxc5 23.
♙b7 a5 24.♗d3
♙c4 25.♗xc5
♙xf1 26.♗xf1
♙fe8 27.♙d5 ♙e5
28.e4 ♙xc6 29.
♙b8+ ♙f8 30.
♙xf8+ ♗xf8 31.
♗d7+ ♗e7 32.
♗xe5 ♙c1+ 33.
♗e2 f6 34.♗c6+

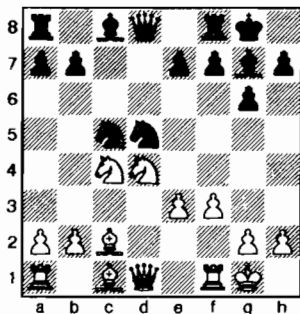
♗d6 35.♗xa5 ♙a1 36.♗c4+ ♗c5 37.a5
f5 38.f3 ♙a2+ 39.♗d2 ♙b2 40.a6 ♗b6
41.♙b7 fxe4 42.♗e3 exf3 43.♗c4+
♗a7 44.♗xb2 fvg2 45.♗f2 1-0

Grünfeld

Ignas Zalyš
GM William Lombardy

Seattle, U.S. Open (3) 1966

1.d4 ♗f6 2.♗f3 g6 3.♗bd2 d5 4.c4 ♙g7
5.e3 O-O 6.♙d3 c5 7.O-O cxd4 8.♗xd4
♗a6 9.cxd5 ♗c5 10.♙c2 ♙g4 11.f3
♗xd5 12.♗c4 ♙c8



13.♗b3 ♗a4 14.♗d4 ♗ab6 15.♙b3 e6
16.♗e2 ♗c7 17.♗xb6 ♗xb6 18.♙xd5
♙d8 19.♗b3 ♙xd5 20.♗c3 ♗xb3
21.axb3 ♙d8 22.♙d1 ♙xd1+ 23.♗xd1
f5 24.♙d2 ♙d7 25.♙c3 ♙f8 26.♙d4 a6
27.♗c3 ♙c8 28.♗f2 ♗f7 29.♙d1 ♙e8
30.♙c1 g5 31.♗e2 ♙xc1 32.♗xc1 ♙b5
33.♗e1 ♙d6 34.g3 e5 35.♙c3 ♗e6 36.
♗a2 ♙c6 37.♗e2 ♙d5 38.♗c1 b6 39.
♗f2 a5 40.♗e2 h5 41.♙e1 ♙c7 42.♙c3
b5 43.♙e1 b4 44.♙d2 ♙d8 45.♗f2 ♙e7
46.♙e1 ♗d6 47.♙d2 ♙f6 48.h3 e4 49.
g4 fvg4 50.fxe4 ♙xe4 0-1

Benko's loss to Cleghorn was a real shocker which proved that Grandmasters too, are only human. After winning a piece for two pawns, Benko failed to exploit his advantage and eventually blundered away two more pawns. With four pawns for the piece, it seemed Cleghorn could

force a won endgame, but a wild time scramble ensued (as a result of which we are unsure of the score of the game); when the smoke had cleared at move 50 and the game was adjourned, it was apparent that Benko could draw by maintaining his Bishop on the critical diagonal, preventing the advance of his opponent's passed pawns. Three moves after the resumption of play the next morning, the Grandmaster astonished everyone by moving his Bishop off the diagonal! Cleghorn's Pawns marched in immediately and Benko was forced to resign after five more moves.

[Chess Life, Oct. 1966, pp. 231-232]

Bird's Opening

NM Peter Cleghorn
GM Pal Benko

Seattle, U.S. Open (4) 1966

Annotations by IM John Donaldson

1.f4 ♗f6 2.♗f3 g6 3.g3 ♙g7 4.♙g2
O-O 5.O-O c5 6.d3 d5 7.♗c3

Two other ways of handling this Leningrad Dutch in reverse are 7.c3 and 7.♗e1.

7...d4 8.♗a4?!

8.♗e4 was another way to play, ala the Leningrad, and perhaps more appropriate for this position.

8...♗fd7!

8...♗bd7 9.c4 ♙b8 10.♙b1 b6 11.b4 ♙b7= Bersecu-Parligras, Timisu de Sus 1998.

9.c4 a6

White was hoping for 9...♗c6 10.a3, with b2-b4 coming. By taking advantage of the fact that he has not committed a Knight to c6 yet, Benko gets a good game.

10.♗g5

Cleghorn, who developed into a Master, achieving a FIDE rating over 2400, in San Francisco in the 1960s, senses he needs to do something active. 10.♗d2 ♙a7 11.b3 b5 12.♗b2 ♙b7 is just what Black wants.

10...♙a7 11.♗e4!?

White continues his aggressive ways. It was not too late to cut his losses with 11.b3 or 11.♗b3 trying to hold back ...b7-b5. However, if he had played ei-

Advertisement for Carl A. Haessler, featuring a chess knight icon and contact information: SCF Life Master, 3-Time Oregon Champion, (503) 358-7871, ssmith6154@aol.com

ther of these moves, the odds are that Benko would have won. The two-time Candidate was a great positional player, but niceties will fall to the wayside in the following mess.

11...♖c7 12.f5

White offers a piece to keep going forward.

12...b5 13.♗f4 ♘e5 14.fxg6

14.♘axc5 drops a piece for nothing after 14...gxf5.

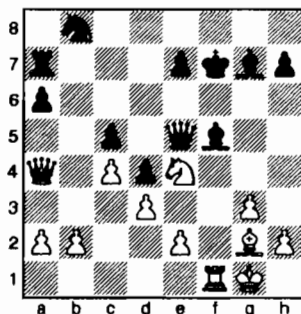
14...bxa4

The piece must be taken immediately as 14...hxg6 is met by 15.cxb5 axb5 16.♘axc5 f5 17.♖b3+.

15.♗xe5 ♖xe5 16.gxf7+ ♗xf7

Black could also have played 16...♗h8, allowing White to pick up a third pawn with 17.♖xa4. Benko probably figures he might as well capture the pawn on f7 right away.

17.♗xf7 ♗xf7 18.♖xa4 ♗f5 19.♗f1



It's probably a good time to sit back and take a look at what Cleghorn has for his piece. Two pawns, good pieces, and a somewhat exposed Black King offer a fair bit of compensation, but not enough for the piece. It may be that Benko, the "King of the Opens" in the U.S. in the 1960s, underestimated Cleghorn, who was living in Anchorage, Alaska, at the time. Rated only 2236 on the August USCF rating list, Cleghorn played very well in Seattle, tying for fourth with 9½ points. The annual list in December saw him go to 2349, ranking thirtieth in the country.

19...♗f6 20.♖a5!?

White plans to get his Queen into the enemy lines. Objectively this should not lead to anything but it can be annoying.

20...♘d7 21.♖d8 ♗g7 22.♗f4 e6 23.♖c8 ♖c7

A strong alternative was 23...♗e7, intending ...♘f6 to get rid of the well-placed Knight.

24.♖e8 ♘e5?

24...♖b6, guarding e6 with the idea of ...♗g6 to drive out the Queen, was a good idea. The following exchange of pieces activates White's position.

25.♘xf6! ♗xf6 26.♖h8+ ♗g6

If 26...♖g7, offering to trade off Queens, White has 27.♖d8+ ♗g6 28.b4! cxb4 29.♖xd4 and his center is ready to roll.

27.♗e4!

It seems paradoxical that White is improving his position with trades when a piece for two pawns down, but the loose King and scattered Black pawns spell counterplay.

27...♖g7?

27...♖d6 with the idea of centralizing and coordinating his pieces via ...♗f7, was the right idea. Now the Black King is forced to walk up the board.

28.♖e8+

Certainly the first move any human would consider, but FRITZ points out 28.♖c8!, picking up the c-pawn, as 28...♘d7 runs into 29.♗g4+.

28...♗g5

There is no other move:

28...♘f7 29.♖xe6+;

28...♖f7 29.♗xf5+;

28...♗f7 29.♖xe6+.

29.♖c8 ♘d7

But now this move is possible.

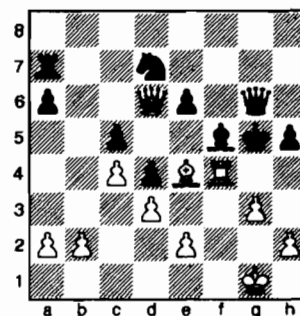
30.♖c6 ♖g6

White's position is definitely the easier to play. Note 30...♖e5? loses a piece after 31.h4+ ♗h6 32.♗xf5 and trading relieves no pressure: 30...♗xe4 31.♗xe4 e5 32.♖e6! with serious troubles for Black.

31.♖d6!

Cleghorn creeps into Benko's position with ideas of playing ♖e7.

31...h5



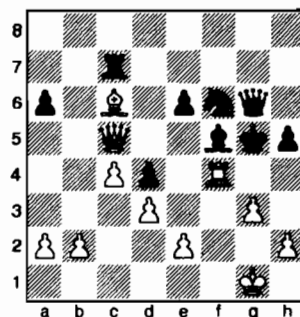
32.♗c6!

Excellent judgement by White, who could have won a third pawn, but been forced into an ending after 32.♗xf5 exf5 33.♗xd4 ♖xd6 (not 33...cxd4 34.♖f4+ ♗f6 35.♖xd4+ ♗e7 36.♖xa7 f4 37.♖d4 with too many pawns for the Knight to cope with.) 34.♗xd6. Benko, one of the all-time greats in the ending, would have been happy to reach this position.

32...♘f6?

The last chance to stay in the game was 32...♖f7, when 33.♗xd7 ♗xd7 34.♖xc5 ♖f6 leads to a very tense position. One can quickly see that White has b2-b4, a2-a4 and b4-b5 coming up, but Black has play against White's King that must be respected. For example, 35.b4 e5 36.♗f3 ♗h6 37.a4 h4 38.b5 hxg3 39.hxg3 axb5 40.axb5 ♗h7 yields chances for both sides, but White seems a little better. Note that in many lines White has a good centralizing bailout move in e2-e4.

33.♖xc5 ♗c7



34.♗xd4

This wins, but FRITZ's 34.e4! is even faster and prettier, as 34...dxe3 35.♖xe3 gives White an unstoppable megaton discovered check.

34...♗h6 35.♖f8+ ♗g7 36.♗f3 ♖g5 37.♗f2 ♘g4+

Black needs to break the pin before playing ...d4+. 37...c6 loses to the nice and forced sequence 38. f4 e5 39. h4 h6 40. f5 f5 41. xh5 h5 42. xg7 with five pawns for the Knight. Toughest is 37...c7, though, after 38. b4 d4+ 39. xg4 xg4 40. f4, White should eventually win.

38. xg4 hxg4

Or 38...xg4, when 39. d7 c7 40. xg7+ xg7 41. xg7+ c7 42. b4 wins.

39. d7 xh7 40. xg7+ xg7 41. xg7 c7 42. e3

The rest should be straightforward—four pawns are too much for the Bishop to handle—but both players were in extreme time pressure.

42...e5 43. d4

43. b4 c6 44. a4 e6 45. b5 axb5 46. a5 d6 47. cxb5 xg8 48. a6 xd5 49. d4 and 47...c5 48. b6 c6 49. d4 are easy wins for White.

43...c6 44. d5 xg8 45. c3 xh7+ 46. e4 c7 47. c5 a5 48. b3 xg8 49. c4 xh7 50. c3 d8 51. a3 xg6 52. b4 xe8 53. c4 axb4 54. axb4 xa4 55. b5 c8 56. c6 xc2 57. c5 xe4 58. b6 1-0

Vienna Game

Walter Grombacher
Leroy Jackson

Seattle, U.S. Open (4) 1966

1. e4 e5 2. c3 d6 3. f4 d5 4. fxe5 dxe4 5. d3 h4+ 6. g3 dxg3 7. d3 h5 8. dxd5 dxh1 9. dxc7+ cd8 10. dxa8 xg4 11. xg2 xxf3 12. xxf3 xxe5+ 13. c7f1 xd6 14. xh1 d6 15. c3 xe8 16. xd2 xh2 17. g2 xg2+ 18. xg2 c8 19. a4 a5 20. e1 xe1+ 21. cxe1 cb8 22. b6 axb6 23. xe3 c7 24. c2 d6 25. d4 h6 26. xd5 f5 27. c3 g5 28. xf7 cd7 29. b4 c7 30. xg6 c6 31. xe8 d7 32. xd2 g4+ 33. c2 f4 34. c4 e6 35. xh5 c5 36. xe8 c4 37. c5 xc7 38. xc3 g3+ 39. c1 f3 40. a5 x4 41. e1 xe3+ 42. f2 xf2+ 43. c1 c3 44. xd7 g2 mate

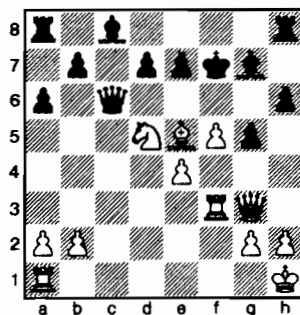
Sicilian Smith-Morra Gambit

Pat Herbers
Bill Kiplinger

Seattle, U.S. Open (4) 1966

1. e4 c5 2. d4 cxd4 3. c3 dxc3 4. dxc3 d6 5. f4 g6 6. d3 xg7 7. xc4 a6 8. O-O d6

9. f5 d4 10. xxf7+ cxf7 11. d5+ c6 12. xg4 d5 13. g3 h6 14. d3 b6+ 15. c7 h1 16. dxf3 17. d5 c6 18. xxf3 d8 19. xf4 g5 20. xc7+ c8 21. xe5 c7



21. f6 exf6 22. f1 d6 23. xf6 xe6 24. xe5+ c6 25. d7+ c7 26. dxc6 dxe5 27. dxe5 xa2 28. b3 d8 29. g4 d2 30. f5+ c8 31. d6+ c8 32. d7+ 1-0

Queen's Gambit Declined

Kent Pullen
NM Elod Macskasy

Seattle, U.S. Open (4) 1966

1. d3 d5 2. d4 d6 3. c4 e6 4. c3 xe7 5. e3 O-O 6. xd3 b6 7. cxd5 exd5 8. O-O xb7 9. b3 d7 10. b2 a6 11. c1 d6 12. d2 e8 13. e1 d8 14. d1 e6 15. d2 b4 16. xc3 xa3 17. c2 d6 18. f3 c5 19. d2 c8 20. b2 e7 21. xa3 c7 22. ec1 ec8 23. f5 g6 24. dxc5 bxc5 25. xd3 d7 26. d3 g5 27. d1 d4 28. e1 dxe3 29. xxe3 xf6 30. b2 d4 31. f2 d5 32. e4 dxc2 33. xc2 dxf3+ 34. gxf3 xb2 35. d3 g3 36. d4 xe4 37. xe4 xf2+ 38. cxf2 c4 39. xd5 c3 40. xc4 x4 41. e2 a5 42. c2 xe5 43. h3 a4 44. d3 d4 0-1

Sicilian O'Kelly

Edgar McCormick
GM Arthur Bisguier

Seattle, U.S. Open (4) 1966

1. e4 c5 2. d3 a6 3. c4 d6 4. d4 cxd4 5. dxd4 d6 6. d3 e5 7. dxc6 bxc6 8. xe2 xc5 9. O-O d6 10. d3 O-O 11. xe3 xe3 12. xxe3 c5 13. ad1 b7 14. d3 e7 15. fd1 ad8 16. d2 d8 17. f4 exf4 18. xf4 f6 19. g4 g6 20. d5 e5 21. xe5 fe5 22. f1 xd5 23. exd5 xf1+ 24. cxf1 b8 25. xd7 c8 26. xe8 c8 27. b3 c7 28. c2 f8+ 29. f3 xf3+ 30. cxf3 c6 31. g4 a5 32. h4 h5 33. a3 g5 34.

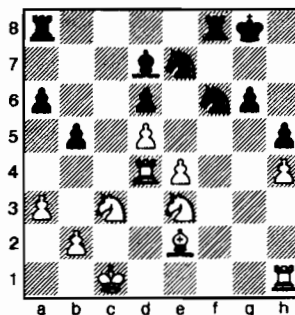
hxg5+ c7g5 35. gxh5 c7h5 36. c2 c5 0-1

King's Indian

Andrew Kalotay
GM Robert Byrne

Seattle, U.S. Open (4) 1966

1. c4 g6 2. d3 xg7 3. d4 d6 4. e4 d6 5. dge2 c6 6. d3 e5 7. d5 cxd5 8. cxd5 a6 9. h4 h5 10. xg5 d7 11. e2 d8 12. f3 d8h7 13. xe3 b5 14. d1 d7 15. a3 d8 16. g4 xf6 17. g5 xg7 18. f4 exf4 19. xxf4 e7 20. d3 xe5 21. xe5 xe5 22. O-O-O d7 23. d4 xd4 24. xd4 f6 25. gxf6 dxf6 26. d3 O-O



27. d1 d1 28. ac8 29. b1 c7 30. d3 d8 31. hg1 d4 32. d3 g4 33. d3 g4 34. d1 a5 35. d3 c7 36. c1 d7 37. d3 g4 hxg4 38. xg4 d5 39. g3 xc1+ 40. cxc1 h8 41. h3 g5 42. g3 g4 43. xe2 xh4 44. d2 c6 45. g1 c5 46. f1 h6 47. c3 h3+ 48. d2 b3 49. f5+ c6 50. f8 xb2+ 51. c3 g3 0-1

Sicilian Scheveningen

Dan Seiter
George Kenney

Seattle, U.S. Open (4) 1966

1. e4 c5 2. d3 d6 3. d4 cxd4 4. dxd4 d6 5. d3 a6 6. xe2 e6 7. O-O d6 8. xe3 xe7 9. f4 c7 10. f3 d7 11. c7 h1 O-O 12. g4 a5 13. g5 d8 14. e1 d4 15. xc1 c8 16. d2 b5 17. b3 d6 18. xd2 d5 19. e5 xc5 20. xa5 b8 21. h4 a8 22. d2 a7 23. e3 b4 24. d1 ac7 25. h5 d5 26. g1 g6 27. h4 d4 28. xd4 b5 29. xc5 xc5 30. hxg6 f6 31. d4 d7 32. h3 xf4 33. d6 xf3 34. dxc5 xh3+ 35. c2 c3 36. d3 xc2+ 37. c1 f8c3 38. g3 d5 39. f3 xd3 40. dxd3 xd3 41. xd3 d4 0-1

Benoni

Arthur Spiller
John Walker

Seattle, U.S. Open (4) 1966

1.d4 e6 2.c4 c5 3.d5 d6 4.♖c3 ♗e7 5.e4
exd5 6.cxd5 a6 7.a4 g6 8.♗f3 ♙g7
9.♙e2 O-O 10.O-O ♗d7 11.♙f4 ♗f6
12.♗d2 b6 13.♗c4 ♗e8 14.♞d2 ♚b8
15.e5 dxe5 16.♗xe5 ♙xe5 17.♙xe5
♗d6 18.♞g5 ♗ef5 19.♙f6 ♞d7 20.f3
♚e8 21.g4 h6 22.♞d2 ♗e3 23.♗e4
♗xe4 24.fxe4 ♗xg4 25.e5 ♚xe5
26.♙xe5 ♗xe5 27.♞xh6 ♙b7 28.♚ad1
♞xa4 29.♚f4 ♞b3 30.♚h4 ♗f3+
31.♙xf3 ♞xb2 1-0

Bird's Opening

NM Elmars Zemgalis
NM Edward Formanek

Seattle, U.S. Open (4) 1966

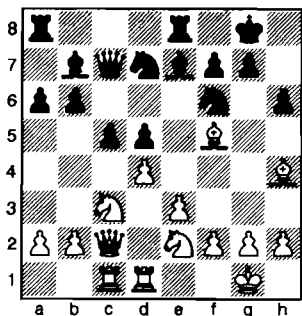
1.f4 ♗f6 2.♗f3 g6 3.g3 ♙g7 4.♙g2 d6
5.d3 ♗c6 6.e4 e5 7.♗c3 O-O 8.O-O ♗e8
9.♙e3 exf4 10.♙xf4 ♗d4 11.♞d2 c6
12.♙e3 ♗xf3+ 13.♙xf3 ♙h3 14.♙g2
♙xg2 15.♗xg2 ♞a5 16.♙h6 ♚d8
17.♚f2 ♞h5 18.♙xg7 ♗xg7 19.♚af1
♚d7 Draw

QGD Exchange

GM Pal Benko
Viesturs Seglins

Seattle, U.S. Open (5) 1966

1.d4 ♗f6 2.c4 e6 3.♗c3 d5 4.cxd5 exd5
5.♙g5 ♙e7 6.e3 O-O 7.♙d3 h6 8.♙h4
♗bd7 9.♞c2 c5 10.♗ge2 b6 11.O-O
♙b7 12.♚fd1 ♚e8 13.♙f5 ♞c7 14.
♚ac1 a6



15.♙xd7 ♞xd7 16.dxc5 g5 17.c6 ♞xc6
18.♗d4 ♞c4 19.♙g3 ♚ac8 20.♞b1
♗h5 21.♗f5 ♙f8 22.♗xd5 ♞b5 23.♗c7
♚xc7 24.♚xc7 ♙e4 25.♗d4 ♗xg3
26.♗xb5 ♙xb1 27.♚xb1 axb5 28.hxg3
b4 29.♚c6 ♚a8 30.♚xb6 ♚xa2 31.g4
♚a7 32.♚d1 ♚c7 33.♚b8 ♗g7
34.♚dd8 ♙e7 35.♚g8+ ♗f6 36.♚b6+

♗e5 37.♚xh6 ♗d5 38.b3 ♙d6 39.g3
♙e5 40.♚xg5 ♗e4 41.♚xe5+ ♗xe5
42.♚b6 1-0

Caro-Kann

GM Robert Byrne
NM Peter Cleghorn

Seattle, U.S. Open (5) 1966

1.e4 c6 2.♗c3 d5 3.♗f3 ♙g4 4.h3 ♙xf3
5.♞xf3 e6 6.d4 dxe4 7.♞xe4 ♗f6 8.♞f4
♙e7 9.♙d2 ♗d5 10.♞g4 ♗xc3 11.
♙xc3 ♙f6 12.O-O-O ♗d7 13.♙e2 ♗b6
14.♙b4 ♗d5 15.♙c5 b6 16.♙a3 b5
17.♙c5 ♞a5 18.♚d3 ♞c7 19.♚f3 h5
20.♞e4 ♙e7 21.♙xe7 ♞xe7 22.♞e5 f6
23.♞e4 ♗f7 24.♚e1 ♚ad8 25.♙d3 f5
26.♞e2 g6 27.♗b1 ♞f6 28.a3 ♚de8
29.c3 ♚e7 30.♙c2 ♚he8 31.♙b3 ♗g7
32.♞d2 ♗f7 33.g4 hxg4 34.hxg4 ♚h8
35.gxf5 exf5 36.♚g1 ♚e6 37.♚e3 ♚xe3
38.♞xe3 ♚e8 39.♞g3 ♗g7 40.♚h1
♞e6 41.♗a1 ♞e4 42.♞h2 ♗f6 43.♚g1
♗f4 44.♞h7 ♚f8 45.♞xa7 ♞e2 46.♞c5
♚e8 47.♞xc6+ ♗g7 48.♞c7+ 1-0

Czech Benoni

NM Ivars Dalbergs
Peter O'Gorman

Seattle, U.S. Open (5) 1966

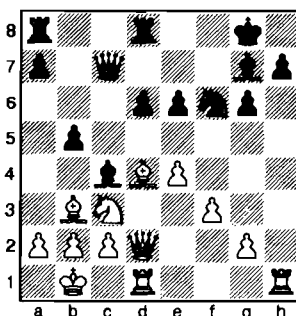
1.d4 c5 2.d5 e5 3.e4 d6 4.f4 g6 5.♗f3
♗d7 6.♙b5 exf4 7.♙xf4 ♙g7 8.♗bd2
♞e7 9.O-O ♗g6 10.♗c4 ♗xe4 11.♚e1
f5 12.♙xd6 ♞f7 13.♙xc5 ♗d8 14.♗d6
♗xd6 15.♙xd6 ♙f6 16.♗d4 ♗f8
17.♗c6+ bxc6 18.dxc6 ♗e6 19.c7+ 1:0

Sicilian Dragon

NM Edward Formanek
Art Spiller

Seattle, U.S. Open (5) 1966

1.e4 c5 2.♗f3 d6 3.d4 cxd4 4.♗xd4 ♗f6
5.♗c3 g6 6.♙e3 ♙g7 7.f3 O-O 8.♙c4
♗c6 9.♞d2 ♞c7 10.♙b3 ♗xd4 11.
♙xd4 ♙e6 12.O-O-O ♚fd8 13.♗b1 ♙c4
14.h4 e6 15.h5 b5 16.hxg6 fxg6



17.♗xb5 ♙xb5 18.♞g5 ♗d5 19.♙xd5
exd5 20.♞xd5+ ♞f7 21.♞xb5 ♚ab8
22.♞d5 ♞xd5 23.exd5 ♙xd4 24.♚xd4
1-0

Czech Benoni

Robert Holzinger
Jerry Hanken

Seattle, U.S. Open (5) 1966

1.d4 c5 2.d5 e5 3.e4 d6 4.f4 exf4 5.♙xf4
♗e7 6.♗f3 ♗g6 7.♙g3 ♙e7 8.♗bd2 O-
O 9.a4 ♗d7 10.♗c4 ♗b6 11.♗fd2 ♗xc4
12.♗xc4 ♙h4 13.♞h5 ♚e8 14.O-O-O
♙xg3 15.hxg3 h6 16.♙d3 ♗e5 17.♗xe5
♚xe5 18.♞f3 ♙d7 19.♚df1 ♞g5+
20.♗b1 ♚f8 21.b3 a6 22.a5 ♞d2 23.♞f4
♞xf4 24.gxf4 ♚e7 25.♚e1 ♚fe8
26.♚e3 f6 27.♚g3 ♗f7 28.e5 fxe5
29.♙g6+ ♗f8 30.fxe5 ♚xe5 31.♚f1+
♗g8 32.♙f7+ ♗h7 33.♙xe8 ♙xe8
34.♚f8 ♙g6 35.♚b8 ♚xd5 36.♚xb7
♚d2 37.♚a7 ♙xc2+ 38.♗c1 0-1

Ruy Lopez Berlin

Leroy Jackson
GM Arthur Bisguier

Seattle, U.S. Open (5) 1966

1.e4 e5 2.♗f3 ♗c6 3.♙b5 ♗f6 4.O-O
♗xe4 5.d4 ♗d6 6.♙xc6 dxc6 7.♙g5
♙e7 8.dxe5 ♙xg5 9.♗xg5 ♞xg5
10.exd6 cxd6 11.♞xd6 ♞e7 12.♞xe7+
♗xe7 13.♚e1+ ♙e6 14.♗d2 ♚hd8
15.♗e4 ♚d5 16.c4 ♚d4 17.c5 ♗f8
18.a3 ♚ad8 19.♚ac1 ♚d5 20.f4 a5
21.♚c3 h6 22.h3 ♚f5 23.g3 ♗g8 24.h4
♚fd5 25.♗d6 ♚d2 26.♗c4 ♚d1
27.♚ce3 ♚xe1+ 28.♚xe1 ♚xc5 29.♗d6
b6 30.b4 ♚d5 31.♗c8 ♚d3 32.♗e7+
♗f8 33.♗g6+ fxg6 34.♚xe6 ♚xg3+
35.♗f2 ♚xa3 36.♚xc6 ♚b3 37.bxa5
bxa5 38.♚a6 ♚h3 39.♚xa5 ♚xh4
40.♗g3 ♚h5 41.♚a8+ ♗f7 42.♚a7+
♗g8 43.♚a8+ ♗h7 44.♗g4 ♚b5
45.♚a4 h5+ 46.♗h4 ♚f5 47.♚b4 ♗h6
48.♚a4 ♚xf4+ 0-1

Bogo-Indian

George Kenney
NM Elmars Zemgalis

Seattle, U.S. Open (5) 1966

1.d4 ♗f6 2.c4 e6 3.♗f3 ♙b4+ 4.♙d2
♞e7 5.a3 ♙xd2+ 6.♞xd2 ♗e4 7.♞c2
f5 8.♗c3 ♗xc3 9.♞xc3 d6 10.g3 ♗d7
11.♙g2 ♗f6 12.♗d2 e5 13.O-O O-O
14.dxe5 dxe5 15.♚fd1 e4 16.♗f1 ♗g4
17.♗e3 ♗xe3 18.♞xe3 ♙e6 19.b3 a5

20. f3 exf3 21. ♖xf3 c6 22. ♗d5 ♜f6
23. ♗f3 ♜e8 24. ♜f4 ♗c8 25. ♜d3 ♜e6
26. ♜d2 ♜c5+ 27. ♘h1 a4 28. ♜b4 ♜f2
29. ♜ad1 axb3 30. ♜d8 ♜e3 31. ♜8d3
♜f2 32. ♜d8 ♜e3 33. ♜8d3 Draw

Modern Benoni

NM Viktors Pupols
Dennis Fritzinger

Seattle, U.S. Open (5) 1966

1. d4 ♘f6 2. c4 e6 3. ♘c3 c5 4. d5 exd5
5. cxd5 d6 6. ♘f3 g6 7. ♗g5 ♗g7 8. ♘d2
O-O 9. e3 ♘a6 10. ♗e2 ♘c7 11. a4 a6
12. ♘c4 ♜b8 13. a5 ♜e7 14. O-O ♗d7
15. ♘b6 ♗b5 16. ♗c4 h6 17. ♗h4 g5
18. ♗g3 ♘d7 19. ♜b3 ♘xb6 20. axb6
♗xc4 21. ♜xc4 ♘e8 22. ♜a3 ♘f6
23. ♘d1 ♘d7 24. ♜b3 f5 25. f3 ♜f6
26. ♗e1 ♜b8 27. f4 ♜d8 28. ♜c2 ♜8f7
29. ♘f2 ♜g6 30. ♘h3 ♜f8 31. ♘h1 g4
32. ♘g1 ♜e7 33. ♘e2 ♜f7 34. ♘g3 ♜xd5
35. ♘xf5 ♜e8 36. ♘g3 ♜g6 37. e4 ♜c6
38. ♗c3 ♗xc3 39. ♜xc3 ♘f6 40. ♜c4
♘h7 41. e5 ♘d5 42. ♜c2+ ♘h8 43. ♜d1
c4 44. ♜a3 c3 45. bxc3 ♘e3 46. ♜d4
♜xg2 mate

Nimzo-Indian Rubinstein

IM Anthony Saidy
Bill Goichberg

Seattle, U.S. Open (5) 1966

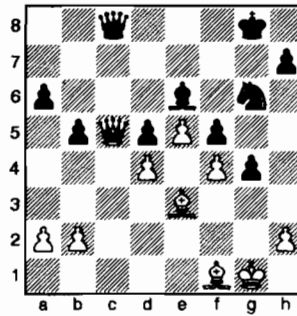
1. d4 ♘f6 2. c4 e6 3. ♘c3 ♗b4 4. e3 c5
5. ♘ge2 cxd4 6. exd4 d5 7. c5 ♘c6 8. a3
♗xc3+ 9. ♘xc3 O-O 10. ♗g5 e5 11. dxe5
♘xe5 12. ♗xf6 ♜xf6 13. ♘xd5 ♜h4
14. ♗e2 ♗e6 15. ♘e3 ♜ad8 16. ♜b1 f5
17. O-O f4 18. ♜e4 ♜g5 19. ♗c4 ♗xc4
20. ♘xc4 f3 21. g3 ♘g6 22. ♜e6+ ♘h8
23. ♘d6 ♜h5 24. ♘f7+ ♜xf7 25. ♜xf7
♜f8 26. ♜e6 ♘e5 27. h4 ♜e8 28. ♜h3
g5 29. ♜f5 ♘f7 30. ♜fe1 ♜e2 31. g4
♜xh4 32. ♜xf3 ♜xf2 33. ♜xf2 ♜xg4+
34. ♜g2 ♜d4+ 35. ♘h1 1-0

Vienna Game

Duncan Suttles
GM William Lombardy

Seattle, U.S. Open (5) 1966

1. e4 e5 2. ♘c3 d6 3. ♗c4 ♘c6 4. f4 exf4
5. ♘f3 ♗e6 6. ♗e2 ♘e5 7. O-O ♘xf3+
8. ♗xf3 g5 9. d4 ♗g7 10. e5 d5 11. ♘a4
b6 12. c4 c6 13. ♘c3 ♜d7 14. cxd5 cxd5
15. g3 ♘e7 16. gxf4 g4 17. ♗e2 O-O 18.
♜f2 f5 19. ♗e3 a6 20. ♘a4 ♜b8 21. ♜c1
♗f8 22. ♗f1 ♘g6 23. ♜b3 b5 24. ♘c5
♗xc5 25. ♜xc5 ♜c8 26. ♜fc2 ♜xc5
27. ♜xc5 ♜c8 28. ♜c3 ♜xc5 29. ♜xc5
♜c8



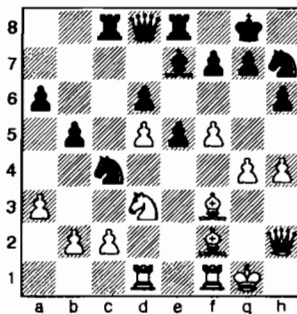
30. ♜d6 ♘f7 31. ♗d2 ♜c2 32. ♗b4 ♜c1
33. ♗c5 ♜e3+ 34. ♘h1 ♜xf4 35. ♜c7+
♘g8 36. ♜d8+ ♘g7 37. ♘g1 ♜e3+
38. ♘h1 ♜f2 39. ♜f6+ ♘h6 40. ♗d3 ♘h5
41. ♗e7 ♜e1+ 42. ♘g2 ♘f4 mate

Sicilian Scheveningen

James Tarjan
GM Pal Benko

Seattle, U.S. Open (5) 1966

1. e4 c5 2. ♘f3 d6 3. d4 cxd4 4. ♘xd4 ♘f6
5. ♘c3 e6 6. ♗e3 a6 7. ♗e2 ♜c7 8. O-O
b5 9. f4 ♗b7 10. ♗f3 ♘bd7 11. ♜e2 ♗e7
12. a3 O-O 13. ♜ad1 ♜fe8 14. f5 e5
15. ♘b3 ♜ac8 16. g4 h6 17. h4 ♘h7
18. ♜h2 ♜d8 19. ♗f2 ♘b6 20. ♘c5 ♗a8
21. ♘d3 ♘c4 22. ♘d5 ♗xd5 23. exd5



23... e4 24. ♗xe4 ♗f6 25. ♗f3 ♘xb2
26. ♘b4 ♘xd1 27. ♗xd1 ♜c3 28. ♘c6
♜d7 29. ♗e1 ♜c4 30. ♗g3 ♗e5 31.
♘xe5 dxe5 32. ♗xe5 ♜xd5 33. ♗b2
♜ce4 34. ♜f2 ♜a2 35. ♗c1 ♜c4 36.
♜g3 ♜d4+ 37. ♘h1 ♜e5 38. ♜xe5
♜8xe5 39. ♗d2 ♘f6 40. ♜g1 h5 0-1

Sicilian Rossolimo

GM Arthur Bisguier
GM Robert Byrne

Seattle, U.S. Open (6) 1966

1. e4 c5 2. ♘f3 ♘c6 3. ♗b5 g6 4. O-O ♗g7
5. c3 ♜b6 6. ♘a3 ♘f6 7. e5 ♘d5 8. ♗c4
e6 9. d4 cxd4 10. cxd4 O-O 11. ♗b3 ♘a5
12. ♗xd5 exd5 13. b4 ♘c4 14. ♜b3 d6
15. ♘xc4 dxc4 16. ♜xc4 ♗e6 17. d5

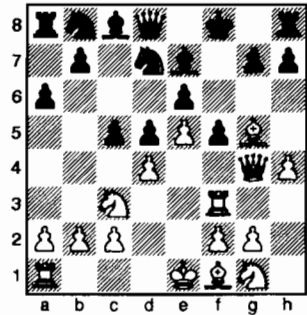
♜fc8 18. ♜b3 ♗g4 19. ♗e3 ♜d8
20. ♗g5 Draw

French Albin-Chatard

Max Burkett
George LeCompte

Seattle, U.S. Open (6) 1966

1. e4 e6 2. d4 d5 3. ♘c3 ♘f6 4. ♗g5 ♗e7
5. e5 ♘f7 6. h4 a6 7. ♜g4 ♘f8 8. ♜h3
c5 9. ♜f3 f5



10. ♘xd5 ♗xg5 11. ♘c7 ♘xe5 12. ♜xg5
♘xf3+ 13. ♘xf3 ♜xc7 14. O-O-O ♘c6 15.
♗c4 cxd4 16. ♘xd4 ♘xd4 17. ♜xd4 ♗d7
18. h5 h6 19. ♜d2 ♘e8 20. ♜e3 ♜f8 21.
g4 e5 22. f4 ♜c8 23. ♗xe5 ffg4 24. ♜d3
♗f5 25. ♜e2 ♜c5 26. ♜e3 b5 27. b4 ♜c7
28. ♗d3 ♗xd3 29. ♜xd3 ♜f1+ 30. ♘b2
♜f2 31. ♜g6+ ♘f8 32. ♜d6+ ♜xd6
33. exd6 0-1

English

Dennis Fritzinger
NM Edward Formanek

Seattle, U.S. Open (6) 1966

1. c4 ♘f6 2. ♘c3 g6 3. g3 ♗g7 4. ♗g2
O-O 5. d4 d6 6. ♘f3 c5 7. O-O ♘c6 8. h3
cxd4 9. ♘xd4 ♗d7 10. ♗e3 ♜c8 11. ♘h2
♘xd4 12. ♗xd4 ♜xc4 13. ♗xb7 ♜ab8
14. ♗f3 ♜xb2 15. ♜c1 ♜a6 16. ♘d5
♗a4 17. ♘xe7+ ♘h8 18. ♜d3 ♜xd3
19. exd3 ♜xa2 20. ♗xa7 ♗b5 21. ♗e3
♗xd3 22. ♜fd1 ♗e2 23. ♗xe2 ♜xe2
24. ♘g2 ♜e8 25. ♜c7 ♘g8 26. ♘c8
♜8xe3 27. ♘xd6 h6 0-1

Giuoco Piano

Patrick Herbers
NM Elmars Zemgalis

Seattle, U.S. Open (6) 1966

1. e4 e5 2. ♘f3 ♘c6 3. ♗c4 ♗c5 4. d4
exd4 5. O-O d6 6. c3 d3 7. b4 ♗b6 8. a4
a5 9. ♜xd3 ♜e7 10. ♗b5 ♘f6 11. ♜e1
O-O 12. ♗xc6 bxc6 13. e5 ♘g4 14. exd6
♗xf2+ 15. ♘f1 ♜xd6 16. ♜xd6 cxd6
17. ♜e4 f5 18. ♜f4 axb4 19. h3 ♗a6+
20. c4 ♗g3 21. hfg4 ♗xf4 22. ♗xf4 ffg4

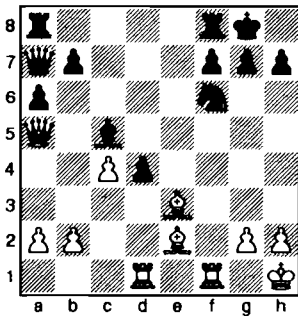
23. ♖xd6 ♜f8 24. ♗e7 gxf3 25. gxf3 ♜xc4+ 26. ♔f2 ♜d1 27. ♖xb4 ♜b8 0-1

Sicilian Scheveningen

Leroy Jackson
NM Ivars Dalbergs

Seattle, U.S. Open (6) 1966

1. e4 c5 2. ♖f3 ♘c6 3. d4 cxd4 4. ♗xd4 ♗f6 5. ♘c3 d6 6. ♗c4 e6 7. ♗e3 a6 8. O-O ♞c7 9. ♗e2 ♗a5 10. f4 ♗e7 11. e5 dxe5 12. fxe5 ♞xe5 13. ♗f4 ♞c5 14. ♗a4 ♞a7 15. ♔h1 ♗d7 16. c4 O-O 17. ♗e3 ♗xa4 18. ♞xa4 ♗c5 19. ♜ad1 e5 20. ♞xa5 exd4



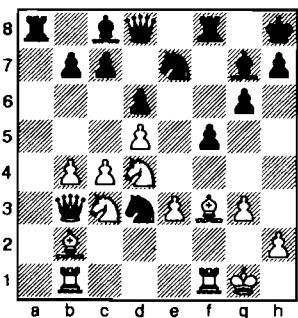
21. ♜xf6 gxf6 22. ♗h6 ♜fe8 23. ♗d3 ♞b6 24. ♞d2 ♞e6 25. ♜f1 ♗f8 26. ♞f4 ♗xh6 27. ♞xh6 ♗f5 28. ♞h3 ♞g6 29. ♗xf5 ♞g7 30. ♔g1 ♜e3 31. ♞h5 ♜ae8 32. b4 d3 33. ♞d1 ♜e2 34. g3 ♞h6 0-1

King's Indian Fianchetto

Gregory Kern
Ziad Baroudi

Seattle, U.S. Open (6) 1966

1. d4 ♗f6 2. c4 g6 3. ♗c3 ♗g7 4. g3 O-O 5. ♗g2 d6 6. ♗f3 ♗c6 7. O-O ♗d7 8. ♜b1 e5 9. e3 a5 10. a3 f5 11. d5 ♗e7 12. b4 axb4 13. axb4 ♔h8 14. ♗b2 e4 15. ♗d4 ♗e5 16. ♞b3 ♗d3 17. f3 exf3 18. ♗xf3



18... f4 19. gxf4 ♗xf4 20. ♗e4 ♗h3+ 21. ♔g2 ♗f5 22. ♗xf5 ♗xf5 23. ♗xg7+ ♔xg7 24. ♞c3+ ♔g8 25. ♗g4 ♞h4 26. ♗xf5 gxf5 27. ♗g3 f4 28. exf4 ♜xf4 29. ♜xf4 ♗xf4+ 30. ♔f3 ♜f8 31. ♔e3

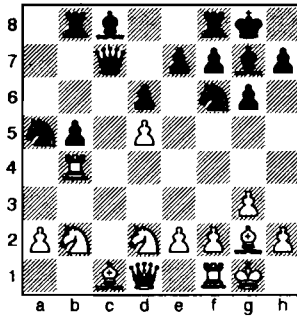
♞xh2 32. ♗e4 ♞h3+ 33. ♔d2 ♞g2+ 34. ♔e3 ♜e8 0-1

King's Indian Fianchetto

Koelsche
GM Pal Benko

Seattle, U.S. Open (6) 1966

1. ♗f3 ♗f6 2. c4 g6 3. g3 ♗g7 4. ♗g2 O-O 5. ♗c3 d6 6. O-O ♗c6 7. d4 a6 8. d5 ♗a5 9. ♗d2 c5 10. ♜b1 ♜b8 11. b4 cxb4 12. ♜xb4 ♞c7 13. ♗a4 b5 14. cxb5 axb5 15. ♗b2



15... ♗xd5 16. ♗xd5 ♞c5 17. ♗b3 ♞xb4 18. ♗d2 ♞a3 19. ♗xa5 ♞xb2 20. ♗c7 ♗h3 21. ♜e1 ♜bc8 22. ♗a5 ♞xa2 23. ♗b4 ♞c2 24. ♗a5 ♞xd1 25. ♜xd1 ♜c2 26. e3 ♜fc8 27. f4 ♗c3 28. ♗xc3 ♜8xc3 29. ♜e1 e6 30. ♗e4 ♜a2 0-1

English Opening

Salvatore Matera
Howard Shelton

Seattle, U.S. Open (6) 1966

1. c4 e5 2. ♗c3 ♗f6 3. d3 d5 4. cxd5 ♗xd5 5. ♗f3 ♗c6 6. ♞a4+ c6 7. ♗xe5 b5 8. ♞e4 f5 9. ♞f3 ♞d6 10. ♗xd5 cxd5 11. ♗f4 ♗d4 12. ♗c4 ♞b4+ 13. ♗d2 ♞c5 14. ♗e3 ♗e6 15. ♜c1 ♗xe3 16. ♜xc5 ♗xc5 17. d4 ♗d6 18. ♞b3 ♗c6 19. e3 a6 20. ♗e2 ♔f7 21. ♗f3 ♗e7 22. ♔e2 a5 23. ♜c1 a4 24. ♞d3 b4 25. ♔d1 ♜hc8 26. ♜xc8 ♜xc8 27. ♞a6 ♜c6 28. ♞xa4 ♜c4 29. b3 ♜c7 30. ♗xb4 ♗xb4 31.

♞xb4 ♜d7 32. ♞c5 ♗g8 33. a4 ♗f6 34. a5 g5 35. a6 g4 36. a7 gxf3 37. gxf3 ♜b7 38. a8=♞ ♜xb3 39. ♞af8+ ♔g6 40. ♞ce7 1:0

Pirc Austrian

Andy Schoene
Duncan Suttles

Seattle, U.S. Open (6) 1966

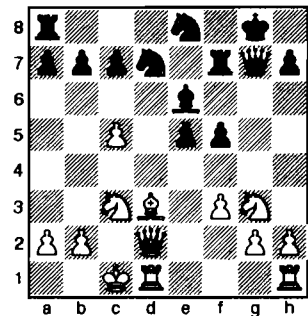
1. d4 g6 2. e4 ♗g7 3. ♗c3 d6 4. f4 ♗f6 5. ♗f3 c5 6. dxc5 ♞a5 7. ♗d3 ♞xc5 8. ♞e2 O-O 9. a3 ♗c6 10. ♗e3 ♞a5 11. ♞d2 ♗g4 12. ♗g1 e5 13. fxe5 ♗cxe5 14. ♗xe5 ♞xe5 15. ♗e2 ♜e8 16. ♗xg4 ♗xg4 17. ♗f2 d5 18. h3 ♗f5 19. O-O dxe4 20. ♜ae1 ♜ad8 21. ♞e2 a6 22. g4 ♗d7 23. ♞xe4 ♞c7 24. ♞b4 ♗c6 25. ♜xe8+ ♜xe8 26. ♜e1 ♜xe1+ 27. ♗xe1 ♞e5 28. ♗f2 ♞f6 29. ♔f1 ♞f3 30. h4 ♗e5 31. ♔e1 ♗f4 32. ♞d4 ♞h1+ 0:1

King's Indian Sämisch

Walter Browne
NM James McCormick

Seattle, U.S. Open (7) 1966

1. d4 ♗f6 2. c4 g6 3. ♗c3 ♗g7 4. e4 d6 5. f3 O-O 6. ♗e3 ♗bd7 7. ♞d2 e5 8. ♗ge2 ♗e8 9. O-O-O f5 10. exf5 gxf5 11. ♗g5 ♗f6 12. ♗xf6 ♞xf6 13. ♗d5 ♞g7 14. dxe5 dxe5 15. ♗g3 ♜f7 16. ♗d3 ♗b6 17. ♗c3 ♗e6 18. c5 ♗d7



19. c6 bxc6 20. ♗xf5 ♜xf5 21. ♗xf5 ♗xf5 22. g4 ♗e6 23. h4 ♗d6 24. b3 ♜f8 25. ♜df1 ♜f4 26. ♗e2 ♜f7 27. ♞c2 ♗d5 28. ♞c3 ♞f8 29. ♜h3 ♗b5 30. ♞e3 ♞c5+ 31. ♞xc5 ♗xc5 32. ♔d2 e4 33. f4 ♗d3 34. f5 ♗d6 35. ♜g3 ♗e5 36. ♔e3 ♜g7 37. g5 ♗f3 38. ♗d4 ♗xd4 39. ♔xd4 ♗b5+ 40. ♔e5 ♜e7+ 41. ♔f4 ♗d6

Free sample copies
of Northwest Chess will be available at the
Oregon Open
(September 1-3 in Eugene)

42. f6 ♖f7 43. h5 ♗h8 44. ♗e5 ♖f8 45. g6 ♖e8+ 46. ♗d4 ♖b5+ 47. ♗c5 ♖e5 48. ♗b4 a5+ 49. ♗a4 ♖d6 50. f7 1-0

Queen's Gambit Accepted

GM Robert Byrne
NM Edward Formanek

Seattle, U.S. Open (7) 1966

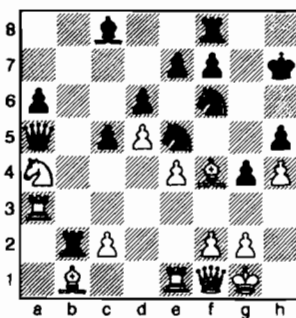
1. d4 d5 2. c4 dxc4 3. ♖f3 ♖f6 4. e3 ♗g4 5. ♗xc4 e6 6. h3 ♗h5 7. ♖b3 ♗xf3 8. gxf3 c5 9. ♖xb7 ♖bd7 10. ♖c3 cxd4 11. exd4 ♗d6 12. ♗b3 O-O 13. f4 ♖d5 14. ♖xd5 exd5 15. ♖xd5 ♖f6 16. ♖f3 ♗b4+ 17. ♗f1 ♖xd4 18. ♗g2 ♖fe8 19. ♖d1 ♖b6 20. ♗e3 ♗c5 21. ♗xc5 ♖xc5 22. ♖ac1 ♖a5 23. ♖b7 ♗h8 24. ♖xf7 ♖f8 25. ♖c7 ♖h5 26. ♖e5 ♖ae8 27. ♖xh5 ♖xh5 28. ♗f1 ♖xf4 29. ♖c3 ♖e7 30. h4 g6 31. ♖e3 ♖xe3 32. fxe3 ♖h5+ 33. ♗g2 ♖e8 34. ♖d3 ♖e7 35. ♗f3 ♖f6 36. ♖d4 ♗g7 37. e4 h6 38. ♗d5 g5 39. hxg5 hxg5 40. b4 ♖c7 41. ♗e6 ♖c3+ 42. ♗e2 ♖h5 43. ♗d2 ♖c7 44. e5 ♖f4 45. ♗g4 ♗f8 46. a4 ♗e7 47. ♗e3 ♖b7 48. ♗e4 ♖e6 49. ♖c4 ♖g7 50. b5 ♖e6 51. ♗xe6 ♗xe6 52. ♖c6+ ♗f7 53. ♗f5 ♖e7 54. e6+ 1-0

Pirc

NM Peter Cleghorn
Kent Pullen

Seattle, U.S. Open (7) 1966

1. ♖f3 g6 2. d4 ♗g7 3. e4 d6 4. ♗e2 ♖f6 5. ♖c3 O-O 6. O-O c6 7. a4 ♖bd7 8. ♗g5 b6 9. d5 ♗b7 10. ♗c4 ♖c8 11. ♗a2 a6 12. ♖e1 h6 13. ♗h4 g5 14. ♗g3 c5 15. h4 g4 16. ♖h2 h5 17. ♖f1 ♗h6 18. ♖e3 ♗xe3 19. ♖xe3 ♖e5 20. ♖f1 ♖b8 21. ♖d1 ♗c8 22. ♗f4 ♗h7 23. ♖de1 b5 24. ♖g3 bxa4 25. ♖xa4 ♖a5 26. ♖a3 ♖xb2 27. ♗b1



27... ♖b8 28. ♖e2 ♗d7 29. ♗d2 ♖b5 30. ♖e3 ♖c4 31. ♖h6+ ♗g8 32. ♖c3 ♖b4 33. ♖b3 ♖a5 34. ♖g5+ ♗h8 35. ♖h6+ ♖h7 36. e5 ♖xd2 37. ♖xd2 ♗f5 38. exd6 exd6 39. ♖xb8 ♖xb8

40. ♖e7 ♗g6 41. ♗a2 ♖d8 42. ♖e3 ♗g7 43. ♗c4 ♗f8 44. ♖a7 ♗g7 45. ♗d3 ♗xd3 46. ♖xd3 ♖f6 47. g3 ♖f8 48. ♖e4 ♖d4 49. ♖xd4+ cxd4 50. ♖xd6 ♖b6 51. ♖xf7 ♗f6 52. d6 ♗e6 53. ♖e7+ ♗f6 54. ♖g5 ♖b8 55. ♗f1 ♖a8 56. ♗e2 ♖g6 57. ♖e6+ ♗f5 58. d7 ♖d8 59. ♖xg6 ♖xd7 60. ♖xa6 d3+ 61. cxd3 ♖b7 62. ♗e3 ♖b1 63. ♖e4 ♖b3 64. ♖h6 1-0

Modern 150 Attack

Bill Goichberg
GM Pal Benko

Seattle, U.S. Open (7) 1966

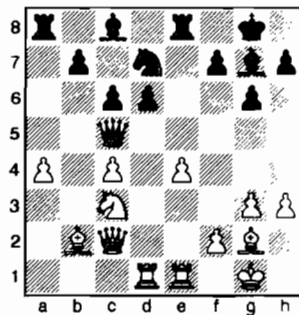
1. e4 g6 2. d4 ♗g7 3. ♖c3 d6 4. ♗e3 c6 5. ♖d2 b5 6. f3 ♖d7 7. ♖ge2 ♖b6 8. b3 ♖f6 9. a4 a6 10. axb5 cxb5 11. d5 O-O 12. ♖d4 ♗d7 13. ♗d3 e6 14. dxe6 fxe6 15. O-O ♖c7 16. ♖ad1 d5 17. ♖de2 b4 18. ♖a2 dxe4 19. ♗xe4 ♖xe4 20. fxe4 ♖xf1+ 21. ♖xf1 a5 22. c4 ♗c6 23. ♖d4 ♖d7 24. ♖xc6 ♖xc6 25. ♖d1 ♖xc4 26. bxc4 ♖xc4 27. ♖c1 b3 28. ♖d3 ♖xd3 29. ♖xd3 a4 30. e5 ♖d8 31. ♖b2 ♖xd1+ 32. ♖xd1 ♗xe5 33. ♗c1 ♗d6 34. ♖b2 a3 35. ♖c4 b2 36. ♗xb2 axb2 37. ♖xb2 ♗f7 38. ♗f2 ♗f6 39. ♖c4 ♗xh2 40. g3 ♗f5 41. ♖e3+ ♗e4 42. ♖g4 ♗xg3+ 43. ♗xg3 h5 44. ♖f2+ ♗f5 45. ♗f3 g5 46. ♖d1 g4+ 47. ♗g3 ♗g5 48. ♖c3 h4+ 49. ♗g2 ♗f4 50. ♖e2+ ♗e3 51. ♖c3 g3 52. ♖d1+ ♗f4 53. ♖c3 ♗g4 54. ♖e4 h3+ 55. ♗g1 e5 0-1

King's Indian Fianchetto

NM Elmars Zemgalis
IM Anthony Saidy

Seattle, U.S. Open (7) 1966

1. d4 ♖f6 2. c4 g6 3. ♖f3 ♗g7 4. g3 O-O 5. ♗g2 d6 6. O-O ♖bd7 7. ♖c3 e5 8. e4 c6 9. b3 exd4 10. ♖xd4 ♖e8 11. ♗b2 ♖c5 12. ♖c2 a5 13. h3 a4 14. ♖ad1 ♖b6 15. ♖fe1 axb3 16. ♖xb3 ♖b4 17. ♖xc5 ♖xc5 18. a4 ♖d7



19. e5 ♖xe5 20. ♖e4 ♗f5 21. ♗xe5 ♗xe5 22. ♖xc5 ♗xc2 23. ♖c1 ♗xa4 24. ♖xa4

♖xa4 25. ♗f1 ♖ea8 26. ♗f3 ♖a2 27. ♗e2 ♗f8 28. ♖b1 ♖8a7 29. ♗d3 ♖d2 30. ♖bd1 ♖b2 31. ♖e2 ♖xe2 32. ♗xe2 ♗e7 33. ♖b1 ♖a1 34. ♖xa1 ♗xa1 35. ♗f3 ♗e6 36. ♗e2 ♗e5 37. ♖d3 ♗d4 38. ♗xc6 bxc6 39. f4+ ♗e6 40. ♗xd4 f5 41. ♖d3 c5 42. ♗c3 d5 0-1

QGD Marshall

Robert Bond
E. K. Dart

Seattle, U.S. Open (8) 1966

1. d4 d5 2. c4 ♖f6 3. cxd5 ♖xd5 4. e4 ♖b6 5. ♖f3 ♗g4 6. ♗e2 ♖c6 7. ♗e3 h6 8. ♖c3 e6 9. O-O a6 10. d5 exd5 11. exd5 ♖e7 12. ♗xb6 cxb6 13. ♖e1 ♖c8 14. ♗b5 mate

Vienna Game

Robert Erkes
Joe Brandenburg

Seattle, U.S. Open (8) 1966

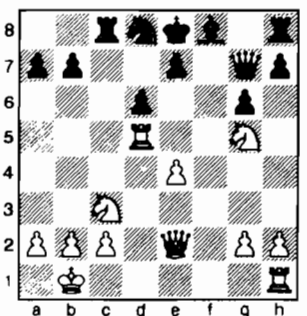
1. e4 e5 2. ♖c3 ♖c6 3. ♗c4 g6 4. d3 ♗g7 5. ♗e3 ♖f6 6. h3 d6 7. ♖ge2 O-O 8. ♖d2 ♖e7 9. f4 ♗h8 10. g4 c6 11. fxe5 dxe5 12. O-O-O a5 13. d4 exd4 14. ♖xd4 b5 15. ♗d3 ♗a6 16. ♖hf1 ♖d7 17. ♖b3 ♖ad8 18. ♖c5 ♖c8 19. ♗g5 ♖fg8 20. ♖e2 a4 21. ♖b4 f6 22. ♗e3 ♗b7 23. ♖d4 ♖de8 24. ♖de6 ♖f7 25. h4 ♖a8 26. h5 ♗c8 27. g5 ♗xe6 28. ♖xe6 ♖c8 29. hxg6 ♖xg6 30. ♖xg7 ♗xg7 31. gxf6+ ♖xf6 32. ♖c3 ♖e6 33. ♗d4 ♖ef8 34. ♖f5 ♗g8 35. ♗xf6 ♖xf6 36. ♖df1 ♖e5 37. ♖g1+ ♗h8 38. ♖xe5 ♖f7 39. ♖gf1 1-0

Irregular

Bill Goichberg
Ziad Baroudi

Seattle, U.S. Open (8) 1966

1. e4 d6 2. d4 c5 3. dxc5 ♖a5+ 4. ♖c3 ♖xc5 5. ♗e3 ♖b4 6. ♖d2 ♖a5 7. ♗c4 ♗e6 8. ♗xe6 fxe6 9. f4 ♖c6 10. ♖f3 ♖f6 11. ♖g5 ♖d8 12. O-O-O ♖d7 13. ♗b1 ♖c8 14. ♖e2 g6 15. ♗d4 e5 16. fxe5 ♖xe5 17. ♗xe5 ♖xe5 18. ♖d5 ♖g7



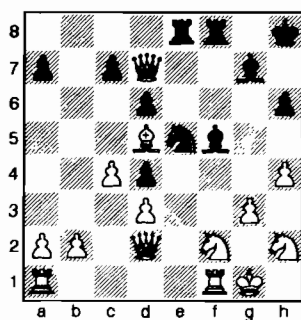
19.e5 d7 20.exd6 exd6 21.♞e1 c7
 22.♘b5+ ♘b8 23.♞f2 b6 24.♘xd6
 ♘xd6 25.♞xd6 ♞c7 26.♞ed1 ♞f8
 27.♞d2 ♘b7 28.♞d7 ♞cd8 29.♘f3
 ♞xd7 30.♞xd7 ♘c5 31.♞d5 ♘b7
 32.♘e5 ♘a8 33.♘c6 ♞c8 34.♘d4 ♞d8
 35.♞f3 ♞xh2 36.c3 ♞d6 37.♞f1 a6
 38.♞e4 ♞f8 39.♞xf8+ ♞xf8 40.a3 ♞f1+
 41.♘a2 ♞f7+ 42.♞e6 ♘d6 43.♞xf7
 ♘xf7 44.♘b3 ♘b7 45.♘c4 ♘c7
 46.♘d5 ♘d7 47.♘e6 ♘d8 48.♘f8+
 ♘e7 49.♘xh7 ♘f7 50.♘g5+ ♘f6
 51.♘f3 g5 52.♘d6 b5 53.♘c7 ♘e6+
 54.♘b6 ♘f4 55.♘xa6 ♘xg2 56.♘xb5
 ♘e3 57.a4 g4 58.♘g1 ♘e5 59.a5 ♘d6
 60.c4 g3 61.b4 ♘c2 62.c5+ ♘c7 63.a6
 g2 64.♘a5 ♘d4 65.b5 ♘b3+ 66.♘b4
 ♘d4 67.♘c4 ♘f5 68.b6+ ♘c6 69.a7
 ♘b7 70.c6+ ♘a8 71.♘b5 ♘d4+ 72.♘a6
 ♘xc6 1-0

English Opening

Koelsche
 NM Elod Macskasy

Seattle, U.S. Open (8) 1966

1.♘f3 g6 2.c4 ♘g7 3.g3 d6 4.♘c3 e5
 5.♘g2 ♘c6 6.O-O ♘ge7 7.d3 O-O 8.e4
 h6 9.♘e3 f5 10.♞d2 g5 11.exf5 ♘xf5
 12.♘e4 ♘d4 13.♘d4 exd4 14.h4 g4
 15.♘h2 ♞d7 16.f3 gx f3 17.♘f3 ♘g6
 18.♘f2 ♘e5 19.♘xb7 ♞ae8 20.♘d5+
 ♘h8



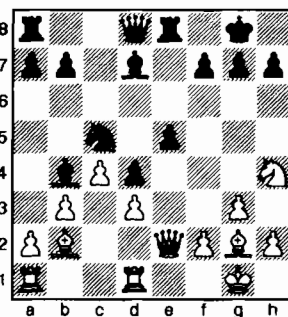
21.♞ae1 ♘h3 22.♘g2 ♘xg2 23.♘xg2
 ♞c6+ 24.♘g1 ♞f3 25.♘e4 ♞xd3 26.
 ♞g2 ♘xc4 27.♘g4 ♘e3 28.♘e3 ♞xe3
 29.♞xe3 dxe3 30.♘c3 ♞xg2+ 31.♘xg2
 c6 32.♞e1 d5 33.♘d1 d4 34.♘f2 e2
 35.b3 h5 36.♘d3 ♞e3 37.♘f4 d3 38.
 ♘xd3 ♞xd3 39.♞xe2 ♘g8 40.♞f2 ♘c3
 41.♞c2 ♞d2+ 42.♞xd2 ♘xd2 43.g4
 hxg4 44.♘g3 ♘f7 45.♘xg4 ♘e6 46.
 ♘f3 ♘d5 47.♘e2 ♘h6 48.♘d3 ♘c5 49.
 a3 a5 50.♘c3 ♘g7+ 51.♘c2 ♘d4 52.h5
 ♘h6 53.♘b2 ♘d3 54.a4 ♘g7+ 55.♘a3
 c5 56.♘a2 ♘c2 57.♘a3 ♘c3 0-1

English Opening

GM William Lombardy
 NM Ivars Dahlbergs

Seattle, U.S. Open (8) 1966

1.c4 ♘f6 2.g3 e6 3.♘f3 d5 4.♘g2 ♘e7
 5.O-O O-O 6.b3 c5 7.♘b2 ♘c6 8.♘a3
 d4 9.e3 e5 10.exd4 cxd4 11.♘c2 ♘f5
 12.d3 ♘d7 13.♞e1 ♞e8 14.♞e2 ♘b4
 15.♘xb4 ♘xb4 16.♞ed1 ♘c5 17.♘h4
 ♘d7



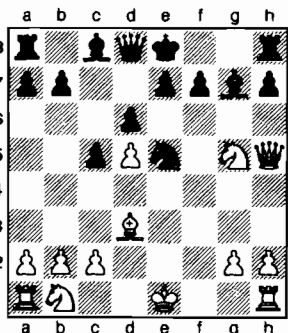
18.a3 ♘c3 19.♘xc3 dxc3 20.♞c2 ♘g4
 21.♘f3 ♘xf3 22.♘xf3 ♞f6 23.♘g2
 ♞ad8 24.b4 ♘xd3 25.♞xd3 ♞xd3
 26.♞xd3 e4 27.♞e3 exf3+ 28.♞xf3 ♞d4
 29.♞c1 c2 30.♞xc2 g6 31.c5 ♞e6
 32.♞xb7 ♞d1 33.♞c4 ♞e1 34.♞c8+
 ♘g7 35.♞g4 ♞g1+ 36.♘h3 ♞f1+
 37.♘h4 ♞h1 38.♞d4+ f6 39.♘g4 ♞xh2
 40.♘f3 ♞h5 41.♞d7+ ♘h6 42.♞h4
 ♞xh4 43.gxh4 ♞h1+ 44.♘e2 ♞xh4
 45.c6 ♞e4+ 46.♘d2 ♞f4+ 47.♘c3
 ♞f3+ 48.♘c2 1-0

Trompowsky

Phil Neff
 Edgar McCormick

Seattle, U.S. Open (8) 1966

1.d4 ♘f6 2.♘g5 c5 3.♘xf6 gx f6 4.d5 f5
 5.e4 fx e4 6.f3 ex f3 7.♘xf3 d6 8.♘d3 ♘g7
 9.♘g5 ♘d7 10.♞h5 ♘e5



11.♘e6 ♘xd3+ 12.cxd3 ♞a5+ 13.♘d2
 ♘xe6 14.dxe6 O-O-O 15.exf7 ♘xb2
 16.♞d1 ♘c3 17.♞e2 ♞xa2 18.♞xe7
 ♘xd2+ 19.♞xd2 ♞a1+ 20.♞d1 ♞e5+

21.♞xe5 dxe5 22.O-O ♞hf8 23.♞f5 b6
 24.♞df1 ♞d7 25.g4 a5 26.g5 ♞e7 27.h4
 e4 28.h5 ♞e6 29.♞f6 ♞e5 30.♞f5
 ♞xf5 31.♞xf5 exd3 32.♘f2 c4 33.♘e3
 ♞d8 34.f8=♞ 1-0

King's Indian Four Pawns

Andrew Kalotay
 George Kenny

Seattle, U.S. Open (8) 1966

1.c4 ♘f6 2.♘c3 g6 3.e4 d6 4.d4 ♘g7
 5.f4 O-O 6.♘e2 c5 7.d5 b5 8.cxb5 a6
 9.bxa6 ♘xa6 10.♘f3 ♞b6 11.O-O c4+
 12.♘h1 ♘bd7 13.♞c2 ♞fc8 14.♞b1
 ♞a5 15.♘d2 ♘b7 16.h3 ♘h5 17.♘h2
 ♞c7 18.g4 ♘hf6 19.♞fc1 ♞c5 20.♘e1
 e6 21.dxe6 fxe6 22.b4 cxb3 23.♞xb3
 ♘a6 24.♘xa6 ♞xa6 25.♞e2 1-0

King's Indian Sämisch

IM Anthony Saidy
 GM Robert Byrne

Seattle, U.S. Open (8) 1966

1.d4 ♘f6 2.c4 g6 3.♘c3 ♘g7 4.e4 d6
 5.f3 a6 6.♘e3 c6 7.♘d3 ♘bd7 8.♘ge2
 O-O 9.O-O b5 10.♞d2 e5 11.♞fd1 ♘b7
 12.a3 exd4 13.♘xd4 ♘e5 14.cxb5 cxb5
 15.♘f1 d5 16.exd5 ♘xd5 17.♘xd5
 ♞xd5 18.♘h6 ♘xh6 19.♞xh6 ♘c6
 Draw

Bird's Opening

NM Elmars Zemgalis
 Kenneth Jones

Seattle, U.S. Open (8) 1966

1.f4 f5 2.♘f3 ♘c6 3.d4 d5 4.e3 ♘f6 5.c4
 e6 6.♘c3 ♘e7 7.a3 O-O 8.♞c2 ♘e4
 9.cxd5 exd5 10.♘xd5 ♘d6 11.♘c3 ♞e8
 12.♘c4+ ♘h8 13.♘xe4 ♘xf4 14.exf4
 ♞xe4+ 15.♘f2 ♘xd4 16.♞d1 ♞f6
 17.♞xd4 ♞xd4 18.♘xd4 ♞xd4+
 19.♘e3 ♞f6 20.♞d1 b6 21.♘d5 ♞b8
 22.♞xc7 1-0

Sicilian Alapin

GM Arthur Bisguier
 IM Anthony Saidy

Seattle, U.S. Open (9) 1966

1.e4 c5 2.c3 ♘f6 3.e5 ♘d5 4.d4 cxd4
 5.♘c4 ♘b6 6.♘b3 d5 7.exd6 ♞xd6
 8.cxd4 ♘c6 9.♘f3 ♘f5 10.♘c3 e6 11.
 O-O ♘e7 12.♘e3 O-O 13.♞e2 ♘b4
 14.♞fd1 ♘d4 15.♘d2 ♞ac8 16.♘e4
 ♘xe4 17.♞xe4 ♘c4 18.♞e2 b5 19.♘e3
 ♞c7 20.♘e1 ♘f6 21.♘d3 ♞d8 22.♘h1

a6 23. ♖ac1 ♘a5 24. ♜xc7 ♞xc7
 25. ♙xd5 exd5 26. b3 ♘c6 27. ♞c2 ♞b6
 28. ♞c5 ♞xc5 29. ♘xc5 a5 30. ♘g1 ♜c8
 31. ♘f1 ♙xd4 32. ♜xd4 ♘xd4 33. ♙xd4
 f6 34. ♘e2 ♘f7 35. ♘d3 ♜c7 36. ♙e3
 ♜e7 37. ♘d4 ♜e5 38. ♘d3 ♜e8 39. ♘f4
 ♜c8 40. ♘d5 ♜c2 41. a4 bxa4 42. bxa4
 ♘e6 43. ♘c3 ♘d6 44. ♘c4 ♜b2
 45. ♙c5+ ♘c6 46. g4 ♘c7 47. ♙d4 Draw

Ruy Lopez

GM Robert Byrne
 GM William Lombardy

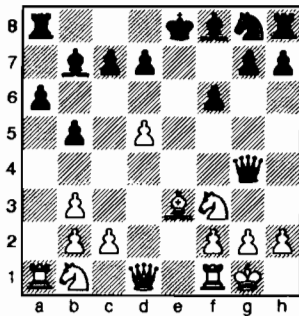
Seattle, U.S. Open (9) 1966

Annotations by GM Robert Byrne

1. e4 e5 2. ♘f3 ♘c6 3. ♙b5 a6 4. ♙a4 b5
 5. ♙b3 ♘a5 6. ♘xe5

My idea was not really a novelty, but most theorists agree that this is not White's strongest continuation because of 6... ♘xb3 7. axb3 ♞e7 or 7... ♞g5. However, I had made a thorough analysis of this line some time ago and I came to the conclusion that White gets the better game with attacking chances whether Black plays, ... ♞e7 or ... ♞g5. The funny part of all this is that I had discussed this very variation with Lombardy some months before and I showed him my analysis. Either he didn't agree with my conclusions or he forgot all about it.

♘xb3 7. axb3 ♞e7 8. d4 f6 9. ♘f3 ♞xe4+
 10. ♙e3 ♙b7 11. O-O ♞g4 12. d5



12... ♘e7 13. c4 ♘f5 14. ♜e1 ♘xe3 15.
 ♜xe3+ ♘d8 16. ♘c3 ♙c5 17. ♜e4 ♞h5
 18. ♞d3 ♘c8 19. ♜h4 ♞f7 20. ♜xh7
 ♜xh7 21. ♞xh7 ♘b8 22. ♞d3 bxc4 23.
 bxc4 a5 24. ♘e4 ♙b4 25. ♞d4 ♞f8 26.
 ♜c1 ♜a6 27. ♘e1 f5 28. ♘g5 ♙e7 29.
 ♞d2 ♞f6 30. ♘g3 ♞d6 31. ♘d3 ♙f6 32.
 ♜e1 ♞f8 33. ♘fe5 ♙c8 34. ♞c2 c6 35.
 dxc6 dxc6 36. c5 ♞g8 37. ♘c4 ♙e6 38.
 ♘d6 ♜a7 39. ♘e5 ♘c7 40. ♞a4 ♙d5 41.
 ♘d3 ♜a8 42. ♞f4 ♘d7 43. ♘e5+ ♘c7
 44. ♘xf5 ♘b7 45. ♘d6+ ♘a7 46. ♞a4
 ♞d8 1-0

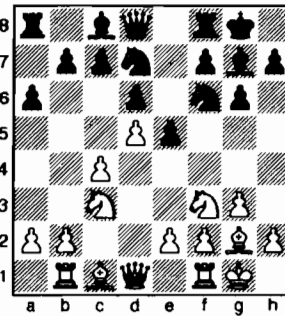
King's Indian Fianchetto

Robert Holzinger
 NM Viktors Pupols

Seattle, U.S. Open (9) 1966

Annotations by Larry Parr

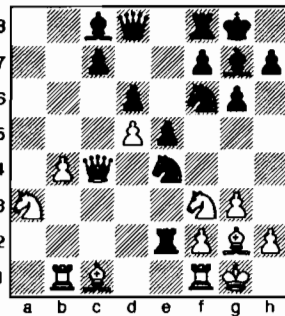
1. d4 ♘f6 2. c4 d6 3. ♘f3 ♘bd7 4. ♘c3
 e5 5. g3 g6 6. ♙g2 ♙g7 7. O-O O-O 8. d5
 a6 9. ♜b1



9... ♜b1!

Black had to envision that he would have sufficient compensation for the trapped Rook six moves later.

10. cxb5 axb5 11. ♘xb5 ♜xa2 12. ♘a3
 ♘c5 13. b4 ♘ce4 14. ♞b3 ♜xe2 15. ♞c4



15... ♜xf2

The culmination of Black's play. He will have many positional advantages (safer King and better pawn structure to name two) and two pawns for the piece.

16. ♜xf2 ♘xf2 17. ♘xf2 ♙b7 18. ♙g5?

18. ♘d2 or 18. ♘e1 had to be played. The text drops the d-pawn in a few moves.

18... ♞a8 19. ♙xf6 ♙xf6 20. ♘c2 ♙xd5
 21. ♞c3 ♙g7 22. ♘e3 ♙xf3 23. ♙xf3 e4!

Correctly staying in the middlegame,

Next Month
**This year's U.S. Open
 Games from the WA Open**

as the endgame after 23... ♞xf3+ 24. ♘xf3
 e4+ 25. ♘xe4 ♙xc3 26. ♘d5 f5+ 27. ♘d3
 ♙e5 28. ♘xc7 is not so clear.

24. ♞xc7 exf3 25. ♜d1 ♞a2+ 26. ♘xf3
 ♞xh2 27. ♞xd6 h5 28. b5 h4

Stripping the last cover from the White King.

29. gxh4 ♞xh4 30. b6 ♞h5+ 31. ♘f2 ♙e5
 32. ♞d5 ♞h4+ 33. ♘e2 ♜e8 34. ♜g1
 ♞f6 35. ♞d7 ♜d8

35... ♞e6! was slightly faster, for example, 36. ♞xe6 ♜xe6 wins the b-pawn on the spot (37. b7 ♙f4).

36. ♞b5 ♙f4 37. b7 ♞e6 38. ♞c5 ♙xe3
 39. ♞xe3 ♞a6+ 40. ♘f2 ♞xb7 41. ♜g5
 ♞b2+ 42. ♘g1 ♜d1+ 0-1

[This game appears in *Viktors Pupols, American Master* by Larry Parr.]

QGD Exchange

NM Ivars Dahlbergs
 NM Elmars Zemgalis

Seattle, U.S. Open (9) 1966

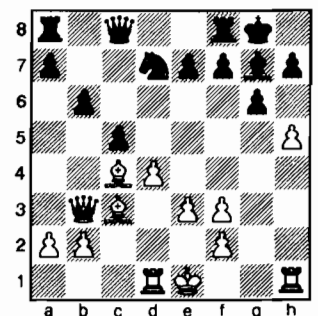
1. d4 d5 2. c4 e6 3. ♘c3 ♘f6 4. ♘f3 ♘bd7
 5. cxd5 exd5 6. ♙g5 ♙e7 7. e3 O-O 8. ♙d3
 ♜e8 9. O-O ♘f8 10. ♞c2 ♘h5 11. ♙xe7
 ♜xe7 12. ♘e5 c6 13. ♘a4 ♘f6 14. ♘c5
 ♘e8 15. b4 ♘d6 16. a4 f6 17. ♘f3 ♞e8
 18. ♞a2 Draw

Grünfeld

NM Elod Macskasy
 Bill Goichberg

Seattle, U.S. Open (9) 1966

1. d4 ♘f6 2. c4 g6 3. ♘c3 d5 4. ♘f3 ♙g7
 5. e3 O-O 6. ♙d2 b6 7. cxd5 ♘xd5 8. ♙c4
 ♙b7 9. ♞b3 ♘xc3 10. ♙xc3 ♘d7 11. ♜d1
 ♙xf3 12. gxf3 ♞c8 13. h4 c5 14. h5



14... cxd4 15. hxg6 hxg6 16. ♙xd4 e5
 17. ♙c3 ♞c7 18. ♙b4 ♘c5 19. ♞c2 ♞c6
 20. ♙d5 ♞f6 21. ♙xa8 ♜xa8 22. ♘e2 e4
 23. fxg4 ♞xb2 24. ♞xb2 ♙xb2 25. ♙xc5
 bxc5 26. ♘d3 ♙g7 27. ♘c4 ♜b8 28. ♜b1

It's Our 25th Year - Join the Celebration!
Now a USCF Classic and Heritage Event!

25th Annual Sands Regency
RENO - WESTERN STATES OPEN

A WEIKEL TOURNAMENT

200 Grand Prix Pts. ♦ **October 12-14, 2007** ♦ F.I.D.E. Rated

\$46,000!!

(b/450)

\$29,850!!

(Guaranteed)

6 Round Swiss ♦ 7 Sections ♦ 40/2 - 20/1 - G/1/2

Entry: \$120 Average! ♦ Rooms: \$39/\$59!!

We're rolling back prices on the Entry Fees and all Side Events!

The fun starts on Wednesday, October 10!

Wed 10/10 7 p.m. Clock Simuls: GM Larry Evans and IM John Donaldson, ONLY \$30!

A great opportunity for everyone (but especially for young upcoming students) to play a serious game of chess (40/2) with a titled player, complete with analysis, and for only \$30!!

(Enter early for choice of GM Evans or IM Donaldson, later entries assigned.)

Thurs 10/11 6 p.m. Lecture: 5-Time US Champion GM Larry Evans, FREE!

Thurs 10/11 7:30 p.m. Simul: GM Walter Browne ("Mr. 6-Time!"), ONLY \$15!!!

Thurs 10/11 7:30 p.m. Blitz: 5 Min., \$15

Sat 10/13 3 to 4:30 p.m. Chess Clinic: GM Larry Evans, FREE!

Sun 10/14 Noon Quick Tournament, 5 Rd Swiss G/25, \$15

PLUS EVEN MORE! DOOR PRIZES!!! CHANCES TO WIN EVERY DAY!!! SEE YOU IN RENO!



For a flyer call, write, or e-mail:

Organizer and Chief TD

N.T.D. Jerome V. (Jerry) Weikel, (775)747-1405

6578 Valley Wood Dr., Reno NV 89523,

wackyykl@aol.com

Room Reservations: Call the Sands Regency,

1-866-FUN STAY. Ask for code CHE 1011.

To confirm receipt of entry:

See player list at

www.renochess.org/wso

VISIT WWW.RENOCHESS.ORG/WSO

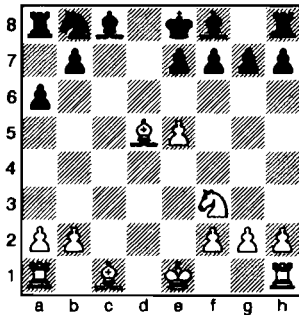
1. e4 e5 2. f3 d6 3. d4 cxd4 4. c3 dxc3 5. dxc3 d6 6. e5 d5 7. e5 d5 8. dxd5 9. dxd5 10. e5 d5 11. d2 f5 12. c1 c8 13. O-O e6 14. xc6+ xc6 15. d4 c5 16. xc5 xc5 17. xf5 exf5 18. c1 b6 19. c8+ d8 20. b8 b6 21. b4 d7 22. a8 e6 23. g5 f6 24. exf6 gxf6 25. e3 e8 26. xb6 f7 27. e3 e7 28. a7 g6 29. g3 xb4 30. xa6 d8 31. a4 c3 32. g2 d5 33. c6 d4 34. f3 e5 35. c2 f7 36. a2 c7 37. d2 d6 38. f4 c6 39. xc7 xc7 40. a5 e6 41. a6 a7 42. f4 h6 43. h4 h5 44. a4 1-0

Sicilian Smith-Morra

**Edgar McCormick
James Tarjan**

Seattle, U.S. Open (9) 1966

1. e4 c5 2. f3 d6 3. d4 cxd4 4. c3 dxc3 5. dxc3 d6 6. e5 d5 7. e5 d5 8. dxd5 9. dxd5 10. e5 d5



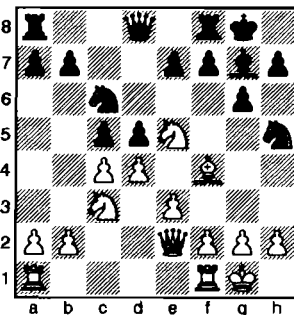
11. d2 f5 12. c1 c8 13. O-O e6 14. xc6+ xc6 15. d4 c5 16. xc5 xc5 17. xf5 exf5 18. c1 b6 19. c8+ d8 20. b8 b6 21. b4 d7 22. a8 e6 23. g5 f6 24. exf6 gxf6 25. e3 e8 26. xb6 f7 27. e3 e7 28. a7 g6 29. g3 xb4 30. xa6 d8 31. a4 c3 32. g2 d5 33. c6 d4 34. f3 e5 35. c2 f7 36. a2 c7 37. d2 d6 38. f4 c6 39. xc7 xc7 40. a5 e6 41. a6 a7 42. f4 h6 43. h4 h5 44. a4 1-0

Grünfeld

**Raymond Schutt
Walter Grombacher**

Seattle, U.S. Open (9) 1966

1. d4 d6 2. c4 g6 3. c3 d5 4. f3 e7 5. f4 O-O 6. e3 c5 7. e2 d6 8. O-O e5 9. e5 xe2 10. xe2 d5



11. cxd5 xf4 12. exf4 xd4 13. e4 f6 14. f3 f5 15. d3 d6 16. g3 c4 17. d1 xf3+ 18. xf3 xc3 19. bxc3 ac8 20. fe1 c5 21. ad1 d8

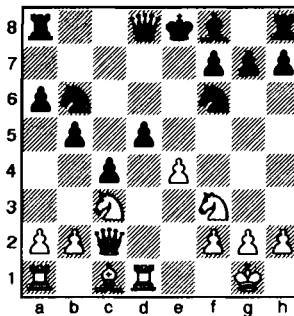
22. e5 d7 23. e2 c7 24. h4 f8 25. h5 d8 26. hxg6 hxg6 27. f3 e6 28. xe6 cxd5 29. de1 d1 30. e8+ xe8 31. xd1 e4 0-1

QGD Slav

**John Walker
Ron Erickson**

Seattle, U.S. Open (9) 1966

1. c4 d6 2. f3 c6 3. d4 d5 4. e3 f5 5. c3 e6 6. d3 xd3 7. xd3 dxc4 8. xc4 b5 9. b3 a6 10. O-O c5 11. d1 c4 12. c2 bd7 13. e4 db6 14. d5 exd5



15. a4 b4 16. xd5 dxd5 17. exd5 a5 18. e3 d6 19. e4+ f8 20. xb6 xb6 21. xc4 f6 22. d4 f7 23. c6 he8 24. e1 c5 25. d6+ f8 26. xe8+ xe8 27. d7 xc6 28. dxe8=+ xe8 29. g8+ d7 30. d1+ c7 31. xg7+ cb6 32. d7 xd7 33. xd7 h6 34. b3 c6 35. h7 d5 36. hxh6 e4 37. h4+ d3 38. c4 d4 39. xd4+ xd4 40. h4 c3 41. h5 xb3 42. h6 a2 43. h7 b3 44. h8= b2 45. h7 b1=+ 46. xb1+ xb1 47. g4 b2 48. f4 b3 49. g5 fxg5 50. fxg5 xa4 51. g6 b4 52. g7 a4 53. g8= a3 54. a2 1-0

Dutch Stonewall

**GM Pal Benko
GM Robert Byrne**

Seattle, U.S. Open (10) 1966

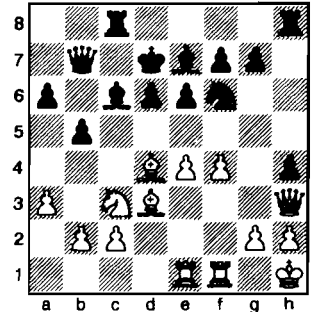
1. f3 f5 2. g3 d6 3. g2 e6 4. O-O e7 5. c4 O-O 6. b3 c6 7. d4 a5 8. c3 d5 9. e5 a6 10. a3 d7 11. h3 e8 12. g4 c7 13. e3 d6 14. b2 b5 15. a4 b4 16. b1 d4 17. f3 g5 18. d2 d7 19. d3 g3 20. f4 d6 21. f3 h4 22. f1 e4 23. f3 e7 24. f2 d6 25. dxe4 dxe4 26. e5 h5 27. gxh5 f6 28. h2 h6 29. d6 xg6 30. hxg6 fxg6 31. g1 h4 32. e1 h6 33. h1 xg1 34. xg1 f7 Draw

Sicilian Kan

**Walter Browne
J Kelly**

Seattle, U.S. Open (10) 1966

1. e4 c5 2. f3 e6 3. d4 cxd4 4. xd4 a6 5. c3 c7 6. d3 b5 7. O-O b7 8. a3 f6 9. h1 e7 10. f4 d6 11. e3 c6 12. f3 c8 13. ae1 h5 14. dxc6 dxc6 15. d4 b7 16. g3 h4 17. h3 d7



18. g1 c7 19. e5 d5 20. d4 d5 21. c5 xc5 22. xc5 d4 23. xd4 cd8 24. c3 b8 25. f2 dg8 26. xh4 f6 27. g3 h6 28. exf6 g6 29. f5+ a8 30. fe6 gh8 31. exf7 xf7 32. e7 1-0

Sicilian Kopec

**A Dubow
Robert Holzinger**

Seattle, U.S. Open (10) 1966

1. e4 c5 2. f3 d6 3. c3 f6 4. d3 c6 5. c2 g4 6. d3 e6 7. e2 e7 8. bd2 c7 9. h3 h5 10. f1 O-O 11. g4 g6 12. d3 d5 13. e5 d7 14. f4 f6 15. exf6 e5 16. g5 xf6 17. d4 ae8 18. xg6 hxg6 19. O-O-O d6 20. b1 b5 21. h4 b4 22. h5 gxh5 23. xf6 xf6 24. hxh5 bxc3 25. f5 d4 26. xd4 cxd4 27. g5 f4 28. h8+ xh8 29. h5+ g8 30. xe8+ f8 31. h5 g6 32. xg6+ g7 33. e6+ f7 34. c8+ f8 35. c6 xf2 36. b3 xb2+ 37. a1 xb3 38. axb3 g7 39. g6 f3 40. e8+ f8 41. e6+ g7 42. xe5+ g8 43. e6+ g7 44. d7+ h6 45. h7+ g5 46. g1+ f4 47. c7+ e3 48. g3 c2 49. xf3+ d2 50. f2+ 1-0

Sicilian Kan

**Bill Goichberg
Joseph Kaltenecker**

Seattle, U.S. Open (10) 1966

1. e4 c5 2. f3 e6 3. d4 cxd4 4. xd4 a6 5. c3 c7 6. g3 g6 7. g2 g7 8. O-O d7 9. e3 O-O 10. f4 d6 11. f5 xd4

1966 U.S. OPEN - Seattle, Washington

PRIZE WINNERS

Champion	Robert Bryne	Indianapolis, Indiana	11-2	\$800.00	
Champion	Pal Benko	New York City, New York	11-2	\$800.00	
3rd Place	Duncan Suttles	Vancouver, B.C.	10-3	\$300.00	
4th-8th	Anthony Saidu	San Francisco, California	9.5-3.5	\$110.00	
	Arthur Bisguier	New York City, New York	9.5-3.5	\$110.00	
	Peter Cleghorn	Anchorage, Alaska	9.5-3.5	\$110.00	
	Ivars Dalbergs	Portland, Oregon	9.5-3.5	\$110.00	
	Ronald Gross	Compton, California	9.5-3.5	\$110.00	
1st Expert	Touradj Saidi	Compton, California	9.5-3.5	\$160.00	
9th-15th	William Lombardy	New York City, New York	9-4	\$75.70	
	Edward Formanek	Berwyn, Illinois	9-4	\$75.70	
	Andrew Kalotay	Toronto, Canada	9-4	\$75.70	
	Jerome Hanken	Los Angeles, California	9-4	\$75.70	
	Viktors Pupols	Seattle, Washington	9-4	\$75.70	
	James McCormick	Seattle, Washington	9-4	\$75.70	
	Viesturs Seglins	Seattle, Washington	9-4	\$75.70	
1st Class "A"	Robert Holzinger	Seattle, Washington	8-5	\$23.34	
	Dennis Fritzingier	San Francisco, California	8-5	\$23.34	
	Kent Pullen	Seattle, Washington	8-5	\$23.34	
	Bruce Haisfield	Silver Spring, Maryland	8-5	\$23.34	
	Joseph Kaltenecker	Port Alberni, B. C.	8-5	\$23.34	
	Terry Nelson	Seattle, Washington	8-5	\$23.34	
	Jerry Wolfe	Seattle, Washington	8-5	\$23.34	
	G. Alan Clark	Seattle, Washington	8-5	\$23.34	
	Jim Tarjan	Sherman Oaks, California	8-5	\$23.34	
1st "B"	Robert Erkes	Baltimore, Maryland	8.5-4.5	\$120.00	
2nd "B"	William Lyons	Seattle, Washington	7-6	\$15.00	
	W. Dobrich	Toronto, Canada	7-6	\$15.00	
	Theodore Day	Seattle, Washington	7-6	\$15.00	
	Gerard Stilless	Seattle, Washington	7-6	\$15.00	
1st "C"	Michael Murray	Missoula, Montana	7.5-5.5	\$75.00	
	Vincent Gillis	Seattle, Washington	7.5-5.5	\$75.00	
1st UNR	Norman Abrahamson	Seattle, Washington	7.5-5.5	\$100.00	
2nd UNR	Charles Griffiths	Seattle, Washington	7-6	\$10.00	
	Chris Corwin	Seattle, Washington	7-6	\$10.00	
	Kenneth Shinn	Billings, Montana	7-6	\$10.00	
	Frank Alexandro	Houghton, Washington	7-6	\$10.00	
	John Meller	Everett, Washington	7-6	\$10.00	
1st Woman	Mary Bain	New York City, New York	7-6	\$200.00	
2nd Woman	Greta Olsson	Los Angeles, California	6.5-6.5	\$100.00	
1st Junior	Leroy Jackson	St. Louis, Missouri	8.5-4.5	\$15.00	books
2nd Junior	Walter Browne	New York City, New York	8.5-4.5	\$10.00	books
3rd Junior	Salvatore Matera	New York City, New York	8-5	\$5.00	books

12. ♖xd4 e5 13.f6 exd4 14. ♗d2 ♘h8
15.fxe7 ♗xe7 16. ♘d5 ♗d8 17. ♗xd4+
f6 18. ♘xf6 ♘c6 19. ♘e8+ 1-0

English Opening

Jerry Hanken

William Lyons

Seattle, U.S. Open (10) 1966

1. ♘f3 e6 2.g3 d5 3.c4 c6 4. ♖g2 f5 5.
O-O ♘f6 6. ♗c2 ♖e7 7.d3 O-O 8. ♘c3
d4 9. ♘b1 c5 10.e3 ♘c6 11.exd4 cxd4
12. ♖e1 ♖d6 13.a3 a5 14. ♘bd2 ♘d7
15. ♖b1 e5 16.c5 ♘xc5 17.b4 axb4
18.axb4 ♘a4 19.b5 ♘c3 20.bxc6 ♘xb1
21. ♗xb1 bxc6 22. ♘xe5 ♖xe5 23. ♖xe5
♗f6 24.f4 ♖d7 25. ♖b2 ♖fb8 26. ♗c2
h6 27. ♖xd4 ♗d6 28. ♖c5 ♖a1+ 29. ♘f2
♗f6 30. ♖d4 1-0

English Opening

Ruth Herstein

Vernon Fagin

Seattle, U.S. Open (10) 1966

1. ♘f3 ♘f6 2.g3 c5 3. ♖g2 ♘c6 4.c4 g6
5. ♘c3 ♖g7 6.O-O O-O 7.a3 d6 8. ♖b1
♖e6 9.d3 h6 10.b4 ♖b8 11.bxc5 dxc5
12. ♖f4 ♖c8 13. ♖xb7 ♘h5 14. ♖d2
♖b8 15. ♖xb8 ♗xb8 16. ♗c2 ♗c7
17. ♖b1 ♖b8 18. ♘b5 ♗d7 19. ♖c3
♖xc3 20. ♘xc3 ♗c7 21. ♗c1 ♘g7
22. ♘d2 ♖xb1 23. ♗xb1 a6 24. ♘de4
♘e5 25. ♗b2 ♘h7 26. ♘a4 ♘g7 27. ♗b6
♗xb6 28. ♘xb6 1-0

Washington Chess Federation (WCF)/Oregon Chess Federation (OCF)

Adult: \$25/year (12 issues). Residents of OR and WA become members and receive *NWC* via periodicals mail each month. **Junior:** \$17/year (12 issues) or \$10/6 months (6 issues). Must be under age 20 at expiration. OR/WA residents only; state membership included. Juniors receive *NWC* each month.
USA Subscriber: \$25/year (12 issues). For subscribers living inside the US mail system, but outside the OR/WA area. Subscribers receive *NWC* each month. **Family:** \$5/year (not a subscription — membership only). This class of membership is open only to co-resident of an Adult or Junior member. Expires at the same time. **Trial:** \$13 (membership and subscription, expires in 3 months). By paying the balance of dues for an Adult membership before the trial status is expired, this option can be extended to 12 months.

OCF/WCF Membership Application/Renewal Form

Name _____ If Junior, give date of birth _____
E-Mail (if you want to subscribe to the *Northwest Chess* e-mail mailing list) _____
Phone Number (optional, will not be used for telemarketing) (____) _____
Street or P.O. Box _____
City _____ State _____ Zip _____
Country (if not USA) _____ Amount Enclosed \$ _____

Make check or money order (USA \$ only) out to Northwest Chess and mail to:

Eric Holcomb, NW Chess Business Manager
PMB 342
12932 SE Kent-Kangley Rd.
Kent WA 98030-7940

Credit this membership to:

A Sensational Game

For over a year, Edward Formanek has been Chicago's most successful tournament player, his rating rising at one point to Senior Master level. Here, St. Louis high school student Leroy Jackson triumphs over him in brilliant fashion.

French Classical

Leroy Jackson

NM Edward Formanek

Seattle, U.S. Open (10) 1966

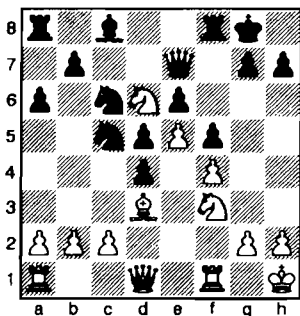
1.e4 e6 2.d4 d5 3.♘c3 ♘f6 4.♗g5 ♗e7
5.e5 ♘fd7 6.♗xe7 ♞xe7 7.f4 O-O
8.♘f3 c5 9.♗d3 f5

Frequently played is 9...f6.

10.O-O ♘c6

10...a6 would prevent what follows.

11.♘b5 a6 12.♘d6 cxd4 13.♗h1 ♘c5



14.g4!? fxg4?

Underestimating the attack. 14...
♘xd3 or 14...♘e4 look better.

15.♗xh7+ ♗xh7 16.♘g5+ ♗g8 17.
♞xg4 g6 18.♗f3 ♗f5

The only defense. Black hopes to
play ...♗xg5.

19.♘xf5 exf5 20.♞g2 ♘e6 21.♗g1
♘xg5 22.♗g3! ♞e6

22...♞f7 offers more resistance.

23.♗xg5 ♘e7 24.♞h3 ♗d7 25.♗h5!
♗f8 26.♗h7 1-0

Black is helpless against White's
♞h6.

[Chess Life, October 1966, p. 231]

King's Indian Classical

Kent Pullen

Jack Shaw

Seattle, U.S. Open (10) 1966

1.d4 ♘f6 2.c4 g6 3.♘c3 ♗g7 4.e4 d6
5.♘f3 O-O 6.♗e2 c6 7.O-O e5 8.d5
cxd5 9.cxd5 a6 10.♗g5 ♘bd7 11.♘d2

h6 12.♗h4 g5 13.♗g3 b5 14.b4 ♘b6
15.f3 ♘h5 16.♗f2 ♘f4 17.a4 ♘xa4 18.
♘xa4 bxa4 19.♗xa4 ♗b7 20.♗c4 ♞c8
21.g3 ♘h3+ 22.♗g2 ♘xf2 23.♗xf2 f5
24.♞e2 f4 25.g4 ♗f6 26.♗f1 ♗d8 27.
♗fa1 ♗b6 28.♘b3 ♗e3 29.♗1a2 ♗f7
30.♘a5 ♗c7 31.♘c6 ♗xc6 32. dxc6+
♗g7 33.♗xa6 ♞h8 34.♗b7 ♗xa4 35.
♗xa4 h5 36.♗a8 ♞h7 37. gxf5 ♗f6 38.
♗d8 ♗e7 39.♗c8 ♗xc8 40.♗xc8 ♞g8
41.♗g4 ♗d8 42.♞a6 ♞b3 43. ♞c8+
♗e7 44.♞d7+ ♗f6 45.♞xd6+ ♗g7 46.
♞e7+ 1-0

Queen's Indian

NM Viktors Pupols

GM Arthur Bisguier

Seattle, U.S. Open (10) 1966

1.d4 ♘f6 2.c4 e6 3.g3 d5 4.♗g2 ♗e7
5.♘f3 O-O 6.O-O ♘bd7 7.b3 b6 8.♘c3
♗b7 9.♗b2 ♗c8 10.♗c1 c5 11.cxd5
♘xd5 12.dxc5 ♗xc5 13.♘xd5 ♗xd5
14.♗xc5 ♘xc5 15.♞a1 f6 16.♗d1 ♞a8
17.♘e1 ♗d8 18.♗xd5 ♗xd5 19. ♗xd5
♞xd5 20.♞c1 ♗f7 21.♞c2 g6 22.♘d3
♘xd3 23.♞xd3 ♞xd3 24.exd3 e5 25.d4
e4 26.f3 exf3 27.♗f2 ♗e6 28.♗xf3 ♘d5
29.g4 b5 30.a4 bxa4 31.bxa4 ♗d6 32.h4
h5 33.gxf5 gxf5 34.♗c1 ♗b4 35.♗f4
♗e1 36.♗f5 ♗xh4 37.♗g6 ♗f2 38.
♗xh5 ♗xd4 39.♗g4 ♗e4 40.♗g3 ♗e3
41.♗b2 ♗f4+ 42.♗f2 ♗e5 43.♗c1 ♘d3
44.♗f3 a5 45.♗e3 ♗c3 46.♗e4 ♗b4
47.♗d5 ♗xa4 48.♗c4 ♗c7 49.♗c5 f5
50.♗e7 f4 51.♗c5 ♗d8 52.♗f2 ♗a3
53.♗e1 ♗b2 54.♗d3 a4 55.♗c3+ ♗b3
56.♗e5 ♗g5 57.♗e4 a3 58.♗f5 f3
59.♗xg5 f2 0-1

King's Indian

IM Anthony Saidy

Duncan Suttles

Seattle, U.S. Open (10) 1966

Annotations by IM John Donaldson

1.c4 g6 2.♘c3 ♗g7 3.d4 d6 4.♘f3 ♗g4
5.e3

If 4...♗g4 has drawbacks, this is the
move to test it. White fortifies d4 against
...♘c6, further pressuring the d-pawn.
5...♘c6

5...c5 is a modern treatment that
looks more logical. The text can easily
lead to a bad King's Indian.

6.h3

To the point. Saidy not only grabs
the two Bishops, he puts Black's critical
light-squared Bishop in his pocket.

6...♗xf3 7.♞xf3 e5

7...♘f6 looks much better than com-
mitting the pawn structure. It's true that
one idea behind the Modern Defense
move order (...g6 and ...♗g7 without an
early ...♘f6) is to not block the f-pawn,
as Black intends to advance ...f7-f5 (af-
ter a future ...e7-e5 met by d4-d5), but,
as we will soon see, this is not the plan
Black should adopt here.

8.d5 ♘ce7 9.e4 f5 10.g4!

This typical weapon emphasizes the
absence of Black's light-squared Bishop.

10...f4

Pretty much forced, as 10...♘f6 11.
gxf5 gxf5 12.exf5 gives White the g-file
and the e4-square.

11.g5!

White puts the Black kingside pieces
under house arrest and prepares to open
the h3-c8 diagonal for his light-squared
Bishop, which would love to set up camp
on e6.

11...h6 12.h4

Keeping the bind on and setting the
stage for ♗f1-h3-e6, which equals posi-
tional capitulation for Black.

12...c5

Computer engines assess this posi-
tion as only a slight edge for White, but
the experienced positional eye realizes
Black is in hot water. One example:
12...♘c8 13.♗g1 hxg5 14.hxg5 ♞d7
15.♗h1 ♗xh1 16.♞xh1 ♗f8 17.♞h7
♘ge7 18.♗h3 ♞d8 19.♗e6 c5 20.♗d2
a6 21.♘e2! (there is no defense to ♘xf4)
21...b5 22.♘xf4 1-0 Szabo-Barendregt,
Amsterdam 1966.

13.♗b1

13.♗g1 à la Szabo was certainly
possible, as was 13.♗h3 ♘c8 14.♗e6
hxg5 15.hxg5 ♗xh1+ 16.♞xh1 ♘ge7
17.♞h7 with a nice advantage, but Saidy
prefers to take over the entire board! He
elects to play for b2-b4, grabbing space
on the queenside before Black has time
for counterplay with ...b7-b5.

13...a6 14.a3 ♘c8 15.♗g1 hxg5 16.
hxg5 ♗h5 17.♞g2 ♗h7

Probably in anticipation of White
soon playing ♗f1-e2-g4-e6, but Saidy
prefers to continue his queenside opera-
tions for the moment.

18.b4 b6 19.bxc5 bxc5

The automatic capture, but I wonder if 19...dxc5!?, sacrificing the pawn structure to get the Knight to d6, might not have offered more practical chances.

20.♖g4 ♗d7?

This looks to be a serious error in judgement. Black's position is not pleasant, but, as a practical matter, the Queens need to stay on the board. With them off, the position offers Black no swindling chances, as White has a crippling advantage in space. More stubborn was 20...♘b6, which has the advantage of hitting c4, which might keep the White Bishop from e6.

21.♗xd7+ ♕xd7 22.♖b7+ ♕d8 23.♗d2

Saidy plays like a textbook. Queen-side infiltration with ♘a4 and ♗a5+ is coming.

23...♖a7 24.♖xa7 ♘xa7 25.♘a4 ♗f8

Suttles tries to maneuver as best he can in cramped quarters. Here, he envisions challenging the White dark-squared Bishop.

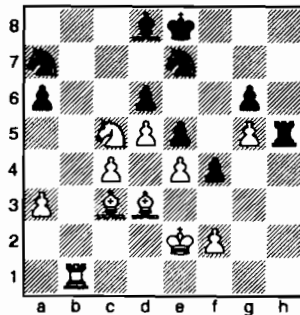
26.♗a5+ ♕e8 27.♗d3 ♗e7 28.♕e2 ♗d8

Necessary, as White's last move prepared the way for a Rook lift (28...♖h5? 29.♖b1!).

29.♗c3

Trading Bishops is not what White has in mind - his Bishop is much better and he has more space which dictates a policy of not trading pieces.

29...♖h5 30.♖b1 ♘e7 31.♘xc5!



It might have been possible to interpolate 31.♖b7 ♘ac8 before sacrificing, e.g., 32.♘xc5 dxc5 33.♗xe5 ♖xg5 34.♗xf4 ♖g4 35.♗g3 (35.♗e3 ♘d6). It also looks very strong, but I prefer Saidy's

method. The Knight stays on the side (a7) without being forced back into play and White's Rook retains its options. Maybe it will penetrate down the b-file or maybe it will enter Black's position from the h-file.

31...dxc5 32.♗xe5 ♖xg5 33.♗xf4 ♖g4 34.♗e3 ♘ac8 35.♖h1

35.♗xc5 was certainly possible but Saidy wants his Rook working to its maximum capabilities, first, and his central pawns advancing, second.

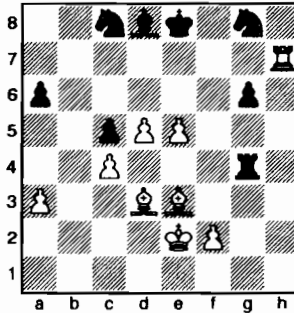
35...♘g8 36.♖h8

A question of taste, as 36.e5 was also quite strong.

36...♕f7 37.♖h7+ ♕e8

37...♕f6? 38.f4 wins immediately.

38.e5



What a dream position for White. Nominally down in material, he dominates the board.

38...♘b6 39.f3 ♖xc4 40.♗xg6+

Saidy is not to be distracted!

40...♕f8 41.♖f7+ ♕e8 42.♖h7+ ♕f8 43.d6 ♖h4 44.♖f7+ ♕e8 45.e6 ♖h2+ 46.♕f1 ♘e7 47.♖xe7+ ♕f8 48.♖f7+ 1-0

Ruy Lopez Classical

Viesters Seglins
Leslie Vitanyi

Seattle, U.S. Open (10) 1966

1.e4 e5 2.♘f3 ♘c6 3.♗b5 ♗c5 4.O-O ♘ge7 5.c3 O-O 6.d4 exd4 7.cxd4 ♗b6 8.d5 ♘b8 9.♗g5 f6 10.♗h4 d6 11.♘c3 a6 12.♗e2 ♘d7 13.♖c1 ♘g6 14.♗g3 ♘de5 15.b4 ♗d7 16.a4 f5 17.exf5 ♘xf3+ 18.♗xf3 ♗xf5 19.♗g4 ♗d7 20.♗xf5 ♖xf5 21.♗c2 ♖af8 22.♘d1 a5 23.bxa5 ♗xa5 24.♘e3 ♖5f7 25.♗b3 ♗b6 26.♘c4 ♗c5 27.a5 ♘f4 28.♗xf4 ♖xf4 29.♘e3 ♖b4 30.♗c3 ♗b5 31.

♖ce1 ♖a4 32.♖b1 ♗a6 33.♗c2 ♗xa5 34.♘f5 ♖f4 35.♘e7+ ♕h8 36.♖b3 ♖xf2 37.♗xh7+ 1-0

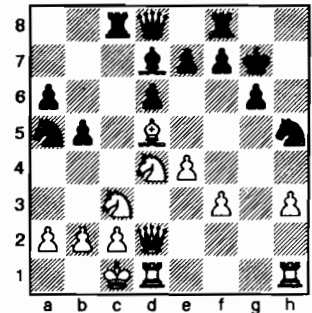
Sicilian Dragon

Sam Sloan

Robert Erkes

Seattle, U.S. Open (10) 1966

1.e4 c5 2.♘f3 g6 3.d4 ♗g7 4.♘c3 cxd4 5.♘xd4 ♘c6 6.♗e3 d6 7.♗d2 ♘f6 8.f3 h5 9.O-O-O ♗d7 10.♗c4 a6 11.♗b3 ♘a5 12.h3 b5 13.g4 O-O 14.♗h6 ♕h7 15.♗xg7 ♕xg7 16.gxh5 ♘xh5 17.♗d5 ♖c8



18.♘f5+ ♗xf5 19.exf5 ♘c4 20.♗d4+ ♘f6 21.fxg6 e5 22.♗d3 ♘xd5 23.♘xd5 ♗a5 24.♖hg1 ♗xa2 25.gxf7+ ♕h8 26.♗xc4 ♗xc4 27.♘e3 ♗c5 28.♖d3 ♗c6 29.♘f5 ♗xc2 mate

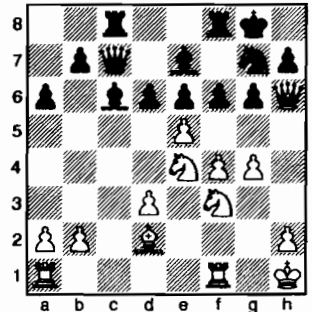
Sicilian Najdorf

Richard Verber

Leroy Jackson

Seattle, U.S. Open (10) 1966

1.e4 c5 2.♘f3 d6 3.d4 cxd4 4.♘xd4 ♘f6 5.♘c3 a6 6.f4 ♗c7 7.♗d3 ♘c6 8.♘f3 ♗d7 9.O-O ♖c8 10.♕h1 e6 11.♗e1 ♗e7 12.♗d2 O-O 13.♗g3 ♘b4 14.e5 ♘h5 15.♗h3 ♘xd3 16.cxd3 g6 17.g4 ♘g7 18.♘e4 f6 19.♗h6 ♗c6



20.exf6 ♗xf6 21.♘xf6+ ♖xf6 22.♗e3 ♗xf3+ 23.♖xf3 ♗c6 24.♖af1 ♗d5 25.♕g1 ♖c2 26.♗h4 g5 27.♗xg5 ♗xg5 28.fxg5 ♖xf3 29.♖xf3 ♖xb2 30.♖f2 ♖xf2 31.♕xf2 e5 32.♕f3 ♕f7

33.h4 b5 34.h5 ♖e8 35.d4 ♗e6
36.dxe5 dxe5 37.♙d2 ♘d6 38.♙b4
♘c4 39.♗e4 a5 40.♙e1 b4 41.h6
♘d6+ 42.♗d3 ♘f7 43.♗c4 ♘xg5
44.♗b5 e4 45.♗xa5 e3 46.♙xb4 ♘f3
47.g5 ♗f5 48.♗b6 e2 49.a4 ♘e5 50.a5
♘c4+ 51.♗c5 ♘xa5 52.♙xa5 ♗xg5
53.♙d2+ ♗g6 Draw

King's Indian Four Pawns

GM Arthur Bisguier

NM Peter Cleghorn

Seattle, U.S. Open (11) 1966

1.d4 ♘f6 2.c4 g6 3.♘c3 ♙g7 4.e4 d6
5.♙e2 ♘bd7 6.f4 c5 7.d5 a6 8.♘f3
O-O 9.O-O b5 10.cxb5 ♗b6 11.bxa6
♙xa6 12.♙xa6 ♙xa6 13.♗e2 ♘e8
14.f5 ♘c7 15.♗f2 ♘b5 16.♘xb5
♗xb5 17.♗h4 ♙f6 18.♗h3 ♙a7 19.
♙h6 ♗xb2 20.fxg6 hxg6 21.♙xf8 ♘xf8
22.♙ab1 ♗c2 23.♙b8 ♙xa2 24.e5
dxe5 25.♘e1 ♗d2 26.♗c8 ♙g7 27.
♗xc5 ♙f6 28.d6 exd6 29.♗c8 ♙g7
30.♙b7 ♗e3+ 31.♗h1 ♙f2 32.♙g1
Draw

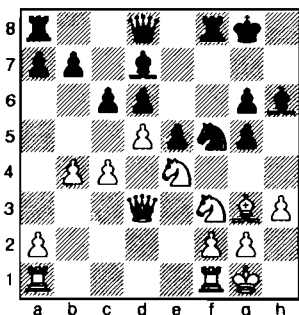
King's Indian Classical

GM Pal Benko

IM Anthony Saidy

Seattle, U.S. Open (11) 1966

1.c4 ♘f6 2.♘c3 g6 3.d4 ♙g7 4.e4 d6
5.♙e2 O-O 6.♘f3 e5 7.O-O ♘c6 8.♙e3
♘g4 9.♙g5 f6 10.♙h4 g5 11.♙g3
♘h6 12.d5 ♘e7 13.b4 f5 14.exf5
♘exf5 15.♘e4 ♘f7 16.♘fd2 ♘h8 17.
♙h5 ♘g6 18.♙xg6 hxg6 19.h3 c6 20.
♘f3 ♙h6 21.♗d3 ♙d7



22.♘xd6 ♘xd6 23.♗xg6+ ♙g7 24.
♗xd6 ♙xh3 25.♗xd8 ♙axd8 26.♘xg5
♙f5 27.♙ad1 b5 28.♘e6 ♙xe6 29.
dxe6 ♙xd1 30.♙xd1 bxc4 31.♙c1 ♙e8
32.♙xc4 ♙xe6 33.f3 ♗f7 34.♙f2 a6
35.♗f1 ♙d6 36.♗e2 ♗e6 37.♙c5 ♙f8
38.♙a5 ♙d5 39.♙xa6 ♙xb4 40.♙xc6+
♗d7 41.♙c2 ♙a5 42.♗d3 ♙d6 43.
♗c4 ♗e6 44.♙b6 ♙a4+ 45.♗b5

♙b4+ 46.♗a5 e4 47.♙e2 ♗f5 48.
fxe4+ ♙xe4 49.♙xe4 ♗xe4 50.♗b5
♙a3 51.♙c5 ♙b2 52.a4 ♙c3 53.♙b4
♙d4 54.♗c6 ♗f4 55.♙d6+ ♗e3 56.
♙c5 1-0

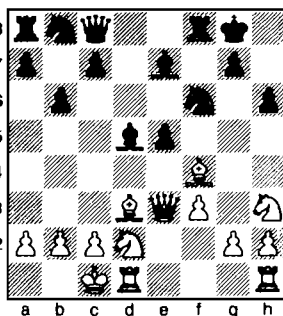
Dutch

Ignas Zalyš

John Walker

Seattle, U.S. Open (10) 1966

1.d4 d6 2.♘f3 f5 3.♙f4 e6 4.♘c3 ♘f6
5.♗d3 ♙e7 6.e4 fxe4 7.♘xe4 O-O 8.O-
O b6 9.♘eg5 h6 10.♘h3 ♙b7 11.
♗e3 ♗c8 12.♙c4 ♙e4 13.♘d2 ♙d5
14.♙d3 e5 15.dxe5 dxe5 16.f3



16...♙xa2 17.♙xe5 ♙c5 18.♗f4 ♘bd7
19.g4 ♙d6 20.♙xd6 cxd6 21.g5 ♘e5
22.♙f5 ♘d5 23.♗a4 ♙xf5 24.♗xa2
♘d3+ 25.♗b1 ♘3b4 26.♗b3 ♗h8 27.
c4 a5 28.cxd5 ♙xd5 29.gxh6 ♙d3 30.
hxg7+ ♗xg7 31.♙hg1+ ♗h8 32.♗c4
♗xh3 33.♙g4 ♗h7 34.♙h4 ♙e8 35.
♙xh7+ ♗xh7 36.♙g1 1-0

French Winawer

Andy Schoene

NM Viktors Pupols

Seattle, U.S. Open (11) 1966

Annotations by NM Viktors Pupols &
Larry Parr

1.e4 e6 2.d4 d5 3.♘c3 ♙b4 4.e5 c5
5.a3 ♙a5 6.b4 cxd4 7.♗g4 ♘e7 8.bxa5
dxc3 9.♗xg7 ♙g8 10.♗xh7 ♗xa5

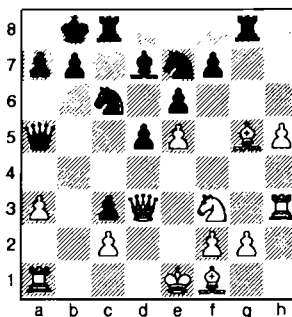
10...♘bc6 11.♘f3 ♗c7 12.♙f4 ♙d7
13.h4 O-O-O 14.♗d3 ♗xa5 15.h5 ♗b8
16.h6 ♘g6 17.♙g5 ♙c8 18.h7 ♙ge8 19.
♙f6 ♗a8 20.g3 ♗a4 21.♙h5 ♘b4 22.
axb4 ♗xa1+ 23.♗d1 ♗b2 24.♙d3 ♘h8
25.♙h4 a5!! 26.bxa5 ♙b5 27.♙xb5
♗xb5 28.♘g5 ♘g6 29.♙h6 d4 30.♗xd4
♙c4 31.♗d1 ♙b4 32.♗d3 ♗xd3 33.
cxd3 ♙b1+ 34.♗e2 c2 and Black won
shortly in Fidel Salas-Pupols, West Val-
ley Parmesan 1977.

11.♘f3

11.f4 ♘bc6 12.♘f3 ♙d7 13.♘g5
♙f8 14.♙e2 ♘d4 15.♘xf7 ♘ef5 16.
♘d6+ ♘xd6 17.exd6 O-O-O 18.♗d3 e5
19.fxe5 ♗c5 20.♙e3 ♘xc2+ 21.♗xc2
♗xe3 22.♗d3 ♗f2+ 23.♗d1 ♙a4+
24.♗c1 ♗xg2 25.♙e1 ♗b8 26.♗g3
♙g8 27.♗h4 ♙h8 28.♗g3 ♗xh2 29.
♗xh2 ♙xh2 30.♙d1 ♙c6 31.♙b3 d4
32.♙d1 ♙h4 33.♙a2 ♙f3 34.♙f1 ♙h5
35.♙af2 d3 36.♙f8 d2+ 37.♗b1 ♙g6+
38.♗a2 ♙h8 39.♙xh8 ♙xh8 40.e6 b5
41.e7 ♙h2 42.♗a1 ♗c8 43.♙e6+ ♗b7
44.d7 ♙f2 45.♙g1 (45.d8=♗ ♙xf1+
46.♗a2 ♙b1+ 47.♗b3 d1=♗+ 48.♗xd1
♙xd1 49.e8=♗ c2 50.♗xb5+ ♗c7 and
White has no more than a draw by per-
petual check.) 45...♙g2 46.♙f1 [46.
♙d5+ ♗a6 47.♙xg2 c2 Oliver-Gilbert,
Australian Championship (corre.) 1969.]
11...♘bc6 12.h4 ♙d7 13.♙g5

13.h5 O-O-O 14.♗d3 d4 15.♙f4
♘d5 16.♙g3 ♗a4 17.♙b1 ♗xa3 18.
♗d1 ♙xg3 19.fxg3 ♘e3 20.♗c1 ♗a4
21.♙d3 ♘b4 22.♗f2 ♘d3+ 23.cxd3
♗a2+ and Black won in a few moves in
Spiegel-Pupols, Yakima Ferry Tornado
1977

13...O-O-O 14.♙h3 ♗b8 15.♗d3 ♙c8
16.h5



16...♘f5

There is a subtle problem with 16...
♘b4 after 17.♗d1 ♘xc2+ 18.♗xc2
♙xg5 19.♘xg5 ♙a4 20.♗c1 c2+ 21.
♗e2 ♙b5+ 22.♗f3 ♙xf1 23.♗xf1 c1=♗
24.♙xc1 ♗xa3+ 25.♗g4 the White King
escapes. Therefore 16...f6 17.♙xf6 ♘b4!
suggests itself, as the White King cannot
then escape via the g-file. But simply
17.exf6 e5 18.f7 is more than adequate
for White—Pupols.

17.♙e2 ♗a4 18.♙b1 ♙xg5 19.♘xg5
♘xe5 20.♗d1 ♘d4 21.♙c1

Nor would 21.♙d3 help much after
21...♘d3+ 22.♙xd3 ♘xc2+ 23.♗f1

♖e3+ 24. ♜xe3 c2 25. ♞c1 cxb1=♞
26. ♞xb1 ♞h4! and Black wins.

21... ♞xa3 22. f4 ♖xe2 23. ♜xe2 ♙b5+
24. ♜e1 ♞c5 0-1

[This game originally appeared in *Sacha Pasaule* (partija 2202) with notes by Viktors Pupols and later was published in *Viktors Pupols American Master* by Larry Parr (pp. 24-26) with expanded annotations.]

King's Indian Classical

Bruce Haisfield
Touradj Saidi

Seattle, U.S. Open (11) 1966

1. d4 ♖f6 2. c4 g6 3. ♖c3 ♙g7 4. e4 d6
5. ♙e2 O-O 6. ♖f3 e5 7. O-O ♖c6 8. d5
♖e7 9. ♖e1 ♖d7 10. f3 f5 11. g4 ♖f6
12. ♙e3 c5 13. a3 ♞d7 14. gxf5 gxf5
15. b4 b6 16. ♖d3 f4 17. ♙d2 ♖h5
18. ♜f2 ♖g6 19. ♞a4 ♞e7 20. ♜f1 ♙f6
21. ♜e1 ♙h4 22. ♜d1 ♙xf2 23. ♖xf2
♙d7 24. ♞a6 ♜fb8 25. b5 ♙c8 26. ♞a4
a6 27. ♞b3 a5 28. ♙e1 ♖h4 29. ♜c2
♖g2 30. ♙d2 ♞h4 31. ♖d3 ♞xh2 0-1

Sicilian Closed

Duncan Suttles
Leroy Jackson

Seattle, U.S. Open (11) 1966

1. e4 c5 2. ♖c3 ♖c6 3. d3 d6 4. g3 g6
5. ♙g2 ♙g7 6. ♖h3 ♖f6 7. O-O O-O 8.
♙g5 ♙d7 9. f3 ♜b8 10. ♞d2 ♖d4 11.
♖d1 e5 12. c3 ♖e6 13. ♙h6 b5 14.
♙xg7 ♜xg7 15. ♖e3 ♞c8 16. f4 ♖xf4
17. ♖xf4 exf4 18. ♜xf4 ♙e6 19. ♜af1
♖g8 20. a3 ♖e7 21. ♜h4 ♖g8 22. ♖f5+
♜h8 23. ♖xd6 ♞d8 24. e5 f6 25. ♜hf4
♞e7 26. ♞e3 ♙b3 27. ♞xc5 ♜fc8
28. exf6 ♜xc5 29. fxg7 ♖xe7 30. d4 ♙g5
31. ♖f7+ 1-0

Untested Improvement

This game has some value for assessing the variations involved. White's move eleven is an improvement offering a chance for some initiative. But the game is no proof because of Black's too cooperative attitude.

Caro-Kann

GM Robert Byrne
NM Elod Macskasy

Seattle, U.S. Open (11) 1966

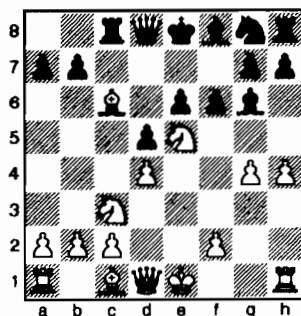
Annotations by IM Hans Kmoch
1. e4 c6 2. ♖c3 d5 3. ♖f3 ♙g4 4. h3 ♙h5

As most players fear to employ the Black text, there's little experience on it. There is no known way to a clear advantage for White.

5. exd5 cxd5 6. g4 ♙g6 7. ♖e5 ♖c6
8. ♙b5 ♜c8 9. d4 e6 10. h4

The main continuation is 10. ♞e2. It prevents 10...f6 because of 11. ♖xc6 bxc6 12. ♞xe6+, while the threat of 11. h4 then requires more delicate counterplay than the text. Black's rejoinder is 10... ♙b4 11. h4 ♞b6.

10...f6 11. ♙xc6+



Here is the apparent improvement. In Fischer-Smyslov (1959 Challenger's Tournament) 11. ♖xg6 hxg6 12. ♞d3 ♜f7 13. h5 gxh5 14. gxh5 ♖ge7 is rated as equal. Indeed, the game ended in a draw, but White had to fight for it.

11...bxc6 12. ♖xg6 hxg6 13. ♞d3 ♜f7
14. ♙f4

White emphasizes development rather than attack. His long-range calculation seems to be that Black's advanced Pawns offer but shaky King shelter.

14...g5 15. ♙g3 gxh4 16. ♜xh4 ♜xh4
17. ♙xh4 ♞c7 18. ♙g3 ♙d6 19. ♙xd6
♞xd6 20. ♞f3 ♖e7 21. O-O-O ♖g6

Here Black threatens to swap Queens, as the endgame is then very satisfactory.

22. ♖e2 c5

Pawn trades are what White needs to generate attacking chances. Still, if Black remains passive, e.g., by 22... ♜h8, White may make headway with 23. ♞e3 and f2-f3 or f2-f4 and ♜e1. Depending on circumstances, he may also play ♜b1 or ♖c1-d3.

23. ♜b1 cxd4 24. ♖xd4 ♜b8 25. b3 ♜b6

Black prepares ...♞f4, but the Rook has more scope on the back rank.

26. ♞e2 ♞f4 27. a4 a5 28. ♜a2 ♖e7
29. f3 e5

Black still insists on doing the wrong thing.

30. ♖f5 ♖c6

30...♖xf5 31. gxh5 ♞xf5 32. ♜xd5 ♜c6 33. c4 Black's position becomes too airy. But the text makes matters even worse.

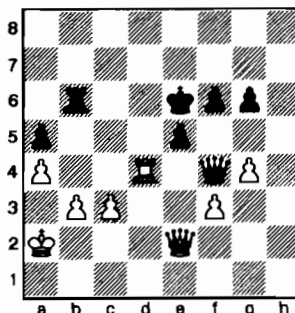
31. c3

White cannot take the Queen Pawn, of course. Grandmaster Byrne did take such a well-protected Queen Pawn in the last U.S. Championship (p. 159, May) when playing Benko, but cannot be expected to do so very often. After the simple text, Black is at a loss for protecting his Queen Pawn.

31...g6

31...d4 32. ♞c4+, e.g., 32...♜g6
33. ♞g8!

32. ♖e3 ♖e7 33. ♖xd5 ♖xd5 34. ♜xd5
♜e6 35. ♜d4!! 1-0



A clever buster. Unless Black gives up his Queen, mate in three follows: 36. ♞c4+ 37. ♞c7+ and mate.

[Source: *Chess Review*, November 1966, pp. 349-350]

The recently concluded United States Open at Seattle was an exciting tournament for me. Having lost a game in the fourth round, (a blunder in a winning position), I found myself a half point behind the leaders for some time. Going into the final round, I still trailed the eventual co-champion, Robert Byrne. While he drew his final game with Duncan Suttles, I defeated Lombardy, thus assuring a tie for first. After the tenth round, I still had to face Saidy, Bisguier and Lombardy, a tough enough lineup under any conditions, but here I was a half point down!

What should be my strategy? Play to win at all costs? Keep the draw in hand? The answer is simple: in every position, make the best move! While I cannot claim to have actually done just that, I did win those last three games.

QGD Semi-Tarrasch

GM Pal Benko

GM Arthur Bisguier

Seattle, U.S. Open (12) 1966

Annotations by GM Pal Benko

1.c4 ♘f6 2.d4 e6 3.♘c3 d5 4.cxd5 ♘xd5

Of course, 4...exd5 is also playable. With the text move Black avoids the Exchange Variation.

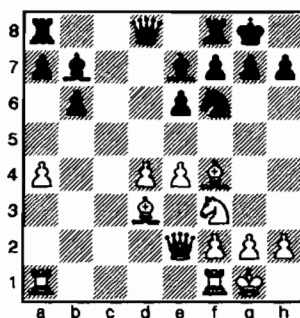
5.e4 ♘xc3 6.bxc3 c5 7.a3!?

The usual move is 7.♘f3, but after 7...cxd4 8.cxd4 ♘b4+ 9.♘d2 ♘xd2+ 10.♙xd2 O-O, Black has equalized. My move is an attempt to steer away from drawish variations by preventing the exchange of the black-squared Bishops, while still maintaining many options. I have never seen this move in this position; so I cannot say whether or not it is original.

7...cxd4 8.cxd4 ♘e7 9.♘f3 O-O 10.♘d3 ♘d7

The more natural maneuver is 10...♘c6 11.♘b2 ♙a5+ 12.♙d2 with the better ending for White, or 12.♘f1 to play for the attack with a later h4, etc.

11.O-O b6 12.♙e2 ♘b7 13.♘f4 ♘f6 14.a4



White now stands better due to his well defended center and good Kingside attacking prospects, as well as Queenside action with a4-a5. It is difficult to suggest a plan for Black to obtain counterplay. Bisguier makes an interesting attempt.

14...♘h5

Presenting White with the problem of where to put his Queen Bishop.

15.♘d2

15.♘e3 is answered by 15...f5! I considered 15.♘c1, but rejected it because of the temporary interference with the Rooks. However, 15.♘c1 was probably better than the text, because after 15...♙d6 16.♘e5 Black cannot play 16...♙xd4 because of 17.♘b2.

15...♙d6 16.a5

Not 16.♘e5? ♙xd4 17.♙xh5 g6 18.♙f3 ♙xe5 and Black wins. White decided to allow Black to carry out his "threat" of ...♘f4, depriving White of the two Bishops. White, meanwhile, creates a strong bind on the Queenside.

16...♘f4 17.♘xf4 ♙xf4 18.a6

White would have the better ending after 18.axb6 axb6 with strong play against Black's b-pawn, but Black would have reasonable drawing chances even if the pawn falls because all the remaining pawns would be on the same side.

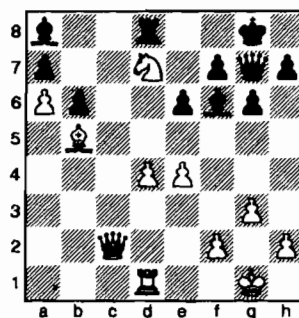
18...♘c6 19.♘e5 ♘ac8 20.g3 ♙h6 21.♘ac1 ♘a8 22.♘c4 ♘f8 23.♘d1 g6 24.♙c2 ♘xc4 25.♘xc4

A small trap:

25...♙g7

If 25...♘c8 26.♘xf7? ♘xf7 [26...♙h3! FRITZ; so this trap would have been on White—D Lucas] 27.♘xe6+—, winning.

26.♘b5 ♘f6 27.♘d7!



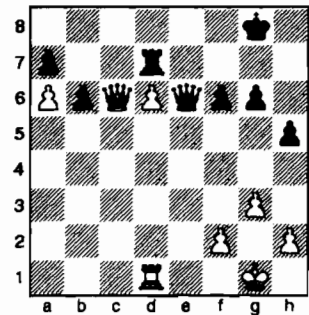
27...♘e7

27...♘d4 28.♙c7 ♘e8 29.e5

28.♘c6 ♘c8 29.d5 exd5 30.exd5 h5 31.♙e4 ♘d6 32.♘xa8

Not the best—there was no hurry to exchange Bishops. Better was 32.♙f3 intending ♘f6+ followed by ♘e4.

32...♘xa8 33.♙c4 ♘d8 34.♙c6 f6 35.♙xd6 ♘d7 36.♙c6 ♙e7 37.d6 ♙e6



38.h4

Black has defended his inferior position well. White, however, still has the advantage because Black's pieces are tied down to the necessary blockade of the passed pawn. It is hard to say whether White's advantage, in theory, is enough to win, but in practical over the board play, the onus of accurate defence generally proves the defender's undoing, especially in a time pressure situation.

38...♘f7 39.♙c8 ♘g7 40.♘h2 ♙f5 41.♘d2 ♙e6 42.♙b7 ♘f7 43.♙c6 ♘g7 44.♙c8

The purpose of White's last several moves has been to "triangulate" with his Queen to force Black into Zugzwang. Now the Queen cannot leave the d-pawn, because White will then play ♘c2-c7 and if 44...g5, 45.hxg5 fxg5 46.♘d5 wins. If 44...♘f7 45.♙h8. Obviously, 44...♘xd6 loses to 45.♙c7+. The only move was 44...♘h7! My intention was to play 45.♘d5! ♘g7 46.♘d4 ♘h7 47.♘e4! ♙xd6 48.♘e8. I thought the resulting position would be a win on account of White's mating threats, but Black has a defense in 48...f5!, after which it would not be clear how White can win. The move made by Bisguier simplifies White's task.

44...b5? 45.♙b7

Now Black cannot defend the b-pawn.

45...g5

If 45...♘h6 46.♙xb5 ♘xd6 47.♙b8! and wins. Black's desperation leads him into further dubious pawn sacrifices.

46.hxg5 h4 47.gxf6+ ♘f7 48.♙xb5 hxg3+ 49.fxg3 ♙g4 50.♙d5+ ♘e8

If 50...♗xf6 either 51.♖d4+ or 51. ♔f2+ wins.

51.♖e5+ ♔d8 52.♖e7+ 1-0

If 52...♗xe7 53.dxe7+ ♔c7 54. e8=♖, and Black doesn't even have a check.

Grünfeld

NM Ivars Dalbergs
Eugene Sobczyk

Seattle, U.S. Open (12) 1966

1.d4 ♖f6 2.c4 g6 3.♗c3 d5 4.♗g5 ♖e4
5.cxd5 ♖xc3 6.bxc3 ♖xd5 7.♗f3 ♖a5
8.♖d2 c5 9.e3 ♗g7 10.♗e2 ♖c6 11.
O-O O-O 12.♗ab1 ♗d8 13.♗fc1 ♖c7
14.a4 h6 15.♗h4 ♗f5 16.♗b5 b6 17.
♖a2 ♗e6 18.♖a3 cxd4 19.cxd4 ♖d7
20.♗b2 ♗ac8 21.♗bc2 g5 22.♗g3 g4
23.♗b5 gxf3 24.♗xc6 ♗xc6 25.♗xc6
♗d5 26.♗c7 ♖g4 27.♖xe7 ♗f8 28.
♗xa7 fxg2 29.♖d6 ♗e6 30.♗ac7 h5
31.d5 ♗f5 32.♖f4 ♖g6 33.d6 ♗d8
34.e4 ♗h3 35.♖h4 1-0

Pirc Austrian Attack

NM James McCormick
NM Elod Macskasy

Seattle, U.S. Open (12) 1966

1.d4 g6 2.e4 ♗g7 3.♗c3 d6 4.f4 ♖f6
5.♖f3 O-O 6.♗d3 ♖a6 7.O-O c5 8.d5
e6 9.dxe6 fxe6 10.f5 ♖g4 11.fxg6 hxg6
12.h3 ♖e5 13.♖xe5 ♗xe5 14.♗xf8+
♖xf8 15.♗e3 ♗d7 16.♖g4 ♖g7
17.♗f1 ♗f8 18.♗xf8+ ♔xf8 19.♖h4
♔e8 20.♗f4 ♖b4 21.♗xe5 ♖xe5
22.♖h7 c4 23.♖xg6+ ♔d8 24.♗e2
♖xc2 25.h4 b5 26.h5 ♗e8 27.♖g8 b4
28.h6 bxc3 29.bxc3 ♖xc3 30.h7 ♖e1+
31.♗f1 ♖e3+ 32.♔h2 ♖h6+ Draw

Modern

NM Viktors Pupols
Duncan Suttles

Seattle, U.S. Open (12) 1966

1.d4 g6 2.c4 ♗g7 3.♗c3 d6 4.e4 ♖c6
5.♗e3 e5 6.d5 ♖ce7 7.c5 f5 8.♗b5+
♗d7 9.♗xd7+ ♖xd7 10.f3 ♖f6 11.♖b3
fxe4 12.fxe4 O-O 13.♖f3 ♔h8 14.cxd6
cxd6 15.O-O h6 16.a4 ♔h7 17.a5 ♖eg8
18.♗a4 ♗f7 19.♗c4 ♖g4 20.♗d2 a6
21.♖e2 ♗af8 22.♗fc1 ♖4f6 23.♗e1
♖e8 24.♖g3 ♗f6 25.♖a4 ♖xa4
26.♗xa4 ♖c7 27.h3 ♖b5 28.♖e2 ♗d8
29.♗f2 ♖f6 30.♗b6 ♗xb6+ 31.axb6

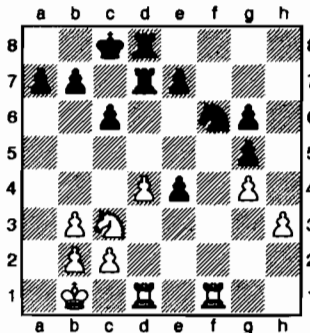
♖d7 32.♖c3 ♗c8 33.♔h2 ♖xc3
34.bxc3 ♖xb6 35.♗b4 ♖c4 36.♗cb1
♗cc7 37.♔g1 b5 38.♔f2 ♖a3 39.♗c1
♗c5 40.♔e2 ♗fc7 41.♔d3 a5 42.♗b3
b4 43.♖g1 ♖b5 44.♖e2 ♔g7 45.cxb4
♗xc1 46.♖xc1 ♗xc1 47.bxa5 ♗c5
48.a6 ♔f8 49.h4 ♔e8 50.h5 gxh5 0-1

Staunton Gambit

Anthony Saidy
NM Peter Cleghorn

Seattle, U.S. Open (12) 1966

1.d4 f5 2.e4 fxe4 3.♗c3 ♖f6 4.f3 d5
5.fxe4 dxe4 6.♗c4 ♖c6 7.♖ge2 ♖a5
8.♗b3 ♖xb3 9.axb3 g6 10.♗g5 ♗g7
11.♖d2 c6 12.O-O-O ♖a5 13.♔b1
♗g4 14.♗h6 ♗xh6 15.♖xh6 ♗xe2
16.♖xe2 O-O-O 17.♖c3 ♗d7 18.♖e3
♗hd8 19.♗hf1 ♖h5 20.h3 h6 21.g4
♖g5 22.♖xg5 hxg5



23.♖e2 ♗h8 24.♖g1 ♗hd8 25.c3 c5
26.♖e2 cxd4 27.♖xd4 ♖xg4 28.♗de1
♖f6 29.♖e6 ♗h8 30.♖xg5 ♗h5
31.♗g1 ♗d5 32.♖xe4 ♗de5 33.♖f2
♗xe1+ 34.♗xe1 ♔d7 35.c4 ♔e8 36.
♔c2 ♗f5 37.♗e2 a5 38.♖d3 ♗f3 39.
♖e5 ♗g3 40.h4 ♖d7 41.♖d3 ♖b8 42.
♖e5 ♖a6 43.♖d3 ♔f7 44.♗e5 ♗g2+
45.♔c3 b6 46.♗b5 ♗g3 47.♔d4
♗g4+ 48.♔e3 ♗xh4 49.♗xb6 ♗h3+
50.♔d4 ♖b4 51.♖xb4 axb4 52.♗xb4
g5 53.♔e4 ♔f6 54.♗b6+ e6 55.c5
♗h8 56.b4 g4 57.♔f4 ♗g8 58.♔g3
♔e5 59.b5 1-0

Center-Counter

GM William Lombardy
Edgar McCormick

Seattle, U.S. Open (12) 1966

1.e4 d5 2.exd5 ♖f6 3.d4 ♖xd5 4.c4
♖b6 5.♖c3 e5 6.d5 c6 7.♖f3 ♗g4
8.♗e3 cxd5 9.cxd5 ♗d6 10.h3 ♗xf3
11.♖xf3 ♖8d7 12.♗d3 O-O 13.O-O
♗e8 14.♗b5 ♗e7 15.♖e4 ♗b8 16.
♗fe1 a6 17.d6 ♗e6 18.♗xd7 ♖xd7
19.♖g5 1-0

King's Indian

Arthur Spiller
Salvatore Matera

Seattle, U.S. Open (12) 1966

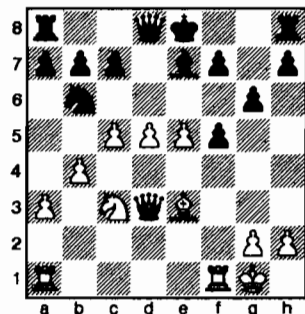
1.d4 ♖f6 2.c4 g6 3.♗c3 ♗g7 4.e4 O-
O 5.♗g5 d6 6.♖d2 c5 7.d5 ♖a5 8.♗d3
e6 9.♖ge2 exd5 10.cxd5 ♖bd7 11.O-O
a6 12.a4 ♗b8 13.f4 c4 14.♗c2 ♖c5+
15.♔h1 ♗e8 16.h3 b5 17.axb5 axb5
18.e5 dxe5 19.fxe5 ♗xe5 20.♗f4 b4
21.♗xe5 ♖xe5 22.♖e4 ♖xe4 23.♗xe4
f5 24.♗c2 ♖f7 25.♗a4 ♖d6 26.♗ab1
♖e4 27.♖f4 ♖d6 28.♖e3 ♗a6 29.♗c2
♗e8 30.♗fe1 c3 31.♔g1 ♗xe2
32.♗xe2 cxb2 33.♗xe4 ♗xe4 34.♖d2
♗c3 35.♖d3 ♗d4+ 36.♔h1 ♖xd5
37.♗xe4 fxe4 38.♖e2 ♗c3 39.♗d1
♗d2 40.♗f1 ♖e6 41.♖xd2 ♖f5
42.♖d8+ ♔g7 43.♖d4+ ♔g8 44.♖c4+
♔g7 45.♖d4+ ♔g8 46.♗e1 0-1

Alekhine

James Tarjan
Ben Gross

Seattle, U.S. Open (12) 1966

1.e4 ♖f6 2.e5 ♖d5 3.d4 d6 4.c4 ♖b6
5.f4 dxe5 6.fxe5 ♖c6 7.♗e3 ♗f5 8.♖c3
e6 9.♖f3 ♗e7 10.d5 ♖b4 11.♖d4 ♖d7
12.♖xf5 exf5 13.a3 ♖a6 14.♗d3 ♖c5
15.O-O g6 16.b4 ♖xd3 17.♖xd3 ♖d8
18.c5



18...♖d7 19.♗d4 O-O 20.♗ae1 ♗e8
21.♖f3 ♗g5 22.g4 ♗d2 23.♗e2 ♗xc3
24.♖xc3 ♖f8 25.♖f3 ♖e6 26.♗b2
♖g5 27.♖g2 fxg4 28.♖xg4 h5 29.♖d4
c6 30.e6 ♖h3+ 31.♔g2 ♖xd5+
32.♖xd5 1-0

Sicilian Dragon

Richard Verber
GM Robert Byrne

Seattle, U.S. Open (12) 1966

1.e4 c5 2.♖f3 ♖c6 3.d4 cxd4 4.♖xd4
♖f6 5.♖c3 d6 6.f4 ♗d7 7.♖f3 g6
8.♗d3 ♗g7 9.O-O O-O 10.♔h1 ♖b4

11.a3 ♖xd3 12.cxd3 b5 13.♖e1 a5
14.♗d1 ♖c7 15.♗e3 e6 16.♖h4 ♖d8
17.g4 ♗e8 18.g5 f5 19.gxf6 ♗xf6 20.f5
exf5 21.exf5 gxf5 22.♗d4 ♗g4 23.
♖xd8 ♖axd8 24.♗dxf5 ♗xe3 25.♗xe3
♖xf1+ 26.♗xf1 ♖f8 0-1

QGD Orthodox

GM Arthur Bisguier
NM James McCormick

Seattle, U.S. Open (13) 1966

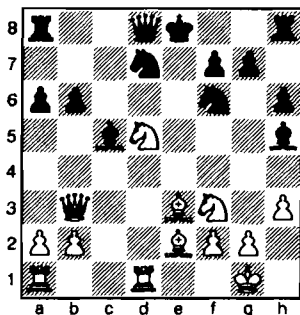
1.d4 ♗f6 2.♗f3 d5 3.c4 e6 4.♗c3
♗bd7 5.♖g5 ♖e7 6.e3 O-O 7.♖d3 c6
8.O-O h6 9.♖h4 a6 10.♖c1 dxc4
11.♖xc4 b5 12.♖d3 c5 13.♖b1 cxd4
14.exd4 ♖b7 15.♖e1 ♖c8 16.a3 ♖e8
17.h3 ♗b6 18.♗e5 ♗bd5 19.♖c2 a5
20.♖xf6 ♗xf6 21.d5 ♖xd5 22.♗g4
♖b7 23.♖cd1 ♖c7 24.♗xf6+ ♖xf6
25.♖h7+ ♗f8 26.♖a2 ♖cd8 27.♖c1
♖b6 28.♖c2 ♖d6 Draw

Sicilian O'Kelly

NM Edward Formanek
Ignas Zalys

Seattle, U.S. Open (13) 1966

1.e4 c5 2.♗f3 a6 3.c3 d5 4.exd5 ♖xd5
5.d4 ♖g4 6.♖e2 cxd4 7.cxd4 e6 8.♗c3
♖d8 9.♖b3 b6 10.O-O ♗f6 11.h3 ♖h5
12.d5 exd5 13.♖d1 ♖c5 14.♗xd5 h6
15.♖e3 ♗bd7



16.♗xf6+ ♖xf6 17.♖xd7 ♖xf3 18.
♖xc5 bxc5 19.♖xf3 O-O 20.♖xa8
♖xa8 21.♖f3 1-0

Dutch

Ron Gross
IM Anthony Saidy

Seattle, U.S. Open (13) 1966

1.d4 f5 2.♖g5 ♗f6 3.♖xf6 exf6 4.e3
d5 5.♖d3 ♖e6 6.♖f3 ♖d7 7.♗e2 g6
8.♗bc3 c6 9.♗f4 ♖g8 10.♗ce2 a5
11.h4 h5 12.♗xe6 ♖xe6 13.♗f4 ♖f7
14.♖c1 b5 15.a4 b4 16.c4 bxc3 17.
bxc3 ♗a6 18.O-O ♖d6 19.c4 ♗b4 20.

cxd5 ♖xf4 21.exf4 cxd5 22.♖c5 ♗f8
23.♖fc1 ♖a7 24.♖g3 ♗xd3 25.♖xd3
♗g7 26.♖b5 ♖d8 27.♖b6 ♖dd7 28.
♖xa5 ♖ab7 29.♖a6 ♖b4 30.♖c8
♖xd4 31.♖a8 ♗h6 32.♖h8+ ♖h7
33.♖xf6 1-0

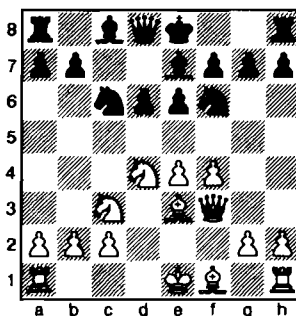
Sicilian Scheveningen

GM William Lombardy
GM Pal Benko

Seattle, U.S. Open (13) 1966

Annotations by GM Pal Benko

1.e4 c5 2.♗f3 d6 3.d4 cxd4 4.♗xd4
♗f6 5.♗c3 ♗c6 6.f4 e6 7.♖e3 ♖e7
8.♖f3



The setup for White became popular after Tal's brilliant victory in the final match game against Larsen. White's plan is to castle long and attack on the King-side, a common procedure in the Dragon variation, but something new in the Scheveningen. Black's next move is an idea that Furman tried against Gufeld in the 33rd USSR Championship.

8...e5 9.♗f5

Probably a new move, but I don't think it will attract many followers. In the Gufeld-Furman game, the continuation was 9.♗xc6 bxc6 10.fxe5 dxe5 11.♖c4 O-O 12.O-O ♗g4 13.♖ad1 ♗xe3! and after 14.♖xe3 (14.♖xd8?! ♖xd8 15.♖xe3?? ♖b6) 14...♖b6 Black has a good game.

9...♖xf5 10.exf5 ♗d4!

The refutation of 9.♗f5. Black either prevents White from castling on the Queenside or forces White to part with his Queen Bishop, after which Black has no problems.

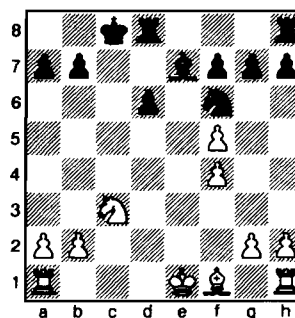
11.♖xd4 exd4 12.♗b5

Probably 12.♗e4 was slightly better. Then, if 12...♖a5+ 13.♗f2, the game looks drawish.

12...♖a5+ 13.c3

If 13.♗d1 O-O, Black has sufficient compensation for the dying Queen Pawn.

13...dxc3 14.♖xc3 ♖xc3+ 15.♗xc3 O-O-O!



Black has a slight but definite advantage due to the weakness of White's doubled pawns. But winning the game is far from easy because of the presence of opposite-colored Bishops.

16.♖d3 d5 17.♗e2 ♖b4 18.♗f3 ♖he8
19.♖ac1 ♗b8 20.♖hd1 h5 21.h3

To prevent the threatened 21...♗g4. In as much as Black is now able to cripple White's majority permanently, perhaps 21.g3 should have been tried.

21...h4 22.♖b5 ♖e7 23.a3 ♖xc3

Taking advantage of the opportunity to get rid of the opposite-colored Bishops situation. Black now has all the winning chances, thanks to his passed pawn.

24.♖xc3 ♖c8 25.♖xc8+ ♗xc8 26.♖a4
♗c7 27.♖b3 ♗d6 28.♖a2

White is compelled to offer only passive resistance. The Rook is unable to move as, on 28.♖d2, Black gets in with 28...♖e1, or if the Rook leaves the d-file, there follows ...d4 and then ...♖e3+ and ...♗e4, etc. But Black, too, has a problem: in order to win he must penetrate with his Rook, but as long as White does nothing to alter the position, this is not possible as there are no available squares for Black's Rook in White's position (28...♖e4 29.♖xd5). Black, therefore, finds it necessary to force open another file on the Queenside, but this operation will cost a pawn.

28...a5 29.♖b1 b5 30.♖a2 a4 31.♖b1
♖b7 32.♖c2 b4!

The time has come—Black sacrifices a pawn to open a file. White might just as well accept the pawn, as the file will be opened anyway.

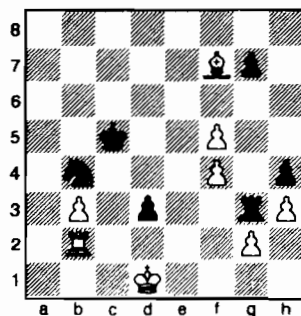
33. ♖xa4 ♜a7 34. b3 bxa3

In his efforts to keep the a- and b-files closed, White has to concede several squares on the c-file.

35. ♜a1 ♜c7 36. ♜xa3 ♜c3+ 37. ♔e2 ♔c5 38. ♜a2 d4 39. ♜b2 ♔d5

The pawns on the Kingside are harmless. But White's b-pawn must not be allowed to advance. The Black King now makes a decisive entrance.

40. ♔d2 ♔b4! 41. ♖e8 ♜g3 42. ♔d1 d3 43. ♖xf7



White's position, despite his two extra pawns, is hopeless, in view of Black's strong, passed pawn. If, instead of the text, 43. ♜f2 ♔d4 44. ♔d2 ♜e3 45. ♖xf7, then either 45... ♔a2, intending ... ♔c3-e4 or 45... ♜e7, planning ... ♜a7-a2, wins.

43... ♔d4 44. ♜f2 ♔c3 45. ♖c4 ♜e3 46. ♜f3

The threat was 46... ♔c2, winning at once because of the threat of 47... ♜e1 mate.

46... ♜xf3 47. gxf3 ♔c2

Winning the Bishop, as the threat of ... ♔e3+ and pushing the pawn is too much. Actually, the immediate 47... d2 was stronger, but the answer I was expecting to 47... ♔c2 was 48. Resigns. The rest is just for the record.

48. ♖xd3 ♔xd3 49. ♔c1 ♔b4 50. ♔b2 ♔d5 51. ♔a3 ♔e3 52. ♔a4 ♔xf3 53. ♔b5 ♔g3 54. ♔c5 ♔xh3 55. ♔xd5 ♔g4 0-1

[Chess Life, October 1966, pp. 233-34.]

French

Duncan Suttles
GM Robert Byrne

Seattle, U.S. Open (13) 1966

1. e4 e6 2. d3 d5 3. ♔d2 ♔f6 4. ♔gf3 b6 5. c3 ♖e7 6. ♞c2 c5 7. ♖e2 ♖b7 8. O-O ♔c6 9. ♜e1 O-O 10. ♔f1 ♞c7 11. ♔g3 ♜fe8 12. ♖f1 ♔d7 13. ♖d2 ♖d6 Draw

Ronald Gross, a former member of the Manhattan Chess Club, meets a crack of that club and tries to outplay him by retaining a gambit Pawn. Relying on a very old game in which Black's line proved to be satisfactory, Gross is taught that technique has made some progress since.

Queen's Gambit Accepted

GM William Lombardy
Ron Gross

Seattle, U.S. Open (?) 1966

Annotations by IM Hans Kmoch

1. d4 d5 2. c4 dxc4 3. ♔f3 ♔f6 4. ♔c3

White apparently aims at the gambit with 4... a6 5. e4.

4... ♔c6

Black transposes to the Chigorin Defense apparently intending to make it a gambit himself.

5. d5 ♔a5 6. e4

White declines to win a piece for two mighty pawns, as per 6. ♞a4+ c6 7. b4 b5 8. ♞xa5 ♞xa5 9. bxa5 b4 followed by 10... cxd5. This line was introduced in correspondence between the Schachklub of Vienna and the chess club of St. Petersburg (later Petrograd and now Leningrad). The game ended in a draw, but the line has little appeal for White.

6... c6 7. ♔e5 b5 8. dxc6 ♞xd1+ 9. ♔xd1

Now White threatens 10. ♖d2.

9... ♔g4 10. ♔xg4 ♖xg4 11. ♔e3 ♖e6 12. c7 ♜c8

The point of White's line now comes up. His advanced pawn must fall, and Black will retain a sound Pawn plus. But will he? It's not that simple.

13. ♖d2 ♔c6 14. a4!

Here is the old remedy in such instances, a genuine minority attack.

14... b4

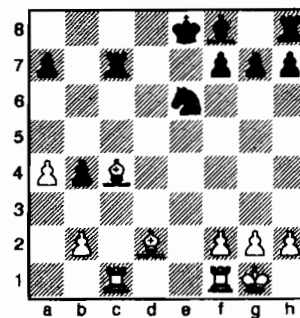
By thus letting his prey go, Black admits defeat in the opening. The consistent 14... a6, however, is even worse because of 15. axb5 axb5 16. b3 cxb3 17. ♖xb5 ♜xc7? [17... ♖d7 18. ♜b1 with a superior game for White. (18. ♔d5 e6 19. ♔b6 leads to unnecessary complications.)] 18. ♔d5 ♜c8 19. ♔b6 ♜c7 20. ♖f4!

15. ♔d5!

The text is stronger than 15. ♔xc4 as now Black must make an extra effort to capture White's advanced pawn.

15... ♖xd5 16. exd5 ♔d4 17. ♜c1 ♜xc7 18. ♖xc4 e5 19. dxe6 ♔xe6 20. O-O

Threatens 21. ♖xe6, winning some pawns.



20... ♖d6 21. ♖xe6 ♜xc1 22. ♜xc1 1-0
[Chess Review, November 1966, p. 349]

From the Business Manager:

When sending payments or other material to the business manager, please remember to always include the BM's name (Eric Holcomb), PMB number and street address. Northwest Chess is optional. Games, articles, and letters to the editor should NOT be mailed to the BM.

Seattle Chess Club Tournaments

Address

17517 15 Ave NE
Seattle WA 98155

Infoline

206-417-5405

www.seattlechessclub.org

cfkleist@cs.com

Address for Entries

SCC Tnmt Dir

2420 S 137 St

Seattle WA 98168

SCC

Rent Raised!!!

The SCC has received a 15% increase in its rent. Until the club restructures entry fees, a temporary (1-3 month) surcharge has been placed on all entry fees. Please add \$2 to any entry fee listed.

SCC Championship

Sept. 7, 14, 28, Oct. 5, 19, 26, Nov. 2

Format: 7-rd Swiss held on Friday evenings. TC: 35/100 and 25/60. EF: \$25 if rec'd by 9/5, \$30 thereafter. SCC memb. req'd — special \$24 tnmt memb. Prize fund: 75% of EFs. Prizes: 23%-16%, U2000 9%, U1800 8%, U1600 7%, U1400 6%, Unrated 3%, Endurance 3%. Reg: Fri. 7-7:45 p.m. Rds: Fridays 8 p.m. Byes: 4 (1 in rds 5-7, commit by 10/17). Misc: USCF memb. req'd. NS. NC.

Aug 18, Sept 15

Format: 3-RR, 4-plyr sections by rating. TC: G/120. EF: \$6 (+\$5 fee for non-SCC). Prizes: Free entry for future quad. Reg: 9:00-9:45 a.m. Rds: 10:00-2:15-ASAP. Misc: USCF, WCF/OCF memb. req'd, OSA. NS, NC.

SCC Saturday Quads

Aug 26, Sept 30

Format: 4-SS. TC: G/64. EF: \$15 (+\$5 fee for non-SCC). Prizes: 1st 35%, 2nd 27%, Bottom Half 1st 22%, 2nd 16% (\$10 from each EF goes to prize fund). Reg: 10:30-11:15 a.m. Rds: 11:30-1:50-4:10-6:30. Misc: USCF, WCF/OCF memb. req'd, OSA. NS, NC.

SCC Sunday Tornado

August 25

Format: 4-SS. Open to U1200 and unrated. TC: G/75. EF: \$10 by 8/22, \$15 at site. (20% disc. for SCC mem., 10% mem. of other dues-req'd CCs in WA, OR, & BC). Prizes: Memberships (SCC, WCF, USCF). Reg: 9-9:45a. Rds: 10-12:45-3:30-6. Byes: 1 (Rd 3 or 4—commit at reg.). Misc: USCF memb. req'd. NS, NC.

SCC Novice

Seattle Fall Open

September 21-23 or September 22-23

A 2-section, 5-round Swiss chess tournament with a time control of 40/2 & SD/1 (except Rd 1 of the 2-day option — G/64) with a prize fund of \$1000 based on 58 paid entries, 6 per prize group.

A Harmon Memorial Grand Prix event

Open: \$180 gtd-\$120 gtd, U2200

\$100, U2000 \$95, U1800 \$90

Reserve (U1700): \$110-\$80, U1550

\$70, U1450 \$65, U1350 \$60, UNR \$30

Entry Fees: \$32 by 9/19, \$40 at site. 25% discount to SCC members or 12.5% discount to members of other dues-req'd CCs in BC, OR, & WA. Unrated players FREE with purchase of 1-yr USCF & WCF. **Add \$1 for 2-day option.** Make checks payable to SCC.

Registration: Fri. 7-7:45 pm or Sat. 9-9:45 am. **Rounds:** Fri. 8 pm, Sat. (10@G/64)-12:30-6:45, Sun. 11-5.

Byes: 2 available. Rounds 4 or 5 must commit at registration. **Misc.:** USCF & WCF required. NS. NC.

Ben Delson Thematic – Oct. 21-22

Format: 5-rd Swiss. TC: G/90. EF: \$12 if rec'd by 10/18, \$16 at site. 25% discount to SCC members or 12.5% discount to members of other dues-req'd CCs in BC, OR, & WA. Unrated players FREE with purchase of 1-yr USCF & WCF. Prize fund: 75% of EFs. Prizes: 30%-20%, Bottom half 15%-10%. Reg: Sat. 10-10:45 a.m. Rds: 11-2:30-6, noon-3:30. Byes: 2 (Rds 4 or 5 commit at reg.). Misc: USCF & WCF memb. req'd. NS. NC.

Rd 1 – Nimzo-Indian Rd 2 – blacks' choice

Rd 3 – Sicilian Dragon Rd 4 – rd 2 non-choosers' choice

Rd 5 – English

Future Events

♣ indicates a Christopher Memorial NW Grand Prix event

♣ Aug 18

Site: *Portland CC*, 8205 SW 24th Ave, Portland OR 97219.
Format: 4-rd Swiss. **TC:** G/60. TD may switch to 5SS and G/45 if more than 25 entries. **EF:** \$20, \$5 discount for PCC members. No advance entries. **Prize Fund:** \$\$200/b20. **Prizes:** \$60-40-30, U1800 35, U1500 35. **Reg:** 9-9:30 am. **Byes:** One ½-pt. bye avail. if requested at reg. **Misc:** USCF & OCF/WCF membership req'd, OSA. **Info:** portlandchessclub@gmail.com, 503-246-2978, www.pdxchess.org.

PCC Game-in-60♣

♣ Aug 18-19

Site: *River Park Square*, W 808 Main, Spokane WA. **Format:** 5-rd Swiss. **TC:** G/90. **EF:** \$18 (\$15 for u18) by 8/17, \$25 at site. **UNR** – free. **Prize Fund:** \$\$400 b/20 (4/prz gp). **Prizes:** \$100-60, U2000 60, U1700 60, U1400 60, Biggest Upset 60 (both players

Spokane Falls Open♣

must have established ratings). **Reg:** 9-9:40. **Rds:** 10-1:30-5:30, 10-1:30 or ASAP. **Byes:** One ½-pt. byes avail., rds 4-5 commit by end of rd 3. **Misc:** USCF memb. req'd. **NC.** **Spokane City Championship Match** Aug. 17-19. **TC:** G/120. **Rds:** 4:30, 10-5:30, 9:30. G/10 tiebreaker 1 hr after rd 4. **Ent/Info:** Dave Griffin, PO Box 631, Spokane Valley WA 99037; 509-928-3260 dbgriffin@hotmail.com. Adam Attwood macrohistorian@gmail.com. www.spokanechessclub.org.

♣ Aug 18-19

Site: *Tacoma Chess Club*, 409 Puyallup Ave E (DTI Soccer Bldg), rm 11, 2nd flr. **Format:** 5-rd Swiss. **TC:** G/120. **EF:** \$30 advance, \$40 at site. Juniors \$20 advance, \$25 at site. Economy players \$12.00. **UNR** – free (ineligible for prize money) with purchase of USCF & WCF memberships. **Prize Fund:** 67% of full-paying EFs. **Prizes:** 1st 25%, top third 15%, middle third 14%, bottom third 13% (b/9 full EFs). **Reg:** 9-9:45. **Rds:** 10-2:30-7, 10-3 or ASAP. **Byes:** Two ½-pt. byes avail. rds 1-4. **Misc:** USCF & OCF/WCF memb. req'd. **NS.** **NC.** **Ent/Info:** Gary Dorfner, 8423 E 'B' St, Tacoma WA 98445; 253-535-2536, ggarychess@aol.com.

Tacoma Summer Open♣



Scholastic Summer Chess Camps



Chess Vision various sites OR

Tony Hann 503-880-0581 www.chessvision.net

Aug 13-17 North Wilsonville OR

Chess4Life various sites WA

Elliott Neff 425-283-0549 kids@chess4life.com www.chess4life.com

Aug 20-24 grades K-8 Bellevue WA

WGM Elena Donaldson & IM Georgi Orlov various sites WA

206-363-6511 chess64@comcast.net www.chessplayer.com/camps2007.htm

Aug 20-24 grades K-6 Everett WA
 20-24 grades K-8 Bothell WA

Chess Odyssey various sites OR

503-504-5756 pete@chessodyssey.com www.chessodyssey.com

Aug 20-24 Beaverton OR

David Hendricks Sammamish WA

425-868-3881 davidhendricks@comcast.net

Aug 20-24 grades 1-3

Scholastic Events

August 2007

22 TCC Wed. Kids Night Gary 253-535-2536 ggarychess@aol.com www.tacomachessclub.netfirms.com Tacoma WA
 25 Cornerstone Jump Start Chess (& Bug) www.chess4life.com/chess-events/tournaments Vancouver WA

October 2007

24 TCC Wed. Kids Night Gary 253-535-2536 ggarychess@aol.com www.tacomachessclub.netfirms.com Tacoma WA

November 2007

21 TCC Wed. Kids Night Gary 253-535-2536 ggarychess@aol.com www.tacomachessclub.netfirms.com Tacoma WA

December 2007

1 Bryant Fall Classic (K,1-3,4-6) Kim bryantchessclub@gmail.com Seattle
 8 Lakeridge Elementary (K,1-3,4-6) Carolyn Hassall carolynhassall@comcast.net www.lakeridgechess.org Mercer Island WA
 21 TCC Wed. Kids Night Gary 253-535-2536 ggarychess@aol.com www.tacomachessclub.netfirms.com Tacoma WA

USCF NATIONAL Scholastics

For information on any national event, visit www.uschess.org

Nov. 16-18

National Youth Action

Saint Louis MO

Dec. 7-9

National K-12/Collegiate Championship

Houston TX

Open Events

August 2007

24,31	TCC Summer Championship (rds 4-5)	253-535-2536	ggarychess@aol.com	www.tacomachessclub.netfirms.com	Tacoma WA	
♣18	SCC Saturday Quads	SCC Infoline	206-417-5405	cfkleist@cs.com	www.seattlechessclub.org	Seattle WA
♣18	♠ PCC Game-in-60	503-246-2978	portlandchessclub@gmail.com	www.pdxchess.com	Portland OR	
♣18-19	Spokane Falls Open	David Griffin	509-928-3260	dgriffin@hotmail.com	www.spokanechessclub.org	Spokane WA
♣18-19	Tacoma Summer Open	253-535-2536	ggarychess@aol.com	www.tacomachessclub.netfirms.com	Tacoma WA	
25	SCC Novice	SCC Infoline	206-417-5405	cfkleist@cs.com	www.seattlechessclub.org	Seattle WA
♣26	SCC Sunday Tornado	SCC Infoline	206-417-5405	cfkleist@cs.com	www.seattlechessclub.org	Seattle WA
29	Seattle Sluggers vs. Boston Blitz			www.uschessleague.com	Bellevue WA	

September 2007

1	PCC Saturday Quads	503-246-2978	portlandchessclub@gmail.com	www.pdxchess.com	Portland OR	
♣1-3	Oregon Open	Jerry Ramey	j-adoube@efn.org	541-232-0328	Eugene OR	
1-3	Langley Open Labor Day Tournament	Hugh Long	www.langleychess.com		Langley BC	
7,14	TCC Gambit Tmt	253-535-2536	ggarychess@aol.com	www.tacomachessclub.netfirms.com	Tacoma WA	
7,14,28	SCC Championship (rds 1-3)	SCC Infoline	206-417-5405	cfkleist@cs.com	www.seattlechessclub.org	Seattle WA
11	PCC Tuesday Quads begin	503-246-2978	portlandchessclub@gmail.com	www.pdxchess.com	Portland OR	
♣15	SCC Saturday Quads	SCC Infoline	206-417-5405	cfkleist@cs.com	www.seattlechessclub.org	Seattle WA
♣21-23	Seattle Fall Open	SCC Infoline	206-417-5405	cfkleist@cs.com	www.seattlechessclub.org	Seattle WA
21,28	TCC Championship (rds 1-2)	253-535-2536	ggarychess@aol.com	www.tacomachessclub.netfirms.com	Tacoma WA	
♣29	♠ PCC Game-in-60	503-246-2978	portlandchessclub@gmail.com	www.pdxchess.com	Portland OR	
29	TCC Quads	253-535-2536	ggarychess@aol.com	www.tacomachessclub.netfirms.com	Tacoma WA	
♣30	SCC Sunday Tornado	SCC Infoline	206-417-5405	cfkleist@cs.com	www.seattlechessclub.org	Seattle WA

October 2007

2,9,16,23,30	PCC Championship	503-246-2978	portlandchessclub@gmail.com	www.pdxchess.com	Portland OR	
5,12,19,26	TCC Championship (rds 3-6)	253-535-2536	ggarychess@aol.com	www.tacomachessclub.netfirms.com	Tacoma WA	
5,19,26	SCC Championship (rds 4-6)	SCC Infoline	206-417-5405	cfkleist@cs.com	www.seattlechessclub.org	Seattle WA
6-7	Washington Senior Open	253-535-2536	ggarychess@aol.com		TBA	
6	PCC Saturday Quads	503-246-2978	portlandchessclub@gmail.com	www.pdxchess.com	Portland OR	
12-14	Western States Open	Jerry Welkel	775-747-1405	wackywk@aol.com	www.renochess.org/wso	Reno NV
♣13-14	Portland Fall Open	503-246-2978	portlandchessclub@gmail.com	www.pdxchess.com	Portland OR	
♣20-21	Ben Delson Thematic NEW EVENT	SCC Infoline	206-417-5405	cfkleist@cs.com	www.seattlechessclub.org	Seattle WA
♣27	♠ PCC Game-in-60	503-246-2978	portlandchessclub@gmail.com	www.pdxchess.com	Portland OR	
♣27-28	Puget Sound Open	253-535-2536	ggarychess@aol.com	www.tacomachessclub.netfirms.com	Tacoma WA	

November 2007

2	TCC Quick Chess (G/15) Champship	253-535-2536	ggarychess@aol.com	www.tacomachessclub.netfirms.com	Tacoma WA	
♣3	SCC Saturday Quads	SCC Infoline	206-417-5405	cfkleist@cs.com	www.seattlechessclub.org	Seattle WA
4	SCC Novice	SCC Infoline	206-417-5405	cfkleist@cs.com	www.seattlechessclub.org	Seattle WA
6	PCC Tuesday Quads Begin	503-246-2978	portlandchessclub@gmail.com	www.pdxchess.com	Portland OR	
9	TCC Blitz Championship	253-535-2536	ggarychess@aol.com	www.tacomachessclub.netfirms.com	Tacoma WA	
♣9-10	Extravaganza	SCC Infoline	206-417-5405	cfkleist@cs.com	www.seattlechessclub.org	Seattle WA
♣17	♠ PCC Game-in-60	503-246-2978	portlandchessclub@gmail.com	www.pdxchess.com	Portland OR	
♣17-18	Tacoma Open	253-535-2536	ggarychess@aol.com	www.tacomachessclub.netfirms.com	Tacoma WA	
♣18	SCC Sunday Tornado	SCC Infoline	(206) 417-5405	cfkleist@cs.com	www.seattlechessclub.org	Seattle WA
♣23-25	Washington Class Championships	to be announced			WA	
30	TCC Quick Chess (G/30) Champship	253-535-2536	ggarychess@aol.com	www.tacomachessclub.netfirms.com	Tacoma WA	

December 2007

4	PCC Tuesday Quad Tmts Begin	503-246-2978	portlandchessclub@gmail.com	www.pdxchess.com	Portland OR	
7,14,21,28	TCC Jingle Bell Swiss	253-535-2536	ggarychess@aol.com	www.tacomachessclub.netfirms.com	Tacoma WA	
♣8	SCC Saturday Quads	SCC Infoline	206-417-5405	cfkleist@cs.com	www.seattlechessclub.org	Seattle WA
♣9	SCC Sunday Tornado	SCC Infoline	206-417-5405	cfkleist@cs.com	www.seattlechessclub.org	Seattle WA
♣15-16	Christmas Congress	253-535-2536	ggarychess@aol.com	www.tacomachessclub.netfirms.com	Tacoma WA	
♣15-16	Portland Winter Open	503-246-2978	portlandchessclub@gmail.com	www.pdxchess.com	Portland OR	
♣29	♠ PCC Game-in-60	503-246-2978	portlandchessclub@gmail.com	www.pdxchess.com	Portland OR	

NOTE: A '♣' in front of the date indicates a Harmon Memorial Northwest GP event. A ♠ in front of the tournament name indicates an OSCF qualifying tournament. Boldface type indicates a tournament announcement (in our Future Events Section) or display ad in this issue.

For Scholastic tournaments and camps, see inside back cover