



NORTHWEST CHESS

Washington Chess Federation
Oregon Chess Federation

September 2007
907 \$3.95

926-0801A
MIKE MACGREGOR



No Geezers



+6=1-2



+7=0-2



+5=2-2

U.S. Open, WA Blitz, and More!

Northwest Chess

October 2007, Volume 61, 10 Issue 712
ISSN Publication 0146-6941

Published monthly by the Northwest Chess Board. Of
file of record: 2420 S 137 St, Seattle WA 98168.

POSTMASTER: Send Address Changes to:
Northwest Chess, PO Box 84746,
Seattle WA 98124-6046.

Periodicals Postage Paid at Seattle, WA

USPS periodicals postage permit number (0422-390)

NWC Staff

Editor: Fred Kleist
Games Editor: FM Chuck Schulien
Technical Assistance: Russell Miller
Printer: Snohomish Publishing
Business Manager: Eric Holcomb

Board Representatives

Oregon: Dave Yoshinaga
Washington: Geoff Gale &
Rick Selzler

Entire contents copyright 2007 by Northwest Chess. All
rights reserved. Published opinions are those of the
contributors and do not necessarily reflect the views of the
editor or the Northwest Chess Board.

Advertising Rates

Display ads run \$150 for a full page, \$100 for
trmt ads; \$85 for a half-page, \$60 for trmt ads;
\$30 for a quarter page, \$20 for an eighth of a
page, and \$10 for a business card-size ad. Add
\$10 if the ad is not copy ready and the staff must
do layout work. A 15% discount is available for
two or more consecutive ads of the same size.

Event Announcement Rates

Each appearance in *Event Announcements*
costs \$20. Payment is required before publica-
tion. Enclose \$2 additional if an invoice is
required—this is a mandatory service charge.

Advertising & Copy Deadline

Please get your ads and submissions in by the
10th of the month for the items to appear in the
next issue (e.g., no later than Oct. 10 for the
Nov. issue). The editor cannot guarantee that late
submissions will appear in the desired issue.

Submit all ads and payments to:

Business Manager, Northwest Chess
PMB 342, 12932 SE Kent-Kangley Rd
Kent WA 98030-7940
Eric@Holcomb.com

Submissions

Hey folks! The editor depends on YOU to make
this magazine vibrant and exciting. I need your
games, photographs, thoughts, and ideas. This
magazine has a great tradition and I hope people
will contribute enthusiastically. You can send
me your materials via U.S. mail or via e-mail:

Northwest Chess
Fred Kleist, Editor
2420 S. 137th Street
Seattle WA 98168
NWCeditor@cs.com
206-242-7076

If you'd like your games annotated by a senior
master, send them to our Games Editor:

FM Chuck Schulien
cschesss@hotmail.com

Subscription Information

Northwest Chess is a benefit of membership in
either the Oregon or Washington Chess Federa-
tions. Adult dues are \$25; Junior dues (under
20) are \$17 (or \$10 for six months). Please send
dues, along with pertinent information to:

Business Manager
Northwest Chess
Eric Holcomb
PMB 342, 12932 SE Kent-Kangley Rd
Kent WA 98030-7940
Eric@Holcomb.com
http://www.nwchess.com

Northwest Grand Prix Administrator

Murlin Varner
13329 208 Ave NE
Woodinville WA 98072
MEVjr54@yahoo.com
425-882-0102

Oregon Chess Federation

President
Dave Yoshinaga
971-404-5251
dave@kdtonline.com

Vice President
Mike Terrill
503-580-9187
pflotus@yahoo.com

Secretary
Carl Haessler
ssmith6154@aol.com

Treasurer
Mike Morris
mikejmorris@earthlink.net

Tournament Coordinator
Peter Prochaska
503-504-5756
pete@chessodyssey.com

Scholastic Coordinator
Taylor Bailey
503-282-6796
cosmos24@gmail.com

Director-at-Large
Marcus Robinson
503-245-1204
mprscorp@comcast.net

Washington Chess Federation

President
Geoff Gale
206-860-9963
geoffreygale@gmail.com

Vice President
Logan MacGregor
loganmacgregor@gmail.com

Secretary
Gary Dorfner
253-535-2536
ggarychess@aol.com

Treasurer
Robert J. Allen
253-761-1288
allenrobertj@msn.com

Tournament Coordinator
Dan Mathews
425-778-7482
dthmathews@hotmail.com

Scholastic Coordinator
David Hendricks
425-868-3881
davidhendricks@comcast.net

NW Chess Board Member
Ricky Selzler
rts89@comcast.net

Greetings from the Editor

Yes, indeed, Palm
Springs was hot! Typical
high 110-117° with a low
of 85-90°. I tied for sec-
ond U2000 and Carol tied
for first U1600 at this
year's U.S. Geezer



*Editor's
Desk*

Next issue will fea-
ture the Sluggers and the Seafair. I also have
some historical articles and a short story.

Nevertheless, please send in your
games, articles and pictures! I need mate-
rial to work on.

Best Wishes,
Frederick K. Kleist

Thanks to R. Miller for working on the crosstables.
Thanks to C. Kleist for proofreading.

Northwest Chess Knights

*Northwest Chess Knight donors
will be listed in the magazine
for a period of one year follow-
ing receipt of donation. Please
consider making a donation
today to help Northwest Chess!*

King: \$1000+
Queen: \$500-\$999
Rook: \$250-\$499
Bishop: \$100-\$249
Knight: \$50-\$99
Pawn: \$15-\$49

Current Patrons

King: Cinthia McBride, Kent
McNall
Queen:
Rook: Nat Koons
Bishop: Ralph Hall, Russell
Miller, Michael Omori, Boyd
Schorzman
Knight: Robert Brewster, Steve
Buck, Darby Monahan
Pawn: Mark James, Gene
Milner

*Contributions can be sent to the
Northwest Chess Business Man-
ager, and are greatly appreci-
ated!*

Northwest News

Portland, OR

Anka, Koons and Lee Tie in Harmon Memorial

Clark Harmon was a long-time member of the Portland Chess Club, thus the Club felt it could honor his memory with a tournament. Unfortunately, the timing of the tournament conflicted with the Evergreen Empire Open in Tacoma. This was the only time that GM Emil Anka, a good friend of Clark Harmon, could come and play. As it turned, Anka could start only with round three (due to other commitments), entering the tournament with 1 1/2 points.

Now to the results: GM Anka did win the three games he played, but NMs Nat Koons and Michael Lee were able to tie for first place with the same end result of 4½ points. Koons and Lee drew their round four game, then followed this up by winning their last round matches. Nick Raptis was the lucky (or unlucky, depending on one's perspective) player who had to play the GM in the last round. He hung in there for quite a while; it was the last game to finish.

The U-2000 prizes were split between Robert Herrera and Steve Surak with four points each. In the U-1700 category, the honors went to Brett Becker and Joel Porter with 2½ points each. I feel that Joel did extremely well in this strong tournament (average rating of 1778) to achieve an even score. The U-1400 prizes were split between two young players, Samir Sen and Jason Lin. A total of 43 players showed up for the tournament. Hopefully the Portland Chess Club can repeat this tournament in the future and avoid scheduling conflicts.

Courtesy of Neil Dale

Bellevue, WA

The Seattle Sluggers have an even score after two matches in U.S. Chess League play. The team opened with a 1.5-2.5 loss to the Boston Blitz, the sole decisive game being a board four loss by NM Michael Lee. The second match went much better as IM Eric Tangborn, FM Slava Mikhailuk, and NM Josh Sinanan scored wins in a 3.5-0.5 rout of the Miami Sharks. GM Gregory Serper has two draws on board one versus fellow GMs. Slava has scored 1½ points. FM Loren Schmidt had a draw on board three in the first match.

Games from these and perhaps the September 12 match against Tennessee will appear in the October issue. ■

Northwest Chess

October 2007

Northwest News

page 3

Cherry Hill, Revisited

Murlin Varner muses about the Kids & Geezers U.S. Open

page 4

USCF Annual Delegates' Meeting

page 6

Ricky Selzler Dominates at Crossroads

NM Elliott Neff reports on the WA Blitz Championship

page 9

USCF Crosstables

page 10

Games from the WA Open

Drayton Hamison annotates several WA Open games

page 12

Tournament Ads

pages 19, 22, 23

Hurt-Sheets, WA Championship 1941

page 20

Northwest Chess Calendar of Upcoming Events

back cover

On the Cover: Northwest's top scorers in Cherry Hill (from left) NM Michael Lee (6.5), Corbin Yu (6.0), and Andy May (7.0). *Photos courtesy of Michael Atkins and the 2007 U.S. Open CD.*

If you set up a NWC subscription using PayPal last year, it will automatically renew this year, unless you specified only a single payment. Please log on to your PayPal account for more information or to manage your subscriptions.

Cherry Hill, Revisited

by Murlin Varner

Another August, another U. S. Open: however, not another town. The 108th U. S. Open returned to the New Jersey site of the 103rd, Cherry Hill. We visited the same hotel, although with a new name, and the highest room rate ever for an Open. This area of New Jersey is a random patchwork of disorganized suburbs. I chose to stay in nearby Maple Shade. My cost for both motel and rental car was less than would have been the cost for a room at the site. And I had a kitchen! This was my tenth Open in a row and I'm finally getting smarter about these things. (Too bad my chess play doesn't get any smarter.) For those who care and haven't already looked it up on the Internet, there was a seven-way tie for first this year: GM Alexander Shabalov, GM Boris Gulko, GM Sergey Kudrin, IM Benjamin Finegold, GM Michael Rohde, IM Michael Mulyar, and Anton Del Mundo each scored 7.5/9.

The turnout was nothing special. Actually, it was rather bad. Excluding house players, there were only 405 entrants among the four different schedules. This is the lowest since the event was held in Hawaii ten years ago. This turnout was over ninety players below the 2002 event at Cherry Hill and almost fifty entrants below the average over the past ten years. For a site within a few hours drive of over one third of all USCF members, this was pretty bad. (This year's event was almost 25% below last year's event in Illinois.)

I suspect that the low turnout was greatly related to the return visit to New Jersey, as well as the high room cost. This Open could be called the "Kids and Geezers Open." If you took away the players over 50 and under 20, there would not be many left. The kids were there, because they hadn't been there five years ago, and the geezers (like me) were there because they go every year, regardless. To illustrate, my first four opponents were all, like me, over 50 (or so they appeared), and my last five were under 20 (actually, only one appeared to be over 15). Our Northwest contingent underscores this young/old trend, leaning waaaaay to the young side.

First, lets go over the old guys. Highest scoring was **Dan Mayers** (1899) from Idaho, with a score of 5.5/9. Dan has been going to the Open for many years and always does well. Among his accomplishments this year were a win over Charles Bouzoukis (2277) of Delaware and draws with Lorand Kis (PA, 2207) and Stanley Yang (TX, 2082). Dan's only losses were to master-rated players. Also scoring 5.5 was Oregonian **Herman Chiu** (2026). Herman has been on a temporary assignment in Pennsylvania and stayed on this summer to play in a few events such as the World and U S Opens. Herman accomplished draws with two masters (Zakhar Fayvinov, PA, 2200 and Robert Rowley, AZ, 2208), and his only losses were also to masters.

Next we have **David Fulton** (1800), an Oregonian recently relocated from Pennsylvania. David had other reasons to be in the area, but found time to play in the Open as well. When I talked to him at the Harmon Memorial in Portland earlier this summer, he wasn't sure he'd be able to play, but I was glad to see that he worked it out. David scored five points, including a draw with Carl Harmon in round four (more on Carl below). Sadly, David was denied his last game when his opponent decided to take off early without informing the directors. Most of us go to these things to

play the games, and it is just rude when an opponent pulls this on you. Finally, we have **Murlin Varner** (1530) (that's me!). I managed to score 3.5/9, just a little below my average performance at the Open. As mentioned above, my first four opponents were geezers like me, except with higher ratings. I managed to obtain two draws, with Roger Smith (MO, 1773) and Clive Usiskin (NJ, 1700). The game with Clive was a rematch of the seventh round of the 2003 Open in Los Angeles. Clive won that one, so I got a little revenge this time. In the final five rounds, I played the kids, breaking even. My loss in the sixth round was to Gabriel Tkach (PA, 1140), my only upset loss of the event. Happily, for him, he went on to win first in class E, collecting \$1000. He didn't send me a gratuity. In the final round, I played my first opponent from outside the Western Hemisphere, as I drew with Ning Hou, a young girl from China.

Take my Rooks!

King's Gambit Declined

Dan Mayers (1937)

Jordanna Williams (1721)

Cherry Hill, U.S. Open (7) 2007

1.e4 e5 2.f4 ♖c5 3.♟f3 d6 4.c3 ♟f6 5.fxe5 dxe5
6.♟xe5 ♞e7 7.d4 ♖d6 8.♖f4 ♟xe4 9.♖c4 ♖e6
10.♞b3 ♞h4+ 11.g3 ♟xg3 12.♖xg3 ♞e4+



THE CHESS HOUSE

Serving the chess community since 1972

**your chess sets
and equipment store**

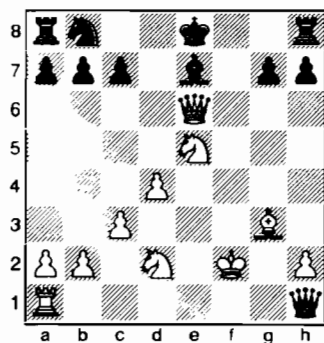


chess sets, combos, clocks
electronic chess, software
books, dvd's, teaching supplies
awards, chess for education
accessories, boards, pieces

www.ChessHouse.com
1-800-348-4749

Northwest Chess

13. ♖f2 ♙xh1 14. ♗e6 fxe6 15. ♙xe6+ ♗e7 16. ♖d2



16... ♙xa1 17. ♗h4 ♗f8+ 18. ♖e2 ♗f6 19. ♗xf6 gxf6 20. ♙g8+ ♗f8 21. ♙f7+ ♖d8 22. ♙xf8 mate

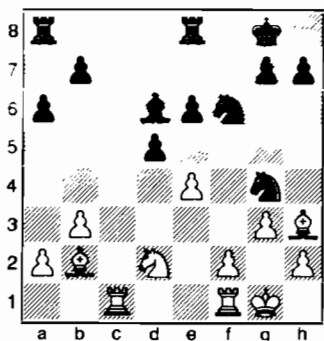
Catalan Closed

Herman Chiu (2000)

Ashley Carter (1820)

Cherry Hill, U.S. Open (5) 2007

1. ♖f3 c6 2. g3 d5 3. ♗g2 ♖f6 4. O-O e6 5. d4 ♗d6 6. ♖bd2 ♖bd7 7. c4 O-O 8. b3 e5 9. cxd5 cxd5 10. dxe5 ♖xe5 11. ♗b2 ♙e7 12. ♖d4 a6 13. ♙c2 ♗e6 14. ♖f5 ♗xf5 15. ♙xf5 ♙e6 16. ♗h3 ♗fe8 17. ♗ac1 ♖eg4 18. ♙xe6 fxe6 19. e4



19... b4 20. ♗c3 ♗xc3 21. ♗xc3 dxe4 22. ♗c7 b5 23. ♖xe4 ♖xe4 24. ♗xg4 e5 25. ♗f3 ♖d2 26. ♗xa8 ♗xa8 27. ♗d1 ♖f3+ 28. ♖g2 ♖d4 29. f4 1-0

That's it for the adults. Just four out of the 21 players hailing from Washington, Oregon and Idaho. By the way, we in the Northwest still outshine many other areas of the country in terms of attendance at the Open. Compare, if you will, to some other clusters of three states with roughly three times the membership of our three states: Michigan, Indiana and Illinois had a total of only 12 players, and Texas, Oklahoma and Louisiana had but 13. Or consider the states of Maryland, Delaware and Virginia, with double the

Northwest Chess

membership and within easy driving distance, yet they only managed a total of 31 entrants, only ten more than our little remote corner of the country.

Now for the more youthful North-westerners, which includes the six money winners from our area. Top scoring was **Andy May** (2068) of Washington, who had an excellent tournament, scoring 7/9. Andy lost to a couple of masters in the first five rounds, then finished strong with four straight wins, beating masters Ryan Milisits (TX, 2221) and Norman Rogers (PA, 2281) in the final two rounds. For his efforts, Andy finished in a tie for 8-18th place, and received \$1500 as his share for 1st-2nd Expert (tied with two-time Polgar winner Abby Marshall). Next, we find Washingtonian **Michael Lee** (2251), scoring 6.5 points. If you read the blog on the USCF website by the aforementioned Ms. Marshall, you would have read that she only lost one game, to a "boy." Michael was that "boy." Michael pretty well performed according to his ever-increasing rating (he gained seven rating points from this tournament). His only losses were to a pair of players rated over 2400, Michael Mulyar (CO, 2428) and Amon Simutowe (TX, 2455).

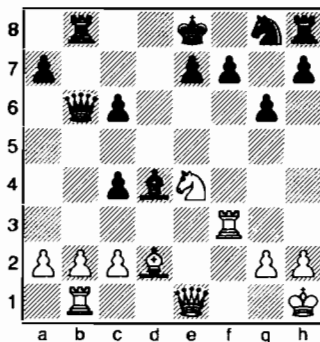
Sicilian Closed

Andy May (2050)

NM Ryan Milisits (2236)

Cherry Hill, U.S. Open (8) 2007

1. e4 c5 2. ♖c3 ♖c6 3. f4 d6 4. ♖f3 g6 5. ♗b5 ♗g7 6. ♗xc6+ bxc6 7. d3 ♙a5 8. ♗d2 ♗b8 9. ♗b1 c4 10. d4 ♗g4 11. e5 ♙b6 12. O-O dxe5 13. fxe5 ♗xe5 14. ♙e1 ♗g7 15. ♖e4 ♗xf3 16. ♗xf3 ♗xd4+ 17. ♖h1



17... c5 18. c3 f5 19. cxd4 fxe4 20. ♙xe4 ♖f6 21. ♙e2 cxd4 22. ♙xc4 ♙b5 23. ♙e6 ♖d5 24. ♗b3 ♗b6 25. ♙c8+ 1-0

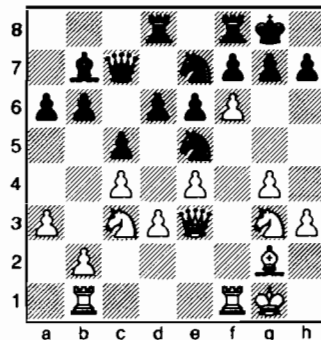
English Opening

NM Michael Lee (2222)

Paulo Santana (2051)

Cherry Hill, U.S. Open (3) 2007

1. c4 c5 2. ♖c3 b6 3. e4 d6 4. g3 ♗b7 5. ♗g2 ♖f6 6. ♖ge2 e6 7. O-O a6 8. f4 ♙c7 9. h3 ♗e7 10. g4 ♖c6 11. d3 ♖d7 12. ♗e3 ♗f6 13. a3 ♗d4 14. ♙d2 ♗xe3+ 15. ♙xe3 ♖e7 16. ♗ab1 ♗d8 17. ♖g3 O-O 18. f5 ♖e5 19. f6



19... ♖g6 20. ♖h5 ♖d7 21. fxg7 ♗fe8 22. ♙h6 ♗e7 23. g5 b5 24. ♖e2 ♙c6 25. ♖ef4 ♖ge5 26. ♖f6+ ♖xf6 27. gxf6 ♗ee8 28. h4 bxc4 29. ♖h3 ♖g4 30. ♙h5 1-0

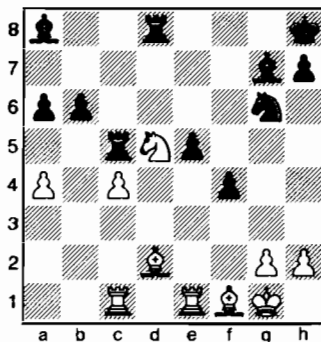
Sicilian Maroczy Bind

Amon Simutowe (2456)

NM Michael Lee (2222)

Cherry Hill, U.S. Open (4) 2007

1. d4 ♖f6 2. c4 c5 3. ♖f3 cxd4 4. ♖xd4 g6 5. ♖c3 ♗g7 6. e4 ♖c6 7. ♗e3 ♖g4 8. ♙xg4 ♖xd4 9. ♙d1 ♖e6 10. ♗c1 d6 11. ♗e2 O-O 12. O-O b6 13. ♙d2 ♗b7 14. f3 f5 15. exf5 gxf5 16. f4 ♗c8 17. b4 ♙d7 18. ♗fd1 ♗fd8 19. ♖d5 ♖h8 20. a3 ♖f8 21. ♙e1 e6 22. ♖c3 ♙e7 23. ♖b5 ♗c6 24. ♖d4 ♗e4 25. ♙f2 ♖g6 26. ♗d3 ♗a8 27. ♗f1 ♗e4 28. ♗d3 ♗a8 29. ♗f1 ♗e4 30. a4 e5 31. fxe5 f4 32. ♗d2 dxe5 33. ♖b5 a6 34. ♖c3 ♗a8 35. ♗e1 ♙xb4 36. ♖d5 ♙c5 37. ♙xc5 ♗xc5



September 2007

38. ♖b4 ♜c6 39. ♜d3 ♜b7 40. ♜e4 a5
41. ♜a3 ♜dc8 42. ♜c3 ♜xc4 43. ♜xb7
♜xc3 44. ♜xc8 ♜xa3 45. ♜f5 ♜f8
46. ♜a1 ♜c5+ 47. ♜f1 ♜xa1 48. ♜xa1
♜e7 49. ♜e4 ♜g7 50. ♜d1 ♜d4 51. ♜c1
♜c5 52. ♜e2 h6 53. ♜d3 ♜c8 54. ♜c4
♜f6 55. ♜d5 ♜e7+ 56. ♜c4 ♜c8
57. ♜c3 ♜e6 58. ♜h3 ♜f8 59. ♜d3 ♜d6
60. g3 b5 61. axb5 a4 62. gxf4 exf4 63. ♜c6
a3 64. ♜c2 ♜c4 65. ♜b1 ♜b6 66. ♜a2
♜e5 67. ♜d3 ♜d6 68. ♜b3 ♜c5 69. ♜d1
♜e6 70. ♜e1+ ♜f5 71. ♜f3 ♜g5
72. ♜e5+ 1-0

At six points, we find **Corbin Yu** (2054) of Oregon. Corbin really had his share of highly rated opponents, facing five with ratings between 2307 and 2399. Corbin defeated Daniel Shapiro (NY, 2326) and drew with Mackenzie Molner (NJ, 2325) and Elliott Yu (CA, 2307). In the first round, Corbin had one of those why-did-we-travel-so-far? moments, when he defeated Nathan Lee of Washington (more on Nathan later). Two Northwest youths joined Mayers and Chiu at 5.5 points, **Ethan Peake** (1908) of Oregon and **Megan Lee** (1571) of Washington. Ethan had a good run in rounds 5-8 against a collection of experts, defeating Matthew Grinberg (VA, 2050) and Michael Zhang (CA, 2068) while drawing with Jeffrey Haskel (FL, 2130) and John Rinaldo (CA, 2056), who, I believe, has a win over Bobby Fischer some

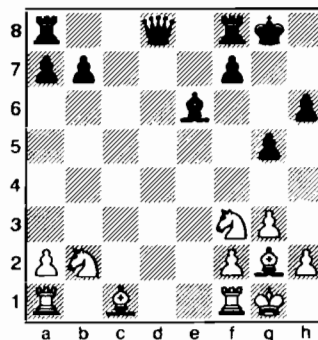
40+ years ago. Megan, aided by three half-point byes, scored 4-2 against six opponents rated between 1797 and 2029. Megan drew with both of her expert opponents, Vanessa West (CA, 2027) and Jason Luchan (NY 2029). As a result, she took sole possession of first Class C and the \$2000 that went with it. Combined with a good performance in the Polgar (more on that below), Megan is no longer Class C, as she is just a few points short of Class A!

Grünfeld Fianchetto

Corbin Yu (2089)
NM Elliott Liu (2332)

Cherry Hill, U.S. Open (3) 2007

1. ♜f3 g6 2. g3 ♜g7 3. ♜g2 ♜f6 4. O-O
O-O 5. c4 d5 6. cxd5 ♜xd5 7. d4 ♜b6
8. ♜c3 ♜c6 9. d5 ♜a5 10. e4 c6 11. ♜g5
cxd5 12. exd5 h6 13. ♜f4 ♜ac4 14. ♞e2
♜xb2 15. ♞xb2 ♜a4 16. ♜xa4 ♜xb2
17. ♜xb2 g5 18. ♜c1 e6 19. dxe6 ♜xe6



USCF Delegates' Meeting

The situation of the USCF is improving, so said USCF President Bill Goichberg. Not only did overall membership rise between May 2006 and May 2007 from 80,623 to 81,827, but adult membership (when the "Young Adult" category is included) appeared to have risen as well. The latter Goichberg attributed to the "internet dues sale" [Post hoc, ergo propter hoc?]. Indeed, although the "financial impact of the dues sale was . . . slightly negative," the federation showed an operating income of about \$23,000.

Executive Director Bill Hall posited that more "contact" with members—tournament activity, the MSA ratings pages, *Chess Life* Online, and, potentially, personal web-pages on the USCF site—is the key to member retention. He also displayed a worrisome graph showing a very high membership peak at age 10 and two much lower peaks just after age 40 and just before age 60. The two lower peaks have been decreasing in height and advancing in age over recent years—a graphic illustration of Murlin's "Kids and Geezers" concept.

VP of Finance Joel Channing said that the USCF was still in recovery and that the surplus was largely due to an accounting change. He also noted the frequent presence of a "cash flow gap" which requires that the USCF carry a \$150,000 line of credit.

The rest of the reports were generally upbeat. Some examples:

- ◆ People are responding to the new-look *Chess Life*; *Chess Life for Kids* is one of few four-color chess publications for children, *Chess Life Online* features timely and lively reporting—Daniel Lucas, Director of Publications
- ◆ Bessel Kok, whose bid for the FIDE Presidency was backed by the USCF, is now chairman of FIDE Global Chess which will manage and market the World Championship—Clay Kelleher, FIDE Vice-President

Continued on p. 21

20. ♜d1 ♞b6 21. ♜d3 ♜fd8 22. ♜e3
♞a5 23. h4 f6 24. hxg5 hxg5 25. ♜d4
♜d5 26. ♜h3 ♜e4 27. ♜ac1 f5 28. ♜c5
♜ac8 29. ♜xe4 ♜xc1 30. ♜f6+ ♜f7
31. ♜xc1 ♜xf6 32. ♜xf5 ♞xa2 33. ♜h6
♞b3 34. ♜g4+ ♜g6 35. ♜c5 ♜d5
36. ♜xd5 ♞xd5 37. ♜xa7 ♞d1+ 38. ♜h2
b5 39. ♜e5+ ♜f6 40. ♜g4+ ♜g7 41. ♜e3
♞d5 42. ♜g2 ♞f5 43. ♜d4+ ♜f8
44. ♜e5 b4 45. ♜c5+ ♜g7 46. ♜xb4
♞xe5 Draw

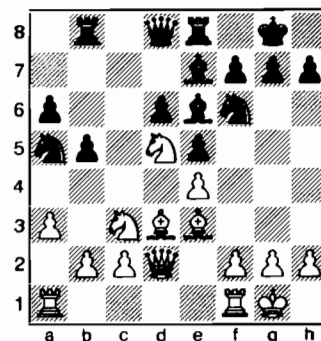
A large cluster of Northwest youth joined Fulton at five points. These include Washingtonians **Darren Wu** (1900) and **Dakota Dixon** (1794), and Idahoans **Daniel Taylor** (1862), **Kenrick Barkell** (1784) and (frequent Washington visitor) **Luke Harmon** (1590). Darren lost his first game and his last, but no others, and had a real nice run against a string of five experts in a row, with wins over George Maxfield (NJ, 2050) and Jonathan Cohen (NJ, 2059) and draws with Tenzing Shaw (IL, 2128), Donald Danlag (CA, 2036) and John McArthur (NY, 2032). Dakota finished his tournament strong with three straight wins to close out his five points. Kenrick scored four of his five wins against experts, and faced only one player rated lower than he. This earned Kenrick \$250 as a share of 3rd-4th Class B. Luke finished with three points in the last four rounds (two wins, two draws) against a string of Class A players, and received \$500 for his share of 2nd-4th in Class C.

Sicilian Kalashnikov

Daniel Taylor (1874)
NM Denis Strenzwilk (2201)

Cherry Hill, U.S. Open (3) 2007

1. e4 c5 2. ♜f3 ♜c6 3. d4 cxd4 4. ♜xd4
e5 5. ♜b5 d6 6. ♜1c3 a6 7. ♜a3 ♜e6
8. ♜c4 ♜c8 9. ♜e3 ♜f6 10. ♜b6 ♜b8
11. ♜bd5 b5 12. a3 ♜e7 13. ♜d3 O-O
14. ♞d2 ♜e8 15. O-O ♜a5



16. ♖xe7+ ♗xe7 17. ♕g5 ♖d7 18. f4 ♗b6+ 19. ♖h1 ♖c4 20. ♗c1 exf4 21. ♕xf6 gxf6 22. ♗xf4 ♗d8 23. ♕xc4 bxc4 24. ♖f3 ♖h8 25. ♗h6 ♗f8 26. ♗h4 ♗g7 27. ♖g3 ♖xb2 28. ♖xg7 ♖xg7 29. ♗g3+ ♖f8 30. ♗f2 ♖db7 31. h3 ♖7b3 32. ♗d2 ♖g7 33. ♖h2 ♖b7 34. ♖f1 ♖2b6 35. ♖d5 ♕xd5 36. exd5 ♖b1 37. ♖f2 ♖e7 38. ♗f4 ♖be1 39. ♗xf6+ ♖g8 40. ♖f3 1-0

There were a few things about the direction of this tournament that bothered me. Of course, I am only a local TD, so maybe I am not up on all the nuances of being an NTD. One problem was that they didn't use alphabetical pairing sheets. When you are trying to find a name among 200 boards, these sheets really help, and should have been used. Additionally, the crosstables were sometimes sorted by rating and sometimes by score. I found sorting by score to be more difficult to use, especially since the scores included half-point byes for rounds not yet completed. Finally, in looking through the completed crosstable, there are a number of strange byes where no byes should have been awarded. I consider such byes to be the director covering for some sort of screw-up. Daniel Taylor's results are one such case. Daniel scored five points, but only half of them came over the board. He took HPBs in rounds 2, 3 and 5. He won in rounds one and three (including a defeat of 2200 rated Denis Strenzwilk of Maryland) and lost in round six. This gave him 3.5/6. Round seven shows Daniel receiving a full point bye. I know this is not in my Local TD handbook. I can only assume that there was some major, uncorrected screw-up involving his pairing. This is not Daniel's fault, by any means, but the directors at a national event should do better than this, especially since there are byes like this in just about

every round. Remember Abby Marshall, the one who lost to Michael Lee and tied Andy May for top expert? Her tournament started with a full point bye. As an expert, I cannot imagine that she was the lowest rated player in her schedule, and therefore believe this shows another screw-up. This was the smallest Open in nine years, I would expect better of a staff of NTDs.

At four points were Oregonians **Marcus Robinson** (1833) and **Taylor Bailey** (1645), **Nathan Lee** (1741) of Washington and another of our frequent visitors from Idaho, **Carl Harmon** (1446). Marcus was a drawmaster at the Open, playing eight. The most significant was in the first round when he drew with Master Charles Bouzoukis (DE, 2277). Taylor used only half as many draws, her best being with Jonathan Lamdan of New Jersey (1920). I mentioned earlier Nathan's opening round game with Corbin Yu. His first six rounds went in the fashion typical of a large tournament for someone with a rating near the middle, alternating losses to significantly higher rated players with wins over substantially lower rated players. Nathan changed that pattern in rounds seven and eight, drawing with New Jerseyites Kevin Drescher (1940) and Timothy Hall (2000). Carl managed to score his four points while facing only one lower rated player the entire tournament. He was also a drawmaster, staying even with Donna Alarie (MA, 1778), David Fulton (OR, 1800, another why-did-we-travel-so-far? pairing), Janice Chen (UT, 1767) (If that name seems familiar, it is because I mentioned that I had drawn with her in last year's article.) (Like you have any reason to remember last year's article.), and Gordon Barrett (NV, 1720). Carl finished with a win over Eve Zhurbinskiy (NJ,

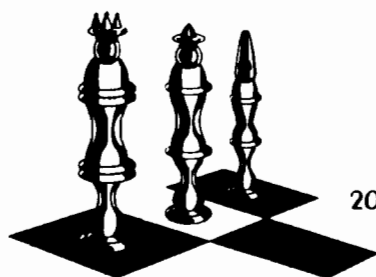
1670) and was rewarded with \$75 for his share of 4th Class D.

Joining me at 3.5 points was **Sompoth Supathanasinkasaem** (1159) of Oregon, winner of the longest surname award (no there is not re-

ally an award like that, don't be so gullible). With a rating below 1200, it would usually take a few rounds to face someone with a lower rating. If one has some success in the early rounds, it might never happen. It never happened for Sompoth, because he did have success, a lot of it, against those higher rated players, drawing with Frank Vogel (RI, 1666) and defeating Walter Schreiner (AZ, 1700), Charles Hatherill (NV, 1553) and Albert Makatenas (NJ, 1449). Sompoth received \$500 as his share of 2nd-3rd Class E. After this and other recent performances, Sompoth will no longer be competing for Class E prizes as his rating is now just short of 1500.

Finally, at three points we find Washingtonians **Sarah May** (1481) and **Darryl Wu** (1399). Sarah started out great with a win in the first round over Ankur Bakshi (NJ, 2022), and then drew with Thomas McCumiskey (VA, 1860) in round three. She was even after four rounds then struggled to the end with a steady diet of high Class B opponents. Darryl didn't face a lower rated player until the last round, in a large part because he defeated Roger Smith (MO, 1773) in round two. In rounds five and six Darryl had back-to-back draws with James Canty (MI, 1664) and John Frank (PA, 1706).

There were other events to discuss as well. The **Denker** Tournament of State High School Champions had a record turnout, with representatives from 48 states and D. C. The event was won by Warren Harper of Texas with 5.5/6. **Andy May** was Washington's representative and tied for 6th with 4/6. Andy scored two significant draws, with Nicholas Yap (CA, 2300) in round two and Daniel Yeager (PA, 2341) in round six. **Ethan Peake** represented Oregon. Ethan scored 3.5/6 to tie for 13th place. In the final round, Ethan defeated Jayson Lian (2089) of New Jersey. Way to treat the hosts, dude! What I like about this type of tournament is all these players get to meet and compete with their contemporaries from around the U. S., with little risk of playing someone for the umpteenth time, as is often the case in local tournaments. I mean, where else can you do what **Daniel Taylor**, Idaho's representative, did and play opponents from both



Allen Smith CHESS LESSONS

USCF A PLAYER
2006 PUGET SOUND CHAMPION

(253) 230-3736 • CHARTERINV@COMCAST.NET

the 49th and the 50th state in the same tournament? Especially when you consider the event was in New Jersey! Daniel scored 2.5/6 and tied for 32nd.

Sicilian Closed

Andy May (2050)

NM Nicolas Yap (2301)

Cherry Hill, Denker (2) 2007

1.e4 c5 2.♟c3 ♟c6 3.f4 g6 4.♟f3 ♟g7
5.♟b5 ♟d4 6.O-O ♟xb5 7.♟xb5 d5 8.e5
a6 9.♟c3 ♟g4 10.d4 cxd4 11.♟e2 e6
12.♟exd4 ♟e7 13.h3 ♟xf3 14.♟xf3
♟c8 15.♟b3 ♟d7 16.♟e3 O-O 17.♟d2
f6 18.exf6 ♟xf6 19.♟d3 ♟xd4 20.♟xd4
♟f5 21.♟e5 ♟e7 22.c3 ♟f7 23.♟e1
♟c5+ 24.♟h2 ♟cf8 25.♟e2 ♟e8 26.g4
♟h6 27.♟e3 ♟ff8 28.♟g3 ♟c6 29.♟d4
♟c7 30.♟e5 ♟e7 31.♟e3 ♟fe8 32.♟b6
♟c6 33.♟d4 ♟c7 34.♟d2 ♟f7
35.♟e5 ♟e2 ♟c6 36.h4 ♟d6 37.♟e5 ♟e4+
38.♟1xe4 dxe4 39.♟e3 ♟d7 40.♟c5
♟a4 41.♟xe4 ♟d1 42.♟c8 ♟xc8
43.♟xe6+ ♟f8 44.♟xd7 ♟d3+ 45.♟g2
♟d2+ Draw

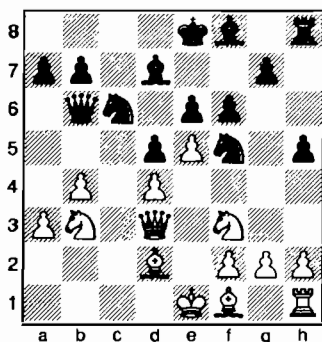
French Advance

Daniel Taylor (1874)

Charles Sonido (1596)

Cherry Hill, Denker (2) 2007

1.e4 e6 2.d4 d5 3.e5 c5 4.c3 ♟c6 5.♟f3
♟b6 6.a3 ♟d7 7.b4 cxd4 8.cxd4 ♟h6
9.♟b2 ♟f5 10.♟d3 ♟a5 11.♟bd2 ♟c8
12.♟c1 ♟xc1+ 13.♟xc1 ♟c6 14.♟b3
f6 15.♟d2 h5



16.b5 ♟xa3 17.bxc6 ♟xc6 18.♟e2 a6
19.♟a5 ♟c1 20.♟xc6 ♟xc6 21.O-O
♟xd2 22.♟xd2 ♟b6 23.♟d3 ♟e7
24.♟b1 ♟c7 25.♟c1 ♟b6 26.♟f4 f5
27.♟g5 g6 28.♟f6 ♟f8 29.♟g5 ♟d7
30.h3 ♟d8 31.♟d2 b5 32.♟b4 ♟b6
33.♟g5 ♟b8 34.♟h7 ♟g8 35.♟f8+
♟e8 36.♟xg6 ♟f7 37.♟f4 a5 38.♟b2
♟e7 39.♟c5 b4 40.♟e2 ♟h8 41.♟xh5
a4 42.♟f6 b3 43.♟b2 ♟b4 44.♟b5

♟e1+ 45.♟h2 ♟a8 46.♟b7 a3 47.♟xb3
♟a5 48.♟b1 ♟a7 49.♟xa7 ♟xa7
50.♟d1 ♟g7 51.♟h5 ♟xd4 52.♟h7+
♟f8 53.♟h8+ ♟f7 54.♟e8+ ♟g7
55.♟xe7+ ♟g6 56.♟h7+ ♟g5 57.♟h5+
♟f4 58.♟e2 ♟g5 59.g3 ♟h6 60.♟h5+
♟g7 1-0

Sicilian Closed

Andy May (2050)

NM Daniel Yeager (2247)

Cherry Hill, Denker (6) 2007

1.e4 c5 2.♟c3 ♟c6 3.f4 g6 4.♟f3 ♟g7
5.♟b5 ♟d4 6.O-O ♟xb5 7.♟xb5 d5 8.e5
a6 9.♟c3 d4 10.♟e4 ♟d5 11.d3 ♟h6
12.a4 a5 13.♟e1 O-O 14.♟fd2 b6
15.♟c4 ♟c6 16.♟d2 ♟e6 17.b3 f6
18.exf6 exf6 19.♟ed6 ♟d5 20.♟g3 f5
21.♟ae1 ♟ad8 22.♟b5 ♟fe8 23.♟a7
♟c7 24.♟b5 ♟c6 25.♟a7 ♟c7 26.♟b5
♟c6 Draw

The Polgar Invitational Tournament for Girls also had some Northwest representatives. Forty-eight girls representing forty states competed in this event. Missouri, Utah, Texas, Florida, New Jersey and Washington each had two representatives and New York had three. The co-champions were Julia Kerr (NY, 2008) and Eunice Rodriguez (FL, 1735). Erica Barkell came from Idaho to play and came out even at 3/6, to tie for 21st. Sarah May also tied for 21st, but should have had good tiebreakers, as she got to play both of the co-champs. Taylor Bailey of Oregon did them a half point better, tying for 12th with 3.5 points. Megan Lee outdid herself in this event, much like she did in the open. Megan went undefeated, scoring 4.5/6 to tie for 3rd place. Only her first round opponent was rated lower than herself. She drew with Janice Chen (UT, 1768), Sylvia Yang (TX, 1854) and Amelia Wheelless (NC, 1722), and defeated Ann Fitch (DE, 601). Jordana Williams (LA, 1776) and, in a final we-could-just-do-this-at-home game, Taylor Bailey (OR, 1652).

Giuoco Piano

Sylvia Yang (1854)

Megan Lee (1571)

Cherry Hill, Polgar (4) 2007

1.e4 e5 2.♟f3 ♟c6 3.♟c4 ♟c5 4.c3 ♟f6
5.d4 exd4 6.cxd4 ♟b4+ 7.♟d2 ♟xd2+
8.♟bxd2 d5 9.exd5 ♟xd5 10.O-O O-O
11.♟c2 ♟e6 12.♟fe1 ♟e8 13.a3 a6

14.♟b3 ♟f6 15.♟d3 h6 16.♟ad1 ♟f4
17.♟e4 ♟d5 18.♟xd5 ♟xd5 19.♟c4
♟b6 20.♟c2 ♟d5 21.♟c4 ♟b6 Draw

QGD Orthodox

Taylor Bailey (1663)

Hannah Hellwig (1399)

Cherry Hill, Polgar (3) 2007

1.d4 d5 2.c4 c6 3.♟c3 ♟f6 4.♟f3 e6
5.♟g5 ♟e7 6.e3 ♟bd7 7.♟d3 dxc4
8.♟xc4 b5 9.♟d3 a6 10.♟c2 ♟b7 11.O-O
O-O 12.♟e5 ♟h8 13.♟xf6 ♟xf6
14.♟e4 h6 15.♟xc6 ♟xc6 16.♟xc6
♟c8 17.♟xc8 ♟axc8 18.♟ac1 ♟fd8
19.♟fd1 g6 20.♟c5 ♟c6 21.♟b3 ♟dc8
22.♟xc6 ♟xc6 23.♟c1 ♟xc1+ 24.♟xc1
♟d5 25.a3 f5 26.♟e2 ♟g7 27.e4 fxe4
28.♟xe4 ♟f6 29.♟xd5 exd5 30.♟f4
♟f5 31.♟xd5 ♟f6 32.♟xf6 ♟xf6
33.♟f1 ♟e6 34.♟e2 ♟d5 35.♟e3 g5
36.b3 a5 37.♟d3 h5 38.h4 g4 39.f4 a4
40.b4 g3 41.f5 ♟d6 42.♟e4 ♟e7
43.♟e5 ♟f7 44.d5 ♟e7 45.d6+ ♟d7
46.f6 ♟e8 47.♟e6 ♟d8 48.f7 ♟c8
49.f8=♟+ ♟b7 50.♟d8 ♟a6 51.♟a8+
♟b6 52.d7 ♟c7 53.d8=♟ mate

Daniel Yeager of PA won the U. S. Open Blitz with a score of 11/14. Marcus Robinson collected eight points to tie for 12th out of forty participants. Two former Northwest residents were present, Adam Weissbarth, now of PA and Riley Yates-Doerr, now of NJ. They both scored 9.5/14 to tie for 4th. Adam also played in the open, scoring 3.5 points before withdrawing prior to the seventh round.

A few final notes:

- ♟ The weather was better this time, but I still don't recommend New Jersey in August.
- ♟ They offered a "quick" schedule, where you still played one game a night, but the time control for the first six rounds was G/60. There were few entrants into that schedule, giving the higher rated players a great advantage over those in the more populated schedules. It seemed bizarre to me and I think they shouldn't repeat this idea.
- ♟ There are way more Dunkin' Donuts in Jersey than Starbucks, but they don't have any Krispy Kremes.

Continued on p. 21

Selzler Takes Two Titles at WA Blitz!

by NM Elliott Neff

The WCF-sanctioned WA State Blitz Championships (five minutes per side for the whole game!) were held on July 21, 2007. Thanks to the efforts of Dan Matthews and Eddie Chang, the site was secured for this event at one of the most popular places to place chess in Bellevue—Crossroads Mall which features a giant wooden chess set and chess players playing at all hours when the mall is open! The tournament was planned to have mostly pre-registration and, with just 35 players pre-registered on Friday, we decided to combine the scholastic and open categories into one section. However, by noon on Saturday, there were 66 players present! The mall scrambled to provide a few extra tables, and the first round started shortly after 12:30 p.m. The format was a seven-round Swiss with two games, White and Black, per round. The field was very competitive, with the WA State Champion Ignacio Perez there, trying to add the title of WA State Blitz Champion to his strong performances this year. Other strong players included FM John Readey, NM Nat Koons, FM David Roper, Ricky Selzler, Josh Sinanan (rated over 2700 on the Internet Chess Club!). Bruce Kovalsky, etc, etc...there was even a contingent from Bellingham that came in for the challenge!

When 4 00 p m rolled around and scores were tallied, the surprise winner was Ricky Selzler, earning both the WA State Junior Blitz Champion (under age 21) and the WA State Blitz Champion titles with a VERY impressive score of 12.5/14, three points ahead of second place! There was some very exciting chess played that afternoon - players enjoyed the opportunity to stroll down to the food court when hungry - and quite a number of scholastic players had a good time, some for the first time competing in a Blitz tournament!

Second-fourth was shared by Sinanan, Perez, and Denis Janky with 9.5. In the scholastic section, Bob Alger, 12th grade, proved that his nerves were stronger than the rest by his strong finish of 11.5, closely followed by Jaan Budzianowski with 10.5 and Darren Hou with ten points. Tied for fourth were Daniel Hua and Wesley Yu with 9.5 each. Special congratulations to kindergartner Benjamin Yee for scoring six points from fourteen!!

With cash prizes in the open category, trophies in the scholastic category, and \$100 in gift certificates donated by Uncle's Games, this was a very enjoyable event. Thanks to the players' assistance in following the requirements of the facility, keeping the tablecloths neat, keeping the fire lanes clear, etc. Crossroads Mall would like to invite the Blitz Championships back for next year if possible! A very big thank-you to Michael Cohn for managing much of the registration and pairings, while I was busy competing. Chess4Life was pleased to be able to help promote chess by hosting this event, providing online registration and tournament management. ■



Elliott welcomes players to the WA Blitz Championships



NM Elliott Neff (L) battles Josh Sinanan (R) on Board One, while Ricky Selzler (LC), the tournament winner, competes on Board Two

USCF Crosstables

(qqqq) indicates Quick Rating

SCC June Quads	6/16	TD: Fred Kleist
1 Sinanan, Joshua	2158 2162	- D W W 2.5
2 Fleury, Matthew	2111 2118	D - W W 2.5
3 Calpo, Benjamin	1990 1979	L L - W 1.0
4 White, Herbert	1300 1300	L L L - 0.0
1 Kolde, Sterling	1867 1876	- W D D 2.0
2 Wu, Darren	1818 1834	L - W W 2.0
3 Fryberg, Skylor	1852 1841	D - L D 1.0
4 Mathews, Dan	1880 1866	D L D - 1.0
1 Ummel, Igor	1776 1801	- W W X 3.0
2 Hickey, Patrick	1772 1770	L - W D 1.5
3 Lessler, Peter	1788 1773	L L - W 1.0
4 Warrior, Krishnan	1721 1711	F D L - 0.5
1 Qu, Frank	1583 1593	- D W W 2.5
2 Lee, Megan	1619 1625	D - W W 2.5
3 Van Veen, Kerry	1316 1314	L L - W 1.0
4 Spitzer, Timothy	1178 1145	L L L - 0.0
1 Piper, August	1515 1522	H W7 W2 2.5
2 Breneman, Jesse	1222 1221	W6 W3 L1 2.0
3 Dunlap, Alexander	660 829	W4 L2 W5 2.0
4 Song, Matthew	1044 1018	L3 H W7 1.5
5 Wang, Patrick	641 716	D7 W6 L3 1.5
6 Abbott, Graham	732 736	L2 L5 W8 1.0
7 Ummel, John	924 887	D5 L1 L4 0.5
8 McGee, Donald	894 849	U H L6 0.5

SCC July Quads	7/21	TD: Fred Kleist
1 Calpo, Benjamin	1990 2047	- W W W 3.0
2 McCormick, James	2204 2200	L - D W 1.5
3 Fleury, Matthew	2117 2110	L D - D 1.0
4 Milicevic, Dragoljub	2164 2145	L L D - 0.5
1 Kelley, Dereque	1978 2001	- W W W 3.0
2 June, Peter	1910 1914	L - W X 2.0
3 Guo, Alex	1969 1955	L L - W 1.0
4 Fryberg, Skylor	1841 1826	L F L - 0.0
1 Ummel, Igor	1801 1812	- W D B 2.5
2 Hickey, Patrick	1729 1757	L - W W 2.0
3 Walther, Randy	1800 1802	D L - W 1.5
4 Ambler, Dennis	1900 1872	H L L - 0.5
1 Buck, Stephen	1777 1798	- W W B 3.0
2 Lessler, Peter	1771 1760	L - D W 1.5
3 Qu, Frank	1668 1672	L D - W 1.5
4 Monahan, Darby	1539 1520	H L L - 0.5
1 Piper, August	1500 1514	- W D W 2.5
2 Breneman, Jesse	1303 1349	L - W W 2.0
3 Etingher, Constantin	1521 1483	D L - D 1.0
4 Chi, Quentin	1155 1156	L L D - 0.5
1 Song, Matthew	1058 1115	W3 W2 W4 3.0
2 Dunlap, Alexander	922 920	W6 L1 D3 1.5
3 Goodfellow, Robert	888 912	L1 W5 D2 1.5
4 Wang, Patrick	716 772	D5 W6 L1 1.5
5 Kostic, Miodrag	1009 944	D4 L3 D6 1.0
6 Abbott, Graham	736 710	L2 L4 D5 0.5

PCC Game-in-60	6/30	TD: Korneljijs Dale
1 Robinson, Marcus	1786(1696)	1843 (1770) W6 W5 W7 W4 4.0
2 Surak, Steve	1920(1777)	1907(1765) W12 L7 W10 W8 3.0
3 Tobin, Sean	1912(1925)	1905(1912) W10 W9 L4 W7 3.0
4 Ball, Larry	1830(1806)	1838(1812) W13 W8 W3 L1 3.0
5 Smyth, Scott	1944(1883)	1933(1870) W15 L1 W12 H 2.5
6 Wang, Eddie	1318(1275)	1407(1338) L1 W14 D9 W15 2.5
7 Chow, Andrew	1589(1524)	1607(1542) W16 W2 L1 L3 2.0
8 Morehouse, Brandon	1573(1495)	1571(1491) W17 L4 W15 L2 2.0
9 Dietz, Arliss	1505(1343)	1500(1345) W18 L3 D6 D12 2.0
10 Moore, Craig	1361(1361)	1373(1363) L3 W18 L2 W16 2.0
11 Dale, Korneljijs	1501(1324)	1506(1333) U D13 W14 U 1.5
12 Chin, Benjamin	WA 1428(1341)	1433(1340) L2 W16 L5 D9 1.5
13 Sen, Samir	WA 1294(1065)	1282(1069) L4 D11 L16 W17 1.5
14 Davey, Brent	1480(1375)	1444(1334) U L6 L11 W18 1.0
15 Harry, Ken	1391(1236)	1367(1220) L5 W17 L8 L6 1.0
16 Pikus, Benjamin	1120(951)	1135(975) L7 L12 W13 L10 1.0
17 Pikus, Aaron	1029(994)	1028(979) L8 L15 W18 L13 1.0
18 Mullins, Michael	WA 954(921)	925(888) L9 L10 L17 L14 0.0

PCC July Game-in-60	7/21	TD: Korneljijs Dale
1 Peake, Ethan	1859(1636)	1893(1718) W9 W6 W7 W4 4.0
2 Ball, Larry	1826(1812)	1844(1821) W10 D4 W6 W7 3.5
3 Porter, Nathan	1600(1485)	1628(1521) L4 W10 W9 W8 3.0
4 Surak, Steve	1910(1765)	1908(1770) W3 D2 W5 L1 2.5
5 Robinson, Marcus	1846(1770)	1827(1744) W8 L7 L4 W9 2.0
6 Holler, Robert	1739(1659)	1723(1640) W12 L1 L2 W11 2.0
7 Bailey, Taylor	1641(1467)	1651(1486) W11 W5 L1 L2 2.0
8 Dale, Korneljijs	1506(1333)	1500(1334) L5 W1 W10 L3 2.0
9 Grehan, James	1591(1591)	1567(1523) L1 W12 L3 L5 1.0
10 Holler, Bruce	1308(1219)	1294(1201) L2 L3 L8 W12 1.0
11 Mack, Brian	520(440)	671(599) L7 L8 W12 L6 1.0
12 Mullins, Michael	WA 923(888)	876(836) L6 L9 L11 L10 0.0

PCC August Game-in-60	8/18	TD: Gregori Alpernas
1 Surak, Steve	1908(1770)	1931(1802) W19 W13 W3 W8 4.0
2 Smyth, Scott	1921(1870)	1933(1879) W18 W17 W4 H 3.5
3 Roua, Radu	2210(2007)	2200(1993) W14 W11 L1 W10 3.0
4 Esler, Brian	1837(1720)	1840(1729) W23 W16 L2 W11 3.0
5 Ball, Larry	1845(1822)	1838(1809) D8 D7 W13 W12 3.0
6 Tezcan, Yaman	904(904)	1756(1530) W21 W10 L8 W17 3.0
7 Bailey, Taylor	1652(1475)	1640(1471) L16 D5 W24 W19 2.5
8 Lu, Peter WA	1069(981)	1287(1182) D5 W21 W6 L1 2.5
9 Tobin, Sean	1905(1912)	1910(1915) W22 W12 U U 2.0
10 Banner, Richard	WA 1823(1605)	1812(1597) W24 L6 W14 L3 2.0
11 Robinson, Marcus	1808(1776)	1797(1759) W15 L3 W22 L4 2.0
12 Porter, Nathan	1628(1521)	1619(1516) W25 L9 W23 L5 2.0
13 Kudva, Vikram	WA 1614(1526)	1609(1522) W28 L1 L5 W22 2.0
14 Minoo, Aaron	1534(1522)	1533(1512) L3 W15 L10 W23 2.0
15 Donchenko, Petr	869(825)	1003(1058) L11 L14 W25 W21 2.0
16 Lou, Jingwei	957(915)	1137(1093) W7 L4 W18 U 2.0
17 Becker, Brett	1609(1379)	1591(1365) W26 L2 D19 L6 1.5
18 Ehrenfreund, Max	1462(1299)	1438(1292) L2 D24 L16 W27 1.5
19 Chin, Benjamin	WA 1433(1340)	1431(1327) L1 W26 D17 L7 1.5
20 Alpernas, Gregori	1969(1782)	1970(1783) U U W26 U 1.0
21 Porter, Joel	1541(1261)	1480(1202) L6 L8 W28 L15 1.0
22 Wang, Eddie	1371(1316)	1361(1305) L9 W25 L11 L13 1.0
23 Kelly, Connor	1234(1157)	1225(1150) L4 W28 L12 L14 1.0
24 Donchenko, Oleg	1152(1152)	1153(1111) L10 D18 L7 D26 1.0
25 Mullins, Michael	WA 874(836)	876(844) L12 L22 L15 W28 1.0
26 Kudva, Priya WA	852(750)	868(768) L17 L19 L20 D24 0.5
27 Fortune, Jon	WY1550(1673)	1527(1646) U U U L18 0.0
28 Smith, James	844(819)	812(779) L13 L23 L21 L25 0.0

SCC July Tornado 7/1	TD: Fred Kleist
1 Pupols, Viktors	2220 2224 W9 W11 W2 W5 4.0
2 Buck, Stephen J	1801 1818 W12 W6 L1 W7 3.0
3 O'Gorman, Peter	1800 1800 W13 D4 L5 W6 2.5
4 Etingher, Constan	1467 1480 W8 D3 L6 W14 2.5
5 Fabian, Steve M	1711 1763 H W10 W3 L1 2.5
6 June, Peter F	1933 1910 W7 L2 W4 L3 2.0
7 Wessbecher, Franc	1459 1494 L6 W12 W11 L2 2.0
8 Dunlap, Alexander	829 922 L4 D13 D14 W12 2.0
9 Ramanujan, Nevin	1501 1496 L1 W14 L10 H 1.5
10 Kleist, Fred	1949 1935 H L5 W9 U 1.5
11 Walther, Randy A	1800 1800 W14 L1 L7 U 1.0
12 Spitzer, Timothy	1145 1123 L2 L7 W13 L8 1.0
13 Hu, Jiayi	1203 1160 L3 D8 L12 U 0.5
14 Wyant, Matthew	1300 949 L11 L9 D8 L4 0.5



Carl A. Haessler
Lessons • Lectures • Exhibitions

USCF Life Master
3-Time Oregon Champion

(503) 358-7871
ssmith6154@aol.com

Games from the WA Open

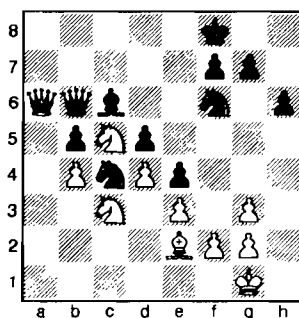
Slav Exchange

Chris Kalina (1957)

NM Curt Collyer (2206)

Seattle, WA Open (1) 2007

1.d4 d5 2.c4 c6 3.♘c3 ♘f6 4.cxd5 cxd5
5.♗g5 e6 6.♘f3 ♗e7 7.e3 O-O 8.♗d3
a6 9.O-O b5 10.a3 ♗b7 11.♞c2 h6
12.♗h4 ♘bd7 13.♞fc1 ♗d6 14.♘d2
♞b8 15.♗g3 ♞c8 16.b4 e5 17.♘b3 e4
18.♗e2 ♘b6 19.♘c5 ♗xg3 20.hxg3
♗c6 21.♞cb1 ♞d6 22.a4 ♘c4 23.axb5
axb5 24.♞c1 ♞e7 25.♞xa8 ♞xa8
26.♞a1 ♞e8 27.♞b1 ♞b8 28.♞a2 ♘f8
29.♞a1 ♞xa2 30.♞xa2 ♞b6 31.♞a6



31...♞xa6 32.♘xa6 ♘e7 33.♘c7 ♘d6
34.♘7xb5 ♗xb5 35.♘xb5 ♘xb5
36.♗xb5 ♘d6 37.♘f1 ♘c7 38.♗e1 ♘b6
39.♗e2 ♘d7 40.♘d2 ♘b8 41.♘c3 ♘c6
42.♘b3 g6 43.♘a4 ♘a7 44.♗f1 h5
45.♗e2 ♘c8 46.♗d1 ♘d6 47.♗e2 ♘c8
48.b5 ♘d6 49.♘b4 f6 50.♘a4 g5
51.♘b4 h4 52.gxh4 gxh4 53.♘a4 f5
54.♘b4 ♘e8 55.♗h5 ♘d6 56.♗g6
♘xb5 57.♗xf5 ♘d6 58.♗e6 ♘c6
59.♗g4 ♘e8 60.♗d1 ♘f6 61.♘a5 ♘h7
62.♗a4+ ♘c7 63.♗d1 ♘c6 64.♗g4
♘f6 65.♗f5 ♘e8 66.♗g4 ♘f6 67.♗h3
♘e8 68.g3 hxg3 69.fxg3 Draw

Queen's Indian

Stephen Buck (1718)

Ryan Ackerman (1473)

Seattle, WA Open (1) 2007

1.c4 ♘f6 2.♘c3 e6 3.♘f3 b6 4.g3 ♗b7
5.♗g2 ♗e7 6.O-O O-O 7.d4 d6 8.♞c2
♘bd7 9.e4 e5 10.d5 a5 11.h3 ♘h5
12.♗e3 g6 13.♗h6 ♘g7 14.♞d2 ♘c5
15.♘e1 ♗a6 16.b3 a4 17.b4 ♗xc4
18.bxc5 ♗xf1 19.cxd6 ♗xg2 20.dxe7
♞xe7 21.♘g2 ♞d7 22.♘d3 f6 23.f4
exf4 24.♘f4 ♞fe8 25.♞d4 ♘f7 26.♞f1

c5 27.♞f2 ♞e7 28.♗xg7 ♘xg7 29.♘e6+
♘f7 30.♞f4 ♞ec8 31.e5 ♗a5 32.♘e4
♞d8 33.♘xf6 ♞xd5 1-0

QGD Orthodox

Kerry Xing (1762)

William Li (1562)

Seattle, WA Open (1) 2007

1.d4 d5 2.c4 c6 3.♘f3 ♘f6 4.♘c3 e6
5.♗g5 ♗e7 6.e3 O-O 7.♗d3 dxc4
8.♗xc4 b6 9.O-O ♗b7 10.♞e2 ♘bd7
11.♞fd1 ♘d5 12.♗xe7 ♘xc3 13.bxc3
♞xe7 14.e4 ♞fe8 15.e5 ♞ac8 16.♘d2
c5 17.♞h5 cxd4 18.cxd4 ♞c7 19.♗d3
♘f8 20.♘c4 ♗d5 21.♘d6 ♞d8 22.f4 f5
23.a4 ♘g6 24.♞f1 ♘h4 25.♞f2 ♞c3
26.♞e2 g5 27.g3 ♘f3+ 28.♞xf3 ♗xf3
29.♞xf3 gxf4 30.gxf4 ♞d7 31.♘h1 ♞f8
32.♞g1+ ♞g7 33.♞xg7+ ♞xg7 34.
♞a8+ ♞f8 35.♞xf8+ ♘xf8 36.♗b5 ♞f3
37.♗c4 ♘e7 38.♘c8+ ♘d7 39.♘xa7
♞xf4 40.♗b5+ ♘c7 41.♘c6 ♞g4 42.h3
♞g7 43.d5 exd5 44.♘d4 ♞e7 45.e6 f4
46.♘g2 ♘d6 47.♘f5+ ♘xe6 48.♘xe7
♘xe7 49.♘f3 ♘d6 50.♘f4 h6 51.h4 h5
52.♘g5 ♘e5 53.♘xh5 ♘f5 54.♗d3+
♘f6 55.♘g4 ♘g7 56.h5 ♘h6 57.♗g6
d4 58.♘f3 d3 59.♘e3 d2 60.♘xd2 ♘g7
61.♘c3 ♘f6 62.♘b4 ♘e7 63.♘b5 ♘f6
64.♘xb6 1-0

Scotch Game

John Walton (1699)

Marvin Hayami (1827)

Seattle, WA Open (1) 2007

1.e4 e5 2.♘f3 ♘c6 3.d4 exd4 4.♘xd4
♘f6 5.♘xc6 bxc6 6.e5 ♞e7 7.♞e2 ♘d5
8.c4 ♗a6 9.b3 O-O-O 10.♗b2 ♘f4
11.♞e3 ♘e6 12.♞xa7 ♗b7 13.♞e3
♞h4 14.♘d2 ♗c5 15.♘f3 ♞e7 16.♗d4
♘xd4 17.♘xd4 ♞de8 18.f4 g5 19.g3
♗xd4 20.♞xd4 c5 0-1

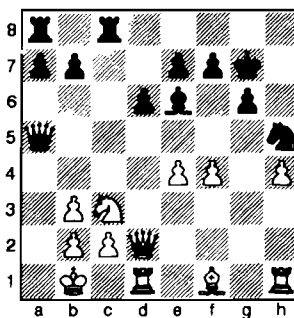
Sicilian Dragon

Alec Ho (1800)

George Fan (1685)

Seattle, WA Open (1) 2007

1.e4 c5 2.♘f3 d6 3.d4 cxd4 4.♘xd4 ♘f6
5.♘c3 g6 6.♗g5 ♗g7 7.♞d2 O-O 8.O-
O-O ♘c6 9.♗h6 ♘xd4 10.♗xg7 ♘b3+
11.axb3 ♘xg7 12.f3 ♞a5 13.g4 ♗e6
14.♘b1 ♞fc8 15.h4 h5 16.gxh5 ♘xh5



17...♗g4 18.♞e1 e6 19.♞g1 f5 20.♗e2
♗xe2 21.♞xe2 ♘h6 22.♞eg2 ♞g8
23.♞xd6 ♞ae8 24.♞g5 ♞d8 25.♞e5
♞d2 26.exf5 exf5 27.♞xg6+ ♞xg6
28.♞xg6+ ♘xg6 29.♞xe8+ ♘h6
30.♞e6+ ♘g7 31.♞e7+ ♘g8 32.♞e8+
♘g7 33.♞xh5 ♞xf4 34.♘e2 ♞f2
35.♘a2 a5 36.♞g5+ ♘f7 37.♘f4 ♞xc2
38.♞g6+ ♘e7 39.♞e6+ ♘d8 40.♞d6+
♘e8 41.♘d5 ♞e2 42.♞g6+ ♘d7
43.♞xf5+ ♘d6 44.♘c3 ♞h2 45.h5 b6
46.♞d5+ ♘c7 47.♘b5+ ♘c8 48.♞c6+
♘d8 49.♞xb6+ ♘e7 50.♞d6+ 1-0

Nimzo-Indian Sämisch

William Rogers (1503)

Nhon Do (UNR)

Seattle, WA Open (1) 2007

1.d4 ♘f6 2.c4 e6 3.♘c3 ♗b4 4.a3
♗xc3+ 5.bxc3 c5 6.♘f3 ♘e4 7.♞c2 f5
8.e3 b6 9.♗e2 ♗b7 10.O-O-O 11.♗d2
d6 12.♞fd1 ♘d7 13.♗e1 f4 14.d5 exd5
15.cxd5 ♞e7 16.c4 fxe3 17.fxe3 ♞ae8
18.♗h4 g5 19.♗e1 ♘ef6 20.♞d3 ♘g4
21.♗d2 ♘de5 22.♘xe5 ♞xe5 23.♗xg4
♞xa1+ 24.♗c1 ♗c8 25.♗xc8 ♞xc8
26.♞b2 ♞xb2 27.♗xb2 ♞ce8 28.♗c1
♞e4 29.♞c3 g4 30.g3 ♞f3 31.♘g2 h5
32.h3 ♘f7 33.h4 ♘g6 34.a4 ♘f5
35.♗d2 ♞e7 36.♗c1 ♘e4 37.♗d2 ♞ef7
0-1

Sicilian Alapin

Trevor Johnson (864)

Sampoth Supathanasinkasaem (1159)

Seattle, WA Open (1) 2007

1.e4 c5 2.c3 d5 3.exd5 ♞xd5 4.c4 ♞d6
5.♘f3 ♘c6 6.♗e2 ♗f5 7.♘c3 ♘b4 8.d3
♗xd3 9.♗xd3 ♘xd3+ 10.♘f1 O-O-O
11.♘b5 ♞b6 12.♞e2 f6 13.♘e1 ♘xc1

14. ♔xc1 e5 15. ♚d1 ♚xd1 16. ♚xd1 a6
17. ♔c3 ♚xb2 18. ♚b3 ♚xb3 19. axb3
♔e7 20. ♔a4 ♔c6 21. ♔d3 ♔c7
22. ♔axc5 ♚xc5 23. ♔xc5 ♔d4 24. ♔e1
♔c6 25. ♔d2 ♔xc5 26. ♔c3 a5 27. f4
♔e2+ 28. ♔d2 ♔xf4 0-1

Nimzo-Indian Rubinstein

Ricky Selzler (2140)

GM Gregory Serper (2577)

Seattle, WA Open (2) 2007

1.d4 ♘f6 2.c4 e6 3.♘c3 ♙b4 4.e3 c5
5.♙d3 ♘c6 6.♘ge2 d5 7.O-O cxd4
8.exd4 dxc4 9.♙xc4 O-O 10.♙g5 ♙e7
11.♙e1 b6 12.a3 ♙b7 13.♙d3 ♘d5
14.♙d2 ♘xc3 15.♙xc3 ♙d6 16.♙h3
♘e7 17.♙d3 ♘g6 18.♘g3 ♙d5 19.♘e4
♙e7 20.♙d2 ♙c8 21.♙e3 e5 22.♘g3
exd4 23.♙xd4 ♙f6 24.♙xf6 ♙xf6
25.♙f5 ♙c4 26.♙d3 ♙cc8 27.♙f5
♙xf5 28.♘xf5 Draw

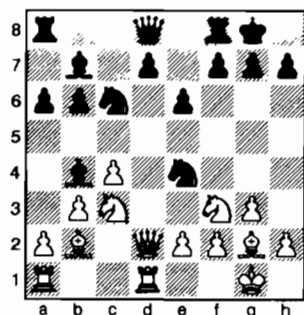
English Opening

NM Michael Lee (2239)

David Rupel (2063)

Seattle, WA Open (2) 2007

1.c4 ♘f6 2.♘c3 c5 3.g3 e6 4.♘f3 b6
5.♙g2 ♙b7 6.O-O ♙e7 7.d4 cxd4
8.♙xd4 ♘c6 9.♙d2 O-O 10.♙d1 a6
11.b3 ♙b4 12.♙b2 ♘e4



13. ♖xd7 ♜xc3 14. ♜xc3 ♖xd7 15. ♙xd7
 ♜xc3 16. ♙c1 ♙ad8 17. ♙xb7 ♜d4
 18. ♜f1 ♜xf3 19. ♜xf3 ♜d4 20. b4 a5
 21. e3 ♜b2 22. ♙c2 ♜a3 23. bxa5 bxa5
 24. c5 ♙c8 25. c6 ♜d6 26. ♙a7

The remaining moves were indecipherable. 1-0 on move 27 or 28.

Black Knights' Tango

NM Curt Collyer (2206)

Howard Chen (1923)

Seattle, WA Open (2) 2007

1.d4 ♘f6 2.c4 ♘c6 3.♘f3 e6 4.a3 d6 5.e3
g6 6.b4 ♘g7 7.♘e2 O-O 8.O-O a5 9.b5
♘b8 10.♚c2 ♘bd7 11.♙d1 ♚e7 12.

♣c3 ♠e8 13. ♠b2 e5 14. ♠ac1 e4 15.
 ♠d2 b6 16. ♠a4 ♠f8 17. c5 dxc5 18. dxc5
 ♠e6 19. c6 ♠c5 20. ♠xc5 ♠xc5 21. ♠xf6
 ♠xf6 22. ♠xe4 ♠xe4 23. ♠xe4 ♠f5 24.
 ♠a4 ♠b2 25. ♠xc5 bxc5 26. ♠f1 c4
 27. ♠xc4 ♠xa3 28. ♠f4 ♠e7 29. ♠a1
 ♠e6 30. ♠e5 a4 31. ♠c4 a3 32. ♠xe6
 fxe6 33. h3 a2 34. ♠b2 ♠a3 35. ♠f6 ♠b3
 36. ♠h2 ♠f8 37. ♠e5 ♠xf2 38. ♠xc7
 ♠b2 39. ♠d8+ ♠g7 40. ♠d4+ ♠xd4
 41. exd4 ♠c2 42. ♠xa2 1-0

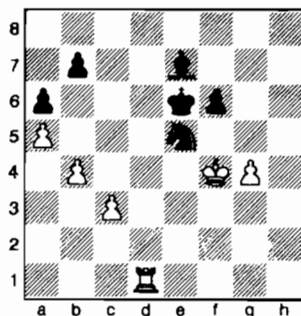
Pirc

Matthew Wilson (1836)

Radu Roua (2174)

Seattle, WA Open (2) 2007

1.e4 ♘c6 2. ♘f3 d6 3. d4 g6 4. ♘c3 ♙g7
5. ♙e2 ♘f6 6. O-O O-O 7. h3 a6 8. a4 e5
9. d5 ♘e7 10. ♙e3 h6 11. a5 g5 12. g4
♘g6 13. b4 ♘f4 14. ♙xf4 exf4 15. ♖d2
♙e8 16. ♙d3 ♘d7 17. ♙a3 h5 18. ♘h2
♘e5 19. f3 ♖f6 20. ♘e2 ♖h6 21. c3 hxg4
22. hxg4 c5 23. dxc6 ♘xc6 24. ♙c4 ♙e6
25. ♙xe6 ♖xe6 26. ♙d1 ♙ad8 27. ♖d5
♖h6 28. ♙b3 ♙e5 29. ♖d2 d5 30. ♖c2
dxe4 31. ♙xd8+ ♘xd8 32. ♘d4 e3 33. ♘f5
♖e6 34. ♙b1 ♘c6 35. ♙e1 ♖c4 36. ♙e2
♙f8 37. ♘f1 ♙d5 38. ♘1xe3 fxe3
39. ♘xe3 ♖d3 40. ♘xd5 ♖xd5 41. ♖d2
♖xd2 42. ♙xd2 ♘e5 43. ♘f2 ♙e7
44. ♙d5 f6 45. ♘g3 ♘f7 46. f4 ♘e6
47. ♙d1 gxf4+ 48. ♘xf4



48... Qg6+ 49. Qe4 Qd6 50. Re1 Re5
51. Re3 Qe7 52. c4 Qc8 53. Rb3 Rc7
54. Re3 Qe7 55. Qd4+ Qd6 56. Rf3
 Qc6+ 57. Qc3 Qe5 58. Rf5+ Qe6 59.
 Rf1 Qd6 60. Re1+ Qd7 61. c5 Re5+
62. Qc4 Qe6 63. Re4 Qd7 64. Re1 Rc7
65. Re4 Qe5+ 66. Qd5 Qg6 67. Qc4
 Qe5+ 68. Qd5 Qd3 69. Qd4 Qf2 70.
 Rc4 Qd3 71. Qd4 Qf4+ 72. Qe4+ Qe6
73. Rc4 Qg6 74. Qd4 Qe5 75. Qe3 Qe7
76. Re4 Qd7 77. Qf4 Qc6+ 78. Qe3 Rg3
79. Qd3 Qe5+ 80. Qd4 Qc6 81. Qc3
 Qb5 82. Qb3 Qc6 83. Re3 Re5 84. Re4
0-1 {Time}

Sicilian Scheveningen

Marvin Hayami (1827)

Stephen Buck (1718)

Seattle, WA Open (2) 2007

1.e4 c5 2. d3 f3 d6 3. d4 cxd4 4. dxd4 d3 f6
5. d3 c3 a6 6. f4 e6 7. a4 d3 c6 8. dxc6 bxc6
9. d3 e7 10. O-O O-O 11. d3 h1 c7
12. e2 d7 13. e3 b8 14. b3 f6
15. d2 c5 16. a1 d3 17. d3
b7 18. g3 e7 19. e3 d4 20. d3
c5 21. f5 f6 22. e1 e5 23. h4 exf5
24. exf5 d7 25. h5 f7 26. g4 d5
27. h3 h8 28. e2 d4 29. f4 xf4
30. xf4 be8 31. g1 e4 32. h4 g5
33. fxg6 xg6 34. g3 f5 35. h6 f7
36. d6 e8 37. d2 d5 38. f4 fe7
39. h6 f5 40. a5 e4 41. b4 cxb4
42. xd4 xc2 43. f3 e5 44. h4 f5
45. e3 e4 46. f4 b2 47. g3 g7
48. g5 f7 49. c1 a2 50. h6 b3
51. b6 1-0

French Rubinstein

Bryan Yue (1453)

Anthony Lamb (1631)

Seattle, WA Open (2) 2007

1.e4 e6 2.d4 d5 3.♘c3 dxe4 4.♗xe4 ♗d7
5.♗f3 ♗gf6 6.♙d3 ♗xe4 7.♙xe4 ♗f6
8.♙d3 ♙e7 9.O-O O-O 10.♙f4 b6
11.♙b5 ♙b7 12.c3 ♙d6 13.♗e5 a6
14.♙e2 ♗d7 15.♙f3 ♙xf3 16.♗xf3 f6
17.♗c6 ♗e8 18.♙xd6 cxd6 19.d5 ♗e5
20.♗xe5 dxe5 21.d6 ♗d7 22.♙fd1 ♙fc8
23.♙d2 ♙c6 24.♙ad1 ♙b8 25.♗d3 b5
26.f3 ♙bb6 27.b3 ♙xd6 28.♗xd6 ♙xd6
29.♙xd6 ♗a7+ 30.♗f1 ♗e3 31.♙xa6
♗xc3 32.♙a7 h6 33.♙dd7 ♗c1+
34.♗e2 ♗c2+ 35.♙d2 ♗c5 36.♙ad7
♗g1 37.♗d3 ♗xh2 38.♗c2 ♗g1
39.♗b2 ♗e3 40.♙d7d3 ♗f4 41.♙d8+
♗h7 42.♙d2d6 e4 43.♙xe6 exf3 44.gxf3
♗xf3 45.♙b8 ♗f2+ 46.♗b1 ♗f5+
47.♗c1 ♗xe6 48.♙xb5 ♗c6+ 0-1

Sicilian Closed

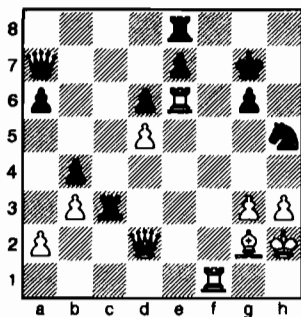
Colin Southcote-Want (1699)

Constantin Etingher (1483)

Seattle, WA Open (2) 2007

1.e4 c5 2. $\text{d}\bar{\text{c}}3$ $\text{d}\bar{\text{c}}6$ 3. g3 g6 4. $\text{h}\bar{\text{g}}2$ $\text{h}\bar{\text{g}}7$
5. $\text{h}\bar{\text{g}}2$ d6 6. O-O $\text{d}\bar{\text{f}}6$ 7. d3 O-O 8. f4 $\text{d}\bar{\text{g}}4$
9. h3 $\text{d}\bar{\text{f}}6$ 10. $\text{h}\bar{\text{e}}3$ $\text{d}\bar{\text{e}}8$ 11. $\text{f}\bar{\text{b}}1$ f5
12. $\text{g}\bar{\text{h}}2$ $\text{h}\bar{\text{d}}7$ 13. $\text{f}\bar{\text{d}}2$ a6 14. $\text{f}\bar{\text{b}}1$ $\text{d}\bar{\text{d}}4$
15. $\text{h}\bar{\text{x}}\text{d}4$ $\text{c}\bar{\text{x}}\text{d}4$ 16. $\text{d}\bar{\text{b}}1$ $\text{f}\bar{\text{b}}8$ 17. c3 $\text{d}\bar{\text{x}}\text{c}3$
18. $\text{d}\bar{\text{b}}\text{x}\text{c}3$ $\text{h}\bar{\text{c}}6$ 19. d4 $\text{f}\bar{\text{x}}\text{e}4$ 20. d5 $\text{h}\bar{\text{d}}7$
21. $\text{d}\bar{\text{x}}\text{e}4$ b5 22. $\text{d}\bar{\text{d}}4$ $\text{f}\bar{\text{c}}8$ 23. b3 $\text{d}\bar{\text{f}}6$
24. $\text{d}\bar{\text{g}}5$ $\text{f}\bar{\text{b}}6$ 25. $\text{f}\bar{\text{f}}\text{e}1$ $\text{f}\bar{\text{f}}\text{e}8$ 26. $\text{d}\bar{\text{g}}\text{e}6$

b4 27.f5 ♖xe6 28.♗xe6 ♖c3 29.♗xg7 ♗xg7 30.♖e6 ♗a7 31.fxg6 hxg6 32.♖f1 ♗h5



33.♖xg6+ ♗xg6 34.♖e4+ ♗g7 35.♗g5+ ♗h8 36.♗xh5+ ♗g7 37.♗h7 mate

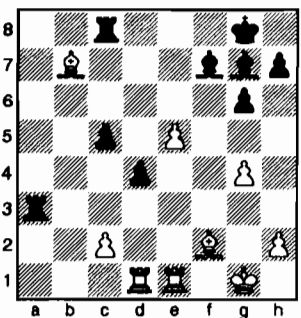
Barry Attack

NM Harley Greninger (2256)

NM Michael Lee (2239)

Seattle, WA Open (3) 2007

1.d4 ♗f6 2.♗f3 g6 3.♗c3 d5 4.♖f4 ♖g7 5.e3 O-O 6.♖e2 c5 7.♗e5 ♗c6 8.O-O ♖f5 9.♖f3 cxd4 10.exd4 ♖c8 11.♗xc6 bxc6 12.♖e1 ♖e8 13.♖e2 ♗a5 14.a3 ♗d7 15.b4 ♗b6 16.♖e3 ♗c7 17.g4 ♖e6 18.♗d2 ♗b6 19.f3 ♗d7 20.♖ad1 f6 21.♖f2 ♖f7 22.♖a6 ♖b8 23.♖g3 e5 24.♗f2 ♖bd8 25.dxe5 fxe5 26.♗e4 ♗c7 27.♗c5 ♗d7 28.♖f1 ♗xc5 29.♗xc5 ♗b6 30.♖f2 d4 31.♗xb6 axb6 32.♖d3 ♖a8 33.♖e4 ♖ec8 34.f4 ♖xa3 35.fxe5 c5 36.bxc5 bxc5 37.♖b7 ... Draw



No moves were recorded until after time control. Draw agreed on about move 50.

QGD Semi-Tarrasch

Radu Roua (2174)

GM Gregory Serper (2577)

Seattle, WA Open (3) 2007

Annotations by Drayton Harrison & Fritz
1.d4 ♗f6 2.c4 e6 3.♗f3 d5 4.e3 c5 5.a3 a6 6.♗c3 dxc4 7.♖xc4 b5 8.♖d3

Better is 8.♖a2, as Serper himself played against Levine in the next round.

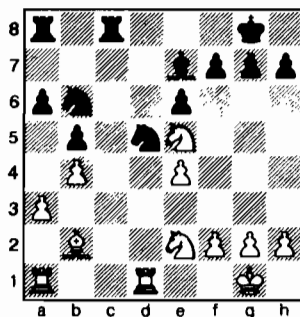
8...♗bd7 9.O-O ♖b7 10.dxc5 ♗xc5 11.♖c2 ♗xd1 12.♖xd1 ♖e7 13.b4 ♗cd7 14.♖b3 ♗b6 15.♖b2 O-O 16.♗e5 ♖fc8!

If Black opposes Rooks on the d-file, the Rooks will get exchanged and the position is drawish. But Black sees that the White Rook cannot invade anywhere on the d-file, and therefore plays his rook to the c-file.

17.♗e2?! ♖d5!

The White Bishop on b3 is defending the c2-square; therefore Black exchanges it.

18.♖xd5 ♗fxd5 19.e4



19...♖c2! 20.exd5??

Black is slightly better in the endgame after 20.♗d4 ♖xb2 21.♗d3 (21.exd5? ♖f6 22.♗g4 ♖xd4 23.♖xd4 ♗xd5+ 21...♗c3 22.♗xb2 ♖f6! (22...♗xd1 23.♖xd1 ♖d8 24.♗c6 ♖xd1+ 25.♗xd1 ♖d6+) 23.♗f1 ♗xd1 (23...♗c4? 24.♗xc4 bxc4 25.f4 ♗xd1 26.♖xd1 ♖xd4 27.♖xd4 ♖c8 28.♗e1±) 24.♖xd1 ♖d8 25.♗c6 ♖xd1+ 26.♗xd1 ♗c4 (26...♗f8+) 27.♗e2 ♗xa3 28.♗b8 ♖e5 (28...♗f8+) 29.♗xa6 ♗f8 due to the Bishop vs. Knight with the b-pawn on a dark square.

20...♖xe2 21.d6?

21.♗d3 ♗xd5 22.♖ac1 (threatening ♗f1) 22...♖g5 23.♖c6 ♗f4 24.♗xf4 ♖xb2+

21...♖f6 + 22.♖d4 ♖xe5 23.♖xb6 ♖xa1 24.♖xa1 ♖d2 25.♖c7 ♗f8 26.♗f1 ♗e8 27.♗e1 ♖c2 28.a4 bxa4 29.♖xa4 ♖b2

29...♗d7 30.b5 a5 31.♖xa5?! ♖xa5 32.♖xa5 ♗xd6+ 30.♗d1 ♖xf2 31.♗c1

31.b5 isn't a serious threat: 31...♖xg2 32.bxa6 ♗d7 (32...♖xh2?? 33. d7+).

31...♖f5 32.♗d2 ♗d7 33.♗c3 h5 34.♗c4 h4 35.g4 ♖d5 36.♖a2 f6 O-O

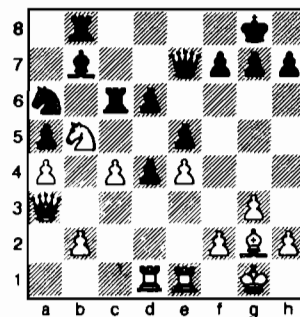
Queen's Indian

Taylor Bailey (1643)

George Fan (1685)

Seattle, WA Open (3) 2007

1.d4 ♗f6 2.c4 e6 3.♗f3 b6 4.g3 ♖b7 5.♖g2 ♖b4+ 6.♖d2 ♗e7 7.a3 ♖xd2+ 8.♗bx d2 O-O 9.O-O c5 10.dxc5 bxc5 11.♗b3 d6 12.♖fe1 ♗c6 13.e4 e5 14.♖ad1 ♖ab8 15.♗d3 a5 16.♗b1 ♗d4 17.♗c3 ♖fc8 18.♗xd4 cxd4 19.♗b5 ♗d7 20.♗a7 ♖c7 21.♗b5 ♖c6 22.a4 ♗c5 23.♗a3 ♗a6



24.♗xd4 exd4 25.e5 ♗b4 26.♖xc6 ♖xc6 27.exd6 ♗xd6 28.♖e2 ♗f6 29.♖de1 d3 30.♖e3 d2 31.♖d1 ♗c2 32.♗d3 ♗xe3 33.♗xe3 ♗xb2 34.h4 ♖e8 35.♗xd2 ♗xd2 36.♖xd2 ♖e1+ 37.♗h2 ♖h1 mate

Sicilian Grand Prix

Anthony Lamb (1631)

David Inglis (1512)

Seattle, WA Open (3) 2007

1.e4 c5 2.♗c3 ♗c6 3.f4 e6 4.♗f3 d5 5.exd5 exd5 6.♖b5 ♗f6 7.♗e5 ♖d7 8.♖xc6 bxc6 9.♗xd7 ♗xd7 10.d3 ♖e7 11.O-O O-O 12.b3 ♖fe8 13.h3 ♖d6 14.♗a4 ♗e7 15.♗f3 ♗e2 16.♖a3 ♗d7 17.g3 ♖e3 18.♗xe2 ♖xe2 19.♖f2 ♖e3 20.♗g2 d4 21.♗b2 ♗b6 22.♗c4 ♗xc4 23.dxc4 ♖ae8 24.♖af1 ♖8e6 25.♖c1 ♖e2 26.♖xe2 ♖xe2+ 27.♖f2 ♖e1 28.♖f1 ♖xf1 29.♗xf1 ♗f8 Draw

Dutch

Sebastian Baker (1759)

Kerry Xing (1762)

Seattle, WA Open (3) 2007

1.d4 f5 2.♖f4 ♗f6 3.e3 g6 4.c3 ♖g7 5.♗f3 O-O 6.♗bd2 d6 7.♖e2 ♗e8 8.♗b3+ ♗h8 9.O-O ♗c6 10.♖b5 a6 11.♖xc6 ♗xc6 12.c4 ♗e8 13.♖ac1 ♗h5 14.d5 e5 15.dxe6 ♗xe6 16.♖fe1

b6 17. g3 b7 18. d4 f7 19. d2f3
 fae8 20. e2 f6 21. g5 d7
 22. f1 e7 23. d4 d7 24. c5 d5
 25. c6 c8 26. a3 e4 27. d2f3 g8
 28. e4 e4 29. d2 e7 30. d4
 e4 31. e4 f8 32. a4 a5 33. b4
 axb4 34. x4 e4 35. db1 x4
 36. x4 a8 37. a4 h6 38. h3 h7
 39. c4 h8 Draw

English Opening

Stephen Buck (1718)

Severo Caluza (1800)

Seattle, WA Open (3) 2007

1. c4 e6 2. f3 f6 3. c3 b4 4. d3
 O-O 5. e3 d5 6. cxd5 exd5 7. e2 c6 8. a3
 d6 9. O-O g4 10. h3 f5 11. b5 e7
 12. b4 a5 13. bxa5 xa5 14. b4 d4
 15. dxd4 d7 16. d2 a7 17. b3
 a4 18. b2 d7 19. f1 f8 20.
 f3 d6 21. c3 c5 22. e2 e7 23. d4
 c4 24. b4 b3 25. c3 x4 26. axb4
 e4 27. e4 dxe4 28. e4 a2 29.
 xa2 xa2 30. c3 f5 31. f3 c2
 32. a1 a2 33. c3 c2 34. e1 b5
 35. d1 a2 36. x3 cxb3 37. x3
 a4 38. b1 c2 39. f1 e2 40. xe2
 xe2 41. c1 f7 42. g3 e6 43. c7
 g5 44. x7 h5 45. h7 f4 46. gxf4 gxf4
 47. xh5 1-0

Sicilian Dragon

Justin Yu (1193)

Sampoth Supathanasinkasaem (1159)

Seattle, WA Open (3) 2007

1. e4 c5 2. f3 d6 3. d4 cxd4 4. dxd4 f6
 5. c3 g6 6. e3 g7 7. b5+ d7
 8. a4 O-O 9. d3 a6 10. d4 c5
 11. b3 fxe4 12. e4 e4 13. O-O
 a5 14. c3 d5 15. c2 f6 16. e1 g4
 17. h3 e3 18. e3 b6 19. e7
 xb2 20. b3 xc3 21. c2 f5
 22. c1 ac8 23. xb7 h6 24. g4 e4
 25. b1 xh3 0-1

Sicilian Hyper-Accelerated Dragon

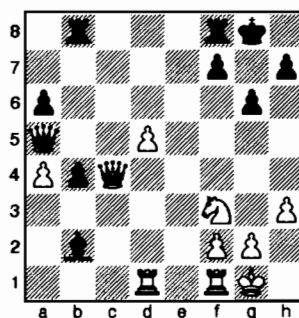
Radu Roua (2174)

David Rupel (2063)

Seattle, WA Open (4) 2007

1. e4 c5 2. f3 g6 3. c3 g7 4. d4 cxd4
 5. cxd4 d5 6. exd5 f6 7. b5+ d7
 8. c3 O-O 9. d6 exd6 10. O-O a6 11. d3
 b5 12. a4 b4 13. e4 e4 14. e4
 b8 15. f4 f6 16. c6 h5 17. g5
 f6 18. e3 d7 19. d5 g7 20. h3
 a5 21. b3 e6 22. e6 e6 23. d5

d5 24. xc5 dxc5 25. ad1 c4
 26. xc4 xb2



27. b3 c3 28. d6 f5 29. d5 d7
 30. g5 be8 31. c2 f5 32. b3 g7
 33. fd1 f6 34. c4 a8 35. c5 a7
 36. c7 xc7 37. xc7 xc7 38. dxc7
 c6 39. d8 f6 40. e6+ f7
 41. c8= xc8 42. xc8 xe6 43. c6+
 e7 44. xa6 d4 45. a5 b3 46. b5
 b2 47. f1 1-0

QGD Semi-Tarrasch

GM Gregory Serper (2577)

NM David Levine (2208)

Seattle, WA Open (4) 2007

1. d4 d5 2. c4 e6 3. c3 c5 4. e3 f6 5. f3
 a6 6. a3 dxc4 7. xc4 b5 8. a2 b7 9.
 O-O d7 10. e1 e7 11. e4 b4 12.
 axb4 cxb4 13. e5 bxc3 14. exf6 xf6
 15. bxc3 O-O 16. a3 e8 17. d2 c7
 18. c4 ed8 19. d6 f8 20. dxb7
 xb7 21. b1 ac8 22. e4 b5 23.
 d3 b7 24. xf8 xf8 25. xa6 c6
 26. xc8 xc8 27. e3 g6 28. f3 1-0

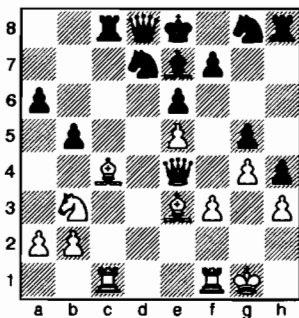
Caro-Kann Advance

Alec Ho (1800)

Matthew Yang (1757)

Seattle, WA Open (4) 2007

1. e4 c6 2. d4 d5 3. e5 f5 4. f3 e6
 5. d2 d7 6. b3 c5 7. c4 e7 8. e2
 c8 9. O-O h5 10. e3 dxc4 11. xc4
 cxd4 12. xd4 a6 13. ac1 g5 14. d2
 h6 15. f3 g6 16. g4 h4 17. h3 g8
 18. e4 xe4 19. xe4 b5



20. xe6 h6 21. f5 xc1 22. xc1
 b8 23. xd7+ xd7 24. f5+ e6
 25. c5+ xc5 26. xc5 e7 27. xg5
 f6 28. xh4 fe5 29. f2 d6 30. c2
 d5 31. f5+ e7 32. xe5+ f7
 33. xd5 1-0

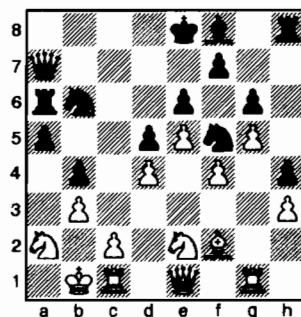
Modern

Nathan Lee (1715)

George Fan (1685)

Seattle, WA Open (4) 2007

1. e4 g6 2. d4 g7 3. c3 d6 4. ge2 a6
 5. e3 b5 6. a3 b7 7. d2 d7 8. f3
 gf6 9. g4 c5 10. O-O b4 11. axb4 cxb4
 12. a2 a5 13. b1 c7 14. g3 h5
 15. g5 g8 16. d3 e6 17. hg1 e7
 18. f4 h4 19. e2 d5 20. e5 b6 21. b3
 a6 22. xa6 xa6 23. h3 f5 24. f2
 f8 25. c1 a7 26. e1



28... a4 27. dxb4 xb4 28. xb4 axb4
 29. cxb3 c4 30. c2 a2+ 31. d1
 c3+ 32. xe3 xe3+ 33. e1 c2+
 34. xc2 xc2 35. b5+ f8 36. d3
 a1+ 37. f2 b2 38. e1 g7 39. f1
 b8 40. f3 xb3 41. g4 h8
 42. g2 e3 43. g4 a2 44. d1 a3
 45. g1 g3 46. xg3 xg3 47. f2
 a8 48. d2 a1 49. f3 xh3 50. g2
 hh1 51. e2 h3+ 52. g3 a3 53. f2
 d3 54. c2 a1 55. e2 aa3
 56. h2 xd4 0-1

Nimzo-Indian Classical

Kerry Xing (1762)

Brian Opalewski (1804)

Seattle, WA Open (4) 2007

1. d4 f6 2. c4 e6 3. c3 b4 4. c2
 c6 5. f3 d6 6. d2 O-O 7. e3 e7
 8. e2 e5 9. d5 b8 10. e4 a6 11. a3
 xc3 12. xc3 c5 13. d2 a5 14.
 O-O-O d7 15. dg1 a4 16. b3 d7
 17. g4 a4 18. b4 b3+ 19. b1 d4 20.
 d1 b5 21. g5 e8 22. h4 f5 23. gxf6
 xf6 24. g5 xe2 25. xe2 h8 26.
 hg1 f7 27. h5 b8 28. f3 bf8
 29. d4 g4 30. xg4 xf2 31. d1

♙xg4 32. ♖xg4 ♜2f4 33. ♖g3 ♜xh4
34. ♙d2 ♜xh5 35. ♙g5 ♜xg5 36. ♖xg5
♜f1+ 37. ♜xf1 1-0

King's Gambit Accepted

Sampoth Supathanasinkasaem (1159)
Bert Rutgers (1339)

Seattle, WA Open (4) 2007

1. e4 e5 2. f4 exf4 3. ♖f3 d5 4. exd5 ♖xd5
5. ♖c3 ♖a5 6. ♙c4 ♙e7 7. d3 ♖f6 8.
♙xf4 O-O 9. O-O ♙g4 10. ♖d2 ♙b4 11.
♜ae1 ♖bd7 12. a3 ♙xc3 13. ♖xc3 ♖xc3
14. bxc3 c6 15. h3 ♙xf3 16. ♜xf3 ♜ae8
17. ♜fe3 ♜xe3 18. ♙xe3 ♜e8 19. ♖f2 b5
20. ♙b3 a6 21. ♙d2 ♜xe1 22. ♙xe1 c5
23. c4 ♖f8 24. cxb5 axb5 25. ♖e3 ♖e7
26. c4 bxc4 27. ♙xc4 ♖b6 28. ♙b5
♖bd5+ 29. ♖f3 ♖c7 30. ♙c4 ♖d7 31.
♙g3 ♖e6 32. a4 ♖b6 33. a5 ♖xc4 34.
dxc4 ♖d4+ 35. ♖e4 ♖d7 36. ♖d5 ♖c8
37. ♖xc5 ♖e6+ 38. ♖b6 f5 39. ♙e5 ♖f8
40. ♙xg7 ♖d7+ 41. ♖b5 ♖b7 42. c5 ♖b8
43. ♙e5 h5 44. ♙xb8 ♖xb8 45. ♖b6 h4
46. c6 f4 47. c7+ ♖c8 48. a6 f3 49. a7 1-0

QGD Exchange

NM Harley Greninger (2256)
LM Viktors Pupols (2230)

Seattle, WA Open (5) 2007

Annotations by Drayton Harrison & Fritz
1. d4 d5 2. c4 e6 3. ♖c3 ♖f6 4. cxd5 exd5
5. ♙g5 ♙e7 6. e3 h6

This weakens the g6-square.

7. ♙h4 O-O 8. ♙d3 c6 9. ♖c2 a5

This move is aimed against the minority attack with b2-b4, but White manages to achieve it anyway, later in the game. 9... ♖bd7 and 9... ♜e8 are the main lines.

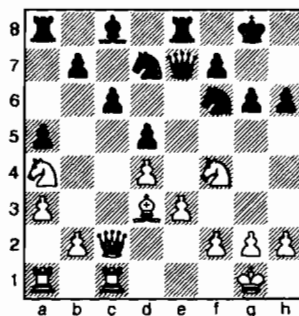
10. ♖ge2 ♜e8 11. O-O ♖h5?! 12. ♙xe7

Exchanging dark-square Bishops favors White. The Black Bishop guarded the b4-square.

12... ♖xe7 13. ♜fc1! ♖d7 14. ♖a4 g6 15. a3

15. ♙xg6 fxg6 16. ♖xg6+ ♖g7 17. ♖xh6 is unclear. Since White's pieces are not in position for a kingside attack, White would have to trade Queens and go for an endgame with pawns versus Black's extra piece.

15... ♖h6 16. ♖f4



16... ♖e4

The next exchanges also favor White, because Black has no counterplay. After 16... ♖d6!? 17. ♜ab1 ♖e4 18. b4 (if 18. ♙xe4 ♙xe4 19. ♖d3, White is better on the queenside, but Black might be able to create counterplay on the kingside.) 18... axb4 19. axb4 b5!?, both sides have weaknesses on the queenside, and White is unable to take advantage of it

17. ♙xe4 ♖xe4 18. ♖xe4 ♜xe4 19. b4! axb4 20. axb4 ♜e8 21. b5 ♖f8

After 21... cxb5 22. ♖c3 ♜xa1 23. ♜xa1 ♖f6 24. ♖fxd5 ♖xd5 25. ♖xd5 ♜d8, White has a superior, almost winning, endgame with 26. ♜a8, 26. ♖c7, or 26. ♖b4. However, 26. ♖e7+?! ♖f8 27. ♖xc8 ♜xc8 is not good enough because white has to take time out to give his king an escape square.

22. bxc6 bxc6 23. ♖c5

Perhaps Black was hoping for 23. ♜xc6? ♙d7.

23... ♙f5 24. ♜xa8 ♜xa8 25. h3 ♜b8 26. ♖fd3

26. g4 ♜b1 27. ♜xb1 ♙xb1 gives Black more drawing chances than in the game.

26... f6 27. ♜a1 ♙xd3 28. ♖xd3 ♜b6

28... ♖e6 29. ♜a6 ♖d8 30. ♜a7 is perhaps a better defense, but Black will suffer passively for a long time. Other tries are worse, e.g., 28... ♜b7? 29. ♜a6 ♜c7 30. ♖b4 ♖f7 31. ♖xc6+-, or 28... ♖f7 29. ♜a6 ♖e6 30. ♜xc6 ♜b3 31. ♖c5!± and White has won a pawn, or 28... ♜b3 29. ♖c5 ♜b8 30. ♜a6 ♜c8 31. ♜a7± and Black is all tied up on the back rank.

29. ♖c5

29. ♜a7 ♖e6 30. ♜e7 ♖g7 31. ♖c5± 29... g5

29... h5 30. ♜a7 h4 31. ♜c7± 30. ♜a8 ♖g7 31. ♜a7+ ♖g8

After 31... ♖g6 32. g4 ♜b8 33. ♜c7 ♜b6 34. ♖g2, Black's King is in a mating net.

32. ♖h2 f5 33. ♜a8 1-0

33... ♖f7 34. ♜xf8+ ♖xf8 35. ♖d7+

King's Indian Fianchetto

Stephen Buck (1718)
Michael Omori (1687)

Seattle, WA Open (5) 2007

Annotations by Drayton Harrison & Fritz
1. c4 ♖f6 2. ♖c3 g6 3. g3 ♙g7 4. ♙g2 O-O 5. ♖f3 d6 6. d4 ♖c6 7. e4?!

7. O-O is more accurate.

7... ♖a5N 8. ♖d3

8. b3 c5 9. O-O ♖c6 10. ♙b2 ♙g4 11. d5 ♖e5=

8... c5 9. O-O ♜b8 10. h3 a6 11. ♙e3 ♖c7??

Better is 11... cxd4 12. ♖xd4 ♖d7.

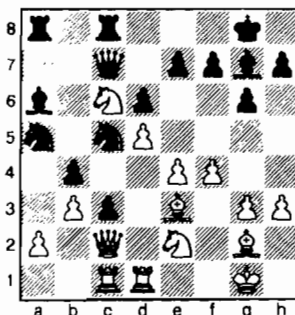
12. d5?

12. dxc5! wins a pawn because 12... dxc5 is answered by 13. ♙f4.

12... b5!? 13. cxb5 axb5?

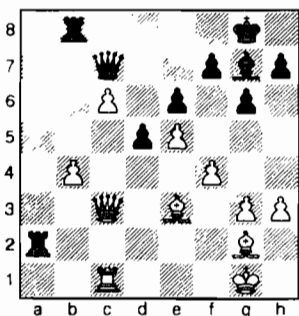
13... c4! 14. b6 (14. ♖e2 axb5=) 14... cxd3 15. bxc7 ♜xb2 16. ♜ac1 ♖c4 17. ♙d4 e5 18. dxe6 fxe6± 14. ♜fe1?

14. ♖xb5! c4 (14... ♙a6 15. a4+-) 15. ♖xc7 cxd3 16. ♖e1! d2 (16... ♜b7 17. ♖xd3 ♜xc7 18. ♙b6+-) 17. ♙xd2 ♖c4 18. ♙c3 ♜b7 19. ♖a6 ♖xb2 20. ♖c2 ♙d7 21. ♖ab4 ♖a4 22. ♙d4 ♜c8 23. ♜fc1± 14... c4= 15. ♖c2 b4 16. ♖e2 ♙a6 17. ♖fd4 ♜fc8 18. ♜ac1 ♖d7 19. b3? c3+ 20. f4 ♖c5 21. ♜ed1 ♜a8 22. ♖c6?



22... ♙d3?

22...♖xc6 23.dxc6 ♗xe2 24.♖xe2
 ♖xc6 25.e5 ♖a6!-+
 23.♗xd3 ♖xd3 24.♖xd3 ♖xc6 25.dxc6
 ♗xa2 26.e5 d5 27.♖xc3
 27.♖d4 e6 28.♗c2±
 27...bxc3 28.♖xc3±
 28.♗xd5 ♗d8 29.♖c4 e6 30.♗g2±
 27...e6 29.b4 ♗b8



30.♖b3??
 30.♗f1 ♗f8 31.b5 ♗a3 32.♖d4 ♗b3
 33.♗f2±
 30...♗a6!± 31.b5 ♗xc6! 32.♗xc6 ♖xc6
 33.bxc6 ♗xb3 34.c7 ♗c3 35.♗b6 ♖f8
 35...f6 36.♗f1 ♗c1 37.♖f2 fxe5
 38.♗a6 exf4 39.c8=♖+ ♗xc8 40.♗xc8
 ffg3+ 41.♖xg3 ♖f7 should be drawn
 36.♗f1 ♖e7 37.♗b5
 37.♗a6 ♗c1+ 38.♖g2 ♗c2+ 39.♖f3
 ♗c3+ 40.♖e2 ♖d7 41.♗b5+ ♖c8 42.
 ♗a6+ ♖d7=
 37...f6 38.♗a5??

38.♗a6 draws.
 38...♗c1+ -+ 39.♖g2 fxe5 40.♗b4+
 ♖f7 41.♗d6 exf4 42.♗d7 ffg3?!

42...♗c2+ 43.♖f1 (43.♖f3 ♗c3+ 44.
 ♖f2 ♗d4+ 45.♖f1 f3! is the same) 43...
 f3! 44.c8=♖ ♗xc8 45.♗xc8 ♗d4 gives
 Black some winning chances.
 43.c8=♖ ♗xc8 44.♗xc8 e5 45.♖xg3
 h6 46.♖f3 ♖f6 47.♖e3 h5 48.♗c7
 ♗h6+ 49.♖d3 ♗f4 50.♗d8+ ♖f7
 51.♗d7 Draw

Caro-Kann Exchange

George Fan (1685)
 Matthew Yang (1757)

Seattle, WA Open (5) 2007

1.e4 c6 2.d4 d5 3.exd5 cxd5 4.♗d3 ♖f6
 5.♗f4 ♖c6 6.c3 ♗g4 7.♖b3 ♖d7 8.♖d2
 e6 9.♖g3 ♗e7 10.♖e5 ♖c8 11.♖xg4
 ♖xg4 12.h3 ♖f6 13.O-O O-O 14.♖f3 a6

15.♖c2 h6 16.♗ae1 ♗d8 17.♖e5 ♖xe5
 18.dxe5 ♖d7 19.♗d2 ♖c5 20.♗h7+
 ♖h8 21.f4 d4 22.cxd4 ♗xd4 23.♗c3
 ♗d8 24.♗a5 ♗d5 25.♗c1 ♖d7 26.f5
 ♗g5 27.fxe6 ♖xe6 28.♗cd1 ♖d4
 29.♖e4 g6 30.♗xg6 ffg6 31.♗c3 ♗d8
 32.e6 ♖d6 33.♖h1 ♗f8 34.♗xd4+
 ♗xd4 35.♖xd4+ ♖xd4 36.♗xf8+ ♖g7
 37.♗f7+ 1-0

Scotch Game

Marvin Hayami (1827)
 Jeff Lowther 1866

Seattle, WA Open (5) 2007

1.e4 e5 2.♖f3 ♖c6 3.d4 exd4 4.♖xd4
 ♗c5 5.♗e3 ♖f6 6.c3 ♖ge7 7.♗e2 a6
 8.♖c2 ♗xe3 9.♖xe3 O-O 10.O-O d6
 11.♖d2 b6 12.♖c2 ♗b7 13.♗ae1 ♗fe8
 14.f4 ♖g6 15.♖d5 ♖d8 16.g3 ♖ce7
 17.f5 ♖e5 18.♖f4 ♖c6 19.♖d5 a5
 20.f6 g6 21.♖c1 ♗a6 22.♖c4 ♖h8
 23.♖h6 ♗g8 24.♖xe5 dxe5 25.♗xa6
 ♗xa6 26.♗d1 ♖f8 27.♖xf8 ♗xf8
 28.♖xc7 ♗a7 29.♖b5 ♗aa8 30.♗d6
 ♗ac8 31.♗fd1 ♗fd8 32.♖f2 ♗xd6
 33.♖xd6 ♗b8 34.♖xf7+ ♖g8 35.♗d7 h5
 36.♖g5 ♖d8 37.f7+ ♖g7 38.♗xd8 1-0

French Winawer

Sampoth Supathanasinkasaem (1159)
 Ian Southcote-Want (1252)

Seattle, WA Open (5) 2007

1.e4 e6 2.d4 d5 3.♖c3 ♗b4 4.e5 c5 5.a3
 ♗xc3+ 6.bxc3 c4 7.♖g4 g6 8.h4 ♖d7
 9.h5 ♖e7 10.♗g5 ♗g8 11.hxg6 hxg6
 12.♗h6 ♖a5 13.♖h3 ♗f8 14.♗h8
 ♗xh8 15.♖xh8+ ♖f8 16.♖d2 ♖c7
 17.♗h6 ♖g8 18.♖xg8 ♖e7 19.♖f3 f6
 20.♗xf8 ♖xf8 21.♖xg6+ ♖e7 22.♖xf6+
 ♖xf6 23.exf6+ ♖xf6 24.♖e5 b6 25.♗e2
 ♗b7 26.♗h1 a6 27.♗h7 ♗c8 28.♗c7
 b5 29.♖c6 a5 30.♗a7 ♗xa7 31.♖xa7
 ♗a6 32.♖c6 a4 33.♖e3 ♗b7 34.♖e5
 ♖f5 35.g4+ ♖g5 36.f4+ ♖f6 37.g5+
 ♖g7 38.♗h5 ♗c8 39.♗e8 ♗a6 40.♖d7
 b4 41.cxb4 c3 42.♖c5 ♗f1 43.♗xa4
 ♖g6 44.♗e8+ ♖g7 45.b5 ♗xb5 46.
 ♗xb5 e5 47.a4 exd4+ 48.♖xd4 ♖g6
 49.a5 ♖h5 50.a6 ♖g4 51.♖d3 ♖h5
 52.a7 ♖g4 53.a8=♖ ♖h5 54.♖h8+
 ♖g4 55.♗d7+ ♖f3 56.♖h3+ ♖e2
 57.♖e3+ ♖d1 58.♖e1+ ♖xc2 59.♗a4
 mate

Next Month
 Seafair & Sluggers

QGD Tarrasch

Radu Roua (2174)
 NM David Levine (2208)

Seattle, WA Open (6) 2007

1.d4 d5 2.c4 e6 3.♖c3 c5 4.e3 ♖f6 5.a3
 a6 6.dxc5 ♗xc5 7.b4 ♗a7 8.♖f3 O-O
 9.♗b2 dxc4 10.♗xc4 b5 11.♗d3 ♗b7
 12.O-O ♖bd7 13.♖e2 ♖e7 14.♖d4
 ♖e5 15.♖b3 ♖xd3 16.♖xd3 ♗ac8
 17.♗fd1 ♖g4 18.h3 ♖e5 19.♖f1 ♖c4
 20.♗c1 ♖xe3 21.♗xe3 ♗xe3 22.fxe3
 ♗xc3 23.♖c5 ♗a8 24.♖f2 ♖g5 25.♗d3
 ♗xd3 26.♖xd3 ♗d5 27.♖c5 a5 28.e4
 ♗c4 29.♖d7 ♗d8 30.♗d1 axb4 31.axb4
 h6 32.♖b6 ♖h8 33.♖c7 ♗e2 34.♗d2
 ♖e7 35.♖d6 ♖xd6 36.♗xd6 f6 37.e5
 fxe5 38.♖xe5 ♗xd6 39.♖f7+ ♖g8
 40.♖xd6 ♖f8 41.♖f2 ♖e7 42.♖e4 ♗c4
 43.g3 ♗d5 44.♖c3 ♗c6 45.♖e3 e5
 46.h4 g5 47.hxg5 hxg5 48.♖d1 ♖e6
 49.♖d3 ♗e8 50.♖e3 ♗g6+ 51.♖c3
 ♗f5 52.♖d2 e4 53.♖d1 ♖e5 54.♖c3
 ♗d7 55.♖e3 ♗c6 56.g4 Draw

King's Indian Exchange

Severo Caluza (1800)
 George Fan (1685)

Seattle, WA Open (6) 2007

1.c4 ♖f6 2.♖c3 g6 3.e4 d6 4.d4 ♗g7
 5.♗e2 O-O 6.♖f3 e5 7.dxe5 dxe5 8.♖xd8
 ♗xd8 9.♗g5 ♗e8 10.♗d1 ♗g4 11.♗xf6
 ♗xf6 12.♖d5 ♗d8 13.♖e3 ♗xf3
 14.♗xf3 ♖c6 15.O-O ♖d4 16.♗g4 c6
 17.c5 b5 18.f4 f6 19.a4 a6 20.♗d3 ♗a5
 21.fxe5 fxe5 22.♗d7 ♗e7 23.♖g4 ♗c7
 24.axb5 axb5 25.♖f6+ ♖g7 26.♗xd4
 exd4 27.♗xc6 ♗f8 28.♖g4 ♗xf1+
 29.♖xf1 h5 30.♖f2 ♗xh2 31.♗xb5 ♗b7
 32.♗a6 ♗xb2 33.♖d3 ♗c2 34.e5 ♖f8
 35.♗b7 ♖e7 36.♗e4 g5 37.c6 g4
 38.♖e1 h4 39.♖d1 ♗c3 40.♖d2 ♖e6
 41.♖f2 ♖xe5 0-1

Black Knights' Tango

Kerry Xing (1762)
 Michael Corey (1722)

Seattle, WA Open (6) 2007

1.d4 ♖f6 2.c4 ♖c6 3.♖c3 e5 4.d5 ♖e7
 5.e4 ♖g6 6.h4 ♗b4 7.h5 ♖e7 8.h6 ♗g8
 9.hxg7 ♗xg7 10.♖f3 ♗xc3+ 11.♖xc3
 d6 12.♖c2 ♗d7 13.♗d2 c5 14.♖e2
 ♖fg8 15.♖g3 ♗g4 16.♗c3 ♖f6 17.♗e2
 ♗xe2 18.♖xe2 ♖d7 19.O-O O-O
 20.♗h3 ♖g6 21.♖f3 ♖f4 22.♗h6 ♗g6
 23.♖f5 ♗d8 24.g3 ♗xh6 25.♖xh6
 ♗g6 26.gxf4 ♗xh6 27.fxe5 dxe5 28.
 ♗xe5 ♖e8 29.♖e3 ♗a6 30.♖xc5+ ♖d8

31.a3 ♖g4 32.♗d4 ♖g5+ 33.♙b1 ♖b6
34.c5 ♖a6 35.♗g3 f6 36.c6 bxc6 37.
dxc6+ ♙e7 38.c7 ♖c6 39.♗d7+ 1-0

Sicilian Closed

Colin Southcote-Want (1699)

Gregg Dillingham (1597)

Seattle, WA Open (6) 2007

1.e4 c5 2.♗c3 ♗c6 3.g3 ♗f6 4.♗g2 d6
5.♗ge2 e5 6.O-O ♗e7 7.d3 O-O 8.f4 exf4
9.♗xf4 ♗h5 10.♗d5 ♗xf4 11.♗xe7+
♗xe7 12.♗xf4 f5 13.♗d2 fxe4 14.dxe4
♗b6 15.♗d5 ♗d8 16.♖xf8+ ♗xf8
17.♖f1 ♗d8 18.♗g5 ♗e6 19.♗xe7
♗xd5 20.♗xd8+ ♖xd8 21.exd5 g5
22.♗h3 ♙g7 23.♗e6 ♖b8 24.♖f7+
♙g6 25.g4 h5 26.h3 hxg4 27.hxg4 a6
28.♖d7 1-0

With this game Supathanasinkasaem achieved 1st place in the Booster section and a perfect 6-0 score. He needed only a draw, as he was already a full point ahead of Chen before the last round.

Sicilian Closed

Irving Chen (1187)

Sampoth Supathanasinkasaem (1159)

Seattle, WA Open (6) 2007

Annotations by Drayton Harrison & Fritz

1.e4 c5 2.♗c3 ♗c6 3.d3

If White intends to play the Grand Prix attack, then 3.f4 followed by 4.♗f3 is a more energetic move order. 3.d3 blocks in the B ishop on f1.

3.♗f3 is a sneaky move order. White waits to see what Black is doing before deciding what variation to play. White can still go into the Open Sicilian with 4.d4, but he has several ways to avoid whatever main line variation Black wants to play. For instance: 3...d6 and 3...e6 can be met by 4.♗b5, 3...g6 by 4.h4, 3...♗f6 by 4.e5, and 3...a6 by 4.g3.

3...g6 4.f4

Since White has already committed himself to d3 on the previous move, 4.g3 is the best option.

4...♗g7 5.♗e3 ♗b6!?

This Queen move disrupts White from developing his pieces.

6.♖b1 d6 7.a3 ♗f6 8.♗f3

8.b4!? ♗g4 9.♗d5 ♗d8 10.♗d2 e6
11.♗e3 ♗xe3 12.♗xe3

8...♗g4 9.♗d5 ♗d8 10.♗d2 O-O
11.♗c3??

White has no time for this move. He must simply play 11.♗e2, preparing to castle; then he would only be worse, but not lost. Also 11.♗c3 takes away the only retreat square from the knight on d5.

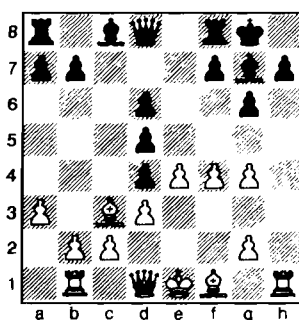
11...♗d4

This is not bad. But Black had an alternative in the surprising 11...♗xc3+! exchanging the "Dragon" Bishop to create a powerful center and some great squares for his Knights. Black's lead in development, permits him to rip open the center and get to White's uncastled King. With the dark-squared Bishop gone, Black should place his pawn center on the dark squares: 12.♗xc3 e5! 13.fxe5 [That pesky Knight on g4 can't be evicted: 13.h3? ♗e3 14.♗d2 exf4 15.♗d5 ♗d4 16.♗xe3 (16.♗xd4 cxd4 17.h4 f5!-+; 16.♗xf4?? ♗xf3+ 17.gxf3 ♗h4+-) and 13.♗d5 is not to be feared: 13...f5!| 13...♗xe5 14.♗xe5 dxe5 15.♗f3 (15.h3?? ♗h4+; 15.♗e2?? ♗e3) 15...f5!]

12.h3?!

It was already too late for White to get castled: 12.♗e2 e6 13.♗xd4 cxd4 14.♗xg4 exd5-+.

12...e6 13.hxg4 exd5 14.♗xd4 cxd4



The tripled isolated pawns are NOT a weakness, but a strength!

15.♗b4 dxe4?!

15...♖e8!! is better. Then 16.♗f3 f5 17.♗h3 h6 and the pressure on e4 is too much for white to handle. Black would win quickly.

16.dxe4 ♖e8! 17.♗d3

This square would not have been available after 15...♖e8.

17...♗f6 18.♗f3 ♗d7

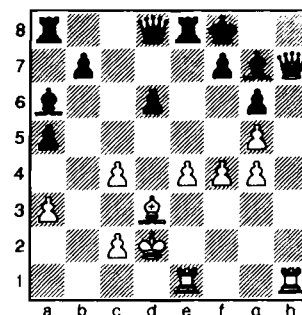
Black continues developing pieces, with an idea of playing ...♗c6. But the inaccuracy on move 15 gives white some time to castle his king to safety.

19.♗d2??

This is the wrong square for the king because the bishop on b4 has no retreat square. It appears that white had some over-optimistic intention of attacking on the open h-file. But before starting an attack it is much more important to pay attention to the opponent's possibilities.

[19.O-O! ♗c6 (19...a5 20.♗d2 ♗h4 21.f5 ♗e5 22.♗h3 ♗xh3=) 20.f5 ♗h6 (20...g5 21.♖be1 ♗e5 22.c3 d5 23.cxd4 ♖xe4 24.♗xe4 ♗xd4+ 25.♖f2 dxe4 26.♗h3±) 21.♗e1 (21.fxg6?! ♗xg6 22.♗c4 ♗e3+ 23.♙h2 ♖e7) 21...♗e3+ 22.♗f2 ♗xf2+ 23.♖xf2 g5]

19...a5! -+ 20.g5 ♗e7 21.♗c3 dxc3+ 22.bxc3 ♗c6 23.♖be1 ♗d7 24.g4 ♗b5 25.c4 ♗a6 26.♗h3 ♗d8 27.♗xh7+ ♙f8



An instructive principle of the fianchettoed Bishop. Even though White has an attack on the h-file, with a Queen (worth nine points of force) and Rook (another five points), when the King steps aside the Black position is held together by the Bishop (only three points of force) and there is no mate. This economy of defensive force gives Black an overwhelming balance of attacking force (two Rooks, a Queen and both Bishops, versus a Bishop and a Rook) on the rest of the chessboard. Even without the extra piece won earlier in the game, Black would be winning.

28.♗h3 ♖c8 29.♗f1 d5 30.exd5 ♖xe1 31.♙xe1 ♗b6 32.♙e2 ♖xc4 33.♗d2 ♗c3+ 34.♗d1 ♗b1+ 35.♙e2 ♗xf1+ 36.♖xf1 ♖e4+ 37.♙f3 ♗xd3 38.cxd3 ♖d4 39.♖c1 ♖xf4+ 40.♙xf4 ♗d2+ 41.♙e5 ♗xc1 42.a4 ♗xg5 43.d6 ♙e8 44.♗d5 ♙d7 45.♙e5 f6+ 46.♗d5 ♗h4 47.♙c5 ♗e1 48.♗d5 ♗b4 0-1

It's Our 25th Year - Join the Celebration!
Now a USCF Classic and Heritage Event!

25th Annual Sands Regency
RENO - WESTERN STATES OPEN
A WEIKEL TOURNAMENT

200 Grand Prix Pts. ♦ **October 12-14, 2007** ♦ F.I.D.E. Rated

\$46,000!!
(b/450)

\$29,850!!
(Guaranteed)

6 Round Swiss ♦ 7 Sections ♦ 40/2 - 20/1 - G/1/2
Entry: \$120 Average! ♦ Rooms: \$39/\$59!!

We're rolling back prices on the Entry Fees and all Side Events!

The fun starts on Wednesday, October 10!

Wed 10/10 7 p.m. Clock Simuls: GM Larry Evans and IM John Donaldson, ONLY \$30!

A great opportunity for everyone (but especially for young upcoming students) to play a serious game of chess (40/2) with a titled player, complete with analysis, and for only \$30!!

(Enter early for choice of GM Evans or IM Donaldson, later entries assigned.)

Thurs 10/11 6 p.m. Lecture: 5-Time US Champion GM Larry Evans, FREE!

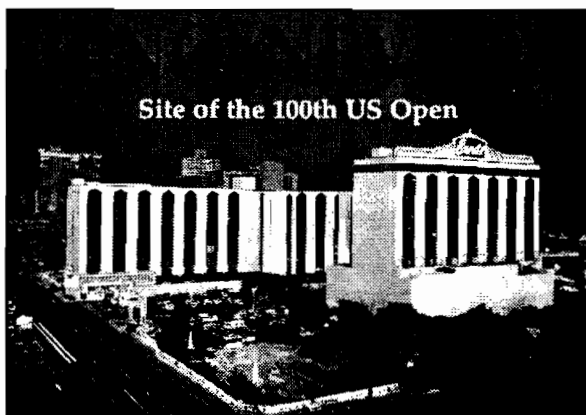
Thurs 10/11 7:30 p.m. Simul: GM Walter Browne ("Mr. 6-Time!"), ONLY \$15!!!

Thurs 10/11 7:30 p.m. Blitz: 5 Min., \$15

Sat 10/13 3 to 4:30 p.m. Chess Clinic: GM Larry Evans, FREE!

Sun 10/14 Noon Quick Tournament, 5 Rd Swiss G/25, \$15

PLUS EVEN MORE! DOOR PRIZES!!! CHANCES TO WIN EVERY DAY!!! SEE YOU IN RENO!



Site of the 100th US Open

For a flyer call, write, or e-mail:

Organizer and Chief TD

N.T.D. Jerome V. (Jerry) Weikel, (775)747-1405
6578 Valley Wood Dr., Reno NV 89523,
wackyykl@aol.com

Room Reservations: Call the Sands Regency,
1-866-FUN STAY. Ask for code CHE 1011.

To confirm receipt of entry:
See player list at
www.renochess.org/wso

VISIT WWW.RENOCHESS.ORG/WSO

Hurt-Sheets, WA Championship 1941!

by IM John Donaldson

I recently bought the *The Chess Correspondent* for 1943-44 and found the game Hurt-Sheets with annotations by Fred Reinfeld. Here is a little background material and the game.

J. L. (Jack Leonard) Sheets (1904-1980) won a record seven Washington State Championship titles ranging from 1932 to 1954. I can find only one tournament where Sheets played outside of the Northwest, but he did well, second in the Minor Tourney at Pasadena 1932 just behind many-time Nebraska Champion Reverend Howard Ohman (8.5 -1.5 to 8-2). Sheets retired from tournament play after winning his last championship, but was still involved in various solving competitions until the end of his life — often at the top of the Northwest Chess problem solving ladder and high up in Problemist competitions. He retired from the post office in 1965 after 36 years. He served during the Second World War with the fleet post office in the Navy.

James Hurt grew up in San Francisco and spent most of his life in the Bay Area, where he is particularly well-remembered for the series of L.E.R.A. tournaments he organized in Sunnyvale for many years. Hurt went to college at the University of Washington, studying chemical engineering and living with his uncle in Seattle. During his stay in Washington state Hurt won four of the five state championships he competed in (1935, 1937, 1938 and 1941) finishing ahead of future U.S. national team member Olaf Ulvestad in 1935. The USCF honored Hurt in 1999 at the U.S. Open in Reno for his long-time work in teaching kids to play chess.

Ulvestad, in his portraits of the 1938 Washington State Championship competitors, paints the following picture:

James Hurt, the champion, shows a faculty for intense and extended concentration. This indicates a healthy nervous system and a capacity for hard work. He exhibits excellent control under time-pressure.

Hurt's style is of a steady positional type, the basis of which is to allow the opponent as little opportunity for potent threats as possible, coupled with the vigilant avoidance of threats.

The following game doesn't show Sheets at his best.

King's Indian Classical

James Hurt

J. L. Sheets

Washington Championship 1941

Annotations by Fred Reinfeld

1.d4 ♘f6 2.♘f3 g6 3.c4 ♗g7 4.♘c3
O-O 5.e4 d6 6.♔b3

Out of place in this opening. Black should simply continue with ...♟b7 and ...e5; in this way he would obtain a good game and soon demonstrate the pointlessness of ♟b3.

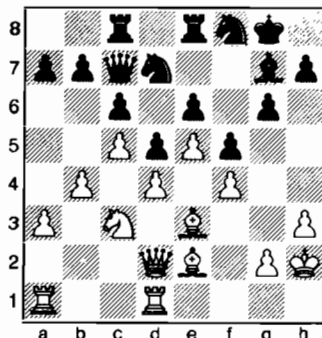
6... c6 7. e2 b6 8. O-O a6 9. f4
g4 10. fd1 fe8 11. h3 xf3 12.
xf3 d7

Black's pieces are very poorly placed, his prospects are meager, and the enemy's two Bishops are likely to become troublesome.

13. ♖e3 ♜ab8 14. ♗g4 ♔c7 15. a3 e6
16. ♔c2 f5 17. ♖e2 ♜f8 18. f4 ♜bc8 19.
e5 d5

Black's pieces are so badly placed, that he naturally prefers to block the position.

20.c5 ♖ab8 21.b4 ♜fe8 22.♔d2 ♘f8
23.♙h2 ♘bd7



24. g1

White has the choice between a3-a4 and b4-b5 (queenside attack) and g2-g4 (kingside attack). He decides in favor of the latter, since the crowded position of the Black pieces makes satisfactory defense impossible in the long run.

24...♔f7 25.♚e1 ♚d8 26.g4 ♜a8 27.
h4 ♚c7 28.♚g3 ♜e7 29.♔h1 ♔g8

This is inconsistent. The King should flee to the queenside, which would greatly increase the difficulties of White's task.

30.h5 fxg4 31.♗xg4 ♖ae8 32.♖a2 ♖f7
33.hxg6 ♜xg6

If 33...hxg6 , White can triple his forces on the h-file and bring his Knight to g5 with decisive effect.

34. ♖f2 ♜df8 35. ♜e2 ♜e7 36. ♙h5
♜fq6 37. ♖h2 ♜f5

This leads to the loss of a pawn. However, if 37...♔f8 38.♚h3 ♚d7 39.♕xg6 ♜xg6 40.♖xg6+.

38. ♔h3 ♕f8 39. ♖xg6 hxg6 40. ♖xg6
♕e7 41. ♖f2 a5 42. ♔g4

White has at last broken through and Black's collapse is only a matter of time.

42...axb4 43.axb4 ♖d7 44.♙h7 ♙h8
45.♙xh8 ♙xh8 46.♜g3 ♙h7+ 47.♜g1
♜g7 48.f5 ♜d8 49.f6 ♜e8 50.♜h5
♜a8

The position is hopeless. If 50...♖c7, 51. ♖g8 ♗e8 52. ♗f4. Instructive position play by Hurt.

51.f7 ♖g7 52.♗f6+ 1-0

From the Business Manager:

If you would like to see bigger magazines (up to 32 pages, instead of the 16-page issues we had in April and May), please submit your games and articles to the editor, and encourage your chess-playing friends to subscribe to *Northwest Chess*!

♙ **Fred and Carol Kleist** were awarded the Outstanding Career Achievement award at the annual banquet this year. Previous Northwest winners of this award are **Rusty Miller** in 1990 and **Robert Karch** in 1993. Former Northwest-erner **John Donaldson** received the award in 2003.

♙ Like in Oregon, you cannot pump your own gas in New Jersey.

♙ **Montana and Wyoming** were the two states missing from the Denker.

♙ The 2008 Open will be held in Dallas, TX. (I'd rather go to Dallas, OR.) I think I'll be there, and hope you will, too. Especially all you missing adults . . .

USCF Meeting cont'd from p.6

◆ There is an upcoming international conference on Chess in Education to be held in Aberdeen, Scotland, and Dr. Alexey Root will chair a workshop at next year's U.S. Open in Dallas—Tim Redman, Chess-in-Education Committee

◆ A destitute New York City GM is being helped to find students and to negotiate lower rent—Fred Gruenberg, Professional Players Health and Benefits Committee

The first substantial order of business was consideration of the 2007-08 budget. It was deferred to the following day, as the copies of the proposed were late in being passed out. Also deferred was the hearing of Sam Sloan's appeal of decision of the Ethics Committee concerning statements he had made on one of the USCF fora during last year's election campaign. A sixty-page packet of documents was handed out at the beginning of the meeting, but no one had yet found time to read it. So we moved on to some minor motions, the most significant of which were the following:

The USCF Scholastic Council must be consulted if the USCF wishes to allow an outside organizer to hold national scholastic events.

The USCF will no longer give free memberships to U.S. GMs unless they specifically request such (an anti-Bobby Fischer measure—his membership was revoked after comments in support of the 9/11 terrorists).

On the second day, the budget which calls for an operating income of about \$50,000, based chiefly on lowering expenses—tournament expenses being \$80,000 lower and professional fees, \$40,000 lower. The Sloan appeal took a little longer to consider, but most felt that his statements to the effect that Beatriz Marinello and Grant Perks had "committed crimes during the course of their duties at USCF . . . [were] made with a reckless disregard for their truth or falsehood." However, I was one of the handful that voted to overturn the Ethics Committee ruling, because no evidence was presented regarding the truth or falsehood of Sloan's assertions, nor was it shown that he knew, or should have known, that his claims were false.

After this, the delegates considered some fifteen to twenty motions. We approved an accounting change, cutting in half the amount of "life member dues recognized" for two years. The money was spent in the past, but not properly accounted for at the time. The effect of this measure will be to lower the USCF's stated income.

The delegates overturned last year's rule change requiring moves to be written down only after they had been played. Players may now revert to writing moves down first, but a "written move may not be changed until after" a move, though not necessarily the one written down, has been played.

The USCF was enjoined from scheduling a national event "in the same metropolitan area on the same weekend as an established regional event." Such an event is defined as "having at least 75 players . . . on the same weekend the previous year."

Some measures that failed included an attempt to establish an adult membership without a subscription to *Chess Life*. The board is considering such a membership, but did not wish to be forced to implement it. Another failed measure would have required voting records of committee members to be published. Nor did the delegates approve free U.S. Open entry for participants in the Denker Tournament of High School Champions. Finally, the Forum Oversight Committee asked that its decisions be final with no possibility of appeal. The motion was defeated.

Fred Kleist, delegate from Washington

Washington Chess Federation (WCF)/Oregon Chess Federation (OCF)

Adult: \$25/year (12 issues). Residents of OR and WA become members and receive *NWC* via periodicals mail each month. **Junior:** \$17/year (12 issues) or \$10/6 months (6 issues). Must be under age 20 at expiration. OR/WA residents only; state membership included. Juniors receive *NWC* each month. **USA Subscriber:** \$25/year (12 issues). For subscribers living inside the US mail system, but outside the OR/WA area. Subscribers receive *NWC* each month. **Family:** \$5/year (not a subscription — membership only). This class of membership is open only to co-resident of an Adult or Junior member. Expires at the same time. **Trial:** \$13 (membership and subscription, expires in 3 months). By paying the balance of dues for an Adult membership before the trial status is expired, this option can be extended to 12 months.

OCF/WCF Membership Application/Renewal Form

Name _____ If Junior, give date of birth _____

E-Mail (if you want to subscribe to the *Northwest Chess* e-mail mailing list) _____

Phone Number (optional, will not be used for telemarketing) (_____) _____

Street or P.O. Box _____

City _____ State _____ Zip _____

Country (if not USA) _____ Amount Enclosed \$ _____

Make check or money order (USA \$ only) out to Northwest Chess and mail to:

Eric Holcomb, NW Chess Business Manager
PMB 342
12932 SE Kent-Kangley Rd.
Kent WA 98030-7940

Credit this membership to:

Seattle Chess Club Tournaments

Address

17517 15 Ave NE
Seattle WA 98155

Infoline

206-417-5405

www.seattlechessclub.org

cfkleist@cs.com

Address for Entries

SCC Tnmt Dir
2420 S 137 St
Seattle WA 98168

SCC Rent Raised!!!

The SCC has received a 15% increase in its rent. Until the club restructures entry fees, a temporary (1-3 month) surcharge has been placed on all entry fees. Please add \$2 to any entry fee listed.

SCC Championship

Sept. 7, 14, 28, Oct. 5, 19, 26, Nov. 2

Format: 7-rd Swiss held on Friday evenings. TC: 35/100 and 25/60. EF: \$25 if rec'd by 9/5, \$30 thereafter. SCC memb. req'd — special \$24 tnmt memb. Prize fund: 75% of EFs. Prizes: 23%-16%, U2000 9%, U1800 8%, U1600 7%, U1400 6%, Unrated 3%, Endurance 3%. Reg: Fri. 7-7:45 p.m. Rds: Fridays 8 p.m. Byes: 4 (1 in rds 5-7, commit by 10/17). Misc: USCF memb. req'd. NS. NC. **STILL TIME TO ENTER!!!**

September 15

Format: 3-RR, 4-plyr sections by rating. TC: G/120. EF: \$6 (+\$5 fee for non-SCC). Prizes: Free entry for future quad. Reg: 9:00-9:45 a.m. Rds: 10:00-2:15-ASAP. Misc: USCF, WCF/OCF memb. req'd, OSA. NS, NC.

SCC Saturday Quads

September 30

Format: 4-SS. TC: G/64. EF: \$15 (+\$5 fee for non-SCC). Prizes: 1st 35%, 2nd 27%, Bottom Half 1st 22%, 2nd 16% (\$10 from each EF goes to prize fund). Reg: 10:30-11:15 a.m. Rds: 11:30-1:50-4:10-6:30. Misc: USCF, WCF/OCF memb. req'd, OSA. NS, NC.

SCC Sunday Tornado

November 4

Format: 4-SS. Open to U1200 and unrated. TC: G/75. EF: \$10 by 8/22, \$15 at site. (20% disc. for SCC mem., 10% mem. of other dues-req'd CCs in WA, OR, & BC). Prizes: Memberships (SCC, WCF, USCF). Reg: 9-9:45a. Rds: 10-12:45-3:30-6. Byes: 1 (Rd 3 or 4—commit at reg.). Misc: USCF memb. req'd. NS, NC.

SCC Novice

Seattle Fall Open

September 21-23 or September 22-23

A 2-section, 5-round Swiss chess tournament with a time control of 40/2 & SD/1 (except Rd 1 of the 2-day option — G/64) with a prize fund of \$1000 based on 58 paid entries, 6 per prize group.

A Harmon Memorial Grand Prix event

**Open: \$180 gtd-\$120 gtd, U2200
\$100, U2000 \$95, U1800 \$90**

**Reserve (U1700): \$110-\$80, U1550
\$70, U1450 \$65, U1350 \$60, UNR \$30**

Entry Fees: \$32 by 9/19, \$40 at site. 25% discount to SCC members or 12.5% discount to members of other dues-req'd CCs in BC, OR, & WA. Unrated players FREE with purchase of 1-yr USCF & WCF. **Add \$1 for 2-day option.** Make checks payable to SCC.

Registration: Fri. 7-7:45 pm or Sat. 9-9:45 am. **Rounds:** Fri. 8 pm, Sat. (10@G/64)-12:30-6:45, Sun. 11-5.

Byes: 2 available. Rounds 4 or 5 must commit at registration. **Misc.:** USCF & WCF required. NS. NC.

Ben Delson Thematic – Oct. 21-22

Format: 5-rd Swiss. TC: G/90. EF: \$12 if rec'd by 10/18, \$16 at site. 25% discount to SCC members or 12.5% discount to members of other dues-req'd CCs in BC, OR, & WA. Unrated players FREE with purchase of 1-yr USCF & WCF. Prize fund: 75% of EFs. Prizes: 30%-20%, Bottom half 15%-10%. Reg: Sat. 10-10:45 a.m. Rds: 11-2:30-6, noon-3:30. Byes: 2 (Rds 4 or 5 commit at reg.). Misc: USCF & WCF memb. req'd. NS. NC.

Rd 1 – Nimzo-Indian Rd 2 – blacks' choice

Rd 3 – Sicilian Dragon Rd 4 – rd 2 non-choosers' choice

Rd 5 – English

Future Events

♣ indicates a Christopher Memorial NW Grand Prix event

9-9:45. Rds: 10-2:30-7 or ASAP. Byes: None. Misc: USCF & OCF/WCF memb. req'd. OSA. NS. NC. Ent/Info: Gary Dorfner, 8423 E 'B' St, Tacoma WA 98445; 253-535-2536, ggarychess@aol.com.

Sept 20-Oct 18 Spokane Fall Championship

Site: 121 Herak, Gonzaga Univ, Spokane WA. Format: 1 rd per night on Thurs. TC: G/120. EF: \$16. Reg: 6:30-7:15 pm. Rds: 2-5 start at no later than 7:15. Misc: USCF memb. req'd. Info: dbgrffn@hotmail.com.

♣Sept 29, Oct 27 PCC Game-in-60♣

Site: Portland CC, 8205 SW 24th Ave, Portland OR 97219. Format: 4-rd Swiss. TC: G/60. TD may switch to 5SS and G/45 if more than 25 entries. EF: \$20, \$5 discount for PCC members. No advance entries. Prize Fund: \$200/b20. Prizes: \$60-40-30, U1800 35, U1500 35. Reg: 9-9:30 am. Byes: One ½-pt. bye avail. if requested at reg. Misc: USCF & OCF/WCF membership req'd, OSA. Info: portlandchessclub@gmail.com, 503-246-2978, www.pdxchess.org.

♣Sept 29-30 Eastern Washington Open♣

Site: Schoenberg Center, Rm 201, Gonzaga Univ, N 900 Pearl St, Spokane WA (sw corner of GU campus - 1 blk e of Division/Ruby couplet off DeSmet Ave). Format: 5-rd Swiss. TC: G/120. EF: \$21 if rec'd by 9/28, \$26 at site; u18 - \$5 less. Prize Fund: \$5800 gtd. (5 per class). Additional classes/prizes may be created if entries exceed 30. Classes/prizes may be reconfigured if less than 5. Prizes: \$150-120-80, A 65-35, B 65-35, C 65-35, D/E/UNR 65-35, Biggest Upset 50 (both players must have established ratings). Reg: 8:30-9:30. Rds: 10-2:30-7, 9-1:30 or ASAP. Byes: One ½-pt. bye avail., rds 4-5 commit by end of rd 3. Misc: USCF memb. req'd. TD reserves right to use class pairings in final rd. NS. NC. W. Entries Spokane CC c/o Kevin Korsmo, N. 9923 Moore, Spokane, WA 99208-9339. Info: 509-466-0530 eve. or wknds; 509-477-2871 days. www.spokanechessclub.org.

♣Sept 29 TCC Quads♣

Site: Tacoma Chess Club, 409 Puyallup Ave E (DTI Soccer Bldg), rm 11, 2nd flr. Format: 3-RR, 4-plyr sections by rating TC: G/120. EF: \$20. Prizes: \$40 each qd, 40-20 for 6-plyr Swiss. Reg:

Oct 7 Fall Back to Kells

Site: Kells Irish Restaurant & Pub, 1916 Post Alley, Pike Place Market, Seattle WA 98101. Format: 7-rd Swiss. TC: G/10. EF: \$20. Prize Fund: \$300 b/30, \$200 gtd. Prizes: 1st 40%, 2nd 20%, 3rd 15%, bottom half/unrated 1st 15%, 2nd 10%. Reg: 12-12:45. Play: From 1:00 until 6:00 pm. Byes: Two ½-pt. byes avail. rds 1-4. Misc: Not rated. Memb. not req'd. Ratings used for pairing/prizes only. Restaurant Info: www.kellsirish.com. Info/Entries: c/o Michael Kent, Drunken Knights Chess Club secretary, 206-295-3335, egilkent@yahoo.com.

♣Oct 13-14 Portland Fall Open♣

Site: Portland CC, 8205 SW 24th Ave, Portland OR 97219. Format: 2-sec., 5-rd. Swiss. TC: Rds 1-3 40/90, SD/30; Rds 4-5 40/2, SD/1. EF: \$30 by 10/10, \$35 at site. \$10 discount for PCC members. Prize Fund: \$5650 b/40. Prizes: Open: \$150-100, U2000 75. Reserve (U1800): \$100-75, U1600 50, U1400 50, U1200/unr 50. Reg: 9-9:30 a.m. Rds: Sat 10-2-ASAP, Sun 10-ASAP. Byes: Two ½-pt. byes avail. if requested at reg. Misc: USCF & OCF/WCF memb. req'd, OSA. Info: portlandchessclub@gmail.com, 503-246-2978, www.pdxchess.org. Entries: Portland Chess Club, 8205 SW 24th Ave, Portland OR 97219.

Oct 6-7 Washington Senior Open

Site: Freight House Square, 430 E 25th St, Tacoma WA. 2 blks up the hill from the TCC & 1 blk down the hill from the Tacoma Dome. Format: 4-rd Swiss. Open to players over 50 years of age. TC: Sat 40/90, SD/30; Sun G/90. EF: \$20 advance, \$25 at site. Prize Fund: \$5275 (b/20). Prizes: \$100+plaque-75, U2000 50, U1600 50. Reg: 9:00-9:45. Rds: 10-2:30, 10-1:30 or ASAP. Misc: USCF & OCF/WCF memb. req'd. OSA. NS. NC. W. Ent/Info: Gary Dorfner, 8423 E 'B' St, Tacoma WA 98445; 253-535-2536, ggarychess@aol.com.

More Scholastic Events

November 2007

3 Chess4Life Beginner Tmt (K-6)	425-283-0549 tournaments@chess4life.com www.chess4life.com	Bellevue WA
3 Northshore Novice, Open, Girls Only! (K-3,4-6)	chess64@comcast.net www.chessplayer.com/signuptoplaychess.htm	Woodinville WA
10 Chess4Life Queens Quest (K-12 girls)	425-283-0549 tournaments@chess4life.com www.chess4life.com	Bellevue WA
17 MtLake Fall Kickoff (K,1-3,4-6; U800 1-3,4-6)	rick.jorgensen@gmail.com www.chess4life.com	Moutlake Terrace WA
17 ChessMates Fall Kick-Off (K,1-2,3-4,5-8)	chessmates@earthlink.net www.chessplayer.com/signuptoplaychess.htm	Seattle WA
21 TCC Wed. Kids Night	Gary 253-535-2536 ggarychess@aol.com www.tacomachessclub.netfirms.com	Tacoma WA

December 2007

1 Bryant Fall Classic (K,1-3,4-6)	Kim bryantchessclub@gmail.com	Seattle WA
8 Lakeridge Elementary (K,1-3,4-6)	Carolyn Hassall carolynhassall@comcast.net www.lakeridgechess.org	Mercer Island WA
19 TCC Wed. Kids Night	Gary 253-535-2536 ggarychess@aol.com www.tacomachessclub.netfirms.com	Tacoma WA

A ♠ in front of the tournament name indicates an OSCF qualifying tournament. Boldface type indicates a tournament announcement (in our Future Events Section) or display ad in this issue.

USCF NATIONAL Scholastics

For information on any national event, visit www.uschess.org

Nov. 16-18

National Youth Action

Saint Louis MO

Dec. 7-9

National K-12/Collegiate Championship

Houston TX

Open Events

September 2007

20-Oct18 Spokane Fall Championship
 ♣21-23 Seattle Fall Open
 21,28 TCC Championship (rds 1-2)
 28 SCC Championship (rds 3)
 ♣29 8 PCC Game-in-60
 ♣29 TCC Quads
 ♣29-30 Eastern Washington Open
 ♣30 SCC Sunday Tornado

2,9,16,23,30 PCC Championship
 5,12,19,26 TCC Championship (rds 3-6)
 5,19,26 SCC Championship (rds 4-6)
 6 PCC Saturday Quads
 6-7 Washington Senior Open
 7 Fall Back to Kells
 12-14 Western States Open
 ♣13-14 Portland Fall Open
 ♣20-21 Ben Delson Thematic **NEW EVENT**
 ♣27 8 PCC Game-in-60
 ♣27-28 Puget Sound Open

2 TCC Quick Chess (G/15) Champ
 3 PCC Saturday Quads
 ♣3 SCC Saturday Quads
 4 SCC Novice
 6 PCC Tuesday Quads Begin
 9 TCC Blitz Championship
 ♣9-10 Extravaganza
 ♣17 8 PCC Game-in-60
 ♣17-18 Tacoma Open
 ♣18 SCC Sunday Tornado
 ♣23-25 Washington Class Championships
 30 TCC Quick Chess (G/30) Champship

1 PCC Saturday Quads
 4 PCC Tuesday Quad Tmts Begin
 7,14,21,28 TCC Jingle Bell Swiss
 ♣8 SCC Saturday Quads
 ♣9 SCC Sunday Tornado
 ♣15-16 Christmas Congress
 ♣15-16 Portland Winter Open

David Griffin 509-928-3260 dbgriffin@hotmail.com www.spokanechessclub.org Spokane WA
 SCC Infoline 206-417-5405 cfkleist@cs.com www.seattlechessclub.org Seattle WA
 253-535-2536 ggarychess@aol.com www.tacomachessclub.netfirms.com Tacoma WA
 SCC Infoline 206-417-5405 cfkleist@cs.com www.seattlechessclub.org Seattle WA
 503-246-2978 portlandchessclub@gmail.com www.pdxchess.com Portland OR
 253-535-2536 ggarychess@aol.com www.tacomachessclub.netfirms.com Tacoma WA
 David Griffin 509-928-3260 dbgriffin@hotmail.com www.spokanechessclub.org Spokane WA
 SCC Infoline 206-417-5405 cfkleist@cs.com www.seattlechessclub.org Seattle WA

October 2007

503-246-2978 portlandchessclub@gmail.com www.pdxchess.com Portland OR
 253-535-2536 ggarychess@aol.com www.tacomachessclub.netfirms.com Tacoma WA
 SCC Infoline 206-417-5405 cfkleist@cs.com www.seattlechessclub.org Seattle WA
 503-246-2978 portlandchessclub@gmail.com www.pdxchess.com Portland OR
 253-535-2536 ggarychess@aol.com Tacoma WA
 Michael Kent 206-295-3335 egilkent@yahoo.com Seattle WA
 Jerry Weikel 775-747-1405 wackyykl@aol.com www.renochess.org/wso Reno NV
 503-246-2978 portlandchessclub@gmail.com www.pdxchess.com Portland OR
 SCC Infoline 206-417-5405 cfkleist@cs.com www.seattlechessclub.org Seattle WA
 503-246-2978 portlandchessclub@gmail.com www.pdxchess.com Portland OR
 253-535-2536 ggarychess@aol.com www.tacomachessclub.netfirms.com Tacoma WA

November 2007

253-535-2536 ggarychess@aol.com www.tacomachessclub.netfirms.com Tacoma WA
 503-246-2978 portlandchessclub@gmail.com www.pdxchess.com Portland OR
 SCC Infoline 206-417-5405 cfkleist@cs.com www.seattlechessclub.org Seattle WA
 SCC Infoline 206-417-5405 cfkleist@cs.com www.seattlechessclub.org Seattle WA
 503-246-2978 portlandchessclub@gmail.com www.pdxchess.com Portland OR
 253-535-2536 ggarychess@aol.com www.tacomachessclub.netfirms.com Tacoma WA
 SCC Infoline 206-417-5405 cfkleist@cs.com www.seattlechessclub.org Seattle WA
 503-246-2978 portlandchessclub@gmail.com www.pdxchess.com Portland OR
 253-535-2536 ggarychess@aol.com www.tacomachessclub.netfirms.com Tacoma WA
 SCC Infoline (206) 417-5405 cfkleist@cs.com www.seattlechessclub.org Seattle WA
 to be announced WA
 253-535-2536 ggarychess@aol.com www.tacomachessclub.netfirms.com Tacoma WA

December 2007

503-246-2978 portlandchessclub@gmail.com www.pdxchess.com Portland OR
 503-246-2978 portlandchessclub@gmail.com www.pdxchess.com Portland OR
 253-535-2536 ggarychess@aol.com www.tacomachessclub.netfirms.com Tacoma WA
 SCC Infoline 206-417-5405 cfkleist@cs.com www.seattlechessclub.org Seattle WA
 SCC Infoline 206-417-5405 cfkleist@cs.com www.seattlechessclub.org Seattle WA
 253-535-2536 ggarychess@aol.com www.tacomachessclub.netfirms.com Tacoma WA
 503-246-2978 portlandchessclub@gmail.com www.pdxchess.com Portland OR

NOTE: A '♣' in front of the date indicates a Harmon Memorial Northwest GP event. A 8 in front of the tournament name indicates an OSCF qualifying tournament. Boldface type indicates a tournament announcement (in our Future Events Section) or display ad in this issue.

Scholastic Events

September 2007

9 8 Soccer Season Quads
 19 TCC Wed. Kids Night
 22 Scholastic Tmt
 23 8 Soccer Season Quads

Tony 503-880-0581 tony@chessvision.net www.oscf.org Portland OR
 Gary 253-535-2536 ggarychess@aol.com www.tacomachessclub.netfirms.com Tacoma WA
 www.chessplayer.com/signuptoplaychess.htm Mercer Island Boys&Girls Club Mercer Island WA
 Tony 503-880-0581 tony@chessvision.net www.oscf.org Portland OR

October 2007

6 Scholastic Tmt (K-3,4-6)
 24 TCC Wed. Kids Night
 27 Terrace Park Fall Tmt (K-8)
 28 8 Bishops Boooooanza

chess64@comcast.net www.chessplayer.com/signuptoplaychess.htm Bellevue WA
 Gary 253-535-2536 ggarychess@aol.com www.tacomachessclub.netfirms.com Tacoma WA
 Michael Behar 425-745-2020 www.chess4life.com/chess-event/tournaments MtLake Terrace WA
 Kate Taylor 503-728-3754 katetaylor@clatskanie.com clatskaniechessclub.tripod.com .. Clatskanie OR

A 8 in front of the tournament name indicates an OSCF qualifying tournament. Boldface type indicates a tournament announcement (in our Future Events Section) or display ad in this issue.

For more Scholastic events, see inside back cover