



# NORTHWEST CHESS

Washington Chess Federation  
Oregon Chess Federation

April 2008  
408 \$3.95

926-0901A  
MIKE MACGREGOR



**GM Serper is New Washington  
Champion!**

# Northwest Chess

April 2008, Volume 62.4 Issue 717

ISSN Publication 0146-6941

Published monthly by the Northwest Chess Board. Office of record 2420 S 137th St. Seattle WA 98168

**POSTMASTER:** Send Address Changes to: Northwest Chess, PO Box 84746, Seattle WA 98124-6046.

Periodicals Postage Paid at Seattle, WA

USPS periodicals postage permit number (0422-390)

## NWC Staff

Editor: Fred Kleist  
Games Editor: FM Chuck Schulien  
Assistant Editor: Nat Koons  
Printer: Snohomish Publishing  
Business Manager: Eric Holcomb

## Board Representatives

Oregon: Dave Yoshinaga  
Washington: Geoff Gale & Ricky Selzler

Entire contents copyright 2008 by Northwest Chess. All rights reserved. Published opinions are those of the contributors and do not necessarily reflect the views of the editor or the Northwest Chess Board.

## Advertising Rates

Display ads run \$150 for a full page, \$100 for tmt ads; \$85 for a half-page, \$60 for tmt ads; \$30 for a quarter page, \$20 for an eighth of a page, and \$10 for a business card-size ad. Add \$10 if the ad is not copy ready and the staff must do layout work. A 15% discount is available for two or more consecutive ads of the same size.

## Event Announcement Rates

Each appearance in *Event Announcements* costs \$20. Payment is required before publication. Enclose \$2 additional if an invoice is required--this is a mandatory service charge.

## Advertising & Copy Deadline

Please get your ads and submissions in by the 10th of the month for the items to appear in the next issue (e.g., no later than May 10 for the June issue). The editor cannot guarantee that late submissions will appear in the desired issue.

## Submit all ads and payments to:

*Business Manager, Northwest Chess*  
1900 NE Third St, Ste 106-361  
Bend WA 97701-3889  
Eric@Holcomb.com

## Submissions

Hey folks! The editor depends on YOU to make this magazine vibrant and exciting. I need your games, photographs, thoughts, and ideas. This magazine has a great tradition and I hope people will contribute enthusiastically. You can send me your materials via U.S. mail or via e-mail:

**Northwest Chess**  
**Fred Kleist, Editor**  
2420 S. 137th Street  
Seattle WA 98168  
NWCeditor@cs.com  
206-242-7076

If you'd like your games annotated by a senior master, send them to our Games Editor:

## **FM Chuck Schulien**

cschess@hotmail.com

## Subscription Information:

**Northwest Chess** is a benefit membership in either the Oregon or Washington Chess Federations. Adult dues are \$25. Junior dues under 20 are \$17 (or \$10 for six months). Please send dues, along with pertinent information to:

## Business Manager

## **Northwest Chess**

Eric Holcomb

1900 NE Third St, Ste 106-361

Bend WA 97701-3889

Eric@Holcomb.com

http://www.nwchess.com

## **Northwest Grand Prix Administrator**

Murlin Varner

13329 208 Ave NE

Woodinville WA 98072

MEVjr54@yahoo.com

425-882-0102

## **Oregon Chess Federation**

### President

**Dave Yoshinaga**

971-404-5251

dave@kdtonline.com

### Vice President

**Mike Terrill**

503-580-9187

pflotus@yahoo.com

### Secretary

**Carl Haessler**

ssmith6154@aol.com

### Treasurer

**Mike Morris**

mikejmorris@earthlink.net

### Tournament Coordinator

**Peter Prochaska**

503-504-5756

pete@chessodyssey.com

### Scholastic Coordinator

**Taylor Bailey**

503-282-6796

cosmos24@gmail.com

### Director-at-Large

**Marcus Robinson**

503-245-1204

mprscorp@comcast.net

## **Washington Chess Federation**

### President

**Geoff Gale**

206-860-9963

geoffreygale@gmail.com

### Vice President

**Duane Polich**

### Secretary

**Gary Dorfner**

253-535-2536

ggarychess@aol.com

### Treasurer

**Robert J. Allen**

253-761-1288

allenrobertj@msn.com

### Tournament Coordinator

**Dan Mathews**

425-778-7482

dthmathews@hotmail.com

### Scholastic Coordinator

**David Hendricks**

425-868-3881

davidhendricks@comcast.net

### NW Chess Board Member

**Ricky Selzler**

rts89@comcast.net

## *Greetings from the Editor*

Assistant editor Nat Koons did a nice interview with GM Gregory Serper. Unfortunately, there was no room in this issue, so it will appear in May along with the games of the WA Invitational. Also on tap, reports from the Collyer Memorial and the Tacoma vs. Seattle match as well as a book review by Robert Karch.

Did you play an interesting game? Send it in to the magazine, annotated or not! Did you go to a game? Write a report! Did you like your newest chess book, software, or just hate it? Let the rest of us know about it by writing a review!

Of course, any other articles or pictures that you contribute will be more than welcome, though pictures generally have to fit in with some article.

Best Wishes,

*Frederick K. Kleist*

Thanks to C. Kleist for proofreading.

## *Northwest Chess Knights*

*Northwest Chess Knight donors will be listed in the magazine for a period of one year following receipt of donation. Please consider making a donation today to help Northwest Chess!*

King: \$1000-  
Queen: \$500-\$999  
Rook: \$250-\$499  
Bishop: \$100-\$249  
Knight: \$50-\$99  
Pawn: \$15-\$49

## Current Patrons

*King:* Cinthia McBride, Kent McNall

*Queen:*

*Rook:* Nat Koons, Michael Wang

*Bishop:* Ralph Hall, Russell Miller, Michael Omori family, Boyd Schorzman

*Knight:* Robert Brewster, Steve Buck, Darby Monahan

*Pawn:* Mark James, Gene Milener

*Contributions can be sent to the Northwest Chess Business Manager, and are greatly appreciated!*



*Editor's Desk*

# Northwest Chess

April 2008

**Serper wins WA Championship, Collyer Tops Premier**  
page 4

**Tournament Ads**  
pages 8, 15, 31

**2007 Harmon Memorial GP Results**  
page 30

**Northwest Chess Calendar of Upcoming Events**  
back cover

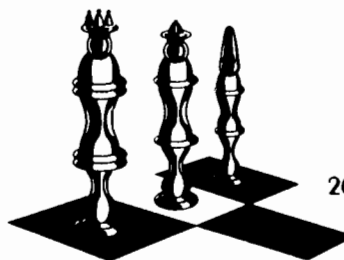
**On the Cover:** GM Gregory Serper, 2008 Washington State Champion, pictured at the 2007 Washington Open. Photo by Michel Milczewski.



**Carl A. Haessler**  
Lessons • Lectures • Exhibitions

USCF Life Master  
3-Time Oregon Champion

(503) 358-7871  
ssmith6154@aol.com



**Allen Smith**  
CHESS LESSONS

USCF A Player  
2006 Puget Sound Champion

**(253) 230-3736 • CHARTERINV@COMCAST.NET**

## Washington Chess Federation (WCF)/Oregon Chess Federation (OCF)

**Adult:** \$25/year (12 issues). Residents of OR and WA become members and receive *NWC* via periodicals mail each month. **Junior:** \$17/year (12 issues) or \$10/6 months (6 issues). Must be under age 20 at expiration. OR/WA residents only; state membership included. Juniors receive *NWC* each month. **USA Subscriber:** \$25/year (12 issues). For subscribers living inside the US mail system, but outside the OR/WA area. Subscribers receive *NWC* each month. **Family:** \$5/year (not a subscription — membership only). This class of membership is open only to co-resident of an Adult or Junior member. Expires at the same time. **Trial:** \$13 (membership and subscription, expires in 3 months). By paying the balance of dues for an Adult membership before the trial status is expired, this option can be extended to 12 months.

### OCF/WCF Membership Application/Renewal Form

Name \_\_\_\_\_ If Junior, give date of birth \_\_\_\_\_

E-Mail (if you want to subscribe to the *Northwest Chess* e-mail mailing list) \_\_\_\_\_

Phone Number (optional, will not be used for telemarketing) (\_\_\_\_\_) \_\_\_\_\_

Street or P.O. Box \_\_\_\_\_

City \_\_\_\_\_ State \_\_\_\_\_ Zip \_\_\_\_\_

Country (if not USA) \_\_\_\_\_ Amount Enclosed \$ \_\_\_\_\_

Make check or money order (USA \$ only) out to Northwest Chess and mail to:

**Credit this membership to:**

Eric Holcomb, NW Chess Business Manager  
1900 NE Third St, Ste 106-361  
Bend OR 97701-3889

# GM Serper Wins WA Championship

## NM Perez Second; NM Collyer Tops Premier

This year's Washington State Championship and Premier round-robins has to rate among the strongest ever. The Championship field included GM Gregory Serper, IM Georgi Orlov, and FM Slava Mikhailuk and had an average rating of 2317. The Premier, with five Masters, had an average rating of 2128. And, because many others wished to participate, a third section, the WA Invitational, was formed.

All this came about because WCF President Geoff Gale was able to secure some substantial donations. But they came with a catch: the state's strongest players had to play. In order to obtain the participation of Serper, Orlov, and Mikhailuk, appearance fees and a suspension of the activity requirement were necessary.

### Championship

The favorite, GM Gregory Serper, finished on top with a score of eight points in the nine-round WA Championship. Finishing second at 6.5 was last year's Champion, NM Ignacio Perez. IM Orlov and FM Mikhailuk shared third-fourth with six points apiece.

The first weekend, February 9-10, was extremely hard-fought, as only one of the twenty games ended in a draw. In addition, there were three large upsets and a couple of minor ones. The upsets started in Round One when Mikhailuk defeated Orlov. No significant upsets occurred in the second round, but Round Three saw Mikhailuk fall to Perez. The final round of the weekend contained two major upsets as Orlov lost to NM Michael Lee and Mikhailuk was upended by NM Harley Greninger, who picked up his first point of the tournament. The only draw of the weekend also occurred in this round when Expert Josh Sinanan, who was seeded into the Championship as winner of last year's Premier, and FM John Readey split the point.

By Sunday night, Serper and Perez, both at 4-0, led the field by two points. Four players, Orlov, Mikhailuk, Lee, and NM Nat Koons, had even scores. Sinanan and Readey stood on 1.5, Greninger had one point, while Alex Guo, the WA Junior Closed winner, had been shut out.

In the second weekend, February 16-18, the number of draws increased as GM Serper drew with IM Orlov and FM Mikhailuk in the first two rounds. In Round Seven, Perez nicked Orlov for a half point and, in Round Nine, Lee did the same to Mikhailuk. In addition, Guo scored his only half point in Round Six in a GM draw with NM Koons. Serper, Orlov, and Mikhailuk all scored four from five and were joined in this feat by Greninger, who clawed his way up to sixth place. Lee added 3.5 points and finished fifth, while Perez had an even score in the second weekend. Readey scored two points to finish in seventh at 3.5. The three bottom finishers Koons, Sinanan, and Guo shared a sole point among them.

### Premier

The Premier also witnessed a win by the favorite, NM Curt Collyer, who scored seven from nine to finish a half-point ahead of unheralded Kerry Xing and one point ahead of Expert Ricky Selzler. FM David Bragg scored 5.5, good for fourth place, and NM Michael MacGregor rounded out the plus-scorers, taking five points and fifth place.

During the first weekend, Collyer employed the classic approach, winning with White and drawing with Black, to score three points and share the lead with FM Bragg. Bragg, on the other hand, won his first three, but lost

to Collyer in Round Four. Expert Andy May, who scored the event's first major upset in Round Two by beating LM Viktors Pupols, and Xing had 2.5 points each. Though Xing had drawn with Collyer in the first round, his wins had been against an out-of-form Chris Kalina (0-4) and a forfeit win against Expert Michael Oshiro. Selzler, along with NMs MacGregor and David Levine, had two points, but had played only two games, as he took Saturday off to play in the WA High School Team Championship.

The second weekend saw Collyer continue at his steady pace with three wins and two draws. Selzler picked up 1.5 points from his two postponements to go along with a 2-2 score on Saturday and Sunday, while Xing scored 3.5 from four to set up a tense final round. Selzler, a point behind, faced Collyer, but could only manage a draw, and Xing, a half-point behind, missed a winning continuation against Levine, landing in a perpetual check.

Congratulations to WCF President Gale for arranging this strong Championship and Premier. It is to be hoped that more of this caliber will follow.

*Next Month Games from the Invitational*



**THE CHESS HOUSE**

Serving the chess community since 1972

**your chess sets  
and equipment store**



chess sets, combos, clocks  
electronic chess, software  
books, dvd's, teaching supplies  
awards, chess for education  
accessories, boards, pieces

**www.ChessHouse.com**

**1-800-348-4749**

# First Weekend Round One

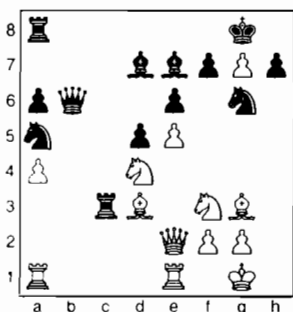
## Caro-Kann Advance

NM Ignacio Perez (2280)

NM Harley Greninger (2220)

WA Championship (1) 2008

1.e4 c6 2.d4 d5 3.e5 c5 4.dxc5 ♖c6  
5.♙f4 e6 6.♗f3 ♙xc5 7.♙d3 ♗ge7 8.  
O-O ♗g6 9.♙g3 ♙e7 10.♗bd2 a6 11.  
♙e1 b5 12.a4 b4 13.♗b3 ♗a5 14.♗bd4  
♙d7 15.♙e2 ♙b6 16.c3 O-O 17.h4 ♙fc8  
18.h5 ♗f8 19.h6 ♗g6 20.hxg7 bxc3  
21.bxc3 ♙xc3



22.♙d2 ♙ac8 23.♙xg6 fxe6 24.♙h6  
♙3c4 25.♙f4 ♗c6 26.♗xc6 ♙xc6  
27.♙g5 ♙a7 28.♙f6 ♙g4 29.♗g5  
♙xg5 30.♙xg5 ♙c5 31.♙e2 ♙b8  
32.♙c2 ♙d7 33.♙ac1 1-0

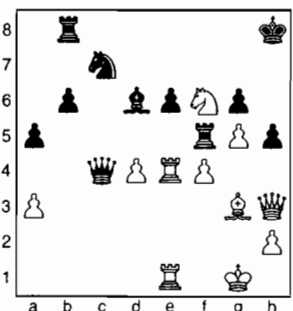
## Dutch Leningrad

NM Michael Lee (2277)

Alex Guo (1991)

WA Championship (1) 2008

1.c4 f5 2.♗c3 ♗f6 3.d4 e6 4.e3 ♙e7  
5.♙d3 d6 6.f4 d5 7.♗f3 b6 8.O-O O-O  
9.♙c2 g6 10.♙d1 ♙b7 11.a3 a5 12.♙b1  
♗a6 13.♙d2 ♙c8 14.♙e1 c5 15.♙b3  
cxd4 16.exd4 ♙c7 17.♗e5 ♗e4 18.cxd5  
♗xc3 19.bxc3 ♙xd5 20.c4 ♙e4 21.  
♙xe4 fxe4 22.♙h3 ♙f5 23.g4 ♙ff8  
24.♙g3 ♙d6 25.g5 ♙f5 26.♗g4 ♗h8  
27.♗f6 ♙b8 28.♙e1 h5 29.♙xe4 ♙xc4  
30.♙be1 ♗c7



31.♗xh5 gxf5 32.♙h5+ ♗g7 33.♙h6+  
♗f7 34.♙h7+ ♗e8 35.♙xf5 1-0

## Queen's Gambit Accepted

Joshua Sinanan (2178)

NM Nat Koons (2313)

WA Championship (1) 2008

1.♗f3 d5 2.d4 ♗f6 3.c4 dxc4 4.e3 e6  
5.♙xc4 a6 6.O-O c5 7.♙b3 b5 8.a4 b4  
9.♗bd2 ♙b7 10.e4 cxd4 11.e5 ♗fd7  
12.♗c4 ♗c6 13.♙g5 ♙c7 14.♙c1 h6  
15.♙h4 ♗c5 16.♙e1 d3 17.♙g3 ♙d8  
18.♗d6+ ♙xd6 19.exd6 ♙b6 20.♙xc5  
♙xc5 21.♙xd3 ♗a5 22.♙xe6 O-O 23.  
♙a2 ♙fe8 24.♙xe8+ ♙xe8 25.h3 ♗c6  
26.d7 ♙d8 27.♙c7 b3 28.♙xb3 ♙xd7  
29.♙xb7 ♗d8 30.♙xa6 ♙xc7 31.♙c4  
♙d1+ 32.♙f1 ♗e6 33.g3 ♙d8 34.♙b5  
♙a8 35.♙b3 ♙a1 36.h4 ♗c5 37.♙e3  
♙d5 38.♗d2 ♙d1 39.♗f3 ♙c4 40.♗d2  
♙c1 41.♙e8+ ♗h7 42.♙xf7 ♙xd2 43.  
♙f5+ ♗g8 44.♙c8+ ♗f7 45.b4 ♙xf2  
46.♙h3 ♗e4 47.♙d7+ ♗g8 48.♙d5+  
♙f7 0-1

## Reti Opening

FM John Readey (2325)

GM Gregory Serper (2576)

WA Championship (1) 2008

1.♗f3 d5 2.g3 b6 3.♙g2 ♙b7 4.O-O ♗f6  
5.c4 e6 6.cxd5 ♗xd5 7.♗c3 ♙e7 8.♗xd5  
♙xd5 9.♙a4+ ♙d7 10.♙xd7+ ♗xd7  
11.♗d4 ♙xg2 12.♗xg2 c5 13.♗b5  
O-O 14.b3 ♙fd8 15.♙b2 ♙f6 16.♙xf6  
♗xf6 17.♙fd1 ♙d7 18.♙ac1 ♙ad8 19.  
d3 e5 20.♗c3 ♗e8 21.a3 ♗c7 22.♙b1  
♗e6 23.♙dc1 ♗f8 24.b4 cxb4 25.axb4  
♙c8 26.♗b5 ♙xc1 27.♙xc1 a6 28.  
♙c8+ ♙d8 29.♙xd8+ ♗xd8 30.♗c7 a5  
31.bxa5 bxa5 32.♗f3 ♗e7 33.♗e4 ♗d6  
34.♗b5+ ♗c5 35.♗c3 ♗c6 36.f4 exf4  
37.gxf4 ♗b4 38.♗b1 a4 39.d4 ♗a5  
40.d5 ♗c4 41.♗d4 ♗d6 42.♗e5 ♗c5  
43.♗c3 a3 44.♗a2 ♗c4+ 45.♗e4 ♗b6  
46.d6 ♗xd6 47.♗d4 ♗d5 48.f5 f6 49.e4  
♗e7 50.♗c3 ♗c6+ 51.♗c4 ♗e5 52.  
♗c5 ♗d4 0-1

## English Opening

IM Georgi Orlov (2573)

FM Slava Mikhailuk (2435)

WA Championship (1) 2008

1.♗f3 ♗f6 2.c4 g6 3.♗c3 d5 4.cxd5  
♗xd5 5.e4 ♗xc3 6.dxc3 ♙xd1+ 7.♗xd1  
♙g7 8.♗c2 ♗d7 9.♗d2 a5 10.a4 b6  
11.f3 ♙b7 12.♗c4 O-O-O 13.♙e3 f5  
14.exf5 gxf5 15.♙d3 ♙hf8 16.♙he1 e5

17.♙ad1 ♙c6 18.b3 ♗b7 19.♙g1 ♙de8  
20.♗a3 h5 21.♙f2 e4 22.♙b5 exf3  
23.gxf3 ♗e5 24.♙xc6+ ♗xc6 25.♙g1  
♙f6 26.♙g3 h4 27.♙h3 ♗g6 28.f4 ♗xf4  
29.♙f3 ♙e2+ 30.♗b1 ♗h3 31.♙xh4  
♙xh4 32.♙xh3 ♙e1 33.♙xe1 ♙xe1  
34.♗c2 ♙f2 35.♙f3 ♙g1 36.h4 ♗d5  
37.♙f1 ♙c5 38.♗e1 ♗e4 39.♗f3 ♗d3  
40.♗g5 ♙e3 41.♗e6 ♙f7 42.♗g5 ♙f6  
43.♗b2 ♗e2 44.♗e4 ♗xf1 45.♗xf6 f4  
46.♗d5 ♙d2 47.♗c2 ♗e1 48.♗f6 f3  
49.♗e4 ♙h6 50.♗d3 f2 51.♗xf2 ♗xf2  
52.b4 ♙f8 53.♗c4 ♙g7 54.h5 ♗e3  
55.bxa5 bxa5 56.h6 ♙xh6 57.♗b5 ♙g7  
58.♗xa5 ♙xc3+ 59.♗b5 ♗d4 60.♗c6  
♙a5 61.♗b5 ♙b6 0-1

## Round Two

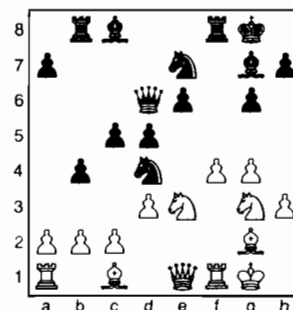
### Sicilian Closed

Alex Guo (1991, 0.0)

IM Georgi Orlov (2573, 0.0)

WA Championship (2) 2008

1.e4 d6 2.g3 c5 3.♙g2 ♗c6 4.♗c3 g6  
5.d3 ♙g7 6.♗e2 ♙b8 7.O-O b5 8.f4  
♗d4 9.h3 b4 10.♗d5 e6 11.♗e3 ♗e7  
12.g4 f5 13.♗g3 O-O 14.♙e1 fxe4 15.  
♗xe4 d5 16.♗g3 ♙d6



17.c3 bxc3 18.bxc3 ♗dc6 19.♗e2 ♙a6  
20.♙d1 ♗b4 21.d4 cxd4 22.cxb4 d3  
23.♗d4 ♙xd4 24.♙b1 ♙xb4 25.♙xb4  
♙xb4 26.♗h1 ♙c5 27.♙f3 ♙c8 28.♙d2  
♙c3 29.♙c1 ♙a5 30.♙b2 d2 31.f5 ♙c1  
32.f6 ♙xb2 33.fxe7 ♙c1 34.♙f6 ♙e2 0-1

### Semi-Slav Meran

GM Gregory Serper (2576, 1.0)

NM Harley Greninger (2220, 0.0)

WA Championship (2) 2008

Annotations by GM Gregory Serper

1.d4 d5 2.c4 c6 3.♗f3 ♗f6 4.♗c3 e6 5.e3  
♗bd7 6.♙d3 dxc4 7.♙xc4 b5 8.♙d3  
♙b7 9.a3 b4 10.axb4

Fifteen years ago, against Kramnik at the World Team Championship in Lucerne, I played 10.♗e4, but, after 10...

a5, Black managed to equalize. The game was eventually drawn and I wasn't too upset. After all, it's not easy to beat a 2700 player and, besides, Russia's first board, in the absence of Kasparov, was considered to be the next World Champion. Anyway, this time I decided to play differently.

10...♙xb4 11.O-O a5 12.e4

Unlike in the Kramnik game, my Knight isn't blocking my own e-pawn; so I use it to create a strong pawn center.

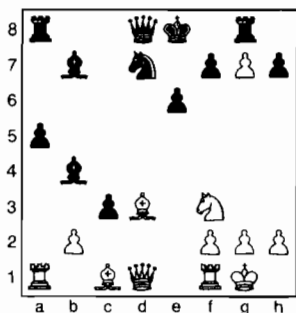
12...c5

Of course, Black immediately strikes back in typical Meran fashion.

13.e5 cxd4!?

Harley definitely deserves credit for this brave move. After 13...♘d5, White keeps his small opening advantage.

14.exf6 dxc3 15.fxg7 ♖g8



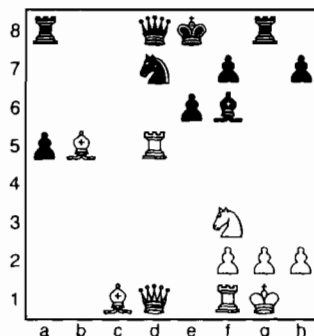
I spent about forty minutes trying to find the best continuation. The first idea that comes to mind is to use the g7-pawn. Unfortunately, after 16.♙h6 ♗f6! 17.♙xh7 ♗xh6 18.♙xg8 ♗xg7, both White Bishops perish. Then I tried to find a way to use the vulnerable position of the Black King. The natural way of attacking the King by pinning the Knight with 16.♙b5 and then doubling heavy pieces along the d-file doesn't look too promising, because Black can always shut the d-file with the ...♙d5 move. That's how I finally came up with the surprising idea to sacrifice my currently unemployed a1-Rook for one of Black's strong Bishops. 16.bxc3 ♙xc3 17.♖a3!!

That was the most difficult idea to find. You can get blindfolded by the natural move 17...♙d5. It's not easy to force yourself to analyse the unnatural 17.♖a3, which invites Black to play 17...♙b4.

17...♙xg7

As it turns out, 17...♙b4 runs into 18.♙b5 (with the threat of 19.♖d3!) 18...♙xa3 19.♙xa3 and, due to a number of threats, such as 20.♘e5, Black is in trouble. For example, 19...♖xg7 20.♗d6! (the threat is ♗f8 checkmate!) 20...♖xg2+ 21.♙xg2 ♗g5+ 22.♗g3 and Black must lose a piece.

18.♙b5 ♙f6 19.♖d3 ♙d5 20.♖xd5!



Mission accomplished! By some strange logic, either of Black's Bishops was more valuable than White's Rook; so I was happy to sacrifice it.

20...exd5 21.♗xd5

Due to White's numerous threats, such as ♙a3 or even the simple ♙xd7+ (Black cannot recapture, since his a8-Rook is hanging.), Black is totally helpless.

21...♙f8

Harley offers the Knight in an attempt to get his King out of danger. Of course, White is uninterested in such a small reward. The fat target on f8 is much tastier.

22.♙h6+ ♙g7

22...♙e7 23.♖e1+ ♘e5 24.♖xe5+ ♙xe5 25.♗xe5 mate wasn't any better for Black.

23.♘g5!

After this final touch, checkmate is unavoidable.

23...♘e5 24.♗c5+ ♗e7 25.♘h7 mate

### English Four Knights

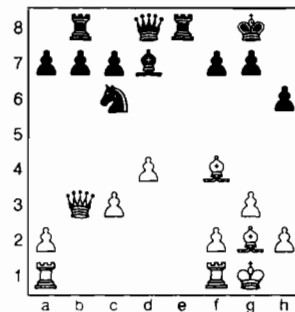
FM Slava Mikhailuk (2435, 1.0)

Joshua Sinanan (2178, 0.0)

WA Championship (2) 2008

1.c4e5 2.♘c3 ♘f6 3.♘f3 ♘c6 4.g3 ♙b4 5.♙g2 O-O 6.O-O ♖e8 7.d3 ♙xc3 8.bxc3 e4 9.♘d2 exd3 10.exd3 d5 11.cxd5 ♘xd5

12.♘e4 h6 13.♗b3 ♘b6 14.♘c5 ♖b8 15.♙f4 ♘d7 16.♘xd7 ♙xd7 17.d4



17...♘a5 18.♗b4 b6 19.c4 ♙f5 20.♖ad1 ♗d7 21.c5 ♙e4 22.d5 ♙xg2 23.♙xg2 ♖bc8 24.c6 ♘xc6 25.dxc6 ♗xc6+ 26.♙g1 ♗e6 27.♗b3 c5 28.♗xe6 ♖xe6 29.♖fe1 ♖xe1+ 30.♖xe1 a6 31.♙f1 ♖c6 32.♖e8+ ♙h7 33.♙e2 g5 34.♙e3 b5 35.♙d3 c4+ 36.♙c3 f5 37.a4 bxa4 38.♖e5 ♙g6 39.♖a5 ♖f6 40.♙xc4 f4 41.gxf4 gxf4 42.♙d4 ♖e6 43.h4 1-0

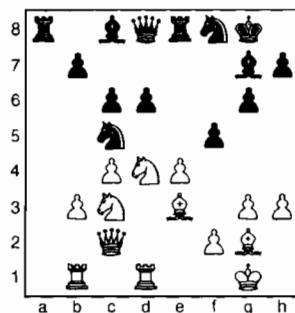
### King's Indian Fianchetto

FM John Readey (2325, 0.0)

NM Michael Lee (2277, 1.0)

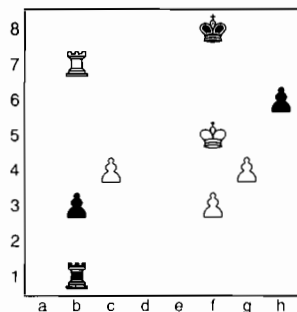
WA Championship (2) 2008

1.♘f3 ♘f6 2.c4 g6 3.g3 ♙g7 4.♙g2 O-O 5.O-O d6 6.♘c3 e5 7.d4 ♘bd7 8.e4 c6 9.h3 a5 10.♖e1 exd4 11.♘xd4 ♘c5 12.♙e3 ♖e8 13.♗c2 a4 14.♖ab1 ♘d7 15.b4 axb3 16.axb3 ♘f8 17.♖e1 f5



18.♘xf5 gxf5 19.♙xc5 ♘e6 20.♙e3 ♘g5 21.h4 ♘xe4 22.♘xe4 fxe4 23.♙xe4 h6 24.♙d4 ♙xd4 25.♖xd4 ♗f6 26.♙h7+ ♙h8 27.♖f4 ♗g7 28.♙g6 ♖e7 29.h5 ♙d7 30.♙h2 ♙e8 31.♖g4 ♖e5 32.♙g2 c5 33.♗d1 ♙c6+ 34.♙g1 ♖d8 35.♖f4 ♙e8 36.♙xe8 ♖dx8 37.♗xd6 ♖xh5 38.♗f6 ♖e2 39.♗f8+ ♗xf8 40.♖xf8+ ♙g7 41.♖b8 ♖e7 42.♖d1 ♖f5 43.♙g2 ♖f6 44.♖d3 ♖c7 45.f3 ♖e6 46.♖bd8 b6 47.♖d6 ♖ce7 48.♖xe6 ♖xe6 49.g4 b5 50.♙f2 ♖a6 51.♖d5 ♖a2+ 52.♙g3 b4 53.♙f4 ♖b2 54.

♖xc5 ♖xb3 55. ♖b5 ♖b1 56. ♖f5 b3 57. ♖b7+ ♖f8



58. f4 b2 59. ♖f6 ♖e8 60. f5 ♖g1 61. ♖b8+ ♖d7 62. ♖xb2 ♖xg4 63. ♖c2 h5 64. c5 h4 65. c6+ ♖c7 66. ♖f7 h3 67. ♖h2 ♖g3 68. f6 ♖xc6 69. ♖f8 ♖d3 70. f7 ♖d7 71. ♖e2 ♖f3 72. ♖d2+ ♖c7 73. ♖d5 h2 74. ♖h5 ♖f2 75. ♖g7 ♖g2+ 76. ♖f6 ♖f2+ 77. ♖g6 ♖g2+ 78. ♖f6 ♖f2+ 79. ♖g7 ♖g2+ 80. ♖f8 ♖d7 { The game continued for several more moves with both players in time pressure. Lee resigned as Readey was about to promote. } 1-0

**King's Indian**

**NM Nat Koons (2313, 1.0)**

**NM Ignacio Perez (2280, 1.0)**

*WA Championship (2) 2008*

1. e4 g6 2. d4 ♖g7 3. c4 d6 4. ♖c3 ♖f6 5. ♖d3 ♖c6 6. ♖ge2 e5 7. d5 ♖e7 8. f3 O-O 9. ♖e3 ♖d7 10. ♖d2 f5 11. O-O-O a6 12. ♖b1 ♖c5 13. ♖c2 b5 14. ♖xc5 dxc5 15. d6 cxd6 16. ♖xd6 ♖e8 17. ♖xc5 ♖e6 18. ♖d5 ♖xd5 19. cxd5 ♖d7 20. d6 ♖h8 21. ♖c3 ♖c8 22. ♖b6 ♖c6 23. ♖b7 ♖f6 24. ♖d2 ♖fxd6 25. ♖hd1 ♖d4 26. ♖b3 ♖cd6 27. ♖d5 fxe4 28. ♖c7 ♖f8 29. ♖xd4 exd4 30. fxe4 ♖c6 31. ♖a7 ♖xe4+ 32. ♖a1 ♖d7 33. ♖e1 ♖c8 34. ♖c1 ♖b7 35. ♖b6 ♖e5 36. ♖e6 ♖g7 37. ♖c5 ♖f8 38. a3 ♖e7 39. ♖b6 ♖e1+ 40. ♖a2 ♖e4 41. ♖d5 ♖a1+ 0-1

**Round Three**

**Colle**

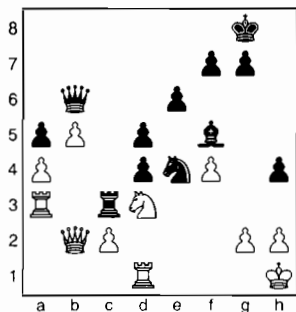
**NM Harley Greninger (2220, 0.0)**

**NM Nat Koons (2313, 1.0)**

*WA Championship (3) 2008*

1. d4 ♖f6 2. ♖f3 d5 3. e3 c5 4. b3 ♖g4 5. ♖b2 ♖a5+ 6. ♖d2 ♖c7 7. ♖e5 ♖e4 8. ♖c1 ♖f5 9. ♖b5+ ♖c6 10. O-O e6 11. f3 ♖f6 12. ♖d2 a6 13. ♖xc6+ bxc6 14. f4 ♖d6 15. ♖df3 O-O 16. dxc5 ♖xc5 17. ♖d4 ♖xd4 18. exd4 ♖e4 19. ♖a3 c5 20. ♖d3 cxd4 21. ♖xf8 ♖xf8 22. ♖b2

♖b6 23. ♖h1 ♖c8 24. a4 ♖c3 25. ♖fd1 h5 26. b4 h4 27. b5 a5 28. ♖a3



28...h3 29. gxf3 ♖d6 30. ♖c1 ♖c4 31. ♖b3 ♖e3 32. ♖d2 ♖e4+ 33. ♖g1 ♖xc2 34. ♖xc2 ♖xd3 35. ♖bxc3 dxc3+ 36. ♖f2 ♖d4 37. ♖g2 ♖e4+ 38. ♖g1 d4 39. b6 ♖a6 0-1

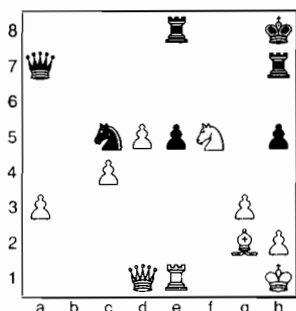
**King's Indian Classical**

**IM Georgi Orlov (2573, 1.0)**

**FM John Readey (2325, 1.0)**

*WA Championship (3) 2008*

1. d4 ♖f6 2. ♖f3 g6 3. c4 ♖g7 4. ♖c3 O-O 5. e4 d6 6. ♖e2 e5 7. O-O ♖a6 8. ♖e1 c6 9. d5 c5 10. a3 ♖e8 11. ♖b1 f5 12. ♖g5 ♖f6 13. ♖h6 ♖g7 14. ♖xg7 ♖xg7 15. exf5 gxf5 16. ♖d2 ♖f6 17. b4 ♖h8 18. ♖b5 ♖g8 19. ♖c3 ♖d7 20. ♖b2 ♖g6 21. ♖f1 ♖g7 22. g3 f4 23. ♖d2 ♖f5 24. ♖e4 ♖g7 25. bxc5 dxc5 26. ♖g2 b6 27. ♖d2 ♖d4 28. ♖f3 ♖e8 29. ♖xa7 ♖f5 30. ♖xd4 cxd4 31. ♖c6 ♖c5 32. ♖xb6 ♖d7 33. ♖b2 ♖xb1 34. ♖xb1 h5 35. ♖d1 ♖h6 36. ♖xd4 fxd4 37. fxd4 ♖c5 38. ♖f5 ♖a7 39. ♖h1 ♖h7



40. ♖d4 ♖xa3 41. ♖xe5 ♖c1+ 42. ♖e1+ 1-0

**Dutch Leningrad**

**Joshua Sinanan (2178, 0.0)**

**Alex Guo (1991, 0.0)**

*WA Championship (3) 2008*

1. ♖f3 f5 2. c4 ♖f6 3. ♖c3 g6 4. g3 ♖g7 5. ♖g2 d6 6. d4 O-O 7. O-O ♖c6 8. d5 ♖e5 9. ♖xe5 dxe5 10. c5 h6 11. ♖b3 ♖h8

12. ♖d1 a6 13. ♖c4 ♖b8 14. b4 b5 15. ♖b3 e4 16. ♖e3 e5 17. dxe6 ♖e8 18. ♖d4 ♖xe6 19. ♖b2 ♖c4 20. e3 ♖f7 21. ♖d2 g5 22. ♖ad1 ♖d3 23. ♖e2 ♖bd8 24. ♖c1 ♖xd4 25. exd4 ♖c4 26. ♖b3 ♖xb3 27. ♖xb3 ♖xb3 28. axb3 ♖d5 29. g4 e3 30. fxe3 ♖xe3 31. ♖e1 f4 32. ♖f3 ♖d8 33. ♖a1 ♖c2 34. ♖xa6 ♖xd4 35. ♖g2 ♖e8 36. ♖a8 ♖xa8 37. ♖xa8 ♖e5 38. ♖d5 ♖g7 39. ♖a2 ♖f6 40. ♖a6+ ♖g7 41. ♖e4 ♖f6 42. ♖d3 ♖f7 43. ♖a7 ♖e5 44. ♖b7 f3+ 45. ♖g1 ♖e6 46. ♖xb5 ♖d5 47. ♖c4+ ♖e4 48. b5 ♖c2 49. b6 cxb6 50. cxb6 ♖b4 51. ♖e7 ♖c6 52. ♖e6 ♖b8 53. ♖xh6 ♖f4 54. h3 ♖g3 55. ♖b5 ♖c3 56. ♖e6 ♖d2 57. ♖e8 ♖f4 58. ♖h8 ♖e5 59. ♖h5 ♖f4 60. ♖f1 ♖e3 61. b7 ♖d2 62. ♖h8 ♖f4 63. ♖e1 ♖g2 64. ♖f8 f2+ 65. ♖d1 ♖g3 66. ♖e2 ♖g1 67. ♖f3 ♖d6 68. ♖d8 ♖c7 69. ♖d1+ ♖h2 70. ♖xf2 ♖xh3 71. ♖f3 ♖h2 72. ♖d5 ♖f4 73. ♖f5 ♖d6 74. ♖xg5 1-0

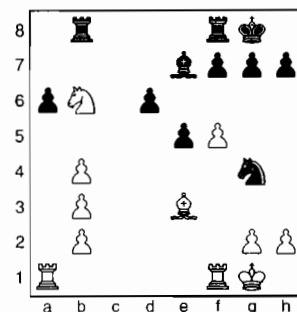
**Sicilian Sozin/Benko**

**NM Ignacio Perez (2280, 2.0)**

**FM Slava Mikhailuk (2435, 2.0)**

*WA Championship (3) 2008*

1. e4 c5 2. ♖f3 ♖c6 3. d4 cxd4 4. ♖xd4 ♖f6 5. ♖c3 d6 6. ♖c4 ♖b6 7. ♖db5 a6 8. ♖e3 ♖a5 9. ♖d4 e6 10. O-O ♖e7 11. f4 O-O 12. f5 ♖xd4 13. ♖xd4 b5 14. ♖b3 b4 15. ♖a4 e5 16. ♖e3 ♖b8 17. a3 ♖xe4 18. ♖f3 ♖b7 19. ♖g4 ♖f6 20. ♖xb4 ♖xb4 21. axb4 ♖d5 22. ♖b6 ♖xb3 23. cxb3



23... ♖g4 24. ♖d5 ♖d8 25. ♖a7 ♖b5 26. ♖fd1 ♖h6 27. ♖xa6 ♖xf5 28. g4 ♖e7 29. ♖xd6 ♖xd5 30. ♖1xd5 ♖e7 31. ♖xb5 ♖xd6 32. ♖c5 ♖xc5+ 33. bxc5 ♖c8 34. ♖b7 ♖f8 35. b4 h6 36. h4 g6 37. ♖f2 ♖g7 38. ♖e3 ♖f6 39. ♖e4 ♖e8 40. b5 ♖e6 41. ♖b6+ ♖d7 42. ♖d6+ ♖c7 43. ♖f6 ♖e7 44. h5 gxf5 45. gxf5 ♖b7 46. ♖f5 1-0

**In May: WA Invitational**

# Washington Open Chess Tournament May 24-26, 2008



WASHINGTON  
CHESS  
FEDERATION

44-19 East B Street  
Tacoma, WA 98444  
206-325-2936

## Washington Chess Federation

### WA Open Sections/Entry Fees (by April 15 / May 15 / on site)

#### OPEN

EF \$79 / \$89 / \$99

#### PREMIER (U2000)

EF \$69 / \$79 / \$89

#### RESERVE (U1700)

EF \$59 / \$69 / \$79

#### BOOSTER (U1400)

EF \$49 / \$59 / \$69

Free entry to GM's, IM's, WGM's.

\$25 entry option for juniors under age 21 playing for medal only.

Three medals awarded per section.

### \$8,000 Prizes Guaranteed by the Washington Chess Federation!

Open	Prem.	Res.	Boos.
\$1,000	\$400	\$350	\$300
\$600	\$300	\$250	\$150
\$400	\$250	\$200	\$100
\$300	\$200	\$150	\$100
\$200	\$150	\$100	\$100
U2150	U1850	U1550	U1100
\$400	\$250	\$200	\$120
\$250	\$150	\$100	\$ 80
\$150	\$100	\$100	\$120(*)
\$100	\$100	\$100	\$ 80(*)

(\*) Prizes for unrated players.

All prizes will be mailed by 6/1.

### Entries/Information:

Dan Mathews  
WCF Tournament Coordinator  
730 Olympic Ave  
Edmonds, WA 98020  
Cell Phone (425) 218-7529  
[Dthmathews@hotmail.com](mailto:Dthmathews@hotmail.com)

Make checks payable to  
Washington Chess Federation  
(WCF).

Also see [www.nwchess.com](http://www.nwchess.com).

Marriott Redmond Town Center, 7401 164th Avenue NE, Redmond, WA 98052. Hotel reservations: 1-800-228-9290 or 425-498-4000 by April 23, mention WA Open Chess. \$89 per night for up to four.

**Registration/Byes:** Saturday 8:15-9:15AM for 3-day, or 3:30-4:15 PM if entering with one half-point bye. Sunday 8:15-9:00 AM for 2-day, or 9:00-9:30 AM if entering 3-day event with two half-point byes. Two half-point byes available, which must be requested in advance, or at site before the announced cutoff time.

**Format/Ratings:** Four sections (see bar at left), six round Swiss system, USCF rated. The Open Section is also FIDE rated. USCF May supplement ratings will be used. Unrated players may play in open or booster section only, and are eligible for top five prizes in open and the two unrated prizes in booster section.

**Time Controls:** 3-day schedule: 40/2 Hrs., SD 1 Hr. 2-day schedule: Rounds 1-3: Game/60 minutes. (Rounds 4-6 same as 3-day schedule.) Both schedules: Digital clocks preferred. 5-second time delay used from start of game.

**Rounds:** 3-day schedule: Saturday: 10:00AM, 5:00PM, Sunday: 10:00AM, 5:00PM, Monday: 9:00AM, 3:30PM. 2-day schedule: Sunday: 9:30AM, 11:45AM, 2:30PM, then join 3-day schedule for rest of tourney. WCF annual meeting: 3:30 PM Sunday, May 25.

**Memberships:** USCF and either WCF or OCF membership required in all sections, OSA. Memberships (including USCF) must be current or paid fully.

**Miscellaneous:** 2008 Chess Cafe Grand Prix event (50 pts), Harmon Memorial NW Grand Prix event. Please bring set, board and clock. No smoking. No computers. Please use entry form (when available) for a list of all discounts and fees, and to indicate schedule, section, side events and byes requested.

**Entries/Prizes/Info:** See bar at left. Entry form will be posted on NWC website.

### Side Events:

**May 24 Washington Open Scholastic.** See NWC website, or contact David Hendricks, WCF Scholastic Director, 2439 220th Place NE, Sammamish, WA 98074, ph. 425-868-3881, e-mail: [DavidCHendricks@comcast.net](mailto:DavidCHendricks@comcast.net).

**May 24 WA Open Bughouse Championship.** Format: 5 round Swiss (2 games per round) in 2 sections, Open and K-6 (scholastic). EF: \$25.00 per 2 player team. TC: G/5. Reg. by 5:00 PM. Rds: 5:30, 5:45, 6:00, 6:15, 6:45. No memberships required. Prizes (b/16): Open 1st \$50.00, 2nd \$30.00, 3rd \$20.00; K-6 trophies for 1st, 2nd, 3rd, 4th, 5th.

**May 25 (Sunday night) WA Open Blitz Championship.** Format: 6 round Swiss in 2 sections, Open and Reserve (U1700). EF: \$25.00 (until May 22nd). \$30.00 at site, \$10.00 discount if playing in main tourney. TC: G/5. Not USCF rated. WCF/OCF membership required, OSA. Reg. by 9:00 PM. Rds: 9:30, 9:45, 10:00, 10:15, 10:30, 10:45, 11:00 PM playoff to break ties for 1st place. Prizes (b/26): Open 1st \$100.00 + plaque, 2nd \$50.00, U1900 \$40.00; Reserve 1st \$100.00 + plaque, 2nd \$50.00, U1500 \$40.00.

**May 25 WA Open Novice Championship.** Format: one section 5 round Swiss, open to U1200 or unrated. TC: G/45. EF: \$12.00 (until May 22nd). \$16.00 at site. Reg. 9:00-9:45 AM. Rds: 10:00, 11:45, 1:30, 3:15, 5:00. Prizes: trophies 1st, 2nd, 3rd and 1st, 2nd U1200, U1100, U1000, U900, U800, Unrated. WCF/OCF membership required (option to pay \$5 tournament membership instead of \$17 or \$25 full-year membership).

Revised 3/15/2008.



English Botvinnik

NM Michael Lee (2277, 1.0)

GM Gregory Serper (2576, 2.0)

*WA Championship (3) 2008*

1.c4 e5 2.g3 d6 3. g2 g6 4. d3 g7  
5.e4 d6 6. dge2 f5 7. d3 d6 8. O-O O-O  
9. d5 e6 10. g5 d7 11. c1 d5  
12. d2 f7 13. b4 af8 14. b5 d8  
15. f4 c6 16. bxc6 bxc6 17. de3 fxe4  
18. dxe4 exf4 19. dxf4 dxf4 20. gxf4  
d7 21. ccd1 h6 22. h4 fxf4  
23. fxf4 fxf4 24. f5 g4 25. dxh6+  
hxh6 26. xh6 g7 27. xg7+ xg7  
28. g3 xc4 29. b1 a6 30. f1 d5  
31. xa6 xa6 32. b7+ f6 33. xa7  
d5 34. g2 e6 {After mutual time  
pressure was over, White resigned. } 0-1

**Round Four**

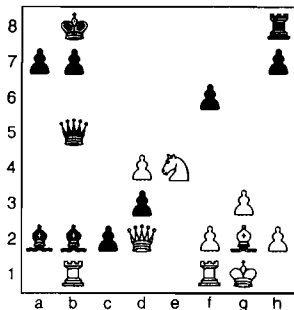
Albin Countergambit

GM Gregory Serper (2576, 3.0)

NM Nat Koons (2313, 2.0)

*WA Championship (4) 2008*

1. d4 d5 2. c4 e5 3. dxe5 d4 4. d3 d6  
5. d2 d5 6. a3 d7 7. g3 O-O O-O 8. b4  
f6 9. exf6 d3 10. b2 dxf6 11. e3 b8  
12. b5 a5 13. c3 xc4 14. xc4  
xb5 15. xf6 gxf6 16. cd2 c5 17. g2  
c4 18. c1 e6 19. d4 xd4 20. exd4  
xa3 21. b1 b2 22. O-O c3 23. de4  
c2 24. d2 a2



25. f4+ a8 26. d6 cxb1= 27.  
xb1 b6 28. xb7 a6 29. xb2 xb2  
30. da5+ 1-0

Anglo-Dutch

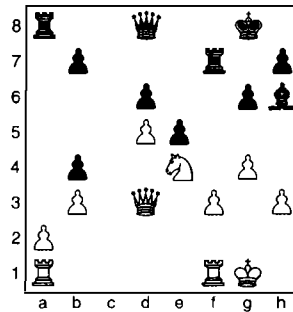
NM Michael Lee (2277, 1.0)

IM Georgi Orlov (2573, 2.0)

*WA Championship (4) 2008*

1. c4 g6 2. d3 g7 3. g3 d6 4. g2 f5  
5. d3 d6 6. e4 e5 7. dge2 O-O O-O c6  
9. h3 e6 10. b3 a5 11. d4 dx4 12. dx4  
fxe4 13. d5 cxd5 14. cxd5 f5 15. g4 d7  
16. d3 d6 17. dx4 b5 18. e1  
d4 19. a3 h6 20. f1 xf1 21.

f1 f4 22. f3 f7 23. xb4 axb4 24.  
d3



24... c8 25. a3 bxa3 26. xa3 f4  
27. a2 fc7 28. g2 h4 29. ff2  
d8 30. fc2 g7 31. xc7+ xc7  
32. c4 xc4 33. bxc4 xc4 34. b2  
h6 35. h4 b6 36. xb6 c2+ 37. f1  
c1+ 38. e2 c2+ 39. d3 h2  
40. xd6 xh4 41. f5+ g5 42. xh4  
xh4 43. d6 1-0

Sicilian Closed

Alex Guo (1991, 0.0)

NM Ignacio Perez (2280, 3.0)

*WA Championship (4) 2008*

1. e4 g6 2. g3 g7 3. g2 c5 4. d3 d6  
5. d3 d6 6. dge2 O-O O-O b8 8. e3  
d6 9. c1 d4 10. d2 d4 11. h3 d5  
12. xd4 cxd4 13. d2 b6 14. b1  
e6 15. f4 d6 16. a3 f5 17. h2 bc8  
18. b4 b5 19. d1 c7 20. b2 fc8  
21. a1 a4 22. exf5 gxf5 23. d3 h8  
24. f2 b5 25. e2 d8 26. e1 g8  
27. f2 d6 28. d4 e6 29. xc6 xc6  
30. d3 xc2 31. xd4 e5 32. fxe5 c1  
33. b1 d1 34. xc1 xe2+ 35. g1  
xc1+ 36. xc1 xf3 37. f2 dxe5  
38. c5 d1+ 39. g2 xd3 40. xa7  
h6 0-1

English Symmetrical

FM John Readey (2325, 1.0)

Joshua Sinanan (2178, 1.0)

*WA Championship (4) 2008*

1. d3 c5 2. c4 d6 3. g3 d5 4. cxd5 dx5  
5. g2 d6 6. d3 d7 7. a3 e5 8. b4 f6  
9. bxc5 xc5 10. d3 O-O 11. O-O e6  
12. d4 e7 13. e3 d4 14. d3 d7  
15. d2 ab8 16. a4 b6 17. xd4 exd4  
18. d5 xb5 19. axb5 xb5 20. xa7  
b4 21. b1 f7 22. xf7 xf7  
23. c1 a4 24. d4 f8 25. d5 a7  
26. d3 b5 27. c2 b4 28. a2 b6  
29. a8 xa8 30. xa8 c3 31. e4  
a7 32. c6 b4 33. b5 c7 34. c2  
f8 35. d2 b7 36. c4 xd2

37. xd2 b3 38. b2 xc4 39. dxc4 b4  
40. c5 c3 41. a3 b2 Draw

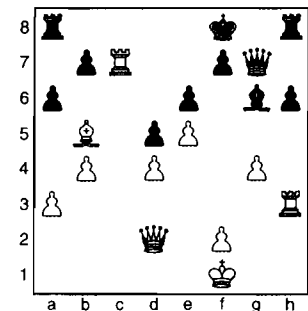
Slav Exchange

FM Slava Mikhailuk (2435, 2.0)

NM Harley Greninger (2220, 0.0)

*WA Championship (4) 2008*

1. c4 c6 2. d3 d5 3. cxd5 cxd5 4. d4 d6  
5. f4 d6 6. e3 f5 7. c1 b6 8. e2  
e6 9. d4 a5 10. f1 e7 11. a3 h6  
12. h4 d8 13. h5 d6 14. d5 xf4  
15. exf4 b6 16. b4 d4 17. g4 h7 18.  
h3 xc5 19. xc5 d8 20. d3 f6  
21. d2 g6 22. d5 g5 23. xh5 g6  
24. h3 dx5 25. fxe5 g7 26. b5+  
f8 27. c7 a6



28. d7 h5 29. c3 h6 30. f3 g8  
31. g5 h5 32. g3+ f8 33. c3  
g6 34. a4 h1+ 35. g1 h3+  
36. xh3 xh3 37. g3 xg3 38. fxg3  
b5 39. d1 a5 40. c3 axb4 41. axb4  
a1 0-1

**Second Weekend**

**Round Five**

Grünfeld Hungarian

NM Nat Koons (2313, 2.0)

FM Slava Mikhailuk (2435, 2.0)

*WA Championship (5) 2008*

1. d4 d6 2. c4 g6 3. d3 c5 4. d3 g7  
5. b3 dxc4 6. xc4 O-O 7. e4 a6 8. e5  
b5 9. b3 d7 10. e6 fxe6 11. e3 d6  
12. h4 d6 13. d1 d5 14. h5 d6  
15. hxg6 hxg6 16. d3 dx3 17. fxe3  
g3+ 18. d2 xg2+ 19. e2 xf3  
20. dg1 f2 21. d1 dx4 22. exd4  
xd4+ 0-1

Dutch Leningrad

NM Harley Greninger (2220, 1.0)

Alex Guo (1991, 0.0)

*WA Championship (5) 2008*

1. d4 f5 2. d3 d6 3. g3 g6 4. g2 g7  
5. O-O O-O 6. b3 d6 7. b2 c6 8. c4 d6

9. ♖bd2 ♖b8 10. ♗e1 ♖e8 11. ♗d3 ♗c7  
 12. ♖c2 g5 13. e4 fxe4 14. ♗xe4 ♗f5  
 15. ♖ae1 ♖g6 16. ♖e2 ♖be8 17. f4 g4  
 18. ♗df2 ♗d7 19. ♖d2 h6 20. ♖e2 b5  
 21. ♖a5 ♗e6 22. cxb5 cxb5 23. ♖xb5  
 ♗xd4 24. ♗xd4 d5 25. ♗xg7 ♗xg7 26.  
 ♖xd5 ♖d8 27. ♗c5 ♖fe8 28. ♗e6+  
 ♗xe6 29. ♖xe6 ♗f6 30. ♖e5 ♗f7 31.  
 ♖e1 ♖d2 32. ♖xe7+ ♖xe7 33. ♖xe7+  
 ♗g8 34. ♖e6+ ♗g7 35. ♗e4 ♗xe4 36.  
 ♖xg6+ ♗xg6 37. ♗xe4+ ♗f6 38. a4 ♖b2  
 39. ♗d5 a5 40. ♗c4 ♗g6 41. ♖e2 ♖b1+  
 42. ♗f2 ♖d1 43. ♖e6+ ♗h5 44. ♖e5+  
 ♗g6 45. ♖xa5 ♖d2+ 46. ♗e2 ♖b2  
 47. ♖b5 ♗f6 48. a5 ♖a2 49. ♖e5 ♗g6  
 50. a6 ♗f6 51. b4 ♗g6 52. ♖a5 1-0

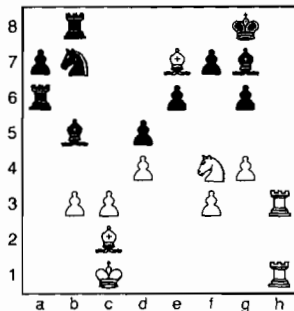
*Pirc Defense*

**NM Ignacio Perez (2280, 4.0)**

**FM John Readey (2325, 1.5)**

*WA Championship (5) 2008*

1. e4 d6 2. d4 ♗f6 3. ♗c3 g6 4. f3 c6 5. a4  
 ♗g7 6. ♗e3 ♗bd7 7. ♖d2 ♖a5 8. ♗c4  
 d5 9. exd5 ♗b6 10. ♗b3 ♗bxd5 11. ♗xd5  
 ♖xd2+ 12. ♗xd2 cxd5 13. O-O-O O-O  
 14. ♗e2 b6 15. ♗f4 e6 16. h4 ♗a6 17. h5  
 ♖fc8 18. hxg6 hxg6 19. c3 ♗e8 20. ♗b1  
 ♗d6 21. ♖h3 b5 22. axb5 ♗xb5 23. ♖dh1  
 ♖ab8 24. ♗c2 ♗c4 25. ♗c1 ♗e8 26. b3  
 ♗d6 27. ♗b2 ♗b5 28. ♗e2 ♖b6 29. g4  
 ♖cb8 30. ♗c1 ♗d6 31. ♗a3 ♖a6 32.  
 ♗c5 ♗b5 33. ♗f4 ♗b7 34. ♗e7



34... ♖c8 35. g5 ♖xc3 36. ♗d2 ♖ac6  
 37. ♗d3 ♗xd3 38. ♗f6 ♖c2+ 39. ♗e3  
 ♗d6 40. ♖h8+ 1-0

*King's Indian Classical*

**Joshua Sinanan (2178, 1.5)**

**NM Michael Lee (2277, 2.0)**

*WA Championship (5) 2008*

1. ♗f3 ♗f6 2. c4 g6 3. ♗c3 ♗g7 4. e4 d6  
 5. d4 O-O 6. ♗e2 e5 7. O-O ♗c6 8. d5 ♗e7  
 9. b4 ♗h5 10. ♖e1 f5 11. ♗g5 ♗f6 12.  
 ♗f3 c6 13. ♗e3 h6 14. ♗e6 ♗xe6 15.  
 dxe6 fxe4 16. ♗xe4 ♗xe4 17. ♗xe4 d5  
 18. ♗c5 dxe4 19. ♖xd8 ♖fxd8 20. ♗xe7

♖d4 21. ♗c5 ♖xc4 22. ♖ac1 ♖xc1  
 23. ♖xc1 ♖e8 24. e7 ♗f6 25. ♗xa7 ♗xe7  
 26. ♗c5 ♗f7 27. ♗f1 ♗xc5 28. bxc5 ♖a8  
 29. ♖b1 ♖a7 30. ♖d1 ♖xa2 31. ♖d7+  
 ♗f6 32. ♖d6+ ♗f5 33. g4+ ♗g5 34. h4+  
 ♗xg4 35. ♖xg6+ ♗xh4 36. ♖xh6+ ♗g5  
 37. ♖d6 ♗f5 38. ♗e1 ♖c2 39. ♖d7 ♖xc5  
 40. ♖xb7 ♖c2 41. ♖e7 e3 42. fxe3 ♗e4  
 43. ♗d1 ♖c3 0-1

*OGD Orthodox*

**IM Georgi Orlov (2573, 2.0)**

**GM Gregory Serper (2576, 4.0)**

*WA Championship (5) 2008*

1. d4 d5 2. c4 c6 3. ♗c3 ♗f6 4. ♗f3 e6  
 5. ♗g5 ♗e7 6. e3 O-O 7. ♖c2 ♗bd7  
 8. ♖d1 b6 9. ♗d3 dxc4 10. ♗xc4 ♗d5  
 11. ♗xe7 ♖xe7 12. O-O ♗b7 13. e4 ♗xc3  
 14. bxc3 c5 15. d5 exd5 16. exd5 ♖d6  
 17. ♗d3 ♗f6 18. c4 ♖ae8 19. ♖fe1 ♗c8  
 20. h3 g6 21. ♖c3 ♖xe1+ 22. ♖xe1 ♖e8  
 23. ♗e5 ♗d7 24. ♖e3 ♖e7 25. g4 ♗e8  
 26. ♖e1 ♗f8 27. ♗g2 f6 28. ♗f3 ♖xe3  
 29. fxe3 b5 30. e4 bxc4 31. ♗xc4 ♖f4  
 32. ♖f2 ♗d6 33. ♖xc5 ♗e8 34. ♗d3  
 ♗xe4 35. ♗xe4 ♖xe4 36. ♗f2 ♖a4 37. a3  
 ♖b5 38. ♖xa7 ♖xd5 39. ♖b8+ ♗e7  
 40. ♖b4+ ♗f7 41. ♖c3 h5 42. gxh5 ♖xh5  
 Draw

**Round Six**

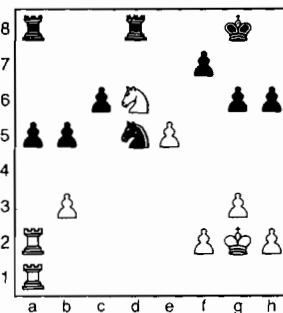
*Reti Opening*

**FM John Readey (2325, 1.5)**

**NM Harley Greninger (2220, 2.0)**

*WA Championship (6) 2008*

1. ♗f3 ♗f6 2. g3 d5 3. ♗g2 c6 4. O-O ♗f5  
 5. d3 e6 6. ♗bd2 ♗e7 7. c4 O-O 8. b3 a5  
 9. a3 ♗a6 10. ♗b2 h6 11. ♖c1 ♗h7 12.  
 ♖c2 ♗g4 13. ♖a1 ♗f6 14. ♖fc1 ♗xb2  
 15. ♖xb2 ♖e7 16. ♖b1 ♗c5 17. ♖c3 e5  
 18. cxd5 e4 19. d6 ♖xd6 20. dxe4 ♗xe4  
 21. ♗xe4 ♗xe4 22. ♖d2 ♖xa3 23. ♖a1  
 ♖b4 24. ♖d4 ♖xd4 25. ♗xd4 ♗xg2 26.  
 ♗xg2 ♗f6 27. ♗f5 g6 28. ♗d6 ♖fd8  
 29. e4 b5 30. e5 ♗d5 31. ♖da2



31... f6 32. f4 fxe5 33. fxe5 ♖f8 34. ♖xa5  
 ♗e3+ 35. ♗h3 ♖xa5 36. ♖xa5 ♖f2  
 37. ♗e4 ♖e2 38. e6 g5 39. ♖a8+ ♗g7  
 40. ♗xg5 hxg5 0-1

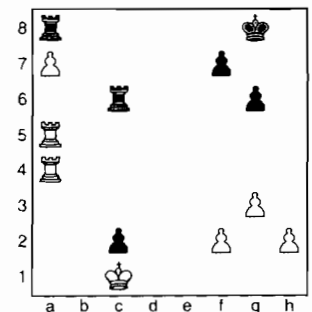
*English Symmetrical*

**IM Georgi Orlov (2573, 2.5)**

**Joshua Sinanan (2178, 1.5)**

*WA Championship (6) 2008*

1. d4 ♗f6 2. c4 e6 3. ♗c3 c5 4. ♗f3 cxd4  
 5. ♗xd4 ♗b4 6. g3 O-O 7. ♗g2 d5 8. cxd5  
 ♗xd5 9. ♗d2 ♗c6 10. ♗xd5 ♗xd2+  
 11. ♖xd2 exd5 12. O-O ♖b6 13. ♖fd1  
 ♗e6 14. ♖ac1 ♖ac8 15. ♗xc6 bxc6  
 16. b4 a5 17. bxa5 ♖a7 18. ♖b4 ♖b8  
 19. ♖c5 ♖a6 20. e4 dxe4 21. ♗xe4 ♗xa2  
 22. ♗d3 ♖a8 23. ♗xh7+ ♗xh7 24. ♖c2+  
 ♗g8 25. ♖xa2 ♖a6 26. ♖c5 ♖fe8  
 27. ♖c2 ♖e6 28. ♗g2 ♖be8 29. ♖d3  
 ♖b7 30. a6 ♖e7 31. ♖h5 g6 32. ♖a5 ♖a8  
 33. ♖c3 ♖c7 34. ♖c5 ♖f6 35. ♖c3 ♖e6  
 36. ♖d4 ♖e7 37. ♖h4 ♖f6 38. ♖d2 ♖d6  
 39. ♖a2 ♖e6 40. ♖b2 ♖f6 41. ♖b7 ♖d8  
 42. ♖b2 ♖f6 43. ♖xf6 ♖xf6 44. a7 c5  
 45. ♖ha4 ♖c6 46. ♗f1 c4 47. ♗e2 c3  
 48. ♗d1 c2+ 49. ♗c1



49... ♖c7 50. ♖a2 ♗g7 51. g4 ♗f6 52. f4  
 ♗e6 53. ♖a6+ ♗d5 54. ♖2a4 ♖c3  
 55. ♖6a5+ ♗c6 56. ♖b4 ♗c7 57. ♖b2  
 1-0

*English Opening*

**NM Michael Lee (2277, 3.0)**

**NM Ignacio Perez (2280, 5.0)**

*WA Championship (6) 2008*

Annotations by NM Michael Lee

1. c4 g6 2. ♗c3 ♗g7 3. g3 e5 4. ♗g2 ♗c6  
 5. e4 d6 6. ♗ge2 h5!?

Black attempts an early kingside  
 foray. 6... ♗ge2 h5!?

7. h4

Prevents ...h4 and ...h3.

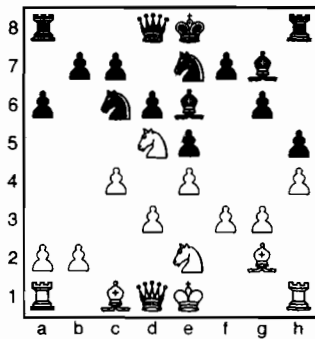
7... ♗g4

Provoking weaknesses before ... ♗e6.

# 2008 Washington State Championship

Name & USCF/FIDE	Rtg	1	2	3	4	5	6	7	8	9	10	T	S-B	
1 <b>Readey, John</b> 10361877 2013959	<b>2325</b> 2278		1	0	0.5	0	0	1	0	1	0	3.5	9.25	
2 <b>Lee, Michael</b> 12858009 2026562	<b>2277</b> 2244	0		1	1	1	0	1	0.5	1	0	5.5	20.00	
3 <b>Orlov, Georgi</b> 12542897 2011271	<b>2573</b> 2494	1	0		1	0.5	1	1	0	1	0.5	6.0	20.25	=3-4th
4 <b>Sinanan, Joshua</b> 12826891 2027593	<b>2178</b> 2183	0.5	0	0		0	0	0	0	1	0	1.5	2.25	
5 <b>Perez, Ignacio</b> 12689583 2028409	<b>2280</b> 2260	1	0	0.5	1		1	1	1	1	0	6.5	22.00	2nd
6 <b>Greninger, Harley</b> 11133916 2017857	<b>2220</b> 2278	1	1	0	1	0		0	1	1	0	5.0	17.00	
7 <b>Koons, Nat</b> 12602749 2016729	<b>2313</b> 2293	0	0	0	1	0	1		0	0.5	0	2.5	6.75	
8 <b>Mikhailuk, Slava</b> 12626859 2012910	<b>2435</b> 2446	1	0.5	1	1	0	0	1		1	0.5	6.0	20.75	=3-4th
9 <b>Guo, Alex</b> 12895494 2006928	<b>1991</b>	0	0	0	0	0	0	0.5	0		0	0.5	1.25	
10 <b>Serper, Gregory</b> 12670753 2012642	<b>2576</b> 2512	1	1	0.5	1	1	1	1	0.5	1		8.0	31.00	1st

8.f3 ♖e6 9.d3 ♘ge7 10.♗d5 a6?!



This move, trying to create queenside counterplay, is unsound. Better would be 10...O-O in order to meet 11.♖g5 with 11...f6.

11.♖g5!

Now Black is paralyzed.

11...♖c8?!

Black may have feared 11...♖d7 12.♖f6, but that is safely met by 13...♗xd5! 14.♖xg7 ♗e3! (an important in-between move). The text move wastes a tempo.

12.♖c1!?

An immediate O-O or ♖a4 is stronger, as now Black is able to move his King away from danger.

12...f5 13.♖a4 ♖f7! 14.♖a3

Trying for c4-c5.

14...♖d7

14...b5?! 15.O-O

15.O-O

15.c5?! ♗xd5 16.exd5 ♖xd5 17.cxd6 ♖xd6-/+

15...♖he8 16.f4

Opening the diagonal for the Bishop, further supporting the Knight on d5 and placing pressure on b7. White has a clear edge.

16...♖ab8 17.c5?!

The immediate attempt to break open the position is not the strongest. 17.b4! would leave White with a strong bind on Black's position.

17...dxc5 18.♖xc5 ♖bc8 19.♗xe7 ♗xe7 20.fxe5 b6! ±

With ...c7-c5, the text move is Black's hope of counterplay

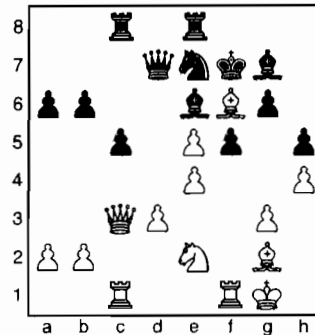
21.♖c3?!

A more solid plan is 21.♖e3 c5 22.♖f6! ♖xf6 23.exf6 ♖xf6.

21...c5

Now the White Queen is tied to the queenside

22.♖f6



22...♖h6?!

Letting the White Bishop become firmly planted into the kingside is unsound. 22...♖xf6! 23.exf6 ♗c6 24.e5?! ♗xe5! 25.♖xe5 ♖xa2 26.♖f4 ♖xe2

23.♗f4 ♗c6 24.exf5 ♖xf5?!

An unsound sacrifice of the exchange. Black would do better to accept the loss of another pawn after gx5 ♖f3!

25.♖c4+

Stronger is 25.♖d5+! ♖f8 (25...♖e6 26.♖xe6+ ♖xe6 27.♖g5 ♖xg5 28.♗xe6+ ♖xe6 29.hxg5, winning) 26.♗xg6+ ♖xg6 27.♖g5+ ♖g7 28.e6+, as pointed out by Perez.

25...♖e6 26.♗xe6 ♖xe6

26...♖xc1? 27.♗xc5+/-.

27.♖g5+ ♖g7 28.♖xh6+ ♖xh6 29.♖f4+ ♖h7 30.♖g5 ♖f5 31.e6!?

A sacrifice in order to eliminate complications. 31.♖e4?! ♖xe4 32.dxe4 ♖d4+ 33.♖h2 ♗xe5 is unclear.

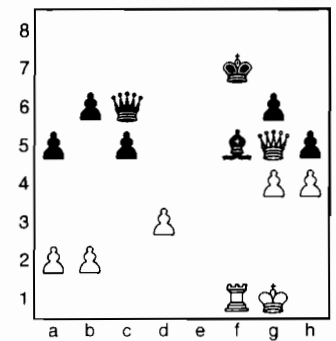
31...♖xe6 32.♖xc6

32.♖ce1!?! ♗e5 33.♖f4 ♖e8 34.♖e3 is better.

32...♖xc6 33.♖ce1 ♖e8! 34.♖e7+! ♖xe7 35.♖xe7+ ♖g8 36.♖d8+ ♖f7! 37.♖e1 ♖e6!

The only defense, although it is only temporary.

38.♖f1+ ♖f5 39.♖e1 ♖e6 40.♖g5+- a5?! 41.♖f1+ ♖f5 42.g4!



Leads to simplification into a won ending.

42...hxg4 43.h5 ♖e8?!

Black is still lost, but there was a better option. 43...♖d6 44.hxg6+ ♖g7! would have been slightly more difficult to win, but White eventually escapes perpetual, i.e.. 45.♖f5 ♖g3+ 46.♖f1 ♖xd3+ 47.♖f2 ♖c2+ (47...♖d4+ 48.♖e3 ♖xb2+ 49.♖g3) 48.♖g3 ♖d3+ 49.♖xg4 ♖e4+ (49...♖e2+ 50.♖g3 ♖e1+ 51.♖g2 ♖e2+ 52.♖f2 ♖e4+ 53.♖g1 ♖e1+ 54.♖f1) 50.♖g3 ♖d3+ 51.♖g2 ♖e2+ 52.♖g1 ♖d1+ 53.♖f1 ♖d4+ 54.♖f2 ♖d1+ 55.♖g2 and White is safe.

44.hxg6 ♖d6 45.♖e1+ ♖e6 46.♖xg4 ♖d7 47.♖xe6!

White safely transposes into a won King-and-pawn endgame.

47...♖xe6 48.♖xe6+ ♖xe6 49.♖f2 ♖f6 50.♖e3 ♖xg6 51.♖e4 ♖g5 52.♖d5 ♖f4 53.♖c6 ♖e3 54.♖xb6 ♖xd3 55.♖xc5 ♖c2 56.♖b5 ♖xb2 57.a4! 1-0

### Petroff Defense

Alex Guo (1991, 0.0)

NM Nat Koons (2313, 2.0)

WA Championship (6) 2008

1.e4 e5 2.♗f3 ♗f6 3.♗xe5 d6 4.♗f3 ♗xe4 5.♗c3 ♗f6 6.d4 ♖e7 7.♖d3 O-O 8.O-O ♖g4 9.h3 ♖h5 10.♗e4 ♗c6 11.c3 d5 Draw

### Round Seven

Semi-Slav Anti-Meran

Joshua Sinanan (2178, 1.5)

GM Gregory Serper (2576, 5.0)

WA Championship (7) 2008

1.♗f3 d5 2.d4 ♗f6 3.c4 c6 4.♗c3 e6 5.e3 ♗bd7 6.♖c2 ♖b4 7.a3 ♖a5 8.♖d2 O-O 9.♖d3 h6 10.O-O ♖c7 11.e4 dxc4 12.♖xc4 e5 13.d5 ♗b6 14.♖a2 cxd5

15. exd5 ♖g4 16. ♖d3 ♖d7 17. ♖ad1 ♖fe8 18. ♖fe1 e4 19. ♗xe4 ♖xe4 20. ♖xe4 ♖f5 21. ♖de1 ♗xe4 22. ♖xe4 ♖d8 23. d6 ♖xd6 24. ♖e2 ♖xe4 25. ♖xe4 ♖e8 26. ♖g6 ♖f4 27. ♖e1 ♗d5 28. ♖d3 ♗f6 29. ♖g6 ♖e2 30. ♖b1 ♖c7 31. g3 ♖d6 32. ♗d4 ♖e5 33. ♗f5 ♗e4 34. ♗e3 ♖c5 35. ♗g4 ♖e7 36. ♖d5 h5 37. ♖xe4 hxg4 38. ♖c3 ♖b6 0-1

*Dutch Leningrad*

**FM Slava Mikhailuk (2576, 3.5)**

**Alex Guo (1991, 0.5)**

*WA Championship (7) 2008*

1. c4 f5 2. ♗c3 ♗f6 3. g3 d6 4. ♖g2 g6 5. d4 ♖g7 6. ♗f3 c6 7. O-O O-O 8. ♖c2 ♖e8 9. d5 ♗a6 10. b3 ♗b4 11. ♖b1 ♗e4 12. ♗xe4 ♖xe4 13. ♗g5 ♗c2 14. ♖xc2 ♖xa1 15. ♖xe4 ♖f5 16. ♖h4 h5 17. e4 ♖d7 18. ♗e6 ♖xe6 19. dxe6 ♖f6 20. ♖h3 ♗g7 21. f4 ♖d4+ 22. ♗h1 g5 23. g4 h4 24. f5 ♖f6 25. a4 ♖d8 26. c5 ♖a5 27. cxd6 exd6 28. ♖d3 ♖e5 29. ♖e3 ♖fe8 30. ♖d2 ♗h6 31. ♖d1 ♖ad8 32. ♖f2 ♗g7 33. ♖d4 ♖a5 34. ♖e3 ♖xd4 35. ♖xg5+ ♗f8 36. ♖g6 ♖c7 37. ♖xd4 ♖g7 38. ♖h5 ♗g8 39. ♖d1 h3 40. ♖xh3 ♖f8 41. g5 ♖e5 42. ♖g6+ ♗h8 43. f6 1-0

*Barry Attack*

**NM Harley Greninger (2220, 3.0)**

**NM Michael Lee (2277, 4.0)**

*WA Championship (7) 2008*

**Annotations by NM Harley Greninger**  
1. d4 ♗f6 2. ♗f3 g6 3. ♖f4 ♖g7 4. e3 O-O 5. ♖e2 d6 6. O-O ♗fd7 7. ♗c3 ♗c6 8. ♖d2 e5 9. ♖g3 h6 10. dxe5 ♗dxe5 11. ♗xe5 dxe5 12. ♖ad1 ♖e6 13. ♖xd8 ♖fxd8 14. ♗b5 ♖dc8!?

Black relinquishes the d-file, however White's Rooks have no inroads.

15. c4 ♗e7 16. b3 f5 17. ♖f3

The main alternative is the immediate 17. f4 a6 18. ♗a3 e4 19. ♖h4 with approximately equal chances.

17... a6 18. ♗a3

Not 18. ♗c3? e4.

18... ♖ab8 19. ♗c2 a5 20. ♖e2 g5 21. f4 gxf4 22. exf4 e4 23. ♗d4 ♖xd4+

Best, although it is psychologically difficult to part with this active Bishop. On 23... ♖d7, I had intended to play 24. ♖f2 ♗c6 25. c5!?, activating the King Bishop. Not good for Black is 23... ♖f7?!

24. ♖h4 ♗g6 25. ♗xf5±.

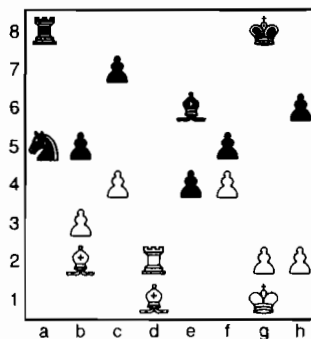
24. ♖xd4 ♗c6 25. ♖d2 ♖d8 26. ♖fd1 ♖xd2 27. ♖xd2 a4!

Michael looks to create his own open file!

28. ♖h4 axb3 29. axb3 ♖a8 30. ♖f6 ♗f7

I had expected 30... ♖a3 31. ♖d1 and now Black cannot play 31... ♗a5? due to 32. ♖b2 ♖a2 33. ♖c3! ♖a3 (33... ♖xd2 34. ♖xd2±) 34. ♖d8+ ♗f7 35. ♖a8+.

31. ♖b2 ♗a5 32. ♖h5+ ♗g8 33. ♖d1 b5?!



Black pushes the envelope and falls into difficulties, although the consequences of this move are very difficult to calculate to their conclusion.

34. cxb5 ♖xb3

34... ♗xb3 35. ♖c2 ♖d8 36. ♖h5! (avoiding lining up the Bishops along the second rank, as one could fall victim to a Rook on d2) 36... ♖d7 37. ♖c6!+-

35. ♖xb3+ ♗xb3 36. ♖d7 ♖a2 37. ♖f6 e3!?

The point to Black's previous play. The e-pawn becomes quite dangerous. The only problem is that White's b-pawn is even more dangerous.

38. ♖xc7!

This is the refutation of Black's 33... b7-b5. Less good is 38. ♖e7 e2 39. ♗f2 ♗c1 and White has to guard against the threat of ... ♗d3+. A pretty suicide would be 40. ♗e1 ♗d3 mate!

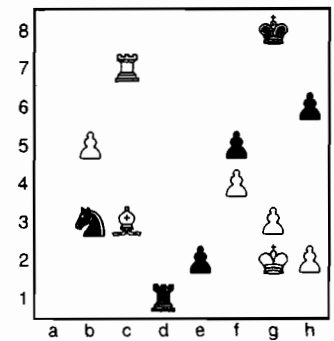
38... ♖d2

Threatening mate on the move.

39. g3

A nice alternative is 39. ♗f1 ♖f2+ 40. ♗e1 ♖xg2 41. b6 ♗c1 42. ♖g7+!+-.

39... ♖d1+ 40. ♗g2 e2 41. ♖c3



This is the first of many times White offers Black his Bishop.

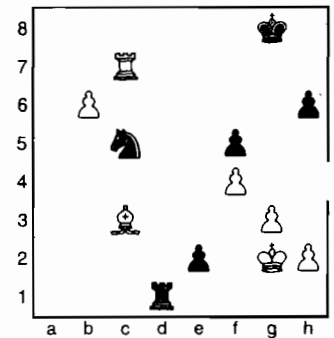
41... ♖c1

After 41... e1=♖ 42. ♖xe1 ♖xe1 43. b6 ♗a5 44. b7 ♗xb7 45. ♖xb7, White wins due to the weak state of Black's remaining pawns.

42. b6!

Offers the Bishop a second time.

42... ♗c5!



Very creative defense, creating an amazing sight on the board. Both sides seem determined to give up their minor piece. Now all pieces are lined up on the c-file and each side has a pawn threatening to promote! 42... ♖xc3 fails to 43. b7!! 43. ♗f2!

43. ♗f2!

Offering the Bishop yet again! 43. ♖xc5? fails to 43... e1=♖+ 44. ♖xe1 ♖xc5.

43... ♗a6

43... ♗e4+ 44. ♗xe2 ♗xc3+ 45. ♗d2 ♖b1 46. b7+-; 43... ♖xc3 44. b7+-

44. ♖g7+!

Forcing the King to a dark-square may prove useful in the future. Also possible is 44. ♖c8+ ♗f7 45. ♗xe2 ♖b1 46. ♖c6.

44... ♗f8 45. ♖a7 ♗c5

If 45... ♖xc3, then White wins with 46. ♖xa6 ♖b3 (46... ♖e3 47. ♖e1 etc.) 47. ♖xe2 ♖e7 48. ♖d2 ♖d7 49. ♖c2 ♖b5 50. ♖c3 ♖c8 51. ♖c4. By playing his King to the queenside, White forces Black to respond by playing his King to the same wing. This allows White to gain additional momentum on the other wing, e.g., 51... ♖b2 52. b7+ ♖xb7 53. ♖xh6. 46. ♖b4

By the way, White offers the Bishop again.

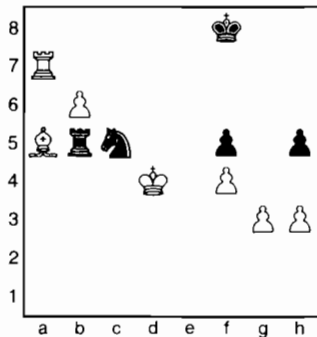
46... e1=♖+ 47. ♖xe1 ♖b1

47... ♖d3+ 48. ♖e2 ♖xe1 49. b7 ♖b1 50. ♖a8+ ♖f7 51. b8=♖+—

48. ♖a5 ♖b2+ 49. ♖e3 ♖b5

White could play ♖d4 immediately. However, if Black allows White to force a second passed pawn on the kingside, it will provide White a clearer path to victory.

50. h3 h5 51. ♖d4!



White is bound and determined to sacrifice this Bishop! This time Black is obliged to accept.

51... ♖xa5

The text is better than the alternative 51... ♖b3+ 52. ♖c4 ♖xa5 53. b7!

52. ♖xa5 ♖b3+ 53. ♖e5 ♖xa5 54. ♖xf5 ♖c4!

In my calculations when sacrificing the Bishop on move 51, I had missed this resource which allows Black's Knight to participate in the battle on the kingside. Nevertheless, White's three connected passed pawns are still decisive.

55. ♖g5 ♖xb6 56. ♖xh5 ♖f7 57. g4 ♖f6 58. ♖h4 ♖g6 59. ♖g3 ♖c4 60. f5+ ♖f6 61. ♖f4 ♖d6 62. g5+ ♖g7 63. h4 ♖c4 64. h5 ♖f7 65. h6 ♖d6 66. h7 ♖g7 67. g6

♖e8 68. ♖e5 ♖h8 69. ♖e6 ♖f6 70. ♖f7 ♖e8

After the better 70... ♖h5, White wins with 71. ♖e7 ♖f6 72. g7+! ♖xg7 73. h8=♖+ ♖xh8 74. ♖xf6.

71. ♖xe8 1-0

This game was such a joy to play, not only due to the end result but in the creativity Black displayed. Michael, under the coaching of Orlov, is sure to make GM if he continues his ascent.

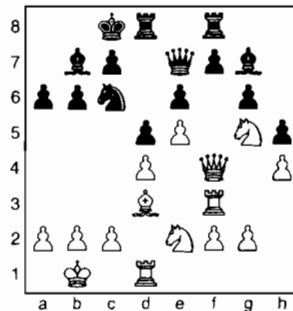
### Trompowsky

NM Nat Koons (2313, 2.5)

FM John Readey (2325, 1.5)

WA Championship (7) 2008

1. d4 ♖f6 2. ♖g5 e6 3. e4 h6 4. ♖xf6 ♖xf6 5. ♖f3 d6 6. ♖c3 ♖d8 7. ♖d2 a6 8. ♖d3 g6 9. O-O-O ♖g7 10. e5 ♖c6 11. ♖f4 d5 12. h4 b6 13. ♖h2 h5 14. ♖f3 ♖b7 15. ♖g5 ♖e7 16. ♖h3 ♖h6 17. ♖b1 O-O-O 18. ♖e2 ♖hf8 19. ♖f3 ♖g7



20. c3 f6 21. exf6 ♖xf6 22. ♖e3 e5 23. dxe5 ♖xe5 24. ♖d4 c5 25. ♖xf6 ♖xf6 26. ♖e2 d4 27. ♖h3+ ♖b8 28. ♖g3 ♖a7 29. ♖f4 ♖xd3 30. ♖xd3 dxc3 31. bxc3 ♖xc3 32. ♖c2 ♖a5 33. ♖e5 ♖xe5 34. ♖xe5 ♖xd1 35. ♖xd1 ♖xg2 36. ♖xg6 ♖d5 37. a3 ♖b3+ 38. ♖c1 ♖a4 39. ♖f4 ♖e1 40. ♖d3 ♖c3 41. f4 ♖d7 42. ♖c2 ♖f6 43. ♖e5 ♖f5+ 44. ♖d2 b5 45. ♖ef7 c4 46. ♖d6 c3+ 47. ♖c1 ♖d3 48. ♖f3 a5 49. ♖e1 ♖e2 50. ♖e4 ♖xh4 51. ♖c2 ♖e7 52. ♖xc3 ♖c4 53. a4 b4 54. ♖e3 bxc3 55. ♖xc4 h4 56. ♖e3 ♖d6 0-1

The game against Ignacio was certainly an interesting effort by both parties. I feel I could have played better, but my opponent found several interesting moves in a tough position and thus the final outcome was probably deserved.— G. Orlov

### Pirc Defense

NM Ignacio Perez (2280, 5.0)

IM Georgi Orlov (2573, 3.5)

WA Championship (7) 2008

Annotations by IM Georgi Orlov

1. e4 d6 2. d4 ♖f6 3. ♖c3 c6 4. a4 g6 5. f3

More in the spirit of this position would be something like 5. ♖f3 ♖g7 6. ♖e2 O-O 7. O-O and the game arrives into a well-known opening position, but Ignacio likes to storm the kingside and proceeds accordingly. Objectively, such play should not succeed.

5... ♖g7 6. ♖ge2 ♖a6 7. ♖e3 ♖a5

I was trying to play aggressively, but probably should have opted for simple 7... O-O instead, with ...c6-c5 to follow. White's attack on the kingside with his King in center (since castling long seems unlikely) does not have very favorable odds.

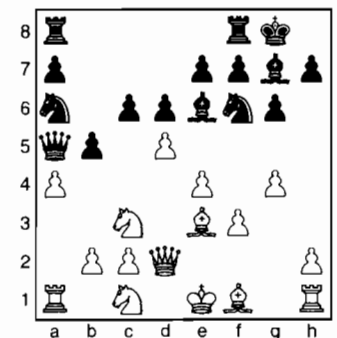
8. ♖c1 ♖e6 9. ♖d2

The more natural 9. ♖b3 would be met by 9... ♖xb3 10. cxb3 ♖b4. If 11. ♖e2 d5!? 12. e5 ♖d7, Black will play ...e7-e6 and ...c6-c5 with a comfortable game.

9... O-O 10. g4 b5!?

I intended to play this move when I castled. The resulting position is very complex and has multiple possibilities on both sides.

11. d5



11... b4

Here I spent a huge amount of time looking at 11... ♖xg4, 11... cxd5 and the move I ended up playing. The problem with a position like this is that it's hard to calculate every single line due to the huge number of moves at every turn and you end up spending gobs of time unproduc-

# Second Annual Clark Harmon Memorial Open April 19-20 \$1700 Guaranteed!

Sponsored by Portland Chess Club and contributors to the  
Harmon Memorial Fund

**5-round Swiss:** One open section

**Time Control:** Saturday 40/90, SD/30; Sunday 40/120, SD 60

**Registration:** Saturday 9-9:45 am. Registration is limited to first 50 entrants. Advanced registration is strongly encouraged.

**Rounds:** Saturday 10:00; 2:00 & 7:00; Sunday 9:30 & 4:30

**Location:** Portland Chess Club, check [www.pdxchess.org](http://www.pdxchess.org) for directions

**Byes:** 2 half-point byes available if requested before 1<sup>st</sup> round.

1<sup>st</sup> \$500 2<sup>nd</sup> \$300 3<sup>rd</sup> \$150  
U2000, U1700, U1400 each 1<sup>st</sup> \$150, 2<sup>nd</sup> \$100

**Entry:** \$50; \$40 for PCC members.

**Memberships:** USCF and OCF/WCF required (OSA). Harmon NW Grand Prix.

This is the **Second Annual Harmon Memorial**. We hope players will join in this tribute to one of the Northwest's premier players and ambassadors of the game. The prize fund is underwritten through the generosity of contributors to the Harmon Memorial Fund.

Name \_\_\_\_\_

Address \_\_\_\_\_

USCF ID # \_\_\_\_\_ USCF Exp \_\_\_\_\_ OCF/WCF Exp \_\_\_\_\_ Rating \_\_\_\_\_

Email \_\_\_\_\_ Bye Rds \_\_\_\_\_

Entries: Payable to Portland Chess Club; mail to Mike Morris, 2344 NE 27<sup>th</sup> Ave., Portland, OR 97212

tively. Interesting, for instance, is something like 11...cxd5 12.♘b3 ♖b4 13.axb5 ♘c5 14.♙xc5? dxc5 15.♞a4 ♘xe4! 16.fxe4 ♙xc3!, but then I saw 14.g5 and my head started spinning a bit, so I abandoned this pursuit. Since 11...♙xg4? 12.♘b3 ♖b4 13.fxg4 ♘xe4 14.♘xe4 ♖xe4 15.♙g2 looked squarely in White's favor, I opted for the text move, which consumed some more of my time.

12.♘3a2

I spent most of the time looking at 12.♘d1, but Ignacio played his move very quickly.

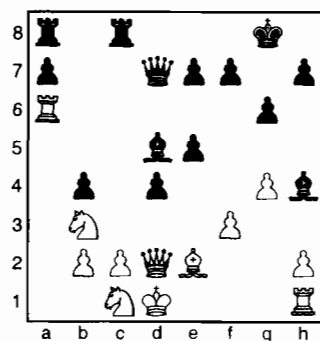
12...cxd5 13.♘b3 ♖xa4 14.♘ac1 ♖d7 15.e5!?

If 15.g5? ♘xe4 16.fxe4 ♙xb2 17.♙d4 ♙xa1 18.♙xa1 ♘c7, Black has a Rook and small bag of pawns; so he should be set. I also looked at 15.♞xa6 dxe4 and liked Black's game.

15...dxe5 16.♞xa6 d4 17.♙g5 ♙d5 18.♙xf6

I think parting with this Bishop swings the game in Black's favor. Instead, 18.♙g2 looks okay. In case of 18...♖b7 19.♖e2 h6 20.♙xf6 ♙xf6 21.O-O ♙g5!, Black looks only a little bit better in an unbalanced position.

18...♙xf6 19.♙e2 ♙h4+ 20.♙d1 ♞fc8



White has lost his castling rights and Black has a pile of pawns and an active dark Bishop. Normally, I would really like my chances, but there was very little time left on my clock.

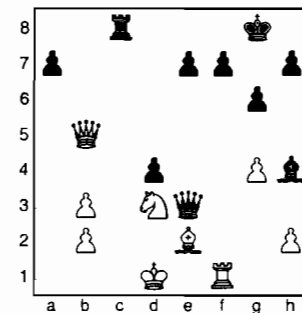
21.♘d3!

This looks risky, but it is the best move, since White can afford to allow build-up along the c-file. 21.♖xb4 e4!? looked very messy.

21...♙xb3 22.cxb3 ♖d5 23.♖xb4 ♞ab8

It is very easy to play this move, but objectively 23...e4! 24.♞a5 ♖c6 25.♞c5 exd3 26.♞xc6 dxe2+ 27.♙xe2 ♞xc6 was best for Black.

24.♞a5! ♖a8 25.♞b5 e4 26.fxe4 ♖xe4 27.♞f1 ♞xb5 28.♖xb5 ♖e3



29.♖d5?

I saw 29.♖d7! and, considering the very short amount of time left on the clock, felt the game was slowly turning against me again. However, Ignacio gave me an opening. White attacks f7, but we have a better fish to fry!

29...♙g5! 30.♖xf7+ ♙h8

Black threatens two mates, on d2 and c1. Chris Kalina would say, "Ignacio is busted," and would be very much on point!

31.♙e1 ♖d2+ 32.♙f2 ♖e3+ 33.♙e1 ♖d2+ 34.♙f2 ♙h4+

It took a bit to find this and the game finally seemed to be over.

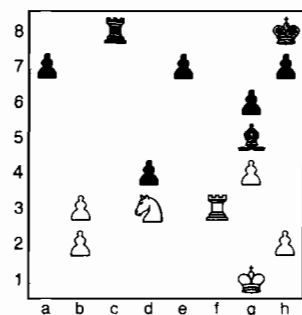
35.♙g1 ♖xe2 36.♖f3 ♖xf3

Even better was 37...♖e3+!

37.♞xf3

Black is up a pawn and 37...♞c2 should do the job. White's King would stay put and the further ...♙h4-g5-e3...♙h8-g7, etc. would win the game. Elementary, Watson, cut the King!

37...♙g5?



38.♙g2 ♙g8 39.♞f1 ♙e3 40.♞a ♞c2+ 41.♙f3

The first time control has finally passed and I realized the position has become much more complicated. White controls the e4-square and my pawn par is going nowhere. I spent a lot of time here and decided to take my chances in a sharp line, since 41...♞c7 42.♞a6 did not look very promising.

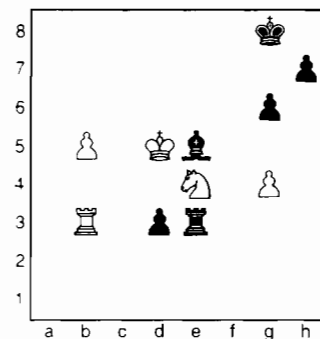
41...♞xh2 42.♞xa7 ♙g5 43.b4 ♞h3- 44.♙e4 ♙f6 45.♞a3!

This move makes things very complicated, as now my plans to unseat White's King from e4 meet serious resistance. In addition, the b-pawn started to look like a major menace!

45...♞e3+ 46.♙d5 e5!? 47.b5 e4 48.♘c5

This is forced, because, after 48.b6 exd3 49.b7 ♙e5, the dangerous runner is caught before the finish line.

48...d3 49.♘xe4 ♙xb2 50.♞b3 ♙e5!



Black needs to control h2-b8 diagonal and this is the place to be. 51.♙xe3 meets 51...d2 52.♞b1 ♞e1! and 52.♞xe3 d1=♖ is good for Black as well.

51.♙d2?

White makes an error. Instead, after simply 51.♘f2! ♙c7, a draw is likely, though Black would have to work for it: 51...♙f4!? 52.♘c4 ♞g3 53.b6 ♙b8

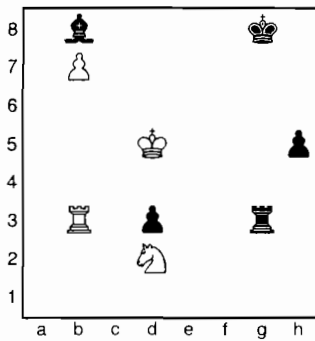
Now Black may be able to win the g-pawn and run a pair of pawns on the kingside. At this moment, however, I was down to a few minutes.

54.b7 h5?

A final blunder in a position that was actually promising after 54...♙g7. After the text move, the game is quickly drawn.



55.gxh5 gxh5 56.♖d2!



This move carries the threat of ♖b3-c3-c8.

56...♗h7?!

I initially planned 56...h4. but, when it came to it, did not play it for some reason. Actually, after 57.♖c3♗h7 58.♖c8 ♖g8 59.♗e4!, White should be able to draw, e.g., 59...♗g7 60.♗c4. It was the sixth hour of a hard-fought game and I accepted the draw after...

57.♗e4 Draw

## Round Eight

### Dutch Classical

GM Gregory Serper (2576, 6.0)  
Alex Guo (1991, 0.5)

WA Championship (8) 2008

1.d4 e6 2.♗f3 f5 3.g3 ♗f6 4.♗g2 ♗e7  
5.O-O O-O 6.♗bd2 d6 7.♖e1 ♗e4  
8.♗xe4 fxe4 9.♗d2 d5 10.f3 exf3 11.exf3  
c5 12.dxc5 ♗xc5+ 13.♗h1 ♗c6 14.f4  
♗d7 15.♗b3 ♗b6 16.♗e3 ♗xe3 17.  
♖xe3 ♖b6 18.♖e2 ♖ae8 19.♖d2 ♗h8  
20.♖ae1 h6 21.c3 ♗e7 22.♖d4 ♗f5  
23.♖xb6 axb6 24.♗h3 ♗g8 25.♖e5  
♖f6 26.♗xf5 ♖xf5 27.♗d4 ♖xe5 28.  
♖xe5 ♗f7 29.h4 ♗f6 30.♗g2 ♖g8 31.  
h5 g5 32.hxg6 ♖xg6 33.♗f2 ♖g8 34.  
♖h5 ♖g6 35.♗f3 ♗e7 36.♗e5 ♖f6 37.  
♗g4 ♖g6 38.♗e5 ♖f6 39.♗g4 ♖g6 40.  
♗xh6 ♗e8 41.♖h4 ♗d6 42.♗g4 ♖g7  
43.♗e5 ♗g6 44.♖g4 1-0

### English Hedgehog

NM Michael Lee (2277, 4.0)  
NM Nat Koons (2313, 2.5)

WA Championship (8) 2008

1.c4 ♗f6 2.♗c3 c5 3.g3 e6 4.♗f3 b6  
5.♗g2 ♗b7 6.O-O a6 7.d4 cxd4 8.♖xd4  
d6 9.♖d1 ♗bd7 10.♗g5 ♗xg2 11.♗xg2  
♖c8 12.♗ge4 ♖c6 13.b3 ♗e7 14.♗a3  
♖a8 15.♗g1 ♗c5 16.b4 ♗cd7 17.b5

axb5 18.♗xb5 ♗xe4 19.♖xe4 O-O 20.  
♗xd6 ♗f6 21.♖e5 ♗xd6 22.♗xd6 ♖a4  
23.♖d4 ♖c5 24.♖e3 ♖a8 25.♖ad1 g6  
26.♖d2 ♗g7 27.♖f4 ♖aa5 28.♖f3  
♖b4 29.♖xf6 ♖xd2 30.♖xf7+ ♗h6  
31.♖d7 ♖c1+ 32.♗g2 ♖f5 33.♗xf5+  
exf5 34.♖b7 ♖xc4 35.♖xh7+ ♗g5  
36.h4+ ♗f6 37.♖e7 mate

### King's Indian Classical

Joshua Sinanan (2178, 1.5)  
NM Ignacio Perez (2280, 5.5)

WA Championship (8) 2008

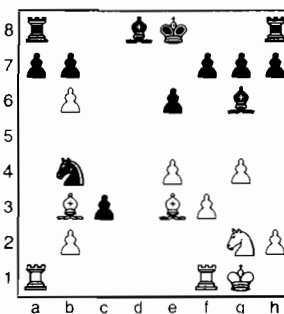
1.♗f3 ♗f6 2.c4 g6 3.♗c3 ♗g7 4.e4 d6  
5.d4 O-O 6.♗e2 ♗a6 7.O-O e5 8.♗e3  
♗g4 9.♗g5 f6 10.♗h4 g5 11.♗g3 ♗h6  
12.d5 ♖e8 13.♗d2 g4 14.a3 ♖g6 15.b4  
♗f7 16.f3 h5 17.fxg4 hxg4 18.♗d3 ♗h6  
19.♖e2 ♗g5 20.♖f5 ♗xd2 21.♖xd2  
♗xf5 22.exf5 ♖h5 23.♗e4 ♗g7 24.♖f2  
♗b8 25.♗h4 ♗d7 26.♖f1 c6 27.g3 cxd5  
28.cxd5 a6 29.♗e2 ♖ac8 30.h3 ♖h6  
31.♗xg4 ♖c1 32.♗e2 ♖xf1+ 33.♗xf1  
♖c8 34.♖f3 ♗f8 35.♗g2 ♗e7 36.♗h2  
♖c2 37.♖g4 b5 38.♖g8 ♖h8 39.♖g6  
♖a2 40.♗g1 ♖xa3 0-1

### Slav Defense

IM Georgi Orlov (2573, 4.0)  
NM Harley Greninger (2220, 4.0)

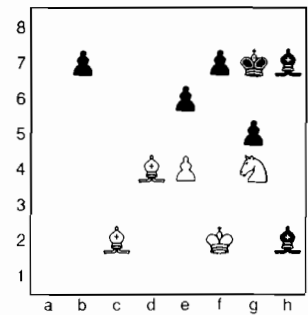
WA Championship (8) 2008

1.d4 d5 2.c4 c6 3.♗c3 ♗f6 4.♗f3 dxc4  
5.a4 ♗f5 6.e3 e6 7.♗xc4 ♗b4 8.O-O  
♗bd7 9.♗h4 ♗g4 10.f3 ♗h5 11.g4  
♗d5 12.♖e1 ♗e7 13.♗g2 ♗g6 14.e4  
♗b4 15.♖d1 ♗b6 16.♗b3 c5 17.a5  
cxd4 18.axb6 dxc3 19.♖xd8+ ♗xd8  
20.♗e3



20...cxb2 21.♖xa7 ♖b8 22.♗a4+ ♗f8  
23.♖b1 ♗f6 24.♗c5+ ♗g8 25.♗d6  
♗d4+ 26.♗f1 ♖c8 27.♗xb4 ♖c1+ 28.  
♗e1 h5 29.♖a8+ ♗h7 30.♖xh8+ ♗xh8  
31.♗c2 hxg4 32.♗a3 gxf3 33.♖xc1  
bxc1=♖ 34.♗xc1 f2 35.♗g2 ♗xb6

36.♗e3 ♗c7 37.♗f4 ♗h7 38.♗xf2 g5  
39.♗d4+ ♗g8 40.♗h5 ♗xh2 41.♗f6+  
♗g7 42.♗g4+



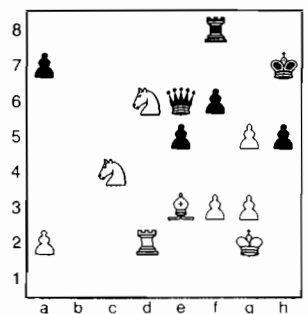
42...e5 43.♗xe5 ♗xe5 44.♗xe5+ f6  
45.♗c3 ♗g8 46.♗g3 ♗c4 47.♗d1 ♗d3  
48.♗f3 ♗c4 49.♗e3 ♗e6 50.♗h5 ♗d7  
51.♗f3 ♗a4 52.♗g4 ♗d1+ 53.♗g3  
♗c2 54.♗f5 ♗f7 55.♗f3 ♗d1+ 56.♗e3  
♗b3 57.♗d4 b6 58.♗b4 b5 59.♗c5  
♗c4 60.♗d6 ♗d3 61.♗e1 ♗c4 62.♗d7  
♗d3 63.♗d5 ♗c4+ 64.♗c5 ♗d3 65.  
♗d4 ♗c4 66.♗b4 ♗e2 67.♗d5 ♗c4+  
68.♗c5 ♗d3 69.♗d4 ♗c4 70.♗c6 ♗e2  
71.♗d5+ ♗g6 72.♗e6 ♗f1 73.♗b3 g4  
74.♗d6 f5 75.e5 g3 76.e6 g2 77.♗h2  
♗c4 78.♗xc4 bxc4 79.♗xc4 f4 80.♗d5  
f3 81.♗g1 1-0

### Grünfeld Fianchetto

FM John Readey (2325, 2.5)  
FM Slava Mikhailuk (2435, 4.5)

WA Championship (8) 2008

1.♗f3 ♗f6 2.c4 g6 3.g3 ♗g7 4.♗g2 O-O  
5.O-O d5 6.cxd5 ♗xd5 7.d4 ♗c6  
8.♗c3 ♗b6 9.d5 ♗a5 10.e4 c6 11.♗f4  
cxd5 12.exd5 ♗ac4 13.♖e2 ♗xb2 14.  
♖xb2 ♗a4 15.♗xa4 ♗xb2 16.♗xb2  
♖xd5 17.♖fd1 ♖b5 18.♖d2 f6 19.♗d4  
♖h5 20.♗b3 ♗g4 21.♗xb7 ♖ad8 22.  
♖e1 e5 23.♗e3 ♗f3 24.♗xf3 ♖xf3 25.  
♖ed1 ♖xd2 26.♗xd2 ♖e2 27.♗dc4 h5  
28.h4 ♖f7 29.♗g2 ♗h7 30.♖d2 ♖g4  
31.♗d6 ♖f8 32.♗bc4 g5 33.f3 ♖e6  
34.hxg5



34...h4 35.gxh4 e4 36.g6+ 37.fxe4  
 ♖g4+ 38.♗f1 ♗h5 39.♞d5+ ♗g6 40.  
 ♞d2 ♗h7 41.♗xa7 ♖f3+ 42.♗e1 ♞g8  
 43.♗b6 ♞g3 44.♗e3 ♞h3 45.♞f2  
 ♞h1+ 46.♗d2 ♖d1+ 47.♗c3 ♖a1+ 48.  
 ♗b4 ♞xh4 49.a4 ♞h3 50.♗b6 ♖e1+  
 51.♗d2 ♞h4 52.♗b5 ♞h5+ 53.♗c6  
 ♖a1 54.a5 ♖a4+ 55.♗c7 ♞e5 56.♗d8  
 ♞e6 57.♗2c4 ♖c6 58.♗c7 ♗g8 59.  
 ♞h2 f5 60.exf5 ♞f6 61.♞e2 ♞f8+ 62.  
 ♞e8 ♞xe8+ 63.♗xe8 ♖xc4 64.♗d6  
 ♖c6 65.f6 ♗f8 66.♗c8 ♖e8 mate

## Round Nine

### Sicilian Closed

Alex Guo (1991, 0.5)

FM John Readey (2325, 2.5)

WA Championship (9) 2008

1.e4 g6 2.g3 ♗g7 3.♗g2 d6 4.♗c3 c5  
 5.♗ge2 ♗c6 6.d3 ♗f6 7.♗e3 O-O 8.  
 O-O ♞b8 9.♖c1 ♞e8 10.f4 ♗g4 11.♗d2  
 f5 12.h3 ♗f6 13.♗e3 ♗d7 14.♗d1 ♗d4  
 15.♗xd4 cxd4 16.♗f2 ♗c5 17.♖d2 b6  
 18.exf5 gxf5 19.b4 ♗a4 20.b5 ♗c5  
 21.♗b2 e5 22.♖b4 a5 23.bxa6 ♗xa6  
 24.♖c4+ ♗h8 25.♗c6 ♞e7 26.♞ae1  
 b5 27.♗xb5 ♗e6 28.♖a4 ♗c5 29.♖b4  
 ♞eb7 30.a4 ♗xa4 31.♖xa4 ♞xb5  
 32.♗d1 ♞a5 33.♖c6 ♗d5 0-1

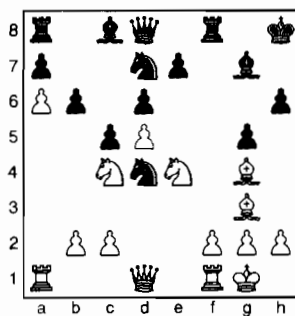
### Pirc Classical

NM Nat Koons (2313, 2.5)

IM Georgi Orlov (2573, 5.0)

WA Championship (9) 2008

1.d4 d6 2.e4 g6 3.♗f3 ♗g7 4.♗e2 ♗f6  
 5.♗c3 O-O 6.O-O c6 7.♗e3 ♗bd7 8.a4  
 ♗g4 9.♗g5 f6 10.♗h4 ♗h6 11.a5 ♗h8  
 12.d5 c5 13.♗d2 g5 14.♗g3 f5 15.exf5  
 ♗xf5 16.a6 b6 17.♗c4 ♗d4 18.♗e4 h6  
 19.♗g4



19...b5 20.♗a5 ♗b6 21.♗xc8 ♖xc8  
 22.c3 ♗f5 23.♗c6 ♖d7 24.♞a5 e6  
 25.♗xd6 ♗xd6 26.♗xc5 ♖f7 27.♗xe6  
 ♞fe8 28.♞e1 ♞ac8 29.♖g4 ♗xd5  
 30.♗cd4 ♗f4 31.g3 h5 0-1

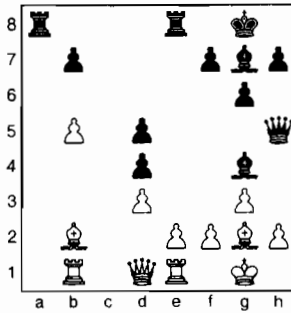
## English

FM Slava Mikhailuk (2435, 5.5)

NM Michael Lee (2277, 5.0)

WA Championship (9) 2008

1.c4 ♗f6 2.♗c3 g6 3.g3 ♗g7 4.♗g2 O-  
 O 5.♗f3 d6 6.O-O e5 7.d3 ♗c6 8.♞b1  
 a5 9.a3 ♗d4 10.b4 axb4 11.axb4 c6  
 12.♗b2 ♗g4 13.♗xd4 exd4 14.♗e4  
 ♗xe4 15.♗xe4 ♞e8 16.♞e1 ♖g5 17.b5  
 d5 18.cxd5 cxd5 19.♗g2 ♖h5



20.♞a1 ♞ac8 21.♖a4 ♗xe2 22.♗xd4  
 ♖g4 23.♗xg7 ♖xa4 24.♞xa4 ♗xg7  
 25.♗f1 ♗xf1 26.♗xf1 ♞xe1+ 27.♗xe1  
 ♞c1+ 28.♗d2 ♞b1 29.♞a5 b6 30.♞a7  
 ♞xb5 31.♞b7 d4 32.♞d7 ♞b4 33.h4  
 ♗f6 34.♗e2 ♗e6 35.♞d8 h5 36.♗f3  
 ♗e7 37.♞d5 ♗e6 38.♞d8 ♗e5  
 39.♞e8+ ♗f5 40.♞d8 ♗e5 41.♞e8+  
 ♗f5 42.♞d8 b5 43.♞d5+ ♗e6 44.♞d8  
 ♗e5 45.♞e8+ Draw

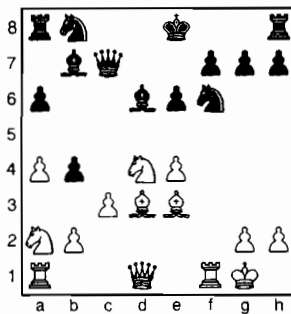
### Sicilian Kan

NM Ignacio Perez (2280, 5.5)

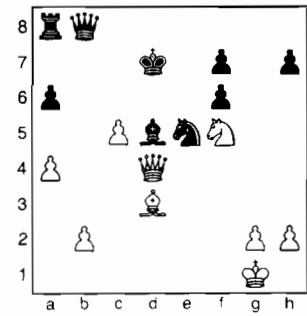
GM Gregory Serper (2576, 7.0)

WA Championship (9) 2008

1.e4 c5 2.♗f3 e6 3.d4 cxd4 4.♗xd4 a6  
 5.♗c3 ♖c7 6.♗d3 ♗f6 7.O-O d6 8.♗e3  
 b5 9.a4 b4 10.♗a2 ♗b7 11.f3 d5 12.c3  
 dxe4 13.fxe4 ♗d6



14.♞xf6 gxf6 15.♖h5 ♗e7 16.cxb4  
 ♗d7 17.♞c1 ♖b8 18.♗c3 ♗f4 19.♖h3  
 ♗xe3+ 20.♖xe3 ♗e5 21.♗d5+ exd5 22.  
 ♗f5+ ♗d7 23.exd5 ♞c8 24.♞c5 ♞xc5  
 25.bxc5 ♗xd5 26.♖d4



26...♗f3+ 27.gxf3 ♖e5 28.♖f2 ♞b8  
 29.♗d4 ♖g5+ 30.♗f1 ♖c1+ 31.♗g2  
 ♞g8+ 32.♗h3 ♖h6+ 33.♖h4 ♖xh4+  
 34.♗xh4 ♞b8 35.♗g3 ♞b4 36.♗e2 a5  
 37.♗c3 ♗c6 38.♗xh7 ♞xb2 39.h4 ♞b3  
 40.♗f5+ ♗e7 41.♗e4 ♗xa4 42.h5 ♞b8  
 43.h6 ♞h8 44.h7 ♗d7 45.♗xd7 ♗xd7  
 46.♗xf6+ ♗c6 47.♗f4 a4 48.♗e5 a3  
 49.♗d5 ♗xc5 50.♗c3 ♞xh7 51.♗f6  
 0-1

### Torre Attack

NM Harley Greninger (2220, 4.0)

Joshua Sinanan (2178, 1.5)

WA Championship (9) 2008

1.d4 ♗f6 2.♗f3 e6 3.♗g5 c5 4.e4 ♖b6  
 5.♗bd2 cxd4 6.e5 ♗d5 7.♗c4 ♖c7  
 8.♗xd4 a6 9.♗f5 ♗c6 10.♗cd6+ ♗xd6  
 11.♗xd6+ ♗f8 12.f4 h6 13.♖h5 g6  
 14.♖h4 ♖a5+ 15.♗d1 ♗e3+ 16.♗c1  
 ♗xf1 17.♞xf1 ♖d5 18.♗xh6+ ♗g8  
 19.♗e8 1-0

**Business manager Eric Holcomb is pleased to report that his relocation to Bend, Oregon was successful. Look for a new business address on the inside cover of this magazine!**

**Most back issues of NWC from the 2002-2007 time period were given to the WCF board. They will be repackaged and available for sale (by year) at the Washington Open in May. If you will be unable to attend and would like any back issues, please make a request with the business manager.**

# First Weekend

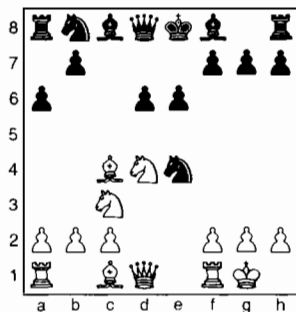
## Round One

### Sicilian Sozin

NM Michael MacGregor (2205)  
Chris Kalina (1959)

Seattle, WA Premier (1) 2008

1.e4 c5 2.♘f3 d6 3.d4 cxd4 4.♗xd4  
♗f6 5.♗c3 a6 6.♙c4 e6 7.O-O ♗xe4



8.♗xe4 d5 9.♙g5 ♙e7 10.♙xe7 ♖xe7  
11.♙xd5 exd5 12.♗c3 ♙e6 13.♗xe6  
fxe6 14.♗xd5 exd5 15.♖e1 ♗xe1+  
16.♗xe1+ ♗f7 17.♗e5 ♖d8 18.♖e1  
♗c6 19.♗e6+ ♗f8 20.♖e3 ♗d4 21.  
♗e7+ ♗g8 1-0

### French Steinitz

Andy May (2128)  
NM Curt Collyer (2254)

Seattle, WA Premier (1) 2008

1.e4 e6 2.♗c3 d5 3.♗f3 ♗f6 4.e5 ♗fd7  
5.d4 c5 6.dxc5 ♗c6 7.♙f4 ♙xc5 8.♙d3  
f6 9.exf6 ♖xf6 10.♙g5 ♗f7 11.♙h4 h6  
12.♗e2 O-O 13.O-O-O ♗de5 14.♗xe5  
♗f4+ 15.♗b1 ♗xe5 16.♗xe5 ♗xe5  
17.f3 ♙d7 18.♙g3 ♗xd3 19.cxd3 ♙d4  
20.♖he1 ♙xc3 21.bxc3 ♖ac8 Draw

I had a hard time trying to prepare against David Bragg. According to my brother, David had played the King's Indian Defense versus 1.d4 before.—K. Xing

### King's Indian Sämisch

Kerry Xing (1871)  
FM David Bragg (2208)

Seattle, WA Premier (1) 2008

Annotations by K. Xing & FM D. Bragg  
1.d4 ♗f6 2.c4 g6 3.♗c3 ♙g7 4.e4 d6  
5.f3 O-O 6.♙e3 a6 7.♗d2 c6 8.a4

I decided to prevent Black's queen-side expansion, namely ...b7-b5.—KX

8...♗a5

# WA Premier

Black threatens ...b7-b5 again, because White's a4-pawn is pinned. From this point on, I was more and more out of book.—KX

9.♖a3 ♖e8

9...c5 would be consistent with the King's Indian idea of fighting over the a1-h8 diagonal.—DB

10.♙d3 ♗bd7 11.♗ge2 e5 12.O-O

Had White played 12.d5, Black's Knight would have had access to the c5-square. I planned to 'sit' in the center. If Black played 12...c5, I intended 13.d5, when c5 is occupied by a pawn.—KX

12...exd4 13.♗xd4 ♗e5 14.♙e2

I decided to place pressure on the d-file against the d6-pawn.

14...♙e6?! (DB)

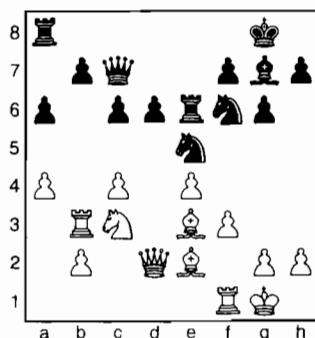
FRITZ prefers 14...♗c7, securing the d6-pawn.—DB

15.♗xe6 ♖xe6 16.♖b3

If 16.♖d1, then 16...♗b4 is strong.—KX

16...♗c7

White threatened 17.♙b6, trapping Black's Queen.—KX



17.♖d1

Better would be 17.♙b6, which puts the question to Black's Queen. The d7-square needs to be reserved for a Knight and the d6-weakness is not protected from c8; so Black must choose either b8 or e7. If 17...♗b8, the a-Rook is trapped, while if 17...♗e7, the other Rook is stuck on e6.—DB

17...♗ed7

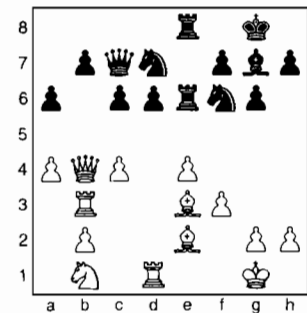
Covering b6 and preparing to recycle through the c5-square.—DB

18.♗b1

I planned 19.♗b4, attacking the b-pawn.—KX

Opening b4 for the Queen or d3 for the Rook.—DB

18...♖ae8 19.♗b4



19...♗xe4! (DB)

My idea is met by a strong objection.—KX

20.fxe4 ♖xe4 21.♗a3

If 21.♗d2, then 21...♖xe3 22.♖xe3 ♗b6 followed by ...♙h6 is very strong.—KX

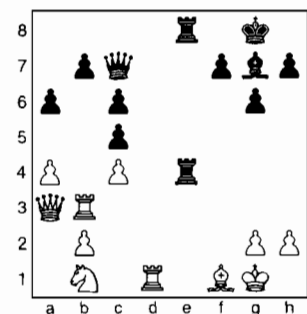
21...♗c5

FRITZ prefers 21...♙f8 22.♖bd3 d5 23.b4 ♖xc4 24.♖b3 ♖h4 25.h3 ♙xb4 26.♖xb4 ♖xb4 27.♗xb4 ♖xe3.—DB

22.♙xc5?! (DB)

22.♗d2 ♖4e7 (22...♖xe3 23.♖xe3 ♙d4 24.♗f1 ♙xe3+ 25.♗xe3 ♗e7 26.b4 ♗xe3+ 27.♗xe3 ♖xe3 28.bxc5 ♖xe2 29.cxd6 ♖e8+) 23.♙xc5 ♖xe2+ (DB)

22...dxc5 23.♙f1



23...♙d4+

Better was 23...♖e1 24.♖bd3 ♙d4+ 25.♖xd4 cxd4 26.♖xe1 ♖xe1.—DB

24.♗h1? (DB)

It would have been better for White to sacrifice the Exchange by 24. ♖xd4.

It would be better to enter the Bishop+Knight-vs.-Rook endgame by 24. ♖xd4 cxd4 25. ♗d2 ♖e3 26. ♖c5. Instead, White takes his King away from the center and then exchanges in the middle, which leaves the f1-Bishop without enough support.—DB

24... ♖e1 25. ♖bd3 ♖8e3 26. ♖xd4 cxd4

26... ♖xa3 is met by 27. ♖xe1.—KX  
27. ♖xe1 ♖xe1 28. ♖d3 ♖f4 29. ♗g1 ♖c1 30. ♗a3

30. ♗d2 fails to 30... ♖d1 (because after 31. ♖e2 ♖xd2 the Black Queen prevents perpetual check by holding the c1-h6 diagonal.—DB), while 30. ♗c3 is met by 30... dxc3 31. ♖d8+ ♗g7 32. ♖d4+ ♗f8 33. ♖d8+ ♖e8 34. ♖d6+ ♗g8.—KX  
30... ♖d1 31. ♖e2 ♖e3+

Faster would be 31... d3 32. ♖e8+ ♗g7 33. ♖e5+ ♗h6 34. ♖f6 ♖xf1+ 35. ♖xf1 d2.—DB

32. ♖xe3

32. ♖f2 would have been better, but White is lost anyway.—KX

Better, but still losing would be 32. ♖f2 ♖d2 33. ♖xe3 dxe3.—DB

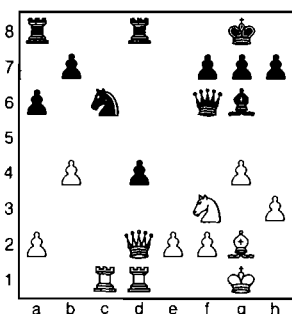
32... dxe3 33. ♗c2 e2 34. ♗e3 ♖xf1+ 35. ♗xf1 e1=♖ 0-1

*QGD Tarrasch*

**LM Viktors Pupols (2201)**  
**NM David Levine (2211)**

*Seattle, WA Premier (1) 2008*

1. c4 e6 2. ♗c3 d5 3. d4 c5 4. cxd5 exd5 5. ♗f3 ♗c6 6. g3 ♗f6 7. ♖g2 ♖e7 8. O-O O-O 9. dxc5 ♖xc5 10. ♖g5 d4 11. ♗e4 ♖e7 12. ♗xf6+ ♖xf6 13. ♖xf6 ♖xf6 14. b4 ♖d8 15. ♖d2 a6 16. ♖fd1 ♖g4 17. h3 ♖h5 18. g4 ♖g6 19. ♖ac1



19... d3 20. e3 h5 21. ♖c5 hxg4 22. hxg4 ♖e4 23. ♗e1 b6 24. ♖h5 ♖g6 25. ♖d5 ♖xd5 26. ♖xd5 ♖d8 27. e4 ♗e5 28. g5 ♖e7 29. f4 ♖xd5 30. exd5 ♗c4 31. ♖f2 d2 32. ♖xd2 ♗xd2 33. ♖xd2 ♖d7 34. d6 ♖e4 35. ♗f2 ♖c6 36. ♗g3 f6 37. gxf6 gxf6 38. ♖d4 ♗f7 39. ♗f2 ♖e6 40. ♗g3 ♖xe1+ 0-1

*The following game was played on Monday morning before the final round.*

*French Advance*

**Ricky Selzler (2132, 4.5)**  
**Michael Oshiro (2114, 0.5)**

*Seattle, WA Premier (1) 2008*

1. e4 c5 2. ♗f3 a6 3. c3 e6 4. d4 d5 5. e5 ♖d7 6. ♖d3 ♖b5 7. ♖c2 h6 8. a4 ♖c6 9. O-O a5 10. ♖e1 ♗a6 11. ♗bd2 ♗e7 12. ♗f1 b6 13. ♗g3 g6 14. h3 ♗c7 15. ♗h2 ♗f5 16. ♗g4 ♖e7 17. ♗e2 c4 18. ♗f6+ ♖xf6 19. exf6 ♖xf6 20. ♖f4 ♖d8 21. ♖d2 ♗d7 22. b4 axb4 23. cxb4 b5 24. ♗c3 bxa4 25. ♗xa4 ♖xa4 26. ♖xa4+ ♖xa4 27. ♖xa4 ♗b5 28. ♖ea1 ♖b6 29. ♖e5 ♖c8 30. ♖a6 ♖b7 31. ♖6a5 ♖c6 32. g4 ♗h4 33. ♖f4 f5 34. ♖xh6 ♗f3+ 1-0

**Round Two**

*Dutch Leningrad*

**Chris Kalina (1959, 0.0)**  
**Kerry Xing (1871, 0.0)**

*Seattle, WA Premier (2) 2008*

1. c4 f5 2. ♗c3 ♗f6 3. d4 g6 4. ♖f4 ♖g7 5. ♗f3 O-O 6. h3 d6 7. e3 ♖e8 8. ♖e2 ♗h5 9. ♖h2 c6 10. d5 ♗a6 11. ♖c1 ♖d7 12. O-O h6 13. ♖d2 ♗f6 14. ♗d4 c5 15. ♗f3 g5 16. ♗e1 ♖g6 17. ♗d3 h5 18. ♗h1 ♖h6 19. ♖ce1 ♗h8 20. ♖g1 ♖g8 21. a3 h4 22. ♖d1 ♖af8 23. g3 hxg3 24. ♖xg3 ♗e4 25. ♖g2 ♗xc3 26. bxc3 ♖f6 27. ♖c2 ♖f7 28. ♖h5 ♖h7 29. h4 g4 30. f3 ♖xh4 31. fxg4 fxg4 32. ♖xg4 0-1

*Reti Opening*

**NM Curt Collyer (2254, 0.5)**  
**NM Michael MacGregor (2205, 1.0)**

*Seattle, WA Premier (2) 2008*

1. ♗f3 ♗f6 2. b3 d5 3. ♖b2 ♖f5 4. g3 e6 5. ♖g2 ♗bd7 6. O-O ♖d6 7. c4 c6 8. d3 ♖e7 9. ♗bd2 O-O-O 10. a3 h5 11. ♖c2 h4 12. e4 dxe4 13. dxe4 ♖g6 14. b4 hxg3 15. hxg3 ♖h5 16. ♖fe1 ♗g4 17. ♖ad1 ♖dh8 18. ♗f1 ♗de5 19. ♗xe5 ♖xe5

20. ♖c1 ♖f6 21. ♖e2 ♗h2 22. ♖d3 ♗xf1 23. ♖xf1 ♖d8 24. ♖xd8+ ♖xd8 25. ♖d1 ♖c7 26. f4 ♖f6 27. ♖e3 ♖h8 28. ♖f3 ♖d8 29. ♖xd8+ ♖xd8 30. ♖d2 a5 31. ♗f2 axb4 32. axb4 ♖d7 33. ♖a2 ♖d3 34. ♖a8+ ♗c7 35. ♖b6+ ♗xb6 36. ♖a5 mate

*King's Indian Sämisch*

**Michael Oshiro (2114)**  
**Andy May (2128, 0.5)**

*Seattle, WA Premier (2) 2008*

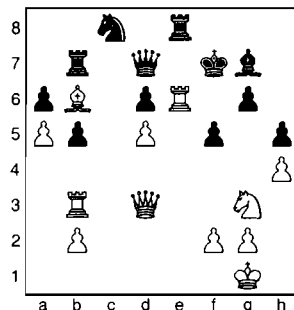
1. d4 ♗f6 2. c4 g6 3. f3 ♖g7 4. e4 d6 5. ♗e2 O-O 6. ♖e3 e5 7. d5 c6 8. ♗ec3 ♗h5 9. ♗d2 f5 10. c5 cxd5 11. ♗xd5 ♗c6 12. cxd6 ♖xd6 13. ♗c4 ♖d8 14. exf5 gxf5 15. ♖c5 ♖e6 16. ♗e7+ ♗xe7 17. ♖xd8 ♖fxd8 18. ♖xe7 ♖d7 19. ♖a3 ♖ad8 20. g3 f4 21. g4 ♖f6 22. ♖e2 ♖h4+ 23. ♗f1 ♖d5 24. b3 b5 25. ♗a5 ♗f6 26. ♗c6 ♖8d7 27. ♗e7+ ♗f7 28. ♗xd5 ♖xd5 29. ♖d1 e4 30. h3 ♖g3 31. ♗g2 ♖g5 32. h4 ♖g8 33. g5 ♗d5 34. ♖c5 ♖c8 35. b4 ♗c3 36. ♖d2 ♗xe2 37. ♖xe2 exf3+ 38. ♗xf3 ♖d5+ 39. ♖e4 ♖e8 0-1

*Caro-Kann Panov-Botvinnik*

**NM David Levine (2211, 1.0)**  
**FM David Bragg (2208, 1.0)**

*Seattle, WA Premier (2) 2008*

1. e4 c6 2. d4 d5 3. exd5 cxd5 4. c4 ♗f6 5. ♗c3 g6 6. ♖b3 ♖g7 7. cxd5 O-O 8. ♖e2 ♗bd7 9. ♖f3 ♗b6 10. ♗ge2 ♖g4 11. ♖xg4 ♗xg4 12. ♖f4 ♗f6 13. d6 exd6 14. a4 ♖d7 15. a5 ♗c8 16. O-O ♖e8 17. d5 ♗e4 18. ♗xe4 ♖xe4 19. ♖e3 ♖b8 20. ♗c3 ♖e7 21. ♖a4 b5 22. ♖b4 a6 23. h4 h5 24. ♗e4 f6 25. ♖d1 ♖d8 26. ♖a1 ♖bb7 27. ♖d3 ♖e8 28. ♗g3 ♗e7 29. ♖b6 ♖d7 30. ♖e1 f5 31. ♖e6 ♗f7 32. ♖b3 ♗c8



33. ♗xf5 gxf5 34. ♖xf5+ ♗g8 35. ♖be3 ♖xe6 36. dxe6 ♖e8 37. ♖d5 ♖e7 38. b4 ♖e5 39. ♖d4 ♖xd4 40. ♖xd4 ♖g7 41. e7 ♗xe7 42. ♖xd6 ♖c6 43. ♖d8+

♣h7 44.g3 ♣c1+ 45.♣g2 ♣c6+ 46.♣g1 ♣d5 47.♣b8 ♣c6 48.♣c8 ♣d4 49.♣e8 ♣f3+ 50.♣f1 ♣d1+ 51.♣g2 ♣xh4+ 52.♣h2 ♣g6 53.♣xa6 ♣f3 54.♣b6 ♣h4 55.♣h8+ ♣xh8 56.♣d8+ ♣h7 57.♣xh4 ♣xf2+ 58.♣h3 ♣f5+ 59.♣h2 ♣d7 60.♣e4 ♣xe4 0-1

The following game was played on the Friday before Round Five.

*King's Indian Petrosian*

**LM Viktors Pupols (2201, 1.0)**  
**Ricky Selzler (2132, 2.0)**

*Seattle, WA Premier (2) 2008*

1.c4 g6 2.♣c3 ♣g7 3.e4 d6 4.d4 ♣f6 5.♣e2 O-O 6.♣f3 e5 7.d5 a5 8.♣g5 ♣a6 9.♣d2 h6 10.♣e3 b6 11.O-O ♣h7 12.♣h1 f5 13.exf5 gxf5 14.f4 ♣d7 15.g4 exf4 16.♣xf4 ffg4 17.♣xg4 ♣h4 18.♣xd7 ♣xf4 19.♣xf4 ♣xf4 20.♣e2 ♣c5 21.♣f1 ♣h4 22.♣e6+ ♣h8 23.♣b5 ♣g5 24.♣xc7 ♣c4 25.♣xe4 ♣xe4 26.♣e1 ♣xe1 27.♣xe1 ♣f2+ 28.♣g2 ♣d3 29.♣xa8 ♣xe1+ 30.♣f1 ♣d3 31.♣xb6 ♣xb2 32.♣e2 ♣d4 33.♣d7 ♣g1 34.c5 dxc5 35.♣d2 ♣c4+ 36.♣c3 ♣d6 37.h3 ♣g7 38.♣b3 c4+ 39.♣c3 ♣f2 40.♣e5 ♣e1+ 41.♣d4 ♣f2+ 42.♣c3 ♣e1+ Draw

**Round Three**

*Pribyl Defense*

**Andy May (2128, 1.5)**  
**LM Viktors Pupols (2201, 0.0)**

*Seattle, WA Premier (3) 2008*

**Annotations by Andy May**

1.e4 d6 2.♣f3 ♣f6 3.♣c3 c6 4.d4 ♣g4 5.♣e3

Another possibility is 5.h3 ♣h5 6.♣e2 e6 7.g4 ♣g6 8.h4 h5 (8...h6?! 9.h5 ♣h7 10.g5 hxg5 11.♣xg5) 9.g5 ♣fd7 10.♣h3, where White's spatial advantage has brought good results.

5...e6 6.♣d3 d5 7.e5

If 7.h3, then 7...♣h5 (7...dxe4? 8.hxg4 exd3 9.g5 dxc2 10.♣xc2 ♣d5 11.g6! ffg6 12.♣xh7 ♣xh7 13.♣xg6+ ♣d7 14.♣xh7±) 8.O-O dxe4 9.♣xe4 ♣xe4 10.♣xe4 ♣d7 with approximate equality.

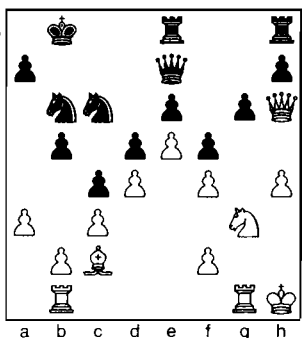
7...♣fd7 8.♣e2 c5 9.c3 ♣c6 10.O-O

Also okay is 10.a3; so if 10...♣b6 there is a possible 11.b4.

10...♣b6 11.a3 c4 12.♣c2 ♣xf3 13.gxf3 ♣e7

Interesting would have been 13...♣xb2!? 14.♣b1 ♣xa3 15.♣xb7 ♣a6 [15...♣b6 16.♣c7 ♣a5 17.♣b1 (threatening either ♣b5+ or ♣c1) 17...♣b3 18.♣c1 ♣e7 19.♣xb3 cxb3 20.♣xb3 ♣xb3 21.♣xb3∞] 16.♣b1 ♣b6 17.f4 g6 18.♣h1 ♣e7 19.f5 gxf5 20.♣f4 with unclear compensation.

14.♣b1 ♣c7 15.♣h1 b5 16.♣g1 g6 17.♣d2 ♣b6 18.♣h6 O-O-O 19.♣f4 ♣f8 20.♣g5 ♣e8 21.♣g3 ♣g7 22.♣h6 ♣xh6 23.♣xh6 ♣e7 24.f4 ♣b8 25.h4 f5



Worth a try was 25...f6, trying to create activity on the f-file.

26.♣g2 ♣hg8 27.♣f1

With the idea to improve the Knight's position by ♣f1-d2-f3, where it will help to control the important g5-square.

27...♣d8 28.♣g5

Else ...♣f7 will trap the Queen.

28...♣f8 29.♣d2 ♣f7 30.♣g3 ♣e7 31.♣f3 h6 32.♣h3

The alternatives ♣f1-e2 and ♣h2 are also worthy of attention.

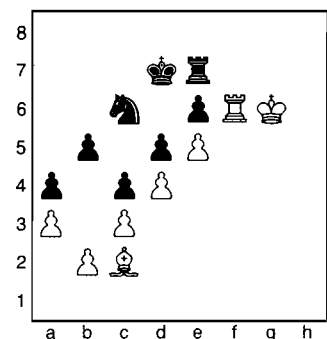
32...g5 33.fgg5 hxg5 34.♣xg5 ♣xg5+ 35.hxg5 ♣xg5 36.♣h4

Not 36.♣xg5?!, as 36...♣h8+ picks up the White Queen.

36...♣g7

36...♣xg1 37.♣xg1 should also be fine for White.

37.♣xe7 ♣exe7 38.♣g3 ♣xg3+ 39.fgg3 ♣c7 40.♣f1 ♣d7 41.♣f4 a5 42.g4 ffg4+ 43.♣xg4 ♣b8 44.♣g6 ♣c6 45.♣g4 ♣d7 46.♣g5 ♣d8 47.♣f6 ♣c6 48.♣g6 a4?



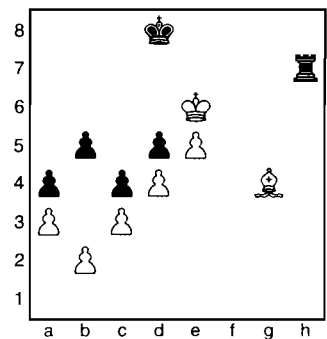
49.♣d1

49.♣f8 would have easily won, e.g., 49...♣d8 (49...♣e8 50.♣xe8 ♣xe8 51.♣f6 ♣d7 52.♣g6 ♣d8 53.♣f7) 50.♣f6 ♣c6 51.♣g6 ♣d8 52.♣f7 ♣c6 53.♣a8 ♣c7 54.♣a6.

49...♣e8 50.♣g4 ♣d8 51.♣h3 ♣d7 52.♣f8 ♣c6 53.♣f6 ♣d8 54.♣g4 ♣h7 55.♣xd8+

The only try or else the Black Rook gets active.

55...♣xd8 56.♣xe6



56...♣h2

FRITZ finds a nice drawing line: 56...♣h4 57.♣f3 ♣h3 58.♣xd5 ♣h6+ 59.♣f7 ♣h2 60.♣c6 ♣xb2 61.d5 b4 62.cxb4 c3 63.♣xa4 c2 64.♣xc2 ♣xc2 65.♣e6 ♣a2 66.b5 ♣xa3 67.♣d6 ♣c3 68.b6 ♣b3 69.♣c6 ♣c3+ 70.♣d6 ♣b3 71.♣c6 ♣c3+ 72.♣d6.

57.♣d6!

Keeping the King able to support the pawn to e7.

57...♣g2 58.♣d7 ♣xb2 59.e6 ♣e2 60.♣xb5 1-0

**Please check your mailing label and PLEASE RENEW!!**

*Two Knights Defense*

**NM Michael MacGregor (2205, 1.0)**  
**Michael Oshiro (2114, 0.0)**

*Seattle, WA Premier (3) 2008*

1.e4 e5 2.♘c4 ♘f6 3.d4 ♘c6 4.♗f3  
 exd4 5.e5 d5 6.♙b5 ♘e4 7.♗xd4 ♙d7  
 8.♙xc6 bxc6 9.O-O c5 10.♗b3 c6 11.f3  
 ♗g5 12.c4 dxc4



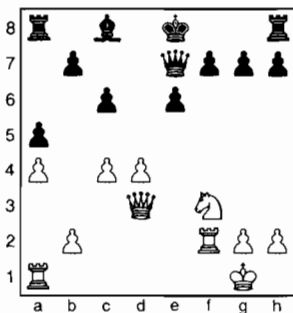
13.♗3d2 ♙e6 14.f4 ♗d4+ 15.♙h1  
 ♗e4 16.♗xe4 ♗xe4 17.♙e1 ♗d3 18.  
 ♗a4 ♗d7 19.♗c3 ♙d8 20.♙e3 ♗b7  
 21.♙ad1 ♙d3 22.♗c2 ♗d7 23.♗f2h5  
 24.♙xc5 h4 25.♙xf8 ♙xf8 26.f5 ♙d5  
 27.e6 ♗e7 28.♗f4 h3 1-0

*QGD Slav*

**Kerry Xing (1871, 1.0)**  
**NM Curt Collyer (2254, 1.5)**

*Seattle, WA Premier (3) 2008*

1.d4 d5 2.c4 c6 3.♗c3 ♗f6 4.♗f3 a6  
 5.a4 e6 6.e3 a5 7.♙d3 ♗a6 8.O-O ♗b4  
 9.e4 ♗xd3 10.♗xd3 ♙e7 11.♙g5 dxe4  
 12.♗xe4 ♗xe4 13.♙xe7 ♗xf2 14.  
 ♙xf2 ♗xe7



15.d5 exd5 16.cxd5 O-O 17.d6 ♗d8  
 18.♙e1 ♙e6 19.♗d4 ♙d5 20.♗f4  
 ♙xf3 21.♙xf3 ♗b6+ 22.♙f2 ♙ad8  
 23.♙e7 ♗b3 24.♙d2b5 25.axb5 ♗xb5  
 26.♗d4 ♗g5 27.♙e5 ♗g6 28.d7 ♗f6  
 29.♙xa5 ♗xd4+ 30.♙xd4 f6 31.♙a7  
 ♙f7 32.♙c7 ♙f8 33.♙c8 ♙e7 34.  
 ♙xc6 ♙xd7 35.♙e4+ ♙d8 36.♙f2  
 ♙d2+ 37.♙e2 ♙xe2+ 38.♙xe2 ♙b7  
 39.♙c2 ♙b3 40.♙f2 ♙e7 41.♙c7+  
 ♙f8 42.♙c2 ♙f7 43.g3 g5 44.♙g2 h5

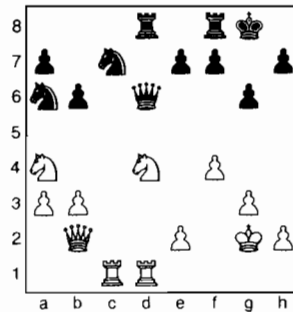
45.h3 ♙g6 46.♙f2 h4 47.g4 ♙f7 48.  
 ♙e2 Draw

*English Rubinstein*

**FM David Bragg (2208, 2.0)**  
**Chris Kalina (1959, 0.0)**

*Seattle, WA Premier (3) 2008*

1.c4 c5 2.♗c3 ♗f6 3.g3 d5 4.cxd5  
 ♗xd5 5.♙g2 ♗c7 6.f4 g6 7.♗f3 ♗c6  
 8.O-O ♙g7 9.b3 O-O 10.♙b2 ♙e6  
 11.♗a4 ♙xb2 12.♗xb2 ♙d5 13.♗a4  
 ♗b4 14.♗c1 b6 15.a3 ♗ba6 16.♗b2  
 ♙b7 17.♙ac1 ♗d6 18.d4 cxd4 19.  
 ♗xd4 ♙xg2 20.♙xg2 ♙ad8 21.♙fd1



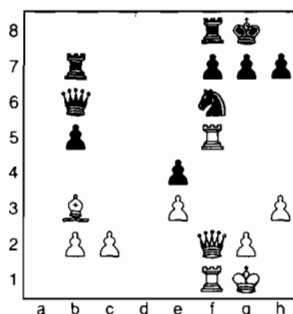
21... ♗d5 22.♙f3 ♗f6 23.♗c6 ♗e6  
 24.♙xd8 ♗e4+ 25.♙f2 ♗g4+ 26.♙e1  
 ♗h1+ 27.♙d2 ♙xd8+ 28.♗xd8 ♗d5+  
 29.♙c3 ♗xd8 30.♗d2 ♗c8+ 31.♙b2  
 ♗f5 32.♗c3 ♗xh2 33.♗c8+ ♗xc8  
 34.♙xc8+ ♙g7 35.b4 ♗f1 36.b5 ♗c5  
 37.♗xc5 bxc5 38.a4 ♗xg3 39.a5 h5  
 40.b6 axb6 41.axb6 h4 42.b7 h3 43.  
 b8=♗ h2 44.♙g8+ ♙f6 45.♗e5 mate

*Ruy Lopez Neo-Moller*

**Ricky Selzler (2132)**  
**NM David Levine (2211, 1.0)**

*Seattle, WA Premier (3) 2008*

1.e4 e5 2.♗f3 ♗c6 3.♙b5 a6 4.♙a4  
 ♗f6 5.O-O b5 6.♙b3 ♙c5 7.d3 d6 8.a4  
 ♙b8 9.axb5 axb5 10.♗c3 ♙g4 11.♙e3  
 ♗d4 12.♙xd4 ♙xd4 13.♗e2 O-O 14.  
 h3 ♙xf3 15.♗xf3 c6 16.♗d1 ♙a8 17.  
 ♙b1 d5 18.exd5 cxd5 19.♗e3 e4 20.  
 dxe4 dxe4 21.♗e2 ♙xe3 22.fxe3 ♗b6  
 23.♙f5 ♙ab8 24.♙b1 ♙b7 25.♗f2



25... ♙c7 26.♗g3 ♙h8 27.♙xb5 ♗a7  
 28.♙g5 ♗e8 29.♗f4 ♙e7 30.♙h1 ♗a6  
 31.♙d1 ♗e2 32.♙d8 f6 33.♗d6 ♗f1+  
 34.♙h2 fxg5 35.♗xe7 1-0

**Round Four**

*Larsen's Opening*

**NM David Levine (2211, 1.0)**  
**Chris Kalina (1959, 0.0)**

*Seattle, WA Premier (4) 2008*

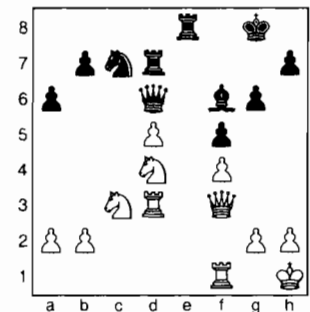
1.b3 ♗f6 2.♙b2 g6 3.g4 ♙g7 4.g5  
 ♗h5 5.♙xg7 ♗xg7 6.♗c1 e5 7.♗b2  
 d6 8.♗f3 c5 9.d3 ♗c6 10.♗bd2  
 ♗e7 11.♙e4 ♗h5 12.c4 f5 13.gxf6  
 ♗xf6 14.♙fd2 ♙d7 15.♗xf6+ ♗xf6 16.  
 ♗e4 ♗e7 17.♙g2 O-O 18.h4 ♗d4 19.  
 O-O-O ♙c6 20.♙h2 a5 21.♗d2 a4  
 22.b4 cxb4 23.h5 g5 24.♗xg5 ♗xe2+  
 25.♙b2 a3- 26.♙a1 ♗f4 27.♙e4 h6  
 28.♗f3 ♙h8 29.♗h4 1-0

*King's Indian Classical*

**Ricky Selzler (2132, 1.0)**  
**Andy May (2128, 2.5)**

*Seattle, WA Premier (4) 2008*

1.d4 ♗f6 2.c4 g6 3.♙c3 ♙g7 4.e4 d6  
 5.♗f3 O-O 6.♙e2 e5 7.O-O exd4 8.  
 ♗xd4 ♙e8 9.f3 c6 10.♗c2 ♗a6 11.♙f4  
 d5 12.cxd5 cxd5 13.exd5 ♗h5 14.♙d2  
 ♗c7 15.♙c4 ♗h4 16.f4 ♙f5 17.♙e1  
 ♗f6 18.♙d3 ♙xd3 19.♗xd3 ♗d6 20.  
 ♙d1 ♙ad8 21.♙h1 f5 22.♗f3 ♗f6 23.  
 ♙h4 ♙d7 24.♙xf6 ♙xf6 25.♗d4 a6  
 26.♙d3



26... ♙ed8 27.♙fd1 ♗b6 28.♗b3 ♗d6  
 29.♗f2 ♙g7 30.♗c5 b5 31.♗b7 ♗b4  
 32.♗xd8 ♙xd8 33.d6 ♗e6 34.♗a7+  
 ♙g8 35.♗d5 ♗xb2 36.♙3d2 ♙xd6  
 37.♙xb2 1-0

**B**efore the game, I asked my friends, "Should I try to squeeze him or crush him?" Wanting to see blood, and noting that Bragg is often surprisingly slippery when squeezed, they voted for

# 2008 Washington State Premier

	Name & USCF/FIDE	Rtg	1	2	3	4	5	6	7	8	9	10	T	S-B	
1	<b>Pupols, Viktors</b> 10511186 2008009	<b>2201</b> 2228		0.5	0	1	0.5	1	1	0	0.5	0	4.5	19.25	
2	<b>Selzler, Ricky</b> 12842861 2024284	<b>2132</b> 2118	0.5		1	1	0	0	1	0.5	1	1	6.0	21.25	3rd
3	<b>May, Andy</b> 12847965 2028522	<b>2128</b> 2102	1	0		0	0	0.5	0	0.5	1	0	3.0	11.75	
4	<b>MacGregor, Michael</b> 12418627 2016923	<b>2205</b> 2213	0	0	1		0	1	1	0	1	1	5.0	16.00	5th
5	<b>Xing, Kerry</b> 13263130	<b>1871</b> 0	0.5	1	1	1		0	1	0.5	1F	0.5	6.5	24.00	2nd
6	<b>Bragg, David</b> 11435025 2013959	<b>2208</b> 2226	0	1	0.5	0	1		1	0	1	1	5.5	21.50	4th
7	<b>Kalina, Chris</b> 12616431 2024446	<b>1959</b> 2108	0	0	1	0	0	0		0.5	0.5	0	2.0	7.00	
8	<b>Collyer, Curt</b> 12517518 2020440	<b>2254</b> 2255	1	0.5	0.5	1	0.5	1	0.5		1	1	7.0	29.25	1st
9	<b>Oshiro, Michael</b> 12487179 2010712	<b>2114</b> 2135	0.5	0	0	0	0F	0	0.5	0		0	1.0	3.25	
10	<b>Levine, David</b> 10113334 2011611	<b>2211</b> 2199	1	0	1	0	0.5	0	1	0	1		4.5	13.75	

crush, and consequently I chose this Four Pawns variation. That being decided, the rest of my preparation time was spent teaching Nat Koons to properly play the Albin Countergambit, a task which I performed adequately in spirit, and insufficiently in details.—C. Collyer

*King's Indian Four Pawns*

**NM Curt Collyer (2254, 2.0)**

**FM David Bragg (2208, 3.0)**

*Seattle, WA Premier (4) 2008*

**Annotations by NM Curt Collyer**

1.d4 ♖f6 2.c4 g6 3.♗c3 ♕g7 4.e4 d6 5.f4 O-O 6.♗f3 c5 7.dxc5 dxc5 8.♞xd8 ♜xd8 9.e5 ♗e8 10.♗e3 b6

Curiously, at the this point, my opponent offered a draw, which, for several reasons I will briefly list, must have been only a psychological ploy:

1. He was leading the tournament with a perfect score and so I obviously needed to play for a win;
2. He was Black and I was White;
3. He was lower rated;
4. His position was worse.

Due to these factors, Bragg had to wait until a future round to score the prize of "shortest draw of the tournament!"

11.♗d5

White is preparing to castle queenside. If Black ever plays ...e7-e6 to kick the Knight, then his d6-square is weakened and he can no longer use the route ...♗e8-c7-e6-d4 for his own Knight.

11...♗c6 12.O-O-O

Incidentally threatening ♗xe7+.

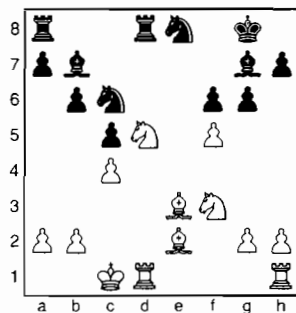
12...♗b7 13.♗e2 f6

The only problem for Black in this position is that his g7-Bishop and e8-Knight are cut out of the game by White's strong pawn on e5. Strategically, if these issues are solved, then he will be perfectly fine: so White has to be accurate to maintain an advantage.

14.exf6 exf6

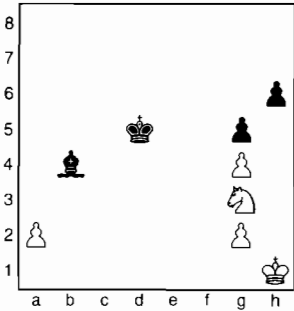
14...♗xf6 would leave the e-pawn isolated.

15.f5!





24. ♖xe5 ♗xe4 25. ♗xe4 ♖e2 26. ♗h7+ ♜h8 27. ♖g6+ ♜xh7 28. ♖xf8+ ♜g8 29. ♖c6 ♖xg3+ 30. hxg3 ♗xa1 31. ♖e6 ♖e7 32. ♖c8+ ♜f7 33. ♖c2 ♖f6 34. ♖h7+ ♜e8 35. ♖g8+ ♜d7 36. ♖b8 ♗e5 37. ♖xb5+ ♜e7 38. ♖b7+ ♜e8 39. ♖a8+ ♜f7 40. ♖xa7+ ♜g6 41. ♖e3 ♗d6 42. ♖d4 ♖e5 43. ♖d3+ ♜f6 44. ♖f3+ ♜g6 45. ♖d3+ ♜f6 46. ♖b5 ♗c5 47. ♖c3 ♖xc3 48. ♖xc3 ♜e5 49. g4 ♗b4 50. ♖e2 ♜xd5 51. ♖g3



51... ♜e5 52. ♖h5 ♜e4 53. ♜g1 ♜e3 54. ♜f1 ♗a3 55. ♜g1 ♗b4 56. ♜h2 ♗d6+ 57. ♜h3 ♜d3 58. ♖g3 ♜c4 59. ♖f5 ♗f4 60. g3 ♗c1 61. ♜g2 ♜b4 62. ♜f3 ♜a3 63. ♜e4 ♜xa2 64. ♖xh6 ♜b3 65. ♖f7 ♜c2 66. ♜f5 ♜d3 67. ♖xg5 ♜e3 68. ♖e4 ♜f3 69. g5 ♗xg5 70. ♜xg5 1-0

Michael Oshiro did not appear for his fourth round game, thus giving Kerry Xing a forfeit win.

## Second Weekend

### Round Five

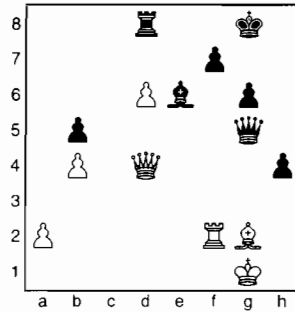
#### Sicilian Kalashnikov

**NM Michael MacGregor (2205, 2.0)**  
**Ricky Selzler (2132, 2.5)**

*Seattle, WA Premier (5) 2008*

1.e4 c5 2. ♖f3 ♖c6 3.d4 cxd4 4. ♖xd4 e5 5. ♖b5 d6 6. ♖1c3 a6 7. ♖a3 b5 8. ♖d5 ♖ge7 9.c3 ♖xd5 10.exd5 ♖e7 11.g3 ♖f5 12. ♖c2 ♗e7 13. ♗g2 a5 14.O-O ♗d7 15.f4 ♖b6+ 16. ♖f2 exf4 17. ♗xf4 O-O 18. ♖d3 g6 19. ♖af1 ♖ae8 20. ♗h3 ♖b7 21.g4 ♖g7 22. ♗h6 ♗h4 23. ♖f4 ♖e5 24. ♗g2 ♗g5 25. ♗xg5 ♖xg5 26. ♖f3 ♗c8 27.h4 ♖e5 28. ♖d4 h5 29. ♖f2 ♗xg4 30. ♖f6 ♖f5 31. ♖xf5 ♖xf5 32. ♖g3 ♖xf1+ 33. ♜xf1 ♖e7 34. ♖xd6 ♖e2+ 35. ♜g1 ♖e1+ 36. ♖f1 ♖xh4 37. ♖f4 ♖e7 38.d6 ♖d7 39. ♖f2 ♖d8 40. ♖d2 ♖f5 41. ♖d4 ♖g5

42. ♖f2 ♗e6 43.b4 axb4 44.cxb4 h4



45. ♜h1 h3 46. ♗f3 ♖g3 47. ♖f1 ♖xd6 48. ♖e3 ♗g4 49. ♖e8+ ♜g7 50. ♗d5 ♗f3+ 51. ♗xf3 ♖d2 0-1

#### Caro-Kann Advance

**FM David Bragg (2208, 3.0)**  
**Michael Oshiro (2114, 0.0)**

*Seattle, WA Premier (5) 2008*

1.e4 d5 2. ♖c3 c6 3.e5 c5 4.d4 cxd4 5. ♖xd4 e6 6.f4 ♖e7 7. ♖f3 ♖ec6 8. ♖f2 ♖d7 9. ♗e3 ♗b4 10. ♗d3 f6 11. ♖d4 ♖dx5 12.fxe5 ♖xe5 13. ♗b5+ ♜f7 14. ♗e2 a6 15.O-O ♗d7 16. ♖ad1 ♗xc3 17.bxc3 ♖a5 18. ♖b3 ♖xa2 19. ♖a1 ♖b2 20. ♗d4 ♖g6 21. ♗h5 1-0

#### Sicilian Maroczy Bind

**Chris Kalina (1959, 0.0)**  
**NM Curt Collyer (2254, 3.0)**

*Seattle, WA Premier (5) 2008*

1.c4 c5 2. ♖c3 ♖f6 3.e4 ♖c6 4. ♖ge2 d6 5.d4 cxd4 6. ♖xd4 g6 7. ♗e2 ♖xd4 8. ♖xd4 ♗g7 9. ♗e3 O-O 10. ♖d2 ♖a5 11.f3 ♗e6 12. ♖c1 ♖fc8 13.b3 a6 14.O-O b5 15. ♖d5 ♖xd2 16. ♗xd2 ♖xd5 17.cxd5 ♗d4+ 18. ♜h1 ♗d7 19.g4 ♜g7 20. ♖xc8 ♖xc8 21. ♖c1 f5 22. ♖xc8 ♗xc8 23. ♗f4 ♜f6 24.g5+ ♜f7 25. ♜g2 fxe4 26.fxe4 ♜e8 27. ♗d2 ♗d7 28. ♜f3 ♜d8 29. ♗d3 e6 30. ♗e1 ♜e7 31. ♗d2 ♗e8 32.a4 bxa4 Draw

#### QGD Lasker

**Kerry Xing (1871, 2.5)**  
**LM Viktors Pupols (2201, 1.5)**

*Seattle, WA Premier (5) 2008*

1.d4 d5 2.c4 e6 3. ♖c3 ♖f6 4. ♗g5 ♗e7 5. ♖f3 h6 6. ♗h4 O-O 7.e3 ♖e4 8. ♗xe7 ♖xe7 9. ♗d3 ♖xc3 10.bxc3 ♖d7 11.O-O dxc4 12. ♗xc4 e5 13. ♖b1 c6 14. ♖d2 ♖f6 15. ♖e2 b5 16. ♗d3 a6 17.c4 ♖d8 18.dxe5 ♖xe5 19. ♖f3 ♖e7 20. ♖d4 ♗d7 21.cxb5 cxb5 22. ♖fc1 ♖ac8 23. ♖b2 ♖d5 24. ♖xc8 ♖xc8 25. ♖c1 ♖xc1+ 26. ♖xc1 ♖b4 27.a3 ♖d6 28.h3

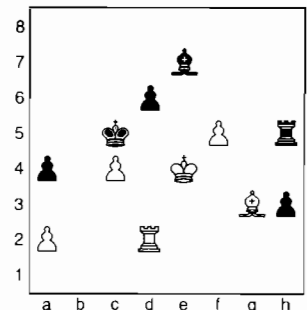
g6 29. ♗e2 ♖b6 30. ♖c3 ♜f8 31. ♖c2 ♗e6 32. ♖h8+ ♜e7 33. ♖xh6 ♖d2 34. ♖h4+ ♜e8 35. ♖h8+ ♜e7 36. ♖h4+ ♜e8 37. ♖h8+ Draw

#### Two Knights Defense

**Andy May (2128, 2.5)**  
**NM David Levine (2211, 2.0)**

*Seattle, WA Premier (5) 2008*

1.e4 e5 2. ♖f3 ♖c6 3.d4 exd4 4. ♗c4 ♖f6 5.e5 ♖g4 6. ♖e2 ♖e7 7. ♗f4 f6 8.exf6 gxf6 9. ♗xc7 d6 10. ♗b5 ♖ge5 11. ♗a5 ♖xf3+ 12.gxf3 ♗f5 13. ♖a3 a6 14. ♗xc6+ bxc6 15. ♖xe7+ ♗xe7 16.O-O c5 17. ♖he1 ♜f7 18. ♖c4 ♗e6 19.b3 ♖hg8 20. ♖e2 ♗xc4 21.bxc4 ♖g2 22. ♗d2 ♖xh2 23. ♗f4 ♖h3 24. ♖d3 ♖b8 25.c3 ♖b6 26.cxd4 cxd4 27. ♖xd4 ♖xf3 28. ♗e3 f5 29. ♖d1 ♖c6 30. ♖c2 h5 31. ♜d2 ♖h3 32. ♜e2 ♖h4 33. ♜d3 ♗f6 34. ♖b1 ♖e4 35. ♖b7+ ♖e7 36. ♖b1 h4 37. ♖h1 ♖ec7 38. ♗d4 ♗e7 39. ♖g1 ♗f6 40. ♖h1 ♗e7 41. ♖g1 ♗f8 42. ♖g5 ♜e8 43. ♖xf5 ♖h7 44.f3 ♗e7 45. ♗g1 ♜d7 46. ♖f4 ♖c8 47. ♗h2 ♖f8 48. ♖b2 ♖xf4 49. ♗xf4 ♜c6 50. ♜e4 ♜c5 51. ♖c2 a5 52. ♗e3+ ♜c6 53.f4 ♖h5 54. ♗d4 a4 55. ♖h2 ♗d8 56.f5 h3 57. ♗f2 ♗f6 58. ♗g3 ♜c5 59. ♖d2 ♗e7



60. ♖d5+ ♜xc4 61.f6 ♖h7 62. ♖d4+ ♜c3 63.fxe7 ♖xe7+ 64. ♜d5 ♖h7 65. ♗h2 ♖h5+ 66. ♜e4 ♖h4+ 67. ♗f4 ♖xf4+ 68. ♜xf4 ♖xd4 69. ♜g3 ♜e3 0-1

## Round Six

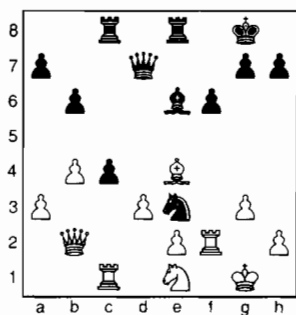
#### English Rubinstein

**NM David Levine (2211, 3.0)**  
**NM Curt Collyer (2254, 3.5)**

*Seattle, WA Premier (6) 2008*

1.c4 c5 2. ♖c3 ♖f6 3.g3 d5 4.cxd5 ♖xd5 5. ♗g2 ♖c7 6. ♖f3 ♖c6 7.O-O e5 8.d3 ♗e7 9.a3 f6 10. ♖e1 O-O 11. ♖b1 ♗e6 12.f4 exf4 13. ♗xf4 ♖d7 14. ♗xc7

23...xc7 15. d5 d7 16. xe7+ xe7  
 17. f2 ac8 18. b3 b6 19. c1 fe8  
 20. b2 f5 21. b4 c4 22. c1 e3  
 23. e4



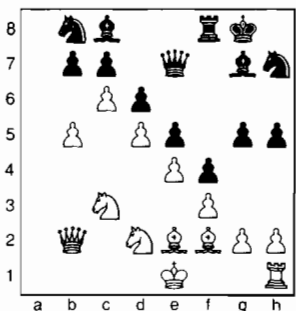
23...c3 24. a1 g4 25. f4 g5 26. f1  
 d4+ 27. g1 h1 28. f2+ 28. f2  
 29. g2 xe2 30. c2 e3 0-1

**King's Indian Petrosian**

**LM Viktors Pupols (2201, 2.0)**  
**FM David Bragg (2208, 4.0)**

*Seattle, WA Premier (6) 2008*

1. c4 f6 2. d3 g6 3. e4 d6 4. d4 g7  
 5. e2 O-O 6. f3 e5 7. d5 b7 8. g5  
 h6 9. h4 e7 10. d2 a5 11. a3 c5  
 12. b4 axb4 13. axb4 xa1 14. xa1  
 a6 15. b2 g5 16. g3 h5 17. f3 h7  
 18. f2 f5 19. c5 f4 20. c6 b8 21. b5



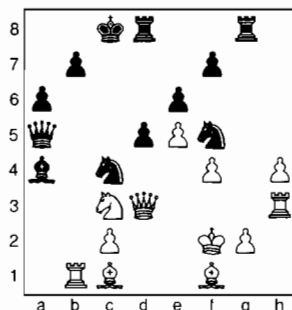
21...bxc6 22. dxc6 g4 23. c4+ gh8  
 24. d5 f7 25. h4 e6 26. b3 f6  
 27. xf6 xc4 28. xc4 xc4 29.  
 xc4 xf6 30. xf6+ xf6 31. f2  
 g7 32. a1 f8 33. a7 1-0

**French Winawer**

**Ricky Selzler (2132, 3.5)**  
**Kerry Xing (1871, 3.0)**

*Seattle, WA Premier (6) 2008*

1. e4 e6 2. d4 d5 3. c3 b4 4. e5 c5  
 5. a3 xc3+ 6. bxc3 e7 7. g4 c7  
 8. xg7 f8 9. xh7 cxd4 10. e2  
 bxc6 11. f4 dxc3 12. d3 d7 13.  
 xc3 a6 14. b1 a5 15. h4 f5 16.  
 h3 O-O-O 17. d2 c4 18. a4 c6  
 19. c1 a5 20. f2 xa4



21. dxd5 fxd5 22. xc4+ c5 23.  
 e4 xc2+ 24. g1 cxd2+ 25. xg2  
 c6 26. xc6+ bxc6 27. hb3 e1+  
 28. h2 xh4+ 29. g1 e1+ 30. h2  
 h8+ 0-1

**Semi-Slav Meran**

**Michael Oshiro (2114, 0.0)**  
**Chris Kalina (1959, 0.5)**

*Seattle, WA Premier (6) 2008*

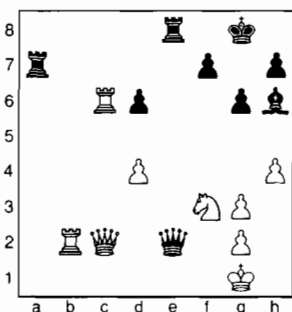
1. d4 d5 2. c4 c6 3. c3 f6 4. e3 e6  
 5. f3 bd7 6. d3 dxc4 7. xc4 b5  
 8. b3 b7 9. O-O e7 10. e2 O-O  
 11. d1 b4 12. a4 c7 13. d2 ac8  
 14. ac1 b8 15. c5 xc5 16. dxc5  
 a5 17. c4 a7 18. d4 a6 19. c2  
 fd8 20. a4 b7 21. e1 d7 22.  
 b3 c7 23. a3 e5 24. axb4 axb4 25.  
 xb4 d3 26. c3 f6 27. a5 b8  
 28. xd8 fxd8 29. d4 Draw

**King's Indian**

**Andy May (2128, 2.5)**  
**NM Michael MacGregor (2205, 2.0)**

*Seattle, WA Premier (6) 2008*

1. d4 f6 2. f3 g6 3. f4 g7 4. e3 d6  
 5. h3 bd7 6. e2 b6 7. O-O b7 8. c4  
 O-O 9. c3 a6 10. b4 e8 11. a4 a5  
 12. b3 e5 13. h2 e4 14. d5 xd5  
 15. cxd5 exd4 16. exd4 d2 17. xd2  
 xe2 18. f3 axb4 19. fe1 a6 20.  
 e7 fd8 21. xb4 f8 22. ee1 f6  
 23. g3 e8 24. ec1 xd5 25. b3  
 a5 26. ab1 h6 27. c4 a7 28.  
 c2 a6 29. b5 b7 30. h4 e7  
 31. a5 f5 32. axb6 cxb6 33. c6 xg3  
 34. fxg3 e7 35. bxb6 e2 36. b2



36... a1+ 37. h2 f1 38. h3 h1+  
 39. h2 ee1 40. g4 ec1 41. e2  
 a3+ 42. g3 xc6 43. b8+ g7  
 44. g5 xg5 45. hxg5 cc3 46. f2  
 xg3+ 47. xg3 xg3+ 48. xg3 c7  
 49. e8 h6 50. gxh6+ xh6 51. f3 g5  
 52. h8+ g7 53. h5 f6 54. h1 d5+  
 55. g2 f4 56. d1 g4 57. h4  
 e4+ 58. f2 c2+ 59. e1 g3 0-1

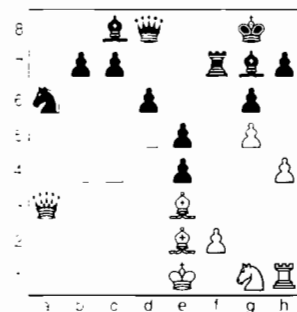
**Round Seven**

**King's Indian**

**FM David Bragg (2208, 4.0)**  
**Ricky Selzler (2132, 3.5)**

*Seattle, WA Premier (7) 2008*

1. d4 f6 2. c4 g6 3. c3 g7 4. e4 d6  
 5. e2 O-O 6. g4 e5 7. g5 fd7 8. d5 f5  
 9. h4 c5 10. b4 xe4 11. xe4 fe4  
 12. e3 a5 13. a3 axb4 14. axb4 xa1  
 15. xa1 a6 16. a3 f7



17. d1 c5 18. dxc6 bxc6 19. b5 cxb5  
 20. cxb5 c7 21. b6 e6 22. a8 b7  
 23. xd8+ xd8 24. b3 d5 25. e2 d4  
 26. O-O dxe3 27. d1 exf2+ 28. f1  
 h8 29. xf7 xf7 30. d7 c8 31.  
 xf7 e3 32. f3 g8 33. xe3 f8 34.  
 c3 a6 35. xf2 b4 36. c2 f8  
 37. f1 e8 38. b7 d6 39. c6 xe2+  
 40. xe2 1-0

**Two Knights Defense**

**NM Michael MacGregor (2205, 3.0)**  
**NM David Levine (2211, 3.0)**

*Seattle, WA Premier (7) 2008*

1. e4 e5 2. f3 c6 3. c4 f6 4. d4  
 exd4 5. e5 g4 6. O-O d6 7. exd6 xd6  
 8. h3 f6 9. g5 d8 10. e1+ e7  
 11. e2 e6 12. a3 a6 13. xe6  
 xe6 14. xe6 xe6 15. g5 O-O-O  
 16. f3 d7 17. c4 hf8 18. a5 c6  
 19. c4 b8 20. ad1 c5 21. c3 d5  
 22. b6 xb6 23. xe7 fe8 24. xd8  
 xd8 25. cxd4 cxd4 26. e4 b5  
 27. f4+ a7 28. exd4 g5 29. d2



11. ♖xe6 O-O 12. ♗xc6 bxc6 13. ♞e2 ♗d6 14. ♗c3 ♞d7 15. ♖e1 ♗h8 16. d3 ♗e4 17. ♖xe4 dxe4 18. ♗xe4 ♖ae8 19. g3 ♞f5 20. ♗xg7+ 1-0

## Round Nine

### QGD Semi-Tarrasch

Michael Oshiro (2114, 0.5)

LM Viktors Pupuls (2201, 4.0)

Seattle, WA Premier (9) 2008

1. e4 c6 2. d4 d5 3. exd5 cxd5 4. c4 ♗f6 5. ♗c3 ♗c6 6. cxd5 ♗xd5 7. ♗f3 ♗f5 8. ♗b5 e6 9. ♞a4 ♗db4 10. d5 ♗c2+ 11. ♗f1 exd5 12. ♗g5 f6 13. ♖d1 fxg5 14. ♖xd5 ♞f6 15. ♖xf5 ♞xf5 16. ♗xc6+ bxc6 17. ♞xc6+ ♗f7 18. g4 ♞c5 19. ♞xa8 ♗d4 20. ♗xg5+ Draw

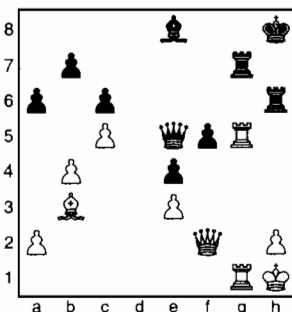
### Veresov Opening

FM David Bragg (2208, 5.5)

NM Michael MacGregor (2205, 4.0)

Seattle, WA Premier (9) 2008

1. d4 ♗f6 2. ♗c3 d5 3. ♗g5 ♗bd7 4. ♗f3 h6 5. ♗f4 a6 6. e3 e6 7. ♗d3 ♗b4 8. O-O O-O 9. ♗e2 ♗h5 10. c4 ♗xf4 11. ♗xf4 c6 12. c5 ♗a5 13. ♗c2 ♖e8 14. ♞d3 ♗f8 15. ♖ad1 ♗c7 16. ♖fe1 ♗d7 17. ♞c3 ♖e7 18. ♗d3 f5 19. ♗fe5 ♗e8 20. ♖f1 g5 21. f4 ♖g7 22. ♖d2 ♗h7 23. fxg5 hxg5 24. g4 ♗f6 25. ♖g2 ♗e4 26. ♞e1 ♗d7 27. ♞e2 ♞e7 28. ♗h1 ♖f8 29. ♖fg1 ♗e8 30. b4 ♖f6 31. gxh5 exf5 32. ♗f2 ♗h6 33. ♗xe4 dxe4 34. ♗b3+ ♗h8 35. ♞f2 ♗xe5 36. dxe5 ♞xe5 37. ♖xg5



37... ♗h5 38. ♖1g3 ♞a1+ 39. ♞g1 ♗f3+ 40. ♖xf3 ♞xg1+ 41. ♖xg1 ♖xg1+ 42. ♗xg1 exf3 43. ♗f2 ♖xh2+ 44. ♗xf3 ♗g7 45. ♗g3 ♖d2 46. ♗f3 ♗f6 47. ♗c4 ♗e5 48. ♗f7 ♖d3 49. ♗b3 f4 0-1

This game was played in the last round. I was having a mediocre tourna-

ment, but my opponent, the lowest-rated player in the Premier was having a terrific tournament and was in contention for first place.—D. Levine

### QGD Tarrasch

Kerry Xing (1871, 6.0)

NM David Levine (2211, 4.0)

Seattle, WA Premier (9) 2008

Annotations by NM David Levine

1. d4 d5 2. c4 e6 3. ♗c3 c5 4. cxd5 exd5 5. ♗f3 ♗c6 6. g3 ♗f6 7. ♗g2 ♗e7 8. O-O O-O 9. ♗g5 cxd4 10. ♗xd4 h6 11. ♗e3 ♖e8 12. ♖c1 ♗g4

The other move played in this position is 12... ♗f8, fighting for the e4-square and intending the Exchange sac ... ♖xe3. However, if White follows the standard plan of ♗xc6, saddling Black with hanging pawns, he can force the trade of Bishops on the a3-f8 diagonal and occupy c5 with his Knight with advantage. Kasparov has shown that if the Bishop stays on e7 instead, it may retreat to d8 after White's ♗c5, retaining pieces on the board and leaving White with multiple pieces trying to occupy c5.

13. h3 ♗e6 14. ♗h2 ♗e5

I thought White's last move was too slow. Since there is not yet a second attacker on h3, it allows me to avoid the Knight trade and keep an extra pair of pieces on the board to synergize with the isolated pawn.

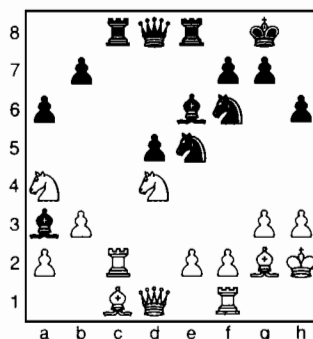
15. b3?!

Making dark-square weaknesses. FRITZ prefers 15. ♗cb5 ♗c4 16. ♗f4 ♗h5 17. ♗c7 ♞d7 18. e4.

15... a6?!

15... ♖c8, developing a piece instead of also making dark-square weaknesses, is probably better.

16. ♗a4 ♗a3 17. ♖c2 ♖c8 18. ♗c1



Fighting for the dark squares. The Bishop now finds a nice home on the long diagonal.

18... ♗f8?!

Black wants to keep pieces on the board and, under the influence of opening theory (see note to move 12), played this quickly. But, probably 18... ♗d6, aiming at White's king, or 18... Bb4, to have the option to capture White's Knight if it returns to c3 and to fight for control of e4, is better.

19. ♗b2

With an eye on Black's Knight on e5. 19... ♗d7 20. ♖xc8 ♗xc8 21. ♞c2 ♗e4

Fighting for the c5-square.

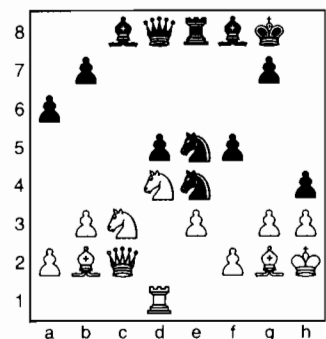
22. ♗c3 f5

In for a penny, in for a pound. This move significantly weakens the light squares in Black's position, but maintaining the Knight on e4 seems the only consistent way to play.

23. e3

White protects f2 with the Queen in order to be able to play ♖d1.

23... h5 24. ♖d1 h4



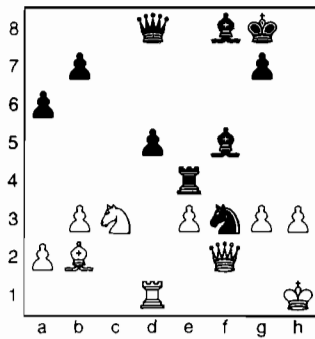
25. ♗xf5?!

Both players were approaching time trouble and the position gets very sharp after this move.

25... ♗xf5 26. ♗xe4?!

On 26. ♗xe4 ♗f7, intending 27... ♞e7, piling up on the pinned Knight, White has 27. ♗f6+ ♞xf6 28. e4, winning back the piece with a messy, but equal, position, according to FRITZ.

26... hxg3+ 27. fxg3 ♗f3+ 28. ♗h1 ♖xe4! 29. ♞f2



29... ♖g5

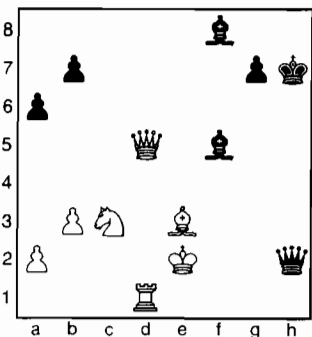
With time running low, I was caught between the almost-brilliant 29...d4, e.g., 30. ♖xf3 dxc3 31. ♖xd8 cxb2 32. ♖xf8+! (Oops!) 32... ♗xf8 33. ♖xf5+ and the Topalov-like Exchange sac 29... ♖e8 30. ♖xf3 ♗xh3 31. ♗xe4 dxe4.

30. ♖xf3 ♖xe3 31. ♖xd5+

When I played 29... ♖g5, I'd been intending to answer this with ... ♗e6, but now noticed that my Queen would hang. 31... ♗h7??

Because I hadn't seen White's threat. 32. ♗c1, I thought I was winning and put the King here to get him off the back rank and shelter him from checks with the f5-Bishop. However, if my Queen moves too far, my Bishop will hang with check. Therefore, better is 31... ♗h8 32. ♗c1 ♖xg3 33. ♗xe3 (33. ♖xf5 ♖xh3+ 34. ♖xh3+ ♖xh3+ 35. ♗g2 ♖xc3) 33... ♖xh3+ 34. ♗g1 ♖xe3+.

32. ♗c1 ♖h5 33. ♗xe3 ♖xh3+ 34. ♗g1 ♖xg3+ 35. ♗f1 ♖h3+ 36. ♗e2 ♖h2+



37. ♗e1?!

On 37. ♗f2!, White ties for first place! Black can win the Exchange with 37... ♗g4+ 38. ♗e1 ♗xd1 39. ♖e4+ ♗g8 40. ♗xd1, but since White is up a Rook it isn't enough.

37... ♗g3+ 38. ♗d2?!

With 38. ♗f1!, White can reach the above position a second time and play ♗f2!, winning. For example, 38... ♖h3+ 39. ♗e2 ♗g4+ 40. ♗d2.

38... ♖h2+ 39. ♗e2??

White misses the last chance to reach the winning position with his King on e2. He must play 39. ♗e1! Note that 39. ♗c1? ♖c2 is mate (so is 39... ♗a3).

39... ♗b4+ Draw

It's perpetual check after 40. ♗c1 ♗a3+.

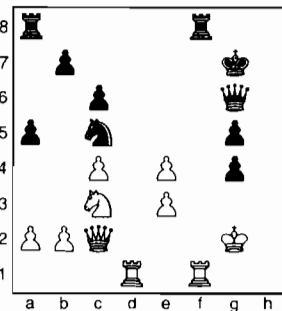
### King's Indian

Chis Kalina (1959, 1.0)

Andy May (2128, 2.5)

Seattle, WA Premier (9) 2008

1. d4 ♗f6 2. ♗f3 g6 3. ♗g5 ♗g7 4. e3 d6 5. ♗e2 O-O 6. O-O h6 7. ♗f4 ♗bd7 8. h3 ♖e8 9. c4 ♗h5 10. ♗h2 f5 11. ♗c3 c6 12. ♖c2 e5 13. ♖ae1 ♗h8 14. ♗h1 g5 15. dxe5 dxe5 16. g4 fxg4 17. hxg4 ♗hf6 18. ♗d2 ♗c5 19. f3 a5 20. ♖d1 h5 21. ♗de4 ♖g6 22. ♗xe5 ♗fxe4 23. ♗xg7+ ♗xg7 24. fxe4 ♗xg4 25. ♗xg4 hxg4 26. ♗g2



26... ♖h5 27. ♖h1 ♖f7 28. ♖e2 ♖e6 29. ♖c2 ♖h8 30. b3 ♖h4 31. ♖d2 ♖e8 32. ♖d4+ ♖e5 33. ♖xe5+ ♖xe5 34. ♖d4 ♖e7 35. ♖h2 ♗d7 36. ♗g3 ♗e5 37. ♖xh4 gxh4+ 38. ♗xh4 ♗f6 39. ♖d6+ ♗g7 40. ♗a4 ♖e8 41. ♗c5 b6 42. ♗e6+ ♗f7 43. ♗g5+ ♗g7 44. ♗g3 a4 45. ♗f4 axb3 46. axb3 ♖e7 47. ♗e6+ ♗f6 48. ♗d4+ ♗f7 49. ♗xc6 ♗xc6 50. ♖xc6 g3 51. ♗xg3 ♖xe4 52. ♗f3 ♖h4 53. ♖xb6 ♗e7 54. c5 ♗d7 55. b4 ♗c7 56. e4 ♖h3+ 57. ♗f4 ♖h4+ 58. ♗e5 ♖h5+ 59. ♗d4 ♖h1 60. ♗d5 ♖d1+ 61. ♗c4 ♖c1+ 62. ♗b5 ♖a1 63. ♖h6 ♖e1 64. ♖h7+ ♗c8 65. ♗b6 ♖xe4 66. b5 ♖e8 67. c6 ♗b8 68. ♖b7+ ♗a8 69. ♖a7+ ♗b8 70. c7+ 1-0

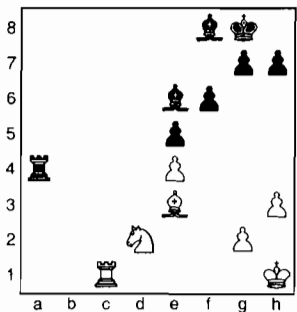
### Queen's Gambit Declined

NM Curt Collyer (2254, 6.5)

Ricky Selzler (2132, 5.5)

Seattle, WA Premier (9) 2008

1. d4 ♗f6 2. ♗f3 e6 3. e3 d5 4. c4 ♗e7 5. ♗bd2 O-O 6. ♗d3 ♗bd7 7. O-O c5 8. b3 cxd4 9. exd4 dxc4 10. bxc4 b6 11. ♖e2 ♗b7 12. ♗b2 ♖e8 13. ♖ac1 ♖c7 14. ♖fd1 ♖ad8 15. ♗b1 ♗a8 16. ♗f1 ♖b7 17. ♗g3 ♖c8 18. ♗e1 ♗d6 19. f3 ♖b8 20. ♗f1 e5 21. d5 b5 22. cxb5 ♖xc1 23. ♗xc1 ♗xd5 24. ♗e4 ♗xe4 25. fxe4 ♗e6 26. ♗h1 ♗f8 27. ♗f3 f6 28. ♗e3 ♗c5 29. ♗d5 ♖b7 30. ♗c3 ♖f7 31. ♗e3 ♖c8 32. ♖f2 ♖b7 33. h3 a6 34. bxa6 ♖xa6 35. ♖b2 ♗a4 36. ♖b5 ♖xb5 37. ♗xb5 ♗c3 38. ♗xc3 ♖xc3 39. ♗d2 ♖a3 40. ♖c1 ♖xa2 41. ♗e3 ♖a4 42. ♗d2



42... ♗b4 43. ♗f1 ♗f7 44. ♗h2 ♗a5 45. ♗g3 ♖a3 46. ♗c5 ♖a4 47. ♖b1 ♖c4 48. ♖b7+ ♗g6 49. ♗f8 ♖c7 50. ♖xc7 ♗xc7 51. ♗c5 ♗f7 52. ♗f5 ♗xf5 53. exf5 ♗d8 54. g4 ♗e7 55. ♗e3 ♗e8 56. ♗g3 ♗d7 57. ♗f3 ♗c6 58. ♗e4 ♗c5 59. ♗c1 ♗b4 60. ♗e3 ♗e7 Draw ■

### Your Mailing Label

Your mailing label is evidence of membership. The first line of your label contains your membership expiration date as the 2-digit year followed by the 2-digit month (e.g., -0805 for May). The date is followed by a letter code indicating your membership type (e.g., A for adult, J for Junior, L for library, Z for life members). The letter "F" will also appear for each additional family member. Please contact the business manager if you find any errors or if your renewal isn't processed within 1 to 2 months.

# 2007 Clark Harmon Memorial

## Northwest Grand Prix

Murlin Varner, administrator  
 13329 208th Ave. NE  
 Woodinville WA 98077  
 mevr54@yahoo.com

### Final Standings

The 2007 edition of the Grand Prix is finally in the books. We had a bit of a delay in collecting the last of the fees, but now the checks can go out. A total of 536 players took part in Grand Prix events in 2007, down twelve from 2006, a decline of 2.2%. The number of entries was also down from the previous year, by 4.4%. This can likely be attributed to a decrease in the number of events, from 80 in 2006 to 75 in 2007. On the plus side, the number of entries per event increased by 2% to 24.7.

The top players this year are Brett Becker from Oregon and Joshua Sinanan from Washington. The highest scoring player from outside our two states was Arie Milner from British Columbia. Brett and Josh will receive nice checks for their efforts; Arie will have to settle for bragging rights.

Below is the final standings list. The top two in each class will receive cash prizes, plus an additional share for the top overall in each state. Fees collected in each state are used for the prizes in that state and any donated money (\$800 this year) is split equally between the states. As a result, the first place share for 2007 is \$79.68 in Oregon and \$150.32 in Washington, while the second place shares are \$39.84 and \$75.16 respectively. Checks should be out by the time you read this.

#### Players in Database 2007

	OR	WA	~	T
Master	8	18	3	29
Expert	10	16	10	36
Class A	19	44	17	80
Class B	28	68	13	109
Class C	25	66	7	98
Class D-below	47	132	5	184
Totals	137	344	55	536

#### Oregon

Masters			
1 Raptis, Nick	112.0	Sinanan, Joshua	211.0
2 Roua, Radu	92.5	Collyer, Curt	123.5
3 Haessler, Carl	33.5	Mac Gregor, Michael	122.5
4 Bricher, James	26.0	Pupols, Viktors	99.0
5 Brownell, Landon	24.0	Lee, Michael	85.0
6 Prochaska, Peter	24.0	Koons, Nat	78.0
Experts			
1 Gay, Daniel	113.5	Calpo, Benjamin	141.0
2 Gutman, Richard	54.0	Bartron, Paul	137.5
3 Breckenridge, Steven	49.5	Julian, John	109.5
4 Yu, Corbin	41.0	May, Andy	84.0
5 Foster, Raleigh	32.5	Do, Nhon	82.5
6 Morris, Michael	22.0	Kelley, Dereque	54.5
Class A			
1 Smyth, Scott	68.5	Wang, Michael	138.5
2 Surak, Steve	68.0	O'Gorman, Peter	134.0
3 Banner, Richard	64.0	Buck, Stephen	133.0
4 Ball, Larry	62.0	Mathews, Dan	128.0

#### Washington

5 Serres, Drew	46.0	Kolde, Sterling	125.5
6 Peake, Ethan	45.5	Smith, Allen	115.0
Class B			
1 Becker, Brett	132.5	Qu Frank	102.5
2 Bailey, Taylor	105.0	Holcomb, Eric	96.5
3 Porter, Nathan	99.0	Xing, Kerry	93.0
4 Encke, Michael	55.5	Countryman, Zachary	91.0
5 Hannibal, Carson	43.5	Lee, Nathan	87.0
6 Bannon, David	40.0	Lessler, Peter	81.0
Class C			
1 Porter, Joel	84.5	Etingher, Constantin	163.5
2 Dietz, Arliss	70.5	Piper, August	129.5
3 Midson, Tony	64.0	Van Veen, Kerry	95.0
4 Supathanasinkasaem, Sompoth	50.5	Wessbecher, Francis	88.5
5 Wentz, Dale	39.5	Monahan, Darby	85.0
6 Minoo, Aaron	35.5	Breneman, Jesse	81.0
Class D and Below			
1 Cohen, David	66.0	Goodfellow, Robert	82.0
2 Terrill, Michael	55.5	Song, Matthew	72.5
3 Smith, James K.	30.5	Tokareva, Kate	62.0
4 O'Sullivan, Conor	30.0	Omori, Jeffrey	60.0
5 Pyle, Galen	22.0	Mac Gregor, Logan	58.0
6 Jones, Morgan	20.0	Nelson, Evan	58.0
2007 Final Top 20			
1 Becker, Brett	132.5	Sinanan, Joshua	211.0
2 Gay, Daniel	113.5	Etingher, Constantin	163.5
3 Raptis, Nick	112.0	Calpo, Benjamin	141.0
4 Bailey, Taylor	105.0	Wang, Michael	138.5
5 Porter, Nathan	99.0	Bartron, Paul	137.5
6 Roua, Radu	92.5	O'Gorman, Peter	134.0
7 Porter, Joel	84.5	Buck, Stephen	133.0
8 Dietz, Arliss	70.5	Piper, August	129.5
9 Smyth, Scott	68.5	Mathews, Dan	128.0
10 Surak, Steve	68.0	Kolde, Sterling	125.5
11 Cohen, David	66.0	Collyer, Curt	123.5
12 Banner, Richard	64.0	Mac Gregor, Michael	122.5
13 Midson, Tony	64.0	Smith, Allen	115.0
14 Ball, Larry	62.0	Julian, John	109.5
15 Encke, Michael	55.5	Qu, Frank	102.5
16 Terrill, Michael	55.5	Gale, Geoffrey	100.5
17 Gutman, Richard	54.0	Pupols, Viktors	99.0
18 Supathanasinkasaem, Sompoth	50.5	Ummel, Igor	96.5
19 Breckenridge, Steven	49.5	Holcomb, Eric	96.5
20 Serres, Drew	46.0	Van Veen, Kerry	95.0

#### Players from Other States

1 Milner, Arie	BC	1928	85.0
2 Weyland, Phillip	ID	1899	52.0
3 Fan, George	TX	1897	49.5
4 Weyland, Ronald	ID	1758	48.5
5 Walker, Andrew	NJ	1530	43.5
6 Monkhouse, Neale	BC	1927	37.0
7 Brewster, Robert	BC	2167	36.0
8 Li, Changhe	BC	1629	32.5
9 Caluza, Severo	BC	1887	31.0
10 Skulsky, Ian	BC	1834	27.5
11 McBroom, William	MT	1579	26.5
12 Jiang, Louie	BC	1819	25.0
13 Harmon, Carl	ID	1765	25.0
14 Carpenter, Romie	MT	2074	23.5
15 Cheng, Jack	BC	1811	23.5

# Future Events

indicates a Christopher Memorial NW Grand Prix event

☞ **Apr 3 -17** **Spokane Winter Championship** ☞  
**Site:** Rm 121 Herak Bldg, Gonzaga Univ. **Format:** 3-RR. **TC:** G/120. **EF:** \$16. **Reg:** 6:30-7:15 pm. **Rds:** 7:15 pm Thurs. **Info:** dbgriffin@hotmail.com.

☞ **Apr 12-13** **Daffodil Open** ☞  
**Site:** Tacoma CC, 409 Puyallup Ave E. Rm 11, 2nd flr (DTI Soccer Bldg). **Format:** 5-SS **TC:** G/120. **EF:** \$30 in advance, \$40 at site. **Jrs:** \$20, \$25. Economy (no Prizes): \$12. UNR free w purch. 1-yr. USCF+WCF. **Prize fund:** 67% of full-pay EFs. **Prizes:** 25% o, top 3rd 15%, middle 3rd 14%, bottom 3rd 13% (2 prz grps if fewer than 9 full EFs). **Reg:** 9-9:45 a.m. **Rds:** 10-2:30-7, 10-3 or ASAP. **Byes:** Two ½-pt byes avail. rds 1-4. **Misc:** USCF & OCF WCF memb. req'd. OSA. NS. NC. **Ent/Info:** Gary Dorfner, 8423 E 'B' St, Tacoma WA 98445; 253-535-2536, ggarychess@aol.com.

☞ **Apr 19, May 10** **SCC Saturday Quads** ☞  
**Format:** 3-RR, 4-plyr sections by rating. **TC:** G/120. **EF:** \$7 (-\$5 fee for non-SCC). **Prizes:** Free entry for future quad. **Reg:** 9:00-9:45 a.m. **Rds:** 10:00-2:15-ASAP. **Misc:** USCF, WCF, OCF memb. req'd, OSA. NS, NC.

☞ **April 26-27** **Inland Empire Open** ☞  
**Site:** Rm 201 Schoenberg Ctr, Gonzaga U, N 900 Pearl St, Spokane WA **Format:** 2-sec., 5-rd. Swiss. **TC:** G/120. **EF:** \$26 if rec'd by 4:25, \$31 at site. **Prize Fund:** \$8750 gtd. **Prizes:** \$150-100-75, X 50, A 50-25, B 50-25, C 50-25, D-E UNR 50-25, Top Upset (non-provisional rtg) 50. Class prizes b/5. **Reg:** 8:30-9:30 a.m. **Rds:** 10-2:30-7, 9-1:30 or ASAP. **Byes:** One ½-pt bye avail. if requested by end of preceeding rd; Rd 5 by end of Rd 3. **Misc:** Dir. reserves right to use class pairings in Rd 5. Coffee & cookies provided. NS. NC. W. **Entries:** Spokane CC c/o David Griffin, PO Box 631, Spokane Valley WA 99037. **Info:** 509-928-320 weekdays, dbgriffin@hotmail.com

☞ **April 26-27** **SCC Plus-Score Swiss** ☞  
**Format:** 4-SS. **TC:** G/125 or G/100+30 s/m. **EF:** \$27 (SCC members subtract \$5, embers of other dues-required CCs in BC, OR, and WA subtract \$2). **Prize Fund:** Based on at least eight entries. **Prizes:** 4.0-\$100, 3.5-60, 3.0-35, 2.5-18. **Reg:** 10-10:45 a.m. **Rds:** 11-3:30, 11-3:30 **Byes:** 1 (Rd 3 or 4-commit at reg.). **Misc:** USCF & WCF memb. req'd. OSA. NS, NC.

☞ **Apr 26, May 31** **PCC Game-in-60** ☞  
**Site:** Portland CC, 8205 SW 24th Ave, Portland OR 97219. **Format:** 4-rd Swiss. **TC:** G/60. TD may switch to 5SS and G/45 if more than 25 entries. **EF:** \$20, \$5 discount for PCC members. No advance entries. **Prize Fund:** \$200/b20. **Prizes:** \$60-40-30, U1800 35, U1500 35. **Reg:** 9-9:30 am. **Byes:** One ½-pt. bye avail. if requested at reg. **Misc:** USCF & OCF/WCF membership req'd, OSA. **Info:** portlandchessclub@gmail.com, 503-246-2978, www.pdxchess.org.

**May 3-4** **Grants Pass Open**  
**Site:** Rogue Community College Student Ctr, 3345 Redwood Hwy, Grants Pass OR. **Format:** 5-SS **TC:** G/120. **EF:** \$30 if rec'd by Apr 12, \$35 at site. **Prize fund:** \$8950 (b/30). **Prizes:** \$200-100, X 80-40, A 80-40, B 80-40, C 80-40, D & E 80-40, UNR 50. **Reg:** 8-9 a.m. **Rds:** 9:30-2-6:30, 9-2. **Byes:** Two ½-pt byes avail. rds 1-4. **Ent/Info:** Rich Duron, PO Box 3071, Central Point OR 97502; 541-621-4707.

☞ **May 4, June 1** **SCC Sunday Tornado** ☞  
**Format:** 4-SS. **TC:** G/64. **EF:** \$17 (+\$5 fee for non-SCC). **Prizes:** 1st 35%, 2nd 27%, Bottom Half 1st 22%, 2nd 16% (\$10 from each EF goes to prize fund). **Reg:** 10:30-11:15 a.m. **Rds:** 11:30-1:50-4:10-6:30. **Misc:** USCF, WCF/OCF memb. req'd. OSA. NS, NC.

**May 11** **SCC Novice**  
**Format:** 4-SS. Open to U1200 and unrated. **TC:** G/75. **EF:** \$11 by 5/7, \$16 at site. (\$2 disc. for SCC mem., \$1 for mem. of other dues-req'd CCs in WA, OR, & BC). **Prizes:** Memberships (SCC, WCF, USCF). **Reg:** 9-9:45a. **Rds:** 10-12:45-3:30-6. **Byes:** 1 (Rd 3 or 4-commit at reg.). **Misc:** USCF memb. req'd. NS, NC.

**May 16-19** **Paul Keres Memorial**  
**Site:** Hungarian Cultural Ctr, 728 Kingsway, Vancouver BC. **Format:** 3 sections: Open (7-SS), U2000 (6-SS), U1600 (6-SS). **TC:** G/90+1 min/move or G/150. **EF:** Open: \$C130 if rec'd by May 2, \$C150 after May 2. U2000: \$C110 if rec'd by May 2, \$C125 after May 2. U1600: \$C90 if rec'd by May 2, \$C100 after May 2. **EF Discounts:** Born after 5/20/88-50%; born before 5/20/43-50%; FIDE-rated-25%; FIDE-titled-free. **EF Surcharge:** Open: \$25 for plyrs w/lifetime high U2000 **Prize fund:** Based on enties. **Reg:** Open: 4-5 p.m. 5/16; U2000, U1600: 4-10 p.m. 5/16, 9-9:30 a.m. 5/17. **Rds:** 5:30 (Open), 10-5, 10-3:30, 9-ASAP. **Byes:** ½-pt byes avail. for all but the last rd. **Misc:** Sets & bds provided. BCCF Annual Mtg btw rds 5/17. Open is FIDE rated. **Entries:** British Columbia Chess Federation, PO Box 15548, Vancouver BC V6B 5B3, CANADA. Do not mailentries after 5/9. **Info:** Stephen Wright, swright2@telus.net, 604-221-7148

☞ **May 17-18** **Pierce County Open** ☞  
**Site:** Tacoma CC, 409 Puyallup Ave E, Rm 11, 2nd flr (DTI Soccer Bldg). **Format:** 5-SS **TC:** G/120. **EF:** \$30 in advance, \$40 at site. **Juniors:** \$20, \$25. Economy (no Prizes): \$12. UNR free w/ purch. 1-yr. USCF+WCF. **Prize fund:** 67% of full-pay EFs. **Prizes:** 25% o, top 3rd 15%, middle 3rd 14%, bottom 3rd 13% (2 prz grps if fewer than 9 full EFs). **Reg:** 9-9:45 a.m. **Rds:** 10-2:30-7, 10-3 or ASAP. **Byes:** Two ½-pt byes avail. rds 1-4. **Misc:** USCF & OCF/WCF memb. req'd. OSA. NS. NC. **Ent/Info:** Gary Dorfner, 8423 E 'B' St, Tacoma WA 98445; 253-535-2536, ggarychess@aol.com.

Next Month: Collyer Memorial, WA Invitational, SCC-TC Match, OR HS Championship

# Open Events

## April 2008

10,17	Taxing Quads (Rds 2-3)	David Griffin 509-928-3260 dbgrffin@aol.com	Spokane WA
11,18,25	Pierce County Championship (Rds 2-4)	253-535-2536 ggarychess@aol.com www.tacomachessclub.netfirms.com	Tacoma WA
<b>#12-13</b>	<b>Daffodil Open</b>	<b>253-535-2536 ggarychess@aol.com www.tacomachessclub.netfirms.com</b>	<b>Tacoma WA</b>
13	Alzheimer's Benefit	Eric Holcomberie@a-holcomb.com	Bend OR
16	Lecture on WA State Championship	info@calandersonpark.org	Seattle WA
<b>#19</b>	<b>SCC Saturday Quads</b>	<b>SCC Infoline 206-417-5405 cfkleist@cs.com www.seattlechess.org</b>	<b>Seattle WA</b>
<b>#19-20</b>	<b>Clark Harmon Memorial</b>	<b>503-246-2978 portlandchessclub@gmail.com www.pdxchess.org</b>	<b>Portland OR</b>
<b>#26</b>	<b>♁ PCC Game-in-60</b>	<b>503-246-2978 portlandchessclub@gmail.com www.pdxchess.org</b>	<b>Portland OR</b>
<b>#26-27</b>	<b>SCC Plus-Score Swiss</b>	<b>SCC Infoline 206-417-5405 cfkleist@cs.com www.seattlechess.org</b>	<b>Seattle WA</b>
<b>#26-27</b>	<b>Inland Empire Open</b>	<b>David Griffin 509-928-3260 dbgrffin@hotmail.com</b>	<b>Spokane WA</b>

## May 2008

2	Pierce County Championship (Rd 5)	253-535-2536 ggarychess@aol.com www.tacomachessclub.netfirms.com	Tacoma WA
3	PCC Saturday Quads	503-246-2978 portlandchessclub@gmail.com www.pdxchess.org	Portland OR
<b>#4</b>	<b>SCC Sunday Tornado</b>	<b>SCC Infoline 206-417-5405 cfkleist@cs.com www.seattlechess.org</b>	<b>Seattle WA</b>
6	PCC Tuesday Quads begin	503-246-2978 portlandchessclub@gmail.com www.pdxchess.org	Portland OR
<b>#10</b>	<b>SCC Saturday Quads</b>	<b>SCC Infoline 206-417-5405 cfkleist@cs.com www.seattlechess.org</b>	<b>Seattle WA</b>
<b>11</b>	<b>SCC Novice</b>	<b>SCC Infoline 206-417-5405 cfkleist@cs.com www.seattlechess.org</b>	<b>Seattle WA</b>
16-19	Keres Memorial	http://chess.bc.ca/events3.html#keresmemorial	Vancouver BC
<b>#17-18</b>	<b>Pierce County Open</b>	<b>253-535-2536 ggarychess@aol.com www.tacomachessclub.netfirms.com</b>	<b>Tacoma WA</b>
<b>#24-26</b>	<b>Washington Open</b>	<b>Dan Mathews 425-218-7529 dthmathews@hotmail.com</b>	<b>Redmond WA</b>
<b>#31</b>	<b>♁ PCC Game-in-60</b>	<b>503-246-2978 portlandchessclub@gmail.com www.pdxchess.org</b>	<b>Portland OR</b>

## June 2008

<b>#1</b>	<b>SCC Sunday Tornado</b>	<b>SCC Infoline 206-417-5405 cfkleist@cs.com www.seattlechess.org</b>	<b>Seattle WA</b>
3	PCC Tuesday Quads begin	503-246-2978 portlandchessclub@gmail.com www.pdxchess.org	Portland OR
7	PCC Saturday Quads	503-246-2978 portlandchessclub@gmail.com www.pdxchess.org	Portland OR
<b>#14</b>	<b>SCC Saturday Quads</b>	<b>SCC Infoline 206-417-5405 cfkleist@cs.com www.seattlechess.org</b>	<b>Seattle WA</b>
<b>#20-22</b>	<b>Emerald City Open</b>	<b>SCC Infoline 206-417-5405 cfkleist@cs.com www.seattlechess.org</b>	<b>Seattle WA</b>
<b>#28</b>	<b>♁ PCC Game-in-60</b>	<b>503-246-2978 portlandchessclub@gmail.com www.pdxchess.org</b>	<b>Portland OR</b>
<b>#28-29</b>	<b>Evergreen Empire Open</b>	<b>253-535-2536 ggarychess@aol.com www.tacomachessclub.netfirms.com</b>	<b>Tacoma WA</b>

**NOTE: A # in front of the date indicates a Harmon Memorial Northwest GP event. A ♁ in front of the tournament name indicates an OSCF qualifying tournament. Boldface type indicates a tournament announcement (in our Future Events Section) or display ad in this issue.**

# Scholastic Events

## April 2008

11-12	OSCF State Championship (K-12)	www.oscf.org oscf@a.oscf.org	Seaside OR
12	WA-BC Int'l Scholastic Chess Match	www.chess4life.com	Vancouver BC
12	Woodinville Spring (K,1-3,4-6)	www.chess4life.com	Woodinville WA
12	Shoreline Qualifier (K,1-3,4-6,7-8, 1-3U 900,4-6 U900)	amisamuels@comcast.net, www.chess4life.com	Shoreline WA
13	Sammamish Mid April Quads	www.groupchessclassinfo	Sammamish WA
16	TCC Wed. Kids Night	Gary 253-535-2536 ggrychess@aol.com www.tacomachessclub.netfirms.com	Tacoma WA
19	Intermat WA vs. BC (K-12)	kids@chess4life.com	Vancouver BC
26	WA Elementary Championships	www.chessenrichment.net	Redmond WA

## May 2008

16-17	Polgar Qualifier	OCF	Portland OR
17-18	Polgar Qualifier (girls >1000)	davidhendricks@comcast.net	Issaquah/Bothell WA
17-18	Miller Comm. Ctr Scholastic		Seattle WA
21	TCC Wed. Kids Night	Gary 253-535-2536 ggrychess@aol.com www.tacomachessclub.netfirms.com	Tacoma WA
24	WA Open Scholastic	davidhendricks@comcast.net	Redmond WA

## June 2008

7-8	Miller Comm Ctr Bughouse		Seattle WA
18	TCC Wed. Kids Night	Gary 253-535-2536 ggrychess@aol.com www.tacomachessclub.netfirms.com	Tacoma WA

### USCF NATIONAL Scholastics

**For information on any national event, visit [www.uschess.org](http://www.uschess.org)**

Apr. 18-20 **National High School Championship**

**Atlanta GA**

May 9-11 **National Elementary Championship**

**Pittsburgh PA**

**A ♁ in front of the tournament name indicates an OSCF qualifying tournament. Boldface type indicates a tournament announcement (in our Future Events Section) or display ad in this issue.**