



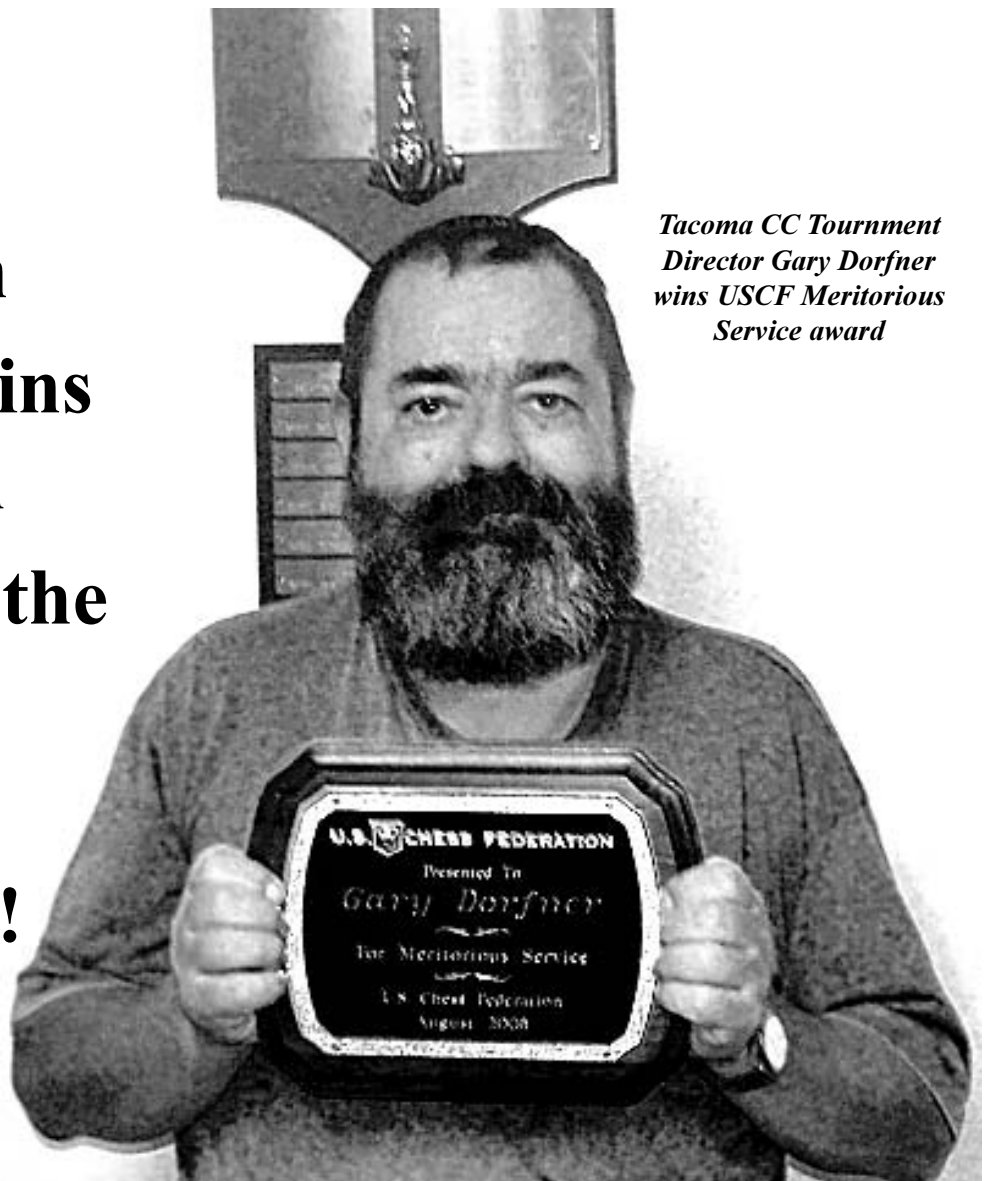
# NORTHWEST CHESS

Washington Chess Federation  
Oregon Chess Federation

October 2008  
1008 \$3.95

**U.S. Open**  
**Heywood Wins**  
**in Oregon**  
**Games from the**  
**WA Open**  
**(Finally)**  
**And More!**

*Tacoma CC Tournament  
Director Gary Dorfner  
wins USCF Meritorious  
Service award*



# Northwest Chess

October 2008, Volume 62,10 Issue 723

ISSN Publication 0146-6941

Published monthly by the Northwest Chess Board. Office of record: 2420 S 137 St, Seattle WA 98168.

**POSTMASTER:** Send Address Changes to: Northwest Chess, PO Box 84746, Seattle WA 98124-6046. Periodicals Postage Paid at Seattle, WA

USPS periodicals postage permit number (0422-390)

## NWC Staff

Current Editor: Fred Kleist  
New Editor: Ralph Dubisch  
Games Editor: FM Chuck Schulien  
Assist Editor: Nat Koons  
Printer: Snohomish Publishing  
Business Manager: Eric Holcomb

## Board Representatives

Oregon: Dave Yoshinaga & Marcus Robinson  
Washington: Duane Polich & Mark Ryan

Entire contents copyright 2008 by Northwest Chess. All rights reserved. Published opinions are those of the contributors and do not necessarily reflect the views of the editor or the Northwest Chess Board.

## Advertising Rates

Display ads run \$150 for a full page, \$100 for tnm ad; \$85 for a half-page, \$60 for tnm ad; \$30 for a quarter page, \$20 for an eighth of a page, and \$10 for a business card-size ad. Add \$10 if the ad is not copy ready and the staff must do layout work. A 15% discount is available for two or more consecutive ads of the same size.

## Event Announcement Rates

Each appearance in *Event Announcements* costs \$20. Payment is required before publication. Enclose \$2 additional if an invoice is required--this is a mandatory service charge.

## Advertising & Copy Deadline

Please get your ads and submissions in by the 10th of the month for the items to appear in the next issue (e.g., no later than Sept. 10 for the Oct. issue). The editor cannot guarantee that late submissions will appear in the desired issue. **Submit all ads and payments to:**

*Business Manager, Northwest Chess*  
1900 NE Third St, Ste 106-361  
Bend OR 97701-3889  
Eric@Holcomb.com

## Submissions

Hey folks! The editor depends on YOU to make this magazine vibrant and exciting. I need your games, photographs, thoughts, and ideas. This magazine has a great tradition and I hope people will contribute enthusiastically. You can send your materials via U.S. mail or via e-mail:

**Northwest Chess**  
**Ralph Dubisch, Editor**  
PO Box 9345  
San Jose CA 95157  
chesscoaching@gmail.com

If you'd like your games annotated by a senior master, send them to our Games Editor:

## **FM Chuck Schulien**

cschess@hotmail.com

## Subscription Information

**Northwest Chess** is a benefit of membership in either the Oregon or Washington Chess Federations. Adult dues are \$25; Junior dues (under 20) are \$17 (or \$10 for six months). Please send dues, along with pertinent information to:

*Business Manager*

## **Northwest Chess**

Eric Holcomb  
1900 NE Third St, Ste 106-361  
Bend OR 97701-3889  
Eric@Holcomb.com  
http://www.nwchess.com

## **Northwest Grand Prix Administrator**

Murlin Varner  
13329 208 Ave NE  
Woodinville WA 98072  
MEVjr54@yahoo.com  
425-882-0102

## **Oregon Chess Federation**

### President

**Dave Yoshinaga**  
971-404-5251  
dave@kdtonline.com

### Vice President

**Mike Terrill**  
503-580-9187  
pflotus@yahoo.com

### Secretary

**Carl Haessler**  
ssmith6154@aol.com

### Treasurer

**Mike Morris**  
mikejmorris@earthlink.net

### Tournament Coordinator

**Peter Prochaska**  
503-504-5756  
pete@chessodyssey.com

### Scholastic Coordinator

**Taylor Bailey**  
503-282-6796  
cosmos24@gmail.com

### Director-at-Large

**Marcus Robinson**  
503-245-1204  
mprscorp@comcast.net

## **Washington Chess Federation**

### President

**Duane Polich**  
PO Box 37  
Bellevue WA 98009  
206-852-3096  
duane@combonate.com

### Vice President

**Joshua Sinanan**  
jsinanan@hmc.edu

### Secretary

**Gary Dorfner**  
253-535-2536  
ggarychess@aol.com

### Treasurer

**Robert J. Allen**  
253-761-1288  
253-471-0170  
allenrobertj@msn.com

### Tournament Coordinator

**Dan Mathews**  
425-778-7482  
dthmathews@hotmail.com

### Scholastic Coordinator

**David Hendricks**  
425-868-3881  
davidhendricks@comcast.net

### NW Chess Board Member

**Mark Ryan**  
mark.ryan@translation.net

## *Greetings from the Editor*

Well, folks, it's time for change of ink at the old editor's desk. Ralph Dubisch will become the new editor starting with the November issue. It's been a wonderful six years. When I started as editor in 2002, I thought that the position would merely be temporary. How did the months stretch into years?

Let's all wish Ralph well by sending him lots of material to work on!

May Caissa smile,  
*Frederick K. Kleist*

Thanks to C. Kleist for proofreading.



## *Editor's Desk*

## *Northwest Chess Knights*

*Northwest Chess Knight donors will be listed in the magazine for a period of one year following receipt of donation. Please consider making a donation today to help Northwest Chess!*

King: \$1000+  
Queen: \$500-\$999  
Rook: \$250-\$499  
Bishop: \$100-\$249  
Knight: \$50-\$99  
Pawn: \$15-\$49

## Current Patrons

*King:* Cinthia McBride, Kent McNall

*Queen:*

*Rook:* Nat Koons, Michael Wang

*Bishop:* Ralph Hall, Russell Miller, Michael Omori family, Boyd Schorzman

*Knight:* Robert Brewster, Steve Buck, Darby Monahan

*Pawn:* Mark James, Gene Milener

*Contributions can be sent to the Northwest Chess Business Manager, and are greatly appreciated!*

## **WCL and NWC 60 , 50, 30 Years Ago**

by Russell Miller

1948

The *Washington Chess Letter* of October announced the Washington State Championship was to be held December 4-5 at the Seattle CC in the Assembly Hotel at 9th and Madison. Entry fee was \$1.50 and players were asked to bring "one self-starting electric clock if possible." Connectors would be used to create chess clocks. Editor Lawrence Taro of Everett complained about a lack of letters to the editor and offered a prize for letters about chess organization. A report and crosstable on the 1948 Oregon Open was given. Arthur Duke of Portland won the ten-player event with a perfect 6-0 score. Junior Jim Schmitt, was second at 4½. Duke's win over Schmitt was printed in this issue. With many top players not taking part, Herman Steiner of Los Angeles won the 1948 U.S. Championship. Olaf Ulvestad of Seattle tied with George Kramer of New York for third-fourth. Ulvestad's win over Steiner was printed. There was also a report on the 1948 U.S. Open in which Ulvestad tied for second-fourth. Weaver Adams won the 74-player event. Editor Taro was also President of the WCF and the top-rated postal player. Vernon Holmes was President of the Tacoma CC. The first article in a series by Olaf Ulvestad, "Kings and Pawns in Soviet Russia," appeared.

1958

Dan Wade of Seattle was the editor for the October *Washington Chess Letter*. Oliver LaFreniere of Yakima won the Woodpusher event held in Seattle over fifteen others with a 4-0 score. This event was started in 1950 and among the winners listed was James McCormick in 1953. The Central Washington Open was announced for Yakima on November 8-9 with a \$3 entry fee and a \$40 first prize. Vik Pupols did an article for this month about "Baby Fischer." Puget Sound League play has started. The Seattle CC defeated West Seattle 7½-2½, Kitsap pulverised McNeil Island 9-1, North Seattle downed Seattle Center 8-2, and Tacoma bested Olympia 5½-4½. A couple weeks later, Kitsap crushed Seattle Center 8-2 with first board being a match between McCormick and Ulvestad which ended in two draws. Other scores: North Seattle fleeced McNeil Island 8-2, West Seattle breezed past Tacoma 8½-1½, and the Seattle CC outpipped Olympia 6½-3½. The closing of the Seattle Chess Center on Pine Street run by Olvestad was announced. Tom Turner won the Walla Walla Valley Championship with 5-1 score over 17 other players. Editor Dan Wade reports on his own win of the Seventh Northeast Seattle event with a 7-3 score. Aaron Benavidez won a couple events among McNeil Island players. In junior play, Willy Brandal won two events.

1978

The lead article by Russell Miller in the October issue of *Northwest Chess* was on the 1978 U.S. Open held in Phoenix, Arizona. The cover photo featured Northwest players David Baran (misnamed on the cover), Thomas Murtola, Ben Thruston, Stephen Chris-

*Continued on page 21*

# **Northwest Chess**

**October 2008**

**WCL and NWC: 60, 50, 30 Years Ago**

page 3

**The Sun Shines in Dallas**

*Murlin Varner reports on the U.S. Open*

page 4

**USCF Delegates Meeting**

page 6

**Tournament Ads**

pages 8, 30, 31

**Hey, Hey, Hey, It's Heywood at the Oregon Open**

page 9

***The Chebanenko Slav According to Bologan***

*IM John Donaldson reviews a new book on the ...a6 Slav*

page 13

**Games from the WA Open, Open Section**

page 14

**Sluggers Enter the Ring and Trip on Shoelaces**

page 22

**Harmon Memorial NWGP Report**

page 27

**On the Beat!**

*Mark Ryan blogs on chess*

page 28

**Northwest Chess Calendar of Upcoming Events**

back cover

**On the Cover:** Longtime Tacoma CC tournament director Gary Dorfner received a Meritorious Service award from the USCF at the U.S. Open in Dallas. See page 26 for IM John Donaldson's testimonial.

# The Sun Shines (Way Too Much) on the U.S. Open in Dallas

by Murlin Varner

I don't know who decided that the U.S. Open should be in August, but we need a new rule that the event should only be held in states that border Canada or the Pacific Ocean. When the event is held elsewhere, the weather is usually unbearable. Dallas was no exception. Over the course of the nine day event, temperatures topped out above 100 degrees all but one day (that one was 98°, I think), with the alcohol-based mercury substitute hitting 107° twice. All this with 60% humidity. Sigh. Every chance I got, I extolled the virtues of summer in the Northwest, with lovely days and cool nights. Dallas was frequently still over 90 degrees at midnight. Who needs that? (To be fair, I may have been spoiled by my first three Opens, which were held in Hawaii, Reno, and St. Paul. The weather was beautiful at all three. Only two of the past eight, Los Angeles and Oak Brook, have managed to meet my exacting standards since.)

Perhaps as a sign of the economy, this year's Open was quite under-attended, being the smallest U.S. Open since Hawaii. When 2007's Open in Cherry Hill, NJ just barely passed the 400-player mark, I blamed it on the protest over the return to the same site as 2002 (when there were almost 100 more players). In Dallas, we only had 377 players, 28 below 2007, and that only due to the excellent support of chess players from within the state of Texas (179, nearly half of the total).

The Northwest delegation was undersized as well, with only eight players for me to report upon. Guess that makes my life easier. Only four players made the trip from Washington, with four more from Oregon. None competed for inclusion on the top boards and none took home any prizes. This is unusual for Northwest players, where we usually are well represented in the prize list (even your steadfast reporter has cashed a couple of times).

It took eight points to win this year, a feat accomplished by GM Alexander Shabalov, IM Enrico Sevillano and IM Rade Milovanovic. All alone at 7.5 from nine was IM Douglas Root, a player with a Northwest connection (his wife, Alexey, used to be a top junior player in Washington, many moons ago). Our best finishers scored 5.5 points, a score that would have been good enough for first Class C except, darn it, I wasn't one of those with that score.

Washingtonian Chouchanik Airapetian (2153) began her Open by defeating

the well-known Oklahoman Frank Berry. She managed to get out of the gate with three points in the first four rounds, but could only break even over the final five. Chouchanik scored a small upset in drawing with Master

Victor Shen (2265) of New Jersey in Round Eight, but she also fell victim to upsets, losing to two Class A players in Rounds Three and Nine. Chouchanik did score 3-0 against her share of all those Texans.

*Ruy Lopez Berlin*

**WFM Chouchanik Airapetian (2153)  
Frank Berry (1800, OK)**

*Dallas, U.S. Open (1) 2008*

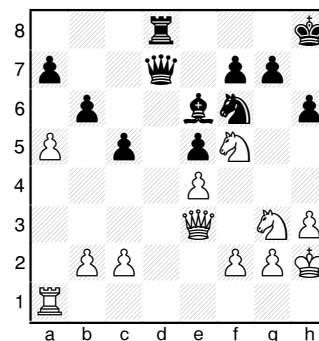
1.e4 e5 2.♘f3 ♘c6 3.♙b5 ♘f6 4.O-O ♘g4 5.h3 h5 6.d4 exd4 7.♘xd4 ♙c5 8.c3 a6 9.♙e2 d6 10.♘a3 ♗h4 11.♘ac2 ♘ge5 12.f4 ♘g4 13.♗e1 ♗e7 14.hxg4 hxg4 15.♙d3 ♙d7 16.♙e3 g6 17.♘xc6 ♙xc6 18.♘d4 f5 19.♘xc6 ♗h7 20.♙xc5 ♗h2+ 21.♙f2 g3+ 22.♙f3 ♗h5+ 23.♙e3 ♙d7 24.♙h1 1-0

*Philidor's Defense*

**NM Victor Shen (2265, NJ)  
WFM Chouchanik Airapetian (2153)**

*Dallas, U.S. Open (8) 2008*

1.e4 e5 2.♘f3 d6 3.d4 ♘d7 4.♙c4 c6 5.♘c3 ♙e7 6.O-O ♘gf6 7.a4 b6 8.♗e2 O-O 9.dxe5 dxe5 10.♙d1 ♗c7 11.♙g5 ♘c5 12.♘d2 ♘e6 13.♙xe6 ♙xe6 14.♘f1 h6 15.♙d2 ♗fe8 16.h3 ♙ad8 17.♘g3 ♙f8 18.♗f3 ♘h7 19.♘f5 ♙h8 20.♙e3 ♙xd1+ 21.♙xd1 ♙d8 22.♙a1 ♙b4 23.♘e2 ♙d2 24.♘eg3 ♙xe3 25.♗xe3 ♗d7 26.a5 c5 27.♙h2 ♘f6



28.♘xh6 ♗d2 29.♘hf5 ♙xf5 30.♘xf5 ♗xe3 31.♘xe3 ♘xe4 32.axb6 axb6 33.♘c4 ♘xf2 34.♙f1 ♘d1 35.♘xe5 ♙g8 36.♙xf7 Draw

**Fast free delivery on chess sets and supplies**

free delivery for orders over \$100 to US address - chess sets boards - pieces - clocks - computers - equipment - etc

1-800-348-4749  
PO Box 705  
Lynden, WA 98264  
contact@chesshouse.com



**CHESSHOUSE.COM**  
smart minds. great memories.



WFM Chouchanik Airapetian

Also at 5.5 was Oregonian Corbin Yu (2099). If you happen to look at the crosstable, Corbin may appear to be an Iowan now, but that is just because he chooses to have his *Chess Life* delivered to him at his abode at Grinnell College in Grinnell, Iowa. Corbin went 5-2 in games played, losing only to Victor Shen (2265) of NJ and Walter Shipman (2235) of CA. Corbin took a half-point bye in Round One, probably related to his play in the college tournament which I will mention later, and is listed with a forfeit loss in Round Five. I should have asked him what that was all about, but I didn't notice it until just now. Corbin neither yielded nor attained any upsets, and beat the only Texan he faced. How he managed to avoid playing more Texans, I'll never know.

*Reti Opening*

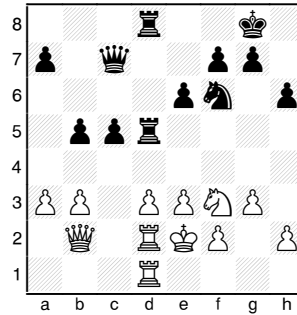
**Corbin Yu (2099)**  
**IM Walter Shipman (2235, CA)**

*Dallas, U.S. Open (9) 2008*

1. ♖f3 d5 2. c4 e6 3. g3 ♗f6 4. ♕g2 ♕e7 5. O-O O-O  
 6. b3 c5 7. ♕b2 ♗c6 8. e3 b6 9. d3 ♕b7 10. a3 ♖d7  
 11. ♖e2 ♗ad8 12. ♗d1 ♖c8 13. cxd5 ♗xd5 14. ♗bd2

♗f6 15. ♕xf6 ♗xf6 16. ♗c4 ♖b8 17. ♖b2 b5 18. ♗ce5  
 ♗xe5 19. ♗xe5 ♕xg2 20. ♖xg2 ♖b7+ 21. ♖g1 ♗d5  
 22. ♗d2 ♗fd8 23. ♗ad1 ♖b6 24. ♖f1 h6 25. ♖e2 ♖c7  
 26. ♗f3

Photo by Hero Smith



26...c4 27. dxc4 bxc4 28. ♗c1 ♖b7 29. ♗xc4 ♗xd2+  
 30. ♗xd2 ♖g2 31. ♖c1 ♖b7 32. ♗c7 ♖a6+ 33. ♗c4  
 ♗d7 34. ♖d1 ♗e5 35. ♗d4 ♗xd4 36. exd4 ♗d3 37. ♖c4  
 ♗b2+ 0-1

Finally, our editor and Washington delegate, Fred Kleist (1981) finished at 5.5 as well. Fred also started out with a half-point bye, but I doubt it had anything to do with a college tournament. There were no upsets on Fred's schedule, he won when he was supposed to and lost to three experts. In the final round, he defeated Humberto Cruz (1820) of Florida, something I wasn't able to do a few rounds earlier. Fred was 2-1 against Texans.

*QGD Ragozin*

**Humberto Cruz (1820, FL) - Fred Kleist (1981)**

*Dallas, U.S. Open (9) 2008*



Corbin Yu

Photo by Alan Losoff

1. d4 ♗f6 2. ♗f3 d5 3. c4 e6  
 4. ♗c3 ♕b4 5. ♕g5 h6  
 6. ♕h4 dxc4 7. e3 b5  
 8. ♕e2 ♕b7 9. O-O a6  
 10. a4 c6 11. ♗e5 ♕e7  
 12. ♕f3 ♗d5 13. ♕g3  
 ♗d7 14. ♕xd5 exd5  
 15. ♖g4 ♗xe5 16.  
 ♕xe5 ♕f6 17. f4  
 b4 18. ♗e2 h5  
 19. ♖f3 ♕c8 20.  
 ♖f2 ♕f5 21. ♗g3  
 ♕d3 22. ♗fd1 h4  
 23. ♗e2 ♕f5 24.  
 g4 ♕xg4 25. ♖h1  
 ♕f5 26. ♗g1  
 ♕e4+ 27. ♗f3  
 ♖d7 28. ♗g1 ♖h3  
 29. ♗af1 ♖e7 30.  
 ♗g2 ♗h6 31. ♖g1  
 ♕xf3 32. ♖xf3  
 ♖xf3 33. ♗xf3 h3  
 34. ♗gg3 ♗c8 35.  
 ♗xh3 ♗xh3 36. ♗xh3 c3  
 37. ♗f3 ♕h4 38. ♕xg7 ♗g8

39. ♖f1 ♗g7+ 40. ♘h1 ♖g8 41. b3 c5  
42. dxc5 ♗c8 43. ♗c1 ♕f2 0-1

At five points we have three Class A players from the northwest. Four, if you count in the ancient warrior Dan Mayers (1895) from Idaho. Dan is eighty-something and has to use a magnifying lens about as big as his head, but he is still a formidable player, as chess journalist and fellow old person Jerry Hanken (2200) related in his account of their fourth round draw.

Oregon's representative to the Denker Tournament (see below), Daniel Gay (1990), also started out with a half-point bye. In a change of schedule, the Denker ran at the same time as the beginning rounds of the Open, meaning that any participants who wished to play in the Open had to choose one of the shorter schedules. Many who did, opted for that first round half-point bye, perhaps for the rest, or perhaps for the swiss-gambit effect, or perhaps to avoid the really crazy five day schedule. The next four rounds saw Daniel defeating three Texans (including one Eric Lu, a young man who denied me the chance to cash by allowing me to fritter away a good opening in the final round), while dropping a game to a master from Indiana. Daniel scored his only mild upset in the eighth round, drawing with expert Steven Zierk (2170) of California. Daniel lost to master Nelson Lopez (2201) of Texas in the final round to end up 3-1 against the Texans.

Edward Addis (1870), also of Oregon, started out with an unplayed game as well, but his was worth a full point as his opponent failed to show up for the first round. Edward did not give up any points to lower-rated players and scored two draws off of experts Hana Itkis (2094) of New Jersey and Ivan Zuniga (2006) of Texas. Edward had quite the pattern going with L-W-D-L-W-D-L-W. I feel quite sure he would have drawn again had there been a tenth round. Edward broke even with the Texans, scoring 1.5/3.

Finally at five points, we find Washington resident Dakota Dixon (1854). Dakota is this year's Northwest drawmaster, with four draws, three against higher-rated opponents Lorenzo Gaskill (2038, TX), Ruth Haring (1998, CA) and

James Hodina (1973, IA). Dakota had the privilege of playing on one of the top boards in round one, facing eventual fifth-place finisher Joel Banawa (2386) of CA. Dakota scored 2.5 points in four games against Texans.

Recently blonde (with touches of pink) Taylor Bailey (1650) came to Dallas from Oregon by way of Lubbock, where the Polgar Tournament for Girls was held this year. Taylor tied for 14<sup>th</sup> there, out of 52, with 3.5/6. Leanne Hwa of Washington also scored 3.5 in Lubbock. At the Open, Taylor broke even with 4.5 of nine. Taylor started off predictably, losing to an expert and a Class A, while defeating two Class E players. She then unleashed a reign of terror on Class A players, defeating Mike Goodall (1815) of CA before taking three straight draws against Texans Jonathan Allen (1964), Matthew Liu (1956) and Iowan Dan Bradshaw (1952). She dropped her

final game with yet another Class A player to finish even. Taylor faced five Texans in the Open, scoring three points.

Finally, we get to your steadfast reporter, scoring 3.5 points for the third straight year. I was both the lowest-rated Northwesterner (1517) and the lowest finishing. I guess that shouldn't be surprising. For some reason, the directors found it necessary to feed me a steady diet of Texans. With the exception of Mr. Cruz (see above), all of my opponents were from various corners of the miserably hot State of Texas, even the one who didn't show up. I should have been playing in the Texas Open instead. I spent an hour in round two watching my clock as my opponent failed to appear; so even though I had a point, I didn't actually score a win until Round Seven, a rather frustrating dry spell. This string included losses to a little sixth grader with a big rating (Sarah Chiang, 1851) and a persistent

## USCF Delegates Meeting

by Fred Kleist

USCF President Bill Goichberg opened the proceedings on Saturday, August 9, by stating that the USCF had lost about \$71,000 in the last fiscal year, despite cost-cutting measures such as freezing salaries and reducing health benefits to employees as well as shaving eight pages from *Chess Life*. Goichberg's main proposal was to add new membership categories to the already over-complicated dues structure. Thus, starting on January 1, 2009, members can choose to receive *Chess Life/Chess Life for Kids* online for a lower price. But I'm racing ahead, the dues changes were passed on the beginning of the second day along with the budget. On the first day, we were too occupied with far more important matters.

Your delegates, including Murlin Varner (WA), Carl Haessler (OR), and myself (WA), were to sit in judgment of USCF Executive Board (EB) member Paul Truong, GM Susan Polgar's husband, who was charged with making derogatory postings on usenet chess bulletin boards while using the name "Sam Sloan." Sloan, a long-time delegate from New York and recent EB member, felt this to be a major cause of his losing last year's election. For the years 2005 through 2007, some 2500 false postings, under Sloan's name and those of two others, have been identified. Of these, about 20 were found to have IP addresses that were identical to addresses of Truong's contributions to USCF fora.

Truong countered that the USCF investigation had focused solely on him from the beginning, that the investigator had made unauthorized use of Truong's uschess.org account, and that members of the EB had tried to "dig up dirt" about himself and Polgar in order to convince them to resign. In addition, he noted that many of the "false Sam Sloan" postings were directed against Polgar.

During this discussion, we also learned that Polgar had just filed a suit against the USCF for defamation of character and interference with contracts. Nevertheless, the delegates voted down the motions to call for Truong's resignation (Aye-28, Nay-39) and to instigate a recall (Aye-26, Nay-38).

Carl, whose primary concern was the budget, was disappointed that the proceedings had gotten bogged down in the "false Sam Sloan" morass, as he had flown in just for the first day. The budget, with an estimated \$20-50,000 loss due to increased legal costs, and the attendant dues proposals were passed in short order first thing on Sunday morning.

The rest of the time was spent on supplementary committee reports, e.g., the U.S. Open committee has been considering ways to increase attendance via Grand Prix enhancement, raising prizes through increased sponsorship and having better food service, and various motions of greater or lesser import. One of the former was the adoption of rules for "Fischer" or "incremental" time controls. Some of the highlights:

- ☞ If the increment is 30 seconds or more, "sudden death" rules do not apply, e.g., players must continue to keep score with less than five minutes remaining and claims of "insufficient losing chances" will not be allowed.
- ☞ If both players have no time remaining in a game with an increment of 30 seconds or more, the clocks shall be reset to the increment and play continued.

Class D player who refused to make any Class D mistakes (Gary Cobb, 1256, who I somehow forgot to ask if he was related to the kinda-famous boxer/actor Tex Cobb). It wasn't until they gave me a Texan rated 1161 that I was able to avoid a defeat (we drew) and the next round I broke through with a win over a 1395-rated Texan. I followed that with my only upset, winning over Texan William Gibson (1800). I'd like to say that I outplayed Mr. Gibson (who is blind and plays with a Braille chessboard), but, in fact, I won when he overlooked (overfelt?) a threat on his Rook in what was otherwise a fairly even game. In spite of my lousy start, I still had a shot at a share of the cash should I win in the final round. As mentioned above, young Mr. Lu took care of that possibility. My final score against the Texans, excluding the forfeit, was 2.5-4.5. This gave the Northwest a final result of 18.5-11.5 and all the bragging rights, if only there were some.

In ten years of writing this article, this is the first time that I haven't had to include accounts of Northwesterners travelling all the way to the Open just to play each other. A feature, I suppose, of the small turnout we had this year. I sure hope to see more of you in Indianapolis next year (although it does make the writing go quicker), and if I managed to successfully plant a bug in the right ears, I expect to see all of you the next time the Open shows up in one of our states. If Texas can come up with 179, we should be able to break the 200 figure.

#### College Tournament of Champions

As for the other two events held in Dallas, Corbin Yu was one of two representatives for tiny Grinnell College at the rather over-named "College Tournament of Champions." Although colleges were limited in the number of players they could send, there was no requirement that they actually be champions of anything. Nevertheless, this event had a huge prize fund and only 17 players, representing but ten colleges, half of which were located in Texas. As a result, every player cashed! We need more tournaments like this! I want in! Corbin tied for fifth in this event with 3.5/6. Corbin's losses were to the top two finishers, Daniel Fernandez (2434) and Aibek Iskakov (2385).

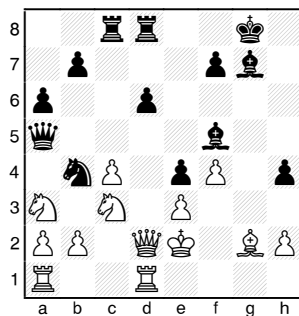
#### Northwest Chess

#### English Opening

**IM Daniel Fernandez (2434, TX)**  
**Corbin Yu (2099)**

*Dallas, College Tournament (6) 2008*

1. d3 c5 2. c4 d6 3. d4 cxd4 4. dxd4 d5 5. dxc3 e6 6. ddb5 d6 7. e4 e5 8. e5 a6 9. e6 gxf6 10. a3 f5 11. e3 e6 12. g3 h5 13. e2 h4 14. e2 e4 15. f4 e7 16. d2 a5 17. f2 b4 18. e2 c8 19. hd1 O-O 20. g4 fd8 21. gxf5 e5



22. d5 e4+ 23. f1 e1 24. xd1 d1 c6 25. e7+ f8 26. xc8 xd2 27. xd2 xc8 28. xe4 e8 29. xc6 bxc6 30. f2 e7 31. f3 f5 32. b3 a5 33. c2 c5 34. a3 d7 35. b5 e6 36. g2 f8 37. g5 f6 38. h5 h6 39. xf5 1-0

#### Denker Tournament of High School Champions

Daniel Gay (OR) and Ricky Selzler (WA) represented their states in the Arnold Denker Tournament of High School Champions (one of the longer names in chess tournaments today). Ricky finished tied for fourth (fifth on tiebreakers), one-half point off the winning score, with 4.5/6. Ricky's only loss was to eventual winner Daniel Yeager (2349) of PA. Daniel finished in a tie for 20<sup>th</sup> with an even score of 3/6. There were 48 players in this year's Denker, representing 46 states. Missing were champs from DC, MT, WY, ND and DE.

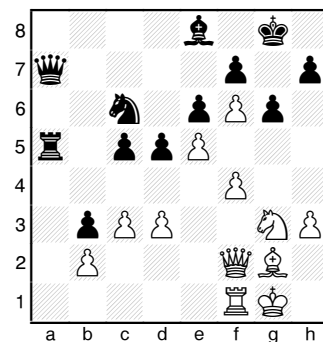
#### Sicilian Closed

**Jonathon McNeill (1861, NC)**  
**Ricky Selzler (2156)**

*Dallas, Denker (4) 2008*

1. e4 c5 2. c3 c6 3. g3 g6 4. e2 e7 5. d3 d6 6. e3 f6 7. h3 b8 8. d2 b5 9. e6 O-O 10. e7 g7 f6 11. f4 e7 12. ge2 b4 13. d1 a5 14. O-O a4 15. e3 b3 16. axb3 axb3 17. c3 b5 18. g4 a5 19. xa5 xa5 20. c4 c7

21. a1 b8 22. e3 e6 23. g3 b5 24. f2 a5 25. f1 e8 26. g5 d7 27. g4 a7 28. e5 d5 29. f6 xf6 30. gxf6+ g8



31. e4 dxe4 32. h4 c4+ 33. d4 h5 34. g5 h7 35. xe4 xd4 36. h2 f5 37. xf5 exf5 38. h4 a1 39. f2 e6 0-1

#### Sicilian Closed

**Karel Gonzalez (2183, FL)**  
**Ricky Selzler (2156)**

*Dallas, Denker (6) 2008*

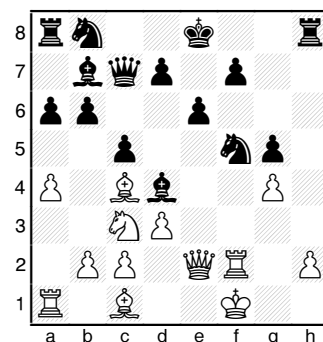
1. e4 c5 2. c3 c6 3. e5 e6 4. xc6 bxc6 5. d3 e7 6. f4 d6 7. f3 g6 8. O-O e7 9. e1 O-O 10. h1 f5 11. e5 d5 12. b3 e6 13. a4 c4 14. dxc4 dxc4 15. f2 cxb3 16. axb3 c5 17. e3 c4 18. b2 c8 19. a5 c3 20. d1 b7 21. xc3 d8 22. xc8 axc8 23. d4 e5 24. c3 e5 25. b4 e6 26. b5 e6 27. xb6 axb6 28. d6 c6 29. f3 e7 30. b2 c8 31. a8 e5 32. d3?? 0-1

#### Sicilian Closed

**Christopher Adkins (1787, AR)**  
**Daniel Gay (1990)**

*Dallas, Denker (6) 2008*

1. e4 c5 2. c3 a6 3. a4 b6 4. e4 e6 5. d3 e7 6. e2 e7 7. f4 g6 8. f3 e7 9. f5 gxf5 10. exf5 xf5 11. g5 h6 12. O-O? e4+ 13. f2 hxg5 14. g4 c7 15. f1



15... g3+ 0-1



# Washington Class Championships

## A Harmon NW Grand Prix Event

### November 28-30, 2008

**WA Class Championships  
Entry Fees and Prize Fund  
\$5,000 Guaranteed by the  
Washington Chess Federation**

**Entry fees listed as:**

**By Oct 12 / By Nov 9 / At site**

**Master** (2200+) EF \$65 / \$70 / \$80

Prizes \$525, \$325, U2300 \$200

**Expert** (2000-2199) EF \$60 / \$65 / \$75

Prizes \$425, \$275, U2100 \$150

**Class A** (1800-1999) EF \$55 / \$60 / \$70

Prizes \$325, \$200, U1900 \$125

**Class B** (1600-1799) EF \$55 / \$60 / \$70

Prizes \$325, \$200, U1700 \$125

**Class C** (1400-1599) EF \$55 / \$60 / \$70

Prizes \$325, \$200, U1500 \$125

**Class D** (1200-1399) EF \$55 / \$60 / \$70

Prizes \$325, \$200, U1300 \$125

**Class E** (1199&below) EF \$50/\$55/\$65

Prizes \$175, \$100, U1000 \$75, U800 \$75, Unrated \$75

Advance entries must be received by November 9. Reentry 1/2 of your entry fee. Add \$25 to play up one class. Free entry to GMs, IMs, and WGMs. Juniors (U21) may play for medals only for an advance EF of \$25. (Medals awarded for Top Two in Each Class.) Canadians may pay C\$ at par (no coins, please) for entry fee only.

ALL PRIZES WILL BE MAILED.

**Entries/Information:**

Send entries to Dan Mathews, WCF  
Tournament Coordinator :

730 Olympic Ave

Edmonds, WA 98020

Cell Phone (425) 218-7529

E-mail:

[Dthmathews@hotmail.com](mailto:Dthmathews@hotmail.com)

Also see [www.nwchess.com](http://www.nwchess.com).

Make checks payable to  
Washington Chess Federation  
(WCF).

Marriot Redmond Town Center, 7401 16th Avenue NE,  
Redmond, WA 98052, phone (425) 498-4000

**Format:** Six class sections as shown at left, six round Swiss system. Sections may be combined if less than 12 players in a section. Late registrations may receive "pot luck" pairings or half-point byes for initial round.

**Rating:** USCF rated. Master/Expert sections also FIDE rated. November USCF rating supplement will be used to determine official ratings. Unrated players may only play in Master section (for 1st/2nd prize), or for unrated prize only in class E.

**Registration:** Friday 8:15-9:15 AM for 3-day option, or 3:30-4:15 PM if entering with one half-point bye. Saturday 8:15-9:00 AM for 2-day option, or 9:00-9:30 AM if entering 3-day event with two half-point byes. Up to two half-point byes available at registration. Play any two days, if taking two half-point byes.

**Rounds:** 3-day schedule: Fri: 10:00 AM and 5:00 PM, Sat 10:00 AM and 5:00 PM, Sun 9:00 AM and 3:00 PM. 2-day schedule: Sat 9:30 AM, 11:45 AM, 2:30 PM, then join 3-day schedule for rest of tourney.

**Time Controls:** 3-day schedule: 40/2 and SD/1. 2-day schedule: rounds 1-3 G/60. (Rounds 4-6 same as 3-day schedule). Digital clocks preferred. Please bring tournament chess set, board and clock.

**Miscellaneous:** Current USCF and WCF or OCF memberships required in all sections. Other States Accepted. Memberships may be paid at time of registration. 2008 chess Café Grand Prix event, Clark Harmon Memorial NW Grand Prix event. No Smoking. No Computers.

**Entries/Prizes/Info:** See bar at left. Please use entry form (available soon on NWC website) for a list of all discounts and fees, and to indicate schedule, section, side events and byes requested.

**Hotel Info/Rates:** \$89.00 for single or double. Reservation link available on Northwest Chess website ([www.nwchess.com](http://www.nwchess.com)).

**Side Events:** See page 2 of this flyer.

**Washington Class Scholastic (Nov 28):** A separate flyer/entry form will be published on the NWC website for this event, or contact: David Hendricks, WCF Scholastic Coordinator, 2439 220th Place NE, Sammamish, WA 98074-6418, phone 425-868-3881, e-mail: [DavidCHendricks@comcast.net](mailto:DavidCHendricks@comcast.net).

Revised 9/19/2008.

**Have any suggestions about  
Northwest Chess magazine and  
what kind of content you'd like to  
see? Please let the editor,  
assistant editor, or business  
manager know about it!**



# Hey, Hey, Hey, It's Heywood!!

by Neil Dale

**B**ill Heywood is the winner of the 2008 Oregon Open. He finished clear first, with four wins and two draws (against Corey Russell and Andy May). Tied for second through fourth with 4½ points each were Russell, May and Alex Guo. A total of forty players made up the Open section.

The Reserve section had 48 participants and also a clear first place winner: Anthony Guo, who scored 5½. David Hendricks and Andrew Larson shared second-third with five points apiece. Samir Sen, Yun Teng, and Gabe Hoxmeier followed with 4½ apiece. In both sections, there were a number of upsets, see the tournament crosstable for details.

The total attendance of 88 is somewhat on the low side for the Oregon Open. Of course, one could always blame the economy, and economists would argue that the cost outlay for a tournament and associated travel cost is a discretionary expense. Some chessplayers take exception to that (what do economists know anyway!) and claim that chess is really an addiction. At any rate, we had players from California and Idaho besides the usual Northwest contingent, and even one from Maine: David Stubbs, a former Portland, Oregon, resident now living near Portland, Maine. Being out of his time zone might have cost him, as he showed up hours late for his last round; by then his opponent had claimed the forfeit win.

Or maybe he had not read the posted time. The most frequently asked question of tournament directors, despite prominent postings and prior announcements is, "When is the next round?" The other forfeit, also in the last round was Raptis not showing up for his game against Corey Russell. I suspect bad chess etiquette here.

A good number of the players in both sections were quite young, as one of their parents aptly put it: "the invasion of kids from Washington." A number of them did really well: Alex Guo shared second in the Open and Michael Wang won the U2000 prize. In the reserve section, Anthony Guo was clear first, and Samir Sen and Yun Teng scored 4½. So, thanks to the kids from Washington who helped make this a better tournament!

The site of the event was the Vista Dining Room at Mt. Hood Community College in Gresham, a very nice facility. As usual, this tournament was held over the Labor Day weekend, and was sponsored by the Portland Chess Club. The usual crew of Grisha Alpernas, Mike Morris, and Neil Dale performed the tournament directing duties.

This game is a good illustration of how easy it is to lose even after playing 'safe' with an early Queen exchange.

## Ruy Lopez Schlieman Deferred

**Daniel Gay (1986)**  
**Michael McGregor (2181)**

*Gresham, Oregon Open (5/6) 2008*

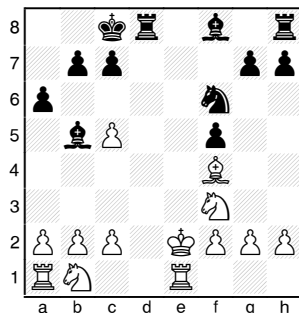
Annotations by FM Chuck Schulien

1.e4 e5 2.♘f3 ♘c6 3.♙b5 a6 4.♙a4 f5  
5.♙xc6

5...d4

5...dxc6 6.♘xe5 ♙d4 7.♘f3 ♙xe4+

8.♙e2 ♙xe2+ 9.♘xe2 ♙d7 10.d4  
O-O-O 11.♙e1 ♘f6 12.♙f4 c5 13.dxc5  
♙b5+ 0-1



## English Opening

**Drayton Harrison (1894)**

**Michael Schemm (1992)**

*Gresham, Oregon Open (2) 2008*

1.c4 ♘c6 2.g3 b6 3.♙g2 ♙b7 4.♘c3  
♘f6 5.d3 e5 6.e4 ♘d4 7.♘ge2 ♘xe2  
8.♙xe2 c6 9.O-O ♙c5 10.h3 O-O  
11.♘h2 ♙e8 12.♙g5 h6 13.♙xf6 ♙xf6  
14.f4 ♙e7 15.fxe5 ♙xe5 16.♙f5 ♙d4  
17.♙af1 d6 18.♙c2 g6 19.♘e2 ♙g7  
20.♙f6 b5 21.d4 ♙b6 22.♙xd6 ♙f8  
23.♙df6 ♙d8 24.e5 ♙c7 25.♙e4 b4  
26.g4 ♙e8 27.♙xg6 ♙xf6 28.♙xf6 ♘h8  
29.♙h5 ♙e6 30.♙f2 ♙c8 31.♘g3 ♙e8  
32.♘e4 ♙e6 33.b3 ♙f8 34.♙f6 a5  
35.♙d2 ♘h7 36.♙f4 ♙d7 37.♘c5  
♙dd8 38.h4 ♙c8 39.♘e4 ♙cd8 40.♘d6  
♙d7 41.d5 cxd5 42.cxd5 ♙xd5 43.♙f5+  
♘h8 44.♙xd7 ♙e6 45.♙e7 ♘g8 46.  
♘e8 ♙h7 47.♙g6 ♙h8 48.♙xe6 1-0

## Bishop's Opening

**NM Carl Haessler (2200)**

**Bill Heywood (2000)**

*Gresham, Oregon Open (2) 2008*

Annotations by FM Chuck Schulien

1.e4 e5 2.♙c4 ♘f6 3.d4 exd4 4.♘f3  
♘xe4 5.♙xd4 ♘f6 6.♙g5 ♘c6 7.♙h4  
♙e7 8.♘c3 d6 9.O-O-O ♙e6 10.♙d3 a6  
11.♙he1 ♙d7 12.♙a4 ♘a7 13.♙h4 h6  
14.♙xe6! fxe6 15.♙g6+ ♘d8 16.♘e5  
dxe5! 17.♘e4?

Black's Knight must be exchanged. After 17.♙xf6 ♙xf6 18.♙xd7+ ♘xd7 19.♙c4, White has the initiative.

17...♘d5 18.c4 ♙f8 19.♙xe7+ ♙xe7  
20.♙g3 ♘c6 21.cxd5 exd5 22.♙xd5+  
♘c8 23.♙g4+ ♘b8 24.♙d7 ♙b4 25.a3  
♙c4+ 0-1

## King's Indian Classical

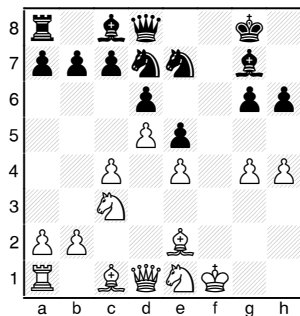
**LM Viktors Pupols (2214)**

**Michael Wang (1893)**

*Gresham, Oregon Open (3) 2008*

Annotations by FM Chuck Schulien

1.d4 ♘f6 2.c4 g6 3.♘c3 ♙g7 4.e4 d6  
5.♘f3 O-O 6.♙e2 e5 7.O-O ♘c6 8.d5  
♘e7 9.♘e1 ♘d7 10.f3 f5 11.g4 fxg4?  
12.fxg4 ♙xf1+ 13.♘xf1 h6 14.h4!



14... ♖f8 15. ♗d3 c5 16. ♕e3 ♗d7  
17. ♜g2 a6 18. ♗f2 ♗f6 19. g5 hxg5  
20. hxg5 ♗h7 21. ♕g4 ♕d7 22. ♕e6+  
♕xe6 23. dxe6 ♗c6 24. ♖g4 ♗f8  
25. ♗d5 b5 26. ♖h3 ♖a7 27. ♗g4 ♗h7  
28. ♖h1 ♕h8 29. ♗gf6+ ♕xf6 30. ♗xf6+  
♜f8 31. ♗xh7+ ♜e7 32. ♗f6 ♖f8  
33. ♗d5+ 1-0

### Anglo-Dutch

**Drayton Harrison (1894)**

**Alex Guo (2054)**

*Gresham, Oregon Open (4) 2008*

Annotations by FM Chuck Schulien

1. c4 f5 2. g3 ♗f6 3. ♕g2 g6 4. ♗c3 ♕g7  
5. d3 d6 6. e4 fxe4 7. dxe4 c5 8. e5 ♗g4  
9. exd6 O-O 10. ♗f3 exd6 11. O-O ♗c6  
12. ♕g5 ♖b6 13. ♖d5+ ♜h8 14. ♖xd6  
♖xb2 15. ♗a4? ♖a3 16. ♖ae1 ♖xa4  
17. h3 ♗h6 0-1

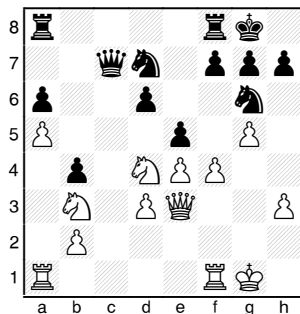
### Sicilian Paulsen

**NM Corey Russell (2200)**

**Andy May (2134)**

*Gresham, Oregon Open (4) 2008*

1. e4 c5 2. ♗f3 ♗c6 3. d4 cxd4 4. ♗xd4  
♖c7 5. ♗c3 e6 6. ♕e3 a6 7. ♕d3 ♗f6 8.  
O-O ♗e5 9. h3 ♕c5 10. ♖e2 d6 11. f4  
♗g6 12. ♗b3 ♕xe3+ 13. ♖xe3 b5 14. a4  
b4 15. ♗e2 O-O 16. a5 ♕d7 17. g4 ♕b5  
18. g5 ♗d7 19. ♗ed4 ♕xd3 20. cxd3 e5



Draw offered.

21. ♖ac1 ♖a7 22. fxe5 dxe5 23. ♗f5  
♖xe3+ 24. ♗xe3 ♗f4 25. ♖c7 ♖f8 26.

h4 ♗f8 27. ♗d5 ♗e6 28. ♖b7 ♖ab8 29.  
♖xb8 ♖xb8 30. ♗xf4 ♗xf4 31. ♗c5 h5  
32. gxh6 ♖b5 33. ♗xa6 ♖xa5 34. ♗xb4  
♖b5 35. ♗c6 ♖xb2 36. ♜h1 ♗xd3  
37. ♗e7+ ♜h8 38. ♖xf7 gxh6 39. ♗f5  
♗c5 40. ♗xh6 ♗xe4 41. ♗g4 ♗g3+  
42. ♜g1 ♖b4 43. ♗xe5 ♖xh4 44. ♗g6+  
Draw

### Ruy Lopez Karpov

**Michael Morris (2053)**

**NM Radu Roua (2229)**

*Gresham, Oregon Open (4) 2008*

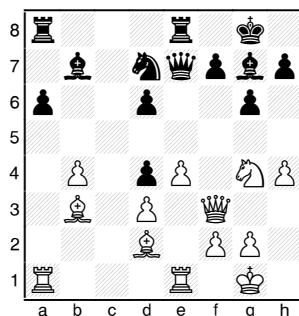
Annotations by FM Chuck Schulien

1. e4 e5 2. ♗f3 ♗c6 3. ♕b5 a6 4. ♕a4 ♗f6  
5. O-O ♕e7 6. ♖e1 b5 7. ♕b3 d6 8. c3 O-  
O 9. h3 ♗d7 10. d3 ♗a5 11. ♕c2 c5  
12. ♗bd2 ♖e8 13. ♗f1 ♕f8 14. ♗e3 g6  
15. ♕d2 ♕b7 16. b4 ♗c6 17. a4 bxa4  
18. ♕xa4 ♗b6 19. ♕b3

19. ♗d5±

19... cxb4 20. cxb4 ♗d4 21. ♗xd4 exd4  
22. ♖f3! ♖e7 23. ♗g4 ♕g7 24. h4 ♗d7

24... d5!?



25. ♕g5 ♖f8 26. ♕a4 ♗e5 27. ♗xe5  
♖xe5 28. ♖g3 h6 29. ♕f4 ♖e6 30. ♕b3  
♖f6 31. ♖ac1 d5 32. exd5 ♖xb4 33. ♕c4  
♕f8 34. ♖b1 ♖a5 35. d6 ♕c6 36. ♕e5  
♖e8 37. ♕xf6 ♖xe1+ 38. ♖xe1 ♖xe1+  
39. ♜h2 1-0

### Pirc Defense

**NM Harley Greninger (2243)**

**Peter Mieke (2019)**

*Gresham, Oregon Open (4) 2008*

1. d4 g6 2. e4 ♕g7 3. ♗f3 d6 4. ♗c3 ♗f6  
5. ♕e3 ♕g4 6. ♕e2 O-O 7. ♖d2 c6 8. O-  
O ♗bd7 9. h3 ♕xf3 10. ♕xf3 e5 11. ♖ad1  
♖e7 12. ♖fe1 ♖f8 13. g3 ♗f8 14. ♕g2  
♗e6 15. d5 ♗c7 16. f4 cxd5 17. exd5 ♗d7  
18. ♖f2 b5 19. f5 a5 20. ♖f1 f6 21. fxg6  
hxg6 22. g4 b4 23. ♗e4 a4 24. c4 bxc3  
25. ♗xc3 a3 26. b3 ♗a6 27. ♕e4 ♗f8  
28. ♗a4 ♗b4 29. ♗b6 ♖ab8 30. ♖d2  
♗a6 31. ♗c4 ♖b4 32. ♖d3 ♖b7 33. ♗a5

♖b5 34. ♗c6 ♖b8 35. ♖xb5 ♖8xb5  
36. ♕d3 1-0

### English Opening

**Michael Wang (1893)**

**Scott Smyth (1922)**

*Gresham, Oregon Open (4) 2008*

1. c4 ♗f6 2. ♗c3 g6 3. g3 ♕g7 4. ♕g2  
O-O 5. ♗f3 d6 6. O-O ♗c6 7. d3 ♗h5  
8. ♖b1 f5 9. ♗e1 a5 10. a3 e5 11. b4 axb4  
12. axb4 e4 13. ♗d5 exd3 14. ♗xd3 ♗e5  
15. ♗xe5 dxe5 16. ♕e3 ♕e6 17. b5 e4  
18. b6 cxb6 19. ♕xb6 ♖d7 20. ♗c7 ♖a2  
21. ♖b3 ♖xe2 22. ♖fd1 ♖f7 23. ♗xe6  
♖xe6 24. ♕f1 1-0

### Philidor's Defense

**Daniel Gay (1986)**

**LM Viktors Pupols (2214)**

*Gresham, Oregon Open (4) 2008*

1. e4 d6 2. d4 ♗f6 3. ♗c3 ♗bd7 4. ♗f3  
e5 5. dxe5 dxe5 6. ♕c4 ♕c5 7. O-O c6 8. a4  
O-O 9. ♕b3 ♖c7 10. ♖e2 ♕e7 11. h3  
♗c5 12. ♕c4 ♕e6 13. ♕g5 ♕xc4 14.  
♖xc4 ♗e6 15. ♕e3 ♖fd8 16. g3 ♗d7  
17. ♖fd1 h6 18. ♜g2 ♗b6 19. ♖e2 ♗d7  
20. ♖c4 ♗b6 21. ♖e2 ♖xd1 22. ♖xd1  
♖e8 23. b3 ♗c8 24. ♗e1 ♕f6 25. ♗f3 b6  
26. ♖d3 ♖d8 27. ♖d1 ♖xd3 28. ♖xd3  
♕e7 29. ♗d2 ♕c5 30. ♕xc5 ♗xc5 31.  
♖e3 ♗e6 32. ♗f3 ♖d6 33. ♗e2 ♗e7 34.  
♖d2 ♖xd2 35. ♗xd2 f6 36. ♗c4 ♗c8 37.  
h4 ♗c5 38. ♜f3 ♜f7 39. ♜e3 g5 40. hxg5  
hxg5 41. ♗c3 ♜e6 42. f4 gxh4 43. gxh4  
exf4+ 44. ♜xf4 ♗e7 45. ♗e2 ♗g6+ 46.  
♜e3 ♜d7 47. ♗f4 ♗xf4 48. ♜xf4 ♜e6  
49. ♗d2 ♗d7 50. ♗f3 c5 51. ♗e1 ♗e5  
52. ♗g2 ♗c6 53. c3 ♗a5 54. b4 ♗c4  
55. bxc5 bxc5 56. ♗e1 ♗e5 57. ♗c2  
♗g6+ 58. ♜e3 ♜d6 59. ♗a3 a6 60. ♗c4+  
♜c6 Draw

### Bishop's Opening

**Michael MacGregor (2181)**

**Bill Heywood (2000)**

*Gresham, Oregon Open (4) 2008*

1. e4 e5 2. ♕c4 ♗f6 3. d4 exd4 4. ♗f3  
♗xe4 5. ♖xd4 ♗f6 6. ♕g5 ♕e7 7. ♗c3  
♗c6 8. ♖d2 d6 9. O-O-O ♕e6 10. ♕xe6  
fxe6 11. ♖he1 ♖d7 12. ♖e2 e5 13. ♕xf6  
♕xf6 14. ♗xe5 ♗xe5 15. f4 O-O-O  
16. fxe5 ♕xe5 17. ♗d5 ♖a4 18. ♜b1  
♖de8 19. ♖d3 c6 20. ♖e4 ♖a5 21. ♗b4  
d5 22. ♖h3+ ♜b8 23. ♖xe5 ♖xe5  
24. ♗d3 ♖e7 25. a3 h6 26. ♖f1 ♖he8  
27. ♖f2 d4 28. ♖f3 ♖g5 29. g3 ♖e3

30. ♖f5 ♖e4 31. ♖c5 b6 32. ♖d6+ ♗b7  
33. b3 c5 34. ♗b2 ♖c6 35. ♖f4 a5 36. ♖f5  
a4 37. ♗f4 axb3 38. cxb3 ♖e4 0-1

*English Opening*

**Alex Guo (2054)**

**NM Corey Russell (2200)**

*Gresham, Oregon Open (5) 2008*

1. c4 ♗f6 2. ♗c3 g6 3. e4 d6 4. g3 ♗g7  
5. ♗g2 O-O 6. ♗ge2 c5 7. O-O ♗c6 8. d3  
♗e8 9. ♗e3 ♗d4 10. ♖d2 ♗c7 11. ♗h6  
♖b8 12. ♗xg7 ♗xg7 13. ♗xd4 cxd4  
14. ♗e2 e5 15. f4 f6 16. b4 ♗g4 17. ♗c1  
♖d7 18. f5 g5 19. ♗b3 ♗h5 20. a4 ♗f7  
21. ♖fb1 b6 22. ♗f3 a6 23. ♗d1 ♖fc8  
Draw

*Sicilian Closed*

**Andy May (2153)**

**Michael Morris (2053)**

*Gresham, Oregon Open (5) 2008*

**Annotations by FM Chuck Schulien**

1. e4 c5 2. ♗c3 ♗c6 3. f4 g6 4. ♗f3 ♗g7  
5. g3 e6 6. ♗g2 d6 7. O-O ♗ge7 8. d3  
O-O 9. ♗e3 ♗d4 10. e5 dxe5 11. fxe5  
♗ef5 12. ♗f2 ♗xf3+ 13. ♖xf3 ♗xe5  
14. ♗xc5 ♗d4+ 15. ♗xd4 ♗xd4 16. ♖f2  
♖b6 17. ♗a4 ♗e2+ 18. ♗h1 ♖xf2 19.  
♖xf2 ♗d4 20. c3 ♗f5 21. ♗c5 ♖b8 22.  
♖e1 ♗d6 23. d4 b6 24. ♗e4 ♗xe4 25.  
♗xe4 ♗b7 26. ♗g1 ♗xe4 27. ♖xe4

White has more space and slightly more active Rooks. Combined with a queenside pawn majority, he has reason for optimism.

27... ♖bc8

27...b5, suggested by Corey Russell, gains some space and prepares counterplay on the queenside before the White King joins the battle.

28. ♗f1 ♖c7 29. ♗e2 ♖fc8 30. ♗d3 ♗g7  
31. ♖c2 h5 32. c4 ♖d8 33. b4 ♖cd7  
34. ♗c3 ♗f6 35. ♖f2+ ♗g5? 36. c5 bxc5  
37. dxc5 ♗h6 38. c6 ♖c7 39. b5 ♖d5  
40. ♗c4 ♗g7 41. ♖d4 ♖xd4+ 42. ♗xd4  
♗f8 43. ♗c5 ♗e7 44. a4 e5 45. a5 ♗d8  
46. b6 axb6+ 47. axb6 ♖e7 48. ♖a2 1-0

*Semi-Slav Marshall Gambit*

**Drew Serres (1952)**

**NM Harley Greninger (2243)**

*Gresham, Oregon Open (5) 2008*

1. e4 c6 2. c4 e6 3. ♗c3 d5 4. d4 dxe4  
5. ♗xe4 ♗b4+ 6. ♗c3 ♗f6 7. ♗f3 O-O  
8. a3 ♗e7 9. ♗e2 b6 10. ♗e5 ♗b7 11. ♗f3

♗fd7 12. ♗xd7 ♗xd7 13. O-O ♖c8  
14. ♗f4 ♖d8 15. ♖e2 ♗f6 16. ♖ad1 ♖d7  
17. ♖d3 ♖f8 18. ♖fd1 ♖ad8 19. ♖3d2  
h6 20. h3 ♗e8 21. ♗e4 ♗d6 22. ♗xd6  
♗xd6 23. ♖e3 ♗e7 24. ♖c3 f5 25. ♗g3  
♗f6 26. ♗e2 g5 27. g3 ♖g7 28. b4 e5  
29. dxe5 ♖xd2 30. ♖xd2 ♖xd2 31. ♖xd2  
♗xe5 Draw

*King's Indian Sämisch*

**David Rupel (2105)**

**Drayton Harrison (1894)**

*Gresham, Oregon Open (5) 2008*

1. d4 ♗f6 2. c4 g6 3. ♗c3 ♗g7 4. e4 d6  
5. ♗ge2 ♗a6 6. f3 c5 7. d5 O-O 8. ♗f4  
♗h5 9. ♗e3 e6 10. g4 exd5 11. cxd5 ♗f6  
12. ♗g3 ♗d7 13. h4 b5 14. ♖d2 b4 15.  
♗d1 ♖a5 16. ♗c4 ♗b5 17. ♗xb5 ♖xb5  
18. ♗h6 ♗h8 19. ♗xf8 ♖xf8 20. ♖e2 c4  
21. ♗e3 ♖c8 22. ♖c1 b3 23. axb3 ♖xb3  
24. ♗f2 ♗b4 25. ♖hd1 ♗d7 26. ♖xc4  
♗c5 27. ♗g2 a5 28. ♗c2 ♗bd3 29. ♖xd3  
♖xc4 30. ♖a3 ♖xe2+ 31. ♗xe2 ♗xe4  
32. ♗cd4 ♗d2 33. ♗c6 ♗c4? 34. ♗e7+  
♗f8 35. ♗xc8 ♗xb2 36. ♖a4 ♗e3+  
37. ♗f2 ♗xd5 38. ♖xa5 ♗b4 39. ♗xd6  
♗e7 40. ♗c4 1-0

The following battle in the penultimate round decided first place. Bill Heywood played in uncompromising fashion, and his risk-taking was rewarded.

*Polish Defense*

**FM Nick Raptis (2317)**

**Bill Heywood (2000)**

*Gresham, Oregon Open (5) 2008*

**Annotations by FM Chuck Schulien**

1. d4 ♗f6 2. ♗f3 e6 3. g3 b5 4. a4 b4 5. c4  
♗b7 6. ♗g2 c5 7. d5 exd5 8. ♗h4 g6  
9. cxd5 d6 10. O-O ♗g7 11. ♗d2 ♗bd7  
12. a5 ♗a6 13. ♖c2 O-O 14. ♗c4 ♖e8  
15. ♗f4 ♗h5!?

Bill provokes unclear complications. Simpler is 15... ♗xc4 16. ♖xc4 ♗e5.

**From the Business Manager:**  
Please send memberships and address changes directly to the business manager's listed address. Sending to the PO Box in Seattle may result in a two-week delay in processing your mail.

16. ♗xd6 ♗xc4 17. ♖xc4 ♗xb2 18. ♖a2  
♗a3!?

18... ♖c8 19. ♖xb2 ♖f6 is possible.

19. ♖a6 ♗hf6 20. ♗f4 ♗e4! 21. ♗xe4  
♖xe4 22. ♗f3 ♖c8

Better is 22...c4! Time is of the essence.

23. ♗d2 ♖d4 24. d6 c4 25. ♗e3

One typically wild variation goes 25. ♖xa7 ♖xf4 26. gxf4 c3 27. ♗b3 c2 28. ♖e3 ♖c3 29. ♖e7! ♖c8 30. a6! c1=♖ 31. ♗xc1 ♖xc1 32. ♖xc1 ♖xc1+ 33. ♗g2, when White's passed pawns should carry the day.

25... ♗b8

25... ♗c5 is much better.

26. ♖xa7 ♖xd6 27. ♗e4 ♖d7 28. ♖a8  
♖e7

Here Black loses the thread until time control. 28...f6!/? prevents ♗g5.

29. ♗g5 ♖e6

29... ♖a7! 30. ♖d5 ♖e6

30. ♗f6+ ♗g7 31. ♗xd7 ♖xd7 32. ♖f3 h6  
33. ♗d2

Not bad, but definitely a missed opportunity. Both 33. ♖f6+ ♗h7 34. ♗e3 ♗c6 35. ♖h4 and 33. ♗f6+ ♗g8 34. ♖f4 would have been better.

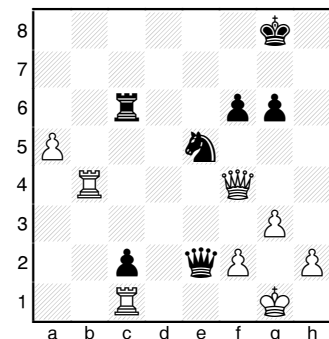
33... ♖c6?

33...c3

34. ♖f4 c3 35. ♖xh6+

White refuses the chance to simplify by 35. ♗xc3+ ♖xc3 36. ♖e5+ ♗h7 37. ♖xb8.

35... ♗g8 36. ♗f4 ♖e8 37. ♗e3 ♗d7  
38. ♗d4 f6 39. ♖f4 c2! 40. ♗b2 ♗xb2  
41. ♖xb2 ♖xe2 42. ♖c1 ♗e5 43. ♖xb4



43... ♗d3?

Who could refuse this family fork? Yet it is a mistake. 43...♖d6! 44.♖b8+ ♘g7 45.♖b7+ ♘g8 is drawn by repetition, while 43...g5! 44.♖f5 ♖d2 45.♖b8+ ♘g7 46.♖b7+ ♘f8 is also drawn. 44.♖b8+?

The wrong check. After 44.♖b8+ ♘g7 45.♖b7+ ♘h6 46.♖h8+ ♘g5 47.♖h4+ (47.♖b5+ ♘e5 48.♖d5 defends against ...♖d1+) 47...♘f5 48.♖h3+ ♖g4 49.♖b5+ ♘e5 50.♖xg4+ ♘g4 51.♘g2, White is winning the endgame. Black must still watch his King, e.g., 51...g5 (51...♘d3 52.h3 mate) 52.♖b6 ♖c7 53.♖xf6 ♘h5 (53...♘d3 54.h3+ ♘h5 55.g4+ ♘h4 56.♖h6 mate) 54.h3 ♘g6 55.♖b6 and White's mate threats give him time to win on the queenside.

44...♘f7 45.♖b7+ ♘e6 46.♖d4 ♖d1+ 47.♘g2 ♘e1+ 0-1

## Reserve Section

### Queen's Pawn Game

Samir Sen (1614)

Stephen Buck (1707)

Gresham, Oregon Open (3) 2008

Annotations by FM Chuck Schulien

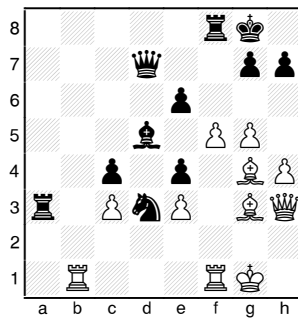
1.d4 d5 2.♗f4 e6 3.e3 ♘f6 4.c3 ♗d6 5.♗g3 O-O 6.f4 c5 7.♘d2 ♘c6 8.♘gf3 c4?! 9.a4 ♘e7 10.♘e5 ♖c7 11.♗f2 ♗d7 12.g4 ♗xe5 13.dxe5 ♘e4 14.♘xe4 dxe4 15.♗g2 ♗c6 16.♖e2 ♗d5 17.♖c2 ♖c6 18.O-O b6 19.♗h4 ♘g6 20.♖f2 a6 21.♗g3 f5 22.exf6 ♖xf6 23.h4 ♘e5 24.g5 ♘d3 25.♖e2 ♖ff8 26.♗h3 b5 27.axb5 ♖xb5 28.♖ab1 ♖d7 29.♖g2 a5 30.♗g4 a4 31.♖h3 a3?

### From the Business Manager:

Northwest Chess now accepts PayPal membership payments (see [www.paypal.com](http://www.paypal.com)) at [info@nwchess.com](mailto:info@nwchess.com). You can pay using credit card, e-check, or funds in your PayPal account. This makes it much more convenient to renew your subscription or start a new one! A PayPal Subscription/Membership Form is available on the Northwest Chess website at [www.nwchess.com/nwcmag/MemberApp\\_PayPal.htm](http://www.nwchess.com/nwcmag/MemberApp_PayPal.htm) (or just use the link on the home page or magazine info page).

Around here, Black should have thought about defense, e.g., 31...♖c6.

32.bxa3 ♖xa3 33.f5



33...exf5? 34.♗xf5 1-0

34...♖e7 35.♗e6+ ♖xe6 36.♖xe6+ ♗xe6 37.♖xf8+ ♘xf8 38.♗d6+ ♘f7 39.♗xa3 is likely winning for White. However, 34.♖xf5 is even better, e.g., 34...♖xf5 35.♗xf5 ♖e8 36.♗d7! (36.♖b8 ♖a1+ 37.♘h2 ♖a2+ is drawn) 36...♖f8 37.♗e6+ ♗xe6 38.♖xe6+ ♘h8 39.♖xc4 with a winning position.

### English Opening

Stephen Buck (1707)

Marc McCown (1500)

Gresham, Oregon Open (4) 2008

Annotations by FM Chuck Schulien

1.c4 e5 2.♘c3 f5 3.♘f3 d6 4.d4 e4 5.♘g5 ♘f6 6.e3 ♘c6

6...h6 7.♘h3 g5 gains space and keeps the White Knight out of f4.

7.♗e2 ♗e7 8.♘h3 d5 9.♘f4 ♗b4 10.♗d2 ♗xc3 11.♗xc3 g5?

Now White can exploit this loosening advance.

12.♗h5+ ♘f8 13. ♘xd5 ♘xd5 14.cxd5 ♖xd5 15.♗e2 ♗e6 16.b3 ♖d7 17.d5! 1-0

### Caro-Kann Classical

Mike Terrill (1444)

Nick Havrilla (UNR)

Gresham, Oregon Open (4) 2008

Annotations by FM Chuck Schulien

1.e4 c6 2.d4 d5 3.♘d2 dxe4 4.♘xe4 ♗f5 5.♘g3 ♗g6 6.h4 h6 7.♘f3 e6 8.♗d3

[8.♘e5 ♗h7 9.♗d3]

8...♗xd3 9.♖xd3 ♘f6 10.c4 ♗d6 11.♗e3 ♖c7 12.♘e4 ♘xe4 13.♖xe4

♘d7 14.O-O-O ♘f6 15.♖d3 O-O-O 16.♘b1 ♘g4 17.♖b3 ♘xe3 18.fxe3 c5 19.♖hf1 ♘b8 20.h5 ♖hf8 21.g4 cxd4 22.exd4 ♗f4 23.♘g1 ♗g5 24.♘f3 ♗f6 25.d5 exd5 26.cxd5 ♗d6 27.♘d4 ♖c5 28.♖xf6 ♖xf6 29.♘f5 ♖b6 30.♖g3+ ♘a8 31.d6 ♖c8 32.♖d3 ♗d8 33.♖e2 ♖c6 34.♖c1 ♖b5 35.♖d2 a6 36.♖c7 ♖c6 37.♖f2 ♖xc7 38.dxc7 ♗d1+ 0-1

### Sicilian Najdorf

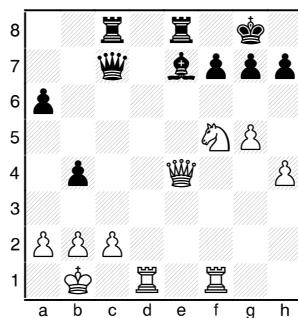
Andy Larson (1530)

Stephen Buck (1707)

Gresham, Oregon Open (5) 2008

Annotations by FM Chuck Schulien

1.e4 c5 2.♘f3 d6 3.d4 cxd4 4.♘xd4 ♘f6 5.♘c3 a6 6.♗g5 e6 7.f4 ♗e7 8.♖f3 ♖c7 9.O-O-O ♘bd7 10.g4 b5 11.♗xf6 ♘xf6 12.g5 ♘d7 13.♘b1 b4 14.♘ce2 ♗b7 15.♘g3 ♖c8 16.♗d3 ♘c5 17.♖hf1 ♘xd3 18.♖xd3 O-O 19.h4 d5 20.f5 dxe4 21.♘xe4 ♗xe4 22.♖xe4 exf5 23.♘xf5 ♖fe8



24.♘xg7!?

The sacrifice is definitely good for perpetual check, so there is no risk involved. 24.♖g2 allows the game to continue without fireworks.

24...♘xg7 25.♖xf7+ ♘xf7 26.♖xh7+ ♘e6 27.♖g6+ ♘e5 28.♖g7+ ♘f5?

On 28...♘e6, White has nothing more than a draw.

29.♖f7+ ♘e5 30.♖d5+ ♘e4 31.♖f5+ 1-0

### From the Business Manager

With the new school year already here, why not consider helping to promote scholastic chess? Contact your WCF or OCF scholastic director for more information. Northwest Chess six-month scholastic memberships are available for only \$10.

# The Chebanenko Slav According to Bologan

by GM Victor Bologan

published by New in Chess, pb.,  
238 pages, FAN. © 2008. Retail \$29.95.

by IM John Donaldson

**T**he *Chebanenko Slav According to Bologan* is the rare opening book written by an active world class player. It is entirely devoted to the position reached after 1.d4 d5 2.c4 c6 3.♘f3 ♘f6 4.♘c3 a6.

Victor Bologan, whose book of his best games was widely praised, has another winner here. His tribute to his trainer and teacher, Vyacheslav Andreevich Chebanenko (1942-1997) is full of funny and touching anecdotes and gives a good impression of what it was like to learn and analyze with him. There are several nice photos from this time period.

I knew that Chebanenko invented the 4...a6 Slav from the ground up and was closely identified with 1.c4 e5 2.♘c3 ♘b4 but didn't realize that he was one of the pioneers in playing an early ♘xc6 in the Rossolimo nor that he was the analyst who discovered the thunderbolt 11...d5 played in the first game of the Fischer-Petrosian Candidates Match in 1971. In a case of great minds thinking alike Chebanenko was the first to play 11...♘e8! (after 1.d4 ♘f6 2.c4 g6 3.♘f3 ♘g7 4.g3 O-O 5.♘g2 d6 6.O-O ♘bd7 7.♘c3 e5 8.e4 c6 9.h3 ♗b6 10.♖e1 exd4 11.♘xd4) against Artamov in 1968 though Smyslov, annotating his win over Bukal (Linz 1980) with 11...♘e8 remarks, "It is curious that I prepared this move for my match with Botvinnik (1954), but I was able to employ this analysis only a quarter of a century later."

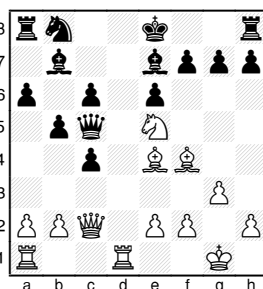
Bologan examines all of White's tries: 5.cxd5, 5.h3, 5.♗c2, 5.♗b3, 5.g3, 5.♘f4, 5.♘g5, 5.a4, 5.♘e5, 5.e3, and 5.c5. There is a lot of analysis but also plenty of prose and the conclusions at the end of each chapter pull things together. While I found the work to be of a uniformly high quality there are a few glitches. In Chapter Six, after 5.♘f4

dx4 6.g3, the comment is made that the Catalan development is possible, but not optimal, with the Bishop already committed to f4. This makes perfect sense, yet the variation given yields a slight edge to White due to the insecure position of the enemy King, i.e., 6...b5 7.♘g2 ♘b7 8.O-O e6 9.♘e5 ♘e7 10.♗c2 (10.a4 is also given as promising) 10...♗xd4 11.♖fd1 ♗c5 12.♘e4 ♘xe4 13.♘xe4 g6 (Bologan points out that 13...f5? loses to 14.♘xf5 exf5 15.♗xf5 ♘f6 16.♖d7!!)

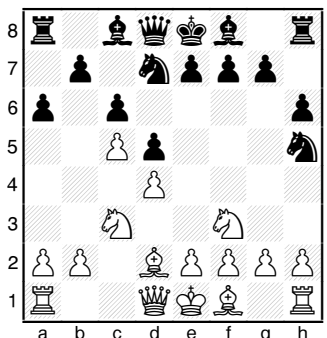
1 4 . ♘ e 3  
♗xe5 15.  
♘d4 ♗c7  
16. ♘ xh8  
♘d7 17.b3  
f5 18.♘g2  
♘f7 19.  
♘b2 cxb3  
20.axb3 c5  
21.e4. No

improvements are offered for Black, yet this is not considered to be a particularly threatening line by contemporary theory.

Bologan and English GM Chris Ward (in his chapter "Having Fun Against the 4...a6 Slav" in the book *Dangerous Weapons: The Queen's Gambit*) butt heads after 5.c5 ♘bd7 6.♘f4 ♘h5 7.♘g5 h6 8.♘d2 when three moves are considered.



After 13.♘xe4



A 8...g6 9.e4 dxe4 10.♘xe4 ♘g7 11.♘c4 ♘hf6 Bocharov-Burmakin, Togliatti 2003. Bologan continues a few more moves and writes Black is close to equality. Ward thinks White is better after 12.♘c3 as the Knight on d7 is misplaced. He also believes 12.♘xf6+ ♘xf6 13.O-O and 12.♗b3 O-O 13.♘xf6+ ♘xf6 14.O-O ♘d5 15.♖fe1 leave White with a small, but lasting, advantage.

B 8...♗c7 9.e4 dxe4 10.♘xe4 ♘df6 11.♘xf6+ ♘xf6 12.♘c4 (Ward also looks at 12.♘e5) 12...♘f5 13.O-O e6= (Bologan) 14.♗e2 ♖d8 15.♘c3 ♘e7 >>> 16.0-0 0-0 17.Rad1 Nd5 19.Rfe1 and Ward likes White.

C 8...♘hf6 9.♘f4 g5 (Bologan's main line, not examined by Ward who focuses on 9...♘h5 10.♘e5) 10.♘g3 ♘g7 11.e3 ♘h5 12.♘e5 f6 13.♘d2 O-O 14.♘g3 ♘xg3 15.hxg3 e5 16.♘b3 exd4 17.exd4 f5 18.♘e2 f4 19.♗d3 fxg3 20.♗xg3 ♗f6 21.O-O ♗f4 22.♗xf4 ♖xf4 23.♖ad1. In this endgame, Black's chances are not worse (Avrukh-Volkov, Internet 2004)—Bologan.

The *Chebanenko Slav According to Bologan* is not a complete guide to all ...a6 treatments unlike Glenn Flear's 2003 book on the subject for Everyman, as Bologan doesn't believe in the ...a6 Slav against every White move order. For instance, after 3.♘f3 ♘f6 4.e3, he recommends 4...♘f5. Against 3.♘c3 ♘f6 4.e3, he thinks 4...a6 is fine and that White should transpose back to normal lines with 5.♘f3. If instead 5.♗c2, then ...e6 and ...c5 exploit the premature development of the Queen.

Thirty-four exercises, plus player and opening indices round out this well-produced book, which, like other New in Chess publications, has a clean layout and lots of diagrams.

**Highly recommended** for those who play the ...a6 Slav. ■

# Games from the Washington Open: Open Section

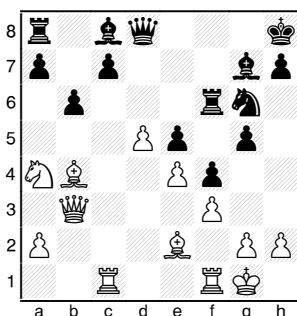
## King's Indian Classical

**Elston Cloy (1965)**

**Mark Naus (2155)**

*Redmond, Washington Open (1) 2008*

1.d4 ♘f6 2.c4 g6 3.♖c3 ♗g7 4.e4 d6  
5.♗f3 O-O 6.♗e2 e5 7.O-O ♗c6 8.d5  
♗e7 9.♗e1 ♗d7 10.♗d3 f5 11.f3 f4 12.  
♗d2 g5 13.♖c1 ♖f6 14.c5 ♗xc5 15.  
♗xc5 dxc5 16.b4 cxb4 17.♗a4 b6 18.  
♗xb4 ♗g6 19.♖b3 ♗h8



20.♖c3 ♗d7 21.♗b2 c5 22.dxc6 ♖xc6  
23.♖d2 a5 24.♗a3 b5 25.♖cd1 ♖b6+  
26.♗h1 ♗e6 27.♗d3 b4 28.♗c1 ♖ac8  
29.♗e1 ♗f8 30.♗d3 ♗c5 31.♗c2 ♗g7  
32.♖e2 ♗e7 33.♗a1 a4 34.♖fe1 ♖c5  
35.♗d2 ♖5c7 36.♗c1 b3 37.axb3 axb3  
38.♗b2 ♗b4 39.♖f1 ♖e3 40.♖b1  
♖xe2 41.♗e2 ♗f6 42.♗d1 ♗c4 43.  
♗xb3 ♗xf1 44.♖xf1 ♗c3 45.♗a3 ♗d4  
46.g3 ♖a7 47.♗c2 ♖xc2 48.♗xc2  
♖xa3 49.♗d1 ♖a1 50.♗g2 ♗f8 51.h4  
h6 52.♗h3 ♗d7 53.♗g4 ♗b6 54.hxg5+  
hxg5 55.gxf4 gxf4 56.♖h1 ♗g6 57.♖f1  
♗c4 58.♗h4 ♗e3 59.♖g1+ ♗f6 60.  
♗h5 ♖xd1 0-1

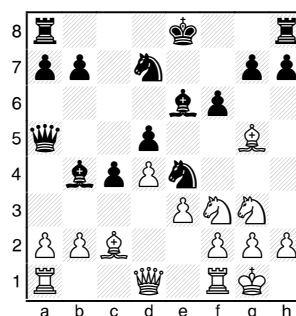
## Pribyl Defense

**Daniel Gay (1983)**

**NM Curt Collyer (2259)**

*Redmond, Washington Open (1) 2008*

1.e4 d6 2.d4 ♗f6 3.♗c3 c6 4.♗g5 ♗bd7  
5.f4 ♖a5 6.♖d2 e5 7.♗f3 ♗e7 8.  
O-O-O O-O 9.♗b1 ♖e8 10.♗d3 ♖c7  
11.♖hf1 b5 12.fxe5 dxe5 13.dxe5 ♗g4  
14.♖f4 ♗dxe5 15.h3 ♗xg5 16.♖xg5 f6  
17.♖f4 ♗h6 18.g4 ♗hf7 19.♗d4 a6  
20.♗f3 ♖a7 21.♗e2 ♗xf3 22.♖xc7  
♖xc7 23.♗xf3 ♖ce7 24.♗g2 ♖e5 25.  
♗e2 h5 26.♗f3 hxg4 27.hxg4 ♗g5



13.♗h5 fxg5 14.♗xg7+ ♗f7 15.♗xe6  
♗xe6 16.♗xg5+ ♗xg5 17.♖g4+ ♗d6

28.♗d4 ♗xf3 29.♗xf3 ♖xe4 30.g5 ♗h3  
31.♖g1 ♗g4 32.gxf6 ♗xf3 33.♖xg7+  
♗f8 34.♖c1 ♖4e6 35.♖a7 c5 36.a3  
♖xf6 37.♖f1 ♖e7 38.♖a8+ ♗f7 39.♖c8  
c4 40.♖d8 ♖e2 0-1

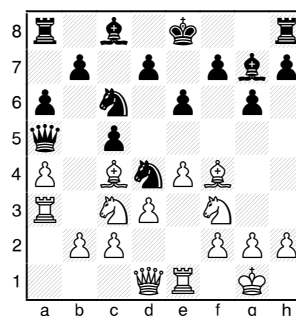
## Modern Defense

**Nhon Do (2094)**

**Zachary Countryman ( )**

*Redmond, Washington Open (1) 2008*

1.♗f3 g6 2.e4 ♗g7 3.♗c4 e6 4.♗c3 c5  
5.O-O ♗c6 6.♖e1 a6 7.a4 ♖a5 8.♖a3  
♗ge7 9.d3 ♗d4 10.♗f4 ♗ec6



11.♗d5 ♗xf3+ 12.gxf3 e5 13.♗e3 ♗d4  
14.c3 ♗e6 15.b4 ♖d8 16.bxc5 ♖h4 17.  
♗h1 ♗f4 18.♗c7+ ♗d8 19.♗xa8 d5  
20.♗xf4 1-0

## QGD Tarrasch

**Alex Guo (2054)**

**NM Luc Poitras (2223)**

*Redmond, Washington Open (1) 2008*

1.c4 c5 2.♗c3 e6 3.♗f3 d5 4.cxd5 exd5  
5.d4 ♗f6 6.♗g5 ♗e6 7.e3 ♗bd7 8.♗d3  
c4 9.♗c2 ♖a5 10.O-O ♗b4 11.♗e2  
♗e4 12.♗g3 f6

18.♖xg5 ♗c7 19.a3 ♗d6 20.b4 ♖b5  
21.a4 h6 22.♖f5 ♖xb4 23.♖xd5 ♖af8  
24.♖ab1 ♗b6 25.♖h5 ♖d2 26.♗e4 c3?  
27.a5 ♗d7 28.♖xb7+ ♗d8 29.♖d5 ♖f6  
30.♗f5 ♖h7 31.♗xh7 c2 32.♗xc2 ♖xc2  
33.♖xa7 ♖e2 34.g3 ♖g4 35.a6 h5  
36.♖a8+ ♗e7 37.♖g8 ♖g6 38.♖xg6  
♖xg6 39.a7 1-0

## QGD Semi-Slav

**Ata Moshiri (1686)**

**FM Paul Bartron (2127)**

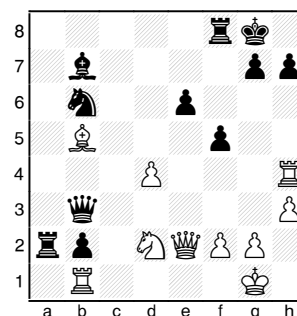
*Redmond, Washington Open (1) 2008*

Annotations by Drayton Harrison

1.c4 e6 2.♗c3 d5 3.d4 c6 4.♗f3 ♗f6  
5.♗g5 ♗bd7 6.e4 dxe4 7.♗xe4 ♗e7  
8.♗d3 ♗xe4 9.♗xe7 ♖xe7

9...♗xf2 10.♗xd8 ♗xd1 11.♖xd1  
♗xd8

10.♗xe4 ♖b4+ 11.♖d2 ♖xc4 12.b3  
♖b5 13.♗d3 ♖h5 14.O-O-O 15.♖fe1  
b6 16.♖e4 ♖a5 17.b4 ♖d5 18.♖h4 f5  
19.♖e1 a5 20.♖e2 b5 21.a4 axb4 22.  
axb5 ♖a2 23.♖f1 cxb5 24.♗xb5 ♗b6  
25.♖b1 b3 26.♖d3 b2 27.♖e2 ♗b7  
28.h3 ♖b3 29.♗d2



29...♖a1! 30.♗d3 ♖d5 31.f3 ♖c8  
32.♗f2 ♖xb1 33.♗xb1 ♗a4 34.♖d2  
♖d8 35.g3 ♖d5 36.♖e2 ♗c3 37.♗xc3  
♖xc3 38.♖f4 ♗a6 39.♖xb2 ♖b3 40.  
♖xb3 ♖xb3 41.♗xa6 g5 0-1

## Sicilian Sveshnikov

**FM Ignacio Perez (2320)**

**Dereque Kelley (2072)**

*Redmond, Washington Open (1) 2008*

Annotations by Drayton Harrison

1.e4 c5 2.♗f3 ♗c6 3.d4 cxd4 4.♗xd4  
♗f6 5.♗c3 e5 6.♗db5 d6 7.♗d5 ♗xd5

## Washington Open Open Section Prize Winners

FM Ignacio Perez	4.5	=1 <sup>st</sup> -4 <sup>th</sup> , 1 <sup>st</sup> -2 <sup>nd</sup>	U2150
FM Nick Raptis			
NM Charles Cadman			
NM Michael Lee			
Andy May			(seeded to WA Champ.)
Mark Naus			
FM Paul Bartron	4.0	3 <sup>rd</sup>	U2150
FM John Readey	4.0	=5 <sup>th</sup>	
NM Luc Poitras			
LM Viktors Pupols			
Ricky Selzler			
Elston Cloy	3.5	=4 <sup>th</sup>	U2150
Dereque Kelley			
Ian Skulsky			
Alex Guo	3.5		Junior Medal Winner

8.exd5 ♖b8 9.a4 ♙e7 10.♙e2 O-O 11. O-O f5 12.♙e3 a6 13.♘a7 ♘d7 14.f3 ♙g5 15.♙f2 ♖f6 16.♘xc8 ♖xc8 17.♖a3 ♖f7

17...♖h6 18.♖b3 ♙f4 19.g3 ♗g5 was the subject of the post-mortem discussion.

18.a5 ♙h4 19.g3 ♙f6 20.b4 e4 21.fxe4 fxe4 22.♙g4 ♖e7 23.♙e6+ ♘h8 24.♗e2 ♗c7 25.♖b1 ♗xc2 26.♗xc2 ♖xc2 27.b5 axb5 28.♖xb5 ♘e5 29.a6 ♘f3+ 30.♘f1 1-0

### Center-Counter

**Luke Harmon (1859)**

**Mireya Levy (1967, ECU)**

*Redmond, Washington Open (1) 2008*

1.e4 d5 2.exd5 ♘f6 3.d4 ♙g4 4.♙e2 ♙xe2 5.♗xe2 ♗xd5 6.♘f3 ♘c6 7.c4 ♗f5 8.♘c3 h6 9.O-O O-O 10.d5 ♘b4 11.♗e5 ♗d7 12.a3 ♘d3 13.♗d4 ♘xc1 14.♗xa7 ♗d6 15.♖axc1 ♗a6 16.♗xa6 bxa6 17.♘e5 ♖g8 18.♘xf7 ♖e8 19.♖fe1 g5 20.♖e6 h5 21.♘a4 ♘d7 22.c5 ♖g7 23.♘h6 ♖h7 24.♘f5 ♖f7 25.♘e3 ♖f4 26.♖xa6 ♘b7 27.♖a5 c6 28.b4 ♘e5 29.b5 cxb5 30.c6+ ♘c7 31.♖a7+ ♘d6 32.♘c3 ♘d3 33.♘xb5+ ♘e5 34.♖f1 e6 35.g3 ♖f3 36.♘c7 ♖c8 37.♘xe6 g4 38.♘g5 ♖f6 39.♖d1 ♘xf2 40.♘c4+ ♘f5 41.♘xf2 ♙c5+ 42.♘g2 ♙xa7 43.♘f7 ♘g6 44.♘fe5+ ♘g7 45.

♖f1 ♖xf1 46.♘xf1 ♖f8+ 47.♘e2 ♙c5 48.c7 ♖e8 49.d6 ♙xd6 50.♘xd6 1-0

### QGD Exchange

**LM Viktors Pupols (2214)**

**Seth Gordon (1375)**

*Redmond, Washington Open (1) 2008*

**Annotations by Drayton Harrison**

1.d4 d5 2.c4 e6 3.♘c3 ♘f6 4.♙g5 ♙e7 5.e3 a6 6.cxd5 ♘xd5 7.♙xe7 ♗xe7 8.♙d3 b6 9.♘xd5 exd5 10.♗c2 ♗b4+ 11.♘e2 h6 12.♘f3 ♗d6 13.♖ac1 ♖a7 14.h3 O-O 15.♖hd1 f6 16.♘f1 c6 17.♗b3 ♖b7 18.♘g1 ♙e6 19.a3 ♖ff7 20.♗c2 ♖fc7 21.b4 ♖a7 22.♗b2 ♘d7 23.a4 c5 24.dxc5 bxc5 25.bxc5 ♘xc5 26.♗a3 ♗e7 27.♘d4 ♙d7 28.a5 ♙e8 29.♖b1 ♘xd3 30.♗xd3 ♗e4 31.♗d2 ♙a4 32.♖dc1 ♖cb7 33.♖xb7 ♖xb7 34.♖c8+ ♘f7 35.♗c3 ♗e5 36.f4 ♗d6 37.♘h2 h5 38.♗d3 ♙d7 39.♖c1 g5 40.♗h7+ ♘e8 41.♗xh5+ ♘d8 42.♗h8+ ♙e8 43.♖c6

White had about one minute left.

43...♗e7 44.♗xf6 ♗xf6 45.♖xf6 gxf4 46.exf4 ♖b4 47.♘f3 d4 48.♖d6+ ♘c7 49.♖xd4 ♖xd4 50.♘xd4 ♘d6 51.g4 ♘d5 52.♘c2... 1-0

In the time scramble, the White Knight forked Black's King and pawn, and then, King and Bishop.

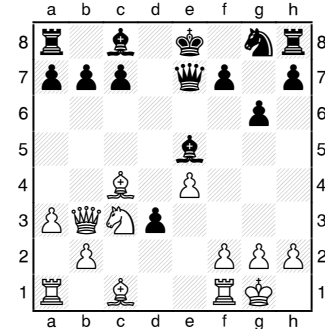
### Queen's Gambit Accepted

**Ricky Selzler (2156)**

**Yevgeniy Rozenfeld (1960)**

*Redmond, Washington Open (1) 2008*

1.d4 d5 2.c4 dxc4 3.e3 e5 4.♙xc4 exd4 5.♗b3 ♗e7 6.a3 g6 7.♘f3 ♙g7 8.O-O d3 9.e4 ♘c6 10.♘c3 ♘e5 11.♘xe5 ♙xe5



12.♙xf7+ ♘f8 13.♙xg8 ♖xg8 14.♙h6+ ♙g7 15.♘d5 ♗d8 16.♙f4 c5 17.♘c7 ♗f6 18.♙g3 ♗xb2 19.♙d6 mate

### Caro-Kann Advance

**Juan Perez (1707)**

**FM David Bragg (2210)**

*Redmond, Washington Open (1) 2008*

1.e4 c6 2.d4 d5 3.e5 ♙f5 4.g4 ♙e4 5.f3 ♙g6 6.f4 ♙e4 7.♘f3 h5 8.♘c3 hxg4 9.♘xe4 gxf3 10.♘g5 f2+ 11.♘xf2 e6 12.♙d3 ♗b6 13.♗g4 ♘h6 14.♗h5 c5 15.♖e1 c4 16.f5 cxd3 17.fxe6 ♗xd4+ 18.♘f1 d2 19.♙xd2 ♗xd2 20.♖e2 ♗f4+ 21.♖f2 ♗c4+ 22.♘e1 ♙b4+ 23.c3 ♙xc3+ 24.bxc3 ♗xc3+ 25.♘f1 ♗xa1+ 26.♘g2 ♗xe5 27.exf7+ ♘xf7 28.♗xf7+ ♘d8 29.♘e6+ ♘c8 30.h3 ♘c6 31.♖f5 ♗d6 32.♖g5 ♗d7 33.♗f5 ♖e8 34.♖g6 d4 0-1

### Orangutan

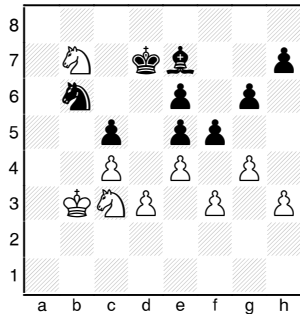
**Ian Skulsky (2138)**

**Matthew Wilson (1863)**

*Redmond, Washington Open (1) 2008*

1.b4 e6 2.♙b2 ♘f6 3.a3 b6 4.♘f3 ♙b7 5.e3 ♙e7 6.♙e2 O-O 7.c4 d6 8.♗c2 ♘bd7 9.♘c3 a5 10.O-O axb4 11.axb4 c5 12.♖xa8 ♙xa8 13.bxc5 bxc5 14.h3 ♗b6 15.♖b1 ♗c6 16.♘e1 ♖b8 17.♙f3 ♗c8 18.♘b5 ♘e5 19.♙xe5 dxe5 20.d3 ♙xf3 21.♘xf3 ♘d7 22.♘f1 f6 23.♖a1 ♖a8 24.♗b2 ♖xa1+ 25.♗xa1 ♗b7 26.♘d2 ♘b6 27.♗a7 ♗xa7 28.♘xa7 ♘f7 29.♘c6 ♙f8 30.♘e4 ♘e8 31.f3 ♘d7 32.♘a5 ♙e7 33.♘e2 f5 34.♘c3 g6 35.g4 ♙f6 36.♘d2 ♙g5 37.♘b5 ♘c8

38. ♖c3 ♗b6 39. ♕e2 ♖e7 40. e4 ♗d8  
41. ♗b7 ♖e7 42. ♗d1 ♗c7 43. ♗a5 ♖g5  
44. ♗b5+ ♗d7 45. ♗b7 ♖e7 46. ♗c2  
♗c6 47. ♗a5+ ♗d7 48. ♗b3 ♖g5 49.  
♗b7 ♖e7 50. ♗c3



50...fxg4 51. ffg4 ♗c7 52. ♗a5 ♖f8 53.  
♗a3 ♖e7 54. ♗b3 ♗c6 55. ♗d2 ♖f6 56.  
♗f3 ♗d6 57. g5 ♖g7 58. ♗d1 ♖f8 59.  
♗e3 ♖g7 60. ♗g4 ♖h8 61. ♗h6 ♗e7 62.  
♗d2 ♖g7 63. ♗g4 ♗d6 64. ♗b3 ♗c6 65.  
♗d2 ♗d6 66. ♗b1 ♖h8 67. ♗c3 ♖g7 68.  
♗b3 ♖h8 69. ♗a4 ♗d7 70. ♗c3 ♗b6 71.  
♗b5+ ♗c6 72. ♗h6 ♖g7 73. ♗f7 ♗d7  
74. ♗fd6 ♖h8 75. ♗b7 ♗c6 76. ♗a5+  
♗d7 77. ♗c3 ♗d6 78. ♗a4 ... 1-0

The remaining moves were not recorded due to time pressure. Black played on until checkmate.

*Caro-Kann Panov-Botvinnik*

**FM Paul Bartron (2127)**  
**NM Michael Lee (2314)**

*Redmond, Washington Open (2) 2008*

1. d4 ♗f6 2. c4 c5 3. e3 cxd4 4. exd4 d5  
5. ♗c3 ♗c6 6. ♗f3 ♖g4 7. cxd5 ♗xd5  
8. ♖e2 e6 9. O-O ♖e7 10. ♗b3 ♗b6  
11. ♗xb6 ♗xb6 12. h3 ♖h5 13. ♖f4  
O-O 14. ♖fd1 ♗b4 15. g4 ♖g6 16. ♗e5  
♗d5 17. ♗xg6 hxg6 18. ♖g3 ♖ac8  
19. ♗xd5 ♗xd5 20. ♖ac1 ♖g5 21. ♖c4  
♖xc4 22. ♖xc4 ♖c8 23. ♖b3 ♖c1  
24. ♖b8 a6 25. ♖xc1 ♖xc1 26. ♖xd5  
exd5 27. b3 g5 28. ♗f1 ♗f8 29. ♖d6+  
♗e8 30. ♗e2 Draw

*Sicilian Sveshnikov*

**James Chan (1963)**  
**Ata Moshiri (1686)**

*Redmond, Washington Open (2) 2008*

1. e4 c5 2. ♗f3 ♗c6 3. d4 cxd4 4. ♗xd4  
♗f6 5. ♗c3 e5 6. ♗db5 d6 7. ♖g5 a6  
8. ♗a3 b5 9. ♗d5 ♖e7 10. ♖xf6 ♖xf6  
11. c3 ♖g5 12. ♗c2 O-O 13. a4 ♖b8 14.  
b4 f5 15. ♖d3 ♖e6 16. O-O ♖xd5 17. exd5  
♗e7 18. c4 e4 19. ♖e2 ♖f6 20. ♖a2 bxc4  
21. ♖xc4 ♗b6 22. a5 ♗a7 23. ♗e2 ♗h8

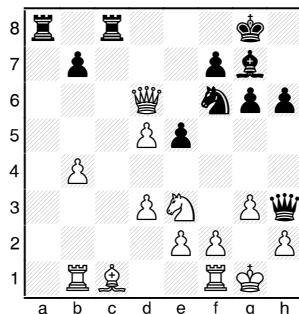
24. ♗h1 ♖c3 25. ♖b1 ♖f6 26. ♗e3  
♗xe3 27. fxe3 f4 28. exf4 ♖xf4 29. g3 ♖f2  
30. ♖b3 ♖e5 31. ♖e3 ♗f5 32. ♖xe4  
♖xg3 33. ♖e2 ♖f3 34. hxg3 ♗xg3+ 35.  
♗g2 ♖bf8 36. ♗d4 ♖c3 37. ♖ec2 ♖e3  
38. ♖xa6 ♗e4 39. ♖c8 ♗g8 40. ♗e6  
♖xc8 41. ♖xc8 h5 42. a6 h4 43. a7 h3+  
44. ♗h2 ♗f6 45. ♗g5 g6 46. ♖e6+ ♗g7  
47. a8=♗ ♗g4+ 48. ♖xg4 ♖e2+ 49.  
♖xe2 1-0

*English Opening*

**Nhon Do (2094)**  
**FM Ignacio Perez (2320)**

*Redmond, Washington Open (2) 2008*

1. ♗f3 ♗f6 2. g3 g6 3. ♖g2 ♖g7 4. c4  
O-O 5. ♗c3 d6 6. O-O e5 7. d3 ♗c6 8. ♖b1  
a5 9. a3 h6 10. b4 axb4 11. axb4 ♗h7  
12. ♗d5 ♗e7 13. ♗c2 ♗xd5 14. cxd5  
♗f6 15. ♗d2 ♖g4 16. ♗c4 ♗d7 17. ♗e3  
♖h3 18. ♖xh3 ♗xh3 19. ♗xc7 ♖fc8  
20. ♗xd6



20... ♗d7 21. g4 ♖d8 22. ♖b2 ♖f8  
23. ♗c7 ♖ab8 24. ♗a5 ♖d6 25. f3 e4  
26. ♖f2 exd3 27. exd3 ♗e5 28. ♖xe5  
♖xe5 29. ♗b6 ♖d6 30. ♗a7 ♖f6 ... 0-1

Remaining moves indecipherable.

*Sicilian Smith-Morra*

**Mireya Levy (1967, ECU)**  
**Matthew Wilson (1863)**

*Redmond, Washington Open (2) 2008*

1. e4 c5 2. d4 cxd4  
3. c3 dxc3 4. ♗xc3  
♗c6 5. ♗f3 d6 6.  
♖c4 e6 7. O-O ♗f6  
8. ♗e2 a6 9. ♖d1  
♗c7 10. ♖f4 ♗e5  
11. ♖b3 ♖e7 12.  
♖ac1 ♗b8 13. ♗a4  
♗fd7 14. ♗d4 b5  
15. ♖xe5 ♗xe5  
16. f4 bxa4 17. fxe5  
axb3 18. exd6 ♖xd6  
19. e5 ♖xe5 20.

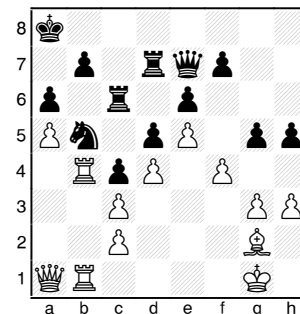
♗c6 ♗b6+ 21. ♗h1 ♖f6 22. ♖d6 ♖d7  
23. ♗h5 ♗e3 24. ♖f1 ♖xc6 25. ♖xc6  
bxa2 26. ♗a5 ♗d3 27. ♖fc1 O-O 28.  
♗xa2 ♖fd8 29. ♖e1 ♗d2 30. ♖f1 ♗xb2  
O-1

*Pribyl Defense*

**Geoff Gale (2038)**  
**LM Viktors Pupols (2214)**


*Redmond, Washington Open (2) 2008*

1. e4 d6 2. d4 ♗f6 3. ♗c3 c6 4. f4 ♖g4  
5. ♗f3 d5 6. e5 ♗e4 7. ♖d3 ♗xc3 8. bxc3  
e6 9. O-O c5 10. h3 ♖xf3 11. ♖xf3 c4  
12. ♖f1 g6 13. a4 ♗c6 14. ♖a3 ♖xa3 15.  
♖xa3 h5 16. g3 ♗a5 17. ♖a1 O-O-O 18.  
♗c1 ♗b8 19. ♗a3 ♗a8 20. ♖g2 ♖d7 21.  
♖b1 ♖c8 22. ♖b5 ♗d8 23. a5 a6 24.  
♖b6 ♗a7 25. ♖b4 ♗e7 26. ♗a1 ♖c6 27.  
♖f1 ♗b5 28. ♖fb1 g5



29. f5 exf5 30. ♖xb5 axb5 31. ♖xb5 ♗e6  
32. ♗d1 f6 33. ♗xh5 fxe5 34. ♗h8+ ♗a7  
35. dxe5 ♗e7 36. e6 ♖xe6 37. ♗d4+ ♗b8  
38. ♖xd5 ♖e1+ 39. ♗g2 ♗e2+ 40. ♗f2  
♗xf2+ 41. ♗xf2 ♖e5 42. ♖xc4 ♖d2+  
43. ♗f3 ♖xb5 44. ♖xb5 ♖xc2 45. c4  
♖c3+ 46. ♗f2 ♗c7 47. a6 bxa6 48. ♖xa6  
♗d6 49. ♗g2 ♗e5 50. h4 gxh4 51. gxh4  
♗f4 52. h5 ♗g5 53. ♖b5 ♗xh5 54. ♖e8+  
♗g4 55. ♖f7 ♖c2+ 56. ♗f1 ♗f4 57. ♖g8  
♗e4 58. ♖e6 f4 59. ♗g1 ♗e3 60. ♖h3  
♖xc4 61. ♖g2 f3 62. ♖h3 ♖h4 ... 0-1

Here Vik stopped recording moves because, as usual for him, his flag was hanging. I think the finish was something



**Carl A. Haessler**  
Lessons • Lectures • Exhibitions

USCF Life Master  
3-Time Oregon Champion

(503) 358-7871  
ssmith6154@aol.com



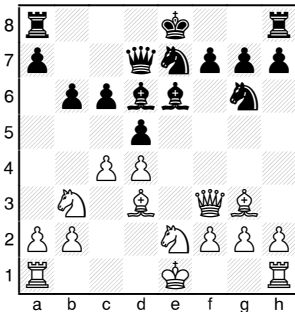
like 63. ♖f1 ♖g4+ 64. ♗h2 ♗f2 65. ♗h3 ♖h4 and White resigned, because it's mate next move.

**French Exchange**

**FM David Bragg (2210)**  
**FM Nick Raptis (2306)**

*Redmond, Washington Open (2) 2008*

1.e4 e6 2.d4 d5 3.exd5 exd5 4.♗d3 ♗c6 5.c3 ♗d6 6.♖f3 ♗ge7 7.♗e2 ♗e6 8.♗f4 ♗g6 9.♗g3 ♗ce7 10.♗d2 ♖d7 11.♗b3 b6 12.c4 c6



13.♗xd6 dxc4 14.♗xg6 ♖xd6 15.♗e4 cxb3 16.O-O bxa2 17.♗f4 ♗d5 18.♗xd5 cxd5 19.♗c2 O-O 20.♖xa2 a5 21.♖d3 g6 22.f4 ♖ac8 23.g4 ♗c6 24.♗b1 ♗b4 25.♖h3 ♗xa2 26.f5 ♖c1 27.♗xa2 ♖f4 0-1

**Catalan System**

**FM Nick Raptis (2306)**  
**LM Viktors Pupols (2214)**

*Redmond, Washington Open (3) 2008*

1.d4 d5 2.♗f3 e6 3.g3 ♗f6 4.♗g2 ♗e7 5.O-O O-O 6.c4 dxc4 7.♖c2 a6 8.♖xc4 b5 9.♖c2 ♗b7 10.♗d2 ♗bd7 11.♗a5 ♖c8 12.b4 ♖e8 13.♗bd2 ♗d5 14.a3 f5 15.e4 ♗5b6 16.♗xb6 ♗xb6 17.♗e5 ♗d6 18.♖ac1 f4 19.♗c6 ♗xc6 20.♖xc6 e5 21.♗f3 ♗c4 22.♖d5+ ♗h8 23.dxe5 ♗xe5 24.♗xe5 ♖xe5 25.♖xe5 ♗xe5 26.♖c6 ♖f6 27.♖fc1 ♖cf8 28.g4 f3 29.♗f1 h6 30.♖1c2 ♖e8 31.♖xf6 gxf6 32.♖c6 ♖a8 33.♖c2 ♖d8 Draw

**English Opening**

**Alex Guo (2054)**  
**Ian Skulsky (2138)**

*Redmond, Washington Open (2) 2008*

1.c4 a6 2.♗c3 c5 3.g3 ♗c6 4.♗g2 ♖b8 5.♗f3 g6 6.b3 ♗g7 7.♗b2 b5 8.d3 ♗b7 9.O-O ♗a8 10.♖d2 d6 11.♗xb5 ♗f6 12.♗c3 O-O 13.♗d5 ♗xd5 14.♗xg7 ♗xg7 15.cxd5 ♗b4 16.e4 a5 17.♗h3 h6 18.♖c3+ ♗h7 19.♗h4 ♖b6 20.♗g2

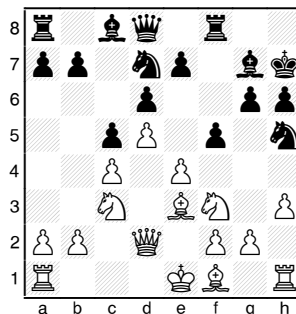
♖b5 21.♖fd1 a4 22.♗e3 ♗b7 23.♗f1 ♖d7 24.♗c4 axb3 25.axb3 ♗a6 26.d4 ♗xc4 27.♗xc4 cxd4 28.♖xd4 ♖b7 29.♖a4 ♖fc8 30.♖d2 ♖b6 31.e5 dxe5 32.♖h4 h5 33.♗f1 ♗c2 34.♗d3 f5 35.♗xc2 e4 36.g4 e3 37.fxe3 ♖xc2 38.♖xc2 ♖xe3+ 39.♖f2 ♖c1+ 40.♗g2 ♖xb3 41.♖a2 ♖g5 42.♖e2 f4 43.♗g1 ♖d3 44.♖e1 ♖xd5 45.♖h3 ♖xg4+ 46.♖g2 ♖d7 47.♗h1 ♖d1 48.♖g1 ♖xg1+ 49.♗xg1 ♖d1+ 50.♖f1 ♖d4+ 51.♗h1 e5 52.♖f3 ♗h6 53.♖d3 ♖xd3 54.♖xd3 ♗g5 55.♗g2 e4 56.♖d8 ♗h4 57.♖e8 1-0

**Benoni**

**Peter Watts (1845)**  
**FM David Bragg (2210)**

*Redmond, Washington Open (3) 2008*

1.d4 ♗f6 2.c4 g6 3.♗f3 ♗g7 4.♗c3 O-O 5.♗g5 c5 6.d5 d6 7.e4 h6 8.♗f4 ♗bd7 9.h3 ♗h7 10.♖d2 ♗h5 11.♗e3 f5



12.exf5 gxf5 13.g4 fxg4 14.♗d3+ ♗g8 15.hxg4 ♖xf3 16.♖xh5 ♗e5 17.♗e2 ♗xg4 18.♖h4 h5 19.O-O-O ♖f8 20.♗e4 ♖f5 21.♗g3 ♖f6 22.♗g5 ♖f7 23.♗e3 ♖xf2 24.♗xf2 ♖xf2 25.♗xg4 ♖xd2+ 26.♗xd2 hxg4 27.♗h5 ♗f3+ 0-1

**Catalan System**

**FM John Readey (2296)**  
**David Rupel (2082)**

*Redmond, Washington Open (3) 2008*

1.♗f3 d5 2.d4 ♗f6 3.c4 e6 4.g3 c6 5.♗g2 ♗b4+ 6.♗d2 ♗xd2+ 7.♗bxd2 ♗bd7 8.O-O O-O 9.♖c2 h6 10.♖fd1 ♖e7 11.e4 dxe4 12.♗xe4 ♗xe4 13.♖xe4 ♖d8 14.c5 ♗f6 15.♖e2 ♖c7 16.♗e5 ♗d7 17.♖ac1 ♗d5 18.a3 b5 19.♗e4 ♗e8 20.♗b1 f6 21.♗f3 ♗f7 22.♗d2 ♗e7 23.♗a2 ♖xd4 24.♗xe6 ♖ad8 25.♗xf7+ ♗xf7 26.♗f3 ♖xd1+ 27.♖xd1 ♖xd1+ 28.♖xd1 ♗d5 29.♗d4 ♖d7 30.♖h5+ ♗g8 31.♖f3 a5 32.h4 b4 33.a4 ♗h8 34.♖e4 ♗e7 35.♗f1 f5 36.♖e5

♗g6 37.♖d6 ♖f7 38.♖e6 ♖xe6 39.♗xe6 ♗e7 40.♗d4 ♗g8 41.♗e2 ♗f7 42.♗d3 f4 43.g4 ♗f6 1-0

**Benko Gambit**

**Elston Cloy (1965)**  
**Nhon Do (2094)**

*Redmond, Washington Open (3) 2008*

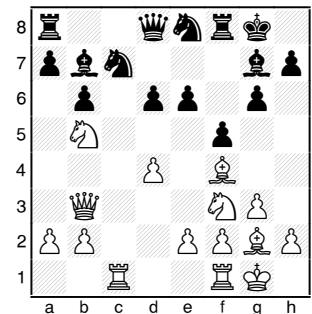
1.d4 ♗f6 2.c4 c5 3.d5 b5 4.♗f3 ♖a5+ 5.♗d2 b4 6.♗a3 g6 7.♗c2 ♖b6 8.a3 b3 9.♗e3 ♗e4 10.♖b1 f5 11.g4 ♖f6 12.gxf5 gxf5 13.♗d1 ♗a6 14.♖d3 e5 15.♖xb3 ♗xd2 16.♗xd2 ♗h6 17.e3 O-O 18.♗c3 ♗h8 19.O-O-O ♖h4 20.f4 exf4 21.exf4 ♖xf4 22.♗d3 d6 23.♗b1 ♗d7 24.♖hf1 ♖g5 25.♖f3 ♖e7 26.♖xf5 ♗e5 27.♖xf8+ ♖xf8 28.♗b5 ♖b8 29.♖c3 ♗g7 30.a4 ♗c8 31.♖f1 ♖e7 32.♖c2 ♗h3 33.♖g1 ♗xd3 34.♖xd3 ♖e5 35.♖a3 a6 36.♖xg7 ♗f5+ 37.♗a2 ♖xg7 38.♗xd6 ♗c2 39.♗2e4 ♗xe4 40.♗xe4 ♖d4 41.♖c3 ♗g8 1-0

**Dutch Defense**

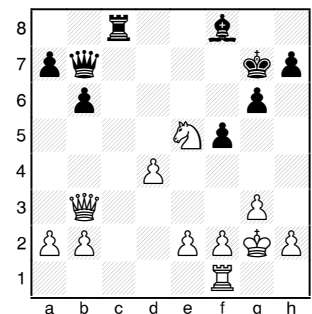
**NM Curt Collyer (2259)**  
**FM Paul Bartron (2127)**

*Redmond, Washington Open (3) 2008*

1.d4 f5 2.c4 b6 3.g3 ♗b7 4.♗f3 ♗f6 5.♗g2 g6 6.O-O ♗g7 7.♗c3 O-O 8.♗f4 e6 9.♖c1 d6 10.c5 ♗a6 11.cxd6 cxd6 12.♗b5 ♗e8 13.♖b3 ♗ac7



14.♖xc7 ♗xc7 15.♗xd6 ♗xb5 16.♗xf8 ♗xf8 17.♖xe6+ ♗g7 18.♖e5+ ♖f6 19.♖xb5 ♖c8 20.♗e5 ♖e7 21.♖b3 ♗xg2 22.♗xg2 ♖b7+



23. ♖f3 ♖e4 24. ♗xe4 fxe4 25. ♖b1 ♖c2 26. e3 ♗d6 27. h3 ♗xe5 28. dxe5 ♘f7 29. ♖d1 ♘e7 30. ♖d4 ♖xb2 31. a4 a5 32. ♖xe4 ♖b4 33. ♘f3 ♘e6 34. g4 g5 35. ♖d4 ♘xe5 36. ♖d7 ♖xa4 37. ♖xh7 b5 38. ♖f7 b4 39. ♖f5+ ♘e6 40. ♖b5 ♖a2 41. ♘e4 b3 42. f4 ♖a4+ 43. ♘d3 gxf4 44. exf4 ♖xf4 45. ♖xb3 a4 46. ♖b6+ ♘e5 47. ♘e3 ♖c4 48. ♖b5+ ♘f6 49. ♖a5 ♖c3+ 50. ♘f4 ♖xh3 51. ♖xa4 ♖b3 52. ♖a7 ♖b4+ 53. ♘g3 ♖b6 54. ♘h4 ♘g6 55. ♖a8 ♖c6 56. ♖g8+ ♘h7 Draw

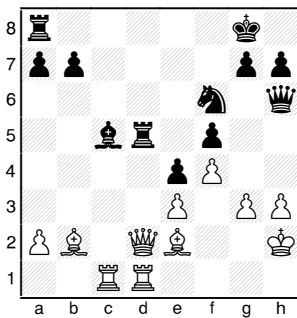
**Dutch Stonewall**

**Ata Moshiri (1686)**

**Mireya Levy (, ECU)**

*Redmond, Washington Open (3) 2008*

1. c4 f5 2. ♖c3 ♖f6 3. g3 e6 4. ♗g2 d5 5. d4 c6 6. ♖f3 ♗e7 7. O-O-O 8. b3 ♖e4 9. ♗b2 ♖e8 10. e3 ♖d7 11. ♖d2 ♖xd2 12. ♖xd2 dxc4 13. bxc4 e5 14. f4 e4 15. ♖fd1 ♖f6 16. d5 cxd5 17. cxd5 ♗c5 18. h3 ♖g6 19. ♘h2 ♖d8 20. ♗f1 ♗e6 21. ♗c4 ♖h5 22. ♗e2 ♖h6 23. ♖ac1 ♗xd5 24. ♖xd5 ♖xd5



25. ♖xd5+ ♖xd5 26. ♖xc5 ♖xe3 27. ♖d7 ♖g4+ 28. ♘g2 ♖f6 29. ♖xb7 ♖d8 30. ♖cc7 ♖g6 31. ♗c3 h6 32. ♖xa7 e3 33. ♗c4+ ♘h8 34. ♗f7 ♖h7 35. ♘f3 h5 36. h4 ♖h6 37. ♗c4 ♖d7 38. ♖c8+ ♘h7 39. ♖aa8 ♖e8 40. ♗b5 ♖d1 41. ♖xe8 1-0

**Orangutan**

**Ian Skulsky (2138)**

**Yevgeniy Rozenfeld (1960)**

*Redmond, Washington Open (3) 2008*

1. b4 e5 2. a3 d5 3. ♗b2 f6 4. e3 ♗d6 5. c4 c6 6. ♖c3 ♖e7 7. cxd5 cxd5 8. ♖b5 ♗e6 9. ♖f3 O-O 10. ♗e2 a6 11. ♖xd6 ♖xd6 12. d3 ♖d7 13. O-O b5 14. ♖d2 ♖b6 15. ♖c1 ♖a4 16. ♗a1 ♖fc8 17. ♖b3 ♖xc1 18. ♖xc1 d4 19. exd4 exd4 20. ♗g4 f5 21. ♗f3 ♖c8 22. ♖e1 ♖c3 23. ♖d2 ♘f7 24. ♖e2 ♖xe2+ 25. ♖xe2 g6 26. ♗xd4 ♖d5 27. ♗c5 ♖d7 28. ♖e5 ♖f6 29. ♗d4 ♖e8 30. ♖h8 h5 31. ♖h7+ ♘f8 32. ♗c5+

33. ♖xc5 33. ♖xd7 ♗xd7 34. bxc5 a5 35. ♗b7 ♘f7 36. d4 ♖c7 37. d5 b4 38. axb4 axb4 39. c6 ♗e8 40. d6 1-0

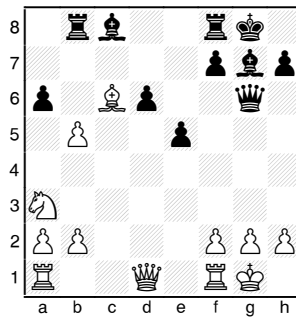
**Sicilian Sveshnikov**

**Matthew Wilson (1863)**

**Dereque Kelley (2072)**

*Redmond, Washington Open (3) 2008*

1. e4 c5 2. ♖f3 ♖c6 3. d4 cxd4 4. ♖xd4 ♖f6 5. ♖c3 e5 6. ♖db5 d6 7. ♗g5 a6 8. ♖a3 b5 9. ♗xf6 gxf6 10. ♖d5 ♗g7 11. c4 O-O 12. ♗d3 f5 13. O-O fxe4 14. ♗xe4 ♖b8 15. ♖f6+ ♖xf6 16. ♗xc6 ♖g6 17. cxb5



17... e4 18. ♖e2 ♗g4 19. f3 ♗xf3 20. ♖c2 f5 21. ♖ab1 axb2 22. ♘h1 ♗h5 23. ♖xb5 ♗e5 24. a4 ♖fc8 25. ♗d5+ ♘h8 26. ♖f2 f4 27. ♖fe1 e3 28. ♖g1 ♖c2 29. ♗f3 ♖g8 30. ♖c3 ♗xf3 0-1

**Alekhine's Defense**

**Robert Brewster (1978)**

**Delmar Webb (1785)**

*Redmond, Washington Open (3) 2008*

1. e4 ♖f6 2. ♖c3 d5 3. exd5 ♖xd5 4. ♖xd5 ♖xd5 5. ♖f3 ♖xf3 6. ♖xf3 g6 7. d4 ♗g7 8. ♗f4 c6 9. ♗e5 O-O 10. ♗xg7 ♘xg7 11. O-O-O ♗g4 12. ♗e2 ♖d7 13. h3 ♗xf3 14. ♗xf3 e6 15. ♖he1 ♖ac8 16. ♘b1 b5 17. h4 h5 18. ♖e3 ♖f6 19. g3 ♖fd8 20. ♖ed3 ♖d5 21. c3 a5 22. ♖3d2 ♖b8 23. ♖c2 ♖d6 24. ♘c1 ♖bd8 25. ♖e2 f5 26. ♖de1 ♘f6 27. ♖e5 a4 28. ♘c2 ♖8d7 29. ♗xd5 cxd5 Draw

**Ruy Lopez Steinitz Deferred**

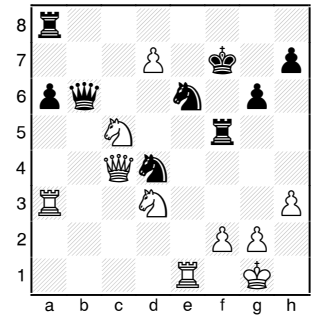
**Charles Cadman (2262)**

**James Chan (1963)**

*Redmond, Washington Open (3) 2008*

Annotations by Drayton Harrison  
1. e4 e5 2. ♖f3 ♖c6 3. ♗b5 a6 4. ♗a4 d6 5. O-O ♖f6 6. ♖e1 ♗d7 7. c3 g6 8. d4 ♖e7 9. d5 ♖b8 10. ♗xd7+ ♖bx7 11. c4 ♗g7 12. ♖c3 O-O 13. b4 b6 14. ♗b2 ♖h5 15. a4 ♖f4 16. a5 f5 17. ♖c2 ♖f6 18. ♖a3

fxe4 19. ♖xe4 ♖g4 20. axb6 cxb6 21. c5 bxc5 22. bxc5 dxc5 23. d6 ♖a7 24. h3 ♖h6 25. ♗xe5 ♗xe5 26. ♖xe5 ♖f5 27. d7 ♖d4 28. ♖c4+ ♖fe6 29. ♖g5 ♖b6 30. ♖d3 ♖f6 31. ♖e4 ♖f5 32. ♖exc5 ♘f7



33. ♖xa6 ♖xa6 34. ♖xe6 1-0

34... ♖xe6 35. ♖xe6 ♖xe6 (35... ♖a1+ 36. ♖e1+) 36. d8=♖+

**Sicilian Sveshnikov**

**Yevgeniy Rozenfeld (1960)**

**Ata Moshiri (1686)**

*Redmond, Washington Open (4) 2008*

Annotations by Drayton Harrison

1. e4 c5 2. ♖f3 ♖c6 3. d4 cxd4 4. ♖xd4 ♖f6 5. ♖c3 e5 6. ♖db5 d6 7. ♗g5 a6 8. ♖a3 b5 9. ♖d5 ♗e7 10. ♗xf6 ♗xf6 11. c3 ♗g5

11... O-O

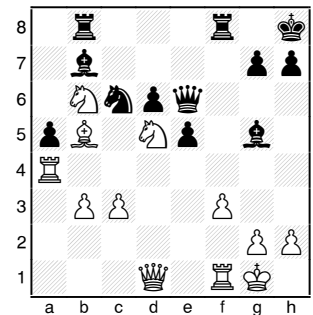
12. ♖c2 O-O 13. a4 bxa4 14. ♖xa4 a5 15. ♗c4 ♖b8 16. b3 ♘h8 17. O-O f5 18. f3

18. exf5

18... ♖e8

18... fxe4; 18... ♗d7; 18... ♖e7

19. ♖a3 ♖g6 20. ♗b5 ♗b7 21. exf5 ♖xf5 22. ♖c4 ♖e6 23. ♖cb6



23... ♖bd8 24. ♗xc6 ♗xc6 25. ♖xa5+ ♖h6 26. ♖c4 ♖f5 27. ♖d3 ♖df8 28. ♖ce3

28. ♖b4+-

28... ♖5f7 29. b4 ♖e6 30. c4 h5 31. b5 ♗xd5 32. ♖xd5 e4 33. ♖e2 ♖g6 34. ♖a3

h4 35.h3 ♖f6 36.f4 ♗d4+ 37.♗h1 ♗e5  
38.♞e3 ♞h6 39.♞xe4 ♗xf4 40.♗xf4  
♞xf4 41.♞xf4 ♞xf4 42.♞xf4 ♞xf4  
43.♞c3 ♞f1+ 44.♗h2 ♞b1 45.♞d3  
♞b4 46.♞d4 g5 47.♗g1 ♗g7 48.♗f2  
♗f7 49.♗e3 ♗e6 50.♞e4+ ♗f5 51.♗d4  
♞b1

51... ♞xc4+?! 52.♗xc4 ♗xe4 53.b6  
d5+ 54.♗c3 ♗e3 55.b7 d4+ 56.♗c2 ♗e2  
57.b8=♞ d3+ 58.♗c3 d2 59.♞b2+-

52.♗d5 ♞b2 53.♞g4 ♞d2+ 54.♗c6 d5  
55.c5 d4 56.b6 d3 57.b7 ♞b2 58.♞d4  
d2 59.♗c7 ♗e5 60.♞d8 1-0

### Grünfeld Defense

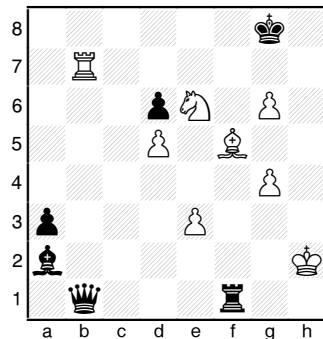
LM Viktors Pupols (2214)

NM Michael Lee (2314)

Redmond, Washington Open (4) 2008

Annotations by Drayton Harrison

1.♗f3 ♗f6 2.d4 g6 3.b4 d5 4.e3 c6 5.c4  
♗g7 6.♗b2 ♗f5 7.♗c3 O-O 8.♗e2 ♗e4  
9.O-O ♗xc3 10.♗xc3 ♗d7 11.cxd5 cxd5  
12.♞b3 ♗f6 13.♞fd1 ♗e4 14.♗e1 ♞d6  
15.♞ac1 g5 16.♗d2 ♗f6 17.♗f1 h5  
18.b5 h4 19.♗b4 ♞d7 20.♗d3 ♗e6  
21.♞c2 ♗e8 22.♞a3 ♗d6 23.♗xd6  
♞xd6 24.♞xd6 exd6 25.♞c7 ♞ab8  
26.♞dc1 ♗f6 27.♗d2 ♗d8 28.♞7c2 f5  
29.♗b3 ♗d7 30.♞c3 ♞a8 31.♗d2 ♗a5  
32.♞3c2 ♞ae8 33.♗b3 ♗d8 34.♞c3  
♗h8 35.♗e2 f4 36.♗f3 fxe3 37.♞xe3  
♞xe3 38.fxe3 g4 39.♗xd5 ♗g5 40.♞e1  
♗xb5 41.♗d2 b6 42.♗e6 g3 43.♗f3  
♗h6 44.♗h1 ♞f6 45.d5 ♗c4 46.♗hx4  
♗xa2 47.hxg3 b5 48.♞c1 b4 49.♞c8+  
♗f8 50.g4 b3 51.♞b8 ♗h7 52.g5 ♞f1+  
53.♗h2 a5 54.♞b5 ♗g7 55.♗f5+ ♗g8  
56.♞b8+ ♗f8 57.g4 a4 58.♗g6 a3 59.  
♗xf8 b2 60.♗e6+ ♗f7 61.♞b7+ ♗g8  
62.g6 b1=♞ ... Draw



The remaining moves were not recorded. It's likely that White was short of time, as he has mate-in-ten: 63.♗xb1 ♞h1+ 64.♗g3 ♞g1+ 65.♗h4 ♞h1+ 66.♗g5 ♞xb1 67.♞g7+ ♗h8 68.♞f7

♞b8 69.♞f8+ ♞xf8 70.g7+ ♗h7 71.  
gxh8=♞ ♗xd5 72.♞g7 mate.

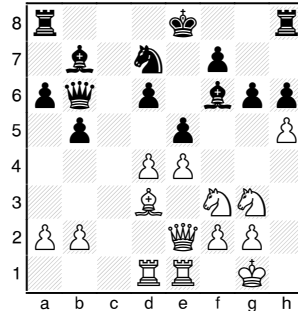
### Polish Defense

Geoffrey Gale (2038)

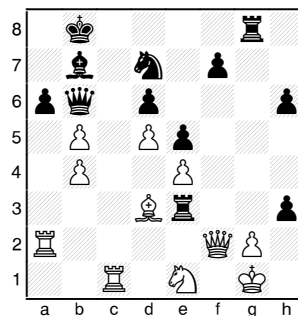
Ian Skulsky (2138)

Redmond, Washington Open (4) 2008

1.e4 e6 2.d4 a6 3.♗f3 b5 4.♗d3 ♗b7  
5.O-O c5 6.c3 ♗f6 7.♗g5 h6 8.♗xf6  
♞xf6 9.♗bd2 ♞d8 10.♞e2 ♗e7 11.  
♞ad1 ♞b6 12.♞fe1 cxd4 13.cxd4 d6  
14.♗f1 ♗d7 15.h4 g6 16.♗g3 e5 17.h5  
♗f6



18.♗b1 O-O-O 19.d5 ♗b8 20.b4 ♞c8  
21.♗d3 ♞hg8 22.♞a1 ♞g7 23.♞ec1  
♞cg8 24.♗e1 ♗h4 25.♗f1 gxh5 26.  
♗e3 ♗g5 27.a4 ♗xe3 28.fxe3 h4 29.  
♞d2 ♗g3 30.axb5 ♞xe3 31.♞f2 h3 32.  
♞a2



32... ♞xe1+ 33.♞xe1 ♞xg2+ 34.♗f1  
♞xf2+ 35.♞xf2 ♞d4 36.♗e2 ♞b2+  
37.♗f1 ♞c3 38.♗e2 h2 39.♞h1 ♞b2+  
40.♗e3 ♞d4+ 41.♗e2 f5 42.♞xf5 axb5  
43.♞f2 ♗b6 44.♞hxh2 ♗c4 45.♞h3  
♗c8 46.♞g3 h5 47.♞f8 h4 0-1

### King's Indian Classical

Dereque Kelley (2072)

Ricky Selzler (2156)

Redmond, Washington Open (4) 2008

1.d4 ♗f6 2.c4 g6 3.♗c3 ♗g7 4.e4 d6  
5.♗e2 O-O 6.♗f3 e5 7.O-O ♗c6 8.d5  
♗e7 9.♗e1 ♗d7 10.♗e3 f5 11.f3 f4  
12.♗f2 g5 13.♞c1 ♗g6 14.c5 dxc5 15.  
♗d3 b6 16.b4 c4 17.♗b2 ♗f6 18.♗xc4

♞f7 19.d6 c6 20.a4 ♗f8 21.b5 c5 22.a5  
♞b8 23.♞c2 ♞g7 24.axb6 axb6 25.♗d5  
♗e6 26.♗dxb6 ♞xb6 27.♗xb6 ♞xb6  
28.♞xc5 ♞xd6 29.b6 g4 30.♞c7 g3  
31.♞xg7+ ♗xg7 32.hxg3 fxg3 33.♗xg3  
♞xb6+ 34.♗f2 ♞d6 35.♞xd6 ♗xd6  
36.♞d1 ♗e7 37.g3 h5 Draw

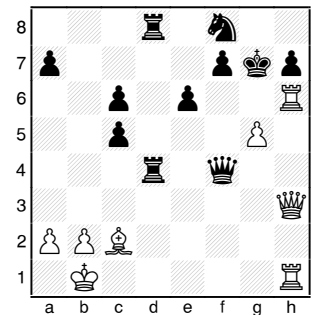
### French Burn

FM Ignacio Perez (2320)

LM Viktors Pupols (2214)

Redmond, Washington Open (5) 2008

1.e4 e6 2.d4 d5 3.♗c3 ♗f6 4.♗g5 dxe4  
5.♗xe4 ♗e7 6.♗xf6 ♗xf6 7.♗f3 O-O  
8.♞d2 b6 9.O-O-O ♗b7 10.♗d3 ♗d7  
11.♞f4 ♞b8 12.♗fg5 ♗xe4 13.♗xe4  
♗xg5 14.♞xg5 ♞d8 15.h4 ♞c8 16.♞e3  
♞e7 17.f4 ♞fd8 18.g4 ♗f6 19.♗f3 ♞d6  
20.c4 c6 21.g5 ♗d7 22.h5 ♗f8 23.♗b1  
♞b4 24.h6 ♞d6 25.c5 ♞e7 26.hxg7  
♗xg7 27.♞h6 bxc5 28.♗e4 ♞xd4 29.  
♞dh1 ♞d6 30.♗c2 ♞xf4 31.♞h3 ♞cd8



32.♞xh7+ ♗xh7 33.♞h6+ ♗g8 34.  
♗xh7+ 1-0

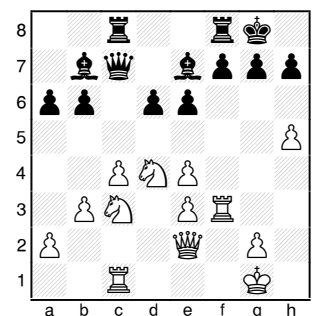
### Sicilian Paulsen

Daniel Gay (1983)

Matthew Wilson (1863)

Redmond, Washington Open (5) 2008

1.e4 c5 2.♗f3 a6 3.c4 e6 4.♗c3 ♞c7  
5.d4 cxd4 6.♗xd4 ♗f6 7.♗d3 ♗c6 8.  
♗e3 ♗e5 9.♞e2 ♗fg4 10.♞c1 ♗xe3  
11.fxe3 ♗xd3+ 12.♞xd3 d6 13.O-O ♗e7  
14.♞f3 b6 15.h4 ♗b7 16.h5 ♞c8 17.b3  
O-O 18.♞e2



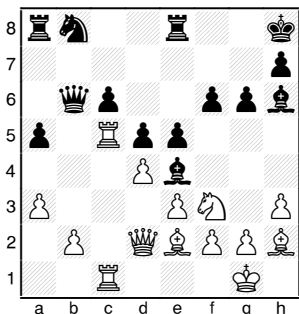
18...d5 19.exd5 exd5 20.cxd5 ♗xd5  
21. ♖ff1 ♗b7 22. ♖d5 ♗d8 23. ♖xc8  
♗xc8 24. ♖c6 ♗d6 25. ♖cxe7+ ♖h8  
26. ♖xc8 ♗xd5 27. ♖xb6 1-0

**QGD Slav**

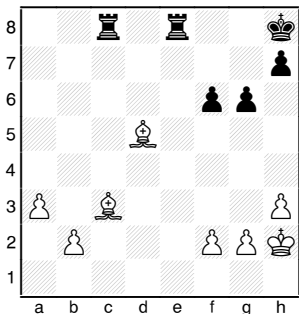
**Ricky Selzler (2156)**  
**NM Curt Collyer (2259)**

*Redmond, Washington Open (5) 2008*

1. d4 d5 2. c4 c6 3. ♖f3 ♖f6 4. ♖c3 a6 5. c5  
♗g4 6. ♖e5 ♗f5 7. ♗f4 g6 8. h3 ♗g7 9. e3  
O-O 10. ♗e2 ♖d7 11. ♖f3 b6 12. cxb6  
♗xb6 13. ♗d2 f6 14. O-O e5 15. ♗h2  
♖h8 16. ♖a4 ♗a7 17. ♖fc1 a5 18. ♖c3  
♗e4 19. ♖d1 ♖e8 20. a3 ♗h6 21. ♖c5  
♖xc5 22. ♖xc5 ♗b6 23. ♖dc1



23... ♗xf3 24. ♗xf3 exd4 25. ♗xd4 ♖d7  
26. ♖xc6 ♗xd4 27. exd4 ♗xc1 28. ♖xc1  
♖ac8 29. ♗c7 ♖f8 30. ♖c3 ♖e6 31.  
♗xa5 ♖xd4 32. ♗xd5 ♖e2+ 33. ♖h2  
♖xc3 34. ♗xc3 ♖g7 35. a4



36... ♖c5 36. ♗f3 ♖xc3 37. bxc3 ♖c8  
38. a5 ♖xc3 39. a6 ♖a3 40. ♗b7 f5 41. h4  
♖f6 42. f4 ♖e6 43. ♖g1 ♖a2 44. ♖h2  
♖d6 45. ♖g3 h5 46. ♖f3 ♖c5 47. ♖e3  
♖a3+ 48. ♖d2 ♖d4 49. ♖e2 ♖a1 50.  
♖f3 ♖a2 51. g3 ♖a3+ 52. ♖f2 ♖d3  
53. ♖f3 ♖c4+ 54. ♖f2 ♖d4 55. ♗c8 ♖a1  
56. ♗b7 ♖a2+ 57. ♖f3 ♖c4 58. ♖e3  
♖a3+ 59. ♖f2 ♖c5 60. ♖g2 ♖d6 61. ♖f2  
♖e7 62. ♖g2 ♖d7 63. ♖f2 ♖d6 64. ♖g2  
♖c7 65. ♖f2 ♖b6 66. ♗c8 ♖c7 67. ♗b7  
♖b6 68. ♗c8 ♖c3 69. ♗b7 ♖c7 70. ♖e3  
♖c3+ 71. ♖f2 ♖a7 72. ♖g2 ♖b8 73. ♖f2  
♖b3 74. ♗d5 ♖a3 75. ♗b7 ♖a7 76. ♗c8  
♖b6 77. ♗b7 ♖a2+ 78. ♖e3 ♖a4 79.

♖f2 ♖a3 80. ♗c8 ♖b3 81. ♗b7 ♖c3  
82. ♖g2 ♖a7 83. ♖f2 ♖a3 84. ♗c8 ♖b3  
85. ♗b7 ♖a3 86. ♖g2 ♖a2+ 87. ♖f3  
♖b2 88. ♗c8 DrawOrangutan

**Ian Skulsky (2138)**  
**FM John Readey (2296)**

*Redmond, Washington Open (5) 2008*

1. b4 e5 2. a3 d5 3. ♗b2 ♗d6 4. e3 ♖f6  
5. c4 c6 6. ♖f3 ♗e7 7. ♖c3 ♖bd7 8. cxd5  
cxd5 9. ♖b5 ♗b8 10. ♖c1 ♖b6 11. ♗c2  
O-O 12. ♖c7 ♗xc7 13. ♗xc7 ♗xc7  
14. ♖xc7 ♖e8 15. ♖c1 f6 16. ♗e2 ♖d6  
17. d3 ♗d7 18. ♖d2 ♖a4 19. ♗a1 ♖fc8  
20. O-O ♖b5 21. ♗f3 ♗e6 22. ♖b1 ♖f7  
23. ♗e2 ♗d7 24. d4 e4 25. f3 ♖d6  
26. ♖d2 ♖xc1 27. ♖xc1 f5 28. ♖c7 ♖e8  
29. ♗d1 ♖c8 30. ♖xc8+ ♖xc8 31. ♗b3  
♖ab6 32. ♖b1 ♗a4 33. ♗a2 ♖d7  
34. ♖c3 ♖c6 35. ♖f2 ♖d6 36. ♗b2 ♗c2  
37. ♗c1 ♖b5 38. ♖xb5 ♖xb5 39. ♖g3  
♖c6 40. ♖f4 ♖a4 41. ♗d2 exf3 42. gxf3  
♖d6 43. ♖g3 [1/2:1/2]

**Stonewall Attack**

**FM David Bragg (2210)**  
**FM Paul Bartron (2127)**

*Redmond, Washington Open (5) 2008*

**Annotations by Drayton Harrison**  
1. e3 d5 2. c4 e6 3. b3 ♗e7 4. ♗b2 ♗f6  
5. d4 ♖e7 6. f4 c5 7. ♖f3 ♖f5 8. ♗d2 ♖c6  
9. cxd5 exd5 10. ♗b5 O-O 11. O-O cxd4  
12. exd4 ♗b6 13. ♗xc6 bxc6 14. g4 ♖d6  
15. ♖e5 ♖e4 16. ♗g2 ♖e8 17. ♖c3  
♗xd4+ 18. ♖h1 ♖xc3 19. ♖ac1 ♗a6  
20. ♖f2 ♗xe5 21. fxe5 ♗xe5 22. ♗xc3 d4  
23. ♗d2 ♗d3 24. ♖g1 ♗e4 25. ♗h3 ♗d5  
26. ♗f4 ♗e4 27. ♖f1

27. ♖ff1 ♖e6 with an attack.

27... ♗h1 mate

**Sicilian Najdorf**

**Yevgeniy Rozenfeld (1960)**  
**Juan Perez (1707)**

*Redmond, Washington Open (6) 2008*

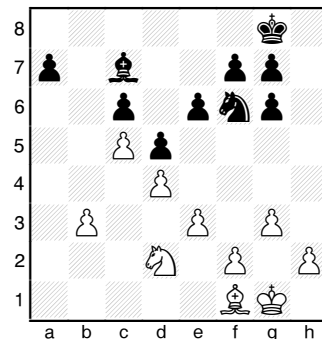
1. e4 c5 2. ♖f3 d6 3. d4 cxd4 4. ♖xd4 ♖f6  
5. ♖c3 a6 6. ♗g5 e6 7. f4 ♗b6 8. ♗d2  
♗xb2 9. ♖b1 ♗a3 10. ♗c4 ♗c5 11. ♗b3  
♖c6 12. ♗a4 b5 13. ♖cxb5 axb5  
14. ♖xb5 ♗a7 15. ♖b4 ♗d7 16. ♗xc6  
♗xc6 17. ♖xc6 ♗c5 18. ♗xf6 gxf6  
19. ♖d4 ♗h6 20. g3 O-O 21. ♖b3 ♗a7  
22. a4 d5 23. ♗d4 ♗e7 24. O-O dxe4  
25. ♗xe4 f5 26. ♗e1 ♗g7 27. a5 ♗d6  
28. ♖f3 ♖fc8 29. ♖d3 ♗c6 30. ♗d2  
♗xc2 31. ♖d8+ ♗f8 32. ♗xc2 ♖xc2  
33. ♖xa8 ♖g7 34. ♖b5 1-0

**English Opening**

**LM Viktors Pupols (2214)**  
**Howard Chen (2029)**

*Redmond, Washington Open (6) 2008*

1. c4 c6 2. ♖f3 d5 3. b3 ♗f5 4. ♗b2 ♖d7  
5. g3 ♖gf6 6. ♗g2 e6 7. d3 ♗e7 8. O-O  
O-O 9. ♖bd2 ♖c8 10. ♗e1 ♗g6 11. ♖d1  
♖c5 12. ♖b1 b5 13. d4 ♖ce4 14. ♖e5  
bxc4 15. bxc4 ♗b6 16. ♗c3 ♖xc3 17.  
♗xc3 ♗a6 18. c5 ♗d8 19. ♖xg6 hxg6 20.  
♗c2 ♖b8 21. ♖d3 ♖b4 22. ♖d2 ♗c7 23.  
e3 ♖fb8 24. ♖b3 ♖8b5 25. ♖fb1 ♗b7  
26. ♗f1 ♖xb3 27. ♖xb3 ♖xb3 28. ♗xb3  
♗xb3 29. axb3



29... a5 30. ♗a6 ♖d7 31. e4 ♖f8 32. e5  
♖e7 33. f4 ♖b8 34. ♗d3 ♖e8 35. ♖f2  
♗d8 36. ♖f3 ♖d7 37. g4 ♖e7 38. ♖g3  
♗c7 39. h4 ♗d8 40. ♖e1 ♖e8 41. ♖c2  
♖e7 42. ♖e3 ♗c7 43. ♖g2 ♗d8 44. ♖e1  
♗c7 45. ♖f3 ♗d8 46. h5 gxh5 47. gxh5  
f5 48. exf6+ ♖xf6 49. ♖g4 ♗c7 50. ♖e5  
♗d8 51. ♖f3 ♗c7 52. ♖g4+ ♖e7 53.  
♖e5 ♖f6 54. ♖g4 ♗d8 55. ♖g6 ♗c7 56.  
♖e5 ♗d8 57. ♗e2 ♗e7 58. ♗f1 ♗d8  
59. ♗h3 ♗c7 60. h6 gxh6 61. ♖h5 ♗xe5  
62. fxe5+ ♖f7 63. ♗f1 ♖g7 64. ♗d3 ♖d7  
65. ♗a6 ♖f8 66. ♗b7 ♖g6 67. ♗xc6  
♖f4+ 68. ♖g4 ♖e2 69. ♗a4 ♖xd4 70. c6  
♖f5 71. c7 ♖e7 72. ♗d7 d4 73. ♗xe6 d3  
74. ♖f3 1-0

**Ruy Lopez Exchange**

**Robert Brewster (1978)**  
**Elston Cloy (1965)**

*Redmond, Washington Open (6) 2008*

1. e4 e5 2. ♖f3 ♖c6 3. ♗b5 a6 4. ♗xc6  
dxc6 5. O-O f6 6. d4 exd4 7. ♖xd4 c5  
8. ♖b3 ♗xd1 9. ♖xd1 ♗d7 10. ♗e3 b6  
11. ♖c3 O-O-O 12. a4 ♖e7 13. ♖d2 ♖c6  
14. ♖c4 ♗e6 15. ♖xd8+ ♖xd8 16. ♖d1+  
♖c8 17. ♖d5 ♖b4 18. ♖xb4 cxb4 19. b3  
♗e7 20. f4 ♖b7 21. ♖b2 ♖d8 22. h3  
♖xd1+ 23. ♖xd1 c5 24. f5 ♗f7 25. g4 c4  
26. bxc4 ♗xc4 27. ♖b2 ♗f7 28. h4 b3  
29. cxb3 ♗xb3 30. g5 ♗c2 31. gxf6 gxf6

32. e5 fxe5 33. ♖c4 ♗xf5 34. ♖xe5 ♗e6  
35. h5 ♗b4 36. ♖f2 ♗a5 0-1

*Caro-Kann Panov-Botvinnik*

**Gil Lapid Shafriri (2118)**  
**NM Curt Collyer (2256)**

*Redmond, Washington Open (6) 2008*

1. d4 ♖f6 2. c4 c5 3. e3 cxd4 4. exd4 d5  
5. ♖c3 ♗e6 6. ♖f3 ♖c6 7. cxd5 ♗xd5 8.  
♗e2 e6 9. O-O ♗e7 10. ♗f4 O-O 11.  
♖xd5 ♗xd5 12. ♗d3 ♖fd8 13. ♖fd1  
♖ac8 14. ♗b5 ♗xb5 15. ♗xb5 ♖d5 16.  
♗g3 a6 17. ♗a4 f6 18. ♖ac1 b5 19. ♗b3  
♖f7 20. h4 h5 21. a4 ♖cb4 22. axb5 axb5  
23. ♖a1 ♖a8 24. ♖f1 ♖dc8 25. ♖xa8  
♖xa8 26. ♖e2 ♖c6 27. ♖h2 ♖d8 28. ♖f3  
♗b4 29. ♖c1 ♖ce7 30. ♖a1 ♖f5 31.  
♖a7+ ♗e7 32. ♖b7 b4 33. ♖b5 ♖g6 34.  
♗h2 ♖a8 35. ♗d5 exd5 36. ♖xd5 ♖a2  
37. ♗f4 ♖xb2+ 38. ♗d2 ♖b3 39. ♖d7  
♖a3 40. ♖b7 ♗f8 41. ♖b6 ♖b3 42. ♖b8  
Draw

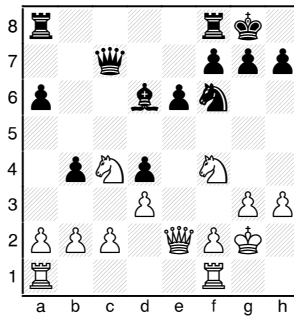
*Sicilian Closed*

**Darren Wu (1903)**  
**NM Luc Poitras (2223)**

*Redmond, Washington Open (6) 2008*

1. e4 c5 2. ♖c3 ♖c6 3. ♖ge2 a6 4. g3 e6  
5. ♗g2 b5 6. O-O ♗c7 7. d3 d6 8. ♗e3 ♖f6  
9. h3 b4 10. ♖b1 d5 11. exd5 ♖xd5

12. ♗c1 ♗e7 13. ♖d2 O-O 14. ♖c4 ♗b7  
15. ♖f4 ♖f6 16. ♗e3 ♖d4 17. ♗xd4 cxd4  
18. ♗e2 ♗xg2 19. ♖xg2 ♗d6



20. ♖xe6 ♗c6+ 21. ♗f3 ♗xf3+ 22. ♖xf3  
fxe6 23. ♖xd6 ♖e8+ 24. ♖e4 ♖xd6+  
25. ♖xd4 ♖f5 26. f4 ♖d5+ 27. ♖e3 ♖c8  
28. ♖ac1 ♖f5+ 29. ♖f2 ♖dc5 30. c4 bxc3  
31. bxc3 ♖xc3 32. ♖xc3 ♖xc3 33. g4  
♖c2+ 34. ♖f3 ♖e7 35. a4 ♖h2 36. h4  
♖h3+ 37. ♖e4 ♖xh4 38. ♖e5 ♖f7 39. f5  
exf5 40. gxf5 ♖xa4 41. ♖f3 ♖a5+ 42.  
♖e4 ♖f6 43. d4 ♖xf5 44. ♖a3 a5 45.  
♖a4 ♖d5 46. ♖c4 g6 47. ♖c6+ ♖g5 48.  
♖c5 ♖f6+ 49. ♖d3 h5 50. ♖c4 ♖xc5+  
51. dxc5 h4 52. c6 ♖e8 53. ♖d5 h3  
54. ♖e6 h2 55. ♖e7 h1=♗ 56. ♖xe8  
♗xc6+ 0-1

*Sicilian Palsen*

**Matthew Wilson (1863)**  
**Corbin Yu (2085)**

*Redmond, Washington Open (6) 2008*

1. e4 c5 2. ♖f3 a6 3. c4 e6 4. ♖c3 ♗c7  
5. ♗e2 b6 6. O-O ♗b7 7. d4 cxd4 8. ♖xd4  
♖f6 9. f3 ♗d6 10. g3 h5 11. ♗e3 ♗xg3  
12. hxg3 ♗xg3+ 13. ♖h1 ♖g4 14. ♖f2  
♖xf2+ 15. ♗xf2 ♗xf2 16. ♗g1 ♗h4+  
17. ♗h2 ♗xh2+ 18. ♖xh2 ♖c6 19. ♖b3  
d6 20. ♖a4 b5 21. cxb5 axb5 22. ♗xb5  
O-O 23. ♖c3 ♖e5 24. ♖d4 ♗a6 25. ♗a4  
♖ab8 26. ♗b3 ♗c4 27. ♖f1 ♗xf1 0-1

*King's Indian Makagonov*

**Peter Watts (1845)**  
**Ricky Selzler (2156)**

*Redmond, Washington Open (6) 2008*

1. d4 ♖f6 2. ♖f3 g6 3. c4 ♗g7 4. ♖c3  
O-O 5. e4 d6 6. h3 e5 7. d5 a5 8. ♗g5 ♖a6  
9. ♗d3 ♗d7 10. ♗d2 ♖c5 11. ♗c2 ♗e8  
12. a4 ♖h8 13. g4 ♖g8 14. ♖h2 f5 15. f3  
fxe4 16. ♖xe4 ♖xe4 17. ♗xe4 ♖f6 18.  
♗xf6 ♗xf6 19. g5 ♗d8 20. h4 ♗f5 21.  
♖g4 ♗xe4 22. fxe4 ♖f4 23. ♗e2 ♗d7  
24. ♖f2 h5 25. gxh6 ♗xh4 26. ♖xh4  
♖xh4 27. ♗f3 ♖f4 28. ♗g3 ♖af8 0-1 ■

*WCL and NWC cont'd from page 3*

topher, Miller, William Schill, Charles Powrie, and Sanders McDougall. Joe Bradford of New Jersey won the 497-player event with 10½-1½. Schill, with 8-4, was the top scoring Northwest player.

Kennedy Poyser of Olympia was the editor for this issue. The crosstable of the Valley Mall Open N° 4 with fourteen players was printed. John Wise of East Wenatchee won it 3-0, garnering \$18. The Central Washington Grand Prix rules and prizes were announced in this issue.

Richard Stewart of Bothell was doing the Northwest Ratings. Eric Tangborn had the highest rating in this issue, 2321. Viktors Pupols was second on the list with Dennis Waterman third. The 88-player Seattle Seafair crosstable was printed. Rajan Ayyar of California, and Seattle players Roger Hanson, John Donaldson and D. Leo Stefurak tied for first with 4½-½.

The U.S. Junior Open was held in Seattle and Yasser Seirawan won the event 7½-½. Among those tied at 6-2 were Donaldson and Tangborn. 82 players took part with George Koltanowski, USCF President, Robert Karch, WCF President, and Michael Tho-

mas as directors. Karch wrote a detailed report on how the tournament came to Seattle and the problems with the USCF office. Bill McGeary topped the 18-player Seattle Summer Swiss crosstable with a 5-0 score. Tangborn won the Emperor Augustus Memorial event 5-0 over 17 other players.

Larry Ball of Portland was the Oregon Editor for this issue and presented several Oregon event crosstables. Oregon Independence Open of 28 players was won by Rick Lindholm of Eugene 5-1. The Portland Summer Open was a two-section event. Donaldson won the Open section 5-0, Bradley Anderson of Salem won the Reserve Section 4½-½. The one-section Oregon Open drew 164 players. The top score was 5½-½ done by Waterman, Stefurak, Pupols and Tangborn. People I saw at the 2008 event that are listed on the crosstable for the 1978 event are: Pupols, Carl Haessler, Karl Schoffstoll, Evan Whipple, Russell Miller, Kornelijs Dale, and Dale Wentz. David Johns of Eugene won the Santiam Open of 25 players. Carl Haessler of Lake Oswego won the 34-player Newburg Open with 4½-½.

Jim Perry of Seattle translated articles and chess news from the Russian Weekly 64 for appearance in NWC. Part of the 20th game from the Karpov-Korchnoi World Championship match was given. David

Brown of Rockford, Illinois, did a problem page in NWC in these days.

Some of the upcoming Tournaments and Activities listed in the issue were: Wapato Grand Prix #1, Wenatchee Grand Prix #1, Oregon Junior Open - Portland, Hobgolin Hectic - Tacoma, 1978-79 Cascade Chess League - Portland area, Seattle Class Championship, Madras Oregon Open, Tri-Cities Grand Prix #1, South Eye Street Blues - Tacoma, Ponderosa Open - Bend, Washington Challengers' Cup - Tacoma, Northwest Christmas Congress - Seattle.

The Washington Chess Federation vote by mail ballot appeared in this issue. The only contest was for President between Russell Miller and Bill Newell plus USCF delegates (vote for 3): Robert Karch, Russell Miller, Jim Perry, Viktors Pupols, David Teplow, Mike Mulford, and Stephen Christopher. Robert Karch and Sherman Marshall were on the ballot running for Editor of NWC. ■



# Sluggers Begin Season 2-2:

Miami-Loss, Tennessee-Draw, New Jersey-Draw, and Chicago-Win

## Wednesday, August 27

### Round One

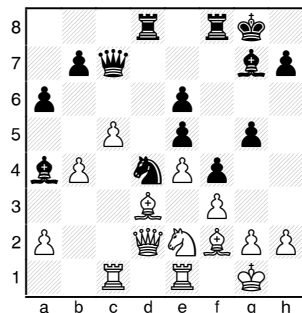
Suddenly, it's that time of year again and the Sluggers are playing their first match of the season. The pre-match buzz has us as slight favorites over Miami, especially as GM Becerra won't be playing, but we know it'll be a tough match.—J. Readey

### Sicilian Paulsen

IM Bruci Lopez (2486)  
GM Gregory Serper (2592)

USCL, Miami vs. Seattle (1.1) 2008

1.e4 c5 2.♟f3 e6 3.d4 cxd4 4.♞xd4 a6 5.♞d3 ♟f6 6.O-O d6 7.♞e2 g6 8.c4 ♟g7 9.♞c3 O-O 10.♞f3 ♞c6 11.♞d1 ♞c7 12.♟f4 ♞d7 13.♞ac1 ♞de5 14.♞xe5 dxe5 15.♟e3 ♞d4 16.♞d2 ♟d7 17.f3 f5 18.b4 f4 19.♟f2 g5 20.♞e2 ♞ad8 21.c5 ♟a4 22.♞e1



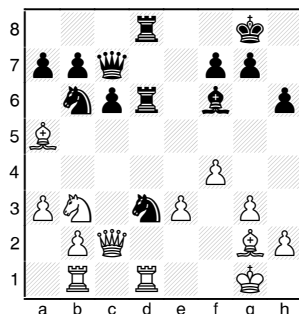
22...♞d7 23.♞xd4 exd4 24.♟c4 ♞e5 25.♞d3 h5 26.c6 bxc6 27.♟xa6 g4 28.♟h4 ♞b8 29.♟c4 ♞e8 30.e5 ♟b5 31.♟xb5 cxb5 32.♞c5 ♞a7 33.♞e2 ♞d7 34.♞xb5 ♞fa8 35.♟f6 ♞a3 36.♞g6 d3 37.♞f2 g3 38.hxg3 fxg3 39.♞xg3 ♞3a7 40.♞xg7+ ♞xg7 41.♟xg7 ♟xg7 42.♞d2 ♞xa2 43.♞xd3 ♟g6 44.♞d7 ♞e2 45.♞a5 ♞c8 46.♞c5 ♞a8 47.♞cc7 ♞xe5 48.♞g7+ ♟h6 49.♞g3 ♞g5 50.♞h7+ ♟hx7 51.♞xg5 ♟h6 52.♞e5 ♞a6 53.b5 ♞a1+ 54.♟f2 ♞a2+ 55.♞e2 ♞a8 56.♞xe6+ ♟g5 57.♞e5+ ♟g6 58.b6 1-0

### QGD Slav

IM Eric Tangborn (2455)  
IM Marcel Martinez (2469)

USCL, Miami vs. Seattle (1.2) 2008

1.d4 ♞f6 2.♞f3 d5 3.c4 c6 4.♞b3 dxc4 5.♞xc4 ♟f5 6.g3 e6 7.♟g2 ♞bd7 8.O-O ♟d6 9.♞d1 O-O 10.e3 h6 11.♞e2 ♟h7 12.♞bd2 ♞e4 13.♞c4 ♟e7 14.♞fe5 ♞b6 15.♞a5 ♞c7 16.f3 ♞f6 17.♟d2 ♞fd7 18.♞d3 ♟xd3 19.♞xd3 e5 20.dxe5 ♞xe5 21.♞c2 ♞fd8 22.f4 ♞d3 23.a3 ♟f6 24.♞ab1 ♞d6 25.♞b3 ♞ad8 26.♟a5



26...♞xb2 27.♞xd6 ♞xd6 28.♞xb2 ♞d1+ 29.♟f1 ♟xb2 30.♞xb2 ♞d3 31.♞c5 ♞d5 32.♟xb6 axb6 33.♞e4 ♞f3 34.♞f2 ♞xe3 35.♞e2 ♞xe2 36.♟xe2 ♞a5 37.♞e4 ♞xa3 38.♞d6 b5 39.♟f2 b4 40.♞c4 ♞a2 41.♟e3 b3 42.♞d2 b2 43.♟d3 c5 44.♟b1 ♞a3+ 45.♟e2 b5 46.♟e4 ♞c3 47.♞b1 ♞c1 48.♟d2 b4 49.♟d3 c4 50.♟c2 ♟f8 51.♟e4 ♟e7 52.♟c2 ♟d6 53.♟e4 ♟c5 0-1

### Pirc 150 Attack

IM Blas Lugo (2393)  
FM John Readey (2296)

USCL, Miami vs. Seattle (1.3) 2008

Annotations by FM John Readey  
1.e4 g6 2.d4 ♟g7 3.♞c3 d6 4.♟e3 ♞f6

This is my first time playing Blas, but from my brief review of his games, I could see he had a straight forward attacking style. I'm not surprised he goes into one of the sharpest lines against the Pirc.

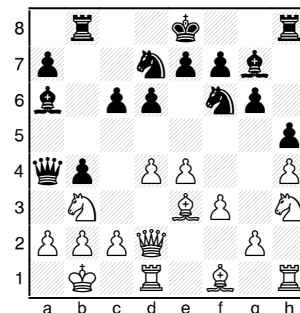
5.f3 c6 6.♞d2 ♞a5

I swing my Queen out to discourage queenside castling, but . . .

7.O-O b5 8.♟b1 b4 9.♞ce2 ♞bd7 10.♞c1 ♞b8 11.h4 h5 12.♞h3 ♟a6?

I was having a tough time getting focused in this game. There was a lot of commotion due to problems with the computers and such. My last move doesn't look best.

13.♞b3 ♞a4



Here I thought White had a simple line to a clear edge: 14.e5 dxe5 15.dxe5 ♞d5 16.e6 fxe6 17.♟xa6 ♞xa6 18.♞f4. I was relieved when he played:

14.♟d3 ♟xd3 15.cxd3?! ♞b5 16.♞f2 a5 17.g4 O-O

I thought Black was doing fine here.  
18.♟h6 ♟h7?!

This was my last chance for ...a5-a4. I didn't play it, because I was hoping to gang up on the d4-pawn without White having time to play ♞b3-c1-e2. But the e2-Knight actually lets me get an effective central break in: 18...a4 19.♞c1 ♟h7 20.♟xg7 ♟xg7 21.♞dg1 ♞h8 22.gxh5 ♞hx5 23.♞g5 ♞b6 24.♞e2 e5+.

19.♟xg7 ♟xg7 20.gxh5 ♞hx5 21.♞dg1 ♞b6

21...a4?? is too late, White breaks through on the kingside by 22.♞g5 ♞b6 23.♞hx5 gxh5 24.♞g5+ ♟h7 25.♞hx5+ ♟g7 26.♞g1+ ♟f6 27.♞h6 mate. So I have to drop the a5-pawn. Well, at least I have the open a-file.

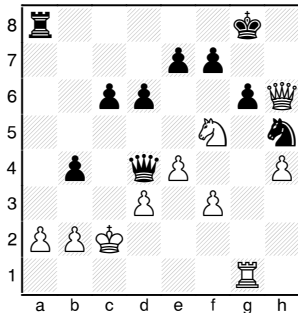
22.♞g5 ♞h8 23.♞xa5 ♞a8 24.♞xa8 ♞xa8 25.♞g4 ♞f8 26.♞h6+ ♟g8

Please check your mailing label  
and PLEASE RENEW!!

27. ♖g1 ♔a7

I'm trying to attack a2 and simultaneously keep d4 under observation, but, just as I played this, I realized White had 28. ♖xh5 gxh5 29. ♖f6+! ♕h8 30. ♖g8 mate! After the game, I showed this line to Serper whose non-plussed reaction was, "Why take the Queen? There's no threat." Indeed, after 28... ♖xa2+ 29. ♕c2 ♖a3! 30. ♖c1 ♖c3+ 31. ♕d1 ♖xb2, Black's attack crashes through.

28. ♕c2 ♖e6 29. ♖e3 ♖xd4+ 30. ♖xd4 ♖xd4 31. ♖f5



31...b3??

I quickly threw in ...b4-b3+, thinking it couldn't hurt to cut off the b3-square for the White King. But I missed the cunning 31... ♖c5+ 32. ♕b3 (otherwise I take the Rook with check) 32... ♖a3+! 33. bxa3 ♖c3+ 34. ♕a4 ♖xa3 mate.

32. axb3 ♖c5+ 33. ♕d2 ♖f2+ 34. ♕c3 ♖c5+ 35. ♕d2 ♖f2+ 36. ♕c3 ♖c5+ 37. ♕d2 ♖f2+ Draw

I took a quick look at the other games and the match seemed pretty level; so I took the safe course of securing a draw. Black could play on with 37... ♖a7, when the situation is unclear. After this game finished, I was shocked to see the games on the other three boards quickly deteriorate. In the next ten minutes, Serper, Tangborn, and Sinanan had to resign. Not the best day for the Sluggers!

*QGD Slav*

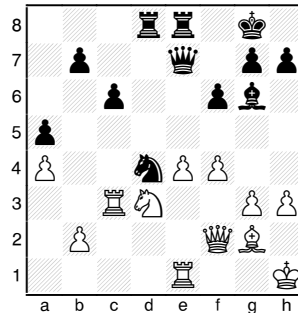
**Joshua Sinanan (2180)**  
**Eric Rodriguez (2242)**

*USCL, Miami vs. Seattle (1.4) 2008*

1. ♖f3 d5 2. d4 ♖f6 3. c4 c6 4. ♖c3 dxc4 5. a4 ♖f5 6. ♖e5 ♖bd7 7. ♖xc4 ♖b6 8. ♖e5 a5 9. f3 ♖fd7 10. ♖xd7 ♖xd7 11. e4 ♖g6 12. ♖e3 e5 13. dxe5 ♖xe5 14. ♖c2 ♖b4 15. ♖e2 f6 16. O-O ♖f7 17. ♖a2 ♖d6 18. f4 ♖d7 19. ♖f3 ♖e7 20.

**Northwest Chess**

♕h1 O-O 21. ♖c1 ♖c5 22. ♖d2 ♖fe8 23. ♖d3 ♖d4 24. ♖c3 ♖xc3 25. ♖xc3 ♖e6 26. ♖fc1 ♖b3 27. ♖d2 ♖ad8 28. ♖c3 ♖b6 29. ♖c2 ♖f8 30. g3 ♖e6 31. ♖g2 ♖d4 32. ♖f2 ♖c7 33. h3 ♖e7 34. ♖e1 ♖g6



35. f5 ♖f7 36. e5 fxe5 37. ♖xe5 ♖d6 38. ♖xe8+ ♖xe8 39. ♖f4 ♖xf5 40. ♖d3 ♖e7 41. ♕h2 ♖e3 42. ♖f3 ♖c4 43. ♖g2 g5 44. ♖d4 gxf4 45. ♖e4 ♖d6 46. ♖xf4 ♖e5 47. ♖f5 ♖g6 48. ♖f6 ♖e6 49. ♖xe6 ♖xe6 50. ♖b6 ♖f7 51. ♖xb7 ♖e4 52. ♖b8+ ♕g7 53. ♖f1 ♖f5 54. ♖f4 ♖xf4 55. gxf4 ♖c2 0-1

## Wednesday, Sept. 3

Round Two

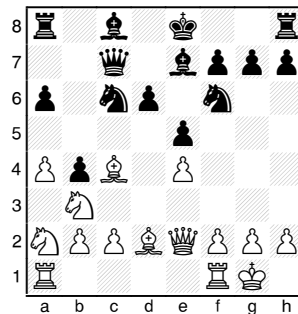
*Sicilian Paulsen*

**Todd Andrews (2350)**

**GM Gregory Serper (2592)**

*USCL, Tennessee vs Seattle (2.1) 2008*

1. e4 c5 2. ♖f3 e6 3. d4 cxd4 4. ♖xd4 a6 5. ♖c3 ♖c7 6. ♖d3 ♖f6 7. ♖e2 d6 8. O-O b5 9. a4 b4 10. ♖a2 e5 11. ♖b3 ♖c6 12. ♖c4 ♖e7 13. ♖d2



13... ♖e6 14. ♖xa6 ♖xe4 15. ♖b5 ♖xd2 16. ♖xd2 O-O 17. ♖xc6 ♖xc6 18. ♖xb4 ♖b7 19. ♖fd1 ♖fc8 20. a5 h6 21. h3 ♖g5 22. ♖e1 ♖c4 23. ♖d3 ♖xc2 24. ♖d2 ♖f5 25. ♖f3 ♖xd3 26. ♖xg5 e4 27. ♖f3 ♖xb2 28. ♖d2 d5 29. ♖e3 ♖c3 30. a6 ♖xa6 31. ♖xe4 dxe4 32. ♖xa6 ♖xa6 33. ♖d8+ ♕h7 34. ♖xe4+ g6 35. ♖e8 ♖g7 36. h4 ♖e2 37. ♖d7 ♖a1+

**October 2008**

38. ♕h2 ♖e5+ 39. ♕h3 ♖e6+ 0-1

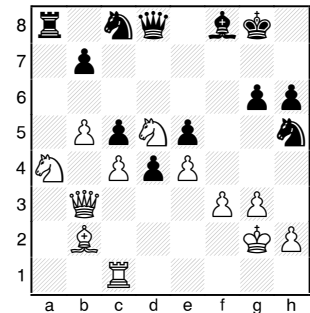
*English Opening*

**FM Slava Mikhailuk (2437)**

**Peter Bereolos (2304)**

*USCL, Tennessee vs Seattle (2.2) 2008*

1. c4 g6 2. ♖c3 ♖g7 3. g3 e5 4. ♖g2 d6 5. d3 ♖c6 6. ♖b1 a5 7. a3 ♖f6 8. b4 axb4 9. axb4 O-O 10. b5 ♖e7 11. ♖f3 h6 12. O-O ♖e6 13. ♖b2 ♖d7 14. ♖a1 ♖h3 15. e4 ♖xg2 16. ♕xg2 ♖h5 17. ♖xa8 ♖xa8 18. ♖e1 f5 19. f3 c6 20. ♖c2 d5 21. ♖b4 d4 22. ♖a4 ♖c8 23. ♖b3 ♖f8 24. ♖a1 fxe4 25. dxe4 ♖e8 26. ♖c1 c5 27. ♖d5 ♖d8



28. b6 ♖f6 29. ♖a3 ♖d7 30. ♖b5 ♕h8 31. ♖b1 ♖d6 32. ♖b3 ♖c8 33. ♖b2 ♖c6 34. ♖d3 ♖c8 35. ♖b5 ♖cxb6 36. ♖a5 ♖e7 37. ♖xe7 ♖xe7 38. ♖xc5 ♖xc4 39. ♖a8+ ♖f8 40. ♖xb7 ♖e3+ 41. ♕f2 ♖f6 42. ♖xd7 ♖xf3+ 43. ♕e2 ♖f2+ 44. ♕d3 ♖d2+ 0-1

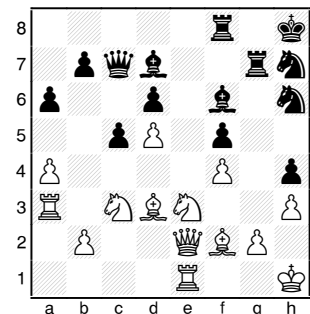
*Modern Benoni*

**John Bick (2249)**

**FM John Readey (2296)**

*USCL, Tennessee vs Seattle (2.3) 2008*

1. d4 ♖f6 2. c4 g6 3. ♖c3 ♖g7 4. e4 d6 5. f3 O-O 6. ♖e3 c5 7. d5 e6 8. ♖d2 exd5 9. cxd5 a6 10. a4 ♖e8 11. ♖ge2 ♖bd7 12. ♖g3 h5 13. ♖e2 ♖h7 14. O-O h4 15. ♖h1 f5 16. ♖f2 ♖e5 17. h3 ♖d7 18. ♖fd1 ♖a5 19. f4 ♖f7 20. exf5 gxf5 21. ♖f2 ♖f6 22. ♖e3 ♖e7 23. ♖d3 ♖h6 24. ♖c2 ♖f8 25. ♖fe1 ♖g7 26. ♖a3 ♕h8 27. ♕h1 ♖c7 28. ♖e2



**23**

28...♙e8 29.♘xf5 ♘xf5 30.♙xf5 ♖f7  
31.♙e6 ♖g6 32.♗g1 ♙xc3 33.f5 ♗xf5  
34.♙xf5 ♖xf5 35.♗xc3 ♙f7 36.♙xh4  
♙xd5 37.♖f2 ♖xf2 38.♙xf2 ♘g5 39.  
♙e1 ♘e4 40.♗e3 ♙c6 41.♗xe4 ♙xe4  
42.♙c3 ♘g8 43.♙xg7 ♘xg7 44.♗f1  
a5 45.♘h2 d5 46.♘g3 d4 47.♘f4 ♙c6  
48.g4 b6 49.♗a1 c4 50.♘e5 c3 51.  
♘xd4 cxb2 52.♗b1 ♙xa4 53.♗xb2 b5  
54.♘c5 1-0

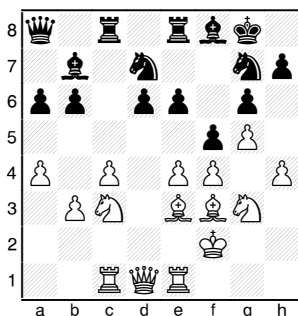
### English Hedgehog

**NM Michael Lee (2314)**

**Jerry Wheeler (2204)**

*USCL, Tennessee vs Seattle (2.4) 2008*

1.c4 b6 2.♘c3 e6 3.♘f3 ♙b7 4.g3 ♘f6  
5.♙g2 c5 6.O-O ♙e7 7.♗e1 O-O 8.e4  
d6 9.d4 cxd4 10.♘xd4 ♖c8 11.♙e3 a6  
12.♗c1 ♘bd7 13.f4 ♗e8 14.g4 g6 15.  
g5 ♘h5 16.♘de2 ♙f8 17.b3 ♖c7 18.  
♙f3 ♘g7 19.♘g3 ♗ac8 20.h4 ♖b8 21.  
a4 ♖a8 22.♘f2 f5



23.gxf6 ♘xf6 24.♙xb6 ♙e7 25.♗h1  
♗f8 26.♘g2 ♘gh5 27.♘xh5 ♘xh5 28.  
♙xh5 gxh5 29.♖f3 ♘h8 30.♘h3 ♙f6  
31.♗he1 ♙e5 32.♙e3 ♙xc3 33.♗xc3  
♙xe4 34.♙d4+ e5 35.♖xe4 ♖xe4 36.  
♗xe4 exd4 37.♗xd4 ♗ce8 38.♗xd6  
♗xf4 39.♗xa6 ♗ee4 40.♗g3 ♗xh4+  
41.♘g2 ♗hg4 42.♗b6 ♗d4 43.a5 1-0

## Wednesday, Sept. 10

Round Three

### Nakamura Slugs, but Seattle can only tie Knockouts

by Joshua Sinanan

GM Hikaru Nakamura made his first appearance for the Seattle Sluggers in week three, facing off against GM Joel Benjamin of the New Jersey Knockouts. Both teams are part of the U.S. Chess League, where four players compete in a match played online on the Internet Chess

Club every week for ten weeks. This was the first ever meeting between Seattle and New Jersey. Of all the matches that transpired Wednesday night, this was the most anticipated.

After a slow start of a half-point after two matches, manager Eddie Chang and the rest of the team were thirsty for victory. The addition of Nakamura was intended to add spark to the roster, which consists mostly of solid, positional players. Also, the Sluggers' chances of bringing a championship to Seattle increase dramatically with the ability to run two GMs in the same lineup.

The match began peacefully, with all players choosing quiet openings. Board One saw Nakamura take the game out of theory with 1.g3. Benjamin replied solidly and took over space in the center. On Board Two, IM Eric Tangborn faced the daunting task of defending the Black pieces against former Soviet Champion GM Boris Gulko. Eric chose the Bogo-Indian, but had to retreat his Knight to d8 after White advanced in the center. On Board Three, FM John Readey sacrificed a pawn for a lead in development against NM Mackenzie Molner, while I played the Modern Benoni against Jayson Lian, reaching an unclear position where White had the better chances.

As the match progressed, Nakamura traded queens to reach an endgame and outplayed his opponent with surprising ease. On board two, Black never seemed to equalize after the opening and faced a difficult middle game. Readey had clear compensation after his pawn sacrifice but Molner was able to keep the game level by creating threats with his queen. After several inaccuracies in the opening, I found myself in a worse position with a complicated middle game.

Nakamura's game was the first to finish: his material advantage was good enough to reach a winning endgame. Readey's game finished next when Molner found a perpetual check. My game finished third after my opponent accidentally allowed a three-time repetition in a winning position. After this surprising result, the match was drawn when Tangborn was unable to save a worse Queen and Knight endgame.

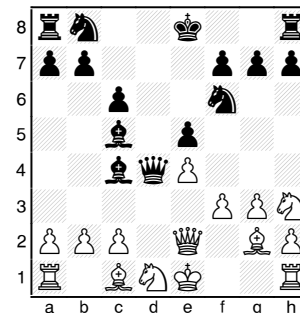
### Benko Opening

**GM Hikaru Nakamura (2742)**

**GM Joel Benjamin (2644)**

*USCL, Seattle vs New Jersey (3.1) 2008*

1.g3 d5 2.♙g2 ♘f6 3.d3 c6 4.♘c3 e5  
5.e4 ♙g4 6.f3 ♙e6 7.♘h3 ♙c5 8.♖e2  
dxe4 9.dxe4 ♖d4 10.♘d1 ♙c4



11.c3 ♖d3 12.♙f1 ♖xe2+ 13.♙xe2  
♙e6 14.♘hf2 ♘bd7 15.f4 exf4 16.gxf4  
♘b6 17.b4 ♙xf2+ 18.♘xf2 ♙c4 19.  
♗g1 O-O-O 20.♗xg7 ♗he8 21.e5  
♘fd5 22.♗xf7 ♘xc3 23.♙g4+ ♘b8  
24.♗xh7 ♘bd5 25.a3 ♘f6 26.♗h3  
♘xg4 27.♗xc3 ♘f2 28.♗xc4 ♘d3+  
29.♘f1 ♗f8 30.e6 ♗de8 31.♗e4 ♗f6  
32.♘e2 ♗fxe6 33.♗xe6 ♘xc1+ 34.  
♗xc1 ♗xe6+ 35.♘f3 ♗h6 36.♗h1  
♘c7 37.h4 ♘d7 38.♘g4 ♘e6 39.h5  
♘f6 40.♗d1 ♗h8 41.♗d6+ ♘e7 42.  
♗g6 ♘f7 43.♘g5 1-0

### Bogo-Indian

**GM Boris Gulko (2618)**

**IM Eric Tangborn (2455)**

*USCL, Seattle vs New Jersey (3.2) 2008*

1.d4 ♘f6 2.c4 e6 3.g3 ♙b4+ 4.♙d2  
♖e7 5.♘f3 ♘c6 6.♘c3 ♙xc3 7.♙xc3  
♘e4 8.♗c1 ♘xc3 9.♗xc3 O-O 10.d5  
♘d8 11.♙g2 d6 12.♖c2 ♙d7 13.O-O  
e5 14.c5 c6 15.cxd6 ♖xd6 16.♗d1  
♖e7 17.♗c5 f6 18.♘h4 g6 19.b4 a6  
20.a4 ♖e8 21.♖d2 cxd5 22.♙xd5+  
♙e6 23.a5 ♗f7 24.♘g2 ♘g7 25.♘e3  
♙xd5 26.♗xd5 ♘e6 27.♘c4 ♗e7  
28.♘b6 ♗b8 29.e3 ♖f7 30.h4 ♗be8  
31.♗d6 ♘c7 32.♖c2 ♘b5 33.♗d7  
♗xd7 34.♗xd7 ♗e7 35.♖c8 ♗xd7  
36.♘xd7 ♘d6 37.♖d8 h5 38.♘xe5  
♖e6 39.♖c7+ ♘g8 40.♘xg6 1-0

### English Opening

**FM John Readey (2296)**

**Mackenzie Molner (2397)**

*USCL, Seattle vs New Jersey (3.3) 2008*

1.♘f3 ♘f6 2.c4 c5 3.♘c3 e6 4.g3 ♙e7  
5.♙g2 O-O 6.O-O ♘c6 7.d4 cxd4



# Monday, Sept. 15

Round Four

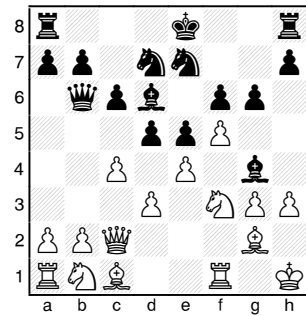
*Bird's Opening*

**GM Hikaru Nakamura (2742)**

**GM Nikola Mitkov (2601)**

*USCL, Seattle vs Chicago (4.1) 2008*

1.g3 d5 2.♔g2 c6 3.f4 f6 4.♘f3 ♕g4  
5.c4 e6 6.O-O ♘d6 7.d3 ♘e7 8.♖c2  
♘d7 9.e4 e5 10.f5 ♖b6+ 11.♘h1 g6  
12.h3



12...♔xf5 13.b4 ♔xb4 14.cxd5 cxd5  
15.exf5 ♘xf5 16.♘h2 ♘d6 17.♖e1  
O-O 18.♔a3 ♖fc8 19.♖d2 ♘c5 20.  
♘c3 ♖a5 21.♔b2 d4 22.♘e4 ♖xd2  
23.♘fxd2 ♘xd3 24.g4 ♘xe1 25.♖xe1  
♘e3 26.♘d6 ♖c2 27.♔c1 ♖d8 28.  
♔e4 ♖xd6 29.♔xc2 ♘xc2 30.♖e2  
♖c6 31.♘e4 d3 32.♖f2 ♘g7 33.♔b2  
♖c4 34.♘xf6 ♘d4 35.♘e4 ♘c6 36.  
♘g5 h6 37.♘f3 ♖c5 38.♘e1 ♖d5  
39.♖d2 ♘f7 40.♖xd3 ♖a5 41.a3 ♖b5  
42.♔c1 ♖b1 43.♖c3 ♘e6 44.♘f3 h5  
45.♘g3 hxg4 46.♘xg4 ♖b5 47.♔e3  
a6 48.♘d2 ♘e7 49.♘e4 ♖b2 50.♖d3  
♘f5 51.♔f2 b6 52.♘d2 b5 53.♘g5  
♘e7 54.♘e4 ♖e2 55.♖d6+ ♘f7 56.  
♖f6+ ♘e8 57.♘d6+ ♘d7 58.♘b7 e4  
59.♘c5+ ♘e8 60.♘g4 e3 61.♔g3 ♘f5  
62.♖xg6 ♘d4 63.♘e6 ♘b3 64.h4 ♖c2  
65.h5 e2 66.h6 ♘f7 67.h7 ♖c8 68.♘f5  
♘d4+ 69.♘xd4 ♖c5+ 70.♘g4 1-0

*Old Indian*

**IM Jan van de Mortel (2460)**

**GM Gregory Serper (2562)**

*USCL, Seattle vs Chicago (4.2) 2008*

1.♘f3 ♘f6 2.g3 d6 3.d4 ♘bd7 4.♔g2  
e5 5.c4 c6 6.dxe5 dxe5 7.♘c3 ♔e7 8.O-  
O O-O 9.♖c2 ♖c7 10.h3 a5 11.♖d1  
♘c5 12.♔e3 h6 13.♖ab1 ♔e6 14.a3  
♖c8 15.♔xc5 ♔xc5 16.b4 axb4 17.

8.♘xd4 ♖a5 9.♔f4 e5 10.♘b3 ♖b4  
11.♔g5 ♖xc4 12.♖c1 ♖g4 13.♔xf6  
♔xf6 14.♘d5 ♔d8 15.♘c5 ♖g6 16.e3  
d6 17.♘e4 f5 18.♘ec3 ♘h8 19.♖b3 e4  
20.♘b5 ♘e5 21.♖fd1 ♘d3 22.♘f4  
♘xf4 23.gxf4 ♔e6 24.♖a3 ♔b6 25.  
♘xd6 ♖h5 26.♘xb7 ♖f6 27.♘c5 ♔f7  
28.♘d7 ♖d8 29.♖d6 ♖xd6 30.♖xd6  
♔xa2 31.♖e7 ♔g8 32.♘xb6 ♖d1+  
33.♖xd1 ♖xd1+ 34.♔f1 ♖g4+  
35.♔g2 ♖d1+ 36.♔f1 ♖g4+ 37.♔g2  
♖d1+ 38.♔f1 Draw

*Modern Benoni*

**Jayson Lian (2142)**

**Joshua Sinanan (2180)**

*USCL, Seattle vs New Jersey (3.4) 2008*

**Annotations by Joshua Sinanan**

1.d4 ♘f6 2.c4 e6 3.♘c3

This was as far as I had prepared before the game, as my opponent had allowed the Nimzo previously. With the fast time control, I decided to steer the game into a Modern Benoni, hoping that I could handle the complications better than my slightly lower-rated opponent.

3...c5 4.d5 exd5 5.cxd5 d6 6.♘f3 g6  
7.♖a4+!?

This early Queen check caught me by surprise, as I could remember it being played only after e2-e4. With this move-order, White avoids early ...a7-a6 lines such as 7.♔f4 a6 and introduces the idea of transferring the Queen to the kingside with ♖h4 or ♖f4, as Drayton Harrison pointed out in the post-mortem.

7...♔d7

7...♘bd7 was an interesting alternative suggested by Ignacio Perez to try and take advantage of the awkward placement of the White Queen on a4 and offer Black easier development, e.g., 8.♔f4 a6 9.e4 ♖b6.

8.♖b3 ♖c7 9.e4 ♔g7 10.h3 O-O 11.♔d3 ♘a6

11...♖e8 12.O-O c4! with equality, according to John Watson in *The Gambit Guide to the Modern Benoni*.

12.O-O ♖fc8?

12...♘b4 was better, as it allows for faster counterplay on the queenside, e.g., 13.♔c4 ♖fb8 14.a4 a6 15.♖e1.

13.♔c4 ♖ab8 14.a4 ♘b4 15.♖e1 ♖e8 16.♔f4

Even better was the direct 16.e5 dxe5 17.d6 ♖xd6 18.♔xf7+ where Dave

Stock showed that Black does not get compensation for the lost Exchange.

16...♘h5 17.♔h2 a6 18.e5 b5 19.exd6 ♖b7 20. axb5 axb5 21.♔f1 ♘f6 22.♘e5 ♔f5

Trying to complicate matters. At this point in the match, all four games were nearing the time scramble phase, where anything can happen.

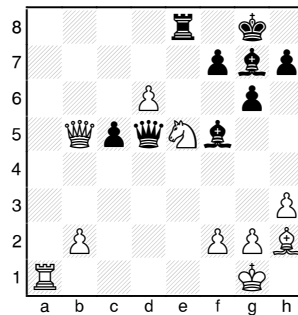
23.♖a5

White missed 23.d7 ♘xd7 24.♘xd7 ♔xd7 25.♔xb8 where the sneaky “London Bishop” is suddenly unleashed.

23...♘c2 24.♖d1 ♘d4 25.♖a2 ♖a8 26.♖a1 ♖xa5 27.♖xa5 ♘xd5 28. ♘xd5 ♖xd5 29.♔xb5 ♘xb5

Missing an opportunity to turn the tables! Amazingly, after 29...♔xh3 30.gxh3 ♔xe5 31.♔xe5 ♘xb5 32.♖xb5 ♖xe5, Black wins with a decisive attack against the newly exposed White monarch.

30.♖xb5



30...♖f8??

A blunder in time pressure. Black has chances to hold with 30...♖xe5 31.♖b8+ ♔f8 32.♔xe5 ♖xe5 33.♖a8 ♖e1+ 34. ♘h2 ♖e5+ 35.g3 ♖g7 36.♖e8 h5, as GM Nakamura, who was casually observing, showed us after the game.

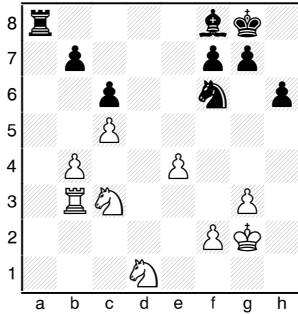
31.♘c6 ♖e6 32.♘e7+ ♘h8 33.♘xf5 ♖xf5 34.d7 ♔f6 35.♖e1 ♖d8 36.♖e8+ ♘g7 37.♖xd8 ♔xd8 38.♔d6 ♘f6 39.♔xc5 ♖e6 40.♔d4+ ♘e7 41. ♔c5+ ♘f6 42.♔e3 ♘e7 43.♔c5+?

Accidentally allowing a repetition. This half-point allowed the Sluggers to tie the match 2-2. This proves there is luck in chess!

43...♘f6 Draw

Please submit changes of address promptly to the Business Manager.

axb4 ♖e7 18. ♜xe5 ♙f5 19. e4 ♙xh3  
20. c5 ♜e6 21. ♜f3 ♙xg2 22. ♙xg2  
♜fd8 23. ♜d4 ♜c4 24. ♜f5 ♙f8 25.  
♜e3 ♜e6 26. ♜b3 ♜xb3 27. ♜xb3  
♜xd1 28. ♜exd1



28... ♜b8 29. ♙f3 b6 30. cxb6 ♜xb6  
31. b5 ♜e8 32. ♜b1 cxb5 33. ♜xb5  
♜xb5 34. ♜xb5 ♜d6 35. ♜c7 ♜c4 36.  
♜c3 ♙d6 37. ♜7d5 g6 38. ♙e2 ♙e5  
39. ♜d1 h5 40. f4 ♙g7 41. e5 ♜a5 42.  
♜1c3 ♜c6 43. ♙d3 ♙f8 44. ♜e4 ♜e7  
45. ♜e3 ♜g8 46. ♜c5 ♙e8 47. ♙e4  
♙f8 48. ♜d3 ♙h6 49. ♜c4 ♜e7 50.  
♜d6+ ♙f8 51. ♜c5 ♜g8 52. ♜c8 ♙e8  
53. ♜d6+ ♙e7 54. ♜c8+ ♙d8 55. ♜d6  
♙e7 56. ♜c4 f6 57. f5 gxf5+ 58. ♙xf5  
fxe5 59. ♙g6 ♙f4 60. ♜e4 ♙xg3 61.  
♜xg3 h4 62. ♜f5+ ♙e6 63. ♜xh4 e4  
64. ♜e3 ♜e7+ 65. ♙g5 ♜d5 66. ♜c4 e3  
67. ♜f3 ♜c3 68. ♜xe3 ♜e4+ 69. ♙f4  
♜f6 70. ♜g5+ ♙d6 71. ♙f5 ♜d5 72.  
♜e4+ ♙c6 73. ♜c2 ♜e7+ 74. ♙e6 ♜g6  
75. ♜d4+ ♙b6 76. ♙d6 ♜f4 77. ♜f6  
♙a5 78. ♙c5 ♜d3+ 79. ♙c4 ♜e5+ 80.  
♙d5 ♜d3 81. ♜d7 ♙b4 82. ♜b8 ♙c3  
83. ♜b5+ ♙d2 84. ♙d4 ♜b4 85. ♜d6  
♜c2+ 86. ♙e4 ♙c3 87. ♜c6 ♜b4 88.  
♜e7 ♙b3 89. ♜ef5 ♜c2 90. ♙d3 ♜e1+  
91. ♙e2 ♜c2 92. ♙d2 ♜a3 93. ♙d3  
♙b4 94. ♜e4 ♜c4 95. ♙d4 ♜a5 96.  
♜e3 ♜c6+ 97. ♙d5 ♜e7+ 98. ♙d6  
♜c8+ 99. ♙c7 ♜a7 100. ♙b6 ♜c8+  
101. ♙c6 ♜a7+ 102. ♙d5 ♜b5 103.  
♜d1 ♜c7+ 104. ♙d4 ♜e6+ 105. ♙e3

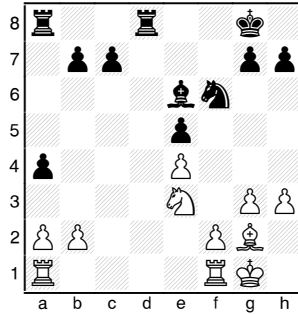
♜c5 106. ♜d6 ♜b3 107. ♜b2 ♙c5  
108. ♜bc4 ♜a5 109. ♜xa5 ♙xd6 Draw

**English Opening**

**NM Michael Lee (2314)**  
**IM Emory Tate (2392)**

*USCL, Seattle vs Chicago (4.3) 2008*

1. c4 e5 2. ♜c3 ♜c6 3. g3 f5 4. ♙g2 ♜f6  
5. e3 d5 6. cxd5 ♜b4 7. d3 ♜fxd5  
8. ♜xd5 ♜xd5 9. ♜f3 ♙d6 10. O-O ♜f6  
11. ♜b3 ♜e7 12. e4 fxe4 13. dxe4 a5  
14. ♜d2 a4 15. ♜c2 O-O 16. ♜c4 ♙c5  
17. ♙e3 ♜g4 18. ♙xc5 ♜xc5 19. ♜e3  
♜xc2 20. ♜xc2 ♜d8 21. h3 ♜f6 22. ♜e3  
♙e6



23. f4 ♜d3 24. ♜fe1 ♜a5 25. f5 ♙f7  
26. g4 g5 27. ♜d5 ♜xd5 28. exd5 ♙xd5  
29. ♙f1 ♜d2 30. ♜xe5 ♜c5 31. ♜ae1 a3  
32. bxa3 ♜c3 33. ♜5e3 ♜xe3 34. ♜xe3  
♙f7 35. ♜d3 ♜xd3 36. ♙xd3 ♙xa2  
37. ♙f2 ♙f6 38. ♙e4 b6 39. ♙e3 ♙e5  
40. ♙c6 ♙c4 41. ♙g2 c5 42. ♙f3 ♙f1  
43. ♙f2 ♙xh3 44. ♙e2 h5 45. gxh5  
♙xf5 46. ♙e3 ♙f6 47. ♙d2 g4 48. ♙c3  
♙g5 49. ♙c4 g3 50. ♙f3 ♙e6+ 51. ♙b5  
♙d7+ 52. ♙c4 ♙e8 53. ♙c3 ♙xh5  
54. ♙c6 ♙f4 0-1

**OGD Slav**

**Adam Strunk (2113)**  
**Andy May (2134)**

*USCL, Seattle vs Chicago (4.4) 2008*

1. d4 d5 2. c4 c6 3. ♜f3 ♜f6 4. ♜c2 ♙g4  
5. ♜bd2 e6 6. g3  
♜bd7 7. ♙g2  
♙e7 8. O-O O-O  
9. ♜e1 ♜c8 10.  
♜b3 ♜b6 11. e4  
♙xf3 12. ♜xf3  
♜xd4 13. cxd5  
cxd5 14. exd5  
♜xd5 15. ♜f1  
♜7f6 16. ♙e3  
♜xb2 17. a3 b6  
18. ♜ab1 ♜xa3  
19. ♜a1 ♜c3 20.

♜ec1 ♜b2 21. ♜cb1 ♜e5 22. ♜xa7  
♙c5 23. ♙xc5 bxc5 24. ♜a5 c4 25. ♜e3  
c3 26. ♜c1 ♜fd8 27. ♙f1 ♜d4 28. ♙a6  
♜a8 29. ♜d1 ♜b4 30. ♜b5 ♜a4  
31. ♜xd5 exd5 32. ♜b6 ♜xa6 33. ♜xd5  
♜xd5 34. ♜xd5 ♜d1+ 0-1



Gary Dorfner, a true friend of chess  
by John Donaldson

I nominated Gary for the USCF's Meritorious Service Award. This award is associated with long-term service to chess at the local and state level and it seemed to me that Gary's work with the Tacoma Chess Club and the Washington Chess Federation made him well qualified.

I first met Gary the day I joined the Tacoma Chess Club in the fall of 1972. He wasn't involved in the organizational duties of the club at the time, Bruce Beardsley, John Ward and the late John Evans were in charge then, but it was only a few years before he would take over many of the duties from organizing and directing tournaments to preserving the club's archives. Gary has kept things going in Tacoma for close to 30 years and I doubt the club would still be around if not for his efforts.

Gary has not confined his efforts to Tacoma. He has also served as an officer of the Washington Chess Federation for several decades in a variety of capacities. He is a real volunteer and a true friend of chess. ■

**Statement Of Ownership, Management And Circulation**

1. Publication Title: NORTHWEST CHESS. 2. Publ. No.: 0146-6941. 3. Filing Date: 9/19/08. 4. Issue Frequency: Monthly. 5. No. of issues Published Annually: 12 (11 for 2008). 6. Annual Subscription Price: \$25.00. 7. Complete Mailing Address of Known Office of Publication: Fred Kleist, 2420 S 137th St, Seattle, WA98168. Contact Person: Fred Kleist, Telephone 206-242-7076. 8. Complete Mailing Address of the Headquarters or General Business Office of the Publisher: PO Box 84746, Seattle WA 98124-6046. 9. Full Names and Complete Mailing Addresses of Publisher, Editor, and Managing Editor: Publisher: Washington Chess Federation, PO Box 84746, Seattle WA 98124-6046; Editor: Fred Kleist, 2420 S 137th St, Seattle WA 98168; Managing Editor: Eric Holcomb, 1900 NE 3rd St, Ste 106, PMB 361, Bend OR 97701-3889. 10. Owner: Washington Chess Federation, PO Box 84746, Seattle WA 98124-6046. 11. Known Bondholders, Mortgagees, and other Security Holders owning or holding 1 percent or more of total Amount of Bonds, Mortgages or Other Securities: None. 12. Tax Status: has not changed. 13. Publication Title: NORTHWEST CHESS. 14. Issue Date for Circulation Data Below: September 2008. 15. Extent and Nature of Circulation: Average No. Copies Each Issue During Preceding 12 Months, No. Copies of Single Issue Published Nearest to Filing Date. a. Total Number of Copies 750, 750; b. Paid Circulation: 1. Mailed Outside-County Paid Subscriptions (PS Form 3541) 438, 396; 2. Mailed In-County Paid Subscriptions (PS Form 3541) 174, 192; 3. Paid Distribution Outside the Mails (carriers, etc.) 0, 0; 4. Paid Distribution by Other Classes of Mail Through the USPS (First-Class Mail) 13, 30; c. Total Paid Distribution 625, 618; d. Free or Nominal Rate Distribution: 1. Outside-County (PS Form 3541) 0, 0; 2. In-County (PS Form 3541) 0, 0; 3. Mailed at Other Classes Through the USPS 0, 0; 4. Free or Nominal Rate Distribution Outside the Mail 50, 45; e. Total Free or Nominal Rate Distribution 50, 45; f. Total Distribution 675, 668; g. Copies not Distributed 75, 82; h. Total 750, 750; i. Percent Paid (15c/15f x 100%) 93, 93. 16. This Statement of Ownership will be printed in the Oct 2008 issue of this publication. 17. Certified by: Name and Title of Editor, Publisher, Business Manager or Owner: J. Eric Holcomb (Business Manager). Date: 9/19/08.

**Allen Smith**  
**CHESS LESSONS**

USCF A PLAYER  
2006 Puget Sound Champion

**(253) 230-3736 • CHARTERINV@COMCAST.NET**

# 2008 Clark Harmon Memorial Northwest Grand Prix

Murlin Varner, administrator  
13329 208th Ave. NE  
Woodinville WA 98077  
mevjr54@yahoo.com

## Players in Database 2008

	OR	WA	~	T
Master	4	12	5	21
Expert	6	21	6	33
Class A	21	45	12	78
Class B	24	55	16	95
Class C	32	55	17	104
Class D-below	41	95	10	146
<b>totals</b>	<b>128</b>	<b>283</b>	<b>66</b>	<b>477</b>

The year 2008, and this edition of the Grand Prix, is rapidly drawing to a close. Some classes have clear leaders, while others remain in question. September brought four events with multipliers, which had, or will have, a lot to do with changes in the standings. Already completed at this writing and included in the stats below are the Oregon Open (started in August, but finished in September) with a 4x multiplier and the Green Open at SCC with a 2x multiplier. Yet to come after I write this, but before you read this, are the Seattle Fall Open and the Eastern Washington Open, both sadly scheduled for the same weekend. Both have 2x multipliers.

No October events with a multiplier are scheduled. Although I do not have the schedule in front of me, I do know that the Washington Class on Thanksgiving Weekend will have a multiplier of at least 3x. There should be one or two additional multiplier events before the 2008 Grand Prix concludes.

A multiplier is applied to an event based on the guaranteed prize fund. If the prize fund is based on entries, e.g., \$750 (b/25), then the guaranteed amount is considered to be half of that, since, by USCF rules, the organizer must pay out at least that much. Should an event have a guaranteed prize fund of less than \$500, it will have no multiplier for the points awarded. At \$500, an event gets a 2x multiplier and at \$1,000, it goes to 3x. At \$2,000, it becomes 4x, and a 5x multiplier is used for an event with a guarantee of \$5000 or more. Only once during my tenure as administrator (this is my sixth year!) have we used 6x, which is for events over \$10,000. That was for the 2005 Washington Open, which had a guaranteed prize fund of \$12,500. Most years, the Washington Open has a 5x multiplier and the Oregon Open has a multiplier of 4x.

2005, 2006, and 2007 each had thirteen events with multipliers. Through the end of September this year—twelve. If we get two more before the year is out, it will be a new record for the Northwest Grand Prix. Now for the stats...

### Oregon

Masters	
1 Raptis, Nick	149.0
2 Roua, Radu	88.0
3 Haessler, Carl	40.0
4 Russell, Corey	26.0
5	
Experts	
1 Heywood, Bill	56.5
2 Morris, Michael	55.0
3 Gutman, Richard	48.0
4 Breckenridge, Steven	42.0
5 Pena, Pablo	17.5
6 Martin, Roger	8.0
Class A	
1 Encke, Michael	85.5

### Washington

Pupols, Viktors	63.0
Bragg, David	56.5
Readey, John	45.0
MacGregor, Michael	40.0
Lee, Michael	32.5
Perez, Ignacio	32.5

2 Gay, Daniel	64.0	Wang, Michael	95.5
3 Bannon, David	56.0	Watts, Peter	90.0
4 Ball, Larry	49.0	O'Gorman, Peter	89.5
5 Peake, Ethan	48.5	Ummel, Igor	64.0
6 Fulton, David	47.5	Cloy, Elston	56.5

### Class B

1 Becker, Brett	110.5	Buck, Stephen	138.0
2 Hannibal, Carson	59.5	Walton, John	85.5
3 Lehman, Jeff	57.0	May, Sarah	80.0
4 Bailey, Taylor	44.5	Lee, Nathan	79.0
5 Gagnon, William	43.0	Sen, Samir	54.0
6 Porter, Nathan	40.5	Li, William	53.5
		Ackerman, Ryan	53.5

### Class C

1 Dietz, Arliss	75.0	Monahan, Darby	92.0
2 Hannibal, Dana	58.0	Piper, August	91.5
3 Pyle, Galen	51.0	Guo, Anthony	81.0
4 Terrill, Michael	49.5	MacGregor, Logan	76.5
5 Midson, Tony	38.5	Baker, Ted	62.5
6 Dalthorp, Dan	38.0	Goodfellow, Robert	61.0

### Class D and Below

1 Petersen, George	42.0	Tokareva, Kate	64.0
2 Harry, Ken	35.5	Chi, Quentin	56.5
3 Dalthorp, Matt	28.0	Bashkansky, Ethan	55.5
4 Hoxmeier, Gabe	26.0	Hu, Jiayi	53.0
5 Mueller-Warrant, Alex	20.0	Song, Matthew	52.0
6 Kesity, Caleb	19.5	Yu, Justin	51.5

### Overall Leaders

1 Raptis, Nick	149.0	Buck, Stephen	138.0
2 Becker, Brett	110.5	Bartron, Paul	131.0
3 Roua, Radu	88.0	Harrison, Drayton	108.0
4 Encke, Michael	85.5	Wang, Michael	95.5
5 Dietz, Arliss	75.0	May, Andy	93.5
6 Gay, Daniel	64.0	Monahan, Darby	92.0
7 Hannibal, Carson	59.5	Piper, August	91.5
8 Hannibal, Dana	58.0	Kelley, Dereque	90.5
9 Lehman, Jeff	57.0	Watts, Peter	90.0
10 Heywood, Bill	56.5	O'Gorman, Peter	89.5
11 Bannon, David	56.0	Walton, John	85.5
12 Morris, Michael	55.0	Guo, Anthony	81.0
13 Pyle, Galen	51.0	May, Sarah	80.0
14 Terrill, Michael	49.5	Guo, Alex	79.0
15 Ball, Larry	49.0	Lee, Nathan	79.0

### Players from Other States

1 Milner, Arie	BC	1927	47.0
2 Havrilla, Mark	ID	1898	42.5
3 Donaldson, John	CA	2459	37.5
4 Weyland, Ronald	ID	1437	36.0
5 Hilling, Lloyd	AK	1663	32.5
6 Cadman, Charles	BC	2265	32.5
7 Lee, Jonah	BC	934	32.5
8 Poitras, Luc	BC	2267	30.0
9 Weyland, Phillip	ID	1870	28.5
10 Skulsky, Ian	BC	2139	27.5
11 McLaren, Sean	BC	2060	27.0
12 Chan, James	BC	1976	25.0
13 Monkhouse, Neale	BC	1761	25.0
14 Yu, Corbin	IA	2131	25.0
15 McLaughlin, Edward	MT	1769	25.0

*Adieu, dear readers!*

# On the Beat!

by Mark Ryan (a.k.a. 'TheChessPlace' Staff Writer - WryDog)

Wow, is Chess towards the end of 2008 going to be exciting!

## The World Scene

Germany is hosting some top level events in late 2008

### World Championship Match

In Bonn, starting in October, two of the world's premier players, Viswanathan Anand and Vladimir Kramnik will play in the only format that should be acceptable for determining the World Champ – they will go head-to-head.

Seattle's own Yasser Seirawan will be covering the match online with a Chat Session open to the public, a first for a World Championship! The new technology being used has been created by a consortium headed by a Dutch company called Chess Media Services, which consist of four Companies that have created a multimedia platform called FoidosChess. Visit [www.foidoschess.tv](http://www.foidoschess.tv) for more details.

### Chess Olympiads

The Chess Olympiads will be held in Dresden and will run from November 12 through 25, 2008. The Germans are pulling no punches, making this not only a very special event for Chess, but also a complete Cultural Festival with many side events and activities taking place. Visit the official web site for more details—[www.dresden2008.de/english](http://www.dresden2008.de/english).

### Chess in Outer Space

"Houston, we have Checkmate," was the caption on the NASA web site!

"For more than a 1,000 years chess has been played in tournaments, on park tables, in schools, in arenas as a spectator sport and even on television, but never in Space!"

NASA Astronaut Greg Chamitoff, an American, decided to bring a chess board with him when he was selected to be one of the few, one of the proud, to be on board the International Space Station. He has been playing against Mission Control staffers and is winning!

Can we now say, 45 years later —

**"That's one small step for Chess, one giant leap for mankind!"**

For an excellent interview with NASA Astronaut Greg Chamitoff, simply Google his name.

### Chess in Political Wars:

#### Saving Captured American Hostages

Here's a harrowing and uplifting tale. Three Americans had spent more than five years as hostages of the FARC

rebel group in the jungles of Colombia. Last week they were rescued in a daring mission. They carried with them a metal lock, a bullet and — a chess board made of cardboard. It helped them survive the ordeal.

The Americans, Marc Gonsalves, Thomas Howes and Keith Stansell, were among 15 hostages, including former Colombian presidential candidate Ingrid Betancourt, who were rescued July 2 in a Colombian military operation, which was code-named Operation Jaque, which translates to Operation Check or Checkmate. The three government contractors had been captured by the Revolutionary Armed Forces of Colombia (FARC) in February 2003, after their plane crashed in a remote region of the country.

The men painted a gruesome picture of their captivity, describing months in which they were ordered not to speak to each other and an initial campsite where they lived with a rat's nest above them. They slept on the floors of drug labs and were forced to march for hours while chained.

"How did you make the pieces?" asked Robin Meade from *Morning Express*.

"I was able to carve them with a broken piece of a machete," replied Marc Gonsalves.

"Your captors allowed you to do it, or did you hide it?"

"No, they allowed me to do it. Some of the lower ranking guards actually took an interest to see if I was going to be able to finish it. Later, they wanted me to carve some for them."

"This chess board must have got hundreds of hours between all the hostages," says Marc Gonsalves. "It was a way for us to stop thinking about the cruel situation we were in."

Marc spent three months carving the pieces. "We would sit chained and, thanks to this guy, we were sitting on a piece of plastic, just playing chess," narrated Keith Stansell. "When you are doing that, you are free. Your mind is engaged, you are not a prisoner. That's the gain, that's the victory. And they don't even know it."

Visit [www.chessbase.com/newsdetail.asp?newsid=4765](http://www.chessbase.com/newsdetail.asp?newsid=4765) for the complete story.

## The Local Scene – The Northwest et. al.

### New Local WGM –

Seattle has been blessed with the presence of a recent addition to the local Chess scene – Katerine Rohonyan, USA – 2321. Katerine is working at Microsoft and recently tied for third-fourth in the U.S. Women's Chess Championship.

In early September she was in Nalchik, RUS participating in the Women's World Championship, which was a knockout event. She won in the first round against Natalia Zhukova who was rated 2489 or about 175 FIDE points higher than her! But was then knocked-out in the second round by Inna Gaponenko, 2468. Katerine, congratulations on a fine result and welcome back home!

## Washington Chess Federation (WCF)/Oregon Chess Federation (OCF)

**Adult:** \$25/year (12 issues). Adult members receive *Northwest Chess* (NWC) via periodicals mail each month. Residents of OR and WA also receive a 1-year membership in the OCF or WCF.

**Junior:** \$17/year (12 issues) or **Scholastic:** \$10/6 months (6 issues, convertible to regular junior membership by paying \$7 before expiration). Junior members also receive NWC each month. Must be under age 20 at time of expiration. OR/WA residents only; state membership included.

**Subscriber:** \$25/year (12 issues). For clubs/organizations or for persons living outside the OR/WA area. Subscribers receive NWC each month. Additional postage required for foreign addresses (contact Business Manager for amount). Inquire about special rates for libraries and school chess clubs.

**Family:** \$5/year (**not a subscription — membership only**). Open only to co-resident of an Adult or Junior member. Expires at the same time. *If first member is a junior (\$17/year), additional family member(s) must also be juniors.*

For general information, Eric Holcomb (541) 647-1021, e-mail: Eric@Holcomb.com

### OCF/WCF Membership Application/Renewal Form

Name \_\_\_\_\_ If Junior, give date of birth \_\_\_\_\_

E-Mail (used for renewal notices and tournament announcements) \_\_\_\_\_

Phone Number (optional, not used for telemarketing) (\_\_\_\_\_) \_\_\_\_\_ Country (if not USA) \_\_\_\_\_

Street or P.O. Box \_\_\_\_\_

City \_\_\_\_\_ State \_\_\_\_\_ Zip \_\_\_\_\_

Membership Type(s) \_\_\_\_\_ Total Membership Amount \$ \_\_\_\_\_

*WA residents only: sales tax based on location where magazine will be received.*

Tax jurisdiction: \_\_\_\_\_ Sales tax rate: \_\_\_\_\_ % Tax on membership amount: \$ \_\_\_\_\_

*A tax rate table is available on the Northwest Chess website. Memberships received without the correct tax will be valid for 11 months instead of 12 (5 months for scholastic option).*

Total: \$ \_\_\_\_\_

Make check or money order (USA \$ only) out to *Northwest Chess* and mail to:

Eric Holcomb  
NW Chess Business Manager  
1900 NE Third St, Ste 106-361  
Bend OR 97701-3889

Credit this membership to:

\_\_\_\_\_  
Clubs, organizers, etc.

#### New Local GM

The Northwest has been blessed with the presence of yet another GM, in this case the super-talented American GM Hikaru Nakamura, who has taken up residence in Vancouver, British Columbia.

His goal is to gain the World Championship title. Hikaru plans to travel in Europe for about eight months out of the year playing in Super-GM Tournaments. The rest of the year will be spent preparing with some time given to supporting the North American chess scene.

In March, he attended the Washington State Elementary School Championships and gave a simultaneous exhibition. Your writer had the pleasure to play against him and lose in proper fashion in a Rook Endgame.

Next he will support the Seattle Sluggers, the Internet-based Seattle chess team is being managed by Eddie

Chang. Hikaru is scheduled to play when the Sluggers meet the New York and San Francisco teams later on in the season.

#### Sluggers Start a New Season

The team is composed of GM Nakamura, GM Gregory Serper, IM Eric Tangborn, FM Slava Mikhailuk, FM John Readey, NM Michael Lee, Joshua Sinanan, and Andy May with FM Marcel Milat and WGM Rohonyan as alternates.

So far the team has played six rounds, scoring 3½-2½ in match points. After suffering a loss to the Miami Sharks in Week One by a score of ½-3½, the Sluggers regained their composure by drawing two matches, against the Tennessee Tempo and the New Jersey Knockouts. They subsequently quenched the Chicago Blaze, 2½-1½ for their first victory. The games from the first four rounds can be found in the article starting on page 22.

In Round Five, the Sluggers met the Dallas Destiny and achieved another drawn match. However, led by Nakamura, they unhorsed the New York Knights 2½-1½. The next match will be against the archrival San Francisco Mechanics on October 8.

#### Start of Scholastic Chess in Washington State

With school having started, all the kids in Elementary School, Middle School and High School have started practicing and gearing for their respective State Championships.

More on the teams and players to watch in an upcoming "On The Beat."

Till then - 'CheckMate!' ■

See you at the  
Washington  
Class!!

# Seattle Chess Club Tournaments

**Address**  
17517 15 Ave NE  
Seattle WA 98155

**Infoline**  
206-417-5405  
www.seattlechess.org  
cfkleist@cs.com

**Address for Entries**  
SCC Tnmt Dir  
2420 S 137 St  
Seattle WA 98168

## ☞ Oct. 11, Nov. 8 Saturday Quads ☞

**Format:** 3-RR, 4-plyr sections by rating. **TC:** G/120. **EF:** \$7 (+\$5 fee for non-SCC). **Prizes:** Free entry for future quad. **Reg:** 9:00-9:45 a.m. **Rds:** 10:00-2:15-ASAP. **Misc:** USCF, WCF/OCF memb. req'd, OSA. NS, NC.

## ☞ Oct. 26, Nov. 22 Sunday Tornado ☞

**Format:** 4-SS. **TC:** G/64. **EF:** \$17 (+\$5 fee for non-SCC). **Prizes:** 1st 35%, 2nd 27%, Bottom Half 1st 22%, 2nd 16% (\$10 from each EF goes to prize fund). **Reg:** 10:30-11:15 a.m. **Rds:** 11:30-1:50-4:10-6:30. **Misc:** USCF, WCF/OCF memb. req'd, OSA. NS, NC.

## November 9 SCC Novice

**Format:** 4-SS. Open to U1200 and unrated. **TC:** G/75. **EF:** \$11 by 8/22, \$16 at site. (\$2 disc. for SCC mem., \$1 for mem. of other dues-req'd CCs in WA, OR, & BC). **Prizes:** Memberships (SCC, WCF, USCF). **Reg:** 9-9:45a. **Rds:** 10-12:45-3:30-6. **Byes:** 1 (Rd 3 or 4—commit at reg.). **Misc:** USCF memb. req'd. NS, NC.

## 3<sup>rd</sup> SCC

# Extravaganza!!

October 31-November 2, 2008

A two-section, seven-round Swiss with a time control of **G/90** (Two-day option – rounds 1 & 2 @ G/45). The prize fund of **\$1000** is based on 50.

	<u>Open</u>		<u>Reserve (U1800)</u>
<b>First</b>	<b>\$200</b>	<b>First</b>	<b>\$140</b>
<b>Second</b>	<b>\$140</b>	<b>Second</b>	<b>\$100</b>
<b>U2200</b>	<b>\$100</b>	<b>U1600</b>	<b>\$70</b>
<b>U200</b>	<b>\$100</b>	<b>U1400</b>	<b>\$70</b>
		<b>U1200</b>	<b>\$60</b>
		<b>UNR</b>	<b>\$20</b>

**Entry Fee:** \$40 by 11/6 (\$30 for SCC members, \$35 for members of other dues-required CCs in WA, OR, & BC), \$48 at site (\$36 for SCC members, \$42 for members of other dues-required CCs in WA, OR, & BC).

**Registration:** Friday 7-7:45 p.m. Saturday 9-9:45

**Rounds:** Friday 8 p.m., Saturday 11-2:30-6, Sunday 11-2:30-6.

**Two-Day Option:** Rounds 1 & 2 Saturday 10-12.

**Byes:** 3 available; 1 for rounds 5-7, must commit before round 3.

**Miscellaneous:** USCF & W/OCF membership required. OSA. NC, NS.

**Side Event:** Blitz (G/5) tournament. Starts at 9:30 p.m., Saturday. **EF:** \$8. **Prize Fund:** at least 80% of EFs.

**Ent/Info:** SCC Tnmt Dir, 2420 S 137 St, Seattle WA 98168. 206-417-5405 (recorded message); cfkleist@cs.com.

## SCC Fridays

The typical Friday fare is one round of an ongoing tournament (free to SCC members, no prizes) played at a rate of 40/90 followed by 30/60. The exception are the G/15 Championship, the Fire-cracker Quads (G/25), the Workingman's Quads (G/25), and the SCC Championship (35/100, 25/60). In addition, the two Championships offer prizes and have entry fees.

## Friday Schedule 2008-2009

<b>SCC Championship (rds 5-7):</b>	Oct. 10, 24, Nov. 7.
<b>Autumn Leaves (rds 2-4):</b>	Oct. 10, 17, 24.
<b>November Rains:</b>	Oct. 31; Nov. 7, 14, 21.
<b>Bagley Memorial:</b>	Dec. 5, 12, 19.
<b>Patzers' Challenge 2:</b>	Dec. 26.
<b>January Thaw:</b>	Jan. 2, 9, 16, 23.
<b>SCC G/15 Championship:</b>	Jan. 30.
<b>Cabin Fever:</b>	Feb. 6, 13, 20, 27.

# Future Events

♣ indicates a Christopher Memorial NW Grand Prix event

## ♣ Oct 18-19

## Portland Fall Open ♣

**Site:** *Portland CC*, 8205 SW 24th Ave, Portland OR 97219.  
**Format:** 2-sec. 5-rd Swiss. **TC:** Rds 1-3 – 40/90, SD/30; Rds 4-5 – 40/2, SD/1. **EF:** \$30 if rec'd by 10/15, \$35 at site. \$10 discount for PCC members. No advance entries. **Prize Fund:** \$\$650 b/40.  
**Prizes:** Open – \$150-100, U2000 75; Reserve (U1800) – \$100-75, U1600 50, U1400 50, U1200/UNR 50. **Reg:** 9-9:30 am. **Rds:** 10-2-ASAP, 10-ASAP. **Byes:** Two ½-pt. bye avail. if requested at reg.  
**Misc:** USCF & OCF/WCF membership req'd, OSA. **Info/Entry:** Send entries to above address; portlandchessclub@gmail.com, 503-246-2978, www.pdxchess.org.

## ♣ Oct 25

## Spokane G/10 ♣

**Site:** *Spokane Valley Library* 12004 E. Main, Spokane WA.  
**Format:** Single or Double RR. **TC:** G/10. **EF:** \$11 (can be paid at club or at site). **Prize fund:** 100% payout. **Prizes:** \$100 (b/10), other prizes b/entries. **Reg:** 10-10:30 a.m. **Misc:** USCF memb. req'd. Coffee & snacks provided. **Info:** David Griffin, 509-928-3260, dbgrffn@hotmail.com.

## ♣ Oct 25, Nov 22

## PCC Game-in-60 ♣

**Site:** *Portland CC*, 8205 SW 24th Ave, Portland OR 97219.  
**Format:** 4-rd Swiss. **TC:** G/60. TD may switch to 5SS and G/45 if more than 25 entries. **EF:** \$20, \$5 discount for PCC members. No advance entries. **Prize Fund:** \$\$200 b/20. **Prizes:** \$60-40-30, U1800 35, U1500 35. **Reg:** 9-9:30 am. **Byes:** One ½-pt. bye avail.

if requested at reg. **Misc:** USCF & OCF/WCF membership req'd, OSA. **Info:** portlandchessclub@gmail.com, 503-246-2978, www.pdxchess.org.

## ♣ Oct 25-26

## Tacoma Open ♣

**Site:** *Tacoma CC*, 409 Puyallup Ave E, Rm 11, 2nd flr (DTI Soccer Bldg). **Format:** 5-SS **TC:** 40/90, SD/60. **EF:** \$30 in advance, \$35 at site. Juniors: \$20, \$25. Economy (no Prizes): \$10. UNR free w/purch. 1-yr. USCF+WCF (full EF req'd to be eligible fr 1st). **Prize fund:** 67% of full-pay EFs. **Prizes:** 25%, U2000 15%, U1700 14%, U1400 13%. Economy – certificate; highest scoring player – FREE ENTRY to next tournament. **Reg:** 9-9:45 a.m. **Rds:** 10-2:30-7, 10-3 or ASAP. **Byes:** Two ½-pt byes avail. **Misc:** USCF & OCF/WCF memb. req'd. OSA. NS. NC. **Ent/Info:** Gary Dorfner, 8423 E 'B' St, Tacoma WA 98445; 253-535-2536, ggarychess@aol.com.



**Allen Smith**  
CHESS LESSONS

USCF A PLAYER  
2006 Puget Sound Champion

**(253) 230-3736 • CHARTERINV@COMCAST.NET**

## More Scholastic Events

### January 2009

10	Whatcom County Championships (K-12)	R Kaech <a href="http://mysite.verizon.net/kaech">http://mysite.verizon.net/kaech</a> .....	Lynden WA
17	Lower Valley Tournament (K-12)	Alan Kawakami <a href="mailto:arivertop@embarqmail.com">arivertop@embarqmail.com</a> 509-786-1822 .....	Prosser WA
19	WA Junior Open and Reserve	davidhendricks@comcast.net .....	Bellevue WA
24	Roosevelt Tournament (K-8)	R Kaech <a href="http://mysite.verizon.net/kaech">http://mysite.verizon.net/kaech</a> .....	Bellingham WA
31	Charles Wright Chess Challenge (K-3, 4-6, 7-12/adult)	<a href="http://www.chess4life.com">www.chess4life.com</a> .....	Tacoma WA

### February 2009

7	Waypoint Foundation Scholastic	<a href="http://www.waypointfoundation.org/index.html">www.waypointfoundation.org/index.html</a> .....	Ephrata WA
7	YMCA Chess Tournament (K-3, 4-6)	<a href="http://www.playingforthequeen.com">www.playingforthequeen.com</a> .....	Vancouver WA
7	International Chess Jam 2009 (K-12)	R Kaech <a href="http://mysite.verizon.net/kaech">http://mysite.verizon.net/kaech</a> .....	Ferndale WA
21	Chess F.E.S.T. (K-6)	R Kaech <a href="http://mysite.verizon.net/kaech">http://mysite.verizon.net/kaech</a> .....	Ferndale WA
21	Eastern WA Championships (K-12)	Dave Merrill <a href="mailto:president@chesschampions.org">president@chesschampions.org</a> .....	Richland WA

### March 2009

7	Cornerstone Chess Challenge (K-12 & ,adult)	<a href="mailto:nmay@pacifier.com">nmay@pacifier.com</a> 360-256-4397 <a href="http://www.playingforthequeen.com">www.playingforthequeen.com</a> .....	Vancouver WA
7	Assumption Open (K-8)	R Kaech <a href="http://mysite.verizon.net/kaech">http://mysite.verizon.net/kaech</a> .....	Bellingham WA
13	Bughouse Bonanza (K-12)	David Sommers <a href="mailto:dsommers@libertychristian.net">dsommers@libertychristian.net</a> 509-946-0602 .....	Richland WA
14	March Madness Chess Party (K-12)	David Sommers <a href="mailto:dsommers@libertychristian.net">dsommers@libertychristian.net</a> 509-946-0602 .....	Richland WA
21	YMCA Chess Tournament (K-3, 4-6)	<a href="http://www.playingforthequeen.com">www.playingforthequeen.com</a> .....	Vancouver WA
28	End of the Season Tournament (K-12)	Ed Dodd 509-628-2299 .....	Richland WA

### April 2009

24-25	Washington State Elementary Ch	James Stripes <a href="mailto:jdstripes@comcast.net">jdstripes@comcast.net</a> <a href="http://www.spokanesportevents.com">www.spokanesportevents.com</a> .....	Spokane WA
-------	--------------------------------	---	------------

A ♣ in front of the tournament name indicates an OCF qualifying tournament. Boldface type indicates a tournament announcement (in our Future Events Section) or display ad in this issue.

### USCF NATIONAL Scholastics

**For information on any national event, visit [www.uschess.org](http://www.uschess.org)**

Nov. 7-9

**National Youth Action**

**Brownsville TX**

Dec. 12-14

**National K-12/Collegiate Championship**

**Kissimmee FL**

Apr. 3-5

**Supernationals IV**

**Nashville TN**

# Open Events

## October 2008

10,24	SCC Championship (rds 5-6)	SCC Infoline 206-417-5405 cfkleist@cs.com www.seattlechess.org	Seattle WA
10,17,24,31	TCC Championship (rds 3-6)	253-535-2536 ggarychess@aol.com www.tacomachessclub.netfirms.com	Tacoma WA
<b>11</b>	<b>SCC Saturday Quads</b>	<b>SCC Infoline 206-417-5405 cfkleist@cs.com www.seattlechess.org</b>	<b>Seattle WA</b>
14,21,28	PCC Championship (rds 2-5)	503-246-2978 portlandchessclub@gmail.com www.pdxchess.org	Portland OR
16	Spokane Fall Championship (rd 5)	David Griffin 509-928-3260 dbgrffin@hotmail.com	Spokane WA
<b>17-19</b>	<b>Western States Open</b>	<b>Jerry Weikel 775-747-1405 wackykl@aol.com www.renochess.org/wso</b>	<b>Reno NV</b>
18	Java Fusion Open	253-535-2536 ggarychess@aol.com www.tacomachessclub.netfirms.com	Tacoma WA
18	Action tournament	mark.ryan@translation.net www.calandersonpark.org	Seattle WA
<b>18-19</b>	<b>Portland Fall Open</b>	<b>503-246-2978 portlandchessclub@gmail.com www.pdxchess.org</b>	<b>Portland OR</b>
<b>25</b>	<b>♯ PCC Game-in-60</b>	<b>503-246-2978 portlandchessclub@gmail.com www.pdxchess.org</b>	<b>Portland OR</b>
<b>25</b>	<b>Spokane G/10</b>	<b>David Griffin 509-928-3260 dbgrffin@hotmail.com</b>	<b>Spokane WA</b>
<b>25-26</b>	<b>Tacoma Open</b>	<b>253-535-2536 ggarychess@aol.com www.tacomachessclub.netfirms.com</b>	<b>Tacoma WA</b>
<b>26</b>	<b>SCC Sunday Tornado</b>	<b>SCC Infoline 206-417-5405 cfkleist@cs.com www.seattlechess.org</b>	<b>Seattle WA</b>
<b>31-Nov 2</b>	<b>SCC Extravaganza</b>	<b>SCC Infoline 206-417-5405 cfkleist@cs.com www.seattlechess.org</b>	<b>Seattle WA</b>

## November 2008

1	PCC Saturday Quads	503-246-2978 portlandchessclub@gmail.com www.pdxchess.org	Portland OR
7	TCC Blitz Championship	253-535-2536 ggarychess@aol.com www.tacomachessclub.netfirms.com	Tacoma WA
<b>8</b>	<b>SCC Saturday Quads</b>	<b>SCC Infoline 206-417-5405 cfkleist@cs.com www.seattlechess.org</b>	<b>Seattle WA</b>
<b>9</b>	<b>SCC Novice</b>	<b>SCC Infoline 206-417-5405 cfkleist@cs.com www.seattlechess.org</b>	<b>Seattle WA</b>
11	PCC Tuesday Quads begin	503-246-2978 portlandchessclub@gmail.com www.pdxchess.org	Portland OR
12	Speed Chess tournament	mark.ryan@translation.net www.calandersonpark.org	Seattle WA
14	TCC Quick Chess Championship	253-535-2536 ggarychess@aol.com www.tacomachessclub.netfirms.com	Tacoma WA
<b>15-16</b>	<b>TCC All-Economy #3</b>	<b>253-535-2536 ggarychess@aol.com www.tacomachessclub.netfirms.com</b>	<b>Tacoma WA</b>
22	Java Fusion Open	253-535-2536 ggarychess@aol.com www.tacomachessclub.netfirms.com	Tacoma WA
<b>22</b>	<b>♯ PCC Game-in-60</b>	<b>503-246-2978 portlandchessclub@gmail.com www.pdxchess.org</b>	<b>Portland OR</b>
<b>23</b>	<b>SCC Sunday Tornado</b>	<b>SCC Infoline 206-417-5405 cfkleist@cs.com www.seattlechess.org</b>	<b>Seattle WA</b>
<b>28-30</b>	<b>WA Kclass Championships</b>	<b>Dan Mathews dhmathews@hotmail.com 425-218-7529</b>	<b>Redmond WA</b>

## December 2008

2	PCC Tuesday Quads begin	503-246-2978 portlandchessclub@gmail.com www.pdxchess.org	Portland OR
5,12,19,26	TCC Christmas Swiss	253-535-2536 ggarychess@aol.com www.tacomachessclub.netfirms.com	Tacoma WA
6	PCC Saturday Quads	503-246-2978 portlandchessclub@gmail.com www.pdxchess.org	Portland OR
<b>6</b>	<b>WA Quick Chess Championship</b>	<b>253-535-2536 ggarychess@aol.com</b>	<b>Seattle WA</b>
<b>13</b>	<b>SCC Saturday Quads</b>	<b>SCC Infoline 206-417-5405 cfkleist@cs.com www.seattlechess.org</b>	<b>Seattle WA</b>
<b>13-14</b>	<b>Portland Winter Open</b>	<b>503-246-2978 portlandchessclub@gmail.com www.pdxchess.org</b>	<b>Portland OR</b>
<b>20-21</b>	<b>WA Challengers' Cup</b>	<b>253-535-2536 ggarychess@aol.com www.tacomachessclub.netfirms.com</b>	<b>Tacoma WA</b>
<b>27</b>	<b>♯ PCC Game-in-60</b>	<b>503-246-2978 portlandchessclub@gmail.com www.pdxchess.org</b>	<b>Portland OR</b>
27	Java Fusion Open	253-535-2536 ggarychess@aol.com www.tacomachessclub.netfirms.com	Tacoma WA

**NOTE: A '♯' in front of the date indicates a Harmon Memorial Northwest GP event. A ♯ in front of the tournament name indicates an OSCF qualifying tournament. Boldface type indicates a tournament announcement (in our Future Events Section) or display ad in this issue.**

# Scholastic Events

*For more scholastic events, see page 23*

## October 2008

15	TCC Wed. Kids Night	Gary 253-535-2536 ggrychess@aol.com www.tacomachessclub.netfirms.com	Tacoma WA
25	Fall Apple Crunch (K-12)	David Sommers dsommers@libertychristian.net 509-946-0602	Richland WA

## November 2008

8	South Ridge Holiday Extravaganza (K-3,4-6,7-12)	seymours@pacifier.com 360-887-8315 www.playingforthekeing.com	Ridgefield WA
11	Veteran's Day Tournament (K-12)	David Sommers dsommers@libertychristian.net 509-946-0602	Richland WA
15	Carl Cozier Chess Kickoff (K-1,2-3,4-5, 6-8)	R Kaech http://mysite.verizon.net/kaech	Bellingham WA
15	Skyview Fall Tnmt, (K-3,K-3 U600, K-6,K-6 U800, K-12,K-12 U1000)	Micah Smith mikeysmith@aol.com 360-944-1686	Vancouver WA
22	King's Way Chess Tournament (K-1, 2-3,4-6,7-12)		Vancouver WA
<b>28</b>	<b>Thanksgiving Scholastic (@ WA Class)</b>	<b>David Hendricks davidhendricks@comcast.net 425-868-3881</b>	<b>Redmond WA</b>

## December 2008

6	Richland Rook Round Up (K-12)	Cathy Kuwamoto cathy.kuwamoto@rsd.edu	Richland WA
13	YMCA Tournament (K-3,4-6)	www.playingforthekeing.com	Vancouver WA
13	Assumption Christmas Classic (K-1,2-3,4-5,6-8)	R Kaech http://mysite.verizon.net/kaech	Bellingham WA

**A ♯ in front of the tournament name indicates an OSCF qualifying tournament. Boldface type indicates a tournament announcement (in our Future Events Section) or display ad in this issue.**