



\$3.95



Kermit Olson poses with some of his thirty-two chess sets that were on display for the month of January at the Tigard (OR) library. Purchased largely during Olson's travels, the sets include examples from Kenya, Mexico, Pakistan, and the Soviet Union and range in price from \$2 to several hundred.

Inside: Games from the WA Class, Book Notes, Idaho Report

February 2012

Northwest Chess

February 2012, Volume 66,2 Issue 769

ISSN Publication 0146-6941

Published monthly by the Northwest Chess Board.
Office of record: 3310 25th Ave S, Seattle, WA 98144

POSTMASTER: Send address changes to:

Northwest Chess, PO Box 84746,
Seattle WA 98124-6046.

Periodicals Postage Paid at Seattle, WA

USPS periodicals postage permit number (0422-390)

NWC Staff

Editor: Fred Kleist,

kleistcf@aol.com

Publisher: Duane Polich,

publisher@nwchess.com

Business Manager: Eric Holcomb,

eric@holcomb.com

Board Representatives

David Yoshinaga, Josh Sinanan,

Dale Wentz, Dan Mathews, Jeffrey Roland

Entire contents copyright 2012 by Northwest Chess. All rights reserved. Published opinions are those of the contributors and do not necessarily reflect the views of the editor or the Northwest Chess Board. Northwest Chess is the official publication of the chess governing bodies of the states of Washington, Oregon, and Idaho.

Advertising Rates

Display ads run \$150 for a full page, \$100 for tournament ads; \$85 for a half-page, \$60 for tournament ads; \$50 for a quarter page, \$30 for an eighth of a page, and \$20 for a business card-size ad. Additional charges apply if the staff must do layout work. A 15% discount is available for two or more consecutive ads of the same size.

Event Announcement Rates

Each appearance in the *Future Events* listings costs \$20. Please arrange payment for ads and Grand Prix fees with the Business Manager.

Advertising & Copy Deadline

Ads and submissions must be received by the 10th of the month for the items to appear in the next issue (e.g., **March 10 for the April issue; April 10 for the May issue**).

Submit all ads, donations, payments, changes of address, & subscriptions to:

Business Manager, Northwest Chess

Eric Holcomb

1900 NE Third St, Ste 106-361

Bend OR 97701-3889

Eric@Holcomb.com

www.nwchess.com

Submissions

Submissions of games, stories, photos, art, and other **original** chess-related content are encouraged! Multiple submissions are acceptable; please indicate if material is non-exclusive. All submissions are subject to editing or revision. Send via U.S. mail to:

Fred Kleist, NWC Editor

2420 S 137 St

Seattle WA 98168

or via e-mail to:

kleistcf@aol.com

Contents

Cover art: Kermit Olson & his Chess Sets

Photo credit: Sally Ho, *The Oregonian*

Page 3:	Games from the WA Class	Murlin Varner (games)
	Gary Dorfner (results)
Page 19:	Idaho Chess News	Jeffrey Roland
Page 20:	Book Notes	IM John Donaldson
Back Cover:	Future Events	

January Errata

1. The Czina–Szabo game on page 6 ends with "1-o" but that should be "o-1", as Black's next move will be 64...♙h8 checkmate.

2. The Ong–Pemsler game on page 12 is missing a move-pair, which might be labeled as 16.5 ♖xh7+ ♔f8.

Thanks to Floyd R. Kirk

Northwest Chess

Business Manager

Eric Holcomb

1900 NE Third St, Ste 106-361

Bend OR 97701-3889

Eric@Holcomb.com

Editor

Fred Kleist

2420 S 137 St

Seattle WA 98168

kleistcf@aol.com

www.nwchess.com

Northwest Chess Knights

Please donate today to help Northwest Chess!

Patrons, 2010-2012 (Bold indicates recent donations)

Kate Tokareva, Gerard Van Deene, Michael Wang, Alan Walker, Dale Wentz, Russell

Miller, Ralph Dubisch, Frank Niro, **Michael and Jeff Omori**,

August Piper, **Robert Brewster**, Steve Buck, Jeff Pennig,

Murlin Varner, Inner Sound, Gene Milener, Dennis Jenquin.

Washington Chess Federation, Oregon Chess Federation

Northwest Grand Prix Administrator

Murlin Varner

13329 208 Ave NE

Woodinville, WA 98072

MEVjr54@yahoo.com 425-882-0102

Games from the Washington Class

E32 Nimzo-Indian Classical

Roland Feng (2113)

NM Joshua Sinanan (2248)

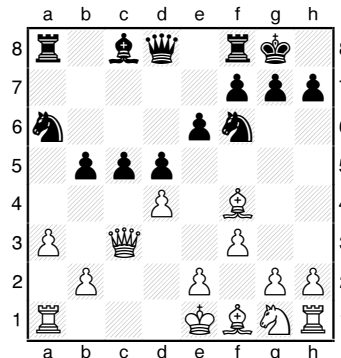
SeaTac, Washington Class (M-1) 2011

Annotations by Murlin Varner

1.d4 ♘f6 2.c4 e6 3.♘c3 ♘b4 4.♖c2
O-O 5.a3 ♘xc3+ 6.♗xc3 b5 7.♗f3
d5 8.cxb5 a6

8...c6 9. ♘g5 cxb5 10. ♘xf6 ♗xf6
11. ♗xf6 gxf6 12. e3 ♘d7 13. ♘f3 ♖c8
14. ♘d3b4 15. ♗e2bxa3 16. bxa3 ♘a4
17. ♘d2 ♘c6 18. ♘a6 ♖cb8 19. ♖ab1
♖b6 20. ♘d3 ♖ab8 21. ♖xb6 ♖xb6
22. ♖b1 e5 23. ♖xb6 axb6 24. dxe5
fxe5 25. e4 ♘e7 26. g3 dxe4 27. ♘xe4
f5 28. ♘d6 e4 29. ♘a6 ♘b3 30. ♘c8
♘c6 31. ♘xf5 ♘e5 32. ♘d6 ♘c2 33.
♘f5 ♘d3+ 34. ♗e3 ♗f8 35. f4 ♘f3 36.
h4 ♘e1 37. ♘xe4 ♘xe4 38. ♗xe4 ♗e7
39. ♘c8+ 1-0 (Ippolito–P Carlsson,
Gibraltar 2007)

9. ♘f4 axb5 10. ♗c3 ♘a6 11.f3 c5



12.dxc5 d4 13.♗c2 ♘d5 14. ♘d6
♘e3 15.♗e4 ♘b7 16.♗xb7 ♘c2+
17.♗f2 ♘xa1 18.b4 ♘c2 19. ♗xb5
♘xa3 20.♗b7 ♗c8 21.♗e4 ♖d8
22.e3 dxe3+ 23.♗xe3 ♘xb4 24.
♗f2 ♘ac2 25.♘c4 ♖xd6 26. cxd6
♗c5+ 27.♗g3 ♗xd6+ 28.♗h3

♖a1 29.g3 g6 30.f4 ♗c5 31.♘d3
♘xd3 32.♗xd3 ♗h5+ 0-1

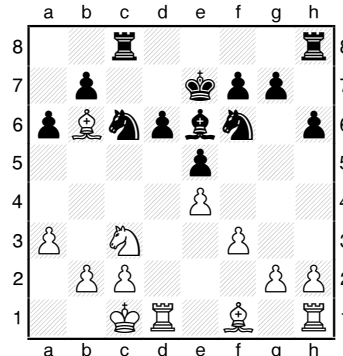
B33 Sicilian Lasker

FM David Bragg (2200)

Samir Sen (2112)

SeaTac, Washington Class (M-1) 2011

1.e4 c5 2.♘f3 ♘c6 3.d4 cxd4 4.
♘xd4 ♘f6 5.♘c3 e5 6.♘db5 h6 7.
♘d6+ ♘xd6 8.♗xd6 ♗e7 9.♗xe7+
♗xe7 10.♘e3 d6 11.f3 ♘e6 12.
O-O-O a6 13.♘b6 ♖ac8 14.a3



14...♘d7 15.♘f2 ♘a5 16.♘d5+
♘xd5 17.♖xd5 ♘c4 18.g3 ♖c6
19.♘h3 ♖hc8 20.♖hd1 ♖8c7 21.
♘xd7 ♖xd7 22.♖5d3 ♖dc7 23.c3
b5 24.♗c2 ♗e6 25.♖a1 ♘b6 26.
b3 a5 27.♖ad1 a4 28.♘xb6 ♖xb6
29.b4 ♖bc6 30.♗b2 g6 31.♖d5
♖xc3 32.♖xd6+ ♗e7 33.♖d7+
♖xd7 34.♖xd7+ Draw

B51 Sicilian Moscow

Hubert Jung (1941)

Chris Kalina (2131)

SeaTac, Washington Class (M-1) 2011

1.e4 c5 2.♘f3 d6 3.♘b5+ ♘d7 4.
O-O ♘gf6 5.♖e1 g6 6.c3 ♘g7 7.
d4 O-O 8.♗e2 a6 9.♘d3 b5 10.e5

dxe5 11.dxe5 ♘g4 12.e6 ♘de5
13.♘e4 ♖b8 14.♖d1 ♗b6 15.
exf7+ ♖xf7 16.♘g5 ♘e6 17.♘bd2
♖bf8 18.h3 ♘xf3+ 19.♘xf3 ♘c4
20.♗c2 ♘e5 21.♖d2 ♘e6 22.♖ad1
♘xf3+ 23.♘xf3 ♘xh3 24.♘d5 ♘e6
25.♗e4 ♘xd5 26.♗xd5 e6 27.♗e4
b4 28.♖d6 ♗a5 29.♗xe6 bxc3 30.
♖xa6 c2 31.♖d7 ♗xa6 32.♗xa6
♖xd7 33.♗c4+ ♗h8 34.♗xc2 ♘d4
35.♘e3 ♖b8 36.♗a4 ♖d5 37.♗c6
♖bd8 38.♘xd4+ cxd4 39.♗f6+
♗g8 40.♗e6+ ♗f8 41.♗f6+ ♗g8
42.♗e6+ Draw

D52 QGD Cambridge Springs

Roland Feng (2113)

Michael Wang (2128)

SeaTac, Washington Class (M-2) 2011

Annotations by Murlin Varner

1.d4 d5 2.c4 c6 3.♘c3 ♘f6 4.♘f3
e6 5. ♘g5 ♘bd7 6. e3 ♗a5 7. ♘d2
♘b4 8.♗c2 ♘e4 9.♘dx4 dxe4 10.
♘h4 O-O 11.♘e2 f5 12.O-O ♘d6
13.c5 ♘b8 14.f3 exf3 15.♖xf3 ♘f6
16.♘xf6 ♖xf6 17.♘c4 ♗h8 18.a3
♗c7 19.g3 ♗e7 20.b4 b6 21.e4
bxc5 22.e5 ♖f8 23.bxc5 ♘xe5 24.
♗f2 ♘f6 25.♖e1 ♗d8 26.♖d3
♖e8 27.♘e2 ♖e7 28.♘f4 ♗e8 29.
♖dd1 ♘d7 30.♘d3 ♖d8 31.♘e5
♘c8 32.♗f3 ♘b7 33.♗g2 ♘xe5
34.♖xe5 ♗d7 35.♗e3 ♖de8 36.
♗g1 ♘c8 37.♖e1 ♗d8 38.h4 h6
39.♘a2 ♘d7 40.♘b1 ♖f7 41.♖f1
♖f6 42.♗h2 ♗c8 43.g4 ♗d8 44.g5
♖g6 45.♖g1 ♖f8 46.♗f4 ♗b8 47.
♘d3 ♗b2+?! 48.♖g2 ♗xa3 49.
♘e2 ♘e8 50.♘h5 ♖xg5 51.hxg5
♘h5 52.gxh6 g6 53. ♖e3 ♗c1
54.♗e5+ 1-0

A85 Dutch

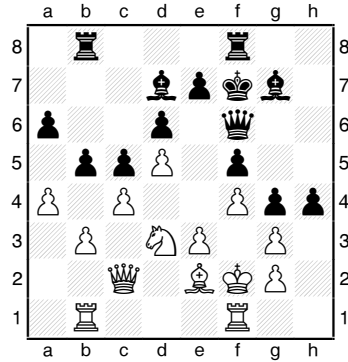
Chris Kalina (2131)

FM David Roper (2318)

SeaTac, Washington Class (M-2) 2011

1.d4 f5 2.c4 ♘f6 3.♘c3 d6 4.♘f3
g6 5.♘g5 ♘bd7 6.e3 ♘g7 7.♘e2
O-O 8.O-O h6 9.♘f4 ♘h5 10.♘g3
♘xg3 11.hxg3 g5 12.♗c2 ♘f6 13.
♘d2 ♘g4 14.♖ad1 c6 15.d5 c5 16.
♘f3 a6 17.♘h2 ♘xh2 18.♗xh2
♘d7 19.f4 ♗e8 20.♗g1 b5 21.b3
♖b8 22.♖b1 ♗g6 23.a4 ♗f6 24.
♘d1 g4 25.♘f2 h5 26.♘d3 h4 27.

♙f2 ♘f7



28. ♖h1 ♖h8 29. gxf4 ♖xh4 30. g3 ♖hh8 31. ♙g2 e6 32. ♗f2 exd5 33. cxd5 ♖c3 34. ♖xc3 ♗xc3 35. axb5 axb5 36. ♖xh8 ♖xh8 37. e4 ♖e8 38. ♗d3 ♙g6 39. ♖h1 fxe4 40. ♗xe4+ ♗f5 41. ♗xf5+ ♙xf5 42. ♖h5+ ♙g6 43. ♖g5+ ♙f7 44. ♗xg4 ♖e2+ 45. ♙f3 ♖b2 46. ♙e4 ♖xb3 47. ♙f5 ♗g7 48. ♖g6 ♗f8 49. ♗f2 ♖e3 50. ♖f6+ ♙g7 51. ♖g6+ ♙f7 52. ♖f6+ ♙g7 53. ♖g6+ Draw

A57 Benko Gambit

NM Tanraj Sohal (2204 CFC)
Benjamin Calpo (2032)

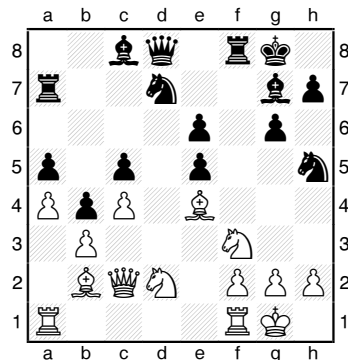
SeaTac, Washington Class (M-2) 2011

Annotations by Murlin Varner

1. d4 ♗f6 2. c4 c5 3. d5 b5 4. ♖c2 b4 5. b3 d6 6. ♗b2 g6 7. e4 ♗g7 8. ♗d3 O-O 9. ♗f3 ♗bd7 10. O-O a5

10... ♗g4 11. ♗xg7 ♙xg7 12. ♖b2+ ♙g8 13. ♗c2 f6 14. h3 ♗ge5 15. ♗e1 g5 16. ♗d2 ♖f7 17. g3 ♖g7 18. ♗g2 ♗f8 19. g4 h5 20. f3 hxg4 21. hxg4 ♗fg6 22. ♙f2 ♗d7 23. ♖h1 ♖h7 24. ♖xh7 ♙xh7 25. ♖h1+ ♙g7 26. a4 Draw (Franett-Pechisker, Vancouver 2000)

11. a4 e5 12. dxe6 fxe6 13. e5 ♗h5 14. ♗e4 ♖a7 15. ♗bd2 dxe5



16. ♖fe1 ♗f4 17. g3 ♗h3+ 18. ♙g2

♗g5 19. ♗xg5 ♖xg5 20. ♗f3

20. ♖ad1

20... ♖h5 21. ♖e2 ♗b8 22. h3 g5 23. g4 ♖e8 24. ♗xg5 h6 25. ♗f3 ♗c6 26. ♖ad1 ♗d4 27. ♗xd4 exd4 28. ♗c1 ♖af7 29. f3 ♖d7 30. ♖d3 ♙h8 31. h4 ♗b7 32. ♗xb7 ♖xb7 33. ♖e4 ♖xe4 34. ♖xe4 e5 35. ♗d2 ♙h7 36. h5 ♗f6 37. ♗e1 ♖e7 38. ♗g3 ♖fe8 39. ♖d1 ♙g7 40. ♖de1 ♙f7 41. ♙f2 d3 42. ♖d1 ♖d7 43. ♖e3 d2 1-0

Something must be missing here. It looks too even to be over. Time?

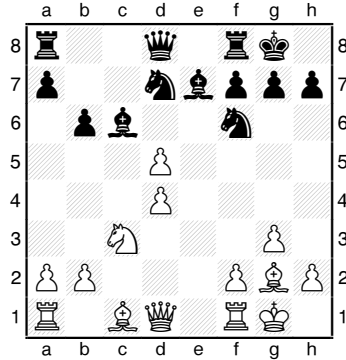
E06 Catalan

FM Nick Raptis (2279)
Chris Kalina (2131)

SeaTac, Washington Class (M-3) 2011

Annotations by Murlin Varner

1. ♗f3 d5 2. g3 ♗f6 3. ♗g2 e6 4. O-O ♗e7 5. c4 c6 6. d4 O-O 7. ♗c3 b6 8. ♗e5 ♗b7 9. e4 ♗bd7 10. ♗xc6 ♗xc6 11. exd5 exd5 12. cxd5 1-0



My database has sixteen games that reached this position. Fifteen continued 12... ♗b7, with only a 17% success rate. The other one went 12... ♗xd5, and ended in a draw.

B40 King's Indian Attack

Nathan Lee (2103)
Roland Feng (2113)

SeaTac, Washington Class (M-3) 2011

1. e4 c5 2. ♗f3 e6 3. d3 ♗c6 4. g3 d6 5. ♗g2 g6 6. O-O ♗g7 7. ♗bd2 ♗ge7 8. c3 O-O 9. ♗h4 b5 10. a3 a5 11. f4 ♖c7 12. ♗df3 f5 13. exf5 exf5 14. ♖b3+ c4 15. dxc4 ♗e6 16. ♖xb5 ♖fb8 17. ♖a4 ♖a7+ 18. ♙h1 ♖c5 19. ♖e1 ♗xc4 20. ♗e3 ♗b3 21. ♗xc5 dxc5 22. ♖xc6 ♗xc6 23. ♗d2 ♗a4 24. b3 ♗xc3 25. bxa4

♖a6 26. ♖a2 ♖d8 27. ♗xc6 ♖xc6 28. ♖e2 ♖cd6 29. ♗hf3 ♖d3 30. ♙g2 ♗f6 31. ♗c4 ♗c3 32. ♖ec2 ♗f6 33. ♗xa5 ♖a8 34. ♗b7 ♗e7 35. ♗xc5 ♖d5 36. ♗e6 ♖xa4 37. ♖c7 ♙f7 38. ♗eg5+ ♙e8 39. ♖e2 ♖d7 40. ♖xd7 ♙xd7 41. ♗xh7 ♖xa3 42. ♗e5+ ♙c8 43. ♗xg6 ♗d6 44. ♗g5 ♖a5 45. h4 ♙d7 46. h5 ♗b4 47. h6 ♗c3 48. h7 ♖a8 49. ♗f7 1-0

E04 Catalan

NM Joshua Sinanan (2248)
NM Dereque Kelley (2273)

SeaTac, Washington Class (M-3) 2011

Annotations by Murlin Varner

1. d4 ♗f6 2. c4 e6 3. g3 d5 4. ♗f3 dxc4 5. ♗g2 ♗c6 6. ♖a4 ♗b4+ 7. ♗d2 ♗d5 8. ♗xb4 ♗dxb4 9. ♗a3 ♗d7 10. ♖b5

10. ♖d1 ♗a5 11. ♖d2 ♖e7 12. ♗e5 ♖d8 13. O-O a6 14. ♗axc4 ♗xc4 15. ♗xc4 ♗c6 16. e4 ♗b5 17. ♖c3 O-O 18. ♖fd1 ♗xc4 19. ♖xc4 ♗c6 20. e5 ♗b8 21. d5 exd5 22. ♖xd5 ♖xd5 23. ♖xd5 c6 24. ♖b3 ♖e8 25. ♖d1 ♖c7 26. ♖e1 ♖d7 27. ♗f3 b5 28. ♖c3 ♖e6 29. ♗d1 ♖e7 30. b4 ♗d7 31. e6 fxe6 32. ♖xe6 ♖d8 33. ♗b3 ♖xe6 34. ♗xe6+ ♙h8 35. ♖d2 1-0, (Tratar-Righi, Elista 1998)

10... ♗d5 11. ♖xc4 ♗b6 12. ♖c3 O-O 13. O-O ♖e7 14. ♗c4 ♖ac8 15. ♖ac1 ♖fd8 16. ♖fd1 ♗e8 17. a3 ♗xc4 18. ♖xc4 f6 19. b4 a6 20. ♗e1 ♖d6 21. e3 ♗f7 22. ♖c5 ♖d7 Draw

E92 King's Indian Exchange

NM Tanraj Sohal (2204 CFC)
FM Ignacio Perez (2279)

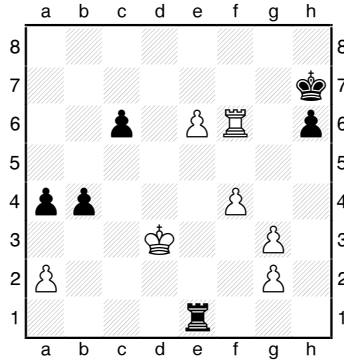
SeaTac, Washington Class (M-3) 2011

Annotations by Murlin Varner

1. d4 ♗f6 2. c4 g6 3. ♗c3 ♗g7 4. e4 d6 5. ♗f3 O-O 6. ♗e2 e5 7. dxe5 dxe5 8. ♖xd8 ♖xd8 9. ♗g5 c6 10. ♗xe5 ♖e8 11. O-O-O h6 12. ♗h4 ♗a6 13. ♗g3 ♗c5 14. f3 ♗h5 15. ♗d3 ♗xg3 16. hxg3

16... ♗e6 17. ♗f4 h5 18. ♗xe6 ♗xe6 19. ♙c2 a6 20. c5 ♖e7 21. b3 ♖ae8 22. ♖d2 f5 23. ♗d3 ♗h6 24. fxe4 25. ♗xe4 ♖f8 26. ♗d6 ♙g7 27. ♖e2 ♖f6 28. ♖he1 ♙f8 29. ♙b2 ♗g7 30. ♙a3 ♙g8 31. ♖xe6 1-0 (Camara-Tavares Da Silva, Recife 1963)

16...♖xd3+ 17.♗xd3 ♗xc3 18. bxc3 ♕g7 19.♖d2 ♖e5 20.♖hd1 ♗e6 21.♕c2 ♖c5 22.♗e2 ♗xc4 23. ♗xc4 ♖xc4 24.♖d7 b5 25.♖b7 a5 26.♖dd7 ♖f8 27.e5 b4 28.e6 ♖xc3+ 29.♕d2 ♖c5 30.♖xf7+ ♖xf7 31.♖xf7+ ♕g8 32.♖f6 ♕g7 33.♖f7+ ♕g8 34.♖f6 ♖d5+ 35. ♕c2 ♖e5 36.f4 ♖e2+ 37.♕d3 ♖e1 38.♖xg6+ ♕h7 39.♖f6 a4



40.♕c4?

40.f5h5 41.♖f7+-

40...♖e4+ 41.♕d3 ♖e1 42.♕c4 ♖e4+ 43.♕d3 Draw

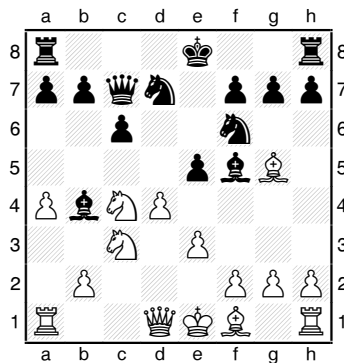
D17 QGD Slav

Roland Feng (2113)

Megan Lee (2117)

SeaTac, Washington Class (M-4) 2011

1.d4 d5 2.c4 c6 3.♖c3 ♖f6 4.♖f3 dxc4 5.a4 ♗f5 6.♖e5 ♖bd7 7. ♖xc4 ♖c7 8.♗g5 e5 9.e3 ♗b4



10.dxe5 ♖e4 11.♖d6+ ♖xd6 12. exd6 ♗xd6 13.e4 ♗e6 14.♖d2 h6 15.♗e3 ♖c5 16.♗xc5 ♗xc5 17. ♗e2 ♖d8 18.♖c2 ♖f4 19.♗f3 O-O 20.♖e2 ♖d4 21.g3 ♖d6 22.♖d1 ♖d8 23.♖c2 ♗h3 24.♖e2 ♕f8 25.♗g4 ♖xd1+ 26.♖xd1 ♗xg4 27. ♖xg4 ♖d2+ 28.♕f1 ♖xd1+ 29. ♖xd1 ♖xd1+ 30.♕g2 ♖xh1 O-1

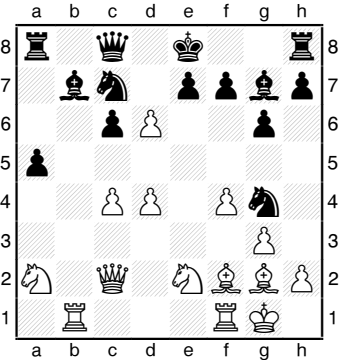
B06 Modern Defense

Nathan Lee (2103)

FM David Bragg (2200)

SeaTac, Washington Class (M-5) 2011

1.e4 c6 2.d4 d6 3.♖c3 g6 4.♗e3 ♗g7 5.♖ge2 b5 6.a3 ♗b7 7.g3 ♖d7 8.♗g2 a5 9.O-O b4 10.♖a2 bxa3 11.bxa3 ♖b6 12.f4 ♖c4 13. ♗f2 ♖xa3 14.♖d3 ♖b5 15.c4 ♖c7 16.♖c2 ♖h6 17.e5 ♖g4 18.♖ab1 ♖c8 19.exd6



19...♖e6 20.♖a4 ♖xf2 21.♖xb7 O-O 22.dxe7 ♖e8 23.♗xc6 ♗xd4 24.♖xd4 ♖xd4 25.♗xe8 ♖h3+ 26.♕g2 ♖xb7+ 27.♕xh3 ♖xe7 28.♖d7 ♖xe8 29.♖xd4 ♖d8 30. ♖e5 ♖xe5 31.fxe5 ♖d2 32.♖c3 ♖d3 33.♖c1 ♖e3 34.c5 ♖xe5 35. c6 ♖c5 36. ♖e2 1-0

E15 Queen's Indian

NM Tanraj Sohal (2204 CFC)

NM Joshua Sinanan (2248)

SeaTac, Washington Class (M-5) 2011

1.d4 ♖f6 2.c4 e6 3.♖f3 b6 4.g3 ♗a6 5.♖c2 ♗b7 6.♗g2 ♗b4+ 7. ♗d2 a5 8.♗xb4 axb4 9.♖bd2 d6 10.O-O ♖bd7 11.e4 e5 12. d5 ♖c5 13. ♖e1 O-O 14. ♖d3 ♖xd3 15. ♖xd3 ♖a4 16. b3 ♖a6 17. ♖b1 ♖a8 18. ♖d2 ♖d7 19. ♖xb4 ♖xa2 20.♖a3 ♖xa1 21.♖xa1 ♖a7 22.♖c2 ♖b8 23.♖b5 ♖d8

24.b4 ♕f8 25. ♖a4 ♕e7 26. ♖e3 g6 27. ♗h3 ♖f6 28.f3 ♗c8 29.♗f1 ♗d7 30.♖c2 c5 31.dxc6 ♗xc6 32.♖a2 ♖b7 33.b5 Draw

D04 Queen's Pawn Game

Chris Kalina (2131)

Roland Feng (2113)

SeaTac, Washington Class (M-5) 2011

1.d4 ♖f6 2.♖f3 g6 3.b3 ♗g7 4. ♗b2 O-O 5.♖bd2 d5 6.e3 b6 7. ♗e2 ♗a6 8.O-O ♗xe2 9.♖xe2 ♖bd7 10.c4 e6 11.♖ac1 c5 12. ♖fd1 ♖e4 13. ♖xe4 dxe4 14.♖e5 ♖xe5 15.dxe5 ♖g5 16.♖d7 ♖fd8 17.♖cd1 ♖xd7 18.♖xd7 ♖d8 19. ♖d2 ♖xd7 20. ♖xd7 ♗xe5 21.h4 ♖f5 22.♗xe5 ♖xe5 23.♖xa7 ♖a1+ 24.♕h2 ♖f6 25.♖b8+ ♕g7 26.♖f4 ♖xf4+ 27. exf4 f5 28.♕g1 ♕f6 29.♕f1 e5 30. g3 exf4 31.gxf4 h6 32.f3 g5 33. hxg5+ hxg5 34. fxg5+ ♕xg5 35. fxe4 fxe4 36.♕e2 ♕f5 37.a3 e3 38. b4 cxb4 39.axb4 ♕e4 40.c5 bxc5 41.bxc5 ♕d5 42.♕xe3 ♕xc5 Draw

A44 Czech Benoni

Roland Feng (2113)

NM Tanraj Sohal (2204 CFC)

SeaTac, Washington Class (M-6) 2011

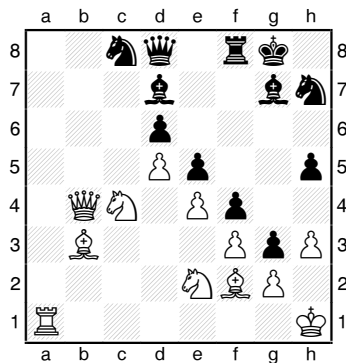
1.d4 c5 2.d5 e5 3.e4 d6 4.♗b5+ ♖d7 5.a4 g6 6.♗e3 a6 7.♗d3 ♗g7 8.♖d2 ♖e7 9.♖a3 f5 10.f3 O-O 11. ♖e2 ♖f6 12.h3 b5 13.c3 f4 14.♗f2 ♗d7 15.axb5 axb5 16.O-O c4 17. ♗c2 g5 18.b3 cxb3 19.♗xb3 h5 20.♕h1 g4 21.♖fc1 ♖h7 22.c4 bxc4 23.♖xc4 ♖xa1 24.♖xa1 ♖c8 25. ♖b4 g3

Orlov Chess Academy
IM Georgi Orlov
2540 USCF

Offers time-tested program,
challenge and quick progress!

Chess Camps, Tournaments
Chess Classes, Private Lessons

chess64@comcast.net
www.chessplayer.com
(206)-387-1253



26. ♖e1 ♜h4 27. ♘g1 ♙g5 28. ♖a2 ♚f7 29. ♙a4 ♙xa4 30. ♖xa4 ♜e7 31. ♖a6 ♖e8 32. ♜b5 ♙f8 33. ♙b4 ♖d8 34. ♚a5 ♚a7 35. ♜b6 ♚c8 36. ♜b8 ♜d7 37. ♚c6 ♖e8 38. ♖a8 ♙e7 39. ♚a7 ♚xa7 40. ♜xe8+ ♜xe8 41. ♖xe8+ ♙f8 42. ♚e2 ♚b5 43. ♚c3 ♚xc3 44. ♙xc3 ♚g5 45. ♙b4 ♚f7 46. ♙g1 ♙g7 47. ♙f1 ♙g8 48. ♙e2 ♙g7 49. h4 ♙g8 50. ♙a5 ♚h8 51. ♖e6 ♚f7 52. ♙c7 ♙g7 53. ♙d3 ♙g8 54. ♙c4 ♙g7 55. ♙b5 ♚h6 56. ♙xd6 ♙xd6 57. ♖xd6 ♚g4 58. fxg4 f3 59. ♖a6 1-0

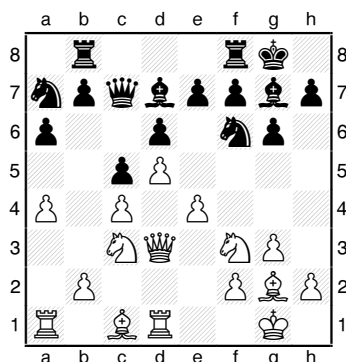
King's Indian Fianchetto

FM Joshua Sinanan (2248)

FM Nick Raptis (2279)

SeaTac, Washington Class (M-6) 2011

1. d4 ♚f6 2. c4 g6 3. g3 ♙g7 4. ♙g2 O-O 5. ♚c3 d6 6. ♚f3 ♚c6 7. O-O a6 8. ♜d3 ♖b8 9. ♖d1 ♙d7 10. d5 ♚a7 11. a4 c5 12. e4 ♜c7



13. ♙f4 h6 14. h3 g5 15. ♙d2 b5 16. axb5 axb5 17. b3 b4 18. ♚e2 ♚c8 19. ♖a2 e5 20. dxe6 ♙xe6 21. ♙c1 ♖b6 22. ♙b2 ♚e7 23. ♖da1 ♚c6 24. ♙h2 g4 25. ♚h4 gxh3 26. ♙xh3 ♚g4+ 27. ♙xg4 ♙xg4 28. ♙xg7 ♙xg7 29. ♚f4 ♚e7 30. ♖a7 ♖b7 31. ♖xb7 ♜xb7 32. f3 ♙d7 33. ♚h5+ ♙h8 34. ♜xd6 ♙e6 35. ♜e5+ 1-0

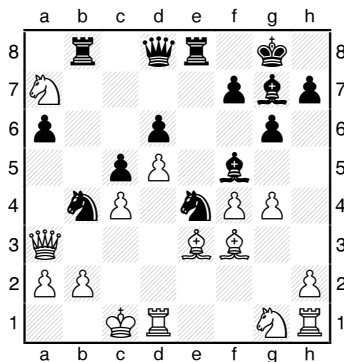
B07 Pirc

FM David Bragg (2200)

FM Ignacio Perez (2273)

SeaTac, Washington Class (M-6) 2011

1. d4 ♚f6 2. ♚c3 g6 3. e4 d6 4. ♙e2 ♙g7 5. ♙e3 O-O 6. f4 c5 7. e5 ♚fd7 8. exd6 exd6 9. d5 ♖e8 10. ♜d2 b5 11. ♚xb5 ♚f6 12. O-O-O ♚e4 13. ♜d3 ♚a6 14. ♙f3 ♚b4 15. ♜a3 ♖b8 16. c4 a6 17. ♚a7 ♙f5 18. g4



18... ♚c3 19. gxf5 ♖xe3 20. bxc3 ♖xc3+ 21. ♜xc3 ♙xc3 22. ♚e2 ♚xa2+ 23. ♙c2 ♖b2+ 24. ♙d3 ♜f6 25. ♚c6 ♚b4+ 26. ♙e3 ♚c2+ 27. ♙d3 ♙d4 28. ♚cxd4 ♚xd4 0-1

Expert Section

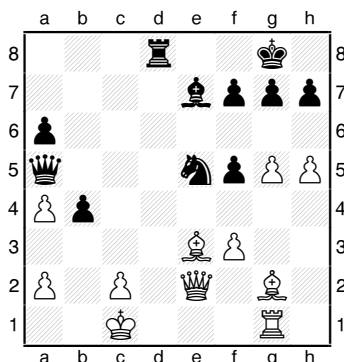
B80 Sicilian Scheveningen

Alan Bishop (2029)

FM Paul Bartron (2096)

SeaTac, Washington Class (X-1) 2011

1. e4 c5 2. ♚f3 d6 3. d4 cxd4 4. ♚xd4 ♚f6 5. ♚c3 a6 6. f3 e6 7. ♙e3 ♙e7 8. ♜d2 b5 9. g4 ♙b7 10. g5 ♚fd7 11. h4 b4 12. ♚a4 d5 13. exd5 ♙xd5 14. ♙g2 ♜a5 15. b3 ♚c6 16. O-O-O ♖c8 17. ♚f5 O-O 18. ♖hg1 ♖fd8 19. h5 exf5 20. ♜xd5 ♚c5 21. ♜c4 ♚e5 22. ♖xd8+ ♖xd8 23. ♜e2 ♚xa4 24. bxa4



24... f4 25. ♙xf4 ♚d3+ 26. ♙b1 ♚xf4 27. ♜xe7 ♚d5 28. ♜b7 ♚c3+ 29. ♙b2 ♜xa4 0-1

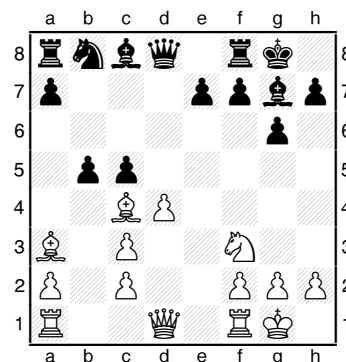
B02 Alekhine's Defense

Hubert Jung (1941)

David Zick (2097)

SeaTac, Washington Class (X-2) 2011

1. e4 ♚f6 2. ♚c3 d5 3. exd5 ♚xd5 4. d4 ♚xc3 5. bxc3 g6 6. ♚f3 ♙g7 7. ♙c4 c5 8. O-O O-O 9. ♙a3 b5



10. ♙d3 ♚a6 11. ♜e2 ♜a5 12. ♙b2 ♙g4 13. ♙xb5 ♙xf3 14. gxf3 ♖ab8 15. a4 ♚c7 16. c4 a6 17. ♜xe7 cxd4 18. ♙a3 axb5 19. ♙d6 bxc4 20. ♙xc7 ♜a7 21. ♙d6 ♜xe7 22. ♙xe7 ♖fe8 23. ♙c5 d3 24. ♖ad1 dxc2 25. ♖d2 ♖b2 26. ♖c1 ♙h6 27. ♙e3 ♖xe3 28. ♖dxc2 ♖e1+ 0-1

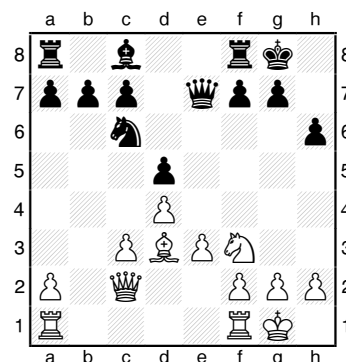
D55 QGD Lasker

John Doknjas (2072)

FM Paul Bartron (2096)

SeaTac, Washington Class (X-3) 2011

1. d4 ♚f6 2. c4 e6 3. ♚c3 d5 4. ♙g5 ♙e7 5. ♚f3 O-O 6. e3 ♚e4 7. ♙xe7 ♜xe7 8. cxd5 ♚xc3 9. bxc3 exd5 10. ♙d3 ♚c6 11. ♜c2 h6 12. O-O



12... ♙g4 13. ♚d2 ♜d7 14. f3 ♙e6 15. e4 ♖ad8 16. e5 ♚e7 17. f4 ♙f5

6th Annual Grand Pacific Open

C\$5,000 GUARANTEED Prize Fund

Easter, April 6-9; Victoria BC

Location: Hotel Grand Pacific, 463 Belleville St, Victoria, BC

Round Times: 6:00pm, Noon-6:00pm, Noon-6:00pm, 10:00am

Time Control: Game in 90 minutes plus 30 second per move increment.

Sections: Open (FIDE and CFC rated); U1800 (CFC rated)

Entry Fees: C\$75 by Feb. 24, C\$85 by Mar. 30, C\$95 on site. Discount C\$20 for U1400 or unrated. Add C\$20 if U1700 AND playing up a section. Family discounts available.

Prizes: C\$5,000 guaranteed.

Registration: online at www.grandpacificopen.com or by cheque payable to Victoria Junior Chess Society. Mail to Brian Raymer, 2386 Dalhousie St., Victoria, BC V8R 2H6

Transportation: Clipper jet boat from Seattle and Coho ferry from Port Angeles both dock across the street. Round times are set up to match the sailing schedule.

Misc: Equipment provided. C\$99 room rate at Hotel Grand Pacific 1-800-663-7550 (rate code "APR12CHESS") See www.grandpacificopen.com for further details and side events.

49th Annual Canadian Open

C\$15,000 GUARANTEED Prize Fund

July 8-13; Victoria BC

Location: Hotel Grand Pacific, 463 Belleville St, Victoria, BC

Rounds: 11-6; 11-6; 11-6; 6:00pm; 6:00pm; 6:00pm

Time Control: Game in 120 minutes plus 30 second per move increment.

Sections: Premier (FIDE and CFC rated); U2000 (CFC rated), U1600 (CFC rated)

Entry Fees: C\$175 by June 1, C\$195 by June 29, C\$215 on site. C\$20 to play up a section.

Prizes: C\$15,000 guaranteed.

Play a GM!: 1st round games against GMs for sale. See website for details.

Registration: online on website; by cheque payable to Victoria Chess c/o Paul Leblanc, 1012 Spiritwood Place, Victoria BC V8Y 1C6. by email: cochess2012@gmail.com

Transportation: Seattle Clipper and Coho ferry from Port Angeles dock across the street.

Misc: Equipment provided. C\$139 room rate at Hotel Grand Pacific 1-800-663-7550 (rate code "JUL12CHESS") See www.monroi.com/2012-cocc-home for further details and side events.

18. ♖ae1 ♗xd3 19. ♖xd3 ♖f5 20. ♖xf5 ♗xf5 21. g4 ♗e7 22. f5 ♗c8 23. h4 ♖fe8 24. g5 c5 25. f6 cxd4 26. cxd4 g6 27. h5 ♗h7 28. hxg6+ ♗xg6 29. gxh6 ♖h8 30. ♖f3 ♖xh6 31. ♖e2 ♗h7 32. ♖g2 ♖g8 33. ♖xg8 ♗xg8 34. ♖g3+ ♗h8 35. ♖c3 ♗b6 36. ♖c7 ♖h3 37. ♖xb7 ♗g8 38. ♖b8+ ♗h7 39. ♖b7 ♗g6 40. ♖xa7 ♖d3 41. ♗b3 ♗c4 42. ♖d7 ♖d1+ 43. ♗f2 ♖b1 44. ♖xd5 ♖b2+ 45. ♗f3 ♖xa2 46. ♗f4 ♖b2 47. ♗c5 ♖e2 48. ♗e4 ♗b2 49. ♖d8 ♗d3+ 50. ♗f3 ♖e1 51. ♖g8+ ♗f5 52. ♖g5+ ♗e6 53. ♗c3 ♗b4 54. ♖g2 ♗f5 1-0

B80 Sicilian Scheveningen

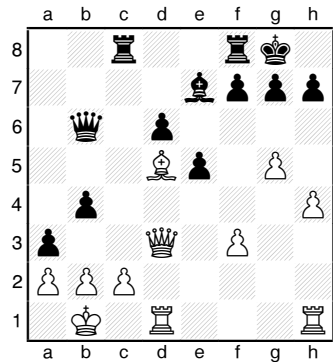
Alan Bishop (2029)

John Doknjas (2072)

SeaTac, Washington Class (X-5) 2011

Annotations by Murlin Varner

1. e4 c5 2. ♗f3 d6 3. d4 cxd4 4. ♗xd4 ♗f6 5. ♗c3 a6 6. f3 e5 7. ♗b3 ♗e6 8. ♗e3 ♗e7 9. ♖d2 O-O 10. O-O-O ♗bd7 11. g4 b5 12. ♗d5 ♗xd5 13. exd5 ♗b6 14. ♗xb6 ♖xb6 15. ♗a5 ♗xd5 16. ♖xd5 ♖xa5 17. ♗c4 ♖ac8 18. ♗b3 ♖b6 19. ♗b1 a5 20. ♖d3 a4 21. ♗d5 b4 22. h4 a3 23. g5



23...g6 24. h5 ♗g7 25. f4 exf4? 26. hxg6 ♗xg5 27. ♖xh7+ ♗f6 28. ♗xf7 ♖h8 29. ♖d5 ♖xh7 30. ♖e6+ ♗g7 31. gxh7 ♖d8 32. ♖g6+ ♗h8 33. ♖xd6 ♖xd6 34. ♖g8+ 1-0

D60 QGD Orthodox

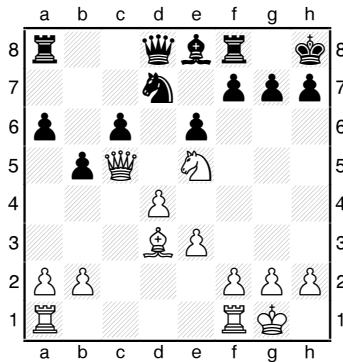
John Doknjas (2072)

David Zick (2097)

SeaTac, Washington Class (X-6) 2011

1. d4 ♗f6 2. c4 e6 3. ♗c3 d5 4. ♗g5 ♗bd7 5. ♗f3 ♗e7 6. e3 O-O 7. ♗d3 c6 8. O-O dxc4 9. ♗xc4 b5 10. ♗d3

a6 11. ♗xf6 ♗xf6 12. ♗e4 ♗d7 13. ♖c2 ♗h8 14. ♗c5 ♗e8 15. ♗e5 ♗xc5 16. ♖xc5 ♗d7



17. ♗xd7 ♗xd7 18. ♗e4 ♖h4 19. ♗f3 ♖fc8 20. ♖ac1 ♖d8 21. ♖c2 ♗g8 22. ♖fc1 ♗e8 23. ♖b4 ♖b6 24. ♖c5 ♖a7 25. ♖e1 ♖c7 26. ♖1c2 ♖d6 27. ♖c1 ♖ac7 28. h3 ♗f8 29. ♖e1 ♖a8 30. ♖c3 ♖ac8 31. e4 ♖d8 32. d5 exd5 33. exd5 b4 34. ♖b3 ♖e7 35. ♖xb4 cxd5 36. ♗xd5 ♖e5 37. ♗b7 ♖b8 38. g3 ♖xc5 39. ♖xc5 ♗c6 0-1

Class A Section

D43 QGD Orthodox

Samuel He (1893)

Sarah May (1820)

SeaTac, Washington Class (A-1) 2011

Annotations by Murlin Varner

1. d4 d5 2. c4 c6 3. ♗f3 ♗f6 4. ♗c3 e6 5. ♗g5 ♗e7 6. e3 O-O 7. ♖c2 h6 8. ♗xf6 ♗xf6 9. cxd5 exd5 10. ♗d3 b6 11. b4 ♗b7

11... ♖e7 12. a3 ♗g4 13. O-O ♗d7 14. ♗d2 ♖e6 15. ♗b3 ♖ac8 16. ♗a6 ♖ce8 17. ♖ac1 c5 18. ♗b7 cxd4 19. ♗xd5 ♖d6 20. ♗xd4 ♖c8 21. ♖b3 ♗xd4 22. exd4 ♗f6 23. ♗b7 ♖cd8 24. d5 ♖fe8 25. ♖fe1 ♖f4 26. ♖c2 ♗f5 27. ♖b2 ♗g4 28. g3 ♖g5 29. ♗c6 ♗e5 30. ♖xe5 ♖xe5 31. f4 ♖e7 32. fxg5 ♖xe5 33. ♖f2 g5 34. ♗b5 h5 35. ♖e1 ♖f6 36. ♗d4 1-0 (Candura-Di Muccio, Ischia 2000) *[Stefano Candura*

was a Seattle CC member in the late 1980s]

12. ♖b1 ♗d7 13. O-O a5 14. a3 ♗e7 15. ♖b3 axb4 16. axb4 ♗f6 17. ♖fc1 ♗d6 18. ♗a4 ♖c8 19. ♗f5 ♖b8 20. b5 c5 21. dxc5 bxc5 22. ♗xc5 ♗xc5 23. ♖xc5 ♖d6 24. ♖c2 ♗d7 25. ♗xd7 ♖xd7 26. ♗d4

26. ♖c7

26... ♖fc8 27. ♖c1 ♖xc5 28. ♖xc5 ♖c8 29. ♖a3 ♖c7 30. ♖xc7 ♖xc7 31. h3 ♖b6 32. ♖e7 g6 33. ♗h2 ♗g7 34. f4 ♗g8 35. ♖d7 ♗g7 36. f5 ♗f6 37. fxg6 fxg6 38. h4 h5 39. g3 ♗a8 40. ♖e8 ♖b7 41. ♖f8+ ♗e5 42. ♖f4 mate

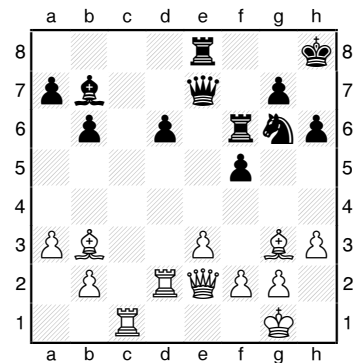
E11 Bogo-Indian

Brian Gibbon (1859)

Daniel He (1950)

SeaTac, Washington Class (A-1) 2011

1. d4 ♗f6 2. ♗f3 e6 3. c4 ♗b4+ 4. ♗bd2 b6 5. a3 ♗xd2+ 6. ♗xd2 h6 7. ♗f4 d6 8. e3 ♗bd7 9. ♗d3 ♗b7 10. ♖e2 ♖e7 11. ♗c2 O-O 12. O-O ♗e4 13. ♖fd1 f5 14. h3 ♖f7 15. ♗d2 ♗xd2 16. ♖xd2 e5 17. dxe5 ♗xe5 18. c5 ♖f6 19. cxd6 cxd6 20. ♗b3+ ♗h8 21. ♖c1 ♗g6 22. ♗g3 ♖e8



Chess DVDs Now Available through Elliott's Chess School!

LEARN CHESS INDEPTH WITH NATIONAL MASTER ELLIOTT NEFF

Chess4Life also offers:

- Chess Camps
- Tournaments
- Afterschool Program
- Private Lessons
- Chess Classes
- Chess4Life Center

Chess4Life
Teaching life skills through chess

For more info, call 425-283-0549 | www.chess4life.com

23. ♖d1 ♗e4 24. ♘d5 ♙xd5 25. ♚xd5 f4 26. ♜d4 ♞e5 27. exf4 ♜xf4 28. ♙xf4 ♚xf4 29. ♚xd6 ♞xb2 30. ♜d8 ♞xf2+ 31. ♜h2 ♚xd8 32. ♞xd8+ ♚f8 33. ♖d1 ♗e3 34. a4 ♜e8 35. ♖c2 ♗e4 36. ♖d1 ♗f4+ 37. ♜h1 ♚e4 38. ♜c8+ ♜h7 39. ♖d3 ♗f5 40. ♜h2 ♚e5 41. ♖c4 ♜d5 42. ♚e8 a6 43. ♚e4 b5 44. axb5 axb5 45. ♞b4 ♖d7 46. ♚e7 ♖d6+ 47. ♞xd6 ♚xd6 48. ♚b7 ♜d5 49. ♜g3 ♜g6 50. ♜f4 ♚d4+ 51. ♜e3 ♚b4 52. ♜d3 ♚b2 53. ♜e4 ♚xg2 54. ♚xb5 ♚g3 55. ♜f4 ♚xh3 56. ♜g4 ♚c3 57. ♚b6+ ♜h7 58. ♚a6 ♚c1 59. ♚b6 ♚g1+ 60. ♜h4 ♚g6 61. ♚b5 ♚c6 62. ♜g4 ♜g6 63. ♜h4 ♚c4+ 64. ♜g3 h5 65. ♚a5 ♜h6 66. ♚a6+ g6 67. ♚b6 h4+ 68. ♜h3 ♜h5 69. ♚b5+ g5 70. ♚a5 ♚c3+ 71. ♜g2 h3+ 72. ♜h2 ♜h4 73. ♚a4+ g4 74. ♚b4 ♚c2+ 75. ♜g1 ♚g2+ 76. ♜h1 ♚g3 77. ♜h2 ♚f3 78. ♚a4 ♚f2+ 79. ♜h1 ♜g3 80. ♚a3+ ♚f3 81. ♚a1 ♚e3 82. ♚g1+ ♜h4 83. ♚d1 g3 84. ♚d4+ ♜g5 85. ♚d1 ♜g4 86. ♜g1 h2+ 87. ♜h1 ♜h3 0-1

B12 Caro-Kann Advance

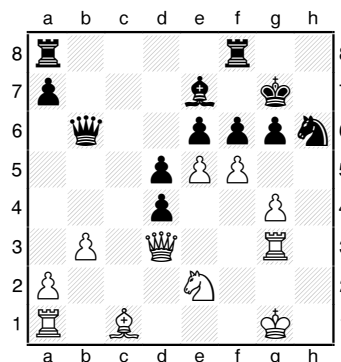
H. G. Pitre (1847)

Paul Le Blanc (1920)

SeaTac, Washington Class (A-1) 2011

Annotations by Murlin Varner

1.e4 c6 2.d4 d5 3.e5 g6 4.f4 h5 5. ♜f3 ♙g4 6.c4 e6 7. ♙e2 ♜e7 8. ♜c3 ♜f5 9.cxd5 cxd5 10.O-O ♜c6 11. ♙b5 ♞b6 12. ♙xc6+ bxc6 13. ♜e2 ♙e7 14. ♖d3 O-O 15.b3 c5 16.h3 ♙xf3 17. ♚xf3 cxd4 18.g4 hxg4 19.hxg4 ♜h6 20. ♚g3 ♜g7 21.f5 f6



22. ♙xh6+ ♜xh6 23. ♚h3+ ♜g7 24. fxg6 ♚h8 25. exf6+ ♙xf6 26. ♚xh8

27. ♜xh8 27. ♜f4 e5 28. ♜h5+ ♜g8? 28... ♚xh5 29.gxh5 e4 30.h6+ ♜xg6 31. ♞g3+ ♜h7+ 29. ♞f5 d3+ 30. ♜g2 ♚xh5 31. gxh5 ♖d4 32. ♚f1 e4 33.h6 1-0

B78 Sicilian Dragon

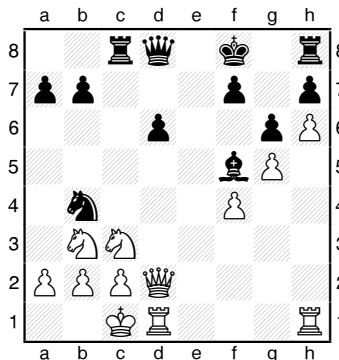
Noah Fields (1861)

Tim Campbell (1730)

SeaTac, Washington Class (A-1) 2011

Annotations by Murlin Varner

1.e4 c5 2. ♜f3 ♜c6 3.d4 cxd4 4. ♜xd4 g6 5. ♜c3 ♙g7 6. ♙e3 ♜f6 7. ♙c4 O-O 8. ♙b3 d6 9.f3 ♙d7 10. ♖d2 ♜e5 11.O-O-O ♚c8 12.g4 ♜e8 13. ♙h6 ♜c7 14. ♙xg7 ♜xg7 15.h4 ♜e6 16.h5 ♚h8 17.h6+ ♜f8 18. g5 ♜c5 19.f4 ♜xb3+ 20. ♜xb3 ♜c6 21.e5 ♙g4 22. ♚dg1 ♙f5 23. exd6 exd6 24. ♚d1 ♜b4



25. ♖d4?!

25. ♜d4

25... ♜xa2+ 26. ♜xa2 ♚xc2+ 27. ♜b1 ♚d2+ 28. ♜a1 ♚xd4 29. ♚xd4 f6 30. ♚hd1 ♞b6 31. ♜bc1 ♜e7 32.gxf6+ ♜e6 33. ♜c3 ♞a5+ 34. ♜1a2 ♜xf6 35. ♚xd6+ ♜e7 36. ♚d5 ♚a6 37. ♚e5+ ♜f7 38. ♜d5 ♚d8 39.b3 ♙c2 40. ♚de1 ♙xb3 41. ♚e7+ ♜f8 42. ♜dc3 ♚c8 43. ♜b2 ♙xa2 44. ♜xa2 ♞b6+ 45. ♜a1 ♞f6+ 46. ♚7e5 ♞xf4 47. ♚e7 ♞f6+ 0-1

B07 Pirc

Daniel He (1950)

H. G. Pitre (1847)

SeaTac, Washington Class (A-2) 2011

Annotations by Murlin Varner

1.e4 g6 2.d4 d6 3. ♜f3 ♜f6 4. ♜bd2 ♙g7 5.g3 ♜c6 6.d5 ♜e5 7. ♜xe5 dxe5 8. ♙g2 ♙g4 9. ♙f3 h5 10.h3

WA Class Winners

Master (18 players)

1st	Dereque Kelly	4.5
=2nd/3rd	Nick Raptis	4.0
	Joshua Sinanan	4.0
jr. medal	Igor Ummel	4.0
U2300	Ignacio Perez	3.5

Expert (8 players)

1st/2nd	David Zick	4.5
	Paul Bartron	4.5
3rd	Michael MacGregor	4.0
U2100	Mark Smith	3.5

Class A (23 players)

1st	Becca Lampman	5.0
=2nd/3rd	Peter Marriott	4.5
	Galen Pyle	4.5
U1900	Gordon Higbie	4.0

Class B (25 players)

1st	Matthew Nill	5.5
2nd	James Colasurdo	5.0
3rd/U1700	Dan Mathews	4.0
	Charles Whitmer	4.0
	Richard Golden	4.0
	Michael Van Scyoc	4.0

Class C (19 players)

=1st-3rd	Sangeeta Dhingra	4.5
	Murlin Varner	4.5
	Carl Dutton	4.5
U1500	Diallo Wilson	4.0
	Keith Huntzinger	4.0
jr. medal	Toshihiro Nagase	4.0

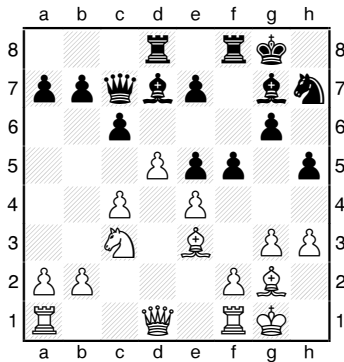
Class D (15 players)

=1st/2nd	Boas Lee	4.5
	Howard Hare	4.5
3rd	Nicholas Teoh	4.0
	Thomas Taylor	4.0
U1300	George Stewart	3.5
	Jiangyu Li	3.5
	Ben Seran	3.5
	Max Dixon	3.5
jr. medal	Vikram Ramasamy	3.5

Class E & Under (26 players)

1st/2nd	Howard Hwa	5.0
	Kirill Filimonov	5.0
jr. medal	Andreas Farny	4.5
3rd	Breck Haining	4.0
	Zuberi Wilson	4.0
jr. medal	Aditya Kannan	4.0
jr. medal	Blaine Mitchell	4.0
U1000	Eugene Chin	4.0
Unrated	Sravan Konda	2.0

♙d7 11.c4 c6 12. ♘b1 ♖c7 13.
 ♘c3 O-O 14. ♙g2 ♜ad8 15.O-O
 ♘h7 16. ♙e3 f5



17. ♖b3 c5 18. exf5 ♙xf5 19. ♘b5
 ♖b6 20. ♖a3 ♜c8 21. ♘xa7 e4? 22.
 ♘xc8 ♜xc8 23. ♜ab1 ♖d6 24. b4
 b6 25. bxc5 bxc5 26. ♖a7 ♙d4 27.
 ♖b6 ♖e5 28. g4 hxg4 29. hxg4
 ♙xg4 30. ♖xg6+ ♖g7 31. ♙xe4
 ♘f6 32. ♖xg7+ ♙xg7 33. ♙xd4
 cxd4 34. ♙d3 ♙f3 35. ♙h2 ♙f7
 36. ♜g1 ♘g4+ 37. ♙g3 ♘e5 38.
 ♙f5 ♜xc4 39. ♙f4 e6 40. ♙xe5 exf5
 41. ♜b7+ ♙f8 42. ♙e6 ♙g4 43. f3
 1-0

D15 Slav Exchange

Paul Le Blanc (1920)

Joseph Kiiru (1832)

SeaTac, Washington Class (A-2) 2011

1. d4 d5 2. c4 c6 3. ♘f3 ♘f6 4. ♘c3
 ♘bd7 5. cxd5 cxd5 6. g3 ♘b6 7.
 ♙g2 ♙f5 8. O-O h6 9. ♙f4 ♜c8 10.
 ♜c1 a6 11. ♖b3 g5 12. ♙e5 ♙g7
 13. a4 O-O 14. ♘d2 e6 15. a5 ♘bd7
 16. ♙d6 ♜e8 17. ♖xb7 ♘b8 18.
 ♙e5 ♖xa5 19. ♘b3 ♖d8 20. ♘c5
 ♜e7 21. ♖b3 ♘fd7 22. ♘b7 ♖b6
 23. ♖xb6 ♘xb6 24. ♘d6 ♜d8 25.
 ♘xf5 exf5 26. ♙xg7 ♙xg7 27. e3
 ♜c7 28. ♜a1 ♜c4 29. ♜a5 ♜b4 30.
 ♜b1 ♘c4 31. ♘xd5 ♜xb2 32. ♜xb2
 ♘xb2 33. ♘e7 f4 34. ♘f5+ ♙h7
 35. ♙e4 fxe3 36. fxe3 ♜d7 37. ♜a2
 ♘d1 38. ♜c2 a5 39. ♜c1 ♘xe3
 40. ♘xe3+ ♙g7 41. ♜c8 ♘a6 42.
 ♜a8 ♘c7 43. ♜xa5 ♘e6 44. d5 ♘d4
 45. ♘f5+ ♘xf5 46. ♙xf5 ♜d6 47.
 ♙f2 ♙f6 48. ♙e4 ♙e5 49. ♙g2 f5
 50. ♜c5 ♜a6 51. ♜c2 h5 52. ♜d2
 ♜d6 53. ♜e2+ ♙f6 54. ♜e8 ♜b6
 55. ♜e2 ♜d6 56. ♜c2 ♙e5 57. ♜c6

♜d8 58. ♙e3 f4+ 59. gxf4+ gxf4+
 60. ♘d3 ♜a8 61. ♜e6+ ♙f5 62.
 ♙e4+ ♙g4 63. ♜g6+ ♙h3 64. ♜g2
 ♜a3+ 65. ♘d4 h4 66. ♜f2 ♙g4
 67. ♙e5 f3 68. ♙xf3+ ♜xf3 69. ♜xf3
 ♙xf3 70. d6 h3 71. d7 ♙g2 72.
 d8=♖ ♙g1 73. ♙f4 ♙xh2 1-0

D53 QGD Lasker

Ricardo Garcia (1701)

Aaron Lawrence (1706)

SeaTac, Washington Class (A-3) 2011

1. d4 d5 2. c4 e6 3. ♘f3 ♘f6 4. ♙g5
 ♙e7 5. ♘c3 h6 6. ♙h4 ♘e4 7. ♙xe7
 ♘xc3 8. ♙xd8 ♘xd1 9. ♜xd1 ♙xd8
 10. e3 b6 11. cxd5 exd5 12. ♘e5
 ♜f8 13. b4 ♙b7 14. ♜c1 f6 15. ♘g6
 ♜e8 16. ♙e2 ♘c6 17. a3 ♘e7 18.
 ♘f4 ♙d7 19. O-O ♜ac8 20. ♜c3
 ♙d6 21. ♜fc1 c6 22. ♙f1 ♜c7 23.
 a4 a6 24. ♘h5 ♘g8 25. ♙d3 b5 26.
 axb5 axb5 27. ♙xb5 g6 28. ♘g3
 ♜ec8 29. ♙d3 ♘e7 30. e4 h5 31. h4
 ♜a8 32. exd5 ♘xd5 33. ♘e4+ ♙d7
 34. ♘c5+ ♙e7 35. ♜b3 f5 36. ♜e1+
 ♙f6 37. ♜e6+ ♙g7 38. ♙c4 ♜a1+

Silverdale Beach Hotel Classic, Third Annual

March 10-11, 2012

For some, chess tournaments are exhausting endurance tests. In this weekend chess tournament join us for a relaxing, bright end to winter. Have a chess vacation on the shore of Dyes Inlet. Relax and study in your room between rounds with all the comforts you need. Play chess the modern, international way, with time increments.

A four-round Swiss event in three sections, USCF rated, USCF membership required, WCF recommended, a Robert A. Karch Memorial Northwest Grand Prix event. Please bring your chess set and digital clock.

Time control: Game in 90 minutes, with 30 seconds increment per move.

Rounds: Saturday 12:30PM and 6PM; Sunday 10AM and 3:30PM. (Daylight Saving Time starts Sunday!)

All Prizes Guaranteed

Professional (2000+)		Competitor (1500-2000)		Education (U1500 & UNR)	
First	\$250 + Hotel-night and breakfast for two	First	\$150	First	\$100
Second	\$150	Second	\$125	Second	\$80
Third	\$125	Third	\$100	Third	\$70
Best Game (non prize-winner)	\$100	Best Game (non prize-winner)	\$75		

advance entry fee: \$55

advance entry fee: \$45

advance entry fee: \$35

If more than 44 players, more prizes. Section boundaries may be modified.

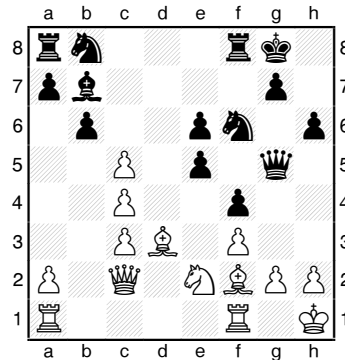
Plus: Competitor and Education section players can get post-game analysis by USCF Master, a former Washington State champion, Bill McGeary. This is the extra value that you have been looking for after your games. During each of the first three rounds he will be available for about two hours. Ask Bill.

Playing Site: Silverdale Beach Hotel, (www.silverdalebeachhotel.com) Silverdale, WA. Ask for SBHC chess rate (\$85, \$95) by 2/24, available by phone only. The hotel offers a swimming pool, restaurant, and entertainment. Special 11AM check-in on Saturday is hoped for, but cannot be guaranteed. Special 2:30PM Sunday check-out will be available. You can't beat this for style, value and ease.

Send **advance entries** with checks by March 1 to **H.G. Pitre, 700 Crockett Street #105, Seattle WA 98109**. All sections entry fees increase by \$10 after this date.

E-mail questions, support to hgpitre@gmail.com

39. ♖e1 ♖xe1+ 40. ♗xe1 ♙c8 41. ♗f6 14.e5 dxe5 15.dxc5 f4 16. ♙f2 ♗g5 17. ♗h1 ♗f6 18. ♗c2



C45 Scotch

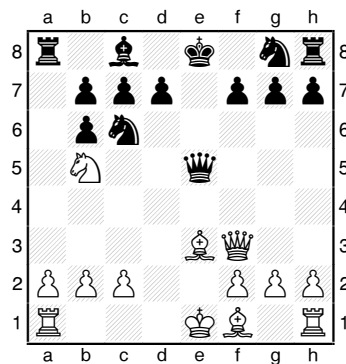
Tim Campbell (1730)

Justin Yu (1642)

SeaTac, Washington Class (A-4) 2011

Annotations by Murlin Varner

1.e4 e5 2. ♗f3 ♗c6 3.d4 exd4 4. ♗xd4 ♙c5 5. ♙e3 ♗e7 6. ♗c3 ♙b6 7. ♗d5 ♗xe4 8. ♗xb6 axb6 9. ♗b5 ♗e5 10. ♗f3



10... ♗d8 11. ♗xf7 ♗ge7 12.c3 d6 13. ♙e2 ♙e6 14. ♗f3 ♖xa2 15. ♖xa2 ♙xa2 16. ♙d4 ♗xd4 17. cxd4 ♗d5 18. ♗c3 ♗xf3 19. ♙xf3 ♙c4 20. ♙xb7 c6 21.d5 cxd5 22. ♗d2 ♗c7 23. ♖e1 ♖e8? 24. ♙xd5 ♙xd5 25. ♗xd5+ ♗d8 26. ♗xb6 ♖f8 27. f3 ♖f5 28. ♖e6 ♖b5 29. ♖xd6+ ♗c7 30. ♗c4 ♖xb2+ 31. ♗xb2 ♗xd6 32. ♗d3 ♗e5 33.g3 ♗f5 34. ♗c4 ♗c6 35.f4 ♗b4+ 36. ♗c3 ♗c6 37. h4 ♗e7 Draw

E43 Nimzo-Indian Rubinstein

Becca Lampman (1885)

Daniel He (1950)

SeaTac, Washington Class (A-4) 2011

1.d4 ♗f6 2.c4 e6 3. ♗c3 ♙b4 4.e3 b6 5. ♙d3 ♙b7 6.f3 ♙xc3+ 7.bxc3 d6 8. ♗e2 h6 9.O-O O-O 10.e4 c5 11. ♙f4 ♗h5 12. ♙e3 f5 13. ♗d2

19. ♗xh7 ♙c5 20. ♙f4+ ♗b6 21. ♙e3 ♗a6 22. ♗g5 ♙xd4 23. ♙xd4 ♖xh2 24. ♗xe6 fxe6 25.g3 ♖d8 26.b4 b6 27.c3 ♗b7 28. ♖e1 ♖e8 29. ♗c2 e5 30. ♗b3 e4 31.f3 Draw

D10 Slav Winawer Gambit

Ricardo Garcia (1701)

Joseph Kiiru (1832)

SeaTac, Washington Class (A-5) 2011

1.d4 d5 2.c4 c6 3. ♗c3 e5 4.cxd5 cxd5 5.dxe5 d4 6. ♗b1 ♗a5+ 7. ♙d2 ♗xe5 8. ♗f3 ♗d5 9. ♙c3 ♗c6 10. ♗xd4 ♗f6 11. ♗xc6 ♗xc6 12. ♗d2 ♙e7 13.e3 O-O 14. ♗f3 ♗a4 15.h3 ♖d8 16. ♙e2 ♗c2 17. ♙d1 ♗d3 18. ♙e2 ♗c2 Draw

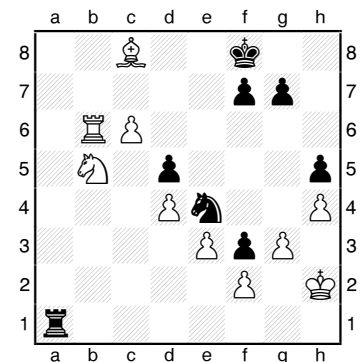
D00 Queen's Pawn Game

Micah Smith (1881)

Tim Campbell (1730)

SeaTac, Washington Class (A-5) 2011

1.d4 d5 2. ♙f4 ♗f6 3.e3 ♗c6 4.c4 ♙f5 5. ♗c3 e6 6. ♗f3 ♗h5 7. ♙g5 ♙e7 8. ♙xe7 ♗xe7 9. ♙e2 ♗f6 10. O-O O-O 11. ♖c1 c6 12.c5 ♗c7 13. b4 a6 14.a4 ♗g6 15. ♗b3 e5 16.b5 axb5 17.axb5 e4 18. ♗d2 ♖fe8 19. ♖a1 ♗h4 20.bxc6 bxc6 21. ♗b6 ♗d7 22.g3 ♗g6 23. ♖fb1 ♗f8 24. ♖a6 ♖xa6 25. ♗xa6 ♗e6 26. ♖b7 ♗c8 27. ♖b6 ♗xa6 28. ♙xa6 ♖a8 29. ♖xc6 ♗g5 30.h4 ♗f3+ 31. ♗xf3 exf3 32. ♖b6 h5 33.c6 ♗f8 34. ♗b5 ♙c8 35. ♙xc8 ♖a1+ 36. ♗h2 ♗e4



37. ♖b8 ♗e7 38. ♙g4 hxg4 39.c7 ♗xf2 40.c8=♗+ ♗d7 41. ♗b6+ ♗c6 42. ♗a7+ ♗c7 43. ♖c8+ ♗xb6 0-1

B00 Nimzowitsch Defense

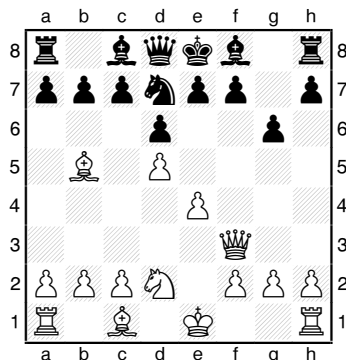
Daniel He (1950)

Michael Hosford (1840)

SeaTac, Washington Class (A-6) 2011

1.e4 ♗c6 2. ♗f3 d6 3.d4 ♗f6 4.d5 ♗e5 5. ♗bd2 ♗xf3+ 6. ♗xf3 g6 7. ♙b5+ ♗d7

Visit Northwest Chess on Facebook!



8. ♖c3 f6 9. ♗f3 a6 10. ♘d4 axb5
11. ♙e6 ♘c5 12. ♙xd8 ♘xd8 13.
f3 b4 14. ♖xb4 ♖a4 15. ♖c3 b5 16.
b3 b4 17. ♖d2 ♖a6 18. ♖xb4 ♖b6
19. ♖d2 ♖a6 20. c4 h5 21. ♖c2
♙c8 22. ♙e3 ♙g7 23. ♖b1 ♖a6 24.
O-O ♘d7 25. a4 ♘e5 26. b4 f5 27.
h3 fxe4 28. fxe4 ♙f6 29. c5 ♙d7 30.
b5 ♖a8 31. cxd6 cxd6 32. a5 ♖xa5
33. ♙b6+ 1-0

Class B Section

B92 Sicilian Najdorf

Brian Sullivan (1629)

Charles Whitmer (1720)

SeaTac, Washington Class (B-1) 2011

Annotations by Murlin Varner

1. e4 c5 2. ♗f3 d6 3. d4 cxd4 4. ♘xd4
♗f6 5. ♗c3 a6 6. ♙e2 e6 7. ♙e3
♙e7 8. O-O ♖c7 9. f4 b5 10. a3 ♙b7
11. ♙f3 ♗bd7 12. ♗de2 O-O 13. g4
♗b6

13... ♗b6 14. ♙xb6 ♖xb6+ 15. ♖d4
♖c7 16. ♗g2 ♖ac8 17. ♗g3 ♖fd8 18.
g5 ♗d7 19. h4 ♗b6 20. ♙e2 d5 21. ♗h5
♙f8 22. ♖ac1 dxe4 23. ♖e5 ♖xe5 24.
fxe5 ♗d5 25. ♗xd5 exd5 26. ♙g4 ♖e8
27. ♙xc8 ♙xc8 28. e6 fxe6 29. ♖cd1
♖d8 30. ♗f4 d4 31. g6 h6 32. ♗e2 e5 33.
♗g3 e3 34. ♖fe1 ♙e7 35. h5 ♙g4 36.
♖d3 e4 37. ♗xe4 ♙xh5 38. ♗g3 ♙xg6
39. ♖dd1 ♙xc2 40. ♖c1 d3 0-1 (Haugen-
Storland, Randaberg 1991)

14. b3 ♖fd8 15. g5 ♗e8 16. ♖d2 d5
17. e5 ♖ac8 18. h4 g6 19. h5 ♗g7
20. hxg6 hxg6 21. ♖f2 ♗f5 22.
♙g4 d4 23. ♙xf5 dxc3 24. ♖e1 exf5
25. ♖h2 ♗g7 26. ♙d4 ♙c5 27. ♖d1
♖h8 28. ♖xc3 ♙xd4+ 29. ♖xd4
♖c5 30. ♖xc5 ♖xc5 31. ♖xh8
♗xh8 32. ♖d8+ ♗g7 33. ♗d4 ♙c8
34. ♗f2 ♖d5 35. ♖d6 ♖xd6 36.
exd6 ♙d7 37. ♗f3 f6 38. ♗e3 ♗f7

39. ♗d4 ♙e6
40. gxf6 ♗xf6
41. ♗c5 ♗c8 42.
♗g5 ♗g7 43.
♗d5 a5 44. c4 a4
45. bxa4 ♗b6+
46. ♗d4 bxc4 47.
a5 c3 48. ♗xc3
♗c8 49. ♗d4
♗xd6 50. ♗c5
♗e4+ 51. ♗xe4
fxe4 52. ♗d4
♙c6 0-1

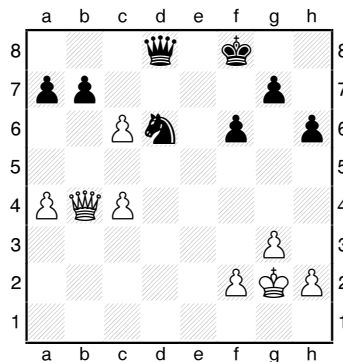
B01 Center-Counter

Joe Davis (1675)

Matthew Nill (1766)

SeaTac, Washington Class (B-1) 2011

1. e4 d5 2. exd5 ♗f6 3. d4 ♗xd5 4.
♗f3 ♙g4 5. ♙b5+ c6 6. ♙e2 ♙xf3
7. ♙xf3 e6 8. c4 ♗b6 9. b3 ♙e7 10.
O-O O-O 11. ♗c3 ♙f6 12. ♙a3 ♖e8
13. ♙c5 ♙e7 14. ♖c2 ♙xc5 15. dxc5
♗6d7 16. ♖ad1 ♖e7 17. b4 ♗f6 18.
♖d6 ♗a6 19. a3 ♖ed8 20. ♖fd1
♗e8 21. ♖6d3 ♗ac7 22. ♖d2 ♖xd3
23. ♖xd3 ♗f6 24. ♗e4 ♗xe4 25.
♙xe4 h6 26. ♖d6 ♗f8 27. a4 ♗a6
28. ♖d2 ♗e8 29. ♖c3 ♖d8 30.
♖xd8+ ♖xd8 31. g3 ♖d1+ 32.
♗g2 ♗f8 33. ♙c2 ♖d8 34. ♙e4 f6
35. ♙f3 e5 36. b5 ♗xc5 37. bxc6 e4
38. ♙xe4 ♗xe4 39. ♖b4+ ♗d6



40. cxb7 ♖b8 41. a5?? ♖xb7+ 0-1


B07 Pirc

Alan Walk (1727)

David Hendricks (1615)

SeaTac, Washington Class (B-1) 2011

1. e4 d6 2. d4 ♗f6 3. ♗c3 g6 4. f3
♙g7 5. ♙e3 O-O 6. ♖d2 e5 7. d5
♗bd7 8. ♗ge2 ♗b6 9. ♗g3 ♗e8



Carl A. Haessler
Lessons • Lectures • Exhibitions

USCF Life Master 503-875-7278
4-Time Oregon Champion ssmith6154@aol.com

10. ♙h6 f5 11. exf5 gxf5 12. ♙xg7
♗xg7 13. O-O-O ♖h4 14. ♖e1 ♖h6+
15. ♗b1 ♗f6 16. ♖d3 ♙d7 17. ♙e2
♖ae8 18. ♙d1 ♗h8 19. h3 ♖g8 20.
♖g1 ♖g7 21. ♗f1 f4 22. ♗h2 ♙f5
23. ♗e4 ♗bxd5 24. ♗g4 ♖g6 25.
♗gxf6 ♗xf6 26. ♗xd6 cxd6 27.
♖xd6 ♖c7 28. ♖d2 ♖d7 29. ♖xd7
♗xd7 30. ♙e2 ♗b6 31. ♙d3 ♙xd3
32. cxd3 ♖d8 33. ♗c2 ♗d5 34. a3
♗e3+ 35. ♗c3 ♖c6+ 36. ♗b3
♖d5+ 37. ♗a4 b5+ 38. ♗b4 a5+
39. ♗c3 ♖c8 mate

A23 English Opening

Stephen Buck (1700)

Derek Zhang (1523)

SeaTac, Washington Class (B-2) 2011

Annotations by Murlin Varner

1. c4 e5 2. ♗c3 ♗f6 3. g3 c6 4. ♙g2
♙c5 5. ♗f3 d6 6. O-O O-O 7. d3 ♖e8
8. ♙g5 h6 9. ♙h4 g5 10. ♗xg5 hxg5
11. ♙xg5 ♙e6 12. ♗e4 ♖e7??
13. ♗xf6+ ♗h8 14. e3 ♗g7 15.
♗h5+ ♗f8 16. ♙xe7+ ♗xe7 17.
♗g7 ♖g8 18. ♗xe6 fxe6 19. a3 a5
20. ♙xc6 bxc6 21. d4 exd4 22. exd4
♙b6 23. ♖d3 ♗d7 24. ♖h7+ 1-0

B78 Sicilian Dragon

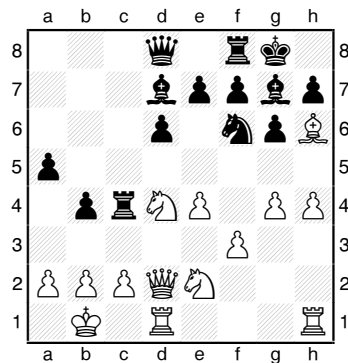
Frederick Davis (1596)

Robert Allen (1750)

SeaTac, Washington Class (B-2) 2011

Annotations by Murlin Varner

1. e4 c5 2. ♗f3 d6 3. d4 cxd4 4. ♗xd4
♗f6 5. ♗c3 g6 6. ♙e3 ♙g7 7. f3 O-O
8. ♖d2 ♗c6 9. ♙c4 ♙d7 10. O-O-O
♖c8 11. ♙b3 ♗e5 12. ♗b1 ♗c4 13.
♙xc4 ♖xc4 14. g4 b5 15. ♙h6 b4
16. ♗ce2 a5 17. h4



17...♗xg4? 18.♗xg7 ♖xg7 19.fxg4 ♗xe4 20.♖e3 d5 21.♗g3 ♗c3+ 22.bxc3 bxc3 23.♖e5+ f6 24.♗e6+ ♖g8 25.♗xd8 fxe5 26.♗xd5 ♗xg4 27.♗e2 ♗b4+ 28.♖c1 ♗f3 29.♗c6 ♗b2 30.♗xc3 ♗xc3 31.♖xb2 ♗xc6 32.♗xe5 1-0

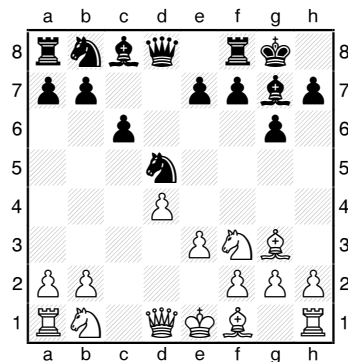
D70 Grunfeld

David Hendricks (1615)

Dan Mathews (1794)

SeaTac, Washington Class (B-2) 2011

1.d4 d5 2.♗f4 g6 3.♗f3 ♗g7 4.e3 ♗f6 5.c4 O-O 6.cxd5 ♗xd5 7.♗g3 c6



8.e4 ♖a5+ 9.♖d2 ♖xd2+ 10.♗bxd2 ♗b6 11.♗b3 ♗8d7 12.♗d3 ♗e8 13.O-O e5 14.dxe5 ♗xe5 15.♗xe5 ♗xe5 16.♗xe5 ♗xe5 17.f4 ♗e8 18.♗ae1 a5 19.♗c5 ♗d7 20.♗b3 a4 21.♗d2 ♗c5 22.♗c2 b5 23.e5 ♗e6 24.♗e4 ♗xe4 25.♗xe4 ♗ac8 26.♗c1 c5 27.a3 ♗ed8 28.♗fd1 ♗xd1+ 29. ♗xd1 b4 30.axb4 cxb4 31.♖f2 a3 32.bxa3 bxa3 33.♗a1 a2 34.h3 ♗b8 35.♖e3 h5 36.♖d2 ♗b4 37. ♖e3 ♗b2 38.♖f3 ♖g7 39.g4 hxg4+ 40.hxg4 f5 41.exf6+ ♖xf6 42.g5+ ♖g7 43.♖e3 ♖f7 44.♖d4 ♗b4+ 45.♖e5 ♗b5+ 46.♖d6 ♗b6+ 47.♖e5 ♗a6 48.♗d3 ♗a5+ 49.♖d4 ♗d5+ 50.♖e3 ♗d7

51.♗e4 ♗a7 52.♖d4 ♗a4+ 53.♖e5 ♗a5+ 54. ♖d6 ♗b3 55.♖c6 ♗a4 56.♗d5+ ♗xd5+ 57.♖xd5 ♖e7 58.♖e5 ♗a5+ 59.♖e4 ♖e6 60.f5+ gx f5+ 61.♖f4 ♗a4+ 62.♖f3 ♖f7 63.♖e3 ♖g6 64.♖f3 ♖xg5 65.♗g1+ ♖f6 66.♗a1 ♖e5 67. ♗e1+ ♖d4 0-1

E68 King's Indian Fianchetto

Faris Gulamali (1701)

David Hendricks (1615)

SeaTac, Washington Class (B-3) 2011

1.d4 ♗f6 2.c4 g6 3.♗f3 ♗g7 4.♗c3 O-O 5.g3 d6 6.♗g2 c6 7.O-O ♗bd7 8.e4 e5 9.♗e1 exd4 10.♗xd4 ♗e5 11.b3 c5 12.♗de2 ♗g4 13.♗f1 ♗xe2 14. ♖xe2 ♗fd7 15.♗b2 ♗c6 16.♗b5 ♗xb2 17.♖xb2 ♗ce5 18. ♗ad1 a6 19.♗xd6 ♖c7 20.f4 ♗c6 21.e5 ♗b6 22.♗e4 ♗d4 23.♗xc5 ♗f5 24.♖f2 ♗ab8 25.♗e4 ♗fd8 26.♗f6+ ♖g7 27.♗d5 ♗xd5 28. ♗xd5 ♗e7 29.♗xd8 ♗xd8 30.♗e4 ♗d7 31.♖b2 ♖c5+ 32.♖h1 ♖g8 33.♖f2 ♖b4 34.♖e1 ♖c5 35.♖c3 b5 36.♗f3 b4 37.♖b2 ♖e3 38. ♖e2 ♖c3 39.♗d1 ♗d4 40.♗xd4 ♖xd4 41.e6 f5 42.♖g2 h6 43.♖d1 ♖b2+ 44.♖g1 ♖g7 45.♖d6 ♖c1+ 46.♖f2 ♖b2+ 47.♗e2 ♖f6 48.c5 ♖xa2 49.♖e5 mate

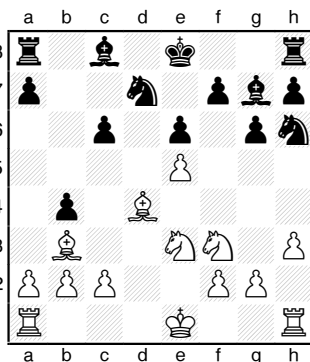
B08 Pirc

Joshua Dokjnas (1676)

David Hendricks (1615)

SeaTac, Washington Class (B-4) 2011

1.e4 d6 2.d4 ♗f6 3.♗c3 g6 4.♗f3 ♗g7 5.♗c4 c6 6.♗e3 b5 7.♗b3 b4 8.e5 dxe5 9.dxe5 ♖xd1+ 10.♗xd1 ♗g4 11.♗d4 e6 12.h3 ♗h6 13.♗e3 ♗d7



14.O-O-O? c5 15.♗a4 cxd4 16.

♗xd4 ♖e7 17.♗xd7 ♗xd7 18.♗xb4 ♗hb8 19.♗xb8 ♗xb8 20.c4 ♗c6 21.♗d4 ♗a8 22.f4 ♗f5 23.♗dxf5+ gxf5 24.♗d1 ♗d8 25.♗xd8 ♖xd8 26.b4 f6 27.exf6 ♗xf6 28.g4 ♗d4 29.♗c2 ♗c3 30.gxf5 exf5 31.♗e3 ♗e4 32.b5 ♖d7 33.c5 h5 34.a4 ♗d4 35.c6+ ♖c7 36.♗f1 ♗f2 37. ♖d2 h4 38.♖e2 ♗b6 39.♗e3 ♗xe3 40.♖xe3 ♗g2 41.♖f2 ♗xh3 42. ♖g1 ♗g4 43. ♖h2 ♗d1 44. a5 ♗e2 0-1

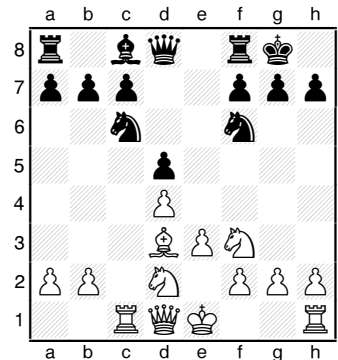
A13 English Opening

Stephen Buck (1700)

Dan Mathews (1794)

SeaTac, Washington Class (B-4) 2011

1.c4 e6 2.♗f3 d5 3.cxd5 exd5 4. d4 ♗f6 5.e3 ♗b4+ 6.♗d2 ♗xd2+ 7.♗bxd2 O-O 8.♗d3 ♗c6 9.♗c1



9...♗g4 10.a3 a6 11.O-O ♖d6 12. ♖c2 h6 13.h3 ♗xf3 14.♗xf3 ♗fe8 15.♗d2 ♗e7 16.♗b3 ♗d8 17.♗c5 c6 18.♗cd1 ♗e6 19.♗xe6 ♗xe6 20.♖b3 ♗e7 21.♗c1 ♗ae8 22. ♖c2 ♗e4 23.♗xe4 ♗xe4 24.♗ce1 f5 25.♖d2 ♖e6 26.♗e2 f4 27.f3 ♗xe3 28.♗xe3 ♖xe3+ 29.♖f2 ♖xf2+ 30.♖xf2 ♗e3 31.♗d1 ♗b3 32.♗d2 ♖f7 33.g3 fxg3+ 34.♖xg3 ♖f6 35.♖g4 g5 36.♖g3 h5 0-1

WA Blitz Winners

(10 players, 5 double rds.)

1st	Nick Raptis	8.5
=2nd/3rd	Elliott Neff	6.5
	Dave Zick	6.5
U2000	Mark Smith	5.0
U1700	Anthony Lamb	0.5

Idaho Open

April 21-22, 2012

A two-section, five-round Swiss with a time control of G/120; d5. The prize fund of \$485 is based on 30 players, not including Idaho State University students.

a Robert A Karch Grand Prix event

Open \$175-85-65 Reserve (U1400) \$75-50-35

Entry Fee: \$30, juniors u18 and seniors over 60 -\$2), ISU students and ISUCC members - \$10, if received by April 18. \$5 more thereafter. USCF membership required.

Registration and Check-in: 7:30-8:30 a.m. Those not paid and checked in by 8:30 may not be paired in the first round.

Rounds: 9-2-7, 9-2. **Byes:** One half-point bye available, rounds 1-4; zero-point bye for round five. Must commit by the end of Round Two.

Site: Idaho State University, Student Union Building, Salmon River Suites, 1065 S Eighth St, Pocatello, Idaho.

Miscellaneous: No smoking. No computers. Wheelchair accessible.

Entries and Information (including lodging rates): ICA c/o Jay Simonson, 391 Carol Ave, Idaho Falls ID 83401; 208-206-7667; rooknjay@yahoo.com; www.idahocheessassociation.org.

D74 Grunfeld

**Faris Gulamali (1701)
Charles Whitmer (1720)**

SeaTac, Washington Class (B-6) 2011

1.d4 ♘f6 2.c4 g6 3.♗f3 ♙g7 4.g3
d5 5.♗c3 c6 6.cxd5 ♘xd5 7.♙g2
O-O 8.O-O ♙g4 9.♘xd5 ♗xd5 10.
♗e5 ♗e6 11.♗f3 ♗d8 12.e3 ♗d7
13.♗b3 ♙xf3 14.♙xf3 ♗c8 15.
♙d2 ♗a6 16.♙c3 ♗c7 17.♙a5 e6
18.♗ac1 ♗d7 19.♗fd1 ♗b8 20.
♙b4 ♗d5 21.e4 ♗xb4 22.♗xb4
♗d8 23.♗c4 f5 24.exf5 exf5 25.
♗b3 ♗h8 26.♗e3 ♗e8 27.♗f4
♗bd8 28.b3 ♗e7 29.h3 ♙f6 30.h4
♗d6 31.h5 ♙g5 32.♗e5+ ♗xe5
33.dxe5 ♗xd1+ 34.♙xd1 ♗xd1+
35.♗g2 ♙e7 36.hxg6 hxg6 37.
♗a4 a6 38.♗f3 g5 39.♗e2 ♗d5
40.f4 gxf4 41.gxf4 a5 42.♗c4 ♙b4
43.♗c2 ♗c5 44.♗b2 ♗d5 45.♗e3
♙c5+ 46.♗e2 ♗d4 47.♗c2 ♙f8 48.
♗e3 ♗e4+ 49.♗f3 ♙h6 50.♗h2
♗xf4+ 51.♗g3 ♗g4+ 52.♗f3 ♗g7
53.e6 ♙g5 54.♗e2 ♗e4 55.♗g2
♗f6 0-1

D14 Slav Exchange

**James Colasurdo (1784)
Stephen Buck (1700)**

SeaTac, Washington Class (B-6) 2011

Annotations by Murlin Varner

1.d4 d5 2.c4 c6 3.cxd5 cxd5 4.♗f3
♗f6 5.♗c3 ♗c6 6.♙f4 ♙f5 7.♗b3
♗b6 8.e3 ♗xb3 9.axb3 e6 10.♙b5
♙b4 11.O-O

11.♗e5 ♗e4 12.♙xc6+ bxc6 13.
♗xc6 ♙xc3+ 14.bxc3 ♗xc3 15.f3 ♗d7
16.♗e5+ ♗e7 17.♗d2 ♗hc8 18.g4
♙g6 19.♗hc1 ♗b1+ 20.♗axb1 ♙xb1
21.♗xb1 f6 22.♗d3 a5 23.♗a1 ♗c6 24.
♗c5 ♗b6 25.♙g3 ♗b5 26.♗d3 e5 27.
♙e1 h5 28.gxh5 f5 29.b4 e4+ 30.fxe4
fxe4+ 31.♗e2 ♗h8 32.♗xa5 ♗bb8 33.
♗a7+ ♗e8 34.♙g3 1-0, (Orlov-Aliev,
Simferopol 1989)

11...O-O 12.♗a4 ♙xc3 13.bxc3 ♗fc8
14.♗c1 a6 15.♙e2 h6 16.h3 ♗d7
17.♙d6 g5 18.♗aa1 ♙g6 19.h4 f6
20.c4 dxc4 21.♙xc4 ♙f7 22.hxg5
hxg5 23.g4 ♗g7 24.♗g2 ♗h8 25.

♙xa6 ♗xd4 26.♙xb7 ♗xa1 27.
♗xa1 ♗xb3 28.♗a7 ♗dc5 29.
♙c6 ♗c8 30.♙b5 ♗g6 31.♙c4
♗c1 32.♙c7 ♗1d3 33.♗d4 ♗b4
34.f4 ♗d5 35.♙xd5 exd5 36.♗f5
♗e8 37.♙b6 ♗e6 38.♗e7+ ♗g7
39.♗xd5 ♗b8 40.♗g3 ♗c8 41.
♗e7 ♗b8 42.♗f5+ ♗g6 43.♗a6
♗e8 44.♙c5 ♗h7 45.♗d6 46.♗xf7
♗g6?? 1-0

46...gxf4+ 47.♗f3 ♗xc5 48.♗xf6
fxe3 49.♗g5+ ♗g7 50.♗f7+=

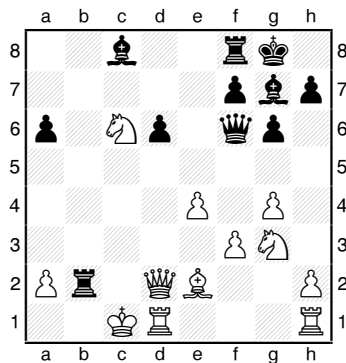
E84 King's Indian Saemisch

**Masayuki Nagase (1688)
Frederick Davis (1596)**

SeaTac, Washington Class (B-6) 2011

Annotations by Murlin Varner

1.d4 ♗f6 2.c4 g6 3.♗c3 ♙g7 4.e4
d6 5.f3 O-O 6.♙e3 ♗c6 7.♗d2 a6
8.♗ge2 ♗b8 9.g4 b5 10.♗g3 bxc4
11.♙xc4 e5 12.d5 ♗d4 13.♙xd4
exd4 14.♗ce2 ♗d7 15.♗xd4 ♗f6
16.O-O-O ♗e5 17.♙e2 c5 18.dxc6
♗xc6 19.♗xc6 ♗xb2



20.g5??

20.e5 dxe5 21.♘e4+-

20...♖b1+! 21.♔xb1 ♗a1+ 22.♔c2 ♗xa2+ 23.♔c1 ♗a1+ 24.♔c2 ♗b2+ 25.♔d3 ♗b3+ 0-1

D02 London System

David Hendricks (1615)

James Soetedjo (1618)

SeaTac, Washington Class (B-6) 2011

Annotations by Murlin Varner

1.d4 ♘f6 2.♗f4 d5 3.e3 e6 4.♘f3 ♗d6 5.♗g3 O-O 6.♗d3 b6 7.♘bd2 ♗b7 8.♘e5 ♘bd7 9.O-O ♘e4 10.f3 ♘g3 11.hxg3 ♘xe5 12.dxe5 ♗xe5 13.♔f2 ♗xb2 14.♖b1 ♗c3 15.♖h1 h6 16.f4 ♗xd2 17.♗xd2 c5 18.c3 ♗e7 19.♗e2 c4 20.♗c2 ♗f6 21.g4 g5 22.♖h3 ♔g7 23.♖bh1 ♖h8 24.♗d2 e5 25.♔g3 exf4+ 26.exf4 gxf4+ 27.♔f2 ♖ae8 28.♖f3 ♖e3 29.♗d4 ♗xd4 30.cxd4 ♖he8 31.♖xe3 ♖xe3

31... fxe3+

32.♖h5 ♖a3 33.♗b1 ♖g3 34.♖e5 ♖e3 35.♖f5 ♖e7 36.♖xf4 ♖c7 37.♔e3 b5 38.a3 a5 39.♔d2 b4 40.axb4 axb4 41.♖f5 ♖e7 42.♖f2 c3+ 43.♔d1 b3 44.♗d3 c2+ 45.♗xc2 bxc2+ 46.♔xc2 ♖e4 47.♔c3 ♖xg4 48.♔d3 ♖g3+ 49.♔d2

♗a6 50.♔c2 ♖d3 51.♖f4 ♗c4 52.♔b2 ♖d2+ 53.♔c3 ♖xg2 54.♖f3 h5 0-1

Class C Section

C02 French Advance

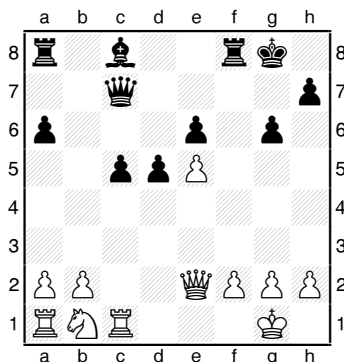
Carl Dutton (1451)

Murlin Varner (1500)

SeaTac, Washington Class (C-1) 2011

Annotations by Murlin Varner

1.e4 e6 2.d4 d5 3.e5 c5 4.c3 ♘c6 5.♘f3 f6 6.exf6 ♘xf6 7.♗b5 a6 8.♗xc6+ bxc6 9.♘e5 ♗c7 10.♗g5 ♗e7 11.♗xf6 ♗xf6 12.♗h5+ g6 13.♗e2 cxd4 14.cxd4 O-O 15.O-O c5 16.♖c1 ♗xe5 17.dxe5



17... c4?!

17...♖f5 18.♖e1 ♗b7

18.b3 ♖f5 19.g3 ♖xe5 20.♗d2 ♗b7 21.bxc4? dxc4 22.♘a3?? ♗d5?

22...♗c6

23.♗c3 ♖f8! 24.♘xc4?? ♗xc4 25.♗xc4? ♖e1+! 26.♔g2 ♗xc4 27.♖xc4 ♖xa1 28.♖a4 ♖a8 29.f4 ♔f7 30.♔h3 h6 31.♔g4 ♔f6 32.h4 h5+ 33.♔f3 ♖c1 34.g4 ♖c3+ 35.♔g2 hxg4 36.♔f2 a5 37.♔g2 ♔f5 38.♔f2 ♖f3+ 39.♔g2 ♖xf4 40.♖a3 a4 41.♔h2 ♖b8 42.♔g2 ♖b2+ 43.♔g3 ♖f3+ 0-1

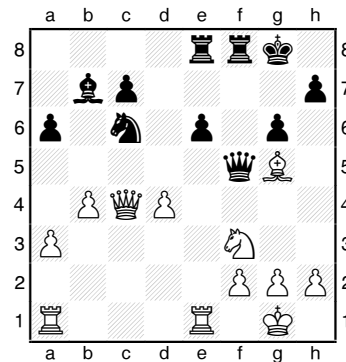
D06 QGD Marshall

Diallo Wilson (1470)

Jothi Ramesh (1527)

SeaTac, Washington Class (C-1) 2011

1.d4 ♘f6 2.c4 d5 3.cxd5 ♗xd5 4.♘c3 ♗d8 5.e4 e6 6.a3 ♘c6 7.♘f3 ♗e7 8.♗c4 O-O 9.O-O a6 10.b4 b5 11.♗b3 ♗b7 12.♗c2 g6 13.♖e1 ♘d7 14.e5 ♘b6 15.♘e4 f6 16.♗b3 ♘c4 17.exf6 ♗xf6 18.♘xf6+ ♗xf6 19.♗g5 ♗f5 20.♗e2 ♖ae8 21.♗xc4 bxc4 22.♗xc4



22...♘d4 23.♗xd4 ♗xf3 24.♖e5 ♗g4 25.♗xg4 ♗xg4 26.♖c1 ♖f7 27.♖c6 ♖d7 28.h3 ♗f5 29.♖xa6 ♖f8 30.g4 ♖d1+ 31.♔g2 ♗d3 32.♖axe6 ♗f1+ 33.♔g3 ♖a8 34.♖e8+ ♖xe8 35.♖xe8+ ♔f7 36.♖e7+ ♔g8 37.♖xc7 ♖d3+ 38.♗e3 ♖xa3 39.♖b7 ♖b3 40.h4 ♔h8 41.♔f4 ♗a6 42.♖b6 ♗c4 43.♔g5 ♖d3 44.♔f6 ♖d7 45.♖b8+ ♗g8 46.b5 ♖f7+ 47.♔g5 1-0

C07 French Tarrasch

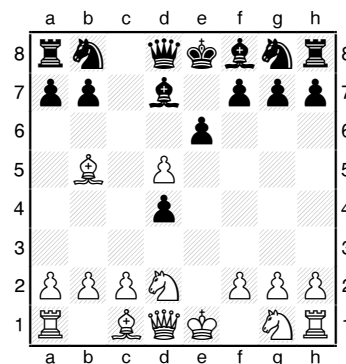
Keith Huntzinger (1351)

Jerrold Richards (1310)

SeaTac, Washington Class (C-2) 2011

Annotations by Murlin Varner

1.e4 e6 2.d4 d5 3.♘d2 c5 4.exd5 cxd4 5.♗b5+ ♗d7



In the Scholastic Event, there were 88 players: K-3 U800 (20), K-3 Open (20), 4-6 U900 (10), and 4-7 Open (38). The winners were: **K-3 U800** – 1st Ryan Tang, 4.5; =2nd-4th Anuta Baturyski, Byron Fong, Hubert Jiang, 4.0; **K-3 Open** – 1st Aaryan Deshpande 5.0, 2nd Eric Zhang 4.0, =3rd-5th James Lai, Justin Chen, and Anthony He 3.5; **4-6 U900** =1st-3rd Jerry Cao, Ben Scheizer, and Andrew Salazar 4.0, =4-6th Tristan Park, Celina Yu, and Kilyan White 3.0; **4-7 Open** 1st Kyle Haining 5.0, =2nd-4th Reese Watabayashi, Olga Cherepakhin, and Jan Buzek 4.0. All of the above winners received a trophy. **Top Teams:** 1st Somerset 13.5, 2nd Spirtridge 13.0, 3rd Samantha Smith 11.5, 4th McAvliffe 11.0. TD David Hendricks.—Gary Dorfner

Portal Games Presents

The Portland Chess Shop

\$1,000 Cash Prizes Guaranteed
Sunday, March 4 • \$35 Entry

SIX-ROUND SWISS RAPID G/15 CHESS TOURNAMENT
USCF QUICK RATED SECTION IS A NWC GRAND PRIX EVENT & OSCF QUALIFIER
NOT RATED SECTION HAS NO MEMBERSHIP FEES
THREE POINTS FOR A WIN SCORING SYSTEM
\$1,000 CASH PRIZES GUARANTEED!

RATED SECTION

1ST \$300
2ND \$200
3RD \$100

NOT RATED SECTION

1ST \$250
2ND \$100
3RD \$50

Sunday, March 4

Registration @ 2:00 pm – 2:45 pm • Tournament @ 3:00 pm – 6:00 pm

PORTAL
G A M E S

1224 SW Broadway • Portland, OR 97204 • 503-575-4887
www.portalgamespdx.com • galen@portland-chess.com

6.dxe6 ♟xb5 7.exf7+ ♔xf7 8. ♖h5+ g6 9.♗xb5 ♖e7+ 10.♗e2 ♟g7 11.O-O ♗c6 12.♗f3 h6 13. ♖e1 ♖e8 14.♟d2 a5 15.♗f4 ♟e5 16.♗b3+ ♔g7 17.♗xe5 ♗xe5 18. ♗d3 ♖f6 19.♗xe5 ♖xe5 20. ♗xb7+ ♗e7 21.♖xe5 ♖f8 22. ♗xe7+ ♖f7 23.♗xf6+ ♔xf6 24. ♖xa5 ♖c7 25.c3 dxc3 26.♟xc3+ ♔f7 27.♖e1 g5 28.♟d4 ♔g6 29. g4 ♖c4 30.♖e6+

30.♖a7

30...♔f7 31.♖f6+ ♔e7 32.♖a7+ ♔e8 33.♖xh6 1-0

C01 French Exchange

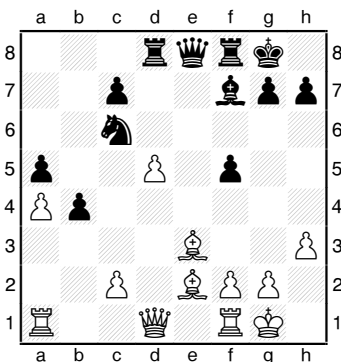
James Wang (1334)

Murlin Varner (1500)

SeaTac, Washington Class (C-3) 2011

Annotations by Murlin Varner

1.e4 e6 2.d4 d5 3.exd5 exd5 4. ♗c3 ♟b4 5.♗f3 ♗c6 6.♟b5 ♗ge7 7.O-O O-O 8.♟g5 f6 9.♟e3 a6 10. ♟d3 ♟g4 11.h3 ♟h5 12.a3 ♟xc3 13.bxc3 b5 14.a4 b4 15.c4 dxc4 16. ♟xc4+ ♟f7 17.♟d3 a5 18.♗h4 ♖e8 19.♗f5 ♗xf5 20.♟xf5 ♟g6 21.♟g4 ♖d8 22.d5 f5 23.♟e2 ♟f7



24.♟c5?? ♖xd5 25.♟xf8 ♖xd1 26.♟xd1 ♟c4! 27.♟c5 ♖e5?!

27...♟xf1 28.♟xb4 ♟xg2 29.♔xg2 ♗xb4

28.♟e2 ♟xe2 29.♖fe1 ♖xc5 30. ♖xe2 ♗d4 31.♖e3 f4

31...♖xc2

32.♖d3 ♖e5 33.♖ad1 c5 34.♔h1 ♗xc2?

34...♖e8

35.♖d8+ ♔f7 36.♖8d7+ ♔e6 37. ♖d8 c4 38.♖e8+ ♔f6 39.♖xe5

♔xe5 40.♔g1 c3 41.♔f1 ♔e4 42. ♔e2 ♗d4+ 43.♔e1 c2 44.♖a1 ♗b3 45.f3+ ♔e3 0-1

A17 English Opening

Murlin Varner (1500)

Logan MacGregor (1427)

SeaTac, Washington Class (C-4) 2011

Annotations by Murlin Varner

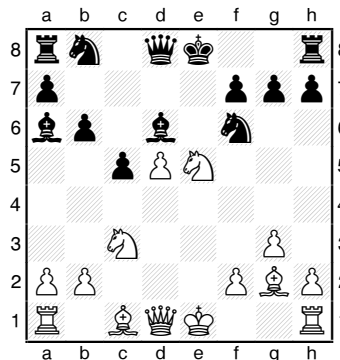
1.c4 ♗f6 2.♗c3 e6 3.g3 ♟e7 4.e4 b6 5.♟g2

5.e5 ♟b7 6.exf6 ♟xh1 7.fxg7 ♖xe7 8.d4±

5...♟b7 6.d4 c5 7.d5 exd5 8.cxd5

8.e5 ♗g8 9.♗xd5

8...d6 9.♗f3 ♟a6 10.e5 dxe5 11. ♗xe5 ♟d6



12.♟f4?

12.♖a4+ b5 13.♗xb5 O-O 14.♗xd6 ♖xd6 15.♗c4

12...O-O 13.♔d2 ♖e8

13...g5 14.♟xg5 ♟xe5 15.♔c2±/+

14.♖e1 ♟b7 15.♔c2 ♗a6 16.a3 ♖c8 17.♗c6 ♖xe1 18.♖xe1 ♟xc6 19.♟xd6?

19.dxc6 ♟xf4 20.♖d1 ♖f8 21. gxf4±/=

19...♟xd5?

19...♟a4+ 20.♗xa4 ♖xd6±/±

20.♗xd5 ♗xd5 21.♟xd5 ♖xd6 22. ♟b7 ♖b8 23.♟xa6

23.♖d1 ♖g6+ 24.♔c1 ♖h6+ 25. f4±/+

23...b5 24.♟xb5 ♖b6 25.♖e2 ♖xb5 26.♖xb5 ♖xb5 27.♖d1 ♔f8 28. ♔c3 a5 29.b3 ♖b7 30.♖d5 ♖e7? 31.♖d8+ 1-0

A22 English Opening

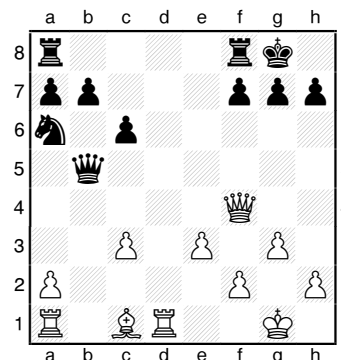
Murlin Varner (1500)

Sangeeta Dhingra (1513)

SeaTac, Washington Class (C-6) 2011

Annotations by Murlin Varner

1.c4 e5 2.♗c3 ♗f6 3.g3 d5 4.cxd5 ♗xd5 5.♟g2 ♟e6 6.e3 c6 7.♗ge2 ♟e7 8.O-O O-O 9.d4 exd4 10.♗xd5 ♟xd5 11.♟xd5 ♖xd5 12.♖xd4 ♖f5 13.♖d1 ♟f6 14.♖f4 ♖b5 15. ♗c3 ♟xc3 16.bxc3 ♗a6



17. ♟d2?

17.♟a3c5 18.c4 ♖a4 19.♟b2

17...♖ad8 18.♖ab1??

18.♟e1 ♖xd1 19.♖xd1 ♖e2 20. ♖d4

18...♖xd2 19.♖xd2

19. ♖f1

19...♖xb1+ 20.♔g2 ♗c5 21. ♖d6? ♗e4 22.♖d1 ♖xa2 23.♖d7 ♖xf2+ 24.♔h3 ♖xe3 25.♖d4 ♗xc3 26.♖g4 ♖b6 27.♖d4 a5 28. ♖d3 ♗d5 29.♖f3 a4 30.♖f5 ♖b2 31.♖g4 a3 32.♖a4 a2 33.♖a3 ♗c3 34.♖a5 b5 35.♖a6 ♗a4 0-1

Class D Section

C28 Giuoco Piano

Jiangyu Li (1201)

Ramone LaMadrid (1332)

SeaTac, Washington Class (D-6) 2011

Annotations by Murlin Varner

1.e4 e5 2.♗f3 ♗c6 3.♟c4 ♗f6 4. ♗c3 ♟b4 5.d3 d5 6.exd5 ♗xd5 7. ♟d2 ♟xc3 8.bxc3 O-O 9.♗g5 h6 10.♖f3

10...♗f4 11.♗e4 ♗e6 12.g4 ♖h4 13. ♖g3 ♖xg3 14.hxg3 ♗a5 15.♟d5 c6 16.♟xe6 ♟xe6 17.c4 b6 18.♟xa5 bxa5

19.f3 f5 20.♘c5 ♖ae8 21.gxf5 ♗xf5 22. ♘e2 ♙c8 23.♖ab1 ♗ef8 24.♖b8 ♘h7 25. g4 ♗f4 26. ♗g1 g5 27. ♖a8 ♙xg4 28.♖xa7+ 1-0, (Ljubisavljevic-Finger, Biel 1979)

10...♘f6 11.♘e4 ♙g4? 12.♘xf6+ ♗xf6 13.♗xg4 ♘e7 14.O-O c6 15. ♖ae1 b5 16. ♙b3 a5 17. a3 ♗fd8 18. ♗e3 g6 19. ♗f3 ♘f5 20. ♙xh6 ♘xh6 21.♖xf6 ♘xg4 22.♖xf7

22. ♖xg6+

22...♘h8 23.♖e1 ♗f8 24.h3 ♖xf7 25.♙xf7 ♘xf2 26.♖xe5 ♗f8 27. ♖e8 ♖xe8 28.♙xe8 ♘d1 29. ♙xc6 ♘xc3 30.♘f2 a4 31.♘e1 b4 32.♘d2 ♘b1+ 33.♘c1 ♘xa3 34. ♙xa4 ♘g7 35.♘b2 ♘f6 36.♘b3 ♘b1 37.♘xb4 ♘d2 38.c4 ♘e6 39. c5 ♘d5 40.c6 ♘d6 41.♘b5 ♘c7 42.♘c5 ♘b1 43.d4 ♘c3 44.♙b5 ♘e4+ 45.♘b4 ♘b6 46. ♙d3 ♘f6 47.♙xg6 ♘xc6 48.♘c4 ♘d5 49. ♙e4 1-0

C78 Ruy Lopez

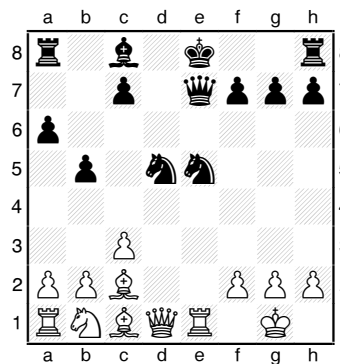
Ramone LaMadrid (1332)

Matthew Coopersmith (WA)

SeaTac, Washington Class (D-3) 2011

Annotations by Murlin Varner

1.e4 e5 2.♘f3 ♘c6 3.♙b5 ♘f6 4. O-O a6 5.♙a4 ♙c5 6.c3 b5 7.♙c2 d5 8.d4 ♙d6 9.exd5 ♘xd5 10. dxe5 ♙xe5 11.♘xe5 ♘xe5 12. ♖e1 ♗e7



12...♗f6 13.♗xd5 c6 14.♖xe5+ ♗xe5 15.♗xe5+ (1-0 in 30, Lowke-Lorenz, Greifswald 2001)

13.♗xd5?? ♘f3+ 14.gxf3 ♗xe1+ 15.♘g2 ♖b8?

15...♗xc1 16.♗c6+ ♘f8 17.♗xa8 ♗g5+ 18.♘h1 ♗c1+ 19.♘g2=

16.♙e3±/+ O-O 17.♗h5 g6 18. ♗h6 ♙e6 19.♙d4 f6 20.♘d2?

20.♙xg6 hxg6 21.♗xg6+ ♘h8 22. ♙xf6+ ♖xf6 23.♗xf6+ ♘h7+

20...♗xa1 21.♘e4??

21.♙xg6

21...♗xb2??

21...♙c4 22.h4 ♖bd8 23.h5 ♗f1+ 24.♘h2+

22.♘xf6+ ♖xf6 23.♙xf6 ♘f7 24. ♗g7+ ♘e8 25.♗e7 mate

Class E & Under

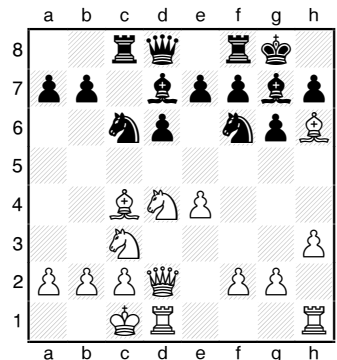
B72 Sicilian Dragon

Zuberi Wilson (1087)

Andreas Farny (738)

SeaTac, Washington Class (E-1) 2011

1.e4 c5 2.♘c3 ♘c6 3.♘f3 g6 4.d4 cxd4 5.♘xd4 ♙g7 6.♙e3 d6 7.♙c4 ♘f6 8.h3 O-O 9.♗d2 ♙d7 10.O-O-O ♖c8 11.♙h6



11...♘xd4 12.♙xg7 ♘xg7

12...♖xc4 13.♙xf8 ♗xf8

13.♗xd4 ♖c5 14.f4 ♗c7 15.♙b3 ♘g8 16.♖de1 a6 17.e5 dxe5 18. fxe5 ♘h5 19.♖hg1 ♖c6 20.♗h4 e6 21.♖gf1 ♗d8 22. ♗f2 ♘g7 23. ♘e4 ♘e8 24.♘f6+ ♘xf6 25. exf6 ♖e8 26.♗h4 e5 27.g4 ♙e6 28. ♗h6 ♗xf6 29.♖xf6 ♙xb3 30. ♖xc6 bxc6 31.cxb3 e4 32.♗f4 e3 33.♖xe3 ♖xe3 34.♗xe3 ♘g7 35. ♗b6 a5 36.♗xa5 ♘h6 37.h4 f6 38. g5+ fxg5 39.♗xg5+ ♘g7 40.a4 h6 41.♗e7+ ♘g8 42.a5 g5 43.hxg5 hxg5 44.a6 g4 45.a7 g3 46.a8=♗ mate

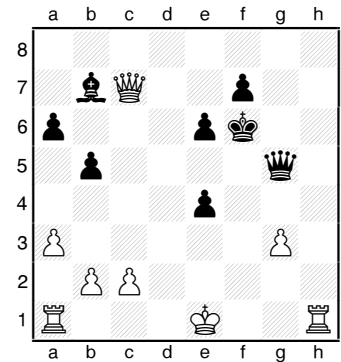
B95 Sicilian Najdorf

Audrey Whitmer (861)

LeBron Sims (1095)

SeaTac, Washington Class (E-1) 2011

1.e4 c5 2.♘f3 d6 3.d4 cxd4 4.♘xd4 ♘f6 5.♘c3 a6 6.♙g5 e6 7.♙e2 ♙e7 8.O-O ♗c7 9.♗d3 ♘bd7 10. ♖fe1 h6 11.♙h4 g5 12.♙g3 b5 13. a3 ♙b7 14.h3 h5 15.h4 gxh4 16. ♙xh4 ♘g4 17.♙xe7 ♘xe7 18.f3 d5 19.fxg4 hxg4 20.g3 ♖h3 21.♘g2 ♖ah8 22.♙xg4 ♖h2+ 23. ♘f1 ♘e5 24.♗d1 ♘xg4 25.♗xg4 ♗c4+ 26. ♘ce2 ♖h1+ 27.♘f2 ♖8h2+ 28.♘f3 dxe4+ 29.♘e3 ♖xe2+ 30.♗xe2 ♗c5 31.♖xh1 ♗g5+ 32.♘f2 ♗f6+ 33.♘e1 ♗xd4 34.♗d2 ♗e5 35. ♗c3 ♗g5 36.♗c7+ ♘f6



37.♗xb7?? ♗xg3+ 38.♘e2 ♗f3+ 39.♘d2 e3+ 40.♘d3 ♗xb7 41. ♘xe3 ♗b6+ 42.♘d3 ♗d6+ 43. ♘e3 ♗e5+ 44. ♘d3 ♗d5+ 45.♘c3 ♗c5+ 46.♘b3 ♗c4 mate

C41 Philidor

Allistair Yu (1007)

Breck Haining (1114)

SeaTac, Washington Class (E-2) 2011

Annotations by Murlin Varner

1.e4 e5 2.♘f3 d6 3.♘c3 c6 4.d4 ♙e7 5.♙c4 exd4 6.♘xd4 b5 7.♙b3 ♙d7 8.O-O ♘f6 9.f4 O-O 10.e5 dxe5 11.fxe5 ♘e8 12.♙e3 c5 13. ♙d5?

13.♘dxb5+

13...cxd4 14.♙xa8??

14.♗xd4+

14...dxe3 15.♗e2 ♗b6 16.♘d5 ♗c5 17.♘xe3 ♗xe5 18.c3 ♙c5 19.♖f3 ♙g4 20.♖e1 ♙xf3 21. ♙xf3 ♗xe3+ 22.♗xe3 ♙xe3+ 23. ♖xe3 ♘d6 24.♖e7 a6 25.♖d7 ♘xd7 0-1

Idaho Chess News

By Jeff Roland

There were no completed events to cover for this issue (late December and early January being a slow time for chess in Idaho), but the ICA is busy organizing many events for the upcoming months. Details of all these events, as they become known, are to be found at www.idahochessassociation.org.

The **Idaho Scholastic Novice Tournament** and **Idaho Scholastic Girls Championship** will be held on February 25 at Fairmont Junior High School in Boise. And the premier scholastic event of the year, the **Idaho Scholastic Championship** (affectionately known as “State!”) is all set for March 17, 2012 at West Junior High School in Boise. This will be the 33rd annual event and, as always, promises to be most exciting.

At time of this article, we are finalizing the details of the **Idaho Open**, which will be on April 21-22, 2012 in Pocatello. This tournament is noteworthy in that it is the FIRST-EVER Idaho tournament that is also a Northwest Grand Prix event! We hope to have many more NWGP events in the future, but this is our first!

We are also organizing two tournaments in Boise (also to be NWGP events): the **Second Annual ICA Players Memorial**, tentatively scheduled for May 19-20, and the **ICA Summer Classic**, tentatively scheduled for July 21-22. And June 9-10, again, tentative at this point, will see the **Northern Idaho Open**, which we hope to have in Lewiston.

Of course, **Idaho Closed State Championship** (which is only open to Idaho players) is set to be played February 18-20 at the AmeriTel Inn (Boise Towne Square), in Boise. Current policy is that this event alternates yearly between Boise and Twin Falls, and this year it will be in Boise. It is a very important tournament in Idaho and many players gear up for it each year in order to have a chance to become Idaho State Chess Champion.



Tom Booth

Photo by Jeff Roland

Tom Booth (from Caldwell, Idaho), pictured above, is 66 years old, but he just seems to get better and better with time. In Idaho, we affectionately call him “Grandmaster Booth.” He is one of the hopefuls who will likely play at the Idaho Closed next month for the Idaho State Chess Championship title (competition for this is VERY stiff). Tom works at a prison and has a passion for prison chess. He often wonders how the prisoners play so well, and they tell him, truthfully, that they have lots of time to prepare things for him!

I know he’s played chess at least as far back as 1972, when Fischer was big news. Tom likes to play casually at the Boise Chess Club, which meets each Monday at All About Games on Overland in Boise, and has a wonderful attitude toward others and toward chess. He has been a strong and consistent player for many years. We are very grateful for Tom Booth and what he brings to chess in Idaho, and we look forward to seeing him play in future events.

Idaho Chess Association

Upcoming Tournaments

Idaho Closed

Boise, ID February 18-20, 2012

ICA Board of Directors

President: Jay Simonson

(rooknjay@yahoo.com)

Vice President: Kevin Patterson

(kpatt42@msn.com)

Secretary/Treasurer: Adam Porth

(aporth1@cox.net)

Trustee for Website Development and Maintenance:

Jeff Roland (jroland@cablone.net)

Trustee for Scholastic Development: Craig Barrett

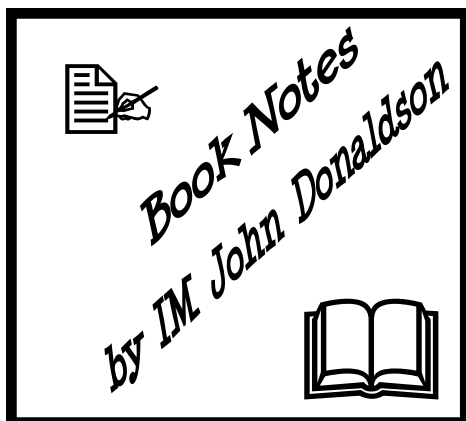
(craig.barrett@ch2m.com)

Trustee for Tournament Organization: Barry Eacker

(mol@q.com)

Trustee for Tournament Organization: Hugh Myers

(hsmyers@gmail.com) ■



1.d4–Beat the Guerrillas! (New in Chess 2011, pb, 272 pages, FAN, \$24.95) by Valeri Bronznik

This is a new type of opening guide, an updated translation of *1.d4 – Ratgeber gegen unorthodoxe Eröffnungen*, that seeks to fill a gap by covering a variety of overlooked systems in one book. Along the lines of Kiril Georgiev’s *Squeezing the Gambits* (which dealt with the three Bs: the Benko, Blumenfeld and Budapest) Bronznik aims to provide a practical repertoire for the tournament player against less commonly seen systems after 1.d4.

Part I deals with various Black first moves. The Englund Gambit (1...e5) and off-shoots, the Dutch Benoni (1...c5 2.d5 f5), the Woozle (1...c5 2.d5 ♖f6 3.♗c3), the Polish Defense (1...b5), Owen’s Defense (1...b6 2.e4 ♗b7), 1...♗c6, Keres’ Defense (1...e6 2.c4 ♗b4+), and the English Defense (1...e6 2.c4 b6) are covered in individual chapters.

Part II is devoted to unusual lines after 1.d4 d5 2.c4. Individual chapters are devoted to the Marshall Defense (2...♗f6), the Austrian Defense (2...c5), the Baltic Defence (2...♗f5), the Albin Countergambit (2...e5), the Schara-

Hennig Gambit (2...e6 3.♗c3 c5 4.cxd4 cxd5), and the delayed Stonewall.

Unusual variations after 1.d4 ♗f6 2.c4 are found in Part III. The Snake Benoni (2...c5 3.d5 e6 4.♗c3 exd5 5.cxd5 ♗d6), the Vulture (2...c5 3.d5 ♗e4), the Fajarowicz Gambit (2...e5 3.dxe5 ♗e4), the Budapest Gambit (2...e5 3.dxe5 ♗g4), and the Black Knights’ Tango (2...♗c6) are the principal lines examined.

The subjects of this book could, in fact, be labeled the good, the bad, and the ugly, as they run the gamut from being seen at the highest levels to the lowest! You will never find the Englund Gambit played by 2700s, but some of the others, including the Delayed Stonewall, the Keres and English Defenses and the Black’s Knight Tango are used by the elite from time to time. What Bronznik dubs the Dutch Benoni was played by no less than Mamedyarov this past summer against Seirawan at the World Team Championship in Ningbo.

Bronznik faces a balancing act when presenting his material. He realizes it’s not very practical to offer a lengthy, difficult to remember variation against a line that is rarely met. In such a case, something that offers 90% of the advantage of the “refutation” may be in order. On the other hand, some unusual variations can be beaten only with a strong blow.

One example of the latter situation is Owen’s Defense. After the classical approach 3.♗c3 e6 4.♗f3 ♗b4 5.♗d3 ♗f6 6.♗g5 h6 7.♗xf6 ♖xf6 8.O-O ♗xc3 9.bxc3 d6 10.♗d2! g5!? there is no convincing route to an advantage for White. Bronznik advocates instead 3.♗d3 e6 4.♗c3 ♗f6 5.♗ge2. This setup is well positioned to meet the traditional Owen strategy of ...♗b4. In addition, 5...d5 yields a bad French for the second player. If Black chooses 5...c5, the surprising gambit 6.d5!? leads to very interesting play, but White needs to know something concrete. A little homework will pay large dividends.

Those who play 1.d4 will find *1.d4 – Beat the Guerrillas!* a very practical

way to learn how to meet lesser seen defenses. This book is aimed at players 1800 on up.

Recommended

Chess Evolution: September 2011 (Quality Chess 2011, pb, 365 pp., FAN, \$44.95) by the team of GMs Naiditsch, Bacrot, Maze, Miton, Sedlak, Sokolov, Jobava and Predojevic

This represents something new in chess publishing – getting cutting edge theoretical material to the chess public within weeks of when they are played. While not completely original, Chess-Publishing.com aims for an electronic equivalent, the Chess Evolution series involves several past and present 2700s among its authors, a considerably higher pedigree.

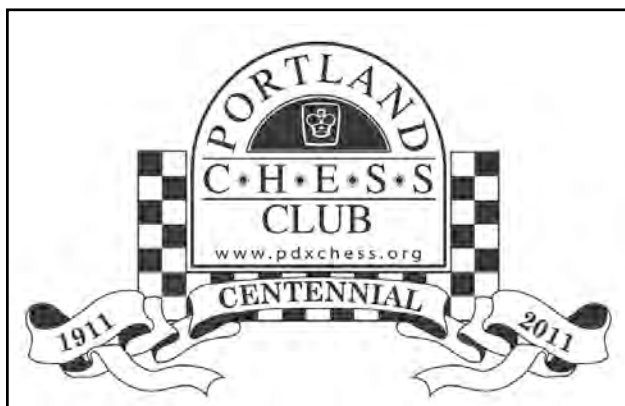
This is not the first volume, go to www.chess-evolution.com for information on older editions, but it the initial one in a partnership between Chess Evolution and Quality Chess, which translates to a marked improvement in the physical qualities of the book—as good as it gets for chess paperbacks in the year 2011.

What the student gets for his or her \$45 is a ton of material which is arranged around fifty games that were played this past July and early August. (This reviewer received his copy in about six weeks!).

The games are heavily annotated (!) in all phases of the game, not just the openings, with plenty of prose and concrete variations. Though each author’s style differs, there is an attempt to put the opening phase in perspective relative to current theory as well as to suggest in what direction things are going.

Although this series is principally aimed at those keen on opening theory, it should interest non-specialists, too. The games are so well annotated in the middle- and endgame phases that this work could easily pass as a best games collection of Biel, Dortmund, the Russian Championship, and the World Team Championship.

Since the games are drawn primarily, but not exclusively, from the 2700 club, the openings tend to reflect what is



popular in those rarefied levels. This means lots of coverage of the Advance Caro Kann, for example.

This is clearly an ambitious project, but who are these books, coming out every two months, aimed for?

Any player over 2200, especially those keen to improve, might find this series one-stop shopping. Besides the games, there is also an instructive eleven-page article on Rook endings by GM Lanka and twelve very challenging puzzles by GM Aagaard. Even the most hardworking will find there is enough material to keep them busy until the next volume appears.

Prospective buyers may wish to check out a sample PDF of part of this book at http://www.qualitychess.co.uk/products/1/139/chess_evolution_september_4_2011_-_edited_by_arkadij_naiditsch/. Also note that there are discounted prices for multi-volume subscriptions (go to the Chess Evolution site for this).

Highly Recommended

Declining the Queen's Gambit (Everyman Chess 2011, pb, 208 pp., FAN, \$26.95) by John Cox

The popularity of this defense at the highest level was demonstrated this spring in Kazan. Time and again some of the best players in the world were unable to show even the smallest of advantages for White.

The present work is a repertoire book and, as is typical for this genre, Cox offers two choices for Black. Against the Queen's Gambit proper this means the Tartakower (1.d4 d5 2.c4 e6 3.♘c3 ♘f6 4.♙g5 ♙e7 5.♘f3 h6 6.♙h4 0-0 7.e3 b6) and the Lasker (6...O-O 7.e3 ♘e4). These systems, both with excellent theoretical reputations, represent roughly a third of the book and 18 of the 53 heavily annotated games around which *Declining the Queen's Gambit* is structured.

The Tartakower is open to more interpretation than the Lasker, principally in whether Black chooses setups based on ...c7-c5 or ...c7-c6. The former might be a clearer route to equality, but the resulting positions are often lifeless with little prospects of playing for a win. Anand-Carlsen, London Classic 2011, is a good example:

1.d4 d5 2.c4 e6 3.♘c3 ♘f6 4.♙g5 ♙e7 5.♘f3 h6 6.♙h4 O-O 7.e3 b6 8.♙e2 ♙b7 9.♙xf6 ♙xf6 10.cxd5 exd5 11.b4 c5 12.bxc5 bxc5 13.♚b1 ♙c6 14.O-O ♘d7 15.♙b5 ♚c7 16.♚c2 Rab8 17.♚fc1 ♙xb5 18.♘xb5 ♚c6 19.♘c3 cxd4 20.♘xd4 ♙xd4 21.exd4 ♚xb1 22.♘xb1 ♚xc2 23.♚xc2

and there was nothing left to play for.

Cox, taking into account his readers will not be facing the World Champion, confines his coverage to Nigel Short's favorite 11...c6, which does not permit such simplification. This is not the only line of Short's that Cox recommends. After examining the Tartakower and Lasker as well as 6.♙xf6 and the currently trendy 4.♘f3 ♙e7 5.♙f4 0-0 6.e3 ♘bd7, the author has a lengthy chapter on the Exchange Variation. This line has long been a favorite at both the amateur and professional level for its ability to steer play into familiar middlegames.

Once again, it is Short that provides Cox with a way to sidestep large amounts of theory with his apparently "ugly" 1.d4 d5 2.c4 e6 3.♘c3 ♘f6 4.cxd5 exd5 5.♙g5 ♙f5 6.e3 c6 7.♚f3 ♙g6 8.♙xf6 ♚xf6 9.♚xf6 exf6. Short (and Cox) show that, despite initial impressions, Black is actually doing fine: his two Bishops compensating for the damaged kingside pawns in this Berlin Wall equivalent of the QGD Exchange. This said, there is one problem—after 6.♚b3 ♘c6 the game is drawn, i.e., 7.♚xb7 ♘b4 8.♚c1 ♚b8 9.♚xa7 ♚a8 and so forth.

Cox attempts to deal with this practical (not theoretical) difficulty by proposing a second system – Lars Bo Hansen's favorite 1.d4 d5 2.c4 e6 3.♘c3 ♘f6 4.cxd5 exd5 5.♙g5 c6 6.♚c2 ♘e7 7.e3 ♘bd7 8.♙d3 ♘h5 and gives convincing demonstrations of its effectiveness. Unfortunately the old problem with move orders crops up if White avoids an early ♚c2. For example, Cox points out that after 6.e3 ♙e7 7.♙d3 ♘bd7 8.♘ge2, 8...♘h5?! does not work out well due to 9.♙xe7 ♚xe7 10.g4! ♘f6 11.♘g3, when White has achieved his maximal setup. Fortunately, the two systems work well together and solve the problem: after 6.e3 Black can play 6...♙f5 to head back into Short's line, having avoided the forced draw variation.

Cox completes his QGD repertoire by offering a line against the Catalan. In 1.d4 d5 2.c4 e6 3.Nf3 Nf6 4.g3 dxc4 5.♙g2 ♙b4+ 6.♙d2 a5, he has chosen a very challenging and fashionable system employed by both Kramnik and Topalov. Cox's coverage is complete up to June of this year and, while theory is constantly changing in this variation, the explanation of what both sides are trying to achieve will prove quite helpful even if a specific line is superceded in the future.

Declining the Queen's Gambit is an excellent repertoire book that pairs up well the author's earlier *Dealing with d4 Deviations* (also Everyman Publishing) which covers everything after 1.d4 d5 except 2.c4. Throw in Cox's book on the Berlin Wall (Quality Chess) and you have a rock solid repertoire for Black that should hold up for a long time.

Recommended

The Ragozin Complex: A Guide for White and Black (New in Chess 2011, pb, 351 pp., FAN, \$27.95) by Vladimir Barsky

Today, with entire books written on sub-variations of popular lines, it seems hard to believe that a popular and well-respected defense is receiving full-fledged treatment for the first time in half a century! Lipnitsky's *Questions of Modern Chess Theory*, published in 1956, included a section on the Ragozin which first introduced Bobby Fischer to this opening. The 2008 English translation by Quality Chess omitted the Ragozin material, but Barsky has translated this missing section to begin his monograph.

Fischer, inspired by Lipnitsky, played the Ragozin and related systems roughly a dozen times between 1958 and 1962, with mixed results. One of his most famous games with it, against Pachmann at Santiago 1959, has recently been making the rounds. Pachman's notes to the game can be found in the recent Czech book *Bobby Fischer proti Českým Velmistřům (Bobby Fischer versus Czech Grandmasters)*. And Lubosh Kavalek takes a fresh look (www.chessbase.com/newsprint.asp?newsid=7717) where he remarks that the notes Hans Kmoch published in *Chess Review* in 1959 were based on a conversation with Fischer.

The Ragozin (1.d4 ♘f6 2.♘f3 d5 3.c4 e6 4.♘c3 ♗b4) straddles the border between the Nimzo-Indian and the Queen's Gambit Declined. Barsky covers a wide field (5.♖a4+, 5.♖c2, 5.♖b3, 5.e3, 5.a3, 5.♗g5, 5.cxd5 exd5 6. ♗g5) in 65 heavily-annotated games (Pachman-Fischer is game #32 in *The Ragozin Complex*). Typical middlegames and endgames are examined along with the opening. At present, the Ragozin is seen predominantly at the professional level, but this book should make the aggressive defense popular with those in the amateur ranks.

Highly Recommended

Chess Evolution 1: The Fundamentals (Quality Chess 2011, pb, 262 pp., FAN, \$29.95) by Artur Yusupov.

Grandmaster Artur Yusupov is coming down the home stretch in his award-winning nine volume guide to chess mastery. His most recent publication is the third and final volume in the introductory level of the series, which is aimed at taking club players to mastery.

Yusupov, who won the FIDE Trainer's Boleslavsky Award in 2009 for the first volumes in this series, doesn't take short cuts, nor promise more than he can deliver. When the final two volumes in the Beyond the Basics and Mastery levels are completed Yusupov will have written around 2300(!) pages. Despite the comprehensive approach, these books work best when used in conjunction with a trainer. Indeed, trainers working with players in the rating range 1600 to 2200 will find much useful material.

Yusupov, who reached number three in the world in the late 1980s, has spent much of the last decade teaching and this shows in his realistic approach as to what sort of progress is possible for older players and those who are not able to play in tournaments regularly. He cautions that while they may reach the understanding of a master by carefully studying his series, they may not be able to show such a level in tournaments.

The present work follows the model set by its predecessors dealing with a mixture of tactics, endgames, strategy, positional play, openings, how to calculate,

etc. Each of the 24 chapters concludes with a dozen exercises that offer the student the opportunity to test what they have learned. Detailed solutions and a scoring program are also offered.

Highly Recommended

Pasadena 1932 International Chess Tournament (Caissa Editions 2011, hc, 118 pp., AN, \$42) by Robert Sherwood, Dale Brandreth and Bruce Monson

Cambridge Springs 1904, New York 1924, Dallas 1957 and the two Piatigorsky Cups of 1963 and 1966 are long remembered as important tournaments in American chess history. The events are not just tied together by their strength and the international players who participated, but also remembered by the books and bulletins devoted to them. In the case of New York 1924 and the two Piatigorsky Cups, these were major works.

One other very important American international, Pasadena 1932, featured World Champion Alexander Alekhine, Isaac Kashdan and the young American stars Reuben Fine, Sammy Reshevsky, and Arthur Dake. Until a few months ago, this tournament, the first big event on the West Coast, only had a small bulletin devoted to it, featuring a selection of 25 unannotated games. The publication of *Pasadena 1932* fills a major gap.

One of the roadblocks behind publishing such a book was the lack of a complete bulletin for the event. Today, when games are available in real time, it's hard to imagine that Dale Brandreth spent over three decades trying to find missing games from Pasadena. In the end, the authors managed to find 54 out of the 66 played. These are presented with detailed notes and copious diagrams and are supplemented by contemporary accounts of the event and photos.

Bruce Monson, one of the great American chess detectives, has also unearthed the fascinating story of Lavieue Hines, a strong female player, coached by Alekhine, who won the women's event at Pasadena, but retired shortly thereafter. Monson also tells the tragic story of Clif Sherwood, predecessor of Herman Steiner as chess columnist of the

Los Angeles Times. Sherwood took his own life after killing a young French girl, Gabrielle Andrieux.

Like all Caissa Edition books, Pasadena 1932 is very nicely produced. A hardback, it's printed on acid-free paper with red covers and gilt lettering in a first printing of 1000 copies.

Highly Recommended

Dvoretsky's Endgame Manual, 3rd Edition (Russell Enterprises 2011, pb, 408 pp., FAN, \$34.95) by Mark Dvoretsky.

Half a dozen years ago Grandmaster Alex Shabalov gave a lecture at the Mechanics' Institute Chess Club in San Francisco. When he finished his talk, Shabalov opened the floor to questions and the first was, "What book do you recommend for someone who is ambitious to improve?" Shabalov said that normally this would be a hard question to answer without more information about the questioner's strengths and weaknesses, their age, how long they had been playing, how much time they had to study, etc., but that a recent book had made this all a moot point. The several-time U.S. Champion recommended *Dvoretsky's Endgame Manual* as that rare book that players of many different abilities could benefit from.

The publication of the third edition of *Dvoretsky's Endgame Manual*, eight years after the appearance of the first, testifies to the excellent reception this work has enjoyed. The present edition, twenty four pages longer than the first, with both corrections and new material, will only add to Dvoretsky's reputation as a chess pedagogue of the first order. The neatly laid-out, oversize paperback is filled with everything one needs to know about the endgame. Over 400 pages of endgame theory might seem intimidating for many, but Dvoretsky has made his masterwork more accommodating by highlighting in blue that which is deemed absolutely essential.

Anyone who does not have the first or second editions of *Dvoretsky's Endgame Manual* will want to have this book.

Highly Recommended ■

Seattle Chess Club Tournaments

Address
 → 2150 N 107 St, B85 ←
 Seattle WA 98133
 ↗ Infoline ↖
 206-417-5405
 www.seattlechess.org
 kleistcf@aol.com
 Address for Entries
 SCC Tnmt Dir
 2420 S 137 St
 Seattle WA 98168

Darby Monahan Memorial Grand Prix

Leaders 10/1-1/31

Fred Kleist	130.4	Boas Lee	83.8
August Piper	122.0	Brian Raffel	82.5
<i>Michael VanScyoc</i>	107.5	Dan Kramlich	79.5
David Kelly	106.5	Catherine Smith	76.0
Carol Kleist	105.0	<i>Alan Walk</i>	75.5
Jothi Ramesh	101.1	<i>Viktors Pupols</i>	74.5
<i>Kerry VanVeen</i>	89.0	Marcell Szabo	71.5

Bolded players are new to the top 14. Players in italics gained less than 10 points since 1/1. The four people whose totals do not end in 0 or 5, played in the Insanity (min. 7.3 pts). Next big event is the **Seattle Spring Open**. The G.P. continues through 5/31/12. *Two prizes will be awarded*—free entry to the 2012 Canadian Open or 2012 U.S. Open.

SCC Fridays

Typical Friday fare is one round of an ongoing tournament (free to SCC members, no prizes) played at a rate of 40/90 followed by 30/60. Drop in for any round!

Cabin Fever:	Feb. 3, 10, 17, 24.
SCC G/15 Champ. (EF: \$8):	Mar 2.
March Winds:	Mar. 9, 16, 23, 30.
April Showers:	Apr. 6, 13, 20, 27.
Close Ratings:	May 4, 11, 18.
Pre-WAO Blitz (G/5):	May 25.
It's Summertime:	June 1, 8, 15, 22.
Firecracker Quads (G/25):	June 29.

Seattle Spring Open

March 23-25 or 24-25

A two-section Swiss (4 rounds – Open, 5 rounds – Reserve) with a time control of 40/2 and SD/1 (two-day Reserve schedule – Round 1, G/64). The prize fund of \$810 is based on 42 paid entries, 5 per prize group.

a Karch Memorial Grand Prix event

Open		Reserve (U1950)	
First	\$160	First	\$100
Second	\$120	Second	\$75
U2100	\$90	U1750	\$60
		U1550	\$50
		U1350	\$40
		Unrated	\$15
Plus Score Pool — \$100			

Entry Fees: \$33 if rec'd by 3/21 (\$24 SCC memb., \$29 memb. of other dues-required CCs in the NW), \$42 at site (\$33 SCC memb., \$38 memb. of other dues-required CCs in the NW). **Unrated**—Free with purchase of 1-yr USCF & 1-yr WCF. Add \$1 to any EF for 2-day schedule.

Registration: Open—Sat. 11-noon; Reserve—Fri. 7-7:45pm, Sat. 9-9:45am.

Rounds: Open—Sat. 12:30-6:45, Sun. 11-5; Reserve—Fri. 8, Sat. (10 @ G/64)-12:30-6:45, Sun. 11-5.

Byes: 1 in Open, 2 in Reserve (Sunday rounds, commit at registration).

Miscellaneous: USCF & WCF membership req'd. No smoking.

Feb. 25, Mar. 17 Saturday Quads

Format: 3-RR, 4-plyr sections by rating. **TC:** G/120. **EF:** \$9 (+\$7 fee for non-SCC). **Prizes:** Free entry for future quad. **Reg:** 9:00-9:45 a.m. **Rds:** 10:00-2:15-ASAP. **Misc:** USCF, WCF/OCF memb. req'd, OSA, NS, NC.

March 2 SCC G/15 Championship

Format: 4-7 rounds depending on entries. **TC:** G/15. **EF:** \$8 (+\$5 fee for non-SCC). **Prize Fund:** \$6 from each EF. **Prizes:** 1st 40%, 2nd 30%, Bottom Half 30%. **1st Rd:** 8:00 p.m. **Misc:** USCF memb. req'd, NS, NC.

March 3 SCC vs. TCC Match

Site: Seattle CC. **Format:** 7-bd (M, X, A, B, C, D, E & Under) match. **TC:** G/120. **Prizes:** ?? **Rd:** 1:00 p.m. **Misc:** USCF memb. req'd, NS, NC.

Mar. 4, Apr. 1 Sunday Tornado

Format: 4-SS. **TC:** G/64. **EF:** \$18 (+\$7 fee for non-SCC). **Prizes:** 1st 35%, 2nd 27%, Bottom Half 1st 22%, 2nd 16% (\$10 from each EF goes to prize fund). **Reg:** 10:30-11:15 a.m. **Rds:** 11:30-1:50-4:10-6:30. **Misc:** USCF, WCF/OCF memb. req'd, OSA, NS, NC.

March 18 NEW EVENT SCC Novice

Format: 4-SS. Open to U1200 and unrated. **TC:** G/75. **EF:** \$11 by 1/5, \$16 at site. (-\$2 for SCC mem., -\$1 for mem. of other NW dues-req'd CCs). **Prizes:** Memb (SCC, WCF, USCF). **Reg:** 9-9:45a.m. **Rds:** 10-12:45-3:30-6. **Byes:** 1 (Rd 3/4—commit at reg.). **Misc:** USCF memb. req'd, NS, NC.

February 25

Portland Chess Club G/60

Site: Portland Chess Club, 8205 SW 24 Ave, Portland OR. Format: 4SS. TC: G/60. (TD may switch to 5SS and G/45 if more than 25 entries.) EF: \$20, \$5 discount for PCC Members. No advance entries. Prize Fund: \$\$200/b20 Prizes: \$60-40-30 U1800, U1500 35 each. Reg: 9-9:30. Byes: Half-point bye if requested at reg. Misc: OCF/WCF and USCF memb req'd, OSA. Info: portlandchessclub@gmail.com, 503-246-2978, www.pdxchess.com.

February 25-26

20 th Dave Collyer Memorial

Site: Basement Conference Room, St. Anne’s Children’s Center, 25 W Fifth Ave, Spokane WA. Format: 5SS. TC: G/115. EF: \$27 if rec’d by 2/24, \$33 at site; under 19, \$5 less. Phone entries accepted. All registrants must check in by 9:30 (exceptions—rd 1 bye or “Sleep-In” option. Prize Fund: \$\$2000 gtd. Prizes: \$400-250-175, X 100, A 100-75, B 100-75, C 100-75, D 100-75, E/UNR 100-75, Biggest Upsets 100-50-50 (no prov. rtgs). Class prizes b/5 per class; classes may be reconfigured if less than five. Extra donated prize: \$200 Stephen Christopher Memorial Perfect Score Prize. Special door prize for every entrant! Reg: 8:30-9:30 a.m. (till 11:40 a.m. for “Sleep-In”). Rds: 10 (or 12)-2:30-7; 9-1:30 or ASAP. Byes: One 1/2-point bye avail. if req’d by end of prior r’d; Sunday bye must be req’d by end of rd 3. Special “Sleep In” option: Rd 1—noon (G/60) . Misc: Mandatory player meeting at 9:45 (except for sleep in). Director reserves right to use class pairings in final rd. NS, NC, W. Entries: Spokane CC, c/o Kevin Korsmo, N 9923 Moore, Spokane WA 99208-9339. Info: 509-270-1772. www.spokanechessclub.org. Simul and Talk: Feb. 24 at 6:00 p.m. - IM John Donaldson lecture at Kress Gallery – Riverpark Square, downtown Spokane. 6:45 p.m. - Donaldson Simul, \$10 per board.

March 4

Portland Chess Shop Rapid Tournament

See display ad on page 16.

March 11-12

Third Annual Silverdale Beach Hotel Classic

See display ad on page 10.

March 17-18

Portland Spring Open

(TA based on previous events and may be subject to change.) Site: Portland Chess Club, 8205 SW 24 Ave, Portland OR. Format: 5SS, two sections. TC: Rds 1-3 (Saturday) 40/90, SD/30; Rds 4-5 (Sunday) 40/120, SD/60. EF: \$35, PCC members – \$10 discount. Prize Fund: \$\$650 b/40. Prizes: Open—\$150- 100, U2000 75; Reserve—\$100-75, U1600 50, U1400 50, U1200 or UNR 50. Reg: opens at 9:00am on Saturday. Misc: USCF and OCF/WCF req’d and can be purch’d/renewed at reg.

March 31

Daffodil Open

Site: Tacoma Chess Club, 409 Puyallup Ave E, 2nd floor, Room 11 in the DTI Soccer Store Building across from Alfred’s Café (two blocks down the hill from the Tacoma Dome). Format: 4SS. TC: G/60. EF: \$20. Prize Fund: \$\$135 b/10. Prizes: Top Half – \$40-25; Bottom Half – 35-25. Reg: 9:00-9:45 a.m. Rds: 10-12:30-3-5:30 or ASAP. Byes: One half-point bye avail. Misc: OCF/WCF and USCF memb req’d. NS. NC. NW. Entries/Info: Gary J. Dorfner 8423 E ‘B’ St, Tacoma WA 98445; 253-535-2536; ggarychess@aol.com.

April 6-9

Sixth Annual Grand Pacific Open

See display ad on page 8.

April 21-22

Idaho Open

See display ad on page 14.

July 8-13

CANADIAN OPEN

See display ad on page 8.

Gotta “Like”

Northwest Chess

on Facebook!!