



**Idaho Co-  
Champions  
Blake  
Furlow** →



**\$3.95**



**and  
← Larry  
Parsons**

**April 2012**

# Northwest Chess

April 2012, Volume 66,4 Issue 771

ISSN Publication 0146-6941

Published monthly by the Northwest Chess Board.  
Office of record: 3310 25th Ave S, Seattle, WA 98144

**POSTMASTER:** Send address changes to:

Northwest Chess, PO Box 84746,  
Seattle WA 98124-6046.

Periodicals Postage Paid at Seattle, WA

USPS periodicals postage permit number (0422-390)

## NWC Staff

Editor: Fred Kleist,  
[kleistcf@aol.com](mailto:kleistcf@aol.com)

Publisher: Duane Polich,  
[publisher@nwchess.com](mailto:publisher@nwchess.com)

Business Manager: Eric Holcomb,  
[eric@holcomb.com](mailto:eric@holcomb.com)

## Board Representatives

David Yoshinaga, Josh Sinanan,  
Dale Wentz, Dan Mathews, Jeffrey Roland

Entire contents copyright 2012 by Northwest Chess. All rights reserved. Published opinions are those of the contributors and do not necessarily reflect the views of the editor or the Northwest Chess Board. Northwest Chess is the official publication of the chess governing bodies of the states of Washington, Oregon, and Idaho.

## Advertising Rates

Display ads run \$150 for a full page, \$100 for tournament ads; \$85 for a half-page, \$60 for tournament ads; \$50 for a quarter page, \$30 for an eighth of a page, and \$20 for a business card-size ad. Additional charges apply if the staff must do layout work. A 15% discount is available for two or more consecutive ads of the same size.

## Event Announcement Rates

Each appearance in the *Future Events* listings costs \$20. Please arrange payment for ads and Grand Prix fees with the Business Manager.

## Advertising & Copy Deadline

Ads and submissions must be received by the 10th of the month for the items to appear in the next issue (e.g., **April 10 for the May issue; May 10 for the June issue**).

**Submit all ads, donations, payments, changes of address, & subscriptions to:**

*Business Manager, Northwest Chess*

**Eric Holcomb**

**1900 NE Third St, Ste 106-361**

**Bend OR 97701-3889**

**[Eric@Holcomb.com](mailto:Eric@Holcomb.com)**

**[www.nwchess.com](http://www.nwchess.com)**

## Submissions

Submissions of games, stories, photos, art, and other **original** chess-related content are encouraged! Multiple submissions are acceptable; please indicate if material is non-exclusive. All submissions are subject to editing or revision. Send via U.S. mail to:

**Fred Kleist, NWC Editor**

**2420 S 137 St**

**Seattle WA 98168**

or via e-mail to:

**[kleistcf@aol.com](mailto:kleistcf@aol.com)**

# Contents

# Cover: Blake Furlow (top) and Larry Parsons – Idaho Champions

by Caleb Abernathy

Page 3:	Oregon Championship .....	Neil Dale
Page 8:	Oregon Junior Closed .....	Dan Dalthorp
Page 13:	Idaho Chess News .....	Jeffrey Roland
Page 18:	Collyer Memorial ....	Kevin Korsmo, John Donaldson, James Stripes
Page 23:	Washington Championship & Premier .....	Josh Sinanan
Page 30:	Northwest Grand Prix .....	Murlin Varner
Back Cover:	Future Events .....	

## *Northwest Chess*

**Business Manager**

**Eric Holcomb**

**1900 NE Third St, Ste 106-361**

**Bend OR 97701-3889**

**[Eric@Holcomb.com](mailto:Eric@Holcomb.com)**

**[www.nwchess.com](http://www.nwchess.com)**

**Editor**

**Fred Kleist**

**2420 S 137 St**

**Seattle WA 98168**

**[kleistcf@aol.com](mailto:kleistcf@aol.com)**

## *Northwest Chess Knights*

*Please donate today to help Northwest Chess!*

**Patrons, 2010-2012** (Bold indicates recent donations)

Kate Tokareva, Gerard Van Deene, Michael Wang, Alan Walker, Dale Wentz, Russell

Miller, Ralph Dubisch, Frank Niro, **Michael and Jeff Omori**,

August Piper, **Robert Brewster**, Steve Buck, Jeff Pennig,

Murlin Varner, Inner Sound, Gene Milener, Dennis Jenquin.

Washington Chess Federation, Oregon Chess Federation

# Northwest Grand Prix Administrator

Murlin Varner

13329 208 Ave NE

Woodinville, WA 98072

[MEVjr54@yahoo.com](mailto:MEVjr54@yahoo.com) 425-882-0102

# Breckenridge and Raptis Top the Oregon Championship

by Neil Dale

One could argue that everything followed form, as, in the end, the three highest rated players occupied the three top spots. NM Steven Breckenridge finished on top with 7.5 points out of nine. He lost to FM Nick Raptis in Round Eight and had a draw against NM Radu Roua. Raptis was undefeated and finished with seven points, having drawn Brian Esler, Mike Pendergast, Daniel Gay and Steven Deeth, thus coming up half a point short. Radu Roua, a former titleholder finished in third place with 5.5 points. The tournament started with everyone in a fighting spirit: only three draws in the first four rounds.

Steven Deeth ended up as sole claimant of fourth place with five points. Curtis Brooks was next with a total of four points, a nice comeback after losing the first three rounds. Pendergast, Gay, and NM Carl Haessler all finished on 3.5. Esler garnered three points and Mike Montchalin had 2.5. It was nice to see Montchalin back in the championship after a long absence. The Portland Chess Club was the host, providing the playing site.

## Games—First Weekend

**NM Steven Breckenridge (2331)**  
**Curtis Brooks (2132)**

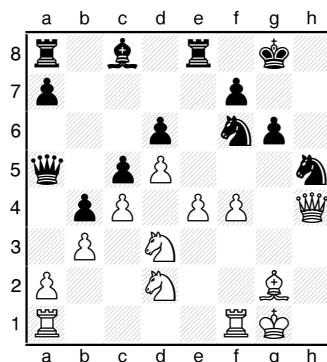
*Portland, OR Championship (1) 2012*  
1-0 [game score unavailable]

### A05 Polish Defense

**FM Nick Raptis (2265)**  
**NM Radu Roua (2249)**

*Portland, OR Championship (1) 2012*  
1. ♖f3 ♗f6 2. g3 b5 3. ♔g2 ♙b7  
4. O-O g6 5. b3 ♔g7 6. ♙b2 O-O 7. c4  
b4 8. d4 d6 9. ♗bd2 c5 10. d5 e5  
11. e4 ♗bd7 12. ♗e1 h5 13. ♗d3  
♙e8 14. ♗e2 h4 15. f4 hxg3 16. hxg3  
♗h5 17. ♗f2 ♙f8 18. ♙ae1 exf4 19.

gx4 ♙xb2 20. ♗xb2 ♗df6 21. ♗h4  
♙e8 22. ♗d3 ♗a5 23. ♙a1 ♙c8



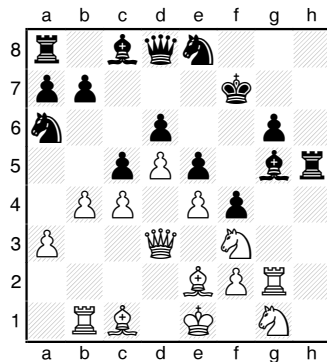
24. f5 ♗d8 25. fxc6 fxc6 26. ♗g5  
♔g7 27. e5 ♗d7 28. ♗xd8 ♙xd8  
29. exd6 ♗g3 30. ♙fe1 ♗f5 31.  
♗e4 ♗f6 32. ♗dxc5 ♗xd6 33.  
♗xf6 ♔xf6 34. ♗e6 ♙xe6 35.  
♙xe6+ ♔g5 36. ♙e4 ♗xe4 37.  
♙xe4 ♙ac8 38. ♙f1 ♙d6 39. ♙f2  
♙c5 40. ♙e7 a5 41. ♔g2 1-0

### E73 King's Indian

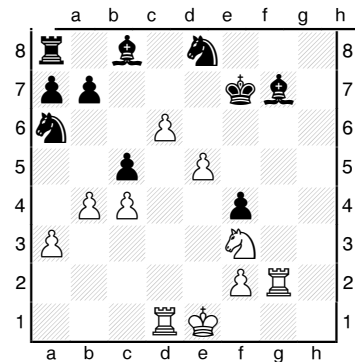
**Mike Montchalin (2168)**  
**Daniel Gay (2185)**

*Portland, OR Championship (1) 2012*

1. d4 ♗f6 2. c4 g6 3. ♗c3 ♔g7 4. e4  
d6 5. ♙e2 O-O 6. g4 e5 7. d5 ♗a6  
8. g5 ♗e8 9. ♙b1 c5 10. a3 f5 11. h4  
f4 12. ♙h2 h6 13. ♙g2 hxg5 14.  
hxg5 ♔f7 15. ♗d3 ♙h8 16. ♙f1 ♙f8  
17. ♗ce2 ♙h4 18. ♗f3 ♙h1 19. b4  
♙e7 20. ♗eg1 ♙h5 21. ♙e2 ♙xg5



22. ♗xe5+ dxe5 23. ♙xh5 gxh5  
24. ♗f3 ♙f6 25. ♙xf4 exf4 26. e5  
♙g7 27. ♗g6+ ♔g8 28. ♗xh5 ♗e7  
29. ♙d1 ♗f7 30. ♗xf7+ ♔xf7 31. d6



32... ♙e6 32. d7 ♙xd7 33. ♙xd7+  
♔f8 34. ♙xb7 ♗ac7 35. ♙g6 ♔f7  
36. ♙c6 ♙c8 37. ♙xa7 ♔e7 38.  
♙xc5 ♔d8 39. b5 ♔d7 40. b6 ♙f8  
41. ♙d5+ ♔c6 42. bxc7 ♗xc7 43.  
♗d4+ ♔b6 44. ♙da5 ♙e8 45. e6 ♙c5  
46. ♙xc5 ♔xc5 47. ♙xc7+ ♔xd4 48.  
e7 ♔d3 49. c5 f3 50. ♔f1 ♙h8 51.  
♔g1 ♔d2 52. ♙d7+ ♔e2 53. ♙d8  
1-0

### B42 Sicilian Kan

**Brian Esler (2017)**  
**Steven Deeth (2083)**

*Portland, OR Championship (1) 2012*

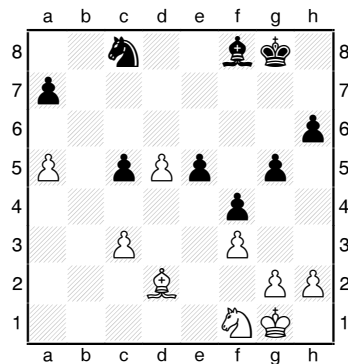
1. e4 c5 2. ♗f3 e6 3. d4 cxd4 4. ♗xd4  
a6 5. ♙d3 ♙c5 6. ♗b3 ♙e7 7. ♙e3  
d6 8. ♗1d2 ♗d7 9. f4 b6 10. ♗e2  
♙b7 11. O-O-O ♗gf6 12. g4 ♗c5  
13. ♗xc5 bxc5 14. g5 ♗d7 15.  
♙hg1 ♗c7 16. f5 ♗e5 17. fxe6 fxe6  
18. ♙c4 ♗xc4 19. ♗xc4 e5 20. ♗g4  
♙c8 21. ♗e2 ♙e6 22. g6 h6 23.  
♗d3 ♙d8 24. ♙gf1 ♗c6 25. b3  
♗b5 26. ♙f2 ♙f8 27. ♙xf8+ ♔xf8  
28. a4 ♗c6 29. ♙d2 ♔g8 30. ♙c3  
♙xc4 31. ♗xc4+ ♔h8 32. ♗e6  
♙g5+ 33. ♔b2 ♙e3 34. ♙xe5 ♙e8  
35. ♙xg7+ ♔xg7 36. ♗f7+ ♔h8  
37. ♗h7 mate

**A48 Colle**

**Mike Pendergast (2162)**  
**NM Carl Haessler (2204)**

*Portland, OR Championship (1) 2012*

1.e3 c5 2.♘f3 g6 3.d4 ♕g7 4.♙e2  
 ♘f6 5.O-O ♖c7 6.♘bd2 O-O 7.c3  
 d6 8.a4 e5 9.dxe5 dxe5 10.e4 ♘c6  
 11.♖c2 ♙g4 12.♘c4 ♗ad8 13.  
 ♙g5 h6 14.♙e3 b6 15.♗fd1 ♘h5  
 16.♗xd8 ♗xd8 17.♗d1 ♘f4 18.  
 ♙c1 ♘xe2+ 19.♖xe2 ♙e6 20.  
 ♘e3 ♙b3 21.♗xd8+ ♖xd8 22.  
 ♖b5 ♘a5 23.♘d2 ♙e6 24.b4 ♘b7  
 25.♖a6 ♖b8 26.♘d5 ♙f8 27.♘f1  
 f5 28.f3 f4 29.♙d2 g5 30.a5 ♙xd5  
 31.exd5 ♘d6 32.bxc5 bxc5 33.  
 ♖c6 ♖c8 34.♖xc8 ♘xc8



35.♙c1 c4 36.♔f2 ♙c5+ 37.♔e2  
 ♘e7 38.♘d2 ♙e3 39.d6 ♘c6  
 40.d7 ♙xd2 41.♔xd2 a6 42.♙a3  
 ♔f7 43.g4 ♘d8 0-1

**C01 French Exchange**

**Daniel Gay (0.0)**  
**Mike Pendergast (0.0)**

*Portland, OR Championship (2) 2012*

1.e4 e6 2.d4 d5 3.exd5 exd5  
 4.♙d3 ♘c6 5.♘e2 ♙d6 6.♘bc3  
 cxd4 8.♘xd4 ♖b6 9.O-O ♘c6 10.  
 e3 ♙g4 11.♖d2 ♗ad8 12.♘c3 a6  
 13.h3 ♙d7 14.♗ad1 e5 15.♘de2  
 ♖c7 16.♖xd6 ♖c8 17.♖a3 ♙xh3  
 18.♘d5 ♙xg2 19.♔xg2 ♖g4 20.f3

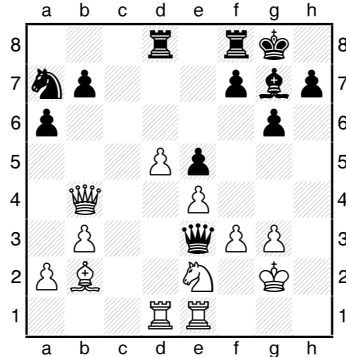
**E60 King's Indian**

**NM Radu Roua (0.0)**  
**Brian Esler (1.0)**

*Portland, OR Championship (2) 2012*

1.♘f3 ♘f6 2.g3 g6 3.b3 ♙g7 4.  
 ♙b2 O-O 5.c4 d6 6.d4 c5 7.♙g2  
 cxd4 8.♘xd4 ♖b6 9.O-O ♘c6 10.  
 e3 ♙g4 11.♖d2 ♗ad8 12.♘c3 a6  
 13.h3 ♙d7 14.♗ad1 e5 15.♘de2  
 ♖c7 16.♖xd6 ♖c8 17.♖a3 ♙xh3  
 18.♘d5 ♙xg2 19.♔xg2 ♖g4 20.f3

♖g5 21.e4 ♘xd5 22.cxd5 ♖e3  
 23.♗fe1 ♘a7 24.♖b4



24... ♗c8 25.♙c1 ♖c5 26.♖xc5  
 ♗xc5 27.♙e3 1-0

**All Reti**

**NM Carl Haessler (1.0)**  
**FM Nick Raptis (1.0)**

*Portland, OR Championship (2) 2012*

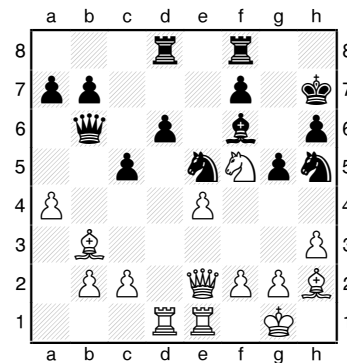
1.c4 ♘f6 2.g3 c6 3.♘f3 d5 4.♙g2  
 dxc4 5.a4 ♖d5 6.O-O ♘a6 7.♘a3  
 e5 8.♖c2 e4 9.♘e1 ♙e6 10.♖b1  
 ♘c5 11.♘ec2 ♘b3 12.♘e3 ♖c5  
 13.♗a2 c3 14.dxc3 ♘xc1 15.  
 ♗xc1 ♙xa2 16.♖xa2 ♙e7 17.b4  
 ♖e5 18.♘ac4 ♖e6 19.♖c2 O-O  
 20.♘d2 ♘d5 21.♖xe4 ♖xe4 22.  
 ♘xe4 ♘xe3 23.fxe3 f5 24.♘d2  
 ♙g5 25.♔f2 ♗fe8 26.♘f1 ♗e5  
 27.c4 ♗ae8 28.♗c3 a6 29.♗b3  
 ♔f8 30.b5 axb5 31.cxb5 cxb5 32.  
 axb5 b6 33.♙c6 ♗d8 34.♗d3 ♔e7  
 35.h4 ♙h6 36.♗a3 ♔f6 37.♗a6  
 ♗b8 38.♗a3 g6 39.♘d2 ♙f8 40.  
 ♗d3 ♙c5 41.♔f3 ♗f8 42.♘c4 ♗e6  
 43.♗d2 h6 44.♗d1 ♗f7 45.♗a1  
 ♗fe7 46.♙d5 ♗xe3+ 47.♘xe3  
 ♗xe3+ 48.♔g2 ♗xe2+ 49.♔h3 g5  
 50.hxg5+ hxg5 51.♗a2 g4+ 52.  
 ♔h4 ♗xa2 53.♙xa2 ♔g6 54.♙f7+  
 ♔h6 55.♙e6 ♙e7 mate

**B07 Pirc**

**NM Steven Breckenridge (1.0)**  
**Mike Montchalin (1.0)**

*Portland, OR Championship (2) 2012*

1.e4 d6 2.d4 ♘f6 3.♘c3 c6 4.♘f3  
 g6 5.a4 ♙g7 6.♙c4 O-O 7.♙b3  
 ♙g4 8.h3 ♙xf3 9.♖xf3 ♘bd7 10.  
 O-O ♖c7 11.♙g5 ♗ae8 12.♗ad1  
 h6 13.♙h4 ♔h7 14.♗fe1 e5 15.  
 dxe5 ♘xe5 16.♖e3 g5 17.♙g3  
 ♘h5 18.♙h2 ♗d8 19.♘e2 ♖b6  
 20.♘d4 ♙f6 21.♘f5 c5 22.♖e2



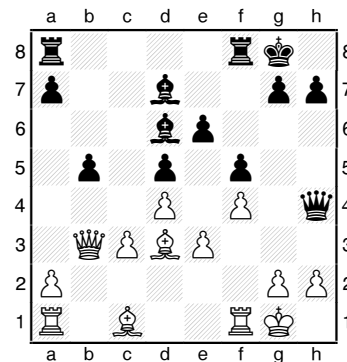
22... ♘g7 23.♘e3 ♗d7 24.♘d5  
 ♖d8 25.♖b5 ♘c6 26.♘xf6+ ♖xf6  
 27.e5 ♖f5 28.♙c4 a6 29.♖b6  
 dxe5 30.♙d3 e4 31.♗xe4 ♔g8  
 32.♗ee1 ♖f6 33.♙h7+ ♔xh7 34.  
 ♗xd7 ♖f5 35.♖xb7 ♘b4 36.♙d6  
 ♗g8 37.♗xf7 ♖d5 38.♖d7 ♔g6  
 39.♗ee7 1-0

**E51 Nimzo-Indian Rubinstein**

**Steven Deeth (0.0)**  
**Curtis Brooks (0.0)**

*Portland, OR Championship (2) 2012*

1.d4 ♘f6 2.c4 e6 3.♘c3 ♙b4 4.e3  
 d5 5.♘f3 O-O 6.♙d3 ♘e4 7.♖c2  
 f5 8.O-O c6 9.♘e5 ♘d7 10.♘xd7  
 ♙xd7 11.f3 ♘c3 12.bxc3 ♙d6 13.  
 ♖b3 ♖h4 14.f4 b5 15.cxb5 cxb5



16.♙a3 ♖e7 17.♙xd6 ♖xd6 18.  
 ♗ab1 a6 19.♗fc1 ♗f7 20.♖b4 ♖c6  
 21.♖a5 g5 22.a4 gxf4 23.exf4 bxa4  
 24.g3 ♗g7 25.♔f2 ♖d6 26.♗b6  
 ♖a3 27.♗cb1 ♗c8 28.♗b8 ♖f8  
 29.♗xc8 ♖xc8 30.♙xa6 ♖a8 31.  
 ♗b6 ♗f7 32.♖b4 ♔g7 33.♖d6  
 ♖f8 34.♖e5+ ♔g6 35.♖xd5 ♖a3  
 36.♖f3 ♖c1 37.♙e2 h6 38.d5 ♗e7  
 39.g4 a3 40.gxf5+ ♔f6 41.♖g4  
 ♗g7 42.♖h4+ ♔f7 43.fxe6+ ♔f8 44.  
 ♗b8+ ♙e8 45.♖f6+ ♔g8 46.♗xe8+  
 ♔h7 47.♙d3+ 1-0

# 2012 Oregon Championship

	USCF	FIDE	1	2	3	4	5	6	7	8	9	10	Total
<b>Breckenridge, Steven</b>	<b>2331</b>	<b>2263</b>	<b>X</b>	<b>0</b>	<b>½</b>	<b>1</b>	<b>1</b>	<b>1</b>	<b>1</b>	<b>1</b>	<b>1</b>	<b>1</b>	<b>7.5</b>
<b>Raptis, Nick</b>	<b>2265</b>	<b>2268</b>	<b>1</b>	<b>X</b>	<b>1</b>	<b>½</b>	<b>1</b>	<b>1</b>	<b>½</b>	<b>½</b>	<b>½</b>	<b>1</b>	<b>7.0</b>
<b>Roua, Radu</b>	<b>2249</b>	<b>2239</b>	<b>½</b>	<b>0</b>	<b>X</b>	<b>0</b>	<b>1</b>	<b>1</b>	<b>0</b>	<b>1</b>	<b>1</b>	<b>1</b>	<b>5.5</b>
<b>Deeth, Steven</b>	<b>2083</b>	<b>2085</b>	<b>0</b>	<b>½</b>	<b>1</b>	<b>X</b>	<b>1</b>	<b>0</b>	<b>1</b>	<b>½</b>	<b>0</b>	<b>1</b>	<b>5.0</b>
<b>Brooks, Curtis</b>	<b>2132</b>	<b>2117</b>	<b>0</b>	<b>0</b>	<b>0</b>	<b>0</b>	<b>X</b>	<b>1</b>	<b>1</b>	<b>0</b>	<b>1</b>	<b>1</b>	<b>4.0</b>
<b>Haessler, Carl</b>	<b>2204</b>	<b>2164</b>	<b>0</b>	<b>0</b>	<b>0</b>	<b>1</b>	<b>0</b>	<b>X</b>	<b>0</b>	<b>1</b>	<b>1</b>	<b>½</b>	<b>3.5</b>
<b>Gay, Daniel</b>	<b>2185</b>	<b>2111</b>	<b>0</b>	<b>½</b>	<b>1</b>	<b>0</b>	<b>0</b>	<b>1</b>	<b>X</b>	<b>½</b>	<b>½</b>	<b>0</b>	<b>3.5</b>
<b>Pendergast, Mike</b>	<b>2162</b>	<b>2149</b>	<b>0</b>	<b>½</b>	<b>0</b>	<b>½</b>	<b>1</b>	<b>0</b>	<b>½</b>	<b>X</b>	<b>1</b>	<b>0</b>	<b>3.5</b>
<b>Esler, Brian</b>	<b>2017</b>	<b>2086</b>	<b>0</b>	<b>½</b>	<b>0</b>	<b>1</b>	<b>0</b>	<b>0</b>	<b>½</b>	<b>0</b>	<b>X</b>	<b>1</b>	<b>3.0</b>
<b>Montchalin, Mike</b>	<b>2168</b>	<b>2099</b>	<b>0</b>	<b>0</b>	<b>0</b>	<b>0</b>	<b>0</b>	<b>½</b>	<b>1</b>	<b>1</b>	<b>0</b>	<b>X</b>	<b>2.5</b>

## B22 Sicilian Alapin

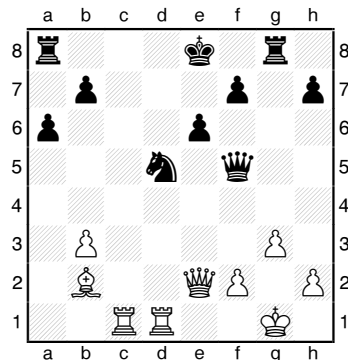
**NM Steven Breckenridge (2.0)**  
**Daniel Gay (0.5)**

*Portland, OR Championship (3) 2012*

1.e4 c5 2.c3 ♟f6 3.e5 ♟d5 4.d4 cxd4 5.♟f3 ♟c6 6.♟c4 ♟b6 7.♟b3 d5 8.exd6 ♟xd6 9.O-O ♟e6 10. ♟a3 dxc3 11.♟e2 ♟xb3 12.♟b5 ♟b8 13.axb3 e6

13...e5

14.g3 cxb2?! 15.♟xb2 a6 16.♟bd4 ♟xd4?! 17. ♟xd4 ♟d6 18.♟f5 ♟d5 19.♟xg7+ ♟xg7 20.♟xg7 ♟g8 21.♟fd1 ♟f5 22.♟b2 ♟d5 23. ♟ac1



23...♟f4? 24.♟d2 ♟e4?? 25.♟d7+ ♟f8 26.♟c8+ ♟xc8 27.♟xc8+ ♟e7 28.♟d7 mate

## A88 Dutch Leningrad

**FM Nick Raptis (2.0)**  
**Mike Pendergast (0.5)**

*Portland, OR Championship (3) 2012*

1.c4 f5 2.♟c3 ♟f6 3.g3 g6 4.♟g2 ♟g7 5.♟f3 O-O 6.O-O d6 7.d4 c6 8.♟b1 ♟e4 9.♟d2 e5 10.d5 ♟xd2 11.♟xd2 c5 12.a3 e4 13.♟c2 ♟d7 14.♟d1 ♟e7 15.♟e1 ♟e5 16.f3 ♟d3 17.♟f1 exf3 18.♟xf3 ♟e5 19.♟f2 h6 20.♟d3 Draw

## B01 Center-Counter

**Curtis Brooks (0.0)**  
**NM Radu Roua (1.0)**

*Portland, OR Championship (3) 2012*

1.e4 d5 2.exd5 ♟f6 3.d4 ♟xd5 4. ♟d3 g6 5.♟f3 ♟g7 6.c3 ♟d7 7. O-O O-O 8.♟b3 c6 9.♟e1 e6 10.c4 ♟5f6 11.♟c3 c5 12.♟e3 ♟g4 13.d5 ♟xe3 14.dxe6 fxe6 15.♟xe3 ♟f6 16.♟d1 ♟c7 17.h3 ♟h5 18. ♟f1 b6 19.♟b5 ♟e7 20.♟d6 ♟d7 21.♟e5 ♟e8 22.♟xe8 ♟xe8 23. ♟de1 ♟d8 24.♟a3 a5 25.♟f3 ♟d6 26.♟g5 ♟d4 27.♟f3 ♟xf3 28. ♟xf3 ♟e7 29.♟e4 ♟d8 30.♟b3 ♟c7 31.♟e2 ♟f4 32.♟g4 h5 33. ♟f3 ♟e5 34.♟xb6 ♟b8 35.♟f6+ ♟h8 36.♟xe5 ♟xb6 37.♟e4 ♟d3

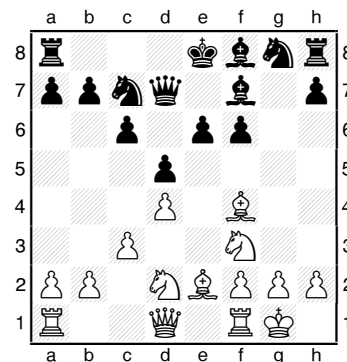
38.♟e2 ♟c1 39.♟d7 ♟xb2 40. ♟f3 ♟xf2+ 41.♟h2 h4 42.♟xe6 ♟g3+ 43.♟g1 ♟d3 44.♟b6 ♟xa2 45.♟f1 ♟f2+ 46.♟g1 ♟c2 47.♟f1 ♟f4 48.♟b1 ♟xc4 49.♟f6 ♟b4 50. ♟d1 ♟g7 51.♟e4 c4 52.♟d7+ ♟h6 53.♟xg3 hxg3 54.♟e1 ♟b2 55.♟d4 ♟xg2+ 56.♟xg2 ♟xg2 57.♟h4+ ♟g7 58.♟xc4 ♟h2 59. ♟a4 ♟h1+ 60.♟e2 g2 0-1

## B12 Caro-Kann Advance

**Brian Esler (1.0)**  
**NM Carl Haessler (1.0)**

*Portland, OR Championship (3) 2012*

1.e4 c6 2.d4 d5 3.e5 ♟f5 4.♟f3 e6 5.♟e2 ♟g6 6.♟e3 ♟a6 7.c3 ♟c7 8.♟f4 f6 9.♟bd2 ♟d7 10.O-O ♟f7 11.exf6 gxf6



12. ♖e5! fxe5 13. ♗xe5 O-O-O 14. ♗xh8 ♖h6 15. ♖f3 ♖b5 16. ♗xb5 cxb5 17. ♖e5 ♜e7 18. a4 ♗e8 19. axb5 ♖b8 20. ♜f3 ♖f5 21. ♜f4 ♖a8 22. ♜a2 ♗xb5 23. ♜fa1 a6 24. ♖g4 ♜c8 25. ♜a5 ♗e8 26. ♜d2 ♜c7 27. ♜e2 ♖b8 28. ♗e5 ♗d6 29. ♜c5 ♜e7 30. ♗xd6+ ♖xd6 31. ♜e5 ♗c6 32. ♖e3 ♜d7 33. c4 ♖a7 34. cxd5 exd5 35. ♖xd5 ♜e8 36. ♜f4 ♖e4 37. ♖f6 ♜xd4 38. ♜ac1? ♜xf6 39. ♜e3 ♖xc5 40. ♜xc5+ ♖a8 0-1

*D13 Slav Exchange*

**Mike Montchalin (1.0)**

**Steven Deeth (1.0)**

*Portland, OR Championship (3) 2012*

1. d4 d5 2. c4 c6 3. ♖f3 ♖f6 4. cxd5 cxd5 5. ♖c3 ♖c6 6. e3 ♗f5 7. a3 e6 8. ♗d2 ♗e7 9. ♜c1 O-O 10. ♜b3 ♜b8 11. ♖h4 ♗g6 12. ♖xg6 hxg6 13. ♗d3 ♜d8 14. f4 ♜c8 15. ♜d1 ♖a5 16. ♜c2 ♖c4 17. ♗c1 b5 18. O-O a5 19. ♖b1 ♜a7 20. b3 ♖d6 21. ♜xc8+ ♜xc8 22. ♜f2 b4 23. ♜c2 ♜c7 24. axb4 axb4 25. ♜xc7 ♜xc7 26. ♗d2 ♖de4 27. ♗e1 ♗d6 28. g3 ♖f8 29. ♖g2 ♖e7 30. g4 ♖f8 31. g5 ♖g8 32. ♖d2 ♖c3 33. ♜a1 ♜b8 34. ♖f3 ♖e4 35. ♜a6 ♖e7 36. ♖e5 ♖g8 37. ♖f3 ♖c3 38. ♗d2 ♜d8 39. ♗b5?! ♖e4 40. ♗e1 ♖f5 41. h4 ♗xe5 42. dxe5 ♖c5 43. ♜c6 ♖xb3 44. ♗xb4?? ♖bd4+ 0-1

*B79 Sicilian Dragon*

**Daniel Gay (0.5)**

**FM Nick Raptis (2.5)**

*Portland, OR Championship (4) 2012*

1. e4 c5 2. ♖f3 d6 3. d4 cxd4 4. ♖xd4 ♖f6 5. ♖c3 g6 6. ♗e3 ♗g7 7. f3 O-O 8. ♜d2 ♖c6 9. ♗c4 ♗d7 10. ♗b3 ♜a5 11. O-O-O ♖e5 12. ♖b1 ♜fc8 13. g4 b5 14. h4 ♜ab8 15. h5 ♖c4 16. ♗xc4 bxc4 17. ♖a1 ♜b4 Draw

*B01 Center-Counter*

**NM Carl Haessler (2.0)**

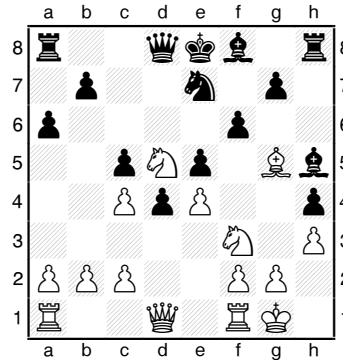
**Curtis Brooks (0.0)**

*Portland, OR Championship (4) 2012*

1. ♖c3 d5 2. e4 d4 3. ♖ce2 c5 4. ♖g3 ♖c6 5. ♖f3 h5 6. ♗c4 h4 7. ♖e2 ♗g4 8. ♖f4 e5

8...e6

9. ♖d5 a6 10. d3 ♖a5 11. h3 ♗h5 12. O-O ♖xc4 13. dxc4 ♖e7 14. ♗g5 f6



15. ♗xf6 gxf6 16. ♖xf6+ ♖f7 17. ♖xh5 ♜xh5 18. ♖xd4 ♜h6 19. ♜f3+ ♖g8 20. ♖f5 ♖xf5 21. exf5 ♜g5 22. ♜ad1 ♜e8 23. ♜xb7 ♜xf5 24. ♜d5+ ♖h8 25. f4 ♜d6 26. ♜f3 ♜xd1 27. ♜xd1 exf4 28. ♜f1 ♜e4 29. b3 ♗g7 30. ♖h1 ♗d4 31. c3 ♗f6 32. g4 hxg3 33. ♜xg3 ♜e5 34. ♜xf4 ♜b1+ 0-1

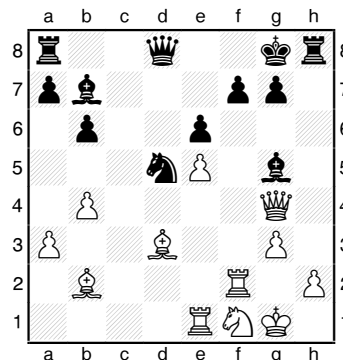
*A47 Colle*

**NM Radu Roua (2.0)**

**Mike Montchalin (1.0)**

*Portland, OR Championship (4) 2012*

1. d4 ♖f6 2. ♖f3 e6 3. e3 b6 4. ♗d3 ♗b7 5. ♖bd2 c5 6. O-O ♖c6 7. a3 ♗e7 8. b3 cxd4 9. exd4 ♖d5 10. g3 h5 11. c4 ♖f6 12. ♗b2 d5 13. ♜e1 h4 14. ♜c1 hxg3 15. fxg3 ♖g4 16. ♖f1 ♖f8 17. b4 dxc4 18. ♗xc4 ♗f6 19. ♖e5 ♖gxe5 20. dxe5 ♗g5 21. ♜c2 ♖e7 22. ♜g4 ♖d5 23. ♜f2 ♖g8 24. ♗d3



24... ♜c8 25. ♗e4 ♜e7 26. h4 ♗h6 27. ♜f3 ♜c4 28. ♖d2 ♗xd2 29. ♜xd2 g6 30. ♜f2 ♜h7 31. ♜ef1 ♜c7 32. ♗xg6 ♖f4 33. ♗xh7+ ♖xh7 34. ♜g4 ♜c6 35. ♖h2 ♜c2 1-0

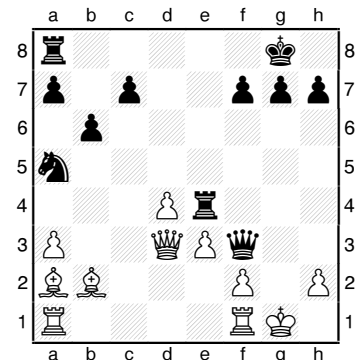
*E52 Nimzo-Indian Rubinstein*

**Steven Deeth (2.0)**

**NM Steven Breckenridge (3.0)**

*Portland, OR Championship (4) 2012*

1. d4 ♖f6 2. c4 e6 3. ♖c3 ♗b4 4. e3 O-O 5. ♗d3 d5 6. ♖f3 b6 7. cxd5 exd5 8. a3 ♗xc3+ 9. bxc3 ♖c6 10. O-O ♗g4 11. c4 dxc4 12. ♗xc4 ♖a5 13. ♗a2 ♖e4 14. ♜d3 ♜e8 15. ♗b2 ♗xf3 16. gxgf3 ♜g5+ 17. ♖h1 ♜h5 18. fxe4 ♜f3+ 19. ♖g1 ♜xe4



20. ♜fd1 ♜g4+ 21. ♖f1 ♜g2 22. ♜c2 ♜xh2 23. ♖e1 ♜h1+ 24. ♖e2 ♜xf2+ 25. ♖d3 ♜xc2 26. ♜xh1 ♜xb2 0-1

*A45 Trompovsky*

**Mike Pendergast (1.0)**

**Brian Esler (1.0)**

*Portland, OR Championship (4) 2012*

1. d4 ♖f6 2. ♗g5 ♖e4 3. ♗f4 c5 4. f3 ♜a5+ 5. c3 ♖f6 6. ♖d2 cxd4 7. ♖b3 ♜f5 8. ♗xb8 ♜xb8 9. ♜xd4 b6 10. e4 ♜f4 11. ♖h3 ♜c7 12. e5 ♖g8 13. O-O-O e6 14. ♗d3 ♖e7 15. f4 ♖c6 16. ♜e3 a5 17. a4 ♖b4 18. ♗b5 ♖a6 19. ♖g5 ♗e7 20. h4 ♖c5 21. ♖xc5 ♜xc5 22. ♜d3 ♗xg5? 23. hxg5 ♖e7 24. ♜xh7 ♜xh7 25. ♜xh7 ♜e3+ 26. ♖b1 ♜xf4 27. ♜xg7 ♜e4+ 28. ♗d3 ♜xg2 29. ♜f6+ ♖e8 1-0

**Next Month:  
the Second  
Weekend**

# Oregon Class Championships

## May 5-6, 2012

Sponsored by the Oregon Chess Federation

The 2012 Oregon Class Championships will be a 5-round Swiss in 5 sections:

**M/X** (2000+); **Class A** (U2000); **Class B** (U1800);  
**Class C** (U1600); and **Under 1400**. Players must play within their class.

**Prizes in each class:** \$200-100-50 based on 10 entries in that class

**TC:** G/90, 30 second increment. Analog clocks: G/105

**Rounds:** Saturday, 10, 2:00, 6:00; Sunday 10, 2:00

**Entry Fee: \$45; \$40 if received by May 3. Registration is limited to first 50 players to register. Advance registration is strongly recommended.**

**Site:** Portland Chess Club, 8205 SW 24<sup>th</sup>, Portland, OR 97219

**Registration:** Saturday 9:00-9:45 am. **Misc:** OCF/WCF & USCF memberships required in all sections. OSA. One ½ pt. bye allowed if requested before round 1. The Oregon resident with the highest score in the M/X Section is seeded into the 2013 Oregon Closed Championship. Tiebreaking according to OCF Bylaws.  
A Northwest Grand Prix Event.

**Information:** [www.oregonchessfed.org](http://www.oregonchessfed.org); [dandtwentz@msn.com](mailto:dandtwentz@msn.com)

Name \_\_\_\_\_

Address \_\_\_\_\_

USCF ID # \_\_\_\_\_ USCF Exp \_\_\_\_\_ OCF/WCF Exp \_\_\_\_\_ Rating \_\_\_\_\_

Email \_\_\_\_\_ Section \_\_\_\_\_ Bye Rds \_\_\_\_\_

Entries: Payable to Oregon Chess Federation; mail to Mike Morris, 2344 NE 27<sup>th</sup> Ave., Portland, OR 97212

# David Wen Captures OR Junior Closed Trophy

by Dan Dalthorp

The Oregon Junior Closed Championship pits the top six available Oregon juniors in a weekend round robin. The winner gets his or her name engraved on a perpetual Junior Championship trophy and gets seeded into the Oregon Championship, provided his or her rating is at least 1900 at year's end.

Usually, most of the top players in the state hail from the Portland metropolitan area. Recently, though, Corvallis has been emerging as a chess powerhouse, and this year's Junior Closed featured four Corvallis players. In celebration of their accomplishments, Crescent Valley High School in Corvallis offered to host the event on January 20-22. After a week of unusually heavy rain, the Red Cross took over the high school to use as a shelter for flood victims. The displaced chess players found refuge at nearby Zion Lutheran School, which graciously provided quiet, comfortable playing conditions at the last minute. The time control was G/90 with a 30 second increment per move, with one game Friday evening and two games on Saturday and two on Sunday.

The top-rated player in the event was Alexandra Botez, a junior at Clackamas High School. Alexandra's solid, relentless chess is impressive, but equally impressive was her off-the-board behavior. Regardless of whether she won or lost, she would cheerfully discuss the game with her opponent and then retreat to the library to work on her homework—an inspiration to the other players.

Calvin Parnon, a sophomore "unschooler" from Corvallis, plays wonderfully creative attacking chess. But he's also accomplished at finding all sorts of defensive resources. He delighted observers in the skittles room with his quick

and witty analysis of all the defensive possibilities available to Matt Dalthorp after Steven Witt delivered him a Greek Gift sacrifice ( $\text{♙xh7+}$ ) in their third round game.

The much anticipated encounter between the two top-rated players began as a relatively quiet, positional struggle in a Caro-Kann. Calvin excels in wild, tactical melees, but Alexandra deftly thwarted his would-be attacks at every turn.

*B14 Caro-Kann Panov-Botvinnik*

**Calvin Parnon (1895)**

**Alexandra Botez (2005)**

*Corvallis, OR Junior Closed 2012*

**Annotations by Dan Dalthorp**

1.e4 c6 2.d4 g6 3.♘f3 d5 4.exd5 cxd5 5.c4 ♘f6 6.♘c3 ♙g7 7.♖b3 e6 8.♙g5 dxc4 9.♙xc4 O-O 10.O-O h6 11.♙h4 ♘c6 12.♗fd1 ♘a5 13.♖b4 ♘xc4 14.♖xc4 ♙d7 15.d5 ♖c8 16.♖b3 ♘xd5 17.♘xd5 exd5 18.♖xd5 ♙c6 19.♖b3 ♖g4 20.h3 ♖h5 21.g4 ♖a5 22.♘d4 ♙e4 23.♘b5

White was ready to call it a day with a draw offer. However, Black had been diligently working on accumulating a number of small advantages—two Bishops, open position, exposed White King—and wanted to keep playing. She would target the long diagonal pointing at the White King. A few moves later, she executed a brilliant plan to win the game.

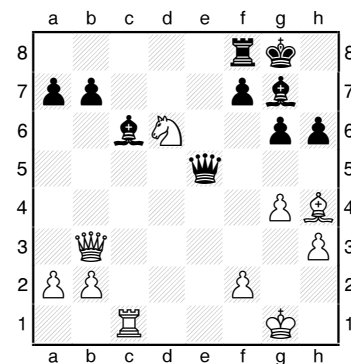
23...♗ac8 24.♗ac1 ♗xc1 25.♗xc1 ♙c6

White just played . . .

26.♘d6

. . . attacking the b-pawn. Black's subtle, but venomous, response . . .

26...♖a5-e5



. . . wins. Black will take control of the long diagonal and force f3 as soon as the White Knight moves. This will open a diagonal for the dark-squared Bishop to take aim at the exposed King. The Queen and two Bishops make short work of White's pieces—a beautiful game.

27.♙g3 ♖e2 28.♘xb7 ♖e4 29.f3 ♙d4+ 30.♙f2 ♖f4!

The decisive blow, threatening . . .♖xc1 and . . .♖g3+. White has no adequate response.

31.♙xd4 ♖xc1+ 32.♙g2 ♖d2+ 33.♙f2 ♗b8 0-1



**Carl A. Haessler**

Lessons • Lectures • Exhibitions

USCF Life Master

4-Time Oregon Champion

503-875-7278

ssmith6154@aol.com



**Maxwell Sun** (1863), a sixth grader from Cheldelin Middle School in Corvallis and the only non-High Schooler, was the third highest-rated player. In the two weeks leading up to the tournament, Max had been playing outstanding chess, twice tying for second with Oregon's top-rated player, Steven Breckenridge, in high-powered tournaments. After struggling in the early rounds, he won his final round game against Alexandra—a hair-raising marathon lasting well over 100 moves.

*D32 QGD Tarrasch*

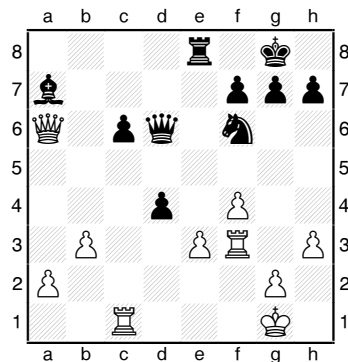
**Alexandra Botez (2005)**

**Maxwell Sun (1863)**

*Corvallis, OR Junior Closed 2012*

**Annotations by Dan Dalthorp**

1.d4 d5 2.c4 e6 3.♘f3 c5 4.e3 ♘c6 5.♘c3 ♘f6 6.cxd5 exd5 7.♙e2 a6 8.O-O ♙d6 9.b3 O-O 10.dxc5 ♙xc5 11.♘a4 ♙a7 12.♙a3 ♖e8 13.♘d4 ♙e6 14.♘xc6 bxc6 15.♖c1 ♗c7 16.♘c5 ♗a5 17.♘xa6? ♗xa3 18.♘c7 ♗d6 19.♘xe8 ♖xe8 20.♗c2 ♙g4 21.h3 ♙b8 22.f4 ♙xe2 23.♗xe2 ♙a7 24.♖f3 d4 25.♗a6



Black is ready for a gutsy sacrifice:  
25...dxe3 26.♗xa7

In exchange for the Bishop, Black gets a menacing passed pawn. He deftly brings his Knight into the action to increase the pressure to win back his material—with interest; then wins a Queen-vs.-Rook endgame in a mad time scramble, with both players playing on increment.

26.♗xa7 ♗d2 27.♖ff1 e2 28.♖fe1 ♘e4 29.b4 ♘c3 30.♗c7 ♗e3+ 31.♘h1 ♘e4 32.♗xc6 ♘f2+ 33.♘h2 ♘d3 34.♗xe8+ ♗xe8 35.♖xe2 ♗b8 36.♖c7 ♘xf4 37.♖b7

**Northwest Chess**

♗f8 38.♖ee7 ♘d5 39.♖ed7 ♘f6 40.♖d4 ♗e8 41.♖d2 ♗e5+ 42.g3 ♗e8 43.a4 h6 44.a5 ♗e3 45.♖b8+ ♘h7 46.♖bd8 ♘e4 47.♖g2 ♘g5 48.♖d1 ♘f3+ 49.♘h1 ♗e4 50.♖f2 ♗e3 51.♘g2 ♘e1+ 52.♖xe1 ♗xe1 53.♖f4 ♗e2+ 54.♘g1 ♗b5 55.h4 ♘g6 56.♘g2 f5 57.♘f2 ♘h5 58.♖d4 g5 59.hxg5 hxg5 60.♘e3 ♗e5+ 61.♘d3 f4 62.gxf4 gxf4 63.a6 ♗e3+ 64.♘c4 ♗e6+ 65.♘c5 ♗c8+ 66.♘b5 ♗b8+ 67.♘c6 ♗c8+ 68.♘b6 ♗b8+ 69.♘c6 ♘g4 70.b5 ♗a8+ 71.♘b6 ♗b8+ 72.♘c6 ♗c8+ 73.♘b6 ♗e6+ 74.♘b7 ♗e7+ 75.♘c6 ♗e6+ 76.♖d6 ♗c8+ 77.♘b6 ♗b8+ 78.♘c5 ♗c7+ 79.♖c6 ♗a7+ 80.♘d6 ♗d4+ 81.♘c7 ♗a7+ 82.♘c8 ♗a8+ 83.♘c7 f3 84.b6 ♗xa6 85.b7 ♗a7 86.♘c8 f2 87.♖c1 ♗e3 88.♖c4+ ♘g5 89.b8=♗ ♗e8+ 90.♘b7 ♗b5+ 91.♘a7 ♗a5+ 92.♘b7 ♗b5+ 93.♘a7 ♗xb8+ 94.♘xb8 f1=♗ 95.♖c5+ ♘f6 96.♘c7 ♗f4+ 97.♘c6 ♘e6 98.♘b5 ♗f1+ 99.♘b6 ♗f2 100.♘b5 ♗e2+ 101.♘b4 ♗b2+ 102.♘a5 ♘d6 103.♖b5 ♗a3+ 104.♘b6 ♗a8 105.♖b4 ♗d5 106.♖b5 ♗c6+ 107.♘a5 ♗c3+ 108.♘a6 ♗a3+ 109.♘b7 ♗a4 0-1

Black squeezed the White King into the corner and won several moves later.

**Steven Witt**, a junior at Century High School in Hillsboro, got a relatively late start in chess, but took to the game with a vengeance once he got rolling. He played his first USCF tournament in February 2008, but by the end of the year, he'd added sixteen more tournaments to his total. He played in yet another 30 tournaments in 2009 and pushed his rating past 1600. Steven displayed great fighting spirit throughout the event and barely missed winning first place.

*B14 Caro-Kann Exchange*

**Steven Witt (1870)**

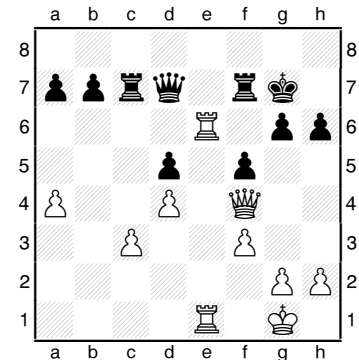
**Alexandra Botez (2005)**

*Corvallis, OR Junior Closed 2012*

**Annotations by Dan Dalthorp**

1.e4 c6 2.d4 d5 3.exd5 cxd5 4.c4 ♘f6 5.♘c3 e6 6.♘f3 ♘c6 7.♙e2 ♙b4 8.O-O O-O 9.a3 ♙xc3 10.bxc3 ♘e4 11.♗c2 ♗a5 12.♙d3 f5 13.

♙b2 ♗d8 14.cxd5 exd5 15.♙b5 ♙d7 16.♙xc6 ♙xc6 17.♘e5 ♙b5 18.♖fe1 ♖c8 19.a4 ♙c4 20.f3 ♘d6 21.♙a3 ♖f6 22.♙xd6 ♗xd6 23.♘xc4 ♖xc4 24.♖e8+ ♘f7 25.♖ae1 ♖c7 26.♖8e5 ♗d7 27.♗b3 ♖d6 28.♗c2 g6 29.♗d2 ♘g7 30.♗g5 ♖f6 31.♗f4 ♖f7 32.♖e6 h6



Steven's game against Alexandra was a tense clash of heavy pieces. Black's 32nd allows White to penetrate with full force beginning with . . .

33.♖d6

After . . .

33...♗xa4 34.♖ee6

. . . White has total control of the sixth rank for a winning position.

34...♗d1+ 35. ♘f2 ♗c2+ 36.♘g3 g5 37.♗e5+ ♘h7 38.♖e8 ♖g7 39.♖h8+ ♘xh8 40.♖xh6+ ♘g8 41. ♗e8 mate

**David Wen** (1786), freshman at Crescent Valley High School in Corvallis, has been one of the top juniors in the state since moving here from Ohio in summer 2010. After struggling a bit in the past few months, he unveiled a devastating new opening repertoire at the Junior Closed. After a chaotic first-round draw against Matt Dalthorp, David was able to get exactly the kinds of positions he excels in and swept the next four rounds to finish at 4.5/5 with clear first, a full 1.5 points ahead of second place Steven Witt, an amazing performance.

Going into the final round, David was leading Steven Witt, 3.5 to 3 with no other players in striking distance. The winner of their game would be the champion. With a draw, David would come out on

top; so Steven played all out for the win. At one point (35. ♖xb4), he sacrificed an Exchange for desperate attacking chances in a losing position rather than winning a pawn and preserving a fighting chance for a draw, but very low possibility for a win.

*B12 Caro-Kann Advance*

**Steven Witt (1870)**  
**David Wen (1750)**

*Corvallis, OR Junior Closed 2012*

Annotations by David Wen

1.e4 c6 2.d4 d5 3.e5 ♗f5 4.h4 h5

Many of the variations that I played in this tournament were my first. It took me a while to take up the Caro-Kann, but I think it fits my style well.

5.c4

Already fighting for space in the center.

5...e6 6.♗c3 ♘d7

6...♗e7 7.♗f3 ♗d7 8.♖b3 ♖b6

7.cxd5 cxd5 8.♗d3 ♗xd3 9.♖xd3

Okay, the c-file is open and a Rook is poised to go onto it. However, the Rook has no target. Perhaps if I could get a pawn on the c-file . . .

9...♗b4 10.♗ge2

Black has a good square for his Knight on c4, an open c-file, and another nice square on f5. In exchange, White has a spatial advantage in the center.

10...♖b6 11.a3 ♗xc3+ 12.bxc3

I was quite surprised to see this move, which puts a target on the c-file. However, my King is still in the center and a pawn push to c4 is quite threatening.

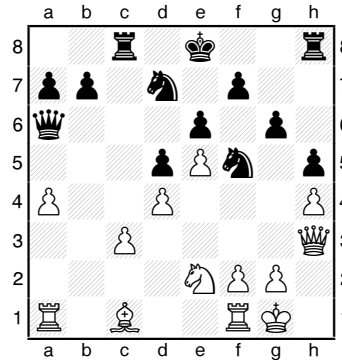
12...♖c8 13.♖g3

Attempting to weaken the dark squares, but perhaps this was unnecessary. Maybe 13.♖b1 was a better try, e.g., 13...♖c7 14.O-O ♗e7 15.♗g5 ♗b6.

13...g6 14.O-O ♗e7

Heading straight to f5, a fantastic square for the Knight.

15.a4 ♗f5 16.♖h3 ♖a6



17.♗f4

After 17. ♖e1 b5 18.a5 b4 19.cxb4 ♖c2 20.♗f4 ♖c4, Black dominates the c-file, and will pick up the pawns on d4 and b4.

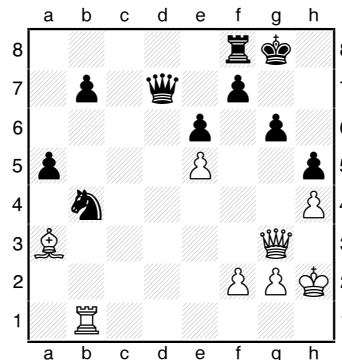
17...♖a5

Shuffling back and forth, attacking different weaknesses. At this point, there is no great way for White to save material.

18.♗b2 ♖c4

18...♗b6 19.♖fb1 ♖c4 20.♖d3 ♗xa4 21.♗a3 b5 22.♗b4 ♖c7

19.♖fe1 a6 20.♗f1 ♖xa4 21.c4 ♖xa1 22.♗xa1 ♗b6 23.♗c3 ♖a4 24.cxd5 ♗xd5 25.♗xd5 ♖c4+ 26.♗g1 ♖xd5 27.♗b4 ♗xd4 28.♗d6 ♗b5 29.♗b4 a5 30.♖c1 ♖d7 31.♗a3 ♗d4 32.♗h2 ♗c6 33.♖g3 ♗b4 34.♖b1 O-O



Steven is ready to play the fighting, uncompromising . . .

35. ♖xb4

. . . sacrificing the exchange to keep alive some fighting chances. He's

hoping to take advantage of the dark-square holes around Black's King. The alternative, 35. ♗xb4, wins a pawn but there'd be little hope of anything better than a long, uphill fight for a draw.—D. Dalthorp

35. ♖xb4 axb4 36.♗c1 ♖e8 37.♗g5 ♗h7 38.♗f6 ♖g8 39.♖g5 ♖f8

After 39...b3, Black can already relax: 40.♖c1 ♖a4 41.♖c7 ♖f4+, winning.

40. ♖f4 b3

40...♖c5 41.♖e4 ♖b6 seems even better.

41.g4 b2 42.♖e4 ♖c5 43.♗g3 ♖c6

43...♖c1 44.♗h2 b1=♖

44. ♖b4 ♖c1

On 44...hxg4, the rest is a matter of technique, e.g., 45.♖xb2 ♖f3+ 46.♗h2 ♖c8.

45. ♖e7 ♖g1+ 46.♗f3 hxg4+ 47.♗f4 ♖xf2+ 48.♗xg4 ♖g2+ 49.♗f4 g5+!

Mating attack!

50.♗xg5 ♖f2+ 51.♗g4 b1=♖ 0-1

**M**att Dalthorp (1777), sophomore at Crescent Valley High School in Corvallis, played his first tournament in fifth grade. Since then, he has gradually and inexorably raised the level of his game to land himself comfortably among the top ten juniors in the state. Lately, he has been enjoying blindfold chess. He even played three opponents at the same time in a blindfold simul—and then did it again against another three later in the day. The visualization skills he has been developing help him see through the wild, chaotic positions he likes to play.

Matt and Max have played over a dozen or so USCF rated games over the past few years. The games are always sharp and double-edged, and this game was no exception.

*C63 Ruy Lopez Schliemann*

**Matt Dalthorp (1776)**  
**Maxwell Sun (1863)**

*Corvallis, OR Junior Closed 2012*

Annotations by Matt Dalthorp

1.e4 e5 2.♗f3 ♗c6 3.♗b5 f5

Visit Northwest  
Chess  
on Facebook!

Okay, then.

4. ♖c3 ♗f6 5. d3

Not the best, but it seemed logical. 5. exf5 d5 6. ♗h4 is apparently good for White, but I don't know any theory outside the main lines.

5... ♗c5 6. ♗g5 O-O 7. ♗d5

Putting pressure on the f6-Knight, though I now must watch out for ...c7-c6 tactics.

7... ♖h8 8. ♖e2

FRITZ says 8. exf5, because after 8... d6 9. g4, the pawns are solidly placed due to the pinned Knight.

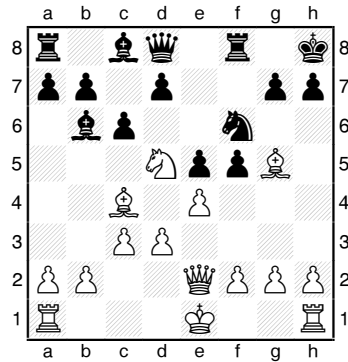
8... ♗d4

Oh look, c6-tactics, good thing I was watching out for them.

9. ♗xd4 ♗xd4 10. c3 ♗b6

10...c6 11. cxd4 (11. ♗xf6 gxf6 12. ♗h6 is fine, too.) 11...cxd5 12. O-O with an odd sort of central formation.

11. ♗c4 c6



Just fine by me. I saw a move earlier that this allowed me to cram both my Bishops onto the kingside.

12. ♗xf6 gxf6 13. ♗h6 ♖e8 14. ♗f7 ♖e7 15. ♗h5

15. ♖h5 d5 isn't so good. FRITZ says I must play precisely to stay out of trouble, and these types of games are no fun.

15...d5 16. exf5 e4 17. d4 c5

I'm going to attack on the kingside, so the obvious plan for him is to use that powerful looking center.

18. O-O-O

My, what fun this leads to . . .

18...cxd4 19. cxd4 ♗xf5 20. g4 ♗e6 21. ♖b1

I think it's worth while to make sure my King is safe before embarking on a kingside expedition.

21... ♖c7 22. f4

Trying to get him to open some lines.

22...f5 23. ♗g5

There are bad Bishops, there are good Bishops; then there are my Bishops!

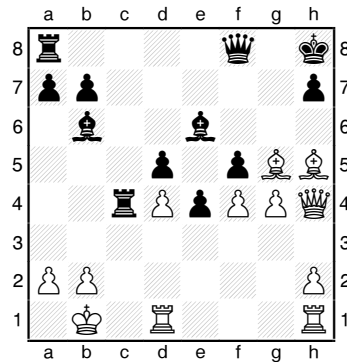
23... ♖f8

The only move to save him from a horrible impending doom.

24. ♖f2 ♖c4

After 24...h6 25. ♗h4 fxc4, Black is clearly better.

25. ♖h4



How many pieces does it take to fill a kingside?

25... ♗d8

Best, but he's in trouble anyway.

26. ♗g6 ♖c7

26... ♖g7 27. ♗xd8 or 26... ♗g8 27. ♗xf5, when I prefer White.

27. gxf5 ♗xg5 28. fxc5 ♖g8

I guess Black's still in it after 28... ♗xf5 29. ♖f4 ♗xg6 30. ♖xc7, though White is clearly better.

29. ♖f4

I was happy about this move, but FRITZ prefers shifting a Rook to the f-file.

29... ♖g7 30. ♗xh7 ♖xh7 31. g6

Much better than just grabbing the Bishop.

31... ♖h5

31... ♖g7 32. ♖h6+

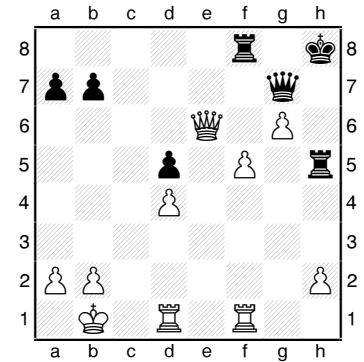
32. ♖e5+ ♖g7 33. ♖xe6 ♖f8 34. ♖hf1 e3

34... ♖xh2 35. ♖h1 and he's done.

35. ♖xe3 ♖g8

Wasted move.

36. ♖e6+ ♖h8



The beginning of the end. After a topsy-turvy game, Matt's final blow was a lovely 12-ply sequence to freeze Max's King and Rook, while leaving his own King free to roam. Max begins by forcing a Queen trade.—D. Dalthorp

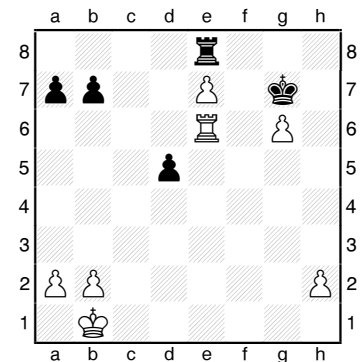
37. ♖e5

I spent a while on this move, making sure that the endgame would be nice and simple.

37... ♖xe5 38. dxe5 ♖hxf5 39. ♖xf5 ♖xf5 40. ♖e1 ♖g7

40... ♖f8 41. e6 ♖e8 42. h4 ♖g7 43. h5

41. e6 ♖f8 42. e7 ♖e8 43. ♖e6



There's nothing Black can do. The culmination of the sequence that began with the last diagram. White is totally winning.—D. Dalthorp

I saw this position before trading Queens; it's simple from here.

43...b6 44. ♖c2 a5 45. ♖d3 b5 46. ♖d4 b4 47. ♖xd5 ♖h6 48. ♖d6 a4 49. ♖d7 ♖a8 50. e8=♖ 1-0

Vancouver WA

Aug 4-12, 2012

# 113th U.S. Open

*A Heritage Event, FIDE Rated!, 300 Grand Prix Points*

**The 2012 U.S. Open will be held at the Hilton Hotel in Vancouver, Washington!**

2012 will be the 25th anniversary of the previous U.S. Open held in Portland won by GM Lev Alburt.

Includes traditional one-game-per-day schedule (9 days), also 6-day slow time control option, and 4-day option requiring only 3 nights hotel stay for most players. 9SS; 40/2, SD/1 (4-day option, Rds. 1-6, G/60).

**Hilton Vancouver Washington,**  
301 W 6th Street, Vancouver  
WA 98660.

Self-Parking \$13.00, valet  
\$17.00 per night. HR: \$110  
single/quad, 360-993-4500, re-  
serve by July 12 or rate may  
increase.

A one-section tournament with Class prizes. **\$50,000** in prizes (**80%** of each prize guaranteed) based on **500** paid entries. Special prizes based on Life Titles.

		by 6/17	by 7/29	after	
<b>Entry Fee:</b>	<i>Online</i>	\$145	\$165	\$185	
	<i>By mail</i>	\$147	\$167		
	<i>By phone</i>	\$150	\$170	\$185	
	<i>At site</i>			all \$190	

Do not mail after 7/29!  
No phone entries after 8/2!  
GMs free!

All entries must be made at least two hours prior to your first game. Current USCF membership required. August official ratings used; unofficial ratings used if otherwise unrated. CCA ratings used if above USCF. Foreign player ratings: usually 100 points added to FIDE or FQE, 200+ added to most foreign national ratings, **no points added to CFC**. Highest of multiple ratings generally used.

**Entries:** USCF, ATTN: 2012 US Open, P.O. Box 3967, Crossville TN 38557. USCF Website online entry. Phone entry: 800-903-8723 (no cell phones). Bring a clock—none supplied. *Sets & boards supplied for tournament, but not for skittles.*

**Side Events:**

- Inaugural Women's U.S. Open
- Denker Tournament of HS Champions
- Barber Tournament of K-8 Champions
- Trophies Plus U.S. Girls' Junior Open
- U.S. Open Blitz Championship
- Weekend Swiss
- U.S. Open Scholastic
- U.S. Open Quads
- Open Bughouse
- U.S. Open G/15 Championship

Check [www.nwchess.com](http://www.nwchess.com) or [www.uschess.org](http://www.uschess.org) for more details.

# Idaho Chess News

by Jeff Roland

The Idaho Closed State Chess Championship was held in Boise on the weekend of February 18-20 at the AmeriTel Inn in the Boise Towne Square. **Larry Parsons** and **Blake Furlow**, both from Boise, are Co-Champions, each scoring 5-1. Parsons has been Champion or Co-Champion seventeen times since 1977, and that is the all-time record in Idaho. This is Furlow's first time as Idaho State Chess Champion. Third place went to **Timothy Stewart** of Meridian.

Other prize winners:

A	Brett Hamilton	Meridian
1st B	Jim Stark	Boise
2nd B	Caleb Kircher	Nampa
1st C	Paul Edvalson	Eagle
2nd C	George Lundy III	Boise
1st D	Peter Olsoy	Boise
2nd D	Nick Bruck	Boise
1st E	Kory Puderbaugh	Eagle
2nd E	Nathan Jiang	Eagle
Unrated	Cody Gorman	Meridian
Senior	Daniel Looney	Meridian
Junior	Caleb Abernathy	Meridian
Woman	Carmen Pemsler	Eagle

### Buckendorf Awards

1st	Jeff Roland	Boise
2nd	Kurt Douglas	Boise
3rd	Tom Booth	Caldwell
4th	Shane Taylor	Boise
5th	Rickey Weathers	Boise

There were five (5) unrated players, which is a welcome sight, for we like to have new players add to the ranks of Idaho's elite chess players.

The 30-player turnout was somewhat less than expected, but that took nothing away from the quality or importance of the event. Jay Simonson was the Chief Tournament Director, and Jeff Roland was the Assistant Tournament Director. The event was covered on the ICA Website ([www.idahocheessassociation.org](http://www.idahocheessassociation.org)) by uploading scanned wall charts, pairing/results charts promptly so that people everywhere could follow the progress of

the historic event. Since I was a player as well as the ICA Webmaster, I spent the first few minutes of the next round on my own time to do that.

### All 11 Games played by Parsons and Furlow!

Since Parsons and Furlow played each other, there are 11 games played by our two Co-Champions that show how they earned their title!

### B38 Sicilian Maroczy Bind

#### Larry Parsons (2000) Shane Taylor (1381)

*Boise, Idaho Closed (1) 2012*

1.c4 g6 2.♘c3 ♘f6 3.e4 d6 4.d4 ♘g7 5.♙e2 O-O 6.♗f3 c5 7.O-O cxd4 8.♗xd4 ♖b6 9.♗db5 a6 10.♙e3 ♗a5 11.♗d4 ♙d7 12.a3 ♗c6 13.b4 ♖c7 14.♖c1 ♖ac8 15.f3 ♗e5 16.♗d5 ♗d8 17.♗d2 e6 18.♗xf6+ ♖xf6?? 19.♙g5 ♗xc4 20.♖xc4 ♗e5 21.♙e3 ♙a4 22.♖fc1 ♖cd8 23.f4 ♖f6 24.♙f3 ♗e7 25.♖c7 ♖d7 26.♖xd7 ♙xd7 27.♖c7 ♖b8 28.♗b3 ♗d8 29.♗xd6 ♙c6 30.♗xd8+ ♖xd8 31.♗a5 ♖d3 32.♖c8+ 1-0

### C55 Two Knights

#### Blake Furlow (1517) Lucas Knoll (UNR)

*Boise, Idaho Closed (1) 2012*

1.e4 e5 2.♗f3 ♗c6 3.♙c4 ♗f6 4.♗c3 d6? 5.♗g5 ♗e7 6.♗xf7 ♖g8 7.♗g5 ♗d5 8.♗xh7 ♖h8 9.♗xd5 ♖h4 10.♗xf8 ♖xe4+ 11.♗e2 ♖xe2+ 12.♙xe2 ♗xf8 13.c3 ♙f5 14.f4 ♙e4 15.♗xc7 ♖c8 16.♗e6+ ♗e7 17.♙g4 ♖h4 18.h3 ♙xg2 19.♖g1 ♙xh3 20.♙xh3 ♖xh3 21.♗g5 ♖h4 22.fxe5 ♗xe5 23.♖g3 ♖h1+ 24.♗e2 ♖ch8 25.♗f3 ♗xf3 26.♗xf3 ♖f8+ 27.♗g2 ♖ff1 28.d4 ♖fg1+ 29.♗f3 ♖f1+ 30.♗e4 ♖xc1 31.♖xc1 ♖xc1 32.♖xg7+ ♗e6 33.♖xb7 d5+ 34.♗d3 ♖b1 35.♗c2 ♖f1 36.♖xa7 ♖f2+ 37.♗b3 ♖f8 38.a4 ♖b8+ 39.♗c2 ♗d6 40.♖a5 ♖c8 41.b4 ♖b8 42.b5 ♗c7 43.♖a6 ♗b7 44.♖d6 ♖a8 45.♗b3 ♖a5 46.♖xd5 ♗b6 47.c4 ♖a7 48.c5+ ♗b7 49.♗b4 ♗c8 50.b6 ♖b7 51.a5 ♗b8 52.♖d8 mate

### B06 Modern Defense

#### George Lundy III (1567) Larry Parsons (2000)

*Boise, Idaho Closed (2) 2012*

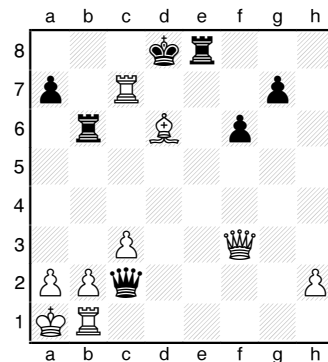
1.e4 g6 2.♗f3 ♙g7 3.d4 d6 4.h3 ♗f6 5.♙d3 O-O 6.O-O c6 7.c3 ♖c7 8.♙f4 ♗h5 9.♙h2 e5 10.♙c2 ♗d7 11.♗bd2 b5 12.♖e1 a5 13.a3 c5 14.d5 c4 15.♗f1 ♗c5 16.♗3d2 ♙h6 17.♖e2 ♙f4 18.♗g3 ♗g7 19.♖ad1 ♙a6 20.♗gf1 ♙h6 21.♖b1 ♖ab8 22.♖ed1 f5 23.f3 b4 24.axb4 axb4 25.♙g3?? b3 26.♙d3 cxd3 27.♖e1 ♗h5 28.♙f2 ♗f4 29.♗h1 ♗e2 30.♙e3 f4 31.♙f2 ♗d7 32.♗h2 ♗f6 33.♗g4 ♙g7 34.♗f1 h5 35.♗gh2 g5 36.♖d2 h4 37.♗g4 ♗xg4 38.hxg4 ♙f6 39.♗h2 ♙c4 40.♗h3 ♖a8 41.♖dd1 ♖fb8 42.♖a1 ♖a2 43.♖ab1 ♙a6 44.♗h2 ♙d8 45.♗f1 ♖e7 46.♗h2 ♙b6 47.♙xb6 ♖xb6 48.♖f2 ♖c7 49.♖e1 ♗g3 50.♖d2 ♖c5 51.♗f1 ♗e2 52.♖dd1 ♖b7 53.♗h2 ♖c7 54.♗f1 ♖g1 55.♗h2 ♖xe1 56.♖xe1 d2 0-1

### A02 From's Gambit

#### Caleb Kircher (1793) Blake Furlow (1517)

*Boise, Idaho Closed (2) 2012*

1.f4 e5 2.fxe5 d6 3.exd6 ♙xd6 4.♗f3 ♙g4 5.e4 ♗c6 6.♙b5 ♙xf3 7.♖xf3 ♖h4+ 8.g3 ♖h3 9.d4 O-O-O 10.♙xc6 bxc6 11.c3 f6 12.♙e3 h5 13.♗d2 h4 14.O-O-O ♖e6 15.d5 cxd5 16.exd5 ♗d7 17.♗c4 ♖a4 18.♗xd6+ ♖xd6 19.♗b1 hxg3 20.♖d4 ♖e8 21.♙f4 ♖b6 22.♙xg3 ♗e7 23.♖e1 ♖g6+ 24.♗a1 ♖c2 25.♖b1 ♗f5 26.♖c4 ♖e8 27.♖xc7+ ♗d8 28.d6 ♗xd6 29.♙xd6??



29...♖xb2+! 30.♗xb2 ♖e1+ 31. ♗xd7+? ♖xd7 22.b5? exd4 23. ♖b1 ♖xb1 mate bxc6

**E62 King's Indian Fianchetto**

**Larry Parsons (2000)**  
**Daniel Looney (1584)**

*Boise, Idaho Closed (3) 2012*

1.c4 ♘f6 2.g3 g6 3.♗g2 d6 4.d4 ♗g7 5.♘f3 O-O 6.O-O c6 7.♘c3 ♘a6 8.e4 ♗g4 9.h3 ♗xf3 10.♗xf3 e5 11.♗e3 ♘d7 12.d5 ♘f6 13.a3 cxd5 14.cxd5 ♖d7 15.♗h2 b6 16. ♖a4 ♖b7 17.b4 ♘c7 18.♘b5 ♘xb5 19.♖xb5 ♖ac8 20.♖ac1 ♘d7 21.♗e2 f5 22.f3 f4 23.♗d2 fxg3+ 24.♗xg3 ♘f6 25.♖a6 ♘h5+ 26. ♗h2 ♖d7 27.♗b5 ♖d8 28.♖xc8 ♖xc8 29.♖xc8 ♖xc8 30.♖c1 ♖xc1 31.♗xc1 ♗f7 32.♗g5 ♗f6 33.♗e3 Draw

**D03 Queen Pawn**

**Timothy Stewart (1901)**  
**Blake Furlow (1517)**

*Boise, Idaho Closed (3) 2012*

1.d4 ♘f6 2.♘f3 d5 3.♗g5 ♗f5 4.e3 ♘bd7 5.c4 c6 6.♖b3 ♗xb1 7. ♖xb1?! ♖a5+ 8.♗d1 ♘e4 9.♗c2 dxc4 10.♗xc4 ♘xg5 11.♘xg5 ♖f5+? 12.♗d2 ♖xg5 13.♗xf7+ ♗d8 14.♖xb7 ♖c8 15.♗e6 ♖a5+ 16.b4 ♖c7 17.♖a6 ♖d6 18.♖a5+ ♗e8 19.♗h3 ♖c7 20.♖hc1 e5 21.

23...dxe3+ 24.♗e2 ♖d3+ 25.♗e1 ♖d2+ 26.♖xd2 exd2+ 27.♗e2 dxc1=♘+ 28.♗f3 ♖c7 29.♖b8+ ♗f7 30.♖b7 ♖xb7 31.cxb7 ♗d6 0-1

**B06 Pseudo-Austrian Attack**

**Blake Furlow (1517)**  
**Larry Parsons (2000)**

*Boise, Idaho Closed (4) 2012*

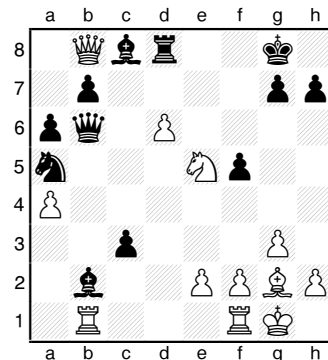
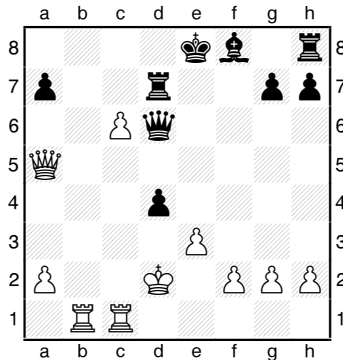
1.e4 g6 2.d4 d6 3.f4 ♗g7 4.♘f3 ♘f6 5.♗d3 O-O 6.♗e3 ♘g4 7.♗d2 c5 8.dxc5?? ♗xb2 9.♗c3 ♗xa1 10.♗xa1 dxc5 11.♖c1 ♘c6 12.f5 f6 13.fxg6 hxg6 14.O-O ♖d6 15. h3 ♘ge5 16.♖h6 ♖f7 17.♖d1 ♗e6 18.♘c3 ♘xf3+ 19.gxf3 ♖g3+ 20. ♗h1 ♖h7 0-1

**A13 Reti**

**Larry Parsons (2000)**  
**Jim Stark (1655)**

*Boise, Idaho Closed (5) 2012*

1.c4 e6 2.g3 ♘f6 3.♘f3 d5 4.b3 dxc4 5.bxc4 ♘c6 6.♗g2 ♗d6 7. O-O O-O 8.d4 ♗e7 9.♗b2 ♖b8 10.♘c3 a6 11.a4 ♘a5 12.♖d3 c5 13.d5 exd5 14.♘xd5 ♘xd5 15. cxd5 c4 16.♖e4 f5?! 17.♖e5 ♗f6 18.♖xb8 ♗xb2 19.♖ab1 c3 20. ♘e5 ♖b6 21.d6 ♖d8??



22.d7

Even better is 22.♗d5+ ♗f8 23.d7 ♗xd7 24.♘xd7+ ♗e7 25.♖e5+ ♗xd7 26.♖fd1 c2 27.♗xb7+ cxd1=♖+ 28. ♖xd1+ ♗d4 29.♖xd4+.

22...♗xd7 23.♘xd7 ♖xb8 24. ♘xb6 ♖d8 25.♗d5+ ♗f8 26.♖xb2 cxb2 27.♖b1 ♖d6 28.♖xb2 ♗e8 29.♗f3 ♗d8 30.♘d5 ♗c8 31. ♘e7+ ♗c7 32.♘xf5 ♖d7 33.e3 g6 34.♘d4 ♗d6 35.♖c2 ♖c7 36.♖b2 ♗d7 37.h4 ♗d6 38.h5 gxh5 39. ♗xh5 ♖c4 40.♗f3 ♖xa4 41.♗xb7 ♘xb7 42.♖xb7 h5 43.♖h7 ♗c5 44.♖xh5+ ♗c4 45.♗g2 ♖a1 46. ♘c6 ♖b1 47.g4 ♖b5 48.♖xb5 ♗xb5 49.g5 1-0

**B72 Sicilian Dragon**

**Kurt Douglas (1763)**  
**Blake Furlow (1517)**

*Boise, Idaho Closed (5) 2012*

1.e4 c5 2.♘f3 ♘c6 3.d4 cxd4 4.♘xd4 ♘f6 5.♘c3 g6 6.♗e3 ♗g7 7.♗e2 O-O 8.♖d2 d6 9.f3 ♗d7 10.O-O-O a6 11.g4 ♘xd4 12.♗xd4 b5 13.h4 b4 14.♘d5 ♖a5? 15. ♘xe7+ ♗h8 16.♗b1 ♗e6 17.♘d5 ♗xd5 18.exd5 ♖fe8 19.♗c4 ♖c7 20.♖xb4 ♖ec8 21.b3 ♖ab8 22.



Photo by Jeff Roland

Tom Booth (B) vs. Dan Looney (W) watched by Jim Stark (B) and Nathan Jiang (W). We stepped in and made them use the proper equipment, which includes a chess board!

♖c3 ♗xc4 23. ♗b2 ♗e2 24. ♕xf6  
 ♕xf6 25. ♗xf6+ ♔g8 26. ♖c1 ♖c4  
 27. ♖he1 ♗d2 28. ♖e7 ♖f4 29.  
 ♗xd6 ♖f8 30. ♗c6 ♖xf3 31. d6?!  
 ♖f6 32. ♗xa6 ♖xd6 33. ♗e2 ♗d4  
 34. ♖e8 ♖xe8 35. ♗xe8+ ♔g7 36.  
 ♗e2 ♖e6 37. ♗d1 ♗f2 38. h5 ♖e4  
 39. hxc6 hxc6 40. ♗g1 ♗h4 41. a4  
 ♖xg4 42. ♗e3 ♗f6 43. ♖e1 ♖d4 44.  
 ♗e5 ♖d1+ 45. ♔b2?? ♖xe1 0-1

*A48 Torre Attack*

**Timothy Stewart (1901)**

**Larry Parsons (2000)**

*Boise, Idaho Closed (6) 2012*

1. d4 ♘f6 2. ♘f3 g6 3. ♕g5 ♕g7  
 4. e3 d6 5. ♘bd2 c5 Draw

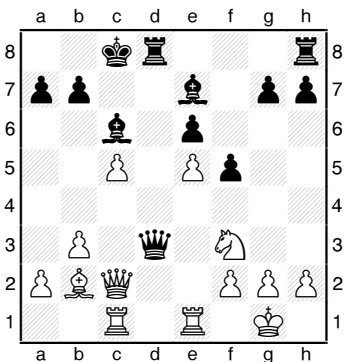
*B12 Caro-Kann Advance*

**Blake Furlow (1517)**

**Daniel Looney (1584)**

*Boise, Idaho Closed (6) 2012*

1. e4 c6 2. d4 d5 3. e5 c5 4. c3 ♘c6  
 5. ♕b5 e6 6. ♘f3 ♕d7 7. O-O ♗b6  
 8. ♕xc6 ♕xc6 9. b3 O-O-O 10.  
 ♘bd2 f6 11. ♕b2 ♘h6 12. ♖e1 f5 13.  
 ♘g5 ♖e8 14. ♗c2 ♗d8 15. ♘df3  
 ♗d7 16. c4 ♘f7 17. cxd5 ♘xg5 18.  
 ♘xg5 ♗xd5 19. ♘f3 ♕e7 20. ♖ac1  
 ♖d8 21. dxc5 ♗d3



22. b4 ♗xc2 23. ♖xc2 ♖d3 24. ♘d4  
 ♖d8 25. ♘xe6 ♖d1 26. ♖c1  
 ♖xe1+ 27. ♖xe1 ♖d2 28. ♕c1  
 ♖xa2 29. ♘xg7 ♖a1 30. ♘xf5  
 ♕g5 31. ♕d2 1-0

**Annual Business Meeting**

The 2012 Annual Business Meeting was held at 8:00 a.m. Sunday morning at the Idaho Closed. Since Adam Porth, Secretary/Treasurer, was unable to attend, it fell upon Jeff Roland to take the minutes. Roland decided to record the

entire meeting on DVD using his video camera to make it easier to get accurate minutes (and to avoid writer's cramp!). This was the first time that minutes were recorded in this manner, and it is likely to be repeated, as it is just so much easier than using paper and pen.

The ICA Constitution & Bylaws were amended to change the wording on Memberships to make it possible for the ICA to be part of *Northwest Chess*.

Elections were held and the four Trustee positions were to be chosen. Jeff Roland was reelected Trustee for Web Development and Maintenance. Craig Barrett (who was appointed by the Board to the position on October 22, 2011) was elected as Trustee for Scholastic Development. George Lundy III was elected as Trustee for Tournament Development. And Patrick Abernathy was elected to the other Trustee for Tournament Development position. Positions in the ICA are for two-year terms.

The three officers, Jay Simonson, President;



Photo by Caleb Abernathy

*ICA President Jay Simonson displays the 2nd Place plaque.*

Kevin Patterson, Vice President; and Porth were not up for reelection, as those terms expire in 2013.

**2012 Idaho Scholastic Novice Tournament**

Forty-four students played in the Idaho Scholastic Novice Tournament, played at Fairmont Junior High School in Boise on February 25, 2012. There were four sections of play: the Grade 6-12

Orlov Chess Academy  
 IM Georgi Orlov  
 2540 USCF

Offers time-tested program,  
 challenge and quick progress!

Chess Camps, Tournaments  
 Chess Classes, Private Lessons

chess64@comcast.net  
 www.chessplayer.com  
 (206)-387-1253

Championship Section, the Grade 4-5 Section, the Grade 2-3 Section, and the Grade K-1 Section. All sections were unrated. For the first time, this tournament was held concurrently with the Idaho Scholastic Girls Championship.

### Grade 6-12 Championship

1st	Micah Sorenson	Calvary Christian	Nampa	6th grade	4.0
2nd	Nathan Hines	Lewis & Clark		8th grade	3.5
3rd	Jacob Hussey	Calvary Christian	Nampa	7th grade	3.5
4th	Nicholas Wurst	home school		6th grade	3.0
5th	Andrew Thomas	Calvary Christian	Nampa	8th grade	3.0
1st Team	Calvary Christian School		Nampa		10.5

### Grade 4-5 Section

1st	Vimean Rath	Lowell		5th grade	4.5
2nd	Chris Gunn	Mill Creek	Middleton	5th grade	3.5
3rd	David Wells	Mill Creek	Middleton	4th grade	3.5
4th	Zoe Kenney	River Valley		5th grade	3.0
5th	Braydon Torrey	Calvary Christian	Nampa		3.0
1st Team	Mill Creek Elementary		Middleton		7.0
2nd Team	Lowell Elementary		Boise		7.0

### Grade 2-3 Section

1st	Ian Wurst	home school		3rd grade	5.0
2nd	Austin Li	Cecil Andrus		3rd grade	4.0
3rd	Annika Wells	Mill Creek	Middleton	3rd grade	3.5
4th	Bradyn Ruggles	Mill Creek	Middleton	3rd grade	3.0
5th	Nathan Edvalson	Cecil Andrus		2nd grade	3.0
1st Team	Cecil Andrus Elementary		Boise		7.0
2nd Team	Mill Creek Elementary		Middleton		6.5

### Grade K-1 Section

1st	August Mussler-Wright	Washington		K-garten	4.0
2nd	Keyton Smith	Washington		K-garten	3.5
3rd	Logan Wendel	Washington		1st grade	3.5
4th	Nate Veltman	Washington		1st grade	3.0
5th	Jacob Edvalson	Cecil Andrus		K-garten	2.5

### 2012 Idaho Scholastic Girls Championship

Twenty-eight girls played in the 9th Annual Idaho Scholastic Girls Championship, played at Fairmont Junior High School in Boise on February 25. There were three sections of play: the Grade 7-12 Championship Section (players were allowed to play up into this section), the Grade 4-6 Section, and the Grade K-3 Section. Only the Championship Section was USCF rated.

Since there were only four girls in the Championship Section, that section was a double round-robin. **Michaela Abernathy** (home school, 8th gr.), won the section with five points, followed by Carmen Pemsler (Eagle M.S., 8th gr.) with four points, Emily Patterson (Meridian Technical Charter School, 11th gr.) with three points, and Anna Kappelman (Coventry Academy, 8th gr.) in her first rated event with zero points. Abernathy will have first rights to represent Idaho in her choice of either the Susan Polgar Girls Invitational or the USCF equivalent.

### Grade 4-6 Section

1st	Alethea Chaney	Ambrose		6th grade	4.5
2nd	Isabella Ojukwu	Washington		4th grade	3.5
3rd	Leah Abernathy	home school		4th grade	3.5
4th	Nichole Adams	home school		6th grade	3.5

### Grade K-3 Section

1st	Elena Yang	Cecil Andrus		3rd grade	5.0
2nd	Adaria Arnold	North Star Charter		3rd grade	4.0
3rd	Verah Arnold	home school		1st grade	3.0

Craig Barrett was the Chief TD overseeing both events. Isaac Barrett was the Head Floor TD and Jordan Barrett was a Floor TD for the Novice, while Jeff Roland was the Floor TD for the Girls. Curtis Barrett was the Head Computer TD for both events, while Tigger Barrett, Nichole Carlson and Cody Stump assisted the various TDs. Elizabeth Barrett, Danielle Patterson, and Tad Flannigan worked the concessions. Katie Patterson helped with set-up. Kevin Patterson made announcements and hosted the awards ceremony.

Kevin Patterson communicated so well that, whenever it was time to start a new round, the girls simply walked into the gymnasium and sat in the right places at the tables with no distractions to anyone else, ready to begin their games. From my perspective as floor TD, this was wonderful! I did not need to make any announcements at all on the floor. But I did make one. Just before play commenced for the final round, I expressed my sincere and heartfelt thanks to all the girls for the way they conducted themselves throughout the tournament, showing courtesy and respect toward one another, and for making the event one of the most pleasant in my memory.

The tournament ran so smoothly, even with six (6) rounds in the Championship Section, that the entire event was finished almost an hour ahead of schedule. Thanks to all who helped clean up after the event was done, everyone was out of the building way ahead of schedule.

## Idaho Chess Association

### Upcoming Tournaments

<b>Idaho Open</b>	Pocatello	April 21-22 (NWGP!)
<b>ICA Players Memorial</b>	Boise	May 19-20 (NWGP!)
<b>ICA Summer Classic</b>	Boise	July 14-15 (NWGP!)

### ICA Board of Directors

<b>President:</b>	Jay Simonson (rooknjay@yahoo.com)
<b>Vice President:</b>	Kevin Patterson (kpat42@msn.com)
<b>Secretary/Treasurer:</b>	Adam Porth (aporth1@cox.net)
<b>Trustee for Website Development and Maintenance:</b>	Jeff Roland (jroland@cableone.net)
<b>Trustee for Scholastic Development:</b>	Craig Barrett (craig.barrett@ch2m.com)
<b>Trustee for Tournament Organization:</b>	George Lundy III (tdmlundy@juno.com)
<b>Trustee for Tournament Organization:</b>	Patrick Abernathy (abernpat@gmail.com)





# IM John Donaldson Sweeps aside Competition in the 20th David Collyer Memorial

by Kevin Korsmo

The Dave Collyer Memorial tournament turned 20 this year, and despite its age, the event had a distinctly youthful look to it with a large number of scholastic players bolstering the turnout. IM John Donaldson won the event with a perfect 5.0 score. It was the fifth perfect score in the history of the event and the third by Donaldson. In addition to winning the first place prize, John also won the Stephen Christopher Memorial Perfect Score prize of \$200 donated by long time Northwest chess figure Rusty Miller. The tourney was played in Spokane on February 25-26.

After the first day's action, there were five 3-0 scores among a field of 64 players: Donaldson, FM Paul Bartron, John Julian, Nikolay Bulakh, and Mika Mitchell. Three other players lingered a half point back due to byes. The Sunday morning action promptly reduced the perfect scores to two. Donaldson turned back John Julian on board one, while the veteran Bartron put away Bulakh, a Gonzaga University freshman, in a long game on board two. Mitchell fell to expert Tim Moroney who had been required by work commitments to take a first round bye. That set up a final round first board encounter between Donaldson and Bartron for the second consecutive year.

Donaldson ground out the win on board one in nice fashion, working late into the round to claim the point and the first place prizes. Second place was decided in a board two encounter between Moroney and James Stripes, whose only record blemish was taking a third round ("old man's") bye Saturday night. Stripes prevailed in a nice endgame to claim clear second with a score of 4.5. Third place (4.0) was shared by Bartron, Julian,

Steve Merwin, and Jon Middaugh. Jon took the first prize in Class A, while the other three shared the prizes for third place and Expert.

A score of 3.5 was the magic number for most of the remaining prize winners. Five of those players shared the second prize in Class A: Ryan Ackerman, Bulakh, Kairav Joshi, Cameron Leslie, and Dave Rowles. The same score gave Steve Fabian and Dan McCourt the Class B prizes. Likewise, that score was the winning tally in Class C for Richard Williams. Second place in Class C went to Ron Weyland with a 3.0 score. The Class D category prizes were won by Jim Burney and Peter Schumaker with 2.5 scores. The Naess sisters from Norway (currently living in Moses Lake until June), Maria and Sara, shared the Class E section prizes with 2.0 scores. They

are attending fourth and fifth grade, respectively. The sisters also claimed the second and third place biggest upset prizes (\$50 each), with Sara's upset only ten points below the top upset achieved by Ron Weyland (\$100). They both claimed scalps of players rated more than 700 points above them!

A large contingent of youthful players – nine scholastic youth in fifth grade or younger -- augmented the turnout and helped make the 20th Collyer the youngest in event history! A special prize of a large magnetic wooden travel set donated by John Dill, coach of the Northwest Christian chess program, went to Nick Seleski who recorded a 814 point upset win in round two. The upset did not qualify for prize money because it involved a provisionally rated player, but was still the largest upset of the event.



courtesy of Kevin Korsmo

*IM John Donaldson watches his opponent make a move during the simul.*

The event was without incident except for a late Saturday morning snow storm that dumped five inches of snow in just a few hours. It prevented one sleep-in player from making his morning game on board one and sent another player home after the first round. By mid-afternoon, though, the roads were clear and the snow was melting, leaving only slush to be dealt with the rest of the weekend.

A special 20th anniversary plaque, featuring a photo of Dave Collyer and Gary Younker (along with a very young Curt Collyer) was handed out as a door prize to each entrant. An anonymous donor spent over \$600 providing 75 plaques for players. With the inclusion of the Stephen Christopher Memorial Perfect Score prize, a total of \$2,200 was paid out in prizes this year. The prize fund was enhanced by a \$400 donation from another anonymous donor and a gift from the Gary Younker Foundation. The board members of the foundation were particularly pleased by the youthful players. One of Gary Younker's passions was supporting youngsters in chess, and the GYF exists in part to help promote that vision.

For the 11th consecutive year, the Collyer weekend was kicked off by a free Friday night lecture from John Donaldson. He spoke about his recent experience at a tournament in Bunratty Castle in Ireland; he had returned to the States the Monday before the Collyer tourney. After the lecture, the IM then took on 26 players in a simul. It was a long week for Donaldson, who certainly racked up a lot of air miles in February.

## John Donaldson Annotates

The 20th David Collyer Memorial, held February 24th and 25th, was a fitting tribute to the event's namesake and the late Gary Younker who did so much for chess in Spokane. Kevin Korsmo and his team organized a first-rate and friendly event which attracted 64 players who came primarily from Eastern Washington and Montana. The attendance for the tournament was excellent, taking into account the snowstorm that blanketed the city the night before the event.

The 20th David Collyer Memorial was not the strongest in the series, but I did have interesting games the last two rounds.

### A04 King's Indian Attack

**John Julian (2039)**

**IM John Donaldson (2402)**

*Spokane, Collyer Memorial (4) 2012*

Annotations by IM John Donaldson

1.e4 c5 2.d3 ♘c6 3.g3 g6 4.♙g2 ♙g7 5.♘f3 e5

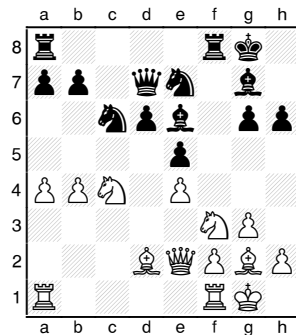
The reversed Botvinnik System has a good reputation, especially when White is committed to a setup with e2-e4.

6.O-O ♘ge7 7.c3 O-O 8.♘bd2 d6 9.a4

9.a3, intending 10.b4, is more flexible.

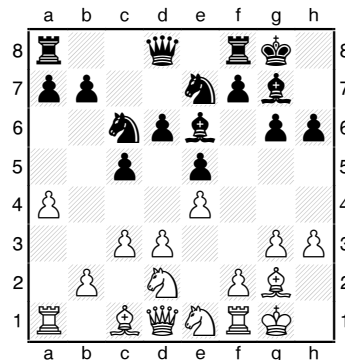
9...h6 10.♘e1

10.♘c4 ♙e6 11.♙d2 ♗d7 12.♗e2 f5 13.b4 cxb4 14.cxb4 fxe4 15.dxe4



15...♗xf3 0-1, was a short and strange miniature that occurred in McLaren-Donaldson, Vancouver 1978, and Joyce-Donaldson, Dublin 1995.

10...♙e6 11.h3



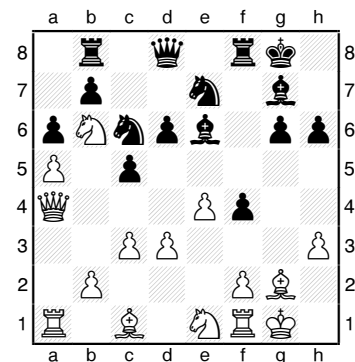
11...a6

11...d5, aiming for a good version of a reversed King's Indian, and 11...f5 were the alternatives.

12.♘c4 ♗b8 13.a5! f5

White has good compensation for the pawn after 13...♙xc4 14.dxc4 ♘xa5 15.♗d3.

14.♗a4 f4 15.gxf4?! exf4 16.♘b6?!



16.♘f3 was a better try.

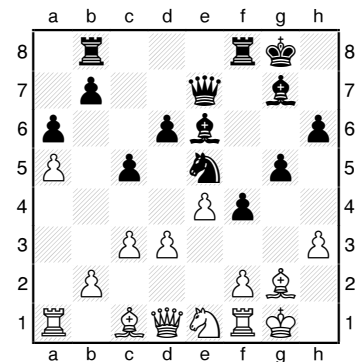
16...g5

16...♘xa5 17.♘d5 recovers the missing pawn.

17.♘d5 ♘e5 18.♘xe7+

18.d4 cxd4 19.cxd4 f3 20.dxe5 fxg2 21.♘xg2 dxe5 favors Black, but not as much as the game continuation

18...♗xe7 19.♗d1



19...g4 20.hxg4 f3 0-1

In view of 21.♙xf3 (21.♘xf3 ♙xc4 22.♗b3+ c4) 21...♘xf3+ 22.♘xf3 ♙xc4 23.♗b3+ c4 24.♗xc4+ ♙e6, winning.

### Catalan E04

**IM John Donaldson (2402)**

**FM Paul Bartron (2102)**

*Spokane, Collyer Memorial (5) 2012*

Annotations by IM John Donaldson

1.♘f3 ♘f6 2.c4 e6 3.g3 d5 4.Bg2 c6 5.d4 ♘bd7 6.O-O

6.♗c2 ♙d6 7.O-O 0-0 8.♘bd2 e5 9.cxd5 cxd5 10.dxe5 ♘xe5 is a reliable

variation for Black. White wants to have his queen on d1 and knight on c3 when fighting against an isolated queen pawn.

6...dxc4

6...♔d6 7.♖c3 0-0 8.♗d2, intending e2-e4, promises White good chances for an advantage.

7.a4

7.♖c2 b5 8.b3 cxb3 9.♖xc6 ♖b8 10. axb3 ♗b7 11.♖c2 ♜c8 is acceptable for Black, according to GM Boris Avrukh in his famous work on the Catalan contained in volume one on 1.d4 published by Quality Chess.

7...♔d6

Or 7...♔e7 8.♖c2 (8.♗c3 ♗b4 9.e4 O-O 10.♖c2 ♜e8 11.♜d1 ♖e7 12.e5 ♗d5 13.♗d2 ♗7b6 14.♗ce4 with a slight edge in Aronian-Portisch, Warsaw 1995) 8...0-0 9.♖xc4 (9.♗a3!?) 9...a5 10.♗c3 ♗d5 11.e4 ♗b4 12.♜d1 b6 13. ♖b3 ♔a6 14.♔e3 ♜c8 15.♜d2 ♖c7 16.♖d1 ♜fd8 17.♜c1 with a slight edge - Avrukh.

7...a5 8.♖c2 ♗b6 [8...b5 9.♗e5! ♗xe5 10.dxe5 ♗d5 11.axb5 cxb5 12.♗c3 ♖d7 (12...♗b4 13.♖d2 ♖xd2 14.♔xd2 ♜b8 15.♜xa5 ♔d7 16.♜d1 ♔e7 17.♜a7 ♔c6 18.♗e4 ♗d5 19. ♗d6+ ♔xd6 20.exd6) 13.♜d1 ♔b7 14. ♔g5 h6 (14...b4 15.♗xd5 exd5 16.e4) 15.e4!, winning] 9.♗bd2 ♔e7 10.♗xc4 ♗xc4 11.♖xc4 O-O 12.♜d1 ♖d5 13. ♗e5 ♖xc4 14.♗xc4 with a pleasant advantage for White.

8.Na3 0-0

8...♔xa3 9.♜xa3 O-O 10.♖c2 ♖e7 11.♖xc4 a5 is better for White as the weakness on b4 is more than compensated by the two Bishops and strong pawn center.

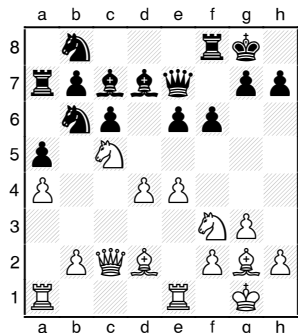
9.♗xc4 ♔c7 10.♖c2 ♗b6 11.♗ce5

Normally the player with more space wants to avoid exchanges, but here 11.b3! was actually a better move.

11...♖e7 12.e4

Objectively White's advantage is not huge but Black's position is unpleasant to play as he has no counterplay.

12...♗fd7 13.♗d3 a5 14.♔g5 f6 15.♔d2 ♗b8 16.♜fe1 ♔d7 17. ♗c5 ♜a7



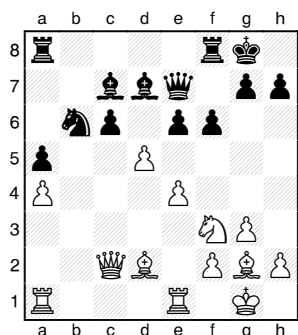
18.b4 ♗a6 19.♗xa6 ♜xa6 20.b5

A strong alternative was 20.bxa5 ♗c8 21.♔f1 ♜a7 22.a6 bxa6 23.a5 with a very nice advantage.

20...♜aa8 21.bxc6 bxc6

As 21...♔xc6 is strongly met by 22. d5 ♔e8 23.♔e3.

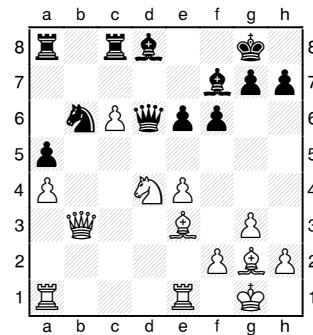
22.d5!



22...♜fc8?!

Black had to play 22...c5, although 23.dxe6 ♔xe6 24.e5 is much better for White.

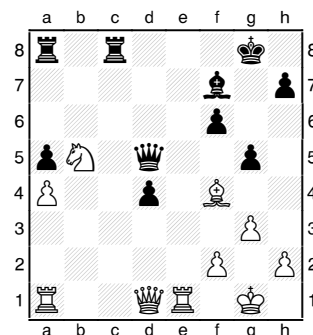
23.dxc6 ♔d8 24.♗d4 ♖d6 25.♔e3 ♔e8 26.♖b3 ♔f7



27.e5!

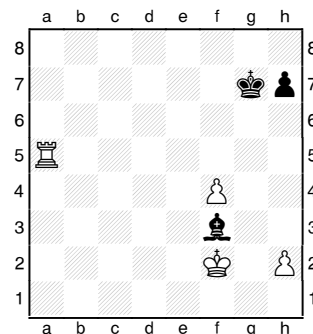
Leads to a decisive win of material. 27...♖xe5 28.♗b5 ♗d5 29.♔f4 ♖h5 30.♔xd5 exd5 31.c7

This wins a piece and the game. 31...♔xc7 32.♔xc7 d4 33.♖d1 ♖d5 34.♔f4 g5



35.♗c7 ♖d8 36.♗xa8 gxf4 37. ♖g4+ ♔g6 38.♗b6 f5 39.♖xf4 ♖xb6 40.♜ab1 ♖f6 41.♜b8

The rest is simple technique. 41...♜xb8 42.♖xb8+ ♔g7 43. ♖a7+ ♔h6 44.♜d1 d3 45.♖e3+ f4 46.♖xf4+ ♖xf4 47.gxf4 ♔g7 48.f3 ♔e8 49.♜xd3 ♔xa4 50.♜a3 ♔c6 51.♜xa5 ♔xf3 52.♔f2



52...♔h1 53.♔e3 ♔f6 54.h4 ♔g2 55.f5 ♔f1 56.♔f4 ♔d3 57.♜d5 ♔c2 58.♜d6+ ♔g7 59.h5 h6 60. ♔e5 ♔a4 61.♜g6+ ♔h7 62.♔f6 ♔d1 63.♔e7 ♔xh5 64.♜g1

**Chess DVDs** Now Available through Elliott's Chess School!

LEARN CHESS INDEPTH WITH NATIONAL MASTER ELLIOTT NEFF

Chess4Life also offers:

- Chess Camps
- Tournaments
- Afterschool Program
- Private Lessons
- Chess Classes
- Chess4Life Center

**Chess4Life**  
Teaching life skills through chess

For more info, call 425-283-0549 | www.chess4life.com

Portal Games Presents

# The Portland Chess Shop

## NW GRAND PRIX EVENT

FIVE-ROUND SWISS RAPID CHESS TOURNAMENT

**\$500** Projected Prizes

**\$300** Unconditionally Guaranteed

\$20 Buy-in

### *Projected Prizes:*

1st: \$80

2nd: \$60

3rd: \$40

Under 2200 Prize: \$60

U2000: \$60

U1800: \$50

U1600: \$50

U1400/Unrated: \$50

U1200/Unrated: \$50

Date: **Sunday, May 13**

Registration: **2:00pm – 2:50pm**

Tournament: **3:00pm – 6:00pm**

**Bughouse Tournament After-Party!**

**PORTAL**  
G A M E S

1224 SW Broadway • Portland, OR 97204 • 503-575-4887

[www.portalgamespdx.com](http://www.portalgamespdx.com) • [galen@portland-chess.com](mailto:galen@portland-chess.com)

NW Grand Prix Event. Tournament time control is game in 15 minutes with 5 second delay. USCF membership required. USCF Quick Rated. There will be no unrated section. Three Points for a Win Scoring System. \$500 Projected Prizes based on 33 entries. \$300 Unconditionally Guaranteed. Email: [galen@portland-chess.com](mailto:galen@portland-chess.com) Bughouse tournament is \$3 entry per participant. Bughouse time-control is game in three minutes. Bughouse tournament is double elimination event with two games per match & bullet tiebreakers.

The Black King is cut off and there is nothing to be done about the f-pawn.  
64...♙e2 65.f6 ♙c4 66.f7 ♙xf7 67.♙xf7 h5 68.♙f6 ♙h6 69.♖h1 1-0

## James Stripes Annotates

*C14 French Classical*

Michael Cambareri (1940)

James Stripes (1879)

*Spokane, Collyer Memorial (4) 2012*

Annotations by James Stripes

1.e4 e6 2.d4 d5 3.♘c3 ♘f6 4.♙g5  
♙e7 5.e5 ♘fd7 6.♙xe7 ♖xe7 7.f4  
a6

In the Turkey Quads 2010, I played  
7...c5 and resigned after 8.♘b5.

8.♙d3 c5 9.♘h3

I do not understand this move.

9...cxd4 10.♘e2 ♖b4+ 11.♖d2  
♖xd2+

I thought for awhile about 11...♖xb2,  
but decided to simplify. I wanted to play  
not to lose.

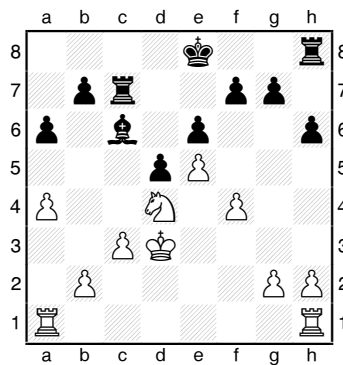
12.♙xd2 ♘c6 13.♘g5 ♘c5 14.  
♖ae1

I did not expect Michael to go for  
14.♙xh7 g6 15.♙xg6 fxc6 16.♘f3.

14...h6 15.♘f3 ♙d7 16.♘exd4  
♘xd3 17.♙xd3 ♖c8 18.c3 ♘xd4  
19.♘xd4 ♙c6

Offering my opponent a Rook  
endgame.

20.♖a1 ♖c7 21.a4!



This plan gave me more trouble than  
initially anticipated.

21...♙e7 22.a5 ♖hc8 23.♖a3 ♘d7

23...b5 24.axb6 ♖b7 25.♖xa6 looks  
losing for Black.

24.♖b3 h5 25.♖b6 ♖a8 26.♙e3  
♙e7 27.♖g1 ♙d7 28.g4 hxg4  
29.♖xg4 g6 30.♖h4 ♖b8 31.♖h7  
♖c5 32.♘f3

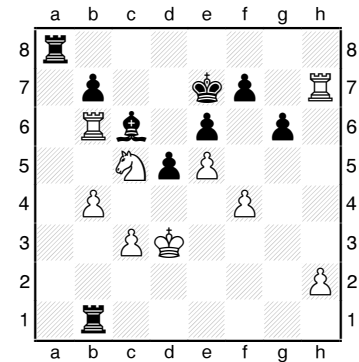
I expected 32.h4.

32...♙c6 33.♘d4 ♙d7 34.♖d6 ♖f8

After 34...♖xa5? 35.♖xd7+ ♙xd7

36.♖xf7+ ♙e8 37.♖g7, White has  
plenty of compensation.

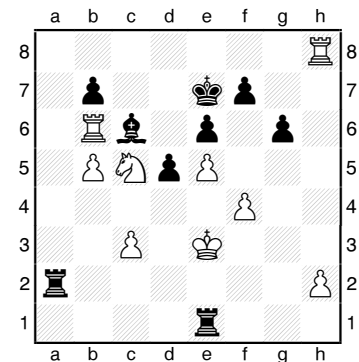
35.♙d3 ♖xa5 36.♖b6 ♖b8 37.b4  
♖a1 38.♘b3 ♖b1 39.♘c5 ♙c6 40.  
♘xa6 ♖a8 41.♘c5



41...♖a7

I failed to find 41...♖a2! 42.♘xb7??  
♖d1+ 43.♙e3 d4+ 44.cxd4 ♖e1+ 45.  
♙d3 ♙e4+ 46.♙c3 ♖c1+ 47.♙b3 ♙d5  
mate.

42.♖h8 ♖d1+ 43.♙e2 ♖h1 44.b5  
♖a2+ 45.♙e3 ♖e1+



Uncertain what to do if the King hid  
on h3, I offered a draw.

46.♙d4??

After 46.♙f3 ♖f1+ 47.♙g3 ♖g1+  
48.♙h3 ♖h1, Michael did not like the  
looks of 49.bxc6 ♖hxh2+ 50.♙g4 ♖xh8  
51.cxb7 ♖b8.

46...♖d2+ 47.♘d3 ♖e4+ 48.♙c5  
♖c4 mate

*C76 Ruy Lopez Steinitz Deferred*

James Stripes (1879)

Timothy Moroney (2076)

*Spokane, Collyer Memorial (5) 2012*

Annotations by James Stripes

1.e4 e5 2.♘f3 ♘c6 3.♙b5 g6

A new move to me.

4.c3 a6 5.♙a4 d6 6.d4



courtesy of Kevin Korsmo

*A view of the tournament hall.*

Via an uncommon move order, we've reached the Bronstein variation of the Spanish. It was employed with success by Alekhine in Game 22 of his 1929 WCC match with Bogoljubov, and has been used with success by David Bronstein, Boris Spassky, and others.

6...♗d7 7.♗g5

7.O-O is the main line.

7...f6

Bronstein played 7...♗e7.

8.♗e3 ♘h6 9.dxe5 ♘xe5

9...dxe5, Bronstein-Sakharov, Soviet Championship 1960.

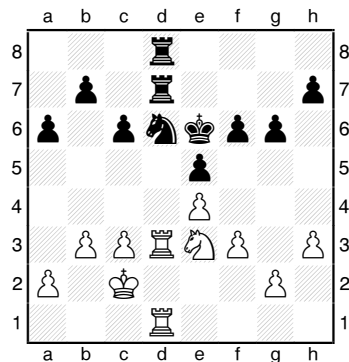
10.♘xe5 dxe5 11.h3 ♘f7

My goal was to finish the tournament without a loss, so I reduce the fighting potential of both sides.

12.♖xd7+ ♖xd7 13.♗xd7+ ♗xd7  
14.♘d2 ♗h6 15.♗xh6 ♘xh6 16.  
♘c4 ♖ad8 17.O-O-O+ ♗e6 18.  
♗c2

It might become useful to have the opposition.

18...♘f7 19.♘e3 ♘d6 20.f3 ♖d7  
21.♖d3 ♖hd8 22.♖hd1 c6 23.b3  
♗e7 24.♖1d2 ♗e6 25.♖d1



I am open to a draw offer, and so happily repeat the position.

25...f5!? 26.exf5+ gxf5

26...♘xf5 27.♘xf5 gxf5 28.♖xd7  
♖xd7 29.♖xd7 ♗xd7=

27.g4 f4

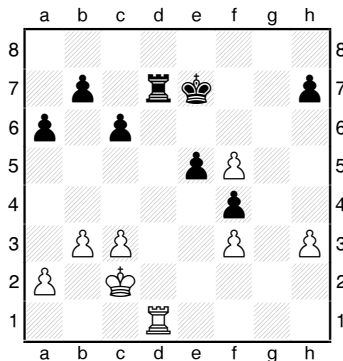
I would have been comfortable with 27...fxg4 28.fxg4, while 27...e4 28.fxe4 fxe4 29.♖d4 seems better for White.

28.♘f5 ♘xf5

This move reduces the likelihood of

the game ending in a draw. Both my opponent and I thought that Black had the advantage. We were wrong. A correct assessment of the endgame might have led to 28...♘e8 29.♖xd7 ♖xd7 30.♖xd7 ♗xd7 31.♗d3.

29.gxf5+ ♗e7 30.♖xd7+ ♖xd7



Someone will lose the pawn endgame. I had to calculate exactly before trading the last set of Rooks. b3-b4 was the key resource that I found, and so ...

31.♖xd7+! ♗xd7 32.♗d3 ♗e7 33. h4

Perhaps inaccurate (33.b4 ♗f6 34.♗e4 b6 35.h4).

33...♗f6

33...a5! requires precision from White: 34.♗e4 ♗f6 35.c4 is the only move [35.h5 b5! 36.a3 c5 37.c4 a4 38. cxb5 (38.bxa4 b4 39.axb4 cxb4 40.♗d3 b3 41.♗c3 e4) 38...axb3 39.♗d3 e4+ 40.fxe4].

34.♗e4 h5 35.b4

The only move, but one that I found four moves back. Black is in *Zugzwang*, for he is the one who runs out of pawn moves first.

35...b6 36.c4 a5 37.bxa5 bxa5 38.c5 1-0

One more pawn move each, and the Black King must give way. ■

**You can play in two national events close to home:**  
**Canadian Open in Victoria, B.C., July 8-13**  
**U.S. Open in Vancouver, WA, August 4-12**

**USCF NATIONAL OPEN**

JUNE 15TH – 17TH OR 16TH – 17TH  
**\$80,000 GUARANTEED PRIZE FUND**  
 8 Sections – Top 2 Sections FIDE Rated  
 200 Grand Prix Points – USCF National Championship

**INTERNATIONAL YOUTH CHAMPIONSHIP**

JUNE 16TH – 17TH  
**Trophies and Chess Prizes**  
 Including Computers with Chess Software  
 5 Round Swiss Game/60  
 4 Sections by Age and Rating

**Special Guest**  
 Former World Champion  
**GM ANATOLY KARPOV**

**U. S. GAME / 10 CHAMPIONSHIP**

THURSDAY, JUNE 14TH 5:00 P.M.  
**\$5,000 Guaranteed Prize Fund**  
 80 Grand Prix Points  
 USCF National Championship

**INTERNATIONAL CHESS FESTIVAL**

June 14th – 17th 2012      Riviera Hotel & Casino  
 SIMULS ★ SCHOLASTICS ★ LECTURES ★ ANALYSIS  
 GRANDMASTER CHESS CAMP ★ POKER TOURNAMENT ★ AND MORE

**www.VegasChessFestival.com**

# 37th Annual Keres Memorial

**C\$4,000 GUARANTEED Prize Fund**

**Victoria Day weekend, May 19-21**

**Location:** Executive Airport Plaza Hotel, 7311 Westminster Hwy., Richmond BC.

**Round Times:** Noon-5:00 p.m., 10:00 a.m.-5:00 p.m., 10:00 a.m.-3:00 p.m.

**Time Control:** Game in 80 minutes plus 60 second per move increment.

**Prizes:** *Open* C\$1000-600-400 U2200 **300** by 4/9 by 5/14 on site  
*U2000* C\$600-400 U1800 **200** **Entry Fees:** *Open & U2000* C\$100 C\$110 C\$120  
*U1600* C\$300 U1400 **100** *U1600* C\$60 C\$70 C\$80  
Top Unrated (any section) C\$100 C\$20 to play up a section

**Registration:** online at [www.keresmemorial.pbworks.com](http://www.keresmemorial.pbworks.com) or by cheque payable to Roger Patterson. Mail to Roger Patterson, 4381 Wildflower Lane, Victoria BC V8X 5H1, Canada.

**Misc:** Equipment provided. Special C\$119 room rate at Executive Airport Plaza Hotel. Free parking for hotel guests, C\$5/day otherwise. FIDE and CFC rated. See [www.keresmemorial.pbworks.com](http://www.keresmemorial.pbworks.com) for more information.

# 49th Annual Canadian Open

**C\$15,000 GUARANTEED Prize Fund**

**July 8-13; Victoria BC**

**Location:** Hotel Grand Pacific, 463 Belleville St, Victoria, BC

**Rounds:** 11-6; 11-6; 11-6; 6:00pm; 6:00pm; 6:00pm

**Time Control:** Game in 120 minutes plus 30 second per move increment.

**Sections:** Premier (FIDE and CFC rated); U2000 (CFC rated), U1600 (CFC rated)

**Entry Fees:** C\$175 by June 1, C\$195 by June 29, C\$215 on site. C\$20 to play up a section.

**Prizes:** C\$15,000 guaranteed.

**Play a GM!:** 1st round games against GMs for sale. See website for details.

**Registration:** online on website; by cheque payable to Victoria Chess c/o Paul Leblanc, 1012 Spiritwood Place, Victoria BC V8Y 1C6. by email: [cochess2012@gmail.com](mailto:cochess2012@gmail.com)

**Transportation:** Seattle Clipper and Coho ferry from Port Angeles dock across the street.

**Misc:** Equipment provided. C\$139 room rate at Hotel Grand Pacific 1-800-663-7550 (rate code "JUL12CHESS") See [www.monroi.com/2012-cocc-home](http://www.monroi.com/2012-cocc-home) for further details and side events.



# Howard Chen Three-peats as WA Champ

## Feng Tops Premier; Bartron and D. He win Invitational

by NM Joshua Sinanan

**F**M Howard Chen, a high school senior from Monroe, repeated as Washington State Champion for an amazing third year in a row, scoring 7/9 in the 10-player round robin held at Seattle Chess Club during the second and third weekends in February. The Championship section, which included two FIDE masters, two USCF life masters, five National Masters and one expert, had an average rating of 2246. Igor Ummel, the lone expert in the field, had an outstanding tournament and finished clear second with 5.5, increasing his rating to

within two points of master! Recent newly-wed NM Nat Koons was clear third with 5.0, ahead of a logjam of players tied with 4.5 including NM Dereque Kelley, FM Ignacio Perez, NM David Golub, and Washington's newest master, NM Gil Lapid Shafirri.

The first weekend of the tournament, played February 11-12, saw the youngsters pull out to an early lead over the veterans as the latter struggled to find their form. Indeed, youth seemed to prevail over experience on many occasions, as high school seniors Golub and Ummel scored upset victories over veterans

Kelley and Perez, respectively, in Round One. Golub, last year's Denker qualifier, extended his winning streak by beating Ignacio's King's Indian in Round Two.

By Sunday night, defending champ and heavy rating favorite Howard Chen had rushed out to a perfect score after four rounds, 1.5 points ahead of Koons, Golub, and Ummel, the only other undefeated player in the section. Dereque Kelley and I were on an even score, while Pupols, the oldest player in the Championship, had drawn his first three games before losing to Chen. Tied with him was the most mercurial player in the section,

speed chess aficionado Ignacio Perez, who, at any moment, could go on one of his famous winning streaks. Shafirri, last year's Premier winner, had scored one point from two draws and the luckless Harley Greninger, the Challenger's Cup winner, had only half a point from his draw with Pupols.

During the second weekend, February 18-19, Howard Chen continued his dominant play and had the rest of the field fighting for second place by clinching clear first with a round to go. The veterans tried to mount a comeback after a tough first weekend, but only Ignacio and Gil man-



Photo by Dan Mathews

*WA Championship players (L-R): FM Howard Chen, Igor Ummel, NM David Golub, NM Harley Greninger, NM Dereque Kelley, NM Josh Sinanan, FM Ignacio Perez, NM Nat Koons, NM Gil Lapid Shafirri*

aged to find their form. The sensation of the tournament occurred in Round six when Perez defeated Chen with the black pieces, handing the defending champ his only loss of the tournament. Ignacio extended his winning streak to three games with wins over Pupols and Kelley before losing to Koons in the last round. Gil scored 3.5/5 with wins over Koons and Greninger as Black and an impressive draw against Chen in the final round. Ummel scored a win against yours truly and drew the rest of his games to finish clear second with +2=7 and became the only undefeated player in all three sections. Koons scored a clutch win over Perez with the black pieces in the last round to claim clear third.

## The Premier

The Premier field was one of the most balanced in recent years, consisting of eight players 2100 or higher and an average rating of 2104. Roland Feng, a fifth grader from Thurgood Marshall Elementary in Seattle, became the Premier's youngest ever winner, scoring seven wins and two losses in the nine rounds of play. Tacoma's Michael MacGregor and Kirkland's Michael Wang tied for second/third with 6.5 and were the only other two players to finish with a plus score. David Rupel and bottom seed Ethan Gottlieb rounded out the money winners, each scoring 4.5 and tying for fourth-fifth place.

During the first weekend, the Premier saw several notable streaks, both amongst the leaders and the tail-enders. The two Michaels, MacGregor and Wang, started off hot, each scoring 3.5 out of four games. Close behind them was Feng, who won three in a row against Gottlieb, Sen, and Xing before being stopped by Wang in Round Four. On the other end of the spectrum were Van Dyke and Sen, both of whom had been shut out. On a plus one score were WFM Chouhanik Airapetian and last year's WA Junior Open winner Ethan Gottlieb, who scored the section's first major upset with a win over the luckless Van Dyke. Olympia's David Rupel was in the middle of the pack with two points while Casey Xing, last year's Invitational winner, and Megan Lee both had 1.5.

The second weekend saw the leaders MacGregor and Wang continue their solid play as each scored three points out of their remaining five games. However, to their amazement, Feng won four games in a row and narrowly edged out both of them by half a point to claim clear first in the Premier, despite losing in the last round to MacGregor. Wang, a half point behind Feng going into the last round and needing only a draw to win first on tie-breaks, lost a heartbreaking game against tail-ender Van Dyke!

# WA Premier Games

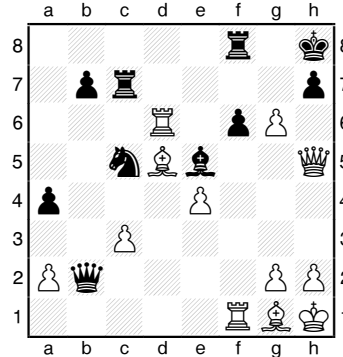
### B35 Sicilian Accelerated Dragon

Michael MacGregor (2162)

Patrick Van Dyke (2102)

Seattle, WA Premier (1) 2012

1.e4 c5 2.♘f3 ♘c6 3.d4 cxd4 4. ♘xd4 g6 5.♘c3 ♗g7 6.♗e3 ♘f6 7. ♗c4 ♖a5 8.O-O O-O 9.♘b3 ♖c7 10.f4 d6 11.♗h1 ♘g4 12.♗g1 ♘a5 13.♘d5 ♖d8 14.♘xa5 ♖xa5 15. ♘xe7+ ♗h8 16.♘xc8 ♖axc8 17. ♗b3 ♘f6 18.♖f3 ♖b4 19.♖ae1 ♘d7 20.c3 ♖b5 21.♖d1 ♘c5 22. ♖d5 a5 23.♖xd6 a4 24.♗d5 ♖xb2 25.f5 ♗e5 26.fxg6 f6 27.♖h5 ♖c7



28.♖xe5 fxe5 29.♖xf8+ ♗g7 30. ♖f7+ ♖xf7 31.gxf7 ♘xe4 32.♖d8 ♘f2+ 33.♗xf2 ♖xf2 34.♖g8+ 1-0

### E32 Nimzo-Indian Classical

Casey Xing (2048)

David Rupel (2130)

Seattle, WA Premier (1) 2012

1.d4 ♘f6 2.c4 e6 3.♘c3 ♗b4 4.♖c2 O-O 5.♘f3 ♗xc3+ 6.bxc3 c5 7.e4 d6 8.♗d3 cxd4 9.cxd4 ♘c6 10. ♗d2 e5 11.d5 ♘e7 12.c5 ♘g6 13.

cxd6 ♖xd6 14.♖b3 ♘d7 15.♗b4 ♘c5 16.♗xc5 ♖xc5 17.O-O ♖e7 18.♖ab1 ♘f4 19.♗c4 ♖f6 20.♘d2 ♖d8 21.♖fc1 ♖d6 22.♗f1 ♘h3+ 23.gxh3 ♖g5+ 24.♗h1 ♖xd2 25. ♖c3 ♖g5 26.♗e2 h6 27.♖g1 ♖f4 28.f3 ♗xh3 29.♖xb7 ♖c8 30.♖c7 ♖xc7 31.♖xc7 ♖g6 32.♖xg6 fxg6 33.♖xa7 ♖d2 34.♖f2 ♖xa2 35.♖e1 ♖a3 36.♖d2 ♖d6 37.♖d1 ♗h7 38.♗f1 ♗d7 Draw

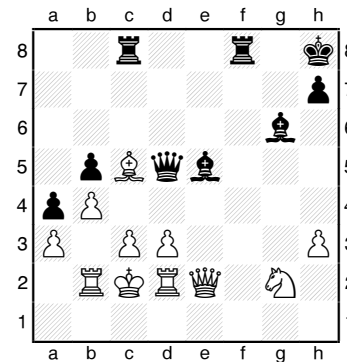
### B40 Sicilian Kopec

Ethan Gottlieb (1948)

Roland Feng (2158)

Seattle, WA Premier (1) 2012

1.e4 c5 2.♘f3 e6 3.c3 ♘f6 4.♗d3 d5 5.e5 c4 6.♗xc4 dxc4 7.exf6 ♘c6 8. fxg7 ♗xg7 9.♘a3 ♖d5 10. ♖a4 ♖e4+ 11.♗d1 ♖g6 12.♘e1 O-O 13. ♖xc4 e5 14.f3 ♗e6 15. ♖e2 ♖ad8 16.h3 a6 17.g4 b5 18. ♘ac2 f5 19. gxf5 ♗xf5 20.♘e3 ♗e6 21.♖g2 ♖f7 22.♖g1 ♗h8 23. a3 ♘e7 24.d3 ♘f5 25.♘xf5 ♗xf5 26.♗c2 ♗g6 27. ♗e3 a5 28.♗c5 ♖fe8 29.b4 a4 30. ♖b1 ♖d5 31. ♖e2 ♖a2+ 32.♖b2 ♖d5 33.♖g2 ♖c8 34.♖e3 ♖ed8 35. ♖d2 ♖e6 36.f4 ♖d5 37.fxe5 ♗xe5 38.♘g2 ♖f8 39.♖e2



39...♖xc5 40.bxc5 ♖xc5 41.♗b1 ♖xc3 42.♘e1 ♗g7 43.♖dc2 ♖xa3 44.♖a2 ♖b3+ 45.♖ab2 ♖d5 46. ♖c7 ♖e8 47.♖e7 ♖d8 48.♖xg7 ♗xg7 49.♖e7+ ♗g8 50.h4 ♖e8 51.♖b4 ♖e5 52.♘c2 ♗xd3 53. ♖g4+ ♗h8 54.h5 a3 55.♖a2 ♖e1+ 0-1

### A22 English Opening

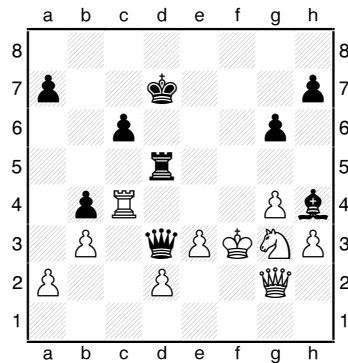
Michael Wang (2117)

Megan Lee (2102)

Seattle, WA Premier (1) 2012

1.c4 e5 2.g3 ♘f6 3.♗g2 d5 4.cxd5 ♘xd5 5.♘c3 ♘b6 6.e3 c5 7.♘ge2

♖c6 8.O-O ♙e7 9.f4 f6 10.♙xc6+  
 bxc6 11.fxe5 fxe5 12.♙c2 g6 13.  
 b3 ♙a6 14.♙e4 ♙d6 15.♙a3 ♖d5  
 16.♙g2 ♖b4 17.♖e4 ♙e6 18.  
 ♙xb4 cxb4 19.♙ac1 ♙b5 20.♖c5  
 ♙g4 21.♙f2 ♙f8 22.♙xf8+ ♙xf8  
 23.♙f1 ♙d8 24.♙e1 ♙d5 25.♖e4  
 ♙e7 26.h3 ♙d7 27.g4 ♙d3 28.  
 ♖2g3 ♙h4 29.♖c5 ♙d6 30.♖xd3  
 ♙xd3 31.♙c2 e4 32.♙xe4+ ♙d7  
 33.♙e2 ♙d5 34.♖f1 ♙e5 35.♙g2  
 ♙a1 36.♖g3 ♙b1 37.♙c4 ♙d3+  
 38.♙f3

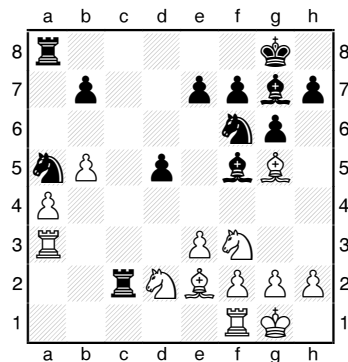


38...♙xd2 39.♙xd2 ♙xd2 40.  
 ♙xb4 ♙xg3 41.♙xg3 ♙xa2 42.  
 ♙b7+ ♙e6 43.♙xh7 a5 44.h4 ♙b2  
 45.♙g7 ♙f6 46.♙c7 ♙xb3 47.  
 ♙xc6+ ♙f7 48.♙f4 a4 49.♙a6 a3  
 50.e4 ♙c3 51.♙a7+ ♙f6 52.e5+  
 ♙e6 53.♙g5 ♙xe5 54.♙xg6 ♙f4  
 55.g5 ♙g3 56.♙a4 a2 57.♙xa2 1-0

**D03 Torre Attack**

**Samir Sen (2131)**  
**WFM Chouchanik Airapetian (2160)**  
*Seattle, WA Premier (1) 2012*

1.d4 ♖f6 2.♖f3 g6 3.♙g5 ♙g7  
 4.♖bd2 d5 5.e3 ♙f5 6.c3 O-O 7.b4  
 a5 8.a4 axb4 9.cxb4 ♖c6 10.♙b3  
 ♙d6 11.b5 ♖a5 12.♙a3 ♙xa3  
 13.♙xa3 ♙fc8 14.♙e2 c5 15.dxc5  
 ♙xc5 16.O-O ♙c2



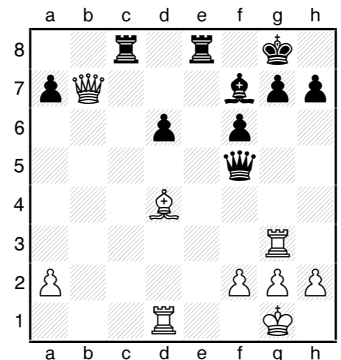
17.♙d1 ♙b2 18.♙c3 ♖e4 19.  
 ♖xe4 ♙xe4 20.♙c7 e6 21.♖d4  
 ♙d3 22.♙e1 ♙b1 23.f4 b6 24.♙f2  
 ♖c4 25.♙e2 ♙b2 26.♙e7 h6 27.  
 ♙d1 ♙xe2 28.♖xe2 ♙xa4 29.  
 ♙c8+ ♙h7 30.♙f3 ♙aa2 31.♙e1  
 ♖d2+ 32.♙f2 ♖e4+ 33.♙f1 ♙xb5  
 34.♙f8 ♙xf8 35.♙xf8 ♙g7 36.♙c8  
 ♙c5 37.♙b8 ♙b2 38.♖d4 ♙f6  
 39.♙a1 ♙c3 40.♙e1 ♖d2+ 41.  
 ♙g1 ♖c4 42.♙e2 ♙xe2 43.♖xe2  
 ♙xe3 44.♙f2 ♙d3 45.♙b7 ♙d2  
 46.g3 d4 47.♙e1 g5 48.♙d7 gxf4  
 49.gxf4 e5 50.fxe5+ ♙xe5 51.  
 ♙xf7 ♙e4 52.♙e7+ ♙d3 53.♖f4+  
 ♙c2 54.♙c7 b5 55.h3 d3 56.♖d5  
 ♙e2+ 57.♙f1 ♙e5 58.♖b4+ ♙c3  
 59.♖a2+ ♙b2 60.♖b4 d2 0-1

**C52 Evans Gambit**

**Michael MacGregor (1.0)**  
**Ethan Gottlieb (0.0)**  
*Seattle, WA Premier (2) 2012*

1.e4 e5 2.♙c4 ♙c5 3.♖f3 ♖c6 4.b4  
 ♙xb4 5.c3 ♙a5 6.♙b3 ♙e7 7.d4  
 exd4 8.O-O d6 9.cxd4 ♙b6 10.♖c3

11.♖xd4 12.♙b2 ♖f6  
 13.♙ad1 ♙xc3 14.♙xc3 O-O 15.  
 ♙fe1 ♖e8 16.e5 ♙e6 17.exd6 cxd6  
 18.♙b5 ♙g5 19.♙xe8 ♙fxe8 20.  
 ♙e3 ♙ac8 21.♙d4 f6 22.♙g3 ♙e5  
 23.♙b4 ♙f5 24.♙xb7 ♙f7 25.♙d4



25...♙c2 26.♙f3 ♙e2 27.♙xe2  
 ♙xe2 28.♙xf6 ♙g6 29.♙f1 ♙cc2  
 30.♙d4 ♙xa2 31.h4 ♙ed2 32.  
 ♙xd2 ♙xd2 33.♙xa7 ♙a2 34.♙d4  
 ♙a4 35.♙c3 ♙xh4 36.♙e2 ♙f7  
 37.♙e3 ♙h5+ 38.♙d2 ♙g6 39.g3  
 ♙c4 40.♙f3+ ♙g8 41.♙e3 d5  
 42.♙e7 d4 43.♙a5 ♙a4 44.♙e5



Photo by Dan Mathews

*Premier participants: (front) Roland Feng; (middle row, L-R) WFM Chouchanik Airapetian, Casey Xing, Michael Wang, Megan Lee; (upper row, L-R) Patrick Van Dyke, David Rupel, Michael MacGregor, Ethan Gottlieb.*

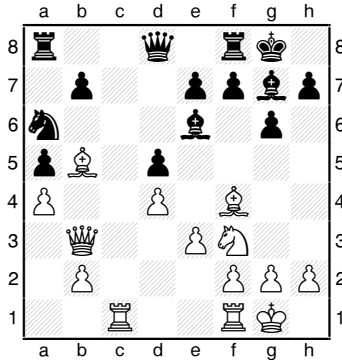
♖a2+ 45.♗e1 ♗f7 46.g4 d3 47.f4  
♖e2+(=?) 48.♖xe2 dxe2 49.♗xe2  
h5 Draw

**D15 QGD Slav**

**Roland Feng (1.0)**  
**Samir Sen (0.0)**

*Seattle, WA Premier (2) 2012*

1.d4 d5 2.c4 c6 3.♖c3 ♗f6 4.♗f3  
a6 5.a4 g6 6.♗f4 ♗g7 7.e3 O-O 8.  
♞b3 a5 9.cxd5 ♗xd5 10.♗xd5  
cxd5 11.♖c1 ♗a6 12.♗b5 ♗e6  
13.O-O



13...♞b6 14.♗g5 ♖ac8 15.♗xe6  
fxe6 16.♗g5 ♗f6 17.♗h6 ♖fd8  
18.♖c3 ♖xc3 19.♞xc3 ♗f7 20.  
♗f4 ♖a8 21.♖c1 ♗g7 22.♞b3  
♗f6 23.♗e8+ 1-0

**C54 Giuoco Piano**

**Patrick Van Dyke (0.0)**  
**Megan Lee (0.0)**

*Seattle, WA Premier (2) 2012*

1.e4 e5 2.♗f3 ♗c6 3.♗c4 ♗c5  
4.d3 ♗f6 5.c3 d6 6.b4 ♗b6 7.a4 a6  
8.♗e3 O-O 9.O-O ♗e6 10.♗bd2  
♗e7 11.♗xe6 fxe6 12.♗xb6 cxb6  
13.♗g5 ♞d7 14.♗c4 ♗c8 15.f4  
exf4 16.♖xf4 h6 17.♗h3 ♞c7 18.  
♞b3 ♗e7 19.a5 bxa5 20.bxa5 ♗g6  
21.♗b6 ♗xf4 22.♗xf4 ♖ae8 23.  
♖f1 ♞f7 24.♗c4 e5 25.♗d5 ♖d8  
26.♗xf6+ gxf6 27.♞b6 ♞d7 28.  
♖f3 ♗h7 29.♗e3 ♞b5 30.♞xb5  
axb5 31.♗f5 ♖g8 32.♖h3 ♖g6  
33.♗e7 ♖g5 34.♗f5 h5 35.♗f2 d5  
36.g4 d4 37.cxd4 exd4 38.♗e2 b4  
39.♗d2 ♖c8 40.♗xd4 ♖xa5 41.  
♖xh5+ ♖xh5 42.gxh5 ♗h6 43.♗b3  
♗xh5 44.d4 ♗g4 45.d5 ♗f4 46.♗a5  
♖c7 47.♗d3 b5 48.♗d4 b3 49.  
♗xb3 ♖c4+ 50.♗d3 ♖xe4 51.♗c5  
♖c4 52.♗d7 ♗f5 53.♗b6 ♖h4 54.  
h3 ♗e5 55.♗d7+ ♗xd5 56.♗xf6+

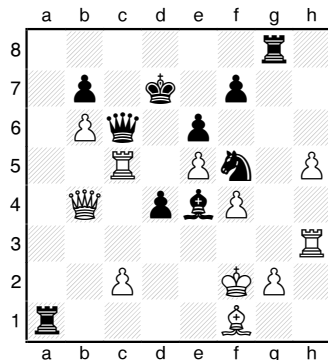
♗c6 57.♗e4 ♖xh3+ 58.♗c2 ♗d5  
59.♗c3+ ♗c4 60.♗e4 ♖h2+ 61.  
♗c1 ♗b3 62.♗c5+ ♗a3 63.♗e4  
b4 64.♗d6 b3 65.♗b5+ ♗a2 66.  
♗c3+ ♗a1 0-1

**C18 French Winawer**

**WFM Chouchanik Airapetian (1.0)**  
**Casey Xing (0.5)**

*Seattle, WA Premier (2) 2012*

1.e4 e6 2.d4 d5 3.♗c3 ♗b4 4.e5  
c5 5.a3 ♗xc3+ 6.bxc3 ♗e7 7.♞g4  
♞c7 8.♞xg7 ♖g8 9.♞xh7 cxd4 10.  
♗e2 ♗bc6 11.f4 ♗d7 12.♞d3 dxc3  
13.♗xc3 a6 14.h4 ♗f5 15.♖h3  
♗a5 16.h5 O-O-O 17.♗d2 ♗c4 18.  
♖b1 ♗c6 19.a4 ♗xd2 20.♞xd2 d4  
21.♗b5 axb5 22.axb5 ♗e4 23.b6  
♞c5 24.♖b5 ♞c6 25.♞a5 ♗d7 26.  
♖c5 ♖a8 27.♞b4 ♖a1+ 28.♗f2



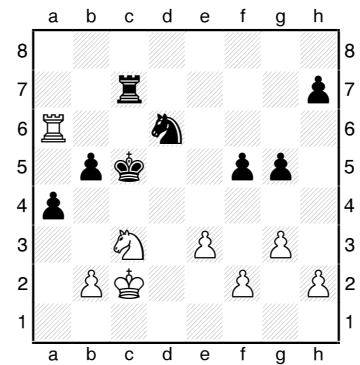
28...♗d3!! 29.♖xd3 ♖xf1+ 30.  
♗xf1 ♞xg2+ 31.♗e1 ♞g1+ 32.  
♗e2 ♖g2+ 33.♗f3 ♞f2+ 0-1

**A29 English Opening**

**David Rupel (0.5)**  
**Michael Wang (1.0)**

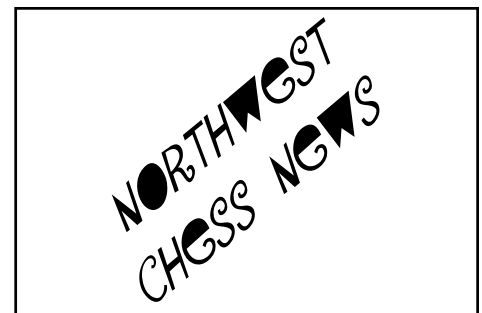
*Seattle, WA Premier (2) 2012*

1.c4 e5 2.♗c3 ♗f6 3.g3 d5 4.cxd5  
♗xd5 5.♗g2 ♗b6 6.♗f3 ♗c6 7.d3  
♗e7 8.O-O O-O 9.♗e3 ♗e6 10. ♗a4  
e4 11.♗e1 exd3 12.♗xd3 ♗d5 13.  
♗xb6 axb6 14.♗xd5 ♞xd5 15. a3  
♗a5 16.♗f4 ♞xd1 17.♖fd1 ♗c4 18.  
♗d4 b5 19.♗c3 ♖fd8 20.♖d3 ♗d6  
21.♖ad1 ♖e8 22.e3 ♗e5 23.♗xe5  
♗xe5 24.♖c3 c6 25.♗f1 ♖ed8 26.  
♖xd8+ ♖xd8 27.♗e2 ♗f8 28.♗d3  
♗c4 29.♖c2 ♗e7 30.♗c5 b6 31.♗e4  
f5 32.♗g5 ♗f6 33.♗f3 c5 34.a4 ♗d6  
35.a5 bxa5 36.♖xc5 a4 37.♗d4 ♖b8  
38.♖c6 ♗e5 39.♖a6 ♖b7 40.♗d3  
♗d5 41.♗e2 g5 42.♗c3+ ♗c5 43.  
♗c2 ♖c7



44.♗d3 ♗c4 45.♗c2 ♖d7 46.♖f6  
♖d2+ 47.♗c1 ♖xb2 48.♖xf5+ ♗b6  
49.♗d1 ♖b3 50.♗c2 ♗a3+ 51.  
♗d2 b4 52.e4 ♗c4+ 53.♗c2 ♖a3  
54.♗b1 ♖d3 55.♗c2 ♖d2+ 56.  
♗c1 b3 57.♖d5 ♖c2+ 58.♗b1  
♗a3+ 0-1

**Next Month:  
The rest of the  
Premier  
plus the  
Invitational  
and  
the Brillancy  
Prize Games**



**Seattle, WA**

**Megan Lee** won the 15-player Open Section of the Seattle Spring Open, held March 23-25 at the Seattle Chess Club. She scored 3.5/4. Igor Ummel was second on three points.

Alan Walk went 5-0 in topping the 34-player Reserve Section. Paul Arond and James Nelson tied for second-third with four points each.



# Washington Open Chess Tournament May 26-28, 2012

Revised 4/2/2012

## Washington Chess Federation

### WA Open Sections/Entry Fees

(by April 28 / May 19 / on site)

#### OPEN

EF \$100 / \$110 / \$120

#### PREMIER (U2000)

EF \$90 / \$100 / \$110

#### RESERVE (U1700)

EF \$80 / \$90 / \$100

#### BOOSTER (U1400)

EF \$70 / \$80 / \$90

Free entry to GM's, IM's, WGM's.

\$40 entry option for juniors under age 21 playing for medal only. Three medals awarded per section. Canadian dollars accepted at par (no coins).

### \$7,000 Prizes based on 170 entries

Open	Premier	Reserve	Booster
\$700	\$300	\$250	\$200
\$550	\$250	\$200	\$150
\$350	\$225	\$175	\$125
\$250	\$200	\$150	\$100
\$200	\$150	\$100	\$75
U2150	U1850	U1550	U1100
\$350	\$200	\$150	\$120
\$250	\$150	\$125	\$ 80
\$150	\$125	\$100	\$120(*)
\$100	\$100	\$100	\$ 80 (*)

(\*) Prizes for unrated players.

All prizes will be mailed starting 6/1/2012.

### Entries/Information:

Dan Mathews

WCF Tournament Coordinator  
2700 NW Pine Cone Dr Apt 402  
Issaquah, WA 98027-8677  
Cell Phone (425) 218-7529  
[dthmathews@aol.com](mailto:dthmathews@aol.com)

Make checks payable to Washington Chess Federation (WCF).

Online registration available at [www.nwchess.com](http://www.nwchess.com).

### Holiday Inn

17338 International Boulevard, Seattle, WA 98188  
Reservations/hotel phone number (866) 536-7370

**Registration/Byes:** Saturday 8:00-9:30AM for 3-day, or 3:30-4:15PM if entering with one half-point bye. Sunday 8:00-9:00AM for 2-day, and entering 3-day event with two half-point byes. Two half-point byes available, which must be requested at registration or before the end of 2nd round.

**Format/Ratings:** Four sections (see bar at left), six-round Swiss system, USCF rated. The Open Section is also FIDE rated (except G/60 games if applicable). USCF May supplement ratings will be used. Un-rated players may play in any section, but can only win the top five prizes in the open section and the two unrated prizes in booster section. Foreign ratings used for players with no USCF rating, or if foreign rating is higher than USCF rating.

**Time Controls:** 3-day schedule: 30/90, SD/1. 2-day schedule: Rounds 1-3: Game/60, Rounds 4-6 same as 3-day schedule. Both schedules: Digital clocks preferred. 5-second time delay used from start of game.

**Rounds:** 3-day schedule: Saturday: 10:00AM, 5:00PM, Sunday 10:00AM, 5:30PM, Monday: 9:00AM, 3:00PM. 2-day schedule: Sunday 9:30AM, 12:00PM, 2:30PM, then join 3-day schedule for rest of tourney. WCF annual meeting and elections: 4:00-5:00PM Sunday, May 27, 2012.

**Memberships:** USCF and state membership required in all sections, OSA. Memberships (including USCF) must be current or paid fully.

**Miscellaneous:** Northwest Chess Grand Prix event. Please bring set, board and clock. Please use entry form (when available) for a list of all discounts and fees, and to indicate schedule, section, side events and byes requested. NS. NC. W.

**Entries/Prizes/Info:** See bar at left. Online entry/forms available on NWC website.

**Hotels Info/Rates:** \$99 Single, \$109 Double. Group Code: IWF. Reservation link will be available on the Northwest Chess website ([www.nwchess.com](http://www.nwchess.com)). The cut-off date for reservations at the discount is May 18, 2012.

### Side Events:

Please see separate flyer for details on the following WA Open Side Events:

- May 26 WA Open Scholastic
- May 27 WA Open Novice Championship
- May 27 WA Open Blitz Championship
- May 28 WA Open Game/10 Championship

# 2012 Northwest Grand Prix

## Improved with the Addition of Idaho!

Murlin Varner, impresario

Welcome to the newly expanded Northwest Grand Prix for 2012. We now have Idaho included in our contest, with the first Idaho Grand Prix event coming up in April. Right now, there are three Idaho events on the Grand Prix calendar. I would encourage Idaho organizers to join in and advertise in the *NWC*. (Events in Coeur d'Alene would be naturals for this, with the prospect of drawing more players from Spokane, eager to gather Grand Prix points.)

The cost to organizers is \$1 per paid entry (\$10 minimum) and all money generated in Idaho tournaments (less expenses) will go to Idaho members. (Complete rules available on line at [nwchess.com](http://nwchess.com).) Even though we haven't had any Idaho events, and therefore have no Idaho prize fund yet, we do have seven Idaho players off to a fast start in points due to their attendance at the Collyer Memorial in Spokane in February.

The year is just started and already we have held four events with multipliers. These included three at 2x (Gresham Open, Seattle City Open and Portland Chess Shop Rapid) and the aforementioned Collyer Memorial at 4x. Looking forward, we have some additional multiplier events on the horizon, including the Oregon Class in Portland, May 5-6 (2x), The Clark Harmon Memorial in Seattle, April 13-15 (I don't have prize fund details at this writing, but this one had a 3x last year), and the Washington Open, May 26-28 (again, I don't have the details, but it was 5x last year). I also do not have the details right now for the Inland Empire Open in Spokane; last year they were not a multiplier event, but maybe this year?

Besides these, there are many other opportunities to gain Grand Prix points, but not if you sit at home. Get out there and play! During April and May, there will be Grand Prix events in Boise, Pocatello, Portland (4), Seattle (5), Spokane, Tacoma (2) and wherever the Washington Open ends up. Surely you can find your way to a few of these. It's going to be a rainy spring anyway.

Idaho	Oregon	Washington
	<b>Master</b>	
	Raptis, Nick 40.5	Pupols, Viktors 9.5
	Breckenridge, 26.0	
	Haessler, Carl 2.0	
	<b>Experts</b>	
	Brooks, Curtis 12.0	Bartron, Paul 35.0
	Gay, Daniel 11.0	Julian, John 24.0
	Esler, Brian 11.0	Merwin, Steven 24.0
	three tied at 10.0	Moroney, Timothy 22.0
		Erickson, Mark 18.0
	<b>Class A</b>	
Joshi, Kairav 22.0	Levin, Scott 21.0	Szabo, Marcell 33.5
Leslie, Cameron 22.0	Cigan, Jason 19.5	Lampman, Becca 30.5

Havrilla, Mark 10.0	Sherrard, Jerry 19.5	Stripes, James 26.0
	Pyle, Galen 14.5	Middaugh, Jon 24.0
	Sun, Maxwell 12.0	three tied at 22.0

### Class B

Bodie, Brad 16.0	Gaikwad, Dagadu 17.0	Zhang, Derek 35.0
	Saputra, Yogi 13.5	Buck, Stephen 33.0
	Dalthorp, Matt 9.0	Fabian, Steve 22.0
	Burris, Christopher 9.0	five tied at 20.0
	Narayanarao, G 7.0	

### Class C

Williams, Richard 22.0	Falbo, Clement 18.0	Nagase, Toto 17.0
Weyland, Ronald 20.0	Havrilla, Nich 13.0	Piper, August 16.0
	Hoglund, Jacob 9.0	Kaul, Sheen 15.0
	Terrill, Michael 9.0	Jones, Davey 14.0
	Dietz, Arliss 8.0	two tied at 13.5

### Class D and Below

Jaroski, Jeffrey 16.0	Sharan, Praveer 11.5	Richards, Jerrold 25.0
	Doddapaneni, V 10.0	Schumaker, Peter 18.0
	Prideaux, Dave 10.0	Burney, James 18.0
		four tied at 16.0

### Overall Leaders, by State

Joshi, Kairav 22.0	Raptis, Nick 40.5	Bartron, Paul 35.0
Leslie, Cameron 22.0	Breckenridge, S 26.0	Zhang, Derek 35.0
Williams, Richard 22.0	Levin, Scott 21.0	Szabo, Marcell 33.5
Weyland, Ronald 20.0	Cigan, Jason 19.5	Buck, Stephen 33.0
Bodie, Brad 16.0	Sherrard, Jerry 19.5	Lampman, Becca 30.5
Jaroski, Jeffrey 16.0	Falbo, Clement 18.0	Stripes, James 26.0
Havrilla, Mark 10.0	Gaikwad, Dagadu 17.0	Richards, Jerrold 25.0
	Pyle, Galen 14.5	Julian, John 24.0
	Saputra, Yogi 13.5	Merwin, Steven 24.0
	Havrilla, Nich 13.0	Middaugh, Jon 24.0
	Brooks, Curtis 12.0	five tied at 22.0
	Sun, Maxwell 12.0	

### Players in Database 2012

class	Idaho	Ore.	Wash.	Other	Totals
Master	0	3	1	1	5
Expert	0	7	10	1	18
Class A	3	8	23	2	36
Class B	1	10	30	4	45
Class C	2	11	17	5	35
Class D & Below	1	15	36	1	53
	7	54	117	14	192



# Seattle Chess Club Tournaments

→ Address ↙  
 → 2150 N 107 St, B85 ↙  
 Seattle WA 98133  
 ↗ Infoline ↗  
 206-417-5405  
 www.seattlechess.org  
 kleistcf@aol.com  
Address for Entries  
 SCC Tnmt Dir  
 2420 S 137 St  
 Seattle WA 98168

## SCC Adult Swiss

May 5-6, 2012

A four-round event open to those born before 5/6/1991 with a prize fund of \$460 based on 24 paid entrants (five per prize group).

<b>First</b>	<b>\$125</b>
<b>Second</b>	<b>\$75</b>
<b>U2000</b>	<b>\$70</b>
<b>U1800</b>	<b>\$70</b>
<b>U1600</b>	<b>\$60</b>
<b>U1400/UNR</b>	<b>\$60</b>

**TC:** G/150;d5

**EF:** \$33 by 5/3, \$42 at site (\$24 & \$33 for SCC members; \$29 & \$38 for members of dues-required CCs in BC, ID, OR, and WA; GMs, IMs, WGMs – FREE; UNR free with purchase of one-year USCF plus one-year ICA/OCF/WCF).

**Reg:** 10-10:45 a.m. **Rds:** 11-4:30, 11-4:30.

**Byes:** 1 (Rd 3 or 4 – commit at reg.)

**Misc:** USCF, ICA/OCF/WCF memb. req'd. OSA. NS. NC.

### How to Find the SCC

Look for the Northway Square East Building, just across I-5 from Northgate Mall, with large signs proclaiming "Northwest Kidney Centers" and "City University." The main entrance is reached by turning east on N. 107th Street from Meridian Ave. N. The club is on the lower level.

☞ **Apr. 29, May 20**

**Sunday Tornado** ☞

**Format:** 4-SS. **TC:** G/64. **EF:** \$18 (+\$7 fee for non-SCC). **Prizes:** 1st 35%, 2nd 27%, Bottom Half 1st 22%, 2nd 16% (\$10 from each EF goes to prize fund). **Reg:** 10:30-11:15 a.m. **Rds:** 11:30-1:50-4:10-6:30. **Misc:** USCF, WCF/OCF memb. req'd, OSA, NS, NC.

☞ **May 12**

**Saturday Quads** ☞

**Format:** 3-RR, 4-plyr sections by rating. **TC:** G/120. **EF:** \$9 (+\$7 fee for non-SCC). **Prizes:** Free entry for future quad. **Reg:** 9:00-9:45 a.m. **Rds:** 10:00-2:15-ASAP. **Misc:** USCF, WCF/OCF memb. req'd, OSA, NS, NC.

### SCC Fridays

Typical Friday fare is one round of an ongoing tournament (free to SCC members, no prizes) played at a rate of 40/90 followed by 30/60. Drop in for any round!

**April Showers:** Apr. 6, 13, 20, 27.

**Annual Membership Mtg & Elections:** May 4.

**Close Ratings:** May 4, 11, 18.

**Pre-WAO Blitz (G/5):** May 25.

**It's Summertime:** June 1, 8, 15, 22.

**Firecracker Hexes (G/17):** June 29.

**Hot as Hades:** July 6, 13, 20, 27.

**Dog Days:** August 3, 10, 17, 24.

**Workingman's Quads (G/24):** August 31.

**Autumn Leaves:** Sept. 7, 14, 21, 28.

**SCC Championship (35/100, 25/60):**

Sept. 7, 14, 28; Oct. 5, 12, 26; Nov. 9.

### Darby Monahan Memorial Grand Prix

#### Leaders 10/1-4/15

August Piper*	199.5	Alan Walk	116.0
Fred Kleist**	183.4	Boas Lee	110.3
Jothi Ramesh*	175.6	Michael VanScyoc	109.0
Carol Kleist**	161.5	Brian Raffel	107.0
Kerry VanVeen**	149.0	Joe Davis	89.0
David Kelly*	135.0	Viktors Pupols*	89.0
Marcell Szabo	119.0	Catherine Smith*	86.0

Bolded player is new to the top 14. Players in italics gained less than 12 points since 3/4. Asterisks indicate number of Reno appearances. The G.P. continues through 5/31/12. Two prizes will be awarded—free entries to the 2012 Canadian Open or 2012 U.S. Open.

#### Attendance at 2012's events

G/15 Ch. (3/2)–6; *Insanity* (12/31-1/1)–7; *Novice* (1/21)–9, (3/18)–5; *Quads* (1/28)–14, (2/25)–19, (3/17)–23; *Tornados* (1/8)–14, (2/5)–5, (3/4)–14, (4/1)–14; **Seattle City Championship** (1/13-15)–30; **Seattle Spring Open** (3/23-25)–51; **SCC Team in Reno** (4/6-8)–6.

♣ **April 28**

**Site:** Tacoma Chess Club, 409 Puyallup Ave E, 2<sup>nd</sup> floor, Room 11 in the DTI Soccer Store Building across from Alfred's Café (two blocks down the hill from the Tacoma Dome). **Format:** 4SS. **TC:** G/60. **EF:** \$20. **Prize Fund:** \$\$135 b/10. **Prizes:** Top Half – \$40-25; Bottom Half – 35-25. **Reg:** 9:00-9:45 a.m. **Rds:** 10-12:30-3-5:30 or ASAP. **Byes:** One half-point bye avail. **Misc:** OCF/WCF and USCF memb req'd. **NS. NC. NW. Entries/Info:** Gary J. Dorfner 8423 E 'B' St, Tacoma WA 98445; 253-535-2536; ggarychess@aol.com.

**TCC Mini-Swiss** ♣

♣ **April 28**

**Site:** Portland Chess Club, 8205 SW 24 Ave, Portland OR. **Format:** 4SS. **TC:** G/60. (TD may switch to 5SS and G/45 if more than 25 entries.) **EF:** \$20, \$5 discount for PCC Members. No advance entries. **Prize Fund:** \$\$200/b20 **Prizes:** \$60-40-30 U1800, U1500 35 each. **Reg:** 9-9:30. **Byes:** Half-point bye if requested at reg. **Misc:** OCF/WCF and USCF memb req'd, OSA. **Info:** portlandchessclub@gmail.com, 503-246-2978, www.pdxchess.com.

**Portland Chess Club G/60** ♣

♣ **April 21-22**

See display ad in February or March issue.

**Idaho Open** ♣

♣ **April 21-22**

**Site:** Gonzaga University (Schoenberg Center) Rm. 201 & 202, N 800 Pearl St, Spokane WA. **Format:** 5SS. **TC:** G/115. **EF:** \$26 if rec'd by 4/20, \$31 at site; under 19, \$5 less. Phone entries accepted. **Prize Fund:** \$\$700 b/30. **Prizes:** \$165-125, A 60-30, B 60-30, C 60-30, D/E/UNR 60-30, Biggest Upset 50 (no prov. rtgs). Class prizes b/5 per class. **Reg:** 8:30-9:30 a.m. **Rds:** 10-2:30-7; 9-1:30 or ASAP. **Byes:** One ½-pt. bye allowed, if req'd before proceeding rd; Sunday byes must be req'd before the end of rd 3. **Misc:** Cookies & coffee provided. Director reserves right to use class pairings in final rd. **NS, NC, W. Entries:** Spokane CC, c/o David B Griffin, PO Box 631, Spokane Valley WA 99037. **Info:** 509-928-3260 or (cell) 509-994-9739.

**Inland Empire Open** ♣

♣ **May 5-6**

**Oregon Class Championships** ♣

See display ad on page 7.

♣ **May 13**

**Portland Chess Shop Rapids** ♣

See display ad on page 21.

**May 19-21**

**Sixth Annual Keres Memorial**

See display ad on page 24.

♣ **May 20-21**

**ICA Players Memorial** ♣

See display ad on page 17.

♣ **May 26-28**

**Washington Open** ♣

See display ads on page 29 and below.



# Washington Open

## Side Events

### May 26-28, 2012

Revised 4/2/2012

**Washington Chess Federation**

All prizes will be mailed starting 6/1/2012.

**Entries/Information:**

Dan Mathews

WCF Tournament Coordinator  
2700 NW Pine Cone Dr Apt 402  
Issaquah, WA 98027-8677  
Cell Phone (425) 218-7529  
[dthmathews@aol.com](mailto:dthmathews@aol.com)

Make checks payable to Washington Chess Federation (WCF).  
Online registration available at [www.nwchess.com](http://www.nwchess.com).

Holiday Inn

17338 International Boulevard, Seattle, WA 98188  
Reservations/hotel phone number (866) 536-7370

**May 26 WA Open Scholastic.** See NWC website, or contact David Hendricks, WCF Scholastic Director, 2439 220th Place NE, Sammamish, WA 98074, ph. (425) 868-3881 email: [DavidCHendricks@comcast.net](mailto:DavidCHendricks@comcast.net).

**May 27 WA Open Novice Championship.** Format: one section 4 round Swiss, open to U1200 or Unrated. TC: G/45 + 5 second delay. EF: \$15.00 (until May 19th), \$20.00 at site. Reg: 8:00-9:00am. Rds: 9:45am, 11:30am, 1:15pm, 3:00pm. Prizes: Trophies 1st, 2nd overall and 1st U1100,U1000,U900,U800,Unrated. State membership required.

**May 27 WA Open Blitz Championship.** Format: 5 rounds Double Swiss in one section. Two games, one with white, one with black. EF: \$25.00 pre-registered or at site. TC: G/5, USCF quick rated. Reg: 7:00-8:00pm. Rds: 8:30pm, 8:55pm, 9:20pm, 9:45pm and 10:10pm. Prize fund \$400 (b/20). 1st \$100, 2nd \$80, 3rd \$60, U2000 \$40, U1700 \$40, U1400 \$40, U1200 and Unrated \$40. WCF or other state membership required.

**May 28 WA Open Game/10 Championship.** Format: 5 rounds Swiss in one section. TC: G/10 + 5 second delay, USCF quick rated. Entry Fee: \$20.00. Prize fund: \$160 based on 10 entries. Prizes: 1st \$50, 2nd \$30 in Top Half; 1st \$50, 2nd \$30 in Bottom Half. Register before 11:00am Monday. Rounds at 11:30am, 12:00pm, 12:30pm, 1:00pm and 1:30pm. WCF or other state membership required.