



\$3.95



Nedzad Imamovic, winner of the Championship Section. of the Magic Valley CC Championship

May 2012

Northwest Chess

Contents

May 2012, Volume 66,5 Issue 772

ISSN Publication 0146-6941

Published monthly by the Northwest Chess Board.
Office of record: 3310 25th Ave S, Seattle, WA 98144

POSTMASTER: Send address changes to:

Northwest Chess, PO Box 84746,
Seattle WA 98124-6046.

Periodicals Postage Paid at Seattle, WA

USPS periodicals postage permit number (0422-390)

NWC Staff

Editor: Fred Kleist,
kleistcf@aol.com

Publisher: Duane Polich,
publisher@nwchess.com

Business Manager: Eric Holcomb,
eric@holcomb.com

Board Representatives

David Yoshinaga, Josh Sinanan,

Dale Wentz, Dan Mathews, Jeffrey Roland

Entire contents copyright 2012 by Northwest Chess. All rights reserved. Published opinions are those of the contributors and do not necessarily reflect the views of the editor or the Northwest Chess Board. Northwest Chess is the official publication of the chess governing bodies of the states of Washington, Oregon, and Idaho.

Advertising Rates

Display ads run \$150 for a full page, \$100 for tournament ads; \$85 for a half-page, \$60 for tournament ads; \$50 for a quarter page, \$30 for an eighth of a page, and \$20 for a business card-size ad. Additional charges apply if the staff must do layout work. A 15% discount is available for two or more consecutive ads of the same size.

Event Announcement Rates

Each appearance in the *Future Events* listings costs \$20. Please arrange payment for ads and Grand Prix fees with the Business Manager.

Advertising & Copy Deadline

Ads and submissions must be received by the 10th of the month for the items to appear in the next issue (e.g., **May 10 for the June issue; June 10 for the July issue**).

Submit all ads, donations, payments, changes of address, & subscriptions to:

Business Manager, Northwest Chess
Eric Holcomb

1900 NE Third St, Ste 106-361
Bend OR 97701-3889
Eric@Holcomb.com
www.nwchess.com

Submissions

Submissions of games, stories, photos, art, and other **original** chess-related content are encouraged! Multiple submissions are acceptable; please indicate if material is non-exclusive. All submissions are subject to editing or revision. Send via U.S. mail to:

Fred Kleist, NWC Editor
2420 S 137 St
Seattle WA 98168

or via e-mail to:

kleistcf@aol.com

Cover: Nedzad Imamovic by Jeff Roland

Page 3: Brilliances and Other Annotated Games various

Page 11: Idaho Chess News Jeffrey Roland

Page 14: Games from the Washington Premier various

Page 22: How to be a Good Chess Parent Kevin Bachler

Page 23: Lakeside Wins WA HS Team Championship Siva Sankrithi

Page 26: Games from the WA Invitational Joshua Sinanan

Page 30: Northwest Grand Prix Murlin Varner

Page 30: Northwest News staff

Back Cover: Upcoming Events

Northwest Chess

Business Manager

Eric Holcomb

1900 NE Third St, Ste 106-361

Bend OR 97701-3889

Eric@Holcomb.com

www.nwchess.com

Editor

Fred Kleist

2420 S 137 St

Seattle WA 98168

kleistcf@aol.com

Northwest Chess Knights

Please donate today to help Northwest Chess!

Patrons, 2010-2012 (Bold indicates recent donations)

Kate Tokareva, Gerard Van Deene, Michael Wang, Alan Walker, Dale Wentz, Russell Miller, Ralph Dubisch, Frank Niro, **Michael and Jeff Omori**, August Piper, **Robert Brewster**, Steve Buck, Jeff Pennig, Murlin Varner, Inner Sound, Gene Milener, Dennis Jenquin.
Washington Chess Federation, Oregon Chess Federation

Northwest Grand Prix Administrator

Murlin Varner

13329 208 Ave NE

Woodinville, WA 98072

MEVjr54@yahoo.com 425-882-0102

Brilliances and Other Annotated Games from the WA Championship, Premier, and Invitational

Brilliance Prize— Championship

by NM Curt Collyer

#1—White seized control in the opening (O-O-O, ♖d5, g4-g5), but then allowed Black's Queen to become active. Some nice tactical play followed, as both sides wrestled for the initiative. A sharp ending was reached where Perez had some advantage, eventually catching White's King in a net. A creative and entertaining game between two strong tacticians.

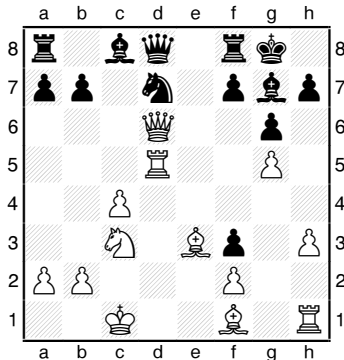
E90 King's Indian Classical

NM Dereque Kelley (2291)

FM Ignacio Perez (2269)

Seattle, WA Championship (8) 2012

1.d4 ♘f6 2.c4 g6 3.♗c3 ♕g7 4.e4 d6 5.♗f3 O-O 6.h3 ♗bd7 7.e5 ♗e8 8.♖e3 c5 9.exd6 ♗xd6 10.g4 cxd4 11.♖xd4 e5 12.♖e3 e4 13.♗xd6 exf3 14.O-O-O ♖a5 15.♖d5 ♖d8 16.g5



16...♗e8 17.♖d4 ♖e1+ 18.♗d1 ♖e8 19.♖xg7 ♗xg7 20.♗f4 ♗b6 21.♖d8 ♖f5 22.♖xa8 ♗xa8 23.♗xf3 ♖e4 24.♗f6+ ♗g8 25.♖g2 ♖e2 26.♖xe4 ♖xe4 27.♖g1 ♖xc4+ 28.♗b1 ♗b6 29.♖c3 ♖e4+ 30.♖c2 ♖e6 31.♖g4 ♗d5 32.f3 ♖c8 33.♖d3 ♖c6 34.a3 ♗f4 35.

♗e4 ♖c1+ 36.♗a2 ♗xh3 37.♗xb7 ♖f8 38.♗d5 ♗f4 39.♖b3 ♖d8 40.♗c3 ♗d3 41.♗e4 ♖f1 42.♖c2 ♗c1+ 43.♗b1 ♗b3+ 44.♗a2 ♖d3 45.♖xb3 ♖xb3 46.♗d2 ♖xa3+ 0-1

Runners Up

#2—Harley's Safari encountered Howard's Hippo—the result was tragic for the White hunter. Black castled by hand and focused his Knights on the central light squares. After a brief turf skirmish, Greninger won the Exchange, but at great cost to his kingside defenses. Strong play by Champion Chen in a unique opening.

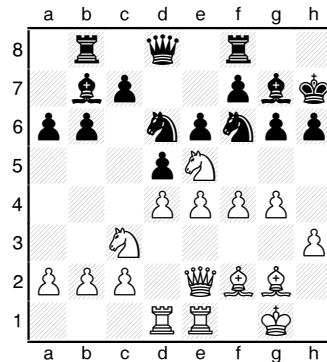
B06 Hippopotamus

NM Harley Greninger (2210)

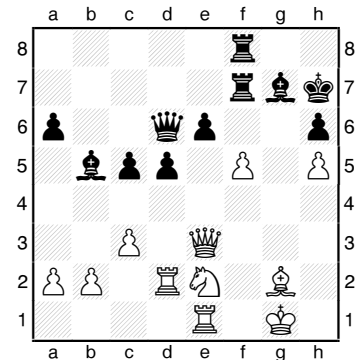
FM Howard Chen (2427)

Seattle, WA Championship (2) 2012

1.d4 g6 2.e4 d6 3.♗f3 ♕g7 4.♗c3 e6 5.♖e3 ♗e7 6.♖d2 h6 7.g3 b6 8.♖g2 ♖b7 9.O-O ♗d7 10.♖ad1 a6 11.♖fe1 ♗f8 12.h3 ♗g8 13.♗h2 ♗h7 14.f4 d5 15.♖f2 ♖b8 16.♗f3 ♖f8 17.♗e5 ♗f6 18.♖e2 ♗c8 19.g4 ♗d6



20.♗xg6 fxc6 21.e5 ♗fe4 22.exd6 ♗xf2 23.♖xf2 ♖xd6 24.♗e2 ♖f7 25.♖e3 ♖bf8 26.c3 ♖c6 27.♖d2 ♖d7 28.h4 ♖b5 29.h5 gxh5 30.gxh5 c5 31.dxc5 bxc5 32.f5



32...♖xf5 33.♖e4 ♗h8 34.♖xf5 ♖xf5 35.♗g3 ♖e5 36.♖f2 ♖g5 37.♖e3 d4 38.♖f3 ♖c6 39.♖f4 ♖d5 40.♗f1 ♖xa2 41.♖d1 ♖b3 42.♖e1 dxc3 43.bxc3 ♖d5 44.♗e4 ♖b5+ 0-1

#3—White's passive opening was shaken by Kelley's 16...♗a4! The queenside soon fell under Black's control, while White tried to steady the boat. Despite his best efforts to help, even the White King was soon battered about by the storming Black Bishops.

A29 English Opening

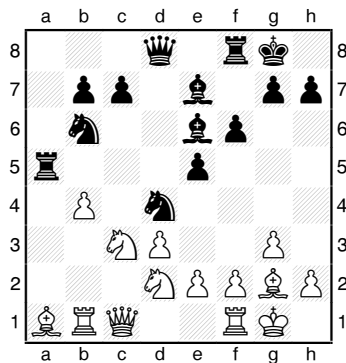
NM Gil Lapid Shafiriri (2203)

NM Dereque Kelley (2291)

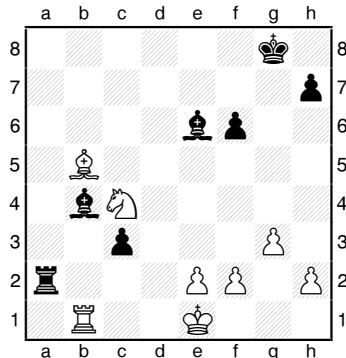
Seattle, WA Championship (2) 2012

1.c4 e5 2.g3 ♗f6 3.♖g2 d5 4.cxd5 ♗xd5 5.♗f3 ♗c6 6.♗c3 ♗b6 7.O-O ♖e7 8.♖b1 a5 9.d3 ♖e6 10.b3 O-O 11.♖b2 f6 12.♖c1 a4 13.♖a1 axb3 14.axb3 ♖a5 15.♗d2 ♗d4 16.b4

Visit Northwest
Chess
on Facebook!



16...♖a4! 17.♞e1 ♗xc3 18.♞xc3 ♞a2 19.♞c1 c6 20.♙xd4 ♞xd4 21.♗f3 ♞d7 22.♞c3 ♞fa8 23.♗f1 ♞8a3 24.♞c1 ♞a4 25.♞c3 ♞2a3 26.♞d2 e4 27.dxe4 ♞xd2 28.♗xd2 ♞xb4 29.♗f3 ♞aa4 30.e5 c5 31.♗d2 b5 32.♙c6 ♞xb1 33.♞xb1 ♞a2 34.exf6 gxf6 35.♗e1 c4 36.♙xb5 c3 37.♗c4 ♙b4



38.♞c1 ♗g7 39.♗e3 c2+ 40.♗f1 ♙h3+ 41.♗g1 ♙d2 0-1

#4—In a typical King's Indian, White, atypically, never managed to win any material on the queenside. Instead, Chen's steady kingside build-up and inevitable ...g5-g4 break dominated the play. Black's smooth win is a good advertisement for the KID.

E99 King's Indian Classical

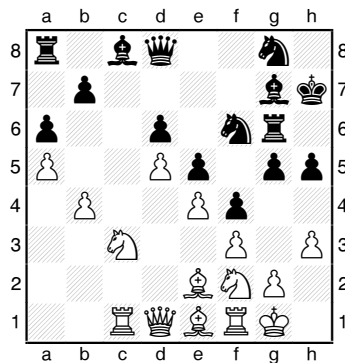
NM Dereque Kelley (2291)

FM Howard Chen (2427)

Seattle, WA Championship (5) 2012

1.d4 ♗f6 2.c4 g6 3.♗c3 ♙g7 4.e4 d6 5.♗f3 O-O 6.♙e2 e5 7.O-O ♗c6 8.d5 ♗e7 9.♗e1 ♗d7 10.♙e3 f5 11.f3 f4 12.♙f2 g5 13.♞c1 ♞f6 14.♗d3 ♞h6 15.♙e1 ♞g6 16.b4 ♗f6 17.♗f2 h5 18.h3 ♗h7 19.c5 a6 20.cxd6 cxd6 21.a4 ♗eg8 22.a5

4



22...g4 23.fxg4 hxg4 24.♗xg4 ♗xg4 25.♙xg4 ♙xg4 26.hxg4 ♗h6 27.♗a4 ♞c8 28.♞xc8 ♞xc8 29.♗b6 ♞g8 30.♞f3 ♗xg4 31.♙f2 ♙f6 32.♞c1 ♙d8 33.♗c8 ♞g7 34.♙b6 ♞h6 35.♞h3 ♞xh3 36.gxh3 ♗f6+ 37.♗f1 ♙xb6 38.axb6 ♗xe4 39.♞c7+ ♞g7 40.♗e7 ♗g3+ 41.♗e1 e4 42.♗c6 f3 43.♗d4 ♗h8 44.♞xg7 ♗xg7 45.♗f2 ♗h1+ 46.♗g1 f2+ 47.♗g2 ♗f6 48.h4 e3 49.♗e2 ♗f5 0-1

#5—Both players were eager to engage in a rowdy Sveshnikov, with neither side castling. White flinched first, traded Queens, and wound up in a worse ending. Koons managed to avoid Ignacio's tricks (27...♗d7? 28.♙e8! mate) and even finished the game with one of his own.

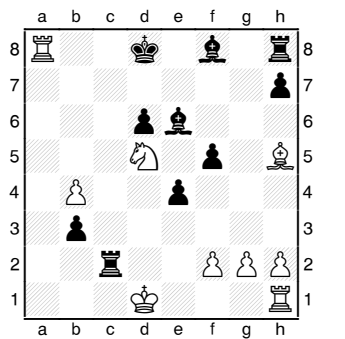
B33 Sicilian Sveshnikov

FM Ignacio Perez (2269)

NM Nat Koons (2280)

Seattle, WA Championship (9) 2012

1.e4 c5 2.♗f3 ♗c6 3.d4 cxd4 4.♗xd4 ♗f6 5.♗c3 e5 6.♗db5 d6 7.♙g5 a6 8.♙xf6 gxf6 9.♗a3 b5 10.♗d5 f5 11.♙d3 ♙e6 12.c4 ♞a5+ 13.♗f1 fxe4 14.♙xe4 ♗d4 15.♗c2 ♗xc2 16.♞xc2 ♞c8 17.♗f6+ ♗e7 18.♗d5+ ♗e8 19.b4 ♞a3 20.♞b3 ♞xb3 21.axb3 bxc4 22.♞xa6 cxb3 23.♗e2 f5 24.♙f3 ♞c2+ 25.♗d1 e4 26.♙h5+ ♗d8 27.♞a8+



May 2012

27...♞c8 28.♞xc8+ ♗xc8 29.♗f4 ♗d7 30.♗xe6 ♗xe6 31.♗d2 ♙g7 32.♙d1 b2 33.♙c2 ♞c8 34.g4 ♙h6+ 35.♗d1 b1=♞+ [0:1]

Brillianty Prize— Premier

C18 French Winawer

Chouchanik Airapetian (2160)

Casey Xing (2048)

Seattle, WA Premier (2) 2012

Annotations by Casey Xing

1.e4 e6 2.d4 d5 3.♗c3 ♙b4 4.e5 c5 5.a3 ♙xc3+ 6.bxc3 ♗e7 7.♞g4 ♞c7

My usual Poisoned Pawn Winawer.

8.♞xg7 ♞g8 9.♞xh7 cxd4 10.♗e2 ♗bc6 11.f4 ♙d7 12.♞d3 dxc3 13.♗xc3 a6 14.h4 ♗f5 15.♞h3 ♗a5

15...♗cd4 16.h5 ♞a5 17.♞d2 (17.♗d1 ♗b5 18.♗e2 ♗c7 19.♞b1) 17... ♞c5 18.♙b2 is given by RYBKA, but I couldn't resist putting a Knight on c4.

16.h5 O-O-O 17.♙d2 ♗c4 18.♞b1 ♙c6

18...♗xa3 19.♞b3 (19.♗xd5? ♗xc2+) 19...♗c4 20.h6 didn't look too appealing to me.

19.a4?!

I felt that this move gave me a little too much time. I was contemplating 19.h6 or 19.♞b3.

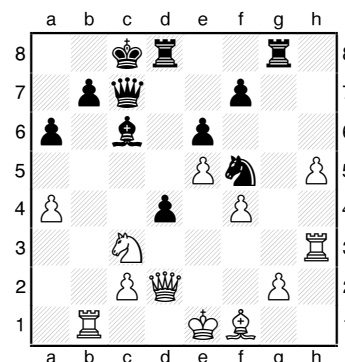
19...♗xd2

In order to push the d-pawn.

20.♞xd2

20.♗xd2 d4 21.♗e4 ♞g4 gives me an active position.

20...d4



Northwest Chess

21. ♖b5?!

21. ♖d1 ♗g3 isn't great for White either.

21...axb5

Just about forced, as moving the Queen yields to 22. ♖a7+ and taking with the Bishop allows 22.axb5 with a strong attack.

22.axb5 ♙e4 23.b6 ♚c5 24. ♖b5 ♚c6

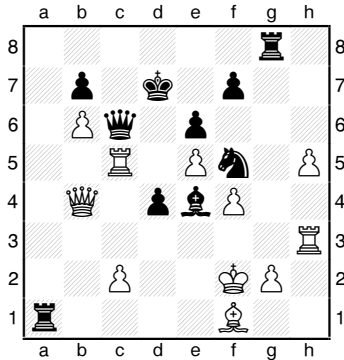
24... ♚e7 was a tad more accurate, though I rejected it because I felt my King was too exposed.

25. ♚a5 ♖d7 26. ♖c5 ♖a8 27. ♚b4?

27. ♙b5 and 27. ♖xc6 lead to a uphill game.

27... ♖a1+ 28. ♖f2?

A blunder, but Black is already winning, e.g., 28. ♖e2 ♙xg2 29. ♖xc6 ♙xf1+ 30. ♖f3 ♖xc6-+ or 28. ♖d2 ♖xf1 29. ♖xc6? (29. ♖h2 ♙f3 30. gxh3 ♖d1+31. ♖xd1 ♚xf3+) 29... ♖xg2 mate.



28... ♙d3-+ 29. ♖xd3 ♖xf1+ 30. ♖xf1 ♚xg2+ 31. ♖e1 ♚g1+ 32. ♖e2 ♖g2+ 33. ♖f3 ♚f2+ 0-1

Brilliancy Prize— Invitational

E27 Nimzo-Indian Sämisch

Becca Lampman (1933)
Daniel He (1961)

Seattle, WA Invitational (1) 2012

Annotations by Daniel He

1.d4 ♗f6 2.c4 e6 3. ♗c3 ♙b4 4.f3 O-O 5.a3 ♙xc3+ 6.bxc3 ♗h5

Nimzo-Indian, Kmocho Variation. Black is threatening 7... ♚h4+, and then 8... ♗g3. White has to play very carefully in this position.

7. ♙e3

7. ♗h3 is the only other playable move.

7...f5 8. ♙f2 d6 9.e3 f4 10.e4 ♗d7 11. ♙d3?

A poor move. Now, after 11... ♚g5, White must play either 12. ♖f1 or 12. ♙f1 to save the pawn.

11... ♚g5 12. ♖f1 e5 13. ♖b1 ♚e7

The Queen isn't doing anything on g5, and I have to be careful not to get it trapped.

14. ♗e2 c5 15. ♙c2 ♖h8 16. ♙a4 ♗b6 17. ♙b3 ♙e6

I'm trying to force White to respond with d4-d5, closing the position and making my Knights better than both of White's Bishops, which are closed in behind the pawns.

18. ♚d3 ♖ac8 19.d5 ♙d7

Black happily retreats the Bishop to d7, as the position is now closed.

20. ♚c2 ♚e8

plan on the queenside, I start to attack on the kingside.

24. ♗d3 ♖g7 25.h3 ♖a8 26. ♖b2 ♚h5 27.a4?

White missed my threat. If 27. ♖d2 ♖b8 28. ♖eb1 ♗c8, the position would still be balanced.

27... ♗xe4 28.a5 ♗a4! 29. ♙xa4 ♙xa4 30. ♚c1

The only safe move for White.

30... ♖e8 31. ♖f1 ♗f6 32. ♚a1 ♙d7 33. ♖xb7 e4!

All of my pieces are in great positions to start attacking. White must take the pawn.

34.fxe4

34. ♗b2 ♙xh3! 35.gxh3 ♚xh3+ 36. ♖g1 (36. ♖e2 ♚xf3+ 37. ♖d2 ♚xf2+ 38. ♖e2e3+) 36... ♗g4!! 37.fxg4 f3

34...f3

Trying to force the g-pawn to move; so the h3-pawn is undefended.

35. ♖e3 ♙xh3 36. ♚b2

36. ♖xg7 ♙xg2+ 37. ♖e1 ♚h1+; 36.gxh3 ♚xh3+ 37. ♖e1 ♚h1+

36...fxg2+ 37. ♖e1

37. ♖g1 ♖xb7 38. ♚xb7 ♙c8!

37... ♚g4 38. ♖g3 ♖xe4+ 39. ♖d2 ♖e2+ 40. ♖c1 ♖xb2 41. ♖xg7 ♚xg3 0-1

Other Annotated Games

D11 QGD Slav

LM Viktors Pupols (2200)
NM Nat Koons (2280)

Seattle, WA Championship (5) 2012

Annotations by NM Nat Koons

1. ♗f3 d5

In earlier times I tried to be more adventurous against Vik, but it never worked out. I once played a Dutch, ending up with a nightmare Bishop on f7 (Black pawns on d5, e6, f5, g6, h7). I lost that game in the middlegame in Zugzwang! None of my pieces could move!

2.g3 c6 3.b3 ♙g4 4. ♙g2 ♗d7 5. ♙b2 ♗gf6 6.c4 e6 7.O-O ♙d6 8.d4

Stopping a3-a4-a5, and keeping White's light-squared Bishop from becoming active at a4.

21. ♗c1 ♖f7 22. ♖e2 ♗f6 23. ♖e1 g5

After stopping White's

Orlov Chess Academy
IM Georgi Orlov
2540 USCF

Offers time-tested program,
challenge and quick progress!

Chess Camps, Tournaments
Chess Classes, Private Lessons

chess64@comcast.net
www.chessplayer.com
(206)-387-1253

**ORLOV
CHESS
ACADEMY**

O-O 9. ♖bd2 ♜c7 10. ♖c1 ♜ae8?!
11. ♖e1 ♜b8 12. c5?!

The whole Black setup is aimed at playing ...e6-e5, and this move just helps me achieve it.

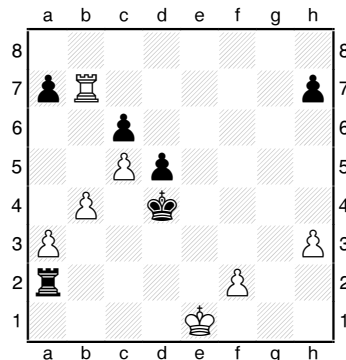
12... ♙c7 13. b4 e5 14. dxe5 ♜xe5
15. ♜xe5 ♙xe5 16. ♙xe5 ♜xe5
17. ♜f3 ♙xf3 18. ♙xf3 ♜e4 19.
♙xe4 ♜xe4 20. a3 f5 21. e3 ♜e6
22. ♜d4 g5 23. ♜xe4 ♜xe4 24. ♙f1
♜fe8 25. ♜ed1 f4 26. gxf4 gxf4
27. exf4 ♙f7 28. ♜c3 ♜xf4 29. ♜h3
♙g7 30. ♜g3+ ♙f6 31. ♜h3 ♜e7
32. ♜dd3 ♜f7 33. ♜he3 ♙g7 34.
♜e2 ♙f8 35. ♜de3 ♜f3 36. ♙g2
♜xe3 37. ♜xe3 ♜f6 38. ♙g3
♜g6+ 39. ♙f3 ♙f7 40. h3 ♜f6+ 41.
♙g3 ♜g6+ 42. ♙f3 ♜g1!

Edge to Black.

43. ♙e2 ♜a1 44. ♜f3+ ♙e6 45.
♜e3+ ♙f6 46. ♜f3+ ♙e5!?

No going back! I thought I had it all worked out.

47. ♜f7 ♜a2+ 48. ♙e1 ♙d4 49.
♜xb7



49... ♙c3?

My computer says 49... ♜xa3 50. ♜xh7 a5 is better, with an edge to Black. The connected Black pawns will be the most valuable on the board. But fixated on the idea of queening the d-pawn, I'd lazily calculated the 'winning' variation and regarded the White queenside pawns as providing a nice shield for my King.

50. b5!

Yes, here we go . . .

50... d4 51. bxc6 ♜a1+ 52. ♙e2
d3+ 53. ♙f3 ♜e1

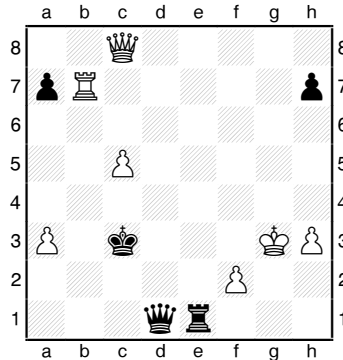
Only at this moment did I realize the position is not actually winning for Black. The intended 54. ♜d7 ♜e8 55. c7 ♙c2

'and queens' obviously runs into 56. ♜d8!

54. c7??

Very ambitious. White will be two pawns up, but Black will queen with check. I expected ♙d7 when I would have to scramble with 54... ♙e6 55. c7 ♙c6 and Black holds, I think.

54... d2 55. c8=♜ d1=♜+ 56. ♙g3



56... ♜d3+??

Wrong check! I thought 56... ♜g1+ useless. After 57. ♙h2 ♜h1+ 58. ♙g3 ♜g1+ 59. ♙f3, the White Queen guards h3; so Black must repeat with 59... ♜d1+. But the computer spots the win: 58... ♜d3+! 59. ♙g2 ♜f1+! 60. ♙g3 ♜g1+ 61. ♙f3 ♜g2+! 62. ♙e3 ♜e1+ 63. ♙f4 ♜e4+ 64. ♙f5 ♜g6 mate.

57. ♙h2!

I missed this somehow. Am I lost?

57... ♜h1+!

No, today, I am lucky!

58. ♙xh1 ♜f1+ 59. ♙h2 ♜xf2+ 60.
♙h1 ♜f1+ Draw

Roland Feng had seven points going into the ninth and final round. He had won seven games with no draws and one loss, to Michael Wang who waited in the shadows, a half-point back, for an opportunity to seize the lead. Michael was playing Patrick Van Dyke, who amused us much with his wit and humor, but was suffering through much of this tournament with one win and seven losses. It was expected by many that Michael should at least draw against Patrick, if not win with the White pieces.

I had 5.5 points, no chance of catching Roland, and was unlikely to tie Michael. I most likely was playing for third place. Moreover, Roland, having

the White pieces, would have to play for the win, since a draw and a Michael victory would mean a tie at 7.5, and Michael might win a tiebreak. This game would be a fight for the full point. A draw would come only by repetition, insufficient material, or insufficient losing chances. – M. MacGregor

D80 Grünfeld

Roland Feng (2158)

Michael MacGregor (2162)

Seattle, WA Premier (9) 2012

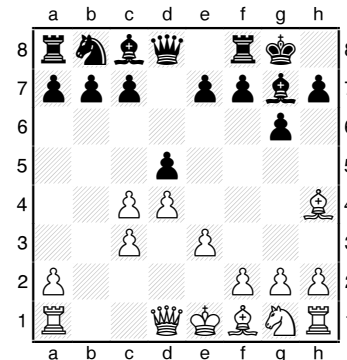
Annotations by Michael MacGregor

1. d4 ♜f6 2. c4 g6 3. ♜c3 d5

Roland plays the King's Indian as Black and would be better suited to play against this defense than I would to play it as Black.

4. ♙g5 ♜e4 5. ♙h4 ♜xc3 6. bxc3
♙g7 7. e3 O-O

This is a book variation, although that shouldn't surprise me, since it's common to sacrifice a pawn or two in the Grünfeld for a lead in development or to prevent White from castling. After I castled, however, I realized that it afforded White the opportunity to win the e-pawn.

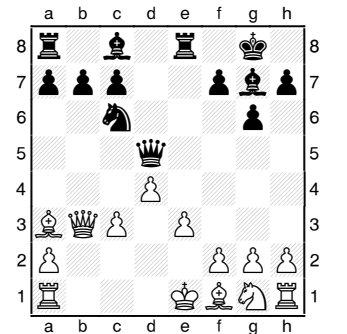


8. cxd5 ♜xd5 9. ♙xe7 ♜e8 10. ♙a3

10. ♙h4 c5 is also a continuation.

10... ♜c6 11. ♜f3

11. ♜b3 is the lead variation.





Washington Open Chess Tournament May 26-28, 2012

Revised 4/2/2012

Washington Chess Federation

WA Open Sections/Entry Fees

(by April 28 / May 19 / on site)

OPEN

EF \$100 / \$110 / \$120

PREMIER (U2000)

EF \$90 / \$100 / \$110

RESERVE (U1700)

EF \$80 / \$90 / \$100

BOOSTER (U1400)

EF \$70 / \$80 / \$90

Free entry to GM's, IM's, WGM's.

\$40 entry option for juniors under age 21 playing for medal only. Three medals awarded per section. Canadian dollars accepted at par (no coins).

\$7,000 Prizes based on 170 entries

Open	Premier	Reserve	Booster
\$700	\$300	\$250	\$200
\$550	\$250	\$200	\$150
\$350	\$225	\$175	\$125
\$250	\$200	\$150	\$100
\$200	\$150	\$100	\$75
U2150	U1850	U1550	U1100
\$350	\$200	\$150	\$120
\$250	\$150	\$125	\$ 80
\$150	\$125	\$100	\$120(*)
\$100	\$100	\$100	\$ 80 (*)

(*) Prizes for unrated players.

All prizes will be mailed starting 6/1/2012.

Entries/Information:

Dan Mathews

WCF Tournament Coordinator
2700 NW Pine Cone Dr Apt 402
Issaquah, WA 98027-8677
Cell Phone (425) 218-7529
dthmathews@aol.com

Make checks payable to Washington Chess Federation (WCF).

Online registration available at
www.nwchess.com.

Holiday Inn

17338 International Boulevard, Seattle, WA 98188
Reservations/hotel phone number (866) 536-7370

Registration/Byes: Saturday 8:00-9:30AM for 3-day, or 3:30-4:15PM if entering with one half-point bye. Sunday 8:00-9:00AM for 2-day, and entering 3-day event with two half-point byes. Two half-point byes available, which must be requested at registration or before the end of 2nd round.

Format/Ratings: Four sections (see bar at left), six-round Swiss system, USCF rated. The Open Section is also FIDE rated (except G/60 games if applicable). USCF May supplement ratings will be used. Un-rated players may play in any section, but can only win the top five prizes in the open section and the two unrated prizes in booster section. Foreign ratings used for players with no USCF rating, or if foreign rating is higher than USCF rating.

Time Controls: 3-day schedule: 30/90, SD/1. 2-day schedule: Rounds 1-3: Game/60, Rounds 4-6 same as 3-day schedule. Both schedules: Digital clocks preferred. 5-second time delay used from start of game.

Rounds: 3-day schedule: Saturday: 10:00AM, 5:00PM, Sunday 10:00AM, 5:30PM, Monday: 9:00AM, 3:00PM. 2-day schedule: Sunday 9:30AM, 12:00PM, 2:30PM, then join 3-day schedule for rest of tourney. WCF annual meeting and elections: 4:00-5:00PM Sunday, May 27, 2012.

Memberships: USCF and state membership required in all sections, OSA. Memberships (including USCF) must be current or paid fully.

Miscellaneous: Northwest Chess Grand Prix event. Please bring set, board and clock. Please use entry form (when available) for a list of all discounts and fees, and to indicate schedule, section, side events and byes requested. NS. NC. W.

Entries/Prizes/Info: See bar at left. Online entry/forms available on NWC website.

Hotels Info/Rates: \$99 Single, \$109 Double. Group Code: IWF. Reservation link will be available on the Northwest Chess website (www.nwchess.com). The cut-off date for reservations at the discount is May 18, 2012.

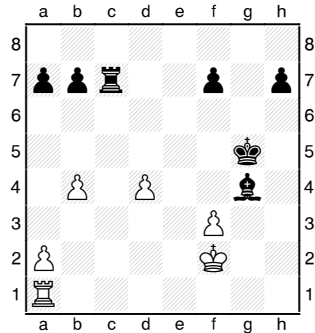
Side Events:

Please see separate flyer for details on the following WA Open Side Events:

- May 26 WA Open Scholastic
- May 27 WA Open Novice Championship
- May 27 WA Open Blitz Championship
- May 28 WA Open Game/10 Championship

11...♔a5 12.♙e2 ♙xd4

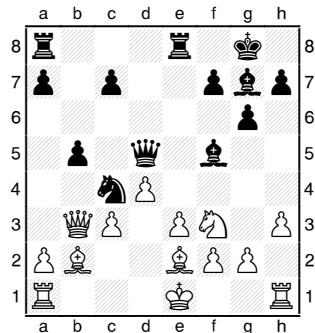
A) 13. ♙b4 ♘xb4 14.cxb4 ♖g5
15.exd4 ♗xg2 16. ♗f3 ♙xe2+ 17. ♗xe2
♗xh1 18. ♗e8+ ♘g7 19. ♗e5+ ♘h6
20. ♗f4+ ♘h5 21. ♘d2 ♗d5 22.h4 g5
23.hxg5 ♗xg5 24. ♘e2 ♗xf4+ 25.
♘xf4+ ♘g5 26. ♘d5 ♙g4 27. ♘xc7
♙d8 28. ♘e3 ♙d7 29.f3 (29. ♘b5 ♙e7+
30. ♘d2 ♙e2+干) 29... ♙e7+ 30. ♘f2
♙xc7干/干



B) 13. ♙c1 ♙e6 14. ♗b2 ♙g7干

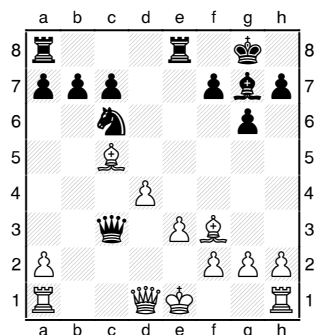
11...♙g4 12. ♙e2

12. ♙b2 ♘a5 13.h3 ♙f5 14. ♙e2
♘c4 15. ♗b3 b5干

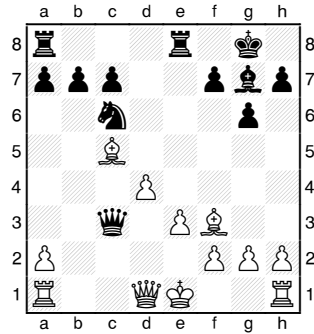


12...♙xf3 13.gxf3

13. ♙xf3 was avoided, because 13...
♗a5 14. ♙c5 ♗xc3+



loses the c-pawn with check and pre-
vents White from castling. But,
after 15. ♘f1 ♗a5 16. ♗b3 ♘d8 17.g3
♘e6 18. ♙c1 ♗a6+ 19. ♘g2 c6,



White has lasting pressure and has
castled by hand. His Bishops rake the
queenside and the Rooks are ready to
come to the b- and c-files.

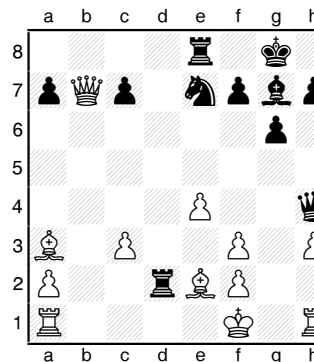
13... ♙ad8

13... ♘xd4

14. ♗b3 ♗g5 15. ♘f1

15. ♗xb7 is annoying, simple, and
likely decisive, e.g., 15... ♗g2 16. ♙f1
♘e7 17. ♙c4 ♙h6 18. ♗xc7 ♙xe3 19.
♗g3 ♗xg3 20.hxg3 ♙xd4 21.O-O-O
♙f6 22. ♙fe1 ♙xd1+ 23. ♘d1 ♘g7.

15... ♗h4 16.h3 ♘e7 17.e4 ♙xd4
18. ♗xb7 ♙d2

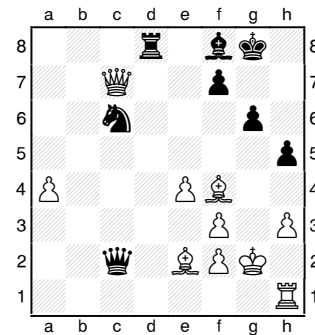


19. ♗b3干

Better is 19. ♙d1 ♙xd1+ 20. ♙xd1
♗f6 21. ♗xa7 ♙d8 22. ♙e2 ♘c6 23.
♗xc7 ♗xc3 24. ♙d6 ♙f8 25. ♙f4 ♗c2



26.a4 h5 27. ♘g2±.



19... ♘d5 20. ♗b5

20. ♗b5 is challenging, except, after
20... ♗d8, White is losing.

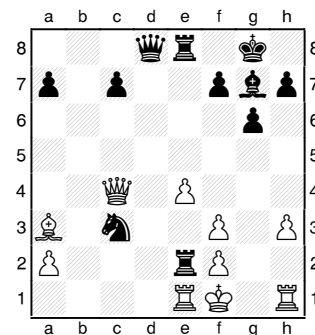
20... ♗d8 21. ♙e1 ♘xc3 22. ♗c4
♘xe2

Better are

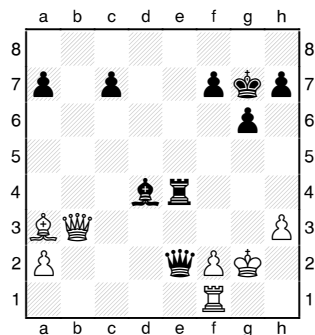
A) 22... ♗f6 23. ♙c1 ♙xe2 24. ♙xe2
♗xf3 25. ♙h2 ♙d4 26.e5 ♘xe2 27.
♗xe2 ♗f5 28. ♗d2 ♙xe5 29. ♙g2
♗xh3 or

B) 22... ♙xe2

I considered this for many minutes, until
I put myself into time pressure. I finally
decided on the move in the game to mini-
mize risk.



23. ♙xe2 ♗d1+ 24. ♙e1 (24.
♘g2 ♗xe2 25. ♗c6 ♗b5 26. ♗xc7
♗g5+ 27. ♗g3 ♗a5
28. ♙c1 ♗xa2-+) 24...
♗xf3 25. ♙g1 (25.
♙h2 ♘xe4 26. ♙b4 ♙d4
27. ♗c2 c5 28. ♙a5
♙e5 29. ♙g2 ♘xf2 30.
♙xe5 ♘d3+ 31. ♙f2
♙xf2 32. ♗xd3 ♗xd3+
33. ♘xf2) 25... ♘xe4
26. ♙xe4 ♙xe4 27.
♗b3 ♗e2+ 28. ♘g2
♙d4 29. ♙f1 ♘g7-+



23. Rxe2 Rd4 24. Qc2 Rd3 25. Re3 Rd2 26. Qc4 Rd4 27. Re2 Rd1+ 28. Re1 Rh4 29. Qc2 Rx e1+ 30. Qxe1 Rd8!

Intending ... Qxf2+. An excellent find in time pressure, with only a couple of minutes left to reach move 40.

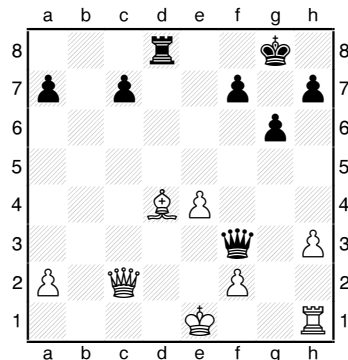
31. Qc5

31. Qf1 Qxf2 32. Qe7 Qxe7 33. Qxf2 Rh4+ 34. Qe2 Qg3 35. Tf1 Qxh3 36. Qc1 Qg2+ 37. Tf2 Qg3--

31... Qf6 32. Qxd4

32. Qf1 Qc6 winning the piece.

32... Qxf3



33. Rg1

White doesn't have time for 33. Qb2, trying to set up some mating threats on the dark squares, e.g., 33... Qxh1+ 34. Qe2 Qxh3 35. Qf6 Qg4+ 36. Qe3 Rd1.

33... Rxd4 34. Rg5 Rxe4+ 35. Qf1 Qh1+ 36. Rg1 Qxh3+ 37. Rg2 Rg4 38. Qxc7

38. Qc6 Qh1+ 39. Qe2 Qxg2 wins the Rook anyway, because, after 40. Qe8+ Qg7 41. Qe5+ Qh6 42. Qe3+ g5, the checks come to an end.

38... Qxg2+ 39. Qe2 Re4+ 40. Qd3 Qf3+ 41. Qd2 Qxf2+ 42. Qd3 Qf3+ 43. Qd2 Re2+ 0-1

And White resigned before being mated with Black's next move.

Michael Wang lost to Van Dyke; so Roland won clear first place with seven points and I tied Michael with 6.5 for second-third. Both games proved dramatic in themselves and had a dramatic effect on the outcome of the tournament.

B07 Pirc

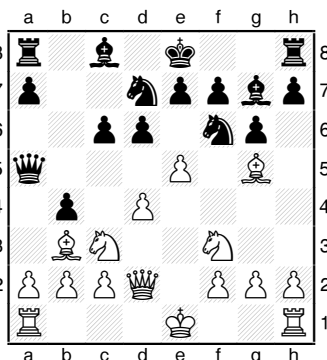
Michael Schemm (1997)

Kyle Haining (1853)

Seattle, WA Invitational (5) 2012

Annotations by Kyle Haining

1. Qc3 g6 2. d4 Qg7 3. Qg5 Qf6 4. e4 d6 5. Qc4 c6 6. Qb3 Qa5 7. Qd2 Qbd7 8. Qf3 b5 9. e5 b4



10. Qe2?

A better line for White was 10. exf6! bxc3 11. fxg7 cxd2+ 12. Qxd2 Qxd2+! 13. Qxd2 Rg8.

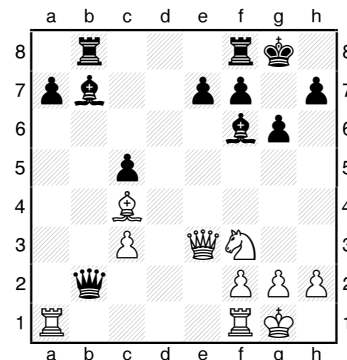
10... dxe5 11. Qxf6 Qxf6 12. O-O O-O 13. a3 Rb8 14. axb4 Qxb4 15. Qe3

A slightly better continuation would have been 15. Qxb4 Rxb4 16. dxe5 Qxe5 17. Qxe5 Qxe5 18. Rxa7 Qb7.

15... exd4 16. Qexd4 Qb6 17. Qe4 Qb7

Better was 17... e5 18. Qe2 Qc5--.

18. Qe6 Qc5 19. Qxc5 Qxc5 20. c3 Qb6 21. Qc4 c5 22. Qe3 Qxb2



23. Rxa7

A better continuation, found after the game with the help of FRITZ and HOUDINI, was 23. Qe5 Qc8 24. h4 Qb6 25. h5 Qc7 26. Tf1.

23... Qxc3 24. Qxc3 Qxc3 25. Qg5 e6 26. Rb1?

At this point I'm confident that I'm winning. After ... Qd5 and exchanging Rooks, I didn't think there was anything to fear.

26... Qd5 27. Rxb8 Rxb8 28. Qd3 c4 29. Qf1 Qd4 30. Rxf7? h6 31. Qf3 Qxf2+ 32. Qxf2 Qxf7 33. Qe5+ Qg7 34. Qxc4 Qxc4 35. Qxc4

I don't mind trading Bishops. I just have to be careful not to walk into a Knight fork.

34... Qf6 36. h3 e5 37. Qd6 Qe6 38. Qe4 Qd5 39. Qc3+ Qd4 40. Qe2+ Qd3 41. Qg3 e4 0-1

Gotta "Like"

Northwest Chess

on Facebook!!

Vancouver WA

Aug 4-12, 2012

113th U.S. Open

A Heritage Event, FIDE Rated!, 300 Grand Prix Points

The 2012 U.S. Open will be held at the Hilton Hotel in Vancouver, Washington!

2012 will be the 25th anniversary of the previous U.S. Open held in Portland won by GM Lev Alburt.

Includes traditional one-game-per-day schedule (9 days), also 6-day slow time control option, and 4-day option requiring only 3 nights hotel stay for most players. 9SS; 40/2, SD/1 (4-day option, Rds. 1-6, G/60).

Hilton Vancouver Washington,
301 W 6th Street, Vancouver
WA 98660.

Self-Parking \$13.00, valet
\$17.00 per night. HR: \$110
single/quad, 360-993-4500, re-
serve by July 12 or rate may
increase.

A one-section tournament with Class prizes. **\$50,000** in prizes (**80%** of each prize guaranteed) based on **500** paid entries. Special prizes based on Life Titles.

		by 6/17	by 7/29	after
Entry Fee:	<i>Online</i>	\$145	\$165	\$185
	<i>By mail</i>	\$147	\$167	
	<i>By phone</i>	\$150	\$170	\$185
	<i>At site</i>			all \$190

Do not mail after 7/29!
No phone entries after 8/2!
GMs free!

All entries must be made at least two hours prior to your first game. Current USCF membership required. August official ratings used; unofficial ratings used if otherwise unrated. CCA ratings used if above USCF. Foreign player ratings: usually 100 points added to FIDE or FQE, 200+ added to most foreign national ratings, **no points added to CFC**. Highest of multiple ratings generally used.

Entries: USCF, ATTN: 2012 US Open, P.O. Box 3967, Crossville TN 38557. USCF Website online entry. Phone entry: 800-903-8723 (no cell phones). Bring a clock—none supplied. *Sets & boards supplied for tournament, but not for skittles.*

Side Events:

- Inaugural Women's U.S. Open
- Denker Tournament of HS Champions
- Barber Tournament of K-8 Champions
- Trophies Plus U.S. Girls' Junior Open
- U.S. Open Blitz Championship
- Weekend Swiss
- U.S. Open Scholastic
- U.S. Open Quads
- Open Bughouse
- U.S. Open G/15 Championship

Check www.nwchess.com or www.uschess.org for more details.

Idaho Chess News

By Jeff Roland

Magic Valley CC Championship

The 2012 Magic Valley Chess Club Championship, played in Twin Falls on March 24, was sponsored by Idaho Chess Union (ICU), the Magic Valley CC, and was rated by Rocky Mountain Chess. Entry was free and by invitation only. The G/60 event took place in the Community Room of the Obenchain Insurance Building at 264 Main Avenue South. Barry Eacker directed the tournament.

There were two sections, Championship Section (winner to be declared 2012 MVCC Champion), and Challenger Section. The winner of the Challenger section earns automatic invitation to the Championship Section the following year. This year, it was Desmond Porth! Last year, Bellevue resident Adam Porth won the Challenger section.

In the Championship Section, comprised of twenty-four games, nine games were won by White, five games by Black, and ten games were drawn.

In the Challenger Section (comprised of eight games), three games were won by White, five games by Black, with NO draws!

The G/60 format allowed for some very lively play. In the ICU, analog clocks are preferred, and, in fact, time delay is forbidden! So, time management skills are essential, adding a whole new level of panic (a.k.a. excitement) to the game!



Photo by Jeff Roland

(L-R): Hugh Myers, Dan Looney (bent slightly), Nedzad Imamovic, Corey Longhurst (upper), Aleksandr Vereshchagin (lower), Barry Eacker, Scott Featherston, Nathanael Winchell, Tom Booth, Kory Puderbaugh, Desmond Porth, Nick Bruck, Jeff Roland, Gary Dugger, Fred Bartell, Adam Porth.

One player, Nathanael Winchell (Mountain Home), played here in his first-ever tournament.

We are, of course, extremely grateful to Obenchain Insurance for the use of its building to host the tournament. And Barry Eacker, as usual, did a great job running the tournament smoothly and without any negative elements.

It was extremely pleasant for the players who attended an impromptu group lunch at the Peking Restaurant. It took a little longer than usual to get the food served, which created a slightly longer lunch break. But socializing with the players was one of those pleasant things one comes to expect when playing chess in Twin Falls and Barry Eacker is the organizer.

The next ICU tournament, the Treasure Valley Championship, will be held in Boise sometime this summer. It will be invitation only and will be limited to players in the Treasure Valley.

Prizes:

Championship Section:

Nedzad Imamovic	First
Blake Furlow	Second
Barry Eacker	Buckendorf Award*

Challenger Section:

Desmond Porth	First
Kory Puderbaugh	Second
Gary Dugger	Buckendorf Award*

* From the Glen Buckendorf, Jr. Library. Barry Eacker won the book *Winning With The Dragon* by Chris Ward. And Gary Dugger won *Beating The King's Indian and Benoni* by Anatoly Vaisser.

Championship Section

##	Player	Residence	Pre	Post	1	2	3	4	Score
1	Nedzad Imamovic	Twin Falls	1688	1707	W10	D6	D2	W4	3.0
2	Blake Furlow	Boise	1684	1701	W12	D3	D1	W7	3.0
3	Barry Eacker	Twin Falls	1633	1634	W9	D2	D5	D6	2.5
4	Fred Bartell	Twin Falls	1777	1772	D5	W8	W6	L1	2.5
5	Hugh Myers	Boise	1621	1610	D4	D7	D3	D9	2.0
6	Daniel Looney	Meridian	1633	1633	W11	D1	L4	D3	2.0
7	Tom Booth	Caldwell	1600	1593	D8	D5	W10	L2	2.0
8	Jeffrey Roland	Boise	1700	1692	D7	L4	D9	W11	2.0
9	Adam Porth	Bellevue	1234	1265	L3	W12	D8	D5	2.0
10	Corey Longhurst	Meridian	1583	1586	L1	W11	L7	W12	2.0
11	Nick Bruck	Boise	1454	1445	L6	L10	W12	L8	1.0
12	Aleksandr Vereshchagin	Twin Falls	1457	1426	L2	L9	L11	L10	0.0

First and Second place in each section also won a print of a painting done by local artist, Daniel S. Looney.

Games from the 2012

Magic Valley Chess Club Championship

C20 King Pawn

Fred Bartell (1777)

Hugh Myers (1621)

Twin Falls, MVCC Championship (1) 2012

1.e4 e5 2.c3 ♘f6 3.d4 d6 4.♙g5 ♙e7 5.♗d2 O-O 6.♗c4 ♗bd7 7.♗f3 ♗xe4 8.♙xe7 ♗xe7 9.♗c2 d5 10.♗e3 c6 11.♙d3 exd4 12. ♗xd4 ♗df6 13.O-O g6 14.♗ae1 ♗c7 15. c4 ♗b6 16.♗b3 ♙e6 17.cxd5 cxd5 18.f3 d4 19.♗c4 ♙xc4 20.♗xc4 ♗d6 21.♗xd4 ♗xd4+ 22.♗xd4 ♗fe8 23.♗b5 ♗xb5 24.♙xb5 ♗xe1 25.♗xe1 ♗f8 26. b3 a6 27.♙c4 ♗d8 28.♗e2 b5 29. ♗c2 bxc4 30.♗xc4 ♗d6 31.♗a4 ♗e7 32.♗f2 ♗d7 33.♗g3 ♗c6 34. h3 ♗b5 35.a3 ♗h5+ 36.♗h4 ♗b6 37.♗b4+ ♗c5 38.♗c4+ ♗b5 Draw

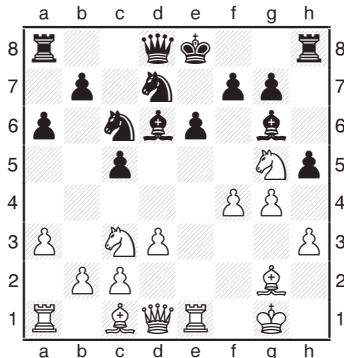
B50 King's Indian Attack

Dan Looney (1633)

Nedzad Imamovic (1688)

Twin Falls, MVCC Championship (2) 2012

1.e4 c5 2.♗c3 d6 3.♗f3 ♗f6 4.g3 a6 5.♙g2 ♙g4 6.O-O ♗c6 7.h3 ♙h5 8.g4 ♙g6 9.d3 e6 10.a3 ♙e7 11.♗e1 h5 12.e5 ♗d7 13.exd6 ♙xd6 14.♗g5 ♗de5?! 15.f4 ♗d7??



16.f5 ♙xf5? 17.gxf5 e5 18.♗ge4 ♙e7 19.♗d5 ♗d4 20.♗xe7 ♗xe7

Challenger Section

##	Player	Residence	Pre	Post	1	2	3	4	Score
1	Desmond Porth	Bellevue	1000	1045	W3	W2	W5	W4	4.0
2	Kory Puderbaugh	Eagle	1400	1389	W5	L1	W4	-B-	3.0
3	Gary Dugger	Twin Falls	1280	1278	L1	W4	-B-	W5	3.0
4	Nathanael Winchell	Mtn. Home	1000	1000	-B-	L3	L2	L1	1.0
5	Scott Featherston	Boise	1000	1000	L2	-B-	L1	L3	1.0

21. ♗f1 O-O-O 22.♙e3 f6 23.♙xd4 exd4 24.c3 ♗e5 25.cxd4 ♗xd4 26.♗xc5 ♗xc5 27.♗c1 ♗c4+ 28. ♗h1 ♗xc1 29.♗xc1 ♗xc1 30. ♗xc1+ ♗b8 31.d4 ♗d3 32.♗c3 ♗xb2 33.♗b3 ♗c4 34.♗xb7+ ♗c8 35.♗a7 ♗d8 36.♗a8+ ♗c7 37. ♗a7+ ♗b6 38.♗b7+ ♗a5 39.d5 Draw

C00 French

Hugh Myers (1621)

Tom Booth (1600)

Twin Falls, MVCC Championship (2) 2012

1.e4 e6 2.f4 d5 3.e5 c5 4.♗f3 ♗e7 5.♙e2 ♗f5 6.O-O ♙e7 7.g4 ♗h4 8.g5 ♗f5 9.♙d3 ♗c6 10.♙xf5 exf5 11.d3 ♙e6 12.c3 ♗b6 13.♗g2 O-O-O 14.b3 h6 15.h4 hxg5 16. ffg5 f6 17.exf6 gxf6 18.♗e1 ♗d7 19.a4 ffg5 20.♙xg5 ♙xg5 21. ♗xg5 ♗de8 22.♗d2 ♗c7 23.♗g3 ♗eg8 24.♗xc7+ ♗xc7 25.♗df3 ♗d6 26.♗h3 f4+ 27.♗xe6 ♗g3+ 28. ♗h2 ♗xe6 29.♗ae1+ ♗f5 30.♗e2 ♗g4 31.♗g2 ♗xg2+ 32. ♗xg2 Draw

D52 QGD Cambridge Springs

Jeff Roland (1700)

Adam Porth (1234)

Twin Falls, MVCC Championship (3) 2012

1.d4 d5 2.c4 c6 3.♗c3 ♗f6 4.♗f3 e6 5.♙g5 ♗bd7 6.e3 ♙b4 7.♙d3 h6 8.♙h4 c5 9.cxd5 exd5 10.O-O c4 11.♙b1 ♙xc3 12.bxc3 O-O 13. ♗c2 ♗b6 14.a4 ♗e4 15.♗e5 ♗xe5 16.dxe5 ♗g6 17.f3 ♗c5 18.♗xg6 ffg6 19.♙xg6 ♙f5 20.♙xf5 ♗xf5 21.f4 ♗d3 22.g4 ♗f7 23.e6 ♗ff8 24.♗ab1 b6 25.♗b5 ♗c5 26.f5 ♗xa4 27.♗xd5 ♗xc3 28.♗d7 ♗e4 29.♗fd1 c3 30.♗c7 ♗c5 31.♙e7 ♗fc8 Draw

At the time of writing this article, the next Idaho event will be the Idaho Open, to be held in Pocatello, Idaho on April 21-22, 2012 (by the time this article is published, it will be in the past). This will be the first-ever Northwest Chess Grand Prix event. Idaho is very excited about becoming part of this program which was designed to help increase participation in over-the-board chess. We look forward to reporting on the Idaho Open in the next issue!

Idaho Chess Association

Upcoming Tournaments

ICA Players Memorial Boise
May 19-20 (NWGP!)

ICA Summer Classic Boise
July 14-15 (NWGP!)

ICA Board of Directors

President: Jay Simonson
(rooknjay@yahoo.com)

Vice President: Kevin Patterson
(kpat42@msn.com)

Secretary/Treasurer: Adam Porth
(aporth1@cox.net)

Trustee for Website Development and Maintenance:
Jeff Roland [jroland@
cableone.net]

Trustee for Scholastic Development: Craig Barrett
(craig.barrett@ch2m.com)

Trustee for Tournament Organization: George Lundy III
(tdmlundy@juno.com)

Trustee for Tournament Organization: Patrick Abernathy
(aberpat@gmail.com) ■



Washington Open Side Events May 26-28, 2012

Revised 4/2/2012

Washington Chess Federation

All prizes will be mailed starting
6/1/2012.

Entries/Information:

Dan Mathews
WCF Tournament Coordinator
2700 NW Pine Cone Dr Apt 402
Issaquah, WA 98027-8677
Cell Phone (425) 218-7529
dthmathews@aol.com
Make checks payable to Washington
Chess Federation (WCF).
Online registration available at
www.nwchess.com.

Holiday Inn

17338 International Boulevard, Seattle, WA 98188
Reservations/hotel phone number (866) 536-7370

May 26 WA Open Scholastic. See NWC website, or contact David Hendricks, WCF Scholastic Director, 2439 220th Place NE, Sammamish, WA 98074, ph. (425) 868-3881 email: DavidCHendricks@comcast.net.

May 27 WA Open Novice Championship. Format: one section 4 round Swiss, open to U1200 or Unrated. TC: G/45 + 5 second delay. EF: \$15.00 (until May 19th), \$20.00 at site. Reg: 8:00-9:00am. Rds: 9:45am, 11:30am, 1:15pm, 3:00pm. Prizes: Trophies 1st, 2nd overall and 1st U1100,U1000,U900,U800,Unrated. State membership required.

May 27 WA Open Blitz Championship. Format: 5 rounds Double Swiss in one section. Two games, one with white, one with black. EF: \$25.00 pre-registered or at site. TC: G/5, USCF quick rated. Reg: 7:00-8:00pm. Rds: 8:30pm, 8:55pm, 9:20pm, 9:45pm and 10:10pm. Prize fund \$400 (b/20). 1st \$100, 2nd \$80, 3rd \$60, U2000 \$40, U1700 \$40, U1400 \$40, U1200 and Unrated \$40. WCF or other state membership required.

May 28 WA Open Game/10 Championship. Format: 5 rounds Swiss in one section. TC: G/10 + 5 second delay, USCF quick rated. Entry Fee: \$20.00. Prize fund: \$160 based on 10 entries. Prizes: 1st \$50, 2nd \$30 in Top Half; 1st \$50, 2nd \$30 in Bottom Half. Register before 11:00am Monday. Rounds at 11:30am, 12:00pm, 12:30pm, 1:00pm and 1:30pm. WCF or other state membership required.

49th Annual Canadian Open C\$15,000 GUARANTEED Prize Fund July 8-13; Victoria BC

Location: Hotel Grand Pacific, 463 Belleville St, Victoria, BC

Rounds: 11-6; 11-6; 11-6; 6:00pm; 6:00pm; 6:00pm

Time Control: Game in 120 minutes plus 30 second per move increment.

Sections: Premier (FIDE and CFC rated); U2000 (CFC rated), U1600 (CFC rated)

Entry Fees: C\$175 by June 1, C\$195 by June 29, C\$215 on site. C\$20 to play up a section.

Prizes: C\$15,000 guaranteed.

Play a GM!: 1st round games against GMs for sale. See website for details.

Registration: online on website; by cheque payable to Victoria Chess c/o Paul Leblanc, 1012 Spiritwood Place, Victoria BC V8Y 1C6. by email: cochess2012@gmail.com

Transportation: Seattle Clipper and Coho ferry from Port Angeles dock across the street.

Misc: Equipment provided. C\$139 room rate at Hotel Grand Pacific 1-800-663-7550 (rate code "JUL12CHESS") See www.monroi.com/2012-cocc-home for further details and side events.

Games from the WA Premier

Round Three

E84 King's Indian Samisch

Casey Xing (0.5)
Feng Roland (2.0)

Seattle, WA Premier (3) 2012

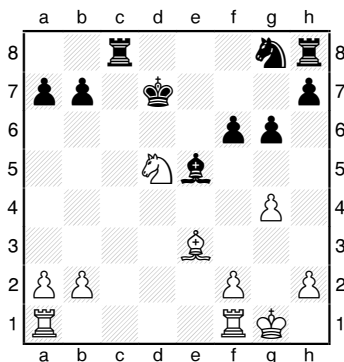
1.d4 ♘f6 2.c4 g6 3.♗c3 ♘g7 4.e4 d6
5.f3 O-O 6.♙e3 ♗c6 7.♞d2 a6 8.
♗ge2 ♖b8 9.g4 b5 10.♗g3 e5 11.
dxe5 ♗xe5 12.♙e2 ♙e6 13.h4 ♗fd7
14.g5 ♗b6 15.♙xb6 ♖xb6 16.f4
♗xc4 17.♙xc4 ♙xc4 18.h5 ♞d7 19.
♗ce2 ♞g4 20.h6 ♙h8 21. ♗f2 f6 22.
gxf6 ♙xf6 23.♖ag1 ♙h4 24. ♖xh4
♞xh4 25.♞c3 ♞f6 26.♞xf6 ♖xf6
27.b3 ♙xe2 28.♗xe2 ♖c6 29.♗e3
♖c2 30.f5 ♗f7 31.♗f4 g5 32.♖xg5
♖xh6 33.♗h5 ♖h2 34.♗f4 c6
35.♗e6 ♖6h3+ 36.♗f4 ♗f6 37.
♖g3 ♖xg3 38. ♗xg3 ♖xa2 39.
♗d4 c5 40.♗f3 ♖a3 41.♗f4 ♖xb3
42.♗h2 h5 0-1

B31 Sicilian Rossolimo

Ethan Gottlieb (0.5)
Patrick Van Dyke (0.0)

Seattle, WA Premier (3) 2012

1.e4 c5 2.♗f3 ♗c6 3.♙b5 g6 4.
O-O ♘g7 5.c3 d5 6.♞a4 ♞d6 7.d4
cxd4 8.exd5 ♞xd5 9.cxd4 ♙d7
10.♗c3 ♞f5 11.d5 ♗e5 12.♗xe5
♙xe5 13.g4 ♙xb5 14.♗xb5 ♞d7 15.
d6 ♖c8 16.♗c7+ ♗d8 17.dxe7+
♗xe7 18.♞xd7+ ♗xd7 19.♗d5 f6
20.♙e3



20... ♖c4 21.f4 ♙xb2 22.♖ab1
♖c2 23.♙xa7 ♗e7 24.♗b4 ♖e2
25.♗d3 ♖a8 26.♖xb2 ♖xb2 27.

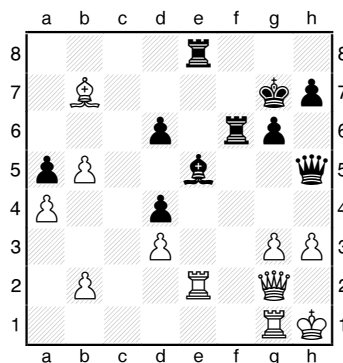
♗xb2 ♖xa7 28.a4 ♗d5 29.♖d1
♗c6 30.♖d4 ♖a5 31.♗f2 ♖c5 32.
♗f3 ♖c3+ 33.♗d3 ♖a3 34.♗e4
♗c3+ 35.♗e3 ♗xa4 36.♖c4+ ♗d6
37.♖d4+ ♗e6 38.♖xa4 ♖xa4 39.
♗c5+ ♗d5 40.♗xa4 b5 41.♗c3+
♗c4 42.♗e4 b4 43.♗xf6 b3 44.♗e4
b2 45.♗d2+ ♗d5 46.♗d3 h6 47.
♗c2 h5 48.h3 ♗d4 49.♗xb2 ♗e3
50.f5 1-0

A36 English Opening

Michael Wang (2.0)
WFM Chouchanik Airapetian (1.0)

Seattle, WA Premier (3) 2012

1.c4 ♗f6 2.g3 g6 3.♙g2 ♙g7 4.♗c3
O-O 5.e4 d6 6.♗ge2 c5 7. O-O ♗c6
8.d3 ♙d7 9.h3 ♗e8 10. ♖b1 ♗c7
11.f4 f5 12.♙e3 ♗e6 13. a3 a5 14.
♗b5 ♗ed4 15.♗h2 ♞b8 16.♗ec3
e6 17.♖f2 ♗xb5 18. ♗xb5 ♗d4 19.
♙xd4 cxd4 20.♞h1 fx4 21.♙xe4
♖a6 22.♖e2 ♙c6 23.a4 e5 24.fx4
♙xe5 25.♙d5+ ♗g7 26.♖be1 ♞d8
27.♞e4 ♞g5 28.♖g1 ♙xb5 29.cxb5
♖aa8 30. ♙xb7 ♖ae8 31.♗h1 ♞h5
32.♞g2 ♖f6



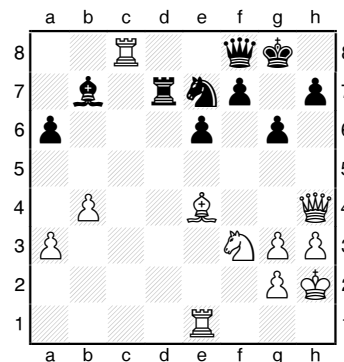
33.♖f1 ♖xf1+ 34.♞xf1 ♖f8 35.
♖f2 ♖xf2 36.♞xf2 ♞xh3+ 37.♗g1
♙xg3 38.♞xd4+ ♙e5 39.♞a7
♗h6 40.♗f2 ♞g3+ 41.♗e2 ♞g4+
42.♙f3 ♞xa4 43.♞e3+ ♙f4 44.♞e4
♞c2+ 45.♗f1 ♞b1+ 46.♗g2 ♞xb2+
47.♙e2 ♞f6 48.b6 d5 49.♞f3 ♞d6
50.b7 a4 51.d4 g5 52.♞h3+ ♗g7
53.♙d3 h6 54.♞f5 ♙h2 55.♞h7+
♗f8 56.♞h8+ ♗f7 57.♞h7+ ♗f8
Draw

B15 Caro-Kann

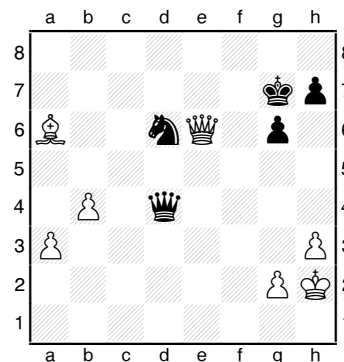
Megan Lee (1.5)
David Rupel (0.5)

Seattle, WA Premier (3) 2012

1.e4 c6 2.d4 d5 3.♗c3 dxe4 4.♗xe4
♗f6 5.♗g3 g6 6.h3 ♙g7 7.♗f3 O-O
8.♙d2 ♞b6 9.♖b1 c5 10.dxc5 ♞xc5
11.♙d3 ♗c6 12.a3 a6 13. O-O b5
14.♖e1 ♙b7 15.b4 ♞d5 16. ♙c3
♖fd8 17.♞e2 ♗h5 18.♙xg7 ♗xg3
19.fxg3 ♗xg7 20.♙e4 ♞d6 21.♗h2
e6 22.c4 bxc4 23.♞xc4 ♖ac8
24.♞c3+ ♗g8 25.♞f6 ♖d7 26.♞h4
♞f8 27.♖bc1 ♗e7 28.♖xc8



28... ♙xc8?! 29.♗e5 ♖d4? 30.♞f6
♖d6 31.♖f1 ♗d5 32.♞f3? f5 33.
♙d3 ♞d8 34.♗c4 ♖d7 35.♗e5
♖d6 36.♙c4 ♙b7 37.♞b3 ♞f6
38.♖e1 ♗c7 39.♗d3 ♙d5 40.♗c5
f4 41.♗e4 ♙xe4 42.♖xe4 ♖d4
43.♖xd4 ♞xd4 44.♙xe6+ ♗g7
45.♙c8 ♗d5 46.♙xa6 ♗c3 47.♞e6
fxg3+ 48.♗xg3 ♗e4+ 49.♗h2 ♗d6
50.♞g4 ♗e4 51.♞e6 ♗d6



52.♞e2 ♗f5 53.g3 ♞d6 54.♞d3
♞e5 55.♞f3 ♞b2+ 56.♗g1 ♞d4+

57. ♖f2 ♖a1+ 58. ♙f1 ♗xa3 59. b5
 ♗xg3 60. ♙g2 ♖a1+ 61. ♗h2 ♗f5
 62. ♗f4 ♖a7 63. ♗e5+ ♗h6 64. ♗f4+
 ♗g7 65. ♗e5+ ♗h6 66. ♗d5 ♗c7+
 67. ♗g1 ♗c1+ 68. ♗h2 Draw

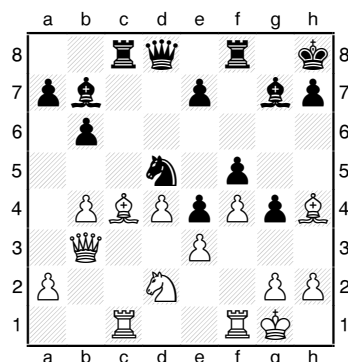
D03 Torre Attack

Samir Sen (0.0)

Michael MacGregor (1.5)

Seattle, WA Premier (3) 2012

1. d4 ♗f6 2. ♗f3 g6 3. ♙g5 ♙g7
 4. ♗bd2 d5 5. e3 O-O 6. c3 b6 7. ♙e2
 ♙b7 8. b4 ♗bd7 9. O-O c5 10. ♗b1
 cxd4 11. cxd4 ♖c8 12. ♗b2 ♗e4 13.
 ♗xe4 dxe4 14. ♗d2 f6 15. ♙h4 g5 16.
 ♙g3 f5 17. f4 g4 18. ♗b3+ ♗h8 19.
 ♖ac1 ♗f6 20. ♙c4 ♗d5 21. ♙h4?



21... ♗xe3! 22. ♙xe7 ♗xe7 23.
 ♗xe3 ♗xb4 24. a3 ♗b2 25. ♗b3
 ♗xa3 26. ♖a1 ♗e7 27. ♖fc1 a5 28.
 ♖a2 ♗b4 29. ♖ac2 a4 30. ♗d2 b5
 31. ♖b1 ♗d6 32. d5 ♙xd5 33. ♖xb5
 ♙xc4 34. ♖xc4 ♖xc4 35. ♗xc4
 ♗d1+ 0-1

Round Four

C17 French Winawer

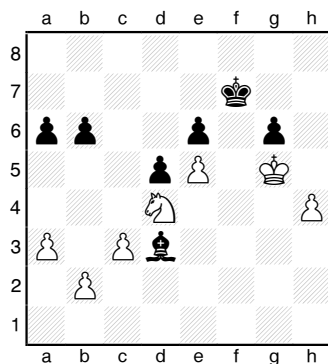
Michael MacGregor (2.5)

Casey Xing (1.5)

Seattle, WA Premier (4) 2012

1. e4 e6 2. d4 d5 3. ♗c3 ♙b4 4. e5
 c5 5. ♙d2 ♗e7 6. f4 ♗bc6 7. ♗f3
 ♗f5 8. a3 ♙xc3 9. ♙xc3 ♗e3 10.
 ♗d2 ♗xf1 11. ♖xf1 b6 12. ♗f2
 ♙a6 13. ♖fe1 ♗c7 14. ♗g1 ♖c8
 15. f5 cxd4 16. ♙xd4 ♗xd4 17. ♗xd4
 ♗e7 18. ♖e3 g6 19. fxe6 fxe6 20.
 ♖f3 ♖f8 21. ♖xf8+ ♗xf8 22. ♗h6+
 ♗g8 23. ♗h3 ♖e8 24. ♖e1 ♙c8
 25. ♖f1 ♖f8 26. ♖xf8+ ♗xf8 27.
 ♗h6+ ♗g8 28. h4 ♙d7 29. ♗f4 ♗g7
 30. c3 h6 31. ♗f3 ♙b5 32. g4 ♖f8
 33. ♗xf8+ ♗xf8 34. g5 hxg5 35.

♗xg5 ♗e7 36. ♗f2 ♙d3 37. ♗e3
 ♙f5 38. ♗f3 ♗f7 39. ♗f4 ♙d3 40.
 ♗d4 a6 41. ♗g5



41... b5? 42. b4 ♗e7 43. ♗b3 ♙c2
 44. ♗c5 ♗f7 45. ♗xa6 ♗e7 46. ♗c5
 ♗f7 47. ♗h6 ♙b1 48. a4 bxa4 49.
 ♗xa4 ♗e7 50. ♗c5 ♗d8 51. ♗xe6+
 ♗d7 52. ♗d4 1-0

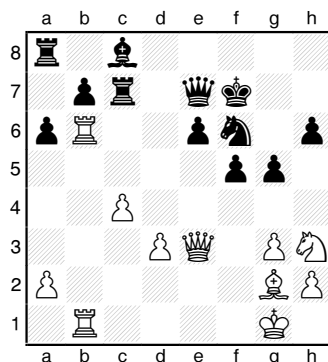
B23 Sicilian Closed

Patrick Van Dyke (0.0)

David Rupel (1.0)

Seattle, WA Premier (4) 2012

1. e4 c5 2. ♗c3 a6 3. g3 ♗c6 4. ♙g2
 g6 5. d3 ♙g7 6. f4 d6 7. ♗f3 e6 8.
 O-O ♗ge7 9. ♙e3 ♗d4 10. e5 ♗ef5
 11. ♙f2 ♗xf3+ 12. ♙xf3 dxe5 13.
 fxe5 ♙xe5 14. ♗e4 ♙xb2 15. ♖b1
 ♙d4 16. c3 ♙xf2+ 17. ♖xf2 O-O 18.
 ♗xc5 ♗c7 19. ♗e4 ♗e7 20. ♖b6
 ♗e3 21. ♗d2 ♗d5 22. ♖b1 f5 23.
 ♗g5 ♖d8 24. c4 ♗f6 25. ♗e3 h6 26.
 ♗h3 g5 27. ♖fb2 ♖d7 28. ♖b6 ♖c7
 29. ♙g2 ♗f7 30. d4



30... ♖xc4 31. ♖xb7 ♙xb7 32. ♖xb7
 ♗d7 33. d5 ♖b8 34. ♖xb8 ♗xb8 35.
 dxe6+ ♗xe6 36. ♗d2 ♖c5 37. ♗f2
 ♗d7 38. h4 ♗g6 39. hxg5 hxg5 40.
 ♗h3 ♗e7 41. ♗xg5 ♗xg5 42. ♗d6+
 ♗f6 43. ♗xd7 ♖c1+ 44. ♙f1 ♗b6+
 45. ♗g2 ♗c6+ 46. ♗xc6+ ♖xc6

47. ♙d3 ♗g5 48. ♗f2 a5 49. a4 ♖c3
 50. ♙b5 ♗f6 51. ♙d7 ♗e5 52. ♗g2
 ♗e4 53. ♙b5 ♗e3 54. ♙d7 ♖c5 55.
 ♙b5 ♖c2+ 56. ♗h3 ♖c7 57. ♗h4
 ♖g7 58. ♙e8 ♖g4+ 59. ♗h3 ♗f2
 0-1

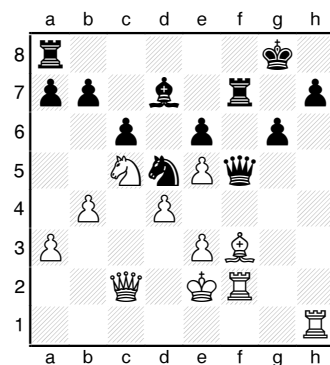
D52 QGD Cambridge Springs

Roland Feng (3.0)

Michael Wang (2.5)

Seattle, WA Premier (4) 2012

1. d4 d5 2. c4 c6 3. ♗c3 ♗f6 4. ♗f3
 e6 5. ♙g5 ♗bd7 6. e3 ♗a5 7. ♗d2
 ♙b4 8. ♗c2 O-O 9. ♙e2 dxc4 10.
 ♙xf6 ♗xf6 11. ♗xc4 ♗c7 12. O-O
 ♗d5 13. ♗e4 ♙e7 14. a3 ♗b6 15.
 ♗e5 ♙d7 16. b4 ♖fc8 17. ♗c5 ♙f6
 18. f4 ♙e8 19. ♙d3 g6 20. g4 ♙g7
 21. g5 ♗e7 22. h4 f5 23. gxf6 ♙xf6
 24. h5 ♙xe5 25. fxe5 ♗g5+ 26. ♗f2
 ♗d5 27. ♖ae1 ♖c7 28. ♙e4 ♖f7+
 29. ♙f3 ♗xh5 30. ♗e2 ♗h3 31. ♖f2
 ♙d7 32. ♖h1 ♗f5



33. ♗e4 ♖af8 34. ♖hh2 c5 35. bxc5
 ♙b5+ 36. ♗d2 ♗xe3 37. ♗b3 ♗f1+
 38. ♖xf1 ♙xf1 39. ♖f2 ♗f4+ 40. ♗d1
 ♙h3 41. ♗f6+ ♖xf6 42. exf6 ♗xd4+
 43. ♗e1 ♖xf6 44. c6 bxc6 45. ♗b8+
 ♗g7 46. ♗c7+ ♖f7 47. ♗g3 ♗e3+
 48. ♗d1 ♖d7+ 49. ♗c2 ♙f5+ 50.
 ♗b2 ♖b7+ 51. ♗a2 ♗b3+ 52. ♗a1
 ♗b1 mate

C78 Ruy Lopez Akhangel'sk

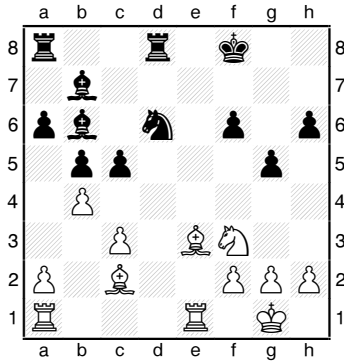
WFM Chouchanik Airapetian (1.5)

Megan Lee (2.0)

Seattle, WA Premier (4) 2012

1. e4 e5 2. ♗f3 ♗c6 3. ♙b5 a6
 4. ♙a4 ♗f6 5. O-O b5 6. ♙b3 ♙c5
 7. c3 d6 8. d4 ♙b6 9. dxe5 ♗xe5
 10. ♗xe5 dxe5 11. ♗xd8+ ♗xd8
 12. ♗d2 ♗e7 13. ♗f3 ♙b7 14. ♙g5
 h6 15. ♙h4 g5 16. ♙g3 ♗xe4 17.

♙xe5 f6 18.♙d4 c5 19.♙e3 ♖hd8
20.♖fe1 ♗f8 21.♙c2 ♘d6 22.b4



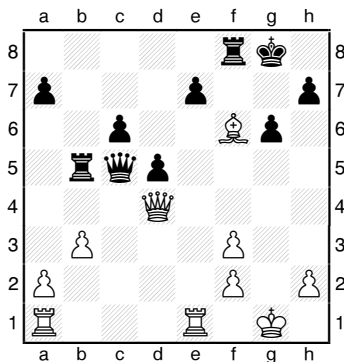
22...♙xf3 23.bxc5 ♙a5 24.cxd6
♙xc3 25.gxf3 1-0

B31 Sicilian Rossolimo

Ethan Gottlieb (1.5)
Samir Sen (0.0)

Seattle, WA Premier (4) 2012

1.e4 c5 2.♗f3 ♗c6 3.♙b5 g6 4.
O-O ♙g7 5.c3 ♗f6 6.e5 ♗d5 7.d4
cxd4 8.cxd4 O-O 9.♗c3 ♗c7 10.
♙a4 d6 11.♙f4 ♙g4 12.♙xc6 bxc6
13.♗e4 ♗e6 14.♙g3 d5 15.♗c5
♗xc5 16.dxc5 ♖a5 17.♖d4 ♙xf3
18.gxf3 ♖ab8 19.b3 ♖b5 20.♙f4
f6 21.♖fe1 ♖a3 22.exf6 ♙xf6 23.
♙e5 ♖xc5 24.♙xf6



24...exf6 25.♖g4 f5 26.♖g5 ♖d6
27.♖e7 ♖f7 28.♖e8+ ♗g7 29.

♖ae1 ♖bb7 30.♖1e6 ♖d7 31.h4
♖b8 32.♖8e7 ♖d8 33.♖f6+ ♗h6
34.♖xf7 1-0

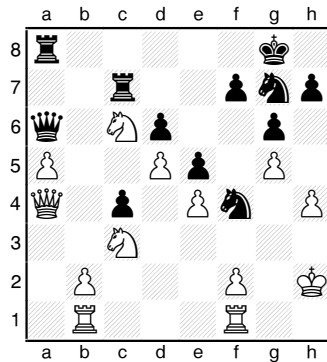
Round Five

A59 Benko Gambit

Casey Xing (1.5)
Ethan Gottlieb (2.5)

Seattle, WA Premier (5) 2012

1.d4 ♗f6 2.c4 c5 3.d5 b5 4.cxb5 a6
5.bxa6 g6 6.♗c3 ♙xa6 7.e4 ♙xf1
8.♗xf1 d6 9.g4 ♙g7 10.♗g2 O-O
11.h3 ♗fd7 12.♗ge2 ♖a5 13.♖b1
♗b6 14.a3 ♗8d7 15.h4 ♖a6 16.
♖b3 c4 17.♖c2 ♗c5 18.a4 ♗d3 19.
a5 ♗d7 20.♙e3 ♖fb8 21.♖a4 ♖b7
22.♖hf1 ♗f6 23.♙d4 e6 24.g5
♗e8 25.♙xg7 ♗xg7 26.♗d4 ♗f4+
27.♗h2 e5 28.♗c6 ♖c7



29.♖fe1 ♖ac8 30.♖e3 ♗gh5 31.
b4 ♖a8 32.b5 ♗d3 33.b6 ♖b7 34.
♖b5 ♗c5 35.♖xc4 ♗f4 36.♗a4
♗xa4 37.♖xa4 ♖a6 38.♖b5 ♖a8
39.♖xa6 ♖xa6 40.♖b5 ♗f8 41.
♗b4 ♖a8 42.a6 ♖bb8 43.b7 ♖a7
44.♖c3 1-0

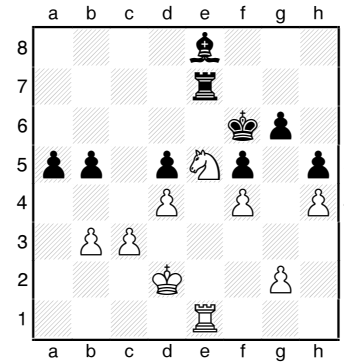
A83 Staunton Gambit

Samir Sen (0.0)
Patrick Van Dyke (0.0)

Seattle, WA Premier (5) 2012

1.d4 f5 2.♗c3
♗f6 3.♙g5 e6
4.e4 fxe4 5.
♗xe4 ♙e7 6.
♙xf6 ♙xf6 7.
♖h5+ g6 8.
♖h6 d5 9.
♗xf6+ ♖xf6 10.
♗f3 ♙d7 11.h4
♗c6 12.O-O-O
O-O-O 13.♖e3
♖df8 14.♙b5

a6 15.♙xc6 ♙xc6 16.♖de1 ♙d7
17.♗b1 h6 18.♖h3 ♖f4 19.♖xf4
♖xf4 20.♖g3 ♖g8 21.♖e5 b6 22.
c3 c5 23.♗c1 ♗c7 24.♗d2 ♗d6
25.♗e3 ♖f5 26.♖xf5 exf5 27.♗e5
♙e8 28.f4 ♗e6 29.♗d3 c4 30.♗e5
♗f6 31.♖h3 h5 32.♖g3 ♖g7 33.
♗d2 b5 34.♖e3 ♖e7 35.♖e1 a5
36.b3 cxb3 37.axb3



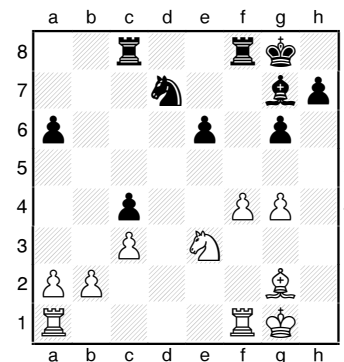
37...b4 38.cxb4 axb4 39.♗d3 ♖e4
40.♗xb4 ♙f7 41.♖xe4 dxe4 42.
♗c3 ♗e6 43.♗c2 ♗d6 44.♗e3
♗c6 45.♗b4 ♙g8 46.♗a4 ♙f7 47.
b4 ♗b6 48.b5 ♙e6 49.♗b4 ♙f7 50.
d5 ♙e8 51.♗c4+ ♗c7 52.♗c5
♙d7 53.b6+ ♗b7 54.♗a5+ ♗b8
55.b7 ♗a7 56.♗d6 ♗b8 57.♗xd7
e3 58.♗c6 e2 59.♗b6 1-0

B23 Sicilian Closed

Megan Lee (2.0)
Roland Feng (3.0)

Seattle, WA Premier (5) 2012

1.e4 c5 2.♗c3 e6 3.f4 ♗c6 4.♗f3
a6 5.d3 d6 6.g3 g6 7.♙g2 ♙g7 8.
♖e2 ♖c7 9.O-O ♗ge7 10.h3 O-O
11.g4 f5 12.♗d1 ♙d7 13.c3 b5
14.e5 fxe4 15.hxe4 ♗d5 16.exd6
♖xd6 17.♗g5 ♖ae8 18.♗e4 ♖e7
19.♙e3 ♗xe3 20.♖xe3 ♗d4 21.
♖d2 ♗c6 22.♖f2 c4 23.dxc4 bxc4
24.♖c5 ♖xc5+ 25.♗xc5 ♗b8 26.
♗e3 ♖c8 27.♗xd7 ♗xd7



Carl A. Haessler
Lessons • Lectures • Exhibitions

USCF Life Master 503-875-7278
4-Time Oregon Champion ssmith6154@aol.com

28. ♖b7 ♜b8 29. ♗xa6 ♜xb2 30. ♗xc4 ♜c5 31. ♜d1 ♜c2 32. ♜f3 ♗e5 33. a4 ♗xf4 34. ♜h3 ♗b8 35. ♜a2 ♜c1 36. ♗e2 ♜e4 37. ♖g2 ♗a7 38. a5 ♜f2 39. ♜xf2 ♜xf2+ 40. ♖g3 g5 0-1

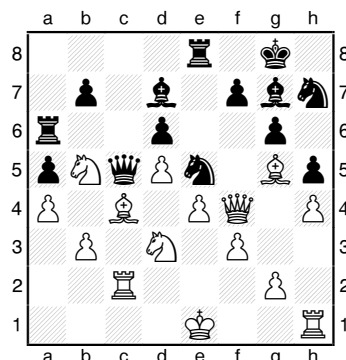
E73 King's Indian

David Rupel (2.0)

WFM Chouchanik Airapetian (2.5)

Seattle, WA Premier (5) 2012

1. d4 ♜f6 2. c4 g6 3. ♜c3 ♗g7 4. e4 d6 5. ♗e2 O-O 6. h4 h5 7. f3 c5 8. d5 e6 9. ♗g5 ♜a5 10. ♜d2 exd5 11. cxd5 ♜bd7 12. ♜b5 ♜b6 13. a4 a5 14. ♜a2 ♜e8 15. ♜f4 ♜a6 16. ♜h3 c4 17. ♜f2 ♜h7 18. ♗xc4 ♜c5 19. b3 ♜e5 20. ♜c2 ♗d7 21. ♜d3



21... ♜xd3+ 22. ♗xd3 ♜b4+ 23. ♜d2 ♜xb3 24. ♜c7 ♜c8 25. ♗c4 ♜xa4 26. ♗xa6 bxa6 27. ♗f4 ♜b3 28. ♗xd6 a4 29. e5 ♗h6 30. ♜d1 ♗f5 31. ♜e2 ♜c3+ 32. ♖f2 ♗d3 33. g3 Draw

B10 Caro-Kann Steiner

Michael Wang (3.5)

Michael MacGregor (3.5)

Seattle, WA Premier (5) 2012

1. c4 c6 2. e4 d5 3. exd5 cxd5 4. cxd5 ♜f6 5. ♗b5+ ♗d7 6. ♗c4 b5 7. ♗b3 g6 8. ♜f3 ♗g7 9. O-O O-O 10. ♜e2 ♜a6 11. a3 ♜c5 12. ♗a2 a5 13. d4 ♜ce4 14. ♜c3 ♜d6 15. b4 axb4 16. axb4 ♗g4 17. ♗f4 ♜f5 18. ♗e5 ♜h4 19. ♗g3 ♗xf3 20. gxf3 ♜f5 21. ♜fd1 ♜c8 22. ♜ac1 ♗h6 23. ♜c2 ♜d7 24. ♗b3 ♜d6 25. ♜e4 ♜h5 26. ♜c5 ♜h3 27. ♜d3 ♜f5 28. ♜e5 ♜f4 29. ♜f1 ♜xc2 30. ♗xc2 ♜xf1+ 31. ♖xf1 ♜xd5 32. ♜c6 ♜c8 33. ♗e4 e6 34. ♜a7 ♜c4 35. ♜xb5 ♜xb4 36. ♗xd5 exd5 37. ♜c3 ♜xd4 38. ♜xd4 ♜xd4 39.

♖g2 f5 40. ♜xd5 ♗g7 41. ♗d6 ♖f7 42. ♗a3 ♜b5 43. ♗c1 ♗e5 44. ♗f4 ♖e6 45. ♗xe5 ♖xd5 46. ♗f4 ♜d4 47. h4 h5 48. ♗e3 ♜e6 49. ♖g3 ♖c4 50. ♖g2 ♖d3 51. ♖f1 ♜c7 52. ♗c1 ♖c2 53. ♗f4 ♜e6 54. ♗e5 ♖d1 55. ♗c3 ♜f4 56. ♗d4 ♜d3 57. ♗c3 f4 58. ♗a5 ♜e5 59. ♗c7 ♜xf3 60. ♗xf4 ♜xh4 61. ♗e3 ♜f5 62. ♗g5 ♜d6 63. f3 ♜f5 64. ♖f2 ♖c2 65. ♖e2 ♖c3 66. ♗f6+ ♖c4 67. ♖d2 ♖d5 68. ♖e2 ♖e6 69. ♗g5 ♜d6 70. ♖f2 ♖f5 71. ♗c1 ♜f7 72. ♖g3 ♜e5 73. ♗d2 g5 74. ♗xg5 Draw

Round Six

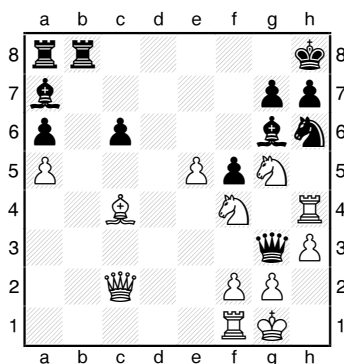
C51 Evans Gambit

Michael MacGregor (4.0)

Megan Lee (2.0)

Seattle, WA Premier (6) 2012

1. e4 e5 2. ♗c4 ♜c6 3. ♜f3 ♗c5 4. b4 ♗b6 5. a4 a6 6. ♗b2 d6 7. b5 ♜d4 8. ♗xd4 exd4 9. bxa6 bxa6 10. a5 ♗c5 11. c3 dxc3 12. ♜xc3 ♜f6 13. d4 ♗a7 14. O-O O-O 15. e5 ♜g4 16. ♜e2 c6 17. ♗d3 dxe5 18. dxe5 ♜e7 19. h3 ♜h6 20. ♜c2 ♖h8 21. ♜a4 ♗e6 22. ♜h4 f5 23. ♜a4 ♜fb8 24. ♗c4 ♗d7 25. ♜c2 ♗e8 26. ♜e2 ♜a3 27. ♜g5 ♗g6 28. ♜f4 ♜g3



29. ♜xg6+ hxg6 30. ♜f7+ ♖h7 31. ♜xh6+ gxh6 32. ♜d2 ♗xf2+ 33. ♜xf2 ♜b1+ 34. ♜f1 ♜xf1+ 35. ♖xf1 g5 36. e6 ♜e8 37. ♜c2 ♜f4+ 38. ♖g1 ♜d4+ 39. ♖h1 ♜a1+ 40. ♖h2 ♜f6 41. ♗d3 ♖g7 Draw

B52 Sicilian Moscow

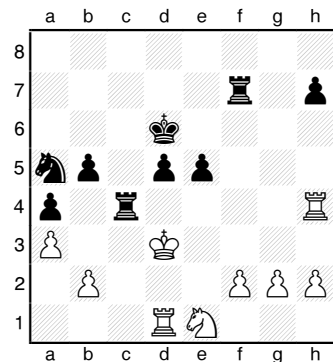
Ethan Gottlieb (2.5)

Michael Wang (4.0)

Seattle, WA Premier (6) 2012

1. e4 c5 2. ♜f3 d6 3. ♗b5+ ♗d7 4. ♗xd7+ ♜xd7 5. O-O ♜c6 6. c3 ♜f6

7. ♜e1 e6 8. d4 cxd4 9. cxd4 d5 10. e5 ♜e4 11. ♜bd2 ♜xd2 12. ♗xd2 ♗e7 13. ♗g5 ♜c8 14. ♗xe7 ♜xe7 15. ♜d2 ♜b4 16. ♜xb4 ♜xb4 17. a3 ♜c2 18. ♜ac1 ♖e7 19. ♜ed1 ♜c6 20. ♖f1 ♜hc8 21. ♜b1 b5 22. ♜e1 f6 23. exf6+ gxf6 24. ♜d3 ♜8c7 25. ♜bd1 a5 26. ♜1d2 ♜a1 27. ♖e2 a4 28. ♜h3 ♖d6 29. ♜d1 ♜b3 30. ♜h6 ♜f7 31. ♖e3 ♜c4 32. ♜h4 ♜a5 33. ♖d3 e5 34. dxe5+ fxe5



35. ♜xc4 ♜xc4 36. ♖c3 ♜xf2 37. b3 axb3 38. ♖xb3 ♜b2+ 39. ♖c3 d4+ 40. ♖d3 ♜b3+ 41. ♖e2 ♜xa3 42. h4 b4 43. ♜b1 b3 44. ♖d1 b2 45. h5 ♜a1 46. ♖c2 ♜a3+ 0-1

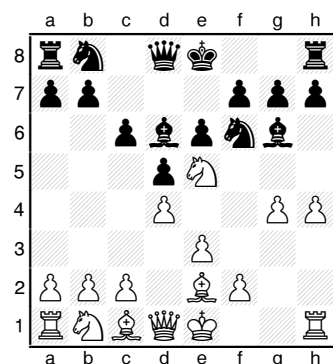
D04 Colle

Samir Sen (1.0)

Casey Xing (2.5)

Seattle, WA Premier (6) 2012

1. d4 ♜f6 2. ♜f3 d5 3. e3 c6 4. ♗d3 ♗g4 5. h3 ♗h5 6. g4 ♗g6 7. ♜e5 e6 8. h4 ♗d6 9. ♗e2



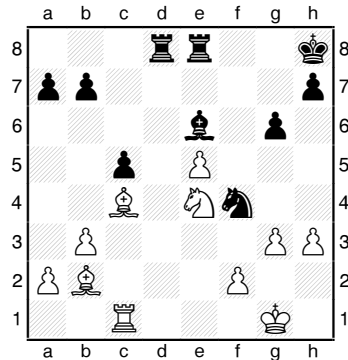
9...h6 10. ♜xg6 fxe6 11. ♗d3 O-O 12. ♗xg6 ♜bd7 13. g5 ♜e4 14. ♗xe4 dxe4 15. ♜g4 ♜a5+ 16. ♗d2 ♜f5 17. ♜xf5 exf5 18. ♜c3 h5 19. O-O O-O a6 20. f3 ♜ae8 21. ♜df1 g6 22. fxe4 fxe4 23. ♜xf8+ ♖xf8 24. ♜f1+ ♖g7 25. ♜e2 ♜b6 26. ♜f6 ♗b8 27. b3 ♜d5 28. ♜f1 ♜e7 29.

♖f4 ♖f5 30. ♖xh5+ gxh5 31. ♖xf5
 ♙g3 32. ♖f1 ♙xh4 33. ♖h1 ♙xg5
 34. ♖xh5 ♙g6 35. ♖h2 ♖e7 36.
 ♙d1 ♙f5 37. ♙e2 ♙e6 38. c4 ♖d7
 39. ♖g2 ♙f5 40. ♖f2+ ♙e6 41. ♖h2
 ♙f6 42. ♙c3 ♙g5 43. ♖h1 ♙f5
 44. ♖f1+ ♙e6 45. ♖g1 ♙f5 46.
 ♖f1+ ♙e6 47. a4 ♖d8 48. ♖h1 ♖d7
 49. ♖f1 ♖d8 50. a5 ♖d7 51. b4 ♖d8
 52. ♖h1 ♖d7 53. ♙e1 ♖f7 54. ♖h5
 ♖g7 55. d5+ cxd5 56. cxd5+ ♙e7
 57. ♖xg5 ♖xg5 58. ♙h4 ♙f6 59. d6
 1-0

C41 Philidor

Patrick Van Dyke (0.0)
WFM Chouchanik Airapetian (3.0)
Seattle, WA Premier (6) 2012

1. e4 e5 2. ♖f3 d6 3. ♙c4 ♖d7 4. c3
 ♙e7 5. ♖b3 ♖c5 6. ♖c2 ♖f6 7. d3
 O-O 8. ♙e3 ♖e6 9. d4 ♖g4 10. ♙c1
 exd4 11. cxd4 c5 12. h3 ♖f6 13. e5
 dxe5 14. dxe5 ♖d5 15. ♖e4 ♖b6
 16. ♙d3 g6 17. O-O f5 18. ♖e2 ♖d4
 19. ♖xd4 ♖xd4 20. ♖d1 ♖h4 21.
 ♖d2 ♙e6 22. b3 ♙h8 23. ♙b2
 ♖ad8 24. ♖ac1 ♖d5 25. ♙c4 ♖fe8
 26. ♖f3 ♖e4 27. ♖xe4 fxe4 28. ♖d2
 ♙g5 29. ♖xe4 ♙xc1 30. ♖xc1 ♖f4
 31. g3



31... ♙xc4 32. gxf4 ♙e6 33. ♖d6
 ♖e7 34. ♖xc5 ♙g8 35. ♙h2 h5 36.
 ♙g3 ♖ed7 37. ♙h4 ♙h7 38. ♖e4
 ♙g7 39. ♙g5 ♖f7 40. ♖d6 ♖e7 41.
 f5 gxf5 42. ♖xf5+ ♙xf5 43. e6+ ♙h7
 44. ♙f6 ♙xh3 45. ♙xe7 ♖g8+ 46.
 ♙xh5 ♙g4+ 47. ♙h4 ♙xe6 48. ♖c7
 ♙d5 49. ♙c5+ ♙g6 50. ♙g4 a6 51.
 ♙f4 ♖e8 52. ♙e7 ♖h8 53. ♙e5
 ♖h5+ 54. ♙d4 ♙c6 55. ♙c5 a5 56.
 a4 ♖f5 57. ♙c4 ♙d5+ 58. ♙c3
 ♖f3+ 59. ♙e3 ♙c6 60. ♖c8 ♖f5 61.
 ♖a8 ♙f7 62. ♙b2 ♙e6 63. ♙b6
 ♖e5 64. ♖xa5 ♖e2+ 65. ♙c3 ♙d5
 66. ♙e3 ♖e1 67. ♖b5 ♙d6 68. b4

♖b1 69. ♙c5+ ♙c7 70. ♖b6 ♖b3+
 71. ♙d4 ♙c6 72. b5 ♙d7 73. ♖h6
 ♙xb5 (=?) 74. axb5 ♖xb5 75. f4
 ♖b1 76. f5 ♖f1 77. ♙e5 ♖e1+ 78.
 ♙d5 b5 79. ♖h7+ ♙d8 80. f6 ♖d1+
 81. ♙c6 1-0

A85 Dutch Stonewall

Roland Feng (4.0)
David Rupel (2.5)
Seattle, WA Premier (6) 2012

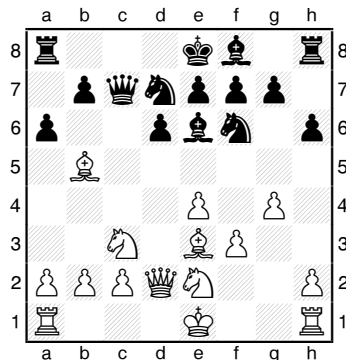
1. d4 d5 2. c4 e6 3. ♖c3 c6 4. ♖f3 f5
 5. e3 ♖f6 6. ♙e2 ♙d6 7. O-O ♖bd7
 8. b3 O-O 9. ♙b2 ♖e4 10. c5 ♙c7
 11. b4 a6 12. a4 b6 13. cxb6 ♙xb6
 14. ♖c1 ♙b7 15. a5 ♖xc3 16. ♙xc3
 ♙c7 17. ♖e5 ♖f6 18. f4 ♙xe5 19.
 dxe5 ♖h6 20. g3 c5 21. bxc5 ♖xc5
 22. ♙d4 ♖e4 23. ♙b6 ♖e8 24. ♖c7
 ♙c6 25. ♖c1 ♖c8 26. ♖xc8 ♖xc8
 27. ♙xa6 ♖e8 28. ♙e2 g5 29. ♖c2
 gxf4 30. exf4 ♖g6 31. ♙f3 ♙b5
 32. ♖c8+ ♙g7 33. ♖c7+ ♙g8 34.
 ♖d8+ ♙g7 35. ♖c1 ♙c4 36. ♙xe4
 fxe4 37. a6 ♖h3 38. ♖f6+ 1-0

Round Seven

A45 Trompovsky

David Rupel (2.5)
Michael MacGregor (4.5)
Seattle, WA Premier (7) 2012

1. d4 ♖f6 2. ♙g5 ♖e4 3. ♙f4 c5 4. f3
 ♖f6 5. dxc5 ♖a5+ 6. ♖c3 ♖xc5 7.
 ♖d2 d6 8. e4 ♙e6 9. ♙b5+ ♖bd7
 10. g4 h6 11. ♖ge2 a6 12. ♙e3 ♖c7



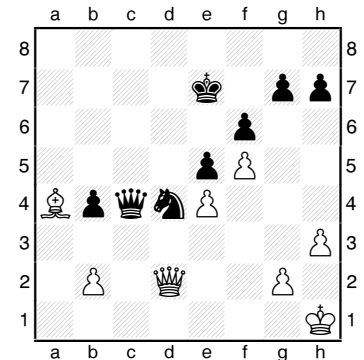
13. ♖d5 ♙xd5 14. ♙xd7+ ♖xd7 15.
 exd5 ♖e5 16. ♙f2 h5 17. h3 ♖c8
 18. b3 hxg4 19. fxg4 ♖xc2 20. ♖hc1
 ♖xd2 21. ♖xc8+ ♙d7 22. ♙xd2
 ♙xc8 23. ♖c1+ ♙b8 24. ♙g2 g6
 25. ♙c3 ♙g7 26. ♖f1 ♖f8 27. ♖f4
 ♙h6 28. g5 ♙g7 29. ♖f2 ♙c8 30.
 ♖e2 ♙d7 31. h4 ♙h8 32. ♙g3 ♖c8

33. ♙b2 ♖g8 34. ♖d2 ♙d8 35. ♖f2
 ♖d7 36. ♙xh8 ♖xh8 37. ♖d3 ♖h7
 38. ♖e2 ♖b6 39. ♖f4 ♖a8 40. a4
 ♖c7 41. ♖e4 ♖e8 42. ♖b4 ♙c8
 43. ♖c4+ ♖c7 44. ♙g4 ♙d7 45. ♖c3
 ♖h8 46. ♖f3 ♖c8 47. ♖d3 ♖g8 48.
 ♖f3 a5 49. ♖d3 ♖a6 50. ♖e2 ♖b4
 51. ♖d4 ♖c8 52. ♖f4 ♖c3 53. h5
 gxh5+ 54. ♙xh5 ♖xb3 55. ♙h6
 ♖g3 56. ♖e2 ♖d3 57. ♖f4 ♙e8 58.
 ♙g7 ♖xd5 59. ♙h6 ♖d3 60. ♖c3
 ♖c5 0-1

B44 Sicilian Paulsen

WFM Chouchanik Airapetian (3.0)
Roland Feng (5.0)
Seattle, WA Premier (7) 2012

1. e4 c5 2. ♖f3 e6 3. d4 cxd4 4. ♖xd4
 ♖c6 5. ♙e2 ♖c7 6. ♖b5 ♖b8 7. c4
 a6 8. ♖5c3 ♖f6 9. O-O ♙e7 10.
 ♙e3 ♖c7 11. ♖d2 O-O 12. ♖a4 d6
 13. ♙b6 ♖b8 14. f4 ♖d7 15. ♙e3 b5
 16. ♖c3 b4 17. ♖a4 ♙f6 18. ♖b3
 ♖d8 19. ♖e1 e5 20. f5 ♖d4 21. ♙d1
 a5 22. ♖c1 ♖b6 23. ♖xb6 ♖xb6
 24. c5 dxc5 25. ♖xc5 ♙a6 26. ♖xa6
 ♖xa6 27. ♙a4 ♙g5 28. ♙h1 ♙xe3
 29. ♖xe3 f6 30. ♖c4 ♖aa8 31.
 ♖fc1 ♖a6 32. a3 ♖ac8 33. ♖xc8
 ♖xc8 34. ♖xc8+ ♖xc8 35. h3 ♖c4
 36. axb4 axb4 37. ♙d7 ♙f8 38. ♖d2
 ♙e7 39. ♙a4



39... ♖f1+ 40. ♙h2 ♖f4+ 41. ♖xf4
 exf4 42. g4 ♙d6 43. ♙g2 ♙e5 44.
 ♙f2 ♙xe4 45. ♙e8 ♙d3 46. ♙f7 b3
 47. ♙g8 h6 48. h4 ♙c2 0-1

B10 Caro-Kann Panov-Botvinnik

Michael Wang (5.0)
Samir Sen (2.0)
Seattle, WA Premier (7) 2012

1. c4 c6 2. e4 e6 3. ♖c3 d5 4. cxd5
 exd5 5. exd5 cxd5 6. ♖f3 ♖f6 7.
 ♙b5+ ♖c6 8. O-O ♙e7 9. ♖e5 ♙d7

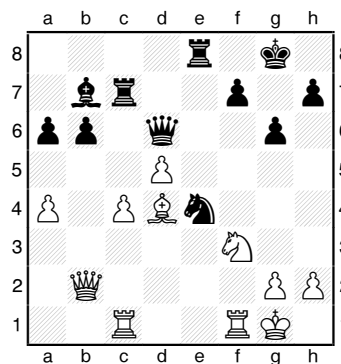
10. ♖xd7 ♜xd7 11. d4 O-O 12. ♕f4 a6 13. ♕e2 b5 14. ♖c1 ♜b7 15. ♕f3 ♖fd8 16. ♕g5 ♖a5 17. ♖e1 h6 18. ♖xd5 ♖xd5 19. ♖xe7 ♜xe7 20. ♕xd5 ♖d8 21. ♕xf6 ♜xf6 22. ♖c5 ♜f5 23. ♕f3 ♜f6 24. d5 ♜xb2 25. d6 ♜b4 26. ♖d5 ♖c4 27. d7 ♖b6 28. ♖d4 ♜c3 29. h3 ♜c7 30. ♜e1 ♖xd7 31. ♜e8+ ♖h7 32. ♖e4 ♖d8 33. ♖e7 ♜c1+ 34. ♖e1 ♖xe8 35. ♖xc1 ♖c8 36. ♖d1 ♖b8 37. ♖d6 a5 38. ♖c6 b4 39. ♖c5 a4 40. ♕c6 ♖c8 41. ♕e4+ g6 42. ♖b5 ♖c1+ 43. ♖h2 ♖c4 44. ♕d3 ♖d4 45. ♖xb6 ♖xd3 46. ♖xb4 ♖a3 47. ♖b2 g5 48. f3 ♖g6 49. ♖g3 h5 50. h4 f6 51. ♖c2 ♖f5 52. ♖c5+ ♖g6 53. ♖c2 Draw

E38 Nimzo-Indian Classical

**Casey Xing (2.5)
Patrick Van Dyke (1.0)**

Seattle, WA Premier (7) 2012

1. d4 ♖f6 2. c4 e6 3. ♖c3 ♖b4 4. ♜c2 c5 5. e3 b6 6. ♕d3 ♖b7 7. f3 O-O 8. ♖ge2 cxd4 9. exd4 d5 10. cxd5 ♜xd5 11. O-O ♕xc3 12. bxc3 ♖bd7 13. c4 ♜c6 14. ♕d2 ♖ac8 15. ♖ac1 ♖fd8 16. ♖fd1 e5 17. ♕e3 ♜c7 18. ♕f5 g6 19. ♕h3 e4 20. fxe4 ♖xe4 21. d5 ♖e8 22. ♖d4 a6 23. a4 ♖cd8 24. ♕xd7 ♖xd7 25. ♖f1 ♜e5 26. ♖f3 ♜d6 27. ♕d4 ♖c7 28. ♜b2



28... ♖c5 29. ♕e5 ♖xe5 30. ♜xe5 ♜d7 31. ♖cd1 h6 32. ♜f4 ♖g7 33. ♖fe1 ♕c8 34. d6 ♖b7 35. ♖e7 ♜f5 36. ♜xf5 ♕xf5 37. ♖xb7 ♖xb7 38. d7 ♖d8 39. ♖d6 a5 40. ♖xb6 ♖f8 41. ♖e5 ♖e7 42. ♖c6+ ♖xc6 43. ♖xc6 ♕xd7 44. ♖a6 ♕xa4 45. ♖xa5 ♖b3 46. c5 ♕d5 47. ♖a6 h5 48. ♖d6 ♕e4 49. ♖f2 f6 50. g3 g5 51. ♖e3 ♕g2 52. h4 ♕a8 53. ♖d4 ♕f3 54. ♖c4 gxf4 55. gxf4 f5 56. ♖d4 ♕g4 57. ♖e5 ♕h3 58. ♖f4 1-0

C68 Ruy Lopez Exchange

**Megan Lee (2.5)
Ethan Gottlieb (2.5)**

Seattle, WA Premier (7) 2012

1. e4 e5 2. ♖f3 ♖c6 3. ♕b5 a6 4. ♕xc6 dxc6 5. O-O ♕g4 6. h3 h5 7. d3 ♜f6 8. ♖bd2 ♖e7 9. ♖e1 ♖g6 10. d4 ♕d6 11. hxg4 hxg4 12. ♖h2 ♖xh2 13. ♜xg4 ♖h4 14. ♜f5 ♖f4 15. ♜xf6 gxf6 16. ♖f3 ♖g4 17. g3 ♖e7 18. ♖g2 ♖d7 19. dxe5 fxe5 20. c4 f6 21. ♕e3 b6 22. ♖ad1 ♖xe4 23. ♖d2 ♖g4 24. f3 ♖g6 25. ♖e4 f5 26. ♖g5 f4 27. gxf4 exf4 28. ♕xf4 ♖ag8 29. ♖f2 ♖xg5 30. ♕xg5 ♖xg5 31. ♖e4 ♖e8 32. f4 ♖f5 33. ♖f3 ♖d7 34. ♖g4 ♖f7 35. a3 c5 36. ♖f1 ♖g7+ 37. ♖f3 ♖f5 38. ♖h1 ♖g3+ 39. ♖f2 ♖b3 40. ♖h7+ ♖c6 41. ♖e2 ♖d4 42. ♖e3 ♖xb2+ 43. ♖f1 ♖c2 44. f5 ♖xc4 45. f6 ♖f5 46. ♖f3 ♖h4 47. ♖f2 ♖c1+ 48. ♖e2 ♖c2+ 49. ♖f1 ♖xf2+ 50. ♖xf2 ♖g6 51. ♖g7 ♖f8 52. ♖e3 ♖d5 53. ♖e7 ♖e6 54. ♖d7 ♖e5 55. f7 ♖f8 56. ♖d8 ♖e6 57. a4 a5 58. ♖e4 ♖xf7 59. ♖d5 ♖e7 60. ♖a8 ♖d7 61. ♖a7 ♕e7 62. ♖a8 ♕d8 63. ♖a7 ♖e6 64. ♖c4 ♖d4 0-1

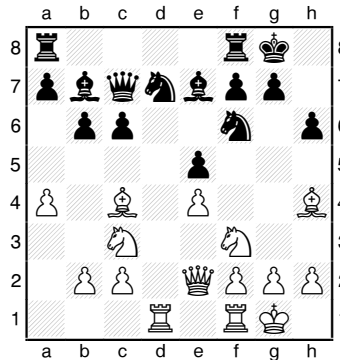
Round Eight

C41 Philidor

**Michael MacGregor (4.5)
WFM Chouchanik Airapetian (3.0)**

Seattle, WA Premier (8) 2012

1. e4 e5 2. ♕c4 d6 3. ♖f3 ♖d7 4. d4 c6 5. a4 ♕e7 6. O-O ♖gf6 7. ♖c3 O-O 8. dxe5 dxe5 9. ♜e2 b6 10. ♕g5 h6 11. ♕h4 ♖b7 12. ♖ad1 ♜c7



13. ♖xd7 ♜xd7 14. ♖xe5 ♜c7 15. ♕g3 ♕d6 16. f4 ♖ad8 17. ♖h1 ♖h8 18. ♕d3 ♕c8 19. h3 ♕e6 20. ♖d1 ♕xe5 21. fxe5 ♖d7 22. ♖e3 ♖xe5

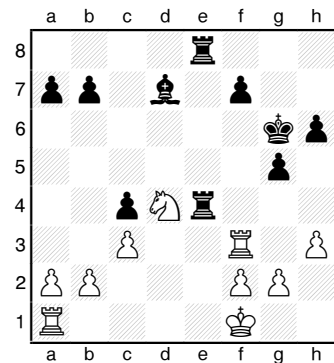
23. ♖f5 ♕xf5 24. ♖xf5 f6 25. ♜h5 ♖de8 26. ♕c4 ♜e7 27. ♕b3 ♖f7 28. ♜g6 ♖d6 29. ♖h5 ♖xe4 30. ♕f4 ♖g5 31. h4 ♜e1+ 32. ♖h2 ♜e4 33. ♜xe4 ♖xe4 34. ♕xg5 fxf5 35. hxg5 ♖f5 36. ♖h3 ♖xg5 37. ♖d3 ♖e8 38. ♖d7 a6 39. ♖b7 b5 40. axb5 axb5 41. c3 ♖e2 0-1

B13 Caro-Kann Exchange

**Ethan Gottlieb (3.5)
David Rupel (2.5)**

Seattle, WA Premier (8) 2012

1. e4 c6 2. d4 d5 3. exd5 cxd5 4. ♕d3 ♖c6 5. c3 ♜c7 6. ♖e2 e6 7. ♕f4 ♕d6 8. ♕xd6 ♜xd6 9. O-O ♕d7 10. ♖d2 e5 11. dxe5 ♖xe5 12. ♕c2 ♖e7 13. ♖d4 O-O 14. h3 ♜f6 15. ♖e1 ♖7g6 16. ♜h5 ♖fe8 17. ♖2f3 h6 18. ♖xe5 ♖xe5 19. ♖e3 ♜f4 20. ♕b3 g6 21. ♜d1 ♖c4 22. ♖f3 ♜c7 23. ♜c1 ♖g7 24. ♕xc4 dxc4 25. ♜f4 ♜xf4 26. ♖xf4 g5 27. ♖f3 ♖e5 28. ♖f1 ♖ae8 29. ♖g3 ♖e4 30. ♖f3 ♖g6



31. ♖g3 f5 32. ♖c2 f4 33. ♖f3 g4 34. hxg4 ♕xg4 35. ♖d4 ♕xf3 36. gxf3 ♖4e5 37. ♖d1 ♖d8 38. ♖d2 ♖f6 39. ♖d1 h5 40. ♖g2 a6 41. ♖h1 ♖de8 42. ♖d1 ♖e1 43. ♖d2 h4 44. ♖h2 h3 45. b3 ♖g8 46. ♖e2 ♖g2+ 47. ♖xh3 ♖xf2 48. ♖d6+ ♖e7 0-1

D02 London System

**Samir Sen (2.5)
Megan Lee (2.5)**

Seattle, WA Premier (8) 2012

1. d4 d5 2. ♖f3 c6 3. ♕f4 ♖f6 4. e3 ♕g4 5. ♕e2 e6 6. h3 ♕h5 7. ♖bd2 ♕d6 8. ♖e5 ♕xe2 9. ♜xe2 O-O 10. O-O ♖e4 11. ♖xe4 dxe4 12. c3 ♜c7 13. ♜g4 f5 14. ♜g3 ♕xe5 15. ♕xe5 ♜f7 16. f3 exf3 17. gxf3 ♖d7 18. ♕d6 ♖fe8 19. ♖h2 ♜f6

20.♔e5 ♖xe5 21.dxe5 ♔h6
 22.♖ad1 ♖ad8 23.f4 ♗h5 24.♗e1
 h6 25.♖d6 g5 26.♖g1 ♕f8
 27.♗d2 g4 28.♖g3 ♗h4 29.e4 ♕e7
 30.exf5 exf5 31.♗d4 b6 32.♗a4
 ♖xd6 33.exd6+ ♕f8 34.♗c2 ♖e4
 35.♖xg4 fxg4 36.♗xe4 ♗f2+
 37.♕h1 ♗f1+ 38.♕h2 ♗f2+ Draw

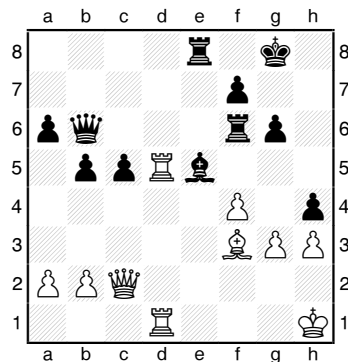
D45 Semi-Slav Anti-Meran

Casey Xing (3.5)

Michael Wang (5.5)

Seattle, WA Premier (8) 2012

1.d4 d5 2.c4 c6 3.♘c3 ♖f6 4.e3 e6
 5.♗f3 ♗bd7 6.♗c2 ♖d6 7.♖d3
 O-O 8.O-O dxc4 9.♖xc4 b5 10.♖e2
 ♖b7 11.♖d1 ♗c7 12.e4 e5 13.
 dxe5 ♗xe5 14.♗xe5 ♖xe5 15.h3
 ♖fe8 16.♖f3 a6 17.♖g5 ♖e6 18.
 ♖d2 ♖ae8 19.♖xf6 ♖xf6 20.♖g4
 ♖h2+ 21.♕h1 ♖f4 22.♖d3 ♗b6
 23.♖ad1 ♖e5 24.♖d2 ♖f4 25.
 ♖d1 g6 26.g3 ♖b8 27.f4 h5 28.
 ♖f3 c5 29.♗d5 ♖xd5 30.♖xd5 h4
 31.e5 ♖xe5



32.fxe5 ♖xf3 33.♗e4 ♖xg3 34.
 ♗xh4 ♖e3 35.♗f4 ♖xh3+ 36.♕g2
 ♖h5 37.♗g3 ♗e6 38.♖xc5 ♖xe5
 39.♖xe5 ♗xe5 40.♗xe5 ♖xe5 41.
 ♖d6 ♖e6 42.♖d2 ♕g7 0-1

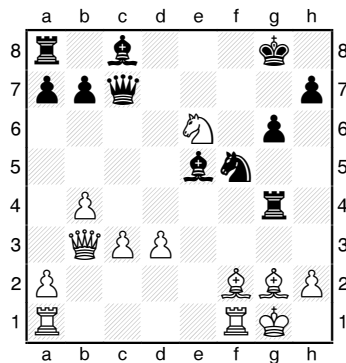
B25 Sicilian Closed

Patrick Van Dyke (1.0)

Roland Feng (6.0)

Seattle, WA Premier (8) 2012

1.e4 c5 2.♗c3 e6 3.g3 ♗c6 4.♖g2
 d6 5.d3 g6 6.f4 ♖g7 7.♗f3 ♗ge7
 8.O-O O-O 9.♖e3 ♗d4 10.e5 ♗ef5
 11.♖f2 ♗xf3+ 12.♖xf3 ♗d4 13.
 ♖g2 dxe5 14.fxe5 ♖xe5 15.♗e4
 f5 16.♗xc5 ♗c7 17.b4 f4 18.gxf4
 ♖xf4 19.c3 ♗f5 20.♗b3 ♖g4
 21.♗xe6



21... ♖xg2+ 22.♕xg2 ♗c6+
 23.♕g1 ♖xe6 24.♗d1 ♗d6 25.d4
 ♖xh2+ 26.♕g2 ♗e3+ 0-1

Round Nine

D80 Grunfeld

Roland Feng (7.0)

Michael MacGregor (5.5)

Seattle, WA Premier (9) 2012

See p. 6 in the article "Brilliances and Other Annotated Games."

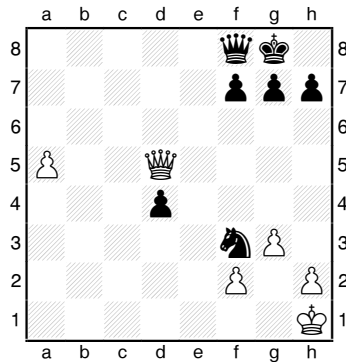
D02 Queen's Pawn Game

David Rupel (3.5)

Samir Sen (3.0)

Seattle, WA Premier (9) 2012

1.d4 d5 2.♗f3 ♗f6 3.g3 c6 4.♖g2
 ♖g4 5.O-O ♗bd7 6.♗bd2 e6 7.b3
 b5 8.♖b2 ♗b8 9.♗c1 ♖d6 10.e4
 ♖b4 11.c3 ♖e7 12.exd5 cxd5 13.
 c4 bxc4 14.bxc4 O-O 15.♖a3 ♖xa3
 16.♗xa3 dxc4 17.♗xc4 ♖xf3 18.
 ♖xf3 ♗d5 19.♖ab1 ♗7b6 20.♗e5
 ♗b7 21.♖fc1 ♖ac8 22.♖c5 ♖c7
 23.♗c1 ♖fc8 24.♗d3 ♖xc5 25.
 ♗xc5 ♗c7 26.♗e1 ♖d8 27.a4 ♗e7
 28.a5 ♗c8 29.♖g2 ♗f6 30.♗b7
 ♖f8 31.♖xd5 exd5 32.♗e5 ♗c6
 33.♗c5 ♗d6 34.♗e7 ♗f5 35.♗xa7
 ♗xd4 36.♖b8 ♗f3+ 37.♕h1 d4
 38.♗d7 ♗xc5 39.♖xf8+ ♗xf8
 40.♗d5



40... ♗e1 41.a6 ♗d3 42.a7 ♗b4
 43.♗b7 1-0

C99 Ruy Lopez Chigorin

WFM Chouhanik Airapetian (4.0)

Ethan Gottlieb (3.5)

Seattle, WA Premier (9) 2012

1.e4 e5 2.♗f3 ♗c6 3.♖b5 a6 4.
 ♖a4 ♗f6 5.O-O ♖e7 6.♖e1 b5 7.
 ♖b3 d6 8.c3 O-O 9.h3 ♗a5 10.
 ♖c2 c5 11.d4 ♗c7 12.♗bd2 cxd4
 13.cxd4 ♗c6 14.d5 ♗b4 15.♖b1
 a5 16.♗f1 ♖d7 17.♖d2 ♗a6 18.
 ♖c2 b4 19.♖c1 ♗c5 20.g4 ♖fb8
 21.♗g3 a4 22.♖b1 ♗b6 23.♖e3
 ♖c8 24.g5 ♗e8 25.♗f5 ♖d8 26.
 ♗h2 ♗b7 27.♗g4 ♖a5 28.♗f3
 ♖xf5 29.exf5 a3 30.b3 ♗xb3 31.
 ♖xc8 ♗xc8 32.g6 ♗f6 33.♗h6+
 gxh6 34.♖xh6 fxg6 35.fxg6 ♗d4
 36.♗g3 ♖a7 37.gxh7+ ♕h8 38.
 ♕h2 ♗xh7 39.♖g1 ♖f6 40.♗d3
 ♗e8 41.♗e3 ♖g7 42.♖g5 ♗h5 43.
 ♖e4 ♗e2 44.♖c1 ♖a8 45.♖c7
 ♗xe3 46.♖xe3 ♗f6 47.♖b1 ♗xd5
 48.♖b7 ♖c8 49.h4 ♗xe3 50.fxe3
 ♗c2 51.h5 ♖h6 52.e4 ♖d2 53.♖b6
 ♗d4 54.♖xd6 ♖c1 55.♖d3 ♖f4+
 56.♕g2 ♖c3 57.♖b1 b3 58.axb3
 ♖xb3 59.♖a6 ♖b2+ 60.♕h3
 ♖xb1 61.♖xa3 ♖b3+ 62.♖xb3
 ♗xb3 63.♕g4 ♕g7 64.♕f5 ♗d2
 65.♕g4 ♗xe4 66.♕f5 ♗g3+ 67.
 ♕g4 ♕h6 68.♕h4 ♗xh5 69.♕g4
 ♗f6+ 70.♕f3 ♕g5 71.♕g2 ♕g4
 72.♕f2 ♗e4+ 73.♕f1 ♕f3 74.♕e1
 ♗c3 75.♕f1 ♖d2 76.♕g1 e4 77.
 ♕h2 e3 0-1

C02 French Advance

Megan Lee (3.0)

Casey Xing (3.5)

Seattle, WA Premier (9) 2012

1.e4 e6 2.d4 d5 3.e5 c5 4.c3 ♗c6
 5.♖e3 ♗b6 6.♗d2 f6 7.♗f3 ♖d7
 8.♖d3 c4 9.♖e2 ♗ge7 10.♗h4 O-
 O-O 11.f4 fxe5 12.dxe5 ♗a5 13.
 ♗a3 g6 14.♗c2 ♗f5 15.♗xf5 gxf5
 16.b4 ♗c7 17.a4 b6 18.O-O ♖e7
 19.♖fb1 ♖df8 20.♗a3 ♗b8 21.
 ♖f1 ♗d8 22.♗f2 ♕b7 23.♗b5
 ♖xb5 24.axb5 ♖f7 25.♖a6 ♕c8
 26.♖ba1 ♖f8 27.♖xb6 axb6 28.
 ♖a8 ♖b7 29.♖xb8+ ♕xb8 30.

Continued on p. 24, col. 3

Oregon Senior Chess Championship

July 7-8, 2012

\$1000 (based on 40 paid entries)

First	\$200 + trophy
Second	\$100
Third	\$50
U1800	\$100-\$50
U1600	\$100-\$50
U1400	\$100-\$50
Over age 60	\$75
Over age 70	\$75
Over age 80	\$50

First Idaho & Washington senior each gtd. \$50

Site: Pioneer Adult Community Center, 615 Fifth St, Oregon City OR (enter by basement door on Washington Street). Wheelchair accessible. **Format:** Five-round, USCF-rated Swiss (open to players age 50 and up, no matter where they reside). **Time Control:** Game in 120 minutes (with or without 5-second delay). **Registration:** 9:00-9:45 a.m. on July 7. **Rounds:** Saturday 10 a.m., 2 p.m., 6 p.m.; Sunday 9 a.m. & 3:30 p.m. **Entry Fee:** \$25 if received by July 1 ; \$30 later. **Memberships required:** USCF and player's state federation. **Byes:** Two half-point byes allowed if requested by end of Round Three.

Champion's name will be engraved on the Dr. Ralph Hall Memorial Trophy on display at Oregon City/West Linn Chess Club, and will receive free entry into the 2013 Oregon Senior Chess Championship. 2011 co-winners, **Mike Janniro & Stephen Deeth**, receive free entry this year.

Advance entries to tournament director: **Frank Niro, 2265 E. Clifton Drive, Meridian, Idaho 83642;** E-mail: fan3@cornell.edu – cell phone: 503-347-0750

Organizer: Oregon Chess Federation

Host: Brian Berger, President of Oregon City/West Linn Chess Club

Sponsor: The Geezer Gallery. Please visit www.geezergallery.com

Coverage: Tournament results and games will be in *Northwest Chess*

How to be a Good Chess Parent

by Kevin Bachler

If your child is just embarking into the world of competitive chess, if she or he is thinking about playing in that first Saturday tournament, then you, as a parent or a coach, need to prepare yourself as well. For most children, especially those in K-3, a chess tournament will be different than any other sporting event in which they have participated.

Alone. During the game, they are alone. Just them, the opponent, sixty-four squares, and thirty-two pieces. No talking. No friends. No physical way to relieve stress. Parents and coaches frequently aren't even allowed in the room. This can be very tough. It can also be very rewarding. As a parent, as a coach, you need to be prepared to offer support and encouragement. Keep the focus on improvement. Don't focus too much on winning, and don't focus on just "survival." The kids are smart. If you downplay winning, they will know they aren't doing well. Instead, manage their expectations before, during, and after the tournament. Teach them a process of improvement from tournament to tournament, not just from game to game.

Have an honest discussion before the tournament about how well the child can do. If he or she is just learning, focus on keeping accurate chess notation. Explain that there are many good players and a goal of winning one or two games would be VERY good for a first tournament. Create little goals that the child can control. Did she get all of her pieces out in every game? Did he ask himself before every move what captures or checks there were in the position?

Find, measure, reinforce, and celebrate SMALL, MEASURABLE, and REACHABLE goals. Repeat messages consistently: "Our goal (not just the child's goal!!) is to get better in every tournament. After a while, the winning will come by itself."

Watch the movie *Searching for Bobby Fischer* with your child. Certainly, some things are exaggerated to help tell a multi-year story in two hours. But remember key points, and, when things get tough in a tournament you can say—"Hey, remember when Josh had that problem?" Kids get this stuff—they identify with it, and the examples help them a great deal.

DO NOT tell them what not to do, especially as the last reminder before a game. There isn't a more certain way to make them mess up. Let me illustrate: Don't think about pink elephants. What's the first thing that came to mind? You see, the human brain is wired to think about things, not to avoid thinking about things. So leave the child with a positive message. Wrong: "Don't bring your Queen out early." Right: "Remember, bring all of your men out early, and bring your Queen out last, after all the other pieces are out."

Stress is a big factor. I've had kids that love tournaments that still literally toss their cookies before every game. Find stress relievers. For some kids, a gentle stroke on the back is reassurance. Others will feel that their parents are nervous about them being nervous; so it just makes it worse. Learn to re-focus their brains. For one youngster I would make a funny face before every game in the tournament room when no one was looking. It would crack him up, be our secret, and get his mind off the big game.

Reinforce how to correct errors, but, believe me, the kids will kick them-

selves about their mistakes; so you usually don't have to do anything to make this a big point. Tears are okay. In fact, there are times when, under the right circumstances, I've even encouraged crying. Let the child know that feeling bad is okay and that, to avoid it next time, here is a positive step that we can take to improve our game. Many kids do very well with this dose of reality so long as you are supportive, for they understand that you are there to help, not criticize. Remember, they have no teammates, no bad refs, no weather, nothing else to blame this on. When they lose, they will know it's because they were outplayed. A realistic approach to improvement offers hope and encouragement for the next game.

Make sure that it is the move you call stupid, not the child. We all make mistakes, we all started out as beginners, and it takes time to get better. I often share that, as an eleven-year-old, I lost a hundred games at Rook odds to a high school friend before I won a single game—and I became a Master. The child can, too, but improvement takes time and persistence. Moves can be bad, dumb, stupid, stinky, etc. Children are not.

Most important of all—have fun. Rejoice and celebrate in your improvements, savor the victories, and have a good time. ■

Chess DVDs Now Available through Elliott's Chess School!

LEARN CHESS INDEPTH WITH NATIONAL MASTER ELLIOTT NEFF

Chess4Life also offers:

- Chess Camps
- Tournaments
- Afterschool Program
- Private Lessons
- Chess Classes
- Chess4Life Center

Chess4Life
Teaching life skills through chess

For more info, call 425-283-0549 | www.chess4life.com

Lakeside Lions State Champs for Third Year in a Row!

by Siva Sankrithi

The Lakeside Lions chess team has won the 2012 Washington High School State Team Championship—for the third straight year. In JV, Andrew Tat (sr.), defending champ, took home the title of JV state champion for a second consecutive year, the first ever repeat JV state champion.

Lakeside A and B teams—11 Lakesiders in all—competed with 28 teams from all over the state at Issaquah High School on February 24. Several more players played in the State JV Championship.

The team now gets a well-deserved week of rest, then March will be all about preparing for the national championships, held in Minneapolis in early April!

Our A team, seeded No. 1, was, in board order, Michael Omori (jr.), Darren Wu (sr.), Ethan Gottlieb (sr.), David Inglis

(jr.), and Nicolo Gelb (fr.). Our B team, seeded No. 3, was Matthew Song (fr.), Benjamin Davis (jr.), Thomas Thongmee (so.), Nicholas Xing (jr.), and Alex Tong (jr.). And Tat played in the JV to defend his title.

We knew who our biggest challenge would be, the No. 2 seed, Interlake. In each of the last four years, this year included, Lakeside and Interlake have been seeded No. 1 & No. 2 in some order. The two schools are very competitive and have never had a result more decisive than 3-2 one way or the other. After Friday's two rounds, of the 28 teams, only two had greater than eight points out of ten, namely Lakeside A & Interlake, both of whom had perfect tens! This meant the Saturday morning round would be the all-important matchup. Thankfully, we had White on the odd-numbered boards. Going into this match, we knew we had the edge on the lower boards and

Interlake had the edge on the first two boards. An absolutely inspired effort from 2012 State Individual Champion Michael Omori against 2011 State Individual Champion David Golub's Pirc defense gave us a whopping 3.5-1.5 victory! This was the game of the year, hands down! Talk to Michael if you want the blow by blow, but let's just say he ended up sacrificing two pawns and a Knight for an unstoppable attack! In the final two rounds, we conceded only three draws and finished with an incredible 22 from 25 points on the event (20 wins, four draws, one loss) for a resounding first place finish and our third consecutive state championship!

Our B team held seed, tying for third place, with great play from everyone. Interlake finished second, and tying our B team for 3rd were Newport and Garfield. In JV, Andrew Tat, this year's third seed, played brilliantly, earned a perfect 5-0, including an remarkable come-from-behind endgame victory against the top seed from Bellevue in the fifth and final round, and took home the title for a second consecutive year.

Cheers and kudos to all on a job well done!

Michael Omori Annotates

Already after the second round, two teams were in the lead and tied for first, Lakeside A and Interlake A, in the 2012 high school state team championship. Lakeside and Interlake have had an epic rivalry for the last several years with both teams being very close to each other in skill level. Last year we (Lakeside) were tied in points and had to have a blitz play-off. My second round match finished quite late and the drive home was a long one. I didn't get home until about midnight and had an early round three against David Golub. I was both looking forward to my match because I wanted to beat him, but also dreading it because I wanted to sleep in a little more. David was the



USCF NATIONAL OPEN

JUNE 15TH – 17TH OR 16TH – 17TH

\$80,000 GUARANTEED PRIZE FUND

8 Sections – Top 2 Sections FIDE Rated
200 Grand Prix Points – USCF National Championship



U. S. GAME / 10 CHAMPIONSHIP

THURSDAY, JUNE 14TH 5:00 P.M.

\$5,000 Guaranteed Prize Fund

80 Grand Prix Points
USCF National Championship

INTERNATIONAL YOUTH CHAMPIONSHIP

JUNE 16TH – 17TH

Trophies and Chess Prizes
Including Computers with Chess Software

5 Round Swiss Game/60
4 Sections by Age and Rating



Special Guest
Former World Champion
GM ANATOLY KARPOV



INTERNATIONAL CHESS FESTIVAL

June 14th – 17th 2012 Riviera Hotel & Casino

SIMULS ★ SCHOLASTICS ★ LECTURES ★ ANALYSIS
GRANDMASTER CHESS CAMP ★ POKER TOURNAMENT ★ AND MORE

www.VegasChessFestival.com

highest rated player in the tournament and this would be a decisive matchup in the tournament. I was thinking about preparing against him, but decided it would be better to just get a good night sleep. The next day I arrived at the board expecting David to play the Winawer French Defense. To my surprise, he played the Pirc! I was shocked and nervous, because I hadn't played against the Pirc in quite a while and I wasn't sure how much he prepared.

B09 Pirc Austrian Attack

**Michael Omori
David Golub**

Issaquah, WA High School Team 2012

Annotations by Michael Omori

1.e4 d6 2.d4 g6 3.♘c3 ♘g7 4.f4 ♘f6 5.♘f3 O-O 6.e5 ♘fd7 7.h4 c5 8.h5

I prepared this line almost a year ago and have never played it in a tournament. Luckily, I still remembered how to play it.

8...cxd4

I took several minutes in deciding which capture to make. In the end, I chose taking on g6, because I guessed that Golub had prepared only the main line, 9.♙xd4, and that he wouldn't like to play against the sharper 9.hxg6.

9.hxg6 hxg6

The main line goes 9...dxc3 10.gxf7 ♙xf7 11.bxc3 and the line becomes really unclear, ...hxg6 is a slight mistake, as now the h-file will be open after I recapture on d4.

10.♙xd4 ♘c6 11.♙f2 e6

To stop my Queen from heading to h4 without a trade.

12.♘g5

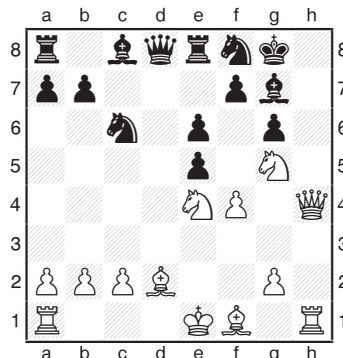
12.exd6 is also good.

12...dxe5 13.♙h4 ♙e8 14.♘ce4 ♘f8

At this point, my clock was ticking, and I had run out of attacking ideas. There didn't seem to be a clear way to knock down his fortress. After considerable time, I thought, "Hey, maybe I can just go ♘d2 and castle queenside." I appeared to have enough compensation

for the pawn, because Black could do nothing to get out of his defensive quagmire. Meanwhile, I should just be able to develop my pieces and crank up the pressure.

15.♘d2

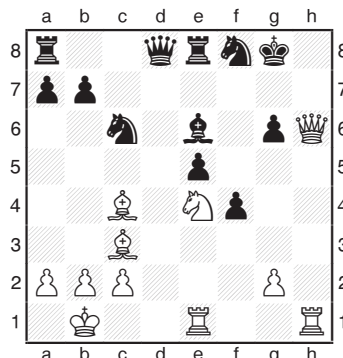


15...exf4

Black mistakenly opens up the a1-h8 diagonal which I want for my dark-squared Bishop. My hope is to trade it off for his crucial defender on g7.

16.O-O-O ♙b6 17.♘c3 e5 18.♘xf7 ♙e3+ 19.♘b1 ♘f5 20.♙e1 ♙b6 21.♘h6+ ♘xh6 22.♙xh6 ♙d8 23.♘c4+ ♘e6

The game is over, I just have to convert my advantage into something solid.



24.♘xe6+ ♙xe6 25.♘g5 ♙f6 26.♘xe6 ♙xe6 27.♘xe5 ♘xe5 28.♙h8+ ♘f7 29.♙xe5 ♙f6 30.♙xf6+ ♘xf6 31.♙he1 ♙d8 32.♘c1 g5 33.♙e8 ♙xe8 34.♙xe8 ♘e6 35.♘d1 g4 36.♙b8 ♘f5 37.♙xb7 f3 38.gxf3 g3 39.♘e1 ♘f4 40.♙f7+ ♘e5 41.♘f1 ♘f4 42.♙xf4 ♘xf4 43.♘g2 a5 44.a4 1-0

WA Premier Games cont'd from p. 20

♙a6 ♘c7 31.♙h4 ♘d7 32.♙a8 ♘e7 33.♙g3 ♙f8 34.♙g7 h5 35.♘e2 ♙f7 36.♙g6 h4 37.♘f1 ♙f8 38.♙g7 ♙c7 39.♘h5 ♙b7 40.♘g6 ♙c7 41.♘e2 ♙b7 42.♘e3 ♙c7 43.g3 hxg3 44.hxg3 ♙b7 45.♘h5 ♙c7 46.g4 fxg4 47.♘xg4 ♙b7 48.♘h5 ♙c7 49.♙b8 ♙b7 50.♙xb7+ ♘xb7 51.♘g6 ♘d8 52.f5 exf5 53.♘d4 f4 54.♘xd5 ♘d7 55.♘f7 f3 56.♙g4+ ♘c7 57.♙xf3 ♘d8 58.e6 ♘xf7 59.exf7 ♙d8+ 60.♘xc4 ♘b8 61.♙g3+ ♘b7 62.♙g8 ♘f8 63.♙g6 ♙c8+ 64.♘d4 ♙d8+ 65.♘e3 ♙c8 66.♙e4+ ♘b8 67.♙e8 ♘b7 68.♘d3 ♘b8 69.♘c2 ♘b7 70.♘b3 ♘b8 71.♙d7 ♘g7 72.c4 ♘f8 73.c5 bxc5 74.b6 1-0

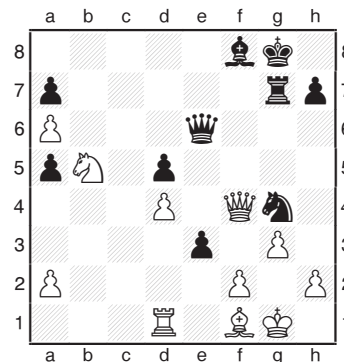
A21 English Opening

Michael Wang (6.5)

Patrick Van Dyke (1.0)

Seattle, WA Premier (9) 2012

1.c4 e5 2.g3 f5 3.♘g2 ♘f6 4.♘c3 d6 5.e3 g6 6.♘ge2 ♘g7 7.O-O O-O 8.♙b1 c6 9.b4 ♘e6 10.d3 d5 11.cxd5 cxd5 12.b5 ♘bd7 13.d4 e4 14.♘a4 ♘b6 15.♘c5 ♘c8 16.♙b3 ♙e8 17.♘c3 ♘c4 18.♙d1 b6 19.♘a6 ♘xa6 20.bxa6 ♘f8 21.♘f1 ♙c8 22.♘b5 ♙e7 23.♘d2 ♙g7 24.♘b4 g5 25.♙bc1 ♘a5 26.♙xc8 ♙xc8 27.♘xa5 bxa5 28.♘c3 ♙e6 29.♙b8 f4 30.exf4 gxf4 31.♙xf4 ♘g4 32.♘b5 e3



33.♙f3 ♙h6 34.♙xd5+ ♙f7 35.h3 exf2+ 36.♘h1 ♘e3 37.♙e4 ♘xf1 38.♙g4+ ♙g7 39.♙h4 ♘xg3+ 0-1

**U.S. Open—August 4-12, 7-12, or 9-12
in Vancouver, Washington**

Portal Games Presents

The Portland Chess Shop

KNIGHT'S DEAL

Tournament Chess Set

with Vinyl Roll-up Board and Tournament Bag • Each choice in five colors!

ONLY \$20

Saitek Competition Digital Chess Clock

Guaranteed Cheapest Digital Chess Clock in the USA

ONLY \$28

Deluxe Wood Chess Set

German Staunton Chess Pieces in Golden Rosewood & Boxwood with Walnut & Maple Chess Board

ONLY \$89

RAPID CHESS TOURNAMENTS!

RATED AND NOT RATED SECTIONS • SUNDAYS AT 3:00 PM

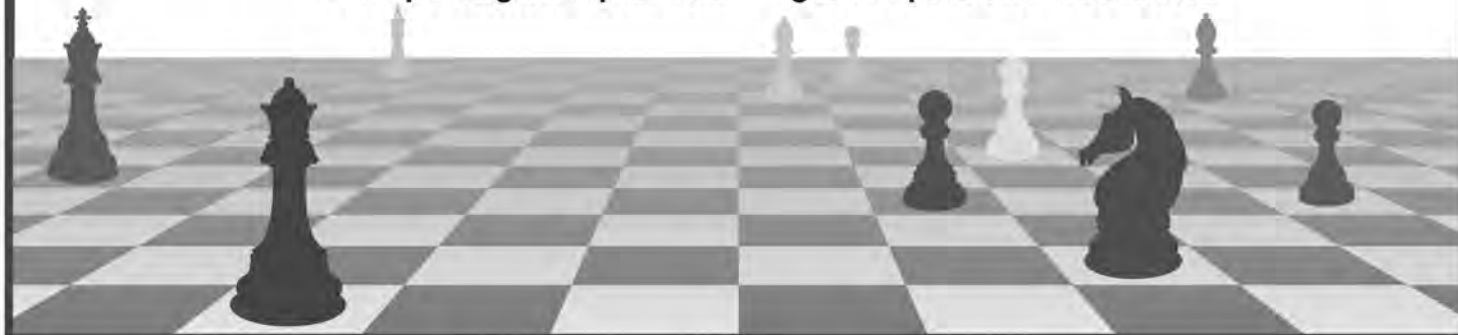
CASH PRIZES • \$5 BUY-IN

SEE OUR TOURNAMENT CALENDAR @ WWW.PORTALGAMESPDX.COM

PORTAL
G A M E S

1224 SW Broadway • Portland, OR 97204 • 503-575-4887

www.portalgamespdx.com • galen@portland-chess.com



Games from the WA Invitational

by NM Joshua Sinanan

This year's Invitational field, which consisted of eight Class A players and two experts, had an average rating of 1947 and was the strongest since the inception of the section in 2008. Top seed FM Paul Bartron of Tacoma and Daniel He of Redmond each scored 6.5 to tie for first place. Chess4Life coach Alan Bishop and Samuel He, Daniel's twin brother, tied for third/fourth with 5.5. Becca Lampman of Vancouver and this year's WA Junior Open winner Kyle Haining each scored 5.0 and split fifth/sixth.

Bartron began the tournament with a perfect 4/4, a point ahead of Haining, who had conceded draws to both of the He brothers in the first two rounds. Daniel and Samuel He had scored 2.5 and were the only other players to have

a plus score after the first weekend. Schemm and Bishop had to reschedule their first round game and had two points and one point respectively. They were followed by Lampman with 1.5, Fields and Smith with 1, and Warrior with just a draw after four games.

Tournament leader Paul Bartron stumbled during the second weekend, losing to Schemm in Round Six and conceding draws to Haining and Lampman in Rounds Seven and Eight. This gave Daniel He a chance to catch up, which he did by scoring 3.5/4 in Rounds Five through Eight. This set up a tense finale between Bartron and D. He, as the two were tied at 6/8 going into last round. A draw was eventually agreed after 34 moves in an equal Knight ending, and Daniel took the title on tiebreaks to earn the seed into next year's Premier.

Thanks to all who participated in this year's State Championship!

C17 French Winawer

FM Paul Bartron (2099)
Noah Fields (1866)

Seattle, WA Invitational (1) 2012

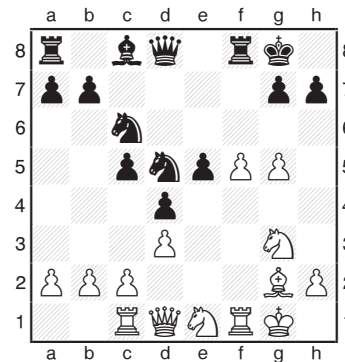
1.e4 e6 2.d4 d5 3.♖c3 ♘b4 4.e5 c5 5.♙d2 ♗e7 6.a3 cxd4 7.axb4 dxc3 8.♙xc3 O-O 9.♗f3 ♗d7 10.♙d3 ♗g6 11.g3 ♖c7 12.♖e2 b6 13.h4 ♙b7 14.♙d4 ♖fe8 15.h5 ♗e7 16.c3 ♗f5 17.O-O ♗xd4 18.cxd4 f6 19.♖fc1 ♖d8 20.♖c2 ♗f8 21.♖c7 ♖e7 22.♖c3 ♙c8 23.♙b5 ♙d7 24.♙xd7 ♖xd7 25.♖xd7 ♗xd7 26.♖c7 ♗b8 27.b5 ♖f8 28.exf6 gxf6 29.♖xh7 ♖e7 30.♖h8+ ♖g7 31.♖c8 ♖h6 32.♖g2 a5 33.♖ac1 ♙b7 34.♖h8+ ♖g7 35.♖cc8 ♖f7 36.♖h7 mate

A08 Reti

Mark Smith (1905)
Vishnu Warrior (1952)

Seattle, WA Invitational (1) 2012

1.g3 d5 2.♙g2 ♗f6 3.♗f3 c5 4.O-O ♗c6 5.d3 e5 6.e4 ♙e7 7.♗c3 d4 8.♗e2 O-O 9.♗e1 ♗d7 10.f4 f5 11.exf5 ♖xf5 12.g4 ♖f8 13.f5 ♙g5 14.♗g3 ♙xc1 15.♖xc1 ♗f6 16.g5 ♗d5



17.♙xd5+ ♖xd5 18.♗g2 ♗e7 19.♗h4 a5 20.♖h5 ♖a6 21.f6 ♗g6 22.♗xg6 hxg6 23.♖xg6 ♖f7 24.♗h5 ♙h3 25.♖f2 ♖d7 26.♗xg7 ♖xg7 27.♖xg7+ 1-0



photo by Dan Mathews

Invitational players (L-R): (front row)—Becca Lampman, Noah Fields, and Kyle Haining; (back row)—Mike Schemm, Paul Bartron, Alan Bishop, and the He twins

E81 King's Indian Sämisch

Samuel He (1894)
Kyle Haining (1853)

Seattle, WA Invitational (1) 2012

1.d4 g6 2.e4 g7 3.c4 d6 4.♘c3 ♘f6 5.f3 O-O 6.♙e3 c5 7.♘ge2 ♘c6 8.d5 ♘a5 9.♘c1 e5 10.a3 b6 11.b4 ♘b7 12.♙d3 ♘h5 13.O-O f5 14.exf5 gxf5 15.♙c2 ♙f6 16.♘1e2 ♙d7 17.♙ab1 ♙ac8 18.♘a4 ♙e7 19.♘ec3 ♙b8 20.♙fe1 ♙f7 21.bxc5 ♘xc5 22.♘xc5 dxc5 23.♙b2 ♙f6 24.♙b3 ♘f4 25.♙f1 ♘g6 26.♙eb1 ♘e7 27.♙xc5 ♙fc8 28.♙f2 ♙d6 29.c5 bxc5 30.♙xb8 ♙xb8 31.♙xb8+ ♙xb8 32.♙xc5 ♘c8 33.♙d3 ♙c7 34.♘b5 ♙xb5 35.♙xb5 ♙f8 36.d6 ♘xd6 37.♙b3+ ♘g7 38.♙d5 ♘xb5 39.♙xf8+ ♘xf8 40.♙xb5 ♙b6+ 41.♙xb6 axb6 42.♘f2 ♘e7 43.♘e3 ♘d6 44.g4 Draw

E27 Nimzo-Indian Sämisch

Becca Lampman (1933)
Daniel He (1961)

Seattle, WA Invitational (1) 2012

See "Brilliances . . .", p. 5.

The game between Michael Schemm and Alan Bishop was postponed until the morning of February 20, before Round Nine.

Round Two

B36 Sicilian Maroczy Bind

Kyle Haining (0.5)
Daniel He (1.0)

Seattle, WA Invitational (2) 2012

1.e4 c5 2.♘f3 ♘c6 3.d4 cxd4 4.♘xd4 g6 5.c4 ♘f6 6.♘c3 d6 7.♙e2 ♘xd4 8.♙xd4 ♙g7 9.♙e3 O-O 10.♙d2 ♙e6 11.♙d1 ♙a5 12.♙d4 ♙fc8 13.b3 ♘d7 14.O-O ♙xd4 15.♙xd4 a6 16.f4 f6 17.f5 ♙f7 18.♙f3 ♘e5 19.♙g3 ♙c5 20.♘d5 ♙xd5 21.exd5 g5 22.♙xc5 ♙xc5 23.b4 ♙c7 24.♙c3 ♙ac8 25.♙dc1 ♘d7 26.♙3c2(=?) a5 27.a3 axb4 28.axb4 ♙a8 29.c5 dxc5 30.bxc5 ♘e5 31.♙b5 ♙a5 32.♙b1 ♘f7 33.h3 h5 34.♘f1 ♙a8 35.♙bc1 ♙ac8 36.♙c3 h4 37.♘g1 ♘g7 38.c6 bxc6 39.♙xc6 ♙d8 40.♘f1 ♘xc6 41.dxc6 ♘f7 42.♘e2 ♙d5

43.♙f1 e6 44.fxe6+ ♘xe6 45.♙fc1 ♘d6 46.♙3c2 f5 47.♘f2 ♘e6 48.♘e2 ♘d6 Draw

A00 Irregular

Vishnu Warriar (0.0)
Michael Schemm (1997)

Seattle, WA Invitational (2) 2012

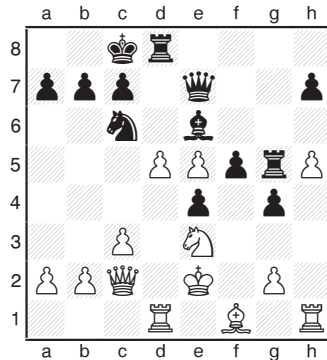
1.f3 ♘c6 2.♘f2 e5 3.e3 ♙c5 4.♙b5 ♘f6 5.♘e2 a6 6.♙a4 b5 7.♙b3 d5 8.d4 ♙d6 9.a4 ♙e6 10.axb5 axb5 11.♙xa8 ♙xa8 12.♘bc3 b4 13.♘b5 O-O 14.♘xd6 cxd6 15.♙d2 ♙b7 16.c3 ♙b8 17.♙c2 b3 18.♙b1 ♘a5 19.g4 ♘c4 20.♙c1 g6 21.h4 ♙xg4 22.fxg4 ♘xg4+ 23.♘f3 f5 24.dxe5 ♘cxe3 25.♙xe3 d4+ 26.♘g3 ♘xe3 27.♙g1 dxe5 28.cxd4 f4+ 29.♘h2 ♙f3 O-1

C35 King's Gambit Accepted

Alan Bishop (2000)
FM Paul Bartron (1.0)

Seattle, WA Invitational (2) 2012

1.e4 e5 2.f4 exf4 3.♘f3 ♙e7 4.♘c3 ♙h4+ 5.♘e2 ♙e7 6.d4 g5 7.h4 g4 8.♘e1 ♘f6 9.h5 d5 10.e5 ♘e4 11.♘xe4 dxe4 12.♙xf4 ♙e6 13.c3 ♘c6 14.♘c2 ♙g5 15.♙d2 ♙g8 16.♙xg5 ♙xg5 17.♘e3 ♙e7 18.♙c2 O-O-O 19.♙d1 f5 20.d5



20...♘xe5 21.dxe6 ♘d3 22.g3 ♙xe6 23.♙g2 ♙e5 24.♘f1 ♙c5 25.♘e3 f4 26.gxf4 ♘xf4+ 27.♘f1 ♙xe3 28.♙xd8+ ♘xd8 29.♙xe4 ♙e5 30.♙d1+ ♘e7 31.♙xh7 g3 O-1

B48 Sicilian Paulsen

Noah Fields (0.0)
Becca Lampman (0.0)

Seattle, WA Invitational (2) 2012

1.e4 c5 2.♘f3 e6 3.d4 cxd4 4.♘xd4 a6 5.♘c3 ♘c6 6.f4 ♙c7 7.♙e3 b5 8.a3 ♙b7 9.♘f3 d6 10.♙d3 ♘f6

11.O-O ♙e7 12.♙e1 O-O 13.♙g3 ♙fd8 14.e5 dxe5 15.fxe5 ♘d5 16.♘xd5 ♙xd5 17.♙f4 ♘a5 18.♙h3 g6 19.♙g5 ♙f8 20.♙f6 ♘c4 21.♙xc4 ♙xc4 22.c3 ♙c8 23.♘g5 h5 24.♙ae1 ♙d2 25.♘f3 ♙xb2 26.♙d1 ♙xc3 27.g4 ♙e3+ 28.♘h1 ♙e2 29.♙a1 ♙c3 30.gxh5 ♙xf3 31.hxg6 ♙xf1 mate

E81 King's Indian Sämisch

Samuel He (0.5)
Mark Smith (1.0)

Seattle, WA Invitational (2) 2012

1.d4 ♘f6 2.c4 g6 3.♘c3 ♙g7 4.e4 d6 5.f3 O-O 6.♙e3 c5 7.♘ge2 ♘c6 8.d5 ♘e5 9.♘g3 a6 10.h3 b5 11.cxb5 axb5 12.♙xb5 ♙a6 13.♙xa6 ♙xa6 14.♙e2 ♙a5 15.O-O ♙fa8 16.♙d2 ♙b6 17.♙fb1 ♙b7 18.a4 ♘e8 19.b3 ♘d7 20.♘f1 ♘b6 21.♘e3 e6 22.♙d3 ♙d4 23.dxe6 fxe6 24.♙a2 d5 25.exd5 ♘xd5 26.♘cxd5 exd5 27.♘h1 ♘f6 28.♘g4 ♘xg4 29.fxg4 ♙f8 30.b4 ♙a8 31.a5 ♙g7 32.b5 c4 33.♙g3 ♙af6 34.♙e3 ♙f1+ 35.♙xf1 ♙xf1+ 36.♘h2 ♙e8 37.♙f2 ♙e5 38.♙f4 ♙xf2 39.♙xf2 ♙xf4+ 40.♙xf4 ♙xb5 41.♙c7 d4 42.♙d8+ ♘f7 43.♙xd4 ♙xa5 44.♙xc4+ ♘g7 45.♙f4 ♙b6 46.♙e5+ ♘f7 47.♙d5+ ♘g7 48.♙e5+ ♘f7 49.h4 ♙b4 50.♘h3 ♙b3+ 51.♙g3 ♙b6 52.♘h2 h6 53.♙f3+ ♙f6 54.g5 ♙xf3 55.gxf3 h5 56.♘g3 ♘e6 57.f4 ♘d5 58.♘f3 ♘d6 59.♘e3 ♘d7 60.♘d3 ♘e7 61.♘e3 ♘d7 62.♘d4 ♘d6 63.♘e4 ♘e6 64.♘e3 ♘e7 65.♘d3 ♘d7 66.♘c4 ♘e6 67.♘c5 ♘e7 68.♘d5 ♘f7 69.♘d6 ♘f8 1-0

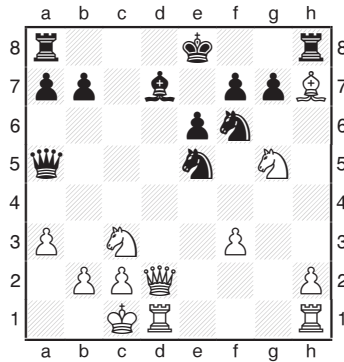
Round Three

A03 Dunst Opening

Michael Schemm (1.0)
Samuel He (1.5)

Seattle, WA Invitational (3) 2012

1.♘c3 ♘f6 2.a3 e6 3.d4 c5 4.♙f4 cxd4 5.♙xd4 ♘c6 6.♙d2 d5 7.♘f3 ♙d6 8.♙xd6 ♙xd6 9.O-O-O ♙c5 10.e4 dxe4 11.♘g5 ♙f5 12.f3 exf3 13.♙d3 ♙a5 14.gxf3 ♙d7 15.♙xh7 ♘e5



16. ♖e4 ♜c4 17. ♗f4 ♖b6 18. ♜xd7 ♗xb2+ 19. ♔d1 ♔xd7 20. ♔e2 ♗xc3 21. ♜xf7 ♜hf8 22. ♜b1 ♜xe4 23. ♜xb7+ ♔e8 24. ♗xe4 ♗d2+ 0-1

B25 Sicilian Closed

Mark Smith (1.0)
Kyle Haining (1.0)

Seattle, WA Invitational (3) 2/2012

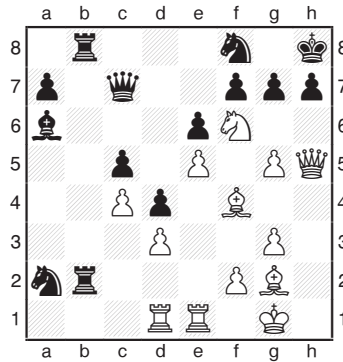
1. ♜f3 g6 2. g3 ♙g7 3. ♙g2 ♜f6 4. d3 d6 5. e4 O-O 6. ♜c3 c5 7. O-O ♜c6 8. h3 ♜b8 9. ♙e3 a6 10. ♗d2 ♗c7 11. ♙h6 b5 12. ♙xg7 ♔xg7 13. ♜e2 e5 14. c3 a5 15. ♜h4 ♗e7 16. f4 ♙b7 17. f5 h6 18. ♜f2 g5 19. ♜f3 g4 20. ♜h2 gxh3 21. ♙xh3 ♜h8 22. ♜g4 ♜xg4 23. ♙xg4 ♗f6 24. ♙h3 h5 25. ♜af1 ♔f8 26. ♜d1 ♜g8 27. ♔h2 ♜d8 28. ♗e3 ♔e7 29. d4 cxd4 30. cxd4 ♗g5 31. f6+ ♔f8 32. ♗xg5 ♜xg5 33. d5 ♜b8 34. ♜c1 ♜a6 35. ♜f5 ♜g6 36. ♜c3 ♜c5 37. ♜xb5 ♜xe4 38. ♜c7 ♙xd5 39. ♜xh5 ♜xf6 40. ♜h8+ ♜g8 41. ♜xg8+ ♔xg8 42. ♜c3 ♙f3 43. ♙f1 ♔g7 44. ♔g1 d5 45. ♔f2 e4 46. ♜b1 d4 47. ♙c4 ♙h5 48. ♜c5 e3+ 49. ♔e1 d3 50. ♙xd3 ♜xd3 51. ♜c3 e2 52. ♜xe2 ♜e3 53. ♜c2 ♜e4 54. ♔f1 ♙xe2+ 55. ♜xe2 ♜xg3+ 0-1

A08 King's Indian Attack

Daniel He (1.5)
Noah Fields (0.0)

Seattle, WA Invitational (3) 2012

1. e4 e6 2. d3 d5 3. ♜d2 ♜f6 4. ♜gf3 c5 5. g3 ♜c6 6. ♙g2 ♙e7 7. O-O O-O 8. ♜e1 b6 9. e5 ♜d7 10. ♜f1 ♗c7 11. ♙f4 ♙a6 12. c3 ♜ac8 13. h4 d4 14. c4 b5 15. b3 bxc4 16. bxc4 ♜b8 17. ♗e2 ♜b6 18. ♜1h2 ♜fb8 19. ♜g5 ♙xg5 20. hxg5 ♜b2 21. ♗h5 ♜b4 22. ♜ad1 ♜xa2 23. ♜g4 ♜f8 24. ♜f6+ ♔h8



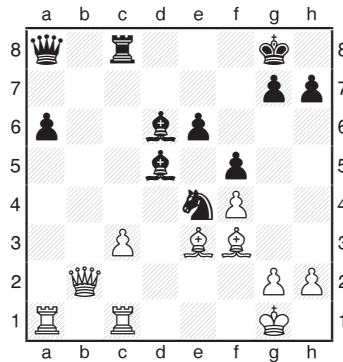
25. ♙e4 g6 26. ♗h6 ♜c3 27. ♜a1 ♜xe4 28. dxe4 ♙xc4 29. ♔g2 ♗b7 30. ♜ad1 ♙e2 31. ♜h1 ♙h5 32. g4 a5 33. gxh5 a4 34. hxg6 fxg6 35. ♜a1 ♜xf2+ 36. ♔xf2 ♗b2+ 37. ♔g3 ♜b3+ 38. ♔g4 ♗g2+ 39. ♔h4 ♗f2+ 40. ♔g4 ♗f3+ 41. ♔h4 ♗xf4+ 42. ♜g4 ♗g3 mate

B47 Sicilian Paulsen

FM Paul Bartron (2.0)
Vishnu Warriar (0.0)

Seattle, WA Invitational (3) 2012

1. e4 c5 2. ♜f3 ♜c6 3. d4 cxd4 4. ♜xd4 e6 5. ♜c3 ♗c7 6. ♜db5 ♗b8 7. ♙e3 a6 8. ♜d4 ♜f6 9. a3 b5 10. ♜xc6 dxc6 11. ♙e2 ♙d6 12. ♗c1 c5 13. f4 b4 14. axb4 cxb4 15. ♜a4 ♜xe4 16. ♜b6 ♙b7 17. ♜xa8 ♗xa8 18. O-O O-O 19. ♙f3 f5 20. c4 bxc3 21. bxc3 ♜c8 22. ♗b2 ♙d5 23. ♜fc1



23...h6 24. ♙e2 ♜c5 25. ♙f1 g5 26. fxg5 f4 27. c4 fxe3 28. gxh6 ♗a7 29. cxd5 e2 30. ♔h1 exf1=♗+ 31. ♜xf1 ♗c7 32. ♗f6 ♙e5 33. ♗g6+ ♔h8 34. ♜ae1 ♜g8 35. ♗h5 ♜d3 36. dxe6 ♗c6 37. ♜e2 ♗xe6 38. ♗f3 ♗xh6 39. g4 ♜d8 40. ♜d1 ♗f4 41. ♗xf4 ♙xf4 42. ♔g2 a5 43. ♔f3 ♙g5 44. h4 ♜f8+ 45. ♔g3 ♙f4+ 46. ♔h3 ♜c1 47. ♜f2 ♔g7 48. ♜xf4 ♜xf4 49. ♜xc1 a4 50. ♔g3 ♜f6 51.

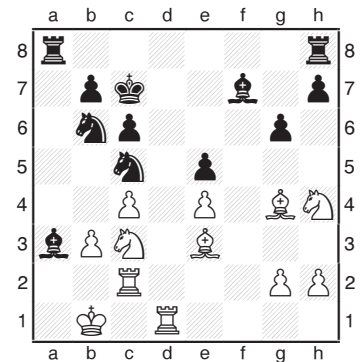
♜c3 ♜a6 52. ♜a3 ♔f6 53. ♔f4 ♔e6 54. ♔g5 ♜a5+ 55. ♔g6 ♔e5 56. g5 ♔f4 57. ♔h6 ♔g4 58. g6 ♔xh4 59. g7 1-0

A41 Old Indian

Becca Lampman (1.0)
Alan Bishop (0.0)

Seattle, WA Invitational (3) 2012

1. d4 d6 2. c4 e5 3. dxe5 dxe5 4. ♗xd8+ ♔xd8 5. ♜c3 ♙e6 6. e4 c6 7. ♙e3 ♜d7 8. O-O-O ♔c7 9. ♜f3 f6 10. ♙e2 ♜e7 11. ♜d2 ♜c8 12. ♜hd1 ♜cb6 13. b3 ♙a3+ 14. ♔b1 a5 15. ♜c2 ♙f7 16. ♜h4 g6 17. f4 a4 18. ♙g4 axb3 19. axb3 ♜c5 20. fxe5 fxe5



21. ♜f3 ♜he8 22. ♙xc5 ♙xc5 23. ♜a4 ♙b4 24. ♜xb6 ♔xb6 25. ♜d7 ♙g8 26. ♜c1 ♜a3 27. ♔c2 ♜a2+ 28. ♔b1 ♜xg2 29. ♙h3 ♜f2 30. ♜d3 ♜e2 31. ♙d7 ♜e7 32. h3 ♜xe4 33. ♜g5 ♜d4 34. ♜xd4 exd4 35. ♙g4 ♙d2 36. ♜f1 ♙xg5 37. ♜f8 ♙e6 0-1

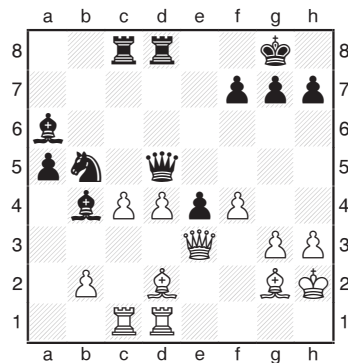
Round Four

Irregular

Vishnu Warriar (0.0)
Becca Lampman (1.0)

Seattle, WA Invitational (4) 2012

1. f3 e5 2. ♔f2 d5 3. e3 ♜f6 4. d4 e4 5. ♜c3 ♙b4 6. ♙d2 O-O 7. a3 ♙d6 8. ♜ge2 c5 9. f4 ♜c6 10. ♜b5 ♙e7 11. h3 a6 12. ♜bc3 ♗c7 13. ♙e1 ♜d8 14. g3 b5 15. ♙g2 ♗b6 16. ♔g1 ♙b7 17. ♙f2 ♜ac8 18. ♗d2 cxd4 19. ♜xd4 ♜xd4 20. exd4 ♗c6 21. ♗e3 b4 22. axb4 ♙xb4 23. ♙e1 a5 24. ♔h2 ♙a6 25. ♙d2 ♜e8 26. ♜hd1 ♜c7 27. ♜ac1 ♜b5 28. ♜xd5 ♗xd5 29. c4



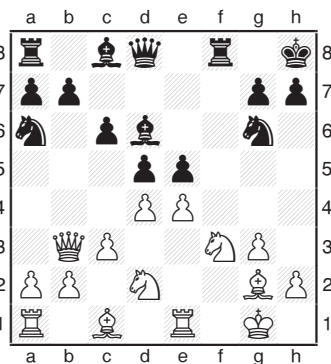
29...xf4 30. Bxd2 Qd7 31. cxb5 Bxc1 32. bxa6 Qa7 33. Qxe4 Qxa6 34. Qe7 Qd6 35. Qg5 Bc4 36. Qxa5 Bxd4 37. Bxd4 Qxd4 38. b4 Bb8 39. b5 Qc5 40. Sc6 Qf2+ 41. Sg2 Qb2 42. g4 Qxb5 43. Qxb5 Bxb5 44. Sg3 Sf8 45. Se4 Se7 46. Sxh7 g6 47. f5 Sf6 48. fxg6 fxg6 49. Sg8 Bc5 50. h4 Bc3+ 51. Sf4 Bh3 52. g5+ Sg7 53. Sg4 Ba3 54. Sd5 Draw

A00 King's Indian Attack

Mark Smith (1.0)
Michael Schemm (1.0)

Seattle, WA Invitational (4) 2012

1. g3 d5 2. Sg2 e5 3. d3 c6 4. Sf3 Sd6 5. e4 Se7 6. O-O O-O 7. Sbd2 f5 8. Be1 Sg6 9. c3 f4 10. Qb3 Sa6 11. d4 fxg3 12. fxg3 Sh8



13. exd5 exd4 14. cxd4 cxd5 15. Sf1 Sg4 16. Sg5 Qd7 17. Se5 Sxe5 18. dxe5 Sc5+ 19. Sh1 Sc7 20. Se3 Sf3 21. Bf1 Sxg2+ 22. Sxg2 Se6 23. Sd2 Sd4 24. Qd3 Qe6 25. Sf4 Qxe5 26. Sc3 Qe4+ 27. Qxe4 dxe4 28. Bfd1 Bfd8 29. b4 Sb6 30. Be1 Sc2 31. Bxe4 Sxa1 32. Se6 Bd7 33. Sxg7 Sg8 34. Sh5 Sf7 35. Bg4 Bcd8 36. Bg7+ Sf8 37. Bg4 Bf7 38. Sf4 Se7 39. Bg5 Sd4 40. Sd2 Sc2 41. Sg2

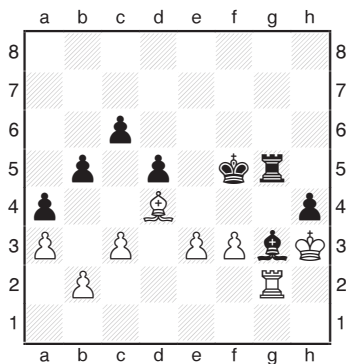
Sf6 42. Sd5+ Sf8 43. Bh5 Sg7 44. Sf4 Bxd5 45. Bxd5 Bxf4 46. Bd8+ Se7 47. Bg8 Bf7 0-1

D00 London System

Samuel He (2.5)
FM Paul Bartron (3.0)

Seattle, WA Invitational (4) 2012

1. d4 d5 2. Sf4 c6 3. c3 Sf5 4. e3 Sd7 5. Se3 e6 6. h3 Se7 7. Sbd2 Se4 11. Se5 Sxd2 12. Qxd2 Sxe5 13. dxe5 Sc5 14. Sd3 Qg5 15. Sxf5 Qxf5 16. Bcd1 f6 17. exf6 Bxf6 18. Qd3 Baf8 19. Qxf5 Bxf5 20. Bde1 h5 21. Be2 e5 22. Sh1 e4 23. Sg3 g5 24. h4 Se7 25. hxg5 Sxg5 26. Sh2 h4 27. Sd6 Bd8 28. Sa3 Sf7 29. Bd1 b5 30. Bed2 Sf6 31. Sc5 Se5+ 32. Sh3 Bg5 33. a3 a6 34. Bg1 Se6 35. Bdd1 Bd7 36. f4 exf3 37. gxf3 Bg3+ 38. Bxg3 Sxg3 39. Bf1 Sf5 40. Sb4 Bg7 41. Bg1 Bg6 42. Sc5 Be6 43. Bg2 a5 44. Sb6 a4 45. Sc5 Bg6 46. Sd4 Bg5



47. Be2 Sd6 48. Sh4 c5 49. e4+ Sf4 50. e5 cxd4 51. exd6 d3 52. Bd2 Bg7 53. d7 Bh7 mate

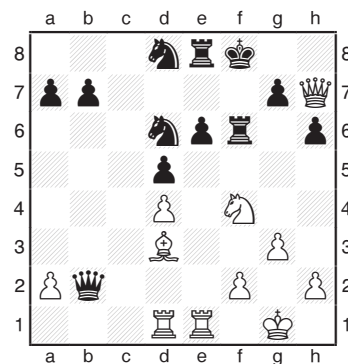
C06 French Tarrasch

Kyle Haining (2.0)
Noah Fields (1.0)

Seattle, WA Invitational (4) 2012

1. e4 e6 2. d4 d5 3. Sd2 Sf6 4. e5 Sfd7 5. c3 c5 6. Sd3 Sc6 7. Se2 cxd4 8. cxd4 f6 9. exf6 Sxf6 10. Sf3 Sd6 11. O-O Qc7 12. g3 O-O 13. Sf4 Sd7 14. Bc1 Sxf4 15. Sxf4 Qd6 16. Be1 Bae8 17. Sf1 Se4 18. Sg2 Sh8 19. Se5 Sf6 20. Sh3 Se4 21. Qh5 Sg8 22. Sxd7 Qxd7 23. Bcd1 Sd8 24. Qe5 Qe7 25.

Bc1 Sg5 26. Sg2 Sgf7 27. Qh5 Qb4 28. Bcd1 Qxb2 29. Sf1 Sd6 30. Sd3 h6 31. Qg6 Bf6 32. Qh7+ Sf8



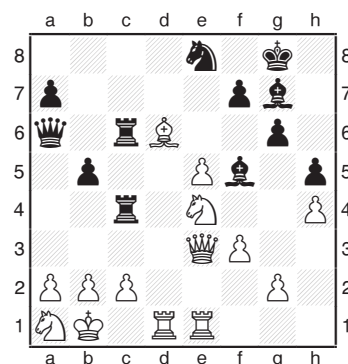
33. Sg6 S8f7 34. Be2 Qb5 35. Sd3 Qd7 36. Sh5 Bf3 37. Qxg7+ Se7 38. Sg2 Bxd3 39. Qf6+ Sf8 40. Bxd3 Se4 41. Qg7+ Se7 42. Bde3 Qc8 43. Qg4 Bg8 44. Qh4+ Sf8 45. Sd6 Sxf6 46. Qxf6 Qd8 47. Qxe6 Sg5 48. Qxh6+ Sf7 49. Qh5+ Sf6 50. Be5 Se4 51. Bxd5 Bg5 52. Bxg5 Sxg5 53. Be5 Qxd4 54. Qxg5+ Sf7 55. Qf5+ 1-0

B79 Sicilian Dragon

Alan Bishop (1.0)
Daniel He (1.5)

Seattle, WA Invitational (4) 2012

1. e4 c5 2. Sf3 Sc6 3. d4 cxd4 4. Sxd4 g6 5. Se3 Sg7 6. Sc3 Sf6 7. Sc4 O-O 8. Sb3 d6 9. f3 Sd7 10. Qd2 Qa5 11. O-O-O Bfc8 12. h4 h5 13. Bhe1 Se5 14. Sg5 Sc4 15. Sxc4 Bxc4 16. Sb3 Qa6 17. e5 Se8 18. Sxe7 Bcd8 19. Sb1 b5 20. Sxd6 Sf5 21. Sa1 B8c6 22. Se4 Qb6 23. Qe3 Qa6



24. Bd2 Sxe4 25. fxe4 Sxd6 26. exd6 Bxd6 27. Bxd6 Qxd6 28. c3 b4 29. e5 Qe6 30. cxb4 Qf5+ 0-1

2012 Northwest Grand Prix

Improved with the Addition of Idaho!

**NORTHWEST
CHESS NEWS**

Murlin Varner, Numbers Kahuna

Well, a quarter of the year is over, and 252 players have participated in one or more Grand Prix events. Only five of them have been Masters. Where are all you Master rated players hiding out? Come back, we miss you.

Many events will have happened by the time you read this that hadn't yet happened at the time I wrote this. Significant among them is/was the Idaho Open, our first Idaho Grand Prix event! Next time I make up the standings, there will be (I hope) more than the current seven Idaho names. Additionally, the Harmon Memorial, the Inland Empire Open and the Oregon Class (a 2x event), will have been completed (that last might still be in the future if the Magazine gets out before May 5th), along with regularly scheduled events at PCC, TCC and SCC. Looking towards the rest of May, events coming up include the SCC Quads (Seattle, May 12), the Portland Chess Shop Rapid (May 13), the Pierce County Open (Tacoma, May 19), the PCC Game/60 (Portland, May 19), the ICA Players' Memorial (Boise, May 19-20), the SCC Quads (Seattle, May 20) and the headliner for May, the Washington Open (SeaTac, May 26-28), with a 4x multiplier. Six more events are on the docket for June, in Portland, Seattle and Tacoma. Make your plans now for a big move up the standings this spring. You have plenty of opportunities.

The standings below indicate the top point earners through April 1st. The classes reflect 2012 peak ratings through the May USCF Ratings Supplement. As you can see, the Master class is sorely underrepresented. Maybe I should declare May to be "Bring a Master to Your Tournament" Month? (Please, go ahead and act as if I just did.)

Grand Prix Leaders

Idaho

	class	events	points
Joshi, Kairav	A	1	22.0
Leslie, Cameron	A	1	
Williams, Richard	B	1	
Weyland, Ronald	C	1	20.0
Bodie, Brad	B	1	16.0
Jaroski, Jeffrey	D	1	
Havrilla, Mark	A	1	10.0

Oregon

	class	events	points
Raptis, Nick	M	6	53.5
Sherrard, Jerry	A	5	30.0
Breckenridge, Steven	M	2	26.0
Gaikwad, Dagadu	B	5	
Levin, Scott	A	4	25.0
Saputra, Yogi	B	4	23.5
Doddapaneni, Venkat	C	4	20.0
Cigan, Jason	A	3	19.5
Falbo, Clement	C	1	18.0
Sato-Duncan, Takuma	C	3	17.5
Gay, Daniel	X	2	16.5
Esler, Brian	X	2	16.0
Sun, Maxwell	A	2	
Booth, Liam	C	3	
Sharan, Praveer	D	3	15.5

Washington

	class	events	points
Buck, Stephen	B	8	51.0
Szabo, Marcell	A	10	47.0
Bartron, Paul	X	4	44.0
Zhang, Derek	B	4	37.5
Lampman, Becca	A	5	34.5
Richards, Jerrold	D	5	33.5
Nagase, Masayuki	B	5	28.0
Nagase, Toshihiro	B	5	26.5
Stripes, James	A	1	26.0
Piper, August	C	7	25.0
Julian, John	X	1	24.0
Merwin, Steven	X	1	
Middaugh, Jon	A	1	
Ackerman, Ryan	A	1	22.0
Bulakh, Nikolay	A	1	
Fabian, Steve	B	1	
Moroney, Timothy	X	1	
Rowles, David	A	1	

Players in Database: 2012

	ID	OR	WA	Other	total
M	0	3	1	1	5
X	0	10	16	1	27
A	3	13	33	2	51
B	2	10	37	4	53
C	1	16	23	5	45
D	1	25	44	1	71
TOTAL	7	77	154	14	252

Myrtle Creek, OR

Clackamas High School, led by junior Alexandra Botez and her 5-0 score won the **Oregon HS Team Championship**, held on February 24-25 at South Umpqua High School. The team was composed of Botez, seniors Kevin Phuong (2.5) and Gavin Megson (3.0), and juniors Kevin Rhine (4.0) and Hai Dao (4.0).

Crescent Valley HS, LaSalle College Prep, and Willamette HS also had four match points, but Clackamas took the title on tiebreaks. Sixteen teams participated in the event.

Portland, OR

Becca Lampman of Vancouver, WA, won a ten-player G/15 quick-rated event held March 25 at the **Portland Chess Shop** with a score of 4-1. Sixteen players took part in a non-rated section. Galen Pyle handled the TD duties.

Courtesy of Rusty Miller

Portland, OR

Micah Smith of Vancouver, WA, and Portland FM **Nick Raptis** topped a field of 26 players at the monthly **PCC G/60** on March 31. The event was under the direction of Neil Dale.

Courtesy of Rusty Miller

Spokane, WA

The **Inland Empire Open** was held at the Spokane Chess Club on April 21-22. Thirty players participated. **John Julian** and **Cameron Leslie** (ID) tied for first-second at 4.5/5. Winning Class A were Mark Havrilla (ID) Michael Cambarreri. Kevin Korsmo and Jim McAleer scored topped Class B. Tim Kennedy and Jim Burney won Class C and D respectively. David Griffin directed the tournament.

Courtesy of Gary Dorfner

Canadian Open—July 8-13 in Victoria, BC

Seattle Chess Club Tournaments

Address
 → 2150 N 107 St, B85 ←
 Seattle WA 98133
 Infoline
 ↗ 206-417-5405 ↖
 www.seattlechess.org
 kleistcf@aol.com
 Address for Entries
 SCC Tnmt Dir
 2420 S 137 St
 Seattle WA 98168

How to Find the SCC

Look for the Northway Square East Building, just across I-5 from Northgate Mall, with large signs proclaiming "Northwest Kidney Centers" and "City University." The main entrance is reached by turning east on N. 107th Street from Meridian Ave. N. The club is on the lower level.

Attendance at 2012's events

G/15 Ch. (3/2)–6; *Insanity* (12/31-1/1)–7; *Novice* (1/21)–9, (3/18)–5; *Quads* (1/28)–14, (2/25)–19, (3/17)–23; *Tornados* (1/8)–14, (2/5)–5, (3/4)–14, (4/1)–14, (4/30)–14; **Seattle City Championship** (1/13-15)–30; **Seattle Spring Open** (3/23-25)–51; **SCC Team in Reno** (4/6-8)–6; **SCC Adult Swiss** (5/5-6)–9.

Attendance at 2011's events

Novice (4)–ave. 4; *Quads* (12)–ave. 22.75; *Tornados* (12)–ave. 19; *3-Day Wknd Tnmts* (5)–ave. 50.6; **Yaz Lecture/Book-signing** (4/10)–60, **Adult Swiss** (4/30-5/1)–10.

May 20, June 17

Format: 4-SS. **TC:** G/64. **EF:** \$18 (+\$7 fee for non-SCC). **Prizes:** 1st 35%, 2nd 27%, Bottom Half 1st 22%, 2nd 16% (\$10 from each EF goes to prize fund). **Reg:** 10:30-11:15 a.m. **Rds:** 11:30-1:50-4:10-6:30. **Misc:** USCF, WCF/OCF memb. req'd, OSA, NS, NC.

Sunday Tornado

June 9, July 7

Format: 3-RR, 4-plyr sections by rating. **TC:** G/120. **EF:** \$9 (+\$7 fee for non-SCC). **Prizes:** Free entry for future quad. **Reg:** 9:00-9:45 a.m. **Rds:** 10:00-2:15-ASAP. **Misc:** USCF, WCF/OCF memb. req'd, OSA, NS, NC.

Saturday Quads

July 21

Format: 4-SS. Open to U1200 and unrated. **TC:** G/75. **EF:** \$11 by 7/18, \$16 at site. (-\$2 for SCC mem., -\$1 for mem. of other NW dues-req'd CCs). **Prizes:** Memb (SCC, WCF, USCF). **Reg:** 9-9:45 a.m. **Rds:** 10-12:45-3:30-6. **Byes:** 1 (Rd 3/4—commit at reg.). **Misc:** USCF memb. req'd. NS, NC.

SCC Novice

Darby Monahan Memorial Grand Prix

Leaders 10/1-5/9

August Piper*	209.5	Brian Raffel	118.0
Fred Kleist**	193.9	Alan Walk	116.0
Jothi Ramesh*	185.1	Boas Lee	112.8
Carol Kleist**	171.0	Michael VanScyoc	109.0
Kerry VanVeen**	157.0	Catherine Smith*	96.0
David Kelly*	139.0	Joe Davis	95.0
Marcell Szabo	125.0	Viktors Pupols*	89.0

Asterisks indicate number of Reno appearances. The GP. continues through 5/31/12. *Two prizes will be awarded*—free entries to the 2012 Canadian Open or 2012 U.S. Open.

Emerald City Open

June 22-24

A two-section, five-round Swiss with a time control of 40/2 & SD/1 (Rd 1 of 2-day schedule – G/64 or G/60;d5). The prize fund of \$800 is based on forty-four entries.

a Northwest Grand Prix event

Open		Reserve (U1700)	
First	\$200	First	\$140
Second	\$130	Second	\$90
U1950	\$95	U1450	\$65
		Unr	\$20

Upset (rds 1-4) \$15

Entry Fees: \$33 if rec'd by 6/20, \$42 at site. SCC members—subtract \$9. Members of other dues-required CCs in BC, ID, OR, and WA—subtract \$4. Unr—free with purchase of 1-year USCF and WCF. Add \$1 to any EF for 2-day schedule.

Registration: Fri. 7-7:45 p.m., Sat. 9-9:45 a.m.

Rounds: Fri. 8, Sat. (10 @ G/64)-12:30-6:45, Sun. 11-5.

Byes: 2 (Sunday rounds, commit at registration).

Miscellaneous: USCF & WCF membership req'd. No smoking. No computers.

Upcoming Events

♣ May 19

Pierce County Open ♣

Site: Tacoma Chess Club, 409 Puyallup Ave E, 2nd floor, Room 11 in the DTI Soccer Store Building across from Alfred's Café (two blocks downhill from Tacoma Dome). **Format:** 4SS. **TC:** G/60. **EF:** \$20. **Prize Fund:** \$\$135 (b/10). **Prizes:** Top Half 50-25, Bottom Half 35-25. **Reg:** 9:00-9:45 a.m. **Rds:** 10-12:30-3-5:30 or ASAP. **Byes:** Avail. **Misc:** ICA/OCF/WCF and USCF memb req'd. NS. NC. NW. **Entries/Info:** Gary J. Dorfner 8423 E 'B' St, Tacoma WA 98445; 253-535-2536; 253-306-7137 (club); ggarychess@aol.com.

♣ May 19-20

ICA Players Memorial ♣

Site: Boise State University (BSU) Student Union Bldg, 1910 University Dr, Boise, ID. **Format:** 5SS, 2 sec.—Open and Reserve (U1400). . **TC:** Rd 1–G/90, Rds 2–5–G/120. **EF:** \$30 by 5/14 (U18 & 60+ \$25; \$10 for BSU Club Members, Family Rate of \$60). \$5 more for all if rec'd after 5/14. E-mail entries OK. **Prize Fund:** \$600 (b/30 non-BSU). **Prizes:** *Open* \$200-100-75, *Reserve* 100-75-50. **Reg & check in:** 8-8:30 a.m. **Rds:** 9-1-6, 9-2. **Byes:** One ½-pt. bye in Rds 1-4 only, commit by end Rd 2. **Misc:** USCF mem. req. NC, NS, W. **Ent/Info:** www.idahocheess-association.org; Jeff Roland, 1514 S Longmont Ave, Boise ID 83706-3732; jroland@cableone.net.

♣ May 26-28

Washington Open ♣

See display ads on pages 7 and 13.

♣ June 2

TCC Economy Mini-Swiss ♣

Site: Tacoma Chess Club, 409 Puyallup Ave E, 2nd floor, Room 11 in the DTI Soccer Store Building across from Alfred's Café (two blocks downhill from Tacoma Dome). **Format:** 4SS. **TC:** G/60. **EF:** \$10. **Reg:** 9:00-9:45 a.m. **Rds:** 10-12:30-3-5:30 or ASAP. **Byes:** Avail. **Misc:** ICA/OCF/WCF and USCF memb req'd. NS. NC. NW. **Entries/Info:** Gary J. Dorfner 8423 E 'B' St, Tacoma WA 98445; 253-535-2536; 253-306-7137 (club); ggarychess@aol.com.

June 10

Unrated G/30

Site: Portal Games, 1224 SW Broadway, Portland OR 97204. **Format:** 4SS. **TC:** G/30. **EF:** \$5. **Reg:** 2:00-2:50 p.m.

June 16-17

Newport Open

Site: Central Lincoln PUD, 219 N Coast Highway (south of Walmart), Newport OR. **Format:** 5-SS. **TC:** Rds 1-2 G/90; Rds 3-5 40/90, SD/30. **EF:** \$35 if rec'd by 6/15. \$40 at site. **Prize Fund:** \$1000 (b/35). **Prizes:** \$150-90, U2000 90-60, U1800 90-60, U1600 90-60, U1400 90-60, U1200 60, U1000 60, UNR 40. **Reg:** 10:15-10:45 a.m. **Rds:** 11-2:30-6, 9:30-2. **Misc:** NC. NS. **Ent/Info:** Bill Barrese 541-563-7033; blbrs2020@yahoo.com.

♣ June 23

Qualchan Quads ♣

Site: Spokane Valley Library, E 12004 E Main, Spokane WA. **EF:** \$16. **Format:** 3RR. **TC:** G/120. **Reg:** 8:30-9:45 a.m. **Misc:** USCF req'd. NC. **Ent/Info:** Dave Griffin, PO Box 631, Spokane Valley WA 99037, 509-994-9739, dbgrffin@hotmail.com, www.spokanechessclub.org.

♣ June 30

Evergreen Empire Open ♣

Site: Tacoma Chess Club, 409 Puyallup Ave E, 2nd floor, Room 11 in the DTI Soccer Store Building across from Alfred's Café (two blocks downhill from Tacoma Dome). **Format:** 4SS. **TC:** G/60. **EF:** \$20. **Prize Fund:** \$\$135 (b/10). **Prizes:** Top Half 50-25, Bottom Half 35-25. **Reg:** 9:00-9:45 a.m. **Rds:** 10-12:30-3-5:30 or ASAP. **Byes:** Avail. **Misc:** ICA/OCF/WCF and USCF memb req'd. NS. NC. NW. **Entries/Info:** Gary J. Dorfner 8423 E 'B' St, Tacoma WA 98445; 253-535-2536; 253-306-7137 (club); ggarychess@aol.com.

July 7-8

Oregon Senior Championship

See display ad on page 21.

July 8-13

Canadian Open

See display ad on page 13.

♣ July 14

Northwest Open ♣

Site: Tacoma Chess Club, 409 Puyallup Ave E, 2nd floor, Room 11 in the DTI Soccer Store Building across from Alfred's Café (two blocks downhill from Tacoma Dome). **Format:** 4SS. **TC:** G/60. **EF:** \$20. **Prize Fund:** \$\$135 (b/10). **Prizes:** Top Half 50-25, Bottom Half 35-25. **Reg:** 9:00-9:45 a.m. **Rds:** 10-12:30-3-5:30 or ASAP. **Byes:** Avail. **Misc:** ICA/OCF/WCF and USCF memb req'd. NS. NC. NW. **Entries/Info:** Gary J. Dorfner 8423 E 'B' St, Tacoma WA 98445; 253-535-2536; 253-306-7137 (club); ggarychess@aol.com.

♣ July 14-15

Portland Summer Open ♣

Site: Portland Chess Club, 8205 SW 24 Ave, Portland OR. **Format:** 5SS, 2 sec.—Open & U1800. **TC:** 40/90, SD/30. **EF:** \$35, \$10 discount for PCC Members. No advance entries. **Prize Fund:** \$650 (b/40) **Prizes:** Open \$150-100, U2000 75; Reserve \$100-75 U1600 50, U1400 50, U1200/UNR 50. **Reg:** begins at 9:00. **Misc:** ICA/OCF/WCF and USCF memb req'd, OSA. **Info:** portlandchessclub@gmail.com, 503-246-2978, www.pdxchess.com.

♣ July 14-15

Spokane Falls Open ♣

Site: Gonzaga University (Schoenberg Center) Rm. 201, N 800 Pearl St, Spokane WA. **Format:** 5SS. **TC:** G/120. **EF:** \$18 if rec'd by 7/29 (u18 \$15), \$25 at site. Unrated in first event—FREE. Phone entries accepted. **Prize Fund:** \$500 (b/25, 4/prz gp). **Prizes:** \$120-80, U1800 60-30, U1600 60-30, U1400 60-30, Biggest Upset 30 (no prov. rtgs). **Reg:** 8:30-9:30 a.m. **Rds:** 10-2:30-7; 9-1:30 or ASAP. **Byes:** One ½-pt. bye allowed, if req'd before preceeding rd; Sunday byes must be req'd before end of Rd 3. **Misc:** USCF memb. req'd. NC. Spokane City Championship match [G/120 + G/10 (if needed)] held concurrently. John Julian vs. ????. **Entries:** David B Griffin, PO Box 631, Spokane Valley WA 99037. **Info:** 509-994-9739.

August 4-12, 7-12, or 9-12

U.S. Open

See display ad on page 10.