



\$3.95

July 2012

Four National Champions



Northwest Chess

July 2012, Volume 66,7 Issue 774

ISSN Publication 0146-6941

Published monthly by the Northwest Chess Board.
Office of record: 3310 25th Ave S, Seattle, WA 98144

POSTMASTER: Send address changes to:

Northwest Chess, PO Box 84746,
Seattle WA 98124-6046.

Periodicals Postage Paid at Seattle, WA

USPS periodicals postage permit number (0422-390)

NWC Staff

Editor: Fred Kleist,
kleistcf@aol.com

Publisher: Duane Polich,
publisher@nwchess.com

Business Manager: Eric Holcomb,
eric@holcomb.com

Board Representatives

David Yoshinaga, Josh Sinanan,
Dale Wentz, Dan Mathews, Jeffrey Roland

Entire contents copyright 2012 by Northwest Chess. All rights reserved. Published opinions are those of the contributors and do not necessarily reflect the views of the editor or the Northwest Chess Board. Northwest Chess is the official publication of the chess governing bodies of the states of Washington, Oregon, and Idaho.

Advertising Rates

Display ads run \$150 for a full page, \$100 for tournament ads; \$85 for a half-page, \$60 for tournament ads; \$50 for a quarter page, \$30 for an eighth of a page, and \$20 for a business card-size ad. Additional charges apply if the staff must do layout work. A 15% discount is available for two or more consecutive ads of the same size.

Event Announcement Rates

Each appearance in the *Future Events* listings costs \$20. Please arrange payment for ads and Grand Prix fees with the Business Manager.

Advertising & Copy Deadline

Ads and submissions must be received by the 10th of the month for the items to appear in the next issue (e.g., **July 10 for the August issue; August 10 for the September issue**).

Submit all ads, donations, payments, changes of address, & subscriptions to:

Business Manager, Northwest Chess

Eric Holcomb

1900 NE Third St, Ste 106-361

Bend OR 97701-3889

Eric@Holcomb.com

www.nwchess.com

Submissions

Submissions of games, stories, photos, art, and other **original** chess-related content are encouraged! Multiple submissions are acceptable; please indicate if material is non-exclusive. All submissions are subject to editing or revision. Send via U.S. mail to:

Fred Kleist, NWC Editor

2420 S 137 St

Seattle WA 98168

or via e-mail to:

kleistcf@aol.com

Cover: Four National Champions (left to right): Kyle Haining (age 12), U.S. Elementary Blitz K-6 Champion & U.S. Elementary Bughouse Champion, Bryce Tiglon (age 11), U.S. Elementary K-5 Champion, Marcell Szabo (age 11), U.S. Elementary K-5 Champion, Roland Feng (age 11), 2012 US Elementary K-6 Champion.

photo by Breck Haining

Contents

Page 3:	Washington Open	various
Page 11:	Idaho Chess News	Jeffrey Roland
Page 15:	Northwest News	various
Page 16:	WA Invitational Games	
Page 21:	OCF Board Mtg./WCF Memb. Mtg.	D Wentz/G Dorfner
Page 22:	Northwest Grand Prix	Murlin Varner
Back Cover:	Upcoming Events	

Northwest Chess

Business Manager

Eric Holcomb

1900 NE Third St, Ste 106-361

Bend OR 97701-3889

Eric@Holcomb.com

Editor

Frank Niro

chesssafari@yahoo.com

www.nwchess.com

Northwest Chess Knights

Please donate today to help Northwest Chess!

Patrons, 2010-2012 (Bold indicates recent donations)

Keith Yamanaka, Kate Tokareva, Gerard Van Deene, Michael Wang, Alan Walker,
Dale Wentz, Russell Miller, Ralph Dubisch, Frank Niro, Michael and Jeff Omori,

August Piper, Robert Brewster, Steve Buck, Jeff Pennig,
Murlin Varner, Inner Sound, Gene Milener, Dennis Jenquin.

Washington Chess Federation, Oregon Chess Federation

Northwest Grand Prix Administrator

Murlin Varner

13329 208 Ave NE

Woodinville, WA 98072

MEVjr54@yahoo.com 425-882-0102

IM Georgi Orlov wins Washington Open

Yogi Saputra of Oregon Tops Premier

Logan MacGregor, Andrew Porish Share Reserve Honors

Howard Hwa, Sean Miller Tie atop Booster

The 61st Annual Washington Open was held at the Holiday Inn in Seatac. It was last held here in 1998, when Gary Dorfner was the Chief TD. The 2012 event drew 144 players, 35 in the Open, 36 in the Premier, 35 in the Reserve, and 38 in the Booster Section. Chief TD Fred Kleist & Assistant TD Gary Dorfner did a good job of keeping things running smoothly as did the Organizer, Tournament Coordinator Dan Mathews.

Open Section			
1st	Georgi Orlov	5.0	\$600.00
2nd-3rd /1st U2150	Nick Raptis Josh Sinanan Samir Sen	4.5	\$356.67
4th-5th	David Bragg Curt Collyer David Golub David Roper	4.0	\$96.25
2nd-3rd U2150	Megan Lee Casey Xing	4.0	\$172.50
4th U2150	Paul Bartron	3.5	\$85.00

Premier Section			
1st	Yogi Saputra	5.5	\$260.00
2nd	James Colasurdo	5.0	\$215.00
3rd-4th	Ryan Ackerman Sarah May Samuel He	4.5	\$180.00
5th	Samuel He	4.0	\$130.00
1st-2nd U1850		4.0	\$150.00

3rd-4th U1850	Paul Arond Mayhul Arora Quentin Chi Frank Fagundes Faris Gulamali Michael Hosford James Wang	3.5	\$39.00
---------------	--	-----	---------

Reserve Section			
1st-2nd	Logan MacGregor Andrew Porish	5.0	\$192.50
3rd-4th	Derek Zhang Carl Dutton	4.5	\$140.00
5th	Murlin Varner	4.0	\$85.00
1st-2nd U1550	Naomi Bashkansky Davey Jones	4.0	\$117.50
3rd-4th U1550	Jothi Ramesh Ben Seran Diallo Wilson Brendan Zhang	3.5	\$42.50

Booster Section			
1st-2nd	Howard Hwa Sean Miller	5.0	\$150.00
3rd-4th	Aditya Kannan		

1st-2nd U1100	Jiangyu Li Anthony He Neil Doknjas	4.5	\$97.50
1st Unrated	Dylan Xu Suha Can	4.0	\$78.33
		3.5	\$100.00

Side Events

Blitz			
1st	Dereque Kelley	8.0	\$70.00
2nd/1st U2000	Ignacio Perez Yogi Saputra	7.5	\$35.00
1st U1700	Marc Huang	4.0	\$20.00
1st U1400	Jothi Ramesh	3.0	\$20.00
1st U1200/UNR	Ryan Cho	2.0	\$20.00

G10 Tournament

1st-2nd Top Half	Marc Naus Micah Smith	4.0	\$32.00
1st Bottom Half	Yogi Saputra		\$40.00
2nd Bottom Half	Anthony Lamb Toshihiro Nagase David Sutton	1.0	\$8.00

WAO Scholastic			
K-3 U800	1st Poppy Honeybone	5.0	
	2nd Andrew Nguyen	4.0	
	3rd Hannah Bazar	3.0	
K-3 Open	1st Ananta Ranganathan	4.5	
	2nd Maggie Yu	3.5	
	3rd Ruthvik Ayyagari	3.5	
4-6 Open	1st Blaine Mitchell	4.5	
	2nd Howard Hare	4.0	
	3rd Konstantin Velichko	4.0	
7-12 Open	1st Eugene Chin	5.0	
	2nd Brian Liou	4.0	
	3rd Aravind Sripada	3.0	
Teams	1st Open Window	14.0	
	2nd Seattle Country Day	11.0	

Only three players showed up to play in the Novice Section. It was run as a quad. Winners were: 1st—Ben Jee, 2nd—Karen Schmidt, and 3rd—Claire Smith. Each received a trophy. TD for the side events, except the Scholastic, was Gary Dorfner. The TD for the 62-player WAO Scholastic was David Hendricks.—*Gary Dorfner*

A Shot for Clear First

by IM Georgi Orlov

I played in the Keres Memorial in Vancouver, B.C., a week before and for the first time in over fifteen years did not finish in the top five. I think I played well overall, but in a critical fifth round game against a German IM, I lost my

cool in time pressure and ruined what seemed like a much better position.

Going into the fifth round of the Washington Open, I had won three and drawn with FM Nick Raptis in a mad time-scramble. The first game against Roland Feng was eventful. I was better earlier in the game, but played ‘an obvious move’ and ended up in a position where Roland had solid compensation for the Exchange. Thankfully, he was unable to develop a serious initiative and I won. In Round Three, Nathan Lee maintained an even game for many moves, but I was able to slowly outplay him.

Curt Collyer’s score after four games was the same, 3.5 points, and a winner of the game would have a shot at clear first place.

E10 Black Knights Tango

FM Curt Collyer (2277)

IM Georgi Orlov (2542)

Seatac, Washington Open (5) 2012

Annotations by IM Georgi Orlov

1.d4 ♘f6 2.c4 ♘c6

I thought a little bit about 2...e6 or 2...g6, but then my hand just grabbed the Queen’s Knight and moved it up.

3.♘f3 e6 4.a3 d6 5.♙g5 h6 6.♙h4 g5 7.♙g3 ♙g7 8.e3 ♘h5

The game moves into the King’s Indian-like set-up. Black’s overextended structure is (usually) compensated by the strong dark Bishop.

9.♘fd2

Another reasonable option is 9.♘c3. Perhaps White wanted to clarify the ♘h5-♙g3 stand-off quickly and then decide what to do. After 9...O-O 10.♙d3 f5 11.d5 ♘xg3 12.hxg3 ♘e7, we reach an interesting and dynamic position. Black’s dark Bishop is unopposed and

should compensate for the extended kingside pawn structure. I thought about 9...♔d7 as well. Black can play ...♖e7 and keep the option of castling long, e.g., 10.♔d3 a6 11.♗d2 ♗xg3 12.hxg3 ♖e7. Objectively, Black seems okay.

Further extending the pawn to f4 seems risky, so Black begins to prepare ...b7-b5, to meet the opposing King's arrival on the queenside.

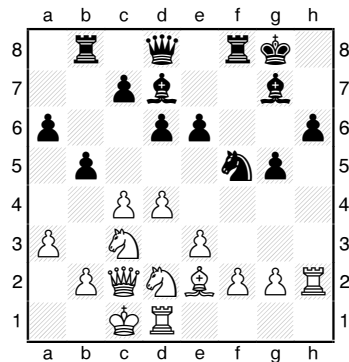
13.g4 ♗e7 14.gxf5

14.♖b3 c5 15.dxc5 dxc5 16.O-O-O ♖c7 17.gxf5 exf5 18.♔f3±

14...♗xf5 15.♖c2 ♔d7 16.♖h2

16.O-O-O ♖b8 17.♗de4 ♖e7

16...♖b8 17.O-O-O b5



18.♖dh1

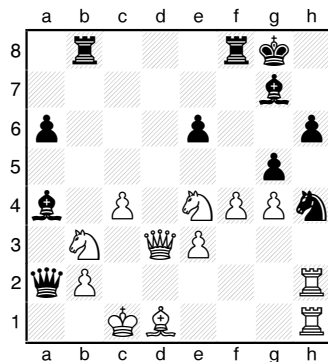
In this kind of position, White must play more aggressively, since, given time, Black will hit with ...c7-c5 and the open dark diagonal will give him a good attack on the queenside. Instead, 18.g4!? with the idea of ♖e4 looks more promising, e.g., 18...♗h4 19.♖f1 (19.♖e4 bxc4) 19...♖e7 20.♖e4 c6 21.♔d3 ♔h8 22.f4 and now, an interesting Exchange sac—

22...bxc4 23.♖xh4! gxh4 24.♗xc4 d5 25.♖g6+ ♖g7 26.♗e5 ♖xg6 27.♗xg6 ♖f7 28.♗xh8 ♗xh8 29.♖h1, when White has good compensation for the Exchange.

18...c5 19.dxc5 dxc5 20.g4 ♗h4 21.f4

21.♖e4 meets 21...b4 22.axb4 cxb4 23.♗d1 b3 24.♔d3 ♖f7 and White's efforts on the kingside have stalled, while ...♖a5 looms.

21...b4 22.axb4 cxb4 23.♗ce4 b3 24.♖d3 ♖a5 25.♗xb3 ♖a2 26.♗d1 ♔a4



27.♗c3?

White was in time pressure and made a blunder. Instead, 27.♗ec5 was forced, even though Black seems better there as well. After 27...♖fd8 28.♖e4 ♖xd1+ 29.♖xd1 ♔xb3 30.♗xb3 ♖xb3 31.♖xe6+ ♗h8, White has too many points to protect, which never works well. 27...♔xc3 28.bxc3 ♖a3+ 29.♖b2 ♔xb3 30.♖e4

Curt mentioned he overlooked 30.♖xh4 ♖xb2+ 31.♗xb2 ♔xc4+, when playing ♗c3.

30...♔xd1 0-1

just 20 minutes left on the clock decided to avoid risk and offered a draw. It was great to see many young players at the Washington Open (including many of my own students). Hopefully, the growth of scholastic chess in our State will continue to bring more new talented players into the game.

Dreaming of a Double Queen Sacrifice

C00 King's Indian Attack

Samuel He (1972)

Ryan Ackerman (1868)

Seatac, Washington Open (4) 2012

Annotations by Ryan Ackerman

1.e4 e6 2.d3 d5 3.♖e2 ♔e7 4.♗f3 ♗f6 5.g3 c5 6.♔g2 ♗c6 7.O-O b6 8.e5 ♗d7 9.c4 d4 10.h4?!

10.♗bd2 ♔b7 11.♗e4 ♗dx5 12.♗xe5 ♗xe5 13.♗f6+ ♔xf6 14.♔xb7 ♖b8 15.♔e4 ♖c8 16.♖h5 g6 17.♖h6 ♗g4 18.♖f4 h5

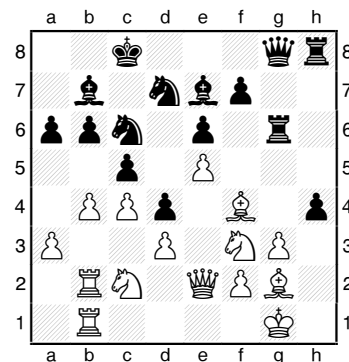
10...h6!? 11.♔f4 ♔b7 12.h5 ♖c7 13.♖e1 O-O-O 14.♗a3 a6 15.♗c2 ♖dg8

15...g5!? 16.hxg6 fxg6

16.a3? g5 17.hxg6 ♖xg6 18.b4 h5 19.♖ab1 h4 20.♖b2 ♖d8

20...♖hg8!? was worth consideration.

21.♖eb1 ♖g8±



22.♗a1??

Samuel played a strange retreating move with his Knight. This move drops the evaluation from -0.5 to -2.00 according to HOUDINI. Apparently, White wasn't maximizing his horse power.

22.bxc5 was much better, e.g., 22...hxg3 23.fxg3 ♔xc5 24.♖f2 ♖h7 25.♗h4 ♖gg8 26.♖f3 ♗b8±.

Orlov Chess Academy
IM Georgi Orlov
2540 USCF

Offers time-tested program,
challenge and quick progress!

Chess Camps, Tournaments
Chess Classes, Private Lessons

chess64@comcast.net
www.chessplayer.com
(206)-387-1253

The last round game against Josh Sinanan ended in a draw. I played it safe and was not able to come up with anything interesting in a well-known balanced position. I was leading by a point and with

22...h3+ 23.♔h1 h2+! 24.♕f1

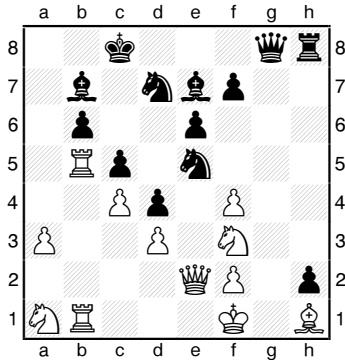
24.♖xh2 fails due to 24...♖h7 25.f3 ♕g5 26.♕f1 ♕xf4 27.gxf4 ♖h3+ 28.♕e1 ♖g1+ 29.♖f1 ♖g3+ 30.♖f2 ♖hx1 31.♖xg3 ♖xg3. Also bad is 24.♕g2 ♖cxe5 25.♕xe5 ♖xe5 26.♖xe5 ♖g5.

24...♖g4!

I spent 30 minutes before playing this move. No less than 24 moves into the game and yet only two pawns have been traded! A chaotic position indeed.

Another possibility is 24...f6! 25.bxc5 ♕xc5 26.exf6 e5 27.♕d2 ♖d8 28.♖c2 ♖xf6+.

25.b5 axb5 26.♖xb5 ♖xf4! 27.gxf4 ♖cxe5!



27...♖a7 works as well, but this is way more cool-looking.

28.♕e1

28.fxe5 leads to a double Queen sacrifice for a mate in three moves. Every chess player dreams of the day he will have the chance to sacrifice his Queen for the ultimate reward; with 28...♖g1+, I sacrifice TWO Queens for the checkmate . . . like a boss.

28...♕xf3 29.♖f1 ♖g1 30.♕d2 ♕xh1 31.fxe5 ♖xf1 32.♖xf1 ♕c6

33.♖bb1 h1=♖ 34.♖xh1 ♖xh1 35.♖xh1 ♕xh1 36.f4 ♕f3 37.a4 ♕h4 38.♖b3 ♕g3 39.a5 ♕xf4+ 40.♕e1 ♕b7 41.axb6 ♕xb6 42.♕f1 ♕d1 43.♖a1 ♕c1 44.♕e1 ♕a4 45.♖b3 ♕xb3 0-1

Games of Prize Winners – Open Section

A08 King's Indian Attack

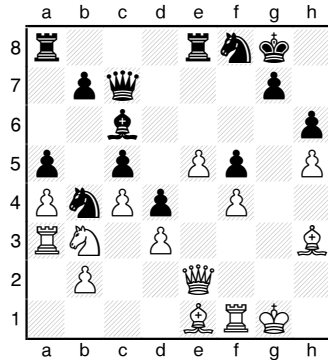
Daniel He (1950)

NM Joshua Sinanan (2246)

Seatac, Washington Open (1) 2012

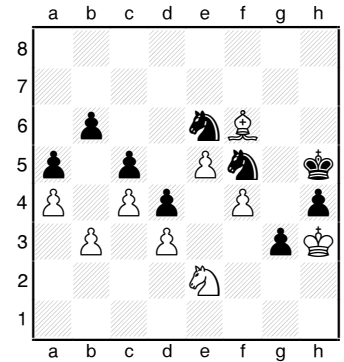
Annotations by Murlin Varner

1.e4 c5 2.♖f3 e6 3.d3 d5 4.♖bd2 ♖c6 5.g3 ♕d6 6.♕g2 ♖ge7 7.O-O O-O 8.a4 ♕c7 9.c3 d4 10.♖e2 e5 11.c4 ♖g6 12.♖b3 ♕d6 13.♖g5 ♕e7 14.♖h5 ♕xg5 15.♕xg5 ♖b6 16.♖a3 ♖b4 17.♖e2 a5 18.h4 h6 19.♕c1 ♖e8 20.h5 ♖f8 21.f4 exf4 22.gxf4 f5 23.♖d2 ♖f6 24.e5 ♖f7 25.♖b3 ♖c7 26.♕d2 ♕d7 27.♕e1 ♕c6 28.♕h3



28...♕d7 29.♕h4 b6 30.♖c1 ♕e6 31.♕h2 ♖f7 32.♖g1 ♕h7 33.♖a1 ♕d7 34.b3 ♖e6 35.♕g3 ♕c6 36.♖a2 ♖f8 37.♕g2 ♕xg2 38.♖xg2 ♖b7 39.♖ag1 ♖g8 40.♖c1 ♖af8 41.♖f2 g6 42.hxg6+ ♖xg6 43.♕h4 ♖fg8 44.♖xg6 ♖xg6 45.♕f6 ♕h7 46.♖e2 ♖f7 47.♖f3 ♖c2 48.♖e2 ♖e3 49.♕h4 ♖f8 50.♕g3 ♕g8 51.♕g1 ♖g6 52.♕f2 ♖g4 53.♖xg4+? fxf4 54.♖xg4 55.♕h4

♖e6 56.♕f6 ♕f7 57.♕g3 h5 58.♕h4 ♕g6 59.♕g3 ♖f5+ 60.♕g2 h4 61.♕h2 ♕h5 62.♕g2 ♖e3+ 63.♕h2 g3+ 64. ♕h3 ♖f5



65.♕h8?

65.♕xh4 ♖xh4 66.♖xg3+ ♕g6 67.♕g4=

65...g2 0-1

A85 Dutch

Casey Xing (2048)

FM Curt Collyer (2277)

Seatac, Washington Open (1) 2012

1.d4 e6 2.c4 f5 3.♖c3 ♖f6 4.♕g5 ♕b4 5.♖c2 h6 6.♕xf6 ♖xf6 7.e3 O-O 8.g3 d6 9.O-O-O c6 10.♕g2 ♖d7 11.♖ge2 d5 12.cxd5 cxd5 13.♖b3 ♕d6 14.♕b1 ♖b6 15.♖b5 ♕b8 16.♖f4 ♕d7 17.♖d3 ♕c6 18.♖c1 ♖c4 19.♖hd1 ♖e7 20.♕f1 ♕xb5 21.♖xb5 a6 22.♖b3 ♕d6 23.♖f4 ♕xf4 24.exf4 b5 25.♕xc4 bxc4 26.♖e3 ♖ab8 27.♖c3 ♖b6 28.♕a1 ♖fb8 29.♖b1 ♖b7 30.♖d2 ♕h8 31.h4 ♖b4 32.♖a3 ♖b6 33.♖c3 ♖b5 34.♖c2 ♖b6 35.♖c3 ♖b8 36.♖c2 ♖c6 37.♖d2 ♖8b5 38.♖c3 ♖d6 39.♖e3 ♕h7 40.♖c3 ♖c6 41.♖d2 ♖b8 42.♖c2 ♕h8 43.♖d2 ♖b6 44.♖c3 a5 45.f3 ♖b5 46.♖c2 ♖b7 47.♖d2 ♖a4 48.♖c3 ♖b4 49.♖c2 ♖b8 50.♖d1 ♖b6 51.♖d2 ♖b4 52.♖c1 ♖a8 53.♖c2 ♖b5 Draw

B40 Sicilian Maroczy Bind

Shiva Chakkoli (2058)

FM David Roper (2295)

Seatac, Washington Open (1) 2012

1.e4 c5 2.♖f3 e6 3.c4 a6 4.♖c3 ♖c7 5.♕e2 ♖f6 6.h3 d6 7.O-O b6 8.d4 cxd4 9.♖xd4 ♕b7 10.♕d3 ♖bd7 11.♖a4 ♕e7 12.♕e3 O-O

Chess DVDs

Now Available through Elliott's Chess School!

LEARN CHESS INDEPTH WITH NATIONAL MASTER ELLIOTT NEFF

Chess4Life also offers:

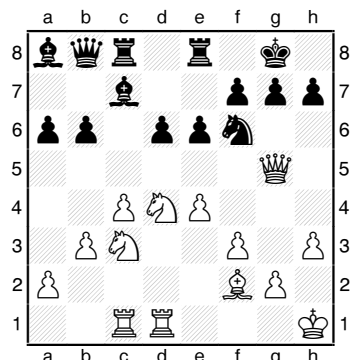
- Chess Camps
- Tournaments
- Afterschool Program
- Private Lessons
- Chess Classes
- Chess4Life Center

Chess4Life

Teaching life skills through chess

For more info, call 425-283-0549 | www.chess4life.com

13. ♖c2 ♜ac8 14. ♜ac1 ♘c5 15. b3 ♜fd8 16. f3 ♘xd3 17. ♖xd3 ♘d7 18. ♘de2 ♖b8 19. ♙f2 ♙c6 20. ♘d4 ♙a8 21. ♖e3 ♜e8 22. ♜fd1 ♙d8 23. ♘h1 ♙c7 24. ♖g5 ♘f6



25. ♘d5 ♙d8 26. ♘xf6+ ♙xf6 27. ♖g3 b5 28. ♘e2 ♙e5 29. f4 ♙f6 30. cxb5 axb5 31. ♖d3 ♖b7 32. ♘d4 ♜xc1 33. ♜xc1 ♙xd4 34. ♙xd4 ♖xe4 35. ♖d2 h6 36. ♙a1 f6 37. ♖f2 ♖d3 38. ♘h2 ♙d5 39. ♜c7 ♖g6 40. ♜a7 ♜c8 41. ♖g3 ♖xg3+ 42. ♘xg3 ♜c2 43. a4 ♜xg2+ 44. ♘h4 bxa4 45. bxa4 ♙f3 0-1

C10 French Rubinstein

FM David Bragg (2200)
Dan Mathews (1775)

Seatac, Washington Open (1) 2012

1. d4 d5 2. ♘c3 e6 3. e4 dxe4 4. ♘xe4 ♘f6 5. ♙d3 ♘xe4 6. ♙xe4 c6 7. ♘f3 ♙e7 8. O-O f5 9. ♙d3 ♙f6 10. ♜e1 O-O 11. ♙f4 ♙xd4 12. ♘xd4 ♖xd4 13. ♙e5 ♖g4 14. ♖xg4 ffg4 15. ♙e2 h5 16. h3 ♘d7 17. ♙d6 ♜e8 18. hxg4 hxg4 19. ♙xg4 ♘f6 20. ♙f3 ♙d7 21. ♜ad1 ♙c8 22. g4 e5 23. g5 ♙g4 24. ♙xg4 ♘xg4 25. f3 1-0

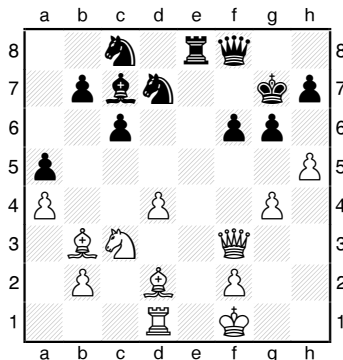
D18 QGD Slav

NM Joshua Sinanan (2246)
Megan Lee (2106)

Seatac, Washington Open (2) 2012

1. d4 d5 2. c4 c6 3. ♘c3 ♘f6 4. ♘f3 dxc4 5. a4 ♙f5 6. e3 e6 7. ♙xc4 ♙b4 8. O-O ♘bd7 9. ♖e2 ♙g6 10. ♜d1 a5 11. ♘e1 O-O 12. ♘d3 ♘b6 13. ♙b3 ♖e7 14. ♘a2 ♙d6 15. ♙d2 ♜fd8 16. ♙e1 ♘fd7 17. ♜ac1 e5 18. dxe5 ♘xe5 19. ♘f4 ♙f5 20. h3 ♙d7 21. ♘c3 ♘g6 22. ♘h5 ♙e6 23. ♙c2 ♙c4 24. ♖g4 ♙e6 25. ♖e2 ♙c4 26. ♖f3 f6 27. ♜d4 ♙f7 28. ♘g3 ♘e5 29. ♖e2 ♙g6 30. ♘f5 ♙xf5 31. ♙xf5 ♙b4 32. ♜cd1 g6

33. ♙c2 ♘g7 34. ♙b3 ♜xd4 35. exd4 ♘ed7 36. ♖f3 ♜e8 37. ♙d2 ♙d6 38. ♘f1 ♖f8 39. g4 ♘c8 40. h4 ♙c7 41. h5



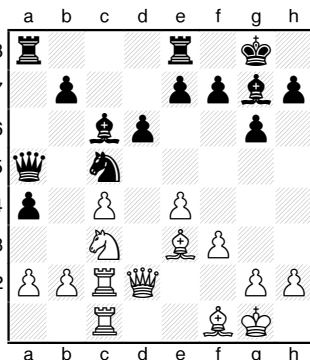
41...h6? 42. hxg6 ♘d6 43. ♖h3 ♖h8 44. g5 f5 45. gxh6+ ♘xg6 46. ♙f4 1-0

B38 Sicilian Maroczy Bind

FM David Roper (2295)
Rudy Vrana (2107)

Seatac, Washington Open (2) 2012

1. e4 c5 2. ♘f3 ♘c6 3. d4 cxd4 4. ♘xd4 g6 5. c4 ♙g7 6. ♙e3 ♘f6 7. ♘c3 d6 8. ♙e2 ♙d7 9. ♜c1 O-O 10. O-O ♘xd4 11. ♙xd4 ♙c6 12. f3 ♘d7 13. ♙e3 a5 14. ♖d2 a4 15. ♜fd1 ♘c5 16. ♙f1 ♜e8 17. ♜c2 ♖a5 18. ♜dc1



18... ♘a6 19. ♖f2 ♘b4 20. ♜d2 a3 21. ♙d4 ♙xd4 22. ♖xd4 axb2 23. ♜xb2 ♖c5 24. ♖xc5 dxc5 25. ♘d5 ♜xa2 26. ♜xa2 ♘xa2 27. ♜c2 ♘b4 Draw

B13 Caro-Kann Exchange

Casey Xing (2048)
Igor Ummel (2184)

Seatac, Washington Open (2) 2012

1. d4 c5 2. e3 cxd4 3. exd4 d5 4. ♙d3 ♘c6 5. c3 ♖c7 6. ♘e2 ♙g4 7. O-O e6 8. h3 ♙h5 9. ♙e3 ♙d6 10. f4 ♘ge7 11. ♖c2 ♙g6 12. ♙xg6 hxg6 13. ♘d2 ♘f5 14. ♖d3 O-O-O 15. ♘f3 ♘b8 16. ♙d2 f6 17. b4 ♜c8 18. a4 ♘d8 19. ♜fe1 ♖c4 20. ♖xc4 ♜xc4 21. a5 ♜e8 22. g4 ♘e7 23. ♘c1 b6 24. axb6 axb6 25. ♘d3 ♘c8 26. ♘g2 ♙f8 27. ♘h4 ♘d6 28. ♘f2 g5 29. ffg5 e5 30. dxe5 fxe5 31. ♘f5 ♜c6 32. ♘xd6 ♙xd6 33. ♜ad1 ♘e6 Draw

D14 Slav Exchange

FM Curt Collyer (2277)
Michael Wang (2159)

Seatac, Washington Open (4) 2012

Annotations by Murlin Varner

1. d4 d5 2. c4 c6 3. cxd5 cxd5 4. ♘f3 ♘f6 5. ♘c3 ♘c6 6. ♙f4 ♙f5 7. e3 a6 8. ♜c1 ♜c8 9. ♘e5 e6 10. ♖b3 ♘xe5 11. ♙xe5 b5 12. a4 ♘e4 13. f3

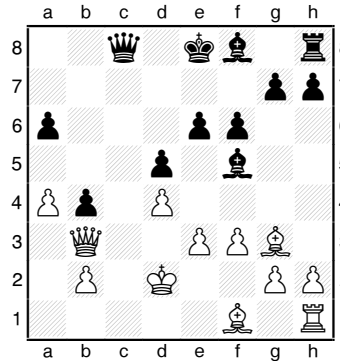
13. axb5 f6 14. ♙g3 ♖a5 15. b6 ♘xg3 16. hxg3 ♙b4 17. ♙e2 ♖xb6 18. ♖a4+ ♘e7 19. ♖xa6 Draw, Lakdawala-Rey, San Francisco 2000.

Gotta "Like"

Northwest Chess

on Facebook!!

13...♖xc3 14.♗xc3 f6 15.♔g3 b4
16.♗xc8 ♜xc8 17.♔d2



17...♔d7 18.a5 ♜c6 19.♔e2 ♔d6
20.♗c1 ♜b7 21.♜a4+ ♔e7 22.
♜c6 ♜xc6 23.♗xc6 e5 24.dxe5
fxe5 25.♔h4+ ♔d7 26.♗xa6 ♗b8
27.♗a7+ ♔c7 28.♔g3 ♔c6 29.
♗xc7+ ♔xc7 30.♔xe5+ ♔b7 31.
♔xb8 ♔xb8 32.♔d3 1-0

B33 Sicilian Lasker

FM David Roper (2295)
Sen Samir (2105)

Seatac, Washington Open (3) 2012

1.e4 c5 2.♖f3 ♖c6 3.d4 cxd4 4.
♗xd4 ♗f6 5.♗c3 e5 6.♗db5 h6 7.
♗d5 ♗xd5 8.exd5 a6 9.dxc6 axb5
10.cxd7+ ♔xd7 11.♔e3 ♔e7 12.
a3 O-O 13.c3 ♜c7 14.♔e2 ♔c6 15.
O-O ♗ad8 16.♜b3 ♜a5 17.♗fd1
♜a4 18.♜xa4 bxa4 19.♔b6 ♗c8
20.♗d2 ♔g5 21.♗d6 ♔e7 22.
♗d2 ♔g5 23.♗dd1 ♔h7 24.♔c5
♗fd8 25.♔b6 ♗f8 26.♔c5 Draw

A81 Dutch

NM David Golub (2212)
FM David Roper (2295)

Seatac, Washington Open (6) 2012

1.d4 f5 2.g3 g6 3.♔g2 ♔g7 4.♗c3
c6 5.e4 fxe4 6.♗xe4 d5 7.♗g5 ♗f6
8.♗e2 h6 9.♗f3 g5 10.h4 g4
11.♗e5 ♔f5 12.♗f4 ♗bd7 13.O-O
♗xe5 14.dxe5 ♗d7 15.e6 ♗f6 16.
♔e3 ♜d6 17.♗e1 a5 18.♔d4 O-O
19.♗d3 ♗e4 20.♔xg7 ♔xg7 21.
♗f4 ♗ad8 22.♜d4+ ♔h7 23.c4
dxc4 24.♜xc4 ♗d2 25.♜c3 ♜d4
26.♗ac1 ♜xc3 27.♗xc3 ♗d4 28.
b3 ♔e4 29.♔xe4+ ♗xe4 30.♗c4
♗xc4 31.bxc4 ♗c5 32.♔f1 ♗f5
33.♗d1 ♔g7 34.♗d8 ♗e5 35.♗e8
Draw

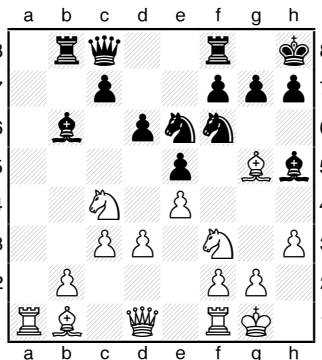
Northwest Chess

C78 Ruy Lopez Neo-Arkhangelsk

Brian Esler (2018)
Megan Lee (2106)

Seatac, Washington Open (6) 2012

1.e4 e5 2.♗f3 ♗c6 3.♔b5 a6 4.
♔a4 ♗f6 5.O-O b5 6.♔b3 ♔c5 7.
d3 d6 8.c3 ♔b6 9.a4 ♗b8 10.♗a3
♔g4 11.axb5 axb5 12.h3 ♔h5 13.
♗xb5 O-O 14.♔c2 ♜d7 15.♔g5
♔h8 16.♔b1 ♜c8 17.♗a3 ♗d8 18.
♗c4 ♗e6



19.♔xf6 gxf6 20.♗e3 ♔xe3 21.
fxe3 ♗g5 22.♔h2 ♗xb2 23.♔c2
♗g8 24.♜c1 ♔xf3 25.♗xf3 ♗xf3+
0-1

E05 Catalan

FM Nick Raptis (2316)
LM Viktors Pupols (2200)

Seatac, Washington Open (46) 2012

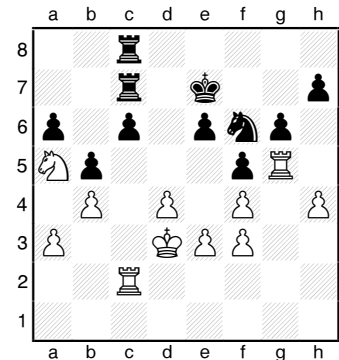
Annotations by Murlin Varner

1.♗f3 d5 2.g3 ♗f6 3.♔g2 e6 4.O-O
♔e7 5.c4 ♗bd7 6.d4 dxc4 7.♜a4
a6 8.♜xc4 b5 9.♜c6 ♗a7 10.♔f4
♔b7 11.♜c2 ♔e4 12.♜c1

12.♜c1 c5 13.dxc5 ♔xc5 14.♗bd2
♔d5 15.♗b3 ♔b6= 16.♜c3 O-O 17.
♗ad1 ♜a8 18.♗e1 ♗e4 19.♔xe4 ♔xe4
20.♔e3 ♗c8 21.♜d2 ♗ac7 22.♔xb6
♗xb6 (0-1, 53) Rojo Gomez-O
Rodriguez, Ampuriabrava 1997.

12...O-O 13.♗bd2 ♔d5 14.♜c2
♜a8 15.♗b3 ♔e4 16.♜d2 ♗d5 17.
♗ac1 ♔b4 18.♜d1 ♗xf4 19.gxf4
♗f6 20.♗c5 ♔d5 21.a3 ♔xc5
22.♗xc5 ♗e4 23.♗c1 ♗f6 24.♗e1
♔xg2 25.♗xg2 ♗d8 26.e3 ♗d7
27.♜c2 ♜f3 28.♜c5 ♗b7 29.♜c6
♜xc6 30.♗xc6 ♗a7 31.♗e1 ♗d6
32.♗c2 ♗e8 33.♗d3 f6 34.♗fc1
♔f7 35.♔g2 ♗b7 36.♗c5 ♗a7
37.♔f3 ♔e7 38.♗a1 ♗a8 39.♗b7
♗b6 40.♗a5 ♔d7 41.b4 ♗c8 42.

♗g1 f5 43.♗gc1 c6 44.♔e2 ♗f6
45.♗b3 ♗d5 46.♗c5+ ♔d6 47.
♔d3 ♗a8 48.♗b3 ♗a7 49.♗g1
♗c7 50.f3 ♗f7 51.♗a5 ♗c7 52.
♗cg2 g6 53.♗c1 ♗b8 54.♗gc2
♗bc8 55.h4 ♗f6 56.♗g1 ♔e7 57.
♗g5



57...♗d5 58.h5 ♔f6 59.♗h2 ♗g7
60.hxg6 hxg6 61.♗g1 ♗gc7 62.
♗gh1 ♗g7 63.♗h8 ♗cc7 64.♗a8
♗a7 65.♗hh8 ♗gc7 66.♗hc8 ♗e7
67.♗xc7 ♗xa8 68.♗xc6 ♗xc6
69.♗xc6 a5 70.d5 axb4 71.♗xe6+
♔f7 72.axb4 ♗a1 73.♔d4 ♗c1 74.
♗c6 ♗d1+ 75.♔e5 ♗d3 76.♗c7+
♔e8 77.e4 ♗xf3 78.♔e6 ♔d8
79.♗d7+ ♔c8 80.e5 ♗xf4 81.♗g7
♗xb4 82.d6 ♗d4 83.♔e7 b4 84.e6
f4 1-0

C82 Ruy Lopez Open

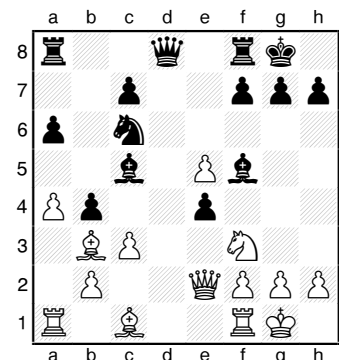
Yevgeniy Rozenfeld (1985)

FM David Bragg (2200)

Seatac, Washington Open (46) 2012

Annotations by Murlin Varner

1.e4 e5 2.♗f3 ♗c6 3.♔b5 a6 4.
♔a4 ♗f6 5.O-O ♗xe4 6.d4 b5 7.
♔b3 d5 8.dxe5 ♔e6 9.c3 ♔c5
10.♗bd2 O-O 11.♜e2 ♔f5 12.a4
b4 13.♗xe4 dxe4



14.♜c4?? ♗a5 15.♔g5? ♗xc4 16.
♔xd8 exf3 17.♔g5 ♗xe5 18.cxb4
♔xb4 19.♗fd1 ♔d6 20.♔d5 ♗ab8

21.b3 ♖c2 22.♞e1 ♗xb3 23.♗xf3 ♗xf3+ 24.gxf3 ♞fe8 25.♗e3 ♗d5 0-1

Premier Section

A03 Bird's Opening

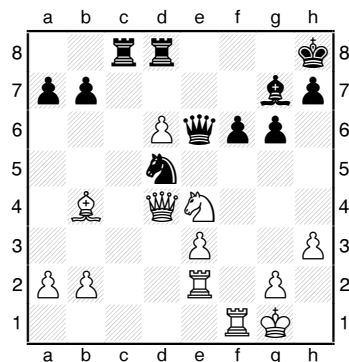
David Bannon (1852)

Yogi Saputra (1749)

Seatac, Washington Open (2) 2012

Annotations by Murlin Varner

1.f4 ♗f6 2.♗f3 d5 3.e3 c5 4.c3 g6 5.d4 ♗g7 6.♗d3 ♞c7 7.♗e5 ♗c6 8.♗d2 ♗xe5 9.fxe5 ♗g4 10.♞e2 O-O 11.h3 ♗h6 12.O-O f6 13.exf6 exf6 14.dxc5 ♞xc5 15.♗b3 ♞c7 16.♗d4 ♗f7 17.♗c2 ♗d7 18.♗b3 ♞e5 19.♗d2 ♗d6 20.♞ad1 ♗e4 21.♗e1 ♗c6 22.c4 ♗c5 23.♗f3 ♞e8 24.cxd5 ♗b5 25.♗c4 ♗xc4 26.♞xc4 ♞c8 27.d6+ ♗h8 28.♞d5 ♞d7 29.♗b4 ♗a4 30.♞d2 ♗h6 31.♞e2 ♗b6 32.♞d3 ♞fd8 33.♗d2 ♞e6 34.♗e4 ♗d5 35.♞d4 ♗g7



36.♗c5? ♞xd6 37.♞d1 ♞b6 38.♞ed2 ♗h6 39.♞e1 ♗xb4 40.♗d7 ♞xd4 41.♞xd4 ♗c2 42.♗xf6 ♗xe1 43.♞e4 ♗g5 44.♗g4 ♞e8 45.♞b4 ♞c7 46.♗f1 ♗c2 47.♞b3 ♗xe3+ 0-1

B34 Sicilian Accelerated Dragon

Michael Hosford (1800)

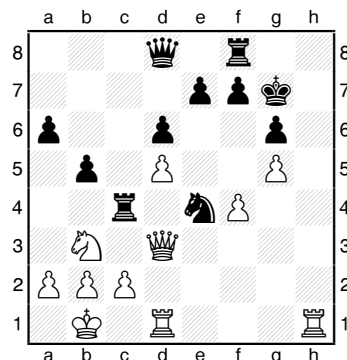
Samuel He (1940)

Seatac, Washington Open (3) 2012

Annotations by Murlin Varner

1.e4 g6 2.d4 ♗g7 3.♗c3 c5 4.♗e3 ♞a5 5.♗ge2 ♗f6 6.f3 cxd4 7.♗xd4 ♗c6 8.♗b3 ♞d8 9.♞d2 d6 10.O-O-O ♗e6 11.♗d5 ♗xd5 12.exd5 ♗e5 13.♗b5+ ♗fd7 14.♗d4 O-O 15.♗b1 a6 16.♗e2 ♞c8 17.h4 h6 18.f4 ♗c4 19.♗xc4 ♞xc4 20.♗xg7 ♗xg7 21.g4 ♗f6 22.g5 hxg5 23.

hxg5 ♗e4 24.♞d3 b5



25.♞h2?

25.♞h7+ ♗xh7 26.♞h3+ ♗g7 27.♞h6+ ♗g8 28.♞h1 and ♞h7 mate.

25...♞h8 26.♞dh1 ♞xh2 27.♞xh2 ♞c8 28.c3?

The pawn was fine just where it was. Better was 28.♞f3±.

28...♞f5 29.♗d4?? ♗xc3+ 0-1

Reserve Section

A03 Bird's Opening

Jothi Ramesh (1495)

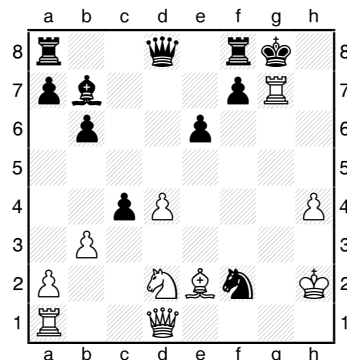
Murlin Varner (1682)

Seatac, Washington Open (1) 2012

Annotations by Murlin Varner

1.f4 d5 2.e3 ♗f6 3.♗e2 e6 4.b3 ♗e7 5.♗b2 O-O 6.♗f3 ♗bd7 7.O-O b6 8.♗e5 c5 9.c4 ♗b7 10.g4 ♗xe5 ♞f7 11.♗xe5 ♗d7 12.♗b2 ♗f6 13.d4 h6 14.♗d2 cxd4 15.♗xd4 ♗xd4 16.exd4 ♗f6 17.g5 hxg5 18.fxg5 ♗h7 19.♞f4 ♗xg5

19...♞xg5+ 20.♞g4 ♞e3+ 21.♗g2 20.♞g4 dxc4 21.h4 ♗h3+ 22.♗h2 ♗f2 23.♞xg7+



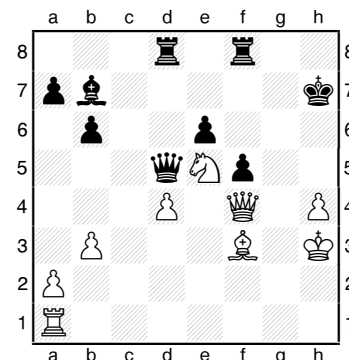
23...♗xg7?

23...♗h8 24.♞e1 ♞xh4+ 25.♗g1 ♞g8-

24.♞g1+ ♗h6

24...♗h8

25.♞xf2 ♞d6+ 26.♗h3 f5 27.♗xc4 ♞d5 28.♗e5 ♞ad8 29.♞f4+ ♗h7 30.♗f3



30...♞a5??

30...♞xd4 31.♞xd4 ♞xd4 32.♗xb7±/±

31.♞g5 ♗xf3 32.♞g6+ ♗h8 33.♞h6+ ♗g8 34.♞g6+ ♗h8 35.♗xf3 ♞c3 36.♞h6+ ♗g8 37.♞g1+ ♗f7 38.♞g7+ 1-0

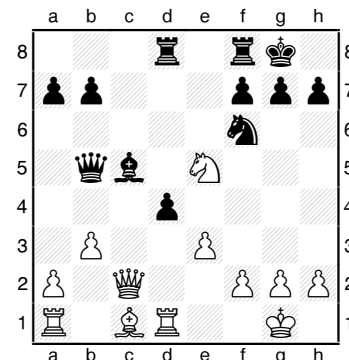
D30 QGD Symmetrical

Michael Mellott (1132)

Naomi Bashkansky (1508)

Seatac, Washington Open (1) 2012

1.♗f3 d5 2.c4 e6 3.d4 c5 4.e3 ♗c6 5.cxd5 exd5 6.♗b5 ♗f6 7.O-O ♗d6 8.♞a4 ♗d7 9.dxc5 ♗xc5 10.♞c2 ♞b6 11.♗xc6 ♗xc6 12.♗e5 ♗b5 13.♞d1 ♞d8 14.♗c3 O-O 15.♗xb5 ♞xb5 16.b3 d4



17.exd4 ♗xd4 18.a4 ♞xe5 19.♞b1 ♗g4 20.♞f1 ♞xh2 mate

A45 Stonewall Attack

Naomi Bashkansky (1508)

Sangeeta Dhingra (1630)

Seatac, Washington Open (2) 2012

1.d4 ♗f6 2.e3 e6 3.♗d3 d5 4.♗d2 ♗bd7 5.f4 b6 6.♗gf3 ♗b7 7.♗e5

♙e7 8.O-O O-O 9.♖f3 ♘e4 10.♖h3 f5 11.♘d7 ♗xd7 12.♘f3 ♗e8 13.♘e5 c5 14.c3 c4 15.♙xe4 fxe4 16.g4 ♙d6 17.♖h5 g6 18.♖h6 ♖f6 19.♗e1 ♙xe5 20.dxe5 ♖f7 21.♗h4 ♗e7 22.♗g3 ♙c6 23.h4 Draw

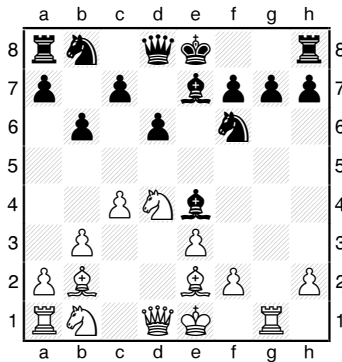
A30 English Opening

Andrew Porish (1623)

Jothi Ramesh (1495)

Seatac, Washington Open (2) 2012

1.b3 b6 2.♙b2 ♙b7 3.e3 d6 4.♘f3 e5 5.♙e2 ♙e7 6.c4 ♘f6 7.d4 exd4 8.♘xd4 ♙xg2 9.♖g1 ♙e4



10.♖xg7 ♙g6 11.♙f3 d5 12.cxd5 ♙d6 13.♘b5 ♔f8 14.♖xg6 hxg6 15.♗d4 ♘bd7 16.♙g4 ♙e5 17.♗b4+ ♔g8 18.♘1c3 ♘xg4 19.♗xg4 ♖xh2 20.f4 ♖xb2 21.fxe5 ♘xe5 22.♗e4 ♘d3+ 0-1

D90 Grünfeld

Brendan Zhang (1474)

Jerrold Richards (1342)

Seatac, Washington Open (2) 2012

1.d4 d5 2.c4 ♘f6 3.♘f3 g6 4.♘c3 e6 5.♙f4 a6 6.e3 ♙g7 7.cxd5 ♘xd5 8.♘d5 ♗xd5 9.♙xc7 O-O 10.a3 ♘d7 11.♖c1 b5 12.g3 ♙b7 13.♙g2 ♗e4 14.♘h4 ♗xh4 15.gxh4 ♙xg2 16.♖g1 ♙d5 17.h5 ♖ac8 18.hxg6 hxg6 19.h4 ♘f6 20.♙e5 ♘h5 21.♙xg7 ♔xg7 22.♖a1 ♙e4 1-0

C00 FRENCH def.

James Dixon (1407)

Murlin Varner (1682)

Seatac, Washington Open (3) 2012

Annotations by Murlin Varner

1.e4 e6 2.d3 d5 3.♘d2 ♙c5 4.♘gf3 ♘e7 5.g3 O-O 6.♙g2 ♘d7 7.O-O ♘g6 8.♖e1 ♖b8 9.e5 f6 10.d4 ♙b6= 11.♘f1 c5 12.c3 fxe5 13.

♙g5 ♗c7 14.dxe5 h6 15.♙d2

15.♗c2

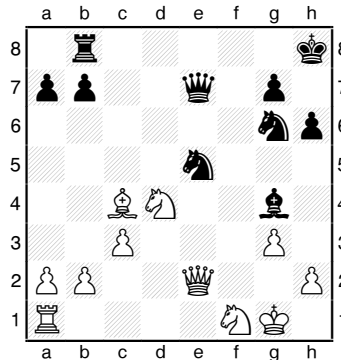
15...c4 16.♙e3 ♙xe3 17.♖xe3 ♘dxe5 18.♘d4 ♗f7 19.f4 ♘d3 20.♖f3 ♗e7

20...♘xb2

21.♗e2 e5 22.fxe5 ♖xf3 23.♙xf3 ♘dxe5?

23...♙e6

24.♙xd5+ ♔h8 25.♙xc4 ♙g4



26.♗e3?

26.♗c2 ♘xc4 27.♗xg6=

26...♘xc4 27.♗xe7 ♘xe7 28.b3 ♘e5 29.♘d2 ♖c8 30.♖e1 ♘7g6 31.♖e3 ♘c6 32.♘xc6 ♖xc6 33.♔g2 ♖d6 34.♘c4 ♖e6 35.♖xe6 ♙xe6 36.♘d6 ♘e5 37.c4 b6 38.♔f2 ♘d3+ 39.♔e3 ♘c1 40.♘b5 ♘xa2 41.♘xa7 ♘c1 42.b4 ♙xc4 43.b5 ♘b3 44.♘c8 ♙xb5 45.♘xb6 g5 46.♘d5 ♔g7 47.♘c3 ♙d7 48.♘d5 ♘c5 49.♔d4 ♘b3+ 50.♔e5 ♘d2 51.h4 g4 52.♘f4 ♘f3+ 53.♔d6 ♙e8 54.♘e6+ ♔f6 55.♘f4 ♙f7 56.♔c5 ♘d2 57.♔d4 ♘f1 58.♘e2 ♙b3 59.♔c3 ♙d1 0-1

C02 French Advance

Cameron Cummings (1443)

Murlin Varner (1682)

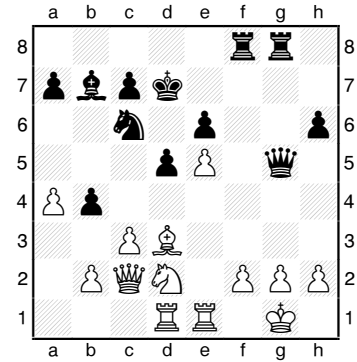
Seatac, Washington Open (5) 2012

Annotations by Murlin Varner

1.e4 e6 2.d4 d5 3.e5 ♘c6 4.c3 ♙e7 4...f6

5.♘f3 ♘h6 6.♙xh6 gxh6 7.♙d3 f6 8.♗c2 fxe5 9.dxe5 ♙g5 10.♙xh7 ♗e7 11.♙g6+ ♔d7 12.O-O b5 13.

♖e1 ♙b7 14.a4 b4 15.♙d3 ♖af8 16.♘bd2 ♖hg8 17.♖ad1 ♙xd2 18.♘xd2 ♗g5



19.♙e4?

19.g3

19...♔c8 20.♙f3 ♖xf3 21.g3 ♖f5 22.♖f1 ♘xe5 23.cxb4 ♘f3+ 24.♘xf3 ♖xf3 25.♗e2 ♗g4 26.♗e5 ♗f5 27.♗d4 ♖g4

27...♔b8

28.♗d2 ♗g6 29.♖c1 d4 30.♖fe1 ♖fxg3+ 31.fxg3 ♖xg3+ 32.hxg3 ♗xg3+ 33.♔f1 ♗h3+ 34.♔g1 ♗h1+ 35.♔f2 ♗g2 mate

A84 DUTCH def.

Murlin Varner (1682)

Derek Zhang (1594)

Seatac, Washington Open (6) 2012

Annotations by Murlin Varner

1.c4 f5 2.d4 b6 3.♘f3 ♘f6 4.♙g5 4.g3

4...e6 5.e3 ♙b4+ 6.♘bd2 ♙b7 7.♙e2 O-O 8.O-O ♙xd2 9.♗xd2 d6 10.♖ad1 ♘bd7 11.b4 h6 12.♙h4 g5 13.♙g3 ♘e4 14.♗c2 h5 15.h4 g4 16.♘d2 ♘df6 17.♙d3 ♗e7 18.♘xe4 ♘xe4 19.♗b3 a5 20.a3 a4 21.♗b2 ♘xg3 22.fxg3 c5 23.bxc5 bxc5 24.♗e2 ♗f6 25.♖b1 ♙c8 26.♖b6 cxd4 27.♖xd6 ♗e5 28.♖xd4 ♗xg3 29.♗f2 ♗e5 30.♗f4 ♗f6 31.♗g3 ♖d8 32.♖xd8+ ♗xd8 33.e4 ♖a5 34.exf5 exf5 35.♖b1?

35.♗e3 ♔h7 36.c5 ♗f8 37.♖c1

35...♗d4+ 36.♔h2 f4 37.♗e1 ♖e5 38.♗d2 g3+ Draw

In August: New Editor Frank Niro!

Vancouver WA

Aug 4-12, 2012

113th U.S. Open

A Heritage Event, FIDE Rated!, 300 Grand Prix Points

The 2012 U.S. Open will be held at the Hilton Hotel in Vancouver, Washington!

2012 will be the 25th anniversary of the previous U.S. Open held in Portland won by GM Lev Alburt.

Includes traditional one-game-per-day schedule (9 days), also 6-day slow time control option, and 4-day option requiring only 3 nights hotel stay for most players. 9SS; 40/2, SD/1 (4-day option, Rds. 1-6, G/60).

Hilton Vancouver Washington,
301 W 6th Street, Vancouver
WA 98660.

Self-Parking \$13.00, valet
\$17.00 per night. HR: \$110
single/quad, 360-993-4500, re-
serve by July 12 or rate may
increase.

A one-section tournament with Class prizes. **\$50,000** in prizes (**80%** of each prize guaranteed) based on **500** paid entries. Special prizes based on Life Titles.

		by 6/17	by 7/29	after
Entry Fee:	<i>Online</i>	\$145	\$165	\$185
	<i>By mail</i>	\$147	\$167	
	<i>By phone</i>	\$150	\$170	\$185
	<i>At site</i>			all \$190

Do not mail after 7/29!
No phone entries after 8/2!
GMs free!

All entries must be made at least two hours prior to your first game. Current USCF membership required. August official ratings used; unofficial ratings used if otherwise unrated. CCA ratings used if above USCF. Foreign player ratings: usually 100 points added to FIDE or FQE, 200+ added to most foreign national ratings, **no points added to CFC**. Highest of multiple ratings generally used.

Entries: USCF, ATTN: 2012 US Open, P.O. Box 3967, Crossville TN 38557. USCF Website online entry. Phone entry: 800-903-8723 (no cell phones). Bring a clock—none supplied. *Sets & boards supplied for tournament, but not for skittles.*

Side Events:

- Inaugural Women's U.S. Open
- Denker Tournament of HS Champions
- Barber Tournament of K-8 Champions
- Trophies Plus U.S. Girls' Junior Open
- U.S. Open Blitz Championship
- Weekend Swiss
- U.S. Open Scholastic
- U.S. Open Quads
- Open Bughouse
- U.S. Open G/15 Championship

Check www.nwchess.com or www.uschess.org for more details.

Idaho Chess News



Photo by Jeff Roland

by Jeff Roland

Great Potato Chess Tournament

On May 5, Erica Barkell (a.k.a. Barkell Chess) held a one-day chess tournament at Capital Christian Center in Meridian. This event was open to everyone, adults included, yet, for some reason, only players in grades K-5 attended. The tournament started at 9:00 a.m. and was to be finished by 2:00 p.m. Time Control was G/20 for Rounds 1-3, and G/30 for Rounds 4-5.

Great Potato Chess Tournament

Player	1	2	3	4	5	Score
1 Chris Baumann	W9	W10	W3	W2	W6	5
2 Rayan Mahin	W7	W4	W6	L1	D3	3½
3 Daniel Duan	W8	D6	L1	W5	D2	3
4 Amelia Mussler-Wright	W5	L2	L7	W9	W8	3
5 Laurel Wheaton	L4	D9	W10	L3	W7	2½
6 Elena Yang	W10	D3	L2	W7	L1	2½
7 Timothy Baumann	L2	D8	W4	L6	L5	1½
8 August Mussler-Wright	L3	D7	D9	D10	L4	1½
9 Mason Swanson	L1	D5	D8	L4	D10	1½
10 Kobi Hutton	L6	L1	L5	D8	D9	1

Wood River High School Championship

On May 12 in Hailey, Wood River H.S. held a five-player, double round-robin tournament to determine the new Wood River High School Champion. The event was won by Desmond Porth (6.5 / 8), followed by Chase Hutchinson (5.0).

ICA Players Memorial

The 2nd Annual ICA Players Memorial Chess Tournament was played in Boise on May 19-20 at Boise State University Student Union Building, Lookout Room. The Tournament Director (TD) was Jeffrey Roland. Twenty-nine players participated as players, and one player recorded moves for another. Sections were evenly divided with fifteen players in the Open Section, and fourteen players in the Reserve Section. Six players in the Reserve Section were unrated! Amazingly, every player was from Idaho.

ICA Players Memorial (L-R): Tom Booth, Alethea Chaney, Kurt Douglas (in back), Cody Gorman, Carmen Pemsler, Nick Bruck, Isaac Blake, Peter Olsoy, Jacob Nathan, Bill Brubaker, Corey Longhurst, Shane Taylor, Jamie Lang, Michaela Abernathy, Nathanael Winchell, Scott Featherston, Jeff Roland, Caleb Kircher, Nathan Jiang, Jim Stark, Caleb Cook, Caleb Abernathy, Paul Johnson, Kevin Patterson, Katie Patterson, Hugh Myers, Lloyd Blake, Paul Edvalson, Jarod Buus, and Brett Hamilton

We had hoped that, with all our promotions via USCF and *Northwest Chess*, we would get more players from out of state, but that's okay. We will keep working on that!

In the Open Section there was a 4-way tie for 1st-4th place among Kurt Douglas, Caleb Kircher, Nathan Jiang, and Paul Johnson. In the Reserve Section there was a 3-way tie for 1st-3rd place among Cody Gorman, Jamie Lang, and Alethea ("Allie") Chaney.

The atmosphere throughout the tournament was very professional. Players were on their best behavior, and I was more relaxed both as a player and as a TD than I've been in a long time. The quality of play was also higher than usual. Players all had very tough games, and there were many comments such as, "Mr. Roland,

this is the best game you and I have ever played with each other" (said to me by Caleb Abernathy), and "This is the first time I've ever gone undefeated in a tournament" (said to me by Kurt Douglas). In fact, the tournament went so well that after it was over there were many different ideas as to why this tournament ran so smoothly. And maybe all those theories are correct!

My theory is that, as TD, I simply expected the players to be professional. I didn't talk down to anyone. I made very few announcements. I think the fact that I didn't make announcements set the tone right away that we were all there to play chess. The fact that, for months, I have been so excited about the event rubbed off on people, too. Everyone was treated with honor and respect



Photo by Jeff Roland

Peter Olsoy (left) holds top-rated Paul Johnson to a draw in Rd. 1

and THAT is what “went around and came around!” There was one game per table and a lot of space between tables. And all the players respected one another’s abilities. Every player was a pretty good chess player and the games reflected that.

I went around and took pictures of all the games throughout the first three rounds. I probably should have done that the second day, too (because, much to my amazement, almost all of them turned out really well!), but I was concerned that I was getting too many for our web server! It does not have unlimited space.

It has become abundantly clear to me in the last few years that everything we do as organizers and players in chess is history in the making. I’ve always known that to a point, but now it has REALLY crystalized! Although most chess players are a little shy, they like to have their pictures taken and like the attention!

It was very nice to see everyone at this tournament. It will be cherished as one of my favorite tournaments because of all who came and participated. Shane Taylor could not play, but still found a way

to participate by recording the moves for a “handicapped” player (I don’t like using that word).

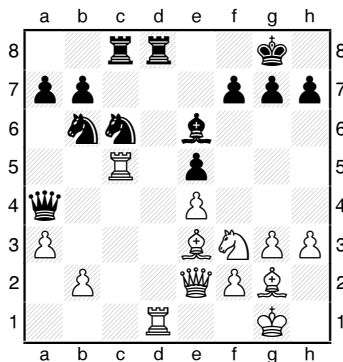
E01 Catalan

Paul Johnson (1994)

Peter Olsoy (1615)

Boise, ICA Players Memorial (1) 2012

1.d4 ♘f6 2.♘f3 e6 3.c4 c5 4.g3 d5 5.♙g2 ♘c6 6.O-O ♖b6 7.cxd5 ♘xd5 8.dxc5 ♙xc5 9.e4 ♘f6 10.♘c3 O-O 11.♘a4 ♖b5 12.♘xc5 ♖xc5 13.♖e2 e5 14.♙g5 ♘d7 15.♙ac1 ♖a5 16.a3 ♘b6 17.h3 ♙e6 18.♙fd1 ♙ac8 19.♙e3 ♙fd8 20.♙c5 ♖a4



21.♙xd8+ ♙xd8 22.♘xe5 ♘xe5 23.♙xe5 ♘c4 24.♙c5 ♖d1+ 25.♖xd1 ♙xd1+ 26.♘h2 ♘xe3 27.fxe3 ♙d2 28.♙b5 b6 29.♙b4 ♘f8 30.g4 ♙e2 31.♘g3 ♙xe3+ 32.♘f2 ♙b3 33.♙xb3 ♙xb3 34.♘e3 ♘e7 Draw

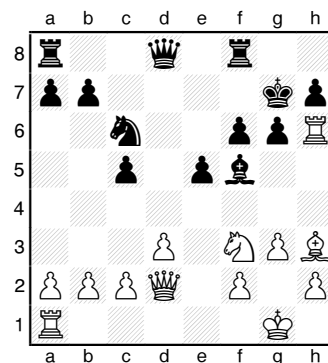
A08 King’s Indian Attack

Caleb Abernathy (1702)

Jeffrey Roland (1700)

Boise, ICA Players Memorial (4) 2012

1.♘f3 ♘f6 2.d3 d5 3.g3 g6 4.♙g2 ♙g7 5.O-O O-O 6.♘bd2 c5 7.♙e1 ♘c6 8.e4 dxe4 9.♘xe4 ♘xe4 10.♙xe4 ♙f5 11.♙h4 f6 12.♙h6 ♙xh6 13.♙xh6 ♘g7 14.♖d2 e5 15.♙h3



15...g5 16.♙xf5 ♘xh6 17.h4 ♘g7 18.hxg5 fxg5 19.♘xg5 ♘d4 20.♘e6+ ♘xe6 21.♙xe6 ♖f6 22.♙d5 ♙ad8 23.♙e4 b6 24.♘g2 h6 25.♙h1 ♙h8 26.♙h4 ♖g5 27.♖e2 ♘f6 28.♖f3+ ♘e7 29.♙g4 ♖f6 30.♖xf6+ ♘xf6 31.♙g6+ ♘f7 32.♘h3 ♙dg8 33.♙xg8 ♘xg8 34.♘g4 ♘g7 35.f3 ♙f8 36.♘h5 ♙f6 37.♘g4 Draw

B54 Sicilian Maroczy Bind

Kurt Douglas (1763)

Nathan Jiang (1632)

Boise, ICA Players Memorial (5) 2012

1.e4 c5 2.♘f3 d6 3.d4 cxd4 4.♘xd4 a6 5.c4 ♘f6 6.♘c3 e5 7.♘f3 ♙e7 8.♙e2 O-O 9.O-O ♘bd7 10.h3 ♘c5 11.a3 ♖c7 12.♙g5 ♙e6 13.b3 h6 14.♙e3 ♙fe8 15.♙c1 ♖c6 16.♙d3 ♘xd3 17.♖xd3 ♖d7 18.♘d5 ♙xd5 19.cxd5 ♙ac8 20.♘d2 b5 21.♘f3 ♙xc1 22.♙xc1 ♙c8 23.♙c2 ♙d8 24.♘d2 ♘f8 25.f3 ♘e7 26.♘f1 ♘h5 27.♖d2 f5 28.♖c1 ♙xc2 29.♖xc2 f4 Draw

ICA Players’ Memorial

Open Section

Player	Res.	Rtg	1	2	3	4	5	Score	Prize
1 Kurt Douglas	Boise	1763	W6	W8	D7	D2	D3	3½	\$85.00*
2 Caleb Kircher	Nampa	1777	W9	L7	W13	D1	W5	3½	87.19*
3 Nathan Jiang	Eagle	1632	W12	D15	D5	W7	D1	3½	85.00*
4 Paul Johnson	Boise	1994	D5	D11	W8	-H-	W7	3½	85.00*
5 Peter Olsoy	Boise	1615	D4	W10	D3	W6	L2	3	
6 Paul Edvalson	Eagle	1565	L1	W14	W15	L5	W11	3	
7 Jim Stark	Boise	1670	W13	W2	D1	L3	L4	2½	
8 Caleb Abernathy	Meridian	1702	W14	L1	L4	D11	W12	2½	
9 Corey Longhurst	Meridian	1583	L2	L13	W10	D12	W14	2½	
10 Tom Booth	Caldwell	1604	D15	L5	L9	-B-	W13	2½	
11 Jeffrey Roland	Boise	1700	-H-	D4	D12	D8	L6	2	
12 Carmen Pemsler	Eagle	1364	L3	-B-	D11	D9	L8	2	
13 Nick Bruck	Boise	1454	L7	W9	L2	D14	L10	1½	
14 Hugh Myers	Boise	1520	L8	L6	-B-	D13	L9	1½	
15 Brett Hamilton	Meridian	1904	D10	D3	L6	-U-	-U-	1	

*Tied players were offered the choice of \$85 in cash or a check for \$87.19

Reserve Section

1 Cody Gorman	Meridian	1252	D6	W8	W12	D4	W5	4	\$70.00
2 Jamie Lang	Meridian	1343	W14	W12	W5	-H-	D4	4	70.00
3 Alethea Chaney	Meridian	Unr	W13	L5	W11	-X-	W6	4	70.00
4 Kevin Patterson	Meridian	1281	D11	W6	W7	D1	D2	3½	
5 Michaela Abernathy	Meridian	1277	W10	W3	L2	W7	L1	3	
6 Caleb Cook	Kuna	Unr	D1	L4	W8	W12	L3	2½	
7 Jarod Buus	Nampa	Unr	-H-	W11	L4	L5	W9	2½	
8 Bill Brubaker	Nampa	Unr	-H-	L1	L6	W11	W13	2½	
9 Lloyd Blake	Boise	Unr	L12	W14	L10	W13	L7	2	
10 Nathanael Winchell	Mtn. Home	Unr	L5	W13	W9	-F-	-U-	2	
11 Isaac Blake	Boise	599	D4	L7	L3	L8	W14	1½	
12 Scott Featherston	Boise	752	W9	L2	L1	L6	-U-	1	
13 Katie Patterson	Meridian	936	L3	L10	W14	L9	L8	1	
14 Jacob Nathan	Idaho Falls	654	L2	L9	L13	-B-	L11	1	



Photo by Jeff Roland

Kurt Douglas: "This is my first tournament where I went undefeated."

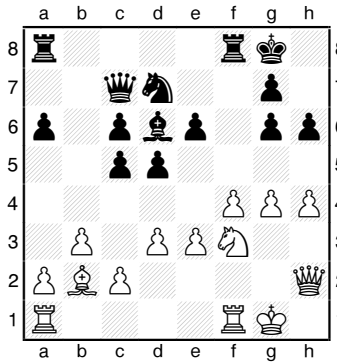
A03 Bird's Opening

Caleb Kircher (1777)

Peter Olsoy (1615)

Boise, ICA Players Memorial (5) 2012

1.f4 d5 2.e3 c5 3.♙b5+ ♘c6 4.♘f3 a6 5.♙xc6+ bxc6 6.b3 ♙g4 7.♙b2 ♘f6 8.O-O e6 9.h3 ♙h5 10.d3 ♙e7 11.♘bd2 O-O 12.g4 ♙g6 13.♘e5 ♙c7 14.h4 h6 15.♘xg6 fxg6 16.♙e2 ♘d7 17.♙h2 ♙d6 18.♘f3



18...♙ae8 19.♘e5 ♘xe5 20.fxe5 ♙e7 21.d4 ♙d8 22.♙a3 ♙xh4 23.♙xc5 ♙xf1+ 24.♙xf1 ♙g5 25.♙f2 ♙d7 26.♙f3 ♙d8 27.♙e2 ♙b7 28.♙f3 ♙d7 29.♙f8+ ♙h7 30.♙f3 ♙c7 31.b4 ♙b7 32.a4 ♙c7 33.♙d6 ♙d7 34.a5 ♙a7 35.♙c5 ♙b7 36.♙d6 ♙a7 37.♙e8 ♙f7 38.♙e2

♙d7 39.♙a8 ♙b7 40.♙b8 ♙a7 41.♙b6 ♙a8 42.♙g2 ♙c8 43.♙b8 ♙d7 44.♙xa6 ♙xe3 45.♙a8 ♙f2+ 46.♙g3 g5 47.♙b7 ♙xc2 48.♙xd7 ♙f4+ 49.♙f3 ♙c3+ 50.♙e2 ♙c2+ 51.♙d3 ♙d2+ 52.♙c3 ♙h2 53.♙d8 ♙h3+ 54.♙b2 ♙h2+ 55.♙a3 ♙h3+ 56.♙a4 ♙c1 57.♙h8+ ♙g6 58.♙e8 mate

Boise Chess Festival

The "premier" activity at this event was the 17-board simultaneous exhibition put on by current and 17-time Idaho State Champion, Larry Parsons. Larry told us that 17 is his lucky number!

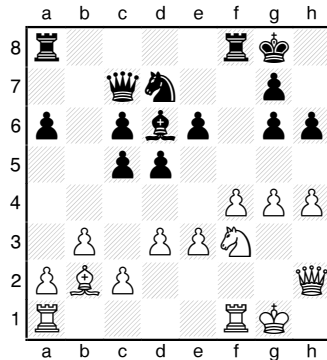
Larry won 14 games, drew one game with Corey Longhurst, and lost two games to Cody Gorman, and David Sawyer. Here are the "upset" games from the simul:

E12 Queen's Indian

LP – Cody Gorman (1252)

Boise, simul 2012

1.c4 ♘f6 2.d4 e6 3.♘f3 b6 4.g3 ♙b7 5.♙g2 ♙e7 6.O-O O-O 7.♘c3 ♘e4 8.♙c2 ♘xc3 9.♙xc3 f5 10.b3 ♙f6 11.♙b2 ♙e7 12.♙ac1 d6 13.♙fe1 c5 14.♙d2 ♘d7 15.♙ed1 ♙ad8 16.♘e1 ♙xg2 17.♘xg2 ♙fe8 18.e3 ♘f8 19.♙c2 g6 20.e4 ♙g7 21.♙d3 cxd4 22.♙xd4 ♙xd4 23.♙xd4 ♙xd4 24.♙xd4 e5 25.♙d5 ♙f7 26.f3 ♙e6 27.♘e3 ♙f6 28.♙g2 ♘e6 29.♙cd1 ♘d4



30.♙5xd4 exd4 31.♙xd4 fxe4 32.fxe4 ♙e6 33.♘d5 ♙d7 34.♙f3 g5

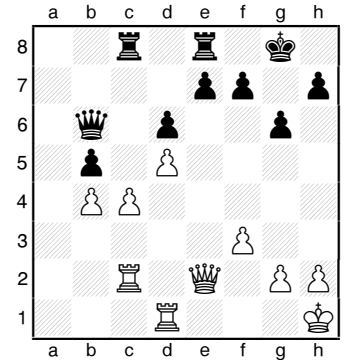
35.♙g4 h6 36.♙f5 ♙e5+ 37.♙g4 ♙g6 38.♙f3 ♙f7+ 39.♙e2 ♙h5 40.h3 ♙g6 41.♘e3 ♙e6 42.♘d5 h5 43.g4 hxg4 44.hxg4 ♙h7 45.♘e3 ♙h2+ 46.♙d3 ♙xa2 47.♘f5 ♙g2 48.♘e3 ♙g3 49.♙d5 ♙f6 50.♙d4 a5 51.♘f5 ♙xg4 52.♘xd6 ♙e6 53.c5 bxc5+ 54.♙xc5 ♙f6 55.♙b5 ♙e5 56.♙xa5 ♙xd5+ 57.exd5 ♙e5 58.♘c4+ ♙f6 59.♙b5 ♙e4 60.d6 ♙e6 61.♙c5 g4 62.♙c6 ♙d4 63.♙c5 ♙d5+ 64.♙c6 g3 65.♙c7 g2 66.♘e3 g1=♙ 0-1

B36 Sicilian Maroczy Bind

LP – David Sawyer (1944)

Boise, simul 2012

1.d4 ♘f6 2.c4 c5 3.♘f3 cxd4 4.♘xd4 ♘c6 5.♘c3 g6 6.e4 d6 7.♙e2 ♘xd4 8.♙xd4 ♙g7 9.O-O O-O 10.♙d3 ♙e6 11.f3 ♙c8 12.♘d5 ♙e8 13.♙b1 ♘d7 14.b4 a5 15.a3 ♘e5 16.♙b3 ♘c6 17.♙b2 axb4 18.axb4 ♘d4 19.♙d3 ♙xd5 20.exd5 ♙b6 21.♙h1 ♘xe2 22.♙xe2 ♙xb2 23.♙xb2 ♙d4 24.♙c2 b5 25.♙d1 ♙b6



26.cxb5 ♙xc2 27.♙xc2 ♙xb5 28.♙c6 ♙b8 29.♙b1 ♙d3 30.♙c1 ♙d2 31.♙b1 ♙xb4 32.♙a8+ ♙g7 33.♙a1+ ♙d4 34.h3 ♙xa1 35.♙xa1 ♙d4 36.♙a5 ♙f6 37.♙h2 h5 38.♙g3 h4+ 39.♙f2 ♙d2+ 40.♙f1 ♙c2 41.♙a4 ♙d2 42.♙f4+ ♙g7 43.♙e4 ♙f8 44.♙xh4 ♙xd5 45.♙a4 ♙d2 46.♙g1 f5 47.♙h2 ♙f7 48.♙g3 ♙f6 49.h4 ♙e5 50.h5 gxh5 51.♙h4 d5 52.♙xh5 d4 53.♙h1 f4+ 54.♙h3 d3 55.♙e1+ ♙e2 56.♙d1 ♙d4 57.g4 fxg3 58.♙xg3 d2 59.f4 ♙e3 60.♙a1 ♙e1 61.♙a3+ ♙e4 62.♙a4+ ♙f5 63.♙a5+ ♙f6 0-1

LP – Corey Longhurst (1583)

Boise, simul 2012

1.d4 ♘f6 2.c4 g6 3.♘c3 ♗g7 4.e4
d6 5.♗e2 O-O 6.♘f3 ♗g4 7.O-O
♘bd7 8.h3 ♗xf3 9.♗xf3 ♖b8
10.♗e3 c5 11.d5 a6 12.a4 ♘e5
13.♗e2 ♖c7 14.♖d2 ♖fe8 15.f4
♘ed7 16.g4 ♘f8 17.♘h1 ♘6d7 18.
♖f2 ♖b6 19.♖a3 ♗d4 20.♖f3
♗g7 21.♖c2 ♖d8 22.a5 e6 23.
♖d2 ♗xc3 24.♖xc3 exd5 25.exd5
♖e7 26.g5 ♖e4 27.♖d3 ♖e7 28.
♗d1 f6 29.h4 ♖g7 30.♗d2 fxd5
31.♗c3 ♖h6 32.fxd5 ♖xh4+ 33.
♗g2 ♘e5 34.♗xe5 ♖xe5 35.♖g3
♖xg5 36.♖e2 ♖e5 37.♖ae3
♖be8 38.♖f2 ♖d4 39.♖xe5 ♖xe5
40.b3 ♖e4+ 41.♗f3 ♖e1 42.♖xe1
♖xe1 43.♗g4 ♘g7 44.♗c8 ♖e7
45.♖f3 ♖c7 46.♗h3 ♘d7 47.♗e6
♘e5 48.♖e3 ♖e7 49.♖e1 ♘f7
50.♖b1 ♘g5 51.♗c8 ♖c7 52.♗g4
h5 53.♗e2 ♖e7 54.♖b2 ♘h6 55.b4
cxb4 56.♗f1 ♖c7 57.♖xb4 ♘e4
58.♖b6 ♖d7 59.♗d3 ♘c5 60.♗c2
♗g7 61.♗g3 ♘f6 62.♘h4 ♘e5
63.♗xg6 ♘d4 64.♗xh5 ♘xc4
65.♗f3 ♘b3 66.♗g5 ♘d4 67.♗e4
♘b5 68.♘f6 ♘b4 69.♘e6 ♖c7
70.♖xd6 ♘xd6 71.♘xd6 ♖c1
72.♘e5 ♘xa5 73.d6 ♖c8 74.♗xb7
♖d8 75.♘e6 ♖xd6+ Draw

Another event was a G/1 bullet tournament. Final standings of that were:

- 1 Caleb Kircher 5-0
- 2 John Nahlen 4-1
- 3 Nathan Jiang 3-2
- 4 Mike Henderson 3-2
- 5 Brett Darden 2-3
- 6 Chip Ruberry 2-3
- 7 Eladio Arizmendi 1-4

The event is planned to be annual and will always be the first Saturday in June. Next year's event will be on June 1st!

Treasure Valley Championship

The 5th Annual ICU Treasure Valley Chess Championship was sponsored by Idaho Chess Union (ICU), and was rated by Rocky Mountain Chess. The event was again held at Redeemer Lutheran Church in Boise and play went from around 9:20 a.m. to 6:00 p.m. on Saturday, June 9. Entry was free and by invitation only. The time limit was G/60. The Tournament Director was Jeff Roland.

David Sawyer (Boise) won first place with 3½ points followed by Peter Olsoy (Boise) and Caleb Kircher (Nampa) tied for 2nd-3rd with three points each.

Idaho Chess Union is grateful to Redeemer Lutheran Church for hosting the event. Treats and drinks were provided by the Sawyers. Prints by local artist, Daniel Looney, himself a player in the event, will be given out as prizes to the top three players. These were not available to hand out at the event and come as a surprise and bonus to the players, but ICU wants to show its appreciation to the players and provide these belated prizes. They will be delivered or presented to the winners soon.

This annual event, started in 2008, is the brainchild of the late Stewart Sutton, whose prevailing impetus was to provide inexpensive, quality chess events for players who play chess because of the game itself. This tournament certainly lived up to that. All the players exhibited

outstanding sportsmanship, courtesy, and professional behavior. It was nice to see some new faces this year in Kory Puderbaugh, Caleb Cook, Nick Bruck (who now lives in Boise and therefore eligible to play in this event), Paul Sawyer, and Cody Gorman. We appreciate all the players who accepted invitations and came to play in this enjoyable event.

Idaho Chess Association

Upcoming Tournaments

- ICA Summer Classic** Boise July 14-15 (NWGP!)
- Mountain Home Summer Tnmt.** Mountain Home July 28
- Eastern Idaho Open** Pocatello Sept. 22-23 (NWGP!)
- Wood River Weekend Progressive** Hailey Oct. 20
- Southern Idaho Open** Twin Falls November
- Western Idaho Open** Boise December

ICA Board of Directors

- President:** Jay Simonson (rooknjay@yahoo.com)
- Vice President:** Kevin Patterson (kpat42@msn.com)
- Secretary/Treasurer:** vacant
- Trustee for Website Development and Maintenance:** Jeff Roland (jroland@cablone.net)
- Trustee for Scholastic Development:** Craig Barrett (craig.barrett@ch2m.com)
- Trustee for Tournament Organization:** George Lundy III (tdmlundy@juno.com)
- Trustee for Tournament Organization:** Patrick Abernathy (aberpat@gmail.com)

Treasure Valley Championship

Player	Res.	Pre	Post	1	2	3	4	Score
1 David Sawyer	Boise	1924	1931	W5	W13	W4	-H-	3½
2 Peter Olsoy	Boise	1700	1703	D11	W6	W8	D3	3
3 Caleb Kircher	Nampa	1570	1591	D6	W11	W13	D2	3
4 Jeffrey Roland	Boise	1690	1690	W9	D8	L1	W10	2½
5 James McGarvey	Boise	1593	1600	L1	W10	D12	W7	2½
6 Kurt Douglas	Boise	1712	1705	D3	L2	W14	W12	2½
7 Hugh Myers	Boise	1610	1585	D10	D12	W9	L5	2
8 Corey Longhurst	Meridian	1607	1601	W14	D4	L2	-H-	2
9 Kory Puderbaugh	Eagle	1389	1392	L4	W15	L7	W14	2
10 Caleb Cook	Kuna	1093	1110	D7	L5	W11	L4	1½
11 Nick Bruck	Boise	1445	1442	D2	L3	L10	W15	1½
12 Kevin Patterson	Meridian	1200	1212	-H-	D7	D5	L6	1½
13 Daniel Looney	Meridian	1633	1624	W15	L1	L3	---	1
14 Paul Sawyer	Boise	1000	1000	L8	-B-	L6	L9	1
15 Cody Gorman	Meridian	1252	1236	L13	L9	-B-	L11	1

U.S. Open in NW
 1966-GMs Pal Benko & Robert Byrne
 1987-GM Lev Alburt
 2012-???

Minneapolis, MN

National High School Championships

Michael Wang (Kirkland) scored 5.5/7 to tie for 9th-17th in the 330-player K-12 section. NM David Golub (Bellevue) and Michael Omori (Seattle) finished on five points. Omori and Nicolo Gelb (Seattle) came 16th-27th in the 268-player Blitz event, scoring 9/12. Golub had 8.5. Over 1300 youths participated in the five-section tournament held April 13-15.

Portland, OR

A fine turnout of 49 players about filled the space at the Portland Chess Club on May 5-6 for the **2012 Oregon Class Championships**. The eight-player Master/Expert section was won with 5-0 by **Daniel Gay** and he now has the USCF master rating. Class A had two with the top score of 3.5, **Jacob Reid** and **Micah Smith**, in a nine-player section.

In Class B (ten players) another perfect 5-0 score was reached by **Yogi Saputa**. The Class C (eleven players) top scorer at 4.5 was **Takuma Sato-Duncan**. **Pranav Sharan** and **Scott Svetal** both scored four points in the eleven-player Class D and Under section. The event was sponsored by the Oregon Chess Federation and directed by Dale Wentz of Salem.

Courtesy of Russell Miller

Nashville, TN

National Elementary Championships

Roland Feng (Seattle) tied for 1st-5th in the 190-player K-6 section, scoring 6.0/7. Kyle Haining (Lake Forest Park), Noah Fields, Jason Yang (Bellevue), and Nathaniel Yee (Seattle) all scored five points.

Eamon Thakur and Kevin Song came 4th-12th with six points in the K-6 U1000 section. Nate Getz scored 5.5,

while Dorian Clay, Asher Thakur and Ruan Wong had five points. Charith Sunku tied for 2nd-5th with six points in the 78-player K-6 UNR section.

Marcell Szabo (Seattle) and **Bryce Tiglon** (Redmond, WA) finished in a nine-way tie for first in the 284-player K-5 section on six points. Derek Zhang (Bellevue) scored five points.

The 374-player K-5 U900 section saw Steve Silverberg finish in a five-way tie for first at 6.5. Scoring six points were Benjamin Jee, Rohan Skariah, and Aedan Tien, while fellow Washingtonians Audrey Whitmer, Seth Yager, and Benjamin Zhang were a half-point back. Liam Reis scored five points.

Praveer Sharan (Lake Oswego) scored six points, good for 3rd-7th in the 255-player K-3 section. Naomi Bashkansky (Redmond) finished on 5.5.

Jeffrey Tiglon (Redmond, WA) was a perfect seven-for-seven in the 380-player K-3 U800 section, but finished in a two-way tie for first. Aditya Singh and Roshan Skariah scored each points each.

Five Washingtonians—**Ruthvik Ayyagari**, **Advait Bulusu**, **Nandini Daga**, **Aidan Lawler**, and **Alex Wei**—were part of a six-way tie atop the K-3 UNR section. Each scored six points.

Anthony He (Sammamish) was a perfect seven-for-seven in the 289-player K-1 section, good for first-second.

Kyle Haining topped the 193-player K-6 Blitz, scoring 11/12. Bryce Tiglon tied for 2nd-4th with 10.5, while Jason Yang scored nine points.

More than 2100 kids took part in the nine-section tournament held May 11-13.

Newport, OR

I played in the **Newport June Open** last weekend. The attendance was kind of sparse, only about twenty entries, but the rating range was well spread out and included scholastic superstars Becca Lampman and Matt Dalthorp. The modified format worked well, allowing a later start on Saturday and an earlier start on Sunday for the long distance participants. Bill Shannon from Reedsport returned to tournament play as a tune up for the U.S. Open in August with only a loss in his last round.—*Phil Carson*

Mikeal Davis topped the field of 19 in the June 16-17 event, scoring 4.5/5 and Lampman came second on four. Shannon and H.G. Pitre of Seattle tied for third-fourth with 3.5 points each.

A43 Modern: Averbakh

H G Pitre (1840)

Phil Carson (1525)

Newport, Newport Open (4) 2012

Annotations by Phil Carson

1.e4 g6 2.d4 ♘g7 3.c4 c5 4.d5 d6 5.♗c3 ♘xc3+ 6.bxc3 ♖a5 7.♗c2 ♗d7 8.♗f3 f6 9.♗d2 ♗e5 10.♗d4 ♗d7 11.a4 a6 12.♗e2 ♗g4

H.G. believes that 12...b5 is called for.

13.♗xg4 ♗xg4 14.♗e6 ♗e5 15.♖b1 ♗xc4 16.♖xb7 ♔f7 17.♗c1 h5 18.O-O ♗h6 19.♗b3 ♗e5 20.c4 ♗c6 21.♗f4 ♗d4 22.♖xe7+! ♔xe7 23.♗b7+ 1-0

E40 Nimzo-Indian Rubinstein

Phil Carson (1525)

Bill Barrese (1424)

Newport, Newport Open (5) 2012

1.d4 d5 2.c4 e6 3.♗c3 ♗f6 4.e3 ♗b4 5.f3 ♗h5 6.♗ge2 dxc4 7.a3 ♗xc3+ 8.bxc3 b5 9.♗c2 ♗b7 10.e4 ♗c6 11.♗e3 O-O 12.g4 ♗f6 13.♗g3 ♗e8 14.h4 e5 15.d5 ♗e7 16.h5 c6 17.dxc6 ♗xc6 18.♗d1 ♗c7 19.♗c5 ♗e7 20.♗xe7 ♗xe7 21.♗f5 ♗f6 22.♗d2 g6 23.g5 ♗b6 24.♗e7+ ♔h8 25.♗d5 ♗c5 26.♗f6 ♗xf6 27.gxf6 ♗b6 28.♗g5 ♔g8 29.♗d7 ♗ae8 30.hxg6 fxg6 31.♗xg6+ hxg6 32.♗g7 mate

San Diego, CA

National Junior High Championships

Noah Fields (Tacoma) scored 5.0/7, good for 14th-28th in the 177-player K-8 section. Becca Lampman (Vancouver, WA) tied for 16th-21st in the 143-player Blitz event. Over 650 competed in the six-section event held April 27-29.

Portland, OR

FM Nick Raptis of Portland won yet another **Portland CC G/60** event and again with 4-0 score. The weather on May 19 must have been nice, as only ten players took part.

Courtesy of Russell Miller

WA Invitational Games—cont'd from the May issue

Round Five

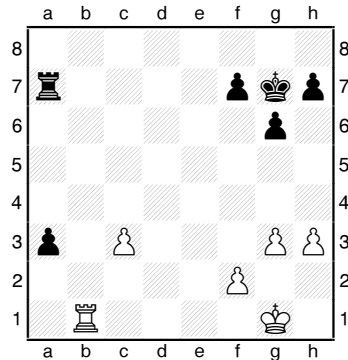
A20 Reti

Becca Lampman (1933, 1.5)

Samuel He (1894, 2.5)

Seattle, WA Invitational (5) 2/11/2012

1.a3 d5 2.♘f3 ♘f6 3.g3 g6 4.♙g2
 ♙g7 5.O-O O-O 6.c4 c6 7.♗c3 ♖e8
 8.d4 ♗e4 9.♖b3 dxc4 10.♖xc4
 ♗xc3 11.bxc3 ♖d5 12.♗e5 ♖xc4
 13.♗xc4 ♗d7 14.♖b1 a5 15.a4 ♙f8
 16.♙f4 ♖a7 17.e4 ♗f6 18.♗b6
 ♙g4 19.♖fe1 ♗d7 20.h3 ♗xb6 21.
 ♖xb6 ♙c8 22.d5 cxd5 23.exd5
 ♙g7 24.♙e5 ♙d7 25. ♙xg7 ♗xg7
 26.d6 exd6 27.♖xe8 ♙xe8 28.
 ♖xd6 ♙xa4 29.♖b6 ♙c6 30.♙xc6
 bxc6 31.♖xc6 a4 32.♖b6 a3 33.
 ♖b1



33...♖c7 34.♖b3 ♖a7 35.♖b1 ♗f6
 36.♗f1 ♖c7 37. ♖b3 ♖a7 38.♖b1
 Draw

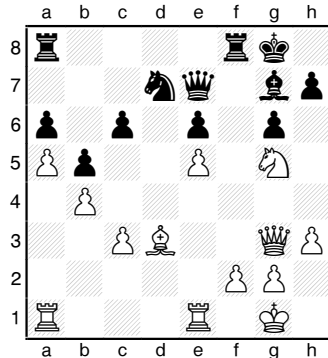
B07 Modern Defense

FM Paul Bartron (2099, 4.0)

Mark Smith (1905, 1.0)

Seattle, WA Invitational (5) 2012

1.e4 g6 2.d4 ♙g7 3.♗f3 d6 4.c3
 ♗f6 5.♙d3 O-O 6.h3 ♗a6 7.O-O
 c6 8.♖e2 ♖c7 9.♖e1 e5 10.dxe5
 dxe5 11.♙e3 ♖e7 12.b4 ♗d7 13.
 ♗bd2 ♗c7 14.♗b3 b6 15.a4 ♗e6
 16.a5 ♗f4 17.♙xf4 exf4 18.e5 b5
 19.♖e4 ♗b8 20.♖xf4 ♙e6 21.♗c5
 ♗d7 22.♗xe6 fxe6 23.♖g3 a6 24.
 ♗g5



24...c5 25.♗xh7 ♙xe5 26.♖xg6+
 ♖g7 27.♗xf8 ♗xf8 28.♖xg7+
 ♙xg7 29.♙e4 ♖a7 30.♖ac1 ♖c7
 31.c4 cxb4 32.cxb5 1-0

B07 Pirc

Michael Schemm (1997, 2.0)

Kyle Haining (1853, 3.0)

Seattle, WA Invitational (5) 2012

See the May Issue, "Brilliances and
 Other Annotated Games from the WA
 Championship, Premier, and Invitational,"
 page 9.

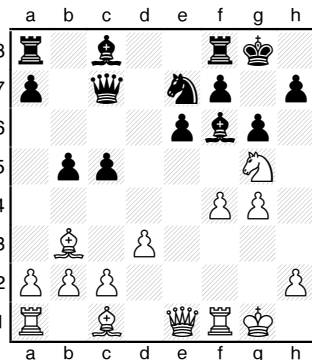
B21 Sicilian Grand Prix

Vishnu Warriar (1952, 0.5)

Daniel He (1961, 2.5)

Seattle, WA Invitational (5) 2012

1.f4 g6 2.♗f3 ♙g7 3.e4 c5 4.♙c4
 e6 5.♗c3 ♗e7 6.d3 O-O 7.O-O d5
 8.♙b3 dxe4 9.♗xe4 ♖c7 10.♖e1
 ♗d7 11.g4 ♗f6 12.♗xf6+ ♙xf6
 13.♗g5 b5



14.♖f3 ♙xg5 15.fxg5 ♖c6 16.♖h3
 ♙b7 17.♖g3 f6 18.♗f1 c4 19.dxc4

bxc4 20.♙a4 fxg5+ 21.♗e2 ♖xa4
 22.b3 cxb3 23.cxb3 ♖e4+ 24.♙e3
 ♙a6+ 25.♗d2 ♖ac8 0-1

B93 Sicilian Najdorf

Noah Fields (1866, 1.0)

Alan Bishop (2000, 1.0)

Seattle, WA Invitational (5) 2012

1.e4 c5 2.♗f3 d6 3.d4 cxd4 4.♗xd4
 ♗f6 5.♗c3 a6 6.f4 e5 7.♗f3 ♖c7
 8.♙d3 ♙e7 9.O-O O-O 10.♗h1 b5
 11.♖e1 ♗bd7 12.fxe5 dxe5 13.a3
 ♙b7 14.♖g3 ♗h8 15.♗h4 g6 16.
 ♗f3 ♗h5 17.♖h3 ♗df6 18.♙g5
 ♖ae8 19.♙xf6+ ♙xf6 20.g3 ♙g7
 21.♖ad1 ♖d8 22.♖de1 ♙c8 23.
 ♖g2 f5 24.♗d2 ♙b7 25.♖e2 ♗f6
 26.♗f3 ♗g4 27.h3 ♗f6 28.♗h2
 ♗h5 29.exf5 e4 30.♖f2 exf3 31.
 ♙e4 ♗xg3 32.♗g1 1-0 {Time}

Round Six

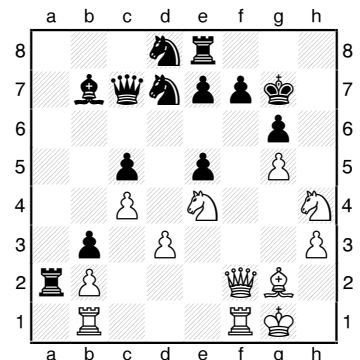
B25 Sicilian Closed

Mark Smith (1.0)

Becca Lampman (2.0)

Seattle, WA Invitational (6) 2/11/2012

1.♗f3 ♗f6 2.g3 g6 3.♙g2 ♙g7
 4.d3 O-O 5.O-O d6 6.e4 c5 7.♗c3
 ♗c6 8.h3 ♖b8 9.♙e3 b5 10.♖d2
 ♖e8 11.♙h6 ♙h8 12.♗e2 a5 13.
 ♗h4 ♖b6 14.♗h2 b4 15.f4 a4 16.
 ♖ab1 b3 17.axb3 axb3 18.c3 ♙b7
 19.g4 ♖a8 20.♗g3 ♖a2 21.g5
 ♗d7 22.e5 dxe5 23.f5 ♗d8 24.♗e4
 ♖c7 25.♖f2 ♙a6 26.c4 ♙b7 27.
 fxg6 hxg6 28.♗g1 ♙g7 29.♙xg7
 ♗xg7



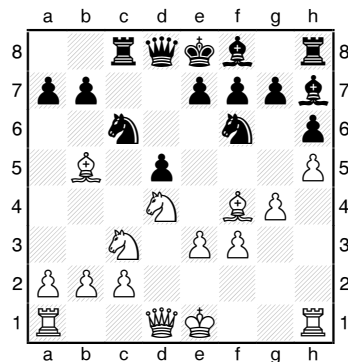
30. ♖f6 exf6 31. gxf6+ ♔h7 32. ♗xb7 ♜xb7 33. ♗xg6 ffg6 34. ♜h4+ ♔g8 35. f7+ ♗xf7 36. ♜xf7 ♔xf7 37. ♜h7+ ♔e6 38. ♜f1 ♔d6 39. ♜f6+ ♔c7 40. ♜f7 ♔c8 0-1

A00 Dunst Opening

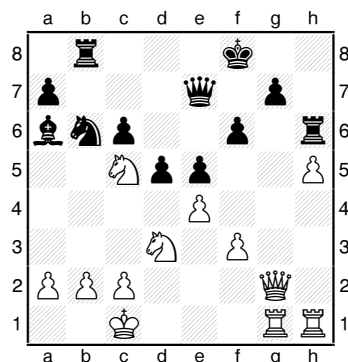
Schemm Michael (2.0)
FM Paul Bartron (5.0)

Seattle, WA Invitational (6) 2012

1. ♖c3 c5 2. ♗f3 ♗c6 3. d4 cxd4 4. ♗xd4 d5 5. ♗f4 ♗f6 6. e3 ♗g4 7. f3 ♗h5 8. ♗b5 ♜c8 9. g4 ♗g6 10. h4 h6 11. h5 ♗h7

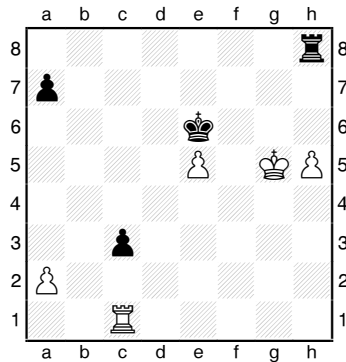


12. g5 hxg5 13. ♗xg5 e6 14. ♜e2 ♗e7 15. O-O-O ♗d7 16. ♗xe7 ♜xe7 17. ♗xc6 bxc6 18. ♜a6 ♗b6 19. ♜dg1 e5 20. ♗b3 ♔f8 21. ♗a4 ♜b8 22. ♗ac5 ♗f5 23. e4 ♗c8 24. ♜e2 ♜h6 25. ♗d3 ♗a6 26. ♜g2 f6 27. ♗bc5



27... ♗c8 28. f4 d4 29. ♜g3 ♗c4 30. b3 exf4 31. ♗xf4 ♗e5 32. ♗fe6+ ♗xe6 33. ♗xe6+ ♔f7 34. ♜xg7+ ♔xe6 35. ♜xh6 d3 36. ♜g2 ♜a3+ 37. ♔b1 dxc2+ 38. ♜xc2 ♜xb3+ 39. ♔a1 ♜a4 40. ♜d2 ♜d3 41. ♜e2 ♜d4+ 42. ♔b1 ♗c4 43. ♜g4+ ♔e5 44. ♜xc4 ♜xc4 45. ♜f5+ ♔d6 46. ♜xf6+ ♔c7 47. ♜e5+ ♔c8 48. ♜c1 ♜b4+ 49. ♔a1 ♜d6 50. ♜xd6 ♜xd6 51. ♜h1 ♜h6 52. ♔b2 ♔d7 53. ♔c3

♔e6 54. ♔d4 ♔d6 55. e5+ ♔e6 56. ♔e4 c5 57. ♔f4 c4 58. ♔g5 ♜h8 59. ♜e1 c3 60. ♜c1



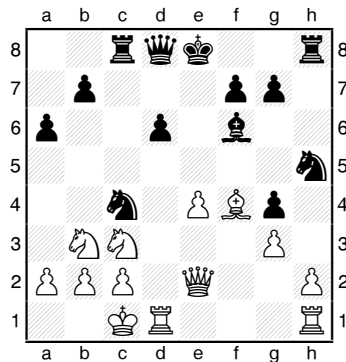
60... ♔xe5 61. ♜xc3 ♜g8+ 62. ♔h6 a5 63. ♜c5+ ♔f6 64. ♜c6+ ♔f5 65. ♔h7 ♜a8 66. ♜c7 ♔f6 67. h6 ♜a6 68. ♜g7 ♜a8 69. a4 ♔f5 70. ♜f7+ ♔e6 71. ♔g7 ♔d5 72. h7 ♔c4 73. h8=♜ ♜xh8 74. ♔xh8 ♔b3 75. ♜f4 1-0

B80 Sicilian Najdorf

Kyle Haining (4.0)
Alan Bishop (1.0)

Seattle, WA Invitational (6) 2012

1. e4 c5 2. ♗f3 d6 3. d4 ♗f6 4. ♖c3 cxd4 5. ♗xd4 a6 6. f3 e5 7. ♗b3 ♗e6 8. ♗e3 ♗e7 9. ♜d2 h5 10. ♗e2 ♗bd7 11. f4 exf4 12. ♗xf4 ♗e5 13. O-O-O ♜c8 14. ♗d4 ♗g4 15. ♗xg4 ♗c4 16. ♜e2 hxg4 17. ♗b3 ♗h5 18. g3 ♗f6



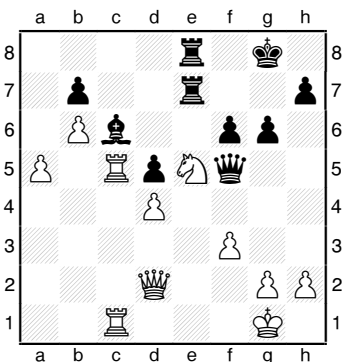
19. ♗xd6 ♗xc3 20. bxc3 ♗xd6 21. ♜xg4 ♜c4 22. ♜e2 b5 23. g4 ♜g5+ 24. ♔b2 ♗f4 25. ♜d2 ♜c6 26. ♔b1 O-O 27. h4 ♜e5 28. ♗d4 ♗xe4 29. ♜e1 ♗xc3+ 30. ♔a1 ♜d5 31. ♗b3 ♗xd1 32. ♜xd1 ♜xd1+ 33. ♜xd1 ♜xc2 34. ♔b1 ♜fc8 35. ♗d4 ♜g2 36. ♗f5 ♜cc2 37. ♗e3 ♜b2+ 38. ♔c1 ♜ge2 39. ♜d8+ ♔h7 40. ♜e8 ♗d3+ 41. ♔d1 ♜bd2 mate

C01 French Exchange

Vishnu Warrior (0.5)
Noah Fields (2.0)

Seattle, WA Invitational (6) 2012

1. e4 e6 2. d4 d5 3. exd5 exd5 4. c4 ♗b4+ 5. ♗d2 ♗xd2+ 6. ♜xd2 ♗f6 7. ♗d3 O-O 8. ♗c3 ♗e6 9. cxd5 ♗xd5 10. ♗ge2 ♗d7 11. ♗xd5 ♗xd5 12. O-O ♗f6 13. f3 ♜e8 14. ♜fc1 ♜d6 15. ♜c5 ♜ad8 16. ♜ac1 ♗c6 17. b4 a6 18. ♗xa6 ♜e7 19. ♗d3 ♗d5 20. b5 ♗e8 21. ♗e4 c6 22. ♗g3 g6 23. ♗xd5 cxd5 24. a4 ♜a8 25. a5 ♜d8 26. b6 ♗c6 27. ♗e2 ♜d7 28. ♗f4 ♜f5 29. ♗d3 ♜ae8 30. ♗e5 f6



31. g4 ♜c8 32. ♗xc6 bxc6 33. ♜xc6 ♜a6 34. ♜1c2 ♜e1+ 35. ♔f2 ♜f1+ 36. ♔g2 ♜a1 37. ♜f2 ♜xa5 38. ♜c8 ♜xc8 39. ♜xc8+ ♔g7 40. ♜c7+ ♔f8 41. ♜e3 ♜a2+ 42. ♔h3 ♜b4 43. b7 ♜xh2+ 44. ♔xh2 ♜d6+ 45. ♔g2 ♜xc7 46. ♜a3+ ♔g7 47. ♜b2 ♜b8 48. ♜b5 h5 49. gxf5 gxf5 50. ♜xd5 h4 51. ♜d7+ ♔h6 52. ♔f2 ♜h2+ 53. ♔e3 ♜g1+ 54. ♔e4 ♜b1+ 55. ♔d5 ♜b3+ 56. ♔c5 ♜c3+ 57. ♔b6 ♜b4+ 58. ♔c7 ♜a5+ 59. ♔c8 ♜a6 60. d5 h3 61. ♜xh3+ ♔g6 62. ♜g4+ ♔h6 63. ♜f4+ ♔g7 64. ♜c7+ ♔g6 65. ♜c6 ♜a3 66. d6 1-0

D61 QGD Orthodox

Samuel He (3.0)
Daniel He (3.5)

Seattle, WA Invitational (6) 2012

1. d4 e6 2. ♗f3 d5 3. c4 c6 4. ♗c3 ♗f6 5. ♗g5 ♗e7 6. e3 h6 7. ♗h4 O-O 8. ♜c2 ♗bd7 9. ♜d1 b6 10. a3 ♗b7 11. ♗d3 ♜c8 12. O-O dxc4 13. ♗xc4 b5 14. ♗a2 a6 15. ♗b1 g5 16. ♗g3 ♔g7 17. h3 Draw

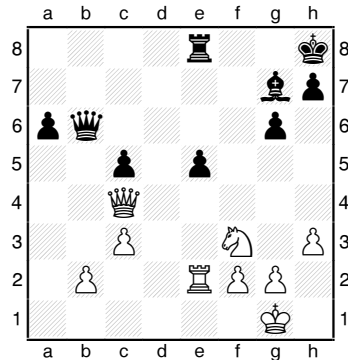
Round Seven

B07 Modern Defense

FM Paul Bartron (5.0)
Kyle Haining (4.0)

Seattle, WA Invitational (7) 2012

1.e4 g6 2.d4 ♗g7 3.♟f3 d6 4.c3
♞f6 5.♙d3 O-O 6.O-O c5 7.h3 ♖c7
8.♗e2 a6 9.a4 ♞c6 10.♙f4 ♞d7
11.dxc5 ♞xc5 12.♙c2 e5 13.♙e3
♞e7 14.♙d1 f5 15.♙xc5 dxc5 16.
♖c4+ ♟h8 17.♞g5 ♞g8 18.♞d2
♗e7 19.♞gf3 ♙e6 20.♗e2 ♞h6
21.exf5 ♙xf5 22.♙e4 ♙ad8 23.
♞c4 ♞f7 24.a5 ♙xe4 25.♗xe4 ♞d6
26.♞xd6 ♙xd6 27.♙xd6 ♗xd6
28.♙e1 b6 29.axb6 ♗xb6 30.♙e2
♙e8 31.♗d5 ♙d8 32.♗c4 ♙e8



33.♞g5 ♖f6 34.♞f7+ ♟g8 35.
♞xe5+ ♗e6 36.♗xe6+ ♙xe6 37.f4
g5 38.g3 gxf4 39.gxf4 ♙xe5 40.
fxe5 ♟f7 41.♟g2 ♟g6 42.♟g3
♟f5 43.h4 ♙g6+ 44.♟f3 ♙e6
45.♙e4 ♙xe5 46.♙a4 ♙e6 47.♙a5
♙c6 48.b4 ♟e6 49.bxc5 ♟d5 50.
♟e3 ♙xc5 51.♙xa6 ♙xc3+ 52.
♟f4 ♙c7 53.h5 ♙e7 54.♙f6 ♙e6
55.♙f7 h6 56.♟f5 ♟d6 57.♙a7
♙e5+ 58.♟g6 ♙e6+ 59.♟f7 ♙e5
60.♙a6+ ♟d7 61.♙xh6 ♙f5+ 62.
♟g6 ♙f8 63.♟g7 ♟e7 64.♙a6

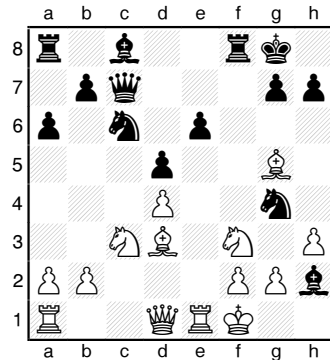
♙f7+ 65.♟g6 ♙f1 66.♟g7 ♙f7+
67.♟g6 ♙f1 68.h6 ♙g1+ 69.♟h7
♟f7 70.♙a7+ ♟f8 71.♙g7 ♙h1
72.♙g2 Draw

C06 French Tarrasch

Noah Fields (2.0)
Samuel He (3.5)

Seattle, WA Invitational (7) 2012

1.e4 e6 2.d4 d5 3.♞d2 ♞f6 4.e5
♞fd7 5.♙d3 c5 6.c3 ♞c6 7.♞e2
cxd4 8.cxd4 f6 9.exf6 ♞xf6 10.
O-O ♙d6 11.♞f3 ♖c7 12.♞c3 a6
13.♙g5 O-O 14.♙e1 ♞g4 15.h3
♙h2+ 16.♟f1



16...♞xf2 17.♟xf2 ♖g3+ 18.♟e3
♙xf3+ 19.gxf3 ♖xg5+ 20.♟f2
♙g3+ 21.♟f1 e5 22.♙e2 ♙xh3+ 23.
♙g2 exd4 24.♞e2 ♙h4 25.♞f4 ♖xf4
26.♗e2 ♞e5 27.♙e1 ♞xf3 0-1

B07 Pirc 150 Attack

Daniel He (4.0)
Mark Smith (1.0)

Seattle, WA Invitational (7) 2012

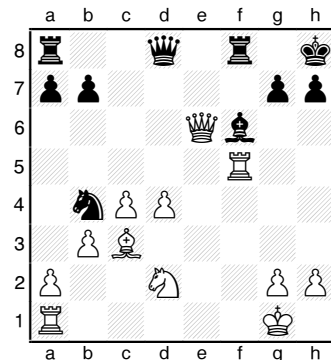
1.e4 d6 2.d4 ♞f6 3.♞c3 g6 4.♙e3
♙g7 5.♗d2 O-O 6.f3 ♞bd7 7.♞ge2
c6 8.O-O-O b5 9.e5 b4 10.exf6
bxc3 11.♞xc3 ♞xf6 12.♙c4 a5
13.♙b3 ♙a6 14.g4 e6 15.♙g5
♖c7 16.h4 ♙b5 17.a4 ♙a6 18.♗h2
♗d7 19.♙xf6 ♙xf6
20.♞e4 ♙e7 21.h5 g5
22.f4 f6 23.f5 d5
24.♗f2 exf5 25.gxf5
♟h8 26.♞c5 ♙xc5
27.dxc5 ♖c7 28.♙he1
♙ae8 29. ♙e6 ♙xe6
30.fxe6 ♗e7 31.♙e1
♙b8 32.♗g3 ♙d8 33.
♖c3 d4 34.♗xa5 d3
35.♙d1 ♙c8 36. cxd3
♙d4 37.♖c3 ♙h4 38.
♙f1 ♟g7 39.a5 ♙f4

D07 QGD Chigorin

Becca Lampman (3.0)
Michael Schemm (3.0)

Seattle, WA Invitational (7) 2012

1.d4 ♞c6 2.♞f3 d5 3.c4 ♙g4 4.e3
e6 5.♞c3 ♞f6 6.♙e2 ♙e7 7.O-O
O-O 8.b3 ♞e4 9.♞xe4 dxe4 10.
♞d2 ♙xe2 11.♗xe2 f5 12.♙b2
♞b4 13.♙c3 ♞d3 14.f3 c5 15.fxe4
cxd4 16.exd4 ♞b4 17.exf5 exf5
18.♗e6+ ♟h8 19.♙xf5 ♙f6



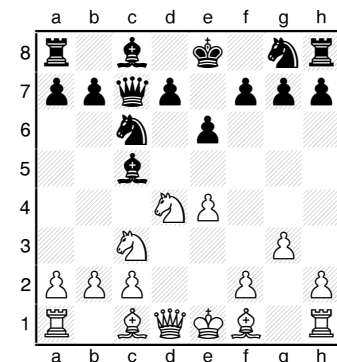
20.♗e4 ♙xd4+ 21.♙xd4 ♙xf5
22.♞f3 ♖f8 23.♗xb7 ♙f7 24.♗b5
♞c2 25.♙c5 ♖c8 26.♙c1 ♙f5 27.
♙xc2 ♙xc5 28.♗b4 ♖f5 29.♙d2
♙f8 30.♗b7 ♖b1+ 31.♟f2 ♙e5
32.♟g3 ♙e3 33.♙d7 ♖e1+ 34.
♟h3 ♖c3 35.♙f7 ♙fe8 36.♗xa7
♖e5 37.♗d7 ♖h5+ 38.♟g3 ♖g6+
39.♟h3 ♙e2 40.♞h4 ♙e3+ 41.
♞f3 ♖h5+ 42.♟g3 ♖g6+ Draw

B47 Sicilian Paulsen

Alan Bishop (2.0)
Vishnu Warriar (1.5)

Seattle, WA Invitational (7) 2012

1.e4 c5 2.♞f3 ♞c6 3.d4 cxd4
4.♞xd4 e6 5.♞c3 ♖c7 6.g3 ♙c5





Carl A. Haessler

Lessons • Lectures • Exhibitions

USCF Life Master

503-875-7278

4-Time Oregon Champion

ssmith6154@aol.com

7. ♖db5 ♖b8 8. ♗f4 e5 9. ♗e3
 ♗xe3 10. ♗d6+ ♗e7 11. ♗f5+ ♗f8
 12. ♗xe3 g6 13. ♗d6 ♗e7 14. ♗db5
 a6 15. ♗d5+ ♗f8 16. ♗bc3 b5
 17. ♗h3 ♖a7 18. O-O d6 19. ♗xc8
 ♖xc8 20. a4 ♖b7 21. axb5 axb5
 22. ♖d3 ♖b8 23. ♖a6 ♗ge7 24.
 ♗xe7 ♗b4 25. ♗c6 ♗xd3 26. ♗xb8
 ♗c5 27. ♖xd6 b4 28. ♖d8+ ♗g7
 29. ♖xh8 ♗xh8 30. ♗d5 ♖xb8
 31. ♖xf7 ♗xe4 32. ♖e7 ♗g5 33. h4
 ♗f3+ 34. ♗g2 ♖f8 35. ♗xb4 ♗e1+
 36. ♗h3 h5 37. ♗d3 ♗xc2 38. ♗xe5
 ♖f6 39. ♖e8+ ♗g7 40. ♖e7+ ♗f8
 41. ♖c7 ♖f2 42. ♗xg6+ ♗g8 43.
 ♗f4 ♗xe3 44. ♖e7 ♗f1 45. ♖e2 1-0

Round Eight

A41 Hodgson

Samuel He (4.5)

Alan Bishop (3.0)

Seattle, WA Invitational (8) 2012

1. d4 d6 2. ♗f3 ♗g4 3. e4 ♗f6 4. ♗c3
 e6 5. h3 ♗h5 6. g4 ♗g6 7. ♖e2 ♗e7
 8. ♗g2 O-O 9. O-O d5 10. ♗e5
 ♗xe4 11. ♗xe4 ♗xe4 12. ♗xe4
 dxe4 13. ♖xe4 ♗c6 14. ♗xc6 bxc6
 15. ♗f4 ♖b8 16. b3 ♖d5 17. ♖d3
 ♗d6 18. c4 ♖a5 19. ♖f3 ♖a6
 20. ♖fd1 ♖fd8 21. ♖d3 ♖d7 22.
 ♖e4 ♖bd8 23. ♗g5 ♖e8 24. ♗h4 h6
 25. g5 hxg5 26. ♗xg5 f6 27. ♖g6
 ♖f8 28. ♗xf6 ♖df7 29. ♗h4 c5 30.
 d5 exd5 31. ♖xd5 ♗h2+ 32. ♗xh2
 ♖xg6 33. a4 ♖xf2+ 34. ♗xf2
 ♖xf2+ 35. ♗h1 ♖g2 mate

All Reti

Mark Smith (1.0)

Noah Fields (2.0)

Seattle, WA Invitational (8) 2012

1. g3 d5 2. ♗g2 ♗f6 3. d3 ♗g4
 4. ♗f3 ♗bd7 5. O-O c6 6. ♗bd2 e6

Northwest Chess

7. c4 ♗e7 8.
 ♖b3 ♖c7 9. h3
 ♗h5 10. ♖e1 O-
 O 11. ♗f1 ♗c5
 12. ♖c2 ♗g6
 13. ♗h4 ♖fd8
 14. ♗xg6 hxg6
 15. b4 ♗cd7 16.
 a3 ♖ac8 17.
 ♗b2 ♗f8 18.
 cxd5 exd5 19.
 ♖ac1 ♗e6 20.
 ♗d2 ♗d6 21.

22. d4 ♗e4 23. e3 ♖e8
 24. ♗d2 ♗6g5 25. h4 ♗xd2 26.
 ♖xd2 ♗e4 27. ♗xe4 ♖xe4 28. f4
 ♖ce8 29. ♗f2 ♖d8 30. ♗f3 ♖e7
 31. ♖f2 f6 32. ♖cd1 g5 33. ♗c1
 gxf4 34. gxf4 ♗xf4 35. ♗d2 ♗h6
 36. ♖g1 ♖xh4 0-1

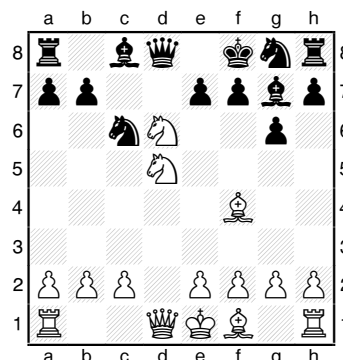
A00 Dunst Opening

Michael Schemm (3.5)

Daniel He (5.0)

Seattle, WA Invitational (8) 2012

1. ♗c3 c5 2. ♗f3 ♗c6 3. d4 cxd4 4.
 ♗xd4 g6 5. ♗f4 ♗g7 6. ♗db5 d6 7.
 ♗d5 ♗f8 8. ♗xd6



8... ♗e6 9. e4 exd6 10. ♗c7 ♗e5
 11. ♗xe5 dxe5 12. ♗xa8 ♖xa8 13.
 h4 h6 14. f4 ♖d8 15. ♖xd8+ ♗xd8
 16. O-O-O ♗c6 17. ♗xe5 ♗ge7 18.
 ♗e2 h5 19. ♖d6 ♗g7 20. ♖hd1
 ♗xe5 21. a4 ♗7c6 22. b3 ♗g4 23.
 ♗f3 ♖c8 24. ♗b2 ♗ce5 25. c3 ♖c5
 26. ♖1d4 ♖c7 27. ♖d1 ♗c6 28. c4
 ♗ce5 29. ♖6d4 a6 30. ♖d6 ♗e3
 31. ♖1d4 ♗3xc4+ 32. bxc4 ♗xc4+
 33. ♗b1 ♗xd6 34. ♖xd6 ♖c6 35. e5
 ♖xd6 36. exd6 b6 37. ♗b2 ♗d7 38.
 ♗b3 ♗f6 39. ♗d5 a5 40. g3 ♗e6
 41. ♗c4 ♗d7 42. ♗b7 ♗e5 43. ♗d5
 ♗xd6 44. ♗xf7 ♗xa4 45. ♗xg6 b5+
 46. ♗d4 ♗d1 47. ♗e8 b4 48. ♗b5 a4
 49. g4 hxg4 50. h5 g3 51. ♗f1 a3 0-1

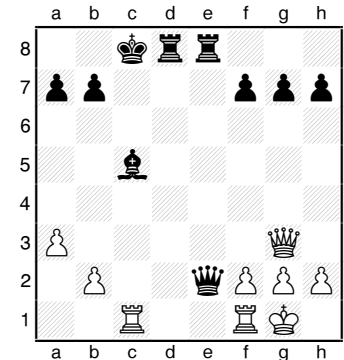
B44 Sicilian Maroczy Bind

Kyle Haining (4.5)

Vishnu Warrior (1.5)

Seattle, WA Invitational (8) 2012

1. e4 c5 2. ♗f3 e6 3. d4 cxd4 4. ♗xd4
 ♗c6 5. c4 ♗f6 6. ♗c3 ♗b4 7. ♖d3
 d5 8. exd5 exd5 9. ♗c2 ♖e7+ 10.
 ♗e3 ♗e6 11. cxd5 ♗xd5 12. ♗d4
 ♗xd4 13. ♖xd4 O-O-O 14. a3 ♗xe3
 15. ♖xe3 ♗c5 16. ♖g3 ♗c4+ 17.
 ♗e2 ♖he8 18. O-O ♗xe2 19. ♗xe2
 ♖xe2 20. ♖ac1



20... b6 21. b4 ♖e5 22. bxc5 bxc5
 23. ♖b3 ♖e6 24. ♖f3 ♖d5 Draw

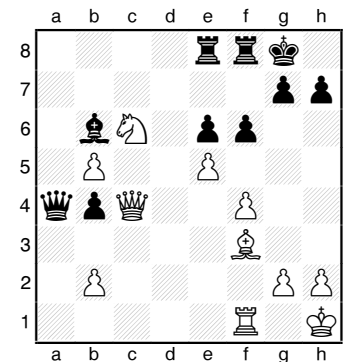
B49 Sicilian Paulsen

FM Paul Bartron (5.5)

Becca Lampman (3.5)

Seattle, WA Invitational (8) 2012

1. e4 c5 2. ♗f3 e6 3. d4 cxd4 4. ♗xd4
 ♗c6 5. ♗c3 ♖c7 6. ♗e3 a6 7. a3
 ♗f6 8. ♗e2 ♗e7 9. O-O O-O 10. f4
 d6 11. ♗b3 b5 12. ♗f3 ♗b7 13.
 ♖d2 ♖ac8 14. ♖f2 ♗d7 15. ♗e2
 ♗f6 16. c3 a5 17. ♗ed4 b4 18. axb4
 axb4 19. ♗xc6 ♗xc6 20. ♖a7 ♖b8
 21. ♗a5 ♗b5 22. c4 ♗c5 23. cxb5
 ♖xa7 24. ♗c6 ♖a4 25. ♗xc5 dxc5
 26. e5 ♗d8 27. ♖xc5 f6 28. ♖c4
 ♗b6+ 29. ♗h1 ♖ce8



30. f5 fxe5 31. fxe6 ♖f5 32. e7+
 ♗h8 33. ♗e4 ♖xf1+ 34. ♖xf1 ♗c5

July 2012

19

35.h4 ♖b3 36.♗f5 ♗d1+ 37.♔h2 ♗g1+ 38.♔h3 ♗h1+ Draw

Round One

This first round game was played at 10:00 a.m. on Monday, February 20.

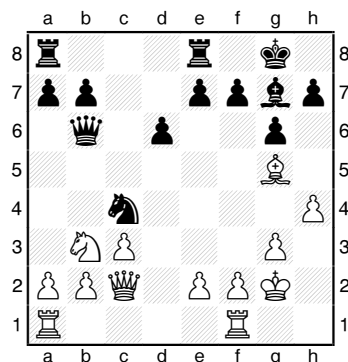
A00 Dunst Opening

Michael Schemm (3.5)

Alan Bishop (4.0)

Seattle, WA Invitational (1) 2012

1.♘c3 c5 2.♗f3 ♘f6 3.d4 cxd4 4.♗xd4 d6 5.g3 ♕d7 6.♕g2 ♗c6 7.O-O g6 8.♗e4 ♗xe4 9.♕xe4 ♕g7 10.c3 O-O 11.♕g5 ♖e8 12.h4 ♗b6 13.♗b3 ♗e5 14.♗c2 ♕h3 15.♕g2 ♕xg2 16.♔xg2 ♗c4



17.h5 ♗b5 18.♕d2 ♗xh5 19.♗e4 d5 20.g4 ♗h4 21.♗f3 ♗e5 22.♗xd5 ♗xg4+ 23.♔h1 ♗xe2 24.♗xb7 ♗h5+ 0-1

Round Nine

unknown

Noah Fields (3.0)

Michael Schemm (3.5)

Seattle, WA Invitational (9) 2/20/2012

No score turned in — 0-1

C42 Petroff

Daniel He (6.0)

FM Paul Bartron (6.0)

Seattle, WA Invitational (9) 2012

1.e4 e5 2.♗f3 ♗f6 3.♗xe5 d6 4.♗f3 ♗xe4 5.♗e2 ♗e7 6.d3 ♗f6 7.♗c3 ♗xe2+ 8.♕xe2 c6 9.O-O ♕e7 10.♗e4 d5 11.♗xf6+ ♕xf6 12.d4 ♕f5 13.c3 ♗d7 14.♖e1 O-O 15.♕e3 ♖fe8 16.♗d2 h6 17.♗f1 ♖e7 18.♗g3 ♕g6 19.♕g4 ♖ae8 20.♕f5 ♗f8 21.♔f1 ♕xf5 22.♗xf5 ♖e6 23.♕d2 ♖d8 24.♖ad1 h5 25.♗g3 g6 26.♗e2 ♖de8 27.♗f4

♖xe1+ 28.♖xe1 ♖xe1+ 29.♔xe1 ♕g5 30.♗d3 ♕xd2+ 31.♔xd2 ♗d7 32.b3 f6 33.a4 ♔f7 34.♔e3 a5 Draw

The game Lampman–Haining was played at 10:00 a.m. on Monday, February 20.

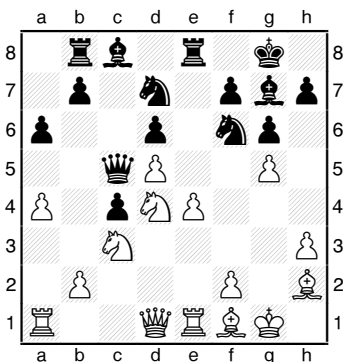
A70 Modern Benoni

Becca Lampman (4.0)

Kyle Haining (5.0)

Seattle, WA Invitational (9) 2012

1.d4 g6 2.c4 ♕g7 3.e4 c5 4.d5 d6 5.♕d3 ♗f6 6.♗c3 e6 7.♗f3 exd5 8.cxd5 O-O 9.O-O ♖e8 10.♖e1 a6 11.a4 ♗bd7 12.♕f4 ♗c7 13.h3 ♗h5 14.♕h2 c4 15.♕f1 ♖b8 16.g4 ♗hf6 17.♗d4 ♗c5 18.g5



18...♗xd5 19.exd5 ♖xe1 20.♗xe1 ♕xd4 21.♗e8+ ♔g7 22.♗e4 ♗xd5 23.♕xd6 ♖a8 24.♕g2 b6 25.♗f6 ♗xg5 26.♗g8+ ♔xf6 27.♗h8+ ♔f5 28.♗xd4 ♕b7 29.♕g3 ♗e7 30.♕xb7 ♖e8 31.♗f4+ ♔e6 32.♖e1+ 1-0

B03 Alekhine Exchange

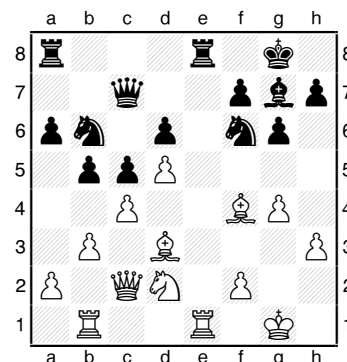
Vishnu Warriar (2.0)

Samuel He (4.5)

Seattle, WA Invitational (9) 2012

1.e4 ♗f6 2.e5 ♗d5 3.d4 d6 4.exd6 exd6 5.c3 ♕e7 6.♕d3 ♗f6 7.♗f3 O-O 8.O-O c5 9.♗a3 ♗c6 10.♕f4

♕g4 11.h3 ♕h5 12.d5 ♗b8 13.♖e1 a6 14.c4 ♗bd7 15.♗c2 ♖e8 16.g4 ♕g6 17.♗e3 ♗c7 18.♗f5 ♕xf5 19.♕xf5 b5 20.b3 ♕f8 21.♗c2 g6 22.♕d3 ♕g7 23.♖ab1 ♗b6 24.♗d2



24...♗d7 25.♕g3 a5 26.f4 h5 27.f5 g5 28.♗e4 ♗xe4 29.♕xe4 h4 30.♕h2 ♕d4+ 31.♔g2 f6 32.cxb5 a4 33.b4 c4 34.♖ed1 ♕e3 35.♔f3 ♗xb5 36.♔xe3 ♗xd5+ 37.♔f3 ♗e3 38.♔xe3 d5 39.♖d4 ♗b6 40.♕c7 ♗a7 41.b5 ♖xe4+ 42.♗xe4 dxe4 43.b6 ♗b7 44.♖xc4 ♖e8 45.♖b5 ♖c8 46.♖xa4 ♗c6 47.♖ab4 ♖e8 48.♔d4 e3 49.♖c5 ♗e4+ 50.♔c3 ♗f3 51.b7 e2+ 52.♔b2 e1=♗ 53.b8=♗ ♖xb8 54.♖xb8+ ♔f7 55.♖c2 ♗d5 56.♖b3 ♗dd1 57.♖bc3 ♗b1+ 58.♔a3 ♗f1 59.♕a5 ♗fb5 60.♖c7+ ♔e8 0-1

B06 Pirc 150 Attack

Alan Bishop (5.0)

Mark Smith (1.0)

Seattle, WA Invitational (9) 2012

1.e4 g6 2.d4 d6 3.♗c3 ♕g7 4.♕e3 ♗f6 5.♗d2 O-O 6.O-O-O c6 7.f3 b5 8.a3 a5 9.♕h6 b4 10.♗b1 bxa3 11.♗xa3 ♕a6 12.♗e2 ♗bd7 13.♗g3 ♕xf1 14.♗xf1 ♗b6 15.♕xg7 ♔xg7 16.♗e3 ♖fb8 17.♗ac4 ♗b4 Draw ■

Learn what's happening in your area of interest at the USCF Committee meetings and workshops scheduled from 9 to 5 on Wed. 8/8, Thu. 8/9, and Fri. 8/10 during the U.S. Open.

Topics include Bylaws, Clubs, Finance, International Affairs, Rules, Scholastic Chess, etc. See p. 9 in the July issue of *Chess Life* or www.uschess.org for complete schedule.

Official Minutes of OCF and WCF Meetings

Oregon Chess Federation Board Meeting May 20th, 2012

Quorum present at 10:05 a.m.—President Dave Yoshinaga; Treasurer Mike Morris; Vice President Richard Gutman; Tournament Coordinator Dale Wentz. Arrived at 10:28—Member-at-Large Grisha Alpernas. Absent—Secretary Daniel Gay; Scholastic Coordinator Tony Hann.

Opened with discussion of upcoming tournaments. Eugene bid for Oregon Open is not going forward. Portland Chess Club will handle, waiting for Mt. Hood Community College to confirm the reservation of the space, which will not be certain until July.

Junior Closed was held in January and won by David Wen. The rotating trophy has been engraved with his name and delivered to him. The 2013 championship was discussed and tentatively scheduled for early next year, with no specific date set.

The Oregon Class Championships were successfully held on the first weekend of May with 48 paid entries. The OCF realized a profit of \$312.71. It was decided that the Class Championships would be held in early May again next year.

Discussion of Junior Open and Denker qualifier. Determined by checking the USCF website for tournament results that this had been won by Alexandra Botez. After discussion, she was also named as Oregon's representative to the Susan Polgar Girl's invitational, should she choose to attend.

Frank Niro is organizing the Oregon Senior Open to be held in Oregon City on July 7-8.

Discussion turned to issues surrounding the Oregon Championship and Nick Raptis' protest of the result. While it was agreed that circumstance had led to a situation that may not have been fair to all participants, it did not rise to the level of overturning the results. Discussion then turned to by-laws change to avoid having this issue in the future. Mike Morris had sent out a by-law change suggesting that any games not played at the scheduled time must be played in advance of the scheduled round. Grisha Alpernas suggested that it read that all other games be played and finished prior to the final round of the tournament. Dale Wentz suggested that the final game, usually held on the President's Day Holiday Monday be scheduled for the evening, rather than during the day, both to allow for time for make up games, and to accommodate those that may have to work during the day. Discussion ensued regarding what could be considered an emergency to delay a game, that both players should be agreeable to the change, and that the TD, insofar as he is reasonably able to do so, should consult with all players regarding schedule changes. Mike will present a formal revision for the Annual Membership Meeting, to be voted on at that time.

Discussion of announcement for Class Championships which required players to play in the section of their published rating. In the past, players have been allowed to play up one section. Decided that players who have an unofficial rating that is up a section will be allowed to play up, if they so choose. This allows players who are advancing quickly to play up, but keeps players looking for comparable opposition from playing players of noticeably lower rating.

Mike has been authorized to check into a replacement for the perpetual Trophy for the state championship, to get estimates for the trophy and the engraving of the names of the champions left off of the current trophy.

Discussion of USCF Rule 32-C-1. Suggestion that OCF adapt the rule, as Portland Chess Club has, that "No Player who has not completed all scheduled rounds of a tournament shall be eligible for prizes." A short investigation of the USCF official rules shows that this is addressed and left to the Organizer's or Tournament Director's discretion. Agreed that this should be in force for OCF tournaments.

Lastly, discussed which officers were willing to continue in their positions when elections are held at the Oregon Open in September. Dave Yoshinaga, Richard Gutman, and Mike Morris are all willing to continue in their positions. Dale Wentz declines to continue as Tournament Coordinator citing family pressures. Grisha Alpernas indicated he will be willing to take over as Tournament Coordinator. Tony Hann has not interacted with the Board for a year. We take that as an indication that he is no longer interested in the position of Scholastic Coordinator. We need a Member at Large and a Scholastic Coordinator. As non-board positions we will need a new Webmaster, and an Oregon editor for *Northwest Chess*. Anyone interested in these positions should contact the Board and make the membership aware before or during the General Membership Meeting in September.

Meeting concluded at 11:55.

Wash. Chess Federation Membership Meeting May 27th, 2012

Officers Present:

President Josh Sinanan, Vice President Duane Polich, Secretary Gary Dorfner, Treasurer Robert Allen, Tournament Coordinator Dan Mathews, Scholastic Director David Hendricks, Member-at-Large vacant. Eleven members present.

The meeting was called to order at 4:28 pm. The minutes were read and approved.

The President and Vice President each gave a short talk.

Discussed bringing back the mail ballot. A motion was made by Mr. Polich and seconded by Mr. Dorfner to re-establish the mail ballot effective 2013 and create process to do so, passed.

Discussed re-establishing Chess Club Representatives or Regional Directors.

Financial Report:

There was \$441.35 on hand as of 5/25/2012. (This does not include the Washington Open.)

Discussed who would be the co-signer on the checking account. A motion was made by Mr. Mathews and seconded by Mr. Dorfner that the President be the co-signer of checks, passed. The Treasurer and the President will be the only ones authorized to write and sign checks.

Election of officers was next. The following were re-elected for two-year terms: President Josh Sinanan, Secretary Gary Dorfner, and Scholastic Director David Hendricks. Marc Kramer was elected Member-at-Large.

Meeting adjourned at 5:26 pm

Gary J. Dorfner, Sec.

July 15, August 26

Sunday Tornado

Format: 4-SS. TC: G/64. EF: \$18 (+\$7 fee for non-SCC). Prizes: 1st 35%, 2nd 27%, Bottom Half 1st 22%, 2nd 16% (\$10 from each EF goes to prize fund). Reg: 10:30-11:15 a.m. Rds: 11:30-1:50-4:10-6:30. Misc: USCF, WCF/OCF/ICA memb. req'd, OSA. NS, NC.

July 21

SCC Novice

Format: 4-SS. Open to U1200 and unrated. TC: G/75. EF: \$11 by 7/18, \$16 at site. (-\$2 for SCC mem., -\$1 for mem. of other NW dues-req'd CCs). Prizes: Memb (SCC, WCF, USCF). Reg: 9-9:45a.m. Rds: 10-12:45-3:30-6. Byes: 1 (Rd 3/4—commit at reg.). Misc: USCF memb. req'd. NS, NC.

August 18, Sept. 15

Saturday Quads

Format: 3-RR, 4-plyr sections by rating. TC: G/120. EF: \$9 (+\$7 fee for non-SCC). Prizes: Free entry for future quad. Reg: 9:00-9:45 a.m. Rds: 10-2:15-6:30. Misc: USCF, WCF/OCF/ICA memb. req'd, OSA. NS, NC.

Address
2150 N 107 St, B85
Seattle WA 98133
Infoline
206-417-5405
www.seattlechess.org
kleistcf@aol.com
Address for Entries
SCC Tnmt Dir
2420 S 137 St
Seattle WA 98168

How to Find the SCC
Look for the Northway Square East Building, just across I-5 from Northgate Mall, with large signs proclaiming "Northwest Kidney Centers" and "City University." The main entrance is reached by turning east on N. 107th Street from Meridian Ave. N. The club is on the lower level.

Seattle Seafair

July 27-29 or July 28-29

A one-section, five-round Swiss with a time control of 40/2 and SD/1 (Two-day schedule – Round 1, G/64).

The prize fund of \$1620 is based on 64 paid entries, 6 per prize group.

a Northwest Grand Prix event

First	\$300	gtd.	U1800	\$130
Second	\$195	gtd.	U1600	\$125
Third	\$115	gtd.	U1400	\$120
U2200	\$140		U1200	\$60
U2000	\$135		Unrated	\$45
Upset (Rds 1-4)			\$10/rd	
Plus Score Pool			\$215	

Entry Fees: \$41 if rec'd by 7/25, \$50 at site. GMs, IMs, & WGMs—FREE. Unrated—Free with purchase of 1-yr USCF & 1-yr WCF. SCC members—subtract \$11. Members of other dues-required CCs in BC, OR, and WA—subtract \$5. Add \$1 to any EF for 2-day schedule.

Registration: Fri. 7-7:45pm, Sat. 9-9:45am. Rounds: Fri. 8, Sat. (10 @ G/64)-12:30-6:45, Sun. 11-5.

Byes: 2 (Sunday rounds, commit at reg.). Misc.: USCF & WCF memb. req'd. OSA. No smoking. No computers.

Upcoming Events

♣ July 14

Northwest Open ♣

Site: Tacoma Chess Club, 409 Puyallup Ave E, 2nd floor, Room 11 in the DTI Soccer Store Building across from Alfred's Café (two blocks downhill from Tacoma Dome). **Format:** 4SS. **TC:** G/60. **EF:** \$20. **Prize Fund:** \$135 (b/10). **Prizes:** Top Half 50-25, Bottom Half 35-25. **Reg:** 9:00-9:45 a.m. **Rds:** 10-12:30-3-5:30 or ASAP. **Byes:** Avail. **Misc:** ICA/OCF/WCF and USCF memb req'd. NS. NC. NW. **Entries/Info:** Gary J. Dorfner 8423 E 'B' St, Tacoma WA 98445; 253-535-2536; 253-306-7137 (club); ggarychess@aol.com.

♣ July 14-15

Portland Summer Open ♣

Site: Portland Chess Club, 8205 SW 24 Ave, Portland OR. **Format:** 5SS, 2 sec.—Open & U1800. **TC:** 40/90, SD/30. **EF:** \$35, \$10 discount for PCC Members. No advance entries. **Prize Fund:** \$650 (b/40) **Prizes:** Open \$150-100, U2000 75; Reserve \$100-75 U1600 50, U1400 50, U1200/UNR 50. **Reg:** begins at 9:00. **Misc:** ICA/OCF/WCF and USCF memb req'd, OSA. **Info:** portlandchessclub@gmail.com, 503-246-2978, www.pdxchess.org.

♣ July 14-15

ICA Summer Classic ♣

Site: Boise State University (BSU) Student Union Bldg, 1910 University Dr, Boise, ID. **Format:** 5SS, 2 sec.—Open & Reserve (U1400). **TC:** Rd 1—G/90, d5; Rds 2-5—G/120, d5. **EF:** \$30 by 7/9 (U18 & 60+ \$25; \$10 for BSU Club Members, Family Rate of \$60). \$5 more for all if rec'd after 7/16. E-mail entries rec'd by 7/9 will lock in adv rate. OK. **Prize Fund:** \$600 (b/30 non-BSU). **Prizes:** Open \$200-100-75, Reserve 100-75-50. **Reg & check in:** 8-8:30 a.m. **Rds:** 9-1-6, 9-2. **Byes:** One ½-pt. bye in Rds 1-4 only, commit by end Rd 2. **Misc:** USCF mem. req. NC, NS, W. **Ent/Info:** www.idahochech-association.org; Jeff Roland, 1514 S Longmont Ave, Boise ID 83706; jroland@cableone.net; chks payable to Idaho Chess Ass'n.

♣ July 14-15

Spokane Falls Open ♣

Site: Gonzaga University (Schoenberg Center) Rm. 201, N 800 Pearl St, Spokane WA. **Format:** 5SS. **TC:** G/120. **EF:** \$18 if rec'd by 7/29 (u18 \$15), \$25 at site. Unrated in first event—FREE. Phone entries accepted. **Prize Fund:** \$500 (b/25, 4/prz gp). **Prizes:** \$120-80, U1800 60-30, U1600 60-30, U1400 60-30, Biggest Upset 30 (no prov. rtgs). **Reg:** 8:30-9:30 a.m. **Rds:** 10-2:30-7; 9-1:30 or ASAP. **Byes:** One ½-pt. bye allowed, if req'd before preceding rd; Sunday byes must be req'd before end of Rd 3. **Misc:** USCF memb. req'd. NC. Spokane City Championship match [G/120 + G/10 (if needed)] held concurrently. John Julian vs. ????. **Entries:** David B Griffin, PO Box 631, Spokane Valley WA 99037. **Info:** 509-994-9739.

♣ July 15, August 26

SCC July Tornado ♣

See display ad on page 23.

July 21

SCC Novice

See display ad on page 23.

♣ July 27-29

Seattle Seafair Open ♣

See display ad on page 23.

♣ July 28, August 25

Portland Chess Club G/60 ♣

Site: Portland Chess Club, 8205 SW 24 Ave, Portland OR. **Format:** 4SS. **TC:** G/60. (TD may switch to 5SS and G/45 if more than 25 entries.) **EF:** \$20, \$5 discount for PCC Members. No advance entries. **Prize Fund:** \$200/b20 **Prizes:** \$60-40-30 U1800, U1500 35 each. **Reg:** 9-9:30. **Byes:** Half-point bye if requested at reg. **Misc:** OCF/WCF and USCF memb req'd, OSA. **Info:** portlandchessclub@gmail.com, 503-246-2978, www.pdxchess.org.

July 28

Run/Chess Championship

Sites: for timed mile—Newport Middle School Track, 825 NE 7 St, Newport OR 97365; for chess—Lincoln County PUD Bldg, 2129 N Coast Hwy, Newport OR 97365 (just s. of Walmart) **Format:** Run, jog, or walk a timed mile after reg. Your time for the mile will be your opponents' time for the 5-SS. **TC:** variable. **EF:** \$5. **Prizes:** Championship trophy; additional age/group trophies as participation allows. **Reg:** 11:30-11:45 a.m. at the track. **Rds:** noon—timed mile, Rd. 1—1:00 p.m. **Info:** Bill Barrese bllbrs2020@yahoo.com; 541-563-7033; 3599 E Alsea Hwy, Waldport OR 97394.

August 4-12, 7-12, or 9-12

U.S. Open

See display ad on page 10.

♣ August 18, Sept. 15

SCC Saturday Quads ♣

See display ad on page 23.

♣ September 1-3

Oregon Open ♣

Site: Mt. Hood Community College, Vista Room; 26000 SE Stark, Gresham. Check www.pdxchess.org for directions to playing site. **Format:** 6SS, 2 sec.—Open & Reserve (U1800). **TC:** 40/120, SD/60; d5. **EF:** \$60 (-\$10 for PCC memb. reg. by 8/30). Juniors (u19): \$15 to compete for non-cash prizes in Reserve (no PCC discount). **Prize Fund:** \$3000 gtd (may be increased if more than 100 non-jrs. **Prizes:** Open \$550-300-200, U2000 200-150-100; Reserve \$370- 220-130, U1600 130-80-50, U1400 130-80-50, U1200 130-80-50. UNR limited to class prz of \$100 (Open) or \$60 (Reserve). **Reg:** 9-10:45 a.m. **Rds:** 11-5:30, 9:30-5:30, 9-3. **Byes:** Two half-point byes avail., requested at reg. **Misc:** ICA/OCF/WCF and USCF memb req'd, OSA. **Entries/Info:** Mike Morris, 2344 NE 27 Ave, Portland OR 97212 (chks payable to Portland Chess Club); www.pdxchess.org.

♣ September 22-23

Eastern Idaho open ♣

Site: Idaho State University (ISU) Student Union Bldg, Salmon River Suites, 1065 S Eighth St, Pocatello. **Format:** 5SS, 2 sec.—Open & Reserve (U1400). **TC:** G/120; d5. **EF:** \$30 by 9/19 (U18 & 60+; \$25). \$5 more for all if rec'd after 9/19. E-mail entries rec'd by 7/9 will lock in adv rate. OK. **Prize Fund:** \$485 (b/30 non-ISU). **Prizes:** Open \$175-85-65, Reserve 75-50-35. **Reg & check in:** 7:30-8:30 a.m. Those not paid & ck'd in may not be paired. **Rds:** 9-2-7, 9-2. **Byes:** One ½-pt. bye in Rds 1-4 only, commit by end Rd 2. **Misc:** USCF mem. req. NC, NS, W. **Ent/Info:** www.idahochechassociation.org; ICA % Jay Simonson, 391 Carol Ave, Idaho Falls ID 83401; 208-206-7667; rooknjay@yahoo.com; chks payable to Idaho Chess Ass'n.