



\$3.95

August 2017

**Chess News and Features from
Idaho, Oregon, and Washington**

GM Timur Gareyev



Northwest Chess

August 2017, Volume 71-8 Issue 835

ISSN Publication 0146-6941

Published monthly by the Northwest Chess Board.

POSTMASTER: Send address changes to the Office of Record:
Northwest Chess c/o Orlov Chess Academy 4174 148th Ave
NE, Building I, Suite M Redmond, WA 98052-5164.

Periodicals Postage Paid at Seattle, WA
USPS periodicals postage permit number (0422-390)

NWC Staff

Editor: Jeffrey Roland,
editor@nwchess.com
Games Editor: Ralph Dubisch,
chesscoaching@gmail.com
Publisher: Duane Polich,
publisher@nwchess.com
Business Manager: Eric Holcomb,
eric@holcomb.com

Board Representatives

David Yoshinaga, Josh Sinanan, Grisha Alpernas,
Jeffrey Roland, Adam Porth, Chouchanik Airapetian,
Duane Polich.

Entire contents ©2017 by Northwest Chess. All rights reserved.
Published opinions are those of the contributors and do not necessarily
reflect the views of the editor or the Northwest Chess Board. Northwest
Chess is the official publication of the chess governing bodies of the
states of Washington, Oregon and Idaho.

Event Announcement Rates (Upcoming Events listings)

Grand Prix events: \$35 for three consecutive listings of the
same event. \$25 for two consecutive listings of the same event.
\$20 monthly for events held every month (may include dates for
current month and next month).

Other events: \$20 for one listing. \$30 for two listings. \$35 for
three listings. (Must be consecutive listings of the same event.)

Please arrange payment for ads and Grand Prix fees of \$1.00 per
player with the Business Manager.

Advertising & Copy Deadline

Ads and submissions must be received by the 5th of the month
for the items to appear in the next issue (e.g., **August 5 for the
September issue; September 5 for the October issue**).

Submit all ads, donations, payments, changes of address &
subscriptions to:

Business Manager, Northwest Chess
Eric Holcomb
1900 NE 3rd St, STE 106 PMB 361
Bend, OR 97701-3889
Eric@Holcomb.com
www.nwchess.com

**Judged Best State Magazine/Newsletter
for 2009 and 2014-16 by Chess
Journalists of America!**

On the front cover:

GM Timur Gareyev in Muldune Canyon playing chess
overlooking the White Cloud Mountains in Idaho.
Photo credit: Adam Porth.

On the back cover:

Tournament Director Fred Kleist at the "It's Summertime!"
tournament taken June 16, 2017 (which is round three of the
weekly Friday-night event). Photo credit: Jim Berezow.

Chesstoons:

Chess cartoons drawn by local artist Brian Berger,
of West Linn, Oregon.

Submissions

Submissions of games (PGN format is preferable for games),
stories, photos, art, and other **original** chess-related content
are encouraged! Multiple submissions are acceptable; please
indicate if material is non-exclusive. All submissions are
subject to editing or revision. Send via U.S. Mail to:

Jeffrey Roland, NWC Editor
1514 S. Longmont Ave.
Boise, Idaho 83706-3732
or via e-mail to:
editor@nwchess.com

Northwest Chess Knights

Please donate today to help Northwest Chess!

Patrons, 2014-2017

Stephen Buck, Murlin Varner, Jennifer Sinanan in honor
of Josh Sinanan, Gerard Van Deene, Washington Chess
Federation, Idaho Chess Association, Ralph Dubisch,
Russell Miller, August Piper, Jr., Catherine Smith.

Subscriptions / Memberships

(State membership included for individual residents
of Washington, Oregon or Idaho.)

		Rate
Adult	1 year	\$ 25.00
	3 years	\$ 65.00
Junior	1 year	\$ 19.00
	<i>U/21 at expiration</i>	\$ 45.00
Scholastic	6 months	\$ 10.00
Additional Family Members	1 year	\$ 5.00
	<i>Residing at same address</i>	\$ 12.00
Tournament/Trial	3 months	\$ 10.00
Canada	1 year	\$ 38.00
Foreign	1 year	\$ 57.00

Washington residents please add sales tax.



Table of Contents

GM Timur Gareyev Adam Porth.....	Front Cover
Letter to Editor David Lucky.....	3
GM Timur Gareyev Comes to Iowa...I Mean Idaho! Adam Porth.....	4
2017 PCC Summer Open Brian Berger.....	7
Oregon Senior Chess Championship (Half-Page Ad) Portland, OR Aug 12-13.....	7
June 2017 PCC Quad 45 Brian Berger.....	10
June 2017 PCC Game 60 Brian Berger.....	12
Helping Chess in Equatorial Guinea Avi Gupta and Seth Talyansky.....	14
Seattle Chess Classic (Full-Page Ad) Seattle, WA Aug 16-20.....	15
67th Annual Oregon Open (Full-Page Ad) Portland, OR Sep 2-4.....	16
The Xu Open Jeffrey Roland.....	17
Kuge Book Collection (Half-Page Ad).....	17
Northwest Players at the 2017 Women's Open Mary Kuhner.....	21
2017 Washington State Championship Brilliancy Prizes (Part 1 of 2) Michael Lee and Curt Collyer.....	23
Washington Women's Championship (Half-Page Ad) Seattle, WA Sep 15-17.....	26
2017 NW Grand Prix Report Murlin Varner.....	28
Seattle Chess Club Tournaments.....	30
Upcoming Events.....	31
Fred Kleist Jim Berezow.....	Back Cover

Letter to Editor

The following email came to me on July 12, 2017 (after the cut-off date of July 5), but I wanted to share this with the readers now because the information contained in it has major significance to Idaho chess players.—Editor.

Hi Jeff,

I hope everything has been going well for you!

Due to some business reasons and business opportunities, at the moment I am relocating to Newport Beach, California for a while. Therefore, I won't be in the Idaho area for some time, and regretfully won't be able to defend my State Championship title, or other Idaho titles, anytime in the near future.

I have really enjoyed my time in Idaho, and will miss my many chess friends. Hopefully I will be able to come back to visit from time to time. If the timing were to coincide correctly, I would still be happy to do a guest lecture, or possibly a simul at some future time.

In the meantime, I certainly do wish you, and all of the other Idaho players the very best of luck, in chess, and everything else!

Hopefully I'll be back at some point in the future. In the meantime, I do have a lot of happy and positive memories of all of the great chess times in Idaho!

Have a great, and wonderful week!

David Lucky

**Please remember to keep
submitting games, articles,
and photos to
editor@nwchess.com.**

GM Timur Comes to Iowa...I mean Idaho!

By Adam Porth

Boise, Sun Valley, Hailey, Ketchum, Bellevue, Twin Falls, etc. — May 18-21, 2017

It isn't the first time that people have confused Idaho with Iowa, but it would be the first time that Iowa State Chess Association would be confused with the Idaho Chess Association! ISCA President Eric Vigil connected ICA President Adam Porth with Grandmaster Timur Gareyev this past month. The new Blindfold World Record holder, GM Timur Gareyev, was excited to accept the invitation to instruct, demonstrate, and exhibit in Idaho. Especially, since the Perrine Bridge is in Twin Falls where base jumping is available with very few restrictions and Timur could organize with jumpers for a future visit. This trip would feature chess in Boise, Sun Valley, and Twin Falls and was paid for by the BCSD Chess Club.

On Thursday, May 18, ICA Website Coordinator, Desmond Porth picked up GM Timur at the Boise airport. Their first stop was Memorial Park where 18 players were able to play their first blindfold chess games using techniques described by

GM Timur. The Memorial Park in Boise houses under-used chess tables and the venue proved to be a winner with chess and nature - despite the chilly weather. David Lucky, Idaho's Champion and top player, received GM Timur at the park and looks forward to another meeting in the near future.

Two and a half hours later, GM Timur was reunited with President Adam Porth at his house in Bellevue. The previous week, Timur trained the BCSD Chess Club Middle School chess team while attending Supernationals. The Porth household is a virtual zoo with Timur also greeting each dog, cat, chicken, "skinny" pig, canary, snake, and rabbit with giddy petting and hugs. Timur is enamored with nature and Idaho is the perfect place for integrating chess with it. Timur was able to visit the Sun Valley ski area, Galena Summit, Muldune Canyon, the Big Wood River, Carbonate Mountain, and other places where chess boards were whipped

out for quick games between "ohs and ahs" and camera clicks. Timur even discovered Bear Tracks!

On Friday, GM Timur visited the first Big Picture Learning school in Idaho, Silver Creek High School. GM Timur participated in a Socratic discussion about Geography and shared knowledge of Uzbekistan and Kazakhstan. During this question and answer time, GM Timur interjected and modeled his memory techniques. "[He] really got the kids to begin visualizing," said Science Teacher, Adam Porth. Beginner chess players listened carefully to his instruction and stories. Dartanyon Ratcliffe put on his teaching hat while Timur donned his student hat and Dartanyon taught a lesson using sign language. Sign language chess-that's new! The day progressed with chess puzzles, endgames, visualizing moves, and Paul Morphy vs. Alonzo Morphy analysis. SCHS students then brought GM Timur up a mountain to a defunct cistern and contributed to the graffiti, albeit, chess quotes and chess art!

Students were engaged the entire weekend. One student designed a vegan diet and a brain-healthy menu for his weekend stay. This helped her earn credit in her health and science courses. Another student explored the physiology of Timur by evaluating heart rate, body temperature, and respiration using a data logger while playing his blindfold simul. Principal Mike Glenn indicated, "Having Timur here was an amazing experience for our school and our students. He taught students how to look at things differently - how to think. Timur's lifestyle was motivational," he continued, "fitness, diet, habits, and an active lifestyle was inspirational for our students." He showed that chess offers more than entertainment or "wood-pushing." Silver Creek High School is for alternative learners and at-risk youths in Blaine County (i.e., teen moms, homeless teens, delinquency, drug issues, PTSD, stressed teens, etc.). Chess programs and celebrities visiting schools like this are important for students.

After school Timur continued to teach endgame lessons to the BCSD Chess Club. He then jogged all the players to a downtown yoga studio (IdaYoga) and convinced all to attend dinner at Globus Asian-fusion restaurant in Ketchum. When I arrived to pick Timur and everyone up for dinner, they were all doing headstands in someone's yard near the Yoga Hut! After dinner, chess



Blindfold blitz warmup. Photo courtesy of Adam Porth.

continued on Galena Summit during the sunset overlooking the Sawtooth Mountains.

As exhausting as Friday was for me, Timur was up at 5 am making “power-smoothies” in preparation for the blindfold simul. It was in my kitchen when Timur exclaimed, “Today, I will set a record for blindfold Chess 960!” After an ATV ride up Muldune Canyon, chess and nature merged with a view of the Whitecloud Mountains. Timur drove down the mountain. Don’t ever let Timur give you a ride down a mountain as your face will tingle with panic and your knuckles will turn white as you hold on for dear life! I guess this was good preparation for the afternoon events.

The simul began with beginners being taught how blindfold Chess 960 Blitz works. Bursts of applause demonstrated the enthusiasm of the 25 spectators after each five-minute game. What’s more, Timur encouraged players to try it blindfolded themselves. As each of the ten simul players prepared their board by randomizing their back ranks, Timur spent an hour memorizing the starting positions and having players take turns trying to memorize the starting position of their own boards. Timur was adorned with a crown of flowers to honor his “blindfold king” status and then began making his way around each board in his mind. Timur slowly pedaled a stationary bike to help keep his focus and gradually sped up his play as the afternoon progressed. He spent 3 ½ hours playing and pedalling! In one game against Dave Zaklan, GM Timur demonstrated his excellent memory by replaying the whole game verbally to double-check a position...twice!



Desmond Porth is being taught blindfold techniques. Photo credit: Adam Porth.

The first casualty was DeWayne Derryberry, a professor from Idaho State University. Gradually as most players began to fall it was clear that the efforts were exhausting Timur. He asked for clocks for the last three games. The games then changed to blitz. Desmond Porth almost scored a win with two bishops, pawns and a rook against a queen and pawns but then blundered a bishop, initiative, and position following one move under time pressure. Timur moved in for a kill. Desmond resigned. Two players were left. Caleb Kircher offered a draw which was refused. Play continued until Timur then offered a draw. Caleb strategically paused while Timur moved to his game against Carmen Pemsler.

Carmen and Timur drew with less than a minute on the clocks. Caleb finally agreed to the draw offer by Timur and the exhibition ended. GM Timur Gareyev earned eight victories and two draws in a Blindfold Chess960 Simul which should be a world record. Timur indicated that this was harder than regular chess, especially keeping all the boards straight without any recognizable positions. “There were so many unfamiliar positions,” he described to me.

Everyone except Timur vacated the school to the Porth’s house for a campfire and potluck. Meanwhile, Timur was graced with a massage and energy work by chess-mom and Sun Valley Therapist, Sandy Shepard as a reward for his outstanding work with the kids of our valley. He emerged looking as fresh as he began the simul and fraternized with players and parents when he arrived at the potluck. More chess lessons ensued next to the campfire for parents and their kids while Timur laughed and stroked bunnies and rabbits while providing analysis and critiques.

On Sunday, Timur mountain biked “Center” and “Two-dog Trails” with SCHS student Phoenix Collins, Professional Biker Billy Olson, and his chess playing son, Otto. Afterwards, Timur’s entourage traveled to Twin Falls to play cafe chess at Moxie Java Tuscany and see the Shoshone Falls. More blindfold blitz and mind-blowing demonstrations of grandmaster chess skills had everyone in the Cafe cheering. Chess on the viewing platform with a couple of stylish Yoga moves had park visitors wondering what was up.

Timur’s trip to Idaho was important



Kids play a full game blindfold under Timur tutelage. Photo credit: Adam Porth.



Mountain chess down Muldune Canyon. Photo credit: Adam Porth.

as he wants to base-jump the Perrine Bridge in the near future. So we visited the bridge to watch base-jumper's in action. Suddenly Timur and another chess player jumped the fence and scaled the cliffs down to the Snake River where jumper's land! I started fretting that ICA would be known as the association that killed Timur. We picked Timur up safely about a mile down the Snake River Canyon at a park.

Over one hundred people were touched by Gareyev's events. The energy and enthusiasm of GM Timur Gareyev will always be remembered as the Idaho chess tour was epic to say the least. As Caleb Kircher put it, "I feel sorry for those that missed it!"

Caleb Kircher (1912) – GM Timur Gareyev

Chess 960 10–Board Blindfold Simul
Hailey, ID, May 20, 2017
[Caleb Kircher]



Initial Position for this game:

1.e4 e5 2.Ng3 Ng6 3.Ne3 Ne6 4.c3

My biggest concern in this game was finding some way to activate my light squared bishop. The other course of action would have been to play a3 and

Ba2 but I wanted to keep that side of the board intact in case I decided to castle queen-side.

4...Ngf4 5.Ne2

I didn't want his knights to take up powerful squares in my space so I aimed to trade one of and then play a g3 move later to keep his other knight off of f4.

5...Nxe2+ 6.Qxe2 f6 7.Bc2 a5

One of the biggest battles in this game was constantly the question of whether or not I should castle? I decided to just keep it available as an option and find squares for my pieces.

8.g3 Ba7 9.f3 Kb8

This move caught me by surprise as I expected him to castle queen-side at some point.

10.Bf2 h5 11.Nd5 d6 12.Bxa7+ Rxa7 13.h4 Nc5 14.Ne3 Ne6 15.Nd5 Bf7 16.d3 a4

Is he going to attack me on that side of the board? I don't want to castle into the scope of his light squared bishop on f7.

17.Qf2 Qb5 18.Rh2

Lending support to the pawn on b2 if I decide to go queen-side.

18...Nc5 19.c4 Qd7 20.Nc3 Ra5 21.Qd2 Rd8 22.Nd5

The first real threat for White in the game. I figured he would probably see it but I wanted to see how engaged his mind was to threats after playing several boards blindfolded for hours.

22...b6 23.Qb4 Kb7 24.Qc3 c6 25.Ne3 d5

Whites last few moves where played

under the stress of having to move too quickly due to Timur having finished off seven of the ten competitors. Here he requested three clocks be placed on each board with 10 minutes for him vs 5 minutes for us.

26.cxd5 cxd5 27.exd5 Bxd5 28.Nc4 Raa8 29.0-0-0

White played 29.0–0–0, which means you simply place the Ra1 on d1, leaving the K where it is.



Position after 29.0-0-0

29...Bxf3 30.Rdd2 Bc6 31.Qb4 Qc7 32.Rhf2 Ne6 33.Bd1 Nd4 34.Bxh5 Rd5

The stress of both having a clock placed on his board and four hours worth of blindfolded 960 causes him to finally make a fatal error.

35.Kb1 Rb5 36.Nd6+ Ka6 37.Nxb5 Bxb5

After this move he offered me a draw. I was a couple minutes ahead on the clock and proceeded to take a few minutes to see if white had any clear way to play for a win. Seeing none I accepted his offer. Draw seems like a fitting end to this game and placed Timur's score for the simul at 8–0–2.

1/2–1/2



Caleb Kircher. Photo credit: Adam Porth.

2017 PCC Summer Open

By Brian Berger

Portland, OR — June 10-11, 2017

The only difference between canned sardines and the record turnout of players who attended the Summer Open, held at the Portland Chess Club over the weekend of June 10-11, was that the players were not immersed in olive oil.

As it was, a bit of olive oil might not have been a bad idea, possibly helping to facilitate ease of movement between the elbow-to-elbow seating necessitated by a room crammed with 51 attendees, not counting friends and family members.

Wandering happily through the middle of this throng of anxious chess habitués was none other than the famous Morgan the Dog, whose presence could have been one of the reasons for the record numbers, as fans of Morgan keep close tabs on their idol and his live-in companion, Jerrold “I Just Want To Make 1600 Before It’s Over” Richards (1334-1300—3.0/5).

It was evident that Morgan was having the time of his life with the amount of attention being given him,



Mike Lilly helping at registration. Photo credit: Brian Berger.

consisting of numerous head pats and belly rubs, along with his very favorite spot of fan attention—the nether region of his back, just above his wagging tail—an area Morgan finds difficult to attend to by

himself.

And overseeing this mass of milling Morgan fans was first time Chief TD Mike Hasuike, having taken on this Herculean task with the help of Assistant

Oregon Senior Chess Championship August 12-13, 2017 Sponsored by Oregon Chess Federation

Type: 5-round US Chess-rated Swiss.

Time Control: Game in 2 hours, 5 second delay (G/120; d5).

Registration: Saturday 9-9:45 am. Bring sets & clocks.

Rounds: Saturday 10:00-2:15-7:00; Sunday 9:00 & 1:30.

Location: Portland Chess Club, 8205 SW 24th, Portland, OR 97219.

Byes: 2 half pt. byes available, request before Rd 4.

Eligibility: Open to all (no residency requirement) at least 50 years old on August 12.

Entry: \$35; pre-registration payable to Oregon Chess Federation, mail to Mike Morris, 2344 NE 27th Ave., Portland, OR 97212.

Other: USCF and OCF/WCF/ICA required (OSA). **OCF Invitational Qualifier.**

\$1000 based on 40 paid entries

1st \$200; 2nd \$100; 3rd \$50. U1800, U1600, U1400 each: 1st \$100; 2nd \$50

Age prizes (only one allowed, not combined with other prizes):

Over age 60 \$75; over age 70 \$75; over age 80 \$50

Winner gets free entry to next year's tournament and name inscribed on perpetual trophy.



(L) Geoff Kenway vs Hugo Hartig. Photo credit: Brian Berger.

Chief TD Lennart Bjorksten, and with the additional registration help of none other than past Chief TD and recent faith-healer Mike Lilly—whose manner of healing was revealed in a photograph appearing in the June issue of *Northwest Chess*.

Pre-registration numbers showed that a larger-than-normal crowd could be expected, but even with this forewarning, the continual influx of players, combined with the phone ringing off the hook, taxed the efforts of all involved in the

registration process, and contributed to starting the tournament almost 40 minutes late.

Hoping to realize my—Brian “I’m Just Glad To Be Here” Berger (1505-1500—1.5/5)—dream of climbing back to my all time high rating, 1707, thence to battle my way to becoming an 1800 player, I chose the Open section with high expectations—expectations which proved higher than my ability this tournament.

Having opted for a third-round bye, so as not to put too much strain on aging neural connections, I hoped to stay alert enough to capture two wins and enter the next day with 2.5 points. But when faced with my first opponent, Kian Patel (1842-1906—3.5/5), who eventually went on to tie for first U2000 with Moshe Rachmuth (1962-1984—3.5/5), I was simply outplayed. Chalk up one loss.

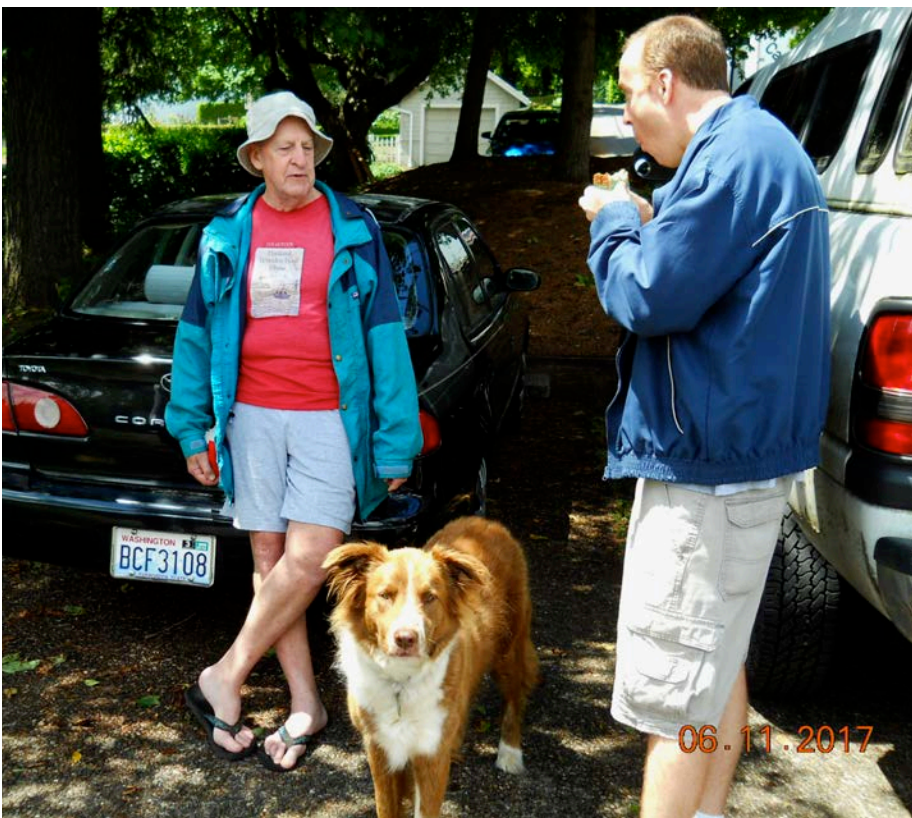
Drawing Will Holloran III (1748-1751—2.5/5) as my number two opponent, it was much the same scenario, leaving me to end the day achieving only a fraction of my goal—the 0.5 point given for my bye.

I appeared on the morning of the second day with hopes renewed, attempting to convince myself that a mere 200 to 300 points rating disadvantage could be overcome by WILL alone. Where I got that idea, I have no clue; but I can now flatly tell you, that WILL is a poor substitute for being 300 points out-gunned, as I was against Isaac Vega (1821-1785—2.0/5) in round four.

To my credit though, I did have my moments in that game, and might have had a winning chance, had I not hung a bishop in the endgame while trying to save a pawn. Had I paid attention that I was giving up THREE points to save ONE, this story might have had a happier ending.

As it turned out, not only did I lose that game, but I had to hang around for another two hours just to find out that I had been given a mandatory one-point bye in the last round because of an uneven number of players. So, when all was said and done, I ended up with a point and a half for not playing—returning me once again to my floor of 1500, and wondering, as I suspect Jerrold Richards does, will the gravity generated by higher ratings continue to keep me on the floor?

But enough of ME. I just counted six paragraphs of whining, and need to fill you in on those in this tournament who have a far better grasp of this game than I. And so, I will start off with a well known IM from Washington, Ray Kaufman (2331-2336—4.5/5), whose 4.5 points just edged out Joshua Grabinsky’s



Morgan The Dog with companion Jerrold Richards—Morgan eyeing the photographer for a treat. Photo credit: Brian Berger.



(L) Kushal Pai vs Raj Kodithyala. Photo credit: Brian Berger.

(2068-2077—4.0/5) 4.0 score, securing him the first place title, along with a tidy sum of \$187.50—second place going to Grabinsky, and a prize of \$125.00.

Having already mentioned that Patel and Rachmuth tied for the U2000 prize (which gave each of them \$47.00 to be frivolous with), I'll move on to the Reserve section, where Kushal Pai (1527-1552—4.0/5) and James Wei (1526-1544—4.0/5) tied for the first

place money, each receiving \$109.50.

First U1600 went to Raj Kodithyala (1297-1347—3.5/5), who kept the whole of the prize money (\$62.50) for himself; as did Kabir Rathore Muthu (931-1213—3.5/5), who made the same amount by winning the U1400 prize, as well as gaining a gigantic 282 more points in his rating!

The final cash payout of \$62.50 went



(L) Moshe Rachmuth vs Aaron Nicoski. Photo credit: Brian Berger.

to Dennis Petersen (1105-1263—3.0/5), for winning the U1200, he too gaining a substantial rating boost of 158 points!

Before I bring this article to a close, I want to mention two games that caught the attention of a number of kibitzers, the first being the 23-move checkmate ending pulled off by David Roshu (1219-1298—3.0/5), who was matched in the first round against the Reserve's highest-rated player, William Gagnon (1719-1653—2.5/5).

Although I failed to catch that ending, I understand that Roshu had been practicing just such an ending under the tutelage of Andrei Botez, who runs the Silver Knights Chess Club, in Happy Valley, Oregon—obviously, a student who listens to his teacher.

By coincidence, the other game involved Andrei's daughter, Andrea Botez (1797-1796—2.5/5) against Will Holloran (whom I mentioned made short work of me in our game). This was a nail-biter ending, with both players experiencing time pressure problems—it being the last game still going in the fourth round.

When I chanced to wander over to watch, piece-wise, Holloran, who was playing Black, had two pawns, a rook, and a bishop against Botez's four pawns and a rook, giving him a one point advantage—Botez having slightly more time on her clock, at 7 minutes and 12 seconds, to Holloran's 6 minutes and 2 seconds.

Botez's compensation for being a point down was in three of her pawns being systematically advanced along the a-, b-, and c-files, with her rook protecting along the a-file, keeping Holloran's rook and bishop looking for a way to keep her from queening—and his king on the eighth-rank, in front of the b-file, looking for a way not to get checkmated.

All the while, Holloran's two connected pawns were kept from advancing along the g- and h-files, impeded by Botez's king and the fourth white pawn, and the fact that his rook and bishop were too busy to assist.

It is to Holloran's credit that he was able to (in the brief time left on his clock) find a solution to a situation I was beginning to think was a foregone conclusion; and to Botez's credit, that she created enough pressure to make it a drawn game.

Whether an accurate record was kept during the last minutes of this game is unknown, but it would make for a valuable lesson in endgame strategy.

June 2017 PCC Quad 45

By Brian Berger

Portland, OR — June 17, 2017

With the Portland Chess Club's two-day, record-attended Summer Open tournament just a weekend past, it was a pleasant surprise to see at least 24 players were not so chessed-out that they passed up one of the club's favorite events—the short, three-game Quad 45—a one Saturday, monthly event that, in August, will switch to a Sunday tournament, hoping to entice even more players to attend—those finding Saturday too busy a day to fit in chess.

In a game that can take upwards of 90 minutes to complete, due to the 15-second increment rule, many participants finish much sooner, by taking on the rhythm of their opponents, making it seem more like a game of rapid chess.

Then there are the old fogies—yes, that includes Brian “I’m Just Glad To Be Here” Berger (1500-1524—2.5/3)—who already think Quad 45 is more like Blitz than regular chess, and who usually need every precious second to score a win. Other of us fogies won’t even entertain the thought of such a time control—Jerrold “I Just Want To Make 1600 Before It’s Over” Richards (famous for being the companion of the even MORE famous, Morgan the Dog) being one of them.

For Richards, who moves even slower than molasses, this time control would be equivalent to the ancient art of water-torture, where every second would seem like a water drop to the forehead, slowly driving him insane—or at best, slightly dizzy. Knowing this, Morgan the Dog makes sure that Richards never gets anywhere near a Quad 45—Game 60 being the absolute fastest Morgan will allow Richards to attend.

I, on the other hand, am obligated to attend, or you readers would never



Thomas Rolfs helping at the registration desk. Photo credit: Brian Berger.

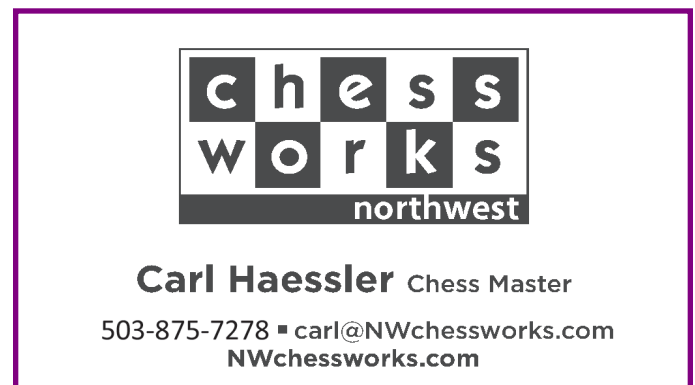


(L) Jon Strohehn vs Cassandra Roshu. Photo credit: Brian Berger.

know what happened—at least not from the perspective of a reporter who takes creative liberties in interpreting the quirks of chess players, the thoughts of dogs (one in particular), or anything that grabs my interest—be it chess-related or not.

So it was a surprise that I somehow managed not to lose a substantial amount of rating points this time to the machinations of the Munchkin crowd, and actually tied with Ian Fudalla (1431-1481—2.5/3) for first place in Quad 3—allowing me to choose a chess book as my prize, which I opted not to take due to the number of big words and funny diagrams most of them contain.

Chief TD for this tournament was, as always, the highly efficient Micah Smith, who this time had some registration help from Thomas Rolfs (1087P-1044P—2.0/3), a provisional player who also came in second in the low-rated eight-player Small Swiss—the winner being Patrick Morrissey (934-1014—3.0/3), who added 80 points to his rating.





(L) Mike Hasuike vs Dale Wentz. Photo credit: Brian Berger.



Chief TD Micah Smith. Photo credit: Brian Berger.

Morrissey, as well as all other winners, was given the option of a chess book, plus a \$10 reduction in his next entrance fee for Quad 45 or the Tuesday night monthly Quads that are held on three or four Tuesday nights throughout the month—the time control being 40/90 SD/30, with a five-second delay.

If you have not attempted to enter this month-long event, you have been missing a great opportunity to play three or four quality games for a mere \$15 (\$10 for members). It is a very quiet venue, and the players are well spread out. (Be at the Portland Chess Club by 6:45 pm on the first Tuesday of the month to register.)

This tournament was divided into four quads, with the lower eight players forming a three-round Small Swiss, the top two players each able to earn a \$10 discount, a book, and if they are also a scholastic player, a trophy. As it was, there were three players tied for second place—Thomas Rolfs (as mentioned above), Havish Sripada (993-984—2.0/3), and Arlo Maslen (931-945—2.0/3).

Each of the second place winners received \$3.50 discount off their next Quad event, with Havish and Arlo receiving medals for being scholastic players (only first place winners and those winning by at least 2.5 points receive trophies), and also their choice of a book.

Winner of Quad 1 was Roshen Nair (1722-1771—2.5/3), a young man whose rating continues to climb at nearly every tournament, who just a week earlier had tied for first place in the Reserve section of the Summer Open.

Another young player who has shown a nearly vertical journey in his quest to become a better player is Kushal Pai (1552-1593—2.5/3), the winner of Quad 2, who like Nair received his \$10 discount, a book, and also a small trophy for being a scholastic player.

And last to win a book and a small trophy were David Ma (1328-1339-2.5/3) and David Roshu (1298-1314—2.5/3), who tied for first place in Quad 4, their draws being against each other.

FIDE Grandmaster Emil Jozsef Anka

Intl. Arbiter, Univ. Degree Chess Coach, USCF Tourn. Dir.

Grandmaster Camps, Private lessons,

Group lessons, After School Clubs

Chesssport
.com

gm.emilanka@chesssport.com, gm.emilanka@gmail.com
Kirkland, WA, www.chesssport.com (360-255-9392)



Strategy.
Satisfaction.
Success.



DGT 1001

\$18.00 Free Shipping

BASIC CHESS CLOCK
Set clock and play.

Dill Books & Chess Gear
509-822-9801 sales@dillbooks.com

June 2017 PCC Game 60

By Brian Berger

Portland, OR — June 24, 2017

Rumors of a prodigious heat spell escalating throughout the weekend could have been a factor in keeping the attendance somewhat lower than is the norm for the Portland Chess Club's Game 60, that drew 22 players (three of them, Masters) not concerned about a little heat (the day topped out at 98 degrees)—many of them having faced some highly heated battles over the chess board.

That this was not a Sunday tournament was fortunate, as that day produced a record 101 wilting degrees! The other fortunate aspect was that the Portland club is located in the bottom of an older, two-story wooden structure that houses some kind of computer company on the upper story, whose need to keep those computers running requires them to use a very large air-conditioning system, thus affording the club an ideal heat barrier—which kept the lower floor quite comfortable throughout the day.

In charge for his first time as a Chief TD was Danny Phipps, whose workout routine has put some "Terminator-like" muscles on what was a very substantial frame to begin with—leaving me to believe that any dispute about the rules this day would not be contested (or for that matter, even mentioned). And if, by chance, he were to encounter resistance (not likely), he would be substantially backed up by Assistant Chief TD Lennart Bjorksten, who knows the ropes.

Also on hand this day were Morgan the Dog and Jerrold "I Just Want To Make 1600 Before it's Over" Richards (1300-1300—1.0/4), Richards hoping to overcome the death spiral he has been in lately to his floor of 1300, after once clawing his way into the low 1500s. Unfortunately, this was not to be the day, as his one win against a 670 provisional player was insufficient for even a one point gain in rating.



(L) Pierre-Hadrien Beauchet vs Will Holloran III. Photo credit: Brian Berger.

However, Morgan the Dog did quite well, attended to throughout the day by adoring fans who supplied him with back scratches, belly rubs, head pats, kind words, and what he seems to have an extreme fondness for, Wendy's fries and chicken nuggets—surreptitiously slipped to him from an unnamed source.

But Richards' predicament is not his alone, as I have mentioned a number of times in past reports, for he and I, Brian "I'm Just Glad To Be Here" Berger (1524-1501—2.0/4), seem to be in lock-step with our inability to make any credible headway in our ratings—surging forward for a time under ideal conditions (luck seems to play a big part), then plummeting like Icarus into a sea of player mediocrity.

This tournament was a perfect example of what I have just discussed—in my case, starting with a win over an unrated player only to be paired in the second round to Abbie Wu (1389-

1441—2.0/4), a very young lady (8 years old) with a very mature understanding of tactics.

Having just dropped her first round game to the tournament's eventual winner, NM Matt Zavortink (2214-2227—4.0/4), who later pocketed the first place prize of \$66, she was looking to take down her next opponent, who was giddily confident after his beat-down of the aforementioned, unrated player.

According her a proper amount of respect on my part (as I have played her before) I still felt that this was going to be my day, and opened with the Sicilian Najdorf against her pawn to e4 opening, and by move 23 I was up a rook and felt confident of the win.

Little did I know that the wheels inside that small cranium were calculating a masterly three-move combination that would cause me to lose my queen, and not long thereafter, the game. It was a combination commencing with, what

Chess4Life™

- Premium Center Classes
- Private Chess Lessons
- After School Clubs

- Rated Tournaments
- Chess Camps
- Workbooks & Materials

Join Us Today!

LEARN LIFE | IMPROVE CHESS | HAVE FUN

KIDS@CHESS4LIFE.COM | 425-283-0549 | WWW.CHESS4LIFE.COM

Neil Salmon

Professional Chess Coach

USCF Life Master
5-time Washington State Champion
45 years experience

Private Lessons, Group Lessons
Scholastic Chess Clubs
Camps & Workshops

(253) 229-9646
neilsalmon@gmail.com



(L) Abbie Wu vs Matt Zavortink. Photo credit: Brian Berger.

seemed at first, an ill-conceived sacrifice of a knight for a pawn. Had I taken a longer look at the at this move, rather than happily grabbing the knight with my queen, I might have seen the trap and answered it with a move that was readily at hand—but confidence breeds greed, and there the story ends, and my chances for a second-round win.

It was a last desperate attempt by Wu, who, no matter what the odds are that she will lose a game, never gives up, and many times has found the path to turn things around—case in point.

Abbie Wu (1389) –

Brian Berger (1524) [B82]

June 2017 PCC Game 60

Portland, OR (R2), June 29, 2017

[Ralph Dubisch]

1.e4 c5 2.Nf3 d6 3.d4 cxd4 4.Nxd4 Nf6
5.Nc3 a6 6.f4 e6 7.Be3 Be7

[Diagram top of next column]

8.Qd2?!



Position after 7...Be7

8.Qf3 is theory, activating the queen on both the f-file and long diagonal. In practice, White scores quite well here.

8...b5 9.Bd3 Bb7 10.a3 Nbd7 11.Nb3
Rc8 12.h3 Nc5 13.Nxc5 dxc5 14.e5 Nd5

[Diagram top of next column]

15.Rg1??

15.Be4

15...Nxe3 16.Qxe3 c4 17.Be4Bc5 18.Qe2
Bxe4 19.Nxe4 Bxg1 20.Nd6+ Kf8



Position after 14...Nd5

21.Qh5 Rc7 22.0-0-0 Be3+ 23.Kb1



Position after 23.Kb1

Qe7??

23...Rd7-+

24.Nxf7??

This works... if Black takes it. If Black stops to think, not so much. Ironically, White actually does have a sound tactic here: 24.Qf3! forking e3 and a8. After winning the e3-bishop, White will have excellent compensation for the exchange in the form of the d6-outpost knight, mobile kingside pawns, and Black's awkward king position.

24...Qxf7??

24...g6 25.Qf3 Kxf7 26.Qxe3 Rd8-+

25.Rd8+ Ke7 26.Qg5+

26.Qh4+ Qf6 27.exf6+ gxf6 28.Rxh8 is even stronger.

26...Qf6 27.exf6+ gxf6 28.Qg7+ Kxd8
29.Qxh8+ Kd7 30.Qxf6 Bc5 31.g4
Be7 32.Qf7 Kd6 33.f5 exf5 34.gxf5 a5
35.Qe6+ Kc5 36.f6 Bd6 37.b3 cxb3
38.cxb3 Rb7 39.b4+



Sri Chess Academy
"Two Eyes and 64 Squares"

20405 123rd Ave NE
Bothell WA 98011

We train kids with age groups 6 and above.
Monday to Friday 6:30pm-8:00pm
Saturday and Sunday 9am-9pm PST
Contact: Sridhar Seshadri, Ph 425-492-4176
Email: SSeshadri@srichessacademy.com

larry ball

p. 503 287-3642 • c. 503 348-2600

larryball48@yahoo.com

3424 ne fremont
portland, or
97212



39.f7

39...axb4 40.axb4+ Kc6 41.Qe8+ Kd5 42.f7 Rb8?

42...Bxb4 is a tougher defense.

43.Qd7

43.Qxb8 Bxb8 44.f8Q looks like 1-0 right away.

43...Rf8 44.Qxb5+ Ke6 45.Qc4+ Ke7 46.b5 Rxf7 47.b6 Rf4 48.Qa6 Rb4+ 49.Kc2 Ke6 50.b7 h6?

Trying to march over to win the b-pawn makes things quite a bit harder for White. 50...Kd7

51.Kc3



Position after 51.Kc3

51...Rxb7??

51...Kd5 holds out much longer, as 52.Qxd6+?? Kxd6 53.Kxb4 Kc7 is not a threat — the K+P ending is drawn.

52.Qxb7 Be5+ 53.Kc4 Kf5 54.Qf3+ Bf4 55.Kd5 h5 56.h4 1-0

Although I managed to win my next game from Pierre-Hadrien Beauchet (1040-1070—1.5/4), his much lower rating was no guarantee that I would. A lad I have played many times in casual games of chess, Beauchet has shown that he is forming some solid tactical skills that can surprise an unwary opponent.

With two wins under my belt, I hoped to face a higher-rated opponent, getting my wish in the person of Jai Dayal (1984-1984—3.0/4), who showed that his almost 500 points rating advantage proved stronger than my desire to win a third game, and quashing any hope of gaining back some of my recently lost rating points.

As already mentioned, NM Matt Zavortink took first place with a perfect score of 4.0/4, followed by four players who tied for second—NM Jason Cigan (2199-2191—3.0/4), NM Benedict Smail (2180-2183—3.0/4), Jai Dayal (whom I met in round four) and Moshe Rachmuth (1984-1970—3.0/4). Splitting the second and third place prizes, each received \$19.25 for a hot afternoon's meeting of the minds.

The U1800 prize money was split three ways, when Roshen Nair (1771-

1762—2.5/4), Chris Burris (1742-1755-2.5/4), and James Grehan (1567-1620—2.5/4) tied. Each received \$12.83, with Grehan also gaining 53 rating points—his first gain in rating after a nearly ten-year hiatus from US Chess tournament play. (83 cents?)

Those tying for the U1500 prize money were Abbie Wu, Sinan Grehan (1349-1333—2.0/4), and Arlo Maslen (945-1054—2.0/4), each taking home \$12.83 (there's that 83 cents again), and all gaining substantially in rating points.

Helping Chess in Equatorial Guinea

By Avi Gupta and Seth Talyansky

As co-leaders of the chess club at the Catlin Gabel School in Portland, we investigated the circumstances of chess in Equatorial Guinea (EG), the only Spanish-speaking country in Africa, as a project for Spanish class.

Seth called the number listed on the government website three times and submitted a form online. EG remained silent. We were tempted to abandon the cause, but we decided to phone the country's embassy in Washington, D.C., as a final effort. A lady answered. She told Seth to write to the consular secretary. Seth did, and he responded within a few hours. He began his letter with "Muy buenas tardes," which in Spanish means "very good afternoon." At that moment we realized that we had at last penetrated the Equatorial Guinean cultural scene—but we had no idea how deeply. He wrote that "chess

isn't a popular activity in Equatorial Guinea. [One] would say it is the exact opposite." He copied on the message Federico Ele Rano, an "enthusiastic chess instructor championing the game," and recommended that we talk to him. Indeed, Seth forwarded Federico our six questions about chess in the country, seeking enough information to compose a slide on our project presentation—to put next to those twenty-word-and-two-image summaries of chess in Mexico, Spain, and Argentina—and then to call it a day. The next morning we found that Federico had replied to our six questions with sixteen paragraphs.

Federico introduced himself as a "passionate 'amateur' instructor of Chess [sic] with no official ranking, or ELO classification, or anything, but only accompanied by love for the noble art of CHESS [sic]." We noticed that he tended to capitalize—sometimes caps lock, when he got carried away—all things that excited him, which included all chess-related things. According to him, the chess players in the country number two dozen, none FIDE-rated. The first "semi-professional" tournament in Equatorial Guinean history was held recently in Malabo, the capital.

We proposed to Federico to play a live online match between our clubs, which he forwent morosely: "unfortunately, the big issue of 'internet' in the third world (and here in my beautiful country) is just awful. The last time I tried to download Arasan, and Chessbase Light, it took me a week..."

(Continued on page 17...)



Students of the Colegio Maria Cano in Malabo starting to play chess. Photo credit: Felipe Varela.

1st Annual Seattle Chess Classic

August 16-20, 2017



Location: Seattle Chess Club, 2150 North 107th Street, Seattle, WA 98133

Format: A *9-round Swiss* in two sections: Open and Reserve (U1800)

Entry fees: Open: \$200 by 8/9, \$250 after or at site. Reserve: \$150 by 8/9, \$175 after or at site. Free entry for GM/IM/WGM/WIM/2400+ USCF

Schedule:

Wednesday 8/16	Check-in	5:45pm
Wednesday 8/16	Round 1	6pm
Thursday 8/17	Round 2 & 3	10am & 5pm
Friday 8/18	Round 4 & 5	10am & 5pm
Saturday 8/19	Round 6 & 7	10am & 5pm
Sunday 8/20	Round 8 & 9	10am & 5pm
Sunday 8/20	Closing Ceremony	About 9 pm
Sunday 8/20	Blitz Tournament	After Closing Ceremony

Time Control: 90 minutes for the first 40 moves followed by 30 minutes for the rest of the game with an addition of **30 seconds per move starting from move one.**

Late Default: 60 minutes.

Rating: Higher of USCF or foreign ratings used at TD discretion.

Both sections USCF rated, open section FIDE rated. Maximum capacity of 80 players.

Prizes: (b/o 40 players in each section)

Open: 1st \$1000, 2nd \$750, 3rd \$550

U2300/U2150/U2000/U1850: 1st \$500, 2nd \$350

Top Female: \$250

Top Senior (50+): \$250

Reserve: 1st \$600, 2nd \$450, 3rd \$350

U1600/U1450/U1300/U1150: 1st \$300, 2nd \$200

Top Female: \$200

Top Senior: \$200

Byes: 2 half-point byes allowed for rounds 1-9 if announced before the start of round 2.

Registration: Please register online at <http://nwchess.com/OnlineRegistration/>. The deadline to register is Tuesday 8/15 at 10pm.

Chief Organizer: Josh Sinanan, WCF President (206-769-3757, joshsinanan@gmail.com)

Tournament Director: Fred Kleist, USCF Senior TD, FIDE National Arbiter

67th Annual Oregon Open

September 2-4, 2017

\$10,000 Guaranteed

Sponsored by the Portland Chess Club and Oregon Chess Federation

FORMAT: 6-round Swiss in three sections, Open, U2000, U1600. The official September US Chess regular ratings generally used. Unofficial US Chess regular ratings based on at least four games or foreign ratings (with adjustment if necessary) generally used for players with no official US Chess regular rating. Choice of 3-day and 2-day schedules. Two half point byes are available if requested before round 1.

TIME CONTROL: 40/120,SD/30;d10, first three rounds of the 2-day schedule played at G/60;d10. **Bring digital clocks as well as sets and boards (none supplied).**

ROUND TIMES: **3-day:** Saturday 11am & 5pm; Sunday 10am & 6pm; Monday 9:30am & 3:30pm. **2-day:** Sunday 9am, 11:45am, 2:30pm, then merge with 3-day schedule for round 4.

ENTRY FEE: \$100 if you pre-register by August 30, \$120 on-site. Free entry to GM's and IM's if pre-registered by August 30 (\$100 deducted from any prizes). Players under 19 in the U1600 section may pay a lower rate (\$25 if pre-registered by August 30, \$35 on-site) and compete for trophies instead of cash prizes. Players in the 3-day may withdraw and re-enter into the 2-day by paying \$100. **US Chess & OCF/WCF/ICA memberships required (OSA).**

RATED: All sections US Chess rated. Open section also FIDE rated except for the first three rounds of the 2-day schedule. FIDE rules used in the Open section (including the first 3-rounds of the 2-day schedule; see the PCC website for the US Chess-FIDE rule differences). US Chess rules used in the other sections.

REGISTRATION: To pre-register, fill out the online registration form at pdxchess.org and pay the entry fee online or mail a check payable to Portland Chess Club to Mike Morris at 2344 NE 27th Ave, Portland, OR, 97212. To get the lower entry fee rate, we must receive your registration form and entry fee by August 30. On-site registration runs from 9-10:30am Saturday for the 3-day schedule and 8-8:45am Sunday for the 2-day schedule (only cash or check accepted on-site).

OPEN SECTION PRIZES

1ST, 2ND, 3RD: \$2000-1000-500; U2200: \$500-300-200

U2000 SECTION PRIZES

1ST, 2ND, 3RD: \$1000-600-400; U1800: \$500-300-200

U1600 SECTION PRIZES

1ST, 2ND, 3RD: \$500-300-200; U1400: \$500-300-200

U1200: \$300 UNR: \$200

Unrated players limited to place prizes in Open section and unrated prize in U1600 section. Any player winning \$600 or more must complete IRS form with SSN before payment. Foreign players may be subject to withholding taxes. Players under 19 in the U1600 section choosing the lower entry fee option will compete for trophies instead of cash prizes based on points. Players rated 1400 or higher will win a trophy if they score at least 5, players rated between 1200 and 1399 will win a trophy if they score at least 4, and players rated under 1200 or unrated will win a trophy if they score at least 3.5.

OTHER: Northwest Chess, US Chess, and US Chess Junior Grand Prix event; qualifier for the Oregon State Championship, Oregon Invitational Tournament, and OSCF State Championship; see the list of tournament sponsors at pdxchess.org

SIDE EVENTS: **Scholastic**-see information at pdxchess.org. **Blitz**-registration Sunday 3-3:20pm, play starts at 3:30pm. One section, 5-round double Swiss, G/3;inc2, \$15 entry fee, US Chess blitz rated, US Chess membership required, prize fund: \$200 based on 20-1st \$60, 2nd \$40, U2100, U1900, U1700, U1500-\$25 each; unrated players are eligible for all of the prizes. The higher of a player's US Chess regular and blitz rating is generally used. **OCF membership meeting**-Sunday at 4:30pm.

LOCATION: Lloyd Center DoubleTree Hotel, 1000 NE Multnomah St, Portland, OR 97232. A limited number of rooms are available at special chess rate (mention tournament); single or double occupancy \$119 plus tax. Reserve early, 1-800-996-0510. Free parking.



A game at the First Semi-professional Tournament in the History of Malabo held in April. Photo credit: Federico Ele Rano.

(Continued from page 14)

Federico is looking to establish both scholastic and general competitive chess in EG. In particular, Federico is seeking

help with acquiring chess materials. We're fundraising for sets, clocks, and books for donation to EG. We have created an online GoFundMe page: <https://www.gofundme.com/chess-supplies-to-equatorial-guinea>.

In Federico's words: "If we use the chess outreach project to offer one chess set per school in Malabo this year for example, I'll let you imagine the opportunity and potential for the following years..."

Currently, nine of our club members are playing correspondence games by email and WhatsApp with nine Equatorial Guinean players. The games are linked on the GoFundMe page.

The Xu Open

By Jeffrey Roland

On July 1, 2017, chess players converged on the "Library! At Bown Crossing" at 2153 E. Riverwalk Dr. in Boise, Idaho. The organizer and tournament director for this event was Dian-xiang Xu and this was his first event as tournament director. Dian is the "chess dad" to Kevin Xu, who is one of the top scholastic players in the state—Kevin is representing Idaho at the upcoming Barber Tournament of K-8 Champions in Norfolk, Virginia later this summer.

It was a surprising success! Why do I say that? Because there was very little advance promotion, it was held at a location so obscure that most native

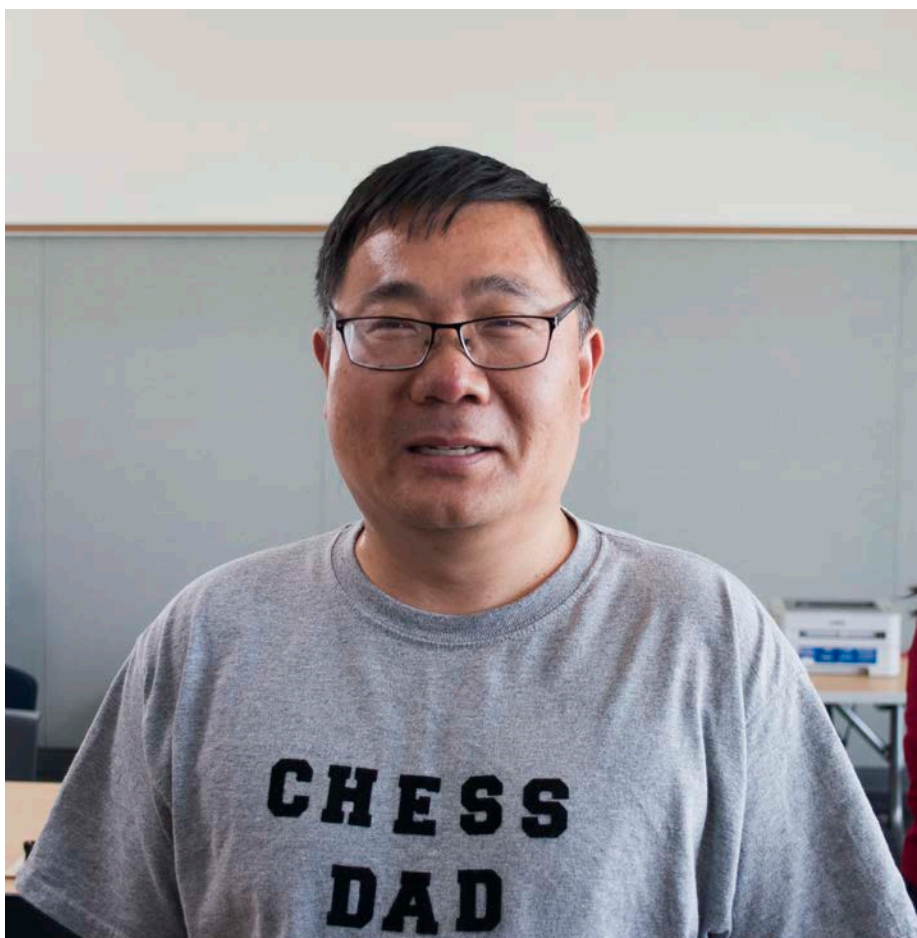
Kuge Book Collection

In March of 2017, the Oregon chess community lost a well-known player, Thomas Kuge, to an untimely death. In his honor and for the benefit of his wife, Kihomi, there will be a sale of his outstanding collection of books and vintage chess sets at this year's Oregon Open, held September 2-4 at the Lloyd Center DoubleTree Hotel in Portland. A sampling includes the entire Everyman Kasparov on Modern Chess series, an entire run of New in Chess Yearbooks, Botvinnik's 4 volume Critical Works, Sahovski and ECO reference works, a 13 vol. set of Secrets of Opening Surprises, and the Khalifman Opening According to Anand and Kramnik series.

There are hundreds of quality and recent works as well as older classic works.

There will be dozens of vintage chess boards and a table of other board games, (such as Go, including boards, stones, books and a complete run of Hikaru no Go). Additionally, a local, innovative chess graphic artist, Beth Marcovic, will be debuting her work.

A collection of 1400 chess magazines (full run of Inside Chess, Chess Life, New in Chess and many others) and a couple hundred Russian-language chess books will open to bids before Labor Day. For information on this please contact Fritz Balwit at fritz.balwit@gmail.com. We are looking for volunteers to help with the sale and are also open to donations of quality chess books or sets to help with our fund-raising endeavor.



*Chief Tournament Director Dian Xu running his first event.
Photo credit: Jeffrey Roland.*

Boise residents have never even heard of it, it was unrated, had a time control of game/25;d3, and was free. Yet still, I've always said, "Where there's a will, there's a way." And 28 players had the will and found the way to play in this event.

I literally decided to go to the tournament only about 45-minutes before it started (I was on the fence for a couple days after seeing a forwarded email—I didn't even get it sent to me directly from the source!), but the real decision was spur-of-the-moment for me. That morning at 11:15 a.m. (the event started at noon), I was in the mood, I wanted to support

a new TD and organizer in the valley by being there, and of course, I wanted to see and interact with all the old and new chess players that could potentially be there. Plus it's just better when one asks the question, "To be or not to be?" and comes up with the answer, "To be!"

The event actually had no name until someone in the pre-tournament announcements asked on-the-fly what it was called, and the name just came to Dian Xu while answering the question... he said, "How about the Xu Open?" And so it was.

This is the first tournament I've ever played in where the time delay on the clock was three seconds instead of five. This almost stopped me from playing because I like to record every move of every game I play... and five seconds gives me time to record (usually), even if in time trouble, but three seconds isn't enough time to record, not even for me! But fortunately, I didn't let that stop me from playing. If it meant I couldn't record every move, so be it... I found my games going the full distance, and so wasn't able to take as many photographs as I usually do during a tournament, however, from my board, I found myself watching players on other tables and could tell everyone was having a great time and really enjoying this tournament. To me, since chess is a game, it seems to me that a successful tournament is one where the people are enjoying it, and this tournament did that with flying colors!!

The event started on time, every round started promptly, and the event ended on time... this was a very prompt and efficiently run event, congratulations, Dian on a job well done.

The winner of the tournament was Jarod Buus, (1693—4.0/4), who sat on board two almost the whole time (which was funny because classic ratings would have put him on board one, but this event used quick ratings which were quite different). Jeffrey Roland (1712—3.5/4), and James Wei (1357—3.5/4), tied for second-third. There were no prizes other than the enjoyment of the competition, the interaction with other chess friends and players, and the chess itself! You know... the true essentials.

**Jeffrey T Roland (1702) –
Forrest Zeng (1108) [A60]**
Xu Open (R2), July 1, 2017
[Ralph Dubisch]

**1.d4 Nf6 2.c4 e6 3.Nf3 c5 4.d5 exd5
5.cxd5 d6 6.Nc3 Be7 7.e4 Bg4 8.Be2
0–0 9.0–0 Nbd7 10.h3 Bxf3 11.Bxf3 Ne5
12.Be2 Qd7 13.Be3 Rac8 14.Qd2 a6
15.Rac1 b5 16.f4 Ng6 17.Bf3 b4 18.Ne2
Qb5?!**

18...Nh4± first eliminates White's light-

Julie Nahlen, Program Director

Nationally Recognized Children's Chess Camp Director and Instructor

208.562.9785 Academy
Email: chessanyone@integrity.com

- ◆ Chess Camps & Tournaments
- ◆ Schooled at Home Programs
- ◆ Home School Programs
- ◆ After School Programs
- ◆ Ages 4 and up
- ◆ Over 20 years experience

www.MastersAcademyBoise.com

Located in Boise, ID
Camps around Northwest and US



Orlov Chess Academy
IM Georgi Orlov
2540 USCF

Offers time-tested program,
challenge and quick progress!

Chess Camps, Tournaments
Chess Classes, Private Lessons

info@chessplayer.com
www.chessplayer.com
(206)-387-1253



square bishop.

19.Ng3 Nd7 20.Nf5 Rfe8 21.Be2 Qa5
22.Bg4 Rcd8



Position after 22...Rcd8

23.Nxg7?

White has a reasonable expectation of finding a big attacking combination here, with the black queen offside and all the other black pieces rather bunched together. And in the main “forcing” line that follows, this sacrifice works. Leading to a clear advantage, 23.a3 is objectively stronger.

23...Kxg7 24.Bxd7 Rxd7 25.f5 Nh8??

Black should give back the piece and repair his weakened king position with something like 25...Kg8 26.fxg6 hxg6∞, when White’s attack seems at an end.

26.f6+

Even stronger is 26.Bh6+! Kg8 (26...Kf6 27.e5+! Kxe5 28.Rce1+ Kf6 29.Qg5#) 27.Qf4, when Black’s pieces are singularly unprepared to face 28.Qg4+. For example: 27...Qd8 28.Qg4+ Ng6 29.fxg6 fxg6 30.Rf7!! White threatens 31.Qe6 with quick checkmate, and every Black move to prevent it loses something else.

26...Bxf6 27.Bh6+ Kg6?

The lesser evil is 27...Kg8 28.Rxf6. Black’s position is horrible, of course, and he can’t even grab a little material compensation with 28...Rxe4 due to 29.Qg5+ Ng6 30.Qf5 Ree7 31.Rxg6+ hxg6 32.Qf6.

28.Rxf6+ 1–0

James Wei (1357) –
Jeffrey T Roland (1702) [C80]
Xu Open (R3), July 1, 2017
[Ralph Dubisch]

1.e4 e5 2.Nf3 Nc6 3.Bb5 a6 4.Ba4 Nf6
5.0–0 Nxe4 6.Re1

While 6.Re1 is certainly logical and playable, the main theoretical line runs 6.d4 b5 7.Bb3 d5 8.dxe5 Be6 and White would now usually continue with 9.Nbd2 or 9.c3, with a complicated game and a normal opening edge.

6...Nc5 7.Bxc6 dxc6 8.Nxe5 Be7 9.d4



Unknown to the chess community three months ago, Chris Herrera is the President of the Chess Club at BSU, and very passionate for chess. He is becoming quite a popular leader, mover, shaker, and friend to all. Photo credit: Jeffrey Roland.

Ne6 10.c3 0–0



Position after 10...0-0

11.Nd2?!

11.Be3 offers White more hope of maintaining an edge. As well as developing a bit more smoothly, it allows White more influence over d4 and d5, so 11...c5 can be met with 12.d5±, and potentially prepares to push the c-pawn, both increasing central influence and planning a possible Nb1–c3.

11...c5

Now d4-d5 is out of the question, and the best White can hope for is equality.

12.Ndf3

12.dxc5

12...cxd4 13.Nxd4

Or 13.cxd4. White's long-term problem here is he will end up with an isolated pawn facing the bishop-pair, which could lead to lengthy suffering. So in general, White should very slightly prefer to keep more pieces on the board.

13...Nxd4 14.cxd4 Be6 15.Bf4 c5?!

While opening the position for the bishop-pair seems an attractive idea, this eliminates White's one weakness and makes the pawn-structure too symmetrical. 15...c6, restraining the isolani, has more potential.

16.dxc5 Bxc5 17.Rc1 Qb6

17...Qxd1 18.Rexd1 Rfd8 and while Black can probably claim a small edge, it's hard to imagine much coming from it.

18.Nd3 Rad8

Last chance to keep the bishops and grind on with 18...Bd4.



Position after 18...Rad8

19.Rxc5 Rxd3 20.Qxd3 Qxc5 21.Bd6 Rd8 22.Qxh7+ Kxh7 23.Bxc5 Bxa2 24.h3 Rd7 25.b4 Bc4 26.Re7

A sharply played draw.

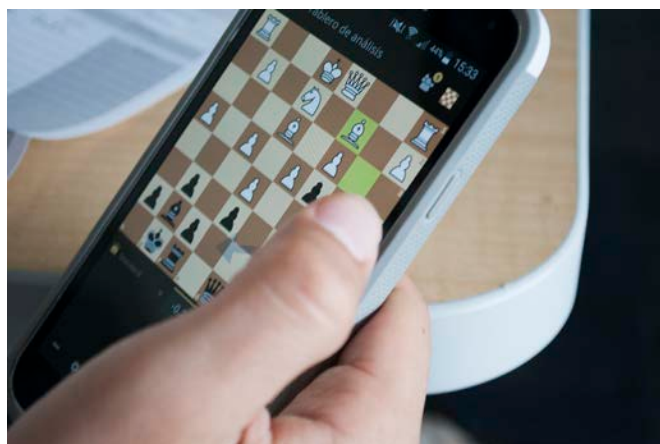
1/2-1/2



(L) Jarod Buus (the winner of the event) makes a move against Daniel L. Duan. Photo credit: Jeffrey Roland.



This is the playing hall from the TD's point of view. Photo credit: Jeffrey Roland.



Chris Herrera playing online correspondence between rounds on his phone. Photo credit: Jeffrey Roland.



Players getting the next round's pairings posted on the wall. Photo credit: Jeffrey Roland.

Northwest Players at the 2017 US Women's Open

By Mary Kuhner

Las Vegas, NV. — June 14-15, 2017



The players at the 2017 US Women's Open. Photo by Tim Hanks.

The US Women's Open was first held in 1934 and has happened on and off since, generally in combination with another tournament. This year it fell on the two days before the National Open in Las Vegas, allowing sufficiently ambitious players to enter the National as well—11 rounds in 5 days! Five players from the Pacific Northwest participated: Badamkhand Norovsambuu, Lois Ruff, and myself from Washington, plus Dylan Porth and Alise Pemsler from Idaho.

Despite apparent hopes to draw in new players, the field was composed mainly of seasoned tournament competitors. The TD was inclined to treat us delicately—spectators were not even allowed between the rows of tables—but the chess was, as is typical in women's tournaments, exceptionally bloody, with only eight draws in the entire five-round, 36-player event. Two of my games ended in checkmate before move 20, and I saw many similar games on nearby boards.

IM Nazi Paikidze, the 2016 US Women's Champion, won the event 5.0/5 with an impressive display of smooth, controlled chess. Unlike most of us, she was content to nurture advantages rather than trying to wipe her opponents off the board. She described her fifth-round game (given below) as her most difficult. Four players tied for second with 4.0/5; I was particularly impressed by 1896-rated Jamie Olsen-Mills of Utah, who carried

out a ferocious heavy piece attack against WGM Carla Heredia with two minutes left on her clock.

Among the Northwest players, Badamkhand tied for 6th-8th with 3.5/5, losing only to Saikhanchimeg Tsogtsaikhan (whose name she can probably pronounce, as they both hail from Mongolia). I scored 3.0/5, losing to IM Paikidze and NM Ramya Inapuri. Unfortunately Dylan and Lois struggled; Dylan won their individual game. I hope they won't be discouraged.

Due to the very wide rating range (567-2429) in the tournament, most of the games were between opponents of markedly different strength—I never played anyone within 250 points of my rating. If the event becomes any larger perhaps a Reserve section would be in order, though I suspect players of all levels were attracted by the chance to play against top competitors like IM Paikidze.

The following game is courtesy of the National Open tournament bulletin:

Saikhanchimeg Tsogtsaikhan (2062) – IM Nazi Paikidze (2429) [B11]
US Women's Open Las Vegas, NV
(R5), June 15, 2017
[Mary Kuhner]

1.e4 c6 2.Nf3 d5 3.Nc3 Bg4 4.h3 Bxf3 5.Qxf3 e6 6.d3 Nd7 7.Bd2 Ngf6 8.g4 h6

9.Qg3 d4 10.Ne2 Qb6 11.0-0-0 c5 12.f4 c4 13.Nxd4 Qxd4 14.Be3 Qd6 15.e5 Qa6 16.exf6 Qxa2 17.fxg7



Position after 17.fxg7

The tournament bulletin notes that Saikhanchimeg was “virtually playing on the increment” from this point on (the tournament was G/90 with 30 second increment).

17...Bxg7 18.c3 a5 19.dxc4 a4 20.Qg2 a3 21.Qc2 Qa1+ 22.Kd2 axb2 23.Bd3 0-0 24.Rb1 Ra3 25.Rxa1 bxa1Q 26.Rxa1 Rxa1 27.Qb2 Ra5 28.Qxb7 Nc5 29.Bxc5 Rxc5 30.Qb6 Rfc8 31.h4 R5c6 32.Qb7 R6c7 33.Qe4 Rd8 34.Ke3 Ra7 35.c5 Ra3 36.c6 Rxc3 37.Ke2 Rd4 38.Qh7+ Kf8

As the tournament bulletin notes, the queen is out of play here, and Black is about to demonstrate the power of the two rooks and bishop against White's

exposed king and vulnerable bishop.

39.Be4 Rcc4 40.Bf3 Rc1 41.g5 Rb4 42.Kf2 hxc5 43.hxc5 Rxf4 44.Qd3 Bd4+ 45.Kg3 Be5 46.Qb5 Rf5+ 47.Kg2 Rxc5+ 48.Kh3 Rc3 49.Kh4 Bf6 50.Qb8+ Kg7 51.Bg4 Rb5#

The National Open bulletin has Paikidze as White, but US Chess lists the colors as shown here, which must be correct given the outcome.

0-1

And here is NM Inapuri, who was part of the tie for second:

Ramya Inapuri (2254) – Mary Kuhner(1973) [A81]

US Women's Open Las Vegas, NV (R5), June 15, 2017

[Mary Kuhner]

1.d4 e6 2.Nf3 f5 3.g3 Nf6 4.Bg2 d5 5.0-0 Bd6 6.b3 Qe7

Recommended to prevent Ba3. I have always wondered, though, what happens if White just plays a4 and Ba3 anyway?

7.a4

Guess I'm going to find out the hard way.

7...0-0 8.Ba3 Nbd7 9.c4



Position after 9.c4

I found this highly annoying as if I play ...c6 I end up with the usual dark square weaknesses, and if I don't my bishop is lost. Stockfish gives ...b6, which I never considered at all; something to remember. 9.Bxd6 cxd6 would have made me happy as I think I could use the clump of center pawns and open c-file.

9...dxc4 10.bxc4 Bxa3 11.Nxa3 e5

My anti-Naomi plan, but in a somewhat different position than usual. At least it gives me a sense that I am doing something concrete and not drifting.

12.e3 e4 13.Nd2 a5 14.c5 Nb8 15.Ndc4 Nc6 16.Rb1 Nd5 17.Qd2 Ncb4 18.f3 Bd7 19.fxe4 fxe4 20.Rxf8+ Rxf8 21.Nxa5

Apparently this move loses White's advantage after either 21...Nd3 or 21...b6. But I miss several chances to prove it, and it's downhill all the way from here.

21...Nd3 22.Rf1 Rxf1+?

22...b6 23.Rxf8+ Kxf8 and Stockfish thinks I am more or less okay. I saw the idea but interpolating the rook exchange does not work. We had about 45 minutes apiece so I can't blame the clock.

23.Bxf1 N5b4?



Position after 23...N5b4

23...h5 is equal according to Stockfish, but why? Apparently the idea is to advance the h-pawn further and break open White's kingside.

24.Nc2 Nxc2 25.Qxc2 b6

25...Ne1 was my other candidate during the game; I spent a long time and couldn't

decide between them, then made a snap decision. Stockfish likes 25...Qf7 but I didn't want to give up the e4 pawn.

26.cxb6 cxb6 27.Qb3+ Be6 28.Qxb6 h5

Both to give my king a bolt hole and with the hope of breaking up White's kingside defenses for a perpetual.

29.Qb8+ Kh7 30.Qb7

This pretty much dashes my hopes, though, as the e-pawn is lost.

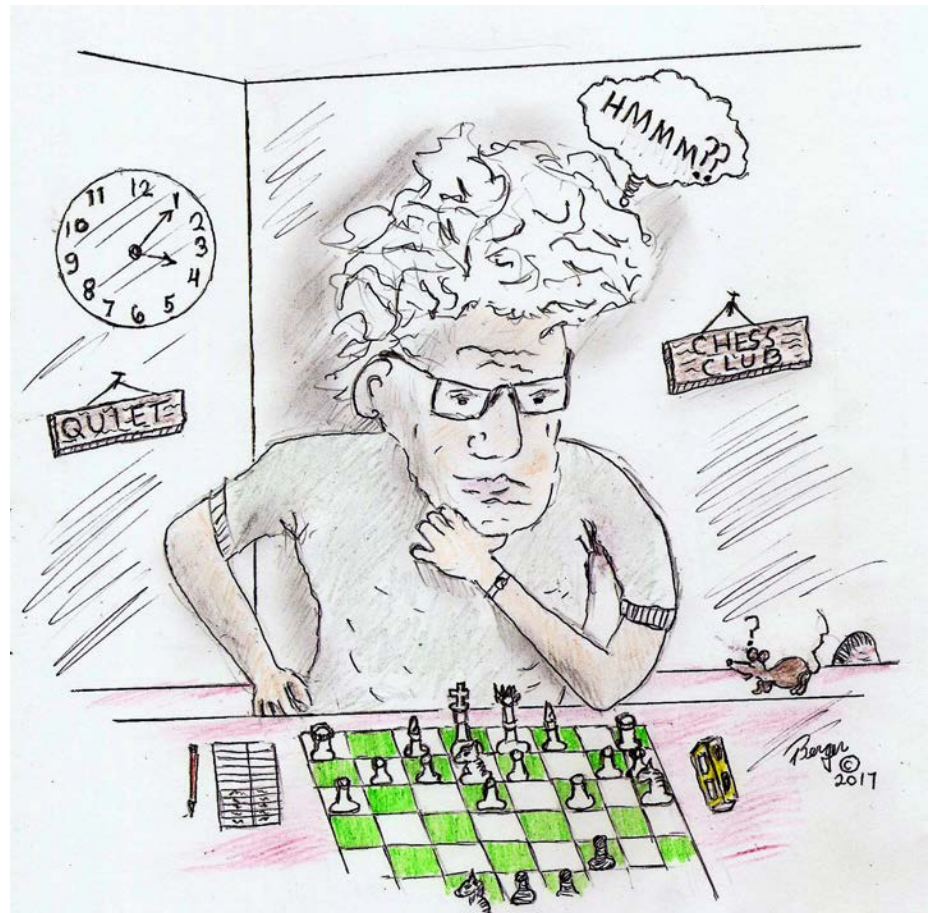
30...Qf6 31.Qxe4+ Bf5 32.Qf3 Qg6

If she takes my knight, I think the light squares on the kingside give me a chance; but she has no interest in giving me that kind of counterplay. Instead she retrieves her straying knight.

33.Nc4 Bg4 34.Qf8 Nc1 35.Ne5 Qe4 36.Qf2 Qb1 37.Nxc4 hxc4 38.a5 Qa1 39.a6 g6 40.Qf7+ Kh6 41.a7 Qa3 42.Qf4+ Kh7

Now a simple combination finishes the game.

43.a8Q Qxa8 44.Qc7+ 1-0



THINKING THAT HE WOULD SURPRISE HIS OPPONENT WITH A UNIQUE OPENING, PERCEY DISCOVERED ON HIS FIFTH MOVE, HE HAD NO IDEA OF WHAT HE WAS DOING.

2017 Washington State Championship Brilliancy Prizes (Part 1 of 2)

Judges: Championship - IM Michael Lee; Premier - FM Curt Collyer; Invitational - Michael Hosford; Challengers - Eric Tohni

Championship

(Judged by IM Michael Lee)

1. He – Kaufman (1-0)

A clean positional victory which begins with tensions over pawn structure with Kaufman's intentional weakening 8...e5. Anthony aggressively extends into fixing the pawn structure with 14.a3, 15.b4 and 16.Nd5, but then consolidates and properly pressures Black with 21.f4. He then smoothly converts his positional advantage in the center, culminating in 26.c5, and navigates the complications professionally starting with 28.Rc4 and the calm 30.a4. By the time Kaufman manages to simplify with 37...Qxe3+, the position is lost. 43.Bf5! is a pretty way to end the game. A great example of converting the advantage.

**Anthony He –
Ray Kaufman [B50]**
Championship Redmond
(R4), February 12, 2017

1.e4 c5 2.Nf3 e6 3.b3 d6 4.Bb2 Nf6 5.Qe2
Nc6 6.d4 cxd4 7.Nxd4 Nxd4 8.Bxd4 e5



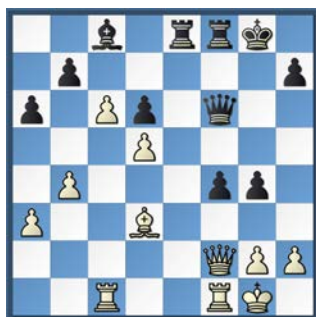
Position after 8...e5

9.Bb2 Be7 10.c4 0-0 11.Nc3 a6 12.Qd2
Qa5 13.Bd3 Be6 14.a3 Rac8 15.b4 Qb6
16.Nd5 Nxd5 17.exd5 Bd7 18.0-0 f5
19.Rac1 Bf6 20.Be2 Qd8



Position after 20...Qd8

21.f4 exf4 22.Bxf6 Qxf6 23.Qxf4 Rce8
24.Bd3 g5 25.Qf2 f4 26.c5 g4 27.c6 Bc8



Position after 27...Bc8

28.Rc4 bxc6 29.dxc6 f3 30.a4 Qg5
31.Re4 Rxe4 32.Bxe4 d5 33.Bd3 Rf6
34.b5 axb5 35.axb5 h5 36.Re1 fxg2
37.Qe3 Qxe3+ 38.Rxe3 Kf8 39.Re5 h4
40.Kxg2 h3+ 41.Kg1 g3 42.hxg3 Rf3



Position after 42...Rf3

43.Bf5 Bxf5 44.Rxf5+ Rxf5 45.c7 h2+
46.Kxh2 Rf2+ 47.Kh3 Rc2 48.b6 1-0

Other games:

Haining – Sang (0-1)

A tense middlegame struggle in which Haining missteps with 20.Ne5 and 21.Re2, which Sang promptly punishes with 21.Rf4 and the powerful sacrifice 23...Bxh3!. After 24...Nxd4, White has no good options and his position promptly collapses in due order. A neat piece of calculation by Black.

**Kyle Haining –
Tian Sang [C60]**
Championship Redmond
(R8), February 19, 2017

1.e4 e5 2.Nf3 Nc6 3.Bb5 Nge7 4.0-0
g6 5.c3 a6 6.Ba4 Bg7 7.d4 exd4 8.cxd4
0-0 9.h3 b5 10.Bc2 d5 11.e5 f6 12.exf6
Bxf6 13.Nc3 Bf5 14.Be3 Na5 15.Bg5 b4
16.Bxf6 Rxf6 17.Na4 Nac6 18.Bb3 Qd6
19.Re1 Raf8 20.Ne5 Bc8 21.Re2 Rf4
22.Nxc6 Nxc6 23.Rd2

[Diagram top of next column]
23...Bxh3 24.gxh3 Nxd4 25.Rxd4 Rxf2



Position after 23.Rd2

26.Bxd5+ Kh8 27.Bg2 Qg3 28.Qf1
Rxf1+ 29.Rxf1 Qe3+ 30.Kh2 Qe5+ 0-1

Perez – Readey (1-0)

Perez turns a small development and space advantage into a win by maintaining pressure on Readey with focused middlegame/endgame play. Starting with the roughly equal position after 15...Be6, Perez finds ways to pressure Black with moves like 18.Bd7. When Black missteps by delaying developing his kingside pieces, Perez punishes him with 26.Bb3 and 30.h3. Allowing 34.Bxe6 is the final blow and Perez converts cleanly.

**Ignacio Perez –
John Readey [B13]**
Championship Redmond
(R5), February 18, 2017

1.e4 c6 2.d4 d5 3.exd5 cxd5 4.c4 Nf6
5.Nc3 Nc6 6.Bg5 dxc4 7.Nf3 h6 8.Bh4
g5 9.Bg3 Bg7 10.Bxc4 Nh5 11.Be5 Bxe5
12.Nxe5 Nxe5 13.dxe5 Qxd1+ 14.Rxd1
Nf4 15.0-0 Be6



Position after 15...Be6

16.Bb5+ Kf8 17.g3 Ng6 18.Bd7 Bc4
19.Rfe1 e6 20.b3 Ba6 21.b4 b6 22.Bb5
Rc8 23.Bxa6 Rxc3 24.Rd7 Ra3 25.Bc4
b5

[Diagram top of next page]

26.Bb3 a5 27.bxa5 Rxa5 28.Re4 g4
29.Rb7 h5 30.h3 b4 31.hxg4 hxg4
32.Rxg4 Nxe5 33.Rf4 Rh7 34.Bxe6
Ra6 35.Bb3 Rah6 36.Kf1 Rh1+ 37.Ke2



Position after 25...b5

Rb1 38.Rh4 Rxb4 39.gxh4 Rb2+ 40.Ke3 Ng4+ 41.Kf3 Ne5+ 42.Kg3 Nd3 43.Rxf7+ Ke8 44.Rf3 Nc1 45.h5 Ne2+ 46.Kg4 Nd4 47.Rh3 Rxf2 48.h6 1-0

Perez – He (0-1)

A neat example of the vicious potential in Black's setup in the Sicilian Dragon. After neglecting development with 10.Qxd4!?, 11.Qd2, and 12.Bh6, He accurately simplifies with 12...b4, gaining an advantage that quickly turns into a strong mating attack after 16.0-0-0 and 17.Rd2?. Although 23...bxc3 was stronger, Black's attack is too strong and the game is over after the tactic 26...Rxb3.

Ignacio Perez – Anthony He [B57]
Championship Redmond (R9), February 20, 2017

1.e4 e5 2.Nf3 Nc6 3.d4 cxd4 4.Nxd4 Nf6 5.Nc3 d6 6.Bc4 Bd7 7.Bb3 g6 8.Be3 Bg7 9.f3 Nxd4 10.Qxd4 0-0 11.Qd2 b5 12.Bh6



Position after 12.Bh6

12...b4 13.Nd5 Bxb6 14.Qxb6 Nxd5 15.Bxd5 Rc8 16.0-0-0 Ba4 17.Rd2 e6 18.Bb3 Bxb3 19.axb3 Qa5 20.Kb1 Rc6 21.Re1 Rfc8 22.Qe3 Ra6 23.c4 Qa2+ 24.Kc2 Ra3 25.Rd3 a5 26.Qd2

[Diagram top of next column]

26...Rxb3 27.Rxb3 Rxc4+ 0-1



Position after 26.Qd2

Premier

(Judged by FM Curt Collyer)

Here are my rankings. White won every game.

1. Schill vs Pupols (Schill wins the Brilliancy Prize)

William Schill – Viktors Pupols [C67]
Premier Redmond (R7), February 19, 2017
[Curt Collyer]

Schill Visits Berlin: The Berlin Defense has a reputation for long, tedious draws. In this game, Schill exploits Black's slightly weakened kingside and brings home a long, tedious win. Look at the position at move 16: Can White really win this? Yes he can! — This game is smooth, subtle, and quietly brilliant. Can a queenless Berlin really win the Brilliancy Prize? — Yes it can! Congratulations to Schill for his refined play.

1.e4 e5 2.Nf3 Nc6 3.Bb5 Nf6 4.0-0 Nxe4 5.Re1 Nd6 6.Nxe5 Nxe5 7.Rxe5+ Be7 8.Bf1 0-0 9.d4 Bf6 10.Re1 Re8 11.c3 Rxe1 12.Qxe1 c6 13.Nd2 Qe7 14.Qxe7 Bxe7 15.Bd3

Black must untangle his queenside, so White retains a slight advantage.

15...Ne8 16.Nf3 d5



Position after 16...d5

The structure now resembles an Exchange French.

17.Bf4 h6 18.Re1 Kf8 19.Ne5

All of White's pieces are better positioned than Black's.

19...g5

Black lashes out, but also slightly weakens the kingside. 19...Bd6 allows the tactical trick 20.Ng6+! fxg6 21.Bxg6 when White is better.; Alternatively, 19...Nd6 20.g4! keeps the Black pieces off f5, so should be better here, too.

20.Bd2 Ng7 21.g4 Bf6 22.f3 Be6 23.h3 Re8



Position after 23...Re8

Black has finished his development but White now controls the pawn breaks on the kingside.

24.f4! gxf4

Black would prefer not to trade on f4, but if he waits, he might face worse problems. For example, 24...Bc8 25.f5 locks in Black's knight. Then if he maneuvers with 25...Rd8 26.c4, Ne8 27.Ba5 is strangely awkward for Black.

25.Bxf4 Bg5 26.Bg3!

No equal trades!

26...Kg8 27.Nf3 Bd7 28.Ne5 Be6 29.Kh2 29...f5

Pupols liquidates his isolated pawn, but this doesn't alleviate the suffering.

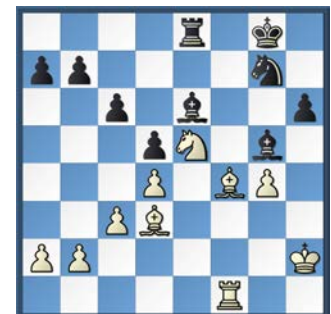
30.Rf1!

Schill is doing a good job keeping tension in the position. And Black's knight still can't move.

30...fxg4 31.hxg4 Be7

The tactical resource 31...Rf8? 32.Bh7+! prevents Black from immediately challenging the f-file.

32.Bf4 Bg5



Position after 32...Bg5

33.Bxg5!

Now this is the right time to trade, as the rook can infiltrate to f6.

33...hgx5 34.Rf6

Despite symmetrical pawn structure and even material, Black is almost paralyzed.

34...c5 35.Bg6 Rd8



Position after 35...Rd8

36.Rxe6

Schill chooses to win the two minors and torture Black in the ending.

36...Nxe6 37.Bf7+ Kg7 38.Bxe6 cxd4 39.cxd4 Rd6 40.Bf5 Rb6 41.Nd3 Kf6 42.Kg3 Ke7 43.a3 a5 44.Kf3 Rh6 45.Bc8 b6 46.Bf5 Kd6 47.Nf2 Ke7 48.Ke3 Rh2 49.Bd3 Rg2 50.Be2

White is steadily reorganizing while extinguishing potential counterplay.

50...Rh2 51.Bf3 Kd6 52.a4 Rh8



Position after 52...Rh8

53.Nd1

White simply needs to coordinate an attack on the d-pawn to win the game.

53...Re8+ 54.Kf2 Rc8 55.Ne3 Rc1 56.Bxd5 Rb1 57.b3 Rb2+ 58.Kf3 Rh2 59.Ke4 Rf2 60.Nc4+ Kc7 61.Ne5 Rf4+ 62.Ke3 Kd6 63.Be4 Rf8 64.Nc4+ Kc7 65.d5 Rf4 66.d6+ Kd7 67.Bf5+ Kd8 68.Ne5 1-0

2. Bada vs Brendan

**Bada Norovsambuu –
Brendan Zhang [E35]**
Premier Redmond
(R3), February 12, 2017
[Curt Collyer]

Bada's Brawl with Brendan: Bada asserts her dominance with creative opening and

aggressive middlegame play. Brendan fights back from a poor position and almost saves the game. This was not a clean, one-sided win. It was a complex and hard-fought battle that showed both players overcoming adversity at different stages.

1.d4 Nf6 2.c4 e6 3.Nc3 Bb4 4.Qc2 d5 5.cxd5 exd5 6.Bg5 h6 7.Bh4 c5 8.e3 g5 9.Bb5+ Nc6 10.Bg3 cxd4 11.exd4 Ne4 12.Nge2 Bf5 13.Qa4 Bd7 14.0-0 Bxc3 15.Nxc3 a6



Position after 15...a6

16.Nxd5!?

Time for a big fight — White begins throwing punches.

16...0-0

16...axb5 17.Nc7+ Qxc7 18.Qxa8+ Qd8 19.Qxb7 is also advantageous for White.

17.Bc7! axb5 18.Qc2!

Enterprising tactical play by Bada.

18...Qe8



Position after 18...Qe8

19.f3!

19.Rae1 Bf5 20.f3 Qe6 21.fxe4 allows **21...Qxd5! =**

19...f5 20.fxe4

White is better, but Black is fighting.

20...Ra4! 21.e5 Nxd4 22.Qd2 Ne6 23.Bb6 Bc6 24.Nf6+ Rxf6 25.exf6

[Diagram top of next column]

25...Rg4?

Probably Black assumed that White would guard g2.

26.Rxf5! Qf7 27.g3 Nf4

White forces a queen trade to avoid any



Position after 25.exf6

surprises.

28.Qd8+ Kh7

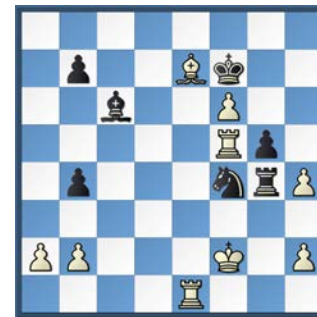
28...Be8? 29.Re1

29.Qe7 Kg6 30.Qxf7+ Kxf7 31.Re1 Nd5 32.Bd8 Rd4 33.Rf2 b4

Now White must find a way to make progress.

34.Be7 h5 35.Rf5 Rg4 36.Kf2 h4 37.gxh4 Nf4!

Black's persistent play provokes a mistake.



Position after 37...Nf4

38.Rxf4?

38.Re3 Rg2+ 39.Kf1 is the cold defensive recommendation.

38...gxf4 39.Bxb4 Rg2+ 40.Kf1 Rxb2

40...f3! threatening **Bb5+** would have drawn. For example **41.Re5 Rxb2 42.Bc3 Rh1+ 43.Kf2 Rh2+ 44.Kf1 (44.Kg3?? Rg2+! 45.Kh3 Bd7+) 44...Rh1+**

41.Bc3 Rh1+ 42.Ke2 Rxb4

Black remains a pawn down.

43.Rg1 f3+ 44.Ke3 Rh7 45.Rg5 Ke6 46.b4

Now Bada gets going on the queenside.

46...Bd5 47.a4 Kd6 48.Bd4 Rf7 49.Bc5+ Ke6 50.Be7 Rh7 51.b5 b6 52.Bd8

[Diagram top of next page]

52...Rh2?

Black cracks; a passive defense such as **52...Rf7** was necessary.

53.Rxd5! Kxd5 54.f7 Rh8 55.Be7 1-0



Position after 52.Bd8

3. Kelley vs Lin

Dereque Kelley – Michael Lin [E92]
Premier Redmond
(R5), February 18, 2017
[Curt Collyer]

Kelley Crushes the KID: Black plays all the normal King's Indian moves and loses immediately. This game raises lots of questions about the soundness of Black's entire defense. Concerned King's Indian players should visit www.chessopenings.com to learn more.

1.d4 Nf6 2.c4 g6 3.Nc3 Bg7 4.e4 d6 5.Nf3 0-0 6.h3 e5 7.d5 a5 8.Bg5 Na6 9.Be2 Qe8 10.g4 Nd7 11.Qd2 Ndc5 12.0-0-0

[Diagram top of next column]



Position after 12.0-0-0

12...f5?

In hindsight, this was not a good idea.

13.gxf5 gxf5 14.Rdg1 Kh8 15.Bh6!

White's attack is surprisingly swift.

15...Bxh6

15...Rg8 16.Bxg7+ Rxg7 17.Rxg7 Kxg7 18.Rg1+ Kh8 19.Qh6 Qf7 20.Nh4 and White is crushing.

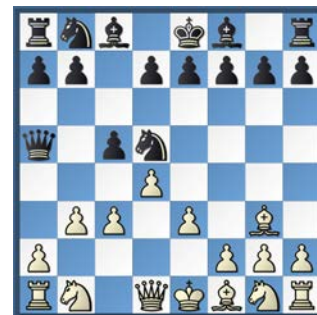
16.Qxh6 Qe7 17.Nh4 Rf6 18.Rg6!? Rf7 19.Rhg1 Bd7 20.Re6 Qxh4 21.Qxh4 Nxe6 22.dxe6 Bxe6 23.Bh5 1-0

4. Alikhan vs Rupel

Alikhan Irgaliyev – David Rupel [A45]
Premier Redmond
(R1), February 11, 2017
[Curt Collyer]

The London Bites Back: Rupel takes a skeptical approach to Alikhan's stodgy London but soon finds his own king evacuating the city. The fourth World Champion shows no mercy in this creative attacking game.

1.d4 Nf6 2.Bf4 c5 3.e3 Qb6 4.b3 Nd5 5.Bg3 Qb4+ 6.c3 Qa5



Position after 6...Qa5

7.Qd2 cxd4 8.exd4 e6 9.Nf3 Nc6 10.Bd3 Be7 11.0-0 b5 12.b4 Qb6 13.a4 bxa4 14.Na3 d6 15.Nc4 Qc7 16.Ng5 Nb6 17.Qf4 f6 18.Nxb6 axb6 19.Nxh7 Nd8 20.Qh4 Rg8

[Diagram top of next page]

21.Qh5+ g6 22.Bxg6+ Kd7 23.Be4 Bb7 24.d5 Kc8 25.c4 Kb8 26.Rfc1 f5 27.Bf3 e5 28.Qxf5 Bc8 29.Qe4 Nb7 30.c5 bxc5 31.Qb1 Ra7 32.bxc5 dxc5 33.Re1 Bd6 34.Nf6 Rf8 35.Ne4 Bf5 36.Qb2 Bxe4

Washington Women's Championship

September 15-17, 2017

Highest finishing Washington resident seeded into the Premier Section of the 2018 Washington State Championship

Site: Seattle Chess Club, 2150 North 107th Street, Seattle, WA 98133.

Format: A one-section 5-Round Swiss. Dual US Chess & FIDE rated.

Time Control: Game in 90 minutes with a 30-second increment added after each move.
US Chess September 2017 rating supplement will be used to determine pairings and prizes.
Foreign ratings used for players with no US Chess rating.
Higher of US Chess or foreign ratings used at TD discretion.

Prize Fund: \$1000 (based on 20 paid entries).

1st \$300, 2nd \$200, 3rd \$100, 1st U1800 \$80, 1st U1600 \$80, 1st U1400 \$80, 1st U1200 \$80, 1st U1000/Unr \$80.

Entry Fee: \$50 if postmarked or online by 09/13, \$60 after 09/13 or at site. Free entry for WGMs and WIMs.

Registration: Friday 6:00 - 6:45 PM.

Rounds: Friday 7:00 PM; Saturday 11:00 AM, 5:00 PM; Sunday 11:00 AM, 5:00 PM.

Byes: Two half-point byes available. Request before end of round 2.

US Chess and WCF/OCF/ICA memberships required, other states accepted.
Trophies Plus Grand Prix Points: 6. US Chess Junior Grand Prix event. NS. NC. W.

Entries: Make checks payable to Washington Chess Federation.

Mail To: Josh Sinanan, 3610 218th Street SW, Brier, WA 98036.

Phone: (206) 769-3757. **E-mail:** joshsinanan@gmail.com.

Online Registration: www.nwchess.com/online-registration.



Position after 20...Rg8

37.Rxe4 Re8 38.Qb5 Re7 39.Rexa4
Rxa4 40.Qxa4 Qb6 41.Bh4 Rh7
42.Qe8+ Kc7 43.Bg4 1-0

5. Bada vs Pupols

**Bada Norovsambuu –
Viktors Pupols [D16]**
Premier Redmond
(R4), February 12, 2017
[Curt Collyer]

Bada Wins Again White converts a textbook-like ending with an active rook and superior minor piece. (Further notes and analysis by Ralph Dubisch)

1.d4 d5 2.c4 c6 3.Nc3 Nf6 4.Nf3 dxc4
5.a4 e6 6.e3 c5 7.Bxc4 cxd4 8.exd4
Be7 9.Bf4 0-0 10.0-0 Nc6 11.Rc1 Nb4
12.Qb3 Bd7 13.Ne5 Be8 14.Rfd1 Nbd5
15.Bg5 Bc6 16.Bxf6 Nxf6



Position after 16...Nxf6

17.d5!

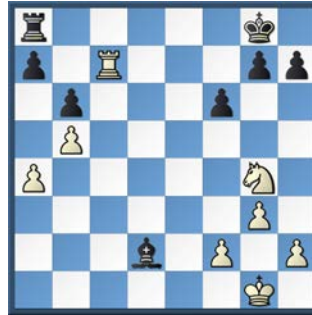
17.Nxf7! is also interesting, gathering up several pawns and a rook for the two minor pieces: 17...Rxf7 (17...Kxf7? 18.Bxe6+ Ke8 19.d5 Bd7 20.d6 is

crushing on the open files.) 18.Bxe6 Be8 19.Qxb7±

17...exd5 18.Nxd5 Nxd5 19.Bxd5 Bxd5 20.Rxd5 Qb6 21.Rb5

21.Qxb6! axb6 22.Nd7 Rfc8 23.Re1± because 23...Rxa4? 24.Rde5!+- (but not 24.Nxb6? Re4!)

21...Qh6 22.Re1 b6 23.Qf3 Bd6 24.Ng4 Qf4 25.Qxf4 Bxf4 26.g3 Bd2 27.Re7 Rfe8 28.Rd7 Red8 29.Rbd5 Rxd7 30.Rxd7 Bc1 31.b4 f6 32.Rc7 Bd2 33.b5



Position after 33.b5

33...Bb4

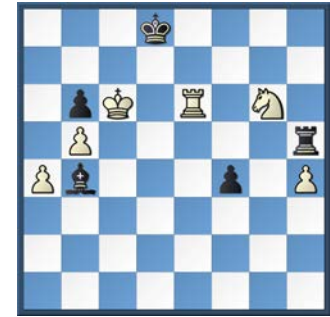
33...a6!, e.g. 34.Rc6 axb5 35.axb5 Ra1+ 36.Kg2 Ra2! 37.Rxb6!? (37.Kf3 Be1 38.Re6 Ba5 39.Ne3 Be1 40.Nd1 Ba5) 37...h5 and White must choose whether to exchange minors or to sacrifice the knight for pawns, but with equal chances either way: (38.Rb8+ Kf7 39.b6 hxg4 40.b7 Rb2 41.Rd8 Rxb7 42.Rxd2; 38.Nxf6+ gxf6 39.Rxf6 Kg7 40.Rf5 Be3 41.Rxh5 Rxf2+ 42.Kh3 Rb2)

34.Ne3 Bc5 35.Nf5 Bf8 36.Rb7 h5 37.Nd4 Bc5 38.Ne6 Bf8 39.Nc7 Rd8 40.Rxa7 Rd2 41.Ne6 Re2 42.Nf4 Re1+ 43.Kg2 h4 44.Ng6 Bc5 45.gxh4 Re2 46.h5 Rxf2+ 47.Kg3 Rf5 48.Ra8+ Kf7 49.Ra7+ Ke8 50.h4 Rxh5 51.Rxg7 Rd5 52.Ra7 Bb4 53.Kf3 Bd2 54.Ke4 Rh5 55.Re7+ Kd8 56.Re6 f5+ 57.Ke5 f4+ 58.Kd6 Bb4+ 59.Kc6

[Diagram top of next column]

59...Bc5

59...Rf5!∞ 60.Re4! (60.Ne5 f3 61.Nxf3 Rxf3 62.Kxb6 Kd7 is similar, but leaves Black better placed to defend.) 60...Rf6+ 61.Kb7 (61.Kd5 f3 62.Rxb4 f2 63.Rb1 f1Q 64.Rxf1 Rxf1 probably doesn't offer serious winning chances.) 61...Bd6! (61...f3 62.Rxb4 f2 63.Rd4+! Ke8 64.Rd1 f1Q 65.Rxf1 Rxf1 66.Kxb6! wins for White: 66...Rf6+ 67.Kc7 Rxf6 68.b6+-) 62.Ne5 f3 63.Nxf3 Rxf3 64.Kxb6



Position after 59.Kc6



Analysis

(#Diagram-analysis after 64.Kxb6)

This obviously favors White, but whether it is winning is still in doubt. 64...Rf6! 65.Kb7! Bc5! 66.a5! Rf7+ 67.Kc6 Rc7+ 68.Kd5 Bf2 69.Rf4 and we're still looking for proof, one way or the other.

60.Nxf4 Rxh4 61.Rf6 Rh7 62.Nd5 1-0

Stay tuned next

month for the

conclusion of the

2017 Washington

State Championship

Brilliance Prizes

covering the

Invitational and

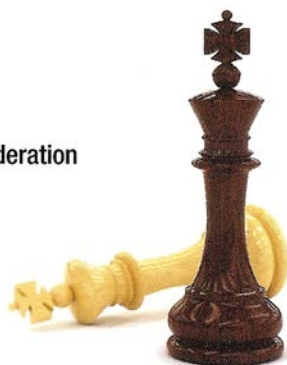
Challengers sections.

Joshua C. Sinanan

National Master
President, Washington Chess Federation

3610 218th St. SW
Brier, WA 98036

Cell: (206) 769-3757
joshsinanan@gmail.com



The 2017 Neil Dale Memorial

Northwest Chess Grand Prix

Murlin Varner, Administrator

First off, two error corrections. Last Month (July) I mistakenly had Jose Gatica of Oregon in the #4 spot in the Masters. Gatica is not a master, at least not yet. He should have been listed as #1 in the Expert Class. This month, I have him back in the right class, but Gatica has slipped down one spot into #2 Expert. The other error wasn't really mine. Isaac Vega's performance in a tournament was wrongly credited to a different Isaac Vega from the other side of the country. With this issue, I have corrected the resulting accounting error, and Vega has eight more points. Vega would still have been #2 in his class last month, but the difference would have only been a single point. This month, Vega moves to the #1 spot in Class A.

The statistics below are current through June 30, which mean this is the half-way point in the 2017 contest. This makes it easy to speculate on what the numbers might be by the end of the year. They look low....

At the halfway point this year, we have had 41 Grand Prix events, in eight different cities, involving 542 players. Of those 41 events, eight have multipliers. This is a pace to leave us equal with 2015 in events and 13 events behind 2016, when we had 95 in 52 weeks. As for multipliers, we are on a pace to have the lowest number since 2012, when there were only 13. Last year, there were 20 events with multipliers.

As of the end of June, no one has over 100 points. This means that no one is on pace to exceed 200 points for the year. If this happens, it will be the first time in Oregon since Nick Raptis won with 181.5 points in 2013. In Washington, an overall winner hasn't scored under 200 points since the late Darby Monahan won with 164.5 in 2009. (In the 14 years I've been doing this job, the Washington winner has been under 200 points only three times: 2004, 2008, and 2009.) This also means that no contestant is so far ahead he or she cannot be caught. Therefore, the contests are all wide open, and you are all invited to be the one to get busy and start piling up the points.

The current leaders in all three states are players who have never won a Grand Prix overall prize during the past 14 years. In my tenure, only four players have won a state competition more than once. Mike Hasuike has won twice in Oregon, Jeffrey Roland three times in Idaho, Stephen Buck six times in Washington, and Nick Raptis ten times, nine in Oregon and one in Washington. Jason Cigan currently leads Oregon. Oregon has not been won by someone other than Raptis or Hasuike since Brett Becker won in 2007. Viktors Pupols leads Washington and Michael Cambareri leads in Idaho. If they can hold on, they would all be first-time winners over the past 15 years. But holding on won't be easy. With no one running away, all races are very close and can swing on just one or two extra tournaments. August holds many good tournaments for you, including a 3x in Vancouver and a 5x in Seattle. Go play.

Northwest Grand Prix Standings

Idaho			Oregon			Washington		
last	first	pts.	last	first	pts.	last	first	pts.
Masters								
			1 Cigan	Jason D	86.5	1 Pupols	Viktors	91.5
			2 Zavortink	Matt	58.5	2 Perez	Ignacio	57.5
			3 Breckenridge	Steven J	41	3 Orlov	Georgi	40
			4 Haessler	Carl A	32.5	4 Feng	Roland	35
			5 Russell	Corey J	13	4 Sang	Tian	35
Experts								
			1 Rachmuth	Moshe S	40	1 Yu	Jason	76
			2 Gatica	Jose M	34.5	2 Bashkansky	Naomi	62.5
			3 Roring	Tres	33	3 Zhang	Brendan	51.5
			4 Seitzer	Phillip	30.5	4 Arganian	David G	47
			5 McCoy	Owen	27.5	5 Calpo	Benjamin V	45
M/X/Class A								
1	Cambareri	Michael E	32					
2	Inman	James	30					
3	Havrilla	Mark A	28					
4	Maki	James J	26					
5	Two tied at		20					
Class B								
1	Martonick	Nick	18					
2	Machin	Alex J	16.5					
3	Derryberry	Dewayne R	10.5					
4	Xu	Kevin	9					
5	Roland	Jeffrey T	8.5					
Class A								
1	Vega	Isaac	44.5	1 Xuan	Owen	88.5		
2	Zhang	Gavin	38	2 Frantz	Joseph K	87.5		
3	Patel	Kian	30	3 Shubin	Daniel	78		
4	Levin	Scott A	30	4 Lewis-Sandy	Joshua M	71.5		
5	Wu	Ethan	28.5	5 Levine	Joseph R	69		

Idaho			Oregon			Washington					
last	first	pts.	last	first	pts.	last	first	pts.			
Class C			Class B								
1	Geyman	Jonathan P	25.5	1	Berger	Brian F	59.5	1	Kirsch	Ronald B	90
2	Weyland	Ron	25	2	Moore	Michael	54.5	2	Jiang	Brandon	83
3	Wei	James	16.5	3	Feldman	Konner	50.5	3	Velea	Stephanie	61.5
4	Jaroski	Jeffrey A	15.5	4	Nair	Roshen S	37	4	Beck	Alec W	60
5	Courtney	Caleb	14	5	Holloran	William T, III	31.5	5	Anthony	Ralph J	58.5
Class D			Class C								
1	Merry	William A F	20	1	Wu	Abbie	80.5	1	Piper	August	88.5
2	Liu	James	10	2	Tang	Zoey	74	2	Richards	Jerrold	69.5
3	Lange	Brian	8.5	3	Fudalla	Ian	43	3	Christy	John P	69
4	Call	Logan	5.5	4	Pai	Kushal	41.5	4	Tien	Andy C	65.5
5	Zeng	Forrest	4.5	5	Hasuike	Mike L	31	5	Hwang	Matthew	60.5
Class E and Below			Class D and Below								
1	Callen	Gregory D	17	1	Tang	Austin	66	1	Li	Melina	67.5
2	Kitterman	Andrew N	10	2	Wu	Kevin	36.5	2	Gupta	Anand	55
3	Belew	Finn C	8	3	Feldman	Neena	35	3	Ruff	Lois	53
3	Porth	Darwin A	8	4	Zhang	Ethan Y	34.5	4	Dunbar	Jason R	50
5	Ang	Ching-E N	7	5	Beauchet	Pierre-Hadrien	29.5	5	Hotani	Kabir	47.5
Overall Leaders, by State											
1	Cambareri	Michael E	32	1	Cigan	Jason D	86.5	1	Pupols	Viktors	91.5
2	Inman	James	30	2	Wu	Abbie	80.5	2	Kirsch	Ronald B	90
3	Havrilla	Mark A	28	3	Tang	Zoey	74	3	Xuan	Owen	88.5
4	Maki	James J	26	4	Tang	Austin	66	3	Piper	August	88.5
5	Geyman	Jonathan P	25.5	5	Berger	Brian F	59.5	5	Frantz	Joseph K	87.5
6	Weyland	Ron	25	6	Zavortink	Matt	58.5	6	Jiang	Brandon	83
7	Roberts	Joseph D	20	7	Moore	Michael	54.5	7	Shubin	Daniel	78
7	Buus	Jarod N	20	8	Feldman	Konner	50.5	8	Yu	Jason	76
7	Merry	William A F	20	9	Vega	Isaac	44.5	9	Lewis-Sandy	Joshua M	71.5
10	Martonick	Nick	18	10	Fudalla	Ian	43	10	Richards	Jerrold	69.5
11	Callen	Gregory D	17	11	Pai	Kushal	41.5	11	Levine	Joseph R	69
12	Machin	Alex J	16.5	12	Breckenridge	Steven J	41	11	Christy	John P	69
12	Wei	James	16.5								

**Be sure to like 'Northwest Chess'
on Facebook.
Also, check out nwchess.com/blog/**

Seattle Chess Club Tournaments

Address ↙
 ↗ 2150 N 107 St, B85 ↖
 Seattle WA 98133
 ↗ Infoline ↖
 206-417-5405
 seattlechess.club
 kleistcf@aol.com
 Address for Entries
 SCC Tnmt Dir
 2420 S 137 St
 Seattle WA 98168

SCC Fridays

Typical Friday fare is one round of an ongoing event (free to SCC members, no prizes) played at a rate of 40/90 followed by 30/60.

Drop in for any round!

Dog Days: 8/4, 11, 18, 25.

Workingmen's Qds (G/16;+8): 9/1.

Close Ratings 3: 9/8, 15, 22, 29.

Autumn Leaves: 10/6, 13, 20, 27.

SCC Championship

Sept. 8, 15, 29; Oct. 6, 20, 27, Nov. 3

Format: 7-rd Swiss held on Friday evenings. **TC:** 35/100 and 25/60. **EF:** \$32 if rec'd by 9/6, \$40 thereafter. SCC memb. req'd—\$30 special tnmt memb. **Prize fund:** 75% of EFs. **Prizes:** 23%-16%, U2000 9%, U1800 8%, U1600 7%, U1400 6%, Unrated 3%, Endurance 3%. **Reg:** Fri. 7-7:45 p.m. **Rds:** Fridays 8 p.m. **Make-up Games for Rds 1-4:** G/75;d5 make-ups may be scheduled for any Wednesday 9/13 through 10/11. **Byes:** 4 (1 in rds 5-7, commit by 10/14). **Misc:** SCC/US Chess memb. req'd. NS. NC.

☞ Aug 13, Sept 10

Format: 4-SS. **TC:** G/60; d5. **EF:** \$18 (+\$7 fee for non-SCC). **Prizes:** 1st 35%, 2nd 27%, Bottom Half 1st 22%, 2nd 16% (\$10 from each EF goes to prize fund). **Reg:** 10:30-11:15 a.m. **Rds:** 11:30-1:50-4:10-6:30. **Byes:** 1 (Rd 3/4—commit at reg.). **Misc:** US Chess, WCF/OCF/ICA memb. req'd, OSA. NS, NC.

☞ Aug 19, Sept 16

Format: 3-RR, 4-plyr sections by rating. **TC:** G/120; d5. **EF:** \$9 (+\$7 fee for non-SCC). **Prizes:** Free entry for future quad. **Reg:** 9:00-9:45 a.m. **Rds:** 10:00-2:15-ASAP. **Misc:** US Chess, WCF/OCF/ICA memb. req'd, OSA. NS, NC.

Oct 22 New Date

Format: 4-SS. Open to U1200 and UNR. **TC:** G/75; d5. **EF:** \$11 by 10/11, \$16 at site. (-\$2 SCC mem., -\$1 mem. other NW dues-req'd CCs). **Prizes:** Memb (SCC, WCF, US Chess). **Reg:** 9-9:45a.m. **Rds:** 10-12:45-3:30-6. **Byes:** 1 (Rd 3/4—commit at reg.). **Misc:** US Chess memb. req'd. NS, NC.

Sunday Tornado ☞

Saturday Quads ☞

SCC Novice

How to Find the SCC

Look for the Northway Square East Building, just across I-5 from Northgate Mall, with a large sign proclaiming "Northwest Kidney Centers." The main entrance is reached by turning east on N. 107th Street from Meridian Ave. N. The club is on the lower level.

WCF @ the SCC

Seattle Chess Classic Aug. 16-20 see ad this issue

SCC Adult Swiss

August 26-27, 2017

A four-round Swiss open to those born before 8/28/1996 with a prize fund of \$375 based on twenty paid entrants (five per prize group).

First	\$105
Second	\$60
U2000	\$55
U1800	\$55
U1600	\$50
U1400/Unr	\$50

Time Control: G/150; d5.

Entry Fees: \$36 if rec'd by 8/23, \$45 at site. *SCC members*—subtract \$10. Members of other dues-required CCs in BC, ID, OR, & WA—subtract \$5 *GMs, IMs, WGMs*—Free. *Unr*—free with purchase of 1-year US Chess plus 1-year WCF/OCF/ICA.

Registration: Sat. 10-10:45 a.m. **Rounds:** 11-4:30, 11-4:30.

Byes: 1 (Sunday rounds, commit at registration).

Miscellaneous: US Chess & WCF/OCF/ICA membership req'd (OSA). No smoking. No computers.

Upcoming Events

♣ denotes 2017 Northwest Grand Prix event; for Seattle Chess Club events see page 30

♣ **Aug 5-6** Vancouver Open, **Vancouver, WA.** (<http://www.nwchess.com/calendar/TA.htm>)

Aug 5-7 Semiahmoo Open Chess Tournament, **White Rock, BC (Canada).** (<http://www.nwchess.com/calendar/TA.htm>)

Aug 12-13 7th Annual Oregon Senior Chess Championship, **Portland, OR.** (See half-page ad page 7)

Aug 13 Boise Chess Club #14, **Boise, ID.** Boise State University, Student Union Building (Jordan Ballroom A), 1910 University Drive, Boise, Idaho 83706. 4SS, US Chess Rated, Game/30 + 30 second time increment per move. Jeffrey Roland will be Chief TD. Please register by e-mailing jroland@cablone.net. Email pre-registration is appreciated to speed up registration. Parking (\$2/day) available, email jroland@cablone.net for the code. Doors open at 8:30 a.m. Registration will be from 8:30-9:00 a.m. First round “should”/“could”/probably will start promptly at 9:00 a.m. Those coming late may get a first-round half-point bye. 90-minute break for lunch taken after round 2. Estimated time for end of tournament is 7:30 p.m. Entry is Free!

♣ **Aug 16-20** Seattle Chess Classic, **Seattle, WA.** (See full-page ad page 15)

♣ **Aug 20/Sep 17** Portland CC Sunday Quads, **Portland, OR.** Portland Chess Club, 8205 SW 24th Ave., Portland, OR. 3-round quads, G/45;inc15. Some/all sections may run as a 3-round Swiss with more than four players. The most current (“live”) US Chess regular ratings are usually used for section placement. On-site registration runs from 9-9:45am. Rounds are scheduled for 10am, 12:30pm, and 3:00pm. Rounds 2 and 3 can be started earlier if both players agree. Players who have a game go long can request extra time off before the next round. EF: \$15, PCC members \$10, \$5 discount for each additional family member who lives in the same household, free entry for players who are unrated in US Chess. US chess and NWSRS rated. US Chess membership is required and can be purchased during on-site registration. Winner of each section receives \$10 discount on the entry fee for one of the next three PCC Sunday Quads or Tuesday Quads. If there is a six or seven player Swiss, the runner-up receives \$5 discount. Scholastic awards: trophy for winning section with 3 points; smaller trophy for winning or tie for first with 2.5; medal for winning or tie for first with 2 or 1.5. OSCF State Qualifier. PCC website.

♣ **Aug 26/Sep 30** Portland CC Game in 60, **Portland, OR.** Portland Chess Club, 8205 SW 24th Ave., Portland, OR. 4SS, G/60;inc5. If 30 or more entries the field will be divided into 2 sections by ratings. EF: \$20, \$5 discount for PCC Members. US Chess rated; OCF/WCF/ICA and US Chess membership required, OSA. No advance entries. Reg: 9:00-9:45 a.m. Byes: 1/2 point bye if requested at reg. Players who have a game go around the full time can request extra time off before the next round. Prizes: If one section (\$200/b20): \$60-\$40-\$30; U1800, U1500/unrated \$35 each. If two sections - upper section (\$150/b15): 1st-\$70, 2nd-\$40, 1st U1800/unrated-\$40; lower section (\$150/b15): 1st-\$70, 2nd-\$40, 1st U1200/unrated-\$40. No tiebreakers (prizes split). OSCF State Qualifier. Info: email@pdxchess.org, phone 503-246-2978, website www.pdxchess.org.

♣ **Sep 2-4** 67th Annual Oregon Open, **Portland, OR.** (See full-page ad page 16)

Sep 15-16 Washington Women’s Championship, **Seattle, WA.** (See half-page ad page 26)

♣ **Sep 30-Oct 1** Eastern Washington Open, **Spokane, WA.** Location: Jepson Center, Rooms 108-109, Gonzaga University (one block southwest from St. Al’s church). Format: 5 round Swiss System. Registration: 8:30-9:30, Sept. 30. Rounds: 10-2:30-7; 9-1:30. Time control: Game/120 (d5). Entry fee: \$21 if received by 9/29, \$26 at the door; under 18 \$5 less. \$630 prize fund GUARANTEED. Additional classes and class prizes may be created if entries exceed 30 players. Class prizes based on at least 5 per class; classes (and class prizes) may be reconfigured if less than five class entries. Only one prize per player (except biggest upset). NS, NC, W. One 1/2-point bye available if requested by end of previous round; Sunday bye must be requested by end of round 3. Director reserves right to use class pairings in final round. PRIZES: First \$125, Second \$75. Class Prizes: \$65 first, \$30 second: A; B; C; D/E/unrated. Biggest Upset (non-provisional) \$50. Entries: Kevin Korsmo, 9923 N. Moore St., Spokane, WA 99208. For information please call (509) 270-1772 (cell). Club website: www.spokanechessclub.org.

Northwest Chess
c/o Orlov Chess Academy
4174 148th Ave NE, Building I, Suite M
Redmond, WA 98052-5164

Periodicals Postage
PAID
Seattle, WA

