



July 2026

Happy
250th Birthday!



Northwest Chess

July 2026, Volume 80-07 Issue 942

ISSN Publication 0146-6941

USPS publication 422390

Published monthly by the *Northwest Chess* Board.
To see the games from this issue online click:

[Issue Games Viewer](#)

To see photos from this issue click:

[Issue Photo Album](#)

POSTMASTER:

Send address changes to the Office of Record:

Northwest Chess c/o Orlov Chess Academy
4174 148th Ave NE, Building I, Suite M
Redmond, WA 98052-5164

Periodicals postage paid at Seattle, Washington
USPS periodicals postage permit number (0422-390)

NWC Staff

Editor: Jeffrey Roland, jeffreyroland9@gmail.com
Games Editor: Ralph Dubisch, chesscoaching@gmail.com
Publisher: Duane Polich, publisher@nwchess.com
Business Manager: businessmanager@nwchess.com

Board Representatives

Aniruddha Barua, Alex Machin, Duane Polich,
Ralph Dubisch, Jeffrey Roland, Josh Sinanan,
Wilson Gibbins, Eric Holcomb.

Entire contents ©2026 by *Northwest Chess*. All rights reserved.
Published opinions are those of the contributors and do not necessarily reflect the views of the editor or the *Northwest Chess* Board. *Northwest Chess* is the official publication of the chess governing bodies of the states of Washington, Oregon, and Idaho.

Advertising & Copy Deadline

Ads and submissions must be received by the fifth of the month for the items to appear in the next issue:

July 5 for the August issue;
August 5 for September.

Submit all ads, donations, payments, changes of address and subscriptions to:

Business Manager

Northwest Chess c/o Orlov Chess Academy
4174 148th Ave NE, Building I, Suite M
Redmond, WA 98052-5164

businessmanager@nwchess.com
<https://www.nwchess.com>



Judged Best Magazine/Newsletter for 2009 and 2014-2025 by Chess Journalists of America!

Front Cover

Peshka says, "Happy 250th Birthday!"

Art by Sasha.

Back Cover

Three-time Washington State
Senior Champion Leonid Gavrysh.

Photo credit: Meiling Cheng.

Submissions

Submissions of games (PGN format is preferable for games), stories, photos, art, and other **original** chess-related content are encouraged! Multiple submissions are acceptable; please indicate if material is non-exclusive. All submissions are subject to editing or revision. Send via U.S. Mail to: **Jeffrey Roland, NWC Editor**

1514 S. Longmont Ave.
Boise, Idaho 83706-3732
or via e-mail to:
editor@nwchess.com

Subscriptions / Premium Memberships

Individual residents of WA/OR only.
Washington residents please add sales tax.
Idaho residents see <https://idahochess.net/>

			Rate
Adult	1 year	\$	33.00
	3 years	\$	88.00
Young Adult <i>Age 19-24 at expiration</i>	1 year	\$	30.00
	2 years	\$	54.00
Junior <i>Age U/19 at expiration</i>	1 year	\$	27.00
	2 years	\$	50.00
Scholastic	6 months	\$	16.00
Senior <i>Age 65 or over</i>	1 year	\$	27.00
	3 years	\$	70.00
Additional Family Members <i>Residing at same address</i>	1 year	\$	11.00
	2 years	\$	20.00
	3 years	\$	28.00
Tournament/Trial	1 month	\$	14.00

Online Subscriptions / Basic Memberships

Individual residents of Oregon only.

			Rate
Adult	1 year	\$	17.50
Junior (U/21 at expiration)	1 year	\$	10.00
Senior	1 year	\$	17.50
Additional Family Members	1 year	\$	5.00

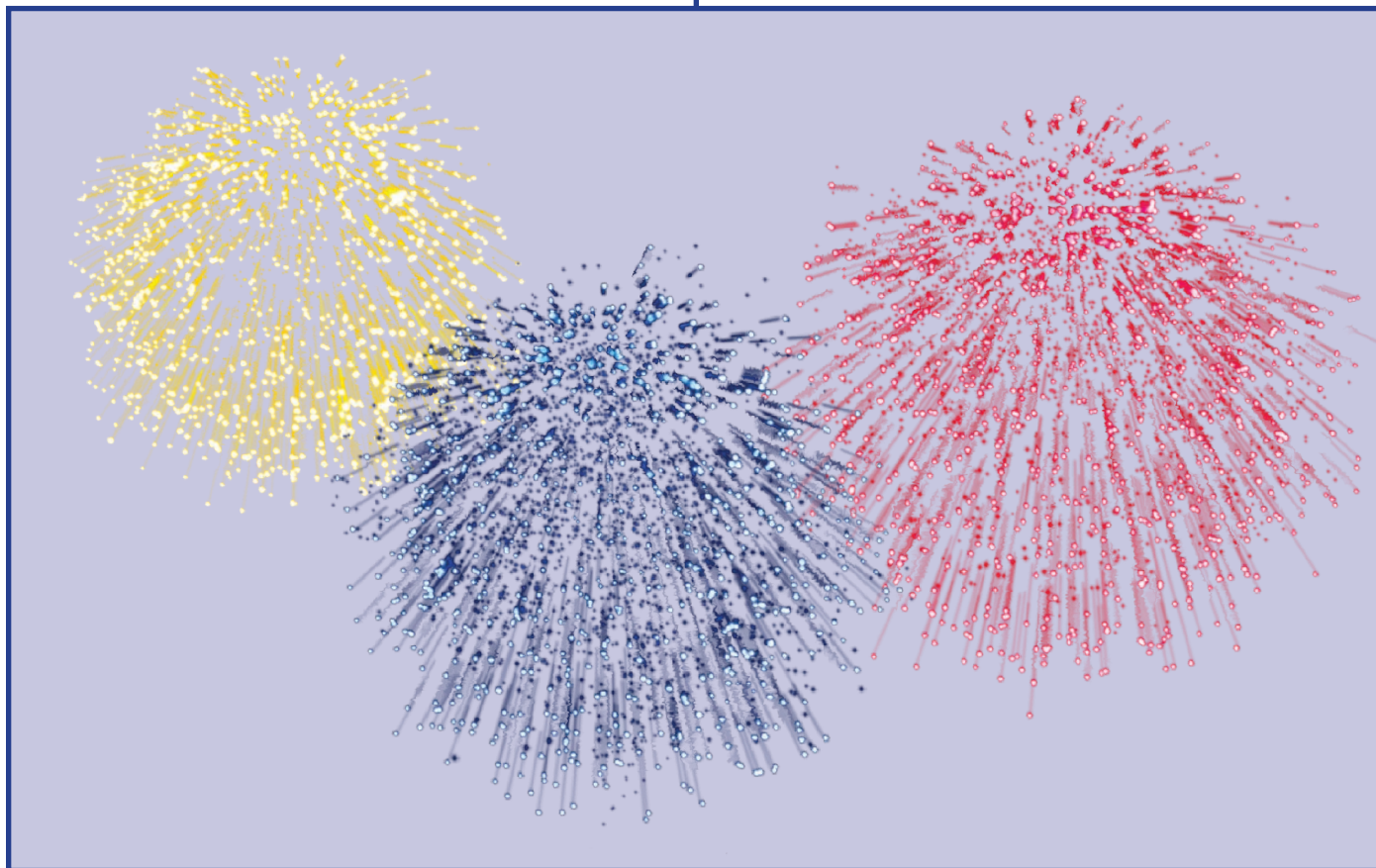
Non-Member Subscriptions

			Rate
U.S. addresses	1 year	\$	33.00
	3 years	\$	88.00
Canada	1 year	\$	44.00
Foreign	1 year	\$	66.00

Table of Contents

Clicking on a Table of Contents entry takes you to that page;
 clicking on any page-footer will take you back
 to the Table of Contents page.

<p>Peshka says, “Happy 250th Birthday” Sasha Front Cover</p> <p>250 Years of Chess The Chess Friends 4</p> <p>3rd Annual Dan Rogers Memorial (Ad) Corvallis, Oregon July 18-19 10</p> <p>Oregon Senior Open Wilson Gibbins 11</p> <p>Eastgate Cup (Ad) Bellevue, Washington July 18-19 15</p> <p>Harmon Memorial Josh Sinanan 16</p> <p>Vancouver Open (Ad) Vancouver, Washington July 25-26 22</p>	<p>Washington Senior Championship Ani Barua 23</p> <p>Bellevue Chess Classic (Ad) Bellevue, Washington August 15-16 25</p> <p>A Diary of a Chess Pawn Skyler (eight years old; second grade) 26</p> <p>76th Oregon Open (Ad) Portland, Oregon September 5-7 29</p> <p>Seattle Chess Club (Ad) Various Events of the Seattle Chess Club 30</p> <p>43rd Annual Reno Western States Open (Ad) Reno, Nevada October 2-4 or October 3-4 31</p> <p>Washington State Senior Champion Leonid Gavrysh Meiling Cheng Back Cover</p>
--	--



250 Years of Chess

The Chess Friends

The Man Benji, The Myth Sarang, and The Legend Vivi

<https://www.chessfriendsbooks.com/blog>

Howdy! It's The Chess Friends!

It's July, which means it is fre-e-e-dom for all the (chess) kids to finally enjoy summer! This July is super extra special because this year, we the People celebrate a big American day!

On July 4, 1776, the Founding Fathers of the United States of America got together to sign the founding document, the Declaration of Independence, getting America the freedom it deserved.

Now, 250 years later, we're here, living in a bustling place, filled with forests, mountain ranges, oceans left and right, and a vibrant chess scene! We have the most super GMs (2700+ FIDE), the most chess players in the top 100, the second most GMs (after Russia), the second most registered FIDE players (after India), and...The World's Most Famous Chess Friends (just kidding about that one!)

Over these 250 years, there have been so many Americans who contributed to the growth of chess, both locally and globally, and in this article, we want to trace the rise of American chess, from the early days all the way to present, and honor some of the chess legends who put the United States on the chess map!



The Man Benji

The first 100 years of US chess

Before the United States was even on the political map, in the 1730s, there lived a super smart college student, way ahead of his time, who would play chess late into the night, writing his thoughts about the game until his candles went out. His name was **Benjamin Franklin**, and he became one of the Founding Fathers of the United States, drafting and signing the Declaration of Independence! If that was not enough, he also established the U.S. Postal Service, the first library, and public hospital! We also know him as a scientist and an inventor! And he was the first advocate of the game we all love: chess!

Though none of his games were recorded, we know he used chess in his diplomatic endeavors from [a painting of him playing against Lady Howe in London](#). When he served as a US Ambassador to France, he even played against French chess legend Philidor!

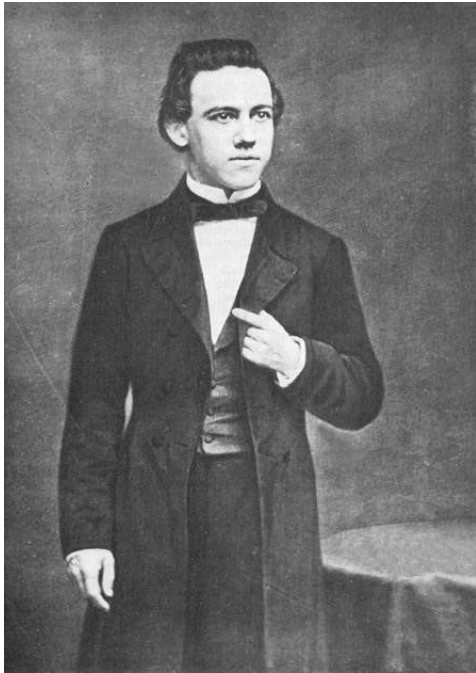
Benjamin collected his life-long experiences and thoughts about the benefits of chess in his 1786 essay [The Morals of Chess](#), where he described what chess sportsmanship is and what traits chess nurtures in those who play: Foresight, Circumspection, Caution, and Perseverance. After 250 years, his thoughts on chess still hold true today. What can I say...he was way ahead of his time!



Portrait of Benjamin Franklin (1706–1790) by David Martin, 1767. Source: [Wiki](#).

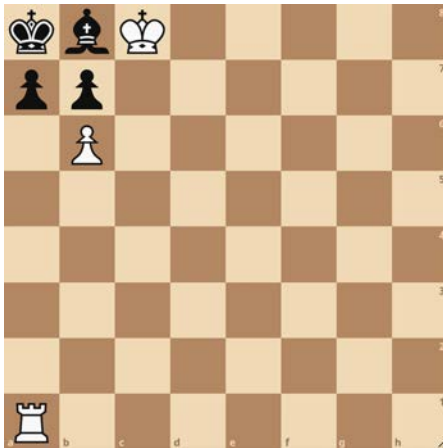
[The Morals of Chess](#) became one of the first chess writing appearing from an American, and some even consider Benjamin Franklin as the Founding Father of American chess literature! He was the first ambassador for the game, popularizing chess, and perhaps thanks to him, chess was a big thing in the United States right from the start!

Maybe partially thanks to Benjamin who encouraged his country to play more chess, there lived a chess loving family in New Orleans. Their young son learned the game by watching his parents and guests play chess on Sundays. He became the first prodigy of chess, the unofficial World Chess Champion who still inspires us today.



Paul Morphy (1837-1884) in New York City, 1857. Source: [Wiki](#).

Paul Morphy was a bright boy, the best in class, who could speak four languages fluently. Once, at the tender age of seven, he was watching his father's game that ended in a draw. Paul sprung up and said his father had a forced checkmate which both players missed, and that was very true! Soon, he was playing and winning against well-respected chess players in the area. At the age of nine, he even invented this cool checkmate-in-two puzzle!



White to play and checkmate in two

In Morphy's family, school came first, so he concentrated on his studies

and earned his lawyer's degree at the age of 20 in 1857, but couldn't practice since he was still considered a minor. So, what did he do during this one-year gap? Became the best chess player in the world!

He started his epic journey by winning the first American Chess Congress (now known as the U.S. Chess Championship) in New York, becoming the US Chess Champion. Then, Paul traveled to London, winning against the best players there, before proceeding to Paris and winning most of his matches there too, even against German chess legend, Adolf Anderssen, who specifically traveled to Paris to face Paul over the chess board!

But Paul Morphy's most famous game, the one that every child learns at the beginning of their chess journey, was against two amateurs, in an informal game known as [A Night in the Opera](#). One day, Paul was invited to the Opera, only on one condition. He had to play a game against two gentlemen: Karl II, Duke of Brunswick and his friend, who got to discuss the moves together. Focusing more on the opera than his game, Paul played one of the greatest attacking games of all times, maximizing each piece to its fullest potential!

Here is the sparkling moment from the game. Can you find the brilliant combination, now known as the Opera Mate?



White to play and deliver The Opera Mate (in two)

Paul then went back home to America, and, true to his word, started his law practice and never played in another

chess tournament. But his brilliancies still shine today. He was America's first chess teacher, showing how to attack, convert advantages, and be a good sport!



Wilhelm Steinitz (1836-1900), the first official World Chess Champion. Source: [Wiki](#).

Talking about chess in the United States in the 1800s, we have to mention another American, **Wilhelm Steinitz**, who redefined the game of chess. Born in Prague, a contemporary of Paul Morphy, Steinitz didn't start playing chess until his early 20s, so he must have watched Paul's triumphant European tour from the sidelines. Maybe he was inspired by Morphy's games, or maybe he saw something from a completely different angle, but he started learning chess very hard, developing his own style for the game. He moved to London to become a chess professional, playing, teaching, and writing about chess.

In the early 1870s, Steinitz introduced a new positional style of play, where every move you make has a small purpose that leads to great things later in the game. Some players argued against this style, including Johannes Zukertort, a Polish player who lived in London and was considered to be another top player in the world at that time.

Though there were many great chess players, there had never been an official World Chess Championship match; players just played each other during different events, counting wins and losses to decide who was the greatest. Somewhere, someone needed to start the Championship show, so everyone could

agree who the Champion of the World was. And what was the better place to have this show than the United States of America?

Luckily for us, in the early 1880s, Wilhelm Steinitz moved to the United States, where he found a new home, eventually accepting American citizenship. In 1886, a match was arranged between Steinitz and Zukertort to determine the World Chess Champion! The match was held in three cities: New York, St. Louis, and New Orleans, and the first player to win ten games would be officially crowned as the first World Chess Champion!

Despite Steinitz's rough start of losing the first four out of five games, he bounced back with the ultimate comeback and clinched victory 12.5–7.5! It only feels fitting that Wilhelm Steinitz, an immigrant representing the American side, won the World chess title the same year that the Statue of Liberty was dedicated!

After that, Wilhelm Steinitz (who changed his name to William) defended his World Title three times before giving the torch to Emmanuel Lasker. Steinitz became known as the Founding Father of Modern Chess.

Every chess player has an immortal game at some point. Steinitz's Immortal Game from 1859, known as [The Battle of Hastings](#), came from the Italian opening against Curt von Bardeleben. In the game, William showed how to exploit the position where your opponent is too slow to castle. The answer is...a calculated romantic attack! In this position below, Steinitz had an astonishing idea: to take his rook on a walk! Can you find the idea that starts with what appears to be a rook sacrifice?

The position after move 21 in the Wilhelm Steinitz vs Curt von Bardeleben game. White to move and win!

[See diagram top of next column]

The answer is 22.Rxe7+ Kf8 23.Rf7+ Kg8 24.Rg7+ Kh8 25.Rxh7+...and Black resigned.

There is a lot to learn from "The Father of Positional Chess,"



and the first undisputed World Champion. He showed the world that you can achieve excellence in chess not only with intuition and natural talent, but also with hard studying and finding your own style. Perhaps that is his greatest gift to us all!

Now, I'm going to turn it over to Sarang, who brings us to the early 20th century.



Frank Marshall (1877–1944), before 1904. Source: [Wiki](#).

The Myth Sarang

The 1900s of US chess

The 1900s of American Chess started with a bang! The first US Open was held in 1900 in the city of Excelsior, Minnesota, and won by Louis Uedemann. In 1939, the United States Chess Federation (USCF) was formed and began to organize the nation's official chess matches, supporting chess participation and popularization.

Frank Marshall was one of the strongest players of the early 20th century and was U.S. Chess Champion from 1909 to 1936, the longest in US chess history, also leading the US to four consecutive gold medals at the Chess Olympiad. He was known for his aggressive, imaginative style, with a fitting nickname 'The Great Swindler,' and his influence went beyond competition because he helped strengthen chess culture in the United States in many ways. He also has multiple openings named after him, for example Marshall Gambit and Marshall Defense are both solid openings as Black. He also founded the Marshall Chess Club in New York, which has been instrumental in growing chess in the USA.

Here's a game of Frank Marshall, as Black against Stefan Levitsky, [played in Breslau in 1912](#).



Levitsky played 20. Qh5?? With the intention to capture Black's rook. This is a huge mistake and Levitsky missed this beautiful move as Black. Can you find it? It's 20...Ref8!

Black is attacking White's rook and has a threat of Rxf2 sacrificing the rook to mate!

The game went...21. Re5 Rh6 22. Qg5



And now, Chess Friends, brace yourselves for the most stunning combo in chess history! Believe me, you'll be shocked. First, Frank Marshall sacrifices...THE ROOOOOOOOOK!

22...Rxh3! If White takes Black's rook 23.gxh3, Black plays 23...Nf3+ with a royal triple fork! Levitsky played 23...Rc5, attacking the queen with a threat of Rc7 and Qxg7 mate:



In response, Frank Marshall finds the most golden move of all time:

23...QUEEN TO G3!!!!!!!!!!!!!!!!!!!!

This is crazy! White has to take Black's queen to avoid Qxh2#. Let's say White takes 24.hxg3, we now have mate in one with 24...Ne2#! If they play 24.fxg3, we have 24...Ne2+, the king is forced to move 25.Kh1, and we have a back rank mate, 25...Rxf1#. If White takes 24.Qxg3, we play 24...Ne2+ with a fork, then 25.Kh1 Nxg3+ 26.fxg3 Rxf1# on the back rank. Levitsky resigned here.

This game is famously known as "[The Gold Coins Game](#)," because apparently after Frank played ...Qg3, the move was so brilliant that the spectators threw gold coins on the players and board! What a move!

Another big name in American Chess in the 1900s was another chess prodigy, who grew up to be the strongest player in the world. Polish-American **Samuel Reshevsky** was the top American player for nearly four decades after Marshall. He won the US Chess Champion title eight times! Only Bobby Fischer could match that! Samuel also famously tied for third in the 1948 world championship and reached the semis of Candidates in 1968.



Samuel Reshevsky in 1921, photo from the magazine Plus Ultra, Argentina. Source: [Wiki](#).

Throughout his chess career, Reshevsky played 11 World Champions, a record that still holds today! The Champs he faced were Lasker, Capablanca, Alekhine, Euwe, Botvinnik, Smyslov, Tal, Petrosian, Spassky, Fischer, and Karpov, the second through 12th World Champs.

After the International Chess Federation (FIDE) was founded in Paris, France in 1924, and a formal title of Grandmaster was established, in 1950 the committee selected several players worldwide to give the first Grandmaster titles, without common nowadays qualification path and norms. Out of the first 27 GM titles, two went to American players: Samuel Reshevsky and Reuben

Fine, who would win the US Open every time he chose to play: seven!



Robert James (Bobby) Fischer (1943–2008), 11th World Chess Champion. Distributed by the Associated Press in 1966. Source: [Wiki](#).

Bobby Fischer transformed chess on a global scale when he won the World Championship in 1972, which made him the first and only American chess World Champion, holding it until 1975. His influence also continued through Fischer Random, later known as Chess960, a variant where the back row pieces are shuffled, introducing a new way of thinking in the opening. Fischer's legacy is in his brilliance, and the chess boom it produced in America and worldwide!

In 1956, Bobby, as Black, played his famous game against Donald Byrne in New York. The game became known as [The Game of The Century](#). Look at this position:



Byrne just played 17.Kf1, escaping Fischer's check. Now, can you find the brilliant queen sacrifice for Fischer?

Chess Friends, brace yourselves because another crazy move is coming!

17.Be6!!

If White takes Black's queen, which Byrne did, Fischer has lots of compensation for ...Bxc4+, ...Ne2+, ...Nxd4+ and ...axb6, which is enough to seal the deal.

Fischer's legacy endures and has been the inspiration for many great books and movies that continue to fascinate the chess players for generations to come.

Now let's turn it over to The Legend Vivaan to talk about the present!

The Legend Vivaan

US Chess Today

There are lots of American legends among us today. In fact, three Americans have achieved a peak FIDE ELO above 2800, namely **Fabiano Caruana** (2844, achieved in 2014), **Wesley So** (2822, achieved in 2017), and **Hikaru Nakamura** (2816, achieved in 2022). A fun fact about Fabiano is he's Italian American. Wesley is Filipino American. Hikaru is Japanese American. We are a nation that thrives with amazing immigrants and chess is no exception!

Chess today is so much more than Super GMs, World Champions, and legends. It's a game that unites people and brings people together across all walks of life, and the USA is at the center of that.

For example, consider **GM Susan Polgar**, a Hungarian American chess coach, teacher, author, pioneer, and World Champion. Her work through her life, and through her foundation, has brought chess to so many and grown the sport

immeasurably. Ukrainian American **GM Irina Krush** was the youngest ever to win the US Women's Chess Championship, doing so at 14, and has championed the US Women's team to silver and bronze medals at the Chess Olympiad!

In the pandemic, chess streaming exploded, and the US is at its center. Canadian Americans **Alexandra and Andrea Botez** (@botezlive) have millions of followers who enjoy chess through their content and learning from them. **IM Levy Rozman** (@gothamchess) is nicknamed "The Internet's Chess Teacher" and many have improved considerably through his videos and became fans of our game, including us through Chessly! He has over two billion YouTube views! Streamer "Jedi Master" **FM James Canty** (@GMCanty) became the first American World Champ in Chess Boxing! We love playing bullet with him and being on his stream!

In the 2013, Sinquefeld Cup, **GM Fabiano Caruana** had a rating performance over 3100! In 2016, in the London Chess Classic, he played **GM Hikaru Nakamura**, where he found a brilliant queen sac. The game now carries the name **Just Fab.**



In this position, Fabiano plays the brilliant 19.Qxf6!

After 19...Bxf6, Black is up a queen for two knights. Believe it or not, the engine evaluation here is +1 for White! Talk about an amazing positional sacrifice to find over the board!

Fabiano further improved his position with 20.Nd5 Qd8 21.Nf5 Rb8 22.Nf6+ Qxf6 23.Rxd6 Be6 24.Rhd1 O-O 25.h5 Qg5+ 26.Be3, resulting in the board shown below:



Note that here Fabiano has crazy mating ideas on the kingside. With the awesome knight on f5 threatening h6, a well-positioned bishop pair, strong rooks, and an open g-file, it's about to go down, and fast, for Black. The game proceeded with 26...Qf6 27.Nxh6+ Kh8 28.Bf5 Qe7 29.b5 Qe8 30.Nxf7+ Rxf7 31.Rxe6 Qxb5 32.Rh6+ at which point Hikaru resigned. Do you see why?

[see diagram top of next page]

Though Black is still +1 materially, there's nothing they can do. After 32...Kg8, White can proceed with 33.Rg1+ Kf8 34.Rh8+ Ke7 35.Rxb8

Orlov Chess Academy
IM Georgi Orlov
2540 US Chess

Offers time-tested program,
challenge and quick progress!

Chess Camps, Tournaments
Chess Classes, Private Lessons

info@chessplayer.com
www.chessplayer.com
(206)-387-1253





Chess4Life
CHESS CLASSES
include individual progress tracking!

START TODAY
WITH A FREE ASSESSMENT
LESSON ON CHESS4LIFE.COM

CLASSES OFFERED
Online & In-Person



Qxb8 36.Bc5+. Note here that ...Ke8 gets mated with Rg8+ Rf8 Rxf8# and if ...Kf6 Rg6#, leaving ...Qd6 losing the queen or ...Kd8, which is met by Rg8 also winning the queen.

In 2007 in Barcelona, **GM Hikaru Nakamura** had an [“Immortal” queen sac of his own against GM Krasenkow](#). Hikaru is also one of the biggest Twitch streamers worldwide (@GMHikaru) and watching him do puzzle rush is truly something else!

Here’s the position after 21.Bxf6, and at this moment Black is up a pawn but the position is crazy!



In this moment, Hikaru finds the amazing 21...Qxf2+! Do you see how epic this is?

After 22.Kxf2 Bc5+ 23.Kf3 Rxf6+ and now materially White is up a queen for two pawns and a bishop, but look at Black’s crazy attack and how strong the bishops and rooks are! What can White

even do? 24.Kg4 Ne5+ ...uh-oh another piece into the attack for Hikaru with that knight! 25.Kg5 Rg6+ 26.Kh5 f6 (threatening ...Rh6#) 27.Rxe5 Rxe5+ 28.Kh4 Bc8, and at this point White resigned. Here’s the final position:



Note that White is still up a queen for a rook and two pawns so +2. That said,

there’s no way for White to defend this position. If White plays g4, Black wins with ...Bf2+ Kh3 Rh6#. If White plays a3, Black wins with ...Rh6+ Qh5 Rxf5# (or if you want to be fancy ...g5#)! White’s only move to survive a little longer is Bd5, but even then, Black can play ...Rxd5 g4 Rd3 Qf3 Rxf3, already way up now but mate coming, Nxf3 Rxf3. At this point, it’s mate in two but we’ll leave the mate-in-two puzzle here for you! 😊

We want to wish you all a very happy 4th of July, and wish our United States of America an amazing happy 250th anniversary!

This month, may you enjoy the fireworks not only in the sky, but also on the chess board!

Three Cheers, Fellow Future Master Chess Friends!

The Man Benji,
The Myth Sarang,
The Legend Vivaan





CORVALLIS CHESS CLUB'S 3RD ANNUAL **DAN ROGERS** MEMORIAL

CHESS TOURNAMENT

July 18 and 19, 2026 • 5-SS, 90+10

📍 **Comfort Suites** at Linn County Fairground, 100 Opal Ct, **Albany, Oregon**



\$40 Entry Fee
(NTAFLOF)

REGISTRATION

\$40 EF! Visit corvallischess.org for the direct registration link, or scan the QR code. *Registration ends July 17 2026 at 5pm. No onsite registration. Registration will close at 120 players.*

SCHEDULE

Player's Meeting: Sat. 9:50am

Saturday: 10am, 2pm, 5:30pm, 9pm Blitz Tournament.

Sunday: 10am & 2pm.

Winners announced end of R5.

\$3000 GUARANTEED PRIZE FUND

OPEN: \$500-350-250. **Under 1600:** \$400-300-200. **Under 1000:** \$300-200-100.

Two half-point byes allowed, must request before first round. \$15 Play-Up fee.

BONUS PRIZES: **Top Female:** \$100 (NB allowed). **Mixed Doubles:** \$200 Best male+female 2-player team combined score among all sections. Team must average under 1900, may play different sections. Register (no extra fee) by 2pm Sat. **Top Unrated Player:** \$50. **Top Upset:** \$50.

5+3 BLITZ TOURNAMENT: Sat. 9:00 pm, register on site by 8:50 pm. \$10 EF. 80% prize payout!

USCF RATED - MEMBERSHIP REQUIRED - See uschess.org for details.

HOTEL RATE: \$169+tax double queen or king, includes free full hot buffet breakfast. Pool, sauna, gym, and other amenities. Reserve by 6/22/2026, call 541-928-0921 and request chess rates.

Tournament Organizer: **Jim Nelson** (CCC President) - jwnelson.nelson1@gmail.com

You can visit corvallischess.org for registration link and information.

Eastgate Cup



July 18-19, 2026
Embassy Suites Bellevue

3225 158th Ave SE, Bellevue, WA 98008



Format: A 5-round Swiss in three sections: **Newport Open**, **Somerset U1700**, and **Lakemont U1200**.

Entry fee: \$110 by 7/11, \$140 after. \$60 play-up fee if rated 1500-1699 or 1000-1199 in USCF and playing up in Newport Open or Somerset U1700, respectively. Players rated 2200+ USCF receive a \$50 discount. Maximum of 200 players, please register early to reserve your spot!

Schedule: Arrival: 9-9:45am. Rounds: Sat @ 10am, 2pm, 6pm. Sun @ 10am, 2pm. Eastgate Blitz Tournament: ~ 6pm or asap. Games that go long may request a late start for the next round.

Time Control: G/75; +30. Late default: 60 minutes.

Rating: Triple rated in NWSRS, USCF, and FIDE. Higher of July USCF or current NWSRS rating used to determine section, pairings, and prizes. CFC rating used for Canadian players if it is higher.

Memberships: Current US Chess and WCF membership/Northwest Chess subscription required. Memberships must be paid at time of registration.

Prize Fund: \$5,500 based on 100 paid entries.

Newport Open: 1st-4th: \$500-\$400-\$300-\$250. 1st-2nd U2100: \$175-\$150, 1st-2nd U1900: \$175-\$150.

Somerset U1700: 1st-4th: \$400-\$300-\$200-\$150, 1st-2nd U1600: \$125-\$100, 1st-2nd U1400: \$125-\$100.

Lakemont U1200: 1st-4th: \$300-\$250-\$200-\$150, 1st-2nd U1000: \$100-\$75, 1st-2nd U800: \$100-\$75.

Special Prizes (per section): Forest Drive Biggest Upset Win: \$20/rd., Factoria Best Female Player (by TPR): \$50, Cougar Mountain Best Senior Player (by TPR): \$50, Newport Hills Best Dressed: \$20/day.

Byes: Up to 2 half-point byes available if requested before the end of round 2.

Registration: Online at nwchess.com/OnlineRegistration. Pay by SettleKing (Washington Chess Federation), Zelle ([wa-chess](https://www.zelle.com)), or mail a check to WCF. Registration and payment **deadline: Fri. 7/17 @ 5pm**. No registrations accepted or refunds offered after the deadline.

Eastgate Blitz: Sunday 6-8:30pm (after rd. 5 of main tournament). **Entry Fee:** \$30. **Format:** A 9-Round Single Swiss in one section, 2 half-point byes available. Dual USCF Blitz + FIDE Blitz rated. **TC:** G/3; +2. **On-site registration:** 5:00-5:45pm. Rds. Sun @ 6pm, 6:15, 6:30, 6:45, 7, 7:15, 7:30, 7:45, 8pm. Closing Ceremony ~ 8:15pm or asap. Current US Chess membership required. Higher of July 2026 USCF Blitz or Regular rating used to determine pairings and prizes.

Prize Fund: \$750 (based on 50 paid entries)

1st - 3rd: \$170-140-100, 1st U2000/U1700/U1400/U1100/Unrated: \$50. Biggest upset win: \$10/rd.

Questions – Josh Sinanan, WCF President, 206-769-3757, washingtonchessfederation@gmail.com

BELLEVUE CHESS CLASSIC



SAT-SUN, AUGUST 15-16, 2026

EMBASSY SUITES BELLEVUE

3225 158TH AVE SE, BELLEVUE, WA 98008

Format: A 6-round Swiss in three sections:

Tiglon Open, Seirawan U1800 & Donaldson U1300.

Maximum of 200 players, please register early to guarantee your spot.

Schedule: Rounds (6): Sat @ 9am, 1pm, 5pm. Sun @ 10am, 2pm, 6pm. Players whose games run long may request a late start for the next round.

Time Control: G/75; +30 sec increment. Late default: 60 minutes.

Prize Fund: \$6,500 based on 100 paid entries

Tiglon Open: 1st – 3rd: \$650 – \$550 – \$450.
1st U2100/U1900: \$225.

Seirawan U1800: 1st – 3rd: \$550 – \$450 – \$350.
1st U1700/U1500: \$225.

Donaldson U1300: 1st – 3rd: \$450 – \$350 – \$250.
1st U1200/U1000: \$225, 1st Unrated: \$170.

Special Prizes (per section):

Biggest Upset Win: \$20 per round
Best Female Player (by TPR): \$75.
Best Senior Player (by TPR): \$75.
Best Dressed: \$20/day.

Entry Fee: \$125 by Aug 8, \$150 after. \$75 play-up fee if rated 1700-1799 USCF or 1200-1299 USCF and playing in Tiglon Open or Seirawan U1800, respectively. Free entry for GMs, IMs, WGMs, WIMs, or US Chess 2300+. 50% discount for Seniors (50+).

Byes: Two half-point byes available. If interested, request before end of round 2.

Memberships: Current US Chess and WCF membership required, other states accepted. Memberships must be paid at time of registration.

Rating: Triple rated in NWSRS, USCF, and FIDE. Higher of August USCF or current NWSRS rating used to determine section, pairings, and prizes. CFC used for Canadian players if it is higher.


Registration: Online at nwchess.com/OnlineRegistration. Pay by SettleKing (Washington Chess Federation), Zelle (wa-chess), or mail a check to WCF. Registration and payment deadline: Fri. 8/14 @ 5pm. No registrations accepted or refunds offered after the deadline.

Bellevue Classic Blitz: Saturday 8-9:30pm (after rd. 3 of main tournament). **Entry Fee:** \$30. **Format:** A 7-Round Single Swiss in one section, 2 half-point byes available. Dual USCF Blitz + FIDE Blitz rated. **TC:** G/3; +2. **On-site registration:** 7:00-7:45pm. Rds. Sat @ 8pm, 8:15, 8:30, 8:45, 9, 9:15, 9:30. Closing Ceremony ~ 9:45pm or asap. Current US Chess membership required. Higher of August 2026 USCF Blitz or Regular rating used to determine pairings and prizes.

Prize Fund: \$750 (based on 50 paid entries)
1st – 3rd: \$170-\$140-\$100,
1st U2000/U1700/U1400/U1100/Unrated: \$50.
Biggest upset win: \$10/rd.

Questions – Josh Sinanan, WCF President, 206-769-3757, washingtonchessfederation@gmail.com

A DIARY OF A CHES S PAWNN




Dylan and matilda as well. I just had to pack a mini sword and shield. My 7 brothers had to pack the exact same thing. the other Dylan, the Knight, ~~behind me~~ had to pack a set of armor, and a shield. The King ~~Robert~~ only had to pack a helmet and a King-stick. Bob the bishop had to pack a wizard stick, and

1

CHAP 1

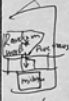

well, was a big day. The ^{championship} game of chess was about to begin we were ~~beginning~~ beginning to pack our weapons and stuff. King Dylan was ordering everybody around and yelling orders. Queen matilda was the most tired. she had 100 pack armor, a shield, and a sword. Rocky the rook was also helping



2

3

a Laser beam fire. When we were all set, we went on the bus. King Dylan Drove aaaaaaah!!!!!!!!!!!! the way to michigan. the drive was 5 hours, and the heat was super hot we all exploded in the bus. Luckily King Dylan turned on chill mode to EXTREME and we were there.

4

CHAP 2

as we arrived, we went to an hotel room and
 Kirr dyban showed us the plans.

Then he showed us some other concepts

the whole was a bit brain-exploding, but at
 least I understood that the game was on.

5

the first move was played by my 3rd bro e4

Then we played Nf3
 to attack the pawn
 on e5. Unfortunately
 they played Nc6
 to defend it.

Then we played
 Bc1 putting
 pressure on their
 pawn. they also played
 Bc5 to put pressure
 on my pawns.

6

went e3 and
 threatening to
 play d4. they played
 Nc6 to attack
 our pawns.

we all wanted
 to play d3, protecting
 the pawn, and opening
 up the bishop
 but Kirr Dyban thought
 they took

and we took
 back - then
 they played
 Bb4! a great move.

7

Then, we knew what to play the Greeks.

They were
 a bit harsh
 on me
 and took
 me, so I had
 to be
 watching the
 whole game
 without playing!

the we castled

They surprisingly
 took with the
 knight, and we
 took back.

8

9

R	B	Q	K	R
P	P	P	P	P
		N		
	B			
	P		N	P
R	R	R	R	R

advantage bar

we resign!

clapper

Brc3, and
the game
went on.

Qob11 Brc1, +2.31
Bct7i Kf8, +2.34
Bos Ne1, p. 10
Nes db, B7!! d5x2x5

QR3+ B P5, +2.60
Bct5 Nxf8 +2.67
Brd8 and +2.95
finally +3.34
they
resigned.

10

as we entered the hotel room,
king dylan gave us some feedback.

you did great!

great!

clap!

you were great! you saved yourself!

me

11

party time!!!

dances!

THE END

12

DIARY OF
A
C/H/ESS
IDANN.

The 76th Oregon Open

September 5-7, 2026, Labor Day Weekend

Check the OCF website (<https://oregonchessfed.org/>) for the most up-to-date information, including links to the registration website. Sponsored by the Oregon Chess Federation (OCF) and Portland Chess Club (PCC).

FORMAT: The tournament is a 6-round Swiss paired event with two rounds per day and is open to everyone, regardless of residency or age. Up to two half point byes are available if requested before round one.

SECTIONS: There are five sections: 2000+, U2000, U1700, U1400, and U1100. **Players may play up one section for a \$25 play-up fee (can't play up more than one section).** The official September US Chess over-the-board regular ratings are generally used for section eligibility, pairings, and prize eligibility. Unofficial US Chess over-the-board regular ratings, US Chess online regular ratings, or converted foreign ratings are generally used for players with no official US Chess over-the-board regular rating. The late arrival default time is 60 minutes in all sections.

TIME CONTROL: G/100;inc30 (one-hour forty minutes per player with thirty seconds added for each move).

SUPPLIES: PLAYERS MUST SUPPLY THEIR OWN BOARD, SET, AND INCREMENT CAPABLE DIGITAL CLOCK FOR TOURNAMENT PLAY. A limited number of sets and boards will be available to purchase at the tournament for \$20 each. Players are responsible for knowing how to set their clock. Notation sheets and pencils provided.

SCHEDULE: A players meeting is at 9:45am on Saturday. There is no need for registered players to “check-in” prior to round 1. The rounds start at 10am and 3:30pm each day.

RATED: All the sections are US Chess regular rated. The 2000+ and U2000 sections are also FIDE standard rated.

ENTRY FEE: \$130 if registered by Friday, August 15; \$140 from August 16 until Friday, September 4 at 1:00pm PDT. Free entry for GM's and IM's with up to \$130 deducted from any prize won. US Chess membership is required for all players. Oregon Chess Federation membership is required for Oregon residents.

PRIZES: \$18,000 total prize fund based on 200 players. The prize fund is adjusted proportionally if there are a different number of players, but \$9000 is guaranteed.

2000+ Section: 1st-\$2150, 2nd-\$1500, 3rd-\$1150
U2150: 1st-\$550, 2nd-\$400, 3rd-\$250

U2000 Section: 1st-\$850, 2nd-\$550, 3rd-\$400
U1850: 1st-\$550, 2nd-\$400, 3rd-\$250

U1700 Section: 1st-\$850, 2nd-\$550, 3rd-\$400
U1550: 1st-\$550, 2nd-\$400, 3rd-\$250

U1400 Section: 1st-\$850, 2nd-\$550, 3rd-\$400
U1250: 1st-\$550, 2nd-\$400, 3rd-\$250

U1100 Section: 1st-\$850, 2nd-\$550, 3rd-\$400
U950: 1st-\$550, 2nd-\$400, 3rd-\$250

Unrated players are eligible for all prizes in their section except the U950 prizes in the U1100 section. Prizes are combined and/or split if there is a tie. Players winning \$600 or more must complete an IRS form with their Social Security number before receiving their prize. Foreign players may be subject to withholding taxes. Prizes are paid via check or PayPal.

QUALIFIERS: The 2000+ section is a qualifier for both the Championship and Challengers sections of the Oregon Closed. All the sections are qualifiers for the Oregon Scholastic Chess Federation (OSCF) State Championship.

LOCATION: Holiday Inn Portland Airport, 8439 Columbia Blvd, Portland, OR 97220. There is free parking in the hotel parking area. Hotel rooms for any of the nights of September 4- September 8 are available at a special chess rate of \$84 plus tax per night for single or double rooms. The hotel chess rate is not guaranteed to be available after July 30, or even earlier if the room block is sold out. After the room block is sold out, the rate increases to \$99 plus tax per night. Use [this link](#) or call 1-888-465-4329 to reserve a room. If reserving by phone, use the following group SRP code: CHS.

REGISTRATION: Register online at onlineregistration.cc (no mailed or on-site registrations are allowed). **The deadline to register is Friday, September 4 at 1:00pm PDT.** Email support@oregonchessfed.org if you encounter any issues while trying to register online, need to withdraw after having already registered, or are unable to pay the entry fee online via credit card, debit card, or PayPal.

TOURNAMENT RULES: The FIDE rules are used in the 2000+ and U2000 sections while the US Chess rules are used in the U1700, U1400, and U1100 sections. The following applies to all sections: **1) Players are not allowed to have a phone or other electronic device capable of chess analysis or communication on their person during their games.** Any such device a player has with them must be turned off and stored in the player's bag (backpack, chess bag, etc.). The penalty for possessing such a device is at the discretion of the chief tournament director. **2) You must let the tournament staff know at least thirty minutes prior to the start time of the next round if you decide to withdraw from the tournament or skip that round.** If you decide to withdraw or skip a round and are not on-site, send us an email to support@oregonchessfed.org letting us know. Any player who forfeits a game without a valid reason in the judgement of the chief tournament director will not be allowed to play in the Oregon Open next year.

SIDE EVENTS: Blitz – starts at 8:30pm on Saturday, September 5. See detailed information at oregonchessfed.org.

Oregon Junior Open: – September 5-6, see <https://chessa2z.org/event/oregon-junior-open-2026/>

QUESTIONS: Send an email to support@oregonchessfed.org if you have any questions.

TOURNAMENTS



venue & mail

**7212 Woodlawn Avenue NE
Seattle, WA 98115**

info & events calendar

www.seattlechess.club

club & tournament inquiries

contact@seattlechess.club

Wednesdays are for casual
play. Come anytime 7-11pm.
It's free!

July 3, 10, 17, 24 (Fri.)

Hot at Hades

One U.S. Chess-rated round per night, 4 rounds per month, at 7:30pm.
Time control: 40 moves in 90 minutes w/10sec. increment, then sudden death 60 minutes w/10sec. increment. SCC members free, \$5/night others. Play in any or all rounds! **Sign up** at contact@seattlechess.club.
Venue: Seattle Chess Club, 28 players max.

July 18 (Sat.)

July Quads

3-round round-robin. 4-player sections by close rating. **Time control:** Game/85 + 10-sec. increment. **Entry fee:** \$15 (+ \$20 day membership for non-SCC). Prepayment required. **Prizes:** winner of each 4-player quad wins free entry to next Quads played within 3 months. **Check-in:** 9:15-9:45am. **Rounds:** 10am, 2 & 6pm. **Byes:** 0 – must play all 3 rounds! **Venue:** Seattle University, Sinegal Bldg. room 100. US Chess rated, US Chess membership req'd. **Sign up:** <https://nwchess.com/OnlineRegistration/>.

July 27 (Mon.)

Simul with GM Samy Shoker

A 1-hour lecture followed by a 3-hour clock simul with GM (and chessboxer!) Samy Shoker. Lecture at 6pm, simul at 7pm. 14 simul players max, 20 for lecture. **Venue:** Seattle Chess Club. Details on our events calendar. **Sign up** at contact@seattlechess.club.

July 31 (Fri.)

Fifth Friday G/15

Time Control: Game/15, no inc. 4 or 5 rounds depending on turnout. US Chess Quick rated. SCC members free, \$5/night others. 7:30pm start. **Sign up** at contact@seattlechess.club. **Venue:** Seattle CC, 28 players max.

August 8-9 (Sat.-Sun.)

Seafair Chess Classic

See below.

Coming up:

- **August Quads** – August 1; tentative, 2B confirmed
 - **SCC Masters tournament** – September 5-7; details to follow
 - **SCC Fall Open** – September 26-27; tentative, 2B confirmed
- Check our events calendar periodically for confirmed dates.*

SEAFAIR CHESS CLASSIC

AUGUST 8 - 9, 2026

A 5-round Swiss in 3 sections – Championship, Reserve (U1800) & Rising/Unrated (U1200)

All sections USCF rated, Championship section also FIDE rated

PRIZE FUND: \$5,500 BASED ON 120 PAID ENTRIES

SEAFAIR BLITZ CHAMPIONSHIP

AUGUST 9, 2026 (approx. 6pm after main tournament)

A 7-round Single Swiss in 1 section. FIDE and USCF rated

PRIZE FUND: \$500 BASED ON 50 PAID ENTRIES

Both events at Embassy Suites Hotel SeaTac Airport, 15920 W. Valley Hwy, Seattle, WA 98188

Details and registration info at <https://nwchess.com/calendar/2026%20Seattle%20Chess%20Classic.pdf>

43rd Annual Reno Western States Open

An American Classic and Heritage Event

Oct 2-4 or Oct 3-4, 2026, 3 Day or 2 Day Schedule

US Chess
150 GPP (Enhanced)

\$27,500!! (b/275)

\$17,000!! (Guaranteed)

F.I.D.E. Rated
OPEN Section

NEW LOCATION: J Resort Casino Hotel, 345 N. Arlington Avenue, Reno, NV 89501

Downtown Reno, formerly Sands Regency Casino Hotel

6 Rd Swiss ♦ 6 Sections ♦ 40/2, Game/1 - d5 ♦ (Open Section) 40/2, Game/55 - d5 ♦ 2 Day (Rds 1-3) G/1 - d5

Open Section, F.I.D.E. Rated (2200 & above) EF: \$194, (2000-2199) \$250, (1999/below) \$300; GMs and IMs free but must enter by 9/4 or pay late fee at door. Guaranteed Prizes; (1-7 in Open Section plus 1/2 of all other prizes).

Open Section \$2,000 - 1,000 - 900 - 800 - 700 - 600 - 500, (2399/below) \$1,000 - \$500, (2299/below) \$1,000 - \$500 (If there is a tie for 1st then a playoff for \$100 out of prize fund plus trophy).

Section Expert	(2000-2199)	EF: \$194 (2-day EF: \$190)	\$2,000-1,000-500-300-200
Section "A"	(1800-1999)	EF: \$193 (2-day EF: \$190)	\$1,800-900-500-300-200
Section "B"	(1600-1799)	EF: \$192 (2-day EF: \$190)	\$1,700-800-400-300-200
Section "C"	(1400-1599)	EF: \$191 (2-day EF: \$190)	\$1,500-700-400-300-200
Section "D/Under"	(1399-below)	EF: \$180 (2-day EF: \$190)	\$1,000-500-300-200, (1199/below) \$400-200-100

Top Senior (65+) - \$200; Club Championship - \$600 - 300.

Wed. 10/30: 7:00 pm - GM Sergey Kudrin Clock Simul w/ complete analysis of YOUR Game (Only \$30!-bring clock)

Thursday 10/1: 6 - 7:15 pm - Lecture by IM John Donaldson (FREE)

7:30 pm - GM Nick de Firmian Simul (\$20); Blitz (G/5 d0) Tourney \$25 - 80% of entries = Prize Fund

Saturday 10/3: 3 - 4:30 pm - Game/Position Analysis - IM John Donaldson (FREE)

♔ ♚ ♛ ♜ ♝ ♞ ♟ **Main Tournament** ♠ ♡ ♢ ♣ ♤ ♥ ♦ ♧

Registration: Thursday (10/1) 5 - 8 pm. - Friday (10/2) 9 - 10 am. - Saturday (10/3) 9 - 10 am.

Round Times: (3-day Schedule) Friday - 12 Noon - 7 pm; Saturday - 10 am - 6 pm; Sunday - 9 am - 4 pm
(2-day Schedule) Sat.- Rd 1 - 10:30 am, Rd 2 - 12:45 pm, Rd 3 - 3 pm, Rd 4 merge with regular schedule - 6 pm

For more information: Call, Write or E-mail Organizer and Chief TD, N.T.D. Jerome (Jerry) Weikel,
(H) 775-747-1405 OR (Cell) 775-354-8728 • 6578 Valley Wood Dr., Reno, NV 89523 • wackykl@aol.com

Room Reservation: Call J Resort Reno, 1-866-386-7829, Group Reservation Code: Westernchess1026

Hotel Rates: Sunday-Thursday \$104.01, Friday-Saturday \$138.06, all taxes and fees included. Reserve by 9/18

For TLA and to confirm receipt of entry see player list at: www.renochess.org

ENTRY FORM - 43rd Annual Western States Open - Reno, Nevada - Oct 2-4 OR Oct 3-4, 2026

Mail to: WEIKEL CHESS, LLC, 6578 Valley Wood Drive, Reno NV 89523

PRINT Name _____ Phone# _____ USCF Rating _____

Street Address _____ City _____ State _____ Zip _____

USCF ID# _____ Exp. Date _____ All pre-registered players check in at TD desk on arrival.

ENTRY FEE ENCLOSED: (CIRCLE SECTION AND FEE BELOW) BYE(S) REQUESTED FOR ROUND(S): (circle)

1	2	3	4	5	6
---	---	---	---	---	---

----- OPEN SECTION ----- EXPERT "A" "B" "C" "D/Under" UNRATED

GM/IM • Masters • 2000-2199 • 1999-Below 2000-2199 1800-1999 1600-1799 1400-1599 1399-Below Free With

3-Day EF Free • \$194 • \$250 • \$300 \$194 \$193 \$192 \$191 \$180 USCF Dues

2-Day EF \$190 \$190 \$190 \$190 \$190 USCF Dues

FEES ALSO ENCLOSED FOR:

- \$30 Wed. Clock Simul GM Kudrin
- \$20 Thu. Simul GM de Firmian
- \$25 Thursday Blitz (G/5 d0)
- \$20 Discount - Sr 65+ Age _____

POSTMARK BY September 4, 2026. Add \$11 after 9/4. Add \$22 on site.

Do not mail after 9/25 or email after 9/29. Make check / m.o. payable to WEIKEL CHESS LLC or provide credit card info and signature. \$7 service charge on credit card entries. Visa Master Card Am.Ex
Name on Credit Card _____
Expiration Date _____ ZIP Code _____
Credit Card# _____ CVV Code _____
Signature _____

- Check Enclosed
- Charge My Card

TOTAL FEES: \$ _____

